

FREE

ISSUE 130

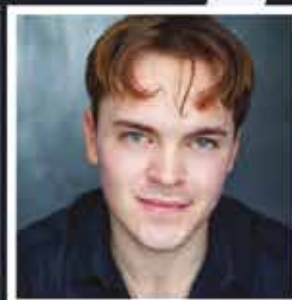
just

BEVERLEY

IT'S YOUR MAGAZINE

EAST RIDING THEATRE PRESENTS

The Snow Queen



WRITTEN BY ANNA WHEATLEY
ADAPTED FROM THE HANS CHRISTIAN ANDERSEN TALE
DIRECTED BY RICHARD AVERY

ert

EAST
RIDING
THEATRE



LAIRGATE
FINANCIAL

PROUD SPONSORS

NEWS, WHAT'S ON, LIFESTYLE, FEATURES, PUZZLES, PHOTOS & MORE

Your Partners in Payroll

Are you worried about getting your payroll right? It's time for change.
Outsource your payroll today and be rest assured everything is taken care of!



**Improve business performance -
outsource your payroll**

Payroll Outsourcing Benefits

- ✓ Cost reduction
- ✓ Better staff productivity
- ✓ High accuracy & reliability
- ✓ e-payslips direct to employees via our app
- ✓ A named personal contact
- ✓ Added value services including HR & Benefits in Kind
- ✓ Useful online information

to arrange a **FREE** meeting
call us on: 0845 308 2288
or visit
www.stipendia.org.uk



Stipendia Payroll Solutions



@StipendiaPay

6/7 EAST RIDING THEATRE - THE SNOW QUEEN



5 KIERAN'S OLYMPIC DREAMS



5 LISA GROUP



10 CHRISTMAS TREE FESTIVAL



23 LEWIS NORTEN



24 THIRTY YEARS OF MKM



35 DICK WHITTINGTON



Contributors:

Julian Minshall, Olivia Peace, Rich Manville, Louise Barrett, Andrew Cooper, Julie Dowding, Sam Drinkall, Fran Dunning, ert, Josh Harrison, Emma Hetherington, Amanda McConnell, Navigation Wealth Management, Jayne Morgan, Colin Raynor, Ian Richardson, Marnie Taylor, Ed Thompson, Nathan Wilson.

REMEMBER! If you see examples of anti-social behaviour or other types of low-level crime, do report it to the appropriate authorities. **POLICE - Emergency 999, Non-urgent 101.**

ANTI-SOCIAL BEHAVIOUR (East Riding of Yorkshire Council) - 01482 393939.

The magazine is available from outlets in Beverley and surrounding areas.

Disclaimer - All the information provided was correct at the time of going to print.

ISSN 2754-9216



Please pass your Just Beverley on or recycle it responsibly.
Printed by: Jadan Press.

www.justbeverley.co.uk

just BEVERLEY

NOVEMBER LETTER FROM THE EDITORS



November, the start to the festive season, with bonfire celebrations to get people in the festive mood, starting on 7th Nov with fireworks at Beverley Rugby Club. Have a look at the What's On page, with a whole range of events planned which includes the

Flemingate Christmas Lights Switch On, on Friday 14th November.

This year the fun starts for all the family, with Talegate Theatre Productions "Dick Whittington", panto characters performing and inviting you to get your tickets for the production at Parkway Cinema and Theatre, or enter the competition on page 35 for free family tickets. On Sunday 23rd November, (TBC) the Traditional Switch On of the Market Cross lights with local school choirs start at 4pm (times to be confirmed), so wrap up, stay warm and have a great November.

Julian.



Happy November readers, I hope you are looking forward to a great festive season ahead. We can officially snuggle up, watch a Christmas film, sort our Christmas lists out and prepare for the festive season, start thinking about

New Year's resolutions we made, plan ahead and get our Christmas gifts sorted!!

The Flemingate Switch on, Traditional Switch On, panto characters, Christmas films, plays and Christmas songs and carols, it's finally time to go all out and get into the Christmas spirit. Plan ahead so you do not miss out. As always, wrap warm, when you give a smile you get a smile, have a great time with the build up.

Enjoy your November. Enjoy the issue.

Olivia.



O2
Media Awards
'Community Publication Award'
Shortlisted Nominee
2017 & 2018



REYTA
'Best Newcomer'
Award Nominee 2016

GET IN TOUCH WITH US:

Website: justbeverley.co.uk

Email: info@justbeverley.co.uk

Telephone: 01482 679947

Facebook: facebook.com/justbeverley

If you would like copies for your business to distribute to staff and customers, call Just Beverley on **01482 679947.**



BEVERLEY CHRISTMAS LIGHTS SWITCH ON, MARKET CROSS

At the time of going to print the traditional Christmas lights switch on at the Market Cross, is Sunday 23rd November from 4pm (TBC).

In addition the memory tree will be manned as noted in memory of our loved ones at Christmas.

The Christmas tree dates are:

Sunday 23rd November 2025 - Memory Tree Lighting Ceremony.

Saturday 29th November 2025 - Memory Tree Manned.

Saturday 13th December 2025 - Memory Tree Manned.

Sunday 14th December 2025 - Festival of Christmas & Tree Manned.

Saturday 20th December 2025 - Memory Tree Manned.

Friday 2nd January 2026 - Remove Labels and deliver to Minster.

These may change depending on availability of volunteers.



DOG CALENDAR 2026

Tim Hart, Beverley Barge Preservation Society fame, is at it again!! A number of people will remember Tim from his "dog" calendar which he produced last year to raise money for Aalia, who was suffering from a rare cancer.

Tim commented, "The calendar portrayed 57 dogs and I'm proud to say that through the generosity of the people of Beverley and the East Riding in general, as well as from as far afield as Cornwall, Scotland, Spain, London, Kent, Northumberland, Switzerland amongst other far flung places, I managed to raise £4,067".

Tim has created another calendar for 2026 with 100 dogs, titled "Tim The Treat Man's Doggy Calendar". They are now available to purchase directly from Tim, so get your orders in quick, before they all go to a new home.



Most of the dog owners whose dogs appear in next year's calendar, also know that Tim is part of the Beverley Barge Preservation Society. Tim reminds people that he is on Syntan most Tuesdays and Fridays from 9am to 12pm where he will have a stock of calendars available at £10 each.

Alternatively contact: **Mobile: 07850551433. Email: timhart5@sky.com**
All the money raised will be going to Young Lives vs Cancer:
www.younglivesvscancer.org.uk

Photo Credit - Mike Smith - The image is of Tim Hart feeding Mike Smith's Golden Girls.

SSAFA - 9TH NOVEMBER REMEMBRANCE SUNDAY

Michael Menzies-Baird, Vice Chair of SSAFA, the Armed Forces charity, commented, "Remembrance Sunday 9th November 2025 is an important day for all service personnel and veterans. SSAFA play a vital role in supporting all service personnel, veterans, and their families, particularly around this solemn occasion".

Remembrance Sunday is held each November, it honours those who gave their lives in military service. For SSAFA, it's a time to reflect on its long history of care and commitment since 1885, providing practical, emotional, and financial assistance to members of the Armed Forces community.



SSAFA are encouraging people to get involved as Volunteers to show support across the country and if they can to take part in Remembrance events, laying wreaths and representing the charity at services and parades and continue the work throughout the year or just to be in attendance. During this period SSAFA raises awareness of the ongoing challenges faced by veterans and their loved ones, ensuring that remembrance extends beyond a single day.

Tel: 01964 552 837. Email: eyorks.branch@ssafa.org.uk
Website: ssafa.org.uk

ssafa | the
Armed Forces
charity

Your Veterans Need You!

SSAFA urgently need a Branch Secretary, admin support and caseworkers.

The Branch Secretary serves as key figures in supporting those who have served their country, ensuring they receive the assistance and resources when in need after protecting our country.

It's a role that requires dedication, compassion, and a commitment to serving others, offering immense personal satisfaction and the opportunity to positively impact the community.



If you think you can help, please get in touch:

Tel: 01964 552 837

Email: eyorks.branch@ssafa.org.uk

Website: ssafa.org.uk

HULL4HEROES, LISA GROUP BEVERLEY

This is a brand new initiative for Beverley, the new GEO and LISA group offers a safe place for military personnel and families.

Through regular meetings and conversations, the initiative aims to cultivate camaraderie, offer valuable insights, and tackle the unique challenges faced by military members. This fosters a robust network of individuals who can uplift and inspire one another as they navigate their lives after military service. Meetings will be held every two weeks, the next being Wednesday 12th November.

At the moment the opportunity is open for women only as a first step. Once the women's group has momentum and is up and running, the intention is to create a men's group.

Location: The Beverley Barge Preservation Society on Syntan, Beckside, Beverley, HU17 0GG. 6pm. 24hr support.
Tel: 01482 534483. www.hull4heroes.org.uk



SONGS OF HOPE AND LIGHT: MACMILLAN CHRISTMAS CONCERT

Beverley Minster will once again host a very special evening this December as the Macmillan Christmas Concert 2025 returns, filling this beautiful, medieval church with music, reflection, and festive spirit - all set amongst the breathtaking display of 150 uniquely decorated Christmas trees from the Minster's renowned Christmas Tree Festival.

At the heart of the concert will be a choir made up of people whose lives have been touched by cancer. Each singer brings with them not only their voice but also their personal story, making this a deeply moving and meaningful performance.

Their songs will celebrate hope, resilience, and community, reminding everyone of the vital support Macmillan provides to those living with cancer and their families.

They'll be joined on the night by a line-up of other talented local musicians - from gifted solo singers to lively a cappella groups - offering a rich mix of music and festive entertainment.

And guiding the evening with warmth and humour will be firm favourite and much-loved broadcaster, Phil White, ex-BBC presenter, who returns to host this year's concert.

Date: Tuesday 9th December, 7pm.

Venue: Beverley Minster, East Yorkshire.

Tickets: £15, available online: <https://macmillan-org.enthouse.com/cf/beverley-christmas-concert-2025> or from the Beverley Tourist Information Office in Champney Road.



COMMONWEALTH GAMES GLASGOW 2026 INSPIRES KIERAN

Beverley's Kieran Grant, British 4x Gold Medalist, International Swimming Competitor and Independent Swimming Instructor has built up a reputation in swimming circles. When he sets his goals it is rare for him not to achieve them, doing things his way!

Kieran, having spent many years as a teenager in the pool and developing his natural talent winning at a high level, decided to step back for a reset, the rest and recap has ignited that spark again.



Kieran commented, "The last 18 months, I needed time away from the sport to discover me, have time for me and understand my needs and wants. It gave me time to reflect, to set up my swimming school and to reignite the flame to win again. Set my target for the Commonwealth Games 2026 in Glasgow starting next July".

Maverick swimmer Kieran added, "Having set my goals, 50m Fly and Freestyle, I am in the right headspace preparing for the Commonwealth Games. My times are good and on target, I now have the dedication, discipline and with my specific schedule (not like others), I know with the right nutrition, training sessions and flexibility exercises specific to my needs, and minor tweaks on my technique, I will be there".

Keiran hopes to inspire through his swimming programme to get people into the pool to learn to swim and feel safe in the water.

While their journey is just to swim, his journey is to inspire others in the community through ambition and excellence and an understanding of the individual.

"We are all different"! Physically and mentally, we respond to different actions."

Keiran is certainly one to believe in his own potential and understands the value of hard work. Having got back on the winning podium in Regional events, he now looks to represent England in Glasgow, ultimately, 2026 is Keiran's time as he embarks on his journey, reminding everyone that dedication and teamwork can transform dreams into inspiring realities.

After the Commonwealth Games 2026, maybe Olympic dreams in 2028!!

Contact Kieran:

Tel: 07526 405423

Email: pureswimming24@gmail.com

Instagram: [pure_swimming](https://www.instagram.com/pure_swimming)

Facebook: [pureswimming](https://www.facebook.com/pureswimming)



Join ERT for another magical Christmas show!

The Snow Queen, from 4th - 27th December

Written by Anna Wheatley

Adapted from the Hans Christian Andersen Tale

Directed by Richard Avery

Best friends Gerda and Kai bring warmth to the Danish Winter and to each other's lives. They spend their days tending to their rose garden, solving maths problems, competing to find the biggest words and listening to the fantastical tales spun by Kai's grandmother.

But now the warmth they have created for themselves may be under threat from the icy reach of The Snow Queen and when Kai suddenly and mysteriously disappears, timid Gerda finds herself having to be braver than she ever thought possible in her efforts to find him.

Join Gerda in her adventures as she crosses Scandinavia wrestling with bandits and befriending a reindeer. Will she be able to summon the strength and love within herself to rescue Kai and to melt the ice that grips his heart? Suitable for ages 5 to 105! A heart warming Winter tale, fun for all the family.

Book your tickets here today

Tel: 01482 874050

Email: boxoffice@eastridingtheatre.co.uk

Or Book Online - www.eastridingtheatre.co.uk

We have a Baby Friendly Performance on the 10th December 2.30pm and a Reduced Capacity Performance on the 17th December 2.30pm.



Jennifer Lane



Lex Stephenson



Olivia Hewitt-Jones



Jo Patmore





EAST RIDING THEATRE PRESENTS

The Snow Queen

4th - 27th December 2025

£30.00 - £15.00



ert

EAST
RIDING
THEATRE

WRITTEN BY ANNA WHEATLEY
ADAPTED FROM THE HANS CHRISTIAN ANDERSEN TALE
DIRECTED BY RICHARD AVERY



LAIRGATE
FINANCIAL

What's On?

ert

EAST
RIDING
THEATRE

Barbara
The Dazzling Debut Album Tour

18.09	SOUTHAMPTON	Harbour Front Arts Centre	15.10	BIRMINGHAM	The Night Owl
19.09	SHOREHAM BY SEA	Aspeton Arts Centre	16.10	NEWCASTLE	Clay
20.09	ALDERSHOT	West End Centre	17.10	MANCHESTER	Kenneth Robinson
21.09	CARDIFF	Arquety	18.10	LEEDS	Old Warden
03.10	MASHAM	Ston Hall	19.10	GLASGOW	Audie Glasgow
09.10	PUTNEY	Half Moon	20.10	BEVERLEY	East Riding Theatre

Tickets at: WWW.BARBARATHEATRE.COM or WWW.AQUATYLE.CO.UK

13TH NOVEMBER
£23.00

Beverley Theatre Company presents
A play by Anthony Murgrave and Neville Storer

JACK THE RIPPER

- THE LEGACY -

19th to 22nd of November 2025

ert

East Riding Theatre, Beverley | Curtain up 7.30pm | £18 per ticket

Tickets available from eastridingtheatre.co.uk or in person from 10 Lord Roberts Road, Beverley, HU17 9BE or by phone 01482 834050

19TH - 22ND NOVEMBER
£18.00

Reni Harris
HOT CLUB TRIO

26TH NOVEMBER
£20.00





EVERY THURSDAY

(Doors open 9.30am)

Join us for a free brew and enjoy some great films on Beverley Parkway's Big Screen. Only £5 (or £6 for newer releases) with drink and biscuits included. Aimed at 55s & over. Films subject to change.

Thursday 6th November -

Springsteen: Deliver Me from Nowhere (£6)

Starring: Jeremy Allen White, Jeremy Strong, Paul Walter Hauser, Stephen Graham.

Grow

Starring: Golda Rosheuvel, Priya-Rose Brookwell, Nick Frost, Joe Wilkinson.

House of Mirth

Starring: Gillian Anderson, Eric Stoltz, Laura Linney, Dan Aykroyd, Jodhi May.

Thursday 13th November -

War Horse

Starring: Emily Watson, David Thewlis, Peter Mullan, Niels Arestrup.

Regretting You (£6)

Starring: Allison Williams, McKenna Grace, Dave Franco, Mason Thames.

The Choral (£6)

Starring: Ralph Fiennes, Roger Allam, Mark Addy, Alun Armstrong.

Thursday 20th November -

Regretting You (£6)

Starring: Allison Williams, McKenna Grace, Dave Franco, Mason Thames.

The Choral (£6)

Starring: Ralph Fiennes, Roger Allam, Mark Addy, Alun Armstrong.

Now You See Me: Now You Don't (£6)

Starring: Jesse Eisenberg, Woody Harrelson, Dave Franco, Isla Fisher.

Thursday 27th November -

Nuremberg (£6)

Starring: Russell Crowe, Rami Malek, Leo Woodall, John Slattery, Mark O'Brien.

The Running Man (£6)

Starring: Glen Powell, William H. Macy, Lee Pace, Emilia Jones, Michael Cera.

Now You See Me: Now You Don't (£6)

Starring: Jesse Eisenberg, Woody Harrelson, Dave Franco, Isla Fisher.

These are the films scheduled to open in November - all are subject to change. Check out up-to-date cinema listings at www.justbeverley.co.uk/cinema-times



A Paw Patrol Christmas

From 7th November
When Santa gets ill, Christmas is cancelled in Adventure Bay.



The Choral

From 7th November
Starring: Mark Addy, Alun Armstrong, Robert Emms, Ralph Fiennes.



Predator: Badlands

From 7th November
Starring: Elle Fanning, Dimitrius Schuster-Koloamatangi.



The Running Man

From 14th November
Starring: Glen Powell, Josh Brolin, Lee Pace, Katy O'Brian, William H. Macy.



Christmas Karma

From 14th November
Starring: Charithra Chandran, Kunal Nayyar, Hugh Bonneville, Eva Longoria.



Now You See Me: Now You Don't

From 14th November
Starring: Jesse Eisenberg, Woody Harrelson, Isla Fisher.



Nuremberg

From 14th November
Starring: Russell Crowe, Rami Malek, Leo Woodall, John Slattery, Mark O'Brien.



Wicked: For Good

From 21st November
Starring: Cynthia Erivo, Ariana Grande, Jeff Goldblum, Michelle Yeoh.



The Thing With Feathers

From 21st November
Starring: Benedict Cumberbatch, Richard Boxall, Henry Boxall, Eric Lampaert.

YOUR LOCAL INDEPENDENT CINEMA



JOIN US FOR SOME GREAT FILMS AND BIG SHOWS THIS AUTUMN

THE CHORAL

1916. As war rages on the Western Front, the Choral Society in Ramsden, Yorkshire has lost most of its men to the army. The Choral's ambitious committee, determined to press ahead, decides to recruit local young males to swell their ranks. They must also engage a new chorus master, and despite their suspicions that he has something to hide, their best bet seems to be Dr. Henry Guthrie.

From 7th November.



PREDATOR: BADLANDS

The newest entry in the "Predator" franchise is set in the future on a remote planet, where a young Predator, outcast from his clan, finds an unlikely ally in Thia (Elle Fanning) and embarks on a treacherous journey in search of the ultimate adversary.

From 7th November.



CHRISTMAS KARMA

From visionary British director Gurinder Chadha (Bend It Like Beckham, Blinded By The Light), CHRISTMAS KARMA sees ones of history's greatest novels - Charles Dickens' A Christmas Carol transformed into a joyous, colourful, feel-good Christmas musical that celebrates modern-day London and all of its communities and cultures.

From 14th November.



NUREMBERG

In the immediate aftermath of the Second World War, as the world grapples with the unveiled horrors of the Holocaust, U.S. Army psychiatrist Lt. Col. Douglas Kelley is assigned the extraordinary task of assessing the mental state of Hermann Goring, the notorious former Reichsmarschall and Hitler's second in command.

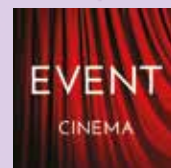
From 14th November.



WICKED: FOR GOOD

Last year's global cinematic cultural sensation now reaches its epic, electrifying, emotional conclusion in Wicked: For Good. As an angry mob rises against the Wicked Witch, Glinda and Elphaba will need to come together one final time. With their singular friendship now the fulcrum of their futures, they will need to truly see each other, with honesty and empathy, if they are to change themselves, and all of Oz, for good.

From 21st November.



Event cinema offers something a little different to mainstream films. Live and pre-recorded shows beamed in via satellite from all over the world. Here are the latest live streams that you can enjoy on the big screen at Parkway Beverley.

Wednesday 5th November, 7.15pm -

RBO: La Fille Mal Gardee

Lise, the only daughter of Widow Simone, is in love with the young farmer Colas, but her mother has far more ambitious plans for her.

Saturday 8th November, 6pm -

The MET: La Boheme

With its enchanting setting and spellbinding score, the world's most popular opera is as timeless as it is heartbreaking.

Thursday 13th November, 7pm -

John Cleese Packs It In

185-year-old Man, 5 Countries, 16 Cities, 23 shows, 6 weeks. Will he make it home - or is this the end of the road?

Saturday 22nd November, 6pm -

The MET: Arabella

On November 22, Strauss' elegant romance brings the glamour and enchantment of 19th-century Vienna to cinemas worldwide in a sumptuous production.

Tuesday 25th November, 7.15pm -

RBO: Cinderella 2025

Stuck at home and put to work by her spoiled Step-Sisters, Cinderella's life is dreary and dull. Everything changes when she helps a mysterious woman out...

Thursday 27th November, 7pm -

NT Live: The Fifth Step (15)

Olivier Award-winner Jack Lowden (Slow Horses, Dunkirk) is joined by Emmy and BAFTA-winner Martin Freeman (The Hobbit, The Responder) in the critically acclaimed and subversively funny new play by David Ireland.

Saturday 29th November, 7pm &

Sunday 30th November, 1pm -

Westlife Live at the Royal Albert Hall

Experience an unforgettable celebration as for the first time ever, Westlife take centre stage at London's iconic Royal Albert Hall for a fun-filled night of nostalgia honouring 25 magnificent years of chart-topping music.

THE UK'S LARGEST CHRISTMAS TREE FESTIVAL RETURNS TO BEVERLEY FOR 2025

This December, Beverley Minster will be transformed yet again into a sparkling forest of festive creativity.

From Friday 5th to Sunday 14th December, visitors can wander through more than 150 beautifully decorated Nordman firs, each one telling its own unique story.

The trees are created by local schools, charities, community groups and businesses, making the festival a true celebration of Beverley's community spirit.

Last year's winning tree, designed by local charity, The Flower Box - covered entirely with recycled and rescued flowers - captured hearts with its beautiful decorations and sustainable message. This year's festival continues the theme of creativity and care, with many groups already planning their moving and imaginative displays.

When the festival ends, the trees continue their journey. Many are taken home by the groups who decorated them or donated to spread more festive cheer around Beverley.

After Christmas, many will make their way to Ings Park Alpacas in North Cave, where they take on a new life as part of the animals' Winter diet - a fittingly eco-friendly final act.

Alongside the dazzling display of trees, visitors can enjoy:

- Hot chocolate, mulled wine and mince pies served among the trees.
- A new festive sledge designed especially for perfect family photos.
- Live music and choirs.
- Workshops led by Beverley Flower Club, where adults can create their own fresh festive decoration to take home (£26 per person, booking required).

The festival runs daily from Friday 5th December to Sunday 14th December. Entry: £5 per adult; accompanied children go free.

Detailed opening times, including late-night openings and early morning Quiet sessions, can be found online: www.beverleyminster.org.uk
Email: communications@beverleyminster.org.uk

Decorators' Day - Thursday 4th December (restricted access to the public).



A festive poster for the Christmas Tree Festival 2025. The background is black with white snowflakes. At the top, there's a row of colorful Christmas ornaments (red, green, white) with gold stars. The word 'Christmas' is written in a large, elegant, gold cursive font. Below it, 'TREE FESTIVAL 2025' is written in bold, gold, block letters. A red banner with white text reads 'Friday 5th - Sunday 14th December'. Below that, 'AT BEVERLEY MINSTER' is written in bold, gold, block letters. The text 'Wander amongst our 150 beautifully decorated trees, enjoy live choirs, sip steaming hot chocolate, and get crafting at festive workshops. Children can take part in a fun Christmas quiz, - and they won't want to miss the brand new Santa sleigh, perfect for family photos. A magical way to celebrate Christmas in Beverley's most atmospheric setting.' is written in white. A gold-bordered box contains the following text: 'Doors open each day at 10am with final entry at 4.15pm', 'Late night opening: 10th & 11th December. Last entry 7pm', 'Quiet Sessions: 10th & 11th December. Doors open at 9am', and 'Entry: Adults £5, Accompanied children FREE'. At the bottom, there's a row of gold, stylized Christmas trees.

EVOLVE - SETTING A NEW LEVEL IN PERFORMANCE

"Music is the food of Love". Professional musician Mark Speight, originally a drummer involved in several projects in the North East, and drummer for many internationally acclaimed artists, recently married local lady Lisa, and settled in Beverley.

Never one to rest on his laurels, Mark decided that having spent a lifetime travelling as a touring musician for major artists, now settled into life in Beverley with his wife Lisa to bring his experience to the local arena.

The expression "music is the food of love" is the opening line of Shakespeare's play, Twelfth Night, and suggests that music can nourish and enhance feelings of love. The statement holds true as he was persuaded to put a band together for his own wedding which went better than anticipated and realised that he could "evolve", bring music and the food of love to other peoples weddings, getting their married life off to the perfect start, bringing music to everyone's ears, and setting the memories for a lifetime of love. Mark set about forming a band locally to do functions and weddings around the country, and took time for the project to "Evolve".



together for his wedding, "A couple of months before the wedding I honestly thought it would be too difficult to arrange and I also wanted it to be of a very high calibre. I met Harry Wallace and was so impressed with his talents. I was inspired, there was chemistry, the gig we performed at the wedding went brilliantly and I then looked to the future. Looking forward and following discussions with Harry, I decided to contact my go to bass player Kiko and after listening to Harry, agreed that we had the beginning of something special, a great group. We then looked locally for a guitarist and Mike, fitted in straight away."

The band, "Evolve", whilst in its infancy, is now setting Beverley and the East Riding alight with local performances, and are adding dates to play functions and weddings. Mark continued, "Original material is definitely on our minds for the future especially with Harry being so talented and so young at 21 years old, but to get our sound established and known, we have a varied eclectic set mix, one to suit the wedding vibe - music for all generations to set the stall for great memories and bring everyone together".

With the talent, creativity, and heart Mark has brought together, Evolve is set to become a defining voice in the local contemporary music scene, a band to watch out for and be part of everyone's future.

Evolve has four members:

Kiko Rivers - Bass guitar and vocals - he has played in several bands across Europe then later met Mark and formed a band with him. He played alongside Mark for 14 years, and Evolve is their latest venture.



Mike Boynton - Guitarist and vocals - He has produced and released his own original music and toured with bands for many years. As well as Evolve he currently produces music for TV & film.

Harry Wallace - Guitar and lead vocals - He does around 3 solo gigs every week. He has had the pleasure of performing to Simon Cowell and Pete Waterman as well as other big names over the years.

Mark Speight - Drums and vocals - He has played and recorded with many bands in the North East and made a name for himself as a musician. He got an early break at 23 and played with John Miles in his studio in Offerton Sunderland with Tina Turner on her warm up and arrangement sessions to her many British tours.

Evolve are live at Ferguson Fawsitt, Friday 28th November, 8.30pm. Tickets £6.
Email: markspeight1300@gmail.com
Or text 07813 065859.



The
Ferguson
Fawsitt



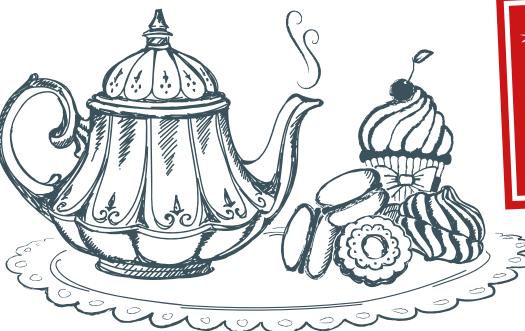
OPENING HOURS

MON: 12:00-LATE

TUE: 16:30-LATE

WED-SAT: 09:30-LATE

SUN: 12:00-22:00



WEDNESDAY TO SATURDAY:
AFTERNOON TEA 12PM to 5PM
www.fergusonfawsitt.co.uk
tel: 01482 526317

What's on at the Fergie

1st Thursday of the Month - Bingo from 2pm

4th Thursday of the Month - Live Music

1st Friday of the Month - Quiz Night from 8.45pm

Sunday 23rd November - Christmas Market, 10am-3pm

Thursday 27th November - Live Music, Murphy Ridge, 8pm

Friday 28th November - Evolve - Live Band, 8.30pm

OPEN
7 DAYS

CHRISTMAS MENU
AVAILABLE FROM
WED 3RD DEC - WED 24TH DEC
(EXCLUDING SUNDAYS)
2 COURSE £27.50 | 3 COURSE £34.95

FOOD HOURS

MON:
12:00-19:30

WED-SAT:
09:30-20:00

SUN:
12:00-18:30

LIVING TO AGE 100: HOW TO MAKE YOUR PENSION LAST LONGER

More of us are reaching our 100th birthdays than ever before. While a letter from the King may seem exciting, funding a long and comfortable retirement requires careful planning. We explore what you need to consider to ensure your pension savings can stretch across 35 years or more.

Prepare to live to 90, 100 or beyond: The number of people hitting the 100-year milestone has reached a record high. There were an estimated 12,500 women aged 100 or over in England and Wales last year, and an estimated 2,830 men, according to the ONS. The number of people in their 90s has also surged. Almost half a million (548,280) people are now in the 90-99 age bracket. About two-thirds of nonagenarians are female.

The first thing to do to prepare for a potentially long retirement is to work out what sort of income or nest egg you'll have when you stop work.

You can get a state pension forecast on gov.uk. Plus, use a pension calculator to see what you're on track to get from any personal and workplace pensions.

Next, consider increasing your pension contributions. If you get a pay rise or a new job, that's an ideal time to reassess whether you can bump up your contributions, even if it's just an extra 1% of your earnings. Your employer may also pay more into your pension if you increase your contributions. Boosting your pension now will put you in a stronger position for when you do retire and you're trying to manage your money.

How the number of nonagenarians and centenarians has surged over the past two decades.

Year	People aged 90 to 99	People aged 100 and over
2004	361,000	7,630
2014	484,150	12,600
2024	548,280	15,330

Source: Mid-year population estimates of the very old, England and Wales, ONS

Consider when you'd like to retire: The next thing to think about is when to retire. If you enjoy working and/or you'd like a few more years to build up a bigger nest egg, it could make sense to push your retirement date back.

Alternatively, you could "phase" your retirement by switching to part-time work and reducing your hours gradually. This means you can keep earning, continue paying into your pension, and have time for other things, like hobbies and spending time with family.

How to access your pensions in retirement: So, now you've retired, you'll need to consider how to draw money from your pensions. We can spend a third of our lives, if not more, in retirement, so our pensions can easily dwindle away if not taken care of, especially if you take out too much too soon.

To ensure your pension pot lasts as long as you do, the safest route is to buy an annuity. This pays

out a guaranteed income for life in exchange for your pension pot. However, this is an irreversible decision, and it means there is no money left to provide an inheritance for loved ones.

Some people like to mix income drawdown (where you keep the pension invested and withdraw money whenever you like) with annuities.

For example, you could buy an annuity with one pension pot to cover basic living costs, and have another one in drawdown where you use the cash to fund "extras" like holidays or a new kitchen.

Alternatively, you could use drawdown at the start of retirement, and buy an annuity later, at, say, age 80, if you'd prefer some regular, guaranteed income.

"Being as tax-efficient as possible is one of the best ways to make your money last": Think carefully about tax. Most savers can take 25% of their pension pots tax-free. One thing to consider is if you need to access all of your tax-free cash, which can be very tempting, but once outside of the pension it is much easier to spend.

If the pension scheme allows, rather than taking the tax-free cash as a lump sum, you could opt to have a quarter of each withdrawal tax-free while the remaining 75% is taxable.

Alternatively, you could use the lump sum to buy a 'purchased life annuity', which provides a guaranteed income, but you are only taxed on part of the income received. This can be useful



Achieve the future you want

We all imagine our future differently.

Whatever your goals, we believe there is value in taking advice from someone you trust. We will work with you to plan, grow and protect your financial future.

Let's start a conversation.

Navigation Wealth Management

01482 379504
navigationwm@sjpg.co.uk
www.navigationwm.co.uk



Navigation Wealth Management Ltd is an Appointed Representative of and represents only St. James's Place Wealth Management plc (which is authorised and regulated by the Financial Conduct Authority) for the purpose of advising solely on the group's wealth management products and services, more details of which are set out on the group's website www.sjp.co.uk/products. The 'St. James's Place Partnership' and the titles 'Partner' and 'Partner Practice' are marketing terms used to describe St. James's Place representatives.



if you don't need the full lump sum immediately and you're happy to swap it for a regular, tax-efficient income either for a fixed term or for the rest of your life. Being as tax-efficient as possible is one of the best ways to make your money last as long as possible, so taking holistic advice across all your assets can mean a significant amount of tax-free income each year.

How to create your ultimate retirement masterplan: It's exciting to think about finishing work and enjoying a nice, long retirement. We can help you maximise your savings and create a tax-efficient plan that can support you for potentially 30 or 40 years of retirement.

This includes providing an inheritance for loved ones and planning for care costs as well as budgeting for the fun stuff like holidays and hobbies. Contact Navigation Wealth Management on **01482 379 504** or visit our website at www.navigationwm.co.uk for more information.

The value of an investment with St. James's Place will be directly linked to the performance of the funds selected and may fall as well as rise. You may get back less than the amount invested.

The levels and bases of taxation and reliefs from taxation can change at any time and are dependent on individual circumstances.

Source:

¹ Gov.UK - 3rd September 2025.



NORTH LINCOLNSHIRE'S PREMIER AUCTIONEERS AND VALUERS

- Friendly and professional service
- Regular online auctions
- Free auction assessment
- Appraisal and collection service
- Probate valuations
- We can also buy Gold and Silver

For appointments or inquiries, please reach out to us on **01724 505005** or **07941 352789**. Alternatively visit our website for the latest auctions and news.

Potters Auction Saleroom LTD Auctioneers and Valuers

The Old School, 42a Northfield Road, Messingham, Scunthorpe DN17 3SA. Tel: 01724 505005

paul@pottersauction.co.uk www.pottersauction.co.uk

Jadan

Print that gets you noticed

Jadan Press are a leading family run commercial and trade printer based in Hull.

With over 25 years experience, we are renowned for producing exceptionally high quality print, design and finishing.

BROCHURES LEAFLETS
POSTERS CALENDARS PADS
LARGE FORMAT PRINTING
STATIONERY MAGAZINES
SAFETY SIGNAGE BANNERS
LABELS DIE-CUTTING
and much much more

Now is the time
to order your
Christmas Cards &
2026 Calendars



01482 610902

sales@jadan-press.co.uk www.jadan-press.co.uk

Rainbow House, Kimberley Street, Hull, HU3 1HH



jadan_press



jadanpress

LECONFIELD KENNELS - KEEPING YOUR PETS COSY

As the festive season approaches, Leconfield Kennels are busy preparing to ensure every animal feels safe, comfortable, and cared for during this special time.

At this time of the year Leconfield Kennels have their Annual Closure, closing on the 12th November and reopen on 1st December to deep clean, repair any damaged items etc and to give the staff a well earned break.

Nigel commented, "Following the deep clean and repair programme, staff and volunteers work together to decorate the spaces with cheerful touches, creating a warm, welcoming atmosphere for both pets and visitors. If your pets are happy, owners can relax and enjoy their time away."



At Leconfield Kennels blankets, toys, and treats are provided where necessary to keep the animals happy and cosy.

Staff routines are adjusted to accommodate the increased number of pets at the kennels, with special attention being given to nervous or first time pets to help them feel secure, settled and loved.

Nigel added, "At this time of the year, through careful planning, we ensure that as we move towards the festive season, the kennels reflect the time of year and make the festive season brighter for every animal in their care".

**Leconfield Kennels and Cattery, Arram Road,
Leconfield, HU17 7NP.
Office: 07360 276707.
Out of hours: 07946 193269.
www.leconfieldkennelsandcattery.co.uk**

**Please Note: We are closed for Deep Clean and repairs 12th November - reopen 1st December.
Our drop off and collection times now operate throughout the year. Drop off: after 2PM.
Collection: Before 12 Midday. Unfortunately we will not be able to accept pets outside these times.**



Botterill & Co Chartered Certified Accountants

We are a modern and professional accountancy practice ideally located to serve businesses in Beverley and the surrounding area.

We utilise modern accounting technology to provide you with a cost effective, professional service.

Our services:

- Annual Accounts
- Company Formations
- Tax Planning
- Payroll
- Management Accounts
- Cloud Accounting
- Tax Returns
- Bookkeeping & VAT

For a free initial consultation please contact us:

Office: 01482 862240

Email: gareth@botterillco.co.uk

Website: www.botterillco.co.uk

1st Floor Offices, 40 Norwood, Beverley, HU17 9EY.

Four Generations, Giving Over 130 Years Service

Herbert 1870-1962 Eardley 1908-1986 Geoffrey 1939-2015 David 1964



Golden Charter
Funeral Plans



- Funerals Respectfully Conducted
- 24 Hour Out of Hours Service
- Free Advice & Support
- Private Restrooms
- Prepaid Funeral Plans Available
- Finance Options Available



Tel: 01482 844695
www.hkempandsonltd.com

259 Hallgate, Cottingham, East Yorkshire, HU16 4BG
Fax: 01482 843898
Email: hkempandsonltd@gmail.com

HANDYMAN IAN - LOOKING AHEAD TO THE FESTIVE SEASON



November starts the run-up to the festive season, and Ian, Beverley's handyman provides services and experience to help clients out as a surge in demand increases and households prepare for festive gatherings, decorations, and cold-weather maintenance.

Ian mentioned, "Many homeowners get in touch to tackle pre-Christmas repairs, from fixing shelves, painting doors and assembling furniture along with small outdoor jobs with people requesting help putting up festive lights, ensuring steps and entrances are safe and welcoming for visitors".

Ian Harrison is aware that with the daylight hours shortening, he has to schedule his work according to daylight hours. Often his flexible hours come in handy during this period to meet growing demand and tight deadlines.

Over the last 5 years a large number of his clients have relied on Ian's skills to help create comfortable, well-maintained homes throughout the year, allowing families to focus on enjoying themselves in a safe, tidy, and beautifully prepared environment.

If you are interested in getting those small jobs done, give Ian a call and he will schedule you in.

Ian Harrison - Beverley's Handyman.

Mobile: 07970 332373

Email: ianharrison68@icloud.com

Website: www.ian-harrison.com



Ian

Follow us on
Facebook and Instagram

HARRISON HANDYMAN

For all your jobs around the home

- Painting, Interior & Exterior
- Mirror & Shelf Installation
- Joinery
- Flat Pack Assembly
- Picture Hanging
- .. and so much more

07970 332373

ianharrison68@icloud.com

www.ian-harrison.com

WHEN BEVERLEY BLOOMS WITH KINDNESS

This Christmas, Islay Bloom on Dyer Lane is inviting everyone to join in "Spread Kindness Across Beverley," a campaign that celebrates community, connection, and the true spirit of giving.

Step through the doors and you'll soon understand why it's often called the best-smelling shop in Beverley. The beautifully curated boutique is filled with unique gifts, home treasures, and seasonal finds to suit every budget.

It's a place where shopping feels relaxed and personal, thanks to the warmth and care of Kerry,

Lisa, Jenny, and Marnie, who make every visit a pleasure.

With each purchase, customers are entered into a draw to win one of three beautifully curated gift boxes and receive a "Spread Kindness" postcard featuring Islay the Deerhound, the shop's namesake, captured outside the boutique's festive storefront.

Each postcard carries a simple but meaningful message: "Someone in Beverley thought of you today and wanted to remind you that kindness connects us all. Together we make our community bloom..." Share your postcard with a friend, neighbour, or colleague. When it is returned before December 20th, that person will also be entered into the draw.

In the bustle of the festive season, Islay Bloom reminds us that the smallest gestures can make the biggest difference. Pop in, discover the perfect gift, and help spread kindness - one purchase, one postcard, and one smile at a time.

How to Take Part:

Visit Islay Bloom, 5 Dyer Lane, Beverley (HU17 8AE).

Make a purchase to be entered automatically into the prize draw. Take your "Spread Kindness" postcard and pass it on to someone you'd like to brighten this Christmas. When they



return it before December 20th, they will have their own chance to win. Campaign runs until December 20th.

Find Islay Bloom on Instagram and Facebook: [@islaybloombeverley](#)

Photo Credits - Josh Harrison





DON'T MOVE, IMPROVE!

The seasons are changing, and its time to think about preparing your home for the months ahead. Its time to improve your home with Cherry Group



- uPVC Windows and Doors
- Aluminium Windows, Bi-folds and Sliding Doors
- Composite Doors
- Sliding Sash Windows
- Glass Replacements



- Tiled Conservatory Warm Roofs
- Modular Home Extensions & Garden Rooms
- Orangery Roofs & Roof Lanterns
- Composite Cladding & Decking
- Fascias, Soffits and Guttering

VISIT OUR SHOWROOM: Unit 2, Beck View Road, Beverley, HU17 0JT





GET IN TOUCH

01482 770621

www.cherrygroup.uk









LAIRGATE PROPERTY GETTING THE FINISHING TOUCHES IT DESERVES

The old Beverley Savings Bank on Lairgate started 2025 as an old peeling, pink building needing some TLC throughout the year.

Architects RD Stott and their skilled craftsmen have put thousands of hours transforming this listed building, from a neglected office building into two high quality individual residential properties.

Every step of the way, quality in the build process and an attention to detail with no cutting of corners has seen the building transform.

As the scaffold comes down, the full yellow exterior has been revealed, but that is the start.

Richard from RD Stott commented, "Finishing details play a crucial role when renovating

a heritage property, as they bridge the gap between preservation and modernisation.

"These details such as mouldings, trims, architraves, hardware, and period-appropriate finishes, ensure that the building's historical character and architectural integrity are maintained".



Throughout the transformation, RD Stott Architects have insisted on craftsmanship and the use of authentic materials, where appropriate, while subtle updates allow the internal finishes to meet modern standards of comfort and safety.

Richard added, "Attention to finishing details also enhances the property's aesthetic and cultural value, ensuring it remains a faithful representation of its era.



"Neglecting these elements can diminish authenticity and reduce overall quality, making the renovation feel incomplete or inconsistent.

"Ultimately, meticulous attention to detail safeguards the building's heritage significantly, creating a harmonious blend of old and new that preserves the story, artistry, and identity of the property for future generations".

As we move towards the year end, inside the old Beverley Savings Bank is getting the finishing touches and attention to detail it deserves.

For years to come, it is hoped that people will be able to appreciate the work that has gone into preserving the building for future generations to enjoy, and families to live in and appreciate.

THE HISTORY OF BONFIRE TOFFEE

Bonfire Toffee, also known as Treacle Toffee, Plot Toffee, or Tom Trot, is a hard, brittle toffee with a rich, dark flavour strongly associated with Guy Fawkes Night (Bonfire Night) on November 5th in the UK.

Here's a breakdown of its history and tradition:

Origin and Association with Guy Fawkes Night

The Gunpowder Plot: The tradition of Bonfire Night dates back to the **Gunpowder Plot of 1605**, when Guy Fawkes and other conspirators attempted to blow up the Houses of Parliament and King James I. The plot was foiled on November 5th, leading to annual celebrations of the King's survival with bonfires and fireworks.

A Festive Treat: Over time, these celebrations evolved to include various festive foods. Bonfire Toffee's association with the night grew, likely because its dark colour and robust, slightly smoky flavour fit the atmosphere of chilly autumn evenings gathered around a bonfire.

Emergence of Toffee: The word "toffee" itself didn't appear in print until the early 19th century, but toffee-like sweets were being made earlier, possibly in Northern England from the mid-18th century, once **black treacle** (molasses) became more widely available from sugar imports in the

17th century. The toffee quickly became popular, displacing older sweets.

Traditional Preparation and Regional Names

Ingredients: Traditional Bonfire Toffee is made with simple ingredients: **sugar, black treacle, golden syrup, and butter.** The black treacle is what gives it its characteristic dark colour and distinctive flavour.

The "Toffee Hammer": Historically, the mixture was poured onto a tray to cool and harden into a large, brittle slab. It was then broken into pieces using a small hammer, often called a "toffee hammer."

Regional Variations: The toffee is known by different names across the UK:

Treacle Toffee (a common alternative)
Plot Toffee (referencing the Gunpowder Plot)
Tom Trot (particularly in Yorkshire)
Claggum or Clack (in Scotland)
Loshin Du (in Wales)

Home-Made Tradition

Victorian Era Popularity: From about 1830 to 1900, Bonfire Toffee was particularly popular, especially in **Yorkshire.**

Homemade Confection: Despite the rise of



industrial confectionery in the mid-19th century, it remained a common homemade sweet. The price of black treacle often made store-bought toffee expensive, leading to the tradition of older members of the community making large batches to give out to local children on Guy Fawkes Night, a practice that continued into the 1960s.

Shane Cooper, Stuarts of Driffield, Lincoln Way, Beverley, HU17 8RH.



IN THE PICTURE WITH JOSH

November offers beautiful lighting for photography, as the clocks have gone back, and the evenings draw in early.

The shorter days bring a soft, low sun that casts long shadows and golden light, perfect for capturing the gentle glow of Autumn's last leaves.

The cool, crisp air gives landscapes a sense of clarity, while misty mornings and frosty textures add a touch of atmosphere to every frame.

As darkness falls, photographers can experiment with longer exposures to capture the enjoyment of family gatherings around bonfires and fireworks, or the shimmer of city lights reflected on wet pavements.



November's subdued tones and early twilight invite a slower, more reflective approach, whether it's photographing quiet woodland paths, wildlife, or landscapes and cityscapes.



November is a month that encourages creativity and patience, celebrating the beauty of transition as Autumn fades and Winter quietly begins.

You can find more information about my work and full portfolios on my website and my social media pages and if you have any questions don't hesitate to get in touch.

Instagram: @joshharrison.photography
Facebook: @JoshHarrisonPhotography
Web: www.joshharrisonphotography.com
Email: info@joshharrisonmedia.com



WINTER IS A COMING!

Last winter we cancelled left, right, and centre with all the bad weather. So how do you prepare for parkrun morning when the weather is all over the place?

My top tips are:

- Check the parkrun web page for any cancellations.
- Check the parkrun social media for any suggestion they might cancel.
- Check your outfit choices to cope with rain, cold, snow, weird Summer sun.
- And lastly check again on parkrun morning!

When we go ahead in the Winter months be sure to dress for the weather, layer up, keep moving, and wrap up, this goes for runners, walkers, and volunteers alike. It can be very breezy on our open pastureland!

When volunteering I often take a flask of coffee on a cold day, just remember we have no loos! Above all, my top tip is to enjoy yourself. Happy people stay warmer (I might have made that last bit up).

If we are cancelled you can always check other local parkruns to see if they are going ahead, and vice versa - local parkruns with footpaths often cancel when icy, that is not a problem for us, we often cancel due to heavy rain, this is often not an issue for others.



Useful links:
www.parkrun.org.uk/beverleywestwood/
www.parkrun.org.uk/cancellations/
www.facebook.com/BeverleyWestwoodparkrun

Louise Barrett.



DISCOVERING THE LOST PUBS OF BEVERLEY TOWN CENTRE - A STROLL THROUGH LIQUID HISTORY

Beverley has long been a town of pubs and thankfully we still have far more than most towns of our size. There are, however, a remarkable number of former, now closed and repurposed, pubs in the town centre.



The former White Swan, now Guest & Philips in Saturday Market

This stroll of under a mile from the railway station to North Bar explores what remains of, remarkably 15, once popular watering holes; it's a rich legacy full of surprises, even to many who know the town well.

The railway station is a good place to start, if only because it once had a licensed refreshment room. Across the square, to the left of the clock tower, lies what was until early in this century The Telegraph pub. Its stables are still prominently labelled. The ornate doorway was taken from what was once a theatre on Lairgate.



Site of The Telegraph

Head up Trinity Lane to where it joins Eastgate to see the nicely restored exterior of what was The Oddfellows. 30 years ago I was a member of their pub quiz team which used to compete with some 25 others in and around town.

Go right into Wednesday Market, the still trading Queens Head once had a rival facing it;



Site of The Oddfellows



Site of The Spotted Cow

The Spotted Cow, part of what is now the Rose Cottage food shop. It pulled its last pint in 1937.

Head down Butcher Row and into Toll Gavel. The impressive multi-gabled frontage of the Halifax, was the Litchfield pub until 1972. It must have been one of Beverley's grandest pubs, maybe some readers recall it?

Just across the way is the tunnel leading to Golden Ball Passage and Brewery Mews. Not just the site of a pub but a well-loved brewery. Returning to Toll Gavel, look above the shops to see the upper floors of the former Holderness Hotel.

Now, into Saturday Market, which for centuries has been the hub of the town's drinking dens. Three still trade, but we have three former ones too. To the left of the King's Arms is the impressive frontage of what was The Pack Horse. Like The Golden Ball, this pub was heavily involved in the politics of the town.



Site of The Holderness Hotel



Before secret voting was introduced, those men who could vote expected free drinks from the candidates.

By the Market Cross and above the jewellers, see the beautiful tell tale pub sign of the former White Swan. The corner building that is now a bank once housed a large pub, The Ship.



Site of The Ship

Now head onto Ladygate which once teemed with pubs and a large brewery. The take away on the corner used to be the Custom House Vaults. Directly facing, what is now a vape store was The Lion & Lamb, whilst across Sow Hill, a lone wall remains of The Globe. This very popular pub had to be demolished in 1967 when the bus station and new road were built.

Back onto Lairgate, heading towards St Mary's you pass some of the buildings of the former Ladygate brewery and a fine house, that until the 1930s was The Freemasons Arms pub.



Site of The Freemasons Arms

North Bar Within had two very grand pubs, The Tiger was vast as the photo suggests, whilst The King's Arms was very striking, the iron stanchion for its sign still stands.

If all those lost pubs bring on a touch of melancholia, the perfect cure is a few drinks in one, or more, of our many still trading and glorious pubs. These are just some of our town centre's lost pubs, I'll be back next month with a tour of those on the outskirts.

Ian Richardson, October 8th 2025.



Site of The Tiger

I'VE BEEN THINKING... SAYS COLIN RAYNOR

During the Covid epidemic when we were house bound for days, the old games came out again such as playing cards, chess, Scrabble, crosswords and guess what, jigsaw puzzles.

It is worth noting here that the jigsaw puzzle gained most of its popularity in similar times in the years of the depression of the 1930s. Now that we are back to normality (if that is so) and we can get out and about again, for many these games have gone back in to the drawers they had surely languished in for too long.

Obviously the glorious weather we have all experienced this year meant we could enjoy the outdoors and in Yorkshire we are blessed with multiple experiences.

I do believe however there has been a resurgence of popularity in jigsaws. There do seem to be more available in the shops and it is not for me to dissuade folks from purchasing a brand new jigsaw. You can be certain, in a new puzzle, that all the pieces are there and that you will be the first to reassemble the picture.

If however you look around Beverley you will find there are other places you can obtain a second hand puzzle for a fraction of the original cost. There are also one or two places where you can pay as little as a pound and borrow from a selection of jigsaws for as long as it takes to you to complete the puzzle.

Toll Gavel Methodist church has a good selection of jigsaws to borrow for a pound donation and there is a table to do a puzzle on. The new

Treasure House library also has a table with a large jigsaw on for folks to spend as long as they wish, making their personal contribution to the completion of the picture.

A man called John Spilsbury invented the jigsaw in the mid 18th century and in the beginning it was meant as a means of education. Having created a map of the world on a wooden board he then proceeded to cut the board into small pieces.



Working out which piece related to which country, and then placing them together, to create a number of small maps, would in due course complete the jigsaw and give the player more knowledge of the countries of the world. As John Spilsbury had dissected the wood into pieces the name of a jigsaw enthusiast is a 'dissectologist'.

One of the merits of a jigsaw puzzle is that, unlike many other puzzles, there is no expectation for it to be completed in a given time. It is the ultimate past time for an individual and in that respect

there is a comparison with the reader of a book.

The reader can decide how long they wish to continue reading and this may depend of how the story is developing and in similar way the dissectologist may continue until another part of the picture begins to emerge.



One aspect of the jigsaw that needs to be taken in to account is that unlike a book, which can be put away until the next time, it is helpful if the jigsaw can remain in the same place until completion. At the end of a dining table perhaps or on a card table that is not needed for anything else.

It is quite amazing however in the latter case a person may be passing and just feels the urge to spend a few minutes putting a few pieces together.

Which brings me to tactics. Is there a right and a wrong way to do a jigsaw? Consider you have 500 (or more) pieces that are all jumbled up. How do you start to make the puzzle in to the wonderful picture on the box?

My way is to filter through all the pieces and collect the corners and all the smooth edges. Then you can put these together giving you the size of the puzzle. You are on your way. I do have a friend who completes a jigsaw without ever looking at the picture on the box. Now that is something special!

RM JOINERY KITCHENS & BEDROOMS

QUALITY WORKMANSHIP FOR ALL YOUR FITTED FURNITURE NEEDS



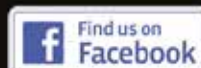
KITCHENS • BEDROOMS • HOME STUDIES • BATHROOMS

Visit Our Showroom: Hull Bridge Road, Tickton HU17 9RT

01482 867389

**FREE HOME
VISITS & DESIGN
SERVICE**

rm.joinery@yahoo.co.uk | www.rmjoinerykitchens.co.uk



FREE CHRISTMAS SUPPORT GROUPS FROM BEVERLEY BUILDING SOCIETY'S CHARITY OF THE YEAR, HULL AND EAST YORKSHIRE MIND!

Local mental health charity, Hull and East Yorkshire Mind, is offering to help people who find the holiday season challenging.

These welcoming sessions across Hull and the East Riding provide a supportive space for anyone feeling the stress or pressure of the festive period. Self-referrals are accepted, ensuring that anyone who feels they need support can join easily.

The charity recognises that Christmas can be a difficult time for many, with feelings of loneliness, financial stress, and general holiday pressures often affecting mental health.

These sessions are designed to offer practical support, understanding, and effective tools to help people manage their mental health and wellbeing through the season.

As part of its charitable Campaign for this year, Beverley Building Society is committed to marketing this important initiative to raise further awareness for people struggling with mental health issues, will be held in Beverley, Hornsea, Hull, Withernsea, Goole, Bridlington, Driffield and Haltemprice, making it simple to join a session nearby.

To download Hull and East Yorkshire Mind's guide to Coping With Christmas and find out more about the festive workshop you would like to attend, visit www.heyhound.org.uk/christmas.

Alternatively, contact the Charity at: info@heyhound.org.uk or on **01482 240200**. For referrals please visit: www.heyhound.org.uk/referral

Society Marketing Manager, Debbie Connolly said: "We wanted to champion the vital work that Hull and East Yorkshire Mind is doing in our region because historically mental health hasn't been taken as seriously as physical challenges, yet it can be just as impactful for some people, particularly over the Christmas period.

"Thankfully, mental health has become far more high profile in recent years, and we want to keep the conversation going. These workshops provide a safe environment for those who are struggling to find the support they need. We encourage everyone to spread the word about this scheme so people who need it can take advantage of it."

Beyond Christmas, Hull and East Yorkshire Mind also runs weekly support groups, one-on-one counselling, bereavement support, and peer support, providing ongoing assistance for anyone struggling with their mental health.

Lisa Johnson, Service Manager at Hull and East Yorkshire Mind concluded: "Christmas can affect our mental health in many ways, whether it's part of your life or happening around you. This time of year often brings extra pressure, and if you're finding it hard, remember that you're not alone.

"Our support groups are here to help you manage your mental health and give you the tools to make a real difference in everyday life."

In addition, If you would like to support the Beverley's 2025 Charity of the Year Campaign to raise vital funds for Hull & East Yorkshire Mind you can donate in their branch in Saturday Market, Beverley, or online at: www.justgiving.com/page/bbs4heyhound



Find **your new home** this Christmas at **The Paddocks in Beverley**

Stunning 3 & 4 Bedroom Homes available to reserve

To find out more call the friendly team on
01482 904 341
or visit
newhomes.lovell.co.uk


THE PADDOCKS
— BEVERLEY —

LOVELL
HOMES

NURTURING THROUGH NOVEMBER: CREATIVITY, CONNECTION, AND COMMUNITY IN BEVERLEY



As November bursts into life, the skies come alive with colour and sound. Bonfire Night marks the month's fiery beginning and as the smoke drifts away, November settles over Beverley as the days shorten and the light softens into that familiar Autumnal glow. Whilst it is easy to hunker down and let the darker days drift by, this month can be a rich opportunity to nurture yourself and your community through creativity, good food, and meaningful connections.

November often marks a turning point in the year as the clocks go back, the pace slows, and many of us feel the pull to retreat indoors; but instead of slipping into isolation, it can be a time to nourish both body and soul. A simple way to start is in the kitchen: making hearty stews packed with root vegetables and pulses not only warms the house but also provides much-needed nutrients for the winter ahead.

With daylight hours dwindling, our vitamin D levels can take a dip, reducing the effectiveness of our immune system at a time when we need to keep it high to ward off the Winter bugs. Sunlight remains the best natural source of vitamin D, so grab the opportunity to pop down to the market on a sunny day and purchase those green leafy vegetables such as kale, spinach, cavolo nero and broccoli for your meals, and help support your intake of vitamin D.

A big pot of homemade, slow-cooked stew is both comforting and energising as you breathe in the sumptuous aroma as you come in from the Autumn chill. Cooking for yourself or sharing a meal with a neighbour can be an act of care, that nourishes more than just the appetite.

November is also an ideal time to turn your attention to the festive season and plan creative, thoughtful gifts. Instead of defaulting to online shopping, why not give something handmade or locally sourced? Beverley's independent shops and artisan markets are bursting with inspiration, from chocolatiers to florists, many offering courses in wreath making or chocolate crafting, ideal for yourself and as a present.



Consider booking an art or craft experience as a gift - for instance, a course with local artist Eleanor Tomlinson, whose work celebrates the beauty of Yorkshire's countryside and heritage. Make your own Christmas cards whilst creating memories that last long beyond Christmas Day (www.eleanortomlinsonart.co.uk).

Staying connected is vital during these darker months, and volunteering is a powerful way to do just that. Giving your time can lift your spirits, expand your social circle, and strengthen the fabric of the community. The East Riding Theatre (www.eastridingtheatre.co.uk/support-us/volunteering-act) welcomes volunteers for roles from front of house to backstage support - a wonderful way to meet like-minded people and stay engaged with local culture.

As November unfolds, light a candle, make something from scratch, and find ways to stay connected. Eat well, create freely, and give generously because nurturing, of ourselves, our creativity, and our community, is what turns these shorter days into something quietly bright.

Every Tuesday, you can take time out for yourself with the free mindfulness session from 7.15pm to 7.45pm. For more information visit www.francesdunning.com or contact me, Fran Dunning on 07973 819867 for details of mindfulness zoom link.

All About You Hypnotherapy

Helping You Get Peace of Mind in Practical Ways

I've been helping people of all ages increase their levels of confidence and improve their life for over 20 years using hypnotherapy.

I can help you reduce anxiety, get rid of fears and phobias and embed positive habits to increase your levels of health and wellbeing.

Based on Victoria Dock and available face to face or via Zoom globally.

Let me help you to enjoy a new sunrise

Fran Dunning

Clinical Hypnotherapist & Provider of Mindfulness in the Workplace

Victoria Dock, Hull

Mobile: 07973 819867

e-mail: info@francesdunning.com

website: www.francesdunning.com

Monks Walk Inn



19 Highgate, Beverley HU17 0DN

Tel: 01482 880871

www.monkswalkinn.com



monkswalk

WELCOME TO ALL OUR CUSTOMERS

- GOOD BEER •
- GOOD COMPANY •
- GOOD CONVERSATION •

- Historic Public House •
- Local Cask Ales • Lagers • Beers • Wines •
- Spirits • Tea • Coffee • Hot Chocolate •
- Extra Seating Area Upstairs & Outside •
- Tuesday QUIZ • Wednesday FOLK •
- Music Early Evening Friday & Saturday •
- Everyday Drinks & Chatter •



WE LOOK FORWARD TO SERVING YOU!

CELEBRATING FIVE YEARS OF SERVICE: BEVERLEY'S ONLY INDEPENDENT FUNERAL DIRECTOR LEWIS NORTHEN

When Lewis Northern was just 19, following a conversation with family and friends, he made the decision to change careers from looking after and maintaining people's cars, to caring for people's loved ones, joining a local Corporate Funeral Directors.

Lewis commented, "I felt straight away this career was right for me, after 15 years in the business, building a name up for myself, I took the bold step to set up my own business, where my family takes care of yours".

Lewis added, "For five years, our independent funeral director has been a pillar of compassion, professionalism, and community spirit in Beverley. I am proud to say "My family takes care of yours".

Lewis Northern reflects back on his 5 years, from the start wanting to go beyond providing essential services during life's most difficult moments, to bring something deeply personal and irreplaceable, genuine care rooted in local values and relationships. Lewis commented, "Unlike



larger, corporate funeral chains, as a funeral director we offer a service shaped by empathy, understanding, and familiarity. Quite often we know the families, share in their community's history, and take the time to ensure every farewell reflects the unique life being honoured".

This local connection allows Lewis Northern to create ceremonies that are personal, meaningful, and respectful of individual wishes, faiths, and traditions. Lewis, his wife Kirsty, and his team are familiar faces and are there when it is most needed. Lewis added, "Through our individual services, "See You" Jewellery, comfort cushions, flowers, urns and other extras, bring comfort and personal meaning to each farewell".

See You, Ashes jewellery allows families to keep a loved one close through beautifully crafted keepsakes, while comfort cushions made from treasured clothing provide a tangible source of solace.

Bespoke funerals ensure every detail is taken care of whether that be, horse and carriage, motorbike, traditional hearse, or through music and flowers to personal tributes, all come together to reflect the individual's life and wishes. Over the last 5 years these added touches go beyond traditional services, helping families to celebrate memories in a unique, heartfelt way. They transform farewells into lasting tributes filled with love, dignity, and a deeply personal connection.

On the 17th December at 6pm, Lewis Northern Funeral Directors, will hold their moving Annual



memorial service at the Beverley Minster, a time for loved ones to come together and honour the memory of someone who has passed. Everyone in the Community is welcome.

Lewis commented: "We are delighted to be able to organise our Annual Memorial Service again. This service is not just about mourning but a celebration of love and giving thanks for the lives of our loved ones."

Anyone wishing to attend is asked to let Lewis Northern Funeral Directors know in advance. Please call the office on **01482 888658** or email info@lewisnorthyfuneralelirectors.co.uk



LEWIS NORTHEN
FUNERAL DIRECTORS

IN

MY FAMILY TAKING
CARE OF YOURS

Get In Touch
1 Lincoln Way, Beverley, HU17 8RH
info@lewisnorthyfuneralelirectors.co.uk
www.lewisnorthyfuneralelirectors.co.uk
01482 888 658

Born and raised in **Beverley**, we are proud of the funeral services we offer to our local community.

As a family business we want you to have confidence in us to support you from the first point of contact, throughout and thereafter. The moment your loved one comes into our care they will be treated with care and respect. We offer a comprehensive range of funeral services ensuring you receive the perfect funeral service for your loved ones.

We are available 24 hours a day, 365 days a year, we will guide and support your family throughout.

Five Years of Service: Beverley's Independent Funeral Director

My family taking care of yours
Beverley's ONLY Independent Funeral Director

Giving the personal touch to funeral services in
Beverley and surrounding areas.

Funeral plans, memorial jewellery, available 24/7 365 days a year.



FROM SIX PEOPLE TO £1.1 BILLION: BEVERLEY BRANCH DIRECTOR ANDY BEET ON MKM'S PEOPLE-POWERED JOURNEY

Back in 1995, I was 26 years old and ready for a new challenge. I didn't know it at the time, but saying yes to a new builders' merchant starting out of a small unit on Stoneferry Road in Hull would change the course of my life - and shape the careers of thousands of others across the country.

That business was MKM Building Supplies. We didn't have much - no yard, no credit accounts, no big plans for expansion. Just six of us, including founders David Kilburn and his good friend Peter Murray, packed into a 5,000 sq ft unit with a fire bell in the warehouse that we rang every time an order came in. The ringing continued, right up to the point we would have needed to employ someone full time to do it.



Fast forward 30 years, and MKM is now the UK's proper independent builders' merchant with 135 branches and specialist business Oceanair. Turnover is set to hit £1.1 billion this year, and we're still proudly based at our Central Support site in Hull. The journey has been fuelled by people, passion, and doing the right thing.

The Beverley branch story

Becoming Branch Director of MKM Beverley branch was a proud moment for me. I've always believed that local businesses should be run by local people who understand their community, and MKM's ownership model gave me that chance.



As a Branch Director, I've had the autonomy to grow the branch the way I know works best for Beverley - from deciding on stockholding to building relationships that last.

That ownership model started with our second branch in Driffild. David offered a trusted colleague, Geoff, a 25% stake, and it just worked. Soon after came Scarborough, then Grimsby, and eventually Beverley. David calls it "The Bush Telegraph" - because once word spread, good people started getting in touch wanting to do the same in their towns. That's how MKM grew - through people who genuinely cared.

Today, Beverley is one of 135 branches, but it's still my business. And the team feels like a family.

Built on relationships

I've been best man at a customer's wedding. My wife and I go for meals with customers who've become close friends. That kind of connection doesn't happen in most businesses - but at MKM, it's always been about more than transactions.

I remember in the early days; we had competitors telling suppliers we'd be bust in three months. Banks wouldn't touch us. But one supplier said, "Take what you need, and you've got six months to pay." That kind of belief meant everything. Loyalty like that built the culture we've kept ever since - one where people matter.

Local heart

When Kate Tinsley joined as CEO in 2020, we had 73 branches and £470 million in turnover. Now our sights are set on 250 branches within the next decade.

But what I admire about Kate is her focus on people. As she often says, "We're a collection of local businesses... expansion's great, but only if you keep the MKM culture alive - something she's passionate about."

And we're not just growing in size. MKM is investing heavily in digital tools, greener branches, and future-ready products. We're proud to have recently become the first merchant to launch 100% recycled bulk bags, which could replace over 800,000 single-use bags a year.

We've also raised over £5 million for local causes over the years - not because we have to, but because it's the right thing to do. At a local level, that ethos has come to life in some special ways. One of the proudest moments for the Beverley branch was supporting DIY SOS: The Big Build



when it came to town to create a brand-new Youth Hub for the Cherry Tree Community Association.

We donated building materials and joined a brilliant team of tradespeople and volunteers to help make it happen. It wasn't just about products - it was about backing something we truly believe in. The finished Youth Hub now offers young people in Beverley a safe space, support, and opportunities they wouldn't otherwise have had. That's the kind of community impact we're proud to be part of.



30 years on, what matters most

For David, Kate and myself, it all comes back to culture. We want MKM to be a place where everyone is welcome, where hard work is recognised, and where people enjoy coming to work in the morning.

Our annual awards night is one of the best examples of that. Every Branch Director across the UK stands to applaud the Branch of the Year - because they respect how hard it is to get there.

So, what am I proudest of? Honestly, it's that after all this time, MKM still has that same family feel as it did when I joined as a fresh-faced 26-year-old. I get up every day excited to do what we do. We've come a long way from that fire bell in the warehouse - but the buzz when we win a customer's trust, when they call us for advice or a general chat? That's still the same.

Here's to 30 years of MKM - and to doing the right thing for the next 30 too.

By Andy Beet, Beverley Branch Director and one of MKM's original six.

Your home for **BEAUTIFUL KITCHENS**

**FREE
LOCAL
DELIVERY**



Visit our showroom to explore our range of kitchens and finishing touches, and book a **FREE** design appointment with our specialists to create your perfect space.

Swinemoor Lane **Beverley** 01482 880088 **HU17 0JZ**

mkm.com

MKM

ARE YOUR EXTENSION LEADS SAFE? PROBABLY NOT - AND THAT'S A PROBLEM

As we move closer to the festive season we increase our use / need for extension leads - they're handy, cheap, and solve the classic "why is there never a socket where I need one?" problem. But here's the thing: many homes are unknowingly creating a fire risk by using them with the wrong appliances, in the wrong way.

The biggest issue comes when you plug in high-draw appliances - things like air fryers, washing machines, irons, or heaters. These devices can pull a lot of power, especially when they first fire up to heat or spin.

While many modern appliances settle down once up to temperature, it's the combination that causes problems.

If you've got more than one big appliance running through the same extension lead, you can overload it without realising. That's when things start to heat up - literally. The plastic casing can melt, and in the worst cases, it can cause a fire.



And while plug fuses are there to help, they're not guaranteed protection - especially if you've daisy-chained two extension leads together (please don't). It's one of the most common mistakes we still see in homes.

The good news? It's not expensive to have a proper socket installed - and if you're thinking of having a few done at the same time, it's a good opportunity to future-proof your setup. Not sure if what you've got is safe? Feel free to give us a ring. We'll happily take a look and point you in the right direction.

Visit: www.smartpower.co.uk Email: info@smartpower.co.uk
Call: **01482 205222**

JAYNE AT LINK AGENCY - IT'S ALL ABOUT THE PRESENTATION

Preparing a house for sale involves creating a welcoming, well-presented space that appeals to potential buyers. You just need to follow a simple procedure to maximise your property's full potential.

Jayne said, "Start by decluttering and deep cleaning rooms to make them smell fresher and feel larger and brighter. Don't forget to clean and repair the windows and their frames: both inside and out. Next complete any small repairs such as filling cracks and repainting scuffed walls, preferably using neutral colours. To enhance each room's appeal, leave out select, colour coordinated ornaments / items and combine them with healthy looking plants, real or faux. Fresh flowers are always good for viewings when placed on tables or breakfast islands as a centre piece."

When a house goes up for sale, its kerb appeal "first impression" is important. Always make sure the front of the property is looking its best with swept clean, weed free paths; recently cut lawns and tidy hedges and borders. It is always advisable to have a For Sale board so it will be noticed by people who pass by sparking conversation, adding interest and thus word of mouth marketing.

Jayne summed up, "Thoughtful preparation can increase buyer interest and lead to a faster, more successful sale".



PROFESSIONAL DEDICATED ELECTRICIANS

CALL 01482 205222

Based in Cottingham, serving East Yorkshire with Domestic, Commercial, and Industrial Electrical Solutions.

OUR SERVICES

- Fault Finding
- Internal and External LED Lighting
- Test and Inspection EICR
- EV Chargers
- Kitchen Electrics
- Consumer Unit Upgrades
- Full and Partial Rewires

SCAN NOW

CONNECT WITH US

Our team will always go the extra mile to ensure that you're delighted with our work.

WWW.SMARTPOWER.CO.UK

Jayne at

linkagency

linkagency Sold

01482 699007
www.linkagency.co.uk

linkagency For Sale

01482 699007
www.linkagency.co.uk

Have you seen these signs?

"I dedicate my time and energy to clients throughout their property selling and buying journey, giving them the comprehensive, professional service they deserve."

01482 699007 (Beverley and Surrounding Villages)
www.jayneatlinkagency.co.uk | jayne@linkagency.co.uk

naea | propertymark

W H Halmshaw Ltd



Our Hull and Beverley showrooms are open
Monday to Friday 9am-5pm & Saturday 9am-1pm.

Our Hull and Beverley trade counters continue to open Monday to
Friday 8am-5pm & Saturday 9am-1pm.

Your Local Bathroom Suppliers, Plumbing Merchants & Glass
Specialists with Showrooms in Hull & Beverley.

FOLLOW THE DUCK!

See me on the back of our vans



#followtheduck

tweet us a pic when you spot
the duck to @whhalmshawltd



The Showroom is constantly updated to reflect new designs.

W H Halmshaw Ltd, Inspirations Works, Annie Reed Road, Beverley, HU17 0LF.

T: 01482 867142 • www.halmshaws.co.uk

KEEPING MOBILE DURING THE COLDER MONTHS WITH FOX MOBILITY

Helping with mobility in the Winter is essential to keeping everyone safe, comfortable, and independent during colder months.

Slippery pavements, icy paths, and reduced daylight can make getting around difficult, especially for older adults or those with mobility challenges.

Paul from Fox Mobility commented, "Simple actions such as ensuring good outdoor lighting, keeping paths clear, can make a big difference".

As we move towards the Winter months, check the weather forecast, plan ahead, and make the most of the better days. Check and use sturdier footwear, walking aids, and layered clothing to help maintain balance and warmth. Anne from Fox added, "It's easier to stay warm than to get warm"!!

Paul mentioned, "By working together and planning ahead, communities can reduce accidents, support independence, and ensure that everyone remains active and confident throughout the Winter season".

Plan ahead, stay warm, keep smiling and have a lovely November.

Fox Mobility: 110-112 Walkergate, Beverley, East Yorkshire, HU17 9BT.

Tel: 01482 887799.

Email: info@fox-mobility.co.uk

Website: www.fox-mobility.co.uk



TC Patisserie

We make our own patisseries.

We are a French food shop complimenting our own products

We make Meals you can reheat at home bought over the counter or pre ordered, via our mailing list or messenger

We can cater for any occasion, buffets, dessert tables or full 3 course meals

We are open Tuesday-Saturday 9am - 4pm.



10 Lairgate, Beverley, HU17 8EE
Tel: 01482 860884



Tel: 01482 887799
Email: info@fox-mobility.co.uk

110-112 Walkergate, Beverley, East Yorkshire HU17 9BT

- **Stairlifts**
- **Riser Recliner Chairs**
- **Walking Aids**
- **Power Chairs**
- **Scoters and Accessories**
- **Servicing and Repairs for your Mobility Equipment**

Need advice about mobility equipment? We're here to help!



Telephone: 01482 869111
sales@rosesofbeverley.karoo.co.uk



The Kitchen Factory, The Courtyard,
Tokenspire Business Park, Beverley
HU17 0TB

Monday to Friday 9am - 5pm | Saturday 9am - 1pm

Roses Kitchens - proud to serve Beverley for the last 25 years

**Coming Soon
ROSES BEDROOMS**

I would love a



kitchen

You will adore your



bedroom

Please call 01482 869111 to book a viewing

MANY MORE OF OUR CUSTOMERS KITCHENS ON OUR WEBSITE

5 STAR RATED OVER 100 GOOGLE REVIEWS ★★★★★

Visit **www.roseskitchens.com**

to see our customers kitchens and read what they have to say about us

Telephone: 01482 869111



MARRAKECH - SPICE UP YOUR LIFE IN "THE RED CITY"!!

Morocco's sensational cultural capital, Marrakech, is a traveller's dream. It may not be everybody's dream as it really is quite a unique destination.

This fascinating city set against the jaw-dropping backdrop of the Atlas Mountains dazzles visitors with its beautiful architecture, sumptuous cuisine, elegant gardens and the bustling beating heart of the Medina, in which you can find its famous souks, a dizzying labyrinth of semi-casual market stalls which come together in a kaleidoscope of colour, selling everything from leather shoes to aromatic spices to gorgeous Persian rugs.

For those new to the city, it can leave quite a first impression. Some of my clients have been quite overwhelmed with it and described it as quite different to anywhere they have been to before and having had the opportunity to visit this October I would agree.



It really is in parts dusty and noisy and one might feel that the desperation to haggle to sell products in the many souks is too much, however I think it makes up part of the character of the destination.

While the wild diversity of the souks offers a huge array of products, fragrances, flavours and colours, the Medina - the old town of Marrakech and the cultural centre for both tourists and locals alike - does display a striking uniformity when it comes to one thing all its buildings are a deep reddish colour.

It is this peculiarity that has lent Marrakech its moniker "The Red City", a distinctive characteristic that only adds to the allure of the city.

We found some wonderful places to explore which were incredibly beautiful and peaceful and therefore quite a contrast to the souks and the main square with its many chained monkeys and dancing cobras whose owners are all willing you to have your picture taken with them which was not something that I personally was prepared to be involved in however I respect that this is a way of living for these locals and likely something they have been doing for many years and will probably continue to do so.

We particularly enjoyed visiting Musee de Marrakech and especially Medersa Ben Youssef, and the Jardins Majorelle. Really stunning pockets of beauty in a peaceful setting, almost an oasis amongst the myriad of souks and a wonderful contrast.

We stayed in a traditional small Riad in the heart of the old city within the Medina and it was a perfect location. Given the muslim culture the vast majority of restaurants and bars within the city do not serve alcohol which



was not an issue for us. We treated ourselves to a day out to visit a beautiful retreat in the foothills of the Atlas mountains, Kasbah Africa. It was a really peaceful setting and so wonderfully quiet just to sit back and read a book and enjoy the glorious sunshine and have a swim and a snooze after a wonderful homemade traditional lunch was served.



It is possible to combine a stay in the city with a stay in a retreat/spa setting or with a beach stay so it does lend itself to a twin centre extended holiday or if time is limited a very fascinating city break with lots of cultural sights, fantastic opportunities for a bargain, and the chance to have some very warm (not humid) sunshine. It really was a particularly exciting place and as I am sure you will agree from the images, rather special too.

If you would like to know more about Moroccan adventures from city breaks to guided tours or beach stays please do get in touch.



Amanda McConnell, Travel Counsellors. Tel: 01482 770540
Email: amanda.mcconnell@travelcounsellors.com
Web: www.travelcounsellors.com/amanda.mcconnell




CHRISTMAS PARTIES 2025



CHOOSE FROM OUR THEMED OPTIONS:

<p>SHOWTIME <small>NEW!</small></p> <p>PARTY NIGHTS</p> <p>from £36.95</p> <p><small>per person</small></p>	<p>ULTIMATE</p> <p>PARTY NIGHTS</p> <p>from £49.95</p> <p><small>per person</small></p>	<p>Classic</p> <p>PARTY NIGHTS</p> <p>£42.95</p> <p><small>per person</small></p>
<p>THEMED</p> <p>PARTY NIGHTS</p> <p>from £39.95</p> <p><small>per person</small></p>	<p><i>Legends</i> <small>NEW!</small></p> <p>PARTY NIGHTS</p> <p>£32.95</p> <p><small>per person</small></p>	

01482 358 327

sales.office@wearehullcity.co.uk

WORDSEARCH

R S T R T X F J D U D X M S Z
B Z C I J E E K G O J X Y J B
W Y D T A M N G D Z I M B G Q
R R Z D R X N K S D Y L U N E
F V U V G I S C A R E C R O W
X U K D E X C I T E M E N T U
S F L G D B A K L N B L C E X
Z O X L I O N K T M S E B L F
C V I W M B V R E R N B E E A
H D T O Y O V V Z E E R N K X
M J G W E Y O E I M T A A S F
S C I M F N X N I S G T T T C
M R M S M S O L U D N I X F V
M L Q T Y P G H Z V Q O T Y D
J L S K R O W E R I F N O B B

BONFIRE
CELEBRATION
COLD
EXCITEMENT
FIREWORKS

FULLMOON
NOVEMBER
SCARECROW
SKELETON
TRICKTREAT



Where are the Ducks?
Answer on Page 27.

QUOTE OF THE MONTH

"Autumn is Spring all over again,
but in reverse".

WHERE IN BEVERLEY?

Where in Beverley can you find this landmark? Answer on Page 33.



WHAT IS IT?

Can you work out what this obscure image is? Answer on Page 33.



COMEDY CORNER

What is the opposite of November?
Yes vember.

Why did the small pepper need a sweater in late autumn?
Because it was a little chilli.

What do you get when you cross a dinosaur with fireworks?
Dyno-mite.

Fireworks have been really popular this year –
Sales have skyrocketed.

How do you organise a space party?
You "planet"!

What do you call cheese that isn't yours?
Nacho cheese!

DREAM DOORS®
NEW LIFE FOR OLD KITCHENS

**THINKING ABOUT
UPDATING YOUR
KITCHEN?**

Save **up to 50%** vs a Full New Kitchen

Proudly transforming kitchens across the East Riding of Yorkshire

01482 861653

SWINEMOOR LANE, BEVERLEY HU17 0LN

WELLNESS IN THE COLDER MONTHS

As the clocks go back and the temperature drops, November can be a real test in regard to your health and wellness, even to the most motivated among us.

Dark mornings, chilly evenings and the lure of the sofa can make it all too easy to hibernate and not pay attention to the betterment of your body and its intrinsic needs for good health.



But keeping active, eating nutrient rich food and maintaining healthy habits are exactly what will help you stay energised and warm through the colder months.

When daylight hours shrink, so can our motivation. But even short bursts of movement can make a big difference. Aim for at least 20 minutes of activity most days. It doesn't have to be the gym or a yoga class necessarily. Even a 20-minute walk will promote blood flow, warm up your body and increase your alertness.

If you struggle to get going, schedule movement into your day like any other appointment and treat it as non-negotiable. Meeting up with a friend to do this can also provide accountability and that much-needed social lift.

With regard to nutrition, colder weather may lead to cravings towards comfort food, but that doesn't mean abandoning your regular, balanced food groups.

Ideally, focus on warm, nutrient-rich meals like hearty soups, for example, packed with vegetables, sources of protein and complex carbohydrates like sweet potatoes or lentils. Seasonal produce such as squash, cabbage,

and beetroot are very dense with essential vitamins and support immune health at the time of the year when you need it most. Stay hydrated too. We often forget to drink water when it's cold.

This does include hot drinks, too, such as tea and coffee. Despite sometimes containing caffeine which may have a diuretic effect, they have a net hydration effect rather than dehydration.

Small, consistent habits keep you feeling grounded. Get outside daily, even briefly, to top up on natural light - it supports mood and sleep quality. Aim for 7-9 hours of sleep as normal and establish a calming before bed.

Finally, remember that Winter can be a tricky time. Expect challenges but ultimately look to find solutions where possible! This November, focus on movement, mindful nutrition, and maintaining balance. Your body and mind will thank you when Spring comes back around!

As always, If you have any questions, feel free to reach out to me: edjthompsonpt@gmail.com



AS THE SEASON NOW FALLS INTO LATE AUTUMN...

As the season now falls into late Autumn, it becomes an ideal time to think about re-designing the garden. Often during the Spring and Summer months certain aspects of the garden do not work as you thought they might.

A feature to consider could be the addition of an arch or pergola. The pergola could enhance a patio, offering shade where it to be in direct sunlight.

The pergola could become the framework for a pathway leading not only yourself but your eye through the garden.

A very simple structure to consider would be an arch that would delineate an entry point from one area of the garden to the next. The picture below shows a rose clad rope walk, created from wooden posts and a tactile heavy

rope which will in turn support a climbing rose.

Two roses in particular come to mind for both their fragrance and colour and also the ability to grow in semi shade. 'The Generous Gardener' can reach 4.5m of growth (15ft) and is a repeat flowerer.

The second is 'Gertrude Jekyll' which will again grow in full sun or semi shade and can reach 2.5m (8ft) in growth.

Now is an ideal time to order bare rooted plants. There are numerous to choose from, and the cost difference from buying in a pot to bare rooted is often more beneficial especially if you are planning on planting a hedge, developing an area for fruit bushes such as raspberries, gooseberries or adding more trees to the garden or in the case of roses creating a rope walk.

The bare rooted season runs from November to March. At this point the plants will have entered what is termed the dormant period, which makes it an ideal time for them to be lifted and then repositioned.

When you have ordered the roses and they arrive give them a good soaking in a bucket of water for at least a couple of hours before planting. Dig a hole and add some well-rotted compost or manure.

Position the plant so as the union joint sits just below the surface, backfill and firm the soil. Then give it a good drink of water.

<https://ordinarygardener.com> - Julie Dowding



WILSONS WHEELS - PREPARE FOR COOLER TIMES!

Cycling in Autumn and Winter, especially now the clocks have gone back, requires extra care and preparation.

Wilson's Wheels opening times have changed too, so don't get caught out. Shorter days mean more time riding in low light, so good visibility is essential.

Nathan added, "Wear reflective clothing and use bright front and rear lights, check your bike regularly, ensuring brakes and tyres are in top condition for wet or icy roads".



Cycling is still fun and beneficial during the colder months so make sure you are prepared. Check the weather forecast, layer clothing to stay warm and dry, and consider gloves and waterproof gear for comfort.



Plan routes with well-lit paths and less traffic where possible.

Cycling through Winter keeps you active and energised, but staying visible, alert, and prepared makes every ride safer and more enjoyable.

Pop in store to see the new **2026** bike range ready for Christmas

WILSONS WHEELS

T: 01482 882881

W: www.wilsonswheels.co.uk E: info@wilsonswheels.co.uk

CHRISTMAS CLUB NOW AVAILABLE

• Adult Bikes • Children's Bikes • Electric Bikes
 • Clothing for all cycling weather • Parts and accessories

89a Grovehill Road, Beverley, East Yorkshire HU17 0EJ

NOW OPEN: Monday - Saturday 9am - 5pm

Sunday: CLOSED - Out riding our bikes

**Earth Life
Craniosacral
Therapy**

£20 first session

**Feel Calmer,
Sleep Better,
Live with More Ease**

Gentle hands-on therapy in Beverley that helps with stress, anxiety, sleep problems, headaches, back & neck pain, and digestive issues.

Book Now:
www.earthlifetherapy.com WhatsApp: +44-7456-939-288

WHAT IS IT ANSWER

Did you guess, it was a kettle.

WHERE IN BEVERLEY ANSWER

Lincoln Way, The King Charles III Coronation Bench.

FIND THE DUCKS ANSWER

You should have found those ducks on the Halmshaw advert on Page 29.

WHAT'S ON IN BEVERLEY

Tell us about your event!

E-mail info@justbeverley.co.uk

Telephone **01482 679947**

For more events visit
justbeverley.co.uk/pages/news

Saturday 1st November



Hocus Pocus Halloween

Bottomless Party, Beverley Hills Diner, 8pm.

Tuesday 4th and 18th November

Singalong Memories

Walkington Methodist Church schoolroom on alternate Tues afternoons 2pm to 3.45pm. We sing along to original recordings from the 1960s and 70s. Large, easy to read words are displayed on-screen. You don't need a great singing voice - just enthusiasm. Refreshments are included in the charge of £3 per session. Contact Val on 01482 865249 or Sue on 01482 882188.

Friday 7th November

Sky Magic Firework Spectacular

Beverley RUFC, Beaver Park. Tickets £5-£25 - Child tickets available to those aged 16 and under only - Under 5s FREE - 4pm Gates Open - 9.30pm Event Close. <https://beverleyrufc.co.uk/news-and-events/fireworks-at-beaver-park>



Mamma Mia

Bottomless Party, Beverley Hills Diner, 8pm.

Tuesday 11th November

Remembrance Day

Queensgate Cemetery from 10am - 2pm, a Remembrance Day reflection space, with tea and coffee provided, and the chance to share stories and memories.

Wednesday 12th November and every 2 weeks onwards

LISA Group Beverley

Location: The Beverley Barge Preservation Society on Syntan, Beckside, Beverley, HU17 0GG. 6pm. 24hr support. Tel: 01482 534483. www.hull4heroes.org.uk

Friday 14th November



90s vs 00s

Bottomless Party, Beverley Hills Diner, 8pm.

Saturday 15th November

Christmas Lights Switch On

Flemingate Beverley.

Beverley Chamber Choir - Reflections

Music Director - PR Dewhurst. 7.30pm to 9.15pm. St Mary's Church, Beverley. Tickets £17.50 reserved, £15 unreserved. Beverley Tourist Information Centre, 01482 391672. www.beverleychamberchoir.org

Abbey Road and Stickyfingers

The Village Hall, Cherry Burton, 8pm. Tickets (£15) are available in advance from www.wegotickets.com/cherryburtonarts Beverley Tourist Info & Budgens Cherry Burton. Tel: 07399 568834

Email: martin.peirson@gmail.com

Tuesday 18th November

Beverley Anglo-French Society

The Beverley Anglo-French Society gives you the opportunity to learn more about France, its

language and culture. 7.30pm at The C Club, Wylies Rd, Beverley. The speakers: Nathalie DeLeval and Professeur Marc DeLeval. The presentation: La vie et la carrière d'un chirurgien exceptionnel. Non members £3 For more information and contact details please visit: www.beverleyanglofrenchsociety.org.uk

Wednesday 19th - Saturday 22nd November

Jack The Ripper - The Legacy at art

Beverley Theatre Company. A play by Anthony Musgrave and Neville Slater. Curtain up 7.30pm. Tickets £18. www.eastridingtheatre.co.uk or phone 01482 874050.

Thursday 20th November

The Quirky Side of Life by Peter Lee

Book signing at Beverley Bookshop, Butcher Row, Beverley. 4pm-6pm.

Friday 21st November



Greatest Showman

Bottomless Party, Beverley Hills Diner, 8pm.

Saturday 22nd November

Tallis Choral Foundation

J.S. Bach - A Christmas Oratorio. Directed by Chris Why. Beverley Minster, 4.30pm. Tickets £18. Free for U25's. Book on Eventbrite.

22nd, 23rd, 27th, 29th, & 30th November

Jack and the Beanstalk

Beverley Memorial Hall. Tickets call 0333 666 3366 or www.ticketsource.co.uk/beverley-musical-theatre

24th November, 29th December, 26th January, & 23rd February

Beverley Ghost Walks

Winter 2025/26 - Outside Mountain Warehouse, Toll Gavel. 7.15pm. Tickets on Eventbrite.

BEVERLEY TOWN COUNCIL
WORKING ALL A COMMUNITY

WHITE RIBBON
.ORG.UK

theWI
INSPIRING WOMEN

White Ribbon
Scouts

WHITE RIBBON VIGIL
Tuesday 25 November 2025

6.00pm Gather at Wednesday Market, Beverley
6.15pm Walk of Solidarity to Toll Gavel United Church
6.30pm Vigil in support of White Ribbon with displays, speakers and song

The launch of 16 days of activism
Raising awareness about gender-based violence
Together, we can make a difference
Refreshments will be available in the church

Thursday 27th November

A Convivial Evening of Comedy

at the Monks Walk, 19 Highgate. Free Entry.

Rock Britannia

7.30pm at St Mary's Church, Beverley, HU17 8DL. Tickets £12 - Age 16 & under £5. Call 07943 276496. www.remarkablearts.net and Tourist Information Centre.



Elsa and Anna Brunch

Tea Party and Meet and Greet, Beverley Hills Diner, 9am.

Friday 28th November

Evolve - Live Band

Ferguson Fawsitt, Walkington. Tickets £6. Email: markspeight1300@gmail.com or text 07813 065859. Show starts 8.30pm.



Movie Musicals

Bottomless Party, Beverley Hills Diner, 8pm.

Saturday 29th November

Hall Together Now #4

The Village Hall in Cherry Burton (7.30pm) SIX local acts. The Bay Horsemen of the Apocalypse will be hosting the event introducing and playing alongside their special guests. Tickets (£10) are available in advance from www.wegotickets.com/cherryburtonarts, Beverley Tourist Information & Budgens Cherry Burton. Info Tel: 07399 568834. Email: martin@peirson.karoo.co.uk Facebook: Cherry Burton Arts.

Sunday 30th November



Country Music

Bottomless Party, Beverley Hills Diner, 3pm.

Friday 5th to Sunday 14th December

Christmas Tree Festival

Beverley Minster, transformed into a sparkling forest of festive creativity. Visitors can wander through more than 150 beautifully decorated Nordman firs, each telling its own unique story.

Tuesday 9th December

Beverley Minster Christmas Concert

In aid of Macmillan Cancer Support. 7pm. Tickets £15. www.macmillan-enthusiase.com/cf/beverley-christmas-concert-2025

Friday 12th December

Beverley Chamber Choir Christmas Carol Concert

Music Director - PR Dewhurst. 7.30pm - 9.15pm. St Mary's Church, Beverley. Tickets £12 reserved, £10 unreserved, accompanied children Free. Beverley Tourist Information - 01482 391672. www.beverleychamberchoir.org or on the door from 7pm.

Saturday 20th December

East Riding County Choir with Beverley Minster Choir and Black Dyke Band - Handel Messiah

Beverley Minster. 7pm - 9.30pm. Tickets £25, £20, & £12. Beverley Tourist Information - 01482 391672. www.eastridingcountychoir.org or on the door from 6.30pm.

Dick Whittington docks at Beverley's Parkway Theatre this Christmas

Parkway Cinema and Theatre prepares to welcome TaleGate Theatre's pantomime production Dick Whittington from 13th to 30th December 2025.

Recently, cast members stepped out in full costume and makeup for a colourful photoshoot. The shoot gave panto fans a behind the scenes glimpse of the much-loved story, which will be delighting local audiences at Parkway Cinema this December.

Artistic director James Worthington said, "Beverley has become a real home for our pantomime productions. The support here in Beverley is second to none, and it's fantastic to return with such a classic story."

Attending a pantomime during Christmas is a cherished tradition for many families, offering a unique blend of entertainment that captivates audiences of all ages. Artistic Director James added, "Panto combines humor, music, and engaging storytelling, this year's production will be a lively performance encouraging audience participation, inviting everyone to cheer for heroes and boo at villains".

The festive season is a time for families and friends to let loose, shout, laugh, boo and cheer bringing Community and Children together to celebrate the festive Christmas spirit.

This year's line-up promises plenty of panto fun. Lulu Frenett is stepping into the villain role as Queen Rat, squaring off against Tamzyn Mace as the



glittering Fairy Bowbells. John Shelley sets out as our hero Dick Whittington, joined by Rebecca Seyhan as the sharp-witted Alice Fitzwarren.

Theo Bazeley-Smith adds mischief as loyal sidekick Tommy the Cat, and Beverley favourite Dame James - "the self-titled (minor) celebrity of Yorkshire" - returns as Sally Fitzwarren, complete with the dazzling costumes and larger-than-life humour Parkway audiences know and love and look forward to".

Secure your ticket to Dick Whittington's unmissable adventure: Parkway Beverley, 13th - 30th December 2025. Box Office: **01482 968090**. Get your tickets today by visiting: parkwaycinemas.co.uk

DICK WHITTINGTON - PERFORMANCE TIMES:

Saturday 13th, 14th, 20th, 21st, 23rd December - 12pm & 4pm

Wednesday 24th December - 10am, 1pm & 4pm

Friday 26th, 27th, 28th, 29th, 30th December - 12pm



Competition Time



Just Beverley, Parkway Cinema and TaleGate Theatre Productions have joined together to give you a fantastic experience to see "Dick Whittington", at Parkway Cinema's Theatre on Saturday 13th December or Sunday 14th December at a showing of the winner's choice.

A family of four (at least one adult) can get into the festive spirit with the best seats in the house to see the show! All you have to do to be in with a chance of winning this great prize is answer the following question:

Who is the Panto Hero played by John Shelley?

Send your answer by email to competition@justbeverley.co.uk by Wednesday 12th November. Put 'Dick Whittington' in the subject box with your name, address and daytime telephone number in the body of the email. The winner will be the first name drawn out of the hat after the closing date.

Winners must be prepared for publicity for Just Beverley, Parkway Cinema and TaleGate Theatre Productions. Photo to be taken on Friday 14th November, at Parkway Cinema, (prior to Flemingate Switch On) there is no cash alternative.



**PARKWAY CINEMA BEVERLEY
13TH - 30TH DECEMBER 2025
WWW.PARKWAYCINEMAS.CO.UK**

FLEMINGATE
BEVERLEY



Christmas

LIGHT SWITCH ON 2025 & FIREWORK DISPLAY HOSTED BY ADAM SMITH



**MATT
TERRY**

X Factor
Winner 2016

Live on Stage

FLEMINGATE
FUTURE STAR 2025
Winners

GRACE LANGLEY
Future Star Winner 2024

**WICKED'S
ELPHABA & GLINDA**

**DICK WHITTINGTON
PANTO CAST**
Talegate Theatre

LEWIS PEMBERTON
Local Artist

**LINKAGE COLLEGE
CHOIR**

THE TRILOGIES

Bradley Johnson,
Freddie Bolt &
Nigel Passey



**FRIDAY 14TH NOVEMBER
5PM - 7.30PM**

Plus **MUSICAL FIREWORK DISPLAY, LARGE SCREENS, FATHER CHRISTMAS,
FESTIVE FOOD & DRINK, FUNFAIR RIDES, CHRISTMAS SHOPPING AND MORE!**

Please arrive early as areas will be limited if it get too busy. Armstrong Way will be closed to traffic from 11.00hrs -22.00hrs (diversions will be in place). The multi-storey car park will get full. Please consider arriving on foot where possible or using other local carparks.

Light switch on & fireworks will take place at 6:45pm.