

just

ISSUE 133

BEVERLEY

IT'S YOUR MAGAZINE

FREE



NAVIGATION
WEALTH MANAGEMENT



NAVIGATION WEALTH - SHARED VALUES, BIG IMPACT

NEWS, WHAT'S ON, LIFESTYLE, FEATURES, PUZZLES, PHOTOS & MORE

Take control of your business



**Improve business performance -
outsource your payroll**

Payroll Outsourcing Benefits

- ✓ Cost reduction
- ✓ Better staff productivity
- ✓ High accuracy & reliability
- ✓ e-payslips direct to employees via our app
- ✓ A named personal contact
- ✓ Added value services including HR & Benefits in Kind
- ✓ Useful online information

to arrange a **FREE** meeting
call us on: 0845 308 2288
or visit
www.stipendia.org.uk



Stipendia Payroll Solutions



@StipendiaPay

6/7 NAVIGATION WEALTH MANAGEMENT



4 PHOTO FINISH

14 February -
6 June 2026



5 LAIRGATE PROPERTY



17 BEVERLEY SINCE 1990



21 RM JOINERY



22 GET BACK TO THE GARDEN



33 WILSONS WHEELS



Contributors:

Julian Minshall, Olivia Peace, Rich Manville, Andy Barber OBE, Louise Barrett, Emily Blake, Andrew Cooper, Julie Dowding, Sam Drinkall, Fran Dunning, ert, Josh Harrison, Amanda McConnell, Navigation Wealth Management, Jayne Morgan, Jo Pinkney, Colin Raynor, Ian Richardson, Nathan Wilson.

REMEMBER! If you see examples of anti-social behaviour or other types of low-level crime, do report it to the appropriate authorities. **POLICE - Emergency 999, Non-urgent 101.**
ANTI-SOCIAL BEHAVIOUR (East Riding of Yorkshire Council) - 01482 393939.

The magazine is available from outlets in Beverley and surrounding areas.

Disclaimer - All the information provided was correct at the time of going to print.
ISSN 2754-9216



Please pass your Just Beverley on or recycle it responsibly.
Printed by: Jadan Press.

www.justbeverley.co.uk

just BEVERLEY

FEBRUARY LETTER FROM THE EDITORS



February is the shortest month of the year, starting the transition from Winter to Spring. Usually felt around late February and Spring usually starts early March.

While cold weather can often linger into March, this period marks a distinct shift with longer, warmer days and the appearance of early spring signs like snowdrops.

This year the Pancake Race in Toll Gavel is taking place in Toll Gavel on Sunday 15th February, be quick you still have time to enter your team, or to get involved in other ways, perhaps just supporting the event.

The week afterwards sees the East Riding Stage Rally return, including a night event from North Bar and up York Road towards the Westwood.

Whatever you do this February, remember have a great February.

Julian.



February is here, sadly my last contribution for a while, small changes, it has been great to be involved with the publication for such a long time.

As we look towards the warmer months ahead, watching nature change from Winter to Spring, the whole countryside comes alive, it certainly puts a Spring into our step.

Whether it's fitness, health or community, just think about the consequences and how you can help make a difference.

Pancakes, chocolate, lent and with love all around. Have a great February.

Olivia.



'Community Publication Award'
Shortlisted Nominee
2017 & 2018



REYTA
'Awardable East Yorkshire'
Award Nominee 2016
'Best Newcomer'

GET IN TOUCH WITH US:

Website: justbeverley.co.uk

Email: info@justbeverley.co.uk

Telephone: 01482 679947

Facebook: facebook.com/justbeverley

If you would like copies for your business to distribute to staff and customers, call Just Beverley on **01482 679947.**



INVESTORS IN COMMUNITY - PUTTING PEOPLE AT THE CENTRE OF WHAT WE DO

We are well settled into the New Year now, the Christmas holidays a distant memory, a chance to reflect on the progress of our resolutions.

Our goal has always been the same, to make a positive difference for local communities. This year, we want to take that further.

We're involving more people in more ways, and are striving towards a community of businesses, charities, and individuals that work together to bring the best for our area.

Building upon the work we have been doing in the region, we see East Yorkshire and Humberside as a pioneer. With around 1,500 charities delivering amazing, vital services, there's so much to get involved in.

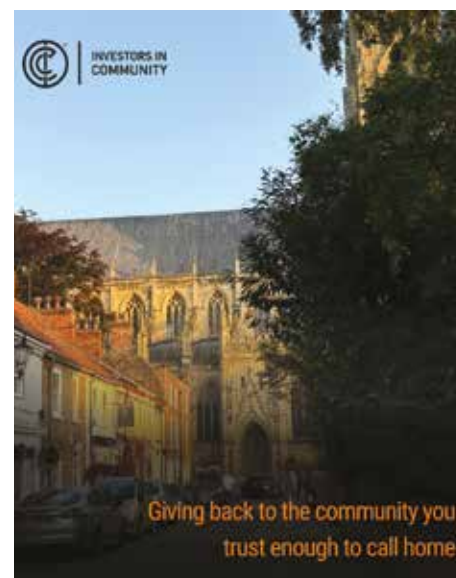
At IIC, we want to make this involvement easier. Your one-stop-shop for helping your community. People are the beating heart of our town.

It is important we value this, as businesses, as employees, and as neighbours. The support for our charity sector is strong, but there is always more to be done.

All of us must pull together, and work collectively to help these organisations deliver their life-saving work. We're starting with businesses, bringing together a community that cares about the impact they have on people.

This gives us, the people, the option to spend our money in a way that will bring a positive impact back to Beverley, and for businesses to be a part of something bigger than themselves, building relationships and trust with other businesses who care about what is right.

For us, it's about giving back to the community that you trust enough to call your home. It's helping others, but it's also helping your town, your street, your neighbours - it's helping



yourself. If you would like to join us in creating a thriving community, or to find out more, get in touch with us at emily.blake@investorsincommunity.org

PHOTO FINISH: A YEAR AT BEVERLEY RACES, OPENS IN THE CHAMPNEY TREASURE HOUSE MUSEUM THIS FEBRUARY

As part of East Riding of Yorkshire Council's exciting exhibition programme for 2026, Photo Finish: A Year at Beverley Races, focuses on the work of seven regional photographers known as The People, who in 2024 set out to record a year of action at Beverley Racecourse.

The images capture the excitement of the crowds, the behind-the-scenes work of the stewards, vets and caterers and the stars of the show - the horses and jockeys. As well as archive and museum documents plus loans from Beverley Racecourse, the exhibition is complemented by a playlist of historic horse racing film footage from Yorkshire Film Archive. Members of *The People* will be in the exhibition space on the opening day of the exhibition from 10.30am to 4pm opens on Saturday 14th February and runs until Saturday 6th June.

Councillor Nick Coultish, cabinet member for culture, leisure and tourism at East Riding of Yorkshire Council said: "This exhibition is a fantastic celebration of Beverley's racing heritage and the creativity of our local photographers. It captures not only the thrill of the races but also the community and tradition that make Beverley Racecourse so special.

"We are proud to showcase this work at the Champney Treasure House Museum and invite everyone to come and experience this unique perspective on one of our region's most iconic events."


Photographer Nigel Walker from *The People* said: "At the start of 2024 seven local photographers, with the support of Beverley Racecourse, set out to record one year in the life of the course. We recognised the importance of racing to the town and the historic links that were forged across much wider areas. We are delighted that the resulting exhibition will feature at the Champney Treasure House Museum this year. We hope anyone with a love of horse racing will be able to relive the excitement of a day at the races. The photographs are supported in the wider context of exhibits from local archives."

For more information and the latest opening times, visit the East Riding Museums page: www.eastridingmuseums.co.uk. Please note, opening times are subject to change. This project was partially funded by Just Beverley and Dogger Bank Wind Farm.

A photograph from the exhibition by Julie Shakesby



CHAMPNEY TREASURE HOUSE MUSEUM








Champney Treasure House

Photo Finish

A Year at Beverley Races

14 February - 6 June 2026

BEVERLEY AC - RUNNING INTO 2026!

Whilst unfortunately the recent spate of cold and windy weather saw many of the events cancelled or postponed, many Beverley AC members have continued to keep busy and active.

The weekly Tuesday evening El Torchio headlight torch runs around Beverley Westwood see a regular turnout of members, as well as the regular Club runs around Beverley on Wednesday evenings.

The speed training sessions on Thursday and Friday evenings along with the strength and conditioning sessions on Monday evenings at East Riding Leisure Beverley, are keeping members fit and ready for the season ahead.

Beverley AC have a lot to look forward to, the Club's calendar is a busy one. To help everyone with their health and fitness-related New Year's resolutions, the Club starts its 9th cohort of the Couch25k programme on Monday 23rd February 2026 at 6:00pm at East Riding Leisure, Beverley.

Whether brand-new to running or building running confidence, this programme is for you, taking you from being non-runners to completing your first 5kms event in 12 weeks of training and will culminate in a graduation run at Beverley Westwood Parkrun in May.

The cost of taking part in the programme is £15, which includes a T-shirt and a discounted membership to Beverley AC for the year.



Details on how to register and further information are available on the Club's website.

Some important 2026 dates for your diaries. The iconic Pittaway Beverley 10k race and Westwood Mortgage Advisors short race will take place on Sunday 10th May 2026.

The Viking Pest Control Walkington 10k race and Westwood Mortgage Advisors fun run will take place on Friday 10th July 2026.

The 10k race is now sold out but places are still available for the short race and further details can be found on the Club's website.

New members, whatever your age and fitness level, are always welcome and further details about the membership and what the Club has to offer to its members can be found on the Club's website: www.beverleyathleticclub.co.uk

"SOLD" - THE 1843 E.R. SAVINGS BANK GETS READY FOR ITS NEW LIFE AHEAD

When RD Stott decided to purchase the old 1843 East Riding Savings Bank Building in Lairgate late in 2025, with the vision to convert it to two residential buildings, he knew just what was in store.

Hard work determination and a fully committed team to deliver excellence, quality and a building the new owners and the community could be proud of.

Richard commented, "The successful renovation of the listed building shows how heritage preservation can work hand in hand with modern vision by respecting historic features while upgrading safety and introducing energy efficiency.



"The project has attracted a lot of interest. Now the building is sold, we look forward to the handover and the building enjoying a new lease of life".

The 1843 Savings Bank is there in all its glory shining bright in the Winter sunshine, brought back to life enhancing Lairgate and strengthened community pride in the area's history.



As you drive along Lairgate into Beverley, glance to your left and enjoy the beauty of the building.

We congratulate Richard on completing the work on phase one and hope phase two goes just as well.

NEW INDEPENDENT TRAVEL AGENCY TO OPEN BY BEVERLEY'S HISTORIC NORTH BAR

North Bar Travel, is set to open adjacent to Beverley's historic North Bar, bringing personalised, expert travel planning to the heart of the town.

North Bar Travel is part of the award-winning Beverley Travel Group, which was established in 2020 on Flemingate in Beverley.

Since opening, the business has grown steadily and now operates four local stores, following the successful launch of additional branches in Hedon and Market Weighton over the past two years.



The decision to open North Bar Travel follows detailed market research and careful planning, with the new location chosen to better serve clients looking for a more personal, face-to-face travel experience in a central Beverley setting.

Karl Douglas and business partner Kelly Cheesman commented: "North Bar Travel is a natural next step in our continued expansion, allowing us to connect even more closely with the local community. We're looking forward to offering carefully tailored travel experiences, backed by the same high standards of customer service that our clients across Beverley Travel Group have come to expect. Our aim is not just to book holidays, but to look after our customers for many years to come."

North Bar Travel will offer a wide range of holiday options, specialising in bespoke travel, cruise & touring, all supported by a knowledgeable local team.

North Bar Travel, North Bar Within, Beverley, HU17 8DL.

We wish the new owners of phase one a long happy future living in the heart of Beverley.



NAVIGATION WEALTH MANAGEMENT - V

At Navigation Wealth Management, it's our privilege to guide our clients on their financial journey. We replace uncertainty with clarity, confidence, and control so clients can focus on the freedom of living their life.

We believe in Lifestyle Financial Planning. This means moving away from industry jargon and the "one-size-fits-all" approach to focus on what truly matters: the life clients want to lead.

We stand for Relationship-First Advice, building deep bonds that allow us to support our clients for the long haul, often working across multiple generations of the same family.

We are committed to Absolute Clarity, ensuring clients always know exactly where they stand today and where they are headed tomorrow.

Ultimately, our goal is Empowerment; we want to provide the secure financial foundation that gives clients the confidence to say "yes" to the things they love doing, knowing their future is protected.

Evolving for the Modern World

The world has changed significantly since 2020, and we have evolved right along with it. In the last five years, we have modernised our toolkit by embracing sophisticated cash-flow modelling technology, which allows us to show our clients "what-if" scenarios in real-time - whether that's retiring early or securing a second home.

We have also deepened our expertise by expanding our team to include specialists who understand the unique pressures of business owners, the complexity of estate and trust planning, those in the creative industries and supporting vulnerable clients and families at a time they need it most.

By refining a flexible hybrid approach, we've made financial advice more accessible, keeping us closer to our clients than ever before.

Investing in Our People

Our team's evolution has been defined by a deep commitment to nurturing talent and creating diverse pathways into the profession. As we have grown, we've intentionally introduced several new roles to the business, ensuring we have the right infrastructure to support our clients' increasingly complex needs.

This growth hasn't just been about increasing our numbers; it has been about building a team that reflects our values of longevity and dedication.

A cornerstone of this journey has been our investment in the next generation. We are incredibly proud to have guided four team members through their apprenticeship



WHO WE ARE AND WHAT WE STAND FOR



journeys, providing them with a hands-on foundation to build lifelong careers in financial services.

In addition to supporting young talent, we have successfully mentored four "second-careerists", helping them transition from their previous professional backgrounds to become fully-fledged financial advisers.

Exceptional Results & Moving Stories

Our commitment to excellence was validated in 2025 when we conducted our latest client satisfaction survey. The results were truly outstanding with 98% of clients being happy with our services, reflecting the hard work our team puts in every day. Beyond the statistics, we also embarked on a series of in-depth interviews to better understand the real-world impact of our work.

These "Client Stories" provided us with incredible, and often deeply moving, feedback regarding the tangible value of working with our firm and the meaningful, trust-based relationships our clients have built with their designated advisers.

Our Pride and Promise

We are proud of the unique blend of fresh energy and diverse life experience within our firm. By investing in both our apprentices and our second-career advisers, we are doing more than just growing a business; we are ensuring that our "Relationship-First" promise remains a reality.

This allows us to provide clients with a consistent, empathetic, and highly skilled team that can walk beside our clients and their families for decades to come.

Our pride also extends deep into the communities we serve. Throughout our time in Beverley, we have remained steadfast in our support for local charities that make a real difference, including Hull 4 Heroes, Cat Zero, and the Smile Foundation.

Our commitment goes far beyond simple donations; we actively raise funds through dedicated golf days, physical challenges, and events like Race for Life.

We are also passionate about providing direct community support - whether that is donating essential supplies to local food banks or providing gifts to disadvantaged children in our area - ensuring that as we grow, our community prospers with us.



NAVIGATION
WEALTH MANAGEMENT

Tel: 01482 379504

Email: navigationwm@sjpp.co.uk

Web: www.navigationwm.co.uk



EVERY THURSDAY

(Doors open 9.30am)

Join us for a free brew and enjoy some great films on Beverley Parkway's Big Screen. Only £5 (or £6 for newer releases) with drink and biscuits included. Aimed at 55s & over. Films subject to change.

Thursday 5th February -

Rental Family (£6)

Starring: Brendan Fraser, Takehiro Hira, Mari Yamamoto, Shannon Mahina Gorman.

H is for Hawk (£6)

Starring: Claire Foy, Brendan Gleeson, Denise Gough, Sam Spruell, Lindsay Duncan.

Saipan (£6)

Starring: Steve Coogan, Éanna Hardwicke, Jack Hickey, Harriet Cains, Alice Lowe.

Thursday 12th February -

H is for Hawk (£6)

Starring: Claire Foy, Brendan Gleeson, Denise Gough, Sam Spruell, Lindsay Duncan.

Saipan (£6)

Starring: Steve Coogan, Éanna Hardwicke, Jack Hickey, Harriet Cains, Alice Lowe.

History of Sound (£6)

Starring: Paul Mescal, Josh O'Connor, Chris Cooper, Molly Price.

Thursday 19th February -

History of Sound (£6)

Starring: Paul Mescal, Josh O'Connor, Chris Cooper, Molly Price.

Shelter (£6)

Starring: Jason Statham, Bodhi Rae, Breathnach, Bill Nighy, Naomi Ackie.

Mercy (£6)

Starring: Chris Pratt, Rebecca Ferguson, Kali Reis, Annabelle Wallis, Kylie Rogers.

Thursday 26th February -

Shelter (£6)

Starring: Jason Statham, Bodhi Rae, Breathnach, Bill Nighy, Naomi Ackie.

Mercy (£6)

Starring: Chris Pratt, Rebecca Ferguson, Kali Reis, Annabelle Wallis, Kylie Rogers.

Kangaroo (£6)

Starring: Ryan Corr, Lily Whiteley, Deborah Mailman, Rachel House.

These are the films scheduled to open in February - all are subject to change. Check out up-to-date cinema listings at www.justbeverley.co.uk/cinema-times



Send Help

From 6th February
Starring: Rachel McAdams, Dylan O'Brien, Edyll Ismail, Dennis Haysbert.



Goat

From 6th February
Starring: Caleb McLaughlin, Gabrielle Union, Stephen Curry, David Harbour.



Strangers Chapter 3

From 6th February
Starring: Madelaine Petsch, Gabriel Basso, Ema Horvath, Richard Brake.



Wuthering Heights

From 13th February
Starring: Margot Robbie, Jacob Elordi, Shazad Latif, Martin Clunes.



The Day the Earth Blew Up: A Looney Tunes Movie

From 13th February
Starring: Eric Bauza, Candi Milo, Peter MacNicol.



Stitch Head

From 13th February
Starring: Asa Butterfield, Joel Fry, Rob Brydon, Tia Bannion, Alison Steadman.



EPIC: Elvis Presley in Concert

From 20th February
Starring: Elvis Presley.
Director: Baz Luhrmann.



Cold Storage

From 20th February
Starring: Liam Neeson, Georgina Campbell, Joe Keery, Lesley Manville.



Scream 7

From 27th February
Starring: Neve Campbell, Courteney Cox, Isabel May, Jasmin Savoy Brown.

YOUR LOCAL INDEPENDENT CINEMA



JOIN US FOR SOME GREAT FILMS AND LIVE SHOWS THIS WINTER

SEND HELP

Two colleagues become stranded on a deserted island, the only survivors of a plane crash. On the island, they must overcome past grievances and work together to survive, but ultimately, it's a battle of wits and wits to make it out alive.

From 6th February.



WUTHERING HEIGHTS

A passionate and tumultuous love story set against the backdrop of the Yorkshire moors, exploring the intense and destructive relationship between Heathcliff and Catherine Earnshaw.

From 13th February.



COLD STORAGE

When a highly contagious, mutating fungus escapes a sealed facility, two young employees, joined by a grizzled bioterror operative, must survive the wildest night shift ever to save humanity from extinction, as the microorganism spreads and destroys everything in its path.

From 20th February.



BOWIE, CAMBO & ALL THE HYPE

Live On Stage - Tuesday 10th February, 7.30pm

An Evening in conversation with John Cambridge and Garry Burnett with a Q&A session. John Cambridge began his musical career in the Hull band, The Gonx before joining ABC, The Hullabalooos and The Rats with Mick Ronson.



AN EVENING WITH JACQUI DANKWORTH

Live On Stage - Wednesday 11th February, 7.30pm.

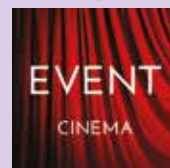
In this very special and intimate concert, audiences will be treated to a sparkling collection of songs drawn from her highly praised studio albums, alongside numbers that have inspired her incredible career.



SPIERS AND BODEN

Live On Stage - Thursday 12th February, 7.30pm.

Spiers & Boden have been at the forefront of the English traditional folk scene for 25 years both as a ground breaking duo and as founder members of folk phenomenon Bellowhead.



Event cinema offers something a little different to mainstream films. Live and pre-recorded shows beamed in via satellite from all over the world. Here are the latest live streams that you can enjoy on the big screen at Parkway Beverley.

Monday 9th February, 7.15pm -

RBO: Woolf Works

Virginia Woolf defied literary conventions to depict rich inner worlds - her heightened, startling and poignant reality.

Thursday 26th February, 7pm -

NTLIVE: The Audience (12A)

Academy Award-winner Helen Mirren plays Queen Elizabeth II in the much-anticipated return of the Olivier Award winning hit production, that inspired Netflix's The Crown.

Tuesday 3rd March, 7.15pm -

RBO: Giselle

The peasant girl Giselle has fallen in love with Albrecht. When she discovers that he is actually a nobleman promised to another, she kills herself in despair.

Saturday 21st March, 6pm -

The MET: Tristan und Isolde

After years of anticipation, a truly unmissable event arrives in cinemas worldwide on March 21 as the electrifying Lise Davidsen tackles one of the ultimate roles.

Tuesday 31st March, 5.15pm -

RBO: Siegfried

Raised by a scheming dwarf and unaware of his true family origins, a young man embarks on an epic journey.

Tuesday 21st April, 6.45pm -

RBO: The Magic Flute

Princess Pamina has been captured. Her mother, the Queen of the Night, tasks young Prince Tamino with her daughter's rescue.

Tuesday 5th May, 6pm -

MET Eugene Onegin

Following her acclaimed 2024 company debut in Puccini's Madama Butterfly, soprano Asmik Grigorian returns to the Met as Tatiana, the lovestruck young heroine.

Saturday 30th May, 6pm -

The MET: El Ultimo Suen De Frida y Diego

On May 30, the Metropolitan Opera's 2025/26 Live in HD season comes to a close with a live transmission of American composer Gabriela Lena Frank's first opera.

SSAFA LOOK AHEAD, LOOKING AFTER VETERANS

The future for SSAFA and its members is built on continued commitment, adaptability, and compassion.

As the needs of serving personnel, veterans, and their families evolve, SSAFA is well placed to respond with tailored support, practical assistance, and trusted guidance.

Growing awareness of mental health, housing, and transition to civilian life will shape future services, ensuring no one in the Armed Forces community faces challenges alone.

Strong partnerships, dedicated volunteers, and modern fundraising approaches will help SSAFA remain sustainable and effective.

For its members, the future offers an opportunity to make a meaningful difference, strengthen community bonds, and uphold a proud tradition of service. Together, SSAFA and its members will continue to provide lifelong support to those who have served the nation.

Tel: 01964 552 837.

Email: eyorks.branch@ssafa.org.uk

Website: ssafa.org.uk



ssafa | the
Armed Forces
charity

Your Veterans Need You!

SSAFA urgently need a Branch Secretary, admin support and caseworkers.

The Branch Secretary serves as key figures in supporting those who have served their country, ensuring they receive the assistance and resources when in need after protecting our country.

It's a role that requires dedication, compassion, and a commitment to serving others, offering immense personal satisfaction and the opportunity to positively impact the community.



If you think you can help, please get in touch:

Tel: 01964 552 837

Email: eyorks.branch@ssafa.org.uk

Website: ssafa.org.uk

THE HISTORY OF THE LOVE HEART

The "love heart" is perhaps the world's most universal symbol, yet its history is a curious case of biological misunderstanding, ancient botany, and medieval poetry.

While we now use it to represent romantic affection, its origins range from extinct contraceptive plants to the "three-chambered" theories of ancient physicians.

Ancient Botany and Early Roots

Before it represented the human heart, the "scalloped" shape appeared in nature. One of the most compelling theories traces the symbol to Silphium, a giant fennel plant that grew in the ancient Greek city of Cyrene.

The "Birth Control" Connection: Silphium was so valuable for its medicinal and contraceptive properties that it was worth its weight in silver. Its seed pods were famously shaped like the modern heart.

Currency of Love: Because the plant was associated with sexuality and intimacy, its shape became a shorthand for desire, even appearing on Cyrene's coinage as early as the 6th century BCE.

Other scholars point to the Ivy leaf, which has a similar silhouette. In Greek and Roman cultures, ivy symbolised fidelity and eternal life, often appearing on funeral steles and marriage crowns.

The Medical "Mistake"

The reason the symbol looks so little like a real human heart (which is more fist-shaped and asymmetrical) lies in early medical illustrations.

Galen's Influence: The 2nd-century physician Galen described the heart as having three chambers with a central indentation.

The Pinecone Phase: Early medieval artists, following Galen's anatomical descriptions without actually dissecting human bodies (which was often taboo), drew the heart as an upside-down pinecone or a pear. It wasn't until the 14th century that the "dent" at the top became a standard artistic feature, likely as a stylistic attempt to represent the organ's valves or the "middle" chamber Galen described.

The Birth of Romantic Love

The heart truly transitioned from a medical diagram to a romantic icon during the Middle Ages, an era obsessed with "Courtly Love."

Roman de la Poire (c. 1250): This French manuscript contains the first known illustration of a lover offering his heart to a lady. In the image, the heart is shaped like a pinecone, but the gesture defined the symbol's future.

The Shift in Orientation: By the 1300s and 1400s, the heart flipped. No longer held by the tip (pointing down), it was depicted with the point at the bottom, mimicking how people

felt the organ was positioned in the chest.

Playing Cards and Mass Media:

In the late 15th century, French card makers standardised the four suits: spades, clubs, diamonds, and hearts. This solidified the red, two-lobed shape in the public consciousness across Europe.

The Victorian Boom and Modern Day

The Victorian era turned the heart into a commercial powerhouse. With the rise of the postal service and Valentine's Day cards, the heart became the central motif for "secret admirers."

By the 20th century, Milton Glaser's "I ♥ NY" logo turned the symbol into a verb, proving that the heart had evolved from a literal organ into a global language for "I care about this."

Did you know? The "Sacred Heart" in Catholic tradition also played a massive role in popularising the shape. By surrounding the heart with flames and thorns, it became a symbol of divine, sacrificial love that eventually bled into secular art.

Shane Cooper, Stuarts of Drifffield, Lincoln Way, Beverley, HU17 8RH.



VALENTINES DAY, SATURDAY 14TH FEBRUARY

Valentine's Day is celebrated by couples showing their love, affection, and connection to each other, making it a unique day to show appreciation for the special people in our lives.

Valentine's Day in recent times is also a time to honor love between friends and family, strengthening relationships in all their forms. Expression is usually in the form of heartfelt cards, thoughtful gifts, chocolates, soft toys, meant to surprise, it's an opportunity to express feelings that might otherwise go unspoken.

Make the most of the day and enjoy special time together to bring a sense of joy and togetherness. This may even include a candlelit dinner, a simple "thank you" note, or spending time with loved ones. More than ever connection is important in every walk of life, Valentine's Day reminds us of the importance to cherish relationships and create lasting memories filled with love.

Wishing you a Happy Valentine's Day.



**The
Ferguson
Fawsitt**



OPENING HOURS

MON & TUES:
12:00-LATE

WED-SAT:
09:30-LATE

SUN:
12:00-22:00

What's on at the Fergie

1st Thursday of the Month - Bingo from 2pm

4th Thursday of the Month - Live Music

1st Friday of the Month - Quiz Night from 8.45pm

**OPEN
7 DAYS**

Bookings being taken for Mother's Day, Sunday 15th March



WEDNESDAY TO SATURDAY:
AFTERNOON TEA 12PM to 5PM
www.fergusonfawsitt.co.uk
tel: 01482 526317

**Valentine's Day
Menu Available**

FOOD HOURS

MON & TUES:
12:00-19:30

WED-SAT:
09:30-20:00

SUN:
12:00-18:30

MAKING YOUR PENSION AND ISA ALLOWANCES WORK FOR YOU

Thanks to a combination of frozen tax thresholds, above average inflation and higher interest rates and changes announced in the recent Budget, many people may face higher tax bills this year. Here, we look at how you can use your pension and ISA allowances to make a big difference at tax year end.

Why more of us are facing a higher tax bill this year

In June 2025, HMRC predicted the total number of higher rate income taxpayers would rise by 400,000; up 38.7% on 2022/23.¹ Driving this increase is a 'perfect storm' of above average inflation, rising prices and, most importantly, the recent extension to the freeze on tax thresholds. Coupled with inflation running stubbornly above the 2% target, it's more important than ever to make the most of the tax saving opportunities of pension and ISA allowances.

Why do frozen tax thresholds matter?

Although salaries have been steadily increasing, tax thresholds have not. And following the Budget, the freeze on income tax thresholds has been extended until 2031. This will pull growing numbers of people into a higher tax band if their earned income goes up. It will also net the government an additional £12 billion, according to the Office for Budget Responsibility reports.²

This passive form of tax-raising is known as 'fiscal drag.' Crossing a tax threshold not only affects the rate of tax you pay on your income, it impacts the amount of tax you pay on your savings too. As a higher rate taxpayer, your personal savings allowance of £1,000 halves to £500. It vanishes

altogether if you become an additional rate tax payer. While the rate of tax you pay is currently the same as non-savings income, from April 2027 savings rates will increase by two percentage points to 22% for basic rate taxpayers, 42% for higher and 47% for additional rate taxpayers.

There is a silver lining, however. Maxing out your ISA or pension contributions, or indeed both, means you'll get the full benefit of your annual tax allowances, helping to reduce your annual tax bill.

Pension contributions - your secret weapon

Pension contributions are an excellent way to save, and a prudent extra contribution before tax year end could help you stay within your current tax band.

Tax relief is limited on your personal contributions to the higher of 100% of your earnings in the tax year or £3,600. However, this is still a great tax incentive. The real bonus is you receive tax relief at your highest rate of tax. When paying into a personal pension the scheme will claim 20% tax relief on your behalf, you can then claim the extra 20% or 25% from HMRC depending on the rate of tax you pay. This reduces the cost of the contribution overall.

Another benefit of making personal contributions into your pension is they reduce 'adjusted net income' - this is the amount used to determine your personal allowance and eligibility for tax-free childcare. Contribution limits on pensions are also quite generous.

The annual allowance tests contributions you

make, and any your employer or third parties make for you. This currently stands at £60,000 for most people. It may be tapered for those with income in excess of £200,000, falling to a low of £10,000.

Restrictions will also apply when you have started drawing certain types of pension income. In addition, unused annual allowance can usually be carried forward for up to three years, although the tax relief on personal contributions will still be restricted by earnings in that year.

All investments held within a pension scheme grow tax free, and although you pay income tax when you need to take money out, the first 25% of the fund is usually tax free, capped at £268,275 for most. Pensions can only be accessed from age 55 (57 from April 2028) but that means you can't touch your fund, making it a great long-term savings vehicle.

How can my ISAs help reduce my tax bill?

The current annual ISA allowance is £20,000 and this can be spread across different ISAs, including cash, stocks and shares or lifetime, if eligible. It's a use-it-or-lose-it allowance, so you can't carry forward unused allowances from previous years.

The real benefit of ISAs is that you don't pay tax on the cash or investments held within them, they grow entirely tax free. This means a tax saving in comparison to just holding funds outside the ISA wrapper. There is also no capital gains or income tax to pay should you need to access the funds, and no restrictions on when or how much you can access either, unlike pensions.

Tax Year 2025/26



The less you leave to chance, the more you leave behind

A little time on tax planning today, so more of your legacy reaches the people you love tomorrow.

The levels and bases of taxation and reliefs from taxation can change at any time and are dependent on individual circumstances.

Discover the power of financial advice. Let's talk before 5 April.



Navigation Wealth Management

01482 379504
navigationwm@sipp.co.uk
www.navigationwm.co.uk

Managing Partner Practice

St James's Place

Navigation Wealth Management is an Appointed Representative of and represents only St. James's Place Wealth Management plc (which is authorised and regulated by the Financial Conduct Authority) for the purpose of advising solely on the group's wealth management products and services, none details of which are set out on the group's website www.sjp.co.uk/products. The 'St. James's Place Partnership' and the titles 'Partner' and 'Partner Practice' are marketing terms used to describe St. James's Place representatives. Navigation Wealth Management is a trading name of Navigation Wealth Management Ltd.

SJP Approved 05/12/2025

SJP5188_DS-BE (10/25)

Don't forget about Junior ISAs either. You also have a Junior ISA allowance of £9,000. If you and your spouse or civil partner both maxed out your ISAs, and a Junior ISA, that could add up to £58,000 that you won't be taxed on.

Budget 2025 - changes to come

In the Budget, the Chancellor announced proposals to restrict national insurance savings, from April 2029, for pension schemes that use salary sacrifice. This will limit the contributions that benefit from the extra NI saving to £2,000 per year.

This won't impact the income tax relief available though, and doesn't diminish the overall benefits of pension savings. In addition, the Chancellor also announced proposals to limit the cash ISA allowance. From 2027, savers under 65 will only be able to save a maximum of £12,000 each year into a cash ISA.

The remaining £8,000 ISA allowance can only go into a stocks and shares ISA. Alternatively the whole £20,000 can be invested into a stocks and shares ISA. The over 65s can choose to use their whole £20,000 in a cash ISA or split it as they see fit.

Which should I choose, pension or ISA?

The short answer is both, if you can. Each has different advantages and benefits, which allow you maximum flexibility when planning for both short- and long-term saving. Of the two, pensions are still the most tax efficient for long-term investing.

On the other hand, ISAs offer a tax efficient, simple and flexible way to save. ISAs are also easily accessible, so you can withdraw money

quickly, making them one of the most popular ways to save. In 2022/23 (the last year for which figures are available) adult ISAs accounted for £71.6 billion of savings.²

Holding a combination of ISAs and pensions is a key component of holistic financial planning. It gives you the greatest flexibility and control over your money, as well as maximum tax efficiency.

How your financial adviser can help you bring down your tax bill

Spreading your wealth across different types of investments can reduce your risk and gives you greater choice in later life on how you draw your retirement income. Many people work together with their financial adviser to help them decide on the right mix.

For us, financial advice is always about helping you and your family to get the most out of your life. As always, that means getting the most out of your money.

Have some questions about reducing tax by saving into ISAs or pensions? Get in touch on **01482 379504** or visit our website **www.navigationwm.co.uk** for more information, we're here to help.

The value of an investment with St. James's Place will link directly to the performance of the funds selected and may fall as well as rise. You may get back less than the amount invested.

An investment in a Stocks and Shares ISA will not provide the same security of capital associated with a Cash ISA. However, please bear in mind that over the long-term, inflation will erode the purchasing power of your capital.



The levels and bases of taxation, and reliefs from taxation, can change at any time and are generally dependent on individual circumstances.

Please note that Cash ISAs and Lifetime ISAs are not available through St. James's Place.

Sources:

¹ HMRC - accessed December 2025

² Government UK website

Jadan

Print that gets you noticed

Jadan Press are a leading family run commercial and trade printer based in Hull.

With over 25 years experience, we are renowned for producing exceptionally high quality print, design and finishing.

**BROCHURES LEAFLETS
POSTERS CALENDARS PADS
LARGE FORMAT PRINTING
STATIONERY MAGAZINES
SAFETY SIGNAGE BANNERS
LABELS DIE-CUTTING
and much much more**



PROMOTA
3 STAR ACCREDITED MEMBER

20 YEAR
bpmi
1 STAR ACCREDITED MEMBER

BPIF
making change positive

CfA
ISO 9001
Quality Management

01482 610902

sales@jadan-press.co.uk www.jadan-press.co.uk

Rainbow House, Kimberley Street, Hull, HU3 1HH



jadan_press



jadanpress



jadanpress

SETTING THE STANDARDS AT LECONFIELD KENNELS AND CATTERY

Leconfield Kennels and Cattery offers peace of mind for pet owners who want the highest level of care for their animals.

Nigels commented, "Because we are family-run, this means pets receive more personal attention from our experienced carers who genuinely understand and love animals. This smaller, hands-on approach allows our staff to get to know each pet's personality, routine, and specific needs, helping them feel safe and comfortable while away from home". Our policy is to staff on a ratio of 1 member of staff to 10 dogs or cats.

At Leconfield Kennels and Cattery they can offer more flexibility services than larger kennels,



accommodating special dietary requirements, medication, exercise routines, or behavioural needs.



Leconfield Kennels and Cattery are proud of their calmer, less stressful environment, which is especially important for nervous or elderly pets.

Recently, having closed for a full deep clean, hygiene, safety, and welfare standards are top priority, as the business's reputation relies heavily on trust, local recommendations, and repeat customers.

Understanding the pet owners needs, Leconfield appreciates the importance of communication, allowing owners to speak to the same carers before, during, and after their pet's stay.



Joanne summed up, "Overall, our kennels and catteries provide a caring, reliable, and personalised service that treats pets as individuals rather than numbers".

Leconfield Kennels and Cattery, Arram Road, Leconfield, HU17 7NP.

Office: 07360 276707.

Out of hours: 07946 193269.

www.leconfieldkennelsandcattery.co.uk

Please Note: Our drop off and collection times now operate throughout the year.

Drop off: after 2PM. Collection: Before 12 Midday. Unfortunately we will not be able to accept pets outside these times.

Botterill & Co Chartered Certified Accountants

We are a modern and professional accountancy practice ideally located to serve businesses in Beverley and the surrounding area.

We utilise modern accounting technology to provide you with a cost effective, professional service.

Our services:

- Annual Accounts
- Company Formations
- Tax Planning
- Payroll
- Management Accounts
- Cloud Accounting
- Tax Returns
- Bookkeeping & VAT

For a free initial consultation please contact us:

Office: 01482 862240

Email: gareth@botterillco.co.uk

Website: www.botterillco.co.uk

1st Floor Offices, 40 Norwood, Beverley, HU17 9EY.

Four Generations, Giving Over 130 Years Service

Herbert 1870-1962 Eardley 1908-1986 Geoffrey 1939-2015 David 1964



Golden Charter
Funeral Plans



- Funerals Respectfully Conducted
- 24 Hour Out of Hours Service
- Free Advice & Support
- Private Restrooms
- Prepaid Funeral Plans Available
- Finance Options Available



Tel: 01482 844695
www.hkempandsonltd.com

259 Hallgate, Cottingham, East Yorkshire, HU16 4BG

Fax: 01482 843898

Email: hkempandsonltd@gmail.com

IAN HARRISON - LOOKING FORWARD - PLAN AHEAD

Ian Harrison is always keen to keep the client happy. Good planning between Ian and the customer benefits both sides by creating clarity, efficiency, and trust.

Ian said, "When the work is planned in advance, I clearly understand the scope, materials, budget, and timeline, which in turn reduces misunderstandings and unexpected changes.

"Working in this way allows me to ensure jobs to be scheduled efficiently, saving time and avoiding wasted effort, both the customer and myself".

Ian continued, "For the customer, planning provides confidence that the work will be completed properly, on time, and within budget. It also helps prioritise tasks, ensuring the most important repairs are addressed first".

When Ian goes about his work, he likes to have a clear plan ahead, understands that planning improves communication, reduces stress, and leads to higher-quality results.

Ultimately, it creates a smoother working relationship, fair pricing, and greater satisfaction for both himself, and the customer.

Ian Harrison - Beverley's Handyman.
Mobile: 07970 332373
Email: ianharrison68@icloud.com
Website: www.ian-harrison.com



Ian

HARRISON
HANDYMAN

Follow us on
Facebook and Instagram

For all your jobs around the home

- Painting, Interior & Exterior
- Mirror & Shelf Installation
- Joinery
- Flat Pack Assembly
- Picture Hanging
- .. and so much more

07970 332373

ianharrison68@icloud.com

www.ian-harrison.com

LIFTING THE CUP - WHAT FOOTBALL CAN TEACH US ABOUT GETTING THE JOB DONE

There's a bit of optimism in the air, isn't there? 2026 is here, and if you ask Julian at Just Beverley, England might just bring the World Cup home this Summer - 60 years on from 1966. If nothing else, it's a nice excuse to start the year with a bit of belief.

It got us thinking. What made that team so special wasn't luck - it was planning, teamwork, and everyone knowing their role. Not a million miles from what you'd want in a good tradesperson.

Because whether it's upgrading your fuse board, sorting garden lighting, or planning a kitchen refurb, the best results come from doing the basics right - knowing what's needed, getting organised, and turning up when promised.

We won't pretend we're not busy - we are. But we're also highly organised. While we can't always respond to "can you set off now?" jobs, we're brilliant at working to a plan. Most of our work is booked in advance, and we stick to our schedule so you know exactly what's happening and when.

We've built our reputation on being the kind of team you'd want on your side - professional, reliable, and fully qualified. Just like a great football squad, we've got specialists for each position - from EICRs to full rewires, EV chargers to fault finding.

So if you're planning ahead for electrical work this year, give us a call. We might not lift a trophy, but we'll give you a top performance.

Visit: www.smartpower.co.uk
Email: info@smartpower.co.uk
Call: **01482 205222**






PROFESSIONAL DEDICATED ELECTRICIANS

CALL 01482 205222



Based in Cottingham, serving East Yorkshire with Domestic, Commercial, and Industrial Electrical Solutions.

OUR SERVICES

- Fault Finding
- Internal and External LED Lighting
- Test and Inspection EICR
- EV Chargers
- Kitchen Electrics
- Consumer Unit Upgrades
- Full and Partial Rewires



SCAN NOW

CONNECT WITH US






Our team will always go the extra mile to ensure that you're delighted with our work.

WWW.SMARTPOWER.CO.UK

THE CHANGE OF SEASONS WITH JAYNE AT LINK AGENCY

Using an independent estate agent offers several valuable benefits for buyers and sellers alike.

Jayne, an independent agent, has a deep rooted knowledge in her local area, offering a strong market knowledge, established relationships, and a clear understanding of neighbourhood trends, pricing, and demand. Jayne's local expertise allows for more accurate valuations and more effective marketing strategies.

Jayne at Link Agency provides a more personal, tailored service. Clients who deal with Jayne are with her throughout the process, ensuring clear communication, accountability, and a better understanding of their individual needs.



Jayne added, "This hands-on approach can reduce stress and help transactions progress more smoothly".

Spring, which often brings an uplift in property interest, means Independent agents like Jayne, adopt a more flexible and responsive attitude, with the ability to adapt quickly to changing circumstances.

Jayne has a good reputation and has a history of customer satisfaction, which often drives higher levels of commitment and care.

If you are looking to make the move as the seasons change, get in touch with Jayne. She is always willing to help and guide you through the stresses of moving property.

Jayne at

linkagency











linkagency

Sold

01482 699007
www.linkagency.co.uk

linkagency

For Sale

01482 699007
www.linkagency.co.uk

Have you seen these signs?

"I dedicate my time and energy to clients throughout their property selling and buying journey, giving them the comprehensive, professional service they deserve."





SCAN HERE FOR MORE

01482 699007 (Beverley & Surrounding Villages)
www.jayneatlinkagency.co.uk
jayne@linkagency.co.uk



CHANGE & CONTINUITY - BEVERLEY SINCE 1990

In the long hot Summer of 1990, I first came to live in our beautiful town. I have seen it change considerably over the past 35 years. I want to reflect here on some of these developments and also to suggest that a great deal of what is so precious about Beverley has largely stayed the same.



Saturday Market.

Beverley does remain relatively unknown outside our region; despite John Betjeman calling it 'one of the most beautiful towns in England' and more recently The Guardian saying 'it's the bee knees', we have still kept a relative sense of seclusion.

That said, the degree of expansion of built up areas and population are considerable. Based on census data, the numbers living in and around town have risen from about 21,000 in 1990 to around 34,000 now. At one point in medieval times, the town was the eighth largest in England - and Hull didn't even exist!

I vividly recall taking a group of friends up one of the Minster towers in that August of 1990. Back then the town centre soon gave way to open countryside on all sides; no estates like Lincoln Way, Parklands or Butterfly Meadows, we were unquestionably a country town. Having said that, and as those estates continue to mushroom, because we still have our four green lungs, the ancient commons of: Westwood, Hurn, Figham and Swine Moor, the town still feels closely linked to the surrounding country.



Figham.

Politically, we have also witnessed change and continuity. In 1996 Humberside County was replaced by the East Riding, and Beverley became the uncontested principal and county town. The parliamentary constituency boundaries have changed over the years, but the town has only elected Conservative MPs for the past century.

The town's retail outlets have certainly changed; back in 1990 we had a handful of small supermarkets in the town centre such as Safeway. Now of course we have 5 major ones, 3 on the outskirts. Yet, unlike in many towns, we have kept a good range of independent shops and our

outdoor markets continue to thrive. Cafes have exploded in number, less than a dozen in 1990, now the town is awash with caffeine and cake.

It's also a little puzzling as to why we need so many barbers! We now have a far greater range of restaurants, you can eat your way around the globe here.



Old and new along the Beck.

Most of our town centre pubs have survived, but sadly a few have bit the dust or are struggling. Flemingate is now a decade old and I think has largely enhanced the town. Certainly it is wonderful to have an independent cinema, although many of us 'old timers' miss the quirky old Playhouse cinema in what is now Brown's.

The racecourse has gone from strength to strength and we are now blessed with a fantastic theatre, the ERT.

Our schools remain good, I was privileged to conclude my teaching career in one of them. As in most places, traffic congestion is a problem and we never have got that Park & Ride. I also think our bus and train services are pretty decent.

Another boost to the town is the Treasure House, now almost twenty years old. Our two ancient churches remain jewels in our crown.



Treasure House.

Overall, Beverley remains a fabulous and friendly place to live, especially if you are within walking distance of the town centre. I know some long term residents and native Beverlonians feel the town has changed too much, and who am I as a relative newcomer and a native Lancastrian to argue?

I can only say that coming here was the best move I ever made, it's been a privilege to raise my family here and write extensively about the town. Here's to the next 35 years!

Ian Richardson.



Our Crown Jewels.



Our Crown Jewels.



Beverley Housing

Live. Connect. Give back.



Beverley Housing Growing an Age-Friendly

On a quiet morning in Beverley, conversation drifts easily between raised beds and seasonal colour. For residents of Beverley Housing Charity's almshouses, these gardens are not just places to tend plants, they are spaces where friendships grow, worries are shared, and wellbeing takes root.



For more than three hundred years, almshouses have been part of Beverley's story. While their original purpose was to purely provide shelter, today they offer something far richer: community, connection, and the chance to age well. At the heart of this modern approach is Beverley Housing Charity's commitment to high quality homes, beautifully maintained gardens, and strong partnerships across the town and between friends.

As part of Just Beverley's 2026 focus on charity, we spent time exploring the value of these green spaces and meeting Steve Helliwell-Morris, who has supported residents for more than 18 years.



Gardens That Bring People Together

From Maisons de Dieu on Morton Lane in the centre of town, Herdwick Close one of the charity's latest investments to Charles Warton and Ann Routh, their shared gardens strike a careful balance between privacy and togetherness - encouraging residents to step outside, connect with neighbours and take shared pride in their surroundings.



Several sites have been recognised over the years with Beverley in Bloom awards, reflecting the care and attention given not just by the team, but vitally, by residents on sites such as Eric Bielby and Leconfield Close. The charity also owns one of the largest allotment sites in the area Queensgate Allotments, bringing joy and the art of growing your own to hundreds of local residents over the years.

The People Behind the Planting

"The gardens give us a reason to chat," says Steve. "Those conversations often lead to residents getting extra support - from Age UK, East Riding Council or other partners, before small issues become bigger ones."

Steve is keen to make sure everyone feels included. "Even those residents who are not able to garden still have a say. We talk about colours, plants and how space should feel. Others like to get more involved, sometimes with just a little bit of help."

ing Charity - riendly Community

Why Community Adds Years to Life

National research into almshouse living has shown just how powerful this sense of community can be. A study analysing up to a century of records across England found that almshouse residents enjoy a longevity boost of up to 2.5 years compared with those living elsewhere. Reduced isolation and strong social bonds are key - and they are clearly visible across Beverley Housing Charity's communities.

One resident describes the gardens simply as "the only reason I leave my front door some days."

Residents' Voices

"Nothing's too much trouble for Steve," another resident shares. "He is knowledgeable, kind and patient with us all. While the charity does not provide care, we always feel cared for. If something is worrying us, we know who to speak to - and that peace of mind means everything."

An Age-Friendly Beverley

Beverley Housing Charity continues to play an active role in shaping an age-friendly town. This includes securing Age UK's return to Beverley for the next five years and collaborating closely with the Council, NHS, and voluntary organisations to listen to how people want to age well.

Sowing the seeds for the future

While Steve is not planning to retire just yet, the charity knows how vital his role is and is already looking ahead. Expressions of interest are invited by people seeking a part-time, people-focused role supporting garden maintenance, general upkeep and light handy-person tasks.

Steve says, "I have immense pride of how the gardens benefit the residents, but sadly as many of our residents get older, more of the gardens have fallen back to the charity to take the lead on, making now the perfect time to welcome additional capacity into the team".

The ideal candidate will live in Beverley or the surrounding villages, be available for up to 20 hours per week, and have a genuine love of gardening, whilst also being happy to carry out limited handy person tasks in the home.

To find out more or to have an informal conversation, contact
charity@beverleyhousingcharity.org
or call **01482 881052**.



IN THE PICTURE WITH JOSH

As we head into February the photography opportunities and the weather can vary a lot.

There is still chance to see lots of wildlife on the clearer days with native birds and wildlife making the most of the windows of good weather, and there are still a range of Winter visitors along the coast and at various nature reserves in the area if you're lucky enough to see them.



The low sun can provide some great light for capturing those natural scenes and we'll start to see the first signs of Spring as the Snowdrops appear in the woodlands.

The cold and misty days can still provide a great chance to take some atmospheric shots and forces you to be a bit creative. I always like doing some black and white photos at this time of year, as there isn't a great deal of colour around anyway, black and white can add to the atmosphere of your photos.

Once again, if we're lucky enough to get some clear skies then we might be treated to some Northern Lights to brighten things up a bit. It's good to have a few locations planned out so you know where to go if there is a good display.



You can find more information about my work and full portfolios on my website and my social media pages and if you have any questions don't hesitate to get in touch.

Instagram: [@joshharrison.photography](https://www.instagram.com/joshharrison.photography)
Facebook: [@JoshHarrisonPhotography](https://www.facebook.com/JoshHarrisonPhotography)
Web: www.joshharrisonphotography.com
Email: info@joshharrisonmedia.com



LEWIS NORTHEN
FUNERAL DIRECTORS

IN

MY FAMILY TAKING
CARE OF YOURS

Get In Touch
1 Lincoln Way, Beverley, HU17 8RH
info@lewisnorthyfuneraleldirectors.co.uk
www.lewisnorthyfuneraleldirectors.co.uk
01482 888 658

Born and raised in **Beverley**, we are proud of the funeral services we offer to our local community.

As a family business we want you to have confidence in us to support you from the first point of contact, throughout and thereafter. The moment your loved one comes into our care they will be treated with care and respect. We offer a comprehensive range of funeral services ensuring you receive the perfect funeral service for your loved ones.

We are available 24 hours a day, 365 days a year, we will guide and support your family throughout.

Five Years of Service: Beverley's Independent Funeral Director

My family taking care of yours
Beverley's ONLY Independent Funeral Director

Giving the personal touch to funeral services in
Beverley and surrounding areas.

Funeral plans, memorial jewellery, available 24/7 365 days a year.



RM JOINERY - BRINGING ROOMS TO LIFE

Rich at RM Joinery stands by his statement, "We like nothing more than to be given the challenge to bring a room to life".

General Manager, Jamie said, "We have been busy with Media Walls recently, bringing a room alive with a fully functional media wall transforms both its look and how the space is used".

RM Joinery, at Tickton, with all their projects, spend time listening and deliver beyond expectations on the clients brief.

Rich added, "A well-designed media wall becomes a natural focal point, combining technology, storage, and style in one seamless feature".

RMJ's designs can include integrated lighting, hidden wiring, and bespoke finishes that create a clean, modern appearance while enhancing

comfort and atmosphere.

Functionality is just as important: housing televisions, sound systems, gaming consoles, and smart devices in one organised space improves usability and reduces clutter.

Jamie added, "Media walls can be tailored to suit any room size or interior style, from contemporary to classic. Beyond aesthetics, they encourage relaxation, entertainment, and social connection".

Ultimately, a thoughtfully designed media wall adds value, personality, and energy, turning an ordinary room into a versatile and engaging living space.

If you are interested in transforming your living space contact Rich or Jamie at RM Joinery, Tickton.



RM JOINERY KITCHENS & BEDROOMS

QUALITY WORKMANSHIP FOR ALL YOUR FITTED FURNITURE NEEDS

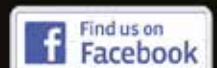


KITCHENS • BEDROOMS • HOME STUDIES • BATHROOMS

Visit Our Showroom: Hull Bridge Road, Tickton HU17 9RT

**FREE HOME
VISITS & DESIGN
SERVICE**

01482 867389



rm.joinery@yahoo.co.uk | www.rmjoinerykitchens.co.uk

LET'S GET BACK TO THE GARDEN

The first months of the New Year although often a seemingly dormant period is an ideal time to prepare for the coming year, not only with soil preparation but perhaps a change with the layout of the garden, the addition of perhaps some risen beds that will give you the opportunity to grow both salads and vegetables or something as simple as a change in the direction of the path which in turn will adapt and alter your view of the garden benefiting both the atmosphere and its visual image.

The ability to grow not only vegetables to supplement meals but also increasing the herbaceous borders in size and shape is another good thing to consider.

There is nothing more satisfying than going out into the garden and picking vegetables that will be used for a meal that evening and a bouquet of flowers that can be placed on the table, all home grown!

A salad crop I planted in the small kitchen garden in 2023 was Wild rocket. A perennial crop that I assumed I would have to replace at some point however, the crop is still growing well and apart from cutting back the bolting flowers in 2025 during the heat wave when they had gone to seed, the Wild rocket is looking healthy and the taste is outstanding.

The yellow flowers that had bolted on the stalks of the rocket are in fact edible so add them to your salads. Water the plants on a regular basis but not excessively. A layer of mulch will retain moisture, helping the plant in dry periods.

Wild rocket can be grown in a semi shaded area as with all salads, again giving you a useful perennial crop in perhaps what one would term a secondary location. A beneficial use of space. The leaves are very strong and peppery in flavour but nonetheless will enhance a salad. If you would like

to grow the plants from seed, then you can sow them from March onwards.

In the photograph of the small kitchen garden, you can see the rocket has been planted next to *Fragaria vesca* (wild alpine strawberry) which was another plant I grew from seed last year and will hopefully, fingers crossed, fruit in May providing wild strawberries for muffins!



To the right of the photograph are a clump of nettles that are used to make soup and next to the chair is Swiss chard and Kale again, vegetables that you are able to harvest by using individual leaves giving you a cost-effective produce for many meals.

In the photograph of the border (right), you will see an abundant crop of perpetual spinach (*Beta vulgaris subsp. circla var. cicla*), another vegetable I would recommend growing. It performs in not only dry conditions but is also hardy during the Winter months when it is much colder making it an extremely good crop to have in the garden all year round.

The plants can be placed approximately 45cm apart which

in small areas can be very productive. A bed of 1m 50cm in length could accommodate at least four plants, giving you the option to position other vegetables in the same area.



There are two clumps, one which is planted with strawberries from which I had an excellent crop last year and the second next to a self-seeded hellebore! The pots that are positioned in the corner are blueberries, these need to be grown in an ericaceous compost, obviously it will depend on what soil you have in your garden which is why it always a good idea to do a soil sample it will give you an outline of what you can grow and where. The blueberries have been in this location for many years and again are an extremely good ingredient to use when making muffins. They are also a favourite for the blackbirds!

Don't forget to purchase your seed potatoes, onions, and garlic bulbs, and also do a simple sketch of where your vegetables were planted last year. Rotating the planting avoids problems with disease.

<https://ordinarygardener.com> - Julie Dowding



I'VE BEEN THINKING... SAYS COLIN RAYNOR

Recently a man who was one of my best friends died from natural causes just short of his 88th birthday.

He had lived alone for many years in the North of England and in truth I had not seen him for some considerable time. We did however retain regular contact with letters and phone calls. Having known each other since junior school there are certain aspects of his lifestyle that I consider worth reflecting upon.

He never had a computer or a mobile phone and he always wrote to me with his fountain pen until in the last few years he used a biro. Even then his writing was always legible and he would rarely send me no less than three pages in clear writing such as he had produced in junior school. Whereas if I chose to write freehand I might manage a couple of hundred words before even I couldn't decipher my scrawl.

I blame my computer of course which allows me to type out sentences and then rectify the mistakes I have made as I am not concentrating on what I have written.

So my New Year resolution is to learn to write again with a fountain pen. My daughter obliged

with such a gift on my birthday but I am still looking for a shop that can supply me with blotting paper.

During his lifetime my friend (who obtained a degree in English at Oxford University) worked in the libraries of two Universities and I can hear him now telling me of his love of books and how he took great delight in ordering books that would bring more and more people in to the library.

I recently heard it said that a very high percentage of children never open a book but prefer to look at their phones. Maybe this is an older person's perspective but the pleasure of opening a new book and reading from the printed page is not to be underestimated.

So the second reflection I take from my friend's life is to promote the fact that Beverley has, in my humble opinion (since the Council's development of the Treasure House) one of the finest community buildings for many miles around.

The library is a brightly painted place and there is a special place for young children with their friends and families to enjoy books. The availability for people of all ages to do research is also well taken care of in the reference library.

I have written previously about the practice of stamp collecting that my friend and I took part in over many years. I often reflect on the amazing way in which we could look at a page of stamps and know immediately which ones we had already got in our collection and those we might consider buying. I wish my memory was as good now as it was then.



So in my third reflection I want to propose collecting stamps can still be a good thing to do but for a very different reason. From the letters that you do receive maybe you could develop the habit of retaining the stamps because many Charities welcome used stamps as a way of making money.

You may be surprised at the number of stamps you still get each year. One such Charity in Beverley who I know of, is the group who support the Community Lift Scheme which transports older people to luncheon clubs etc.

It may be worthwhile asking at the other charity shops in town if they also welcome second hand stamps.

MORE THAN A BOX OF CHOCOLATES



After 2025 arrived and departed in what seemed like the blink of an eye, 2026 is now racing onwards as we reach the second month of the year, in the second quarter of the 21st century.

February brings about a fabulous collision of cultures, mixing romantic and spiritual milestones.

Shops are filling up with the pink and red hues of Valentine's Day, originally a Christian celebration honouring St. Valentine, which has evolved into a global celebration of romantic love.

In December I wrote about the value of "presence over presents" and whilst we may think of grand, expensive gestures for a Valentine's Day, isn't it true that if we look at the most enduring bonds in our lives, they are rarely built on diamonds; they are built on the quiet, thoughtful ways we show we care.

Perhaps it's a handwritten letter - not a store-bought card with a pre-printed sentiment, but a few lines on a piece of paper expressing why you are glad that person is in your life. Perhaps it's a "memory walk" around the Westwood, revisiting the spots that mean something to your shared history.



Following February 14th's romantic celebrations, we dive into Chinese New Year on the 17th February, moving from western to eastern tradition. This is the most important holiday in the Chinese calendar, marking the transition from 2025's Wood Snake to the 2026's powerful Fire Horse, associated with high energy, independence and rapid change - a year of transformations. You may well be out celebrating the cultural and culinary delights of Chinese New Year, only to wake up the following day on February 18th to the sombre fasting of Ash Wednesday, the start of Lent in the Christian calendar.

Easter falls on 5th April and Lent is the 40-day period (excluding Sundays) leading up to Easter. The period recalls the time Jesus spent fasting in the desert. Modern practises may involve fasting from meat or giving up a specific "vice" like social media, sugar or chocolate as a test of self-discipline and spiritual focus.

It occurred to me, in a world that can seem to, at times, have an agenda of divide and rule, that generally, when we're left to our own devices, in an atmosphere of mutual respect and a desire for common good, most people rub along together rather well and respect each others' values and beliefs.

This thought resonated with me when I read the incredible story of Karl Bushby, a former paratrooper who's remarkable 36,000 mile, 27-year journey has seen him walk around the world, setting off in November 1998 and due back home to East Yorkshire in October 2026. Karl reflects on the "wonder" of humanity, describing it as the most surprising and profound lesson of his nearly 30-year journey, leaving him with a deep conviction that the world is far kinder than typically portrayed with "smiles and nods" being enough to bridge cultural gaps.

In a year of 'Fire Horses' and transformations, may we all find that the world is indeed a kinder place than we are led to believe.

Every Monday, you can take time out for yourself with the free mindfulness session from 7.15pm to 7.45pm. For more information visit www.francesdunning.com or contact me, Fran Dunning on **07973 819867** for details of mindfulness zoom link.

All About You Hypnotherapy

Helping You Get Peace of Mind in Practical Ways

I've been helping people of all ages increase their levels of confidence and improve their life for over 20 years using hypnotherapy.

I can help you reduce anxiety, get rid of fears and phobias and embed positive habits to increase your levels of health and wellbeing.

Based on Victoria Dock and available face to face or via Zoom globally.

Let me help you to enjoy a new sunrise

Fran Dunning

Clinical Hypnotherapist & Provider of Mindfulness in the Workplace

Victoria Dock, Hull

Mobile: 07973 819867

e-mail: info@francesdunning.com

website: www.francesdunning.com

Monks Walk Inn



19 Highgate, Beverley HU17 0DN

Tel: 01482 880871

www.monkswalkinn.com



WELCOME TO ALL OUR CUSTOMERS

- GOOD BEER •
- GOOD COMPANY •
- GOOD CONVERSATION •

- Historic Public House •
- Local Cask Ales • Lagers • Beers • Wines •
- Spirits • Tea • Coffee • Hot Chocolate •
- Extra Seating Area Upstairs & Outside •
- Tuesday QUIZ • Wednesday FOLK •
- Music Early Evening Friday & Saturday •
- Everyday Drinks & Chatter •



WE LOOK FORWARD TO SERVING YOU!

TIME TO START PLANNING YOUR GARDEN ROOMS

As the new year gets into full flow, forward-thinking homeowners are already planning how to maximise their outdoor living space for the warmer months ahead. A garden room offers the perfect solution for those seeking to extend their living area whilst adding significant value to their property.

Garden rooms have evolved from simple summer houses into sophisticated, year-round spaces that serve multiple purposes. Whether you need a dedicated home office, a tranquil retreat for relaxation, or an entertainment area for hosting friends and family, a garden room offers the versatility modern lifestyles demand.

The benefits extend far beyond extra space. Today's garden rooms are remarkably energy-efficient, maintaining comfortable temperatures year-round.

When compared with a traditional brick extension, they are comparable in quality and longevity. With rapid installation, there's minimal disruption to your daily routine.

Planning now means your garden room will be ready for summer entertaining. The lead time allows you to carefully consider design options, obtain the necessary approvals, and schedule installation in optimal weather.

You'll be enjoying barbecues in your new space whilst others are just beginning their planning.

Cherry Group stands out as a quality provider through its partnership with the innovative Leka Xi modular system.

Using lightweight, insulated GRP (glass-reinforced plastic), its installations fully comply with UK Building Regulations whilst offering superior durability, including no rotting, minimal maintenance, and a 40-year guarantee option.

Customisation options are extensive, ranging from realistic brick and timber-clad finishes to a variety of canopy and decking configurations.

As approved Leka Xi installers, Cherry Group combines technical expertise with personalised service, ensuring your garden room seamlessly complements your existing property.

Don't wait until Spring; start planning your garden room transformation today and be ready to embrace outdoor living when Summer arrives.

Tel: 01482 770621
Unit 2, Beck View Rd, Beverley HU17 0JT
Email: info@cherrygroup.uk



TIME TO UPGRADE YOUR FASCIAS SOFFITS AND GUTTERING?

Upgrade your home's exterior and protect it from the elements with our high-quality uPVC fascias, soffits and guttering.



- uPVC Windows and Doors
- Aluminium Windows, Bi-folds and Sliding Doors
- Composite Doors
- Sliding Sash Windows
- Glass Replacements



- Tiled Conservatory Warm Roofs
- Modular Home Extensions & Garden Rooms
- Orangery Roofs & Roof Lanterns
- Composite Cladding & Decking
- Fascias, Soffits and Guttering

VISIT OUR SHOWROOM: Unit 2, Beck View Road, Beverley, HU17 0JT

GET IN TOUCH
 01482 770621
www.cherrygroup.uk



Your home for **KITCHENS & BATHROOMS**

**FREE
LOCAL
DELIVERY**



Pop into branch to meet **Paul & Jackie**, enjoy a coffee, & let's chat through your kitchen or bathroom project to see how we can help you create your ideal space.

Swinemoor Lane **Beverley** 01482 880088 **HU17 0JX**

mkm.com
MKM

FOX MOBILITY - YOUR SUPPORT FOR BETTER MOBILITY

Mobility aids provide essential support, independence, and confidence for people with limited movement, and their benefits are especially important in February.

During Winter months, icy pavements, wet weather, and shorter daylight hours increase the risk of slips and falls. Mobility aids such as walking frames, sticks, and wheelchairs offer added stability and safety when navigating these conditions. Anne mentioned, "February is also a time when cold weather can worsen joint pain, stiffness, and arthritis, making movement more challenging. Using the right mobility aid can reduce strain, improve comfort, and help individuals stay active and socially engaged".

As we look forward to Spring, make sure you have the right mobility aids for your safety, continued independence, and wellbeing during the colder Winter period.

Fox Mobility: 110-112 Walkergate, Beverley, East Yorkshire, HU17 9BT.

Tel: 01482 887799.

Email: info@fox-mobility.co.uk

Website: www.fox-mobility.co.uk



MR CARPETS

CARPET AND FLOORING SPECIALISTS



↓ TAKE A LOOK AT OUR QUALITY INSTALLATIONS ↓



38 YEAR ANNIVERSARY

38 years in business

38 years of good, honest service




Check out our Facebook and Google reviews

01482 872134

E: mrcarpets@hotmail.co.uk

3 Becks North, Beverley, HU17 9PR

[f mrcarpetsbeverley](https://www.facebook.com/mrcarpetsbeverley)



Tel: 01482 887799
Email: info@fox-mobility.co.uk

**110-112 Walkergate, Beverley,
East Yorkshire HU17 9BT**

- **Stairlifts**
- **Riser Recliner Chairs**
- **Walking Aids**
- **Power Chairs**
- **Scooters and Accessories**
- **Servicing and Repairs for your Mobility Equipment**

**Need advice about mobility equipment?
We're here to help!**



W H Halmshaw Ltd



Pop into our showroom and fall in love with a new suite



Our Hull and Beverley showrooms are open
Monday to Friday 9am-5pm & Saturday 9am-1pm.

Our Hull and Beverley trade counters continue to open Monday to
Friday 8am-5pm & Saturday 9am-1pm.

Your Local Bathroom Suppliers, Plumbing Merchants & Glass
Specialists with Showrooms in Hull & Beverley.

FOLLOW THE DUCK!

See me on the back of our vans

#followtheduck

tweet us a pic when you spot
the duck to @whhalmshawltd



The Showroom is constantly updated to reflect new designs.

W H Halmshaw Ltd, Inspirations Works, Annie Reed Road, Beverley, HU17 0LF.

T: 01482 867142 • www.halmshaws.co.uk

An Ode of Love to Beverley Westwood parkrun

*In February's hush, when dawn is still pale,
We gather on our Westwood, through frost, sun, or gale.*

*Love isn't roses or words overdone,
It's shared on the grass, five kilometres run.*

*Oh Beverley Westwood, open and wide,
Where community meets with joy and with pride.
Each Saturday morning, come rain or come shine,
We show up together, right on the line.*

*To the volunteers, the heartbeat, the glue,
With hi-vis bright smiles and a cheery hello or two.
You clap, time, direct us, scan barcodes with care,
In wind, rain, and mud, you are always there.*

*To the runners, walkers, bimbles too,
Fast or unhurried, there's space here for you.
Every pace matters, each effort is seen,
From charging ahead to strolling serene.*

*To the dogs and the cows who share in the view,
One wagging with joy, one mooing right through.
You ground us in nature, remind us to smile,
And laugh at ourselves at least once per mile.*

*To Beverley's community and BWp supporters near,
Who welcome all warmly and cheer every cheer.*

*This February ode is simple and true
Beverley Westwood parkrun, we love you.*



TC Patisserie

We make our own patisseries.

We are a French food shop complimenting our own products

We make Meals you can reheat at home bought over the counter or pre ordered, via our mailing list or messenger

We can cater for any occasion, buffets, dessert tables or full 3 course meals

We are open Tuesday-Saturday 9am - 4pm.

Regular Market Days

Cottingham Market, every Thursday
Beverley Saturday Market, every Saturday



10 Lairgate, Beverley, HU17 8EE
Tel: 01482 860884

TC Patisserie Valentines Day

Reheat at home meal

Saturday 14th February

£27.95 pp

Lobster Bisque

Goats cheese croquette

served with a salad garnish and raspberry vinaigrette

Filet Mignon Pork with a herb crust

served with an apple & calvados sauce

Salmon & cod Lattice

Woven strips of fresh salmon & cod, served with a creamy ginger sauce

Served with potatoes & seasonal vegetables.

Raspberry & white chocolate cheesecake

Mocha cup of love

A dark chocolate teacup filled with tiramisu and topped with cream

Pre order only, call us on 01482 860884 or pop in to book directly.

We will need your name, contact number, menu choices and a £10 pp deposit.
Collection will be from our shop on Saturday 14th February from 10 am - 4pm.

Add a bottle of sparkling pink Cremen £25 or rose wine for £15.

Telephone: 01482 869111
sales@rosesofbeverley.karoo.co.uk



The Kitchen Factory, The Courtyard,
Tokenspire Business Park, Beverley
HU17 0TB

Monday to Friday 9am - 5pm | Saturday 9am - 1pm

Roses Kitchens - proud to serve Beverley for the last 25 years

**Coming Soon
ROSES BEDROOMS**

I would love a



kitchen

You will adore your



bedroom

Please call 01482 869111 to book a viewing

MANY MORE OF OUR CUSTOMERS KITCHENS ON OUR WEBSITE

5 STAR RATED OVER 100 GOOGLE REVIEWS ★★★★★

Visit **www.roseskitchens.com**

to see our customers kitchens and read what they have to say about us

Telephone: 01482 869111



MAKING NEW HABITS FOR WELLNESS SUSTAINABLE

By the time February arrives, the noise of January has usually faded. The bold promises and busy periods give way to something quieter and much more honest.

The gyms thin out, the running shoes gather a little dust and many people quietly decide that this year's attempt at "being healthier" hasn't quite gone to plan. That moment is not failure.

In many ways, it is the exact moment where real change can begin. January is built on enthusiasm. February is built on reality. And it is reality, not excitement, that creates habits which last.

Most people try to change their health using motivation. Motivation is useful, but it is fragile. It disappears quickly when the weather turns cold, when sleep is short or when life becomes busy.

If our health depends on feeling inspired, it can easily be neglected. What lasts is identity and routine.

People who remain well over time are rarely the ones who feel driven every morning. They are simply the ones who see themselves as someone who looks after their body, someone who values their energy, someone who protects their independence. From that identity, behaviour follows quietly and consistently, without constant internal battles.

For many people, particularly those who spend much of the day sitting, the biggest obstacle is not a lack of exercise but a lack of movement.

Long, uninterrupted periods in a chair stiffen joints, slow circulation and gradually weaken the muscles that keep us upright and balanced. A simple habit can change this.



Standing up and moving for just a couple of minutes every half hour - walking around the room, gently stretching, rolling the shoulders or marching slowly on the spot - protects the joints,

improves blood flow and reduces stiffness far more than people realise.

These moments seem small, but repeated daily they quietly preserve comfort and mobility.

Walking remains one of the most powerful and underrated tools for health at any age. It strengthens the heart, supports the joints, improves mood and helps maintain confidence with everyday movement.

Ten to twenty minutes once or twice a day is enough to make a meaningful difference. The pace does not matter. The route does not matter. What matters is that it becomes part of life. A steady walk through the town, for example, builds resilience one step at a time.

Wellness is not about becoming fitter than you were at twenty. It is about protecting the life you enjoy now and the independence you hope to keep in the years ahead.

February does not have to be the month where resolutions fade. It can be the month where quiet routines take root, slowly shaping better health, one ordinary day at a time.

If you have any questions, feel free to reach out to me: edjthompsonpt@gmail.com



Group walks for those who are bereaved

Together in Grief (tiG) walks are easy-paced, group walking sessions to help people cope with the loss of loved ones. They offer some gentle exercise and the chance to talk with others who share your experience.

Where: Morton House, Morton Lane, Beverley

When: Every Monday 6.30pm (Starting 12th January)

Cost: Free

The walks are safe, supportive and suitable for all (aged 16+) - men and women, and all abilities.

No need to book - just turn up. Come along whenever you feel a walk and talk might help - every week or just occasionally.

For more information, scan the QR code or email heather@fitmums.org.uk.

© 2024 Fitmums & Friends is a registered charity in England and Wales No. 1173919

New Classes Coming to Sportsability Swim School

Kingfisher series (learning diving skills)

Stroke-Specific classes (learning front & back crawl, breast-stroke and butterfly)

Beginner's (Octopus) & Improver's (Goldfish) classes have limited availability

Scan to enquire

Dunswell, Hull

Contact us at 01482 229676

WORDSEARCH

S Y R B V Z C R I W T Z L F F
E E L G V P H O M C N F I M D
C A K O O C O S W R E V E Y P
A X L A C V C E T B L N G X Y
R H K W C H O S R E W O L F T
N H D V M N L U A Z J U V N T
Z W A I K V A L E N T I N E S
B M L P L R T P H X G T D L M
D W Y M Y P E D E G Y R U P C
Q G K E F W S R W X K Y Q O T
T U V N I U E X Y V Z C V S Y
N I L H C A B T L O H V H T X
C L Z M Z G F D X B R O A X T
Q M H D P M G P F M X J F G E
D Q Q S R P X H Q H W O W E W

CHOCOLATES
FEBRUARY
FLOWERS
HEART
LENT

LOVE
PANCAKES
RACES
ROSES
VALENTINES



Where are the Ducks?
Answer on Page 32.

QUOTE OF THE MONTH

February is the month of hope -
With Spring ahead.

WHERE IN BEVERLEY?

Where in Beverley can you find this landmark? Answer on Page 32.



WHAT IS IT?

Can you work out what this obscure image is? Answer on Page 32.



COMEDY CORNER

Do you have a date for Valentine's Day?
Of course! February 14th!



When is the best time to run a marathon?
Lent – when you fast!

What month is the best month to tell a lie?
FIB–ruary.

Why did the man get fired from the calendar factory?
He took a few days off in February thinking nobody would notice.

What do you call a very small Valentine?
A valentiny.

What did the girl squirrel say to the boy squirrel on Valentine's Day?
I'm nuts about you.

DREAM DOORS®
NEW LIFE FOR OLD KITCHENS

dreamdoors.co.uk

FALL IN LOVE
WITH YOUR
KITCHEN
AGAIN...

SAVE MORE WITH DREAM DOORS:
UP TO **50% LESS** THAN A
NEW FULLY FITTED
KITCHEN

From the UK's #1 kitchen makeover company

01482 861653

SWINEMOOR LANE, BEVERLEY HU17 0LN

ST VALENTINE'S DAY: FROM MARTYRDOM TO MODERN LOVE

Every February, shop windows blush pink and red, restaurant tables fill with couples, and the global language of hearts takes over. Yet behind the roses and restaurant bookings lies a surprisingly complex story. St Valentine's Day, now a celebration of romance, began with far darker, more tangled roots.

The name itself is thought to derive from one, or possibly several, early Christian martyrs called Valentine. The most cited is a Roman priest who, according to later legend, defied Emperor Claudius II by secretly marrying couples, and was executed on 14th February in the third century.

Over time, stories embroidered his fate: he supposedly left a farewell note signed "from your Valentine", a detail that now feels eerily familiar every time we write a card. The date also brushes up against older midwinter and early spring traditions. In ancient Rome, the festival of Lupercalia was held in mid-February: a raucous day of purification rites and fertility customs.

As Christianity spread, elements of pagan ritual and saintly commemoration blurred. By the Middle Ages, poets in France and England were already linking 14th February with the mating season of birds and, by extension, with human courtship.

Geoffrey Chaucer wrote of it as a time when every bird chose its mate, anchoring the association between this winter's day and the promise of love renewed.

From there, the idea of Valentine's as a day to express affection slowly evolved. In 18th- and 19th-century Britain, exchanging hand-written notes and simple tokens became fashionable, especially among the rising middle classes. The industrial revolution then did for romance what it did for so much else: it made it printable. Mass-produced cards, often ornate and sentimental, spread the tradition far beyond elite circles, first in Britain and then across the Atlantic.

Today, the way St Valentine's Day is marked varies widely, revealing as much about local culture as it does about love itself. In the United Kingdom, the familiar pattern of cards, flowers and dinners remains dominant, though many couples now stretch their celebrations over a weekend, or swap material gifts for shared experiences. In Japan, Valentine's customs have a striking

twist: it is women who traditionally give chocolate on 14th February. Some of it is offered to romantic partners, but much is "giri-choco", or obligation chocolate, for colleagues and friends.

A month later, on White Day, men are expected to reciprocate. In neighbouring South Korea, a similar pattern unfolds, followed in April by "Black Day", when the unattached gather to commiserate over bowls of noodles.

Elsewhere, the focus sits less squarely on couples. In parts of Latin America, 14th February is celebrated as the "Day of Love and Friendship", with platonic relationships as warmly acknowledged as romantic ones.

In Finland and Estonia, it is officially a friendship day, when friends are remembered and thanked. Mexico has its "Día del Amor y la Amistad", while in Brazil, the main celebration of romance shifts to June, aligned with St Anthony, patron saint of marriage. There are countries where St Valentine's is muted or contested, either for religious reasons or as a reaction against commercialisation.

Yet even there, quieter, more private rituals often persist: a handwritten note, a favourite meal cooked at home, a simple walk shared.

Across borders and belief systems, the forms may differ, but the impulse is recognisable: to pause, once a year, and say to someone, in whatever language and with whatever symbols feel right, "You matter to me."

Personally I have a love of travel - from my early days being brought up in Kenya to my career which has always been in the travel industry and has led me to be fortunate enough to visit so very many places.

I still have a lot of places to cover and am very excited to see where my heart takes me in 2026 and beyond.

If you need any ideas of new places to explore please feel free to contact me, Amanda McConnell, by phone on **01482 770540** or by email on amanda.mcconnell@travelcounsellors.com and let's make your dreams come true.



HUMBER BRIDGE TOLL - "NEW SYSTEM" - BE AWARE

Humber Bridge Toll - the new and improved tolling system at the Humber Bridge - will be fully operational from Monday, 2nd February.

The launch of the new system starts on Saturday, 31 January and will take the full weekend for the customer data to be migrated from the existing HumberTag accounts over to the new system.

A new payment website, new Humber Bridge Toll app, and other payment methods will then become fully operational from Monday, 2nd February.

The start of the go-live weekend - at midnight on Friday, 30 January - also corresponds with the first increase in the Humber Bridge toll charges since 2012. For non-account customers, the toll fee will rise from £1.50 to £2.00 for cars, from £4.00 to £5.00 for vans and from £12.00 to £15.00 for HGVs.

Customers with an account, however, will see a more modest rise from £1.35 to £1.50 if crossing in a car. Account customers crossing in a van will be charged £4.00 and those crossing in HGVs will be charged £12.

To sign up for an account to get access to the discount, go to www.humberbridge.co.uk

WHAT IS IT ANSWER

A love heart.



WHERE IN BEVERLEY ANSWER

Arches for the Toll Collectors Seats.



FIND THE DUCKS ANSWER

You should have found those ducks on the Halmshaw advert on Page 27.



WILSONS WHEELS RICH CUTSFORTH, NATIONAL CHAMPION STRATHPUFFER 2026

Mid January 2026. Freezing temperatures. 17 hours of darkness. Miles upon miles of gruelling terrain. Brutal weather, ice, wind, hail, rain, mud and snow. Mountain-bike challenges don't come much tougher or more rewarding than the Strathpuffer - the legendary 24 hour mountain-bike endurance event held every year in the Highlands of Scotland in the middle of Winter.

Richard mentioned, "The last time I was racing up in Scotland's Strathpuffer was in 2018, it has been a long time since I was last there, I didn't know what to expect".



When entering these endurance events it is always difficult to know what to take and logistically it's hard to know what equipment, kit to have and organise support to go all the way up to Strathpeffer, from Beverley.

Rich and his support crew Lucy, set off on the Thursday before with an overnight stop in Aviemore on the way up. The endurance journey began!



At this time of the year and particularly in Scotland, participants have to contend with cold temperatures, and this year heavy snowfall in the days leading up to the race.

For Richard these conditions were perfect for him, especially at the start of the race, to build up his confidence and mindset for the challenge ahead.



Richard commented, "The first four laps were great, but then the temperatures increased, making the snow break up into a thick slush the riding became harder and harder with every lap. I had tried to start carefully and reserve energy but inadvertently managed to do the fastest lap of my category (male solo 55+ age group) on my 2nd or 3rd lap. So much for plans and strategy!"

Richard continued, "As the halfway point approached it was a case of managing effort and to keep on top of food and drink, just to keep going, I had lost the lead by that point and was in second place.

"Rain was forecast for the early hours, this made the course even harder to ride, increasing tiredness plus ice and slush resulted in numerous falls from the bike, my strategy now was to manage not only nutrition but injury prevention".

As the daylight returned, Richard continued giving his all, his mood improved, although energy levels were low, he continued to give his best, until he could ride no more!!

Leaving the highlands of Scotland, returning to Beverley, it wasn't until a few days later he got the news from the organisers it transpired he had actually won and become National Champion of his category Male Solo 55+ years old - geared bike!

Results apart from his specific category - 20th out of 159 solo riders. Riders can ride in teams of 4 or pairs as well and there were approx 650 riders there in total.

As we start 2026, it's great that inspirational people of Beverley enter competitions far and wide, helping to put Beverley on the map.

The Wilsons Wheels team headed up by owner Nathan Wilson managed a podium finish at Walesby Scout Camp, Sherwood Forest winning the Focus Winter round 1 while WW rider Paul Campbell came 4th in the Sport Race.







Pop in store
to see the new
2026 bike range

WILSONS WHEELS

T: 01482 882881

W: www.wilsonswheels.co.uk E: info@wilsonswheels.co.uk

Wishing Everyone a Happy Cycling 2026

- Adult Bikes
- Children's Bikes
- Electric Bikes
- Clothing for all cycling weather
- Parts and accessories

89a Grovehill Road, Beverley, East Yorkshire HU17 0EJ

NOW OPEN: Monday - Saturday 9am - 5pm

Sunday: CLOSED - Out riding our bikes

WHAT'S ON IN BEVERLEY

Tell us about your event!

E-mail info@justbeverley.co.uk

Telephone **01482 679947**

For more events visit
justbeverley.co.uk/pages/news

Every Wednesday

Ladies Who Latte Beverley and Villages

10am-12noon. Launched at ERT Cafe in Beverley. For Ladies who work in and around Beverley, wanting to make connections with like minded ladies. Free to attend. Attendees are encouraged to purchase drinks and food. Co-hosts, Nicola King and fellow local business lady, Julie Rogerson.

Saturday 31st January - Saturday 14th March

Eastgate Studio Members' Winter Exhibition

Eastgate Studio Gallery reopens after its January redecoration with a printmaking exhibition celebrating the work of our studio community. Eastgate Studio, 11 Eastgate, Beverley. www.eastgatestudio.co.uk

Wednesday 4th February

Jazz Makers Collective

Join the Jazz Makers Collective, for an evening of classic jazz. Monthly residency at the Sun Inn, features Matthew Smith on saxophone. Start playing soon after 8pm so be sure to get there early to grab a seat. And it's only £5!

Friday 6th February

Nigel Clark (Dodgy) Live at St Nicholas'

Join us for a great night out with the legendary Nigel Clark from Dodgy! Nigel enjoyed chart-topping success and critical acclaim, releasing hit singles such as "Staying out for the Summer" & "Good Enough". The band's unique blend of Indie & Rock quickly garnered a loyal fanbase, and they became a staple of the UK music scene. Come and hear Nigel performing live in the brilliant surroundings of St Nicholas' Church, Holme Church Lane, Beverley, HU17 0QP. 7.30pm.

Sunday 8th - Sunday 15th February

Stage4Beverley Winter Festival

February sees the return of the ever popular Stage4Beverley Winter Music Festival which has become a major event in the town's calendar offering music, comedy, and spoken word events as well as a dance for those with plenty of energy to expel.

Monday 9th February

Community Cinema Event

Norwood Church, Beverley. 7pm. A group of friends reunite as their friend, Peter's English country estate after ten years. Each one gets an opportunity to reassess their life choices and help each other through an unexpected crisis. We warmly invite you to join us again or, for the first time, to our monthly film night. FREE ADMISSION! A new programme running February '26 - July '26. Due to Copyright we are only allowed to display film titles on the Church premises. Refreshments and Raffle from 6.30pm. Films shown in the hall to the rear of the Church.

Saturday 14th February - Saturday 6th June -

Photo Finish - A Year at Beverley Races

Champney Treasure House Museum. FREE. Seven regional photographers capture a year of

action at Beverley Racecourse - the excitement of the crowds, the behind-the-scenes work of the stewards, vets and caterers and the stars of the show - the horses and jockeys.

Sunday 15th February

Beverley Pancake Race

www.beverley.gov.uk/pancakes - teams gather at 11.30am, Cross Street, Toll Gavel.

Friday 20th February

The Whisky Club

A celebration of chocolate. www.northmenspirit.co.uk at Junk Bar.

Saturday 21st - Sunday 22nd February

East Riding Stages Rally

This year's rally brings a completely new route to test crews and thrill spectators. The weekend begins on Saturday evening, when competitors are flagged away from the ceremonial start at Beverley's historic North Bar Within. Start 6pm.

Monday 23rd February

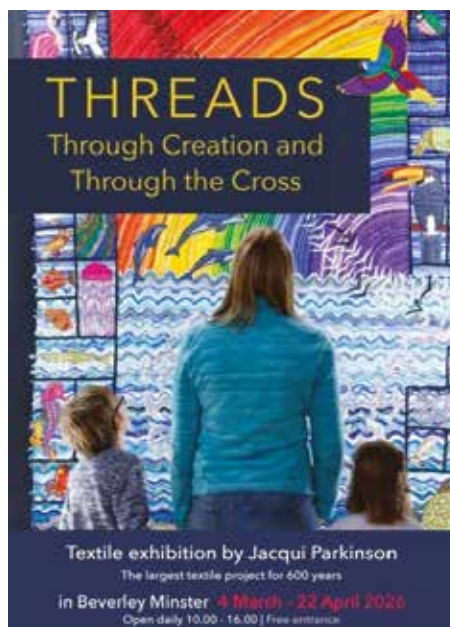
Beverley Ghost Walk

Winter 2025/26 - Outside Mountain Warehouse, Toll Gavel. 7.15pm. Tickets on Eventbrite.

Wednesday 4th March - Wednesday 4th April

Threads - Through Creation and Through the Cross

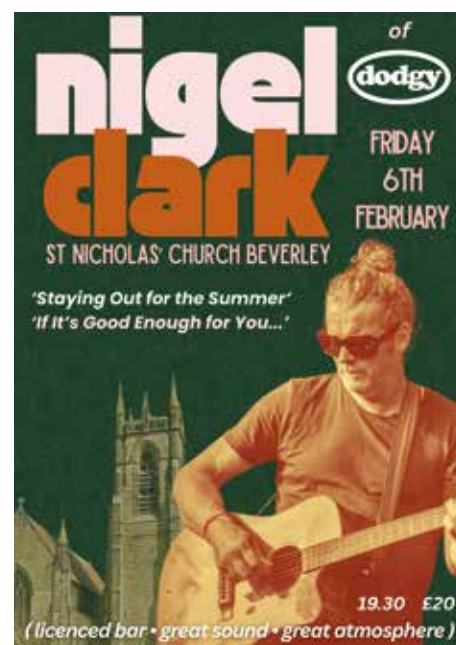
Textile exhibition by Jacqui Parkinson, Beverley Minster. Open 10am - 4pm. Free Entrance.



Monday 9th March

Community Cinema Event

Norwood Church, Beverley. 7pm. The powerful story of love, passion and religious conflict. We warmly invite you to join us again or, for the first time, to our monthly film night. FREE ADMISSION! A new programme running February '26 - July '26. Due to Copyright we are only allowed to display film titles on the Church premises. Refreshments & Raffle from 6.30pm. Films shown in the hall to the rear of the Church.



NEW 'NORTHERN SOUL' WATERCOLOUR AND PRINT EXHIBITION

A new exhibition at Beverley Art Gallery looks beyond the familiar, picture-perfect image of England to explore the real character of the north.

East Riding of Yorkshire Council's newest exhibition is a love letter to the north of England by Ian Scott Massie. Shaped by a journey that began nearly fifty years ago, the pieces on display delve into both the honest and the complex.

Entrance to the exhibition is free. Beverley Art Gallery is located within the Champney Treasure House, Beverley. For more information and opening times, please visit: Beverley Art Gallery. 'Northern Soul' will feature inside Beverley Art Gallery, on until Saturday, 14 March.



Photo: Scott P&W

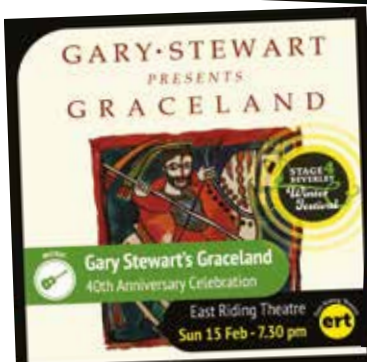
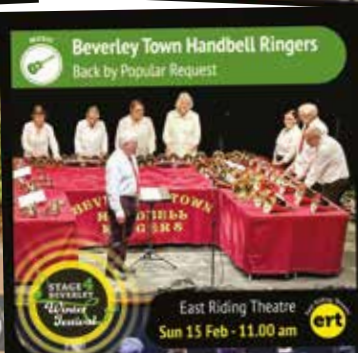
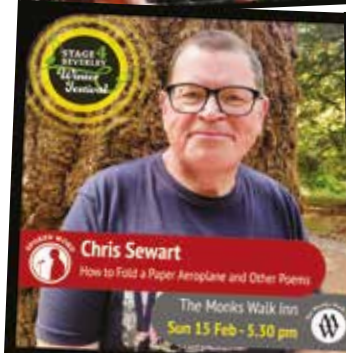
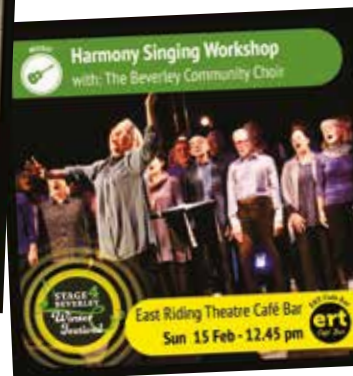
STAGE4BEVERLEY WINTER MUSIC FESTIVAL, 8 - 15TH FEBRUARY 2026



February sees the return of the ever popular Stage4Beverley Winter Music Festival which has become a major event in the town's calendar offering music, comedy, and spoken word events as well as a dance for those with plenty of energy to expel.

For more informal events at prices where at some "Pay What you Can" is an option there are Workshops, the Horizon Stage for young emerging musicians, and finishing off the Friday and Saturday evenings with a Late Night Festival Club.

Venues for the festival include the East Riding Theatre, Parkway Cinema, Toll Gavel United Church, The Memorial Hall, Monk's Walk Inn and Beverley Library.



STAGE4BEVERLEY Winter Festival FEBRUARY 2026

www.stage4beverley.com / 01482 874050

Monks Walk Inn Sun 8th 1.30 pm	Poetry Writing Workshop "Earworms: Poems inspired by Music" led by Chris Sewart.	SOLD OUT
Parkway Cinema Tue 10th 7.30 pm	An Evening with John Cambridge, "Bowie, Cambo & all the Hype" In conversation with John Cambridge & Garry Burnett about his work with David Bowie	£15
Parkway Cinema Wed 11th 7.30 pm	An Evening with Jacqui Dankworth in Concert, A special concert with this moving and award-winning vocalist with keyboard accompaniment	£27.50
ERT Auditorium Wed 11th 7.30 pm	Alan Johnson "The Beatles, Harold Wilson and Me" One of the most popular and respected politicians of our time tells the story of his greatest influences	£25
Parkway Cinema Thur 12th 7.30 pm	Spiers and Boden have been at the forefront of the English traditional folk scene for 25 years both as a duo and as founder members of Bellowhead	£25.50
ERT Auditorium Fri 13th 7.30 pm	The Sam Kelly Trio with support from Maddie Morris Three of the finest musicians on the English Folk scene	£21.50
ERT Café Bar Fri 13th 10.00 pm	Late Night Festival Club with festival guests including Maddie Morris, The Nick Rooke Band and Chris Sewart Great music and good company	£6
Beverley Library Sat 14th 10.30 am	Shanty Singing Workshop with The Saltburn Smugglers Bringing singing and songwriting together with the history of Yorkshire's smuggling coast	£11
ERT Café Bar Sat 14th 11.00 am	The Horizon Stage presents some of the best young musical talent around today, with Rillen, The Rookery and Dexter Humphries	pay what you can
Toll Gavel Church Sat 14th 12.00 & 2.30pm	The UK's Poet Laureate, Simon Armitage, reads live on stage from a range of his poetry and answers questions from the audience	£20
ERT Auditorium Sat 14th - 2.30 pm	The Saltburn Smugglers transforming tales of smuggling into vibrant, contemporary sea shanties. Support from Beverley Community Choir	£18
Memorial Hall Sat 14th - 7.30 pm	Dance to The New York Brass Band North Yorkshire's only contemporary New Orleans inspired Brass Band. Dance - Limited seating	£18
ERT Auditorium Sat 14th - 7.30 pm	Brian Bilston - "Alexa, what is there to know about love?" He has been described as the Banksy of poetry and Twitter's (now X) Poet Laureate	£25
Monks Walk Inn Sat 14th 7.30 pm	Informal Evening of Songs & Music enjoy some acoustic music in this unique and historic setting from Michael Nagasaka, Rillen and more	£8.50
ERT Café Bar Sat 14th 10.00 pm	Late Night Festival Club with Michael Nagasaka and The Rookery, Chris Sewart and more. Relax with great music, beer and good company	£6
ERT Auditorium Sun 15th 11.00 am	The Beverley Town Handbell Ringers A chance to have a go as well as listen to a range of well known tunes and different ringing styles	pay what you can
ERT Café Bar Sun 15th 12.45 pm	Harmony Singing Workshop with The Beverley Community Choir led by Sue Murray. Warm harmonies sung with infectious enthusiasm.	pay what you can
ERT Auditorium Sun 15th 2.30 pm	The Charlotte Carrivick Band new acoustic music, Bluegrass, Old time and Swing with support from Pete Bolton & Brian Swinton	£17.50
Monks Walk Inn Sun 15th 5.30 pm	Chris Sewart "How to Fold a Paper Aeroplane and other poems" Once again Chris smashes the square peg of his life through the round hole of poetry	£9
ERT Auditorium Sun 15th 7.30 pm	Finale Concert with Gary Stewart's "Graceland" celebrating the 40th Anniversary of Paul Simon's "Graceland" with South African rhythms and harmonies.	£24

That's it for 2026 Folks - see you back again in 2027 - Sunday 7th to Sunday 14th February!

THEATRE COMEDY MUSIC

AT EAST RIDING THEATRE

TAKE A LOOK AT WHATS
COMING UP THIS YEAR



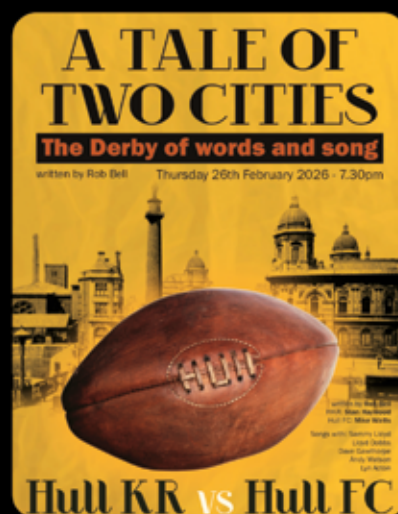
What's On?



**THE BLACKHEART
ORCHESTRA**
5th February



HAY!
19th February



A TALE OF TWO CITIES
26th February

