

just

ISSUE 137

BEVERLEY

IT'S YOUR MAGAZINE

FREE

A brand new play

THIS IS THE LIFE

By John Godber



*27th June -
11th July*

NEWS, WHAT'S ON, LIFESTYLE, FEATURES, PUZZLES, PHOTOS & MORE

Your Partners in Payroll

Are you worried about getting your payroll right? It's time for change. Outsource your payroll today and be rest assured everything is taken care of!



**Improve business performance -
outsource your payroll**

Payroll Outsourcing Benefits

- ✓ Cost reduction
- ✓ Better staff productivity
- ✓ High accuracy & reliability
- ✓ e-payslips direct to employees via our app
- ✓ A named personal contact
- ✓ Added value services including HR & Benefits in Kind
- ✓ Useful online information

to arrange a **FREE** meeting
call us on: 0845 308 2288
or visit

www.stipendia.org.uk



Stipendia Payroll Solutions



@StipendiaPay

6/7 THIS IS THE LIFE AT ERT



4 CHERYL GILES - MAYOR



4 JOAN DEARING - 105 YEARS OLD



14 ARMED FORCES DAY



20 WESTWOOD PLUMBING



32 ROSES - THE STUDIO



36/37 BEVERLEY & ER GOLF



Contributors:

Julian Minshall, Rich Manville, Lynne Auton, Andy Barber OBE, Andrew Cooper, Julie Dowding, Sam Drinkall, Fran Dunning, ert, Ben Gardiner, John Godber, Jackie Hardman, Josh Harrison, Amanda McConnell, Navigation Wealth Management, Jo Pinkney, Colin Raynor, Ian Richardson, Phil Simpson, Nathan Wilson, Kenton Wright.

REMEMBER! If you see examples of anti-social behaviour or other types of low-level crime, do report it to the appropriate authorities. **POLICE - Emergency 999, Non-urgent 101.**
ANTI-SOCIAL BEHAVIOUR (East Riding of Yorkshire Council) - 01482 393939.

Front Cover Image - John Godber.

Disclaimer - All the information provided was correct at the time of going to print.
ISSN 2754-9216



Please pass your Just Beverley on or recycle it responsibly.
Printed by: Jadan Press.

just BEVERLEY

JUNE LETTER FROM THE EDITOR



What a June we have in store.

1st June is the start of the Meteorological Summer, a great way to begin the month.

The 2026 FIFA World Cup begins on Thursday 11th June, I am sure we will be supporting our national teams. Looking forward to England lifting the trophy on the 19th July.

We welcome the Classic Car Night in Beverley on Wednesday 17th June, and this year the cars can be viewed at School Lane Car Park, behind the Fire Station.

Beverley Folk Festival is back from the 18th - 21st June, leading into the longest Day of the year, Sunday 21st June, with the Solstice, and coinciding with Fathers Day - plenty of daylight to celebrate.

Whatever you decide to do, try to enjoy the great outdoors, activities and events with the family.

Have a good read through the publication as there are some really good events, inspirational stories and lots going on in and around Beverley and further a field for you to check out.

So, plan ahead and make June a month to remember and get behind your team.

Congratulations on Hull City making it 3 playoff successes and looking forward to Premiership football in the 2026 - 27 season - UTT.

Julian.



'Community Publication Award'
Shortlisted Nominee
2017 & 2018



REYTA
'Award Nominee 2016'
'Best Newcomer'

GET IN TOUCH WITH US:

Website: justbeverley.co.uk

Email: info@justbeverley.co.uk

Telephone: 01482 679947

Facebook: [facebook.com/justbeverley](https://www.facebook.com/justbeverley)

If you would like copies for your business to distribute to staff and customers, call Just Beverley on 01482 679947.

CLLR CHERYL GILES IS BEVERLEY'S 422ND MAYOR OF BEVERLEY

Beverley Mayor making is a civic tradition held annually at the historic Beverley Guildhall. Cllr Cheryl Giles was elected on the 18th May as the 422nd Mayor of Beverley, for the 2026-27 municipal year.

In May each year at The Guildhall, Beverley Town Council hold their Annual Meeting, which includes the traditional "Mayor Making" ceremony.

Cllr Cheryl Giles was unanimously supported and Beverley's new Mayor was elected to applause from a full watching gallery.

Councillor Giles said: "It is a great honour to be elected as the 422nd Mayor of Beverley and to serve our historic town in this important civic role. I promise to do my very best for Beverley and would like to thank the previous Mayor, Councillor



Alison Healy, for her service to the town over the past year." Over the coming year, the Mayor will be fundraising for the White Ribbon Campaign.

Beverley's Mayor serves as the community's leader, representing residents' voices and advocating for their needs. The Mayor is voted in to oversee municipal services, help manage budgets and development projects.



To assist with her duties the Mayor's Consort will be Mrs Cathy Derrick. Councillor Paul Coe was elected Deputy Mayor. His consort will be Mrs Kay Coe.

For anyone looking to book the Mayor for events, The Mayor's diary of civic engagements is managed by the Town Council's Civic Office.

If you wish to invite the Mayor of Beverley to attend your event or you are seeking her support,



send a written invitation to our Civic Office by completing the Mayoral Invite Form (found at www.beverley.gov.uk/mayor-civic/ along with more details) and returning it by post (12 Well Lane, Beverley, HU17 9BL) or email (clerk@beverley.gov.uk).



Photo: Outgoing Mayor Councillor Alison Healy presenting a cheque to longstanding local organisation, the Beverley Church Lads and Girls Brigade (Beverley CLGB), for £2810.00.

JOAN DEARING - THE SECRET TO BECOMING 105 YEARS OLD

At 105 years old, Joan Dearing is a remarkable woman who still enjoys a chat, has a great sense of humour, enjoys a little walk, and who is affectionately called Nana. Asked what her secret was to living to 105 she giggled and said "It's a miracle!"



Joan grew up in Selby with her parents and sister, and worked in Maynards sweet shop, the perfect place for someone who was a chocoholic! Joan and her husband enjoyed dancing, and as her husband was in the Territorial Army, they were able to go to lots of dances hosted by them.

While not dancing, they lived life to the full ensuring they enjoyed their holidays. In the winter they would always go to Benidorm for a month to seek some sun - perhaps that's the secret to reaching 105!

As a member of the British Legion, Joan was always active, keeping busy and along with her love of baking, Joan loved her favourite cake, a Madeira cake, especially after a lovely Sunday roast dinner cooked for the family along with a glass or two of "pink" wine (rose) - no surprise Joan was so popular. It's no miracle Joan has reached 105, her infectious giggle is probably the reason she is still keeping everyone on their toes to this day.



RILEYS LAW

SIGN THE PETITION!

Make helmets a legal requirement while riding a bicycle or scooter

SCAN THE QR CODE



You may or may not know we lost Riley following a fatal collision in 2021. Since then I have set up a petition that will make it a legal requirement to wear a helmet while riding your bike or scooter.

Please scan the QR code, sign and share this petition, we need 10,000 signatures to make Riley's law possible.

Thank you

COUNCILLOR LINDA JOHNSON ELECTED AS NEW CHAIRPERSON OF EAST RIDING OF YORKSHIRE COUNCIL

Councillor Linda Johnson has been elected as the new Chairperson at May's Annual General Meeting, taking over from Councillor Liam Dealtry.

Councillor Johnson has served as a Liberal Democrat councillor representing St Mary's Ward in Beverley for the past seven years, whilst also being a member of the Beverley Town Council. She served as Town Mayor of Beverley (Chair of the Town Council) for two years, between 2021 and 2023.

During her time in office as Chairman, Cllr Johnson has chosen to support two charities; East Riding Domestic Abuse Trust (ERDAT) which works with victims of domestic abuse, both men, women and children, within the East Riding, who need urgent monetary assistance after fleeing

to a place of safety. Along with White Ribbon - the charity which works towards ending men's violence against women and girls by challenging its root causes of harmful misogynistic attitudes and behaviours.

Councillor Linda Johnson said: "I have chosen these charities because it's only by bringing conversations about domestic abuse and violence against women and girls into the open that we can hope to challenge and change toxic behaviour.

The Chairman will attend a variety of events within the East Riding organised by local organisations and further afield if there is an East Riding connection. The Chairman will also attend events organised by council departments, such as opening of community homes, schools, youth clubs and exhibitions.



HULL CITY - "THE TIGERS", PREMIER LEAGUE 2026 - 27

The Tigers gained promotion to the Premier League through the playoffs, winning the Final at Wembley on Saturday 23rd May 2026, 1-0 against Middlesbrough, with Oli McBurnie scoring the vital goal.

Previous promotions in 2008 and 2016, both through the playoffs, gives the club a good platform; it means far more than simply moving into the Premier League.

The promotion brings pride, belief and recognition to the City and the East Riding.

After years of challenges and rebuilding, reaching the Premier League shows the grit and determination of the club and the area, now we can look forward to Hull City competing with the biggest clubs in England.

Promotion will transform the atmosphere across Hull and East Riding, the MKM Stadium would host world-famous teams, bringing excitement, economic benefits and national attention to the city. Young fans would grow up watching elite football on their doorstep, while lifelong supporters would finally see years of loyalty rewarded.

Most importantly, promotion unites the community. Hull City's success has always reflected the spirit of the City and the area, resilient, passionate and determined. "UTT".



BRAND NEW JOHN GODBER SHOW 'TH

The John Godber Company returns to The East Riding Theatre this summer with a brand-new comedy, *This Is The Life*, giving East Yorkshire audiences the very first opportunity to see the show before it heads off on a national tour in 2027.

The play follows backstage stalwarts Dave and Sapphire, two loyal workers at the crumbling Old Forge Theatre.

Happy to stay in the shadows, they suddenly find themselves centre stage when they discover their beloved venue is under threat.

Faced with dwindling audiences, chaos behind the scenes and the prospect of redevelopment, they decide to create a show of their own in a bid to save the theatre they love.

Packed with humour and heart, the production also draws on the countless

stories, characters and theatrical mishaps Godber has witnessed across his career.



Audiences can expect a rich mix of affectionate anecdotes, comic observations and a celebration of the resilience of live performance.

John Godber has written about classrooms, dancefloors, pubs, families and communities, but remarkably, *This Is The Life* is the first time he has

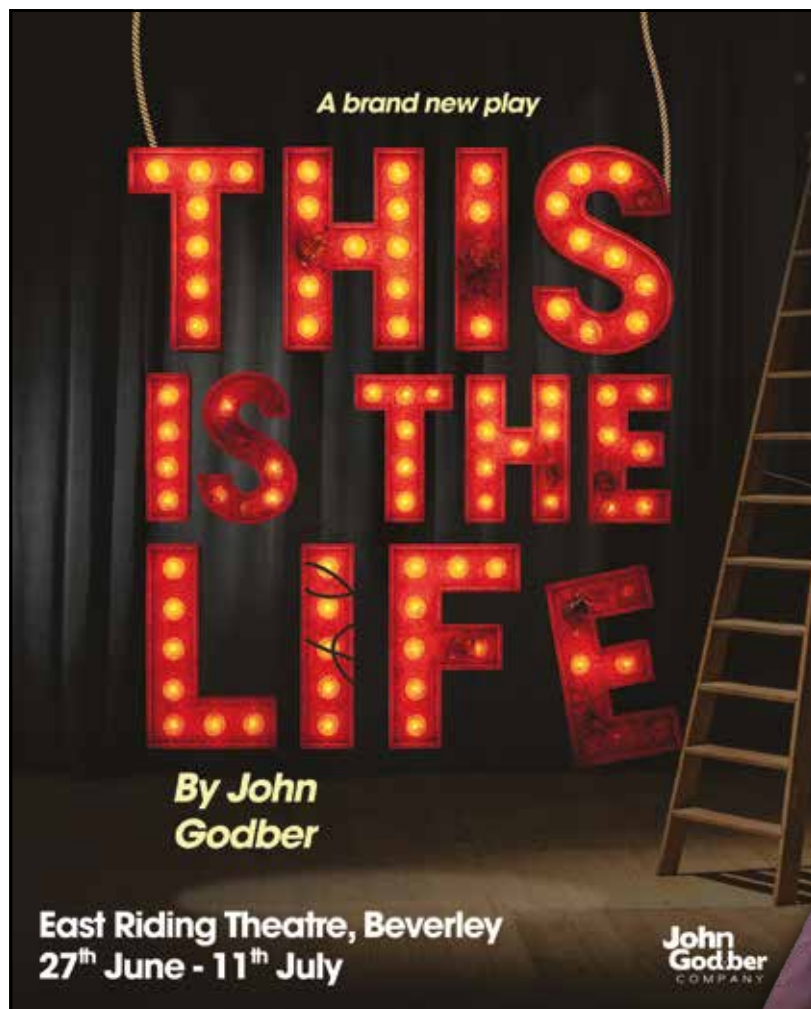
turned his eye directly to the world of theatre itself, making this premiere a special moment for long-time fans and newcomers alike.

If you love theatre, or simply love a great night out, *This Is The Life* looks set to be one of the highlights of the Beverley summer.

**On at East Riding Theatre, Beverley:
27th June - 11th July 2026.**

**Including an access show on
Wednesday 8th July at 2:30pm.**

Photo credits: Ian Hodgson



'THIS IS THE LIFE' TO OPEN AT THE ERT



Tom Gallagher and Chloe McDonald in 'This is The Life'.



EVERY THURSDAY

(Doors open 9.30am)

Join us for a free brew and enjoy some great films on Beverley Parkway's Big Screen.

Only £5 (or £6 for newer releases) with drink and biscuits included. Aimed at 55s & over.

Films subject to change.

Thursday 4th June -

The Christophers (£6)

Starring: Ian McKellen, Michaela Coel, James Corden, Jessica Gunning.

The North (£5)

Starring: Bart Harder, Carles Pulido, Oly Bassi, Gráinne Blumenthal.

The Magic Faraway Tree (£5)

Starring: Andrew Garfield, Claire Foy, Nonso Anozie, Nicola Coughlan, Jessica Gunning.

Thursday 11th June -

The North (£5)

Starring: Bart Harder, Carles Pulido, Oly Bassi, Gráinne Blumenthal.

The Magic Faraway Tree (£5)

Starring: Andrew Garfield, Claire Foy, Nonso Anozie, Nicola Coughlan, Jessica Gunning.

Power Ballad (£6)

Starring: Paul Rudd, Nick Jonas, Peter McDonald, Marcella Plunkett.

Thursday 18th June -

Power Ballad (£6)

Starring: Paul Rudd, Nick Jonas, Peter McDonald, Marcella Plunkett.

Tuner (£6)

Starring: Leo Woodall, Havana Rose Liu, Lior Raz, Tovah Feldshuh, Jean Reno.

My Mother's Wedding (£6)

Starring: Scarlett Johansson, Sienna Miller, Emily Beecham, Freida Pinto.

Thursday 25th June -

Tuner (£6)

Starring: Leo Woodall, Havana Rose Liu, Lior Raz, Tovah Feldshuh, Jean Reno.

My Mother's Wedding (£6)

Starring: Scarlett Johansson, Sienna Miller, Emily Beecham, Freida Pinto.

Savage House (£6)

Starring: Claire Foy, Richard E. Grant, Bel Powley, Jack Farthing.

These are the films scheduled to open in June - all are subject to change.
Check out up-to-date cinema listings at www.justbeverley.co.uk/cinema-times



Masters of the Universe

From 5th June

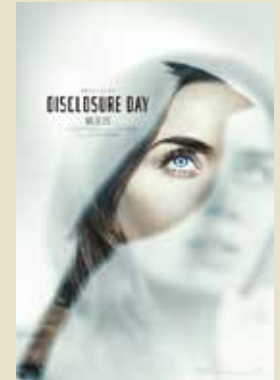
Starring: Nicholas Galitzine, Camila Mendes, Jared Leto, Alison Brie, Idris Elba, Kristen Wiig.



Scary Movie

From 5th June

Starring: Anna Faris, Regina Hall, Marlon Wayans, Shawn Wayans, Damon Wayans Jr., Sydney Park.



Disclosure Day

From 10th June

Starring: Emily Blunt, Josh O'Connor, Colin Firth, Eve Hewson, Wyatt Russell, Colman Domingo.



Solo Mio

From 11th June

Starring: Kevin James, Nicole Grimaudo, Alyson Hannigan, Jonathan Roumie, Julee Cerda.



Toy Story 5

From 19th June

Starring: Tom Hanks, Tim Allen, Joan Cusack, Blake Clark, Greta Lee, Conan O'Brien.



Supergirl

From 26th June

Starring: Milly Alcock, Matthias Schoenaerts, Eve Ridley, David Krumholtz, Emily Beecham.



Jackass: Best and Last

From 26th June

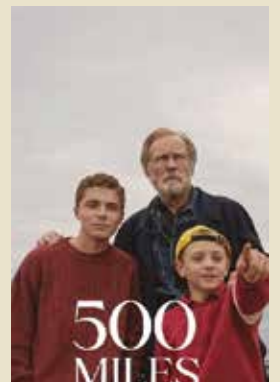
Starring: Johnny Knoxville, Steve-O, Chris Pontius, Wee Man, Dave England.



The Furious

From 26th June

Starring: Mo Tse, Joe Taslim, Yang Enyou, Jeeja Yanin, Brian Le.



500 Miles

From 26th June

Starring: Bill Nighy, Roman Griffin Davis, Dexter Sol Ansell, Maisie Williams.

YOUR LOCAL INDEPENDENT CINEMA



JOIN US FOR SOME GREAT FILMS AND LIVE SHOWS THIS SUMMER

MASTERS OF THE UNIVERSE

In Masters Of The Universe, director Travis Knight brings the legendary franchise back to the big screen in this epic live-action adventure. After being separated for 15 years, the Sword of Power leads Prince Adam back to Eternia where he discovers his home shattered under the fiendish rule of Skeletor. To save his family and his world, Adam must join forces with his closest allies.

From 5th June.



SCARY MOVIE

Twenty-six years after outrunning a suspiciously familiar masked killer ("Ghostface"), the Core Four are back in the killer's crosshairs and no horror movie IP is safe. Marlon Wayans ("Shorty"), Shawn Wayans ("Ray"), Anna Faris ("Cindy"), and Regina Hall ("Brenda") reunite in Scary Movie alongside returning favorites and fresh faces to slash through reboots, remakes, requals, prequels, sequels, spin-offs, elevated horror, origin stories, anything with the word legacy in it, and every "final chapter" that absolutely isn't final.

From 5th June.



TOY STORY 5

The toys are back in Disney and Pixar's "Toy Story 5," and this time around it's Toy meets Tech. Buzz, Woody, Jessie and the rest of the gang's jobs get exponentially harder when they go head to head with this all-new threat to playtime. With an all-star cast featuring Tom Hanks, Tim Allen, Joan Cusack, Blake Clark, Greta Lee, Conan O'Brien.

From 19th June.



SUPERGIRL

When an unexpected and ruthless adversary strikes too close to home, Kara Zor-El, aka Supergirl, reluctantly joins forces with an unlikely companion on an epic, interstellar journey of vengeance and justice.

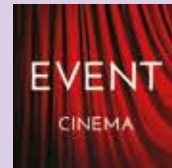
From 26th June.



JACKASS: BEST AND LAST

Johnny Knoxville and the gang return featuring all-new stunts and stupidity along with the greatest hits and biggest laughs from the past, jackass: best and last is a joyously raucous celebration of all the mischievous camaraderie that you've come to love and expect from these idiots over the past 25 years.

From 26th June.



Event cinema offers something a little different to mainstream films. Live and pre-recorded shows beamed in via satellite from all over the world. Here are the latest live streams that you can enjoy on the big screen at Parkway Beverley.

Saturday 30th May, 6pm -

The MET: El Ultimo Suen De Frida y Diego

On May 30, the Metropolitan Opera's 2025/26 Live in HD season comes to a close with a live transmission of American composer Gabriela Lena Franka's first opera.

Thursday 25th June, 7pm -

NT Live: Les Liaisons Dangereuses

BAFTA Award-winner Lesley Manville (Phantom Thread) joins Aidan Turner (Rivals) in a striking new staging of Christopher Hampton's celebrated adaptation of the classic novel, where among the glittering salons of the super-rich, one misstep can mean ruin.

LIVE ON STAGE

Monday 8th June, 7pm -

Beverly Flower Club - June in Bloom

Jonathan is an internationally celebrated floral designer with over 30 years experience and now one of the UK's most renowned floral designers. He is humorous and friendly and guaranteed to thrill his audience with his amazing floral displays.

Friday 26th June, 7.30pm -

Creedence Clearwater Revived

This is a rare chance to see a classic British band perform their interpretation of a classic American Set. The band will also add all the other classic CCR songs to the set list making it an amazing two hour show.

Sunday 28th June, 2pm -

Circus Spectacular - Summer Show 2026

Step right up and enter a world of wonder, excitement, and imagination as BDC presents Circus Spectacular. Our talented dancers take to the stage in a high-energy celebration inspired by the magic of the Big Top.

Saturday 8th August, 2.30pm & 7.30pm -

Very Beautiful South: A Tribute to The Beautiful South

Celebrating this legacy are a group of enthusiastic and experienced musicians who are, first and foremost, lifelong fans of The Beautiful South.

SAVINGS ARE CHANGING... LET'S TALK!

Whether it's a rainy-day fund, or planning for exciting life goals, such as a house deposit, a wedding, or a dream holiday, building a great savings habit has always been essential.

But how much we invest, and the way in which we do it has changed more than you might think during the last 25 years, as these infographics show...

Here at Beverley Building we've been busy researching to understand how we can continue to support you today and in the future.

Savings That Work For You ¹

Digital pace of change:
the use of computers and the internet has accelerated from 7% of the world's population in 2000, compared to **over half of it today**

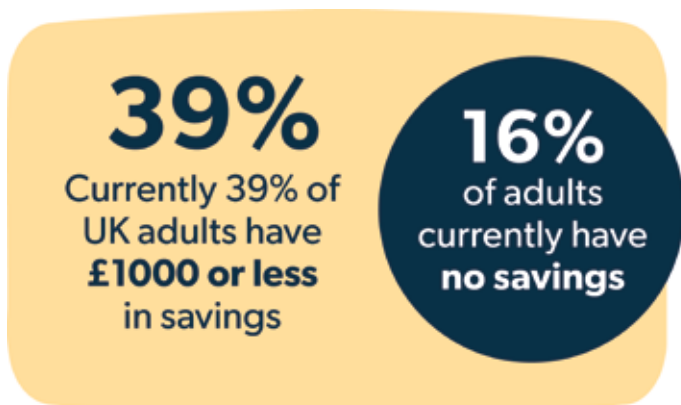


Since the millennium it's fair to say there has been a dramatic change to the way we live due to advances in technology, particularly when it comes to financial services.

Maybe you're one of the many people who like to manage everything at your fingertips - checking your balance on your phone, moving money around quickly, and having that flexibility whenever you need it.

However, you might value a more personal touch: a friendly face, a passbook in hand and the reassurance that someone knows *you* and your goals.

Helping You Grow - At Every Stage ²



Are you making your money work hard for you? Here at the Beverley, you could choose from a wide variety of products, including notice accounts, a range of competitive fixed rate bonds and our highly competitive Junior ISA is available exclusively to young savers in our region.

Savings can help provide peace of mind. Eligible deposits are now protected by the FSCS up to £120,000 per person, per authorised institution.



Beverley Building Society's Savings Team Members, Chris, Andrea & Kirsty look forward to helping you!

Why Our Members Stay

Of course, great products matter - but it's the experience that really sets things apart in a competitive, and often automated, marketplace. Walk through our doors, and you'll find something increasingly rare: genuine, personal service, which is highlighted in our 2025 customer feedback score of 4.92 out of 5. We're not just helping you today, we want to be part of yours and your family's journey for years to come.

As our team member, Chris Gibbon, puts it: "I love the fact that I'm helping generations of the same family to secure their financial future."

Looking Ahead

With a mobile app on the horizon, managing your savings will soon be even easier, allowing you to stay in control, wherever you are.

Our purpose? To give you real value and support our community across East Yorkshire and beyond. Building one better financial future, one step at a time.

Whatever you're saving for, we'd love to help you get there.

Accounts are subject to terms and conditions.

Source: ¹ <https://www.weforum.org/stories/2020/11/heres-how-technology-has-changed-and-changed-us-over-the-past-20-years/>

Source: ² <https://blog.moneyfarm.com/en/personal-finance/average-savings-by-age-in-the-uk-how-much-should-you-be-saving/>

Tel: 01482 881510

Email: Savings@beverleybs.co.uk



Authorised by the Prudential Regulation Authority and regulated by the Financial Conduct Authority and the Prudential Regulation Authority.
Registered Number 206064.

Est. 1866

BEVERLEY
BUILDING SOCIETY
Building Better Futures

IN THE PICTURE WITH JOSH

As we head into June and hopefully more stable weather, there should be plenty to see and photograph, although some wildlife is a bit trickier to spot now the woodlands and fields are in full bloom.

Locations like Bempton Cliffs still offer great opportunities to capture the array of Sea birds nesting there, and you can even join one of the boat trips to see them out on the water fishing. While you're out on the water there's also a chance to see the numerous seals and even dolphins and whales if you're lucky.

It's also a great time for macro photography, as the temperature heats up, you'll find many more insects to photograph, and I nearly always find something I've never seen before!

It's also the perfect time of year to capture some stunning sunsets, (and sunrises if you're up that

early), with places like Whitby providing a great backdrop to capture the Summer Solstice. It's also worth visiting some of North Yorkshires waterfalls if we get some rain, not just for the waterfalls, but for the wildlife as well, with dippers, adders, slow worms and other species often found along the rivers.

You can find more information about my work and full portfolios on my website and my social media pages and if you have any questions don't hesitate to get in touch.

Instagram: [@joshharrison.photography](https://www.instagram.com/joshharrison.photography)
Facebook: [@JoshHarrisonPhotography](https://www.facebook.com/JoshHarrisonPhotography)
Web: www.joshharrisonphotography.com
Email: info@joshharrisonmedia.com



The Ferguson Fawsitt



OPENING HOURS

MON & TUES:
12:00-LATE

WED-SAT:
09:30-LATE

SUN:
12:00-LATE

What's on at the Fergie

Monday Evenings (weekly, excluding the 3rd Monday of the Month and Bank Holidays) – Viewfinder Photographic Society – a friendly Walkington based club for photography enthusiasts of all abilities.

1st Wednesday of the Month – Porsche Club

1st Thursday of the Month – Bingo from 2pm

Last Thursday of the Month – Fergie Live Lounge –

1st Friday of the Month – Quiz Night from 8.45pm



WEDNESDAY TO SATURDAY:
AFTERNOON TEA 12PM to 5PM
www.fergusonfawsitt.co.uk
tel: 01482 526317

OPEN
7 DAYS

FOOD HOURS

MON & TUES:
12:00-19:30

WED-SAT:
09:30-20:00

SUN:
12:00-18:30

STRONG UK SAVINGS CULTURE - BUT PERSISTENT INVESTMENT GAP

How can we get more people to invest? For savers, it's the next step, according to a UK-wide campaign aimed at encouraging UK savers to invest for long-term growth - and closing the UK's persistent investment gap. Invest for the Future is a multi-year campaign spearheaded by the UK trade body, the Investment Association (IA). It is backed by a wide range of UK financial services firms, including St. James's Place.

Research for the campaign, carried out by the Financial Conduct Authority in association with Opinium, reveals around seven million adults in the UK hold at least £10,000 in cash savings¹. Yet nearly half (44%) of those who save have no investments. Ten million people say they want to learn more about investments, the campaign points out, while 37% of savers would be more likely to invest after a conversation with someone they know. Yet 69% rarely or never talk about investing.

So, what is deterring people from investing in the stock market, given the potential financial benefits of investing over the long term? Crucially, the Invest for the Future campaign focuses on the barriers people feel when it comes to investing. These barriers include fear of losing money, confusion over how investing works, and a sense investing is "for other people".

It will look to frame investing as the 'next step' from saving - as an evolution. It will seek to make the benefits of investing clearer by breaking long-term goals (retirement, housing, financial security) into manageable steps. In this way, it will help people to build confidence over time, which in turn could lead to a cultural shift in attitudes towards

investing. Many people want to invest but struggle to take that first step. A recent report from St. James's Place² and Ipsos, based on a survey of nearly 6,000 people, explored why. It found using behaviour-led interventions in the form of effective messaging could help create a new generation of investors. It could also boost the amount invested by more than £2 billion a year.

Key findings included:

- Clear, behaviour-led messages help people feel more confident about investing - especially younger people.
- Using clear examples to demonstrate what small, regular investments can become over time was the most effective way to shift behaviour.
- Normalising investing shifts behaviour. Messages that show investing as something people like you already do significantly increase investment intention.
- Targeted messages can help close investment gaps.

These findings support the retail investment campaign and underline the importance of presenting investing as a mainstream, everyday behaviour. By supporting this campaign, St. James's Place hopes to help shape informed debate, raise investment confidence, and play an active role in leading the conversation on the future of wealth management.

Olivia Booth-Smith, Head of Public Affairs, Public Policy at St. James's Place welcomes the campaign's focus on having everyday conversations about investing. She says: "Our recent behavioural report shows clearly that when investing feels socially normal, personally relevant,

and connected with people's future selves, they are more willing to invest."

The multi-year Invest for the Future campaign will feature a character Savvy the Squirrel, inspired by the idea of 'squirrelling money away'. The figurehead is intended to represent someone who has already taken the first step into investing.

Make talking about investing normal

As part of the nationwide campaign, Savvy the Squirrel will be heading out into communities across the UK. The campaign launched in Manchester on 23 April. A fleet of taxis have been transformed into so-called 'Savvy Cabs'. Passengers are offered free journeys in return for taking part in informal conversations about money and investing. By making investing a more visible and normal topic of conversation, the campaign seeks to address the barrier that 74% of savers feel investing is a big step to take.

For more information on how to make your money work harder for you, contact Navigation Wealth Management at our Beverly office on **01482 379504** or visit us at www.navigationwm.co.uk

Sources:

¹ Financial Conduct Authority/Opinium research among 4,000 UK adults, 7-12 April 2026.

² 'Shifting behaviours to create a new wave of investors' - St. James's Place - 26 March 2026 - On behalf of SJP, Ipsos interviewed a nationally representative sample of 5,916 adults aged 18+ across Great Britain. The survey was conducted online between 17 October-20 November. Quotas were applied and data are weighted to match the profile of the population.



We replace uncertainty with **clarity, confidence, and control** so you can focus on the freedom of living your life.



How We Can Help You

-  Mortgages
-  Protecting You & Your Estate
-  Retirement Planning
-  Investment Planning
-  Long Term Care Planning
-  Corporate Financial Planning

The Partner Practice is an Appointed Representative of and represents only St. James's Place Wealth Management plc (which is authorised and regulated by the Financial Conduct Authority) for the purpose of advising solely on the group's wealth management products and services, more details of which are set out on the group's website www.sjp.co.uk/products. The 'St. James's Place Partnership' and the titles 'Partner' and 'Partner Practice' are marketing terms used to describe St. James's Place representatives.



SJP Approved 20/01/2026

 01482 379504

 NavigationWM@sjpp.co.uk

 www.navigationwm.co.uk

SUMMER GADGETS, BIG POWER DRAWS - IS YOUR HOME READY FOR IT?

When people think about electrical strain on a house, they usually picture winter. Heating on, tumble dryer running, Christmas lights everywhere. But summer can quietly put just as much demand on your electrics - just in different ways.

Take portable air conditioning units, for example. We've seen a huge rise in these over the last few years. They're brilliant for cooling bedrooms and home offices, but they also draw a fair amount of power, especially when they first kick in.



If they're plugged into a daisy chain of extension leads alongside fans, chargers and a television, things can start getting warm behind the scenes - and not in a good way.

Hot tubs are another big one. They really should have their own properly installed circuit, particularly if they're outdoors. Water and electricity can work together safely, but only when installed correctly. Temporary setups and "that'll do for now" electrics are where problems start. Then there are electric patio heaters. Great for stretching out those summer evenings, but if you're installing one permanently, it's often far better to have it wired in properly with a fused spur rather than relying on plugs and extension leads outside.

And while we're on the subject - paddling pools and fans don't mix particularly well either. Every summer we see cables trailing across gardens, plugs balanced on window ledges, and extension reels sitting far too close to water.

Most of the time, people aren't doing anything reckless - they're just making do with what they've got. The good news is that many of these issues are easy and relatively inexpensive to sort properly. A couple of extra sockets, an outdoor supply or a dedicated circuit can make a huge difference to both convenience and safety. If you're planning to power a bit more this summer, it might be worth checking whether your setup is ready for it.

Visit: www.smartpower.co.uk | Email: info@smartpower.co.uk
Call: 01482 205222

WHEN IS THE FIRST DAY OF SUMMER?

The first day of summer can either be at the start of June or mid-way through June dependent on whether you follow astronomical or meteorological definitions.

Astronomical Summer: Start of the summer solstice, this year is Sunday, 21st June, 2026 (at 4:24 A.M. EDT). This marks the longest day of the year in the Northern Hemisphere (UK).

Meteorological Summer: Always starts on 1st June and ends on 31st August, as meteorologists group the year into four 3-month seasons in the UK, (Northern Hemisphere), the longest day of the year (the summer solstice) usually falls on 21st June, but it can depend on the year occur on either the 20th or 22nd June.

The date moves because the astronomical year (the time it takes for Earth to orbit the Sun) is roughly 365.25 days. This means the exact timing of the solstice drifts slightly against the standard 365-day calendar.

SMART POWER

PROFESSIONAL DEDICATED ELECTRICIANS

CALL 01482 205222

Based in Cottingham, serving East Yorkshire with Domestic, Commercial, and Industrial Electrical Solutions.

OUR SERVICES

- Fault Finding
- Internal and External LED Lighting
- Test and Inspection EICR
- EV Chargers
- Kitchen Electrics
- Consumer Unit Upgrades
- Full and Partial Rewires

CONNECT WITH US

Our team will always go the extra mile to ensure that you're delighted with our work.

WWW.SMARTPOWER.CO.UK

Jayne at linkagency

ESTAS 25 ***** WINNER

PrimeLocation ZOOPLA naea | propertymark OnTheMarket rightmove

linkagency Sold 01482 699007 www.linkagency.co.uk

linkagency For Sale 01482 699007 www.linkagency.co.uk

Have you seen these signs?

"I dedicate my time and energy to clients throughout their property selling and buying journey, giving them the comprehensive, professional service they deserve."

01482 699007 (Beverley & Surrounding Villages)
www.jayneatlinkagency.co.uk
jayne@linkagency.co.uk

STEP INSIDE NORMANDY BARRACKS: BEVERLEY ARMED FORCES DAY RETURNS ON 4TH JULY

The Defence School of Transport is delighted to announce that Beverley Armed Forces Day 2026 will take place on Saturday 4th July at Normandy Barracks, offering the local community a rare and unique opportunity to step inside an active military base and celebrate those who serve.

This year's event promises something truly special. For one day only, the gates of Normandy Barracks will open to welcome residents from Beverley and across the region to experience Armed Forces Day in the heart of where our military community lives and works.



Visitors can look forward to a packed programme of entertainment, including strongman and strongwoman competitions, a display of military and classic vehicles, live music and a wide selection of food. Whether you're a long-standing supporter of the Armed Forces or simply looking for a memorable day out, this event has something for everyone.

The event is being held in partnership with SSAFA, the Armed Forces charity, as part of the national Armed Forces Day programme. It is free to attend and open to all.



Event details:

- **Date:** Saturday 4th July 2026
- **Location:** Normandy Barracks, Beverley
- **Time:** 1000 - 1600
- **Admission:** Free event - parking fee is payable on entrance.

For more information, follow:
www.facebook.com/DefenceSchoolofTransport

BEVERLEY ARMED FORCES DAY 26

CELEBRATING 30 YEARS OF
THE DEFENCE SCHOOL OF TRANSPORT

SATURDAY 4 JULY 2026
1000 - 1600

NORMANDY BARRACKS LECONFIELD
EAST YORKSHIRE

ABOUT THE EVENT

ARMY STRONGEST MAN & WOMAN COMPETITION • MILITARY DISPLAYS
CLASSIC CAR DISPLAYS • FAIRGROUND RIDES • FOOD AND DRINK
MILITARY VEHICLE DISPLAYS • LIVE MUSIC & DANCING
VETERANS' VILLAGE • EMERGENCY SERVICES DISPLAYS • ARCHERY

Lifelong support for our heroes and their families

Defence School of Transport

ARMED FORCES DAY
SHOW YOUR SUPPORT

SATNAV: HU17 7LZ What 3 Words: cassettes tweeted group

the
Armed Forces
charity

2026 - Your Veterans Need You!

SSAFA urgently need a Branch Secretary, admin support and caseworkers.

The Branch Secretary serves as key figures in supporting those who have served their country, ensuring they receive the assistance and resources when in need after protecting our country.

It's a role that requires dedication, compassion, and a commitment to serving others, offering immense personal satisfaction and the opportunity to positively impact the community.

If you think you can help, please get in touch:

Tel: 01964 552 837

Email: eyorks.branch@ssafa.org.uk

Website: ssafa.org.uk

15 QUESTIONS WITH FOLK SINGER, SONGWRITER, JANILEIGH COHEN

Beverley Folk Festival returns 18th - 21st June, showcasing music, entertainment and a weekend of community celebration. We caught up with Janileigh Cohen, to find out what inspired her and keeps her motivated. Janileigh supports Stornoway at St Mary's Church on Friday 19th June.

1. Creative Journey - where and when did it all begin?

From as young as I can remember, I've always loved singing and playing music. My grandad bought me a keyboard when I was little, and I taught myself all the built-in songs, I remember the first one I learnt was Pachelbel's Canon. When I started secondary school, I joined the choir, and after one class my music teacher pulled me aside and began giving me private singing lessons. She really encouraged me to pursue music seriously. I owe a lot to Miss Brown.

2. What first inspired you to pursue music as a career?

I was working at Travelodge and one of my friends said, "I bet you could make money busking instead of working in a hotel." He encouraged me to give it a try. I remember making five pounds on my first day busking and being completely amazed by it. I quit my job and started busking full-time.

3. Was there a defining moment when you realised this was the path you wanted to follow?

I think uploading my first YouTube video was a huge moment for me. I was incredibly nervous and didn't have much confidence at the time, but when people started responding positively to the music, it made me feel like maybe I really could follow my dreams and become a singer-songwriter.

4. How did you take your first steps into the professional side of the industry?

I was approached by management in my early twenties, which was really my first experience of the professional music industry.

5. What challenges did you face early on, and how did you overcome them?

Throughout my twenties, I was managed by a few different people, and I don't think I always trusted my own instincts. I signed things without fully understanding them and often followed other people's direction because I believed they knew better than I did. Over time, I learnt a lot about myself and the importance of trusting your intuition and making the music that feels true to you.

6. What are some personal or professional goals you're currently working toward?

I took a long break from music after feeling like I'd lost my love for it, so right now my focus is on reconnecting with the creative process and looking after my mental health. I'd love to release another album next year, continue performing, and eventually find the right manager and booking agent to help support what I'm building.

7. How would you describe your sound, and which artists or genres influence you most?

My music is rooted in folk and singer-songwriter traditions. The songs are usually very personal and written simply on piano or guitar. Artists like Leonard Cohen, Bob Dylan, and Joni Mitchell were the artists who really made me fall in love with music. Recently, I've been incredibly inspired by artists like Adrienne Lenker, Courtney Marie Andrews, and Joshua Burnside. There's so much beautiful and inspiring music being released at the moment.

8. What has been the biggest challenge so far in your music career, and how did you overcome it?

Having to step away from music after a difficult experience with management was probably the biggest challenge for me. The record I've just released, *As a Child*, was actually an album I'd tried to make twice before and never managed to finish. A friend suggested crowdfunding it and giving it one final shot, and I was completely blown away by the support I received. That experience really helped me overcome the resistance and fear I'd developed around making music again.

9. When you write your own music, what's your songwriting process?

Sometimes ideas come to me when I'm out and about, and I'll quickly record them on my phone before I forget them. But most of the time, songwriting starts with sitting down at the piano or with a guitar and following whatever emotion or feeling I'm carrying that day and I try not to force it too much.

10. What's one moment on stage or in the studio that you'll never forget?

When I first started performing outside of busking, I was absolutely terrified. During my first run of gigs, I would sometimes freeze on stage from nerves. I also had this habit of introducing my songs by saying they were "not very

good" because I didn't want people to expect too much. Looking back now, I can't believe that was my approach, but it shows how much I've grown in confidence since then.

11. What's your dream collaboration - artist, producer, or even a venue?

I would love to make an album with Rick Rubin and then perform at the Royal Albert Hall with a full orchestra. That would definitely be a dream come true.

12. How do you balance staying true to your sound while evolving as an artist?

I think I can only write the songs I write through lived experience. I don't really know how to do it any other way. Because of that, I feel like I naturally stay true to myself and my sound, even as I grow and change as a person.

13. What's next for you?

I want to continue playing live music. I took nearly ten years away from performing, so it's been incredibly rewarding to start playing again. I'm also focusing on my next album, but before that I'd love to do a few headline shows to close this chapter of releasing my first album.

14. What's special to you about Beverley and the Folk Festival?

I first met my publisher, Phil Simpson, in Beverley. I remember meeting him in a café there, and after our chat I felt really positive about pursuing music again, which had been quite a rare feeling for me at the time. He's been incredibly supportive ever since. Every time I've gone back to Beverley, I've felt really at home and never wanted to leave, so being invited to play the folk festival this year feels really special to me.

15. How do you connect with your fans and what message do you hope people take from your music?

I think I connect with people by writing honestly. Sometimes it feels very exposing, and I worry that I'm oversharing, but then I remember that the artists I admire most are the ones who are brave enough to be vulnerable in their songs. My music can often sound melancholic or sad on the surface, but it's always written with hope, love, and optimism underneath it. I'd like to think that's what people take away when they listen.



FAST RIDING
BEVERLEY FOLK FESTIVAL
18 – 21 JUNE 2026

WARD THOMAS STORNOWAY
CHRIS CLEVERLEY joshua ELANOR MOSS
Danny Bradley burnside Janileigh Cohen
REG MEUROSS
BELLA GAFFNEY · CLARA AND WILD · COLIN METCALFE
DOGFINGER · DAISY DOT · EMILY SLADE · LEE GABEL
JACK ROBERTSON · JESSICA LAWSON · MALIN HILL
PETER DILLEY · SIMON W. BOULT · THE FLATT EAST
THE HILLBILLY TROUPE · THE IMPROMPTONES
THE LAGGY BAND · THE OLD CROW ROAD · THE SMUGGLERS ·
TOBEY BRITTON TYMISHA · WHITE SAIL
and much more TBA!

MORRIS & DANCE TEAMS · SESSIONS · CHARITY BUSKATHON · CEILIDH
CAMPING AVAILABLE

A friendly, action-packed weekend of live music showcasing the best established and emerging acts in truly unique venues across Beverley's ancient cobbled streets.

TICKETS ON SALE NOW!
www.beverleyfolk.com



MAKE A LASTING FIRST IMPRESSION WITH A NEW COMPOSITE DOOR

If you've been keeping an eye on home design lately, you'll have noticed one colour cropping up on the smartest front doors across the region: black.

Once a bold statement, it's now firmly established as a go-to finish for a stylish, contemporary entrance, and there's an exciting new development that takes the look even further.

Comp Door, one of the UK's leading composite door manufacturers, has just launched a brand-



new black outerframe.

For the first time, you can have a fully colour-matched door and frame, creating a seamless, top-to-toe black finish that looks effortlessly premium.

Available in both black-on-black and white-on-black configurations, in chamfered or sculptured profiles, and even on stable and French doors, it's the perfect way to achieve a truly coordinated look.

Of course, black is just the beginning. While it's having a real moment, the beauty of a composite door is the sheer choice on offer, and at Cherry Group, we're proud to help you find the one that's just right for your home.

From timeless traditional styles to sleek modern designs, our composite doors come in a wonderful range of colours, including elegant greys, classic whites, rich blues, greens and reds.

Add in a choice of glass styles, decorative panels, handles and accessories, and you can create a front door that's genuinely unique to you.

And it's not just about looks. Composite doors are built to perform, offering excellent security, brilliant thermal efficiency to help keep your home warm, and the kind of durability that means they'll look fantastic for years to come, with very little upkeep required.



Whether you're after a striking statement in Total Black or something softer and more traditional, we'd love to help you make the right choice.

Pop into our Beverley showroom on Beck View Road to explore the full range and see the quality for yourself. Our friendly team is always on hand to offer honest advice and help you find the perfect door.

Get in touch with Cherry Group on **01482 770621** or visit **cherrygroup.uk** to find out more.



IT'S A TOTAL BLACK OUT!

Introducing the all-new black outerframe from Comp Door. Designed to make a statement.

No more compromising with a contrasting frame. Just a sleek, coordinated look that turns heads for all the right reasons.

- Available in black-on-black or white-on-black
- Choice of chamfered or sculptured profiles
- Now available on front, stable and French doors.



VISIT OUR SHOWROOM: Unit 2, Beck View Road, Beverley, HU17 0JT

GET IN TOUCH
01482 770621
www.cherrygroup.uk



BWP: A QUIRK OF THE STATS

Beverley Westwood parkrun has developed a reputation not just for its scenic, challenging course, and friendly atmosphere, but for a collection of quietly remarkable statistics that reveal the character of our community.

At the heart of it are the people, and few examples capture the parkrun spirit better than our very own Event Director, Kay Farrow. Her milestone saw her line up 287 runs and exactly 287 volunteer credits earlier in May. It's a perfect balance that reflects the ethos of parkrun, taking part and giving back in equal measure, and I am fairly sure that's a rarity at any event.

Another milestone, equally satisfying in its symmetry, was also seen in May. I reached my 250th volunteer credit at our 250th event! The alignment feels almost too tidy to be real, but certainly one to celebrate especially as 244 of my volunteer credits were earned at Beverley!

Beyond individual stories, the broader statistics



of Beverley Westwood parkrun reveal some intriguing patterns. Since its inception, the event has grown to more than 250 events, with an average finish time of just over 31 minutes. That figure hints at an inclusive field where participation matters more than pace.

Attendance itself can fluctuate in interesting ways. While the long-term average hovers at just over 200 runners per week, certain events have attracted more than 300 participants. These spikes often coincide with anniversaries, favourable weather, or an influx of visitors, adding an unpredictable rhythm to the event's scale.

Do you remember January last year when only 3 Yorkshire parkruns were on and we attracted 599 hardy folks? That was my most favourite of our events for atmosphere and the cherry on the cake for me was I was the Run Director on the Day!

Performance statistics offer their own quirks. The course records stand at 15:53 and 18:20, but it is the latter that stands out most. The women's record, set by Becky Briggs in 2019, has endured unchanged since the early days of the event.



In a parkrun that has otherwise evolved and grown, it remains a benchmark that has proven stubbornly difficult to beat. You may be aware the men's record at Hull parkrun has just gone after 15 years in place! I wonder how long Becky's record will stand!

Age-grade performances add another layer to the story. Beverley Westwood regularly sees strong results from veteran runners, with age grades exceeding 70% not uncommon. Week after week, experienced runners continue to produce some of the most impressive results on the course.

Taken together, these numbers paint a picture of an event defined not by elite performance alone, but by variety, balance, and coincidence.

From perfectly matched run-and-volunteer totals to milestone alignments and long-standing records, Beverley Westwood parkrun offers more than just a weekly 5K. It is a place where statistics tell stories of dedication, community, and the small, satisfying quirks that make each event unique.

Louise Barrett.

Four Generations, Giving Over 130 Years Service

Herbert 1870-1962	Eardley 1908-1986	Geoffrey 1939-2015	David 1964
----------------------	----------------------	-----------------------	---------------



Golden Charter
Funeral Plans



- Funerals Respectfully Conducted
- 24 Hour Out of Hours Service
- Free Advice & Support
- Private Restrooms
- Prepaid Funeral Plans Available
- Finance Options Available



Tel: 01482 844695
www.hkempandsonltd.com

259 Hallgate, Cottingham, East Yorkshire, HU16 4BG
Fax: 01482 843898
Email: hkempandsonltd@gmail.com



tig
Together
in Grief

Group walks for those who are bereaved



Together in Grief (TiG) walks are easy-paced, group walking sessions to help people cope with the loss of loved ones. They offer some gentle exercise and the chance to talk with others who share your experience.

Where: Morton House, Morton Lane, Beverley

When: Every Monday 6.30pm (Starting 12th January)

Cost: Free

The walks are safe, supportive and suitable for all (aged 16+) - men and women, and all abilities.

No need to book - just turn up. Come along whenever you feel a walk and talk might help - every week or just occasionally.

For more information, scan the QR code or email heather@fitmums.org.uk.



© 2024 Fitmums & Friends is a registered charity in England and Wales No. 1173919

IAN HARRISON - HANDYMAN JOBS FOR THE SUMMER

Summer is the ideal season for Ian the handyman to tackle essential jobs around the home, as longer days and warmer weather provide perfect conditions for maintenance and improvement projects.

Outdoor work often takes priority, including repairing fences, painting sheds, cleaning patios, replacing damaged decking. Garden structures such as gates, pergolas, and raised beds may also require repairs or fresh treatment to protect them from the elements.

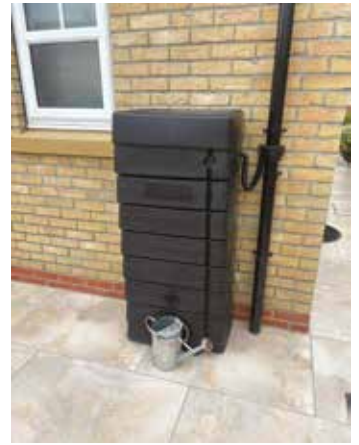
Inside the home, Ian commented, "Summer offers a good opportunity to fit shelving, repair doors and windows, and complete projects that may have been postponed during colder months, decluttering and modifying".

Many homeowners also use this time to prepare their properties for holidays, visitors, for sale or future winter weather by checking insulation, sealing cracks, and servicing outdoor lighting.

Engaging Ian to carry out regular handyman work during summer not only improves the appearance and comfort of a property but can also prevent expensive repairs later. Well-maintained homes retain their value and provide safer, more enjoyable living spaces for families throughout the year.



Ian Harrison - Beverley's Handyman.
Mobile: 07970 332373
Email: ianharrison68@icloud.com
Website: www.ian-harrison.com



Follow us on
Facebook and Instagram

Ian

HARRISON
HANDYMAN

For all your jobs around the home

- *Painting, Interior & Exterior*
- *Mirror & Shelf Installation*
- *Joinery*
- *Flat Pack Assembly*
- *Picture Hanging*
- *.. and so much more*

07970 332373

ianharrison68@icloud.com

www.ian-harrison.com

LET'S VISIT THE NEIGHBOURS - SOUTH YORKSHIRE

For the fourth in our series of suggested day trips to areas that border the East Riding, we visit South Yorkshire.

On the surface this region may have less to appeal to the visitor than more scenic areas to the north, nonetheless there is much to enjoy, and with good transport links to take you there. We'll explore from east to west.

Doncaster, now Yorkshire's 8th city, is very easily reached by road or direct trains from Beverley. It has more to offer than many realise; a fantastic free museum and gallery, with a focus on railways, fabulous markets and elegant Georgian terraces leading to the famous racecourse, home of the St. Leger.

A few miles east takes us to the small town of Conisbrough, where perched high above the Don is one of the most spectacular medieval castles in the country.

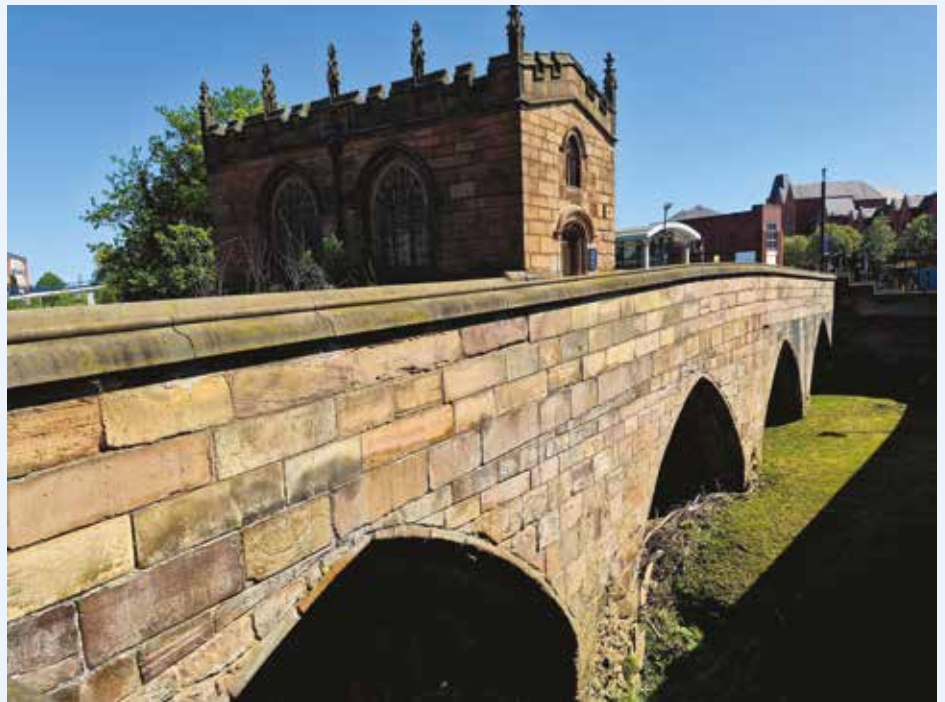
Rotherham, a few miles further east, is making admirable efforts to regenerate its historic town centre. It has a beautiful Minster church and a rare medieval bridge chapel, one of only four left in England. A special mention for the heritage Cutler's Arms pub on Westgate with a stunning interior.

Hidden a few miles north in pleasant rolling country you will find the pretty estate village of Wentworth and the staggeringly enormous Wentworth Woodhouse stately home and gardens.

Sheffield is a fascinating city with a wealth of attractions; I especially recommend Weston Park with its museum, the Graves Art Gallery, the Botanical Gardens and the indoor Winter Garden - all are free to visit.

For a taste of Pennine Yorkshire, a visit to the little hill town of Penistone is recommended. So, South Yorkshire in a nutshell, with lots more for the curious traveller to discover for themselves.

Ian Richardson.



WESTWOOD PLUMBING & HEATING: A BEVERLEY BUSINESS BUILT ON TRUST, GROWTH AND TECHNICAL EXPERTISE

From its base on North Bar Within, in the heart of Beverley, Westwood Plumbing & Heating Ltd has grown from a local plumbing and heating specialist into a thriving, multi-skilled business serving domestic and commercial customers across the nation.

As the business looks ahead to its 10th anniversary in 2027, Westwood can point to a strong record of progress. Its growth has been shaped by local recommendation, investment in skilled people and a practical understanding of what homes and businesses need from a trusted contractor - with a clear focus on reliability,



workmanship and customer care. For Beverley residents, that trust matters. From older town-centre properties to newer family homes and commercial premises, the local area has varied plumbing, heating and maintenance needs.

With no job too small, Westwood's capabilities encompass plumbing and heating repairs and breakdown support, plumbing including leak and burst repairs or tap replacements.

The company also provides kitchens and bathrooms renovations, with services for plastering, joinery, windows and doors, patios, driveways, landscaping, property maintenance and general repairs.

A major area of growth is renewables. With energy efficiency now a priority for many, Westwood has developed expertise in air source heat pumps, solar hot water, underfloor heating and air conditioning.

The company helps customers assess system suitability, choose appropriate technology and understand long-term performance, rather than offering a one-size-fits-all solution.

For eligible homes and small non-domestic properties, the Boiler Upgrade Scheme can provide a substantial grant towards the cost and installation of a qualifying heat pump. Westwood can advise on suitability, manage the application and deduct the grant from the installation price,



making the process more straightforward and hassle free.

Air conditioning is another growing part of the company's service range. With warmer summers, professionally installed air conditioning is increasingly a practical investment, offering efficient climate control as demand grows for year-round comfort.

As Beverley continues to balance heritage, growth and modern living, Westwood Plumbing & Heating stands as a strong local example of a business combining traditional trade values with modern energy expertise.

Approaching its first decade in business, Westwood Plumbing & Heating will mark not only a business milestone, but the continued evolution of a Beverley-born company helping local residents and businesses prepare for the future.

Enquire now or book online at westwoodplumbers.co.uk.



Monks Walk Inn

Find us at: 19 Highgate, Beverley HU17 0DN

Tel: 01482 880871
www.monkswalkinn.com

A WARM WELCOME TO ALL OUR CUSTOMERS

GOOD BEER
GOOD COMPANY
GOOD CONVERSATION

CELEBRATING 10th ANNIVERSARY 2016-2026

Historic Public House

Local Cask Ales • Lagers • Craft Beer • Wines • Spirits
Hot Drinks + Extra Seating Area Upstairs & Outside

Tuesday Quiz • Wednesday Folk Night
Music Events • Everyday Drinks & Chatter

SUMMER PIZZA TIMES 

Fridays 5:30-7:30pm
Sundays 12:30-5:30pm

Vegan and Gluten Free options available

Check out our Website/Socials for more details

MR CARPETS

CARPET AND FLOORING SPECIALISTS

↓ TAKE A LOOK AT OUR QUALITY INSTALLATIONS ↓



38 YEAR ANNIVERSARY
38 years in business
38 years of good, honest service




Check out our Facebook and Google reviews

01482 872134  [mrcarpetsbeverley](https://www.facebook.com/mrcarpetsbeverley)

E: mrcarpets@hotmail.co.uk
3 Becks North, Beverley, HU17 0PR

Visit our **LANDSCAPING DISPLAY**



Visit our branch and chat to our specialists who can help you find the right products for your space.

Swinemoor Lane Beverley
HU17 0JX 01482 880088



MKM
mkm.com



Beverley Housing Charity Live. Connect. C



Beverley Housing Charity (BHC), pride themselves on supporting residents to live, not just exist in retirement.

BHC achieves this by working in partnership, listening, providing practical solutions, and offering advice and support to the charities hosted at Morton House and those charities that provide vital assistance to their residents and partner organisations in and around Beverley.

For many elderly people including residents, transport and social engagement is key to remaining independent, **Beverley Community Lift (BCL)** is therefore a vital component to ageing well in Beverley and the surrounding district. BCL is a partner to whom BHC is proud to work alongside, with many of their residents benefitting from BCL services.

Working Together To Transform the Lives of Older People

Throughout Beverley and the surrounding villages, many people face isolation a quiet challenge that often goes unnoticed. Some live alone, some struggle with limited mobility, and others feel disconnected from the communities they once played an active role in. Yet within every community there is also an enormous amount of kindness, connection, and practical support, life changing opportunities for elderly people who need help reaching community hubs and social activities.

BHC already plays a vital role in supporting their residents. It provides safe homes, sheltered accommodation, wellbeing services, and trusted staff who know residents personally. BCL provides accessible minibuses, **volunteer drivers**, and reliable travel services for people who may otherwise be unable to leave their homes. Separately, both organisations make a positive

difference. Together, they can build something even more powerful: a complete network of care, independence, and belonging.



Making a Difference Beverley Community Lift

BCL realised that for many retiree's people, transport is one of the biggest barriers to social inclusion. A community hub may only be a few miles away, but without access to a car, reliable public transport, or the confidence to travel alone, it can feel completely out of reach.

Some older people stop attending lunch clubs, exercise classes, medical appointments, or coffee mornings simply because getting there becomes too difficult. Over time, isolation can affect mental health, physical wellbeing, and confidence.

BHC and BCL collaborate, understand and are aware of each other's services. BHC are often the first to notice when residents are becoming isolated or struggling with daily life. Employees and partner organisations such as Age UK,

identify people who would benefit from attending community hubs, befriending groups, or local activities. By working together, they can ensure those residents are not only encouraged to participate but are also physically able to get there safely and comfortably.

In 2016 BCL opened their charity shop on Sow Hill Road, next to the bus station. Over the last 10 years have welcomed customers in, accepted donations of all kinds (except electrical items), and raised not only income but awareness of who they are and what they do. Over 95% of the people who are supported by BCL are aged 65 and over.

The people who use BCL are traditional unable to use public transport, even when it is available, as services are either insufficient to meet their needs, or often inappropriate.

Without **volunteer drivers**, many people would find themselves housebound and lonely. Leaving people with physical or learning difficulties would be left without any means of independence.

Working Together to Build Together

The impact of the understanding of each other's services is remarkable.

Imagine an older adult who rarely leaves their flat because they worry about falling or cannot manage multiple bus changes. A friendly community transport driver arrives at their door, helps them onto an accessible minibus, and takes them to a local hub where they enjoy a hot meal, conversation, gentle exercise, or creative activities.

Over time, that resident begins to smile more, build friendships, and regain confidence. What may seem like a simple journey can actually

Housing Charity

Give back.



Housing Charity - Get. Give Back.



become the pathway back into community life. Community hubs themselves become stronger when more older adults people can attend regularly. These hubs are often places where people can access advice, health support, even perhaps digital skills training, warm spaces, and opportunities to volunteer.

Older adults bring wisdom, experience, humour, and valuable life stories that enrich these spaces for everyone. Working together, attendance grows and hubs become more vibrant, inclusive, and welcoming. **BHC** already have communal spaces that can host activities, while **BCL** have vehicles ready to help.

By coordinating schedules and sharing information, they can maximise the support available without duplicating services. Joint funding applications and collaborative projects can also attract investment from local councils, health organisations, and community grants.

Beverley Housing Charity
Live. Connect. Give back.

Tel: 01482 881052

Email: charity@beverleyhousingcharity.org

If you are looking for help to get to an appointment, event or the shops contact:
Beverley Community Lift
25 Corporation Road, Beverley, HU17 9HG.

Office Hours - Monday to Friday
9am to 12 noon

Car and Mini Bus Service - 01482 868082

Fiona Wales, Manager of Beverley Community Lift:

"As a small, local charity we rely on help and support from the community, whether that is people giving their time to volunteer for us as a driver or passenger assistant, or choosing to support us in other ways, all help is very gratefully received as it enables us continue to deliver our much needed services."

Andy Barber, Beverley Housing Charity: Living Life to the full

"We passionately believe in playing our part in removing the barriers for older adults in our region to live not exist and believe strongly that retirement should be a new beginning, not the beginning of the end. But to achieve this we need to wherever possible collaborate as organisations to unlock the barriers to social inclusion and alleviate loneliness and isolation and Beverley Community Lift epitomise this opportunity, in their activities but vitally in the purpose volunteering with charity can provide."

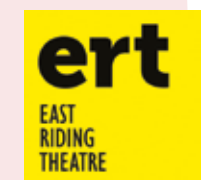
Morton House and Beverley Community Lift Supporting Connection

Collaboration between **BHC** and **BCL** will become increasingly important as populations age and communities seek new ways to combat loneliness and isolation. **The good news** is that the solution already exists. At Morton House caring organisations, dedicated volunteers, and older adults' people with a shared purpose and compassion, continue to transform lives one journey, one conversation, and one community connection at a time.

From BCL, MASH, U3a and WI - BHC are working with partners to positively change the conversation, remove barriers and unlock the potential of our ageing population not just for them but for the wider benefit of our community here in Beverley.

Margaret, Beverley Passenger:

"Since using Beverley Community Lift I can honestly say my mental health has improved enormously. I look forward to Wednesdays and the various trips I go on with other passengers. Even my GP remarked on how well and positive I looked. I cannot thank all the volunteers who give their time up to transport us to these places. Many, many, thanks to everyone on the team who work so hard to ensure that there are outings etc. for us to participate."



BEVERLEY AC - PITTAWAY BEVERLEY 10K AND SHORT RUN SUCCESS!

This year's sell-out Beverley 10k race saw a great atmosphere among runners and spectators alike, with a record number of 1836 finishers and a new course record set!

The winner and setting a new course record of 30:06 was Oliver Donkin, of Barton and District AC, with 2nd place going to Sebastian Pearson (Kingston upon Hull AC) with a time of 31:48. First female finisher was City of Hull AC's Carla Stansfield in 36:14. 253 participants enjoyed the atmosphere of the short race, with Beverley Junior runners producing some outstanding performances!

Rob Reid commented: "As Race Director and Beverley AC Chairman, I'm hugely indebted to the near two hundred marshals and helpers who ensured this year's Beverley 10k was, once again, a great success. The race committee spent months finalising details, and that core group of Beverley AC members are a brilliant bunch to work with.



"Sponsoring the race for the ninth time, the Pittaway Group is an integral part of the organisation over race weekend and I'm not sure what we'd do without their incredible support. The best bits of the event for me were seeing so many ecstatic runners at the finish celebrating personal bests and, of course, witnessing a new men's race record.



"Race times were helped by unusually cooler conditions; we'd doubled our water provision and increased medical coverage considering the hot conditions experienced over the last two years... this year, Beverley Ambulance Service only had to deal with a grazed knee and a blister!"

The Beverley Couch25k runners celebrated their graduation at Beverley Westwood parkrun with 13 graduates celebrating. Well done and congratulations to Angie Artley, Anjie Mok, Claire Gardiner, Jane Webster, Nichola Shaws, Sally Wood, Gary Fisher, Sue Fisher, Carol Taylor, Hannah Crawford, Katie Blakey, Ian Blakey and Harvey Whiting.



Some graduates are already signed up and have started the next 5k210k progression group, a 10-week training plan, perfect for those wanting to increase their pace or distance or those coming back to running after a break or injury, with a graduation at the South Cave 10k on 26th July! We look forward to welcoming you to our next race, the Walkington 10kms, which will take place on Friday 10th July. The 10kms route, starting at Little Weighton Road, Walkington, is an undulating, picturesque, rural route, taking in a loop to Little Weighton and back to Walkington for a village playing fields finish!

The short run is a 1.75-mile multi-terrain route using road, footpaths and grassland. Further details and information can be found on the club's website.

New members, whatever your age and fitness level, are always welcome and further details about the membership and what the Club has to offer to its members can be found on the Club's website: www.beverleyathleticclub.co.uk

RM JOINERY KITCHENS & BEDROOMS

QUALITY WORKMANSHIP FOR ALL YOUR FITTED FURNITURE NEEDS



KITCHENS • BEDROOMS • HOME STUDIES • BATHROOMS

Visit Our Showroom: Hull Bridge Road, Tickton HU17 9RT

01482 867389

FREE HOME
VISITS & DESIGN
SERVICE



rm.joinery@yahoo.co.uk | www.rmjoinerykitchens.co.uk



YOUR LOCAL ROOFING SPECIALIST

ROOF CRAFT

"Whatever the weather
we have you covered."

● ROOFING ● BUILDING ● JOINERY

| ALL TYPES OF ROOFING SERVICES | BIG OR SMALL |

| NEW ROOFS | RE-ROOFS | ROOF REPAIRS | FLAT |

| ROOFING | CONSERVATORY ROOFS |



We are proud to have offered our services to the area for over 23 years building up our reputation by offering a high quality service at affordable, honest and reasonable prices to both residential and commercial customers.

Many of our customers are return customers or gained through 'word of mouth' and we **welcome this loyalty.**

Office hours Monday - Saturday 7am - 7pm

- Office 01482 241610
- Hornsea 01964 260012
- After hours 0800 3411721
- info@roofcraftgroup.co.uk
- www.roofcraftspecialists.co.uk

**24 Hours 7 Days a Week Emergency Repair Call Out
service with our expert roofing team on hand to
assist in those most unexpected times
0800 3411721**

A DIFFERENT TALE OF TWO CITIES

I wrote this article whilst having the pleasure of experiencing two wonderful European cities.

The plan was a three night break to Munich, which is one of those cities that feels instantly familiar, yet full of surprises. You can quickly discover that this Bavarian capital is far more than beer halls and lederhosen. It is a city of graceful squares, leafy parks and grand boulevards, where centuries of history sit comfortably alongside a relaxed, modern way of life.



Your introduction is Marienplatz, Munich's atmospheric central square and the natural starting point for exploring the old town. Cobbled and ringed with ornate facades, it is dominated by the neo-Gothic New Town Hall, its spires and statues rising theatrically above the crowds. Time your visit to coincide with the famous Glockenspiel, when chimes ring out across the square and mechanical figures whirl through scenes from Munich's past.

Around you, café terraces spill onto the pavements and street performers add a gentle buzz. It is the kind of place where you find yourself lingering over a coffee simply to watch city life unfold. From here, narrow lanes lead you towards Baroque churches, artisan shops and the bustling food stalls of Viktualienmarkt, where locals stock up on seasonal produce and visitors snack on pretzels, cheeses and cured meats.



In the evenings, traditional beer halls and refined restaurants alike serve hearty Bavarian classics alongside fine local wines and crisp lagers. Even if beer is not your usual tittle, there is something rather irresistible about raising a glass in a vaulted hall where generations of Münchners have done the same.

Yet Munich's most disarming charm lies in how quickly you can swap historic streets for soothing greenery. A short tram or bike ride brings you to the Englischer Garten (English Garden), one of the largest urban parks in Europe and the city's green heart. Here, shady paths wind through meadows and woodland, past streams and ornamental bridges. In summer, locals stretch out on the grass with books and picnics, while cyclists drift by and dogs chase sticks into the water. Follow the sound of rushing water and you will find the Eisbach wave, where wetsuit-clad surfers queue up to take turns riding a powerful standing wave in the river, drawing a small crowd of onlookers at almost any time of day. The Englischer Garten is the perfect place to feel your shoulders drop. Spend an unhurried afternoon strolling between its beer gardens, pausing under chestnut trees with a cool drink, or simply watching the light shift across the lawns.

In autumn, the park glows with russet and gold; in winter, it can feel almost storybook-like, especially dusted with snow. One of the greatest luxuries of basing yourself in Munich, however, is how easy it is to change countries for the day.

From the central station, sleek trains glide south through rolling alpine foothills towards Salzburg, crossing the border into Austria in just a couple of hours. It makes a wonderfully civilised day trip: no airport queues, no stress, just a scenic rail journey depositing you in a city of spires and domes on the banks of the Salzach River.

Salzburg's compact old town is instantly enchanting. Pastel townhouses line cobbled streets, church bells echo between the hills and the Hohensalzburg Fortress keeps watch from its rocky perch above. Fans of "The Sound of Music" will recognise views and squares, but you do not need to know a single lyric to appreciate the elegance of its Baroque architecture and the sheer romance of its setting.

With a day at your disposal, you might wander through Mozart's birthplace, browse independent boutiques, linger over coffee and cake in a grand café, and still have time to ride the funicular up to the fortress for sweeping



alpine views before returning to Munich by evening. Both cities are fantastic - very clean and it felt very safe and the people are very friendly.

The Salzburg day trip was in all honesty a fairly last minute amendment to the itinerary and I am so glad we did as it really is very beautiful and I would happily return to stay for a few nights as a city break in its own right. My late father was a big fan of Mozart and his incredible music so it was really special to visit his birthplace. Salzburg is a very special place indeed!



**Amanda McConnell,
Travel Counsellors.**

Tel: **01482 770540**

Email: amanda.mcconnell@travelcounsellors.com

Web: www.travelcounsellors.com/amanda.mcconnell


Botterill & Co
Chartered Certified Accountants

We are a modern and professional accountancy practice ideally located to serve businesses in Beverley and the surrounding area.

We utilise modern accounting technology to provide you with a cost effective, professional service.

Our services:

- Annual Accounts
- Tax Planning
- Management Accounts
- Tax Returns
- Company Formations
- Payroll
- Cloud Accounting
- Bookkeeping & VAT

For a free initial consultation please contact us:

Office: 01482 862240

Email: gareth@botterillco.co.uk

Website: www.botterillco.co.uk

1st Floor Offices, 40 Norwood, Beverley, HU17 9EY.

FOX MOBILITY BUILD CONFIDENCE

Exploring new mobility aids can open up opportunities for greater independence, confidence, and enjoyment in everyday life.

Modern mobility equipment is designed not only for comfort and safety but also to help people remain active and socially connected. Whether using a lightweight wheelchair, mobility scooter, walking frame, or powered aid, many individuals discover renewed freedom to visit friends, enjoy shopping trips, explore parks, or take holidays with less difficulty and fatigue.

Anne from Fox Mobility commented, "Trying different options can help people find equipment that best suits their lifestyle, physical needs, and personal preferences".

Paul from Fox Mobility added, "Mobility aids also encourage participation in community activities and reduce feelings of isolation by making travel and outdoor experiences more accessible".

With improved design, technology, and convenience, today's mobility aids from Fox Mobility support active living and allow many people to continue enjoying hobbies, independence, and valuable time spent with family and friends.



Fox Mobility: 110-112 Walkergate, Beverley, East Yorkshire, HU17 9BT.
Email: info@fox-mobility.co.uk | Web: www.fox-mobility.co.uk
Tel: 01482 887799.

FOXMOBILITY.

11 YEARS

Tel: 01482 887799
Email: info@fox-mobility.co.uk
110-112 Walkergate, Beverley, East Yorkshire HU17 9BT

- **Stairlifts**
- **Riser Recliner Chairs**
- **Walking Aids**
- **Power Chairs**
- **Scoters and Accessories**
- **Servicing and Repairs for your Mobility Equipment**

Award
winning care
homes



6 weeks
free care*

A lifestyle tailored to you

Residents' quality of life is at the heart of everything we do, helping individuals to stay active and independent so they can live each day to the full.

Beverly Parklands care home, Beverly Parklands
01482 262 163
careuk.com/beverley-parklands

Inspected and rated

Outstanding ☆



Trusted to care

care UK 

*Join us as a permanent resident and enjoy six weeks free in your first six months. T&C's apply

How to spot when an older loved one may need additional support

It isn't always easy to judge when a loved one may need additional help with day-to-day living, particularly if they are living with dementia or have other health needs. However, there are some subtle indicators and clues that can signal that the person may not be coping and may benefit from support, either from members of their family or from professional caregivers.

Physical indicators

This might include the person becoming disorientated and getting lost in familiar places for those living with dementia. Other signs might be weight loss or looking unkempt which may suggest the person is having difficulty attending to their nutritional or personal hygiene needs. Bruising or similar injuries may indicate an increase in falls or accidents caused by physical and cognitive decline.

Emotional changes, including increased distress

Family members often notice subtle but growing changes in a loved one's behaviour, like increased anger, frustration, anxiety, or withdrawal.

If your loved one has dementia, they may also become rude, swear more, or lash out, which is linked to brain damage affecting their ability to process the world around them. These shifts can be signs that they need more support.

Safety warning signs

Signs that your loved one may need help include neglecting their safety, like forgetting medication, leaving appliances on, or leaving doors unlocked. If their home is unusually messy or has expired food in the fridge, it could indicate they're struggling with everyday tasks. These are important things to watch for when assessing if they need extra support.

What to do

Raising concerns about a loved one's declining abilities can be tough, but starting with open-ended questions like "How are you feeling?" can help. Offering practical support, like helping with shopping or housework, is a gentle way to assist without overwhelming them.

It's also helpful to consult their GP, who can provide guidance and point you to local resources and support. Patience and understanding are key in these conversations.

Nestled in the market town of Beverley, Beverley Parklands is a CQC 'Outstanding' rated care home offering residential and specialist dementia care on a permanent and respite basis.

Our beautiful care home is designed with residents in mind and features

many luxury facilities including a café, two bars, hair and beauty salon and bowling green. Choose from a tastefully decorated bedroom with an en-suite bathroom, or a premium suite - perfect for couples or individuals who prefer a little more space. Outside there are large, landscaped grounds, an enclosed courtyard garden with raised flower beds and a stunning balcony and roof terrace.

Our home also hosts regular free informative talks to support you and your older loved one in a warm, welcoming environment.

To find out more about our luxury care home, call 01482 262 163 or visit careuk.com/beverley-parklands

**Beverley Parklands care home
Beverley Parklands,
Yorkshire HU17 0RA**



'ONE SMALL CHANGE MAKES ALL THE DIFFERENCE'

An area now known as the large kitchen garden used to be an open expanse of lawn. It had been used for many purposes over the years, an area in which to play both cricket and chess.

Positioned on the edge of the wood connecting to the lawn was a simple stone bench, curved in shape, but of a size that would adapt to be used in both a large or small garden. The planting in the wood has now increased in volume, and the connective area produces a good supply of fruit and vegetables.

The bench was used on many occasions but had almost disappeared into the shrubs, I decided therefore to create a new feature next to the Ceanothus where I was able to sit, just take time out, have a cup of tea and relax.

I have often found that when viewing the garden from a different perspective it provokes thoughts of change, altering the angle of approach to a specific feature, or just planting. The injection of both colours, texture and above all fragrance can make all the difference.



There is nothing better than sitting in a semi shaded area encased in nature. To reposition the bench however required an access point to be created.

The stepover apples on the edge of the border were planted 10 or 15 years ago, the most attractive and size conscious way to produce fruit in both small and large gardens. There were originally three stepovers planted in this area but unfortunately, the central one had died last year, a negative in some ways but yet allowed the positioning of brick path creating a journey to the bench.

The bricks used for the path had all been recycled from various areas in the garden, stored for a number of years yet the colour blended with the existing planting and gave the opportunity for me to not only create an access point but also to increase the planting around the bench.

It is something I am looking forward to sourcing and covering in the future.

The Gardening Calendar

What I love most about gardening is that each year things change.



Experiments can be made, using different colour combinations and textural foliage, and the productivity such as growing vegetables to provide food for the house and cut flowers that will both enhance and connect both the interior and exterior is always uplifting.

The weather has fluctuated to such a degree that I have held back with planting out tender vegetables, however the month of June is now a good time to do this. Prepare the ground for winter leeks, a vegetable that can feed the house with many different recipes. Winter spinach is another crop to think about sowing. I am still harvesting the crops of spinach I planted last year.

Keep on top of the weeds as this allows the vegetables to flourish. It is a good idea however if you have the facilities such as a cold frame, to place the plants in there for a week just to get them used to the change in temperature before they are planted outside. If you do not have a cold frame, then cover with a fleece overnight.

There is still time to directly sow beans and peas to have a good harvest. Marrows, courgettes, pumpkins and squashes should be ready to plant out, position the plant into a bowl-shaped hollow so that when it is watered the water soaks to the area that is needed.

It is a good time to purchase summer bedding plants, hanging baskets and pots will bring colour into the garden, there are numerous different varieties to choose from.

<https://ordinarygardener.com> - Julie Dowding

I'VE BEEN THINKING... SAYS COLIN RAYNOR

I recently had the pleasure, and the privilege, along with many hundreds of people to visit Beverley Minster to view the free exhibition of "Threads Through Creation".

Created in large textile panels over nine feet high by the designer Jacqui Parkinson over ten years, they told the dramatic stories of Creation and what the Christian world believes followed on with Adam and Eve and the life of God's son Jesus Christ.

As we left the Minster we were asked to comment on the wonderful creative tapestries we had just seen. The word 'amazing' appeared many times in people's comments but I felt even that was not sufficient.

I was reminded of a number of pastors from Singapore who came to the North of England several years ago to take services in the local Methodist churches. At that time we lived in Holmfirth, a small town outside Huddersfield (best known for the programme 'Last of the Summer Wine').

The Rev Richard Tan came to our church and he offered us a modern day parable. He spoke of his personal interest in Persian rugs and in particular rugs that were known to have faults. He explained

how the rugs were woven. (You may remember that in a previous article I wrote of working as a weaver for a number of years in the textile mills of Huddersfield so I had a personal interest in what the Rev Tan told us.)

The Master Weaver sits at one point and all the strands (warp) of the rug stretch out before him. Across from the Master Weaver sit numerous people each with a different coloured bobbin (weft).

At the master's command the colours are interspersed at a rapid rate and a pattern is built up forming the rug. From time to time mistakes will be made as a wrong colour is inserted but such is the pace of the rug being created, the mistake may not be noticed until it is too late to rectify it. Herein lies the skill of the Master Weaver.

He alone knows what the pattern of the rug should be so he adapts the wrong colour into the overall pattern and only he knows a mistake was ever made. The person who buys the rug is told there is a fault but it is undetectable.

This, Rev Tan stated, was how we who have lived, making many mistakes, can be presented faultless before God. Rev Tan spoke of how he personally felt many of the parables in the Bible were a bit

like good jokes and should not always require an explanation.

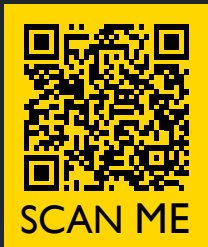
He also pointed out that many of the parables were told in the context of the local community using things that people were familiar with. Hence his story of the Master Weaver was relevant being told in the heart of the textile industry.

However I later found out that Rev Tan was scheduled to preach that weekend in another part of North Yorkshire and a colleague of his should have been at Holmfirth. Had we experienced a modern day parable created by the Master Weaver himself? Or should we just have faith to realise that even the changes that occur in our daily lives can never totally spoil the plan that the Almighty has for each one of us.

Returning to the comments book in the Minster I felt that the oft repeated word 'amazing' was totally justified but I needed to raise the bar a little to "inspiring".

The exhibition can be viewed in Chester Cathedral until June 28th and then in Lincoln Cathedral July 3rd until August 31st.





YOU'RE EVICTED



“ No, you can't,
It's my home. ”

“ Yes I can,
it's my house. ”

TENANTS AND LANDLORDS:
Know your new rights from 1, May 2026

PREVENT ILLEGAL EVICTION

Visit:  housinghub.campaign.gov.uk/renting-is-changing
or scan the QR code for more information.

ROSES INVITE YOU TO "THE STUDIO"

Roses Kitchens and Bedrooms are delighted to be able to showcase "The Studio", where you can select, design and bring together all the elements of "your" kitchen and bedroom in one place - "The Studio".

Ken from Roses said, "We already have the kitchen showroom with over a dozen kitchens to walk around - adding The Studio lets customers get creative with their ideas and really shows that you can achieve pretty much any look, colour and feel to your kitchen, in a way that works for your budget."

At Roses Studio, customers can see complete displays of cabinets, taps, sinks and worktops, allowing customers to gain inspiration and confidence in their decisions for their new kitchen. Taking this concept further for inspired bedroom design, customers can view full door displays with all the furniture to make their

perfect bedroom come to life in front of them.

Lizzie from Roses commented, "We're loving working with people in the studio space. It's all about the experience, we have a lot of fun pulling together the doors, worktops and handles and helping people create a kitchen that reflects their personality and style."

Matthew from Roses added, "Our design system really helps you visualise what your finished kitchen would look like and adding The Studio has only helped with that. You can see customers faces light up when they bring together all of their choices and it works."

Showcasing products together simplifies the planning process, allowing homeowners to match complementary items more easily. Coordinated displays reduce uncertainty and encourage customers to experiment with design combinations they may not have previously considered.

Ultimately, "The Studio", will be an inspiring showroom experience that helps transform ideas into achievable design concepts.

Customers can make informed choices with greater confidence, ensuring the finished kitchen and/or bedroom is visually appealing, highly functional, and tailored to their individual preferences and everyday requirements.



Jadan

Print that gets you noticed

Jadan Press are a leading family run commercial and trade printer based in Hull.

With over 25 years experience, we are renowned for producing exceptionally high quality print, design and finishing.

- BROCHURES** **LEAFLETS**
- POSTERS** **CALENDARS** **PADS**
- LARGE FORMAT PRINTING**
- STATIONERY** **MAGAZINES**
- SAFETY SIGNAGE** **BANNERS**
- LABELS** **DIE-CUTTING**
- and much much more**



01482 610902

sales@jadan-press.co.uk www.jadan-press.co.uk
Rainbow House, Kimberley Street, Hull, HU3 1HH

Instagram: jadan_press X: jadanpress Facebook: jadanpress

Telephone: 01482 869111
sales@rosesofbeverley.karoo.co.uk



The Kitchen Factory, The Courtyard,
Tokenspire Business Park, Beverley
HU17 0TB

Monday to Friday 9am - 5pm | Saturday 9am - 1pm

Roses Kitchens - proud to serve Beverley for the last 25 years

ROSES invite you
to view **THE STUDIO**

I would love a



kitchen

You will adore your



bedroom

Please call 01482 869111 to book a viewing

MANY MORE OF OUR CUSTOMERS KITCHENS ON OUR WEBSITE

5 STAR RATED OVER 100 GOOGLE REVIEWS ★★★★★

Visit www.roseskitchens.com

to see our customers kitchens and read what they have to say about us

Telephone: 01482 869111



WITH HALMSHAWS YOU CAN SAY GOODBYE TO LIMESCALE

In Beverley and the East Riding of Yorkshire, HU17 postcodes are classified as having hard water, with a hardness level of 34 ppm above the UK national average of 207 ppm.

Yorkshire Water draws water from sources that naturally contain dissolved minerals, primarily calcium and magnesium compounds.

What this means is that you will notice:

- Significant limescale buildup in kettles, pipes and boilers
- Soap scum on shower screens and taps
- Higher energy bills from scale in heating elements
- Dry skin and dull hair after washing
- White residue on dishes and glassware

Fiona from WH Halmshaw mentioned, "A water softener offers several important benefits for



domestic households in our area where we have hard water. Installing a water softener helps protect household appliances, improving efficiency and extending their lifespan. Softer water also allows soap and detergents to work more effectively".



Halmshaws have a variety of choices when it comes to solving the water hardness problem. BWT water softeners are a reliable choice for households looking to solve hard water issues, often recommended for its balance of price, performance, and low running costs. Available from W H Halmshaw, the BWT Cilsoft 45 and 55 models are highly regarded for their efficient, compact design and praised for its performance against hard water, fitting into the kitchen of a modern home.

ActivFlo's catalytic water conditioner changes the structure of hard water without using salts or chemicals. The treated water prevents limescale build-up and reduces existing limescale problems, saving you money on your bills. ActivFlo doesn't



take up valuable cupboard space and once fitted no maintenance is required. One ActivFlo water conditioning device is enough to protect an entire home. Chris from WH Halmshaw mentioned, "With new technology purchasing the right water softener is key, we provide expert advice on selecting the correct system for household size, water usage, and local water conditions".

WH Halmshaw supply high quality, reliable products from trusted manufacturers and can recommend qualified installers if needed. Using a professional supplier ensures better customer support, product warranties, and access to replacement parts, helping homeowners achieve long term performance and value while reducing maintenance costs and improving overall household convenience every year.

LEWIS NORTHEN
FUNERAL DIRECTORS



MY FAMILY TAKING CARE OF YOURS



Get In Touch
1 Lincoln Way, Beverley, HU17 8RH
info@lewisnortnenfuneraldirectors.co.uk
www.lewisnortnenfuneraldirectors.co.uk
01482 888 658



Five Years of Service: Beverley's Independent Funeral Director

Born and raised in **Beverley**, we are proud of the funeral services we offer to our local community.

As a family business we want you to have confidence in us to support you from the first point of contact, throughout and thereafter. The moment your loved one comes into our care they will be treated with care and respect. We offer a comprehensive range of funeral services ensuring you receive the perfect funeral service for your loved ones.

We are available 24 hours a day, 365 days a year, we will guide and support your family throughout.

My family taking care of yours
Beverley's **ONLY** Independent Funeral Director

Giving the personal touch to funeral services in Beverley and surrounding areas.

Funeral plans, memorial jewellery, available 24/7 365 days a year.



W H Halmshaw Ltd



Our Hull and Beverley showrooms are open
Monday to Friday 9am-5pm & Saturday 9am-1pm.

Our Hull and Beverley trade counters continue to open Monday to
Friday 8am-5pm & Saturday 9am-1pm.

Your Local Bathroom Suppliers, Plumbing Merchants & Glass
Specialists with Showrooms in Hull & Beverley.

FOLLOW THE DUCK!
See me on the back of our vans



#followtheduck

tweet us a pic when you spot
the duck to @whhalmshawltd



The Showroom is constantly updated to reflect new designs.

W H Halmshaw Ltd, Inspirations Works, Annie Reed Road, Beverley, HU17 0LF.

T: 01482 867142 • www.halmshaws.co.uk

HOME GLORY AND HISTORIC GREENS: A WINNING START TO THE SEASON AT THE WESTWOOD

There is a fantastic buzz up on the Westwood this month, as Beverley and East Riding Golf Club celebrates a perfect start to the competitive golfing season - topped off with a brilliant piece of silverware staying right where it belongs.

The Challenge Trophy Comes Home

On Friday May 8th, the club hosted the historic Beverley Challenge Trophy, the oldest golf competition in Yorkshire. Anticipation was high, with a full tee sheet of top-tier talent descending on the Westwood.

In a thrilling finish, it was a proud day for the club as a home team claimed victory, lifting the prestigious trophy on their own turf. It was a



spectacular day of sport, and we extend our congratulations to the winners, John Holmes, Tony Parkinson, Neil Burnley and Lee Blackledge, and to everyone involved in organising such a flawless event.

The Verdict is In: The New Greens are "Excellent"

Adding to the excitement, our two brand-new greens on the 4th and 7th holes are now officially in play for competitions. They have been met with universal praise from both members and visiting players, who have described them as nothing short of excellent. Their superb condition is a testament to the vision of Course Director Andy Greetham, the meticulous work of Head Greenkeeper Dave Jackson, and the expert guidance of club member and consultant Dave Norton. With all 18 greens running beautifully, the course is arguably in the best shape in its long history.

Soak in the Views on Our New Patio

The upgrades aren't just limited to the fairways. Our brand-new clubhouse patio is now fully open and proving to be a massive hit. It offers a modern, stylish space designed specifically to showcase those unrivalled, panoramic views over the Westwood. Whether you are a golfer dissecting your round over a cold drink or a local resident stopping by for a relaxed bite to eat in the summer sunshine, the new terrace is the perfect place to unwind.



Be Part of the Action

With the vibrant summer season now in full swing, there has never been a better time to get involved with the club:

- **Women's Golf Lessons:** Our popular women's coaching sessions are back up and running this month. They are perfect for beginners looking to learn the game in a fun, relaxed, and social setting.

- **Discover Membership:** We have membership categories available to suit all lifestyles and skill levels.

Come up and see us, enjoy a drink on the new patio, and experience Yorkshire's most historic course for yourself. For membership enquiries, lesson bookings, or clubhouse opening times, please visit beverleygolfclub.co.uk or call the team on **01482 868757**.



There's never been a better time to join Beverley & ER Golf Club



Why Choose Beverley & East Riding?

Championship-Quality Greens: Recently rated by a retired Ganton Professional as "the best greens he has played on all winter." and we have brand-new, excellent greens on the 4th and 7th holes

A Vibrant Social Scene: Relax after your round on our brand-new clubhouse patio, offering the finest summer views over the Westwood.

A Welcoming Community: Thriving men's, women's, and junior sections with a full calendar of competitions and social events.

HISTORY ON THE WESTWOOD

On Friday 8th May, Beverley and East Riding Golf Club held the historic Beverley and East Riding Challenge Cup sponsored by East Yorkshire Golf Passport, which represents far more than just the silverware, it's Yorkshire's Oldest Golf Team Event, with the first competition being held on 7th and 8th April 1893 to be played for annually at Beverley.

Kenton Wright from East Yorkshire Golf Passport mentioned, "We are delighted to sponsor the event, the Cup embodies tradition, pride, and continuity across generations of golfers.



"Each engraved name tells a story of competition, sportsmanship, and personal achievement, linking today's players with those who shaped the club's history decades earlier".

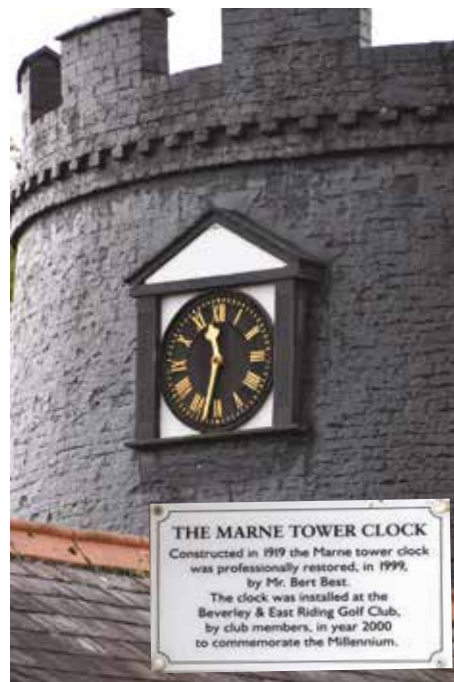
Kenton continued, "In my honorary role at the golf club, Chair of The Heritage Committee, our aim is to: Remain Progressive and Preserve, Celebrate the Club's Rich History".



The Challenge Cup inspires golfers from clubs far and wide, to unite players, preserve and celebrate such a prestigious Cup which honours the club's heritage, motivates future golfers, and reinforces the enduring values of respect, commitment, and friendly rivalry within the game.

If you wish to experience golf in the area, getting in touch with The East Yorkshire Golf Passport is a great way to play up to 5 premium golf courses for just one bargain price. Find out more at: <https://eastyorkshiregolf.co.uk>

Next year, you may wish to experience playing in the Prestigious Challenge Cup. Congratulations to winners, John Holmes, Lee Blackledge, Tony Parkinson and Neil Burnley won with an amazing 152 points, all 4 players stableford scores to count.



BEVERLEY & EAST RIDING GOLF CLUB - TOP MOMENTS IN HISTORY

- **1889** Beverley & East Riding Golf Club founded. 2nd oldest in Yorkshire.
- **1891** Professional's 72 hole match played between Bernard (Ben) Sayers (North Berwick GC), George Sayers (Beverley & ERGC), John White (Open Champion 1904 York GC) & Thomas Chisholm (Ganton).
- **1893** Challenge Cup inaugurated. Played by 4 teams from Huddersfield GC, Cleveland GC and two teams from Beverley. It is Yorkshire's oldest team trophy. 33 years younger than The Open, first played for in 1860 but pre-dates the US Open by 2 years, the USPGA by 23 years and the US Masters by 41 years.
- **1896** A match between Beverley GC & The Black Watch Regiment which included Freddie Tait, British Amateur Champion 1896 and 1898 was played.
- **1905** Beverley lady member Bertha Thompson won the Ladies British Open Amateur Championship.
- **1906** The Clubhouse moved from the Black Mill to its current site the Anti-Mill which originally stood at 110 feet, the highest in England.

- **1907** Course improvement layout design by 1902 Open Champion Sandy Herd, including one of the original Mackenzie style double tiered 8th greens.
- **1960** Beverley member George Ash won the Yorkshire Amateur Championship.
- **1920** Sir W. Alfred Gelder MP, Lord Mayor of Hull was named Club Captain.
- **1947** Beverley & East Riding Golf Club established as the home to the East Riding Union of Golf Clubs ERUGC.
- **1989** Beverley & East Ring Golf Club Centenary Year.
- **2000** Installation of The Marne Clock onto the Anti-Mill tower, commemorating the Battle of Marne, where

soldiers from Beverley fought, as part of the British Expeditionary Force (BEF) just six weeks into WW1.

- **2026** New and perfectly contoured 4th and 7th greens opened. The largest investment made in the history of the golf club. Designed by long standing club member and acclaimed Greenkeeper David Norton.



ED THOMPSON - INSPIRED BY NATURE



As June arrives the days stretch out, there's a noticeable shift in how people approach their habits and behaviour around health and wellness. Energy levels lift, routines become a little more flexible, and there's often a renewed focus on getting outside and doing something productive.

In the background the 2026 London Marathon continues to have a ripple effect motivating people to lace up their trainers.

One of the consistent themes in high-performance is that wellness isn't actually about intensity or complexity, it's about alignment. That means aligning behaviour with the environment. In June more daylight, better weather, and more opportunity to move naturally throughout the day encourages commitment.

From my own coaching perspective, the biggest wins come from simply getting people to move more often and recover better between sessions. Walking is still one of the most powerful tools for that.

It's easy to underestimate because it doesn't feel like "working out", but physiologically it does a huge amount of work, improving aerobic capacity at a low cost to recovery, regulating stress, and building the base layer that everything else sits on. It is the most important habit to rebuild first.

Running has its place, but it needs to be earned, not rushed. The post-marathon period often creates a wave of enthusiasm, but enthusiasm isn't the same as readiness. A lot of problems come from people trying to jump straight into continuous running when the body isn't conditioned for it. The smarter approach is gradual exposure, short, controlled efforts mixed with walking.

The walk-jog model still works for a reason: it respects physiology. It allows tendons, joints, and cardiovascular systems to adapt together rather

than forcing one system to catch up with another. The June heat, even in the UK, subtly increases load. Sessions that felt easy a few weeks earlier can suddenly feel harder, not because fitness has dropped, but because thermoregulation and hydration demands more attention. This is where pacing becomes more important than ego.

Slowing things down slightly, especially on easy sessions, is often what allows consistency to stay high across the week.

Consistency over intensity is really where most people either make progress or stall. Training only works when it can be repeated. If every session leaves you flat for two days afterwards, you're not building capacity, you're accumulating fatigue. The aim in summer isn't to do more for the sake of it, it's to do enough, often enough, that adaptation actually sticks.

There's also a wider layer to this that tends to get overlooked. Training doesn't exist in isolation. Sleep quality, daily movement, stress, nutrition, and even time spent outside all feed into how well someone adapts to exercise.

There's a growing understanding in my industry that timing and rhythm matter just as much as effort. When people are more in sync with their natural daily patterns, light exposure in the morning, movement during the day, and proper nervous system relaxation in the evening, everything else tends to improve without forcing it.

June is a good time of the year, it removes barriers. You don't have to rely on discipline in the same way. A walk after dinner becomes easier. A short run before work becomes realistic. Even just being outside more often shifts overall energy expenditure without needing structured training.

Remember the goal isn't to be a performance athlete. Usually the goal is to feel better, move better, and function better in daily life.

That might mean building towards a 5K, or it might just mean being able to walk regularly without feeling tired. Both are valid outcomes, and both require the same underlying principle: steady, repeatable behaviour over time.

The London Marathon will always be an impressive reference point, but it doesn't need to be the benchmark for everyone. It's better viewed as a reminder of what structured preparation can achieve, rather than a standard everyone should measure themselves against.

This summer build momentum, keep it, and make movement part of everyday life rather than something that has to be negotiated.

Summer gives you the conditions, use the conditions properly.

If you would like to get in touch for any reason at all, feel free to reach out to me:
edjthompsonpt@gmail.com



FATHERS DAY - SUNDAY 21ST JUNE

Father's Day is a wonderful opportunity to show appreciation for the love, support, and guidance fathers and father figures provide throughout life.

Making the day special does not require expensive gifts; thoughtful gestures and quality time often mean the most. Families may celebrate with a favourite meal, a relaxing outing, or simply spending time together sharing memories and laughter.



Handmade cards, personal messages, or small acts of kindness can make fathers feel valued and appreciated.

Father's Day reminds us to enjoy those happy moments that strengthen family bonds and leave lasting memories for everyone involved.

WORLD CUP 2026 STARTS 11TH JUNE

The World Cup will take place in the USA on 11th June and runs until July 19, 2026.

The final is taking place in the MetLife Stadium, East Rutherford, New Jersey, west of New York.

The tournament will be hosted across the United States, Canada, and Mexico, and is looking to be the biggest and the most exciting tournament to date as 48 teams from around the globe compete in 104 fixtures over 39 days.

Now is the time to show your colours and get behind your team.



Do you have any amusing stories, quotes or pictures? Send them to info@justbeverley.co.uk

WORDSEARCH

N W S Q U Q K I D W L C L X B
 G E O S K S W R D R L Y J T C
 B I Q O K R F G L B J E V M D
 L E C L Q V D V N M N R R L Y
 W V A C T I V I T I E S F N M
 U W H C O E Q P H M P F L X N
 N Q R W H N P S M X C M E M X
 K D K R Z E N U A X R O A A J
 E M P W D U S W C X S P Y C Y
 U X X P S Y A Z A D L N O L P
 T S U L I T R A V E L F T T K
 Y M H G I J Q Y O V E R U O A
 M S L Y S B V A C A T I O N S
 O M T H P K Q I X K M Y K W U
 C F T S E W G V F N V H U S F

ACTIVITIES
 BEACHES
 CAMPING
 FUN
 SUMMER

SUNSHINE
 TRAVEL
 VACATION
 WALKS
 WORLD CUP



Where are the Ducks?
 Answer on Page 42.

QUOTE FOR JUNE

Don't stop, enjoy the process of getting there.

WHERE IN BEVERLEY?

Where in Beverley can you find this landmark? Answer on Page 42.



WHAT IS IT?

Can you work out what this obscure image is? Answer on Page 42.



COMEDY CORNER

How do you make an octopus laugh?
 With ten-ticles.

If a bird flies over the sea, it's a seagull.
 So if that bird flies over the bay is it a baygull!!

Mummy llama said to baby llama let's go for a picnic...
 Alpaca lunch.

What do frogs wear on holiday?
 Open-toad sandals.

What's the difference between a pair of socks and a pair of shoes?
 Don't Know! I am not going ask you to get my socks!

YOUR Dream Kitchen

IN TIME FOR SUMMER

Longer days. Brighter spaces.
 The perfect time to fall in *love* with your home all over again.

BOOK YOUR FREE DESIGN APPOINTMENT TODAY

PREMIUM MATERIALS
 We use high-quality boards, soft-close fittings and durable finishes built to last.

HOW THIS ADDS VALUE:
 Longer lifespan and better performance = more value over time.

EXPERT DESIGN & MADE TO MEASURE
 Bespoke designs tailored to your space, needs and lifestyle.

HOW THIS ADDS VALUE:
 Peace of mind and a flawless result.

BESPOKE DESIGNS
 Tailored to your space, your style, your life.

QUALITY YOU CAN TRUST
 Expertly made doors built to last.

MANY COLOUR & DOOR DESIGN OPTIONS
 Explore a wide range of colours, door styles and finishes to create your perfect look.

LOCAL & FAMILY RUN
 Proudly serving Dewsbury and the surrounding areas.

DREAM DOORS®
 NEW LIFE FOR OLD KITCHENS

*It's more than a new kitchen
 it's new life, lifestyle.*

Checktrade
 Where reputation matters

9.8 ★★★★★
 Based on 100+ reviews

GET IN TOUCH

☎ 01484 869653
 📍 Unit 4a Belgrave Park, Swinnow Lane, Dewsbury HU17 0LN
 🌐 www.dreamdoors.co.uk

VISIT OUR SHOWROOM

Pop in and explore our beautiful displays and talk to our expert team.

THE LONGEST DAY - SOLSTICE, SPARK PLUGS & SOLITUDE

There is something quietly magical about the longest day of the year. The Summer Solstice arrives not with fanfare, but with light - lingering golden evenings, gardens reluctant to sleep and a sense that time itself stretches a little further than usual, offering a gentle invitation to pause. Perhaps that is why June always feels reflective to me.

The Solstice reminds us that life moves in cycles. We reach a peak of brightness before the days slowly begin to shorten again. Nature, as ever, teaches us balance. We celebrate the light while understanding it cannot stay exactly as it is forever. There is comfort in that rhythm.

This year, the longest day falls on Father's Day, another moment tied deeply to memory. Fathers and father figures become the quiet mechanics of our lives - steady hands fixing

bicycles, mowing lawns or teaching us how to ride a bike and later to drive a car whilst trying not to panic. Time measured not by years, but by moments shared with them.

And perhaps nowhere is nostalgia more beautifully displayed than at a Classic Car Night. Lovingly restored engines become more than vehicles; they are memory machines.

A particular model can transport someone instantly back to a first date, family holiday or treasured Sunday drives. You overhear conversations beginning with, "My dad had one of those," or "I learned to drive in that exact car."

The vehicles may be vintage, but emotions stirred remain fresh. My own memories of my dad are linked with family car journeys around the Lakes or Scotland; fond memories of watching the majestic mountains of the Highlands or being plucked out of a lakeside where I tripped and landed face-down in the mud. Dads and cars seem to be intrinsically linked.

Classic cars also ask us an interesting question: what do we keep, and what do we leave behind? In today's world, we are encouraged constantly to upgrade, replace and surge forward but how different would the world be if we shared the classic car enthusiast's understanding of

the value of restoration. Sometimes things worth keeping simply need care, patience and a little polishing. Not everything old has lost its purpose.

That thought feels especially relevant during the Solstice season - a natural halfway point through the year. It is a chance to re-evaluate. To reassess where we are heading. To remember where we have come from.

Not every memory deserves rose-tinted treatment, of course. Looking back honestly means accepting both the good and the difficult. Some roads were smooth; others certainly were not. Reflection helps us recognise how far we have travelled.

The beauty of the longest day is not just its sunlight, but its perspective. The evening light softens edges, slows conversations and encourages us outdoors. Neighbours linger at garden gates. Families eat later. Engines hum through the town as classic cars parade proudly past, carrying stories from another era.

And maybe that is the real lesson of June: treasure the journey while there is still light enough to enjoy the view.

Every Monday, you can take time out for yourself with the free mindfulness session from 7.15pm to 7.45pm. For more information visit www.francesdunning.com or contact me, Fran Dunning on **07973 819867** for details of mindfulness zoom link.



All About You Hypnotherapy
Helping You Get Peace of Mind in Practical Ways

I've been helping people of all ages increase their levels of confidence and improve their life for over 20 years using hypnotherapy.

I can help you reduce anxiety, get rid of fears and phobias and embed positive habits to increase your levels of health and wellbeing.

Based on Victoria Dock and available face to face or via Zoom globally.

Let me help you to enjoy a new sunrise

Fran Dunning
Clinical Hypnotherapist & Provider of Mindfulness in the Workplace
Victoria Dock, Hull
Mobile: 07973 819867
e-mail: info@francesdunning.com
website: www.francesdunning.com

Kids Beginner

Swimming Lessons!

Enquire here

- Private, heated pool in a quiet setting
- Parents can sit on poolside
- Plenty of FREE private parking

Sportsability Swim School, HUG OAL
01482 229676

WILSONS WHEELS - FEEL THE HEAT!

Cycling in hot weather can be enjoyable and rewarding, but it is important to take sensible precautions to stay safe and comfortable.

Hydration is essential, so cyclists should drink water regularly before, during, and after a ride. Don't forget electrolytes, salts and minerals to combat cramp, even if you do not feel thirsty. Wearing lightweight, breathable clothing and a well-ventilated helmet can help keep body temperature under control. Sunscreen, sunglasses, and protection for the neck and arms reduce the risk of sunburn and heat exposure.

Planning rides during cooler parts of the day, such as early morning or evening, can prevent overheating. Cyclists should also pace themselves, take regular breaks in shaded areas, and watch for signs of heat exhaustion, including dizziness, nausea, or unusual fatigue.

Proper preparation helps ensure safer and more enjoyable cycling during warm summer conditions. If you are able, cycle with a few friends to make the ride more enjoyable.







*Pop in store
to see the new
2026 bike range*

WILSONS WHEELS

T: 01482 882881
W: www.wilsonswheels.co.uk E: info@wilsonswheels.co.uk

Wishing Everyone a Happy Cycling 2026

• Adult Bikes • Children's Bikes • Electric Bikes
 • Clothing for all cycling weather • Parts and accessories

89a Grovehill Road, Beverley, East Yorkshire HU17 0EJ

NOW OPEN: Monday - Friday 8.30am - 5.30pm
Saturday 9am - 5pm Sunday: CLOSED - Out riding our bikes



Memberships

EAST RIDING
LEISURE

SHAPE *up*

£75 for 3 Months
Premier or Crew
Membership
Available 1 - 30 June

for
SUMMER
Invest in yourself this summer!



SCAN ME

NO TIE-INS, NO DIRECT DEBIT, NO JOINING FEE

Access ten centres, eight pools, nine gyms, over 1,500 classes a week and more.
(Includes a FREE week's pass to share with a friend or family member) Visit eryc.link/shape-up-for-summer or scan the QR code.



eastridingleisure.co.uk @ERLeisure /EastRidingLeisure
EastRidingLeisure @ERLeisure er_leisure

WHAT'S ON IN BEVERLEY

Tell us about your event!

E-mail info@justbeverley.co.uk

Telephone **01482 679947**

For more events visit
justbeverley.co.uk/pages/news

Beverley Bites Walking & Tasting Tours

www.beverleybites.com

Every Monday

Together in Grief Group Walks

6.30pm. Morton House, Morton Lane, Beverley.
Cost: Free. Group walks for those who are bereaved. TiG walks are easy-paced, group walking sessions to help people cope with the loss of loved ones.

Every Wednesday Morning

Tai Chi Class

10.30am-11.30am, CLCGB Building, George Street, Beverley. Come and feel the benefits of learning Tai Chi. Ideal for beginners. Cost £6.00 per person. First class is FREE. To book a place and for more information please contact Shaun 07854 306762 or by email shaun-sun@hotmail.co.uk

4th Wednesday of the Month

Beverley Ladies Who Latte

New venue - King's Head, Beverley. 10am-12pm.

Saturday 30th May

Beverley Race Course

Very British Race Day.

Sunday 31st May

Spring Live 2026

Bishop Burton College. From 10am-3pm. Tickets £13 for adults £7 for children aged 3-15. Under 3s are free, students are £5, family ticket is £30. Parking is free and available via the college's main entrance on the A1079.

Until Friday 5th June

Portraits of Two Pastures

Beverley Guildhall. An exhibition on artistic films on Figham and Swinemoor pastures. A unique blend of contemporary footage and nostalgic memories. Free admission. Open Wednesdays (from 1st May) 10am - 4pm. Fridays 10am-4pm.

Until Saturday 6th June

Photo Finish - A Year at Beverley Races

Champney Treasure House Museum. Seven regional photographers capture a year of action at Beverley Racecourse. Free admission.

From Thursday 4th June

May The Toys Be With You

New Star Wars 'May The Toys Be With You' exhibition at Beverley Art Gallery. 11am-2pm. First Floor of Champney Treasure House, Champney Rd, Beverley, HU17 8HE.

Saturday 6th June

The Classical Guitar Ensemble of The East Riding of Yorkshire

Conducted by Nicole Alderson. St Michael's Church, Cherry Burton. Tickets £10. Call 01964 550191 or 07507 722825. www.ticketsource.co.uk
Price includes Tapas and Sangria Supper
<https://classicalguitareroy.co.uk>

Monday 8th June

Beverley Flower Club

42

Just
BEVERLEY

June in Bloom Flower Demonstration - Jonathan Mosely. Parkway Cinema, Flemingate. Tickets £15. 01482 968090. www.parkwaycinemas.co.uk

Thursday 11th June

Beverley Film Society

Parkway Cinema, Beverley, 7.30pm. My Favourite Cake (2024). Iran I Comedy Drama (12). Tickets £3 members, £6.50 Guests.

Sunday 14th June

Beverley Barge Preservation Society Open Day

11am-3pm. As well as the barges Syntan and Sun, there will be free trips up and down the Beck on Mermaid as usual.

Tuesday 16th June

Beverley Race Course

Evening Racing.

Wednesday 17th June

EYTCC - Mid Summer Classic Car Night

New venue, rear of the Fire Station off New Walkergate. School Lane Car Park. 6pm onwards.

Friday 19th - Sunday 21st June

Beverley Folk Festival

www.beverleyfolk.com

Saturday 20th June

English Summer Evening

The East Riding Concert Orchestra. St Mary's Church, Beverley. Tickets - www.eastridingconcertorchestra.com

Tuesday 23rd June

Beverley Race Course

Afternoon Racing.

Thursday 25th June

Lunchtime Song Recital

12.30pm-1.15pm. Kevin Ormond - Baritone, Matthew Stanley - Piano. Toll Gavel United Church. Free Concert - Donations split between Toll Gavel United Church and Beverley Minster Choral Foundation.

Saturday 27th June

Beverley Chamber Choir

7.30pm to 9.15pm. Summer Evening Concert. St Mary's Church, Beverley. Music Director: PR Dewhurst. Tickets £17.50 reserved, £15 Unreserved from T.I.C or www.beverleychamberchoir.org

WHERE IN BEVERLEY ANSWER

East Riding Theatre



WHAT IS IT ANSWER

A bug hotel.



FIND THE DUCKS ANSWER

You should have found those ducks on the Halmshaw advert on Page 35.


Beverley
RACECOURSE

Summer Saturday

Featuring Chris Moyles DJ Set



Saturday 4th July



All meet at ours
beverley-racecourse.co.uk

www.justbeverley.co.uk



Jeeves & Wooster

IN PERFECT NONSENSE

£28.00 - £15.00

10th - 26th
September

A Play From The Works Of P.G. Wodehouse
By Robert Goodale and David Goodale
Directed by Richard Avery

What's On?



A MIDSUMMER NIGHT'S DREAM
10th June



ANYONE FOR TENNIS?
16th June



JEKYLL AND HYDE
24th June



An Honest and Affordable Service

Plumbing & Heating
rooted in Beverley,
dedicated to you.



We pride ourselves in finding the most cost-efficient solution to your plumbing needs.

Professional plumbing, heating and home improvement services.

Big enough for serious projects. Local enough to care about the details.

Services for Homes & Businesses

- > Plumbing repairs & maintenance
- > Boiler servicing, repairs & installations
- > Heating systems
- > Air Conditioning
- > Bathrooms, wet rooms & washrooms
- > Kitchens & appliance plumbing
- > Renewable heating solutions
- > Home renovations and maintenance

Westwood

PLUMBING & HEATING LTD

westwoodplumbers.co.uk   

Enquire Now.
Scan for your
FREE Quote.

