

just

ISSUE 136

# BEVERLEY

IT'S YOUR MAGAZINE

FREE

# 2026 BEVERLEY

& EAST RIDING

EARLY MUSIC  
FESTIVAL

22-24 MAY

# MIRACLES & MYSTERIES



EAST RIDING  
OF YORKSHIRE COUNCIL

NEWS, WHAT'S ON, LIFESTYLE, FEATURES, PUZZLES, PHOTOS & MORE

# Your Partners in Payroll

Are you worried about getting your payroll right? It's time for change. Outsource your payroll today and be rest assured everything is taken care of!



**Improve business performance -  
outsource your payroll**

## Payroll Outsourcing Benefits

- ✓ Cost reduction
- ✓ Better staff productivity
- ✓ High accuracy & reliability
- ✓ e-payslips direct to employees via our app
- ✓ A named personal contact
- ✓ Added value services including HR & Benefits in Kind
- ✓ Useful online information

to arrange a **FREE** meeting  
call us on: 0845 308 2288  
or visit

[www.stipendia.org.uk](http://www.stipendia.org.uk)



Stipendia Payroll Solutions



@StipendiaPay

# 6/7 EARLY MUSIC FESTIVAL 2026



# just BEVERLEY

MAY  
LETTER FROM THE EDITOR



Happy May! It starts with a lovely Bank Holiday weekend, full of sunshine, maybe!

This month we can look forward to the Race Day calendar continuing, including the family Fun Day, and Beverley & East Riding Early Music Festival, 22nd - 24th May.

Check out What's On at the back of the magazine and enjoy the puzzle pages on pages 34 & 35.

Wilson's Wheels encourage everyone to get out and about and shake off the cobwebs, explore the countryside and enjoy the great outdoors on your bikes.

While our beautiful Westwood is the perfect place to relax or get involved with activities with the family.

Remember every day is a day to see something new, Spring is the month of change, so start the month off with a smile and try something new.

We look forward to hearing from you. Have a great May.

Julian.

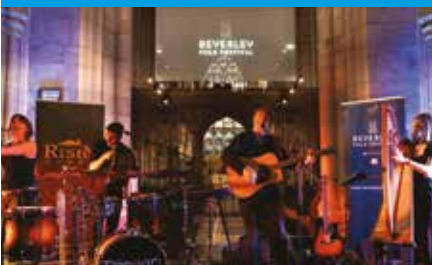
## 4 CHEERLEADING CHAMPS



## 5 NEW GREENS AT GOLF CLUB



## 17 BEVERLEY FOLK FESTIVAL



## 18 BEST OF BEVERLEY



## 30 ACTIVITY ON THE WESTWOOD



## 37 BEVERLEY AC



### Contributors:

Julian Minshall, Rich Manville, Lynne Auton, Andy Barber OBE, Shelagh Bourke, Andrew Cooper, Shane Cooper, Julie Dowding, Sam Drinkall, Fran Dunning, ert, Jackie Hardman, Josh Harrison, Amanda McConnell, Navigation Wealth Management, Jayne Morgan, Jo Pinkney, Colin Raynor, Ian Richardson, Kathryn Walker, Nathan Wilson.

**REMEMBER!** If you see examples of anti-social behaviour or other types of low-level crime, do report it to the appropriate authorities. **POLICE - Emergency 999, Non-urgent 101.**  
**ANTI-SOCIAL BEHAVIOUR (East Riding of Yorkshire Council) - 01482 393939.**

Front cover illustration by RedBonsai.co.uk courtesy of the NCEM & Beverley Early Music Festival. The magazine is available from outlets in Beverley and surrounding areas.

Disclaimer - All the information provided was correct at the time of going to print.  
ISSN 2754-9216



Please pass your Just Beverley on or recycle it responsibly.  
Printed by: Jadan Press.



### GET IN TOUCH WITH US:

Website: [justbeverley.co.uk](http://justbeverley.co.uk)  
Email: [info@justbeverley.co.uk](mailto:info@justbeverley.co.uk)  
Telephone: 01482 679947  
Facebook: [facebook.com/justbeverley](https://facebook.com/justbeverley)

If you would like copies for your business to distribute to staff and customers, call Just Beverley on 01482 679947.

# FREE HISTORY WALKS IN BEVERLEY

**New to Beverley or have lived here many years? In either case you have probably seen the Walking Festival advertised each September?**

For over 20 years people have experienced FREE history walks in Beverley and each year over 450 people learn more about the town.



Beverley is unique, with over 350 listed buildings, i.e. buildings of historic importance. However, to understand the town and the people who live here we need to tell stories. Our stories range from medieval Beverley with its town defences to Charles I visits to the town during the English Civil War. Do you know that for short periods Charles lived in the town and hence had the royal court here?

Shipyards, iron works and one of Europe's great tanneries were in the town. During WWII there were Home Guard platoons and detachments of Churchill's Secret Army. Beverley's history tells a diverse and colourful story.

Do you fancy getting involved?

Over the years we have welcomed new walk leaders into the group, and we would like to do so again.



Why not email Colin ([ben.lui@btinternet.com](mailto:ben.lui@btinternet.com)) or Carl ([carlblack1066@gmail.com](mailto:carlblack1066@gmail.com)) for more details. You do not have to be an expert on Beverley as we can help you with both information and walk routes. We look forward to hearing from you.

ADVANCE WARNING: this year's Heritage Open Days and Walking Festival are between September 11th and September 20th. *Images credit: Colin Bradshaw.*

## BEVERLEY TOWN FC WIN PROMOTION

**Beverley Town Football Club are promoted to the Northern Premier League - East.**

Congratulations to the staff, players and everyone who has been involved behind the scenes. The promotion of the football club for the 2026 - 27 season will have a powerful positive impact on the town and its wider community. Success on the pitch brings a strong sense of pride and identity, uniting residents behind a shared achievement and inspiring young footballers throughout the club.

Beverley Town will now make modifications to the ground to deal with the increased attention that will mean more spectators / supporters attending matches next season. Congratulations and good luck for the 2026 / 27 season and beyond.



## LOCAL LADS REPRESENT ENGLAND AT THE ICU WORLD CHEERLEADING CHAMPIONSHIPS 2026

**Two local lads from Beverley and Hull were proud to represent England in the 2026 ICU World Cheerleading Championships in Florida, USA, held at the ESPN Wide World of Sports Complex.**

Matthew Minshall from Beverley and Brandon Spiring from Hull demonstrated how years of dedication, discipline, and sacrifice, balanced alongside work, education, can lead to being able to represent your country. Unlike professional athletes, these individuals compete primarily for passion rather than financial reward, making the honour of national representation even more meaningful.



Photo credit: Estelle Palmer

Matty commented, "Wearing the England vest symbolises pride not only in personal achievement but also in the journey, and selection becomes a shared success for the family and friends".

Brandon added, "We hope it will inspire young athletes in the community, showing that reaching a national level is possible through hard work and perseverance".

At its core, representing England at this level is about identity and belonging. It connects athletes to a wider sporting tradition while reinforcing their role as ambassadors for both their sport and their hometown.

## NAVIGATION WALKING CLUB IS BACK!

**Meeting point: Garton Road, Driffeld (YO25) - roadside parking available. May 6th, 11am-2pm.**



We are doing the Cottam Round route. Description - This lovely walk takes us through peaceful, scenic dales with some fascinating history along the way.

We'll visit a deserted medieval village and explore an abandoned WWII airfield, adding a real sense of discovery to the route.

It's a moderately challenging walk with some steady inclines, so a reasonable level of fitness is needed, and you should be comfortable on varied terrain. The walk will last around 2-3 hours. Open to everyone, it's a great way to get outdoors, enjoy some fresh air, and meet new people.



There is more information on our website! They can sign up by contacting [meg.sargeson@sjpp.co.uk](mailto:meg.sargeson@sjpp.co.uk) or by calling Meg Sargeson at our Beverley office on **01482 379504**.

# STIPENDIA - WHAT CHANGES HAS THE FAIR WORK AGENCY MADE TO THE LAW?

**The new Fair Work Agency (FWA) is a new UK government body introduced under the Employment Rights Act 2025 and formally launched on 7th April 2026.**

This will mean better access to guidance and support for employers who already comply with the law.

The changes represent a major reform of how employment rights are enforced in the UK.

The FWA brings together several existing enforcement bodies, including those responsible for minimum wage, labour exploitation, and agency worker protections, into a single, central authority, aiming to simplify what was previously a fragmented system and create a "one-stop shop" where both workers and employers can seek guidance and support.

The FWA has wide-ranging powers, including:

- inspecting workplaces
- issuing penalties
- bringing tribunal claims on behalf of workers.

It also plays a dual role: enforcing compliance while supporting businesses that aim to follow employment law correctly.

**For businesses.**

The impact is significant. On one hand, the agency provides clearer guidance and a single point of contact, which may reduce confusion and improve compliance.

On the other hand, stricter enforcement increases the risk of inspections, financial penalties, and legal action for non-compliance.

This means organisations must ensure robust HR practices, accurate wage records, and adherence to employment rights.

The FWA is expected to raise standards across workplaces while placing greater responsibility on businesses to meet legal obligations.

Stipendia Payroll Solutions are experts in providing solutions which meet with your company's needs.



Contact Lynne on **0845 3082288**, or visit their website: **www.stipendia.org.uk**

# NEW GREENS UNVEILED AT BEVERLEY AND EAST RIDING GOLF CLUB

**On Friday 17th April, Beverley and East Riding Golf Club unveiled two new golf greens to the course, replacing greens on the 4th and 7th holes. The newly positioned greens will significantly transform the golf course, both in playability and overall appeal.**

New greens introduce fresh challenges, encouraging golfers to adapt their strategies and refine their short game skills. Visually, they elevate the course's aesthetic, creating more defined and attractive finishing areas for each hole.

Theo Blake, The Club Professional mentioned, "The iconic 7th stroke index 1, will now present a new challenge and will test any level of golfer".

David Norton who joined the club as a junior, and held the position of greenkeeper for 30 years plus, gave his expert knowledge to the club.

David was given the honour to tee off first, "No Pressure", promptly showing everyone the way forward.



Gordon Duncan, ex-president, mentioned, "The new greens introduce fresh challenges and will demand greater precision and course management".

Andy Greetham, delighted to win the prestigious "first", lighted hearted near pin challenge, was presented with a sleeve of Golf Balls from Ben Gardiner the Beverley and East Riding Marketing Manager.



# INVESTORS IN COMMUNITY

**At Investors in Community, we are proud of the work of every good cause that chooses to use our platform to find support. One of these charities that we are excited to be partnered with is the RSPCA Hull and East Riding branch.**

In Beverley, we love our pets. It's tradition to have a dog to take with you on your walks around the Westwood, or countless cats patrolling your streets. The RSPCA is there to protect those cats and dogs without a home, and to make sure people know how to keep our relationships with our pets as strong as possible.

Since 1903, the RSPCA has been serving our local area and supporting animals who have been subjected to cruelty and neglect, giving them a better life. Part of the funding for this work comes from the charity shop on Butchers Row, that sells a wide range of products and is always open to support from volunteers.

The RSPCA also has many opportunities available on the Investors in Community platform, where you can donate to or volunteer with the different projects our branch is running at the time.

In April, the RSPCA hosted a microchipping event, that gave pet owners the opportunity to protect their pets if they go missing for only £15.

This is just one of the projects there to support our community of pet-owners, alongside others such as animal behaviour sessions, a food bank partnership with the Trussell Trust, and the Petwise project, which educates children on animal welfare needs.

All of this is only possible with support from the public. Receiving no support from the national RSPCA, or from local public bodies, local communities and businesses are vital in maintaining the running of the RSPCA.

If you would like to give your support, pop into their charity shop on Butcher's Row, or give them a search on the IIC platform.

Website: **www.investorsincommunity.org**  
Contact: **philip.webb@investorsincommunity.org**



# MIRACLES & MYSTERIES, BEVERLEY & EA

**The Beverley & East Riding Early Music Festival is back! This hugely popular weekend features the very best artists from the world of Early Music, plus workshops, talks and fun for all the family.**

Now in its 38th year it continues to attract visitors from far and wide who visit Beverley not just for the wonderful music on offer but also to enjoy the town's rich history, its array of independent restaurants and shops, and last but not least, its famous market.

This year the festival is proud to be working with East Riding Libraries, staging Baroque Around the Books, four free concerts in the run up to the main weekend. Hear the words of Shakespeare set to the music of Dowland, brought to you by Dowland's Foundry's Sam Brown and Daniel Thomson.

Près de votre oreille  
Photo: ©Hélène Hanon



Celebrating the town's iconic buildings, the weekend begins with internationally acclaimed French ensemble Près de votre oreille, performing Lighten Mine Eies, music by William Lawes who was lutenist to Charles I, in the glorious surroundings of St Mary's Church, the perfect setting for the evening.

This year's theme is Miracles and Mysteries intertwining the story of St John of Beverley with the music by the world-renowned Tallis Scholars who will be appearing at Beverley Minster. Tickets for this internationally acclaimed group are selling fast so make sure you book now!

A weekend celebrating the extraordinary musical traditions of Beverley - not to be missed!

The Tallis Scholars  
Photo: Hugo Glendinning



## Discovering new talent

At the heart of the festival is the discovery of new talent and stars of the future. This year three outstanding ensembles will be performing over the weekend:

**Intesa**, recently dazzled York audiences with Baroque Around the Books. Join them for a celebration of Armenian and Italian baroque music.

Intesa  
Photo: The Musician's Photographer



**Pseudonym**, a young quartet based in Switzerland and finalists in the York International Young Artists Competition 2024 bring us music from 18th century France with a fresh and spontaneous twist.



Pseudonym  
Photo: Mara Winter

**Rune**, this remarkable young ensemble also hold the unique title of Medieval Ensemble in Residence at St Bartholomew-the-Great, the City of London's oldest Parish Church! Join them for an afternoon concert in the atmospheric Quire, Beverley Minster when four medieval miracle stories are set to music from across Europe.



Rune  
Photo: Ben Tomlin Photography

## The New Generation Baroque Ensemble

An afternoon of outstanding music, presented by the hugely talented Bellot Ensemble, the newly appointed New Generation Baroque Ensemble, a prestigious initiative supported by BBC Radio 3, the Royal College of Music and the National Centre for Early Music. These rising stars perform War and Peace, music by 17th century composers which will be recorded for broadcast by BBC Radio 3.



Bellot Ensemble  
Photo: Ben Reason

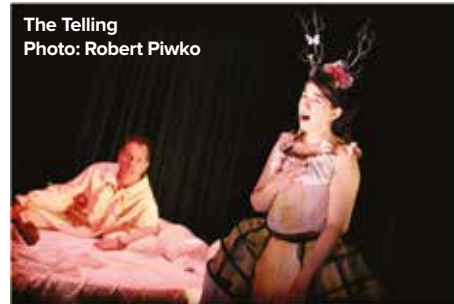
## The Telling

### Purcell: The Musical

Music and theatre collide when The Telling make a triumphant return to Beverley with Purcell: The Musical as part of a national tour. Join composer Henry Purcell, who, under pressure to finish a song, is transported back in time by a series of surreal experiences and if that's not all, his wife keeps bursting into his songs.

The Telling is an arts charity that attempts to "break new ground" (The Guardian), where new writing by award-winning writer Clare Norburn meets music.

★★★★ The Times



The Telling  
Photo: Robert Piwko



# EAST RIDING EARLY MUSIC FESTIVAL 2026

## Festival Diary

### Monday 11th & Tuesday 12th May

- Baroque Around the Books, Pocklington Library and Market Weighton Library
- Baroque Around the Books, Goole Library and Beverley Library

### Friday 22nd May

- Illustrated talk
- Près de votre oreille

### Saturday 23rd May

- Come and Sing
- Illustrated Talk by Pseudonym
- Family Concert by Rune
- Intesa
- The Tallis Scholars

### Sunday 24th May

- Rune
- Bellot Ensemble
- The Telling

### To book:

Online: [ncem.co.uk](http://ncem.co.uk)

Telephone: 01904 658 338

Email: [boxoffice@ncem](mailto:boxoffice@ncem)

Beverley Tourist Information Centre, Treasure House, Champney Road, Beverley, HU17 8EH

Facebook: [yorkearlymusic](https://www.facebook.com/yorkearlymusic)

Instagram: [nationalcentreforearlymusic](https://www.instagram.com/nationalcentreforearlymusic)

Cover illustration by [RedBonsai.co.uk](http://RedBonsai.co.uk)



**FREE CONCERT WITH EAST RIDING LIBRARIES**

**BAROQUE AROUND THE BOOKS**

**11 & 12 May**  
Pocklington, Market Weighton, Goole & Beverley Libraries

**2026 BEVERLEY & EAST RIDING EARLY MUSIC FESTIVAL**



**NCEM**  
THE NATIONAL CENTRE FOR EARLY MUSIC



**RUNE presents**

**SUMMER IS ICUMEN IN!**

**23 May 3pm | £5**  
**Beverley Memorial Hall**

An interactive concert of medieval songs and lively dance tunes for all the family!

**2026 BEVERLEY & EAST RIDING EARLY MUSIC FESTIVAL**



**NCEM**  
THE NATIONAL CENTRE FOR EARLY MUSIC



## EVERY THURSDAY

(Doors open 9.30am)

Join us for a free brew and enjoy some great films on Beverley Parkway's Big Screen.

Only £5 (or £6 for newer releases) with drink and biscuits included. Aimed at 55s & over. Films subject to change.

### Thursday 7th May -

#### Glenrothan (£6)

Starring: Alan Cumming, Brian Cox, Shirley Henderson, Alexandra Shipp.

#### The Sheep Detectives (£6)

Starring: Hugh Jackman, Emma Thompson, Julia Louis-Dreyfus, Bryan Cranston.

#### Michael (£6)

Starring: Jaafar Jackson, Nia Long, Laura Harrier, Juliano Krue Valdi, Miles Teller.

### Thursday 14th May -

#### The Sheep Detectives (£6)

Starring: Hugh Jackman, Emma Thompson, Julia Louis-Dreyfus, Bryan Cranston.

#### The Devil Wears Prada 2 (£6)

Starring: Meryl Streep, Anne Hathaway, Emily Blunt, Justin Theroux, Kenneth Branagh.

#### Michael (£6)

Starring: Jaafar Jackson, Nia Long, Laura Harrier, Juliano Krue Valdi, Miles Teller.

### Thursday 21st May -

#### The Devil Wears Prada 2 (£6)

Starring: Meryl Streep, Anne Hathaway, Emily Blunt, Justin Theroux, Kenneth Branagh.

#### Northern Soul: Still Burning (£5)

Starring: David Nathan, Elaine Constantine, Ian Dewhirst, Ian Levine.

#### Michael (£6)

Starring: Jaafar Jackson, Nia Long, Laura Harrier, Juliano Krue Valdi, Miles Teller.

### Thursday 28th May -

#### The Devil Wears Prada 2 (£6)

Starring: Meryl Streep, Anne Hathaway, Emily Blunt, Justin Theroux, Kenneth Branagh.

#### Northern Soul: Still Burning (£5)

Starring: David Nathan, Elaine Constantine, Ian Dewhirst, Ian Levine.

TBC

These are the films scheduled to open in May - all are subject to change. Check out up-to-date cinema listings at [www.justbeverley.co.uk/cinema-times](http://www.justbeverley.co.uk/cinema-times)



#### The Devil Wears Prada 2

From 1st May

Starring: Meryl Streep, Anne Hathaway, Emily Blunt, Justin Theroux, Kenneth Branagh.



#### Iron Maiden: Burning Ambition

From 7th May

Starring: Bruce Dickinson, Steve Harris, Nicko McBrain, Adrian Smith.



#### Mortal Kombat 2

From 8th May

Starring: Karl Urban, Adeline Rudolph, Jessica McNamee, Josh Lawson, Ludi Lin, Mehcad Brooks.



#### The Sheep Detectives

From 8th May

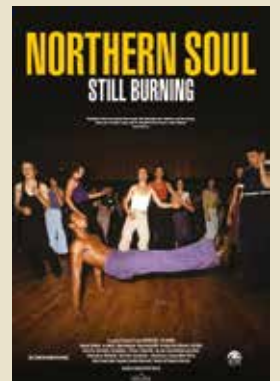
Starring: Hugh Jackman, Emma Thompson, Julia Louis-Dreyfus, Bryan Cranston.



#### Obsession

From 15th May

Starring: Michael Johnston, Inde Navarrette, Cooper Tomlinson, Megan Lawless, Andy Richter.



#### Northern Soul: Still Burning

From 15th May

Starring: David Nathan, Elaine Constantine, Ian Dewhirst, Ian Levine, Levanna Mcleann.



#### Star Wars: The Mandalorian and Grogu

From 22nd May

Starring: Pedro Pascal, Jeremy Allen White, Brendan Wayne, Sigourney Weaver.



#### Backrooms

From 29th May

Starring: Chiwetel Ejiofor, Renate Reinsve, Mark Duplass, Finn Bennett, Lukita Maxwell.



#### Power Ballad

From 29th May

Starring: Paul Rudd, Nick Jonas, Peter McDonald, Marcella Plunkett, Havana Rose Liu, Jack Reynor.

# YOUR LOCAL INDEPENDENT CINEMA



## JOIN US FOR SOME GREAT FILMS AND LIVE SHOWS THIS SPRING

### THE DEVIL WEARS PRADA 2

Twenty years after making their iconic turns as Miranda, Andy, Emily and Nigel - Meryl Streep, Anne Hathaway, Emily Blunt and Stanley Tucci return to the fashionable streets of New York City and the sleek offices of Runway Magazine in 20th Century Studios' "The Devil Wears Prada 2," the eagerly awaited sequel to the 2006 phenomenon that defined a generation.

**From 1st May.**



### MORTAL KOMBAT 2

From New Line Cinema comes the latest high-stakes installment in the blockbuster video game franchise in all its brutal glory, Mortal Kombat II. The ultimate, no-holds barred, gory battle to defeat the dark rule of Shao Kahn that threatens the very existence of the Earthrealm and its defenders.

**From 8th May.**



### THE SHEEP DETECTIVES

In this witty, new breed of mystery, George (Hugh Jackman) is a shepherd who reads detective novels to his beloved sheep every night, assuming they can't possibly understand. But when a mysterious incident disrupts life on the farm, the sheep realise they must become the detectives.

**From 8th May.**



### THE MANDALORIAN AND GROGU

The evil Empire has fallen, and Imperial warlords remain scattered throughout the galaxy. As the fledgling New Republic works to protect everything the Rebellion fought for, they have enlisted the help of legendary Mandalorian bounty hunter Din Djarin (Pedro Pascal) and his young apprentice Grogu.

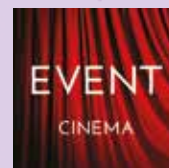
**From 22nd May.**



### POWER BALLAD

When Rick (Paul Rudd), a past-his-prime wedding singer, meets fading boy-band star Danny (Nick Jonas) during a gig, the two bond over music and a late-night jam session. But when Danny turns one of Rick's songs into the hit that reignites his career, Rick sets out to reclaim the recognition he believes he deserves - even if it means risking everything he cares about.

**From 29th May.**



Event cinema offers something a little different to mainstream films. Live and pre-recorded shows beamed in via satellite from all over the world. Here are the latest live streams that you can enjoy on the big screen at Parkway Beverley.

**Tuesday 5th May, 6pm -**

**MET Eugene Onegin**

Following her acclaimed 2024 company debut in Puccini's Madama Butterfly, soprano Asmik Grigorian returns to the Met as Tatiana, the lovestruck young heroine.

**Saturday 30th May, 6pm -**

**The MET: El Ultimo Suen De Frida y Diego**

On May 30, the Metropolitan Opera's 2025/26 Live in HD season comes to a close with a live transmission of American composer Gabriela Lena Franka's first opera.

## LIVE ON STAGE

**Saturday 2nd May, 8pm -**

**The Comedy Store Presents - "Live on Stage"**

With nearly 40 years experience in the business and as the premier name in comedy, The Comedy Store is renowned as a breeding ground for new comedy talent, and remains the place to see tomorrow's stars today.

**Sunday 10th May, 2pm -**

**Music Box**

For 25 incredible years, we have had the absolute joy of sharing the magic of music and performance with hundreds of amazing children. It's been a journey filled with passion, creativity, and countless unforgettable moments.

**Saturday 16th & Sunday 17th May, 6pm -**

**Joseph and the Technicolor Dreamcoat**

Oxbow Lake Performing Arts presents this well-loved Musical: Joseph and the Amazing Technicolor Dreamcoat. Performed by students aged 5-14yrs old.

# YOUR SAVINGS, YOUR WAY - SERVICE AT THE HEART OF EVERY ACCOUNT

**Choosing an online savings account does not have to mean sacrificing the personal touch and reassurance that comes with attentive service.**

At Beverley Building Society, we ensure that every member continues to receive warm, personalised support, no matter how they choose to manage their savings.

Trevor and Helen have been loyal savers with Beverley Building Society for over two decades, embracing the straightforward convenience of an instant access account.

For much of this time, Trevor took comfort in visiting our branch to update his passbook - a simple routine that allowed him to connect directly with the team caring for his finances.

Although Trevor and Helen once planned on retiring in Yorkshire, life led them to settle in Essex. Despite living further away, Trevor remained committed to Beverley Building Society.

He was determined to make the most of his savings without relinquishing the ability to speak to a real person whenever support was needed - a feature that is becoming increasingly rare as high streets turn to automation.

## Digital Savings, Human Service

Our expanding range of digital savings accounts offered Trevor and Helen the flexibility they were looking for at just the right moment. Designed to provide more choice, our online products enable members to open and manage accounts digitally, while still enjoying the high standard of service that Beverley Building Society is renowned for.

Helen shared her experience:  
“We found everything was clear and easy to follow. I didn’t need to call the branch for help - although I know they would have been happy to talk to me if I had. It feels like a real ‘comfort’ account, something for life’s unexpected moments, and Trevor is very happy with it.”

Offering genuine choice is at the heart of Beverley Building Society’s ethos.

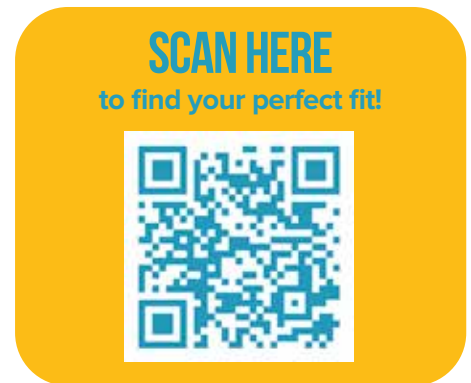
Whether members prefer to manage their savings online or in person with their passbook, our commitment is to provide authentic human service whenever it is needed.

Helen concludes: **“Beverley Building Society really does offer the best of both worlds, simple online banking, backed by someone friendly at the end of the phone. I’d happily recommend you to anyone.”**

Rates may change, Accounts subject to T&Cs.

**Tel: 01482 881510**

**Email: [Savings@beverleybs.co.uk](mailto:Savings@beverleybs.co.uk)**



Authorised by the Prudential Regulation Authority and regulated by the Financial Conduct Authority and the Prudential Regulation Authority. Registered Number 206064.

Est. 1866

**BEVERLEY**  
BUILDING SOCIETY

Building Better Futures

# EAST YORKSHIRE FOOD BANK 10TH ANNIVERSARY - "HELPING LOCAL PEOPLE IN CRISIS"

East Yorkshire Food Bank has been helping people in Beverley and the surrounding towns and villages since May 2016.

This year we are proud to celebrate 10 years of helping local people in crisis with emergency food parcels. Based in Beverley our reach travels as far as Stamford Bridge, Goole, Patrington, Bridlington from our base in Beverley.

The need for help and support to put a meal on the table has increased dramatically over the last few years.

- 4684 emergency food parcels given out last year
- 10869 people in crisis were helped in the year to March 2026 - over one third of those were children

The cost of living crisis means this is still three times more than the 3567 people helped pre Covid (2019/20). We provide food parcels on the recommendations of GPs, Social Services, schools and other charities. Families can be helped for



a maximum of 3 months, although the average number of emergency food parcels given to a household is just 3.8.



We couldn't provide this help without our team of hard working volunteers, many of whom have been with the Charity for several years, and our Trustees. 72 volunteers give their time week in week out to ensure help is available to those who have hit rock bottom.

Richard, who organises the client sessions, a founder member in 2016, helped set the Food Bank up.

Richard commented, "East Yorkshire Foodbank is very grateful for the support of the community and donations from local companies, churches and community groups. Food donations by the public are absolutely vital. Every item donated



to the food bank goes into free food parcels for emergency situations".

As well as food support, clients can get help with money management and benefit claims through the financial inclusion project. Over the three years it has been running it has added over £1m to the income of clients, giving people a more secure financial footing.

We shall be organising 12 fundraising events in Beverley and the surrounding areas from May to celebrate our 10 year anniversary. Look out for these being advertised and please come along to join us!!



Website: <https://eastyorkshire.foodbank.org.uk/>



## The Ferguson Fawsitt



### OPENING HOURS

MON & TUES:  
12:00-LATE

WED-SAT:  
09:30-LATE

SUN:  
12:00-LATE

## What's on at the Fergie

Monday Evenings (weekly, excluding the 3rd Monday of the Month and Bank Holidays) -

Viewfinder Photographic Society - a friendly Walkington based club for photography enthusiasts of all abilities.

1st Wednesday of the Month - Porsche Club

1st Thursday of the Month - Bingo from 2pm

Last Thursday of the Month - Fergie Live Lounge -

1st Friday of the Month - Quiz Night from 8.45pm



WEDNESDAY TO SATURDAY:  
AFTERNOON TEA 12PM to 5PM  
[www.fergusonfawsitt.co.uk](http://www.fergusonfawsitt.co.uk)  
tel: 01482 526317



### FOOD HOURS

MON & TUES:  
12:00-19:30

WED-SAT:  
09:30-20:00

SUN:  
12:00-18:30

# CAN A TRUST HELP PROTECT YOUR ESTATE?

**Trusts are increasingly used in the UK as a strategy to manage inheritance tax (IHT) liabilities, especially with upcoming changes to IHT rules set to affect pensions. We look at how they work in estate planning.**

Benjamin Franklin, a founding father of the United States, once famously said “the only things certain in life are death and taxes.” Nor was he wrong. Here in the UK, taxes have risen steadily under successive governments. These include increases to capital gains tax and corporation tax in recent years. Meanwhile, freezing the thresholds on income tax levels has seen many more people dragged into higher and additional rate tax bands. And, from April 2027 - less than a year away - unused pension assets will fall into the scope of people’s estates for IHT purposes, increasing the value of the estate. If this exceeds the IHT threshold, the estate (and beneficiaries) could be hit by a 40% tax charge on the surplus above the threshold.

The IHT nil rate band - the threshold above which IHT is payable - has been fixed at £325,000 since 2009 and will stay at this level until at least 2031. Yet if it had grown in line with inflation, it would now be £525,000. It’s not surprising therefore that growing numbers of people are turning to trusts in a bid to reduce their liability to inheritance tax. Figures from HM Revenue & Customs show that around 121,000 trusts were set up in the tax year 2024/25, up from 115,000 the previous tax year.

## Reasons to trust

IHT is charged on the value of your estate when

you die. One straightforward way to reduce a future IHT bill is to give money or assets away while you’re alive. If you live for seven years after making the gift, it normally falls outside your estate for IHT purposes. The catch is that an outright gift is a gift.

Once given, you may not be able to control how it’s used - which may matter if you are looking to help family financially. For example, if you gift money to an adult child and they then go through divorce, your gift could form part of a divorce settlement. Alternatively, any money gifted could be vulnerable to creditor claims or poor spending decisions.

Trusts can be a way to make gifts with more structure. Under the terms of a **discretionary trust**, the trustees (people you appoint) decide who benefits, how much they receive and when. The settlor - the person setting up the trust - can leave guidance in a ‘letter of wishes’ which can be updated as circumstances change.

According to Marcia Banner, tax and trusts specialist at St. James’s Place, discretionary trusts are used in lifetime financial planning because they combine potential IHT benefits with control, flexibility and asset protection.

She says: “Outright gifts can reduce IHT, but a trust can let you make the gift in a controlled way. Trustees act as custodians and can decide who gets what and when. That can help where beneficiaries are young, not financially confident, or where you want to reduce the risk of third party claims, for example after a divorce.” Trustees

can also use trust funds in practical ways. For example, a trust might buy a property that a beneficiary can live in. Because the trust owns the asset, it may offer more protection than gifting the money to the beneficiary directly.

## Protecting assets

Trusts can also help with planning across generations. For example, you might want to give money to an adult child, but they may worry that receiving it outright will increase the value of their estate for IHT. With a discretionary trust, the assets can potentially sit outside beneficiaries’ estates while still being available for their benefit. However, HMRC applies specific IHT charges to some trusts - particularly discretionary trusts - partly because the assets may not be taxed as part of anyone’s estate on death.

## How the charges work

Discretionary trusts face potential IHT charges every ten years, known as periodic charges. Each trust has its own nil-rate band (currently £325,000). If the trust’s value is above that band at the 10 year point, the excess may face a charge of up to 6%.

As an example:

- You place £300,000 into a discretionary trust (below the £325,000 nil-rate band), so there’s no immediate IHT to pay.
- By year 10, the trust is worth £400,000.
- The value above the £325,000 nil rate band - £75,000 in this case - is potentially subject to a 6% charge. This liability would fall on the trust. Even with periodic charges, a trust may still be more tax efficient than leaving the money outside the estate where it might otherwise be taxed at



We replace uncertainty with **clarity, confidence, and control** so you can focus on the freedom of living your life.



## How We Can Help You

- Mortgages
- Protecting You & Your Estate
- Retirement Planning
- Investment Planning
- Long Term Care Planning
- Corporate Financial Planning

The Partner Practice is an Appointed Representative of and represents only St. James’s Place Wealth Management plc (which is authorised and regulated by the Financial Conduct Authority) for the purpose of advising solely on the group’s wealth management products and services, more details of which are set out on the group’s website [www.sjp.co.uk/products](http://www.sjp.co.uk/products). The ‘St. James’s Place Partnership’ and the titles ‘Partner’ and ‘Partner Practice’ are marketing terms used to describe St. James’s Place representatives.

**St James’s Place**

**SJP Approved 20/01/2026**



01482 379504



[NavigationWM@sjpp.co.uk](mailto:NavigationWM@sjpp.co.uk)



[www.navigationwm.co.uk](http://www.navigationwm.co.uk)

40% upon death. However, it will depend on the size of the gift, who needs access, and the wider estate plan.

#### Retaining access to funds

A common question is whether you can reduce the value of your estate but still have access to the money. Sometimes trusts can help, but the rules are strict. The wrong setup can mean the money is still treated as part of your estate for IHT. For example, if you 'give' money away but keep benefiting from it (such as taking income back from the gift), HMRC may treat it as a 'gift with reservation'. In that case, it can still count as part of your estate for IHT.

One option sometimes discussed is a **discounted gift trust** (also called a discounted gift arrangement). Broadly, you place a lump sum into a trust for beneficiaries while retaining a right to regular withdrawals\*. It can offer IHT benefits in some cases, but it's complex and needs specialist advice. Trusts can be powerful, but they're not "set and forget" - and many are difficult or impossible to unwind once established. If you're considering a trust, take professional advice so it fits your family's needs, your tax position and your long term plans.

For more information on trusts or financial planning solutions, visit our website: [www.navigationwm.co.uk](http://www.navigationwm.co.uk) or contact our Beverley office on **01482 379 504** to speak with a member of the team.

The value of an investment with St. James's Place will be directly linked to the performance of the funds selected and may fall as well as rise. You may get back less than the amount invested.

The levels and bases of taxation and reliefs from taxation can change at any time. Tax relief is dependent on individual circumstances.

\*Please note that if the withdrawals taken exceed the growth of the Bond, the capital will be eroded.

Trusts are not regulated by the Financial Conduct Authority.

Source: <sup>1</sup> Statistics on trusts in the UK - HM Revenue & Customs, 18th December 2025.

## THE RENTERS RIGHTS ACT

*The Renters' Rights Act is here on 1st May 2026, bringing some of the biggest changes the lettings industry has seen in decades.*

While it may feel overwhelming at first, it's about raising standards and setting clear expectations for both landlords and tenants.

For landlords, the shift is towards a more structured approach to management. Compliance is no longer something to dip in and out of, it needs to be consistent.

It means keeping up to date with safety requirements, maintaining the property to a good standard and following the correct legal processes for rent increases and possession. For tenants, it introduces more defined rights but with that comes the importance of understanding what those rights are and how they work.



From May, tenants should expect to receive updated information from their landlord or agent, helping them understand both their rights and responsibilities within the tenancy. The landlords who will do well are the ones who treat their properties as long-term investments, not quick wins. And the tenancies that run smoothly are going to be the ones where everyone knows where they stand from the start. Get that balance right and things will tick along nicely. Get it wrong and problems will show up quickly.

If you would like to know more go to: [www.renteastyorkshire.co.uk](http://www.renteastyorkshire.co.uk)  
Email: [info@renteastyorkshire.co.uk](mailto:info@renteastyorkshire.co.uk) or call: **01377 250550**

LEWIS NORTHEN  
FUNERAL DIRECTORS



MY FAMILY TAKING  
CARE OF YOURS



Get In Touch  
1 Lincoln Way, Beverley, HU17 8RH  
[info@lewisnorthenfuneraldirectors.co.uk](mailto:info@lewisnorthenfuneraldirectors.co.uk)  
[www.lewisnorthenfuneraldirectors.co.uk](http://www.lewisnorthenfuneraldirectors.co.uk)  
01482 888 658

Five Years of Service: Beverley's Independent Funeral Director

Born and raised in **Beverley**, we are proud of the funeral services we offer to our local community.

As a family business we want you to have confidence in us to support you from the first point of contact, throughout and thereafter. The moment your loved one comes into our care they will be treated with care and respect. We offer a comprehensive range of funeral services ensuring you receive the perfect funeral service for your loved ones.

We are available 24 hours a day, 365 days a year, we will guide and support your family throughout.

**My family taking care of yours**  
Beverley's **ONLY** Independent Funeral Director

**Giving the personal touch to funeral services in Beverley and surrounding areas.**

Funeral plans, memorial jewellery, available 24/7 365 days a year.

# SSAFA EAST YORKSHIRE, POWERED BY VOLUNTEERS, BUILT ON TRUST

*Behind every veteran supported, every family helped through crisis, and every service person guided back to stability, there is an SSAFA volunteer. Quietly, consistently, and compassionately, they show up.*

SSAFA, the Armed Forces charity, makes a meaningful difference to serving personnel, veterans, and their families by providing practical, emotional, and financial support when it is most needed. Across East Yorkshire, a dedicated network of trained volunteers does exactly that every single day.



From help with housing and debt to mental well-being and access to healthcare, SSAFA ensures that no member of the Armed Forces community ever has to face hardship alone.

Volunteers are at the very heart of SSAFA's work, building trusted, lasting relationships that make a real difference to wellbeing and resilience. And it works both ways.

Volunteering with SSAFA means gaining new skills, growing in confidence, and finding a genuine sense of purpose whilst giving back to your community.



## Join Us This Summer, Beverley Armed Forces Day 2026

Come and show your support at one of East Yorkshire's most cherished annual events. Beverley Armed Forces Day returns to the Defence School of Transport, Leconfield a wonderful opportunity for the whole family to step inside DST and celebrate our Armed Forces community together.

**Date: Saturday 4th July 2026**

**Time: 10am - 4pm**

**Venue: Defence School of Transport, Leconfield, Beverley, East Yorkshire, HU17 7LX.**

## Get Involved: We'd Love to Hear From You

Whether you need support or want to volunteer and make a difference in your community, SSAFA East Yorkshire is here.

**Tel: 01964 552 837.**

**Email: [eyorks.branch@ssafa.org.uk](mailto:eyorks.branch@ssafa.org.uk)**

**Website: [ssafa.org.uk](http://ssafa.org.uk)**

*Proudly supporting the Armed Forces community across East Yorkshire.*

**ssafa** | the  
Armed Forces  
charity

## 2026 - Your Veterans Need You!

### SSAFA urgently need a Branch Secretary, admin support and caseworkers.

The Branch Secretary serves as key figures in supporting those who have served their country, ensuring they receive the assistance and resources when in need after protecting our country.

It's a role that requires dedication, compassion, and a commitment to serving others, offering immense personal satisfaction and the opportunity to positively impact the community.



**If you think you can help, please get in touch:**

**Tel: 01964 552 837**

**Email: [eyorks.branch@ssafa.org.uk](mailto:eyorks.branch@ssafa.org.uk)**

**Website: [ssafa.org.uk](http://ssafa.org.uk)**

## Four Generations, Giving Over 130 Years Service

Herbert	Eardley	Geoffrey	David
1870-1962	1908-1986	1939-2015	1964



Golden Charter  
Funeral Plans



- Funerals Respectfully Conducted
- 24 Hour Out of Hours Service
- Free Advice & Support
- Private Restrooms
- Prepaid Funeral Plans Available
- Finance Options Available



**Tel: 01482 844695**  
**[www.hkempandsonltd.com](http://www.hkempandsonltd.com)**

259 Hallgate, Cottingham, East Yorkshire, HU16 4BG

Fax: 01482 843898

Email: [hkempandsonltd@gmail.com](mailto:hkempandsonltd@gmail.com)

# IAN HARRISON - WORKING TO ADD VALUE TO YOUR HOME

Ian, a professional handyman, plays a crucial role in maintaining and improving the condition of a home. His skills, experience and knowledge allows him to handle everyday jobs around the house both inside and outside (weather dependent), such as repairing doors, painting architraves, and assembling furniture efficiently and to a high standard.

Ian with his experience not only saves homeowners time and effort but also prevents small issues from developing into more costly problems.

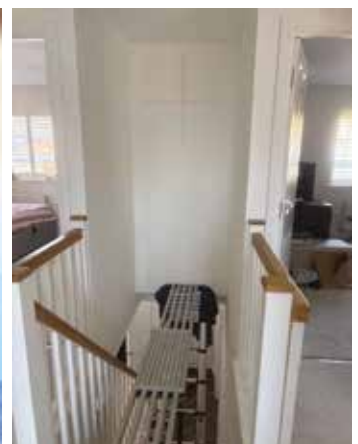
Ian commented, "As a skilled handyman I bring experience and the right tools to complete tasks safely and correctly, reducing the risk of damage or injury that can occur with DIY attempts. While I am with you, I can also offer practical advice on maintenance and improvements, helping homeowners make better decisions about their property".

As Ian finishes the jobs in hand, he can look back knowing he has assisted in helping to increase the overall value and appearance of a home. Well-maintained spaces are more comfortable to live in and more appealing to potential buyers when the time comes.

Ian is your professional handyman, providing convenience, reliability, and peace of mind.



**Ian Harrison - Beverley's Handyman.**  
**Mobile: 07970 332373**  
**Email: [ianharrison68@icloud.com](mailto:ianharrison68@icloud.com)**  
**Website: [www.ian-harrison.com](http://www.ian-harrison.com)**



Follow us on  
Facebook and Instagram

Ian

HARRISON  
HANDYMAN

For all your jobs around the home

- Painting, Interior & Exterior
- Mirror & Shelf Installation
- Joinery
- Flat Pack Assembly
- Picture Hanging
- .. and so much more

07970 332373

[ianharrison68@icloud.com](mailto:ianharrison68@icloud.com)

[www.ian-harrison.com](http://www.ian-harrison.com)

# DRIVE INTO SAVINGS: BEAT RISING FUEL COSTS WITH ELECTRIC & HYBRID CARS

*With fuel costs continuing to rise, more drivers are turning to electric and hybrid vehicles as a practical way to reduce everyday expenses.*

Unlike traditional petrol and diesel cars, electric vehicles (EVs) are significantly cheaper to run, with lower energy costs per mile and reduced maintenance due to fewer moving parts. Hybrid models also offer improved fuel efficiency by combining electric power with conventional engines, helping to stretch every litre further.



Making the switch isn't just about the vehicle itself, it's also about how you power it. Installing a home charging point allows you to take advantage of off-peak electricity tariffs, further lowering running costs and giving you greater control over your energy usage.

At Smart Power, we support homeowners and businesses in making this transition by providing safe, reliable EV charging solutions tailored to your needs. As energy prices fluctuate, investing in electric or hybrid technology now can offer long-term savings while also preparing for a more sustainable future.

If you're considering making the switch or want to learn more about how you can start saving, our team is here to help. Get in touch with Smart Power for expert guidance and friendly advice, just give us a call to find out more.

Visit: [www.smartpower.co.uk](http://www.smartpower.co.uk)  
 Email: [info@smartpower.co.uk](mailto:info@smartpower.co.uk)  
 Call: **01482 205222**

# JAYNE AT LINK AGENCY EASES THE STRESS IN MOVING HOUSE / HOME

*Moving home can be one of life's most stressful experiences, bringing emotional, financial, and logistical challenges.*

The process: packing belongings, co-ordinating timelines, and managing paperwork can quickly become overwhelming, especially when combined with the uncertainty of buying or selling a property. Disruptions to routine and the pressure to meet deadlines often add to the strain, and stress levels rise.

Jayne at Link Agency, an independent estate agent, can significantly reduce this stress by offering personalised support throughout the process.

Jayne commented, "At Link Agency we provide a more tailored service, guiding our clients through each stage with clear communication; we help clients gain an understanding of the often confusing process especially the legal conveyancing".

From the initial introduction and for sale sign going up, Jayne at Link Agency handles negotiations, organises viewings, and manages key stages efficiently. Throughout the whole experience she acts as a reliable point of contact, giving expert advice and reassurance, thus allowing clients to focus on settling into their new home with greater confidence and peace of mind.



SMART POWER

PROFESSIONAL DEDICATED ELECTRICIANS

CALL 01482 205222

Based in Cottingham, serving East Yorkshire with Domestic, Commercial, and Industrial Electrical Solutions.

OUR SERVICES

SCAN NOW

- Fault Finding
- Internal and External LED Lighting
- Test and Inspection EICR
- EV Chargers
- Kitchen Electrics
- Consumer Unit Upgrades
- Full and Partial Rewires

CONNECT WITH US

Our team will always go the extra mile to ensure that you're delighted with our work.

WWW.SMARTPOWER.CO.UK

Jayne at **linkagency**

PrimeLocation

ZOOPLA

naea | propertymark

TheMarket

rightmove

linkagency

Sold

01482 699007  
www.linkagency.co.uk

Have you seen these signs?

linkagency

For Sale

01482 699007  
www.linkagency.co.uk

"I dedicate my time and energy to clients throughout their property selling and buying journey, giving them the comprehensive, professional service they deserve."

SCAN HERE FOR MORE

01482 699007 (Beverley & Surrounding Villages)

[www.jayneatlinkagency.co.uk](http://www.jayneatlinkagency.co.uk)

[jayne@linkagency.co.uk](mailto:jayne@linkagency.co.uk)

# BEVERLEY FOLK FESTIVAL RETURNS WITH A WEEKEND OF MUSIC, COMMUNITY AND CELEBRATION

*The much-loved Beverley Folk Festival returns from June 19th-21st 2026, bringing a joyful celebration of folk, Americana and acoustic music to the heart of East Yorkshire.*

Since its revival in 2018, the festival has grown from a small series of events under the name 'Beverley Fringe' back into a much-anticipated weekend in the town's cultural calendar. This year's festival promises its most exciting and varied programme yet, with three days of concerts, community events and spontaneous music-making across Beverley.

The weekend begins on Friday evening at the magnificent St Mary's Church, where the acclaimed indie-folk band Stornoway headline the opening concert, fresh from playing London's Royal Albert Hall. Opening the evening is rising singer-songwriter Janileigh Cohen, who also recently played Beverley in support to American Blues artist Eric Bibb back in March.



Photo credit: Ben Rowsell

Saturday is the festival's lively centrepiece, with music, dance and community events taking place throughout the town. Highlights include the much-loved Charity Buskathon, a colourful folk dance parade and Morris displays, and a series of intimate acoustic concerts at The Monks Walk, East Riding Theatre and St Nicholas' Church. The evening programme offers something for everyone. The Armstrong Centre hosts a lively Ceilidh, while St Nicholas' Church welcomes a special return performance from folk favourite Reg Meuross, supported by York-based singer-songwriter and member of the Magpies Bella Gaffney. Meanwhile, at East Riding Theatre, Britain's 'first country stars' and Gold-record selling sister duo Ward Thomas headline a concert supported by Beverley local songstress Jessica Lawson.

On Sunday, the festival draws to a close with a truly special performance from acclaimed Irish experimental folk singer Joshua Burnside at East Riding Theatre, with Lincolnshire singer songwriter Elanor Moss supporting - the perfect way to end the weekend on a magical and intimate note.

True to its spirit of openness and community, the festival also features a wide range of free events and informal sessions throughout the weekend. The Monks Walk and The Sun Inn will host relaxed, foot-stomping performances from favourites including The Laggy Band, Paddy and the Portermen, and The Flatt East, alongside lively sessions where musicians of all abilities are welcome to join in.

Festival organiser Phil Simpson said: "We're delighted to bring the festival back for another year with such a wonderful mix of artists. From internationally renowned performers to brilliant local musicians, it really captures the spirit of folk music - which is less about genre and more about people coming together. We're incredibly grateful to our sponsors East Riding of Yorkshire Council and TC Group for helping make it all possible."

Alongside the main concerts, the festival also runs a number of community-focused events, including school workshops at Tickton and Molescroft Primary Schools, a Barbershop singing workshop led by Humber Harmony, a folk workshop led by FolkLincs at East Riding Theatre, and a special performance for residents of Beverley Parklands Care Home.

Tickets and further information are available at [www.beverleyfolk.com](http://www.beverleyfolk.com)

[www.justbeverley.co.uk](http://www.justbeverley.co.uk)

EAST RIDING  
A COUNTRY MUSIC FESTIVAL

## BEVERLEY FOLK FESTIVAL

18 – 21 JUNE 2026

### WARD THOMAS STORNOWAY

CHRIS CLEVERLEY JOSHUA ELANOR MOSS  
Danny Bradley burnside Janileigh Cohen  
REG MEUROSS

BELLA GAFFNEY · CLARA AND WILD · COLIN METCALFE  
DOGFINGER · DAISY DOT · EMILY SLADE · LEE GABEL  
JACK ROBERTSON · JESSICA LAWSON · MALIN HILL  
PETER DILLEY · SIMON W. BOULT · THE FLATT EAST  
THE HILLBILLY TROUPE · THE IMPROMPTONES  
THE LAGGY BAND · THE OLD CROW ROAD · THE SMUGGLERS ·  
TOBEY BRITTON TYMISHA · WHITE SAIL  
and much more TBA!

MORRIS & DANCE TEAMS · SESSIONS · CHARITY BUSKATHON · CEILIDH  
CAMPING AVAILABLE

A friendly, action-packed weekend of live music showcasing the best established and emerging acts in truly unique venues across Beverley's ancient cobbled streets.

TICKETS ON SALE NOW!

www.beverleyfolk.com

Find us at: 19 Highgate, Beverley HU17 0DN

Tel: 01482 880871

www.monkswalkinn.com

A WARM WELCOME TO ALL OUR CUSTOMERS

- GOOD BEER
- GOOD COMPANY
- GOOD CONVERSATION

Historic Public House

Local Cask Ales • Lagers • Craft Beer • Wines • Spirits  
Hot Drinks + Extra Seating Area Upstairs & Outside

Tuesday Quiz • Wednesday Folk Night  
Music Events • Everyday Drinks & Chatter

Join us Every Sunday 1-4pm for  
'Sounds Like Monks'

Musicians and Listeners Welcome!

# CELEBRATING THE BEST OF BEVERLEY - AWARDS NIGHT SHINES A LIGHT ON LOCAL EXCELLENCE

*Beverley Town Council was proud to host the Best of Beverley Awards 2026 on Friday 24th April at East Riding Theatre, bringing together residents, community groups and businesses for a memorable evening celebrating everything that makes the town so special.*

The event showcased the very best of Beverley, recognising outstanding contributions across four categories and highlighting the remarkable dedication, talent and community spirit found throughout the town.

This year saw an exceptional number of nominations, making the shortlisting process particularly challenging and reflecting the strength and vibrancy of Beverley's community.

Entertainment for the evening was provided by St Mary's Beverley Church Lads' and Church Girls' Brigade (CLCGB) and Kimberly Raw, adding to the celebratory atmosphere.

A highlight of the evening was the bestowal of the title of **Honorary Freewoman of Beverley** on Linda Freeman, in recognition of her outstanding service to the community, particularly her long-standing work with Beverley in Bloom.



The Mayor's Civic Award was presented to Melanie Bruton for her inspirational leadership of the CLCGB and her commitment to supporting young people in the town.



Former Mayor of Beverley **Councillor David Boynton** was presented with a ceremonial badge to commemorate his year in office.

Awards were presented to winners in each category:

**Local Business:** Beverley Baking Studio



**Branch of a Chain Business:** Cambian School Beverley



The Mayor of Beverley, Alison Healy, said: "The Best of Beverley Awards Night is a wonderful opportunity to celebrate the people, organisations and businesses that make our town so unique. The standard of nominations this year was incredibly high, which made selecting the shortlist no easy task.

"Each and every nominee should feel immensely proud of their contribution to our community. These awards truly shine a light on the dedication, kindness and civic pride that define Beverley."

**Individual:** Sally Knapp



**Community Group:** Rotary Club of Beverley



The evening was a fitting celebration of local achievement, bringing the community together to recognise those who go above and beyond to make Beverley a place to be proud of.



# LET'S VISIT THE NEIGHBOURS - THE NORTH YORKSHIRE MOORS

*In this, the third in our series exploring day trip opportunities in the regions neighbouring the East Riding, we head north into the glorious landscapes, towns and villages of the North Yorkshire Moors.*

Car journeys from Beverley of an hour or so will take us to Pickering, or the hills beyond Scarborough.



The best public transport option is to use the splendid Moorsbus which runs from Beverley every Saturday, Sunday and Bank Holiday from April to October - this leaflet is available at libraries.

Let's structure our visits around four popular attractions: towns, villages, historic buildings and walks.

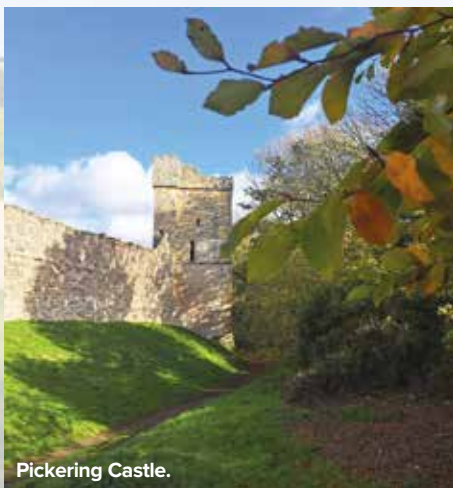
Pickering rightly styles itself as the Gateway to the Moors. It has a fabulous range of independent shops, great pubs and cafes, a beautiful medieval castle and perhaps best of all is the southern terminus for the 24 miles of the North York Moors Railway to Whitby.

The other main town of the Moors is Helmsley; again with a fine castle, lovely shops and eateries, even an outdoor swimming pool.

Now for some of my favourite villages. Hutton Buscel is a little known gem 7 miles west of Scarborough, its main attraction is tranquility, feeling far from the madding crowd.

Hutton Le Hole and Thornton Le Dale are far busier, meccas for lovers of tea shops and ice creams, but both full of lovely stone buildings. Coxwold is a favourite of mine, with a beautiful church and Shandy Hall.

I have already mentioned some of the area's churches and castles, it also has a stellar collection of medieval abbeys and country mansions.



Pickering Castle.



Hutton Buscel Church.

Rievaulx is arguably the most beautiful monastic ruin in England, a visit never disappoints.

A few miles west is the equally lovely Byland, surprisingly it is free to visit. Nunnington Hall is a stunning National Trust property in the tranquil Rye Valley.

To really appreciate the beauty of the Moors, walks, even if just a short stroll, are highly recommended.

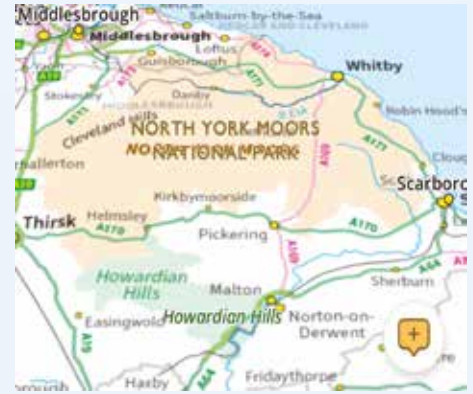
Here are a few suggestions: the dramatic Hole of Horcum, easily accessible from the parking area on the A169 above Pickering.

A riverside stroll along the lovely Esk at Lealholm.

A visit to one of the waterfalls around Goathland, such as Mallyan Spout.

Choose a fine day and you're almost certain to have a grand day out exploring the many delights of our northern neighbour.

**Ian Richardson, 3/4/26.**



Byland Abbey.



Shandy Hall, Coxwold.



Flying Scotsman approaching Pickering.



# Beverley Housing Charity

## Partnership surpasses Major milestone in just 9 months

*At Beverley Housing Charity, we pride ourselves on supporting our residents to live, not just exist, in retirement. We achieve this by working in partnership rather than isolation - providing practical advice and support and hosting leading local charities and community groups at our home, Morton House.*

The Charity's partnership with Age UK has reached its first significant milestone with £544,000 now received by residents from Beverley and the wider East Riding since the funding was secured by Beverley Housing Charity to welcome Age UK back to East Yorkshire.

### Working Together with Age UK Hull & East Yorkshire

Thanks to funding secured by Beverley Housing Charity, in partnership with East Riding of Yorkshire Council, we are pleased to host an experienced Information, Advice and Support Officer from Age UK Hull & East Yorkshire three days a week - Monday to Wednesday. Although based within our offices, this service is managed and delivered independently by Age UK Hull & East Yorkshire and remains fully confidential.

Andrew Barber, CEO of Beverley Housing Charity, said: "We are delighted that this

service, in just nine months, has secured such great resources for East Riding residents. Attendance Allowance enables people to gain vital services they need in their home to remain independent, whilst also being a resource which can reconnect the person to services within communities, such as transport costs. In short, it can be the difference between existing and living."

### Contacting AGE UK East Riding

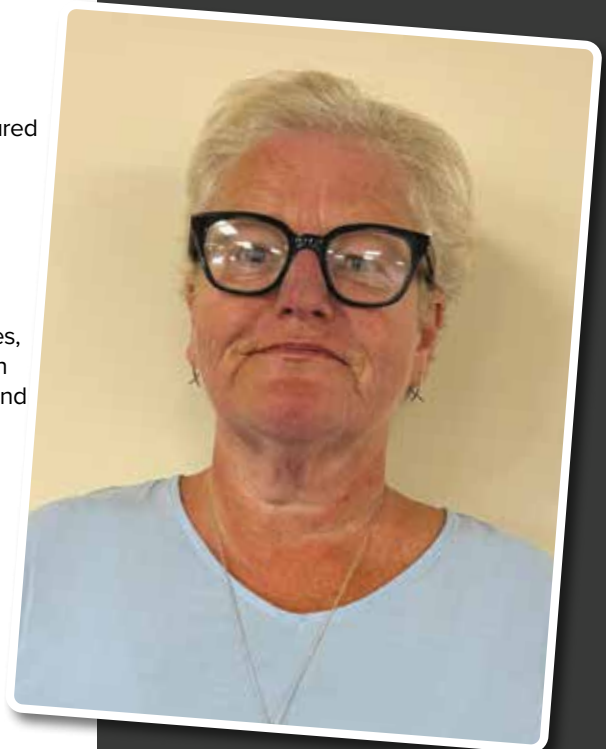
The Officer is available to offer free, confidential advice across a wide range of issues, including:

**Benefit checks and application support**, such as:

- Attendance Allowance
- Pension Credit
- Carer's Allowance
- Housing Benefit
- Council Tax Reduction
- Cost of Living Grants

They can also help with:

- Completing forms and paperwork
- Information about local services and resources
- Guidance on health, care and social matters
- Crime prevention and personal safety
- Housing and utilities advice



**Julie,**  
Information, Advice and Support Officer



Julie, who leads the service from Morton House, said: “We are making real progress and hitting this milestone is one thing but I’m fortunate enough to see just what a difference it makes to people’s lives. Sadly, still so many people who could receive Attendance Allowance and other benefits in retirement are not aware of the support available and at times even the thought of applying is exhausting and that’s why we are here to help.”

### John’s story

John has lived with disabilities for most of his life, but he ensured it was never a barrier to him, working and now volunteering in retirement. As he has got older, he reached out to Beverley Housing Charity to access an affordable property as he had limited financial resources and has lived in Beverley all his life.

In John’s words, “in the last 12 months. I felt it a bit more tiredness creeping in, but I keep going”. Beverley Housing charity recognised that with some small adaptations to his bathroom, life would be much easier. Over a cuppa they also found out that John had not applied for some of the potential benefits like Attendance Allowance which could be a big help.

Six months on, John’s wet room is now in place, full Attendance Allowance has been awarded and John’s still loving his volunteering. Andy Barber CEO of Beverley Housing Charity, said “This is the perfect combination of recognising there is a need with a resident, accessing the right support from the right agencies to create greater independence alleviating anxiety from the resident and potential pressure on statutory services.”

### Accessing Age UK Services - When & Where

**Days:** Monday to Wednesday

**Time:** 10am - 4pm (by appointment only)

**Location:** Beverley Housing Charity, Morton House, Morton Lane, Beverley, HU17 9DD.

Please note that waiting times may vary depending on demand.

### Contact Details

Although delivered from our premises, the service is operated by Age UK Hull & East Yorkshire. To make an enquiry or book an appointment:

**Email:** [hello@ageukhull.org.uk](mailto:hello@ageukhull.org.uk)

**Phone:** 01482 324644

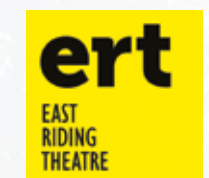
**Website:** [www.ageuk.org.uk/hullandeastyorkshire](http://www.ageuk.org.uk/hullandeastyorkshire)

### Morton House - Supporting Community Connections

Since moving into Morton House, Beverley Housing Charity has been working hard to make the most of this beautiful space - not just for our team, but for the wider community. We are delighted that the building is fast becoming a hub of activity, bringing together local groups and charities doing fantastic work across Beverley and the East Riding. As part of our ongoing commitment to supporting others, we have opened our boardroom and meeting spaces to a range of community groups and charitable organisations. It is wonderful to see the space being used regularly, helping to foster connection, wellbeing, and mutual support. Alongside Age UK, Beverley Housing Charity also host:

- U3A
- WI’s
- Parkinson’s Support Group
- East Riding Theatre
- Fitmums
- MASH
- Matthews Hub

If you are a charity or community group looking for high-quality space in the centre of Beverley, with parking available, please contact us on **01482 881052** or email [charity@beverleyhousingcharity.org](mailto:charity@beverleyhousingcharity.org)



# HAMBURG: A SHORT BREAK WITH A BIG CITY HEART

*If you are looking for a short break that feels a little different from the usual European suspects, Hamburg deserves a place firmly on your radar. Germany's "Gateway to the World" has all the ingredients for a memorable long weekend: characterful neighbourhoods, world-class culture, striking waterfront architecture and a food scene that ranges from cosy cafés to sleek riverside restaurants. It feels effortlessly cool, yet warmly welcoming.*

Arriving into Hamburg, the first impression is of water and light. The River Elbe snakes through the city, feeding a network of canals and lakes that shape daily life.

A leisurely stroll along the harbour sets the tone: container ships glide past, historic tall ships are moored nearby and the brick warehouses of the UNESCO-listed Speicherstadt district rise from the water like something from a film set. This is the largest warehouse complex in the world built on timber-pile foundations, and wandering its narrow bridges and cobbled streets is a highlight in itself.



Just beyond, the striking Elbphilharmonie concert hall has become the modern symbol of the city. Even if you are not catching a performance, it is worth riding the long, curving escalator up to the viewing platform.

From here, Hamburg opens up beneath you: cranes on the horizon, spires puncturing the skyline and ferries weaving back and forth on the river. It is a wonderful way to get your bearings at the start of your stay.

Hamburg is a city made for walking.

From the Elbphilharmonie, you can wander into the Altstadt, where traditional merchant houses and grand churches sit alongside stylish shops and cafés. Pause by the Rathaus, the ornate City Hall, and then head towards the Binnenalster lake. On a sunny day, locals gather along its promenade with ice creams and coffee, sailing boats drifting across the water. Even in cooler months, the city feels sociable, with lively markets and snug spots to linger over a hot chocolate or a glass of local wine.

## Art lovers are well served by the Kunsthalle.

One of Germany's most important art museums, which moves from Old Masters to contemporary works under one roof. For something a little quirkier, the Miniatur Wunderland in the Speicherstadt is a surprisingly absorbing experience for all ages: vast, painstakingly created model worlds that mirror real-life cities and landscapes with a dash of humour.

## Food is central to Hamburg's charm.

You could start the day with fresh Franzbrötchen, a local cinnamon pastry, and end it in a harbourside restaurant, tasting impeccably fresh fish while the sun sinks behind the cranes. The Sternschanze and Karolinenviertel neighbourhoods are perfect for casual evening exploring, with independent bars, bistros and street art giving a bohemian feel.

## What makes Hamburg so appealing for a short break is its balance.

It feels substantial and cosmopolitan, yet compact enough that you can really get under its skin in just a few days. Whether you are drawn to music and museums, waterside walks or simply the pleasure of discovering a city that blends heritage with a modern creative spirit, Hamburg offers a refreshing alternative for your next European escape. It felt a very friendly

place and I felt very safe too. The shops are really beautifully designed and prices were relatively reasonable too.



We chose this city for a short break primarily because there was a three night cruise from Hamburg back to Southampton on MSC Virtuosa which I wanted to try as it is particularly popular on its Southampton sailings.

We had a wonderful time and the ship was beautiful and we were very well looked after and really enjoyed the evening entertainment. It really is nice to explore new ships and itineraries so it was a good opportunity to visit a new German city and try a new ship. Last time we did this we started in Copenhagen so it is possible to have a short break which combines a bit of a city break with the relaxation of a few days at sea while you sail home.

If you feel inspired to try a new European city or combine a city break with cruise combination I would be delighted to assist you in making your travel dreams a reality.



## Amanda McConnell, Travel Counsellors.

Tel: 01482 770540

Email: [amanda.mcconnell@travelcounsellors.com](mailto:amanda.mcconnell@travelcounsellors.com)

Web: [www.travelcounsellors.com/amanda.mcconnell](http://www.travelcounsellors.com/amanda.mcconnell)

## THE SAVOURY EMBASSY OPENS IN FLEMINGATE

*The Savoury Embassy is a new Indian street food concept which opened on Wednesday 22nd April, in Flemingate.*

Food lovers can enjoy vibrant flavours of Indian street food inspired by India's bustling roadside kitchens. The Savoury Embassy will serve flavour-packed dishes featuring fragrant spices and recipes prepared with care and passion, delivering an authentic street food experience in a relaxed and welcoming setting.

The menu offers affordable lunchtime options, a more extensive evening menu, and convenient takeaway and collection choices. Making it ideal for shoppers, local workers, families, and evening visitors alike, whether stopping by for a quick lunch, a sit-down meal, or an evening or weekend takeaway to enjoy at home.

A key feature of The Savoury Embassy is its commitment to being a completely nut-free eatery, providing reassurance

for customers with nut allergies while maintaining the depth and authenticity of Indian street food flavours. Mukesh Tirkoti, owner of The Savoury Embassy, said he was delighted to be opening at Flemingate and becoming part of Beverley's thriving food scene. Having worked closely with Chef Gajender for the past 12 years, following the success of Ruthvika Spices Kitchen in North Ferriby, Mukesh explained that The Savoury Embassy has been developed in response to current market demand, with a strong focus on fresh, high-quality food using mainly local suppliers.

### Opening Hours:

Monday: closed, Tuesday to Saturday: 12pm-10pm, Sunday: 12pm-9pm. (takeaway is open after 5pm Monday to Friday and all weekend).



# FOX MOBILITY - THE MINDSET OF DISCOVERY

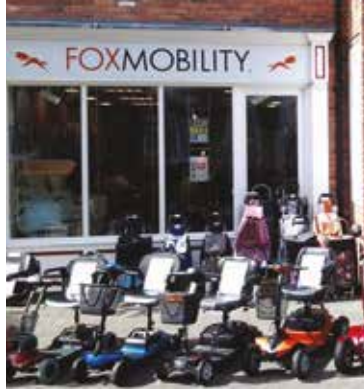
*Spring often brings a noticeable shift in mindset, especially for people using mobility aids. As the weather becomes warmer and days grow longer, there is a natural motivation to leave the house and reconnect with the outdoors. Brighter environments, blooming landscapes can boost mood, reduce feelings of isolation, and encourage a more positive outlook.*

Anne added, "For individuals who rely on mobility aids, Spring can also mean improved accessibility. This seasonal change can inspire confidence to explore local areas, try new activities, or simply spend more time outside".

At this time of year, paths are clearer, parks become more usable, and community spaces are more active, making outings feel safer and more enjoyable and gives a renewed outlook to explore. Social opportunities also increase, from casual meetups to local events, helping people feel more connected.

Fox Mobility understands that Spring acts as a gentle motivator, encouraging independence, exploration, and wellbeing, while supporting a more active and engaged lifestyle for those using mobility aids. Anne and Paul are there to ensure you get the right equipment for your circumstances.

**Fox Mobility: 110-112 Walkergate, Beverley, East Yorkshire, HU17 9BT.**  
**Email: [info@fox-mobility.co.uk](mailto:info@fox-mobility.co.uk) | Website: [www.fox-mobility.co.uk](http://www.fox-mobility.co.uk)**  
**Tel: 01482 887799.**





## Botterill & Co

Chartered Certified Accountants

We are a modern and professional accountancy practice ideally located to serve businesses in Beverley and the surrounding area.

We utilise modern accounting technology to provide you with a cost effective, professional service.

**Our services:**

- Annual Accounts
- Company Formations
- Tax Planning
- Payroll
- Management Accounts
- Cloud Accounting
- Tax Returns
- Bookkeeping & VAT

For a free initial consultation please contact us:

**Office: 01482 862240**  
**Email: [gareth@botterillco.co.uk](mailto:gareth@botterillco.co.uk)**  
**Website: [www.botterillco.co.uk](http://www.botterillco.co.uk)**

1st Floor Offices, 40 Norwood, Beverley, HU17 9EY.




**Tel: 01482 887799**  
**Email: [info@fox-mobility.co.uk](mailto:info@fox-mobility.co.uk)**

**110-112 Walkergate, Beverley, East Yorkshire HU17 9BT**

---

- **Stairlifts**
- **Riser Recliner Chairs**
- **Walking Aids**
- **Power Chairs**
- **Scoters and Accessories**
- **Servicing and Repairs for your Mobility Equipment**










# IN THE PICTURE WITH JOSH

*Now the warmer weather is here, it's the perfect time to get out with your camera in nature and start conditioning yourself into looking a bit closer, whether you have a macro lens or just a standard lens, you can still get some great close ups of various plants, flowers and insects.*

From butterflies to bee orchids, the Summer weather will give you plenty of chances to see things you've probably never even noticed before.

Nature reserves are a great place to find all sorts of wildlife, but with macro photography you can usually find something new just in your garden.



It's also a great time for photographing other wildlife, such as the seabirds at Bempton as the gannets, puffins and other sea birds are nesting.

As we get later into May there are also more reptiles to see such as lizards on the Yorkshire Coast or adders and slow worms up in the Moors, or even grass snakes in East Yorkshire.



Wherever you go, there will be something to see. The rivers and waterfalls are not usually as impressive during the warmer months, but if we get any heavy showers or storms coming through, it's worth visiting them the next day when they are in full flow.

You can find more information about my work and full portfolios on my website and my social media pages and if you have any questions don't hesitate to get in touch.

Instagram: [@joshharrison.photography](#)  
 Facebook: [@JoshHarrisonPhotography](#)  
 Web: [www.joshharrisonphotography.com](http://www.joshharrisonphotography.com)  
 Email: [info@joshharrisonmedia.com](mailto:info@joshharrisonmedia.com)



## RM JOINERY KITCHENS & BEDROOMS

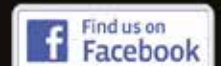
QUALITY WORKMANSHIP FOR ALL YOUR FITTED FURNITURE NEEDS



**KITCHENS • BEDROOMS • HOME STUDIES • BATHROOMS**

Visit Our Showroom: Hull Bridge Road, Tickton HU17 9RT

**01482 867389**



[rm.joinery@yahoo.co.uk](mailto:rm.joinery@yahoo.co.uk) | [www.rmjoinerykitchens.co.uk](http://www.rmjoinerykitchens.co.uk)



# Live your life the way you choose

Live every day your way at Beverley Parklands in Beverley, where you can continue with much-loved hobbies, try new activities and make new friends all in a welcoming, safe environment.

Beverley Parklands, rated 'Outstanding' by the CQC, is now part of Care UK, offering residential, dementia, and respite care.

From pampering sessions in the hair and beauty salon, movie marathons in the cinema, to socialising in the café and bar – enjoy a fulfilling lifestyle tailored to you.

## Relax in luxurious surroundings

Beverley Parklands is designed to go beyond the expectations of a traditional care home. Residents can enjoy a range of luxury facilities, including a bar, café, and hair and beauty salon, a bowling green, roof terrace, and spacious terraced balconies.

Residents can choose from a range of rooms, with larger rooms and suites offering extra space and comfort – ideal for couples wishing to stay together.

## Choose what makes you happy

At Beverley Parklands, you can fill your day with activities you enjoy. From crafting, painting and gardening to laughter-filled days out, we'll support you to live life to the full. Highlights include a lovely trip to our local coffee shop for delicious cakes, coffee and a good catch up with friends.

For restful moments or quieter days, you can enjoy a natter over afternoon tea with friends and family in the café or simply enjoy the sunshine with a good book in our landscaped gardens.

## Fulfilling lives and dreams

Dreams really can come true with our Wishing Tree initiative, which all residents can take part in. When you hang your wish on our tree, we will do our best to make it happen, no matter how big or small your request is.

## Home-cooked meals to savour

Care UK's award-winning dining experiences focus on providing choice and accessibility for all. Meals are tailored to suit any dietary needs you may have, including modified diets if you have difficulties with swallowing (dysphagia). Rest assured that no matter your needs, you'll enjoy high-quality, tempting meals, as well as sweet and savoury treats.

Dine in restaurant-style surroundings, with the reassurance that our team is ready to step-in if you need a helping hand at mealtimes. In-room meals are also available if needed.

To find out more about Beverley Parklands, call **01482 262 163** or visit our website [careuk.com/beverley-parklands](https://www.careuk.com/beverley-parklands)

**Beverley Parklands care home**  
**Beverley Parklands, Yorkshire**  
**HU17 0RA**

# THE LONG BUT NARROW GARDEN

**The size of a garden always has impact on the visual impression it creates. A small garden though narrow in width but longer in length is often a much harder task to create a design that will work from many perspectives.**

Creating a journey through the garden will be a key aspect to the design. Features need to be added in order to break the view, and slow your pace, and in doing this will encourage further exploration taking the eye forward.

If possible, dividing the garden is the first thing to consider, however the division needs to be both open and leading, and also connective. Something as simple as an arch, encasing the path will create both an entry point and take you on a journey to the next area of the garden.

The use of an arch will in turn frame the view with not only the tactile structure of perhaps wood or metal, but also the addition of climbing plants that can be used to give both colour and texture to the feature. Positioning a bench further through the garden would be an option, again encouraging you to sit down and take time out.

Often a long garden will be divided into irregular sections, and the cohesion that needs to be created from this pattern is essential. A path will lead you from one area to the next but at the same time needs to connect the whole garden, it may be a straight path but one that can be planted at both sides, which will create both structure

and yet informality. The planting of shrubs at key points in the borders connected to the path will give a visual image of unity.

Over time the shape will increase in volume changing the image. The borders can be interplanted with seasonal bulbs and perennials offering a long season of colour and interest.



## The Gardeners Calendar

The month of May can be perceived as the end of Spring, but it is often one of the most exciting times indicating the start of a new season. Rhododendrons are coming into flower, a striking shrub especially in a woodland setting. You can however grow them in pots in an ericaceous compost. A stunning evergreen feature on a semi shaded terrace.

The Ribes sanguineum in my garden has been flowering since mid-February, a truly beautiful feature and one that has been heaving with bees. On numerous occasions this year I have created flower arrangements with the branches a valuable addition to the house. After flowering it is time to prune back the shrub, remove any old wood and trim to

shape Early flowering shrubs are important garden features and perennials such as Hellebores which were flowering in November and December and are now only just coming to an end, they are essential to the early feeding of insects, and bees.



Keep sowing lettuce seeds every two to three weeks to ensure a good supply throughout the Summer months and into Autumn. Salad crops do not need to be in full sun so again are valuable if you only have a small space outside the back door.

I have just started to harvest my Rhubarb, which I will do until June or July. Pull the stems from the base rather than cutting, as this will encourage further growth.



The tulip in the photograph is called 'Purissima' one that could be sourced in Autumn and planted in November. It flowered very early this year but in doing so lifted the border with its distinctive colour and shape.

<https://ordinarygardener.com> - Julie Dowding

## I'VE BEEN THINKING... SAYS COLIN RAYNOR

**Retirement. It is supposed to mean that period of your life when you are no longer paid for the work that you do, day by day. I was fortunate to retire in that sense some twenty years ago.**

My recent illness has reminded me of the many things my dear wife and I have been able to do since my retirement which we may not do again.

Not for me, the pursuit of higher education in my younger days and I often think that a person's ability to achieve academically can come at different stages in their life.

The pressure to progress with the rest of your age group along the examination route can have a negative effect on some teenagers.

The first 15 years of my working life found me in the textile mills of the town of my birth, Huddersfield. This was the centre of the textile industry and I was proud that in due course I was one of the weavers helping to produce some of the finest cloth in the world.

When I read the words 'weaver's shuttle' I am taken back to the time when my days were filled with the noise of forty looms and inch by inch there would appear another 70 yards of cloth soon to become a suit or classic coat.

The noise from all those machines was so intense that at first I wondered how on earth I was going to hear myself speak. However I soon became accustomed to the noise and in due course held a conversation. Then the noise of the looms was just that, background noise.

The fact that I worked with many people, men and women older than myself, and observed their interaction with each other was to prove invaluable in the years that followed as a social worker.

One example of the change that can take place in people was when the mill introduced a 'time and motion study' in the weaving department.

Up to that point I had considered myself very fortunate to work with a group of men who would stop what they were doing and guide me on various aspects of the work I was doing for the first time. But the central factor of a time and motion study is to specify a set time and payment for every bit of work you were doing. A person would sit with a time watch and record how long each procedure took to accomplish.

The result of course was supposed to increase production and no doubt it did. But no longer could your friend stop what he was doing to

help you as a learner because it might mean he would have less money in his pay packet at the end of the week.

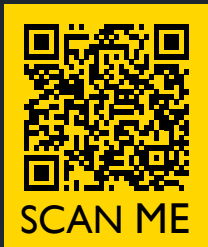
The revelation of how men treasured what they had in their weekly pay packet and how much they shared with their family could be subject for another time.

I remember having to sit an examination as part of my training to work in the mill on the Saturday afternoon of a Cup Final. Predictably my exam results were not good and it may have been as a result of that failure that I moved on to another of the main textile mills in the town.

Helping at the local Y.M.C.A in their Youth work, and through my church being in at the start of the first Samaritans group in Huddersfield, led me to apply to become a social worker.

Now I had to apply myself to two years of study and education about society. But now studying was no hardship as both in books and in my daily work, I was to learn very quickly what the term 'dysfunctional family' really meant and how I was able to offer to help.





**YOU'RE EVICTED**



“ No, you can't,  
It's my home. ”

“ Yes I can,  
it's my house. ”

TENANTS AND LANDLORDS:  
Know your new rights from 1, May 2026

**PREVENT ILLEGAL EVICTION**

Visit:  [housinghub.campaign.gov.uk/renting-is-changing](https://housinghub.campaign.gov.uk/renting-is-changing)  
or scan the QR code for more information.

# LOVE YOUR CONSERVATORY AGAIN THIS SUMMER

*Summer is calling, leaving many homeowners with a familiar dilemma. The conservatory that felt so inviting in Spring becomes uncomfortably hot by midsummer, leaving a much-loved living space largely unused for weeks on end. If that sounds familiar, the good news is that there is a straightforward solution.*

Traditional glass and polycarbonate conservatory roofs were never designed for year-round comfort. They create a greenhouse effect that sends temperatures soaring on sunny days, produce uncomfortable glare on screens and furniture, and offer very little sound insulation when the rain arrives. For many families, that means a beautiful room sits empty just when they most want to enjoy it.

At Cherry Group, we fit warm conservatory roofing systems that replace dated glass or polycarbonate

panels with a fully insulated solid roof. The result is a room that stays noticeably cooler in Summer and significantly warmer in Winter, so you can finally use your conservatory every day of the year rather than just a handful of weeks between seasons.

The benefits go well beyond temperature. A warm roof dramatically reduces glare, making the space ideal for reading, working from home, or simply relaxing in front of the television. The improved sound insulation muffles heavy rain and hailstones, while the enhanced thermal efficiency helps keep energy bills in check.

Many of our customers tell us their conservatory has effectively become a brand-new room in the house. Installation is typically completed in just a few days, with minimal disruption to your home.

Skylights and lanterns can be incorporated to retain natural light, and the finished ceiling can be plastered and decorated to match the rest of your interior.

Rather than replacing the whole structure, a warm roof refurbishment gives your existing conservatory a fresh lease of life at a fraction of the cost of a full rebuild.



If your conservatory has been unused because it is too hot, too cold or too noisy, now is the perfect time to plan a refurbishment ahead of Summer.

Our team at the Beverley showroom would be delighted to talk you through the options and arrange a no-obligation quotation.

Get in touch with Cherry Group on **01482 770621** or visit [cherrygroup.uk](http://cherrygroup.uk) to find out more.







## IS YOUR CONSERVATORY SUMMER READY?

All year round living space with a warm roof from Cherry Eco Rooms.

- No aluminium or timber
- Resistant to rot, decay and pests
- Cool and relaxing in the summer
- Fast fitting with minimal disturbance
- Building regulations compliant
- Industry-leading energy values
- A range of roof finishes to choose from




**VISIT OUR SHOWROOM: Unit 2, Beck View Road, Beverley, HU17 0JT**





GET IN TOUCH  
01482 770621  
[www.cherrygroup.uk](http://www.cherrygroup.uk)






# Your local **LANDSCAPING SPECIALISTS**

**FREE  
LOCAL  
DELIVERY**

Visit us in branch and explore our landscaping display with a wide range of materials, and speak to one of our specialists who can help you find the right product for your space.

Swinemoor Lane **Beverley**  
HU17 0JX **01482 880088**



**MKM**  
mkm.com

# SPRING WELCOMES A HIVE OF ACTIVITY ON THE WESTWOOD

**The Beverley Westwood has an interesting history, and is key to the development of Beverley through the ages.**

The Westwood, with its wide open space on the edge of the market town, plays a vital role in supporting physical activity, mental health, and overall well being, particularly during the Spring season.

As temperatures rise and daylight hours lengthen, the Westwood becomes an inviting environment for walking, running, outdoor exercise, rest and relaxation, helping to motivate with health and fitness but also encourages people of all ages to adopt more active lifestyles in a natural setting.

Beyond physical benefits, the open green spaces provide a calming escape. The fresh air, blooming flowers, and greenery has been shown to reduce stress, anxiety, and fatigue.

Simply spending time outdoors, whether relaxing on the grass, reading, or socialising can significantly boost mood and mental clarity.

The changing season symbolises renewal and growth. The Westwood is there to offer opportunities to reconnect with nature, observe wildlife, and enjoy the sensory benefits of colour and scent. building on community interaction, bringing people together and it's on our doorstep for free.



## THE HISTORY OF THE MAYPOLE

**The Maypole is one of the most colourful and enduring symbols of British folklore, representing a blend of seasonal celebration, community identity, and historical controversy. While today it is often associated with school children in Victorian dress, its history is far more robust and, at times, politically charged.**

### Ancient Roots and the Spirit of Spring

The exact origins of the maypole are shrouded in the mists of the medieval period, though it is widely accepted as a Germanic and Pagan-influenced tradition. At its heart, the maypole was a celebration of the return of Spring - specifically May Day (1st May).

Historically, villagers would venture into the woods to fell a tall birch or larch tree, strip its branches, and haul it back to the village green. This act was more than mere decoration; it was a communal rite intended to ensure fertility for the land and the livestock.



### The Medieval "Maying"

In the 14th and 15th centuries, the maypole was the centrepiece of a festival known as "bringing in the May." These celebrations were often raucous affairs involving:

- Morris dancing and archery competitions.
- The crowning of a May Queen.
- Feasting and "mummer's plays."

### Religious Conflict and the Puritan Ban

The maypole's history took a dramatic turn during the 16th and 17th centuries. To the rising Puritan movement, these poles were "stinking idols" that encouraged "lewdness" and "heathenry."

In 1644, under the leadership of Oliver Cromwell, the Long Parliament issued a decree banning all maypoles across England and Wales. The poles were chopped down and burned as symbols of vanity and superstition.

However, this suppression only increased their symbolic value for Royalists. Upon the Restoration of Charles II in 1660, maypoles were triumphantly re-erected across the country - most notably the "Grand Maypole" in the Strand, London, which stood over 40 metres tall.

### The Victorian Reimagining

The version of maypole dancing most familiar to us today- the intricate braiding of coloured ribbons - is actually a relatively modern invention.

In the medieval era, dancers typically circled the pole in a more chaotic, free-form fashion.

During the Victorian era, there was a surge of "Merrie England" nostalgia. Teachers and folklorists, such as John Ruskin, sought to "civilise" the dance for children.



They introduced:

- Coloured ribbons attached to the top of the pole.
- Choreographed patterns, such as the "Spider's Web" or the "Plait."
- Standardised music, moving away from the bawdy folk tunes of the past.

### The Maypole Today

Today, the maypole remains a staple of village fetes and primary school playgrounds. While its pagan significance has largely faded, it remains a powerful link to Britain's rural past.

Whether it is the permanent stone-based poles found in North Yorkshire or the temporary wooden ones in southern village greens, the maypole continues to stand as a testament to the British love for tradition and the seasonal cycle of the natural world.

"The may-pole is a sign of joy... that the Winter is over and the Summer is come." - Traditional Folk Saying.

How do you feel about the transition of these ancient, "wild" traditions into the more structured celebrations we see today?

**Shane Cooper, Stuarts of Driffield, Lincoln Way, Beverley, HU17 8RH.**

# W H Halmshaw Ltd



Our Hull and Beverley showrooms are open  
Monday to Friday 9am-5pm & Saturday 9am-1pm.

Our Hull and Beverley trade counters continue to open Monday to  
Friday 8am-5pm & Saturday 9am-1pm.

Your Local Bathroom Suppliers, Plumbing Merchants & Glass  
Specialists with Showrooms in Hull & Beverley.

**FOLLOW THE DUCK!**  
See me on the back of our vans



#followtheduck

tweet us a pic when you spot  
the duck to @whhalmshawltd



The Showroom is constantly updated to reflect new designs.

W H Halmshaw Ltd, Inspirations Works, Annie Reed Road, Beverley, HU17 0LF.

**T: 01482 867142 • [www.halmshaws.co.uk](http://www.halmshaws.co.uk)**

# EXCELLENCE AND HISTORY AT BEVERLEY & EAST RIDING GOLF CLUB

*There is a palpable sense of excitement at Beverley and East Riding Golf Club. With the season now officially underway and competition play returning to the white tees, the course has never looked - or played - better.*

## Championship Standard Greens

The talk of the clubhouse this month is the official opening of the brand-new greens on the 4th and 7th holes. These additions have been met with universal acclaim from members and visitors alike. Their successful debut is the result of a dedicated team effort led by Head Greenkeeper Dave Jackson and Course Director Andy Greetham, with invaluable expertise from consultant and club member Dave Norton.

The quality isn't limited to the new holes, however. The entire course is in world-class condition. Recently, Gary Brown, a retired professional from



the prestigious Ganton Golf Club, remarked that our greens were the finest he had played on all Winter - high praise indeed for our hard-working greenkeeping team.

## Modern Comforts, Classic Views

Off the course, we are delighted to unveil our newly laid patio. Designed to make the most of our unrivalled views across the Westwood, it offers a modern, stylish space for golfers to tally their scores and for local residents to enjoy a relaxed summer drink. Whether you are hosting a social event or simply stopping by after a walk, the new terrace is the perfect spot to soak in the scenery.

## Historic Honours

The Club is also celebrating a significant milestone in its history. Our Secretary/Manager, Andrew Webster, has been nominated to serve as Captain of the Yorkshire Golf Club Managers Association (GCMA) for 2027. This is a prestigious honour; Andrew is the first manager from our club to receive this nomination since the Association was founded in 1933. It is a testament to his dedication and to our club's growing reputation within the regional golf community.

## Dates for Your Diary

**The Beverley Challenge Trophy (May 5th):** We are proud to host the oldest golf competition in Yorkshire. We already have a full tee sheet for this historic event, promising a fantastic atmosphere on the course.



**Women's Golf Lessons:** Following high demand, our popular women's coaching sessions are set to resume in mid-May. These lessons are perfect for those looking to take up the game or refine their skills in a supportive, social environment. Whether you are a seasoned pro or a local looking for a beautiful place to enjoy a coffee, Beverley and East Riding Golf Club welcomes you.

## Did You Know?

**A Century of Leadership:** When Andrew Webster takes the Captaincy of the Yorkshire GCMA in 2027, he will be the first-ever representative from our club to hold the title in the Association's 94-year history.

**The Ultimate Test:** The Beverley Challenge Trophy, played this May 5th, holds the distinction of being the oldest golf competition in Yorkshire.

**Pro-Approved:** Our greens were recently described by a retired Ganton professional as the best he has played on all Winter - a testament to our year-round playability.

**A View for Everyone:** You don't need to be a member to enjoy our new patio. It's open to locals and walkers looking for the best vantage point of the Westwood.

## GOLF LESSONS

Coaching programme for women  
Thursdays 6:30 - 7:30 pm  
£10 per session  
To book phone 01482 868757  
or email [theo@beverley.golf](mailto:theo@beverley.golf)

**STARTS 14TH MAY**

Telephone: 01482 869111  
sales@rosesofbeverley.karoo.co.uk



The Kitchen Factory, The Courtyard,  
Tokenspire Business Park, Beverley  
HU17 0TB

Monday to Friday 9am - 5pm | Saturday 9am - 1pm

*Roses Kitchens - proud to serve Beverley for the last 25 years*

Coming Soon  
ROSES BEDROOMS

I would love a



kitchen

You will adore your



bedroom

**Please call 01482 869111 to book a viewing**

MANY MORE OF OUR CUSTOMERS KITCHENS ON OUR WEBSITE

5 STAR RATED OVER 100 GOOGLE REVIEWS ★★★★★

Visit [www.roseskitchens.com](http://www.roseskitchens.com)

to see our customers kitchens and read what they have to say about us

**Telephone: 01482 869111**



## BEVERLEY BLOSSOM PHOTO QUIZ

Can you try to identify the exact locations of my photos of our lovely Spring blossom. Answers on Page 37. Ian Richardson.



1



2



3



4



5



6

# Jadan

Print that gets you noticed

Jadan Press are a leading family run commercial and trade printer based in Hull.

With over 25 years experience, we are renowned for producing exceptionally high quality print, design and finishing.

- BROCHURES** **LEAFLETS**
- POSTERS** **CALENDARS** **PADS**
- LARGE FORMAT PRINTING**
- STATIONERY** **MAGAZINES**
- SAFETY SIGNAGE** **BANNERS**
- LABELS** **DIE-CUTTING**
- and much much more**



PROMOTA 3 STAR ACCREDITED MEMBER  
 BPIF making change positive  
 CFA ISO 9001 Quality Management

## 01482 610902

[sales@jadan-press.co.uk](mailto:sales@jadan-press.co.uk) [www.jadan-press.co.uk](http://www.jadan-press.co.uk)

Rainbow House, Kimberley Street, Hull, HU3 1HH

jadan\_press jadanpress jadanpress

## WORDSEARCH

E P F L G P Q Z D K H B Y J P  
 B M O Z U K U L E Z L C E O H  
 I Y X K H E M J P O G V L T L  
 Z E U Y B V A R S V R L A Q T  
 F W G H T Q E S P R E L B V A  
 E G L R P D O F R N E B G F E  
 F C A T V M F L I F N W M L Q  
 A Y G O G P E H N G E Z O D U  
 F X J T A E S E G U R P X L W  
 V P U O Q N J Y T M Y K J Y F  
 K Z S B U A P T I A K N I S G  
 E K K S E E B N M Y Z K V B L  
 V X L C K A W S E D D T O Q A  
 X Y V L P H T M R A W M M B R  
 W L H K G Z C K T Y V Z U D F

BEES  
 BLOSSOM  
 FLOWERS  
 GREENERY  
 MAYDAY

MAYPOLE  
 POLLEN  
 SPRINGTIME  
 SUNSHINE  
 WARMTH



Where are the Ducks?  
 Answer on Page 37.

## QUOTE FOR MAY

May - Making adventures, keep smiling,  
 there's so much to smile about.

## WHERE IN BEVERLEY?

Where in Beverley can you find this landmark? Answer on Page 37.

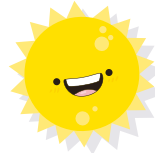


## WHAT IS IT?

Can you work out what this obscure image is? Answer on Page 37.



## COMEDY CORNER



What did the dirt patch say to the rain?  
 Keep this up, my name will be mud.



Why is the letter A like a flower?  
 Because B's come after it.

What bow cannot be tied?  
 A rainbow.

What do you call a trendy Lion?  
 A Dandy Lion.

What Bulb glows in the dark?  
 A light bulb.

Why was the tomato embarrassed?  
 It saw the Salad Dressing.

What is a Spring time emergency?  
 May Day.

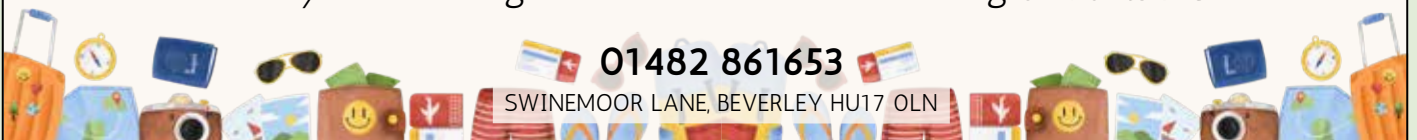
**DREAM DOORS**<sup>®</sup>  
 NEW LIFE FOR OLD KITCHENS



**BRING NEW LIFE  
 TO YOUR KITCHEN  
 THIS SUMMER**

Get Holiday-Ready for Less: Save up to 50% vs a Full New Kitchen

Proudly transforming kitchens across the East Riding of Yorkshire



01482 861653

SWINEMOOR LANE, BEVERLEY HU17 0LN

# LOOKING ON THE BRIGHT SIDE OF LIFE

*It's impossible not to notice how amazing the cherry blossom looks in April and May - the branches seeming to sag towards the grass, weighted down by the floral abundance of pink petals. Beverley is feeling alive with the promise of Summer and the warmer days stretching ahead.*

Even though I work in the field of wellbeing, I often forget how uplifting it is to notice the simple things in life that cost nothing and yet lighten the mind and spirit.

I wonder if it is part of the human experience to focus on the negative as it takes effort to notice when things are as we would like them to be; we notice a sore throat or a crick in the neck but on days when we feel healthy, well and positive, do we have a moment of gratitude?

Our brains are wired to have a natural negativity bias as we are evolutionarily hardwired to notice the "cows on the Westwood" if they look like they might charge, but to ignore the beauty of the grass and the buttercups that they're standing on.



With Mental Health Awareness Week (11th - 17th May) this is a great opportunity to highlight techniques that allow us to take that positive slant on life. When things feel overwhelming at times and the mind can feel a bit like the overburdened cherry blossom tree, journaling or writing a gratitude list can help relieve your mind as if you're allowing those excess thoughts to float down to the ground.

If you keep every worry, to-do list, and intrusive thought in your head, the branch starts to strain and sag but journaling moves those thoughts from your internal "branch" onto the paper.

The past is history and tomorrow is a mystery so staying in today helps to make life manageable and even enjoyable.

It is OK to not be OK and on days like this, it's worth remembering the phrase "this too shall pass".



Another tool I recommend people pop in their toolbox comes from mindfulness... taking each minute, hour and day, moment by moment, without judging it as good or bad.

How does this work practically... here's an example: as the Jocks Lodge roadworks continue, next time you find yourself sitting in a queue of traffic, safely take a moment to look around at flowers growing along the roadside, birds peacefully flying by and marvel at how you can manage change (which can be stressful) to use a moment "stuck in traffic" to an "opportunity to take a beneficial pause".

With two Bank Holidays in May (Monday 4th and 25th), there's even more time to relax and watch the world go by whether its in a zen corner of St Mary's church or joining the community for a bank holiday stroll to the Black Mill. Remember, always look on the bright side of life... and I challenge you not to have that song in your head.

Every Monday, you can take time out for yourself with the free mindfulness session from 7.15pm to 7.45pm.

For more information visit [www.francesdunning.com](http://www.francesdunning.com) or contact me, Fran Dunning on **07973 819867** for details of mindfulness zoom link.

**All About You Hypnotherapy**  
Helping You Get Peace of Mind in Practical Ways

I've been helping people of all ages increase their levels of confidence and improve their life for over 20 years using hypnotherapy.

I can help you reduce anxiety, get rid of fears and phobias and embed positive habits to increase your levels of health and wellbeing.

Based on Victoria Dock and available face to face or via Zoom globally.

Let me help you to enjoy a new sunrise

**Fran Dunning**  
Clinical Hypnotherapist & Provider of Mindfulness in the Workplace  
Victoria Dock, Hull  
Mobile: 07973 819867  
e-mail: [info@francesdunning.com](mailto:info@francesdunning.com)  
website: [www.francesdunning.com](http://www.francesdunning.com)

**CHILD SWIMMING LESSONS AVAILABLE IN DUNSWELL**

For beginner & intermediate levels

- ✓ Private, heated pool in a quiet setting in Dunswell
- ✓ Parents can sit on poolside to support their child
- ✓ Plenty of **FREE private parking** available on site

**HUG OAL**

Enquire here

Contact us at **01482 229676**

# WILSONS WHEELS - ENJOYING THE DAYLIGHT HOURS

*Spring is one of the best times to get the most benefit from cycling, both physically and mentally.*


As temperatures rise and daylight hours increase, it becomes easier to ride more consistently without the extremes of Winter cold or Summer heat. To make the most of Spring cycling, start by setting a regular routine and aim for a few rides each week to rebuild fitness gradually after Winter.

Take advantage of the fresh air and blooming scenery to boost motivation and mental well-being. Cycling outdoors in Spring can reduce stress and improve mood, making it easier to stay committed. It's also a great time to vary your rides: mix longer, steady rides with shorter, more intense sessions to improve endurance and strength.

Make sure your bike is in good condition after Winter storage, check tyres, brakes, and gears to ensure a smooth and safe ride. Wearing layers is key in Spring, as the weather can change quickly during a ride.



Finally, stay consistent rather than pushing too hard too soon. Gradual progress will help prevent injury and build lasting fitness, allowing you to fully enjoy the benefits of cycling as the season develops.





Pop in store to see the new 2026 bike range



WILSONS WHEELS

T: 01482 882881

W: [www.wilsonswheels.co.uk](http://www.wilsonswheels.co.uk) E: [info@wilsonswheels.co.uk](mailto:info@wilsonswheels.co.uk)

Wishing Everyone a Happy Cycling 2026

- Adult Bikes
- Children's Bikes
- Electric Bikes
- Clothing for all cycling weather
- Parts and accessories

89a Grovehill Road, Beverley, East Yorkshire HU17 0EJ

NOW OPEN:

Monday - Friday 8.30am - 5.30pm  
 Saturday 9am - 5pm    Sunday: CLOSED - Out riding our bikes

# BEVERLEY AC - WELCOMING SPRING WITH SOME GREAT RUNNING!

*There is certainly a spring in the step of several Beverley runners as they put on their running shoes producing some outstanding performances during the month as well as putting in the training for some popular upcoming local races!*

Huge congratulations to one member who has certainly put in the miles especially on the trails! Peter Watkinson received his '1000 miles' awards from Hardmoors organisers, Jon and Shirley Steele, and he received a plaque, hoodie and permanent running number after completing the Hardmoors 55. Well done Peter on your incredible achievement!



The iconic Pittaway Beverley's 10kms race takes place on Sunday 10th May. The event is now full, but entries are open for the Viking Pest Control Walkington 10kms and the Westwood Mortgage Advisers Walkington fun run which takes place on Friday 10th July.



This is a great opportunity to get your weekend off to a flying start! A few places are still available for Walkington so head to the Club's website where further details and a link to register can be found!

New members, whatever your age and fitness level, are always welcome and further details about the membership and what the Club has to offer to its members can be found on the Club's website: [www.beverleyathleticclub.co.uk](http://www.beverleyathleticclub.co.uk)

## WHERE IN BEVERLEY ANSWER

'Nellies', the White Horse Inn



## WHAT IS IT ANSWER

Did you guess the laces and the shoe?



## BEVERLEY BLOSSOM QUIZ ANSWERS

- 1 - Lord Roberts Rd.
- 2 - St Mary's
3. Corner of Well Lane & Cross St.
4. Jubilee Garden, New Walkergate
5. Outer Trinities
6. Minster Yard North

## FIND THE DUCKS ANSWER

You should have found those ducks on the Halmshaw advert on Page 31.

# WHAT'S ON IN BEVERLEY

Tell us about your event!

E-mail [info@justbeverley.co.uk](mailto:info@justbeverley.co.uk)

Telephone **01482 679947**

For more events visit  
[justbeverley.co.uk/pages/news](http://justbeverley.co.uk/pages/news)

**Beverley Bites Walking & Tasting Tours**  
[www.beverleybites.com](http://www.beverleybites.com)

**Every Monday**  
**Together in Grief Group Walks**  
6.30pm. Morton House, Morton Lane, Beverley.  
Cost: Free. Group walks for those who are bereaved. TiG walks are easy-paced, group walking sessions to help people cope with the loss of loved ones.

**4th Wednesday of the Month**  
**Beverley Ladies Who Latte**  
New venue - King's Head, Beverley. 10am-12pm.

**Every Monday**  
**Together in Grief**  
Easy paced walking sessions, Morton Lane, Beverley, every Monday at 6.30pm. Email: [heather@fitmums.org.uk](mailto:heather@fitmums.org.uk)

**Saturday 2nd May**  
**East Riding County Choir**  
Music Director: PR Dewhurst. Rossini: Petite Messe Solennelle. Beverley Minster, 7.30pm. Tickets £20 & £12 -Tourist Information Centre and on the door from 7pm or online at [www.eastridingcountychoir.org](http://www.eastridingcountychoir.org)

**Monday 4th May**  
**Beverley Race Course**  
Family Fun Day.  
<https://beverley-racecourse.co.uk/event-type/fixtures-and-tickets/>

**Sunday 10th May**  
**Beverley 10km**  
Starting at 10am outside Beverley Minster, running through the glorious Westwood common land, and spectacular finish through the town centre

**Tuesday 12th May**  
**Beverley Race Course**  
Afternoon Racing.

<https://beverley-racecourse.co.uk/event-type/fixtures-and-tickets/>

**Wednesday 13th May to Saturday 16th May**  
**Love from a Stranger by Agatha Christie and Frank Vosper**  
The Beverley Theatre Company. Curtain up at 7.30pm, Memorial Hall. Tickets - Tourist Information Centre £12 or on the door.

**Saturday 16th May**  
**Quartet of Choirs Concert**  
St Mary's Church. 7pm. Doors open at 6.30pm. Tickets £10 from Choir Members, 07779 277506 - Beverley Tourist Information.

**War Graves Week**  
St Mary's Church Cemetery. 11.30am. Discover learn and remember about the lives of 1.7 million men and women of the Commonwealth commemorated by the CWGC. Book your free ticket at [www.cwgc.org/war-graves-week](http://www.cwgc.org/war-graves-week)

**Friday 22nd May to Sunday 24th May**  
**Beverley & East Riding Early Music Festival**  
Miracles & Mysteries. Tickets: Beverley Tourist Information Centre. Box Office - 01904 658338. [www.ncem.co.uk/bemf](http://www.ncem.co.uk/bemf)

**Friday 22nd May**  
**War Graves Week**  
St Mary's Church Cemetery. 5.30pm. Discover learn and remember about the lives of 1.7 million men and women of the Commonwealth commemorated by the CWGC. Book your free ticket at [www.cwgc.org/war-graves-week](http://www.cwgc.org/war-graves-week)

**Until Saturday 23rd May**  
**Memories of Drawings**  
A free exhibition inside Beverley Art Gallery by pioneering American artist Georgia O'Keeffe. This exhibition is a Hayward Gallery Touring exhibition from Southbank Centre, London.

**Wednesday 27th May**  
**Beverley Race Course**  
Family Fun Race Day.  
<https://beverley-racecourse.co.uk/event-type/fixtures-and-tickets/>

**Saturday 30th May**  
**Beverley Race Course**  
Very British Race Day.  
<https://beverley-racecourse.co.uk/event-type/fixtures-and-tickets/>

**Sunday 31st May**  
**Spring Live 2026**  
Bishop Burton College. From 10am-3pm. Tickets £13 for adults £7 for children aged 3-15. Under 3s are free, students are £5, family ticket is £30. Parking is free and available via the college's main entrance on the A1079.

**Until Friday 5th June**  
**Portraits of Two Pastures**  
Beverley Guildhall. An exhibition on artistic films on Figham and Swinemoor pastures. A unique blend of contemporary footage and nostalgic memories, it is hoped the film will bring back memories for those who frequented the pastures as children and encourage those who have never been to explore these beautiful places. Free admission. Open Wednesdays (from 1st May) 10am - 4pm. Fridays 10am-4pm.

**Until Saturday 6th June**  
**Photo Finish - A Year at Beverley Races**  
Champney Treasure House Museum. Seven regional photographers capture a year of action at Beverley Racecourse. The photographs are complemented by museum objects, archive documents and loans from Beverley Racecourse exploring Beverley's long horse racing history. Free admission.



# Jeeves & Wooster

IN PERFECT NONSENSE

£28.00 - £15.00

10<sup>th</sup> - 26<sup>th</sup>  
September



A Play From The Works Of P.G. Wodehouse  
By Robert Goodale and David Goodale  
Directed by Richard Avery

## What's On?

**SIMON YATES OF  
'TOUCHING THE  
VOID' – 'PLEASURE  
AND PAIN'**

22<sup>nd</sup> May



**BOILER ROOM SIX**

A TITANIC STORY

23<sup>rd</sup> May



**MACBETH**

27<sup>th</sup> and 28<sup>th</sup> May





# YOUR LOCAL ROOFING SPECIALIST

## ROOF CRAFT

"Whatever the weather  
we have you covered."

• ROOFING • BUILDING • JOINERY

ALL TYPES OF ROOFING SERVICES	BIG OR SMALL		
NEW ROOFS	RE-ROOFS	ROOF REPAIRS	FLAT
ROOFING	CONSERVATORY ROOFS		



We are proud to have offered our services to the area for over 23 years building up our reputation by offering a high quality service at affordable, honest and reasonable prices to both residential and commercial customers.

Many of our customers are return customers or gained through 'word of mouth' and we **welcome this loyalty.**

**Office hours Monday - Saturday 7am - 7pm**

- Office 01482 241610
- info@roofcraftgroup.co.uk
- After hours 0800 3411721
- www.roofcraftspecialists.co.uk

**24 Hours 7 Days a Week Emergency Repair Call Out  
service with our expert roofing team on hand to  
assist in those most unexpected times  
0800 3411721**