

just BEVERLEY

01482 679947
justbeverley.co.uk
info@justbeverley.co.uk



FREE ISSUE 27

KELLY FOLEY
ARTISTIC PROGRAMMER AT
BEVERLEY FOLK FESTIVAL



• 4 FREE TICKETS TO
'GIGGLES LIVE' AT
PARKWAY THEATRE

**FAMILY FUN AT
BEVERLEY RACE
COURSE**

• A MEAL FOR TWO AT
THE KING'S HEAD

MARTIN PEIRSON
IN THE SPOTLIGHT

• FOLK FESTIVAL
TICKETS



THE PERFECT PLACE FOR US

BEVERLEY ARMS INVESTOR BACKS DESTINATION BEVERLEY

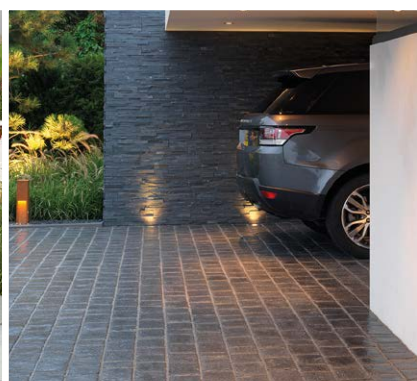
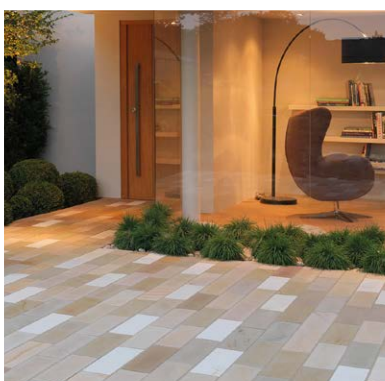
NEWS, WHAT'S ON, LIFESTYLE, FEATURES, PUZZLES, PHOTOS & MORE

FREE
LOCAL DELIVERY

MY KIND OF
GARDEN

Make your **outdoor space** your perfect **living space**

Inject personality into your garden this summer with a little help from **MKM** & ensure your garden is the one they're all talking about!



Call into branch today at...

MKM BEVERLEY
SWINEMOOR LN, BEVERLEY HU17 0JX
01482 880088 | mkmb.co.uk  





Letter from the Editors



Spring is a time when nature wakes up! The sun seems to shine more brightly, trees come into blossom and leaves start to unfurl, fields start to change colour from brown to green as plants grow and new life comes into the world - it's a wonderful time of the year. We all seem to have an inner glow with smiles on our faces and an optimism for the time ahead.

Beverley continues to develop with new businesses opening and the building work on the Beverley Arms Hotel beginning as it acquires a new lease of life. Destination Beverley launches to attract increased footfall into the area so that more people can experience our extensive variety of businesses, shops and entertainment - read our article on page 8.

Whether you are looking to relax, be entertained or shopping for something new, Beverley and our lovely surrounding villages have something for everyone. Let us know what you are up to - send us your pictures, get involved, tell us your stories - we love to hear from you.

Have a great Easter!

Julian.



As soon as the clocks go forward, I'm reminded to start Spring cleaning! My Gran would literally turn the house upside-down in her quest to remove the last traces of winter.

First, the living room and parlour had to be cleared ready for the chimney-sweep, then the floors scrubbed whilst the carpets and mats were aired over the washing line and beaten to within an inch of their lives to get every last dust-mite out. How wonderful to have electricity and vacuum cleaners today!

But all that scrubbing and cleaning, although time-consuming and hard work, was great exercise. I'm not surprised so many of the generation born at the turn of the 20th century lived so long - my own great aunts were 101 and 105 when they passed on and their father was 98! So I urge you to get those windows open to air your living space and then get yourselves out in the fresh spring air - maybe not beating carpets, but in the garden (see Jane's advice on page 31) or on a good walk (see Ian's walk on page 35).

Do get the most out of the longer days - sunlight is proven to make you feel good as it stimulates the pineal gland which controls sleep, mood and energy levels. No excuse to not be happy, then!

Linda.

Get in touch with us:

Website: justbeverley.co.uk
Email: info@justbeverley.co.uk
Telephone: 01482 679947
Twitter: @JustBeverley
Facebook: [facebook.com/justbeverley](https://www.facebook.com/justbeverley)

Printed by: Jadan Press



CONTENTS

Letters from the Editors
News
Parkway Cinema

PAGE

3
4, 5, 11, 12, 24, 26
6, 7

Features

Destination Beverley Launch 8
 Elizabeth Godber meets Sara Anderson 30
 Karen Robinson's Choose Amuse 22
 Kelly Foley, Artistic Programmer 25
 Martin Peirson in the Spotlight 27
 Roses - a lifetime of building kitchens 9

Regulars

Competitions 7, 15, 25
 Competition winners 6, 32
 Countryside Matters 22
 Finance 17, 21
 Flemingate Update 11
 Gardening 31
 Lifestyle 14, 15
 Motoring 29
 New Businesses 23
 Poetry 5, 24, 30
 Puzzles 28
 Sport 32, 33, 35
 What's On 34

Competition Terms and Conditions

Competition answers should be emailed to info@justbeverley.co.uk before the closing date with the competition title in the subject field. Include your name, address and daytime contact telephone number along with your answer. Winners will be notified within 1 week of the closing date and MUST be available for publicity purposes for Just Beverley magazine, website and Facebook page and the prize provider. The judge's decision is final. No cash alternative is offered. Details may be used for marketing purposes by Just Beverley and the prize provider and for website analytics by Just Beverley.

CONTRIBUTORS

Julian Minshall, Linda Johnson, Jane Dale, John Fewings, Richard Manville, William Bundy, Carfan, Ian Richardson, Sam Walton, Colin Raynor.

You can pick up the magazine from:

Beverley Parkway Cinema, Beverley Tourist Information, Beverley Library/Treasure House, Tesco, Morrisons, East Riding Leisure Beverley, Browns café, Beverley News, Boyes, Tesco café, Colette and Tyson Garden Centre, Beverley Garden Centre, Cherry Tree Garden Centre, Mace News in Saturday Market and Lincoln Way, Tickton News, Costcutter in Walkington, Molescroft News, Grovehill Convenience Store, Maple News, Leconfield PO, Poundland, Halfords, East Riding Community Hospital, Bishop Burton PO, The Altisidora, Cherry Burton PO, Monks Walk, Health Centres, cafés, hairdressers and more!

New controversial housing plans for Beverley

Additions to the current East Riding of Yorkshire Council Planning Strategy Document from 2016 due to be released at midnight on March 31st include recommendations that 75% of new build in Beverley and District will be earth-sheltered (underground) housing or single-story buildings.

There are currently only approximately 100 earth-sheltered houses in the UK due to the misapprehension that underground houses are dark, damp and smelly. But in Russia there is more development below ground than above it and highly-populated countries such as China and Japan are researching new methods to ensure such houses meet their potential as environmentally-friendly homes.

Meeting government targets for energy consumption as well as reducing the impact of storm-damage due to the increasing number of storms hitting the region is the key impetus for a rethink on new housing. The soil-type, topography,

precipitation, ground water levels, load-bearing properties and slope-stability will determine whether the houses built are earth-sheltered or single story.

There are several techniques for building earth-sheltered houses but all include enhanced ventilation to ensure indoor air quality and humidity. Light shafts, wells and atriums ensure such dwellings are spacious and light-filled and often, the materials excavated in construction can be used to build them. These houses require fewer building materials so the build cost is lower making them affordable for most people.

Earth insulation makes them highly energy-efficient and by using ground source heat exchange systems and solar panels, energy costs are often zero.

One of the other major attractions is that underground houses blend with the natural



landscape, leave habitat for wildlife and maintain attractive views. There has been concern expressed by residents that views of the Minster are becoming restricted due to excessive building. Adopting this new strategy will ensure views of the Minster, especially from the south are maintained.

Beverley Westwood Probus seeks retired and semi-retired business and professional men to join their club

Enjoy speakers and coffee mornings whilst interacting with like-minded people.

Recent speakers include Andrew Karavacs, head gardener to Sledmere Estate, who discussed his love of garden design, aspirations for Sledmere and the inspiration he finds in classical music. The gardens are kept in order by Andrew and his 2 assistants, who are always mindful of the wear and tear caused by an increasing number of visitors. Interested gentlemen should contact David Woods on davidwoods36@outlook.com or phone **01482 869209** for more details.



Join the Culture Train along the Hull to Bridlington line

This innovative development as part of the Hull City of Culture 2017 is funded by an East Riding of Yorkshire Council's Active Creative Grant to develop arts and cultural opportunities for residents and visitors to the East Riding.

During the 1960's, it was the fashion for folk artists to travel around the USA and Canada by train, performing on the trains as well as venues at the station stops. Chris Warkup, who is well-known locally as a music promoter, was reminded of this at a gig one evening. This gave him an idea - why not do something similar in East Yorkshire? With Hull being City of Culture 2017 and Paragon Station being a hub for travel through the region, why not use one of the train lines to take artists from Hull to the towns and villages along the route to perform? This could mean some of the villages would be treated to performances they are not usually able to access due to their remote location.

Not only were ERYC happy to support this idea, but so were Northern, the train company which runs trains between Hull and Bridlington! They committed to free return travel for the artists on the 5.45pm from Paragon Station meaning that Culture Train will operate on 6 Saturdays from April 1st to June 3rd.

19 different acts will play on different nights, traveling on the 5.45pm from Hull to the destination venue, which will be ready for them to plug in and play. They will then return to Hull on a later train. Chris hopes that some people might travel on the same train to the gig to get involved with the ethos of the Culture Train. The gigs are free for the public, but donations will be invited as each act will only get a small fee. The evenings will be recorded and a CD made of the project.



Chris is keen to see if this project could be extended to the other train lines which run through East Yorkshire.

The Culture Train programme to date is:

April 1st - Hutton Cranswick, The White Horse

April 15th - Cottingham, Hallgate Tavern

May 6th - Beverley, St Mary's Church. More about this next month - but Mighty and the Moon are headlining!

May 13th - Hull Paragon Station in the afternoon then Driffield Bell Hotel in the evening

May 20th - Nafferton Blue Bell

June 3rd - Bridlington Station Finale Concert.



Molescroft Primary School to change its daily schedule

Curriculum changes which raise the bar for achievement by primary school pupils in maths and English (including grammar) have meant that Molescroft Schoolchildren will lose their afternoon play-time - but increase lesson-time as well as PE time.

Molescroft School believes in providing the widest possible curriculum with rich experiences for its pupils to ensure they are equipped for the real world so they can capitalise on any opportunities that may come their way. Reducing the time spent on subjects such as RE, history and geography as well as Food Technology therefore was not an option - so the school has come up with innovative ways of creating more time.

Assembly has moved to the afternoon and, although afternoon play-time has been cancelled, children will be able to access a fitness unit every week from November to April as a full year group.

There is now a requirement for children to have at least 1 hour's physical activity every day (half of that being a requirement on the school, the other half hour on parents) so lunch-time and morning play-times remain as they were.

For children who have worked particularly hard at their academic classes, though, they will be rewarded with a visit to the Adventure Playground as a treat!

Molescroft School believes this is the best way to provide a generation of highly skilled, articulate and tolerant citizens equipped to be the next leaders, designers, inventors, innovators, discoverers and creators.



New Conductor for Beverley Chamber Choir's Good Friday Concert

Jeffrey Makinson, Assistant Director of Music at Lincoln Cathedral and Tutor in Organ Studies at the Royal Northern College of Music has taken over the baton from Mark Pybus at Beverley Chamber Choir.

Founder Alan Binnington originally directed the 30-strong choir, which performs three concerts every year in the East Riding as well as occasional cathedral tours. It has gained an enviable reputation and seeks to build on that reputation with the performance of one of J. S. Bach's much-loved liturgical cantatas which was written to be performed on Good Friday, St John Passion. It is a truly optimistic work, anticipating the resurrection with music suffused with light and hope. The Choir will be joined by invited soloists Richard Dowling (Evangelist), Eleanor Garside (soprano), Joyce Tindsley (contralto), Austin Gunn (tenor) and Robert O'Connell (bass). The performance is on April 14th at 7.30pm at St Mary's Church, Beverley.



Lost Poem Found!

In Edition 24, in his walk to Kiplingcotes, Ian Richardson mentioned an elusive poem called 'Kiplingcotes' by a lady called Clare Ellin and wondered if any readers had a copy.

Fortunately, local musician Martin Peirson, who we feature on page 31, did!

You can see the poem below. We think it is simple and beautiful and it would be lovely to find out more about Clare Ellin, who died over 30 years ago.

Fortunately, there is a new book published in 2016 about her life and poetry 'Clare Ellin: The Wise Woman of Kilnwick' by Frank McGarry available from the usual outlets.

Thank you, Martin, for sending the poem in - here it is, on the right...

Kiplingcotes

Long ago

*I picked cowslips here
on a green hill-side
where trains rushed by.*

A boy

*waved from a window.
I thought I'll never see
that boy again
and I went on picking
cowslips in the rain.*

Cowslip sweetness on my mouth

*when I kissed raindrops
from the fragrant flowers.
Warm rain from the south
but the boy went north
in the whistling train.*

*I'll never pick cowslips
here again -*

*no railway, no train,
only the sad grey rain
on this bare hill-side.*

New Paths Music Festival

The second New Paths Festival runs from Wednesday 19th April with 3 free events at Toll Gavel United Church, Beverley to the closing concert at St Mary's Church on Sunday 23rd, St George's Day.

New Paths is one of the most exciting music festivals in the country, featuring an array of artists and combining world-class concerts with dynamic community involvement.

There is something for everyone, young or not-so-young, including newly-commissioned work as well as established favourites and even a come-and-sing event. Several performers are from the East Riding and new baroque-band Contraband,

are performing with local teenage musicians as well as by themselves.

There are explorations of our two beautiful gothic buildings, a celebration of local artist Fred Elwell and organ events dedicated to the memory of Alan Spedding. Many events are free, although it is recommended that you reserve your seat at admin@newpathsmusic.com.

Festival, day and event passes are available from East Riding Theatre Box Office www.eastridingtheatre.co.uk
Download the full event brochure at: www.newpathsmusic.com



Yorkshire Cancer Research Charity Business Challenge gets underway

Do you work for or own a business? Are you up for a challenge that helps local people avoid, cope and survive cancer? Do you like fun, competition and using your imagination? If the answer is yes, this could be the event for you!

The format is simple. Invest £100 and fundraise for the month of April 2017. There will be prizes for the team (maximum 20 people) which raises the most money and the team which uses the most imaginative (but legal!) format.



All the details you need can be found in a booklet available from adrienne@yrcr.co.uk

Don't worry if you haven't got off the mark on April 1st, but the sooner you sign up, the more time you have to raise the cash. No fundraising can be done until 00.01 on the first of April (and that's no joke!)

Helping to raise money for local charities.

BEVERLEY EASTER EGG HUNT

7th to 24th April

vote for your favourite egg
£100 for winning design

£5 per entry

Entry forms available from
Vanessa's Cafe & Parkway Cinema

Easter Egg Hunt

Remember that spooky Halloween Treasure Hunt round Beverley town centre and Flemingate shops and businesses? Well, this time, we're hunting for Easter Eggs!

20 eggs are going to be placed in shops and businesses from Saturday April 8th to Sunday April 23rd. All you have to do is find them and vote for your favourite to be in with the chance of winning cinema tickets and chocolate!

The eggs are all being decorated by local schools, nurseries and children's groups who hope you will vote for their effort so they can win the £100 prize! Entries cost £5 per family. Forms are available from Vanessa's and Parkway Cinema.

The event is being organised by Beverley Community Lift and Yorkshire Cancer Research who will benefit from the proceeds. Have fun!



EVERY THURSDAY AT 10.30am
(doors open 9.45am)

Join us for a free brew and a natter and enjoy some great films on Beverley Parkway's Big Screen. Only £4 with drink and biscuits included. Aimed at 55s and over. Films subject to change.

Thursday 6th April -

Denial
La La Land

Thursday 13th April -

Jackie
Denial

Thursday 20th April -

Live By Night
Jackie

Thursday 27th April -

Hacksaw Ridge
Live By Night

PARKWAY PENGUIN PARTIES



YOUR OWN PRIVATE SCREENING
SEE YOUR CHILD ON THE BIG SCREEN
FUN & GAMES WITH OUR PARKWAY PENGUIN
ONLY £170

For more information contact the Box Office or come in store and speak to a member of staff

TOP SECRET



MYSTERY MOVIE MONDAY

MONDAYS @ 8.15pm

More 'what is it' than 'whodunnit'. Fancy a film but not sure what you want to see? Try our Mystery Movie Monday! You won't know what it is until it starts, unless you can solve our Facebook and Twitter clues! It could be a classic or a gem you have never seen or even the first screening of an upcoming film. The fun is in the discovery! Only £4 per person, restricted to 15 and over only unless otherwise stated as some will be for 18 and over due to content.

Remember to look out for information on our **Facebook page** and **Twitter @parkwaybeverley**.

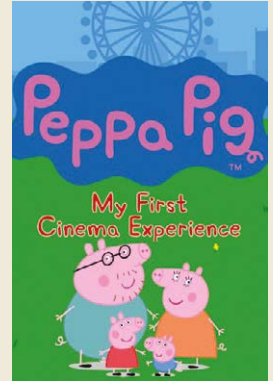
*These are the films scheduled to open in April **all are subject to change**. Check out up-to-date cinema listings at www.justbeverley.co.uk/cinema-times*



1st April



7th April



7th April



7th April



12th April



21st April



21st April



28th April



Competition Winner



Mr Anthony Oxtoby won last month's Beauty and the Beast competition, winning a pair of Tickets for Parkway Cinema and a whole host of Beauty and the Beast goodies to keep the grandchildren happy.

YOUR NEW INDEPENDENT CINEMA



Live on Stage!

Sunday 2nd April at 7.30pm

Giggles Live presents
Giggles at the Parkway

Monday 3rd April at 7.30pm

Ranagiri in Concert with
Edwina Hayes and Steve Dagliesh

Friday 14th April at 2pm

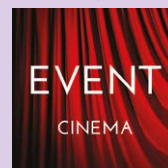
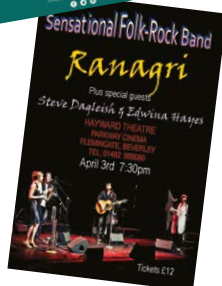
Talegate Theatre presents
'Alice in Wonderland'

Sunday 14th May at 7.30pm

Gimme Abba

Sunday 21st May at 8pm

Jeremy Hardy Live!



Event cinema offers something a little different to mainstream films. Live and pre-recorded shows beamed in via satellite from all over the world. Here are the latest live streams that you can enjoy on the big screen at Parkway Beverley.

TICKETS NOW ON SALE:

**Thursday 6th April at 7pm -
NT LIVE: TWELFTH NIGHT (12A)**

**Sunday 9th April at 4pm -
BOLSHOI: A HERO OF OUR TIME (TBC)**

**Tuesday 11th April at 7.15pm -
ROH: JEWELS (TBC)**

**Tuesday 18th April at 7pm -
ALL'OPERA - LA GAZZA LADRA (TBC)**

**Wednesday 19th April at 7.30pm -
THE AUSTRALIAN BALLET: COPPELIA (TBC)**

**Thursday 20th April at 7pm -
NT LIVE: ROSENCRANTZ & GUILDENSTERN
ARE DEAD (12A)**

**Wednesday 26th April at 7pm -
RSC LIVE: JULIUS CAESAR (TBC)**

**Friday 5th May at 7pm -
ALL'OPERA - DON CARLO (TBC)**

**Thursday 11th May at 7pm -
NT LIVE: OBSESSION (15)**

**Wednesday 24th May at 7pm -
RSC LIVE: ANTONY & CLEOPATRA (TBC)**

**Saturday 4th June at 5.45pm -
BRITISH MUSEUM PRESENTS HOKUSAI
(TBC)**

**Wednesday 7th June at 7.15pm -
ROH: SYMPHONIC VARIATIONS (U)**

For full programme of the Event Cinema,
please visit www.parkwaycinemas.co.uk

Competition Time!



Giggles

Beverley's Parkway Cinema has established itself in less than 18 months as an integral part of Beverley's entertainment scene. From new releases to old favourites, independent film to block-busters, 2D and 3D capability, the cinema's 6 screens utilise the most modern sound and vision equipment to ensure visitors get the best film experience possible.

But film isn't everything that Parkway has to offer! Screen 6 is a fully-equipped theatre - hence Beverley's own first star-studded professional pantomime played in the Hayward Theatre, which Screen 6 is also known as, last December. The sound quality of the theatre makes it a perfect venue for music - as Beverley Blues Festival and other musical acts have discovered - as well as for the spoken word, including comedy.

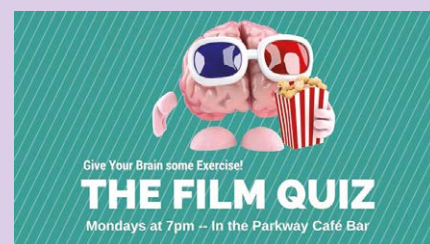
Beverley has not had a regular comedy night featuring local talent for far too long, so Parkway has stepped into that vacuum, hosting Giggles Live! Giggles Live, a group of like-minded comedians whose intentions are to bring fun and laughter to people whilst showcasing local and regional comedic talent, are scheduled to appear twice during the month of April on the 2nd and 30th. April 2nd features Jed Salisbury as host with Fran Garrity, Pete Phillipson, Dave Smith and Cal Halbert (one half of the Mimic Men as seen on BGT 2016) providing the laughs.

The 30th April show will again be hosted by Jed Salisbury and feature top class comedians including Jack Gleadow, Steff Todd & Lou Conran. Lou Conran has been described by Sarah Millican as "naturally funny" and Fringe Review said "If her name is on the programme, you're in for a good night. She's masterful at owning a room, and manages that rare talent of being able to tease audience members while becoming their best friend for the night."

Parkway Cinema are offering 4 free tickets to the April 30th Giggles Live show for the winner of this month's competition. All you have to do is answer the following question:

What is Screen 6 at Parkway Cinema also known as?

Send your answer by email to info@justbeverley.co.uk by April 15th. Put 'Giggles Live Competition' in the subject box and include your name, address and daytime telephone number in the body of the email along with your answer. The winner will be chosen at random and must be available for publicity for Parkway Cinema and Just Beverley magazine. Full terms and conditions are on Page 3 of the magazine.



Why not test your film knowledge at 7pm
before the Mystery Movie Monday?
There are free film tickets for the winners!

Destination Beverley is Launched!

Destination Beverley is an independent organisation dedicated to promoting all that is great about Beverley to drive visitor numbers, footfall and spend in the town. Additionally, Destination Beverley will provide a vehicle to support initiatives that enhance the visitor experience, ensuring Beverley is a thriving market town for many years to come. It was launched on March 23rd at East Riding College.

Beverlonians don't need to preach to the converted! But there is a need to spread the word to ensure that there is widespread awareness of what Beverley has to offer and that there really is something here for everyone. Which is why, way back in 2012, Welcome to Yorkshire was commissioned to carry out work to look into people's perceptions of Beverley as a place to visit. Many interviews were held with various stakeholders including council members, tourist attractions, businesses and members of the public. Some of the results were quite eye watering - at least two people said that Beverley's most famous tourist attraction was the Deep!

The message that came through was that people who had not visited before but were aware of Beverley, had the impression that it was a historic town but somewhat quaint in its offering. It was agreed that this misperception needed to change. Similar market town Skipton had re-invented itself with their I Love Skipton Brand, so it was agreed that Beverley should follow suit with Destination Beverley branding.

It was important to make sure that the new Destination Beverley organisation was not only independent but also thoroughly representative of the town and its businesses, so representatives to work on the marketing organisation were sought from all quarters.

Representing the Georgian Quarter is David Bird; Graham Tait joins from Flemingate; Janet Bedford brings with her one of the oldest financial institutions in Beverley - Beverley Building Society; Phil Pond has a Beverley-based business in Scarlet Opus; Dominic Gibbons is from Wykeland, who are big investors in the town; John Meehan is a PR expert and brings a wealth of knowledge to the table in terms of spreading the word - and lives in Beverley - and The Minster also has a place at the main table. The organisation is chaired by Sally Iggulden from Beverley Racecourse.

Over the years, individuals have been busy marketing their own Beverley businesses, spending lots of money and reaching a fair amount of people - but this is the first time that the main visitor attractions have sat round a table and formed a partnership. The combined passion and joined up thinking is what will really drive the objectives of Destination Beverley.

VHEY (Visit Hull and East Yorkshire) has been doing a wonderful job of promoting the region, but their remit is Hull and East Yorkshire - this is all about Beverley.

The repeated themes of Destination Beverley are Visit, Spend, Stay and Enjoy:

VISIT. Destination Beverley aims to increase footfall in Beverley and look at the economic impact of tourism. Visitor numbers to the town are sketchy and this is something that should be put right! It is important to ensure visitors keep coming back and that they tell their friends what a

wonderful time they have had. Every visit needs to be a fantastic experience! Expectation is so very high these days and it must not only be lived up to but exceeded, so that visitors are planning their next visit on their journey home.



SPEND. Destination Beverley aims to ensure people spend their hard-earned money at Beverley businesses, whether that be at tourist attractions, in the restaurants or on the wonderfully-diverse high street. Current visitor numbers generate in excess of £48 million in expenditure but increasing visitor numbers increases spend and keeps the money local.

STAY. If people stay in Beverley, they spend more money as well as more time here. For example, if people are visiting one of the race meetings at the racecourse, it's important to encourage them to stay on after racing for the night and take in what else is on offer. Many of the racegoers are travelling from over an hour away - it is Destination Beverley's responsibility as a local company to tell them about the wonderful things they can see if they stay just one night.

ENJOY. It is really important that expectation is met. Beverley needs to ensure that there is the delivery of a great visitor experience on every visit to the town, which is something that every Beverlonian can help with! Small things can make such a big difference to a first-time visitor. How is Destination Beverley going to market Beverley? The logo for brand Destination Beverley will be

seen all over the town, in shops, businesses and visitor attractions, with everyone showing their support for this wonderful market town. There is a Destination Beverley website, which is now live, which everyone is invited to populate. There's a Destination Beverley Facebook page and a Twitter account featuring guest bloggers tweeting their account of what it is like to live, work and play in Beverley. Through these methods, Destination Beverley will promote Beverley to a worldwide audience to all ages.

Destination Beverley is here to provide a consistent, passionate and proactive voice for Beverley, especially via the media, to foster pride in the town. It is keen to accommodate journalists and show them exactly what can be expected by anyone looking to visit, live or work in our town and will facilitate and support the funding and delivery of projects that enhance visits to the town. If you have ever thought 'wouldn't it be nicer if...' then let Destination Beverley know your thoughts! Have a look at the projects already in planning and see which ones you think will make a difference!

Destination Beverley is all about working together to fulfil a broad agenda, not duplicating the excellent work already happening but having a joined-up approach to creating an even better Beverley. Wearing a Destination Beverley badge will identify people as Beverley Ambassadors - people who love Beverley and are happy to tell others why it is such a special place! It's all about spreading the word!

Destination Beverley has a financial commitment from Beverley Building Society, Beverley Racecourse and Wykeland Group (which built Flemingate) to fund the vision but it will be looking for commercial partners to join it going forwards. If you own a business and believe in creating a better Beverley, do get in touch!

In fact, Destination Beverley creates an exciting opportunity for the private sector to give something back as it has linked up with Spacehive, a successful crowdfunding platform which, since 2012 has helped to fund more than 250 projects. Spacehive and Destination Beverley together can help the town prosper to the benefit of all - thriving businesses mean more job opportunities for local people which in turn helps people make their lives better.

Find out more at: www.destinationbeverley.co.uk



Roses of Beverley - a lifetime of building kitchens

No other kitchen company designs, makes and pre-installs their kitchens to make sure there are no hiccups. And before you ask, no, they don't do bedrooms or bathrooms!

Family business, Roses of Beverley, is a family business, headed up by Ken Rose and his son, Matthew with Dorian Brown, the designer and a team of local fitters, electricians, plumbers, plasterers and tilers who are contracted in but who have the same ethos - to give great service. Buy a Roses kitchen and you get the ultimate in team-working as well as a bespoke kitchen to meet your needs and desires.

Ken's experience in building kitchens is extensive. At the age of 25, he became Production Director at Hygena, running manufacturing bases in Scunthorpe, Hull and Stockton-on-Tees. When Ken was 35, Hygena was bought out by MFI. One of Hygena's owners invited Ken to go to America, to work with him there in Connecticut, building kitchens. Ken remembers the interviews to get his Green Card to be allowed to work in America - in those days, you had to prove there was no-one else in the US who could do your job!

After a short time, Ken then moved to Ohio, where the company's manufacturing plant was based. This was a dream job for Ken, for the plant had its own kiln and saw-mill. Here, Ken learnt about wood - how to grade it, how to select the best wood for veneers, how to choose prime timber to make solid wood kitchens and which to send to be used for railway sleepers. None of the wood which came into the saw-mill was ever wasted; even offcuts and bark were turned into mulch for parks and gardens.

Ken told **Just Beverley**: "The company owned tracts of forest growing red oak, white oak, hickory, walnut and maple. Someone called a 'cruiser' would go out finding suitable tracts of forest. The mature trees

would be cut down into logs, kiln-dried and then cut into lengths. The best wood, veneer-grade wood, would go to Japan for keyboards and the like."

After 5 years in America, Ken was home-sick - and ambitious to use the skills he'd learnt in his own back yard. The family were happy enough over there; Matthew was going to school in the States and daughter Elizabeth (Lizzy) was developing a fine American accent but Ken knew that it was time for his adventure to come to an end. That was when Roses of Beverley came into being!



Roses has been making tailor-made kitchens for 20 years. From choosing a kitchen to completion - that's full-installed, appliances working, tiling and painting completed, lights in and flooring down - can take up to 3 months.

That's because, for Ken, everything has to be perfect. Roses could fit more kitchens, but the quality would not be there, because the different stages would have to be rushed and that would affect the Roses reputation.

Ken said: "When someone comes in to have a look at our different ranges, we call that Day - 10. Between Day - 10 and Day 0 when the order is placed is the time period when Dorian the Designer gets to work and clients choose what best suits their needs and budget.

"A refurbishment takes less time and is less expensive than a full kitchen, but even our budget ranges get the best Roses service complete with pre-installation. Pre-installation was the best thing we ever did - it ensures quality - and means I can oversee the project and time-frames."

The Roses showroom proudly displays letters and cards from satisfied customers and is gratified that so many of their customers come by word-of-mouth. Ken says there is one word for that - Service!

"We work around our customers. The summer months are particularly busy because that's when people go away on holiday so that's when we can fit a new kitchen in their home. They leave us the key and we get on with it! It means we don't get a summer holiday but my job is my hobby! I love seeing big smiles on clients' faces! We are completely customer-focussed, our innovations are all customer-focussed - like the working kitchen in the show-room.

"We have an exclusive to announce, too! We are converting a van into a laundry room with a washer/dryer so clients have somewhere to wash and dry their clothes. There are very few laundrettes nowadays and this is all part of the service. We are taking things to another level!"

Roses of Beverley, The Kitchen Specialists are located in **The Courtyard, Tokenspire Business Park, Beverley, HU17 0TB**. Telephone: **01482 869111** www.roseskitchens.com

Telephone: 01482 869111
sales@rosesofbeverley.karoo.co.uk



The Kitchen Factory, The Courtyard,
Tokenspire Business Park, Beverley
HU17 0TB

Our bespoke range of kitchens designed, pre-installed and fully project managed from start to completion.

Roses refurbishment range.
Let Roses give your kitchen a makeover with our replacement door and worktop service.

Roses DIY range of kitchens. Designed and pre-installed, ready to fit. Ex-factory price list.

"TICKTON MATT"	Price inc VAT
715 x 295	£22.40
715 x 395	£26.32
715 x 495	£29.28
715 x 595	£33.08

"WALKINGTON (HANDLELESS GLOSS)"	Price inc VAT
715 x 295	£38.74
715 x 395	£42.92
715 x 495	£48.12
715 x 595	£53.88

"LEVEN AND SKIDBY SHAKER"	Price inc VAT
715 x 295	£33.52
715 x 395	£37.10
715 x 495	£39.82
715 x 595	£44.52

"BEVERLEY GLOSS"	Price inc VAT
715 x 295	£35.33
715 x 395	£39.10
715 x 495	£41.98
715 x 595	£44.99

MANY MORE SIZES, DOOR STYLES AND COLOURS AVAILABLE

FULL PRICE LIST AVAILABLE IN STORE

TRADE ENQUIRIES WELCOME

Visit www.roseskitchens.com

to see our customers kitchens and read what they have to say about us

Telephone: 01482 869111 • www.roseskitchens.com

FLEMINGATE

BEVERLEY



FASHION

FOOD



FILM



& FUN



WE'VE GOT IT ALL AT FLEMINGATE

RIVER ISLAND

OUTFIT

TOPMAN

TOPSHOP

DEBENHAMS

H&M

GUEST & PHILIPS

Superdrug

GOURMET BURGER KITCHEN



SUBWAY

GREGGS

deli



RIVA

PATISserie VALERIE

PEACOCKS

bolo

Baytree Interiors



TRESPASS

Card Factory

Poundland

Entertainer

wilko



@FlemingateBev

FLEMINGATE.CO.UK

FlemingateBeverley

Mouth-watering farmer's food event comes to Flemingate

A new farmer's food event showcasing the best in local and regional produce is to become a regular monthly fixture at Beverley's Flemingate centre.

The indoor and outdoor food event will take place on the second Sunday of every month starting on Sunday, April 9, and will offer locally grown and produced food, ranging from savoury pies; artisan bakes; macaroons and other sweet treats; fruit and vegetables; and hot and cold street food.

A range of gourmet dog biscuits will ensure our furry friends are also catered for.

Graham Tait, Flemingate Centre Manager, said: "We're really pleased to welcome independent traders to our food event at Flemingate. Yorkshire boasts top-quality produce and we hope our monthly event will complement Beverley's existing Saturday and Wednesday markets giving customers even more variety and access to locally-produced food.

"Regular food events benefit local traders, customers and the community as a whole and encourage people to buy local where possible. It's also another example of our desire to make Flemingate available for events that bring the community together and enhance the reputation of Beverley as a great place to visit."

Organised by The Market Managers, a York-based organisation responsible for successful markets in the North Yorkshire towns of Malton, Scarborough and Acomb, the monthly food event will offer high-quality produce at competitive prices and will be open from 10am to 4pm.

The food event is in addition to a monthly Craft and Artisan Fair, which was launched at Flemingate last September and now runs on the first Saturday of every month.

For more information on trading at the Flemingate food event, visit www.themarketmanagers.co.uk

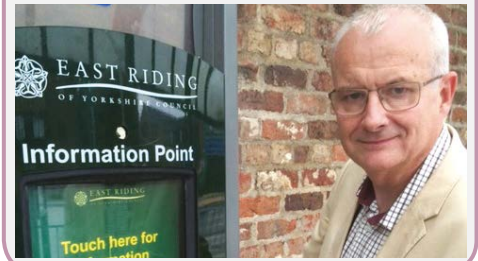


Beverley and Molescroft Residents invited to suggest how 'Commuted Sums' are spent

Developers are legally required to pay a 'commuted sum' for each house built into a pot held by the local council to spent on community amenities.

With more than 3000 new houses being built around the town, house-builders are contributing around £6m into developing Beverley! Some of the projects benefitting so far agreed include new changing rooms on Molescroft Carr Playing Fields for Beverley Braves Rugby Club, improvements to Beverley Town Football Club's pitch, a new clubhouse for Beverley Town Cricket Club and improvements to Burden Road Play Area. But there is a considerable sum of money left in the coffers!

St Mary's Ward Councillor Denis Healy told **Just Beverley**: "Residents in Molescroft are bidding for an extension to the much-used Pavilion, but there is money currently available and more coming through. As long as the bid meets the criteria of children's play, sport or recreation, the Council will consider the project. I think it's important that residents know about this fund and are invited to make suggestions as to how it is spent." Local ward councillors can be contacted via their e-mail addresses which are listed on the East Riding of Yorkshire Council website: www2.eastriding.gov.uk/council/



Telephone: 01482 869111
sales@rosesofbeverley.karoo.co.uk



The Kitchen Factory, The Courtyard,
Tokenspire Business Park, Beverley
HU17 0TB

Our bespoke range of kitchens designed, pre-installed and fully project managed from start to completion.

Roses DIY range of kitchens
Designed and pre-installed, ready to fit.
This 12 unit kitchen (18 doors) includes
cornice, pelmet, worktops, etc

Roses refurbishment range.
Complete kitchen
makeover service.
Ex-factory price list.

"TICKTON MATT"
£2,750.00
inc VAT

"LEVEN SHAKER"
£2,950.00
inc VAT

SEE ALSO OUR NEW:
"SKIDBY SHAKER" • "BEVERLEY GLOSS" • "COTTINGHAM ASH" • "WALKINGTON (HANDLESS GLOSS)"

FULL PRICE LIST AVAILABLE IN STORE

TRADE ENQUIRIES WELCOME

Visit www.roseskitchens.com

to see our customers kitchens and read what they have to say about us

Telephone: 01482 869111 • www.roseskitchens.com

Beverley Town Council

Well, Spring is in the air and the Beverley in Bloom Group have been busy preparing the Summer Planting!

They are currently working with the Town Council on the Yorkshire in Bloom campaign. Last year Beverley won Gold and also Overall Large Town Winner, so there is a lot to live up to! The Beverley in Bloom group does some tremendous work in the community to help our town look beautiful for residents and visitors alike. They have just completed a recent funded project to create a lovely seating area on New Walkergate, which has really improved the area. Beverley Town Council supports the Bloom group with a £2,000 budget to purchase plants and equipment.

The **Christmas Lights Working Group** has met a couple of times this year to make plans to light up the town for the festive season. Again, this working group, like Beverley in Bloom, is supported by the Town Council with a £15,000 budget and operational officers to carry out works required. Fundraising members of the Christmas Lights group work all year long to raise money to improve the Christmas lights in the town. Like Beverley in Bloom this is another group who work hard in our community and should be applauded. Both groups are always looking for more volunteers, so if you have some spare time on your hands, they would love you to join them. Please call Beverley Town Council on **01482 874096** or email: clerk@beverley.gov.uk

The **10th Annual Beverley Town Council Pensioner Lunch** this year is on 12th April at Armstrong Social Club from 12noon to 3pm. Hosted by The Mayor, there's a two-course meal of main course and dessert followed by tea or coffee with entertainment, a raffle and bingo. Invitations go out to residential homes, Cherry Tree and Millers with Town Councillors personally inviting pensioners in their wards. Carers are welcome to attend for a small charge. For tickets, ring Beverley Town Council on **01482 874096**.

Beverley Town Council
Making a difference



Places available

in all year groups

- **Dedicated** to your child's education
- **Unparalleled GCSE results** for boys in the East Riding
- **Mixed sixth form** with proven success as University route



Beverley Grammar School

Specialising in boys' education since 700AD

Contact the school on Tel: **01482 881531**
or e-mail: admin@beverleygrammar.co.uk

Beverley Grammar School
Queensgate, Beverley HU17 8NF



LA LUMIÈRE

PHOTOGRAPHY



TEL: 01482 867455
WWW.LA-LUMIERE.CO.UK
ENQUIRIES@LA-LUMIERE.CO.UK
22 TRINITY LANE, BEVERLEY

YOU ARE INVITED



Crown Care would like to invite you to Claremont House Open Day

When: Saturday 8th April, from 10am to 4pm.

Where: Claremont House, Wingfield Way, Beverley

Join us for a tour of the brand new luxurious Care Facility that is Claremont House.


CLAREMONT HOUSE
CROWN CARE

Contact
Jennie Falconer
Marketing Manager

Tel: 07833 291973
www.crowncaregroup.co.uk

Driffield's No.1 estate agent*
is now open in Beverley.



...to the Woolley & Parks
experience.

W&P WOOLLEY & PARKS

- Pro-active service
- 5 star rating from buyers and sellers
- Open 7 days a week
- 100% accompanied viewings

**19 North Bar Within
Beverley**

01482 755700

beverley@woolleyparks.co.uk

woolleyparks.co.uk

*For property sales in 2016. Statistics supplied by Rightmove.

**PHONAK
BOLERO™ B**
The ONLY power
BTE available
with rechargeable
technology.



A rechargeable
hearing aid which
combines the
latest technology
with ground
breaking battery
technology.
Giving 24 hours
of hearing with
one simple
charge.



The
closest
thing to
having
your
hearing
back!

**PHONAK
VIRTO™
B-TITANIUM**
The smallest
Phonak in-the-ear
hearing aid
ever!



Beautifully
designed and
built from
medical grade
Titanium,
they are
super discreet,
strong and
light-weight.



HearPure
YOUR HEARING AID PEOPLE

Book your FREE consultation and
FREE 30 day trial for these revolutionary
new Hearing Aids ONLY JUST RELEASED
13a Saturday Market, Beverley, HU17 8BB
Call: 01482 870957 www.hearpure.com

MICRO SUCTION AND EAR IRRIGATION EAR WAX REMOVAL AVAILABLE

Communication is key for healthy relationships

When we are children, we learn high expectations. We ask 'Santa' for a watch or a new bike for Christmas and 'if we are good' the aforementioned article appears magically overnight, wrapped in paper and bows or propped against the mantle-piece. At Easter, chocolate eggs appear as we celebrate this Christian festival with more excess. As we get older, we can become disappointed when the number of people buying us gifts at Christmas and Easter drops off, so the pressure to fulfil that void of expectation then moves to friends, romantic partners and work colleagues.

But whenever you have an expectation of someone, you are opening yourself to disappointment. Why? Because in most cases, that expectation has never been voiced let alone discussed!

Expectations are almost entirely in a person's head. Yet masking disappointment is hard, so people become stressed due to their negative thinking and react unreasonably towards the person who they think has let them down. The recipient of the emotionally-charged behaviour cannot understand what they have done wrong and label the expectant person as 'difficult' or 'high-maintenance'. Once a person is perceived as 'emotional' or 'difficult' it is hard to shake it off.

Harbouring resentment against someone can be very disruptive because the resentment can grow into hatred; it can destroy relationships. The easiest way to stop ill-feeling due to unfulfilled expectation is to discuss the issue openly so that it can be resolved. Learning to be more emotionally intelligent and to behave in an 'adult' way also helps, actively reducing stress levels through mindfulness to remain calm. A contented relationship really does depend on the way we communicate with each other!



Until next month, be happy!

Linda.

07585 802035

www.releaseyourpotential.co.uk

www.releaseyourbusiness.com



Hair By Dosie

Opening Hours
9am - 7pm Tuesday - Friday
9am - 4pm Saturday

STYLIST REQUIRED

We are recruiting!

We are looking for an enthusiastic and passionate stylist, with a desire to learn and further their career in hairdressing.

Please send your CV to the address below.

10% discount
for students &
NHS workers



Telephone: 01482 863603
Or you can book online via the website:
www.hairbyrosie.mysalononline.com
www.facebook.com/hairbyrosie16

34 NORTH BAR WITHIN • BEVERLEY • HU17 8DL

Coles

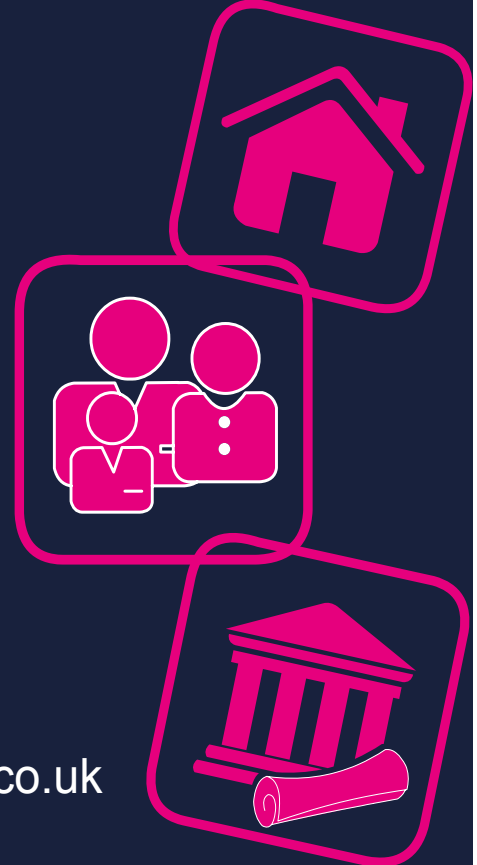
the solicitors

Providing expert legal advice in the very heart of Beverley

22 Lairgate, Beverley HU17 8EP

T: 01482 231 300

E: info@coles-law.co.uk W: www.coles-law.co.uk



- Family Law • Wills & Probate • Conveyancing • Powers of Attorney
- Medical Negligence • Litigation • Dispute Resolution • Personal Injury

I've Been Thinking... by Colin Raynor

I've been thinking about short stories so here is one I call "Passion in the Park". Is it a true story? If you believe what the story tells you, it is a true story, so your decision.

The story begins at the December Council meeting of a Local Authority in the West Midlands. Item 18 is 'Park Bench'. A new single seat bench has been placed by the children's pool in the local park. This is contrary to Council regulations. Only seats of a Council design, purchased from Council stock and placed in a position agreed by the Council are acceptable.

This seat also has a bronze plaque on with the words "In memory of olive wood". It is the Council who determine the words and there is a cost. The Chairperson instructs the property division to contact the family and advise them of the Council's regulations. Over the next few weeks the seat, or "the throne" as the public call it, gains more and more publicity. No family by the name of wood has been shown to have a relative named olive which leads the Council to believe the seat has been placed by a person not living in the borough; another breach of regulations. People speak of feeling renewed in energy by just sitting on it for a short time and the media begins to write about the seat having healing powers. Flowers and potted plants are placed by it and unlike other seats it does not suffer from any damage or graffiti. This is too much for the Council and at their meeting in February the Chairperson advises the members that action must be taken. Central Government have been in touch and they consider the present state of affairs is indicative of a weak Council if they are unable to adhere to their own regulations. Unless the Council takes action to regain control, future grants to the Council may have to be reconsidered.

When the council meets in March the decision is taken to remove the seat but Council agree this should take place when the park is closed at night. Such is the popularity of the seat the Council is determined not to have any public disorder. The next meeting of the Council is postponed for a week as the normal date falls on Good Friday. When the Council does meet, the property division are able to report that the seat has been removed.

Council workmen remarked on the high quality of the wood and in fact stored all the wood (apart from the seat arms as they had holes in them) for further use as an example of recycling. The wood was stored in a locked shed but when workmen returned after the weekend it had all gone, although the door was still locked. The Chairperson felt that might merit an independent enquiry at some stage but felt the matter had been dealt with, so closed the meeting.

Olive wood grows in an area around Bethlehem and is often used by carpenters as it is a hard wood. It was the choice of the Romans when they were erecting crosses for crucifixion.

Good Friday is on April 14th.





Creations
Direct Furniture Repairs

Specialising in:

- Leather Restoration
- French Polishing
- Upholstery
- Loose Covers & Roman Blinds
- Curtains & Soft Furnishings



T: 01482 871954 M: 07951 759253
E: info@creations-biz.co.uk
W: www.direct-furniture-repairs.co.uk



FRESH MENU LAUNCH!

29th March

To celebrate the launch of the new menu we are giving away a **FREE** Three Course meal at The Kings Head. To be in with a chance of winning, answer the following question.

What award did the King's Head Beverley win in November 2016?

Send your answer to: info@justbeverley.co.uk with your name, address and telephone number by **Tuesday 18th April.**

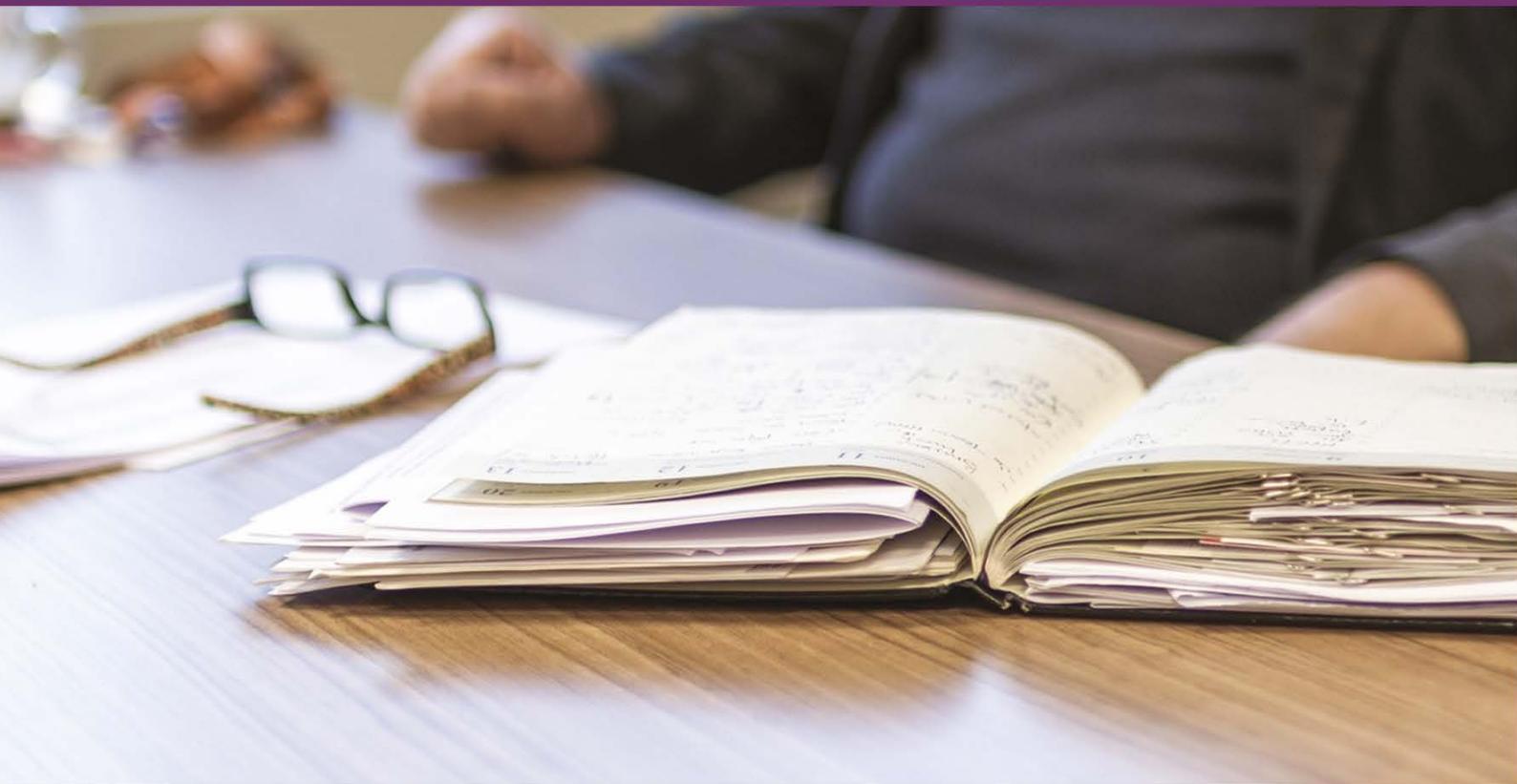
Winner must be prepared to take part in publicity for Just Beverley and The King's Head.

37-38 Saturday Market, Beverley, HU17 9AH
www.kingsheadpubbeverley.com
Tel: 01482 868103





Outsource your payroll today and be rest assured everything is taken care of!



Could the implementation of workplace pensions have a serious impact on your workload?

Outsourcing payroll will save you time and money, redirecting time to growing your business. You will be given a named personal contact and access to our free and easy-to-use app with a plethora of online information available for you to use on the go!

**Arrange a FREE consultation to discuss the benefits of a tailored payroll package to suit your business needs.
Call us on 0845 308 2288 or visit www.stipendia.org.uk.**



Stipendia Payroll Solutions



@StipendiaPay

Could the changes to Salary Sacrifice impact you?

The Spring Budget has been and gone and companies are bracing for change. Despite that, one key announcement from the previous Autumn Statement seems to have been glossed over - the significant changes to salary sacrifice arrangements. Here is a quick overview of the changes and how they could affect you.

Salary sacrifice allows employees to exchange a portion of their cash pay in return for non-cash benefits. These reduce the amount of taxable income and therefore reduce the PAYE and National Insurance Contributions (NICs) due on the employee's remuneration.

From April 2017, the PAYE advantages of salary sacrifice schemes will be removed in an effort to 'promote fairness in the tax system'. As a direct result of this, employees swapping salary for benefits will pay PAYE on the benefit, but will continue to receive National Insurance savings.

Under the government's new rules, certain arrangements will no longer offer tax and NIC benefits. These include cash and non-cash vouchers, living accommodation, school fees, and cars (excluding ultra-low emission cars) and fuel. However, some benefits will remain in place unaffected, in particular pension contributions and arrangements (including pension's advice), childcare vouchers and Cycle-to-Work schemes.

Employees may still be eligible to join salary sacrifice schemes up until the 6 April 2017 deadline. However, from this point on, remaining in such a scheme may result in an additional PAYE tax bill.

Employers, on the other hand, will no longer benefit from employer NIC savings and may be required to review staff members' contracts, as salary sacrifice schemes may be incorporated into the terms and conditions of employee contracts. Employers will also be required to report these benefits on a P11D form.

Stipendia has an expert team in place who can guide you on these changes as well as payroll, auto enrolment and more. Stipendia can be contacted on **0845 308 2288** or visit their website - www.stipendia.org.uk



more than just web design

SPRING MADNESS GET A WEBSITE FOR ONLY £1995! UNLIMITED NUMBER OF PAGES

What's included? Your website comes with all of these fantastic features: A Bespoke Website Design (with no templates used) • Content Management System (so you can update the website yourself) • Contact Form, Analytics (see when & how people visit your website) • Mobile friendly • Blog • Gallery • Links to social media accounts • Dedicated account manager



FREE!
DOMAIN NAME
EMAIL ADDRESSES
WEB HOSTING*
& SUPPORT
*FOR 12 MONTHS

CALL NOW ON 01482 428650



WATCH YOUR PET FROM HOME VIA OUR LIVE STREAMING APP

Prices from £12

Baths, handstrips, mini grooms, full grooms, nails, de-shedding and much more!

Pet boutique selling a wide range of products, perfume, collars, leads, coats and toys

OPENING HOURS:
Mon - Sat 9.30-4.30 Sun 11-4

TELEPHONE:
01482 880122

WEBSITE:
www.doggroomersbeverley.co.uk



BEES

BURTON ELECTRICAL SOLUTIONS

High quality electrical work across East Yorkshire & the Humber region

DOMESTIC

COMMERCIAL

TESTING

Whether it's for your home, rental property portfolio or business premises, all electrical installations need to be checked periodically by a qualified electrician.
For a quote contact:

Andrew Burton
28 Carnaby Close, Leconfield, East Yorkshire HU17 7LA
Tel: 01964 552769 Mob: 07585 601730
Email: info@burtonelectricalsolutions.co.uk
Web: www.burtonelectricalsolutions.co.uk



NICEIC
DOMESTIC
INSTALLER



Send your photographs of your celeb
Find us on Twitter and Facebook to s

Juan at Cafe V's 50th Birthday



Dementia Friendly East Yorkshire Launch



Twininging visit from Japan



HERE TO GET *you* THERE

HUNTERS®

EXCLUSIVE

BEVERLEY / 01482 861411

M&Co Fashion Show in Aid of Yorkshire Cancer Research



Destination Beverley Launch



SALES / LETTINGS / MANAGEMENT

HUNTERS®

BEVERLEY / 01482 861411

HERE TO GET *you* THERE

Abu Dhabi - one of the most exciting holiday destinations in the world!

The Gulf now attracts more tourists than ever. Dubai often overshadows many other exciting destinations in the region but Abu Dhabi is one of the newest and most exciting holiday destinations. With its name meaning 'Land of the Gazelle' in Arabic, Abu Dhabi is perfect for families, couples and groups of friends.

Providing year-round good weather, stunning hotels, sandy beaches, a vast array of exciting attractions and a charismatic charm unlike its much bolder, bigger brother, Abu Dhabi really does have something for everybody, whilst offering the exceptional level of luxury you expect to find in the UAE.

At only a seven-hour flight from the UK and with average daytime highs of 24°C in January, Abu Dhabi is ideal for those looking to exchange the cold for some winter sun. The Corniche is an impressive eight kilometres of manicured waterfront that includes children's play areas, separate cycle and pedestrian pathways, cafés and restaurants, along with a life-guarded beach park.

Most of the world's leading hotel chains boast luxurious five-star properties in Abu Dhabi - it's not uncommon for them to be much cheaper than their Dubai counterparts.

With stunning pools overlooking either the ocean or the city, it's easy to spend a week here soaking up the sun.

There is, however, plenty of exciting options for those that require something a little more adventurous - with Ferrari World being one of the most famous.

From driving experiences to incredible roller coasters to fascinating performance shows, you don't have to be interested in cars to enjoy this official Ferrari Amusement Park.



It's only 30 minutes from the city's central zone and with plenty of places to eat and shop, it's a thrill-seeking full day-out. It's also one of the best trips for families - with Junior GT and Karting Academies on offer for the kids.

Those who enjoy shopping will love the luxurious, ultra-modern malls with plenty of famous international brands of offer, available tax-free along with the small, souk-like shops where you can buy traditional perfumes, handicrafts, spices and carpets. An impressive must see is the Sheikh Zayed Grand Mosque.



This architectural marvel, with a capacity for an astonishing 40,000 worshippers, features 80 domes, over 1,000 columns, gold plated chandeliers and the world's largest hand-woven carpet. The city is also perfect for golf-lovers with a championship-ready parkland, a gentle urban centre course, a world-class 'sand' course and a country course in the heritage heartland of Al Ain, which is also an equestrian and shooting club.

With so much to offer, Abu Dhabi really is the destination for everyone.



BEVERLEY'S ONLY INDEPENDENT TRAVEL AGENCY

ONEWORLD
TRAVEL GROUP



Abu Dhabi

DEPARTS 18 NOV 2017

With good weather all year-round and plenty to do and see, Abu Dhabi is a beautiful destination for those looking for a more unique city break experience.

INCLUDES:

RETURN DIRECT FLIGHTS FROM MANCHESTER
4 NIGHTS IN 5* JANNAH BURJ AL SARAB HOTEL

550.00 PER PERSON


BASED ON 2 ADULTS. OFFER AND PRICE SUBJECT TO AVAILABILITY.



35 Saturday Market, Beverley HU17 8BE

☎ 01482 280081

🌐 www.1worldtravel.co.uk



ASIAN CURRY AWARDS 2016
NEWCOMER OF THE YEAR
HIGHLY COMMENDED

NEW FOR 2017 TAPAS MENU
Sun to Wed 5.30pm to 7.30pm

Tapas @ Rumi's

OUR RECOMMENDATION IS THE CHEFS CHOICE
A SMOOTHLY BLENDING TAPAS DISHES
SERVED WITH RICE AND A ROTI

£15.95

MACHLI (SEAFOOD)	KOLI (CHICKEN)
MACHLI KARFI	NARKEI MURGH
MISHRITI BHUNDA	MURGH ZAL
BENGALI JINGERI	CHICKEN MURGH
PILLAU RICE	PILLAU RICE
ROTI	ROTI
£14.95	£8.95

ATTARUTTI (LAMB)	SHARZI (VEGETERIAN)
MITHAI GOSHT	DAAL TARKA
MATAR ATTARUTTI	BIHNDI ALOO DOPIAZA
MIRCHI IMLEF	SHARZI KARE
PILLAU RICE	PILLAU RICE
ROTI	ROTI
£13.95	£10.95

Nominated in the 'Curry Awards' and by 'Curry Life Magazine'

The Only Beverley Indian Restaurant included on the Welcome To Yorkshire Spice Trail

Rumi's Bangladesh Indian Cuisine
New Walkergate, Beverley, HU17 9EP

T: 01482 428642
www.rumisrestaurant.co.uk
Mon - Thurs: 5.30pm - 11.30pm
Fri - Sat: 5.30pm - 12am Sun: 5.30pm - 11pm

Rumi's Recipe - Bhegun Bharta (Aubergine Curry)

Ingredients:

- 1 large aubergine
- 2 tbsps. vegetable oil
- 1 tsp. cumin seeds
- 1 medium onion, thinly sliced
- ½ tbsp. minced ginger root
- ½ tbsp. minced garlic
- 1 tbsp. curry powder
- 1 tomato, diced
- 4oz low-fat plain yoghurt
- 1 fresh green chilli, finely chopped
- 1 tsp. salt
- Half bunch fresh coriander, finely chopped



Method:

Pre-heat oven to 230°C. Place aubergine on a medium baking tray. Bake for 20-30 minutes until tender. Remove from oven, peel and chop.

Heat the oil in a saucepan over a medium heat. Add the cumin seeds and onion. Fry until the onion is tender.

Stir in the ginger, garlic, curry powder and tomato. Cook for 1 minute. Add yoghurt and stir well. Mix in the aubergine and chilli. Season with salt.

Cover and cook for 10 mins over a high heat. Remove cover, reduce heat to low and continue to cook for further 5 mins.

Garnish with coriander to serve.

How to make the most of your Money through Tax-efficient Charitable Giving

There are different ways in which your gift to charity can be made more valuable.

Gift Aid

If you're a UK tax payer, gift aid can top up your charitable donation by 25% at no extra cost to you. Gift Aid is a government scheme allowing charities and community groups to increase the value of donations made to them. Gift Aid makes a huge difference to small charities, but if a charity isn't registered with the Charity Commission or HMRC, it can't claim gift aid. Many smaller groups don't know this or simply don't have the time and resources to process the required gift aid claims. For every £1 donated, HMRC provides an additional 25p supplement to registered charities. If you're a higher rate tax payer then your gift aid donation could also save you 20% - 25% of the donation, so a £1,000 donation could save you up to £250 in tax, in addition to the additional 25% gift aid received by the charity. In order to qualify for gift aid you must be a registered taxpayer, be donating your own money and pay enough tax to cover the amount reclaimed by the charity.

Leaving gifts to a charity in a will

A fixed amount can be donated to charity in a will, or an amount can be donated to charity after other gifts have been taken out of the estate. The standard rate of inheritance tax is 40% on an estate in excess of £325,000. If you make a charitable donation from your estate then your donation can be taken off the value of your estate before inheritance tax is calculated, or if you leave 10% or more of the net value of your estate to a charity, the estate can pay inheritance tax at a reduced rate of 36%.

Donating land, property and shares

You don't have to pay tax on land, property or shares that you donate to charity, this also includes selling them for less than their market value. In addition to this, if you are a taxpayer, you can get tax relief by deducting the value of your donation from your total taxable income, this could give you a tax refund of up to 45% of the value of the gift.

If you would like to discuss this in more detail, then please contact Gareth Botterill on **01482 862240** or email: gareth@botterillco.co.uk

www.justbeverley.co.uk

Botterill & Co

Chartered Certified Accountants

We are a modern and professional accountancy practice ideally located to serve businesses in Beverley and the surrounding area.

We utilise modern accounting technology to provide you with a cost effective, professional service.

Our services:

- Annual Accounts
- Tax Planning
- Management Accounts
- Tax Returns
- Company Formations
- Payroll
- Cloud Accounting
- Bookkeeping & VAT

For a free initial consultation please contact us:

Office: 01482 862240

Mobile: 07966 051458

Email: gareth@botterillco.co.uk

Website: www.botterillco.co.uk

1st Floor Offices, 40 Norwood, Beverley, HU17 9EY

Choose Amuse - Karen Robinson's Muse House for choosy holiday-makers

Renting holiday accommodation can be a gamble. Karen's own experiences lead to her looking for a property which she could convert to the perfect holiday home after being challenged by husband, Mark.

Choose Amuse is in Walkington. It opened as a boutique holiday home 3 years ago. It is a mews house, which, after a complete refurbishment is now the ultimate high-end 2-bedroom holiday let. Choose Amuse has everything anyone could possibly need to ensure they enjoy the perfect holiday experience whilst staying there - although that wasn't quite true when it first opened! It was missing a tea-cosy and a fly-swatter! Fortunately, one guest knitted a tea-cosy and the other went out and bought a fly-swatter, which they donated.

Karen told **Just Beverley**: "Mark and I have 2 children. We loved taking the kids away to different places when they were young, staying in holiday cottages. But, quite frankly, the cottages were always a let-down. The lighting was never right, plugs weren't in the right places. In the end, Mark said 'Well, if you can do better yourself, why not have a go at a holiday cottage yourself; then you can make it perfect.' We looked at lots of properties until we found this house in Walkington. Although we only had 60% occupancy during the first year, we are now up to 85%. I never thought it would go as well as it has, which is why I am now looking for another property to open as a holiday or short-break let. My Mother-in-Law is joining me in the business so we can expand our service."

Countryside Matters with Sam Walton

Ever wondered what retired racing drivers do? How about taking up farming?

People farm for different reasons. In some cases, the farm will be passed on to the next generation almost as a right. But I visited a very interesting farm some years ago, which was owned and run by the retired Formula One racing driver, Jodie Sheckter.

It was not only organic but the crops were farmed according to the stages of the moon! Was it successful? Yes, very much so, in as much as he is in the right place with a huge range of rare products, such as wild boar and the milking of bison and buffalo. Jodie had his own abattoir, farm shop and a range of food for people with food allergies, which included his own son who was allergic to cow's milk, hence the alternatives. I have to say, I had never seen buffalo or bison milked before, nor had I tasted their meat. As well as the wild boar, Jodie also had traditional old-type pigs, which were running around outside in grass over a foot high.

The farm was a huge undertaking, covering 2,500 acres, but it looked after extremely well. Jodie grew oil seed rape and the oil from that was being used to drive his tractors. No expense had been spared in setting it all up and it was being run in a very efficient way.

It is almost essential these days for farmers to be entrepreneurial, but of course we couldn't all do as Jodie had done as there would not be the demand everywhere for the more expensive produce.

I would think that organic production in the UK is around 3 percent. Good luck to those who can do it and make a success of it - but this enterprise of Jodie's was something really spectacular!



Guests staying at Choose Amuse can expect an immaculately-decorated house with a little south-facing courtyard overlooking a paddock complete with BBQ. The kitchen has the latest equipment installed - everything from a washer/dryer to dishwasher to Nespresso machine to wine-cooler. The bathroom has Christy towels and White Company toiletries. The zipped beds can be converted into doubles or singles. There's even a picnic hamper for guests to use and a walking boot locker.

Not surprisingly, all the reviews on TripAdvisor give it 5 stars! Karen provides starter packs of cleaning materials and a mini-hamper of treats which includes coffee pods for guests. Fresh linen is delivered once-a-week. Karen will only go into the property during a let if the client requests it, offering her guests complete privacy. Minimum stay is 2 nights with a slightly different pricing structure between the seasons. Choose Amuse has been awarded a Gold Award by Visit England and is a finalist in the Remarkable East Yorkshire Tourism Awards 2017 Remarkable Self Catering Provider/ Property Category. The REYTA's are announced on March 30th, which is after the publication goes to print, but watch the **Just Beverley website** for announcements and next month's magazine. Good luck Choose Amuse!

**Choose Amuse, 7, Taylor's Rise, Kirk Lane, Walkington HU17 8SF.
Telephone: 07515 325962. info@chooseamuse.co.uk
www.chooseamuse.co.uk**



CHOOSE MUSE

Holiday Mews House

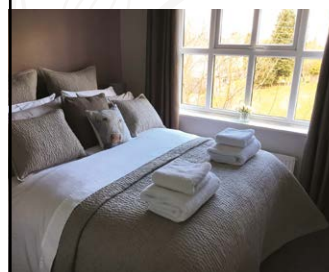


Do you ever need to accommodate family or friends?

Do you love having them nearby but would all like your own space?

Is it a struggle putting up camp beds or finding extra bed linen?

Are you entertaining business clients who may not wish to stay in a hotel?



Or maybe you know someone who is looking for somewhere fabulous to stay in the superb village of Walkington?

Whether you're planning a family celebration or an impromptu get together with friends, then just maybe we can help.

Choose Amuse is a luxury mews style self-catering house situated in the very heart of Walkington.

It offers high quality furnishings and fittings plus those little extras that can make a short break or a holiday that bit more memorable.



Sleeping up to four guests in fabulous hotel standard bedrooms, we can accommodate families or groups of friends in either twin or king-sized beds.

For more information or to make a reservation, please call **Karen on 07515 325962**.

Email: info@chooseamuse.co.uk or visit the website: www.chooseamuse.co.uk

White Rose Crafts

Answering the need for a shop selling materials, haberdashery and crafting materials along with ready-made crafts is Anne Rogers and her cousin, Sally Johnson. Anne is well-known for running the craft stall on Beverley Market but demand has seen her opening this delightful shop in this prestigious arcade.



The lovely crafts which Anne sold on market stalls here and elsewhere are now beautifully arranged in the new shop - cushions, bunting, gifts, cards, small animals and dolls - along with a wide range of 100% cotton material, which is suitable for making into girls' dresses, boys' shirts, aprons, patchwork and bags as well as for crafts and soft furnishings. A dressmaker's dummy in the shop has one length of material made into a sarong - maybe not ideal for Beverley at the moment, but perfect for the summer!

Anne gave up running her stalls after Christmas, along with attending craft fairs, including the prestigious Sandringham Flower Show attended by HM The Queen. Family commitments, time and the cost of fuel meant that she needed to stay closer to home and as Beverley did not have a dedicated haberdashery, it really was no hardship to put roots down. This has also given her more time for crafting, especially now Sally is around to act as 'front-of-house' and 'do the running around'.

Anne told **Just Beverley**: "I can now take on more commissions and produce more items to sell in the shop, such as fabric gingerbread men for Christmas trees. I want to make hair decorations and fascinators, too. I'm always looking for new ideas as I just love making things. We will be stocking wool soon.

"We have the space to run classes and workshops seven days a week, so I invite anyone who would like to run a craft, sewing or knitting class to get in touch to discuss their idea. We want this place to be a hive of activity! Sally and I are really excited about the potential for all ages and abilities to get crafting - it has been my life and I want to pass on my enthusiasm."

The shop is open from 9.30am - 5pm Tuesdays to Saturdays until Easter and then open every day. Anne can be contacted on **07493 606367**. **White Rose Crafts, 5 St Mary's Court, North Bar Within, Beverley HU17 8DG.**

Orchard Professional Solutions Ltd

This new local business is unique in its offering and approach. Orchard Professional Solutions changes the practice of recruitment and facilities management into a user-friendly, cost-effective solution for businesses and organisations needing expertise.

Craig Wardale started this solutions-based business 5 years ago, from his own home. He has worked for large corporate businesses but wanted to concentrate on working locally, with local people, helping the local economy. His idea was simple - every business or organisation has needs in which they are not experts, so his company would provide that expertise.

For example, a school has need of office equipment and stationery yet does not usually have the time or expertise to source such products in a timely, cost-effective manner. Orchard Professional Solutions can undertake that task on the school's behalf. Or perhaps a shop needs a complete refit without closing whilst it happens? Orchard Professional Solutions will source and contract shopfitters, ensuring the job is completed causing as little disruption as possible. From the recruitment perspective, Orchard Professional Solutions has 4,500 CVs on its database. But it will also head-hunt the right person through a variety of channels. It can also facilitate a selection centre for a company, checking references and DBS statuses of the candidates, even sending the candidates a 'Good Luck' message on the day of their interview!

Craig told **Just Beverley**: "Orchard Professional Solutions really gets to the heart of the problem by building relationships with our customers and clients. We don't specialise in any particular field of recruitment - there are some areas we can't work in, such as aviation, caring or NHS - but ensuring we get the right fit between employer and employee is something we pride ourselves in. That's because we try to make job-searching and recruitment easy. We find out what the employee needs, not only in qualifications but in attributes and attitude and find out as much as we can about applicants so we 'match' them to the right employer. Finding a job can be very stressful, so we ask our applicants to complete as much as possible on-line. When they come into the office, it's just a matter of getting to

know them as people. However, the final decision as to whether someone is offered a job is up to the employer as only they can judge whether someone is going to fit into their team."

Craig talks a lot about team-work, which is because he has spent many years playing football - goal-keeping to be precise - as a semi-professional footballer for Bridlington, Goole and North Ferriby. He currently plays for the Ex-Tigers Team with such luminaries as Dean Windass, Adam Lowthorpe and Ian Ashbee; they raised over £60,000 last year for charity! He coaches at Tickton and sponsors 5 of the Tickton football teams, too. In fact, he likes sponsoring people to help them achieve their dream. He's pledged to help 9-year-old Jake Bedford, an ice-hockey player from Tickton who aims to get to the Junior Olympics with the Bradford Bulls Rugby League team.

Orchard Professional Solutions Ltd has now outgrown the back-bedroom and moved to premises in Landress Lane, Beverley with dedicated office space. Craig has created a people-focussed brand which highlights the benefits of people coming together for mutual reward, an 'army' of individuals who together can save time and money and get the job done efficiently and effectively. No matter how big or small your organisation and how little or large your problem, Craig can probably get it sorted! After all, all organisations are different but every business has the same problems and Craig has made solving those problems his specialist subject. Do give him a call!

Orchard Professional Solutions Ltd, Landress Lane, Beverley, HU17 8HA. Telephone: **01482 862222** or **07906 416134.**



The Dog House

Expanding into Beverley is Antonia Skinner's new dog-grooming salon. Occupying premises next to Savoy Tyres which only became vacant a few weeks ago, the salon has 4 kennels carpeted with fake grass, 2 grooming tables complete with pens, an electric bath suitable for all-size dogs and a large, pink hair-dryer - which comes in very useful when the weather is wet as well as for drying dogs off after a bath.

Antonia studied for 5 years to complete City and Guilds and Diploma-level qualifications in Dog Grooming. She had to go to Grimsby to study as the qualifications she wanted were not available this side of the River Humber. As she has two young children, too, it demonstrates her commitment to ensuring dogs are treated to the highest standards, reassuring owners that their pooches are in the best possible hands.

What motivates Antonia to do the job she clearly loves? "I have been brought up with dogs and wanted to work with them. I also wanted to run my own business. I set up my first parlour in Anlaby 8 years ago, and now have 3 full-time groomers, 2 part-time bathers and an apprentice. Then there's my Mum, Tina Edwards, who helps with the children and the Beverley salon and my brother, Darren, who converted these premises after getting lots of ideas from Pinterest!"



Antonia has experience of working with all breeds, cross-breeds and Heinz 57 varieties. She has a Spanish Waterdog on her books, a dachshund (which managed to escape one of the kennels by crawling under the gate - so one of the kennels now has a floor-level gate) and several sled-dogs/huskies. She told **Just Beverley**: "There are a lot of poodle-crosses about today, which people like because they do not moult. But they still need to be groomed! Hair underneath the top coat and on the legs and tail can become matted; brushing this out can be painful and distressing for the dog. We recommend every dog has its first grooming session at 3 months so it becomes used to something which is going to be a regular occurrence for the rest of its life. In fact, we will give your puppy its first cut free of charge. Just pop in, say hello and pick up a voucher or give us a call to make an appointment."

The shop in Landress Lane has already become something of an attraction. You can watch dogs being groomed through the window and you can also watch your dog being groomed live on Facebook! Log on to The Dog House Beverley and Antonia will stream as she makes your pet look its best.

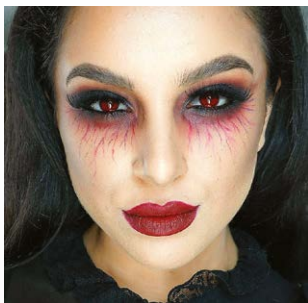
Antonia is amazed at how welcoming Beverlonians are. Dozens of people have popped their heads around the door to wish her luck; she's had flowers and cards and someone even dropped in a 'Back in 5 minutes' sign! She cannot thank Savoy Tyres enough for their help, either - they have even provided a 'drop-off' car parking spot so dog-owners don't have to worry about finding a parking place.

The Dog House also stocks dog accessories and toys and they take debit and credit cards. **The Dog House, 10, Landress Lane, Beverley HU17 8HA.** Telephone: **01482 880122.**

SHORT STORY - Cardinal Time by William Bundy

I awoke at midnight with a blazing fire roaring in front of me. How long I had lain there I do not know, but the midnight chimes echoed throughout the vast and cavernous interiors of the house like some long-forgotten bell of memory, as I attempted to form a report of my present circumstances.

My last memory was of meeting who I shall now refer to as, "The Rainbow Lady", at her house in the Beverley environs for tea and supper, during which time she had regaled me with tales of her past life and circumstances. She had grown up in abject poverty before becoming a seamstress and used what meagre income she had to move here, before falling for and marrying a wealthy landowner who left her in her present situation. She was a beautiful and fair lady as I recall, with long auburn hair and an air of beauty and grace which belied her more fractured beginnings. Her last vision to me was of a wretched wild woman, with gleaming red eyes, the likes of which I had never seen.



I attempted to gain some bearing of my surroundings but felt a curious tug, or pull as if being kept prisoner by some magical hand. The world seemed faint and covered by gauze as I attempted to stand up but failed; the memory of my previous encounter echoing like the midnight bells that chimed through the town of Beverley, haunting my dreams on may an occasion. I attempted to stand up once more, only to find myself sinking back further and further, time now losing all meaning as distant objects seemed

to place themselves many leagues from me and strange figures appeared in my peripheral vision - of what sort I could not tell, but they were evidently not of the human kind, which alarmed me as I felt doused under a mighty veil of sleep which proceeded to carry me off to the land of dreams and beyond.

Haunted by nightmares, I awoke again to find myself face to face with my lady, her face having lost none of its youthful figure, but by the same measure, losing some of its previous beauty, now seeming like the face of a wild, yet fragile beast waiting to strike.

"Did you sleep well?" She asked, in a cooing voice. "Of a fashion" I replied. "How long have I been here?" "Fifty years". She replied, my own expression of shock seeming to promote an amused one of hers as I struggled to make sense of this calamity. "But how... why?, what witchcraft is this..."



With that her face gleamed red again and I had to contain myself from fleeing the room entirely as the candlelight flickered in the dark. "I have kept you from times grasp and from the others who would seek to harm you... they clamour for your skin which now lies so seductively before them... yet I do not age and nor will you... you are my prisoner until I decide otherwise. In the meantime I have kept the hall as you wish, but have renewed the prior experiments we initially came here to perform... and until the time is right, you shall remain here to witness things as they unfold... but better or for worse."

With that, she made for the door, leaving me utterly speechless. Before she left, however, she turned and I saw what liked like, for the briefest instant, a look of affection and love the likes of which I had never seen. It warmed my heart and for a moment all of my cares disappeared as if they had never existed, and I wondered what was to come next as she closed the door.

The candlelight flickered as I returned to my tomb of time and the hour hand marked its next hour.

It would be a while before I would see any semblance of life again. Time would only tell my true fate. As the hour hand struck late.



Merrick by John Fewings

(A poem about the "Elephant man")

*Top-hatted, silk-tied gentlemen and ladies all a-bustle
Laugh and joke and giggle and loudly share their fright.
"Can it be real?! Was that a man?!" "My dear, 'twas just a hustle."
Their cobble-clatter carriage wheels mis-punctuate the night.*

*And when gaslights from the penny gaff are finally extinguished -
Exhibition over - and the gaffer calls it "Time!"
A shadow of a creature drags back toward the workhouse,
Seeking out the shelter of the shadows and the grime.*

*Nor African nor Indian, this elephantine creature,
Muscles heavy burdened with the sackfuls of his bulk,
Hauls his wearied limbs of gargantuan proportion
Along the darkened alleyways to loiter and to skulk.*

*Cranial protuberance disguises his humanity.
His porridge-lumpy cheeks struggle vainly for expression
His physical affliction oft mistaken for insanity.
Rarely given second chance to change that first impression.*

*Dragging ragged sackcloth through cobbled streets one night,
His liquid eye of octopus surveys each gin-grey alley;
Alights upon a trashy pile - something not quite right -
His curiosity aroused - A momentary daily -*

*A rustle of the heap leaves him mindless of himself
For huddled there twixt road and wall, in filthy foetal curl,
Wafer thin and feather light and flimsy as an elf,
Scarce lifting up her sorry cup - a ragamuffin girl!*

*He tosses half a penny and for just a fleeting while
Strokes her greasy, scabby head and grieves her sorry plight.
And in that fractured second he elicits half a smile
Then shuffles quietly back into the shadows and the night.*



John Fewings is Just Beverley's Poet-in-Residence as well as a member of The Argy-Bargy Poets. He writes poetry for people who don't like poems. Check out www.johnfewings.zone

Exciting changes to Folk Festival Site planned for 2017

The Big Top Concert Stage was so popular in 2016 that the Main Stage will also be a Big Top this year!

Although it's in its 34th year, every year brings something different to Beverley Folk Festival. The introduction of a Big Top last year as the Concert venue had many people commenting on how much they loved its intimate festive feel - so this year, instead of just one Big Top, there will be two! Jim Pybus, one of the small team of Volunteer Directors who run the festival told **Just Beverley**: "The transformation of the racecourse into a Festival Village gives the visitors to the Folk Festival a real festival experience. We are always looking to enhance this experience. With a Big Top Main Stage, afternoon concerts will be able to use lighting effects we have not been able to utilise before as the marquee was too bright. We will also be able to accommodate larger audiences where we need darker venues. This gives us much more flexibility! I don't know why we haven't thought of this before!"

The Folk Festival has over 80 acts booked so far this year, including comedy, literature, film, and poetry as well as folk music, which ranges from traditional to Americana and everything in between. Community groups, children's events and folk clubs also feature in a weekend which is tailored to be fun for all ages. Jim also commented "The festival is a real part of the Beverley scene. It features over 100 hours of entertainment, supported by numerous local businesses and volunteers who work hard over the weekend to ensure everyone enjoys the event. It is part of the community and a showcase for Beverley. Audiences travel from far and wide to be part of Beverley at its Best."



Beverley Folk Festival - reinvigorated with new Artistic Programmer, Kelly Foley

Beverley Folk Festival is grasping the opportunity to bring new experiences to the third weekend in June. Kelly Foley talked to Just Beverley to enlighten us of some of the exciting things we can expect this year.

Kelly has been involved with music from a very early age. She's been playing the 'cello since the age of 8 and studied music technology at university. But her life in folk music didn't really begin until April 2009 when she answered a call to help out with administration at the Beverley Folk Festival office, which was then based in North Dalton. As they say, the rest is history as she has been involved with folk music and the Folk Festival ever since! Volunteer roles in stage management and artist liaison lead to a Directorship of the Festival last year and this year, she was offered the role of Artistic Director. Being only the 4th person to curate the festival means there is a lot of pressure, but, as Kelly says, even though the Directors have the ultimate say, it means she can do lots of research, go and listen to lots of different artists and make suggestions which will make the Beverley Folk Festival 2017 unique!

We asked how different the 2017 Festival will be. Kelly said: "My approach in programming this Festival is different to my predecessors. I wanted to bring the festival back to concentrate on folk music and all its derivatives, so there will be no pop music this year, but there will be folk in as many guises as I can offer. Beverley is one of the longest-established folk festivals in England, so we will include a healthy amount of English folk. But that is not at the exclusion of Scottish or Irish folk music.

"I also wanted to include 'edgier' folk, and give a showcase to some of the emerging talent within the folk genre. English folk stalwarts and festival favourites, Martin and Eliza Carthy were booked last year along with False Lights, Jim Moray and Sam Carter's 'gleefully raucous' folk-rock band, whose latest album was envisaged during a retreat in a log cabin in Lincolnshire! Jim also appears as a solo artist. They created a great basis on which to build, which I did first by looking to see what people wanted through the feed-back forms which we ask our audiences to complete.

"The feedback from festival-goers last year was that people wanted more of Scotland's passionate and eclectic Eddi Reader and Lau (who never fail to fill a venue due their visionary sets and amazing musicianship) so they are also both appearing. There was also a huge amount of support for the Americana session which this year features Underhill Rose, Jonas and Jane, Jaywalkers and the most incredible banjo-player Dan Walsh. Then others commented that they liked seeing BBC Radio 2 Folk Award Winners so there's Kathryn Roberts and Sean Lakeman (best duo winners 2016 and 2013), Andy Cutting (Best Musician 2016, 2011 and 2008) and Moore, Moss and Rutter (Best Band 2011). That's just a few of more than 80 acts booked!"

A precedent which was set last year was that headliners don't necessarily need to go on last, so Kelly assured **Just Beverley** that there will definitely be some surprises with running orders!

For example, last year, Seth Lakeman (Sean Lakeman's brother) shared the headline spot with The Peatbog Faeries, which went down really well. Seth came on before The Peatbogs as he had a long drive home, but no-one considered him



anything other than a star performer. There will be more late-night sessions (watch out for Spanish folk band, BOC and The Alterego Ceilidh Band) and the ever-popular Arena Two, Moonbeams and Westwood Sessions. There will be more happening on the main site, too, which will look a little different this year with its layout. There will be poetry, literature, film, workshops, folk clubs, choirs, a Sunday morning act of worship, a song circle and an outside stage which will feature some of the acts which are playing inside as well as buskers. And then there are the Morris dancers...

So who is Kelly most excited about? Four names tripped off her tongue! First, Jon Boden is appearing solo, headlining on the Friday night. He's a surprise package since parting company with both Bellowhead and John Spiers and, as Kelly says, she 'can't wait to see what he pulls out of the bag!'. Second highlighted was Sam Kelly and the Lost Boys. Sam has gone from reaching the final of Britain's Got Talent to heading up a band of very talented musicians which has won several awards and a slot playing live on BBC Radio 2's Mark Radcliffe Show. Third was Daóirí Farrell (pronounced Derry) who has been described as perhaps the most important traditional Irish folk singer to come out of Ireland in recent years by none other than Christy Moore and fourth was Ninebarrow, who are a witty and humorous duo who like to tell the stories behind their songs, which they sing with incredible harmonies.

It is clear that Kelly is really passionate and knowledgeable about folk music but she is also keen to ensure that Festival-goers have the best experience possible. She really has put a lot of time and effort into doing things in different ways so that Beverley Folk Festival 2017 will be remembered for all the right reasons - great music, wonderful ambience and fabulous fun.

This is at the same time as running her own agency, KJM Music and representing The Paul McKenna Band from Scotland, Kate in the Kettle and the sensational Lauren Housley who is taking a trip across the Pennines from her Manchester base to appear at Beverley. As Kelly is taking a trip to Canada in the not-too-distant-future to sign more acts, one wonders if the programme at Beverley is full and whether there might just be space for yet another surprise!

Tickets for Beverley Folk Festival are currently on sale through the website www.beverleyfestival.com or telephone **07568 593960**. Tickets are available in various price-bands but under 12's are free! Beverley Folk Festival is held at **Beverley Racecourse, 16-18th June**. The site opens at 4pm on Friday 17th. Camping is available at extra cost. Car-parking is free. Do visit the website for more information!

BEVERLEY FOLK FESTIVAL



Competition

Beverley Folk Festival has kindly offered a pair of full weekend tickets so that a lucky couple can experience all the fun of the festival courtesy Just Beverley.



And as children under the age of 12 are free, this prize could include a whole family. All you have to do to be in with a chance of winning this very generous prize, which is worth £240, is to answer the following question:

Last year, Seth Lakeman was one of the headline acts. This year, his brother is appearing alongside Kathryn Roberts. Who is Seth's brother?

Send your answers by email to info@justbeverley.co.uk by May 17th. Put 'Beverley Folk Festival Comp' in the subject box. Winners MUST be available for publicity for **Just Beverley** and **Beverley Folk Festival**, if possible before the Festival but definitely at the Festival. Only one entry per person. The prize **DOES NOT** include camping - camping passes are available to purchase through the Beverley Folk Festival website or telephone number. The competition is open to all UK residents **OVER 18**. The winning is selected at random from all correct entries. The prize is not redeemable for cash or resale. No exchange, refund, resale or equivalent monetary value offered. The judges' decision is final.

Local students from The Pauline Quirke Academy set to perform at Hull City Hall

Talented young performers from The Pauline Quirke Academy in Beverley will soon be wowing audiences at Hull City Hall on Friday 18th August. PQA Beverley opened at Beverley Grammar School in May 2016, the students enjoy a carousel of workshops each week in Comedy & Drama, Musical Theatre and Film & Television.

Students will perform alongside Dave Finnegan's Commitments, Britain's Got Talent semi-finalists The Garnett Sisters, The All for Once Choir and there will be a special performance by East Yorkshire Motor Services' employees. The performance will be part of a Hull UK City of Culture charity event to raise money for the Children's & Teenager's Cancer Unit at Castle Hill Hospital and the NSPCC. "We're really excited to be taking part in such a special event in an incredibly prestigious venue. We'll be performing alongside some great professional acts, and we're sure it'll be a night to remember", said Principal James Aconley. "The fact that the event takes place during the year of Hull UK City of Culture makes it even more special". As well as this exciting opportunity, the students from PQA Beverley will be taking their first ever Trinity College London exams in the Summer. PQA exclusively offers Trinity College London exams as part of the training they provide at no extra cost. For more information on PQA please contact Principal James on 07753179070 or james@pqacademy.com.

HAYWARD Befriending

Are you, or someone you know, struggling to maintain independence?

Do you need time-out from your role as carer?

HaywardBefriending can provide support for adults aged 18-65 and 65+

- Company at home
- Accompanied outings
- Shopping with/for you
- Handy person service
- Support with paperwork
- Support with housework
- Appointment transportation
- Pet service



Contact Jennie for further details
Call: 01482 868166 or 07834 491242

www.haywardbefriending.org.uk

Would you like to make a difference to someone?



VOLUNTEER CAR & MINIBUS DRIVERS NEEDED



Full training given, ring or pop in for a chat!



25 Corporation Road, Beverley, HU17 9HG

Tel: 01482 868082

www.bclift.org.uk

Reg. Charity No: 506813



THE PAULINE QUIRKE ACADEMY OF PERFORMING ARTS IS ENROLLING NOW IN BEVERLEY!

Outstanding performing arts tuition for 4-18 year olds.

Find us at **Beverley Grammar School, Queensgate, Beverley, East Riding of Yorkshire, HU17 8NF**

Academies run on Saturdays from **8.45am - 12pm**

To enrol and for further information please visit www.pqacademy.com or call **FREephone 0800 531 6282**



In the Spotlight - Martin Peirson

Well-known for promoting other people through his day job at Strada Music Agency and organising Cherry Burton Arts, Martin is also known as a prolific solo performer at The Processed Pea and for the odd slot at local festivals. But he also has a history of performing in bands which goes back to his Longcroft School days! Does anyone remember Diggory Venn?

He is currently one of Henry Priestman's 'Men of a Certain Age' backing band and performs with his own band 'The Runaway Train', which has a flexible line-up. He also plays with The Goathland Plough Stots, one of the oldest sword-dance teams in the country, which boasts Eliza Carthy, Jim Eldon and Steve Peirson (no relation) as accompanists. But he has now recorded some of the many songs he's composed over the years and made a solo album.

The first thing we asked Martin when we caught up with him was why it had taken him so long to record his songs? He said: "I have spent years encouraging others and at long last realised that I had lots of music that I wanted to share. But this is only me, at my level, so Ed Sheeran can sleep soundly in his bed!"

Having heard the album, 'Shadows and Candlelight' we think Martin is underselling himself. Maybe he doesn't want to give up the day job just yet, but there are some catchy tunes and some very well-thought-out lyrics to accompany them on there. There are also other musicians as well as Martin performing the songs. Clearly this is more than just the work of a novice!

Martin said: "Giving up running The Processed Pea after 25 years gave me the head space to write new songs and even revisit my old songs. I asked Peter Robinson, who is technical as well as a bass guitar player, if he could record them before I forgot them. Every song I write is a stand-alone piece, but the

material grew organically until there was enough for an album. Then there was some scope creep in that what was just meant to be just Peter and me developed and I found myself inviting various musicians to come and contribute. It's one of the best things I have ever done!"

Those people include Paul Liddell from Sunderland, playing trumpet and harmonising, Peter himself playing trombone, Peter's daughter playing sax, BJ Cole playing pedal steel guitar and members of Vent du Nord providing feet percussion. Martin could have called in lots of favours from the people he promotes, but on the whole he hasn't done that, the exception being BJ Cole who was delighted to be asked. He's well-known for playing pedal steel guitar on Elton John's 'Tiny Dancer' and Andy Fairweather-Low's 'Wide-eyed and Legless'. Other local artists such as Sarah Shiels and Katie Spencer, who have graced these pages, were also involved.

Martin said: "In my job as a music promoter I get to meet some very interesting people. But it strikes me that the people who have achieved most are those who just love performing; they are lovely to work with as for them, it's not about ego. Such as Henry Priestman. I knew Henry Priestman when we were at Art College in Hull. I booked him once for the Processed Pea and he said he wanted to play with a backing band, which is how 'The Men of a Certain Age' came about. That band includes Peter Robinson and Les Glover as well as me. Henry gets in touch with us all when he is in the area and we experience the joy of playing together. He contributed to the album, too. The Runaway Train is a lot of fun, too. It includes, at various times and amongst others, Dez Allenby, Rob Peirson and Mick Harding.

"The launch gig was a hoot. My niece Holly, who is a dancer and a singer performed along with Rob Peirson, Tony Underwood from The Alligators, Keith



(Ched) Cheeseman (ex-Rats and Dog House Skiffle Band), Hugh Whittaker (ex-Housemartins) and Gary Pullen (ex-Dog House Skiffle Band). It was great seeing Gary and Ched on stage together again. Emma Fee was the support act - she's been involved with a re-recording of Henry Priestman's 'Forgotten Town' as a City of Culture project. All these links and co-incidences..."

Shadows and Candlelight isn't the only recording Martin is involved with. Way back in the day, Diggory Venn recorded an album at Fairview Studios. Fairview is releasing an album to celebrate its 50-year milestone, 'Fairview at 50', and Martin has been asked to contribute a new song, which will be performed by The Runaway Train. Meanwhile, 'Shadows and Candlelight' is creating a stir in the local area and beyond - Martin has been on Radio Humber, Vale Radio, Beverley FM and Vixen - and bookings for live performances are increasing.

If we have whetted your appetite enough for you to want to avail yourself of this album of quirky songs with interesting arrangements, it's available at Minster Records in Beverley or by contacting Martin through his website www.martinpeirson.co.uk. It could be the best £10 you have spent so far this year!

Cosmo's

LUNCHTIME OFFER

SUNDAY - FRIDAY
11AM-4PM



TWO DINE FOR £13.95*

Choose any two main courses from our salads, risottos, sandwiches or wraps.

PLUS
125ml glass of house wine, soft drink or 1/2 pint of draft beer

*Terms and conditions apply. Please see website

www.cosmosbeverley.co.uk



COMPLIMENTARY £10 GIFT VOUCHER

WHEN YOU PURCHASE COSMO'S VOUCHERS WORTH £50 OR OVER

THE PERFECT PRESENT ALL YEAR ROUND

Cosmo's

AVAILABLE TO PURCHASE IN THE RESTAURANT OR ONLINE AT www.cosmosbeverley.co.uk

PUZZLE PAGE

Sudoku

Fill in the grid with digits in such a manner that every row, every column and every 3x3 box accommodates the digits 1-9, without repeating any.

2	4			5	7	3	6	
					8			9
3	7	8				2		
	6			4	1	7		2
	8							5
				5		1		
1	3							
	5				3		2	6
			8	1	2			

Wordsearch

J D M U S N L B A X C H H D T
 X Y A D I L O H I P C G A B I
 D D P X F K H N R R R F I C B
 E G K L S Y S S U R F I A B
 D B H S E Q R H X O T P L R A
 K L T Z X K C E D K K N J D R
 A L E F C C N I T R E A T S C
 L T V O I Y L U E S E K B W Y
 O T Q L T S X E D G A U J L Q
 P E P N E D N A G I U E H R O
 R G F A M N I S Q A T D X L A
 W F H T E K U G Z N A V Q Q Q
 K V M F N U N E A V K U W M A
 P Q V G T E N U V G Y P I G P
 W G T P S L H B I R M X P Q L

APRIL
 CARDS
 CHURCH
 DAFFODILS
 EASTER



EGGS
 EXCITEMENT
 HOLIDAY
 RABBIT
 TREATS



It's the tea and cake
 that make's cycling
 great!

Do you have any
 amusing stories,
 quotes or pictures?
 Send them to
 info@justbeverley.co.uk

Positive thoughts for Spring

Choose not to participate
 in their bad news, choose
 instead to spread the
 good news

If everyone was the
 same, what kind of
 place would it be?

Take a positive
 action in life; Ask
 "How can I help"?

Experience is not what
 happens, but what we
 do with what happens

Before you engage
 - smile

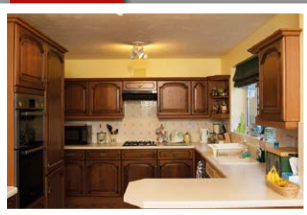
A positive attitude
 inspires, be inspirational

QUALITY FITTED KITCHENS
 AND QUALITY REFURBISHMENTS



DREAM DOORS[®]
 NEW LIFE FOR OLD KITCHENS

Before



- Huge choice of doors, worktops, appliances, sinks & taps
- 50% deposit, balance on completion
- Made to measure custom-built doors and units
- Door swaps to full kitchens - tailored to your needs

CALL ANDY OR TERRI
 FOR A FREE ESTIMATE:

01482 861653
 dreamdoors.co.uk



EST.
 1999



Visit our showroom:
 Belprin Park, Swinemoor Lane,
 Beverley HU17 0LN

Easter Sale

Terms & Conditions apply

Checkatrade.com
 Where reputation matters



THE GREEN DRAGON
IN BEVERLEY

MON 'MONDAY CLUB' SELECTED DRINKS **£1.99**

TUES SMARTPHONE PUB QUIZ "NO PENS NO PAPER NO CHEATING" TUESDAY CLUB DRINKS FROM £1.90

WEDS 8 PM **IN THE ROUND** OPEN MIC / JAM NIGHT ALL WELCOME

THURS Traditional QUIZ 10% OFF FOOD CASK ALES £2 AFTER 8PM CRACK THE SAFE

FRI JOIN US **LAST FRIDAY** OF THE MONTH LIVE MUSIC FROM 9 PM

ASK ABOUT OUR **DRINK PACKAGES**

- BREAKFAST SERVED FROM 9AM EVERY DAY
- FOOD SERVED 7 DAYS A WEEK
- 10 CASK ALES AND HAND PULLED CIDERS
- QUIZ NIGHTS START 9PM

2x Gin & Tonic for £5 double up for extra £2.50

Live Band
The Air Waves
Friday 28th of April

51 Saturday Market, Beverley, East Yorkshire, HU17 8AA
Tel: 01482 889801
www.thegreendragonbeverley.co.uk

Classic Cars with Carfan - The Aston Martin DB5

The name's Martin, Aston Martin! The DB5 is possibly the most famous car ever made - and it probably saved the company, allowing it to restructure into the great company of today.

Incredibly, only 1059 DB5s were ever made, including the Vantage, convertible and 13 shooting-brake versions. It had an inline 6-cylinder engine that followed on from the DB4. This was a hand-built car, with artisans starting with a piece of aluminum and ending up with a wing, for example, many hours later. It's not unusual for the wings to be slightly different in dimension on the same car, such was the level of human input. This was before the advent of robots, don't forget. As a result, deep pockets are needed for restoration projects, if you can find one, that is. If you ever even see a shooting brake, you will probably win Top Trumps.

If you bought the car new, it would have cost over £4000 which was more than twice as much as an E-Type Jaguar. To buy one now would cost anything up to £800,000, which is a pretty good return on your investment! As a result, the main place to spot a DB5 is Aston Martin Owners' Club meetings, which holds many of them, both in the U.K. and indeed abroad. The club is also a mine of information, especially for those difficult-to-find parts.

The Bond theme follows this car wherever it goes. If the car that appeared in Goldfinger which was stolen in 1997 from a Florida airport is ever found and comes to market, the sky is the limit, price-wise.

So if you see a DB5 blasting past with a tuxedo-wearing driver who looks like he's on a mission, don't forget that cheery Carfan wave!



BEVERLEY MOTORWORKS INDEPENDENT BMW & MINI SPECIALISTS

Follow us on:



 search for Beverley Motor Works

BMW Qualified Senior and Technicians Offer

- Saving up to 70% OFF main dealer prices
- Manufacturer's warranty not affected
- Resale value of your vehicle not affected
- Award-winning customer service
- Over 30 years' combined BMW experience

Call today on **01482 881128**

Our dealership expertise means high quality for car servicing at a fair price...

- ATA Accreditation
- Routine servicing
- Condition-based servicing
- Diagnostics
- Mechanical repairs
- Air conditioning
- Performance tuning
- MOT's

Call now for a no obligation quote or to book in on **01482 881128** or email us directly from our website www.beverleymotorworks.co.uk

Unit D1 Grovehill Industrial Estate Annie Reed Road, Beverley HU17 0LF
E: web@beverleymotorworks.co.uk



Elizabeth Godber meets... poet Sara Anderson

Sara Anderson is currently a student at the University of Nottingham, studying English with Creative Writing, but she is also a developing young poet. I caught up with her to talk about the inspiration for her poetry and growing up in the village of Skirlaugh.

Sara explains how, initially, when she began studying, she was not a great fan of writing poetry, "but, about half way through the year, something clicked" and her opinions changed. She describes how she "thinks it's hard not to be daunted by poetry, especially if you compare your work to poets like Geoffrey Hill or Emily Dickinson, but she finally escaped the comparison stage, and found her own style" by realising that "poetry can be as simple as you like, but still beautiful." Sara explains how much of her poetry is inspired by "natural things like a tree that catches my eye, or the way ivy spreads up a building" and how this love of the natural world is due to her childhood in East Yorkshire. "The landscape of East Yorkshire that surrounds Beverley is wonderfully flat - and I love it!"

She exclaims, "there's something magical about being able to look across a horizon of fields and seeing Beverley Minster standing proudly in the distance." However, as well as walking her dog along the Westwood, Sara also has a much more exciting hobby: skydiving, and "lately she has been trying to capture the way the air feels when you're falling through it, which has led her to write other poems about 'elements'". She studied in Malaysia during her second year at university, which also undoubtedly impacted upon her work, as she describes herself as "a chaser of natural beauty" and she is "currently working on a poetry collection that mixes poetry with origami as another way of engaging with readers" and making poetry more accessible.

Here is Sara's poem, '+3.75'.

What do you mean?
I stayed awake later to watch
the panels of light from streetlights
thrown shafted through the blinds

Etched like straight claw scars. Non-permanence
forms the beauty of it like you said
to me the day I missed the shooting star

Sometimes I stare at the lights
or a flickering flame for long enough to
blur away the truth of it. And remains the shifting form
of a thousand stars galaxies from almost blindness
made seen by the truth of it when I asked-



MR CARPETS

CARPET AND FLOORING SPECIALISTS

3 Beckside North, Beverley, HU17 0PR



30 Years

- in business
- of good honest service
- speaks for itself

01482 872134

BEVERLEY MUSIC AND DANCE

Specialists in sheet music, guitars, ukuleles,
woodwind, brass and accessories

Ballroom shoes · Dancewear

14 Norwood, Beverley, HU17 9EZ

Tel: 01482 881584



Peter Hall Violins

14 Norwood, Beverley, HU17 9EZ

Tel: 07901 591965

- Dealers and restorers of fine Violins, Violas, Cellos and Double Bass
- Bows and Re-hair service
- Strings, Cases and accessories
- Comprehensive teacher list
- Bespoke music stands with individual logos, names or images made to order

Visit our Facebook page and website:
www.peterhallviolins.com



WHITE RABBIT
CHOCOLATIERS

this Easter, crack into our yummy...



AWARD WINNING
CHOCOLATE

made in Beverley

Natural ingredients, NO preservatives.

Hop on over to our new online shop!
whiterabbitchocolatiers.co.uk

Facebook: /White-Rabbit-Chocolate Twitter: @WhiteRabbitChoc

16 Dyer Lane, Beverley HU17 8AE 01482 679325

In the garden... April

When April arrives, the garden starts to burst into colour. It seems that there is something 'new' to enjoy every day. Drifts of daffodils will be providing us with a carpet of yellow and cherry blossom will be blowing in the wind like pink snow.

On the whole in April we can expect warmer day temperatures and more hours of sunshine, but don't be fooled night time temperatures can be low enough for frosts to occur. Snow can occur in April, but it rarely lasts long and of course we can expect some 'April Showers'. April is undoubtedly a busy month in the garden. However, try to spend some time enjoying your garden, remember 'all work and no play'... So, plants to enjoy - I have already mentioned the flowering cherries, other trees are the crab apples (*Malus*) and *Magnolia stellata*. Last month I had hoped that my *Viburnum carlesii* would be in flower and giving off its wonderful fragrance by the end of March, this won't have happened and so I still have that treat to look forward to.

Other shrubs, perennials and climbers to enjoy in April are: *Chaenomeles*; *Camellia*; *Forsythia*; *Clematis alpine* and *armandii*; *Bergenia*; *Aubretia* and *Dicentra spectabilis* (bleeding heart) to name a few.

Tasks for April...

Planting and Sowing

- Plant new shrubs, perennials and any other container grown plants - if we experience a dry spell make sure the plants are watered, don't allow them to wilt.
- Plant out autumn sown sweet peas and sow vegetables outdoors.
- April is a good month to seed a new lawn - remember sowing the seed is the easy part, it is important to prepare the ground carefully.
- Seed any bare patches in the lawn.
- Plant out all summer flowering bulbs by the end of the month.
- If you have a greenhouse or protected space, plant up your summer containers and hanging baskets towards the end of the month, BUT don't be in too much hurry to put them out much before the end of May.

Pruning and Tidying

- Spend a little time tidying your borders and weeding - annual weeds can be pulled out by hand or give the border a quick hoe, perennial weeds are deeper rooted and will need digging out.
- Prune hydrangeas, lavender and other grey foliated plants.
- Prune and shape fan trained fruit and tie in new growth on climbers.
- Dead head daffodils (leaving the foliage to die back) and prune forsythia and *chaenomeles* plants after they have finished flowering - they both flower on wood produced the previous summer.
- Of course the lawn may need mowing more regularly - trim it lightly with the blades set high.

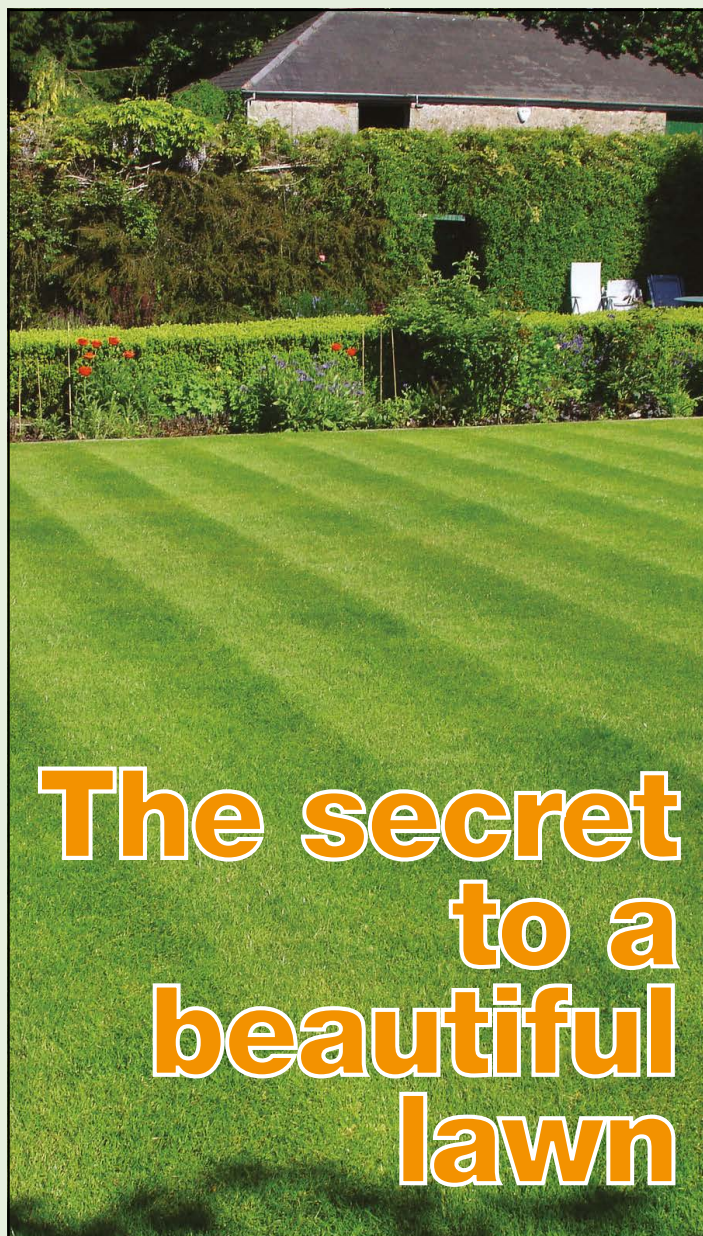
Pests etc.

- All this lush growth makes a veritable feast for aphids, slugs and snails so keep a lookout for them and deal with them swiftly. If you're not an 'organic' gardener use slug pellets. Organic gardeners have several ways to control slugs, including a biological control using nematodes. Traps are also effective and my favourite is the 'beer trap', lay a plastic sparkling water bottle (or similar) on the ground, sinking it far enough down so that the bottle opening is just proud of the soil surface and filled with some beer which attracts the slugs - what a way to go!!
- Try to encourage hedgehogs, frogs, toads and thrushes into your garden - they all enjoy a meal of succulent slugs and snails, I often find smashed and empty snail shells on my stone path.

After all this hard work I hope we have some nice evenings when you can sit in the garden and relax with a cup (or glass) of something, until next month.

Happy Gardening! J.

Jane Dale of 'Designed Gardens'
Tel: 07983 392 411



The secret to a beautiful lawn

Our lawn experts use the right products, in the right quantities, at the right time. They kill weeds, control the moss, and work with you for a beautifully lush and healthy lawn.

- Free consultation and lawn surveys
- UK's leading professional lawn service for over 28 years
- No contracts to sign, pay as you go service
- Specialist feeds exclusive to GreenThumb
- Cheaper than D.I.Y.
- From £15 (inc VAT) per treatment

GreenThumb
LAWN TREATMENT SERVICE

www.greenthumb.co.uk

01482 880082



6 Top Opportunities for Family Fun at Beverley Racecourse in 2017

This summer there are more opportunities than ever before to enjoy a perfect family day out at Beverley Racecourse. With six fun-filled race meetings planned, from free chocolate and Easter fun on White Rabbit Day to the hilariously naughty racing donkeys at A Very British Raceday, why not try and make it to them all! Under 18s go free and you can enjoy some fantastic discounts when you book in advance, with tickets starting at just £4 into the Course Enclosure.

Read on for 6 top ways for families to have fun at Beverley Racecourse this summer.

1. White Rabbit in Easterland Day - Wednesday 19th April

We certainly have a treat lined up to welcome everyone back to our first raceday of 2017. Join us for a magical Alice in Wonderland themed Easter Egg hunt, featuring live theatre and free chocolate eggs for all the kids, as well as a lovely afternoon's racing.



2. May Day Raceday - Monday 1st May

Lambs, chicks and baby rabbits combined with an exciting afternoon of racing; need we say more!? Ok then, how does trampolining, face painting, the mysterious living hedges and a live Ceilidh band sound? This lovely bank holiday Monday is a the perfect opportunity to bring a picnic, the family and enjoy a happy and relaxing day off.

3. Half Term Raceday with Hull FC - Wednesday 1st May

A special extra this year, it's the school holidays so why not bring the whole family and join us for a fab day out, with giant zorb balls, funfair rides and exciting racing. The training squad from Hull FC will even be coming down! Half-term entertainment taken care of and you can enjoy yourself whilst the kids are having fun!

4. A Very British Raceday - Saturday 10th June

Guaranteed to have you all crying with laughter, this lovely summer Saturday sees the running of the infamous Donkey Derby, a global phenomenon with over 3 million views online. There's also traditional British sidestalls, a Last Night of the Proms singalong and some top notch racing.



5. Roll Up Roll Up Raceday - Tuesday 1st August

An exciting and popular family day returning for 2017, this circus theme will keep the whole family entertained. Learn how to unicycle, juggle & hula in our fabulous circus workshops, run by internationally acclaimed Greentop Circus, Sheffield. There'll also be popcorn and all the fun of the fair, plus our first ever DOG race, the Bark De Triomphe.

6. A Sunday Hop - Sunday 27th August

Relaxation is the name of the game on this laid back Sunday afternoon. For grown ups, a tasty cask ale accompanied by live music in our Beer and Folk Festival is a must, whilst fun for kids includes loads of funfair rides and side stalls from The Beverley Lions.

To pre-book tickets just visit www.beverley-racecourse.co.uk or call **01482 867488**. Remember, tickets booked in advance are much cheaper so make sure you book before the day!

Caption Competition Winner



Sian Grewcock won the caption competition with the caption; "G'up lad, I've got a pint on tap at Nellies!" It was chosen by Sally Iggulden, CEO of Beverley Racecourse as the winning caption. Congratulations to Sian on winning a family ticket for the first race meeting of the season.



Tales from the Racecourse - How I got my Dream Job!



From the age of 6 when my sister first took me to Beverley races I was hooked. I loved the horses and everything going on around me. At my insistence, my sister placed a bet for me on a grey horse, all of 6 old pennies. It didn't win and there ended my love of grey horses! But I still had the horse bug and at the age of 15 when I left school I desperately wanted to work with horses and one day be a jockey.

My parents had other ideas though and wanted me to get a 'proper' job in the building trade. A local man, Fred Elvidge took me on as his apprentice decorator and I was with him a few years. Still with a keen interest in racing I often called in at the bookmakers in Lairgate (Fred Butt) and with a few wins along with wages I bought myself a shiny red Lambretta. One Sunday morning, I decided to ride to Malton to see if I could find any work in the racing stables there. I noticed a sign for Pat Rohan stables and decided to enquire there. Mr. Rohan told me I lived too far away in Beverley but said Geoff Toft was due to set up some stables in Beverley. In due course I went along there in search of a job.

Mr. Toft had nothing available with horses, but when I said I was serving my time as a painter, he seemed more optimistic. Because I desperately wanted to be there, I accepted some work painting his horse box and stables, working weekends and nights around my other work. When Mr. Toft offered me a job cleaning out the stables and looking after the horses I was so happy that I handed in my notice with Mr Elvidge! All was good until one teatime a knock at the door saw Mr Elvidge there telling my Dad that I was going to leave him to work at the stables. My Mum and Dad were not very happy at all and I received a good telling off and told I had to keep on with the painting. I wasn't very happy either but it made me even more determined to find a way to do what I really wanted. Carrying on at the stables evenings and weekends, I travelled all over, taking horses to race meetings. I was eventually given a horse to look after called Nunny Punny and was asked to ride it as a lead horse. I was thrilled to bits! Although it was an older horse it did go on to win a race.

In need of more cash and with bills to pay, I returned to decorating working for Lightowler; one of my first jobs was at Beverley Racecourse! It was as though I was meant to be around horses! We painted just about everything in dark green. After a couple of years, I branched out on my own and one of my first jobs was again at the racecourse! Whilst there, I was approached by a Mr. Cleverley to see if I was interested on working race days. Was I interested! You bet! He had a job for me painting all the jockey's names and the winners onto the jockey boards, plus chalking tips from the newspapers onto the tipsters' board, a job I still do to this day along with my own selections. Whilst working there, Steve Jessop and me formed The Hurn Racing Club. We purchased a horse called Loch Hurn Lady, trained by Ken Hogg. We had many exciting days out with her and she eventually had a win at Catterick. For the last 18 years, I have been working at Beverley and other Yorkshire courses as Declarations Clerk. I not only fulfilled my ambition to work in racing but have met some amazing people along the way, including HM The Queen, to whom I have been presented. Almost 50 years in racing one way or another, I consider myself to have the best job in the world! A job I had wanted from the age of 6!

Colin Stamford.



The BEVERLEY HAT COMPANY

46 Lairgate, Beverley, HU17 8EU



Telephone: 01482 861046
Email: anne_anderson24@hotmail.com

Golf with Stewart Fraser - New Rules proposed from 2019

Some new additions to the rules of golf have just been proposed from 2019 to bring the game more up to date with the needs of the modern golfer. What are these changes and how will these make the game more appealing?

Relaxed putting green rules:

- There will be no penalty if a ball played from on the putting green hits a flagstick still in the hole.
- Players may repair spike marks and other shoe damage on the green.
- No penalty for touching the line of a putt.

Relaxed rules in penalty areas:

- No penalty for moving loose impediments or touching the ground with a club inside a red or yellow hazard.

Relaxed bunker rules:

- No penalty for moving loose impediments or touching the sand inside a bunker.
- An option to have a penalty drop outside the bunker if unplayable.

Relying on player integrity:

- No more use of camera replays to later question decisions made on the golf course.

Pace of play:

- Reduced time for lost ball search.
- Play when ready golf.

New dropping procedure:

- Relaxed dropping rules.

In my eyes, the new rules have mainly been introduced to speed up play and decision-making in golf. Recently, slow play has been highlighted as one of the main problems in golf and the R&A have decided to try and combat this with these new rules. For example, golfers don't have to wait till the flag is taken out to putt and don't have to wait until it is their turn to play, providing it is safe.

The new rules also supersede some old antiquated rules from years gone by that seem out of date and illogical. Why weren't players allowed to repair spike marks on the line of their putt? The integrity of players has also been brought into question in recent times, too, with the use of high speed TV camera replays, which has always seemed unfair to me as often it is only the leaders of a tournament that are on camera and not the entire field. I have no doubt that some of the new rules are a step forward for golf and hopefully will increase participation. If you would like to find out if golf is the game for you, I have a new series of beginners' lessons coming up at the special price of £25 for 5. Do give me a call for more details at Beverley and East Riding Golf Club on **01482 869519**.



HUBY

DOMESTIC APPLIANCES

HUGE SAVINGS
when you

BOOK ONLINE

at
hubys.co.uk

Book in advance and save money.
The further you book in advance
the more you could save...




You've tried the rest,
now use **THE BEST!** **01482 240511**



Print that gets you noticed



- ✓ Brochures
- ✓ Leaflets
- ✓ Business Cards
- ✓ Business Stationery
- ✓ Posters
- ✓ Desk Calendars
- ✓ Wall Calendars
- ✓ Pop-up Banners
- ✓ Pads
- ✓ Invites

20 YEARS EXPERIENCE

We are committed to providing an excellent service by offering value for money and ensuring complete customer satisfaction



Jadan Press are a leading family run commercial B2 colour litho printer based in Hull. With 20 years experience, the company is renowned for producing work of an exceptionally high quality. We are committed to providing an excellent service by offering value for money and ensuring complete customer satisfaction.

Tel: 01482 610902
info@jadan-press.co.uk www.jadan-press.co.uk
 Rainbow House, Kimberley Street, Hull, HU3 1HH



What's On IN BEVERLEY

SPONSORED BY: **küchenhaus**

Tell us about your event!

E-mail info@justbeverley.co.uk

Telephone **01482 679947**

For more events visit
justbeverley.co.uk/events

2 Toll Gavel, Beverley, HU17 9AJ. T: 01482 862172.
Open: Mon - Sat: 10am-5pm. Sun: 11am-3pm.
Bank Holidays: 10am-4pm.

Friday 31st March

- **Croft and Pearce are not Themselves**

East Riding Theatre. 7.30pm. £10/£12. See these rising comedy stars in their hilarious sketch show at ERT for one night only.

Saturday 1st April

- **ArTERY live presents the Eduardo Niebla Duo in Concert**

Swanland Village Hall HU14 3QR. 7.30pm. Tickets from 01482 634863. yd@swanlandvillagehall.info

Monday 3rd April

- **Processed Pea presents Tom Townsend**

Light Dragoon, Etton HU17 7PQ. 7.30pm. £8. Tickets from 01430 810669.

Sunday 9th April

- **Play-writing Surgery with Jane Thornton and guest speaker John Godber**

East Riding Theatre. 10am - 5pm. £25. The second of Jane's workshops but open to all. Guidance offered on formatting and theatrical practice, concluding with writing and dramatization of your own 5-minute play.

- **ArTERY live presents Dommy B performing Aaaaaaaaaaagh! Dinosaurs!**

Etton Village Hall HU17 7PG. 3pm. £3-£6. A young troll must defend the town from a gang of destructive, deadly dinosaurs! Recruiting allies - a powerful goblin wizard and a snotty, bogey-blowing dragon - does she have what it takes to save the day? Written and performed by Dommy B from BBC's 'Rhyme Rocket', this show is suitable for ages 5-10 and their families. This was one of the top eight shows at the Edinburgh Fringe 2016. Tickets 01430 810285

- **Beverley Minster Choir sing Stainer's Crucifixion**
Beverley Minster. 5.30pm. Free. Retiring Collection.

- **A Street Cat Named Bob (12A)**

Bishop Burton Village Hall. 7.30pm. £5/£4.50. In conjunction with Cine North. A moving, uplifting film based on a true-life story of a London busker and the injured cat which comes into his life. Tickets on the door. Refreshments available.

- **Monday 10th - Wednesday 12th April**

- **St Mary's Easter Holiday Club for Primary School-aged Children**

10am - 12noon each day. Details: stmarys.beverley@gmail.com

- **Monday 10th April**

- **Norwood Nites presents...**

Norwood Church schoolroom. 7pm. Free - donations welcome. Refreshments and raffle. The chance to catch a film you may have missed or enjoy an old favourite. This one is about 4 siblings who were evacuated during the war to a country house where they find a magical wardrobe.

- **White Horse Folk Club Singers and Musicians Night**
Beverley Conservative Club 8.30pm £2.

- **Thursday 13th April**

- **Beverley Film Society presents Embrace the Serpent (2015) Cert 12A Drama/history**

Parkway Cinema, Flemingate. Doors open 7pm. £6.50/£3. Oscar-nominated film of two European scientists working in the Amazon with a Shaman looking for a sacred plant.

- **Thursday 13th - Friday 14th April**

- **Other Lives Productions presents Tale Spinner - Your Story, Your Voice**

East Riding Theatre. 7.30pm. £6 for audience, free to story-tellers! Hear the chosen stories and vote on your favourite.

- **Friday 14th April**

- **Beverley Chamber Choir sing Bach's St John Passion**

St Mary's Church, Beverley. 7.30pm. Tickets £17.50/£12.50 /£5 from Beverley Tourist Information 01482 391672 or www.beverleychamberchoir.org

- **Beverley Churches Together Walk of Witness**
Beverley Town Centre. 10.45 - 11.45am.

Beverley Chamber Choir & Orchestra

Music Director: Jeffrey Makinson

J.S. BACH ST. JOHN PASSION



Evangelist Richard Dowling
Soprano Eleanor Garside Contralto Joyce Tinsley
Tenor Austin Gunn Bass Robert O'Connell

Good Friday April 14th 7:30pm St. Mary's Church Beverley

Tickets £17.50, £12.50 and £5 students, from March 1st from
Beverley Tourist Information (01482 391672), online at
www.beverleychamberchoir.org
or on the door from 6.45pm

- **Thursday 20th - Sunday 23rd April**

- **New Paths Music**

Various times, various venues around Beverley and East Riding, various prices. Tickets, day passes and festival pass available from boxoffice@eastridingtheatre.co.uk. Some events free but reservation recommended at admin@newpathsmusic.com. See full programme at www.newpathsmusic.com.

- **Friday 21st April**

- **Physic Night - Mediumship and Music**

Armstrong Social Club, Grovehill Road, Beverley. £10. 7.30pm. Medium Just Janie and music from The Covergirls. Tickets from: www.tsavocal.co.uk/jukebox-and-bobby.html

- **Sunday 23rd April**

- **Ballroom and Sequence Dancing**

Armstrong Social Club, Grovehill Road, Beverley. £10/£8. Live music from Gary Cole.

- **Monday 24th April**

- **White Horse Folk Club Singers and Musicians Night**
Catholic Club, Station Square, Beverley. 8.30pm. £2.

- **Wednesday 26th April - Saturday 20th May**

- **Shakers by John Godber and Jane Thornton**

East Riding Theatre. 7.30pm and 2pm. £11.50 - £16.50. Carol, Adele, and Mel work in a bar that is worse than hell. Welcome to the 80s where every town has its Shakers, the trendy cocktail bar with plastic palms and Pina Colodas where everyone wants to be seen!

- **Friday 28th April - Friday 5th May**

- **Exhibition: Stitching Heaven by East Yorkshire Embroidery Society**

Beverley Minster. Free. Quilts, embroideries, textiles art and flags of hope. Work for sale.

- **Saturday 29th April**

- **Beverley Town Bowling Club Open Day and Flemingate Invitation**

Bowling Club, Norwood Park, Norwood, Beverley. 11am - 3pm. Free. Refreshments available. Contact Dave Money 01482 860918 for more information.

küchenhaus
The German Kitchen

FUN DAYS THIS MONTH!

1st - National Sourdough Bread Day

2nd - National Peanut Butter and Jelly Day

2nd - International Pillow Fight Day

7th - National Beer Day

8th - National Empanada Day

16th - National Eggs Benedict Day

20th - National Wear a Flower Day

23rd - St Georges Day

25th - World Penguin Day

30th - International Jazz Day

ALSO, THIS MONTH IS....

Mathematics Awareness Month
Bowel Cancer Awareness Month
National Pet Month
Stress Awareness Month

- **Beverley Folk and Roots present Ranagri, Edwina Hayes and Steve Dagleish**

Parkway Cinema. 7.30pm. £12/£11. Ranagri fuse worldwide folk music with contemporary songwriting and virtuoso instruments, all interlaced with vivid storytelling. Booking at <http://beverley.parkwaycinemas.co.uk/Ticketing>

- **The White Horse Folk Club presents Nick Dow (singer/guitarist)**

Beverley Conservative Club, Wyllies Road, Beverley. 8.30pm £7.00

- **Beverley Flower Club present Spring Festival**

Longcroft Lower School, Church Road, Molescroft, Beverley. 7.30pm. Demonstration by Roma Berridge.

Friday 7th April

- **King Pleasure and the Biscuit Boys**

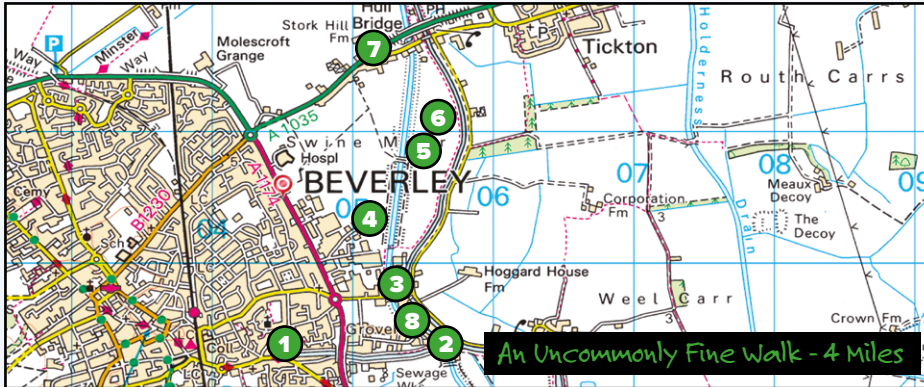
East Riding Theatre. 7.30pm. £12.50-£16. Celebrating 30 years on the road, King Pleasure have played to audiences in 21 countries, been on 36 radio shows and 73 TV programmes. Not that they are counting... See them on their 150-date anniversary tour!

Saturday 8th April

- **North Bar Folk Club presents Wildwood Jack**

St Mary's Parish Hall. 7.30pm. £8. Refreshments available. Americana and folk married couple who first met in Hull!

Walking with Ian Richardson - Swine Moor Stroll



Flock of golden plover on the flooded pasture

I suspect that for most locals Swinemoor means a housing estate or perhaps a school, in fact they both take their name from the ancient common pasture the Swine Moor, comprising some 260 acres alongside the River Hull. This is a wonderful open access area to wander across, unploughed for centuries and prone to flooding, it teems with bird life and flowers. It is in many ways Beverley's little-known green oasis. This walk takes you down Beverley Beck then along the river and allows you the freedom to enjoy the common as far as Hull Bridge and back. The pasture is likely to be flooded in many areas till later in the spring, so take your wellies!



Beverley Beck

1. Start this walk at the head of Beverley Beck by the fine statue of a creeler - creelers were medieval porters who must have had great physical strength. Walk along the north side of the beck, passing the two fine former trading vessels which are often moored there. Now this is a desirable waterside residential areas, for centuries it was the busy heart of Beverley's port with tiles, bricks and leather the key to prosperity. Pass under the road bridge, perhaps going on it to see the fine vista back to the Minster. There are ducks and moorhens aplenty as you head for the interesting collection of vessels at the boatyard and dry dock.



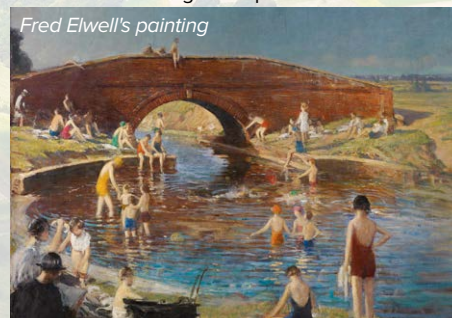
The Creeler

2. Just before the lock gates at the confluence with the tidal river Hull, take the signed path to the left over the drain, which is initially well made and swings you alongside the river as it flows south. Here in the first week of March I saw the first cherry blossom of the season, always a cheering moment. A lady also told me she had just spotted a kingfisher - a blue blur, as you usually have to have sharper eyes than mine to catch them. Walk up the river bank which can be muddy and see the varied collection of boats, some well passed it and even half submerged, whilst others are splendid houseboats.

3. At the road bridge, walk back towards town for 30 yards or so and just over the brick bridge follow another clear signed path on the right past the industrial units and alongside Barmston Drain, which for over 200 years has played a key role in controlling the waters of the river. Rare marsh frogs breed in the waters of the drain.

4. In 200 yards a high stile leads you onto the open access land of Swine Moor, I suggest keeping to the left bank of the drain until you reach the splendid brick bridge in another half mile but you are free to wander as you please. As soon as you are away from the buildings the birdlife will become very noticeable, with over 80 species recorded on the pasture such as lapwing, snipe, heron, and most strikingly in late winter, huge flocks of golden plover, which rise like squadrons of spitfires when disturbed. Also, the pastures are full of wild flowers in spring and summer. I saw the first of the year's daisies and will go back to see the orchids later this year. In very wet weather much of the pasture is under water and pools can often last into the summer in some spots.

5. I think the beautiful bridge in the middle of the common is one of the Riding's special places. It appears in one of Fred Elwell's paintings, copies of which now feature around town. In his day, this was clearly a popular bathing spot for local people, who called it 'Brickie'. This picture was apparently painted during WW2 when the army had commandeered the swimming baths. The Council had to stop bathing there during the 1950's due to a diphtheria epidemic. A gentleman who saw me looking at the picture commented



Fred Elwell's painting

that he could be one of the bathers as he regularly swam there - despite the dead dogs that would float past!

6. Cross the bridge and meander at will towards the raised river bank. The views here are lovely, particularly back over the flooded fields to the Minster twin towers. On reaching the river, head upstream to Hull Bridge. I hope the boat hire business here enjoys success as the upper reaches of the River Hull are a delight to explore. If you arrive at the right time you can cross the footbridge and enjoy the food and drink at the Crown and Anchor, looking splendid in its smart new livery, there is also an ice cream parlour here now with an outdoor terrace.



The same spot from the painting, now



View of the Minster



The Crown and Anchor at Tickton

7. You could return to the common along the river bank, but for variety head down the road to its junction with the main A1035 and between the houses on the left at Sandholme, take the footpath that leads you to the midst of the pasture and soon to a nice area of hawthorn bushes and pools. Later in the year horses roam the common but sadly the telegraph poles are a visual blight. From the brick bridge you can go back on either side of the drain to the road. Then follow the same riverside path you took earlier back to the beck.



Winter floods

8. At the beck cross by the lock gate footbridge, so that you can walk back to your starting point on the south side. Again there are many interesting vessels to view including what is apparently a home made submarine, which if we get much more rain may well be required for a visit to the Swine Moor.

Next Month - A Figham Frolic
Ian Richardson - ricojosh@msn.com

Savings are blossoming in our

Spring Sale

We take part exchange



Small Scooters
From
£395

Power Chairs
From
£595



We take part exchange



Rise & Recline
Chairs
From
£595



Stairlifts
From
£995

Hot savings for the new season

HOME VISIT DEMONSTRATIONS AVAILABLE ON REQUEST

SUPPLIERS & INSTALLERS OF INDIVIDUALLY TAILORED EASY ACCESS BATHROOM SOLUTIONS
CALL US FOR MORE DETAILS