

just

ISSUE 45

# BEVERLEY

PICK ME  
UP, I'M  
FREE

**MARTIN HUTSON**

**DIRECTS 'ART' AT ERT**

**13th ANNUAL**

**BEVERLEY FOOD FESTIVAL**

**FEED A SCHOOL**

**FOR A DAY**

**COMPETITIONS**

**WIN!**

- A meal for two at the Beverley Arms
- 'Smallfoot' Goodies and Cinema Tickets
- Fancy a bounce at Inflata Nation?

**WELL I NEVER...**

**MILLIE BUDWORTH**

**NEWS, WHAT'S ON, LIFESTYLE, FEATURES, PUZZLES, PHOTOS & MORE**



# DON'T GET A FRIGHT THIS HALLOWEEN!

Are you worried about getting your payroll right? It's time for change. Outsource your payroll today and be rest assured everything is taken care of!



**Pension contributions have changed now that final Automatic Enrolment dates have passed, new tax codes, Apprenticeship Levy's, up to date figures, CIS tax and more.**

Outsourcing payroll will save you time and money, redirecting time to growing your business. You will be given a named personal contact and access to our free and easy-to-use app with a plethora of online information available for you to use on the go!



To arrange a **FREE** meeting call us on 0845 308 2288 or visit [www.stipendia.org.uk](http://www.stipendia.org.uk)



Stipendia Payroll Solutions



@StipendiaPay



**stipendia**  
payroll solutions



## CONTENTS

Letters from the Editors **3**  
News **4, 5, 10, 25**  
Parkway Cinema **6, 7**

## FEATURES

Rev'd Peter Cross returns **8**  
Beverley Food Festival **8**  
Feed a School **9**  
Martin Hutson Creating 'ART' from a blank canvas **11**  
Fit4dogs - Open Day 20th October **22**  
Pocklington Canal **28**

## REGULARS

Arts and Culture **28**  
Business **19, 22, 25**  
Competitions **7, 14, 16**  
Competition Winners **7, 34**  
Countryside Matters **26**  
Fashion **17, 18, 19, 37**  
Finance **24**  
Food Rhino **25**  
Gardening **27**  
I've Been Thinking **18**  
Lifestyle **17, 28**  
Motoring **29**  
Photos **20, 21**  
Poem **35**  
Puzzles **32**  
Short Story **36**  
Sport **31, 34**  
Well I Never - Millie Budworth **33**  
What's On **38**



4



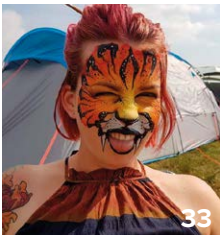
8



19



22



33



37

### Competition Terms and Conditions

Competition answers should be emailed to [competition@justbeverley.co.uk](mailto:competition@justbeverley.co.uk) before the closing date with the competition title in the subject field. Include your name, address and daytime contact telephone number along with your answer. Winners will be notified within 1 week of the closing date and **MUST** be available for publicity purposes for **Just Beverley** magazine, website and Facebook page and the prize provider. Photographs are usually taken the weekend after the prize-winners have been notified. The judge's decision is final. No cash alternative is offered. Details may be used for marketing purposes by **Just Beverley** and the prize provider and for website analytics by **Just Beverley**.

### Contributors include:

Julian Minshall, Linda Johnson, Richard Manville, Gareth Botterill, Dave Brown, Garry Burnett, carfan, Jane Dale, Food Rhino, Alan Gillott, Elizabeth Godber, Colin Raynor, Dave Tunstall, David Tute, Sam Walton, Lee Wardell, Clint Wastling, Nathan Wilson.

### You can pick up the magazine from:

Parkway Cinema, Flemingate, Beverley Tourist Information, Beverley Library/Treasure House, Tesco, Morrisons, East Riding Leisure Beverley, East Riding Theatre, Browns café, Beverley News, Boyes, Tesco café, Colette and Tyson Garden Centre, Beverley Garden Centre, Cherry Tree Garden Centre, Mace News Saturday Market, Co-op Food Lincoln Way, Tickton News, Costcutter in Walkington, Molescroft News, Grovehill Convenience Store, Maple News, Leconfield PO, Willerby News, Poundland, Halfords, East Riding Community Hospital, Bishop Burton PO, Leven PO, The Altisidora, Cherry Burton PO, Barkers of Cottingham, Middleton-on-the-Wolds PO, Light Dragoon at Eton, Gnu at North Newbald, Monks Walk, Hayride, Sally's Deli, Ferguson Fawcett at Walkington, health centres, churches, cafés, hairdressers and more!

Printed by: Jadan Press.

[www.justbeverley.co.uk](http://www.justbeverley.co.uk)

# just BEVERLEY

## LETTER FROM THE EDITORS



October is here - time for change as the clocks go back! As nights get longer and we prepare for the winter months ahead, celebrations such as Halloween and Bonfire Night loom up. The leaves on the trees change colour and drop off, the fields have changed from yellow stubble to brown earth and we change our clothing from the bright jewel colours of summer to the more somber colours of late autumn. Yes, October is all about change.

We have enjoyed the spring, summer and harvest festivals (don't forget the Food Festival on October 7th) but - well, the **BIG ONE** is on its way.

We know there will be lots of events in the run-up to Christmas, so let **Just Beverley** know about them. Listings are **FREE** on our website What's On page and, if we can get them into the magazine, we will do. Just email [info@justbeverley.co.uk](mailto:info@justbeverley.co.uk). And remember to send us your good news!!! Meanwhile - what will you do with that extra hour on the morning of Sunday 28th October?

**Julian.**



I am, to steel a phrase from a good friend of mine, 'beside myself' with excitement about 'Art' coming to our own East Riding Theatre. By the time you read this, it will be into its run and garnering rave reviews. If you have never been to the theatre before, this has to be the one to watch. Whether you

enjoy any or all of comedy, drama, pathos, modern art (or not), sparkling dialogue, brilliant acting, creative staging and magical lighting, this is for you! You can read more about the wonderful Martin Hutson, who has sculpted this play into what you see on-stage, on page 11.

We are very happy to promote Beverley Rotary Club's new project to 'Feed the Children' at their adopted school in the Gambia. The suggestion is that you donate £15 from your celebration budget of a notable anniversary or donate in memory of a loved one and know that every child in the school will be fed on that day. We think it's a wonderful idea and we will be following up with articles about developments at the Aisha Memorial School in Tujerig. See page 9 for more details!

**Linda.**



'Community Publication Award'  
Shortlisted Nominee  
2017 & 2018



## GET IN TOUCH WITH US:

**Website:** [justbeverley.co.uk](http://justbeverley.co.uk)

**Email:** [info@justbeverley.co.uk](mailto:info@justbeverley.co.uk)

**Telephone:** 01482 679947

**Twitter:** @JustBeverley

**Facebook:** [facebook.com/justbeverley](https://www.facebook.com/justbeverley)

If you would like copies for your business to distribute to staff and customers, call Just Beverley on **01482 679947**.



# BEVERLEY CARNIVAL SET TO BECOME ANNUAL EVENT

**Gemma Ward - the driving force behind the Beverley Carnival - was delighted to have raised £2,200 for the EYESeeMe Project as well as sums for the other charities which were there on the day. To have put such a fun event together in just 6 weeks was impressive, but the reason for it is down to Gemma's love of children and making sure their childhood is a happy time and for children worldwide to have the same opportunities as her own.**



The EYESeeMe Project was set up by Gemma's friend, humanitarian photographer Rebecca Robyns who came across such poverty on a visit to Thailand that she could not get over the things she saw. The project raised enough money to support 70 children so that they could go to school, for although education is free there, many of the children live in slums and have no money for food, let alone money for transport, uniforms, books or equipment. Now the project is moving to Bangladesh, Gemma is getting more involved. Gemma's background is in the garment industry and she hopes she will be able to make a real difference to the lives of poor children by working with the contacts she has made in her career.

Gemma and Rebecca have hooked up with a charity in Dhaka (previously Dacca) called the APON Foundation which has set up pop-up schools in parks and neighborhoods - that is, the schools are going to the kids, not the other way around. Gemma is visiting Bangladesh in November with the objective of meeting the companies she has worked with to ask them to sponsor this initiative and then take on a child as an apprentice. With the number of companies she knows reaching towards a hundred, if only half of them agreed to do this, that would mean 600 children in education and 50 teenagers given a foot in the door towards a career and self-sufficiency.

Gemma said: "The slums in Bangladesh are the worst I have ever seen. These kids deserve much, much more! I'm raising funds specifically for work in Dhaka and Cox's Bazaar - not only for education but for the kids' nutritional needs, too. But we haven't abandoned Bangkok where Rebecca is setting up an office. We are supported by InXpress Courier and Parcel Delivery to whom we are most grateful but would love other support.



it bigger and better. She wishes to thank Woolley & Parkes, AdPlant and Andrew Day Electricals without whom the Carnival wouldn't have happened, and The Mayor, Cllr Bryan Pearson for his encouragement. Beverley is recognised as a 'town of festivals' so throwing a carnival into the mix seems like perfect sense!

Please call **07714 860098** if you can help. In Asia, a little goes a long way." Gemma has three children of her own, including daughter India, photographed here with Gemma, who loved the Carnival, as did everyone who went. Gemma has an organizing team in place for next year and plans to make

## BEAT'ULLS 8 DAYS A WEEK TOUR

**Local band specialising in playing their own interpretation of Beatles and 60's music set for a tour of Beverley.**

Carl Harrison and Pete Ragsdale from Beverley along with Don Hooke and Nigel Byron-Chappel from Hessle, formed The Beat'ulls in 2014 - and spent a whole year just practicing perfecting the fabulous harmonies and sound which typifies 60's pop music.



With three vocalists in the band, they can perform Beatles, Mamas and Papas, Simon and Garfunkel and Kinks standards as well as other 60's music from bands like the Rolling Stones.

The band insist that the music HAS to be from the 60's - anything from 1970 will not make the cut!

The favourite crowd-pleaser at the moment is 'Eleanor Rigby' but then, if you like 60's music, you will just love whatever The Beat'ulls play!!

You can catch them at The Hayride on October 6th from 9pm, The Moulders Arms from 7pm on 7th October and The Sloop from 8pm on October 13th.

## FAIRTRADE BUFFET AND CEILIDH TO PROMOTE FAIRTRADE PRODUCE

**Beverley is a proud Fairtrade Town! What better way to increase awareness than to hold a buffet supper made of fairly-traded food with some energetic dancing to whet appetites for fairly-traded produce?**

Fairtrade East Riding Network (FERN) is hosting a ceilidh on Saturday, October 27th from 7pm at Toll Gavel United Church featuring the Whitby Woolly-backs Ceilidh Band along with fairly-traded refreshments and food. Tickets are £10 for adults, £5 for children or £25 for a family. There will be a raffle where all the prizes are fair trade items and the launch of Traidcraft's autumn and winter catalogue which has a huge range of Christmas gifts, seasonal food and household products. It promises to be an energetic, fun night out for the whole family! Tickets are available on **01482 867573, 01964 550688** or from Toll Gavel Church Centre where coffee is served every weekday morning.





# THE MISTLETOE FAIR RETURNS TO BEVERLEY

**Returning by popular demand, the Mistletoe Fair is coming to Beverley Racecourse from Friday 9th to Sunday 11th November 2018.**

The Fair will include 100 stalls set within the Racecourse buildings and, new for 2018, a shopping marquee that visitors enter through a winter wonderland snow globe.



The Mistletoe Fair features craft and gift stands selling beautiful and original items as well as Christmas decorations, gift-wrappings and edible treats!

Free tickets are available for Friday 9th November whilst there's a 2 for 1 ticket offer for visiting on the Saturday and Sunday.

Both ticket offers can be claimed by registering on the Beverley Mistletoe Fair website: [www.mistletoefairs.co.uk](http://www.mistletoefairs.co.uk).

Tickets on the door cost £3 per adult whilst children (under 12) enter free of charge. Well-behaved dogs are welcome!



Children can phone Santa and there's a post box facility for sending that all-important list direct to his workshops! A free shuttle bus service will run throughout the event between Flemingate, Beverley town centre and the Mistletoe Fair.

The Vintage tearooms will be open within the Racecourse building to rest



and replenish ready for the next round of shopping Commenting on the Fair, event organiser, Paul Leonard said, "The 2017 event was a great success for Beverley attracting over x thousand visitors to the Fair.

"We received very positive feedback from both visitors and stallholders, many of whom were local traders and have no doubt that this year, once again; Beverley Racecourse will be the place to be for all your Christmas shopping."

For more information please contact: Paul Leonard on **07730 034417**.

## GET READY TO PIMP YOUR POPPY!

**Final preparations are underway for what is going to be a night to remember! The Beverley and District Chamber of Trade Annual Ball is on Friday November 2nd at 7.30pm at the Memorial Hall, Lairgate, Beverley. Tickets are £25 each - which includes a complementary drink on arrival, food, entertainment, raffle, a charity auction and lots of surprises!**

Hosting the charity auction in aid of SSAFA will be Beverley FM's Dave Fewster, with Chamber Chair Julian Minshall and Event Manager Leanne Marshall as his glamorous assistants!



The lots for the auction are all items which cannot usually be picked up on the High Street - and which reflect the generous nature of the donors in support of this essential charity. There is something for

everyone to get excited about bidding on! Lots include a Tiger Moth flight experience, framed Dam Busters posters, a framed Tower of London Poppy, a pleasure flight, a trip to Auschwitz, Chloe Nugent artwork, a limited edition bottle of gin, a Lazy Spa, a signed New Zealand 7's rugby shirt and more.

But the main lot is a bespoke memorial bench from Sherburn Forge which will be sited at Flemingate - Beverley's newest, most modern development is keen to reflect the history of Beverley and give thanks for the sacrifice of past generations. The De Lacy team is responsible for the design of the bench with Lee Cade and his team responsible for the interpretation and build with the winning bidder's own dedication incorporated.

Raffle prizes include a P&O Mini Cruise for two and a special creation from White Rabbit Chocolatiers. The dress code is 'Pimp Your Poppy'. Although the association between poppies and commemoration of the war dead predates the First World War, the connection was popularised by John McCrae's WW1 poem 'In Flanders Fields', who was inspired to write it after conducting the burial service for an artillery officer who was killed in conflict.

It seems fitting that, as this year is the 100th anniversary of the end of WW1, the chosen



charity is SSAFA and the event is being held at the Memorial Hall, the theme of poppies ties in nicely. The organisers expect lots of creative outfits! There will be prizes for the best-dressed man and woman!

Tickets are already selling fast. To make sure you are part of this special occasion contact Leanne on **01482 861411** to book your tickets!





**EVERY THURSDAY AT 10.30am**  
(doors open 9.45am)

Join us for a free brew and a natter and enjoy some great films on Beverley Parkway's Big Screen. Only £4.20 with drink and biscuits included. Aimed at 55s and over. Films subject to change.

**Thursday 4th October -**

**The Bookshop**

Starring: Emily Mortimer, Bill Nighy

**Swimming with Men**

Starring: Charlotte Riley, Rupert Graves, Daniel Mays

**Thursday 11th October -**

**Mission: Impossible - Fallout**

Starring: Tom Cruise, Henry Cavill, Ving Rhames

**The Bookshop**

Starring: Emily Mortimer, Bill Nighy

**Thursday 18th October -**

**The Happy Prince**

Starring: Rupert Everett, Colin Firth, Emily Watson

**Mission: Impossible - Fallout**

Starring: Tom Cruise, Henry Cavill, Ving Rhames

**Thursday 25th October -**

**The Meg**

Starring: Jason Statham, Bingbing Li

**The Happy Prince**

Starring: Rupert Everett, Colin Firth, Emily Watson

## PENGUIN PARTIES

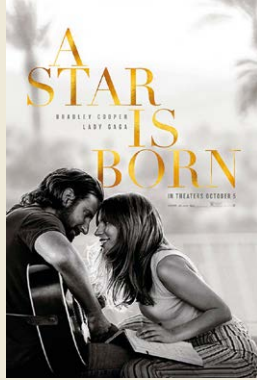


**ONLY  
£195**

- Suitable for ages 5 to 12
- Up to 40 guests (additional charge for extra guests)
- Party games in a private function room with Parkway Penguin
  - Tea and coffee for parents on arrival
- Personal Photo montage on screen followed by your own film screening

For more information,  
please contact a member of staff

These are the films scheduled to open in October - *all are subject to change.*  
Check out up-to-date cinema listings at [www.justbeverley.co.uk/cinema-times](http://www.justbeverley.co.uk/cinema-times)



3rd October



3rd October



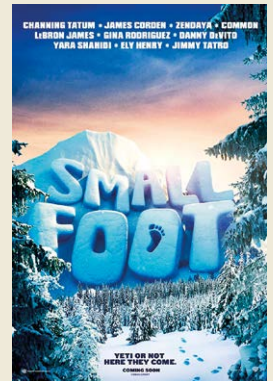
5th October



10th October



12th October



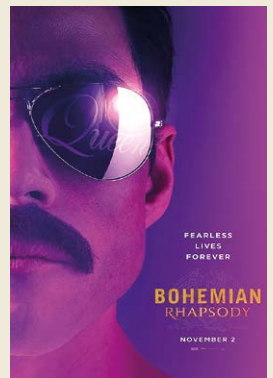
12th October



19th October



19th October



24th October



31st October



Congratulations to Angela Shingler who won last month's competition to win Predator merchandise.



# YOUR NEW INDEPENDENT CINEMA



## BEVERLEY BUZZ COMEDY CLUB RETURNS

After a successful season earlier this year, *Beverley Buzz Comedy Club* is coming back to the *Hayward Theatre (Screen 6)* at Parkway Cinema, Flemingate, HU17 0PW. The format is the same, with four top comedians per show *COMPERED BY Agraman the Human Anagram*, on the last Sunday each month through to the end of March.

On the re-opening night Sunday 28th October, the headliner Brennan Reece will be joined by Dominic Woodward, Steff Todd and James Alderson.

English Comedian of the Year and Edinburgh Comedy Award nominee, Brennan Reece has been acting since he was 4, sings and dances, is a magician, writes scripts, does improv and tells very funny stories. If you haven't seen Brennan Reece before then he is well worth the ticket price alone! Look out for Brennan joining the list of great comedians which John Marshall has booked over the years.

That is in no way meant to diminish the skills of actor and comedian Dominic Woodward who heads over the Pennines to entertain us Yorkshire folk; Steff Todd, a quirky ascending new comedian and impressionist with an impeccable wit and cutting one-liners and James Alderson, who is a familiar face at comedy clubs throughout the country. This really will be a cracking night!

Showtime is 7.30pm prompt. There is a bar from 6.30pm and the evening finishes by 9.30pm to encourage those needing to get up for work the next day. Admission prices remain pegged at £10 (£9). Tickets are available at the Parkway box office, online at [www.parkwaycinemas.co.uk](http://www.parkwaycinemas.co.uk) or by telephone on **01482 968090**. Further details from **01964 532322** and [www.buzzcomedy.co.uk](http://www.buzzcomedy.co.uk)

## GET READY FOR 'SMALLFOOT' TURNING THE BIGFOOT LEGEND UPSIDE DOWN!

Many humans doubt Yetis exist. If you were a Yeti, would you believe humans existed? Migo, a young Yeti, is convinced that they do. All he has to do is prove it. So, he enlists the help of Meechee and the SES - the *Smallfoot Evidentiary Society* - 'Smallfoot' being the name Yeti's call humans. *Geddit?*

This is the first Warner Animation Group musical film! It's directed by Karey Kirkpatrick with an all-star cast which includes Channing Tatum, James Corden, Zendaya, Common, LeBron James, Danny DeVito and Ely Henry. It's humorous and charming with a heartfelt message which will appeal to adults and children.

You can watch a trailer for the movie at [www.youtube.com/watch?v=34cHO5\\_LX9g](http://www.youtube.com/watch?v=34cHO5_LX9g)  
Follow **#smallfoot** on social media!

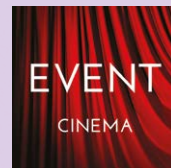


## COMPETITION

To celebrate the release of 'Smallfoot' in cinemas on October 12th, Warner Bros. Pictures and Parkway Cinema Beverley offer you the chance to win a raft of 'Smallfoot' goodies and a pair of tickets to see it (or another film of your choice)! The goodies are likely to include a Beanie Hat, Child Tee, Furry Pens, Fury Notebook, Liquid Glitter Phone Case and Stickers (Goodie-bag mix not confirmed at time of going to press).

An animated adventure for all ages, with original music and an all-star cast, "Smallfoot" turns the Bigfoot legend upside down when a bright young Yeti (Channing Tatum) finds something he thought didn't exist - a human. News of this "smallfoot" (James Corden) throws the simple Yeti community into an uproar over what else might be out there in the big world beyond their snowy village, in an all new story about friendship, courage and the joy of discovery. All you have to do to win this fabulous prize is to answer the following question:

*This acting legend's career spans nearly five decades and his film credits include the voice of the Lorax in The Lorax and the mean father in Matilda. Name this actor who plays Dorgle.*  
Send your answer in an email to [competition@justbeverley.co.uk](mailto:competition@justbeverley.co.uk) by October 19th. Put 'Smallfoot' in the subject box and your answer, name, address and daytime telephone number in the body of the email. The winner will be the first name out of the hat after the closing date. They will be informed as soon as possible after the closing date. Winners must be prepared for photographs to be taken for publicity purposes for **Just Beverley** and **Parkway Cinema**, Beverley. Good luck! ©2018 Warner Bros. Ent. All Rights Reserved.



Event cinema offers something a little different to mainstream films. Live and pre-recorded shows beamed in via satellite from all over the world. Here are the latest live streams that you can enjoy on the big screen at Parkway Beverley.

### TICKETS NOW ON SALE:

Thursday 4th October at 7.15pm -  
**THE WINTER'S TALE: LIVE FROM SHAKESPEARE'S GLOBE**

Tuesday 9th October at 7.15pm -  
**OWSL: THE IMPORTANCE OF BEING EARNEST (12a)**

Friday 12th October at 8pm -  
**CLIFF RICHARD LIVE: 60th ANNIVERSARY TOUR (12a)** with encore on Sunday 14th October at 3pm

Monday 15th October at 7.15pm -  
**ROH: MAYERLING**

Wednesday 17th October at 6.40pm -  
**PETERLOO: LIVE EVENT - UK PREMIERE PLUS LIVE BROADCAST Q&A (12a)**

Wednesday 24th October at 7.15pm -  
**FUNNY GIRL - THE MUSICAL (12a)**

Sunday 28th October at 5pm -  
**ROH: DIE WALKURE**

Thursday 1st November at 7pm -  
**NT LIVE: ALLELUJAH! (12a)**

Tuesday 6th November at 6pm -  
**EOS: DEGAS - PASSION FOR PERFECTION**

Sunday 11th November at 3pm -  
**BOLSHOI: LA SYLPHIDE**

## LIVEshows

Sunday 7th October at 7pm -  
**GIMME ABBA**

Sunday 14th October at 7.30pm -  
**70 SHADES DAMPER**

Sunday 21st October at 7pm -  
**THE BON JOVI EXPERIENCE**

Sunday 28th October at 7.30pm -  
**BEVERLEY BUZZ COMEDY CLUB**

Monday 29th October at 2pm -  
**TALEGATE THEATRE PRODUCTIONS PRESENTS HOCUS PANTO**

Sunday 4th November at 7pm -  
**ALI COOK: PRINCIPLES OF DECEPTION**

Thursday 6th December at 7.30pm -  
**FIVE STAR SWING AT CHRISTMAS**

From Saturday 15th December -  
**PARKWAY PANTO - JACK & THE BEANSTALK**



# BEVERLEY FOOD FESTIVAL RETURNS FOR 13TH TASTE-TERRIFIC YEAR ON OCTOBER 7TH - WITH VIKINGS!

**Beverley Town Council has been organizing the event since 2006; it's now one of the most anticipated annual events enjoyed by thousands of residents and visitors alike! This year, though, the Vikings are coming in an archeological project featuring farming and feasts through the ages and East Riding College students are joining the line-up in the Food Theatre.**

In 2006, 35 local producers set up their stalls, along with a small Food Theatre, to help celebrate local food production. This year, there will be around 130 stalls along with the much-loved Food Theatre which is now housed in a large marquee.

Thousands of people will attend, trying the tempting offers and watching culinary delights being cooked up by local expert chefs! This free community events brings a welcome economic boost, not only to food producers, but to retailers and the local hospitality trade.

This year's special guest is TV Chef and Food Writer Peter Sidwell, who is coming back to his Beverley College roots. BBC Radio Humberside's Jonathan Parker and Marcus Heald will compete in the annual 'Ready, Steady Cook'-style competition followed by the hotly-contested

Hull and East Yorkshire Hospitality Association (HEYHA) Copper Saucepan Apprentice Chef competition with two local aspiring apprentice chefs.

To many, the highlight of the day is sampling the street food not usually available in the town, discovering new food and drink delights on the many stalls or marching around the town with a stick of locally-grown Brussels sprouts!

The Mayor of Beverley, Cllr. Bryan Pearson is justifiably proud of this award-winning festival, which comes together with the support of Beverley Town Council, Jacksons Yorkshire Champion Bread, HEYHA, East Riding College, Deli No 1 and EY Events.

He said: "Beverley Town Council officers plan and manage the day for the townsfolk to enjoy. A huge amount of work goes into it! But we are delighted to welcome back our wonderful local chefs with a few guest appearances from friends and local producers - this festival has really put Beverley on the foodie map".

Town Clerk Helen Watson said: "Beverley was founded around 721AD by St John. It became a town of sanctuary and pilgrimage and there would



have been feasting, music and entertainment throughout the years - so we carry on that tradition at the Food Festival. Professor Fiddlesticks, Mambo Jambo, Beverley Brass Band, Beverley Garland Dancers, The Church Lads and Church Girls Brigade and Beverley FM will be out and about between the start at 9.30am and finish at 4.30pm.

"It's part of British Food Fortnight and has been recognised as being something special by Chef Raymond Blanc. There really is something to suit all tastes. We look forward to seeing you there!"

## REV'D PETER CROSS RETURNS TO HOME TURF

**Beverley Methodist Circuit's new Superintendent Minister is an East Yorkshireman who, before being called to Ministry, worked at the Job Centre in Morton Lane! No wonder he feels at home here!**

Peter and his wife, Pauline, moved into Beverley Methodist Circuit's Manse in St Giles Croft at the very end of August, but, says Peter, by the beginning of September, the whole street had stopped to say 'hello'. The Cross's think Beverley must be the friendliest place ever! And that's without the welcome from his 4 congregations and fellow Ministers.

Peter was born in Bridlington and grew up in Flamborough. 'Cross' is a common Flamborough name which goes back countless generations, so, says Peter, it was a huge shock when the Cross's moved a whole 2 miles down the road to Sewerby! The move, traumatic as it was for a 6-year-old, was softened, though, by the fact that they moved next door to his Auntie - and, nearer to the sea. Peter's father was not in good health and the sea air was good for him, too, but he sadly died when Peter was only 16, on the day when Peter took his last O-level exam at Bridlington Grammar School. The family had always been Church-goers and this helped him with his bereavement and to understand values which he has adopted.

Peter did not settle in the sixth form and left to join the Civil Service where he worked for 2 years before experiencing a call from God. He was able to take a year out to explore his vocation at a Christian theological college in Derbyshire before returning to work in the Dept. of Employment for 10 years, during which time he married Pauline, who he met at Church Youth Group, had 2 children and came to work in Beverley. But his call to Methodist Ministry became more focused over

these years, even though he was well-regarded by the Civil Service. In fact, on the day he was accepted into training for Ministry, he was also offered promotion in the Civil Service!

The Cross's and their young sons moved to Manchester where the church provided a house whilst Peter was studying. After ordination, they moved to Prestatyn where Peter was stationed for 7 years, which is where Jonathan and David grew up. Then they moved to Bolsover in Derbyshire where Peter took up a Superintendency.

A Superintendent Minister has oversight of a number of churches in a Circuit, which involves more administration as well as pastoral responsibilities. But this was at the end of the Miner's Strike where communities and even families were divided. Life had revolved around the pit (which provided a secure job and comfortable lifestyle), the pub (which provided the social life) and the Church (which provided spiritually) - but now there was no pit and no money to spend in the pub, the Church was the one pillar on which people could lean and which could provide the healing and practical help people needed.

The change in Government, investment and time all helped Bolsover to get back on its feet and after 8 years, Peter was on the move again, this time back to Yorkshire! 7 years in Pickering - a very different place and landscape to Bolsover - was followed by 7 years in Scarborough. And now Beverley where he is once again a Superintendent ministering to Toll Gavel United Church, Norwood and Walkington Methodist Churches and the Church in Tickton!

Peter's experience of ministry in very different circumstances - from poverty to affluence, rural to industrial and countryside to sea-side - means he



has great insight and understanding of the human condition, including his own. He has suffered from anxiety, but now recognises the symptoms so he can deal with them accordingly, although wife Pauline is fiercely protective and will frequently spot them first!

So now in Beverley, Peter is looking forward to whatever God has in store for the congregations and people who frequent the churches in the Circuit. He is also excited about the possibilities which are afforded by Churches Together in Beverley and the place which all the churches in Beverley and district hold in people's hearts.

As he said: "Working with people creates challenges but they are really just opportunities for growth as the people of God. I am loving Beverley so far - it is a bit like coming home!"



# ROTARY CLUB INVITE YOU TO SHARE YOUR PARTY WITH A WHOLE SCHOOL

*Everyone loves a good party with lots of nice food to eat, cakes to savour and perhaps something sparkling to drink. But Rotary's adopted school in The Gambia has 90 kids attending who barely have enough food for one meal a day. So how about sending just £15 of your budget to 'Feed a School for a Day' and enjoy knowing that your celebrations are making a difference!*

The Aisha Memorial School in Tujering, The Gambia, was built by two local retired teachers on land donated by an American Christian Charity.



They were visiting the country to study the local bird population and were shocked to see under-eights had no schooling - in fact, most had few belongings at all. There is no legal requirement for children to be educated in the

Gambia and therefore no tradition for children to be 'in school', so this initiative will change lives.

The school which has been erected has classrooms and a kitchen, with enough land for an allotment, mango trees and a football pitch.

The children are taught, in English, by 3 Unicef teachers, although they are also taught Arabic for 1 lesson a week. There is little play equipment but a recent appeal to football clubs has seen Hull City donating football shirts and a charity called 'Furniture for Education Worldwide' transporting donations.

But most of the children are from such poor families that they go to school on a glass of water and live on a single meal a day, which they eat 3 o'clock in the afternoon.

Liz Whitaker is Beverley Rotary Club's President this year. Rotary is an international service organisation whose stated purpose is to bring together business and professional leaders in order to provide humanitarian



service to advance goodwill and peace at home and abroad. This year, Liz has chosen to support Beverley Community Lift and Daisy Appeal as 'home' charities' with Aisha Memorial School as her 'away' charity.

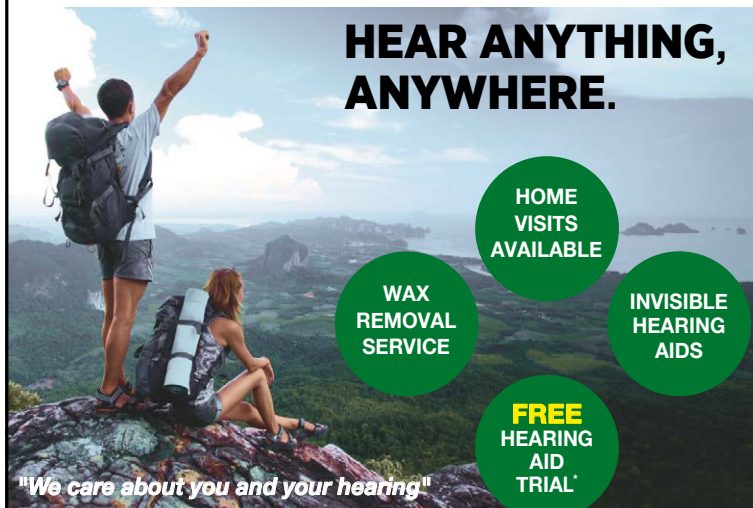
She is hoping that the idea of sharing a celebration with 90 children, who you might never get to meet, will catch on and the kids will be guaranteed full stomachs on your special day! You will receive a presentation certificate to commemorate the event, with grateful thanks from the school.

How to make your £15 donation (more if you wish!) visit the Club's website: [www.rotary-ribi.org/clubs/homepage.php?ClubID=180](http://www.rotary-ribi.org/clubs/homepage.php?ClubID=180), click on the 'Feed a School for a Day' link and complete the details.

You could also sponsor the school in memory of a loved one!

# HEAR THIS!

## HEAR ANYTHING, ANYWHERE.

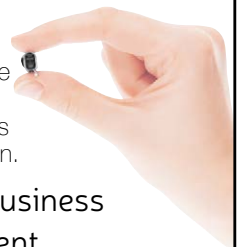


- HOME VISITS AVAILABLE
- WAX REMOVAL SERVICE
- INVISIBLE HEARING AIDS
- FREE HEARING AID TRIAL\*

"We care about you and your hearing"

Would you like professional hearing care that is different, more experienced and more caring than others?

Finding your perfect hearing aid is easier than ever because our independence guarantees you access to the biggest choice and best value for money. Try the latest, smallest hearing aids available, programmed to suit your lifestyle. Ask us for a **FREE**, no-obligation demonstration.



- INDEPENDENT family business
- **FREE** Hearing Assessment
- **FREE** aftercare
- 5 YEAR warranty\*
- 5 YEAR **FREE** batteries\*

A LEADING CONSUMER SURVEY



AWARDED Independent hearing specialists like HULL HEARING CENTRE **5 GOLD STARS** for choice, pricing & service.

## Trouble hearing? Then contact us today.

GO Local. GO Independent. BE Happy!

Clare House, 8-10 Baker Street, Hull HU2 8HP

tel: **01482 22 22 04**

[www.hullhearingcentre.co.uk](http://www.hullhearingcentre.co.uk) e:[stephen@hullhearingcentre.co.uk](mailto:stephen@hullhearingcentre.co.uk)



\*on selected products





The Ethical Fostering Service  
"Partnerships for Children"

**OUR CORE SET OF VALUES:**

- ✓ PUTTING CHILDREN FIRST
- ✓ WORKING IN PARTNERSHIP WITH FOSTER CARERS, CHILDREN & THEIR FAMILY, ALL AGENCIES AND OUR STAFF
- ✓ OFFERING LIFE OPPORTUNITIES TO OTHERS



**BECOME A FOSTER CARER TODAY**

[WWW.ETHICALFOSTERINGSERVICE.CO.UK](http://WWW.ETHICALFOSTERINGSERVICE.CO.UK)

Would you like to offer life opportunities to children?  
Could you keep a child safe and secure?  
Do you think brothers and sisters should remain together?

Fostering is an amazing and rewarding journey that puts children first. Could you work with us to maximise a child's life chances?

We are a small, socially responsible fostering agency that is looking to recruit applicants and experienced foster carers and we would love to hear from you.

Please call Colin on **07736397251** or Marilyn on **07501234611**.

[www.ethicalfostering.co.uk](http://www.ethicalfostering.co.uk)  
[enquiries@ethicalfostering.co.uk](mailto:enquiries@ethicalfostering.co.uk)

# LOST EX-NEIGHBOUR FOUND!

**David and Christine (nee Jagger) Butterfield married in 1976 and moved in next to Gladys and Gerald Duffill at 44 Cherry Tree Lane. Over the years, their friendship blossomed as Gladys and Gerald helped their young neighbours through the early years of marriage. This year, Gladys celebrated her 103rd birthday, but, to David's consternation, Gladys was not at 44 Cherry Tree anymore. Where was she?**

Gladys was born in 1915, which was probably overshadowed by events elsewhere - the First World War had broken out the previous August, George V was on the throne and it would be another 30 years before some women could vote. But over the years, despite David and Christine moving from Beverley to Norfolk, Edinburgh, Manchester, Harrogate, Altrincham, Northwich, Whaley Bridge and Wilmslow, they had kept in touch with gift hampers and flowers. But then came the 'this number is no longer available' message. What to do?

David contacted a former work-colleague who is now a local councillor, Denis Healy, and asked him to walk down Cherry Tree Lane, knocking on a few doors, to see if he could find out what



had happened to Gladys. Incredibly, people did know where she had gone - to live in Figham House Care Home, only the second address Gladys has lived since marrying Gerald! Gladys has settled into her new home where the staff have taken to her in the same way as David and Christine did all those years ago. And Denis was delighted to deliver flowers on behalf of the Butterfields on her special day!

## RACHEL RETURNS HOME A WINNER AGAIN!

**Beverley resident, Rachel Brennan, rides as a member of the Riding for the Disabled (RDA) team and the Able2 Special Olympics team. Just last month she won gold and silver medals, a gold rosette and overall Highest-placed Athlete in her class - all on a borrowed horse called Jazmin!**

Rachel trains regularly at Willerby Hill Equestrian Centre under the tuition of Vicky Harrison but has been tutored in the past by Elaine Goodall at the RDA centre in Bingley is also coached by Special Olympics Head Coach Marjorie Sheppard. Along with her haul of awards last month, she won gold in 2016 and gold in 2017!

Rachel competes in Dressage and Working Trail events and Horse Care Knowledge. As with any national competition, Rachel has to qualify, which means reaching set standards. It also means traveling the country to compete, which she does with her Shared Lives Carer, Marie Hindmarch, with whom she lives. Marie is justifiably proud of Rachel's achievements!



We wondered if Rachel would move on to mastering show-jumping, but she laughed and said not. However, we do wonder if Charlotte Dujardin might have some competition come the next Olympics in 2020!

# HUBY DOMESTIC APPLIANCES

Covering Hull, Beverley, Pockington, Driffield and all the local villages



**BOOK ONLINE**

and **SAVE**  
at  
**hubys.co.uk**

Book in advance and save money.  
The further you book in advance the more you could save...



For service and repair call: **01482 866660**



# MARTIN HUTSON - CREATING 'ART' FROM A BLANK CANVAS

**Being given the opportunity to direct 'Art' is, says Martin Hutson, a bit of a dream come true. Having visited Beverley's East Riding Theatre to see 'Kiss Me' being rehearsed and 'Good People' being staged he has been 'blown away' by the space and the groundbreaking productions.**

'Art' is a mid-90's comedy by French-writer Yasmina Reza, translated into English by Christopher Hampton. It premiered in Paris in 1994, ran in London from 1996 and then went onto Broadway from 1998. The 1990's was a time when young artists came to the fore - writers such as Sarah Kane and Mark Ravenhill spring to mind as well as Damien Hurst and Tracey Emin. They provoked a response with their energy and pushed boundaries which created discussion and division. And this play does the same; on the surface it is a play about a piece of art but underneath it exposes emotional conflict and puts friendships to the test.

The original London production famously starred Tom Courtney, Ken Stott and Albert Finney, men in their late 50's/early 60's, which added a further layer of tension to the play. "As we age", said Martin, "we approach a time of finite choices. If friendships are broken in later years, there are fewer opportunities to create more, so losing friends can be harmful. This realisation underpins the weight of the play - which is why I was delighted when casting resulted in three mature men being awarded the roles of Serge, Marc and Yvan. The fact that they are all local Beverley favourites and friends in real life makes the casting extra special, the three being Richard Avery, Malcolm Tomlinson and Clive Kneller."



Martin trained at LAMDA. His career has included acting on stage, most recently with the Royal Shakespeare Company in 'Julius Caesar' as Cassius and in 'Titus Andronicus' as Saturninus; appearing in television programmes - did you see him in 'The Honorable Woman' as MI6 agent Max Boorman or spot him in 'Doctors', 'Casualty' or 'Midsummer Murders'? - and directing.

He also helped set up the Norwich Theatre Royal Actors Company where he became Associate Director and where he directed 'Blackbird' amongst many other plays. He has been nominated twice for the Ian Charleson Award (which recognises the best classical stage performances for actors under 30) in 2000 when he lost out to David Oyelowo and in 2001 when Claire Price won.

But back to 'Art'. As with any piece of art, whether it be a painting, sculpture, poem or a play, everyone has an opinion. Opinions can be particularly polarising when considering modern art! As Martin said: "People of that time thought the Impressionists were producing vulgar, childish nonsense, yet people who don't like Tracey Emin, for example, probably cling to the Impressionists! The trump card with modern art is undoubtedly Antony Gormley who we have taken to our hearts because his interpretation of the human form reflects us. Yet the Angel of the North, for example, is just a copy of a body on a great scale and the figures at Crosby Beach looking out to sea are modelled on him. Art has to speak to us. That's the beauty of the play 'Art' - it does!"



So how did Martin come to be directing at East Riding Theatre in Beverley? Martin has the same agent as ERT's Artistic Director Adrian Rawlins and he was the catalyst, not only for suggesting Martin as director but for recommending the three actors, too. When Martin first turned up, he felt like a cuckoo in the nest! But with only 3 weeks rehearsal, it is a major benefit for a director to be able to 'push' the actors, which is the case with Richard, Malcolm and Clive. Martin has worked with Clive in the past and reconnecting with him has been a great pleasure and has enhanced the joy of working in Beverley at East Riding Theatre.

Does Martin prefer acting or directing? "Directing gives choices.", said Martin, "As an actor you are told what to do as you are in a production which has been created by someone else; as a director you can sculpt the final version with your own interpretation of the demands you feel are made by the play. This production of 'Art' will be like no other version you have ever seen. I am bringing in a more French feel and the lighting effects which can



be created with the new lighting rig will help to 'pull' people in from the side and aisles. As a director you can let your imagination spiral!"

There are many people in the local area who are very excited about 'Art', which has a short 3½ week run. It is a huge coup that this modern comedy classic which has won Olivier, Tony, Evening Standard and Moliere Awards is being staged here in Beverley.

It is even more exciting that Martin Hutson is directing Richard Avery, Martin Tomlinson and Clive Kneller! Do get your tickets soon - this is NOT to be missed!

'Art' by Yasmina Reza, translated by Christopher Hampton and directed by Martin Hutson runs from Thursday 27th September to Sunday 20th October at 7.30pm most evening with selected afternoon matinees at 2.30pm.

Bookings can be made via the website: [www.eastridingtheatre.co.uk](http://www.eastridingtheatre.co.uk), by email: [boxoffice@eastridingtheatre.co.uk](mailto:boxoffice@eastridingtheatre.co.uk), by telephone: **01482 874050** or in person Tuesday - Saturday 10am - 4pm or from 6.30pm on performance evenings.



# WHAT IF...

*you have just arrived back from a holiday and feel a bit unwell. At the hospital you are placed in an induced coma. Unlikely? Well this actually happened to TV personality Richard Bacon in July this year. Closer to home my father-in-law has dementia and now resides in a care home as he was unable to cope in his own home.*

What if something like this happens in your family? How will the bills be paid, money accessed, suitable accommodation arranged and numerous organisations informed of the necessary changes? A lasting power of attorney can give a trusted person the authority to assist a temporarily or permanently incapacitated person to continue to carry out financial and welfare related activities.

In respect of my father-in-law, John, we are able to pay his care home fees and also, unfortunately, are in the process of selling his house. The lasting power of attorney allows John's children to undertake these tasks.

Without a lasting power of attorney, the care home could have asked that a Deputy be appointed by the Court of Protection so that they can be paid. This is a lengthy and expensive alternative with annual reports and fees. They could appoint someone outside of the family and restrict the authority of the Deputy compared with a lasting power of attorney.

Anyone over the age of 18 can make a lasting power of attorney. Just as with a

will you should be of sound mind. Having a lasting power of attorney for family members, even husband and wife,

is as important as having a will. Having both is vital planning for your life and to protect your family and loved ones. I wish you all a long, happy and healthy life but please don't delay in asking What If?

For a free guide on lasting power of attorney or for a no obligation free appointment to discuss your requirements please contact: **dave@eastridingwills.co.uk** or telephone **07939 085752**.



## WHY DO WE HAVE FLORAL TRIBUTES AT FUNERALS?

*Floral tributes became popular in Victorian times when the deceased was laid at home for a period before the funeral service took place. White lilies became the traditional flower of mourning, partly because of their ability to hide any unpleasant odours. Since then flowers have seen to become an essential part of paying tribute and showing respect to the deceased.*

Floral tributes have always been used by world leaders to pay their respects to those who have given their lives to their country and more commonly flowers are laid at public places of mourning

following a tragedy uniting the community in grief. Today flowers are no longer needed to perform a practical function but are used more for decoration or as a representation of the deceased's preferences.

Quite often families will request just a single tribute to be placed on the coffin and suggest donations to a favourite charity instead. Apart from Spring flowers, most flowers and colours are available all year round and any reputable florist will guide you on the most appropriate choice to enable you to create the tribute you desire.

Floral tributes can come in all shapes and sizes and some of the more popular designs include lettering spelling a name or initials of the deceased, MUM and DAD being the most requested.

Designs can reflect your loved one's hobbies, it is amazing to see the varied designs created by local florists to show someone's' love of trains, cars or even knitting.

Alternatively, there is nothing more effective than a single flower on a coffin, it seems to symbolise beauty in its simplest form and can often be the favourite flower of a couple who have shared a happy life together.

It is not necessary to use a florist for your tribute, occasionally we have had tributes made by family friends from flowers cut from their own or the deceased's garden, a unique and very personal tribute. Following the service tributes can be left on display at a crematorium or placed on a family grave as a mark of respect to family members no longer with us.



It never ceases to amaze me how a beautiful floral tribute appears to put the finishing touches to the ceremony, providing a symbolic reminder of the beauty and simplicity provided by nature for our enjoyment.

For more information or advice please feel free to contact us tel: **01482 844695** or email: **hkempandsonltd@gmail.com**

**Four Generations,  
Giving Over 125 Years Service**

Herbert 1870-1962	Eardley 1908-1986	Geoffrey 1939-2015	David 1964
----------------------	----------------------	-----------------------	---------------

**Golden Charter**  
Funeral Plans

**H. KEMP & SON LTD.**  
FUNERAL DIRECTORS  
(ESTABLISHED 1893)

**SAIF**  
INDEPENDENT  
FUNERAL  
DIRECTORS

- Funerals Respectfully Conducted
- 24 Hour Out of Hours Service
- Free Advice & Support
- Private Restrooms
- Prepaid Funeral Plans Available
- Finance Options Available

**Tel: 01482 844695**  
**www.hkempandsonltd.com**

259 Hallgate, Cottingham, East Yorkshire, HU16 4BG  
Fax: 01482 843898  
Email: [hkempandsonltd@gmail.com](mailto:hkempandsonltd@gmail.com)



# Enjoy Life

*at a Barchester care home*



## Personalised care is at the heart of everything we do.

- Choice of nutritious and delicious menus, prepared by talented chefs
  - Daily activities, tailored to residents' interests and hobbies
- Beautiful and safe surroundings with a choice of ample living spaces
  - Well-trained and experienced staff who get to know each and every residents' care needs and personal preferences

**Nursing Care • Residential Care • Respite Care & Short Breaks**  
**Beautifully Refurbished • Minibus • Beauty Salon • En-suite Rooms**

Join us for our Open Day! Saturday 20th October • 1–5pm

We hope you can join us at our open day! Call our friendly team or visit our website for more information.

**Call: 01482 977 831**

1 Deer Park Way, Lincoln Way, Beverley, HU17 8RN



**LINDUM  
HOUSE**

BARCHESTER HEALTHCARE

[www.barchester.com](http://www.barchester.com)

# WIN A MEAL FOR TWO AT THE BEVERLEY ARMS

Chantell Dickinson-Clark, General Manager of The Beverley Arms, is delighted to offer a meal for two to the value of £75 to the lucky winner of this special competition.

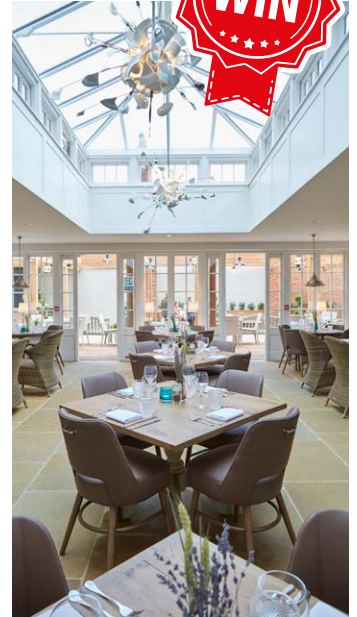
The Beverley Arms has been lovingly-restored and refurbished by The House of Daniel Thwaites, who reopened this former coaching inn in August. It has been welcoming guests for the past 300 years and is now rapidly re-establishing its place in the hearts of Beverlonians. With its 38 bedrooms and 68-seat restaurant, 2 private dining/meeting rooms, a modern bar and outdoor courtyard, the designers have managed to combine some quirky new concepts with lots of the original features.

The menu is a treat - home-cooked food that fills your plate, dishes to delight, fresh salads, thick soups and tasty sharing platters accompanied by an extensive selection of ales, wine, spirits, mixers and soft drinks and there's even a Champagne bar. Which is why there are going to be lots of entries for our competition!

How to win this exclusive prize?

**Tell us the last 6 digits of the Beverley Arms phone number!**

Send your answer by email to [competition@justbeverley.co.uk](mailto:competition@justbeverley.co.uk) by Thursday 18th October. Put **Beverley Arms Comp** in the subject box with your answer, name, address and daytime telephone number in the body of the email.



## Competition Terms and Conditions

The competition is open to UK residents aged 18 or over. The winner will be the first name drawn at random after the closing date. The winner will be notified by telephone within 4 days of the close of the competition and must be available for publicity purposes for Just Beverley and The Beverley Arms soon afterwards. The prize is not transferable and cannot be exchanged for cash. The prize consists of a meal for two

at The Beverley Arms to the total value of £75. No change will be given and the meal must be pre-booked as per the information on the winner's voucher. The prize cannot be used in conjunction with any other offer or promotion. Employees of Daniel Thwaites or Just Beverley and persons connected in any way with the competition are not eligible to enter. The judges' decision is final and no correspondence will be

entered into. The promoters take no responsibility for lost e-mails or incomplete entries. Proof of sending is not accepted as proof of delivery. The promoters reserve the right to amend the rules of competition or cancel it at any time without prior notice. Entry into the competition implies acceptance of these rules. Only one entry per person.

**WHITE RABBIT**  
CHOCOLIERS

♦ HOP ON DOWN TO THE ♦  
**CHOCOLATE CAFE**

— for handmade, quality treats! —

*A taste of wonderland...*

16 Dyer Lane, Beverley, East Yorkshire, HU17 8AE  
[whiterabbitchocolatiers.co.uk](http://whiterabbitchocolatiers.co.uk)  
 Tel: 01482 679325

**BURTON ELECTRICAL SOLUTIONS**

HIGH QUALITY ELECTRICAL WORK ACROSS  
EAST YORKSHIRE AND THE HUMBER REGION

**DOMESTIC**

**COMMERCIAL**

**TESTING**

**FAULT DIAGNOSTICS**

*Whether it's for your home, rental property portfolio or business premises, all electrical installations need to be checked periodically by a qualified electrician.  
For a quote contact:*

**Andrew Burton**  
 01964 552769 • 07585 601730  
[www.burtonelectricalsolutions.co.uk](http://www.burtonelectricalsolutions.co.uk)  
[info@burtonelectricalsolutions.co.uk](mailto:info@burtonelectricalsolutions.co.uk)





THE  
BEVERLEY ARMS

*To the dear people of Beverley,*

It's been almost 2 months since we re-opened our doors at The Beverley Arms and we'd like to say a huge thank you for the overwhelming support we've received.

It's been a busy, fun and at times challenging re-opening for us, but with a great team, some understanding guests and a good helping of humour, we're seeing things settle down now and enjoying welcoming guests old and new to our fabulous new look inn.

We've been listening to the feedback and have, and will continue to, make changes to better meet the needs of our guests.

Our Christmas brochures are now available – just pop in and pick one up or download a copy from the website [beverleyarms.co.uk](http://beverleyarms.co.uk)

Drop us a line if you'd like to book a table in the restaurant or private dining areas – but if you're calling please double check the number you're using. Our number is **01482 296999**.

Of course you can email too on [relax@beverleyarms.co.uk](mailto:relax@beverleyarms.co.uk)

*The Team at The Beverley Arms*



# FLEMINGATE

## BEVERLEY

FASHION | FOOD | FILM | FUN

MORE TO

ENJOY

AT FLEMINGATE

FEEL FANTASTIC WITH THIS GREAT COMPETITION

## FANCY A BOUNCE ON US?



### WIN A FAMILY PASS TO INFLATA NATION

TO WIN THIS FANTASTIC PRIZE  
SIMPLY ANSWER THIS QUESTION.

Which animal can jump the highest?

Kangaroo

Grasshopper

Flea

#### How to Enter

Send us your answer by Friday 12th October 2018 by emailing [info@flemingate.co.uk](mailto:info@flemingate.co.uk)  
and let us know your name and daytime phone number or complete the form to the  
right and hand into the Management Suite at Flemingate\*

KANGAROO [ ] GRASSHOPPER [ ] FLEA [ ]

NAME .....

ADDRESS .....

DAYTIME PHONE NUMBER .....

EMAIL .....

\*All contact details are gathered strictly to communicate with the  
competition winner and will not be used for any other purpose.  
If you would like us to stay in touch with all the very latest news  
and exciting events at Flemingate please tick here [ ]

 **InflataNation**  
Inflatable Theme Parks



# CREATE YOUR OWN STYLE WITH LEE WARDELL FROM VERB

*We love autumn in clothing retail... a fresh new season, when people wear more! Colder weather requires that extra layer AND a change of colour palettes.*

For men the rustic rural combination of greens/browns/burnt oranges and berry reds topped off with sky blue are a fantastic look heading in to winter. Keeping these colours in mind, here are some pointers, which we at VERB have been crafting into the perfect outfit.

Brown, Tan, Navy or Burgundy brogues are all available in store. Worn with a matching belt, they complete the look. Coordinating socks are also available from Burlington in an argyle pattern, incorporating three of the colours mentioned. The staple trouser going into autumn is either a dark blue jean with tan stitch or a cinder-toffee brown cord, worn with a sky-blue button-down Oxford shirt.

Knit-wear is a key accessory to add to your wardrobe in Autumn. Crew necks, roll necks and cable knits are all in store to add that extra layer of



warmth with Fair Isle jumpers making a stronger statement this season.

Tweed jackets with hints of green, brown, orange or red are definitely on-trend this season. A Harris tweed cap and gloves with scarf to match can all finish off an outfit to perfection. As you can probably tell, all of the garments are being described as I stand in store at VERB, where we have the best range of jackets ever.

The ranges, the sizing and the co-ordination we can offer now with our business partner Brook Taverner is second to none.

Ladies - don't forget our womenswear range upstairs, where we have new autumn arrivals from Lilly And Me, a range of lifestyle clothing with a twist of vintage style and an emphasis on femininity. Combining casual weekend wear and smarter work wear pieces, with two colour palettes of Autumn Frost and Mulled Wine.

Autumn Frost combines teal and blue tones with navy, while Mulled Wine features deep plums and purples with grey. We have hand-selected pieces, which again will coordinate; beautiful autumnal outfits can be created with the skill and expertise of our ever helpful team.

As ever we are available on Facebook/Twitter/Instagram. Do check out our brand-new website: [www.verbfashion.co.uk](http://www.verbfashion.co.uk)

# VERB

TO WEAR - TO WANT - TO WISH FOR - TO OWN - TO FASHION

FLORENTINE

PEARLY KING

Gibson  
LONDON

MAC

BROOK TAVERNER  
TAILORS OF DISTINCTION SINCE 1912

OPENING TIMES:  
MON / SAT 9.30-5.30  
SUN 11.00-4.00

01482 880141  
VERBFASHION.CO.UK  
INFO@VERBFASHION.CO.UK

FLEMINGATE SHOPPING CENTRE  
FLEMINGATE, BEVERLEY  
EAST YORKSHIRE HU17 0NQ

@ VERBFASHION    @ VERBFASHION    / VERBFASHIONBEV

TO FASHION YOUR OWN STYLE

## I'VE BEEN THINKING... BY COLIN RAYNOR

Because it isn't linked specifically with one of the main Christian festivals e.g Christmas or Easter, October is known, in some Church calendars, as being "in ordinary time." But I can only suggest October days are no less ordinary than any other days!



When we open our eyes each day in the month and consider that, until we return to our bed, we will have the unique opportunity to exercise the sole use of the most marvellous piece of engineering in the world, namely our minds, we must never lose the thrill and excitement of that fact. If one day doesn't make it to the top of the charts there is another one coming right along! As the Kurdish human rights activist Dr Widad Akrawi wrote: "If you are positive you will see opportunities, but if you are negative, you will see only obstacles." The film "Groundhog Day" (1993) has become more than just a special film; it is now part of the language. Bill Murray was caught in a time warp in which every day, for months, he could not alter anything that happened to him at any minute of the day. He knew exactly what people were going to say, also when and how they were going to do things. It began to drive him mad! He was no longer in charge of his own life.

When you start watching this film you are laughing but as time goes on you begin to feel very sad for this man. You must watch this film, if only to see how it is all resolved and how he gets his life back to normality - the type of normality that brings new experiences every day that you can affect by your own actions irrespective of the old negative actions of others. No day need be an ordinary day, be it in October or any other month.

October 18th 1968 was an extraordinary day in my life because that was the day I became, along with my wife of course, a parent for the first time. If you do your sums you will realise that little girl born that day is fifty years old this month. There was another special day three years later when her sister was born on April 1st, but that is a story for another time! Everyone who has been blessed in becoming a parent never forgets such days. I know some folks think that birthday cards are "a racket", and it may be so in some shops, but look around or make your own. We never forget to send a birthday card to our children, even though the first one arrived in the month of October that some call ordinary! For us, it was just amazing. Hope you agree!

## GET AHEAD WITH UNIQUE - AUTUMN COLOUR

Salon Director John Fallows from Unique Beverley looks at autumn and winter hair trends for the colder months.



With autumn making an appearance and winter just around the corner, it's time to say goodbye to the cool colours of summer and start our journey to a warmer richer season. With Balayage still holding its own, why not introduce gloss and shine through the ends, adding warm toffee, soft copper or even softer muted blondes with extra tone?

For blondes, we'll start to move towards tones such as softer, 'minkier' muted colours. If you want to stay on the cooler side, soft pinks and pastel colours are still a big hit and this can also be achieved to follow the autumnal and winter trends.

For darker hair, adding a few slices of colour can really create depth and accentuate your cut, giving you a multi-tonal effect and creating shine for that real wow factor. Summer saw a lot of long bobs, one length cuts and waves. Waves are here to stay - if your hair is straight, why not mix it up by adding waves to create texture and give you a brand-new look without having to have the chop? Long bobs will see a few more inches off the length to compliment winter clothes and accessories.

Gents will see winter styles taking a trip back to the 90's with both texture and movement in the hair. The new gents' range from System Professional has everything you need to keep both your hair, and facial hair, neat and tidy and looking great all the way through to the New Year.

Make an appointment at any of our salons for a consultation to find the style and products to keep you ahead this autumn!

Unique Salons:  
108 Walkergate, Beverley. Tel: **01482 881199**.  
7-8 Market Green, Cottingham. Tel: **01482 847111**.  
12 The Weir, Hessle. Tel: **01482 645499**.

# MR CARPETS

CARPET AND FLOORING SPECIALISTS








**31 YEAR**

**ANNIVERSARY**

**31 years** in business  
**31 years** of good, honest service  
**31 years** speaks for itself

Tel: 01482 872134

 [mrcarpetsbeverley](https://www.facebook.com/mrcarpetsbeverley)

3 Becks North, Beverley, HU17 OPR

## SPECIAL OFFER

3 Months Toning  
3 Months Vibraxis  
3 Contour Wraps

# £179

Normal price over £300  
Limited Availability

Take advantage of  
School Term time  
and get fit for  
Christmas

**TONING TABLES**  
help with fat loss, ME, MS, hip  
replacements, depression,  
bad backs and much more!

Wheelchair access and  
stair lift available

FREE TRIALS, No obligation  
Testimonials available

# INCHES BODY STUDIO

CELEBRATING 27 YEARS IN BUSINESS

Inches Body Studio, 1 Norwood, Beverley, HU17 9ET  
Telephone: 01482 865229  
Email: [inchesofbeverley@hotmail.co.uk](mailto:inchesofbeverley@hotmail.co.uk)  
[www.inchesofbeverley.co.uk](http://www.inchesofbeverley.co.uk)



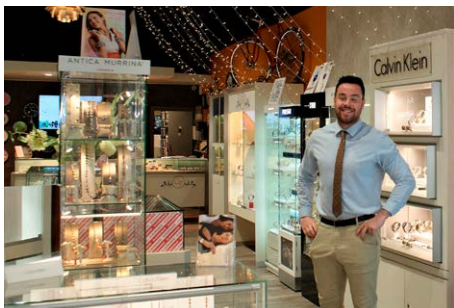


# GUEST AND PHILIPS' FASHION EXCLUSIVES ATTRACT YOUTHFUL CUSTOMERS

*Opening a modern, boutique store in Flemingate 3 years ago meant Guest and Philips had the space to stock fashion brands and modern ranges, to cater for a younger age-group and those who enjoy more contemporary fashions.*

November 15th, 2015 was the day when some of the most exclusive names in fashion jewellery came to Beverley. Carat London Jewellery; Clogau Jewellery; Tommy Hilfiger Jewellery; Swatch Watches and Mondaine Watches are Guest and Philips exclusive brands.

Carat London Jewellery was founded in 2003 and is the official jewellery partner to the British Academy Television Awards - check out their website to see the stars wearing some of their beautiful pieces. Clogau Jewellery has a beautiful range of jewellery using rare Welsh gold for pendants and necklaces, earrings, wedding and engagement rings and more. Tommy Hilfiger Jewellery needs no introduction with its edgy designs whilst Swatch watches for men and women provide time-pieces to suit every style,



every time and every place. Mondaine Watches are based on the archetypal Swiss Railway watch with contemporary, innovative twists, such as back-lighting, manufactured using renewable resources and smart technology.

Who has the pleasure of advising customers of their fashion choices? Manager Ruth and Assistant Manager Danny have both worked for Guest and Philips for 3 years. Ruth is a Beverlonian who has 20 years' experience in retail, including 15 years working in Harrods, before she returned to Beverley and took up her post at Guest and Philips. Danny was working at a well-known pizza chain when he had the pleasure of serving Karen Guest on evening - and she was so impressed with his charm and customer interaction that she offered him a job. Needless-to-say, he accepted and began his career working at the Saturday Market outlet as well as at Flemingate.

He says he 'gets the best of both worlds' by working with traditional and higher-end pieces as well as the more modern brands. Both pride themselves on trying to 'go the extra mile' in service and are fiercely loyal to Guest and Philips, something which they are imbuing in sales assistant Holly.

Hand-in-hand with sales is Guest and Philips top-rated, personalised customer services for watch and jewellery repairs, watch batteries, watch strap adjustments and replacement straps made by Hirsch. Guest and Philips are proud sponsors of Beverley Town Football Club. They are delighted to have donated £1000 to the club for



tracksuits which are emblazoned with the Guest and Philips logo. It's great that a local company can support a local team in this way and the local players can help promote Guest and Philips in return.

Guest and Philips Flemingate is at **23a Chantry Lane, Beverley HU17 0PW**. Tel **01482 881001**. Opening hours Mon-Sat 9am - 5.30pm, Sunday 10.30am - 4.30pm.



## GUEST & PHILIPS

EXCLUSIVE TO  
GUEST AND PHILIPS:

**CARAT\***  
LONDON

**CLOGAU**  
GOLD OF ROYALTY

CELEBRATING OUR



ANNIVERSARY  
IN  
FLEMINGATE

TOMMY HILFIGER

**swatch**<sup>®</sup>

MONDAINE

MANY OTHER BRANDS IN STORE

23A FLEMINGATE CENTRE, CHANTRY LANE, BEVERLEY, EAST YORKSHIRE HU17 0PW

T: 01482 881001 | WWW.GUESTANDPHILIPS.CO.UK

MON - SAT 9AM TO 5:30PM, SUN 10:30AM - 4:30PM





Send your photographs of your celeb  
Find us on Twitter and Facebook to s

# FILM ON A FARM



HERE TO GET *you* THERE

# HUNTERS®

EXCLUSIVE

BEVERLEY / 01482 861411



# BEVERLEY CARNIVAL



# BCL PIGGY RACE NIGHT



SALES / LETTINGS / MANAGEMENT

# HUNTERS®

HERE TO GET *you* THERE

BEVERLEY / 01482 861411



# FIT 4 DOGS HYDROTHERAPY OPENS OCTOBER 20TH WITH GRAND OPENING DAY

As of October 22nd, any visits to Fit 4 Dogs is strictly by appointment only, but on Saturday October 21st, potential clients are very welcome to visit the hydrotherapy centre to see the facilities which could help their dog.

Kirsty Skeates, Head Canine Hydrotherapist said: "We are delighted to be opening a canine hydrotherapy centre in Beverley. It could be the perfect therapy for your dog to ease arthritic pain, get him back to full health after surgery or keep your dog in shape.

"It's great for aerobic conditioning but low



impact on the joints and bones. It's safe exercise all year round as it's not affected by outside temperatures.

"Being supported in water means that dogs which have recently undergone surgery or have arthritis means they can move their joints and maintain muscle mass in a pain-free environment. It's great toning exercise, too, if they need to lose a few pounds.



"Water itself is great for helping to improve a dog's circulation which in turn increases lymph drainage, ridding the body of toxins and improving the immune system. It also helps your dog's skin and coat.

"Dogs love playing in water, so hydrotherapy is fun for them. Our therapists all love dogs and water so it's fun for them, too!"

A new member of the Fit 4 Dogs team is



veterinary physiotherapist Mary Holland, AdvCertvPHS. Mary will be available (by appointment) on Tuesdays 4pm-8pm and Wednesdays 9am-1pm. The Open Day on Saturday 20th between 10am and 4pm includes a tour of the facilities with Kirsty and Mary on hand to answer your queries and to make bookings.

Twisted Angel brewery will be providing drinks and entertainment. Meanwhile, if you have any queries, do contact **07849 256736** or consult the website: [www.fit4dogsuk.com](http://www.fit4dogsuk.com)

**Open Day - 20th October**




Rehabilitation | Weight Loss & Management | Wellness, Fun & Fitness

## SPECIALISTS IN CANINE HYDROTHERAPY

Here at the Fit 4 Dogs, our aim is to provide a professional, passionate, patient, friendly and positive experience for you and your canine friend.

With our team of dog lovers, including experienced hydrotherapists, dog trainers and vet nurses, your dog is sure to get the care it needs.

Whether recovering from injury, getting in shape, having some fun in the pool, or helping you to understand your dogs behaviour and controlling it, you can be sure that the Fit 4 Dogs team will take care of mans best friend.

**Appointments now being taken**  
**Tel: 07849 256736**

Fit4Dogs, Unit 1 Becksde Court, Annie Reed Road, Beverley HU17 0LF



**AFTERNOON TEA MENU**  
£12.95 PER HEAD OR £24 FOR TWO PEOPLE  
AVAILABLE MON-SAT 12-5PM. PRE-BOOKING IS REQUIRED AND GLUTEN FREE OPTIONS ARE AVAILABLE

**CHRISTMAS BOOKINGS**  
NOW BEING TAKEN




DOG FRIENDLY

Brains required from 8.30pm

FIRST SATURDAY OF THE MONTH  
**Big Quiz**  
Free food/prizes to be won, all money raised to our house charities.  
£1 per person entry

HOMECOOKED  
**Sunday Lunches**  
Served every Sunday 12noon-7pm

## THE TIGER INN

Tel: 01482 869040 | [www.tigerinnbeverley.co.uk](http://www.tigerinnbeverley.co.uk)  
Lairgate, Beverley HU17 8JG

HOME COOKED FOOD SERVED 7 DAYS A WEEK

TRY OUR LEGENDARY SUNDAY LUNCH!





Telephone: 01482 869111  
sales@rosesofbeverley.karoo.co.uk



The Kitchen Factory, The Courtyard,  
Tokenspire Business Park, Beverley  
HU17 0TB

*Together we will design a beautiful kitchen*



Roses will then  
**project manage**  
your kitchen installation from  
**start to completion**

Visit [www.roseskitchens.com](http://www.roseskitchens.com)

to see our customers kitchens and read what they have to say about us

**Telephone: 01482 869111**

## YOUR FINANCES WITH GARETH BOTTERILL - CHILDCARE VOUCHERS

Employers regularly offer childcare vouchers to employees as an efficient way of tax saving for both the employee and employer. This works via a salary sacrifice arrangement, where the employee receives child care vouchers instead of taxable pay. The scheme has been popular with parents and has allowed eligible parents to earn up to £55 per week in childcare vouchers. However, the scheme is set to change and from 4 October 2018 the old child care voucher scheme will close to new entrants. Anyone who is already part of the scheme on 4 October 2018 will be able to remain in the scheme.

The new system will be called "Tax Free Childcare". Users will be required to deposit funds into an account on the HMRC website. For every £8 deposited into the account, the government will then add £2. Users then pay their approved childcare provider via the online account.

You can get Tax Free Childcare if you and your partner are:

- In work or getting parental leave, sick leave or annual leave.
- Each earning at least the national minimum wage for 16 hours per week.

You're not eligible if:

- Your child does not usually live with you.
- The child is your foster child.
- Either you or your partner has taxable income over £100,000.
- You're from outside the EEA.
- Your child is 11 or over.

Unfortunately, there are a large number of variables which make it difficult to understand which system is better for each individual. Due to this, it is recommended to visit the HMRC website and use the online calculator to work out if you will be better off staying in the old system or joining the new system.

If you would like to discuss this in more detail, then please contact Gareth Botterill on **01482 862240** or email: [gareth@botterillco.co.uk](mailto:gareth@botterillco.co.uk)



**SHOCKINGLY GOOD VALUE**

# £49 PER MONTH WEBSITES

**PAY JUST £499 DEPOSIT**  
**THEN JUST £49 PER MONTH**  
**FOR A MINIMUM TERM OF 12 MONTHS**  
**AND THEN PAY MONTH-BY-MONTH THEREAFTER**

**FOR A WEBSITE THAT GETS REAL RESULTS...**

CALL NOW ON:  
01482 428650  
[marketing@indicoll.com](mailto:marketing@indicoll.com)  
[indicoll.com](http://indicoll.com)

**INDICOLL**



Beverley's newest affordable meeting space...



**THE BUSINESS LOUNGE AT WAFFLE21**

**8P PER MINUTE, THAT'S £4.80 PER HOUR OR JUST £19.20 PER DAY**

**EVERYTHING ELSE IS FREE** - hot & cold drinks, lunch, snacks, cake, superfast broadband, FREE Car Parking & more!  
FREE Business Membership Required

Contact us: **01482 534746**  
[info@waffle21.co.uk](mailto:info@waffle21.co.uk)  
[www.waffle21.co.uk](http://www.waffle21.co.uk)  
Waffle21, Colonial House, Swinemoor Lane, Beverley, HU17 0LS



  
**Botterill & Co**  
Chartered Certified Accountants

We are a modern and professional accountancy practice ideally located to serve businesses in Beverley and the surrounding area.

We utilise modern accounting technology to provide you with a cost effective, professional service.

**Our services:**

- Annual Accounts
- Company Formations
- Tax Planning
- Payroll
- Management Accounts
- Cloud Accounting
- Tax Returns
- Bookkeeping & VAT

For a free initial consultation please contact us:

Office: **01482 862240**  
Mobile: **07966 051458**  
Email: [gareth@botterillco.co.uk](mailto:gareth@botterillco.co.uk)  
Website: [www.botterillco.co.uk](http://www.botterillco.co.uk)

**1st Floor Offices, 40 Norwood, Beverley, HU17 9EY**



# BEVERLEY MOTOR WORKS CELEBRATES 8 YEARS IN BUSINESS

**Just Beverley meets founder directors Alan Lewis and Richard Hayes to find out what inspired them to set up this successful motor maintenance garage.**

**Richard Hayes (RH):** Both Alan and I were working for a main dealer at the time, and we shocked at the poor customer experience dealerships delivered to their customers.

**Alan Lewis (AL):** Not only poor customer experience, but with a high price tag to boot. We thought we could do it better, and Beverley Motor Works was born!

**Describe the business in 3 words?**

**RH:** Professional. Honest. Caring.

**AL:** Yeah, I'd agree with that. Me & Rich are professional & caring people at heart. When setting the business up transparency was a key identity to our business.

**What advice would you give to people thinking of setting up their own business?**

**AL:** Business success is not a given. You can't rest on your laurels when you finally become successful because it will hinder your growth & eventually take away the things you've worked so hard to achieve.  
**RH:** It was daunting going from the security of working for a main dealer, but we both felt so strongly that we could be doing a better job for our customers, and by keeping that in

mind every step of the way we've managed to create a reputable, successful business with plenty of repeat customers.

**What do you know now that you wish you'd known 8 years ago?**

**AL:** It's about the journey, not the destination. Enjoy and appreciate the journey you're on in business, instead of just focussing on where you hope to be.

**Do you have anything you'd like to say to your customers?**

**RH:** Just thank you. Thanks ever so much for your business - we really do genuinely appreciate it.

**AL:** Also thank you ever so much & big thank you to all of our customer for believing in us in the early days.

**What does the future look like for Beverley Motor Works?**

**AL:** We're working really hard at the minute to strengthen our team - all of which are local to the area. Growing our own people is hugely important and has already been instrumental

to the success of Beverley Motor Works.  
**RH:** Developing our pipeline of talent and continuing to nurture that talent is what we'll be working on for the next couple of years. Along with continuing to delight our customers of course!

Beverley Motor Works is located at **Unit D1 Grovehill Industrial Estate, Annie Reed Road, Beverley HU17 0LF**. Telephone: **01482 881128**.



**RIBA**

Chartered Practice

**rd stott**

Architects Limited

---

An architects practice putting the client first. From small extensions to a complete new home R D Stott Architects can offer services from initial appraisal to completion.

---

- Architectural and Design services
- Building surveys
- Feasibility studies
- Cost advice
- Planning services
- Building regulation submissions
- Detailed and working drawings
- Tender information,
- Advice on appointing a contractor
- On site project management

**22 Laigate  
Beverley  
East Riding of Yorkshire  
HU17 8EP**

**T +44 (0)333 772 9707**

**E studio@rdstott.co.uk**

**W www.rdstott.co.uk**

## RECIPE BY THE FOOD RHINO - ORANGE AND POPPY SEED SCONES

*Whether you are vegan or not, you will love these delicious scones! Serve them warm with dairy-free cream and jam as a treat with your afternoon tea.*

**Ingredients:**

- 60g Vitalite
- 90g Caster sugar
- Zest of 1 orange
- 30g Juice from the orange
- 7g Poppy seeds
- 400g Self raising flour
- 200g Oat milk

**Method:**

In a bowl, cream together the caster sugar and Vitalite to form a soft paste. Mix in to the paste, the orange juice, zest and oat milk before adding the rest of the ingredients.

Mix together well and turn the mixture out onto a floured surface. Use a circular cutter (I used a scone cutter with a 6cm diameter) and cut out your scones.

Place on a lined baking tray and cook for 15 - 20 minutes on 180°C turning the tray half way or until golden.

Allow to cool slightly before serving warm.

## COUNTRYSIDE MATTERS WITH SAM WALTON

*I know a lot of people think they are hard done to but having travelled as extensively as I have, I have seen many sights and ways of doing things which have been banned here years ago. As a boy, it was quite common on farms to see men carrying 16 to 18 stone sacks of corn, peas and beans etc. up granary steps on threshing days and thought nothing of it!*



Asia is beautiful, but in some parts of Asia, despite some modernisation, there is still a lot goes on which would be banned here. Not every farm has facilities for handling animal feed in bulk, so it still comes in bags and is carried into the store on someone's back. You see men climbing ladders which are quite unsafe and I have come across many small workshops set up on pavements where they are welding without face masks. If you are not watchful, you could trip over the cables they have laid around, too!



Having said that, I have seen many ingenious devices at work on small farms all over Asia. One thing which we have which is tightly regulated, is slurry storage and handling. Well, slurry is used a lot in places like Thailand and Cambodia and they too have some quite large pig units.

On one farm, which did not have a lot of land to spread the slurry on, had actually sown a green crop on top of the slurry! That crop



soaked up the slurry, so they rarely had to empty the lagoon. The crop was not used for anything but did the job it was intended for admirably.

Another farm I saw had laid a very basic plastic sheet over the slurry pit and had harvested the gas to drive a generator to give the farm electricity. Crude, yes, effective, yes, but it would not work or be allowed here.

Nobody seems to care over there, life carries on regardless.

So I do wonder at times if we have too much red tape along with some stupid rules? What do you think?



## Hammer and Anvil Creative Iron Works Ltd.

Designers of Bespoke Wrought Iron Gates and Fencing. Window Grilles, Garden Furniture, Interior Design and Ornamental Pieces.

We are happy to work with you to realise your design or you can take advantage of our design service.

[www.hammerandanvilcreative.co.uk](http://www.hammerandanvilcreative.co.uk)

Tel: 07517 907273 for a no obligation free quote or email:

[hammerandanvilcreative@gmail.com](mailto:hammerandanvilcreative@gmail.com)

Hammer and Anvil Creative Iron Works Ltd is a sister company of R&V Plant Services Ltd, Unit 33, Wiltshire Road, Hull, East Yorkshire, HU4 6PA.



# IN THE GARDEN... OCTOBER

October is the latest month when attending to the lawn is sensible, and I am guessing there will be a lot of people wondering what to do with their beleaguered lawns after the wet cold spring and then the hot dry summer we have experienced. Some may still have brown patches and tufty patches of green on them, others may have recovered well.

## Lawns in October

- October is an ideal month for laying new turf - this will give you an instant green lawn as opposed to seeding, BUT preparation of the soil before the turves are laid is key and its hard work!
- Any newly seeded areas should be lightly mown when the grass is about 3ins. (8cm) high - cut with the blades set high.
- Scarify established lawns with a rake, then aerate with a fork if you haven't done it already - this will be quite important this year as some soils will be rock hard and need opening up.
- Top dress established lawns and apply an autumn 'weed and feed', this has a slightly different balance of elements to the spring lawn feeds, encouraging strong root and grass growth next spring.
- Remove fallen leaves - if they are allowed to build up bare patches will appear.
- Continue to mow existing lawns with the blades set at their highest.

A lawn left to its own devices will always recover in time. But, in order to help this process and minimise the effects of either waterlogging or drying out, keep your lawn healthy by aerating, feeding and weeding. It also helps in dry spells to cut the grass 'little and often', with the blades set high and leaving the clippings on the lawn.

## Harvesting in October

- Bring in tender perennials, trim and store in a frost-free place.
- Harvest apples and pears - before they fall and get damaged or 'nibbled' by various beasties.
- Dig up carrots, potatoes and other root crops.

## Tidying in October

- Rake up fallen leaves and clear up in the garden (any diseased leaves should be burnt not composted).
- Dig over any empty areas of soil - but not if too wet.

## Getting Prepared

- Plant up containers with bulbs and winter bedding.
- Plant bulbs in the garden.
- Put Glue Bands on fruit trees - these set in place a sticky barrier which stops female moths climbing the tree to mate and lay their eggs, and other pests from hibernating in cracks in the bark.
- This is also a good time of year to plant new shrubs and perennials. The warmth in the soil will help them to get quickly established.
- At the end of the month remove any pumps and filters from the pond, clean them out and store until spring.

Speak again in November.

## Happy gardening, J.

Jane Dale of 'Designed Gardens'  
Tel: **07983 392 411**



**FREE**  
No obligation, lawn analysis to assess your lawn's condition.

# TRUST GREENTHUMB TO BRING YOUR LAWN BACK TO ITS BEST

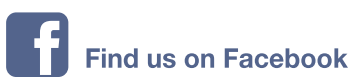
Our lawns have had a lot of extreme weather to put up with in the last year. Is yours in need of some serious revitalisation? We offer a completely free, no obligation, lawn analysis to assess your lawn's condition.

### SEASONAL TREATMENTS

Designed for the great British weather, our bespoke seasonal treatments contain nutrients to feed the lawn - supporting root development and encouraging stronger, more robust grass plants - and a herbicide to control weeds.

*We'll provide you with a wonderful lawn and exceptional customer service.*

Contact GreenThumb for your **FREE** lawn analysis and quote:  
**01482 880082**  
or email: [beverley@greenthumb.co.uk](mailto:beverley@greenthumb.co.uk)



# POP ALONG TO POCKLINGTON CANAL

*Built in 1818 to transport agricultural produce, this is one of the UK's best canals for wildlife. Just half an hour away from Beverley, this canal is owned and managed by Canal & River Trust, the national waterways charity.*

## **Back to the beginning...**

Canal Head is the original starting point of the 9.5-mile canal, which never reached its namesake town. Beside the water you can see the period warehouse and the lock-keepers house (now private homes). Dragonflies skim over the water's surface on a sunny day - keep an eye out for the buzzards and red kites that often circle the area.

Wooden fishing platforms line the basin, with licenses available from the York District & Amalgamation of Anglers.

## **A canal of two halves**

The eastern end is not yet restored, and the tree lined towpath between Canal Head and Coates Bridge (1.5 miles) has beautiful vistas of the reed filled canal and Grade II Listed derelict locks. Rich autumnal colours and frosty leaves add interest in the colder months, whilst spring sees the return of cuckoos calling and the warblers and buntings singing from the reeds.

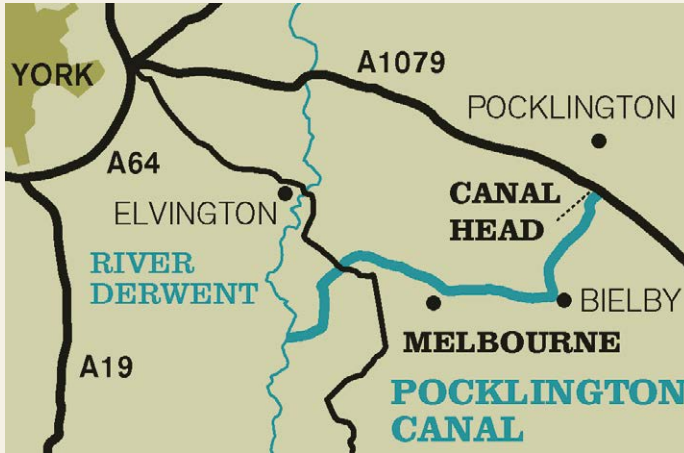
## **Saved from infilling...**

After the railways took over, the canal began a long process of decline. Local people saved the canal and have been restoring the canal since 1969. About 7 miles is open to boats, which enter from the River Derwent at the western end and can travel as far as Bielby Arm. Only a few boats use this canal, maintaining the balance for wildlife. Visit Melbourne Arm Moorings

(YO42 4QJ) to see the brightly coloured boats, and to walk beside the wildflower rich 'ings' - a Norse word meaning 'wet meadows'.

## **Internationally protected...**

The western end of the canal lies in the Lower Derwent



© Jon Hawkins



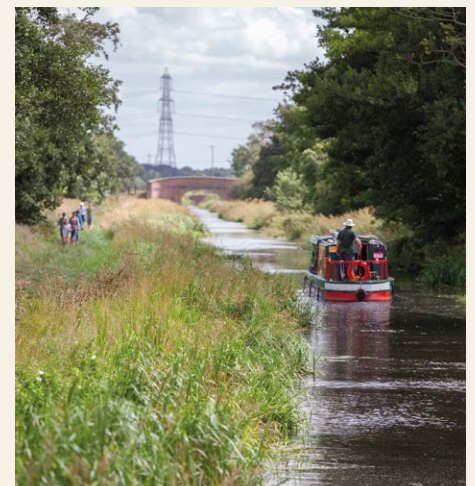
Valley National Nature Reserve. The landscape is more open than the eastern end, perfect for spotting barn owls quartering the ings or hares darting over the open ground. Look for curlews and lapwings in spring, whilst in winter the flooded landscape is packed with swans, geese and ducks.

## **Take to the water...**

Pocklington Canal Amenity Society run short boat trips from Melbourne Arms Moorings on Sunday afternoons between Easter and October. Longer trips are available on request. The boat is a great platform to see some of the 15-recorded species of dragonflies and damselflies. Keep your eyes peeled for the brilliant flash of blue as kingfishers whizz past.

## **Plan your visit**

Canal Head (YO42 1NW) has a car park but no facilities. Melbourne Arm Moorings (YO42 4QJ) is accessible on foot from Main Street along the private road beside the pub of the same name. There is a Sanitary Station at Melbourne Arm Moorings open to those with a CRT key. There is a grass footpath along the entire canal. This path is only open to bikes and horses on the Public Bridleway between Canal Head and Coates Bridge.





# CLASSIC CARS WITH CARFAN - THE JOWETT JAVELIN

The subject of this issue may make some of us glad to have been born in God's own county as it is the Jowett Javelin, made by a proud Yorkshire company in Bradford. Founded in 1901 by two Jowett brothers and a business partner, the company originally started making motor cycles before producing their first car in 1906.



The company passed through various owners over the years as well as having total producing stopped for the duration of World War 2, in common with many other companies, not just those making cars. The company seems to have had mixed fortunes over its lifespan, although this is not an uncommon occurrence when its

peers and competitors are looked at. These were difficult times indeed and it looks like the company eventually simply ran out of money.

The site of one of Jowett's factories is now a well-known national supermarket and customers who are not aware of Jowett's history might well wonder why there are old pictures of the factory and cars on the cafe's walls.

This particular model is the 1952 Deluxe version and has been in the current owner's possession for the last 9 years and has only needed a little cosmetic work done to keep it in its beautiful condition, which is fortunate for the owner as he does his own maintenance himself. Parts are surprisingly easy to obtain, via the Owner's Club which has the proud boast of being the world's oldest one-make car club. The car is interesting in that it has all round laminated windows, was the first all-new model launched after World War 2 and was the first car in the U.K. with a curved windscreen!

So, should you see this particular Yorkshire car tootling along, don't forget that cheery Carfan wave!

# PRACTICAL MOTORING WITH RICH HAYES

Petrol prices hit 4 Year high - here's some tips to get more miles to the gallon!

According to RAC Fuel Watch, motorists have had to endure rising petrol and diesel prices for 8 out of the last 12 months. Another increase in August saw the average cost of petrol going from 1.65p to 130.59p, along with diesel increase by 1.32p to 132.19p. Since this time last year fuel has increased by 13p in price, with prices the highest they have ever been since July 2014.

But that's not all - the RAC has warned motorists to expect another hike on the forecourt this month. Data from RAC Fuel Watch shows that the average cost of filling up a 55 litre family car with unleaded petrol comes in at £71.82, an astonishing £7.32 more expensive than the same time last year. A combination of global oil prices and a weakened pound are largely to blame, which means retailers have to pay more on the wholesale market.

There are techniques you can use to get the maximum number of miles out of a litre of fuel. Although most of us would love to be Lewis Hamilton, driving like a pro racing driver, it is not conducive to fuel efficiency. So, drive smoothly, accelerate gently and read the road ahead to avoid breaking unnecessarily; don't stop if you don't have to as rolling along rather than stopping and starting again uses more fuel and change up gears as early as you can as a labouring engine is not a happy engine. And unlike Lewis Hamilton driving round a race-track, watch your speed! Cruising at 55mph is 10-15% more fuel-efficient than driving at 65 and 20% more efficient than driving at 70mph.

Regular servicing, replacing oil and air filters and keeping your tyres inflated also contribute to improved fuel consumption. Make sure you book your regular service at BM Works to keep your car in tip-top condition!





*The Game Bird*  
Hotel, Restaurant & Bar

**SUNDAY ROAST**  
Every Sunday  
12pm to 6pm




**Saturday 6th October LADIES NIGHT** Free Cocktail on arrival **£10 per ticket**

**Friday 19th October 90's NIGHT** Fancy dress and band!

Watch all the Premier League matches **LIVE** on either Sky or BT




5 Double Deluxe en suite Bedrooms B&B available **Book in advance!**

**FRIDAYS ARE STEAK DAYS!** 12 til 8.30pm **TWO STEAKS £15**

**The Game Bird**  
183 Holme Church Lane, Beverley HU17 0QL

**Tel: 01482 770923**  
gamebirdbeverley@gmail.com


**INDEPENDENT BMW & MINI SPECIALISTS**

**Our dealership expertise means high quality car servicing at a fair price...**





Unit D1 Grovehill Industrial Estate,  
Annie Reed Road, Beverley HU17 0LF

**Call today: 01482 881 128**  
**Visit: [beverleymotorworks.co.uk](http://beverleymotorworks.co.uk)**

**SPECIAL OFFER**

**MOT COUPON**

MOT YOUR CAR FOR ONLY

**£29.99**

IT'S BACK!

THE BIG  
KITCHEN  
DRAW

Free  
MKM apron  
when you book  
a consultation  
with our dedicated  
kitchen  
specialist\*\*\*

WIN A  
SYMPHONY  
OR OMEGA  
KITCHEN\*

WIN\*\*  
1 of 10  
VIP  
experience  
days

\* Up to the value of £2500, cabinets only. All Symphony and Omega kitchens purchased between 03/09/18 and 03/12/18 will automatically be entered into the draw. If the winner has already purchased a Symphony or Omega kitchen between these dates, they will be credited the value up to £2500. Minimum spend £2500. \*\* No purchase necessary. You will be entered into the experience day prize draw if your consultation is between 03/09/18 and 03/12/18. \*\*\* Free gift, while stocks last. For full T&Cs for the above, visit [mkmb.co.uk](http://mkmb.co.uk) or ask in branch.

AEG

Symphony®

EFF  
COOKING PASSION SINCE 1877

OMEGA PLC

natural stone  
surfaces

MKM BEVERLEY

SWINEMOOR LANE, EAST YORKSHIRE HU17 0JX

01482 880 088 | [mkmb.co.uk](http://mkmb.co.uk)

OPEN Mon-Fri 7:30-5:30 Sat 7:30-noon

MKM  
BUILDING SUPPLIES



# CYCLING WITH WILSONS WHEELS

*With the clocks changing on the 28th October, there is bound to be at least some part of the day when the light quality is poor. It's incredible how quickly the nights pull in so it's easy to get caught out, which is why it's not just important to carry lights with you at all times but to think about your visibility to other road users by wearing reflective clothing and accessories.*

Nowadays there is no excuse to not have lights on your bike. They are so cheap and bright compared to the old halogen lights of old, when they had big 9v batteries the size of a brick! Little USB rechargeable lights are now available that can be easily strapped on to your bike in seconds and even though they are small they pack a big punch in terms of brightness.

Technology seems to improve every year with lights getting brighter, smaller and cheaper as technology filters down from other industries. Heck, even electric bikes are now becoming more popular due to better technology, making them more user-friendly in day to day life.

Just as important as lighting, though, is making sure you and your bike outline are seen. If you carry panniers, make sure they come with reflective material (most do!) or in bright yellow/orange as they are situated right at the rear of the cycle and are not obstructed by anything else. Wrist and ankle bands which snap on and off and can be adjusted around whatever you are wearing and are a cheap reflective accessory that won't break the bank.



A new helmet design (which is now available at Wilsons Wheels) has a red LED strip around the circumference giving 360° of visibility. It may look a bit Judge Dredd, but you will certainly stand out. It has been said many times before, but the best way of staying safe is to be seen. Cyclists can be very vulnerable and common sense must prevail. Do pop and see me at 89a Grovehill Road, Beverley and I'd be happy to advise.

PREPARE FOR CHRISTMAS

**WILSONS WHEELS**  
T: 01482 882881  
W: [www.wilsonswheels.co.uk](http://www.wilsonswheels.co.uk) E: [info@wilsonswheels.co.uk](mailto:info@wilsonswheels.co.uk)

**WE NOW STOCK CUBE CYCLES**  
2018 RANGE NOW AVAILABLE

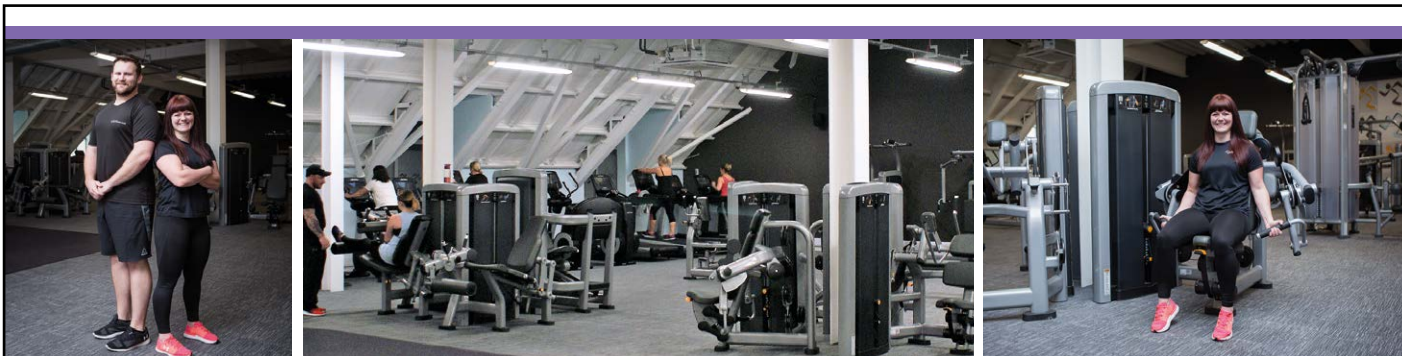
Be SEEN and be SAFE, stay BRIGHT and on the right track

**CHRISTMAS PAYMENT PLANS NOW AVAILABLE**

**DISCOUNTS ON:**

- Adult Bikes
- Children's Bikes
- Clothing for all cycling weather
- Parts and accessories

89a Grovehill Road, Beverley, East Yorkshire HU17 0EJ  
OPEN: Monday - Friday: 08.30 - 17.30  
Saturday: 09.00 - 17.00 Sunday: CLOSED - Out riding our bikes



## Kids gone back to school?



**De-stress after the 6 weeks holiday!**  
**Make time for yourself!**  
**Burn off those extra calories!**  
**Get ready to smash the rest of 2018!**

**HOW?**  
**With MEMBERSHIP AT ANYTIME FITNESS!**  
**JOIN NOW AND GET YOUR FIRST MONTH FREE\***

**Contact us on:**  
**01482 247100**  
**for more information.**

**Flemingate Centre, Flemingate HU17 0NG**



\* Offer ends 31st October 2018

# PUZZLE PAGE

## WORDSEARCH

H S W E A T S E F I P R Z Y N  
 T A V L D Q D P N L U E H U L  
 N Q L S E L D N A C M B C Q O  
 W T Q L V M S S H K P O K I H  
 Z F S B O D N Q C Y K T O M A  
 F T F Q L W K F A L I C B C L  
 S T R Y Y A E E L E N O O M G  
 E R N I F B S E F H S S M R C  
 J E E X C T M Q N D T W L U E  
 Q A P D S K Y T W U E P C G H  
 Y T D O I E P Z M M E S R P D  
 Z S H I Y P T E X L N M P U S  
 P G O I X Y S W Q P F I S F B  
 T T K U B N F D X S Y I I Q X  
 M W F R C V E G X T O B B D H

CANDLES  
 COSTUMES  
 GHOSTS  
 HALLOWEEN  
 OCTOBER

PUMPKINS  
 SPIDERS  
 SWEATS  
 TREAT  
 TRICK

Do you have any amusing stories, quotes or pictures? Send them to [info@justbeverley.co.uk](mailto:info@justbeverley.co.uk)

## THOUGHTS FOR OCTOBER

How many days to Christmas?

Eat slowly, you will eat less!

Why do we have Pumpkins at Halloween?

Why do the clocks go back?

Where do all the leaves go?

## JUST FOR FUN

Where in Beverley would you find this landmark?  
 Answer on Page 36.



## Quality Kitchen Facelifts

## From a simple door swap to a full replacement kitchen

Why replace when you can reface?



GUARANTEED fitted for Christmas



EST. 1999

20% OFF! AUTUMN SALE NOW ON!\*

**DREAM DOORS®**  
 NEW LIFE FOR OLD KITCHENS

- 50% deposit, balance on completion
  - Made to measure custom-built doors and units
  - Huge choice of doors, worktops, appliances, sinks and taps
- [www.dreamdoors.co.uk](http://www.dreamdoors.co.uk)

Call Andy For a Free Estimate:  
**01482 861 653**

[hu@dreamdoors.co.uk](mailto:hu@dreamdoors.co.uk)  
 Dream Doors Beverley, 4a Belprin Park,  
 Swinemoor Lane, Beverley, HU17 OLN

Proud members of **Checkatrade.com**  
 Where reputation matters





# WELL I NEVER...

## MILLIE BUDWORTH

*Beverley and district is blessed with many residents who contribute to the character of the area and go well beyond the confines of their day jobs to make a difference. Just Beverley is keen to meet such people to find out more about them!*

This month we meet Millie Budworth, creator of the beautiful mural at Lord Roberts Road Gardens. As well as creating vibrant paintings which engage the viewer, she also paints faces as Fantastic Faces and baby bumps as Beautiful Bellies.

She uses eco-friendly products which have not been tested on animals and biodegradable glitter to demonstrate her awareness of the effect we can have on the planet.

You might have seen other examples of her work in Hull at galleries and festivals, in Beverley at Creative Lab and around the East Riding. Check out Millie's work at [www.facebook.com/fantasticfaceshull](http://www.facebook.com/fantasticfaceshull) and [www.facebook.com/beautifulbellieshull](http://www.facebook.com/beautifulbellieshull)

Over the Millie for our 19 questions. The answer to No 13 had us saying 'well I never'.

### 1. Do you consider yourself an introvert or an extrovert?

I have learnt to be extroverted for events! As an artist I tend to be quite introverted whilst in my studio.

### 2. What's the craziest thing you have ever done?

Becoming a mum! Never dull!



### 3. When was your biggest adrenaline rush?

Going on 'The Bid Shot' in Las Vegas; the huge tower ride looks over the entire Strip, incredible!

### 4. Is what you are doing now what you always wanted to do growing up?

I always wanted to paint - but was never quite sure what!

### 5. Who were you closest to when you were growing up?

My Momma, Mandy. She has been my rock through thick and thin.

### 6. Who is the one person you can talk to about anything?

I am lucky to have some wonderful friends, an incredible partner and an amazing family, so usually take my pick!

### 7. What are you most thankful for?

My son, Azrael. Bringing him up alone hasn't been easy, but worth it? Totally!

### 8. What's on your bucket list for this year?

I'm starting an SFX Make-up art course, so enhancing my skillset and painting at Body Jam (body painting competition)



9. If a genie granted you 3 wishes, what would you wish for?  
Good health, happiness and more wishes, of course.

### 10. What's your idea of a perfect vacation?

Exploring a new city or lazing on a beach, swimming in the sea. Either is great!

### 11. What do you think about when you are by yourself?

My never-ending to-do list.

### 12. Do you judge a book by its cover?

As long as it's a self-help book I'll read it.

### 13. What is your favourite all-time movie - and why?

Loving Vincent. Every single still was hand painted by a team of artists, it's incredible.

### 14. What would you do differently if you had your time again?

Paint more.

### 15. What would you change in Beverley and why?

I would have more colourful artwork on the walls to make our town brighter!

### 16. What was your most memorable birthday?

My 23rd. All of my good friends and family went for a meal at Hitchcocks; bliss!

### 17. What is your favourite drink - alcoholic or non-alcoholic?

Freshly-ground coffee..

### 18. What is your biggest achievement - sporting, hobby or past-time?

Setting up a business from my passions.

### 19. How would you describe yourself in one sentence?

A lot more than meets the eye.





# LOOKING TO KICK-START YOUR FITNESS DURING THE AUTUMN MONTHS? CHRISTMAS IS COMING!

Anytime Fitness has a great offer to fast-track your fitness goals through the final period of the year with a 6-week starter fitness plan.

This special offer of just £150 for 6 weeks includes personal training for 2 sessions a week for 6 weeks, 24/7 gym access during those 6 weeks and a tailored diet to get you well on the way to a fitter, healthier you!

Give James or a member of the team at Anytime Fitness a call on **247100** to get booked in!



## COMPETITION WINNER

Congratulations to the Dixon Family who won last month's competition of a family pass for Inflata Nation!



- SWIMMING LESSONS AGE 3 YEARS +
- STAMINA AND TECHNIQUE CLASSES
  - DAYTIME AND EVENING
  - SMALL GROUPS 6:2
- PRIVATE POOL - EXCLUSIVE USE
- BASED IN DUNSWELL

Learn to swim and be safe with our amazing highly qualified and experienced teachers

6 WEEK COURSES - PRICES START @ £45

Facebook: @SportsabilitySwim  
Email: sportsabilityswim@gmail.com

Tel: 01482 229676



# HALLOWEEN



## AT ARMSTRONGS

### Wizards & Witches

## CAULDRON CAPERS

### MONDAY 29<sup>TH</sup> OCTOBER

DOORS 4.15PM | STARTS 4.30PM - 6.30PM  
(RECOMMENDED FOR 5yrs+)

TICKETS

£1

INCLUDES

FAMILY HOGWARTS QUIZ, BINGO, GAMES & PRIZES HALLOWEEN FANCY DRESS WELCOME

Toffie will be carving pumpkins throughout - bring your own!

TICKETS

£3

## SPOOKY FAMILY DISCO

### WEDNESDAY 31<sup>ST</sup> OCTOBER

5.30PM - 7PM

FUN & DANCING FOR ALL THE FAMILY WITH SALLY-ANN

FANCY DRESS PRIZES TO BE WON

Due to demand - these events are Strictly Ticket Only

Tickets will go on sale the 1st September






## TOFFIE'S PUMPKINS - THE THRILLER FROM MANILLA!

This Pumpkin was created by local man Kristoffer Reña who also runs Armstrong Social Club along with his wife, Sally-Ann Reña.

Toffie, as he is familiarly known, has a history of carving and artistry carried down from his family roots in Pakil in the Philippines.

Halloween is his favourite time of year as it's then when he can get creative with pumpkins! This pumpkin won first prize last year at the annual Pumpkin Festival at Burnby Hall Gardens and Museum in Pocklington.



This year, the festival runs from October 29th - November 4th when Toffie hopes to replicate his victory. This pumpkin was called 'Thriller from Manilla' as it has a resemblance to Michael Jackson.

Armstrong's runs its own Halloween event when Toffie carves pumpkins whilst children watch. This year it is October 29th at 4.30pm - 6.30pm by ticket only. He also demonstrates his art at Sandhills Garden Centre (Thurs 25th Oct 5pm onwards) at their special Halloween event. If you would like to see more of Toffie's carvings, you can visit his Facebook Page Toff Art.

## POEM - NEAR THE BUS STOP

Sue Lozynskij is Just Beverley's guest poet this month. She has lived in Bridlington for 22 years and loves it! She writes about the way things fit together. She is yet to publish a collection; her work appears in anthologies and on the web. Sue runs *Subtle Flame* at the Tiger Inn, Beverley (8.30pm 1st Thursday of the month) where you can perform your own poetry or music. She worked as a Midwife.



### NEAR THE BUS STOP

Just over there  
the council replaced a giant sycamore  
with six rowan saplings.

Only one survived  
the trunk-snapping craze,  
this year its modest canopy  
hid its first blackbird's nest.

Now among leaves mostly yellow,  
a scatter of scarlet berries -  
clusters of cheap earrings  
bought wholesale.

I notice how the mat of leaves dropped  
around its trunk still belongs to the tree.

A mum with a push-chair waits,  
an e-cig in her hand. She sucks so deep  
it's like a holy moment for her.

The bus doors hiss open,  
she heaves her burdens on board.

The bus pulls away, the tree  
adds another leaf to the circle  
cloaking the pavement.

# JOIN US FOR Christmas

AT  
**CHAMAS**  
RODIZIO BAR & GRILL

Enjoy an unlimited table side service of up to 15 different cuts of prime meats from our churrascaria and a variety of traditional Brazilian hot and cold side dishes from our gourmet salad bar in the unique festive atmosphere of Chamas Rodizio bar & Grill.

DECEMBER MENU 1ST - 31ST DECEMBER 2018	CHRISTMAS DAY RODIZIO	NEW YEARS EVE RODIZIO
<p><b>LUNCH 12PM - 5PM   £25.95pp</b> <b>EVENING 5PM - 10PM   £37.95pp</b></p> <p>A glass of Prosecco on arrival, our usual rodizio plus grilled Turkey and a Christmas pudding or Chamas dessert.</p> <p><b>VEGETARIAN/FISH OPTION</b> <b>LUNCH 12pm - 5pm   £24.95pp</b> <b>EVENING 5pm - 10pm   £28.95pp</b></p> <p>Includes a glass of Prosecco on arrival and a choice of Christmas pudding or Chamas dessert</p> <p><b>CHILDREN: Under 5 free.</b> <b>All day price for 5 yrs - 12 yrs: £13.95pp</b></p>	<p><b>12PM - 2:30PM &amp; 3PM - 5:30PM   £48.95pp</b></p> <p>Enjoy a Christmas Rodizio of 15 cuts of meat plus fillet steak and roasted Turkey, a VIP buffet with all the traditional trimmings, a glass of bubbly on arrival and a choice of Christmas pudding or Creme caramel.</p> <p><b>CHRISTMAS DAY</b> <b>VEGETARIAN OPTION   £42.95pp</b></p> <p><b>CHILDREN: Under 5 free.</b> <b>All day price for 5 yrs - 12 yrs:   £22.95pp</b></p>	<p><b>LUNCH 12pm-5pm   £25.95pp</b> <b>VEGETARIAN/FISH OPTION: £24.95</b> <b>CHILDREN: Under 5 Yrs Free.</b> <b>5 yrs - 12 yrs: £13.95</b></p> <p>Our usual rodizio plus grilled Turkey, a glass of Prosecco on arrival and a choice of Christmas pudding or Chamas dessert</p> <p><b>EVENING 5pm - late   £48.95pp</b> <b>VEGETARIAN/FISH OPTION: £42.95</b> <b>CHILDREN: Under 5 yrs Free.</b> <b>5 yrs - 12 yrs: £22.95</b></p> <p>Enjoy a full evening rodizio menu of 15 cuts of meat plus fillet steak, a VIP buffet, glass of bubbly on arrival and chocolate fountain whilst being entertained by live Brazilian samba dancers*.</p>

\*Usual rodizio menu available on request throughout December except for Christmas Day and New Year's Eve evening sitting. Christmas Day and New Year's Evening sitting pre-bookings only. A non refundable deposit of £10 per person is required to secure your table throughout December. For Christmas Day and New Year's Eve evening bookings, we request the final balance is paid 2 weeks before your booking with us. Samba dancers to perform on our last evening sitting only.

**chamasbeverley.co.uk Tel: 01482 867897**  
**9-10 WEDNESDAY MARKET, BEVERLEY**



# SHORT STORY - THE MIRROR BY CLINT WASTLING

*The bric-à-brac store was crammed full of items and possessed a musty smell that Peter associated with lofts and libraries. He and his wife looked around.*

“Nothing,” Emma reported. Peter moved some frames. “What about this?” he held up an almost circular object and blew away the dust. “Must be 1930’s.” He took out a handkerchief to polish the glass. “Looks ok, a few spots but that shows its age.” “It might clean up. How much is it?”

“Forty.”

“That’s a bit steep, offer the man twenty and see how it goes.”

Peter took the mirror to the desk and haggled a decent price. “I’m glad to get rid of it,” said the proprietor counting the five pound notes. “Gives me the spooks.”

“Why’s that?” “Catches me unawares sometimes.”

Later that evening, after a wash and polish, the mirror was hung in the hall opposite the coat hooks. Husband and wife stood back to admire it. “I thought you’d polished the glass?”

“You saw me,” Peter said defensively. “Well that stain looks like someone wearing lipstick has kissed the mirror.” Emma then polished the surface and the mark faded. “That’s how to clean,” she teased. “Come on, it looks a nice evening. Let’s walk across The Westwood to catch the autumn sunset.” The couple thought no more about their purchase as they watched the October sun setting in glowing colours behind Black Mill. “That’s odd,” Emma remarked on their return home. “That mark is back.” Peter pushed his finger over the surface and smeared the image. “Maybe it’s behind the mirror?”

“Can you smell that perfume?” Emma asked. Peter sniffed the air. He shrugged, took off his coat, shoes and put on his careworn slippers. “Eau de Cologne. I haven’t smelt that since great gran passed away in the 1970’s.”

“Well, it’s here now and I don’t like it. And look!” Emma pointed at the mirror.

The unmistakable outline of pouting red lips could be seen where the red smudge had been. Emma shivered, closed the door on the hall and turned on her favourite TV programme. Peter studied the mirror and just for a moment thought he saw a shadow move across the silvered surface as if someone was the other side. Peter swallowed hard. He walked backwards, staring at the mirror, only turning away to collect the shed keys.

The scream stopped Peter in his tracks. He ran across the patio into the house. Emma was standing in front of the mirror. She pointed. “I saw her!” Emma was shaking. “I saw a woman staring back at me.”

“Surely a trick of the light?” Peter responded hoping to calm her.

“Well, I want it out of here!”

“I’ll do it as soon as I finish that repair.”

Emma reluctantly went back in to the lounge and Peter returned to his work. Another shrill scream then silence. Peter ran back inside. The TV was on but no one was watching. “Emma?” he shouted, as he reached the hall.

Staring back at him from inside the mirror was his wife. He fell against the wall, bit his knuckle and looked once again, hoping against hope this nightmare was just a dreadful trick.

Clint is a novelist and poet. His sci-fi novel ‘Tyrant’s Rex’ can be ordered through all good book shops. He is performing ‘Poetry and Geology: Words and Pictures’ (a unique blend of scientific discussion, creative performance and comedy which is guaranteed to make you think) at Ilkley Literature Festival Fringe on Monday 9th October at 9pm - details here: [www.ilkleyliteraturefestival.org.uk](http://www.ilkleyliteraturefestival.org.uk)

**'JUST FOR FUN' ANSWER**  
The front wall of the Beverley Arms Hotel

**OVER 20 YEARS EXPERIENCE**

**Jadan press**

Print that gets you noticed

**BROCHURES LEAFLETS BUSINESS CARDS POSTERS  
CALENDARS POP UP BANNERS INVITES PADS**

**Tel: 01482 610902**  
**info@jadan-press.co.uk www.jadan-press.co.uk**  
**Rainbow House, Kimberley Street, Hull, HU3 1HH**

Logos for: Jadan-Press, PROMOTA, PROMOTA 3, BPiF, URS, U.K.A., bpma, URS, @JadanPress



# FASHION SHOW FUN TO FUND MORE CHRISTMAS LIGHTS

Join Verb, Collections, Phase 8, M&S, Sea Salt, Dorothy Perkins and Crew at Beverley Memorial Hall as they display their annual winter collections in aid of Beverley Christmas Lights Appeal Group.

The annual fashion show is a Beverley must as fashionistas gather to see the must-have pieces for their wardrobes over the coming season.

Along with nibbles and a glass of wine (all included in the £10 entry fee) is a raffle to raise funds to ensure Beverley looks its best over the Christmas period. This year, 20 more 'Little Blizzards' will be adorning the tree brackets along Toll Gavel but with repairs to other displays and increasing insurance costs, the need to fund-raise is constant. That's without improving the lights along Lairgate and into North Bar! The Group is looking to raise £5000 with every penny made at their fund-raising ventures going to light up Beverley.



They would also love to invite new members to their group - individuals and businesses are encouraged to speak to Joy Jack on **01482 881413**.

Tickets for the Fashion Event on October 16th, 7pm for 7.30pm start are available from Jean at North Bar Kitchens on **01482 882441**, Collections, Verb, Phase 8, M&S and Shirley's on Lairgate. Last year it was a sell-out - so don't miss out!!!

# The Snowman Tour



**Big screen | Iconic film  
World class musicians**

**BEVERLEY MINSTER - 27 DECEMBER 2018**

**SEATS AVAILABLE FROM**  
[www.carrotproductions.com](http://www.carrotproductions.com)  
**BOX OFFICE: 0344 8000 410**

© Snowman Enterprises Limited




# Jack and the Beanstalk

PARKWAY, BEVERLEY  
14th-31st December 2018  
Box Office: 01482 968 090  
[parkwaycinemas.co.uk](http://parkwaycinemas.co.uk)

## TICKET'S GOING 'CHEEP'? OH, YES THEY ARE, WITH OUR EARLY BIRD OFFER!

*This year's festive pantomime 'Jack and the Beanstalk' at Parkway Cinema and Theatre, produced by the much loved 'TaleGate Theatre Productions' are offering early bird ticket prices.*

Early Bird Tickets are- Adult £13, Concessions £11.50 and a family ticket for £40 (Family ticket includes four tickets with a minimum of two children).

This offer must end on 31st October. Grab them whilst you can, before prices go back to normal.

The only professional pantomime in the Beverley area is set to be GIANT this year. Preparations are already underway with local talented children working on the spectacular song and dance numbers alongside the professional choreographer and cast. Book your tickets and join in on the Fe-Fi-Fo-FUN!



# WHAT'S ON

## SPONSORED BY: **kü**tchenhaus

2 Toll Gavel, Beverley, HU17 9AJ. T: 01482 862172.

Open: Mon - Sat: 10am-5pm. Sun: 11am-3pm. Bank Holidays: 10am-4pm.

### Until Sunday 20th October

#### • 'Art' by Yasmina Reza, directed by Martin Hutson

East Riding Theatre. 7.30pm and 2.30pm (selected perfs). £16.50/£15.50/£14.00/£12.00). Richard Avery, Malcolm Tomlinson and Clive Kneller star in this modern comedy classic about Serge who buys an all-white painting. But is it art? Friendships are stretched to the limit as they agree to disagree.

### Until Saturday 3rd November

#### • Birds, Blooms and Butterflies: Elizabeth Lambert's Art

Treasure House, Beverley. Free. Beverley artist and St Mary's Church organist produced 100's of artworks, many of which are on show.

#### • Peripheral Vision: Straw People by Julian Swift

Beverley Art Gallery. Free. Straw-people fantasy drawings.

### Until Friday 16th November

#### • Conservation 50

Beverley Guildhall, Register Square HU17 9XX. Free. Fridays 10am-4pm. Wednesdays 10am-4pm until October 31st, 10am-1pm after November 1st. An exhibition celebrating the 50th anniversary of Beverley's Conservation Area designation.

### Friday 5th October

#### • Box Tale Soup present 'The Picture of Dorian Gray' by Oscar Wilde

St Nicholas Community Centre, Holme Church Lane, Beverley. 7.30pm. £9. Not suitable for under 12 years. Features puppetry and an original soundtrack. ArtERT live event.

### Saturday 6th October

#### • Wars of the Roses (Abridged)

St Mary's Church, Beverley. 7pm. £5/£4. A rollicking slide through one of the bloodiest periods of British history. First performed at the 2018 Edinburgh Fringe, it's more E4 than BBC4! Also includes a demonstration of medieval instruments.

### Sunday 7th October

#### • Beverley Food Festival

Saturday Market/North Bar Within Beverley



and beyond. 9.30am - 4.30pm. 130 stalls selling food and drink from local producers; Food Marquee with demonstrations; entertainment and music around the town; street food.

### Monday 8th October

#### • Norwood Nites Community Cinema

Norwood Church Schoolroom. 7pm. Free. The story of Christina Noble who overcomes her harsh Irish upbringing to discover her destiny in Saigon. Refreshments and raffle.

### Sunday 14th October

#### • The Annual St John of Beverley Lecture by Prof. John Wilton-Ely

Peter Harrison Room, Minster Parish Rooms. 3pm followed by afternoon tea. Free to Friends of Beverley Minster/£5 non-members. Talk on Nicholas Hawkesmoor, pioneer of the Gothic Revival and Beverley Minster.

#### • Festal Friends Evensong

Beverley Minster. 5.30pm.

### Tuesday 16th October

#### • Fashion Show

Memorial Hall, Beverley. 7 for 7.30pm. £10 includes fizz and nibbles. Fashions from Phase 8, Dorothy Perkins, Collections, Crew, M&S, Sea Salt and Verb. Tickets from North Bar Kitchens, Collections, M&S, Phase 8, Shirley's Lairgate or by phoning 01482 882441. In aid of Beverley Christmas Lights.

Tell us about your event!

Email: [info@justbeverley.co.uk](mailto:info@justbeverley.co.uk)

Telephone: 01482 679947

For more events visit:  
[justbeverley.co.uk/events](http://justbeverley.co.uk/events)

### Thursday 18th October - Sunday 21st October

#### • East Riding Festival of Words

Various venues, times and prices. Adults and children's events and Elizabeth Godber's Memory project. See [www.festivalofwords.co.uk](http://www.festivalofwords.co.uk) for programme and booking. Tickets also available from 01482 392699 or you local library.

### Thursday 25th October

#### • The Tainted League

East Riding Theatre. 8pm. £10. Local singing-star Biz and a 7-piece band perform 80's classics.

### Saturday 27th October

#### • Friendship Quilters Coffee Morning in aid of Beverley Community Lift

Walkington Village Hall, 10am - 12noon. £2.50/50p. Entry includes tea/coffee with scone and jam.

#### • Croft and Pearce

East Riding Theatre. 7.30pm. £13/£11. Direct from BBC Radio 4's 'Croft and Pearce Show' and 'Sketchorama' come Hannah and Fiona, with their 'head-flingingly funny' sketches.

### Sunday 28th October

#### • Ceilidh with The Whitby Woolly-backs and Fair-Trade Supper

Toll Gavel United Church. 7pm. £10/£5/£25. Tickets from 01482 867573, 01964 550688 or Toll Gavel Church Centre.

#### • Candelight Sessions with Bella Gaffney and Polly Bolton

East Riding Theatre Café Bar. 7.30pm. £8 in advance, £10 on the door. Celtic bluegrass fusion.

### Monday 29th - Wednesday 31st October

#### • She Productions present 'The Lightless Pumpkin'

East Riding Theatre Café Bar/Beverley Library. 2pm and 4pm. £6.50/£5.50/£20 family ticket. Can you find the Lightless Pumpkin and pals? Join the BanSHes in a Pumpkin Parade and show.

### Thursday 1st November

#### • Phill Jupitus in 'Jupiticy'

East Riding Theatre. 7.30pm. £15/£14. Stand-up comedian, improviser and TV stalwart.

# kü

tchenhaus

The Largest Manufacturer of Quality German Kitchens

At Kutchenhaus we have affordable solutions made to meet your highest standards

2 Toll Gavel, Beverley, HU17 9AJ. T: 01482 862172.

Open: Mon-Sat: 10am-5pm. Sun: 11am-3pm. Bank Holidays: 10am-4pm.







WWW.POTTINGSHEDBAR.COM

*the*  
**POTTING  
SHED**  
BAR & GARDENS

*Join us for our*  
**BONFIRE NIGHT  
FIREWORK  
DISPLAY**

**MONDAY 5<sup>TH</sup> NOVEMBER**



**1<sup>ST</sup> FIREWORK  
DISPLAY - 7PM**



**2<sup>ND</sup> FIREWORK  
DISPLAY - 9PM**



**OUTDOOR  
FOOD STALLS**

**JACKET  
POTATOES  
HOT DOGS  
MULLED WINE  
& MUCH MORE**

**BOOK NOW CONTACT [LOISWOODHOUSE@POTTINGSHEDBAR.COM](mailto:LOISWOODHOUSE@POTTINGSHEDBAR.COM)**

**FLEMINGATE, BEVERLEY HU17 0NU**





*Mistletoe*



*Fair*  
[www.mistletoefair.co.uk](http://www.mistletoefair.co.uk)

**It's all about the shopping!**

**9th - 11th NOVEMBER**

# **BEVERLEY MISTLETOE FAIR**

**BEVERLEY RACECOURSE**

**Free tickets available for Friday 9th November at [www.shopforsomethingdifferent.com](http://www.shopforsomethingdifferent.com)**

**Your Christmas wish granted!**

