

# just BEVERLEY

ISSUE 36

**FREE**



**Henry Priestman &  
Les Glover**  
**Six of One  
& Half a Dozen of the Other**

**WIN!**

- Signed copy of Henry Priestman and Les Glovers new album
- Buzz Comedy Club Tickets

**No 2 Hengate**  
**Getting a new lease of life**

**Town Crier**  
**Michael Wood**  
**Shares Some Surprises**

NEWS, WHAT'S ON, LIFESTYLE, FEATURES, PUZZLES, PHOTOS & MORE



Telephone: 01482 869111  
sales@rosesofbeverley.karoo.co.uk



The Kitchen Factory, The Courtyard,  
Tokenspire Business Park, Beverley  
HU17 0TB

*Together we will design a beautiful kitchen*



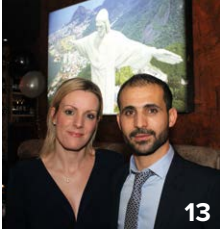
Roses will then  
**project manage**  
your kitchen installation from  
**start to completion**

Visit [www.roseskitchens.com](http://www.roseskitchens.com)  
to see our customers kitchens and read what they have to say about us

**Telephone: 01482 869111**



8



13



15



17



18



23



25

## CONTENTS

- 3 Letters from the Editors
- 4, 5 News
- 6, 7 Parkway Cinema
- 7, 9 Competitions

## FEATURES

- 8 Henry Priestman
- 13 Chamas Rodizio Bar
- 15 Meet Lisa Brown
- 17 Busmans Holiday, Labour of Love
- 23 Blooming Successful
- 25 Well I Never

## REGULARS

- 33, 29 Arts and Culture
- 6, 12 Competition Winners
- 22 Countryside Matters
- 20 Recipe
- 24 Legal
- 31 Motoring
- 18, 19 Photos
- 33 Poem
- 32 Puzzles
- 29, 30 Sport
- 34 What's On

# just BEVERLEY

## LETTER FROM THE EDITORS



I would like to wish everyone a very healthy, happy and prosperous 2018.

**Just Beverley** is looking forward to hearing all your good news throughout the year - so remember to send us your stories and pictures.

Pick up the phone and call us on **01482 679947** or email us on [info@justbeverley.co.uk](mailto:info@justbeverley.co.uk). You can also message us on Facebook or Twitter!

Julian.



2018 promises to be an exciting year for Beverley - so many people work hard for the good of our town and our Town Council is harnessing everything positive which is really putting us on the map! Do read the report from Helen Watson, the Town Clerk on page 20.

**Just Beverley** is all about the people who make a difference, who go that extra mile, which is why we are challenging some of them to answer 19 thought-provoking questions, so we can learn something we don't know about them. Our first interviewee is Michael Wood, East Riding's Town Crier and yes, we found out something very surprising to which we all said 'Well, I never...' Head over to page 25 to see what it was.

Whatever you do in 2018, be happy!

Linda.

### Competition Terms and Conditions

Competition answers should be emailed to [info@justbeverley.co.uk](mailto:info@justbeverley.co.uk) before the closing date with the competition title in the subject field. Include your name, address and daytime contact telephone number along with your answer. Winners will be notified within 1 week of the closing date and **MUST** be available for publicity purposes for **Just Beverley** magazine, website and Facebook page and the prize provider. Photographs are usually taken the weekend after the prize-winners have been notified. The judge's decision is final. No cash alternative is offered. Details may be used for marketing purposes by **Just Beverley** and the prize provider and for website analytics by **Just Beverley**.

### CONTRIBUTORS

Julian Minshall, Linda Johnson, Richard Manville, Nick Auton, James Bedford, Lisa Brown, Will Bundy, Carfan, Jane Dale, Annie Drew, John Fewings, Food Rhino, Aaron Gilpin, Heather Green, Rich Hayes, John Marshall, Colin Raynor, Ian Richardson, Sam Walton, Helen Watson, Lee Wardell, Nathan Wilson.

### You can pick up the magazine from:

Parkway Cinema, Flemingate, Beverley Tourist Information, Beverley Library/Treasure House, Tesco, Morrisons, East Riding Leisure Beverley, East Riding Theatre, Browns café, Beverley News, Boyes, Tesco café, Colette and Tyson Garden Centre, Beverley Garden Centre, Cherry Tree Garden Centre, Mace News in Saturday Market and Lincoln Way, Tickton News, Costcutter in Walkington, Molescroft News, Grovehill Convenience Store, Maple News, Leconfield PO, Willerby News, Poundland, Halfords, East Riding Community Hospital, Bishop Burton PO, Leven PO, The Altisidora, Cherry Burton PO, Barkers of Cottingham, Middleton-on-the-Wolds PO, Light Dragoon at Etton, Gnu at North Newbald, Monks Walk, Hayride, Sally's Deli, New Inn at Tickton, Ferguson Fawcett at Walkington, Health Centres, Churches, cafés, hairdressers and more!

Printed by: Jadan Press

[www.justbeverley.co.uk](http://www.justbeverley.co.uk)



'Community Publication Award' Shortlisted Nominee 2017



### GET IN TOUCH WITH US:

Website: [justbeverley.co.uk](http://justbeverley.co.uk)

Email: [info@justbeverley.co.uk](mailto:info@justbeverley.co.uk)

Telephone: 01482 679947

Twitter: [@JustBeverley](https://twitter.com/JustBeverley)

Facebook: [facebook.com/justbeverley](https://facebook.com/justbeverley)

If you would like copies for your business to distribute to staff and customers, call Just Beverley on **01482 679947**





# THE COCKPIT IS NOW OPEN!

Lucie Mountain's aviation-themed vintage café-bar is now open in Wednesday Market.

The quirky 1950's-style café serves food and drink from authentic hostess trollies by staff in vintage airline costumes. The café adds to the vibe of Wednesday Market, which is rapidly becoming a hub in Beverley with Chamas and Cosmos, Lempicka and The Queen's Head all offering different menus and drinks.

Lucie is now employing 15 members of staff, including her Mum. The café has mainly 40's & 50's jazz playing over the sound system and has a piano for live entertainment.

Lucie also runs a street-food business, Crepes Lucette, which you might have experienced at local festivals.



## BEVERLEY STREET ANGELS SEEK MORE ANGELS

Beverley Street Angels was launched in July 2012 as a response to needs in the town centre by some of the churches in Beverley. Street Angels are volunteers that give their time on Saturday nights until the early hours of Sunday mornings and are also around when there are special events in the town. They are on the streets in all weathers, supporting and caring for those who have become vulnerable at night. Not all Beverley Street Angels are Christians or part of a church, but all volunteers respect the Christian ethos.

Beverley Street Angels walk around Beverley town centre in hi-vis jackets, ready to care for the vulnerable. They pick up empty bottles, discarded glasses and tin cans that could be used in a negative way later in the night and clear up broken glass which could become embedded in bare feet. They listen and talk to all who want to spend time with them.

Beverley Street Angels look out for vulnerable people by providing them with information and assistance; dispensing free bottled water, safe footwear and where necessary, first aid.

Their motivation is to ensure anyone enjoying the nightlife or events in the town is safe and secure so that all, especially visitors to the town, have a pleasurable evening.

The Street Angels work alongside the police and door staff at the various locations in Beverley town centre. This is what the police have to say about the work of Street Angels: "Policing the pubs and clubs is a vital part of ensuring that the public have enjoyable nights out and by utilising all our powers and working with partners we are doing our bit to create a safe environment. However, the police cannot do this alone and one of the partner agencies that they work with and support are the Street Angels who are an established and integral part of a multi-agency approach to ensuring that people are safe when they visit Beverley, both for the Night Time Economy or for the larger meetings at Beverley race course.

This combined approach to helping people has resulted in the Street Angels undertaking a range of training that has increased their expertise whilst also ensuring that they have the best equipment available to provide the valuable and reassuring service that they do."

Anyone over 18yrs can volunteer to be part of the team. A DBS and two references will be taken to anyone applying. You would be most welcome to shadow an experienced Angel on a shift first to see if it's for you. All Street Angels receive training in first aid, conflict management, radio technique and drug and alcohol awareness; this training enables them to be more effective in the role they perform. If you can keep going into the early hours and love working with people, why not find out more at: [www.beverleystreetangels.com](http://www.beverleystreetangels.com), email: [info@beverleystreetangels.com](mailto:info@beverleystreetangels.com) or phone 01482 868124.



## YOUR FAVOURITE JUST BEVERLEY MAGAZINE IS ON THE UP!

Just Beverley's readership is currently around 12,000 for the 'hard' copy with a minimum of 4,000 'hits' on our website every month! Our posts on Facebook have reached up to 29,000 people.



BUT we know that there are still some people who haven't heard of Just Beverley. So why not share your copy with them? Or let them know they can download it and most of our back-copies from [www.justbeverley.co.uk/magazine](http://www.justbeverley.co.uk/magazine).

Although we publish a list on page 3 of many of our outlets, many of which are in Beverley, here is a list of the villages where it is available: **Bishop Burton; Cottingham; Etton; Leven; Lockington; Middleton-on-the-Wolds; North Newbald; Tickton; Willerby; Walkington.**

If you live in a village and could take a few copies to a local outlet, please let us know! Could you deliver and distribute copies around businesses in your locality - the more advertisers we can attract, the bigger and better Just Beverley will be!

Do you run a business and could advertise with us and put some copies of the magazine in your staff room? Could you 'like' us on Facebook and share our posts?

Just Beverley is YOUR magazine! The aim is to improve the profile of Beverley to attract more visitors to contribute to the local economy and to enable locals to get the most out of what Beverley has to offer. So tell us what you are doing, let us know your good news and let's take Just Beverley to the next level! Happy New Year!

## STOP PRESS

Helen Garnett is to appear in new BBC1 prime-time programme coming to our TV screens very soon, called 'All Together Now'.

Helen Garnett will be a judge and music industry singing professional along with 100 super-talented people. You can have a sneaky peak at <https://twitter.com/BBCOne/status/942144824479592449>



## TALE SPINNERS 2 - YOUR STORY ON STAGE AGAIN!

Following the success of Tale Spinners events last year, Other Lives Productions in conjunction with the East Riding are set to run another series in January when the works of fact or fiction written and submitted by the end of November last year is read by the authors. The audience decides the winning story!

The events will be at East Riding Theatre on January 17th and 18th and 30th and 31st January; at Lund Village Hall on 20th January; at Swanland Village Hall on 21st January; at The Ropery in Barton-Upon-Humber on 24th January; at North Dalton on 26th January (when the evening also includes supper) and Bishop Burton Village Hall on 28th January.

Book for ERT on 01482 874050, for Lund, Swanland and Bishop Burton on 01482 862752, for North Dalton on 01377 217625 and for The Ropery on 01652 660380.

## BEVERLEY FOLK FESTIVAL ANNOUNCES LATEST ARTISTS

Beverley's popular Folk Festival returns on 15/16/17 June, based at Beverley Racecourse. Now in its 34th year, Beverley attracts visitors and acts from all over the world to enjoy our lovely town and music of the expansive folk genre.

Gracing the Big Top and Little Big Top this year are internationally-renown Charlie Dore with Julian Littman; Denmark's Habadekuk; Devon duo Harbottle and Jonas; Welsh award-winners Calan; Two-time BBC Radio 2 Folk Award winners Greg Russell and Ciaran Algar; Teeside award-winners Megson; Glastonbury and other major festival favourite Grace Petrie and local songstress Katie Spencer with Foss Paterson. Find out more at [www.beverleyfestival.com](http://www.beverleyfestival.com)

The festival is run as a not-for-profit event and therefore relies on volunteers to help organise and run the weekend. Volunteering can be hard work but is great fun and looks good on a CV! In return for about 15 hours of volunteering from build-up to knock-down, the Festival offers a weekend pass, free camping and free tea/coffee and biscuits. Contact [volunteers@beverleyfestival.com](mailto:volunteers@beverleyfestival.com) and someone will get back to you!



## NEW PATHS FESTIVAL TO TAKE OVER BEVERLEY!

Now in its 3rd year, New Paths now has a warm-up period before the Festival proper - just to get you in the mood!

New Paths runs from April 5th - 8th, the warm-up from 2nd - 4th with an eclectic programme. There are plenty of FREE events as well as ticketed events. There are events for children and families, music events, talk events, sight-seeing events, come-and-join-in events, worship events, fringe events and, very exciting news, Bertie the Beaver will be leading a Carnival of musical events throughout the town on Saturday 7th April. The Festival is also venturing out to Selby for a day on April 4th.



Whether you enjoy early music, classical, tango, folk, gospel, brass, organ, gypsy, religious, choral, canticles, romantic or Scandinavian, there is something for everyone of any age. Events take place in many different venues in Beverley - not just the obvious one! You can find out about the Festival at [www.newpathsmusic.com](http://www.newpathsmusic.com). Tickets are now on sale!

[www.justbeverley.co.uk](http://www.justbeverley.co.uk)

## BEVERLEY FAIRTRADE GROUP SEEKS TO EXPAND ITS INFLUENCE

Beverley's Fairtrade Group was established back in 2004, but it took the committee members until 2007 to earn Beverley the title of a 'Fairtrade Town'. Now, after 10 years, signs have been put up around the town to demonstrate the continuing commitment of Beverley folk to buying fairly-traded goods and supporting the fair-trade ethos. But how did Beverley earn the title? Just Beverley's Heather Green met Beverley Fairtrade Group's John Turner to find out.

To be accredited as a Fairtrade Town, there are certain criteria to fulfil. These include:

- Gaining support from the local council to pass a resolution supporting Fairtrade with an agreement to serve Fairtrade products (for example, in meetings, offices and canteens).
- Having a range of at least four Fairtrade products readily available in the area's retail outlets (shops, supermarkets, newsagents, petrol stations) and served in local catering outlets (cafes, restaurants, pubs).
- Ensuring local workplaces and community organisations (places of worship, schools, universities, colleges etc.) agree to support Fairtrade and use Fairtrade products wherever possible.
- Demonstrating proof of media coverage and the organising of events to raise awareness and understanding of Fairtrade across the community.
- Establishing a local Fairtrade Steering Group who meet regularly to ensure the Fairtrade Town campaign continues to develop and gain new support.

This is no mean feat by anyone's standards! John and his fellow Fairtrade enthusiasts approached local schools, community groups and retailers; made contact with Councillors on both Beverley Town Council and East Riding of Yorkshire Council and talked to newspapers and radio stations about their venture, gaining support and increasing enthusiasm and have continued their efforts over the last 10 years to keep the title. The 7 new signs, John hopes, will ensure the proof of their progress is recognised and encourage people to continue to be mindful that the goods they purchase are fairly-traded wherever possible. John is passionate about all things Fairtrade and noted the expansion of available goods from when the group first started. In 2004, there was only a small selection of products endorsed with the Fairtrade logo - tea, coffee and biscuits.

Nowadays, Fairtrade includes fresh and dried fruits, fruit-juices, cotton clothing, ice cream, flowers and jewellery. The most recent edition is gold from small mines in southern Africa. And they run holidays to meet the producers so you can see what benefit your fair-trade purchase is making. John has visited South Africa, Chile and Ghana so far! John supports the view that providing a fair income and opportunities to those in underdeveloped countries is of utmost importance. He said: "It is our responsibility as a town to strive towards fulfilling this ideal and making purchasing choices that benefit us in terms of quality but also profits those who work hard in other countries to provide these products that are so essential to us."



The Fairtrade group runs a number of events over the year, many during Fairtrade Fortnight which this year runs from Monday 26th February through to Sunday 11th March. These include breakfasts, coffee mornings and afternoon teas where you can sample Fairtrade products. Could you make your work-place staff room a Fairtrade one, knowing that you are helping to change the world for the better at every tea-break?

There are 10 schools in the East Riding which are Fairtrade Schools - perhaps your (child's) school/college could work towards gaining that accreditation? Could you join the Beverley Fairtrade Group Committee and help expand their influence throughout East Yorkshire?

Please contact John on 01482 867573 or email on [jetbev2@gmail.com](mailto:jetbev2@gmail.com) to find out more and get involved!





**EVERY THURSDAY AT 10.30am**  
(doors open 9.45am)

Join us for a free brew and a natter and enjoy some great films on Beverley Parkway's Big Screen. Only £4.20 with drink and biscuits included. Aimed at 55s and over. Films subject to change.

**Thursday 4th January -  
The Limehouse Golem -**

Starring: Bill Nighy, Olivia Cooke, Sam Reid  
**Final Portrait -**

Starring: Geoffrey Rush, Armie Hammer

**Thursday 11th January -  
Breathe -**

Starring: Andrew Garfield, Claire Foy

**The Limehouse Golem -**

Starring: Bill Nighy, Olivia Cooke, Sam Reid

**Thursday 18th January -  
Loving Vincent -**

Starring: Jerome Flynn, Douglas Booth

**Breathe -**

Starring: Andrew Garfield, Claire Foy

**Thursday 25th January -  
Only the Brave -**

Starring: Josh Brolin, Jeff Bridges, Miles Teller

**Loving Vincent -**

Starring: Jerome Flynn, Douglas Booth

## COMPETITION WINNER

Congratulations to Gill Richmond who was the winner of last month's competition to win four tickets to the Beverley Buzz Comedy Club at the Parkway Cinema.



These are the films scheduled to open in January *all are subject to change.*  
Check out up-to-date cinema listings at [www.justbeverley.co.uk/cinema-times](http://www.justbeverley.co.uk/cinema-times)



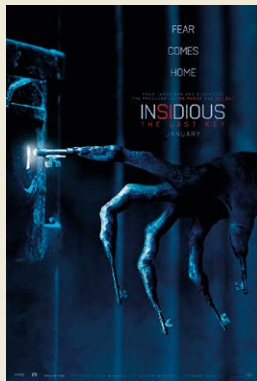
5th January



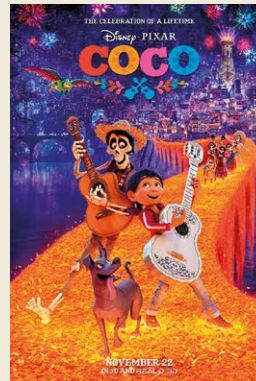
12th January



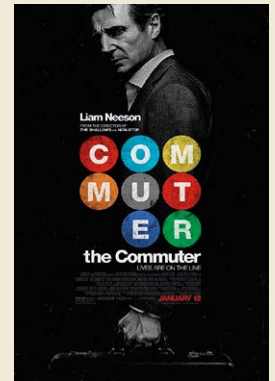
12th January



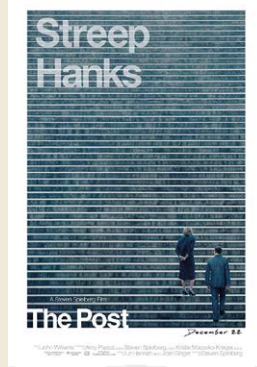
12th January



19th January



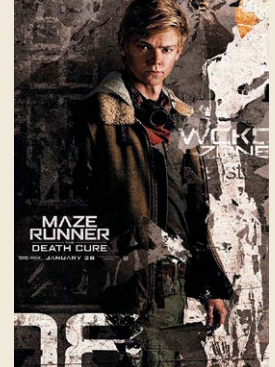
19th January



19th January



26th January



26th January

## PARKWAY PENGUIN PARTIES



YOUR OWN PRIVATE SCREENING  
SEE YOUR CHILD ON THE BIG SCREEN  
FUN & GAMES WITH OUR PARKWAY PENGUIN

ONLY £170

For more information contact the Box Office or  
come in store and speak to a member of staff



# YOUR NEW INDEPENDENT CINEMA



## FUTURE BIG NAMES IN COMEDY SET TO FEATURE AT BUZZ COMEDY CLUB

*Live comedy lovers will have been disappointed with the cancellation of Peter Kay's tour, but the man that discovered him (Agraman the Human Anagram) is bringing a new comedy club to Beverley. Agraman gave Peter his very first paid gig, and also his first one man show, but lost money as it did not sell out because nobody had heard of Peter in 1995!*

Agraman also used to run the comedy night at Hodgson's pub on Flemingate in Beverley, where you could have seen Sarah Millican just starting her comedy career. Just across the road from what is now the Potting Shed is Parkway Cinema, where the new comedy club will run on the last Sunday in the month.

So why wait and pay big money to see comedy superstars in the distance at large arenas, when you can see the stars of the future at close quarters for a bargain price?



Headlining the opening night is Jamie Sutherland, Lancashire's other brilliant and naturally funny observational stand-up.

Support comes from the cheeky but charming hilarity of Karen Bayley, and clever quips from one-line genius Tony Cowards.

Beverley Buzz Comedy Club is taking place in the Hayward Theatre, Parkway's live performance space, and tickets for the opening night on Sunday 28th January are just £10 via the box office on **01482 968090** or online at [www.parkwaycinemas.co.uk](http://www.parkwaycinemas.co.uk)

### COMPETITION

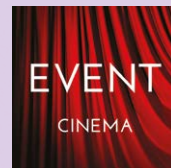
*The response to the return of comedy at Parkway Cinema has been phenomenal - Agraman, the Human Anagram, you have been missed!*

Parkway Cinema are therefore delighted to offer 4 tickets for February's Buzz Comedy Club on Sunday 25th as this month's prize - and **Just Beverley** will add a bottle of prosecco for you to further enhance your enjoyment!

All you have to do to win the tickets and prosecco is answer the following question: Human Anagram, gave a famous comedian, who has just had to cancel a major tour, his first paid gig. Who is that comedian?

Send your answer by email to [competition@justbeverley.co.uk](mailto:competition@justbeverley.co.uk) by January 17th. Put 'Beverley Buzz Comp 2' in the subject box and include your name, address and daytime telephone number in the body of the email along with your answer.

The winner will be chosen at random after the closing date. The winner must be available for publicity for **Just Beverley** and **Parkway Cinema**.



Event cinema offers something a little different to mainstream films. Live and pre-recorded shows beamed in via satellite from all over the world. Here are the latest live streams that you can enjoy on the big screen at Parkway Beverley.

#### TICKETS NOW ON SALE:

Tuesday 9th January at 7.30pm -  
**INTIMISSIMI ON ICE WITH ANDREA BOCELLI (U)**

Wednesday 10th January at 7pm -  
**A LIFE IN 12 BARS + Q & A (15)**

Tuesday 16th January at 7:15pm -  
**ROH: RIGOLETTO**

Wednesday 17th January at 8.30pm -  
**SUGGS: MY LIFE STORY & Q&A (15)**

Sunday 21st January at 3pm -  
**BOLSHOI - ROMEO AND JULIET**

Tuesday 23rd January at 6pm -  
**EOS: CEZANNE - PORTRAITS OF A LIFE**

Sunday 4th February at 3pm -  
**BOLSHOI - LADY OF THE CAMELIAS**

Wednesday 7th February at 7:15pm -  
**ROH: TOSCA**

Wednesday 14th February at 7pm -  
**RSC: TWELFTH NIGHT (12a)**

Thursday 22nd February at 7pm -  
**NT LIVE: CAT ON A HOT TIN ROOF (15)**

Wednesday 28th February at 7:15pm -  
**ROH: A WINTER'S TALE**

Sunday 4th March at 3pm -  
**BOLSHOI - FLAMES OF PARIS**

Tuesday 6th March at 6.45pm -  
**ROH: CARMEN**

Tuesday 20th March at 6pm -  
**EOS: VINCENT VAN GOGH - A NEW WAY OF SEEING**

Tuesday 20th March at 7:15pm -  
**OWSL: LADY WINDERMERE'S FAN (12a)**

For full programme of the Event Cinema, please visit [www.parkwaycinemas.co.uk](http://www.parkwaycinemas.co.uk)



# HENRY PRIESTMAN - PURVEYOR OF FINELY-CRAFTED RHYME FOR 40 YEARS!

*Many of todays under thirty-somethings will not have heard of The Christians, a multi-platinum album-selling band who were huge in the 1980's and 90's. Their debut album, the eponymously-titled 'The Christians' issued in 1987, sold 1.3million copies and was Island Record's most successful debut album at that time. All the songs on that album were written (or co-written) by one Henry Priestman, a young man who was born in Hull and whose Grandparents lived in Beverley. Five of the songs were released as singles and all became Top 10 hits. The Christians were 'Top of the Pops' stalwarts, having appeared at least 8 times on the 'must-watch' programme. Yet Henry, who is now in his 60's, is fast becoming 'cool' again. Just Beverley was lucky enough to spend an afternoon in Henry's company ahead of his sell-out Christmas gig at The Processed Pea Folk Club at Etton.*

Because Henry's parents ended up living in Leconfield, he's often seen around Beverley, in his trademark John Lennon-style fisherman's hat. He's also to be found regularly at three local schools, running song-writing workshops. His work with Longcroft School led to the Longcroft Gospel Choir being recorded for 'True Believer', a track on his 'The Last Man Surge of Youth' album and to appearing with him on stage at Beverley Folk Festival and Cornucopia. Working with young people and appearing at small festivals is a long way away from the heady days of pop superstardom - but it's all part of having a different mind-set, says Henry, and thoroughly enjoying what he's currently doing!

Henry says: "30 years ago (when we, The Christians, were at the height of our fame) kids might've been over-awed by having someone like me coming into school, but because these kids have never heard of me, they are just totally natural, and all the better for it! I didn't write my first song until I was 21, but some of these kids are writing great stuff from the age of 14. Longcroft is the only senior school I currently work with - it really is a joy! I know they have appeared in their own right at Beverley Folk Festival, too."

Hailing from Hull was a driver for Henry's 1987 hit song for The Christians 'Forgotten Town' being picked up by Hull City of Culture. It was reworked and recorded as "A Place They Called Forgotten Town", a film to promote seasons two and three of City of Culture year, involving Humber Film, Culture:Music and about 20 different community groups. You can view it here at [www.humberfilm.com/forgotten-town-film](http://www.humberfilm.com/forgotten-town-film) - see who you can spot!



Henry left The Christians in 2007, but his impact on them as a songwriter has not diminished as they have just released a new album 'The Christians Sings and Strings - Reimagined Greatest Hits' with 8 of the tracks penned by Henry. As he says: "If the odd royalty comes in it's a bonus, as I can then carry on working with schools and doing house-concerts and small gigs like The Processed Pea. I keep song-writing and doing gigs, because I don't know what else I could do! But my music can't be pigeon-holed - I'm not rock, I'm not folk, I'm not pop - I'm a category all of my own. Radio 2 DJ Johnny Walker called it 'music for grumpy old men'! I don't feel part of the music industry anymore, which gives me the freedom to do my own thing, record my own music in my own studio and even book my own gigs. And now I have my own little fan base, including one here in East Yorkshire, which is great."

Henry is often to be found performing with the band he dubbed "The Men of a Certain Age", which is a term picked up by Henry's current musical performing and writing partner, Les Glover, who wrote a song with the same title. Henry and Les have been working together for the last 4 years but they actually first met 38 years ago when Henry was in a pre-Christians band called Yachts. Les was a big fan of Yachts, who were appearing second-on-the-bill at Manchester Apollo Theatre. He arrived very early for the gig, so went into the pub next door and who were there, but Yachts.



So, he went over for a chat and to get their autographs. It was another 35 years-or-so before Henry and Les teamed up. Now they have a new album out - 'Six of One and Half-a-dozen of the Other' - with a dozen songs which are all relatable to men (and women) of a certain age!

Henry's first gig as a solo performer was at The Processed Pea, which is where he met Martin Peirson, who is now a member of The Men of a Certain Age - he plays mandolin and acoustic guitar and sings backing vocals. Other local musicians - Dez Allenby, Peter Robinson and Will Priestman, Henry's brother, also get involved in this fluid line-up when Henry is in the locality. But Henry uses different musicians when he and Les are performing elsewhere in the country, which isn't infrequent as Les is a Lancastrian and Henry now lives in Liverpool. Henry went to Art College in Liverpool in 1975 where he met the future Mrs Priestman, and there he stayed. Les, similarly has roots back in the west; they both say their strong, Lancastrian partners keep them grounded.

Les, like Henry, writes lyric-driven songs, often with catchy, sing-along choruses, which deserve to be listened to, which is why they will only play gigs where the audience will sit, enjoy the evening and join in the fun. In fact, the banter between Henry and Les is very funny, so much so that some say their gigs are sometimes repartee interspersed with songs! A three-hour gig is not unusual! But that is not in any way meant to diminish the artistry and musicality of the songs - which can be a rant ('Not in my Name'); full of pathos ('Ghosts of a Thousand Fishermen'); about changing times ('Old'); possibly autobiographical ('Tony') or a love song ('Grey is the New Blonde'). Some of their current album has been written together, others individually or with other writing partners - but all of them are likely to become friendly ear-worms in the same way as Christians' songs have become for some of us. 'Ideal World' anyone? Yes, that is included in their set, too!

'Six of One and Half-a-Dozen of the Other' has already had some very positive reviews. Mark Kermode, who reviews the latest film releases with Simon Mayo on Radio 5-Live, was a massive Yachts fan; Henry invited him to play double bass on 'Love you Love you' and he has given the album a glowing endorsement on the radio and Twitter. It's also been played on BBC Radios Wales, Merseyside and Humberside and tracks will be making appearances on Max Roberts' 'The Folk Hour' which streams on Beverley FM and several other local radio stations.

Henry said "We are very dependent on social media nowadays to get our music heard and bring in bookings. None of the music press will give us the time of day (we're too old and un-cool!), so it's Facebook, Twitter and YouTube posts for us. So, if everyone could 'like' our Facebook pages - @henrypriestman and @LeslieGlover7 - and follow us on Twitter @HenryPriestman and @leslieglover17 that would be good. If you would like to book me and Les for a gig or house party, I can be contacted by email at [henpman@gmail.com](mailto:henpman@gmail.com). And do have a look at our YouTube posts to get a flavour of what we do, although they can't really capture the atmosphere - for that, you need to be there!"

Here in the office, we can truly say we haven't stopped smiling yet after Henry's visit, especially as he brought Les with him! Do have a look at Henry's website to find out when he is playing his next local gig and to order your copy of Henry's solo albums and 'Six of One and Half a Dozen of the other'. It's [www.henrypriestman.com](http://www.henrypriestman.com)

Les Glover will be playing a solo gig at Processed Pea in May - but chances are Henry will be there and maybe, just maybe, those Men of a Certain Age will be, too. We've got our tickets ordered already!

We've also got our fingers poised on the keyboard for when booking opens for Henry's next (official) gig at Processed Pea for the 10th year on the trot next December! Well, we wouldn't want to miss out!



# CAPITALISING ON THE RENAISSANCE OF VINYL RECORDS IS BUG VINYL, THE RECORD STORE

*Selling only new vinyl, bug vinyl opened in January last year. The recent resurgence of vinyl has meant that sales are on a huge year on year growth and having been in retail for nearly 30 years, Neil Harris had no hesitation when the shop at 11 Ladygate became available as he felt that the time was right, and the location was perfect. The shop is a grade II listed 16th century building which still retains many of its original fixtures.*

As an independent record shop, bug vinyl stocks many limited edition coloured vinyl releases as well as a growing selection of local bands who have made it to vinyl. Already the shop has been visited by a number of artists appearing in the region including John Grant, Smoove and Turrell and recently Henry Priestman and Les Glover.

Record Store Day in April was a great boost for the shop - each year on Record Store Day over 1,200 instantly collectable limited-edition records are released, especially produced by record companies for the event. Not having done this before, Neil was not sure what to expect! However, he needn't have worried as people started queueing from 3am to secure their choices, with the queue stretching back some 300 meters to the bus station at times.

bug vinyl is always happy to try to order releases customers have been unable to find. Recently the shop has sourced a number of specialist labels from around the world including "Third Man Records" which is Jack White's record label from Detroit; 'Colemine Records' specialising in deep soul from Ohio, both in the USA and most recently, 'Sleazy Records', the specialist Rock'n'Roll label from Spain.

After being asked by a number of customers to stock record players it was a natural progression to expand upstairs with a new listening room. The shop is now stocking a selection of 5 star rated record players from Rega, Project and Audio Technica. Also, the upstairs walls now provide a gallery for music related limited-edition framed photographs, posters and prints. Gift vouchers are also available.

Follow bug vinyl on Twitter and Facebook to be kept up to date with all the new releases and events at the shop. Or pop in - it's located at **11 Ladygate, Beverly HU17 8BH**, phone **01482 887293**.



**bug vinyl**  
the record store

EST 2017  
produced in  
HU17

45 RPM

01482 887293

11 Ladygate  
Beverly  
HU17 8BH

licensed courtesy of bugvinyl.co.uk

**huge range of new vinyl  
quality record decks  
limited edition music prints  
gift vouchers**

## COMPETITION



*Henry Priestman and Les Glover have given us a signed copy of their new album, 'Six of One and Half a Dozen of the Other' for the winner of our free-to-enter competition!*

It's getting glowing reviews for it's very hummable songs! All you have to do to be in with a chance of winning the prize is to answer the following question:

Henry's middle name is the same as that of a band he was in from the 1980's until 2007. What is it?



Send your answer by email to [competition@justbeverley.co.uk](mailto:competition@justbeverley.co.uk) by February 17th. Put 'Henry Priestman' in the subject box with your answer, name, address and daytime telephone number in the body of the email.

The winner will be chosen at random after the deadline. They must be available for publicity for **Just Beverley**. Good luck!



# FLEMINGATE

## BEVERLEY



# FASHION

# FOOD



# FILM



# & FUN

WE'VE GOT IT ALL AT FLEMINGATE





# CREATE YOUR OWN STYLE WITH LEE WARDELL FROM VERB

**Happy New Year!**

Now that Christmas is behind us, thoughts turn to spring - but it's still a long way off. With February often recording temperatures colder than November it is worth thinking about how to get the best from your winter wardrobe.

Layering is a great way to add to your winter wardrobe, choosing flexible garments that you can wear as stand-alone pieces when the weather turns warmer. Such garments will also add a twist to your existing wardrobe.



Layering is great for changes in temperature, cold mornings and warmer afternoons, or going from a walk on the Westwood to the pub!

Also think about accessories like scarves, hats and gloves which ring the changes to a coat or outfit whilst keeping you toasty.



If you are concerned about avoiding a bulky look, opt for natural fibres like wool or silk to add layers without weight.

In terms of colour consider choosing a neutral shade that compliments your natural colouring as well as other items in your wardrobe.

Not sure where to start? Pop in to see us at Verb, we'll happily help you look at options for your wardrobe.

Keep warm and enjoy the start of 2018!

VERB is located at **Flemingate**, is open 7 days a week and can be followed on Instagram and Facebook to give you lots of ideas for your unique style.

Check out the website: [www.verbfashion.co.uk](http://www.verbfashion.co.uk)

## VERB

TO WEAR - TO WANT - TO WISH FOR - TO OWN - TO FASHION

FLORENTINE

PEARLY KING

Gibson  
LONDON

MAC

BROOK TAVERNER  
TAILORS OF DISTINCTION SINCE 1912

OPENING TIMES:  
MON / SAT 9.30-5.30  
SUN 11.00-4.00

01482 880141  
VERBFASHION.CO.UK  
INFO@VERBFASHION.CO.UK

FLEMINGATE SHOPPING CENTRE  
FLEMINGATE, BEVERLEY  
EAST YORKSHIRE HU17 0NQ

@ VERBFASHION    @ VERBFASHION    / VERBFASHIONBEV

TO FASHION YOUR OWN STYLE

# KEEPING FIT, EATING WELL, STAYING HEALTHY BY JAMES BEDFORD

*Now the new year is upon us it's a time we are all setting out to improve our health and fitness. Resolutions are made, goals are set and now it's the time to think 'how am I going to achieve this!?'*

Many jump straight in and go full throttle from the word go - strict diet, 2 hours exercise a day 7 days a week and then after two weeks they stagnate or drop off from what they set out to achieve as it's unsustainable long term. Others take the more cautious approach and January soon passes without making inroads into the goals they have set out to achieve. The good news is I am here to help!! Here are my top tips for achieving your health and fitness goals in January:

- Be honest with yourself - your goal needs to be achievable! Have an overall goal and then break it down into mini goals so you have easier targets to achieve and constant motivation to progress week by week, month by month. Make sure you have an end date to achieve your absolute goal whether this be to get to a certain weight or a holiday you've booked to continue pushing yourself towards success.
- Add structure to your day - planning will be your biggest tool to help you achieve your health and fitness goals. Plan everything from when you will be working out each day to meal planning for the week ahead to keep yourself accountable during your journey. Make it realistic to your time frames e.g. don't plan a morning workout if you struggle to get out of bed - plan it for later in the day when you are awake and full of energy.
- There is no point in throwing out all the junk food and alcohol from the house, dropping all carbohydrates out of your diet and swapping all meals for shakes on January 1st. Instead manipulate your diet to become where it needs to be. Balance out your meals, ensure you eat protein with every meal and add more vegetables.
- Drink more water! This was a tip pre-Christmas but the principle applies every day. Drinking enough water is essential to keep your body functioning efficiently, especially your digestive system. Drinking water also helps you avoid over-eating; dehydration is often mistaken for hunger, so you reach for a left-over mince pie as opposed to a glass of water!!
- Get advice. Achieving your health and fitness goals can be full of ups and downs, but there is no need to panic. Come see a fitness professional and we can help you with everything from workout plans to diet plans to health assessments. We are here for you at Anytime Fitness at Flemingate every step of the way!!

Pop in and see us - we are here 24/7 - or call on **01482 247100** for a chat.

## COMPETITION WINNER

Congratulations to Leigh Hartley who was the winner of a 3-month gym pass and 12-session personal trainer package with Anytime Fitness!




# FLEMINGATE A YEAR THAT WAS!

*Flemingate had an exciting year in 2017 which was topped off with a fantastic festive period. We saw visitors and footfall grow. New retailers, bars and restaurants opened their doors to Beverley, including VERB, THECREATIVELAB, Anytime Fitness, FIREPIT and Buca di Pizza.*

There were some great achievements. Beverley and Flemingate won Gold at Yorkshire in Bloom, Parkway Cinema were shortlisted for the prestigious Cinema of the Year (24 screens and under) Award in the Screen Awards 2017 and the first ever Creative Club was run over the summer holiday for young people.

We held some great events. Hundreds of families turned out for the Beverley Rocks event, we held monthly craft fairs and food events, joined up for Beverley Children's Literature Festival. Over the year we managed to raise a large amount of money for local charities through fund raising and charity events.

There were many firsts. Flemingate Ladies Day took place at Beverley Racecourse in August and we look forward to growing that relationship this year. The summer saw a 'beach' set up along with deck chairs and bucket and spades on the grassed area. Bartipi launched at the Christmas lights event. This Beverley family run business offered visitors log fires, mulled wine, locally brewed ales and warming hot drinks in their Nordic-themed tipi bar. We loved having them at Flemingate and hope they will return.

The highlight for me had to be the Christmas light switch on and firework display. It was a great way to end the year and wonderful to see so many local people together to celebrate and enjoy the festivities.



What exciting things will 2018 hold for Flemingate? We would like to thank everyone for visiting and want to continue to grow as a place for local people to enjoy.




**Support**

Every member gets a free, personalised Get Started Plan when they join along with free regular health checks. Our friendly, professional staff are trained to help you along your fitness journey, no matter how much support you need.

**Convenience**

24 hour access to the club to fit in workouts around your lifestyle

**Tools and Training**

With a fully equipped state of the art facility we offer all the tools to help you succeed with your health and fitness goals. The gym it boasts a multitude of cardio equipment along with resistance machines, free weights area and a functional training rig.

We also run classes throughout the week which are included in all memberships with virtual classes available if you're unable to make the scheduled ones. We have our personal training staff on hand to provide you with the right tools to reach your goals.

**Community**

You're not just joining a gym; you're joining a supportive community of like-minded people who are here to give you the encouragement you need.

ANYTIME FITNESS

Flemingate Centre, Flemingate HU17 ONQ

Tel: 01482 247100



# CHAMAS RODIZIO BAR AND GRILL EXTENDS TO ACCOMMODATE ENTHUSIASTIC DINERS

*When Ali Tecke made the decision to open a Brazilian Rodizio and Grill in Beverley, little did he realise quite how popular it would be! The positive reception to the restaurant meant that there were waiting lists with 5 weeks of the opening! There was only one solution - to expand! But how to expand without affecting his equally-popular Cosmo's Restaurant located next door? Ali explains...*



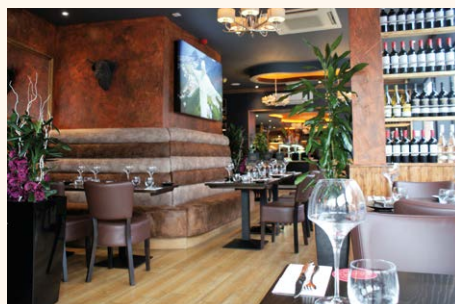
Ali said: "There's a lot of effort and thinking goes into everything we do. But with Chamas becoming so popular so quickly, we had to do something! The 50-seat restaurant was always full, and we were having to turn bookings away. The high-quality offering of traditional Brazilian meat, fish, cheese and delicious salads for a set price has appealed to Beverley and we knew with the feed-back on Trip Advisor, the high demand would continue. So, we came up with a creative solution - move Cosmo's upstairs into a dedicated Mediterranean-style diner and extend Chamas into a 100-seat restaurant downstairs; this would also create extra space to extend and expand the salad and accompaniments bar with hot and cold dishes."

The large salad bar was designed especially for Chamas by Ali and built by a Portuguese

manufacturer. 'It was', says Ali, 'a challenge to get it into the restaurant! But it has allowed us to increase the offering for people who enjoy delicious, colourful, gourmet salads with their meat or who prefer to eat vegetarian or vegan food. And it is a beautiful piece of furniture which people comment on - it has become the heart of the restaurant.'

Cosmo's and Chamas have now been able to alter their bookings policies to allow diners to stay at their tables for longer. Diners in Chamas have almost 2 hours to enjoy the excellent food, which has been imported from South America if it cannot be sourced in the UK. The Brazilian chef cooks the meat to the diner's own taste over open flames, which is then delivered straight to your seat.

There are up to 15 cuts of meat (8 at lunch-time) delivered by the passadores (waiters) so there is no waiting - diners control the delivery of the next course to the table by using red and green service cards.



There are also fish and vegan dishes. Alongside the exquisite meals is a selection of fine South American wines and cocktails and other alcoholic and non-alcoholic drinks in the well-stocked bar.



The national drink of Brazil is a cocktail of Cachaça rum, freshly-squeezed lime and sugar known as a 'Caipirinha' which is a must-try and, if you are celebrating a birthday, comes with the compliments of the staff - along with a chorus of 'Happy Birthday'! But whether celebrating or not, the staff are always attentive and always ensure you have the best experience.


This attention to detail is the reason why Chamas' name is spreading. Ali said: "We ask our guests where they have come from when we request feedback. People are coming from as far away as Doncaster and Scarborough! We are now ranked No 2 on Trip Advisor for restaurants in the Beverley area so we know we are going in the right direction. The ethos of Chamas is good food, good wine and good times with friends and family - the Rodizio tradition encapsulates that and we are delighted that so many people are coming to experience Chamas and then coming back with their friends and family. If you have not been yet, we look forward to welcoming you!"

Visit [www.chamasbeverley.co.uk](http://www.chamasbeverley.co.uk) to find out more about Chamas. Book on **01482 867897** for both Chamas and Cosmo's.

Get a taste of  
Brazil's traditional  
*gaucho-style grilling*  
*and Rodizio dining*  
in a unique and  
vibrant atmosphere  
**ONLY AT**  
**CHAMAS**



9-10 Wednesday Market, Beverley HU17 0DG  
[www.chamasbeverley.co.uk](http://www.chamasbeverley.co.uk) • T: 01482 867897

 /ChamasBeverley  /ChamasBeverley  @ChamasBeverley

  
RODIZIO BAR & GRILL



# I'VE BEEN THINKING... BY COLIN RAYNOR

*It is the time of year for parties, so I have been thinking about children's games. I have become, over the years in our family, the person who everyone looks to organise the games. I'm sure I could fill this column with a list of games I played in my younger days and then add all the other games that you know and that I've probably never heard of anyway. But there is one game I clearly remember playing that does not bring back happy memories and that is the one known in this country as "Musical Chairs".*

My memory begins when I am eight years old. I'm at the annual party held, as always, in the local village hall which has been the focal point of the community during the previous five years of wartime conflict.

It starts at five o'clock with a tea, which to our young eyes looks unbelievable - and probably to the adults is unbelievable, considering the rations everyone is on!

The games start with quiet ones like "Simon Says" and "Sleeping Lions". Perhaps the adults think such games will keep all the children docile. Not a chance... a shout goes up for "Musical Chairs" and someone starts playing a piano.

I notice there always has to be twelve chairs

put out and by the nature of the game, adjacent chairs have to face alternative ways. The music gets louder and louder and it all gets a bit frantic. I must find a chair when the music stops!

I'm sure I got pushed out of the way one time when I might have been just about to sit down? I'll have to make sure I get around to that other side before the music stops again! And so it goes on. I don't ever remember being the winner at musical chairs. I'm not too sure why I recall Musical Chairs more than other games, but I do know that, as I get older, I sense that many adults and groups, even countries, engage in a type of musical chairs.


Some people must win at all costs and if that involves (as it did in the children's game) pushing people around and elbowing an opponent out of the way irrespective of the consequences for that other person, then so be it. I'm not sure what is happening in our national government at present, but it is surely a classical case of musical chairs.

Even here in Beverley amongst the churches, we can see a type of musical chairs being acted out with so many changes taking place as the leaders of our churches move out and other people come to take their places.




In many cases for those trying to follow the changes, it becomes apparent that the rules have been changed from the last time, as it was in musical chairs. I wrote above that we know the game as Musical Chairs in this country but in one European country the game is known as "Journey to Jerusalem" and that country is Germany. Now that, I suggest, is something to think about.

Every blessing to you and all your loved ones in the year of our Lord 2018.



**CHOOSE AMUSE**  
Holiday Mews House



Do you ever need to accommodate family or friends?

Do you love having them nearby but would all like your own space?

Is it a struggle putting up camp beds or finding extra bed linen?

Are you entertaining business clients who may not wish to stay in a hotel?

Or maybe you know someone who is looking for somewhere fabulous to stay in the superb village of Walkington?

Whether you're planning a family celebration or an impromptu get together with friends, then just maybe we can help.



**Choose Amuse** is a luxury mews style self-catering house situated in the very heart of Walkington.

It offers high quality furnishings and fittings plus those little extras that can make a short break or a holiday that bit more memorable.

Sleeping up to four guests in fabulous hotel standard bedrooms, we can accommodate families or groups of friends in either twin or king-sized beds.

For more information or to make a reservation, please call **Karen** on **07515 325962**.

Email: [info@chooseamuse.co.uk](mailto:info@chooseamuse.co.uk) or visit the website: [www.chooseamuse.co.uk](http://www.chooseamuse.co.uk)


**SPECIAL OFFER**

**2 Courses for the Price of 1**  
Between 6-15 inches minimum inch loss in 5 sessions

Please call for details  
Offer ends January 2018

**TONING TABLES** also help with **ME, MS, hip replacements, depression, bad backs and much more!**


**Wheelchair access and stair lift available**



INCHES  
BODY STUDIO

CELEBRATING 26 YEARS IN BUSINESS

Inches Body Studio, 1 Norwood, Beverley, HU17 9ET  
Telephone: 01482 865229  
Email: [inchesofbeverley@hotmail.co.uk](mailto:inchesofbeverley@hotmail.co.uk)  
[www.inchesofbeverley.co.uk](http://www.inchesofbeverley.co.uk)





# MEET LISA BROWN - OUR NEW BOUTIQUE BEVERLEY CORRESPONDENT

*Landing in Beverley, via Hull and London, Lisa and partner Chris Terry run The Modern Draper on North Bar Within. Chris has 30 years' experience in retail, but Lisa's last job was as Head of Learning and Development at London Overground Transport, which you might think is a million miles away from menswear! But, says Lisa, both jobs are about people - people's aspirations: Learning and Development is making the most of yourself, whereas the way you dress is all about presenting the 'you' to the world the way you want to be perceived. Just Beverley went to find out more about Lisa and the fascinating ethos for the shop.*

Lisa and Chris were both working in London, but they wanted to come home, to spend more time with their families, to enjoy a more relaxed pace of life and be part of a community. London is busy, busy, busy - Lisa was doing a 90-minute commute just to get into work. Now she is a 3-minute walk away from The Modern Draper, ambling down beautiful streets where passers-by say: 'Good Morning'.

Lisa said: "We saw the unit was vacant and it was in the right area of the town; Chris saw the potential, I handed in my notice and we opened the shop on April 8th last year. The last 9 months has just flown by! We already have a loyal customer-base with people popping in to say 'hello' even if they aren't intending to buy. Some customer's dogs won't pass the shop without stopping as they know they will get fussed and a dog-biscuit treat!"



We asked Lisa why she was so keen to contribute to **Just Beverley**. She said: "There are so many people doing wonderful, creative things in Beverley and District and **Just Beverley** gives those people a voice, making a positive difference to Beverley. Beverley is booming - there is a 98% occupancy rate of all the retail outlets in Beverley, with many of those outlets taken by independent owners. Yes, there are some of the usual chains, but it's the independent owners of shops, restaurants, cafes and entertainment venues who are making Beverley particularly attractive to locals and visitors alike. Independents can empower their staff to raise their standing in the community whereas if you work for a chain you are just a member of staff with no authority to make positive change. Working together with other independents is definitely the way to raise the profile of Beverley. **Just Beverley's** philosophy is all about raising the profile of Beverley - that's why I want to write for them!"

Lisa commented that when she was a young girl living in Hull, she and her friends would go for a day out to Leeds; nowadays, people in Hull are coming for a day out in Beverley. The 'going-out' culture of the area is very different to that in London. Here people of all ages meet up with their friends and go out in large groups, spending time and money on their appearance. The Modern Draper taps into that culture with collections of clothes and accessories which aren't to be found anywhere else locally which hot different price points.

The last thing The Modern Draper wants is to be perceived as 'too posh' and 'unaffordable' - what it does want to be is inclusive! Chris has been in the fashion industry since he was 17 years old. He owned fashion boutiques, Evolution and Space, in Hull in the early 90's catering for the club and music scene for men and women and prides himself on introducing brands such as Dolce and Gabbana to Hull. You might remember Dagger Lane Arcade, Room on George Street and The Blue Lamp as being the nucleus of the club scene? He then went to London to work in the wholesale side of the industry managing a well known American lifestyle brand. All this experience has been distilled into The Modern Draper.

Lisa said: "Men are difficult to buy for, yet in some men's shops, the women are invisible. Yet women drive sales, which is why we have gender-neutral fragrances to make the shop appeal to women as well as men. Anyone who comes in to try on clothes or browse for any length of time is offered a complimentary coffee (we have our own unique blend from The Blending Room) as we have cards, bags, shoes, socks, scarves, wallets, toothpaste and books. Chris loves books on music - he loves music - so the sound system is 'just so', too."

Lisa joins **Just Beverley** at a time of growth and cultural change for Beverley and we look forward to reading Lisa's columns which will give us her independent insight into our wonderful town. Welcome, Lisa!

The Modern Draper is at **1, North Bar Within, Beverley HU17 8AP**, tel: **01482 873947**, Facebook and Instagram @moderndraper [www.themoderndraper.co.uk](http://www.themoderndraper.co.uk)





**BURTON ELECTRICAL SOLUTIONS**

High quality electrical work across East Yorkshire & the Humber region

DOMESTIC

COMMERCIAL

TESTING

*Whether it's for your home, rental property portfolio or business premises, all electrical installations need to be checked periodically by a qualified electrician.*

For a quote contact:

**Andrew Burton**  
**28 Carnaby Close, Leconfield, East Yorkshire HU17 7LA**  
 Tel: 01964 552769 Mob: 07585 601730  
 Email: [info@burtonelectricalsolutions.co.uk](mailto:info@burtonelectricalsolutions.co.uk)  
 Web: [www.burtonelectricalsolutions.co.uk](http://www.burtonelectricalsolutions.co.uk)



**DOMESTIC INSTALLER**

**FREE**  
LOCAL DELIVERY

# Searching for your dream kitchen?

Come see our specialists to discuss your next kitchen project

1.

Professional free design consultation

2.

Expert guidance & advice

3.

Competitive prices for trade & public

MY KIND OF  
KITCHEN

**MKM BEVERLEY**

SWINEMOOR LANE, EAST YORKSHIRE HU17 0JX

01482 880 088 | [mkmb.co.uk](http://mkmb.co.uk)

  OPEN Mon-Fri 7:30-5:30 Sat 7:30-noon





# A BUSMAN'S HOLIDAY OR A LABOUR OF LOVE?

*Estate agent Leanne Marshall describes the challenge of restoring an historic building back to its former glory. Just one year ago, Leanne purchased the Grade 2 listed building she was leasing for her business, Hunter's Estate Agency, with the intention of renovating it so it could be fully utilised and, at the same time, reflect its prestigious past. Located opposite St Mary's Church, this beautiful old building, No 2, Hengate, surely deserves the TLC which Leanne is lavishing on it!*

Leanne said: "After a slow start with the wrong architect, we enlisted the help of Salts Architects on Lairgate. Bridget Hansford immediately understood my vision for the upstairs renovations and with a mutual love for historic buildings, understood the sympathy needed to restore Hengate back to its former glory. Her attention to details has been amazing. The building has been in such a sad state of repair for many years, but we are expecting permission to go ahead with the renovations within the first couple of weeks of January. As a listed building in a conservation area, permission for changes has to be sought from Listed Buildings as well as the local planners - but first we had to do a structural survey!"

The building is listed on Historic England's website thus:  
*BEVERLEY HENGATE TA 0339 (south-west side) 9/76 No 2 and 4 (formerly 2.7.69 listed as No 2) GV II Early C19. 3 stories in red brick with slate roof. Wood eaves gutter on block brackets at wide intervals. 5 windows, casements with horizontal panes. Ground floor shop front full width, double doors in centre, and door at each end of front, 1 with horizontal panes. 6 plain pilasters and moulded entablature to case. Original large square panes to 2 shop windows. 1st floor, French case-ments with simple wrought iron guards, and wood cases with cornices. Sunk panels with stucco enriched mouldings, above 1st floor windows. 2nd floor case-ment windows with moulded architraves.*

Leanne said: "The Historic England description makes the building sound very beautiful, completely unlike the state of the building at the moment. It has been open to the elements for many years, so a lot of time, money and effort is going to have to be injected into getting the structure of the building sound first. This work is going to cost tens of thousands of pounds alone, but it has to be done before the stripping back of the inside can begin. I plan to renovate from the roof down to ensure that everything is done correctly. But by the time I have finished, it will not need touching again during my lifetime at least!"



Photo credit: Eastriding Archives - [www.flickr.com/photos/erarchives](http://www.flickr.com/photos/erarchives) - [www.picturearchive.org/eastridingphotos](http://www.picturearchive.org/eastridingphotos)

Fortunately, Leanne does have experience of restoring old buildings, but she's not underestimating the task on her hands. She would never claim to be a builder, but is not scared to get her hands dirty. As she says, this renovation and the experience she gains from it will all add to her expertise as an estate agent. Even now, though, with her current knowledge, she is able to advise people taking on renovation projects - if she doesn't think a property is worth the asking price for the work which needs doing, she will say so.

What is the future for No. 2, Hengate? Leanne said: "We plan to create two beautiful apartments on the first and second floors that we will offer on short term let to both buyers and sellers. So many people when buying and selling property need to break chains or simply want to take a short time off of the property ladder to clear their minds and take stock to enable them to find their next home without the stress of a chain dictating a completion date. Or they have renovation projects themselves whereby they are not able to live on-site, so this is an exciting prospect for me as an estate agent to offer temporary accommodation for this purpose. This allows us to offer our clients something very unique in the town centre of Beverley and hopefully shows our commitment to the forward thinking of our client's needs."

It will be quite a while before Leanne will be able to do the pretty things, like choosing kitchens and bathrooms, tiles and flooring! But she plans to take her time, choosing the best local tradesmen and women to undertake the work so the finished result will be very special indeed. Hunters are often asked to recommend trades-people, so this project will prove that they only recommend those who they use in their own home! Giving the work to local trades is very important for local girl Leanne - local pride and support of each other is all important.

Leanne grew up in Beverley, attending Longcroft School, which meant walking past No 2 Hengate regularly. She remembers Bromby's Sports Shop and In-toto kitchens being based there, peering through the double-fronted shop windows. Being able to buy the property really is a dream-come-true for Leanne who is equally proud of her Hunter's Estate Agency, which is a local independent business with the added benefit of being part of a large national network of 200 offices nationwide. For property vendors, this means national exposure which is unique in the town. As Leanne says, the more exposure they can gain for a property, the more interest and the better the sale price overall.

Here at **Just Beverley** we are sure the view from the new apartments will be one of the best in Beverley looking out directly onto St Mary's Church - and that will make all the hard graft, blood, sweat and tears all worthwhile. Leanne will be justifiably proud to be able to say: "I did that!" when the building has been preserved and the apartments are ready. She has promised **Just Beverley** an exclusive viewing - we can honestly say we can't wait!

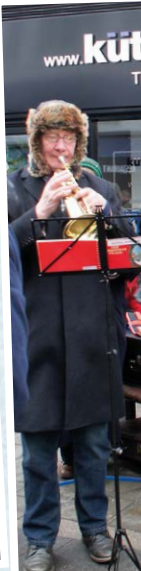
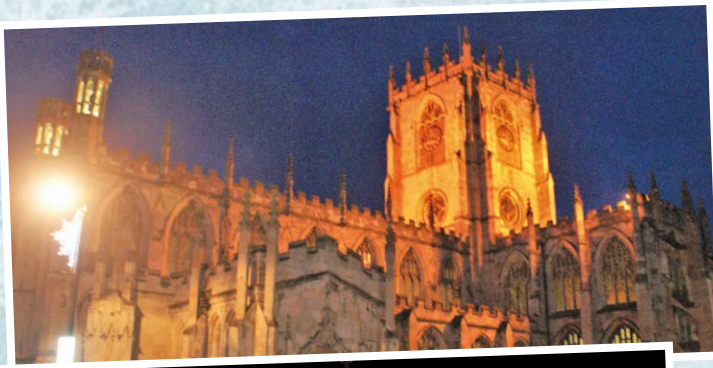






Send your photographs of your celebrations  
Find us on Twitter and Facebook to share yours

# BEVERLEY AT



HERE TO GET *you* THERE

# HUNTERS®

EXCLUSIVE

BEVERLEY / 01482 861411



# T CHRISTMAS



SALES / LETTINGS / MANAGEMENT

# HUNTERS®

BEVERLEY / 01482 861411

HERE TO GET *you* THERE



# HAPPY NEW YEAR FROM BEVERLEY TOWN COUNCIL!

The Town Councillors would like to wish you all a very Happy New Year. We hope you enjoyed the Christmas festivities. We thank all the community groups that worked so hard to make it such a Happy Christmas in Beverley. We look forward to starting the New Year and celebrating the things that make Beverley great in 2018!

December was a busy month for the Council. The Mayor, Cllr Ann Willis and the Town Clerk, Helen Watson were invited to speak at the National Association of Local Councils' Larger Councils Conference in London, on the award-winning Food Festivals and their input to local economic growth within the town.

We would like to thank local photographer, Nick Hedges, for supplying a short film to support this presentation.

We were delighted to share our good practice to help other towns and were equally delighted to be invited to attend and take the workshops. We also met with colleagues from the Japanese Local Government Agency based in London, who will be sending a delegation to visit Beverley in the New Year, to learn about our rich history, heritage and culture. We are already preparing for events and business in 2018 - there sure looks to be a full calendar! Here's a taste of what's to come!

- Planning starts for the Food Festivals this month; the stall-holders' documentation will be out in February.


- The NGS Day and Scarecrow Festival on Queensgate allotments is all signed up in the NGS yellow book.

- As you all know, it's a special year, where 2018 will be the 100th anniversary of the end of the First World War and the formation of the RAF. There was an Airfield started on The Hurn in 1916, this became part of the 447 Squadron which disbands in 2018. There will be a Town Council Subgroup meeting to set commemoration plans in place. Any ideas from members of the public are most welcome, please email: [clerk@beverley.gov.uk](mailto:clerk@beverley.gov.uk) and let us know.

- We are preparing for spring planting with the Beverley in Bloom group. We are looking forward to a good year of growing, both of the community and of the lovely plants.




We are always looking for volunteers for all aspects of our events and community groups that keep Beverley alive and kicking. Please come forward and get involved in growing our community. Our people make our place! Contact me on: [clerk@beverley.gov.uk](mailto:clerk@beverley.gov.uk).








**HOP ON DOWN TO THE CHOCOLATE CAFE**

*for handmade, quality treats!*

*A taste of wonderland...*

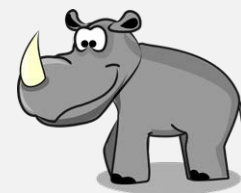




16 Dyer Lane, Beverley, East Yorkshire, HU17 8AE  
[whiterabbitchocolatiers.co.uk](http://whiterabbitchocolatiers.co.uk)

## RECIPE BY THE FOOD RHINO - 'TIBETAN' COCONUT CURRY

### Ingredients:

- 5cm Grated Ginger
- 5 Cloves Garlic
- 2 tbsp Cumin
- 2 tbsp Fenugreek
- 1 tbsp Ground Coriander Seeds
- 2 tbsp Turmeric
- 40g Chopped Coriander (keep a little back for sprinkling on the top)
- 1 Veg Stock Cube
- 1 Chopped Yellow Pepper
- 1 Sliced Red Onion
- 8 Quartered New Potatoes
- 200g Chopped Baby Sweetcorn
- 2 x 400g Drained Chickpeas
- 2 x 400ml Coconut Milk



### Serves 4 - 6

Lightly sweat the garlic, ginger, spices and onion for a few minutes in rapeseed oil until the onion is soft. If you think the spices are going to catch add a little water to prevent this.

Add the coconut milk and veg stock and simmer for a few more minutes before adding the pepper and potatoes. Now it's a waiting game. Once the potatoes are nearly cooked add the rest of the ingredients and simmer until the potatoes and are cooked thoroughly. Serve sprinkled with a little coriander and serve with rice cakes, if you wish. Enjoy! You can find more vegan recipes and tips by following The Food Rhino on social media - [www.instagram.com/TheFoodRhino](https://www.instagram.com/TheFoodRhino) or [www.facebook.com/TheFoodRhino](https://www.facebook.com/TheFoodRhino)





# Are you thinking about care for a loved one this winter?

The festive season can be a joyous time, but can also be a time for reflection – the realisation that an older person close to you may be struggling to cope at home.

Whether it's the challenges of age, the feeling of loneliness or the pressures of winter, Lindum House Care Home – with its stunning interior – could be the new beginning that's needed.

**OPEN DAY: SATURDAY 27TH JANUARY • 12PM–4PM**

Whether you need urgent care or just some help and advice, our friendly team at Lindum House Care Home are here when you need them.

**Call: 01482 977 831**

1 Deer Park Way, Lincoln Way, Beverley, HU17 8RN [www.barchester.com](http://www.barchester.com)



**LINDUM  
HOUSE**

BARCHESTER HEALTHCARE

Nursing Care • Residential Care • Respite Care & Short Breaks



Your Partners  
in Payroll

# Has managing your payroll become a real headache?

New legislation for RTI and Auto Enrolment has tripled the workload for payroll staff!

We can help reduce the burden.

#### Benefits of working with us include:

- Access to a dedicated payroll specialist
- Flexible and tailored services that are adapted to suit your needs
- Transparent pricing
- Clarity and efficiency
- Access to our FREE and easy to use payroll app



To arrange a **FREE** meeting  
call us on 0845 308 2288  
or visit [www.stipendia.org.uk](http://www.stipendia.org.uk)



Stipendia Payroll Solutions



@StipendiaPay



**stipendia**  
payroll solutions



# BLOOMING SUCCESSFUL!

The Beverley Flower Shop has relocated! Previously situated on Dyer Lane, owners Sarah Slater and Jade Hartley are celebrating the move to Well Lane as it gives them the opportunity to grow and flourish as an independent business. With a shop all to themselves, the duo can fully showcase their range of floral bouquets, potted plants and elegant arrangements.

Sarah said that she feels what makes the business work so seamlessly is a resolute dedication to outstanding customer service with a focus on building a personal relationship with their clientele in order to tailor flowers to each unique event.

The partnership began when Sarah and Jade met whilst studying floral design at Bishop Burton. Jade is the brains behind the admin and social media aspects of the company with Sarah offering expert taste and a flare for flower arranging; their combination of skills create a dynamic, successful team. The Beverley Flower Company were proud to provide the flowers to over 100 weddings in 2017 and have another 75 already booked for 2018.

Their beautiful door wreaths, some including lights, graced many a Beverley front door over the Christmas period and their bouquets were received by many grateful recipients.

They also supply flowers and wreaths for funerals.

The Beverley Flower Shop is located at **10, Well lane, Beverley HU17 9BL**, telephone **01482 873313 or 07767 293449**.

You can also find them on Facebook!



# AUTO-ENROLMENT UPDATE

The final staging date for Auto-enrolment is 1 February 2018, if you are yet to stage please visit our website and watch our video or download our useful factsheet and learn more about the 10 step process: [www.stipendia.org.uk/auto-enrolment](http://www.stipendia.org.uk/auto-enrolment).

The process has become much easier for many small organisations, often packaging up pensions staging with their payroll provider, making compliance and payment simple.

Employers can find out their own staging date at [www.tpr.gov.uk/planner](http://www.tpr.gov.uk/planner).

## Changes from 6 April 2018:

- Minimum employee contribution amounts increase to 3% of qualifying earnings (previously 1%).
- Minimum employer contributions increase to 2% for the employers (previously 1%).
- The employer and staff member can still choose to pay more than the minimum contributions.
- If a pension scheme does not increase its minimum contribution levels in line with the legal requirements, it will no longer be a qualifying scheme for existing members and cannot be used for automatic enrolment.
- Pension scheme trustees and providers, and payroll and software providers, should ensure their products support this legal requirement of automatic enrolment.

Stipendia can help your business with the auto enrolment process. We offer services alongside our tailored payroll solutions for your employees, including help with compliance, employee communications and consultancy.

Talk to us on **0845 308 2288** or visit our website - [www.stipendia.org.uk](http://www.stipendia.org.uk). Our team of payroll specialists are on hand to guide through the processes of wage compliance, payroll, auto enrolment and more.

Happy New Year from all at Stipendia wishing all readers a prosperous 2018.

# HUBY

## DOMESTIC APPLIANCES



**HUGE SAVINGS**  
when you  
**BOOK ONLINE**  
at  
**hubys.co.uk**

Book in advance and save money. The further you book in advance the more you could save...



**You've tried the rest, now use THE BEST!** **01482 240511**

IN 2018

# REACH MORE CUSTOMERS ONLINE

A WEBSITE THAT GETS REAL RESULTS  
**FOR ONLY £1995**

## WHAT'S INCLUDED?

Your website comes with all of these fantastic features;

- A bespoke website design
- Content Management System
- Contact form
- Analytics
- Mobile friendly
- Blog & gallery
- Links to social media accounts
- A dedicated account manager

**FREE!**  
Domain name  
Email addresses  
Web hosting\*  
& Support  
\*for 12 months

CALL NOW ON:  
**01482 428650**  
[marketing@indicoll.com](mailto:marketing@indicoll.com)  
[indicoll.com](http://indicoll.com)

# INDICOLL

# LEGAL Q'S AND A'S

Every month, Just Beverley asks a team of legal experts a question to which we don't know the answer. This month the question is about completion on a house purchase.

**Q. The leaseholders on our block of flats formed a limited company to obtain the freehold. However, the freehold owners have now stated, incorrectly, that there is £21,000 outstanding in unpaid service charges and will not complete the conveyance until this has been paid. What is our next course of action?**

Coles the Solicitors have given the following answer:

**A. The freehold owners cannot delay completion until service charges, whether real or imaginary, are paid. Any outstanding service charges could be attached to the freehold as a 'lien' by means of a charging order registered at the Land Registry. However, you should have applied for an order which would have allowed you to pay the money into court and have the freehold transferred over to you. Unfortunately, there are time limits for this and you may be too late. You need a solicitor's help with complicated legal matter such as this. Why not give us a call on 01482 231300 as soon as possible?**

Coles the Solicitors are located in the very heart of Beverley at 22, Lairgate, HU17 8EP.

Or check out their website: [www.coles-law.co.uk](http://www.coles-law.co.uk)

# TRIVIAL BENEFITS

An employer can now provide trivial benefits such as a bunch of flowers, a box of chocolates, a meal out, a bottle of wine, without having to put it on the P11D and without any tax or national insurance for either the employer or employee.

There are three main conditions that must be followed:

- the trivial benefit must cost no more than £50
- the benefit must not be a reward for services or in any way contractual
- the benefit must not be cash or a cash voucher

There appears to be no limit to the number of times an employer can make a gift of this type to each employee. However, if the gift exemption was used on a regular basis of say monthly, then it is possible that HMRC would argue the benefit is a reward for services or being used as a substitute for salary.

For directors, HMRC has imposed a limit of £300 per year for trivial benefits provided to directors. Employers should also be careful when issuing gift cards to employees, these gift cards or vouchers cannot be exchangeable for cash, if they are they are not covered under the exemption.

Under the rules it would certainly be acceptable to make gifts of no more than £50 to all directors and employees on occasions such as Christmas, birthdays and work anniversaries.

If you would like to discuss this in more detail, then please contact Gareth Botterill on 01482 862240 or email: [gareth@botterillco.co.uk](mailto:gareth@botterillco.co.uk)

## THOMAS HENEBURY

### CLASSICAL GUITARIST

### AVAILABLE FOR RECITALS AND PRIVATE TUITION

Thomas has a Bachelor's Degree of Music, and an Associateship of Trinity College.

He teaches grades one through eight for Trinity and Associated boards.



**T: 07732 099838**

**W: [www.thomasheneburyguitar.com](http://www.thomasheneburyguitar.com)**

**E: [tom@thomasheneburyguitar.com](mailto:tom@thomasheneburyguitar.com)**



## Botterill & Co

Chartered Certified Accountants

We are a modern and professional accountancy practice ideally located to serve businesses in Beverley and the surrounding area.

We utilise modern accounting technology to provide you with a cost effective, professional service.

### Our services:

- Annual Accounts
- Company Formations
- Tax Planning
- Payroll
- Management Accounts
- Cloud Accounting
- Tax Returns
- Bookkeeping & VAT

For a free initial consultation please contact us:

Office: 01482 862240

Mobile: 07966 051458

Email: [gareth@botterillco.co.uk](mailto:gareth@botterillco.co.uk)

Website: [www.botterillco.co.uk](http://www.botterillco.co.uk)

1st Floor Offices, 40 Norwood, Beverley, HU17 9EY



# WELL I NEVER... MICHAEL WOOD

**Beverley and district is blessed with many residents who contribute to the character of the region, going well beyond the confines of their 'job-spec' to make this area unique. Just Beverley is keen to know what makes these people tick! But we didn't want to ask them the usual twenty questions - so here's nineteen questions which we hope will reveal something about them which will surprise you! First up, Michael Wood, the East Riding Town Crier. His answer to Question 18 certain resulted in our comment - "Well I never..."**

## 1. Do you consider yourself introvert or an extrovert?

I'd say I am a part time extrovert. If in performing mode I like to be a showman. In a normal situation I remain normal - whatever normal is!

## 2. What's the craziest thing you have ever done? Would you do it again?

Once when in New Orleans in a serious music bar in Bourbon Street you could volunteer to do a turn. I did my Jimmy Hendrix bit on a house guitar and was booed off. I was hauled off almost. I'd do it again just to see the look on the faces of American tourists who I enjoyed winding up.

## 3. When was your biggest adrenaline rush?

Aged nineteen, the first time I ever flew in an aircraft I had to jump out of it. I was in the army and had applied to be a paratrooper. Doing such things at an early age helped make me less scared of later challenges in life.

## 4. Is what you are doing now what you always wanted to do when you were growing up?

When young I loved art and I had a talent for drawing; it gave me ideas of being an architect but academic qualifications were needed. I flunked school but luckily my education came later when I joined the army. After demob day I fell into the entertainment business and I must have had a secret ambition to be an entertainer and to have stuck with it because, unless you're a bit of a star, it doesn't pay particularly well - but it does offer immense job satisfaction.

## 5. Who were you closest to when you were growing up?

My younger brother Graham. We were so alike. He sadly passed away aged thirty-five and I miss him every day.

## 6. Who is the one person you can talk to about anything?

Myself - from whom I always seem to get the answer I want! But seriously it is my wife that I talk to, from whom I don't always seem to get the answer I want...

## 7. What are you most thankful for?

When working abroad I saw how tough it was for people living in less well-developed countries. I'm most thankful for the freedoms we have in Britain that we often take for granted.

## 8. What's on your bucket list for this year?

I visited Venice in 1975 during a day off from

military manoeuvres. Everything was outrageously expensive. I was only a Private back then on meagre wages and couldn't afford to enjoy the café society I witnessed there. If I win the lottery I will travel first class with my wife on the Orient Express to Venice and sit for hours people-watching whilst indulging champagne and caviar in one of the swanky cafés in San Marko Square that boasts a private orchestra. I might even over-tip the waiter.



## 9. If a genie granted 3 wishes, what would you wish for?

First wish: for my kids to have wonderful lives. Second wish: to not be losing hair where I want it. Third wish: to not be growing hair where I don't want it.

## 10. What's your idea of a perfect vacation?

See question 8. But if staying in the UK it would always be Bournemouth from where each day I'd take off to go exploring the county of Dorset.



## 11. What do you think about when you are by yourself?

My family. Life was chaotic for me growing up, but we had some wonderful laughs. My mam and dad are long gone now. I have outlived my two brothers and sisters. What I miss is having not having any of them left to remember with.

## 12. Do you judge a book by its cover?

I'm afraid so, yes. I shouldn't because I get the feeling others definitely do the same about me.

## 13. What's your favourite all time movie and why?

I love westerns having been brought up then on as part of the Sunday afternoon bill of fayre in the 1960s. 'Butch Cassidy and the Sundance Kid' is my favourite because of the humour, no over-the-top violence, a cracking story and watchable male and female actors. It's a western yarn you can believe.

## 14. What would you do differently if you had your time again?

I would have been born a decade earlier than I was, travelled to America and seen Elvis Presley perform live.

## 15. What would you change in Beverley and why?

Extend the Beck to have it flow through the town if possible. Most great towns and cities have a river running through them that brings a gentrified romantic feel and would add another dimension to Beverley.

## 16. What was your most memorable birthday?

My fortieth. It was a double celebration to reach this mid-life milestone and to mark my time up in the army after 22-years.

## 17. Favourite drink - alcohol or non-alcoholic?

I love a whiskey on the rocks, but it can be too moreish. I therefore tend to opt

out of the optics for a pint which lasts longer. A perfect pint is a pint of real ale.

## 18. Biggest achievement - sporting, hobby or past-time?

My first success at anything major in life was winning the Second Millennium World Town Crier Championship. It was held in Ghent, Belgium in the year 2000. The follow up competition will be in the year 3000, which means until then I own the title for a thousand years! To defend it I will have to ensure my ashes and a tape recording of my voice are held in the East Riding Council vaults for them to offer me up as a contestant when it is next held, ha!

## 19. How would you describe yourself in one sentence?

Someone who will give anything a go - even becoming a politician, which is really saying something.

**Michael Wood is available for Proclamations for All Occasions™. Contact him on Mobile: 07770 372999. Email: iringmybell@yahoo.co.uk. Website: www.iringmybell.com**



## HAVE YOU EVER THOUGHT OF BUYING A FUNERAL PLAN? BY FIONA KEMP

*Planning your own funeral and talking to your family about your wishes can be a very difficult but it also can be one of the most thoughtful things you can do for your friends and family. The most common reasons for taking out a funeral plan is consideration for others and peace of mind for the plan holder.*

By purchasing a funeral plan and discussing your wishes with your Funeral Director, who will be able to assist your family in carrying them out, you will relieve your family of any worries or uncertainties they may have at a very difficult time.

There are many different plan providers offering numerous types of plans and my advice would be to find out as much information as you can about what the plan includes and how it operates before purchasing.

These are some of the questions you should be asking:

- What exactly does the Funeral Directors Services include and are they guaranteed to be covered by the plan upon realisation? Reputable plans will include a hearse, good quality coffin and viewing in the Chapels of Rest. Additional items such as limousines can be added and should also be guaranteed.
- Enquire if other fees paid on your behalf such as Cremation/Burial fees, Celebrants/Ministers of Religion fees, flowers etc are included in your plan. These usually are, but not always guaranteed because these fees can rise faster than the plan grows and cannot be capped by the plan provider or Funeral Director. As a result, at the time of realisation there can be a small shortfall to be paid by the family. Be careful of plans offering to be fully guaranteed as these can sometimes be very overpriced.
- Is the plan protected by a Trust and what would happen if the plan provider or Funeral Director ceased trading? You should be provided with the option to move your plan to another local Funeral Director.

As an Independent Funeral Director, H Kemp and Son Ltd provide plans by Golden Charter Limited who are regulated by The Funeral Planning Authority. We are able to offer plans tailored to your specific requirements without the inclusion of unnecessary items and charges. If you would like more information please view the Pre-Paid Funeral Plan section on our website: [www.hkempandsonltd.com](http://www.hkempandsonltd.com) or contact us on by telephone on **01482 844695** where we will be happy to provide free advice with no obligation.

## Four Generations, Giving Over 100 Years Service

Herbert 1870-1962    Eardley 1908-1986    Geoffrey 1939-2015    David 1964



Golden Charter  
Funeral Plans



- Funerals Respectfully Conducted
- Personal Attention
- Home and Abroad
- Private Restrooms
- Prepaid Funeral Plans Available

**Tel: 01482 844695**  
[www.hkempandsonltd.com](http://www.hkempandsonltd.com)

259 Hallgate, Cottingham, East Yorkshire, HU16 4BG  
Fax: 01482 843898  
Email: [hkempandsonltd@gmail.com](mailto:hkempandsonltd@gmail.com)

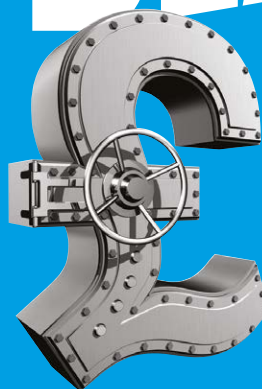
## LA LUMIÈRE PHOTOGRAPHY



**TEL: 01482 867455**  
[WWW.LA-LUMIERE.CO.UK](http://WWW.LA-LUMIERE.CO.UK)  
[ENQUIRIES@LA-LUMIERE.CO.UK](mailto:ENQUIRIES@LA-LUMIERE.CO.UK)  
22 TRINITY LANE, BEVERLEY

## TAX RETURN

# DON'T MISS THE DEADLINE



The clock is ticking! Don't miss the January 31st tax return deadline and incur a penalty, speak to us today.

**01482 235363**

**TaxAssist Accountants**  
The Accountancy Firm For Everyone

[www.taxassist.co.uk/beverley](http://www.taxassist.co.uk/beverley)



# COUNTRYSIDE MATTERS WITH SAM WALTON



*I was once taken to task for saying that August was traditionally the wettest month of the year. I still think it is! Last year we had 2.5 inches one August day which was followed by almost another inch the following week! That pales into insignificance when you think about what happened in Texas when they got a whole year's rain in one day...*

Talking of rainy days reminded me of being a lad on a farm when there were 10 workers at harvest time. What did you do with them on rainy days? One thing was to sit in the granary, listen to yarns and mend holes in the Chisholm, Fox and Gardner massive sacks, as rats used to eat holes in them!

If the corn was for home use it would be heaped up loose on the granary floor, but most of the wheat was for sale and would be stored in sixteen stone sacks until the lorry came to collect them. The lorry driver could pull alongside the granary door, stand on the back of his lorry so he was almost up to the door where the sacks would be stacked. He would then carry the sacks on his back and stack them tidily on his lorry. In those days a load would then be about 10 tons.

Another job for a rainy day would be to clear out the manure from a fold yard or even put wet weather clothes on to clip hedges and clean ditches, which, of course, were cleaned out every year by hand. There were no diggers or excavators in those days! These days, wet days give an opportunity to service machinery or do any other kind of repairs inside buildings. Or there might still be the opportunity for cutting hedges as the operator will be in a cab keeping dry. On the other hand, there might just be opportunity for an odd day off!



May I wish a Happy and Prosperous New Year to all.

# IN THE GARDEN... JANUARY

*January is the month I consider to be midwinter, everything in the garden is still dormant and although the shortest day has passed, daylight hours do not seem to be lengthening. Often the weather is too miserable to venture outside into the garden, thus limiting the tasks that can be done.*

As in the last issue if we get snow - shake the snow off trees, shrubs and hedges where you can (the weight of the snow can bring branches down). Do this as soon as you can after the snow has fallen and before it freezes. Don't worry about snow lying over low shrubs and borders, this layer of snow will actually help insulate the plants beneath it.

The thaw and frost can bring their own problems in particular for lawns, as the snow melts a large amount of water is released. Look out for patches of dying, yellow grass that gradually get larger (they may even have a fluffy white mould on them). This is 'snow mould' and occurs when snow has been standing for a long time and/or the lawn has been regularly walked on when frozen. Treat this with a lawn fungicide.

## Tasks for January...

- Continue to protect tender plants against frosts and icy winds.
- Order seeds and summer-flowering bulbs.
- Plant new fruit trees and canes when weather allows.
- Plant bare-root roses, hedging, trees and shrubs when weather allows.
- Mulch around new plantings.
- Prune fruit trees.
- Start digging over vegetable beds when weather allows - not if the soil is frozen or 'sticky'.
- Sow early vegetables under cover.
- Keep small area of ponds ice-free - don't smash the ice as the vibrations could kill any fish in the pond, instead place a football or similar on the pond surface before it freezes or if it has frozen place a metal bowl/saucepan filled with boiling water on the surface of the ice and allow it to 'melt' a hole.
- Clean out your greenhouse and tidy the shed (note to self!)
- Clean and sharpen mowers and other tools.
- Make sure the birds have food and water.
- Take your Christmas tree for recycling.

Evergreen plants continue to provide interest, in particular the variegated varieties and of course there may still be some berries remaining on shrubs to liven up the garden. Also, trees and shrubs that flower at this time of year tend to have the added bonus of an intense fragrance.

And, just in case we had forgotten the green shoots of the spring flowering bulbs will be starting to push their way out of the ground, reminding us that spring is on its way... HURRAY!

## So, roll on next month.

Jane Dale of 'Designed Gardens'  
Tel: 07983 392 411



**Would you like to make a difference to someone?**



**VOLUNTEER CAR & MINIBUS DRIVERS NEEDED**




**Full training given, ring or pop in for a chat!**

**25 Corporation Road, Beverley, HU17 9HG**  
**Tel: 01482 868082**  
[www.bclift.org.uk](http://www.bclift.org.uk)  
Reg. Charity No: 506813 



# TALES FROM THE RACECOURSE BY BEAT THE BOOKIE!

Well it's in to January and we're busy getting things sorted for the new racing season at Beverley with the first meeting not too far off on 18th April. So what do we have lined up for you punters this season? Well, over the winter there has been a lot of work going on in the Parade Ring where the Paddock has been dug out, refurbished and completely redesigned to give you a much better view of the horses as they parade around. There are lots of fun days ahead including our famous Ladies Day.

Something new for this year... our Bygone Beverley theme day which will take place on 7th May (Bank Holiday). We will be recreating a classic raceday from the 1950s to include tic tac men and classic children's entertainment. Lots of us will be in 50s outfits - I'm sure I will still have something lurking in the back of the wardrobe! Do get dressed up for the day; there will be a prize for the best dressed couple. There will also be an exhibition of photos and memorabilia from Beverley racecourse in the 1950s. Do you have any stories to share of that time? Any artefacts or other items which we can include? Do let us know!


Cast your mind back to the 50's to the likes of Lester Piggot, Jo Mercer, Edward Hide and Jo Sime, they were all well-known faces of the day. And how about the horse racing tipster, that colourful character Ras Prince Monolulu, often seen at Beverley in his fancy costumes and feathered headdress, shouting out his famous catchphrase "I've got a horse!"

He was a larger than life character who travelled around the country attending race meetings. People used to follow him around and it was said to be lucky if you shook his hand. He would tell people that he was a Zulu prince! In fact, his real name was Peter Carl Mackay and he wasn't a prince - but he was a man of whom it is said 'once seen never forgotten'. I wonder if the same will be said about me, Beat the Bookie, in years to come? Probably not!




More likely some of you will remember 'The Major' who sold tips in little brown envelopes in the car park at Beverley races. Now he was a character! We have another great year to look forward to, so I hope to see you there. Best Wishes and Good Luck for 2018! Beat the Bookie (Colin Stamford).

Stockists of **Woof Dog Beer!**



**INTRODUCING OUR NEW AFTERNOON TEA MENU!**  
 £12.95 PER HEAD OR £24 FOR TWO PEOPLE  
 AVAILABLE MON-SAT 12-5PM. PRE-BOOKING IS REQUIRED AND GLUTEN FREE OPTIONS ARE AVAILABLE.



**THE TIGER INN**

Brains required from 8:30pm


FIRST SATURDAY OF THE MONTH

## Big Quiz

Free food/prizes to be won, all money raised to our house charities.  
 £1 per person entry

WEEKLY




## Bingo



Cash prizes to be won  
 50p entry per game  
 Every Tuesday 1.30pm

# THE TIGER INN

Tel: 01482 869040 | [www.tiger-inn-beverley.co.uk](http://www.tiger-inn-beverley.co.uk)  
 Lairgate, Beverley HU17 8JG



## Print that gets you noticed



- ✓ Brochures
- ✓ Leaflets
- ✓ Business Cards
- ✓ Business Stationery
- ✓ Posters
- ✓ Desk Calendars
- ✓ Wall Calendars
- ✓ Pop-up Banners
- ✓ Pads
- ✓ Invites

OVER 20 YEARS EXPERIENCE



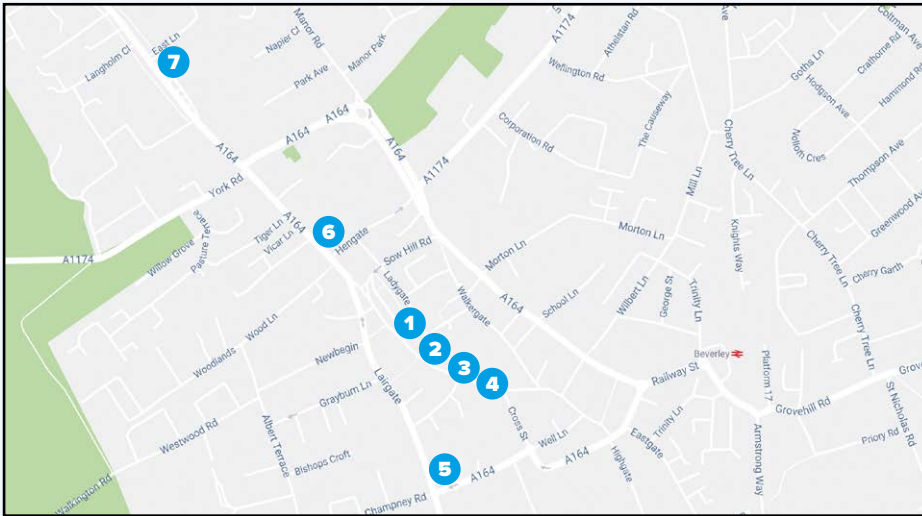
Jadan Press are a leading family run commercial B2 colour litho printer based in Hull. With 20 years experience, the company is renowned for producing work of an exceptionally high quality. We are committed to providing an excellent service by offering value for money and ensuring complete customer satisfaction.

**Tel: 01482 610902**  
**info@jadan-press.co.uk** [www.jadan-press.co.uk](http://www.jadan-press.co.uk)  
 Rainbow House, Kimberley Street, Hull, HU3 1HH





# POLITICS OF THE GUTTER - A STROLL THROUGH BEVERLEY'S CORRUPT PAST



**It was December 7th, 1868. But as Christmas approached in Beverley, the town and soon the whole country was shaken by allegations of blatant corruption in the election of the constituency's 2 MPs. So serious were the issues that Beverley would soon lose its own seats in parliament and the way we cast our votes in elections would never be the same again! At the heart of the story lies famous novelist Anthony Trollope, seeking to become a Liberal MP for the town. This stroll passes the key places from this dark tale of our murky political past and can be made into a pleasant circular, passing the substantial homes of local politicians old and new.**



*The Polling by Hogarth - captures the atmosphere of voting in public*



*Market Place in Victorian times*

**1** Begin by the Market Cross, the focus of political life in Victorian times. Here boisterous hustings were held, and voting took place in the open. Around 2,700 men aged over 21 could vote at the time; women had to wait another 60 years to enjoy the franchise whilst 18-20-year olds had to wait another 100 years.

Voters were expected to declare their choices, which were recorded in the poll book. Each had two votes qualifying as house owners, had completed local apprenticeships or were freemen of the town. This led to frequent and blatant

bribery - at least half those voting in 1868 are known to have accepted money. Alcohol flowed freely to assist in the bribing and apparently to get opposing voters so drunk that they were incapable of mounting the voting platform!

Party colours, crimson for the Conservatives and orange for Liberals - the two dominant parties - were everywhere. Also in the Market Place was the town's Conservative newspaper the Guardian, which only ceased publication in 2016. The Liberals had their own paper, the Recorder, in Wednesday Market.

**2** After the declaration it was customary for the two winning candidates to go in procession to the Guildhall. We will follow their route up Toll Gavel. These parades were often bizarre, headed by stuffed foxes and cockerels! In 1857, the Liberals had been less concerned with the morality of bribery and set up a booth between Toll Gavel and Walkergate, where up to 3 gold sovereigns were given for votes.

In 1868, one of the two Liberal candidates was Anthony Trollope, famous writer of the Barsetshire novels. Of more interest to most of the voters: he refused to offer bribes. The election, which he described 'as the worst two weeks of my manhood', still cost him £400, largely spent on 'treating' potential supporters to food and drink. Yet with no sovereigns on offer, it is unsurprising that Trollope came bottom of the polls. He thoroughly despised Beverley 'full of fools and bores', using the town as a model of political decadence in his novel 'Ralph the Heir'.

**3** Turn right into Cross Street and Register Square. The Conservative party HQ was in the Doric columned building. Here was a Mechanics Institute which campaigned for votes for all males but this building was demolished by 1900. The winning candidates, in this case the two Conservatives Edwards and Kennard, would have celebrated lavishly in the Guildhall.

**4** To complete our stroll in the political gutter, go up Butcher Row noting the plaque on the Angel pub, then run by the so called 'Prime Minister of Beverley', the Liberal agent Daniel Boyes. That December he was crying into his beer, resentful that the hapless Trollope had been imposed by the national office.



**5** Head for Lairgate Hall, turning right from Wednesday Market into Lord Roberts Road, then left past the library, emerging on Lairgate near the imposing Georgian hall, formerly the home of Thomas Pennyman, MP for Beverley in the eighteenth century.

Head down Lairgate and near its end, on Newbegin, is a hotel run by a former Conservative MP of the 1990s.

**6** Go into North Bar Within; the balcony above the currently unoccupied Beverley Arms Hotel was often used for political speeches. In 'Ralph the Heir' it was called the Percy Standard. Go through the Bar to North Bar Without. On your left is Seven Corners Lane, home to our current MP.

**7** Cross the road. Number 62 is the magnificent Ash House. In 1868 it was the town residence of Sledmere's Sir Christopher Sykes, who had been a Beverley Conservative MP before this election.

Return to the Market Place, perhaps pondering that things politically may not have changed much over the past 150 years!

MPs still often live in rather nice surroundings, and whilst we may no longer get dirty money for our votes, politicians still make extravagant, arguably deceitful, promises to garner our support.

As for 1868, the two elected Conservatives were stripped of their seats due to the corruption. Nationally, Gladstone's Liberals defeated Disraeli's Conservatives. This was a reforming government, providing free primary schooling for example, and with the cause celebre of Beverley in mind, passing the Ballot Act of 1872, introducing voting in secret.

So, Beverley inadvertently played a key role in developing the UK's democracy.



*Ash house*

**Next Month - August 4th 1914**

Ian Richardson – ricolosh@msn.com



## GOLF BY STEWART FRASER

Winter... time to get your game and clubs ready for the season ahead.

Most golfers have lessons in the wintertime to improve their game ready for the season ahead. However, the most common mistake I see day in day out is a player not preparing his or her clubs correctly for the season ahead. I would say that around 50% of golfers I see have grips on their clubs that are old and not fit for purpose.



The grip is the most important part of the club. Ahead of length, lie angle and shaft type, the grip is your only point of contact with the golf club. Most tour pros will regrip their clubs 3-4 times per year; the average club golfer does not need to go that far but I certainly recommend once a year for someone that plays every week.

Wear and tear, but mainly sweat and dirt, will all take their toll on the surface of the grip. A poor grip surface will cause unwanted slipping and twisting of the club during the swing and this will result in a loss of control of the golf club and clubface. If you cannot control your clubface then you will not be able to control your ball flight, regardless of the quality of the swing. This year alone I have seen grips that are rock hard, cracked, have thumb holes in and are just generally slippery. Add into the equation cold hands and a good dose of rain and the club can twist up to 10 times more than normal when it contacts the ground! If this sounds familiar, then it is time to change. I guarantee it will save you shots! Do not let bad equipment ruin your round - it is the one thing you can control. So what grips are best?

Do not make the mistake that most do, going into your Proshop and selecting new grips based on looks or colour. Let your PGA Professional give you advice on the best grip for you based upon factors like size, durability, texture and feel. The wrong grip WILL affect distance, trajectory and direction, i.e. everything about your shot can be affected. Once you have the correct grip for you it is finally time to express your personality with the colour of your choice!

If you would like any advice on the correct grips for you, please come and talk to us at Beverley Golf Club and have a look at our vast range of grips available including free fitting. There's an additional 10% off until the end of January if you quote 'Just Beverley', too. Happy New Year to all!

## IS YOUR NEW YEAR'S RESOLUTION TO LOSE WEIGHT? TRY CYCLING!

I'm sure you're not the only one who wants to lose weight this New Year! Most of us overindulge during the Christmas period. So, what is the best way to lose weight? Here are some tips and suggestions that can help you burn that fat more efficiently by cycling - you may not even have to break into a sweat!

Firstly, you do need some fat in your diet; you can't live without it. It's an important part of your diet, especially naturally occurring fats, and it's also a great source of energy when it's broken down during exercise. I'm not suggesting you go out and eat lots of fatty foods though!

Light, gentle aerobic exercise burns off the greatest amount of fat to carbohydrate ratio, so going for a steady bike ride, for example, at a low-level intensity can do the trick.

If you have a heart rate monitor, try not to exceed 130bpm. If you are a bit older, your maximum heart rate will generally be lower, so you can adjust this to roughly 110bpm or even 100bpm. The body doesn't really start burning fat properly until about 30 minutes into exercise, so you do have to exercise for longer than this in order to start burning the fat - I find that an hour is usually a good round figure to aim for.

One way to trick the body into using fat for energy more quickly is to exercise whilst fasted. A great example of this is to exercise in the morning before you have any breakfast. You may feel a bit sluggish doing this, but it is proven to burn that fat quicker.

Caffeine has also been proven to increase the amount of fat burned during exercise. Sometimes I have a coffee first thing in the morning before going for an hour's bike ride or setting off on my commute to work.

I personally don't believe in specific diets. It's perfectly possible to burn off any excess fat/weight with exercise and a healthy diet. Then, going forward, to maintain a healthy weight by eating a balanced diet and exercising - except, maybe at Christmas! **Nathan Wilson.**

**AWARD WINNERS!**  
SHAM ALOM  
Best newcomer and chef of the year  
SARAH DAY  
Best Maitre d'

Disabled Parking and Lift for Disabled access

The Only Beverley Indian Restaurant included on the Welcome To Yorkshire Spice Trail

**Rumi's Bangladesh Indian Cuisine**  
New Walkergate, Beverley, HU17 9EP

**T: 01482 428642**  
[www.rumisrestaurant.co.uk](http://www.rumisrestaurant.co.uk)  
Mon - Thurs: 5.30pm - 11.30pm  
Fri - Sat: 5.30pm - 12am Sun: 5.30pm - 11pm

**WWW**

**WILSONS WHEELS**  
T: 01482 882881  
W: [www.wilsonswheels.co.uk](http://www.wilsonswheels.co.uk) E: [info@wilsonswheels.co.uk](mailto:info@wilsonswheels.co.uk)

**WE NOW STOCK CUBE CYCLES**  
2018 RANGE NOW AVAILABLE CUBE KTM BOTTECCHIA

**UP TO 40% DISCOUNT ON 2017 MODELS**

MENTION JUST BEVERLEY FOR **FREE BIKE FIT**  
WITH EVERY CUBE, KTM OR BOTTECCHIA ROAD BIKE PURCHASED AND IN STORE DISCOUNTS

**DISCOUNTS ON:**  
• Adult Bikes • Children's Bikes • Parts and accessories  
• Clothing for all cycling weather

89 Grovehill Road, Beverley, East Yorkshire HU17 0EJ  
OPEN: Monday - Friday: 08.30 - 17.30  
Saturday: 09.00 - 17.00 Sunday: CLOSED - Out riding our bikes



## CLASSIC CARS WITH CARFAN - THE BENTLEY ARNAGE

*"To build a good car, a fast car, the best car in its class" was the ambition of W.O. Bentley, and although many years have passed since then, most would argue that the cars rolling out of the factory in Crewe today that bear the founder's name are just that! From very early on, owners bought a chassis and then had the body of their choice put on by a bespoke coachbuilder, an option that is still surprisingly available today.*

Established in 1919 and still going strong (albeit under the ownership of Volkswagen), Bentley entered the Le Mans 24-hour endurance race. By 1923, a privately-owned Bentley came fourth; the following year the same two drivers achieved a remarkable first place, one of many to follow for the company.

The subject of this issue, the Bentley Arnage, is named after a famous corner on the Le Mans circuit in France. Produced in 1989, it has a 4.4 litre twin turbo V8 engine, courtesy of B.M.W. and is presented in a beautiful colour known to the factory as Fountain Blue. It belonged to Chelsea Football Club owner Ken Bates when it was new.



When it met its current owner just two years ago it had only done about 35,000 miles. Apart from spending a lot of time at petrol stations as a result of it doing only 10 m.p.g., nothing has been done to the car bar replacing an electric window regulator, which comes as a relief as parts can be rather expensive.

The Bentley Drivers Club is continuing the proud tradition of wealthy amateurs who appreciate excellent mechanical engineering when they see it. If you see a "Blower Bentley" (or supercharged as others may call it) it will almost definitely be on a racetrack! But if you see a Bentley on the road, especially this beautiful Bentley Arnage, don't forget the cheery Carfan wave!

## PRACTICAL MOTORING WITH RICH HAYES - CHANGES TO THE UK DRIVING TEST

*The brand-new revised driving test was introduced on 4th December and new drivers are being urged ensure they are up to date with the new requirements. The changes come in a bid to make sure that new drivers have the confidence, knowledge and required skills to take to the roads safely. Do you have a son or daughter who will soon be learning to drive or taking their test? Here we've summarised the main changes for you.*

- The independent driving part of the test is increased to 20 mins; this will take up about half of the test.
- During the independent drive, candidates will be asked to follow a sat nav instead of depending on road signs. The examiner will provide the sat nav and set it up. Only one in five tests won't use a sat nav so it's a good idea to familiarise learner drivers with sat nav instructions.
- Gone are reversing around a corner and three-point turns, although instructors will still probably teach them. In are:
  - parallel parking at the side of the road;
  - parking in a bay (driving in and reversing out or reversing in and driving out - the examiner will decide);
  - pull up on the right-hand side of the road, reverse for 2 car lengths and rejoin the traffic
- The 'show me, tell me' questions are asked as part of the UK driving test, and whilst the 'tell me' questions will still be asked before candidates start driving, the 'show me' will now be asked during the driving part of the test. An example is "show me how to wash the windscreen using the car controls and wipers".

It's reported that only half of drivers pass their driving test the first time, so the DVSA is keen that learner drivers prepare themselves for the new format. DVLA Chief Executive Gareth Llewellyn said: "Making sure the driving test better assesses a driver's ability to drive safely and independently is part of our strategy to help you stay safe on Britain's roads. It's important learner drivers are prepared to take the current or new-style driving test."

So the new driving test may not be easy, but at least motor maintenance once you've ripped those L-plates up can be!

Beverley Motor Works are an independent BMW & MINI specialist - although we repair, service & MOT all makes and models - and you can expect an honest and reliable service, with competitive prices to boot. Book online or call **01482 881128** today.



BEVERLEY **MOTOR WORKS**

INDEPENDENT  
BMW & MINI  
SPECIALISTS

**Our dealership expertise means high quality car servicing at a fair price...**

- ATA Accreditations
- Routine servicing
- Condition-based servicing
- Diagnostics
- Mechanical repairs
- Air conditioning
- Performance tuning
- MOT's

Unit D1 Grovehill Industrial Estate,  
Annie Reed Road, Beverley HU17 0LF

**Call today: 01482 881 128**

**Visit: [beverleymotorworks.co.uk](http://beverleymotorworks.co.uk)**



the Good Garage Scheme



**BE SAFE THIS WINTER**

GET YOUR FREE SEASONAL VEHICLE CHECK WITH BEVERLEY MOTOR WORKS



# PUZZLE PAGE

## WORDSEARCH

E V L X D N W J M O T S U B E  
 W X O P B A N S X F J N B N V  
 U I V Z F Z E H J Y S O O L P  
 I G W K M L M N S T O I D O G  
 Y P U N I X T N E L T T M N Y  
 R R J M B A S I R A M U E U H  
 A A S U J N D P R U S L R H N  
 U E X O D O N B S G C O T H E  
 N Y K E R A E U S H M S M D W  
 A W T W V L I U E T X E M M K  
 J E X V E P R O N E M R L L C  
 B N P C O A F E T R D T E Y M  
 G Q Y G V R J D I C D L U K R  
 C M U C E T Q S F E M M S C K  
 I G O K N Y V T L Y H U M B G

NEWYEAR	FRIENDS
CELEBRATION	SMILES
PARTY	LAUGHTER
RESOLUTIONS	FITNESS
JANUARY	DIETS

## JUST FOR FUN

Where in Beverley would you find these landmarks?  
 Find out on Page 34.



### THOUGHT FOR 2018

'Choose not to participate  
 in their bad news;  
 choose instead to spread  
 your good news'

### NEW YEAR RESOLUTIONS!!

- ✓ Lose weight
- ✓ Exercise
- ✓ Get organised
- ✓ Eat Healthy
- ✓ Family Time
- ✓ Husband / Wife Time
- ✓ Challenge (Bike, run swim)
- ✓ Bucket List to do's

Do you have any amusing stories, quotes or pictures?  
 Send them to  
[info@justbeverley.co.uk](mailto:info@justbeverley.co.uk)

## Quality Kitchen Facelifts

## From a simple door swap to a full replacement kitchen

Why replace when you can reface?



EST. 1999

Wishing All Our Clients  
 A Very Happy  
 New Year

- 50% deposit, balance on completion
  - Made to measure custom-built doors and units
  - Huge choice of doors, worktops, appliances, sinks and taps
- [www.dreamdoors.co.uk](http://www.dreamdoors.co.uk)

Call Andy For a Free Estimate:  
**01482 861 653**

[hu@dreamdoors.co.uk](mailto:hu@dreamdoors.co.uk)  
 Dream Doors Beverley, 4a Belprin Park,  
 Swinemoor Lane, Beverley, HU17 0LN

**DREAM DOORS**<sup>®</sup>  
 NEW LIFE FOR OLD KITCHENS

Proud members of  
**Checkatrade.com**  
 Where reputation matters





# THE EAST RIDING THEATRE LAUNCHES OFF BEVERLEY'S FESTIVAL SEASON BY CHRIS WADE

2018 looks set to be one of the busiest years yet in the history of the theatre with a programme already packed full of great performances. As its Christmas show ends, the next major event in the theatre's calendar is the winter music festival, Stage4Beverley, which is back for its second year after a major success in 2017.

Last year's festival covered just 3 days of events, but due to its great popularity this year the festival has spread out to become a 5-day event starting on Wednesday 14th February and finishing on the evening of Sunday 18th February. The festival reflects all the musical genres that the theatre encompasses in its annual programme, with folk, contemporary, jazz and classical music along with the added bonus of some literary giants thrown into the mix.

Artists performing include popular poet and humorist Ian McMillan; writer for the music for the epic drama "War Horse" and film "Sharpe" and singer, John Tams; TV personality, songwriter and musician Richard Digance and International best-selling crime writer Mark Billingham with country music duo My Darling Clementine. The co-founder of the band Squeeze, Chris Difford, will be sharing the stage with Mercury Prize nominee Kathryn Williams and young folk and Bluegrass musicians The Carrivick Sisters and Granny's Attic will present a concert of transatlantic music.

With the popularity of Jazz at the theatre, the festival will present one of the finest female Jazz vocalists and Radio 3 presenter Claire Martin with her trio; and for a relaxing Sunday morning of light, classical music local musicians the Westwood Quartet will be making a return visit. To round off the weekend in rousing style will be the popular young gypsy, folk'n'roll band Holy Moly and the Crackers.

With formal concerts, workshops and informal sessions there is a chance to relax and enjoy the music, learn some techniques from the experts or have a go yourself: it's a great weekend to chase away those Winter blues. And it's all under one roof at the East Riding Theatre, where tickets are available. So why not wander out of the cold, stay indoors and enjoy the atmosphere?

Tickets: [www.eastridingtheatre.co.uk](http://www.eastridingtheatre.co.uk), tel: 01482 874050, more information: [www.stage4beverley.com](http://www.stage4beverley.com)



# MELLIFLUOUS THE MERMAID BY JOHN FEWINGS

## Part 1 - Seven Sisters

*As six of seven sisters reached her fifteenth mermaid year,  
Their visits to the surface furnished visions crystal clear  
And each reported dreamily of wonders they had seen  
Beyond the surfy borders of their world of blue and green.  
Spiralled back to coral deeps with swish of fishy tail,  
New come-of-age young Merriment her sisters did regale  
With breathy recollections of scenes that did enthrall;  
Colours and shapes and sounds and scents - the wonder of it all!*

*"High upon the cliffs and soaring dreamy to the skies  
With crenellated tower-tops and spires that ever rise  
The castle of the Earthfolk stands, imposing, tall and grand;  
A solid, sturdy structure firmly planted on dry land.  
And there upon an emerald lawn, with paths that twist and twine,  
Gentlemen and peacocks strut, and maidens so divine  
Do blush behind their feather fans and giggle at their chances  
Of walking out with princes and alluring them at dances."*

*"Grand receptions, stately balls,  
Palace grounds and vaulted halls,  
Silken gowns, cascades of curls.  
Rubies! Diamonds! Emeralds! Pearls!  
Golden carriages, horses prancing -  
But above all else, my sisters, ... dancing!"*

*Meridian and Merciful, Merino and Merganser  
Mercurial and Merriment all yearned to find an answer.  
An answer to the tantalising tease of land and air  
And where to find enchantment that would protect them there.  
And as six sisters shared again the highlights of their dreaming,  
The seventh of those sea-bound siblings even now was scheming.  
Resolving not to let herself be bound by Merfolk laws,  
Mellifluous had set her heart on walking on those shores.*



This month's poem is a little different from usual, being the first part of a much longer poem based on Hans Christian Andersen's enchanting story of 'The Little Mermaid'.

The poem tells how Mellifluous, the youngest of seven mermaid sisters, falls in love with an earthly prince and vows to win his affection. But how is that possible? Can a mermaid

forsake the security of the ocean to walk on dry land? What will happen if she does? Will the prince fall in love with her? Will she live 'happily ever after'? Or is there a twist in the tale?

If you want to find the answers to these questions, all is revealed in this beautifully poetic re-telling of the story - which is published in a 32-page booklet entitled 'Mellifluous the Mermaid'.

As a special introductory offer to brighten up the New Year of **Just Beverley's** readers, John Fewings, our resident poet, will be giving away the first 10 copies of 'Mellifluous the Mermaid' for **FREE**.

John will be conducting a special book-signing at the Oxfam Bookshop in Toll Gavel on Saturday 13th January, between 10am and 2pm. Pop into the shop and mention **Just Beverley** to claim your free copy.

Once the free copies have been claimed, "Mellifluous the Mermaid" will be on sale for just £2 (that's half the normal price). John will also have some of his other books on sale - so do call in for a browse and a chat.

After all, it's not every day that you are offered a free mermaid! Find out more about John at [www.johnfewings.zone](http://www.johnfewings.zone)





# WHAT'S ON

## SPONSORED BY: **kü**tchenhaus

2 Toll Gavel, Beverley, HU17 9AJ. T: 01482 862172.

Open: Mon - Sat: 10am-5pm. Sun: 11am-3pm. Bank Holidays: 10am-4pm.



### Until 6th January

#### • It's a Wonderful Life

East Riding Theatre, Beverley. 7.30pm with some matinees at 2.30pm. £11.50 to £18.50. Fabulous stage adaptation of Frank Capra's classic 1946 film. Whether you are 8 or 80, you will love this heart-warming winter treat.

### Until 17th February

#### • Humber Estuary Changing Views

Beverley Art Gallery. Free. Funded by Humber Museums Partnership.

### Thursday 4th January

#### • Hardy Plant Society East Yorkshire Group presents 'Winter Colour' by Mike Innes

Lund Village Hall. 7.40pm. Free/£4. Non-members welcome. Plants for sale. More details: [www.hardy-plant.org.uk/eastyorkshire](http://www.hardy-plant.org.uk/eastyorkshire)

### Friday 5th January

#### • St Mary's Eve Carol Service with the Salvation Army Band

Toll Gavel United Church. 7pm. Harpers, Musicians, Singers & Readings to celebrate Twelfth Night

#### • Modern Jazz with The Jazzmakers Collective featuring Snake Davis

Lairgate Hotel, Beverley. 8.30pm. Free. Raffle. Tables for dining available - book on 0844 387 6273. Snake Davis has played with some of the world's biggest artists - don't miss this!

### Saturday 6th January

#### • Epiphany Organ Recital

Beverley Minster. 6pm. Robert Poyser plays Olivier Messiaen's 'La Nativité'

#### • Topsy Turvey - An Evening of Song with London Theatre Voices

Toll Gavel United Church. 7.30pm. £15/£13/free. Tickets from Beverley Library 01482 395320 or [www.events.eastriding.gov.uk](http://www.events.eastriding.gov.uk)

### Sunday 7th January

#### • Epiphany Procession

Beverley Minster. 5.30pm. Celebrate the journey of the Magi and the offering of their gifts of gold, frankincense and myrrh.

### Monday 8th January

#### • Norwood Nites Community Cinema

Norwood Church Schoolroom. 7pm. Free. Raffle and refreshments. Watch a film you may have missed at the cinema or an old favourite. This month, Joaquin Phoenix stars as Johnny Cash with Reese Witherspoon as love of his life June Carter.

#### • White Horse Folk Club Singers and Musicians Night

Beverley Conservative Club. 8.30pm. £2.

### Thursday 11th January

#### • Little Singers - Opera North

East Riding Theatre, 10.30am £5/child. A fun, interactive session where adults, tots and babies can explore music together in a friendly environment. Suitable for under 5's with their grown-ups!

#### • Beverley Film Society presents 'Barry Lyndon' (1975 Cert 12A, remastered 2016)

Parkway Cinema, Beverley. 7.30pm prompt. £3/£6.50 for guests. Directed by Stanley Kubrick, this film has been hailed as one of his greatest. The story follows the adventures of an Irish rogue who wins the heart of a rich widow and assumes her dead husband's aristocratic position 18th Century England. For membership enquiries please contact <https://beverleyfilmsociety.org.uk/membership/>

### Saturday 13th January

#### • John Fewing's Book Signing

Oxfam Shop, Toll Gavel, Beverley. 10am-2pm. First 10 people quoting Just Beverley will get a FREE copy of 'Mellifluous the Mermaid' otherwise a copy is on offer for half normal price at £2. John's other books will also be on sale!

### Monday 15th January

#### • White Horse Folk Club presents Alistair Russell and Chris Parkinson

Beverley Conservative Club. 8.30pm. £7. Virtuoso playing, enthusiastic singalongs and tender ballads.

### Saturday 20th January

#### • Country & Western Evening

Armstrong Social Club, Beverley. 7.30pm - 11pm. £6. Music with Sandown, social line-dancing with Hilary Usher (for beginners and experienced alike!) and charity raffle. Tickets from 01482 882999 or email [sallyann75@hotmail.com](mailto:sallyann75@hotmail.com)

### Sunday 21st January

#### • Down Against and At Quintinshill featuring Michael Simkins

East Riding Theatre, Beverley. 7.30pm. £10/£12. In 2001, actor and writer Michael Simkins became interested in Britain's deadliest rail disaster which shook rail, military and civilian communities at the height of WW1. He searched for living survivors and found one - this evening Michael will discuss his research and experiences surrounding this event. Following his talk, Down Against is a vibrant new play about the disaster designed and directed by Simon Bedwell as a tribute to those who were lost and became scapegoats for the negligent authorities.

### Monday 22nd January

#### • White Horse Folk Club Singers and Musicians Night

Beverley Conservative Club. 8.30pm. £2.

### Friday 26th and Saturday 27th January

#### • Austen the Musical

East Riding Theatre, Beverley. 7.30pm. £7.50-£13. Musical exploring how Jane Austen became one of England's most treasured writers despite her background (the daughter of a country parson),

Tell us about your event!

E-mail [info@justbeverley.co.uk](mailto:info@justbeverley.co.uk)

Telephone 01482 679947

For more events visit [justbeverley.co.uk/events](http://justbeverley.co.uk/events)

her failed romances and the male-dominated society which she fought against to have her work published. Tickets 01482 874050. [www.eastridingtheatre.co.uk](http://www.eastridingtheatre.co.uk)

### Saturday 27th January

#### • Lunctime Concert with Vocivoices

Beverley Minster. 1pm.

### Sunday 28th January

#### • Hope and Social

East Riding Theatre. 7.30pm. £11-£15. If you haven't seen Hope and Social you are in for a treat! Hope and Social make every gig and event - you, the audience become part of the performance. One of the UK's top 5 bands, they have played the largest festivals (Glastonbury, Greenbelt) the biggest arenas (Leeds), theatres, pubs and front rooms up and down the country. Joyful and glorious - this will sell quickly!

#### • Beverley Buzz Comedy Club

Parkway Cinema, Flemingate. 7.30pm £10. Hosted by Agraman the Human Anagram, this is your chance to hear some of the funniest comedians around! Tickets from 01482 968091.

### Monday 29th January

#### • White Horse Folk Club Singers and Musicians night

Catholic Church Hall. 8.30pm. £2. BYO drinks and glasses.

### Thursday 1st February

#### • Hardy Plant Society East Yorkshire Group presents 'Fungi' by Rhona Sutherland

Lund Village Hall. 7.40pm. Free/£4. Non-members welcome. Plants for sale. More details [www.hardy-plant.org.uk/eastyorkshire](http://www.hardy-plant.org.uk/eastyorkshire)

### Friday 2nd - Saturday 3rd February

#### • Hurricane Michael by Russell Layton

East Riding Theatre, Beverley. 7.30pm £9-£13. 25 years ago, Michael Fish failed to spot the UK's biggest storm since 1703. Hear one man's version of events of that hair-raising day!

## 'JUST FOR FUN' ANSWERS

- The Beverley Old Bookshop
- White Rabbit
- The Beverley Flower Company

## kü

The German Kitchen

### FUN DAYS IN JANUARY

5th JANUARY:  
Whipped Cream Day

14th JANUARY:  
Dress Up Your Pet Day

17th JANUARY:  
Ditch New Year's Resolution Day

24th JANUARY:  
Belly Laugh Day

27th JANUARY:  
Chocolate Cake Day

29th JANUARY:  
Bubble Wrap Appreciation Day

KUTCHENHAUS  
2 Toll Gavel, Beverley, HU17 9AJ.  
T: 01482 862172.

Open: Mon-Sat: 10am-5pm. Sun: 11am-3pm.  
Bank Holidays: 10am-4pm.





Images courtesy of Humber Bondholders

## Destination Beverley - promoting our town as a great place to visit and enjoy!



Actor James Andrew as Dr Small

### Beverley Ghost Adventure

Beverley-born actor James Andrew is bringing history to life in the shape of the eccentric and rather creepy character Dr Smalls for a weekly jaunt through Beverley's ancient and bloody past.

James takes up to 25 people on the Beverley Ghost Adventure, which takes place on Wednesday evenings, adopting the persona of Dr Smalls to enthusiastically retell stories of ghosts, poltergeists and headless soldiers.

Dressed in frock coat and top hat, the Victorian doctor leads tour parties on a route which takes in Beverley Minster; Highgate; the walk-through alongside The Monk's Walk (one of the town's oldest pubs); Eastgate; The Friary; Minster Moorgate; North Bar, and the Market Cross.



Cyclists race through the streets of Beverley

### Tour de Yorkshire

Beverley has been confirmed as the host town for the start of both the men's and women's 2018 Tour de Yorkshire races.

The events have been extended, with the men's race running for four days from Thursday, May 3, to Sunday, May 6, and the Women's Tour de Yorkshire doubling in size from one to two days - from Thursday, May 3, to Friday, May 4.



Ian McMillan and Luke Carver Goss launch the event

### Stage4Beverley Festival

The region's most eclectic music festival is on a roll ... having already responded to demand by adding an extra day for its 2018 festival, the organisers of Stage4Beverley have done it again, with news the event will now stretch over five days.

The festival will be based at Beverley's East Riding Theatre from 14 - 18 February 2018, with a line-up bridging diverse musical genres, from folk to blues, jazz to classical, Americana to world music and more.

Highlights of the festival are many and various with Ian McMillan and Luke Carver Goss launching the event on Wednesday February 14th, promising a hilarious night of words, music and improvisation.

For more details on all these stories and much more, go to our website

[www.destinationbeverley.co.uk](http://www.destinationbeverley.co.uk)

Follow us on Twitter @DestinationBev and like us on Facebook



# WELCOME TO LIGHTING & LIVING OF BEVERLEY



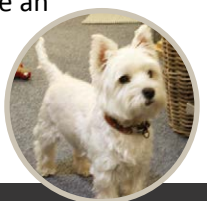
Our years of passion for property development and interior design has led us to create an inspiring home store in the heart of Beverley's beautiful Georgian quarter.

David and Sara were frustrated to find the pieces they needed to light, furnish and accessorise their apartment in the heart of Beverley. Fortunately, on a trip to the Netherlands, they discovered Dutch brand, Lighting and Living, which has become their inspiration; Lighting and Living's pieces now take pride of place.

Lighting and Living also stock Weaver Green's rugs and textiles which are made from recycled plastic bottles and Pacific Lifestyle's furniture, lighting and accessories.

Sara said: "Lighting and Living is very much in keeping with North Bar Within - exclusive, high quality and aspirational. We have sole access to the brands we stock and we will continue to look for suppliers with our own ethos of contemporary design with old-fashioned service. We will deliver pieces free-of-charge and source an electrician for you if you need one (fee payable by customer)."

Sara and David and their little dog, Chalky, are literally on-hand as they live above the shop!



LIGHTING AND LIVING - 41 North Bar Within, Beverley, East Riding of Yorkshire, HU17 8DG.

Call: 01482 880626 Email: [sales@lightingandliving.net](mailto:sales@lightingandliving.net) Web: [www.lightingandliving.net](http://www.lightingandliving.net)