

just BEVERLEY

WIN AN EASTER EGG!
MONEY SAVING OFFERS
TOUR DE YORKSHIRE

FREE

ISSUE 3

NEWS, EVENTS, HISTORY, HEALTH & WELLBEING, SPORT, PUZZLES, PHOTOS

FEATURE

FLEMINGATE

The story behind the hoardings

FEATURE

OUT AND ABOUT

Things to do over Easter Weekend

FEATURE

ST MARY'S CHURCH

Operation Restoration

EVENTS

WHAT'S ON IN BEVERLEY

See our monthly listings



PHOTOS

MINSTER WAY 5K

Run like the wind!



FEATURE

LAMBING SUNDAY

Bishop Burton College goes baa-rmy!

justbeverley.co.uk

A R C A D E[®]



Arcade is the latest line in the bathroom brands stable.

We are delighted to have three settings of this period style product on display in our beautiful Beverley showroom.

Throughout our history, we've worked hard to build up a strong reputation, and we're committed to providing friendly customer service, competitive prices, quality products and helpful support.

Come in and see us today.
www.halmshaws.co.uk



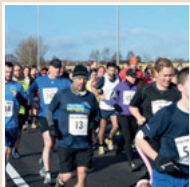
Halmshaw's

Bathroom & Shower Centres

Hull Branch
Pioneer Works, Goulton Street, Hull, HU3 4AS
Tel: 01482 589689 Fax: 01482 325084
hullshowroom@halmshaws.co.uk

Beverley Branch
Inspiration Works, Annie Reed Road, Beverley, East Yorkshire, HU17 0LF
Tel: 01482 867142 Fax: 01482 871177
beverleyshowroom@halmshaws.co.uk

Open Mon-Fri 9-5.30, Sat 9-5



Just Beverley magazine can be collected from:
 Beverley Tourist Information Centre, Beverley Library/Treasure House,
 local newsagents, Morrisons (Victoria Road) & Asda (Norwood).

CONTENTS

Around Beverley

Elections	Page 5
Tour de Yorkshire	Pages 6 & 7
News	Pages 8 & 9
Flemingate	Page 11
Beverley Photographic Club	Page 12
St Mary's Church	Pages 14 & 15

Active

Charity Cycle Ride	Page 17
Beverley Golf Club	Page 19
Minster Way 5K Run	Pages 21 - 23
East Riding Leisure Beverley	Page 25
Sport for Everyone & Competition	Page 27
All Mobility	Page 29

Easter & Springtime

Lambing Sunday	Page 31
Easter Eggs & Competition	Page 33
Happiness	Page 35

Leisure

Out and About	Pages 36 & 37
Offers	Page 38
Puzzles	Page 39
Events Listings	Pages 40 & 41
Competition Results	Page 42

CONTRIBUTORS

Julian Minshall, Catherine Goble, Councillor Margaret Pinder,
 Councillor Stephen Parnaby OBE, Richard Porter, Andy Tate,
 Linda Johnson, John Duncan, John Holtby, Kevin Merrills,
 James Wigglesworth, Ian Partridge, Stuart Hancock

just BEVERLEY



I am looking forward to the onset of spring, a time when mother nature wakes up and somehow manages to put a smile on everyone's face. Days get longer, the sun gets brighter, flowers start to bloom and we see blossom on the trees; a new lease of life in our countryside.

Beverley is no exception - we see a southern relief road open, christened by the Beverley Athletic Club and a whole army of runners getting to grips with a windy run on 1 March, and the official opening on 12 March. We hear the announcement that on 2 May we will have the first Tour de Yorkshire coming through the heart of the town. This is an ideal opportunity for everyone to create a festival of Beverley and showcase our town on worldwide TV channels. The whole community pulling together with the 'decorate a wheel' display for the Tour de Yorkshire weekend. Let's hope we can ensure the Tour comes through our streets again in years to come.

In Beverley, we see new shops opening, businesses looking forward to the summer ahead and new investment in the town. Beverley is, without doubt, moving with the times and staying ahead.

That's Just Beverley.

Julian Minshall



Spring – a time of rebirth. Flowers and fauna start to bloom, baby animals come into the world and, it is thought, Jesus rose from the cross. Leaves start to reappear on trees, and birds welcome the dawn with song. Daylight time is getting longer as the earth tilts more towards the sun, making it warmer and promoting growth. It is a season of hope. Of new beginnings.

Many people will spruce up their houses and gardens and have a spring clean to get rid of unwanted items and freshen up. This can also be a time to freshen up your mind. Check out page 35 to see how you can make yourself happier. Or, just look at some photos of cute lambs from Bishop Burton College's Lambing Sunday on page 31, to brighten up your day.

The first day of spring in 2015 coincides with the publication date of this magazine – 20 March. It is the vernal equinox, when hours of daylight and darkness are the same. Why not make the most of this extra daylight, with our Easter Out and About feature on pages 36 and 37?

Find out why we give Easter eggs, and enter our competition to win an Easter egg, kindly donated by White Rabbit Chocolatiers, on page 33.

Overdone it on the chocolate this Easter? The pictures of the Minster Way 5K run on pages 21-23 may inspire you to get out your trainers. Plus, we have a competition to win a year of Sport for Everyone on page 27. Or, Beverley Leisure Complex has been refurbished and is holding an open weekend on 11-12 April. See page 25 to find out what they have going on.

Why not join Leanne Marshall as she cycles from York to Beverley to raise funds for St Mary's Church on 18 April? You can find out more about the cycle ride, St Mary's Church and 'Operation Restoration' on pages 14-17.

Plus, we've got our regular selection of money-saving offers, what's on listings and puzzles to keep the whole family occupied over the Easter break.

Beverley. Don't you just love it?

Catherine Goble

Website: justbeverley.co.uk

Email: info@justbeverley.co.uk

Telephone: 01482 679947

Follow us on Twitter: @JustBeverley

Like us on Facebook: [facebook.com/justbeverley](https://www.facebook.com/justbeverley)



East Riding College is on the move...

OUR NEW BEVERLEY CAMPUS

Part of the Flemingate development

Opening
September
2015

By train
15 minutes from Hull,
7 minutes from
Cottingham



Browse our range of courses at
www.eastridingcollege.ac.uk
or call 0845 120 0037

East Riding College
BEVERLEY • BRIDLINGTON • HULL



Spring - a season of hope; a season for the young



Margaret Pinder, Labour's Prospective Parliamentary Candidate for Beverley and Holderness, talks about the importance of registering to vote.

It's Spring at last. As the white glories of the snowdrops give way to colourful crocuses and Lambing Sunday at Bishop Burton College once again charms grown-ups and children alike, we

look forward to the coming year with a sense of new life, new hope and optimism.

Spring is the season for the young and now is a good time to think about our young people here in Beverley and the challenges that face them in the coming year. Foremost among many of them will be important exams that will decide their futures from the universities they will attend to the jobs and practical, technical training they can aspire to.

Too often young people, especially teenagers, get a bad press. "Kids today!" is a stock phrase accompanied by much eye rolling and tutting. My response is always: "Yes, aren't they terrific." And they are!

I don't think it's ever been harder to be a teenager than it is right now. There are so many pressures that people of my generation never had to deal with, from social media and all its benefits and well-publicised problems, to the constant pressure of assessment at school to the lack of certainty about access to the jobs they want and to homes they can afford. Peer pressure is a tremendous factor in their lives, affecting the day-to-day choices they make from the clothes they wear to the friends they make. We "grown-ups" should be very careful before we add to all these stresses and strains for them.

But, they continue to subvert and challenge our expectations in ways we

should surely welcome. They push our boundaries and test our tolerance, which is exactly as it should be. We must remember, the next generation is not like ours; nor should we want it to be.



This year, one of the biggest opportunities and challenges facing all those who turned eighteen since May 2010 is the chance to vote in national and local elections, on 7 May 2015.

Under new legislation, many of our first-time voters now have to register to vote themselves rather than relying on information provided by the head of the household. I have been pursuing an active campaign in schools and colleges to encourage young people from age 16 (when they can first register) to get online and make sure that their name is on the electoral roll. Many of my fellow candidates have been doing the same. It is up to all of us to make sure our young people are not left behind. Their voices must be heard.

Which brings me back to the theme of hope. Our young people are our hope for the future. Just as our decisions shape their lives so they must be given the opportunity to allow their decisions to shape ours.

In the last election, the turnout was only 66.8%; let's see if we can do better than that in May. Let's get our young people voting and may their Spring voices help decide the hopes and vision for all our seasons to come.

It's easy to register – just go online at www.gov.uk/register-to-vote - it only takes 5 minutes, or collect a voter registration form from your local council customer service centre.

Margaret Pinder

(Margaret was Mayor of Beverley from 2012-2013)

You can find out more information and also register via the Bite the Ballot campaign at <http://bitetheballot.co.uk>

hemingway
bailey

Sign up for QuickBooks Online and
Receipt Bank software and save
£18 on the standard fees.

Now just £20/month.

Only for Just Beverley readers
who sign up by 5th April 2015.



Claim this exclusive offer, visit: www.hemingwaybailey.co.uk/justbeverley

Providing better insights for you and your business.

Hemingway Bailey Ltd, 37A North Bar Within, Beverley HU17 8DB
www.hemingwaybailey.co.uk help@hemingwaybailey.co.uk Telephone: 01482 679333

Tour De Yorkshire

The Tour de Yorkshire comes to town on 2 May and we want YOU to get involved.



Did you watch last year when Le Grand Depart went through parts of Yorkshire? Did you see the banners on top of York Minster, visible from the sky? Perhaps you were impressed by the huge chalk drawing of a sheep on a bicycle, on a school playground? Or the umbrella-based bicycle performance art in the middle of a field? Or maybe it was the array of yellow bicycles popping up on the sides of houses and shops which caught your eye?

With your input, we can help put Beverley on the map this May. From decorating old bikes, or even your own, to a large community event on Beverley Westwood, get into the spirit of the Tour de Yorkshire and help to promote our town to the millions of people who will be watching from the sidelines or on TV.

The event is being shown on Eurosport and a terrestrial TV channel, and there will be a helicopter buzzing around taking videos and photographs to mark the momentous occasion.

We want to create a fanfare around the event, and we want to make it big and bold. We want to make a real statement and show the rest of Yorkshire what we are made of.

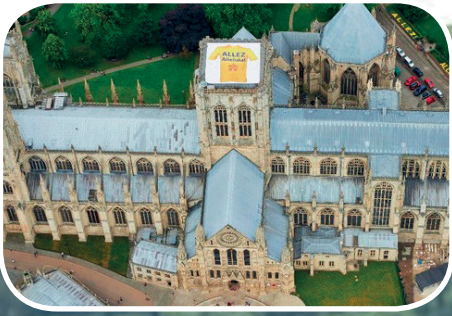
Whether you are a school, a community group, a business or even an individual, get set for the cycling event of the year coming through Beverley. Schools could make it part of an educational project, community groups can get everyone interested, maybe you could make it a teambuilding exercise for your business. However you can get involved, do!

It is your chance to be creative and show what us Beverlonians can do. Suggested themes include cycling, blue (Pantone 306) and yellow (Pantone 604) - the official Tour de Yorkshire colours - or the history of Beverley. But don't just stop there; let your imagination run wild. There really is no limit to what we can do.

We are encouraging businesses to find a bicycle wheel and decorate it, as part of a town-wide competition. Additional details will be available on justbeverley.co.uk, where you can keep up to date on all things Tour de Yorkshire.

For more information, or to get involved, contact Julian Minshall (Chairman of Beverley and District Chamber of Trade) on 07925 471975.





Tour de Yorkshire gathering pace



The highly-anticipated start and finish times for the Tour de Yorkshire have been announced, along with the precise location details of the race starts and finishes.

Riders will be entering Walkington on 2 May at approximately 12.40pm, through to Beverley at 12.45pm and into Cherry Burton approximately 10 minutes later.

There will be over 500km throughout Yorkshire where people can choose to see the race over the three days.

Gary Verity, chief executive of Welcome to Yorkshire, said “The confirmation of the timings and precise routes in and out of the start and finish towns and cities will help fans, spectators and businesses who can now begin to plan their weekend, where to watch and how to get the best out of the event. This is going to be an extremely exciting three days for Yorkshire.”

Thierry Gouvenou, Tour de France sports director said; “Our technical team had a good final visit to Yorkshire and we are very happy with the route the riders will take. With 515km in total there are some excellent opportunities throughout the three days for spectators to see riders take Sprint and King of the Mountain climb points, ahead of finish lines designed to generate the kind of welcome that Yorkshire spectators gave the peloton in the Tour de France.”

The race, will be one of the most exciting cycling events held in Europe in 2015 and will be broadcast in the UK, and on Eurosport, to 70 countries around the world. The organisers are also looking for volunteers and marshals to help make the event a complete success.

Maps of the Tour de Yorkshire race starts and finishes, timings and information for spectators can be found at letouryorkshire.com/routemaps

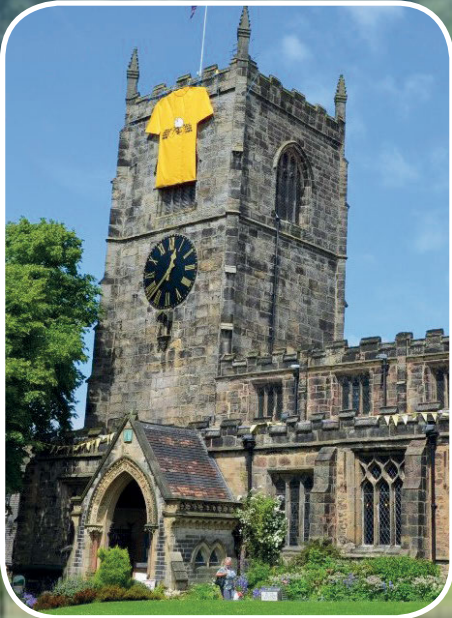
Beverley’s amateur cyclists will be able to take advantage of a unique opportunity to ride the Tour de Yorkshire route on Sunday 3 May - the final day of the tour - with 140km, 100km and 50km routes going along the same route as the pro race.

They will also be able to compare their climb times against the pros, enjoy mechanical support, and have their results texted as they cross the line.

The Tour de Yorkshire will be an annual event and the organisers hope it will grow year on year to be one of the biggest events in the cycling calendar and position Yorkshire as the heartland of cycling in Europe.

Visit justbeverley.co.uk for regular updates on Tour de Yorkshire events and information.

136.5	37.5	B1230	HIGH HUNSLEY (EAST RIDING OF YORKSHIRE)		12:35	12:37	12:40
132	42		WALKINGTON		12:41	12:43	12:46
129	45		BEVERLEY (B1230-A164-LRD-A164-A1035)		12:45	12:48	12:51
121.5	52.5	A1035	Crossroads A1035-B1248		12:54	12:58	13:01
121	53	B1248	CHERRY BURTON		12:56	12:59	13:03
118.5	55.5		ETTON		12:59	13:02	13:06
113	61		LUND		13:06	13:10	13:14
109	65		BAINTON (B1248-A614)		13:11	13:15	13:20
107.5	66.5	A614	Crossroads A614-B1248		13:13	13:18	13:22
105.5	68.5	B1248	TIBTHORPE		13:16	13:20	13:25
100.5	73.5		WETWANG (B1248-A166)		13:22	13:27	13:32
100	74	A166	WETWANG	Sprint	13:23	13:28	13:33
99	75		Crossroads A166-B1248		13:24	13:29	13:34
95.5	78.5		Côte de Fimber (KOM)	NC	13:29	13:34	13:40
90	84	B1248	WHARRAM LE STREET		13:36	13:42	13:47
87	87		NORTH GRIMSTON		13:41	13:46	13:52
81.5	92.5		NORTON (B1248-LRD)		13:48	13:54	14:00
79.5	94.5		NORTON	FZ	13:51	13:57	14:03



News in Brief...



Anniversary for Burden Road Fitness Club

Burden Road Track Fitness and Boxing Club in Beverley celebrated its first anniversary with an open day in February. The club was opened by local people who recognised the potential of an underused asset at Burden Road Youth Centre.

Since the creation of the club, the usage of the Burden Road Centre has increased by over 16% with around 80 adults and children attending the club each week.

Councillor Kerri Harold, who supported the creation of the club, said: "It's been a great year at the Burden Road Youth Centre, I'm so pleased to see the Track Fitness and Boxing Club going from strength to strength. It's vital we are able to utilise all of our assets to the benefit of the community and I fully commend the efforts of everybody who has been involved.

"We're finding that more and more people are coming along to enjoy the social benefit of the club, so we've recently engaged with a Youth Worker to come along and offer support to young people. Personally, I feel this is a vital aspect to the role of the club, especially since the Youth Club at Burden Road closed."

Member of Parliament for Beverley and Holderness Graham Stuart visited the open day to see how the club has developed over the past 12 months.

Commenting on his visit, Graham said: "The time, effort and dedication of community volunteers has paid dividends in the creation of Burden Road Track Fitness and Boxing Club which is a valuable asset to the residents of Beverley.

"This is a place where people of all ages can come to participate in sport at all levels, but you don't have to be sporty to be involved. There are lots of opportunities to be part of the club and they're always looking for volunteers to help out."

The club runs junior sessions (up to 16 years) on Monday, Tuesday and Friday from 6pm-7pm (50p sub) and senior session (14 years and over) on Monday, Tuesday, Wednesday and Friday from 7pm-8pm (£2 sub).

For more information about the sessions please contact Phil Dodsworth on 07779 143905.

Beverley Businesses Shortlisted for Tourism Awards



After a record number of entries and hours of painstaking deliberation, Visit Hull and East Yorkshire (VHEY) have announced the shortlist for the sixth annual Remarkable East Yorkshire Tourism Awards (REYTA).

The hotly-anticipated list features some of Hull and East Yorkshire's finest attractions, restaurants, cafes, pubs, hotels, accommodation providers and tourism experiences. Beverley is heavily featured, particularly in the Remarkable Small Tourism Event category, where it has four of the six shortlisted places. This includes the **Christmas Festival of Food and Drink**, **Beverley Georgian Festival**, **Beverley Puppet Festival** and **Beverley Races Ladies Day**.

Other Beverley-based businesses in the running for awards include **Newbegin House** (Remarkable Bed & Breakfast), **TC Patisserie** (Remarkable Cuppa and Remarkable Food Producer), **Vanessa Delicatessen & Café** (Remarkable Cuppa and Remarkable Food Provider), **Tickton Grange** (Remarkable Hotel Accommodation and Remarkable Restaurant of the Year) and **Beverley Festival of Christmas** (Remarkable Large Tourism Event). Walkington also gets a mention with **Broadgate Farm Cottages** shortlisted in the Remarkable Self-Catering Provider and Remarkable Sustainable Tourism Award categories.

Tickton Grange won the Remarkable Hotel Accommodation category last year, with **Beverley Folk Festival** jointly winning the award for Remarkable Tourism Event/Experience.

The REYTA's honour the brightest and best in this region's tourism industry and celebrate the enormous achievements of businesses across Hull and East Yorkshire. Tourism is a vital part of this area's economy, contributing £757 annually. The REYTA's help to support the industry by raising awareness of the superb quality we have to offer visitors.

Andy Gray, tourism manager of Visit Hull and East Yorkshire, said: "We have been setting records ever since the awards began and this year is no exception. Both the numbers and quality of entries have been amazing."

He said the creation of new categories, including those rewarding both food producers and food providers, better reflected the vibrant tourism market in Hull and East Yorkshire, which continues to attract more and more visitors.

"Equally, having categories for events both large and small allows the awards to better highlight the fantastic range of attractions, festivals and arts events across the region," Mr Gray said. "We've had more first-time entries this year, which is extremely pleasing, and all of the categories have been keenly contested. The judges have had a really tough job short listing but I firmly believe the awards really do showcase the very best of what Hull & the East Riding has to offer the visitor.

An Evening of Yorkshire Entertainment

Bishop Burton College event management students George Payne, Amy Scutt, Fran Lane and David Marshall, once again aim to support Beverley Community Lift by organising a fun-filled evening of entertainment at Tickton Grange, Beverley on 27 March at 7pm.



The evening has been given a Yorkshire theme, to reflect the historic Yorkshire town of Beverley and the community the charity serves. The students have organised a brass band, themed quiz, a fantastic prize draw offering donations from local businesses and an evening dinner served to all guests.

The students have been gaining further experience throughout their event management degree since their successful Family Fun Day event at Armstrong's in Beverley last April, where they raised over £1,000 for the charity. They are excited to take the lead on another event for the charity to gain more positive feedback and raise awareness to members of the public.



Jan Stainforth, chief executive of Beverley Community Lift, said: "It is great to be supported by, and be associated with, such an enthusiastic, talented and professional group of young people. We are very much looking forward to the Yorkshire Evening on 27 March and hope lots of people will join us to celebrate everything that is Yorkshire!"

It is hoped the event will be as successful as last time to raise further money for Beverley Community Lift, as the students wish to continue their support to the charity. If you are interested in coming along to the event and supporting a great charity, tickets can be purchased from Beverley Community Lift on 01482 868082.

Or, if you are a business who is interested in giving a gift for the prize draw, please get in touch with Beverley Community Lift.

We offer a caring and supportive voluntary service for people who cannot easily use other forms of transport e.g. elderly or disabled

Do you have difficulty getting to the supermarket?



Charity No: 506813



Try our shopper bus from your door.

Choice of **Morrison's or Aldi** £4 per return trip

Covering Beverley & surrounding villages





Do you need
experienced
payroll
professionals?

Why not get in
touch with

stipendia

payroll solutions

Multiple services including:

Tailored payroll services.

Additional services including HR,
Benefits in Kind & Auto Enrolment.

A named contact for that
personal service.

Useful tools on our website

www.stipendia.org.uk

Email
us at
[payroll@payroll
solutions.org.uk](mailto:payroll@payroll
solutions.org.uk)

Call us now on 0845 308 2288

Wishing you a Merry Christmas!

 Stipendia Payroll Solutions

@StipendiaPay 

Beverley's Youngsters Inspired by Flemingate Scheme

The future for Beverley is looking brighter than ever with the opening of the new Flemingate retail and leisure development fast approaching.

As the clock ticks on towards October - the date the doors are due to swing open - a great deal of work is also being done to inspire the next generation of shoppers, home-buyers, entrepreneurs and employees.

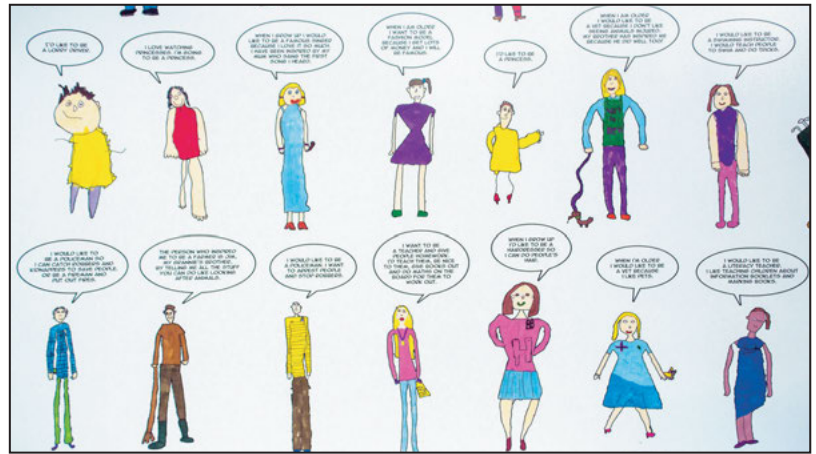
In recent months, children at the nearby St Nicholas Infants School have been involved in a ground-breaking arts-in-business initiative designed to inspire them to think positively about their futures, gain confidence and understand more about the Flemingate development. The project has also linked into curriculum subjects at the school in various ways; offering real-live examples of maths, history, geography in action and on the doorstep.

Around 330 pupils - some as young as four - have spent time on the 'Future Me' project organised by developers Wykeland Group, in association with Wykeland's arts consultant Elaine Burke. The children's artistic skills have been put on public display adorning the hoardings along Flemingate and Armstrong Way.

Elaine said: "The aim of the Future Me project is to take an innovative approach to making a positive impact on children and young people. Wykeland is keen to support the aspiration and potential of the next generation and the St Nicholas School project is an excellent example of how companies can use art to engage meaningfully with communities.

"At St Nicholas, artist Simon Crook taught the pupils to create cartoon-style self-portraits. The children were encouraged to think how they might see themselves in their adult life, for example as an engineer, builder, footballer, fashion designer or an artist. They were supported to think about what they would need to do to reach these aspirations. They were excited to imagine all of the possibilities open to them, and to know that these are all achievable. Simon then incorporated all 330 drawings and statements about their future selves onto three large hoardings".

Guy Evans, head of development at Wykeland, said the



company had thoroughly enjoyed being involved in the Flemingate "Future Me" project. He added: "We realise that such large-scale developments have an impact on the lives of local people - mostly a very positive impact in terms of job creation and better local facilities - but we are always looking to find ways of linking our work with the local community.

"By engaging with the children through art, we have helped them to gain a much better understanding of the Flemingate development and we hope passers-by will have taken a few moments to admire their work. The project has also involved three visits by the school onto the construction site"

The Flemingate development, including the completed residential scheme, is a £120million project that will bring new life to this part of town. Occupying land that was previously given to industrial use, the scheme has already attracted a number of high-profile retailers, including the anchor retailer, Debenhams, H & M and Arcadia.

It will also house a five-screen cinema operated by Parkway Cinemas, an 80-bed Premier Inn and the new Beverley campus for the East Riding College, now under construction. When completed, Flemingate is expected to create around 700 jobs in the town.



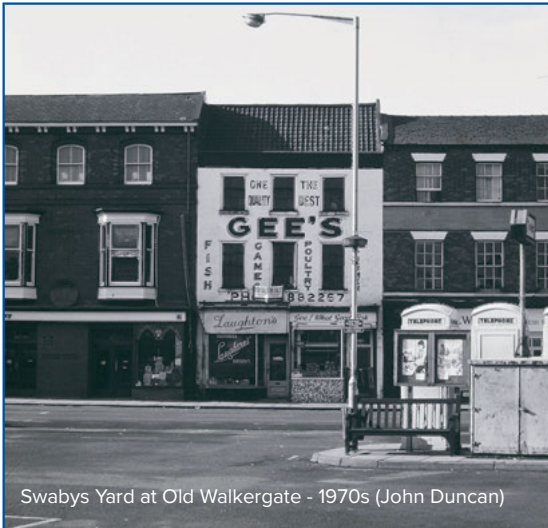
Guy Evans, head of development at the Wykeland Group, Elaine Burke, arts consultant, and teacher Laura Watts with the Achievement For All children from St Nicholas Primary School stand beside one of the Future Me hoardings on display outside of the Flemingate Development, Beverley.

Beverley Photographic Club

Beverley Beck (Kevin Merrills)



Blue Tit in Beverley (James Wigglesworth, age 13)

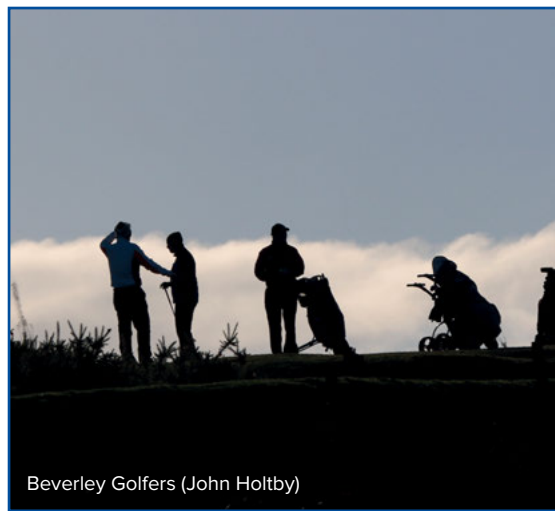


Swabys Yard at Old Walkergate - 1970s (John Duncan)

Swabys Yard at Old Walkergate - 2008 (John Duncan)



North Bar Within (John Holtby)



Beverley Golfers (John Holtby)



Help your vision last a lifetime.

Book your Eye Test with an in-store expert.

Find us on Toll Gavel, Beverley.

Call 01482 863547 or visit visionexpress.com

vision ~~ex~~press

VISION.TAKEN SERIOUSLY.

Down the Rabbit Hole with St Mary's Church

St Mary's Church is a fascinating place of discovery. A veritable Wonderland, if you will.

Ten things you may not know about our Parish Church...

1. Legend has it that Lewis Carroll sent his illustrator John Tenniel to St Mary's Church to get inspiration from the pilgrim rabbit carving situated on the doorway from the chapel to the sacristy. And, from that, the White Rabbit was born. Lewis Carroll had strong links with the East Riding, with his grandparents living in Hull and his uncle in Burton Agnes.

2. St Mary's Church has always been a building for, and by, the community. The trades and craftspeople in the north of the town wanted somewhere closer than the Minster, and St Mary's became a standalone church in the 1300s. Business used to take place in the church, and there are sculptures on the pillars, of businesspeople who invested in and made contributions to the church.

3. On the ceiling of the chancel, there are illustrations of 40 kings, painted in the 1440s, going backwards from Henry VI. There were, in fact, only 36 kings at this time but, in order to give the ceiling some symmetry, the painter just made up four of them!

4. There are 625 ceiling bosses, many of which are humorous or reflect the lighter side of life. Several of them show people playing instruments – the Beverley townfolk have always had a passion for the arts. There is even a group of minstrels on top of one of the pillars. Each ceiling boss has its own history, and an Australian student wrote her entire PhD thesis on just one of them.

5. There are 28 misericords, which form the seats of where the choir sits, and was traditionally where the clergy would sit and pray. They are swing hinge seats with carvings underneath which provide a resting place when standing. The carvings feature such unlikely characters as preaching foxes and even an elephant – something very few people would actually have seen at the time. They date from 1445 and originally came from Ripon.

6. Very unusually for a parish church, St Mary's has two storeys of windows – a design which was later copied by one of the Cambridge University colleges.

7. The Tower collapsed in April 1520, but was rebuilt within about four years because the townspeople were so concerned that Henry VIII would disestablish the church, in favour of Beverley Minster, if they did not repair it and bring it back into use immediately.

8. A telescopic staircase in one of the pillars leads to two priests' rooms, which is where clergy staff would often spend the night if they needed to be in the church late into the evening and then early the next morning. The main room contains historical treasures, including original painted wooden panels from the chancel ceiling, showing the original colours of Edward III and parts of Stephen and Henry VI, painted in 1445.

9. St Mary's houses the oldest maiden's garland in the UK. This is a helmet or crown bestowed upon a female at her funeral if she died a virgin. The garland in St Mary's was given to a 21-year-old in the 1680s and is still in pristine condition. The colours of paint are still distinct, showing flowers and an inscription which reads: ELIZABETH ELLINOR DIED ye 14 OF AUGUST AGE 21. 1680.

10. The large oval plaque on the Hengate side of the church commemorates a duel which took place between two young men. A trial took place under Danish law, which saw the survivor of the duel found guilty and beheaded with a sword. It is thought that this was the last execution of its kind in England. It was such a big event that eyewitness accounts were handed down through generations, of the bells of St Mary's tolling and then falling silent when the thud of the head occurred. A lot of money was spent on the memorial, which features two swords with gold gilt handles.

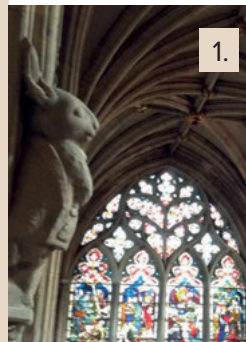


Operation Restoration

St Mary's Church holds so many fascinating and historically important treasures that the fabric of the building needs bringing up to standard in order that these may be protected. It is expected that the restoration project will need £5million to fully repair and restore the church to its former glory. It is going to take years, as the church needs a major overhaul to make the roof watertight, repair the upper windows, the pinnacles and the bell tower – one of only a few in the land which has ten bells.

Richard Porter volunteers at the church, dealing with grant applications and other fundraising efforts, and is highly enthusiastic about the importance of keeping St Mary's going, long into the future. He said: "One of the applications we have put in is to the lottery fund to try to sort the drainage system, which was designed by 'the man for church buildings in the 19th century', Augustus Welby Pugin. The crypt has been flooding and water extractor pumps have been fitted. But it is still a serious threat and needs to be addressed.

"It would be a tragedy if St Mary's was lost and had to close because it isn't safe anymore. People are working so hard and have been so generous with their time and resources so that we don't get to



that point. But there is a mountain to climb and we haven't yet got to base camp. An appeal started last year and has already raised £20,000 from private donations from individuals and businesses. But there is still a long way to go. Even just the scaffolding for the repairs can run into hundreds of thousands of pounds.

"Lots of fundraising events have been set up by the local community and church congregation, which show how much St Mary's means to Beverley. There is a great deal of sympathy and understanding for the project. The people of Beverley know it is a special place and it needs to be preserved.

"It is inconceivable how much it would have cost to build in today's terms. But it was a vital building for a thriving community, and the result of a vision they had all those years ago. It was a safe place for those generations, and needs to remain so for generations to come. What is there, in St Mary's Church, is way beyond what you would find in most parish churches. It is historically significant and worth protecting.

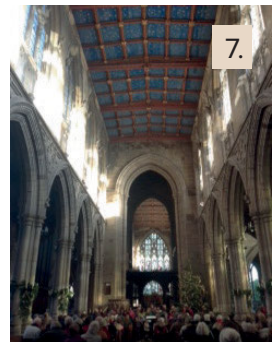
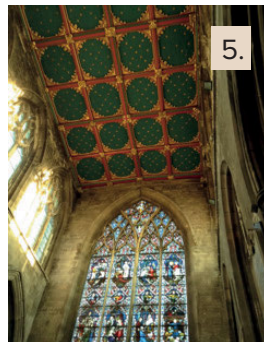
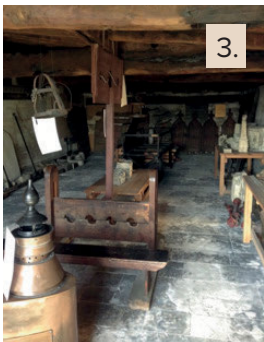
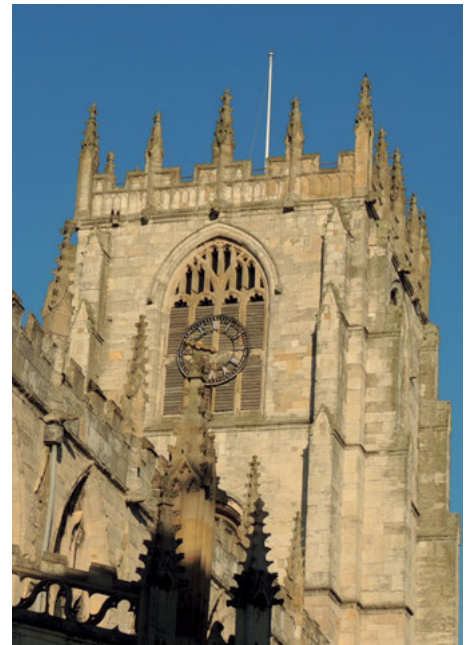
"The history of the church is a metaphor for life in the town. It has a real connection and charm, and a real feel of the place of Beverley. There is a sense of community, a calm atmosphere; everyone is so welcoming, generous and kind to strangers. People really love Beverley. It is in their blood. And St Mary's Church is a big part of that. Throughout the church's 900-year history, the townspeople have always been a material and integral part of the church's growth. We hope that the legacy of our generation will be that future generations will have the benefit and privilege of being able to enjoy this magnificent place, both aesthetically and spiritually."

The vicar of St Mary's, Reverend Becky Lumley, added: "It is such a privilege to be at the heart of the life of St Mary's church. It is a magnificent building and a jewel in the crown of Beverley. It has stood as a testament to the dedication, sensitivity and

philanthropy of our ancestors throughout the centuries. It is my hope that together we can all play our part in ensuring that our hard work and gifts will guarantee that St Mary's continues to be for locals and visitors of future generations a place of sanctuary, beauty and tranquility."

Photo captions:

1. The Pilgrim Rabbit of c1335 overlooking St Michael's Chapel
2. A close up of the white rabbit
3. One of the two Priests' Rooms directly above St Michael's Chapel
4. The Ceiling of Kings above the chancel
5. The south transept ceiling
6. St Michael's Chapel Built c1320s
7. The central nave. Christmas
8. Funeral bier and maiden's garland.





 **ceramic**
TILE MERCHANTS

Ceramic Tiles in Beverley
www.ceramictilemerchants.co.uk



Visit Our Beverley Showroom

Monday – Friday: 08.30 – 17.30
Saturday: 09.00 – 17.00



379 Grovehill Road
Beverley
East Yorkshire
HU17 0JG



Tel: 01482 679599
E: info@ceramictilemerchants.co.uk

**CLASSICAL
FLAGSTONES**
Internal Stone Flooring and Tiling

 **ORIGINALSTYLE**

unicomstarker™

GRESPANIA

EDMAX

Get on y'er bike for St Mary's Church

Leanne Marshall has heard the cries of help from St Mary's Church and is responding with a charity cycle ride from which she hopes to raise £10,000 to put towards the repairs of the building.

Leanne is the director of Hunters in Beverley, which looks out over the church, and is keen to do her bit to help ensure the church does not fall to ruin.



But she doesn't want to do it by herself, and is encouraging people to join her for the leisurely Saturday morning bike ride.

"The idea is to meet at Hunters head office at Apollo House in York on 18 April, to start the journey at 10am," she said. "We will join the York to Beverley national cycle route, which takes us through Stamford Bridge, Pocklington and Market Weighton Way.

"We aim to take a steady ride back to Beverley, stopping off at one of the many watering holes along the way and hope to finish at St Mary's Church at about 2.30pm. I appreciate there will be some fitter members of the group that could probably do this in half the time, but the idea is to leave as a team and finish as a team. So, for the fitter members, maybe look at it like a leisurely day out."

The finish line will be on Hengate outside Hunters' Beverley office and St Mary's Church, but they may choose to do a final lap round the one way system and enter the Church grounds through the main entrance.

The finish is designed to be a fantastic celebration of all of their achievements in raising the sponsorship money and for dedicating time to this event. There will be refreshments, a barbecue, bouncy castle and a singer performing in the church gardens to entertain the gathering supporters, family and friends.

Minster Cycles has generously donated a Pashley bike as a raffle prize, which retails at £675, and the prize draw will also take

place on the day. Tickets can be purchased from Hunters now, or at the barbecue celebration.

"When we have had a quick bite to eat and got our breath back, we will present a cheque with total monies raised to Becky Lumley (St Mary's Church Reverend)," Leanne added.

"We have our own unique text number for this single event and the target is to raise £10,000, so it is important that we raise our own sponsorship and encourage our friends and family, and the public, to text well in advance of the event."

To donate £10 to the fundraising efforts, text HUNT33£10 to 70070. For more information, and to get involved with the bike ride, contact Leanne on 01482 861411.



Tips from the Top – Minster Cycles

**Getting your bike out for the first time this year?
Here are our top tips for a safe and enjoyable ride....**

- Check your tyres. Your tyres will have lost pressure during the winter months. Inflate them to the correct pressure (indicated on the side wall), check the condition of the tread for wear and look for any signs of cracking.
- Lube the chain and check through the gears. Make sure the brakes work well too. Maybe book the bike in for a service at your local bike shop if you are in any doubt.
- Dig out your cycle helmet. How old is it? If it's more than five or six years old, it really ought to be replaced as it will have lost up to 50% of its strength over time. Check it for damage, try it on and check that it is a secure fit.
- Consider getting a pair of padded cycle shorts or underwear. They make cycling so much more comfortable and will really help to prevent saddle soreness.
- Check your saddle height. If your saddle is too low your pedalling will be inefficient and it can make cycling very hard work. As a rule, when you sit on the saddle with the pedal at the lowest point, if you put your heel on the pedal, your leg should be straight. Then, when you place the ball of your foot on the pedal, you will have just enough bend in your knee to pedal efficiently.
- Make sure you have a basic repair kit and/or your mobile phone with you when you ride in case you should get a flat tyre whilst you're out.
- Take a water bottle and something to snack on whilst you ride - you need to keep hydrated and your energy levels up.
- If you go out riding alone, let someone know your intended route and estimated time of arrival back home.

www.minstercycles.co.uk 01482 867950

HUBY

DOMESTIC APPLIANCES

Domestic Appliance Repairs and Servicing



Hubys specialise in domestic appliance repairs and servicing for a wide range of gas and electric domestic appliances including washing machines, dishwashers, tumble dryers, refrigerators, cookers, ovens and more.

www.hubys.co.uk | 01482 240511

Westwood Ho! For A Healthy Golf Challenge

If that New Year resolution to get fitter and healthier in 2015 is something you decided to put on the backburner because you couldn't face the stress of the gym or the perils of cycling, then an easier, more relaxing, alternative may be just what the doctor - or your partner - ordered.

Because, according to a recent Swedish survey, playing a round of golf can burn up to 1400 calories - and when taken up as your main activity may increase life expectancy by up to five years.

In Beverley, we have just the place to enjoy the full benefits of golf right on our doorstep. The town's ancient Westwood has been home to Beverley and East Riding Golf Club for more than 125 years, making it one of the oldest clubs in Yorkshire. A nine-hole course was first laid out on this common pasture land in 1889 and, since then, the great and the good of Beverley have been intimately associated with the golf club, which continues to be firmly embedded in the local community.

In 1895 it was extended to 18 holes meandering up and down the Westwood's gentle hills and valleys, through some of the East Riding's most beautiful scenery.



While appreciating the club's rich history, members and officials do not live in the past and there are several new initiatives aimed at encouraging more people to join and experience the pleasure of golf club membership.

So, why not give club Manager Richard Reynolds a call on **01482 868757** or email him on golf@beverleygolfclub.karoo.co.uk? Better still, why not stop off at our landmark Anti Mill premises just off the B1230 Walkington road and check out our Professional's Shop and comfortable bar and dining facilities for yourself?

At the moment there is no waiting list for members and no one-off entrance fee, so very soon you could be enjoying the full health, sporting and social benefits of Beverley golf for yourself. And surely that must beat the lonely treadmill of the gym?!

SPRING OFFERS
 3 Months Toning
 3 Months Vibraxis
 3 Contour Wraps
£179
 Normal price over £300
 Limited Availability

TONING TABLE SESSIONS
 Lose between 7" - 15" in six sessions, toning tables help if you are new to exercise, have issues with mobility, depression, bad backs & much more

FREE trials, no obligation
TESTIMONIALS AVAILABLE

SPECIAL OFFERS
 Skin Deep Personalised Facial includes eyebrow shape
£25 was £30
 Aromatherapy Massage Back & Shoulders 45 mins
£15 was £20
 Valid until 31st March

INCHES BODY STUDIO

Inches Body Studio, 1 Norwood, Beverley, HU17 9ET

Telephone: 01482 865229

Email: info@inchesofbeverley.co.uk

www.inchesofbeverley.co.uk

FREE
Local Delivery



KITCHENS ARE THE TALK OF THE TOWN

MY KIND OF
KITCHEN



FREE
CDA Wine
cooler*



1. *Free professional design consultation*
2. *Expert guidance & advice*
3. *Competitive prices for both trade & public*

Call us **today**, we're here
& happy to help you discover
your dream kitchen

Tel: 01482 880088

Your kitchen specialists at MKM Beverley:

Anne Wallis

anne.wallis@mkmbms.co.uk

Tom Moore

tom.moore@mkmbms.co.uk



Swinemoor Lane, HU17 OJX
OPEN TO TRADE & PUBLIC
Fri: 7.30am - 5.30pm Sat: 7.30am - 12noon

www.mkmbms.co.uk

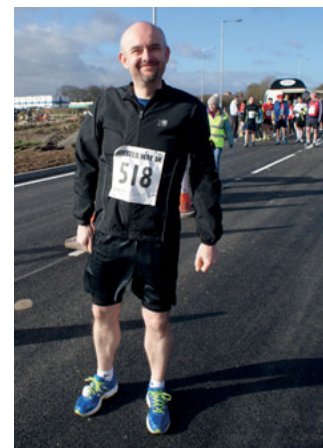
[@mkmbms](https://twitter.com/mkmbms) facebook.com/mkmbms



“My Kind of Merchant”

*Free CDA 150mm Wine cooler, code: fwc152 with every kitchen order placed between now and the end of March 2015. Orders over £4,000 inc VAT.

Minster Way 5K Run



On Sunday 1 March, almost 500 runners were the first members of the public to gain access to the new Minster Way – Beverley’s Southern Relief Road.

The 5km run organised by Beverley AC was won by Anthony Whiteman in a time of 17 minutes 12 seconds with Rebecca Wilkinson the first woman home, in 20 minutes 37 seconds, and 26th place overall.

Although it was a bright and sunny morning, the strong westerly wind gave the runners a challenging second half of the run and all deserved their commemorative medal and goody bag at the finish.

Many families and non-club members took part in the event, including 17 members of Beverley Whitestar Sharks under-14 football team who play in the HBSL Myton League. First over the line for the team was Tom Worsley in 33rd place, with a fast time of 20’ 43”.

Beverley AC would like to thank East Riding of Yorkshire for supporting the event and main sponsor Balfour Beatty for all their assistance. In addition, associate sponsors Morrisons for allowing car parking and providing the goody bag, and Strawberry for their marketing and publicity services.

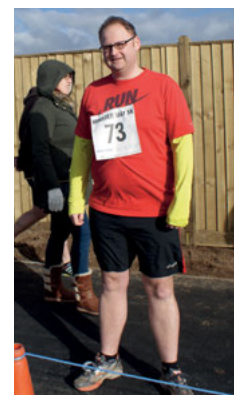
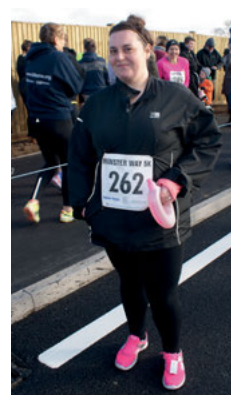
Anyone interested in joining Beverley AC should come down to the leisure centre on a Wednesday night at 6.30pm and give it a try. There is no pressure to join straight away and all abilities are welcome.

More details are available on www.beverleyac.com



Ernie Molloy – “It is exciting, but I am a bit nervous.”

Neil Elwood – “I like the road. I feel lucky to run today and I am proud to be here.”



The first woman home Rebecca Wilkinson.

Gillian Whitton – “The bypass looks great, but it is a bit windy today.”

Paul Hutchings – “They have done a good job on the road and this is a great opportunity to run.”



Mark Wilson – “It is a fantastic road and this should be a great run.”



Jane Priest – “The bypass looks fantastic and it is great to be involved in the run.”

Sarah Frost, Liz Draper and Karen Scott – “The bypass is lovely, but that is the worst headwind we have ever had to run into.”

Winner – Anthony Whiteman

Send your photographs of your celebrations



Minster Run



around Beverley, to info@justbeverley.co.uk.





Tone Zone

EAST RIDING LEISURE
BEVERLEY

New Tone Zone

Opening April 2015; come and join us on
our open weekend 11-12 April 8am to 4pm.



Free tours
and new Les
Mills class
launch.

For more details visit www.beverleyleisurecomplex.co.uk
or call (01482) 395230.

East Riding Leisure Changes Shape

There's never been a better time to become a member of East Riding Leisure Beverley, which will soon be marking the completion of a £1.2million improvement programme with an open weekend on 11-12 April 2015, 8am-9pm (both days) with free tours of the new Tone Zone gym and launch of the new Les Mills program.

The new purpose-built state of the art Tone Zone Health and fitness suite will boast an extensive range of high tech resistance and cardiovascular equipment. Instead of pounding the pavements of Beverley, customers will be able to run through the Grand Canyon or cycle through the Rocky Mountains before finishing their spin class with a sprint across the Brooklyn Bridge or completing their first Body Pump class without collapsing in a pool of sweat.

The new facility has doubled in size, to house 90 pieces of equipment, and there will also be a purpose-built spin cycle room featuring the 'My Ride' technology where the virtual instructor will supplement the extensive programme of Les Mills – RPM spin classes. The old gym will be converted into a studio to host fitness classes and will be known as Group X Studio.

Work will start as soon as the new Tone Zone is available to users.

Councillor Richard Burton, portfolio holder for civic wellbeing and culture, said: "I'm very excited to see that this much-needed project is nearly complete. The new facilities will greatly enhance this already very popular and very successful leisure centre, and the new Tone Zone will prove a fantastic asset to the town – and its residents."



Work on the new 90 station Tone Zone is well under way at East Riding Leisure Beverley.

Car parking is easier, with 48 extra car parking spaces created at the back of the complex, taking the total number of parking spaces up to 174.

Four new cycle shelters and external seating and benches have also been installed, allowing space for ten bikes in each shelter, totalling about 40 bike spaces, up from the previous 26.

East Riding College, Beverley, has agreed a partnership with East Riding Leisure Beverley that will take effect when the college's new Beverley campus opens in September 2015.

It means that those studying towards sport coaching, development and fitness qualifications in the town will take theory lessons in the modern £14million campus and benefit from practical sessions using the indoor and outdoor facilities at the centre.

For more details of the open weekend and redevelopment go to www.beverleyleisurecomplex.co.uk or call 01482 395230.



Redevelopment works at East Riding Leisure Beverley.

MAKE MORE MONEY!



Google AdWords™ TRAINING COURSE

ONLY £99 PER PERSON

(INCLUDES LUNCH AND REFRESHMENTS)

Training delivered by
Google AdWords™ Certified Professionals

ONLY 4 PEOPLE PER COURSE

This results-focused training course will show you how to create and manage campaigns that don't break the bank and are focused on your target audience, improving your return on investment

Call now to book your place 01482 871178

Visit www.indicoll.co.uk/googleadwordstrainingcourse for more information

Training Venue: indicoll, 40 Norwood, Beverley, HU17 9EY



Sport For Everyone

This fun multi-activity sports event is open to anyone of all ages. (Under-14s have to be accompanied by an adult). Sports have included badminton, table tennis, football, short tennis, and even kickboxing, with people being given the opportunity to try sports they may not otherwise get to do.



Sylvia Hood started the entertaining sessions five years ago, in memory of her son David (who was a keen sportsman), to use her skills as a coach and PE teacher and to bring the community in the Beverley area together. David died of cancer in 2010, and funds raised from the evenings go towards helping the Teenage Cancer Trust.

Sport for Everyone has evolved into a fortnightly fixture, with the community getting together at Beverley Leisure Complex on a Saturday evening (6pm-8pm) to play and enjoy a huge variety of fun sporting activities.

This year, Beverley Town Council gave a grant to the group to keep the subscriptions at £1 for a child and £2 for an adult or £5 for a family and the good news is that we have received a grant, from a donor who wants to remain anonymous, to obtain new equipment and keep the subs down this year.



To win a year's subscription to Sport For Everyone, and to join in all the fun, just send your answer to the following question to info@justbeverley.co.uk.

In whose memory was Sport for Everyone founded?

Visit www.sportforeveryone.co.uk or the Sport For Everyone Facebook page for more information.

The answer will be published in next month's magazine and on justbeverley.co.uk after the closing date. Good luck!

Closing date for entries is Monday 6 April.

Judges' decision is final. No cash alternative is offered. Details may be used for marketing purposes by Sport for Everyone, and for data collection and website analytics by Just Beverley. The winner will be notified within one week of the closing date and must be prepared to participate in publicity within the magazine and website.



Chauffeur Luxury

reliability • style • quality

First Class Personal Chauffeur Service Corporate & Private Clients



- Prestige fleet of Mercedes S Class and executive transporters with Wifi - TV - DVD
- Attentive, discreet and personal service
- 24hr transfers to all UK airports
- Fully ERYC licensed and CRB checked professional drivers
- Corporate accounts welcome
- No journey is too short or too far

YOUR WEDDING The Most Special Day of Your Life

A choice of prestige vehicles for a memorable occasion:
Bentley Arnage T Mulliner - Aston Martin DB9 - Mercedes S Class

- Premier personalised attentive service
- Cars decorated to match your wedding theme
- Complimentary flowers and champagne
- 20 years experience in the hospitality industry



www.chauffeurluxury.co.uk

for reservations, quotes & full details call **0800 181 4001** or **07580 371 732**

All Mobility - The Company That Cares

Helping people maintain their independence is the key aim of All Mobility, which was opened by the Mayor of Beverley, Councillor Paul McGrath, on 14 March.

Local business people Paul and Anne Fox run the new mobility aids business, assisting residents in the Beverley area.

The Beverley store provides a wide range of mobility aids, from electric scooters, power chairs, wheelchairs, stair lifts, and riser/recliner chairs, to smaller items such as grabbers and ferrules.

“At All Mobility, we place the same level of importance on pre- and after-sales support,” Paul said. “Should a scooter or any other piece of mobility equipment require repair or servicing, we will ensure that the work is carried out quickly and efficiently.”



“We are also happy to demonstrate the products in our customer’s home, or arrange demonstrations for groups, clubs, residential homes, etc.”

Anne added: “All Mobility’s mission is to provide a personalised, caring and local service, which will keep every customer mobile all of the time. We will always ensure that our customers have the correct mobility product to meet their specific needs.”

Paul and Anne are delighted to have the support and commitment of the All Mobility Group behind them in their new venture.

As a member of the All Mobility Group, the Beverley branch is

part of one of the largest chains of mobility stores in the UK, which has branches across the country.

So, why not contact them on 01482 887799, or pop into the shop for a chat? They are open from 10am to 4pm, Monday to Saturday, and a warm welcome awaits.



NOW REOPENED AFTER MAJOR REFURBISHMENT...

Pizza Kitchen

Cocktails

New premium wines and spirits range

Table service and restaurant areas

Improved patio area with additional seating



**“NO ABDICATION”
The King’s Head
“A NEW CORONATION”**

37-38 Saturday Market | Beverly | HU17 9AH
Tel 01482 868103



Lambing Sunday

Mothering Sunday was definitely in the air at Bishop Burton College on 15 March, with hundreds of new baby lambs having been born to adoring ewes over the past few weeks.

Bishop Burton College, which is celebrating its Diamond Jubilee this year, opened its doors for one of the most popular family events in its calendar - Lambing Sunday.

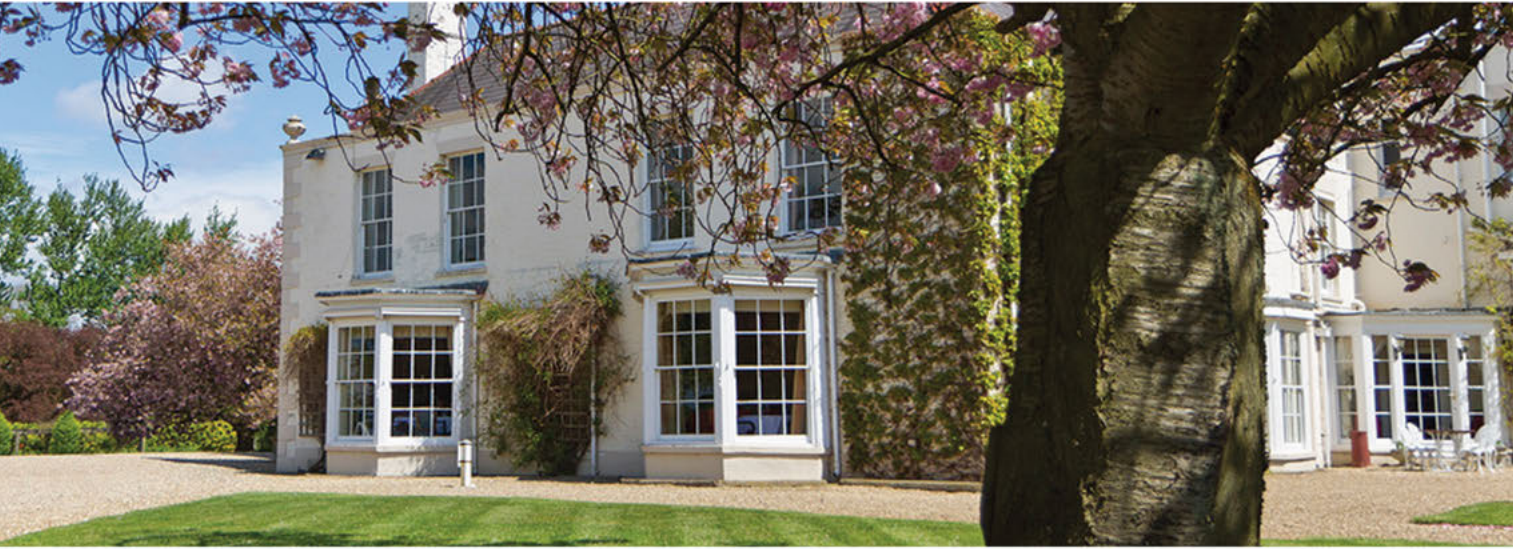
Visitors had the chance to watch lambs being born, taking their first few steps and bonding with their mothers, as well as learning about lambing from the team on Bishop Burton College's working farm. There was even the opportunity for children and adults alike to have a cuddle with a lamb in the petting areas.

There were also many other activities for the whole family to enjoy, including a show jumping competition, dressage to music, a display of tractors and farm machinery and tours of the indoor and outdoor animal management units - where visitors got the chance to meet some of the College's more exotic residents including snakes, reptiles, meerkats and wallabies.





TICKTON GRANGE



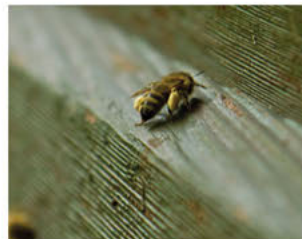
Welcome to Tickton Grange Hotel

Our chefs have been busy testing and tasting, preparing new Dinner and Lunch for Less menus for our restaurant HIDE. Come and try them.

As the sun starts to shine why not join us for Afternoon Tea in the garden, or by the fire if it is still chilly?

Our baker makes lovely homemade cakes, some are sweetened with a little help from the bees we keep here at Tickton.

And, of course, if you would like to treat yourself and stay overnight with us we would love to have you!



The Tradition of Easter Eggs

Easter eggs are a symbol of fertility and rebirth, with the earliest Easter eggs thought to derive from Christianity, with the egg symbolising an empty tomb, out of which comes life – Jesus rising again.

The early Easter eggs were painted chicken eggs. The practice of decorating eggs goes back over 60,000 years, with painted ostrich eggs having been found in Africa. Many Ancient Egyptian tombs also hold gold or silver painted ostrich eggs. The Christians adopted this method, by staining eggs red in memory of the blood of Christ and regarding the eggs as a symbol of resurrection. Lent is a time when you traditionally used up all the eggs in your house as they were forbidden during this time, hence Shrove Tuesday becoming known as Pancake Day – the eggs were used to make the pancakes before the start of Lent.

Eggs have been given as marks of friendship for many years, and the giving of Easter eggs stems from this tradition. Long ago people gave gifts of eggs carved from wood or precious stones. The first sweet eggs made for eating were produced in the last 100 years, from sugar or marzipan. Since then, chocolate eggs have become popular and these are now traditionally given on Easter Sunday.

A centuries-old tradition of bringing hand-coloured eggs to Church to be blessed and then presented to friends and family had evolved through the years and, amongst the highest echelons of Russian society in the 19th Century, the custom developed of presenting valuably jewelled Easter gifts. Tsar Alexander III commissioned Faberge to create a precious Easter egg as a surprise for the Empress, and the first Imperial Easter egg was born.

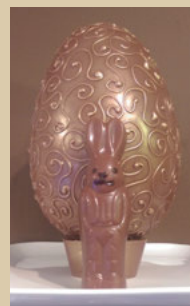


The series of lavish Easter eggs created by Faberge for the Russian Imperial family, between 1885 and 1916, is regarded as the artist-goldsmith's greatest and most enduring achievement. Faberge's eggs are his most celebrated and awe-inspiring works of art, inextricably bound to the Faberge name and legend.

Many games have also derived from the giving of Easter Eggs, with Easter egg hunts still being widely popular, particularly with children. Decorated eggs, chocolate eggs, or eggs filled with sweets are hidden around the house or garden for people to find. A prize is often given to the person who collects the most eggs.

A traditional Easter game is played in which hard boiled eggs are distributed between players and each player hits the other player's egg with their own. This is known as egg tapping. The winner is the holder of the last intact egg.

Egg rolling is another Easter egg game, with children rolling eggs down hillsides at Easter. An Egg dance involves eggs being laid on the ground or floor, and the goal is to dance among them without damaging any eggs. This is called the Hop Egg.



Eighty million Easter eggs are sold in the UK each year. Have you got yours yet? If not, why not enter our competition to win a giant 20cm Easter egg made from 440g of extra fine milk chocolate, on a solid chocolate egg cup, and even including a 'surprise' 11cm tall chocolate rabbit inside the egg, from White Rabbit Chocolatiers?

Visit justbeverley.co.uk and fill in the competition entry form, answering the question:
The 'Pilgrim Hare' carving in St. Mary's church was the inspiration for which famous character?

Closing date for entries is Monday **30 March**. The winner must be available to collect their egg from White Rabbit Chocolatiers on Dyer Lane on Thursday **2 April**.

Judges' decision is final. No cash alternative is offered. Collection only. Details will not be used for marketing purposes, but may be used for data collection and website analytics. The winner must be prepared to participate in publicity within the magazine and website.





Message From Councillor Stephen Pamaby OBE

There's a lot happening in Beverley and the surrounding area this spring.

I'm especially delighted that the new southern relief road is now open. It's a key part of the Integrated Transport Plan and will provide much-needed relief for traffic across the town. I'd like to thank Beverley residents and motorists for their patience in recent months during all the works at Grovehill,

Figham and on Swinemoor Lane, and I am sure that the combined effect of the completion of all these schemes will deliver real benefits to the town.

We will also soon see the opening of the refurbished – and hugely improved – Tone Zone at East Riding Leisure Beverley. The state-of-the-art Tone Zone health and fitness facility will be double the size of the previous gym – with around 90 exercise stations – and will offer a wide range of high-tech resistance and cardiovascular equipment, as well as a purpose-built spin room.

The Tour de Yorkshire cycling event will be coming to Beverley on 2 May and will provide a superb spectacle for the town. Once again, the East Riding will be showcased around the country by the TV coverage and the whole nation can see what a beautiful town Beverley

is and what fantastic landscapes we have in the East Riding. Full details of the route and the timings – across many parts of the East Riding – are included in this issue of Just Beverley.

Meanwhile, Beverley Art Gallery is hosting an exhibition curated by the Mall Galleries in London – 'Still Alive: The Contemporary Still Life'. This is our first collaboration with this prestigious London gallery, which is home to the Federation of British Artists. It's a real vote of confidence in the newly-refurbished Art Gallery and I hope it will be the first of many similar collaborations, putting Beverley well and truly on the cultural map.

I'd also like to congratulate the East Riding Theatre on its superb launch over Christmas and the New Year and wish it all the very best for continuing success throughout 2015.

Daily News

Have your favourite daily newspaper delivered to your door by one of our delivery team.

Or, if you'd prefer to come to the shop, we can save your newspaper to avoid disappointment.

We also stock

Vast Selection of Groceries
Toys
Pet Food
Seasonal Plants
Fresh Veg & Meat
Licensed & Lottery
Cards & Stationery
Cheap Chilled Drinks & Confectionery

Opening Times

Mon - Sat: 5:15am - 6:30pm
Sunday: 6:00am - 2:00pm



BEVERLEY NEWS

292 GROVEHILL ROAD, BEVERLEY, HU17 0JE
01482 866010

Happiness! It is all it's cracked up to be!

Are you happy? Are you the kind of person who is always cheerful? Are you the kind of person who nothing fazes, who takes everything in their stride? Are you the kind of person who people go to with their troubles, because you encourage them to get back on track?



they understand what motivates the people they interact with. As we know, motivated people are happy people, are more energised and are twice as productive, which is why leaders want happy people on their team. But a good leader is also able to work with an unhappy person to increase their motivation, raise their energy levels and increase their productivity.

So, next time you are feeling sorry for yourself, behave like a leader! Remember, you are in charge of your own happiness and the happiness of others, think positively, don't judge yourself and just get on with it! You know you can!

Linda Jane Johnson
www.releaseyourpotential.co.uk
Tel: 07585 802035



According to Dr. Travis Bradbury, happy people are 36% more motivated, six times more energised, and twice as productive as those who say they are not happy. But happy people are just so much nicer to be around. Happiness is infectious; when you smile, the whole world smiles with you (to coin a phrase)!

So, can you become happier? Yes, you can! Because it's all to do with how you process the information which your brain receives – if you process information in a positive way you are much likelier to be happier than if you process it negatively. Happiness is down to the way you think, because the way you think affects the way you feel and the way you feel affects those around you.

In business circles, people who are intuitive about their actions, thoughts and feelings are said to be emotionally intelligent. Leaders are emotionally intelligent because



Do you want to change your life for the better?

Lifestyle Coaching and Clinical Hypnotherapy which will help you...

- ✓ Lose Weight
- ✓ Reduce pain
- ✓ Curb anger
- ✓ Control bad habits
- ✓ Over-rule addictions

- ✓ Stop Smoking
- ✓ Ease stress and anxiety
- ✓ Become fitter and healthier
- ✓ Conquer fears and phobias
- ✓ Sleep better

Tel: 07585 802035

Email: linda@releaseyourpotential.co.uk

Web: releaseyourpotential.co.uk

Out and About Over Easter

The long Bank Holiday Easter weekend is the ideal opportunity to go out and explore what this area has to offer.

The weather should be improving as we start to embrace spring, so why not go for a walk or cycle ride on **Beverley Westwood**? This large area of open pastureland is a perfect place for dog walking and kite flying. Or maybe you could have a game of golf at Beverley Golf Club while you are there? It is also an excellent spot for a shot of amateur photography.

Or, perhaps you could give the **Beverley Town Trail** a go and discover what life was like in Medieval Beverley. Works of art, sculptures and architectural oddities make up four trails that guide you through Beverley, exploring medieval guilds and crafts.



The **Elwell Art Trail** follows a series of 22 replica paintings displayed throughout the town, by eminent local artists Fred and Mary Elwell. Pick up a map from the Tourist Information Centre and head out for the day. You never know what you might find.



Take a stroll along **Beverley Beck** and visit the Syntan barge, walk along the 1km bankside of the River Hull to Swinemoor and Figham Common. Maybe you want to be on the river yourself? **Beverley Boat Hire**, based in Tickton, offers short

boat trips and hiring services so you can explore the river at your own pace. Open from 9am-4.30pm throughout the Easter weekend, this is a great family day out.



Saturday Market will be holding its regular collection of stalls selling everything from gifts and homewares to food, drink and much more. A shoppers' paradise in the centre of the town.

Of course, we cannot legislate for the weather, even in beautiful Beverley, so these indoor activities may be more suitable if we are getting some seasonal April showers.

Swimming at **Beverley Leisure Complex** is always an exceedingly popular pastime.

There is a fun floats session for children from 2pm-4pm on Good Friday and Easter Monday. For those who don't like getting wet, a bouncy castle session for children aged five and over will also be available. Crash Course Swimming Lessons will be run over the Easter break, with a half hour lesson every day for four days costing just £17.60. Lessons will run in three grade sections from 1.15pm - 2.45pm.

If the kids aren't too exhausted after all that swimming and bouncing, **Mega Fun Indoor Play Centre** on Annie Reed Road offers three separate play zones for children aged up to 12, while the adults can relax in the coffee shop.

If galleries are your thing, check out **Creation Fine Arts**, with their Berger & Wyse exhibition of cartoons.

Beverley Art Gallery presents an exhibition curated by the Mall Galleries in London, called Still Alive: The Contemporary Still Life.

The exhibition, featuring works by internationally recognised artists, offers a survey of contemporary still life painting. The exhibition explores time-honoured





themes such as the fragility of human life in Sam Dalby's *Skull and Bottles* and the futility of regret in David Cobley's *Spilt Milk*. The exhibition also addresses contemporary subjects including pub grub and party shoes and demonstrates that still life painting remains an enduring and challenging art form.

Also, at the **Treasure House**, is the new exhibition *Eating In: A Celebration of Cooking and Dining at Home*. This looks at what we eat, the influence of other cultures on British food and the way our diet affects our health and lives. It explores how time, trends and technology have altered where our food comes from, whether it's the wild, the garden, the shop, the supermarket or online.

Your family history can be traced at the Treasure House archives, family and local history section and **Beverley Library** on Saturday 4 April, with access to ancestry.com and Find My Past Yorkshire Collection. There is a pay and display car park behind the Treasure House for public use.

Beverley Minster and St Mary's Church will also be open throughout the weekend for anyone to visit.

Beverley Minster offers tours of its roof at 11.15am and 2.15pm on Saturdays and Mondays. On Easter Monday, there is an



organ recital by Ian Seddon in the Minster (6pm). Or, you could go to one of the church services to mark Easter.

Easter Sunday services at the Minster include Holy Communion (8am), Sung Holy Communion (10.30am) and Choral Evensong (4pm), with Good Friday seeing Choral Matins and the Litany in Procession (9.30am), Churches Together in Beverley Walk of Witness (10.45am), Prayers at the Cross (12pm-2pm) and the Last Hour (3pm-4pm).

St Mary's Church is holding Children's Easter Activities (9.30am-10.30am) on Good Friday, followed by an Hour at the Cross (12pm-1pm). Beverley Chamber Choir will be performing from 7.30pm-9.30pm. The Choir invites everyone to Come and Sing on Easter Saturday (11am-5pm). A Big Easter Breakfast starts Easter Sunday (9am-10am) after which St Mary's holds its Easter Communion service, complete with an Easter Egg Hunt (10am-11am).

The Passion Play is being performed at **Toll Gavel United Church** on Saturday 4 April. Entitled 'An Impossible God', it is one-man production of the death and resurrection of Jesus, as experienced by those who were there, starring Mark Topping.

East Riding Theatre continues the Easter offerings with *Judea* - an adaptation of four chapters of the 'Master and Margarita' - a dramatic and controversial re-telling of the Passion. Combining guilt and innocence, courage and cowardice, good and evil, and man's responsibility to the truth in a totalitarian state.

Carrying on the theatrical theme, *Brief Lives* is being presented by Other Lives Productions at **Newbegin House**. Old John Aubrey takes his audience by the hand and, with a twinkle in his eye, leads them through a day in his life. He recounts wicked tales of his contemporaries - Oliver Cromwell, Charles II, Nell Gwyn - and he tells stories of Shakespeare, Queen Elizabeth and Sir Walter Raleigh. Forget the modern blogger, John Aubrey was blogging 300 years ago and his words come alive in this show.

After all that activity, you probably want a rest. Don't forget to pop into one of Beverley's many pubs, cafes or restaurants for a well-earned cuppa or meal to really finish off your day in style.

Offers BEVERLEY

Check out this months special offers

Want to lose weight, get fitter and healthier?

Release Your Potential can help you change your life for the better – forever! Using life coaching and hypnotherapy, we can help you:

- Change the way you think about nutrition
- Help you incorporate exercise into your daily life
- Keep you mindful of what you are eating
- Give you added confidence, vitality and enthusiasm

Check out www.releaseyourpotential.co.uk for testimonials and case studies. Usual price for 8-week course, plus 6-month follow-up £395. Just Beverley readers get a 25% discount until 31 May 2015 by quoting JBRYPO2.

Rachel's Beauty World

Get six anti-aging oxygen facials for just £299 (normally £493), including one day cream, one night cream and one serum. Quote Just Beverley. To maintain that glowing look, come back every month for just £55.

Plus, call today to book a consultation and get a free skin analysis worth £45 when you quote Just Beverley.



Book now for

Afternoon Tea at Lempicka

An exquisite and delicious Afternoon Tea service at Lempicka

Café is now being served daily. Treat yourself to our elegantly prepared Afternoon Tea including homemade baked cakes and tarts, savoury sandwiches, speciality loose leaf teas and our

inspiring Kir Royale aperitif.

Please call 01482 866960 for reservations.

Visit Lempicka Café and Bistro for delicious all-day breakfasts, tempting lunches, home-made baked goods and our renowned espresso based coffees.

Luxury 4 star self catering/bed and breakfast holiday accommodation also available at Lempicka Apartment and Cottages

**LEMPICKA CAFE AND BISTRO, 19 WEDNESDAY MARKET
BEVERLEY HU17 0DH**

Mention this advertisement for a Lempicka hot chocolate sachet to take home

Inches Body Studio

Skin Deep Personalised Facial (includes eyebrow shape) - £25 (was £30). Aromatherapy Back & Shoulder Massage (45 minutes) - £15 (was £20) Call 01482 865229 and quote 'Just Beverley'.

Spring sale at Minster Cycles

50% off selected clothing

Customised bike fitting from £50.

Enquire now on 01482 867950 and quote 'Just Beverley'.

March Madness at Beverley Leisure Complex

East Riding Leisure is offering an amazing gym membership deal for just £19.50 (valid for a month) at Beverley Leisure Complex, with no joining fee, no cancellation fee and no Direct Debit required. Saving users over £13 on a premier membership, you can take advantage of our Les Mills classes and a full swimming programme, along with many other premier membership benefits. The March Madness membership is now available until 31 March and only one purchase per customer can be made. The deal also includes Healthplus, which includes three appointments with the instructor to set personal targets and objectives during the monthly membership.

Free CDA wine cooler from MKM Building Supplies

Get a free CDA wine cooler with every kitchen order (over £4,000 inc VAT) placed at MKM Building Supplies between now and 31 March 2015. Call 01482 880088 and quote 'Just Beverley'.

Lempicka Café and Bistro

Mention Just Beverley in Lempicka Café and Bistro to get a hot chocolate sachet to take home. For enquiries, call 01482 866960.

AdWords training for £99

Get a personalised AdWords training course at indicoll for just £99 + VAT (normally £295).

Run by a Google Certified Professional, helping you get more bang for your buck. Call Gary on 01482 871178 for more information and to book your place.

Save on online accounting software with Hemingway Bailey

Sign up for QuickBooks Online and Receipt Bank software and save £18 on the standard fees. Now just £20/month, only for Just Beverley readers who sign up by 5 April 2015.

For details, visit: www.hemingwaybailey.co.uk/justbeverley

Beverley Camera Centre

Get 20% off all memory cards until 25 April 2015 on production of this advertisement.

Beverley Musical Theatre

Come and see our wonderful show Singin' in the Rain and take advantage of our special offer. It's Spring and we have taken £2 off every seat ticket price until Easter Sunday. Usual ticket prices £17, £15 and £13. Call the theatre booking office on 01482 300300, quote 'Spring offer' and mention you saw it in Just Beverley.

PUZZLE PAGE



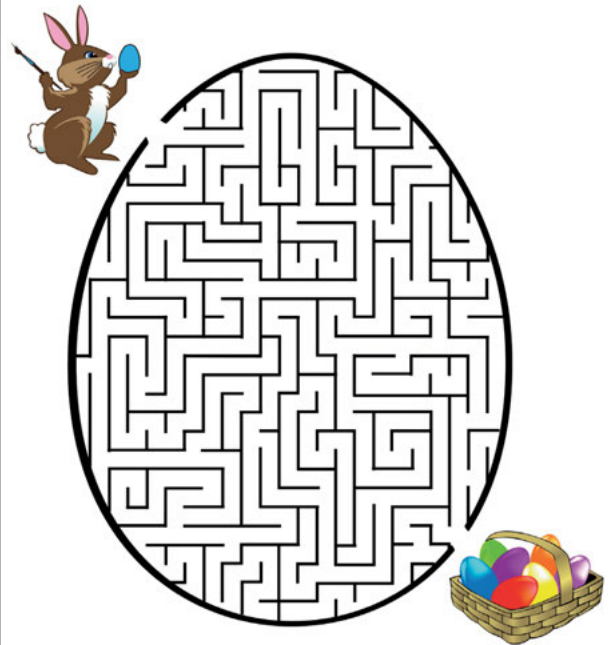
Easter Wordsearch

O	L	N	C	R	Y	W	B	P	V	B	O
I	N	U	B	S	S	O	R	C	T	O	H
D	B	U	N	N	Y	N	V	A	P	Z	I
R	Q	T	L	G	E	G	G	E	V	L	E
H	C	R	U	C	I	F	I	X	I	O	N
X	Q	N	Q	Q	Z	S	S	G	M	R	G
Y	G	O	O	D	F	R	I	D	A	Y	P
N	Y	C	R	E	T	S	A	E	U	U	G
Y	V	S	I	M	N	E	L	C	A	K	E
J	F	W	F	U	S	H	T	N	I	J	J
N	I	P	A	P	R	I	L	T	N	E	L
J	O	B	M	A	L	C	T	X	F	R	K

April
Bunny
Crucifixion
Easter
Egg

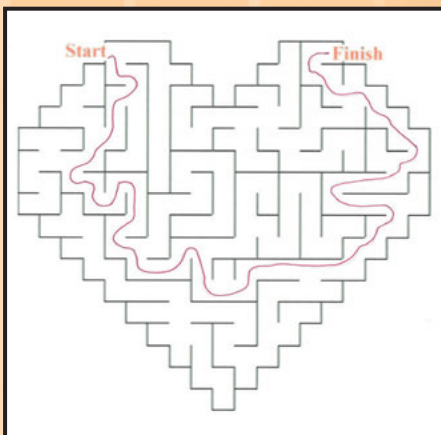
Good Friday
Hot Cross Bun
Lamb
Lent
Simnel Cake

Easter Maze



LAST MONTH'S ANSWERS

Valentine Maze



Sudoku Puzzle

1	4	8	3	5	9	6	7	2
5	3	2	7	6	4	1	8	9
7	9	6	1	8	2	4	5	3
8	2	9	5	7	1	3	6	4
4	1	5	6	9	3	8	2	7
3	6	7	2	4	8	5	9	1
9	5	4	8	3	7	2	1	6
6	7	1	4	2	5	9	3	8
2	8	3	9	1	6	7	4	5

VALENTINE'S WORDSEARCH

E	F	I	W	R	E	S	T	A	U	R	A	N	T
K	S	J	F	E	B	R	U	A	R	Y	H	U	Q
Q	G	L	T	Q	B	O	Y	F	R	I	E	N	D
R	V	D	V	T	N	Y	W	H	E	I	Q	H	H
I	V	N	S	V	A	L	E	N	T	I	N	E	J
R	F	A	B	D	X	I	C	Z	O	R	A	W	A
W	A	B	R	X	J	A	F	L	O	W	E	R	S
N	M	S	A	K	N	U	P	Z	R	M	Z	V	A
F	M	U	C	Y	U	P	Z	R	M	Z	V	A	Q
J	D	H	O	D	N	E	I	R	F	L	R	I	G
H	T	C	H	O	C	O	L	A	T	E	K	I	Y
Q	Y	B	B	Q	Y	D	M	E	V	O	L	E	M
B	J	N	M	L	S	E	O	M	C	B	A	Q	E

Boyfriend
Cards
Chocolate
February
Flowers
Girlfriend
Heart
Husband
Love
Restaurant
Valentine
Wife

WHAT'S ON IN BEVERLEY



MARCH & APRIL

Saturday 21 March

Gruffalo Family Day – Beverley Minster, 10am-12.30pm
Shoppers' Lunch – Beverley Minster, 10am-2pm
Ladies' Day – Beverley RUFC, 12pm
Teddy Tumble's 1st Birthday Party – Molescroft Pavilion, 2pm-5pm
Sport for Everyone – Beverley Leisure Complex, 6pm-8pm
Hessle Sinfonia – Longcroft School Auditorium, 7.30pm

Sunday 22 March

Brief Lives – Bishop Burton Village Hall, 7.30pm

Tuesday 24 March

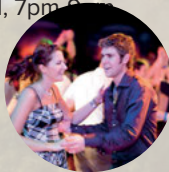
Dance on the Map – Memorial Hall, 4.30pm-8.15pm (every Tuesday)
Creative Drawing Course – Beverley Art Gallery, 5.30pm-7.30pm
Beverley Photographic Club – Longcroft School, 7.30pm-9.30pm

Wednesday 25 March

Isolation: Paula Dunn – Creation Fine Arts, 10am
Life Drawing Class – Creation Fine Arts, 7pm-9pm (every Wednesday)

Thursday 26 March

The Story of Art: A Stylish 18th Century England, 7pm-9pm
Ghost Walk – Royal Standard, 7.30pm
An Evening with London Mozart
Players – Toll Gavel United Church, 7.30pm
Ceroc Dance Class – Memorial Hall, 7.30pm-10.30pm (every Thursday)



Friday 27 March

Beverley U3A Coffee Morning – Lairgate Hotel, 10am
A Reight Bobby Dazzler of a Night! – Tickton Grange, 7pm
Longcroft School Gospel Choir Concert – Beverley Minster, 7.30pm

Saturday 28 March

'Me and My Dad' Breakfast – Beverley Minster Parish Hall, 9am-10.30am
Still Life Pictures – Treasure House, 10am-3pm



Sunday 29 March & Monday 30 March

Eric & Ern – East Riding Theatre, 7.30pm

Monday 30 March

Valuation Day – Farthings Bar and Grill, 10.30am-3.30pm

Tuesday 31 March

MixEd: Personal Brand – East Riding College, 5.30pm-7pm

Thursday 2 April to Friday 17 April

Judea – East Riding Theatre, 7.30pm

Friday 3 April

Beverley Chamber Choir – St Mary's Parish Church, 7.30pm

Saturday 4 April

An Impossible God – Toll Gavel United Church, 7pm

Sunday 5 April

Brief Lives – Newbegin House, 7.30pm

Monday 6 April

Organ Recital – Beverley Minster, 6pm

Wednesday 8 April

Local Produce Monthly Market – Wednesday Market, 10am-4pm



Friday 10 April

Beverley Film Society: Calvary – Masonic Hall, 7.30pm
Cathryn Craig and Brian Willoughby – Hodgsons (Flemingate), 8pm

Saturday 11 April

The Choir and Orchestra of Invitatione – Beverley Minster, 7.30pm

Tuesday 14 April

Mini-Messy Church – Beverley Minster Parish Hall, 3.30pm-5.30pm

Thursday 16 April

Beverley U3A Meeting – Memorial Hall, 2pm
The Story of Art: Fantastic Alternatives – Creation Fine Arts, 7pm-9pm

Friday 17 April

Friends of Beverley Minster Study Day – Beverley Minster, 10am-4pm

Saturday 18 April – Saturday 16 May

Pre-Pop to Post Human: Collage in the Digital Age –

For more information visit justbeverley.co.uk/events.
To submit an event email info@justbeverley.co.uk or call 01482 679947.



Beverley Art Gallery, 10am-4pm

Saturday 18 April – Saturday 30 May

The Collectors – Treasure House, 10am-4pm

Saturday 18 April

Shoppers' Lunch – Beverley Minster, 10am-2pm
Swimathon (Teams) – Beverley Leisure Complex, 4pm-6pm
Charlie Bicknell: Gorgeous for Yorkshire – East Riding Theatre, 7.30pm

Sunday 19 April

Swimathon – Beverley Leisure Complex, 9am-12pm

Tuesday 21 April

Beverley Anglo-French Society – Conservative Club, 7.30pm

Thursday 23 April

Beverley U3A Coffee Morning – Lairgate Hotel, 10am
Creative Writing Workshop – East Riding Theatre Club Room, 6pm
Family History in the Archives – Treasure House, 6pm-7.30pm
The Story of Art: 19th Century Narratives and Impressions – Creation Fine Arts, 7pm-9pm
The Flanagan Collective: Sherlock Holmes: A Working Hypothesis – Longcroft School, 7.30pm
Peter Robinson – East Riding Theatre, 8pm



Saturday 25 April – Sunday 10 May

Shafted – East Riding Theatre, 7.30pm

Saturday 25 April

'Me and My Dad' Breakfast – Beverley Minster Parish Hall, 9am-10.30pm
Vintage Fair – Beverley Minster, 10am-4pm
British Showjumping Event – Bishop Burton College, 10am-4pm

Tuesday 28 April

Mini-Messy Church – Beverley Minster Parish Hall, 3.30pm-5.30pm
MixEd: Increasing Productivity – East Riding College, 5.30pm-7pm
General Election Hustings – Beverley Minster, 7.30pm
Frank Yamma – East Riding Theatre, 7.30pm



Thursday 30 April

The Story of Art: England Promotes Arts and Crafts – Creation Fine Arts, 7pm-9pm

Saturday 2 May

Tour de Yorkshire – Walkington, Beverley and Cherry Burton, 12pm.
East Riding County Choir Concert – Beverley Minster, 7.30pm
Theatre Newfoundland: With Cruel Times in Between – Bishop Burton Village Hall, 7.30pm

Thursday 7 May

The Story of Art: Modern Considerations – Creation Fine Arts, 7pm-9pm

Friday 8 May

Beverley Film Society: The Lunchbox – Masonic Hall, 7.30pm
CRE:8 – Peter Harrison Room, Beverley Minster, 7.30pm-9.30pm
Cello and Piano Recital – Beverley Minster, 7.30pm

Saturday 9 May

Choral Evensong – Beverley Minster, 5pm

Tuesday 12 May

Mini-Messy Church – Beverley Minster Parish Hall, 3.30pm-5.30pm
Curating the Celts – Treasure House, 6.30pm

Wednesday 13 May – Saturday 16 May

Satin 'n' Steel – East Riding Theatre, 7.30pm

Wednesday 13 May

Local Produce Monthly Market – Wednesday Market, 10am-4pm

Thursday 14 May

Beverley U3A Meeting – Memorial Hall, 2pm

Saturday 16 May

Shoppers' Lunch – Beverley Minster, 10am-2pm
Rock Roadshow – Treasure House, 11am-3pm
Organ Recital – Beverley Minster, 6pm



Competition Winner

LIZ WRIGHT

Last month we ran a competition on justbeverley.co.uk to win a beautiful flower arrangement from Fleurs de Lisa.

We asked you: **What is your favourite flower and why?** And Beverley must have been in a spring mood, because we received lots of responses and it was very difficult to pick a winner. We have included a selection here, but it was Liz Wright who won, with: **Lilies – I just love the scent and various colours and the way they can brighten any day.**

On receiving her arrangement, Liz said: "I look forward to Just Beverley coming out each month, winning the display of flowers in the competition was a great surprise. They are a fantastic display and will take pride of place."

Lisa Barrow from Fleurs de Lisa added: "When I was approached to offer a prize for Just Beverley, I thought 'what a great idea', and I am delighted that Liz is so pleased with the display." They are pictured here, with the beautiful arrangement.

Other answers to the question included:

Fiona King: I love gerberas because they are so pretty and intense in colour.

Janifer Lack: Gerberas remind me of talking to my friends on MSN Messenger as a pink gerbera was the default picture.

Kathleen Eccles: A daffodil, a cheerful sign of spring on its way.

Zoe Goulding: Sunflowers as they brighten up my house. My dad used to grow them for me when I was a child.

Sophie Leavesley: Sunflowers because if happiness was a flower it would be a sunflower, they never fail to make me smile.

Kathleen Bell: I love the simple daffodil, because they are nice and bright and a sure sign it is getting warmer.

Angie Allen: I love poppies as they make the countryside beautiful and can be seen by all whilst on your travels.

Lynn Mitchell: Freesia, reminds me of the day my daughter was born. They were on the table and the smell was wonderful.

Sylvia Lennox: I love roses. They are nature's beauty to behold. Majestic, queen of the flowers. Their scent and colour are breathtaking.

Emma Walters: Red poppies, such simple beauty, yet so significant.

Marian Cox: The primrose, with its delicate yellow petals, that braves the sometimes harsh weather to bring the hope of Spring.

Julie Anne Goodman: The freesia is my favourite bloom, for its pretty colours and sweet perfume.

Thank you to everyone who entered.

We have two competitions this month, with a chance to win an Easter Egg from White Rabbit Chocolatiers on page 33, or win a year's subscription to Sport for Everyone on page 24. Good luck!



BEVERLEY MOTORWORKS INDEPENDENT BMW & MINI SPECIALISTS

Follow us on:

 search for
 Beverley Motor Works

BMW Qualified Senior and Technicians Offer

- Saving up to 70% OFF main dealer prices
- Manufacturer's warranty not affected
- Resale value of your vehicle not affected
- Award-winning customer service
- Over 30 years' combined BMW experience

Call today on **01482 881128**

Our dealership expertise means high quality for car servicing at a fair price...

- ATA Accreditation
- Routine servicing
- Condition-based servicing
- Diagnostics
- Mechanical repairs
- Air conditioning
- Performance tuning
- MOT's

Call now for a no obligation quote or to book in on **01482 881128** or email us directly from our website www.beverleymotorworks.co.uk

Unit D1 Grovehill Industrial Estate Annie Reed Road, Beverley HU17 0LF
 E: web@beverleymotorworks.co.uk



allmobility

The Company That Cares



Riser Recliner Chairs

- ✓ Handcrafted here in GB
- ✓ Hardwood Frames
- ✓ Matching Settees
- ✓ Large selection of fabrics/leather



Daily Living Aids

- ✓ Bathroom
- ✓ Kitchen & Eating
- ✓ Dressing & Grooming
- ✓ Walking Aids



New Stairlifts

- ✓ Installation
- ✓ Service
- ✓ Repair



New Scooters

- ✓ 2 Years Guarantee
- ✓ 2 Years Insurance
- ✓ 2 Years Breakdown Cover
- ✓ 2 Years Servicing



Main Dealer

110 - 112 Walkergate, Beverley, HU17 9BT TEL: 01482 887799



(Butcher Row & School Lane Car Parks approx 35 yards away)

Feel good in the skin you live in...

Rbw

Rachel's Beauty World
anti-aging laser clinic



Appleton House, 3a Wednesday Market, (opposite Boyes) Beverley HU17 0DG.

PAY AS YOU GO TREATMENTS FROM ONLY £60
NO NEEDLES • NO DOWNTIME • NO RISK

Skin Rejuvenation



All the very latest anti-aging treatments to suit your needs. For wrinkles, fine lines, uneven skin tone and oily skin - IPL anti-aging facial, carbon laser facial or RF. The Madonna Treatment. Pressurised oxygen that pushes hyaluronic acid (the moisture molecule that makes your skin plump) and antioxidants deep into the dermis of your skin. *"We can't make you sing like Madonna, but we can make your skin as beautiful."*



Thread Vein Removal (face or leg)

The very latest technology for large areas on the leg, or a brand new laser which targets small areas on the face and around the nose. See them being zapped away.



Slimming and Body Contouring

Inch loss and cellulite reduction. We have a variety of treatments that attack that *stubborn fat* in a number of ways – melting, freezing and vibrating by sound. We use laser, ultrasound and infrared. And for that annoying cellulite – the only answer is RF (radio frequency).



Permanent Hair Removal

Does what it says on the tin!

Tattoo removal

Got a tattoo with the wrong name on it? Or, maybe what suited you last year doesn't this year.

Treatments start from £60 a session and go down each treatment. **PAY AS YOU GO. NO COMMITMENT.** You come, you try, you decide. We are friendly and flexible. We look forward to seeing you.

Claim your FREE 3D skin analysis - worth £45
Call us on 01482 888 234 • www.rachelsbeautyworld.uk