

FREE

just

ISSUE 87

BEVERLEY

IT'S YOUR MAGAZINE

**IT'S GOING TO BE A BIT
'SHERLOCK' AT ERT
THIS MONTH**

**NEW PRODUCTION THE HOUND OF
THE BASKERVILLES TO OPEN THIS APRIL**

ert

**EAST
RIDING
THEATRE**

← entrance

10 Lord Roberts Road, Beverley HU17 9BE

Tel: 01482 874050 / www.eastridingtheatre.co.uk

NEWS, WHAT'S ON, LIFESTYLE, FEATURES, PUZZLES, PHOTOS & MORE

Photo: Sara Kruger (@sarah.kruger)

The National Minimum Wage is Increasing... Are you prepared?



**Improve business performance
by outsourcing payroll**

Payroll Outsourcing Benefits

- ✓ Cost reduction
- ✓ Better staff productivity
- ✓ High accuracy & reliability
- ✓ e-payslips direct to employees via our app
- ✓ A named personal contact
- ✓ Added value services including HR & Benefits in Kind
- ✓ Useful online information

to arrange a **FREE** meeting
call us on: 0845 308 2288
or visit
www.stipendia.org.uk



Stipendia Payroll Solutions



@StipendiaPay

6/7 EAST RIDING THEATRE



5 DREAM DOORS



13 EVERYTHING BUT THE DOG



14 FERGUSON FAWSITT



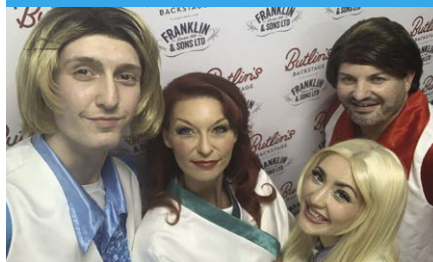
19 SPRING LIVE



28 JULIE ROGERSON



34 PLATINUM JUBILEE



Contributors:

Julian Minshall, Olivia Peace, Rich Manville, Natalie Acton, Cliff Baillie, Jane Dale, Jack Dickerty, Ed Hawkes, M Horst, Amanda McConnell, Navigation Wealth Management, Phoebe Noel, Colin Raynor, Ian Richardson, Julie Rogerson, Sue Southcoat, David Tunstall, Becky Walker, Sam Walton, Clint Wastling and Nathan Wilson, JF Woodford. Illustration Bev n Ley by Jasmine Stephenson.

REMEMBER! If you see examples of anti-social behaviour or other types of low-level crime, do report it to the appropriate authorities. **POLICE** - Emergency 999, Non-urgent 101. **ANTI-SOCIAL BEHAVIOUR** (East Riding of Yorkshire Council) - 01482 393939.

Magazine available from outlets in Beverley and surrounding areas.
Disclaimer - All the information provided was correct at the time of going to print.



Please pass your Just Beverley on or recycle it responsibly.
Printed by: Jadan Press.

just BEVERLEY

APRIL LETTER FROM THE EDITORS



Spring is here, the sun is starting to shine, the clocks have gone forward so we can enjoy longer days and a lovely summer ahead.

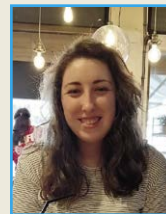
As usual we can look forward to a festival of fun around the Easter Holidays with treasure hunts, picnics and treasure trails further afield, so make sure you get out and about and enjoy the fun with all the family.

Jane's gardening column will help you keep on track as the garden goes wild in spring, and Wilson Wheels give you a few tips on how to stay healthy and remove pounds and save pounds at the same time. While Ed at White Rabbit focuses on a Sustainable Easter.

As plans are moving forward in Beverley for the Beverley Platinum Jubilee Celebrations keep up to date to plan what you are doing on 3rd June.

Thinking ahead, I like the new plans for the Beverley welcome arch for visitors.

Have a good Easter.
Julian.



Happy April readers! Does anyone else go into self-imposed hermit mode at the turn of this month in an attempt to avoid being April fooled too? Trust. No. One.

With Easter coming up, it's a nice chance to press pause, reflect and spend quality time with family or friends regardless of whether you celebrate it religiously. There are plenty of things to do around Beverley, or if you're like me and love to celebrate with food there are lots of nice eateries around the town centre to visit.

As always, stay safe and have a lovely month.
Enjoy the issue.
Olivia.

ISSN 2754-9216



GET IN TOUCH WITH US:

Website: justbeverley.co.uk

Email: info@justbeverley.co.uk

Telephone: 01482 679947

Twitter: @JustBeverley

Facebook: [facebook.com/justbeverley](https://www.facebook.com/justbeverley)

If you would like copies for your business to distribute to staff and customers, call Just Beverley on 01482 679947.

BEVERLEY ARMED FORCES & VETERANS BREAKFAST CLUB - 3RD BIRTHDAY

Leddy is a proud Veteran and has the honour and privilege of being the chair for the Beverley Armed Forces & Veterans.

Along with Treasurer Paul Weston, they put on the 3rd birthday celebrations which included a bake off to celebrate the occasion.

Having started the club 3 years ago at the Sloop Inn they have grown and given valuable support to members over the years.

As Leddy and Paul mentioned, the club is all about welcoming the Armed Forces Veterans to a morning breakfast and to catch up and have some fun and banter.

On the first Saturday of the month they have a Breakfast and raffle whilst on the 3rd Saturday a breakfast and event. The key behind the consistent growth of the club is the camaraderie



and banter, what they refer to as pulling up a sandbag and encouraging "the return of the Tribe".

Important to all is the health and wellbeing of keeping tabs on each other, contact through facebook and friends.

Guys, Ladies and families are encouraged to go along and enjoy the group, not to be on their own, everyone gets something different from the group.

The group is getting together, working together and building relationships together, not only the breakfast club at The Angel, they also put trips on and have days out.

If you fancy getting out and meeting people, get in touch and go to one of the meetings. Beverley Armed Forces & Veterans Breakfast Club.



NATIONAL INSURANCE THRESHOLD TO INCREASE BY £3,000 TO £12,570

From April 2022 there will be a 1.25% increase in both employer and employee contributions.

National Minimum Wages Increases April 2022:

National Living Wage	£9.50
21-22 yrs	£9.18
18-20 yrs	£6.83
16-18 yrs	£4.81
Apprentice rate	£4.81

If you wish to discuss any of the above matters then please call Lynne Auton of Stipendia Payroll Solutions and parent company Finnies Accountants on **01482 861919**.



CRACKING FUN FOR ALL THE FAMILY THIS EASTER

Scientific Entertainment
Taking place in the unit in-between Sports Direct and H&M

TUESDAY 12TH APRIL BATH BOMBS
9:30-10:30, 11:00-12:00, 13:00-14:00
Come and make your own bath bombs and learn the science behind them.

TUESDAY 19TH APRIL DRY ICE VOLCANOES
9:30-10:30, 11:00-12:00, 13:00-14:00
These volcanoes are amazing. They rumble before erupting to simulate an earthquake, produce a large gas cloud and lava. Discover plate tectonics, earthquakes, volcanoes and natural disasters.

THURSDAY 21ST APRIL HARRY POTTER POTIONS
9:30-10:30, 11:00-12:00, 13:00-14:00
Come and take part in a magical Harry Potter themed potions lab. Experiment expanding foams & powders, colourful potions, flames and more!

BOOK DIRECT. FIND THE LINK ON OUR WEBSITE.

POP-UP POTTERY STUDIO

Taking place in the unit in-between Sports Direct and H&M
MONDAY 11TH, WEDNESDAY 13TH, WEDNESDAY 20TH & FRIDAY 22ND APRIL

10:00-11:30, 12:00-13:30, 14:00-15:30, 16:00-17:30
PLUS FRIDAY 22ND APRIL, 18:00-19:30

£5 deposit redeemable against purchase on the day. Pottery painting starts at £11, other crafts start at £4.95

Decorate pots using fun foam clay and high-quality acrylic paint - no need for a kiln, take your pot home with you! Plus craft kits inc. needle felting, wooden crafts, crystal art and more!

Small play area available for children under 5 - children remain the responsibility of parents at all times. Children under 13 must be accompanied by an adult.

BOOK DIRECT. FIND THE LINK ON OUR WEBSITE.

#Entertainer

31ST MARCH - 27TH APRIL

The Entertainer has a fun packed Easter to help keep the little ones entertained. There are toys galore and fun instore Events and Competitions, including:

THE ENTERTAINER ROCKS
find the hidden rock somewhere in Beverley to win a £20 The Entertainer Gift Card!

DESIGN AN EASTER EGG COMPETITION
THOMAS THE TANK ENGINE CHARACTER HUNT

+ Easter Activity sheets and puzzles

JUMP INC

URBAN PLAYGROUNDS
BE A GOOD EGG

Throughout the Easter holidays Jump Inc. will be fundraising for Andy's Children's Hospice with all sorts of fun activities. Customers can donate 50p when they book online and Jump Inc. are matching all the donations.

1 HOUR TODDLER SESSION
Every day, 9am-10am. £5 plus 2 free adults.

EAT + DRINK + JUMP
1 hour of jumping, a slice of margaria pizza and a soda for £12.

MONEY SAVING DEALS FOR 4+
Our group deals means you can bring the whole family or meet up with pals!
4 jump for £30, 5 jump for £35, 6 jump for £40.

BOOK DIRECT. FIND THE LINK ON OUR WEBSITE.

Rapunzel

A TANGLED TALE

10th Anniversary

MONDAY 11TH APRIL
12:00-13:45, 15:00-16:45

This fundraising advertorial from Talegate Theatre is Live on stage at the Parkway for one day only.

Plus great Family Films all Easter holidays including Sonic 2 and The Bad Guys.

BOOK DIRECT. FIND THE LINK ON OUR WEBSITE.

FOR MORE INFORMATION: WWW.FLEMINGATE.CO.UK/EASTER

ENJOY AN EGG-CITING TIME AT FLEMINGATE THIS EASTER!

Take part in an Easter Hunt with Egg Animal Characters popping up everywhere!

Head down to Flemingate between Saturday 9th and Sunday 24th April 2022 and see if you can find the eggs and match the animal to the right places. Every entry will be able to collect their special Easter treat from Art & Soul and enter a fantastic competition to win a Family Ticket for 4 to Jump Inc. Inflatable Park at Flemingate. There are also a full range of workshops, events, and activities for everyone to get involved in.

Lab Rascals are running workshops with Bath Bombs, Dry Ice Volcanoes and Harry Potter Potion in the unit between Sports Direct and H&M!

Crafty Cat Events are bringing their pop-up pottery studio to Flemingate in the same unit! They will also be bringing along a range of other craft kits - needle felting, wooden crafts, crystal art and more. There will be something for everyone!

The Entertainer have lots to keep little ones entertained with design an Easter Egg Competition, The Entertainer Rocks and other fun activities. Talegate Theatre are back with their panto Rapunzel: A Tangled Tale at Parkway Cinema, plus new releases Sonic 2, The Bad Guys and Fantastic Beasts: The Secrets of Dumbledore.

Jump Inc. are raising money for Andy's Children's Hospice all Easter, plus kids can enjoy 'Eat, drink and Jump' with 1 hour of jumping, slice of margarita pizza and soda for £12. There are also money saving deals for groups of 4 or more people, plus daily toddler sessions 9-10am for only £5 plus 2 adults free.

Plus don't miss out on lots of great food offers and 'Kids Eat Free' at various places.

For more information on everything that is happening, visit www.flemingate.co.uk/easter

NORTHERN MASTERS WEIGHTLIFTING COMPETITION

Lynne Auton, local amateur weightlifter, competed in the Northern Weightlifting competition in Gateshead at the beginning of March.

She successfully claimed gold in her age and weight category, with a personal best in the clean and jerk and a personal best total.



Her next competition is the British Masters in Bangor in May.

Just Beverley wishes her the best of luck!



DREAM DOORS EXPANDING FAMILY BUSINESS

In February this year on Valentine's Day, Dream Doors celebrated 8 years in business since opening on Swinemoor Lane in Beverley specialising from a handle swap to complete kitchen and bedroom refurbishments.

Andy and Terri, a husband and wife team, have never looked back since opening the doors and are delighted to help breathe a new lease of life into the heart of any family home.



In December 2016 Dream Doors won the Rising Star Award at the national Dream Doors franchise awards ceremony.

From humble beginnings, Dream Doors have gone from strength to strength and look forward to continued growth and more success.

To handle the continued growth and success of the business Andy and Terri are delighted to be welcoming 2 new family members, a dream come true for son Shaun and future daughter-in-law Jodi who is due to marry their youngest son Jack in June this year.

Richard, their Installation Manager of 7 years,
www.justbeverley.co.uk



welcomes Shaun on board to help him with organising components for the fits and deliveries.

Jodi will be trained up in Sales to work alongside Andy, and will also help Terri out in the running of the office.



LIVE MUSIC AT ST NICKS!

St Nicholas' Church are presenting an exciting programme of live music throughout 2022.

In the cosy surrounds of Beverley's 'hidden gem' church, a plethora of established names are set to appear, kicking off with hugely popular singer-songwriter Gareth Davies-Jones on Friday 8th April, and alt-folk sensation Nick Harper (pictured) on Saturday 21st May.



The Vicar of St Nicholas Church Reverend Mike Peatman says "We're delighted to be welcoming audiences to St Nicholas' for a range of great music from talented performers. It is great to be widening the use of our building to enable these concerts to take place."

Ticketing information and details of further upcoming concerts can be found at www.stnicholaschurchbeverley.co.uk/social-events

LIVE MUSIC AT ST NICHOLAS'
Holme Church Lane, Beverley HU37 6QP

beautiful concerts in a stunning historic church

8 APRIL | 7.30 PM
GARETH DAVIES-JONES

21 MAY | 7.30 PM
NICK HARPER

tickets available from:
www.stnicholaschurchbeverley.co.uk
BAR, COMFORTABLE, VENTILATED VENUE, EARLY FINISH

EAST RIDING THEATRE RETAKES ITS PLACE IN BEVERLEY'S POST-PANDEMIC CULTURAL OFFER...

Beverley's theatrical producing house, East Riding Theatre (ERT), had been operating successfully from its former Baptist chapel on Lord Roberts Road since its first production in 2014 - then coronavirus arrived.

Whilst the pandemic isn't over, we're learning to live alongside it however, the theatre industry nationally is still coming to terms with its effects. Audiences remain hesitant to return to theatres and reduced ticket sales continue to threaten these vibrant spaces.

Andrew Aldis, the new Theatre Manager says "We're starting to see a growing confidence in visitors to the theatre, and we're determined to help people reconnect with social activities. After a forced hiatus and our tentative steps back into live performances, we're proud to be presenting our next in-house production, *The Hound of the Baskervilles*, at the end of April.

"We recognise the importance of helping customers to feel comfortable returning to the theatre so I'd recommend to anyone with questions or concerns to please call or email us and we can try to allay any fears.

"East Riding Theatre is one of the cultural gems of Beverley. The return of audiences is key not only to its continued success but also to the cultural well-being of residents and visitors to the town."

Working in a Grade-II-listed chapel and being able to marvel at its architectural beauty is something of a privilege for the venue's employees and volunteers, so this week we've been digging through the local archives on a mission to uncover the past of our theatre. With the help of local historian Susan Neave, we've discovered a rich history of the building's numerous functions dating back to the 1900s.

Built in 1909, the Edwardian building we use as a theatre today, was a Baptist Chapel for the people of Beverley. The building was designed by architects Garside and Pennington in 'Art Nouveau Gothic' style of red brick and stone. The chapel, which officially opened in 1910, sat 400 churchgoers and had a meeting room and Sunday School based in the rear part of the building.



The chapel closed in 1964 and was sold to the East Riding County Council to be used as a storage space. For a time, the space was also used for vaccinations to help protect the local people against diseases such as measles and diphtheria.

From 1996 to 2007 the building became home to the East Riding Archives, pending the completion of the building of the Treasure House.

It was in 2013 that the Lord Roberts Road building began its journey to become a theatre. It was thanks to a voluntary board helping to raise the funds, the work of 80 volunteers and the generosity of a few local businesses that the renovation and conversion of the old chapel could take place, resulting in an outstanding independent theatre.

The new East Riding Theatre officially opened its doors in late 2014 with its production of Charles Dickens' *A Christmas Carol*, a show which many Beverlonians remember fondly.



in the area, the venue runs largely due to the incredible support of its dedicated volunteers.

When the UK went into national lockdown in March 2020, and the theatre was forced to close its doors for the very first time, the venue was left with an uncertain future. However, the venue staff and volunteers spearheaded a fundraising campaign to help pay staff and building costs to

avoid permanent closure. The doors reopened in September 2021 with audiences returning for a production of Harold Pinter's *The Dumb Waiter*.

The theatre was used in 2014 by Universal Productions to film parts of *Dad's Army*. The entrance foyer became Captain Mainwaring's office, and the auditorium was used as the village hall. This provided a timely financial injection of cash that helped build the stage and café bar. Today, as a registered charity and one of the only producing theatres

ERT remains optimistic about the future and is committed to rebuilding its audience. With an exciting programme of events for 2022, striving to provide high quality theatre and entertainment for the local community remains the theatre's goal.

The Hound of the Baskervilles begins this month from Thursday 28th April to Saturday 21st May. Performances start at 7.30PM with selected matinees. Tickets cost £18 Standard / £17 Conc. (Over 65 & 16-22) / £12.50 Child (U16).

To find out what's on at ERT this month, visit their website at www.eastridingtheatre.co.uk or call Box Office on 01482 874050.

Written by Phoebe Noel based on research by Susan Neave (2014).

East Riding Theatre presents

The Hound of the Baskervilles

By Sir Arthur Conan Doyle

Adapted by Steven Canny & John Nicholson

Directed by Marieke Audsley

a comedy

A Howlingly
Funny Spoof

proudly sponsored by



THE BEVERLEY ARMS

eastridingtheatre.co.uk

box office: 01482 874050

10 Lord Roberts Road

Beverley HU17 9BE



Thur 28 Apr to Sat 21 May 2022

7.30 pm & selected matinees

Standard £18 / Conc. £17 (Over 65 & 16-22) / Child £12.50 (Under 16)

Recommended age 8+



EVERY THURSDAY

(Doors open 10am)

Join us for a free brew and enjoy some great films on Beverley Parkway's Big Screen.

Only £4.50 with drink and biscuits included.
Aimed at 55s & over.
Films subject to change.

Thursday 7th April -

Never Too Late - 10.45am

Starring: James Cromwell, Dennis Waterman, Roy Billing

The Power of the Dog - 10.30am

Starring: Benedict Cumberbatch, Kirsten Dunst, Jesse Plemons

Thursday 14th April -

The Eyes of Tammy Faye - 10.45am

Starring: Jessica Chastain, Andrew Garfield, Cherry Jones

Never Too Late - 10.30am

Starring: James Cromwell, Dennis Waterman, Roy Billing

Thursday 21st April -

Belfast - 10.45am

Starring: Caitriona Balfe, Judi Dench, Jamie Dornan

The Eyes of Tammy Faye - 10.30am

Starring: Jessica Chastain, Andrew Garfield, Cherry Jones

Thursday 28th April -

The Power of the Dog - 10.45am

Starring: Benedict Cumberbatch, Kirsten Dunst, Jesse Plemons

Belfast - 10.30am

Starring: Caitriona Balfe, Judi Dench, Jamie Dornan

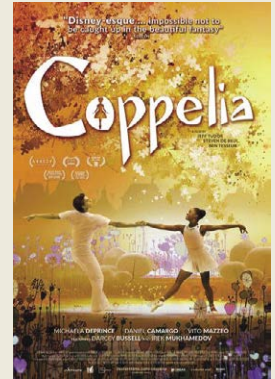
These are the films scheduled to open in April - all are subject to change.
Check out up-to-date cinema listings at www.justbeverley.co.uk/cinema-times



April 1st



April 1st



April 2nd



April 8th



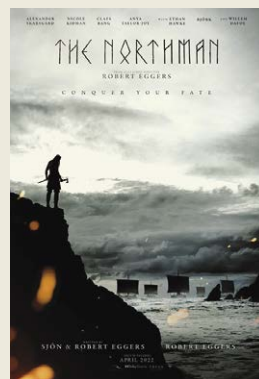
April 8th



April 13th



April 15th



April 15th



April 22nd



April 22nd



Coming Soon



Coming Soon

YOUR LOCAL INDEPENDENT CINEMA



JOIN US FOR SOME GREAT FILMS AND EVENTS THIS SPRING

Take a look at what is forthcoming this April at Beverley Parkway.

THE BAD GUYS

After a lifetime of legendary heists, notorious criminals Mr. Wolf, Mr. Snake, Mr. Piranha, Mr. Shark and Ms. Tarantula are finally caught. To avoid a prison sentence, the animal outlaws must pull off their most challenging con yet - becoming model citizens.

Showing from April 1st.



SONIC THE HEDGEHOG 2

The world's favourite blue hedgehog is back for a next-level adventure in SONIC THE HEDGEHOG 2. After settling in Green Hills, Sonic is eager to prove he has what it takes to be a true hero. His test comes when Dr. Robotnik returns, this time with a new partner, Knuckles, in search for an emerald that has the power to destroy civilizations.

Showing from April 1st.



DOWNTON ABBEY - A NEW ERA

Downton Abbey: A New Era reunites the original principal cast. In addition to the original cast, Hugh Dancy, Laura Haddock, Nathalie Baye and Dominic West will join the cast. Downton creator Academy-Award® winner Julian Fellowes will once again write the film's screenplay. BAFTA and Emmy nominated director Simon Curtis (My Week with Marilyn) will join the filmmaking team to direct the sequel.

Showing from April 22nd.



RAPUNZEL: A TANGLED TALE

Rapunzel Rapunzel, let down your hair.

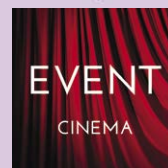
From Talegate Theatre, the team that brought you "Goldilocks", "The Little Mermaid" and "Wizard of Oz" comes this hair raising adventure.

Join Rapunzel as she escapes the tower from the evil witch Gothel and has the most amazing day ever! A tangled tale featuring pop songs, magic and puppets.

Don't have a bad hair day, book your tickets today!

<https://beverley.parkwaycinemas.co.uk/rapunzel>

Monday 11th April at 12noon & 3pm.



Event cinema offers something a little different to mainstream films. Live and pre-recorded shows beamed in via satellite from all over the world. Here are the latest live streams that you can enjoy on the big screen at Parkway Beverley.

Tuesday 5th April, 1pm & 7.30pm -
Exhibition On Screen: Easter In Art

Wednesday 13th April, 6.45pm -
Royal Opera House - La Traviata



Thursday 21st April, 7pm -
NT Live 2022: Henry V

Sunday 24th April, 2pm -
Northern Ballet: Merlin

Thursday 19th May, 7.15pm &
Sunday 22nd May, 2pm -
Royal Opera House - Swan Lake

Tuesday 24th May, 1pm & 7.30pm -
Exhibition On Screen: Pissarro

Thursday 26th May, 7pm -
NT Live: Straight Line Crazy

BROOK TAVERNER - THE SPRING/SUMMER COLLECTION IS HERE

April means many things to many people, but to us at Brook Taverner, it certainly signifies new life and the freshness of spring! Fortunately, our 2022 Spring/Summer Collection holds the exact same values, promising to have every event covered whether dressing to the nines or opting for off-duty looks.

Having just arrived in store, the Felix Ice Blue Overcheck Jacket has become an overnight favourite!

The Felix is woven in the prestigious FITECOM mill, blending linen with smart fibres to achieve a crease-resistant masterclass of tailoring. Coming from Portugal, this formal staple knows a thing or two about keeping its cool when temperatures rise!

Rest assured that you'll maintain an elegant silhouette and a feeling of refined comfort throughout the day, thanks to a jacket that sits at the cutting edge of garment design.



The Felix's delicate blue hue epitomises the beginning of spring, with a versatile overcheck that will complement just about anything in your wardrobe!

If you're still on the lookout for linen, why not sample our brand-new linen popover shirts?

With an over-the-head style, the popover collection represents a contemporary shift in warm-weather casualwear, offering a laid-back alternative to the conventional button-through shirt. Rely on the quick-drying and effortlessly stylish qualities of 100% linen to look and feel your best, when sunning yourself on distant shores to lounging poolside!



Finally, the brand-new Jason trouser could bring something completely different to your wardrobe, acting as a stylish experiment with texture and colour galore.



A vibrant colour palette will brighten any ensemble with a considered confidence, ideal for when the sun's shining and style is front of mind. Available in sand, caramel, raspberry, and blue and in a tailored fit for a contemporary appeal, wherever this summer takes you, rest assured that you trousers will move with you, thanks to a hint of elastane, giving this composition the gift of flexibility.

The print exudes an understated quality, noticeable only when up close, showing you care for what you wear without having to shout it from the rooftops.

As always, the devil is in the detail and what better way to appreciate the finish and finer detail of our garments than popping into our Beverley store at 35 Toll Gavel? Lee and the team will be happy to see you!

Our 2022 Spring/Summer collection is now in store

OPEN
9am to 5pm Monday to Saturday
11am to 4pm Sunday

www.brooktaverner.co.uk

BROOK TAVERNER

35, TOLL GAVEL, BEVERLEY. 01482 882356

VINE & GRAIN - FLAVOUR OF THE MONTH

Vine & Grain is a small independent shop in the heart of Beverley where we strive to bring you the very best in Craft Beer, Wines & Spirits. From Whisky distillers in Yorkshire to tiny Vineyards in Greece we hope to find something that will whet your palate. Pop in store, say hi and lets discover your next favourite drink!

Gin of the Month -

Northern Fox Rhubarb Cream Tea Gin - £34.95

Beverley's own gin distillery, Northern Fox, have been going from strength to strength over the last couple of years with their Gins earning much deserved Great taste awards amongst others.

Their gins are dry in nature, but they use exciting and different botanicals to create unique gins from Honeyberry (only one in the UK) to Coffee and most recently they have released their new creation; Rhubarb Cream Tea Gin. The blend of tea and rhubarb is a great homage to our county



and tastes fantastic. The rhubarb gives great tartness to the gin while this is balanced by the floral notes of the tea, add a splash of quality tonic and you have a very tasty springtime G&T. Pop in-store for a sample and to discover the range.

Wines for Easter -

Rola Wines Branco & Tinto - Both £13.95

With easter coming up fast it's that time of year to think about what wine to have with your Easter Monday roast dinner. This year I'm delving into the wines of Portugal and in particular the Rola Branco & Tinto wines.



Portugal is home to some truly brilliant wine makers and the wine that it produces is top notch but often goes under the radar when compared to its neighbour Spain.

Ana Rola, winemaker, is no exception and is making standout wines that are true to their location in the Douro Valley. The Tinto is a full bodied, elegant wine with dark fruits on the nose and bright red fruits on the palate. The Branco is



fresh and crisp with great tropical fruit notes. This is a very smooth wine with great complexity and matches well with its brother the Tinto. The wines are both vegan friendly and low in sulphites as they are both low intervention wines so that the essence of the terroir has been bottled up with little interference. Both wines would make great accompaniments to your Easter Roast or any meal for that matter.

Brewery of the Month - Bricknell Brewery

Tucked away on Bricknell Avenue is the small but impressive brewery that is Bricknell Brewery. Since 2015 they have been brewing up a wide range of quality bottle conditioned beers of differing styles from hearty porters, warming best bitters and zesty pale ales.

Don't just take my word for it as they have featured regularly in CAMRA's Good Beer Guide. Their beers are all vegan friendly and they even grow their own hops that they use on a seasonal basis making these truly local beers. These have always been a firm favourite from the day we opened and no doubt will be for years to come, pop in and try for yourself.



VINE & GRAIN

CRAFT BEER, WINES AND SPIRITS

MENTION "JUST BEVERLEY" FOR 5% OFF YOUR FIRST PURCHASE*

(*one per customer, not to be used with any other offer)
*Excludes old and rare products. Valid until 01.06.2022

34 BUTCHER ROW, BEVERLEY, HU17 0AB

@VINEANDGRAINBEVERLEY

WHO INVENTED IT AND WHERE DID IT COME FROM? THE HISTORY OF CRAFT BEER

Although difficult to pinpoint the invention of beer, it is likely to have emerged alongside the development of grain agriculture some 12,000 years ago. It is probable that while discovering crops like wheat, maize, rice and barley the fermentation process was discovered.

Evidence of the earliest alcoholic beverage brewed comes from neolithic pottery found in China, dating from around 7,000 BCE. The brew consisted of honey, rice and fruit. The first barley beer dates back around 5,000 years where hard evidence of beer production was unearthed in the Middle East. Archaeologists discovered ceramic vessels with sticky residue still inside. The vessel had a poem etched on to it which honoured Ninkasi, the patron goddess of brewing. It was

thought that the brews were a safer alternative to drinking water so became a staple in Sumerian diets. In the Babylonian Empire a law was set, the Code of Hammurabi, which saw beer rationed to citizens: 2 litres for labourers and 5 litres for priests and their administrators. The beers were often flavoured with unusual additives such as dates and olive oil.

It wasn't until the Middle Ages that artisans, such as Christian Monks, began brewing with hops. In fact, the early 800's saw the monastery of St. Gallen in Switzerland build the first full scale brewing operation in Europe. Over the 1100's hops were used to evolve the way Europe made beer. It was discovered (and written about by St. Hildegard) that hops preserved many types of drink as well as having health benefits. This led to a rise in the use of hops and Europe expanded into a brewing powerhouse.

We believe the process of brewing beer didn't come over to England until 1412, with the cultivation of hops coming later still: there is record of the first planting of hops starting in 1520 in Kent. Brewing soon became a household skill expected of all women in medieval times, some women became alewives and set up commercial operations on a small scale. The modest income made from their alehouses provided them with independence. In 1350, after the Black Plague, demand was high for ale and female brewers became better established. With rising demand and further understanding of the preservative properties of hops, it meant beer could be



produced on a larger scale as it no longer needed to be consumed in a matter of days. However, the small amount of money made by alewives was not enough to invest into larger kettles or bigger units, forcing women out of their own businesses and into employment in new, dedicated breweries. By the late 1500's most British beer was being made with hops.

Supply and demand saw the birth of craft beer, with microbreweries originating in the 1970's. Trends towards beer changed during this time with campaigns to support traditional brewing methods, such as the Campaign for Real Ale (CAMRA). These trends saw many open their own small breweries to create beer inspired by different styles, focusing on rich flavours, and an overall better quality of beer.

Today Atom, are pushing boundaries to create modern, flavourful beers while collaborating with our local community.





ATOM

BAR BEVERLEY




OPENING TIMES

MONDAY CLOSED
TUESDAY 4PM-10PM
WEDNESDAY 12-10PM
THURSDAY 12-10PM
FRIDAY 12-11PM
SATURDAY 12-11PM
SUNDAY 12-8PM





**7 NEW WALKERGATE
BEVERLEY
HU17 9EH**



DELIVERING EVERYTHING BUT THE DOG!

Sasha said to Flossie her dog, "Come on time to take you to the groomers for a trim". Sasha was a little apprehensive although it wasn't the first time she had booked her dog Flossie into Everything but the Dog on Butcher Row, it turned out to be a day that changed her life.

Having left her dog to have her trim, Sasha spent her time doing a little shopping and enjoying the Friday in Beverley, but as she turned to go back to the dog groomers, she noticed a face, a face from the past. Within a blink of an eye she stopped and called "Anne", then called again, following after her. Anne was in a rush to pick up the Grand Children, and wasn't in tune with her surroundings.



Anne stopped, Sasha caught up and said "hello", but Anne was distracted by the clock and picking up the grandchildren. Sasha mentioned she had just taken her dog to the groomers around the corner, Anne explained she was off to pick up the Grand Children and they parted company.



It was only when Anne was in the car on her way for the pick up that she had the light bulb moment and shouted out "Sasha, that was Sasha, OMG, it was Sasha", they had been best of friends, going to amateur dramatics together many many years previous, at least 30 plus years ago.

Having picked the grandchildren up, the search began, Anne thought how do I get in touch with Sasha, I cannot believe I did not recognise her, the penny had dropped.

Dog Groomers, Anne thought about where they had bumped into each other, it had to be Everything but the Dog. (EBTD) "Lets see if they can deliver for me Everything But The "and thanks to the" Dog"

So Anne called the groomers and explained about the off chance meeting, mentioned Sasha and her dog Flossie and then left her number, so when she went back in, if she wished she could get in touch. Sam the Spa Manager and Leonie, one of the grooming team made some notes and said to Anne that they would do what they could to help.



Following various conversations, with the approval of Andrea, the owner of EBTD, Sasha was contacted, and the team explained that Anne

had left her number to be passed on and because she was in such a hurry it wasn't until later the penny had dropped and would like to be in touch.



Sasha and Anne got in touch, had coffee together and realised that despite the years that had gone past, they still had a lot in common and a lot of catching up to do.

Anne surprised Sasha with the handing over of a mug they bought together to share some 30 + years ago. She said to Sasha "I think it's time you held on to it now", the mug being a symbol and memory of the good times they had together. Amanda and the team at EBTD were more than delighted to hear that Anne and Sasha had got in touch, it is only through their help and awareness that friends for over 30 years have been reunited.



A dog can bring the best of friends together.

An independant shop on Butcher Row in Beverley demonstrates the value of great customer service offering Everything But The Dog.

MR CARPETS

CARPET AND FLOORING SPECIALISTS

TAKE A LOOK AT OUR QUALITY INSTALLATIONS

34
YEAR
ANNIVERSARY

34 years
in business

34 years
of good, honest service

Check out our Facebook and Google reviews [f mrcarpetsbeverley](https://www.facebook.com/mrcarpetsbeverley)

01482 872134

3 Becksid North, Beverley, HU17 OPR

THE DOORS ARE OPEN AT THE FERGUSON FAWSITT

The doors are open but who has taken on the next chapter of The Ferguson Fawsitt.

Allen Slinger could not resist the opportunity to take over the running of The Ferguson Fawsitt, having been successful in all his previous public houses, Allen could not resist the challenge.

During March Allen and a team of people have been busy transforming the popular public house and finally Allen Slinger was able to open the doors to the general public.

Building on his reputation over the past number of years in Beverley at a number of different public houses including the Royal Standard and more recently The Tiger Inn, Allen set his heart on transforming the Ferguson Fawsitt in Walkington and to bring it back to its former glory.



The Ferguson Fawsitt has

been empty for a number of years, so prior to opening the doors a lot of work had to be done to bring it up to Allen's exacting standards.



On Wednesday 16th March a soft opening allowed the team to welcome invited guests and friends to the Ferguson Fawsitt, to sample food and drinks and put the staff through their paces.

Allen commented: "I'm so excited to open the doors, this is a great location. Walkington is a



vibrant place, and we can't wait to welcome everyone to come and enjoy the relaxing setting. You can bring your dog as well as we are dog friendly".

If you have driven or walked past over the last few years, take the opportunity now to stop, go in and sample the food and have a drink.



Telephone:
01482 526317

Email: info@fergusonfawsitt.co.uk

www.twitter.com/fergiefawsitt

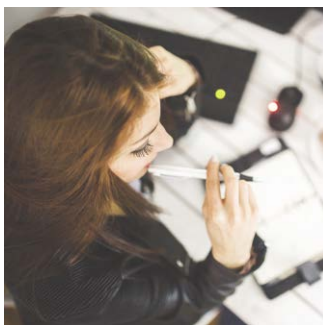
www.instagram.com/fergiefawsitt/

www.facebook.com/FergieFawsitt

WILL YOU TRY SOMETHING NEW?

Your first question might be, quite reasonably, why should I? Perhaps I can persuade you.

When we try something new, such as learning a new skill, our brains and bodies are challenged. You must have heard the phrase "use it or lose it". Also trying something new changes our perspective and allows us to see things differently. You may then see things you had previously missed and discover new possibilities.



Of course, trying something new often results in leaving our comfort zone, particularly if it is something we were once afraid of trying, such as flying, swimming or painting. If you venture outside your comfort zone you could see and identify new opportunities.

Trying something new will stimulate you intellectually, emotionally, and physically. Can you develop a habit of trying new things? It will result in learning, personal development and being open to, rather than fearful of, change.

I have a friend who on meeting me always ask "what's new?". Next time he does I will have a great answer for him. I am learning Spanish, about to attempt drawing, as I struggle with drawing even a stick man and take up some exercise to improve my flexibility and movement. I will need help, especially with the drawing, so there is another challenge, asking for help.

Will you try something new? What will it be?

Let me know what you are going to try please just contact dave@eastridingwills.co.uk

Will You Leave it?

Protect your family and assets make a will today.



Stop Putting it Off

For a free no obligation home visit contact, Beverley based, Dave Tunstall **now**

07939085752

dave@eastridingwills.co.uk



Family friendly wills in the East Riding and further afield.

YOUR LOCAL LANDSCAPING SPECIALISTS

**FREE LOCAL
DELIVERY**

Open to
trade and public



Visit our
landscaping
displays in branch



Partner with
industry-leading
suppliers



Competitive
prices



Landscaping
experts in branch

SWINEMOOR LANE

HU17 0JX | 01482 880088 | mkmbss.co.uk
OPEN MON-FRI 7:30-17:30 SAT 7:30-NOON

M M
BUILDING SUPPLIES

PAVING | DRIVEWAYS | DECORATIVE AGGREGATES | DECKING | FENCING

WHITE RABBIT - A SUSTAINABLE EASTER

In 2022 sustainability is the name of the game. Whether your gripe is the use of fossil fuels, the destruction of ecosystems, or the volume of plastic littering our world, there is no longer debate that human practices must become more sustainable.

But with the UK set to tuck into an estimated 80 million Easter eggs this Easter, how can we protect our environment whilst still enjoying our traditional over-the-top indulgences?

To begin with, choosing sustainable chocolate is a must. When done right, cocoa farming requires shade trees, reducing the output of carbon dioxide; proper waste disposal means the soil is not depleted and can be reused so more rainforest doesn't need to be cleared; and teaches communities the core skills needed to make an income and pass through the generations.

Sustainable chocolate doesn't come with a label like 'fair trade', which refers only to paying a consistent price for cocoa beans on the open market, but is a holistic approach to cocoa growing practices encompassing not just the farming but the economy of the region of origin.



Chocolate produced in this way isn't just sustainable but has a real impact on the quality of the end product, so it may take a little bit more searching to find a chocolate company aligned with these practices but it is worth

it for the green credentials, as well as the delicious taste.

The next to think about is the packaging. It needs to be said, plastic has been unrivalled at keeping food fresh and preserved for the longest time, but as we now know it has its near-eternal negatives. Especially the polypropylene clear bags which show off the chocolate at its best, a lot of chocolate packaging is yet to be recyclable in this country. Eco-packaging has taken a long time to catch up, and become budget friendly for small producers, but it is finally starting to come. The 'eco' line at White Rabbit has now covered our truffle boxes and has newly expanded to our flavoured bars, saving over 3.5K un-recyclable bags a year! Our Easter Boxes are 99% sustainable packaging, with just the gold foil around the egg left to conquer.



Finally, it's the food miles. Unfortunately, this is a tricky one to get around as chocolate will only grow in the tropics, but there are things that can be done to reduce this part of the carbon footprint. Some companies have started to produce the end product in the chocolate country of origin, something called 'Raise Trade' as it raises the standards in these traditionally poor communities and keeps more money for them. This takes one leg of the journey out, but not all. The best thing to do is focus on the farming practices and the packaging, helping to off-set the unavoidable food miles so you can enjoy your chocolate guilt-free!

Sustainable chocolate is the only kind White Rabbit sell, so you can treat yourself whilst supporting local trade and the whole planet!
Ed Hawkes, White Rabbit Chocolatiers.

WHITE RABBIT CHOCOLATIERS

CRACKING GIFTS

INDEPENDENT, ETHICAL, HAND-MADE CHOCOLATE CREATIONS

UNIQUE EASTER HOT CHOC BOMB

HAND-FINISHED TRUFFLES

Indulge in luxury, fresh tasty treats

whiterabbitchocolatiers.co.uk

01482 679325
14 - 16 DYER LANE, HU17 8AE
BEVERLEY

01482 699039
PARAGON ARCADE, HU1 3PQ
HULL

Botterill & Co

Chartered Certified Accountants

We are a modern and professional accountancy practice ideally located to serve businesses in Beverley and the surrounding area.

We utilise modern accounting technology to provide you with a cost effective, professional service.

Our services:

- Annual Accounts
- Company Formations
- Tax Planning
- Payroll
- Management Accounts
- Cloud Accounting
- Tax Returns
- Bookkeeping & VAT

For a free initial consultation please contact us:

Office: 01482 862240
Mobile: 07966 051458
Email: gareth@botterillco.co.uk
Website: www.botterillco.co.uk

1st Floor Offices, 40 Norwood, Beverley, HU17 9EY.

WHY IS EASTER CALLED EASTER?

Celebrated usually in April every year, Easter has now become heavily associated with chocolate eggs and bunnies, but where did the name Easter originate and why was it celebrated?

Easter is a Christian holiday steeped in tradition that celebrates the resurrection of Jesus and marks the end of Lent. This year Good Friday will be celebrated on April 15, Easter Sunday on April 17, and Easter Monday on April 18.

The modern term Easter developed from the Old English word *Eāstre* or *Eōstre*, which itself derived originally from the name of the Anglo-Saxon goddess *Eōstre* nearly 2000 years ago.

Feasts and celebrations were held in *Eōstre*'s name before those traditions died out and were replaced by the religious meaning we follow today. Christians who follow the Bible believe that Jesus was crucified on Good Friday and according to the New Testament, Easter occurs three days after his crucifixion.

The Bible tells of how three days after Jesus was nailed to the cross, his disciples discovered his body had disappeared from the tomb he was buried in. Christians believe that on this day "he had risen" making it the date of his resurrection. This has now become known as Easter Sunday.

For centuries the date of which to celebrate Easter has been full of controversy and it still changes from year to year. In fact, Easter can occur on any Sunday between March 22 and April 25.

The reason the date varies so much is because it depends on the Paschal Full Moon, the first full moon after the spring equinox. Centuries ago, Christians wanted Easter to coincide with Passover because Jesus's death and resurrection happened after the Jewish holiday, however, the Jewish calendar is tied to solar and lunar cycles which is why the dates of Passover and Easter fluctuate each year.

EGGCITING THINGS TO DO IN BEVERLEY AROUND EASTER

With the Easter holidays coming up it's time to think about things to do in Beverley for some family fun. Here are some ideas to put a hop skip and a jump into your Easter plans.

Beverley Racecourse

Racing is back at Beverley Racecourse for 2022 and there are special plans for this Easter. On April 13, Beverley Racecourse are putting on an afternoon of racing, children's entertainment, food and drink, and you never know, you might well catch a sighting of the Easter Bunny. It's a family day out for all the family, with an Easter Egg decorating workshop for the kids to get creative and decorate their own Easter Egg and a mobile petting farm with all your friendly and favourite animals from Ian's Farm as seen on The Yorkshire Vet.

Easter egg hunt on the Westwood

Spend an afternoon keeping the kids entertained with a picnic and active by making your own Easter egg hunt on Beverley Westwood. It will require a bit of planning to make sure you have memorised the route, sorted out a basket and excellent treats, and printed out any clues you want to include but it will make for a fun couple of hours. It's something the whole family will enjoy.



Outdoor fun

Why not take advantage of the springtime sunshine and have some outdoor fun with the family? Take a leisurely walk around the Westwood or venture into the town centre and explore the local shops Beverley has to offer. There's also Let Loose! Adventure Park just a short drive from Beverley if you long for a thrill or follow the Flemingate trails and perhaps finish indoors and JUMP.

LEWIS NORTHEN
FUNERAL DIRECTORS



MY FAMILY TAKING
CARE OF YOURS



Get In Touch
1 Lincoln Way, Beverley, HU17 8RH
info@lewisnorthyfuneraldirectors.co.uk
www.lewisnorthyfuneraldirectors.co.uk
01482 888 658



Born and raised in **Beverley**, we are proud of the funeral services we offer to our local community.

As a family business we want you to have confidence in us to support you from the first point of contact, throughout and thereafter. The moment your loved one comes into our care they will be treated with care and respect. We offer a comprehensive range of funeral services ensuring you receive the perfect funeral service for your loved ones.

We are available 24 hours a day, 365 days a year, we will guide and support your family throughout.

My family taking care of yours

Giving the personal touch to funeral services in Beverley and surrounding areas.

Funeral plans, memorial jewellery, available 24/7 365 days a year.

LET'S TAKE A TRIP TO WETWANG - FOR A SPRING WALK

Wetwang usually raises laughs for its quirky name and its notional celebrity mayors, formerly Richard Whiteley and now popular weatherman Paul Hudson.

The diminutive village, just a dozen miles from Beverley, has a surprising amount to offer the visitor and is especially well-blessed by public footpaths, making for a splendid wander on any fine day this spring.

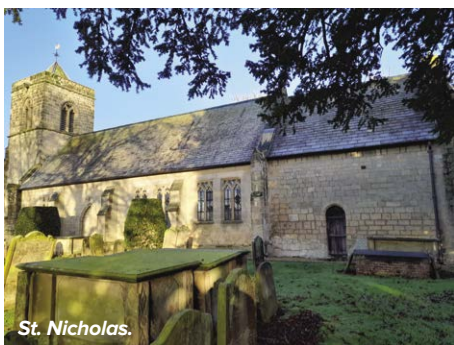
There are 2 good pubs and an outstanding fish and chip shop to refresh. You could confine yourself to the village streets, which do offer fine views, but if you can, try to stride out for a 4.5 mile circular through glorious surrounding countryside.



Track bed of former railway.

1. There is a very limited bus service from Driifield, but for most reaching Wetwang by car along the scenic B1248 is the best option - there is plenty of parking on the back lanes. Begin your walk at St. Nicholas' church, which typically for our area is a pleasing mixture of architectural styles. The churchyard is very verdant and attractive. The church might well be open, when closed on my last visit in late February, a kindly local lady with a key let me in. The best features are the medieval nave piers and a beautifully patterned font.

2. From the church, cross the often very busy A166 with care and head right past the pub to the fine village pond - an important wildlife area with a fine Victorian former rectory at its eastern end. Ponds are of course a feature of most Wold's villages as running water is so rare in the chalk landscapes, scarcity of water could even lead to



St. Nicholas.

battles between villages, as at nearby Fimber and Fridaythorpe, where a violent water war erupted in the dry summer of 1826. The name, Wetwang might come from the very opposite of Dri(y)ffield, others think it is a Norse name for a legal meeting place.

3. Turn left by the pond down the quiet lane of Station Road which sweeps over the Wolds to Sledmere. The views to the north are splendid. In the dip you can see a set of buildings from the former railway station. This was on the sleepy line between Malton and Driffield, affectionately known as the Malton Dodger, services ceased in 1950.

4. In 100 yards take the signed path right which takes a dog-leg route into the country. Continue north towards Station Farm, your route heads right just before the farm buildings and then passes to the rear of Wetwang Grange. In half a mile you reach a wide track along the ridge.

5. Go right here and follow this airy route as far as the striking Tatton Sykes monument, a noted viewpoint with expansive views across much of the East Riding. At 120 feet high it is impossible to miss, dating from 1865, it marks the life and work of the owner of the Sledmere estate.

6. Turn around and follow the track back the half mile to where a path descends to your left. This leads across the route of the former railway and soon reaches the main road, again cross carefully. A pleasant path leads across flat land to join a lane.

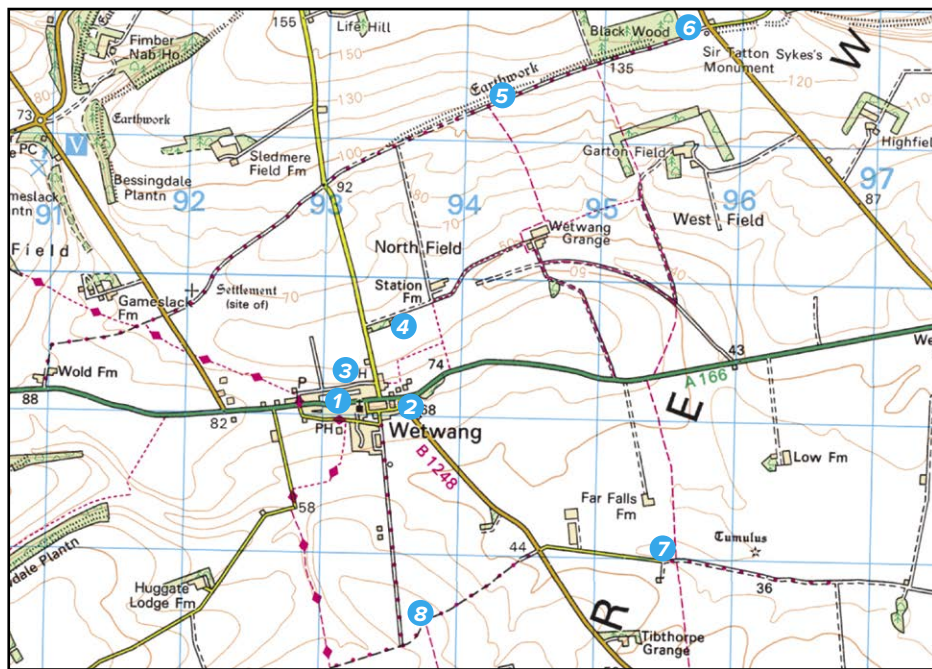
7. Turn right here back towards the village and



follow an easy route over the B road and up genty rising ground to the west. This area around Wetwang is exceptionally rich in archaeological remains, most importantly the chariot burial now in the British museum.

8. Take the clear track on your right which takes you back to the heart of Wetwang. If you have timed it right, a drink in the pub and some of the region's finest fried food awaits, I particularly recommend the home made fish cakes - truly scrumptious!

Ian Richardson.



HERE TO GET *you* THERE

HUNTERS[®]
EXCLUSIVE

BEVERLEY / 01482 861411

FERGUSON FAWSITT OPENS ITS DOORS



SPRING LIVE AT BISHOP BURTON COLLEGE



SALES / LETTINGS / MANAGEMENT

HUNTERS®

BEVERLEY / 01482 861411

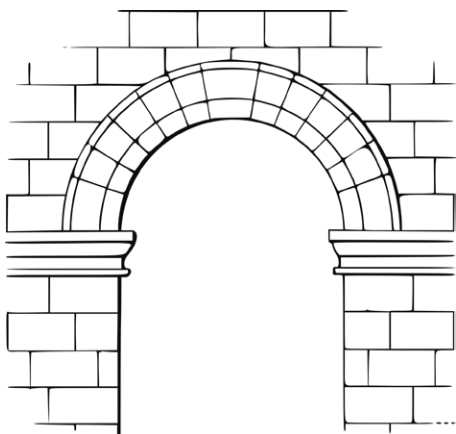
HERE TO GET *you* THERE

BEVERLEY LOOKS TO THE FUTURE WITH A NEW SOUTH BAR

In celebration of the Queen's Platinum Jubilee, plans have been unveiled to bring back some of the nostalgia to our historic market town.

Following an extensive survey carried out during lockdown, what people like about Beverley, those that entered the town via North Bar thought it was a fantastic, nostalgic welcome to the town and immediately raised people's spirits and minds, to enter as one person put "The world of Beverley".

With such history embraced in one section of the Town and the immediate impact it has on people, local councillors felt the timing would be right to introduce more symbolic entrance to the town.



Original artist sketch

Consultation is on the way for at least one more Bar "South Bar", with the ongoing conversation around Jocks Lodge to have a "Jocks Lodge Bar" built on entry to the Town.

Repeating on history following on from the historic stone markers to the centre of Beverley the Jocks Lodge Bar will be incorporated into the designs as people come into Town.

Keeping the Symbolic North Bar Design, but with a modern twist will leave people with a fantastic first impression.

There's evidence that Beverley was unique in Medieval times in that it did not have walls, but it did have 'bars' at its main entry points. **The only 'bar' left standing is North Bar**, which was built in 1409, at what was, in those days, the main entrance to the town.



The original South Bar was somewhere on Keldgate. As times have changed, the most-used access to the town is from the South and, with changes to the road layout, it seems to be an excellent idea to build a modern-day South Bar.

In the last 700 years, Beverley's growth has been due to its importance geographically and strategically as well as to its links with St John of Beverley, who founded the town in 721AD, and his impact on Kings and Queens throughout the years, many of whom have visited.

The erection of a South Bar would remind people of the town they are entering, its history and relevance and could carry images of some of the industries which have made Beverley what it is as a centre of commercial excellence over the years (everything from wool, tanning, cloth-making, coopering, brick and tile-making and chemicals to ship-building) as well as being



at the forefront of education (St John founded Beverley Grammar School in 700AD).

Cllr Linda Johnson, Mayor of Beverley said: "The fact that Beverley had 'bars' was nothing to do with fortification and everything to do with taxation! Beverley was a well-off town and the need to collect taxes on trade to improve the infrastructure was as important then as it is now.

"Building a new South Bar somewhere near the Sanctuary Stone on the A164, near its intersection with the A1079, which is 2 miles from Beverley Minster, would also remind us of Beverley's historic status as a place of refuge which has traditionally helped and welcomed refugees and which, with the War in Ukraine, Beverley is being called on again to do."



BEVERLEY PHOTOGRAPHIC SOCIETY

Our summer program starts in April when we get out and about on photo walks and visits. All participants will need to sign up.

Please note the start times.

Tuesday 29th March is our annual awards dinner at the Rose and Crown.

Tuesday 5th April 7pm at the Rose and Crown a workshop with Julien. "An introduction to on and off camera flash".

Tuesday 12th April 7pm at the Rose and Crown. Mike will give us a presentation "The Lakes and Scotland's Hills and Mountains.

Tuesday 19th April 11am at South Dalton. Meet at the church for a photo walk round the village.

Saturday 30th April meet 11am at the Appleby and North Frodingham railway. Scunthorpe DN16 1XA. Four hour visit. There are limited places available if anyone wants to join us. £15 non members. <https://www.afrps.co.uk/>

Tuesday 3rd May 7pm. Social meet in the Rose and Crown.

If you are interested in joining the club, please come along and meet the members.

No commitments. If you don't want to join the club but are interested in a particular

presentation or Zoom session you can join us for £3 by prior appointment.

We are members of the Yorkshire Photographic Union and affiliated to the Photographic Alliance of Great Britain.

All participants are asked to do a Lateral Flow Test before attending meetings.

Please come along, we are a friendly bunch and would love to welcome you.

For more information email: billbevphoto@gmail.com

BEVERLEY AC ROLLS OUT THE BLUE AND YELLOW CARPET FOR ITS ANNUAL AWARDS CELEBRATIONS!

Beverley AC rolled out the blue and yellow carpet on Friday 11th March when the Club held its Annual Club Awards Evening at the Beverley Barn.

Over 120 members attended the evening, enjoying a meal before celebrating the achievements of many Club members. Another 7 joined online to watch the live streaming of the awards section of the night.

This year's Awards saw a new award presented - the Committee Recognition Award. This award is presented to a member who has shown outstanding dedication, commitment and support to the Club in a range of ways, not just in running, and the first recipient of this award was Nicola Riley.

Two of the most prestigious Awards are the Club Runner of the Year, the member who has achieved the most as a runner and the Members' Member Award, where members nominate and vote for the Club Member who has made a huge and

significant contribution to the Club. This year's Members' Member Award was presented by Mel Pittaway, father of Graeme Pittaway of the Pittaway Group, sponsor of the Beverley 10K, to Sam Allen, in recognition of all her efforts in organising the Cross Country League. He was also delighted to present the Award for Club Runner of the Year to Rob Sparkes.



Fiona Oakes, the Club's Secretary, summed it up perfectly: "To be back together in person celebrating the vast range of achievements in our club was a very special thing. We are a big club now, but we are still friendly and inclusive. It is a pleasure to be involved in organising such a joyous event!"

Beverley AC was also proud to sponsor 3 new awards that were also presented. The first was The Steve Evins Trophy, presented in memory of a popular club member who loved running, especially cross country, who sadly passed away in 2020. His wife, Victoria, proudly presented the Award to the 1st FV50, Sam Allen. The other new Awards, the Brian Richardson Trophies, were presented to the 1st MV65 and 1st FV65 to acknowledge the work undertaken by Club member, Brian Richardson, in setting up and



establishing the Cross Country League 27 years ago.

The next key event in the Club's busy calendar is the Pittaway Beverley 10K taking place on Sunday 8th May. The Specsavers Walkington 10K will take place on Friday 8th July and entries opened on 19 March. Entries are available via the Beverley AC website - www.beverleyathleticclub.co.uk.

If you love to run and are interested in becoming a member of the Club, whatever your age or ability, you will receive a warm welcome. If you would like more information and details on how to join, please visit the Club website on www.beverleyathleticclub.co.uk.

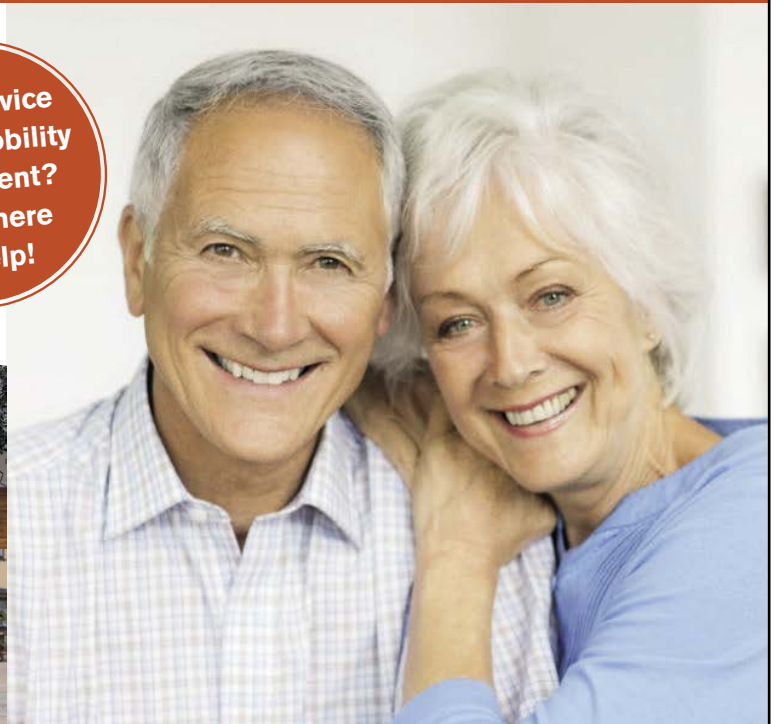


Tel: 01482 887799
Email: info@fox-mobility.co.uk

Fox Mobility
110-112 Walkergate
Beverley
East Yorkshire
HU17 9BT

- **Stairlifts**
- **Riser Recliner Chairs**
- **Walking Aids**
- **Power Chairs**
- **Scoters and Accessories**
- **Servicing and Repairs for your Mobility Equipment**

Need advice about mobility equipment? We're here to help!



WHATEVER YOUR FINANCIAL GOALS, DON'T MISS THIS YEAR'S USE-BY DATE FOR YOUR TAX ALLOWANCES

With the ongoing COVID-19 pandemic making the future feel uncertain, you may feel torn between wanting to save for your long-term financial goals and shorter-term measures. You may be rebuilding your income and savings buffer after a challenging period, planning for a long-awaited holiday or wondering what to do with the extra money you've saved during lockdown.

The best thing is to look for a balance, then put what you can into all the different areas of your life. To do this, it helps to clearly understand your goals and how you will make them possible financially. If you're unsure whether they're achievable, step back and think objectively. Then you can create a plan.

Seeking expert financial advice can help, and there's no better time to start than now. What's more, acting before the end of the 2021/22 tax year on 5 April - and making the most of all the allowances and reliefs available to you before their use-by date - could go a long way towards helping you reach your short and long-term goals sooner.

If you're starting to build a financial foundation...

...you can consider taking on more risk with your investments. The longer your money is invested, the greater the potential rewards. Tax-efficient wrappers such as ISAs and pensions are ideal ways to begin your investment journey. You can put your money into a wide range of investments, which can help to reduce your risk and broadens the potential opportunities for longer-term growth.

The returns provided by the tax advantages of pensions and ISAs are particularly valuable. Unlike assets held outside these wrappers, you don't pay Capital Gains Tax (CGT) on the growth, and that can make a huge difference.

The government has put off proposals to raise CGT to bring it in line with Income Tax rates. But it might revisit this in future, so planning around CGT

now - before the end of the tax year on 5 April - could help reduce your tax bill in years to come.

If you're securing the financial future for you and your family...

...don't panic if you haven't done much about this yet - you're not alone. People often put off investing for the future as they manage today's cash-flow needs, particularly during these difficult times, "but it's never too late to begin," and ISAs can be a great place to start, as they're very simple and you don't pay Income Tax or CGT on the interest or investment gains. ISAs are incredibly popular. More than 13 million UK adults paid into one in 2019/20, yet only around one in four chose the Stocks & Shares ISA option.¹

If ISAs are part of your plan for five to ten years or longer, your money has more potential to grow faster in a Stocks & Shares ISA than if you held it in cash.

If you're thinking about a comfortable retirement...

...you should make the best, and most appropriate, use of all available tax-efficient savings options, particularly your pension and ISAs. For example, the current ISA limit is £20,000. But if you have a spouse or partner, you can each have an ISA, effectively doubling the allowance. You can also invest up to £9,000 in a Junior ISA on behalf of someone under 18 if you are their parent or guardian. This can go a long way towards giving them a more secure financial future.

For your pension, you can generally pay in up to £40,000 or 100% of your relevant earnings (whichever is lower) and claim Income Tax relief for this tax year. You can also carry forward unused allowances from the past three tax years, so use those if you can.

ISAs are straightforward, but if they're part of your longer-term plan, it's important to invest your allowances wisely to make the most of the tax benefits. When it comes to pensions, there is a lot more to consider, and financial advice is critical to ensure you maximise the opportunities.

It's crunch time to get the most from this year's tax allowances

Don't let anything go to waste. Use by 5 April 2022.



NAVIGATION WEALTH MANAGEMENT

Senior Partner Practice of St. James's Place Wealth Management

01482 379504
navigationwm@sjpg.co.uk
www.navigationwm.co.uk



The levels and bases of taxation, and reliefs from taxation, can change at any time and are dependent on individual circumstances.

The Partner Practice is an Appointed Representative of and represents only St. James's Place Wealth Management plc (which is authorised and regulated by the Financial Conduct Authority) for the purpose of advising solely on the group's wealth management products and services, more details of which are set out on the group's website www.sjp.co.uk/products. The 'St. James's Place Partnership' and the titles 'Partner' and 'Partner Practice' are marketing terms used to describe St. James's Place representatives.

SJP11763b V4 (01/22)

The use-by date for all of the allowances above is the end of the tax year (5 April), so make sure you don't leave it too late.

If you're considering how to pass on your wealth...

...look at the tax-efficient options available to support other people in your family, now and in the future. Again, you need to think about the full spectrum of options because some have better tax implications than others.

It's important to understand the impact of Inheritance Tax. This is a complex area, so it's always worth seeking advice. The key aspect is that anything over the tax-free threshold is generally taxed at 40%. This threshold starts at estates valued at £325,000, but could be higher – for example, if you're passing a residence to direct descendants or if you've inherited IHT allowances from your spouse or civil partner.

However, you can act now, before the end of the tax year, to reduce how much could be taxed. A popular option is to start gifting money to your children and grandchildren. You can give away up to £3,000 a year, thereby reducing the value of your estate. You could make these gifts into a Junior ISA, although a parent or guardian must set this up. Saving early means the power of compounding will build a child's fund significantly over the long term.

Another option is to create a trust, such as an Asset Preservation Trust, whereby the death benefits from your personal pension go into a trust rather than direct to a beneficiary. This removes the benefits from your estate, with the beneficiary receiving payments from the trust.

Whatever your goals, the time is ripe to ensure you're making the most of this year's tax-saving allowances and reliefs. The levels and bases of taxation, and reliefs from taxation, can change at any time and are generally dependent on individual circumstances. Trusts are not regulated by the Financial Conduct Authority. Any tax relief over the basic rate is claimed via your annual tax return.

To receive a complimentary guide covering wealth management, retirement planning or Inheritance Tax planning, contact Navigation Wealth Management on **01482 379504** or email navigationwm@sjpp.co.uk

¹ Commentary for annual savings statistics, Gov.uk, June 2021.



HASSLE FREE LETTING AGENT



Telephone: **01482 241261**
Website: www.emlets.co.uk
Email: admin@emlets.co.uk
Facebook: [@EmletsLtd](https://www.facebook.com/EmletsLtd)
Instagram: [emletsproperty](https://www.instagram.com/emletsproperty)

Jadan

Print that gets you noticed

Jadan Press are a leading family run commercial and trade printer based in Hull. With over 20 years experience, we are renowned for producing exceptionally high quality print, design and finishing.

We are committed to providing an excellent service by offering value for money and ensuring complete customer satisfaction.

**BROCHURES LEAFLETS
POSTERS CALENDARS PADS
LARGE FORMAT PRINTING
STATIONERY MAGAZINES
SAFETY SIGNAGE BANNERS
VARIABLE DATA/MAILING
and much much more**

TAKE A LOOK AT OUR WEBSITE AND VIDEOS
www.jadan-press.co.uk



**MORE THAN...
...JUST A GOLF CLUB**
Two challenging courses, one great academy, the ideal facility for you and your game

Cottingham Parks
THE COMPLETE EXPERIENCE

01482 610902 info@jadan-press.co.uk www.jadan-press.co.uk
Rainbow House, Kimberley Street, Hull, HU3 1HH

 JadanPress  JadanPress  jadan_press

SHORT STORY - A GILDED CAGE BY JF WOODFORD



Her parrot's feathers were still dropping out. Over the last few weeks, more blue, green and yellow softness had lined the cage floor. Stella started to collect them. She still took him out for a clipped-wing flutter around the living-room of her old, top floor Elland flat. She gave Charley his usual kiss on the beak.

"I love you!"

"I love you!" she said back.

They'd been happy like this for years since her husband had died, and one Charley had replaced another.

"I love you," she murmured, looking at the gilt-framed photo on the side table. That had been in Kenya after the war when they'd had an aviary of birds and a nursery with no children. But they had been happy, happy and happy again. Until this. Until autumn.

What a beautiful tragedy of colour. The brilliant feathers fell and she put them in their bag. The vet said it was alopecia. Stella felt terrible for Charley and kissed him even more. Charley lost so many feathers. The first tufts of Stella's own hair started to come out in her brush soon after. She kept that in a bag, too.

She didn't need to be told what was wrong and took to wearing a silk head scarf. It was a bad morning when she'd reached in and picked up a motionless Charley from the corner of his cage. She kissed the bird. Silence.

"I love you!" she whispered.

Silence.

"I love you."

But Charley had died again. This time there was no funeral. Instead, she had Charley stuffed, and his feathers were fixed back by a country taxidermist in one of the villages. She ordered a bright new cage with three buttons on top.

She pressed one: "Hello beautiful" sang out.

Another: "Morning, gorgeous," and one more, "I love you!"

"I love you, too, Charley..."

Stella still took Charley out, gave him a kiss and flew him around the room. Time also flew and one day she saw her reflection in the hall: a scarf-headed mannequin so she took down the leather suitcase from the top of her wardrobe, put on an old work skirt and jacket and headed on the train to Leeds.

It only took an hour to get into town and the shop she'd read about in a women's magazine. When she got back she unpacked the suitcase, now full to bursting with the wigs she had bought. That night she tried them all on, methodically suiting them to the occasion: a red one, bun, full blonde. People might think it strange, but they'd have to get used to it.

Next day, cup of tea and saucer on her lap, Stella felt happier, like things once were. Spring grass was being cut, sun shone through the open window and from the garden she could hear a robin freely singing.

She pressed: "Morning, gorgeous."

"Morning, gorgeous."

She smiled and pressed: "I love you."

"I love you, too, Charley."

Julian is co-founder of Dead Bod Films whose award-winning feature 'One Summer When You Went Away' was released at the end of 2021. He is a writer, filmmaker, poet, playwright, author and journalist. Julian is director of The High Wolds Poetry Festival.

POEM BY SUE SOUTHCOAT - I'M FROM YORKSHIRE

I'm proud to come from Yorkshire
With its wise and witty folk.
With whippets and the odd flat cap
We can take a joke!

I'm proud to come from Yorkshire
With its seaside golden sands.
With parks and gory candy floss
And music from brass bands!

I'm proud to come from Yorkshire
With its vales and moors and dales.
With limestone cliff escarpments
Such beauty never fails!

I'm proud to come from Yorkshire
With its cheese and Yorkshire pud.
With fish n chips and mushy peas
And beers that are so good!

I'm proud to come from Yorkshire
With its language queer and short.
Where the words define its people
And the accents never taught!

I'm proud to come from Yorkshire
With its workers of all types.
With farms and boats for fishing
And the postmen on their bikes!

I'm proud to come from Yorkshire
With its long and mighty past.
From the Romans and the Vikings
May our Yorkshire last and last!

Sue has been writing poetry since childhood and has published a book on children's poems. She regularly attends the High Wolds Poetry festival.



Monks Walk Inn

19 Highgate, Beverley HU17 0DN

Tel: 01482 880871

www.monkswalkinn.com

A HAPPY EASTER TO ALL OUR CUSTOMERS

- BAR & TABLE SERVICE •
- GOOD BEER •
- GOOD COMPANY •

- Historic Public House
- Enjoy Drinks and Conversation by our Real Fire
- Local Cask Ales • Lagers • Beers • Wines •
- Spirits • Tea • Coffee •

SPECIAL DEALS on our April Pizza Nights!!



WE LOOK FORWARD TO SERVING YOU!

SERVING FAMILIES SINCE 1872

Your funeral wishes. Our local experts.

Funerals from
£995

Unattended Funerals

Attended Funerals

Prepaid Funeral Plans



We're here for you anytime.

Whatever your wishes or budget, we can provide a funeral to suit you.

FRANK STEPHENSON & SON

29 Minster Moorgate

Beverley

01482 881 367

dignityfunerals.co.uk/local



We're proud to be a Dignity Funeral Director,
providing exceptional services to families across the UK.

Pricing is correct at time of going to print and is subject to change. Price stated is for an Unattended Funeral.

★★★★★
Customer rated
Powered by Yext

I'VE BEEN THINKING... SAYS COLIN RAYNOR

April brings the festival of Easter and the churches of the town will be speaking of their belief in real hope for the future.

All this against a backdrop as one country tries to dominate another country and destroy the lives of innocent men, women and children. But this is nothing new.

Over two thousand years ago, evil men tried to destroy and overwhelm the innate goodness and caring that is the hallmark of the human race. The message from the churches of course is just the opposite. Over the Easter weekend the story of total darkness is eclipsed by the dawning of a new day of hope for the future. You may not choose to accept this 'resurrection of a new day' though, so let me offer you a story that I heard many years ago that I suggest embodies all the truth of the Gospel story.

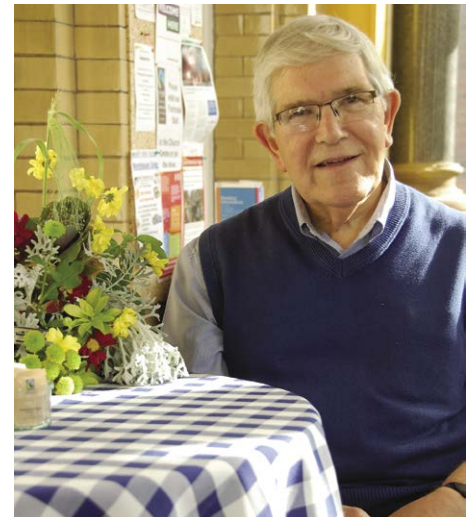
A wealthy man, along with his son, had a passion for collecting art. They travelled the world to bring back priceless pictures to adorn the walls of their house. The widowed father was so pleased that his son had an eye for great works of art. Then war came to their land and the son left to serve his country. A telegram informed the father that his son was missing in action and then came the news that his son had died, whilst trying to save the life of another soldier.

The old man became increasingly depressed and, as he had few visitors he was surprised one day to find a young man on his doorstep with a parcel for him. The visitor explained that he had been a comrade in arms with the old man's son and they had talked many times about the art collection.

The visitor unwrapped the parcel which contained a portrait which he had painted of the old man's son. The old man was overcome with emotion and he hung the painting above his fireplace. Whilst it was no masterpiece, for the old man it was priceless as he could gaze at the image of his son each day and remember how he had given his life to save another.

Over the coming days he learnt more about how his son had saved the lives of many of his wounded companions. The picture of his beloved son became his prized possession far above any of the other paintings he possessed. When the old man died many wealthy people from the art world gathered and prepared to spend their money and were surprised when the first item that came up for auction was the painting of the old man's son.

The auctioneer asked for an opening bid but no one spoke. One man objected and demanded the other pictures come up for sale. The auctioneer explained that his instructions



were that the picture of the son should be sold first. A voice from the assembled group offered £10. The auctioneer accepted the bid and, in due course, as there were no more bids, brought his gavel down and the picture was sold to the one and only bidder.

He then told his audience the auction was over and explained to his audience that the terms of the old man's will stated that whoever takes the son... gets it all.

Isn't that the Easter message? The father's joy came from his son who gave his life rescuing others, and whoever takes the son gets the richest prize of all.

C CLUB - BOY GEORGE COMES TO BEVERLEY

The Michael Buble Tribute held at Beverley's C Club on 4 March was well attended with 100 tickets sold. Live entertainment is up and running at the C Club.

The C Club's next tribute act is Paul Sutton as Boy George, and you don't want to miss this one.

Tickets are on sale now and are selling fast for the tribute event on Friday 22nd April, so make sure you get the Boy George experience next month for only £8 a ticket.

Beverley's C Club is a members club and a venue that boasts a welcoming fully licensed bar, 5 first-class snooker tables, monthly

entertainment, weekly bingo and raffle sessions, a function room for hire and more. If anyone is interested in Horse Racing, they will know that the first meeting of the season at Beverley is on Wednesday 13th April.

Why not call in at the C Club for a drink or two first? If you book in advance, they can arrange a buffet lunch for you.

Don't forget, the C Club can accommodate up to 100 people for any special occasion, whether that's a birthday, anniversary, christening or something else.

Call **01482 867968** for more details about upcoming tribute bands and memberships.



Telephone: 01482 869111
sales@rosesofbeverley.karoo.co.uk



The Kitchen Factory, The Courtyard,
Tokenspire Business Park, Beverley
HU17 0TB

Monday to Friday 9am - 5pm | Saturday 9am - 1pm

What's New in 2022

Roses Kitchens grown in Beverley for over 20 years



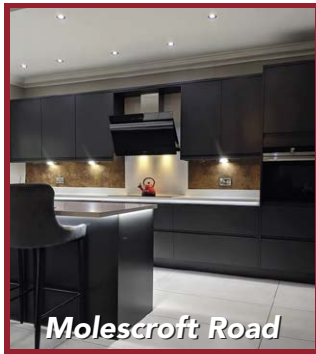
Laburnam Drive



Carter Drive



Thyme Way



Molescroft Road



Lincoln Way

kitchen



All Hallows Road, Walkington



Hunsley Road, Walkington



West Mill Rise, Walkington

Please call 01482 869111 to book a viewing

MANY MORE OF OUR CUSTOMERS KITCHENS ON OUR WEBSITE

5 STAR RATED OVER 57 GOOGLE REVIEWS ★★★★★

Visit www.roseskitchens.com

to see our customers kitchens and read what they have to say about us

Telephone: 01482 869111



BEVERLEY'S JULIE ROGERSON MODELLING FIGURES FOR CAKE TOPPERS

Julie has always had an interest in baking, from being a child helping her mum bake through to baking with her own children. As most parents will appreciate, there was something special about sitting on the kitchen counter to stir the mixtures (and licking the spoon afterwards!), making for good memories.

People usually associate spending time in the kitchen with producing exotic tastes and cooking wonderful meals for tea or a dinner party, but for Julie, time in the kitchen has always been about baking. She finds it much more enjoyable and relaxing.

While she has always expressed an interest in baking, it wasn't her first choice for a career and she fell into baking completely by accident.

Julie started off following in her mum's footsteps, working in an office at the old BeA Fastening Systems in Beverley where she began as an office junior and worked up to PA to the Managing Director over a 10-year period. She then took a break to have children, enjoying being an 'at home mum', but then as her youngest started school she tried a new career path. She started training to be a teaching assistant and then a nursery nurse, but eventually decided it didn't fit into her lifestyle as her children were still young.

Spending more time baking in the kitchen and enjoying time with her children made her passion grow even more, and Julie started cake decorating as a hobby. When baking previously it was more for eating - and satisfying her sweet tooth - rather than decorating, so this was new. Very quickly Julie realised she was very good at decorating cakes and enjoyed the creative elements involved. The rest, as they say, is history.

Having no history as such in sculpturing or modelling, it was quite a surprise for Julie that she picked up the skills needed quite quickly, and being a fast learner she soon put them into practice. Learning from books, online tutorials and a few face-to-face classes for specific skills, it wasn't too long before her first model was produced; a small panda. She had followed a tutorial for it in a book and the result was incredible.



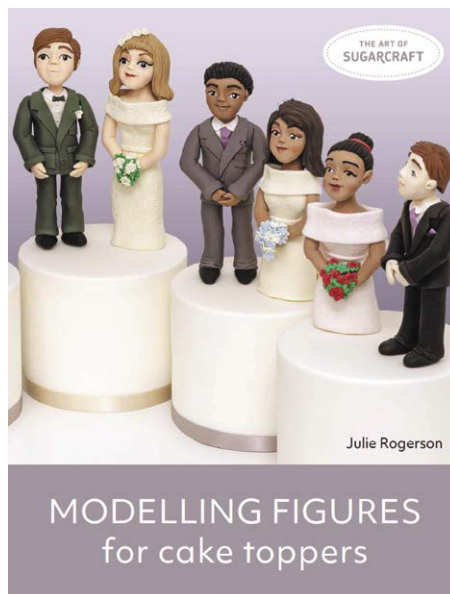
Since those early days, changes in cake decoration have in some ways played to Julie's strengths, allowing her to push the boundaries as far as possible. It is much more of an art form now with a huge international community of amazing cake artists.

General day-to-day cake decorating has since moved on from the days of Royal Icing covered fruit cakes to the use of sponge cakes and sugar paste, which give much more flexibility and scope

for more different styles and designs.

TV shows and the rapid nature of social media have led to customers choosing more complex designs as they have really showcased what can be achieved with cakes. Trends and demands are changing constantly so there is a vital need to keep up with the latest skills and techniques.

With the exposure of baking being increasingly shown on television, more skills are being developed and understanding the difference between cake decorating and cake toppers is crucial. Cake decorating is the overarching term, which cake toppers are part of.



There are many areas of cake decorating skills, from the basic covering of the cake through to making decorations to attach to the covered cake. Decorations can include sugar flowers, stencilling work, piping, hand painting, airbrushing and modelling cake toppers.

Julie enjoys creating novelty styled cakes, which often include models of people and/or animals. These give a real personal touch to celebration and wedding cakes as they can be personalised to feature themselves or their loved ones.

On the other hand she enjoys carving cakes, making them look like anything but the cake that they started out as, for example dogs, vehicles, faux food, trainers etc. These are often known as illusion cakes, designed to trick the mind.

The question everyone asks is, how do you protect them in transportation?

Julie said: "Cakes are always transported in boxes in the car, giving them a flat surface to sit on with a non-slip mat underneath the box to prevent it moving whilst driving. If the cake is multi-tiered, I will sometimes transport the tiers separately and then stack at the venue. For example, wedding cakes. Fragile decorations can then be added carefully once the cake is fully stacked".

What is your favourite table topper?

"My favourite topper was actually made for a competition table at Cake International (NEC Birmingham). I decided to make a sculpted pirate mermaid, sitting on a rock. She was modelled completely by hand, using a mixture



of modelling pastes and modelling chocolate, measuring approximately 15" tall. The whole model took around 3 weeks to complete, as it was very intricate and I needed to let parts dry before I could continue. It was entered into the competition as part of a collaboration with other sugar artists from around the world, and we were awarded first prize as a group table".

One of the amazing attributes Julie has is as unbelievable as it sounds... Julie cannot draw. She says she has not been blessed with the ability to draw, and so explained, "I tend to visualise the piece in my head, sometimes looking for inspiration in art or other mediums, then make the actual model. It can take a few attempts to get it just right".

Clients usually go to Julie with an idea of a theme or perhaps a hobby, sport or interest that the recipient has. For example, they might love a particular football or rugby team, or maybe they are a keen gardener or pet owner. In this instance, Julie suggests elements to include within the design to fit to the size of the cake and their budget. With wedding cakes, they are often coordinated to the colour scheme of the wedding, as well as to fit in with the venue choice. A more rustic design fits in well with a barn style wedding, such as a tree bark effect covering. The time of year can also be reflected in the design, with the inclusion of autumnal leaves or winter snowflakes.

When Julie was contacted by Alison Brown from The Crowood Press back in February 2020, she explained that they had discovered her by doing an online search, and was particularly interested in the fact that Julie was already producing magazine tutorials used to create step-by-step guides for models and cake designs.

Alison could see from Julie's website and social media pages that she had a particular skill for modelled cake toppers, which was a subject they were interested in covering, so she emailed Julie to see if she would be interested in working with them.

With the book being published, Julie hopes it will help her to reach a wider audience of people who may not have found her otherwise, both on a national and global level. It will help her move further into the online marketplace for teaching modelling skills to others along with leading on to other exciting opportunities within the world of cake decorating.

Not to rest on her success, Julie hopes to write or create another book with lots of ideas to fall back on and is full of optimism for the future. She advocates the belief: "seize opportunities that you are given, especially if they push you out of your comfort zone, as these are the things that will help you to grow. Believe in yourself and never stop learning - always look to improve your skills and increase your knowledge in your chosen field".



Bev 'N' Ley: April Fool!



Spring has arrived in Beverley, and the sunshine dazzles the Market Cross. The lighter mornings mean families are out sooner and Bev watches shyly from the window.

But one little group don't look right.

"Chocolate is a yummy part of it, isn't it? Come on, keep up."



"We should explore." Bev decides. When there is no reply, Bev realises inquisitive Ley is already outside. "There you are!" Ley greets when Bev arrives at the Coronation Gardens. "Er, Bev? What's an April Fool?" The blue beaver asks, with a mischievous grin.

"Are these the new flowers?" Bev frowns, trying to understand why the flowers are different. Then the beaver sees it.

This time, Bev vanishes! When Ley discovers Bev back in the Market Square, the orange beaver has a big bowl of melted chocolate and an even bigger smile.

"There! The ones in the plant pot. That group have eyes! Oh! Ley. Did you hide those ones with eyes?"

"Oh... that smells sooo good. Wait, a minute...!" Ley says, seeing the smudge of chocolate around Bev's mouth. "You've been eating the chocolate!"

"Googly eyes!" Ley claps, proud of the joke.

Bev pretends to look guilty. "Nuh-huh. Me? I wouldn't."

"Yes, one a pot of daffodils just for you!" Just then, the wind blows and all the daffodils bob in the breeze. The eyes wobble. Ley laughs so hard it hurts. "April Fool!"

"Yes, you would." The curious beaver laughs. Bev hands Ley a spoon and the pair make chocolate Easter nests.

Ley is acting secretly and Bev hesitates, wondering if it's a good idea to explain the joke tradition to Ley. "It's a day when people play harmless jokes on each other. I'm not sure why." The orange beaver adds. "Ah."

"April... Fool?" Bev blinks, then understands the mischievous prank and laughs, too.

"Very special flowers, Ley. I don't think you should put googly eyes on all the daffodils, though."

"Look at your paws, Bev, they're all sticky!" Ley gasps with surprise when Bev carefully places colourful little eggs in the centre of each nest.

"What are you doing?" Bev enquires, leaning forward to see past the beaver. "Didn't you hear? They've planted new flowers this year, designed especially for people in Beverley."

"Spoil sport." Ley pouts.

"But... hiding one plant pot? It's a harmless April Fool that will make others smile." Ley looks relieved, and changes the subject by holding a painted egg up to Bev. "I keep finding these. Why are people leaving eggs everywhere?"

"It washes, but-" Bev smiles and licks the chocolate away. "That's the best bit."

"Special flowers?" Bev sounds doubtful and attempts to see. "I didn't know that."

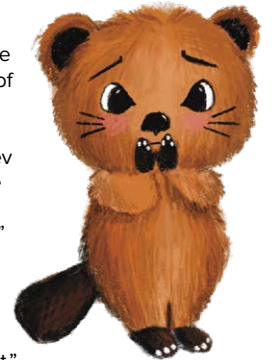
Bev smiles. "For Easter."

"Yep. Super special ones!" Ley says with an excited flourish and Bev investigates closer.

The orange beaver admires the delicate purple flowers and savours the sound of the water feature. The daffodils are a blaze of brilliant yellow.

"Oh... Chocolate! At last!" Ley exclaims excitedly. "We're going to see how they make chocolate at White Rabbit!"

"Nuh-huh." Ley replies and licks the spoon clean. "I've got the best bit."



THE HAIR & BEAUTY LOUNGE

MOTHER'S DAY SALE!

Luxury facial was £42 now **£30**
 Luxury pedicure was £27 now **£20**
 Cut & blow dry was £32 now **£25**
 Mini olaplex treatment & blow dry **£20**

**OFFER ENDS 20TH OF APRIL
 NEW BOOKINGS ONLY**

Message to book or call 01482 880880
 31 Highgate Beverley
 HU17 0DN

"Easter's about more than chocolate. People like to paint eggs, or decorate trees as a sign of hope and rebirth."

Bev laughs and points to Ley as the beaver scrapes the bowl for more melted chocolate.

"But I like chocolate!"

"Now you've got a chocolate smile, too."

Bev gives Ley a playful nudge, seeing Ley's sad face.

As the sun sets, the pair settle in their favourite chairs, noisily eating the Easter nests and wondering where their adventures will lead next.

**Storyline: Michelle Horst.
 Illustration: Jasmine Stephenson.**

THE HAIR AND BEAUTY LOUNGE

Charlotte is back after maternity leave and looking forward to catching up with clients old and new.

If you are looking at extending Mothers Day, then make the most of the Mother's Day offer valid until 20th April. The salon is a Matrix hair and beauty is Dermologica products.

Charlotte said "There is nothing better than making people feel good about themselves, I really enjoy it when clients walk out with a spring in their step, a smile on their face, it is a fantastic feeling".

Charlotte's clients are of a wide range, she enjoys doing put ups for special occasions. To celebrate Mother's Day, why not take advantage of the Mothers Day Treatment Offers.



Charlotte Leason would like to welcome clients Old and New. Tel. 01482 880880

CYCLING WITH WILSONS WHEELS - CHANGING HABITS AND SAVING POUNDS

As they say "timing is everything", so why not use the increase in fuel prices to change your habit of jumping in the car to get to work? We know for some people this may be not practical but for a number of people this could be a good step forward.

Now that fuel prices are increasing we are all starting to look at how we can save a few pounds. That could be by turning the thermostat down at home, reducing the number of hours the heating is on and finally only using the car when necessary.



Cycling can be a great alternative too, costing nothing to get to work and benefiting your health and well being at the same time. "Spring into action".

With the improvement of cycle lanes and a number of business owners supporting cycling to work, now is the time to make that shift. Taking a leisurely cycle to work can benefit your fitness and actually make you more alert, completely benefiting your performance physically and mentally.

As we move toward Easter and summer, make the move to save pounds and shed pounds for a more active lifestyle.

Pop in store to see the new 2022 bike range

WILSONS WHEELS

T: 01482 882881

W: www.wilsonswheels.co.uk E: info@wilsonswheels.co.uk

WE NOW STOCK **CUBE CYCLES**
2022 RANGE NOW AVAILABLE

Electric Bikes in Stock

• Adult Bikes • Children's Bikes • Electric Bikes
• Clothing for all cycling weather • Parts and accessories

89a Grovehill Road, Beverley, East Yorkshire HU17 0EJ
NOW OPEN: Monday - Saturday 8.30am - 5.30pm
Sunday: CLOSED - Out riding our bikes

THE IMPORTANCE OF WOMEN'S MENTAL HEALTH AWARENESS

Mental health awareness is hugely important and it's something we've talked about before.

We know that the Covid-19 pandemic has had an impact on people's mental health. Whilst awareness around this issue is the highest it's ever been, women can sometimes be forgotten about.

Lots of campaigns and charities are dedicated to men's mental health. The work they do is vital and they've been instrumental in getting men to open up, talk about their feelings, and recognise the importance of mental health. But women's mental health is equally important and will have taken an enormous hit during the pandemic. Even in a normal year in England, 1 in 5 women suffer from mental health problems, many of them linked to women's health issues.

Here's some info about women's mental health and the things you can do to improve it. This increase in mental health issues would appear to be due to a number of factors, including:

- Loneliness
- Stress
- Uncertainty
- Homeschooling children
- Job insecurity
- Having no space to relax
- An increase in domestic abuse

These are all things that might not normally have been there and whilst the general awareness of these things is good, we often forget that women bear many of the burdens above. Over the course of the pandemic, we can see a bigger gender gap in deteriorating mental health between men and women. With women at 61% and men at 47%.

So what can you do? Self-care is such an important aspect of maintaining a healthy mental state. There are so many ways to experience self-care, from exercising, going on walks, relaxing, reading a book and doing things you love and bring you joy.

WOULD YOU LIKE TO WORK IN FITNESS OR ADD TO YOUR QUALIFICATIONS?

Visit our website for all our blended learning, elearning and face to face courses available this year

FACE TO FACE COURSE DATES AVAILABLE AT LOCAL VENUES FOR 2022 INCLUDE

Level 2 Gym Instructor
Level 3 Personal Trainer
Level 3 Mat Pilates
Level 3 Pre and Post Natal Exercise

Give us a call for a chat or visit our website

ACCREDITED COURSES

CHECK OUT OUR WEBSITE FOR FULL DETAILS OF DATES & COSTS

WWW.SPORTSABILITYTRAINING.CO.UK

OR CALL US FOR A CHAT 01482 229676

SCAN OUR QR CODE FOR A QUICK LINK TO OUR WEBSITE

PUZZLE PAGE

WORDSEARCH

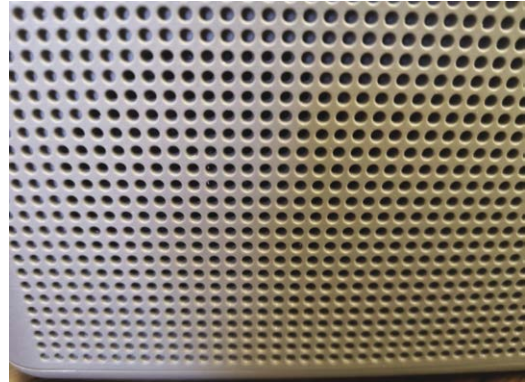
O B C J S Z T E D W K K M Z W
 B G P T Y G E X Y K X T Y F J
 X M F K D H G T A U Z J F E T
 A G N I R P S E D T H F J N C
 F L O W E R S J I U A D U F E
 U T S L D Z N F L R R H R K L
 Z Q V U C T E V O X E E G D E
 O A D E N A H Q H R S S H O B
 I I F R S S R C U H Z T Q I R
 T G J T H Q H S A P B V X Y A
 Q P E U V Y A I M C Z S Y K T
 B R J I P E R V N L E Q L Z I
 T I Z J R F Z A C E O B S L O
 A G W T P T B X S G M H C M N
 E D I S Y R T N U O C C O U Q

CELEBRATION
 COUNTRYSIDE
 EASTER
 EGGS
 FLOWERS

FRESHAIR
 HOLIDAY
 SPRING
 SUNSHINE
 TREASUREHUNT

WHAT IS IT?

Can you identify what item this is? Answer on Page 33.



WHAT'S NEXT?

MNBVC__

Answer on Page 33.



Did you spot our April Fool's joke?
 Page 20 - 'the new South Bar'...
 we hope you weren't too fooled!!

COMEDY CORNER!

Things that make you laugh!

We have a poorly toilet.
 It's got a little flush!

Where would you find a magic key?
 Where you left it.



Do you have any amusing stories,
 quotes or pictures? Send them to
info@justbeverley.co.uk

WORTH A THOUGHT

Yesterday is in the past. Learn from
 the experience and move on.

DREAM DOORS®
 NEW LIFE FOR OLD KITCHENS



**SPRING SALE
 NOW ON!
 20% OFF**
 T&Cs Apply

VISIT OUR
 SHOWROOM NOW:

4a Belprin Park,
 Swinemoor Lane,
 Beverley, HU17 0LN

Call us now for a free estimate:

01482 861 653



Checkatrade.com
 Where reputation matters

AVERAGE SCORE **9.7/10**



QUALITY BEDROOM MAKEOVERS BY LOCAL PROFESSIONALS

- Bespoke sliding wardrobes
- Styles to suit every home
- Wide range of colours and finishes to choose from
- 96 showrooms nationwide

www.dreamdoorsbedrooms.co.uk

SPRING SALE

THE UK'S #1 KITCHEN MAKEOVER EXPERTS

- From simple door replacements to complete fitted kitchens
- Fully installed by local professionals in just a few days
- Choose from a large selection of doors, worktops and appliances
- 96 showrooms nationwide

www.dreamdoors.co.uk



FOLLOWING
 GOVERNMENT
 GUIDELINES

REMOVE DAILY STRESSES, EXPERIENCING THE WINTER SUNSHINE

Traditionally we are not one for just a few days away in the sunshine over the winter months before the Spring sunshine squeezes through, however this year we were invited to enjoy five nights in Tenerife in the first week of March.

I have to say that it was absolutely lovely. I admit it arrived at the perfect time for us on a personal level after an extremely busy start to the year however I now feel this is something I could quite happily build into a tradition.



It was good to have some sunshine and take all the pressures of daily life and work away just for a few days. Time to have some amazing coastal walks and ride the waves of the Atlantic which I always find seems to

release lots of endorphins, so you could argue it is in one's best interest on health grounds to take a little time away - removing daily stresses and taking the time to do what you enjoy.

We had the pleasure of staying at Hard Rock Tenerife and it really was an amazing experience.

We stayed on half board and enjoyed both the buffet restaurant and two of the a la carte restaurants - Montauk, reputedly the best steakhouse in Tenerife and Narumi which is the Asian restaurant. Both were wonderful experiences.



I was particularly impressed with the quality of the buffet restaurant - incredible quality and lots of very fresh produce and live cooking stations. The wine and cocktails were also incredible - certainly pricey but certainly worth it! As a hotel it catered for both an adult only vibe with a separate pool and also for the family market.

As we did not travel with any youngsters we took time out to enjoy the sky bar on the 16th floor with warming fire pits and a DJ spinning his discs and



exquisite cocktails which was a wonderful way to finish our last night on the island. Had we stayed a bit longer we would have taken advantage of hiring a car and explored the island and would happily use this as an excuse for a return visit.

The climate was really nice to - not a really humid heat and was just really comfortable.

Writing this article so soon after going has me feeling the post-holiday blues - I shall just have to book another holiday then!

Amanda McConnell, Travel Counsellors.

T: 01482 770540

E: amanda.mcconnell@travelcounsellors.com

W: www.travelcounsellors.com/amanda.mcconnell

Tc Patisserie

We are now no longer a café, but still make our own patisseries and Tc Patisserie is now a French food shop to compliment our own products.

We have a daily selection of freshly made croissants, breads and patisseries.

We make reheat at home meals which can be bought over the counter or pre ordered, via our mailing list or messenger.

We can cater for any occasion, buffets, dessert tables or full 3 course meals can be arranged.

We are open Tuesday-Saturday 9am - 4pm.



Four Generations, Giving Over 125 Years Service

Herbert 1870-1962	Eardley 1908-1986	Geoffrey 1939-2015	David 1964
----------------------	----------------------	-----------------------	---------------



Golden Charter
Funeral Plans



- Funerals Respectfully Conducted
- 24 Hour Out of Hours Service
- Free Advice & Support
- Private Restrooms
- Prepaid Funeral Plans Available
- Finance Options Available



Tel: 01482 844695
www.hkempandsonltd.com

259 Hallgate, Cottingham, East Yorkshire, HU16 4BG

Fax: 01482 843898

Email: hkempandsonltd@gmail.com

COUNTRYSIDE MATTERS WITH SAM WALTON

Like most of the Asian communities such as Thailand, Cambodia, Laos and Myanmar, the people are so welcoming and want to know how their farming compares to what we do.



I suppose most of what the poorer people do would be banned here in UK, but they just accept it as life and carry on, hopefully providing for their families.

One pedigree pig breeder had a sign outside his farm with a picture of four different breeds on it, so you could not really miss what it was.

That was the house with no walls other than the bedrooms, and he had been one of the first to save gas from his slurry, enabling him to produce electricity for not only his house but also the pig unit and to mix his own pig rations.

In the UK on the breeding side, we have long been into artificial insemination which has revolutionised production on the pig side particularly, meaning breeders have the choice of excellent genetics rather than the run of the mill commercial boars.

To be realistic, boars should only be used naturally perhaps three times a fortnight to increase fertility, which means you would need a lot of boars in the herd.



Overuse of a boar reduces the fertility and on that man's farm, he did not know about such things so he was not having as many piglets born as he would have as he was using one boar to 40 sows.

We had a chat about that and when I returned a year later, he had one boar to 20 sows and had increased numbers born considerably. He did have some better buildings than a lot of other locals who would come to him for replacement breeding stock.



WHAT IS IT?
A radio!

WHAT'S NEXT?
The answer is X and Z, it is the bottom line of a keyboard in reverse.

IN THE GARDEN... APRIL

Welcome to April - this is the month when the garden steps up a few gears!! Suddenly everything is sprouting, and the garden can get 'out of hand' very quickly.

Our saving grace may be the fact that the clocks have gone forward, and we have more daylight hours to get out into the garden, especially in the evenings. On that note, here are some gardening tasks for April...

Planting and Sowing

- Seed any bare patches in the lawn (do not be overzealous with the amount of seed you use).

- Plant out all summer flowering bulbs by the end of the month.

- If you have a greenhouse or protected space, plant up your summer containers and hanging baskets towards the end of the month, BUT do not be in too much hurry to put them out much before the end of May.

Pruning and Tidying

- Spend a little time tidying your borders and weeding - annual weeds can be pulled out by hand or give the border a quick hoe, perennial weeds are deeper rooted and will need digging out.

- Prune hydrangeas, lavender, and other grey foliated plants.

- Prune and shape fan trained fruit and tie in new growth on climbers.

- Of course, the lawn may need mowing more regularly - trim it lightly with the blades set high.

Pests etc...

- All this lush growth makes a veritable feast for aphids, slugs and snails so keep a lookout for them and deal with them swiftly.

- A ban on the outdoor use of **metaldehyde** slug pellets has been introduced across Great Britain from this spring (2022) - so check that you are not using a banned substance, the metaldehyde gets into the food chain and has a devastating effect on wildlife that feeds on slugs and snails (hedgehogs and birds). Other methods to control slugs, include biological control using nematodes and traps, my favourite is the 'beer trap.' Try to encourage hedgehogs, frogs, toads, and thrushes into your garden - they all enjoy a meal of succulent slugs and snails.

Some of you may be 'dipping your toes' into vegetable gardening for the first time - reliable results can be obtained from salad leaves (rocket and lambs' tongue), runner beans, onions/shallots, beetroot, courgettes, and potatoes. Potatoes are particularly useful if you have a new plot and the soil needs breaking up - but make sure you dig **ALL** the tubers up as next year you will have an unexpected (unwanted) crop of potatoes. If you have a small plot, then buy plants as seedlings rather than packets seed.

Most of all enjoy your garden and have fun - I love an 'Easter Egg Hunt,' don't you? (grandchildren optional!)

Jane Dale of 'Designed Gardens'. Tel: **07983 392 411**.



PLATINUM JUBILEE PLANS REVEALED FOR BEVERLEY



In just two months the whole town will be coming together to celebrate the incredible achievement of Queen Elizabeth II.

For the **Beverley Platinum Jubilee event on 3rd June**, Beverley Town Council have put together a huge programme of events to entertain people of all ages and create lasting memories for the whole family.

With a main stage on Market Cross in Saturday Market, there is going to be a vast range of events and different styles of entertainment in all the various locations such as The Big Jubilee Tea Party, Platinum Party at Flemingate, Platinum Jubilee Proms, Platinum Jubilee Pageant, and Little Jesters.

Two stages at these locations will feature music that varies throughout the decades the Queen has reigned, and if that doesn't appeal to some of the younger audiences there will also be an entertainment area for children to be creative and have fun.

This includes ScrapStore with arts and crafts resources, and Spec-u-lab offering a science party. The day wouldn't be complete without a delightful choice of food and drink from our local area.

Some of the bands and acts already confirmed to be performing across the day are the Humberside Police Concert Band, Buddy Holly tribute act Bootleg Buddy, Beverley Garland Dancers, High Flyers, and ABBA tribute band Kiss The Teacher, with more acts to be announced.

Get ready to hear the symphonic sounds of our orchestras in Saturday Market, chill out to acoustic tunes and have a cup of tea in the Coronation Garden, or if you want an upbeat vibe head over to Flemingate. The day is being planned to a T and will be fit for a Queen.

There are even plans for a large screen so we can be enjoying the moment in Beverley but also keep an eye on how our Queen is spending her monumental day.

Earlier this year on February 6, Her Majesty The Queen became the first British Monarch to celebrate a Platinum Jubilee, marking an



PLATINUM JUBILEE COMPETITION



The organisers of the BEVERLEY Platinum Jubilee Celebrations have put up one of the limited edition teddies as a prize.

To win the special prize just answer the following question.

On 3rd June how many years has the Queen reigned for?


Send your answers to info@beverleyjubilee.co.uk Put "Platinum Jubilee Teddy" in the subject box with your name, address and telephone number in the body of the email.


The winner will be drawn out at random after the closing date Friday 20th May 2022. Winners must be available for publicity purposes for Just Beverley and Beverley Platinum Jubilee Celebration Team. No Cash alternative, the Platinum Jubilee organisers decision is final.



incredible 70 years of service to the people of the United Kingdom, the Realm and the Commonwealth. To celebrate such a huge moment in history, this year in the UK there will be an extra Bank Holiday, with the usual Spring Bank Holiday being moved from the end of May to the start of June to create the special 4 day Jubilee Bank Holiday weekend from Thursday 2 June to Sunday 5 June.

Don't forget to keep an eye out on www.beverleyjubilee.co.uk over the coming weeks before the Platinum Jubilee party as new information is being released for scheduled bands and more announcements.

Don't miss out on any updates and like the Facebook page:
 **Beverley Platinum Jubilee Celebration**

and follow the Instagram page:
 **@beverleyplatinumjubilee**

Beverley Platinum Jubilee events announced so far...

Humberside Police Concert Band -

Consisting of of police volunteers, expect a vast repertoire of music including military classics, pop, selections from the stage and screen, and Last Night of the Proms style finales.

Bootleg Buddy -

Experience some of the best of Buddy Holly and Artists connected to the Rock and Roll star.

Beverley Garland Dancers -

A spark of joyous, jingly, floral fun, traditional North West Morris style dancing and a whole lot more.

High Flyers -

Set in a future dystopia, this pedal powered flying machine has its own soundtrack.



Kiss The Teacher -

The ultimate feel good party, prepare to be dazzled by a programme of the very best, most iconic ABBA hits.



BEVERLEY

PLATINUM JUBILEE
CELEBRATION



YOU ARE HEREBY INVITED TO THE CELEBRATION OF THE QUEEN'S PLATINUM JUBILEE IN BEVERLEY

FRIDAY 3RD JUNE 10AM - 8PM

- The Big Jubilee Tea Party
- Platinum Party at Flemington
- Platinum Jubilee Proms
- Platinum Jubilee Pageant
- Little Jesters
And More...



Visit the website
www.beverleyjubilee.co.uk
to find out more

Follow us on social

Facebook: **Beverley Platinum Jubilee Celebration**

Instagram: **@beverleyplatinumjubilee**

WIN
A FAMILY
TICKET FOR 4
(+ SOCKS) TO
JUMP
URBAN PLAYGROUNDS



EGG-CITING EASTER FUN



HOP DOWN TO FLEMINGATE OVER THE EASTER HOLIDAYS TO ENJOY FUN FOR ALL THE FAMILY!

Take part in our Egg-tastic Hunt to collect your free Easter Treat, join one of our amazing workshops, activities and events, watch the Easter Panto and enjoy some tasty deals including kids eat free at selected restaurants.



**PICK UP A
LEAFLET TODAY
OR VISIT OUR
WEBSITE
FOR MORE
INFORMATION**

**SATURDAY 9TH –
SUNDAY 24TH APRIL 2022**

FRESH NEW SHOPPING AND MORE TO ENJOY

FLEMINGATE.CO.UK



@FlemingateBev



FlemingateBev



FlemingateBeverley