

just BEVERLEY

W: justbeverley.co.uk
E: info@justbeverley.co.uk

Yorkshire
Le Tour
29 APRIL - 1 MAY 2016

FREE
ISSUE 15

 **REYTA**
Remarkable East Yorkshire
Award Nominee 2016
'Best Newcomer'

LANDSCAPING
INSPIRATION AT
MKM

BEACHSIDE
Simply one understated style...

CORDARA
Choose from two colours...

Available sizes (mm):
400x200x30 750x200x30

TIPS FOR
SPRING GARDENS

WIN!

BATMAN V SUPERMAN GOODIES
CINEMA TICKETS
FOLK FESTIVAL TICKETS

FEATURES

HOW TO SELL YOUR HOUSE
ST GEORGE'S DAY
PASTURE MASTERS ELECTIONS

PROMOTIONAL OFFERS

NEWS, WHAT'S ON, LIFESTYLE, FEATURES, PUZZLES, PHOTOS & MORE

THE PAULINE QUIRKE ACADEMY OF PERFORMING ARTS IS ENROLLING NOW IN BEVERLEY!

With outstanding performing arts tuition for 4-18 year olds, your very own movie screened at the cinema, free Trinity exams and our West End show - what are you waiting for?



FREE OPEN DAY
Saturday 7th May
Starts 9.45am Ends 1pm

Find us at **Beverley Grammar School,**
Queensgate, Beverley, HU17 8NF

Call **FREephone 0800 531 6282**
Visit **www.pqacademy.com**



PQA
THE PAULINE QUIRKE
ACADEMY OF PERFORMING ARTS



Letter from the Editors



The REYTA'S were a fantastic experience for Just Beverley and we were delighted to have been involved with such a fantastic awards night. To have been shortlisted was a great honour! Congratulations to Beverley winners Folly Lakes Café, Tickton Grange, Beverley Food Festival and Broadgates Farm Cottages. Have a look at our photos on page 19!

Beverley is such a wonderful place to live and work, even more so when the sun starts to shine. As soon as April arrives with more daylight, people just seem to smile more! As we move towards summer and its plethora of sporting events, remember to keep Just Beverley informed of your awards, and the inspirational stories behind those awards, that will perhaps motivate others to try that bit harder.

On May 1st, I will be participating in the TdY sportive with Andy Beet from MKM, so April will not be a relaxing month for me! Talking of the TdY, it will be fantastic to see everyone getting into the spirit, getting their bikes out and turning the town blue and yellow. Our congratulations to Welcome to Yorkshire, ERYC and Beverley Town Council and their partners for bringing the event to the town. Please remember, Just Beverley is your magazine, so send in your pictures, stories and contributions.

Julian.



Although we are not being treated to a Bank Holiday in honour of Her Majesty the Queen's 90th birthday, I am sure many of us will be raising a glass to her on April 21st. Queen Elizabeth 2nd has been the Head of State during the whole of my lifetime, performing important constitutional and formal roles and providing a matronly presence which acts as a focus for national identity. So 'Happy Birthday, Your Royal Highness and may you reign over us for a while longer yet!'

Birthdays are important events in anyone's book, not only because they mark the passing years, but because they mark the accrual of knowledge and wisdom which can be used to make lives better. MKM are celebrating their 21st anniversary this year with a whole new landscaping service – see their advert and article on pages 12/13. Just Beverley would like to wish them all the best for the future and encourage anyone who is planning a garden make-over to give them a call.

And perhaps you need to tidy your garden to sell your house? See page 15 for more tips on how to sell your house the easy way!

Once again we have some fabulous competition prizes from Parkway Cinema (see page 7) and also a Pair of Half-day passes for Beverley Folk Festival (see page 27). Do enter – you might be as lucky as our current winners featured on page 26!

Be happy!
Linda.

Get in touch with us:

Website: justbeverley.co.uk
Email: info@justbeverley.co.uk
Telephone: 01482 679947
Twitter: @JustBeverley
Facebook: facebook.com/justbeverley



CONTENTS

News

News	4, 5, 9
Parkway Cinema Listings	6, 7

Features

Beverley's Unique Election	10
Landscaping Inspiration at MKM	13
How to sell your home the easy way	15
St George, England's Patron Saint who never came to England	16
Laboratory Manager who is 'Mum' to Many	24

Regulars

Competitions and Winners	7, 26, 27
Charity Champions	16
Legal Q's and A's	17
Photos	18, 19
Comment	21
Lifestyle	22
Poem	22
Puzzles	25
Recipe	26
Arts Page	27
Fitness	28
In the Garden	29
Sport	30, 31, 32
What's On	33, 34

CONTRIBUTORS

Julian Minshall, Linda Johnson, Alice Thomson, John Fewings, Jane Dale, Richard Manville, Aaron Gilpin, Paul and Anne Fox, Sham Alom.

You can pick up the magazine from:

Beverley Parkway Cinema, Beverley Tourist Information Centre, Beverley Library/Treasure House, Tesco, Morrisons, Browns café, Beverley News, Boyes, Tesco café, Colette and Tyson Garden Centre, Beverley Garden Centre, Cherry Tree Garden Centre, Mace News in Saturday Market and Lincoln Way, Tickton News, Costcutter in Walkington, Molescroft News, Grovehill Convenience Store, The Game Bird, Maple News, Leconfield PO, Poundland, Halfords, East Riding Community Hospital, Bishop Burton PO, The Altisidora, Cherry Burton PO, Health Centres, cafés, hairdressers and more!

Beverley Folk Festival – Fun and amazing value for money

Beverley Folk Festival, with its diverse mix of old and new folk music (and even music which stretches the definition of ‘folk’), film, comedy, workshops, worship and more has always been great value for money. This year’s changes in ticketing and programming offers even more for your money!

This year there are more acts on more stages in more venues than ever before. The move to Beverley Racecourse offers more space for more of everything, including increased capacity, so more people can experience this fabulous weekend. Ticket prices this year are £115 for the full weekend (camping extra); £50 for the full day; 1am-6pm for £30 or 6pm until the early hours for £35. This means that anyone with a ticket for a time-slot can experience everything which is going on! There are concessions available for over 65’s and under 18’s with under 12’s going free.



So if you bought a ticket for Saturday afternoon, you would be able to take in the Main Stage concert with Maia, Sam Carter, Gilmore & Roberts and The Young’uns or the Concert Marquee concert with The Grand Old Uke of York, The Darcy DaSilva Trio, Anthony John Clarke, King Courgette and Tim Edey or even switch between the two and still catch The Westwood Sessions, outside events, crafts, workshops, food and stalls and whatever else is going on around the Festival site all for £30!

Festival-goers can also purchase individual tickets for the Main Stage concerts each evening for £25. Friday evening features Kate Rusby, Saturday is a Tyne Treasures Special with The Lindisfarne Story Band, Animals and Friends and Jez Lowe and folk favorites Steeleye Span appear on Sunday.



Festival Chairman Geoff Sargieson said “Beverley Folk Festival is now acknowledged as the biggest musical event in the East Riding; it is a fun, friendly, eclectic and creative event, which can be enjoyed by everyone.”

Just Beverley is particularly looking forward to the Sunday evening party in the Big Top with local but internationally-renown band, Celtarabia. See **page 27** for our interview with their hurdy-gurdy player, Quentin Budworth. For the chance to **win** a pair of half-day tickets to Beverley Folk Festival, see the competition on **page 27**, too!

Move to make East Riding Community Hospital Ward Dementia Friendly

Anyone who is keen to get involved in ensuring there is a dementia-friendly ward at East Riding Community Hospital are invited to a meeting to share their views.

Emma Williams of the Dementia Action Alliance invites interested parties to an informal meeting at the Hospital café on Wednesday 13th April at 2pm. Emma is particularly keen to hear from people with experience of caring for a loved one with dementia or who is themselves living with dementia. There is free parking at the hospital. Call Emma on **01482 211255** to find out more.

Beavers to be reintroduced to Beverley



Despite spending thousands of pounds on flood defences, the local council and residents have been concerned about the amount of standing water which has been left, especially on our common land, after this winter’s particularly wet weather.

Although Storms Desmond and Eva did not cause flooding in Beverley or the surrounding villages this year, the River Hull at Tickton has been very full due to the amount of rain which has fallen on the Yorkshire Wolds, filling the tributaries and becks which feed it.

Beverley Town and East Riding Councils have been examining the way in which work carried out to create a system of dams on the North Yorkshire Moors have protected Pickering from flooding over the winter. The dams are made of natural materials such as logs and branches, which hold up high flows of water. Similar schemes have been successfully implemented in South Yorkshire, Somerset and Scotland.

The cost of building a similar scheme could be prohibitive so the decision has been made to begin a pilot project, based on the Westwood, using beavers. Beavers were once common sightings in Beverley – in fact the name comes from the words Beaver Leah, which means Beaver Clearing – but were hunted to extinction for their fur in the 16th century.

The reintroduced beavers will, it is hoped, recolonise their old, natural habitat, and, over the years, if the pilot is successful, build a series of dams around the town which will protect it from future inundations.

Beverley’s Mayor, Councillor Peter Astell said “I don’t know why we didn’t think of this before! It seems the obvious solution to our problems, especially as we have Pasture Masters who can look after the beavers alongside the other animals on the common land.”

The beavers are due to be released on March 31st at 23.59.

Beverley Racecourse Season Opener on April 13th followed by A Meeting Fit for The Queen on April 21st

The new flat season opens with the first race at 2pm on Wednesday, April 13th (gates open 12noon) when Beverley Racecourse will be able to showcase the latest developments to its facilities, making a visit to the races more than just the excitement of an excellent sporting occasion.

To this end, the Racecourse is set to widen its appeal even further with more themed afternoon and evening meetings!

The first special event celebrates the 90th birthday of The Queen, when the Hull Detachment A (Yorkshire) Squadron of the Queen's Own Yeomanry will be visiting the Racecourse and reinstating a Yeomanry Race which last happened about 50 years ago!

They will be bringing a selection of their armoured vehicles for the public to inspect and climb on, performing a drill alongside riders in original Yeomanry mounted uniform

and taking the salute as the National Anthem is played.

As a mark of respect to one of horse-racing's most ardent fans, this will be an experience not to be missed! First race 1.50pm.

For further details, check out www.beverley-racecourse.co.uk. All Racecourse meetings are listed (with other events) on www.justbeverley.co.uk/whats-on.



Coles expand East Yorkshire team

Coles Solicitors, who operate from 10 locations across North and East Yorkshire are delighted to announce the arrival of two new solicitors to the firm at their East Yorkshire locations, strengthening their Family, Agricultural and Commercial Law capability.

Becky Brown joins Coles Law from Howells in Hull. She is experienced in family law including divorce, financial settlements, child provision and cases involving domestic violence.

Martin Hewitt joins the firm from Sandersons in Hull where he has recently covered a period of maternity leave. Martin's career spans several legal firms including Powell & Young of Pocklington, and more recently Harrowells. He specialises in Agricultural and Commercial Law, specifically farm sales, tenancies and commercial land use including pipelines and wind farms.

Becky and Martin are based in the Coles Beverley office, and Becky will be covering family work in the Coles Market Weighton office. MD Peter Gibson commented: "I am delighted to welcome Becky and Martin to the Coles team. We were keen to bolster our East Yorkshire operations after acquiring our Market Weighton and Beverley offices in 2014 and 2015 respectively. Our team of lawyers now exceed 25 providing a complete range of services to personal and business clients across Yorkshire and further afield"



New Paths Music – the journey begins in Beverley!

A new concept in Festivals takes place in various venues in Beverley and Hull beginning on April 7th with a free event for babies and toddlers (and grown-ups) in Toll Gavel United Church. It ends on Sunday April 10th with a closing concert in St Mary's Church featuring the beautiful music of Schumann, Brahms and Clara Schumann for £12.

In the intervening days there are masterclasses, concerts, organ recitals, opera, barbershop, songs and more, featuring some of the UKs finest young professional musicians.

Tickets and Day Passes are available along with a full Festival Pass from East Riding Theatre box office 01482 874050. Tickets for an Organ Masterclass at Hull City Hall are available from Hull City Hall 01482 300300. Many tickets are also available on-line. Places can be reserved for free events by e-mailing info@newpathsmusic.com. The full programme can be viewed at www.newpathsmusic.com.

www.justbeverley.co.uk

Beverley 'Twins' are planning their next visit to Nogent-sur-Oise

Members of the Beverley-Nogent-sur-Oise Twinning Association are going to France on April 1st to enjoy French hospitality staying in the homes of their 'Twins'.

Upon arriving in France, they will be received The Mayor in the Town Hall, before enjoying a busy 2-day schedule which involves visiting the French Parliament; touring and dining in Paris; visiting the Senlis flower festival and experiencing a cultural afternoon in a museum in Verneuil en Halatte.

Their 3-day visit will come to a close with a buffet supper.

There is an expectation that Beverlonians visiting Nogent will reciprocate as hosts for the return visit scheduled for 8th -11th July.

Last year, there were more French people wishing to visit beautiful Beverley than there were hosts!

Members do not need to be able to speak French, but any attempts are much appreciated!

Anyone who would like to find out more about the Association should contact Carol Tree on carolanntree@gmail.com.

Excitement builds as the Tour de Yorkshire heads this way

Beverley Saturday Market hosts the spectacle of the riders of Tour along with a day of entertainment on Friday April 29th.

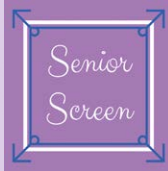
As an official Spectator Hub, there will be cycling stalls, stunt rides, music, refreshments and a big screen which will show a transmission of the coverage of the whole race as it happens on ITV4.

50 children have been recruited to be part of the entertainment which will appeal to both visitors and local people.



EVERY THURSDAY AT 10.30am (doors open 9.45am)
Join us for a free brew and a natter and enjoy some great films on Beverley Parkway's Big Screen. Only £4 with drink and biscuits included. Aimed at 55s and over!

Thursday 31st March
The Lady in the Van
Thursday 7th April
Trumbo
The Lady in the Van
Thursday 14th April
Trumbo
The Choice
Thursday 21st April
Spotlight
The Choice
Thursday 28th April
Spotlight
Dad's Army
Thursday 5th May
Dad's Army



The Lady in the Van
Director: Nicholas Hytner
Stars: Maggie Smith, Alex Jennings, Jim Broadbent
The film tells the true story of the relationship between Alan Bennett and a woman of uncertain origins who 'temporarily' parked her van in Bennett's London driveway and lived there for 15 years.

Trumbo
Director: Jay Roach
Stars: Bryan Cranston, Diane Lane, Helen Mirren
In 1947, Dalton Trumbo was Hollywood's top screenwriter, until he and other artists were jailed and blacklisted for their political beliefs.

The Choice
Director: Ross Katz
Stars: Benjamin Walker, Teresa Palmer, Alexandra Daddario
Travis and Gabby first meet as neighbors in a small coastal town and wind up in a relationship that is tested by life's most defining events.

Spotlight
Director: Tom McCarthy
Stars: Mark Ruffalo, Michael Keaton, Rachel McAdams
The true story of how the Boston Globe uncovered the massive scandal of child molestation and cover-up within the local Catholic Archdiocese, shaking the entire Catholic Church to its core.

Dad's Army
Director: Oliver Parker
Stars: Bill Nighy, Catherine Zeta-Jones, Micheal Gambon
The Walmington-on-Sea Home Guard platoon deal with a visiting female journalist and a German spy as World War II draws to its conclusion.

MONDAYS @ 8.15pm
Starts Monday 11th January
More 'what is it' than 'whodunnit'

Fancy a film but not sure what you want to see? The try our Mystery Movie Monday! You won't know what it is until it starts! It could be a classic you love or a gem you have never seen; perhaps even the first screening of an upcoming film. The fun is in the discovery and it's only £4 per person.

Look out for clues on our Facebook page and on Twitter @parkwaybeverley

Most screenings will be 15 and over only. However, and this is a big clue, some will be over 18 only due to content.



New releases for April (release dates and films are subject to change)

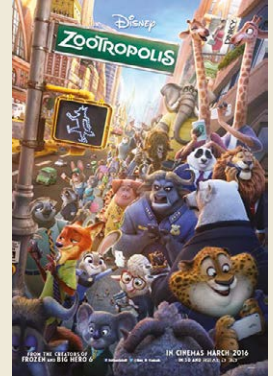
18th March



25th March



25th March



1st April



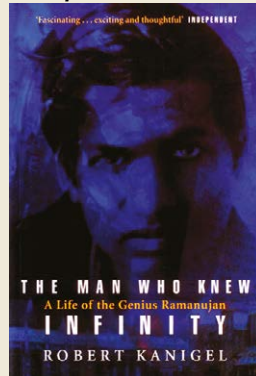
1st April



8th April



8th April



15th April



15th April



22nd April



22nd April



29th April



YOUR NEW INDEPENDENT CINEMA



SUNDAYS @ 5:30pm

Sunday 3rd April - ALL NIGHT LONG (With introduction) (15)
Director: Basil Dearden. Cast: Marti Stevens, Patrick McGoohan, Paul Harris, Richard Attenborough

Sunday 10th April - THE HERE AFTER (15)
Director: Magnus Von Horn. Cast: Sven Ahlström

Sunday 17th April - DISORDER (15)
Director: Alice Winocour. Cast: Diane Kruger, Matthias Schoenaerts

Sunday 24th April - HITCHCOCK/TRUFFAUT (12A)
Director: Kent Jones

**Competition - Win Fabulous Batman Vs Superman:
Dawn of Justice goodies and cinema tickets**



From director Zack Snyder ("Man of Steel") comes "Batman v Superman: Dawn of Justice," starring Oscar winner Ben Affleck ("Argo") as Batman/Bruce Wayne and Henry Cavill ("Man of Steel," "The Man from U.N.C.L.E.") as Superman/Clark Kent in the characters' first big-screen pairing. Fearing the actions of a god-like Super Hero left unchecked, Gotham City's own formidable, forceful vigilante takes on Metropolis's most revered, modern-day saviour, while the world wrestles with what sort of hero it really needs. And with Batman and Superman at war with one another, a new threat quickly arises, putting mankind in greater danger than it's ever known before.

To celebrate the release of 'Batman Vs Superman: Dawn of Justice' in cinemas March 25, Warner Bros. Pictures and Parkway Cinemas offer you the chance to win the following –

- Lenticular Key Tag
- Dawn of Justice Logo Keyring
- Metal Earth Batmobile
- Reversible Beanie Hat
- Wallet
- Batman T-shirt
- Superman T-shirt
- Journal
- Pair of cinema tickets
- There are also 4 pairs of cinema tickets for runners-up!

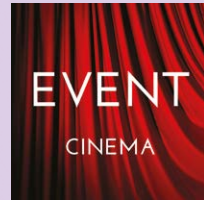
All you have to do to win is answer the following question:

Batman Vs Superman: Dawn of Justice also stars this Oscar nominee as Lois Lane, name this actress.

E-mail your answer to info@justbeverley.co.uk by Thursday 14th April with your name, address and daytime telephone number. Winners MUST be available for publicity purposes for Just Beverley and Parkway Cinemas. The usual Just Beverley terms and conditions apply.

Follow trends on social media with hashtags #BatmanVsSuperman #WhoWillWin

© 2016 Warner Bros. Entertainment Inc. All Rights Reserved



Mon 28th March @ 17:00
THE RAILWAY CHILDREN from York Railway Museum -

Tues 29th March @ 18:00
ALVIN AILEY AMERICAN DANCE THEATRE MIXED PROGRAMME (tbc)

Wed 6th Apr @ 19:15
ROH: GISELLE (tbc)

Sun 10th Apr @ 16:00
BOLSHOI: DON QUIJOTE (tbc)

Tues 12th April @ 18:00
MONET TO MATISSE - PAINTING THE MODERN GARDEN

Sat 23rd April @ 20:15
SHAKESPEARE LIVE! FROM RSC (tbc)

Mon 25th Apr @ 19:15
ROH: LUCIA DI LAMMERMOOR (tbc)

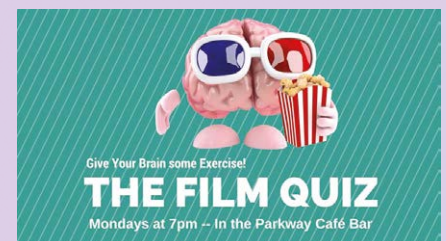
Tues 26th Apr @ 18:00
BALLET HISPANICO: CARMEN/CLUB HAVANA (tbc)

Wed 18th May @ 19:15
ROH: FRANKENSTEIN (tbc)

Thurs 26th May @ 18:00
TEATRO ALLA SCALA- THE TEMPLE OF WONDERS (TBC)

Wed 8th June @ 19:00
RSC LIVE: HAMLET (12a)

Thurs 16th June @ 18:00
LEONARDO DA VINCI: THE GENIUS IN MILAN (TBC)



Why not test your film knowledge at 7pm before the Mystery Movie Monday?

There are free film tickets for the winners!

OUTSOURCING YOUR PAYROLL COULD INCREASE YOUR PROFITS



Has the new legislation for RTI and Auto-Enrolment had a serious impact on your payroll workload?

Outsourcing to payroll experts can reduce costs whilst increasing productivity, accuracy and reliability. With a named personal contact, e-payslips direct to staff via our app, added value services and useful online information there has never been a better time to check out our services.

To arrange a **FREE** consultation to discuss the benefits of a tailored payroll package to suit your business needs call us on: 0845 308 2288 or visit www.stipendia.org.uk



Stipendia Payroll Solutions



@StipendiaPay

Wetherspoon reopens The Cross Keys on April 19th

Beverley's long-anticipated Wetherspoon opens with local woman, Emma Badham at the helm.

Born in Beverley, Emma is currently Manager of the William Wilberforce in Hull; she has been waiting for the opportunity to move back to Beverley and is very excited to be able to put her own stamp onto this new Wetherspoon venture.

Emma told Just Beverley "My social life is geared up around Beverley – I even got engaged at a Beverley restaurant- which is why I am so keen to be back here!"

Wetherspoon has invested about £1m in the Cross Keys, which is listed, and the adjoining old Siam Star building.

The Cross Keys will be invigorated with its range of drinks. It will feature 9 craft beer lines as well as around 30 different craft beers in bottles. There will be 12 hand pulls, 6 dedicated to local Yorkshire ales, with an attractive price point to encourage people to try them.

For gin fans, there will be a Gin Palace experience where different gins are served with fruits to complement the flavours and bring out the botanicals used to make them.

Wetherspoon are renown for offering a day-long food menu, starting with breakfast. But the Cross Keys restaurant will have a unique offering, in that it will be serving themed food over lunch and dinner times. On Mondays the speciality will be Mexican, Tuesdays will be Steak, Chicken on Wednesdays, Curry on Thursdays, Fish on Fridays, As You Like It Saturdays and Lunch and Drinks on Sundays!

Wetherspoon's charity of the year is CLIC Sargent. Emma has skipped across the Humber Bridge and worn fancy dress to raise cash for this leading children's cancer charity. Just Beverley looks forward to featuring the Cross Keys as Charity Champions in the future as Emma is sure to be motivating her staff and customers to get involved in fundraising as soon as she can! The Cross Keys is located at **8 Lairgate, Beverley, HU17 8EE.**



Café HU17 - it's a new café in HU17!

Café HU17 occupies premises previously inhabited by the Poppy Seed. Chris Cockerill jumped at the chance to make Café HU17 into the sort of family-friendly and dog-friendly café which he looks for when out and about with his family.



With great breakfasts, home-made soups, sandwiches, burgers and cakes, which change throughout the day, and a children's menu, there is something for everyone. The ingredients are sourced locally and food is prepared to order so it is as fresh as it can be. Dietary requirements are catered for. The coffee served is a coffee Chris has enjoyed himself for several years; the coffee menu is quite extensive! Café HU17 is also licensed. A particular bonus is that Café HU17 has a function/meeting room space upstairs which is adaptable to most situations. It is available for hire during the daytime and evenings. Enquiries should be made to cafehu17@gmail.com or **01482 871598**. Café HU17 is located at **13 North Bar Within, Beverley HU17 8DG.**

PQA of Performing Arts to open in Beverley



The initials PQ stand for Pauline Quirke; yes, THE Pauline Quirke we all know and love from such wonderful TV shows as 'Birds of a Feather', 'Broadchurch' and the recent 'You, Me and The Apocalypse'.

It seems amazing, but Pauline has been appearing on our screens since she was 9 years old when first cast in an edition of 'Dixon of Dock Green'. Since then she has had her own chat show and appeared in every acting idiom since, gaining a BAFTA nomination on the way. She is so passionate about the performing arts that she wanted to pass her skills onto the next generation and so set about recruiting industry professionals who shared her enthusiasm to open the Pauline Quirke Academy. There are now 150 branches operating nationwide. Luckily for Beverley, we are next on the list!

Heading up Beverley's PQA will be James Aconley, who has been running the York and Scarborough branches for the last couple of years.

He is a Yorkshire-based singer, actor and director who is proud that the PQA offers bang up-to-date coaching and amazing opportunities for their students. And, James stressed to Just Beverley, Pauline Quirke is not just an arms-length figurehead; she gets involved as often as she can, running Masterclasses and introducing West End shows which star pupils can audition to perform in.

Aimed at 4-18 year-olds, PQA will meet at Beverley Grammar School on Saturday mornings. There is a FREE open day scheduled for May 7th, 9.45am-1pm. To find out more, visit www.pqacademy.com/academy_locator/beverley

Just Beverley welcomes Rachael Smith

Rachael is mum to an energetic 5-year-old boy and a cheeky nearly 2-year-old girl, yet is going to find time to contribute to Just Beverley!

Before having children, Rachael had an active social life, but, as all new parents know, life changes when you have children! Rachael found that she had no knowledge as to what was available for Mums, Dads and children in and around Beverley and did not know where to look for information. So when she was on maternity leave with her second child, she decided to build a website to create an on-line presence where parents and carers could go to find out what is going on in the area.

A year ago, Hull and East Riding Mumbler was born.

The website that lists everything from weekly playgroups and classes to local days out ideas and special family events – it has over 1000 things listed on it! Just Beverley is delighted to be welcoming Rachael to begin a monthly column listing family and children's events which will sit alongside our current, more adult-orientated What's On page.

So now you can go to www.hullandeastridingmumbler.com as well as www.justbeverley.co.uk/whats-on. There is also a **Hull and East Riding Mumbler Facebook page** and you can follow them on **Twitter @Hull_ER_Mumbler**. If you have an event to let Rachael know about, you can complete the form on her website. If you have an event for Just Beverley, email info@justbeverley.co.uk.



Beverley's Unique Election

Every year, since 1836, at 9am on March 1st (or the next day if March 1st is a Sunday) the Guildhall sees an election, the like of which is held nowhere else in the country. It's the election of Beverley's 12 Pasture Masters who will be custodians of the common land on The Westwood, Swinemoor and Figham for the next year.

The Pasture Masters are drawn from the ranks of the Freemen of Beverley (who are themselves the sons and daughters of Freemen), who can stand for election to this ancient role as long as they reside in Beverley, Molescroft or Woodmansey.

Since 2010 when an Act of Parliament (The Local Democracy, Economic Development and Construction Act 2009) allowed women to become Freemen, there have been male and female Pasture Masters. The Pasture Masters pursued a change in the Law to include Molescroft and Woodmansey in the residency requirement.



The Mayor opens the meeting, which is presided over by Returning Officers from the East Riding of Yorkshire Council. The election must remain open for 1 hour, but can be brought to a close after that by The Mayor if a vote has not been cast for 20 minutes and as long as there are 12 names which have been voted on to serve as Pasture Masters.

This is an 'open election' with the Returning Officers keeping a tally on the voting as the election progresses.


Botterill & Co
Chartered Certified Accountants

We are a modern and professional accountancy practice ideally located to serve businesses in Beverley and the surrounding area.

We utilise modern accounting technology to provide you with a cost effective, professional service.

Our services:

- Annual Accounts
- Management Accounts
- Tax Returns
- Company Formations
- Cloud Accounting
- Bookkeeping & VAT

For a free initial consultation please contact us:

Office: 01482 862240
Mobile: 07966 051458
Email: garth@botterillco.co.uk
Website: www.botterillco.co.uk

1st Floor Offices, 40 Norwood, Beverley, HU17 9EY

All 200+ Freeman have a vote, but they can only vote for a maximum of 12 Pasture Masters. It has never happened that at least 12 Freemen have not stood for this voluntary post.

An interesting custom of the election is that whisky and beer are available for consumption, harking back to the days when voters might be bribed with a drink for their support. Sally Fraser, Clerk to the Pasture Masters, pointed out that the alcohol is very rarely touched, although voters will have a glass of orange juice to maintain the tradition. The election is seen as a social occasion, even though the majority of Freemen do not go to vote due to other commitments or because they live away.

So what do the Pasture Masters do? Each year they examine the common pasture quality and decide (or allocate) the number of cows which can be grazed on The Westwood, the number of sheep and cows on The Hurn (part of The Westwood in the middle of Beverley Racecourse) and the number of horses on Figham and Swinemoor. The allocation is known as 'gaits'. Farmers, known as 'stockers' who wish to graze their animals on the common land, apply for 'gaits'. 1 gait is an allocation for 1 cow or 1 horse or 3 sheep. A gait costs £35 for 1 cow or 3 sheep and £45 for a horse. The Pasture Masters advertise the availability of gaits in the press with applications to the Clerk, or more usually through the relevant Neetherd (pronounced 'netherd') who looks after the animals and the land on behalf of the Pasture Masters. Jim Cornfoot is the Neetherd on the Westwood; Michael Murgrave looks after Figham and Swinemoor.

There is no restriction on the number of gaits a stocker can apply for, but priority is always given to Pasture Masters or their widows. The Pastures are open from the 3rd week in April to the first week in December, but many animals are taken in at the turn of the clocks in October, which is why there are so few around on the Westwood on Bonfire night.



The Pasture Masters meet every month under the Chairmanship of Allan English and Vice-chair Trevor Walker utilising the skills of all the Pasture Masters. Michael Musgrave is unique in that he is a Pasture Master as well as an employed Neetherd. Michael described the job to Just Beverley.

"I go out twice a day, seven days a week, checking the health of the animals and the fencing. Many of the stockers who own the animals live away, so it can be busy at calving and foaling time. I have a background in farming and this is my third season. Jim, who is the Neetherd on Swinemoor and Figham and I are old friends – we studied together at Bishop Burton College back in the day when it was just an agricultural college.

"Unfortunately I do have to tend to cows which have been hit or even killed by cars. It's local people who cause the vast majority of accidents – they really have no excuse for not slowing down. It's hard telling the owners that their animals have been involved in an accident."

This year there are 3 women Pasture Masters, including 1 new lady. They and the other 9 Pasture Masters are sworn in on the 3rd Thursday in March, ready for the new season.

Spring
at
Flemingate



FLEMINGATE

BEVERLEY

Fun
Easter
events



Let's
Go
on an
EGG
HUNT



Spring at Flemingate is hopping with fun Easter events and more

Your little bunnies will love our **Easter Egg hunt on 25 - 27 March**, chocca-block with prizes and treats. The **1st and 2nd April** see a **host of Town Criers battle it out to become world champion** - come along on both weekends for unforgettable family days out!



FREE
LOCAL DELIVERY

**MY KIND OF
GARDEN**

Make your **outdoor** **space** your perfect **living space**

Inject personality into your garden this summer with a little help from **MKM** & ensure your garden is the one they're all talking about!



Call into branch today for assistance with design ideas and inspiration!

MKM BEVERLEY
SWINEMOOR LANE, EAST YORKSHIRE HU17 OJX
01482 880 088 | mkmb.co.uk  
OPEN Mon-Fri 7:30-5:30 Sat 7:30-noon



Landscaping Inspiration at MKM

Here at MKM Beverley there is all the inspiration you'll ever need for your next garden and landscaping projects!

Make your outdoor space the envy of all your friends with the vast range of turfs, aggregates, paving, walling, decking or fencing available, many of them on show. The specialist team at Beverley will guide you every step of the way to help you turn your garden and landscaping dreams into reality.



There is something to suit all tastes and budgets from the traditional Marketstone to the contemporary Avante-Garde.

If decking is more your style, then why not try the on trend composite Trex Transend - it's a low-maintenance decking that is the also one of the most weather resistant. It won't warp or splinter and doesn't require staining or painting.

Combined with a concealed fix, this decking has a seamless quality look and feel, available in a wide range of colours designed to echo the natural variants of wood.

MKM offer a variety of block paving from standard low cost rectangular block paving, to blocks in a variety of shapes, textures and colours to suit both traditional and modern settings. Many products come with complementary accessories such as edging and walling materials. Whilst most block paving is manufactured in concrete, they offer a collection of both natural stone pavers and granite setts.



MKM Beverley specialists can advise on the right materials and quantities of supporting materials to install your products correctly. Why not pay MKM Beverley a visit and be truly inspired by their BRAND NEW landscaping display and have a chat with their specialist sales team?



Andy Beet, Lee Gale, Andy Sleight, Kim Hornshaw and Marc Rowson are there to help you.



**MKM Beverley is located on Swinemoor Lane, Beverley HU17 OJX.
Telephone: 01482 880088.**



Would you like to make a difference to someone?



VOLUNTEER CAR & MINIBUS DRIVERS NEEDED



Full training given, ring or pop in for a chat!



25 Corporation Road, Beverley, HU17 9HG

Tel: 01482 868082

www.bclift.org.uk

Reg. Charity No: 506813

Attend

BEES

BURTON ELECTRICAL SOLUTIONS

High quality electrical work across East Yorkshire & the Humber region

DOMESTIC

COMMERCIAL

TESTING

Andrew Burton

28 Carnaby Close, Leconfield, East Yorkshire HU17 7LA

Tel: 01964 552769 Mob: 07585 601730

Email: info@burtonelectricalsolutions.co.uk

Web: www.burtonelectricalsolutions.co.uk

NICEIC
DOMESTIC
INSTALLER

Hard Work Recognised at East Riding College

Excellence and dedication were recognised at East Riding College's annual awards ceremony at The Spa Bridlington when 40 students, employers and staff were each presented with a glass trophy and a gift voucher in recognition of their achievements.

Winners came from all over the East Yorkshire and ranged from younger students in full-time further education to adults who were studying as part of their job.

Some of the winners were recognised for simply excelling throughout their course whilst others had overcome significant personal difficulties to be successful.

There were also awards for employers in recognition of their commitment to workforce development and East Riding College employees who had excelled in using their own professional development for the benefit of learners.

Principal Derek Branton said: "Our annual awards are an opportunity to celebrate the outstanding achievements of our students and the progress they have made since enrolling at the College. Myself, colleagues and the friends and families of our learners watched with great pride as they stepped up to receive their awards and enjoyed their fully deserved moment in the spotlight."

He added: "It is very pleasing to recognise the commitment of employers who partner with the

College to train their staff and enhance the professional effectiveness of their workforce.

"The event is also an opportunity to thank our own staff for their excellent achievements and the ongoing dedication they show to their professional development."

Simon Wright, Chairman of the College's Governors, said: "My fellow governors and I were delighted to hear such wonderful stories of achievement from our students.

Working in education is very rewarding and never more so than when we see what students can achieve with the support and encouragement of a talented team of tutors."

The evening began with the College's Annual General Meeting, in which Mr Branton looked back on a very successful 2014-2015 academic year. He referred to the College's extensive work with employers and the close alignment of the curriculum with the skills priorities set for the region by the Local Enterprise Partnerships. The College recruitment levels remained very high for both young people and adults.

High success rates were accompanied by strong positive rates of progression with 94 per cent of learners on full-time courses



progressing directly into employment or higher level study, either at the College or at university.

Mr Branton also mentioned that the College had transformed its estate in seven years, with the construction of new campuses in Beverley and Bridlington and the refurbishment of its Hull site.

The awards ceremony was then led by Vice Principal, Rhys Davies and Director of Human Resources, Barbara Collinson, with the awards presented by members of the governing body.

Each of the awards was sponsored by a local firm.

To see more photographs of the award winners, visit www.facebook.com/eastridingcollege.



SHORT COURSES STARTING IN APRIL

DIGITAL PHOTOGRAPHY
ECO ART
COOKERY
FRENCH
COUNSELLING
DRAWING
and more...

Drop in for a part-time prospectus, call **0345 120 0044** or visit www.eastridingcollege.ac.uk

The Flemingate Centre
Armstrong Way,
Beverley

East Riding College
BEVERLEY • BRIDLINGTON • HULL



ENROLLING NOW!

How to sell your home the easy way!

Do you remember the Channel 5 TV programme 'The House Doctor'® with Ann Maurice? She 'staged' homes ready for selling by clearing the clutter.

She recommended using 'neutral' colours for walls, floors and furniture, choosing 'accent' colours to highlight interesting features and create focal points, and replacing anything which could not be freshened up. She ensured the garden was tidy and attractive and made sure the property had that all important 'kerb appeal'. The concept was so successful she patented the name! More recently we have 'Selling Houses with Sarah Beene' who uses similar principles, advising sellers how to get buyers interested.

If you wish to sell your home, presenting your property to its best advantage is very important. It might take time and effort and even some investment.

But your home deserves to reach its best possible value, which it can only achieve by being shown to its best potential. That doesn't mean complete redecoration, though! But a prospective buyer needs to be able to see themselves living in your home, so it's key that they aren't put off before they step over the threshold!

Because today's purchasers can see your property on-line, the work needs to be done before you put your house on the market and definitely before you have those pictures and videos taken! However, there is a fine line between doing too much and not doing enough. This is where your estate agent can be so helpful. They can 'see' your home from a buyer's perspective and create a unique marketing plan for your home.

You may be surprised to learn that your property has just 3 seconds to make an impression when viewed on a website! It also means that the reality has to match the marketing.

Your home has to look inviting when viewed on-line to encourage a viewing in person but the reality has to meet the expectation created by the photography. A 'show home' has to look like a show home whenever a potential buyer comes to view, which can be challenging. However, people can make assumptions about you when they see your house on-line – not always good assumptions!



Here's a quick check-list of things that you can do to encourage interest and that all-important offer:

- Clean the windows, mow the lawn and weed the garden
- Repair and paint fences and gates. Replace uneven paving and fill holes in pathways.
- Hide away your rubbish bins.
- 'Stage' your garden, courtyard or balcony with a table and chairs, plants, pots, ornaments and fairy lights or candles. Why not use plant-filled window-boxes, too?

- Clear away all of your clutter – take rubbish to the tip and donate unwanted items to charity. Space sells, so the less you have, the better.
- Wash your windows and curtains, dust away cobwebs and freshen up tired paintwork. Clean your bathrooms and kitchen so they are spotless and gleaming. Remove dying pot plants.
- Open the windows – make sure your house smells fresh and inviting.
- Position mirrors opposite windows to increase the amount of light in a room.
- Make the beds and close the wardrobe doors!

Leanne Marshall from Hunters has moved house several times and uses this experience to help her clients. She told Just Beverley "When I was selling my last house, I bagged all the kids' toys up and hid them in the boot of the car whenever we had a viewing! In fact, I did the same with the washing and ironing – it all got folded into a basket and put on the back seat."

She mentioned other little tips, too! Make sure there aren't too many coats on the hall clothes pegs and put away shoes which aren't needed on a day-to-day basis. Box up anything which you are going to take to your new home and stack it in the garage or spare room. Buy some fresh flowers. Position sofas and chairs opposite each other. Create a focal point in your lounge if you don't have a fire-place. Focus on the positives!

If you are thinking of selling your home, you can contact Leanne for advice on **01482 861411**.

Hunters is one of the country's leading estate agencies with over 150 independently owned branches providing a proactive service to market your house optimally.

indicoll

more than just web design

MAKE MORE MONEY!



**Google AdWords™
TRAINING COURSE**

ONLY £99 PER PERSON

(INCLUDES LUNCH AND REFRESHMENTS)

Training delivered by
Google AdWords™ Certified Professionals

ONLY 4 PEOPLE PER COURSE

This results-focused training course will show you how to create and manage campaigns that don't break the bank and are focused on your target audience, improving your return on investment

Call now to book your place 01482 871178

Visit www.indicoll.co.uk/googleadwordstrainingcourse for more information
Training Venue: indicoll, 40 Norwood, Beverley, HU17 9EY



HUBY DOMESTIC APPLIANCES

HUGE SAVINGS
when you

BOOK ONLINE

at
hubys.co.uk

Book in advance and save money.
The further you book in advance
the more you could save...



You've tried the rest,
now use **THE BEST!**

01482 240511

St George - England's Patron Saint who never came to England!

There are stained glass windows in Beverley Minster and Toll Gavel United Church, along with many other churches through England and Scotland, which depict St George.

He is usually shown on horseback carrying a shield emblazoned with a red cross on a white background, with a spear in his hand which is aimed at a fantastical dragon.

Everyone knows the story of how St George killed the dragon – but no-one really knows who St George was, except that we remember him every year on April 23rd, the anniversary of his martyrdom in around 303AD. However, other countries also venerate him and Roman Catholics recognise him as one of the Fourteen Holy Helpers.

St George was a real person. Georgios was born to Greek Christian parents in Palestine somewhere between 275 and 285AD. He became an officer in the Roman Army but was put to death for failing to renounce his Christian faith.

St George's dragon-slaying escapade reputedly happened in Libya when he was passing a lake which had a large town on its shores. An enormous fire-breathing dragon threatened to burn down the town and kill all the inhabitants unless they gave it 2 sheep to eat every day; when the sheep had been eaten, the dragon demanded young virgins.

Now there was only one virgin left – the King of Egypt's daughter, and she was tied to a stake on the shore as St George rode past. He released the girl, and when the dragon appeared, St George charged at it on horseback, making the sign of the Cross. He severely wounded the dragon which he bound up by using the princess's girdle.

They then dragged the dragon to the town where St George said he would kill it if everyone would be baptised and convert to Christianity. Unsurprisingly, everyone converted and the dragon was slain!

Edward III is to be thanked for giving St George such prominence by naming him as the Patron Saint of the Order of the Garter, which he established in 1348 as the highest honour for chivalry after his grandfather, Edward I rode into battle against Simon de Montfort and the Welsh

in the 13th century, wearing a red cross on a white background, invoking the bravery of St George and winning battles.

The reason why Edward I wore the Cross of St George is the myth that he appeared to The Crusaders and helped them win the Siege of Antioch. (Note, the link between Richard the Lionheart and St George is now discredited by Oliver de Laborderie.)



So on April 23rd when you are celebrating English culture and raising a glass to St George, just remember he was not actually English.

Also remember we share him as Patron Saint with Georgia (where there are 365 Churches dedicated to him); Malta and Gozo; Brazil; Bulgaria; Newfoundland and Labrador; Ethiopia; The Greek Army; Lebanon; several towns in Italy including Milan; Aragon and Catalonia in Spain; Montenegro and The Boy Scouts of America

amongst others. Whether he was English or not, he has an international acclaim and it is wonderful to think that so many, not just the English, consider him their own.

But it must be noted that Edward I also carried the banners of St Edward, St Edmund, St Cuthbert and St John of Beverley into battle! It could have been St John of Beverley who became England's Patron Saint! In that case we could all have been wearing beavers instead of a red cross and celebrating, not on April 23rd, but on May 7th, St John's feast day and not had to share him with anyone!

Edward III is to be thanked for giving St George such prominence by naming him as the Patron Saint of the Order of the Garter, which he established in 1348 as the highest honour for chivalry after his grandfather, Edward I rode into battle against Simon de Montfort and the Welsh in the 13th century, wearing a red cross on a white background, invoking the bravery of St George and winning battles. The reason why Edward I wore the Cross of St George is the myth that he appeared to The Crusaders and helped them win the Siege of Antioch. (Note, the link between Richard the Lionheart and St George is now discredited by Oliver de Laborderie.)

So on April 23rd when you are celebrating English culture and raising a glass to St George, just remember he was not actually English. Also remember we share him as Patron Saint with Georgia (where there are 365 Churches dedicated to him); Malta and Gozo; Brazil; Bulgaria; Newfoundland and Labrador; Ethiopia; The Greek Army; Lebanon; several towns in Italy including Milan; Aragon and Catalonia in Spain; Montenegro and The Boy Scouts of America amongst others. Whether he was English or not, he has an international acclaim and it is wonderful to think that so many, not just the English, consider him their own.

But it must be noted that Edward I also carried the banners of St Edward, St Edmund, St Cuthbert and St John of Beverley into battle! It could have been St John of Beverley who became England's Patron Saint!

In that case we could all have been wearing beavers instead of a red cross and celebrating, not on April 23rd, but on May 7th, St John's feast day and not had to share him with anyone!

Just Beverley loves to celebrate good news! We know there are many un-sung heroes in Beverley in do so much to help others, so here's your chance to let us know about your efforts.

Email info@justbeverley.co.uk or call **01482 679947**.

Inches Body Studio Users Raise over £5k for Yorkshire Cancer Research

Adrienne Hodgson was delighted to receive cheques totalling £5,400 for YCR from Inches. Owner Yvonne Jones says that her generous body studio users help raise over £50 a week by purchasing numbers for £1 a time on a 'name-card'-type board; the winning number being the number on the bonus ball drawn in the Lottery, the prize being donated by the studio itself.

Yorkshire Cancer Research uses money raised within Yorkshire to support Yorkshire people living with cancer. There are 527 people diagnosed with cancer every week in Yorkshire and this money will be used to help find out how to reduce that figure and how to help improve the quality of their lives.

As Yvonne says "My own father died from bowel cancer and we have ladies here who have been diagnosed with cancer. It touches everyone which is why we are all keen to help where we can by donating a little every now and again. As you can see, a little soon turns into a lot!"

Charity Champions



Aaron Gilpin of La Lumière Photography offers some professional tips to help us take better photographs

Flash Photography Tips:

Ok, so you have a nice camera and you have invested into a flash to help you create better looking photos, but you soon realize that pointing a flash directly at your subject makes everything look worse, red eye, harsh shadows etc etc. We've all been there, so here are some handy tips for using your new flash.

1. Bounce It

This is the number one secret weapon when it comes to on-camera flash techniques. I use this all the time especially at weddings, or indoors with bad light. Point your flash at the ceiling if it is a light or white colour, this creates an even spread of fill light around your subjects without looking too "flashy" you can even bounce off walls to give the light some direction.

2. Make It Bigger

The size of the light source, relative to your subject, will affect the overall look of the image. This is because a larger light source will create a smoother transition between light and shadow, or what photographers refer to as soft light. There are a number of accessories you can buy to attach to your flash to achieve this.

3. Turn It Off

Sometimes, the best thing you can do with your on-camera flash is, nothing. As you become better at using your flash, you will become tempted to use it all the time. There's plenty of good light available in most situations. So, your next area to master is natural light!

LA LUMIÈRE
PHOTOGRAPHY

La Lumière Photography, 22 Trinity Lane, Beverley, HU17 0DY.
www.la-lumiere.co.uk
Telephone: 01482 867455

Legal Q's and A's

Every month, Just Beverley asks a question of a team of local legal experts. The questions we ask are the kind of thing which can happen to anyone for which we don't know the correct answer. Hopefully this column is of interest to you! If you have any questions for our Legal Team, please send them to info@justbeverley.co.uk with 'Legal Q's and A's' in the subject box!

Many of us today either are landlords or know a landlord! It has become more common to use agencies or estate agents to handle tenancy agreements, so we were interested to find the answer to this query.

Q. I have a flat which I rent out through an estate agent. The tenants have been paying the rent to an agency, but the agency hasn't been paying me. What can I do?

Coles the solicitors have provided the following response.

A. We assume that you have a contract with the estate agent? Check this to see what it says about payment. If they're supposed to be paying you monthly, they're in breach of contract, in which case you can sue them for the amount owing. Send them a letter giving them 14 days to pay and warning that you intend to take legal action before taking out a claim at the small claims court. Should you decide to switch to a different agency, your contract should also deal with notice periods required for doing this.

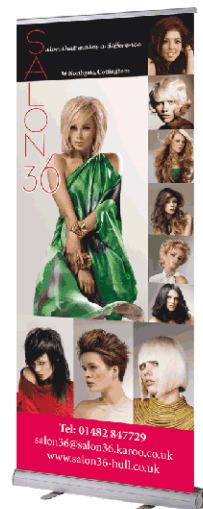
Coles are based at 22, Lairgate, Beverley HU17 8EP, telephone **01482 231300**. Check out their website www.coles-law.co.uk

Coles
the solicitors



Print that gets you noticed

- ✓ Notepads
- ✓ Business Stationery
- ✓ Business Cards
- ✓ Flyers/Leaflets
- ✓ Wiro Desk Calendars
- ✓ Wall Calendars
- ✓ Pop-up Banners



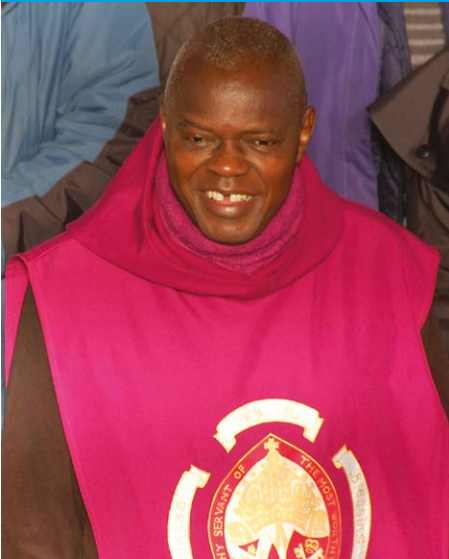
Tel: 01482 610902
info@jadan-press.co.uk www.jadan-press.co.uk
Rainbow House, Kimberley Street, Hull, HU3 1HH



World Book Day at Beverley St Nicholas School



Arch Bishop Sentamu's Pilgrimage around Beverley



HERE TO GET *you* THERE

HUNTERS®

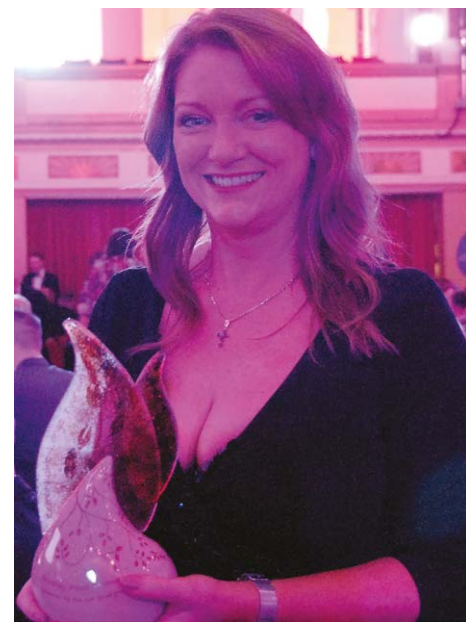
EXCLUSIVE

BEVERLEY / 01482 861411

Honorary Freeman Ceremony



REYTA Awards Ceremony, Bridlington Spa



SALES / LETTINGS / MANAGEMENT

HUNTERS[®]
HERE TO GET *you* THERE

BEVERLEY / 01482 861411



Book now for Afternoon Tea at Lempicka

An exquisite and delicious Afternoon Tea Service at Lempicka Café is now being served daily. Treat yourself to our elegantly prepared Afternoon Tea including homemade baked cakes and tarts, savoury sandwiches, speciality loose leaf teas and our inspiring Kir Royale aperitif.

Please call 01482 866960 for reservations.

Visit Lempicka Café & Bistro for delicious all-day breakfasts, tasty lunches, home-made baked goods and our renowned espresso based coffees. Luxury 4 star self catering/bed and breakfast holiday accommodation also available at Lempicka Apartment and Cottages

**Lempicka Café & Bistro, 15 Wednesday Market,
Beverley, HU17 0DH**



Tutto Italia

ABTA
The Travel Association



Hand-picked offers for you

- Beautiful Italian cottages prices from £470
- Walking tours in Italy prices from £435 per person
- 4* Short breaks in an Italian City prices from £379 per person

- Italy specialist with unique concierge service
- Specialist tours
- Cruises
- Ski/snowboard holidays
- Regional flights, trains, car hire... and so much more

I am looking forward to helping with your next holiday

Visit: www.clairestravelagents.com

Call: Claire Hastie - 01964 550741

Email: claire@tuttoitalia.co.uk



Looking for your dream holiday?

Look no further than Oneworld Travel - Beverley's only independent travel agency. From those all important family holidays in fantastic destinations like Tenerife and the Canaries, to luxurious honeymoons in The Maldives and Mauritius - our team of expert travel specialists will help you every step of the way.

**EXCELLENT RATES ON
FOREIGN EXCHANGE**



- > SUMMER HOLIDAYS
- > CITY BREAKS
- > CRUISES
- > ESCORTED TOURS
- > COACH & RAIL HOLIDAYS
- > FLIGHT & HOTEL ONLY
- > WEDDINGS & HONEYMOONS
- > AIRPORT PARKING & HOTELS
- > UK COTTAGES
- > FLORIDA PARKS
- > VISA SERVICES
- > CURRENCY EXCHANGE



**35 SATURDAY MARKET
BEVERLEY
HU17 8BE**

01482 280081
beverley@1worldtravel.co.uk

*Low deposits
available on
selected
Summer Holidays
2016*

Comment from Councillor Stephen Parnaby, OBE, Leader of East Riding of Yorkshire Council

Despite huge cuts in funding from central Government, East Riding of Yorkshire Council is a strong believer in the need to continue investing in our communities and is determined to find the necessary money to invest in the area's infrastructure and facilities.

This policy of investing to save and working extremely hard to attract external funding to support major projects has served the East Riding well over the years and has seen massive investment in all sorts of schemes. Our philosophy is that such investment will benefit the East Riding, its residents and local businesses for years to come. This can be in all sorts of ways, whether it is improved roads which is good news for every motorist as well as all the firms who need good transport links and the businesses which rely on tourism, to state-of-the-art leisure facilities which improve the population's health and wellbeing.

For example, our street lighting 'Invest to Save' programme is seeing £16million spent on 9,000 new columns around the East Riding and 16,000 new energy-saving lights. We are spending £9million on integrating customer services, libraries and registration services under into the same buildings, thus saving significant running costs.

A large amount of the money for these projects has come from grant awards and the council continues to have great success in securing such external funding for capital projects.

This has been achieved through a very competitive bidding process against other authorities and enables the council to increase the overall scale of capital investment within the East Riding.

More than £300million of investment has been secured by the council's asset strategy service for investment in the East Riding on highways infrastructure, flood risk and alleviation work, schools, housing and leisure facilities within the East Riding. We are tripling our investment in 'A' roads highway maintenance to £24million. Despite the continuing national economic difficulties, the council's future capital programme is substantial, with investment now at a figure of around £402million for 2016/17 and future years.

The priority for investment is now fully focused on an invest to save, sustain and improve services approach and we are also targeting a sustained growth in economic development.

It's a tough balancing act; the need to reduce revenue expenditure while trying to protect and improve services for local communities and boost growth in the East Riding economy.

However, our long-term, planned capital investment will not only sustain and improve our facilities and infrastructure, helping to support the local construction industry and maintain jobs, but it will also attract match-funding external investment towards developing the local economy.

The council's capital investment programme helps to maintain and create jobs, with a great deal of the work being carried out by local contractors.

While some other local authorities are closing facilities such as libraries and customer service centres, we in the East Riding are using this capital investment to make better use of buildings and achieve long-term savings while also working to improve services for residents by delivering them differently.

You can rest assured that we will continue this policy, despite continued central government austerity measures and funding cuts, to make sure that the East Riding has the best possible facilities and services that our residents deserve.



Does Your Whole Company Fall Apart When You're Not THERE?

Using Quickbooks Online
puts you back in control
Wherever You Are!



Call today on 01482 679333
For your FREE 30 day Trial

intuit

www.hemingwaybailey.co.uk/quickbooks-online

hemingway
bailey

What have you done about your WILL?

aps
Legal & Associates
Professional Will Writing &
Legal Specialists Estate Planning Practitioners

Would you like a FREE consultation,
in your own home, to get advice
and costs on Power of Attorney and
preparing or updating your Will?



Jenny Fothergill AIPW, LLB (Hons)

Tel: 01482 968001

Email: jenny@apslegalbeverley.co.uk

www.apslegalbeverley.co.uk

APS Legal & Associates Ltd is a Member of the Institute of Professional Willwriters (IPW)
APS Legal & Associates complies with the TSI Approved IPW Code of Practice

Funeral Plans also now available

Forget diets - adopt a new lifestyle!

So many people seem to be continually on diets! They go on a diet for their holidays, they go on a diet for Christmas, their New Year Resolution is to lose weight! They join diet clubs, lose lots of weight and then put it all back on again when they stop going to the club! Why is this?

I think there are two main reasons why diets don't work. First, it's because we eat the wrong types of food. Diets based on processed, sugar-laden, wheat-based food is not what our bodies need; it prevents our bodies working efficiently and effectively and causes weight gain. If we eat food in as natural a manner as we can without additives or manipulation, then we can become fitter and healthier. Fresh fruit and vegetables, nuts and seeds, whole grains, coconut and olive oils, grilled fish and meat with herbs and spices for seasoning are the basics we need to ensure we have optimum nutrition.

The second reason diets don't work is that we have not convinced our subconscious mind that if we are slimmer it's better for our long-term health. If the subconscious mind associates slimming with restricting food choices, then it will rebel. If it thinks we are going to be hungry because we can only eat a certain number of calories every day,

it will do everything it can to sabotage our efforts. If our subconscious thinks that losing weight is going to cause us to be less safe in that we could starve, then it will put temptation in our way. 90% of what we do is subconsciously motivated – the subconscious mind is the difference between success and failure in almost everything we do!

As a Clinical Hypnotherapist and Life Coach, I help my clients overcome their reticent subconscious minds with positive suggestions delivered whilst relaxed.

Once the subconscious mind is engaged and the positive reasons for becoming slimmer and fitter accepted, losing weight becomes so much easier. Additionally, my background in science and fitness means I can also give nutrition and exercise advice which further helps with weight loss.

You learn to eat food which helps you stay fuller for longer and provides important protein, carbohydrates, fats, vitamins and minerals. I also help you to incorporate exercise into your daily routine so you become more toned.

Adopting a new lifestyle is the best way to ensure you become the healthier, fitter person you want to be.



It's not about dieting – it's about a new way of living so that you release the new you!

If you would like to find out more, visit www.releaseyourpotential.co.uk, follow @RYPotential, check out my Facebook page or give me a call for a chat **07585 802035**. Whatever you do - be happy!

Linda
www.releaseyourpotential.co.uk
Tel 07585 802035

BIKE SHED by John Fewings

Perhaps being inspired by the Tour de Yorkshire has Just Beverley's poet-in-residence, John Fewings, musing about cycling!

*I bought myself a brand new bike -
I've been meaning to get one a while.
Imagining cycling on warm, Summer days,
I stood with a big beaming smile.*

*I'd conquer the hills and I'd speed down the
slopes
Enjoying the wind in my hair
I'd stop for a while for a packed picnic lunch
In truth, I'd not have a care*

*Then a thought crossed my mind – and a
dark thought at that -
It's a truth that you can't contradict
There's folks around here that will steal
anything
And I wouldn't want my bike to get nicked*

*Joy-riders once made away with my car
Smashed it up - so I know how it feels
So I thought I'd best set about making a shed
I could use it for stowing my wheels*

*It could go by the kitchen, alongside the fence
I'd worked it all out in my head
I designed it, aligned it, re-drew and refined it
'Til at last I had planned perfect shed*

*Then off to Wickes to purchase the wood
4 by 2 should make a strong frame
When you've got possessions you wanna
protect
Then sturdy's the name of the game*

*I measured it, marked it, sawed it and screwed it
To make it as strong as you like
To make double-sure I then nailed it and glued it
They won't get their hands on my bike!*

*Of a truth it's the acme of tough garden sheds
The best one that's ever been erected
It's not just a shed – it's a fortress is that
So I know that my bike's well protected*

*A toughened steel hasp to secure the shed door
A padlock to push through and lock it
All told, by the time that I'd finished the job
I was 70 quid out of pocket!*

*But later that night as my head hit the pillow
At least I'd sleep sound in the knowledge
My bike would be safe and I'd ride it tomorrow
Just after my toast and my porridge*

*I slept well that night – there was never a
doubt -
I was shattered with all my exertions
As birds softly twittered and woke me from
slumber
I arose and I pulled back the curtains*

*Expecting to glow with some pride I looked
out
But I soon filled with anger instead
Oh – there was my bike – propped up on the
fence
But some so-and-so's stolen my shed!*



John Fewings is a member of the Argy-Bargy Poets and a presenter on Beverley FM. Find out more about John on his website - www.johnfewings.zone

Evans Halshaw offers free car insurance to motorists in Beverley

Local Vauxhall retailer, Evans Halshaw, is helping motorists in Beverley enjoy the thrill of owning a new car with a special insurance deal available on selected vehicles.

Young drivers (18 to 20 year olds) can take advantage of £99 first year insurance, provided by ingenie, on the New Corsa Limited Edition when an ingenie black box is fitted.

On the same model, those aged 21 and over can get free insurance, through Vauxhall Insurance*.

“The Corsa is one of our most-loved cars, especially among young drivers so we’re really pleased to be helping young and mature drivers alike with this insurance offer, and getting even more motorists in Beverley on the road.” said Aron Brown, Dealer Principal at Evans Halshaw Beverley.

As well as this great offer, Vauxhall is running a Scrappage Allowance scheme when customers trade in their old motor.

This means a 21 year old customer could benefit from the £2,000 allowance, which would result in a £1,190 finance deposit contribution and payment of just £193 per month over 36 months for a Corsa three-door 1.2-litre Limited Edition, which includes one year’s free insurance and one year’s free OnStar featuring emergency response notification, stolen vehicle recovery technology and 4G Wi-Fi**.

Vauxhall’s Scrappage Allowance scheme helps customers take advantage of a £2,000 (including VAT) scrappage trade-in against most new passenger cars in its range. To qualify for the scheme, customers

must have owned their trade-in vehicle for a minimum of 90 days. There is no upper age limit for cars and any manufacturer’s vehicle will be accepted.

To find out more about this insurance offer or any other information about Evans Halshaw, please visit the retailer in Beverley. Alternatively go online to www.evanshalshaw.com/vauxhall.

*Terms and conditions apply visit: www.vauxhall.co.uk/insurance

**On selected models only. OnStar is a comprehensive package, which includes a high-speed 4G Wi-Fi mobile network and stolen vehicle recovery technology. It can even give parents of young drivers more peace of mind thanks to its emergency response notification if the vehicle’s airbags deploy.

CORSA LIMITED EDITION 1.4i 75PS 3-DOOR

£149 PER MONTH
£149 Deposit

AVAILABLE WITH
1 YEAR’S INSURANCE‡
FREE 21-75 YRS, ONLY £99 18-20 YRS



Representative Example

35 Monthly Payments of	Customer Deposit	Dealer Deposit Contribution	Scrappage Allowance	Term of Agreement	On the Road Cash Price	Total Amount of Credit	Credit Arrangement Fee†	Option to Purchase Fee††	GMFV - Option to Purchase Payment	Total Amount Payable	Rate of Interest (Fixed)	Representative APR
£149.00	£149.00	£2,000.00	£1,550.00	36 Months	£13,954.00	£10,255.00	£149.00	£149.00	£6,002.00	£15,214.00	3.93%	5.3% APR

Evans Halshaw Vauxhall Beverley

01482 862 801
evanshalshaw.com/vauxhall

Swinemoor Lane
Beverley
East Yorkshire
HU17 0LJ



VAUXHALL

Official Government Test Environmental Data. Fuel consumption figures mpg (litres/100km) and CO₂ emissions (g/km). Vauxhall Corsa range: Urban: 38.2 (7.4) - 76.3 (3.7), Extra-urban: 58.9 (4.8) - 94.2 (3.0), Combined: 48.7 (5.8) - 88.3 (3.2). CO₂ emissions: 133 - 85g/km.

Reg Vardy (VMC) Limited is a credit broker/intermediary that can introduce you to a limited number of lenders to provide funding for your vehicle. They may incentivise us for introducing you to them. †Payable with first monthly payment. ††Payable with Option to Purchase Payment. GMFV = Guaranteed Minimum Future Value. Contract mileage of 5,000 per annum and is subject to an excess mileage charge of £0.09 (per mile). Further charges may apply subject to vehicle condition and mileage if you return the vehicle at the end of the agreement. All details correct at time of publication and are subject to being withdrawn or changed without notice. Not to be used in conjunction with any other offer. Vehicles available while stocks last. Image shown for illustration purposes only, and may show optional specification. Finance subject to status. Terms and conditions apply. Applicants must be 18 or over. Guarantee/Indemnity may be required. Test drive subject to applicant status and availability. Finance provided by Vauxhall Finance, PO Box 6666, Cardiff, CF15 7YT. Subject to acceptance by an Evans Halshaw approved finance company. Offer may include Associate Partners discount. Scrappage Allowance and Finance Deposit Allowance where stated. Offer applies to selected new vehicles ordered from 1 January 2016 and registered by 31 March 2016 and is subject to terms and conditions. ‡First year insurance offer available on New Corsa Limited Edition only. All drivers must have held a valid full UK licence for a minimum of 1 year. All policies are underwritten by Ageas Insurance Ltd. Other insurance specific Ts&Cs apply. Drivers aged 18-20 will make a contribution of £99 to their premium and must agree to the fitting of a telematics box to the car: every 3 months, your contribution will be reviewed and if you drive well, we will return part of this to you. The policy may be cancelled for excessive speeding or consistently poor driving. Only available through ingenie. The offer will cover the full premium for drivers aged between 21-75 (motor policy only). Only available through Vauxhall Insurance.

The Beverley Laboratory Manager who is 'Mum' to many

Laura Mason is a Senior Embryologist and Deputy Lab Manager at The Hull IVF Unit which is based at the Women and Children's Hospital, Hull Royal Infirmary.

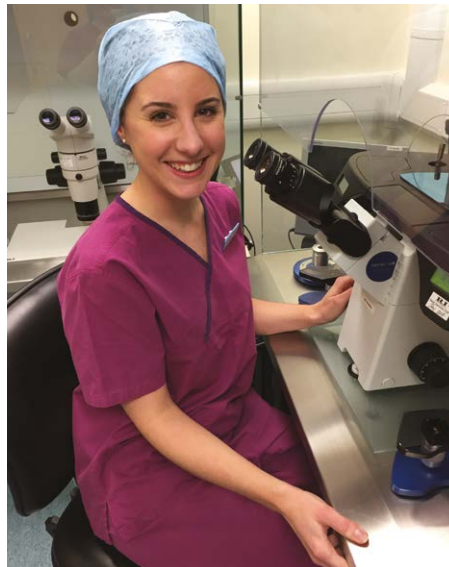
The IVF Unit, which is a private company, but treats NHS as well as private couples, is one of the most successful units in the country at helping childless couples have the child or children they long for. As the Unit is in an independent area, it is quite discrete for visitors.

Laura, who lives in Beverley, has always leaned towards the sciences, but she also wanted to help people, so this job ticks both boxes. As an embryologist, she is classed as a clinical scientist which means she can give clinical advice to doctors and other health-care professionals, but she can also be involved with research as the Unit has a research license.

So how did Laura get involved in this very rewarding branch of medicine? She trained initially as a Biomedical Scientist at Newcastle University which involved a small research project which lead her towards a Masters in Assisted Reproduction Technology at Nottingham. More training followed so that she could gain a Certificate of Attainment from the Academy for Healthcare Science and register as an embryologist with the Health and Care Professions Council (HCPC). The training is rigorous, which is why there are so few embryologists in the country.

Laura is one of a small, close-knit team of only 20 people, including directors, doctors, nurses, administrators, ultrasound technicians, counsellors and other embryologists. However, this means they all get to know their patients really well – so well that the new parents usually bring their babies in to show them off.

As Laura says "Seeing the new babies is lovely! This is what we are here for. Our patient satisfaction rating is 92% and we love seeing new parents with big smiles on their faces! Our live birth rate in 2014 was 37.9% which compares favourably with the national average of 31.7%"



The Unit offers a variety of different tests, treatments and services to people living in Hull and the East Riding, North and Northeast Lincolnshire and beyond. The vast majority of patients are treated with their own eggs or sperm, but they offer egg-donation for ladies (age limit 35 years) and sperm-donation for men (age limit 40 years) who generously help people who may require donations for various reasons such as premature infertility, as a result of oncology treatment or for same-sex couples. Additionally, there is the possibility of egg-sharing for privately-funded patients and also surrogacy.

Laura said "We are keen to increase the number of sperm and egg donors at the Hull IVF Unit and are hoping to raise the profile in this area. This level of kindness and altruism is not often seen and many members of the public are unaware of the great need for donors."

If you are interested in finding out more about the Hull IVF Unit and whether they can help you, have a look at their website www.hullivf.org.uk. Enquiries for more information should be made by email to hullivf@mail.com. The Unit will get back to you as soon as possible. Enquiries are met with absolute discretion. Or contact the Unit expressing an interest to attend their free Open Evening at Lempicka Café on Thursday April 14th where you can meet fertility experts. Again, email hullivf@mail.com or ring **01482 382648** as booking is essential.

INCHES BODY STUDIO

FREE TRIAL for anyone with health issues. No obligation.
Toning tables can help with ME, MS, osteoarthritis, RA, knee and hip replacements, depression, bad backs, frozen shoulder and stroke rehab.
Chair lifts up to the salon.

Lose between 7" and 15" in six sessions.

Toning tables can help if you are new to exercise.

TESTIMONIALS AVAILABLE

Wear comfortable clothing and a pair of socks.

SPECIAL OFFER

3 Months Toning
3 Months Vibraxis
3 Contour Wraps

£179.00

INCHES BODY STUDIO

Inches Body Studio, 1 Norwood, Beverley, HU17 9ET
Telephone: 01482 865229
Email: info@inchesofbeverley.co.uk
www.inchesofbeverley.co.uk

WHITE RABBIT CHOCOLATIERS

this Easter, crack into our yummy...

CHOCOLATE

made in Beverley

Natural ingredients, NO preservatives.

Hop on over to our new online shop!
whiterabbitchocolatiers.co.uk
16 Dyer Lane, Beverley, HU17 8AE
01482 679325
f /White-Rabbit-Chocolate @WhiteRabbitChoc

PUZZLE PAGE

Sudoku

Fill in the grid with digits in such a manner that every row, every column and every 3x3 box accommodates the digits 1-9, without repeating any.

		7	8	5		2		
		5			3	7		
8	9				4		3	5
	3	9	5		6			1
4								6
6			7		8	4	9	
1	2		3				5	4
		4	1			3		
		3		8	9	6		

Wordsearch

P K D K M W R L S U O E R P S
 R V T A J Q Z O K T X D L A T
 G T B Z H C U X Q E L A O T O
 R O S E S U Q P S Y N A H K O
 B U K J M T Z N R T M U M K H
 B T X M K W H S I E D M O B S
 V U G A R D E N I N G B Z P S
 S W T C V V G G M X X R X Y H
 O P X T L J W L N C J E C L Y
 G O I A E X I X I R C L T P L
 C X C L T R N N V X T L Z I A
 O F Z C U J F Y N N I A W Q U
 B C X P Z T N L S R E W O H S
 F X N Y F K V X Y A H R D G D
 Q B K D J S F Q I A T O R U H

BUTTERFLY
 CALVES
 GARDENING
 LAMBS
 PLANTING
 ROSES
 SHOWERS
 SHOWERS
 TULIPS
 UMBRELLA

Why is it people work hard all their life to become famous, then wear dark glasses to avoid being recognised?

Why is the kettle always empty when you go for a cuppa?

Why is the electrical lead you need not with the other 30?

Why is it biscuits go soft overnight, yet bread goes hard?



What Cyclist?!

Do you have any amusing stories, quotes or pictures?
 Send them to
info@justbeverley.co.uk

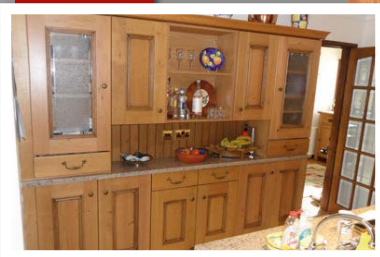


Me, Full, Never!

QUALITY KITCHEN FACELIFTS

For kitchens as individual as you are

Before



- From a simple door swap to a complete kitchen refit
- Huge choice of doors, worktops, appliances, sinks & taps
- Free planning & design service
- 50% deposit balance on completion

CALL ANDY OR TERRI FOR A FREE ESTIMATE:

01482 861653
dreamdoors.co.uk



FREE
 Franke Sink & Tap
 on all orders over
 £3000 + VAT
 Conditions Apply

EST. 1999

DREAM DOORS®
 NEW LIFE FOR OLD KITCHENS

Visit our showroom:
 Belprin Park, Swinemoor Lane,
 Beverley HU17 0LN

Checkatrade.com
 Where reputation matters



Get involved with our Charity Fundraising!
Over £1500 donated in just 3 months!

Join our
Easter Egg Hunt
Easter Sunday
5.30pm
Kids under 12
eat for free!

New Walkergate, Beverley, HU17 9EP
Telephone 01482 428642
www.rumisrestaurant.co.uk
Mon - Thurs: 5.30pm - 11.30pm
Fri - Sat: 5.30pm - 12am
Sun: 5.30pm - 11pm



Rumi's Vegetable Curry

Because of the history, geography and climate, Bengali cuisine uses many different types of vegetables.

Here's a curry created by Sham at Rumi's which uses Bengali and English influences.

Ingredients:

- 1 medium red onion, chopped
- 1 courgette, diced
- ½ butternut squash, diced
- 2 handfuls of button mushrooms
- 1 red pepper, diced
- 1 head of small cauliflower in florets
- 1 tspn of mild curry powder
- 1 tspn of paprika
- 1 tspn of coriander powder
- 1 tspn tomato puree
- 1 clove garlic, chopped
- 400ml water
- 1 tspn oil for frying

Method

In a pan, heat the oil and fry the garlic until brown; add the onion and fry until brown, too.

Add all the spices and allow to cook for 20 seconds. Add the remainder of the ingredients except the water and stir into the spice and onion mix.

Add the water and mix well. Simmer for 15-20mins until the vegetables are cooked.

Enjoy served with rice in the traditional Bangladeshi way!

Winners, winners and more winners!



The winners of last month's competition were delighted to receive their prizes.

The winner of the Coen Brothers Boxed Set and Parkway Cinema tickets was G Adams of South Cave; runners-up prizes of a pair of Parkway Cinema tickets went to Matt Clapison, Graham Singleton, Christine Latham and Victoria Ballinger.

Mary Sugden was thrilled to have won the Adeli Hamper, as she is a regular customer at the delicatessen. She told Just Beverley 'This is the best thing that has happened to me all year!'. We are happy that she is happy!

Why not enter for this month's competitions which you will find on Pages 7 and 27? You never know, you might be lucky!



faith

Faith Hair & Beauty, Unit 1, Lincoln Way, Beverley H17 8RH
Telephone: 01482 872871



HAIR EXTENSIONS



Before



After

£100 saving
on 16" hair extensions

£180.00
instead of £280.00

offer available until 30/4/2016

APRIL SPECIAL
20% OFF
FOR NEW CUSTOMERS
(excluding extensions)

Organist Nigel Ogden Entertains At Beverley Minster

BBC Radio 2 celebrity organist, Nigel Ogden, is coming to play in Beverley Minster on Saturday April 16th at 7.30pm, courtesy Beverley Arts Trust.

Nigel celebrates 45 years of presenting 'The Organist Entertains' this year – it's the BBC's longest-running specialist music programme. Yet he has always wanted to play the Beverley Minster organ, so was delighted to accept the invitation when it landed on his doorstep.

Nigel learnt to play the organ as a boy when growing up in Blackpool. There he was able to listen to the incomparable Reginald Dixon playing the Wurlitzer in the Tower Ballroom. So can we expect Beverley Minster to be transformed into the Blackpool Tower Ballroom on April 16th? Well, Nigel is renown as one of the most versatile organists in the country! For this concert, he has put together a special programme of light classical and popular music designed to appeal to Radio 2 fans as well as to fans of organ music.

Nigel is a world-renown concert organist. He has played in churches, chapels, cathedrals, town halls and theatres all over the world.

He has accompanied choirs and soloists and played background music for plays, documentaries and films – as well as silent films! His technique, creativity and spontaneity is recognised by the American Theatre Organ Society where he has been inducted into their Hall of Fame. The British Academy of Songwriters, Composers and Authors (BASCA) have also recognised his skills by awarding him a Gold Badge of Merit in 2012. So Nigel is equally at home with Bach or Broadway!

Carol Hancock who is Chair of the Beverley Arts Trust said "We're thrilled to be bringing such a prestigious musician to Beverley. We're sure people are really going to enjoy hearing the Minster's magnificent organ doing something a bit different, in a non-Sunday mode, so to speak! And afterwards, there'll be a chance to meet Nigel at our post-concert drinks reception in the Minster. Everyone is welcome."

The Beverley Arts Trust is a group of volunteers behind many successful events over recent years, including the biennial, REYTA award-winning Puppet Festival; ARERY, which is a scheme which brings high quality

professional music and theatre to Beverley in partnership with Longcroft School and numerous concerts. They are always keen to hear from other people who are interested in the arts who would like to join them. Contact them on www.beverleyartstrust.com

Tickets are £10 (Under 18s free) from The Beverley Arts Trust (01482 870751), Beverley Tourist Information (01482 391672) and the Minster Parish Office (01482 868540). If they haven't all been snapped up, they will also be available on the door.



Quentin Budworth – Inspired by Minster Minstrels to make Music

Celtarabia, in which Quentin plays hurdy-gurdy, are due to be playing the closing set of the Last Night Party in the Big Top Concert Marquee at the Beverley Folk Festival. As Quentin says, get your dancing shoes on and be prepared to move!



Quentin was born in Gibraltar, where he grew up listening to Arab-Andalusian music, which heavily influences Celtarabia. The East-meets-West fusion, which is backed by global beats, creates an exhilarating and unforgettable live show of incredible musicianship which is probably unique!

However, Quentin's inspiration is not only due to his Gibraltar roots. He first visited Beverley when about 20 years of age. He remembers Nellie's (the name by which locals know the White Horse Inn on Hengate) when it was lit by gas lights, but it was the Minster and particularly the Minstrel carvings in the Minster which really encouraged him to learn more about medieval instruments and indeed, to learn to play all of them.

Having set himself this amazing challenge, he settled on pipes and hurdy-gurdy. It's the hurdy-gurdy which, along with the hammer dulcimer, gives Celtarabia its distinctive sound!

The hurdy-gurdy is a stringed instrument, but instead of a bow being drawn across the strings, a rosined wheel, which is turned by a cranked-handle, produces the sound.

There are drone strings, which produce the same sound all of the time, like a bag-pipe, and melody strings which produce a tune when 'keys' are depressed to shorten them, in the same way as fingers on a violin. Being such an ancient, folk instrument, Quentin plays hurdy-gurdy in medieval show band The Grinnigogs and also in The Hesse Ceilidh Band.

Celtarabia are the sort of band which has your feet tapping because it has a rhythm section which drives the beat.

The rhythm section consists of drummer Alan Raw, one of the top dub-reggae drummers in the country and well-known from Radio Humberside and Radio Leeds 'Introducing' programmes and Lou Duffy-Howard on bass and vocals, ex indie-band Red Guitars. Amanda Lowe, who is one of the most exciting hammer dulcimer players in the UK completes the line-up; she also plays violin and contributes stunning vocals.

Some of the music is traditional, but much has been written by Quentin using Eastern European, Spanish, Breton and Klezmer scales and modes. There are lots of bands using Quentin's music, which is also used in computer games!

If you have never seen Celtarabia, why not enter our competition, on the right, to **win a pair of half-day Beverley Folk Festival tickets.**

Competition



The Beverley Folk Festival is an unforgettable, family-friendly three-day celebration of music, workshops, comedy and spoken word that is held in Beverley. It attracts acts and visitors from all over the world and is definitely not just folk music! There's Americana, world music, blues, classic rock, dance, drama, comedy, film, poetry and spoken word, children's events, stalls, camping and more as well as folk music – something for young and old.

The organisers are offering a pair of half-day tickets for either Friday, Saturday or Sunday 6pm till late or Saturday or Sunday 11am – 6pm (a half-day of the winner's choosing). Up to 2 children under 12 go free with these tickets, discounted tickets are available for 12-17's if required.

To win this fabulous prize, answer the following question:

The Sunday night Main Stage headliners had a hit record in 1975 with the song 'All Around my Hat'. Who are they?

Send your answers to info@justbeverley.co.uk with **BFF Competition** in the subject title by Thursday 14th April. You must include your name, address and day-time contact telephone number and be available for publicity photographs for the Beverley Folk Festival and Just Beverley.

Top 10 tips for Spring Gardeners

This winter has been mild but pretty wet in places! Some keen gardeners have been out on the warmer-than-usual February days we have had, admiring the daffodils and snowdrops which, unusually, have appeared at the same time.



But most gardeners are waiting till it gets a bit drier and days longer before thinking of getting the garden back in shape. Unfortunately, a warm spring day can tempt us to try and do a fortnight's work in a single day!

Gardening is great exercise but after several months of inactivity, make sure you don't come a cropper and put your back out. Here are some tips to help you avoid trouble this spring:

1. Wear the right clothing.

- Make sure vests and shirts are tucked in - a bare bit at the bottom of your back can make the muscles cold and increase the chances of straining something.
- It is a good idea to use a few layers, then take something off as your body warms up
- Most heat is lost from your head so use a hat if it's cold.

2. Warm up. Start with gentler jobs e.g. light pruning or weeding, then something a bit more vigorous e.g. cutting grass and then the heavier jobs, like digging. Towards the end of a session in the garden it is good to do the same in reverse so your body gradually eases down.

3. Rotate Jobs. Swap from one job to another rather than keeping on until you are exhausted. For example, do a bit of weeding, then some grass cutting, then some hedge-trimming, then some digging, but rather than doing each job till you have finished leave half of it for the next cycle and repeat. This pattern usually means that you will be able to get more done in a session because you don't go on until you are fatigued with each task.

4. Tools. There are many tools on the market. Find the ones that suit you best. Think about:

- Long handled tools (spades, forks, hoes, long-handled loppers). You don't have to bend so much with long handled tools.

- Use the most appropriate lawnmower for your lawn. A larger more powerful mower for a bigger lawn. Smaller lighter mowers for smaller lawns.
- Electric mowers and hedge trimmers can be just the job for small gardens but for larger gardens you may need to think about petrol tools.

5. Use knee pads. If you have to do a lot of kneeling, knee pads are a great idea. Also it helps to alternate between kneeling on both knees, kneeling on one knee and crouching.

6. Use decent boots or wellies. Keep your feet warm and dry with good boots or wellies.



An extra pair of socks can be helpful too.

7. Gloves. There are many different styles of gardening gloves available. Use ones which you find comfortable and are suitable for the job you are doing.

8. Keep blades sharp. The job is always easier if you use sharp tools. So before you begin get your secateurs and your lawn-mower blades sharpened. Sharper tools = less effort. Even your hoe works better if it has a sharp blade.

9. Be careful with bending. Bending from the waist for long periods tends to put extra strain on the lower back. So keep straightening up or use other positions (kneeling or crouching).

10. Take a break. Sit back, have a cuppa or a glass of something, and admire your handiwork.

And if you do come a cropper in the garden and hurt your back or strain your muscles, ask your GP or osteopath for advice.

Wadsworth Osteopaths, 30 Lockwood Road, Beverley HU17 9GQ Tel: 01482 875004.

allmobility
The Company That Cares

Treat Someone You Love - Call and See us Today

MADE TO MEASURE

SALE Price
£995

JUBILEE RANGE

£500 Off RRP

Made in Great Britain

Free Local Delivery

Riser Recliner Chairs from £495 - Made to measure from £995
Refurbished Stairlifts from £695* New Stairlifts from £1,350
Wheelchairs, Walking Sticks, Walkers, and a whole lot more!
*Subject to availability

110 - 112 Walkergate, Beverley, HU17 9BT
01482 887799
www.all-mobility.co.uk
Shop open Mon - Sat 10.00am - 4.00pm

Sticks and Canes - a fashion accessory as well as an aid to walking!

Sticks and canes are practical, functional objects. The obvious use is to give support and balance to the user, but they are also used to fend off unwanted attention from dogs (and cows on the Westwood) and reach for choice fruit on trees and briars!

However, newer designs go beyond that and incorporate portable seats with back-rests or leather leisure seats; have umbrellas rolled around the shaft or are long, weighted and water-proof for fishing. Allmobility stock a range of walking sticks to suit any use or occasion. Some are adjustable and include shock-absorbers, which is great for people with arthritis, fold up for ease of transport or have ergonomic handles to make them comfortable to use.

Paul Fox, owner of allmobility in Beverley said "Walking sticks are becoming a collector's item! Because they are made of different woods and to different designs, with different types of handles, people see them as something that will never go out of fashion. "Many of our lady customers have different sticks to co-ordinate with their outfits; we hear the latest trend is for brides to carry them, too!" Allmobility will also ensure walking sticks are the right length for the user – the shaft should finish at the wrist joint.

Interestingly, if the user is registered disabled, there is no VAT to pay on the stick, as with other disability aids. But as Paul says, his sticks are bought by many without a disability because of their practicality. They make great presents for people who might never have thought they would find one useful, too.

Why not pay Paul at Allmobility a visit and see if you can be similarly inspired! **110-112 Walkergate, Beverley HU17 9BT. Telephone 01482 887799. www.all-mobility.co.uk**

In the garden... April

Firstly, let me wish you all a very happy 'Gardening New Year'.

April is arguably the most exciting month of the year in the garden with new flowers and fresh green shoots appearing, and the bonus of the longer evenings and hopefully warmer weather!! Spring has definitely arrived and there is cheeriness in the garden.

April is the month when we really need to start keeping on top of tasks in the garden – the longer day length and increase in temperatures not only encourages shrubs etc. to grow but weeds will start to romp away if not checked and of course the grass will start to grow too! I've already heard the dulcet tones of lawn mowers in March – remember don't cut the grass too short to begin with, just tidy it up, and apply a weed and feed later in the month.

There are plenty of tasks to be done in the garden during April - so maybe seize this opportunity to 'work off' the excesses of Easter and maybe any lingering from Christmas. I know I'll fall into this category!

So, things to do...

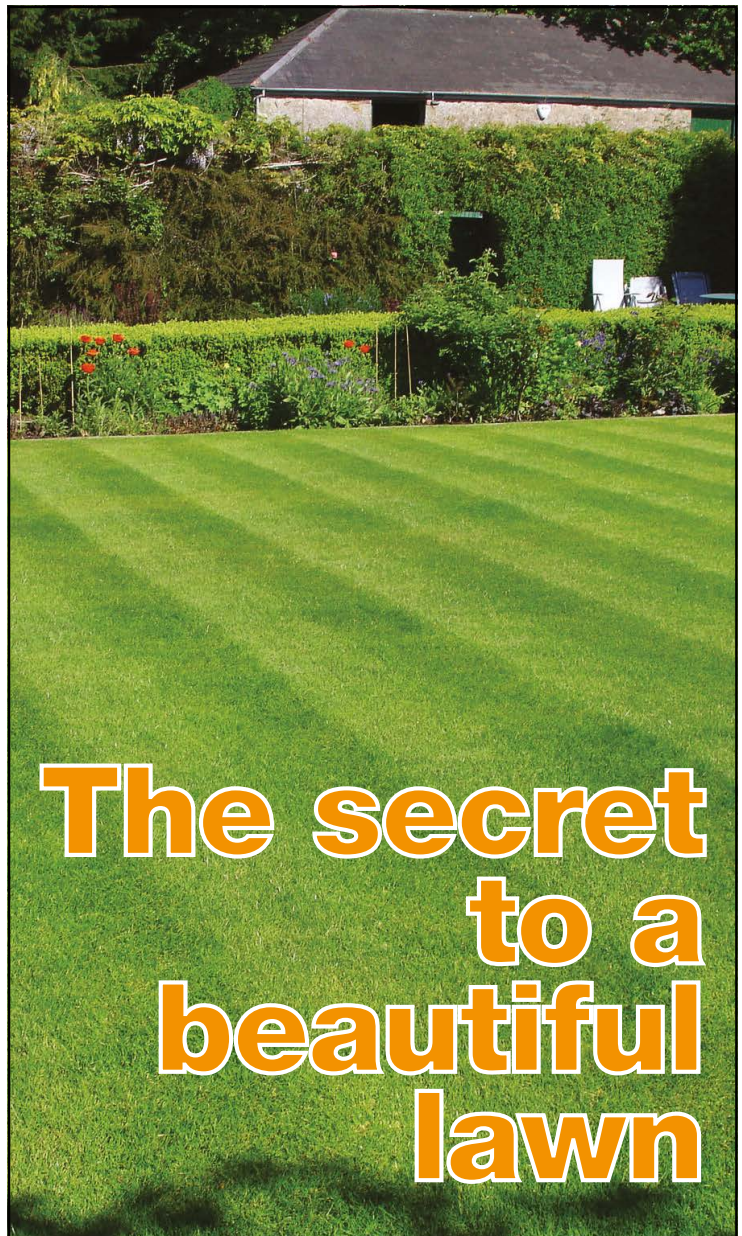
- Plant new shrubs, perennials and rock plants
- Plant evergreen hedges
- Weed borders and mulch
- Prune shrubs that have finished flowering – winter flowering jasmine, forsythia and chaenomeles
- Prune lavenders and other grey-leaved shrubs
- Prune hydrangeas
- Continue to dead-head daffodils – only take off the flower heads, let the leaves remain
- Check for pests especially on roses and in the greenhouse
- Continue to sow hardy annuals out of doors
- Plant out autumn-sown sweet peas
- Tie-in new growth of clematis and other climbers
- Plant maincrop potatoes
- Continue to sow vegetables outdoors
- Feed blackcurrants and blackberries
- Start sowing tender vegetables in the greenhouse
- Feed established lawns and re-seed bare patches
- Create new lawns from seed – perhaps wait until the end of the month for this
- Divide overgrown pond plants including water lilies
- Winter displays in containers may now start going over; if so clear them out and clean your pots and baskets ready for summer. Don't be tempted to plant up yet unless you have somewhere frost-free to keep the containers.

Phew, I'm exhausted just writing this...

Happy gardening, J.

Jane Dale of 'Designed Gardens'

Tel: **07983 392 411**



The secret to a beautiful lawn

Our lawn experts use the right products, in the right quantities, at the right time. They kill weeds, control the moss, and work with you for a beautifully lush and healthy lawn.

- Free consultation and lawn surveys
- UK's leading professional lawn service for over 28 years
- No contracts to sign, pay as you go service
- Specialist feeds exclusive to GreenThumb
- Cheaper than D.I.Y.
- From £15 (inc VAT) per treatment

GreenThumb
LAWN TREATMENT SERVICE

www.greenthumb.co.uk

01482 880082



Beverley Racecourse - exciting times ahead for all!

The racecourse has been staging horse races since 1690, but it's iconic setting makes it a perfect venue for other events – and for integrating the two!

The flexible facilities at the Racecourse, which is one of the largest venues in Beverley, make it ideal for weddings, parties, dinners and conferences.



With ample free, off-road parking on the newly-resurfaced car park, it offers advantages which town-centre venues cannot offer. In the near future, the refurbished Racecourse Lodge, which is used by stable lads and lasses on race days, will also be available as accommodation for up to 24 people.

On-going developments at the racecourse have seen improvements to the main Premier enclosure restaurant, called 'Attraction', which opens on April 8th and will seat 250 people, making it one of the largest venues in Beverley. Local businesses have been engaged to carry out the work on the Racecourse.

This includes replacing the track-side fencing to reduce the chances of distracting the horses as they come past the sheep and cattle which graze on The Hurn. For anyone who has not been to the races, there are three enclosures which each offers a different experience.

- The Course Enclosure is the no frills family enclosure where you can drive your car up to the track to see the horses close by. You can bring your own picnic into this enclosure or enjoy food and drink from The Hurn bar.
- The Grandstand and Paddock Enclosure is the largest enclosure with the greatest range of bars and food outlets, including Cleverley's Bar and Bistro which was new last year, on-course bookmakers and access to the paddock.
- The Premier Enclosure offers the best vantage point to watch the racing with first rate facilities, including the Laurent-Perrier Champagne Bar and Attraction's Restaurant. There is a dress code of smart-casual with collared shirts for men, although many people take the opportunity to dress up!

There are 19 race fixtures this year with a £1m purse, building on Yorkshire's strong racing base. Beverley is attracting more runners from further afield than ever before

as the course has a reputation for being a very safe track.

Just Beverley learnt that the slight uphill finish is kinder to horses' legs, which is why so many trainers like to introduce their new horses here.

Introducing new spectators to racing is why, along with the themed race days, there are 3 themed evening race meetings this year starting with Laurent Perrier Evening of the Horse on June 14th, Party on the Pasture on July 1st and ending with a Rio Carnival Night on July 18th.

In between a full race card, there will be all kinds of things going on yet there will be no additional cost!

Check out Just Beverley's What's On pages for more information www.justbeverley.co.uk/whats-on or the Racecourse's own website www.beverley-racecourse.co.uk/



BEVERLEY MOTORWORKS INDEPENDENT BMW & MINI SPECIALISTS

Follow us on:

search for Beverley Motor Works

BMW Qualified Senior and Technicians Offer

- Saving up to 70% OFF main dealer prices
- Manufacturer's warranty not affected
- Resale value of your vehicle not affected
- Award-winning customer service
- Over 30 years' combined BMW experience

Call today on **01482 881128**

Our dealership expertise means high quality for car servicing at a fair price...

- ATA Accreditation
- Routine servicing
- Condition-based servicing
- Diagnostics
- Mechanical repairs
- Air conditioning
- Performance tuning
- MOT's

Call now for a no obligation quote or to book in on **01482 881128** or email us directly from our website www.beverleymotorworks.co.uk

Unit D1 Grovehill Industrial Estate Annie Reed Road, Beverley HU17 0LF
 E: web@beverleymotorworks.co.uk



Squash – the Healthiest Sport in the World (according to Forbes Magazine)

The Government is currently trying to get people to be fitter and healthier and Beverley Squash and Racketball Club coach, Lee Scott, reckons squash is the ideal sport to take up to reach that goal.

For people who are not as mobile, racketball is a gentler alternative, as it can be played on the same court, although it is a different game with different rules.

The Club is a section of the Beverley Town Cricket and Recreation Club which also provides a place to play tennis, bowls and football. It has 2 warm, clean, well-maintained courts, male and female changing rooms and social facilities in the Cricket pavilion. It can be found on Norwood Park, off Norwood and has plenty of free parking.

Lee Scott joined as professional squash coach in June last year – an amazing coup for Beverley as Lee is the 2016 Over 45s British National Squash Champion. Lee has been playing squash for over 35 years and has competed at junior and senior levels in Britain and Europe.

His latest win has improved his seeding and he has been selected to play for England in the Home Internationals in April. However, his first love is coaching – he is recognised as an Advanced England Squash Coach and as such he has developed several junior champions at British, European and World Tour level.



He is currently working with Beverley's Lydia Robinson who was England's Under 13 No 1 until she aged out. She is now playing at Under 17 level – and one of only 18 young people selected for the England Development Programme.

The sport is not an Olympic sport, but is rapidly growing in popularity. Hull is hosting the Allam British Open Squash Championships at the Aircro Arena from March 21st – 27th which has attracted world-class players and created lots of 'noise'. Schools are getting more involved, too.

As Lee says, anyone can come and have a go at playing squash or racketball to see if it is for them! Saturday mornings are for kids with adult sessions available on Saturdays, Tuesdays and Thursdays. The Club would love to build more courts and provide even better facilities, which it will do as membership grows. As a not-for-profit organisation, proceeds are ploughed back into development. You can find out more about the Club on their website www.beverleysquash.co.uk

Lee also runs his own coaching business, Zenith Academy; he is available in Beverley and also Scunthorpe for private lessons, group sessions and fitness sessions. Lee can be contacted on **07496-766382** or e-mail I.scott@zenithacademy.co.uk

Beverley Whitestar Dragons Under 11s are On the Road to the Finals


It may not be Wembley, but for the Whitestar Dragons U11s it could be!


They have reached the finals of Hull Boys Sunday Football League Plate having lost only 1 game in the last 6. The final is to be played at Haworth Park on Sunday 24th April, kick-off 10.30am. On their day, the Dragons are a match for any team (bring on Chelsea!). Having beaten Hull United, Cumbrian Tigers, Orchard Park Rascals and North Ferriby on their way to the final with their sturdy defence, magical midfield and hot strikers, Hesse Rangers best be awake!



Manager Craig Darley is well aware it will be a tough match but coaches Craig Bannister and Rich Fell are pulling out all the stops in training so the Dragons are well-prepared! The lads would love some support! If you fancy a morning on the terraces, cheering The Dragons on, you would be most welcome. Just Beverley wishes them Good Luck!

*£1,000,000
Portrait Give-Away*



X
PERIENCE

As part of The Xperience Photography Group of over 50 studios around the UK we are giving away £1,000,000 worth of portrait photography.

To claim your FREE portrait photography experience and a 7x5" framed print worth £175 call the studio on 01482 867455 or email us at enquiries@la-lumiere.co.uk

BEVERLEY CTC
Yorkshire's Premier Shooting Ground



Clay Pigeon Shooting Experience for everyone to enjoy -
A perfect activity for all ages.

25 target lesson for £35

Includes 25 clays and cartridges, gun, safety equipment, briefing and full instruction. All ages welcome.

To book please give the Club a call on 01964 551134.

Café open for food on Saturdays and Sundays.
Hot and cold drinks are available throughout the week.

From 31st March - 21st October
we are open until 8pm every Thursday for lessons.

www.beverleyctc.co.uk
Ground Enquiries: 01964 551134 / info@beverleyctc.co.uk

Golf is a great game for kids as well as adults

10 reasons why your children should play golf;

- 1. Life.** Golf is a sport, that prepares kids and teenagers for life – it teaches them rules and the ability to make a decision. Golf gives them a chance to meet people and improve their communication skills.
- 2. Fresh air.** Golf is an amazing opportunity to spend several hours outside in the fresh air.
- 3. Differences.** Golf is played by people of different ages, genders, cultural backgrounds, heights, weights, and abilities. People can play as individuals or work as part of a team. That is an important life lesson.
- 4. Friendship.** When kids meet new people they improve their interpersonal and social skills. You never know who you can meet on the golf course – maybe even a friend for life.
- 5. Emotions.** There are many similarities between golf and life – In golf, like in everyday life, you have to cope with ups and downs.
- 6. Safe Haven.** Golf course is a safe place to have fun.
- 7. Humility.** Sometimes, the ball doesn't bounce the way you want, sometimes, the result is not just like the way you imagined. No matter what the circumstances are, you have to accept the reality of what has happened.
- 8. Etiquette.** While the code of good behaviour is sometimes a bit cloudy in everyday situations, in golf the etiquette is inherent part of the game. And it is also very easily transferred to off the golf course.
- 9. Golf time is Family Time.** How many sports do you know that you can play with your whole family and everyone can have a good time?
- 10. Health.** Obesity is a result of unhealthy lifestyle. Golf helps to get kids away from their computers and sofas. They carry their bag while walking many miles during a round – they make more than 10 thousand steps and burn a lot of calories (The average person burns around 350 calories in one round).

Stewart Fraser is the PGA Golf Professional and Director of Golf at Beverley and East Riding Golf Club, Beverley HU17 8RG, telephone 01482 869519.












*20% of the value of the bike up to a maximum of £250. See in store for details.

We now offer 0% finance available on bikes from £500 with only a 10% deposit

Minster Cycles, 5-7 Norwood, Beverley, HU17 9ET 01482 867950	Minster Cycles, 542 Anlaby Road, Hull, HU3 6SY 01482 509502
---	--

www.minstercycles.co.uk

TRIAL MEMBERSHIP
3 months £100 includes coaching and use of the Golf Course from 1st April 2016



WESTWOOD GOLF

FULL MEMBERSHIP
£435 to 1st February 2017

GET INTO GOLF
Join the 'Get into Golf' programme
5 lessons for £25

Call us on
01482 869519

GOLF SIMULATOR
Now available for bookings
£50 per 4 ball for 18 holes




Please note the Snainton Golf Store has now relocated to Beverley & East Riding Golf Club

What's On for Families

Country Houses

A lot of the local Halls & Gardens have Easter Egg hunts and free activities running (after normal admission prices) during the Easter holidays.

At Burton Constable, Barry the Bunny has gone missing with all the eggs! From 26th March to 3rd April children can follow the trail around the grounds to find them; there's also Easter crafts in the Stables. Sewerby Hall has Medieval Jousting on Easter Sunday and then different crafts and activities on daily to the 8th April. Burton Agnes has hidden lots of chocolate eggs to be found around the estate on the 27th and 28th March, then they have clues to follow through the woodland walk with prizes running to the 10th April.



A trip to Hornsea

Hornsea is close by and there's plenty to do on the seafront and in the town.

It's worth popping into Hornsea Freeport while you're there; across the Easter Bank Holiday weekend there is a mobile farm so you can meet some baby animals and there are free craft workshops.



Then, throughout the school holidays to 10th April, there is an Easter Bunny Hunt around the centre with instant prizes. Nearby Honeysuckle Farm has now re-opened for this year so another idea is to combine a trip to Hornsea seafront or the Freeport with a visit to their farm.

Museums

If the weather is bad, museums are always a great place to go, especially if they are free! The Treasure House in Beverley is running a free family craft activity on 2nd April, 10am-3pm, to make a moving animal.

If you want to go into Hull, Streetlife, Hull

& East Riding Museum and the Maritime Museum are all good places to visit.

Hull Maritime Museum has a new exhibition 'SOS – Heroes of the Humber' which looks at people who have saved lives at sea.

Don't miss the Edwardian Easter on 26th March, a big, annual fete and old style market around the Hull Museums Quarter. If you're in Hull, try combining it with a stop at Princes Quay for their Play Days; there are various children's activities on daily to 10th April.

The Deep

Another wet weather favourite, The Deep have a new Science Event running to 17th April which explores the world of science around us, with experiment stations, talks, workshops and an activity trail.

Information compiled by Rachael Smith. For more ideas and events, take a look at www.hullandeastridingmumbler.com, and follow the **Hull and East Riding Mumbler Facebook page** and **Twitter @Hull_ER_Mumbler** for regular updates and highlights.



UK Event Associates offers clients information to help organisers understand their legal duties on health and safety to make sure workers and the visiting public are not exposed to risk.

UK Event Associates have the qualifications and expertise to guide you through the world of licensing and Health & Safety so it happens safely and legally.

Our consultants can offer advice and help in the process of completion of;

- Licensing Applications (Premises Licenses, TENS etc.)
- SAG meetings
- Risk Assessments
- Safety site inspections
- Legalities required to ensure the safety of the infrastructure and contractors
- Attending the event
- Traffic management
- Emergency procedures
- Site design, ensuring the safest option from the start.
- Fairground
- Food and drink concessions

Contact UK Event Associates on **03333 441033**.

Beckside Court, Annie Reed Road, Beverley, HU17 0LF.
www.ukeventassociates.co.uk
info@ukeventassociates.co.uk



What's On IN BEVERLEY

Tell us about
your event!

E-mail info@justbeverley.co.uk

Telephone **01482 679947**

For more events visit
justbeverley.co.uk/events

Saturday 20th February – Saturday 23rd April

• **Beverly Art Gallery** presents 'Finding the Future of Figurative Art'

• **Treasure House, Beverley** presents 'Aerofilms: Britain from Above'

A photographic exhibition in partnership with Historic England.

Tuesday 1st March – Monday 11th July

• **Trades. Exhibition of Crafts and Trades in the East Riding**

Skidby Windmill and Museum of East Riding Rural Life. 10am-5pm Saturday – Thursday. Friday 10am – 4.30pm. 01482 848405.

Friday 25th March (Good Friday)

• **The Beverley Passion**

Begins at Beverley Minster North Door at 10.45am. Tableaux of the Easter Story in various places in Beverley Town Centre. Concludes with the Crucifixion in Saturday Market, 11.30am. Information from 01482 868124.

• **Beverley Chamber Choir and Orchestra : Fauré: Requiem and Durufle: Requiem**

St Mary's Church, Beverley. 7.30pm. Tickets £16/£12/£5(students) from Tourist Information 01482 391672 or www.beverleychamberchoir.org or on the door.

Monday 28th March (Easter Monday)

• **Organ Recital**

Beverley Minster. 6pm. £6/free. Tickets on the door.

Wednesday 30th March

• **Beverley and District Chamber of Trade**

East Riding College. 6pm. Refreshments available. All local businesses welcome.

Thursday 31st March

• **Beverley Ghost Walk**

Meet outside Royal Standard Pub, North bar Within. 7.30pm. £3.50pp. Booking essential at Beverley Tourist Information 01482 391672.

Friday 1st April

• **Beverley Male Voice Choir 'Last Night of the Proms'**

St Michael's Church, Cherry Burton. 7.30pm. £6. Tickets in advance from Stanifords Estate Agents or on the door.

Saturday 2nd April – Thursday 28th April

• **Art Exhibition – 'New Paintings' by Esther Cawley and Jane Beharrell**

Beverley Minster.

Monday 4th April

• **Processed Pea presents Lucy Marshall**

The Light Dragoon, Etton, Beverley HU17 7PG. Doors open 6.30pm, music starts at 8pm. £5 from www.wegotickets.com.

Tuesday 5th April

• **Walkington Methodists Book Club**

Dog and Duck Pub. 8pm.

Thursday 7th April – Sunday 10th April

• **New Paths Music Festival**

Various Venues. See www.newpathsmusic.com for details.

Saturday 9th April

• **ArtERY live presents Woody Holler & His Orchestra in Concert**

Lund Village Hall YO25 9TF. Tickets from 01377 217776/01377 219598.

Monday 11th April

• **Norwood Nites Community Cinema presents 'The Bucket List'**

Norwood Church Schoolroom. 7pm. Free. Refreshments and raffle. Transport available through Beverley Community Lift 01482 868082.

Tuesday 12th April



• **Aly Bain and Phil Cunningham**

East Riding Theatre. 7.30pm. £12.50 - £16.50. Tickets from 01482 874050 or boxoffice. eastridingtheatre@gmail.com.

Thursday 14th April

• **ArtERY live presents Balbir Singh Dance Company**

Longcroft School, Beverley HU17 7EJ. 7pm. Contact Tourist Information for tickets 01482 391672.

• **Beverley Connections**

Beverley Golf Club. 6pm. £5.00 includes refreshments. Relaxed networking.

Saturday 16th April

• **Beverley Arts Trust presents Nigel Ogden 'The Organist Entertains'**

Beverley Minster. 7.30pm. £10/under 18s free. Tickets in advance from 01482 870751/01482 391672/01482 868540.

Saturday 16th April - Sunday 17th April

• **Snow White by Mike Kenny**

East Riding Theatre. Saturday 1.30pm and 4.30pm; Sunday 11am and 2.00pm. £7/£10 Box Office 01482 874050.

Wednesday 27th April

• **Café Scientifique – 'Why Everyone should be asking for the Evidence'**

White Horse Inn (Nellie's). 7.30pm. science.cafe.beverley@gmail.com

Monday 2nd May

• **ArtERY live presents Sunday's Child 'My Name is Saoirse'**

St Nicholas Community Centre, Beverley. 7.30pm. Contact Tourist Information 01482 391672.

**FLEMINGATE
BEVERLEY**

Spring into Flemingate

Spring into a blooming marvellous selection of season events at Flemingate.

Roll on down with the family for a day of cracking Easter fun this Easter weekend (Fri 25 – 27 March). Your little bunnies will love hopping between stores, keeping an eye out for special stickers in shop windows and collecting eggs on their way. Once they've handed in their completed 'egg box', they'll win a free Cadbury's Crème Egg. Scrumptious!

From little bunnies to big ones, if they upload a selfie of themselves with the "selfie egg" in Deli No.1 to the Flemingate Facebook page, they could be in with a chance of winning a giant chocolate Easter bunny.

Celebrations continue as Flemingate marks the 20th birthday of the East Riding of Yorkshire with an occasion to shout about – Beverley's fantastic Town Crier Event. Held over Friday 1 and Saturday 2 April, the event involves 11 town criers from around Yorkshire who, as part of the celebrations, will be attempting to beat the world record for the loudest town cry on Friday 1 April - be sure to come along to witness what will (hopefully!) prove to be a record breaking event at Flemingate. Afternoon activities also include Yorkshire Champion Club Sandwich at Deli.No.1, followed by the launch of Beverley Microbrewery Ale – cheers!

On Saturday 2 April, Flemingate will be attempting to set another record, for the most people gathered ringing bells. Ring-a-ding-ding! Then there will be the third round of the Town Crier competition with a full length cry on the theme of Tour de Yorkshire, with the fourth and final round resulting in the announcement of the overall winner.

Enjoy a season of good, old-fashioned Yorkshire family fun this spring at Flemingate.





In life and in death we're here to help, in the very heart of Beverley

...you

Family Law

Land & Estates

Wills & Probate

Conveyancing

Personal Injury

Medical Negligence

...your business

Litigation

Employment Law

Agricultural Law

Property Work

Dispute Resolution

Disaster Planning

T: 01482 231300

E: info@coles-law.co.uk

22 Lairgate, Beverley HU17 8EP

www.coles-law.co.uk



YORSwitch

CHEAPER ENERGY TOGETHER

Scan me!



Want to pay less for your gas and electric?

HOW

- Register with **YORSwitch**
- East Riding of Yorkshire Council negotiates a better rate
- Receive a no obligation offer for cheaper gas and electricity



- Hassle free**
- Obligation free**
- Cost free**

Gladys and Kath from Elloughton switched and saved

To register on YORSwitch visit
www.eastriding.gov.uk/yorswitch

alternatively call (01482) 393939 or visit your local customer service centre.
You will need to have a recent energy bill to hand.



Register by
16 May 2016
with no obligation to switch



EAST RIDING
OF YORKSHIRE COUNCIL