

just BEVERLEY

ISSUE 40

FREE
TO PICK UP
EVERY MONTH

WIN!

- Chamas Rodizio Dining Experience Voucher
- 'Deadpool 2' Goodies and Cinema Tickets
- Unique Hair Salon Vouchers
- Shakespeare Rose Theatre Tickets
- A signed Album by Frankie

**Cycling with
Wilson Wheels**

**Discover East
Yorkshire's
Wildlife**

**Well I Never...
Phil Anastasi**

NEWS, WHAT'S ON, LIFESTYLE, FEATURES, PUZZLES, PHOTOS & MORE

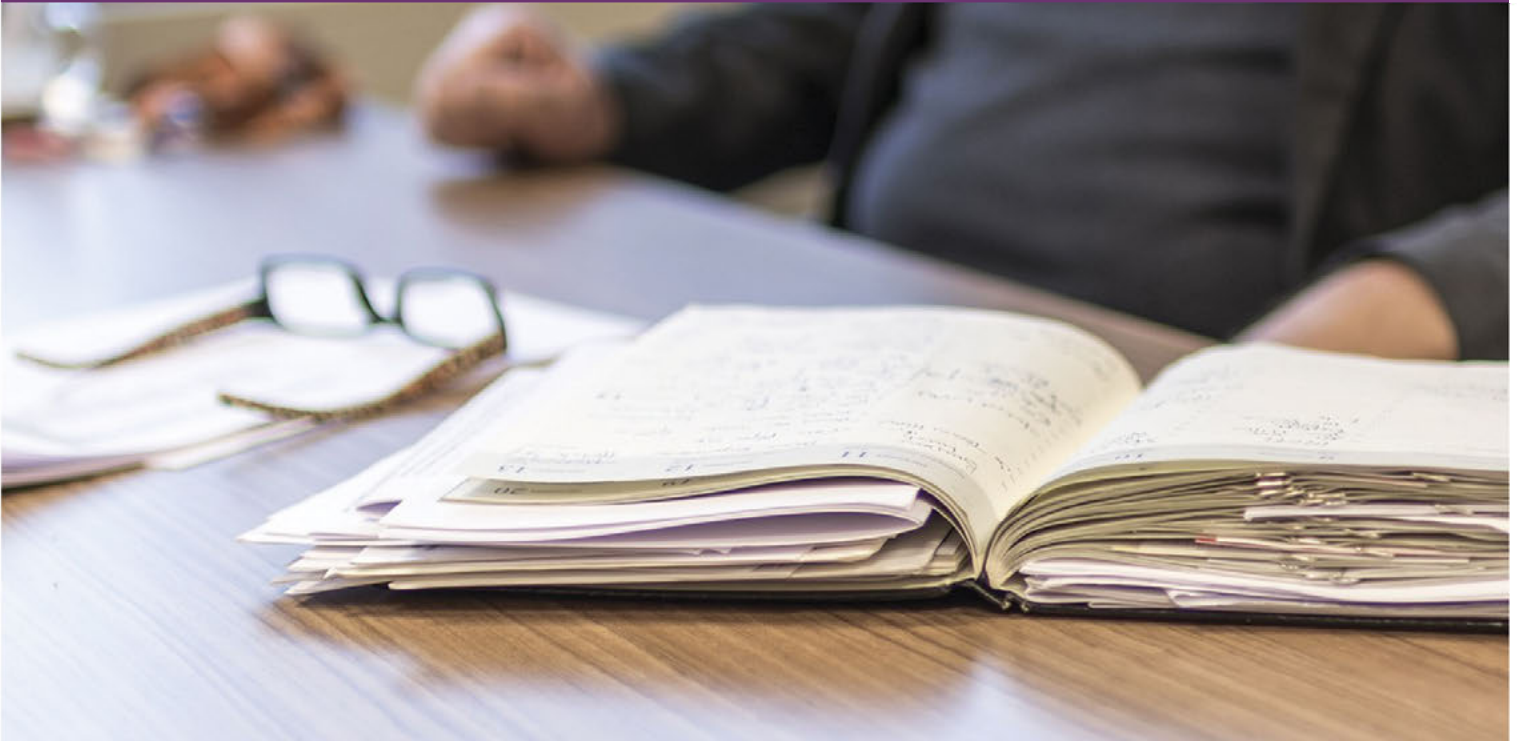


Spring is in the air



And so is the new financial Tax year.

Are you worried about getting your payroll right? It's time for change.
Outsource your payroll today and be rest assured everything is taken care of!



Pension contributions have changed now that final Automatic Enrolment dates have passed, new tax codes, Apprenticeship Levy's, up to date figures, CIS tax and more.

Outsourcing payroll will save you time and money, redirecting time to growing your business. You will be given a named personal contact and access to our free and easy-to-use app with a plethora of online information available for you to use on the go!



To arrange a **FREE** meeting
call us on 0845 308 2288
or visit www.stipendia.org.uk



Stipendia Payroll Solutions



@StipendiaPay



stipendia
payroll solutions



13



11



12



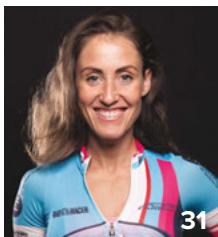
18



22



29



31

CONTENTS

Letters from the Editors **3**
News **4, 5, 9, 11, 13, 25, 28, 31**
Parkway Cinema **6, 7**

FEATURES

Unique Hair Salon **13**
Facebook Camera - Colin Edwards **10**
Well I Never, Phil Anastasi **12**
Discover Yorkshire Wildlife **22**
Brazilian Chef Claudio **35**

REGULARS

Arts and Culture **20, 24, 26, 27, 29**
Business **11, 13, 16, 25**
Competitions **7, 13, 24, 29**
Competition Winners **7, 32**
Countryside Matters **14**
Finance **16**
Gardening **23**
Lifestyle **9, 13, 14, 16**
Motoring **33**
Photos **18, 19**
I've Been Thinking **20**
Puzzles **32**
Sport **29, 30, 31**
What's On **34**



Erratum: The daffodil is the emblem of Marie Curie, not Macmillan, as quoted in Colin Raynor's column 'I've been thinking...' Apologies to Marie Curie whose nurses give care and support through terminal illness.

Competition Terms and Conditions

Competition answers should be emailed to competition@justbeverley.co.uk before the closing date with the competition title in the subject field. Include your name, address and daytime contact telephone number along with your answer. Winners will be notified within 1 week of the closing date and **MUST** be available for publicity purposes for **Just Beverley** magazine, website and Facebook page and the prize provider. Photographs are usually taken the weekend after the prize-winners have been notified. The judge's decision is final. No cash alternative is offered. Details may be used for marketing purposes by **Just Beverley** and the prize provider and for website analytics by **Just Beverley**.

Contributors include:

Julian Minshall, Linda Johnson, Richard Manville, James Bedford, Andy Burton, Carfan, Jane Dale, John Fewings, Elizabeth Godber, Fiona Kemp, Food Rhino, Colin Raynor, Sam Walton, Helen Watson, Lee Wardell, Clint Wastling, Nathan Wilson.
Additional photography by: Brown's Photography.

You can pick up the magazine from:

Parkway Cinema, Flemingate, Beverley Tourist Information, Beverley Library/Treasure House, Tesco, Morrisons, East Riding Leisure Beverley, East Riding Theatre, Browns café, Beverley News, Boyes, Tesco café, Colette and Tyson Garden Centre, Beverley Garden Centre, Cherry Tree Garden Centre, Mace News Saturday Market, Co-op Food Lincoln Way, Tickton News, Costcutter in Walkington, Molescroft News, Grovehill Convenience Store, Maple News, Leconfield PO, Willerby News, Poundland, Halfords, East Riding Community Hospital, Bishop Burton PO, Leven PO, The Altisidora, Cherry Burton PO, Barkers of Cottingham, Middleton-on-the-Wolds PO, Light Dragoon at Etton, Gnu at North Newbald, Monks Walk, Hayride, Sally's Deli, New Inn at Tickton, Ferguson Fawcett at Walkington, health centres, churches, cafés, hairdressers and more!

Printed by: Jadan Press

www.justbeverley.co.uk

just BEVERLEY

LETTER FROM THE EDITORS



Beverley is delighted to host the Tour de Yorkshire again and this year, both the Women's and Men's races will be starting from Saturday Market on May 3rd. Our local ladies team, Jadan-Weldtite Vive le Velo are competing so do give them a cheer! You can read more about them on page 31.

Talking about cycling, **Just**

Beverley is delighted to announce sponsorship of the local Wilson Wheels Cycle team who compete in events all around Yorkshire and beyond. Their team colours are orange with the **Just Beverley** blue and white logo on the back and chest. Racing horses is also important to Beverley and the new racing season is underway. Beat the Bookie resumes his column of News from the Racecourse on page 29 where you can see photos of the new parade ring. Beverley has such a beautiful course with such incredible facilities!

Beverley and district is constantly changing as people work together to the benefit of the area. If you have good news, stories or pictures, keep us informed - it's your magazine! Have a great May - enjoy the wedding **Julian**.



Having loved every minute of New Paths (well done, Roland and Libby - what a fabulous few days of such different music-based experiences!) we look forward to the 31st Beverley Early Music Festival over the Whit Bank Holiday weekend. This year the theme is 'A European Grand Tour' with early music played by some of the UK's most distinguished artists working alongside emerging stars from across Europe and young musicians from the county. For all of you who loved playing recorder and took your Grade 6, there's also a workshop with the fabulous Piers Adams!

As the weather is now so much better (well, it couldn't really get much worse!) we begin a series highlighting some of our local Nature Reserves to encourage you to pay them a visit. This month, we feature Tophill Low at Watton Carrs on page 22. It's a great place to see kingfishers and barn owls and, if you're lucky, the family of otters which have moved in! It's a wildflower paradise and last summer, Mr J. and I saw a grass snake! As ever, East Riding Theatre produces drama which is well beyond the scope of many theatres. It is a real coup that John Godber is staging his latest play at ERT with many local actors to boot. I have seen almost every John Godber play so this one is already in the diary. You have until May 19th to catch it! Don't forget the café bar is open Tuesday to Saturday, 10am - 4pm, for delicious food, including vegan-friendly options, cake and drinks and is open 45 minutes before performances for drinks. Whatever you choose to do in May, be happy!
Linda.



'Community Publication Award' Shortlisted Nominee 2017



REYTA Remarkable East Yorkshire Award Nominee 2016 'Best Newcomer'

GET IN TOUCH WITH US:

Website: justbeverley.co.uk
Email: info@justbeverley.co.uk
Telephone: **01482 679947**
Twitter: [@JustBeverley](https://twitter.com/JustBeverley)
Facebook: facebook.com/justbeverley

If you would like copies for your business to distribute to staff and customers, call **Just Beverley** on **01482 679947**.



BEVERLEY BARGE PRESERVATION SOCIETY 2018 SEASON BEGINS

The MV Syntan, which is moored at Scaife Mews, Cranehill Wharf, Beverley Beck welcomes visitors every Sunday between 10.30am to 3pm.

The restored barge is a floating museum, illustrating Beverley's thriving industrial past. The Syntan is a prominent feature of the Beck and a point of interest on Beverley's Heritage Trail. Admission is free, although donations are very welcome in helping maintain Syntan to her high standard. She's an ex-working barge which was operated by Hodgson's Tannery in Flemingate to carry hides and other materials from Hull docks to Beverley.

The Syntan can be booked as a unique venue for parties, meetings etc.

You can also enjoy a trip along the Beck on the MV Mermaid, an ex-lifeboat, which can carry 8 people along the Beck and up-river or on the MV Sun, a former British Waterways maintenance vessel, which can take 12 people on the River Hull towards Driffeld Navigation. Both the Mermaid and Sun can be booked by calling **07811 270712**.

Further information at: www.syntanbarge.org.uk

PS Don't forget the World Barge-pulling Championships on Sunday 23rd September 2018. The World Record for male and mixed teams are currently held by local teams.



BEVERLEY MOTOR WORKS SCOOP TWO AUTO INDUSTRY EXCELLENCE AWARDS

Local Beverley garage Beverley Motor Works, which also writes Just Beverley's Practical Motoring column, has been recognised for expertise and service at the 2018 Auto Industry Excellence Awards.

As well as winning two gongs, for Garage of the Year and Customer Service Excellence, Beverley Motor Works was also a finalist in the Repair Garage Employer and Marketing & Advertising Excellence categories. These accolades come on top of the Customer Focus Award they won at the Hull Daily Mail Business Awards in November 2017.

Established in 2010, Directors Richard Hayes and Alan Lewis received their awards at a glittering ceremony in Surrey. Richard said: "To be nominated for 4 more awards after our success in winning the Hull Daily Mail Customer Focus Award is testament to the hard work and attention to detail that we as a team work tirelessly to achieve.



"To go on to win 2 of those awards really is a huge achievement for the team, as we continue to strive for excellence every day!"

Beverley Motor Works is an independent BMW and MINI specialist offering expert motor maintenance to all marques in Beverley.

Contact them on **01482 881128** - and watch **Just Beverley** for their special offers only for **Just Beverley** readers!

TIME TO PARTY AT THE TIGER IN LAIRGATE!

Thursday May 24th marks a whole year since the Tiger Inn was refurbished! Where does the time go? To mark the occasion, Manager Allen Slinger will be launching new food and drink menus and providing a buffet in return for a donation to his House Charities. It will be an Open Mic night, so there is no excuse to not head along and join in the fun!

Do remember the Tiger Inn's food is all home-cooked with their famous Sunday Roasts are home-made! Booking for Sunday lunch on **01482 869040** is recommended as they are very popular.



THE ARCHBISHOP OF YORK TO CELEBRATE THE LIFE OF ST JOHN OF BEVERLEY

The annual Civic Service to celebrate the Festival of St John of Beverley will be held at 2.30pm on Sunday 13th May in Beverley Minster with the Most Rev'd and Rt. Hon. Dr. John Sentamu.

Beverley's wealth and prosperity is entirely due to John. He was born at Harpham near Driffeld, becoming Bishop of Hexham (687-706) and then York (706-c714). He retired to a monastery he had founded in Beverley where he died in 721.

His holy life and the miracles attributed to him after his death persuaded the Pope to canonize him in 1037.

Beverley grew up around his tomb and the Minster, where John's remains were interred (translated) in 1307 became a privileged sanctuary and centre of pilgrimage. By 1377, Beverley was one of the dozen largest towns in England.

From the early days, John's favour was said to grant victory in battle. King Athelstan is said to have prayed at John's tomb after which he won a great battle in 937; Edwards I, II and III carried his banner into battle; in 1138 his banner was carried when the men of Yorkshire beat an invading Scottish army at Northallerton and in 1415, Henry V won the Battle of Agincourt on the Feast of St John's translation (October 25th).

Unfortunately, Henry VIII robbed and destroyed the splendid tomb and shrine but his bones were rediscovered and re-interred in 1664 and to this day, his present tomb can be seen in the Minster between the nave choir stalls.

His Feast Day, May 7th, is celebrated annually on the nearest Sunday with a Service of Thanksgiving. It is an honour to be able to invite one of his predecessors, Dr John Sentamu, to preach at this event.

People wishing to attend the Service should be in their seats at the Minster by 2.15pm. The Civic procession will arrive at 2.20pm.



APRIL FOOLS ONE AND ALL!

We hope you enjoyed our April Fool joke this year when we suggested that St Mary's would be getting a 'tambourine' bell.

There is, of course, no such possibility but we thank Chris Munday for being 'in' on the joke and we do, of course, look forward to the three new real bells being installed in St Mary's bell-tower very soon.



ENJOY YOUR 40TH EDITION OF JUST BEVERLEY!

It seems only yesterday when Issue 1 hit the streets in December 2014, at the same time as East Riding Theatre established itself!

But although it is just 3½ short years ago, so much has happened in Beverley. Flemingate has opened; we have a state-of-the-art cinema; an 'intelligent' building which houses the learning centre which is East Riding College; the Tour de Yorkshire has been here 3 times; Beverley Racecourse has been refurbished and is enjoying constant investment; iconic buildings such as the National Farmer's Union building in Walkergate and Norwood House have taken on new leases of life; The Tiger, Kings Head and Green Dragon have been upgraded and the Beverley Arms is well on its way to reopening after extensive renovations. Beverley is now well-established on the festival map as New Paths and Stage 4 have joined the Early Music Festival, Folk Festival, Puppet Festival, Chamber Music Festival, Literary Festival, Beverley Blues Weekender, Food Festival and Festival of Christmas.

We hold the World Barge-pulling Championships here; have held an attempt to beat the World's Loudest Cry from a Town Crier and won the Best in Bloom in Yorkshire competition last year. Our infrastructure has improved with the building of Minster Way and new housing developments - Beverley has grown and prospered by the community working together and we, at **Just Beverley**, will continue to encourage people to develop community and networks by letting you know about all the great things which happen around here.

And we haven't even mentioned our satellite villages which hold their own festivals and open days and each have their unique characters!

So, happy birthday to us - and to you for supporting us - and here's to the next 40 issues!

SCOUTS WOLDS CHALLENGE RESULTS IN LOCAL WINNERS

A team of girls from the 5th Beverley Scouts have come first in a prestigious Yorkshire hiking and navigation competition tying with a team of lads from 1st Walkington Scouts in their first ever competition; they navigated their way around a challenging course in 4 hours 10 minutes. The Beverley Explorers consolidated their position - and bragging rights - by winning their section for the third time in the last 3 years.

The Wolds Challenge is an annual event for teams of scouts from Yorkshire and beyond. Scouts, aged 10 1/2 - 14 cover a 12 mile course whilst Explorers, aged 14-18, have a 17 mile course to navigate.

Based on the Wolds Way, teams of 4-6 get details of the route with grid references, check-points and rules about a week before the event; they have to map their own route although if there is a busy road, they will be told where to cross it. The teams set off at intervals. This year, around 60 teams made the starter's whistle.

There is no adult intervention although there are experienced helpers at every check-point who are in constant radio communication to ensure no-one gets lost, and a roving doctor is available in case of emergency. This year, every team from Beverley got around the course without getting lost. There were some drop-outs along the way, although in true Scout manner, the team members who



CHRISTIAN AID WEEK (MAY 13TH - 19TH) IS AN OPPORTUNITY TO #STAND TOGETHER



Christian Aid Week is May 13th-19th - a chance for supporters to contribute to emergency relief work around the globe and long-term development to alleviate poverty. Churches across the UK are organising special events to raise fund and awareness.

Campaigns include helping displaced people, working for tax justice and climate change awareness in 39 countries.

Christian Aid works with local, partner organisations who are best-placed to help the communities needing help. They engage closely with governments and the private sector.



couldn't complete the route were more concerned about letting their team-mates down than they were about themselves.

Running events such as this enable boys and girls to build skills for life - they gain confidence and develop leadership skills. But there is a waiting list of 50,000 children and young people who want to gain these skills but cannot because there aren't enough adult volunteers.

The Scout Organisation in Beverley also need a Manager as well as supporters at all levels, who are themselves trained to ensure the young members get the experience they deserve. So if you would be interested in finding out more about the achievements of Beavers, Cubs, Scouts and Explorers, do contact 5thbeverleygs1@gmail.com



Local events include the annual Humber Bridge Cross, which is supported by Martin Vickers, MP for Cleethorpes, concerts, quizzes, plant sales, exhibitions and the house-to-house collection.

Here in Beverley, there will be the opportunity to help build a mile of coins (or more) along the Toll Gavel Church Drive and to sponsor local organiser, John Turner, on a day-long cycle ride from Beverley to York and back again the previous week. That's a distance of around 80 miles, which said John, will 'test his fitness!'

There are many pilgrimages taking place from across the country to arrive at York Minster on May 12th ready for the rededication of the Minster's Great East Window at Evensong, all collecting for Christian Aid.

During Lent, 5 local churches raised over £1000 by holding Lent Lunches of soup and a roll in return for a donation. The Christian Aid Christmas Appeal raised funds to help tackle hunger and malnutrition in Sudan and more recently money has been raised to help the Rohingya Muslims.

To find out more and contribute visit www.christianaid.org.uk/christian-aid-week



EVERY THURSDAY AT 10.30am
(doors open 9.45am)

Join us for a free brew and a natter and enjoy some great films on Beverley Parkway's Big Screen. Only £4.20 with drink and biscuits included. Aimed at 55s and over. Films subject to change.

Thursday 3rd May -

The Greatest Showman -

Starring: Hugh Jackman, Michelle Williams
Three Billboards Outside Ebbing Missouri -
Starring: Frances McDormand, Sam Rockwell

Thursday 10th May -

The Shape of Water -

Starring: Sally Hawkins, Octavia Spencer

The Greatest Showman -

Starring: Hugh Jackman, Michelle Williams

Thursday 17th May -

Walk Like a Panther -

Starring: Stephen Graham, Jason Flemyng

The Shape of Water -

Starring: Sally Hawkins, Octavia Spencer

Thursday 24th May -

Phantom Thread -

Starring: Daniel Day-Lewis, Lesley Manville

Walk Like a Panther -

Starring: Stephen Graham, Jason Flemyng

Thursday 31st May -

Game Night -

Starring: Jason Bateman, Rachel McAdams

Phantom Thread -

Starring: Daniel Day-Lewis, Lesley Manville

PENGUIN PARTIES



**ONLY
£195**

- ★ Suitable for ages 5 to 12
- ★ Up to 40 guests (additional charge for extra guests)
- ★ Party games in a private function room with Parkway Penguin
 - Tea and coffee for parents on arrival
- ★ Personal Photo montage on screen followed by your own film screening

For more information,
please contact a member of staff

These are the films scheduled to open in May - all are subject to change.
Check out up-to-date cinema listings at www.justbeverley.co.uk/cinema-times



4th May



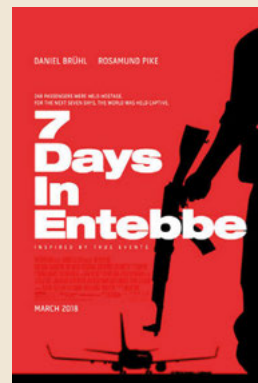
4th May



4th May



11th May



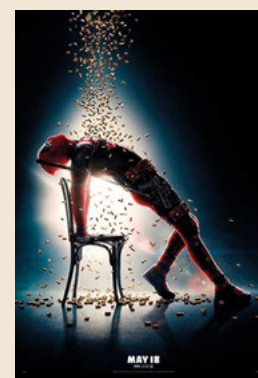
11th May



11th May



11th May



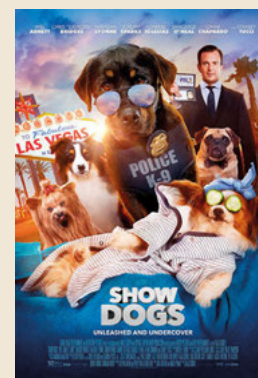
16th May



18th May



24th May



25th May



25th May

YOUR NEW INDEPENDENT CINEMA



MAKE AN EVENT OF IT AT BEVERLEY PARKWAY'S EVENT CINEMA

Screen 6 at the Parkway transforms itself into The Hayward Theatre for shows, live music and comedy. It's also the venue for special 'Event Cinema' showings. This month, on the 75th anniversary of the dam busters raid, the iconic film 'The Dambusters' will be shown in 4K to accompany several very special guests live from the Royal Albert Hall.

The incredible story of Operation Chastise was the inspiration for one of the most famous films of all time, 'The Dambusters'. On the night of the 16/17 May 1943, Wing Commander Guy Gibson led 617 Squadron from RAF Scampton in Lincolnshire to attempt to bomb three dams in the Ruhr Valley with Barnes Wallis' innovative 'bouncing' bombs. Barnes Wallis, engineer, scientist and inventor, is linked with East Yorkshire as he lived in Howden (where his daughter was born) and was involved in developing the R100 airship which was built there.

At this special showing, historian Dan Snow is joined by the Glenn Miller Orchestra, playing a stirring rendition of 'The Dam Busters March' family members of the Dambusters' crew, family members of the film's director Michael Anderson, historian Paul Beaver and Professor Hugh Hunt. They will explore the history of the raid along with former members of 617 Squadron and current members of the Royal Air Force. There will also be a 'bouncing bomb' experiment and an exploration of the science behind the invention.



The 1955 classic film, starring Michael Redgrave as Barnes Wallis and Richard Todd as Guy Gibson, has been fully restored in 4K to give a fabulous Parkway experience. Tickets can be booked through the cinema's website: www.parkwaycinemas.co.uk or by phoning **01482 968090**.

WIN DEADPOOL GOODIES!

Marvel's motormouth mercenary is back! Bigger, better and occasionally more pantless than ever before. When a super soldier arrives on a murderous mission, Deadpool is forced to think about friendship, family and what it really means to be a hero - all while kicking 50 shades of ass. Because, sometimes, to do the right thing you need to fight dirty.

To celebrate the launch of Deadpool 2 on May 15th, Twentieth Century Fox and Parkway Cinema Beverley is offering this great prize of Deadpool goodies and a pair of cinema tickets.

The goodies include:

- Computer Buddy
- Unicorn
- Apron
- Swear Jar
- Hawaiian Shirt

To be in with a chance of winning this fantastic prize, all you have to do is answer the following question:

Who plays Deadpool?

Send your answer by email to competition@justbeverley.co.uk by May 16th.

Put 'Deadpool 2' in the subject box and your answer, name, address and daytime telephone number in the body of the email.

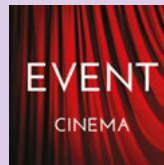
Winners must be available for publicity purposes for **Just Beverley** and **Parkway Cinema** the weekend following the closing date.

Good luck!



COMPETITION WINNER

Congratulations to Mr and Mrs Hoggard from Hull, who won the Isle of Dogs merchandise.



Event cinema offers something a little different to mainstream films. Live and pre-recorded shows beamed in via satellite from all over the world. Here are the latest live streams that you can enjoy on the big screen at Parkway Beverley.

TICKETS NOW ON SALE:

Thursday 3rd May at 7.15pm -
ROH: MANON

Thursday 10th May at 7pm -
NT LIVE: MACBETH (15)

Tuesday 15th May at 7pm -
MATTHEW BOURNE'S CINDERELLA + LIVE Q&A (12a)

Wednesday 16th May at 7.15pm -
AN AMERICAN IN PARIS - THE MUSICAL

Thursday 17th May at 7pm -
THE DAM BUSTERS AT 75: LIVE FROM THE ROYAL ALBERT HALL (PG)

Tuesday 22nd May at 6pm -
EOS: I CLAUDE MONET (ENCORE)

Tuesday 5th June at 7.15pm -
OWSL: AN IDEAL HUSBAND (12a)

For full programme of the Event Cinema, please visit www.parkwaycinemas.co.uk

LIVEshows

Sunday 29th April at 7.30pm -
BEVERLEY BUZZ COMEDY CLUB

Thursday 30th August at 12noon -
JEDDYBEAR & GARY'S PICNIC

Tuesday 4th September at 7.30pm -
KEEP IT CASH

Sunday 7th October at 7pm -
GIMME ABBA

Sunday 21st October at 7pm -
THE BON JOVI EXPERIENCE

Monday 29th October at 2pm -
Talegate Theatre Productions presents HOCUS PANTO

Sunday 4th November at 7pm -
ALI COOK: PRINCIPLES OF DECEPTION

FLEMINGATE BEVERLEY

FASHION | FOOD | FILM | FUN

TAKE A

FRESH LOOK



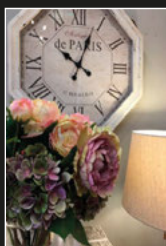
AT ALL YOU CAN ENJOY!

GREAT SHOPPING AND MORE THIS SPRING AT FLEMINGATE.

@FlemingateBev

FLEMINGATE.CO.UK

FlemingateBeverley



10% OFF YOUR NEXT PURCHASE

Valid only in our Flemingate, Beverley store
Only one voucher per purchase and per customer.

T&Cs apply. Offer expires 30 June 2018

Baytree Interiors



CREATE YOUR OWN STYLE WITH LEE WARDELL FROM VERB

Finally!... some warmer weather is upon us! What a contrast to a year ago! We received the keys to our unit in April last year and whilst fitting out the shop ready for the launch, we experienced some fantastic weather. We launched VERB on May 22nd 2017!

With the help and support of my family, we transformed the store into, what I believe, is a customer-friendly, stylish shopping experience, bringing in exclusive brands which so far, the patrons of Beverley and beyond have enjoyed.

The whole year has flown by, with a 7 day a week / 24-hour day challenge, which is so rewarding when dealing with the always-pleasant customers of Beverley. And now we have people visiting from beyond Beverley. The catchment area of Flemingate really is expanding, with regular weekend stayers and coastal caravan trippers coming into town to enjoying the eating experiences and pubs of Beverley combining with the second-to-none retail offer. It all gives customers a fantastic 'Beverley' experience.

Launching womenswear on a 2nd floor was a real success pre-Christmas, giving the store a much better flow and experience for the female customer. VERB is in Flemingate and is open every day of the week. You can also visit their website: www.verbfashion.co.uk and follow them on Facebook, Twitter and Pinterest.



LUXURY BAYTREE INTERIORS MAKEOVER SCHEDULED

Leading home accessories and furniture store, Baytree Interiors, is set to unveil an exciting new look at Flemingate centre, bringing new must-have homewares to Beverley. The popular homewares store will close on Monday, June 4, to undergo a full refurbishment and luxury makeover, before reopening on Saturday, June 9, with a completely fresh look and an entirely new range.

Nicola Boxall, Manager at Beverley's Baytree Interiors, said: "We're really excited about our refurbishment. The store will be closed for five days for a full makeover and will reopen with fabulous new lines of home accessories and furniture. Our customers can expect new decor and an improved layout of the store and it goes without saying they'll love the new lines of gorgeous homewares and furniture. We are currently selling off all our current stock and there are some great bargains to be had, so I would urge shoppers to pay us a visit before it's too late!"



The revamped store will feature new lines including Mayfair reclaimed elm and gloss chrome furniture; burlesque-style Estelle range; the elegant mirrored Belfry collection and the Indonesian-inspired Bali selection. With 14 stores located around the north of England, Baytree Interiors offers a wide range of stylish home accessories, including furniture, lighting, wall art and garden décor. Graham Tait, Flemingate Centre Manager, said: "Baytree Interiors has been a great success at Flemingate since opening two years ago and has built up a strong following. We're delighted that Baytree Interiors is investing in such an extensive revamp and introducing so many fantastic new ranges when they re-open."

For more details about Baytree Interiors visit www.baytree-interiors.co.uk or follow the brand on social media [@baytreeinteriors](https://twitter.com/baytreeinteriors)

VERB

TO WEAR - TO WANT - TO WISH FOR - TO OWN - TO FASHION

FLORENTINO

PEARLY KING

Gibson
LONDON

MAC

BROOK TAVERNER
TAILORS OF DISTINCTION SINCE 1912

OPENING TIMES:
MON / SAT 9.30-5.30
SUN 11.00-4.00

01482 880141
VERBFASHION.CO.UK
INFO@VERBFASHION.CO.UK

FLEMINGATE SHOPPING CENTRE
FLEMINGATE, BEVERLEY
EAST YORKSHIRE HU17 0NQ

[@VERBFASHION](https://twitter.com/VERBFASHION) [@VERBFASHION](https://www.instagram.com/VERBFASHION) [f / VERBFASHIONBEV](https://www.facebook.com/VERBFASHIONBEV)

TO FASHION YOUR OWN STYLE

COLIN EDWARDS - THE MAN WITH THE FACEBOOK CAMERA

Many of the photos of Beverley posted on our Just Beverley Facebook page are courtesy of Colin. His passion is documenting the changing face of Beverley - which is the perfect project for someone who enjoys photography, history and walking! Colin began collecting images of Beverley in around 2007 and although he admits that some of the photos aren't the best in the world, they all tell a story. He intends leaving his thousands of files of photographs to the Treasure House when he leaves this 'mortal coil' so they can be viewed by future generations, although he's a long way from hanging up his Nikon yet!

Colin has lived in Beverley for all of his married life - he was born and grew up in Cottingham and married a girl from Woodmansey so hasn't moved far!

He lives along Norwood and has been fascinated by the changes along that one Beverley Road.



For example, Norwood Cycles used to be an off-license; the Lady le Gros public house has gone; the Cornerhouse has been previously called the Valiant Soldier and the Furlong and Firkin; Sleepers Restaurant used to be the Regal Cinema, then a nightclub and snooker hall, then a video

shop before being converted into the Purple Cow and Cactus Jack's; Asda's supermarket was previously Presto and Safeway and even the Methodist Church has changed its heavy blue door to a glass-and-wood door so you can see into the chapel.

Until he took early retirement, Colin admits there were many places in the area he had not discovered but joining the 'Walking for Health' scheme which runs from the Leisure Centre on a Thursday morning at either 10am or 11am has uncovered some wonderful snickets and historic areas.



The recent series of walks published in **Just Beverley** by Ian Richardson have also been illuminating - these are all available online on the **Just Beverley** website.

As well as being well-known locally for his photography skills, Colin is also quite famous within the company he used to work for, Reckitts, now Reckitt Benckiser Health Care UK Ltd or RB.

RB set up an off-shoot which is now a stand-alone company called Indivior PLC which is a world-leader in opioid addiction treatment.



They have a research facility in Hull on Priory Sidings where the Edwards Room is named after non-other than Colin!

Colin is a chemist who worked at RB for 40 years, in research and then compliance, with such household names as Gaviscon™ and Fybogel™ and other more specialist products and was recognised for his contribution to medical research in this special way.

As well as having photographs published in **Just Beverley**, Colin's pictures have also been used by Hull Daily Mail and Look North so we are really proud to have Colin joining our team.

**NOW OPEN
FREE
barbecue with
every hot tub
ordered**

**BEVERLEY
HOT TUBS**

**2 Sow Hill Road, Beverley, HU17 8BG
T: 01482 882384
E: info@beverleyhottubs.co.uk
Open: Tuesday - Sunday 10am-4pm**

THE MONKS WALK HAS A NEW OWNER!

After being a tenant for the last 3 years, Gill Pickford is now the owner of the historic Monks Walk pub on Highgate. Sadly, husband Neil, who lost his life to cancer in October 2017, will never see his dream of ensuring this wonderful building has a sound future come to fruition - but his memory and vision live on in the plans he and Gill made together.

Being the owner of such an old, prestigious building like the Monks Walk would be a rather daunting prospect to many of us! After all, one of the walls dates back to 1270, which is older than much of the Minster which is just 250 -or-so yards away. In fact, the Monks Walk owes its existence to the Minster as it was originally built as a grain store to house the tithe granted to John of Beverley by King Athelstan in the 10th Century. Many of the original buildings along Highgate - which was previously called London Road, then Old Highgate - were grain stores as a trading settlement grew up around Beverley Minster based on the miracles said to be due to John, who had been Bishop of York.

Beverley became very prosperous with 38 trades listed in the town in the 14th century - including clay pipe-making. In fact, the last clay pipe-maker in Beverley, John Goforth, was based in Yorkshire, in the Monks Walk - although by this time it had changed its use from a grain store to a public house known as The George and Dragon. There is a painting of John Goforth by Elwell in the Feren's Art gallery in Hull; he was a well-known local character with red hair and a beard who played the fiddle until his dying day in 1915, aged 71. His nickname was 'Dandy' so his pipes became known as 'Dandy Pipes.' Prior to becoming The George and Dragon in 1802, there is evidence it was known from 1658 as The George. There was a brewery on the site, too, at one time, utilising water from the well underneath what is now the car park. There were certainly cottages on the site, as revealed by architectural investigations in 1995.

It's not surprising that the building has been Grade II* listed since the 1950s as the 18th century frontage appears to be built onto two buildings either side of a medieval street, with some of the timbers dating to 1420, probably to make it more in keeping with the 18th century merchant's buildings on either side. A wall to the north of the street/passageway is from the 17th century and the entrance to the home of Sir Michael Warton who helped save the Minster from collapse in 1710.

Taking ownership of such history has made Gill into a custodian as well as a publican! But owning the freehold means The Monks Walk is a free house and is not tied to one brewery, so she can sell whatever beer and spirits she wishes - local beers from breweries such as Wold Top and Great Newsome go down very well. The Monks Walk has a fully-functional kitchen which is now utilised every lunch-time making good, home-cooked food. The famous Monks Walk platters (Abbott for large appetites or to be shared, Monk for regular appetites and Novice for light-lunches), soups and sandwiches are available from Monday - Saturday with a full roast and puddings on Sundays from 12noon to 2.45pm every day. As three of the staff are vegetarian/vegan, there is always a non-meat alternative, too!

Evenings and the pub carries its long-standing tradition of being music-friendly with Katie Spencer's Unplugged Open Mic night on Mondays, Music in the Bar on Wednesdays, usually with Phil Simpson and Jessica Lawson and Mark Kelly's 'Upstairs at Monks' events occasionally on a Friday evening. There's a quiz every Tuesday, organised by Steve Davies. The upstairs room is available for bookings - it holds about 40 people - and there's a pool table in the front room, which is proving very popular.

The pub is a 'chatter' pub - there for conversation and socialising, perhaps perusing a newspaper or



magazine (**Just Beverley** is always available!) and enjoying the many beers, ales and spirits available, which are constantly reviewed! Gill is always open to suggestions and approaches to ensure the Monks Walk is the community-focused pub it is designed to be and becomes the tourist attraction it should be.

Gill's first jobs are to do the repairs required to ensure the building is sound, improve the cellar and signage and get the garden ready for summer. Then it's insulation and heating work as next winter approaches before developing the upstairs. Because of the listing, much of the work Gill has planned will require planning permission.

But she has a great team of people around her who aren't frightened to have a go at anything, who understand each other, the business and the building and who are as enthusiastic as she is to ensure the Monks Walk lives up to the hopes and dreams of the much-missed Neil. His picture takes pride of place in the Monks Walk and everyone who visits should raise a glass in his memory - as well as toasting Gill for her incredible passion in taking such a task on.

The Monks Walk Inn, 19 Highgate, Beverley HU17 0DN is open 12noon - 11pm. Telephone 01482 864972.

DELICIOUS DELI NO 1 BRINGS BURGERS AND COCKTAILS TO THE TABLE AT FLEMINGATE

An independent American-style deli and coffee shop is now serving up an exciting new range of burgers and cocktails at Beverley's Flemingate centre. Deli No.1 has extended its opening hours and introduced a delivery service for the launch of its new burger range.

At launch night on Friday, April 27, the new burger and cocktail menu was introduced. It includes 'The Korean', a British steak patty glazed in sweet and spicy Korean sauce and topped with Kimchi, garlic mayo and cheese; the 'Italian Avocado Burger' - chicken topped with pesto, mozzarella, sundried tomato and avocado; and 'The Indian' - a chicken burger, vegetable and spinach pakora and onion bhaji, topped with Korma sauce.

Dan Moxon, Director of Deli No.1, said: "We're very excited about our new menu, delivery service and later opening times. Our customers were crying out for our high-quality burgers and kept asking us to offer a takeaway service in the evening. Beverley has a great range of takeaways but we noticed there was an opportunity to add a quality range of burgers, which are different to the norm, to eat in or order as a takeaway. Our new menu offers some really tasty options - from a Mexican Burger to a Strawberry and Feta Salad to a Hoisin Duck Wrap - we're delivering restaurant-quality

food direct to people's homes. We've also updated our menu with a great range of cocktails and a fantastic brunch selection. We even offer a glass of Prosecco to go with it - perfect if you're going to Beverley races!"

The menu also includes a range of classic burgers and a good selection of vegetarian offerings, such as the Falafel Burger topped with traditional spiced Moroccan relish, feta cheese, cress, red onion, pickle and sliced courgette. Diners with a hearty appetite can attempt the whopping 3-in-1 American Burger. This ultimate burger consists of three 6oz steak patties nestled between melting cheese, bacon, mac'n'cheese bites, salad, finished off with American mustard and buffalo sauce. Cocktails include a Gin Bramble - a refreshing blend of gin, lemon and blackberry - and the classic Cosmopolitan, featuring vodka, cranberries, Persian limes and a squeeze of orange. A great range of salad and side order options, which are also available for home delivery, complete the menu.

Graham Tait, Flemingate Centre Manager, said: "It's great news that Deli No.1 are responding to customer demand by launching an exciting new menu and delivery service. Flemingate's lively evening scene is incredibly popular and it's

wonderful that Deli No.1 is now becoming part of this and giving diners even more tasty choices."

The exciting new range of burgers can be delivered to your door using the **Just Eat** delivery service, **Deli No.1's Facebook** page or by telephone on **01482 222229**. Deli No.1 is open from 9am-9pm Monday to Saturday, 10am-9pm Sunday. The delivery service is available from 4pm-9pm, seven days a week. For more details and to view the new menu follow Deli No.1 on Facebook: **www.facebook.com/delino1flemingate**. To order via the Just Eat delivery service, go to **www.just-eat.co.uk**



WELL I NEVER... PHIL ANASTASI

Beverley and district is blessed with many residents who contribute to the character of the region and go well beyond the confines of their job-spec to make a difference. Just Beverley is keen to meet these people to find out what makes them tick! This month we meet Phil Anastasi, NHS Health Trainer and Social Prescriber and Chair of Dementia Friendly East Riding (DFER). He tells us a little about his background and then answers our 19 questions (20 would be too obvious!). His answer to Question 18 had us saying 'well I never...' But over to Phil.

Who am I?

I was born in Essex to a father from the Greek Cypriot community of Islington in London and a mother who was originally from Surrey. My career path started with a print apprenticeship. Then I moved to a more people-focused role in account management. I travelled all over the UK and Europe with that company.

I married Tracey, who's from Hessle in 1998. We had a beautiful 2-bed thatched cottage in Wiltshire but wanted to move north - which to me was anything north of Watford Gap Services! We moved to the Beverley area in 2000. I began working with Hull & East Yorkshire Mind which gave me the opportunity to work with people from all walks of life who were suffering from mild to moderate mental health issues. Then I joined the NHS Health Trainer's service, where I remain today, working as a Social Prescriber within GP practices in Driffield and Beverley. I am proud and humbled to be able to help improve someone's life every day.

Outside of my day job, I am Chair of Trustees for DFER, increasing awareness of this debilitating disease and educating members of the public and businesses on how to best help and support individuals to live as positively as they can with Dementia. If you would like to know more about the work the charity does please visit: www.dementiafriendlyeastriding.org.uk

Outside of work, I regularly put myself through the pain of supporting Hull City, I get out on my road bike and spend time with Tracey and our two dogs, brothers Woody and Murphy, affectionately known locally as Ronnie and Reggie after the Kray Twins as they are always up to mischief! Here's my answers to the 19 questions! Thank you for reading!

1 Do you consider yourself an introvert or an extrovert?

I would say I am an extrovert. I am outgoing and approachable. I pride myself on my ability to be able to communicate and support people at all levels, improving their lives. I guess that is why I enjoy my current role so much as a Social Prescriber Community Link Worker for the Humber Teaching NHS Foundation Trust.

2 What's the craziest thing you have ever done?

Once auditioned for the TV programme 'Gladiators' in the early 90s, a programme fronted by Ulrika Jonsson and John Fashanu. I used to be very fit.

3 When was your biggest adrenaline rush?

Anyone who knows me well knows that I love

cars. Around 3 years ago I went on a track day experience and got the opportunity to put a Ferrari 526 and a Lamborghini Collardo through their paces. Driving high speeds into corners, fantastic.

4 Is what you are doing now, what you always wanted to do when you were growing up?

No. Like a lot of young lads growing up, I wanted to be a professional footballer. I managed to fulfil part of that dream by playing semi-professionally for Billericay Town and Newbury Town. I also played at Blackburn Rovers, Leicester City and Sheffield United in fundraisers for the Bobby Robson Foundation - happy days!

5 Who were you closest to when you were growing up?

I have always been close to my parents. My Mum and Dad have inspired and guided me to be the person that I am today, supporting me in everything I have done, particularly during my football career. I have many fond memories of being driven all over the country to games in all weathers, with them both cheering me on. Sadly, my dad passed away in 2016 following a two-year battle with Mesothelioma (Cancer).

6 Who is the one person you can talk to about anything?

I am fortunate to have a support network of my wife, my mum, my mother-in-law and a host of close friends that I can always rely on when I need some good advice and guidance.

7 What are you most thankful for?

My lovely wife who also my best friend. She is the most supportive and caring person I know. I appreciate that I am also biased!

8 What's on your bucket list for this year?

I hope to re-develop and convert a stable block attached to our house into living accommodation. Visit Dubai and The Seychelles and take a winter break in Poland. Upgrade my car, although not sure what I want?

9 If a genie granted 3 wishes, what would you wish for?

1. Teleportation so I could get to places quicker without sitting in traffic.
2. To find a cure for cancer.
3. Have a fleet of sports cars, one for each day of the week.

10 What's your idea of a perfect vacation?

Being able to visit places with my wife, where we can learn about different cultures and then chill out on a beautiful beach, listening to my favourite tunes through my headphones.

11 What do you think about when you are by yourself?

Generally all the things I would like to do with my life, making sure I make every day count.

12 Do you judge a book by its cover?

Growing up probably yes. However, not now. I pride myself on being open to getting to know someone before making any decisions with regards my thoughts and feelings.



13 What's your favourite all-time movie and why?

Rocky III. The portrayal of almost losing the will to continue, coming back from the brink, finding the motivation when knocked down, to get up and try again. A film that when I first watched it filled me with energy and emotion. I really believe that when I have had tough times, this particular film has always inspired me to dust myself down and try again.

14 What would you do differently if you had your time again?

If I had been as confident about my own ability as I am today, that I could have taken a leap of faith to become a professional footballer and when that ended, move into media work or punditry. I would also have moved north sooner than I did, too. I love the people, the pace of life and the fact that we live so near the coast.

15 What would you change in Beverley and why?

Better facilities to support the growth of Beverley as new houses are built in the area, such as schools, GP Surgeries, car parking and road infrastructures.

16 What was your most memorable birthday?

That's easy. My 50th on the 27th March, 2018, thanks to my wife. It lasted a full week! It started with a 3-day trip to Masham (Nr. Ripon) at the Swinton Park Hotel and Country Club with special friends and the dogs. I tried clay pigeon shooting and enjoyed lots of surprises as the week unfolded.

17 What's your favourite drink, alcoholic or non-alcoholic?

Gin & Tonic. Have been a fan for many years, before craft gins and the gin revolution took place. Lovely to see a gin bar open in Beverley.

18 What's your biggest achievement - sporting, hobby or past-time?

There's two! Playing in the FA Cup for Newbury Town and coming off the bench to score. Playing for Blackburn Rovers in a soccer legends game being marked by Kevin Gallacher (former Blackburn Striker part of the Premier League winning side of 1994/95) and being awarded man of the match with a signed football and Blackburn Rovers shirt.

19 How would you describe yourself in one sentence?

I have not answered this question. My friends and family have, as I felt it would be inappropriate to big myself up. Funny, approachable, loud, caring and sensitive.

ABOUT UNIQUE

Unique Salons evolved from a vision to offer more than just great hairdressing; they strive to deliver a truly unique experience. Group Managing Director Allan Smith established the first salon in 2006 in the heart of Cottingham. A second salon opened on 'designer row' in Hessle in 2007 and a third opened in the busy shopping town of Beverley in 2012. With a growing team of over 30 of the region's best stylists, Unique is now the largest hair salon group in the East Riding.

Unique is very proud of its staff, many of whom have won awards at internal and national competitions. In 2014, Matthew-Anthony Whiting, from Unique Beverley, become one of only five finalists from the UK to be nominated for the International Visionary Awards at the Alternative Hair Show. In 2015, Unique were finalists in the Best Regional Salon category at The HAIR Awards; regional finalist for the Wella TrendVision Awards; and finalists in Sassoon's Image of the Year Competition. In 2017, Unique Beverley provided two finalists for one of the biggest hairdressing competitions in the world when Matthew-Anthony Whiting (Colour Vision) and Hollie Lindop (Creative Vision) competed at the Wella TrendVision Awards. This year, three stylists from Unique Beverley are through to the regional finals of the Wella TrendVision Awards in Manchester with the hope of going to the national finals in London.

Unique use Wella System Professional using a specialist energy code to find the perfect home care system prescribed just for you; Sebastian Professional for fierce styling; Sassoon Professional for ultimate luxury and classic free flowing style and Nioxin for clients with thinning hair and scalp issues recommended by the institute of trichologists, giving thicker, fuller hair in just 30 days. Our expert teams across the Unique salons are highly trained to deliver the very best in technical hair cutting, colour expertise and other specialist services. Each of our teams proudly includes a 'Master of Colour' expert - one of the highest colour qualifications in the UK. To understand what our clients desire, we provide in-depth bespoke consultations, leaving our expert staff to create truly gorgeous hair that leaves our clients feeling fantastic every time they visit.

Six members of staff have been with Unique since the first salon opened in 2006. Unique has six apprentices - all trained at our training school in Hessle and creating not just hairdressers, but exceptionally talented stylists. Unique's motto is to never imitate... never compromise... everyone is Unique! From relaxing in our dedicated spa areas to styling at the hands of our professional team, a visit to a Unique salon is a genuinely affordable luxury experience from the moment you walk through the door.

COMPETITION - WIN A £50 VOUCHER FOR UNIQUE IN BEVERLEY



Just Beverley has teamed up with Unique to offer FIVE of our lucky readers the opportunity to win a £50 voucher off all hair services at their Beverley salon at 108 Walkergate. What's more - all other entrants will receive a £10 gift voucher for participating!

Passionate and professional, you're always in good hands at Unique. We have to mention their famous shampoo and spa service! After having your hair shampooed followed by the Unique head massage you're in a state of total relaxation! Why not call in for a complimentary consultation with one of our Unique team members (subject to available appointments) or visit the website to find out more.

To be in with a chance of winning a £50 voucher or to get your hands on a £10 voucher, simply answer the following question: **Where is Unique Beverley located: a) Walkergate, b) Flemingate, or c) Ladygate**

Send your answer by email to competition@justbeverley.co.uk by May 16th. Put 'Unique' in the subject box and your answer, name, address and contact telephone number in the body of the email. The 5 first prize winners will be required to receive their £50 vouchers and have their photographs taken over the weekend following May 16th. They must be prepared to be available for publicity for **Just Beverley** and **Unique** with names and photographs appearing in **Just Beverley** magazine, website and possibly **Just Beverley** and **Unique's** Facebook pages. Full terms and conditions are available on Page 3 of this magazine, which is downloadable from www.justbeverley.co.uk/magazine. Entrants who do not win one of the £50 vouchers will be contacted by **Unique Beverley** after the competition has closed with details on how to claim their £10 voucher.



BEVERLEY STYLISTS RECOGNISED AT UNIQUE STAR AWARDS

It was a memorable evening for Unique Beverley at the prestigious salon group's fifth biennial Star Awards.

Set against the backdrop of the iconic Humber Bridge, the Hallmark Hotel played host to the glamorous celebration that recognises the hard work and dedication from the talented team of staff across all three Unique salons situated in Beverley, Cottingham and Hessle.

Iyla Slater, Premier Stylist at Unique Beverley, was presented with the Colourist of the Year and the Clients' awards, while Beth Richardson, Assistant Salon Director received the Shining Star award and Hollie Lindop, Premier Stylist, took the Directors Cup.

Hosted by Group Managing Director, Allan Smith, the internal awards ceremony is the most anticipated social event of the salon calendar. He said: "We believe we are unique in many ways and this is just one of them. Our Unique Star Awards brings together our three salon teams, our business partners and the national salon sector to celebrate in a style reflecting Unique's high quality brand."

UNIQUE

Unique Beverley
108 Walkergate
Beverley HU17 9BT
Tel: 01482 881199

Unique Cottingham
7-8 Market Green
Cottingham HU16 5QG
Tel: 01482 847111

Unique Hessle
12 The Weir
Hessle HU13 0RU
Tel: 01482 645499

auniquesalon.co.uk • Facebook: [unique.eastriding](https://www.facebook.com/unique.eastriding)
Twitter: [@UNIQUEsalons](https://twitter.com/UNIQUEsalons) • Instagram: [UNIQUEsalons](https://www.instagram.com/UNIQUEsalons)

COUNTRYSIDE MATTERS WITH SAM WALTON

Having been brought up in the 'olden days' with feet and inches, gallons, ounces, pounds, stones and acres, it takes a bit of getting my head around centimetres, litres and hectares etc. So it must be equally as frustrating for the modern generation to understand the old technology, should they come across it. I have to admit that the modern £'s and pence are probably easier to cope with than the old £sd (pounds, shillings and pence!)



My understanding is that a normal football pitch is about one hectare or about 2.45 acres. It sounds a lot better if a farmer, when asked how much land he farms, says something like 500 acres as it sounds more than 200 hectares!

What made me think about such things was when I visited a friend who farms in New Zealand. He had 1,200 acres, 1,200 cows and 1,200 sows. I asked him how many gallons each cow produced on average. In the UK it would be around 2,000 gallons or between 8,000 and 10,000 litres (that word again) for the Friesian or Holstein cows we have. He looked at me bit askance and said "young man", (I liked that bit), "in New Zealand it is the number of kilos of solids produced per hectare".



Some years later I am still trying to work out what he meant and have failed completely! I think I know what he was getting at as he had a lot of Jersey cows in his herd which are renowned for their cream (or solids) in their milk and they get paid on that. I still know what a sixteen-stone sack of corn felt like on my shoulders on threshing days and I can still roughly stride a yard but that extra 3 inches to make it a metre is not quite so easy. Thankfully my rain gauge is in both languages, so I know when we have had an inch of rain. I still also work out how many miles my car does to the gallon as I just can't get my head around litres per kilometer - I think would frighten me into thinking I was using a lot a fuel. Or maybe it is just me getting past it!

CHOOSING A MOBILITY SCOOTER WITH ACCESS MOBILITY BEVERLEY

A reputable mobility dealer will assist you in making the right choice of scooter or power chair for your needs. They should be able to offer you a free, no pressure assessment at home to ensure you would be able to use a scooter safely as well as storing and charging it correctly. Some considerations you may wish to make are suggested here.

Do you want a scooter that you can take apart or folds up so you can put it in a car boot? These are generally smaller scooters suitable for local pavement, shopping or garden center areas having a range of 7 to 12 miles up to 4mph. These scooters may be allowed on public transport and transportable on airlines. Do you need a larger scooter, possibly your main mode of transport, which will give you more comfort and weight carrying capacity? Some of these can be used on pavements and others for road use up to 8mph with ranges of up to 32 miles.

Other considerations include: Can I get on and off it easily? Will it be comfortable during prolonged use? Can I operate and control it safely? Where can I store and charge it? Will it fit in my house shed or garage? Will it manoeuvre easily around home or the shops? Access Mobility Beverley was established in 2011 and last year was proud to work with Safer Roads Humber and produced a guide to the selection of and safe courteous use of scooters.



For your free copy of this guide or further advice just contact Martin on **01482 966962** or email: acsmobility@yahoo.co.uk

BEES

BURTON ELECTRICAL SOLUTIONS



HIGH QUALITY ELECTRICAL WORK ACROSS
EAST YORKSHIRE AND THE HUMBER REGION

DOMESTIC

COMMERCIAL

TESTING

FAULT DIAGNOSTICS

Whether it's for your home, rental property portfolio or business premises, all electrical installations need to be checked periodically by a qualified electrician. For a quote contact:

Andrew Burton

01964 552769 • 07585 601730

www.burtonelectricalsolutions.co.uk

info@burtonelectricalsolutions.co.uk

RECIPE BY THE FOOD RHINO - LENTIL AND SPINACH BURGERS

Makes 3-4 patties.

Ingredients:

- 2 Tbsp ground coriander seeds
- 1 Tbsp cumin
- 1 Veg stock cube
- 150g Lentils
- 50g Chopped spinach
- 3 Sliced spring onions
- 10g Nutritional yeast
- 70g Breadcrumbs
- 400ml Boiling water



Method:

Mix the cumin, coriander, stock and lentils with 400ml boiling water and boil in a pan until the lentils have absorbed all of the water and are soft, you may need to add a little more water if necessary.

Add the rest of the ingredients and mix thoroughly.



The mix should be moist but firm. Mould the patties by hand and shallow fry on a medium heat for a few minutes either side until golden on the outside.

Serve each in a burger bun with your favourite salad and relish.

Telephone: 01482 869111
sales@rosesofbeverley.karoo.co.uk



The Kitchen Factory, The Courtyard,
Tokenspire Business Park, Beverley
HU17 0TB

Together we will design a beautiful kitchen



Roses will then
project manage
your kitchen installation from
start to completion

Visit www.roseskitchens.com

to see our customers kitchens and read what they have to say about us

Telephone: 01482 869111



HOME PLANNING WITH RICHARD STOTT OF R D STOTT ARCHITECTS - HAS THE CONSERVATORY HAD ITS DAY?

With the first signs of summer just beginning to take hold, the daffodils are well and truly out, the lambs are bleating in the fields, and, I don't want to tempt fate, but the temperatures are just beginning to rise, and so this might seem a rather odd question to ask at this time of year! But it is one of the main requests that I get asked time and time again when clients come to me looking to do some alterations to their house.

The old conservatories are too cold during the winter months and too hot in the summer months. This is because their lightweight construction makes them very susceptible to outside temperature changes.

But what are the alternatives and what do you need to consider?

The rise of the garden room or sunroom is often an alternative, and while their names may suggest limited use, only when it is sunny and you want to be in the garden, they are actually designed to be enjoyed all year round.

Built of more solid construction than your conservatory with often a couple of solid brick or block walls that add mass to the building, keep it warm in winter and cool during the summer, while still enjoying plenty of light with often, full height glazed elevations facing onto the garden and with rooflights or lanterns above.

You will have to consider how it will impact on the existing internal rooms, but if it is well planned with a few simple alterations internally, it could form part of a much larger open plan kitchen/dining/living area, or family room that is now becoming the norm of modern living.

Before you start any works, always seek professional advice from either registered architects, professional designers or builders who should be able to advise on what you can or cannot do and what approvals you will need, if any. Make sure everything is signed off prior to starting any works.

YOUR FINANCES WITH GARETH BOTTERILL - THE GENDER PAY GAP - WHAT DO THE FIGURES SHOW?

Employers with 250 or more employees must publish figures comparing men and women's average pay across the organisation.

More than 10,000 large businesses have had to provide details of their pay structure and gender pay gap. 78% of these employers pay men more than women, 14% pay women more than men, while 8% have reported no pay gap at all.

These statistics don't give the full picture though as they don't reveal the roles being carried out by their employees and whether the different genders are being paid equally for the same job. For example, most companies have fewer females at the top of their organisation.

The proportion of women tends to fall the further up the pay scale you go. Ryanair has revealed that only 3% of women are in higher paid jobs. This headline number can therefore appear worse than it is in reality, until you look into the detail and realise that just 8 of their 554 pilots are women, whilst two thirds of the cabin crew are women.

There are differences when you look at different sectors. The construction and finance sectors appear to have the greatest pay gap with just 44 employers in these sectors paying women more than men.

At the BBC, the average woman is paid 9.3% less than the average man. Recently Martina Navratilova revealed that John McEnroe is paid "at least ten times more" than she was for commenting at Wimbledon.

In January 2018 six of the BBC's male presenters agreed to take a pay cut following revelations over unequal pay.

If you are an employer with 250 employees or more, new legislation means that you will need to publish your gender pay gap data annually. From April 2017 employers have up to 12 months to publish this information.

If you would like to discuss this in more detail, then please contact Gareth Botterill on **01482 862240** or email: gareth@botterillco.co.uk

RIBA 

Chartered Practice

r d stott

Architects Limited



An architects practice putting the client first. From small extensions to a complete new home R D Stott Architects can offer services from initial appraisal to completion.

- Architectural and Design services
- Building surveys
- Feasibility studies
- Cost advice
- Planning services
- Building regulation submissions
- Detailed and working drawings
- Tender information,
- Advice on appointing a contractor
- On site project management

22 Lairgate
Beverley
East Riding of Yorkshire
HU17 8EP

T +44 (0)333 772 9707
E studio@rdstott.co.uk
W www.rdstott.co.uk



Botterill & Co

Chartered Certified Accountants

We are a modern and professional accountancy practice ideally located to serve businesses in Beverley and the surrounding area.

We utilise modern accounting technology to provide you with a cost effective, professional service.

Our services:

- Annual Accounts
- Company Formations
- Tax Planning
- Payroll
- Management Accounts
- Cloud Accounting
- Tax Returns
- Bookkeeping & VAT

For a free initial consultation please contact us:

Office: 01482 862240

Mobile: 07966 051458

Email: gareth@botterillco.co.uk

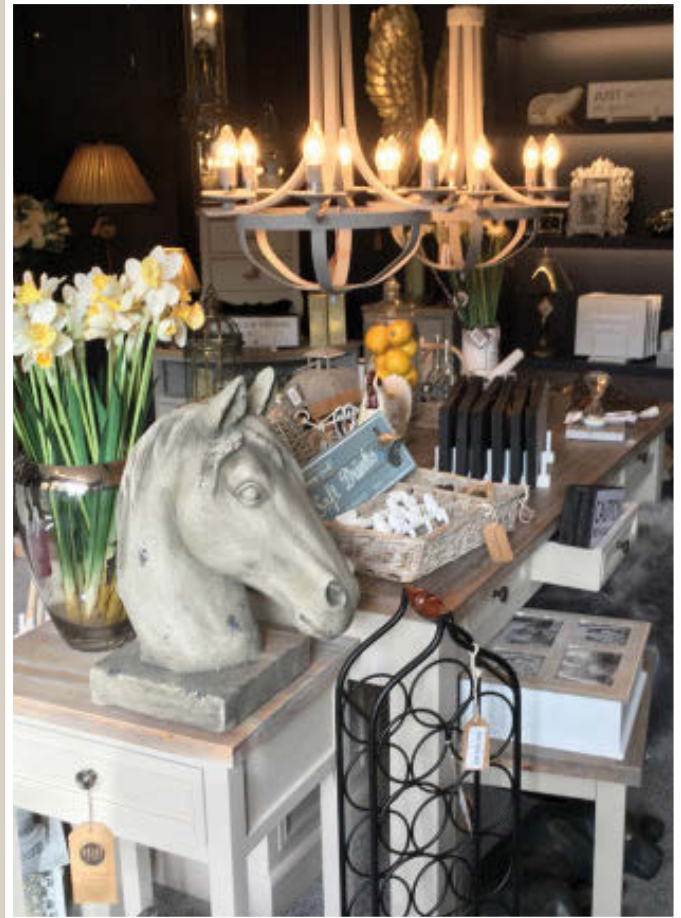
Website: www.botterillco.co.uk

1st Floor Offices, 40 Norwood, Beverley, HU17 9EY

Baytree Interiors

— Beverley —

Furniture | Home Furnishings | Clocks | Lighting | Wall Art



The Beverly store will be closing for refurbishment on 5th June and reopening on the Saturday 9th June.

The revamped store will feature new lines including **Mayfair** - reclaimed elm and gloss chrome furniture; burlesque-style **Estelle** range; the elegant mirrored - **Belfry** collection; and the Indonesian inspired **Bali** selection.

Visit the new look store and enjoy **20% off**.

Come and Visit Us

Flemingate Shopping Centre, Beverley, HU17 0NQ

www.baytree-interiors.co.uk



Send your photographs of your celebra
Find us on Twitter and Facebook to sp

X FACTOR AUDITIONS



HERE TO GET *you* THERE

HUNTERS®

EXCLUSIVE

BEVERLEY / 01482 861411

celebrations around Beverley, to info@justbeverley.co.uk
spot yourself in more photos each month.

WILSON WHEELS CYCLO CROSS



SALES / LETTINGS / MANAGEMENT

HUNTERS[®]
HERE TO GET *you* THERE

BEVERLEY / 01482 861411

I'VE BEEN THINKING... BY COLIN RAYNOR

As May bursts forth, there is the promise of warmer weather, longer days, maybe a holiday to think about and certainly if you are a sport enthusiast, a great variety of events to choose from each week. However, there is a phrase that rears its head also at this time of year that can, if you let it, send shivers down your spine - Spring cleaning.



I have known this phrase all my life and, as the saying goes, 'it doesn't get better with keeping!' As a child, it meant a total upheaval of the whole household with such an avalanche of cleaning that I often felt that if I stood in one place too long I might be erased with a bucket of bleach or some such cleanser! The protagonist in all this, of course, who seemed to take a delight in moving things that hadn't moved 'since Adam was a lad', was my mother, bless her. She had no doubt inherited this yearly ritual from her mother who, I'm sure, believed in the old adage that 'cleanliness was next to godliness'. And so it went on. As a social worker I can assure you that these principles did not apply to every house I entered. So when people use the word 'filthy' to describe the state of their home as they begin their cleaning, I just smile and reflect to myself what I have seen over the years. I suppose it is the cumulative aspect of spring cleaning that initially affects my thinking. Let me explain what I mean with this little story. Are you sitting comfortably... There was one house in Fairy Land that was dirty. This really bothered the other fairies who liked seeing things clean and tidy. This was a shame because they were all friends with the fairy who lived there. They tried all sorts of schemes to get her to clean her house, but nothing seemed to work, and this made them all very sad. So they decided they would have to do something about it themselves. They hit on the idea of giving their friend a beautiful vase for her birthday. She was delighted with this gift and gave it pride of place in her kitchen! But her windows were so dirty she realised could hardly see it. She cleaned the windows and then she could clearly see her sparkling vase on the kitchen table. However, the fairy then realised the floor was covered in dust, so she got her sweeper and gave it a clean such as it hadn't had for a long time. Before long she had cleaned the whole house and her fairy friends were delighted! As with many things in life we sometimes need a little prod to get us going when the thought of what we need to do is getting us down. Just one question though. Why can't spring cleaning be done when there aren't so many other things we want to do in the merry month of May?

COMMUNICATION - WHICH METHOD DO YOU PREFER?

We all use many different forms of communication in our daily lives, some of us like to send and receive letters and cards, others prefer speaking on the phone or even text messaging. There are some who prefer to post pictures and information on social media. All these methods of communication are valid and most of us have used one or all of them at some point.

Having said this, following the death of a friend or family member many people struggle to decide which is the best way to communicate this sad event to others. Traditionally, announcements were printed in the local paper and this is still popular with some families today, particularly if there are people from their past they might have lost touch with. This is where a mail announcement can be useful, we often receive calls from the public trying to confirm if the notice they have read in the paper belongs to an old school friend or neighbour they have lost touch with, expressing an interest in attending the service to show their respect.

Increasingly it is becoming more popular to inform people by social media, and this can be a very useful tool in communicating simultaneously to a wider community of friends and family. It is important to be careful regarding the information posted as mis-interpretation can quickly lead to the wrong information being circulated. Private messaging rather than posting on home pages can reduce the risk of accidentally offending or upsetting anyone. It is worth remembering that public posts can reappear at anytime, if shared or liked and this can be distressing to a family member who may not have expected to see it again.

Whichever method of communication is preferred it is always difficult to bring sad news to those you care about and there is no easy way to say what you have to say. The support of family and friends is invaluable at this stage and hopefully their help will make this less difficult for you.

If you have suffered a bereavement, do contact H Kemp & Sons for information or advice. They are always there to help.
Tel: **01482 844695** or email: hkempandsonltd@gmail.com



Beverley Community Lift CHARITY SHOP

www.bclift.org.uk
Tel: 01482 868082

6 Sow Hill Road,
Beverley, HU17 8BG

Making a difference to local people's lives

Have you visited our local charity shop?





A warm welcome awaits you!

Open Tues to Fri - 9.30am to 4pm
Sat 9.30am to 4.30pm






Reg Charity No: 1163868

Four Generations, Giving Over 125 Years Service

Herbert 1870-1962	Eardley 1908-1986	Geoffrey 1939-2015	David 1964
----------------------	----------------------	-----------------------	---------------

H. KEMP & SON LTD.
FUNERAL DIRECTORS
(ESTABLISHED 1893)



Golden Charter
Funeral Plans 



- Funerals Respectfully Conducted
- 24 Hour Out of Hours Service
- Free Advice & Support
- Private Restrooms
- Prepaid Funeral Plans Available
- Finance Options Available



Tel: 01482 844695
www.hkempandsonltd.com

259 Hallgate, Cottingham, East Yorkshire, HU16 4BG
Fax: 01482 843898
Email: hkempandsonltd@gmail.com

20  BEVERLEY

www.justbeverley.co.uk

Personalised Care

At Lindum House Care Home



At Lindum House we understand finding the right care home can be a daunting decision, that's why our friendly team are on hand to offer advice and guidance at a time to suit you.

Our beautifully refurbished home offers a range of care services whilst supporting independence and maintaining individual interests. With a varied activities programme and freshly prepared home-cooked meals, we pride ourselves on making everyone feel at home.

Nursing Care • Residential Care • Respite Care & Short Breaks

Whether you need urgent care or just some help and advice, our friendly team at **Lindum House Care Home** are here when you need them.

Call: 01482 977 831

1 Deer Park Way, Lincoln Way, Beverley, HU17 8RN



**LINDUM
HOUSE**

BARCHESTER HEALTHCARE

www.barchester.com

DISCOVER EAST YORKSHIRE'S INCREDIBLE WILDLIFE AT TOPHILL LOW

Beverley is well-paced for exploring Yorkshire's Nature Triangle. Four local organisations are involved in maintaining this unrivalled range of wildlife experiences - Yorkshire Wildlife Trust, The RSPB, Yorkshire Water and East Riding of Yorkshire Council. This month, we explore Tophill Low.

Tophill Low Nature Reserve is perhaps an unlikely setting for the most diverse array of wildlife in East Yorkshire. The name is a reference to a glacial hillock in the middle of a vast wetland wilderness until it was drained for agriculture in the 1700's. In the 1950's Hull required a new water supply and the farmstead being at the edge of the tidal range of the river Hull was developed as an abstraction, storage and treatment facility for Yorkshire Water drinking water.

Two huge concrete reservoirs contain 320 million gallons of water and at first glance look barren and industrial. However, the clear shallow water allows light to reach lush aquatic vegetation holding billions of insect larvae which attract thousands of wigeon, tufted duck and goldeneye ducks to name but a few in winter, for which the reservoirs were protected as Sites of Special Scientific Interest in 1988. In summer emerging insects act as food for thousands of swallows, martins, swifts and wagtails migrating between Africa and Europe, whilst the settlement pools are perfect feeding grounds for diverse wading birds like greenshank, black tailed godwits and sandpipers.

The other areas of the site were left as wetlands or planted with an eclectic mix of trees and the site quickly gained the attentions of local wildlife enthusiasts whom have recorded 270 species of bird, 700 species of butterfly and moth, and hundreds of plants including spectacular bee orchids in June. Because it is a water supply site it has never seen blanket application of fertiliser or pesticides, allowing many important species to remain and thrive such as great crested newts, grass snakes, water voles, roe deer and otters with enthusiasts and universities constantly monitoring and researching wildlife.

In 1993 Yorkshire Water invested and opened the site to the public with 12 hides installed for viewing the wildlife, and works have continued culminating in the 2017 reception hide giving views over the reservoir with telescopes, bird feeders and displays on the wildlife before it can be enjoyed from over 3km of accessibility paths which take circuits of both reservoirs. It takes a couple of hours to walk each with a stop in the hides to enjoy the wildlife and take in the peaceful surroundings; The nearest main road is 3 miles away in any direction so in May and June bird song abounds, not to mention the raucous marsh frogs croaking from the lagoons.

The reserve is open every day of the year from 9am to 6pm with admission costing £3.50 for adults or £1.80 for concessions (there is a no dog policy to protect the wildlife). Access is signposted from Watton village on the A164 Beverley to Driffield road.

Events take place throughout the year advertised on the web, the most notable being on June 17th 2018 when the free admission open day takes place; with many local wildlife organisations exhibiting their work and lots of activities to inspire a new generation of naturalists.





IN THE GARDEN... MAY

May is the month when spring turns into early summer, there are still spring flowering bulbs flowering and an abundance of blossom on trees. Temperatures should start to rise during both day and night (here's hoping), although be prepared for the odd frost.

Over the last couple of weeks I have been asked the same question on a number of occasions.

Q. "Why have the leaves on my evergreen plants gone brown?"

A. This is Wind or Leaf Scorch

If you have any plants showing these signs it will be a result of the very cold windy weather we had earlier in the year. There are plenty of plants on the A1174 between Dunswell and Woodmansey showing the symptoms of Wind Scorch.

THE CAUSE OF WIND SCORCH

When the wind blows, the rapid air movement causes moisture to be lost from foliage and from the soil. And, if the soil is also dry, plants may not be able to replace moisture lost from leaves fast enough. Likewise, plants are also unable to extract moisture from frozen or waterlogged soils. The leaves soon become desiccated and scorched.

SYMPTOMS

Scorch shows up in a number of ways;

- Scorched leaves have brown, desiccated edges or may be entirely brown and dry.
- Wind scorch may be worst in exposed areas or on the windward side of the plant.
- Large-leaved evergreens are affected worse than small-leaved plants, and pot plants are at particular risk.

CURE

Cut out the scorched foliage from broadleaved evergreen trees and shrubs in the spring as growth resumes. Conifers will often fail to regrow from badly damaged shoots and should not be pruned. To encourage recovery, feed plants with general-purpose fertiliser e.g. Bone meal or pelleted chicken manure.

TASKS FOR MAY...

Bear in mind that we have had a lot of rain and some gardens will be very wet or even waterlogged - so please exercise some caution when working the soil or trampling on a soggy lawn.

- Be ready to protect plants against sudden frosts.
- Water all new plantings if weather is dry.
- Trim spring-flowering perennials.
- Finish pruning spring-flowering shrubs e.g. Forsythia and Kerria.
- Tidy up foliage of spring bulbs and mark.
- Harden off summer bedding plants.
- Plant up hanging baskets and patio pots.
- Keep on top of pests and weeds - including slugs.
- Trim hedges and feed them.
- Trim topiary and feed.
- Keep sowing vegetables out of doors.
- Continue to sow tender vegetables under cover.
- Check greenhouse ventilation and provide shading if necessary.
- Continue pruning trained plums and cherries.
- Mulch strawberries with straw or mulch mats.
- Cut lawns weekly and blitz lawn weeds.
- Remove duckweed and blanket weed from ponds.

So until next month, happy gardening.

Jane Dale of 'Designed Gardens'

Tel: 07983 392 411



FREE LAWN ANALYSIS

Is your lawn full of moss and weeds or in need of some serious revitalisation? We offer a completely free, no obligation, lawn analysis to assess your lawn's condition.

SEASONAL TREATMENTS

Designed for the great British weather, our bespoke seasonal treatments contain nutrients to feed the lawn - supporting root development and encouraging stronger, more robust grass plants - and a herbicide to control weeds.

We'll provide you with a wonderful lawn and exceptional customer service.

Contact GreenThumb for your FREE lawn analysis and quote:

01482 880082

or email: beverley@greenthumb.co.uk

GreenThumb
LAWN TREATMENT SERVICE



ROSE THEATRE TO OPEN IN YORK FOR A SUMMER OF SHAKESPEARE

Something unique is happening in York when the first ever 'pop-up' Shakespearian theatre opens next to the historic Clifford's Tower.

The theatre will have seating for 600 in tiered balconies with standing room for 350 'groundlings' in the uncovered courtyard, echoing the original Rose Theatre which was built in London on the south bank of the Thames in 1587, whilst the village around the theatre will provide a Shakespearian experience never seen before anywhere in Europe. The build starts at the end of May, ready for the first play to be performed in June.

The theatre is the brainchild of James Cundall, CEO of international York-based theatre company, Lunchbox Theatrical Productions. He said "More than 400 years ago, the first audiences for Shakespeare's plays enjoyed an experience that was as intimate as it was exciting, crowded in close to the actors and the action, in a small theatre in the bustling city of London. Shakespeare's Rose Theatre will replicate that setting.

"The unique environment connects actors and audience together in ways many people will never have experienced before. While an interactive experience awaits those closest to the stage in the courtyard, no seat in the theatre will be more than 15m from the action, providing plenty of breathtaking, spine-tingling, heart-stopping moments! With dramatic sword-fights, bubbling cauldrons, wayward fairies, passionate love scenes, gruesome murders, grand poetry and no shortage of fake blood, audiences will experience the comic heights and tragic depths of Shakespearean theatre in a memorable setting."

The theatre will combine state-of-the-art scaffolding technology, corrugated iron and timber with the historic 13-sided design of a 16th century Shakespearean theatre to authentically reproduce four of Shakespeare's most-loved plays across the genres from Monday June 25th until Sunday September 2nd.

- A tragedy - *Macbeth*
- A comedy - *A Midsummer Night's Dream*
- A tragic love story - *Romeo and Juliet*
- A history - *Richard III*

Romeo and Juliet and *Richard III* will be directed by the West End's renowned Lindsay Posner, while York Theatre Royal's Olivier Award-winning Artistic Director Damian Cruden will direct *Macbeth*, and Associate Director Juliet Forster will be putting her stamp on *A Midsummer Night's Dream*.

Outside Shakespeare's Rose Theatre will be 'Shakespeare's Village' which will be free-to-enter. Yorkshire-born celebrity chef and food ambassador for the Village, Brian Turner, is creating a special street food menu with leading Yorkshire street food vendors; there will be locally-made ice cream and a fully licensed bar, all housed in traditional oak-framed and reed-thatched buildings.

Award-winning Yorkshire garden designer Sally Tierney has been engaged to design and create an Elizabethan garden, with ornate box-edged beds of cottage flowers, roses and herbs and there will be a regular schedule of 'wagon' entertainment from actors, musicians and jugglers performing from farm wagons.

Tickets, which are priced from £12.50, are already on sale at www.shakespearesrosetheatre.com where you can find the full schedule.

Tickets are also available at www.ticketmaster.co.uk and York Theatre Royal www.yorktheatroyal.co.uk, phone **01904 623568**.

Please note, booking fees may apply.

You can follow developments on Twitter [@ShakespearesRT](https://twitter.com/ShakespearesRT), too!



THOMAS HENEBURY

CLASSICAL GUITARIST

AVAILABLE FOR RECITALS AND PRIVATE TUITION

Thomas has a Bachelor's Degree of Music, and an Associateship of Trinity College.

He teaches grades one through eight for Trinity and Associated boards.



T: 07732 099838

W: www.thomasheneburyguitar.com

E: tom@thomasheneburyguitar.com

COMPETITION

Shakespeare's Rose Theatre in York is offering 2 pairs of tickets to the performance of *A Midsummer Night's Dream* at 7.30pm on the 29th June 2018.



All you have to do to be in with a chance of winning this fabulous prize is answer the following question:

Shakespeare's Rose Theatre is being built beside which historic York building?

Send your answer by email to competition@justbeverley.co.uk by May 16th. Put 'Rose Theatre Comp' in the subject box with your answer, name, address and daytime telephone number in the body of the email.

You must be available between May 18th - 20th for photographs for publicity for **Just Beverley**; photographs will be taken in Beverley. The winners' names and photographs will be sent to Shakespeare's Rose Theatre where tickets will be available at the Box Office on the night. The prize does not include travel or any other costs which the winner might incur in traveling to York to enjoy this event.

EAST RIDING COUNTRY CHOIR TO JOIN FORCES WITH EAST RIDING YOUTH SINGERS

Performing Vivaldi's Gloria and Howard Goodall's 'Eternal Light - A Requiem' in Beverley Minster on May 5th allows for an augmented choir with the youngster along with well-known local soloists, Lucy Bates, Berenice Lewis and Kevin Ormond.

The East Riding Youth Singers is the senior vocal group within the East Riding Schools' Music Service. With 25 accomplished voices, they explore repertoire in a variety of musical styles, performing in concerts and competitions across the East Riding and beyond, including the Birmingham Conservatoire and at the National Festival of Music for Youth. Last November the choir enjoyed a weekend in London where they performed on stage at the Royal Albert Hall as part of a 1,000-strong youth choir in a performance of Handel's Messiah.

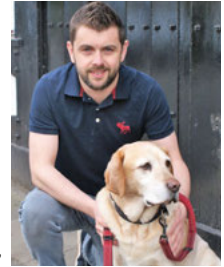
They will be joining the Youth Orchestra on this summer's tour to Sorrento. The Singers are directed by Elaine Dave who is also the accompanist for County Choir. The musical pieces being performed are the well-known 'Gloria' by Vivaldi, which was written for orchestra and choir which suits the County Choir perfectly. The Goodall Requiem 'Eternal Light' is only slightly less well-known as, although it is only 10 years old, it has been performed hundreds of times across the world. The contrast between the two pieces is striking and testament to the professionalism of this local choir.

Howard Goodall himself is very famous, too, for writing the 'Vicar of Dibley' theme tune! His requiem is written to give solace to the grieving, unlike most traditional requiems which are written to offer prayers for the salvation of the deceased. The work was initially performed in a choreographic setting by the Rambert Dance Company - perhaps another option for the County Choir going forward would be to work with a dance company? The local soloists are all amazing musicians. Soprano Lucy Bates was born, lives and teaches singing in Beverley. She studied at the Royal Northern College of Music, has appeared at Glyndebourne and worked extensively in concert, recital and oratorio throughout the country. Contralto Berenice Lewis is Director of Music at St Mary's and of York Philharmonic Male Voice Choir. She sings with Sine Nomine, a chamber choir, has sung as a soloist in many large-scale productions and teaches singing and piano at Hymers College in Hull. Baritone Kevin Ormond worked at Smith & Nephew before studying as a post-graduate at the Royal Northern College of Music. He sings with the Beverley Chamber Choir and has performed a variety of roles in opera and oratorios.

Tickets are priced at £10 or £17.50, available from Beverley Tourist Information in the Treasure House (01482 391672), or online from www.eastridingcountychoir.org

CHARITY DOG-WALKS HEAD OUT FROM THE TIGER EVERY 1ST SUNDAY

The Tiger Inn's popular walks raise money for charity and introduce dog owners (and their dogs) to each other, providing an opportunity for socialising and growing a social network.



What could be better than heading out with your best friend and other like-minded people for a 30-45minute walk around Beverley and then back for refreshments in probably the most dog-friendly pub in the town whilst at the same time raising money for charity? If this appeals to you and your pooch, then head down to the Tiger Inn on Lairgate on the first Sunday of the month where Allen Slinger, Manager of the Tiger and his rescue dog, Mac, a cream Labrador, adopted from Jerry Green Dog Rescue in Gilberdyke, will be there to say hello! Allen asks for £1/dog as a donation to his 'House Charities' tin. The popular pub supports 7 charities, including Jerry Green and Guide Dogs.

He's raised almost £1000 already this year. His experience of fund-raising has demonstrated that he can raise more by supporting a group of charities than by just concentrating on one as it increases awareness of all the charities and people become more generous. The other charities include Beverley Community Lift; Macmillan; Beverley Ladies' Netball and Hull City Ladies' FC. When you get back from your walk, there is water and treats for the dogs and tea and coffee for their walkers, all free, but donations to the charity tin are most welcome. The next walk is May 6th. No booking required - just turn up!

HUBY

DOMESTIC APPLIANCES

Covering Hull, Beverley, Pockington, Driffield and all the local villages



BOOK ONLINE

and **SAVE**

at

hubys.co.uk

Book in advance and save money. The further you book in advance the more you could save...




For service and repair call: **01482 866660**

AFTERNOON TEA MENU!
 £12.95 PER HEAD OR
 £24 FOR TWO PEOPLE
AVAILABLE MON-SAT 12-5PM. PRE BOOKING IS REQUIRED AND GLUTEN FREE OPTIONS ARE AVAILABLE.



DOG FRIENDLY

Brains required from 8.30pm

FIRST SATURDAY OF THE MONTH

Big Quiz

Free food/prizes to be won, all money raised to our house charities.
 £1 per person entry

WEEKLY

Bingo

Cash prizes to be won
 50p entry per game
 Every Tuesday 1.30pm

THE TIGER INN

Tel: 01482 869040 | www.tiger-inn-beverley.co.uk
 Lairgate, Beverley HU17 8JG

HOME COOKED FOOD SERVED 7 DAYS A WEEK

TRY OUR LEGENDARY SUNDAY LUNCH!

BEVERLEY AND EAST RIDING 31ST EARLY MUSIC FESTIVAL TICKETS NOW ON SALE!

Recently shortlisted for the second year running in the prestigious Remarkable East Yorkshire Tourism Awards, REYTA's, tickets are now on sale for this spring's Beverley & East Riding Early Music Festival, Thursday 24 - Tuesday 27 May. Following a successful 30th anniversary in 2017, which included an installation at Beverley Minster, the Festival this year celebrates the European 'Grand Tour' of early music from London to Venice to Vienna.

Some of the area's finest churches host the festival. From the majesty of Beverley Minster to the heritage centre of St James' Warter, via Toll Gavel United Church, St Mary's Church and St John's RC Church, the highlights of the festival include rising stars Il Quadro Animato, Lux Musicae London and the University of York's 24 chorus.



The National Centre for Early Music's youth instrumental ensemble The Minster Minstrels will also perform in Beverley for the first time and are taking part in a community project with Castaway Goole Accessible Music Theatre. With illustrated talks, open public opportunities for recorder players to hone their skills with legendary recorder player Piers Adams, and community concerts featuring some of the most talented individuals from across the Riding, the Beverley & East Riding Festival will bring its usual ray of light to the region. Tickets are on sale at www.ncem.co.uk



bemf, phone: **01904 632220** or **01904 658338**. The Festival is supported by the East Riding of Yorkshire Council Arts Council England, the National Centre for Early Music, Welcome to Yorkshire, Visit Hull and East Yorkshire and Schroders. Follow the National Centre for Early Music to keep up to date with news, events and behind the scenes [facebook.com/yorkearlymusic](https://www.facebook.com/yorkearlymusic) and [@yorkearlymusic](https://twitter.com/yorkearlymusic) on Twitter.

TRENT GALLERIES SHOWCASE OF KRIS HARDY ORIGINALS

Trent Galleries in Beverley will be showcasing a collection of stunning originals by Kris Hardy from the 1st - 11th May. Kris has created some truly outstanding pieces, ranging from sports and classic cars, urban cityscapes and specially commissioned artwork just in time for the Tour de Yorkshire 2018, including the Beverley Minster.

He paints in oil, watercolour and acrylic on canvas. Previously he has undertaken numerous commissions, to both Boris Johnson and former Deputy Mayor of London, Richard Barnes.

Kris Hardy's background is in fine art painting and automotive design. He was born in Nottingham in 1978, where he lived until he went to university at 19.

He studied art and design at college and then vehicle design at the University of Huddersfield, where he graduated with a 1st Class Honours Degree in 2000.

Kris Hardy then went on to study at the Royal College of Art in Kensington where he gained his MA.

He worked at various design studios after graduating from the Royal College of Art in 2002, including Lotus Cars.

Kris has lived in East Yorkshire for the past few years.



To view this collection please pop along to **Trent Galleries, 9 Butcher Row, Beverley HU17 0AA.**

Telephone: **01482 874621**. Email: beverley@trentgalleries.co.uk







Kris Hardy Event

1st - 11th May
Trent Galleries
Beverley
01482 874621

ANYTHING BUT PLASTIC BY JOHN FEWINGS

I walk through town
And I've got my plastic bag
Though I don't intend to shop
But, you know, just in case.

And the bookshop's closing down again
And I go as far as Market Place
'Cos that will help me meet
My daily target on my fit-bit.

And I'll dally on a bench
In the Coronation Garden
And throw seeds for the robins -
And I'm sure I've seen a wren.

And if I'm so inclined, I'll wander round in Oxfam
Or Age Concern or Cancer shop
'Cos they've got the cheapest picture frames
And I'm working on a project.

And I might stop a while and have a chat with Alan;
Or perhaps bump into Brian if he's walking with his dogs;
Or maybe I'll see Carol and we might go for coffee;
Or maybe chat with Katie in the café about crosswords.

And I love this little town
And I love its generous people
And it's really them I go for
Rather than the shopping.

And though I've got my plastic bag
'Cos, you know, just in case -
You don't need a plastic bag
To carry home their friendship.



John Fewings is **Just Beverley's** poet-in-residence and a member of the Argy-Bargy Poets. He writes poems for people who don't like poetry. Find out more at www.johnfewings.zone

MAY DAY BY CLINT WASTLING

Gill looked around the living room at the unpacked boxes, then outside at the sun trying to break through the mist. The anxiety of the move had given her a sleepless night. A walk would clear her head and she needed some thinking time.



After putting on her walking shoes, Gill popped her head out of the front door. There was a chill in the air and the mist swirled gently under the silvery early morning light. She reached back inside for a jacket, before setting off down Shepherd Lane.

The mist had lifted slightly by the time she reached Old Hall Farm. She glanced at the information panel before walking round Millennium Orchard. Eighteen years of growth - had it really been eighteen years?

The trees were in bud and a few flowers emerged from the undergrowth, whilst others vanished into the mist. She had expected to hear bees and insects but instead was startled by drumming, this was followed by bells tinkling.

Gill listened for a while then took out her mobile, just in case. A whistle blew then music. Dark shadows pulsed in and out of view. Gill felt her throat tighten, she looked at the phone, her finger hovering over dial. The raggedy edges of cloth twisted and waved to the rhythm.

The shadows were definitely too big for faery folk. Gingerly she took a couple of paces forward and collided with a man sporting a blacked-out face.

She gasped.

"Sorry! Are you alright?" The man asked before continuing.

"Fine, just startled." Gill took a deep breath and watched as people span round the trees to the folk melody. As the dance slowed, the man who had collided with her sang a few words to the tree before the Morris dance restarted. Gill used her mobile to take photos.

During a break in the dancing, the man returned. "We're blessing the apple blossom," he explained. "It's a tradition to ensure a good harvest of apples for the cider."

"Sounds interesting," she responded.

"Would you like a glass, whilst you're watching?"

"A bit early for me." Gill responded.

"It's only apple juice!"

"That's ok then." Gill replied.

As she watched the dancers move round the trees, she found herself swaying in time with the music.

"We're always short of dancers. I'm George by the way, King Crow for this year's Beltane celebrations."

"Gill," she said holding out her hand.

"We're meeting in town for breakfast, if you'd like to join us."

"Thanks," Gill smiled, "I would."

Maybe moving to Beverley was the best decision she'd made in a long time.

John Godber COMPANY

ert
EAST RIDING THEATRE

SEASONS IN THE SUN

BY JOHN GODBER

Tuesday 24th April - Saturday 19th May 7:30pm
(Matinee dates and times online)
East Riding Theatre, Beverley : 01482 874050

'JUST FOR FUN' ANSWERS

- a) Entrance to the Green Dragon Pub
- b) Beverley Minster Roof

THE GREEN 'D' IN SATURDAY MARKET REVEALS ITS NEW LOOK

If you haven't been in the Green Dragon for a while, you are in for a surprise. The new food menu will delight you, too!

After a two-week refurbishment in March one of Beverley's favourite pubs reopened with an exciting new look! Enthused general manager Simon Gibson said: "It's been fantastic seeing the pub take on a different atmosphere and we can't wait to welcome everyone who comes to pay us a visit. The team and I are very excited to see our guest's reactions to our fresh, new look which complements the pub's traditional features."

The Green Dragon, known affectionately by locals as the 'Green D' is the perfect place to relax with a drink from the fantastic selection, including a new range of craft beers and ciders. The revamped menu now offers delicious fresh food with something for everyone to enjoy, featuring all the pub classics as well as brand new freshly made stone baked pizzas, juicy stacked burgers, mouth-watering slow cooked meat and rib options. There's also mix & match tapas including drunken mushrooms, jalapeno peppers and cheese 'n' bacon covered fries for those who fancy something with a Mediterranean twist.



Visitors to the Green Dragon will be able to enjoy the new drinks and food offering whilst taking in traditional pub entertainment, such as live sport and music.

The significant investment made at the pub has created five new jobs with the team ready to pull pints and serve delicious food to guests! Do pop in and see them!

For more information about the Green Dragon please visit www.thegreendragonbeverley.co.uk or call **01482 889801**.

Come and join us at the newly refurbished

GREEN DRAGON



- Exciting new food menu - pizzas, burgers, tapas and more
- A wide selection of craft beers and ciders
- Big screen sports action from Sky and BT

Tel: 01482 889801

www.thegreendragonbeverley.co.uk

51 Saturday Market, Beverley, East Yorkshire, HU17 8AA

SPECIAL OFFER

2 Courses for the Price of 1
on all Toning Tables
booked before 10th June

FREE TRIALS, No obligation
Testimonials available

TONING TABLES
help with fat loss, ME, MS,
hip replacements,
depression, bad backs
and much more!

Wheelchair access and
stair lift available



INCHES BODY STUDIO

CELEBRATING 27 YEARS IN BUSINESS

Inches Body Studio, 1 Norwood, Beverley, HU17 9ET

Telephone: 01482 865229

Email: inchesofbeverley@hotmail.co.uk

www.inchesofbeverley.co.uk



IN 2018

REACH MORE CUSTOMERS ONLINE

A WEBSITE THAT GETS REAL RESULTS
FOR ONLY £1995

WHAT'S INCLUDED?

Your website comes with all of these fantastic features;

- A bespoke website design
- Content Management System
- Contact form
- Analytics
- Mobile friendly
- Blog & gallery
- Links to social media accounts
- A dedicated account manager

FREE!
Domain name
Email addresses
Web hosting*
& Support
*for 12 months

CALL NOW ON:

01482 428650

marketing@indicoll.com

indicoll.com

INDICOLL

YOUNG, INNOVATIVE AND THE FUTURE, THAT'S FRANKIE!

Once upon a time, you were either a singer, a song-writer or an actor. Most of today's artists are multi-talented, being able to act and sing (think Harry Styles in 'Dunkirk', Ed Sheeran in 'Game of Thrones' and actors such as Emily Blunt, Jennifer Lawrence and Robert Downey Jnr who all have fabulous singing voices - but Frankie Turton from Sancton is already accomplished at all three skills. She has won a Hollywood Best Actress Award for 'Moving On', been a runner-up in the national singer-songwriting competition Local Music Live 2017 and Minster FM's 'Battle of the Bands' and released her first solo album AND she is only 15 years old!

With a voice reminiscent of Lily Allen, Frankie (or Francesca to her Mum!) already has an agent, a back-list of gigs and festival appearances, been in a music video, done over 50 TV commercials, feature films and documentaries, been on the radio (including Radio Humberside's Introducing and Minster FM) and appeared at Hull New Theatre. When you meet her, she is quite shy and introspective - but see her on stage and she becomes Frankie the artist, Frankie the actress, Frankie the singer-songwriter accompanying herself on her baritone ukulele.

Many will have seen her perform already, at Hull New Theatre in One Off Productions' 'White Christmas'; at Beverley Folk Festival in the Arena 2 tent for up-and-coming artists; at 'Tidal Waves' in Bridlington; in 'The Eschatrilogy' movie from 2013 (a zombie movie available from Amazon) or in 'Moving On', a short film by young film-maker Holly Jacobsen which is on Youtube or at any number of gigs she has played in Yorkshire.

She plays gigs not only in East Yorkshire, but in West, North and South Yorkshire - her first gig was in Doncaster - as her manager, Andrew Beverley of AB Music is based in Leeds. Frankie met Andrew through working with Josh Taylor on a

promo video; he's another young up-and-coming actor-singer-songwriter and front-man of The Hara. She approached Andrew with her self-penned repertoire and he liked what she does. He now arranges her gigs and recorded her album with him. Andrew is a multi-instrumentalist, so that he could play the instruments on the album which Frankie doesn't play - although Frankie herself plays guitar, ukelele, piano and drums!



Frankie's music can be badged as indie/folk but her lyrics confront social issues not usually explored in indie music which tends to major on love and heartbreak. 'Kingdom of Doubt' is about people 'bigging' themselves up only to find they aren't as good as they say they are, whereas her first single 'Graffiti Children' was about back-street kids being as valued as anyone else if they would just be themselves. She says her love of music is from the extensive genres which were playing as she grew up with Mum, Dad and two (much) older siblings. This means she does one or two favourite covers as well as her own songs!

Frankie's first album, 'In Between Forever' is now available to buy, download or stream from Spotify, Deezer, i-tunes, Google Play or Amazon. But we have a copy to give away to one lucky winner, PLUS you get the opportunity to meet Frankie, too! See right for details.

Meanwhile, you can find out more about Frankie's music and where she will be appearing on her website: www.frankieofficial.co.uk

In May, Frankie will be playing Cottingham's Springboard Festival at CC Café on the 25th May and The Railway on 27th May - check out www.springboardfestival.org for timings.

If you like what you hear, Frankie is available for concerts and house-gigs, too. But bear in mind she is only 15 and still at school so late nights are not an option!

COMPETITION



Frankie is one-to-watch. Her first album has just been released, called 'In Between Forever' on the back of her first single 'Graffiti Children'.

Frankie has played the Beverley Folk Festival for the past 2 years as an up-and-coming artist.

To be in with a chance of winning a signed copy of 'In Between Forever' and to meet Frankie in person, all you have to do is say **which tent she played in at Beverley Folk Festival.**

Send your answer by email to competition@justbeverley.co.uk by May 16th. Put 'Frankie Comp' in the subject box with your answer, name, address and daytime telephone number in the main body of the email. The winner will be drawn by random after the closing date. You must be available over the following weekend for presentation and publicity purposes for **Just Beverley** and Frankie. Good luck!

RACECOURSE REFURB READY FOR EXCITING NEW RACING SEASON

Colin Stamford AKA Beat the Bookie, joins **Just Beverley** from one of Beverley's greatest assets - the Racecourse.

Yes, they're off. A warm welcome to the 2018 season at Beverley Racecourse. After a very long and wet winter we are looking forward to some action-packed days, and some warm weather.

Because of all the rain of late, the going is quite soft on the course - so when choosing your horses look out for those that love soft ground. Of course, some of the horses will have been keeping fit over the winter by running on an all-weather track. Personally, I never fancy any of those as it's difficult when they come to run on grass. It's always a good pointer to check the horses form and how they ran at this time last year.

As for the jockeys, many of them have also been keeping fit by riding on the all-weather track, too. This helps keep their riding weight down to their minimum. Those that don't ride over the winter soon find themselves putting on the pounds and then have difficulty getting back to normal riding weight, usually somewhere around 8st 6lb. This is the time of year when we get a lot of 2-year olds running for the first time. If you've ever watched them walking around the paddock be aware, as

they can be very frisky and kick out a lot. I feel for the jockeys who have to ride them! In the weighing room, when the jockeys are waiting to come out to ride I will sometimes remark that 'I wouldn't get on that horse for anything, have you seen the way it's playing up!' I have known jockeys refuse to ride a horse that's jumping all over! Make a point next time you're at the races to watch the 2-year olds, scary!



Having worked many years with jockeys I have learned to admire them for the hard job they do. A jockey's day can be very long and tiring. They get up very early in the morning to ride out at the stables, then dash off to a racetrack, driving hundreds of miles sometimes maybe for just a one-hour ride. If they end up unplaced, they only get paid their riding fee. So if you have backed a loser, spare a thought for the jockey - sometimes it's the horse that's not good enough rather than



the skill of the jockey. If you get to Beverley this season, then take a look at the new parade ring which is now complete after a lot of hard work. You would think you were at Ascot! Well done Beverley Race Company.

I look forward to seeing you this season and hope lots of you will be able to make our very special Bygone Raceday on Bank holiday Mon 7th May.

It will be a day of racing as it was in the 1960s. Come along for a great day out. And don't forget to try to Beat the Bookie!

CYCLING WITH WILSONS WHEELS

Road Racing season is well under way, with the Tour de Yorkshire racing around East Yorkshire and the spring classics like the Paris Roubaix already decided. Lighter nights and warmer weather is the sign that local evening races in our area are about to start during the week as well as on a weekend.

Anyone can enter the local race series organised by local volunteers and cycling clubs/teams. So why not give one a go? All you need is a bike, a racing license and a helmet - pop into Wilson Wheels or give us a call to find out how to get a license and we can sort you out with a helmet and bike at the same time. I would recommend practicing riding in a group first before completely taking the plunge - we can advise on that, too, or you can visit www.britishcycling.org.uk to find one. Races are handicapped so that when you do get started, you can begin in a group that matches your ability. Race circuit locations include Walkington, Eton, and Little Weighton. There is also a league in Lincolnshire, which features circuits in Barton and Great Limber, which are not too far away. More information on these leagues can be found on the TLI cycling website (The League International) or you could even just pop in and see me at Wilsons Wheels.

If entering a road race seems too daunting but you still want to try something competitive, why not start with time trialing? Also known as the 'race of truth', it's you against the clock as there is no one else to slipstream or pace you. The major local cycling clubs like Hull Thursday Road Club and City Road Club organise local time trial series.

At Wilsons Wheels we have our very own Race Team, with twelve members racing under the Wilsons Wheels colours. We have also recently introduced a new team kit for the 2018 racing season, which features the logo of our new sponsor, **Just Beverley**. We will be racing in the local TLI East Yorkshire races and some of the Lincolnshire events. A handful of us will also be racing at weekend in longer races a bit further a-field. These races are usually 50-70 miles long where 25 mph averages are the norm, so we don't hang about! Unfortunately, this year, the Beverley 'Crit' won't be going ahead this year but if you see the team locally, be sure to give us a wave!

Nathan Wilson.

Wilson Wheels is at 89a Grovehill Road, Beverley, tel **01482 882881**. Visit www.wilsonswheels.co.uk or email: info@wilsonswheels.co.uk



ANYTIME FITNESS CHARITY BIKE RIDE ROUTE REVEALED

Ashton-under-Lyne to Beverley via Huddersfield, Wakefield, Castleford, York and Pocklington is 102 miles, uphill and down dale, until the more gentle scenery after this side of the Wolds. The current participants are already training hard - but they would love more people to join them. Could that be YOU?

The motivation for this bike-ride is the raising of funds for two amazing charities - Hull4Heroes and Beverley Community Lift (BCL). Hull4Heroes helps ex-armed forces personnel who struggle when back on civvy street.

Some find 'normal' life so stressful that they end up misusing drink or drugs or find themselves on the streets. BCL is a local transport charity which has served the community for over 45 years.

Caring for the elderly, disabled or anyone rurally isolated, BCL provides a transport service to allow them to get out and about and live life to the full. Both charities fully deserve our backing and are central to the communities they serve. The more money we can raise for them, the more people they can help.

The physical test of this ride presents us with a challenge that few people will have tried before. We have delayed the date to the mid- to back end of June for operational reasons which gives you more time to train!

Why not give Anytime Fitness a call to discuss this ride, training programmes and logistics? We'd love you to join us!

James Bedford.

Anytime Fitness is based in Flemingate, phone **01482 247100**.

WW

BE PREPARED FOR SPRING

WILSONS WHEELS

T: 01482 882881

W: www.wilsonswheels.co.uk E: info@wilsonswheels.co.uk

WE NOW STOCK CUBE CYCLES

2018 RANGE NOW AVAILABLE

MENTION JUST BEVERLEY FOR

FREE BIKE FIT

WITH EVERY CUBE, KTM OR BOTTECCHIA ROAD BIKE PURCHASED AND IN STORE DISCOUNTS

DISCOUNTS ON:

- Adult Bikes
- Children's Bikes
- Clothing for all cycling weather
- Parts and accessories

89a Grovehill Road, Beverley, East Yorkshire HU17 0EJ

OPEN: Monday - Friday: 08.30 - 17.30

Saturday: 09.00 - 17.00 Sunday: CLOSED - Out riding our bikes

Train with your friends at
Anytime Fitness

Join now and we will
guarantee a price
matched membership

Call us today on:
01482 247100

ANYTIME FITNESS

Flemingate Centre, Flemingate HU17 0NG

30

Just BEVERLEY

www.justbeverley.co.uk

LOCAL AMATEUR LADIES TEAM TO RIDE IN THE TOUR DE YORKSHIRE



Team Jadan-Weldtite Viva le Velo, led by Hull's Victoria Hood, is one of only 3 amateur ladies' teams which have been selected to ride in the Tour de Yorkshire. Sponsored by local companies Jadan Press (which is entrusted with Just Beverley design and print), Weldtite who manufacture innovative bike maintenance products and Viva le Velo, which supplies performance cycles and accessories, this is very much a local team which we should all get behind!

The team is made up of 9 riders, all of whom are desperate to compete in the Tour de Yorkshire (TdY) - but as each team can only include 6 riders, 3 will be very disappointed.

Why is competition so fierce? This is the first time the ladies' race has been over 2 days and, importantly, it's the first time the ladies' race will be leaving from home soil! Team Manager Victoria Hood spoke to **Just Beverley** about the team and why she is so excited about their prospects for this race and the future. She said: "There is no reason why women cannot ride the full race, so this 2-day race is a step in the right direction. Getting parity with men is important and, as women's cycling becomes more popular, so entrenched attitudes are changing. Being able to get this local amateur team a slot means the race organisers have recognised our potential - we are thrilled and would hope everyone who can will come out and wave us off from Saturday Market in Beverley at 8.40am on May 3rd or cheer us on along the route."



The route for Day 1 of the TdY offers many opportunities for seeing the peloton and the support cars. From Beverley, the Tour heads out on the A164 to Skidby and then to Little Weighton, arriving in Walkington at around 9am (Walkington Methodist Church will be decorated and open in the afternoon for tea/coffee but unfortunately not in the morning), to Cherry Burton for about 9.20am, Middleton-on-the-Wolds at 9.30am and Pocklington at 9.50am. From Pocklington, you can catch the riders at Holme-on-Spalding-Moor at 10.25am, Howden at 10.44am and Rawcliffe at

11am when it crosses into South Yorkshire to Doncaster. Find the exact timings here <https://letour.yorkshire.com/media/2064/women-stage1.jpg>

Team Jadan-Weldtite Viva le Velo is very much a development team, which means girls as young as 17 might be riding in the TdY! The strategy will be to get the team around the course but because most of the girls in the team have already ridden in the GB Squad, the chances are they will all finish in reasonable times. Girls with potential join at 14 and, if good enough, become full-time at 18.

They cycle as a team all over the UK and Europe - the season starts at the beginning of April so they have already raced 2-3 times a week in high-level rides. In the first week of April, the Junior National Series was won by a Jadan girl! May is the busiest Month, not only with the TdY, but with the ITV Tour Series which holds races all over the UK. As several of the girls are still at school, fitting exams in can be challenging - the girls end up studying in the back of the team car! Supporting this team is important! These girls will be in the GB team at the 2024 Olympics; they will be on the TV competing in tours and world championships; they will become household names and they will have local sponsors names on their shirts, bags, bikes and other kit. Exciting times for East Yorkshire!

You can follow the team on their Facebook page www.facebook.com/TeamJadan/





Print that gets you noticed



- ✓ Brochures
- ✓ Leaflets
- ✓ Business Cards
- ✓ Business Stationery
- ✓ Posters
- ✓ Desk Calendars
- ✓ Wall Calendars
- ✓ Pop-up Banners
- ✓ Pads
- ✓ Invites




Jadan Press are a leading family run commercial B2 colour litho printer based in Hull. With 20 years experience, the company is renowned for producing work of an exceptionally high quality. We are committed to providing an excellent service by offering value for money and ensuring complete customer satisfaction.

Tel: 01482 610902
info@jadan-press.co.uk www.jadan-press.co.uk
 Rainbow House, Kimberley Street, Hull, HU3 1HH








PUZZLE PAGE

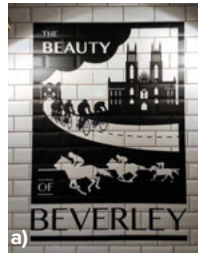
WORDSEARCH

S T E A M S A B N T F O H J C
 Y E R L U P M E Q E Y X H Y H
 W A L O S G V V U P Y R C X N
 X Y M B I F Y E R V Q L E B K
 W A F Y B Q D R H E I J H S C
 F H P B O O P L M S B O R Y X
 T K H T Y R C E T U D G N B W
 V P R S N J K Y F V F K A A D
 H H J P P O I S V X A W Y E I
 E L C Y C I B O H K U O Y U T
 Z Y H Y L P I C J I R L O B W
 F D C S E C Y H T Y R L Z S T
 C E L E B R A T I O N E H A L
 E F T X E L X K C V O Y I Z J
 N S D F H V B Z U E N H Z R C

BEVERLEY	FAMOUS
BICYCLE	TEAMS
CELEBRATION	TYRES
COBBLES	YELLOW
CYCLIST	YORKSHIRE

JUST FOR FUN

Where in Beverley would you find these landmarks?
 Answers on Page 35.



HINTS FOR SUMMER!

Ice cubes for summer drinks

Scrub your BBQ with scrunched up tinfoil, comes up a treat

Mix equal parts lemon juice and water to make an all purpose cleaner

Add chopped mint or a dash of lemon to the ice cube tray for refreshing ice cubes

COMPETITION WINNER



Congratulations to Lisa Wilkinson and her daughter from Hull, who won a signed copy of the 'Jack and the Boody Monster' book.

Do you have any amusing stories, quotes or pictures?
 Send them to
info@justbeverley.co.uk

Quality Kitchen Facelifts



From a simple door swap to a full replacement kitchen



Why replace when you can reface?



EST. 1999

SUMMER SIZZLER!

Ask for details in store
Terms and conditions apply

DREAM DOORS®
 NEW LIFE FOR OLD KITCHENS

- 50% deposit, balance on completion
 - Made to measure custom-built doors and units
 - Huge choice of doors, worktops, appliances, sinks and taps
- www.dreamdoors.co.uk

Call Andy For a Free Estimate:
01482 861 653

hu@dreamdoors.co.uk
 Dream Doors Beverley, 4a Belprin Park,
 Swinemoor Lane, Beverley, HU17 0LN

Proud members of
Checkatrade.com
Where reputation matters



PRACTICAL MOTORING WITH RICH HAYES - TIME TO SPRING CLEAN YOUR CAR!

Give your car a good clean inside and out - it helps maintain the fabric and the longevity of your vehicle. Driving around in a shiny new car can make you feel good, too! Getting rid of winter clutter, dirt, salt and grease helps improve your environment and making the effort to remove every trace of winter will give you pride in your car's appearance.

EXTERIOR

The bane of the British car is salt. Along with mud and road-grit, its designed to eat into the metal-work, causing rust and corrosion! So remember to not only clean the top and sides of your vehicle, but the wheels and underneath, too. Car shampoos are specially-formulated to clean metal-eating culprits from your motor - it really is worth spending money on a good brand of shampoo and time and effort on removing every last trace of winter. Give your indicators an extra wipe-over, too - ensuring they are able to attract other road-users' attention will keep you and your passengers safe. Then give your car some extra TLC with a layer of wax, which will restore the shine to your paintwork and protect it all summer long from insects, bird-droppings and sunlight itself. You can tell if you have missed a section when you are waxing, as when it rains, the rain won't go into 'beads'!

CLEAN THE GLASS!

Use a proprietary car glass cleaner to ensure mark, blemishes and fingerprints are thoroughly removed from the windscreen, inside and out. Anything but a pristine screen could be dangerous especially when the sun shines and sun dazzle can impair your view.



INTERIOR

Clear out the clutter and then vacuum to get rid of all mud and dust in your car's interior before giving your carpets a shampoo, cleaning your upholstery and using a specialist trim restorer and dashboard cleaner to bring your interior plastic up like new. There's nothing like a freshly-cleaned car interior to make your journey more enjoyable - it might take some effort but with modern, specially-formulated products, the job can be done in next-to-no-time!

CLASSIC CARS WITH CARFAN - THE MARK II FORD CORTINA

The subject of this edition will be instantly recognisable to sales representatives of a certain age as it became the almost default choice for a company car - the Mark II Ford Cortina. Only made for a relatively short time (1966 to 1970), the Cortina has a place in a lot of car enthusiasts' hearts, as it was the most popular car in the UK in 1967.

The car featured is interesting in as much as it was the Deluxe version, made for export. This particular model was sent to Cyprus immediately after production in 1970. The fact that it was exported and has spent most of its life overseas has essentially ensured its survival - Cyprus doesn't use the nemesis of most British cars built in the period, salt. Any form of rustproofing was virtually non-existent in the 60s and 70s which is why we don't see many cars from that period on our roads nowadays, sadly.

Available in 2, 4 and a 5-door estate version, the car featured has opening front quarterlights that were denied British owners - probably to help cool the vinyl-covered interior during long hot Cypriot summers. Re-imported back into the U.K. in 2015, its current owner purchased the vehicle less than a year ago and loves its colour - reportedly Ford referred to it as "Stone Beige". Admittedly, although not a very exciting colour, it is certainly noticeable in a carpark!



Considering it is a popular British car, parts are difficult to source. The owner of this car had to join the Mk. II Owners Club to obtain track rod ends as they are unavailable elsewhere. Apart from a wheel bearing, the car has been completely reliable in its custodian's short ownership - long may this continue!

If you see this Mk. II Cortina on your travels, don't forget the cheery Carfan wave!

BEVERLEY



INDEPENDENT
BMW & MINI
SPECIALISTS

Our dealership expertise means high quality car servicing at a fair price...





Unit D1 Grovehill Industrial Estate,
Annie Reed Road, Beverley HU17 0LF

Call today: 01482 881 128
Visit: beverleymotorworks.co.uk


SPECIAL
OFFER

MOT
COUPON




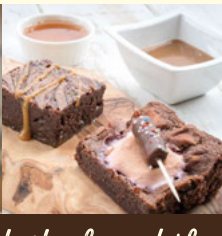



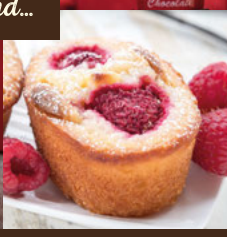
MOT YOUR CAR
FOR ONLY

£29.99






HOP ON DOWN TO THE
CHOCOLATE CAFE

for handmade, quality treats!

A taste of wonderland...

16 Dyer Lane, Beverley, East Yorkshire, HU17 8AE
whiterabbitchocolatiers.co.uk
Tel: 01482 679325

WHAT'S ON

SPONSORED BY: **kü**tchenhaus

2 Toll Gavel, Beverley, HU17 9AJ. T: 01482 862172.

Open: Mon - Sat: 10am-5pm. Sun: 11am-3pm. Bank Holidays: 10am-4pm.

Until 19th May

- **'Seasons in the Sun'** by John Godber performed by **The John Godber Company** East Riding Theatre. 7.30pm with some matinees at 2pm. £16.50/£15.50/£11.50/£7.50. Tickets from www.eastridingtheatre.co.uk

Wednesday 2nd May

- **'Amy Johnson'** by Kate Bramley presented by **Badapple Theatre** Woodmansey Village Hall, HU17 0RN. 7.30pm. For more info & tickets 01482 339168.
- **Cadenza in Concert** Toll Gavel United Church. 7.30pm. £7. All proceeds to Christian Aid.

Friday 4th May - Monday 7th May

- **Filey Folk Festival** Evron Centre/Masonic Lodge/pubs around Filey. Visit <http://fileyfolkfestival.bravesites.com>

Saturday 5th May

- **Craft and Artisan Fair** Flemingate, 11am - 4pm. Located in the exhibition space between Outfit and Baytree Interiors. Showcase of high-quality artwork, crafts and locally-created pieces.
- **East Riding County Choir sing Vivaldo and Goodall** Beverley Minster. 7.30pm. £10/£17.50. Tickets from Beverley Tourist Information (01482 391672) or www.eastridingcountychoir.org

Sunday 6th May

- **Leven Fun Day** Leven Playing Fields. White Cross Netball Team tournament from 9.30am. Charity football match between The Hare & Hounds and The New Inn at 11am. Stalls and more from 11am.
- **Line Dance-athon** David Lloyd Function Room, Kingswood. 11am - 4pm. All proceeds to the Ivan Usher Memorial Fund. Sponsor forms and details from Hilary Usher on 07900567328 or email hilusher@hilusher.karoo.co.uk

Monday 7th - Monday 14th May

- **Riding the Waves Art Exhibition** Beverley Minster. Free. East Riding Artists display some of their work and will be on hand to talk to visitors.

Thursday 10th - Sunday 20th May

- **Thy Kingdom Come Global Prayer Initiative** See Churches Together Beverley Facebook Page or individual churches for details of prayer opportunities between Ascension and Pentecost.

Thursday 10th May

- **Making (dry) Pastel Waves with Mary Wells** Walkington Methodist Church Hall. 1.30pm -

4pm. £25. Learn how to use pastels to their best effect. Booking essential on 07812 178282 or marywells8@gmail.com

- **Beverley Film Society presents 'Graduation'** Parkway Cinema, Beverley. 7.30pm. Members £3/guests £6.50. A Romanian crime drama about fatherly ambition.

Saturday 12th May

- **Birkett & Fisk - The Music of Venuti & Lang** Swanland Village Hall HU14 3QR. 7.30pm. An evening of hot violin and guitar jazz. Tickets from 01482 634863 or yd@swanlandvillagehall.info
- **House Concert with Hungrytown** Eastgate Beverley. £10 incl. refreshments. Vermont's finest Americana duo. Venue details and booking to 07964 059912

Sunday 13th May

- **Beverley 10k** Mass start Beverley Minster 11.15am. Race build-up from 9.30am at Beverley Leisure. Cheer on runners raising funds for local charities. Course details at <http://www.beverleyathleticclub.co.uk>
- **Food & Drink Fair** Flemingate. 10am-4pm
- **St John of Beverley Civic Service with Revd John Sentamu** Beverley Minster. 2.30pm. Guests should be seated by 2.15pm.

Monday 14th May

- **Norwood Nites Community Cinema** Norwood Church Schoolroom. 7pm. Free. Raffle and refreshments. A 1994 British comedy which involves four romantic events and one death. Yes, THAT film!!!
- **Process Pea presents Les Glover & Pete Reilly** Light Dragoon, Etton. 7.30pm. £7. Les appears as a solo artist with his own repertoire and possibly a cover or two. Pete Reilly is a singer/songwriter from Liverpool.
- **The White Horse Folk Club Singers and Musicians Night** Beverley Conservative Club, Wylies Road, 8.30pm. £2. Performers and audience welcome.

Thursday 17th May

- **MacMillan Cancer Support Bus** Flemingate. 9am - 4pm. Information and advice about life with or beyond cancer.
- **Beverley and District U3A Monthly Talk - The Mind of a Compulsive Gambler** by Paul Isherwood Beverley Memorial Hall, 2.00 pm. More details at <https://u3asit4es.org.uk/beverley/home>

Saturday 19th May

- **Meet and Greet the Sylvanian Family Chocolate Rabbit** The Entertainer, Flemingate. 10am - 4pm

Tell us about your event!

Email: info@justbeverley.co.uk

Telephone: **01482 679947**

For more events visit:
justbeverley.co.uk/events

- **'Amy Johnson'** by Kate Bramley presented by **Badapple Theatre**

Lockington Village Hall YO25 9SN. 7.30pm. For more info & tickets 01482 339168.

Sunday 20th May

- **Call Mr Robeson - A Life, With Songs** North Dalton Village Hall. YO25 9XA. 7.30pm. Tayo Aluko presents Paul Robeson's life and times. Tickets from 01377 217523 chris.wade@adastra-music.co.uk

Monday 21st May

- **The White Horse Folk Club** Beverley Conservative Club, Wylies Road. 8.30pm



Friday 25th May

- **Beverley and District U3A Coffee Morning** Lairgate Hotel, Beverley. 10am-noon. Come and find out about the U3A in this area. Information at <https://u3asit4es.org.uk/beverley/home>

Sunday 26th May

- **'Make a Wish' Charity Family Day** Poundland, Flemingate. 10am - 4pm. Come and meet special guests from Frozen!

Tuesday 29th - Wednesday 30th May

- **Sash Regan's 'Iolanthe'** by Gilbert and Sullivan East Riding Theatre. 7.30pm nightly plus 2.30pm matinee on 30th. £21.50/£19.50/£10. An all-male cast present G&S's topsy-turvy love story between the most unlikely of couples!

Tuesday 29th May - Saturday 2nd June

- **Funfair and Candyfloss** Flemingate. Daily.

kü

tchenhaus

The Largest Manufacturer of Quality German Kitchens

At Kutchenhaus we have affordable solutions made to meet your highest standards

2 Toll Gavel, Beverley, HU17 9AJ. T: 01482 862172.

Open: Mon-Sat: 10am-5pm. Sun: 11am-3pm. Bank Holidays: 10am-4pm.



BRAZILIAN CHEF CLAUDIO BRINGS HIS SKILLS TO CHAMAS

Hailing from Paraná in Southern Brazil, Claudio has been brought up enjoying the centuries-old way of cooking around churrasco campfires in the tradition of the South American horsemen (gauchos) when large skewers of meat would be spit-roasted and passed around the gauchos who would slice a piece off each until they were full. This is the basis for Chamas in Wednesday Market, which has taken the town by storm, rapidly rising to No 1 out of 115 local restaurants on Trip Advisor.



Claudio's love of the rodizio - the 'all-you-can-eat' style of continuous service of meats - has brought him to help Chamas owners, Ali and Nicola Tecke, ignite the flames at Chamas in Beverley. Chamas means 'flames' in Portuguese, echoing the flames of the campfires.

At Chamas, the skewers are spit-roasted over special grills which ensure the flavour of the meats are just as they would be when cooked over open campfires.

Coming from Paraná, the town which has the largest annual meat festival in Brazil, where thousands of people gather every year to share

in 300 ribs (16 tonnes) of meat cooked around a huge, open-pit barbecue, Claudio is very discerning! Which means diners can be assured the meat at Chamas is cooked to perfection.

Alan Lavender, former Head Chef at the prime Minister's country residence, Chequers, and an experienced South American traveler, says the cuts of meat at Chamas are 'some of the best he has ever had.'

Claudio said; "Capturing the spirit of Brazil is unstoppable. I truly believe everyone should have the opportunity to experience Brazilian life, the passion of the people and the feast and festivity of the rodizio. At Chamas, you can!"

"The authentic décor and table-side service of grilled meat served by our passadors to accompany the extensive delicious salads makes every visit to Chamas an occasion."



Chamas' position in the heart of Beverley, overlooking Wednesday Market is the perfect place to enjoy lunch or dinner. If you are enjoying a special event, Chamas make it extra special with a complimentary drink for the birthday boy or girl or the happy couple.

COMPETITION



To celebrate being No 1 on Trip Advisor, Chamas are offering a £50 voucher so you and a friend can enjoy the Chamas experience!

In order to win this fantastic prize, all you have to do is answer the following question:

Chamas is a Portuguese word. What does it mean in English?

Email your answer to competition@justbeverley.co.uk by May 16th. Put 'Chamas Comp' in the subject box and your name, address, daytime telephone number and answer in the body of the email.

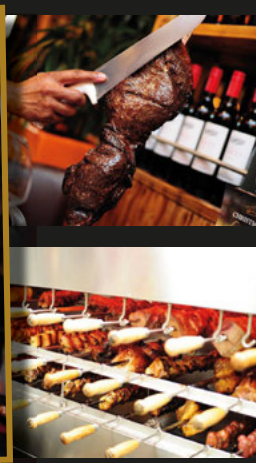
The winner will be drawn at random after the closing date. Winners must be available for publicity for Just Beverley and Chamas over the weekend of 18th - 20th May.

Full terms and conditions are available on Page 3 of this magazine and are downloadable from www.justbeverley.co.uk/magazine



FUSING THE TRADITION BEHIND BRAZIL'S UNIQUE gaucho style grilling and rodizio dining

Direct from the southernmost region of the Brazilian high plains comes a centuries-old way of cooking, where the rodizio found its roots around the campfires of the traditional gaucho.



A continual service of large skewers of meat including beef, pork, lamb and chicken were spit-roasted over the famous churrasco barbecues and passed from man to man to enjoy.

At Chamas, we warmly invite you to experience an authentic taste of the gaucho life - the food, the wine and most importantly, **the passion of the people.**

RATED No. 1

out of 112 best restaurants in Beverley on

BOOKINGS RECOMMENDED



chamasbeverley.co.uk | Tel: 01482 867897 | 9-10 WEDNESDAY MARKET, BEVERLEY

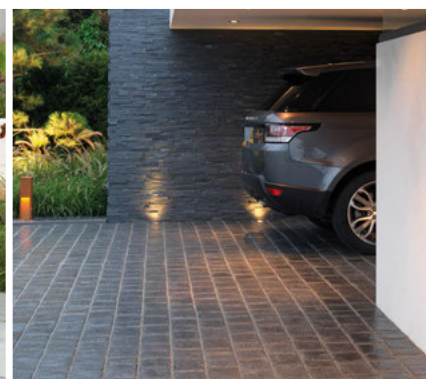


MY KIND OF
GARDEN

FREE
LOCAL DELIVERY

Make your **outdoor space** your perfect **living space**

Inject personality into your garden this summer with a little help from **MKM** & ensure your garden is the one they're all talking about!



Call into branch today at...

MKM BEVERLEY

SWINEMOOR LN, BEVERLEY HU17 OJX

01482 880088 | mkmb.co.uk  

