

just

ISSUE 54

BEVERLEY

PICK ME
UP, I'M
FREE



MIRAGE

NEW CAFÉ-BAR IN BEVERLEY

NEWS, WHAT'S ON, LIFESTYLE, FEATURES, PUZZLES, PHOTOS & MORE

To arrange a **FREE** meeting
call us on 0845 308 2288
or visit www.stipendia.org.uk



Your Partners in Payroll

Changes in payroll. Have you got it right?

Benefits in kind / informing HMRC of changes

Outsource your payroll today and be rest assured everything is taken care of!

Are you:

- Making the Correct Pension Contributions?
- Aware of the Minimum Wage Rates?
- On top of the Statutory Sick and Maternity Pay Rates?
- Making the most of your Payslips?

Improve business
performance by
outsourcing payroll

Registered Office:
4-6 Swabys Yard, Walkergate,
Beverley, East Yorkshire. HU17 9BZ





CONTENTS

Letters from the Editors **3**
News **4, 5**
PARKWAY CINEMA 6, 7
EAST RIDING THEATRE 35

FEATURES

Safeguarding Vulnerable Adults from Abuse **8**
Tropical Tiki Ice Cream Bar Opens **31**
Mirage brings London Style Cafe Culture to Wednesday Market **11**
Meet Beverley Arms Head Chef **12**
Icons of our time on Canvas **23**

REGULARS

Art & Culture **14, 24, 35**
Competitions **7, 11**
Competition Winners **6, 30**
Countryside Matters **27**
Fashion **21, 22**
Fitness **29**
In The Garden **27**
I've Been Thinking **24**
Motoring **17**
Music **26**
Pets **8**
Photos **18, 19**
Poems and Prose **32**
Puzzles **30**
Sport **28, 29**
Travel **16**
Walking **33**
What's On **34**



Competition Terms and Conditions

Competition answers should be emailed to competition@justbeverley.co.uk before the closing date with the competition title in the subject field. Include your name, address and daytime contact telephone number along with your answer. Winners will be notified within 1 week of the closing date and MUST be available for publicity purposes for **Just Beverley** magazine, website and Facebook page and the prize provider. Photographs are usually taken the weekend after the prize-winners have been notified. The judge's decision is final. No cash alternative is offered. Details may be used for marketing purposes by **Just Beverley** and the prize provider and for website analytics by **Just Beverley**.

Contributors:

Julian Minshall, Linda Johnson, Rich Manville, Phil Ascough, Robert Beverley, Lara Blythe, Johanna Boal, Carfan, Jane Dale, Laura Hitchman, Chris Kidd, Mikey Mathieson, John Marshall, Ian Richardson, Janey Revill, David Tute, Sam Walton, Clint Wastling, Nathan Wilson.

REMEMBER!

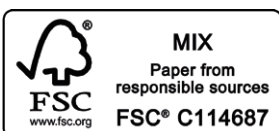
If you see examples of anti-social behaviour or other types of low-level crime, do report it to the appropriate authorities. Without knowledge, the Police and Council cannot put in place processes and procedures to combat it! Cyclists without lights, on one wheel, traveling the wrong way down a one-way street put other road-users' in danger - let the Police know immediately!

POLICE - Emergency 999, Non-urgent 101.

ANTI-SOCIAL BEHAVIOUR (East Riding of Yorkshire Council) - 01482 393939.

You can pick up the magazine from:

Parkway Cinema, Flemingate, Beverley Tourist Information, Beverley Library/Treasure House, Tesco, Morrisons, East Riding Leisure Beverley, East Riding Theatre, Browns café, Beverley News, Boyes, Tesco café, Colette and Tyson Garden Centre, Beverley Garden Centre, Cherry Tree Garden Centre, Mace News Saturday Market, Co-op Food Lincoln Way, Tickton News, Costcutter in Walkington, Molescroft News, Grovehill Convenience Store, Maple News, Leconfield PO, Willeby News, Poundland, Halfords, East Riding Community Hospital, Bishop Burton PO, Leven PO, The Altisidora, Cherry Burton PO, Barkers of Cottingham, Middleton-on-the-Wolds PO, Light Dragoon at Etton, Gnu at North Newbald, Monks Walk, Hayride, Sally's Deli, Ferguson Fawcett at Walkington, THECREATIVELAB, health centres, churches, cafés, hairdressers and more!



Please pass your Just Beverley on or recycle it responsibly.
Printed by: Jadan Press.

LETTER FROM THE EDITORS



Just Beverley is proud to be part of the growth of our market town, working to attract people to the area by highlighting the variety of shops, cafés and restaurants and entertainment. Recently we have welcomed Brook Taverner, Space NK

Apothecary, Aura and White Company retailers, Mirage café-bar, Hayes Travel and HARC Health to the town and Guitar Galleries is moving to larger premises. Beverley is a thriving, vibrant town - no wonder so many people want to come to visit, live and work here!

July is always a special time of the year as it is the end of exams and the school year for our children, warmer weather, Wimbledon, Tour de France and holidays! We spend more time outdoors (remember the sun cream) and feel more relaxed. Whatever you are up to in July, remember to send in those photos and let us know those funny stories!

Julian.



Our annual Armed Forces Day is always such a special day for Beverley when we can show our support for the people who are responsible for defending our country and our overseas territories and for supporting international peacekeeping

and humanitarian work. This year, there will be a full day of celebrations on July 7th beginning with a parade and act of worship at Beverley Minster followed by activities, displays, stalls and music acts in Beverley's Saturday Market. I hope the Battle of Britain Memorial Flight's Lancaster is able to fly - the sound of those Rolls Royce Merlin engines are so recognisable - but with THREE pipe bands, choirs and the fantastic Cherie Lawrence, although it will be missed, it will be a great day, fly-past or not! See you there! Be happy!

Linda.



'Community Publication Award'
Shortlisted Nominee
2017 & 2018



REYTA
'Remarkable East Yorkshire'
Award Nominee 2016
'Best Newcomer'

GET IN TOUCH WITH US:

Website: justbeverley.co.uk

Email: info@justbeverley.co.uk

Telephone: 01482 679947

Twitter: @JustBeverley

Facebook: [facebook.com/justbeverley](https://www.facebook.com/justbeverley)

If you would like copies for your business to distribute to staff and customers, call **Just Beverley** on **01482 679947**.

BEVERLEY COUPLE START NEW CLUB FOR YOUNG PEOPLE TO HELP CHILDREN

#TheCrew is for 7 to 18-year olds who want to learn new skills, make a difference and develop confidence and self-esteem within an organised club. Inspired by the Children's Air Ambulance, the expertise of the charity and its needs for funds, the #TheCrew is free to join with all members receiving a membership card, lanyard, badge, fundraising tool-kit and target chart and collection box. Schools are being encouraged to join #TheCrew, which offers fundraising incentives and the chance to meet the helicopter crew for those who achieve certain targets.

Kirsty and Russell Clegg will always be grateful to the Children's Air Ambulance because it probably saved their son's life. Little George, now 3, needed urgent specialist medical treatment for a heart and trachea condition in 2016 but they were 200 miles away. George might not have survived the 4-5 hour journey from Leeds to Great Ormond Street Hospital in London by road but the 65 minute trip in a specialist helicopter made all the difference. There are only 2 dedicated state-of-the-art paediatric transfer helicopters which are based at Doncaster and Oxford

and they receive no Government funding - they rely entirely on donations. Kirsty and Russell hope **#TheCrew** will therefore raise awareness as well as funds.

#TheCrew was the brainchild of the charity's first-ever ambassadors, Anna and Kloe, who wanted to help raise vital funds, but didn't want grown-ups telling them how to do it! They have lots of ideas for fundraising, from organizing a dress-down day at school to having a collection tin at their local sport's club. All they ask is for each member to raise £25 a year! Full details about how to join **#TheCrew** can be found at: www.childrensairambulance.org.uk/thecrew



GRAB YOURSELF A BARGAIN WHILST HELPING SOME OF THE POOREST PEOPLE IN THE WORLD

Jacobs Well Appeal, based at King's Church on Swinemoor Lane (behind Aldi), was set up in 1984 by Dr Beryl Beynon after her heart was touched by the problems she experienced in Poland in the early 1980's, when it was in the Eastern Bloc, when the people were unable to get even basic medical supplies. Since then, Jacob's Well Appeal (JWA) has helped people in Romania, Afghanistan, Pakistan, Moldova, Syria, Somaliland, Kenya and Western Africa with practical and monetary help as well as sending aid during humanitarian crises and disasters in many parts of the world.

JWA raises funds for its humanitarian work through donations of almost anything which it sells on to the public through warehouse sales, drive sales, in its charity shops and on eBay (NOT soft toys, pianos, furniture, books over 2 years old, DVDs, printers etc - see the full list of what JWA does and doesn't take on the website). It accepts cash donations with grateful thanks and also writes funding bids, holds coffee mornings and runs sponsored walks etc. to fund its work - so if you could help with any of these great ideas, please get in touch! The great thing is, though, that because of the variety of items which are donated, there is often a bargain available! Need some different toys for the children? A board game for a rainy day? A new vase? Bedding and kitchen equipment for a student going off to university? JWA might just have what you need! The warehouse is open Monday, Wednesday and Friday 9.30am- 4pm whilst the shops are open 6 days a week. Visit www.jacobswellappeal.org to find out more.

P.S. Because of its presence in some countries, JWA supporters can even sponsor a child, knowing that every penny of their sponsorship money will get to the child! In Burkina Faso, for example, education for children is not free and beyond the ability of many families to pay, so families who can afford the fees often choose to send boys to school instead of girls, yet educating girls as well as boys has been shown to increase a country's GDP by 3%. So that bargain could be providing the stepping stone to releasing someone from living in poverty for the rest of their lives!

MERIDIAN GYMNASTICS CLUB MEMBERS HEAD TO EUROPE

18 girls from the Meridian Gymnastics Club in Beverley are heading off to the 16th World Gymnaestrada Exhibition in Austria from 7-13 July. It's the world's largest general non-competitive gymnastics event and is held every four years: at the last one there were over 21,000 gymnasts from 55 nations who came together to showcase their talents! It is non-competitive and open to anyone of any age registered with the Federation Internationale de Gymnastique (FIG)



The Meridian Club started only 2 years ago (based on Beck View Road) but the girls, aged 11-18, have been working incredibly hard on their routines and performances with their dedicated coaches Kevin Bishop and Sue Robinson. They are very proud to be representing their club and be a part of Team GB Gymnastics and appreciate what a fantastic experience it is to perform in large and small stadiums, both inside and out, with gymnasts from around the world. 60 countries are signed up to participate this year.

The World Gymnaestrada is being held at venues along the Vorarlberg Rhine Valley, centred on the Dornbirn Trade Exhibition Centre. Starting with the grand opening on 7th of July 2019 in the Birkenwiese Stadium in Dornbirn, the large group performances will be in Bregenz and the city performances in eight different villages. Then there are national evenings, FIG Gala, the Dornbirn Special for large groups and, ending with the grand

closing ceremony on 13th of July, the whole variety of gymnastics will be presented to the locals and national and international visitors alike. For each gymnast the cost for this event, travel and accommodation is in excess of £1000. The gymnasts have carried out bag packing events, run quiz nights, done sponsored bike rides and more but need a little more help... if anyone reading this could help with a donation, whether large or small, please donate at: www.gofundme.com/world-gymnaestrada-austria-2019-fundraising?viewcontent=&utm_source=facebook&utm_medium=social&utm_campaign=fb_dn_lbxcontentshare_r

This is a once-in-a-lifetime event for some of these girls - they are flying the flag for Britain and British Gymnastics! You can follow them and 'like' them on Facebook at **Meridian Gymnastics Club**.

GET BUILDING THOSE RAFTS!!

One of Beverley's most fun events is back on Beverley Beck on July 20th.

Organised and held in aid of NURSE (Needed Urgent Remedial Surgical Equipment), the event sees Beverley's competitive spirit come to the fore whilst raising money for this important charity. Homemade rafts with teams of 4 compete for the Best-Dressed Raft as well as their prowess in the water racing along the Beck.

The Mayor and Mayoress, Cllr Duncan and Joy Jack, will officially open the event, judge the rafts for best turned-out and present prizes to the fastest. Beverley Beck comes into its own on Raft Race Day! Beverley FM broadcast, there are stalls and food outlets, live music, an outside bar and a fabulous raffle.

Sponsors include the Foresters' Arms, Croda International and Spitfire Services but with rising costs, more sponsorship would be very welcome, as would raffle prizes.

We know there are people reading this who are desperate to take part! Book your place by emailing: janetattam1955@gmail.com



DERECK HARDMAN AWARDED POINT OF LIGHT AWARD FOR SETTING UP THE ARMED FORCES & VETERANS' BREAKFAST CLUBS

Every day, someone is presented with this prestigious award, recognizing their voluntary contribution to society and its value to the country. Dereck is the 1185th recipient.

Graham Stuart MP made the award to Dereck on behalf of the Prime Minister at the Beverley Armed Forces and Veterans' Breakfast Club at The Angel, Butcher Row, on June 1st.

Ex-serviceman Dereck pioneered the idea of fellow veterans and servicemen meeting for breakfast in 2007.

It was a few more years before he realized the difference the club was making to the people who attended and that the concept could be replicated nationally and internationally.

The club fosters the camaraderie and sense of belonging which is so often lost when service personnel leave the forces or retire and enables members to return to the 'tribe', ending social isolation and improving well-being.

You can read the citation from the Prime Minister and Graham Stuart, plus Dereck's response at www.pointsoflight.gov.uk/armed-forces-and-veterans-breakfast-clubs/

There are now 27,000 members of 300 Breakfast Clubs. Clubs are free to join and held in welcoming, relaxed, safe places.

The Beverley Armed Forces and Veterans Breakfast Club is run by Simon Bailey who can be contacted on baileysimon205@gmail.com



THE BEVERLEYS VISIT BEVERLEY

Some very special visitors dropped into Beverley on a tour of England last month - Robert and Kay Beverley from South Carolina with their son Justin, his wife Meghan and grandchildren Evie and Grant. Robert's ancestors emigrated to America in 1663 and the family thought it was about time they came to find out more about their heritage. Robert was greeted to the town by the Mayor of Beverley, Cllr Duncan Jack and he sent us this potted history.

"My name is Robert Beverley. I am 73 years old and live in South Carolina, USA. Yes, my name is Beverley. My family came from Beverley, England



in 1663. Major Robert Beverley settled near Jamestown, Virginia. He was a lawyer, surveyor, and was in the House of Burgess.

"I have a very extensive book called The Beverley Family of Virginia. It shows almost all of the descendants from when Robert of Beverley first came to Virginia.

"For several generations the children were sent back to England for schooling. Some went back to Beverley Grammar School, and some further to Cambridge.

"One example was William Beverley. After Beverley Grammar School, he went to Cambridge in 1781. About 1795 he married Mary Midgeley, daughter of Jonathan Midgeley of Beverley.

"He served as Alderman and Mayor of Beverley (1806-1807). Their daughter, Maria Beverley married Edmund Beckett, son of Sir John Beckett, Bart. Maria was a great niece and sole heir of Anne, Dowager, Lady Denison, widow of Sir Thomas Denison, Judge of the King's Bench.

"Maria's younger brother, Robert McKenzie Beverley lived in Beverley, where he had the title of Lord of Scarborough. He was the last of the Beverleys in England from Robert the Immigrant.



"The Beverleys in Virginia through the ages inter-married into other American families such as: King Carter, Randolph, George Washington, Robert E. Lee, Chief Justice John Marshall. So, you can see that the original Major Robert Beverley left a great legacy."

The Beverley's enjoyed a personal tour of Beverley, a tour of the Minster, visited the Treasure House (and bought appropriate gifts from Tourist Information), saw where Mayor William Beverley lived (Norwood House) and were very impressed with the hospitality shown to them.

BEVERLEY GRAMMAR SCHOOL LADS MEET UP AFTER 40 YEARS

Have you ever wondered what happened to your schoolmates when you left school? Some of these ex-Beverley Grammar School pupils haven't seen each other since their last day of the 6th form in 1979!

Beverley Grammar School's song, which the boys used to sing in assembly, included the words '40 years on when afar and asunder'. As this year was 40 years since the Class of 1979 left, a couple of them thought it was the right time to get as many of them as they could back together from afar!

Because it was only a 2-form entry and there were only about 50 boys stayed on for 6th form, contacting the classmates wasn't too difficult.

Sadly, four of the boys have died in the intervening years and a few sent their apologies, but 34 turned up - an amazing percentage all these years later.

The reunion was held at the school itself but later moved on into Beverley, to make a day of it. A comment from one of the Old Boys, John Rubinstein, was: "People re-established contact with old friends and I think quite a lot will meet up again in the future.

There were lots of memories that people talked about, but also we were impressed at what lovely people we had all turned out to be!"

On the right is a reconstruction of the old school photo with 1979 and 2019 versions.





EVERY THURSDAY AT 10.30am
(doors open 9.45am)

Join us for a free brew and a natter and enjoy some great films on Beverley Parkway's Big Screen. Only £4.20 with drink and biscuits included. Aimed at 55s and over. Films subject to change.

Thursday 4th July -

Calamity Jane

Starring: Doris Day, Howard Keel

The White Crow

Starring: Oleg Ivenko, Ralph Fiennes

Thursday 11th July -

The Keeper

Starring: David Kross, Freya Mavor

Calamity Jane

Starring: Doris Day, Howard Keel

Thursday 18th July -

Long Shot

Starring: Charlize Theron, Seth Rogen

The Keeper

Starring: David Kross, Freya Mavor

Thursday 25th July -

Wild Rose

Starring: Jessie Buckley, Matt Costello

Long Shot

Starring: Charlize Theron, Seth Rogen

PENGUIN PARTIES



**ONLY
£195**

- Suitable for ages 5 to 12
- Up to 40 guests (additional charge for extra guests)
- Party games in a private function room with Parkway Penguin
 - Tea and coffee for parents on arrival
- Personal Photo montage on screen followed by your own film screening

For more information,
please contact a member of staff

These are the films scheduled to open in July - all are subject to change.
Check out up-to-date cinema listings at www.justbeverley.co.uk/cinema-times



2nd July



5th July



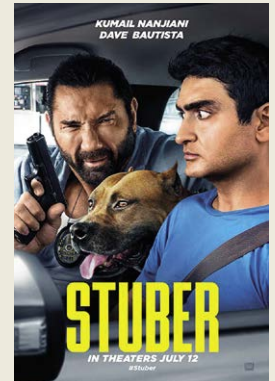
5th July



5th July



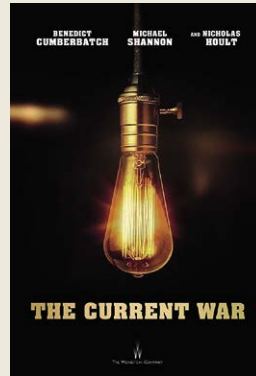
12th July



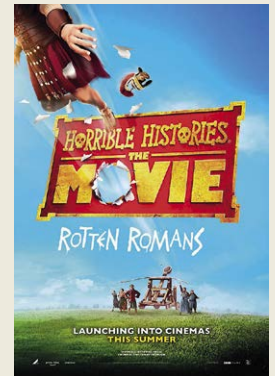
12th July



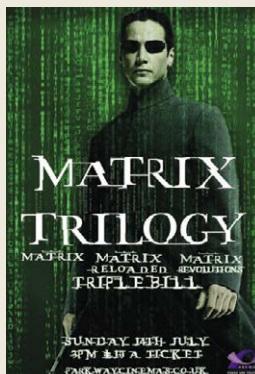
19th July



26th July



26th July



Sunday 14th July at 3.15pm
The Matrix Triple Bill - £10

COMPETITION WINNERS

Congratulations to Kirsty Macree c/o Josie Macree who won tickets to the live stream of the Westlife gig.

Congratulations to Imogen Hairsine who won the X-Men Dark Phoenix goodies.



YOUR LOCAL INDEPENDENT CINEMA



BEVERLEY BUZZES AT BUZZ COMEDY CLUB

Once again Beverley Buzz Comedy Club brings four very contrasting styles of stand-up comedy to the forthcoming show on Sunday 28th July.

Headliner Alex Boardman will showcase his usual utter hilarity and promises a storming set about the worrying hidden signs of growing older.

Brummie legend Lovdev Barpaga cannot resist daft wordplay, and cheerfully chuckles at his own jokes: Lovdev was voted "UK Pun Champion 2017". Stella Graham is a naturally funny and lively entertainer, and her half Sri Lankan heritage gives her a candid view of topical British issues.

John Lebbon is a former Rugby League player from Cumbria whose startling stories are inspired by the discomforts of having to return, albeit temporarily, to live at the parental home. As ever, the night is compered by resident wit Agraman the human Anagram aka John Marshall, who was awarded the Les Dawson Award for promoting live comedy in the North West in 2005..

Beverley Buzz Comedy Club runs quarterly in the Hayward Theatre at Parkway Cinemas, Flemingate Shopping Centre, Armstrong Way, Beverley HU17 0PW. Doors and bar open at 6.30pm for a start time of 7.30pm prompt. To reserve your preferred seats, get advance tickets priced at £10 (£9) for the show on Sunday 28th July: these are available online from www.parkwaycinemas.co.uk or via the Box Office on **01482 968090**. It is also possible to pay on the door on the night.

THE BUZZ IS BACK

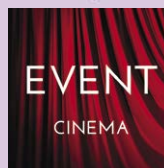
Beverley BUZZ Comedy Club

A great night of comedy hosted by AGRAMAN THE HUMAN ANAGRAM

SUNDAY 28TH JULY Showtime 7:30pm

TICKETS ON SALE NOW ONLY £10

PARKWAYCINEMAS.CO.UK



Event cinema offers something a little different to mainstream films. Live and pre-recorded shows beamed in via satellite from all over the world. Here are the latest live streams that you can enjoy on the big screen at Parkway Beverley.

**Wednesday 3rd July at 7.30pm -
MATTHEW BOURNE'S SWAN LAKE (PG)**

**Thursday 4th July at 12.15pm & 8pm -
THE COLD BLUE**

**Saturday 6th July at 8pm -
WESTLIFE: THE TWENTY TOUR LIVE (12a)**

**Thursday 11th July at 7.30pm -
THE CURE - ANNIVERSARY 1978-2018
LIVE IN HYDE PARK**

**Saturday 13th July at 7pm -
PAVAROTTI - PLUS SATELLITE Q&A (12a)**

**Thursday 25th July at 7pm -
NT LIVE - THE LEHMAN TRILOGY (12a)**

**Saturday 27th July at 7pm &
Sunday 28th July at 3pm -
ANDRÉ RIEU: SHALL WE DANCE**

**Wednesday 31st July at 7pm -
RSC: MEASURE FOR MEASURE**

**Thursday 1st August at 7.30pm -
BALANCE NOT SYMMETRY WITH BIFFY
CLYRO SET & Q&A (15)**

**Wednesday 21st August at 7.30pm -
RUSH: CINEMA STRANGIATO 2019**

**Tuesday 10th September at 7.30pm -
MARGARET ATWOOD - LIVE IN CINEMAS
(12a)**

**Tuesday 17th September at 7.15pm -
RIGOLETTO ON THE LAKE**

LIVEshows

**Thursday 25th July at 7pm -
ROCK BRITANNIA**

**Sunday 28th July at 7.30pm -
BUZZ COMEDY CLUB**

**Friday 30th August at 2pm -
THE AMAZING BUBBLE MAN**

**Sunday 15th September at 7pm -
THE BON JOVI EXPERIENCE**

**Sunday 13th October at 7pm -
GIMME ABBA**

**Sunday 20th October at 7pm -
TAKE THAT EXPERIENCE**

COMPETITION

Buzz Comedy and Parkway Cinema would like to offer you the chance to win a pair of tickets for the next Buzz Comedy Club on July 28th.



With four different styles of comedy, there is always something to press everyone's chuckle button. Hosted by Agraman the human Anagram (aka John Marshall), the shows are motivated by comedy and not profit, although it is true that some of the acts John has 'discovered' have gone on to be household names - Bill Bailey, Harry Hill, Stewart Lee, Catherine Tate, Reginald D Hunter, Russell Kane, Ross Nobel, Sarah Millican and 'pun-slinger' Tim Vine to name but a few. You never know if the acts you enjoy at a Buzz Comedy Club gig will go on to be the stars of the future - Lucy Beaumont was a John Marshall discovery, too!

To be in with a chance of winning the tickets, all you need to do is answer the following question:

In 2005, John Marshall was awarded a prestigious award named after one of the UK's favourite late comedians. Who was that comedian?

Send your answer by email to competition@justbeverley.co.uk by July 17th. Put 'Buzz Comedy' in the subject box with your answer, name, address and daytime telephone number in the body of the email. The winner will be chosen at random on July 18th and informed as soon as possible. Winner/s must be available for publicity purposes for Just Beverley, Parkway Cinema and Buzz Comedy. There is no cash alternative.

SMALL CHANGES, BIG IMPACT : SAFEGUARDING VULNERABLE ADULTS FROM ABUSE

Would you be able to identify modern slavery if you saw it? Financial abuse? What signs would you look for? Continuing on our theme of Small Changes, Big Impact, which began at the start of the year, our focus this month is Safeguarding, a term many people may not have even heard of.

Every adult has a right to live safely, free from abuse, harm or neglect, and the Safeguarding Adults Board (SAB) is the organisation responsible for ensuring the protection and safety of the most vulnerable adults in the East Riding.

It is also responsible for developing preventative measures to stop the abuse and harm occurring in the first place. It is a multi-agency partnership and independent body, which includes amongst other agencies, representatives from the Local Authority, the NHS and the police.



Adult abuse can happen to anyone aged 18 or over who has:

- Care and support needs
- Is experiencing or is at risk of experiencing abuse or neglect
- Is unable to protect themselves from abuse or neglect

The individual may:

- Be elderly and frail due to ill health
- Have a physical disability or cognitive impairment
- Have a learning disability
- Have a physical disability and / or sensory impairment
- Have mental health needs including dementia or a personality disorder
- Have a long term illness or condition
- Abuse substances and / or alcohol

There are a number of types of abuse and neglect that individuals may experience.

- Physical abuse
- Domestic abuse
- Sexual abuse
- Psychological abuse
- Financial abuse
- Modern slavery
- Discriminatory abuse
- Organisational abuse
- Neglect, and acts of omission
- Self-neglect.



Abuse is often marked by a change in behaviour, and depending on the type of abuse an individual may have experienced they may be withdrawn, experience increased anxiety and fear, have less money, perhaps unexplained bruising or they may display other signs.

You can find out more information about the different types of abuse at www.ersab.org.uk.

Things you may not expect may also constitute abuse for example - cyber bullying, fraud, internet scamming, forced labour and extreme lack of self-care. If you are concerned about someone in your community - you must tell someone.



The Safeguarding Adults Team (SAT), separate from the Safeguarding Adults Board are part of the East Riding of Yorkshire Council. This team is dedicated to helping to keep adults safe, and supporting them if abuse or neglect does occur. The Safeguarding Adults Team is responsible for responding to concerns raised by a member of the public, a professional or an individual themselves should abuse or neglect to a vulnerable adult occur. If you become aware of, or suspect that a vulnerable adult is being abused or neglected, contact the East Riding Safeguarding Adults Team on Tel: **01482 396940** or through their secure email address: safeguardingadultsteam@eastriding.gov.uk. You must tell someone, safeguarding is everyone's business.

If you would like to find out more about the Safeguarding Adults Board please visit their website at <http://www.ersab.org.uk>. Representatives from the SAB will be at Driffeld show on Wednesday 17th July. Written by a regular contributor in conjunction with the East Riding Safeguarding Adults Board.

MEET LAUREN MIDDLETON - PETS' BEST FRIEND!

Lauren is passionate about animals - she has spent her whole life working towards her goal of gaining the relevant qualifications to work with them professionally. She has now set up 'Pets' Best Friend' to look after your pets when you aren't there to look after them yourself.



Lauren has and does have pets as varied as dogs, horses and geckos! Which is why her qualifications encompass care of animals of all types.



From dog-grooming, to equine therapy and rehabilitation to animal care, Lauren ensures your pets are as important to her as they are to you!

Her qualifications include: City & Guilds Level 2 and 3 in Dog Grooming; Foundation Degree in Equine Therapy and Rehabilitation; BHS Stage 1 Riding and Horse Care and BTEC First Diploma in Animal Care. Lauren has experience with: dogs; cats; guinea pigs; rabbits; horses; fish; exotics; poultry; livestock and rodents.

Give her a call anytime on **07874 737961** to find out how she can help become your pet's best friend!

RENOWNED CHEF SUPPORTS DAISY APPEAL WITH SECOND HELPING OF MEMOIRS

A few months ago, we highlighted local celebrity chef Derek Baugh and his book 'Memories of a Dorchester Chef and Beyond'. We are delighted to report that the first print run has sold out, raising £6000 for the Daisy Appeal. So, Derek is thinking of a second helping...

A chef who lifted the lid on his 50-year career with tasty tales from the Dorchester in London's Park Lane to some of the top kitchens in East Yorkshire is now sounding out demand for a second print run of his remarkable memoirs.

Derek, who lives in Beverley, became well known



throughout the region and further afield for his part in transforming the culinary scene in East Yorkshire, first as Head Chef at the Nag's Head in Routh, then as Managing Director of Willerby Manor Hotel and finally in partnership with his wife, Lee, as owners of the renowned Manor House Hotel in Walkington.

Friends and former diners persuaded Derek to publish the pick of his wealth of anecdotes, and business sponsorship enabled him to donate all the sales proceeds to the Daisy Appeal.

The initial batch of 300 sold out quickly, and the Daisy Appeal is now taking orders from people who missed out.

Derek said: "People had always been on at me because of some of the stories I had told. When the beast from the east arrived in 2018 and the golf course was closed for about six weeks, I decided to give it a go. I didn't make any notes - the whole thing was done from memory."

"I chose the Daisy Appeal because I know some of the people who are involved in it and because if I was going to do it I wanted to support a charity. A friend at MKM Building Supplies arranged for them to sponsor the printing, so it sold for £10 a copy with all the proceeds going to the appeal."

The book is written in the style of the laid-back, convivial and occasionally disjointed after-dinner chats which Derek and Lee used to enjoy with guests over a glass or two after service.



It develops into a fascinating collection of cooking tips, social history and random ramblings as it tells of Derek's unglamorous upbringing in North Wales and his first venture into catering at the age of 13 in a fish and chip restaurant.

The book tells how Derek played a key part in launching the careers of some notable chefs, worked in the kitchen of one of the most famous hotels in the world and built two brilliant businesses on the edge of Hull by combining his passion for food with a business acumen that beat the recession.

Professor Nick Stafford, who launched the Daisy Appeal in 2002, said proceeds from the book will go towards the campaign target of £8.2 million to build and equip the new Molecular Imaging Research Centre, which is under construction at Castle Hill Hospital.

He said: "We are delighted and very grateful that he is donating proceeds from the book to the Daisy Appeal and using the book to help raise our profile. We hope the demand will be there to support a second print run and maybe more after that."

To order a copy of the book please email: jane@daisyappeal.org. To find out more about the Daisy Appeal please visit: www.daisyappeal.org

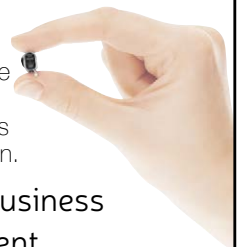
HEAR THIS!

HEAR ANYTHING, ANYWHERE.

Would you like professional hearing care that is different, more experienced and more caring than others?

Finding your perfect hearing aid is easier than ever because our independence guarantees you access to the biggest choice and best value for money. Try the latest, smallest hearing aids available, programmed to suit your lifestyle. Ask us for a **FREE**, no-obligation demonstration.

- **INDEPENDENT** family business
- **FREE** Hearing Assessment
- **FREE** aftercare
- **5 YEAR** warranty*
- **5 YEAR FREE** batteries*



- HOME VISITS AVAILABLE
- WAX REMOVAL SERVICE
- INVISIBLE HEARING AIDS
- FREE HEARING AID TRIAL*

"We care about you and your hearing"

A LEADING CONSUMER SURVEY



AWARDED Independent hearing specialists like HULL HEARING CENTRE **5 GOLD STARS** for choice, pricing & service.

Trouble hearing? Then contact us today.

GO Local. **GO** Independent. **BE** Happy!

Clare House, 8-10 Baker Street, Hull HU2 8HP

01482 22 22 04

tel:

www.hullhearingcentre.co.uk

[e:stephen@hullhearingcentre.co.uk](mailto:stephen@hullhearingcentre.co.uk)



*on selected products



WELCOME TO MIRAGE

COCKTAIL BAR & BISTRO

SISTER BUSINESS OF



RODIZIO BAR & GRILL



SIMPLE - SOCIAL - SOULFUL

WE WARMLY INVITE YOU TO ENJOY
Great Food & Drink in a vibrant
and friendly atmosphere

YORKSHIRE'S BEST LIVE JAZZ MUSIC
Every Thursday and Friday after 8pm

COCKTAIL CLUB

COCKTAILS £4.50 • JUGS £12

Sun - Thurs 5pm - 7pm,

All day Thursday,

Sun - Fri 10pm - Close

*T&C's apply

PIZZA & PROSECCO EVERY WEDNESDAY

Any 2 pizzas and a bottle for £28

10% OFF YOUR FIRST DRINK OR DESSERT

at Mirage when dining
with us at Chamas!



8 Wednesday Market, Beverley, HU17 0DG
Tel: 01482 880660 • miragebeverley.co.uk

BEVERLEY'S NEW CAFÉ-BAR, MIRAGE, BRINGS LONDON-STYLE CAFÉ-CULTURE TO WEDNESDAY MARKET

Sit outside or in; enjoy a meal at breakfast, lunch or in the evening; savour delicious coffee, wine or beer; indulge in a cocktail or enjoy a sweet treat with delicious home-made cake or Yorville 'made on the farm' ice-cream. Mirage, as the name conjures up, is adult-oriented, classy and cool, yet relaxing and welcoming: Mirage's concept takes vision, which is down to the proprietors, Nicola and Ali Tecke.



Nicola and Ali already run the very successful Chamas restaurant. Prior to that, they ran Cosmo's, which inhabited some of the space where Chamas is based.

Now they have opened Mirage, just 2 doors down from Chamas, which has a very different offering, but is complementary to it and is bringing Wednesday Market into its own.

Wednesday Market is now a destination in its own right - and with walking distances between all four main areas of Beverley so short (Georgian Quarter, Saturday Market, Wednesday Market and Flemingate), is making Beverley a 'must-visit' town.

The ambience of Mirage lends itself to music - soft jazz, soul and 'yacht' music spring to mind - which is provided live by local soul man Sean Finch on a Thursday evening and The PJ Johnson Band on Fridays. Why not treat yourself to one of Mirage's extensive range of cocktails to sip whilst enjoying the sounds?



Mirage's 'happy hour', which they call 'Cocktail o'clock', operates between 5pm and 7pm



Monday to Wednesday, all day Thursday and 10pm to late on Fridays when selected cocktails are available at £4 and jugs for £12. Many of the cocktails are the invention of Bar Manager Yannis and that includes non-alcoholic versions, too, such as Lady Ella which is gin-based and Miss Ella which misses out the gin.

One of Yannis' favourite cocktails is 'Spirit of Harrogate' which is made with Slingsby rhubarb gin (which is made in Harrogate), fresh pomegranate, St Germain Elderflower Liqueur, lime, sugar and grapefruit juice - it sounds delicious!



Open from 10am for breakfast, then serving lunch and dinner, with patisserie, ice cream, soft drinks and beverages available all day, Mirage also has a buzzer system should you prefer to dine at Chamas, with a discount card for diners at Chamas.



MIRAGE COMPETITION



Mirage is offering one lucky couple a meal for 2 (starter/lightbite, main course and a soft drink each) to enjoy at a time of their choosing in Mirage's fabulous surroundings by the end of August.

All you have to do to be in with a chance of winning this prize is to answer the following question:

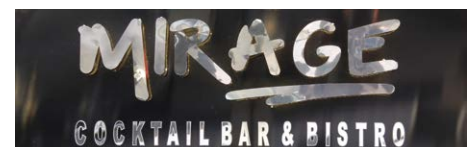
Spirit of Harrogate cocktail is made using pomegranate, elderflower liqueur, lime, sugar, grapefruit juice and Slingsby gin. Which fruit is used to infuse the Slingsby gin?

Send your answer by email to competition@justbeverley.co.uk by July 17th. Put 'Mirage Comp' in the subject box along with your name, address and daytime telephone number in the body of the email. The winner will be the first name drawn by random on July 18th. Winners must be available for publicity purposes for **Just Beverley** and **Mirage**. There is no cash alternative. Winners must purchase their own accompanying alcoholic drinks.

Mirage also has dining offers - one of the current offers is the rather-tempting 'Any 2 Pizzas + Prosecco' for £28 available on Wednesdays. The delicious bistro menu includes vegetarian and vegan options and, in a nod to the much-missed Cosmo's, chicken makes a welcome appearance.



You will always find a great welcome from the team at Mirage who will ensure your visit will not be your last.



Find out more at <https://miragebeverley.co.uk/> and follow Mirage on Facebook and Instagram.

Phone **01482 880600**.

Email: miragebeverley@gmail.com

Address: **8, Wednesday Market, Beverley, East Riding of Yorkshire, HU17 0DG.**

MEET THE HEAD CHEF: DARREN DAVIS AT THE BEVERLEY ARMS HOTEL

Like so many people, Darren Davis has his mother to thank for his successful career. When asked about his rise through the ranks to become Head Chef at the award-winning Beverley Arms Hotel, he answered: "My mum was a terrible cook so I thought I better learn to cook for myself - sorry Mum!"



Darren, 35, is one of a select group of local chefs who have been invited to host a cooking demonstration at this year's Beverley Food Festival.

Darren has been with The Beverley Arms, which is part of the House of Daniel Thwaites Collective, since its grand opening in July 2018. The hotel was named in the Top Ten British Hotels of the Year by The Times shortly after welcoming its

first guests and Darren plans to showcase the restaurant's finest dishes when he takes the stage this October.

Going back to his teens, it was Darren's Food Technology teacher who spotted his natural talent for cooking and food. Spurred on by his teacher's support, a 14-year-old Darren took an after-school job washing pots in a small Italian bistro. Ten years later he was the Head Chef at a Rosette standard restaurant.

Talking about what inspires him, Darren said: "I'm proud to have been a Head Chef by the age of 24, but what really motivates me is seeing my team enjoying their time in the kitchen and truly flourishing. We're a young team and every single person genuinely cares about maintaining our high standards. This comes through in our dishes, which reflect all of our efforts and passion, not only mine."

The Beverley Arms is a boutique hotel with striking interior design which re-opened following a £6million restoration. Local residents had high hopes for the investment and Darren said: "The community has been extremely supportive since the re-opening and we're all incredibly proud of what we've achieved so far."

So, what does Darren have in store for Beverley Food Festival? Talking about his cooking style he said: "I would describe my style as 'organised chaos', but our diners would never know - everything has a place on the plate!"





THE
BEVERLEY ARMS

Enjoy the summer weather on our Terrace Bar. Choose from our range of sparkling cocktails and delicious light snacks from our tapas menu. It's the perfect place to relax with friends and family.

With 38 beautiful bedrooms and a bar and restaurant serving dishes to delight.

AA 5 STAR INN



THE BEVERLEY ARMS

25 North Bar Within, Beverley, HU17 8DD
01482 296999 beverleyarms.co.uk



DO GIFT GIVING THE RIGHT WAY!

In a consumer centric world it is not hard to find a quick “off-the-shelf” gift for that upcoming event **HOWEVER ...**

Why is it so hard to find something that really speaks to both the person and event you are buying for? Consider these questions:

1. Does that gift truly represent how you feel about the recipient?
2. Is it something that's going to provide value, joy, and show how much you know and care about them?



Often the answer to these questions with mass produced “off-the-shelf” gifts is “No”! Why? ... It's not special!

We all want the absolute best for our loved ones. Seeing them smile with genuine appreciation at something we've given them is enough to send us soaring with happiness and with a little dash of creative thought you can find something for literally anyone in your life, be it men, women, kids, or even your elderly aunt that has it all.

Follow these three simple rules to your gift search and you won't go far wrong!

SUPPORT LOCAL MAKERS

Items made by unique, creative local individuals mean they are often one-of-a-kind and cannot be found anywhere else.

SHOP LOCAL

As opposed to the generic box of



chocolates from the supermarket, a little trip to your local market or locally owned store will provide you with options you hadn't even considered.

CUSTOMISE & PERSONALISE

Many local makers can personalise or custom-make a product for you at a very reasonable cost to ensure that your gift is definitely a one off.

Spend a little time on the right gift search and you'll not go wrong, the happiness of a loved one is priceless.

You can find a wide range of creative and customisable gifts for any member of the family and at a range of prices at **THECREATIVELAB** in the **Flemingate**.

THECREATIVELAB

ART · FASHION · DESIGN · INTERIORS · GIFTS

www.thecreativelabuk.com

FLEMINGATE BEVERLEY

EA

embryonic art & interiors

www.embryonicart.net

FLEMINGATE

BEVERLEY

FASHION | FOOD | FILM | FUN

MORE TO

ENJOY

AT

FLEMINGATE

FABULOUS FUN, FOOD AND SHOPPING THIS SUMMER

FLEMINGATE.CO.UK



@FlemingateBev



FlemingateBev



FlemingateBeverley

ONEWORLD TRAVEL - BULGARIA

Bulgaria can be very cheap to eat out and buy products. See One Travel's in-house expert, Amber, who has recently been to Bulgaria and can give some great advice on visiting the country.

St Vlas

St Vlas is approximately 5 kms north of the busy, purpose-built holiday resort of Sunny Beach. It has a nice cosy sort of atmosphere. The area is split by the road that leads from Sunny Beach to a holiday resort known as Elenite. St Vlas (also known as Sveti Vlas or just "Vlas") has a lovely feeling to it and is home to some of Bulgaria's amazing beaches and stunning marina. The area is scattered with traditional Bulgarian houses, just a few little hotels and small apartment blocks plus bars and restaurants as well as little shops etc. The village centre has a pretty pedestrianized area with a fountain, trees and shrubs. Some evenings there are little stalls where people sell paintings, jewellery and the like as well as activities for children. Occasionally there's some entertainment too. For a more traditional Bulgaria St Vlas is a great holiday, and with it being close to Sunny Beach you have the best of both.



Nessebar

A UNSECO site of world heritage, Nessebar provides the perfect balance of historical buildings, markets and many restaurants, with great views to complement the good food on offer. Navigate through the narrow cobbled streets and look out for traditional craft shops. There are 44 Byzantine churches built between the 5th and the 19th century, and a proportion of these are restored and even operating, with others now functioning as galleries and museums. A short ten minute drive from Sunny Beach and twenty minutes from St Vlas, Nessebar makes an excellent day trip as well as a longer stay.

Sunny Beach

Stretching for over fifteen kilometres of golden sand, Sunny Beach has become one of the most popular spots in Bulgaria. This has brought an array of attractions, from waterparks to a bustling night life, creating the perfect action packed holiday. Along the promenade, you can find numerous playgrounds and bouncy castles for the children, as well as areas with beachfront bars and DJs. Nearby to Sunny Beach, there is the Action Aquapark, with over 30 water attractions in all here ranging from extreme plunges to more relaxing rivers and pools.

ONeworld TRAVEL GROUP

BULGARIA

**12th September 2019 - 7 nights
Flights from Manchester
Staying in St. Vlas
4* Hotel
Self Catering
£479 per person**

**ONEWORLD TRAVEL GROUP
35 Saturday Market, Beverley HU17 8BE
T: 01482 280081
www.1worldtravel.co.uk**

ASK THE EXPERT - WHY IS WHITE RABBIT CHOCOLATE SO SPECIAL?

Just Beverley has teamed up with White Rabbit Chocolatiers to bring you 'Ask the Expert' with Ed Hawkes, the managing director of the family-owned company, to answer all your chocolate-related questions.

"Why is White Rabbit Chocolate superior to other cheaper chocolate brands?"

White Rabbit works with 'Extra Fine' chocolate, which in a similar way to Extra Virgin Olive oil, is considered to be superior. As there are grades of Olive oil (Extra Virgin, Virgin and standard), there are grades of chocolate (Extra Fine, Fine and standard).

Strictly speaking it is the cocoa content - the percentage of cocoa mass and cocoa butter from the original bean - which determines the quality of the chocolate. The higher this percentage, the higher the quality of the final product.



In reality, the phrase 'Extra Fine' relates to the whole process of chocolate production - the quality of the cocoa plantation and it's beans, the methods used to process the beans, and the 'crafting stage', where skilled chocolatiers prepare the chocolate for moulding in a process called tempering.

For further information and an expanded version of this article please see the **Just Beverley Website** at <https://justbeverley.co.uk>

WHITE RABBIT CHOCOLATIERS

COOL OFF IN OUR CHOCOLATE CAFE
Perfect for the Summer!

A taste of wonderland...

**16 Dyer Lane, Beverley, East Yorkshire, HU17 8AE
Tel: 01482 679325 whiterabbitchocolatiers.co.uk
Open 7 days a week
Breakfast, Lunch & Afternoon Tea available Tue-Sat**

CLASSIC CARS WITH CARFAN - THE LANCIA GAMMA COUPE

The feature of this month's issue is another rare beauty - the Lancia Gamma coupe. Sharing a garage with Prince Andrew's Aston Martin DB7 volante, the fortunate owner purchased this car in 1990 when it was six years old.

The new owner has put many additional miles on the odometer since he acquired it, largely consisting of two trips to Turin, one of which included a (slow) drive around the old Fiat factory at Lingotto which is famous for featuring as a chase location in Michael Caine's film The Italian Job. Carfan is happy to admit to a certain amount of envy here!

Launched in 1976 as both a 2-door and 4-door variant, the Gamma was available with a 2-litre and 2.5-litre engine, with the former mainly being available in its home country. The model suffered from an Achilles heel though - the flat



four engine was designed in such a way that the power steering pump was driven from one of the camshafts. Most of the time this was fine, but the belt could fail, resulting in pistons meeting each other with dire consequences, not just to the owner's wallet. Add camshaft and cooling problems and it is somewhat surprising that over 2000 were imported into the U.K. Although these problems were sorted out with the introduction of an improved S2 version, the damage was done and sales rapidly dropped off, which is why the Gamma joined a lot of other Lancias in the history books of beautiful, if flawed, cars.

Having said that, a small core of loyal owners have formed the U.K. Gamma Consortium to source parts to help ensure their beautiful steeds continue to grace our roads well into the future.

So, should you happen to see a Gamma passing by, don't forget that cheery Carfan wave!

PRACTICAL MOTORING WITH RICH HAYES - TAKING YOUR MOTOR TO EUROPE



Rules and regulations aren't consistent across Europe so it's worth checking exactly what you need when you set out as well as what is required when you get there.

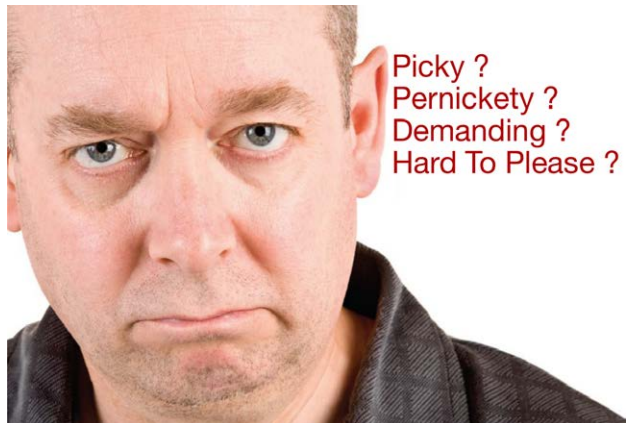
Did you know that you need to have a portable breathalyser kit with you in France whilst carrying a first aid kit is compulsory in France, Germany and Austria? Every country stipulates each passenger must have a high-vis jacket whilst most say you should have a warning triangle.

The French also say every car must have a 'Crit'Air' sticker on its windscreen, to identify the emissions your car produces and how polluting it is. There are 6 categories with corresponding colour-coding - Category 1, purple, equates to Electric and Hydrogen-powered cars with Category 6, dark grey, for the oldest, mostly diesel cars. To apply, visit www.certificat-air.gouv.fr/en/. You will need your vehicle's Euro standard which is indicated in the V.9 field on your car registration certificate. Should you find yourself travelling in a French ZCR (permanent clean air zone) or ZPA (weather-dependent zone without a sticker or with a car which does not comply with the access rules for the zone, you are likely to be fined up to 117Euros or even have your car impounded. There is a Green-Zone website and app to check whether your car is compliant within a ZCR or ZPA, which are currently operational in at least 28 cities and towns including Paris, Strasbourg, Lille, Lyon and the Vendee. See www.crit-air.fr/en/information-about-the-critair-vignette/french-environmental-zones-zcr/french-environmental-zones.html

Wherever you are traveling in Europe, don't forget your full, valid driving licence and NI number; vehicle insurance and travel insurance documents; V5C certificate; EU breakdown cover; emergency phone numbers and that your tax and MOT are up to date.

There are several websites which can help ensure your European holiday is as safe and enjoyable as if you were traveling within the UK! Bon voyage!

Need An Electrician?



Picky ?
Pernickety ?
Demanding ?
Hard To Please ?

When You Want The Job Done Right The First Time. Then We're The Right Electrical Contractors for YOU !

Call Beverley's Premier Electrical Contractors Today On

01964 552769 / 07585 601730

BES BURTON ELECTRICAL SOLUTIONS

www.burtonelectricalsolutions.co.uk



BEVERLEY **MOTORWORKS**

INDEPENDENT BMW & MINI SPECIALISTS

Our dealership expertise means high quality car servicing at a fair price...



the Good Garage Scheme



Unit D1 Grovehill Industrial Estate, Annie Reed Road, Beverley HU17 0LF

Call today: 01482 881 128

Visit: beverleymotorworks.co.uk

SPECIAL OFFER
MOT COUPON



MOT YOUR CAR FOR ONLY

£29.99



Send your photographs of your celeb
Find us on Twitter and Facebook to s

BEVERLEY GIRLS HIGH AND BOYS GRAMMAR SCHOOLS PROM



HERE TO GET *you* THERE

HUNTERS[®]

EXCLUSIVE

BEVERLEY / 01482 861411

WILDLIFE PHOTOGRAPHER OF THE YEAR LAUNCH



EAST YORKSHIRE CLASSIC CAR CLUB SUMMER GATHERING



SALES / LETTINGS / MANAGEMENT

HUNTERS[®]
HERE TO GET *you* THERE

BEVERLEY / 01482 861411



[SWATCH.COM/BIGBOLD](https://www.swatch.com/bigbold)

swatch[®] 
S W I S S M A D E

SUMMER IN A WATCH SWATCH-STYLE AT GUEST AND PHILIPS

What images and thoughts does your mind conjure up when you think about summer? Strawberries and cream? Deckchairs? Sunshine? Summer clothes? Having more energy? Festivals? Travel? Being yourself?

Swatch has been inspired by the colours and patterns that tell the story of summertime serendipity with its Energy Boost and BIG BOLD ranges. Want something less ostentatious - then SKIN might be the range for you! All three ranges and more are available at Guest and Philips, Flemingate.



Or will it be the gentler SKIN range which comes in so many different designs and colour-ways for men and women?



With classic as well as funky, frivolous and fruity designs, Swatch have a style to suit.



Fashion-brand Swatch are always on-trend with innovative ranges and designs that means there is a watch to suit your style and convey the impression you want to make - although choosing your favourite is almost impossible!

Will it be Sanguinello with its red and white vertical stripes with a sun-brushed red dial, which makes us think of beaches and deckchairs?

Will it be Big Bold Beauty with its in-your-face black and orange which gives out a 'can-do', bold attitude - just what you need to survive a three-day festival?




GUEST & PHILIPS

EXCLUSIVE TO
GUEST AND PHILIPS:

TOMMY HILFIGER

CARAT*
LONDON

CJOGAU
GOLD OF ROYALTY

UNO_{de50}



PERFECT GIFTS
FOR ALL OCCASIONS

swatch+

LINKS
LONDON

CLAUDIA BRADBY
Paul Power

CALVIN KLEIN

MONDAINE

KIT HEATH

23A FLEMINGATE CENTRE, CHANTRY LANE, BEVERLEY HU17 0PW
T: 01482 881001 | WWW.GUESTANDPHILIPS.CO.UK

BROOK TAVERNER CELEBRATE THEIR YORKSHIRE CONNECTION IN STYLE

Brook Taverner are proud of their rich Yorkshire heritage that will soon see them reach 110 years of operating in the county. With headquarters based in Keighley, West Yorkshire after previously being located in Huddersfield until the late 2000s, the menswear company certainly feel an affinity with the county that has allowed them to prosper.

To celebrate this fantastic achievement, Brook Taverner has once again teamed up with the Welcome to Yorkshire team to create their limited-edition formal wear.



welcometoyorkshire

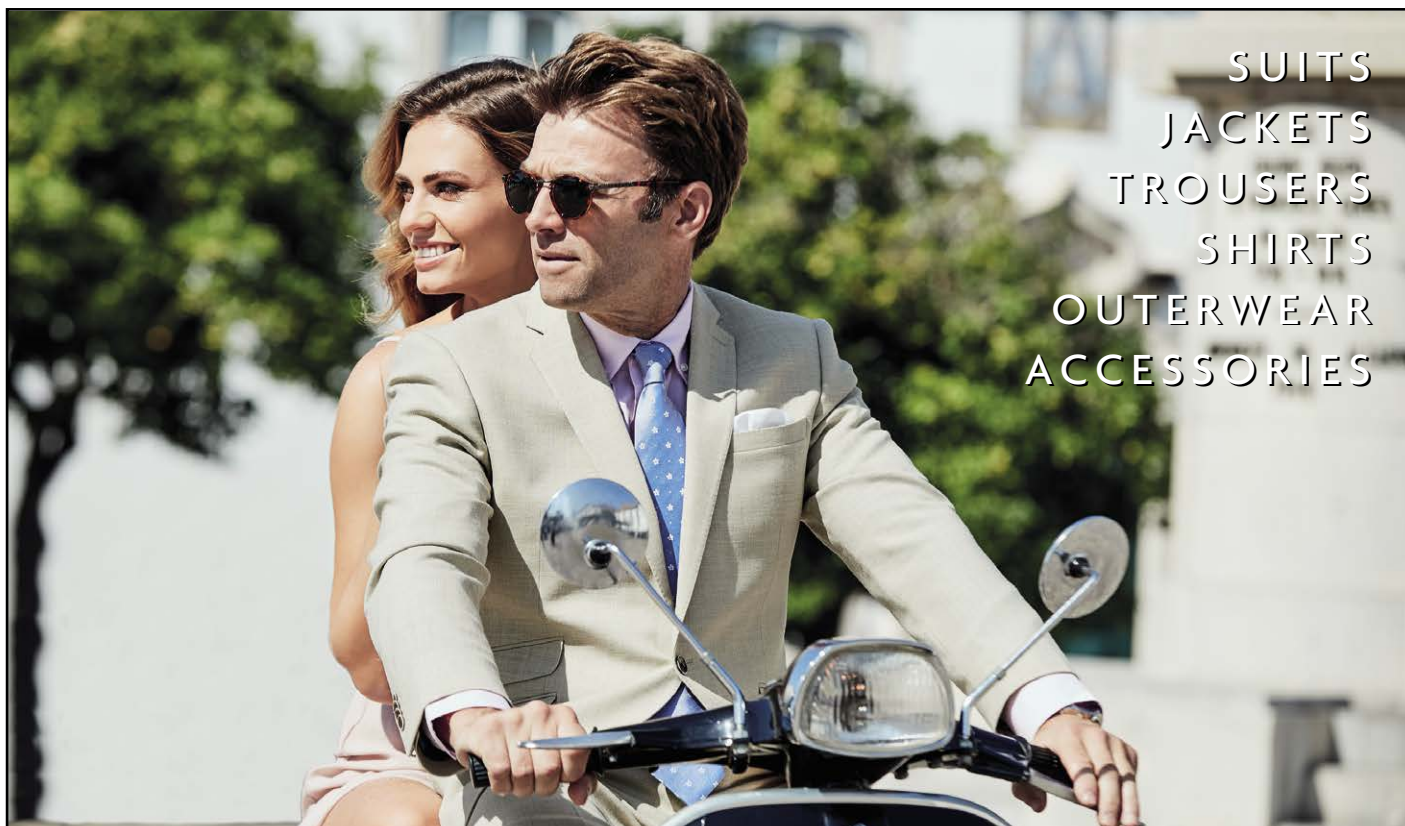
Woven by Guiseley-based Abraham Moon, this jacket is available in both men's and ladies' sizes and features an exclusive wool check made from an exclusive lightweight merino wool fabric that is designed with the Yorkshire countryside in mind.



For the first time, this jacket is available to purchase exclusively at the new Brook Taverner store at 35 Toll Gavel. Standing out with its feature gold lining and Welcome to Yorkshire embroidery beneath the collar, this 430-gram jacket is perfect to wear all year round and is a true celebration of Yorkshire spirit.

The team at Welcome to Yorkshire have proudly displayed their jackets at various events all over the country, most recently at the wonderful exhibited RHS Chelsea show garden that received yet another Gold award.

You'll also see the fantastic team show off their attire at other major events such as last month's Tour de Yorkshire and July's forthcoming Great Yorkshire Show.



SUITS
JACKETS
TROUSERS
SHIRTS
OUTERWEAR
ACCESSORIES

BROOK TAVERNER
35, TOLL GAVEL, BEVERLEY
TEL: 01482 882 356

ICONS OF OUR TIME AND CINEMATIC LEGACY COMMITTED TO CANVAS AT TRENT GALLERIES

David Tute discusses Jim Dowie' and Pete Humphrey's canvasses of well-known characters.

As I type out this editorial for this edition of **Just Beverley**, one of our Peaky Blinders canvas' has just left us, leaving a hole to be filled in our main window. The Gent came inside and exclaimed; "I adore Peaky Blinders, it's marvellous!"

And it turns out, he had just the spot for the portrait of Thomas Shelby in his home, and I'm sure it will be ideal, by the sounds of it! Cinema and television series are now so engrained into our culture, characters sometimes feel part of our family circle almost, as is the emotional connection we may feel towards them.



For this reason, artist Pete Humphreys creates stunning oil canvas works based on such characters, whether that be The Joker, Han Solo, or The Shelby Brothers for one of the Nation's favourite BBC Series...

Pete is a huge cinema fanatic himself and has always been interested in how directors use the camera to frame and capture an emotion, atmosphere and level of intensity. He therefore aims to do the same when creating his originals in paint form, capturing fleeting moments from our favourite screen roles. "I search for subtlety, hidden glances and underlying motivation. I am not trying to fool the viewer into thinking that they are seeing a photograph, but rather am embracing the opportunity to interpret in paint while retaining a sense of honesty and accuracy."

Contrasting to Pete's highly naturalistic approach is the work and technique of Jim Dowie - another of our portfolio artists who have got our imaginations whirring. You may have seen some of his work recently - whether that be the striking dreadlocks of Bob Marley on a vibrant orange canvas, or the iconic whisper pose of the late, great David Bowie... Working in the medium of Acrylic paint, Jim has a fabulous technique of manipulating the paint to form a 'mesh' of lines and colours to create instantly recognisable personalities from our past - whether that be Monroe, Laurel & Hardy, or Elvis Presley.

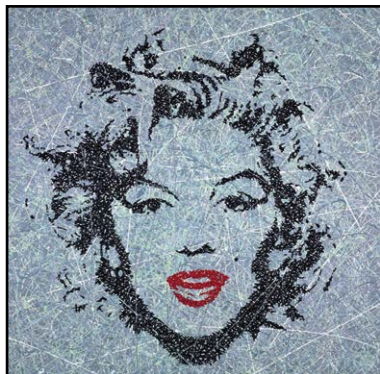
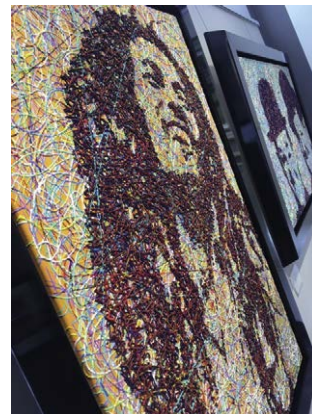
The reason I am highlighting both of these artists

here is to highlight to you that there are so many opportunities to get that ideal feature piece for your home, and have it tailored to you. This is because both of these artists' works are perfect examples

of commission opportunities which you can investigate. The Peaky Blinder artworks were created upon request for us at Trent, and three of the five artworks now have a home, as is the demand for the Television 'bad-lads from Birmingham'... And with Jim Dowie's work, if you have an icon you admire from the past or present, you could have them emblazoned on your lounge wall. Marilyn in hot-pink, or George Best on Manchester United Red.

Part of why I enjoy my role here as an Art Consultant is to explore these possibilities with you all - to see the excitement as we discover together what is possible with our eclectic portfolio. There are no silly questions here; if you are looking for something special and unique for that hallway, or have been searching for years for the perfect Jimi Hendrix portrait, then you should definitely come on in and ask the question... 'Is that possible?'

Maybe so. Let's find out.



Explore the possibility of having your favourite screen character committed to canvas, or your most revered icon brought into your home...

Pete Humphreys & Jim Dowie

Come to Trent Galleries Beverley today to find out more!



9 Butcher Row Beverley, HU17 0AA

Tel: 01482 874621

Email: beverley@trentgalleries.co.uk

follow us on Instagram & Facebook

www.trentgalleries.co.uk

I'VE BEEN THINKING... SAYS COLIN RAYNOR

It is good to have something to celebrate as July begins with still no clear path forward for our country. So I ask you to join me in celebrating the appointment of Simon Armitage as the new Poet Laureate.



You may think it is a strange idea to celebrate, but I can suggest a good few things about Simon Armitage that are worthy of raising a glass, or whichever method you choose, to applaud his achievement. First and foremost, I am delighted to say, he is a Yorkshireman. He succeeds Dame Carol Ann Duffy, (who remains the only female to become Poet Laureate) and is only the twenty first person to hold this office since it began in 1668 when Charles the Second appointed John Dryden. Ted Hughes in 1984 was the last Yorkshire man to hold this office, but he was born just outside Halifax. Simon Armitage, I am pleased to record, comes from my hometown of Huddersfield (Marsden to be precise) where he still lives with his family. The definition of the word laureate is 'a person who is honoured with an award for outstanding creative or intellectual activity', hence the title Poet Laureate. Perusal of the Internet shows the depth of his work, not just in the sphere of his activities in Universities but also his consistently good work and influence, with all age groups, to promote poetry in this country. He received the Queens Medal in 2018 as recognition of such work. The Prime Minister recommends the person for appointment to the Queen and the Poet Laureate is an honorary position as part of the Royal Household and as such comes with an honorarium of £ 5,730 per annum. The position was originally for life, but is now for a decade and comes with a butt of sherry (720 bottles) from Spain! Does this mean that he has to write poems for, and about the Royal family, and at their command? Absolutely not! In fact, more than one past holder of the post has spoken of how the position seemed to stifle their own creativity although that seems to me to be a rather fatuous statement. There is no stipulation for the person in this post to write anything other than what they choose to write, despite its opening a number of possibilities. Simon Armitage has clearly stated that, despite this Royal appointment, he does not consider himself a member of the establishment, although he retains a high regard for the Royal Family. He worked for many years as a probation officer and therefore he has a wide experience of people's difficulties and those who are disadvantaged in our land. He has a very real and ongoing strong commitment to furthering causes that seek to improve the lifestyle of us all. He has written about using his profile as the Poet Laureate to establish a project and award, to those writing about climate change, which is something he feels very strongly about. I'm sure he would approve of Kipling's lines (who never was Poet Laureate): 'The camel's hump is an ugly lump, which well you may see in the zoo; but uglier yet is the hump we get, from having too little to do'.

HUBY

DOMESTIC APPLIANCES

Covering Hull, Beverley, Pockington, Driffield and all the local villages

BOOK ONLINE

and **SAVE**
at
hubys.co.uk

Book in advance and save money.
The further you book in advance
the more you could save...

For service and repair call: **01482 866660**

Botterill & Co

Chartered Certified Accountants

We are a modern and professional accountancy practice ideally located to serve businesses in Beverley and the surrounding area.

We utilise modern accounting technology to provide you with a cost effective, professional service.

Our services:

- Annual Accounts
- Company Formations
- Tax Planning
- Payroll
- Management Accounts
- Cloud Accounting
- Tax Returns
- Bookkeeping & VAT

For a free initial consultation please contact us:

Office: 01482 862240
Mobile: 07966 051458
Email: garth@botterillco.co.uk
Website: www.botterillco.co.uk

1st Floor Offices, 40 Norwood, Beverley, HU17 9EY

*Four Generations,
Giving Over 125 Years Service*

| | | | |
|----------------------|----------------------|-----------------------|---------------|
| Herbert 1870-1962 | Eardley 1908-1986 | Geoffrey 1939-2015 | David 1964 |
|----------------------|----------------------|-----------------------|---------------|

Golden Charter
Funeral Plans

- Funerals Respectfully Conducted
- 24 Hour Out of Hours Service
- Free Advice & Support
- Private Restrooms
- Prepaid Funeral Plans Available
- Finance Options Available

Tel: 01482 844695
www.hkempandsonltd.com

259 Hallgate, Cottingham, East Yorkshire, HU16 4BG
Fax: 01482 843898
Email: hkempandsonltd@gmail.com

Telephone: 01482 869111
sales@rosesofbeverley.karoo.co.uk



The Kitchen Factory, The Courtyard,
Tokenspire Business Park, Beverley
HU17 0TB

Together we will design a beautiful kitchen



Roses will then
project manage
your kitchen installation from
start to completion

Visit www.roseskitchens.com

to see our customers kitchens and read what they have to say about us

Telephone: 01482 869111

BURTON AGNES JAZZ AND BLUES FESTIVAL RETURNS ON JULY 12TH-14TH

With around 25 bands playing every genre of jazz and blues you can think of, this eclectic festival is a local joy!

Where better to be on a July afternoon than sitting listening to talented musicians producing music to relax or move to at one of the most beautiful and atmospheric Elizabethan country piles in England? With artists playing in four different areas (in Burton Agnes Hall and outside it on the main stage, in the courtyard or, when night falls, in the beer tent), the weekend passes far too quickly!

Many camp on the picturesque camping ground with hot showers, others stay in local accommodation or travel in daily from their homes, but everyone has a great time at this family-friendly festival - and that includes canine members! With locally produced food and drink on offer, including the tea-tent with home-made cakes, the ice-cream van and café; the gorgeous house; fabulous lawns and gardens; shops; games; children's activities and woodland walks, the festival is over all too quickly!



Now in its 12th year, the music just gets better and better!

Artists this year include the fantastic American keyboard player and multi-instrumentalist Mo Pleasure (of Earth, Wind and Fire fame) with his band; melodic jazz from the vibrant quartet Emma Johnson's Gravy Boat; Max and Veronica with their country blues and ragtime; Atila, King for a day; the Nat King Cole Story; the hard blues of The Alligators; ArtepHis; soul band Geoff Green & The Carousels; Afrobeat and punk jazz from Newcastle's Ponyland and, closing the show, Ben Beattie's After Midnight with organiser Simon Cunliffe-Lister guesting on sax.



Tickets are now on sale from www.burtonagnes.com or phone 01262 490324.



BURTON AGNES COMPETITION



Burton Agnes Jazz and Blues Festival has teamed up with Just Beverley to offer you the chance to win a full family weekend pass worth £253!

All you have to do to be in the draw is to answer the following question:

Traditionally, Ben Beattie's After Midnight closes the festival with a special guest on saxophone. Who is that special guest?

Send your answer by email to info@justbeverley.co.uk by July 5th. Put 'Jazz & Blues' in the subject box with your answer, name, address and daytime telephone number in the body of the email. The winner MUST be available for publicity photos for Just Beverley and Burton Agnes Jazz and Blues on Monday 8th July.

GUITAR GALLERIES MOVES TO FLEMINGATE

An independent guitar shop selling some of the world's most revered musical brands is moving to Beverley's thriving Flemingate centre as its business continues to grow.

Guitar Galleries' Managing Director, Matt Dunn, opened in Wednesday Market in September 2016 as an offshoot to its Scarborough base. The shop sells quality guitars, amplifiers and accessories from world-leading brands including Fender, Taylor, CF Martin, PJD, Rickenbacker, Duesenberg, Eastman, Orange and Boss. It also supports musicians in store, as well as selling globally online. Now the business is looking to expand to offer more brands and more support and is moving to Flemingate to the two-floor shop recently vacated by VERB.

Matt said: "We were looking for somewhere that is not only impressive to look at but also functions how we want it to. There is so much more we need to display, and, in the new unit, we can present and stock the guitars in the right climate, humidity and environment. In this new space we have a contemporary unit and space to present guitars properly, so people can walk in and play everything they aspire to own.

We only sell products we would pay to own ourselves and don't compromise quality to hit a low price-point. We are also looking to offer more to the community, such as guitar lessons."



Guitar Galleries provides guitars and instruments to beginners and professionals alike, with prices ranging from £100 upwards. The business also buys guitars from its customers, offers trade-in deals against new guitars and offers credit facilities with 0% finance on purchases. Matt said: "We feel really blessed that the local community in Beverley has been so supportive from day one. Now we are moving just a stone's throw away to be part of the Flemingate family to offer even more. When the trend is for on-line shopping, we are delighted people enjoy coming into the store and spending their money locally with us."

Guitar Galleries closes in Wednesday Market on August 30th before opening in Flemingate the following day.

✿

INCHES BODY STUDIO

✿

**COURSES
FROM
£110**

**Lose those extra inches for Summer
WITH OUR FANTASTIC OFFERS!**



FOR JULY ONLY
Book a course and
bring a friend for half price -
phone for details

What are toning tables used for?

Toning Tables help with fat loss, ME, MS, Osteoarthritis, rheumatoid arthritis, knee and hip replacements, depression, bad backs, frozen shoulders and stroke rehab

FREE
WEEKS TRIAL
for anyone with
Health Issues
No obligation

Lose between 4" and 15" in 5 sessions!
The Inches team are on hand to help with your Diet and Nutrition

Inches Body Studio, 1 Norwood, Beverley HU17 9ET
Wheelchair access & stairlift available
Telephone: 01482 865229
Email: inchesofbeverley@hotmail.co.uk
www.inchesbodystudio.co.uk
Established 1992

COUNTRYSIDE MATTERS WITH SAM WALTON



Especially at this time of the year, our roads seem to be blocked with weekenders 'rushing' to the seaside - but they spend the biggest part of their time wither in a traffic jam or going slowly! I wonder if they have ever thought of going via the North Yorkshire Moors where there is little traffic, beautiful moorlands with heather and lots of wild birds.

The land is farmed, of course, by sheep. At this time of the year the ewes still have their lambs with them and they completely ignore you as they graze the grass by the roadside. I had occasion to visit a farmer recently up near Guisborough, so I went via Hutton-le-Hole and over the top to Castleton. It was magnificent, the heather was at its best and the sheep were enjoying the sunshine. Most of the heathland is allocated to various farms for grazing as it needs to be managed. You may have seen that some of the heather has been burnt off. That is a management technique because if it is not burnt one year in three the heather becomes too woody for anything to eat it. You may well ask, too, what happens to the sheep in the wintertime? Well, they are then grazed on the farms you can see in the valleys and the lovely green hillsides behind them. Farming sheep this way is very hard, but we have the farmers to thank for maintaining our beautiful landscape and they deserve every bit of subsidy they can get!



Hutton-le-Hole is a fascinating village with an excellent old farming museum, a hotel, several cafes, an ice cream parlour, craft shops and a chocolate factory selling chocolate that is to die for. If on your way you care

to turn off to Farndale, you see the village where a lot of the James Herriot filming was done. If on the other hand you want to turn off the other way and go to Rosedale, you can see an old mining site and again, enjoy the shops in the village. Another way of going is to go to Pickering and follow the road alongside the railway and go up through Stape, through the magnificent forest, pass the old Roman Road and either go to Egton Bridge or turn off for Goathland which has also been the scene of a lot of filming. The seaside town you will end up in is Whitby, in North Yorkshire - it's easy to get there from either route - which offers a different seaside experience to Hornsea or Bridlington.



Are you ready for the tastiest summer ever?




Announcing an amazing opportunity for ALL bakers aged 2½ to 11.

We will be baking up a sweet and savoury storm with a different theme every week of the holidays including magical mini-beasts, Italian adventures, flower power, picnic parties, colour coolness and seaside delights!

Give your baker a chance to meet like-minded friends, make memories, discover new favourite foods and develop endless life skills! ALL ingredients included, plus games, stories, crafts and a drink. Each workshop costs £15 a child, £13.50 for siblings. If your baker takes part in 3 workshops, you get the 4th one half price! Let's get baking! Booking essential.




To book, the site is: <https://LittleBunnyBakers.class4kids.co.uk>

☎ 07763 680774
✉ littlebunnybakers@gmail.com

🌐 <https://littlebunnybakers.wixsite.com/mysite>

IN THE GARDEN... JULY

Well so far 'flaming' June has not lived up to expectations (unless you wish to use 'flaming' as an expletive) - in fact I suspect it's on target to become one of the wettest June's ever!! However, its saving grace is that the gardens will be relishing the rainfall and we should also be grateful that we haven't had to do too much watering. So here's hoping that July lives up to expectations as the sunniest month in the year and we can enjoy the fruits of our labour from earlier in the year. You should be harvesting produce from the vegetable plot and your garden will be a riot of colour and fragrance.

Tasks for July...

There should be minimal work to do in the garden this month as all the hard work has been done earlier in the year, if you are planning on getting some tasks done try to work in the early morning or evenings.

Mow the lawn - in dry spells don't cut it so often, raise the blades on the mower and leave the clippings on the lawn, all this will help retain moisture.

Water wisely - I'm hoping we will need to do some watering. I know we all like a lovely green lawn but watering your lawn is not necessary. When rain does fall, the grass will spring back and look lush again almost instantly. Containers and hanging baskets will require watering on a daily basis and apply a liquid feed once a week.

Most established trees and shrubs will survive quite long spells of dry, hot weather (here's hoping). But water any newly planted shrubs and trees - give them a good soaking, it's better to give a few a good soak in rotation than all of them a little water each day.

Vegetables will need regular watering, otherwise they will certainly bolt and start producing seeds, making them inedible.

Pest Watch - with warm weather and (inevitable) showers pests and diseases can breed and develop rapidly, so keep a very watchful eye and deal with them as soon as you spot them.

Plan for your holidays - make sure everything is 'ship shape' before you go and book a friendly neighbour or relative to come in and water and harvest the produce.

Dead head - do this religiously, it encourages more flowers to form and prevents flowers from setting seed too early.

So until August,

Happy gardening, Jx.

Jane Dale of 'Designed Gardens'. Tel: **07983 392 411**.



CYCLING WITH WILSONS WHEELS - GEAR UP FOR THE TOUR DE FRANCE!

Even though our weather may be bad - and this year has been a bit hit and miss compared to last year - you are almost always guaranteed some sunshine by watching the Tour de France! If it's pouring down outside, turn on ITV4 or Eurosport and enjoy the scenery, which is to die for, especially in the Alps.

Unfortunately, weather has put paid to Chris Froome's hopes of winning another Tour de France - a gust of wind caught him broadside and forced him to crash into a wall, resulting in serious injuries. Geraint Thomas also had a nasty crash but is fortunate to defend his title.



Before Geraint Thomas became a household name, he rode for Barloworld and raced in lesser-known races in the UK. He and I are exactly the same age, so I had the misfortune of racing against him. I say misfortune is because he is a lot quicker than me and put the rest of us mere mortals in a lot of pain,

but in reality, it's my only claim to fame. I have also raced against Ben Swift and a host of other big names as a youth and junior; it's a real pleasure to see how these individuals progressed and achieved greatness.

I for one always get motivated to do more cycling after watching the Tour de France on TV so if you are looking for that extra motivation to get out on your bike, even if the weather is grim watch a bit of the tour and that will gee you up! But please, don't forget that cycle helmet - both Chris Froome and Geraint Thomas might have been even more seriously injured without their helmets.

Nathan Wilson

WILSONS WHEELS

T: 01482 882881
W: www.wilsonswheels.co.uk E: info@wilsonswheels.co.uk

WE NOW STOCK CUBE CYCLES
2019 RANGE NOW AVAILABLE

Be SEEN
and be SAFE,
stay BRIGHT
and on the
right track

DISCOUNTS ON:

- Adult Bikes
- Children's Bikes
- Clothing for all cycling weather
- Parts and accessories

89a Grovehill Road, Beverley, East Yorkshire HU17 0EJ
OPEN: Monday - Friday: 8.30am - 5.30pm | Saturday: 9am - 5pm
Sunday: CLOSED - Out riding our bikes

AFTERNOON
TEA MENU

£12.95 PER HEAD OR
£24 FOR TWO PEOPLE

AVAILABLE MON-SAT 12-5PM,
PRE-BOOKING IS REQUIRED AND
GLUTEN FREE OPTIONS ARE AVAILABLE

TRY OUR
LEGENDARY
SUNDAY
LUNCH!

HOME COOKED
FOOD SERVED
7 DAYS A WEEK

CYCLISTS
WELCOME

THE TIGER INN

Brains required from 8.30pm

FIRST SATURDAY
OF THE MONTH

Big Quiz

Free food/prizes to be won,
all money raised to our house charities.
£1 per person entry

Tel: 01482 869040

www.tigerinnbeverley.co.uk

Lairgate, Beverley HU17 8JG

Going to East Riding Theatre?
Book at The Tiger Inn for a
pre - show meal

HOMECOOKED
Sunday
Lunches

Served every Sunday
12noon-7pm

28 BEVERLEY

www.justbeverley.co.uk

ANYTIME FITNESS GYM - THE GYM FOR PEOPLE WHO DON'T DO GYMS!

You don't have to be a member to join in with an Anytime Fitness class – and for the month of July, you pay just £2 per class with the New Anytime Class Pass.

There's a new timetable for instructor-led fitness classes at Anytime which offers something for everyone! From, Legs, Bums & Tums to Pilates and Yoga to Spin, High Intensity Interval Training (HIIT) and Synergy Circuits, Anytime Fitness' classes enable you to become fitter and healthier with like-minded people.



And for the month of July, you can try out as many or as few classes as you wish for just £2 a time!

If you haven't been to an exercise class or the gym for a while, Stretch and Tone might be a good option - it's available at 9.15am on a Tuesday morning.



For those of you who have an appropriate level of fitness and like a challenge, Bootcamp or Kettlecise could be your cup of tea. AF Pump is Anytime Fitness' own style of Bodypump class where you can be as energetic and work as intensively as you wish.

Whichever you choose, you can be sure that the instruction is of the highest level and you own personal fitness of the utmost importance.

You can check the timetable at www.anytimefitness.co.uk/gyms/uk-0292/beverley-yorkshire-and-the-humber-hu17-0nq/ and book on **01482 247100**.

| CLASS TIMETABLE | | | | | | |
|---------------------------------------|-------------------------------------|---------------------------------|-------------------------------|---------------------------------------|------------------------------|--|
| MONDAY | TUESDAY | WEDNESDAY | THURSDAY | FRIDAY | SATURDAY | |
| 06:15am - 06:45am SPIN | 06:15am - 06:45am SPIN | 06:15am - 06:45am SPIN | | | 06:15am - 09:00am SPIN | |
| 07:15am - 07:45am SYNERGY CIRCUITS | 07:15am - 07:45am HIIT | 07:15am - 07:45am KETTLECISE | | | 11:30am - 12:30pm YOGA | |
| 09:15am - 10:00am HIIT | 09:15am - 10:00am STRETCH & TONE | | | | | |
| 17:30pm - 18:15pm SPIN | | | 17:30pm - 18:15pm SPIN | | | |
| 18:30pm - 19:15pm LBT | 18:30pm - 19:15pm AF PUMP | 18:30pm - 19:30pm YOGA | 18:30pm - 19:30pm BOOTCAMP | 18:30pm - 20:30pm SYNERGY CIRCUITS | 18:30pm - 20:30pm PILATES | |
| | | | | | 09:15am - 10:00am AF PUMP | |
| | | | | | SUNDAY | |
| | | | | | AF PUMP | |

PILATES - If practiced with consistency, Pilates improves flexibility, builds strength and develops control and endurance in the entire body. It puts an emphasis on alignment, breathing, developing a strong core and improving coordination and balance.

SPIN - Indoor cycling, often called spinning, is a form of exercise with classes focusing on endurance, strength, intervals, high intensity and recovery and involves using a special stationary bike with a weighted flywheel in a class setting.

CLASS TYPE

- CARDIO
- STRENGTH
- STRETCH
- FUNCTIONAL
- CIRCUITS
- DANCE
- MIND & BODY

INSTRUCTOR TYPE

- INSTRUCTOR LEAD
- VIRTUAL CLASS

*Classes subject to change



SPORTSABILITY

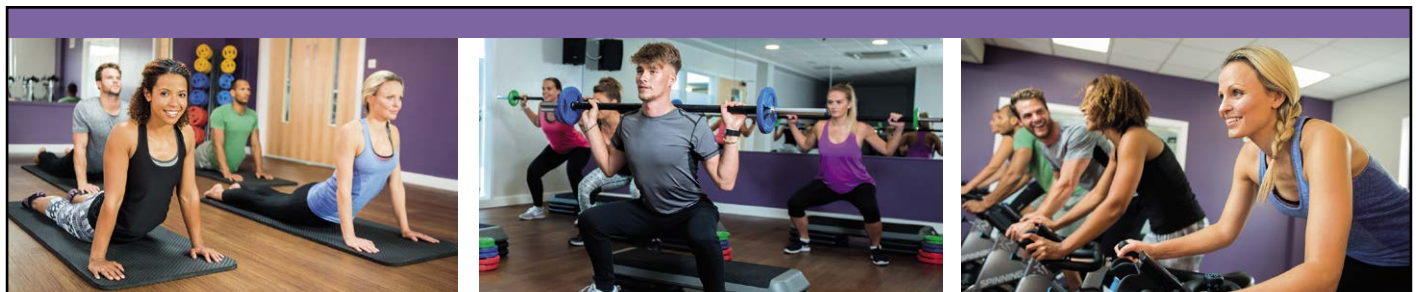
PRESCHOOL, BEGINNER, INTERMEDIATE & ADULT LESSONS

- Small Groups
- High Staff Ratios
- SEN Specialists
- Beautiful Non Intimidating Learning Environment
- Quality Lessons
- Fully Qualified & Experienced Swim Teachers
- Lessons available Daytime, Evening and Weekends

"Don't take our word for it - check out our Facebook Page for recommendations"

NEW: BEGINNER CLASS 8.30AM AND SEN CLASS 12.30PM SATURDAYS

Facebook: @SportsabilitySwim
Email: sportsabilityswim@gmail.com
Website: www.sportsability.org.uk
Tel: 01482 229676



Join Anytime Fitness
Improve your Mind and Body
with Qualified Experienced Staff

New Gym Class Timetable

Call: 01482 247100
Flemingate Centre, Flemingate
HU17 0NQ



PUZZLE PAGE

WORDSEARCH

X E S U X H R R N S R E E T P
 F T P U Q B M U Z F R X N Q R
 V F E F N D R I N K S E S T H
 N G W K G S S E Z Y M R J U F
 E F Z E C I H Y T E M C K F L
 D E H V N I Y I T V I I E E D
 I Q S N M O R I N C U S I Z J
 S P E J U J C C E E N E A R I
 A T D F G X M C I U H N X X K
 E Q H Z E A R E F I L D L I W
 S S N G K E Z P K C Z Y R M J
 F U W N A F T K X G D Q B S Q
 A M P M M Z F V S V G H E J H
 H O L I D A Y S K A J C A L N
 N G Q R V X B P P I Z Q H D V

| | |
|------------|----------|
| CRICKET | ICECREAM |
| DRINKS | SEASIDE |
| EXCITEMENT | SUNSHINE |
| EXERCISE | TENNIS |
| HOLIDAYS | WILDLIFE |

WHERE IN BEVERLEY?

Where in Beverley would you find this landmark? Answer on Page 34.



SMALL CHANGE - BIG IMPACT

Take a deep breath. Count to 10 before you reply!

Calm, Cool, Collected.

Have a break, have a night out

Sarong - use as a towel or to keep you warm, great accessory

Pack your suitcase roll your clothes up

COMPETITION WINNER

Congratulations to Jo Beard who won the King's Head dining experience.



Do you have any amusing stories, quotes or pictures? Send them to info@justbeverley.co.uk

QUALITY KITCHEN MAKEOVERS

by simply replacing the doors and worktops

Est. 1999

From the UK's #1 kitchen makeover experts. Visit our showroom now

Before



- FROM SIMPLE DOOR REPLACEMENTS TO COMPLETE FITTED KITCHENS
- FULLY INSTALLED BY LOCAL PROFESSIONALS IN JUST A FEW DAYS
- CHOOSE FROM A LARGE SELECTION OF DOORS, WORKTOPS AND APPLIANCES
- 84 SHOWROOMS NATIONWIDE



20% DISCOUNT
 Terms and Conditions Apply

FAMILY RUN BUSINESS

Proud members of **9.7/10 Checkatrade.com**
 Where reputation matters

See what our customers have to say

CALL US NOW FOR A FREE ESTIMATE:

01482 861653



VISIT OUR SHOWROOM:
 4A BELPRIN PARK, SWINEMOOR LANE,
 BEVERLEY, HU17 0LN

DREAM DOORS®
 NEW LIFE FOR OLD KITCHENS

www.dreamdoors.co.uk

BEVERLEY'S OWN TROPICAL 'TIKI' ICE CREAM BAR OPENS AT ARMSTRONG SOCIAL CLUB

Imagine you are on a desert island, eating the most delicious Gelato ice-cream, with palm trees swaying and happy music playing! Tiki Bar recreates that colourful, family vibe usually only experienced on holiday!

With a young family and an international heritage, Sally-Ann and Toffie Rena have taken the plunge and transformed the Lounge Bar at Armstrong's into an ice-cream parlour reminiscent of the bars they have visited on holiday in Spain and the Canary Islands and whilst visiting family in the Philippines.

Multi-talented Toffie has reimagined the room by painting the walls and with new flooring, transformed serving and bar area and, by adding



the all-important ice-cream fridge, as of July 5th, paradise is open!

Designed with families very much in mind, Tiki Bar has also expanded outside with new bench seating and colourful canopies!

As an ice-cream bar, Tiki is second to none! The hand-made Italian Gelato Giovanni ice-cream comes in cones, tubs and sundaes in flavours as diverse as Midnight Mint; Chocolate Cake and Custard; Bubblegum; Panna Fragola and Madagascar Vanilla, although all might not be available at the same time.

There is also good old traditional vanilla and for those who are allergic to dairy or follow a vegan lifestyle, raspberry sorbet and pineapple sorbet.

For grown-ups there are 'retro' sundaes such as Knickerbocker Glory and Banana Split with more up-to-date versions such as 'Movie Madness', 'Mad About Mint' and 'Banoffee Pie Sundae'.

But the real stars of the show are the 'animal' sundaes, which come in toddler, child and adult sizes, enticingly called 'Melody the Monkey', 'Betty the Butterfly' and 'Terry the Toucan'. You will have to visit Tiki Bar to find out just what is in them! Or you could design your own sundae - now that's a new experience to look forward to!

There is a huge selection of toppings and sweets including traditional flake and fudge - but don't forget to give your new creation a name!



As if eating lots of ice-cream isn't a big enough draw in itself, there are competitions, games and activities, which are all family oriented.

Tiki Bar is available for children's parties, too, if the main function room at Armstrong's is too large - but the ice-creams will be a welcome addition to any function. They are also available at the Family Disco (entry just £1) on Friday 5th between 6pm and 7.30pm.

Tiki is open from 12noon to 6pm every day. Take-away options are also available. It seems to us as so much choice will require lots of visits!



SHOCKINGLY GOOD VALUE

£49 PER MONTH WEBSITES

PAY JUST £499 DEPOSIT
THEN JUST £49 PER MONTH
FOR A MINIMUM TERM OF 12 MONTHS
AND THEN PAY MONTH-BY-MONTH THEREAFTER

FOR A WEBSITE THAT GETS REAL RESULTS...

CALL NOW ON:
 01482 428650
 marketing@indicoll.com
 indicoll.com

INDICOLL





ARMSTRONG'S Ice Cream Bar

OPEN NOW!

ALL DAY FROM 12 NOON

Try our Italian Gelato Ice Cream!

ICE-CREAM SUNDAE MENU
TUBS AND CONES AVAILABLE TO TAKE-AWAY
CHILDREN SPECIALS
ACTIVITIES AND COMPETITIONS
FAMILIES WELCOME (UNTIL 7PM)
(SUNDAE MENU MAY BE LIMITED AT BUSY TIMES)

ARMSTRONGS SOCIAL CLUB
GRIVEHILL ROAD, BEVERLEY, HU17 9DG
WWW.ARMSTRONGSOCIAL.CO.UK | FIND US Facebook



PROSE BY JOHANNA BOAL - THE CHALK CLIFFS AT FLAMBOROUGH, EAST YORKSHIRE



In a small village, tucked in to the Wolds, are chalk cliffs jutting out in to the North Sea. The chalk certainly does draw on their imposing, grand awareness and for this reason it is a great place for families, walkers and anybody else who enjoys the outdoors for its natural beauty.

On sunny days when the sea is a vibrant blue, they look jewel like against the background of a sandy cove beach. It's a long walk down from the top: a narrow hard mud path, then to wooden steps with deep insteps; it certainly works your upper thighs.

Down at sea level, the cliffs are hard with an uneven surface and bowl-shaped holes are dotted about and they are ideal for sea birds nesting.



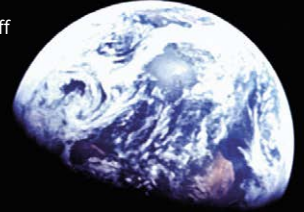
At the water's edge the chalk has formed a flat base for paddling but it does drop sharply after so much wading and I do wonder whether it is a mirror image of the cliff as it becomes deep in the water.

At the cliffs, every so often you find large mantels are formed. You can climb on to them fairly easily; it makes a very nice sitting area, somewhat cosy and sense of a fireplace with cups of teas from your flask and eating your sandwiches - a picnic with great views all round.

POEM BY CLINT WASTLING - APOLLO

In a darkened cinema
the film took me back
to my ninth birthday
and optimism of Christmas 68,
knowing Apollo 8 was up there.
Watching Bowman, Lovell, Anders
orbit our Moon via grainy
black and white images.

Space was cool,
every guy in the playground
knew each mission, each name.
My model Saturn V broke apart on lift off
like the real thing.
I didn't know the chemistry of rockets
nor that three men burned alive
when hydrogen and oxygen exploded.



Fifty years on, I cried when
footage showed Neil Armstrong
hesitantly step on the Eagle's
ladder and take that one small step
into immortality and our Space Age.
And those photographs of Earth
from The Moon showing how
alone our planet really is.

Seeing all this, hearing the bleeps,
silences and static at Mission control,
I realise it was a lifetime ago.
Promises of conquering space,
of missions unifying the world
have vanished in one small step
but there's hope we can still make
a giant leap for all our kind.





Print that gets you noticed







**BROCHURES LEAFLETS BUSINESS CARDS POSTERS
CALENDARS POP UP BANNERS INVITES PADS**

Tel: 01482 610902
info@jadan-press.co.uk www.jadan-press.co.uk
Rainbow House, Kimberley Street, Hull, HU3 1HH

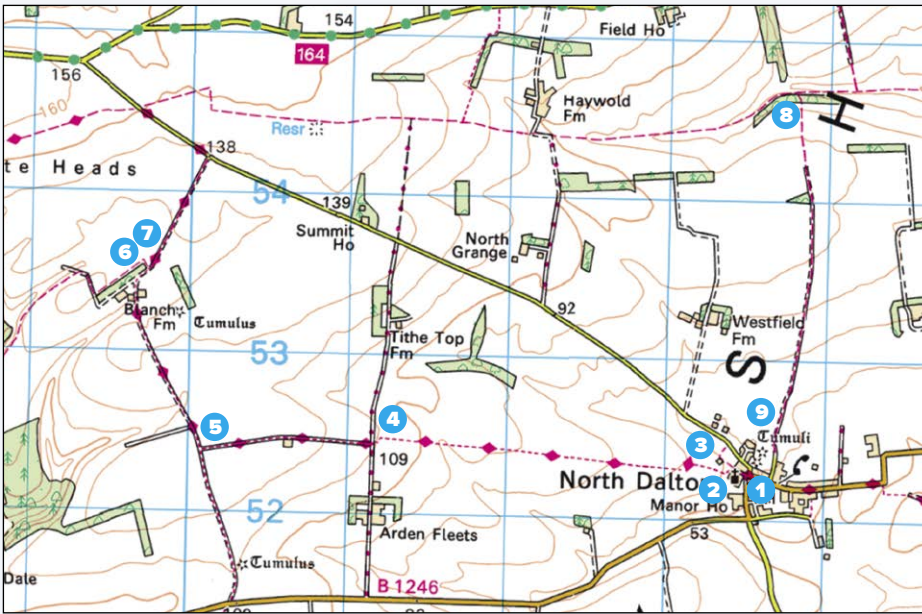









WALKING WITH IAN RICHARDSON... NO DAWDLING AROUND NORTH DALTON



Chalk track over the Wolds

4 After a steady mile, our route meets a farm track - take care to go briefly left and then immediate right here. Head west for a further half mile to join the track north (go right at Point 5) up to Blanch Farm. This is a beautifully sited and well-sheltered set of farm buildings, just on the lip of the dry valley of Meadow Dale.



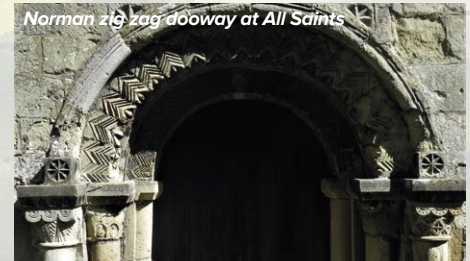
Blanche Farm

6 A brief diversion left here by the plantation and over a field path, allows you to look down into the fine valley of Lavender Dale and makes a perfect half way point for a picnic stop. Return towards the farm from the dale head.

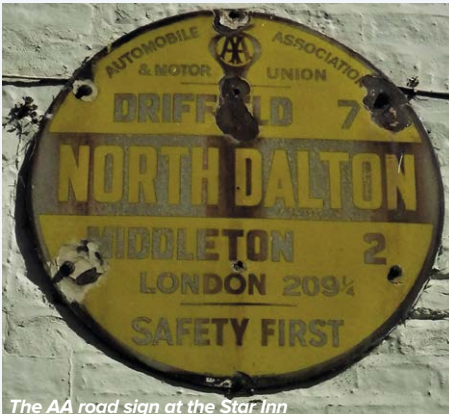
7 Take the clear farm road to the left up to the public road to Huggate. Cross over the road and your route continues on the other side. After 100 yards, you bear right along a good path back towards North Dalton. Again the views are very extensive as you head down the dry valley of Deep Dale for the next two miles.

8 Look for a path to your right through a plantation which descends steadily back to the east end of the village passing the cricket ground.

9 There are more nice buildings to enjoy on the street as you head back to your starting point and maybe a well earned drink at the pub, but you will need to take your own refreshments if walking on a weekday. Two of my former work colleagues have lived happily in the village for the past 15 years and both told me how welcoming and supportive the village community is. It did lose its shops and school decades ago, but the village hall provides a wide range of activities from quiz nights to zumba. Their good offices helped me in resolving the two history mysteries mentioned. The rousing hymn was indeed written at a vicarage in Yorkshire in 1865, by the splendidly named Sabine Baring-Gould, but he was never an incumbent here - but did serve at another Dalton, the one near to Thirsk. Also I can find no clear evidence that De Gaulle stayed here, yet there was certainly a Free French army HQ at Westwood House in the village during the summer of 1944, so it remains a possibility. So do go and visit lovely North Dalton this summer, but if you do do the full route, there will be no time for dawdling!



Norman zig-zag doorway at All Saints



The AA road sign at the Star Inn

This is a fine walk for a bright summer's day. You could just wander the village streets, enjoying the many fine buildings and maybe visiting the splendid pub (open evenings and weekends), or you could take the full 8 mile route over the nearby Wolds, with particularly extensive views across country. North Dalton is a most attractive village, rightly designated a conservation area. The church is fascinating and has within it some important Norman details and striking Morris company glass. Two historical mysteries intrigued me whilst visiting the village one lovely day in late May: was the famous hymn Onward Christian Soldiers written here by an incumbent nineteenth century vicar and did General Charles De Gaulle stay here during WW2? Hopefully, I have discovered the right answers to both questions. but all good historians should be open to change their minds in the light of new evidence.



Former Wesleyan Chapel

1 The Star Inn pub YO259UX, is the perfect place to begin, with parking if you plan drinking or eating there, or along the main street to the east if not. The village also has a decent bus service - EYMS 45 from Driffield or Market Weighton. The pond is a fine one, apparently it has only ever dried up once, during the

hot summer of 1826, but levels were very low when I passed by. The west end gable of the pub has a striking old yellow enamel AA road sign, once most common, yet now very rare - this is one of just 65 left in situ.

2 All Saints is atop a large conical mound and is thus most impressively sited. Sadly, it is normally locked, I have tried many times to gain access over the years. However, the contact details of the churchwardens are on the village website www.northdalton.org - all the news that's fit to print - and I must thank Phil Hindley for arranging to let me in and enjoy. It has a fine Norman south doorway and chancel arch and restored PreRaphaelite glass at the east end, designed for the Morris company by the outstanding Victorian artist Sir Edward Burne-Jones, whose varied work was displayed in a major exhibition at the Tate gallery earlier this year, which I was fortunate enough to see. The best buildings of the village, are as is usual in England, all clustered around the church. Seek out the Old Manor, now partly used as luxury holiday cottages facing the pub, former rectory, old school house - which closed in the 1960s - and the former Wesleyan chapel: Capella, standing high and handsome on its bank. These represent, along with the pub, one of the best collections of village architecture in East Yorkshire, each building is a delight and the whole ensemble most rewarding.



All Saints on its Mound

3 If you are confining your walk to the village, you can now head east up the main street to enjoy more old cottages before returning to the pub. For those brave souls who want to stretch their legs and go further, take the path by the side of the church, which winds through trees - part of the Minster Way - before picking up a wide track over open country to the west. This track rises gently, occasionally on exposed chalk, and gives increasingly extensive views over the Riding.

WHAT'S ON

SPONSORED BY: **kü**tchenhaus

2 Toll Gavel, Beverley, HU17 9AJ. T: 01482 862172.

Open: Mon - Sat: 10am-5pm. Sun: 11am-3pm. Bank Holidays: 10am-4pm.

Until Friday 19th July

• Trawling through Time

Beverley Guildhall. Free. The history of ship-building in Beverley from 1763 to the 1970's.

Until Saturday 14th September

• Wildlife Photographer of the Year Exhibition

Treasure House, Beverley. Free. Mon, Wed, Fri 9.30am-5pm; Tues, Thurs 9.30am-8pm. Sat 9am-4pm, Sun 10am-4pm.

Until Friday 24th April, 2020

• Time off: Leisure and Diversions in the East Riding

Skidby Windmill and Museum of East Riding Rural Life. £2.50/£1.50/£1.25/Free.

Tuesday 2nd July

• Creative Writers on Stage

East Riding Theatre. 7.30pm. £5. In aid of Yorkshire Air Ambulance. Prose, poetry and script from a group of local writers, including 'I've Been Thinking...' writer, Colin Raynor.

• Singalong Memories

Walkington Methodist Church Schoolroom. 2pm-3.45pm. £2 (includes refreshments). Ring Val or Mike on 01482 865249 or email val.memories@outlook.com for more details.

Thursday 4th July

• Grand Opening of Tiki Ice Cream Bar with the Mayor and Mayoress

Armstrong Social Club, Grovehill Road, Beverley. 5pm-8pm. Meet Daisy the Dinosaur, enjoy the CLCGB Band and the stars of the show, Gelato Ice Creams!

Friday 5th July

• Luncetime Concert Series - William Duckworth (Piano)

Beverley Minster. 12.30pm. Free - retiring collection. Light refreshments available from 12noon.

• 70's Racenight featuring Bus Stop

Beverley Racecourse. £4 upwards, under 18s free. Gates open 4.10pm, first race 6.10pm, followed by the Sounds of the 70's in the Premier Enclosure (accessible to all). Evening ends 10pm.

• Armstrong's Family Disco

Armstrong Social Club, Grovehill Road, Beverley. 6pm. £1. Tickets from 01482 882999. Party dances and fun with Sally-Ann. Ice creams from Tiki Ice Cream Bar also available.

Saturday 6th July

• Big Race Saturday

Beverley Racecourse. From £4, under 18s free. Gates open 12noon, first race 2pm. Live music. Visit <https://beverley-racecourse.co.uk/event/the-big-saturday-raceday/> to plan your day.

Saturday 6th - Sunday 7th

• Skidby Scarecrows Festival

Skidby Village. 10am-5pm both days. Purchase a map at Skidby Village Hall and find your favourite scarecrow! Refreshments and cakes in the Village Hall. Entertainment includes brass bands, falcon

show and stalls.

Sunday 7th July

• Cottingham Day

Cottingham Village Centre. 10am-5pm. Free park and ride from The Lawns HU16 5SQ. Music and entertainment, classic cars, dog show, market and craft stalls, fun fair, climbing wall etc.

Monday 8th July

• The White Horse Folk Club presents Bob Fox

Beverley Conservative Club, Wylies Road. 8.30pm £8. Singer and guitarist from the North East.

Friday 12th July

• Luncetime Concert Series - Luca Myers (French Horn) and Robert Poyser (Piano)

Beverley Minster. 12.30pm. Free - retiring collection. Light refreshments available from 12noon.

• Rachel Harrington

Monks Walk. 8pm. £12. Tickets from Beverley Tourist Information or on the door. 'Haunted, Gothic Americana' says Mojo, 'Beguiling' says the Daily Mirror.

• Never Forget Take That Tribute

Armstrong Social Club. 8pm. £18/£21. Reserved seating, hot buffet, tribute show and DJ. Bookings essential with £5 deposit to 01482 882999.

Monday 15th July

• The White Horse Folk Club Singers and Musicians Night

Beverley Conservative Club, Wylies Road. 8.30pm. £2. Performers and audience welcome.

Tuesday 16th July

• Afternoon Racing

Beverley Racecourse. From £4, under 18s free. Gates open 12.15pm, first race 2.15pm. Card includes 133rd running of the Watt Memorial Handicap Stakes.

• Singalong Memories

Walkington Methodist Church Schoolroom. 2pm-3.45pm. £2 (includes refreshments). Ring Val or Mike on 01482 865249 or email val.memories@outlook.com for more details.

Wednesday 17th July

• Driffield Show

Kellythorpe Showground. 9am onwards. Advance £15/£4/free. 143rd year of one of the largest agricultural shows in the country. Entertainment, demonstrations, livestock, horticulture, stalls etc. Tickets <https://driffield.ticketme.com/Sales/categories/agricultural-shows/driffield-show-2019/driffield-show-2019> or on the gate.

Thursday 18th July

• Tiny Treasures

Treasure House, Beverley. 1.30pm. Free. Come and explore fossils!

• Beverley and District U3A Monthly Meeting

Beverley Memorial Hall. 2pm. Free/£1. Entertainment with Fools Gold.

Friday 19th July

Tell us about your event!

Email: info@justbeverley.co.uk

Telephone: 01482 679947

For more events visit:

justbeverley.co.uk/events

• Luncetime Concert Series - Claire Little (Cello) and Robert Poyser (Piano)

Beverley Minster. 12.30pm. Free - retiring collection. Light refreshments available from 12noon.

Saturday 20th July

• Charity Sale

Toll Gavel United Church Drive. 9am-3pm. Tombola. Books, Bric-a-brac, toys, DVDs etc. Raising funds for Jacob's Well Appeal to help the poorest people in the world.

Monday 22nd July

• Evening Racing ft. the Go Racing In Yorkshire Summer Festival

Beverley Racecourse. From £4, under 18's free. Gates open 4pm, first race 5.55pm.

• White Horse Folk Club Singers and Musicians Night

Beverley Conservative Club, Wylies Road. 8.30 pm. £2. Performers and audience welcome.

Thursday 25th July

• Rock Britannia

Parkway Cinema, Beverley. 7pm. £10/£6. Rock Choirs from across the country accompanied by a live band bring the best of British rock to Beverley. Queen, Beatles, Oasis, Coldplay, Blur, Verve, Status Quo etc. Tickets 01482 968090 or www.beverley.parkwaycinemas.co.uk. For details ring 07943 276496.

Friday 26th July

• Beverley and District U3A Coffee Morning

Lairgate Hotel, Beverley. 10am-12noon. Come and say hello and find out about our activities.

• Luncetime Concert Series - Kidderminster

• Valentines Choir

Beverley Minster. 12.30pm. Free - retiring collection. Light refreshments available from 12noon.

• Beverley Male Voice Choir and Kidderminster Valentines in Concert

Toll Gavel United Church. 7.30pm. Tickets from Beverley Tourist Information or on the door.

Tuesday 30th July

• PAW Patrol Family Raceday including the Bark de Triomphe

Beverley Racecourse. From £4, under 18's free. Gates open 12.05pm, first race 2.05pm. Chase and Marshall from PAW Patrol will be making appearances during story-time session so bring your little ones along! The Bark de Triomphe is a slightly bonkers charity race for jockey's dogs where anything goes!

• Singalong Memories

Walkington Methodist Church Schoolroom. 2pm-3.45pm. £2 (includes refreshments). Ring Val or Mike on 01482 865249 or email val.memories@outlook.com for more details.

'WHERE IN BEVERLEY' ANSWER

Outside Browns, Saturday Market

kü

tchenhaus

The Largest Manufacturer of Quality German Kitchens

At Kutchenhaus we have affordable solutions made to meet your highest standards

2 Toll Gavel, Beverley, HU17 9AJ. T: 01482 862172.

Open: Mon-Sat: 10am-5pm. Sun: 11am-3pm. Bank Holidays: 10am-4pm.



ert

EAST
RIDING
THEATRE

10 Lord Roberts Road
Beverley HU17 9BE
Tel: 01482 874050

Email: boxoffice@eastridingtheatre.co.uk

Current Box Office Opening Times:
Tues - Fri 10am - 4pm or Sat 10am - 12noon.

ert
Café
Bar

Cafe/Bar Opening Times:
Tues - Sat 10am - 4pm

Tom Binns Weds 3rd July - 7.30 pm



Multi award-winning comedian Tom Binns has performed his 'Psychic' Character Ian D Montfort to 5-star reviews around The World and in the smash hit British film "Eaten by Lions".

He's entertained and amazed sceptics and believers alike on his own BBC Radio 2 series 'Ian D Montfort is Unbelievable' and his critically acclaimed BBC 1 Friday night series Hospital People.

Pavey Ark Sunday 14th July - 7.30pm



Join us for an evening of live music in the relaxed Café Bar, where the Candlelight Sessions brings you up close and personal with the artist; candlelit, in-the-round, close, and completely unamplified. Be a fly-on-the-wall to a completely 'off the cuff' music session like you've never heard before.

Pavey Ark are an alt-folk band from Hull. Atmospheric vocals and violins glide over fingerpicked guitar, melodic bass and complex percussion. They have played major UK festivals including Glastonbury and Cornbury, and The Unsigned Guide included the band in their 2018 'Ones To Watch' list. Pavey Ark's debut album is due for release in 2019.

George Egg Movable Feast Sunday 21st July - 7.30pm



Previewing before it heads to the Edinburgh Fringe comes a BRAND NEW comedy-and-cooking show from the award-winning stand-up who makes real food live on stage.

In his first show, 'Anarchist Cook', George made a meal in a hotel room with complimentary appliances. In his second, 'DIY Chef', he was stuck in a shed cooking with tools. In this show, he's on the road! It's time for Planes, Trains and Automob-meals (sorry).

Three plates of gourmet food cooked live in the most unconventional ways and with the opportunity to taste the results at the end, provided you can stop laughing.

She Inspires She Empowers She Engages

ert PRODUCTIONS

She Productions will take over East Riding Theatre for 2 weeks to celebrate local female identifying artists, past and present.

She FEST
9th to 20th July

TOP PICKS:

- Interconnected**
Art Exhibition
Tue 09 to Sat 20 Jul
- Emma Garness' Craft workshops**
Wed 10 to Tue 16 Jul
10.00 am to 12.00 pm
- Fearsome Fabulous Female Pirates**
By Hollyzone History
Thur 11 July - 7.30 pm
- Weirdo**
By Lois Mills
Fri 12 Jul - 8.00 pm
- FrenShe Breakfast: Coffee & Convo**
With Jessica Duffield
Fri 12 July
11.00 am to 12.00 pm
- Sip & Sing / Sing from your bits!**
With Annie Kirkman
Tue 16 Jul - 6.30 to 8.30 pm
Wed 17 Jul - 11 am to 2.00 pm
- Wild Thing Yoga**
With Katie Huntsman
Wed 17 July - 4.00 to 5.30 pm
- She Roars!**
Hosted by She Productions & The Roaring Girls
Sat 20 Jul - 5.00 to 7.00 pm

Headline Show: A Shevening

4 eclectic nights of cabaret hosted by the company who brought you *Beverly Does Broadway*. Singing, dancing, comedy - you name it, these ladies have got it and they're making *herstory* with it!

Post-show Panels
Join us for a drink in the bar and a themed post show Q & A to finish each Shevening. Includes:

- Women & Art
- Women & Writing
- Women & Wellbeing
- Women & Our World

With guest appearances from:
Indigo Pole Dance & Fitness
Grace Christiansen Music
Zoe the Clown
Dani Sylvia
The Girlfriends
Anna Bean and Michelle Dee
Lois Mills

#shenefestert

FREE LOCAL
DELIVERY

DISCOVER OUR NEW KITCHEN & BATHROOM SHOWROOM

Come and meet our Kitchen and Bathroom Specialists Paul and Dan for a free design consultation.

MY KIND OF
HOME



Symphony®

OMEGA PLC

EFF
COOKING BRASSIERE SINCE 1877

DURAVIT

Roca

hansgrohe

50% OFF FLOORS OR TILES*

*Terms and conditions: when spending over £5000+VAT on a kitchen or £3000+VAT on a bathroom. Orders to be placed and delivered before 30th September 2019. Selected ranges only. Offer capped at 30 square metres. Only available at MKM Beverley. MKM reserve the right to withdraw or amend the offer at any time.

BEVERLEY

Swinemoor Lane, East Yorkshire HU17 0JX
01482 880088 | beverley.mkmb.co.uk

MKM
BUILDING SUPPLIES