

just

ISSUE 52

# BEVERLEY

PICK ME  
UP, I'M  
FREE

THE BEST OF BEVERLEY AT

*Beverley  
Bestifal*

NEWS, WHAT'S ON, LIFESTYLE, FEATURES, PUZZLES, PHOTOS & MORE

MY KIND OF  
**HOME**

# QUALITY JOINERY FROM DOORS TO FLOORS



**FREE**  
LOCAL DELIVERY

Complete the look you want with doors, floors, windows, stairs, skirtings and architraves.

Pick up our brochure in branch today or visit [mkmbbs.co.uk](http://mkmbbs.co.uk)



**MKM BEVERLEY**  
SWINEMOOR LANE, EAST YORKSHIRE HU17 0JX  
01482 880 088 | [mkmbbs.co.uk](http://mkmbbs.co.uk)

  OPEN Mon-Fri 7:30-5:30 Sat 7:30-noon





## CONTENTS

Letters from the Editors **3**  
News **4, 5, 8, 9, 11, 20, 23**  
**PARKWAY CINEMA 6, 7**  
**EAST RIDING THEATRE 33**

## FEATURES

Beverley Bestifal **5**  
Institute of Technology Higher Skills Training **8**  
Interior Trends for your Home **10**  
East Riding College Apprentices Honoured **20**  
Anytime Fitness Trainers **29**

## REGULARS

Arts and Culture **4, 10, 16, 32, 33**  
Competitions **7**  
Competition Winners **6, 11**  
Countryside **25, 31**  
Fashion **13**  
Finance **20, 24**  
Fitness **29**  
Gardening **25**  
I've Been Thinking **14**  
Lifestyle **5, 13, 14, 15, 21, 29**  
Literature **32**  
Motoring **28**  
Sport **30**  
Walk **31**  
What's On **4, 5, 6, 7, 9, 11, 16, 21, 27, 33, 34**



## LETTER FROM THE EDITORS



This year the TdY will be passing through Beverley at lightning speed on Thursday 2nd May; you need to pick your spot carefully and early to get a glimpse of the professional riders. Check our website and Facebook pages after the event to see what

Just Beverley has captured on film!

On a cycling theme, 'Beryl' is running at ert until Saturday 18th May, celebrating the inspirational story behind an ordinary Yorkshire Mum. If you have not seen the production then book your tickets now - if you have, tell us what you think about it by commenting on our review on Facebook.

As the days grow longer and warmer, planning a holiday is foremost in many people's minds which often involves thinking about losing a few pounds, toning up or getting fitter for a particular activity. So why not take Anytime Fitness up on their 8-week challenge? Remember small changes BIG impact. Send in your good news and pictures; we love to hear from you!

Have a great May.

Julian.



My love of a good festival is well-known, so I'll be there on May 18th at Beverley's newest festival, Bestifal at Beverley Rugby Club. Unlike other festivals which bring people in from outside of the town to entertain us, this one celebrates all that is good

about us, here in Beverley! All organisations, clubs and charities are invited to be there to let everyone know what they are up to, and to encourage you to get involved, which, along with a stage with a very eclectic range of musicians, traders, an assault course (teams of 5 needed!), food and drink will make for a fabulous day! See our article on page 5 and follow Beverley Bestifal on Facebook to keep abreast of developments and announcements.

Almost the complete opposite of Bestifal is the Early Music Festival which brings in amazing musicians playing beautiful music written many years ago in our ancient buildings. But it's theme of 'passion' is very much the theme of Bestifal - passion for life and living and enjoying each other's strengths and talents. Whatever your passion, be happy!

Linda.

### Competition Terms and Conditions

Competition answers should be emailed to [competition@justbeverley.co.uk](mailto:competition@justbeverley.co.uk) before the closing date with the competition title in the subject field. Include your name, address and daytime contact telephone number along with your answer. Winners will be notified within 1 week of the closing date and MUST be available for publicity purposes for **Just Beverley** magazine, website and Facebook page and the prize provider. Photographs are usually taken the weekend after the prize-winners have been notified. The judge's decision is final. No cash alternative is offered. Details may be used for marketing purposes by **Just Beverley** and the prize provider and for website analytics by **Just Beverley**.

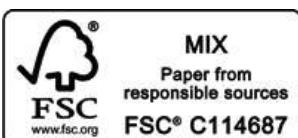
### Contributors:

Julian Minshall, Linda Johnson, Rich Manville, Lynne Auton, Lara Blythe, Gareth Botterill, Steve Brailsford, Carfan, Jane Dale, Paolo Deyes, Steve Duke, Elizabeth Godber, Colin Raynor, Ian Richardson, Karen Shead, James Storey, David Tute, Sam Walton, Clint Wastling, Helen Watson.

### You can pick up the magazine from:

Parkway Cinema, Flemingate, Beverley Tourist Information, Beverley Library/Treasure House, Tesco, Morrisons, East Riding Leisure Beverley, East Riding Theatre, Browns café, Beverley News, Boyes, Tesco café, Colette and Tyson Garden Centre, Beverley Garden Centre, Cherry Tree Garden Centre, Mace News Saturday Market, Co-op Food Lincoln Way, Tickton News, Costcutter in Walkington, Molescroft News, Grovehill Convenience Store, Maple News, Leconfield PO, Willerby News, Poundland, Halfords, East Riding Community Hospital, Bishop Burton PO, Leven PO, The Altisidora, Cherry Burton PO, Barkers of Cottingham, Middleton-on-the-Wolds PO, Light Dragon at Etton, Gnu at North Newbald, Monks Walk, Hayride, Sally's Deli, Ferguson Fawcett at Walkington, health centres, churches, cafés, hairdressers and more!

Printed by: Jadan Press.



Please pass your Just Beverley on or recycle it responsibly



## GET IN TOUCH WITH US:

Website: [justbeverley.co.uk](http://justbeverley.co.uk)

Email: [info@justbeverley.co.uk](mailto:info@justbeverley.co.uk)

Telephone: 01482 679947

Twitter: [@JustBeverley](https://twitter.com/JustBeverley)

Facebook: [facebook.com/justbeverley](https://facebook.com/justbeverley)

If you would like copies for your business to distribute to staff and customers, call Just Beverley on 01482 679947.

# EAST RIDING COLLEGE HITS THE TOP SPOT FOR ACHIEVEMENT IN YORKSHIRE

National achievement tables have put our own college at the top in Yorkshire and in the top 1% of all colleges nationally. East Riding College with its campuses in Beverley, Bridlington and Hull, was the best Further Education college in Yorkshire for 2017-18, when its students had an overall achievement rate of 89%. Additionally, the College was placed in the top 10% nationally for basic skills in English and maths achievement and for GCSE maths high grades achievement. This followed verified data that showed 94% of the College's 'class of 2018' progressed to positive destinations.

Mike Welsh, Principal and Chief Executive of the College said, "First of all, I'm really pleased for our students, who are obviously doing well at East Riding College in achieving their qualifications, as well as progressing onto positive destinations at an extremely high rate.

"Secondly, I want parents in Beverley to understand that they have an excellent post-16 provider right on their doorstep, which is delivering high-quality education and training to young people in Beverley and beyond. The College is riding high on a series of excellent results for its students, continues to develop its state-of-the-art facilities in Beverley, and is growing its apprenticeship provision. In short, it has all the features of an outstanding provider, both for advanced level courses and apprenticeships."

Teresa George, Head of English and Maths said, "High achievement in English and Maths is especially pleasing for us, as our English and Maths GCSE students in particular are often retaking exams after several attempts at school. To see them overcome what, for some, has become a real obstacle and be able to move on in their studies or into work is extremely gratifying."



Those taking their GCSEs at school this year can explore their post-16 options with East Riding College at an information evening at the College's Flemingate campus in Beverley on 2 May, 4-7pm.

## FINAL ACT FROM ARTERY LIVE! IS FROM YUKON TERRITORY, CANADA

*Diyet and the Love Soldiers promise to leave music-lovers utterly spellbound with their country/folk vibe when they visit Lund Village Hall as the final act of ArtERY Live's latest programme.*

Diyet is an indigenous singer/songwriter who sings in Southern Tutchone (her native language) and English. Her songs are about the people and landscape of her northern Yukon home and experience.

Diyet was born in a tent and raised in a cabin on the shores of a glacial lake in the Kluane region of Canada's Yukon Territory. The Love Soldiers are husband Robert van Lieshout on guitar and Bob Hamilton. Both are multi instrumentalists who collaborate to build the canvas for Diyet's

words and melodies. You can find out more at [www.diyetmusic.com](http://www.diyetmusic.com)

The gig is on Friday May 10th at 7.30pm with tickets available from 01377 217776 or 01377 219598 or email: [malcolmmckechnie@btinternet.com](mailto:malcolmmckechnie@btinternet.com)



## BEVERLEY'S EARLY MUSIC FESTIVAL 2019 EVOKES PASSION!

Running over the Spring Bank Holiday weekend, May 24th-26th, this year sees a passion for life celebrated by 5 groups of amazing musicians, including the sublime Tallis Scholars who, along with the Fitzwilliam String Quartet, make a welcome return.



Now in its 32nd year, the festival this year visits Beverley's beautiful Minster, St Mary's, St John of Beverley and Toll Gavel United Churches as well as taking a trip out to St James' Church at Warter featuring music, words and walks.

There is also a part-song workshop to discover popular harmony songs from chapel, tavern, parlour and theatre on Saturday morning at 10am.

The festival begins at St Mary's on Friday 24th with a tale of the Virgin Queen from exuberant Joglearesa with recorder ensemble Block4 presenting a programme dedicated to star-gazers in, where else? but St Mary's over Saturday lunchtime.

The Fitzwilliam String Quartet, who this year celebrate their 50th anniversary, will present an extraordinary work by Haydn, 'Seven Last Words', which features reflections by Canon Peter Moger to engage the soul as well as the mind.

Based on the Passion story, the work was commissioned in Cadiz and has been performed in Christian and secular buildings across the world. Here, it can be experienced in St John's Church at 3pm on Sunday, May 26th.

In contrast, the festival finishes with a flourish of Iberian passion from young group Cantoria, one of the National Centre for Early Music's emerging ensembles funded by Creative Europe. The Saturday evening concert (May 25th) features the Tallis Scholars singing Byrd, Fawkyner & Fayfax.

The programme is designed to reflect the love of sonority with a sense of profound contemplation. Prepare to be moved!

Tickets are available from Beverley Tourist Information, online at <http://tickets.ncem.co.uk> or 01904 658338.



## NEW COMMUNITY BUS ROUTE LAUNCHED

*The Hotham to Market Weighton route which operates every other Tuesday, morning and afternoon, courtesy of Beverley Community Lift is now in operation, for only £2!*

Hotham, Newbald and Sancton villagers bemoaned the fact there was no bus to take them to Market Weighton to connect with buses to Pocklington, York or Beverley.



Newbald residents, Hamish and Diana Stewart, worked with local Parish Councils and Beverley Community Lift to start a new service, using an 11-seater mini-bus which is suitable for young and old, with or without disabilities, with wheelchairs or buggies. At a heavily-subsidised £2 fare, Hamish and Diana are confident this service will be most welcome.

Hamish said: "You could enjoy an hour-and-a-half in Market Weighton by catching the morning or the afternoon bus before returning home or, if you catch the morning service, you can travel further afield and still be home in time for tea!

"You do need to register to use the service by phoning BCL on 01482 868082 but it is there for everybody! If we don't use it, we will lose it, so I urge residents to make a note of the timetable and get on board!"

The timetable is as follows:

OUT	RETURN
08.50 Hotham	10.45 Mkt Weighton
09.00 Nth Newbald	10.55 Sancton
09.10 Sancton	11.05 Nth Newbald
09.20 Mkt Weighton	11.15 Hotham
13.45 Hotham	15.30 Mkt Weighton
13.55 Nth Newbald	15.40 Sancton
14.05 Sancton	15.50 Nth Newbald
14.15 Mkt Weighton	16.00 Hotham

# BEVERLEY BESTIFAL - THE PLACE TO BE ON MAY 18TH

**If you go down to Beverley Rugby Club on May 18th, you are in for a great surprise because Beverley Bestifal is happening! Bestifal is designed to be a platform for any club, organisation or charity in Beverley to showcase what they do and how you can get involved with it, without it costing you a fortune!**

A day-long outdoor festival is coming to Beverley to celebrate all that's good about the town!

Family-friendly, with demonstrations, stalls, interactive games, fairground rides, a market and an 'It's a Knockout'-style assault course, food and drink, commentary by Beverley FM and a live music stage, Beverley Bestifal is a new festival for everyone to enjoy.



Try a taster session of a sport you've never had a go at before! Learn about a charity and perhaps offer to help them deliver their services! Listen to a local band or artist you've not heard before! Cheer on your team on the 'It's a Knockout'-style assault course!

Everyone is very welcome, especially families, teenagers, young adults, parents, children, Mums and Dads, Grannies and Grandads, Aunts and Uncles, cousins, friendship groups, sports teams, students, schoolchildren, workers and the retired - everyone!



If you run a charity, an organisation or a club or are a trader and want to be part of the day to help raise your profile and promote what you do, contact the organiser, Natalie Acton at [natalie@ukeventassociates.co.uk](mailto:natalie@ukeventassociates.co.uk) or **03333 441033**.

Natalie said: "There's a lot going on in Beverley, but I still hear kids saying 'I'm bored' or people saying they are lonely because they don't know how to find out about things that are happening. It's great to go swimming, for example, but that can incur a cost which people can't always afford and as it's a solitary activity, you don't necessarily meet anyone. Yet there are lots of outlets, activities and clubs for people of all ages if only they knew about them. Well, today, they can find out about them! So we need all those clubs to come along and show their offering."



Most festivals bring people in but this festival is all about home-grown, local talent. The musicians and bands appearing so far include everyone's favourite feel-good band The Beckwater Bushwackers; Claire Brocklebank with her Kylie and Lady Gaga tribute act; Grace Christianson; Rolling Stones tribute band Sticky Fingers; Work In Progress; Beverley Musical Theatre and blues band The Juke Joint Kings. The main stage will be hosted by Beverley FM's Alex Dunn and Adam Smith.

As to clubs and organisations, at the time of going to press, those already signed up include Indigo Pole Dancing; Fitmums; Track Fitness Boxing; Beverley Martial Arts and Leadership Academy; Tickton AFC; Beverley and Hornsea Scouts; Pauline Quirke Academy; Beverley Breeze Ladies Cycling; Nordic Walking; the Army and Beverley Rugby Club.



What is creating much excitement, though, is the 'It's a Knockout'-style 'assault' course built out of inflatables, which means anyone and everyone can have a go! Teams of 5 will complete the course, which will be timed (and handicapped appropriately) so a slot **MUST** to be booked.



The course opens at 12.30pm but slots are booking up fast! Make sure your team gets a slot by ringing **03333 441033**.

**Just Beverley** will be there, of course, capturing the fun on camera and posting out on Facebook and Twitter. See if you can spot yourself enjoying the day!

The day starts at 12noon and runs through until 9pm. Tickets are £1 from the Rugby Club or £2 through Eventbrite or on the gate.



Follow Bestifal on **Facebook/ BeverleyBestifal**



**EVERY THURSDAY AT 10.30am**  
(doors open 9.45am)

Join us for a free brew and a natter and enjoy some great films on Beverley Parkway's Big Screen. Only £4.20 with drink and biscuits included. Aimed at 55s and over. Films subject to change.

**Thursday 2nd May -**  
**Green Book | Mary Poppins Returns**

**Thursday 9th May -**  
**The Favourite | Green Book**

**Thursday 16th May -**  
**Vice | The Favourite**

**Thursday 23rd May -**  
**All Is True | Vice**

**Thursday 30th May -**  
**The Aftermath | All Is True**

## COMPETITION WINNER

Congratulations to Denise Raine from Beverley who won the Shazam! film goodies.



## PENGUIN PARTIES



**ONLY  
£195**

- Suitable for ages 5 to 12
- Up to 40 guests (additional charge for extra guests)
- Party games in a private function room with Parkway Penguin
  - Tea and coffee for parents on arrival
- Personal Photo montage on screen followed by your own film screening

For more information,  
please contact a member of staff

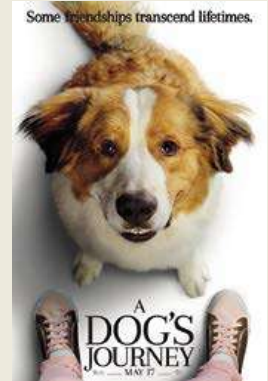
These are the films scheduled to open in May - *all are subject to change.*  
Check out up-to-date cinema listings at [www.justbeverley.co.uk/cinema-times](http://www.justbeverley.co.uk/cinema-times)



3rd May



3rd May



3rd May



3rd May



10th May



10th May



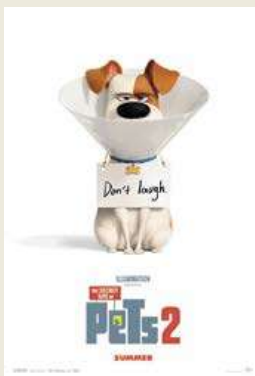
17th May



17th May



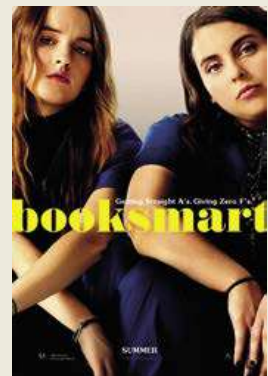
22nd May



24th May



24th May



27th May

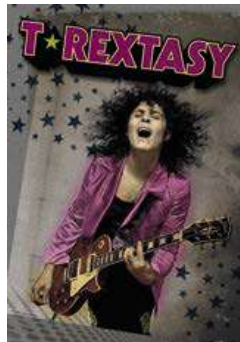
# YOUR LOCAL INDEPENDENT CINEMA



## RELIVE THE 1970'S GLAM ROCK ERA WITH T.REXTASY

*Pull on those platforms, get out the sparkle and get ready to boogie with the ultimate T. Rex tribute band!*

Marc Bolan with his band T. Rex, was one of the most flamboyant and charismatic stars of the original glam rock era. The band had a string of huge hits throughout the 1970's, including Love to Boogie, Telegram Sam, Jeepster, and 20th Century Boy.



T.Rextasy have been performing around the world for over 20 years - longer, ironically, than T.Rex itself. The band is endorsed and approved by Marc Bolan's family, estate, original ex-members of T. Rex and Bolan's catalogue management. T Rextasy is accepted as the world's only official live tribute band dedicated to Marc Bolan and T. Rex and been described by many as 'beyond the boundaries of tribute'. This is a rock 'n' roll concert for all ages! If you want to relive those glam rock hey days or just experience a Marc Bolan concert from the 1970's, this show is for you!

### WIN! TICKETS TO SEE T.REXTASY



Parkway Cinema Beverley and T. Rextasy would love to invite a lucky couple of T. Rex fans to this gig. All you have to do to win a pair of tickets is to answer the following question:

*T. Rex were originally a psychedelic folk band called Tyrannosaurus Rex. But in 1971 they released an album, their second as T. Rex, to critical acclaim. It is now considered the pivotal glam rock album. What was it called?*

Send your answer by email to [competition@justbeverley.co.uk](mailto:competition@justbeverley.co.uk) by close of play Sunday May 12th. The winner will be the first name drawn at random on May 13th. The winner must be available for publicity purposes for Just Beverley and Parkway Cinema. There is no cash alternative. It would be wonderful to see the winners in their glam rock threads!

### WIN POKÉMON GOODIES



*Launched on May 10th (book your tickets now!) and starring Ryan Reynolds as the voice and facial motion-capture of the Detective, the film also stars Justice Smith, Ken Watanabe, Bill Nighy and Kathryn Newton amongst others in live-action roles.*

Ryan Reynolds stars in the first-ever live-action Pokémon adventure as Pikachu, the iconic face of the global Pokémon phenomenon-one of the world's most popular, multi-generation entertainment properties and the most successful media franchise of all time. The story begins when ace detective Harry Goodman goes mysteriously missing, prompting his 21-year-old son Tim (Justice Smith) to find out what happened. The film is distributed by Warner Bros. Ent. who, to celebrate the release of the latest in the Pokémon franchise are, along with Parkway Cinema Beverley and Just Beverley, offering one lucky winner a goody-bag full of Pokémon Detective Pikachu merchandise. The goody-bag includes (contents not guaranteed):

- Detective Hat
- Fuzzy Headband
- Insulated Lunch Box
- Light-up Beach Ball
- Light-up Phone Charger
- Phone Wallet and Cleaning Cloth

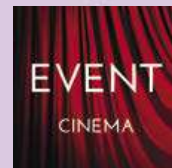


To be in with a chance of winning this great prize, all you have to do is answer the following question:

*Like all Pokémon, the title star of the new movie POKÉMON Detective Pikachu is known for being able to speak only a single word. What would that be?*

Send your answer by email to [competition@justbeverley.co.uk](mailto:competition@justbeverley.co.uk) by May 16th. Put **POKÉMON COMP** in the subject box with your answer, name, address and daytime telephone number in the body of the email. The winner will be the first name drawn at random on May 17th.

The winner will be informed as soon as possible. The winner **MUST** be available for publicity purposes for Just Beverley, Parkway Cinema and Warner Bros. There is no cash alternative. Good luck!!! ©2019 legendary and Warner Bros. Entertainment Inc. All Rights Reserved.



Event cinema offers something a little different to mainstream films. Live and pre-recorded shows beamed in via satellite from all over the world. Here are the latest live streams that you can enjoy on the big screen at Parkway Beverley.

**Tuesday 30th April at 6.45pm -  
ROH: FAUST**

**Tuesday 7th May at 1pm & 7.15pm -  
AN AMERICAN IN PARIS - THE MUSICAL -  
ENCORE (PG)**

**Wednesday 8th May at 7.15pm -  
AUSTRALIAN BALLET: SPARTACUS (12a)**

**Tuesday 14th May at 7pm -  
NT LIVE: ALL MY SONS (12a)**

**Thursday 16th May at 7.15pm -  
ROYAL BALLET: WITHIN THE GOLDEN  
HOUR/NEW SIDI LARBI CHERKAOUI/  
FLIGHT PATTERN**

**Sunday 19th May at 4pm -  
BOLSHOI: CARMEN SUITE/PETRUSHKA**

**Tuesday 4th June at 6pm -  
EOS: VAN GOGH & JAPAN**

**Wednesday 5th June at 7pm -  
RSC: THE TAMING OF THE SHREW**

**Saturday 8th June at 8pm -  
TAKE THAT GREATEST HITS LIVE (12a)**

**Tuesday 11th June at 7.15pm. Encore  
Performance Sunday 16th June at 2pm -  
ROYAL BALLET: ROMEO & JULIET**

**Tuesday 25th June at 7.30pm -  
NORTHERN BALLET: VICTORIA**

**Thursday 27th June at 7pm -  
NT LIVE: SMALL ISLAND (15)**

## LIVEshows

**Sunday 19th May at 7pm -  
T. REXTASY**

**Friday 30th August at 2pm -  
THE AMAZING BUBBLE MAN**

**Sunday 15th September at 7pm -  
THE BON JOVI EXPERIENCE**

**Sunday 20th October at 7pm -  
TAKE THAT EXPERIENCE**

**Sunday 10th November at 7pm -  
THE COUNTERFEIT SIXTIES**

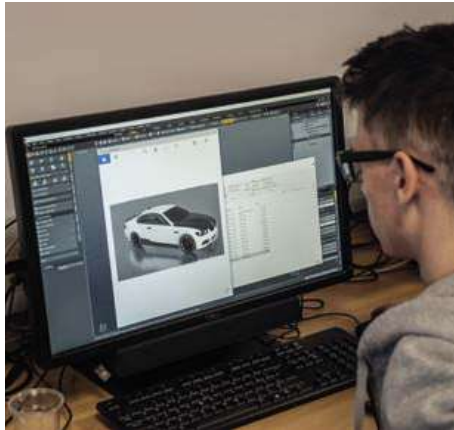
**Sunday 17th November at 7pm -  
THE BEST OF QUEEN**

# EAST RIDING AND BISHOP BURTON COLLEGES BOTH INVOLVED IN HIGHER-SKILLS TRAINING INSTITUTE OF TECHNOLOGY (IOT) INITIATIVE

Both colleges are working with York College (which was the lead applicant), Askham Bryan College, Craven College, East Riding College, Grimsby Institute of Further and Higher Education, Selby College, the University of Hull and the University of York St John to become a centre of excellence which is being funded by the Department of Education.

The new IoT is one of a number nationally. The Yorkshire and Humber IoT will be financed by £10m capital investment which will see both East Riding and Bishop Burton Colleges expand.

Bishop Burton will see a new £2m agricultural



training facility whilst East Riding College will have £1m invested in further developing its hi-tec engineering/technology skills provision.

The joint bid to become an IoT received significant levels of employer support, which was instrumental in its success.

Companies including VISR, CATCH, Skipton Building Society, GB Recruitment and ENGIE Fabricom recognised the need for investment in education to address their wider skills shortages.

Bill Meredith, Chief Executive and Principal of Bishop Burton College said: "The college is already the home of land-based education and training in the region, but this new investment will take that to a new level. It will deliver new courses in precision agriculture to ensure students learn the skills needed for successful careers in modern farming and allow them to launch exciting and rewarding careers. This will have a really positive impact on the local economy."

Helen Wooldridge, Assistant Principal at East Riding College said, "We are so pleased to see our collaborative bid succeed in attracting extra



investment in skills training in the region. What this means for the East Riding is investment that will see the future workforce acquiring higher level skills in the engineering and technical sector that employers in our area demand, and for which there is a projected skills shortage."

All the businesses involved in the bid have been signed up as employer partners to be involved in designing the curriculum, supported by research from the universities.

These employers will be part of the governance of the IoT to ensure continued collaboration and long-term benefits for the region.

## VERB

MENS AND WOMENS FASHION

TO WEAR • TO WANT • TO WISH FOR • TO OWN • TO FASHION



OPENING TIMES:  
MON / SAT 9.30 - 5.30  
SUN 11.00 - 4.00



01482 880141  
VERBFASHION.CO.UK  
INFO@VERBFASHION.CO.UK



FLEMINGATE SHOPPING CENTRE  
FLEMINGATE, BEVERLEY  
EAST YORKSHIRE HU17 0NQ



@VERBFASHION



@VERBFASHION



VERBFASHIONBEV

TO FASHION YOUR OWN STYLE



## CAFÉ SCIENTIFIQUE IS NOW BASED AT THE POTTING SHED

*Café Scientifique is a national initiative that brings scientists of all disciplines into a local hostelry to talk about their research. Events are free to attend - all you need to do is get yourself a drink and listen in!*

Monthly talks discuss topics from climate change to astronomy, medical advances to clean energy and palaeontology. It's an opportunity to find out about the ground-breaking work which is going on locally, current problems and potential solutions. The speakers welcome questions, too!



Beverley Science Café is held on the last Wednesday of every month and is sponsored by the British Science Association (Hull Branch), The University of Hull and The Royal Society of Chemistry. Find out more from Gareth Few and Isabel Pires at [science.cafe.beverley@gmail.com](mailto:science.cafe.beverley@gmail.com) on Twitter at [@Bev\\_Cafe\\_Sci](#) and Facebook.



## IT'S TICKTON'S BIENNIAL SCARECROW FESTIVAL TIME!

*Celebrating 'icons', Tickton's scarecrows are very likely to represent a wide variety of people!*

The scarecrows are on show on May 18th-19th, 10am-4pm each day. Programmes are £5 for a family, £2 for adults and £1 for children. They will be on sale at Tickton Methodist Chapel on main Street and at Cullington Car Park at the Beverley end of the village. Refreshments, a cake stall, tombola, Name the Scarecrow and Guess the Anagram competitions. Organised by The Church in Tickton, the Scarecrow Festival attracts locals and visitors to this lovely village.



## YOU ARE CORDIALLY INVITED TO A JUNE WEDDING

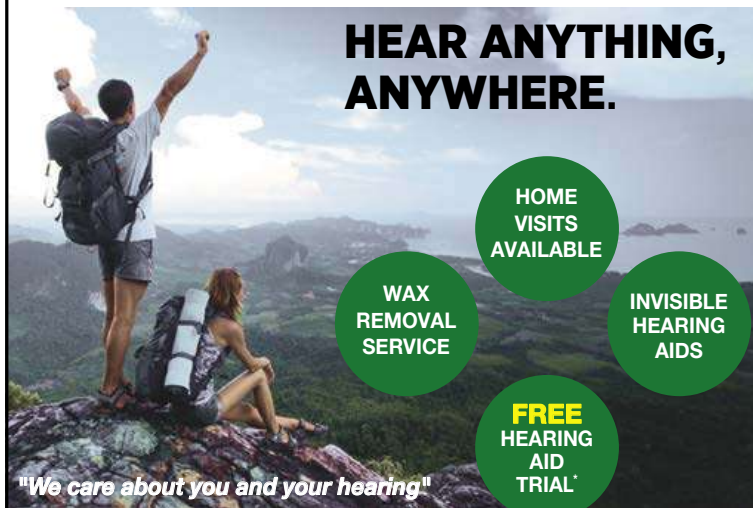
*From June 5th-8th, Beverley Theatre Company present Jimmie Chinn's hilarious comedy, 'Sylvia's Wedding'. With a script reminiscent of 'The Royle Family', 'Keeping Up Appearances' and 'A Bit of a Do' to name just a few, Paul Thomas and Colin Walls direct this comedy full of Chinn's customary keen observation of humanity.*



After 10 years of courting, Gordon suddenly decides to propose to Sylvia and throws his family, and hers, into turmoil. The two families are hardly compatible, but they do co-operate in the wedding preparations, until fate intervenes. Will the wedding go ahead? Head to Beverley Memorial Hall to see Emma Drew (as Sylvia), Colin Walls, Nev Slater, Tony Musgrave, Angela Chapman, Pat McKenzie and Jo Harding tell the tale. Curtain up at 7.30pm each night. More information and tickets from [www.beverlytheatrecompany.com](http://www.beverlytheatrecompany.com)

# HEAR THIS!

### HEAR ANYTHING, ANYWHERE.

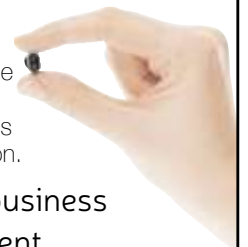


- HOME VISITS AVAILABLE
- WAX REMOVAL SERVICE
- FREE HEARING AID TRIAL
- INVISIBLE HEARING AIDS

"We care about you and your hearing"

Would you like professional hearing care that is different, more experienced and more caring than others?

Finding your perfect hearing aid is easier than ever because our independence guarantees you access to the biggest choice and best value for money. Try the latest, smallest hearing aids available, programmed to suit your lifestyle. Ask us for a **FREE**, no-obligation demonstration.



- INDEPENDENT family business
- **FREE** Hearing Assessment
- **FREE** aftercare
- 5 YEAR warranty\*
- 5 YEAR **FREE** batteries\*

**A LEADING CONSUMER SURVEY**



AWARDED Independent hearing specialists like HULL HEARING CENTRE **5 GOLD STARS** for choice, pricing & service.

### Trouble hearing? Then contact us today.

GO Local. GO Independent. BE Happy!

Clare House, 8-10 Baker Street, Hull HU2 8HP

tel: **01482 22 22 04**

[www.hullhearingcentre.co.uk](http://www.hullhearingcentre.co.uk) e:[stephen@hullhearingcentre.co.uk](mailto:stephen@hullhearingcentre.co.uk)



\*on selected products

# INTERIOR TRENDS FOR YOUR HOME!

As the sun pops its head out from behind the grey clouds and the kids return to school after their Easter Break, **THECREATIVELAB** talks interior trends to rejuvenate your home with style and flair.

As attentions now turns to the home and, more specifically, the regeneration and redecoration of interior spaces everyone wants to know what they should be focusing on in 2019.

Influenced by the ever changing world around us, recent trends have a strong forward thinking focus on everything from Scandinavian design

that is individual and sustainable (so avoid **IKEA** at all costs this year), to bolder statement colour confidence and full-on maximalism.

So what should you be thinking about for your 2019 interior design?

Well, silvers and whites are out and you should commit to completely redesigning your current colour palettes. The focus is two fold this year. You either want to go for the natural or the industrial.

Whatever your preference you should focus on two key words: "**MAXIMIST**" & "**INTEREST**"

## NEW NEUTRALS & BANISHING THE STRAIGHT LINES

Over the years interior fashion has increasingly experimented with a range of colour options and this year magnolia is finally and officially out! Instead you need to get your hands on a nice blush pink or pastel honey colour to coat your walls and complement it with high quality, locally produced wood furniture and 2019's skyrocketing trend of curves, curves and more curves. Curved mirrors, curved sofas and naturally curved wood furniture are all in for this seasons win!

Natural fabrics and locally purchased are also the go to staple for 2019. From natural woods to local ceramic homeware, if its natural or locally made then you can't go too far wrong.



## DARK & INDUSTRIAL DOESN'T HAVE TO BE DULL

The other massive trend in 2019 is industrial and interesting. If you are not one for pastelle colours then not to worry, midnight blue tones to decadently dark interiors are also a big hit this year when coupled with a range of industrial furniture and interesting statement pieces. If it gets people talking then you are on track for your living space to be the toast of the town in 2019.

You can find a range of interior furniture and stylish statement art and sculptures at **THECREATIVELAB** in the **Flemingate**.



**THECREATIVELAB**  
 ART • FASHION • DESIGN • INTERIORS • GIFTS  
[www.thecreativelabuk.com](http://www.thecreativelabuk.com)  
**FLEMINGATE**  
 BEVERLEY

**THE**  
**Depot**  
 Home to Beverley's Original  
 French Toast Sandwich

**BEVERLEY BUS STATION**

# NEWS FROM BEVERLEY TOWN COUNCIL BY TOWN CLERK HELEN WATSON

*With the advent of spring come changes for Beverley Town Council. With the local elections on Thursday 2nd May, a new council of 14 elected members will be selected by the residents of Beverley via the ballot box. Whilst several of the current councillors are standing again, others have chosen to step down after the four-year term of office. In total, 37 candidates are standing for the 14 seats, in what will be an enthusiastically contested election.*

However, this democratic process does not mean the work of the council has stopped! On Tuesday 9th April, the Brighter Beverley group hit the streets with a tidy day by collecting litter from the Lord Roberts Road, the Library and Jubilee Gardens. Thank you to everyone who joined us. The next tidy day is on Tuesday 14th May, 10am until 12pm, meeting at the green on the corner of Grovehill Road and St Nicholas Road, then moving round to Mintfields. Gloves, bags and litter picking equipment will be provided and all volunteers are warmly welcomed.

The Mayor of Beverley, Councillor Bryan Pearson, held his Civic Dinner on Thursday 25th April at Tickton Grange. This was his final big civic event and the last opportunity to raise funds his official charities - Cherry Tree Community Association and The Beverley Company of Church Lads' and Church Girls' Brigade. Both are fantastic organisations that play vital roles within our community.

May sees a tradition of Mayor Making take place in the Guildhall on Monday 20th at 6:30pm. The

town councillors annually select a chairperson from their number, who serves as Mayor for the year. As with all town councillors this is a voluntary role, but one that is a great honour and continues a tradition dating back to 1573.



Although the Town Council was only incorporated in 1999, it has taken on this ancient duty to ensure it survives into the 21st century. It will also be the first official meeting of the newly-elected council, to which members of the public are welcome to attend. The evening will see the outgoing Mayor present awards to celebrate the voluntary work of local groups and individuals. The councillors then elect a new Mayor, who dons the robes and chains of office and will serve as Beverley's First Citizen for the following 12 months.

Finally, thank you to all councillors who have served on the town council for their work over the past four years, especially to the Mayor and Deputy Mayor. Beverley Town Council staff look forward to working with the newly-elected councillors during their term of office.

## TIGER INN COMPETITION WINNERS



Congratulations to Alyson Pamley from Willerby who won cocktails at the Tiger Gin festival.



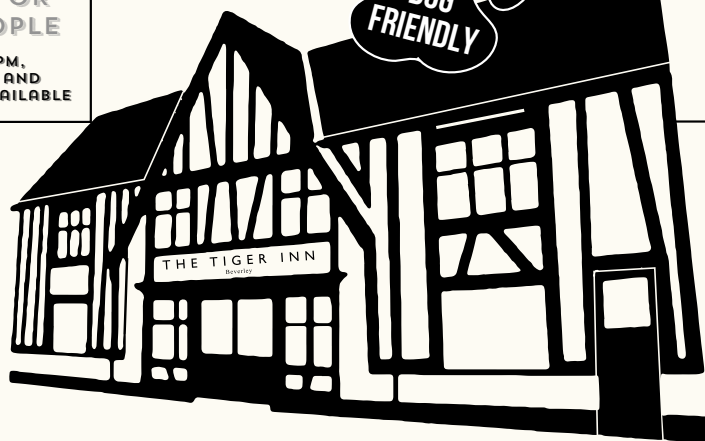
Congratulations to David Hall from Hessele who won afternoon tea at the Tiger Inn.



### AFTERNOON TEA MENU

£12.95 PER HEAD OR  
£24 FOR TWO PEOPLE

AVAILABLE MON-SAT 12-5PM,  
PRE-BOOKING IS REQUIRED AND  
GLUTEN FREE OPTIONS ARE AVAILABLE



HOME COOKED  
FOOD SERVED  
7 DAYS A WEEK

### GIN FESTIVAL

INCLUDES 50 SPIRITS  
GIN, WHISKEY, AND RUM  
BESPOKE COCKTAILS

4TH & 5TH  
MAY 2019

TRY OUR  
LEGENDARY  
SUNDAY LUNCH!

# THE TIGER INN

Tel: 01482 869040

[www.tigerinnbeverley.co.uk](http://www.tigerinnbeverley.co.uk)

Lairgate, Beverley HU17 8JG

**Going to East Riding Theatre?  
Book at The Tiger Inn for a  
pre - show meal**

### HOMECOOKED

## Sunday Lunches

Served every Sunday  
12noon-7pm

Brains  
required  
from  
8.30pm

FIRST SATURDAY  
OF THE MONTH

## Big Quiz

Free food/prizes to be won,  
all money raised to our house charities.

£1 per person entry

# FLEMINGATE BEVERLEY

FASHION | FOOD | FILM | FUN



SPRING

INTO ACTION  
AT FLEMINGATE



FRESH NEW SHOPPING AND MORE TO ENJOY

FLEMINGATE.CO.UK



@FlemingateBev



FlemingateBev



FlemingateBeverley

# GUEST AND PHILIPS AT FLEMINGATE IS BRILLIANT!

**Calvin Klein (CK) is a brand which exemplifies modern minimal or, as they put it 'absolute, contemporary'. Their fluid, organic sensual and integrated designs are a reflection of nowadays trends, appealing across all age ranges.**

'Brilliant' is a range which is made of strong, modern, yet eternally-beautiful stainless steel which effortlessly maintains its shine.

The design incorporates Swarovski crystals used in a very innovative way, which give extra sparkle whether you choose the silver or gold-colour.

The bangle has a one-sided twist so it opens easily, available in different sizes ranging from XS, S and M; the earrings are studded; the ring is available in L, N and P sizes and the necklace is adjustable to any length.



Guest and Philips also stock Calvin Klein's beautiful men's and women's Swiss-made watches which combine style and function with traditional engineering along with other ranges of open and alluring jewellery to suit

the most discerning individual. Since 1997 when US designer Calvin Klein and the Swatch Group pooled their formidable talent, their fresh designs, which take the everyday life and the world as inspiration have remained an international leader.

These photographs demonstrate why!



## GUEST & PHILIPS

EXCLUSIVE TO  
GUEST AND PHILIPS:

TOMMY HILFIGER

CARAT\*

LONDON

CJOGAU

GOLD OF ROYALTY

UNO

de50

PERFECT GIFTS  
FOR ALL OCCASIONS



LINKS

LONDON

swatch®

CALVIN KLEIN

MONDAINE

KIT HEATH

23A FLEMINGATE CENTRE, CHANTRY LANE, BEVERLEY HU17 0PW  
T: 01482 881001 | [WWW.GUESTANDPHILIPS.CO.UK](http://WWW.GUESTANDPHILIPS.CO.UK)

## I'VE BEEN THINKING... SAYS COLIN RAYNOR

At 9 a.m. Friday May 3rd on BBC Radio 4 you will hear the very familiar music by Eric Coates of the "Sleepy Lagoon" as forty-five minutes of the ever-popular Desert Island Discs begins with another famous castaway.



Started in 1942, it finally settled on to Radio 4 in 1967 and in 2017 celebrated its 75th year of broadcasting. The original idea was by Roy Plumley; he presented the programme until his death in 1985 with the format of the programme changing very little over all that time. Several household names have chaired the programme since then, but the principle of a guest choosing his or her own eight favourite records has remained the same. It is probably the longest running radio programme in this country, if not the world. I have to confess that it is less about the music and more what the people say about their choices, and, inevitably about themselves and their lives, that I often find most interesting. Then there is the place in the programme when questions are asked as to how the castaway will cope with the solitude of the desert island. They are told they will be given a copy of The Complete Works of Shakespeare, a copy of The Bible and that they can take a book of their choosing. I have read recently that the producers are considering not offering The Bible anymore and it is true that some famous people have chosen not to take The Bible. Maybe in our very mixed culture of society that we live in, there is a case for change, although I hope not in this case. I don't think the Bible is just offered to the castaway as a symbol of the Christian faith, although that might have been the original thinking, but I do believe there is another more valid and deliberate reason as to why The Bible is a good choice.

Shakespeare and The Bible have done more to shape the way in which we use language and understand our fellow human beings than any others and both books are on the best sellers' list each year. Why is that? Because, all life is there! Murder, mystery, poetry, wars, music, some very complicated family relationships and every conceivable human emotion, with historical events that have changed our world - and that is just in The Bible! I think of The Bible as a guide book for life and I would challenge any castaway who did read The Bible not to be influenced for good in their thinking and to gain a wider knowledge of humanity. The man or woman who is capable of reading but chooses not to read at all is missing so much of what life is all about. I don't have to go to a desert island to have the pleasure of reading such a good book. I sincerely hope the producers of Desert Island Discs don't change the programme's content.

## BREATHE EASIER!



For thousands of years 'salty air' has been a recommended form of health therapy

Could help with:  
Hayfever  
Persistent cough  
COPD  
Asthma  
Eczema  
Psoriasis

*'I can breathe deeper than I have been able to in years'*

Kim

SALT REVIVE  
85 MILL LANE, BEVERLEY  
01482 679453  
WWW.SALTREVIVE.COM



# EXPERIENCE STEAK LIKE NEVER BEFORE



ABUNDANT • ENTERTAINING • FRESH

9-10 Wednesday Market, Beverley HU17 0DG  
www.chamasbeverley.co.uk | T: 01482 867897

Rated Number 1  
out of 104 restaurants on  
tripadvisor  
\* as of 13/09/2019

## HEALTHY EATING WITH WEIGHT WATCHERS (WW)

*Building on the successful SmartPoints® system, WW gives you more freedom and flexibility than ever before, which means life doesn't have to stop while you lose weight. With WW, nothing is off the menu, so you can still enjoy the foods you love.*

WW inspires healthy habits for real life. It encourages you to enjoy food with freedom, find what moves you physically, and gives you the skills to shift your mindset so you can focus on what really matters on your weight loss journey - taking care of yourself and living your life the way you want to.

Every food and drink has a SmartPoints value: one simple number based on the calories, protein, saturated fat and sugar it contains. Protein drives the SmartPoints value up, while sugar and saturated fat drive it down. You have a personalised SmartPoints budget\* and as long as you don't overspend, you can expect to lose up to 2lb a week.

### EASY FISH STEW

This wonderfully rich-tasting fish stew is great for sharing with friends.

**Serves:** 4

**Prep Time:** 10 min.

**Cook Time:** 35 min.

**SmartPoints:** 0

### INGREDIENTS:

- 2 red onions, thinly sliced
- 400g tin chopped tomatoes
- 300g fish pie mix
- 100g young leaf spinach

### FROM THE STORECUPBOARD

- Calorie controlled cooking spray
- 2 garlic cloves, thinly sliced
- 1 teaspoon chilli flakes
- 2 teaspoons dried mixed herbs
- 200ml fish stock, made with
- 1 stock cube

### TO SERVE (optional)

- Crusty brown bread rolls

### METHOD:

1. Set a large nonstick pan over a medium heat and mist with cooking spray. Fry the onions for 10 minutes until softened and starting to caramelise - add a splash of water if they start to stick to the pan. Add the garlic and cook for a further 1 minute.

2. Add the chopped tomatoes, chilli flakes, dried mixed herbs and stock to the pan. Bring to the boil, then simmer for 20 minutes.

3. Add the fish pie mix and spinach to the pan and stir gently to coat in the sauce. Season to taste. Gently simmer for 5 minutes until the fish is cooked through and just starting to flake and the spinach has wilted, then serve.



## Find your nearest WW Studio™ in your local area

0345 677 7788\* [ww.com](http://ww.com)



WW Logo and WW Studio™ are the trademarks of WW International, Inc. © 2019 WW International, Inc. All rights reserved. \*Standard network charges apply.

**SHOCKINGLY GOOD VALUE**

# £49 PER MONTH WEBSITES

**PAY JUST £499 DEPOSIT**  
**THEN JUST £49 PER MONTH**  
**FOR A MINIMUM TERM OF 12 MONTHS**  
**AND THEN PAY MONTH-BY-MONTH THEREAFTER**

**FOR A WEBSITE THAT GETS REAL RESULTS...**

CALL NOW ON:  
01482 428650  
[marketing@indicoll.com](mailto:marketing@indicoll.com)  
[indicoll.com](http://indicoll.com)

**INDICOLL**

# 'CELEBRATE YORKSHIRE WITH MACKENZIE THORPE' SAYS DAVID TUTE

*Quirk and colour, alongside themes of family & love are abundant within Trent Galleries this Spring time. After another hugely successful Doug Hyde visit on March 28th, we look forward to welcoming new collections from numerous artists on our portfolio of national and international artists.*

You may have seen in recent newspaper articles or TV spots that internationally-renowned, Middlesborough-born Mackenzie Thorpe is this year's Artist of the Tour de Yorkshire. Having met Mackenzie in early April, his pride in representing the famous bike race, and indeed Yorkshire and its landscape, is enormous.

"The Boro' is practically Yorkshire anyway" he beamed, when unveiling his wonderful new collection to Gallery representatives in Leeds.

As well as having this great responsibility in conveying the pride of Yorkshire in pastel, Mackenzie is also celebrating 30 years as a professional artist - which ever since being a boy,

has been his driving passion, and very much his dream... He simply loves to draw!

Often compared to L.S. Lowry due to his working-class upbringing, simplicity of work and his passion and pride in where he is from, Mackenzie always reiterates that family is everything. "Love is all." He said. "On a canvas, I don't worry about details of eyelashes or grass, because to me, those things don't matter!" What Mackenzie does depict in his pictures is indeed love, and more crucially, a message and story with which people can make a personal connection to.

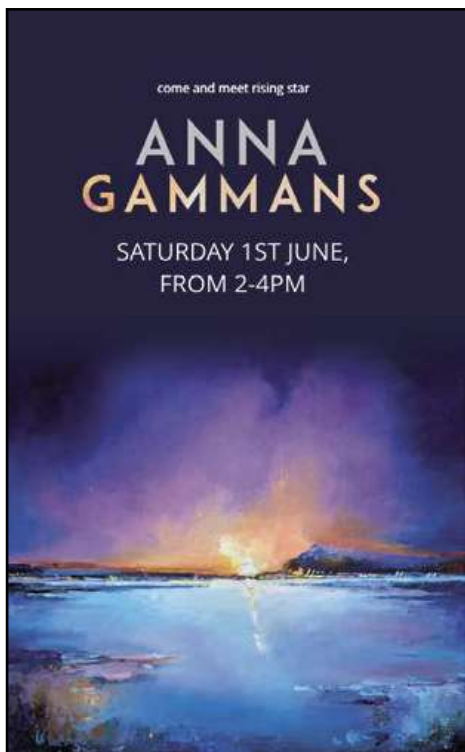
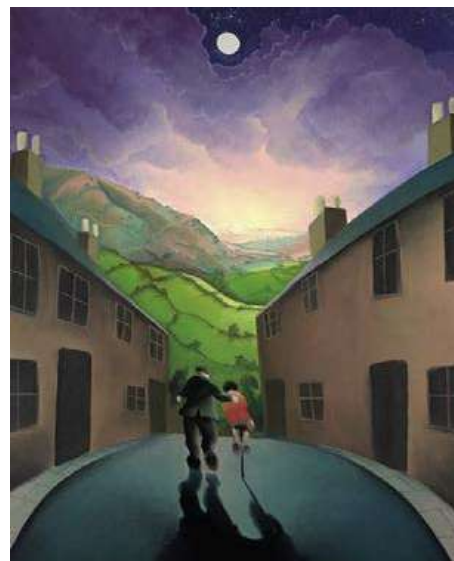
There is so much to discuss when it comes to Mackenzie Thorpe's artworks, and to mark his 30th Anniversary, and of course the upcoming Tour de Yorkshire, Trent Galleries will host an exhibition of his latest works. Having had a sneak peak of these as I type this article, I can say that as a Yorkshireman, the artworks will certainly capture the hearts of his followers and should certainly gain him new appreciation.

her works, in time for clients to secure pieces to get personally dedicated at the event - making for gorgeous Springtime gifts and additions to the home. And then, before we know it, June 1st will be upon us in Beverley, and we host our second event of the year in the company of upcoming contemporary artist Anna Gammans (as advertised below).

Lots of dates for the diary there, but Team Trent encourage you all into the Gallery over the coming weeks to explore the works first hand, and discover wonderful works of colour and emotion. What better way of seeing in the Spring-Summer seasons than immersing yourselves in a canvas or two?!!



Alongside Mackenzie's new release, Trent Galleries are looking to May and June and getting prepared for two more artist events - it's all go, I tell you! Dorset-based artist Rebecca Lardner will be joining our team in Newark for a showcase of her charming coastal scenes and glorious sculptures. In the build up to this occasion (Saturday 11th May), Trent Galleries Beverley will be showcasing



Renowned as an innovative and exciting new talent, Anna's spontaneous and energetic captures of stunning harbour locations are bathed by a whole spectrum of radiant and dramatic colours, creating a sense of visual harmony within her captivating sunset scenes.

Contact us to secure your name on the guest list



RSVP: 9 Butcher Row Beverley, HU17 0AA

Tel: 01482 874621

Email: [beverley@trentgalleries.co.uk](mailto:beverley@trentgalleries.co.uk)

[www.trentgalleries.co.uk](http://www.trentgalleries.co.uk)



Telephone: 01482 869111  
sales@rosesofbeverley.karoo.co.uk



The Kitchen Factory, The Courtyard,  
Tokenspire Business Park, Beverley  
HU17 0TB

*Together we will design a beautiful kitchen*



Roses will then  
**project manage**  
your kitchen installation from  
**start to completion**

Visit [www.roseskitchens.com](http://www.roseskitchens.com)

to see our customers kitchens and read what they have to say about us

**Telephone: 01482 869111**





Send your photographs of your celebration  
Find us on Twitter and Facebook to spot yo

# EGG-STRAVAGANZA



HERE TO GET *you* THERE

# HUNTERS®

EXCLUSIVE

BEVERLEY / 01482 861411

## SPRING VIEWS OF BEVERLEY



## BEVERLEY WESTWOOD LIONS DONATE PARATEDS TO NHS



SALES / LETTINGS / MANAGEMENT

**HUNTERS**<sup>®</sup>  
HERE TO GET *you* THERE

BEVERLEY / 01482 861411

# EAST RIDING COLLEGE APPRENTICES HONOURED AT ANNUAL AWARDS

**A prestigious event held at Beverley Racecourse, saw over 100 guests celebrate the hard work and dedication of the college apprentices and their employers. Twelve 'Apprentices of the Year' were celebrated after nomination by their assessors and employers and businesses recognised for their contribution and commitment to training apprentices.**

East Riding College's annual apprenticeship awards ceremony was held during National Apprenticeship Week to celebrate the contribution that apprentices are making to the region's businesses and to recognise the employers that are supporting them.

Apprentices of the Year were nominated by their assessors and employers, with the twelve eventual winners selected from over 400 apprentices training with the College.

Businesses were nominated by the College's Business Development team, in recognition of their contribution and commitment to training apprentices.

Outstanding contribution awards were nominated by employers themselves, honouring their apprentices for making an outstanding contribution to their business. Winners ranged from younger apprentices to adult apprentices.

Of particular note was Apprentice of the Year for Civil Engineering, Design and Highways Kerry Lewis, from Market Weighton who works as an apprentice at East Riding of Yorkshire Council. Kerry was nominated by her assessor, for being an asset to course.

Richard Sellick, Director of Business Programmes at the College said, "Kerry is a mature, motivated and confident apprentice. She is a great team worker, always ready to participate, and approaches her learning in a very collaborative way, adding value for her fellow apprentices. She aims for the highest possible standard and raises everyone's expectations of what should be produced, gaining very high pass rates so far. We're lucky to have Kerry as an apprentice in civil engineering and she fully deserves to be apprentice of the year, we expect her to progress to a higher-level apprenticeship in the near future."

Kerry Lewis, assistant engineer at East Riding of Yorkshire Council, said: "I'm really honoured to get the award. It came as a bit of a shock. But it's great to be recognised for your hard work and commitment."



*Pictured: Chair of Governors Simon Wright, Kerry Lewis and Mike Welsh, Principal and CE of East Riding College*

## HOW ARE STUDENT LOANS COLLECTED? LYNNE AUTON FROM STIPENDIA EXPLAINS THE SYSTEM

**UK employers deduct student loan repayments through the PAYE system based on information provided by their employee, although HMRC will send employer prompts if they think incorrect deductions are being made. Should incorrect or no information on the loan type be provided, repayments will be deducted as if the employee has a Plan 1 loan.**

Where the borrower completes a self-assessment tax return then student loan repayments are calculated and paid through the self-assessment. However, loan repayments are not included when calculating payments on account. It's important to remember that any voluntary repayments borrowers make are not taken into account when calculating payments due through either PAYE or self-assessment; instead, such repayments enable the loan to be repaid faster.

### How are loan repayments calculated?

Repayment thresholds and rates differ by the type of loan. Generally, for earned income in the 2019/20 tax year:

- Plan 1 loan repayments are due at a rate of 9% on earnings above £18,935;
- Plan 2 loan repayments are due at a rate of 9% on earnings above £25,725;
- Postgraduate loan repayments (England and Wales only) are due at a rate of 6% on earnings above £21,000.

### Earnings

Earnings for student loan purposes are calculated in the same way as for National Insurance contributions, so before calculating loan repayments you may need to adjust the earnings for tips received, for example. However, pension income which is not subject to national insurance is treated as unearned income for this purpose (see below).

### Unearned income

If a borrower completes a SA tax return and has more than £2,000 of unearned income, this is also included when calculating loan repayments. The repayment calculation is different for unearned income, because where it is more than £2,000 the whole amount is included, not just the income above the threshold (as would be the case for earned income).

### Example

Adam receives £3,000 of rental income which is declared on his tax return. The whole £3,000 falls into his loan repayment calculation, not the excess of £1,000 (£3,000 - £2,000).

Contact Stipendia on **0845 308 2288** for more information!

# BEES

BURTON ELECTRICAL SOLUTIONS



HIGH QUALITY ELECTRICAL WORK ACROSS EAST YORKSHIRE AND THE HUMBER REGION

**DOMESTIC**

**COMMERCIAL**

**TESTING**

**FAULT DIAGNOSTICS**

*Whether it's for your home, rental property portfolio or business premises, all electrical installations need to be checked periodically by a qualified electrician. For a quote contact:*

**Andrew Burton**

**01964 552769 • 07585 601730**

**www.burtonelectricalsolutions.co.uk**

**info@burtonelectricalsolutions.co.uk**

## LOST YOUR PARTNER RECENTLY? PERHAPS NOW'S THE TIME TO JOIN A NEW FRIENDSHIP GROUP

When the time feels right to join in again after bereavement, local friendship group Loyal Beaver Branch Oddfellows, say they can help make those daunting first steps a little easier to take.

Steve Duke, Branch Secretary, for the Loyal Beaver Branch, said: "Wanting time alone or to stay in is only natural following the loss of a partner; the time it takes to feel ready to step out and meet people again is a very personal thing. It can be a matter of weeks for some or possibly years for others. Our advice is to take it one step at a time and to do it when it feels right."

With over two centuries of experience in offering friendship and support to its local members, the Beverley based Branch of the Oddfellows is no stranger to supporting people through difficult times.

Steve Duke continued: "When you've lost someone it can be hard to muster up the courage to join in and meet new people again. We understand how daunting it can be as you probably did a lot of things as a couple. Sustaining friendships can seem hard after a loss, but over time the people around you will be a crucial part of helping you to cope moving forward. There are so many wonderful things to get involved with locally.

"We'd recommend coming along to our Lunch & Chat on 8 May at 12.00 noon at Gilberdyke Garden Centre as it's a great first event for those who would like to meet new people. We've seen many supportive friendships form within our group, especially between other widows and widowers because they just know what each other is going through. If you have transport problems, we may be able to pick you up & bring you back - just ask!"

To have a chat with somebody ahead of the event, or to find out what else is going on, contact Steve Duke on [steve.duke@oddfellows.co.uk](mailto:steve.duke@oddfellows.co.uk) or call **01482 860537** (we use caller screening for unknown callers, so please follow the instructions & if in we will pick up & answer) after 8am.

For information on the Oddfellows and further advice on socialising again after losing a partner visit [www.oddfellows.co.uk/firststeps](http://www.oddfellows.co.uk/firststeps)

## Four Generations, Giving Over 125 Years Service

Herbert 1870-1962    Eardley 1908-1986    Geoffrey 1939-2015    David 1964



Golden Charter  
Funeral Plans



- Funerals Respectfully Conducted
- 24 Hour Out of Hours Service
- Free Advice & Support
- Private Restrooms
- Prepaid Funeral Plans Available
- Finance Options Available



**Tel: 01482 844695**  
[www.hkempandsonltd.com](http://www.hkempandsonltd.com)

259 Hallgate, Cottingham, East Yorkshire, HU16 4BG  
Fax: 01482 843898  
Email: [hkempandsonltd@gmail.com](mailto:hkempandsonltd@gmail.com)

**OVER  
20 YEARS  
EXPERIENCE**



Print that gets you noticed



**BROCHURES LEAFLETS BUSINESS CARDS POSTERS  
CALENDARS POP UP BANNERS INVITES PADS**

**Tel: 01482 610902**

**[info@jadan-press.co.uk](mailto:info@jadan-press.co.uk) [www.jadan-press.co.uk](http://www.jadan-press.co.uk)**

**Rainbow House, Kimberley Street, Hull, HU3 1HH**



To arrange a **FREE** meeting  
call us on 0845 308 2288  
or visit [www.stipendia.org.uk](http://www.stipendia.org.uk)



 Stipendia Payroll Solutions  @StipendiaPay



## Your Partners in Payroll

April changes in payroll. Have you got it right?  
Outsource your payroll today and be rest assured everything is taken care of!

- New Pension Contributions Rates
- New Minimum Wage Rates
- New Statutory Sick and Maternity Pay Rates
- Perfect your Payslips



Scan the code above to download our New App  
Or download our App on iOS:  
<https://itunes.apple.com/us/app/myaccountants/id1317268476?mt=8&ign-mpt=uo%3D4>

Or download our App on Android:  
<https://play.google.com/store/apps/details?id=uk.co.myfirm.sapp.one.accountants&hl=en>

Once downloaded you will need a unique unlock code  
which is "STIP0418"



## IN THE PINK IS NOW OPEN IN TOLL GAVEL!

*#inthepinkbeverley is now trending on social media. Why? If you have your photograph taken on the fabulous rocking horse in the Beverley shop, post it on Instagram or Facebook with the hashtag #inthepinkbeverley and prove to the staff you have posted you could be in receipt of a free pair of silver earrings - one pair per customer until the end of May or stocks last!*



Now vibing is complete, the boutique In The Pink store in Toll Gavel is showing off its handmade and specially-selected ranges of silver jewellery to their finest.

As a way of welcoming In the Pink to Beverley, you could be the owner of a complimentary pair of beautiful silver earrings, just for visiting the store and having your photograph taken!

We at **Just Beverley** look forward to seeing the photos of the ladies of Beverley on the rocking horse with their new earrings!



## BCL RECEIVES WELCOME DONATION

*Beverley Community Lift were delighted to receive a grant of £5000 from the Masonic Charitable Foundation (MCF) and welcome members of the Masonic Province of Yorkshire North & East Riding to their offices.*

BCL Manager Fiona Wales said "We were unaware of the MCF until Karl Douglas of Not Just Travel told us about it. We applied for and have been granted one of their small grants which we have split between our replacement minibus fund, our hardship fund and our outings fund. I would like to thank the MCF for their generosity and for taking the time to come and visit us to find out more about the services we provide. As a small local charity, BCL relies on funding of this nature alongside our own fundraising efforts.



"Our next big fundraising event is our 24-hour Sing-a-thon with Leconfield Community Choir on June 9th. Running alongside it is a Grand Prize Draw with some fantastic prizes - an iPhone X, an iPad Pro, a hand-made double quilt, Tea for 2 with Bubbles at the Beverley Arms. Tickets are £1 from the BCL Shop on Sow Hill.

"We always need volunteers for a myriad of jobs, too. Do call me on **01482 868082** or email [manager@bclift.org.uk](mailto:manager@bclift.org.uk)."



**OPEN 7 DAYS**

**Opening Hours:**

**Mon, Tues, Wed, Fri 9am to 6pm**

**Thu 9am to 7pm**

**Sat 8am to 6pm**

**Sun 10am to 3.30pm**



**CAVEMAN BARBER - 13 BUTCHER ROW, BEVERLEY, HU17 0AA**

**Tel: 01482 872172**

**HAIR CUT & STYLING**

**SKIN FADE**

**BEARD**

**KIDS (UNDER 16)**

**WET SHAVE**

# PROFESSIONAL LOGO DESIGN FOR YOUR BUSINESS

Your logo is the very first thing that a potential customer sees, so you need to be sure that it leaves a lasting impression. Whether you are a new business or you're an established company looking to rebrand, here's why Indicolll believes its team is the perfect partner to deliver a professional logo design.



## • YEARS OF EXPERIENCE

Indicolll's design team has spent more than a decade working with businesses like yours to craft a logo that is reflective of what you offer. First impressions count so Indicolll takes the time to understand your business and the message you are trying to portray to your customers.

## • WIDE & VARIED PORTFOLIO

Indicolll has worked with lots of different businesses, from local startups to big corporations. By choosing Indicolll you'll get the benefit of this experience! Explore their portfolio and check out some of the clients that they have worked with at <https://indicoll.co.uk/portfolio>

## • GOOD VALUE FOR MONEY

Your logo will be used in every element of your business for years to come, so it's worth investing in a professional logo design from the off.

Indicolll's fixed price logo design packages offer great value for money and allow you to choose from 2 or 3 different concepts. They will show you how these logo concepts might look on a range of different mockups, including a website, business card and other marketing materials.

This gives you a glimpse of how the logo may be used and brings the brand to life. Most clients choose 2 or 3 concepts, but if you require more, Indicolll can provide you with an estimate. Simply get in touch with them to discuss your needs.

Once you have chosen your preferred logo design, Indicolll will supply your logo in a selection of file formats for future use.

## • FREE BUSINESS CARD DESIGN

In addition to high quality logo concepts, Indicolll will also produce a business card design for you once you have chosen your preferred logo design.

## • QUICK TURNAROUND

Your new logo design is usually delivered within a couple of weeks or even sooner so you can get on with setting up your brand new business.

## • GET A QUOTE TODAY!

The next step is to get in touch for a no obligation quote.

Let Indicolll know how many concepts you would like and they will give you an estimate in return. Once you've accepted the estimate, the team can get on with bringing your new branding to life!

Call **01482 871178** or email: [marketing@indicoll.com](mailto:marketing@indicoll.com) today for a quote.

# PENSION TAX CHANGES FOR DOCTORS COULD LEAD TO NHS CRISIS

A number of doctors have recently become aware of significant tax charges that are being applied to their pension contributions. From 6 April 2016 a new tapered annual allowance was introduced that tests an individual's "threshold income" and "adjusted income".

If the threshold income (taxable income) exceeds £110,000 then the adjusted income is also tested. If adjusted income (taxable income plus pension inputs) exceeds £150,000, then the individual's annual allowance for pension contributions is reduced by £1 for every £2 excess.

The current pension annual allowance is £40,000 and this can only be reduced as far as £10,000. The problem is that the doctor, and anyone else who is a member of a defined benefit pension scheme, are not in control of how much their pension benefits increase by each year.

If a substantial pay increase is received then there is also a substantial increase in the benefits in that particular year. This could increase the adjusted income in any particular tax year and then lead to a large tax bill.

Any excess of pension inputs are taxed at the tax rate that is applicable to the individual, in this case at least 40%. This scenario is apparently leading to some doctors refusing extra shifts to ensure that their taxable income remains below £110,000 and could potentially cause issues for the NHS over a longer period of time.

Any members of these types of schemes should seek advice immediately and review the details of their pension schemes for the period since 6 April 2016 as in many cases the tax charges that relate to these tax years are only just now becoming apparent.

If you would like to discuss this in more detail, then please contact Gareth Botterill on **01482 862240**.



**Botterill & Co**  
Chartered Certified Accountants

**We are a modern and professional accountancy practice ideally located to serve businesses in Beverley and the surrounding area.**

**We utilise modern accounting technology to provide you with a cost effective, professional service.**

**Our services:**

- Annual Accounts
- Tax Planning
- Management Accounts
- Tax Returns
- Company Formations
- Payroll
- Cloud Accounting
- Bookkeeping & VAT

**For a free initial consultation please contact us:**

**Office: 01482 862240**  
**Mobile: 07966 051458**  
**Email: [gareth@botterillco.co.uk](mailto:gareth@botterillco.co.uk)**  
**Website: [www.botterillco.co.uk](http://www.botterillco.co.uk)**

**1st Floor Offices, 40 Norwood, Beverley, HU17 9EY**



# COUNTRYSIDE MATTERS WITH SAM WALTON

*It is quite funny how people stop you in the street when you have written something to which they can relate.*



At some time, I must have mentioned about how farm workers were treated years ago and how, before masks were invented, some men would wrap their handkerchiefs around their mouth and nose to keep the dust out on threshing days.

They would be called 'Cissy' by some of the others but, sadly, many later in life suffered all sorts of problems with their breathing as hankies were not really good enough. But there are still one or two old timers around to tell the tale.

Coming out of Leconfield Post Office recently, an elderly gentleman stopped me and asked: "Are you that chap what writes about farming in that there magazine **Just Beverley**?" We had quite a conversation about threshing days and how there was competition to see who could carry the heaviest sack. I recalled one day when it was decided the men would have a properly organised and weighed competition!



Normally if wheat and barley were going away to a merchant, they would be in 16 or 18 stone sacks, so each one had to be weighed. If corn was going to be taken up into the granary and tipped out for use on the farm as feed, they would fill the sacks as full as possible.

I remember one sack of beans being weighed at 19 stones! That inevitably put a strain on the carrier's legs and gave them back ache - in addition to breathing problems.

One day the boss arrived to see what was going on. He was relatively young and very strong and I know he had done his share of carrying corn. There was a bit of banter about whether or not he would still be able to carry a full bag.

He carried a really full bag with the greatest of ease and someone suggested that they would need a bigger sack to test him. Having a sense of humour, he then suggested that one of them got on top of the sack as well and he carried both up to the granary. I don't think they would ever doubt his ability anymore!

The gentleman talking to me said he had trouble with his knees now all due to carrying corn. I guess the industry owes a lot to many men who are suffering effects but the men who carried the corn were paid twice as much as the others, so probably thought they were on to a winner.

So money is not everything.

## IN THE GARDEN... MAY

*Well this year we seem to have been spared the ravages of a 'beast from the east' and a very wet winter, this has made getting the garden ready for the coming season relatively straight forward - no soggy soil or wind scorched plants to deal with.*

**May** is the month when we transition from late spring into early summer, greenery still has freshness and the exuberance of summer colour starts to unfold. Wherever you look vibrant colour is appearing, plants at their very best are Rhododendrons; Syringas (Lilacs); Peonies; Wisteria and Spireas to name a few.

Last year I was very lazy when it came to growing produce in my small vegetable plot, I intend to make amends this year and will be sowing beetroot, courgettes, runner beans, dwarf beans and salad leaves in the ground and tomatoes and peppers in pots.

I may even plant a squash or two, although they are a bit like Triffids, the last time I grew them they wandered over the fence into next doors garden! At the beginning of May I will plant up my pots and containers with summer annuals and let them establish under cloches before I place them around the garden at the end of the month, even later if the weather is cold and miserable.

### *Tasks for May...*

- Be ready to protect plants against sudden frosts.
- Water all new plantings if weather is dry.
- Trim spring-flowering perennials.
- Finish pruning spring-flowering shrubs e.g. Forsythia and Kerria.
- Tidy up the foliage of spring bulbs and mark where they are in the garden. Divide daffodil bulbs and replant if they are starting to produce less flowers, this is a sign they are becoming crowded.
- Plant up hanging baskets and patio pots with summer bedding, but harden off in a sheltered spot.
- Keep on top of pests and weeds - including slugs.
- Trim hedges and topiary and then feed them.
- Keep sowing vegetables out of doors.
- Continue to sow tender vegetables under cover.
- Check greenhouse ventilation and provide shading if necessary.
- Continue pruning trained plums and cherries.
- Mulch strawberries with straw or mulch mats.
- Cut lawns weekly and blitz lawn weeds.
- Remove duckweed and blanket weed from ponds.

### *Happy gardening, Jx.*

Jane Dale of 'Designed Gardens'. Tel: **07983 392 411**.



# PUZZLE PAGE

## WORDSEARCH

B O F K G Q X A P H N E N S M  
 Y L V X O N F W S Q N R N L W  
 G X O Z E F I J S I C R U A E  
 M C V S K C T N H U G U S V G  
 S H J P S U X S E N K F P I V  
 H S R I G O N H A D I Q R T W  
 Z T K F P U M T P P R Q I S S  
 D T L L S W U K Z P B A N E G  
 P O Z G A R J H T B T V G F M  
 C H S O E W Z L Z X X J I L P  
 I M F B Z T D F B D N Y M E P  
 K M O I J A U P H M U H B U L  
 S L I D O F F A D S B M A L E  
 D A Y L I G H T J I Q L G R B  
 C T C D Y B R C M T I I K E K

BLOSSOM  
 DAFFODILS  
 DAYLIGHT  
 FESTIVALS  
 GARDENING

LAMBS  
 NATURE  
 SPRING  
 SUNSHINE  
 WALKS

## WHERE IN BEVERLEY?

Where in Beverley would you find these landmarks?  
 Answers on Page 34.



## SMALL CHANGE - BIG IMPACT

Smile - see the reaction

Ask - How are you today

Have a Glass of water before a meal

Take 30 minutes to have time for yourself

Stretch - makes you feel good

Try something new - Food, Drink, Recipe, Exercise

Do you have any amusing stories,  
 quotes or pictures? Send them to  
[info@justbeverley.co.uk](mailto:info@justbeverley.co.uk)

## THOUGHT FOR MAY

Wake up and say "this is a fantastic day"

## QUALITY KITCHEN MAKEOVERS

by simply replacing the doors and worktops

Est. 1999

From the UK's #1  
 kitchen makeover experts.  
 Visit our showroom now

Before



- FROM SIMPLE DOOR REPLACEMENTS TO COMPLETE FITTED KITCHENS
- FULLY INSTALLED BY LOCAL PROFESSIONALS IN JUST A FEW DAYS
- CHOOSE FROM A LARGE SELECTION OF DOORS, WORKTOPS AND APPLIANCES
- 84 SHOWROOMS NATIONWIDE

Proud members of  
**9.7/10 Checkatrade.com**  
 Where reputation matters  
 See what our customers have to say



**20% DISCOUNT**  
 Terms and Conditions Apply



CALL US NOW FOR A FREE ESTIMATE:

**01482 861653**



VISIT OUR SHOWROOM:  
 4A BELPRIN PARK, SWINEMOOR LANE,  
 BEVERLEY, HU17 0LN

**DREAM DOORS®**  
 NEW LIFE FOR OLD KITCHENS

[www.dreamdoors.co.uk](http://www.dreamdoors.co.uk)

# EAST YORKSHIRE COACHES

*Because quality matters.*



## Get away by coach!

### Coaches from Beverley from just £79!

#### City "Freedom" Breaks

Spend a couple of days away based on your choices and not ours – where you eat, where you visit and when you do things. With centrally located hotels close to all the cities' amenities, restaurants and attractions, you have the freedom to enjoy the city and savour the atmosphere – with bed and breakfast included.

**Newcastle : £85pp : Sunday 14 July : 2 days**

**Lincoln : £79pp : Sunday 4 August : 2 days**

**Liverpool : £85pp : Sunday 25 August : 2 days**



#### Concorde, Castles & Code Breakers

Thursday 6 June : 5 days : £399

DOOR to DOOR

- Four nights' dinner, bed & breakfast.
- Admission to the Imperial War Museum Duxford.
- Entrance & guided visit of Rockingham Castle.
- Entry to Bletchley Park.
- Excursions & free time in Lincoln, Cambridge & King's Lynn.

Your Hotel: Huntingdon Marriott Hotel \*\*\*\*

#### The Lake District

Monday 24 June : 5 days : £379

DOOR to DOOR

- Four nights' dinner, bed & breakfast
- Visits to Leyburn, Hawes & Skipton
- Excursions to Keswick, Grasmere & Kendal
- Scenic drive including visit to Ulverston

Your Hotel: Shap Wells Hotel \*\*\*+

#### Explore the Isle of Man

Thursday 8 August : 6 days : £499

DOOR to DOOR

- Five nights' dinner, bed & breakfast.
- Return ferry crossing.
- Train journey from Douglas to Port Erin.
- Full day guided tour of the island.
- Free time in Douglas.
- Excursions to Port St. Mary & Castletown.

Your Hotel: Chesterhouse Hotel \*\*\*

#### Forest of Dean & Brecon Beacons

Monday 19 August : 5 days : £409

DOOR to DOOR

- Four nights' dinner, bed & breakfast.
- Visit to Tintern Abbey.
- Entry to Chepstow Castle & Museum.
- Guided tour and tasting at Hillside Brewery.
- Return rail journey.
- Full excursion programme.
- Live entertainment in the hotel.

Your Hotel: Bells Hotel \*\*\*

#### Devon Delights

Monday 26 August : 5 days : £429

DOOR to DOOR

- Four nights' dinner, bed & breakfast.
- Visits to Bideford & Barnstaple.
- Excursions to Lynton, Lynmouth & Woolacombe.
- Day in Paignton.

Your Hotel: Best Western Tiverton \*\*\*+

#### Picture Perfect Constable Country

Sunday 8 September : 5 days : £419

DOOR to DOOR

- Four nights' dinner, bed & breakfast.
- Admission to the Beth Chatto Gardens.
- Guided tour of Constable Country.
- Entry to Audley End House.
- Full excursion programme.
- Free use of the hotel's leisure facilities.

Your Hotel: Best Western Marks Tey Hotel \*\*\*+

#### A Real Tonic in Winchester

Thursday 12 September : 5 days : £459

DOOR to DOOR

- Four nights' dinner, bed & breakfast.
- Admission to Winchester Cathedral.
- Tour of the Bombay Sapphire Gin Distillery.
- Entry to the Milestones Museum & Mid Hants Railway journey.
- Entry to Arundells House, Garden & Exhibition Room.
- Full excursion programme.
- Free use of the hotel's leisure facilities.

Your Hotel: Norton Park Hotel \*\*\*\*

#### The Broads Explorer

Monday 16 September : 5 days : £409

- Four nights' dinner, bed & breakfast.
- Steam train ride with cream tea.
- Cruise on the Norfolk Broads.
- Visits to King's Lynn, Cromer & Sheringham.
- Free time in Norwich & Ely.
- Access to the hotel's leisure facilities.

Your Hotel: Dunston Hall \*\*\*\*

#### Idyllic Isle of Wight

Monday 7 October : 5 days : £379

DOOR to DOOR

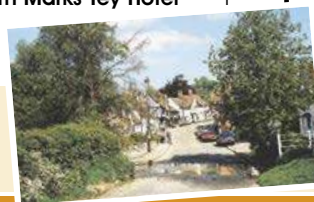
- Four nights' dinner, bed & breakfast.
- Admission to Osborne House.
- Visits to Ryde & Shanklin.
- Optional excursion to the Needles (admission charges may apply).
- Entertainment in the hotel.

Your Hotel: Trouville Hotel \*\*\*



Like us  
East Yorkshire Coaches

Follow us  
@EYCoaches



Single supplements apply for some holidays.

Just **MOTURING**  
**CLASSIC CARS WITH CARFAN - THE HUMBER**

*It is a little-known fact that Hull is home to the world's largest collection of Humber's, a make unknown to many, even locally. The subject of this issue is tinged with more than a little sadness in that in the very near future it, together with its 23 stablemates may well be on their way to a wealthy collector in India.*

Sadly, after repeated requests to the Council for financial assistance and recognition, the Museum is due to close and Hull will lose a hidden gem that can be driven past without anyone realising it even exists.

Originally formed in 1887 and going on to manufacture bicycles, motor bikes and cars as Humber Limited, the Roots brothers took over the company before being taken over themselves by Chrysler in 1967. This was typical for the time and history is littered with similar examples of struggling car companies that have sadly closed their doors forever.



The featured car is a Humber Pullman limousine Mk. IV and has been in the owner's possession for the last 49 years. Prior to that it was owned by Baroness Rothschild, the actor Stanley Baker and also a local funeral director, before being bought for the princely sum of £90! Its fortunate owner has for many years hired the car out for weddings etc. and many a blushing bride (and new husband) will have graced the rear seat and not had to worry about crumpling a beautiful dress as there is ample space to sit and relax. Many of those local to Hull will have seen this car and others from the collection on sunny summer days whisking their occupants to a church and the reception and they made a great sight. In conclusion, should you see one of these rare beasts purring past, as well as perhaps shedding a tear at what could have been, don't forget that cheery Carfan wave!

(Editor's note - Mr J and I hired 2 Humber's for our wedding day - they were much-admired!)

**PRACTICAL MOTURING WITH RICH HAYES - IT'S TIME TO SPRING-CLEAN YOUR MOTOR!**



*Summer has its motoring challenges in the same way as winter has. Now that spring is definitely here it's time to do some important checks to keep your summer motoring problem-free.*

**CHECK YOUR TYRES**

This was probably first on the list for our article on preparing your car for winter! But tyres impact on both safety and performance. Check for wear, check the tread depth, check for uneven wear, check the sidewalls for bubbling and check they are correctly inflated. If you have a spare tyre, check that, too.

**CHECK YOUR OIL AND BRAKE FLUID LEVEL**

Your dipstick should show an amber-coloured liquid up to the full mark. If the oil looks dark and dirty, you need to change it. Temperature can affect the integrity of oil. Low brake fluid level could mean your brakes do not function properly.

**CLEAN YOUR CAR EXTERIOR - ESPECIALLY UNDERNEATH**

Salt and grit will do untold damage to your car bodywork so do ensure you give it a good clean with a hose to remove grime which may have lodged in gaps, wheel-arches, nooks and crannies. Then give it a good polish to protect the finish against hot summer temperatures and make it gleam! Don't forget your wheels and tyres, either.

**BOOK IT IN FOR A SPRING MAKE-OVER**

There are many jobs which are easier to do in a garage with expert equipment such as removing the wheels to check the brakes and replace pads, rotors and drums. Brakes can be adversely affected by snow and ice and slower driving - getting your brakes checked could save your life. Checking the transmission fluid in a manual car can be tricky and if you don't have a handy coolant-tester, so can ensuring your radiator coolant is the correct mix. At the same time, ask for your air conditioning to be serviced - if our summer is as hot as last year, you will be pleased your air-con works.

Beverley Motor Works would be delighted to ensure you are a happy motorist this summer! Call **01482 881128** to book your car in for a summer check.

**HUBY**  
**DOMESTIC APPLIANCES**

Covering Hull, Beverley, Pockington, Driffield and all the local villages

**BOOK ONLINE**  
 and **SAVE**  
 at  
**hubys.co.uk**

Book in advance and save money. The further you book in advance the more you could save...

**GAS safe**  
 No. 24001

For service and repair call: **01482 866660**

**BEVERLEY MOTOR WORKS** INDEPENDENT BMW & MINI SPECIALISTS

**Our dealership expertise means high quality car servicing at a fair price...**

**Which?** Trusted trader | **the Good Garage Scheme** | **ata** AUTOMOTIVE TECHNICIAN ACCREDITATION

Unit D1 Grovehill Industrial Estate,  
 Annie Reed Road, Beverley HU17 0LF

**Call today: 01482 881 128**  
**Visit: beverleymotorworks.co.uk**

**SPECIAL OFFER**  
**MOT COUPON** **£29.99**  
 MOT YOUR CAR FOR ONLY

# THE ANYTIME FITNESS TEAM WORK WITH BODIES AND MINDS TO INCREASE FITNESS

*A positive mindset plus the right training techniques delivered by a motivational fitness trainer can aid you on your fitness journey.*

*Which is why Anytime Fitness now have three experienced trainers so, no matter what your goal, you can find the perfect person to work with. Their relationship with MIND (the mental health charity) means they work to enhance positive mind-sets as well as improve physical fitness. Here we profile Anytime Fitness's three trainers:*

**John Williams (aka 'Big J:')** is a boxing fan who is especially keen on using this sport to inform his fitness coaching. A Level 2 Fitness Instruction and Level 3 Personal Trainer, John also holds a Level 4 Certificate in GP Referral, providing exercise on prescription.



John loves making his sessions fun and as high energy as his clients wish, with novel ways of improving fitness, including boxing and pad-work and boot camps! He likes to ensure his clients are eating well and that they are mentally in a good place.

**Jasmine Cook (aka 'Jazz')** is especially attuned to working with ladies, empowering them to feel comfortable in the gym. Her expertise is in resistance and strength training, encouraging clients to use their own body



weight for conditioning and toning. She holds Level 2 Fitness Instruction qualification and is currently working to expand her skillset.

**Alex Campbell** is a Level 2 Fitness Instructor, Level 3 Personal Trainer and a Sports Massage Therapist. He has an BSc (Hons) degree in Sports Coaching and Fitness where he developed his interest in circuit training, weight training and sports-specific transformation.



So, whatever you are training for, whether an endurance or sprint-style sport, Alex will provide the right training and nutrition programme for you.

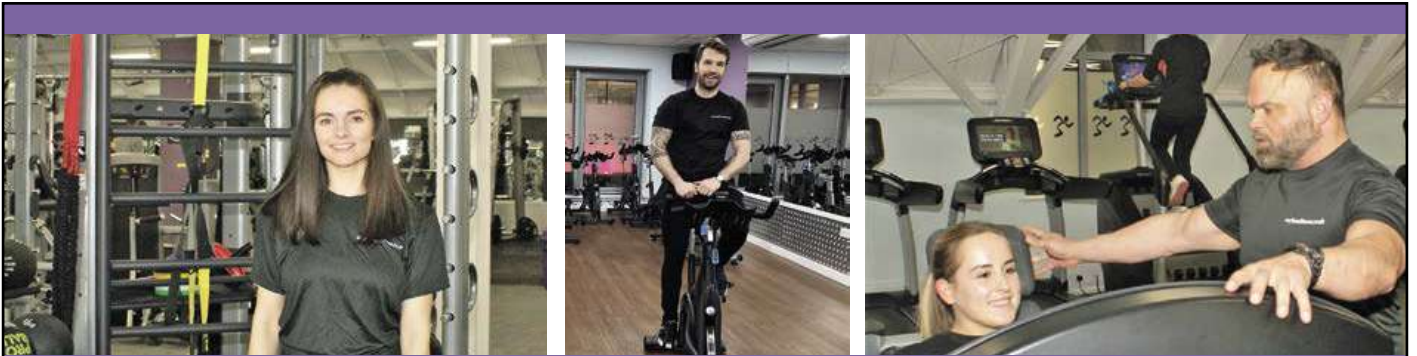
Or perhaps you want to be 'beach-body ready' for your holidays? Then Alex can help you with weight training, diet and massage for fat-loss and toning.

Whether working with John, Jazz or Alex, they will



keep you motivated, with your own programme for you to follow.

But other members of the club will also motivate you to succeed in your goals - Anytime Fitness is much more than a gym - it's a community where success breeds success!



**Join Anytime Fitness**

**Improve your Mind and Body with Qualified Experienced Staff**

**Call: 01482 247100**  
**Flemingate Centre, Flemingate**  
**HU17 0NQ**

**FREE**  
**Day pass**  
 Call James  
**01482 247100**





**INCLUSIVE SWIM SCHOOL LESSONS FOR ALL**

**PRIVATE POOL DUNSWELL**  
Pre School, Intermediate, 1-2-1's, SEN Classes and Adult Swimmers  
Wednesdays, Thursdays, Fridays and Saturdays  
Daytime and Evening

**MERCURE HOTEL**  
Intermediate, Advanced, 1-2-1'S and Adult Swimmers  
Sunday Mornings

**FREDERICK HOLMES HYDROTHERAPY POOL**  
Pre School, Intermediate, 1-2-1's and Adults  
SEN and Disability Specific Sessions – Carers Welcome to  
Support in the Pool for More Complex Needs  
Mondays 4pm to 6pm

**COST: £40 PER MONTH**  
Highly Experienced and Qualified Teachers  
Call Us For Chat or Message via our Facebook Page

☎ 01482 229676      🌐 www.sportsability.org.uk  
✉ SportsabilitySwim@gmail.com      📱 @SportsabilitySwim

## CYCLING WITH WILSONS WHEELS - FUELING-UP FOR YOUR CYCLE RIDE OR EVENT

*Nutrition is a massive part of an athlete's routine. Most professional athletes have dieticians who work out meal plans for them and some even have their own chefs to prepare their meals. But what about us mere mortals?*

Here are a few suggestions for a pre exercise workout, based on my own experience as a cyclist, which may also benefit those participating in other sporting activities that use a lot of aerobic energy. My pre-race or event meal usually consists of either poached eggs on toast, porridge or a rice-based dish. Pasta is also a good alternative and I know a lot of athletes go for this option. You then want to be eating your pre-event meal roughly 3 hours before you are due to start. A high-sugar snack, around 30 minutes before the start, is also advisable. I usually have a banana! Ultimately, the body should have enough energy stored in it to last 1 hour 30 mins before you then need to start taking on more food and energy. I find that energy gels will only give you about 20 minutes of energy and a banana 30 minutes, so try mixing it up with maybe a rice cake or flapjack or energy bar, until you find a combination that suits you. Also remember that you're not riding the Tour de France, so don't throw your wrappers away into the grass verge. Put them in your back pocket and dispose of them responsibly.

In terms of what to drink, if you haven't any energy drink left or don't have time to buy any, a glass of cordial juice/squash, a pinch of salt and a teaspoon of sugar combined, will contain most of the ingredients found in some energy drinks and is quick and easy - and cheap to make. If you suffer from cramps you can also now buy tablets that have all of the vitamins, minerals, electrolytes and salts that you need to prevent them. They work in exactly the same way that a dissolvable Vitamin C tablet does. Just pop it in your water and watch it fizz away. These tablets are particularly popular with riders who are participating in events in hot conditions. Overall, whatever you choose to eat and drink, always remember to stay well-fueled and hydrated. If you're out and about, it's also a good idea to take a little money with you, just in case you need to buy anything to top yourself up as there's nothing worse than running out of energy when you're miles from home. It can turn a nice ride into a battle, so always be prepared!

**Nathan Wilson.**



**INCHES BODY STUDIO**

**3 CONTOUR BODY WRAPS £129**

**Too many Easter Eggs?**

**Get back into shape with Inches**

**TONING TABLE SESSIONS AVAILABLE**  
Loose between 1-15" in six sessions, toning tables help if you are new to exercise, have issues with mobility, depression, bad backs & much more.

**Spring Offers**

- 3 months Toning
- 3 months Vibraxis
- 3 Contour Wraps

**£179.00**

**Inches Body Studio, 1 Norwood, Beverley HU17 9ET**  
Wheelchair access & stairlift available  
**Telephone: 01482 865229**  
Email: inchesofbeverley@hotmail.co.uk  
www.inchesbodystudio.co.uk  
Established 1992



**WILSONS WHEELS**  
T: 01482 882881  
W: www.wilsonswheels.co.uk E: info@wilsonswheels.co.uk

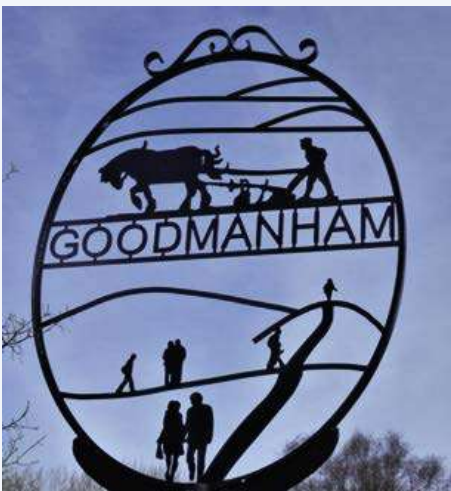
**WE NOW STOCK CUBE CYCLES**  
2019 RANGE NOW AVAILABLE CUBE KTM BOTTECCHIA

**DISCOUNTS ON:**

- Adult Bikes
- Children's Bikes
- Clothing for all cycling weather
- Parts and accessories

89a Grovehill Road, Beverley, East Yorkshire HU17 0EJ  
OPEN: Monday - Friday: 8.30am - 5.30pm | Saturday: 9am - 5pm  
Sunday: CLOSED - Out riding our bikes

# WALKING WITH IAN RICHARDSON... MAY THE FAITH GO WITH YOU AT GOODMANHAM



**Goodmanham, a mile and a half north east of Market Weighton, is one of our finest villages. It sits high and handsome, surrounded by pastures, wells and streams. It is full of impressive buildings and steeped in history. It has been a place of great religious importance for over 1400 years and still attracts the faithful today. The lucky possessor of a splendid pub and more recently a delectable farm cafe - I greatly enjoyed the hospitality of both on this walk. Oddly, though once bordered by two railway lines - which can be walked today - it never had a station. Our 2.5 mile walk skirts the village boundaries, but on a fine day you might be tempted, as I was, to take the much longer suggested alternative over the nearby Wolds.**



ALL HALLOWS

**1** There is an admirable free car park and picnic area just around the corner from the pub at **YO433JA**. The village is reachable by bus, if you are happy to walk the old rail track or the lane up from Market Weighton. A pub is a great place to begin, and more especially to end, any walk and they don't come much better than the Goodmanham Arms. Beautifully restored rooms, open fires and enticing seating areas

outside combine with splendid food and the joy of beer brewed on site to make any visit there delightful. I restricted myself to just a half of their own delectable Ragged Robin ale. The pub also has a key to the church, should it not be open, and this is one that is too interesting not to enter. All Hallows is largely Norman with the tell tale indicator of zig-zag decoration on the doorway and in the chancel. The atmospheric interior is notable for having two fonts, one a very high and elaborate affair. The views from the churchyard are lovely and you might be able to find the distinctive headstone of William Fetherby who played cricket for Yorkshire in the 1920s. Here, you are standing on one of the key sites in the history of English Christianity, for on this spot in 627 the Pagan temple was destroyed by the forces of the newly converted King Edwin of Northumbria. Goodmanham is certainly a place for pondering upon religious faith.

**2** From the church it is pleasant to take a short loop out across the pastures onto the nearby Wold. Follow the Wolds Way sign by the striking Old Hall, at the rear of All Hallows. This wide track descends under the bridge that carries the former railway to Driffield, a rural line that stood no chance of survival when the notorious Beeching set to work with his axe in the 1960s. The path rises by a pretty stream and veers to the left at Beggars Bush Well - the many such sites around the village no doubt explain its spiritual importance over the ages, as fresh water and the supernatural went hand in hand on the largely dry Wolds.

**3** Look carefully for the path left back down to the village that this time crosses the former railway. For many years people used the track bed to walk into Market Weighton, but it has now regrettably been blocked. Our route takes us over the spring and straight up the bank back into the village near the pub.



SPRING AT GOODMANHAM

**4** Follow the road past the church and in 100 yards on the left a welcome new business venture appears - The Fiddle Drill Cafe at Manor Farm. Do check opening times, it was closed Mondays and Tuesdays when I last looked - in lovely surroundings the refreshment are delightful and very reasonably priced. With a fabulous scone and cappuccino inside me, I was in happy mood when I headed off after my visit in early April.

**5** Take the quiet lane to the right just past the cafe, which descends steeply towards a deep valley and the trackbed of yet another former railway - this one carried the Market Weighton to Beverley line which should never have been closed. Just before the track on the left it is interesting to view Rifle Butts Quarry, an amazing geological site that was used in WW2 for firing practice by the Home Guard - don't panic!

**6** Head up the bank to join the trackbed which forms a fantastic leisure 12 mile route for walkers, horse riders and cyclists. Here is a beautifully crafted flowing wooden bench, whose inscription alludes to the incident in 627 mentioned earlier - you are learning quite a lot on this walk. If you are feeling energetic you could head the two miles to the east up the track to Kiplingcotes station, it is a route full of beauty, and return along the Wolds Way from Arras Hill - but this will add 5 miles to your day including a steep climb up the lane to Arras. Follow the track through Spring Dale - as lovely as it sounds - and in 400 yards on your left view the moving St. Helens Well where people have been making offerings for good health for centuries - faith lingers long at Goodmanham.



FORMER MILL

**7** 300 yards on from the well, take the steps up to the left onto the road bridge and turn right back towards the village. At the road junction there is a very impressive former mill house which always looks rather Russian to me. The bench and iron village sign by the stream make a nice spot to sit. If you are walking back to Market Weighton, you can access the other railtrack at the bridge on your left.

**8** If your vehicle is at the village, walk the lane up to your right which has some striking buildings to admire, especially the 17th century Brockenhirst cottage. Leaving Goodmanham without a visit to the pub, cafe or both, might prove impossible. Either makes a fine place to sit and reflect on a village with a fascinating history and blessed by glorious natural surroundings.



WOLD PANORAMA ABOVE GOODMANHAM

## SHORT STORY BY CLINT WASTLING - ETA AQUARIDS



*The first time I saw him he gave me quite a fright! He was there again last night, staring south-eastwards towards Hull, thermos mug in hand. I don't normally see anyone as I walk back from work. I know, talking to a complete stranger at midnight is not wise.*

As soon as he spoke, I thought he sounded genuine. "I'm watching for the meteor shower, the Eta Aquarids," he said. Now, I remember dad corralling us into the garden one cold January night to watch a meteor shower. It was spectacular - greens, reds, golds almost pouring like sparks from the night. When I told him about that night the stranger replied, "Quadrantids," as though it really meant something. I knew mum would be waiting as usual for my phone call as soon as I got home. She wasn't happy when I told her about my encounter. "Of course he's genuine, why else would you stand out on The Westwood at that hour with binoculars and a warm drink? Anyway, you can go to bed now you know I'm safely back. I know you'd prefer it if I got a taxi but it costs an hour's wages; anyway I'm safe now, lots of love. Night! Night!"

When I spoke to dad he was of the same opinion. He offered to pay for a taxi until he did the maths and worked out that was nearly forty quid a week. He reminded me that when were very young we'd gone out several January nights over the years to see the Quadrantid meteor shower. The following day I rang mum early and told her I'd done some research online and discovered the Eta Aquarids are for real and that last night and tonight are peak viewing times. They emerge from below the horizon apparently and that means light pollution will be a problem. It's like any pollution, you must have seen the city of Hull casts an orange glow into the night sky. Guess it's us not thinking about what we're doing. George likes the idea of turning off all the street lamps for a few hours during the night, he says it would make a big difference. "Who's George?" asked mum. The man with the binoculars on The Westwood, do keep up. He was walking along Main Street this morning, when I was on my way to work, so I said hello. Seems he too lives in Walkington. Anyhow, I'm ringing early to say don't wait up for a call tonight, I'm out. "Where?" Well if you must know I'm taking a flask and duffle coat and spending Tuesday before dawn watching for meteors. Did you know the Eta Aquarids form when the Earth travels through debris from Halley's Comet - yes that one from 1066 and all that!

**Clint Wastling is a local writer and poet. His science fiction/fantasy novel 'Tyrants Rex' is available from Stairwell Books.**

## NEVER HEARD OF DOROTHY MACKAILL? YOU HAVE NOW!

*Dorothy Mackaill was a megastar of the silver screen, a Hollywood icon of the 1920s and early 30s, starring in over seventy films, including one opposite a young Humphrey Bogart. She was once cited as the "most kissable girl in Hollywood".*

This All-American Girl was, in fact, a Yorkshire girl from the Avenues area of Hull, the daughter of a greengrocer. Despite a blue plaque at her old school, Thoresby Primary, much of Mackaill's legacy has been forgotten. A new play, titled 'The Remarkable Tale of Dorothy Mackaill', written by local writer Elizabeth Godber, seeks to bring the history alive.

It will be performed at the newly-renovated studio at Hull New Theatre as a part of the theatre's continuing support of local artists and local stories. The play uses original music from the 1920s and film projections to tell the story of Dorothy's life and some of the wider history of 1920's Hollywood.



Featuring four local actors, some making professional debuts, it aims to bring Dorothy back into the public eye where she belongs. 'The Remarkable Tale of Dorothy Mackaill' plays at Hull New Theatre on the 3rd, 4th and 5th June. Tickets available online.

## POEM BY STEVE BRAILSFORD - HEART'S DESIRE

*What is it we yearn for,  
that indefinable thing,  
clothed in different guises,  
given different names?*

*We think it might be riches.  
We think it might be fame.  
We think it might be one true love;  
no two dreams are the same.*

*Some think it might be heaven;  
the answer will be there.  
Some think that it is nearer,  
waiting here on earth.*

*Onward, ever onward  
through our lives we try  
to find that which eludes us,  
to find our heart's desire.*



Steve Brailsford first published in Barton Muse Poetry Group's anthology "Cracking the Nut". Steve is a member of Barton Muse Poetry Group whose next meeting is 6.45pm Sunday 30th May at The Old Mill, Barton-upon-Humber. The painting of Steve Brailsford in by Phil Corby of Barton Muse.

**WHITE RABBIT**  
CHOCOLATIERS

♦ HOP ON DOWN TO THE ♦  
**CHOCOLATE CAFE**

— for handmade, quality treats! —

*A taste of wonderland...*

f t i

16 Dyer Lane, Beverley, East Yorkshire, HU17 8AE  
[whiterabbitchocolatiers.co.uk](http://whiterabbitchocolatiers.co.uk)  
**Tel: 01482 679325**



# ert

EAST  
RIDING  
THEATRE

10 Lord Roberts Road  
Beverley HU17 9BE  
Tel: 01482 874050

Email: [boxoffice@eastridingtheatre.co.uk](mailto:boxoffice@eastridingtheatre.co.uk)

Current Box Office Opening Times:  
Tues - Fri 10am - 4pm or Sat 10am - 12noon.



Cafe/Bar Opening Times:  
Tues - Sat 10am - 4pm

## Musical Theatre and Drama Summer Schools



### Andy Johnson Drama School

**Tuesday 23rd to Sunday 28th July**

*Andy's Drama School offers an insight into what training to be an actor is really like by working with professional theatre-makers and directors, in a real theatre space.*

Workshops and master-classes for aspiring actors, looking to be challenged, are designed to hone physical, creative and vocal skills.

The course finishes with a lunchtime performance on Sunday 28th July as well as the chance to return for an intensive day the following weekend on Saturday 3rd August before performing to the public again.

For ages 14 to 20 years.

£150.

Or £135 per week when booking the Musical Theatre course also.



### Musical Theatre Summer School

**Monday 29th July to Saturday 3rd August**

*The Musical Theatre course is designed for aspiring performers who want to improve in their craft, challenge their creativity by working with professional actors and have a lot of fun doing so!*

Leading the course is choreographer Neil Fisher, formerly Senior Lecturer at Manchester MET and LIPA, Head of Dance at Hurtwood House and now Movement Director at various independent schools. Through a variety of workshops and classes, you will be exposed to a range of styles within the three disciplines, from ensemble singing to lyrical dance. The week will finish with an intensive day on Saturday 3rd August before performing to the public in the second half of the evening.

Workshops and Classes will include:

- Group Singing
- Vocal Coaching
- Song & Dance
- Audition Technique
- Acting through Song
- Singing Technique
- Movement & Choreography



### Technical Theatre Course

**Monday 29th July - Saturday 3rd August**

*Not everyone wants to perform centre stage but let's face it, without theatre technicians and a backstage crew, the magic of theatre would not be possible!*

Our new course in 2019 takes place during the Musical Theatre week. The course will be led by John Merrylees, former Head of Drama and Dance at York St. John University, and original stage manager of Hull Truck Theatre.

ERT's Production Manager and Freelance Lighting Designer, Simon Bedwell, together with former Radio Humberside presenter and sound engineer, Ray Williams, will assist John to provide an insight into technical theatre.

The students will run the public performance by our Summer School students on the evening of Saturday 3rd August.

6 places only.  
£80.

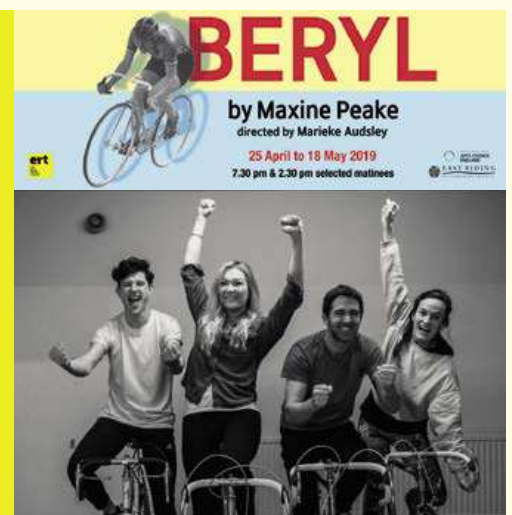
## Beryl by Maxine Peake

*Actress and playwright Maxine Peake's critically acclaimed play uses a great dollop of Northern wit to bring to life the incredible and inspirational story of an ordinary Yorkshire Mum.*

Still seen as 'the greatest sportswoman who ever lived', Beryl Burton faced more than up-hill cycling challenges in her struggle against poor health and the barriers faced by women in sports. But her remarkable story was largely forgotten - until now!

When Beryl Charnock met keen cyclist Charlie Burton she was smitten, not only with Charlie but with the thrill and freedom she found on her bike. She would out-work the men in the rhubarb field, she could out-class the cyclists on the road and still time to knit young Denise a cycling jumper - though it wasn't meant to come down to her knees! With husband and daughter at her side, the determined Beryl defied the world embarking on a journey that led to true sporting greatness. She dominated cycling throughout the 1950s, 60s and 70s, becoming five-time world champion and best British all-rounder for 25 consecutive years. And she still made it home in time for tea!

Directed by Marieke Audsley. Tickets £12 - £17.50. An ERT production.



# WHAT'S ON

## SPONSORED BY: **küchenhaus**

2 Toll Gavel, Beverley, HU17 9AJ. T: 01482 862172.

Open: Mon - Sat: 10am-5pm. Sun: 11am-3pm. Bank Holidays: 10am-4pm.

### Until Saturday 18th May

#### • 'Beryl' by Maxine Peake

East Riding Theatre, Beverley. 7.30pm and selected matinees. £17.50/£16.50/£15.50/£12. Tickets from [www.eastridingtheatre.co.uk](http://www.eastridingtheatre.co.uk) or 01482 874050.

### Until Saturday 8th June

#### • Afloat and Ashore - the art of Frank Henry Mason

Beverley Art Gallery, Champney Road, Beverley. Free. Founding member of the Northern Impressionists and maritime paintings and as a creator of art deco travel and railway posters.

### Until Saturday 15th June

#### • Rocks, Pots and Lilypads

Treasure House, Champney Road, Beverley. Free. Exhibition of the restoration of Burnby Hall Gardens and Museum to their Edwardian Glory by volunteers and specialists with a Heritage Lottery Grant.

### Until Friday 19th July

#### • Trawling through Time

Beverley Guildhall. Free. The history of ship-building in Beverley from 1763 to the 1970's.

### Thursday 2nd May

#### • College Open Evening

East Riding College Flemingate Campus. 4pm- 7pm. Find out about your post-16 options.

### Friday 3rd May - Friday 10th May

#### • East Yorkshire Embroidery Society Exhibition

#### • 'Hopes and Dreams in Stitch'

Beverley Minster. 10am-4pm daily except Sunday 12noon-5pm. Free. Items for sale.

**THE FOUR CANDLES**

Join The Four Candles for an afternoon of delightful choral music from the past five centuries, featuring works by composers from William Byrd to John Tavener. The concert is entirely a capella and explores the beautiful simplicity of the human voice.

To conclude the programme we invite you to join us for Michelin star refreshments: wine included!

Admission is £15 on the door.

Saturday 4th May at 1pm, St Mary's Church, South Dalton.

### Saturday 4th May

#### • 'Frank Henry Mason - A Voyage of Discovery' talk by Edward Yardley

Treasure House, Champney Road, Beverley. £5.

Self-taught marine painter Mason was famous for his railway poster designs but he also illustrated magazines and books and even designed cigarette and playing cards. Tickets from 01482 392699.

#### • East Riding County Choir with Hymers College Junior School Choir sing Rossini and Carter

Beverley Minster. 7pm. £17.50/£10. Tickets 01482 391672 or [www.eastridingcountychoir.org](http://www.eastridingcountychoir.org)

#### • Bohemian Rhapsody (PG-13)

Bishop Burton Village Hall. 7.30pm. £5/£4.50. Pay on the door. Refreshments and ice cream available.

### Tuesday 7th May

#### • Singalong Memories

Walkington Methodist Chapel Schoolroom. 2pm-3.45pm. £2 incl. refreshments. No auditions, solos or concerts - just for fun! Ring Val/Mike 01482 865249. [val.memories@outlook.com](mailto:val.memories@outlook.com)

#### • Processed Pea presents Jon Palmer & Wendy Ross

Light Dragoon, Etton. 7.30pm. £4. Jon and Wendy are an offshoot of the Jon Palmer Band. Jon is an award-winning and published songwriter.

### Wednesday 8th May

#### • Find Your Groove for People living with Dementia and their Carers

St Mary's Parish Hall, Beverley. 1.30-3.30pm. Free. Refreshments available. Booking on 07731 614349.

### Thursday 9th May

#### • Beverley Film Society presents 'Shoplifters'

Parkway Cinema, Beverley. 7.30pm. £6.50/£3. Japanese crime drama. Palme D'Or 2018 winner.

### Friday 10th May

#### • Diyet and the Love Soldiers

Lund Village Hall. 7.30pm. Songs from the Yukon territory of Canada. Tickets and more information 01377 217776 or [malcolmmckechnie@btinternet.com](mailto:malcolmmckechnie@btinternet.com)

#### • Cadenza in Concert

Toll Gavel United Church. 7.30pm. £7.50. In aid of Immanuel Orchestra and Music School, Bangkok. Tickets 01482 867573 or on the door.

### Saturday 11th May

#### • East Riding Festival of Words

Treasure House, Beverley. Full day 10am-5.30pm £10. Individual events £3. Featuring Robert Scragg, Catherine Isaac, Andrew Michael Hurley, Anna Woodford and Clare Shaw. Tickets and more details [www.festivalofwords.co.uk](http://www.festivalofwords.co.uk) or 01482 392699.

### Sunday 12th May

#### • St John of Beverley Civic Service

Beverley Minster. 2.30pm.

### Monday 13th May

#### • Norwood Nites Community Cinema

Norwood Church Schoolroom. 7pm. Free. This month's film stars Shirley MacLaine as Charity Hope Valentine who is determined to find love but ends up with a seemingly endless run of bad dates - until she finds herself stuck in a lift. Raffle and refreshments.

#### • The White Horse Folk Club presents John Conolly and Rob Van Sante

Beverley Conservative Club, Wylies Road. £8.

Tell us about your event!

Email: [info@justbeverley.co.uk](mailto:info@justbeverley.co.uk)

Telephone: 01482 679947

For more events visit:

[justbeverley.co.uk/events](http://justbeverley.co.uk/events)

8.30pm. A chance to hear Mr Fiddler's Green accompanied by singer and guitarist Rob.

### Thursday 16th May

#### • Tiny Treasures

Treasure House, Beverley. 1.30pm. Free. Come and explore sessions for under 5's and their grown-ups.

### Monday 20th May

#### • Stacey Kent and her Band

East Riding Theatre. 7.30pm. £25/£24/£22. Tickets [www.eastridingtheatre.co.uk](http://www.eastridingtheatre.co.uk) or 01482 874050.

#### • The White Horse Folk Club Singers and Musicians Night

Beverley Conservative Club, Wylies Road. £2. 8.30pm. Performers and audience welcome.

### Tuesday 21st May

#### • Singalong Memories

Walkington Methodist Chapel Schoolroom. 2pm-3.45pm. £2 incl. refreshments. No auditions, solos or concerts - just for fun! Ring Val/Mike 01482 865249. [val.memories@outlook.com](mailto:val.memories@outlook.com)

### Wednesday 22nd May

#### • Find Your Groove for People living with Dementia and their Carers

St Mary's Parish Hall, Beverley. 1.30-3.30pm. Free. Refreshments available. Booking essential on 07731 614349.

### Thursday 23rd May

#### • Beverley and District U3A Monthly Meeting

Beverley Memorial Hall. 2pm. Free/£1 Talk by Amanda Smith from NatWest - Friends Against Scams.

### Friday 24th May - Sunday 26th May

#### • Beverley Early Music Festival

Various venues and prices. Music, walks and talks. Visit [www.ncem.co.uk/bemf](http://www.ncem.co.uk/bemf) for details. Tickets 01904 658338 or online.

### Tuesday 28th and Wednesday 29th May

#### • Sasha Regan's All-Male 'The Pirates of Penzance' by Gilbert & Sullivan

East Riding Theatre. 7.30pm. £21.50/£19.50/£18/£10. The classic musical comedy of mistaken identity!

### Wednesday 29th May

#### • Café Scientifique presents 'The Last vestiges of Doggerland: Exploring the Humberhead Levels in 4 Dimensions'

Potting Shed, Flemingate. 7.30pm. Free. Guest speaker Jane Bunting. More information [science.cafe.beverley@gmail.com](http://science.cafe.beverley@gmail.com)

### Friday 31st May

#### • Beverley and District U3A Coffee Morning

Lairgate Hotel, Beverley. 10am-12noon. Come and say hello and find out about our activities.

## 'WHERE IN BEVERLEY' ANSWERS

1. Gardens on the corner of Railway Street.
2. Elwell Picture on Champney Road.

# küchenhaus

The Largest Manufacturer of Quality German Kitchens

At Küchenhaus we have affordable solutions made to meet your highest standards

2 Toll Gavel, Beverley, HU17 9AJ. T: 01482 862172.

Open: Mon-Sat: 10am-5pm. Sun: 11am-3pm. Bank Holidays: 10am-4pm.



# THE NUMBER 1 SPORTS BAR IN BEVERLEY



## MAJOR UPCOMING EVENTS



ANTHONY JOSHUA, CHAMPIONS LEAGUE FOOTBALL  
JOSH WARRINGTON, SUPER LEAGUE RUGBY  
PLUS MUCH MORE...

### BOOK TODAY

0845 555 5000

CALLS COST 4P PER MINUTE PLUS YOUR NETWORK ACCESS CHARGE

[WWW.FIREPITBAR.CO.UK](http://WWW.FIREPITBAR.CO.UK)

UNIT 3, 4 & 4A, FLEMINGATE  
SHOPPING CENTRE, HU17 0NZ



# IN THE PINK

THE SILVER SPECIALIST

[www.inthepinkjewellery.com](http://www.inthepinkjewellery.com)



#inthepinkbeverley



#inthepinkbeverley



#inthepinkbeverley

*Sell you soon x*

VISIT OUR BEAUTIFUL NEW STORE TO CLAIM YOUR

# FREE

PAIR OF EARRINGS

All you have to do is visit our store, take your photo on our gorgeous carousel horse and upload to instagram and #inthepinkbeverley.

You can find us in between Carphone warehouse and the EE store.

44 TOLL GAVEL, BEVERLEY HU17 9AR

