

just

ISSUE 94

# BEVERLEY

IT'S YOUR MAGAZINE

FREE

EVERYTHING BUT THE DOG®

**THE SPA 2 IS OPEN**

**ANDREA AND HER TEAM LEAD THE WAY**

NEWS, WHAT'S ON, LIFESTYLE, FEATURES, PUZZLES, PHOTOS & MORE



# stipendia

payroll solutions



**It's not rocket science!  
Outsource your payroll -  
Remove the fireworks from your office**



**Improve business performance  
by outsourcing payroll**

#### Payroll Outsourcing Benefits

- ✓ Cost reduction
- ✓ Better staff productivity
- ✓ High accuracy & reliability
- ✓ e-payslips direct to employees via our app
- ✓ A named personal contact
- ✓ Added value services including HR & Benefits in Kind
- ✓ Useful online information

to arrange a **FREE** meeting  
call us on: **0845 308 2288**  
or visit  
**[www.stipendia.org.uk](http://www.stipendia.org.uk)**



Stipendia Payroll Solutions



@StipendiaPay

## 6/7 EVERYTHING BUT THE DOG BOUTIQUE NUMBER 2



## 4 BBS KEEP CHILDREN WARM



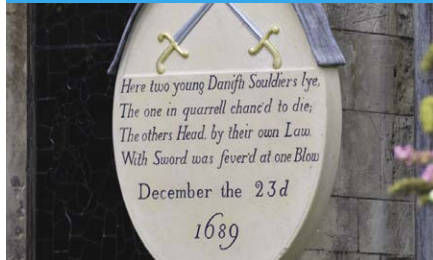
## 4 UNIQUE SALONS



## 10 PANTO TIME COMPETITION



## 12 DANISH SOLDIERS PLAQUE



## 26 TONY CHRISTIE



## 32 STAGE4BEVERLEY



### Contributors:

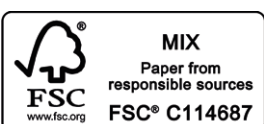
Julian Minshall, Olivia Peace, Rich Manville, Cliff Baillie, Julie Barker, Carfan, Nicky Condetto, Jane Dale, Fran Dunning, Jackie Hardman, Sara Kruger, Amanda McConnell, Navigation Wealth Management, Ed Norman and (Jennie England), Colin Raynor, Ian Richardson, Sam Walton, Clint Wastling and Nathan Wilson.

Illustration for Bev n Ley by Jasmine Stephenson.

**REMEMBER!** If you see examples of anti-social behaviour or other types of low-level crime, do report it to the appropriate authorities. **POLICE** - Emergency 999, Non-urgent 101. **ANTI-SOCIAL BEHAVIOUR** (East Riding of Yorkshire Council) - 01482 393939.

Magazine available from outlets in Beverley and surrounding areas.

Disclaimer - All the information provided was correct at the time of going to print.



Please pass your Just Beverley on or recycle it responsibly.  
Printed by: Jadan Press.

NOVEMBER  
LETTER FROM THE EDITORS

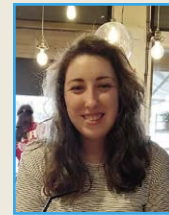


Happy November everyone, enjoy your Bonfire night, and perhaps take time to have family and friends around to have a small display in the garden. Sadly the Westwood Bonfire and Fireworks display is cancelled.

The Nights are drawing in, Christmas is coming and the excitement starts to build, have you started your festive plans yet? Panto is on at The Parkway Theatre "Oh yes it is". Book your tickets now to avoid disappointment, why not enter our competition for free tickets.

With the nights getting darker and colder, as always wrap up, stay warm and safe, enjoy the issue and have a good November.

**Julian.**



Happy November readers! What a month ahead. The men's FIFA World Cup starts, we can get cosy and celebrate Bonfire Night and we have just had an extra hour in bed... sounds perfect to me. Not only that, but Christmas is nearly here!

That's right, we're finally in a sensible month to start getting Christmassy. Lights will be going on in town and there will be Christmas films galore - although a small disclaimer; that is the one thing I allow to begin earlier! What have you got planned this month?

As always, stay safe and enjoy the issue.

**Olivia.**

ISSN 2754-9216



## GET IN TOUCH WITH US:

Website: [justbeverley.co.uk](http://justbeverley.co.uk)

Email: [info@justbeverley.co.uk](mailto:info@justbeverley.co.uk)

Telephone: 01482 679947

Twitter: [@JustBeverley](https://twitter.com/JustBeverley)

Facebook: [facebook.com/justbeverley](https://facebook.com/justbeverley)

If you would like copies for your business to distribute to staff and customers, call Just Beverley on 01482 679947.

# BEVERLEY BUILDING SOCIETY HELPING TO KEEP PRE-SCHOOL CHILDREN WARM THIS WINTER

**Beverley Building Society is helping to keep a group of pre-school children warm this winter, through its Golf Day, fundraising of over £3,000 for the Beverley Cherry Tree Community Centre!**

As part of its Community Strategy, the team at the East Riding mutual has been working hard throughout 2022 to deliver a packed program of fundraising activities, in aid of its Charity of the Year, the Beverley Cherry Tree Community Centre.

For that reason, the Society's team were over the moon to learn that the Centre had invested the £3,069 raised from its first ever Golf Day, on 26 August 2022, to keep its 40 pre-school children, who attend its Little Gruffalos nursery, warm this winter! The children, all between the ages of two and four, were each given a heavy-duty reversible coat in a bid to help struggling parents in the current cost of living crisis.



Society CEO, Janet Bedford commented: "Giving back to our local community is part of the Society's founding values and is a commitment that we continue to maintain. So, I'm delighted to hear that the funds we raised have been put to such fantastic use and helped these children and their families in the current economic climate. It's yet another example of the important work that the Beverley Cherry Tree Community Centre does and we're very proud to be working with them."

The funds raised from the Golf Day were part of a total figure of £6,800 that Beverley Building Society has given to the charity to date this year, from activities which included a Bike Challenge, Jubilee Tea Party, donations in branch and income from its AGM member voting in April, which was then matched by the Society.

Since 1993, the Beverley Cherry Tree Community Centre has been a vital lifeline for vulnerable people of all ages across the East Riding region. In addition to its Little Gruffalos pre-school nursery, where children can learn in a fun environment, the Beverley Cherry Tree Community Centre offers a wide range of services, from free advice on issues including money, housing and employment, food bank services, community shop and youth club.

Beverley Building Society Marketing Manager, Debbie Connolly, added: "It's a wonderful feeling to think that we've helped such a great cause. Keeping warm in cold weather is something we can all relate to, so I felt quite emotional seeing the children's faces as they were given their coats!"

Jo Ramsay, Manager of the Beverley Cherry Tree Community Centre, who's website perfectly



captures their motto as: 'When you don't know where to turn, we can help you, or find someone who can', concluded:

"It was very exciting to be able to purchase these fantastic children's coats because some of our families really struggle with essentials, and it's now more of a challenge to continue our work in the current cost of living crisis. On behalf of the whole team at the Centre I'd like to express my sincere thanks to the Society and everyone who donated to the Golf Day and other fundraising activities this year, you are making a big difference to people in need."

## UNIQUE SALONS RAISE £5,232 WITH 'BIG BRA' WALK

**Unique Salons in Beverley, Hessle and Cottingham have raised over £5,200 for local charity Hull and East Riding Breast Friends following their sponsored 'Big Bra' walk held in August.**

The 'Big Bra Walk' forms part of the East Yorkshire salon group's annual Caroline's Day fundraising activities when staff, clients, friends and families from their three salons come together each year to honour Caroline Abuelo, a former Salon Director who sadly passed away from breast cancer in 2009.

This year's event saw staff sporting distinctive white tee shirts emblazoned with a pink bra across the front to help raise awareness for this year's chosen charity Hull and East Riding Breast

Friends. Starting and finishing at the Triton Inn, Brantingham there were plenty of looks from the general public as the fundraisers took on the 10k walk through Brantingham, Welton and Elloughton Dale on one of the hottest days of the year.

Allan Smith, Unique's Director said: "It really was a fantastic day and commendable that so many of our staff and friends braved the heat to complete the walk! Our annual fundraising efforts raise vital money for local charities and over the years we have raised a staggering £40,000. I'd like to thank everyone for their hard work and the generosity of our friends, families and clients who support us each year."

Jayne Beck, Hull and East Riding Breast Friends Charity Manager says, "The support Unique



Salons have given HER Breast Friends over the years has been incredible. Not only the fantastic amount they have raised from their fundraising events but in helping to raise the awareness of the Charity too.

"As a small local charity we really do rely on support such as this to enable us to continue to provide the services we do for local people affected by breast cancer. Every single member of the Unique team has been amazing!"



STOP PRESS!

**Unfortunately the Westwood Lions Club bonfire on Saturday 5th November has been cancelled.**



# EAST RIDING RESIDENTS HAVE YOUR SAY ON THE LOCAL PLAN UPDATE

Residents are being invited to have their say on proposed plans for development that will shape the future of the East Riding for years to come. Responses are welcomed from Monday, 24 October until 11:59pm on Monday, 5 December 2022. Late comments will not be accepted.

The documents, response form and guidance can be found at [www.eastriding.gov.uk/localplanupdate](http://www.eastriding.gov.uk/localplanupdate), where there is also a series of interactive information pages which summarise key issues and will signpost readers to the various consultation documents.

East Riding of Yorkshire Council is asking for resident's views and comments on the Proposed Submission East Riding Local Plan Update, which sets out revised planning policies, including housing and employment development targets for the East Riding to 2039. The Local Plan is a key driver in determining planning applications and development opportunities, including identifying land allocations for specific types of development such as housing and employment in the East Riding.



A range of background and evidence-based documents supporting the aims of the Local Plan Update will also be published and available for comment in what is known as the Document Library. The library includes weblinks to the information. These documents may help you understand the decisions that have been made when preparing the Local Plan Update. More information on these documents can be found at [www.eastriding.gov.uk/localplanupdate](http://www.eastriding.gov.uk/localplanupdate)

The current East Riding Local Plan was adopted in April 2016. The updated plan proposes that 20,900 dwellings are built in the East Riding and approximately 208 hectares are allocated as employment land in the period up to 2039. The Plan also seeks to retain and enhance the East Riding's high-quality environment, and ensure good access to a range of infrastructure, services and facilities.

The council are now asking for views on the latest version of the update, titled the Proposed Submission Local Plan Update. At this stage, comments are sought on whether the Plan is legally compliant, sound, and complies with the duty to cooperate. This is the final time the council will ask for views on the Local Plan Update before it is submitted to the Secretary of State for Examination.

Hard copies of the main consultation documents will also be available to view at the council's libraries, customer service centres, multi-service centres and mobile libraries during normal opening hours. A series of public drop-in events have been arranged to give members of the public an opportunity to speak to a planning officer about the Local Plan Update.

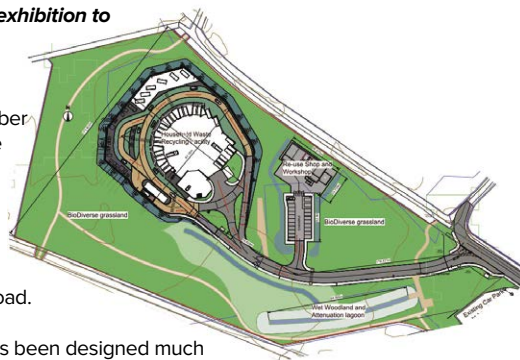
Location	Date	Time
Driffield Community Centre	Thursday, 3 November 2022	12-7pm
Bridlington Spa	Monday, 7 November 2022	12-7pm
Brough Community Centre	Monday, 14 November 2022	12-7pm
<b>Beverley Leisure Centre</b>	<b>Wednesday, 16 November 2022</b>	<b>12-7pm</b>
Hessle Town Hall	Tuesday, 22 November 2022	12-7pm

Councillor Claire Holmes, portfolio holder for planning, infrastructure and housing at East Riding of Yorkshire Council, said: "The Local Plan is a really important document for shaping communities for the future, and so we really want residents to get involved and have their say. We want to hear what they have to say. Equally, it's an opportunity for residents to find out information about what's planned for the future."

## RESIDENTS INVITED TO NEW EXHIBITION FOR PROPOSED BEVERLEY RECYCLING CENTRE

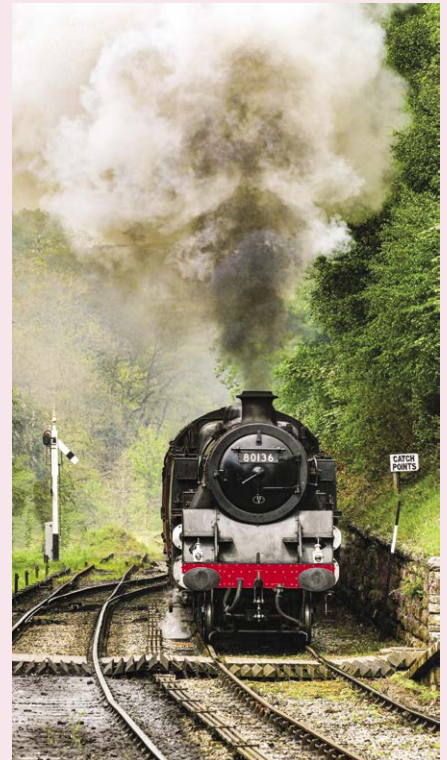
Residents are being invited to a third open exhibition to view plans for a proposed new household recycling centre for Beverley.

The event will be held on Thursday 3 November in the Education Room at the Treasure House in Champney Road, Beverley, from 5pm to 7.30pm. East Riding of Yorkshire Council has unveiled plans to replace the current household waste recycling site at Weel by creating a new facility on land to the west of Ings Road, off the Grange Way A164/A1035 road.



The proposed household recycling centre has been designed much larger and more spacious, with better access and capacity to cope with the area's expanding population. Residents are invited to go along to the open exhibitions to view the proposed new scheme, give their views and have the chance to speak to engineers and recycling officers from the council.

## BEVERLEY PHOTOGRAPHIC SOCIETY - NOVEMBER'S PROGRAM



**Tuesday 1st November** - 7pm at the Rose and Crown. Presentation by club member Mike, "10 days in Iceland."

**Tuesday 8th November** - 7pm at the Rose and Crown. Presentation by Gavin Prest. Excellent thought provoking photographer.

**Tuesday 15th November** - 7.30pm we are hosting an inter-club print competition in St Mary's Church Hall. All welcome.

**Tuesday 22nd November** - meet 7pm at the Rose and Crown.

**Tuesday 29th November** - meet at the Rose and Crown for a print workshop.

**Tuesday 6th December** - 7pm at the Rose and Crown. Judging of our reflection's images by an external judge.

If you are interested in photography or photographs, please come along, and meet us.

All welcome, no commitments. You don't have to be a photographer to appreciate good photographs.

If you don't want to join the club but are interested in a particular presentation or Zoom session you can join us for £3.

We are members of the Yorkshire Photographic Union and affiliated to the Photographic Alliance of Great Britain.

# ANDREA AND HER TRUST



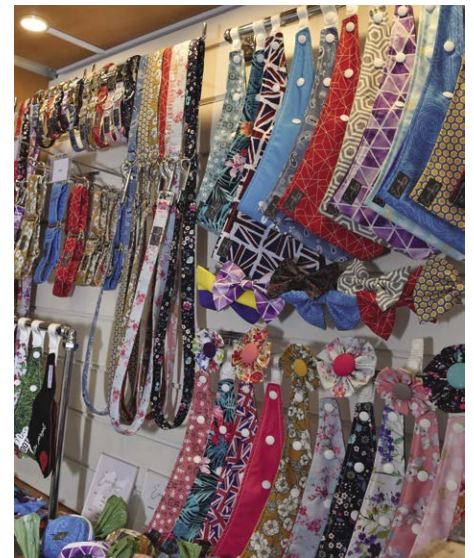
**The DOG is well and truly out of the bag, Everything But The Dog opened the doors of The Spa 2 on November 1st 2022.**

Time flies when you are having fun - it was back in July 2021 when Everything But The Dog opened its doors on Butcher Row in Beverley.

As the name suggests, the vision was to provide "Everything But The Dog", and over the past 15 months the products and services have evolved greatly to reflect what customers, both 2 and 4 legged, not only want, but need.

With quality and customer service high on the agenda, the business that Andrea describes as a "combination business", is a beautiful Dog Spa and Boutique that is anything but ordinary.

The Spa offers a range of baths, grooms and treatments that are centred around the superior Hydrobaths and the philosophy is to only sell grooming products that are used by the team. Advice and tips on caring for your dog between grooms is always available, and all of the services have your pup's welfare and well-being at the heart.



The Boutique offers fantastic brands and partnerships with strategic suppliers and local makers and artists, which has allowed exclusivity deals in the UK to be established, and an extensive range to be available for customers.

*Everything*<sub>btd</sub> was not part of the original plan, but has proved a fantastic addition, exclusively available in store and on the website. The range has evolved over the past 12 months to include beautifully hand made bandanas, bows, flowers, collars, leads and poop bag holders in a variety of sizes and plentiful designs.

With the success of the store on Butcher Row, and to maintain availability for The Spa customers, keeping her eyes and ears open to what was going on in and around the area, Andrea was quick to react when the shop on North Bar Within



# TY TEAM LEAD THE WAY

became available for her to expand. Maintaining the branding and features created at Everything But The Dog on Butcher Row, The Spa 2 will continue to offer an experience that is anything but ordinary.

The team delivering the experience are vital to its consistency and success. The principles and values adopted by Everything But The Dog are really important to the overall team and so will be replicated at The Spa 2.

The team don't just want the best for your pup, no matter what stage of life they are at, they want the best for you too!!

The Spa 2 replicates the look and feel of the original location, and uses the same Hydrobaths, equipment and products, which ensures that whichever location is available, the result is a well bathed or groomed pup that is returned to you smelling delightful, thanks to a spritz of their signature colognes.



The feature window replicates what is recognised as a reason to visit the main store, and people who shop in Beverley will tell you when it comes to window displays, Everything But The Dog are on point, with theme and style, keeping up with times and telling a story through an elaborate display in the shop window. People look forward to the window display changes.

Andrea said "It's all about the experience, you do not have to be a customer or indeed a dog owner or lover, to enjoy what we have to offer. The window display, is about projecting our professionalism and raising the profile of our business. Everyone, knows someone who has a dog, we like to get people talking and put a smile on their face, the window display does just that".

The opening of the additional Spa 2, will add a new freshness to the North Bar Within shopping area.



Andrea said, "Being almost on the corner of a main high street and busy traffic thoroughfare will allow us to engage with a new audience, be that visitors to the nearby iconic St. Mary's Church, dog lovers walking towards or away from a stroll on the Westwood Pastures or drivers and passengers of passing vehicles as they pass through the one way systems".

**Everything But The Dog.**  
Butcher Row, Beverley, HU17 0AB.  
Tel: 01482 874897

**North Bar Within, Beverley, HU17 8AX. Tel:**  
01482 888178

[everythingbutthedog@outlook.com](mailto:everythingbutthedog@outlook.com)

[www.everythingbutthedog.co.uk](http://www.everythingbutthedog.co.uk)





**EVERY THURSDAY**  
**(Doors open 10am)**

Join us for a free brew and enjoy some great films on Beverley Parkway's Big Screen. Only £4.50 with drink and biscuits included. Aimed at 55s & over. Films subject to change.

**Thursday 3rd November -**  
**Three Thousand Years of Longing**  
Starring: Idris Elba, Tilda Swinton  
Director: George Miller

**Thursday 10th November -**  
**Three Thousand Years of Longing**  
Starring: Idris Elba, Tilda Swinton  
Director: George Miller

**Thursday 10th November -**  
**Juniper**  
Starring: Charlotte Rampling, George Ferrier  
Director: Matthew J. Saville

**Thursday 17th November -**  
**Juniper**  
Starring: Charlotte Rampling, George Ferrier  
Director: Matthew J. Saville

**Thursday 17th November -**  
**Don't Worry Darling**  
Starring: Florence Pugh, Harry Styles  
Director: Olivia Wilde

**Thursday 24th November -**  
**Don't Worry Darling**  
Starring: Florence Pugh, Harry Styles  
Director: Olivia Wilde

**Thursday 24th November -**  
**The Woman King**  
Starring: Viola Davis, Thuso Mbedu  
Director: Gina Prince-Bythewood

**Thursday 1st December -**  
**The Woman King**  
Starring: Viola Davis, Thuso Mbedu  
Director: Gina Prince-Bythewood

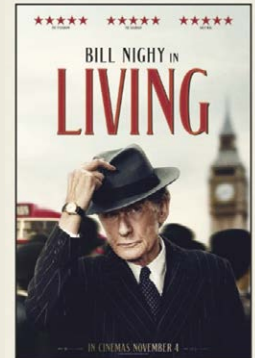
*These are the films scheduled to open in November - all are subject to change.  
Check out up-to-date cinema listings at [www.justbeverley.co.uk/cinema-times](http://www.justbeverley.co.uk/cinema-times)*



4th November



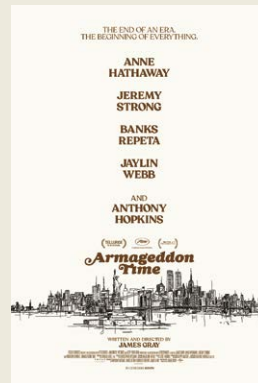
4th November



4th November



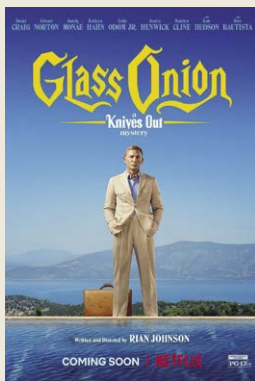
11th November



18th November



18th November



23rd November



25th November



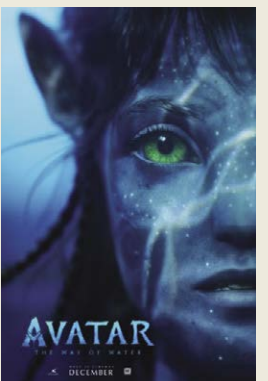
25th November



25th November



25th November



Coming Soon



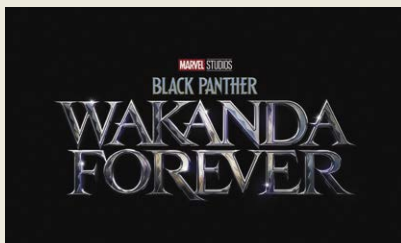
# YOUR LOCAL INDEPENDENT CINEMA



## JOIN US FOR SOME GREAT FILMS AND BIG LIVE SHOWS

### BLACK PANTHER: WAKANDA FOREVER

In Marvel Studios' "Black Panther: Wakanda Forever" Queen Ramonda, Shuri, M'Baku, Okoye, and the Dora Milaje, fight to protect their nation from intervening world powers in the wake of King T'Challa's death.



As the Wakandans strive to embrace their next chapter, the heroes must band together with the help of War Dog Nakia and Everett Ross and forge a new path for the kingdom of Wakanda. Starring: Angela Bassett, Danai Gurira, Letitia Wright.  
From Friday 11th November

### GLASS ONION: A KNIVES OUT MYSTERY

This fresh adventure finds the intrepid detective at a lavish private estate on a Greek island, but how and why he comes to be there is only the first of many puzzles.



We will be the only cinema in East Yorkshire playing this film and will be for one week only before it debuts on Netflix on Christmas Day. Starring: Daniel Craig, Dave Bautista, Ethan Hawke.  
From Wednesday 23rd November

## LIVE SHOWS AT PARKWAY

**Sunday 20th November, 7pm -  
The Comedy Store Presents -  
"Live on Stage"**

With nearly 40 years experience in the business and as the premier name in comedy, The Comedy Store is renowned as a breeding ground for new comedy talent, and remains the place to see tomorrow's stars today.



The likes of Eddie Izzard, John Bishop, Jimmy Carr, Rhod Gilbert and Sarah Millican, have all cut their comedy teeth with us. We bring you 'The Best In Stand Up' from around the globe, showcasing the brightest names in comedy today.

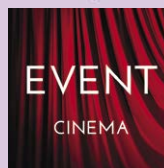
**Sunday 27th November, 2pm -  
Hull Brass Band: An Afternoon of Festive Music**  
City of Hull Band presents an afternoon of festive music live at Parkway Beverley.



**Saturday 10th December - Wednesday 28th December  
Beauty & The Beast - Xmas Panto**  
Parkway Beverley in association with TaleGate Theatre Productions invite you to be our guest for Beauty and the Beast, our magical pantomime for 2022.



Follow the beautiful Belle as she is trapped in an enchanted castle by a fearsome beast. Pop songs, magic and silliness fill this pantomime full of family fun. Book your tickets before the last petal falls.



Event cinema offers something a little different to mainstream films. Live and pre-recorded shows beamed in via satellite from all over the world. Here are the latest live streams that you can enjoy on the big screen at Parkway Beverley.

**Thursday 3rd November, 7pm -  
NT Live: The Seagull**

Emilia Clarke makes her West End debut in this 21st-century retelling of Anton Chekhov's tale of love and loneliness.

**Saturday 5th November, 4.55pm -  
Met Opera: La Traviata**

Soprano Nadine Sierra stars as the self-sacrificing courtesan Violetta—one of opera's ultimate heroines, in Michael Mayer's vibrant production of Verdi's beloved tragedy.

**Tuesday 15th November, 7.30pm &  
Sunday 20th November, 2pm -  
Matthew Bourne's Nutcracker!**

With family-sized helpings of Bourne's trademark wit, pathos and magical fantasy, Nutcracker! is influenced by the lavish Hollywood musicals of the 1930s.

**Wednesday 16th November, 7.15pm -  
The Royal Ballet: A Diamond Celebration**

An evening that comprises of three world premieres.

**Thursday 17th November, 7.30pm &  
Friday 18th November, 7.30pm -  
Liam Gallagher: Knebworth 22**

Earlier this year Liam Gallagher defied all expectations and returned to Knebworth.

**Wednesday 23rd November, 7.30pm -  
Tim Minchin: BACK**

Tim's critically acclaimed, record breaking, sell-out show BACK will be in cinemas for one night only!

**Sunday 27th November, 2pm &  
Thursday 1st December, 7.30pm -  
A Christmas Carol - A Ghost Story**

It's Christmas Eve. As the cold, bleak night draws in, the avaricious Ebenezer Scrooge is confronted by the spirit of his former business partner Jacob Marley.

**Thursday 8th December, 7.15pm &  
Sunday 11th December, 2pm -  
Royal Ballet: The Nutcracker**

Peter Wright's much loved production for The Royal Ballet.

# OH NO IT'S NOT... OH YES IT IS - "PANTO TIME"

Having just finished *The Panto Zone Spooktacular Halloween Panto*, we now look forward to performing *"Beauty and the Beast"*, running from 10th to 28th December at Parkway. Tickets now available from [parkwaycinemas.co.uk](http://parkwaycinemas.co.uk)

With the Beast of all beasts, an enchanted Rose and costumes to die for, this Christmas at Parkway is the only place to get you in the festive mood.

With a Tale as Old as Tales get, a production for all ages to enjoy, Beauty and the Beast is not to be missed or "Hissed at".

Slapstick comedy and music to entertain the audience who will be laughing and booing the theatre down, catch the treats if you can, this year's Panto is just full of fun.

Panto is back at Parkway, bigger, better and louder - "Beauty and the Beast" will send you into Christmas 2022 full of joy and happiness.

Get behind the best professional local panto in the area and where better to watch a show than in the luxurious seating of Parkway with a massive tub of popcorn.

For ticket details visit: [www.parkwaycinemas.co.uk](http://www.parkwaycinemas.co.uk)



## COMPETITION TIME



Just Beverley, Parkway Cinema and TaleGate Theatre Productions have joined together to give you a fantastic VIP experience to see 'Beauty and the Beast', at Parkway Cinema's Theatre on Saturday December 17th or Sunday 18th at a showing of the winner's choice.

A family of four (at least one adult) can get into the festive spirit with the best seats in the house to see the show, meet the cast afterwards and have pictures taken with the actors in their costumes by Just Beverley!

All you have to do to be in with a chance of winning this great prize is answer the following question:

**What is the name of the Theatre Company putting on the production?**

Send your answer by email to [competition@justbeverley.co.uk](mailto:competition@justbeverley.co.uk) by Noon Monday 14th November. Put 'Beauty' in the subject box with your name, address and daytime telephone number in the body of the email. The winner will be the first name drawn out of the hat after the closing date.

Winners must be prepared for publicity for Just Beverley, Parkway Cinema and TaleGate Theatre Productions. Photo to be taken on Friday November 18th - there is no cash alternative.

## PERFORMANCE TIMES

Sat 10th December - 12pm & 3pm  
 Sun 11th December - 12pm & 3pm  
 Sat 17th December - 12pm, 3pm & 7pm  
 Sun 18th December - 12pm (relaxed) & 3pm  
 Tue 20th December - 2pm & 7pm  
 Wed 21st December - 2pm & 7pm  
 Thu 22nd December - 12pm & 3pm  
 Fri 23rd December - 12pm & 3pm  
 Sat 24th December - 12pm & 3pm  
 Mon 26th December - 3pm  
 Tue 27th December - 12pm & 3pm  
 Wed 28th December - 12pm & 3pm



FLEMINGATE  
BEVERLEY



# CHRISTMAS LIGHTS SWITCH ON

HOSTED BY **ALEX DUNN** AND **ADAM SMITH**  
FROM BEVERLEY FM

**FRIDAY 18TH NOVEMBER 5:00-7:30PM**

FROM  
5:00PM

**HATS OFF**  
BATTLE OF THE BANDS  
WINNERS

**BEAUTY & THE BEAST**  
PARKWAY PANTO CAST

**ALL FOR ONE** CHOIR

**MARIGOLD ADDAMS**  
IS CHER  
AS SEEN ON ITV  
STARSTRUCK



6:45PM

**LIGHT  
SWITCH-ON  
AND FIREWORK  
DISPLAY**

*Future*  
**STAR**  
2022

**OLIVIA TWOREK**  
A PERFORMANCE FROM  
OUR 2022 WINNER

PLUS 2021'S WINNER  
**MEGAN WRIGHT** HANDS  
OVER THE CROWN



90'S POP  
SENSATION

**S**  
**CLUB**  
ALLSTARS

TINA & BRAD  
LIVE ON STAGE

7:00PM

**FUN FAIR RIDES / FOOD & DRINK / LATE NIGHT SHOPPING**

FLEMINGATE.CO.UK



@FlemingateBev



FlemingateBev



FlemingateBeverley

PLEASE NOTE: THERE WILL BE A 7-MINUTE FIREWORK DISPLAY SET TO MUSIC AT 6.45PM.

# IN MY VIEW... DARKER NIGHTS BRING SPARKLING SIGHTS...

*Hello everyone and welcome to November! Autumn is in full swing, Halloween's chills and thrills linger in the air, leaves have an amber and gold hue, and soon the sky will be aglow with fireworks, and the streets with twinkling Christmas lights.*

This season, in particular, lends the night time a new, magical appearance. So, with this in mind, I thought night photography would be a good topic this issue.

I love night photography. Some of my favourite shots were taken at night, and it is a style that lends itself well to many situations: my theatre work, for example, or trips to an aquarium. It all centres around the right mix of aperture, shutter speed and ISO (the camera's sensor sensitivity to light).

This can get quite involved so, if it is something you would like a bit more in-depth knowledge about, please feel free to email me. I would be more than happy to provide you with some information that could help you get into the more advanced aspects of photography.



ISO: 400 Aperture (f): 1.6 Shutter Speed: 1/50s

The examples in this article were taken on my phone; the reason being that this is many people's preferred format for capturing those special memories and moments. Also, most modern smart phones are great at working out the right mix of the above elements automatically, creating a good foundation to learn from.

## THE DANISH SOLDIERS PLAQUE

*Pinned on a buttress on the south side of St Mary's church is a plaque telling the tragic story of two Danish soldiers.*

In 1689, about seven thousand Danish soldiers arrived in Hull on their way to fight in Ireland on behalf King William III of England. Many of them were billeted in and around Beverley.

This may have been the first time Danish



Each image here has the settings used listed underneath it for illustration.

We recently went to Disneyland Paris to celebrate our 10th wedding anniversary. As far as night photography goes, the opportunities this afforded were endless. Lots of colours, fireworks, drone shows - you name it. Cue some exciting photos, packed with colour and tone.



ISO: 500 Aperture (f): 1.6 Shutter Speed: 1/25s

When it comes to editing my photos - particularly ones taken at night - one of the main things I adjust is the colour temperature. I also mentioned this in the last issue because it really can make a difference to the finished results. It depends how you want the final image to look but, for all of these, I cooled the colour temperature and boosted the saturation slightly. This really makes the colours pop, giving the image a neon feel.

Thinking of what is to come locally these coming weeks, such as Bonfire Night and the Christmas lights switch on, there will be lots of opportunities to take some exciting photographs.

Some tips would be, if using your phone, take landscape shots to get more in the frame.

Play around with the inbuilt editing tools to bring out colours and details. If using a camera, have the aperture as wide as your lens will allow (f1.8, f2.8 etc.) and experiment with different shutter speeds and ISO settings. To avoid having to use a tripod you will need a fast shutter speed (around 1/125s) with an ISO of around 3200.



I hope you enjoy everything that is in store, and have fun taking some photos along the way. As always, I would love to see what you do, and please feel free to get in touch if you would like some more in-depth information. Also, if you have any requests for future topics, send them my way. I would love to hear from you.

Have a great month, and see you back here for the Christmas issue! Happy snapping, everyone!

Instagram: @sara.kruger  
Facebook: @sara.kruger.photography  
Web: [www.sarakrugerphotography.com](http://www.sarakrugerphotography.com)  
Email: [info@sarakrugerphotography.com](mailto:info@sarakrugerphotography.com)



ISO: 1250 Aperture (f): 1.6 Shutter Speed: 1/5s



immortalises the deaths of two young men far from home.

Ed Norman (& Jennie England).

Telephone: 01482 869111  
sales@rosesofbeverley.karoo.co.uk



The Kitchen Factory, The Courtyard,  
Tokenspire Business Park, Beverley  
HU17 0TB

Monday to Friday 9am - 5pm | Saturday 9am - 1pm

## What's New in 2022

*Roses Kitchens grown in Beverley for over 20 years*



Laburnam Drive



Carter Drive



Thyme Way



Molescroft Road



Lincoln Way

kitchen



All Hallows Road, Walkington



Hunsley Road, Walkington



West Mill Rise, Walkington

**Please call 01482 869111 to book a viewing**

MANY MORE OF OUR CUSTOMERS KITCHENS ON OUR WEBSITE

5 STAR RATED OVER 57 GOOGLE REVIEWS ★★★★★

Visit [www.roseskitchens.com](http://www.roseskitchens.com)

to see our customers kitchens and read what they have to say about us

**Telephone: 01482 869111**



# FOX MOBILITY - KEEPING YOU MOBILE

As we move through Autumn and onwards to the festive season, Fox Mobility looks to keep people active and on the move whether that be around the home or getting about around the town.

Most people tend to spend more time indoors when the clocks have gone back and prefer to be inside as the nights get darker earlier. So now could be the perfect time to invest in a stair lift to ensure you are able to access all parts of the house, and have continued comfort in your own home.

Fox Mobility have a demonstration stairlift at the shop and Paul and Anne would be more than happy to demonstrate the ease of use and the installation process.

If you are looking to get out and about but struggle with space then have a look at the The Smarti - a remote controlled folding 'suitcase' scooter. It doesn't get any easier than the Smarti. With just a click of a button it unfolds and folds into a suitcase size which is easy to walk around with, just like a suitcase. This is the perfect scooter for any type of travel, easy to get in and out of your car. Ideal for your next holiday adventure or just going shopping. Alternatively why not pop into Fox Mobility, they stock a variety of scooters including one of the UK's lightest folding scooters, the eFOLDi Lite. Why not call in and see which scooter is the best fit for you.

Fox Mobility also offers a hire scheme, so if you do not want to invest in a scooter, you can hire them by the hour, day, week or month. Ideal for those who have a temporary mobility issue and still need to get around to the shops.

At a time when gifts are becoming more difficult to buy for the person who seems to have everything, again, Fox Mobility can help. For scooter accessories or perhaps a walking stick, Fox Mobility can help. Give Fox Mobility a call or pop in, they will be delighted to help.

**Fox Mobility, 110 -112 Walkergate, Beverley, East Yorkshire, HU17 9BT.**  
**Tel: 01482 887799.**  
**Email: [info@fox-mobility.co.uk](mailto:info@fox-mobility.co.uk)**  
**Website: [www.fox-mobility.co.uk](http://www.fox-mobility.co.uk)**

**Fox Mobility**  
 110-112 Walkergate, Beverley  
 East Yorkshire, HU17 9BT  
 Tel: 01482 887799  
 Email: [info@fox-mobility.co.uk](mailto:info@fox-mobility.co.uk)



- Stairlifts
- Riser Recliner Chairs
- Walking Aids
- Power Chairs
- Scooters and Accessories
- Servicing and Repairs for your Mobility Equipment









# Jadan

Print that gets you noticed

Jadan Press are a leading family run commercial and trade printer based in Hull. With over 25 years experience, we are renowned for producing exceptionally high quality print, design and finishing.

We are committed to providing an excellent service by offering value for money and ensuring complete customer satisfaction.

- BROCHURES LEAFLETS**
- POSTERS CALENDARS PADS**
- LARGE FORMAT PRINTING**
- STATIONERY MAGAZINES**
- SAFETY SIGNAGE BANNERS**
- VARIABLE DATA/MAILING**
- and much much more**

**TAKE A LOOK AT OUR WEBSITE AND VIDEOS**  
[www.jadan-press.co.uk](http://www.jadan-press.co.uk)

Don't forget to order your Christmas Cards **NOW!**



**01482 610902    [info@jadan-press.co.uk](mailto:info@jadan-press.co.uk)    [www.jadan-press.co.uk](http://www.jadan-press.co.uk)**  
**Rainbow House, Kimberley Street, Hull, HU3 1HH**



# Your home for **BEAUTIFUL KITCHENS**

Visit our showroom to explore our range of kitchens and all the finishing touches.

Book a free design appointment with our specialists today.

Swinemoor Lane **Beverley**  
01482 398979 **HU17 0JX**

**FREE  
LOCAL  
DELIVERY**

[mkm.com](https://www.mkm.com)

**MKM**

# I'VE BEEN THINKING... SAYS COLIN RAYNOR

**A question that I seem to hear a lot at the current time is "how competitive are you?", and I have begun to wonder what the question is really about.**

Often heard in quiz programmes on television, but also heard when an interviewer is trying to get behind the public persona of a famous individual.

I do wonder if the question is basically asking 'are you an honest person?', or "how far would you go to ensure that you came out the winner in a given situation?"

Before this gets too philosophical (I can recommend a book with the wonderful title, "How to teach philosophy to your dog") let me spell out the situation that set me on this train of thought.

As you know I am into sport and so I am particularly thrilled to see the wonderful exposure that women's sport is rightly getting in the media. In the football and cricket arenas especially they are showing the men how to play the two games that were previously thought to be a man's domain



alone. When England had their only success in the football World Cup in 1966 (only fifty six years ago) the Football Association did not recognise women's football at all.

So back to my question about competitiveness. In a recent women's international cricket match between England and India, the match was at a crucial point. England had their last two players at the crease and needed only 19 runs to win the game. India had 28 bowls to get the last wicket. The England batter at the bowler's end moved, ready to go for a run, but stepped out of her crease before the bowlers bowled. The bowler broke the stumps with the ball and in so doing the England batter was given out.



It was the right decision to give the batter out but many people have stated it was not done in "the spirit of the game". If the batter was prone to going out of her crease she should have been given a warning of what her actions would produce. No warning was given and the bowler broke the



wicket knowing that action would win her side the game. She was certainly being competitive.

So, two points I leave with you. We have all, I suggest, had some experiences in life when we knew that if we chose to say, or write, certain words, there would be repercussions. But we believed that what we were doing was the right thing to do at that time.

The second point I want to make is that the England batter who lost her wicket did not get mixed up in the debate about her dismissal. She fully accepted the decision and before leaving the field shook hands with the bowler and other members of the Indian team.

Her action was done without a doubt, 'in the true spirit of the game' but I suggest did not in any way detract from her competitiveness. I hope you agree with me.

## BEVERLEY AC - A MONTH OF MARATHONS AND CELEBRATING SUCCESSES!

**Beverley had reason to celebrate its success in this summer's Champagne league, organized by City of Hull. 8 local clubs had taken part in the league, a series of races held every other Tuesday night throughout the summer.**

Three separate competitions took place throughout the series - a Handicap competition based on each runner's best 8 of 10 race results, a Yellow Jersey competition for those completing all 10 races, and a team competition for teams of 3 within the handicap competition.

Beverley AC prize winners were many. T-shirts for running all 10 races were awarded to Lucy Stamford, Andy Tate, Dean Field, Bruce Woodford, Simon Pick, Sam Allen, Paul Allen, Rob Sparkes, Chris Gibson, Andy Johnson, Cat Williamson, and Carol Cooke.

In the Yellow Jersey competition, prizes awarded to - Rob Sparkes Yellow Jersey men's 1st place; Lucy Stamford Yellow Jersey ladies 2nd place;



Sam Allen Yellow Jersey ladies 3rd place; Dean Field Yellow Jersey V55 1st place; Frank Harrison Yellow Jersey V80 1st place; Lucy Stamford Yellow Jersey V45 1st place; Sam Allen Yellow Jersey V50 1st place; Paul Furness 4th overall in the handicap series; Sam Allen 5th overall in the handicap series.

In the team competition, Cat Williamson and Pam Atkins were members of the winning team of 3 and Chris Gibson and Frank Harrison were members of the 3rd place team of 3.

The Beverley athletes take on many challenges. October saw the first event of the East Yorkshire Cross Country League take place at Wetwang, where 68 Beverley runners donned their club vests and trail shoes to take on the challenge. The team comprised of new runners as well as the more experienced runner and finished in 2nd place. November's event will be held at Welton.

October has been a marathon month for many club members! 8 Beverley runners took part in this year's London marathon.

Ian Boardley was the first runner home in 3:22:05 followed by Peter Watkinson - 4:08:30; Lucy Berriman - 4:12:21; Jackie Hardman - 4:15:17; Lucy Bishop - 4:35:05; Matthew Seymour - 4:51:09; Stella Evins - 5:31:16 and Laura MacLachlan - 8:00:38.

Meanwhile, in the Loch Ness marathon, Jan Stott completed in 4:44:46 and Jo Rowland in 4:44:52 and the York marathon saw Jody Horth finish in



3:29:31, Brad Freeman in 3:42:42, Patrick Marshall in 4:22:26, Bruce Woodford in 4:22:36 and Nicola Riley in 5:42:40.

In Amsterdam, Valeriya Marshall ran her marathon in 3:39:23. Meanwhile, 26.2 miles wasn't enough for Peter Watkinson who completed the Dick Turpin 6-hour race at York, completing 35 miles and finishing 3rd overall and 1st in the MV70 age group.

If you are interested in becoming a member of the club, details on how to join can be found on the Club's website - [www.beverleyathleticclub.co.uk](http://www.beverleyathleticclub.co.uk)



# FRAN DUNNING - OVERCOMING LONELINESS

*As we move into the darker months of the year, it can feel a bit gloomy with the nights drawing in and the weather turning colder and darker so it's important that we have tools available to us to keep physically and emotionally well over winter.*

There are many studies which demonstrate a link between being emotionally well and having a high immune system so there are practical reasons for keeping our emotional wellbeing in optimum health as this can impact our physical wellbeing at a time when the winter bugs are taking hold. One of the practical things we can do is to keep in touch with other people. The last couple of years has surely shown us all how vital it is to maintain contact with friends and family.

Loneliness is something that every human being can encounter at any time of life. As a shy child, I remember feeling very isolated at school, looking around and thinking that everyone else was having a good time and there was me, tongue-tied and awkward, never knowing the right thing to say. I overcame this but of course, circumstances in life can mean that we can encounter loneliness throughout life, whether we are on our own or in a crowded room.



If you have felt lonely for a long time, it can feel terrifying to think about meeting new people but take it easy on yourself, there are lots of ways that you can reach out and just taking baby steps each day can add up to long-lasting change, a growing confidence and a whole new social circle or one or two close friends to lean on.

The Chatty Café is one such scheme and offers three services designed to reduce loneliness and isolation which include:

- Chatter and Natter tables where customers can get together to talk.
- Virtual Chatty Café Sessions held online on Zoom every Tuesday, Thursday and Friday from 1pm to 1.30 pm for anyone over 18 to simply chat to others.
- Telephone Friendship Service for anyone who is over 18 and experiencing loneliness and could benefit from a weekly chat on the phone.

If you'd like to offer the hand of friendship to those who are feeling isolated, you can become a volunteer with the scheme. It might feel a bit scary to reach out to strangers but very often, knowing that overcoming our own fear is helping another person overcome their isolation and loneliness can give us the impetus to pick up the phone. Chatty Cafe Scheme UK - Chatty Cafe Scheme UK ([thechattycafescheme.co.uk](http://thechattycafescheme.co.uk))

You might also find that your local college or adult education centre offers a range of courses that can help you to find like-minded people and some of the courses are directed to those who may be



feeling isolated or who need specific help. For example, courses on Gardening for Health and Wellbeing, Mindfulness and Meditation, Stress Management, Dementia Awareness or Pottery for Relaxation. These courses may not have been what you would have expected to find in your local area and can, in some cases, be accessed online so if leaving the house is a challenge then an online course may be just the thing. Courses to improve computer and digital skills are also available if using a computer is something you find challenging! Employment education and skills ([eastriding.gov.uk](http://eastriding.gov.uk))

If you're curious about mindfulness, every Monday evening I run an online mindfulness session free of charge which offers a wonderful opportunity to take time out for yourself. If you'd like to join, drop me a message/e-mail or give me a call and I'll send the zoom link to you.

For more information and details on further techniques including hypnotherapy, visit [www.francesdunning.com](http://www.francesdunning.com) or contact me, Fran Dunning on **07973 819867** or e-mail [info@francesdunning.com](mailto:info@francesdunning.com). I can support you to change your thinking and be that friend to talk to.

LEWIS NORTHEN  
FUNERAL DIRECTORS



MY FAMILY TAKING  
CARE OF YOURS



Get In Touch  
1 Lincoln Way, Beverley, HU17 8RH  
info@lewisnorthenfuneraldirectors.co.uk  
www.lewisnorthenfuneraldirectors.co.uk  
01482 888 658



Born and raised in **Beverley**, we are proud of the funeral services we offer to our local community.

As a family business we want you to have confidence in us to support you from the first point of contact, throughout and thereafter. The moment your loved one comes into our care they will be treated with care and respect. We offer a comprehensive range of funeral services ensuring you receive the perfect funeral service for your loved ones.

We are available 24 hours a day, 365 days a year, we will guide and support your family throughout.

## My family taking care of yours

### Giving the personal touch to funeral services in Beverley and surrounding areas.

Funeral plans, memorial jewellery, available 24/7 365 days a year.

# LET'S VISIT - BEVERLEY'S HERITAGE PUBS

*One of the many pleasures of such a fine historic town as Beverley, are the many splendid heritage pubs. We can enjoy these just for their architecture, or better still, also for the refreshments and conviviality they offer.*

The admirable CAMRA (Campaign for Real Ale) promotes and seeks to protect heritage pubs, their guidebook to the dozens across Yorkshire, is highly recommended. In it, 3 of our historic pubs get full coverage: The Woolpack, Tiger, and the incomparable Nellies; all will be covered here. In addition, I will also reflect on the pleasures of other pubs in town, housed in splendid old buildings, such as Atom Bar and the venerable Monk's Walk.



There is no pub in England quite like The White Horse, more widely known as Nellies, after a long-serving hostess. A welcoming warren of ancient rooms, gaslights and open fires, has to be experienced to fully appreciate. The outside seating yards are full of character, and reveal the ancient fabric of this remarkable set of buildings. CAMRA calls it 'a vernacular gem' and the Sam Smith's beers are very well-priced! After an hour spent in Nellies, the world invariably seems a

much better place. A short stroll away, on Westwood Road, is the character filled local, the Woolpack. It has been a pub for almost 200 years, and so enhances everyday life in this Hampstead-like area of town. The interior is intimate, especially the paneled snug with bench seating. Noted for excellent food and popular quiz nights, the pub is ideal for those taking a walk on the nearby common.



Again, in staggering distance on the southern end of Lairgate, we find the Tiger, with its striking 1930's mock Tudor exterior. Pub heritage lovers always appreciate a pub that has kept its original separate rooms, opening out, is almost always a disaster for old architecture. Here, the Tiger scores wonderfully, with distinctive spaces, off the central corridor. The pub has become a top notch place to dine, with a fabulous menu. The outside area is tastefully done too.

So, as the nights draw in, do seek out the historic pubs in and around town. You will receive a warm welcome and fabulous refreshment in each of them. Check opening times on websites, or at each venue. Cheers!

Ian Richardson - October 15th 2022.

Stroll down Minster Moorgate, turning left at the Minster, onto Highgate. Here is the Monk's Walk, that makes all other pubs in our region seem positively modern. With parts going back to the thirteenth century, and a pub heritage at least 350 years old, the building is a major historic site, rightly used in the recent Heritage Open days.



The ancient timbered roof, in the room at the rear, is an

absolutely magnificent location for my quiz team each Tuesday night! The pub offers a great range of drinks and themed evenings, music and pizza nights being favourites. The outside seating area have been greatly enhanced of late, the Minster views are exceptional.

Back in the centre of town on New Walkergate, we find in a nice eighteenth century building, a very modern venture - Atom Bar. It offers a great selection of its own locally-brewed beers, in an environment that tastefully blend the old and new.

Here, high quality beer is very much the focus.



HERE TO GET *you* THERE

**HUNTERS**<sup>®</sup>  
EXCLUSIVE

BEVERLEY / 01482 861411

# SSAFA - THE ARMED FORCES CHARITY (EAST YORKSHIRE BRANCH) NEEDS VOLUNTEERS

**What do we do:- We provide lifelong support to those currently serving, reservists, veterans and their families to help regain independence and dignity.**

**Whether practical, emotional or financial, we can get them the support they deserve.**

**If you can help, we need volunteers for the following positions:**

- Caseworkers
- Divisional Secretarial support
- Branch volunteering coordinator
- Treasurer support
- Branch Fundraiser or coordinator
- Mentors
- Recruitment Coordinators
- Admin Assistants

**Please contact us on: 01964 552 837**

**Email: [eyorks.branch@ssafa.org.uk](mailto:eyorks.branch@ssafa.org.uk)**

**Website: [ssafa.org.uk](http://ssafa.org.uk)**



## WHAT MAKES NOVEMBER SO SPECIAL?

*What makes November special to you? It's something I was thinking about recently, and perhaps it was because I was starting to feel Christmassy but the essence of the penultimate month of the year hit me.*

To me, November is one of the best months. Not because of the earlier dark nights or the rubbish weather, but because there are lots of exciting and fun things to do as the build up to Christmas begins.



In November we have the grand turning on of Christmas lights in cities and towns all over the country, and it really is beautiful. Think about it, people gather from all walks of life to celebrate light. The sense of community really is quite lovely.

Not only that but at the start of the month there's Bonfire Night or Guy Fawkes Night if you prefer.



Bonfires are lit all over and people come together, huddling around a giant mass of flames and have a great time.

The smell of burning and the noise of chatter amongst the crowds is such a comforting mix to me. If you haven't experienced a bonfire before, this is the year to go to a local one

and meet new people. You never know what's around the corner and you might be introduced to someone really special. If you haven't heard of the Butterfly Effect, it's worth googling!

November to me is also quite sensory; it's filled with the best smells. As I mentioned before,



burning is one of them, but also as we are in the winter months now the gorgeous smell of home cooked stews and roast dinners will follow me down the street.

Following on from Halloween, perhaps I'll make this year the first time I try pumpkin soup too. I for one am looking forward to seeing what else November has in store.

Then onto Christmas!

SALES / LETTINGS / MANAGEMENT

**HUNTERS®**  
HERE TO GET *you* THERE

BEVERLEY / 01482 861411

# HOW SPLITTING ASSETS WITH YOUR OTHER HALF CAN REDUCE CAPITAL GAINS TAX

**Thinking of selling? We look at how assets are taxed - and how you can ensure you don't pay a bigger bill than you need to.**

Selling a second property? Cashing in a share portfolio? When you sell a valuable asset, you may have to pay Capital Gains Tax (CGT) on your profits.

One possible way of avoiding - or at least reducing - this tax bill is to give an asset to your partner, or split it with them. By doing this, both of you are able to use your individual CGT allowance and reduce the amount of tax payable overall.

Read on to find out how sales of assets are taxed and how splitting them with a partner, along with other strategies, can help you cut your CGT bill.

## Who pays Capital Gains Tax?

CGT may be payable when you sell certain assets and your gains are over the annual CGT allowance.

So-called 'chargeable assets' include shares that aren't held in a tax wrapper such as an ISA or pension; business assets; personal possessions worth more than £6,000; and property that isn't your main home, which could be a holiday home, pied-à-terre or rental.

## How much is Capital Gains Tax?

How much CGT you pay depends on your income and the asset you're selling. If you pay the higher or additional rate of income tax, CGT is charged at 28% on your gains above the annual CGT allowance from residential property and 20% on gains from all other chargeable assets.

It's a bit more complicated if you pay basic-rate tax. CGT is charged at 18% and 10% respectively; however, if your gains take you into the higher-rate tax threshold, you may pay tax at both rates.

Certain business assets may also be eligible for a special rate of 10%. This is known as Business Asset Disposal Relief. It's important to note that the tax is only charged on the gain that you've made on the asset, not its total value.

## What is the Capital Gains Tax allowance?

The CGT allowance for 2022/23 is £12,300. This is the amount of profit you can make on the sale of chargeable assets this tax year before you have to pay CGT. You get a new CGT allowance each year. However, if you don't use it in one year, it cannot be carried over to the following year.

## How can giving assets to my partner cut our CGT bill?



If the sale of an asset is going to take you over your £12,300 CGT allowance and land you with a tax bill, you can give the asset to your partner assuming their allowance is still available. They can then sell it and use their annual allowance so you can reduce or avoid paying CGT altogether.

For example, if you have shares that are now worth £17,000 more than when you bought them, selling them would take you over your CGT allowance. Instead, you could give some shares to your partner, who could then sell them. This means the amount gained is less than your individual allowances and won't be subject to tax.

It's important to note, though, that you have to give away the asset outright and your partner will become its legal owner. If you're planning your financial future together, this shouldn't be a problem - nonetheless, it's not something to do without proper consideration.

## Are there other ways to cut my CGT bill?

There are several other options:

- Straddle the sale of assets over several tax



# Just ask

If you're thinking about the road ahead, we can help. Whatever's on your mind, just ask.

## NAVIGATION WEALTH MANAGEMENT

Managing Partner Practice of St. James's Place Wealth Management

01482 379504  
navigationwm@sjpg.co.uk  
www.navigationwm.co.uk



# NAVIGATION

WEALTH MANAGEMENT

The Partner Practice is an Appointed Representative of and represents only St. James's Place Wealth Management plc (which is authorised and regulated by the Financial Conduct Authority) for the purpose of advising solely on the group's wealth management products and services, more details of which are set out on the group's website [www.sjp.co.uk/products](http://www.sjp.co.uk/products). The 'St. James's Place Partnership' and the titles 'Partner' and 'Partner Practice' are marketing terms used to describe St. James's Place representatives.

years. For example, you could sell part of a share portfolio on 3 April and the rest on 6 April to take advantage of two years' CGT allowance.

- Offset any losses you've made on other assets. So, if you have a share portfolio or family heirloom that's made a loss, for example, you can use that to reduce the taxable gain on another asset you're selling, such as property.
- Over time, you can shelter more of your assets from tax by investing them in an ISA or pension. You might want to consider a Bed and Breakfast ISA - where you sell shares and immediately buy them back within an ISA wrapper to shelter future gains.

#### **How we can help**

CGT can make selling assets seem fraught with hassle. But depending on your circumstances and over the long term, it could still work out to be more tax efficient than drawing down other assets, such as your pension.

By talking to us on a regular basis and considering all your assets together - rather than in isolation - you'll be able to build a solid financial plan. We'll be able to help you work out which assets you need to sell and when. Whether you give away assets to your other half or do something entirely different, we can ensure your finances are managed as tax-efficiently as possible. This means taking advantage of all available reliefs and allowances so you pay the right amount of tax and no more than necessary.

To receive a complimentary guide covering wealth management, retirement planning or Inheritance Tax planning, contact Navigation Wealth Management on **01482 379504** or email [navigationwm@sjpp.co.uk](mailto:navigationwm@sjpp.co.uk)

The levels and bases of taxation, and reliefs from taxation, can change at any time. The value of any tax relief is generally dependent on individual circumstances.

## *Tc Patisserie*

*We* are now no longer a café, but still make our own patisseries and Tc Patisserie is now a French food shop to compliment our own products.

*We* have a daily selection of freshly made croissants, breads and patisseries.

*We* make reheat at home meals which can be bought over the counter or pre ordered, via our mailing list or messenger.

*We* can cater for any occasion, buffets, dessert tables or full 3 course meals can be arranged.

*We* are open Tuesday-Saturday 9am - 4pm.



**Capstone**  
foster care

# Thinking about Fostering?

Chat to us  
**0800 012 4004** or  
visit our website  
**capstonefostercare.co.uk**

# FERGUSON FAWSITT KEEPING WITH TRADITION AND ADDING A LITTLE EXTRA!!

**Allen Slinger at the Ferguson Fawsitt has always been one for pushing boundaries whilst maintaining a local connection, supporting local business and community.**

So Thursday 3rd November is a date for the diary. From 7pm onwards it is your opportunity to allow your taste buds to go to unexplored places, or perhaps revisit places from days gone by and acquaint them with flavours in a new way. The Ferguson Fawsitt will be launching their range of gins, perhaps try a gin in a way you have not tried a gin previously, with a range of gins, tonics and other alternatives to explore.



Allen, on taking over the Ferguson Fawsitt back in February and opening in March, set his sights on the Fergie being the place to go to try new things, a traditional pub with a look to

the future and forging partnerships with local businesses. Allen introduced himself to Jane Howes, a 4th generation Walkington lady and local gin producer just a few hundred yards away from the Ferguson Fawsitt.

Jane started her business in 2019 from her house in Walkington having taken early retirement to look after her father. Jane explained "Being a

traditional Gin drinker and having time on her hands having taken early retirement she wanted to keep herself busy whilst exploring a passion of hers which was drinking Gin."

Setting up a still at home with all the licences in place, and fulfilling all the legal requirements, Jane soon realised that after each run even she was unable to drink 12 to 16 litres of gin, so her micro business was born. Jane wanted her brand to represent her tradition and her desire was to deliver a traditional brand. She uncovered how important the Black Mill was in her family, from her grandfather returning to the area after the war and recognised he was nearly home on viewing the Black Mill, along with her father referring to the Black Mill as his resting place. It's well worth asking Jane about that story, it's not what you may think. And so Black Mill Gin was born.



On Thursday 3rd November the six gins will be available to sample.

- Traditional Gin
- Raspberry and Watermelon - (Pink and Fruity)
- Blood Orange (Fresh not sweet)
- Lemon (Sharp Lemon)
- Elderflower
- Passionfruit and Mango



Allen mentioned, "A number of people have tried gin with a tonic and have been put off and gone no further. But we ask people to come and try our selection of gin's either on their own, or try them with a tonic's from the London Essence Tonic Tower with a variety of flavours to try. There are Indian Tonic, Elderflower, Cucumber, Rhubarb and Grapefruit or maybe just with a Lemonade, they will genuinely be surprised and refreshed"

Allen welcomes everyone to pop in to the Ferguson Fawsitt after 7pm on Thursday 3rd November to sample a gin the Fergie way.



Telephone: **01482 526317**  
<https://fergusonfawsitt.co.uk>  
[www.twitter.com/fergiefawsitt](https://www.twitter.com/fergiefawsitt)  
[www.instagram.com/fergiefawsitt](https://www.instagram.com/fergiefawsitt)  
[www.facebook.com/FergieFawsitt](https://www.facebook.com/FergieFawsitt)



## The Ferguson Fawsitt



# Afternoon Tea

A SELECTION OF SANDWICHES, SAVOURIES AND DESSERTS,  
A CHOICE OF TEAS AVAILABLE...



**AFTERNOON BINGO**

1ST THURSDAY OF THE MONTH

STARTS 2PM

£13.95 EACH, 2 FOR £26, 3 FOR £35, 4 FOR £42

MAKE YOUR AFTERNOON TEA FIZZ,  
ADD A BOTTLE OF PROSECCO FOR £15.99

VEGAN AND GLUTEN FREE OPTIONS AVAILABLE

AVAILABLE THURSDAY – SATURDAY 12 – 5PM  
24 HOURS NOTICE REQUIRED, MUST BE PRE ORDERED

**QUIZ NIGHTS**

1ST FRIDAY OF THE MONTH

STARTS 8.45PM

SERVING FAMILIES SINCE 1872

# Your funeral wishes. Our local experts.

Funerals from  
**£995**

Unattended Funerals

Attended Funerals

Prepaid Funeral Plans



**We're here for you anytime.**

Whatever your wishes or budget, we can provide a funeral to suit you.

## FRANK STEPHENSON & SON

29 Minster Moorgate

Beverley

01482 881 367

[dignityfunerals.co.uk/local](http://dignityfunerals.co.uk/local)



We're proud to be a Dignity Funeral Director,  
providing exceptional services to families across the UK.

Pricing is correct at time of going to print and is subject to change. Price stated is for an Unattended Funeral.

★★★★★  
Customer rated  
Powered by Yext

## SHORT STORY BY CLINT WASTLING - EXOTIC CREATURES



It's strange to think that when I awake at night and stare at the sky, somewhere out there amongst all the stars and planets there must be a wild population of the creatures which became status symbols as pets.

They do not live in water, as we do, they can't breathe in it but they can swim as I found to my cost when it tried to escape! They are curious to look at having only four appendages, not the usual eight.

It was reported that if you squeeze them with a tentacle, they burst noisily and make rather a mess. We wouldn't do this, Avery and I aren't cruel.

The exotic creatures have to be kept in a vivarium containing a noxious mix of gases. It's expensive to create and maintain. It shows our status in society that we can afford to buy the gases our pet requires for survival. The creatures become pale and lethargic without a regular supply of clean air.

I've always enjoyed nature programmes on TV and there were several about the boom in these exotic pets. This has helped our understanding of their needs.

I realised how boredom can kill these delicate things. Avery and I ensured that our pet had an obstacle course for it to master and other challenges.

The vivarium was kept on a rocky ledge where Avery and I relaxed after work. One evening we watched a movie. In it, bipedal creatures invaded our planet and killed off everything. Pure greed!

What we hadn't realised until the credits was that the story was based on a monochrome film found in a crashed spaceship. It had creatures rather like our species doing something similar on an unpleasant looking rocky planet. Avery and I were horrified but noticed our pet biped sat on its wheel crying.

Coincidentally, just another week later a spaceship crash-landed on the mountainous island above our waters. Alien bipeds roamed our rich forests unhindered. We observed them, of course and our pet took particular interest in their survival techniques.

However, they committed the cardinal sin of cutting down trees and starting fires. That's when our *octoped* army intervened and captured the invaders. They were auctioned at the pet shop.

Avery bought another biped. This one was more rounded in appearance. We put them together in a cage, not certain whether they'd fight or mate. We hoped they might breed.

The more rounded biped expanded and after several months we found the creature with two identical offspring. These were utterly useless beings unable to do anything other than suckle, make noises and leave a dreadful mess.

Avery and I realised there was no quick profit to be made with these exotic creatures and sold them to the local wildlife park. With the money we were able to buy an aquatic huffhound. We discovered much more of our local submarine landscape as a result and also got to know many of the other huffhound owners.

These aquatic beasts enjoy fetching the squid and playing hide and seek. Less intelligent but much less trouble to keep and something which lived in our own marine environment.

## POEM BY JULIE BARKER - SEASONS IN THE DALE



April in the dale: bright sunlight peeping  
through the trees,  
Daffodils gently bobbing and bowing in the breeze,  
Nature casts her youthful bloom  
Upon the buds of ash and broom  
Rabbits nibble blades of grass  
Dappled deer gracefully pass  
Throughout the copse of birch and oak  
April bringing joy and hope.

August in the dale: scorching sunshine burning through,  
Nature has lost her youthful hue  
Walkers roam across the dusty paths  
Laden down with maps and flasks  
August looking tired and jaded  
Summer's glory dry and faded.

October in the dale, a blaze of red and brown  
Autumn's colours all around  
The ground is laden with fallen leaves  
The low-slung sun gently weaves  
In and out of twigs and branch  
October leading Autumn's dance.

December in the dale, winter's icy blast  
Casting shadows upon the year that has passed.  
Leaden skies threatening snow  
Slippery paths glisten and glow  
Pale sunlight struggling through  
The old encroaching upon the new  
December, cold and dull and tragic  
Promising a little festive magic!

**Julie Barker is a keen writer and has had two short stories published in anthologies produced by the University of Hull. Julie was a finalist two years running in the local Tale Spinners competition.**

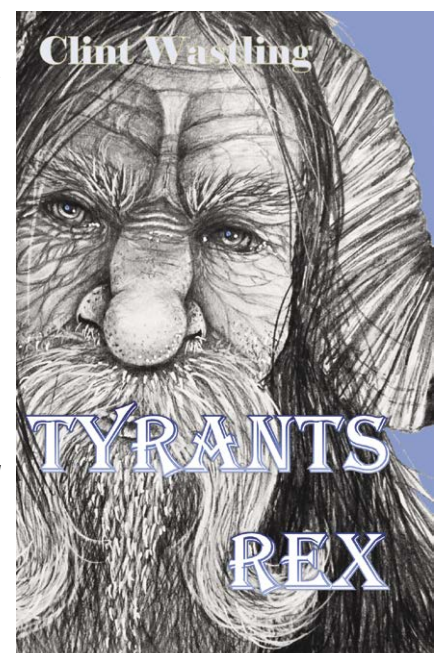
**She enjoys art and also belongs to a local community choir. Julie works part time as an IAG Adviser for East Riding Council.**

The bipedal pets?  
Forgotten, however, I saw  
on a news programme that  
a family had escaped the  
wildlife park and forged a  
living in the mountains.

The *octoped* army is  
considering the next steps  
with this invasive species.  
Perhaps if another  
spacecraft lands on our  
planet we'll find out more  
about them. I don't think  
they will amount to much.

**Clint Wastling's sci-fi novel  
Tyrants Rex is available  
from Stairwell Books**

**www.stairwellbooks.  
co.uk/product/tyrants-rex**







## “£10,000 TO HELP WITH MY BILLS? YES PLEASE!”

Reserve a beautiful new McCarthy Stone property at one of our stunning developments in Beverley, Brough, Filey or Swanland by the 28th February 2023 and we'll give you £10,000 off the purchase price\* to help with your living costs – so you can relax and enjoy the lifestyle you deserve.

What's more, with our Smooth Move service<sup>†</sup>, you'll also get free specialist removals and we'll help cover your legal and estate agent fees.

Plus with the changes to Stamp Duty, now is a great time to move.

Beat rising living costs today. Call **0800 185 5005**  
or visit **[mccarthystone.co.uk/bills-offer](https://mccarthystone.co.uk/bills-offer)**

**McCARTHY STONE**  
*Life, well lived*

\*T&Cs apply. Reservations must be made by 28th February and go on to complete by 30th April 2023. Selected developments only. Offer excludes rentals, relets, resales, Part Buy Part Rent and Shared Ownership apartments. See [mccarthystone.co.uk/bills-offer](https://mccarthystone.co.uk/bills-offer) for full details. £10,000 will be deducted from purchase price on completion. <sup>†</sup>T&Cs apply. See [mccarthystone.co.uk/smoothmove](https://mccarthystone.co.uk/smoothmove) for full details.

# TONY CHRISTIE: IS THIS THE WAY TO BEVERLEY?

**Tony Christie and Ranagri present 'The Great Irish Songbook' in Beverley.**

Tony Christie, the legendary singer best known for his recording of "Amarillo", rolls into Beverley next month for a performance at St Nicholas' Church with top folk band Ranagri - performing their popular show 'The Great Irish Songbook' (from the album of the same name).

The project came about by a chance meet in

the late 90's after a gig when Christie produced an old accordion heirloom from County Mayo and told the band of his Irish heritage.

"We sat around the kitchen table until the early hours of the morning, having a few drinks and singing old folk songs from a shared heritage; the songs we remembered our parents singing; songs of great joy and deep sorrow, many of which we would go on to record on this album" says Ranagri's piper Eliza Marshall.

"As we sang the old songs we wondered if there'd ever be a way we could shine some new light on them. In the morning we laughed and said "maybe, someday".

"We recorded The Great Irish Songbook at Stockfish Records with some amazing people and whilst it's great to have finally made the album that we'd spoken about 20yrs ago, it seems the only conclusion we can draw is that the journey hasn't ended, it's merely begun" concludes Donal Rogers, Ranagri's frontman, singer and guitarist.

Ranagri are no strangers to Beverley, having played to a packed house at the Parkway Cinema back in 2019.

"We're so looking forward to hosting not only the legendary Tony Christie, but the great band Ranagri with him for what promises to be a very special night" says Reverend Mike Peatman, vicar of St Nicholas'.

St Nicholas' Church has been presenting live music throughout 2022 and has proven a popular venue for acoustic and roots music.

Tony Christie and Ranagri perform at St Nicholas' Church, Holme Church Lane, on Saturday 26th November.

Tickets are priced £20 and available from [www.stnicholaschurchbeverley.co.uk/concerts](http://www.stnicholaschurchbeverley.co.uk/concerts)



## Four Generations, Giving Over 125 Years Service

Herbert 1870-1962	Eardley 1908-1986	Geoffrey 1939-2015	David 1964
----------------------	----------------------	-----------------------	---------------



Golden Charter  
Funeral Plans



- Funerals Respectfully Conducted
- 24 Hour Out of Hours Service
- Free Advice & Support
- Private Restrooms
- Prepaid Funeral Plans Available
- Finance Options Available



**Tel: 01482 844695**  
[www.hkempandsonltd.com](http://www.hkempandsonltd.com)

259 Hallgate, Cottingham, East Yorkshire, HU16 4BG  
Fax: 01482 843898  
Email: [hkempandsonltd@gmail.com](mailto:hkempandsonltd@gmail.com)



## Botterill & Co

Chartered Certified Accountants

We are a modern and professional accountancy practice ideally located to serve businesses in Beverley and the surrounding area.

We utilise modern accounting technology to provide you with a cost effective, professional service.

### Our services:

- Annual Accounts
- Tax Planning
- Management Accounts
- Tax Returns
- Company Formations
- Payroll
- Cloud Accounting
- Bookkeeping & VAT

For a free initial consultation please contact us:

Office: 01482 862240

Mobile: 07966 051458

Email: [gareth@botterillco.co.uk](mailto:gareth@botterillco.co.uk)

Website: [www.botterillco.co.uk](http://www.botterillco.co.uk)

1st Floor Offices, 40 Norwood, Beverley, HU17 9EY.



# Ardent Fireworks

## QUALITY FIREWORKS

over 100 lines from only £4.00

Open until 5th November 2022

10.30am to 5.30pm

Open 27th December to 31st December

10.30am to 5.30pm

[www.ardentfireworks.co.uk](http://www.ardentfireworks.co.uk)

Annie Reed Road  
Grovehill Industrial Estate  
Beverley  
HU17 0JT  
Tel: 07962 225 600

Our Pocklington shop is open all year -  
Wednesday, Thursday, Friday and  
Saturday, 10am - 6pm  
2F Hampden Road,  
Pocklington Industrial Estate YO42 1NR

You must be over 18 to purchase fireworks



# CYCLING ELECTRIC WITH WILSON WHEELS

As the clocks went back 1 hour (Fall BACK - Spring FORWARD), we now have to make the most of the daylight and the opportunity to get more from our cycling adventures and explore our countryside of colour.



For those who perhaps need a little extra then the electric bike is the answer. Whether you are looking for a bike to commute to work on, or a bike to explore the countryside to cycle and explore further afield, Wilson Wheels will have an Electric Bike to suit your needs. The bike will save you money rather than driving to work and you will naturally become fitter and healthier.

As we approach Christmas, this year could be the year to think about a new bike, new lights, helmet, gloves or Hi Viz clothing to keep you warm and safe.



At this time of the year pop into Wilson Wheels where professional cyclists Nathan and Dave will give you the best advice to make the right purchase.

Stay safe, warm and bright - do not forget to check your lights.

# CARFAN - THE TRIUMPH ROADSTER

Anyone of a certain age will immediately recognise the car featured in this issue - the Triumph Roadster, or 18 TR to give it its correct model name as it was driven by Bergerac in the eponymous television detective series.

With a choice of 1800 or 2000 c.c. the featured car is the former converted to the latter for a little extra power, with the emphasis on the "little" as even with the larger engine this is no boy racer.



Sadly this car doesn't have a good reputation for reliability either, breaking down on its first trip with its current owner due to an unreliable ignition system. Bergerac had similar problems on set too with multiple breakdowns even though two cars were used for filming as the breakdowns were so frequent, often from overheating.

Only owned for a year so far, the featured car has had the column mounted gear change moved to the floor and interesting features include it having three windscreen wipers, a dickie seat with rear windscreen, trafficators and suicide doors.

This car has its own club - the Triumph Roadster club and parts are not too hard to obtain although membership of a specific club is recommended here if only due to the age of the car. Should you fancy a Roadster on your drive be prepared for a long search with very little choice and having to pay between £15,000 and £33,000 for a good one, although one of the Bergerac cars did sell for £37,000 a few years ago, albeit with TV provenance which always helps.

With a combined total of only about 4500 of this model produced between 1946 and 1949, it is a rare sight on our roads and should you see one on your travels, don't forget that cheery Carfan wave!

*Pop in store for all your cycling needs*

## WILSONS WHEELS

T: 01482 882881  
W: [www.wilsonswheels.co.uk](http://www.wilsonswheels.co.uk) E: [info@wilsonswheels.co.uk](mailto:info@wilsonswheels.co.uk)

CHRISTMAS CLUB NOW AVAILABLE




- Adult Bikes
- Children's Bikes
- Electric Bikes
- Clothing for all cycling weather
- Parts and accessories

89a Grovehill Road, Beverley, East Yorkshire HU17 0EJ  
NOW OPEN: Monday - Saturday 9am - 5pm  
Sunday: CLOSED - Out riding our bikes



**NEW YEAR COURSES**

## 15% OFF ALL COURSES FOR 2023

Gym Instructor | Personal Trainer | Pilates Instructor  
Nutrition | Award in Education & Training  
Mental Health Awareness



*What a fabulous Christmas gift for your loved one!*

CHECK OUT OUR WEBSITE FOR ALL OF OUR COURSES  
USE CODE: NEW15

ACCREDITED COURSES




ActiveIQ



CHECK OUT OUR WEBSITE FOR FULL DETAILS OF DATES & COSTS

WWW.SPORTSABILITYTRAINING.CO.UK

OR CALL US FOR A CHAT 01482 229676

SCAN OUR QR CODE FOR A QUICK LINK TO OUR WEBSITE

# PUZZLE PAGE

## WORDSEARCH

J F Y X N O V E M B E R G L V  
 S Y H M R P P R Y S C H O B U  
 E B P O L U K S O K T S W C W  
 K I Q V H M E X J Y I M T C D  
 W N Z D C H K K W X A I F L K  
 A I P D S Y P T O Z N L P J C  
 F B C A S K Z I W K C E B A Q  
 Y I L S P A R K L E R S M P Y  
 U F R L S R E E H C R E A K O  
 G N R E P B Y D U H R G S N L  
 D U W Z W A G U J A S T L S D  
 X J N G U O T O S G H M G G M  
 Z W I K J J R D E G J G U N R  
 D H S E G L V K I A T N X A M  
 R D D X J T E N S R Q F Z B F

BANGS  
 CAMERAS  
 CHEERS  
 FIREWORKS  
 FLASHES

GUYFAWKES  
 NIGHTSKY  
 NOVEMBER  
 SMILES  
 SPARKLERS

## WHAT IS IT?

Can you identify what this obscure image is? Answer on Page 31.



## COMEDY CORNER!

Things that make you laugh!



New Christmas gifts for Pets?  
 I saw the sign "Watch for animals".

I just flew back from a holiday –  
 My arms are tired!

Local swimming club asked  
 for donations –  
 I gave them a bottle of water!

## QUOTE OF THE MONTH

Learn from yesterday, work on tomorrow.

## SMALL CHANGE BIG IMPACT

Go to bed without your phone - sleep better.

Do you have any amusing stories,  
 quotes or pictures? Send them to  
[info@justbeverley.co.uk](mailto:info@justbeverley.co.uk)

**DREAM DOORS®**  
 NEW LIFE FOR OLD KITCHENS



**AUTUMN SALE  
 NOW ON!**

VISIT OUR  
 SHOWROOM NOW:

4a Belprin Park,  
 Swinemoor Lane,  
 Beverley, HU17 0LN

Call us now for a free estimate:

**01482 861 653**



**Checkatrade.com**  
 Where reputation matters

AVERAGE SCORE **9.7/10**



## THE UK'S #1 KITCHEN MAKEOVER EXPERTS

- From simple door replacements to complete fitted kitchens
- Fully installed by local professionals in just a few days
- Choose from a large selection of doors, worktops and appliances
- 96 showrooms nationwide

[www.dreamdoors.co.uk](http://www.dreamdoors.co.uk)

## QUALITY BEDROOM MAKEOVERS BY LOCAL PROFESSIONALS

- Bespoke sliding wardrobes
- Styles to suit every home
- Wide range of colours and finishes to choose from
- 96 showrooms nationwide

[www.dreamdoorsbedrooms.co.uk](http://www.dreamdoorsbedrooms.co.uk)

FOLLOWING  
 GOVERNMENT  
 GUIDELINES



# TRAVEL COUNSELLORS - ARABIAN ADVENTURES

*I wanted to share with you some of the fabulous offerings available to you on a holiday to Dubai - where the skyscrapers tower over the golden beach and the shores of the Arabian Sea.*

Until only twenty or so years ago Dubai was pretty much a desert and has blossomed in to a very popular and very vibrant destination.

Even the airport is huge with a train to link terminals and a six lane motorway taking you out of the city to your destination. It is such a popular destination now - not just for the rich and famous, although they are very well catered for, but also honeymooners and families and those seeking different experiences and adventures to tick off the bucket list. There are fabulous kids clubs in many of the hotels, and the iconic Atlantis waterpark for non stop fun!!

We chose to stay near the Marina so that we were able to easily step out of the hotel and have a walk around the area, and stayed at the four star JA Ocean View Hotel in an ocean view room which we felt was worth the supplement.

We had a fantastic view of the ocean and the latest man-made island - Bluewater, and the iconic largest observation wheel in the world which looked fabulous on an evening with various light displays. We stayed on half board which was a buffet, however it certainly offered a wonderful choice of freshly made dishes and each night was themed so it gave a variety in its offering.

Breakfast was also buffet unless you wanted to have freshly served Eggs Royale or Eggs



Benedict or their fabulous Smashed Avocado on toast. There was such a huge choice of restaurants locally from Japanese, Lebanese, Italian, Korean and many others that we would not have struggled at all had we booked on a bed & breakfast basis.

We pre booked three excursions so that we knew we would not be disappointed with any lack of availability and made the most of our time there. Our first excursion was to the magnificent Mall of the Emirates which is simply out of this world! We could have booked to arrive earlier and spend time (for a supplement) in their aquarium however we decided to window shop and enjoy the air conditioning!! We then headed for the tallest building in the world - the Burj Khalifa - and enjoyed observing the Dubai skyline from the 124th and 125th floor which we timed perfectly so that we were able to watch the sunset and see the city in lights.



We then headed down to the fountains for a fabulous five minute display of lights and music to the dancing fountains which is on every thirty minutes. It was absolutely beautiful and such a vibrant yet safe environment to enjoy with a huge choice of restaurants overlooking the fountains too.

Our second excursion was a small group yacht charter from Dubai Marina where we set sail at 1130 and enjoyed sunning ourselves on the deck and spotting the main sights and iconic hotels such as the Burj Al Arab, and also enjoyed a barbeque lunch on board. I had a few minutes at the wheel with close supervision from the captain which was great fun. It was worth seeing the palm and marina from the sea as it gives a completely different view point and was a



wonderful experience and one I will definitely be recommending to my clients. Our third and final excursion was the Desert Adventure Day. We went quad biking in the desert, sand dune bashing, and sand boarding, and fitted in a camel ride too. So it was certainly an action packed morning.

The desert was incredible. I have to confess the dune bashing - despite taking motion sickness tablets - nearly finished me off so it is not for the faint hearted or those susceptible to being travel sick or with bad backs. I am glad I tried it, and will recommend to some of my clients, however I think I will be aiming for the sunset desert experience with a barbeque next time.

So a perfect destination for sunshine all year round, and in my opinion with an offering of so much more than just a beach. It also works very well as a stopover to break the journey to further afield so you arrive at your final destination more relaxed and ready to take on the next adventure life gives you.

If you want to know more about Dubai and the various different hotels and areas please do get in touch.

**Amanda McConnell, Travel Counsellors.**

**T: 01482 770540**

**E: amanda.mcconnell@travelcounsellors.com**

**W: www.travelcounsellors.com/amanda.mcconnell**

## BEVERLEY RESIDENT RECYCLING "UNRECYCLABLE" WASTE TO FUNDRAISE FOR GUIDE DOGS

**Beverley resident Kwai White is raising money for the Guide Dogs for the Blind Association by recycling "unrecyclable" oral care products and packaging from the community.**

Kwai has signed up to the Colgate and Hello Oral Care Free Recycling Programme run by TerraCycle, the world leaders in recycling hard-to-recycle waste. This allows the community to recycle any brand of electric toothbrush heads, plastic toothbrushes, toothpaste cartons and toothpaste tubes among other items that the council doesn't collect to be recycled.

For each piece of waste sent in, TerraCycle points are awarded which are redeemable as monetary donations to charity. Kwai's chosen charity is the Guide Dogs for the Blind Association, and local residents are encouraged to make use of Kwai's public drop-off location for oral care waste which is open 24/7 at 38 Hillcrest Drive, Beverley.

Oral care products are often made of a complex

mix of materials which makes them hard to recycle. This means the recycling process costs more than the recycled product is worth, making it uneconomical for councils to collect and recycle them.

So far Kwai has recycled more than 40kg of oral care waste from the community, saving it from landfill and incineration, and wants others to get involved to continue raising money to support those with sight loss.

Kwai said: "Taking part in TerraCycle's free recycling programmes is a simple way to do something great for the environment whilst supporting a charity that provides invaluable support for people with sight loss. It's a fantastic way to support a charity without parting with hard-earned cash.

"All of us use toothbrushes, toothpaste and other oral care products, so instead of throwing them out and letting them end up in landfill or

incineration, please collect them at home and then bring them to my drop-off location. Please encourage your family, friends and neighbours to do the same."

For more information about TerraCycle, or to get involved head to: [www.terracycle.com/en-GB](http://www.terracycle.com/en-GB)



# COUNTRYSIDE MATTERS WITH SAM WALTON

*I know I have mentioned Neil Unger in Australia quite a bit, but he is an extraordinary person and tells it exactly as it is.*



Farming there is upside down to ours if you like, which means on the arable side, they will be drilling in May/June and harvesting in November. You might think of Oz as a dry Country and certainly part of it is.



Sometimes they are looking for rain for their crops and sometimes as has happened this year, whilst we have had a drought, Neil on his 8,500 acres has about a quarter of it not drilled because of excessive rainfall and some that is drilled is too wet to do anything with, so no spraying or top-dressing fertiliser will be possible. I suppose that

is one reason and probably the main reason why farming is so different all around the World.

Farmers over the years have been very far seeing and one thing is for sure, wherever you are on a farm, they are always doing something different, and even if they are neighbours with similar soil and climate, one will always be farming in a different way and have a different rotation.



Some farms may be suitable for potatoes or vegetables and fruit and if there is livestock on a farm, then they will treat their grasses differently if they have dairy cows, a beef unit or sheep. We have to be thankful that there is always food in the shops which also play a part and the companies who deliver the food not only from our farms here but from around the world as well as locally.

So you could say that we all farm or work in unison and let's hope that continues but it is going to be more difficult, particularly with the situation in Europe and I think about the Ukraine a lot, wonderful farming country and such lovely people.

## WHAT IS IT?

*Did you guess? It was a car alloy wheel!*



# IN THE GARDEN... NOVEMBER

**November is late autumn in the gardening calendar, autumn ends when most plants stop growing because the daily temperature is too low (due to a combination of shorter days and a weaker sun) and they enter a period of dormancy.**

For me November is a transitional month, we move from the bright hues of autumn colour that may still be lingering at the beginning of the month and then tumble into winter at its close. Colour from flowers will be scarce, but replaced by berries, variegated evergreen foliage, and decorative bark on trees, seed heads and grasses.

Two plants that may be worth considering for winter colour are Vibernum tinus and Mahonia vars. The Vibernum bears clusters of small white flowers from pink buds and the Mahonia bears slender racemes of yellow, fragrant flowers.

## Tasks and Tips for November...

These are mainly tidying and protecting for the coming winter months:

- Continue to clear up leaves and compost if applicable. Do not allow them to stay on the lawn as this will lead to bare patches and clear them from nooks and crannies, slugs and snails will overwinter in them especially if they are dry!!
- Tidy up roses and any other shrubs by clearing old stems and dead foliage - do not overdo this as grasses and seed heads can look extremely attractive in the depths of winter (especially with a frost on them) and they will provide food and shelter for the smaller creatures in the garden.
- Aerate (spike) the lawn, give it a light cut and apply an autumn feed. Autumn feed differs from the spring/summer feeds, containing a different ratio of nutrients which enhance root development, helping your lawn get off to a flying start next spring. Do not apply any feed if frost is forecast.
- Protect tender plants using horticultural fleece.
- November is your last chance to plant spring flowering bulbs - plant bulbs at 2 to 3 times their own depth for best results.
- November is a good month to plant a hedge; bundles of bare root hedging plants will become available in nurseries and garden centres. It is also a good time to transplant any shrubs or trees that are not 'quite where you want them' in the garden.
- Dig over bare soil in the vegetable garden when weather permits. If done early in the month the rain and frost over winter will help to break up the soil and digging will be easier in the spring. However, do not trample on the soil if it is wet enough to stick to your boots as you will end up compacting it, which will do more harm than good.
- If you decide to have a bonfire, please check before you light it that no four-legged creatures have decided to make a home in it.
- Remove and overhaul pond pumps - store in a dry place over winter. Stop feeding fish and tidy up pond plants, particularly lilies.

*So, until December, happy gardening, J.*

Jane Dale of 'Designed Gardens'. Tel: **07983 392 411**.



# STAGE4BEVERLEY ANNOUNCES ITS HEADLINERS FOR THE 2023 FESTIVAL

**12th - 19th February 2023. The 7th Stage4Beverley festival is fast approaching and with the headline acts now in place, tickets are already selling fast with many more artists still to be announced.**

We welcome back some old favourites to the festival as well as new faces, some well established and some rising stars on the folk, roots and Americana scene, as well as our poets who became a popular side to the festival for the first time at the 2022 event.

Kicking off the main events on Wednesday 15th February will be the legendary BBC Radio 2 presenter **Bob Harris**, described by the Radio Times as “one of the greats of British contemporary music broadcasting”. He will be in conversation with **Martyn Joseph**, a unique and mind blowing artist, a great songwriter and guitarist, described as “The Welsh Springsteen”.

Thursday 16th seems a welcome return of the



Gary Stewart's Graceland

multi award winning singer **Lauren Housley** with her Trio. The band gave such a stunning afternoon performance at the last festival that a return visit for an evening show was a must.

Friday 17th sees another welcome return of poet, comedian and musician, **John Hegley** described by The Statesmen as “...one of the funniest men alive...” and by The Independent as “*Awesomely mundane!*”



New to the festival are **Rusty Shackle** on Saturday 18th with their distinct folk-roots sound with an electrifying mix of rampant fiddle, slick guitar and banjo hooks drums and bass. They deliver excitement every time they step onstage and steal hearts with their music.

Our finale concert on Sunday 19th will see the return of **Gary Stewart** with his “**Graceland**” project performing the songs from that legendary album. The band scored a major success a few years ago at the festival and it will be a delight to



John Hegley

have them back with us.

With the addition to the programme of poetry workshops and performances; some of the top young musicians from the Leeds Conservatoire; and the festival's ever popular Late Night Clubs, the festival is set to brighten up those cold and dark February days and lift the spirits.

Check it out at [www.stage4beverley.com](http://www.stage4beverley.com). Tickets available from the East Riding Theatre Box Office **01482 874050** or online - go to the link from the festival website.



Martyn Joseph and Bob Harris





## A CHRISTMAS ADVENTURE

COMMENCING: 26TH NOVEMBER 2022

- BREAKFAST WITH SANTA
- SANTA'S GROTTTO
- WINTER WONDERLAND ROLLER-SKATING

LIMITED TICKETS AVAILABLE! BOOK ONLINE:  
[WWW.LETLOOSEYORKSHIRE.CO.UK](http://WWW.LETLOOSEYORKSHIRE.CO.UK)



# STAGE 4

## BEVERLEY'S

### Winter Festival 2023

ert

Sun 12th to Sun 19th February 2023



Rusty Shackle



Gary Stewart's Graceland



John Hegley



Lauren Housley Trio



+ more acts to follow inc. poets, Leeds Conservatoire students & more

STAGE 4  
BEVERLEY'S

Winter  
Festival

Sun 12 to Sun 19 February 2023

East Riding Theatre / Café Velo / Monks Walk / Toll Gavel Church



Bob Harris and Martyn Joseph



Pete Bolton



Michael Nagasaka & Lewis Kilvington



# WHAT'S ON IN BEVERLEY

Tell us about your event!

E-mail [info@justbeverley.co.uk](mailto:info@justbeverley.co.uk)

Telephone **01482 679947**

For more events visit  
[justbeverley.co.uk/events](http://justbeverley.co.uk/events)

**Saturday 24th September to Saturday 7th January 2023**

• **23rd OPEN Art Exhibition**

The 23rd Annual Open Art Exhibition at the Beverley Art Gallery is a celebration of local talent from across Hull and East Riding. [www.eastridingmuseums.co.uk/open-art-exhibition/](http://www.eastridingmuseums.co.uk/open-art-exhibition/)

**Saturday 1st October to Saturday 4th February 2023**

• **Treasure! Hidden Hoards and Fabulous Finds**

There are thousands of treasured items in the Treasure House but some objects are quite literally...treasure. Pop in and discover gold, silver, rings, coins and more! Treasure House, Champney Road, Beverley.

**Thursday 3rd November**

• **The Orchard**

East Riding Theatre. 7.30pm. Price: £10. The play takes a comical examination of the 'little Englander' attitude of Eric Brown.

**Friday 4th November**

• **Beverley Big Comedy Night - Laugh 'Til It ERTs**

East Riding Theatre. 7.30pm. Price: £12 (16+). You will be transported to the legendary salon of Kelli! Taylor: Hair, Body, Her Choice. A number of guests will be calling in!

**Saturday 5th November**

• **Edwina Hayes (support from Carrie Martin)**

East Riding Theatre. 7.30pm. Price: £14.50 Standard / £13.50 Conc. (Over 65 & Under 23).

• **Westwood Lions Club bonfire**

**HAS NOW SADLY BEEN CANCELLED**

**Monday 7th & Tuesday 8th November**

• **Talking Heads - 'A Chip in the Sugar' & 'Bed Among the Lentils'**

East Riding Theatre. 7.30pm. Price: £17 Standard / £16 Concession (Over 65 & Under 23). These two monologues, originally written for television by Alan Bennett; one of Britain's best-loved and most highly acclaimed writers, are brought to life live on stage by ONE OFF PRODUCTIONS.

**Friday 18th November**

• **Christmas Lights Switch On**

Flemingate, Beverley, 5pm - 7.30pm. Fun fair rides, food stalls, late night shopping.

**Saturday 19th November**

• **Handel's MESSIAH**

7pm in Beverley Minster - [www.beverleyminster.org.uk](http://www.beverleyminster.org.uk). The Parisi Consort and Manchester Baroque - Conductor, Roderick McPhee.

**Friday 25th & Saturday 26th November**

• **The ABBA Reunion Christmas Show**

Live in Beverley Minster. Starring the original 'Frida' from the London West End cast! Tickets £25 / £23. Book Now: 01964 552470 Mon-Fri 9am-4pm.

**Saturday 26th November to Sunday 4th December**

• **Beverley Musical Theatre present Cinderella**

## NORWOOD NITES Community Cinema @ Norwood Church

**We warmly invite you to join us again or, for the first time, to our monthly film night. FREE ADMISSION! A new programme running October '22 - March '23.**

Due to Copyright we are only allowed to display film titles on the Church premises. Refreshments & Raffle from 6.30pm. Films start at 7pm. Films shown in the hall to the rear of the Church.

**Monday 14th November at 7pm**

A little eight year old boy is willing to do whatever it takes to end World War 2 so he can bring his father home. A film about the love a father has for his son.

**Monday 12th December at 7pm**

Lonely transit worker, Lucy pulls her longtime crush from the path of an oncoming train. Whilst in hospital, and in a coma, a misplaced comment causes his family to assume that she is his fiancée.

Ring or message **07903 136996** for more film details. If you require transport to and from this event please contact Beverley Community Lift on Tel: **01482 868082**.

At the Beverley Memorial Hall  
[www.beverleymusicaltheatre.co.uk](http://www.beverleymusicaltheatre.co.uk)

**Thursday 8th December**

• **Richard Durrant's Candlelit Christmas**

With Christmas songs and wintry folk music. Richard will be joined onstage by his sons Django and Felix, legendary musician Brian Gulland and much loved singer Amy Kakoura. Toll Gavel United Reform Church, 27 Toll Gavel, Beverley, HU17 9AA. Doors: 19:30. Tickets: £17/£15.00. Contact: 01262 678258.



### BEVERLEY RUFC

**UPCOMING FIXTURES**

Beverley RFUC, Beaver Park, Norwood, Beverley, HU17 9HT  
[www.beverleyruffc.co.uk](http://www.beverleyruffc.co.uk)

Hospitality packages for all home matches are now available to book. For more information, email or call the Hospitality Team on [events@beverleyruffc.co.uk](mailto:events@beverleyruffc.co.uk) or call **01482 870306**.

**5th November**

Beverley v Old Rishworthian (H)

**12th November**

Roundhegians v Beverley (A)

**26th November**

Beverley v West Leeds (H)  
**Durham Ox Match Sponsor**

**3rd December**

Beverley v Bradford Salem (H)

WORDS OF WEIGHTON PRESENTS

# DON'T LOSE YOUR HEAD

ARAGON BOLEYN SEYMOUR CLEVES HOWARD PARR

(With songs from SIX THE MUSICAL)

Friday 2nd December 2022 • 7.30pm  
Saturday 3rd December 2022 • 2.00pm & 7.30pm

Little Weighon Village Hall • Old Village Road  
Suitable for aged 10 and over • Licensed bar & raffle

Tickets available **07908 207356** **£8**

**DIVORCED BEHEADED DIED - DIVORCED BEHEADED SURVIVED**

**Saturday 10th December - Wednesday 28th December**

• **Beauty & The Beast - Xmas Panto**

Parkway Beverley in association with TaleGate Theatre Productions invite you to be our guest for Beauty and the Beast, our magical pantomime for 2022.



# CHAPTER HOUSE

A **SPRINGFIELD** CARE HOME

—  
**BOOK  
A TOUR  
NOW**  
—



## EXCEPTIONAL & PERSONALISED CARE

*in the heart of Beverley...*



## RESIDENTIAL & DEMENTIA CARE DELIVERED IN A BEAUTIFUL PURPOSE-BUILT ENVIRONMENT

ROOF TERRACE • MINSTER VIEWS • NAMASTE ROOM • CINEMA • SPA

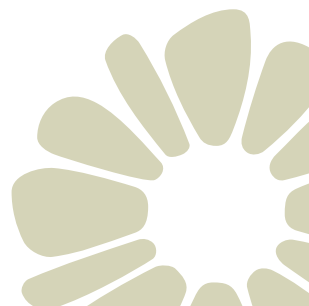


RESERVE YOUR ROOM NOW, OR FIND OUT MORE...

a: Keldgate, Beverley, HU17 8HU

e: [info@springfieldhealthcare.com](mailto:info@springfieldhealthcare.com) t: 01482 904647

w: [www.springfieldhealthcare.com](http://www.springfieldhealthcare.com)



# Autumn Ready?

Adults aged 50+ can get a **COVID-19 booster** and **flu vaccine** to **increase protection** against respiratory viruses **ahead of winter**.

Extra groups also eligible for a seasonal booster are:

- Pregnant women
- Those aged 5+, in a clinical risk group
- Those aged 5+, who are immunosuppressed
- Those aged 5+, who are household contacts of anyone immunosuppressed
- Carers aged 16+
- Residents and staff in care homes for older adults
- All frontline health and social care workers.

Visit **nhs.uk/covidvaccination** to book an appointment.



Scan to find a clinic for you.

**Not sure where you can get yours?**

Head to **vaccinatehullandeastriding.co.uk** for information on local clinics.

**Stay safe. Stay sound. Protect others.**



EAST RIDING  
OF YORKSHIRE COUNCIL



**#TogetherEastRiding**