

just
ISSUE 51

BEVERLEY

**PICK ME
UP, I'M
FREE**



CAVEMAN BARBER TRAINS NEXT GENERATION

WIN!

- SHAZAM GOODIES AND PARKWAY CINEMA TICKETS
- TIGER INN AFTERNOON TEA FOR TWO
- COCKTAILS AT THE TIGER SPRING COCKTAIL SOIRÉE

NEWS, WHAT'S ON, LIFESTYLE, FEATURES, PUZZLES, PHOTOS & MORE

To arrange a **FREE** meeting
call us on 0845 308 2288
or visit www.stipendia.org.uk



Stipendia Payroll Solutions



@StipendiaPay



Your Partners in Payroll

Be aware of the April changes in payroll. Have you got it right?
Outsource your payroll today and be rest assured everything is taken care of!

- New Pension Contributions Rates
- New Minimum Wage Rates
- New Statutory Sick and Maternity Pay Rates
- Perfect your Payslips



Scan the code above to download our New App

Or download our App on iOS:

<https://itunes.apple.com/us/app/myaccountants/id1317268476?mt=8&ign-mpt=uo%3D4>

Or download our App on Android:

<https://play.google.com/store/apps/details?id=uk.co.myfirm.sapp.one.accountants&hl=en>

Once downloaded you will need a unique unlock code
which is "STIP0418"





8

CONTENTS

Letters from the Editors **3**
 News **4, 5, 10, 28**
PARKWAY CINEMA 6, 7
EAST RIDING THEATRE 31

FEATURES

Caveman Trains Next Generation **8**
 New Paths Musical Journey **9**
 St Mary's School -
 Small Changes, Big Difference **10**
 Clogau's 30th Anniversary **13**
 East Yorkshire Judo Academy **25**



5



9



10



19



25



29

REGULARS

Competitions **5, 7, 14**
 Competition Winners **6**
 Countryside **22, 23**
 Fashion **16**
 Finance **21, 23**
 Fitness **29**
 Gardening **23**
 I've Been Thinking **14**
 Lifestyle **6, 7, 10, 16, 27, 28, 31**
 Literature **30, 31**
 Motoring **26**
 Sport **29**
 Walk **33**
 What's On **6, 7, 20, 31, 34**

Competition Terms and Conditions

Competition answers should be emailed to competition@justbeverley.co.uk before the closing date with the competition title in the subject field. Include your name, address and daytime contact telephone number along with your answer. Winners will be notified within 1 week of the closing date and MUST be available for publicity purposes for **Just Beverley** magazine, website and Facebook page and the prize provider. Photographs are usually taken the weekend after the prize-winners have been notified. The judge's decision is final. No cash alternative is offered. Details may be used for marketing purposes by **Just Beverley** and the prize provider and for website analytics by **Just Beverley**.

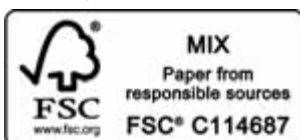
Contributors:

Julian Minshall, Linda Johnson, Rich Manville, Hannah Ali Photography, Lynne Auton, Brenda Cartwright, Jane Dale, James Hardisty, Grace Hutchinson, Emma Lusby, Colin Raynor, Ian Richardson, Sam Walton, Lee Wardell, Nathan Wilson.

You can pick up the magazine from:

Parkway Cinema, Flemingate, Beverley Tourist Information, Beverley Library/Treasure House, Tesco, Morrisons, East Riding Leisure Beverley, East Riding Theatre, Browns café, Beverley News, Boyes, Tesco café, Colette and Tyson Garden Centre, Beverley Garden Centre, Cherry Tree Garden Centre, Mace News Saturday Market, Co-op Food Lincoln Way, Tickton News, Costcutter in Walkington, Molescroft News, Grovehill Convenience Store, Maple News, Leconfield PO, Willerby News, Poundland, Halfords, East Riding Community Hospital, Bishop Burton PO, Leven PO, The Altisidora, Cherry Burton PO, Barkers of Cottingham, Middleton-on-the-Wolds PO, Light Dragoon at Etton, Gnu at North Newbald, Monks Walk, Hayride, Sally's Deli, Ferguson Fawcett at Walkington, health centres, churches, cafés, hairdressers and more!

Printed by: Jadan Press.



Please pass your Just Beverley on or recycle it responsibly

www.justbeverley.co.uk

just BEVERLEY

LETTER FROM THE EDITORS



Beverley is changing like the seasons with new shops opening (In the Pink, The White Company, Hays Travel and Brook Taverner all in Toll Gavel spring to mind), new shows at East Riding Theatre and Parkway Cinema and new events at Flemingate,

in our churches and elsewhere. Our Beverley in Bloom and Brighter Beverley teams have been making the town sparkle with their spring clean-up - and then there's our pretty surrounding villages all of which make East Yorkshire such a desirable place to live, which will be showcased again when the Tour de Yorkshire comes to town in early May. If you are new to the area and are reading **Just Beverley** for the first time, then welcome! Do get involved, send us your good news, pictures, stories. Don't forget to check our website which is updated daily and 'like' us and share our Facebook posts and Twitter feed. Have a good Easter break!

Julian.



Now the days are much, much longer, most of us have much more get-up-and-go! April means we fair-weather cyclists get our bikes out - please don't forget to get your cycle checked out at Wilsons Wheels and buy yourself a new helmet if it's older

than 3-5 years from the date of manufacture, or sooner if it's worn or cracked - and longer, warmer days are great for planning walks in our fabulous countryside. **Just Beverley** has a walk every month in it - and you can find previous walks in past copies on our website.

It's New Paths, too, which has rapidly become one of my favourite festivals, and this year, the great Christian celebration of Easter, which signals the end of Lent so we can eat (Fairtrade) chocolate again without feeling guilty! Talking about chocolate, White Rabbit Chocolatiers are again teaming up with She Productions and East Riding Theatre to present Alices' Extravaganza in Wonderland. Such fun, with or without the chocolate workshop!

Music, walking, cycling, eating - there's lots to make everyone happy this April!

Linda.



'Community Publication Award' Shortlisted Nominee 2017 & 2018



REYTA Remarkable East Yorkshire Award Nominee 2016 'Best Newcomer'

GET IN TOUCH WITH US:

Website: justbeverley.co.uk

Email: info@justbeverley.co.uk

Telephone: 01482 679947

Twitter: @JustBeverley

Facebook: facebook.com/justbeverley

If you would like copies for your business to distribute to staff and customers, call **Just Beverley** on **01482 679947**.



BEVERLEY CHAMBER CHOIR TO RECREATE HANDEL'S ORIGINAL MESSIAH

The Messiah was first performed on Good Friday in Dublin 1742 by a choir of 35 singers, overseen by Handel himself. Beverley Chamber Choir will perform The Messiah on Good Friday (April 19th) in St Mary's Church at 7pm with a small choir and a professional orchestra of professional musicians drawn from the north of England.

For the last 20 years, Beverley Chamber Choir has presented a special concert of religious music on Good Friday to meet with the solemnness of the occasion. This year, the choir will also be joined by professional soloists, Eleanor Gregory, Joyce Tindsley, Guy Elliott and Stuart O'Hara to perform The Messiah, conducted by Jeffrey Makinson.



Jeffrey Makinson has been Musical Director of Beverley Chamber Choir since 2016, something he combines with his other roles as Assistant Director of Music and Sub-Organist at Lincoln Cathedral and tutor for the Royal College of Organists Academy.

Tickets are priced at £17.50 and £12.50 and available through the website: www.beverleychamberchoir.org

QUIET RIOT RETURNS TO BEVERLEY CRICKET CLUB

Quiet Riot, the Beverley alternative, has found its new home! Lovers of local indie and rock music have been without their Beverley 'fix' since Quiet Riot had to leave its previous venue when Hodgsons closed in 2015.

The fantastic line-up of Let Man Loose, Evil Litter and The Vida Cult play on Friday, April 12th from 9pm. Tickets are £3 in advance from Hull Box Office or £4 on the door.

Quiet Riot organiser, Chris Warkup said: "We are wanting to reinvigorate the indie scene in Beverley at the Cricket Club and bring in bands who you would usually have to travel to Hull or further afield to hear. The monthly Quiet Riot at Hodgsons was very popular and Beverley has been missing out by not having a platform for them to play. You could be listening to future stars all for £3!"



THE TOUR DE YORKSHIRE COMES TO BEVERLEY AGAIN ON MAY 2ND!

Although there is no start or finish in Beverley this year, Beverley will feature in Stage 1 of the Men's Race, as it rides from Doncaster to Selby.

The route heads from Doncaster to Askern, Howden, Elloughton (where there is an intermediate sprint), North Ferriby, Swanland, Skidby and Walkington before reaching Beverley. As the race leaders and peloton race towards York, there is a King of the Mountains points opportunity at the Côte de Baggaby Hill and a second sprint at Pocklington. The race ends outside Selby Abbey - a great way to celebrate the 950th anniversary of this beautiful building. The route is tailor-made for sprinters - so if you want to see them for any longer than a few



seconds, Baggaby Hill is the place to go! The Tour de Yorkshire is now the second biggest pro stage race after the Tour de Britain. It has been upgraded to HC status by the UCI, which makes it the highest category possible for a multi-day race outside of the UCI World Tour - which is coming to Beverley in September. Whether you are a cycling fan or not, 2019 will see some of the best cycling stars in the world gracing our streets!

BEVERLEY BESTIFAL - THE BEST OF BEVERLEY!

Come and showcase the best of Beverley at Beverley's Bestifal!

Beverley RUFC have had a fantastic season - but so have many of Beverley's other clubs, associations and organisations, which are inclusive to all ages and promote health, fitness and team-working. What better way than to celebrate than with a 'Bestifal' Day!



On Saturday May 18th, Beverley Rugby Club at Norwood (adjacent to the railway crossing) is hosting Beverley Bestifal on their own playing fields. Everyone is invited! This is the opportunity to celebrate with a family programme of events for all ages and abilities, a live music stage with everything from indie to rock, a market and traders' area and a spectacularly fun 'It's a Knockout' assault course. In fact, everything you need to celebrate the Best of Beverley!

Traders, clubs, charities and other organisations are offered space to showcase the finest Beverley can offer and provide a platform to reach out to Beverley's growing community. From the wacky to the wonderful, fast paced to chilled and

comfortable, this is the chance for you to show others what you do and get them engaged. The whole day will be an opportunity to fundraise for your club, recruit new members and generally engage with people. Don't hesitate to get in touch for any queries and feel free to pass details on to anyone that may want to be involved. Follow Beverley Bestifal on Facebook and look forward to what's coming at Beverley Bestifal in May.

Email: info@ukeventassociates.co.uk
Facebook/ [BeverleyBestifal](https://www.facebook.com/BeverleyBestifal)
Eventbrite/ [Beverley Bestifal](https://www.eventbrite.com/#!/search/Beverley%20Bestifal)
Phone: 03333 441033

A NEW HOBBY COULD LEAD YOU TO A NEW BUSINESS!

Have you ever thought you might try something new? Tracey Spurgin of Craftworx, based at Coldharbour Farm, Bishop Burton inspired the creation of Lux Ornatus Jewellery!

Tracey runs metal clay courses which show students how to make jewellery out of silver, copper, bronze and iron and more - you can even make silver jewellery without a kiln! Making jewellery is absorbing and gives a great sense of satisfaction when you have finished - and Lux Ornatus Jewellery is of such a high standard and so original that, when shown on Facebook, people were wanting to purchase it!

You can buy Lux Ornatus Jewellery at Creative Labs at Flemingate shown off beautifully against a purple backdrop. Check out www.facebook.com/LuxOrnatus



EAST RIDING COUNTY CHOIR MAY BANK HOLIDAY CONCERT

The Choir and orchestra will be performing two works in their concert on Saturday 4th May at 7.00 pm in Beverley Minster.

Rossini's 'Petite Messe Solennelle' was composed in 1863. Although the title translates as "Little Solemn Mass" it is neither little nor solemn and is in a lively operatic style like much of Rossini's music. York-based Andrew Carter wrote 'Benedicite' for choir, children's choir and orchestra in 1991, inspired by the restoration of roof bosses at the southern transept of York Minster which had been destroyed in a fire in 1984. The County Choir is delighted to be joined by Hymers College Junior School Choir, which enjoys a national reputation, for this piece.

Tickets are priced at £10 or £17.50, available from Beverley Tourist Information in the Treasure House (01482 391672), online from www.eastridingcountychoir.org, or at the door.

THE NARROW ROAD

The Narrow Road - powerful theatre performed by Riding Lights Theatre Company on the journey to Easter

The Narrow Road is a passion play and a moving experience of theatre and worship written expressly for the season leading to Easter. Four actors will retrace the footsteps of Jesus through a world of miracles and madness.

Written by Paul Birch, this extraordinary journey will begin on a dusty road, amid the heat and beauty of ancient Palestine. As the Narrow Road is walked, the already turbulent world is turned upside down and its inhabitants confronted by an unexpected and surprising vision.

York-based Riding Lights is one of the UK's most successful independent theatre companies and is internationally renowned for over forty years of touring productions. The Narrow Road was first performed in 2010, commissioned jointly by the Dean and Chapter of York and Lightline Pilgrimages. For one night only, at Beverley Minster on Saturday 13th April at 19.30.

Tickets (£10.00) are available from **Beverley Minster Parish Centre, 34 Highgate, Beverley.** Tel: **01482 868540.**

EAST RIDING MUSEUMS GUILD HERITAGE TALKS SERIES

Ever fancied learning something new? Then this series of talks might be for you!

At Beverley Guildhall towards the end of the next 4 months, you can learn about: Elwell's Beverley on Saturday 27th April at 1pm; The Yorkshire Nature Triangle on Wednesday May 22nd at 4.30pm; Beverley's Railways on Saturday 27th June at 1pm and Unusual and Cruel Punishments on Wednesday 31st July at 4.30pm.



Talks cost £3, which includes refreshments and can be booked on **01482 392699** or at East Riding of Yorkshire Council Events: www.bridspa.com/events

ELITE CHAMBER CHOIR TO APPEAR IN SOUTH DALTON

The Swan Consort made up of young singers from around the UK is to sing at South Dalton Church on Saturday, April 13th at 1pm with refreshments afterwards (supplied by The Pipe and Glass) served in the Village Hall all for £15.

The Swan Consort explore diverse and elegant repertoire from the Early Renaissance through to the present day, with a specialist take on Early Music. The group's name honours the companion animal of the Goddess Saraswati, Hindu Goddess of Music and Learning. Their programme includes English madrigals, works of choral satire and newly-edited works from Cavalli. Just turn up and pay on the door!



IN THE PINK OPENS IN TOLL GAVEL, BEVERLEY

Silver specialist, In the Pink, well-known in Grimsby and Cleethorpes for its own, handmade silver Dollie range along with other brands, has come to Beverley!

The boutique store, which showcases its beautiful jewellery, also features a colourful carousel horse which customers are invited to use to pose for photographs.

With popular Italian brand Nomination, Hot Diamond, Arabella Collection wedding rings and watches by Cath Kidstone and Radley amongst others, In the Pink has something special for everyone, men, women and children.

You might know Dollie as it features as gift items on Virgin airlines!



HUGE CYCLE SCULPTURE TO BE PLACED AT CENTRE OF NEW JOCK'S LODGE JUNCTION TO RECOGNISE BEVERLEY'S CYCLING HERITAGE

The multi-million pound scheme which will transform the A1079/A164 Jock's Lodge intersection and dual the A164 to reduce tailbacks will mean the current road bridge over the A1079 will be at the centre of the new road layout, but will be unused.

In the same way as the Brownhills Roundabout in Staffordshire has its Tin Man and the Tewkesbury Stonehills Roundabout has a wooden statue of a horse and rider charging into battle, so a committee of roundabout enthusiasts has put plans into East Riding of Yorkshire Council to site a huge yellow and blue-painted road cycle at the northern entrance to Beverley.

With Beverley now featuring regularly in the Tour de Yorkshire and the exciting news that it will host the opening stages of the UCI Road World Championships and the Paracycling event which runs alongside it in September, a huge cycle seemed to be the best way to record Beverley's unique place on the cycling calendar.



THE ANNUAL TIGER GIN FESTIVAL RETURNS FOR MAY BANK HOLIDAY



Join The Tiger Inn, Beverley over the 2019 May Bank Holiday weekend and immerse yourself in a Spring Cocktail Soirée .

Sample the vast range of premium gins, rums and whiskies all paired with the perfect tonic or mixer. Explore the carefully curated 'sensory' drinks menu, with cocktails created from the 4 of the human taste senses; savoury, sweet, sour & bitter. They're talking Chorizo, parmesan, raisin, coffee infusions into gins, rums and whiskies to create the perfectly balanced, bespoke cocktail experience. Mmmm...



The Tiger's good friends at Poma will also be joining in for the weekend, serving their popular gelato flavours from the Poma Pod along with some brand new flavours blended to pair with the cocktails on offer.

COMPETITION

Win 2 free cocktails of your choice at the Tiger Gin Festival! To be in with a chance of winning, just answer the following question: **Gin is made by redistilling ethanol with what berry?**

Send your answer by email to competition@justbeverley.co.uk by April 15th. Put 'Gin Festival' in the subject box with your answer, name, address and daytime telephone number in the body of the email. The winner must be available for publicity purposes for The Tiger Inn and Just Beverley magazine.



EVERY THURSDAY AT 10.30am
(doors open 9.45am)

Join us for a free brew and a natter and enjoy some great films on Beverley Parkway's Big Screen. Only £4.20 with drink and biscuits included. Aimed at 55s and over. Films subject to change.

Thursday 4th April -

The Upside
Mary Queen of Scots

Thursday 11th April -

Colette
The Upside

Thursday 18th April -

Can You Ever Forgive Me
Colette

Thursday 25th April -

Mary Poppins Returns
Colette

COMPETITION WINNER

Congratulations to Shirley Robinson who won a pair of tickets to 'West End Nights' at Parkway Cinema.



PENGUIN PARTIES



**ONLY
£195**

- ★ - Suitable for ages 5 to 12
- ★ - Up to 40 guests (additional charge for extra guests)
- ★ - Party games in a private function room with Parkway Penguin
 - Tea and coffee for parents on arrival
- ★ - Personal Photo montage on screen followed by your own film screening

For more information, please contact a member of staff

These are the films scheduled to open in April - all are subject to change.
Check out up-to-date cinema listings at www.justbeverley.co.uk/cinema-times



5th April



5th April



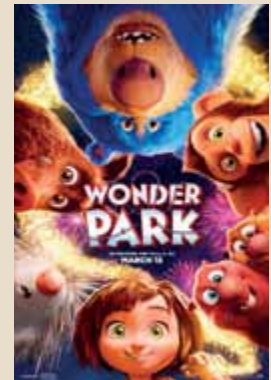
5th April



5th April



5th April



8th April



11th April



12th April



19th April



26th April



26th April

COMPETITION WINNERS



Congratulations to Deirdre Fincham of Beverley, Michelle Laird of Malton and Rita Murtagh of Walkington who won André Rieu's brand new DVD, 'Love in Maastricht'.



YOUR LOCAL INDEPENDENT CINEMA

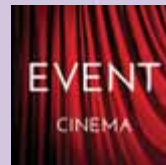


BEVERLEY BUZZ COMEDY CLUB - IT WILL MAKE YOU CRY WITH LAUGHTER!

Hugely entertaining headlining comedian Sean Percival brings his down to earth hilarity to Parkway Cinema as part of the latest Beverley Buzz Comedy Club show on Sunday 28th April.

Supporting Sean will be Barry Dodds who charms audiences with his irrepressibly cheeky style, the quick-witted improvisations of Hayley Ellis, and George Lewis who was a big hit at the Edinburgh Festival in August. Regular compere is local legend Agraman the human Anagram with his persistent puns. With thanks to continued local support, the Beverley Buzz shows will continue throughout the year on a quarterly basis.

Tickets for Sunday 28th April are £10 (£9) and available from Parkway box office on **01482 968090** or online via www.parkwaycinemas.co.uk. The show commences at 7.30pm prompt.



Event cinema offers something a little different to mainstream films. Live and pre-recorded shows beamed in via satellite from all over the world. Here are the latest live streams that you can enjoy on the big screen at Parkway Beverley.

Tuesday 2nd April at 6.15pm -
ROH: LA FORZA DEL DESTINO

Thursday 4th April at 1pm & 7pm -
**THE KING AND I FROM LONDON
PALLADIUM (U)**

Sunday 7th April at 4pm -
BOLSHOI: THE GOLDEN AGE

Tuesday 9th April at 6pm -
EOS ENCORE: REMBRANDT

Thursday 11th April at 7pm -
NT LIVE : ALL ABOUT EVE (12a)

Wednesday 17th April at 7pm -
RSC: AS YOU LIKE IT

Tuesday 30th April at 6.45pm -
ROH: FAUST

Tuesday 7th May at 1pm & 7.15pm -
**AN AMERICAN IN PARIS -THE MUSICAL -
ENCORE (PG)**

Wednesday 8th May at 7.15pm -
AUSTRALIAN BALLET: SPARTACUS

Tuesday 14th May at 7pm -
NT LIVE: ALL MY SONS (12a)

Thursday 16th May at 7.15pm -
**ROH: WITHIN THE GOLDEN HOUR/ NEW
SIDI LARBI CHERKAOUI/ FLIGHT PATTERN**

Sunday 19th May at 4pm -
BOLSHOI: CARMEN SUITE/PETRUSHKA

LIVEshows

Saturday 13th April at 11am & 2pm -
ON STAGE - THE LITTLE MERMAID

Sunday 28th April at 7.30pm -
BEVERLEY BUZZ COMEDY CLUB

Sunday 19th May at 7pm -
T. REXTASY

Sunday 15th September at 7pm -
THE BON JOVI EXPERIENCE

Sunday 13th October at 7pm -
GIMME ABBA

Sunday 20th October at 7pm -
THE TAKE THAT EXPERIENCE

SHAZAM! COMES TO LIFE ON APRIL 5TH!

We all have a superhero inside us, it just takes a bit of magic to bring it out. In Billy Batson's (Angel) case, by shouting out one word - SHAZAM! - this streetwise 14-year-old foster kid can turn into the adult Super Hero Shazam (Levi), courtesy of an ancient wizard. Still a kid at heart - inside a ripped, godlike body - Shazam revels in this adult version of himself by doing what any teen would do with superpowers: have fun with them! Can he fly? Does he have X-ray vision? Can he shoot lightning out of his hands? Can he skip his social studies test? Shazam sets out to test the limits of his abilities with the joyful recklessness of a child. But he'll need to master these powers quickly in order to fight the deadly forces of evil controlled by Dr. Thaddeus Sivana. Book your tickets Now!

The star of SHAZAM! Zachary Levi, who plays the eponymous hero, is a self-professed comic book fanboy and genre nerd. Like the theme of wish fulfilment in the movie, playing Shazam is a dream come true for him. Foster kid, Billy Batson, played by Asher Angel, transforms into Shazam when he says the magic word - he looks different on the outside but remains his true age, 14, on the inside. It was The Wizard (Djimon Hansou) who transported Billy to The Rock of Eternity to endow superpowers on him and British actor, Mark Strong who plays Dr Thaddeus Silvana who tests him out!



To celebrate the release of 'SHAZAM!' in cinemas 5th April, Warner Bros. Pictures, Parkway Cinema and Just Beverley offer you the chance to win a heap of SHAZAM! film merchandise.

You could win: a duffel bag; ladies' white t-shirt; light up zip hoodie; lightning bolt pen; phone wallet and stand; reversible beanie; glow in the dark lapel pin (prizes subject to change without notification). All you have to do to be in with a chance of winning these superb goodies is to answer the following question:

In the movie SHAZAM!, Billy Batson is magically spirited away to a secret place inhabited by the Wizard, who endows Billy with powers based on his strong spirit and pure heart. What is this place called?

Send your answer by email to competition@justbeverley.co.uk by April 15th. Put 'SHAZAM!' in the subject box with your answer, name, address and daytime telephone number in the body of the email. The winner will be the first name drawn at random on April 16th and informed that day. The winner MUST be available for publicity purposes for Just Beverley, Parkway Cinema and Warner Bros. There is no cash alternative. Good luck!

© 2019 Warner Bros. Ent. All Rights Reserved. TM & © DC Comics.



CAVEMAN BARBER TRAINS NEXT GENERATION

With a passion for classic and contemporary hairdressing and good grooming, Caveman Barbers has grown in popularity since its inception in 2015.

Beverley resident Nico Jamil opened Caveman's doors on June 29th 2015, bringing his passion for good hair and beard care to Beverley. Why was the shop called 'Caveman'? Because when Nico had a beard and long hair, friends would say he looked like a cave man! The long hair has since gone in favour of a more traditional hair-style and the hair and beard are now groomed with Nico's own grooming products.

Caveman offers the following services: hair wash, haircut, clipper cut, dry cut, hair styling, hair re-styling, blow dry, beard tidy, beard trim, moustache trim, wet shave with hot towel, shave and shape-up. Nico and his team, Jessica and Tito, have built up a very loyal customer base over the years with many endorsements on the Caveman Facebook page singing the praises of their professionalism and customer care.

Nico said: "I love making people look good and putting a smile on people's faces! I have seen fashions come and go, but it's given me great experience in being able to advise what style I think will suit a client. Now we have our own grooming products, I can also recommend how customers can best look after their 'look' until their next visit. To me, being a barber is a passion, not work. The shop is open 7 days a week because I love what I'm doing! It's a privilege to make someone look their best."

Caveman products have been created based on a fragrance called Dogma which contains essential oils, herbs, spices, fruits and just a hint of tobacco. The range includes hair-care and hair-styling products and shaving and beard-care. They are designed to reflect the barbershop heritage, are of high quality and retail at a fair price. They are continually evolving to ensure they meet the expectations of today's clientele and are worthy of bearing the Caveman label. Nico and his staff are proud that they get such complimentary customer feedback, which is reflected by the repeat visits of his loyal customer base.

The shop is warm and welcoming. Caveman Barbershop's ethos of traditional customer care with traditional hairdressing skills which encompass classic and more modern techniques ensures its appeal, to young people wanting to be on-trend, to the business person needing to look well-groomed or to the older member of our society who wants a barber as it used to be.

What next for the Caveman.

Nico's new Hairdressing academy based on the 1st floor of the Caveman Barbers is set to train the next generation in classic and contemporary hairdressing and grooming, including wet shave and cut throat techniques. The academy will be open four days a week to deliver the skills for the next generation barber.

You can find Caveman Barber at 13, Butcher Row, Beverley, HU17 0AA. Tel 01482 872172. Bookings are advisable but not always necessary.



NEW PATHS TAKES NEW PATHS IN ITS MUSICAL JOURNEY

New Paths fourth spring festival runs from April 4th-7th with some of the brightest new stars in the classical world and free tickets for under 18s to every performance due to generous sponsorship from Guest and Philips!

Founded by former Minster chorister Roland Deller in 2016, New Paths has established a reputation for presenting world-class music in an imaginative and down-to-earth manner.

This year, instead of a musical journey around Beverley, there is a Schubert Odyssey with performances of Schubert's three great song cycles and the lesser-known 'Trout Quintet'



every afternoon at 4.30pm at Toll Gavel United Church. Its very rare to hear all of Schubert's song cycles in a year, let alone in a week! And although they are sung in German, there will be translations provided.

New Paths is delighted to especially welcome mezzo-soprano Katie Bray, who has been selected to represent England in the world's biggest singing competition, the BBC Cardiff Singer of the World.

She has won many awards and sung with Opera North, at Glyndebourne and with the English and Welsh National Opera companies amongst others.

Another cause for celebration is the 250th birthday of the Minster's Snetzler pipe organ. It was built in 1767 but its opening concert was in 1769. There are over 4000 pipes, 75 stops, 4 manuals and a pedal board and organist Ashley Grote will be treating festival-goers to a lunch-time recital on Sunday 7th featuring some favourite classical organ standards.

Roland Deller said: "This year's artistic line-up also includes Martin Roscoe with whom we have a very happy partnership now we are working with him on Beverley Chamber Music Festival. We are honoured that he is coming to perform as he is, arguably, the country's favourite pianist.

"It's with luck that New Paths is timed to fit into



his busy diary! We are also delighted that the Beverley Arms is now open providing additional accommodation for our artists and there's a big thank you to the local community who have contributed so generously to our costs. Moving to Beverley when I was a child changed my life which is why I wanted to give something back and I'm so pleased that others feel the same way."

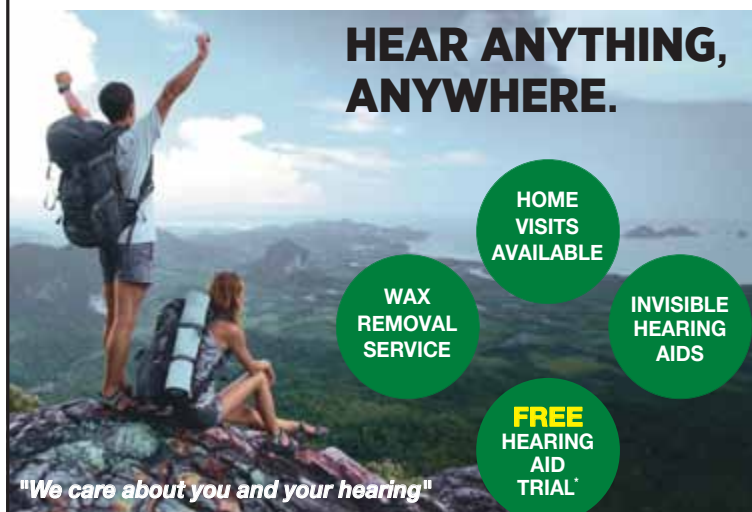
Artistic Director Libby Burgess said: "Beverley is a constant source of inspiration to us with its history, thriving cultural scene and so many venues. Most of our performers live in cities so a week in the East Riding is a special treat as they know they will get a warm welcome - which is why some of them are here for a second or third New Paths - Eva Thorarinsdottir, Edward Grint and Ashley Grote for example.

"Last year, the festival attracted 4000 audience members who travelled from near and far and this year, we have events which were sold out in March! We would encourage anyone who hasn't got a ticket to their chosen events to book as soon as possible to avoid disappointment."

Tickets are available at www.newpathsmusic.com or from Beverley Tourist Information.

HEAR THIS!

HEAR ANYTHING, ANYWHERE.



HOME VISITS AVAILABLE

WAX REMOVAL SERVICE

INVISIBLE HEARING AIDS

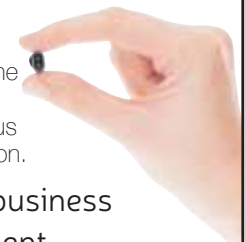
FREE HEARING AID TRIAL*

"We care about you and your hearing"

Would you like professional hearing care that is different, more experienced and more caring than others?

Finding your perfect hearing aid is easier than ever because our independence guarantees you access to the biggest choice and best value for money. Try the latest, smallest hearing aids available, programmed to suit your lifestyle. Ask us for a **FREE**, no-obligation demonstration.

- INDEPENDENT family business
- **FREE** Hearing Assessment
- **FREE** aftercare
- 5 YEAR warranty*
- 5 YEAR **FREE** batteries*



A LEADING CONSUMER SURVEY



AWARDED Independent hearing specialists like HULL HEARING CENTRE **5 GOLD STARS** for choice, pricing & service.

Trouble hearing? Then contact us today.

GO Local. **GO** Independent. **BE** Happy!

Clare House, 8-10 Baker Street, Hull HU2 8HP

tel: **01482 22 22 04**

www.hullhearingcentre.co.uk e: stephen@hullhearingcentre.co.uk



*on selected products

ST MARY'S SCHOOL LEAD ON SMALL CHANGES, BIG IMPACT!

Year 6 children at St Mary's CE primary School were so concerned to see children in South Sudan having to drink dirty water which endanger their lives, that they determined to do something about it. They decided they would raise money for water pumps by selling their own water bottles, which they have designed, with every penny of profit going to South Sudan via Christian Aid. They are also collecting old batteries for recycling to highlight the importance of recycling and looking after scarce resources.

• WATER BOTTLES

We all know how distressing it is to see hungry and thirsty children living in poor countries. Christian Aid, one of St Mary's School's supported charities, has been highlighting this issue, which the children have addressed by selling water bottles with their own unique label. The bottles retail for £3 or two for £5. The children in the school are encouraged to buy them so they remember to drink more water as well as reminding themselves of some of the dreadful conditions children in other countries face every day. If you would like to support St Mary's School and Christian Aid in this way, please contact **01482 868149**.



• BATTERIES

St Mary's School is taking part in 'The Big Battery Hunt' which is a nationwide battery recycling initiative organised by the National Schools Partnership and funded by Duracell. They are appealing to everyone to collect their used batteries and take them into their drop-off point at Beverley Car and Cycles, Norwood. You can take in all your old AAA, AA, B, C

and button batteries but do take in other batteries if you have them, too! The children in the school have taken home a small box to fill with AA, AAA, C and D batteries with the help of an adult - for safety reasons they not asked to collect button batteries - but YOU can!

Aimed at Key Stage 2 pupils, the children are encouraged to look to the wider community to get involved - so, **Just Beverley** readers, here's your challenge!!! The schools which collect the most batteries are in with a chance of winning math subscriptions for the whole school, vouchers for school equipment and prizes and certificates for the children.

Wouldn't it be great if St Mary's was at the top of the leader board when the competition ends on June 3rd? We can help them to do this! You can check out their progress at www.bigbatteryhunt.co.uk

Debbie Frost who is leading the campaign at the school said: "This is a great way to get children enthused about such an important issue. We're hoping everyone will get behind this campaign and help us show that together we can make a difference!"

St Mary's is already registered under the Eco Schools scheme and has a band of Eco Beavers who led an assembly on the importance of recycling. Well done everyone - you are an inspiration!



HUNTERS WIN GOLD!

Never heard of the British Property Awards? If you are thinking of selling your property, then perhaps you should! The British Property Awards are awarded to estate agents who fulfill key criteria and go that extra mile to ensure you get the best service when selling a property or buying a new home.

The British Property Awards were created by a team of former Estate Agents who were concerned that the industry is unfairly judged by some consumers, due to the shortcomings of some estate agents.

The British Property Awards highlight agents who provide a great service and reward them accordingly. They assess estate agents across the country, on a town by town basis, working against a set of 25 criteria which include areas often overlooked by clients and often not considered before they decide to get into contract with an agent. All agents are judged over a number of months to ensure that there is continuity of great service.




The British Property Awards aim to provide a useful standard for the consumer on a local level, highlighting excellence within their town, giving confidence in that an estate agent winning this award can be trusted to be the very best. This award can therefore be used as part of the decision-making process when choosing an agent.

Following a strict procedure, the British Property Awards then narrow down the agents who have delivered on the criteria set out following months of judging via secret shopper, visits, emails, requests and follow ups, speed of response, presentation and feedback.

Hunters of Beverley were shortlisted and named British Property Awards Gold Winner in Beverley.


Leanne Marshall, Tony Sherwin, Melanie Hammond and Ellie Fanshaw are all excited and delighted to have won such an award and be recognised for the hard work they put into looking after their clients and contributing to the local community.



WHITE RABBIT
CHOCOLATIERS

◆ HOP ON DOWN TO THE ◆
CHOCOLATE CAFE

— for handmade, quality treats! —



A taste of wonderland...

f t i

16 Dyer Lane, Beverley, East Yorkshire, HU17 8AE
whiterabbitchocolatiers.co.uk
Tel: 01482 679325

FREESTYLE RECIPES BY WEIGHTWATCHERS: AUBERGINE & TOMATO CURRY

This simple veg curry is bursting with flavour, thanks to a variety of spices, curry leaves and bright, fresh coriander.

Serves 4

Prep Time: 15 min. **Cook Time:** 50 min. **SmartPoints:** 1 per serving

INGREDIENTS:

- Calorie controlled cooking spray
- 1 large onion, finely sliced
- 2cm piece fresh ginger, peeled and finely grated
- 3 garlic cloves, crushed
- 1 tablespoon mild curry powder
- 1 teaspoon ground coriander
- 1 teaspoon ground cumin
- 2 tablespoons tomato purée
- 2 aubergines, trimmed and cubed
- 8 dried curry leaves
- 500g large tomatoes, roughly chopped
- 400g tin chopped tomatoes
- 500ml hot vegetable stock, made with
- 1 stock cube
- Grated zest and juice of 1 lime, plus wedges to serve
- 2 tablespoons finely chopped fresh coriander, plus extra, to serve



METHOD:

1. Mist a large, lidded pan with cooking spray and put over a medium-high heat. Cook the onion for 6-8 minutes until soft, then add the ginger, garlic and spices and cook for another 2 minutes.
2. Stir in the tomato purée and aubergines and cook for a further 3-4 minutes. Add the curry leaves, all of the tomatoes and the stock, reduce the heat and gently simmer, covered, for 25 minutes, then remove the lid and continue to cook for 10 minutes. Remove and discard the curry leaves, then stir through the lime zest and juice and the coriander.
3. Sprinkle over the extra fresh coriander, then serve the curry with the lime wedges on the side. The curry can be frozen in an airtight container for up to 2 months.



Amélie R,
WW member

Find your nearest WW Studio™ in your local area

0345 677 7788* ww.com



WW logo and WW Studio™ are the trademarks of WW International, Inc.
© 2019 WW International, Inc. All rights reserved. *Standard network charges apply.

RIBA 
Chartered Practice

rd stott
Architects Limited



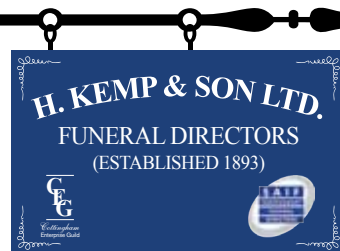
An architects practice putting the client first. From small extensions to a complete new home R D Stott Architects can offer services from initial appraisal to completion.

- Architectural and Design services
- Building surveys
- Feasibility studies
- Cost advice
- Planning services
- Building regulation submissions
- Detailed and working drawings
- Tender information,
- Advice on appointing a contractor
- On site project management

22 Lairgate
Beverley
East Riding of Yorkshire
HU17 8EP
T +44 (0)333 772 9707
E studio@rdstott.co.uk
W www.rdstott.co.uk

*Four Generations,
Giving Over 125 Years Service*

Herbert 1870-1962 Eardley 1908-1986 Geoffrey 1939-2015 David 1964



Golden Charter
Funeral Plans 

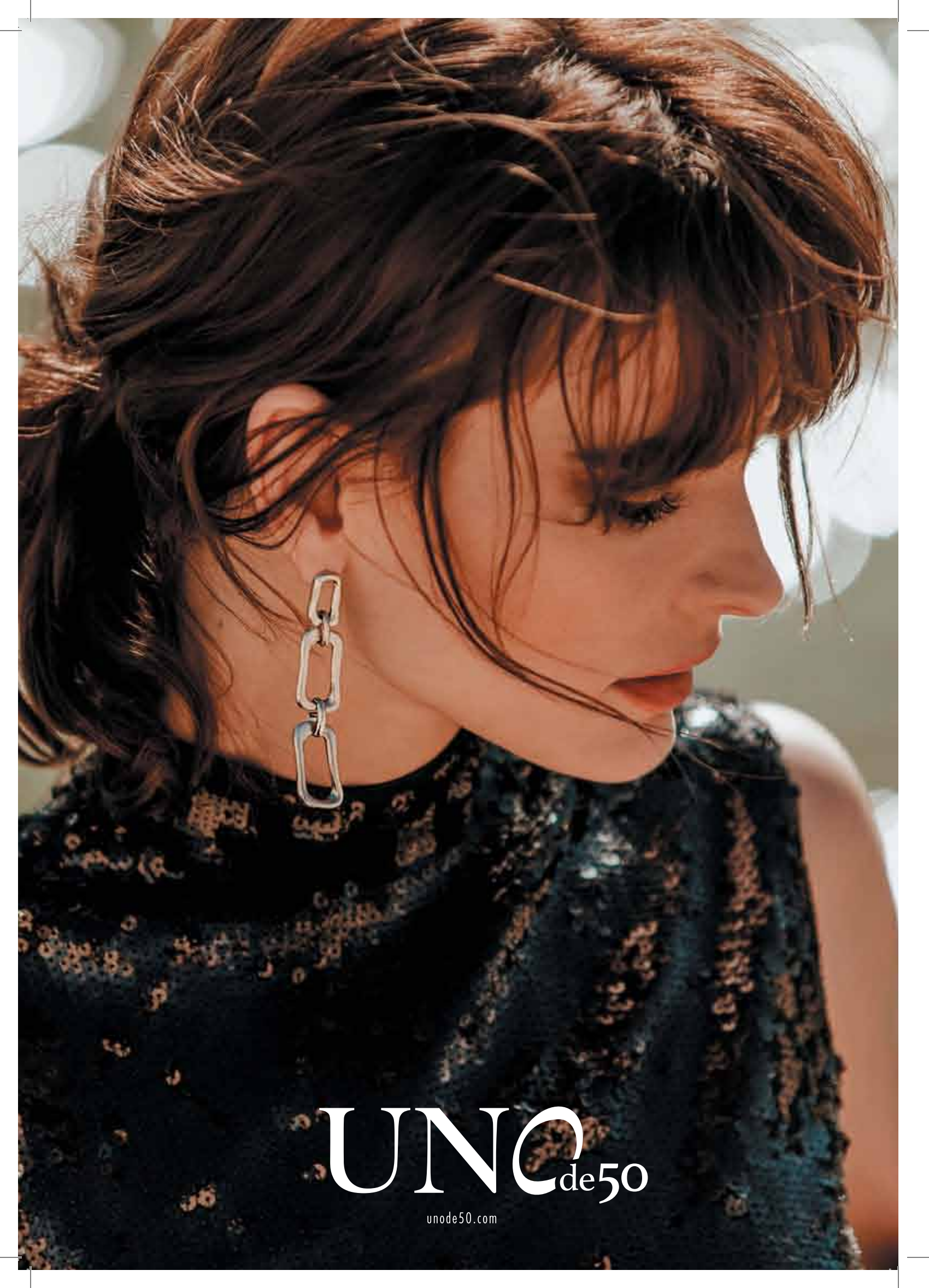


- Funerals Respectfully Conducted
- 24 Hour Out of Hours Service
- Free Advice & Support
- Private Restrooms
- Prepaid Funeral Plans Available
- Finance Options Available



Tel: 01482 844695
www.hkempandsonltd.com

259 Hallgate, Cottingham, East Yorkshire, HU16 4BG
Fax: 01482 843898
Email: hkempandsonltd@gmail.com



UNO_{de50}

unode50.com

EXQUISITE PIECES COMMORATE THE 30TH ANNIVERSARY OF CLOGAU WELSH JEWELLERY

Opals and diamonds have been used to create fine jewellery recreating the rare Snowden Lily which blooms upon the cliffs of Mount Snowden as Clogau celebrate 30 years since acquiring the Clogau St David's mine in the mid-1980's.

Beautiful rings, necklaces and earrings make up the new Lady Snowden Anniversary Collection.



Yellow gold, rose gold, opal, diamond and yellow sapphire are used to represent and evoke the delicate Snowden Lily which is Britain's rarest plant and can only be found in five locations within Snowdonia.

Clogau's other collections, which can be found in Guest and Philips' Flemingate store include 'The Two Queens'.

Echoing Beverley's 'Alice in Wonderland' connection is this beautiful collection of two locket and earrings sets which echo Lewis Carroll's Queen of Hearts who was inspired by Margaret of the House of Lancaster and Queen Victoria.



Alice herself was also crowned Queen in 'Through the Looking Glass'. Ruby acts as a tribute to the heart whilst blue topaz represents Alice's iconic dress.

These more traditional pieces from a range inspired by stories from Wales are also created using silver, rose gold and white topaz.







GUEST & PHILIPS

**FIND THE
PERFECT GIFT
FOR ALL OCCASIONS**



CHECK IN STORE FOR EASTER OFFERS

EXCLUSIVE TO
GUEST AND PHILIPS:

TOMMY HILFIGER

CARAT*
LONDON

CLOGAU®
GOLD OF ROYALTY

UNO_{de50}

LINKS
LONDON

swatch®

MONDAINE

KIT HEATH

23A FLEMINGATE CENTRE, CHANTRY LANE, BEVERLEY HU17 0PW
T: 01482 881001 | WWW.GUESTANDPHILIPS.CO.UK

I'VE BEEN THINKING... SAYS COLIN RAYNOR

I have a feeling that April may be a little confusing, but it surely could not be more so than what has just passed. Let me explain.



More than once during the month of February I became confused with the days and dates because they were exactly the same as in March (e.g. the 11th of February was on a Monday as was the 11th of March and so on). I know it is different in a Leap Year, but that is next year. Now one of the factors of writing for **Just Beverley** is that my article has to be with the Editor half way through the previous month, i.e. around the 15th. So what you are reading was written nearly three weeks ago and a lot has happened since then! Life does not stand still, however old you may be, and indeed, because of that, it may seem to move faster and even catch up with itself!

Beverley is proud to be a Fairtrade Town and therefore celebrated Fairtrade Fortnight from Monday 25th of February until Sunday 10th of March. During that period, we were asked, and rightly so, to consider the plight of farmers who produce most of the world's cocoa (in Cote d'Ivoire in Africa) on less than a living wage. Inevitably, this meant that chocolate was available for sale in abundance, which was very tempting. The consumption of succulent pancakes was this year on Tuesday March 5th followed by Ash Wednesday. Move on to March 10th and we had the first Sunday of Lent in the Christian calendar. This is the point when many people choose to stop eating a variety of foods, predominantly chocolate. There may be no rational reason for this habit, but it persists! Lent, of course, continues until we reach the Christian celebration of Easter. Wait! I am getting ahead of myself, as I thought I might do.

An event took place at the end of March which has been heralded as one of the most significant dates in the calendar year of 2019. I am referring to Friday March 29th when, hopefully, the politicians decided on our future relationship with the European Union. Another significant event took place at Toll Gavel United Church on Saturday March 30th. This day promised to ask us to take a closer look at the environment in particular and at the goods and food we produce and buy/consume. The first of those days I hope became a positive turning point for our country. Let us hope the next day was also a turning point in the way we choose to treat the land we live in. There is another turning point for all, because on that Saturday, March 30th, we lose an hour's sleep and move in to summer time by turning our clocks forward one hour.

So how will April more be confusing than all that for me? It is the month of birthdays in our family with FOUR between March 27th and April 20th. One daughter has a birthday I will not mention in years, just with love, despite it being on April 1st, and three teenaged grandchildren who, like all teenagers, cannot wait to get older. So, it's cards, presents, school exams and parties all taking place, not allowing for the fact that two of them go back to school on Easter Tuesday. Who organised that?

As the saying goes, in Yorkshire, from one to another. "Alright?" and the answer comes back "As right as I'll ever be."

WIN AFTERNOON TEA FOR TWO AT THE TIGER INN



Just Beverley and the Tiger Inn would love to treat you and a friend to Afternoon Tea!

Afternoon Tea was first introduced by Anna, the seventh Duchess of Bedford in 1840. At that time, dinner would not be eaten until 8pm. With lunch at 12noon, Anna would become hungry late afternoon and ask for tea, bread and butter and cake, hence Afternoon Tea is traditionally served at around 4pm.

The Tiger Inn's Afternoon Tea echoes Anna's tea, in that it includes a selection of sandwiches, delicious desserts and a choice of teas (or house coffee or hot chocolate, if you prefer). Usually retailing at £24.00 for two (or £12.95/head), we would be honoured if you would be our guest!



To be in with a chance of winning this prize, simply answer the following question:

What time is Afternoon Tea usually served?

Send your answer by email to competition@justbeverley.co.uk by April 15th. Put 'Afternoon Tea' in the subject box with your answer, name, address and daytime telephone number in the body of the email. The winner will be selected at random on April 16th and informed as soon as possible. The winner must arrange their treat with The Tiger to be enjoyed by May 31st 2019.

AFTERNOON TEA MENU

£12.95 PER HEAD OR £24 FOR TWO PEOPLE

AVAILABLE MON-SAT 12-5PM, PRE-BOOKING IS REQUIRED AND GLUTEN FREE OPTIONS ARE AVAILABLE

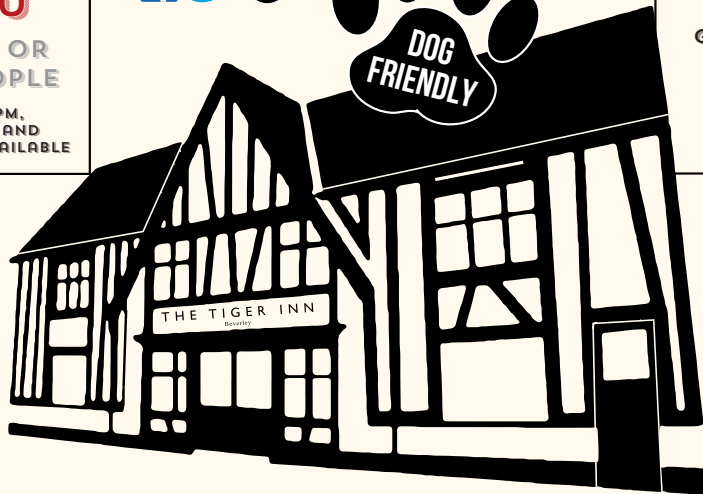


GIN FESTIVAL

INCLUDES 50 SPIRITS GIN, WHISKEY, AND RUM BESPOKE COCKTAILS

4TH & 5TH MAY 2019

HOME COOKED FOOD SERVED 7 DAYS A WEEK



TRY OUR LEGENDARY SUNDAY LUNCH!

THE TIGER INN

Brains required from 8.30pm

FIRST SATURDAY OF THE MONTH

Big Quiz

Free food/prizes to be won, all money raised to our house charities. £1 per person entry

Tel: 01482 869040
www.tigerinnbeverley.co.uk
Lairgate, Beverley HU17 8JG

Going to East Riding Theatre?
Book at The Tiger Inn for a pre-show meal

HOMECOOKED

Sunday Lunches

Served every Sunday 12noon-7pm

Telephone: 01482 869111
sales@rosesofbeverley.karoo.co.uk



The Kitchen Factory, The Courtyard,
Tokenspire Business Park, Beverley
HU17 0TB

Together we will design a beautiful kitchen



Roses will then
project manage
your kitchen installation from
start to completion

Visit www.roseskitchens.com

to see our customers kitchens and read what they have to say about us

Telephone: 01482 869111



CREATE YOUR OWN STYLE WITH LEE WARDELL FROM VERB

Our changeable weather means ensuring your wardrobe can cope with a multitude of conditions. Through rain and shine to wind and calm, warmer to nippy, Verb can help to guarantee you are ready to face whatever spring brings.

Jackets

There are many different styles and materials which are on-trend this season. Suede and faux suede are vying with heavy-duty wool mixes, leather, cotton and linen in a variety of designs.

The utilitarian **Chore Jacket** with big, practical pockets and large buttons is this season's addition to the work-wear trend with the **Bomber Jacket** continues to be the epitome of laid-back style, especially in green, navy and black. Pop it over a hoody for cooler days.

The **Suede Jacket** is now to be found gracing the office over an **Oxford Shirt** and tie; its especially popular in shades of brown and biscuit.



Its looser fit means you can wear a **Lightweight Cardigan** or **Jumper** in merino underneath it for extra warmth on those chilly days, without overheating. Less formally, an unlined **Unstructured Blazer** can be dressed up or down - neutral shades can solve a multitude of 'what to wear' dilemmas.



Trousers

Who doesn't own a pair of chinos? Until recently, the trend has been for neutral colours, navy or black, but this season there's a nod towards brighter hues, so **Washed-Out Chinos** in a slimmer fit add colour to gloomier days. Add a woven belt to keep the waistband where it should be in a complimentary or contrasting colour.

Shoes

Who remembers **Desert Boots**? Well, they are back! With soft suede upper and rubber sole, the



latest colours are dark brown and sand which pair perfectly with denim and neutral trousers alike. **Penny Loafers** are so versatile - in black for the office or in oxblood or navy for a more casual look, buy them in leather to increase their wearability on wet and dry days alike.

Tops

Although **Oxford Shirts** are a wardrobe staple, the **Henley** has come into its own. Once only ever worn as an undergarment, it is now as popular as a white t-shirt! But keep an eye on fit - too tight and it will look as if it has shrunk in the wash but too loose and it will do nothing to flatter your body shape.

All these items are in stock and VERB, and I'm available to advise on fit and offer tailoring as usual.

As usual follow us on **Facebook**, **Twitter** and **Instagram**, with our website: www.verbefashion.co.uk also available.

VERB

MENS AND WOMENS FASHION

TO WEAR • TO WANT • TO WISH FOR • TO OWN • TO FASHION



OPENING TIMES:
MON / SAT 9.30 - 5.30
SUN 11.00 - 4.00



01482 880141
VERBFASHION.CO.UK
INFO@VERBFASHION.CO.UK



FLEMINGATE SHOPPING CENTRE
FLEMINGATE, BEVERLEY
EAST YORKSHIRE HU17 0NQ



@VERBFASHION



@VERBFASHION



VERBFASHIONBEV

TO FASHION YOUR OWN STYLE

THECREATIVELAB TURNS TWO!

THECREATIVELAB is celebrating its second anniversary on 1st April 2019!

In 2017, THECREATIVELAB opened its doors to the public bringing a unique retail offering incorporating the work and products of a wide variety of creative individuals and small local businesses.

In the two years since it opened THECREATIVELAB has grown from the initial offering of work from just twenty local artists to now proudly displaying the products of more than fifty. So far they have accomodated

over 100 different concessions to date.

In addition to the retail offering, based at the Flemingate Shopping Centre, THECREATIVELAB



have also engaged thousands of individuals through their community activities which include Creative Clubs, Art Markets, Art Exhibitions and Community Art Installations.

Company director, Chris Kidd said "We continue to be amazed at the level of support for the space. Two years ago we couldn't have imagined that our little concept would be so successful"



Fellow director, Mikey Mathieson added "It's great to see the number of success stories that have come from people being involved in the space. We've seen artists and makers progress from our space onto their own shops and other incredible avenues"

Two years is an important milestone for THECREATIVELAB as it demonstrates not only that the space is successful but also shows the sustainability and potential for environments that support locally produced work. THECREATIVELAB, and spaces like it, are breaking new ground to help reinvigorate the ailing high street for the future. Here's to many more!



THECREATIVELAB
 ART • FASHION • DESIGN • INTERIORS • GIFTS
www.thecreativelabuk.com
 FLEMINGATE
 BEVERLEY

EA
 embryonic art
 & interiors
www.embryonicart.net



Send your photographs of your celebra
Find us on Twitter and Facebook to spc

ARMED FORCES AND VETERANS BREAKFAST CLUB



ERT BERYL ARTWORK



HERE TO GET *you* THERE

HUNTERS[®]
EXCLUSIVE

BEVERLEY / 01482 861411

celebrations around Beverley, to info@justbeverley.co.uk
to spot yourself in more photos each month.

JESSICA HYNES AT BEVERLEY PARKWAY



SALES / LETTINGS / MANAGEMENT

HUNTERS[®]
HERE TO GET *you* THERE

BEVERLEY / 01482 861411

FLEMINGATE

BEVERLEY

FASHION | FOOD | FILM | FUN

ENJOY



EGG-CITEMENT AT FLEMINGATE

**EASTER BUNNY
FLEMINGATE
HUNT!**

Saturday 6th -
Tuesday 23rd April

**EASTER
FAMILY FUN
AT INFLATANATION**

Saturday 6th -
Tuesday 23rd April

**BEVERLEY
BRAVES U13'S AND
BEVERLEY RU U13'S
CHARITY BIKE RIDE**

Saturday 6th April

**FUNFAIR &
CANDYFLOSS
EASTER FUNFAIR**

Monday 8th -
Thursday 11th April

**LAB RASCALS
SLIME
WORKSHOP**

Wednesday 10th April

**LAB RASCALS
PLANETARIUM
SHOW**

Wednesday 17th April

**TALEGATE THEATRE
THE LITTLE
MERMAID PANTO
AT PARKWAY CINEMA**

Saturday 13th April

**BEVERLEY BOWLS
DEMO DAY
AT FLEMINGATE**

Saturday 20th April

**BEVERLEY
BUZZ COMEDY
AT PARKWAY**

Sunday 28th April

GREAT SHOPPING AND MORE TO ENJOY

FLEMINGATE.CO.UK



@FlemingateBev



FlemingateBev



FlemingateBeverley

MAKING TAX DIGITAL FOR VAT

From 1 April 2019 all VAT registered businesses with a turnover of more than £85,000 will be required to keep their records in a digital format and to submit their VAT returns through compliant software. The new regime applies to VAT returns with a period starting on or after 1 April 2019. This means that all VAT registered businesses with a turnover in excess of £85,000 now need to ensure they are ready to transition to Making Tax Digital for VAT.

The process is straightforward and should be managed as follows;

- Check the date when you are due to go live for Making Tax Digital.
- Find compatible software that lets you submit returns via Making Tax Digital.
- Sign up for Making Tax Digital using your existing HMRC Government Gateway user ID and Password.

It should be noted that as soon as you sign up for Making Tax Digital, all future VAT returns must be submitted using MTD compliant software, therefore do not sign up until you have submitted all prior returns and you have compliant software in place.

The timing of your sign up should also be carefully planned as for 72 hours after you sign up you will be unable to submit VAT returns using either the old or new system.

Certain exemptions are in place for unusual circumstances but for the vast majority of businesses Making Tax Digital will be mandatory for VAT filing from 1 April 2019.

If you would like to discuss this in more detail, then please contact Gareth Botterill on **01482 862240** or email gareth@botterillco.co.uk

MR CARPETS

CARPET AND FLOORING SPECIALISTS



31 YEAR ANNIVERSARY
31 years in business
31 years of good, honest service
31 years speaks for itself

01482 872134

3 Becks North, Beverley, HU17 0PR

HAPPY EASTER!

[f mrcarpetsbeverley](https://www.facebook.com/mrcarpetsbeverley)

Botterill & Co

Chartered Certified Accountants

We are a modern and professional accountancy practice ideally located to serve businesses in Beverley and the surrounding area.

We utilise modern accounting technology to provide you with a cost effective, professional service.

Our services:

- Annual Accounts
- Company Formations
- Tax Planning
- Payroll
- Management Accounts
- Cloud Accounting
- Tax Returns
- Bookkeeping & VAT

For a free initial consultation please contact us:

Office: 01482 862240

Mobile: 07966 051458

Email: gareth@botterillco.co.uk

Website: www.botterillco.co.uk

1st Floor Offices, 40 Norwood, Beverley, HU17 9EY

HUBY

DOMESTIC APPLIANCES

Covering Hull, Beverley, Pockington, Driffield and all the local villages

BOOK ONLINE

and **SAVE**
at
hubys.co.uk

Book in advance and save money.
The further you book in advance
the more you could save...



For service and repair call: **01482 866660**

ENJOY WILDLIFE IN EAST YORKSHIRE - WHATEVER THE SEASON

Rolling countryside, big skies and sweeping coastline provide the perfect backdrop to wildlife watching adventures in East Yorkshire. Yorkshire Wildlife Trust has published three beautiful new spring guides to help you find out more about wildlife and the best places to enjoy it on the coast, Wolds or along the Humber. Inspiration and information to help you plan a day, weekend or week of wild activities has never been easier.

Start the day at Yorkshire Wildlife Trust's North Cliffe Woods where you can tiptoe among the bluebells surrounded by a cacophony of springtime birdsong. Later you could amble on the scenic Wolds Way, with stunning views from Thixendale. Tophill Low nature reserve also remains a favourite day trip among springtime bird watchers - keep a close eye out for otters and kingfishers here too.



If the coast is your go-to location then you're spoilt for choice - puffins and their seabird friends start to arrive back this month and are easy to spot at Flamborough or Bempton Cliffs or from the famous Yorkshire Belle cobble.

Spend a weekend exploring Flamborough Headland. With more time, soak up the views at various landmarks including the iconic lighthouses at Flamborough and Spurn. A day at Spurn is needed

to enjoy the remote wildness and activities on offer, booking for guided trips and specific events is recommended. The Humber Estuary is one of the country's most important sites for feeding and roosting wading birds and is the first port of call for many birds arriving at the end of a long migration.

Include in your itinerary trips to RSPB's Blacktoft Sands, Yorkshire Wildlife Trust's North Cave Wetlands and head over the bridge to Lincolnshire Wildlife Trust's Far Ings; among the best locations to spot rare birds and watch wildlife during its spring activity. Enjoy the suspense as you wait under cover of well positioned bird hides or take a walk along meandering trails, pausing occasionally to listen out for or catch a glimpse of passing wildlife.

Once you've had your fill of outdoor fun, a warm East Yorkshire welcome awaits you in one of the many cafes - including those on reserves including Spurn, restaurants and pubs, which pride themselves on supporting local producers. And then there's ice cream or chips out of the paper with a fresh side order of sea air!

Looking ahead, local wildlife experts from Yorkshire Wildlife Trust have also published the summer wild guides to inspire people living in or planning a visit to East Yorkshire. The colourful sheets outline wild activities on the Coast, Wolds and Humber and are now available for every season on the Trust's website, so you can enjoy watching wildlife throughout the year: ywt.org.uk





OVER 20 YEARS EXPERIENCE

Print that gets you noticed



**BROCHURES LEAFLETS BUSINESS CARDS POSTERS
CALENDARS POP UP BANNERS INVITES PADS**

Tel: 01482 610902
info@jadan-press.co.uk www.jadan-press.co.uk
Rainbow House, Kimberley Street, Hull, HU3 1HH










IN THE GARDEN... APRIL

The clocks have gone forward and in April we have longer evenings and Easter to look forward to. That also means there will be a lot of children on school holiday - so why not get them into gardening with some fun activities?



April is the perfect month to do this in as most plants grown from seed are starting out on their journey - I can still remember nurturing sunflower seeds in yoghurt pots on the windowsill with my two offspring. The internet is full of lovely ideas, here are a few that appealed to my inner child:

- Plant some easy to grow seeds e.g. runner beans, nasturtiums and sweet peas.
- Build a 'bug hotel'.
- Plant up an 'Easter pot' for indoors.
- Start a garden Scrapbook.
- Plant some flower seed to attract butterflies and wildlife.

Now, for the 'grown ups' - fun tasks for April...

Planting and Sowing

- Plant out autumn sown sweet peas and sow vegetables outdoors.
- Seed any bare patches in the lawn.
- Plant out all summer flowering bulbs by the end of the month.
- If you have a greenhouse or protected space, plant up your summer containers and hanging baskets towards the end of the month, BUT don't be in too much hurry to put them out much before the end of May.

Pruning and Tidying

- Spend a little time tidying your borders and weeding - annual weeds can be pulled out by hand or give the border a quick hoe, perennial weeds are deeper rooted and will need digging out.
- Prune hydrangeas, lavender and other grey foliaged plants.
- Prune and shape fan trained fruit and tie in new growth on climbers.
- Of course the lawn may need mowing more regularly - trim it lightly with the blades set high.

Pests etc...

- All this lush growth makes a veritable feast for aphids, slugs and snails so keep a lookout for them and deal with them swiftly. If you're not an 'organic' gardener use slug pellets.

Organic gardeners have several ways to control slugs, including a biological control using nematodes. Traps are also effective and my favourite is the 'beer trap'. Try to encourage hedgehogs, frogs, toads and thrushes into your garden - they all enjoy a meal of succulent slugs and snails.

Most of all enjoy your garden and have fun. Jx.

Jane Dale of 'Designed Gardens'. Tel: **07983 392 411**.

COUNTRYSIDE MATTERS WITH SAM WALTON



I suppose wherever we live there is always a thought that everywhere else has it better than we do. It may be the weather, it may be the political situation, it may be that we think a lot of other countries are better off than we are - and to be honest I am sure there are some who qualify. However not everywhere is the land of milk and honey. We know about poverty in Africa and parts of Asia; I have seen both and certainly would not want to swap.

I was recently talking to a man (originally from our area) who is managing a large pig set-up in Perth, Australia; he had come over to see his parents. It seems that technology, which is common-place now in animal breeding to produce more pigs, has caused a few problems there.

For years they have managed to balance production with demand and export any surplus to Asia.

But, because of increased production and more farmers producing pigs, the price per pig in Australia has dropped significantly and the abattoirs are so busy that they will not take one extra pig above the contracted amount.



Some farmers in Australia have had to shoot excess bacon pigs, which is not a good scenario. Also, the Asian markets are not buying - does this mean that they are producing enough so they do not need to import or are they having a difficult time financially? From mating a sow to marketing her pigs is roughly 9 months and a lot can happen in that time!

We moan about the weather constantly here in UK! It's either too wet, too dry, too hot or too cold! It is never right! So, can you imagine growing oil seed rape in Australia and the frost freezes the seed heads as they appear so there is no crop? And the frost also has an adverse effect on the wheat. It does not happen every year, but it happened there last year. In Canada, temperatures can drop to minus 50, which creates challenges for animal farmers.

Farmers have to heat pens and troughs and if they want to move their animals, have to heat the transporter. If they need to go somewhere in their car, it can be started by remote control, allowed to run for ten minutes so as when they get it into it, it is not frozen up.

Those are just a few examples of difficulties worldwide and there are lots more, so perhaps East Yorkshire really is a good place to be after all!

MINIMUM WAGE RATES ARE CHANGING IN APRIL - STIPENDIA PAYROLL SOLUTIONS HIGHLIGHT THE CHANGES

Not only are Minimum Wage Rates changing, but Statutory Sick Pay and Statutory maternity, Adoption and Shared Parental Payments are also changing.

There are also other changes which could affect your payroll.

New Minimum Wage Rates from April

- 25+ - £8.21 per hour
- 21-24 year olds - £7.70 per hour
- 18-20 year olds - £6.15 per hour
- 16-17 year olds - £4.35 per hour
- Apprentice rate - £3.90 per hour

Statutory Sick Pay will rise to £94.25 per week.

Statutory Maternity, Adoption and Shared Parental Payments will rise to £148.68 per week.

Perfect Your Payslips

There are two important developments in this area:

- Previously only employees were entitled to an itemised payslip, but from 6 April 2019, that will include workers too. "Workers" covers agency staff, casual staff, zero hours staff, and so on.

If you employ workers, you'll need to provide them with a payslip if you don't already.

- Staff whose pay varies depending on the

number of hours they work. From April onwards, their payslips must state the exact number of hours you are paying them for.

This is a new rule for better transparency around pay, and for making matters more straightforward when a worker challenges the number on their payslip.

For more information see the link below to view HMRC Guidance: https://assets.publishing.service.gov.uk/government/uploads/system/uploads/attachment_data/file/764576/payslips-legislation-april-2019-additional-info-on-payslips.pdf

PUZZLE PAGE

WORDSEARCH

Q E E U M G L I N R T K S I B
 Y L Q V C N F L W Y E E S U T
 K T X D S I I A Y V T T N P R
 J V R C V R A Q Q A Y N S Z E
 Z B H E P P J L L X I F K A B
 Z P W A A S C O Z E N N V P E
 F Y P O A S C V S F Z M D Z K
 T W J W Y O U U I L Y W T K C
 U J W C H U N R B O X Q K M Q
 O N Q C V O G O E W W E G G S
 Y A D I L O H V H E F Z M Q O
 A L U G V S A K U R V E V L N
 I B T Q D I C L E S Z B B M Y
 V B D A F F O D I L S P R R N
 O C V E K D E Z T Z Z Q T J Y

- | | |
|------------|----------|
| APRIL | EGGS |
| BUNNIES | FLOWERS |
| CHOCOLATES | HOLIDAY |
| DAFFODILS | SPRING |
| EASTER | TREASURE |

WHERE IN BEVERLEY?

Where in Beverley would you find this landmark?
 Answer on Page 34.



SMALL CHANGE - BIG IMPACT

GET SET FOR THE SUMMER - EAT HEALTHIER IN THE SPRING

Eat Wholegrain Bread instead of White Bread

Eating too much? Use a smaller plate

Drink a glass of water before your meal

Try eating some Blueberries, rich in antioxidants

Do you have any amusing stories,
 quotes or pictures? Send them to
info@justbeverley.co.uk

QUALITY KITCHEN MAKEOVERS

by simply replacing the doors and worktops

Est. 1999

From the UK's #1
 kitchen makeover experts.
 Visit our showroom now

Before



- FROM SIMPLE DOOR REPLACEMENTS TO COMPLETE FITTED KITCHENS
- FULLY INSTALLED BY LOCAL PROFESSIONALS IN JUST A FEW DAYS
- CHOOSE FROM A LARGE SELECTION OF DOORS, WORKTOPS AND APPLIANCES
- 84 SHOWROOMS NATIONWIDE

20% DISCOUNT
 Terms and Conditions Apply

FAMILY RUN BUSINESS

CALL US NOW FOR A FREE ESTIMATE:

01482 861653



VISIT OUR SHOWROOM:
 4A BELPRIN PARK, SWINEMOOR LANE,
 BEVERLEY, HU17 0LN

DREAM DOORS®

NEW LIFE FOR OLD KITCHENS

www.dreamdoors.co.uk

9.7/10 **Checkatrade.com**
Proud members of
Where reputation matters

See what our customers have to say

EAST YORKSHIRE JUDO ACADEMY - A FRIENDLY CLUB WITH AN ENVIABLE REPUTATION

With over 350 children enjoying judo on a weekly basis, it's no wonder that our local Judo Academy has enjoyed such success!

The enthusiastic coaches, who have all competed at a high level (for the country, if not county) and the children's parents, are to be applauded for giving these youngsters the opportunity to try something which they just might be good at!

Coach Danny Kissenisky, who represented Great Britain and won a Silver Medal for England at the Commonwealth Championships in 1992 said: "There is an Olympic Champion in every school - it's just getting it out of them through coaching and encouragement. East Yorkshire Judo Academy takes kids on a training pathway all the way through to the highest development level if they are good enough - we don't just introduce them to the sport and then they have nowhere to go."

The Academy was so forward-thinking that it set up a school's programme in 2001 at several local schools, to give more children the chance to get involved. In Beverley, St Mary's, Minster and Keldmarsh primary schools hold judo sessions with EYJA coaches.

Children from 5-18 can also go to sessions at Beverley Leisure on Thursdays and Saturdays. Holly Bentham, who went to St Mary's Primary School, had her first judo taster-session at age 6 at the school and 12 years later became Commonwealth Youth Champion.

However, children can also head straight to Beverley Leisure, which is what Logan Smith did. He is now, at age 16, on a full-time training programme at England Headquarters in Camberley. The club produces a continuous stream of medal-winners.



In the British Championships last December, there were 4 medal-winners with Sean Tooby now selected for a full GB development squad and in the mix for a place in the Youth Olympic Team.

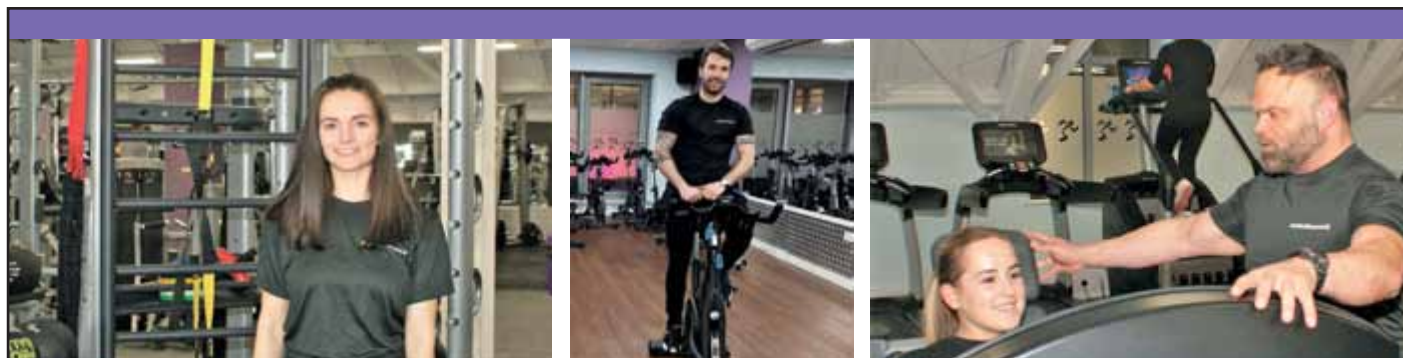
One young lady, Gracie Wilson, has her heart set on being an Olympic medallist so she is doing extra strength training. But not everyone in the club wants to compete! Some do it for fun, for self-defence or to get the grades/belts. The levels are red, yellow, orange, green, blue, brown, black with a Grand Master at 7th Dan wearing a white and red belt.

There are more mature members (they have had 80-year-old on the mat!) who use judo to keep fit and to socialize.

At the moment there is no provision for adult beginners, but the club is remedying that by starting a senior's beginner programme in the near future - watch this space for details!

They are also looking to work with more schools - if you are reading this and are involved with a school and would like to explore this option, do contact Danny at danny@eastyorkshirejudoacademy.com. The coaches bring their own mats so they can utilise almost any space!

Similarly contact Danny if you would like further information about the Academy for your child or even for you!



**Join Anytime Fitness
and take on the
8 week challenge!**

REMEMBER...

- **No joining fee**
- **No set up fee**
- **First 2 months free**

**Classes available for members
and non members**

Call: 01482 247100
Flemingate Centre, Flemingate HU17 0NQ

**ANYTIME
FITNESS**

FREE
7 day trial pass

Valid to 30th April 2019
Only one per person
during offer period

Call James
01482 247100





MOTORING

CLASSIC CARS WITH CARFAN - THE MORRIS 8

Although 164,000 Morris 8s were produced both here and in Australia, you would be hard-pressed to see one today unless it was at a classic car club rally. Built between 1935 - 1937, this car came with a 918cc engine in an age when speed was not a necessity - so don't expect it to leave skid marks at traffic lights!

Five different versions were available - a 2-door saloon, 4-door saloon, 2-door cabriolet, 2-door tourer and a 5cwt van. The cars were utilitarian rather than to make a fashion statement as cars (sometimes) are nowadays.

The car featured was one of the first manufactured. It was purchased in 1989 by the current owner, having previously languished in a garage for 40 years. Needless to say, it needed restoring. It took 2 years, with the owner doing the work in his own garage. But when the body was removed, the only parts which needed replacing were those which were perishable, which is testament to the original build quality. It even has its original brake pipes and petrol pipes! Since then, 14,000 miles have been added to the odometer and, quite rightly, it gets a lot of attention wherever it goes.



Membership to the Morris 8 fan club doesn't have to be too expensive. A "project" car is currently available for £1600 and a good condition example is also available for £14,000, with others to choose from at all prices in between. There are at least two Morris 8 car clubs around.

It's a good idea to join an owner's club with a car of this age and pedigree as membership comes with a lot of very useful advice should the need arise.

So, should you see this lovely little car tootling along, don't forget that cheery Carfan wave!

PRACTICAL MOTORING WITH RICH HAYES - HOW TO GET CHEAP INSURANCE



When it comes to car insurance it certainly pays to shop around. Follow our top tips for securing the best insurance deal that will ensure you're covered, without being left out of pocket.

Secure your vehicle

Keeping your car on your drive will notably bring your car insurance premium down compared to keeping your vehicle on the road. If you have a garage, even better - store it there to keep the price to a minimum. The safer your vehicle, the cheaper your premium. Go one step further by increasing the security of your car - tracking devices and immobilisers both help to reduce car insurance costs.

Consider your driving

Driving sensibly is one of the best ways to ensure your car insurance is as cheap as possible. This includes driving to the speed limit to avoid speeding tickets, which are likely to increase your premium. Reducing the mileage you do annually can also help to keep your premiums down. Could you consider walking or taking public transport for some journeys to help bring the cost down?

Check the policy benefits

Whilst it's great to secure a low price for your car insurance, many insurers offer extra benefits to add value to their policies. Check if these will be useful to you, as they could save you further money. Some typical benefits insurance companies offer include a courtesy car should yours need repairs; European driving cover or recovering uninsured losses.

And don't forget - always check the compulsory excess before accepting a car insurance quote. Some cheap insurance deals come with huge excesses, which could make your cheap insurance not so cheap after all in the event of a claim.

BEES

BURTON ELECTRICAL SOLUTIONS



HIGH QUALITY ELECTRICAL WORK ACROSS EAST YORKSHIRE AND THE HUMBER REGION

DOMESTIC

COMMERCIAL

TESTING

FAULT DIAGNOSTICS

Whether it's for your home, rental property portfolio or business premises, all electrical installations need to be checked periodically by a qualified electrician. For a quote contact:

Andrew Burton

01964 552769 • 07585 601730

www.burtonelectricalsolutions.co.uk

info@burtonelectricalsolutions.co.uk

BEVERLEY MOTORWORKS

INDEPENDENT BMW & MINI SPECIALISTS

Our dealership expertise means high quality car servicing at a fair price...



Unit D1 Grovehill Industrial Estate, Annie Reed Road, Beverley HU17 0LF

Call today: 01482 881 128

Visit: beverleymotorworks.co.uk

SPECIAL OFFER
MOT COUPON



MOT YOUR CAR FOR ONLY

£29.99



THE MULTI-USE MARKETING TOOL: FLYERS & LEAFLETS

Whether you are a business, organisation, club or charity, a professionally designed flyer is a brilliant way to create a buzz around an event, promotion, product or service. Here's just some of the different ways you can use a flyer or leaflet...

Handed out

Most people will recognise flyers as bits of paper given out to passers by in the street, and this is actually a very effective way to promote an event or business to a specific geographical audience.

If your business has a physical location you want to drive people to - maybe you're a shop or a restaurant - then flyer distribution within your locality could be one of the most direct ways to reach potential customers.



Direct mail

Flyers can also be used in direct mail - physically posted through the doors of your chosen audience, which is another tactic with a high success rate when it comes to increasing the footfall of your business or organisation.

Tip: Want to increase the membership of your club? Consider a direct mail campaign delivered to the addresses within a 15 minute walk of your location. Promote your club with a professionally designed flyer shouting about all the brilliant reasons to join.

Within product packaging

For businesses or organisations dispatching products to their customers, a flyer can be packaged with the order to draw their attention to a special offer or a certain product. Flyers used in this way work well, as they are being placed in front of already engaged customers!

Physically in store or at your event

In addition to all of these brilliant uses, you could also make use of your flyer within your shop or business, as a piece of marketing material customers or clients are free to pick up to find out more about your offering.

They also work particularly well for trade shows and events, where you want to give potential customers something to take away to



remember your business by.

Tip: Why not encourage action from your audience on your flyer? Try adding a web address for them to visit, or include a voucher which can be used in your store or restaurant. This is a great way to measure the success of your flyer.

What next?

If you think a flyer or leaflet would be useful to your business or organisation, whether you want to generate interest around an event, offer or product, get in touch! At Indicoll we have decades of experience designing eye-catching flyers and leaflets, sure to grab your audience's attention. We can also arrange printing for you, too. Call **01482 871178** or email sayhello@indicoll.com today.

CREATE A BUZZ

WITH A FLYER OR LEAFLET

Get an un-BEE-lievable response to your event, special offer, new product or service - make a beeline for Indicoll today.

INDICOLL

01482 871178 | sayhello@indicoll.com



INCHES BODY STUDIO

3 CONTOUR BODY WRAPS
£129



Spring Offers

- 3 months Toning
- 3 months Vibraxis
- 3 Contour Wraps

£179.00

TONING TABLE SESSIONS AVAILABLE
Loose between 1-15" in six sessions, toning tables help if you are new to exercise, have issues with mobility, depression, bad backs & much more.

Inches Body Studio, 1 Norwood, Beverley HU17 9ET
Wheelchair access & stairlift available
Telephone: 01482 865229
Email: inchesofbeverley@hotmail.co.uk
www.inchesbodystudio.co.uk
Established 1992

KEEP SAFE ON YOUR MOTORCYCLE WITH ADVANCED TRAINING FROM E-YARD

East Yorkshire Advanced Riders and Drivers (E-YARD) is the sole deliverer of RoSPA advanced riding in the area and the East Riding's premier advanced motorcycle training provider. On April 14th, E-YARD is holding a FREE assessment of your motorcycle skills to ensure you are as fresh and as ready-to-go as your newly-serviced motorbike!

E-YARD not only provide training but are holding this event to encourage motorcyclists to have their riding abilities and skills assessed before the summer season kicks in. #ridethewolds is a repeat of a similar event held last year, which was so successful and welcomed by all who attended. Riders will be observed by a qualified Advanced Riding Tutor with positive feedback to improve the rider's road skills and for them to get a taste of what advanced riding is all about - progressive, fun and safe. There will be representatives from the Institute of Advanced Motorists' RoadSmart, the local police BikeSafe team, Safer Roads Humber with their virtual reality system and other technology and the East Riding Road Safety Team with their Sharing the Roads promotion. The event commences at 10am and the last observed ride will be 3pm. The observed rides will take about an hour in total, including debrief and feedback, and a written report will be provided which can be taken to a chosen advanced training group as a guide to what training development may be considered. Riders must hold a full motorcycle licence (A1 or A2). E-YARD also hold social and training meetings for advanced riders and drivers at Beverley Golf Club on the 4th Wednesday of the month; there are also special events and drive-outs. The group is inclusive, welcoming riders of any age or sex of all kinds of bikes and cars with both sections dovetailing. As most bike riders are car drivers, training is beneficial to all. #ridethewolds will encourage participants to join the group and sign up to take their advanced test to create safer, more observant riders. #ridethewolds is being held at **Wolds Way Café, Londesborough Roundabout, Market Weighton YO43 3LW** from 10am on April 14th. That means there will be tasty food and refreshing drinks available. Grateful thanks to Wolds Way Café for allowing the event to take place on their premises. Other attractions will include main motorcycle dealerships and Visorcat, an innovative British invention for keeping visors clear and clean all year around. Please contact E-YARD to book your observed ride on yardenquiries@gmail.com



CHAMAS
RODIZIO BAR & GRILL
A CUT ABOVE THE REST

EXPERIENCE STEAK LIKE NEVER BEFORE



ABUNDANT • ENTERTAINING • FRESH

9-10 Wednesday Market, Beverley HU17 0DG
www.chamasbeverley.co.uk | T: 01482 867897

Rated Number 1
out of 104 restaurants on
tripadvisor
*as of 13/03/2019

BREEZE BIKE RIDES FOR WOMEN - A BRITISH CYCLING INITIATIVE TO GET MORE LADIES CYCLING

Beverley Breeze rides are now in their third year with other groups at Hull, Driffield, Pocklington and Ennerdale Cycling Circuit where you can experience totally traffic-free cycling. Over 60 new ladies signed up in Beverley last year - you could join them in 2019!

Cycling is growing in popularity with rides ranging from gentle 10-mile routes to more challenging 30-mile routes to cater for all abilities. Rides are offered on a weekly basis by three qualified 'Breeze Champions' for Beverley, who ensure all women, on any of the rides, have an enjoyable and positive experience as cycling offers so much for all - physically, mentally and emotionally. There's always a coffee stop on the rides - a great way to make new friends. The cycling routes are always varied and interesting, usually on quiet roads and cycle paths.



As you progress in fitness and confidence, there are amazing opportunities for more adventurous rides for women cyclists. Numerous weekly rides in the locality offer longer distances, routes and different terrain and

there are monthly Sportives, 100 Miles-in-a-Day rides, a Dales Road trip and a Coast to Coast to name but a few. Beverley WOW (Women on Wheels) offers more challenging rides and now has 45 members.

In 2018, Beverley Breeze was nominated for a Hull Daily Mail Community Heart Award and reached the final. As a group they go far to help improve the lives of others through fund-raising, community involvement and encouraging their own members to get fit. Last year, for example, they raised money for St Leonard's Hospice in York and a big 'Wear it Pink' ride raised over £300 for breast cancer; they led the rides in the Beverley Outdoor and Walking Festival and helped out at the Immobilise and Bikeathon events in Beverley and when the Tour de Yorkshire came to Beverley, Breeze groups organized a cycle relay for their members. Beverley Breeze members enjoy social occasions, too, including 'taster sessions' for other activities and practical sessions learning bike maintenance and upgrades. Are you keen to find out more? To sign up for a Breeze ride visit the 'Let's ride' website. You can also contact the Breeze Champions on Let's Ride or the Beverley Breezers FB page for more information. Happy cycling!

GET READY FOR THE NEW RACING SEASON AT BEVERLEY RACECOURSE

After a memorable 2018 season which saw the racecourse celebrate an increase in attendances, win a prestigious racing industry award and be named as one of the top courses in the country for raceday experience, the Beverley team are aiming to raise the stakes again when the new season launches on April 17.



With the picturesque Westwood course ranking among the best in England and Wales for its raceday experience, Beverley again offers innovative themed meetings which make racedays a fun day out for families, with features including camel racing, a Donkey Derby (which was last year started by Beverley-born Poldark star Eleanor Tomlinson) and, of course, Ladies Day, East Yorkshire's social event of the summer.

2019's Flemingate Ladies Day promises to be bigger and better in 2019, after attracting a bumper crowd of 12,000 last year.

CYCLING WITH WILSONS WHEELS - A SUMMER OF CYCLING AHEAD!

This year, we will see two major international cycle races come to Yorkshire - the Tour de Yorkshire in May and the Road World Championships in September.

Most people will be familiar with the Tour of Yorkshire, as it has been a date in the calendar for the last few years, with several stages having previously started in Beverley and Bridlington. In 2019's edition, Stage 1 on Thursday 2nd of May, sees the race start in Doncaster and finish in Selby, with the route going through the centre of Beverley, providing a great opportunity to see the riders come through our town along with the entourage of motorbikes, team cars, police etc. If you fancy a ride out to watch the race, my recommendation would be to watch from the main road coming out of North Dalton towards Pocklington as there is a long drag up-hill from North Dalton where you should be able to see the peloton. Alternatively, a short distance further along the same road, is the top of Kilnwick Percy climb where there is a good view of the Vale of York.

The second major event is the Road World Championships in September. I personally am really looking forward to this, as this is the kind of event that will only come to the UK once in a lifetime. In the world of cycling, this event is the highlight of the year for a single day race and is just as important to some as the Olympics. The majority of the race routes are based around Harrogate; however the Paracycling event starts in Beverley and finishes in Harrogate. I intend on riding the route in summer to raise money for local good causes. Even if you're not that into cycling, this is an event that I would highly recommend you go and watch. The main event, the Elite Men's race, is normally the last race of the Championships of which Mark Cavendish has been a previous winner. Harrogate and the surrounding area is also a beautiful area of Yorkshire and is well worth a visit, just for the scenery. Be advised, though, that the roads are likely to be very busy or even closed on the day of the race. This is most definitely a summer of cycling to look forward to.

Nathan Wilson.



WILSONS WHEELS

T: 01482 882881

W: www.wilsonswheels.co.uk E: info@wilsonswheels.co.uk

WE NOW STOCK CUBE CYCLES

2019 RANGE NOW AVAILABLE   



DISCOUNTS ON:

- Adult Bikes
- Children's Bikes
- Clothing for all cycling weather
- Parts and accessories

89a Grovehill Road, Beverley, East Yorkshire HU17 0EJ

OPEN: Monday - Friday: 8.30am - 5.30pm | Saturday: 9am - 5pm

Sunday: CLOSED - Out riding our bikes

SHORT STORY BY CLINT WASTLING - APRIL'S FOOL



It was a lovely spring morning as April and George walked across the Westwood. Clusters of anemones lined the track heading towards Black Mill. As usual they sat on the seats there and contemplated the view over the town.

"Have you forgotten what day it is?" April asked. George thought about the question, "why it's April 1st! At least that's what they said on the news when they talked about decimalising time. Ten seconds in a minute, ten minutes in an hour." "No, what day!" April said with uncharacteristic force. Her husband shrugged his shoulders, "I said white rabbits three times." His wife made a hissing noise through her teeth and stopped talking as they descended towards Newbald Road. They waited for a group of cyclists then crossed, taking the path towards Burton Bushes. "I can't believe you've forgotten." April looked hurt as she stared at her husband. George couldn't contain himself any longer and blurted out a laugh. "April Fool!" he shouted handing her an envelope.

April slid her finger along the flap and opened it up with expectation. "A weekend in a caravan in Withernsea? Not even a full week?" George looked at his wife with a slightly hurt look he'd perfected over twenty five years. "Do you remember the Friday we got married? It was sunny like this but bitterly cold." "It all went by in a blur for me, I was so nervous," April confessed. "Any how a weekend in Withernsea will be nice but a caravan..." "You are always saying that you want to get closer to nature." "That's why we're out here, they say walking is the best exercise well for me walking is the best medicine as well, except when you join me and offer a couple of days in a caravan as an anniversary present!"

"You mean, that's not what you want?" "George, you know perfectly well what I wanted, I spelt it out some weeks ago when you were looking for a spring break to celebrate." "Oh," George replied, "then you'll want this." He passed across a coloured envelope, it contained a card and some folded A4 sheets. April carefully opened each one in turn. "The Lion King at the Lyceum."

She quickly kissed her husband and threw her arms around him. Papers scattered on the breeze and the couple spent several minutes chasing pieces until they regrouped. "You've been spending." "I thought after twenty-five years of marriage you might need a little pampering. Isn't a four-star London hotel good enough?" April placed her arm around her husband's waist and snuggled onto his shoulder before they climbed the path toward the trees.

Clint Wastling is a local writer and poet. His science fiction/fantasy novel 'Tyrants Rex' is available from Stairwell Books.

POEM BY DILYS JONES - DON'T CALL ME A RABBIT

*Don't call me a rabbit
I happen to be a hare
I'm nothing like these vulgar creatures
Hopping everywhere.
I am from a species
Of elegance and grace
Don't confuse me with a rabbit
They're a very common race.
And while I'm on the subject
A message I must send
That I've been asked to pass along
From my harebell friend.
'Don't call me a bluebell
It gets me quite upset
That people can confuse me with
That gaudy show-off set!
Harebell blooms are subtle
In colour and in size.
Saying that we look the same-
How can people tell such lies?
'So from me and the harebell
I'd like to tell you all
Don't call us rabbits and bluebells
And we won't call you Neanderthals!*

*Dilys is a member of Subtle Flame Poetry.
The group meet once a month in
The Tiger at 8.30pm. Next meeting Thursday
4th April - competition theme is "Egg."*

INCLUSIVE SWIMMING LESSONS

EXPERIENCED & QUALIFIED TEACHERS FOR ALL SEND

Small Groups • 45 minute lessons
Carers Welcome to Support in the Pool for More Complex Needs

MONDAYS, 4PM TO 4.45PM & 4.45PM TO 5.30PM
FREDERICK HOLMES HYDROTHERAPY POOL
Inglemire Lane, HU6 8JJ

£15 PER LESSON - PAID MONTHLY
STARTS MONDAY 29TH APRIL
LIMITED AVAILABILITY - CALL NOW TO SECURE YOUR PLACE

01482 229676
SportsabilitySwim@gmail.com
@SportsabilitySwim
Swim England Learn to Swim

New Paths Music

The fourth New Paths Spring Festival

4th - 7th April 2019
Beverley, East Riding of Yorkshire

www.newpathsmusic.com

Artistic Director: Libby Burgess • Founder: Roland Deller
Registered charity number 1176545

ert

EAST
RIDING
THEATRE

10 Lord Roberts Road
Beverley HU17 9BE
Tel: 01482 874050

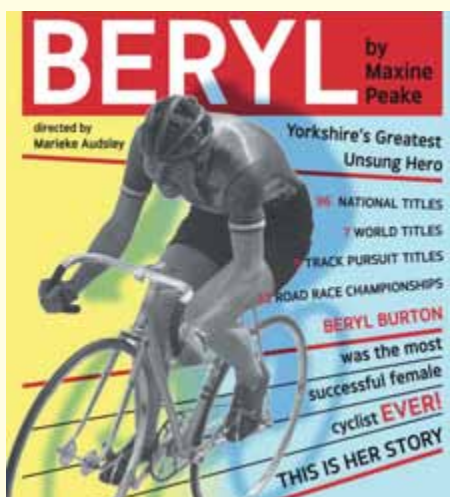
Email: boxoffice@eastridingtheatre.co.uk

Current Box Office Opening Times:
Tues - Fri 10am - 4pm or Sat 10am - 12noon.



Cafe/Bar Opening Times:
Tues - Sat 10am - 4pm

WHAT'S ON IN APRIL



BERYL

Thurs 25th April - Sat 18th May
2.30pm & 7.30pm

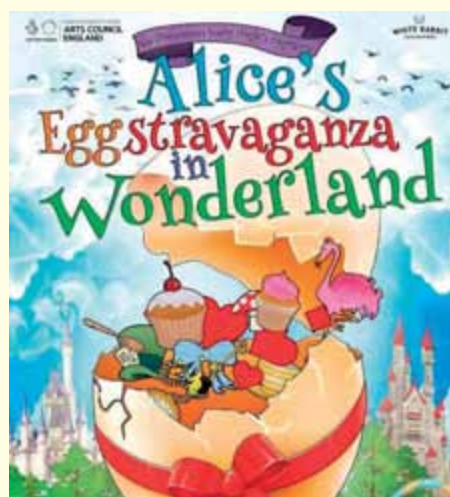
Actress and playwright Maxine Peake's critically acclaimed play uses a great dollop of Northern wit to bring to life the incredible and inspirational story of an ordinary Yorkshire Mum.

Still seen as 'the greatest sportswoman who ever lived', Beryl Burton faced more than up-hill cycling challenges in her struggle against poor health and the barriers faced by women in sports. But her remarkable story was largely forgotten - until now!

When Beryl Charnock met keen cyclist Charlie Burton she was smitten, not only with Charlie but with the thrill and freedom she found on her bike. She would out-work the men in the rhubarb field, she could out-class the cyclists on the road and still time to knit young Denise a cycling jumper - though it wasn't meant to come down to her knees!

With husband and daughter at her side, the determined Beryl defied the world embarking on a journey that led to true sporting greatness. She dominated cycling throughout the 1950s, 60s and 70s, becoming five-time world champion and best British all-rounder for 25 consecutive years. And she still made it home in time for tea!

www.justbeverley.co.uk



ALICE'S EGGSTRAVAGANZA IN WONDERLAND

Weds 17th - Sat 20th April
11am & 2pm

Deep down the rabbit warren things aren't quite as they seem. A family feud has shaken Wonderland to its core and the two cotton-tailed siblings, Easter Bunny and White Rabbit, have let their jealousy get the better of them...

Today is the Queen of Hearts' Annual Eggstravaganza Party and she is relying on the Easter Bunny to deliver her prized chocolate eggs. But the Easter Bunny has awoken this morning to an empty basket and a missing sister.

Alice needs your help to retrieve the eggs and return them to their rightful owner or it's "off with their heads"!

Join She Productions in this well-loved musical promenade where the Wonderland locals, including a first-time appearance from the Mad Hatter, will have you singing and dancing in search for the runaway rabbit.

For ages 0-100.



HORRIBLE HISTORIES: BARMY BRITAIN

Wednesday 10th April
1.30pm & 5pm

We all want to meet people from history. The trouble is everyone is dead!

So it's time to prepare yourselves for Horrible Histories live on stage with a brand new West End show that has never toured before - featuring all-new scenes!

Would you be shaken or stirred by Richard III? Mount a mutiny against King Henry VIII!

See Mary Tudor knock the spots off Mary Queen of Scots! Will Queen Elizabeth I endure her terrible teeth?

Would you be hanged by King James I for being a witch? Peep into the world of Samuel Pepys and help Georgian detectives find the headless man!

Take a trip into the night with the night soil men and discover how to survive the first ever train ride!

It's the history of Britain with the nasty bits left in!





QUALITY JOINERY FROM DOORS TO FLOORS

FREE
LOCAL DELIVERY

Complete the look you want with doors, floors, windows, stairs, skirtings and architraves.

Pick up our brochure in branch today or visit mkmbbs.co.uk



MKM BEVERLEY
SWINEMOOR LANE, EAST YORKSHIRE HU17 0JX
01482 880 088 | mkmbbs.co.uk

OPEN Mon-Fri 7:30-5:30 Sat 7:30-noon



WALKING WITH IAN RICHARDSON... PUT A SPRING IN YOUR STEPS AROUND LOCKINGTON



The weather has been particularly capricious so far this year, incredibly warm in February, wet and stormy in early March. Whenever you head for the lovely village of Lockington, however, you can be sure there will usually be a spring in your steps, as except in the driest times, the intriguingly named Bryan Mills Beck flows attractively alongside the main street. The village is also a fine place to see spring flowers, in February great swathes of snowdrops at the church, a little later - daffodils everywhere, with rarer wild primulas on Bealey's Lane. This really is a gorgeous place to visit, with a much better network of footpaths than surround most of our villages and this gentle 2 miles stroll takes in some of them. A century ago there was a huge range of shops and services in the village: an albeit distant railway station, baker, grocers, tailor, even a cycle shop. In the late 1980s, when I first visited, there was still a post office and pub. Sadly, these are all no more but it remains a lively, thriving and largely affluent community with many activities at the village hall and with the considerable blessing of a primary school.



1 Spring at Lockington
Begin on the green banks of the beck by the road bridge at YO259SH. Park with consideration for residents, or you can reach Lockington by using the 121 bus, as I did on a bright blustery day in mid-March but it is a brisk 15 minute walk to and from the bus stops on the main road. The village information board is often a good place to find out about the place you are exploring and this one tells you much of interest about former residents, such as the famous Remington family of US' gun fame who have their origins here. One snippet on the board had always interested me, concerning a possible English Civil War site at Barf Hill, 2 miles to the east beyond the splendid former station. If you have a vehicle and the time, it is well worth seeking out and pondering over later in the day. There is a fine array of period houses across the road, Rockingham House is especially

handsome and was the village pub and later a fine restaurant before closing over a decade ago. When a community loses its pub and or its shop, something of its soul disappears in my view, but it's hard to argue with economics. Another sign of change is that the phone box now houses not a phone, but a defibrillator.



2 Changing Times
Go east (right) along the main street and take the footpath over the field to your right. You see the impressive Georgian buildings of the former rectory to over the beck. At the gate, turn right on a path quickly leading to the fine church. This is usually open and a fascinating mix of styles which earns it a coveted place in Simon Jenkins' peerless England's Thousand Best Churches (this would be my Desert Island book of choice). For me its delightful location is its best quality, nearby Scarborough and South Dalton churches with their striking spires - both visible on our route - are also deservedly included.



3 St. Mary's
After visiting the church - the side chapel of the Moyser and Estoft families is very striking- take the signed path that heads south over the pastures. The path runs near to the sparkling beck and gives good views of the fine range of buildings at Hall Garth, formerly the seat of the Estofts.

Hidden by a clump of trees on private land are the earthworks of a motte and bailey castle from Norman times. Route finding across to Bealey's Lane can be a touch tricky here but after a footbridge, strike diagonally across the field to pick up a clearer path to the right.



4 Hall Garth
At a corner junction of paths, again go right and you soon reach the surfaced lane. Here go left for 200 yards to enjoy one of my favourite spots in the whole area. A footbridge takes the path over a deep pool formed by Moor Beck. It is rare in the East Riding to find running water and thus this has become a much-loved picnic spot and bathing place for dogs.

5 At this point, turnaround and go back up the lane to the village. It is possible when you reach the junction of paths at point 4, to go left over the fields and loop back on pleasant paths to the lane, but we head directly back to Lockington, enjoying the front elevation of Hall Garth as we go.



6 Myself with borrowed dog at Moor Beck Pool
At the road go right through Thorpe, oddly tiny Lockington has a suburb, back to the village centre. Fork left at the grimly-named Dead Lane and cross over the beck on the footbridge with your starting point just to the right. Just before the bridge, the Village Hall on your right in an old Victorian school building is one of the social hubs of the whole county. One local resident told me of film evenings, model rail groups and even a bar, watch out Las Vegas! She was also keen to tell me what a friendly and supportive community Lockington is. As the fine new book on the village An Illustrated History of Lockington Parish by Kevin Marshall Roger Hateley puts it 'a very green and pleasant place to visit and to live.' Do go and enjoy this piece of England at its best this spring.



Primulas on Bealey's Lane
Ian Richardson.

WHAT'S ON

SPONSORED BY: **kü**tchenhaus

2 Toll Gavel, Beverley, HU17 9AJ. T: 01482 862172.

Open: Mon - Sat: 10am-5pm. Sun: 11am-3pm. Bank Holidays: 10am-4pm.

Tell us about your event!

Email: info@justbeverley.co.uk

Telephone: 01482 679947

For more events visit:
justbeverley.co.uk/events

Until Friday 19th July

• Trawling through Time

Beverley Guildhall. Free. The history of ship-building in Beverley from 1763 to the 1970's.

Monday 1st April

• **The Processed Pea presents Sunjay plus support**
Light Dragoon, Etton. 7.30pm. £7.70. Singer-guitarist playing blues with elements of folk and country and humorous asides! Tickets 01430 810699.

• **White Horse Folk Club Singers & Musicians Night**
Beverley Conservative Club, Wylies Road. 8.30pm £2. Performers and audience welcome.

Tuesday 2nd April

• Beverley Gardener's Club - Fuchsias and Hardy Fuchsias

St Mary's Parish Hall. 7.45pm. Free/£4. Guest speaker Ron Mawer from Roanne Nurseries. More details 01482 865432.

Thursday 4th April

• The Minster Junior Choir Spring Concert

Beverley Minster Parish Hall. 4.40pm. Free.

Thursday 4th - Sunday 7th April

• New Paths Music 2019

Various Venues, times and prices, including free events for all ages. www.newpathsmusic.com

Friday 5th April

• **Lunchtime Concert Series - Rachel Jerome (Harp)**
Beverley Minster. 12.30pm. Free, donations welcome. Soup and drinks available from 12noon.

• **Comedy Evening with Margaret Preece**
Skirlaugh Village Hall. 7pm. Ticket includes 2-course meal. Bar. Contact 01964 563137/01964 562885 for details.

Saturday 6th April

• Vintage/Retro and Handmade Fair

Beverley Minster. £2/free. 10am - 3.30pm.

• **'The Children Act' (2017) 12A starring Emma Thompson, Fionn Whitehead and Stanley Tucci**
Bishop Burton Village Hall. 7.30pm. Pay on door £5/£4.50. Refreshments. Doors open 7pm. A high court judge whose marriage is at breaking point is asked to rule on a complex case.

• **Broadside On: Echoes from the Shipyard by Gordon Meredith**

Beverley Guildhall. 1.30pm. Tickets 01482 392699. Tales from Beverley's Cook, Welton and Gemmell shipyard in the voices of some of the men who worked there.

Monday 8th - Thursday 11th April

• Funfair and Candyfloss Easter Funfair

Flemingate. 10am-4pm daily. Various prices. Some rides are weather-dependent.

Monday 8th April

• The White Horse Folk Club presents Cohen Braithwaite-Kilcoyne

Beverley Conservative Club, Wylies Road. 8.30pm. £8. This talented young singer and musician is a member of the popular Granny's Attic.

Tuesday 9th April

• Singalong Memories

Walkington Methodist Church Schoolroom. 2pm-3.45pm. £2 includes refreshments.

Wednesday 10th April

• Lab Rascals Slime Workshop

Flemingate. 10am and 11.30am. £6.50/child. Minimum age 5. Children under 7 or with additional needs must be accompanied by an adult. Make slime, bubbles and trumping noises. Book at <https://bookwhen.com/labrascals>

• Horrible Histories Live on Stage!

East Riding Theatre. 1.30pm and 5pm. £15/£13/Child £13. The history of Britain with the nasty bits left in. A brand new show featuring all new scenes. Book at 01482 874050.

Thursday 11th April

• Beverley Film Society presents 'Bombshell - The Hedy Lamarr Story' (2017)

Parkway Cinema, Beverley. £3members/£6.50 for guests. 7.30pm. Inventive genius whose talents were obscured by her beauty.

Friday 12th April

• Lunchtime Concert Series - Lewis Scott, Theatre Organist

Beverley Minster. 12.30pm. Free, donations welcome. Soup and drinks from 12.30pm.

• Friends of Beverley Minster Study Day - The Appreciation of Stained Glass

Peter Harrison Room, Beverley Minster. 10am-4.30pm. £20/£15. Bookings essential to 01482 442221.

Friday 12th, Saturday 13th and Sunday 14th April

• Straw in the North

Bishop Burton College. Workshops, displays. More information northernevents@strawcraftsmen.co.uk

Saturday 13th April

• Riding Lights Theatre Company present 'The Narrow Road' by Paul Birch

Beverley Minster. 7.30pm. £10. Powerful theatre on the journey to Easter. Tickets from 01482 868540 or www.beverleyminster.org.uk

Sunday 14th April

• E-YARD #ridethewolds Observed Motorcycle Rides

Wolds Way Café, Londesborough Roundabout, Market Weighton YO43 3LW. 10am-3pm. Free. Advice, displays and motorcycle dealerships. Book on yardenquiries@gmail.com. Visit www.yard-advanced.org for more details.

• Stainer's Crucifixion performed by the Minster Choir

Beverley Minster. 5.30pm. Free, donations welcome.

Monday 15th April

• White Horse Folk Club Singers & Musicians Night

Beverley Conservative Club, Wylies Road. 8.30pm. £2. Performers and audience welcome.

Wednesday 17th April

• Lab Rascals Stars in the Night Sky Planetarium Show

Flemingate. 10am and 11am. £4.50/person. Suitable for 4+. Discover how stars are born, map put the constellations and listen to stories of goddesses in the sky. Mats provided to sit on. Booking essential. <https://bookwhen.com/labrascals>

Wednesday 17th - Saturday 20th April

• Alice's Eggstravaganza in Wonderland

East Riding Theatre, 11am and 2pm. £6.50/£6. With chocolate workshop with White Rabbit Chocolatiers on Wed 17th and Thursday 18th, £10/child. Booking 01482 874050.

Friday 19th April

• Beverley Chamber Choir and Orchestra present Handel's Messiah

St Mary's Church, Beverley. 7pm £17.50/£12.50/£5. Traditional Good Friday concert. Soloists and a small choir sing The Messiah as and when it was meant to be performed. Tickets 01482 391672 or www.beverleychamberchoir.org

Saturday 20th April

• Beverley Town Bowls Club Open Day

Flemingate grassed area. 11am-3pm. Free. Try your hand at bowls and maybe take up a new sport!

• Easter Tree Festival

Norwood Methodist Church 10am-1pm. Free. Refreshments, treasure hunt, crafts and more.

Tuesday 23rd April

• Singalong Memories

Walkington Methodist Church Schoolroom. 2pm-3.45pm. £2 includes refreshments.

Thursday 25th April - Saturday 18th May

• 'Beryl' by Maxine Peake

East Riding Theatre. 7.30pm plus selected matinees. £17.50/£16.50/£15.50/£12. The incredible and inspirational story of Beryl Burton, wife, mother and world champion cyclist and British record-holder told with a great dollop of Northern wit. Tickets 01482 874050.

Sunday 28th April

• NGS Open Garden for Charity

Fawley House, 7 Nordham, North Cave HU15 2LT. £5/free. Treasure hunt, plant sale, art exhibition, refreshments, log fire if necessary.

• Beverley Buzz Comedy Club

Parkway Cinema, Beverley. 7.30pm £10. Sean Percival, Barry Dodds, Hayley Ellis and George Lewis with the incomparable host, Agraman the Human Anagram. Tickets from 01482 968090 or online <https://beverley.parkwaycinemas.co.uk/Browsing>

Monday 29th April

• White Horse Folk Club Singers & Musicians Night

Catholic Church Hall (next to Rose and Crown). 8.30pm. £2. Performers and audience welcome. Bring your own drinks and glasses.

'WHERE IN BEVERLEY' ANSWER

The Clock in Railway Square

kü

tchenhaus

The Largest Manufacturer of Quality German Kitchens

At Kutchenhaus we have affordable solutions made to meet your highest standards

2 Toll Gavel, Beverley, HU17 9AJ. T: 01482 862172.

Open: Mon-Sat: 10am-5pm. Sun: 11am-3pm. Bank Holidays: 10am-4pm.



T&CS APPLY

the
POTTING SHED
BAR & GARDENS

SIGN UP AT
THE BAR FOR
A FREE
PRIVILEGE
CARD

THIS EASTER

EASTER HALF TERM
(6TH-21ST APRIL)



BANK HOL
SUNDAY
APRIL 21ST



LIVE MUSIC
DAILY



KIDS CAN
EAT FREE*

SHED STOCK
MUSIC FESTIVAL

FLEMINGATE, BEVERLEY HU17 0NU

08455 000 999 | INFO@POTTINGSHEDBAR.COM | WWW.POTTINGSHEDBAR.COM



Clogau is a second generation family business based in Wales.

For 30 years, our growing range of jewellery has captured the hearts and imaginations of jewellery lovers from far and wide.

Every piece they create contains rare Welsh gold
- the Gold of Royalty for over 100 years.

Clogau jewellery is seen as an heirloom with both a personal and cultural meaning and a permanent tie to Wales – something valuable to pass down the generations.

It is our heritage that defines what we are, and provides the cornerstone for our future – a future that will hopefully be as successful as our story has been to date.

CLOGAU®

STORYTELLING THROUGH BEAUTIFUL JEWELLERY



GUEST & PHILIPS

23a Flemingate Centre,
Chantry Lane, Beverley, HU17 0PW,
01482 881001