

# just BEVERLEY

O<sub>2</sub>  
Media Awards

'Community  
Publication Award'  
Shortlisted Nominee  
2017



REYTA  
Remarkable East Yorkshire  
Award Nominee 2016  
'Best Newcomer'

destination  
beverley

01482 679947

JUSTBEVERLEY.CO.UK

INFO@JUSTBEVERLEY.CO.UK

FREE

ISSUE 35

*America  
Beckons*  
FOR BEVERLEY  
SONGWRITER



- New Year  
3 Month  
Fitness Pass at  
Anytime Fitness

- Buzz  
Comedy Club  
Tickets

Beverley is  
Booming

# Duggie Brown

Stars in Parkway Pantomime

NEWS, WHAT'S ON, LIFESTYLE, FEATURES, PUZZLES, PHOTOS & MORE

**FREE**  
LOCAL DELIVERY

# Searching for your dream kitchen?

Come see our specialists to discuss your next kitchen project

1.

Professional free design consultation

2.

Expert guidance & advice

3.

Competitive prices for trade & public

MY KIND OF  
KITCHEN

**MKM BEVERLEY**

SWINEMOOR LANE, EAST YORKSHIRE HU17 0JX

01482 880 088 | [mkmb.co.uk](http://mkmb.co.uk)

  OPEN Mon-Fri 7:30-5:30 Sat 7:30-noon



## LETTER FROM THE EDITORS



The Christmas lights are glowing, the Christmas trees are up, the gloves, scarves, hats and thick coats are being worn - it's Christmas time! This year, for the first time ever, 95% of all my Christmas gifts have been bought, wrapped and stored ready for the big day ahead of Christmas Eve. Christmas this year will be celebrated in style at the Minshall household!

Beverley and its surrounding villages are looking fabulous with their Christmas trees and Christmas lights.

From Panto at the Parkway to Plays at ERT and good food and drink throughout Beverley, along with a great choice of high street shopping, Beverley is the place to be this Christmas. There is something for everyone!

Thank you for supporting **Just Beverley** and getting involved with the team here. It's not our magazine, it's Beverley's Magazine. You determine the content! Let us know your plans and what you aspire to before it happens! If you've got some good news - tell us so we can tell the world! Don't forget to check out our website and follow us on Facebook and Twitter - we regularly get over 6,000 hits a month on our website and one FB post reached over 30,000 people. **Just Beverley** is fast becoming the most influential magazine in the area!

Have a wonderful Christmas and all the best for 2018.

Julian.



If Christmas to you means relaxation, then make yourself a cuppa and settle down with our scary story on page 34. Will Bundy is a new writer with a very fertile imagination whose stories we have been proud to feature in **Just Beverley**.

We were also delighted to be contacted by Geoff Green who is a singer-songwriter from Beverley who has had one of his songs licensed for a new American soul album; for someone who is now hob-nobbing with some

of the top stars in the music world, he's very down-to-earth! You can read about him on page 36.

We try to bring articles and features to inform as well as entertain. We know Rich Haye's motoring tips and Gareth Botterill and Stipendia's finance columns are very popular and you loved Aaron Gilpin's series on photography. Remember, all our magazines are available on our website, so you can easily find information you might have missed. This month, we are delighted to welcome Fiona Kemp to the team, writing on the topic of bereavement; not a subject most people really want to read about but something we all have to face at some time in our lives.

To me, the best thing about Christmas is the magic created by a candle-lit carol service. This year, we have listed as many services as we have information for within our What's On column on pages 38-39 and on the website. There is a special service for people who don't really feel like celebrating Christmas at St Mary's, too. However you celebrate Christmas, may you experience the joy and peace of this special time and have a healthy and prosperous New Year. And be happy!

Linda.



## GET IN TOUCH WITH US:

**Website:** [justbeverley.co.uk](http://justbeverley.co.uk)

**Email:** [info@justbeverley.co.uk](mailto:info@justbeverley.co.uk)

**Telephone:** 01482 679947

**Twitter:** @JustBeverley

**Facebook:** [facebook.com/justbeverley](https://www.facebook.com/justbeverley)

Printed by: Jadan Press



## CONTENTS

Letters from the Editors  
News  
Parkway Cinema  
Competitions

## PAGE

3  
4, 5  
6, 7  
7, 13

## Features

The Panto Will Go On 9  
They Met Over Popcorn 10  
Beverley Is Booming 14  
Bartipi - Turning Ordinary Into Extraordinary 18  
Only The Best For Beverley Race Course 29  
Simon Bedlow - Magic At ERT 35  
Geoff Green - America Beckons 36

## Regulars

Arts and Culture 34, 37  
Competition Winners 6, 9, 17, 35  
Countryside Matters 22  
Recipe 16  
Legal 17  
Motoring 28  
Photos 20, 21  
Poem 37  
Puzzles 26  
Sport 13, 31, 32, 33  
What's On 38, 39

## Competition Terms and Conditions

Competition answers should be emailed to [info@justbeverley.co.uk](mailto:info@justbeverley.co.uk) before the closing date with the competition title in the subject field. Include your name, address and daytime contact telephone number along with your answer. Winners will be notified within 1 week of the closing date and MUST be available for publicity purposes for **Just Beverley** magazine, website and Facebook page and the prize provider. Photographs are usually taken the weekend after the prize-winners have been notified. The judge's decision is final. No cash alternative is offered. Details may be used for marketing purposes by **Just Beverley** and the prize provider and for website analytics by **Just Beverley**.

## CONTRIBUTORS

Julian Minshall, Linda Johnson, Richard Manville, Nick Auton, Lisa Brown, Will Bundy, Carfan, Jane Dale, Annie Drew, John Fewings, Food Rhino, Aaron Gilpin, Rich Hayes, Colin Raynor, Ian Richardson, Sam Walton, Helen Watson, Lee Wardell, Nathan Wilson.

## You can pick up the magazine from:

Beverley Parkway Cinema, Beverley Tourist Information, Beverley Library/Treasure House, Tesco, Morrisons, East Riding Leisure Beverley, Browns café, Beverley News, Boyes, Tesco café, Cherry Tree Community Centre, Colette and Tyson Garden Centre, Beverley Garden Centre, Cherry Tree Garden Centre, Mace News in Saturday Market and Lincoln Way, Tickton News, Costcutter in Walkington, Molecroft News, Grovehill Convenience Store, Maple News, Leconfield PO, Poundland, Halfords, East Riding Community Hospital, Bishop Burton PO, The Altisidora, Cherry Burton PO, Monks Walk, Hayride, Health Centres, Churches, cafés, hairdressers and more!

## ASIAN AND ORIENTAL CHEF OF THE YEAR 2017 AND BEST MAITRE D' 2017 ARE BOTH TO BE FOUND IN BEVERLEY!

*If you asked most people where they would expect to find the best curry chef, they would doubtless say Bradford, Manchester or even London. But they would be wrong! Sham Alom of Rumi's in New Walkergate, Beverley was awarded Best Chef in the Asian and Oriental Awards earlier this year. But behind every good chef is a great Maitre D' and last month, Sarah Day was awarded this great honour at the Asian Curry Awards.*

Sham was keen to take the credit for Sarah's success saying that he had taught her everything she knows, which is true, but the application of knowledge and going the extra mile is what stood out for the judges. Sarah is not from an Asian background, but her knowledge of the range of dishes which Sham can prepare, the drinks available and overall customer care clearly make the difference!

Sham isn't your traditional 'chicken tikka masala' chef; he likes to make dishes based on his Bengali background which diners would not usually find in a curry house. Bengali cuisine uses lots of different vegetables, hence the range of vegetarian and vegan dishes, but also many different types of meat and fish. He also uses less fat than many curry chefs. Asia is rich in available spices which gives Sham the opportunity to create tastes which really do make the mouth water! But if a chicken tikka masala is what takes your fancy, then Sham will serve that, too!

As Sarah said: "I find out what people like, don't like or are allergic to. Sham can take into account lifestyle choices and allergies as dishes are made to order. Whatever he serves is almost always well-received - if it's not, we sort it out. We ask diners to be patient whilst their food is cooked but I ensure drinks are topped up and starters arrive in a timely fashion. I have had to learn rudimentary Bengali to translate the names of the dishes - Chukander Brinjal, for example, includes aubergine and beetroot and Mahisa Narkal is a buffalo dish. Sham's chips are pretty good, too, but then he did grow up in Yorkshire!"

It's no wonder that Rumi's is the only local curry house included on the Welcome to Yorkshire Spice Trail. If you like food which is tasty and different, do pay Rumi's a visit or try a take-away! The restaurant is open 7 days a week from 5.30pm, telephone **01482 428642**. [www.rumisrestaurant.co.uk](http://www.rumisrestaurant.co.uk)



## SUN INN TO HOST FUNDRAISER FOR CURE4HAYLEY

*Hayley Crawley has a rare type of cancer for which there is currently no cure. However, there are drugs on the horizon which might just work, but may need to be funded privately.*



Hayley has an 11-year-old son, Callum, who, along with other well-wishers, is holding many imaginative fund-raising events, hoping to raise £200,000 under the banner Cure4Hayley.

On December 8th from 7.30pm, the Sun Inn is hosting a Rock4Hayley evening with The Beckwater Bushwackers, Rob Nicklas and Evans MacBarton.

There is a promise that there will be an appearance from The Smurfs, too!

If you can, do pop down to the Sun and donate a few quid to the bucket - have a great time, too!

## A CHRISTMAS MESSAGE FROM THE MAYOR OF BEVERLEY, ANN WILLIS

*As a Christian I will be celebrating Christmas as the birth of my Lord and Saviour but in whatever way you are celebrating, enjoy it!*

The Archbishop of York, John Sentamu once said: "You can't have too many parties!"

However, I would encourage you not to forget those less fortunate than yourselves.

As a town, a county and a country we are going through very difficult times and this will be even more so in 2018.

So I wish you a blessed and peaceful Christmas and I will keep you all in my thoughts and prayers as we go into 2018.



## THE YORK WAITS RETURN TO ST MARY'S CHURCH, BEVERLEY FOR CHRISTMAS

*The mythical figure of My Lord Sire Christmass is the inspiration for this concert of Early Music, which includes two of the carols in which he makes his debut, along with songs and dances of the 17th century which celebrate the festive season.*

The York Waits play shawms and sackbuts, strings recorders and crumhorns, bagpipes and hurdy gurdy in recreating the sounds of the 15th to 17th centuries. They play the renaissance and medieval music as performed by the official city band of York of the time. Formed in the mid-1970's they have played throughout the UK and overseas and have recorded 11 albums around historical themes. They appear with Deborah Catterall who has performed with the York Waits since 1993, appearing on 3 of their albums. Deborah is a professional singer, teacher and choral conductor in her own right.

Originally a 'carol' was a dance song which had no particular connotation of Christmas but became associated with it by the late 1500's when participatory singing, indoor dancing and Christmas became synonymous.

In 1642 a book of 'New Christmas Carols' was published which included 'The Old Year Now Away is Fled' sung to the tune of 'Greensleeves' (which was written by Henry VIII) which will feature in this concert - but as a Morris version, as it was in 1899 on Boxing Day that folklorist Cecil Sharp first encountered Morris dancers!

The York Waits appear at St Mary's Church on Wednesday December 20th at 7.30pm. Tickets are £10/£7 for concessions and are available from Beverley Tourist Information (**01482 391672**), St Mary's Church Office or on the door.



## BEVERLEY CIVIC SOCIETY EXPLORES THE UNIQUE HISTORY OF 'THEATRE IN BEVERLEY'

*Civic Society member Berna Moody has researched the strong theatrical traditions within Beverley, discovering that the earliest mention of a play ever being performed anywhere in England was in Beverley, at the Minster somewhere between 1215 and 1219! She is to give a talk to the Society at their Christmas meeting on Thursday 14th December at 7.30pm in St Mary's Parish Hall.*

At the time, the Minster was being rebuilt after a fire and was covered in scaffolding. A boy watching the play climbed the scaffolding to get a better view and fell from it. The audience thought he had been killed but he survived; the miracle of his survival was attributed to St John of Beverley. The Minster was also the site for the Mystery plays which were produced by the 38 Guilds in Beverley working together to perform a cycle of plays over 2 days. The plays reflected the honour of the town, which was on a par with York and Ripon.

There are records of men (the plays were only performed by men) being fined if they didn't learn their lines! By the 18th century, travelling players came to Beverley, which boasted several theatres and playhouses, including the Assembly Rooms which is now Bird and Beer. Beverley was also the home of a famous actress, Mary Elizabeth Bradden, who wrote poetry and prose for the **Just Beverley** of the day, Beverley Recorder. She had an interesting private life, too! Berna is sure to tell more about her in her talk.



By-the-way, you may wonder where Berna's unusual name comes from. She was named after the heroine of a book which her father was reading when she was born: 'The Trail of '98' by Robert Service. Robert Service was a popular writer during WW1; he wrote about the dreadful conditions which the miners lived in during the Yukon Goldrush which resonated with the soldiers in the trenches. Service's name Berna, was from a brand of condensed milk which the miners lived on - as Berna says, she could have been a Libby or Carnation or even a Nestlé!

## BRIDLINGTON SPA GOES STRICTLY PANTO WITH 'ALADDIN'

*Sashaying onto the stage as the mystical Genie of the Lamp at Bridlington Spa in this year's pantomime, 'Aladdin', is professional dancer Robin Windsor from BBC's Strictly Come Dancing.*

This jewel-encrusted presentation also stars Benidorm's Asa Elliott as Aladdin, Art Attack presenter Lloyd Warbey as Wishee Washee and Bridlington's favourite dame, Joe Standerline steps into the glitzy shoes of Widow Twankey.

There's mystery, romance and adventure on this magic-carpet-ride of a story, with spectacle, slapstick and song as Aladdin, Widow Twankey and Wishee Washee do battle with the evil Abanazar! Will Aladdin find love with Princess Jasmine? Come along to Brid Spa to find out.

As Robin Windsor said: "I'm used to OTT productions on Strictly - I can't wait to make my mark with this great pantomime." Performances run from Friday 15th December to Tuesday 2nd January with matinees as well as saver, relaxed and evening performances. More info from [www.bridspa.com](http://www.bridspa.com) or **01262 678258**.



## EAST RIDING FOOD BANK CHRISTMAS APPEAL UNDERWAY

*Richard Newby, East Yorkshire Foodbank Development Manager, is most grateful for the 2,732 meals so generously donated over harvest-time, but unfortunately, the need for more donations is as critical as ever. The on-going collections in Beverley Tesco, Mill Lane Community Hub and Toll Gavel United Church, which are bolstered by the Tesco Christmas Appeal running from November 30th to December 2nd are vital to help feed local people who are unable to feed themselves and their families.*

Richard said: "Now we have the Community Hub in Mill Lane, we are able to provide more than just food as we can provide a range of support from there as well as from Toll Gavel Church, which means we can help more people. However, our main objective to stop people being hungry. 1 in 5 live below

the poverty line so we are calling on the 4 in 5 to help if and where they can with donations of cash, non-perishable food items or essential toiletries."



Always-in-demand staples include tinned fruit, tinned tomatoes, tinned meat, tinned fish, UHT milk, biscuits, tea and coffee and long-life fruit juice and cash is always needed to purchase items which the Food Bank runs out of in an emergency. But people skills are also necessary. Could you help the Food Bank?

Do contact <https://eastyorkshire.foodbank.org.uk/> to find out more.

## ARTERY LIVE

*If you missed Maire Ni Chathasaigh and Chris Newman on November 24th at Bishop Burton Village Hall, their Celtic Christmas Festive Treat is scheduled for Etton Village Hall on Saturday 9th December at 7.30pm and Holmpton Village Hall on Sunday 10th at 2pm.*



The concerts have been organised by ArTERY, which is a rural touring scheme where volunteers and bookers promote live, professional entertainment in their locality. ArTERY is supported by East Riding of Yorkshire Council and receives an Arts Council Lottery grant.

It is managed by Blaize, a community arts organisation and social enterprise company based here in Yorkshire. Maire Ni Chathasaigh and Chris Newman are a talented duo who blend traditional Irish music with hot jazz, bluegrass and baroque. They will be giving festive favourites a fresh voice with inventive, moving and heart-warming fervour.

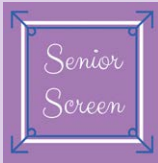
They have attended festivals in New Zealand, Ireland, the USA, Canada, Australia and various parts of Europe where they received rave reviews. The target audience is 1 to 100! Tickets for Etton are available from [villagehalletton@gmail.com](mailto:villagehalletton@gmail.com) and Holmpton from [aprysome@gmail.com](mailto:aprysome@gmail.com)

## CREATING THRILLS AND SKILLS FOR LIFE

*The Pauline Quirke Academy of Performing Arts is a weekend performing arts school for 4-18 year olds - and they are enrolling now in Beverley and Hull!*

It has been a busy year for the students of PQA Beverley and PQA Hull, from performances at Hull City Hall in the UK City of Culture celebrations to specialist masterclasses with West End professionals and theatre companies. And that is just the beginning! In September the students from PQA Hull performed with X Factor finalists G4 in their concert at Scunthorpe Baths Hall. December will see PQA Beverley performing with G4 at Beverley Minster as part of their Christmas by Candlelight tour.

PQA Beverley's students were recently awarded Trinity College London exams in Acting and Musical Theatre with Merits and Distinctions being awarded across the board. The highlight and possibly the performance of a lifetime will come in July 2018 when the students from PQA Beverley will be taking to the stage in the heart of London's West End in PQA's brand-new musical 'Trouble's A Brewin'. Meanwhile, the students from PQA Hull will be performing at The Grand Opera House in York in the musical 'The Magical Mind of Cory Clagget'. PQA Beverley and PQA Hull are enrolling now! Academies run on Saturdays for more information visit [www.pqacademy.com](http://www.pqacademy.com) or to book a free taster session please contact [james@pqacademy.com](mailto:james@pqacademy.com) or call **07753 179 070**.



**EVERY THURSDAY AT 10.30am**  
(doors open 9.45am)

Join us for a free brew and a natter and enjoy some great films on Beverley Parkway's Big Screen. Only £4 with drink and biscuits included. Aimed at 55s and over. Films subject to change.

**Thursday 7th December -**

**American Made -**

Director: Doug Liman  
Starring: Tom Cruise, Domhnall Gleeson

**Goodbye Christopher Robin -**

Director: Simon Curtis  
Starring: Margot Robbie, Domhnall Gleeson

**Thursday 14th December -**

**White Christmas -**

Director: Michael Curtiz  
Starring: Bing Crosby, Danny Kaye

**American Made -**

Director: Doug Liman  
Starring: Tom Cruise, Domhnall Gleeson

**Thursday 21st December -**

**Final Portrait -**

Director: Stanley Tucci  
Starring: Geoffrey Rush, Armie Hammer

**White Christmas -**

Director: Michael Curtiz  
Starring: Bing Crosby, Danny Kaye

**Thursday 28th December -**

No shows - Christmas break

## COMPETITION WINNER

Congratulations to the winner of last month's Justice League competition, Diane Kelly.



These are the films scheduled to open in December all are subject to change. Check out up-to-date cinema listings at [www.justbeverley.co.uk/cinema-times](http://www.justbeverley.co.uk/cinema-times)



1st December



1st December



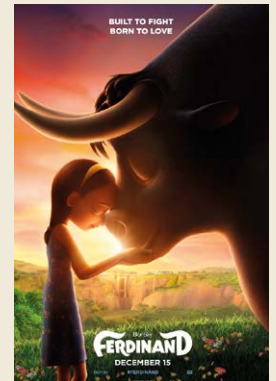
8th December



8th December



14th December



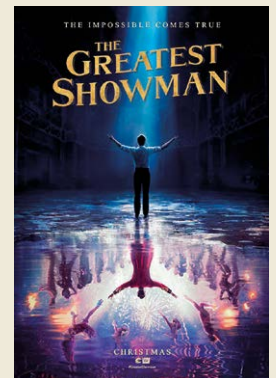
16th December



20th December



20th December



26th December

## PARKWAY PENGUIN PARTIES



YOUR OWN PRIVATE SCREENING  
SEE YOUR CHILD ON THE BIG SCREEN  
FUN & GAMES WITH OUR PARKWAY PENGUIN  
ONLY £170

For more information contact the Box Office or come in store and speak to a member of staff

# YOUR NEW INDEPENDENT CINEMA



## PARKWAY CINEMA LIVE SHOWS RETURN IN 2018

*Parkway Cinema's own theatre has brought shows and performances to the town which has enhanced Beverley's cultural offering - a professional pantomime to name just one! Early in the New Year sees the return of the popular Sunday comedy nights with Buzz Comedy Club and Talegate Theatre present everyone's favourite story, The Wizard of Oz! Live music includes the amazing 5-Star Swing Big Band and tribute acts, The Upbeat Beatles and Magic - A Kind of Queen.*

Cliff Baillie, General Manager of Parkway Cinema said: "The facilities we have at the Parkway are so flexible that we can attract audiences into the cinema who wouldn't usually come. When they see what we have on offer, they are sure to return! The Cinema isn't just for film as our live programme demonstrates! But film is very important - and because we are an independent it means we can show art-house film as well as block-busters and event cinema with live streaming, making the most of our 4K capability and state-of-the-art sound system."

So put the following dates in your diaries:

**Sunday 28th January - Beverley Buzz Comedy Club** with top Northern stand-up Jamie Sutherland; rapid-fire one-liner joke merchant Tony Cowards; cheeky but charming Karen Bayley and lively, inventive raconteur Marvyn Dickinson.

**Sunday 11th February - The Upbeat Beatles.** Powerhouse vocals, precision harmonies and tight musicianship with an easy, happy rapport which has given them a reputation as the best in the business. There isn't a band to touch them - 8 bars of 'Twist and Shout' and you will see why: not other band can perform this song like the Upbeat Beatles. The show takes you from the Cavern Club, through Beatlemania, America, Sargent Pepper to Abbey Road with full media presentation. If you love The Beatles, you'll love The Upbeat Beatles; if you don't love The Beatles, you will love this show.

**Sunday 25th February - Beverley Buzz Comedy Club** features Yorkshire Live-wire Scott Bennett with his wry local humour including his Dad's tips on how to pile up a plate at a carvery! Also on the bill are Stephen Cookson with his dry, droll, deadpan manner; Chris Washington who is a former postman who delivers first-class comedy and cheery, chatty, naturally funny Nina Gilligan.

**Sunday 11th March** welcomes Swing Time with the unique **Five Star Swing Band.** Fresh from Leicester Square, Blackpool's Tower Ballroom and BBC's Children in Need, this band will delight with songs from Glenn Millar, Ella Fitzgerald, Frank Sinatra, Count Basie and more! The band features Simone from the Ivy Benson Orchestra and Chris Smith (Jnr) who is composer and arranger for the BBC Radio Big Band and the Herb Miller Orchestra (Glenn's brother).

**Saturday 31st March** sees the welcome return of Talegate Theatre with 'The Wizard of Oz'. Click your ruby heels together and join us over the rainbow for a magical adventure suitable for all ages. Follow Dorothy and her new friends along the yellow brick road as they help the wonderful Wizard of Oz defeat the Wicked Witch of the West. This is a fast-paced show featuring pop songs, magic, puppets and your favourite Oz characters.

**Sunday 8th April** is when tribute band **Magic - A Kind of Queen** take to the stage performing Queen's greatest hits. From Gorky Park and the London Palladium and now Beverley, Magic are the reckoned to be the best, playing familiar songs and some you might not have heard for a while completely live!



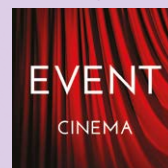
## COMPETITION

*Parkway Cinema is offering one lucky winner FOUR tickets to celebrate the return of live comedy to the Parkway on Sunday 28th January. Beverley Buzz Comedy Club will feature not one, but four comedians, who you can enjoy from the comfort of the theatre's relaxing arm-chair seats.*

All you have to do to win this great prize is name one of the four comedians set to entertain you! Send your answer to [info@justbeverley.co.uk](mailto:info@justbeverley.co.uk) by December 14th 2017.

Put 'Beverley Buzz Comp' in the subject box and include your name, address and daytime telephone number in the body of the email along with your answer.

The winner will be chosen at random after the closing date and must be available for publicity for **Just Beverley** and **Parkway Cinema**.



Event cinema offers something a little different to mainstream films. Live and pre-recorded shows beamed in via satellite from all over the world. Here are the latest live streams that you can enjoy on the big screen at Parkway Beverley.

**TICKETS NOW ON SALE:**

**Sunday 3rd December at 3pm - BOLSHOI: THE NUTCRACKER**

**Tuesday 5th December at 7:15pm - ROH: THE NUTCRACKER**

**Thursday 7th December at 7pm - NT LIVE: YOUNG MARX (12a)**

**Tuesday 16th January 2018 at 7:15pm - ROH: RIGOLETTO**

**Wednesday 17th January 2018 at 8.30pm - SUGGS: MY LIFE STORY & Q&A (15)**

**Sunday 21st January 2018 at 3pm - BOLSHOI - ROMEO AND JULIET**

**Tuesday 23rd January 2018 at 6pm - EOS: CEZANNE - PORTRAITS OF A LIFE**

**Sunday 4th February 2018 at 3pm - BOLSHOI - LADY OF THE CAMELIAS**

**Wednesday 7th February 2018 at 7:15pm - ROH: TOSCA**

**Wednesday 14th February 2018 at 7pm - RSC: TWELFTH NIGHT (12a)**

**Thursday 22nd February 2018 at 7pm - NT LIVE: CAT ON A HOT TIN ROOF (15)**

**Wednesday 28th February 2018 at 7:15pm - ROH: A WINTER'S TALE**

**Sunday 4th March 2018 at 3pm - BOLSHOI - FLAMES OF PARIS**

**Tuesday 6th March 2018 at 6.45pm - ROH: CARMEN**

**Tuesday 20th March 2018 at 6pm - EOS: VINCENT VAN GOGH - A NEW WAY OF SEEING**

**Tuesday 20th March 2018 at 7:15pm - OWSL: LADY WINDERMERE'S FAN (12a)**

For full programme of the Event Cinema, please visit [www.parkwaycinemas.co.uk](http://www.parkwaycinemas.co.uk)

**LIVE ON  
STAGE**

TONY PEERS PRESENTS

A FABULOUS FAMILY PANTO

# Dick Whittington

AND HIS WONDERFUL CAT

STARRING  
**DUGGIE BROWN**  
AS SARAH THE COOK



PRESENTING

Chiara Castania as DICK WHITTINGTON

Devan Kellett as ALICE FITZWARREN

Colin Roberts as CAPTAIN

Michael Walter as MATE

Jackie Grimwood as QUEEN RAT

Dancers from the

FLEUR ELIZABETH ACADEMY OF DANCE

DIRECTED BY LINDA NEWPORT

FRIDAY 15TH DECEMBER 2017 - MONDAY 1ST JANUARY 2018

Parkway Theatre  
Flemingate Centre  
Beverley HU17 0PW

BOX OFFICE  
**01482 968090**  
[www.parkwaycinemas.co.uk](http://www.parkwaycinemas.co.uk)





# THE PANTOMIME WILL GO ON - THOUGHTS FROM TONY PEERS

*I always know that Christmas is just around the corner when I get to this stage during the production of a Pantomime. From starting in February when we sat round a table with the Director Linda Newport, the Choreographer Fleur Elizabeth and our chief technician from Persono Entertainment, Chris James and of course, not forgetting my right-hand Elaine, a discussion starts regarding the pantomime at Flemingate in Beverley. Having already held discussions with the Theatre Manager, Cliff Baillie, it is decided that this year's panto will be Dick Whittington.*

At the first round of talks, casting possibilities are discussed, and we decide that we would like one of Yorkshire's Comedy Legends, Duggie Brown, to take the lead role as Sarah the Cook. Over the coming couple of months, auditions are held, and all the principle members are selected.

Returning this year is the very talented senior dancers and juveniles from the Fleur Elizabeth Academy of Dance. Running alongside this, the scenery is chosen and matched with the script.

About now we are ready to announce the 'Title' and put the tickets on sale and from now on it is all hands to assembling the props, sorting the music and costuming the show which takes us up to the middle of November when the real work begins.

At this stage, the director Linda Newport will be refining the scripts and looking for topical jokes and popular chart music to slot into the production. Chris James will be organising the sets, repainting as required and checking sound systems and any effects required. By now Fleur will already have the music and will be rehearsing the dancers and juveniles as well as applying for the performing licences.

The mammoth job of organising the costuming, not only for the Beverley Pantomime but the six other panto productions we produce across the country, means there is also the not insignificant task of transportation of costumes, props, and sets to each venue.



Joining Elaine this year we are delighted to have on board Hannah Pegram who has proved invaluable in the busy preparations for all productions.

I hope this gives you some idea of the amount of effort that goes on behind the scenes! From February, with a blank piece of paper, to the opening night of the show it is a hive of activity by a team of people I am proud to work with.

I congratulate them on their dedication, skill and attitude. Me, I am the producer: what do I do? I buy the cakes!

Dick Whittington and his Wonderful cat opens at Parkway Cinema's beautiful Parkway Theatre on Friday 15th December and runs until Monday 1st January with performances every day but Christmas Day. There are various times scheduled to suit the youngest and the oldest!

Tickets are available from the Box Office on **01482 968090** or [www.beverley.parkwaycinemas.co.uk](http://www.beverley.parkwaycinemas.co.uk). Don't miss it!



## COMPETITION WINNER

Congratulations to Harry Drake who won the VIP Access all-Areas visit to 'Dick Whittington and his Wonderful Cat' at Parkway Theatre.



# THEY MET OVER

**Marie Mitchell joined the management team at Beverley's family-run Parkway Cinema in April. When a vacancy arose a few weeks ago, guess who applied for and got the job? Yes, husband Mark! Just Beverley went to find out more about this couple who really did meet over the popcorn in a cinema!**

Marie has been working in cinemas ever since she was at university when she took a part-time job to help fund her studies. She tried managerial jobs in different industries after graduation, but always ended up back in a cinema. For a young woman who wants a social life, the unsocial hours (working late nights, weekends and Bank Holidays, for example) aren't the most attractive, but Marie loves the feel-good reward of giving cinema-goers a great experience and, sometimes, even gets to see the films which are showing! She is a big Disney fan and loves romantic comedies but dislikes anything with violence - unlike husband Mark, who relishes the Marvel and DC superhero films and science fiction.



She said: "Getting family time can be challenging - Mark and I have two boys - but there are up to 30 staff now working here at Parkway under General Manager Cliff Baillie and the range of film and events, including live shows, which we put on means we attract all sections of the community. Mark and I share management responsibilities with Trevor Sturman, who has been here, like Cliff, since the cinema opened. You can do so much here which is impossible at a multiplex! Parkway is a real community resource and we just love it."

Mark's background in cinema is as a projectionist, a job which is now defunct. He began his career in Wakefield before moving to Cineworld Sheffield which features the amazing 4DX auditorium. From there, he moved to Cineworld in Hull as Chief Projectionist, which is where he met Marie. Now that films are available in digital formats and all that is needed is a laptop, a memory stick and the ability to 'drag and drop', Mark has moved into management, which is what has brought him to Beverley Parkway.

He said: "I do miss the days of 35mm films which came on several large spools, which had to be shown in the right order, with adverts and trailers



put in manually. There would be three dots appear on the top right-hand-corner of the film as the spool was coming to an end which is when you had to ensure the next spool was ready, or else there would be a break in projection and an unhappy audience. The spools would get worn with each showing and sometimes break, which meant the film had to be spliced together - it usually happened when you were least expecting it! It was easier in those days to have an intermission, too, with ice-cream sellers appearing in the auditorium at exactly the right time, as you would just stop as a spool came to an end!

"It seems strange now that we just see one film when we go to the cinema, but not so long ago there would be a short film in support of the main feature or even a double bill. Nowadays, audiences have gotten used to just seeing the main event, backed up with forth-coming attractions and advertising. It's the distributors which govern what adverts and future films are shown - in fact, it's the distributors who govern what films are seen and how often we show them. It can sometimes take 2 weeks to get a new release as that's part of their strategic plan to get the maximum number of bums on seats.

But as an independent, we can get art-house films to attract smaller audiences which the multiplexes don't show.

"The old projector which is on show in the Parkway is a good reminder of where film came from and that some directors do still use film to make a movie even though it is mastered digitally for release. For example, Tarantino's 'The Hateful Eight' and Christopher Nolan's 'Dunkirk' were filmed on 70mm film, a wide high-resolution film gauge. Filming both of those films in that medium gave them the 'feel' of the era being evoked, but movie-goers today tend to demand the clarity of film and soundtrack which filming and processing in digital provides. Laser projection is coming in and beyond that there could be 8K resolution (Parkway can show ultra-high resolution 4K films) and even holographic film."



# THE POPCORN...

One of Mark and Marie's favourite tools is the camera view of each of the auditoria, which means they can check on the audience at frequent intervals to ensure they are safe, have turned their phones off and are keeping their feet off the seats! They can also ensure the theatres are clear and ready for cleaning up after each showing, collecting and recycling as much rubbish as they possibly can.

Cinemas are open every day of the year bar Christmas Day, with Christmas Eve their busiest day of the year! Last year, Parkway showed 'Polar Express 3D' in the run-up to Christmas which was so popular that they are repeating the exercise this year; at the time of writing, the screening for Christmas Eve had already sold out but watch for extra showings. It can be a challenge for a cinema with 6 screens, only 2 of which can show 3D films, to accommodate everything audiences and distributors demand! December is particularly challenging as there are so many new films due out - 'Star Wars - The Last Jedi'; 'Jumanji - Welcome to the Jungle'; 'Ferdinand'; 'Pitch Perfect 3' and 'Wonder' to name just 5 of 60! See page 6 for the list of new releases being shown at Parkway and check out our website every week for cinema listings, events and shows.



Marie is very excited that the café bar now sells different flavoured hot chocolate as well as a variety of teas, Costa coffee and alcoholic beverages which can all be taken into the auditoria. There is also ice-cream, soft drinks, snacks and, most important of all, popcorn. Without the popcorn, there would be no Mark and Marie. Can you guess which of them likes sweet and which likes salted though? Remember to ask them next time you are there!

Beverley Parkway Cinema is located at **Flemingate**, telephone: **01482 968090**. Check out the website for daily listings, forthcoming attractions and for bookings: <http://beverley.parkwaycinemas.co.uk/>

# IT'S THE MOST WONDERFUL TIME OF THE YEAR TO CREATE YOUR OWN STYLE WITH LEE WARDELL FROM VERB

*It is upon us!... The most exciting and best time to be in retail, the whole trading year is built towards a successful festive period. The increased footfall and festive spirit make for a great time to be working on the high street.*

Here at VERB, we have complete outfits for MEN and WOMEN, our staff are trained to offer guidance on sizing and coordination.

Previously, I suggested listening for any pre-Xmas hints or requests, measuring shirts / woolens / trousers / coats with a piece of string or reading size labels before a shopping trip for a surprise present for a loved one.

That's because different brands have different sizing measurements, so men could be a Medium



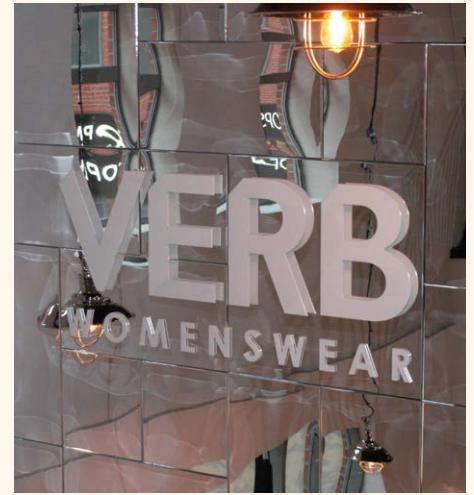
in one brand or even Extra Large in another - there really is no industry standard measurement!

Being mindful of hair colour and complexion is important, the majority of men suit NAVY - it is men's default / go-to colour!



Current TV series offer some great styling options - Peaky Blinders for example! Caps / pocket watches / knitted ties / penny-collared shirts / waist-coats / car coats are a real 'on trend' look.

As NAVY is most men's 'go to colour', and with jeans so popular, this an obvious co-ordination.



However, the rustic rural colour palette of burnt orange / sky blue / greens / browns / berry reds (imagine a countryside scene!) all look great and offer so many options for co-ordination.

Scarves, belts, gloves and socks are a great present if they co-ordinate. Matching shoes with belts is a must!

As always, we are here to help and advice at VERB. With a gift wrapping service and Gift Vouchers available, I'm confident we can make your festive shopping experience as relaxed and enjoyable an experience as possible.

VERB is located at Flemingate, is open 7 days a week and can be followed on Instagram and Facebook.

Check out our website: [www.verbfashion.co.uk](http://www.verbfashion.co.uk)

## VERB

TO WEAR - TO WANT - TO WISH FOR - TO OWN - TO FASHION

FLORENTINE

PEARLY KING

Gibson  
LONDON

MAC

BROOK TAVERNER  
TAILORS OF DISTINCTION SINCE 1912

OPENING TIMES:  
MON / SAT 9.30-5.30  
SUN 11.00-4.00

01482 880141  
VERBFASHION.CO.UK  
INFO@VERBFASHION.CO.UK

FLEMINGATE SHOPPING CENTRE  
FLEMINGATE, BEVERLEY  
EAST YORKSHIRE HU17 0NQ

@ VERBFASHION

@ VERBFASHION

f / VERBFASHIONBEV

TO FASHION YOUR OWN STYLE

# FLEMINGATE

## BEVERLEY

### at Christmas

**LATE NIGHT SHOPPING EVENT**  
**THURSDAY 14 DECEMBER**  
**4pm - 8pm**

**WHAT'S ON**  
**December**  
**Sat 2nd - Craft & Artisan Fair**  
**Sun 3rd - Craft & Artisan Fair**  
**Sat 9th - Judy's Attic Crafts**  
**Sun 10th - Beverley Festival of Christmas**  
**Sat 16th - Storytime & Crafts Party**  
**Sun 17th - Young Enterprise Market**

**ALL FREE TO ATTEND**  
 Check website or Facebook for details

**Christmas GROTTO**  
 COME SEE SANTA!

Tony Peers Presents  
 A fabulous Family Panto

**LIVE ON STAGE**

**Dick Whittington**  
 AND HIS WONDERFUL CAT

15th December - 1st January

ARKWAY CINEMA AND THEATRE

**BARTIPI**

Open Thursday - Sunday 11am-11pm  
 with fantastic Thursday night ticketed events

**WE'VE GOT IT ALL AT FLEMINGATE**



# ANYTIME FITNESS ANNOUNCE THEIR NEW MANAGER AND JUST BEVERLEY WELCOMES A NEW CONTRIBUTOR!

James Bedford has recently been appointed Manager at Beverley's 24-hour Anytime Fitness Gym. Anytime Fitness opened its first club 15 years ago in Minneapolis USA and is now the world's leading health chain with 3,500 clubs in 29 countries and growing.

A new member joins an Anytime Fitness club every 3 minutes! As a sports and exercise science graduate, James was attracted to the concept of being able to access a gym when it suited the user - if you are a member at Anytime Fitness, you have access to 3,500 gyms which are open 24/7. There is no excuse for not being able to keep fit with Anytime!

James additionally is a qualified Personal Trainer, which means he will ensure you get faster and better results than if you were working out by yourself, reducing the chance of injury, overcoming plateaus and helping you establish a life-long exercise habit.

Additionally, should you wish to train as a hammer thrower, James is your man - he's competed for England and Great Britain in the discipline!



## KEEPING FIT, EATING WELL, STAYING HEALTHY BY JAMES BEDFORD

Welcome to my new column, just in time for Christmas! Christmas is a challenging time for anyone so here's some tips to help you with your health and fitness goals over the Christmas and New Year period.

Avoid over-eating. Over-eating is so easy to do around Christmas with what seems like an unlimited supply of food available for a long period of time! Always avoid serving yourself large portions and give yourself a break (20 mins or so) before reaching for your second helping of the main course or dessert. Keep exercising throughout the Christmas holidays to burn off those extra calories you are consuming. Working out can be the last thing you want to think about but utilise circuit training and H.I.I.T (high intensity interval training) styles of training to burn lots of calories in short 30 min workouts. This will give you lots of time to spend with loved ones, too.

Eat your greens! Filling a large part of your plate with vegetables is a filling, low calorie and nutrient packed way of reducing over-eating at your meal-times; it's also a great way to get large amounts of fibre in your diet to optimise your digestive system. Drink more water. Drinking enough water is essential to keep your body, especially your digestive system functioning efficiently. Having a large glass of water before a meal can also help you avoid over eating as dehydration can be mistaken for hunger. Keep well-hydrated and reduce the temptation to reach for a mince pie!

Don't let Christmas run for the full month! In reality, Christmas is just one day so avoid ruining your healthy lifestyle by treating it as such. Life is about balance so do enjoy yourself on The Day, but also maintain good habits leading into the New Year.

Relax and sleep. The Christmas break is a great time to catch up on sleep and recharge your batteries. Lack of sleep caused by life's demands can lead to over-eating and weight gain so ensure you get 7-8 hours per night and recharge your batteries ready to start the New Year feeling relaxed and ready to go!

If you would like to get fit, lose weight, adopt a healthier lifestyle or become part of our community, why not give Anytime Fitness at Flemingate, Beverley a call on **01482 247100**. Or why not pop in and speak to me or one of our other members of staff. We are open 24/7!




**Support**

Every member gets a free, personalised Get Started Plan when they join along with free regular health checks. Our friendly, professional staff are trained to help you along your fitness journey, no matter how much support you need.

**Convenience**

24 hour access to the club to fit in workouts around your lifestyle

**Tools and Training**

With a fully equipped state of the art facility we offer all the tools to help you succeed with your health and fitness goals. The gym it boasts a multitude of cardio equipment along with resistance machines, free weights area and a functional training rig.

We also run classes throughout the week which are included in all memberships with virtual classes available if you're unable to make the scheduled ones. We have our personal training staff on hand to provide you with the right tools to reach your goals.

**Community**

You're not just joining a gym; you're joining a supportive community of like-minded people who are here to give you the encouragement you need.

**ANYTIME FITNESS**  
Flemingate Centre, Flemingate HU17 ONQ  
Tel: 01482 247100

### GYM COMPETITION



Want to get fit in 2018? Enter our competition to win a 3-month gym pass and 12-session personal trainer package with Anytime Fitness!

- Kick-start your New Year fitness regime with Anytime Fitness, Beverley's 24-hour gym located at Flemingate. As with any new member at Anytime Fitness you will get:
  - A free, personalised Get Started Plan upon joining along with free regular health checks. Anytime Fitness friendly, professional staff are trained to help you along your fitness journey, no matter how much support you need.
  - The convenience of 24-hour access to the club to fit in workouts around your lifestyle.
  - A full-equipped state-of-the-art facility with all the tools you need to help you succeed with your health and fitness goals. The gym boasts a multitude of cardio equipment along with resistance machines, free weights area and a functional training rig. There are classes throughout the week which are included in all memberships with virtual classes available if you're unable to make the scheduled ones. Anytime Fitness personal training staff are on hand to provide you with the right tools to reach your goals.
  - Anytime Fitness is a community of like-minded people. You're not just joining a gym; you're joining a supportive group who are here to give you the encouragement you need.

To win this fabulous prize, all you have to do is answer the following question:

#### Who is the new Manager at Anytime Fitness?

Send your answer by email to [info@justbeverley.co.uk](mailto:info@justbeverley.co.uk) by December 14th. Put 'Anytime Fitness Pass' in the subject box. Include your name, address, daytime telephone number and answer in the body of the email. The winner will be chosen at random after the closing date and must be available for publicity for Just Beverley.

# BEVERLEY IS BOOMING

*Wouldn't Christmas shopping be idyllic if you could spend a day wandering through magical cobbled streets, exploring unique independent boutiques, a lovely quirky department store, the best of the high street retailers and enjoying superb food and drink? Well you can - and it's here in East Yorkshire, our local historic market town of Beverley says Lisa Brown.*



Unlike so many other town centres Beverley is experiencing a stampede of retailers opening new shops. Retailer Philip Guest of Guest & Philips jewellers who specialise in fine diamond jewellery, antique jewellery and luxury antique watches said: "It's great to see so many new names in the town. At one time there were a number of empty shops but now there is hardly a space to be had."

Perfume specialists Jo Malone and ladies wear retailer Mint Velvet have recently opened in Saturday Market. The former Subway sandwich shop on Toll Gavel is soon to open as a specialist bridal and prom wear shop - just in time for winter weddings and parties. Hotel Chocolate is selling devilishly delicious treats on Toll Gavel and Jack Wills is soon to join the list of high-street names.

Men are spoilt in Beverley with Rileys, Murray Todd and Barbour now joined by prestigious new menswear and lifestyle store The Modern Draper selling brands such as Edwin, Norse Projects, John Smedley and Red Wing Boots. Owner, Chris Terry is keen to encourage people to shop in Beverley. He says: "Time and money is precious - especially at Christmas - so people can visit Beverley to find unique gifts in one place, experience great customer service from people who are passionate about what they do and have a relaxing, fun day out with the family."

Other independent boutiques worth exploring including record store Bug Vinyl on Ladygate, brand new home-ware specialist Light & Living, Miss Ellies Design Florist on North Bar Without and the plethora of shops on the historic St Marys Court.

Take a look at the fabulous traditional and individual designs in Four Horsemen Custom Tattooing in the Georgian Quarter or Tom Browns Tattoos if you fancy a more permanent reminder of your trip to Beverley. There is also the vibrant Saturday Market where you can buy artisan cheeses, locally baked breads, hand-made gifts and decorations, fresh flowers and plants and hot street food from around the world.



Once you need a break from all that shopping there's somewhere to eat to suit all tastes. Breakfast like a Parisienne on the flakiest filled croissants and fruit brioche at TC Patisserie, enjoy a leisurely brunch at James Allcocks sensational new bistro The Pig & Whistle, explore the range of coffee and cakes at Filmore & Union or head to North Bars Bird & Beer for the best range of craft beers and their exciting chicken dishes.

Fleur De Lis, a new French restaurant is newly opened on North Bar too and is a great place for a simple lunch or a lavish dinner. If you want to take a taste of Beverley home with you stop at Vanessa Deli for their award-winning steak pie or drop into White Rabbit Chocolate for their almost-too-pretty-to eat chocolate creations.

Towards the stunning Beverley Minster, the Flemingate Centre is now running at almost full capacity. And no visit to Beverley would be complete without a pint in the atmospheric, gas-lit White Horse pub - aka the legendary Nellies.

Looking to the future, we will have to wait until Easter for the re-opening of The Beverley Arms hotel which is currently undergoing a multi-million-pound re-vamp by the new owners Braithwaites who are transforming it into a boutique hotel. Beverley is booming - and is the place to be at Christmas and beyond.

great taste 2014 Top 50 Foods

WHITE RABBIT CHOCOLATIERS

'TIS THE SEASON  
to eat (lots of)  
CHOCOLATE  
fa la la la laaa...

f t

Jingle down to our cafe or shop online  
[whiterabbitchocolatiers.co.uk](http://whiterabbitchocolatiers.co.uk)

# BEVERLEY'S FESTIVAL OF CHRISTMAS SET TO TRANSFORM THE TOWN INTO A MAGICAL WONDERLAND.

Beverley is the place to be on Sunday, 10th December as it hosts its annual festival. Each year, on the second Sunday in December, the centre of the town becomes a shopper's paradise with over 120 stalls selling all manner of Christmas gifts and locally produced food and drink whilst entertainers bring a festive feel to the day.

The festival takes place from 10am-4pm. It will open with a Christmas Parade from Wednesday Market to Saturday Market led by Santa with his sleigh and reindeer. This year there will be four traditional Victorian Christmas Markets nestled within Saturday Market, Wednesday Market, North Bar Within and Flemingate Shopping Centre interspersed with live music, dancing and carol-singing.

Additionally, face-painters, fairground rides, pantomime performances and Santa will provide fun things to do whilst those wanting to take the weight off their feet will find refreshments available at Toll Gavel United and St Mary's Churches, in the Minster (where the Christmas Tree Festival will be in full swing) and the Mayor's Parlour. The shops and restaurants will all be open as will Flemingate's latest addition, Nordic Bartipi in Flemingate.

Find out more about the Beverley Festival of Christmas at [www.beverleyfestivalofchristmas.co.uk](http://www.beverleyfestivalofchristmas.co.uk) where you can also download a programme!



# IT'S NOT CHRISTMAS WITHOUT SANTA!

Visit Santa's Christmas Grotto at Flemingate from Thursday 23rd November - Sunday 24th December, 10am-6pm Thursday, Friday and Saturdays and 11am-5pm Sundays with extra openings near Christmas Day!

Don't miss your chance to meet Santa at Flemingate's magical grotto this Christmas. Santa's elves have been busy building him a new grotto which we can't wait for you to see. You'll get to meet his magical Christmas elves, who have been working hard all year to make everyone's Christmas gifts. We're sure you're on the nice list this year, so you can look forward to a special present - although no peeking until Christmas Day!

Santa is happy to be in photo souvenirs with his visitors, so make sure you're spreading lots of Christmas cheer in your photo. Tickets to Santa's grotto are £5 and include a present. Santa is a very busy man so to avoid sad faces we encourage you to book in advance.

Tickets can be bought from Flemingate or online at [www.flemingate.co.uk/grotto](http://www.flemingate.co.uk/grotto) (small online booking fee incurred). We welcome school and nursery visits. Group discounts are also available. Please call 01482 320088 to arrange!



## CHRISTMAS AT CHAMAS

Beverley's only Brazilian restaurant offering a new and unique dining concept.

Enjoy an unlimited tableside service of unlimited prime cut meats carved at your table and gourmet salad bar for one fixed price

**30TH NOVEMBER - 31ST DECEMBER 2017**

### LUNCH 12PM - 5PM | £24.95

The usual full rodizio of 8 different cuts of meats, cinnamon coated pineapple and garlic bread plus grilled turkey, a glass of prosecco on arrival and a choice of Christmas pudding or dessert wine.

### EVENING 5PM - 10PM | £37.95

The usual full rodizio of 15 different cuts of meats, cinnamon coated pineapple and garlic bread plus grilled turkey, fillet steak and bacon wrapped dates. Also includes a glass of prosecco on arrival and a choice of Christmas pudding or dessert wine.

### VEGETARIAN/FISH OPTION

Includes a glass of prosecco on arrival and a choice of Christmas pudding or dessert wine.

**LUNCH 12pm - 5pm | £24.95pp**  
**EVENING 5pm - 10pm | £37.95pp**

### CHILDREN

**Under 5 free. All day price for over 5 yrs: £13.95**

## CHRISTMAS DAY RODIZIO

**CHRISTMAS RODIZIO | £48.95pp**

**Sittings times: 12pm-2.30pm & 3pm - 5pm**

Enjoy our Christmas rodizio of 15 different cuts of meats, cinnamon coated pineapple and garlic bread plus turkey, fillet steak and bacon wrapped dates. Also includes a glass of prosecco on arrival and a choice of Christmas pudding or a dessert wine

**CHRISTMAS DAY VEGETARIAN OPTION | £42.95**

**CHILDREN : Under 5 free. All day price for over 5 yrs: | £24.95**

## NEW YEARS EVE RODIZIO

**LUNCH 12pm-5pm | £24.95**

The usual full rodizio of 8 different cuts of meats, cinnamon coated pineapple and garlic bread plus grilled turkey, a glass of prosecco on arrival and a choice of crème caramel or dessert wine.

**EVENING 5pm-10pm | £48.95**

Enjoy our New Year's Eve rodizio of our usual 15 different cuts of meats, cinnamon coated pineapple and garlic bread plus turkey, fillet steak and bacon wrapped dates. Also includes a glass of prosecco on arrival and a choice of Crème Caramel or a dessert wine

[chamasbeverley.co.uk](http://chamasbeverley.co.uk) Tel: 01482 867897  
9-10 WEDNESDAY MARKET, BEVERLEY

*\*Normal Menu available (except Christmas day and New Year's Eve). Drinks and desserts not included. Christmas Menu pre-bookings only. A non refundable deposit of £10 per person is required to reserve your table*

# I'VE BEEN THINKING... BY COLIN RAYNOR

Not surprisingly, as we are in the month of December, I have been thinking about carols. In particular, the one about "good King Wenceslas" and not just because he "looked out" on the Feast of Stephen (which is Boxing day and my birthday) but wondering why we sing of him as the "Good King".



Over a 1000 years ago Bohemia in Central Europe, was ruled by King Vratislav. When he died in 924 AD his elder son Wenceslas, (in Czech, Václav) who was just a boy of thirteen, became king. There are many variations of what followed but I offer you this simple but authentic version. If what you read makes you think of a possible panto script, remember where you read it first!

Wenceslas' mother Queen Drahmir, wasn't exactly a person who could be called "Mother of the Year". She hated Wenceslas and wanted his younger brother Boleslaus to be the king. She plotted to get rid of Wenceslas, but the lad's Grandma knew her daughter's evil ways and got the young king out of Prague until she could gather enough loyal folks to support him. Wenceslas went to live with monks in the countryside. Meanwhile, Queen Drahmir set up her son Boleslaus as head of the country but could not crown him King as long as her older son lived. Bohemia became a dreadful place to live, especially for poor people. There was no justice, great cruelty and the country went downhill. When Wenceslas did return with his supporters he set out to improve matters and bring justice to his country. Queen Drahmir still plotted against Wenceslas and she made the mistake of killing her own mother Ludmilla because of that elderly lady's loyalty to the King.

Nearby Germany decided this was the time to attack as they believed the country would be in chaos. However, they were very surprised when their advancing forces were met by the friendly King Wenceslas. He offered no resistance at all but opened the city gates and insisted there should be no bloodshed. His one idea was to bring his country to God through Christianity, not to see them killed in battle. He agreed a treaty which placed Bohemia under German rule. But his subjects turned against him, not wanting to be ruled by an occupying power. He was murdered whilst at worship on September 29th 949 AD and his younger brother Boleslaus became King after all. Bohemians may have opposed their peace-loving King, but it wasn't long before they were looking back on his short reign with great affection. Several years after his death, Wenceslas was created Patron Saint of Bohemia. His country, now part of the Czech Republic, celebrates St Wenceslas' Day on the date of his death. The Good King Wenceslas is remembered all over the world as we recall his kind act to a humble peasant, as the snow lay "deep and crisp and even". I don't know if this carol commemorates a single act, or many such deeds, but as we sing this carol over the Christmas period let us remind ourselves again of a loving and peaceable Christian man.

## Good King Wenceslas by John Mason Neale (pub 1853)

Good King Wenceslas looked out on the feast of Stephen,  
when the snow lay round about, deep and crisp and even.  
Brightly shown the moon that night, though the frost was cruel,  
when a poor man came in sight, gathering winter fuel.  
"Hither, page, and stand by me, if thou knowest it telling:  
yonder peasant, who is he? Where and what his dwelling?"  
"Sire, he lives a good league hence, underneath the mountain,  
right against the forest fence by Saint Agnes fountain."

"Bring me flesh, and bring me wine, bring me pine logs hither:  
Thou and I shall see him dine, when we bear them thither."  
Page and monarch, forth they went, forth they went together;  
Through the rude wind's wild lament and the bitter weather.

"Sire, the night is darker now, and the wind blows stronger;  
Fails my heart, I know not how; I can go no longer."  
"Mark my footsteps, good my page. Tread thou in them boldly  
Thou shalt find the winter's rage freeze thy blood less coldly."

In his master's steps he trod, where the snow lay dinted;  
Heat was in the very sod which the saint had printed.  
Therefore, Christian men, be sure, wealth or rank possessing,  
Ye who now will bless the poor, shall yourselves find blessing.

The Carol is sung to the tune *Tempus adest floridum*, a 13th century spring carol with words which bear no resemblance to Good King Wenceslas at all!

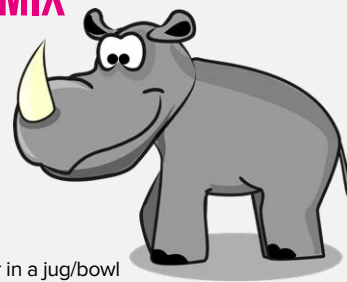
# RECIPES BY THE FOOD RHINO

Here are two recipes especially good for Christmas Day! Enjoy a waffle for breakfast loaded with lots of fruit, almonds and delicious soya cream and the a Vegan Nut Roast for Christmas Dinner with all the trimmings. Have a delicious Christmas, everyone!

## VEGAN WAFFLE MIX

### Waffle Batter ingredients:

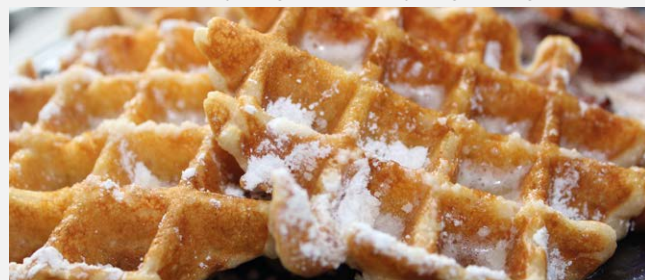
- 200ml coconut milk
- 1 tbsp baking powder
- 50g rolled oats
- 200g gluten free flour
- 70g maple syrup
- 30g sunflower spread



### Method:

Mix all the ingredients together in a jug/bowl and leave in the fridge for 30 minutes to chill then pour the mixture into your waffle iron and cook. Simple and delicious!

I'll leave the cooking time to you, because everyone will have a different waffle iron, but once they are golden brown your good to go!



## VEGAN & GLUTEN-FREE NUT ROAST

### Ingredients:

- 200g Mixed chopped nuts
- 1 Diced red onion
- 100g Sliced mushroom
- 3 Tomatoes seeded and chopped
- 1 Red pepper sliced
- 4 Chopped cloves of garlic
- Salt & pepper to season
- 1 Tbsp. thyme
- 1 Tbsp. yeast extract
- 40g Gluten free flour
- 20g Gluten free breadcrumbs

1 Baking tin 3cm deep, 25cm long, 20cm wide, lined with grease-proof paper

### Method:

Preheat your oven to 180 °c.

- In a saucepan sweat the garlic, pepper, onion, tomato and mushroom along with a few drops of rapeseed oil until they have all softened.
- Now season with salt, pepper, yeast extract, thyme and mix together well.
- Once you are happy with the seasoning remove from the heat and mix in the rest of the ingredients making sure the mixture is consistent.
- Line the tin with grease proof paper and fill with the mixture, evening out the top.
- Put in the oven and cook for 45 minutes to an hour or when the top has caramelized.





# LEGAL Q'S AND A'S

Every month, Just Beverley asks a team of legal experts to answer a question to which we don't know the answer. This month the question is about a spouse's legal rights to manage her husband's affairs when he is suffering from Alzheimer's.

**Q. My mother is 86 and her husband is suffering from Alzheimer's. Everything they have, including the house and bank accounts is in joint names. She has been advised to seek power of attorney over his affairs. Is this necessary or should she leave things as they are.**

**Coles the Solicitors** have given the following answer:

**A. If your mother has access to the household finances, there may be no need to create a power of attorney. In any case, if her husband has lost mental capacity it may be too late - he may be in no position to grant a power of attorney. In this case, your mother would have to apply to the Court of Protection to manage his affairs. If necessary, you should discuss this with your solicitor.**

If you need advice, why not give **Coles the Solicitors** a call?

They are located in the very heart of Beverley at **22, Lairgate, HU17 8EP**, telephone **01482 231300**.

Or check out their website: [www.coles-law.co.uk](http://www.coles-law.co.uk)

## BUDGET UPDATE BY GARETH BOTTERILL

**Stamp duty changes dominated the headlines after the 2017 autumn budget statement in November.**

The removal of stamp duty for first time buyers, on homes costing up to £300,000 is designed to help the housing market and in particular, to get first time buyers on the ladder. It remains to be seen whether, as a consequence, we see a house price increase. The help to buy scheme is also to be extended.

The chancellor also plans to help building companies by committing £44 billion to the housing market in the form of loans, funding and guarantees. This should help build 300,000 new homes a year.

Brexit has had another £3 billion earmarked to deal with extra costs.

The main budget was relatively silent on other tax issues, but digging into the detail:

· It was confirmed that the corporation tax rate, currently 19%, will continue to be reduced and reach just 17% by 2020.

From April 2018:

- The personal tax free allowance will increase to £11,850.
- The higher rate threshold will increase to £46,350.
- The national living wage will increase from £7.50 to £7.83.

From 29 November 2017:

- it will be possible to claim marriage allowance for a deceased person and backdate this for up to four years.

From April 2019:

- VAT registered businesses will have to comply with making tax digital from April 2019.

There will be a new consultation on IR35 and personal service companies, it is widely expected that public sector changes introduced in April 2017 will be rolled out to the private sector in the near future. This will affect anybody supplying their services through their own personal service company, where in reality they should be classified as an employee.

There have also been changes to company car tax rules:

- The diesel supplement, which is subject to income tax under the benefit in kind rules will increase from 3% to 4%.
- The fuel benefit rises to £22,600.

If you would like to discuss this in more detail, then please contact Gareth Botterill on **01482 862240** or email: [gareth@botterillco.co.uk](mailto:gareth@botterillco.co.uk)

## Botterill & Co

Chartered Certified Accountants

We are a modern and professional accountancy practice ideally located to serve businesses in Beverley and the surrounding area.

We utilise modern accounting technology to provide you with a cost effective, professional service.

### Our services:

- Annual Accounts
- Tax Planning
- Management Accounts
- Tax Returns
- Company Formations
- Payroll
- Cloud Accounting
- Bookkeeping & VAT

For a free initial consultation please contact us:

Office: 01482 862240

Mobile: 07966 051458

Email: [gareth@botterillco.co.uk](mailto:gareth@botterillco.co.uk)

Website: [www.botterillco.co.uk](http://www.botterillco.co.uk)

1st Floor Offices, 40 Norwood, Beverley, HU17 9EY

## COMPETITION WINNER

Congratulations to Amanda Coe who won our fabulous competition to win 1 month's FREE membership at Anytime Fitness!



# BOUTIPI - TURNING THE ORDINARY INTO THE EXTRAORDINARY

*The Booty family from Beverley are the brains behind the concept of BOUTIPI. Michelle Booty needed a venue for her wedding to Richard Bussey but found nothing with the real 'Wow' factor until they saw some Scandinavian tipis. As they couldn't find any tipis locally they decided to set up their own business and BOUTIPI was born.*

Along with Richard, Michelle's mum, Carole, her sister, Sam and Sam's partner Ellis Robinson, Michelle's dad, Rob, invested time in ensuring the giant tipis they sourced could be delivered, erected and decorated and then dismantled after an event without a hitch.

As Richard and Ellis are from the construction industry, they had an added advantage! Additionally, they purchased chairs, tables, bars, lighting, heating and a huge array of accessories to help create any dream theme.



Their aim is to ensure anyone walking into their tipis is amazed and delighted and never forgets the experience, BUT they also want to ensure they immediately feel at home.



Sam said: "We were so delighted to be invited to create BARTIPI for Christmas at Flemingate. Our opening night was a great success - there were elves entertaining and welcoming the guests - and we've had some great feedback on our BOUTIPI Facebook page. The opening coincided with the Christmas Lights Switch-on, so we were able to enjoy Santa and the fabulous fireworks. We're here until December 23rd and have 3 special nights coming up, but the Comedy show on December 7th is already sold out. Tickets for the Hypnotist Show on December 14th are available here: [www.eventbrite.co.uk/e/bartipi-hypnotist-night-tickets-39288946296?aff=erelexpmit](http://www.eventbrite.co.uk/e/bartipi-hypnotist-night-tickets-39288946296?aff=erelexpmit) and the Show on December 21st here: [www.eventbrite.co.uk/e/bartipi-drag-evening-with-the-devine-miss-l-tickets-39328930891?aff=erelexpmit](http://www.eventbrite.co.uk/e/bartipi-drag-evening-with-the-devine-miss-l-tickets-39328930891?aff=erelexpmit).

"Closing night might be a bit special, too! Michelle, Ellis, Rich and I are all front-of-house, doing all the jobs that need doing from serving drinks to tidying up and scrubbing the floor, but most importantly, looking after our customers.

"We care about our business and our home town and even have signs on the door saying 'Home is where the heart is' because this is our home; this is our family. BOUTIPI really is a labour of love - we just set out to exceed expectations."



You can find out more about **BARTIPI** and **BOUTIPI** by contacting Sam on **01482 870154** or emailing [info@boutipi.co.uk](mailto:info@boutipi.co.uk). Visit [www.boutipi.co.uk](http://www.boutipi.co.uk), like **BOUTIPI** and **BARTIPI** on Facebook or follow **BOUTIPI** on Twitter.

Opening dates are Tuesday 5th - Saturday 23rd December, Tues - Sunday 11am-11pm. Ticketed nights are on a Thursday, with the bar closing to the public at 5pm in preparation of the event starting at 7pm.

## WOULD YOU LIKE TO....

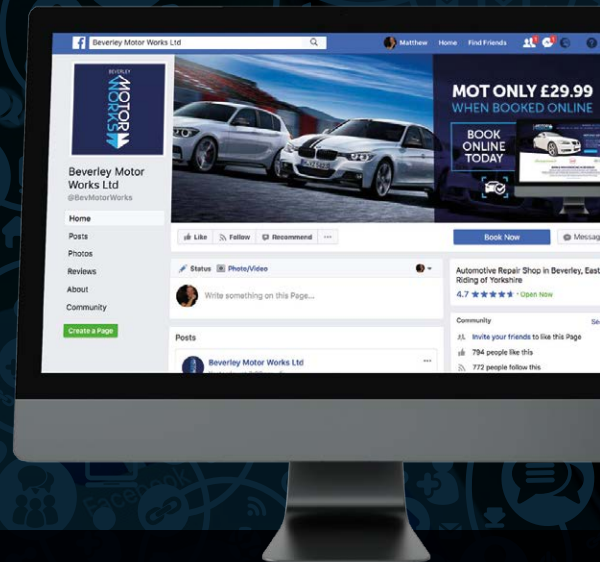
- Drive traffic to your website?
- Engage with current & future customers?
- Increase trust in your business or brand?

Then your business should be actively using social media...

Indicoll understand you don't have the time to spend hours writing content, dreaming up what to post and managing your networks.

Which is why we have created an affordable social media & content package that ticks all the boxes.

## INDICOLL



**FROM £100 PER MONTH**  
your social media & content could be taken care of...

Call **01482 871178**

Email [marketing@indicoll.com](mailto:marketing@indicoll.com)

## MINGUS' AND CHRIS' FAN-DANCE TRAINING RAMPS UP

*Mingus Menzies-Baird and Chris Gibson's fund-raising challenge for SSAFA, the Military Charity, which is in need of serious funds to fulfill its remit, is reaching its climax. The challenge is on January 20th, 2018 - so will Mingus and Chris still be able to enjoy their Christmas Dinner? You bet you they will, but it's back to the schedule on Boxing Day!*

With only weeks to go to the SAS Fan Dance 24km challenge, fitness levels are being pressed hard. Kit-levels are now at the necessary weight with 3 litres of fluids, food, compass, map, sleeping bag, hat and gloves (so over 30lbs) but training sometimes includes the odd bottle of something refreshing for the finish and can be much higher! Mingus told **Just Beverley**: "One of our long training walks at the end of November was from the Minster. My kit-bag weighed 39.4lbs, pushed over the edge by 2 bottles of Guinness as a treat at the end. The last 2 miles were murder, with all that extra weight, but the Guinness did taste good!" The lads are now doing spinning classes up wo 4 times a week, wearing a sweat bag to increase cardio effort, 12 miles of running and training walks. Chris unfortunately injured his foot in November so had to lay off the walking/running but increased his gym work to compensate.

One of Mingus' and Chris's favourite walks is a 12-miler called Jessie's Loop which starts in Hovingham. At over 12 miles it covers some hilly terrain which increases the need for calories to maintain energy levels to keep warm in the cold weather as well as complete the walk, so they must eat and drink 'on the hoof'. Apples have become a firm favourite as they hydrate and provide instant energy along with fruit cake for extra slow-release carbohydrate. Jessie's Loop is just 3 miles short of the distance of the Fan Dance but there is nowhere around here which can compete with the ruggedness of the Brecon Beacons or the extreme weather conditions which Mingus and Chris are likely to face.

Mingus and Chris would not be doing this without the drive to raise money for SSAFA. We think they deserve everyone's support and would invite you to head over to the Just Giving page where you can contribute a few quid, if you are able and would be so kind. [www.justgiving.com/fundraising/michael-menzies-baird1](http://www.justgiving.com/fundraising/michael-menzies-baird1)



## BEVERLEY WELCOMES A NEW BUSINESS - LIGHTING AND LIVING OF BEVERLEY

*David and Sara Harrison recently moved into central Beverley from Kilham, purchasing an apartment in North Bar Within. Having an interest in contemporary interior design, they had already spotted a gap in the market. Then the retail space below became vacant...*

David and Sara were already struggling to find the pieces they needed to light, furnish and accessorise their apartment. Fortunately, on a trip to the Netherlands, they discovered Dutch brand, Lighting and Living, which has become their inspiration; Lighting and Living's pieces now take pride of place in David and Sara's home and in the shop they decided to open. Additionally, the shop also stocks Weaver Green's rugs and textiles which are made from recycled plastic bottles and Pacific Lifestyle's furniture, lighting and accessories.

Sara said: "Lighting and Living is very much in keeping with North Bar Within - exclusive, high-quality and aspirational. We have sole access to the brands we stock and we will continue to look for suppliers with our own ethos of contemporary design with old-fashioned service. We will deliver pieces free-of-charge and source an electrician for you if you need one (fee payable by customer)."



Sara and David and their little dog, Chalky, are literally on-hand as they live above the shop, which is located at **41, North Bar Within, Beverley, HU17 8DG**, telephone **01482 880626**. If you haven't had chance to pop in yet, their website is [www.lightingandliving.net](http://www.lightingandliving.net) or email: [sales@lightingandliving.net](mailto:sales@lightingandliving.net)

**Coles**  
the solicitors

Providing expert business  
and personal legal advice  
in the very heart of Beverley

22 Lairgate, Beverley HU17 8EP

T: 01482 231 300

E: [info@coles-law.co.uk](mailto:info@coles-law.co.uk) W: [www.coles-law.co.uk](http://www.coles-law.co.uk)

- Family Law • Wills & Probate • Conveyancing • Business and Commercial Law
- Medical Negligence • Litigation • Dispute Resolution • Personal Injury



Send your photographs of your celebrations  
Find us on Twitter and Facebook to share yours

# CHRISTMAS LIGHTS SWITCH ON & BARTIPI WARMING UP FOR CHRISTMAS



HERE TO GET *you* THERE

# HUNTERS®

EXCLUSIVE

BEVERLEY / 01482 861411

# CHRISTMAS FESTIVAL OF FOOD AND DRINK



SALES / LETTINGS / MANAGEMENT

# HUNTERS®

HERE TO GET *you* THERE

BEVERLEY / 01482 861411

## COUNTRYSIDE MATTERS WITH SAM WALTON



*Each year I think the same thing as December approaches and that is that it seems no time at all since Xmas last year! Of course, we have timely reminders from about August onwards as the commercial firms start their drive for us to spend loads of money on things which bear little resemblance to what Xmas is really all about.*

I sometimes think that some people are trying to outdo others in what they spend. It is now a financial bonanza and I read somewhere that after a week, half the toys bought for kids at Xmas last year were cast aside or broken.

I remember the days when you sent a card to friends, family and neighbours to wish them well. It was expected to hang a sock up in the hopes of getting an apple or an orange and that was about it.

Everyone went to Church at some time on Xmas Day and it was customary to have a special meal also.

Turkeys have long played their part in celebrating Christmas, but I do not know how that came about. I know several poultry producers who now sell turkeys all the year round.

I suppose they can be better processed these days and every bit of the carcass utilised. Some families of course will not eat meat, so I am not sure how they prepare a Xmas lunch!

Other families will have a chicken. I personally like a cooked ham or a beef joint is good. I have nothing against turkey in any way, but you do need a fair amount of people around the table to justify cooking one.

Having said that, life now generally is so different from how it used to be. People have different values these days, mostly an obsession with money and I think that rather spoils life for many.

But, however you are celebrating Christmas and whatever comprises your lunch, may you enjoy it and think about the farmers and growers who have brought that food to your table.



## IN THE GARDEN... DECEMBER

*December is the quietest month in the garden, very little is growing due to the cold temperatures and the very short day length. As a result there is not a great deal to attend to, however if you are feeling energetic and in need of some fresh air you can:*

- Dig over the garden (don't attempt this if the ground is wet and sticky, you will do more harm than good).
- Clear any remaining leaves that are still lingering in nooks and crannies, and clear away the remains of any old crops.
- Give you pots and containers of seasonal bedding an occasional liquid feed - the plants may not need it now, but nutrients will be leached out by rainfall and watering and they will welcome the feed when things get going again.
- And dare I mention, that if we get snow - shake the snow off trees, shrubs and hedges where you can (the weight of the snow can bring branches down). Don't worry about snow lying over low shrubs and borders, this layer of snow will actually help insulate the plants beneath it.

Splashes of colour in the garden are generally in the form of berries (pyracantha, cotoneaster, holly and skimmia); variegated leaves (ivy, eleagnus, holly and aucuba); bark (dogwood, acers, birch and cherry) and flowers (helleborus, winter flowering jasmine, viburnum and bergenia), there may even be a few spring flowering bulbs starting to come into flower.

For many of us venturing out into the garden will be completely 'off the radar' but we can still enjoy some indoor plants, for flowers choose from: Cyclamen - they enjoy a cooler environment, perfect for a conservatory or porch; Azaleas and of course the seasonal favourite, Poinsettias. Often the biggest concern is 'will the Christmas tree have any needles left on it on Christmas Day?'

Take a look at the tips below...

### Happy Christmas Trees

When displaying trees indoors, avoid placing them too close to a fire or radiator, as this will cause excessive moisture loss and needle drop - even the 'non drop' varieties will shed their needles if not cared for properly.

**Cut trees** - treat them as you would a cut flower.

- When you get the tree home, saw 2.5cm (1in) off the bottom with a saw.
- Place in a stand with a well of water in the base.
- Check daily and top up the water when the level drops - a 6ft tree can drink a pint of water a day.
- With care, cut trees should last about four weeks.

*Thanks for reading, that's all for 2017.*

*With best wishes for a festive season, J.*

Jane Dale of 'Designed Gardens'  
Tel: **07983 392 411**



Telephone: 01482 869111  
sales@rosesofbeverley.karoo.co.uk

**ROSES**  
OF BEVERLEY LTD.  
THE KITCHEN SPECIALISTS

The Kitchen Factory, The Courtyard,  
Tokenspire Business Park, Beverley  
HU17 0TB

*Together we will design a beautiful kitchen*



Roses will then  
**project manage**  
your kitchen installation from  
**start to completion**

Visit **[www.roseskitchens.com](http://www.roseskitchens.com)**  
to see our customers kitchens and read what they have to say about us

**Telephone: 01482 869111**

just  
BEVERLEY

# EAST RIDING SMES URGED NOT TO MISS OUT ON FREE SKILLS TRAINING

**Businesses in East Riding are being urged to take advantage of free training that is being offered to small to medium sized enterprises (SMEs) in the region to help upskill staff, raise productivity and boost business growth.**

Over £1 million has been made available for businesses through the York, North Yorkshire and East Riding Skills Support for the Workforce project, but businesses only have until early next year to apply.

The scheme, which is funded by the European Social Fund, is designed to give SMEs the chance for their staff to gain professional training across a range of skills and sectors.

There are 156,200 people of working age living within East Riding, offering great economic strength and growth potential in industries such as renewable energy, food and agriculture, as well as manufacturing and engineering.

However, some employers have reported that they find it difficult to recruit due to potential employees lacking the right skills and qualifications.

The East Riding economy is relatively diverse, but is heavily dependent on small businesses and there are ongoing issues with finding and retaining appropriately skilled workers to support new investment and job creation in the area.

Businesses across the region are already benefiting from the training which include flexible and bespoke training plans, designed to help SMEs in the East Riding grow their business.

Research has found that employees that undertake non-compulsory, work-related training do their jobs better and are more satisfied with their work. However, a lack of time and potential costs act as a barrier to accessing training.

The Skills Support for the Workforce project is designed to tackle these challenges.

Courses include training in Excel Intermediate and Advanced skills, Introduction and Marketing, Report Writing and Delegating and Managing Upwards.

The project is co-financed by the European Union's European Social Fund and the Education and Skills Funding Agency and is available for SMEs seeking non-compulsory work-based training to support their business growth plan.

As it is funded with European money, it is the last project of its kind and available only until July 18th 2018.

Delivered by Calderdale College - one of the country's largest provider of European Social Fund funded training - through local providers, the training is for businesses operating in Agriculture, including Agritech; Bio Renewables and Bio-Economy; Food Manufacture; Construction;

Engineering; Voluntary, Community and Social Enterprise; Visitor Economy and Health and Social Care in East Riding.

For more information and to see if your business is eligible for fully-funded training please visit <http://ssw.fundingunit.org.uk/areas/york-north-yorkshire-and-east-riding>



## HUBY

### DOMESTIC APPLIANCES



HUGE SAVINGS

when you

BOOK ONLINE

at

hubys.co.uk

Book in advance and save money. The further you book in advance the more you could save...





You've tried the rest, now use THE BEST!    01482 240511

## MR CARPETS

CARPET AND FLOORING SPECIALISTS



Merry Christmas and a Happy New Year to Customers Old and New







30

YEAR

ANNIVERSARY

30 years in business  
30 years of good, honest service  
30 years speaks for itself

01482 872134

3 Becks North, Beverley, HU17 0PR



# HOW TO DEAL WITH A DEATH IN THE FAMILY

## BY FIONA KEMP

*It is unfortunate when loved one passes away at this most festive time of the year. But no matter, whenever a close family member dies, it can be difficult to know what you should do next. So here is a brief guide which we hope will help.*

### • A Death at Home

For an expected death at home call the GP or Out of Hours Service to request a visit. Once that visit has taken place contact a Funeral Director to remove the deceased to their premises. At the earliest possible time contact the deceased's GP Surgery to make arrangements to collect their death certificate. Once you have collected the certificate make an appointment with the Registrar's office to register the death and collect the legal paperwork. Finally, make an appointment with your chosen Funeral Director to begin the process of arranging a funeral service. You do not have to choose the Funeral Director who attended your premises.

### • A Death in Hospital

Once you have been notified of the death you should be given an appointment with the Hospital's Bereavement Service, who will collate the necessary paperwork and make an appointment at the Registrar's office for you. Finally, make an appointment with your chosen Funeral Director.

### • Choosing A Funeral Director

The role of a Funeral Director is to support and guide your family through the process of arranging a service.

All Funeral Directors vary in their approach, the services they offer and the prices they charge. In order to get a balanced picture of what is available to you and which company is right for you, we recommend you speak to more than one company before making your decision. If you are not happy with your original choice it is possible to change to another company part way through the process.

### Things to think about before meeting with your Chosen Funeral Director

- Would you like a burial or cremation?
- What clothing you would like the deceased to be dressed in?
- Content of a mail announcement if desired.
- Whether you would like a religious or non-religious service.
- Preferences for floral tributes if desired.

More information can be found on our website on the In the Event of Death section on our homepage: [www.hkempandsonltd.com](http://www.hkempandsonltd.com). Please do not hesitate to call us on **01482 844695** if we can be of any help.

## Four Generations, Giving Over 100 Years Service

Herbert 1870-1962	Eardley 1908-1986	Geoffrey 1939-2015	David 1964
----------------------	----------------------	-----------------------	---------------

**H. KEMP & SON LTD.**  
FUNERAL DIRECTORS  
(ESTABLISHED 1893)



Golden Charter  
Funeral Plans





- Funerals Respectfully Conducted
- Personal Attention
- Home and Abroad
- Private Restrooms
- Prepaid Funeral Plans Available

**Tel: 01482 844695**  
[www.hkempandsonltd.com](http://www.hkempandsonltd.com)

259 Hallgate, Cottingham, East Yorkshire, HU16 4BG  
Fax: 01482 843898  
Email: [hkempandsonltd@gmail.com](mailto:hkempandsonltd@gmail.com)

# PAYROLL IN THE MODERN WORLD

*Employers need to be aware that not being paid on time not only causes upset for the employee but can also damage the reputation of the company. Ensuring wages are paid on time allows for peace of mind for all involved and will keep your employees engaged says Nick Auton.*

At Stipendia we would recommend you consider the following:

### 1. Introduce online pay slips:

Offering employees instant access to their pay slips not only removes another onerous administration task from your to-do list, it also provides employees with the opportunity to back-track and access important pay slip information - which may be required for mortgages, bank loans etc. often on a weekend when the payroll department is not at work!

### 2. Web-based solutions:

Processing your payroll online gives you the freedom to run payroll anytime, anywhere - making missing those important payroll deadlines even harder to miss. Also, web-based payroll systems have low impact on accuracy and processing times when new employees are added or when employees quit - so no matter how your employee numbers fluctuate, you can be sure that you are paying your people on time.

### 3. Establish a backup / contingency plan:

There needs to be more than one person who is capable of understanding and handling all payroll functions within the company to mitigate single points of failure. Also, if you are using software, make sure you have reliable access to technical support and also a backup system in case any systems go down.

### 4. Outsource:

Free up your time and spend the time spent on payroll growing your business. With the ever increasing burden on employees with RTI and Auto enrolment outsourcing your payroll makes sense allowing you to take advantage of the new technology in your business at a small cost.

Stipendia already embrace the technology for its clients and their employees and the flexibility it gives makes payroll easier to operate for the client.

Talk to us on **0845 308 2288** or visit our website - [www.stipendia.org.uk](http://www.stipendia.org.uk). Our team of payroll specialists are on hand to guide through the processes of wage compliance, payroll, auto enrolment and more.



**BURTON ELECTRICAL SOLUTIONS**

High quality electrical work across East Yorkshire & the Humber region

DOMESTIC

COMMERCIAL

TESTING

*Whether it's for your home, rental property portfolio or business premises, all electrical installations need to be checked periodically by a qualified electrician.*

For a quote contact:

**Andrew Burton**  
28 Carnaby Close, Leconfield, East Yorkshire HU17 7LA  
Tel: 01964 552769 Mob: 07585 601730  
Email: [info@burtonelectricalsolutions.co.uk](mailto:info@burtonelectricalsolutions.co.uk)  
Web: [www.burtonelectricalsolutions.co.uk](http://www.burtonelectricalsolutions.co.uk)



**DOMESTIC  
INSTALLER**

# PUZZLE PAGE

## WORDSEARCH

J K J Y P W S D V F I V B Q Q  
 S P P P E Z S A M C W U N P T  
 Q V X Z X K R K M L U N F M C  
 R S D F C P R F M T C Y L Q V  
 P K P I H I V U D U S W B W Y  
 P R C C O S R A T S S I A C D  
 L T Q S C P A R T I E S R Y S  
 I W S N O I T A R O C E D H Y  
 G R I P L Y G U B O L X Q R C  
 H D W U A W I N T E R B G V C  
 T A J E T A R B E L E C R Y G  
 S I Y L E A O E M Q C U P I J  
 Z V X H Q Z R R M F U I F A I  
 Y N B W L C P H C R L T E G O  
 R M W H U U Q J Q N S P M R Q

CHRISTMAS	LIGHTS
DECORATIONS	CELEBRATE
WINTER	PARTIES
GIFTS	CHOCOLATE
STARS	TURKEY

## JUST FOR FUN

Where in Beverley would you find this landmark?  
 Find out on Page 37.



## BEST CHRISTMAS JOKES EVER!

Why does Santa like gardening?  
 So he can HOE, HOE, HOE

Why does Santa get new socks at Christmas?  
 Because his socks have HO, HO, Holes in them

Where does Santa stay on holiday?  
 In a HO, HO, Hotel

## BEVERLEY CHRISTMAS QUIZ

- 1 - Name the period running up to Christmas?
- 2 - Which Panto is on at The Parkway Cinema Theatre?
- 3 - What Town was Baby Jesus born in?
- 4 - Who is the Mayor of Beverley?
- 5 - What brings you luck if found in your Christmas Pudding?
- 6 - Who is the Vicar of St Mary's?
- 7 - Who is the Dame in the Panto at Parkway?
- 8 - Where did baby Jesus sleep?
- 9 - What is the best selling Christmas single of all time?
- 10 - Who sung the best selling Christmas Single?

Answers are on Page 37.

Do you have any amusing stories, quotes or pictures?  
 Send them to  
[info@justbeverley.co.uk](mailto:info@justbeverley.co.uk)

## Quality Kitchen Facelifts

## From a simple door swap to a full replacement kitchen

Why replace when you can reface?



EST. 1999

Wishing All Our Clients  
 A Very Happy  
 Christmas

**DREAM DOORS**  
 NEW LIFE FOR OLD KITCHENS

- 50% deposit, balance on completion
  - Made to measure custom-built doors and units
  - Huge choice of doors, worktops, appliances, sinks and taps
- [www.dreamdoors.co.uk](http://www.dreamdoors.co.uk)

Call Andy For a Free Estimate:  
**01482 861 653**

[hu@dreamdoors.co.uk](mailto:hu@dreamdoors.co.uk)  
 Dream Doors Beverley, 4a Belprin Park,  
 Swinemoor Lane, Beverley, HU17 0LN

Proud members of  
**Checkatrade.com**  
 Where reputation matters



Wishing you a very Merry Christmas and a Happy New Year from the Stipendia team!



Let 2018 be the year you take control of your business by outsourcing your payroll!

#### Payroll Outsourcing Benefits

- ✓ Cost reduction
- ✓ Better staff productivity
- ✓ High accuracy & reliability
- ✓ e-payslips direct to employees via our app
- ✓ A named personal contact
- ✓ Added value services including HR & Benefits in Kind
- ✓ Useful online information

to arrange a **FREE** meeting  
call us on: 0845 308 2288  
or visit  
[www.stipendia.org.uk](http://www.stipendia.org.uk)



Stipendia Payroll Solutions



@StipendiaPay

## CLASSIC CARS WITH CARFAN - THE TRIUMPH STAG

*This issue should bring back a lot of happy memories from the seventies for those of a certain age - the lovely Triumph Stag. You will probably hear it first as it has a wonderful "burble" courtesy of its V8 engine.*

With just under 26,000 produced, the Stag never met its hoped-for sales, partly due to a combination of poor reliability and a war in the middle east which badly affected sales in the U.S.A. where a "gas guzzler" tax hit sales for six. The main problem, and one that it is almost compulsory to quiz any owner about, is the overheating. It seems that the radiator was badly designed right from the off but a range of larger, improved versions are available to cure the problem. Replacement parts for the Stag are generally easy to obtain, and a healthy owners' club can provide a wealth of information and support.

The owner of the featured car drives it for 3000 miles each year, having bought it in 1985. It's a Mk. 2 version with overdrive, produced in 1974. It has been comprehensively restored with work done that includes a full back-to-bare metal respray, engine re-build and new wings being fitted. This particular car is unusual in that it has the word "TRIUMPH" imprinted upside down on the engine. This causes consternation to some onlookers, but it was intentional at the factory apparently. The reason why is anybody's guess. There are usually quite a few Stags for sale, so expect to pay about £14,000 on average, although mint versions can cost up to £26,000 at the moment for those with deeper pockets. Brave souls can pick up a restoration project for around £4000. Don't forget, should you hear that impressive burble, to make sure you give the lucky driver a cheery Carfan wave!



## PRACTICAL MOTORING WITH RICH HAYES

*As fuel increases in price here are 7 fuel-saving tips to help you get more miles for your money!*

### • Slowest Speed, Highest Gear

You may already be familiar with the idea that driving in your highest gear at the slowest speed reduces the number of revs and uses less fuel as a result. The ideal speed for fuel economy is thought to be 55/56mph in your highest gear, and this formula is often used for manufacturers to quote fuel figures.

### • Less Fuel = More Miles

You may think that filling your tank every time you see your fuel light is the best course of action, but if you're an urban driver frequently pottering around Beverley and the surrounding areas, it may actually be more fuel efficient to only drive on half a tank at a time.

### • Go Easy on The Gas

For optimum fuel economy, all acceleration should be gentle. The harsher you are with the right foot, the more fuel you'll be burning; we're looking at you, boy & girl racers!

### • Apply the Pressure

Keeping tyres inflated to the recommended pressure will ensure fuel economy is kept to its optimum level. Did you know just a 1 psi drop in pressure could lower your fuel mileage by as much as 0.4%? The tyre pressure for your vehicle can be found in your owner's manual - keep them inflated!

### • Lose Some Weight

From your boot that is! We know lots of motorists are guilty are carting around a load of unneeded stuff in their boots. Just 25kg in your boot could increase fuel consumption by 1% - so get rid of anything hanging around that isn't a motoring essential!

### • Ditch Air Con

Air conditioning uses engine power and affects your fuel consumption, so only use it when it's necessary. In summer months, consider opening your car windows 10 minutes prior to getting into your vehicle to allow it to cool down.

### • Don't Pay for Premium

In the UK we're lucky that the fuel sold on our forecourts is some of the best quality in the world, so don't get conned into paying for a premium fuel. If you drive a regular vehicle with a normal-output engine, normal unleaded or diesel will do the job just fine - you won't notice any benefit from using higher octane premium fuels! Do you have any fuel saving tips of your own? We'd love you to share them on our Facebook page

**Beverley Motor Works Ltd.**

Beverley Motor Works, Unit D1  
Grovehill Industrial Estate, Annie Reed  
Road, Beverley HU17 0LF, tel: 01482  
881128, www.beverleymotorworks.  
co.uk



BEVERLEY  
**MOTOR  
WORKS**

INDEPENDENT  
BMW & MINI  
SPECIALISTS

**Our dealership expertise means  
high quality car servicing at a fair price...**

- ATA Accreditations
- Routine servicing
- Condition-based servicing
- Diagnostics
- Mechanical repairs
- Air conditioning
- Performance tuning
- MOT's

Unit D1 Grovehill Industrial Estate,  
Annie Reed Road, Beverley HU17 0LF

**Call today: 01482 881 128**

**Visit: [beverleymotorworks.co.uk](http://beverleymotorworks.co.uk)**



the Good Garage Scheme



**BE SAFE THIS  
WINTER**

**GET YOUR FREE SEASONAL  
VEHICLE CHECK WITH  
BEVERLEY MOTOR WORKS**

# ONLY THE BEST FOR BEVERLEY RACECOURSE

**Danny Burke is the Catering Manager at Beverley Racecourse. He also happens to be the recipient of his company's Employee of the Year Award. Just Beverley went along to meet Danny to find out more about him and the extra mile he goes to through personal and professional development to ensure everyone attending an event at the racecourse has a great experience.**

Beverley Racecourse is increasingly being regarded as more than just a racecourse with its programme of events, festivals, parties, weddings and conferences running throughout the year alongside its very busy racing season. People attending such occasions always need refreshment and food - anything from a simple biscuit or sandwich with a cup of tea or coffee to 5-course dinner with wine or even champagne. That's where Danny comes in - he's the man who ensures that catering is planned to fit the bill, there are plenty of supplies to meet demand and enough trained staff to provide an excellent service.

The company Danny works for is known as CGC Event Caterers. He has worked for them for 6 years, ever since he left college where he was studying sciences, the mathematics having clearly stood him in good stead! He started as an apprentice catering manager and now has management and catering qualifications under his belt. The company clearly recognised potential as at the age of 19, he managed the catering at Drifffield, Rydale and Nidderdale Shows where he ran the bars, restaurant facilities, cash cafés and retail food outlets.

Danny said: "To ensure we have enough stock for an annual event I'm dependent on the previous year's figures to make realistic projections. It can take me ages to sift through reports to ensure all eventualities are covered. If there is an outdoor element to an event I have to think about weather cover and make a guess as to whether people will drink more tea or beer!"



But it's Christmas and into the New Year which is occupying Danny's thoughts at the moment. The Racecourse's Christmas Party nights are very popular with companies, groups of friends and couples alike. There are 1,200 people booked in this year over the Fridays and Saturdays in the run up to Christmas which sometimes means two separate rooms with their own festive décor, discos and bars. Then there are Awards Ceremonies and Dinners for local organisations such as sports clubs and schools and into January, the first ever Murder Mystery event at the Racecourse titled 'Black's Beauty' with its story based around Ladies' Day. More details of this and booking can be made on Beverley Racecourse's website as well as on Eventbrite.

The Racecourse is a great venue for conferences, too, with its range of facilities which can provide a main auditorium for up to 250 people plus break-out rooms, along with plenty of parking for speakers and delegates. And then there are weddings! Danny takes great pleasure in ensuring the happy couple have his personal attention - whatever they want, he will endeavour to provide. There are 4 separate rooms at the Racecourse which are licensed for civil weddings and so much space that they can hold 2 weddings at the same time without either party knowing the other is there! There are some amazing photo

opportunities at the Racecourse, too, with its fabulous views over Beverley, especially from the Paddock Bar. There is no reason why anyone couldn't get married and hold their reception there on a race day, either - it's been done at Ripon Racecourse!

The busiest day of the year is Ladies' Day when there are 7 separate kitchens in operation compared with the usual 5! The busiest weekend is probably the Bank Holiday weekend when there are back-to-back race meetings and the Attractions Restaurant in the Premier Enclosure is fully booked for both days and Cleverley's Restaurant in the Grandstand and Paddock Areas has a constant flow of diners. But Danny clearly relishes the challenge and seeing happy customers who return year after year.

So what's the future for Danny? CGC Event Caterers also exclusively cater at Ripon, Thirsk, Pontefract, Wetherby, Catterick, Redcar and York racecourses as well as marquee village catering at Doncaster and Newcastle racecourses; Yorkshire Event Centre in Harrogate; Lincolnshire Showground; Theatre Royal & Royal Concert Hall Nottingham, The Bridgewater Hall, Manchester, Sheffield Cathedral, Northern Commercial Stadium at Valley Parade, First Direct Arena, Leeds, Metro Radio Arena, Newcastle and AECC all the way up in Aberdeen, amongst others and they have already won the contract to manage the catering at the new Hull Arena which is scheduled to open late 2018, so there are plenty of opportunities for Danny (when he's not too busy at Beverley!)

But at the moment, Danny is just loving his job here at Beverley and Beverley is just loving having such an enthusiastic and capable young man around! You can find out more about CGC Event Caterers at [www.cgceventcaterers.co.uk](http://www.cgceventcaterers.co.uk) and you can book your table for the Black's Beauty Murder Mystery there, too.

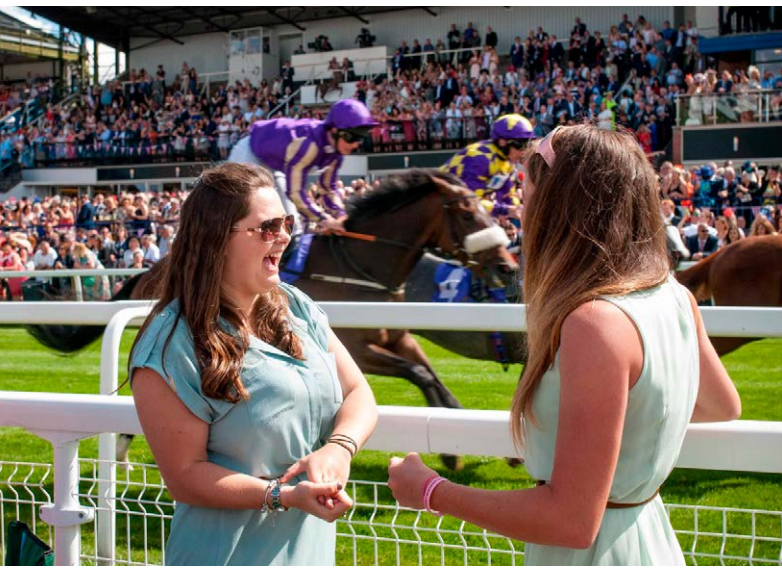
We can guarantee you will have a great time!

[www.justbeverley.co.uk](http://www.justbeverley.co.uk)

## LA LUMIÈRE PHOTOGRAPHY



**TEL: 01482 867455**  
**WWW.LA-LUMIERE.CO.UK**  
**ENQUIRIES@LA-LUMIERE.CO.UK**  
**22 TRINITY LANE, BEVERLEY**



## **Transform your community with Destination Beverley and Spacehive**

Destination Beverley, the new partnership dedicated to promoting all that is best about the town, has teamed up with funding platform Spacehive to enhance your community.

Spacehive is a funding platform for projects that make local places better, by allowing anyone to create and fund public projects online.

Our partnership will make Beverley an even better place to live, do business and visit and we want the people of Beverley to get involved in making that happen.

### **Why crowdfunding?**

Spacehive's crowdfunding platform works by providing tools that help people develop their ideas, get noticed by crowds of people, companies, councils, the media, in order to attract funding to make great projects happen.

Since its launch in 2012, Spacehive has helped fund over 250 projects across the UK worth over £6m - from public wi-fi in Mansfield to an urban farm in London.

We already have great projects put forward by the local community in Beverley. Please find out about those projects, back the ones you love or put forward your own!

**Find out how you can get involved at:**  
**[www.spacehive.com/movement/destination-beverley](http://www.spacehive.com/movement/destination-beverley)**



destination  
beverley



**[www.destinationbeverley.co.uk](http://www.destinationbeverley.co.uk)**

Follow us on Twitter @DestinationBev and like us on Facebook.com/Destination Beverley

# GOLF BY STEWART FRASER - GOLF SHOE FITTING

*Every round of golf we play is around 4-5 miles; bearing this in mind it is very important to get a good quality, correctly-fitting pair of golf shoes. Very few people are used to getting their feet measured when they come to buy a new pair of shoes and I feel it is an essential service.*

## Here are just some reasons why:

Research has shown around a 15% increase in performance for people wearing properly fitting golf shoes. Simple enough, right?

Well, did you know that more than 70% of people are wearing the wrong size? Here is my guide:

## Are you wearing the right size?

1. Rule of thumb - The opening at the top of the lace eyelets should be about a thumbs width apart.
2. Feel - Leave about ½ inch of space between your longest toe and the end of the shoe.
3. Look - When flexed the break of the shoe should match the flex of your foot.
4. Listen - A correctly fitting shoe should make a whoosh sound when your foot is inserted.
5. Test - There should not be excess movement inside the shoe when you walk around.

A Brannock device must be used to measure foot length, width and arch length. Try not to go shopping for a new shoe with a pre-conceived idea of size.

Bear in mind that nearly every manufacturer's sizing/fit will vary.

## Benefits of a correctly fitted shoe:

Proper fit reduces friction, prevents slipping - which in turn, prevents blistering. A proper fitting shoe will also maintain its shape and appearance for longer.

Some common signs you are wearing the wrong size...

1. Top of the lace eyelets too close or too far away - shoe to big or too small.
2. Bunching and creasing across the toes - shoe is too big.



3. Stretching of the upper over the sole - shoe too small.

4. Wearing of the inner heel or sole - your foot is moving inside the shoe and the shoe is too big.

5. Poor fitting shoes can cause tiredness and back/leg pain as well as blisters.

At Beverley Golf Club we pride ourselves in service and making sure everyone gets correctly fitting shoes, please come and ask us about our service and for a fitting if you are now unsure about your shoes.

Call us on **01482 868757!**





**Print that gets you noticed.**



- ✓ Brochures
- ✓ Leaflets
- ✓ Business Cards
- ✓ Business Stationery
- ✓ Posters

- ✓ Desk Calendars
- ✓ Wall Calendars
- ✓ Pop-up Banners
- ✓ Pads
- ✓ Invites

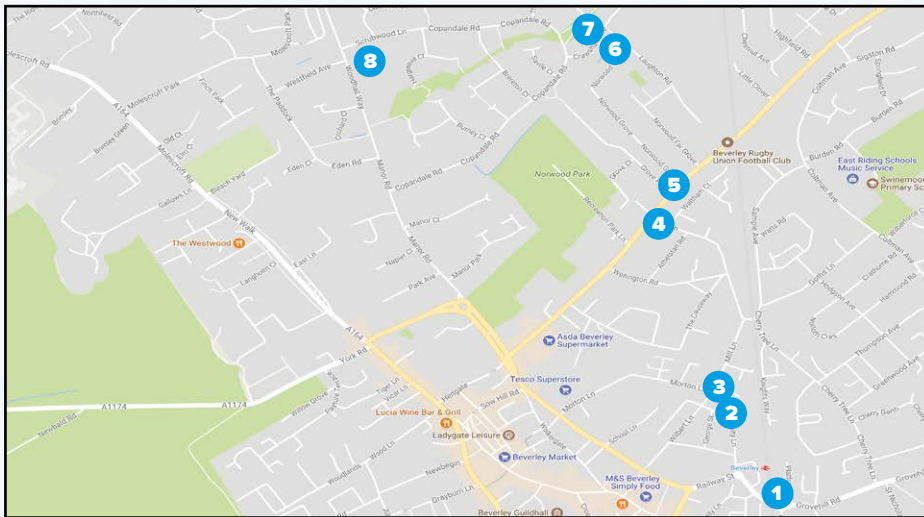
Jadan Press are a leading family run commercial B2 colour litho printer based in Hull. With 20 years experience, the company is renowned for producing work of an exceptionally high quality. We are committed to providing an excellent service by offering value for money and ensuring complete customer satisfaction.

**Tel: 01482 610902**  
**info@jadan-press.co.uk [www.jadan-press.co.uk](http://www.jadan-press.co.uk)**  
 Rainbow House, Kimberley Street, Hull, HU3 1HH

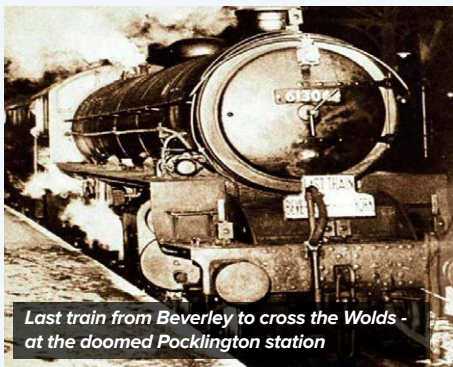




# BYGONE BEVERLEY STROLL - THE LAST TRAIN ACROSS THE WOLDS



**Saturday November 27th, 1965, The Seekers were at Number One and Harold Wilson was Prime Minister. On that snowy day in East Yorkshire, Hull City fought out a 1-1 draw with local rivals Grimsby Town at Boothferry Park - and just after 8pm, the last ever passenger train for Market Weighton, Pocklington and York, which was steam hauled, pulled out of Beverley station. This stroll traces that sad day in our transport history and follows the route from the station to what was then Beverley Junction.**



The line from Hull to York had been around for a century by 1965. It was a lovely rural route, passing through the high Wolds. Despite new investment in modern signalling and the use of diesel units rather than steam trains, the line was one of many earmarked for closure by the infamous Dr. Beeching.

A huge campaign, supported by every local council, fought in vain for two years to save the line from closure, which would mean no trains at all for Pocklington and Market Weighton. It would mean that Beverley rail travellers wishing to go to York would have to take the much longer route via Hull and Selby. The six car DMU that left York at 9.41pm on that chilly night for the last ever journey over the Wolds was suitably carrying wreaths as the line headed for oblivion.

There is the touching tale of dozens of Pocklington schoolboys lining the platform and tolling hand-bells as the last train departed.



**1** Start the walk at Beverley Station, rightfully included in Simon Jenkins' latest book as one of the Best 100 Railway stations in the UK. He feels the town is 'blessed' by this 'entrancing' station, virtually unchanged since opening in 1846. Of course, he is right, but it was so much the better before 1965 when the town was a rail junction. It is fantastic that parts of the station have now been put to good use by a fine restaurant and an incredible deli, which I use frequently. Have a good look around inside and out; there is so much to enjoy such as the rare tiled NER map from the 1930s which has on it the light railway to North Frodingham that was never built! If you look left at the end of the platform 2, you will see a huge pile of sleepers which I reckon almost certainly come from the dismantled line to York. One somehow ended up in my nearby garden, before I arrived I hasten to add, so I like to think I have a little piece of the lost line in my possession.



**2** This stroll now follows the railway as closely as is practical, as it heads north towards Driffield. Outside the station turn immediate right along Trinity Lane, noting the lovely archway of Railway Terrace built at the time the line opened.

**3** At the junction with Wilbert Lane, turn right and into Mill Lane and walk past the garage, passing one of the four town level crossings. In the past, all of these crossings were manned, which was very costly; the high cost of running the Wolds line was a major factor in sealing its fate.

**4** At the end of Mill Lane by the fish and chip shop, go right up Norwood to view the last of the town crossings and the keeper's cottage that stands behind high fences. The houses on the right approaching this have a range of beautiful tiles in their porches - little known gems of Beverley I feel.

Cross over the road at the crossing and head back along Norwood to Grove Park.



**5** Turn right along Grove Park and at the end take the footpath that leads onto Copandale Road. Go right after Crawshaw Avenue and follow the concrete footpath that leads down to the Hudson Way on the route of the old railway.

**6** When you reach the track near to the site of the commendable millennium wood, go right towards the rugby ground following the track as far as you can before an iron fence prevents further progress. Here, for a century until 1965 was Beverley Junction, where the Beverley North signal box controlled trains using the Wolds line. It is an oddity that on OS maps the area is still called Beverley Junction, over 50 years on from its demise. For me this is one of the most evocative and melancholy places in the town, at least we have a great leisure track along the 11 miles to Market Weighton, yet what was lost here is still painful for any rail enthusiast or lover of the past.



**7** Retrace your steps along the track and go left down the long footpath of Rosemary Way, which is an attractive route between the houses of the estate, bearing right when the path forks. In half a mile you emerge onto Manor Road. Eagle eyed readers may have seen an old signal box built onto a garage quite near here in Molescroft. The original signal box came from Cranswick and has since been recovered by the Yorkshire Wolds Railway project, to be replaced by a reproduction.

**8** A left here takes you back into the town centre. The Minster Rail Campaign Group have been fighting for many years now to restore rail travel between Beverley and York. The benefits would be both environmentally and socially enormous, but whilst governments are willing to spend untold billions on HS lines, it seems highly unlikely that anybody will ever again travel from Kipling Cotes to Beverley by train - and that for me is very sad.



**Next Month - Political corruption in nineteenth century Beverley**  
Ian Richardson - rcojosh@msn.com



# EVER THOUGHT OF PLAYING PÉTANQUE (FRENCH BOULES)?

A group of enthusiasts from Beverley who have a passion for the game of Pétanque (French Boules) are hoping to form a new club in Beverley to encourage participation in the sport.

Many people will have observed the game being played all over France, Spain and Portugal whilst on holiday abroad and some may have tried the game for themselves.

Essentially it is a simple game where you try to outscore an opponent by leaving your metal 'boule' closer to the wooden 'cochonnet' (jack) which is thrown a distance of between 6 and 10 metres. The modern game evolved in Provence just over 100 years ago and it is hoped that it will be included in the Paris Olympics in 2024.

The enthusiastic Beverley players all play regularly at Brandesburton Pétanque Club and are hoping to introduce the game to a greater number of players in the Beverley/Molescroft area.

A possible site for a terrain has been identified and the Beverley Pétanque Club now wish to gauge the local interest. The game is suitable for all ages from 8 - 80 (plus!) and the club will be contacting local schools to encourage youngsters to get involved.

If you would like to get involved please leave your name and contact details with Thierry Condette at TC Patisserie, Lairgate, Beverley.



Telephone: **07592 681418** or email Toni Mündel at [acmtextld00@aol.com](mailto:acmtextld00@aol.com).

# CYCLOCROSS - A WINTER PURSUIT



Cyclocross as a sport has really become popular in recent years. This is down to it being more accessible and geared up to the whole family. Bike technology has also moved on, meaning cyclocross bikes can be used not only for events but also for social rides and commuting.

What is cyclocross? It's basically a cross between road racing and mountain biking, an off-road race that isn't too technical. Cyclocross was officially recognised in 1950; there is a cyclocross world series and world championship every year. The cyclocross season starts in September and ends in January; it has been rumoured to be considered a sport in the Winter Olympics in the future!

The bikes used are basically a road bike with extra clearance for the tyres and bigger, nobby tyres that give surprising amounts of grip in muddy conditions. But you don't need to have a cyclocross bike to do a cyclocross race - any mountain bike is allowed to enable beginners to have a go. Most events have races for all age categories, from youths to veterans. There is a Yorkshire Cyclocross Series held predominantly in West Yorkshire and the Lincolnshire Cyclocross Series held all over Lincolnshire, but a few events are closer to home in Scunthorpe, Brigg and Winterton.

Cyclocross bikes are great for riding down bridleways or cinder tracks. A great route is the old railway line, the Hudson Way, starting from the Hayride pub on Beverley's north bypass to Market Weighton. Why not stop at the Goodmanham Arms on the way? It's a very nice country pub with its own microbrewery and many guest ales to quench your thirst.

Anyone who might be interested in getting into cyclocross can get additional advice and tips from Wilson Wheels. I have been racing cyclocross for the last 3 years at a high level and have been ranked in the top 5 in Yorkshire for the last 2 years. I've even won a few races! **Nathan Wilson.**



Stockists of Woof Dog Beer!



THE TIGER INN

## CHRISTMAS MENU

Available Monday 4th December to Friday 29th December  
(Excluding Sundays and Christmas Day)

<p><b>STARTERS</b> HOMEMADE VEGETABLE SOUP <i>Served with a warm bread roll</i></p> <p>PRAWN &amp; MELON COCKTAIL (GF)</p> <p>GLUTEN FREE SMOKED HADDOCK &amp; MOZZARELLA FISH CAKE (GF) <i>With smoked paprika mayonnaise</i></p>	<p><b>MAINS</b> <i>Choose from:</i> ROAST TURKEY, TOPSIDE OF ROAST BEEF OR HONEY GLAZED ROAST GAMMON <i>Served with creamy mashed potato, roast potatoes, pigs in blankets, seasonal vegetables, Yorkshire pudding and rich homemade gravy (Gluten free &amp; vegetarian option available)</i></p> <p>SUCCULENT SALMON FILLET (GF) <i>With a whole grain mustard glaze, served with new potatoes and seasonal vegetables</i></p> <p>SOMERSET BRIE 'N' WEST COUNTRY CIDER APPLE CHUTNEY TART (GF) <i>Served with new potatoes and seasonal vegetables</i></p>	<p><b>DESSERTS</b> CHRISTMAS PUDDING <i>Traditional Christmas pudding served with a rich brandy sauce</i></p> <p>GLUTEN FREE &amp; LACTOSE FREE LEMON, LIME &amp; BLACKCURRANT TEAR (GF)</p> <p>CHOCOLATE &amp; COCONUT TART (GF) <i>A gluten free crunchy shortcrust pastry case filled with an indulgent dairy free chocolate truffle ganache (Dairy free and suitable for vegans)</i></p> <p>DARK CHOCOLATE &amp; CHERRY CHEESECAKE <i>A chocolate digestive base topped with dark chocolate cheesecake, injected with cherry sauce, finished with swirls of white chocolate cheesecake and sweet dusting powder</i></p>
--	--	---

**2 COURSES - £14.95 | 3 COURSES - £18.95**

Tel: 01482 869040 | [www.tigerinnbeverley.co.uk](http://www.tigerinnbeverley.co.uk)  
Lairgate, Beverley HU17 8JG



## WILSONS WHEELS

T: 01482 882881  
W: [www.wilsonswheels.co.uk](http://www.wilsonswheels.co.uk) E: [info@wilsonswheels.co.uk](mailto:info@wilsonswheels.co.uk)

**WE NOW STOCK CUBE CYCLES**  
2018 RANGE NOW AVAILABLE   



UP TO 40% DISCOUNT ON 2017 MODELS



FREE BIKE FIT

MENTION JUST BEVERLEY FOR FREE BIKE FIT WITH EVERY CUBE, KTM OR BOTTECCHIA ROAD BIKE PURCHASED AND IN STORE DISCOUNTS

**DISCOUNTS ON:**  
• Adult Bikes • Children's Bikes • Parts and accessories • Clothing for all cycling weather  
• Christmas payment plans available  
• We can store bikes bought from us until Saturday 23rd December

89 Grovehill Road, Beverley, East Yorkshire HU17 0EJ  
OPEN: Monday - Friday: 08.30 - 17.30  
Saturday: 09.00 - 17.00 Sunday: CLOSED - Out riding our bikes

# THE OLD MAN BY WILLIAM BUNDY

*The old man stared into the fire as the flames flickered in his weathered and greyed eyes. He sighed mournfully before turning to the clock on the wall, chiming at the midnight hour which grew upon the red room he sat in, all alone in a grey chair that had seen better days. He turned to the lone candle flickering as it did beside him, before extinguishing it and letting the trailing smoke form small dances of joy in the gloomy air around.*

He was 86, and fast approaching the time where he felt the grave would come calling, eager as it was to welcome him into its deep and earthy interior, confident of a long and peaceful rest among the worms he would come to call friends in a gloomy afterlife full of comfort and despair. He did not fear death, not that he welcomed it particularly; it was simply an unwelcome distraction, a thought that constantly whirled through his head like a gyrating wheel of fire that seemed to draw ever closer; beckoning him into its red interior, not unlike the room he was now in.

The room grew colder as the embers began to pulsate and glare into the surrounding darkness, small embers beginning to crisp into the battered fireplace which had seen many such fires over the course of its lifetime. He felt the chill beginning to bite at him as the cold enveloped the now bare room, whisperings of past events chattering amongst the gathering dark as his mind cast its gaze to the shadows which yearned to consume him as one of their own; foretelling of coming events which he could not foresee, whilst also reminding him of darker times past. As he settled into the chair, feeling the leathered surface grained against his own grained skin, he thought back to a time when the house seemed less like a creature, and more like a welcoming friend at the end of a long journey, remote as it may have been, but still within reach as the embers glistened in his eyes remembering events long gone.

He remembered his father, stern and proud, a taskmaster of ill repute who treated his son like a carnival freak, not knowing of his true power as he lay in bed each time talking to the "man" in the corner. Only... it was no man, and yet behaved like one. It invited him to journey beyond the pale interiors of his own mind to seek more common and secluded parts of the world, parts he had not heard of yet wished to visit upon his own new and innocent soul. The man talked to him each night; a pale and whispery voice that seemed indistinct yet with flavour of some darker spirit that he knew not where to place. Its red eyes glared out at him softly yet with a gaze that could pierce flesh, seeming to vanish into the darkness that surrounded it; the pale outline of the figure barely resembling humanoid form yet talking as if it had walked the Earth it now haunted.



He had known the "man" as it preferred him to call it for many years. It had hovered above his bed on many a night, gazing down at him with the radiancy of a new born angel, yet with a darkness that could piece the night. It often cajoled him with tales of the other places it had haunted, confident it would haunt many more and shepherd him to manhood as only it could, having witnessed many tales of woe and horror as it crept silently through the shadows of the wider world. He gazed as the firelight dimmed down even further, pale whispers of ash now settling as lights from the past illuminated his eyes like beacons on a cold winters night.

He remembered the "man" standing at the foot of his door one night, the tall form dwarfing its surroundings and laughing coldly in small murmurings which echoed through the corners of his room.

The "man" had told him of the wicked things his parents had gotten up to when they were alive, indulging in the sins of the flesh, and that he was never to go down that road lest his spirit be torn from his body and his existence plunged from this world never to emerge again. The "man" had given him this warning in the gravest of tones and he had always abided by it. He never drank, he never smoked, and only had one partner who had died many years ago, the two having never been very adventurous in the slightest. The "man" had disappeared from time to time, only to emerge in nightmares that resembled the blackest fever dreams, taunting him with the notion that he would never make anything of himself, yet laughing like a cruel hyena gloating in the gathering gloom. The man shivered as the room grew darker still, his breath now beginning to emerge in cold clouds in front of him; the dim lights of Christmas decorations growing steadily and presently brighter in the distance as he remembered that this was indeed the time of good cheer and hope. Yet he felt neither and as the firelight barely illuminated the room he sat in. He felt the temperature drop further as a familiar shadow entered the room. It was him... and he meant to take the old man with him, as he drew his last breath, and the firelight disappeared into nothingness.

# TAX RETURN

# DON'T MISS THE DEADLINE



The clock is ticking! Don't miss the January 31st tax return deadline and incur a penalty, speak to us today.

## 01482 235363

TaxAssist Accountants  
The Accountancy and Tax Service for Small Business

[www.taxassist.co.uk/beverley](http://www.taxassist.co.uk/beverley)

MERRY CHRISTMAS  
and a Happy New Year

# রাপালকো'ই

AWARD WINNERS!

SHAM ALOM  
Best newcomer and chef of the year

SARAH DAY  
Best Maitre d'

Merry Christmas!

CHRISTMAS BOOKINGS NOW BEING TAKEN

New CHRISTMAS MENU AVAILABLE.

Disabled Parking and Lift for Disabled access

The Only Beverley Indian Restaurant included on the Welcome To Yorkshire Spice Trail

Rumi's Bangladesh Indian Cuisine

New Walkergate, Beverley, HU17 9EP

T: 01482 428642

www.rumisrestaurant.co.uk

Mon - Thurs: 5.30pm - 11.30pm  
Fri - Sat: 5.30pm - 12am Sun: 5.30pm - 11pm

# SIMON BEDLOW - THE MAN WHO CREATES MAGIC WITH LIGHT AND SOUND AT ERT

Heading up the Technical Production Department since November 2014 (2 weeks after the 'Dad's Army' troupe had used the theatre for the film), Simon has since been recruited as a director for Stage 4, Beverley's winter music celebration!

Just Beverley met with Simon in the ERT's House Café, over a cup of their delicious house-blend coffee. The café has recently had an 8-point music system installed and there was some airy, relaxing, elevator-type music playing which perfectly complemented the industrial, muted paint-work with yellow accents which are the brand colours for ERT. The music system also provides a public-address capability which enhances safety as well as removing the need for someone with a loud voice to let patrons know a performance is about to start!

Simon is coming up to his fourth Christmas show on top of the 10 in-house productions he has worked on, which include the atmospheric 'A Steady Rain' starring previous Artistic Director Vincent Regan and current Artistic Director, Adrian Rawlings. It toured to London for 4 weeks after the run in Beverley and created huge interest in ERT, which is, by anyone's measure, punching well above its weight! Productions are unique, challenging and push boundaries - audiences are constantly surprised and delighted by the innovation and quality of the works.

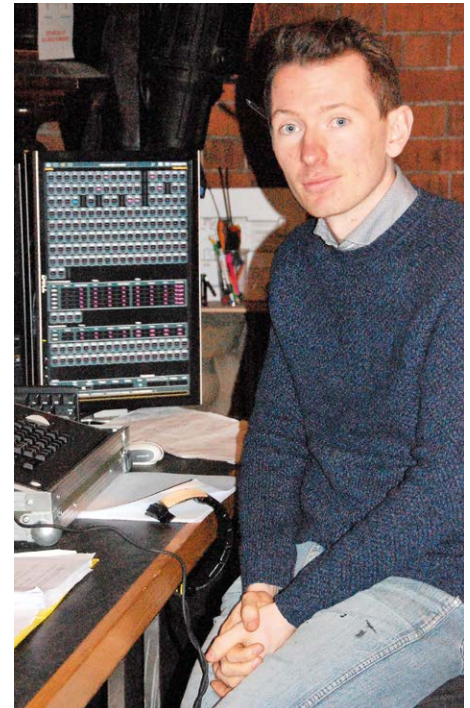
After 3 years of Dickens ('A Christmas Carol', 'Oliver Twist' and 'Great Expectations'), Adrian Rawlings has this year chosen 'It's a Wonderful Life' which is directed by Hull's Jake Smith. As with all in-house productions, the casting includes an ensemble of local and national actors. As Technical Director, Simon is involved from day 1 when the Director meets with the cast for the first read-through to find out how the work is to be represented by light and sound. The ERT space itself creates difficulties in that the building is an old church, with high ceilings from which hanging lighting is testing - it requires a scaffold tower to mount lighting. However, the acoustics are excellent which means there is no need to use microphones. But, as Simon said, the whole theatre, which has been built in a non-theatre space with little money and lots of goodwill is now attracting the best, so technical restrictions are not a barrier and the advantages tend to outweigh the disadvantages.

The theatre and the café bar both lend themselves to up-close performances (although the acoustics in the café bar are problematic as the wooden ceiling absorbs sound!) which is one of the reasons for putting on Stage 4 in February. Last year's first Stage 4 was a great success, with many performances sold out. As the theatre has 165 seats plus 30 restricted views, this has encouraged the Stage 4 team of Simon, Chris Wade, Roy Woodcock and Ray Williams to be even more adventurous next year and expand it to 4 days, running from February 14th - 18th!

The festival will extend to other venues in the town, too, in 2018, although ERT will be the hub. The aim is to engage all age-groups with an offering from classical to folk, jazz to comedy. Acts already booked include Richard Digance; Claire Martin; John Tams & Barry Coope; The Carrivick Sisters; Chris Difford & Kathryn Williams and Holy Moly & the Crackers.

More details and tickets, which are already selling well, are available from [www.stage4beverley.co.uk](http://www.stage4beverley.co.uk), on 01482 874050 or in person at ERT.

Meanwhile, Simon is concentrating on making 'It's a Wonderful Life' into a production as memorable as the popular film. Based on the short story 'The Greatest Gift' by Philip Van Doren Stern, which was published in 1945, the Frank Capra film starring James Stewart and Henry Travers has become a firm Christmas favourite. It is sure to become an ERT favourite, too, adapted by Mary Elliott Nelson for the stage to ensure that, whether you are 8 or 80, you leave the theatre with your heart warmed! It runs from Thursday December 14th to Saturday January 6th, with evening shows at 7.30pm and some matinees at 2.30pm. Book tickets on [https://uk.patronbase.com/\\_EastRidingTheatre/Productions/133/Performances](https://uk.patronbase.com/_EastRidingTheatre/Productions/133/Performances)



## COMPETITION WINNER

Congratulations to Rose Oliver Johnson who a pair of tickets to the opening night of East Riding Theatre's Christmas production, 'It's a Wonderful Life'.



Would you like to make a difference to someone?

**VOLUNTEER CAR & MINIBUS DRIVERS NEEDED**

Full training given, ring or pop in for a chat!

25 Corporation Road, Beverley, HU17 9HG  
**Tel: 01482 868082**  
[www.bclift.org.uk](http://www.bclift.org.uk)  
 Reg. Charity No: 506813

# GEOFF GREEN - BEVERLEY'S SINGER-SONGWRITER GAINING FAME IN THE USA

*Dad of four and off-shore engineer Geoff, has been writing songs for the past 2 years. One of his songs, 'Relax, Rewind (Feed my Soul)' has been licensed and signed to an American soul compilation album 'Got Soul! New Soul Power Vol 1' which was released on November 10th.*

Geoff is a self-taught guitarist but only really decided to perform a couple of years ago. He rehearsed Ray Lamontagne's song 'Trouble', went over to the Sun Inn's open mic one Tuesday and caught the ear of Helen Baldwin, ex-Beverley FM. She encouraged him to continue gigging and to write. He posted out a raw cut of 'Relax, Rewind' which Helen sent to producer Steve MacManus (who has worked for Kanye West, Kid Creole and Rick Astley amongst many others).

Steve liked it, produced and mastered it and it is that cut which is now on 'Got Soul!' Other tracks on the album are by soul artists including Marva King (who was in Prince's band, New Power Generation), so Geoff is in fine company! Even more impressive is that he has been over to the States and recorded 4 other self-penned songs, 'Northern Lights', 'Need Some Love', 'Forever Young' and 'Please'.

Geoff said: "At the start of 2017, I got a bizarre email, saying I had been selected to play at a pre-Grammy Award ceremony. At first, I dismissed it as a wind-up! But I followed it up, emails went backwards and forwards between me and the man who sent the original, who turned out to be the man who gave U2 their big break in America. He'd heard 'Relax, Rewind' and it was he who wanted to license it for a compilation new-soul album. So off I went."

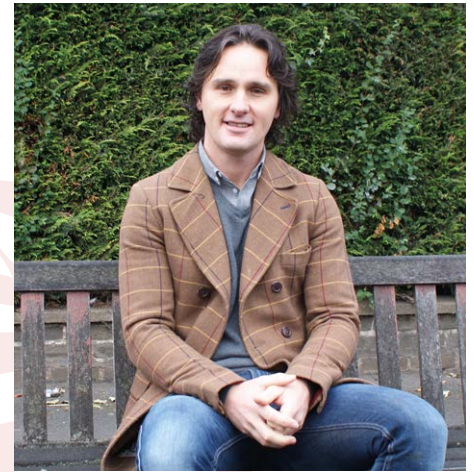
Whilst in America, Geoff met some very famous people - backing vocalist and Voice contestant Judith Hill who worked with Prince and star hip-hop manager Steve Lobel (Run DMC, Tupac) amongst others.

Geoff said: "It was difficult not to be overawed - I wanted to ask for phone numbers but didn't want to appear too pushy! But I did get to jam with a rapper called Kid Lit; we played 'Relax, Rewind' and it sounded so different, magical. I've got a treasured video of the session. It takes the creativity of others to show off a song to its full potential - the cut on 'Got Soul!' produced by Steve MacManus is so different to how I imagined it. It stands out on the album, too, as its very different to the other tracks."

Geoff's getting quite a catalogue of songs now, which are mostly inspired by just a word which someone might say, or a sentence which resonates. 'Relax, Rewind' was written whilst questioning his own motivation for what he was doing - had he bitten off more than he could chew? 'Forever Young' was written whilst potty-training his youngest child and 'Christmas Song' was written when he realised Christmas wouldn't be the same if he had to work away over the holiday period as he would miss his kids' faces on Christmas morning.

Geoff has already sent 'Christmas Song' to Will.i.am's writers but so far has had no reply... but it can only be a matter of time.

Geoff is currently working on his own album and he has released 'Christmas Song' as a single. Why not give his music a listen?



Here are the links to Geoff's music and social media:

[www.geoffgreenmusic.com](http://www.geoffgreenmusic.com)

[www.reverbnation.com/geoffgreen](http://www.reverbnation.com/geoffgreen)

[www.facebook.com/No1GeoffGreen](https://www.facebook.com/No1GeoffGreen)

[www.twitter.com/n01surfbum](https://www.twitter.com/n01surfbum)

[www.youtube.com/channel/UCW05BIK01L6ZVYUUX5xaeZg](https://www.youtube.com/channel/UCW05BIK01L6ZVYUUX5xaeZg)

[www.instagram.com/geoff.green.927](https://www.instagram.com/geoff.green.927)

The album can be found at:

<https://itunes.apple.com/us/album/relax-rewind/1297034837?i=1297036425>

And the single 'Christmas Song' can be found here:

<https://itunes.apple.com/us/album/song-for-christmas-single/1308242054?ign-mpt=uo%3D4>

Make this Christmas Truly Special for those you love, with the Gift of Art

**Christmas Special Offer available at Trent Galleries**

For all purchases made over £295 we are offering this beautiful limited edition framed print 'A Winters Walk' by outstanding artist John Waterhouse FREE until 23rd December.

While stocks last!!



9 Butcher Row, Beverley, HU17 0AA

01482 874621

[beverley@trentgalleries.co.uk](mailto:beverley@trentgalleries.co.uk)

[www.trentgalleries.co.uk](http://www.trentgalleries.co.uk)

# TOM HENEBURY - CLASSICAL GUITARIST ARRIVES IN BEVERLEY



**Recitalist and solo-performer Tom is keen to inspire more people to take up classical guitar, especially children.**

Tom studied music, specialising in classical guitar at Hull University under Rob Johns.

He has decided to settle in Beverley as he sees the town as a show-case for the performing arts, with the range of festivals which feature classical and classical-style music and the enthusiastic support they enjoy.

Tom's favourite composers are contemporary Italian guitarist Carlo Domenicone and Spanish guitar maestros Fernando Sor and the 'father of classical guitar' Francisco Tárrega.

He has performed mini-recitals around the country and is looking to perform locally. He is also available to teach guitar, sight-reading, musicality and theory. Tom can be contacted on **07732 099838** or **tom@thomasheneburyguitar.com**

## THOMAS HENEBURY

### CLASSICAL GUITARIST

### AVAILABLE FOR RECITALS AND PRIVATE TUITION

Thomas has a Bachelor's Degree of Music, and an Associateship of Trinity College.

He teaches grades one through eight for Trinity and Associated boards.



**T: 07732 099838**

**W: [www.thomasheneburyguitar.com](http://www.thomasheneburyguitar.com)**

**E: [tom@thomasheneburyguitar.com](mailto:tom@thomasheneburyguitar.com)**

# YULE SEE BY JOHN FEWINGS

*You'll never get it into the house  
You'll have to take the door off  
You'll have to trim the top of it down  
You'll need a metre or more off*

*You'll tell me, I know, we both agreed  
To give a real tree a try-out  
You'll cause a damage with that bloomin' thing  
You'll have somebody's eye out!*

*You'll have to keep on top of it  
You'll have no time for slacking  
You'll have needles dropping all over the place  
You'll be forever vaccing*

*You'll need more than enough of those bauble-y things  
You'll need tons of decorations  
You'll need more lights and LED's  
Than Blackpool illuminations*

*You'll need two tons of prezies to go round the base  
You'll have to get started on wrapping  
You'll need trinkets and tinsel and sweeties and glitter  
You'll spend fortunes on Christmassy trappings*

*You'll need a new star to go on the top  
You'll have to replace the old 'un  
You'll have seen when you took it from out of its box  
It's more mildewed than shiny and golden*

*You'll ignore my advice - I just know it  
You'll think I'm a silly old fool  
But that tree is huge - I agree with old Scrooge  
Bah! Humbug! to you and your Yule!*

*PS: I'm not really that grumpy. Merry Christmas everybody!*

John Fewings is **Just Beverley's** Poet-in-Residence as well as being a member of the Argy-Bargy poets.

He writes poetry for people who don't like poetry!

Check out: **[www.johnfewings.zone](http://www.johnfewings.zone)**



## 'CHRISTMAS QUIZ' ANSWERS

- |                           |                           |
|---------------------------|---------------------------|
| 1 - Advent                | 6 - Reverend Becky Willis |
| 2 - Dick Whittington      | 7 - Duggie Brown          |
| 3 - Bethlehem             | 8 - In a Manger           |
| 4 - Councillor Ann Willis | 9 - White Christmas       |
| 5 - Sixpence              | 10 - Bing Crosby          |

## 'JUST FOR FUN' ANSWER

M&S shop front window -  
Toll Gavel

# WHAT'S ON

## SPONSORED BY: **kü**tchenhaus

2 Toll Gavel, Beverley, HU17 9AJ. T: 01482 862172.

Open: Mon - Sat: 10am-5pm. Sun: 11am-3pm. Bank Holidays: 10am-4pm.



### Until Sunday 3rd December

#### • There's Something Fishy Going On

St Mary's Church, Beverley. 11am - 3pm daily. Free. Fisherman's Mission exhibition.

### Until Saturday 9th December

#### • Karl Blossfeldt - Art Forms in Nature

Treasure House, Beverley. A Hayward Touring exhibition from Southbank Centre, London.

### Saturday 2nd December

#### • East Riding County Choir and Orchestra Concert - Handel's 'Messiah'

Beverley Minster. 7pm. £17.50/£10. Tickets from Beverley Tourist Information or <https://www.ticketsource.co.uk/boxoffice/venueplan/dBNWLJFetCFZ>. Their 39th rendition!

#### • Simon Mayor and Hilary James with special guests Beverley Community Choir.

Toll Gavel United Church. 7.30pm. £12. Blues, standards and folk songs on voice, fiddle, mandolin, bass, bag-pipes and more with Beverley Community Choir in support. What's not to like? Tickets from Beverley Tourist Information 01482 391672 or 0118 9268615.

### Saturday 2nd and Sunday 3rd December

#### • Christmas Craft and Artisan Fair

Flemingate. 11am - 4pm. Free. Located opposite Verb. Beautiful handmade crafts, delicious Christmas food and unique gifts.

### Sunday 3rd December until 31st December

#### • Art Installation - Herald Angels by Mervyn King

Beverley Minster. Free. A group of sculptures of angels who are the guardians of a special gift.

### Sunday 3rd December

#### • Starbrite Studios present 'Elf Jr. the Musical'

Hayward Theatre, Parkway Cinema, Beverley. 2.30pm and 5.30pm. £8.50/£10. Based on the film 'Elf', 60 students aged between 3 and 16 years present this original production. Tickets from <http://www.starbritestudios.co.uk/events/elfjrthemusical/> or Parkway Cinema

#### • Advent Procession

Beverley Minster 6.30pm. An atmospheric service of readings, hymns and anthems, tracing the journey from darkness to light.

### Monday 4th December

#### • The White Horse Folk Club presents Vicki Swan and Jonny Dyer's Christmas Show

Beverley Conservative Club, Wylies Road HU17 7AP. 8.30pm. £7.

### Friday 8th - Sunday 10th December

#### • Christmas Tree Festival

Beverley Minster. £2/free. Over 90 sponsored trees decorated by various local organisations, schools and charities. Refreshments and light lunches available. At various times, there will be items by visiting choirs.

### • Bartipi

Flemingate. 11m - 11pm daily. The perfect place to unwind with mulled wine, hot drinks, local real ales and spirits.

### Friday 8th December

#### • The Young'uns - We Three Sings

St Mary's Church, Beverley. 7pm. £16. BBC Radio 2 Folk Award winners don their festive jumpers for a light-hearted romp through Christmas past. Age 12+ Tickets from 01482 221113 or [www.hullboxoffice.com](http://www.hullboxoffice.com)

#### • Rock 4 Hayley with RobNiklas, Evans MacBurton, The Beckwater Bushwackers and The Smurfs

The Sun Inn, Beverley. 7pm till late. Free entry, donations to Cure4Hayley.

### Saturday 9th December

#### • Judy's Attic Crafts

Flemingate. 10am - 4pm. Free entry. Face painting, crafts etc. Opposite Verb.

#### • Beverley Singers present 'Musical Christmas' in aid of HERIB

Toll Gavel United Church, Beverley. 2pm. £5 includes refreshments. Tickets from Beverley Tourist Information or 01482 866065.

#### • Licensing of Rev'd Cannon Jonathan Baker

Beverley Minster. 6pm. Institution and licensing by the Bishop of Hull.

#### • Máire Ní Chathasaigh & Chris Newman

Etton Village Hall HU17 7PG. 7.30pm. Celtic Christmas Strings - a festive treat of harp and guitar. Tickets 07903 663657 or [villagehalletton@gmail.com](mailto:villagehalletton@gmail.com)

### Sunday 10th December

#### • Beverley Festival of Christmas

Beverley Saturday and Wednesday Markets, Toll Gavel, Butcher Row, the Georgian Quarter and Flemingate come alive with stalls, entertainment, music, dancing, carol singing, reindeer, good cheer and Father Christmas. Entertainment, coffee and mince pies in Toll Gavel Church 10.30am - 3pm; refreshments, stalls and children's activities in St Mary's Church with a carol service at 3pm; refreshments in the Guildhall 10am-3pm; Children's crafts drop-in at the Treasure House and refreshments from 10am-3pm and the Christmas Tree Festival at The Minster. Download the full programme from: [www.beverleyfestivalofchristmas.co.uk](http://www.beverleyfestivalofchristmas.co.uk)

#### • Invitatione Concert

Beverley Minster. 7pm. £9/£6/free. Christmas choral and instrumental music from Charpentier, Bach, Corelli, Victoria, Poulenc and Lauridsen. Tickets from [info@invitatione.org](mailto:info@invitatione.org) or on the door.

### Monday 11th December

#### • The White Horse Folk Club Singers and Musicians Night

Beverley Conservative Club, Wylies Road HU17 7AP. 8.30pm. £2. Performers and audience welcome.

#### • Norwood Nites Community Cinema

Norwood Church Schoolroom. 7pm. Free - donations welcome. Raffle and refreshments. A film from 1948 starring Cary Grant, David Niven and Loretta Young; the one where an angel enters the life of a Bishop in

Tell us about your event!

E-mail [info@justbeverley.co.uk](mailto:info@justbeverley.co.uk)

Telephone 01482 679947

For more events visit [justbeverley.co.uk/events](http://justbeverley.co.uk/events)

order to help him build a new cathedral.

### Tuesday 12th December

#### • Macmillan Cancer Support 15th Annual Carol Concert

Beverley Minster. 7pm. £12.50 includes wine and a mince pie. Tickets from Beverley Tourist Information or [www.beverleyminstercarolconcert.co.uk](http://www.beverleyminstercarolconcert.co.uk)

### Wednesday 13th December

#### • Carols at Christmas in aid of Alzheimer's Society

Beverley Minster. 7pm. £15/£10/£5. Refreshments available. Tickets [www.alzheimers.org.uk/carolsbeverley](http://www.alzheimers.org.uk/carolsbeverley)

### Thursday 14th December

#### • Bartipi Hypnotist Night with Paul Hazel

Flemingate. 7pm - 11pm. £19.95 includes burger and chips from GBK. A night of comedy and hypnotism with Paul Hazel as seen on TV. Tickets from Bartipi.

#### • Richard Durrant Candlelit Christmas Concert with Amy Kakoura and Nick Pynn

Toll Gavel United Church. 7.30pm. £15/£13/Children under 14 free with full paying adult. Guitar maestro and composer with folk fiddler, Nick and singer Amy. Tickets from Beverley Library, phone 01482 395320 or [www.events.eastriding.gov.uk](http://www.events.eastriding.gov.uk)

#### • Beverley Film Society screen 'A Man Called Ove' (2015, cert PG)

Parkway Cinema, Beverley. 7.30pm. £3 for members (membership costs £15/year), £6.50 for guests. Details from [www.beverleyfilmsociety.org.uk](http://www.beverleyfilmsociety.org.uk)

#### • Late Night Christmas Shopping at Flemingate

Shops open until 8pm!

### Friday 15th December

#### • Culture:Christmas Concert with Culture:Orchestra and Culture:Voice

Toll Gavel United Church. 7.30pm. £10/£8/£6. A Yuletide celebration of family favourites from motion pictures and traditional Christmas tunes re-imagined. Tickets from [www.hullboxoffice.com](http://www.hullboxoffice.com) or on the door!

### Friday 15th December - Monday 1st January

#### • Dick Whittington and his Wonderful Cat

Hayward Theatre, Beverley Parkway Cinema, Flemingate. Various times. £13/£14. Tony Peers annual panto starring Mark Two and Duggie Brown. Action, adventure, secrets, songs, dancing, trickery, romance and lots of audience participation! Tickets from <http://beverley.parkwaycinemas.co.uk>

**kü**tchenhaus  
The German Kitchen

**FUN DAYS IN DECEMBER**

**4th DECEMBER:**  
**National Sock Day**

**8th DECEMBER:**  
**Pretend to be a Time Traveller Day**

**15th DECEMBER:**  
**Ugly Christmas Jumper Day**

**25th DECEMBER:**  
**Christmas Day**

**28th DECEMBER:**  
**Chocolate Day**

**KÜTCHENHAUS**  
2 Toll Gavel, Beverley, HU17 9AJ.  
T: 01482 862172.  
Open: Mon-Sat: 10am-5pm. Sun: 11am-3pm.  
Bank Holidays: 10am-4pm.

### Saturday 16th December

#### • Christmas Story Time and Crafts

Flemingate. 11am - 3pm. Free. Join Flemingate East Riding Libraries for crafts, activities and stories. Yorkshire Cancer Research will be on hand selling refreshments and snacks, face painting and running a raffle and games. Children must be accompanied by a responsible adult. Opposite Verb.

#### • Beverley Chamber Choir sing Carols by Candlelight

St Mary's Church, Beverley. 7.30pm. £12/£10/free. Tickets from Beverley Tourist Information or [www.beverleychamberchoir.org](http://www.beverleychamberchoir.org)

#### • Jez Lowe's Yule Do!

Lund Village Hall, YO25 9TF. 7.30pm. £9.50/£6. With The Bad Pennies and Benny Graham. Tickets 01377 219598.

#### • Buckrose Concert Band Christmas Concert

Beverley Minster. 7.30pm. Tickets from Beverley Tourist Information.

### Sunday 17th December

#### • Young Enterprise Business Market

Flemingate. 11am - 4pm. Students from the Young Enterprise Company programme 2017-18 will be selling and promoting their products and businesses. Opposite Verb.

#### • Family Nativity

St Mary's Church, Beverley. 11.15am. Children welcome to come dressed as shepherds and angels.

#### • Prelude to Christmas with Beverley Male Voice Choir and special guests Cantabile

Toll Gavel United Church. 2.15pm. £8. Carols old and new from the choirs and the audience! Tickets from Beverley Tourist Information 01482 391672 or on the door.

#### • A Quiet Christmas

St Mary's Church, Beverley. 4pm. For people who don't feel like celebrating Christmas.

#### • Churches Together in Beverley Carol Service

Beverley Minster. 6.30pm.

### Monday 18th December

#### • The White Horse Folk Club Christmas Party Night

Beverley Conservative Club, Wylies Road HU17 7AP. 8.30pm. £2. Performers and audience welcome.

### Tuesday 19th December

#### • Messy Church

Minster Parish Hall. 3.30pm - 5.30pm.

### Wednesday 20th December

#### • The York Waits with Deborah Catterall sing Early English music for the Christmas season

St Mary's Church, Beverley. 7.30pm. £10/£7. Tickets from Beverley Tourist Information (01482 391672) or on the door.

### Thursday 21st December

#### • Bartipi Drag Evening with the Devine Miss L - Drag Artist to the Stars!

Flemingate. 7pm - 11pm. £19.95 includes burger and chips from GBK. Tickets from Bartipi.

#### • Service of 9 Lessons and Carols by Candlelight

St Mary's Church, Beverley. 7.30pm. Traditional carol service for the festive season.

### Friday 22nd December

#### • Carol Singing in aid of Shelter

Angel Square, Beverley. 2pm-4pm. Bring your family and friends and spare cash! Join with the Quakers as they raise money to help the homeless this Christmas.

### Friday 22nd December - Saturday 23rd December

#### • Bartipi

Flemingate. 11am - 11pm daily. The perfect place to unwind after a busy day of shopping. Farewell party on Saturday 23rd.

### Saturday 23rd December

#### • Drop in for Carols and Mince Pies with St Mary's Church Choir

St Mary's Church Beverley. 11am - 1pm.

#### • Nine Lessons and Carols

Beverley Minster. 6.30pm.

### Sunday 24th December

#### • Crib Service

Beverley Minster. 1.30pm and 3pm. Sing carols, say prayers and walk around the Minster remembering the journey of Mary and Joseph, the shepherds and the Wise Men to Bethlehem.

#### • Christingle Service

St Mary's Church, Beverley. 2pm and 3.30pm.

Magical Christmas services for children.

#### • Nine Lessons and Carols

Beverley Minster. 6.30pm.

#### • Midnight Communion

St Mary's Church. 11.30pm; Beverley Minster. 11.30pm.

### Monday 25th December

#### • Christmas Day Services

Beverley Minster. 8am Holy Communion (BCP) with Carols; 10.30am Communion for all. St Mary's Church, Beverley. 8am Holy Communion and 10am Celebration for all ages with Communion.

### Sunday 31st December

#### • New Year's Eve Celebration

Beverley Minster. 11pm. Ring out the old, ring in the new.

### Monday 1st January

#### • Beverley Westwood Lions New Year's Day Fun Runs

Market Cross 11am. 3km £3; 10km £5.

### Saturday 6th January

#### • Epiphany Organ Recital

Beverley Minster. 6pm. Robert Poyser plays Olivier Messiaen's 'La Nativité'.

#### • Topsy Turvy - An Evening of Song with London Theatre Voices

Toll Gavel United Church. 7.30pm. £15/£13/free.

Tickets from Beverley Library 01482 395320 or

[www.events.eastriding.gov.uk](http://www.events.eastriding.gov.uk)

BRIDLINGTON  
**SPA**

PHA  
paul holman associates

Strictly Come Dancing  
**Robin Windsor**  
Genie of the Lamp

Art Attack  
**Lloyd Warbey**  
Wishee Washee

Benidorm  
**Asa Elliott**  
Aladdin

**Aladdin**

Friday 15 December - Tuesday 2 January  
Box Office 01262 678258 • [bridspa.com](http://bridspa.com)

Charley Maclaren  
Princess Jasmine

Collette Tyler School of Dance

Joe Standerline  
Widow Twankey

# BARTIPI

## Bartipi at Flemingate

Pop Up Nordic Themed Tipi Bar



Open From Tuesday 5th December

Tues-Sunday 11am-11pm until the 23rd December

Thursday's from 5pm are ticketed events only, we are open throughout the day

01482 870154

[info@bartipi.co.uk](mailto:info@bartipi.co.uk) [www.boutipi.co.uk](http://www.boutipi.co.uk)

