

# just BEVERLEY

**REYTA**  
Remarkable East Yorkshire  
Award Nominee 2016  
'Best Newcomer'

W: [justbeverley.co.uk](http://justbeverley.co.uk)  
E: [info@justbeverley.co.uk](mailto:info@justbeverley.co.uk)

Yorkshire  
Le Tour  
29 APRIL - 1 MAY 2016

FREE

ISSUE 16



EARLY MUSIC FESTIVAL

PP ARNOLD

COCKTAIL MAKING

PROMOTIONAL OFFERS

**WIN!**

COCKTAIL MIXING EXPERIENCE  
CINEMA GOODIES AND TICKETS  
MUSIC FESTIVAL TICKETS

NEWS, WHAT'S ON, LIFESTYLE, FEATURES, PUZZLES, PHOTOS & MORE



**stipendia**  
payroll solutions

# OUTSOURCING YOUR PAYROLL COULD INCREASE YOUR PROFITS



## Has the new legislation for RTI and Auto-Enrolment had a serious impact on your payroll workload?

Outsourcing to payroll experts can reduce costs whilst increasing productivity, accuracy and reliability. With a named personal contact, e-payslips direct to staff via our app, added value services and useful online information there has never been a better time to check out our services.

To arrange a **FREE** consultation to discuss the benefits of a tailored payroll package to suit your business needs call us on: 0845 308 2288 or visit [www.stipendia.org.uk](http://www.stipendia.org.uk)



Stipendia Payroll Solutions



@StipendiaPay



### Letter from the Editors



Beverley again managed to keep everyone entertained over a very hectic Easter period; the Passion Play will remain with me for some time to come. Very well presented and much appreciated by the crowds of people that witnessed the event.

Having camped up on the Westwood on 31st March to photograph and witness the release of the Beavers onto the Westwood, it then dawned on me that at 00.01 1st April I should go back to bed - April Fool! Thank you to the Town Council for working with Just Beverley on that little joke.

Did you know there will be a Teenage Market in Beverley on Sunday June 5th at Flemingate? The FSB has teamed up with East Riding College and the Council to provide this market place for our young entrepreneurs and ensure that Beverley remains firmly on the map. Read more about it in our Flemingate feature on page 9 or go to [www.theteenagemarket.co.uk/market/ttmarket-629948](http://www.theteenagemarket.co.uk/market/ttmarket-629948). This is yet another example of how our businesses, college, councils and schools all work together to make Beverley the fantastic place it is, with that real community spirit of pride and encouragement, no matter what your age or skill-set.

And that's the ethos for Just Beverley. In this issue enjoy the photos and the news articles and please do not hesitate to get involved. You might be reading this watching the Tour de Yorkshire - if so, please send us your stories and pictures! All will be as welcome as the flowers currently in bloom. Just Beverley is a magazine for all - and we wish all a great May!

Julian.



Wasn't April an exciting month for Beverley? All those Town Criers; the celebration of 20 years of the East Riding; the world record attempts for the most people ringing bells in the same place at the same time and for the loudest and quietest cry; our newest festival, New Paths Music entertaining music lovers of all ages; Nigel Ogden playing the Minster organ as it has never been played before; Her Majesty The Queen's 90th birthday recognition at Beverley Racecourse with The Queen's Own Yeomanry; the Tour de Yorkshire start; dance; theatre; cinema and more music! And May brings us even more, culminating in the Early Music Festival! Read about the exciting things which are going on here in Just Beverley magazine and on our website [www.justbeverley.co.uk/whats-on](http://www.justbeverley.co.uk/whats-on)

If your event isn't listed, then perhaps you haven't told us about it? Drop us an email and we promise we will include it free of charge on the website. We will also include it in the magazine if it meets copy deadline (around the 14th of the month) and if we have space!

We will be printing more copies of the magazine in future as we just don't have enough to meet demand. Why not pass your copy on when you have finished with it? If you don't manage to get a copy, you can always download it from the website. You might be reading this online in another part of the country or even in another country! Wherever you are, you are warmly invited to get involved - we would love to hear from you.

Happy May, everyone!  
Linda.

Get in touch with us:

**Website:** [justbeverley.co.uk](http://justbeverley.co.uk)  
**Email:** [info@justbeverley.co.uk](mailto:info@justbeverley.co.uk)  
**Telephone:** 01482 679947  
**Twitter:** @JustBeverley  
**Facebook:** [facebook.com/justbeverley](https://facebook.com/justbeverley)



## CONTENTS

### News

News	4, 5, 9
Parkway Cinema Listings	6, 7

### Features

Focus on Flemingate	9
Cocktails for Connoisseurs	11
Time for your Cycle's MOT	28
The Legendary PP Arnold	33

### Regulars

Competitions and Winners	7, 10, 32
Legal Q's and A's	12
Photos	18, 19
Lifestyle	20
Poem	21
In the Garden	23
Puzzles	29
Recipe	31
Sport	26, 27, 28
What's On	34

### CONTRIBUTORS

Julian Minshall, Linda Johnson, Alice Thomson, John Fewings, Jane Dale, Richard Manville, Paul and Ann Fox, Sham Alom, Rachael Smith.

### You can pick up the magazine from:

Beverley Parkway Cinema, Beverley Tourist Information Centre, Beverley Library/Treasure House, Tesco, Morrisons, Browns café, Beverley News, Boyes, Tesco café, Colette and Tyson Garden Centre, Beverley Garden Centre, Cherry Tree Garden Centre, Mace News in Saturday Market and Lincoln Way, Tickton News, Costcutter in Walkington, Molescroft News, Grovehill Convenience Store, The Game Bird, Maple News, Leconfield PO, Poundland, Halfords, East Riding Community Hospital, Bishop Burton PO, The Altisidora, Cherry Burton PO, Health Centres, cafés, hairdressers and more!

## First Tickton Scout Group now up and running

**Tickton now has its own Scout Group! Led by Rob Fisher and Claire Anderson, with help from 2 more adult volunteers, Scouts, Cubs and Beavers are currently all meeting on Wednesday evenings between 6pm and 7pm at Tickton Methodist Church.**

Rob told Just Beverley "We have been open since February and have attracted girls as well as boys. Our capacity is 20 children per section. We know that there are waiting lists at other Scout Groups in the area, so we can take the pressure off them by opening nearby. But there is now the opportunity for children living in Tickton to join their own group!



"Scouting offers activities and experiences that encourage girls as well as boys to develop into confident, positive young people and reach their full potential. Having a disability is not a barrier to joining! We go gliding, go-karting and camping locally, but there is nothing like international camp with Scouts from all over the world where life-long friendships are made alongside shared experiences. Scouts work towards awards, such as 'badges' which demonstrate prowess in a particular area. Challenge Awards, the Chief Scout's Award, the Duke of Edinburgh Award and Explorer Award."

Scouting offers adult volunteers similar opportunities to develop, too. The 'Wood Badge' demonstrates volunteers have completed training as a leader, which is recognised by UK Skills. This can lead to Associate Membership of the Institute of Leadership and Management and Institute for Training and Occupational Learning. However, there are roles 'behind the scenes' in helping with vital fund-raising, for example. What makes First Tickton Scout Group special is the fact that the leaders are all friends and are rooted in Scouting. They have the desire and enthusiasm to enable kids and adult volunteers experience more than they would if they weren't members – which is why they envisage the group growing very quickly!

If you are interested in knowing more about First Tickton Scout Group, contact Rob Fisher at [robfisher5@hotmail.com](mailto:robfisher5@hotmail.com) or **07493 332250**.

## Fancy being social?

**The power of the internet transformed Angela Shingler's life when she was newly-widowed and living in Newcastle-upon-Lyme. Now she has just returned to the East Riding to live in Beverley, she is using the internet to transform her life again.**

Angela was in need of a social life when her husband passed away. She found the Meetup app whilst looking for possible groups to join. One of the Meetup groups was a social group in Stoke-on-Trent, which offered a variety of theatre and cinema trips, lunches and dinners, walks and stately home visits which were free to join. Angela joined, accepted the invitation for her first 'meet-up' and has not looked back, making many firm friends along the way and enjoying life again. She even joined a Meetup for Christmas Day dinner!

Angela set up Beverley Socialites through the Meetup app in March, almost as soon as she moved in. Within 4 short weeks she had over 85 members, with Meetups attracting men and women of all ages, although the majority tend to be people who are 40+. Most members are single but married couples are very welcome as long as they socialize!

Members are notified by e-mail when a new Meetup is arranged, which they can accept or decline as they wish. Meetups have been as diverse as Adult Colouring at East Riding Theatre Café, to dinner at Rebel's Smokehouse to a walk on the Westwood. As Angela says "I don't drive so all of the Meetups I arrange have to be Beverley-based. If I arrange a Meetup to the seaside, for example, then we meet at the bus or train station and use public transport.

"This is a great way to meet new people - you never know but they might become your friends!" If the thought of joining Beverley Socialites is appealing to your social side, then why not join?

You can find the group at [www.meetup.com/Beverley-Socialites](http://www.meetup.com/Beverley-Socialites)



**Just Beverley's Julian Minshall and MKM's Andy Beet ride the Maserati Tour De Yorkshire (TdY) Sportif in aid of Chamber of Trade Charities**



**Being keen cyclists, Julian and Andy applied for the chance to ride the same course as the professional TdY cyclists – ahead of the Tour riders themselves – on Sunday May 1st and won a place!**

Organised jointly by the company behind the Tour de France, ASO, Human Race (the UK's largest mass participation company) and Welcome to Yorkshire this ride promised a unique rider experience with exhilarating climbs, fabulous scenery and amazing crowds lining the route cheering them on.

Julian Minshall said "Andy and I applied to do the whole 119km which has 6 climbs, including the Cote de Harwood Dale at 13km and the Cote de Oliver's Mount at 109km with a total elevation of 1,620metres. But the finishing line is the same finish as the professional ride, so the finisher's medal is a real incentive.

"But more important is sponsorship – we are putting ourselves through this challenge to raise money for Beverley Community Lift and GoKidsGo. As we are both members of Beverley and District Chamber of Trade, we decided to support the Chamber Charities of the Year.

We would be most grateful for contributions to these Beverley-based charities via <http://uk.virginmoneygiving.com/team/Beverleychamber>

## College shortlisted in accounting awards – and offers discounts for Saturday learners

**East Riding College has been shortlisted in the Association of Accounting Technicians (AAT) Training Provider Awards for its delivery of professional accountancy courses.**

The winners of the 12 AAT award categories will be announced at a ceremony at the Hilton Birmingham Metropole on May 5.

Head of business Kate Harding said: "We are delighted to be shortlisted for these prestigious awards which is an acknowledgement of how far we have come over recent years.

"These qualifications have proven very useful for our learners as they look to progress in their careers or move into a new job and we are continuing to expand our range in the future. We now offer an accountancy course at the Beverley campus on Saturday mornings which discount at 25%. It's a Level One Award in Accounting which is perfect for those who have little or no accounts experience but who want to gain new skills or move into accounts-related roles"

The College, which has main campuses in Beverley and Bridlington, has rapidly grown its range of accounting qualifications over the past five years as interest from members of the public and employers has increased. It now includes short beginner courses at level one and goes up to year-long level four programmes for qualified accounting technicians and managers. From September it will be providing courses from the Chartered Institute of Management Accountants.

East Riding College offers courses accredited by the Association of Accounting Technicians and will also be providing courses from the Chartered Institute of Management Accountants from September.

For more information accounting or any other courses at East Riding College, call **0345 120 0044** or visit [www.eastridingcollege.ac.uk/accounting](http://www.eastridingcollege.ac.uk/accounting)

# Beverley Blokes Book Bash

**Book-lovers will NOT want to miss this event! Head along to Deli No. 1, Flemingate, at 7.30pm on Thursday 26th May to meet with not one but four very different local authors and to hear some of their work.**

This is a book launch with a difference – and although it's four blokes presenting their work, the event will appeal to women as well as men. The four authors are: John Fewings, Just Beverley's Poet in Residence and a member of the Argy Bargy Poets who is launching his novel "A Logical Sequence of Events"; Clint Wastling, another Argy Bargy Poet, who will be talking about his book "The Geology of Desire"; Malcolm Brooks, Olympic and Paralympic track and field official, who is the author of "The Eva Trilogy" and local musician and Beverley FM's John Brien who will be reading extracts from "Me Sannies are Brannies".

The four books are all quite different, which is why the evening will be so fascinating!

"A Logical Sequence of Events" is a light-hearted, comedy novel about one man's struggle against all that irks him about modern society. Although the main character in John Fewings' novel is called Malcolm, and the hero of "The Eva Trilogy", written by Malcolm Brooks, is called John, the pair are keen to point out that this is purely coincidental. John explained, "My Malcolm character has been described as a Machiavellian clown-sociopath – which is so unlike the real Malcolm – and the John character in the Eva Trilogy is quite heroic – which is so unlike me."

"The Eva Trilogy" is a time-travel adventure soon to be supplemented by a fourth volume.

"I'm not sure what you call a four-part adventure," Malcolm confessed, "But I've been encouraged by my readers to write this latest episode."

Clint Wastling's "The Geology of Desire", a tantalizing murder mystery set in the East Riding. If you are familiar with the coastline you will recognize the settings of the adventure and view them with fresh eyes after reading Clint's book.

"Me Sannies are Brannies" by John Brien is a diversion through the snickets and ginnels of local terminology. John explained, "I have tried to capture in my book something of the fascination I have for Hull words and phrases and the pleasure they have given me."

Those who go along to the Book Bash event can meet the authors, buy the books and judge for themselves. Tickets, which are available from Beverley Tourist Information, are only £3 for which you get a glass of 'something bubbly' on arrival plus a £1 voucher against the purchase of any of the promoted books.

Tony Moxon, proprietor of Deli No. 1 in Flemingate, who is hosting the event, told me, "We are keen to host a variety of events that showcase local talent, whether it's music, poetry or comedy. This is just the kind of thing we are looking for." There will also be entertainment from a talented local singer.

Details: [www.johnfewings.zone/BookBash](http://www.johnfewings.zone/BookBash)

## Beverley Ramblers begin evening walks – to the pub!

**Beverley Ramblers invite anyone who would like to join them for a 5-mile circular walk from The Barrel, Walkington, and back again, on the evening of Thursday May 3rd at 7pm.**

Beverley Ramblers is a 350-strong group within the East Yorkshire and Derwent Area Group within The Ramblers GB, Britain's biggest walking charity. Although the charity's main aim is to protect the ability of people to enjoy the benefits of being outdoors on foot they are also involved in maintaining and even improving footpaths, promoting walking as a social occasion as well as great exercise, and increasing the ability of the public to access the countryside. By law, the Ramblers in England and Wales need to be consulted on changes to paths so walkers keep a weather eye over rights of way.

The Ramblers have ensured that walkers have plenty of opportunities to explore the countryside. For example, the public now have access to the entire coast of England and can walk around the boundary of Wales – all 870 miles of it!

The Beverley Group, alongside the Hull and Holderness Group, Howden and Goole, Pocklington, York, Ryedale and Scarborough Groups walk the paths of East Yorkshire and beyond. The Beverley Group day walks tend to happen on Sundays, are between 8 and 12 miles long and always end up in a café!

Walkers take a drink with them and a pack-up for lunch as they are a very sociable group!



The Monday afternoon group is popular with Beverlonians, too – they are around 6 miles long – and with the evening walks starting, the shorter distance is perfect for people to get out and about now the light nights are here. The walks are all listed on the website and are led by experienced walk leaders. Have a look at [www.eastyorkshireramblers.org.uk/walks/all-walks.html](http://www.eastyorkshireramblers.org.uk/walks/all-walks.html)

Walks tend to happen no matter what the weather and attract people of all ages, although most are between 40 and 80 years as there is a group specifically for the under 40s based in York. Walkers should have appropriate gear – good footwear and waterproofs at a minimum, and, of course, a flask!

Budding walkers are invited to 'come and try' any 2 walks before being asked to join The Ramblers 300,000 other members. Members can then join as many walks as they wish to, country-wide. If you would like an informal chat about the Ramblers and their walks, please contact David Court at [courtvd@fsmail.net](mailto:courtvd@fsmail.net)

## The Pauline Quirke Academy of Performing Arts is coming to Beverley Grammar School

**Our front cover this month features James Aconley, who is opening a branch of The Pauling Quirk Academy (PQA) here in Beverley.**

Stage-struck youngsters will now be able to learn the skills to give them a grounding in comedy & drama, musical theatre and film and television, all delivered by professional instructors!



The Pauline Quirk Academy (PQA) opens its doors on May 7th at 9.45am to provide a weekend performing arts school at Beverley Grammar School. In order to introduce children and their parents to the PQA, the first morning is FREE!

Since 2007, the PQA has given 14-18 year olds outstanding training in the performing arts in an environment that is both friendly and rewarding. But for Beverley Grammar School, this is a new venture. The Head Teacher of Beverley Grammar, Gavin Chappell said, "The Academy will provide an extra-curricular opportunity to students of Beverley and beyond to experience and enjoy, with the hope that we may see yet more children from the town on the big screen. The Grammar School has a rich history of successful students in many fields, and it would be wonderful to add some Hollywood glamour to this list!"

The PQA works with theatres in the West End to enable its students to perform their shows at these top venues, and organises 'red carpet' premieres at local cinemas, so the Head Teacher's wishes may well be realised. For students wanting to pursue a career in performing arts the PQA is a welcome stepping stone, offering an agency, Quirky Kidz, to promote these students for professional work.

Pauline Quirk states, "I started The Pauline Quirke Academy (PQA) because when I was younger some of my happiest times were spent in drama classes. Looking back I can see that the skills I learnt and the friends I made were really where it all started for me, so I wanted to re-create that opportunity for a new generation of young people."

James Aconley said "Do come along on Saturday May 7th between 9.45am and 1pm so you can see for yourself the ethos behind the Academy, demonstrate what we do to benefit the children to ensure they reach their goals.

For more information, or to enrol for this fantastic opportunity please see the website here: [www.pqacademy.com/academy\\_locator/beverley](http://www.pqacademy.com/academy_locator/beverley) or contact PQA HQ directly on **0800 5316282** or at [enquiries@pqacademy.com](mailto:enquiries@pqacademy.com)



**EVERY THURSDAY AT 10.30am** (doors open 9.45am)  
Join us for a free brew and a natter and enjoy some great films on Beverley Parkway's Big Screen. Only £4 with drink and biscuits included. Aimed at 55s and over!

**Thursday 5th May - Room (15)**

**Dad's Army (PG)**

**Thursday 12th May - Hail, Caesar! (12a)**

**Room (15)**

**Thursday 19th May - Truth (15)**

**Hail, Caesar! (12a)**

**Thursday 26th May - London Has Fallen (15)**

**Truth (15)**

**Room (15)**

Director: Lenny Abrahamson

Stars: Brie Larson, Jacob Tremblay, Sean Bridgers  
A kidnapped mother and son escape from a room in which they have endured imprisonment for the entirety of the boy's life. Upon breaking free from its confines, they experience a dramatic homecoming.

**Dad's Army (PG)**

Director: Oliver Parker

Stars: Bill Nighy, Catherine Zeta-Jones, Micheal Gambon  
The Walmington-on-Sea Home Guard platoon deal with a visiting female journalist and a German spy as World War 2 draws to its conclusion.

**Hail, Caesar! (12a)**

Directors: Joel Coen, Ethan Coen

Stars: Josh Brolin, George Clooney, Scarlett Johansson  
When befuddled film star is kidnapped by a mysterious group called 'The Future', it's up to a Hollywood fixer to find out how to get their valuable star back.

**Truth (15)**

Director: James Vanderbilt

Stars: Cate Blanchett, Robert Redford, Topher Grace  
Newsroom drama detailing the 2004 CBS 60 Minutes report investigating then-President George W. Bush's military service, and the subsequent firestorm of criticism.

**London Has Fallen (15)**

Director: Babak Najafi

Stars: Gerard Butler, Aaron Eckhart, Morgan Freeman  
In London for the Prime Minister's funeral, Mike Banning discovers a plot to assassinate all the attending world leaders.

**MONDAYS @ 8.15pm**

Starts Monday 11th January  
More 'what is it' than 'whodunnit'

Fancy a film but not sure what you want to see? Try our Mystery Movie Monday! You won't know what it is until it starts! It could be a classic you love or a gem you have never seen; perhaps even the first screening of an upcoming film. The fun is in the discovery and it's only £4 per person.

Look out for clues on our Facebook page and on Twitter @parkwaybeverley

Most screenings will be 15 and over only. However, and this is a big clue, some will be over 18 only due to content.



## New releases for May (release dates and films are subject to change)

**29th April**



**1st May**



**6th May**



**6th May**



**6th May**



**13th May**



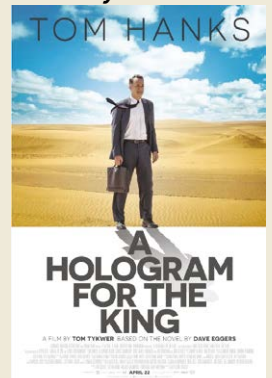
**13th May**



**20th May**



**20th May**



**27th May**



**27th May**



**27th May**



# YOUR NEW INDEPENDENT CINEMA

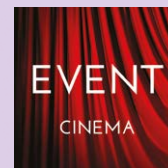
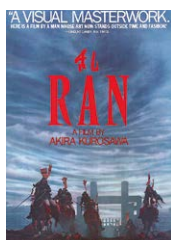


**SUNDAYS @ 5:30pm**

**Sunday 1st May - THE WITCH (15)**  
**Director: Robert Eggers.**  
**Cast: Anya Taylor-Joy, Ralph Ineson.**

**Sunday 8th May - RAN**  
**Director: Akira Kurosawa.**  
**Cast: Tatsuya Nakadai, Akira Terao.**

**Sunday 15th May - DHEEPAN**  
**Director: Jacques Audiard.**  
**Cast: Jesuthasan Antonyhasan, Kalieaswari Srinivasan.**



**TICKETS NOW ON SALE**

**Mon 7th May @ 19:30 -**  
**GLOBE ON SCREEN: MEASURE FOR MEASURE (12a)**

**Thurs 12th May @ 19:00 -**  
**NT LIVE (Encore): A VIEW FROM THE BRIDGE (12a)**

**Wed 18th May @ 19:15 -**  
**ROH: FRANKENSTEIN (tbc)**

**Thurs 26th May @ 18:00 -**  
**TEATRO ALLA SCALA- THE TEMPLE OF WONDERS (TBC)**

**Wed 8th June @ 19:00 -**  
**RSC LIVE: HAMLET (12a)**

**Thurs 9th June @ 19:00 -**  
**NT LIVE (encore): THE AUDIENCE (PG)**

**Mon 13th June @ 19:30 -**  
**GLOBE ON SCREEN: The MERCHANT OF VENICE (PG)**

**Thurs 16th June @ 18:00 -**  
**LEONARDO DA VINCI: THE GENIUS IN MILAN (TBC)**

**Sunday 21st June @ 14:00 -**  
**THE RAILWAY CHILDREN (Encore) (PG)**

**Tues 21st June @ 18:30 -**  
**GLYNDEBOURNE- THE BARBER OF SEVILLE (TBC)**

**Mon 27th June @ 19:30 -**  
**GLOBE ON SCREEN: RICHARD II (PG)**

**Mon 4th July @ 18:00 -**  
**ST PETERS AND THE PAPAL BASILICAS OF ROME(TBC)**

**Thu 7th July @ 19:15 -**  
**BRANAGH THEATRE LIVE: ROMEO & JULIET (TBC)**

**Tues 12th July @ 17:30 -**  
**GLYNDEBORNE: THE MASTER SINGERS OF NUREMBERG (TBC)**

**Sat 23rd July @ 19:00 & Sun 24th July @ 15:00 -**  
**ANDRE RIEU's 2016 MAASTRICHT CONCERT (12a)**

**Tues 9th Aug @ 18:30 -**  
**GLYNDEBORNE: BEATRICE ET BENEDICT (TBC)**

**Wed 28th Sept @ 19:00 -**  
**RSC LIVE: CYMBELINE (tbc)**

**Wed 12th Oct @ 19:00 -**  
**RSC LIVE: KING LEAR (tbc)**

## Competition

What a great competition prize we have from Parkway Cinema this month! Not one, but ten real film posters from recent films! They would certainly grace the walls of the Just Beverley office, but sadly we can't enter!

These are the film-posters which the winner gets to keep:

- Batman vs Superman
- Creed
- Dads Army
- Danish Girl
- Hail, Caesar!
- 10 Cloverfield Lane
- Jungle Book
- London Has Fallen
- Star Wars Episode VII
- Zootropolis



All you have to do to win these posters along with 2 free cinema tickets is answer the following question:

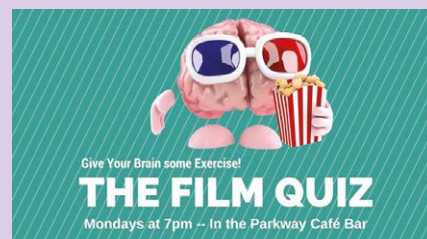
**There are 10 posters to be won. Which recent film had 10 in its title?**

Email your answer to [info@justbeverley.co.uk](mailto:info@justbeverley.co.uk) by 17th May with your name, address and daytime telephone number. Winners MUST be available for publicity purposes for Just Beverley and Parkway Cinema. The usual Just Beverley terms and conditions apply. There are 4 pairs of cinema tickets for runners-up.

Congratulations to our competition winners from last month! The answer was to the question 'Which Oscar nominee plays Lois Lane in Batman Vs Superman: Dawn of Justice?' was Amy Adams.

Our lucky winner of the Batman Vs Superman goodies was Rebekah Greaves, who also won a pair of cinema tickets. Runners-up, who also won pairs of cinema tickets were Brian Stabler, Julie Anne Goodman, Kirstin Sims and Karenza Malton.

Well done to you all!



Why not test your film knowledge at 7pm before the Mystery Movie Monday?

There are free film tickets for the winners!

## Hair by Rosie comes to the GQ

*Rosie Ward has swapped her sea-legs for land-locked Beverley as she establishes her new boutique hair salon on North Bar Within.*

Having worked on cruise ships, Rosie has decided that dry land is the place to anchor her dreams of making people happy through great hair styling and colouring.

Rosie proudly showed off her quirky premises to Just Beverley and told us that, although the majority of her clients are ladies, she loves styling men's and children's hair as she is experienced in cutting techniques for all ages and all types of hair. Rosie trained at Sessions on an apprenticeship with Beverley College

(now East Riding College) and always dreamed of having her own salon here.

What's more, she now has an exclusive deal with milk\_shake and as such is the only salon in the area to use the trendy and innovative milk\_shake product range which uses the power of nature to care for hair.

milk\_shake is part of a young, dynamic Italian company which make their hair products with an amazing mix of professional ingredients including milk protein and argan oil, which are like food for hair. Their products include shampoo, conditioners, hair treatments and styling products and are very competitively priced.



**Hair by Rosie is located in the Georgian Quarter at 34, North Bar Within, HU17 8DL, telephone 01482 683603.**

## How would your little princess fancy a Pamper Party to celebrate her birthday?

**Princess Pamper Parties is a NEW company which arranges parties for your daughter, with a difference!**

Princess Pamper Parties treats your little princess and 4 friends like young ladies as they enjoy a real, grown-up pamper session!

Included in the 3-4 hour party-time is:

- Hair curling, straightening, plaits or put-up
- Fingers and toes polish
- Room decorated with banners and balloons
- Party games
- Mini-disco

- Party food (bring your own birthday cake)
- Tea/coffee for parents

All this is included for only £150, with extra children charged at £22.00 each.

The Parties are only available on Sundays at either 11am over lunch-time or 3pm for tea-time in the stylish surroundings of Faith Hair and Beauty on Lincoln Way.

Booking is essential.

Please contact Rachel on **07585 118645** or **01482 872871** to discuss your little girl's party!



## Butt Farm Caravan and Campsite



**Oly White and Jen Johnson have opened a new caravan and camping site in Beverley. What's more, this site is on a traditional grass and arable working farm of 180 acres, which is also home to a herd of cows and calves!**

Farmer Oly and Business Studies graduate Jen are both keen campers who have always dreamed of running their own campsite. They have been tenants at the farm since 2014 and have been planning ways of incorporating their passion for camping alongside their passion for farming ever since, especially as they recognised there is a need for a caravan and camping site in Beverley.

They identified disused farm buildings which could be converted into a modern shower and toilet block, utility room and dog shower (!), and applied for planning permission, which was granted last year.

They converted the old farm grain silo into a recycling area and use sustainable methods of heating and lighting where possible. A new road was built for access and the first guests welcomed at Easter after 8 months of hard work!

At the moment, the site has 30 pitches including 12 hard standings and 6 electric hook-ups and welcomes tents, caravans and



motorhomes, but Oly and Jen are keen to extend the site over the next few years and even offer glamping accommodation!

The site is 2 miles from the centre of the historic market town of Beverley, and ideally located for exploring the East Yorkshire Coast, the Yorkshire Wolds, York and Hull.

A public footpath runs through the farm which links up to the popular Beverley 20 & Beaver Trail walks. Jen and Oly are keen on attracting more tourists to the area especially as Beverley is becoming known as a town of festivals and with City of Culture 2017 on the horizon.

**Butt Farm is located on Victoria Road, Beverley HU17 8PJ. Telephone 01482 870984.** Check out the website for more details [www.buttfarm.co.uk](http://www.buttfarm.co.uk) or e-mail [butt.farm@hotmail.co.uk](mailto:butt.farm@hotmail.co.uk)



## Flemingate to host Teenage Market

The Teenage Market Movement is coming to Flemingate on Sunday 5th June.

The Teenage Market is an opportunity for a town to connect with its young people, offering them a free platform to demonstrate their business ideas, sell their products or demonstrate their skills and talents.



Sunday June 5th promises to be a day with a difference at Flemingate as it is also the start of Humber Business Week. The Federation of Small Businesses (fsb) has teamed up with East Riding College, East Riding Council and Flemingate to enable as many young people (age 12 – 29) to get involved. Just create a trader or performer profile on Teenage Market website, [www.theteenagemarket.co.uk](http://www.theteenagemarket.co.uk) and the organisers will be in touch! fsb Committee Member Ben Wright who has coordinated this event said: "The Teenage Market is the key to identifying a new generation of market traders by enabling young people to become an active part of our towns. This is a free platform for young people to get their businesses off the ground and showcase their creative talents. There are so many positive opportunities that can come out of it!"

## Deli No 1 rebrands as it launches as a destination

To anyone who has visited Deli No 1 in Flemingate, you will know that it's more than a coffee shop – the rebrand is intended to enhance the reputation of Deli No 1 which is the second in the up-and-coming chain as owner Tony Moxon expands into East Yorkshire and beyond!

As a marketer, Tony knows that the offering has to be right – customers have to feel comfortable and special. The coffee is a bespoke blend which perfectly complements the new branding on the coffee cups. Tony wants people to ask 'Where did you get that?' about the cup as well as its contents. Likewise, the sandwich bags contain sandwiches in a huge variety of breads, most locally-sourced and including gluten-free and yeast-free varieties with as many different fillings as you can think of.



Tony's staff are trained to a high level in customer service as well as in preparing the food and drinks. Tony said, "We don't expect our customers to have to remember their table number! It's up to us to notice where they have chosen to sit and to deliver their order directly to them.

"We try to be able to satisfy our customer needs by being as user-friendly and as accommodating as we can be. We have see-through glass doors to the kitchen; have a gluten-free board and a full food allergy guide; ensure our coffee machine water temperature is properly calibrated so we don't 'burn' the coffee; use Alpro professional soya milk to make soya lattes and have a proper American milk-shake machine to make our milk shakes!"

Tony loves the Flemingate spirit and aims to keep Deli No 1 consistent with the brand. He has a dedicated 'Dynamic Area' which is particularly attractive to kids and their carers, especially at 10am on Thursdays and Fridays when there is Storytelling. Plans for the future include spoken word nights and other specialist evening events. Already in the calendar is the Beverley Blokes Book Bash on May 26th at 7 for 7.30pm when 4 local word-smiths will be reading from and talking about their self-penned books. Deli No 1 is open from 8am to 5.30pm every day barring Sunday when it is open from 10.30 to 4.30pm. [www.flemingate.co.uk/units/deli-no-one](http://www.flemingate.co.uk/units/deli-no-one)

[www.justbeverley.co.uk](http://www.justbeverley.co.uk)

## Flemingate and allmobility team up!

Visitors to Flemingate can now hire a motorized mobility scooter or a manual wheelchair supplied by Beverley company allmobility to make their visit more enjoyable.

People wishing to hire a wheelchair or scooter should ring Flemingate Office on **01482 867024**, between the hours of 8am-4pm, stating the time they wish to pick the equipment up. Photo ID, such as a driving license or passport is required, along with proof of address (e.g. a utility bill). A refundable deposit is required if there is no proof of address (£200 for a scooter, £100 for a wheelchair). Charges are as follows:

Hiring Period	Wheelchair	Mobility Scooter
Day	£10	£10
Weekend (Fri night to Sunday)	£20	£30
Week	£30	£45
Month	£60	£80



The scooter features a handy shopping basket on the front of it, has a range of 6-8 miles and has a top speed of 4 miles/hour. The wheelchair is a fully-serviced model, which is easy to manoeuvre. Booking is subject to availability. Just Beverley would love to hear from anyone who has benefitted from this scheme!

## New Restaurants opening at Flemingate

The new restaurants which are due to open at Flemingate will make it the attractive destination it is designed to become.

Gourmet Burger King (GBK) is opening a 3,756 sq ft restaurant for 106 covers, adjacent to the six-screen Parkway Cinema. The brand, which was founded 15 years ago in Battersea opened its 70th restaurant earlier this year. There will be external seating and a great view of the Minster. Keith Bird, Chief Operating Officer at GBK added, "With the opening of Flemingate, the town of Beverley is thriving, so the time seemed right to open a restaurant in the area. As a new destination, Flemingate is attracting a lot of attention which stood out as a new location for us. The presence of Debenhams and the Parkway Cinema, together with the proximity to the Minster helped to seal our decision. We can't wait to open!"

Independent operator, Riva Lounge is a new concept 3,650 sq ft restaurant positioned as an authentic European lounge and café bar. The founders, Shaun and Julie Thompson, conceived the offering following extensive research. The 116-cover restaurant will be complemented by a dedicated bar area and a separate gelato counter and is set to open in May, ready for the summer! It, too, will have external seating.

Graham Tait, Centre Manager of Flemingate told Just Beverley, "Gourmet Burger Kitchen and Riva Lounge are two key additions to Flemingate's line-up. They reaffirm the centre's position as a complete day out, with Flemingate offering visitors a high-quality combination of shopping and leisure previously unavailable in the catchment. The brands are also a great complement to one another, providing visitors with even more choice whilst both bringing something new to Beverley."

Additionally, Subway is also bringing an outlet to Flemingate, joining Costa, Deli No 1, Greggs and Patisserie Valerie on the 16-acre development, Beverley's largest-ever regeneration scheme.





THE  
PERFECT PLACE  
TO UNWIND

37-38 Saturday Market  
Beverley  
HU17 9AH  
Tel: 01482 868103

Ever needed somewhere to accommodate yourself, family or friends in the Beverley area?

Maybe you've just come back from the infamous racecourse, or you just fancy a break for you and your partner?



*We have it all!*

10 beautiful en suite rooms, all that underwent a huge refurbishment in 2015 with a fantastic view of the historic Saturday Market.



*Not enough?*

Why not stick around for the freshly cooked breakfast in the morning, or 20% off your food if you dine with us during your stay?

Give us a call on  
**01482 868103**  
to book your room now



## Competition

Win time with Jack Arksey -  
learn to make Cocktails the King's Head way!

*Just Beverley has teamed up with the King's Head to give you the opportunity to spend time with Jack making cocktails.*

This Cocktail Experience will allow you to spend a minimum of 1 hour learning about the theory of cocktail making, which ingredients work together, how the spirits complement the other flavours and why shaking works for some cocktails and stirring for others.

What will you choose? You could be making James Bond's favourite tippie, a Vodka Martini – shaken, not stirred, or Don Draper's drink of choice (and Jack's own favourite) an Old Fashioned!

Or will it be a Whiskey Sour or a Russian Comfort? You could learn to make up to 4 cocktails for you to share with a partner or colleague. This is the ultimate make, shake and try experience!

All you have to do to win this great prize is answer the following question:

**Which of these following magazine publications is also the name of one of our popular cocktails?**

- A) Look
- B) Cosmopolitan
- C) House Beautiful

E-mail your answer to [info@justbeverley.co.uk](mailto:info@justbeverley.co.uk) by 17th May with your name, address and daytime telephone number.

Winners MUST be available for publicity purposes for Just Beverley and Parkway Cinema. The usual Just Beverley terms and conditions apply.



# Cocktails for Connoisseurs at The King's Head

**Kings' Head bar-tender, Jack Arksey is a big fan of cocktail-making, and partaking. Jack studied history as an undergraduate and then trained to be a teacher, but he discovered the world of cocktail-making when he graduated and has never looked elsewhere!**

Just Beverley has never considered making a career out of cocktails, although bar-tending is an established profession in America, where salaries can be as high as a lawyers. So we were very keen to meet with Jack to find out what makes cocktails so fascinating.

Jack's one-word description of the attraction is 'technicality'. A cocktail has to be 'balanced' so not to be overwhelmingly sweet or sour. Cocktails are traditionally a beverage of 3 ingredients, one of which is alcohol, either a spirit or, since the 1860's, a liqueur. Yes, people have been drinking cocktails for THAT long! 'Professor' Jerry Thomas really started the trend when he published his bartender's guide 'How to Mix Drinks; The Bon Vivant's Companion', which included 10 recipes for cocktails, in 1862.

So where did the name 'cocktail' come from? There are several suggestions, all of which are equally plausible! Here are a few of them:

Once it was customary to dock the tails of horses which were not thoroughbred, when they became known as 'cocktailed horses'. The term was then applied to anyone who thought they were better than they actually were – someone who rose above their station. Cocktails often have water or ice as an ingredient which dilutes the alcohol so it is not 100% pure -so the term is a derogatory term.

Or another idea is that the word came from 'cock ale' which was popular in the 17th century.

Cock ale was literally that – chicken boiled in ale with herbs and spices added which was used medicinally.

Or, another involving horses, is suggested by David Wondrich in his 2007 book on alcohol drinks 'Imbibe: From Absinthe Cocktail to Whiskey Smash' published by Perigee Trade ISBN 0-399-53287-0. He proposes that it comes from the practice of perking up an old horse by means of a ginger suppository so that the animal would 'cock its tail up and be frisky'.

But cocktails have made a bit of a resurgence, recently. Whether it's the influence of period American TV shows such as 'Mad Men' and 'Boardwalk Empire', the association with James Bond or people becoming more adventurous when they go out for a drink, cocktails just seem sometimes more exciting than a pint of beer – although beer is used in cocktails. So what is Jack's favourite cocktail?

Jack said 'My favourite to both make and drink is an Old Fashioned. It can take 10 minutes to make properly but it's subtle and delicious. It's made in a rocks glass. You put a sugar cube in the glass and douse it with angostura bitters; by adding a little bit of bourbon and some ice you stir until you have a paste. Then you add more bourbon and ice and stir. When you have added all your ice and bourbon, you add the rind of an orange. It's all made in the same glass and is just stirred.'

No wonder that Don Draper's favourite tippie in 'Mad Men' was an Old Fashioned, then! Jack learnt much of his trade from his time working at The Living Room in York, where they were expected to have knowledge of at least 100 cocktails. The King's Head menu lists 14, including Long Island Iced Tea,

Mai Tai, Mojito and Cosmopolitan, but Jack keeps a 'spec' book of practically any cocktail you can think of!

"On a Saturday night I could be making 5 cocktails at once. As we also serve popular 'duos' such as Vodka and Pepsi, as well as our range of beers and extended range of spirits, we have to restrict the choice. But you name it and I can probably make it!"

The King's Head bar is certainly well-stocked. Bullet Bourbon with an aniseed aftertaste, Woodford Reserve Kentucky Bourbon and Maker's Mark Kentucky Straight Bourbon appear along with popular Jack Daniels Tennessee Whiskey and Scotch whiskies. The gin selection now includes Tanqueray 10, Sipsmith Sloe Gin, Broker's Gin and Hendrick's which uses cucumber as its primary botanical. Gin and tonic is a very popular drink, even more so now there is such a wide choice of tastes.

Jack told Just Beverley "The best way to get enthused about cocktail-making and drinking is to try your hand at some! We often have customers who express an interest in making cocktails and want to see every step of the way we prepare their drink. Which is why we came up with this great idea for a competition! The couple winning our 'Cocktail Experience' will learn all about the theory of cocktail making, learn about the spirits and liqueurs and other ingredients which go into making a cocktail and get the opportunity to make, shake and try up to 4 cocktails to share. I personally can't wait to share my knowledge."

If you are excited about spending an hour or two with Jack, learning the art of cocktail-making, why not enter our competition? You never know – it could be the start of a new career for you, too!



Serving a mix of traditional cocktails,  
and a few of our own thrown in for good measure  
*we serve the best of the best -  
every day of the week!*



From *Mojito's* to enjoy in the summer sun,  
to *Espresso Martini's* at the end of a night,  
we do it all.



THE  
PERFECT PLACE  
TO UNWIND

37-38 Saturday Market  
Beverley  
HU17 9AH  
Tel: 01482 868103



Pop in any day of the week and ask  
a member of staff for a recommendation!

# TC Patisserie awarded for their Good Food

Thierry and Nicky Condette are now proudly able to display a certificate in their patisserie/restaurant announcing they have been bestowed with a Good Food Award for 2016.

The citation said that customer feedback from TC's customers 'demonstrated exceptional levels of food quality, service and value when compared to industry benchmarks in their category'.



TC Patisserie is an authentic French café which makes the most delicious pastries, tarts and croissants for eating in and taking away as well as serving traditional French light lunches and drinks.

It is often necessary to queue - but the wait is well-rewarded! Which is why the award comes as no surprise to their customers!

Although usually only open during the day, Thierry occasionally demonstrates his culinary skills by opening in an evening and providing a

three-course menu of traditional French dishes; these are very popular events and sell out quickly.

TC Patisserie has been recognised on several occasions by the Remarkable East Yorkshire Tourism Awards – but the Good Food Award gives Thierry and Nicky national endorsement. Just Beverley wishes them many congratulations!

# Legal Q's and A's

**Q. I have put down a deposit on a new build property. On the plans and at the show-house there is a window in the en-suite bathroom upstairs, but my house has now been built without this window. Can I insist that the window is installed? So far contracts have not been exchanged.**



Coles the solicitors have provided the following response.

**A. You, or the solicitor carrying out your conveyancing work, should check the content of your contract carefully. On the face of it, you will have a good case to insist on either a reduction in the price or in the reinstatement of the window. But the contract may "allow" for minor deviations from the plans.**

Coles are based at 22, Lairgate, Beverley HU17 8EP, telephone **01482 231300**. Check out their website [www.coles-law.co.uk](http://www.coles-law.co.uk)



BURTON ELECTRICAL SOLUTIONS

High quality electrical work across East Yorkshire & the Humber region

DOMESTIC

COMMERCIAL

TESTING

Andrew Burton

28 Carnaby Close, Leconfield, East Yorkshire HU17 7LA

Tel: 01964 552769 Mob: 07585 601730

Email: [info@burtonelectricalsolutions.co.uk](mailto:info@burtonelectricalsolutions.co.uk)

Web: [www.burtonelectricalsolutions.co.uk](http://www.burtonelectricalsolutions.co.uk)



# Does Your Whole Company Fall Apart When You're Not THERE?

Using Quickbooks Online puts you back in control Wherever You Are!



Call today on 01482 679333

For your FREE 30 day Trial

intuit

[www.hemingwaybailey.co.uk/quickbooks-online](http://www.hemingwaybailey.co.uk/quickbooks-online)



# Folly Lake Café, Risby Park Fishing Ponds and Country Walks

**Winning the Remarkable Cuppa award at this year's Remarkable East Yorkshire Tourism Awards was Folly Lake Café at Risby Park, just a short walk across the fields or by road from Walkington.**

The four Risby Park Fishing Ponds have often been quoted as the local coarse anglers' favourite place to fish due to the range of fishing, the good distance between the pegs and no bans on the type of bait that can be used. But adding to that list must now be the availability of such a great little café with delicious food and that all important cup of tea!

The fishing ponds were first opened 17 years ago on the site of Risby Hall, which was, after several fires, finally burnt to the ground in 1784. However, the terraces can still be seen along with the folly, which remains on the bank of the lake which adopts its name. The folly has a hearth and steps leading down to the lake which would suggest it was once accessible by boat and was used as a shelter, possibly for fishermen or deer hunters. It's also likely there was a roof on the building. Rumour has it that the Ellerkers, who lived at Risby Hall, wanted somewhere nice to sit and watch the swans. Today you can sit and watch the world go by from the veranda of the café!

The Risby estate has been in the Clappison family for 3 generations. While Park Farm is looked after by John, brother Anthony looks after the Lakes and café. Along with wife Jo and her team of Phillip and Kerry, Folly Lake

Café produces the most amazing range of freshly-made food, including salads, sandwiches, soups, burgers, breakfasts and fabulous cakes in one of the smallest, most well-organised kitchens you are every likely to find.



Ever mindful of the needs of their customers, many who return frequently, the café uses locally-sourced ingredients and always lists gluten and dairy-free options on the menu as standard. There are vegetarian meals and children's portions. Extremely popular are the hand-cut 'fat' chips – they are so tasty that sometimes Jo admits they are challenged to keep up with demand! If a chip could be legendary, then perhaps Folly Lake's chips fit that bill.

Along with the tea, coffee and soft drinks, the café has an alcohol license. There are canned and bottled beers and Jo sources wine from specialist merchant, Berkman Wine Sellers which she sells by the bottle or glass to suit. The most popular wines are the Sauvignon Blanc, Verdelho and Merlot, but there are other grapes depending on recommendation by Berkman's.

Having a license makes the café a great place for a party. After the café has closed to the public, it could be a special place to meet with friends and family on a warm summer's evening to celebrate a birthday. Anthony is the man to call to discuss possibilities on **07861 255981**.

Of course, being situated where it is, there are some great walks. Just walking round the 4 ponds makes a very pleasant stroll, though not allowed on match days. The 'Risby Round' is a 2.9-mile walk from the café back to the café which takes about 1 hour. But extending the walk to include Skidby and Walkington is only 6 miles and there is that welcoming café at the end of your ramble.

The site is registered by English Heritage in recognition of its historic interest, even though it is owned privately. There are information sheets in the café describing the history of Risby Park along with picture maps of the 'Risby Round' which add to your enjoyment.

The lakes are open for fishing all the year round, from 6am – 9.30pm in summer. Early-birds often catch a glimpse of a deer wandering around the park, although you will have to wait for your breakfast until the café opens at 9.30am (later in winter) and ensure you get your tea before it closes at 5pm (4pm in winter).

Risby Park offers a great day out for the whole family. Fishing, walking, bird-watching and a fabulous café – what's not to like?



## ICELAND & THE NORTHERN LIGHTS OFFER

FLIGHTS FROM MANCHESTER  
4 NIGHTS - 3\* HOTEL IN REYKJAVIK  
INCLUDES NORTHERN LIGHTS TOUR, GOLDEN CIRCLE TOUR & ENTRY TO THE BLUE LAGOON

**468.00 PER PERSON**

BASED ON TWO ADULTS. SUBJECT TO AVAILABILITY.



- > SUMMER HOLIDAYS
- > CITY BREAKS
- > CRUISES
- > ESCORTED TOURS

- > COACH & RAIL HOLIDAYS
- > FLIGHT & HOTEL ONLY
- > WEDDINGS & HONEYMOONS
- > AIRPORT PARKING & HOTELS

- > UK COTTAGES
- > FLORIDA PARKS
- > VISA SERVICES
- > CURRENCY EXCHANGE



## BALI

FLIGHTS FROM MANCHESTER  
13 NIGHTS  
4\* HOTEL IN KUTA

**660.00 PER PERSON**

BASED ON TWO ADULTS.  
SUBJECT TO AVAILABILITY.

**35 SATURDAY MARKET  
BEVERLEY  
HU17 8BE**

01482 280081  
beverley@1worldtravel.co.uk

# Glowing Ofsted report highlights outstanding practice

**East Riding College has received the best Ofsted report for a general further education or sixth form college since the new, tougher inspection regime was introduced last September.**

The College, which has campuses in Beverley and Bridlington and a smaller site in Hull, was rated “good” overall and “outstanding” for personal development, behaviour and welfare, and courses for adults.

Inspectors praised the “culture of high expectations”, the outstanding learning facilities and the close alignment of its courses with the skills needs of the local economy.

Their glowing report also highlighted well qualified tutors who are role models for students, high levels of positive progression into employment and further study, and the ambitions of the Principal and senior team which staff are highly motivated to achieve.

Of the 30 FE and sixth form colleges inspected this academic year, East Riding College has the best profile of grades yet, with two outstanding and four good grades in the six sub-sections and a grade of good overall.

Principal Derek Branton said: “We are proud to receive this excellent report after such a thorough examination of the College’s work with students of all ages, employers and the local community. This is testament to the hard work of our staff who have faced challenging times through a period of unprecedented change in the further education sector and a tightening of resource brought about by reductions in public sector funding.”

“They have demonstrated impressive professionalism, creativity and dedication to their students, who in turn have shown a focused and committed attitude to learning.”

He added: “Inspectors clearly recognised the outstanding learning environments we provide for practical and academic learning in two new campuses in Beverley and Bridlington, and our recently refurbished site in Hull. The report demonstrates that East Riding College is the ideal choice for young people and adult learners, whether they wish to progress to employment, university or in their current career.”

Ofsted carried out the four-day inspection in late February, five years after the College secured a

“good” overall in its previous inspection. The report gave “outstanding” grades to personal development, behaviour and welfare, and adult learning programmes.

The quality of teaching, learning and assessment, outcomes for learners, 16 to 19 study programmes and apprenticeships were all rated as “good”.

Inspectors said the College was not rated “outstanding” overall because English and mathematics results, despite being above the national average, are not yet good enough. They also suggested improvements, all in the minority of cases, to the promotion of equality and diversity, ensuring activities meet all needs and written feedback.



HIGH QUALITY,  
HIGH SATISFACTION,  
AFFORDABLE PRICES

HIGHER  
EDUCATION  
AT EAST RIDING COLLEGE

HNCs, HNDs, Foundation degrees,  
degrees and teaching qualifications

[www.eastridingcollege.ac.uk](http://www.eastridingcollege.ac.uk)  
text **ercask** to 88020  
0345 120 0044

**East Riding College**  
BEVERLEY • BRIDLINGTON • HULL



\* When you enrol on our higher national certificates or diplomas



# In life and in death we're here to help, in the very heart of Beverley

**...you**

**Family Law**

Land & Estates

**Wills & Probate**

Conveyancing

Personal Injury

Medical Negligence

**...your business**

**Litigation**

Employment Law

**Agricultural Law**

**Property Work**

Dispute Resolution

Disaster Planning

**T:** 01482 231300

**E:** [info@coles-law.co.uk](mailto:info@coles-law.co.uk)

22 Lairgate, Beverley HU17 8EP

[www.coles-law.co.uk](http://www.coles-law.co.uk)



**allmobility**  
The Company That Cares



Treat Someone You Love - Call and See us Today

**MADE TO MEASURE**

**SALE Price £995**

**JUBILEE RANGE**

**£500 Off RRP**

Made in Great Britain

Free Local Delivery

Riser Recliner Chairs from £495 - Made to measure from £995  
Refurbished Stairlifts from £695\* New Stairlifts from £1,350  
Wheelchairs, Walking Sticks, Walkers, and a whole lot more!  
\*Subject to availability



110 - 112 Walkergate, Beverley, HU17 9BT

01482 887799

www.all-mobility.co.uk

Shop open Mon - Sat 10.00am - 4.00pm



**indicoll**

more than just web design

**MAKE MORE MONEY!**



**Google AdWords™ TRAINING COURSE**  
**ONLY £99 PER PERSON**  
(INCLUDES LUNCH AND REFRESHMENTS)

Training delivered by  
Google AdWords™ Certified Professionals

**ONLY 4 PEOPLE PER COURSE**

This results-focused training course will show you how to create and manage campaigns that don't break the bank and are focused on your target audience, improving your return on investment

Call now to book your place 01482 871178

Visit [www.indicoll.co.uk/googleadwordstrainingcourse](http://www.indicoll.co.uk/googleadwordstrainingcourse) for more information  
Training Venue: indicoll, 40 Norwood, Beverley, HU17 9EY



**HUBY**  
**DOMESTIC APPLIANCES**

**HUGE SAVINGS**  
when you

**BOOK ONLINE**  
at  
**hubys.co.uk**

Book in advance and save money.  
The further you book in advance  
the more you could save...



You've tried the rest,  
now use **THE BEST!**

**01482 240511**

Would you like to  
make a difference to  
someone?



**VOLUNTEER CAR & MINIBUS  
DRIVERS NEEDED**



Full training  
given, ring or  
pop in for a  
chat!



25 Corporation Road, Beverley, HU17 9HG

Tel: 01482 868082

[www.bclift.org.uk](http://www.bclift.org.uk)

Reg. Charity No: 506813





# What have you done about your WILL?



Would you like a FREE consultation, in your own home, to get advice and costs on Power of Attorney and preparing or updating your Will?



Jenny Fothergill AIPW, LLB (Hons)

Tel: 01482 968001

Email: [jenny@apslegalbeverley.co.uk](mailto:jenny@apslegalbeverley.co.uk)

[www.apslegalbeverley.co.uk](http://www.apslegalbeverley.co.uk)

APS Legal & Associates Ltd is a Member of the Institute of Professional Willwriters (IPW)  
APS Legal & Associates complies with the TSI Approved IPW Code of Practice

Funeral Plans also now available

Every month Just Beverley asks a question of a team of local experts. The kind of questions we ask are the kind of things which anyone might need to know about. Hopefully this column is of interest to you!

If you have any questions for our legal team, please e-mail them to [info@justbeverley.co.uk](mailto:info@justbeverley.co.uk) with 'Legal Q's and A's' in the subject box.

## Q. Who makes decisions about your health and well-being if you are unable to?

A. For the majority of us, if we need any medical or social care, we have the mental capacity to understand and make decisions. But what if we no longer have that capacity i.e. we have dementia or are unconscious? Most people assume that our next of kin or loved ones would make the decisions on our behalf. But in fact, that's not the case. If it's medical treatment we need, it's the doctors and social services who decide for us, unless, that is, we have already set up in advance a document to legally name someone else to make decisions on our behalf, such as a Lasting Power of Attorney.

A Lasting Power of Attorney (LPA) for Health & Welfare is a legal document that is separate from the LPA for Financial, Property & Legal matters. This document enables the writer (called the 'Donor') to give legal authority to one or several people who they choose and trust, usually family members, to be involved and make decisions on their behalf when they are not in a position to do so. The people who are appointed to help are called 'Attorneys'.

The Attorneys can make decisions on all matters related to health & welfare, including daily routine, medical care, moving into a care home, social services, etc. They can also give or refuse consent to life-sustaining treatment. A routine operation might not go as planned and doctors may need to administer medicines or care to maintain life. It might be something as simple as a course of antibiotics or the need to ask for a second opinion; Attorneys can make these decisions.

Some people write down in advance their wishes with regards to certain types of treatment. This is known as a 'Living Will' or 'Advanced Decision Document'. It needs to be a comprehensive list of the circumstances when a treatment is to be refused as there may be instances when a treatment would be considered acceptable whilst at other times it would not be. Even when someone has been diagnosed with a deteriorating illness, such as dementia, they may still have enough capacity to make a LPA. However, the best recommendation is to make an LPA when the Donor still has full mental and physical capacity.

APS Legal & Associates can offer full advice and preparation of Lasting Power of Attorney or Advanced Decision documents.

If you are considering making an LPA or Living Will, why not give **Jenny Fothergill** a call on **01482 968001** to arrange a free consultation in your own home?

## Aaron Gilpin of La Lumière Photography offers professional tips to help us take better photographs. This month - Understanding Aperture

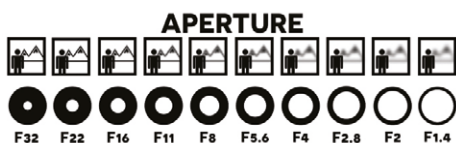
Aperture is one of three important factors that are responsible for creating the right photographic exposure, the other two being ISO and Shutter Speed (which will be covered in future issues) known as the exposure triangle. Aperture is one of the most important when it comes to the creative side of your image because choosing a certain aperture will determine how out of focus (blurry) or in-focus (sharp) your background & foreground is.

### 1) What is Aperture?

Simply put, aperture is the hole within a lens, through which light travels into the digital sensor or in the old days, film.

### 2) Size of Aperture – Large vs Small Aperture

Aperture is expressed in f-numbers (for example f/5.6). These f-numbers that are known as "f-stops" are a way of describing the size of the aperture, or how open or closed the aperture is. And now for the confusing bit, the bigger the f-stop the smaller the hole, for example f/4 is larger than f/8 and so on.



### 3) Depth of field

One important thing to remember here, the size of the aperture has a direct impact on the depth of field, which is the area of the image that appears sharp. A large f-number such as f/32, (which means a smaller aperture) will bring all foreground and background objects in focus, while a small f-number such as f/1.4 will isolate the foreground from the background by making the foreground objects sharp and the background blurry. The amount of blurriness is commonly called Bokeh.

### 4) Lens Apertures - Maximum and Minimum

Every lens has a limit on how large or how small the aperture can get. A quick rule of thumb: the wider the aperture (small number) = more money. A pro level f/1.4 lens can cost around £2k although their now companies producing great wide aperture lenses for less. Most entry-level cameras come with what they call a "kit" lens with a widest aperture of around f/3.5 – f/5.6 and go through to around f/22

### 5) Stops

In photography, increments in aperture as well as shutter speed and ISO are referred to as whole stops. A stop of light i.e., f/4 increases a whole stop to f/5.6 however, just to confuse things further, there are also 1/3 stops in-between whole stops, see below.

**f/2.8** f/3.2 f/3.5 **f/4** f/4.5 **f/5** f/5.6 f/6.3 f/7.1 **f/8**  
(**BOLD = full stops**)

So, in a nutshell that's the basics of aperture covered. Next month: Shutter Speed. La Lumiere Photography 22 Trinity Lane, Beverley, HU17 0DY, East Riding of Yorkshire.

**Ballerinas Wanted**

Dance into the spotlight with an amazing ballerina portrait session and be entered in to the exclusive Xperience Awards with a chance to win a wall portrait worth £500.

To book please call the studio on 01482 867 455

**LA LUMIÈRE**  
PHOTOGRAPHY  
[www.la-lumiere.co.uk](http://www.la-lumiere.co.uk)

# Town Crier Event



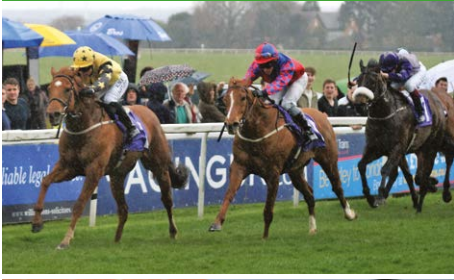
HERE TO GET *you* THERE

# HUNTERS®

EXCLUSIVE

BEVERLEY / 01482 861411

## Beverley Racecourse - Race Opener



## Mayor's Civic Dinner for the Queen's 90th Birthday



SALES / LETTINGS / MANAGEMENT

**HUNTERS**<sup>®</sup>  
HERE TO GET *you* THERE

BEVERLEY / 01482 861411

## LIFESTYLE

### Is it anxiety, stress or depression which is getting you down? Understanding the difference

**Anxiety is one of the most common mental health diagnoses so it isn't surprising that many of my clients are suffering from some degree of anxiety when they come to see me.**

Anxiety disorders are characterised by worry, doubt and weakness. Future events are always predicted to turn out negatively and therefore the sufferer tends to put in place ways of avoiding or protecting themselves against what might happen.

For example, people suffering from Obsessive Compulsive Disorder, which is an anxiety state, will spend hours checking that house doors and windows are locked in case someone should try to get in to harm them. Or they will fanatically clean kitchen work-tops in case they are harbouring bugs which could kill them.

Anxiety can respond well to talking therapies such as Clinical Hypnotherapy especially when it incorporates positive methods to reduce the intensity of the fears. People with anxiety can become depressed worrying about their anxiety because of the way it prevents them getting on with their lives. Some of the medicines which are used for depression are also used to treat anxiety because of the way anxiety and depression adversely affect brain chemistry. If prescribed one of these medicines for anxiety, it doesn't mean you are necessarily depressed.

Depressed people don't worry about the future because the worst has already happened and bad things will continue to happen.

Depression causes a sense of hopelessness – there is no point in doing anything, even if there was the energy to do it, because there is no enjoyment, only feelings of sadness. Depression often causes anorexia or the opposite, comfort eating, leading to changes in weight; it interrupts normal sleep patterns, causes difficulties in concentration, memory and decision-making and can lead to thoughts of death and even suicide.

Having worked for companies which manufacture proprietary medicines for depression and with my Biomedical Science background I would always recommend that clients who I consider to be suffering from depression see their GP.

Talking therapies can be helpful for people coping with depression but professional medical help should be sought.

Stress is a result of the pressure of daily life – when life gets too much and we just cannot cope anymore, we can become stressed and go into melt-down or have a 'nervous breakdown'. Stress is due to identifiable 'stressors' which cause the release of stress hormones which want us to run away, stand and fight or freeze like a rabbit in a car's headlights. Stress goes away when the stressors are removed, unlike anxiety and depression which have no identifiable external root causes.

Stress can be handled by learning techniques and strategies to minimise the effects of the release of stress hormones or even prevent



stress hormone release altogether. Practicing meditation and mindfulness, exercising regularly and eating healthily can all help control stress hormone release.

Clinical hypnotherapy can help with stress as it changes the way in which the stressor is perceived.

E-mail [linda@releaseyourpotential.co.uk](mailto:linda@releaseyourpotential.co.uk) in the strictest confidence if you think clinical hypnotherapy could help you, or telephone **07585 802035** for a chat.

Linda  
[www.releaseyourpotential.co.uk](http://www.releaseyourpotential.co.uk)  
Tel 07585 802035

Opening Hours  
9am - 7pm Monday - Friday  
9am - 4pm Saturday

10% discount  
for students,  
NHS,  
council workers

Telephone: 01482 863603  
Or you can book online via the website:  
[www.hairbyrosie.mysalononline.com](http://www.hairbyrosie.mysalononline.com)  
[www.facebook.com/hairbyrosie16](http://www.facebook.com/hairbyrosie16)

34 NORTH BAR WITHIN • BEVERLEY • HU17 8DL

**28 YEARS  
IN BUSINESS**

**28 YEARS  
OF GOOD HONEST SERVICE**

**28 YEARS  
SPEAKS FOR ITSELF**

**YOU CAN TRUST**  
**MR CARPETS**  
CARPET AND FLOORING SPECIALISTS  
3 Beckside North, Beverley, HU17 0PR  
**01482 872134**

# OLD WIVES' TALES by John Fewings

Trust not the man whose eyebrows meet  
For in his heart you'll find deceit,  
But separate arcs mean trustworthy  
geezerz  
Or denote a man with a pair of tweezers.

And if by chance a maiden's beset  
By overwhelming amounts of debt  
It's lucky for a bride to wear no knickers.  
It pleases grooms – though it upsets  
vicars.

Drop a glove and then retrieve it  
That's unlucky (some believe it)  
But if perchance you see a pin  
Then pick it up – and luck floods in!

And if in so doing your finger you prick,  
Quick as a flash then give it a lick  
For that stops vampires, demons and  
devils  
From sucking your soul in their midnight  
revels.

And if your palms begin to itch  
Sure as eggs is eggs you'll soon be rich.  
But if you eat eggs then guard the shells  
For witches use them to cast their spells.

Don't put on your left shoe 'til you've put on  
the right.

Don't eat cheese last thing at night.  
Pluck a hair from your head that you've  
spotted gone grey;  
There'll be ten more there by the very next  
day.

If you break a mirror, for seven years  
Your life will be filled with nothing but tears.  
Put shoes on the table with a clattering  
bang  
And someone you know will definitely  
hang.

So no-one's been hanged since '64  
But still put your shoes down on the floor!  
Do you want to cause me days of worry?  
It's better to be safe than sorry!

If from the same pot two women pour  
Then one will get pregnant, that's for sure!  
Then don't pass another upon the stair  
Or you'll have twins with ginger hair.

Ne'er cast a clout 'til May be out  
Who's got a clue what that's about?!

What's a clout and how do you cast it?  
I'm probably safe: I'm probably past it!

There's an old wives' tale for every  
event:  
Christmas, New Year, Easter, Lent,  
Birthdays, Saints Days, Halloween too.  
Things you should and shouldn't do.

A catalogue of tales that threaten you ill  
(There's few that promise you good)  
But I don't believe in all that rubbish  
And I never will! . . .  
Touch wood!

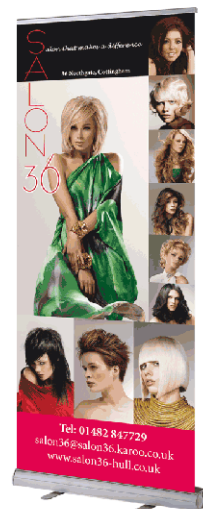


John Fewings is a member of the Argy-Bargy Poets and a presenter on Beverley FM. Find out more about John on his website - [www.johnfewings.zone](http://www.johnfewings.zone)



Print that gets you noticed

- ✓ Notepads
- ✓ Business Stationery
- ✓ Business Cards
- ✓ Flyers/Leaflets
- ✓ Wiro Desk Calendars
- ✓ Wall Calendars
- ✓ Pop-up Banners



Tel: 01482 610902  
[info@jadan-press.co.uk](mailto:info@jadan-press.co.uk) [www.jadan-press.co.uk](http://www.jadan-press.co.uk)  
 Rainbow House, Kimberley Street, Hull, HU3 1HH



**FREE**  
LOCAL DELIVERY

MY KIND OF  
GARDEN

# Make your **outdoor** **space** your perfect **living space**

Inject personality into your garden this summer with a little help from **MKM** & ensure your garden is the one they're all talking about!



Call into branch today for assistance with design ideas and inspiration!

**MKM BEVERLEY**  
SWINEMOOR LANE, EAST YORKSHIRE HU17 OJX  
01482 880 088 | [mkmb.co.uk](http://mkmb.co.uk)    
OPEN Mon-Fri 7:30-5:30 Sat 7:30-noon



# In the garden...

**May – is a transitional month in the garden, at the beginning we are still in spring with daffodils and tulips in their full glory.**

During the month plant growth speeds up and by the end of May we are heralding in the summer – with the showy blooms of large flowered clematis and roses starting to bud and open their flowers.

With all this growth there is a lot to keep us busy in preparation for the long hot days of summer (well we can hope!!). This leads me nicely onto...

...some 'Essential Jobs' for May

- **Be ready to protect plants against sudden frosts**
- **Water all new plantings if weather is dry**
- **Trim spring-flowering perennials**
- **Finish pruning spring-flowering shrubs**
- **Tidy up foliage of spring bulbs and mark where they are in the borders – unless you like the surprise when they appear next spring**
- **Harden off summer bedding plants**
- **Plant up hanging baskets and patio pots**
- **Keep on top of pests and weeds – including slugs**
- **Trim topiary and feed**
- **Keep sowing vegetables out of doors**
- **Continue to sow tender vegetables under cover**
- **Check greenhouse ventilation and provide shading if necessary**
- **Continue pruning trained plums and cherries**
- **Mulch strawberries with straw or mulch mats**
- **Cut lawns weekly and blitz lawn weeds**
- **Remove duckweed and blanket weed from ponds**
- **Keep a 'look out' for green fly on roses and other plants with lush new growth**

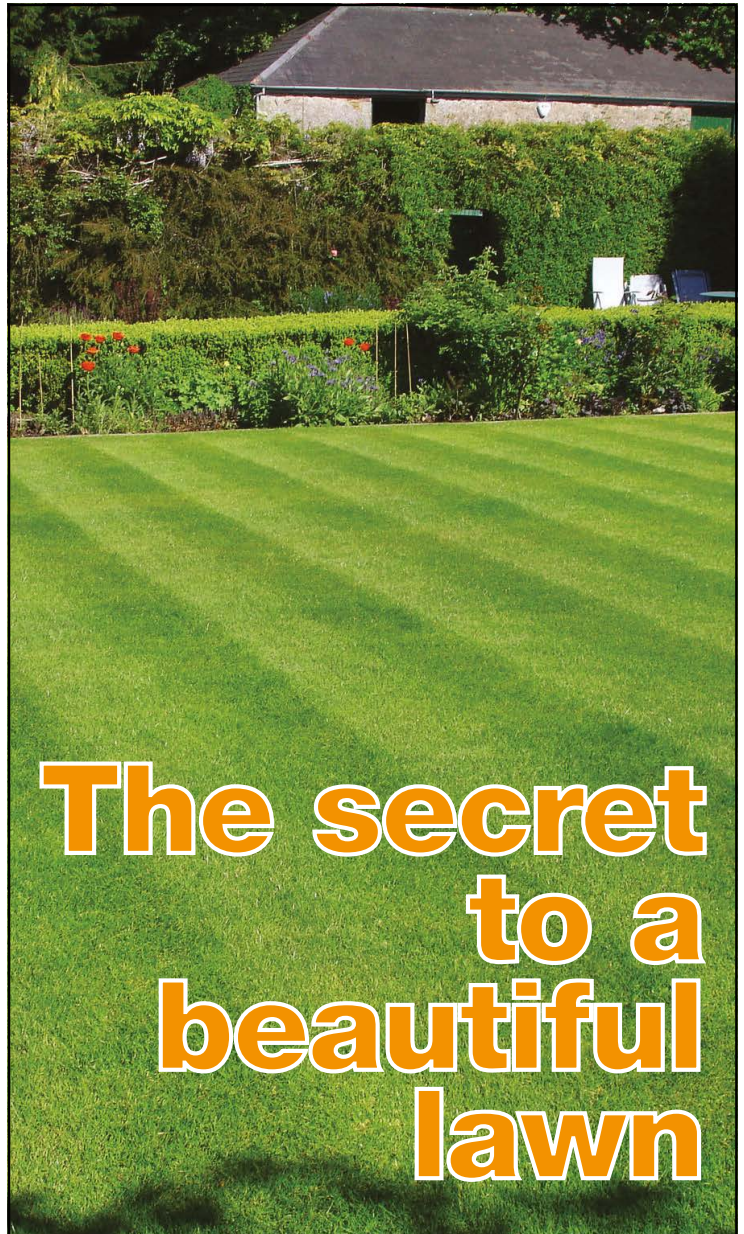
And your 'Last Chance' to...

- **Sow half-hardy annuals**
- **Plant summer bulbs**

Blossom is everywhere in May, tumbling like confetti in the wind. The two main plant families providing this are Malus (crab apple) and Prunus (flowering cherries and almonds), and of course the waxy flowers of the Magnolia should not be left out. Generally, the soils in this area are not suitable for the acid loving Azaleas and Rhododendrons which put on a magnificent display in May – dwarf varieties can happily be grown in containers, but must be planted in ericaceous compost, be fed with an ericaceous feed and ideally watered with rainwater.

## Happy gardening, J.

Jane Dale of 'Designed Gardens'  
Tel: **07983 392 411**



Our lawn experts use the right products, in the right quantities, at the right time. They kill weeds, control the moss, and work with you for a beautifully lush and healthy lawn.

- Free consultation and lawn surveys
- UK's leading professional lawn service for over 28 years
- No contracts to sign, pay as you go service
- Specialist feeds exclusive to GreenThumb
- Cheaper than D.I.Y.
- From £15 (inc VAT) per treatment

**GreenThumb**  
LAWN TREATMENT SERVICE

[www.greenthumb.co.uk](http://www.greenthumb.co.uk)

**01482 880082**



# Evans Halshaw Offers New Box of Tricks for Flirty 50s

Local Vauxhall retailer, Evans Halshaw, is encouraging local flirty fifties to rediscover the feeling they had from their early twenties, following the launch of the all-new VIVA model.

The 'This Gran Can' study, commissioned by Vauxhall Motors found the over 50s in Beverley to be embracing their thirst for life with tattoos, swimming with sharks and hitting karaoke bars.

Almost a quarter confessed to using their savings to experience new adventures rather than sensibly saving for future investments. New adventures include going to Glastonbury for the first time, booking a lads or girls' holiday and taking a gap year.

Almost a quarter said they had started acting out of character, including making excuses not to babysit to give themselves free time to spend on newfound interests. Many said their new found confidence allowed them to feel comfortable to flirt with someone younger, whilst almost three in ten confessed they had started using their savings on extended travel, a new car or new technology since getting their renewed zest for life.

Celebrities epitomising this generation were Helen Mirren, Joanna Lumley, David Attenborough and Richard Branson.



In comparison, when the Vauxhall VIVA first launched over 50 years ago, stars such as Alec Guinness and Fanny Cradock epitomised the over 50 age group of the sixties with more modest aspirations.

Aron Brown, Dealer Principal at Evans Halshaw Beverley said: "It's great to see this generation adopting a 'This Gran Can' attitude, much like our new VIVA, which pays homage to the original Viva model. The original was produced from 1963 to 1979, but today's model features cool technology, great styling and practical design much like today's over 50s from our report!"

The all-new Vauxhall VIVA is now available, featuring Lane Departure Warning and Heated Door Mirrors as standard.

For more information, visit Evans Halshaw in Mount Pleasant and Priory Park, Hull, and Beverley. Alternatively, visit [www.evanshalshaw.com/vauxhall](http://www.evanshalshaw.com/vauxhall).

People can get inspired and celebrate adventurous over 50s in Vauxhall's 'This Gran Can' film at <https://youtu.be/nOVsGrHdXJQ>.

Vauxhall VIVA's This Gran Can list: the top 5 activities over fifties are enjoying:

1. Booking last-minute holidays
2. Signing up to social media
3. Dipping into the 'life savings' for treats
4. Booking a big travel trip
5. Buying clothes from the high street



## AMAZING 16 PLATE SPRING DEALS

With delivery mileage only

### CORSA 1.4T LIMITED EDITION 3DR

FROM **£149 PER MONTH**  
with £0 customer deposit after  
£2,000 minimum part exchange



### CORSA 1.0T LIMITED EDITION 3DR

FROM **£169 PER MONTH**  
with £0 customer deposit after  
£2,000 minimum part exchange



### VIVA 1.0i SE

FROM **£99 PER MONTH**

with £0 customer deposit after £1,000 minimum part exchange



#### Representative Example

47 Monthly Payments of	Customer Deposit	Minimum Part Exchange	Term of Agreement	On the Road Cash Price	Total Amount of Credit	Credit Arrangement Fee*	Option to Purchase Fee**	GMFV - Option to Purchase Payment	Total Amount Payable	Rate of Interest (Fixed)	Representative APR
£149.00	£0.00	£2,000.00	48 Months	£11,991.00	£9,991.00	£10.00	£10.00	£5,596.25	£14,760.17	4.62%	8.91% APR

Evans Halshaw Vauxhall Beverley

01482 862 801  
[evanshalshaw.com/vauxhall](http://evanshalshaw.com/vauxhall)

Swinemoor Lane  
Beverley  
East Yorkshire  
HU17 0LJ



**VAUXHALL**

Official Government Test Environmental Data. Fuel consumption figures mpg (litres/100km) and CO<sub>2</sub> emissions (g/km). Vauxhall Corsa range: Urban: 38.2 (7.4) - 76.3 (3.7), Extra-urban: 58.9 (4.8) - 94.2 (3.0), Combined: 48.7 (5.8) - 88.3 (3.2). CO<sub>2</sub> emissions: 133 - 85g/km.

Reg Vardy (VMC) Limited is a credit broker/intermediary that can introduce you to a limited number of lenders to provide funding for your vehicle. They may incentivise us for introducing you to them. \*Payable with first monthly payment. \*\*Payable with Option to Purchase Payment. GMFV = Guaranteed Minimum Future Value. Contract mileage of 5,000 per annum and is subject to an excess mileage charge of £0.09 (per mile). Further charges may apply subject to vehicle condition and mileage if you return the vehicle at the end of the agreement. All details correct at time of publication and are subject to being withdrawn or changed without notice. Not to be used in conjunction with any other offer. Vehicles available while stocks last. Image shown for illustration purposes only, and may show optional specification. Finance subject to status. Terms and conditions apply. Applicants must be 18 or over. Guarantee/Indemnity may be required. Test drive subject to applicant status and availability. Finance provided by Motonovo Finance, Cardiff, CF14 5GL. Subject to acceptance by an Evans Halshaw approved finance company. Offer only available on selected pre-registered stock vehicles. Offer includes Part Exchange Allowance as stated. Part Exchange allowance only available when financed with an approved Evans Halshaw Finance Company, subject to acceptance. For full details on this offer, please visit your nearest Evans Halshaw Vauxhall dealership. Terms and conditions apply. Offer ends 30th June 2016.



# Just Beverley Welcomes a New Contributor - Carfan

**Being able to drive round in an Aston Martin is the norm for James Bond, but not for your average car-driver.**

Except our new contributor, who wishes to be known as 'Carfan' to keep that bit of mystique around his true identity – like 'The Stig' - can drive round in an Aston Martin every day of the week – because he owns a 1999 DB716 Coupé.

Needless to say, Carfan did not wish to be photographed, as, in his book, the car is always the star!



So here is his beautiful car set against the delightful setting of the Humber Bridge on the coldest, greyest day in March – which makes the car shine even more brightly!

What Carfan doesn't know about Aston Martins quite frankly isn't worth knowing about.

But if he does get stuck, one of his best

friends is the editor of Aston Martin Magazine – who owns not one but 5 Aston Martins!

Carfan used to own a Triumph TR6 before he acquired the DB716 about 3 years ago from a garage in Hemel Hemstead.

It is one of only 789 ever made. If it bears a passing resemblance to the Jaguar XK8 that's because both cars were created when the marques were under the ownership of Ford – but the DB7 is rarer, more refined and costs about 5x more than the Jaguar!

Carfan knows the full history of his car, because Aston Martin Magazine has logged every car Aston Martin have ever made since 1999, and many before that date. Of all versions, there were about 7000 DB7s built and it is celebrated as 'the car which saved the company'.

As a member of the East Yorkshire Thoroughbred Car Club, Carfan hopes to take part in the Bridlington Car Run on Sunday 12th June and their Beverley Midsummer Gathering from 6pm on June 22nd.

Just Beverley are delighted that Carfan will be writing an occasional Classic Car Column

for us, though being an Aston Martin fan, the chances are that you may find some of the classics-of-the-future included as well, such as the Toraf (which replaces the Lagonda), the GT12, the Vulcan and DBX prototype which were all revealed at last year's Geneva Motor Show.



We are sure some of you will think you know the true identity of Carfan – but we're saying nothing!

**BEVERLEY MOTOR WORKS** INDEPENDENT BMW & MINI SPECIALISTS

Follow us on:  
    
search for  
Beverley Motor Works

**BMW Qualified Senior and Technicians Offer**

- Saving up to 70% OFF main dealer prices
- Manufacturer's warranty not affected
- Resale value of your vehicle not affected
- Award-winning customer service
- Over 30 years' combined BMW experience

Call today on **01482 881128**

*Our dealership expertise means high quality for car servicing at a fair price...*

- ATA Accreditation
- Routine servicing
- Condition-based servicing
- Diagnostics
- Mechanical repairs
- Air conditioning
- Performance tuning
- MOT's

Call now for a no obligation quote or to book in on **01482 881128** or email us directly from our website [www.beverleymotorworks.co.uk](http://www.beverleymotorworks.co.uk)

Unit D1 Grovehill Industrial Estate Annie Reed Road, Beverley HU17 0LF  
E: [web@beverleymotorworks.co.uk](mailto:web@beverleymotorworks.co.uk)



   
THE INSTITUTE OF THE MOTOR INDUSTRY  
AUTOMOTIVE TECHNICIAN ACCREDITATION

## What we can learn from the Masters 'Drive, Chip and Putt' Competition

**This year we see the third annual Masters 'Drive, chip and Putt' competition for younger golfers.**

In my eyes this is one of the best new additions to the Masters in many years, giving young talented golfers something to strive for throughout America. This is definitely something the R&A, the governing body of the golf world, can learn from - to get kids involved in Britain's biggest golf tournament, The Open.

However, it is the format for me that is revolutionary. The 'Drive, Chip and Putt' tournament keeps a competitive element whilst highlighting all the most enjoyable parts of the game, hitting long straight drives and holing chips and putts. This also highlights the three areas of the game that you have to be good at to be successful at a higher level. Every golfer can learn from this by focussing their practice on the more important aspects of the game but also making their practice FUN, something that is often overlooked by most and yet it is the one thing that will make you come back to this wonderful game time after time.

Another thing we can learn from this is that younger kids enjoy games that don't take as much concentration, 'Drive, chip and putt' is a much shorter format, probably only taking 20 minutes to play. Perhaps golf courses should be made 4-9 holes and shortened for juniors, it is certainly something that we are looking into starting at Beverley Golf Club this year.

Would golf be more exciting and appealing in a shorter format? We plan on running Fun Family Nights for all ages over the summer months in 2016.

To learn more about these and other fun things planned for 2016 at your local golf club, please contact me on **01482 869519**.

It would be great to chat to you! Stewart.



## New at Beverley and East Riding Golf Club!

**Having welcomed the new renowned Golf Professional, Stewart Fraser, to the Club earlier in the year (see his exclusive column to the left) the arrival of the Royle family has transformed the dining experience for members and visitors.**

New Steward and Stewardess Steve and Jayne Royle bring with them years of experience of working at Golf and Social Clubs throughout the north of England. Their outstanding culinary and presentation skills are already enhancing Beverley Golf Club's reputation in Beverley and beyond!



With Steve and Jayne at the helm, members and visitors alike are assured of a warm welcome and an excellent dining experience. Whether it's one of their Sunday lunches, a family occasion or a fine dining evening, they are keen to ensure that a visit to the Golf Club is one that you will want to repeat! Please give them a call them on **01482 867190** for details.

The Professional's shop is now fully open with the state-of-the-art Golf Studio, which has revolutionised coaching facilities at the Club. Stewart brought with him Irishman Michael Durcan and rising star, local amateur Nick Raybould, who are working with adults and children alike to help them improve their game. For more information on golf at Beverley, please ring Stewart Fraser on **01482 869519**.

The totally refurbished shop is supplied by Snainton Golf, which has a nationwide reputation for supplying top equipment and clothing at discount prices. Snainton Golf's slogan is 'The One Stop Golf Experience' - so it's well worth a visit, even for non-Golfers.

Beverley and east Riding Golf Club, based on the glorious Westwood, has been a feature on the town's landscape since it was formed in 1889, making it the oldest inland golf club in Yorkshire.

Its reputation as a tough but fair test of golf is enhanced by the quality of the fairways, tees and greens, maintained by a team led by one of the region's top amateur golfers, Neil Burnley.



# Play golf on the glorious Westwood

A GREAT COURSE WITH STUNNING VIEWS ON YOUR DOORSTEP

## YOUR LOCAL FRIENDLY CLUB OFFERING:

Indoor coaching and play  
Courses for beginners  
Thriving ladies' section

Growing junior golf  
New golf shop  
Top class catering facilities



**Beverley & East Riding Golf Club – Call Stewart Fraser on 01482 869519**

# Beverley's Holly Bentham is British School's Judo Champion 2016

**Longcroft pupil, Holly Bentham has had a great start to 2016!**

She has built on her successes of 2014, when she was awarded the title of Hull Daily Mail Sporting Champion Junior Girl age up to 16, and 2015 when she won School Sports Awards Sports Personality, The East Riding Chairman's Award for Sport and was recognised for her achievement in sports by Humber Sports Partnership.

For Holly currently holds the title of British School's Judo Champion (under 70kg), a title which she won in Sheffield at the beginning of April, against tough opposition. This has encouraged Holly to pursue her dream of going to the Europeans and progressing to the World and Olympic Championships. Holly has already competed in Holland and Belgium but she has a game-plan with the Olympics 2024 firmly in her sights!

Just Beverley spoke to Holly to find out why she is so attracted to judo, which she has been involved in since the age of 4 years when she first went to a taster day at Beverley Leisure Centre (as it was then called).

Holly said "It was my older brother who first inspired me. He has now given up judo, but I just love everything about it! There's lots of balance and flexibility required to be good at judo - it's not all about strength. But the endurance training increases muscle tone, too. The lads tend to do weight training but with women, it's more about technique. As the opposition gets harder, you get

better technically. Which is why I have training fights with boys as well as girls. But the camaraderie is amazing and I now have friends from all over the world."

Holly is now at the top of her 'Cadet' age-band for 15-17 year-olds, which will give her more chances to win fights, something which her father (and taxi-driver), Alan, is very keen to see. He said "It's a nerve-wracking sport to watch, as your daughter could get flattened! It is a contact sport and Holly has been injured in the past. In fact, she hurt her knee on her first trip abroad without me or her Mum. But Holly has a great coach in Commonwealth Games silver medallist, Danny Kissenisky, and we hope she will be able to train at the Birmingham Centre of Excellence next year, where all the England coaches are based."

As well as training at the East Yorkshire Judo Club every Saturday morning, Holly goes to Grimsby Judo Club on a Monday where she fights different people, including older men and women.



She also coaches youngsters at her judo club on a Saturday and will be taking her coaching qualifications when she is 16, wanting to give others the chance to see if they can progress as she has done. Holly is also studying for her GCSEs! As a member of Longcroft's Sports Academy for Elite Athletes, she has lots of support and her school avidly tracks her success.

She also has time for other hobbies, although they do tend to be sports! She is captain of the school netball team, likes running and the Bentham family has just taken up scuba diving.

Holly is grateful to the ongoing financial assistance she gets from Coles the Solicitors and occasionally from the East Riding. Although not an expensive sport, travel to training and competitions can mount up and any help is gratefully received and acknowledged. Just Beverley is charmed to have met Holly and wishes her every success as she goes forwards to the European Cups and European Championships. We don't know where the 2024 Olympics will be held, but we are confident Holly will be there, flying the British flag!

**BEVERLEY CTC**  
Yorkshire's Premier Shooting Ground

Clay Pigeon Shooting Experience for everyone to enjoy -  
A perfect activity for all ages.

**25 target lesson for £35**

Includes 25 clays and cartridges, gun, safety equipment, briefing and full instruction. All ages welcome.

To book please give the Club a call on 01964 551134.

Café open for food on Saturdays and Sundays.  
Hot and cold drinks are available throughout the week.

From 31st March - 21st October  
we are open until 8pm every Thursday for lessons.

[www.beverleyctc.co.uk](http://www.beverleyctc.co.uk)  
Ground Enquiries: 01964 551134 / [info@beverleyctc.co.uk](mailto:info@beverleyctc.co.uk)

**WHITE RABBIT**  
CHOCOLATIERS

Your Luxury **Chocolate Destination**  
*handcrafted in Beverley!*

16 Dyer Lane, Beverley, HU17 8AE  
01482 679325  
[whiterabbitchocolatiers.co.uk](http://whiterabbitchocolatiers.co.uk)

# Time for your bike's MOT!

**The Tour de Yorkshire has no doubt inspired the most sedentary couch potato to get their bike out and take to the open road. But any cycle which has been stood for any length of time, really needs a bit of TLC spending on it before you start pedalling.**

Just Beverley asked local cycle experts, Minster Cycles on Norwood for their tips to ensure that first ride out of the year is as safe and trouble-free as you expect it to be.

First of all, any bike which has been stood for any length of time will have flat, or at the very least, flattened tyres. It's a good idea to store any bike on a stand or on its handlebars to reduce the pressure on the tyres.



There are various types of stands available, which hold one or more cycles and are either freestanding or screw into a wall. Inner tubes are naturally porous so they will lose pressure over a period of time and the weight of the cycle can cause the tyres to splay out, which could mean new inner tubes or even new tyres – you will find out when you come to pump up your tyres!

The pressure to pump your tyre is printed on the side of the tyre – they are all different – but if the inner tube will not hold the air or the tyre is damaged, you might need a trip to the cycle shop.

The second important consideration is your safety. Cycle helmets should be changed every 5-6 years regardless of whether they seem damaged or not.



Polystyrene and plastics become more brittle as they age, due to the impact of UV light and temperature variations.

Cold temperatures are particularly harmful to polystyrene. If your cycle helmet has been stored in your garden shed over winter, it will definitely not pass the British Standard!

Now to the engineering part. Check the chain to ensure it is running freely – the odd stiff link and a bit of surface rust might be eased with a drop of oil but a seized up chain needs to be replaced. But do not put any oil on the brakes!

Oil on a squeaky brake will stop the squeak, but then the brake won't stop you! When you spin the

wheels, ensure they don't catch the brake blocks or cables. Ensure there are still grooves on the brake blocks – if the grooves are worn or absent, you need new brake blocks.

Check for loose bearings, too. It's a good idea to go for a short test ride down the road before setting out to make sure there are no strange noises; if there are, it's off to the bike shop for a service.

Our light nights often mean that we are back home before dark, but always check your lights are working and even carry a spare set of batteries in your emergency kit just in case. It's a good idea to check the contents of your emergency bag, too. Make sure your pump is working and that the glue is still OK in your puncture repair kit – or carry a spare inner tube.



Do you have the means to get your tyre off if you do have a puncture while out and about? Oh, and remember to take your charged mobile phone – there's nothing worse than a flat phone battery when you need it most! So all you need now is to fill your water bottle, get the padded lycra pants on and the high-vis clothing and away you go! Happy cycling!

## INCHES BODY STUDIO

FREE TRIAL for anyone with health issues.  
No obligation.  
Toning tables can help with ME, MS, osteoarthritis, RA, knee and hip replacements, depression, bad backs, frozen shoulder and stroke rehab.  
Chair lifts up to the salon.

Lose between 7" and 15" in six sessions.

Toning tables can help if you are new to exercise.

TESTIMONIALS AVAILABLE

Wear comfortable clothing and a pair of socks.

SPECIAL OFFER

3 Months Toning  
3 Months Vibraxis  
3 Contour Wraps  
**£179.00**

## INCHES BODY STUDIO

**Inches Body Studio, 1 Norwood, Beverley, HU17 9ET**  
Telephone: 01482 865229  
Email: [info@inchesofbeverley.co.uk](mailto:info@inchesofbeverley.co.uk)  
[www.inchesofbeverley.co.uk](http://www.inchesofbeverley.co.uk)

# MINSTER CYCLES

MENTION JUST BEVERLEY AND GET UP TO **£250 WORTH\*** OF ACCESSORIES AND EQUIPMENT FREE ON ANY NEW CYCLE PURCHASE

\*20% of the value of the bike up to a maximum of £250. See in store for details.

We now offer 0% finance available on bikes from £500 with only a 10% deposit

Minster Cycles, 5-7 Norwood, Beverley, HU17 9ET <b>01482 867950</b>	Minster Cycles, 542 Anlaby Road, Hull, HU3 6SY <b>01482 509502</b>
---	--

[www.minstercycles.co.uk](http://www.minstercycles.co.uk)

# PUZZLE PAGE

It's a thought...

## Sudoku

Fill in the grid with digits in such a manner that every row, every column and every 3x3 box accommodates the digits 1-9, without repeating any.

7	5		9		3			6
			4	5				3
6	2			9		8		
	1	5				2	3	
		9		1			7	5
3				8	4			
9			6		1		5	7

## Wordsearch

R G N Q V K F F G G Y K L W L  
 E I N L I Z Z A W N Y R E N Y  
 T Y I U Q Y L K C K I S M P C  
 S X D B S O G A V T T L O L R  
 N N H O Q R N X O W Y U C H A  
 I Z W A Y K E U O Z X C U Y E  
 M E R B S S R O V D Q I E V C  
 O V J R E H D Y E L R E V E B  
 V B Y Q U I J P O I H D T I V  
 P I T V G R T S E P F E Z T O  
 F P M A B E P D I D M O D N E  
 L O C J E R S E Y L A C T L L  
 O F B W Q B G G E T C L G H Z  
 X W T Y I A G H X J J A S D B  
 J F L U H B A W Y T L F B E F

BEVERLEY  
 CYCLING  
 HELMET  
 JERSEY  
 LYCRA

MINSTER  
 PEDALS  
 TOUR  
 WESTWOOD  
 YORKSHIRE

If you fancy a nap  
 but stay awake,  
 are you resisting a rest?

Why is abbreviated  
 such a long word?

Are all the words in  
 the dictionary spelt  
 correctly?

Cyclists don't  
 see hills,  
 just challenges!

## The Best April Fool of the Year awarded to Beverley's Town Crier, Michael Wood

The first weekend in April was an important one for Beverley, especially as Beverley is now on the map for being the place where the Best April Fool took place.

Disappointed as Just Beverley was to learn that our plan of releasing beavers on the Westwood to build dams to hold back the water was not deemed to be the Best April Fool, we are extremely proud that Michael Wood's World's Quietest Cry was given this prestigious top accolade!

The added twist is that Michael now owns the title for real! Congratulations, Michael!

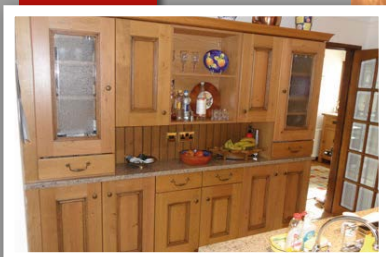


Do you have any  
 amusing stories,  
 quotes or pictures?  
 Send them to  
[info@justbeverley.co.uk](mailto:info@justbeverley.co.uk)

## QUALITY KITCHEN FACELIFTS

For kitchens as individual as you are

Before



- From a simple door swap to a complete kitchen refit
- Huge choice of doors, worktops, appliances, sinks & taps
- Free planning & design service
- 50% deposit balance on completion

CALL ANDY OR TERRI FOR A FREE ESTIMATE:

**01482 861653**  
[dreamdoors.co.uk](http://dreamdoors.co.uk)



EST. 1999

**DREAM DOORS®**  
 NEW LIFE FOR OLD KITCHENS

Visit our showroom:  
 Belprin Park, Swinemoor Lane,  
 Beverley HU17 0LN

[Checkatrade.com](http://Checkatrade.com)  
 Where reputation matters



# Beverley author Helen Johnston and her fascination for Victorian crime and punishment

*Helen has always been interested in the history of criminology. She studied for a degree in Criminal Justice and then discovered history, when she became especially interested in the financial and social impact of long-term prison sentences after 1853 when prisons were built in the south of England to house prisoners sentenced to more than 28 days in jail.*

Before 1857, long sentences meant execution or transportation to Australia. Such sentences were often given for crimes such as sheep stealing (particularly if it was second offence), rioting and political protestation as well as murder.

But in 1830, Sir William Molesworth started campaigning to get the practice abolished as he said transportation did not act as a deterrent and the convicts could be used for public works in the UK. The costs of transportation were high, too. Australia was becoming more reticent to accept convicts in the same way that America had refused to take anymore in 1776 on their Declaration of Independence. But circa 160,000 people were transported to Australia until the practice ceased completely in 1868, when public execution also ended.

The majority of prisoners were not able to get back to the UK as passage was too expensive and they would not have the wherewithal to build their life back up when they returned, so they started a new life in Australia when they were released. Many families were left with no means of support when the convict was deported and ended up in the Workhouse. The change to the convict system to penal servitude ('doing time') would also ensure

families could remain together once the sentence had been served.

Helen, who has a PhD and is a Senior Lecturer in Criminology at Hull University, was able to secure a grant through the Economic and Social Research Council to look at the financial and social costs of imprisonment after 1853. This involved reconstructing the lives of 650 social convicts, finding out everything about them from cradle to grave.

Along with the colleagues who worked alongside her, Barry Godfrey and David J. Cox, she has written a book about 100 of these convicts.

The first long-term prisons were built in Chatham, Portland and Dartmoor. Convicts were sentenced to a minimum of 4 years (instead of being sent to Australia for 7 or more years), kept in isolation for 1 year and then put on public works. Prisoners at Chatham Prison built Chatham Dockyard, for example. The book gives insight into the social background, working lives, families and offences, how they were treated by the justice and penal system and how society regarded them.

It all makes for fascinating reading for anyone interested in Victorian England, crime and criminals or social and family history.

With TV programmes now revealing 'The Secrets from the Asylum', 'The Secret History of My Family' and 'The Secret History of Our Streets' along with 'Who do you think you are?' there is an interest in finding out how our ancestors lived – and whether there were any skeletons in our family closet!



Websites such as Ancestry.com and Find My Past make research so much easier and fun.

Although Helen doesn't recall there being any local convicts included in the book, Beverley did have its own jail for people sentenced to less than 28 days, many for debt or drunkenness.

Beverley is famous for having had lots of pubs!

The book is called 'Victorian Convicts: 100 Criminal Lives'. It is published by Pen & Sword Book Ltd, currently in hardback format only and is available from all good book shops and on-line book suppliers.



## Rumi's Indian Restaurant





**Get involved with our Charity Fundraising!**  
**Over £1500 donated in just 3 months!**

New Walkergate, Beverley, HU17 9EP  
 Telephone 01482 428642  
[www.rumisrestaurant.co.uk](http://www.rumisrestaurant.co.uk)

Mon - Thurs: 5.30pm - 11.30pm  
 Fri - Sat: 5.30pm - 12am  
 Sun: 5.30pm - 11pm

**TRY OUR NEW!  
 DELICIOUS  
 DESERT MENU**

**Tuesday and  
 Wednesday Special!  
 Mention Just Beverley  
 for a FREE!  
 desert after your  
 Main Course**





## Botterill & Co

Chartered Certified Accountants

**We are a modern and professional accountancy practice ideally located to serve businesses in Beverley and the surrounding area.**

**We utilise modern accounting technology to provide you with a cost effective, professional service.**

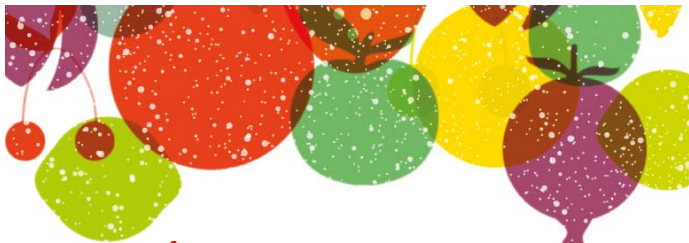
**Our services:**

- Annual Accounts
- Company Formations
- Management Accounts
- Cloud Accounting
- Tax Returns
- Bookkeeping & VAT

**For a free initial consultation please contact us:**

**Office: 01482 862240**  
**Mobile: 07966 051458**  
**Email: [gareth@botterillco.co.uk](mailto:gareth@botterillco.co.uk)**  
**Website: [www.botterillco.co.uk](http://www.botterillco.co.uk)**

**1st Floor Offices, 40 Norwood, Beverley, HU17 9EY**



## Ideas for days out with your family this Spring

*As a mum of 2 young children I am so glad Spring is here! No more (hopefully!) cold wet days to keep the children entertained and crowded indoor attractions to face.*

### Rumi's Summer Spiced Fruit Salad Recipe

- 6tspn granulated sugar
- ½ pint water
- 2 tbsp. syrup
- 2 pieces of star anise
- 1 inch cinnamon stick
- 1 clove
- Juice of ½ lemon
- 1 mango, peeled and cut into chunks
- 2 bananas, sliced
- 8 fresh lychees
- 2 cups strawberries, sliced
- 1 pineapple, cored and cubed

Put the sugar, water, syrup, star anise, cinnamon, clove and lemon juice into a pan and bring to the boil. Strain into a bowl and set aside to cool.

When cool, add the prepared fruits. Mix so that the fruits are covered with the liquid. Serve chilled!



I feel very lucky to live in this area; there are lots of great outdoor places to take children in and around Beverley, and you don't have to go far or spend a lot to have a fun, family day out. Now we can get outside again, here's my top 5 picks for places to go and things to do with children this Spring:

- Explore Nutwood, which is also known as Raywell Wood. These are woodlands with well-worn paths to look out for Gruffalo on! Park opposite Raywell Hall and pop into Millers Tea Room for great tea and cake afterwards.
- Go to the beach - there are several good beaches and seaside towns close by. We are spoilt for choice! I often take my family to Bridlington; it's a short drive but there's lots to do. Park at South Shore as the beach there is nice and quiet, then get the land train or walk to the regenerated area around the Spa.
- Don't forget the Westwood! A simple picnic with cow-spotting is a favourite activity.
- Pocklington is only 20 minutes away, yet this small town has a surprising number of things to do. Burnby Hall Gardens has really interesting and varied gardens that children enjoy exploring; a large lake with huge fish to feed and a large lawn for picnics. Just outside Pocklington is the Smile Café, a farmshop and café with a good outdoor play area and small indoor soft play, should the weather not be that great. And further up the road is Millington Woods, which are great to explore and has good paths.
- Just over the Humber Bridge is Water's Edge Nature Reserve and Visitor Centre. It's free to walk around, with boardwalks over the lakes so you can feed the ducks. Inside there are children's activities and a café with great food and kids meals.

The Hull & East Riding Mumbler is a website that lists things to do locally with children from playgroups and classes to days out and family events. For more ideas check it out at [www.hullandeastridingmumbler.com](http://www.hullandeastridingmumbler.com) or follow me on Facebook or Twitter @Hull\_ER\_Mumbler.

Rachael.



## Don't let crowds put you off! How to enjoy BIG events with small children

**UK Event Associates Ltd. attends hundreds of family events every year. Beverley itself is hosting the Tour de Yorkshire, Beverley Folk Festival and Beverley Races, to name but a few! And with these events comes the excitement of possibly HUGE crowds, which means safety concerns for parents, especially those attending with younger children.**

UK Event Associates Ltd.'s core business is crowd management and the safety of spectators. We want to share some of our experience to help you stay safe when attending some of these great events with the youngest members of your family! These tips may also come in handy for shopping centres, football matches and gigs, where there are lots of people.

The first consideration is ensuring you know where your kids are and, if you get separated, how you find them again. Having an action plan could help you become reunited! Here's a few suggestions which you might like to think about.

As silly as it sounds, make sure your children know your name! If you can teach your kids some basic information from a young age it can be invaluable. We recommend teaching kids their names, address and parents/ guardians name.

Put your child's name and your name and contact number on a wristband or even on a piece of paper tucked in their pocket. If you laminate the card/wristband, it can be used again and again.

You could keep it in your bag for when you go out with kids.

You can also add important info like allergies to these bands in case of a medical emergency. If your child gets separated from you, you can be confident that you can be contacted quickly.

It's a good idea to familiarise yourself with your venue/surroundings. Nine times out of ten when someone goes missing, especially in a large venue, the 'lost' person is still where they were!



So agree a meeting point which is easy to remember, even if that meeting point is staying put so that steps can be retraced.

Discuss beforehand the steps your children should take to find you again if they lose you. Depending on their age, this may include finding a Police Officer, a security guard or Lost Person's Information Point.

You might need to find someone to look after your other children while you go searching. Always have a photo of each of your children on your phone taken on the day so you know exactly what they are wearing. You will also have a lovely reminder of a great event you've been to with your kids.

It's easier said than done, but stay calm and composed. Keeping your stress under control really does help as you are more rational and able to think and answer the questions asked of you. Also, your child does not want to see you distressed as it might frighten them, too.

Remember that Event Officials deal with 'Lost Child' situations all the time and by using some of these tips, it isn't long before they are 'Found Children'.

UK Event Associates Ltd are available if you need any help planning your event or with crowd safety. Please don't hesitate to get in touch on **03333 441033!**

**Beckside Court, Annie Reed Road, Beverley, HU17 0LF. [www.ukeventassociates.co.uk](http://www.ukeventassociates.co.uk) [info@ukeventassociates.co.uk](mailto:info@ukeventassociates.co.uk)**



# Beverley Early Music Festival set to inspire young and old alike!

**Now in its 29th year, the festival has developed from its roots of a tourist-focussed event based on Beverley's unique history, to one which encompasses education, enjoyment and excitement for locals and tourists alike.**

As ever, the musicians performing the works (which cover seven centuries of European music) are extremely talented and a joy to hear – but this year many of these same artists are getting involved in educational sessions and workshops for school students.

Festival organiser, Delma Tomlin said "There is so much emphasis in schools nowadays around science, technology, engineering and maths (STEM subjects) that parents can be nervous about children wanting to take arts subjects.

This project allows different ages to integrate and mix with professional musicians to learn about career paths within music. "Early Music is a style of playing music in the same way as pop or hip-hop and is therefore as relevant today as it was when written, which is why we are keen to develop students to give them opportunities which they would not otherwise have. It's not necessary that children appreciate the place of Early Music – just that they appreciate the music itself. Our project with Beverley Grammar School and its feeder primaries, which is supported by the East Riding Music Hub, The Orchestra of the Age of Enlightenment (OAE) and the University of York, is unique."

Working with music teacher Zoe Hughes at Beverley Grammar School, 15 students have been trained to

become mentors and teachers within Keldmarsh, Walkington and Beverley Minster primary schools.

They work with the younger school children to reinterpret and recreate the music and story being studied – Purcell's Dido and Aeneas. Throughout the week leading up to the Festival, the OAE will work with the students and children, fine-tuning their new work ready for its performance at 5pm on Friday 27th May at Beverley Grammar School.

The story of Dido and Aeneas one of love and loss, happiness and sadness with jealousy, magic and naughtiness thrown in for good measure! Just Beverley is excited and fascinated to see what this amazing collaboration of such diverse ages and abilities comes up with! But grown-ups are not forgotten at Beverley Early Music Festival.

There is a workshop for flute/recorder trio-sonata groups led by Ashley Solomon, Florilegium's Director, which will provide accompanists for solos/duos who do not have their own accompanist.

For people interested in choral singing, Andrew Cawood, Director of Music at St Paul's Cathedral and of The Cardinal's Musick will be leading participants in studying some of the music included in their concert programme as well as a piece by Lassus. The music for the choral workshop will be made available upon booking.

More information about the Festival is available at [www.ncem.co.uk/bemf](http://www.ncem.co.uk/bemf). Bookings for all the concerts and workshops can be made online or by emailing [boxoffice@ncem.co.uk](mailto:boxoffice@ncem.co.uk) or by phoning **01904 658338**. Tickets can be printed out at home up to 2 hours before a concert.

Subject to availability, tickets are also available on the door, one hour before the concert. There are discounts available for students and a 'Saver' ticket for multiple events, which includes the best front nave seats for the Minster concerts.



## Competition



Beverley Early Music Festival is offering free tickets for a family of 2 adults and 2 students (worth up to £60) for the Florilegium Concert on Friday 27th May at 7.30pm in St Mary's Church.

Florilegium are 25 years old and marking their return to Beverley by playing 2 of Bach's Brandenburg Concertos (including Brandenburg Concerto No 5, which is on next year's music GCSE syllabus) and CPE Bach's Flute Concerto in D minor, along with an Overture by Leclair.

To win these tickets, all you have to do is answer the following question:  
**Beverley Early Music Festival celebrates a significant anniversary next year! For how many years will it have been an annual feature in the Beverley festival calendar in 2017?**

E-mail your answer to [info@justbeverley.co.uk](mailto:info@justbeverley.co.uk) by **May 13th**. Be prepared to participate in publicity for both Just Beverley and Beverley Early Music Festival. Good luck!



## Book now for Afternoon Tea at Lempicka

An exquisite and delicious Afternoon Tea Service at Lempicka Café is now being served daily. Treat yourself to our elegantly prepared Afternoon Tea including homemade baked cakes and tarts, savoury sandwiches, speciality loose leaf teas and our inspiring Kir Royale aperitif.

**Please call 01482 866960 for reservations.**

Visit Lempicka Café & Bistro for delicious all-day breakfasts, tasty lunches, home-made baked goods and our renowned espresso based coffees.  
Luxury 4 star self catering/bed and breakfast holiday accommodation also available at Lempicka Apartment and Cottages

**Lempicka Café & Bistro, 15 Wednesday Market,  
Beverley, HU17 0DH**



# The Legendary PP Arnold headlines Burton Agnes Jazz and Blues Festival

**Beverley is becoming renowned for its festivals, particularly music festivals; we have Folk, Blues, Classical, Early Music and New Paths but no dedicated jazz festival actually in the town.**

However, we do have one within striking distance! Now in its 10th year, the Burton Agnes Jazz and Blues Festival runs from July 1st-3rd with its usual eclectic mix of acts – everything from trad to fusion to afro-beats to cool to Gospel to soul and Latin. For jazz and blues fans, Burton Agnes is not to be missed! This year there is an extra special reason to go – pop legend PP (Pat Cole) Arnold, will be headlining on the Saturday night.

Just Beverley was very excited to be offered an exclusive interview with Ms Arnold – who has been associated with almost every well-known pop artist from the mid-60's. She came to the UK as one of Ike and Tina Turner's backing singers - and was persuaded to stay by none other than Mick Jagger!

She said "I lived in a flat with Glyn Johns as flat mate when I first moved here from America. He recorded my first album, 'The First Lady of Immediate' when I signed as a solo singer to Andrew Loog Oldham's Immediate Records. The Small Faces were my stable-mates. Stevie Marriott and I hit it off straight away – he was like my soul brother! I sang backing vocals on their hits 'Itchycoo Park' and 'Tin Soldier' before I had my big hits, 'The First Cut is the Deepest' which was written by Cat Stevens, and 'Angel of the Morning'. I toured with other 60's bands when those songs were in the charts. I remember going to York, Leeds, Harrogate and Cleethorpes, but I don't recall ever having been to Beverley. My backing band at the time was The Nice with the late Keith Emerson on keyboards.

I'm going to do a tribute to him at Burton Agnes - 'Moody's Mood for Love' was one of his favourite songs. On the 26th July it's the 50th anniversary of PP Arnold and The Nice."

Pat is recording a new album to coincide with the release of her autobiography, which she has been writing since 1994 when there was a hiatus in her career. But then things started taking off again and she was in demand as a collaborator – Barry Gibb, Primal Scream, Eric Clapton, Peter Gabriel, Rod Stewart, Jimi Hendrix, Ocean Colour Scene, Roger Waters and Mick Jagger are just a few of the artists who she has worked with.

Pat's life has not been without tragedy. Her daughter died in a car accident and whilst Pat was performing in 'Starlight Express' as Belle the Sleeping Car, she was also involved in a car crash. The damage to her legs was so bad that Pat was told she would never walk or dance again. But by using self-determination, prayer and alternative therapies, she proved the doctors wrong.

Pat said "I was brought up as a Protestant but I am extremely spiritual having moved away from the institution of religion. I meditate 3-4 times every day, using different mantras and centering thoughts. I thank God for being so blessed that I can still be doing all of these things. God gave me a gift which I can use to make people happy – He is my manager. But even though I have been singing since I was 4 years old, I am still learning. I now work with a vocal coach and think my voice is better than ever."

As well as singing, Pat now writes her own material, some of which will be included on her new album



and in her set at Burton Agnes. She said: "In the past, so many people have wanted me to cover their songs, there was no encouragement to write. But I now write Gospel, soul, ballads and even rock. I still enjoy covers, though – I'm currently recording Sandy Denny's 'I'm a Dreamer'. Pat is also involved as a consultant on The Small Faces' musical 'All or Nothing' with Stevie Marriott's daughter, Molly, which is now showing in London and features her character. She also performs Small Faces' Tribute Nights! On top of this she is a Reiki Therapist and into nutrition for healing. She told Just Beverley that she considers herself a healer and this keeps her grounded so she doesn't get caught up in the 'celebrityness' of the music scene. She is also involved in The Prince's Trust.

She said "I love doing what I do! And I am so looking forward to singing at Burton Agnes where I will be singing more of her own material as well as standards from my back catalogue, including 'The First Lady' album. I have an extensive repertoire and am so pleased The Ray Russell Band will be backing me. Do come and say hello!" We can't wait to accept the invitation!

Tickets are on sale for Burton Agnes Jazz and Blues Festival now. July 1st-3rd 2016.

**Email: [office@burtonagnes.com](mailto:office@burtonagnes.com)**

**[www.burtonagnes.com/Jazz\\_Festival.html](http://www.burtonagnes.com/Jazz_Festival.html)**

## faith

Faith Hair & Beauty, Unit 1, Lincoln Way, Beverley H17 8RH  
Telephone: 01482 872871



**Huge new range of colours for your hair – including NEW on-trend pastels, violets and reds**



Introducing **OLAPLEX INTENSE TREATMENT** for hair-colouring and after-care. **OLAPLEX** repairs broken bonds in hair to give **AMAZING** results

**OLAPLEX** takes colouring and treatment to a new level.  
**Why not call in for a free, no obligation consultation. You won't be disappointed!**

**£10 OFF**  
any colour if you mention  
**JUST BEVERLEY**  
(offer expires 31/5/2016)

## 30% more music at Beverley Folk Festival

**After last year's highly successful festival with such diverse acts as The Bootleg Beatles and Hayseed Dixie which attracted people who have never been to the Folk Festival before, there are even more changes afoot for this year!**

With workshops for everything from creative writing to dance to ukulele playing; the Beverley Film Society showing 3 films and 'Words On the Westwood' poetry and prose from comedic poet Les Barker, The Argy Bargy Poets, author Ian Clayton and more there is something for everyone.



Also this year, there will be a Folk Club! 5 guest clubs from Grimsby, Cottingham, Keyingham, Holmpton and Hull will host each of the 5 sessions bringing their own unique flavour to the event! Building on the adage of more is better it means there is more going on in the Festival Village, too. The Village Green Stage will be programmed continuously during the day with music, dance and a few surprises and it's very likely that the Food Marquee which sits alongside the multiple food outlets, will attract buskers, too. As might the beer tent!

Alongside children's activities, the Westwood Sessions for teenagers and young adults, crafts, shopping opportunities, free attended parking and camping, the Westwood is definitely the place to be between June 17-19th.

# What's On IN BEVERLEY

## Monday 2nd May

### • May Day Raceday

Beverley Racecourse. Gates open 10am, first race 1.45pm. £20/£13/£5. Lambs, chicks and baby rabbits, bungee trampolining, face painting, giant bumblebees, a live Ceilidh band and Maypole dancing combined with a full afternoon's racing.

### • ArtERY live presents Sunday's Child 'My Name is Saoirse'

St Nicholas Community Centre, Beverley. 7.30pm. Contact Tourist Information 01482 391672.

### • The Processed Pea presents Mean Mary in Concert

The Light Dragoon, Etton. 8pm. £10.50.

## Thursday 5th May

### • Subtle Flame Poetry Group

Tiger Inn, Lairgate. 8.30pm. £2.00. Competition topic – Bark/Barque. Poems after the break on any topic. [www.facebook.com/subtlepoets](http://www.facebook.com/subtlepoets)

## Friday 6th May

### • Creating Space for God – Jazz Church

Meet in the schoolroom behind Norwood Church at 6.30pm for refreshments before an hour of worship with a difference in Norwood Chapel from 7pm.

## Saturday 7th May

### • Cadenza present 'All things Bright and Beautiful' charity concert with Danielle Thomas

Toll Gavel United Church. 7.30pm. £7. In aid of Christian Aid. Tickets from 01482 867573.

### • East Riding County Choir presents Dvorak's 'Stabat Mater'

Beverley Minster. 7.30pm. £16/£12/£8/free for children under 16. Tickets from Beverley Tourist Information centre 01482 391672.

## Sunday 8th May

### • Vintage, Retro and Handmade Fair

Beverley Racecourse. 10am – 4pm. £2.

### • St John of Beverley Festival

Festal Evensong, 5.30pm. Preacher: The Rector of Hexham Abbey, Dr Dagmar Winter.

## Monday 9th May

### • Norwood Nights presents 'Mamma Mia'

Community cinema in the schoolroom behind Norwood Church. 7pm. Free. Refreshments and raffle. Call Beverley Community Lift on 01482 868082 if you need transport.

### • Aled Jones Cathedral Tour -

<https://beverleyminster.org.uk/8952-2/>

Beverley Minster. 7.30pm. £55/£35/£25/£19.50. Tickets 0844 888 999 [www.ticketline.co.uk](http://www.ticketline.co.uk); 0844 844 0444 [www.ticketmaster.co.uk](http://www.ticketmaster.co.uk)

## Tuesday 10th May

### • Afternoon Racing

Beverley Racecourse. First race 2pm. £20/£13/£5

## Thursday 12th May

### • Beverley Connections Networking

Parkway Cinema. 6pm. £5. Open to all businesses. Relaxed networking.

## Friday 13th May

### • Ladies Night

Armstrong Social Club. 8pm. £18/£15. Top drag queen, 3 top male acts and spectacular opening act. Disco, hotdogs and guaranteed fun! Booking essential 01482 882999

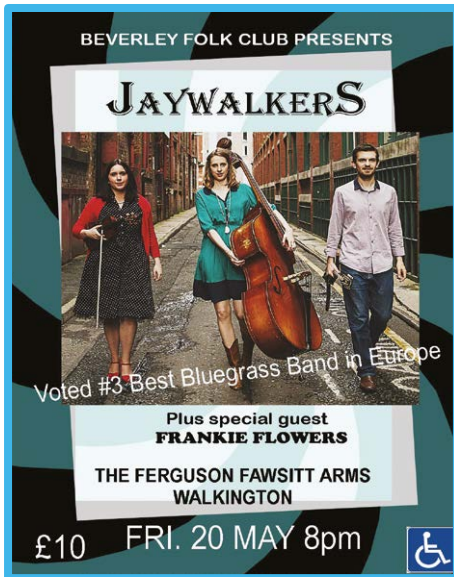
## Saturday 14th May

### • Beverley Community Choir presents 'An Evening of Music and Song' charity concert

Toll Gavel United Church. 7.30pm. £7/£5. Tickets from Beverley Tourist Information 01482 391672.

## Friday 20th May

### • Beverley & District Chamber of Trade: Graham Stuart MP 'Understanding the Ins and Outs of the Referendum



### on Europe'

Venue to be confirmed. 5pm. Free. Refreshments available.

### • Beverley Folk and Roots Club presents Jaywalkers and Frankie Flowers

The Ferguson Fawsitt Arms, Walkington HU17 8RX. 8pm. £10. Tickets from Beverley Tourist Information, Minster Records and Costcutter, Walkington. [www.beverleyfolkclub.com](http://www.beverleyfolkclub.com)

## Saturday 21st May

### • Me and My Dad Breakfast

Beverley Minster Parish Hall. 9.30am

### • Organ Recital by Roger Tebbet

Beverley Minster. 6pm. £6 on the door (under 18s free)

## Sunday 22nd May

### • Dementia Friends Public Awareness Session

Beverley Leisure. 11.35am – 12.20pm. Free. Information session for people wanting to learn more about dementia.

## Monday 23rd – Wednesday 25th May

### • Sasha Regan's All Male HMS Pinafore

East Riding Theatre 7.30pm. £18.50/£17.50/£16.50/£9. Presented in partnership with The Spa, Bridlington, this well-loved Gilbert and Sullivan production is joyful, witty and fun for all the family.

## Thursday 26th May

### • Beverley Blokes Book Bash – John Fewings, Clive Wastling, Malcolm Brooks & John Brien

Deli No 1, Flemingate. 7.30pm. £3.00 includes glass of 'something bubbly' plus £1 voucher towards any book being promoted. Book launches and readings from local authors plus musical entertainment.

## Friday 27th May

### • Beverley Lions Grand Charity AM/AM Golf Stableford

Driffild Golf Club. £160/team includes refreshments on arrival and meal on completion. Great prizes! Bookings 01964 551224. [h.burton@btconnect.com](mailto:h.burton@btconnect.com)

### • Beverley Early Music Festival – Consone Quartet: Mozart & Mendelssohn

Toll Gavel United Church. 2pm. £12/£10/£5. [www.ncem.co.uk/bemf](http://www.ncem.co.uk/bemf)

### • Beverley Early Music Festival – The Age Old Story

Beverley Grammar School. 5pm. £3. [www.ncem.co.uk/bemf](http://www.ncem.co.uk/bemf)

### • Beverley Early Music Festival – Florilegium: The Bach Family Entertains

St Mary's Church. 7.30pm. £25/£20/£5

Tell us about your event!

E-mail [info@justbeverley.co.uk](mailto:info@justbeverley.co.uk)

Telephone **01482 679947**

For more events visit  
[justbeverley.co.uk/events](http://justbeverley.co.uk/events)

[www.ncem.co.uk/bemf](http://www.ncem.co.uk/bemf)

## Saturday 28th May

### • Beverley Early Music Festival – Trio-Sonata Workshop Day

St Mary's Parish Hall. 10.00am. £18/£6 (observers £6) [www.ncem.co.uk/bemf](http://www.ncem.co.uk/bemf)

### • A Very British Raceday

Beverley Racecourse. Gates open 11.30, first race 1.50pm. £20/£13/£5. Dress in red, white and blue to enter the best-themed British outfit competition; cheer on the donkeys in the Donkey Derby, try your hand at the side stalls and join in a rousing 'Last Night of the Proms' singalong after the racing at about 5.45pm.

### • Beverley Early Music Festival – Elizabeth Kenny and Elin Manahan Thomas

Toll Gavel United Church. 1pm. £15/£13/£5 [www.ncem.co.uk/bemf](http://www.ncem.co.uk/bemf)

### • Beverley Early Music Festival – The Restoration of St James' Church, Warter

St John of Beverley RC Church. 4.30pm. £7.50 [www.ncem.co.uk/bemf](http://www.ncem.co.uk/bemf)

### • Beverley Early Music Festival Concert by Candlelight – The Cardinal's Musick

Beverley Minster. 7.30pm. £25/£20/£15/£13/£5. [www.ncem.co.uk/bemf](http://www.ncem.co.uk/bemf)

## Sunday 29th May

### • Beverley Early Music Festival – Choral Workshop led by Andrew Carwood

Hexagon Music Centre. £18/£6 (observers £6) [www.ncem.co.uk/bemf](http://www.ncem.co.uk/bemf)

### • Beverley Early Music Festival – Lucie Skeaping 'Singing Simpkin and other Bawdy Jigs'

St Mary's Parish Hall. 2.30pm. £7.50 [www.ncem.co.uk/bemf](http://www.ncem.co.uk/bemf)

### • Beverley Early Music Festival – Fitzwilliam String Quartet play Beethoven

St James' Church, Warter. 7.30pm. £20/£18/£5 [www.ncem.co.uk/bemf](http://www.ncem.co.uk/bemf)

### • NSPCC Big Board Game Day

Armstrong Social Club. 12noon. £1 entry plus a donation to play tournaments, games and challenge Scrabble Champion Andy Goodwin at Speed Scrabble. Win prizes, including a star prize! Board games wanted! [www.armstrongsocial.co.uk](http://www.armstrongsocial.co.uk) Tel 01482 882999

## Monday 30th May

### • Beverley Early Music Festival – The Flautadors Recorder Quartet

St Mary's Church. 1pm. £15/£13/£5. [www.ncem.co.uk/bemf](http://www.ncem.co.uk/bemf)

### • Beverley Early Music Festival Concert by Candlelight – University of York Chamber Choir and Baroque Ensemble and Compagnia d'Istrumenti with guest musicians

Beverley Minster. 7.30pm. £20/£15/£12/£10/£8/£5 [www.ncem.co.uk/bemf](http://www.ncem.co.uk/bemf)

## Thursday 2nd June

### • Subtle Flame Poetry Group

Tiger Inn, Lairgate. 8.30pm. £2.00. Competition topic – Medium. Poems after the break on any topic. [www.facebook.com/subtlepoets](http://www.facebook.com/subtlepoets)

## Friday 3rd June

### • Corinne West

House Café, East Riding Theatre. 7.30pm £10. Californian singer/songwriter entertains. [www.eastridingtheatre.co.uk](http://www.eastridingtheatre.co.uk)

## Sunday 5th June

### • Teenage Market

Flemingate. 10am – 4pm. Free. Giving young people a free platform to showcase their creative talents. [www.theteenagemarket.co.uk](http://www.theteenagemarket.co.uk)

17  
18  
19

JUNE

A JEWEL IN EAST YORKSHIRE'S CROWN  
BEVERLEY RACECOURSE

# BEVERLEY FOLK FESTIVAL 2016

OVER 80 ACTS

A FAMILY FRIENDLY FESTIVAL

CONCERTS, SESSIONS, DANCE  
COMEDY, LITERATURE, FILM  
WORKSHOPS, LATE NIGHT CLUB  
CHILDREN & YOUTH EVENTS

## OUR BIGGEST LINE UP EVER



## BURSTING WITH MUSIC



**TRADITIONAL TO MODERN FOLK - ROCK - AMERICANA - JAZZ - BLUES**

**KATE RUSBY - LINDISFARNE STORY BAND - STEELEYE SPAN**

**ANIMALS & FRIENDS - ACOUSTIC STRAWBS - SAM CARTER - TIM EDEY  
STEVE TILSTON & FRIENDS - THE YOUNG'UNS - GILMORE & ROBERTS**

**THE ROAMIN JASMINE (USA) - WILD PONIES (USA) - JEZ LOWE - MAIA - FLATS & SHARPS**

**JOE BROUGHTON'S CONSERVATOIRE FOLK ENSEMBLE - THE GOAT ROPER RODEO BAND - ROGER DAVIES**

**BILLY LEE AND THE SWAMP CRITTERS (USA) - BUFFALO GALS STAMPEDE - ANTHONY JOHN CLARKE**

**THE GRAND OLD UKE OF YORK - MERRY HELL - THE CHURCHFITTERS - CELTARABIA AND LOTS MORE...**

## A WEEKEND OF FUN - EVENTS FOR ALL

Children's Marquee – Outdoor Stages – Undercover Venues – Great Food

Craft & Music Stalls – Street Shows – Real Ale Bars – Camping

Free Parking – Town Centre Shuttle Bus – FREE ENTRY for Under 12s

**WEEKEND, DAY, HALF-DAY & MAIN STAGE EVENING TICKETS**

BOOKINGS  
AND INFORMATION

[BEVERLEYFESTIVAL.COM](http://BEVERLEYFESTIVAL.COM)

TICKETS DELIVERED TO YOUR INBOX

#BevFest



01377 219112

New caterers  
win praise for  
food and  
drink

# 'Royle' Standard at Beverley Golf Club

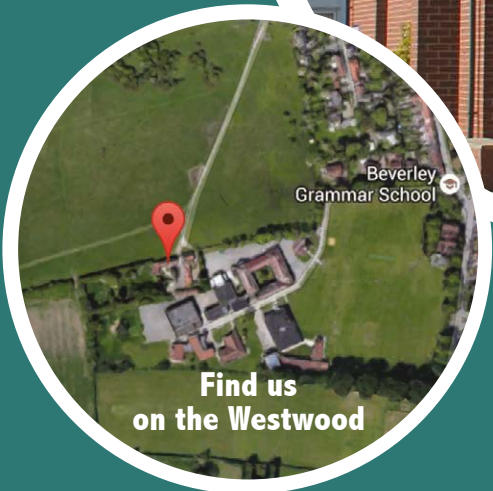
Indoor teaching  
studio proves  
a massive hit

*New Stewards - Steve and Jayne Royle*

*Superb course on the town's Westwood*



*Professional golf team  
at your service*



**Find us  
on the Westwood**

*New members and  
visitors welcome*



*Excellent dining facilities*

**Westwood, Beverley, HU17 8RG**

**Pro Shop: 01482 869519 · Steward: 01482 867190**

**email: [golf@beverleygolfclub.karoo.co.uk](mailto:golf@beverleygolfclub.karoo.co.uk)**

