

just

ISSUE 58

BEVERLEY

PICK ME
UP, I'M
FREE



HUNTERS

5 YEARS ON - AWARD WINNING ESTATE AGENTS

NEWS, WHAT'S ON, LIFESTYLE, FEATURES, PUZZLES, PHOTOS & MORE



Ardent Fireworks

**QUALITY
FIREWORKS**

over 100 lines from only £4.00

OPEN 10am - 5.30pm

Visit our website at
www.ardentfireworks.co.uk

Annie Reed Road
Grovehill Industrial Estate

Beverley

HU17 0JT

Tel: 07962 225 600

You must be over 18 to purchase fireworks





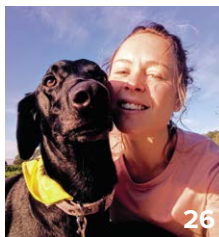
18/19



11



12



26



29



30

CONTENTS

Letters from the Editors **3**
News **4, 5, 7, 11**
PARKWAY CINEMA 6, 7
EAST RIDING THEATRE 33

FEATURES

New on the Westwood **12**
Fabian Perez at Trent **14**
Hunters Celebrate **18, 19**
Winter Menu at The Kings Head **21**
Snowman at the Minster **29**
Stipenda Celebrate **30**

REGULARS

Art & Culture **12, 23, 29, 32**
Competitions **7, 11, 21**
Competition Winners **4, 6**
Countryside **9**
Fashion **10, 20**
Gardening **24**
Literature **32**
Motoring **26**
Pets **26**
Puzzles **27**
Sport and Fitness **5, 28**
Travel **23**
View from the Council **16**
What's On **34**
Walking with Ian Richardson **35**

Competition Terms and Conditions

Competition answers should be emailed to competition@justbeverley.co.uk before the closing date with the competition title in the subject field. Include your name, address and daytime contact telephone number along with your answer. Winners will be notified within 1 week of the closing date and MUST be available for publicity purposes for **Just Beverley** magazine, website and Facebook page and the prize provider. Photographs are usually taken the weekend after the prize-winners have been notified. The judge's decision is final. No cash alternative is offered. Details may be used for marketing purposes by **Just Beverley** and the prize provider and for website analytics by **Just Beverley**.

Contributors:

Julian Minshall, Lara Blythe, Rich Manville, Linda Johnson, Colin Raynor, Sam Walton, Clint Wastling, Emma Knowles, Lynne Auton, Ian Richardson, Richard Hayes, Tony Barker, Jane Dale, Dave Tute, Lauren Middleton, Olivia Peace, Pauline Kirk-Haven.

REMEMBER!

If you see examples of anti-social behaviour or other types of low-level crime, do report it to the appropriate authorities. Without knowledge, the Police and Council cannot put in place processes and procedures to combat it! Cyclists without lights, on one wheel, traveling the wrong way down a one-way street put other road-users' in danger - let the Police know immediately!
POLICE - Emergency 999, Non-urgent 101.
ANTI-SOCIAL BEHAVIOUR (East Riding of Yorkshire Council) - 01482 393939.

You can pick up the magazine from:

Parkway Cinema, Flemingate, Beverley Tourist Information, Beverley Library/Treasure House, Tesco, Morrisons, East Riding Leisure Beverley, East Riding Theatre, Browns café, Beverley News, Boyes, Tesco café, Colette and Tyson Garden Centre, Beverley Garden Centre, Cherry Tree Garden Centre, Mace News Saturday Market, Co-op Food Lincoln Way, Tickton News, Costcutter in Walkington, Molescroft News, Grovehill Convenience Store, Maple News, Leconfield PO, Willerby News, Poundland, Halfords, East Riding Community Hospital, Bishop Burton PO, Leven PO, The Altisidora, Cherry Burton PO, Barkers of Cottingham, Middleton-on-the-Wolds PO, Light Dragon at Etton, Gnu at North Newbald, Monks Walk, Hayride, Sally's Deli, Ferguson Fawcett at Walkington, THECREATIVELAB, health centres, churches, cafés, hairdressers and more!



Please pass your Just Beverley on or recycle it responsibly.
Printed by: Jadan Press.

LETTER FROM THE EDITORS



Firstly, it's great to have Lara working with **Just Beverley**, bringing new ideas to our publication. We're both delighted to have Linda as a contributor - read "View from the Council Chamber" for more details! It all makes for interesting reading and

keeping everyone up to date with news and events in and around Beverley.

Everyone is looking forward to the festive season, Bonfire night seems to get us in the mood. Support the Westwood Lions as much as you can, they work hard throughout the year!

Christmas Lights switch on is Friday 22nd November at Flemingate. The traditional switch on with carol singers is taking place on Sunday 24th November in Saturday Market. Lots to keep you entertained this month including Talegate Theatre Productions 'Sleeping Beauty' at Parkway Cinema and Theatre. **Just Beverley** have some VIP tickets up for grabs - don't sleep on it - get your tickets now!

Put those dates in your diary to brighten up the festive season!

Julian.



Thanks to everyone at the **Just Beverley** 'family', who have given me such a warm welcome to my new role. I really look forward to getting stuck in and keeping up to date with all that's happening in and around Beverley!

A busy time of year coming up when everyone's diaries fill up fast! Plenty to do and get involved in despite the dark nights and colder weather. Christmas lights always brighten the town as well as people's faces. Fairy lights can also lift the mood when the weather can't!

Lots to look out for in the magazine this month, including a super competition from Brook Taverner!

Enjoy the month whatever you get up to - from firework displays to seasonal shows, there's something for everyone.

Lara.



GET IN TOUCH WITH US:

Website: justbeverley.co.uk
Email: info@justbeverley.co.uk
Telephone: 01482 679947
Twitter: @JustBeverley
Facebook: facebook.com/justbeverley

If you would like copies for your business to distribute to staff and customers, call **Just Beverley** on **01482 679947**.

ARDENT FIREWORKS OPENS ON ANNIE REED ROAD!

What started as chance opportunity to be responsible for the fireworks display at a family wedding, has grown into a thriving business for Craig of Ardent Fireworks!

Ardent Fireworks offer 140 different lines of fireworks including low-noise fireworks - everything needed for very low-key home displays as well as fully designed large-scale shows.

They even offer a bespoke design service to create your own magnificent display.

The company has 17 years of experience in firework displays, and supply the fireworks to many pubs and villages across the county for their events. Craig and his team have been involved in displays all over the country with past venues including York Racecourse, Cave Castle, Rudding Park and Hazlewood Castle. With a permanent store in Pocklington, Ardent Fireworks has now opened a pop-up store in Beverley. The store, located down Annie Reed Road, is open until the 5th November (10am - 5.30pm) and between the 27th to the 31st December just in time for the New Year celebrations!



SANDRA CELEBRATES 30 YEARS AT SSAFA!

On Wednesday 16th October 2019 Mrs Sandra Staples, East Yorkshire Branch Secretary of SSAFA, the Armed Forces Charity, was awarded her 30 year certificate for voluntary work with SSAFA by HM Lord-Lieutenant of the East Riding of Yorkshire the Hon. Dame Susan Cunliffe-Lister, DCVO and Lieutenant General Sir Gary Robert Coward, KBE, CB, Chairman of SSAFA.



The event took place at The Beverley Arms Hotel where a wonderful lunch was laid on.

A further 18 very special guests were invited by the Chair of the East Yorkshire Branch, Michael H. Menzies-Baird, who said that Sandra Staples was an amazing person with an incredible work ethic of which any employer would be proud to have within the team.

SSAFA are very lucky to have such a wonderful individual onboard. Sandra has extraordinary talent and aims to set an example to others by giving up her time to help those in need within the Armed Forces Community (Navy, Royal Marines, RAF, Army, Reserves and their families) whether serving or veterans, on a daily basis.

Volunteers such as Sandra are very special. SSAFA needs to celebrate such momentous events as this.



Botterill & Co

Chartered Certified Accountants

We are a modern and professional accountancy practice ideally located to serve businesses in Beverley and the surrounding area.

We utilise modern accounting technology to provide you with a cost effective, professional service.

Our services:

- Annual Accounts
- Company Formations
- Tax Planning
- Payroll
- Management Accounts
- Cloud Accounting
- Tax Returns
- Bookkeeping & VAT

For a free initial consultation please contact us:

Office: 01482 862240
Mobile: 07966 051458
Email: gareth@botterillco.co.uk
Website: www.botterillco.co.uk

1st Floor Offices, 40 Norwood, Beverley, HU17 9EY

COMPETITION WINNERS



The winners of the £50 vouchers to use at Unique salon are: Andrea Gaden, Joanne Kaye and Janice Fowler shown here being presented with their vouchers from Jono. Also below is winner, Christine Waterworth. Our other winner was Sylvia Foster who was unable to make the presentation.





SUCCESS FOR JASON HUBY AND DOGS RUBY AND HOPE!

Jason Huby, local businessman and dog agility handler, recently found out his dog Ruby had qualified to compete at the Team GB International Tour Final in March 2020!

There are a number of ways to reach the GB Squad, and this year one way was to accumulate points at 6 qualifying heats. Jason, who competes in blue, and Ruby only managed two heats but finished 9th overall and consequently qualified to run in the final at the UK Team GB Performance Weekend in March 2020 - it is from this final that the Team GB Squad is chosen.



Ruby is not new to success and recently finished fourth in a Championship Class Final that took place earlier this year at Weardale. To qualify for the final, Ruby competed against other grade 7 dogs (the highest grade) and came out in the top 20 combined results from two qualifiers held on the same day.

In other trials, Hope, also an agility dog who now sits at grade 5, was competing against grade 7 dogs and came out second only to a championship winning dog! This year Ruby also qualified for the second year running for the Mixed Pairs Final, which was held at the 'Discover Dogs' event at the Excel Centre in London on 12/13th October.

Sadly, there are no champion-class trainers in the area, meaning Jason has to travel to Lincoln once, sometimes twice a week! Jason also travels to various locations around the country to train with top-level trainers. In a normal week, training costs, in addition to fuel and time away from work all add up, so funding Ruby's and Hope's progress is hard work. Jason is looking for sponsorship to cover the costs of training Ruby and Hope, if you think you can help - get in touch!

BEVERLEY COMMUNITY LIFT LAUNCHES VOLUNTEER RECRUITMENT DRIVE

Beverley Community Lift (BCL), the East Yorkshire community transport operator, has launched an appeal for new volunteers in the county as the charity approaches its 50th anniversary year.

The service helps dozens of people every week in the East Riding with car and minibus transport services, particularly those who have difficulties using public transport or have no access to a car.

Manager Fiona Wales says: "Our successful service has depended on the great work of volunteers over the last half-century and they enjoy providing an invaluable service to the public. As demand for our transport rises, we need more people to help in various parts of the East Riding."

The charity needs car drivers, minibus drivers and passenger assistants. Full training will be given.

Drivers: use their own car to provide essential door-to-door transport for registered passengers. Individuals need to be over 25 with a full licence and no more than six penalty points.

Minibus Drivers: Beverley Community Lift also operates services to various East Riding towns and day trips to popular destinations. Minibus drivers need to be 25 or over and have a D1 driving licence.

Passenger Assistants: Minibus drivers enjoy the assistance of a volunteer to help with journeys and supporting passengers, especially for shopper services and day trip. This role may involve assisting customers with wheelchairs and handling money.

For full details, please call **01482 868082**, email manager@bclift.org.uk, or visit www.bclift.org.uk for information about the charity and the roles.

WHAT DO CHARITIES DO? PUPILS CAN FIND OUT AS LEPROA LAUNCH NEW EDUCATION PROJECT!

The international health charity Leproa has launched a new school education project this year, giving pupils a fabulous opportunity to learn more about the world they live in and become a global citizen.

Through the project Leproa, which has worked on fundraising initiatives in UK schools for more than 25 years, supports pupils to understand the very different life circumstances of those who live in other parts of the world and offers the chance for students to work together and improve those lives. It enables pupils to identify and stand against discrimination, raises awareness of volunteering and encourages the development of new skills.

Developed by teachers and experts working in international aid, the project is aimed at Year 7 pupils and is linked in to the Key Stage 3 Curriculum (but can be adapted for primary levels) and is delivered by a Leproa representative. All materials are free and a lesson plan is included. All your school needs to be is enthusiasm!

Leproa, founded in 1923, works internationally to beat Leprosy, which despite being curable, still attracts a lot of prejudice. If left it is a debilitating disease which precludes access to education and employment and can result in social ostracisation. Leproa is passionate about raising awareness of Leprosy and its impact on this and future generations.



For further information about this and other Leproa projects please contact the local Leproa representative Jill Richardson on **07494 866184** or email JillR@Leproa.org.uk.

**Four Generations,
Giving Over 125 Years Service**

Herbert 1870-1962	Eardley 1908-1986	Geoffrey 1939-2015	David 1964
----------------------	----------------------	-----------------------	---------------

H. KEMP & SON LTD.
FUNERAL DIRECTORS
(ESTABLISHED 1893)

SAIF
INDEPENDENT
FUNERAL
DIRECTORS

Golden Charter
Funeral Plans

SAIF
INDEPENDENT
FUNERAL
DIRECTORS

- Funerals Respectfully Conducted
- 24 Hour Out of Hours Service
- Free Advice & Support
- Private Restrooms
- Prepaid Funeral Plans Available
- Finance Options Available

Tel: 01482 844695
www.hkempandsonltd.com

259 Hallgate, Cottingham, East Yorkshire, HU16 4BG
Fax: 01482 843898
Email: hkempandsonltd@gmail.com



EVERY THURSDAY AT 10.30am
(doors open 9.45am)

Join us for a free brew and a natter and enjoy some great films on Beverley Parkway's Big Screen. Only £4.20 with drink and biscuits included. Aimed at 55s and over. Films subject to change.

Thursday 7th November -

The Goldfinch Starring: Nicole Kidman

The Mustang Starring: Matthias Schoenaerts

Thursday 14th November -

The Lion King Starring: Donald Glover

The Goldfinch Starring: Nicole Kidman

Thursday 21st November -

Hotel Mumbai Starring: Dev Patel

The Lion King Starring: Donald Glover

Thursday 28th November -

Hustlers Starring: Jennifer Lopez

Hotel Mumbai Starring: Dev Patel

COMPETITION WINNER



Congratulations to Mally Shields (pictured here with Carina Birrell) who won a pair of tickets to 'Harry Birrell Presents Films of Love and War'.

PENGUIN PARTIES



**ONLY
£195**

- Suitable for ages 5 to 12
- Up to 40 guests (additional charge for extra guests)
- Party games in a private function room with Parkway Penguin
 - Tea and coffee for parents on arrival
- Personal Photo montage on screen followed by your own film screening

For more information, please contact a member of staff

These are the films scheduled to open in October/November - all are subject to change. Check out up-to-date cinema listings at www.justbeverley.co.uk/cinema-times



31st October



1st November



1st November



5th November



8th November



8th November



15th November



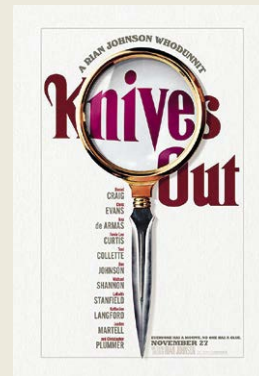
15th November



15th November



22nd November



27th November



29th November

YOUR LOCAL INDEPENDENT CINEMA



PARKWAY PANTO'S JUNIOR CHORUS

The Parkway Panto is a yearly tradition for many families in Beverley. Pantomime is inclusive to all ages and brings everyone together from grandparents to great grandchildren to enjoy some festive fun. It is a great reason to get together as friends and family, forget daily life and laugh together. As pantomime is based on traditional fairy tales it tells stories of love, acceptance and joy - exactly what we need over Christmas.

A little way TaleGate Theatre make an impact on the local community is with the junior chorus. We are thrilled to once again be working with thirty dancers who represent over ten dance schools from Beverley. They are having a fantastic time rehearsing with local award winning dance teacher Laura Bulless. The dance chorus bring extra life and excitement to the production every year.



SLEEPING BEAUTY COMPETITION

Just Beverley, Parkway Cinema and TaleGate Productions have joined together to give you a fantastic VIP experience to see 'Sleeping Beauty', at Parkway Cinema's Theatre on Saturday December 14th or Sunday 15th at a showing of the winner's choice.

A family of four (at least one adult) can get into the festive spirit with pre-show drinks, best seats in the house to see the show, meet the cast afterwards and have pictures taken with the actors in their costumes by Just Beverley!

All you have to do to be in with a chance of winning this great prize is this answer the following question:

What is the name of the Theatre Company putting on the production?

Send your answer by email to competition@justbeverley.co.uk by November 18th. Put 'Sleeping Beauty' in the subject box with your name, address and daytime telephone number in the body of the email. The winner will be the first name drawn out of the hat after the closing date. Winners must be prepared for publicity for Just Beverley, Parkway Cinema and TaleGate Theatre. There is no cash alternative.



CONGRATULATIONS PARKWAY BEVERLEY!

Parkway Cinema Beverley has recently been shortlisted for the Screen Awards (24 screens and under) 'Cinema of the Year'! This is the second time the cinema has been nominated in this category - the first was in 2017.

Parkway Beverley, now open for 4 years, have run a range of successful programs that are in part responsible for their shortlisting.

These include regularly running autism-friendly and dementia-friendly screenings, running school tours of the cinema, offering a wide range of films of various genres, and regularly being the only cinema in the East Riding to release certain films.

The autism-friendly and dementia-friendly showings - when films are adjusted to the requirements of the audience - have been extremely successful!

Parkway Beverley are certainly doing something right, and feedback from the community demonstrates this with excellent ratings on Trip Advisor, Google and Facebook.

The Awards Ceremony is taking place on 28th November at The Ballroom Southbank, London, and, although competition may be stiff, we wish the Parkway Beverley team the best of luck!



Event cinema offers something a little different to mainstream films. Live and pre-recorded shows beamed in via satellite from all over the world. Here are the latest live streams that you can enjoy on the big screen at Parkway Beverley.

**Tuesday 5th November at 7:15pm -
ROH: CONCERTO/ENIGMA VARIATIONS/
RAYMONDA ACT**

**Thursday 7th November at 7pm -
NT LIVE: HANSARD (15)**

**Sunday 10th November at 2pm -
42ND STREET - THE MUSICAL**

**Sunday 17th November at 3pm -
BOLSHOI: LE CORSAIRE**

**Tuesday 19th November at 8pm -
LIONEL RICHIE AT GLASTONBURY (PG)**

**Wednesday 20th November at 7pm -
RSC: TIMON OF ATHENS**

**Thursday 21st November at 8pm -
DEPECHE MODE SPIRITS IN THE FOREST**

**Wednesday 27th November at 7.30pm -
INXS: LIVE BABY LIVE AT WEMBLEY
STADIUM (15)**

**Thursday 28th November at 7pm -
NT LIVE: PRESENT LAUGHTER (12a)**

**Wednesday 4th December at 7pm -
BRANAGH THEATRE LIVE: THE WINTER'S
TALE (ENCORE) (PG)**

**Tuesday 10th December at 7:15pm -
ROH: COPPELIA**

**Sunday 15th December at 3pm -
BOLSHOI: THE NUTCRACKER**

**Tuesday 17th December at 7:15pm -
ROH: THE NUTCRACKER**

LIVEshows

**Sunday 3rd November at 7.30pm -
CHRISTMAS WITH STEPTOE & SON**

**Sunday 10th November at 7pm -
THE COUNTERFEIT SIXTIES**

**Sunday 17th November at 7pm -
BEST OF QUEEN WITH THE BOHEMIANS**

**Saturday 23rd November at 11am & 2pm -
FATHER CHRISTMAS NEEDS A WEE**

**From Saturday 14th December
SLEEPING BEAUTY**

HUBY

DOMESTIC APPLIANCES

Covering Hull, Beverley, Pockington, Driffield and all the local villages



BOOK ONLINE

and **SAVE**
at
hubys.co.uk

Book in advance and save money.
The further you book in advance
the more you could save...



For service and repair call: **01482 866660**

I'VE BEEN THINKING... SAYS COLIN RAYNOR

Turning the calendar to November, we know we've reached the back end of the year. I don't think it's just me, but I seem to hear more and more people saying 'where has this year gone?'



Perhaps it is because we increasingly read about events taking place, not in three weeks' time, but in three years' time, our mind is already racing ahead and we don't treasure the moment as we should. Putting aside the reasons for and against upholding the traditions of 5th November, my mind instantly recalls potatoes thrown onto the fire and then pulled out and eaten with lashings of butter, not caring if you might also be consuming potato skin burnt to a cinder!

Another thing that highlights the passage of time is having a hair cut. If anything, Beverley is not short of really good hairdressers - for men and women. I have to confess that I have, over the years, tried quite a few but have now settled on one that suits me. I can't advertise which one but I will give you a clue and those of you who do daily crosswords will soon decipher the answer ('midweek gentlemen seeks the traditional pole'). A recent visit to my chosen 'barbers' proved to be an uplifting experience. My turn came and as I took the chair the cloak was thrown around me. Of necessity the glasses came off and, as they know me, the scissors were soon at work. There are a number of hairdressers in my chosen venue but they are all very friendly. Some talk and others are quiet as they use the comb and scissors with such dexterity. On this occasion the person cutting the Raynor thatch began with the question that 'made my day' as the saying goes. "What are you doing with your day off?" What a question to ask a man who hasn't been in employment for over twenty years! I took it as a compliment and replied "I think I might cut the grass".

I'm sure my old Mum would have told me that was 'a back handed compliment', meaning it was just something to say. But there comes a time in life when you 'don't look a gift horse in the mouth' and if this young woman (yes it was a woman) was of the opinion that I was still a working man, who was I to disillusion her? I think one person in my family spoke about the hairdresser needing to go to the opticians but I think that was just sour grapes. So the question remains - did I give this person a tip? To take another phrase from yesteryear - 'that's for me to know and you to find out'. One of my favourite tips used to be 'never jump off a moving bus' but I think on this occasion I did give something more tangible.

LOOKING TO MAKE FRIENDS in the Beverley area?

Since 1929 many women across the country have enjoyed the invaluable benefits of TG membership. They've experienced new things, visited different places, taken on incredible challenges, fought for women's rights and most importantly developed lasting friendships.

Interested in seeing what it is all about?

You are welcome to attend a Guild before considering membership.

If you would like more information or to find your local Guild visit
www.the-tg.com/north or call **0121 326 0400**

Join the TG family

JBJOIN



**UNITING
WOMEN
SINCE
1929**

COUNTRYSIDE MATTERS WITH SAM WALTON

'If you want to live and thrive, let a spider run alive'. This was said to me when I was very young and I have never forgotten it. During my life, I have come across a variety of spiders and have come to the conclusion that they must be one of the most adaptive and creative creatures on this earth.



It was my daughter and granddaughters that brought spiders to mind - they're not exactly spider fans, and there have been several times during their visits when an enormous spider has appeared and slipped into the kitchen sink. Consequently I've had to scoop it up and gently take it outside. Usually, the next day it (or one of its relatives) is back in again! I can only assume they are able to creep, crawl and squeeze through very tiny spaces, and how do they manage to get between double glazing panes?

There is no doubt their webs are excellent at catching flies, but I do sometimes wonder how often they actually eat. I was recently fascinated by one such magnificent creature in the process of spinning a web, lit up by the sun in such a way that made it easier to see. The triangular web had been created between a six ft high overflow pipe down to a mint plant in an old stone trough,

across to the rim of the trough and back to the lower end of the long thread. Between these three points the spider weaved the most intricate web I have ever seen. I watched for ages as the spider made its way around the strands to create the web and the result was absolutely perfect in all its detail. It looked computer designed, maybe it was! Do they have an inbuilt mechanism to do such things? And how on earth do they produce yards and yards of web?



The spider eventually settled in the centre of the web and stayed there all day until a fly met its doom later that night. The next day everything had disappeared! Nature is wonderful, and I am sure there is someone out there who has studied spiders in great detail and could let me know all about this fascinating creature.

INCHES BODY STUDIO



SPECIAL OFFER

- 3 Months Toning
- 3 Months Vibraxis
- 3 Contour Wraps

£179

Normal Price over £300
Limited Availability

• Warm friendly environment

• A great way to improve joint mobility

COURSES FROM

£110

What are toning tables used for?

Toning Tables help with fat loss, ME, MS, Osteoarthritis, rheumatoid arthritis, knee and hip replacements, depression, bad backs, frozen shoulders and stroke rehab

FREE ONE WEEK TRIAL
for anyone with health issues - No obligation

Inches Body Studio, 1 Norwood, Beverley HU17 9ET

Wheelchair access & stairlift available

Telephone: 01482 865229

Email: inchesofbeverley@hotmail.co.uk
www.inchesbodystudio.co.uk
Established 1992

Hear CLEARLY again...

Never miss out on the sounds you love

with the latest comfortable and invisible hearing aids

FREE HEARING AID TRIALS*

FREE HEARING TESTS

INVISIBLE RECHARGEABLE & SPECTACLE HEARING AIDS

WAX REMOVAL SERVICE

- ✓ EASY parking
- ✓ HOME visits available
- ✓ FREE aftercare
- ✓ 5 YEAR warranty*
- ✓ 5 YEAR FREE batteries*
- ✓ INDEPENDENT family business



Clare House, 8-10 Baker Street, Hull HU2 8HP

t: 01482 22 22 04

www.hullhearingcentre.co.uk

HULL hearing CENTRE

independent hearing aid audiologists

TROUBLE HEARING? CONTACT US TODAY

BROOK TAVERNER ANNOUNCE EXCLUSIVE LUXURIOUS TWEED COLLECTION

Whilst Brook Taverner have consistently led the way in top-quality, sensibly-priced, can't-find-anywhere-else men's clothing since their inception in 1912, and with such a heavily competitive market, it sometimes takes that something special to stand out from the crowd. The time has arrived for Brook Taverner to announce their own exclusive, Yorkshire-Woven Tweed Collection.

Worked on for the best part of two years and created with the truly unique Yorkshire Gent in mind, the inspiration behind The Haincliffe Tweed Collection can be found very close to home. In fact, the keen eyed may have noticed the Haincliffe Road title in the Brook Taverner Head Office postal address, or perhaps spotted the road sign directly outside the Keighley location. It is fitting that the design has roots so close to home, as the Yorkshire-based designers have created a collection for the Yorkshire customer that is woven exclusively in Yorkshire itself.



The lead product of the collection is a wonderful three-piece suit designed to stand out. Made from 100% wool as any good Tweed should be, and with comfort in mind, the ensemble features defining blue, red and caramel overchecks with a fully lined interior and four internal pockets.



These checks are in keeping with the traditional Yorkshire heritage which inspired it and offer a subtle nod towards our historical weaving heritage through the use of gold matching that found at the centre of the famous Yorkshire Rose.

With the three-piece suit at the forefront, it is further enhanced by an accessory collection. The



Haincliffe Collection also includes a top-of-the-range suit carrier, holdall, briefcase, and washbag as well as matching caps, gloves, slippers, wallet and scarf. All expertly crafted by fellow-Yorkshire based Abraham Moons of Guiseley.

Brook Taverner have always prided themselves on their ability to offer a range of items that are unavailable anywhere else, either on the Highstreet or Online. The Haincliffe Tweed Collection is a further example of this variety, and despite only being released recently, it has already seen success. This success truly epitomises the spirit, culture and heritage of the proud Yorkshire community and reinforces the positive image of the mightily proud county to the wider reaches of the Great British Isles.



Brand New
Autumn 2019
Collection
In store Now

Store Opening Times
Monday to Saturday 9am - 5.30pm
Sundays 11am - 4pm

BROOK TAVERNER

35, TOLL GAVEL, BEVERLEY. 01482 882356

ALL UNDER ONE ROOF: RAYMAC SIGNS, INDICOLL AND JUST BEVERLEY CONSOLIDATE MOVE

Last month Raymac Signs moved to Beverley which prompted Indicoll Ltd and Just Beverley to relocate too, with the businesses now functioning under one roof in the industrial heart of Beverley. Having relocated to Annie Reed Road all three companies are keen to develop partnerships and grow their business respectively.

The move comes at a time of celebration and big change as Indicoll Ltd, a web design and development agency, have just celebrated 10 years in business.

Raymac Signs, specialist manufacturers of bespoke signage, have relocated from Malton to encourage ease of communication, and Just Beverley - an essential voice of Beverley - neatly ties the businesses together.



By localising all three businesses under one roof just off Annie Reed Road, the move effectively combines Raymac's exciting new services of express large scale and personalised printing with the one stop shop for web, graphic design, print, social media and internet marketing of Indicoll and the thriving business and community of Just Beverley. The companies' transition into a new all-purpose design studio brings about exciting change for business and the industries in Beverley. While Indicoll and Just Beverley have been operating in the area since they were established, Raymac is essentially a new business in the heart of Beverley despite having a longstanding history of 30 years and a well-known national reputation.

"The new two-storey facility accommodates all three businesses which give us a more efficient level of communication and collaboration on projects, and opens the scope for the enormity of projects we can now take on," said Andy. Now with double the space of their previous office, Indicoll, Raymac Signs and Just Beverley can really focus on the future.

SHOCKINGLY GOOD VALUE

£49 PER MONTH WEBSITES

PAY JUST £499 DEPOSIT
THEN JUST £49 PER MONTH
FOR A MINIMUM TERM OF 12 MONTHS
AND THEN PAY MONTH-BY-MONTH THEREAFTER

FOR A WEBSITE THAT GETS REAL RESULTS...

CALL NOW ON:
 01482 428650
 marketing@indicoll.com
 indicoll.com

INDICOLL

Boasting state of the art printing equipment, there are now more creative opportunities and increased production capabilities of in-house products for clients and customers. The consolidation of businesses now provides Beverley with express services and a quick turn around.

Andy said: "Combining the three companies is something I've thought about for some time, and the more we invested in technology and the future the more the move started to naturally fall into place. The new office space has really modernised the working environment for everyone, which reflects our values and passion for each of the businesses in a much stronger way".

Now home to a comfortable waiting area, more offices and a sizeable meeting room for clients, the new building offers more flexibility and a more engaging environment for employees and clients.

The new office is located at **Unit 2, Backside Court, Annie Reed Road, Beverley, HU17 0LF.**

BROOK TAVERNER COMPETITION

To celebrate the release of the exclusive Haincliffe Tweed Collection, Brook Taverner are launching a fantastic offer in conjunction with Just Beverley Magazine. The prize for this marvellous competition gives you the opportunity to win an item of your choice from our Beverley store up to the value of £200 (No cash alternative).

All you need to do to enter is hand in this form (also available in store) filled with your contact details and item of choice to a member of staff no later than Wednesday 20th November. A winner will be selected at random immediately after the closing date and will be informed as soon as possible. The winner will be required to receive their prize and have their photograph taken by Sunday 24th November at the Beverley store and announced in the next edition of Just Beverley.

Full Name: _____ **Contact Telephone:** _____

Contact Email: _____ Tick this box to opt out of email communication from Brook Taverner

Item of Choice: This can be the product name or SKU number on the label of item _____

NEW FEATURE ON BEVERLEY'S ICONIC WESTWOOD

A traditional dry stone wall built by Beverley-born Australian citizen Emma Knowles has recently become a new feature on Westwood common.

Emma is one of only five female Dry Stone Walling Association (DSWA) Advanced Dry Stone Wallers in the world, and the only advanced waller and instructor operating in the southern hemisphere!



Emma is currently in England fulfilling the requirements of an International Specialized Skills Institute Fellowship, as well as managing the estate of Pat Knowles, Emma's mother, who passed away late last year.

The Fellowship aims to develop Dry Stonework in Australia by establishing an internationally recognised accreditation system and further developing the diversity of the walling community, with a particular focus on women and people from Aboriginal backgrounds in rural areas. Pat and Emma spent a lot of time together on the Westwood over the years, and in recent years Pat had commented that the dry stone wall at Westwood Close could do with Emma's attention.

A chance discussion with owner Professor Barbara English, a well known and highly regarded historian, meant Pat's suggestion is now a reality.

Born a snicket away around the same time the original wall was built, Emma said "As this chapter of my family's history in the town draws to a close it's an absolute privilege to be able leave our mark in such a special place." Normally a feature of the North and West Ridings, dry stone walling is an unusual sight in the East Riding of Yorkshire so this construction has attracted a lot of attention over the last few weeks, from both people and cows alike!



Emma added "Through the construction of this wall I hope to have raised awareness and understanding of traditional dry stone techniques, as well as provoking thought around the capability of women in trades".

Emma is director of Stone of Arc an Australian based company focused on design, construction, restoration and training in dry stone work. Primarily working on commissions in Australia, Emma has worked on several UK constructions, facilitated training workshops internationally, and has been

instrumental in foundation work to establish an international women's walling network.

A number of information sessions have been held during the course of the construction at Westwood Close, and a marker stone has been laid within the wall bearing the date of construction and the owner's initials. A unique Stone of Arc masons mark has also been included and the Yorkshire rose incorporated in the design.

If you haven't seen it yet, be sure to check it out next time you're on Westwood!



**AFTERNOON
TEA MENU**

£12.95 PER HEAD OR
£24 FOR TWO PEOPLE

AVAILABLE MON-SAT 12-5PM,
PRE-BOOKING IS REQUIRED AND
GLUTEN FREE OPTIONS ARE AVAILABLE

**CHRISTMAS
BOOKINGS
NOW BEING TAKEN**

MON 2ND DECEMBER -
FRI 27TH DECEMBER

2 COURSE MEAL £15.95
3 COURSE MEAL £21.95
(EXCLUDES SUNDAYS &
CHRISTMAS DAY)

**HOME COOKED
FOOD SERVED
7 DAYS A WEEK**

**CYCLISTS
WELCOME**

THE TIGER INN

Brains required from 8.30pm

FIRST SATURDAY
OF THE MONTH

Big Quiz

Free food/prizes to be won,
all money raised to our house charities.
£1 per person entry

Tel: 01482 869040

www.tigerinnbeverley.co.uk

Lairgate, Beverley HU17 8JG

Going to East Riding Theatre?
Book at The Tiger Inn for a
pre - show meal

HOMECOOKED
Sunday
Lunches

Served every Sunday
12noon-7pm

12

Just BEVERLEY

www.justbeverley.co.uk



Salt Revive

nature's cleanser

For thousands of years 'salty air' has been a recommended form of health therapy.



Salt therapy could help adults and children suffering from COPD, Asthma, Eczema, Psoriasis, Stress, Anxiety.



New health and beauty room

Look after your inside as well as your outside



Our new health and beauty room features an innovative infrared blanket.

The benefits of this blanket include detoxification, improved blood circulation, relief from back pain, arthritis, sore muscles and joints, and it could also aid weight loss.



For more information

Tel: 01482 679453

85 Mill Lane, Beverley HU17 9DH

COME AND MEET FABIAN PEREZ AT TRENT GALLERIES

The nights may well be drawing in as that Autumn chill hits the air, but as we head towards the final months of 2019, our excitement for Beverley's final Artist Event of the year certainly does not dampen! Bringing Latin flair, passionate storytelling, and paintwork of unrivalled light and shade; Fabian Perez joins us as part of his Autumn UK Tour.

Trent Galleries Beverley has played host to three events this year, prior to Fabian... and all of them have allowed clients to explore work of great talent and varying subject matter, alongside getting to meet the artist behind the canvas.

Whether that be Doug Hyde's sentimental pastels of family life & love; Anna Gammans' vibrant 'exploding skies' and seascapes; and recently, Kris Hardy's creative reincarnations of classic cars, buildings and movie-icons.

To complete our year of events, we end with the privilege of welcoming the world-renowned Argentinian Master of the canvas to Beverley for his first visit to Trent Galleries, over from his California Family-home...

Intrigued? Well, let us whet your appetite a little!

If you haven't yet taken a look at a Fabian Perez artwork, his eloquence with telling a story is arguable his biggest strength.

He portrays his characters mid-conversation, or alone at the bar waiting for someone. He drapes his subjects in cinematic lighting, with light

and shadow bringing depth and intrigue to his scenes. He portrays the beauty of a lone woman or the strong gaze of a brooding male using that same intention - he is always asking the viewer questions;

What are they thinking? Who are they waiting for? What is their story? Once you have explored Fabian's work, this will all make sense.

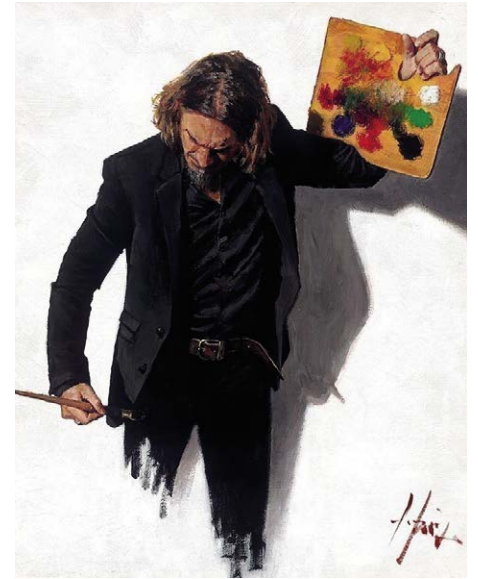
Fabian's work has layers, and underneath the artistry of the paintwork or charcoal, there is always a passionate meaning or indeed a conversation to be had.

At present, Fabian is enjoying unparalleled success with all of this work, both original and published.

He is a multi-award winning, world-renowned talent, who more recently has continued to paint a series of Modern-Icons of our time such as Arnold Schwarzenegger, Pep Guardiola, Evander Holyfield, as well as painting a family portrait of the Argentinian President's family.

As one of the foremost figurative artists of our time, Fabian has become an exceptional global entity.

Trent Galleries are simply thrilled to be hosting an artist of such renown, and we want to share the date far and wide, and ensure that he is given a wonderful Yorkshire welcome when he joins us on the Friday evening, November 22nd from 6.30pm.

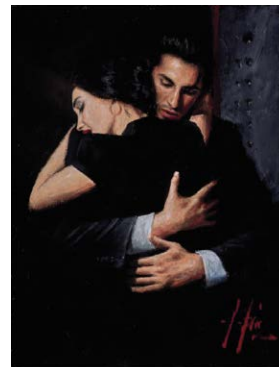


Trent Galleries will again be supported by local business Roberts & Speight, as they will be providing the wine for the evening - which will be a lovely Winter treat, in addition to the wondrous artwork and festivities.

The question is; are you going to join in on the occasion? It is not to be missed!

Contact the gallery today to RSVP and be added onto the Gallery Guestlist - contact details below.

Come and meet **FABIAN PEREZ** during his Autumn UK Tour



'Buscando Amor'

Friday 22nd November from 6.30pm to 8.30pm

RSVP: 9 Butcher Row Beverley, HU17 0AA

Tel: **01482 874621**

Email: **beverley@trentgalleries.co.uk**

follow us on Instagram & Facebook

www.trentgalleries.co.uk



2020 coach holidays **ON SALE NOW!** Coach holidays & city breaks

- : FREE door to door pick-ups.
- : No feeder coaches.
- : Pick up a brochure today from the Travel Centre in Hull Paragon Interchange, or see all our holidays online.
- : Book today:
01482 222 444
www.eastyorkshirecoaches.co.uk



Do you commute to Hull?

Leave the car at home & get the bus!

There are five buses an hour from Beverley to Hull and you can buy a 7 day ticket on the East Yorkshire Buses app for only £26.40!

- : No need to worry about parking.
- : Beat the traffic as you use the bus lane.
- : Do your bit to be green by using the bus.

Find out more at eastyorkshirebuses.co.uk.
Download the East Yorkshire Buses app for FREE!
Pick up a timetable leaflet from Beverley Tourist Information.



VIEW FROM THE COUNCIL CHAMBER

On May 2nd, the last local elections, I was voted in as an East Riding of Yorkshire Councillor representing St Mary's Ward and as a Beverley Town Councillor representing St Mary's Ward East. My previous experience of either council was paying my council tax precept or enjoying the events or using the services they provide. So, what has my first few months as a representative of the people been like? Read on as I share some thoughts...

Let's begin with the East Riding of Yorkshire Council - affectionately known as ERYC. Just walking through the front door for the first time without having to sign in at the front desk was awesome.

But when I discovered I had my own seat in the Council Chamber with my name on the microphone on the shelf in front, I felt quite over-awed at the solemnity and the fact that people had put such faith in me. That's when the enormity of the task really hit me - I now had the ability to make a real difference to the community I live in.

The East Riding of Yorkshire Council covers 3 parliamentary constituencies - East Yorkshire; Haltemprice & Howden and Beverley & Holderness.

Each of those constituencies is divided into a number of 'wards' - there are 26 wards in total within ERYC, each ward having between

1 and 3 elected councillors to represent it. The number of councillors elected to ERYC totals 67.

Most of them represent their ward as members of a political party: 48 of the current councillors are Conservatives, there are 9 Liberal Democrats and 2 Yorkshire Party. The remaining 8 councillors stood as Independents, 7 of whom have joined together as an Independent Group.

Because the Conservatives are the majority party, they elect the Leader and Portfolio Holders from amongst their midst. They also elect the Chairs and Deputy Chairs of committees - this is not a criticism as the way in which appointments to committees are made depends on the numbers and the Chair and Deputy are therefore from the largest political group.

Parliament works the same way; you would expect the Prime Minister to be elected from within the party with the largest number of MPs and for that PM to appoint his Cabinet and other members of the Government from his fellow MPs.

However, the smaller groups have the opportunity to nominate members to sit on committees, working parties and review panels.

As these meetings are held for the benefit of the constituents of the county - in effect to



hold the (unelected) officers of the council to account - a good Chair will ensure political allegiances do not affect discussions.

In my limited experience, the Chairmen I work with are all excellent and the committees I attend are valuable, challenging where necessary and reassuring where there has been positive change.

Of course, politics do come into play, especially at Full Council which is held in the aforementioned Council Chamber. Full Council is the ERYC equivalent of Prime Minister's Questions. More about the fun and games - as well as the serious side - of Full Council next time!



Enjoy an unlimited table side service of up to 15 different prime cuts of meat from our traditional Brazilian grill and a variety of hot and cold sides from our gourmet buffet bar in the unique and festive atmosphere of Chamas Rodizio Bar & Grill.

Includes festively dressed tables and £10 gift voucher for tables of 4 or more to spend in January!



DECEMBER MENU

15th November - 31st December 2019

A glass of Prosecco on arrival, our usual hot and cold sides from our Brazilian buffet and an unlimited Rodizio of 8 cuts of barbecue meats plus grilled Turkey. A choice of Christmas pudding or Brazil's traditional Mousse Do Maracuja (Passion Fruit Mousse).

MON - SUN: LUNCH 12PM - 4PM - £26.95pp • EVENING 4PM - 10PM - £42.95pp

VEGETARIAN/FISH OPTION

A glass of Prosecco on arrival, all suitable options from our Brazilian buffet, choice of any main meal and a choice of Christmas pudding or Brazil's traditional Mousse Do Maracuja (Passion Fruit Mousse)

MON - SUN: LUNCH - 12PM - 4PM - £24.95pp • EVENING - 4PM - 10PM - £32.95pp

CHILDREN: under 5's FREE • 5 Yrs to 12yrs - 15.95pp

CHRISTMAS DAY RODIZIO

**CHRISTMAS RODIZIO | £59.95pp
12pm - 2:30pm & 3pm - 5:30pm**

A glass of Prosecco on arrival, a Christmas Rodizio of 15 prime cuts of beef, lamb, chicken and pork plus fillet steak & Roast Turkey, a VIP buffet with all the traditional trimmings and a choice of Christmas Pudding or Brazil's traditional Mousse Do Maracuja (Passion Fruit Mousse)

**CHRISTMAS DAY VEGETARIAN OPTION
£49.95pp**

**CHILDREN: under 3's FREE
All Day Price for under 12 years: £29.95pp**

*December Menu offered alongside our usual menu throughout December and is available on request. A non refundable deposit of £10 per person is required to secure your table throughout December unless a minimum of 48 hours notice of cancellation is given. Our usual menu is not available alongside the Christmas Day Rodizio on Christmas Day. We politely request that the final balance for Christmas Day reservations are settled no later than 4 weeks before dining with us.

chamasbeverley.co.uk | 9-10 WEDNESDAY MARKET, BEVERLEY | 01482 867897

Telephone: 01482 869111
sales@rosesofbeverley.karoo.co.uk



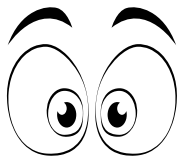
The Kitchen Factory, The Courtyard,
Tokenspire Business Park, Beverley
HU17 0TB

Together we will design a beautiful kitchen



Roses will then
project manage
your kitchen installation from
start to completion

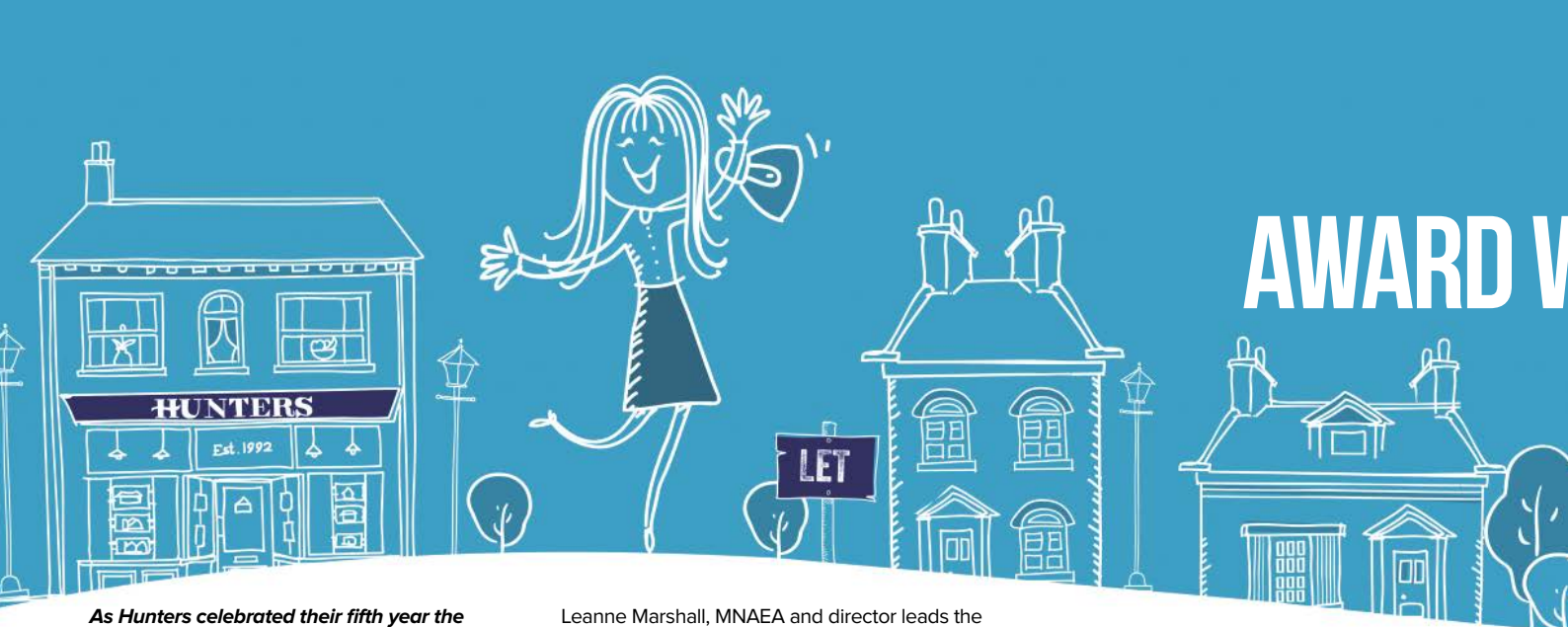
**Our NEW 2020 Season
Displays are now being
Installed in our Showroom**
Why Don't You Come And Have A Look



Visit **www.roseskitchens.com**
to see our customers kitchens and read what they have to say about us

Telephone: 01482 869111





As Hunters celebrated their fifth year the renovations, ongoing for the past 18 months, are looking to be completed in 2020. The property down Hengate, which was bought with a view to renovate, is being sympathetically restored in conjunction with planning from the East Riding of Yorkshire Council.

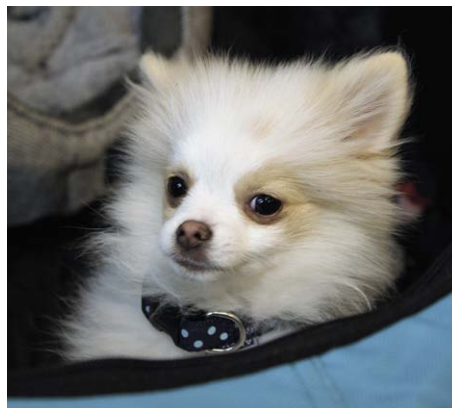


Some exterior structural work has already been completed and the team, who are committed to using local tradesmen including builders, plasterers, plumbers, electricians and painters, have almost finished the downstairs refurbishment, which is the hub of activity for the estate agency.



Leanne Marshall, MNAEA and director leads the team which includes Anthony Sherwin (MARLA), Lettings Coordinator, Melanie Hammond (MNAEA), Sales Negotiator and Ellie Fanshaw Sales Negotiator, who is also en-route to achieving MNAEA status.

And, let's not forget their apprentice PR Manager Casper the Dog!



The company are dedicated to giving back to the community. They have been involved with St Mary's bike ride, the annual Beverley Raft Race, children's football as well as other community events.



Leanne has been heavily engaged with the Beverley Chamber of Trade, organising the Annual Ball and commissioning the Beverley Building Society / SSAFA memorial bench that is located, pride of place, overlooking the Minster. Hunters have also sponsored the Beverley Barge pull, and have previously run Christmas competitions with one local family winning a Nintendo Switch!



Promotional activities have also had the local community in mind with de-icers, umbrellas and car sunscreens being part of the giveaway, and have even included celebratory inflatable tubes for the children supporting the Tour de Yorkshire.



Hunters are an award winning estate agent, and this year have won the British Property Awards Gold Standard. They are experienced in the rental and sale of properties ranging from a value of £80,000 to exclusive homes worth in excess of £1 million.

In 2020 Hunters want to be known as the peoples' estate agent for a stress free move,

HERE TO GET *you* THERE

HUNTERS®

EXCLUSIVE

BEVERLEY / 01482 861411

HUNTERS - WINNING ESTATE AGENT TURNS 5!



ensuring property is bought and sold at its true value. Hunters have the appropriate accreditations and ensure professional ethics throughout the process of buying and selling whilst all the time maintaining a healthy communication with their clients.



Meanwhile the renovations continue, and whilst the downstairs is almost complete, the first and second floors will be two 2-bedroom luxury apartments for Hunters' clients (both vendors and buyers) to use as a stop

gap between properties, which will greatly relieve some of the pressure and stress associated with moving.

Look out for Hunters innovative ideas for 2020 - thinking outside the box whilst always having the customer and the community in mind!



SALES / LETTINGS / MANAGEMENT

HUNTERS[®]
HERE TO GET *you* THERE

BEVERLEY / 01482 861411

JUMP TO IT! HUGO BOSS AT GUEST AND PHILIPS

Hugo Boss is a premium, luxury brand that speaks its principles. Success, precision, innovation and sustainability are displayed throughout the range of products on offer, and with a whole plethora of products on the market from clothing to fragrances to timeless timepieces finding your style is simple.

Founded in 1924 by Hugo Ferdinand Boss, the brand has developed into a fully fledged fashion and accessories brand that supports both the sporting and artistic worlds with involvement in motorsports, golf, sailing and football. The latest addition to the sporting family being Formula E.

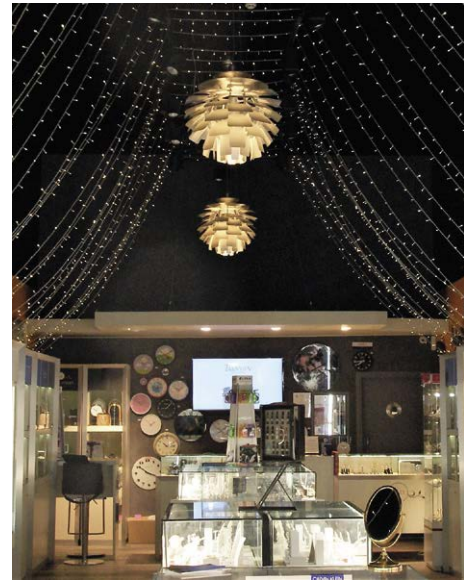


Hugo Boss offers a range of watches which will stand the test of time and see you through daily life as well as significant life events.

This month pay particular attention to the line-up of 'Jump' watches - a casual range of timepieces designed to be exemplary in their performance at a desirable price.



Guest and Philips have two notable events this month. On 22nd November, in conjunction with the Christmas Lights switch-on, there will be extended opening times between 9am until 7pm.



What's more a 'Black Friday Event Weekend' with 20% discount will take place between 29th November and 1st December. Perfect timing for buying that Christmas gift!





GUEST & PHILIPS

EXCLUSIVE TO
GUEST AND PHILIPS:

CARAT*
LONDON

CLOGAU
GOLD OF ROYALTY

UNO_{de50}

swatch[®]₊



BOSS

HUGO BOSS

FLEMINGATE CHRISTMAS
LIGHTS SWITCH ON
~ 22ND NOVEMBER ~
WE ARE OPEN FROM
9AM TO 7PM

TOMMY HILFIGER

CLAUDIA BRADBY

CALVIN KLEIN

MONDAINE

KIT HEATH

23A FLEMINGATE CENTRE, CHANTRY LANE, BEVERLEY HU17 0PW
T: 01482 881001 | WWW.GUESTANDPHILIPS.CO.UK

THE KINGS HEAD LAUNCH THE NEW WINTER MENU

The King's Head, situated in one corner of Beverley's historic Saturday Market place is ideally located to welcome you in from the cold, after braving the Westwood or perhaps just enjoying a stroll around town.

On arrival, whether for a pre-meal drink or a three course meal, expect a warm, friendly greeting. Our party of four sat at a window table in comfortable, spacious surroundings and enjoyed the views over Saturday Market as we ordered drinks and read the new Winter Menu. With many new dishes on offer, we were grateful for the very polite and helpful staff on hand to answer our questions.



Before enjoying any starters, we ordered and shared some nibbles - charred sourdough, hummus, olive oil, balsamic vinegar (ve) along with Halloumi fries, spring onions and Gotcha mayo (v). As we tucked in it quickly became apparent that our taste buds were going to be taken to another level; the Halloumi fries were a delight, so much so that more were ordered. With so much choice on the starter menu, we decided sharers were the way forward and our choice was proven right. The Baked British Camembert with

honey & thyme, red onion & balsamic jam and charred sourdough (v) was cooked wonderfully and together with the charred sourdough made the perfect combination. Our starter set us up beautifully for the main course to come.

For the main course, we each made a different choice and as is always the case, you wonder individually whether you have chosen well. Again, it seems we came up trumps! Between us we ordered the bacon & cheese burger, which with the Butler's Mature Cheddar had a great little twist the fillet of pork wellington, mouthwateringly cooked with a slightly pink centre the kale caesar salad with grilled chicken which had a variety of flavours that encouraged just another mouthful and the lemon & thyme roasted chicken breast. The chicken breast served with clotted cream mash demonstrated that the King's Head were happy to mix things up a little for customer satisfaction, as originally this meal should have been accompanied by sautéed new potatoes. Each of the dishes, served by Kora our waitress, were well presented and the clean plates at the end of the meal did justice to the dishes we enjoyed.

At this point, not everyone at the table had room for a desert, so the helpful staff suggested we thought about a sharer - just enough to enjoy, but not too much to push you over the edge. The sharer dessert consisted of apple crumble tart with clotted cream & vanilla custard; gooey chocolate brownie with chocolate mousse, caramel sauce & honeycomb and baked lemon curd cheesecake with clotted cream & custard sauce.

As you might guess each individual at the table had a different favourite. Served with a small jug of custard the apple crumble sneaked in to top spot, very closely followed by the baked lemon curd cheesecake with clotted cream. The subtle flavours of these finished

COMPETITION

Win a meal for 4 to celebrate the New Winter menu at the King's Head.



To be taken before the end of December 2019. Table has to be pre booked.

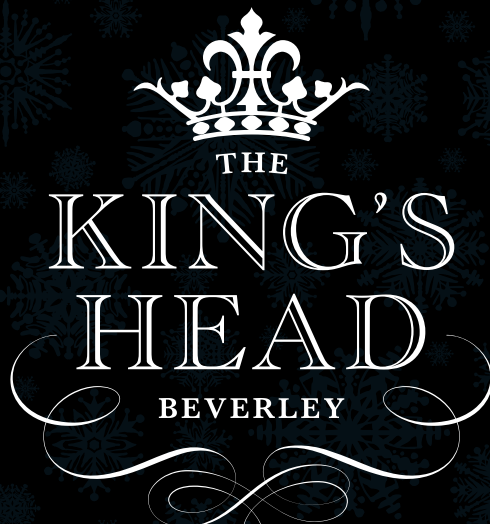
Just answer the following question:

What type of cream accompanies the sharer desert?

Send your answer to competition@justbeverley.co.uk by Monday 18th November. Put **King's Head** in the subject box with your answer, name and address and daytime telephone number in the body of the email. Full terms and conditions are available on page 3 of this magazine which is downloadable from www.justbeverley.co.uk/magazine

the meal off to perfection. That said, the younger guests at the table were overjoyed with the chocolate brownie, which can sometimes can be too chocolatey, but in this instance the balance was just right.

As we sat and enjoyed our after dinner drinks and reflected on our fine dining experience that was the Winter Menu, we checked our diaries to decide when it would be convenient to return and experience further the delights of the wide range of options on offer. If this is winter then may it be a long one!



NEW WINTER MENU



2 FOR 1 PIZZA

12pm - 7pm Mon to Fri

50% OFF ALL STEAKS

12pm - 9pm Tuesdays

37-38 Saturday Market, Beverley, HU17 9AH.
Tel: 01482 868103



WE ARE
No.1
IN YORKSHIRE
FOR OVERALL ACHIEVEMENT
(General FE Colleges based in Yorkshire)

**Book
now!**

OPEN EVENT

Wednesday,
13 November, 4-7pm
Flemingate, Beverley



Free Travel
2 college

Visit our website
for details

East Riding College



www.eastridingcollege.ac.uk/visit

WE'VE COVERED THE ART BEHIND CHOCOLATE MAKING - NOW WHAT ABOUT THE SCIENCE?

Chocolate starts to melt at 32°C, and so, as soon as it touches the body it melts (body temperature is approximately 36.5 - 37°C). Chocolate is one of the few substances on earth that melts within the range of temperatures humans can tolerate. Such a low melting point is one of one chocolate's marvellous properties - we can watch it melt, but what's more we can feel it melt on the tongue!



Chocolate contains two active ingredients - phenylethylamine and theobromine, both of which produce a chemical reaction in the body. Phenylethylamine causes the production of dopamine. Dopamine is one of the 'happy hormones' and creates the magical feeling we get when we fall in love - so you could say when we eat chocolate we are falling in love with it!

Theobromine, which in greek actually means 'food of the gods', is a mild stimulant and when consumed makes us feel good. Most creatures however are intolerant to theobromine - dogs being the classic example, so don't give your dog chocolate!



For an extended version of this article please visit www.justbeverley.co.uk. More details about White Rabbit chocolate shop and café can be found here www.whiterabbitchocolatiers.co.uk.

WHITE RABBIT
CHOCOLATIERS

◆ COOL OFF IN OUR ◆
CHOCOLATE CAFE
Perfect for the Summer!

A taste of wonderland...

16 Dyer Lane, Beverley, East Yorkshire, HU17 8AE
Tel: 01482 679325 whiterabbitchocolatiers.co.uk
Open 7 days a week
 Breakfast, Lunch & Afternoon Tea available Tue-Sat

ONeworld
TRAVEL GROUP

ANDRÉ RIEU
& HIS JOHANN STRAUSS ORCHESTRA

Andre Rieu - Live in Amsterdam

Departure Date: 10th January 2020
4 Days
Overnight sailings on board P&O Ferries
on an en-suite cabin only basis

£299 per person

ONeworld TRAVEL GROUP
35 Saturday Market, Beverley HU17 8BE
T: 01482 280081
www.1worldtravel.co.uk

ONEWORLD TRAVEL - ANTWERP & AMSTERDAM

Andre Rieu is a Dutch violinist and conductor best known for creating the waltz-playing Johann Strauss Orchestra. His incredible talent as a musician, combined with his more modern interpretations of waltz and other classical genres, has allowed him to carve a name for himself in the classical music industry. He is taking his 60 piece orchestra on tour throughout 2020, with destinations including Antwerp and Amsterdam. The concerts will combine unique performances by André Rieu, the Johann Strauss orchestra, choir and all the international soloists, leading to an unforgettable evening.



Antwerp is one of the locations for the concert in January 2020. Lively Antwerp is a hidden gem, despite being the world's fifth-largest port. It has medieval streets, Renaissance monuments as well as a vibrant nightlife. Cycling is a popular choice for getting around this stylish Flemish city, with all the major attractions being within walking distance. See thousands of Old Masters at the Royal Museum and Rubens House and then experience the bustle of life at the Grote Markt. In the Antwerp skyline, the Cathedral of Our Lady takes pride of place, it is the highest church spire in the Low Lands and is on the UNESCO World Heritage List. Despite being unfinished, you can marvel at the art and architecture, dating back to 1351.

Andre Rieu is also visiting Amsterdam. With world-class museums, quirky festivals, theatre, live music, laid-back bars and delightful restaurants, there's never a shortage of things to do in Amsterdam! The Anne Frank Huis draws over a million visitors each year. The focus of the tour is the 'secret annexe', with Anne's melancholy bedroom and her actual diary - sitting in its glass case, filled with sunnily optimistic writing tempered by quiet despair - it's a powerful experience. Another one of the key places to visit in Amsterdam is the Van Gogh Museum, which traces Van Gogh's life and development via the world's largest collection of his work, both familiar paintings and wonderful little-known pieces. Cruise down the canals on scenic tours to explore the full depth Amsterdam has to offer.



BURTON ELECTRICAL SOLUTIONS

HIGH QUALITY ELECTRICAL WORK ACROSS
EAST YORKSHIRE AND THE HUMBER REGION



**Stay safe this christmas -
loose wires cause fires!**

- * DOMESTIC
- * COMMERCIAL
- * TESTING
- * FAULT DIAGNOSTICS

Whether it's for your home, rental property portfolio or business premises, all electrical installations need to be checked periodically by a qualified electrician. For a quote contact:

Andrew Burton
01964 552769 • 07585 601730
www.burtonelectricalsolutions.co.uk
info@burtonelectricalsolutions.co.uk



STAY SAFE AND WARM THIS WINTER - INSTALL AN OUTDOOR SOCKET!

Beautiful outdoor lighting is a wonderful way to keep our spirits up over the winter period - fairy lights in trees, lighting over decking and as we get closer to December, Christmas decorations!

But, how do we ensure that we can enjoy the full benefit of outdoor lighting, heating and festive decorations whilst staying safe? Plugging an appliance into an indoor socket with the flex poking through an open or closed window is far from ideal, letting the cold air and bad weather in, and all the warm air out - a waste of energy and a nasty draft. What's more, it isn't safe!



Flexes shut in window frames can be damaged, and if the flex isn't weatherproof it can lead to further, more dangerous problems involving electricity and water!

Installing an outdoor socket that is RCD-

protected, and which ideally sits in a weather proof box, is the safest way to light up those dark nights and experience a warm glow!

Clearly outdoor sockets aren't solely for winter use. A whole range of outdoor electricals are used throughout the year from DIY tools to the ubiquitous lawnmower, and all can be plugged in to the outdoor socket.

So, if you do intend putting up some outdoor lighting this winter, make sure you do so safely! Remember - loose wires do cause fires. Contact Burton Electrical on **01964 552769**.

IN THE GARDEN... NOVEMBER

November is considered to be late autumn, autumn ends when most plants stop growing because the daily temperature is too low (due to a combination of shorter days and a weaker sun) and they enter a period of dormancy.

The bright colours of summer flowers have long gone and the autumnal hues of foliage too. However, some plants come into their own, particularly those which produce berries and one of my all-time favourites Viburnum tinus var. which bears clusters of white flowers from apple blossom pink buds. Viburnum tinus also makes a very nice informal hedge.

The weather in November is not necessarily the best for gardening, so in order to get any tasks done take advantage of any 'good' gardening days to...

- Continue to clear up leaves and compost if applicable. Don't allow them to stay on the lawn as this will lead to bare patches and clear them from nooks and crannies, slugs and snails will overwinter in them especially if they are dry!!
- Prune fruit trees - try to maintain a well-shaped tree, it should take the form of a wine glass (open in the centre). Firstly, prune out any dead, dying or diseased wood then remove any branches that are crossing each other and branches that are growing into the centre of the tree.
- If you decide to have a bonfire please check before you light it that no four legged creatures have decided to make a home in it.
- Aerate (spike) the lawn, give it a light cut and apply an autumn feed. Autumn feed differs from the spring/summer feeds, containing a different ratio of nutrients which enhance root development. Don't apply any feed if frost is forecast.
- Protect tender plants using horticultural fleece.
- Plant spring flowering bulbs - plant bulbs at 2 to 3 times their own depth.
- November is a good month to plant a hedge; bundles of bare root hedging plants will become available in nurseries and garden centres. It is also a good time to transplant any shrubs or trees that maybe not 'quite where you want them' in the garden.
- Continue to dig over bare soil in the vegetable garden when weather permits. Don't trample on the soil if it is wet enough to stick to your boots as you will end up compacting it, which will do more harm than good.
- Remove and overhaul pond pumps - store in a dry place over winter. Stop feeding fish and tidy up pond plants particularly lilies.

Finally, you may want to think about what you would like 'Santa' to bring you or use those evenings indoors to start planning for next season.

Thanks for reading.

Until next month, J.

Jane Dale of 'Designed Gardens'. Tel: **07983 392 411**.



WALKING WITH IAN RICHARDSON... AN AUTUMN SLOW DAWDLE AT SOUTH DALTON



South Dalton is one of our most tranquil and exquisite villages, so close to Beverley yet so far from the crowds and traffic of our busy town. Sadly, it is not well served by country paths, in stark contrast to nearby Kilnwick, for example.

Yet as the days shorten and grow ever colder, the village pavements and quiet lanes offer a perfect autumn stroll, a slow dawdle of no more than a mile, where you can keep your shoes clean and also enjoy two of the Riding's outstanding treasures, St Mary's Church and the Pipe and Glass Inn and Restaurant.



Chimneys, gables and spire

1 You will struggle to reach South Dalton by bus, although cycling is a popular option. As most will arrive by car, it is good that roadside parking along Main Street (HU17 7PN) is usually plentiful.

My favourite approach to the village is on the roller coaster road north from Etton, where the 208ft spire of St. Mary's shoots up like a golden arrow, dominating the landscape. Simon Jenkins rightly calls it 'one of the loveliest... in England.'

This stroll is certainly one for lovers of architecture, with the peerless Pevsner guide judging South Dalton as 'among the most appealing of East Riding villages, possessing a delightful mix of buildings.' A good place to begin is just after the beck, where the lovely houses of this estate village commence.

This has long been the domain of the Hothams of Dalton Hall, from a line that reaches back to the famous Civil War commander and beyond. They still let many of the properties in the village.



Approaching South Dalton

2 Gently rising Main Street offers a lovely and varied set of buildings to enjoy, especially delightful is Oak Cottage at no.26 and Manor Farm at no.18. It is easy to spot the old post office, I recall it still functioning in the early 1980's, with its splendid GR letterbox.



The mere

3 At Mere Road go right to see the fine pond, passing the model sheep at the new Lambing Yard rooms venture. Turn around and head back to Main Street, rising again to the right towards the church. Here is a delightful row of whitewashed cottages with door canopies and across the road, a set of Tudor style Victorian almshouses - lifted right out of a Trollope novel.

4 The church is far too good not to explore internally as well as from the outside. Most commendably it always seems open and welcoming to visitors, a model all historic parish churches should aspire to. Although it is deeply disturbing to hear of a spate of lead thefts from church roofs, including Lockington in recent times.

The tiles, stained glass and a most striking tomb of the Hotham family are among the many highlights of the church. The architect was the renowned JL Pearson and in 1858 the Hothams paid the then huge sum of £25,000 for the building.

Across the road by the park gates is a delightful lodge which touchingly was designed by Pearson's son, Frank. There is no public access to the Hall and its splendid gardens, but it is an impressive Georgian house with important rococo style gardens.

The house and gardens served as a Free French HQ during WW2, and it was here that the noted French soldier General Leclerc was accommodated by the Hothams in the build up to D Day in 1944. Retrace your steps to the road junction on your right.

5 Now go down West End, another lovely collection of buildings await. The former Victorian school is very enjoyable and the current Village Hall, originally built in 1896 as a Reading Room and Billiard Hall is very distinctive, reminiscent of a style used in spa towns.

It now hosts a toddlers group and on my last visit it was lovely to see a group of them waddling down the lane, led by their carers like happy ducklings. All the houses are nice and the street is framed at the far end by the beautiful eighteenth century Pipe and Glass Inn.

Its reputation for fine food is well-deserved under the leadership of chef James Mackenzie and the gardens, with a centuries old yew and herbarium are an absolute delight on fine days. It offers an extensive evening menu, a varied and reasonably priced lunch menu, afternoon tea, and ideal options for strollers. I can vouch for the splendid Lyonnais Omelette.



Pipe and Glass

6 You can easily walk a little way on the gated public road at the side of the pub to enjoy the parkland and glimpse the hall. Either way, you can now retrace your steps to your starting point on Main Street, with fresh prospects on the fine range of buildings you saw earlier. The residents of South Dalton that I know, love the peace and beauty they enjoy there, and though it is no longer blessed with many amenities, Beverley is just four miles away, so they arguably have the best of both worlds.



The spire, close up

BEVERLEY

MOTORWORKS

**INDEPENDENT
BMW & MINI
SPECIALISTS**

**Our dealership expertise
means high quality car
servicing at a fair price...**



the Good Garage Scheme



Unit D1 Grovehill Industrial Estate,
Annie Reed Road, Beverley HU17 0LF

Call today: 01482 881 128

Visit: beverleymotorworks.co.uk

PRACTICAL MOTORING WITH RICH HAYES - WINTER CAR CARE TIPS



We take our cars for granted on a daily basis, and maintaining them during the winter season is especially important. Here are some of our top tips for taking care of your vehicle this winter.

Keep your car clean! Regularly washing your car is important and can help avoid corrosion and rusting. If you don't fancy cleaning it yourself there are plenty of car washes in Beverley and the surrounding area to choose from.

Parking your car under cover where it's warm and dry, such as in a garage or under a carport will both decrease the time you spend deciding your car in a morning, and reduce the risk your car not starting. If you don't have a garage or a carport park in the lee of your house or next to a tall hedge.

There are few things worse than your vehicle breaking down in the winter, so make sure you have the essentials in your car just in case! A blanket, some snacks, a first aid kit and a book will come in very handy whilst you wait for the breakdown recovery vehicle to turn up!

Winter means icy conditions and longer journeys, so ensure your car is as comfortable as possible by keeping the inside clean and tidy.

Wiping down the dashboard and disposing of any rubbish regularly, will help make your car a home from home during those longer drives.

Beverley Motor Works understand the importance of keeping your car in top working order all year round, which is why every year they offer free vehicle checks for both new and existing customers. Simply book online or call **01482 429350** and the team will carry out a thorough vehicle check and advise you of any issues you may need to address.

SPECIAL OFFER
MOT COUPON

MOT YOUR CAR FOR ONLY £29.99

PETS' BEST FRIEND BY LAUREN MIDDLETON

This month has been very busy with pet owners going on holiday, which has given me the opportunity to spend time with some awesome pets!

The health of my clients is very important, and ensuring their health conditions are monitored and cared for whilst their owners are away is paramount. A few of my clients have had vet appointments booked during my stay and I've supported my clients through both minor and major incidents and had the responsibility of their aftercare. Recent experiences have included caring for wounds and ensuring good healing, and supporting clients with diabetes, which included administering injections!

All my experiences build my expertise and enhance my skill set and keep each day quite different from the next. I work hard to ensure these pets are cared for - it makes the experience of the change in pack leader easier for them to understand. I've also had lots of dog walking activities to attend to and for this I quite frequently use the Molescroft and Walkington secure dog walking fields, more so when I have more challenging dogs to walk.



Both the secure fields as well as Beverley Westwood fields provide spacious environments where dogs both old and

young can roam freely - something that is good for their health but which the dogs absolutely love! The Westwood has an endless choice of walks for all ages too. The onset of November brings me some free time in which I will be making meet and greet appointments as well as catching up with regulars!

SALT

GALLERY at SALT offers an opportunity for local artists to exhibit their work within a contemporary space situated on the ground floor of SALT Architects, in the heart of Beverley, East Yorkshire.

A rolling programme of exhibitions showcases a wide range of high quality works including paintings, printmaking, ceramics, jewellery and glassware.

GALLERY at SALT reinforces the connections between Art and Architecture providing a hub for discussion, debate and creativity.

Tel: 01482 888102 | Email: enquiries@saltarchitects.co.uk

Web: www.creationatsalt.co.uk

54 Lairgate, Beverley, East Yorkshire, HU17 8EU



PUZZLE PAGE

WORDSEARCH

E A S Q P L H R D F S E Q C T
 N X G M G P E O S I E U A H S
 N Y C G I B W P E R I A Q Z J
 B E B I M L A J K E L P P N D
 G I R E T R E P F W I G C S V
 N Q V D K E D S S O M L S V O
 W O G L L J M P Y R A O M I V
 N X E Z B I G E H K F V H B Z
 D R R L N U H J N S N E R D A
 S R J D D F F C K T E S Y R F
 O S B O N F I R E E T B A T M
 P L T Y Y Q X S Y A L P S I D
 P X C M C W Z X U E D M H G K
 L O Q G C Y J Q P W Q Y L I S
 M O Y C Y S D U H V P A U X Z

BONFIRE	FIREWORKS
CHILDREN	GLOVES
DISPLAYS	NOVEMBER
EXCITEMENT	SMILES
FAMILIES	SPARKLERS

WHERE IN BEVERLEY?

Where in Beverley would you find this landmark? Answer on Page 32.



WORDS OF WISDOM

Whatever you want to be, you can be, believe it.
 Have a Positive mindset.

SMALL CHANGE BIG IMPACT!

Allow time to recover in order to stay fit.
 Not enough sleep increases potential weight gain.
 Mix up your exercise to stay motivated.

THOUGHT FOR THE MONTH

To discover what you can do without, do without

Do you have any amusing stories,
 quotes or pictures? Send them to
info@justbeverley.co.uk

QUALITY KITCHEN MAKEOVERS

by simply replacing the doors and worktops

Est. 1999

From the UK's #1
 kitchen makeover experts.
 Visit our showroom now

Before



- FROM SIMPLE DOOR REPLACEMENTS TO COMPLETE FITTED KITCHENS
- FULLY INSTALLED BY LOCAL PROFESSIONALS IN JUST A FEW DAYS
- CHOOSE FROM A LARGE SELECTION OF DOORS, WORKTOPS AND APPLIANCES
- 84 SHOWROOMS NATIONWIDE

www.dreamdoors.co.uk



CALL US NOW FOR A FREE ESTIMATE:

01482 861653

VISIT OUR SHOWROOM:
 4A Belprin Park, Swinemoor Lane,
 Beverley, HU17 0LN



Christmas Sale
20% OFF
 T&C's Apply

DREAM DOORS®
 NEW LIFE FOR OLD KITCHENS



Proud members of
9.7/10 Checkatrade.com
 Where reputation matters

See what our customers have to say

CYCLING WITH WILSONS WHEELS

As the clocks go back and the nights draw in, take extra care when cycling in the dark.



See and be seen is a motto to live by during the winter months when mornings and evenings are dark and the weather often dreary.

When cycling in the dark, taking two lights with you is a necessity - one for the front and one for the rear of your cycle. This increases visibility both for yourself and for the drivers you are riding alongside. One of these lights can even act as a backup should the other fail or run out of battery.

Wearing reflective clothing or having reflective items on your bicycle that are visible from a side view is another great way of being seen.

Being seen side-on is important - a motorist may not be able to see your front and rear lights from this angle!

When cycling down roads that are not street-lit a stronger, more powerful front light (100 lumens or higher) is also recommended so you can both see where you are going and also be seen by others.



Having a light on that all important helmet is also a good idea. Many helmets nowadays come with a light on the rear for extra visibility and light mounts can also be bought to affix a light to the front of your helmet.

The beam from a front helmet light will point in the direction of your vision, rather than where your handlebars are directed, which is often not the way you're looking.







Level 2 Certificate in INSTRUCTING GYM

The aim of this qualification is designed to train learners to a professionally competent level, enabling them to prescribe, plan and deliver safe and effective exercise programmes in a gym or health club environment.

COST £550 PAID IN FULL OR 3 MONTHLY INSTALLMENT PLAN AVAILABLE

VENUE: PEAK HEALTH & FITNESS Main Road, Ryehill, Hull, HU12 9NH
DATES: SATURDAY 9TH & SUNDAY 10TH NOVEMBER
 SATURDAY 16TH & SUNDAY 17TH NOVEMBER
 8.30AM TO 3PM (PLUS 1 ASSESSMENT DAY)

CONTACT SUZANNE OR LUKE AT SPORTSABILITY LIMITED TODAY TO EXPRESS YOUR INTEREST OR TO GAIN FURTHER INFORMATION

☎ 01482 229676 ✉ info@sportsabilitytraining.co.uk
 📱 @SportsabilityFitnessTraining 🌐 sportsabilitytraining.co.uk

CHRISTMAS IS COMING



WILSONS WHEELS

T: 01482 882881

W: www.wilsonswheels.co.uk E: info@wilsonswheels.co.uk

WE NOW STOCK CUBE CYCLES

2020 RANGE NOW AVAILABLE   

Be SEEN and be SAFE, stay BRIGHT and on the right track



CHRISTMAS PAYMENT PLANS NOW AVAILABLE

DISCOUNTS ON:

- Adult Bikes
- Children's Bikes
- Clothing for all cycling weather
- Parts and accessories

89a Grovehill Road, Beverley, East Yorkshire HU17 0EJ

OPEN: Monday - Saturday: 9am - 5pm
 Sunday: CLOSED - Out riding our bikes

ANYTIME FITNESS





Join Anytime Fitness

Improve your Mind and Body with Qualified Experienced Staff

FREE Day pass

Call James 01482 247100

New Gym Class Timetable

Tel: 01482 247100
 Flemingate Centre, Flemingate HU17 0NQ



MAKE IT A MAGICAL CHRISTMAS WITH THE SNOWMAN AT BEVERLEY MINSTER

This Christmas, Beverley Minster welcomes back Carrot Productions, the world's leading performers of The Snowman film with live orchestra.

"We're so delighted to be returning to Beverley to perform The Snowman again this year" said Rachel Whibley of Carrot Productions. "Last year's shows in the stunning Minster proved to be some of the most moving and memorable, thanks to the splendour and sanctuary of the setting, but also thanks to the warmth of the local people."



Set in the stunning surroundings of Beverley Minster, the performance offers much more than just a viewing of the beloved animated movie.

Opening with a toe-tapping Christmas Medley, there follows a fun musical tour of the orchestra, offering audience members young and old the opportunity to see and hear the instruments individually. And there will even be a visit from The Snowman himself!



The orchestra includes top musicians handpicked from some of the UK's finest orchestras, such as The Hallé and the BBC Philharmonic. The performance features a local soloist, singing the haunting Walking in the Air solo which lies at the heart of The Snowman.

The programme also features A Donkey's Tale, a specially created animation by Carrot Productions. Set amidst the wild landscape of Connemara in the west of Ireland, the film tells the story of Dillon the donkey, who has a dream to make music.

With accompanying narration and musical score by Daniel Whibley, it has become a firm family favourite.



Daniel Whibley said "I wanted the music to be the star of the piece, with the addition of traditional folk instruments such as the bodhrán and low whistle conjuring up the unique feel and mood of a special part of Ireland."

A truly heartwarming experience for all ages, and the perfect family outing between Christmas and New Year.



The Snowman Tour

"TOP THINGS TO DO AT CHRISTMAS"

THE GUARDIAN, THE SUNDAY TIMES & THE TELEGRAPH

**BIG SCREEN ICONIC FILM
WORLD CLASS MUSICIANS**

11 DECEMBER | BEVERLEY MINSTER

FOR FULL PROGRAMME DETAILS & TO BOOK VISIT

www.carrotproductions.com/the-snowman

carrotproductions @carrotprod @carrot_productions

©Snowman Enterprises Limited "The Snowman" by Raymond Briggs is published by Puffin www.thesnowman.com

BOOK NOW!
Carrot
productions



HAPPY BIRTHDAY STIPENDIA!

Stipendia recently celebrated its 6th birthday! Each year has been a milestone for the Beverley-based payroll solutions company as they have continued to provide their clients with the highest standards of service, delivering a complete outsourced payroll solution.

'Stipendia' is Latin and means 'pay' or 'salary', but there's so much more to the company than simply delivering a pay slip at the end of the month.

So what is the modern day Stipendia? Based in Swaby's Yard, Beverley, the Stipendia serves over 200 customers across the UK, including London, Manchester and the North East.

Part of the Fannies Group, Stipendia's first employee was Lynne Auton, who was appointed as operations director in 2013.

From there, four more employees were quickly recruited to service the expanding business.

Today the staff force has doubled to eight, demonstrating the rapid speed of growth. In addition to providing payroll solutions, Stipendia is an active part of the community.

Over the past six years, the company has raised money for Beverley Barge Preservation Society, Alzheimer's and Go Kids Go as well as other charitable causes.



Funds raised really help to make a difference to those living in the local area. And it's not just charity that the company supports.

The local football team, Barton Town, part of the NCEL Premier Division, have benefitted from Stipendia's sponsorship over the past three years. As a professional team, Barton Town have aspirations to fire their way up the ranks and all the support is warmly received.

It's been an eventful six years, which have truly flown by. But here's to a further six and more - continuing to contribute to the local economy and provide unrivalled support to clients across the country.



Print that gets you noticed







BROCHURES LEAFLETS BUSINESS CARDS POSTERS
CALENDARS POP UP BANNERS INVITES PADS

Tel: 01482 610902
info@jadan-press.co.uk www.jadan-press.co.uk
Rainbow House, Kimberley Street, Hull, HU3 1HH







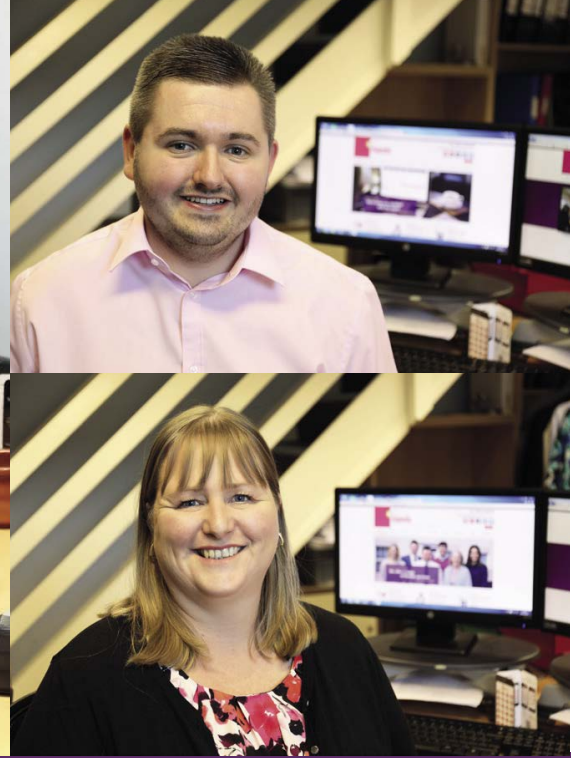



To arrange a **FREE** meeting
call us on 0845 308 2288
or visit www.stipendia.org.uk



 Stipendia Payroll Solutions

 @StipendiaPay



Your Partners in Payroll

Changes in payroll. Have you got it right?

Benefits in kind / informing HMRC of changes

Outsource your payroll today and be rest assured everything is taken care of!

Are you:

- Making the Correct Pension Contributions?
- Aware of the Minimum Wage Rates?
- On top of the Statutory Sick and Maternity Pay Rates?
- Making the most of your Payslips?

**Improve business
performance by
outsourcing payroll**

Registered Office:
4-6 Swabys Yard, Walkergate,
Beverley, East Yorkshire. HU17 9BZ



SHORT STORY BY CLINT WASTLING - NOVEMBER WOODS

"Are you sure you're going to be ok walking back to Wold Newton?"

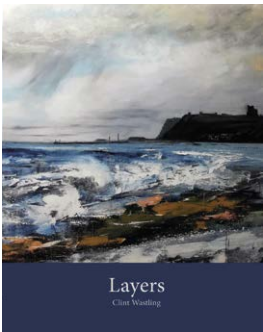


David swayed. "It's a fine and frosty night and the walk will sober me up! Besides I might be hit by the muse and unlock this writer's block!"

"You'll be hit by a car more like, if you're not careful," his friend responded with concern. "I'll be careful," David replied, putting on his coat. He waved goodnight and began his walk home. It was a few minutes before the chill air hit him and he realised he'd had one pint too many in the Burton Arms. He staggered a little before he came to a stop. A dog barked which made him jump. David resumed his journey and before long he was leaning on the Welcome to Burton Fleming sign, looking up to admire the milky way and so many other stars. David's head was clearing so he resumed his journey. His route should have been the sharp right over the bridge of the Gypsy Race but something compelled him to turn left. He climbed towards a small woodland.

As he approached, he heard the tinkling of musical instruments coming from the woods and saw flickering lights in shades of red and green. "Kids!" he muttered to himself. Standing at the edge of a mound covered in skeletal trees silhouetted against a midnight sky of twinkling stars, all his woes vanished. When a warm hand touched his, he panicked. "Don't be afraid, come and join us," the lady's voice calmed and soothed him. She was a woman of great beauty dressed in shimmering green; her hair sparkled with emeralds. She drank from a golden cup then presented it to him. He took a sip, grimaced at a taste so pure and magical then passed it back. The woman laughed as she began a beguiling dance. David joined her, then a dark skinned man with a black goatee beard made a circle of three. In the distance David saw a blur of beautiful creatures; laughing and singing - the fae. The beautiful woman whispered in David's ear, "don't be afraid, not every human gets to meet the fairy queen and king."

"Titania and Oberon?" he asked. She laughed, "Shakespeare called us by those names. Many a year ago he was invited to join our celebrations for this month of mist and frost. What will you do after meeting us? You must leave us a gift." David thought about this. "I'll write a story about a stupid man who reforms his ways after meeting you both on a cold November night!" Titania smiled and drew him into the dance once more. When he woke he was covered in a carpet of leaves. Although his joints were a little stiff he felt refreshed and thankfully, without a hangover. He looked around but there was no evidence of the fae. David knew he was in the hollow of a Howe - an ancient burial place. He brushed himself down and resumed his journey home a feeling of magic still coursing through him. He knew he was a reformed character.



Clint's first poetry collection, Layers, is available to order through Maytree Press and all good bookshops. His fantasy novel Tyrants Rex is still available and can be ordered via Stairwell Books.

POEM BY PAULINE KIRK - HAVEN



*Autumn calls later here.
Beech leaves drift downwards:
feathers from a torn duvet.
Cold spills across still water,*

*echoes between fading slopes.
Beyond this level path, tracks
tempt upwards to stone and wind,
but this is a safer walk, murmuring*

*a tamer story. Here there is shelter,
found only by local lore - or accident.
Sunday strollers pull collars tight,
remember gloves. Above them,*

*rowan berries beckon,
scarlet like deep south beauties,
but northern - hardy -
radiant against October mist.*

Pauline is a published poet and Editor of Fighting Cock Press. writing as both Pauline Kirk and with her daughter Jo Summers, as PJ Quinn.

'WHERE IN BEVERLEY' ANSWER

*The Hudson Way Old Railway Line,
Beverley to Market Weighton.*

AB PLUMBING & HANDYMAN SERVICE

No job too big or small, from general plumbing to any jobs that need doing.

Any queries or questions please don't hesitate to ask.

Call now for a free quote on **07753 651610**

or check out my Facebook page

@AB Plumbing & handy man service



Email: andrewbricklebank@gmail.com

TALCOTE THEATRE PRODUCTIONS

SLEEPING BEAUTY

THE PANTOMIME OF YOUR DREAMS

PARKWAY BEVERLEY
Sat 14th - Sun 29th December 2019
Box Office: 01482 968 090 Web: parkwaycinemas.co.uk

ert

**EAST
RIDING
THEATRE**

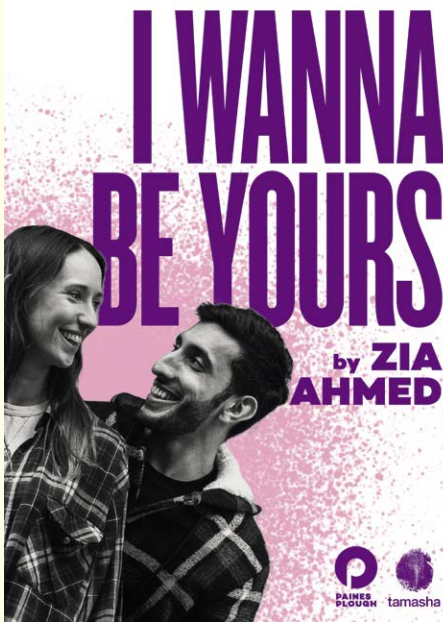
10 Lord Roberts Road
Beverly HU17 9BE
Tel: 01482 874050

Email: boxoffice@eastridingtheatre.co.uk

Current Box Office Opening Times:
Tues - Fri 10am - 4pm or Sat 10am - 12noon.



Cafe/Bar Opening Times:
Tues - Sat 10am - 4pm



I WANNA BE YOURS

Saturday 16th November - 7.30pm

Ella is from Yorkshire. Haseeb is from London. They order a pizza. House red for Ella. Hot chocolate for Haseeb.

"I think I'm falling in love with you." People and playlists. Christmas and Eid. Travelcards and Mega buses. London to Leeds.

Love is more than just a game for two. Especially when there's an elephant in the room.

A tender, funny, lyrical play about finding love and holding onto it with everything you've got. I Wanna Be Yours is the debut play from slam poetry champion Zia Ahmed.



Zia is from North West London. He is a London Laureate, having been shortlisted to be the Young Poet Laureate for London 2015/16. He is a former Roundhouse Poetry Slam champion.

I Wanna Be Yours was developed with support from the Channel 4 Playwrights' Scheme.

A Paines Plough and Tamasha production. Tickets £10/12.



LANDMARKS

**Saturday 2nd, Sunday 3rd & Wednesday 6th
November - 7.30pm**

It is Cheshire in the 1930s. In the countryside, the tractor is taking over from the horse.



Wilf is a farmer whose traditional methods have served him well all through his hard-working life.

When his younger brother-in-law Totty insists on introducing new technology into their family business, Wilf fears that the balance of nature will be upset. A family feud develops and things get worse for the family when a mysterious stranger appears in the form of a harmless priest, but the family fear that he is possibly a ghost or an angel or... a Boggart, a spirit portentous of disasters.

They decide to take action and their hilarious ineptitude and the interference of the eccentric busybody Mrs Mayse has dire consequences for the family.

A funny and thought-provoking story from the past which has something important to say about our present concerns for the environment. Tickets £12-14.



THE STEPHEN FROST IMPROV ALLSTARS

Saturday 9th November - 7.30pm

Four brave performers arrive with no script and not the faintest idea of what will happen. Willed on by a supportive crowd (that's you!), through improvisation they create sketches and comic dramas that are amazingly inventive and sometimes take off into flights of surreal brilliance. Stephen Frost's Improv Allstars grew out of the popular TV show Whose Line Is It Anyway? and the Allstars troupe has played festivals all over the world.

Just added to the line-up is Dave Johns. Dave is one of the most respected and best-loved stand up comics working on the British comedy circuit. A multi-award-winning film actor, accomplished stage actor and improviser who has appeared on the West End stage and is best known for his breakthrough role in Ken Loach's critically acclaimed film 'I, Daniel Blake' which won the coveted Palme D'Or Award at the 2016 Cannes Film Festival. Tickets £14.50/15.50.

CHRISTMAS MINI MARKET

**Sunday 17th November -
10:30am - 3:30pm**



Join us for our annual Christmas Minimarket located in our wonderful Cafe/Bar! Come and browse a selection of stalls selling fabulous local handmade goods. Mulled wine and hot drinks will be available along with award-winning authentic German bratwurst & frankfurters. Vegan options will also be available too so there is no excuse NOT to join us! Free entry.

WHAT'S ON

SPONSORED BY: **küchenhaus**

2 Toll Gavel, Beverley, HU17 9AJ. T: 01482 862172.

Open: Mon - Sat: 10am-5pm. Sun: 11am-3pm. Bank Holidays: 10am-4pm.

Monday 4th November

• Singers and Musicians Night

The White Horse Folk Club at Beverley Conservative Club, Beverley. 8.30pm. £2. Performers and audience welcome.

Tuesday 5th November

• Singalong Memories Just for Fun

Walkington Methodist Church Schoolroom. 2pm-3.45pm. £2 (incl. refreshments). For further details please contact Val/Mike on 01482 865249 or Sue on 01482 882188 or email val.memories@outlook.com

• Bonfire and Fireworks with Beverley Westwood Lions Club

Beverley Westwood. Lighting the Bonfire 6.45pm, Professional Fireworks Display 7.30pm. A bucket collection will be made to help cover the costs of the fireworks. www.justgiving.com/crowdfunding/beverley-bonfire

Thursday 7th November

• Rebecca Newman presents 'A Journey through Song'

Toll Gavel United Church, Beverley. 7.30pm. Tickets: Adults £16, Concessions £14; all children under 16 FREE with full paying adult, additional children £6; and are available from Beverley Library, or call 01262 678258, or visit Bridspa.com

Monday 11th November

• Copper Viper

An acoustic duo from London who draw inspiration from British folk and American country/bluegrass. The White Horse Folk Club at Beverley Conservative Club, Beverley. 8.30pm. £8.

• Norwood Nites

Norwood Church, Beverley. 7.00pm. Community cinema event. Films are shown in the schoolroom to the rear of the church.

Thursday 14th November

• Tiny Treasures Explore Buildings

Treasure House, Beverley. 1.30pm-2.30pm. Free for under 5's and their grown-ups.

Saturday 16th November

• Beverley Chamber Choir Concert

St. Mary's Church, Beverley. 7.30pm. Performance of the great choral work 'Elijah' by Mendelssohn under the direction of Jeffrey Makinson. Tickets from £5 to £18 from www.beverleychamberchoir.org, Beverley Tourist Information 01482 391672, or on the door.

• Grimethorpe Colliery Band Concert

Beverley Minster, Beverley. 7.30pm. £20 Adults £18/£12 Children (under 16) from www.eventbrite.co.uk (a booking fee may apply), or on the door.

Monday 18th November

• Singers and Musicians Night

The White Horse Folk Club at Beverley Conservative Club, Beverley. 8.30pm. £2. Performers and audience welcome.

Tuesday 19th November

• Singalong Memories Just for Fun

Walkington Methodist Church Schoolroom. 2pm-3.45pm. £2 (incl. refreshments). For further details please contact Val/Mike on 01482 865249 or Sue on 01482 882188 or email val.memories@outlook.com

Friday 22nd November

• Flemingate Christmas Lights Festivities

Flemingate Centre, Beverley. 5pm-8pm. Free. Lights switch-on and fireworks display starts at 7.15pm.

Monday 25th November

• Singers and Musicians Night

The White Horse Folk Club at Catholic Church Hall, Beverley (next to the Rose and Crown). 8.30pm. £2. Performers and audience welcome. Bring your own drinks and glasses.

Wednesday 27th November

• Cafe Scientifique - 'The Coinage Metals' by Michael O'Neill

The Potting Shed, Beverley. 7.30pm-9pm. 'Science for the price of a coffee'.

• Snow White and the Seven Dwarves

Beverley Memorial Hall, Beverley. 7.30pm (Weds to Sat), 2.30pm (Sat and Sun). £8 Adults, £6 Under 16's. Show runs Weds 27th Nov until Sun 1st Dec. Tickets available from Beverley Music and Dance, Norwood, Beverley.

Saturday 30th November

• East Riding County Choir Present Handel: Messiah

Beverley Minster, Beverley. 7.30pm. Tickets £17.50 Reserved / £10 Unreserved. Available from www.beverleychamberchoir.org, Beverley Tourist Information 01482 391672, or on the door.

Sunday 27th October to

Sunday 3rd November

• Petrifying Pumpkin Hunt and Spooky Maize Maze Sledmere House, nr Drifffield. 10am-5pm. Closed Monday. Normal entry prices apply. Free to Sledmere Friends Members.

Tuesday 29th October to

Saturday 2nd November

• The Circus is coming to Flemingate!

Flemingate, Beverley. Free. 10am-3pm Tues, Weds and Thurs, then 10.30am-3pm

Tell us about your event!

Email: info@justbeverley.co.uk

Telephone: 01482 679947

For more events visit:
justbeverley.co.uk/events

Friday and 11.30am-4.00pm on Saturday.

Until Friday November 22nd

• Edwardian Beverley: A Snapshot in Time

Beverley Guildhall, Register Square. Free. 10am-4pm Wednesday and Friday until October 30th, then 10am-4pm on Fridays and 10am-1pm on Wednesdays.

Until Saturday November 30th

• Mysteries Inside Us: Medical Illustrations by Annamaria Dutto

Treasure House, Beverley. Annamaria produces illustrations for books, patient leaflets and medical teaching materials including the illustrations for Channel 4's 'One Born Every Minute'.

Until Friday 24th April 2020

• Time off: Leisure and Diversions in the East Riding Skidby Windmill and Museum of East Riding Rural Life. £2.50/£1.50/£1.25/Free.



Beverley Westwood
Lions Club



Bonfire & Fireworks

Tuesday 5th November 2019

on

Beverley Westwood

Lighting the Bonfire: 6.45pm

Professional Fireworks Display: 7.30pm



Photograph by M. Hoppes

A bucket collection will be made to help cover the costs of the fireworks - Please give generously.

www.justgiving.com/crowdfunding/beverley-bonfire

Come and enjoy a great night safely!

No on-site parking available



Printed and donated by Print and Design. Call 01482 393323 or visit printanddesignonline.co.uk

küchenhaus

The Largest Manufacturer of Quality German Kitchens

At Küchenhaus we have affordable solutions made to meet your highest standards

2 Toll Gavel, Beverley, HU17 9AJ. T: 01482 862172.

Open: Mon-Sat: 10am-5pm. Sun: 11am-3pm. Bank Holidays: 10am-4pm.



FLEMINGATE
BEVERLEY

FASHION | FOOD | FILM | FUN

LATE NIGHT
SHOPPING

CHRISTMAS LIGHTS SWITCH ON!

FRIDAY 22ND NOVEMBER 2019
5PM - 8PM

Live performances from
**Anna, Elsa
and Olaf**

PLUS
Britain's Best Little Mix Tribute
Little Chix

**MAGICAL
FIREWORKS
AT 7:15PM**

PLUS
Bartipi Christmas Tipi Bar
Beverley Lions Santa's Sleigh
Parkway Panto Cast
AFO Choir and more...

GREAT SHOPPING & MORE TO ENJOY AT FLEMINGATE

FLEMINGATE.CO.UK



@FlemingateBev



FlemingateBev



FlemingateBeverley

HOSTED BY
THE SOUND OF EAST YORKSHIRE
BEVERLEY
107.8 FM

WHERE MAGIC IS MADE!

AS SEEN ON TV

REAL DEALS FOR YOU



STANLEY FATMAX

£29.99

INC VAT

RRP £46.50

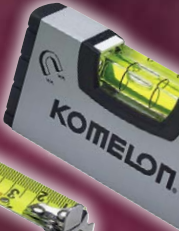


KOMELON

£16.99

INC VAT

RRP £23.99



£54.99

INC VAT

RRP £89.99

AS SEEN ON TV



Einhell

£49.99

INC VAT

RRP £79.99

Lighthouse

£9.99

INC VAT

RRP £15.50

IRWIN Marples

£69.99

INC VAT

RRP £118.50

BETTER THAN HALF PRICE

CRESCENT

£19.99

INC VAT

RRP £46.50

BLACK+DECKER

£79.99

INC VAT

RRP £99.99

SAVE £20

REAL DEALS FOR YOU

APPROVED STOCKIST

SPELLBINDING OFFERS AT BEVERLEY

Swinemoor Lane, East Yorkshire, HU17 0JX
01482 880088 | www.mkmbss.co.uk

Available in store now until 31st December or while stocks last

