

just
ISSUE 56

BEVERLEY

PICK ME
UP, I'M
FREE



INDICOLL
10 YEARS OF MORE THAN JUST WEB DESIGN

NEWS, WHAT'S ON, LIFESTYLE, FEATURES, PUZZLES, PHOTOS & MORE

To arrange a **FREE** meeting
call us on 0845 308 2288
or visit www.stipendia.org.uk



Your Partners in Payroll

Changes in payroll. Have you got it right?
Benefits in kind / informing HMRC of changes
Outsource your payroll today and be rest assured everything is taken care of!

Are you:

- Making the Correct Pension Contributions?
- Aware of the Minimum Wage Rates?
- On top of the Statutory Sick and Maternity Pay Rates?
- Making the most of your Payslips?

Improve business
performance by
outsourcing payroll

Registered Office:
4-6 Swabys Yard, Walkergate,
Beverley, East Yorkshire. HU17 9BZ





CONTENTS

Letters from the Editors **3**
News **4, 5**
PARKWAY CINEMA 6, 7
EAST RIDING THEATRE 35

FEATURES

What was here? **9**
Indicoll Celebrating 10 years in Business **11**
Mac's Trust Launched **12**
50 years delivering live music **22**

REGULARS

Art & Culture **4, 8, 9, 15, 30, 35**
Competitions **5, 32**
Competition Winners **7**
Countryside **8**
Education **5, 23**
Fashion **10, 16, 20**
Fitness **28, 33**
Gardening **25**
I've Been Thinking **14**
Lifestyle **4, 10, 16, 22**
Literature **14, 24**
Motoring **26**
Pets **26**
Photos **18, 19**
Puzzles **27**
Sport **4, 28, 33**
Travel **23**
What's On **15, 30, 34, 35**
Walking with Ian Richardson **31**



12



18



19



26



30



32

Competition Terms and Conditions

Competition answers should be emailed to competition@justbeverley.co.uk before the closing date with the competition title in the subject field. Include your name, address and daytime contact telephone number along with your answer. Winners will be notified within 1 week of the closing date and MUST be available for publicity purposes for **Just Beverley** magazine, website and Facebook page and the prize provider. Photographs are usually taken the weekend after the prize-winners have been notified. The judge's decision is final. No cash alternative is offered. Details may be used for marketing purposes by **Just Beverley** and the prize provider and for website analytics by **Just Beverley**.

Contributors:

Julian Minshall, Linda Johnson, Rich Manville, Sam Bartle, Lara Blythe, Barbara English, Val Horner, Lauren Middleton, David Tute, Clint Wastling, Nathan Wilson.

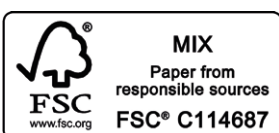
REMEMBER!

If you see examples of anti-social behaviour or other types of low-level crime, do report it to the appropriate authorities. Without knowledge, the Police and Council cannot put in place processes and procedures to combat it! Cyclists without lights, on one wheel, traveling the wrong way down a one-way street put other road-users' in danger - let the Police know immediately!
POLICE - Emergency 999, Non-urgent 101.

ANTI-SOCIAL BEHAVIOUR (East Riding of Yorkshire Council) - 01482 393939.

You can pick up the magazine from:

Parkway Cinema, Flemingate, Beverley Tourist Information, Beverley Library/Treasure House, Tesco, Morrisons, East Riding Leisure Beverley, East Riding Theatre, Browns café, Beverley News, Boyes, Tesco café, Colette and Tyson Garden Centre, Beverley Garden Centre, Cherry Tree Garden Centre, Mace News Saturday Market, Co-op Food Lincoln Way, Tickton News, Costcutter in Walkington, Molescroft News, Grovehill Convenience Store, Maple News, Leconfield PO, Willerby News, Poundland, Halfords, East Riding Community Hospital, Bishop Burton PO, Leven PO, The Altisidora, Cherry Burton PO, Barkers of Cottingham, Middleton-on-the-Wolds PO, Light Dragon at Eton, Gnu at North Newbald, Monks Walk, Hayride, Sally's Deli, Ferguson Fawcett at Walkington, THECREATIVELAB, health centres, churches, cafés, hairdressers and more!



Please pass your Just Beverley on or recycle it responsibly.
Printed by: Jadan Press.

LETTER FROM THE EDITORS



Holidays over, Autumn is here and we have the build up to the C word - "Christmas".

Whether you are going out for a Christmas meal, the Panto or Theatre, book early for some great savings and to secure your place.

September will probably see the last days of the Summer weather, let's hope the Paracycling and the UCI cycling events see our beautiful county in all its glory with the Autumn Sunshine. You can see the start in Beverley on Saturday 21st September or follow the whole event running through to Sunday 29th. The whole world will be watching.

At **Just Beverley** we embrace change, Small Change BIG impact, let us know about your small changes and what a big impact they have had. Have a great September.

Julian.



September is my favourite month as the nights draw in - especially if we enjoy an Indian Summer with warm days and warm evenings! I love the berries on the rowan trees, the yellow stubble changing to brown earth as the harvest is

brought in and that glut of apples and pears! It's a great time to get out into the countryside and thank our farmers for looking after our land.

Every month, Ian Richardson features a lovely walk so you can do just that - this month he guides you around Kilnwick on the Wolds on Page 31.

Wherever you may wander, be happy!

Linda.



'Community Publication Award'
Shortlisted Nominee
2017 & 2018



REYTA
'Remarkable East Yorkshire'
Award Nominee 2016
'Best Newcomer'

GET IN TOUCH WITH US:

Website: justbeverley.co.uk

Email: info@justbeverley.co.uk

Telephone: 01482 679947

Twitter: @JustBeverley

Facebook: [facebook.com/justbeverley](https://www.facebook.com/justbeverley)

If you would like copies for your business to distribute to staff and customers, call **Just Beverley** on **01482 679947**.

BEVERLEY'S FIRST GENTLE CONCERTS HAVE BECOME A GENTLE FESTIVAL

Join Music Living for a weekend of music, workshops and concerts designed for the whole community whilst providing specific support for children, young people and adults with special educational needs and disabilities (SEND).

Based in the lovely surroundings and fabulous acoustics of Toll Gavel United Church, this is an opportunity for people to come together to share music in a totally inclusive and accessible way. This will be a weekend to remember for everyone, building on the success of last year's Gentle Concerts.

The Friday will enable young people with SEND to participate in community singing and playing, listen to top musicians and work with their able-bodied peers. But adults with SEND are, of course, most welcome and the organiser, Denis Delahay of Music Living, is reaching out purposefully to the isolated elderly to encourage them to come along. This weekend is designed to develop

camaraderie and understanding for everyone through the medium of music! On the Friday and Saturday evenings there will be concerts similar in format to last year with an additional Open Concert on the Saturday afternoon. For anyone who attended last year, the concerts are joyous occasions with dancing, clapping, moving around and even chatting during the musical items encouraged! The Gentle Festival will run over the weekend of Friday 4th-Sunday 6th October and include a Gentle Act of Worship on the Sunday morning at 10.30am with Holy Communion.



For more information contact **07964 059912** or email music-living@outlook.com. Do spread the word!

IT'S HAVE-A-GO MONTH FOR ADULT LEARNING COURSES THIS SEPTEMBER!

Ever fancied being the new David Bailey? Have you got a book inside you which you don't know how to get out? Loved watching your Granny quilting or crocheting when you were a child and would love to know how to do it yourself? These, and more, are all on offer at www.eastriding.gov.uk/learn or your nearest adult learning centre.

East Riding of Yorkshire Council has been working with The Festival of Learning, led by the Learning and Work Institute, to encourage adults to continue or resume their education. So, during September, they have put together 2-hour 'have a go' sessions so you can see if the activity is right for you. As well as the more vocational courses such as pottery, block-printing and dress-making, there is conversational Spanish, counselling, increasing self-esteem, how to use a computer and even on-line shopping. It's amazing what you can learn in 2 hours - and if you find your appetite is whetted, tutors will let you know how to sign up for a full course! Booking is essential and the sessions are bound to be very popular. If you try something and get the bug, let **Just Beverley** know about it!

NORWOOD NITES COMMUNITY CINEMA IS BACK IN ACTION

Meeting on the second Monday of the month, Norwood Nites welcomes old and new friends to their free showing of films you may have missed at the cinema or would like to see again, with a post-film chat for those who wish to comment.

There is a loyal group of Norwood Nites fans, but everyone is welcome! The films are shown in Norwood Church's Schoolroom and there are refreshments and a raffle. Anyone wishing to go who needs a lift should contact Beverley Community Lift on **01482 868082** to arrange transport. The new season starts on September 9th at 7pm when a working-class bouncer becomes the driver of a classical pianist on a tour of venues through the 1960's American south.

ST MARY'S AND CHAMBER MUSIC - MADE FOR EACH OTHER!

September 25-28th sees Beverley's annual celebration of Chamber Music with the renowned Brodsky Quartet in residence.

Presenting music from Russia by Borodin, Rachmaninov and Shostakovich; enjoying the 'classiest brass ensemble in Britain' Onyx Brass in a programme entitled 'Firebox' wondering at the skill of BBC Young Musician of the Year 2002 Jennifer Pike; listening to a couple of lectures; wishing Clara Schumann 'happy 200th birthday with some of her exquisite music and not forgetting Elgar's contribution to English chamber music, this festival offers a packed, exciting few days. And there's time for a pizza! Tickets are on sale now at Beverley Tourist Information **01482 391672** or online at www.newpathsmusic.com

BEVERLEY'S OWN FOOD FESTIVAL IS ON OCTOBER 6TH

Put the date in your diary and join 30,000 residents and visitors as local food and drink is celebrated with demonstrations, tastings and purchasing opportunities.

This year, there will be an emphasis on food education, buying local and seasonally and cooking healthy meals.

Local chefs will be demonstrating their skills, with the ever-popular 'Ready, Steady, Cook'-type food challenge and surprise Radio Humberside presenters. There'll also be some musical entertainment. So, save the date!

'SEPTEMBER IS FRIENDSHIP MONTH' SAYS ODDFELLOWS FRIENDLY SOCIETY

'Make more mates and meet more often' says the Oddfellows as it organises some special get-togethers to encourage people to make new friends.

20% of all adults over 55 go for at least 6 months without being socially active - including going to church or grabbing coffee with a friend. Yet friendship is hugely important for health and happiness. The Oddfellows Friendly Society runs social events all the time but this September they are adding an afternoon tea at Rowley Manor on 12th September and short walks around Welburn/ Castle Howard with lunch on September 16th to their programme. Ring **07732 585186** to find out more. There's also a quiz & bingo night on September 27th with a free light supper - contact **01482 881018** for more information.

Steve Duke is the local branch secretary of the Oddfellows. He said: "The Oddfellows offers friendship and support all year round. We are

no strangers to helping people discover new friendships and support networks. If you would like to come to an event, please give me a call in advance so we can become acquainted and we will ensure there's someone to meet you, especially if you are coming by yourself. I'm on **01482 860537** or email steve.duke@oddfellows.co.uk. Visit www.friendshipmonth.com to see what else the Oddfellows offers, too."



SALT REVIVE **STOP PRESS!**

Coming soon to Salt Revive - a health and beauty centre with a difference.

Offering beauty treatments using natural products in a spa style setting. Look after your inside, as well as your outside and take advantage of our pamper packages, combining salt therapy with beauty and massage for the ultimate in relaxation and wellbeing.



BEVERLEY'S NEWEST SPORTING CLUB - PÉTANQUE

Pétanque is a game which anyone can play - which is why the new Beverley Molescroft Pétanque Club is guaranteed success.

The man behind the club is Thierry Condette, who is well-known for the delicious French food he prepares at TC Patisserie on Lairgate. He started playing pétanque about 6 years ago and got the bug! He now plays in the Northern Pétanque League as well as in local competitions and knows more people would become similarly enthused if they had the opportunity to play. When he approached Molescroft Paris Council about the idea, they were similarly enthusiastic and set about building the 9m x 15m boulodrome or piste. Now Thierry is inviting everyone to have a go!

Pétanque is one of the 'boules' sports which has a lot in common with lawn and crown bowls, in that boules/bowls are played towards their target. Boules can be dated back to ancient Greece but pétanque is rapidly gaining in popularity in the UK. The Beverley Molescroft Club is open Tuesday and Thursday evenings, all day Wednesday and Saturday mornings and has a few sets of boules available for people to borrow until they buy

their own sets. For people who join up, Thierry is creating leagues with competitions between members and neighbouring clubs.

To find out more, visit the **Facebook page Molescroft/Beverley Petanque Club**, give Thierry a call on **07849 067110** or catch him at TC Patisserie on Lairgate **01482 860884** or pop along to the club.



LIFESTYLE GROUP 'BUZZ FOR BEES' JOIN BEVERLEY IN BLOOM

Have you found a packet of 'bee-friendly' seeds around the town? They were put there by a group of 10-year-olds from St Mary's Primary School called Buzz for Bees, who are concerned about the decline in the number of bees and the need to increase their numbers. Along with leaving the seeds for people to take and plant in their own gardens, they have written to East Riding of Yorkshire Council and Linden Homes to encourage them to plant bee-friendly plants on the new roundabouts.

When the holidays come to an end, Buzz for Bees don't want their campaigning to stop, so they have joined forces with Beverley in Bloom to help out at the bee-friendly sites around the train station. **Just Beverley** loves to hear about people getting together to the benefit of us all, especially when our young people demonstrate such leadership.

Well done, Orlaith, Daisy and Jemima!

WALKING AND OUTDOORS FESTIVAL INCREASING IN POPULARITY

By the time you read this, it's likely that many of the wonderful events arranged by the contributing organisations will be sold out - but there are many which are not restricted in numbers and do not require booking.

Did you know you could have a go in a kayak or a canoe at Kelsey Gardens near Burstwick? Or walk along the cliff-tops at Bempton and the site of a medieval village on the same walk? If you fancy something more strenuous there are 5, 6, 7 and 10-mile walks at Millington, along Hessle Foreshore or Yapham and around Hotham or Londesborough and Pocklington which you can just turn up to join. There's Nordic Walking and jogging, too!

Do check on the full programme at www.visithullandeastyorkshire.com/yorkshire-wolds/wolds-walking-festival.aspx and contact the appropriate organisation for availability!

NEW BEGINNERS' WRITING COURSE TO START AT ARMSTRONG SOCIAL CLUB

Everyone has a book in them, so they say! If yours is desperate to get out, help is at hand. Sign up for a 10-week Creative Writing course with Mandi Allen at feedback@thecoffeehousewriter.com for just £105.

The course runs from 7-9pm on Thursday evenings starting on September 12th.

Mandi also runs The Coffeehouse Writer's Group which meets on the 3rd Wednesday of every month upstairs at The Potting Shed.

Contact Mandi at the same address for more details!

GET YOUR TEAMS IN TRAINING FOR THE WORLD CHAMPIONSHIP BARGE PULL!

Sunday 29th September is the date when you and three fellow team-members can get yourselves into the record books for pulling the 64-ton Syntan barge 200m from a standing start on Beverley Beck.

Teams of 4 can be 4 men, 4 women or mixed - and sponsorship is encouraged! Teams and their supporters are invited to dress up, but that is not mandatory - although wearing appropriate footwear and gloves to pull the thick, marine ropes, is.

This year, the barge pull is one of the #YCF10for10 challenges which the charity and community arm of Yorkshire County Cricket Club is including in their fundraising challenges with their official fundraising partner, Involve Adventures.

Lynne Auton of Stipendia Payroll Solutions, who unofficially holds the record for the fastest mixed-team pull, is hoping to improve her



team's previous results by being the fastest team overall. She said: "My fellow female team-member is Ana Polujan who is England's second-strongest lady. Her partner, Juris Skribans, who is in the team is a body-builder, as is his friend. I'm English Champion and British Masters Silver Medallist for weightlifting. Our team name is 'Team Sexy Bulls' as we are wearing bull hats along with our weight-lifting kit! Do come and cheer us on - crowd support might just give us that extra bit of pulling power!"

More details and entry forms are available from www.syntanbarge.org.uk/barge-pull or info@syntanbarge.org.uk

NEW HIGH WOLD'S POETRY FESTIVAL TO CELEBRATE LOCAL WORDSMITHS

From 2pm-7pm on Saturday September 21st, everyone is invited to this first ever festival of poetry at North Dalton Village Hall, YO25 9XA to share your own or other people's poetry.

As we move into autumn with the harvest gathered in, what better time than to put pen to paper to share your thoughts about the beautiful and diverse Wolds, the multitude of activities enjoyed and the characters who live there? Or just listen to the poems submitted and read whilst enjoying tea and homemade delights. There will be surprise guest poets and feature readings, too!

Submit your poems to highwoldspoetry@gmail.com or to **High Wolds Poetry Festival, East Riding Museums, Treasure House, Champney**

www.justbeverley.co.uk

Road, Beverley HU17 8HE by Saturday August 31st if you would like them to be considered for a special High Wolds Poetry Festival Collection available on the day, otherwise by Friday 20th September along with an indication of whether you would like to read.





EVERY THURSDAY AT 10.30am
(doors open 9.45am)

Join us for a free brew and a natter and enjoy some great films on Beverley Parkway's Big Screen. Only £4.20 with drink and biscuits included. Aimed at 55s and over. Films subject to change.

**Thursday 5th September -
Late Night**

Starring: Emma Thompson, Mindy Kaling

Rory's Way

Starring: Thora Birch, Rosanna Arquette

**Thursday 12th September -
Sometimes Always Never**

Starring: Bill Nighy, Sam Riley, Alice Lowe

Late Night

Starring: Emma Thompson, Mindy Kaling

**Thursday 19th September -
Rocketman**

Starring: Taron Egerton, Jamie Bell

Sometimes Always Never

Starring: Bill Nighy, Sam Riley, Alice Lowe

**Thursday 26th September -
The Current War**

Starring: Benedict Cumberbatch, Tom Holland

Rocketman

Starring: Taron Egerton, Jamie Bell

PENGUIN PARTIES

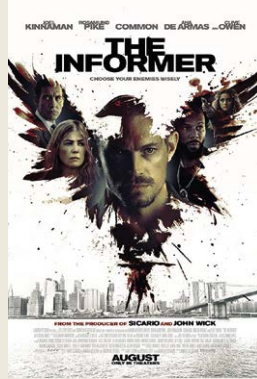


**ONLY
£195**

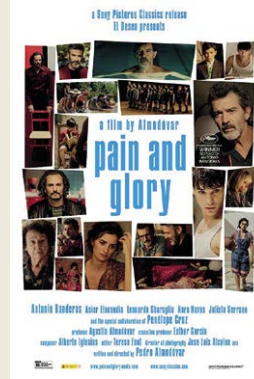
- Suitable for ages 5 to 12
- Up to 40 guests (additional charge for extra guests)
- Party games in a private function room with Parkway Penguin
 - Tea and coffee for parents on arrival
- Personal Photo montage on screen followed by your own film screening

For more information,
please contact a member of staff

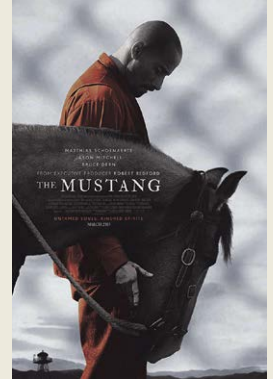
These are the films scheduled to open in August/September - *all are subject to change.*
Check out up-to-date cinema listings at www.justbeverley.co.uk/cinema-times



30th August



30th August



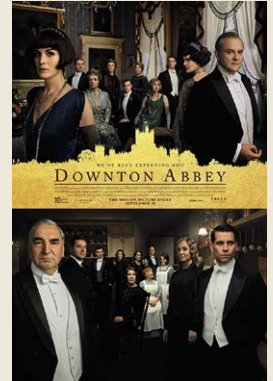
30th August



6th September



6th September



13th September



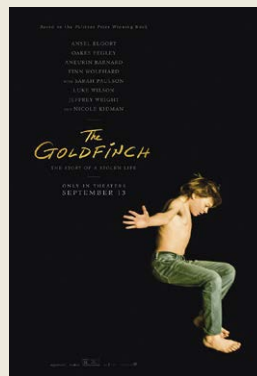
13th September



18th September



20th September



27th September



27th September

COMPETITION WINNER

Congratulations to Alyson Pamley who won a pair of tickets to see the Amazing Bubbleman.



YOUR LOCAL INDEPENDENT CINEMA

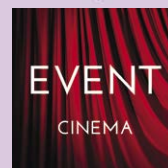


DOWNTON ABBEY TICKETS ARE NOW ON SALE

The long-awaited *Downton Abbey* which continues where the TV series left off is due to hit our screens on September 13th. *Downton Abbey's* last series aired in 2015, ending in 1925. The movie jumps a couple of years to 1927 when the Crawley's learn they are to expect a royal visit.

All our favourite characters are present and correct from both 'upstairs' and 'downstairs'. From the Dowager Duchess of Grantham with her cutting wit played by Maggie Smith to the ice-cold Lady Mary (Michelle Dockery) now married to Henry Talbot (Matthew Goode) and Thomas Barrow (Rob James-Collier) recovering from his suicide attempt to the love-match of Bates (Brendan Coyle) and Anna (Joanne Froggatt) who now have a son, not forgetting the surprise marriage of Carson and Mrs Hughes.

Although *Downton Abbey* is filmed at Highclere Castle near Newbury, the seat of the Earl of Grantham is Downton, Yorkshire. The appeal to British audiences is clear - but the 6-series run was also one of the most-watched series on American television; the premier of Season 6 attracted 9.9m viewers in the USA alone! It is expected that this film will be beating all box office figures to date - 'golly' as Lady Cora would say!



Event cinema offers something a little different to mainstream films. Live and pre-recorded shows beamed in via satellite from all over the world. Here are the latest live streams that you can enjoy on the big screen at Parkway Beverley.

Tuesday 10th September at 7.30pm - MARGARET ATWOOD - LIVE IN CINEMAS (12a)

Thursday 12th September at 7.30pm - NT LIVE: FLEABAG (15)

Monday 16th September at 8pm - THE GAME CHANGERS & ADDITIONAL FOOTAGE

Tuesday 17th September at 7.15pm - RIGOLETTO ON THE LAKE

Thursday 26th September at 7pm & Sunday 29th September at 1pm - NT LIVE - ONE MAN TWO GUVNORS (ENCORE) (12a)

Friday 27th September at 3pm & Thursday 3rd October at 7.30pm - NT LIVE: FLEABAG (ENCORE) (15)

Monday 30th September at 7.30pm - HITSVILLE: THE MAKING OF MOTOWN

Tuesday 1st October at 7.15pm - PLÁCIDO DOMINGO: 50TH ANNIVERSARY GALA EVENING

Wednesday 2nd October at 7.30pm - ROGER WATERS US+THEM

Tuesday 8th October at 6.45pm - ROH: DON GIOVANNI

Thursday 17th October at 7pm - NT LIVE: MIDSUMMER NIGHT'S DREAM (12a)

LIVEshows

Sunday 15th September at 7pm - THE BON JOVI EXPERIENCE

Sunday 13th October at 7pm - GIMME ABBA

Sunday 20th October at 7pm - TAKE THAT EXPERIENCE

Monday 21st October at 7pm - HARRY BIRRELL PRESENTS PICTURES OF LOVE & WAR

Sunday 27th October at 7.30pm - BEVERLEY BUZZ COMEDY CLUB

Monday 28th October at 2pm - PANTO OF THE DEAD

IT CHAPTER TWO COMPETITION



To celebrate the release of 'IT CHAPTER TWO' in cinemas September 6th, Warner Bros. Pictures, Parkway Cinema and Just Beverley offer you the chance to win 'IT CHAPTER TWO' goodies.

'IT CHAPTER TWO' is a horror film which continues on from 'IT CHAPTER ONE'. Because every 27 years evil revisits the town of Derry, Maine, 'IT CHAPTER TWO' brings the characters who've long since gone their separate ways-back together as adults, nearly three decades after the events of the first film. Tickets are already on advanced sale and there will be a high-level of activity for this competition!



We cannot promise exactly what is in the 'IT CHAPTER TWO' goodie-bag - except to say we would be happy to win any of the goodies! It could be one or all items of a t-shirt, a balloon lamp, a key-ring, notebooks or decal - the surprise will be for the winner to discover!

To be in with a chance of winning this fantastic goodie bag, all you have to do is answer the following question:

'IT CHAPTER TWO' is a continuation film based on the novel by Stephen King. In the novel and in the first film, it is stated that Pennywise comes to terrorize the town of Derry in increments of how much time?

Send your answer by email to competition@justbeverley.co.uk by September 18th. Put 'IT CHAPTER TWO' in the subject box with your answer, name, address and daytime telephone number in the body of the email. The winner will be chosen at random the day after the closing date and informed as soon as possible. Winners must be available for publicity purposes for Just Beverley, Parkway Cinema and Warner Bros. Ent. You can follow #ITChapter2 and #ITMovie on social media and link to official social pages on Facebook, Instagram and Twitter. © 2019 Warner Bros. Ent. All Rights Reserved.

BON JOVI TRIBUTE BAND SET TO ROCK THE PARKWAY

The *Bon Jovi Experience* appears on Sunday September 15th ready to recreate the atmosphere and energy of a Bon Jovi gig - they are, after all, the only tribute band to have played live with Jon Bon Jovi himself!

Tickets on sale now at Parkway Cinema!



BEVERLEY'S OPEN DAYS 2019

September, and it's Heritage Open Days again (13-15 September), the 25th anniversary of this event - in 2018 there were 5517 events, 3.1 million visitors. That's in all England of course - the Beverley figures were equally impressive. This year, we have more openings, more events. **AND EVERYTHING IS FREE.** So, come and have a look, or a walk, or a listen.

The theme this year is People Power: we have a special lecture (Saturday 14 September in the Treasure House) on the Pilgrimage of Grace, 1536, the most serious rebellion of Henry VIII's reign, which started in Beverley, and led to the capture of both York and Hull, before it all ended in tears. Pre-booking at the Treasure House (Archives) very strongly advised. On Sunday 15 September there is a walk/talk about the 1381 the Peasants' Revolt, and a famous strike of Minster clergy against the Archbishop of York (peasants lost, clergy won).



The great churches are open, with special tours; this year Toll Gavel church too. The Friary, with its 16th cent. wall paintings. Our High School and our Grammar School. Grade I listed buildings, Lairgate Hall and Norwood House. First time offers:- Barges on Beverley Beck, and Bishop Burton College's walled garden.

County Hall, the Guildhall, Skidby Windmill, the Racecourse and the Golf Club, the Treasure House, the Archives and the Masonic Hall in Trinity Lane are all open, and the archaeologists are surveying the site of Fishwicks Mill on Westwood.

This year we have walks in and around town, including Westwood archaeology, and a new walk called 'Lost Houses of Risby: where Henry VIII came to dinner'. Highgate has many buildings open, including No.2, which was Mary Wollstonecraft's childhood home. You could spend a happy Saturday looking at all the Highgate buildings, refreshing yourself at the Monks' Walk.

We have also joined with Rowley (Manor and Church, with an exhibition of the surrounding places), Howden plus Saltmarsh Hall and Goole to provide some out of town sites. And there are an amazing number of events put on in Hull. You can search on line for details www.heritageopendays.org.uk/visiting or find one of the 10,000 printed programmes available around town. It'll be a great weekend.

COUNTRYSIDE MATTERS WITH SAM WALTON



The more I travel, the more I think how lucky we are to live where we do and have such beautiful countryside around us and all that it brings. The Wolds are unique! The Yorkshire Wolds are higher and more rolling than the Lincolnshire Wolds and the big fields (and I mean BIG fields) are well-suited to modern farming.

In the 20's and 30's, I am reliably informed that farms on the Wolds were sold for about £10 per acre. They were difficult to manage using only horses and needed a lot of labour to grow a restricted range of crops. There was a lot of sheep-farming, turnips and barley with some of the barley used for malting. Modern farm machinery and technology have completely altered how farming is done on the Wolds and there isn't really a crop which cannot now be grown there. Apart from cereals and oil seed rape, there are fields and field of potatoes, many for seed and, of course, vining peas. There are no drains to maintain, hedges generally are lower and easier to keep, but, I think the size of the fields are a bonus as some of them will be at least 100 acres which means less headland and turning (which we get on small acreages) which allows more acres to be covered with any sort of cultivation or combining in any period of operation. I recently had a trip round two large Wold farms and was absolutely staggered at the crops and that made me realise how harder it is to run a farm with smaller fields and soil type variations.



Years ago, yields would be a lot less on the Wolds than on the lower land but to-day the yields are up there with the rest. Fertility and production capabilities of the Wolds has improved since the pig industry developed and slurry was made available to help improve the soil, which is probably only 6-8 inches or so deep in places or even less.

But what a joy it is to find a viewpoint and just gaze across the expanse of acres: absolutely stunning. And realise that today a decent Wolds farm could be worth £10,000 an acre and I will never get the chance to farm one!



LOOKING TO MAKE FRIENDS in the Beverley area?

Since 1929 many women across the country have enjoyed the invaluable benefits of TG membership. They've experienced new things, visited different places, taken on incredible challenges, fought for women's rights and most importantly developed lasting friendships.

Interested in seeing what it is all about?

You are welcome to attend a Guild before considering membership.

If you would like more information or to find your local Guild visit www.the-tg.com/north or call **0121 326 0400**

Join the TG family

JBJOIN



**UNITING
WOMEN
SINCE
1929**

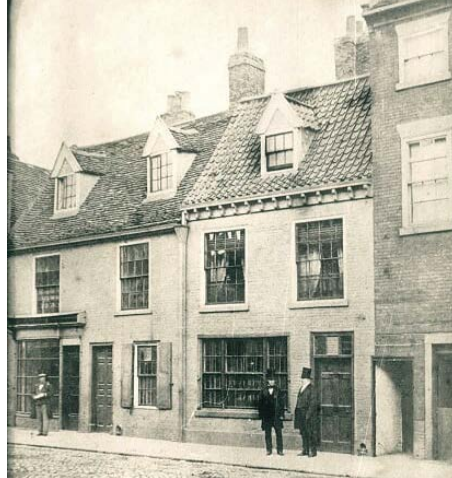
WHAT WAS HERE? SAM BARTLE INTRODUCES EAST RIDING ARCHIVE'S NEW APP

How many times have you been stood looking out at your surroundings and wondered 'What was here?'. We've all asked it at some point! The frustrating thing is that we won't always be able to find the answer to that curiosity and, worse still, we may not even know where to begin looking. But a new app for Android and Apple devices allows you to compare the past with the present - and it's free!

East Riding Archives have launched an app that turns your smartphone or tablet device into a virtual 'time machine'. 'What Was Here?' uses historical photos from the archives, plotted onto a Google Maps base map, to show you literally 'what was here' at your location in Beverley and across the East Yorkshire region. The 'What Was Here?' app lets you see available historic photos that are relevant to where you are standing. This means that you can use the 'What Was Here?' map to explore your chosen area and see how it used to look. It gives you a window to look back through time.

I'm a digital archivist at East Riding Archives and came up with the idea for the app when I was walking along Long Lane on my way into work one day. I was alongside the meadow south of Beverley Minster when I glanced up and recognised the scene in front of me from a photograph taken in 1939. The subject of the photograph was renowned artist Fred Elwell as he painted The Admiral Duncan Inn, and the image is preserved at East Riding Archives.

There is now an unobstructed view of the Minster, but the photograph shows buildings and I thought to myself 'I doubt many people know what used to be here!' and with that 'What Was Here?' was born!



Using the power of smartphone and GPS technology, combined with the heritage collections from the archives, the knowledge of what used to be at a given location, or how it used to look, can now be shared far and wide to people's devices - you could be in Beverley, Stamford Bridge or Withernsea and find it possible to explore the past with this app.

The 'What Was Here?' app also features heritage trails that guide you to various points of interest, where you can apply an augmented reality function in which you use your device's camera to



overlay the featured historic image on top of the modern scene and get a feel for how it looked in the past. One such heritage trail is currently part of the Sewerby Hall & Gardens visitor experience (admission charge applies) and there are three in Beverley: a 'Children's Explorer Trail' (must be accompanied by an adult at all times); a 'Festival Of Words' literary trail (as in-app purchase) and a 'Walking & Outdoors Festival' trail.

If you really like what you see on the app, you can buy prints of selected images by following links through to the East Riding Photos website. The initiative is also a crowdsourcing project in which you can donate your historic images to the Archives for permanent preservation and potential upload onto the 'What Was Here?' platform. Users can also suggest corrections to location coordinates so that the image points can be made as accurate as possible to maximise the visual effect of comparing past with present.

'What Was Here?' is available on Google Play Store and the App Store. You can also check out the accompanying website at www.whatwashere.org

Hear CLEARLY again...

Never miss out on the sounds you love

with the latest comfortable and invisible hearing aids

FREE HEARING AID TRIALS*

FREE HEARING TESTS

INVISIBLE RECHARGEABLE & SPECTACLE HEARING AIDS

WAX REMOVAL SERVICE

- ✓ **EASY** parking
- ✓ **HOME** visits available
- ✓ **FREE** aftercare
- ✓ **5 YEAR** warranty*
- ✓ **5 YEAR FREE** batteries*
- ✓ **INDEPENDENT** family business



Hearing aids don't have to be seen!

Clare House, 8-10 Baker Street, Hull HU2 8HP

t: 01482 22 22 04

www.hullhearingcentre.co.uk



HULL hearing CENTRE
independent hearing aid audiologists

TROUBLE HEARING? CONTACT US TODAY

*on selected products

BROOK TAVERNER AUTUMN WINTER COLLECTION INBOUND

As the light starts to ever so slowly shorten and the shadows lengthen earlier in the day, in timing with the changing of seasons you may start to see some exciting developments brewing in our Beverley store.

As the British climate dictates, we must now look to shelve the polo shirts and shorts that have treated us so well throughout the summer rollercoaster of heatwaves and downpours, and instead look towards milder evenings and layered clothing - without compromising that stylish look of course.



The Brook Taverner Autumn Winter 2019 collection has been 18 months in the planning and each season our in-house buyers pore over the ranges of renowned British and European mills to find great looking designs which conform to the established colour palette.



With a variety of Wool, Pure New Wool, Yorkshire Wool and hints of polyester combinations within the composition of our jackets to provide harder wearing fabrics, not only this collection focus on providing heavier, warmer and more durable elements to a garment, but delivers a luxurious, quality look to our carefully crafted clothing. With this season in particular, expect more



prominent patterns with distinctive checks, perfectly partnered with Autumnal colours to provide the distinctive style that Brook Taverner has become famous for; Standing out from the crowd via quality trademarks, fantastically woven clothing and allowing you to look great in the best jackets the UK has to offer.

A great jacket requires a great name, and an unknown fact about Brook Taverner collections are the use of themes throughout ranges for many a year.

The wonderful Greenwood Jacket, for example, was named after a certain Mr William Greenwood in our season of celebrating British Rugby excellence; or the Calder, Adur, and Ebble jackets, all inspired by the meandering rivers flowing all over the country. This collection has been dedicated as a nod to the stunning nature we are fortunate enough to cohabit and has been labelled after various trees that you'd be able to find throughout the British countryside, so please do ensure you endeavour to sample our Yew, Ash and Beech jackets (among others of course) as we see out the remainder of 2019 in style.



Brand New
Autumn 2019 Collection
In store Now

Store Opening Times
Monday to Saturday 9am - 5.30pm
Sundays 11am - 4pm

BROOK TAVERNER
35, TOLL GAVEL, BEVERLEY. 01482 882356

SEPTEMBER SEES INDICOLL CELEBRATE 10 YEARS IN BUSINESS

Indicoll Ltd has much to celebrate after reaching a fantastic 10 years in business this month. The big milestone reflects the extent of how much the business has grown and cemented itself in the heart of the market over the past decade.

From humble beginnings on Annie Reed Road in Beverley, Indicoll's story began with honesty and professionalism - the two founding core values that it prides itself on maintaining to this day.



Now 10 years on with preparations for a big move into a new premises, Managing Director and Founder, Andy Hayes looks back at the history of the Beverley-based web design and development agency and talks about the success and future for Indicoll.

Indicoll was founded in 2009 as a web design and development agency and has since taken on lead marketing roles for hundreds of businesses across the country. Unique at the point of its initial concept, the business was purely set out for website delivering for Small to Medium Enterprises (SMEs) on a platform which allowed clients to update content themselves.

Speaking about where the idea for Indicoll came about, Andy said: "I actually started out in IT, that's where my background was and I was interested in using those skills to capitalise on a gap in the web design market. A lot of my skills really allowed me to venture into the world of design agencies and we've grown from there really, it all started with that initial vision. As we made a name for ourselves, gaining more and more clients, we found that they were keen on extending the partnership we had created. They wanted us to do more than just web hosting, so that's really when the idea of us expanding into a fully fledged, full-service agency came about."



The agency, currently residing on Corporation Road, has developed dramatically over the last decade, and as the website development business grew, so did the team.

Shortly after Indicoll was founded, Andy was joined by Julian Minshall as a Director. Responsible for the organisation and management, Julian works at the helm of the business representing the company at networking events throughout the region, and supporting the growing nature of the industry.

Fast-forward to 2011 and next to be recruited was Technical Director, Tim Warwick, who had spent the last 20 years working on a variety of software systems in the Defence, Healthcare and Manufacturing sectors. A Maths alumni of Cambridge University, Tim continues to lead the development of Indicoll's bespoke content management system while developing web applications that save clients' time and money.

Service Director, Gary McCune joined the team in 2013, adding another avenue for company development. Indicoll's Pay-Per-Click and SEO specialist, Gary's certification in Google Adwords gave Indicoll Google Partners status, adding another dimension of what the agency could do for its clients.

Two years ago, Indicoll recruited Graphic Designer, Matthew Wood, who has enjoyed a long and successful career at some of the most well-known design agencies in the region. Even more recently, the arrival of Digital

Marketing Executive, Olivia Peace, added another branch to the team. Olivia's degree in journalism goes hand-in-hand with Indicoll's development. With each addition brought a new skill set that continues to present opportunities for the business to grow, and for the last 5 years Indicoll has extended its services to managing Adwords for other businesses.



Speaking about the growth of the company, Andy said: "We now look after hundreds of businesses, generating new business through all available marketing channels. Our team is now full of highly skilled creatives who can support businesses from the running of their websites to recreating branding, from graphic design to running their social media channels, the scope of what we can do is huge and not slowing down".

"We're now effectively a one stop shop for web, graphic design, print, social media and internet marketing with packages and products to suit businesses of all sizes. Looking ahead to the future we want to continue developing the long-standing relationships we have already built and embrace new ventures while we continue to grow."

It seems that the only way is up for this Beverley based company as plans for the future are already underway with a move into a new all-purpose design studio in the up and coming business area of Beverley just off Annie Reed Road.

With the business starting off and now heading back to Annie Reed Road, the upcoming relocation perfectly captures the cyclical nature that takes Indicoll back to its roots.

SHOCKINGLY GOOD VALUE

£49 PER MONTH WEBSITES

PAY JUST £499 DEPOSIT
THEN JUST £49 PER MONTH
FOR A MINIMUM TERM OF 12 MONTHS
AND THEN PAY MONTH-BY-MONTH THEREAFTER

FOR A WEBSITE THAT GETS REAL RESULTS...

CALL NOW ON:
01482 428650
marketing@indicoll.com
indicoll.com

INDICOLL

MAC'S TRUST GETS OFF TO A FLYING START RAISING MONEY FOR LOCAL GOOD CAUSES

Mac the Dog was Allen Slinger's pride and joy - the man's best friend! Mac passed away earlier this year and in his memory Allen, landlord and owner of The Tiger Inn, has set up Mac's Trust, a charity umbrella fund designed to support a variety of local causes.

Donations have come streaming in throughout August making Mac's Trust an immediate success. The first contribution was an amazing £100 from the Beverley Referral Business Network!

The BRBN sponsored local businessman and editor of **Just Beverley**, Julian Minshall, £1 per mile for cycling the Prudential Ride London on 4th August.

After successfully making it through the ballot to take part in the event, Julian took on the challenge with gusto, and together with around 30,000 others, Julian cycled 100 miles through London and Surrey.

Julian is delighted to have raised the £100, which was handed over by Tony Hall, BRBN treasurer, to Allen to get the Trust started.

So far, The Tiger Inn has held charity events during August including a Beer Festival sponsored by **Just Beverley**.

More events are expected at The Tiger over the coming months all designed to support local causes, including Emmaus, Guide Dogs, Jerry Green Dog Rescue,



MacMillan Cancer Support, RSPCA, Beverley Braves and Beverley Ladies Netball and Football Teams.

Already booked is a Race Night in aid of the Beverley Ladies' Netball and Football Teams on September 14th.

Another way of honouring Mac's memory is with the Charity Dog Walk on the first Sunday of every month, which continues as ever!

Mac thoroughly enjoyed his regular walk and you can similarly enjoy a 40-minute walk followed by refreshments at the pub.

At £1 a dog, no excuses are needed to get out and enjoy the fresh air and a relaxing stroll!

All proceeds go to Guide Dogs and the Jerry Green Dog Rescue Centre.

If you'd like more information about any of the above events, please visit The Tiger Inn at www.tigerinnbeverley.co.uk or pop in!



AFTERNOON TEA MENU

£12.95 PER HEAD OR
£24 FOR TWO PEOPLE

AVAILABLE MON-SAT 12-5PM,
PRE-BOOKING IS REQUIRED AND
GLUTEN FREE OPTIONS ARE AVAILABLE

CHRISTMAS BOOKINGS

NOW BEING TAKEN

MON 2ND DECEMBER -
FRI 27TH DECEMBER

2 COURSE MEAL £15.95
3 COURSE MEAL £21.95
(EXCLUDES SUNDAYS &
CHRISTMAS DAY)

HOME COOKED
FOOD SERVED
7 DAYS A WEEK

CYCLISTS
WELCOME

THE TIGER INN

Tel: 01482 869040

www.tigerinnbeverley.co.uk

Lairgate, Beverley HU17 8JG

**Going to East Riding Theatre?
Book at The Tiger Inn for a
pre - show meal**

CHARITY
RACE NIGHT
14TH SEPTEMBER

Brains required from 8.30pm

FIRST SATURDAY OF THE MONTH

Big Quiz

Free food/prizes to be won,
all money raised to our house charities.

£1 per person entry

HOMECOOKED

Sunday Lunches

Served every Sunday
12noon-7pm

Telephone: 01482 869111
sales@rosesofbeverley.karoo.co.uk



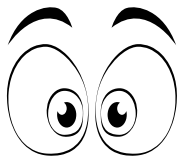
The Kitchen Factory, The Courtyard,
Tokenspire Business Park, Beverley
HU17 0TB

Together we will design a beautiful kitchen



Roses will then
project manage
your kitchen installation from
start to completion

**Our NEW 2020 Season
Displays are now being
Installed in our Showroom**
Why Don't You Come And Have A Look



Visit **www.roseskitchens.com**
to see our customers kitchens and read what they have to say about us

Telephone: 01482 869111



I'VE BEEN THINKING... SAYS COLIN RAYNOR

I do believe that one of the most aptly named buildings in Beverley is the Treasure House which includes the Art Gallery and where, until September 14th, you can still view the excellent Wildlife Photographer of the Year exhibition.



A panel of experts have chosen from thousands of photographs taken all over the world, so what you see is the best of the best. Nearly all the photographs show animals interacting with each other in their natural habitat. At the side of each picture is information (in very clear print and at a height that can be easily read) for the photo enthusiast detailing the type of film used, lens and exposure figures etc.

Equally of interest is the extent to which the photographer has gone to obtain the particular shot. Sometimes this is in cramped and muddy conditions and at other times up to their waist in water for hours just waiting for that one precious moment when he or she can capture an image of a bird or a fish, or a creature from a dense forest. The great detail supplied about the creatures in the photographs is worthy of attention not least because many of these creatures are so rare that the images of them, included in this exhibition, may be the last time they will be seen by human beings. For me the essential aspect of these photographs is that people are showing respect and admiration for creatures with whom we share this planet.

I have to question therefore why a section of this serious exhibition includes pictures of man abusing creatures in way that degrades both. The public needs to know that such practices still take place and there is a warning that some pictures will shock and appall. I would still encourage people to go and see the exhibition for themselves while they can, though.

My feelings are summed up in the words of the writer E. J. Brailsford:
'All things which live below the sky or move within the sea
Are creatures of the Lord most high, and brothers unto me'.

Four Generations, Giving Over 125 Years Service

Herbert 1870-1962 Eardley 1908-1986 Geoffrey 1939-2015 David 1964

Golden Charter
Funeral Plans



- Funerals Respectfully Conducted
- 24 Hour Out of Hours Service
- Free Advice & Support
- Private Restrooms
- Prepaid Funeral Plans Available
- Finance Options Available



Tel: 01482 844695
www.hkempandsonltd.com

259 Hallgate, Cottingham, East Yorkshire, HU16 4BG
Fax: 01482 843898
Email: hkempandsonltd@gmail.com

INCHES BODY STUDIO

COURSES FROM **£110**



What are toning tables used for?
Toning Tables help with fat loss, ME, MS, Osteoarthritis, rheumatoid arthritis, knee and hip replacements, depression, bad backs, frozen shoulders and stroke rehab

GET FIT FOR CHRISTMAS!



SPECIAL OFFER

3 Months Toning
3 Months Vibraxis
3 Contour Wraps

£179

Normal Price over £300
Limited Availability

FREE WEEKS TRIAL

for anyone with Health issues - No obligation

Inches Body Studio, 1 Norwood, Beverley HU17 9ET

Wheelchair access & stairlift available

Telephone: 01482 865229

Email: inchesofbeverley@hotmail.co.uk
www.inchesbodystudio.co.uk

Established 1992

POEM BY VAL HORNER - SEPTEMBER MORNING

*Children swoop in chattering flocks
scuffing new school shoes, their
year has turned, they race ahead
calling 'what's next? what's next?'*

*A morning of blue and gold
this is almost enough
chill winds have stilled
the day now holds its breath*

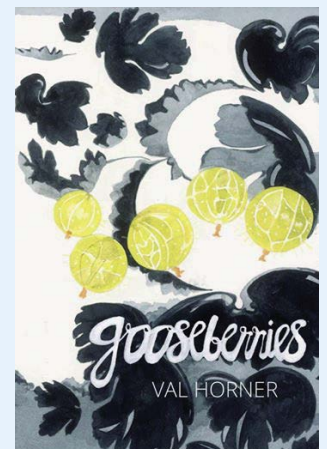
*as light intensifies
and ruby flecked with rose
the last of this year's
crop gleams pendent.*

*I reach for a plum
low sun gilding the tree
leaves like stained glass
and warm as an egg from the nest*

*fruit slides into my palm,
ripeness is all, the flesh
yellow and soft as silk slips
sweetly from the stone*

*and for a moment it all makes sense
the indelible impress of your touch
voices that echo in an empty house
words on a page.*

*'September Morning' first appeared in 'Gooseberries'
by Val Horner published by Stairwell Books 2017.*



NIGEL WALKER - ULTRA PHOTOGRAPHER!

Ultramarathon anyone? Not many people would say yes, but Nigel Walker, a local photographer, jumped at the chance to become the official photographer for the recent 'Fire and Ice Ultra' which took place in Iceland last month (August). With several photographic projects ongoing, Nigel is a busy man...

On retirement, Nigel decided to take the plunge and dedicate his time to his lifelong passion of photography. He has a varied portfolio, from a project documenting localities around Beverley and images from exotic locations such as Jordan, to sensitive topics that demand conversation.

During July, Nigel gave two guided tours of the Wildlife Photographer of the Year Exhibition (Treasure House, Beverley) and an insight into Wildlife photography. A philosophical thinker, influenced by photographers such as Robert Adams and Don McCullen and the writings of Susan Sontag, Nigel has tracked the advances of photography since he learnt to develop his own black and white film at the age of 16.

What started as a hobby and social photography became increasingly about storytelling - images to describe an event, a process or a concept.



One of the official photographers of the Beverley Puppet Festival, stories can be of varying lengths - over the course of few days or longer...

Nigel is currently working on a project based on retirement; what life beyond this milestone is like, and what impact this major change has.

Focusing his work specifically on older males, Nigel is looking for individuals willing to share their experiences of retirement.

If you are interested in the project documenting retirement and would like further information please contact Nigel through his website www.nigelwalker.co.uk

Since January 2016, Nigel has been working on 'Lost', a photographic narrative tracking the fabrication and placement of the Lost Trawlerman Sculpture, (located on St. Andrews Quay, Hull). Although the story is far from over, an exhibition at The Carriage House, Burton Constable Hall showing progress so far opens on 17th September at The Carriage House, Burton Constable Hall, and can be accessed via tickets to the Hall Grounds.



And the 'Ultramarathon'? It is as gruelling as sounds! Billed as 'Iceland's Toughest Foot Race', it's a 250km race across rough terrain where the competitors have to carry everything including food, water and clothing with them for the race duration; it takes place over 6 days!

You can see Nigel's official photos at www.fireandiceultra.com/team-fire-ice

OPEN STUDIOS IN EAST YORKSHIRE - 66 TO VISIT THIS YEAR!

OPEN STUDIOS has become a favourite event in the creative calendar, enabling visitors to admire the skills of many local artists who work in such differing media. Some of the studios are not usually open to visitors whilst others are 'pop-up' studios especially for the two weekends over which OPEN STUDIOS run.

This year, there are 16 venues open in Beverley and Molescroft alone, some displaying work from more than one artist. From ceramics, to jewellery, glasswork to prints and paint, visitors are welcome to look and to purchase most of the artworks on offer.

One such artist showing her work is Susan Beulah, who many will remember from her 2017 exhibition at the Treasure House entitled 'Red Earth and Blue Water' inspired by studies of Indian life. Susan is due to return to India in December, to Cochin,

Kerala to exhibit, but this year, visitors are welcome to her studio to revisit her travels in India and to see some of her other work.

Susan's brother farms at Meaux Abbey and has ten acres of wild flowers planted under the Countryside Stewardship scheme. Susan has been busy painting in one of Andrew's fields sown with Bumblebird Mix as well as in cornfields which contrast against our blue skies. She is also inspired by water - countryside as well as more industrial views - and people. Susan paints from direct observation, taking her easel out of doors.



Susan's Open Studio is at **32 Woodlands, Beverley HU17 8BX**. It is open on both OPEN STUDIOS weekends 21st-22nd September & 28th-29th September from 10am to 5pm.

You can see her work at www.susanbeulah.com

east yorkshire
2019 OPEN
STUDIOS



With over 20 artists and crafts people in the Beverley area and many more beyond
21st-22nd September & 28th-29th September - 10am to 5pm

For more information please visit:
www.eastyorkshireopenstudios.com

THE FUTURE OF THE HIGH STREET

With online shopping here to stay, customer experience and individuality is the future for the UK's High Street.

What made the High Street a thriving and integral part of daily UK life in the second half of the 20th century was its specific evolution from the collective market place and gather of small, local, independent businesses that specifically served the community that it was settled within.

When we look at this in the comparative context to the modern high street it is of little wonder that the offering of monolithic and generic multinational stores means that the once great UK High Street has lost its local appeal. The specific individuality that made it great now feels like a lost memory.

This loss of identity combined with ever increasing rents and a subsequent move to the more convenient online arena means that the UK High Street is choked by its own development.

The big question nowadays is ... How can we save the UK High Street?

Fundamentally, a return to traditional retail values on the High Street has the biggest change to save this quintessentially British institution.

These values are:

- * An Innovative Customer Experience
- * Distinct & Unique Retail Offerings
- * A One-of-a-Kind Offline Experience
- * A Feeling and Sense of Community

In Beverley alone there are dozens of unique, interesting, engaging and innovative Independents that can provide you with a retail experience and product line that you simply cant find anywhere else on the High Street.

These independents provide a range of excellent products such as Art, Fashion, Furniture, Jewellery, Homeware, Crafts, Vintage & Pre-

Loved items. The list is endless.

It is hard to imagine a future without our thriving UK High Streets. However, we have a long way to go before they can return to their former glory. We do however wholeheartedly believe that there will always be a place for the creative, independent retailer and as long as the community can get behind them then the High Street can thrive once more.



THECREATIVELAB

ART · FASHION · DESIGN · INTERIORS · GIFTS

www.thecreativelabuk.com

FLEMINGATE
BEVERLEY



embryonic art
& interiors
www.embryonicart.net



FLEMINGATE

BEVERLEY

FASHION | FOOD | FILM | FUN



MORE TO



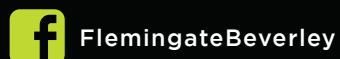
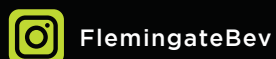
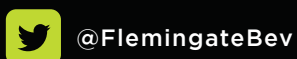
ENJOY



AT
FLEMINGATE

FUN, FOOD AND SHOPPING FOR ALL THE FAMILY

FLEMINGATE.CO.UK





Send your photographs of your celeb
Find us on Twitter and Facebook to s

LADIES DAY AT BEVERLEY RACECOURSE



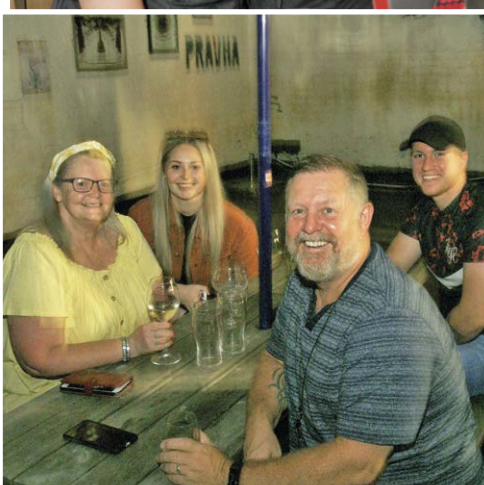
HERE TO GET *you* THERE

HUNTERS®

EXCLUSIVE

BEVERLEY / 01482 861411

TIGER INN BEER FESTIVAL



SALES / LETTINGS / MANAGEMENT

HUNTERS®

HERE TO GET *you* THERE

BEVERLEY / 01482 861411

GUEST AND PHILIPS GET READY FOR THE AUTUMN AND, DARE WE SAY IT, CHRISTMAS!

Guest and Philips will be showcasing new brands over the coming months and welcoming new ranges from their current best-performers.

It's all change at Guest and Philips as summer gives way to autumn and winter and the popular jewellery brands revamp their offering to reflect new trends and attract attention.

Watch out for new lines from favourites

Clogau, Kit Heath, Banyan and Claudia Bradbury and new styles from Storm and Calvin Klein watches.

Trending now are stacking rings, bracelets and pendants from brands such as Links of London, Calvin Klein and Virtue jewellery.

Watch brands which are performing include ultra-cool Bering and Armani, both ladies' and gents', in contemporary and



Swiss-made styles, not forgetting Swatch, which is such a dependable go-to brand for that watch-with-a-difference - always affordable and always reliable in providing that timepiece to convey your mood or style.

Whatever your desire, Guest and Philips' ranges ensure there is a perfect match for you or the lucky recipient of one of their pieces.

You are assured of the best attention at all times at Guest and Philips, Flemingate.



GUEST & PHILIPS

EXCLUSIVE TO
GUEST AND PHILIPS:

TOMMY HILFIGER

CARAT*
LONDON

CLOGAU®
GOLD OF ROYALTY

UNO_{de50}

swatch[®]+



LINKS
LONDON

CLAUDIA BRADBY
Pearl Power

CALVIN KLEIN

MONDAINE

KIT HEATH

BOING 

23A FLEMINGATE CENTRE, CHANTRY LANE, BEVERLEY HU17 0PW
T: 01482 881001 | WWW.GUESTANDPHILIPS.CO.UK

More buses to Hull from Beverley

From 2 September there's an earlier bus to Hull, getting to the city centre just after 6am.

Ideal for early morning commuters or those catching an early train to London!

Great value
weekly tickets
available!



BusLine: 01482 59 29 29

eastyorkshirebuses.co.uk

Twitter @EYBuses

East  Yorkshire



STUART BELL - BRINGING LIVE MUSIC TO EAST YORKSHIRE FOR 50 YEARS!

If you are a live music fan, especially of acoustic music, then the Processed Pea must be one of your ports of call. Running on the first Monday of the month, the past 50 years has welcomed artists as diverse as Jasper Carrot, Labi Siffre, Martin Carthy, Snake Davis (of M People fame), Richard Digance and The Strawbs to its tiny stage. It is a club which nurtures new talent as well as booking more well-established artists, but Stuart is the man who has never lost his enthusiasm or vision.

It's September 2nd 1969 at The Light Dragoon at Etton and four friends who worked at the same company, including Stuart, booked an act - Linda Arundel - to play on a stage made of wooden crates. They had no idea whether the idea for an acoustic music/folk club outside of Beverley would go down well, but the Light Dragoon on the night was packed out! It was so successful that the lads gave the club a name, 'The Processed Pea', after a provision which their company sold and ran it together for the next two-and-a-half years.

Sadly, the company folded, and the friends went their separate ways, but Stuart wanted to keep the club running. Fortunately, Dave Robinson who ran a folk

club in Hull wanted to get involved and for the next 20 years, acts such as Lindisfarne found their way to Etton. When Dave took a back seat due to ill-health, one of the artists who occasionally played at the 'Pea' said he would be keen in getting more involved and for the next 25 years, Stuart worked with Martin Peirson.

By now, the club had moved from being a weekly event to a monthly event but then Martin said he wanted to concentrate more on his own music career and he would rather take a back seat, so up stepped Max Roberts (of Beverley FM 'Folk Hour' fame) and Andy Mowthorpe. Another regular artist, Rob Nicklas also got involved and then, more recently, Tony Sturdy (of the Beckwater Bushwackers) and his wife Anne, offered to help. The club is resurgent with packed, appreciative audiences, even more diverse musicians and a great atmosphere.

Stuart is very well-connected in the 'folk' music world (he says he struggles to define the word 'folk') but one of the most popular artists ever to appear at the 'Pea' is very much associated with pop music rather than folk. Henry Priestman (ex The Christians) has sold out the 'Pea' every year for the last 10 years and is now the club's patron. He's appearing at the 50-year anniversary gig, which is being held at the Parkway Cinema on September 7th, along with Les Glover and The Men of a Certain Age. It is, as you would expect, long sold out!

Another artist appearing at the 50th birthday party is Flossie Malavialle, a French-born singer who lives in the North, who is very entertaining and



incredibly talented. She got her first professional gig at the 'Pea' entirely through asking for the opportunity to sing some songs when she was roadying for that evening's headliner - she was rebounding on the spot! Making up the line-up is Billy Mitchell, who has probably appeared at the 'Pea' in more guises than any other artist. Billy has appeared solo, with his son, with Friends and in various bands - who will he bring to party on September 2nd? If you have a ticket, you will find out!

Although Stuart has been the lynchpin of the club, all credit must go the various managers of the Light Dragoon, because the 'Pea' has always been held there and it is, therefore, the longest-running folk club at the same venue in the country! It's more than likely that it will go on for another 10, 20 or even 30 years! It is, after all, quite simply, a good night out! Oh - and Henry Priestman will be back in December, so get your tickets now!

Find out more about The Processed Pea at www.theprocessedpea.co.uk



CHAMAS
RODIZIO BAR & GRILL

We can't promise you the weather,
but we can promise you a true Brazilian experience!

EXOTIC MEATS CARVED
AT YOUR TABLE

FRESH GOURMET
HOT / COLD SALADS

RODIZIO GRILL

EXOTIC COCKTAILS

9-10 Wednesday Market, Beverley HU17 0DG
www.chamasbeverley.co.uk | T: 01482 867897

/ChamasBeverley /ChamasBeverley @ChamasBeverley

MIRAGE
COCKTAIL BAR & BISTRO

SIMPLE • SOCIAL • SOULFUL

EXQUISITE CRAFT COCKTAILS
 WINES • CHAMPAGNE • BEERS • TAPAS

**YORKSHIRE'S BEST
 LIVE JAZZ MUSIC**
 Every Thursday &
 Friday from 8pm.

*Bookings not necessary

Dine with us in our next door sister business
 Chamas Rodizio Bar & Grill and receive
 10% off your choice of drink or dessert!

8 WEDNESDAY MARKET, BEVERLEY, HU17 0DG
www.miragebeverley.co.uk
 01482 880600 • /MirageBeverley

ASK THE EXPERT WITH ED HAWKES: DO YOU EVER LET PEOPLE 'HAVE A GO' IN YOUR KITCHEN?

Ever since the White Rabbit Chocolatiers' Chocolate Kitchen opened in 2007, the question on everyone's lips has been 'Do you ever let people have a go?'


At White Rabbit, we're really behind the idea of opening up our chocolate kitchen and chocolate parties and workshops have been on offer almost since that question was first asked, so thankfully the answer is yes! For everyone that wants to try their hand at making chocolates, then here's your perfect chance!

There's not just one 'hand's on' option either: for those who want to have a bit of fun and get their hands all chocolatey we have chocolate parties and for those who want a more educational experience there is the chocolate workshop.



Both are a chance to learn some of the skills and techniques of the chocolatier and, as you'll find out, there is more to the world of chocolate making than just pouring molten chocolate into moulds - it is an art, as well as a science!

For an extended version of this article please visit www.justbeverley.co.uk. More details on the workshops and parties on offer at White Rabbit are available at www.whiterabbitchocolatiers.co.uk





WHITE RABBIT
CHOCOLATIERS


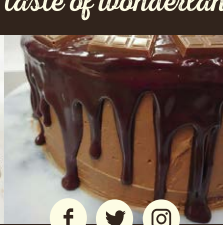
◆ COOL OFF IN OUR ◆

CHOCOLATE CAFE

Perfect for the Summer!

A taste of wonderland...

16 Dyer Lane, Beverley, East Yorkshire, HU17 8AE
Tel: 01482 679325 whiterabbitchocolatiers.co.uk
Open 7 days a week
 Breakfast, Lunch & Afternoon Tea available Tue-Sat



ONeworld

TRAVEL GROUP



NEW YORK

3 Nights departing on the 13 February 2020
Flights from London Heathrow
4* Hotel
£573.00 Per Person
Transfers not included - subject to availability

ONeworld TRAVEL GROUP
35 Saturday Market, Beverley HU17 8BE
T: 01482 280081
www.1worldtravel.co.uk

ONEWORLD TRAVEL - NEW YORK

"The Big Apple", New York is the largest city in the US. It really is a city that never sleeps, how could you sleep when you have culture, entertainment, fashion, arts and sports at your feet. The city of New York is located among a cluster of islands which surround New York Harbour.

A sightseer's paradise, every turn you take in New York City will lead you to more iconic buildings, monuments, parks and bridges. The most popular attraction been The Empire State Building which is the most iconic and recognized symbol of New York City. A visit to this legendary structure and its observation deck is a must. This classic New York City attraction gives millions of visitors each year spectacular views of New York City and the surrounding area from its 86th and 102nd-floor observatories.

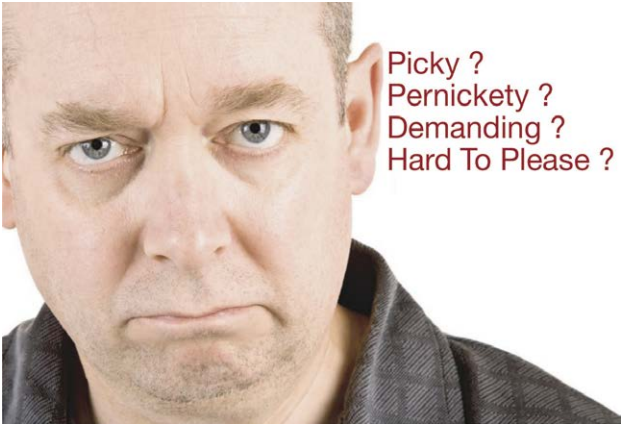
Take a walk to Broadway where you will find plenty of theatre shows including The Phantom of the Opera and The Lion King. Hop on the Staten Island Ferry and sail past the Statue of Liberty or shop 'til you drop in one of New York's famous department stores such as Macy's or Bloomingdales. Or take a helicopter ride at sunset over the city and watch Times Square come alive at night from the air.



New York is a place everyone should visit at least once in their life. With direct flights multiple times a day from Manchester, this city is within easy reach. Weekend breaks to New York are guaranteed to impress even the pickiest of travellers, with its modern culture, vibrant nightlife and welcoming atmosphere.

Why not visit just after thanksgiving in November for Christmas time to marvel at the Rockefeller Centre Christmas tree and lights, as well as that a beautiful ice rink is just outside to make it even more special.

Need An Electrician?



Picky ?
Pernickety ?
Demanding ?
Hard To Please ?

When You Want The Job Done Right
The First Time. Then We're The Right
Electrical Contractors for YOU !

Call Beverley's Premier Electrical
Contractors Today On

01964 552769 / 07585 601730

BES BURTON ELECTRICAL
SOLUTIONS

www.burtonelectricalsolutions.co.uk



LOOSE WIRES REALLY DO CAUSE FIRES!

Here at Burton Electrical we get called out regularly by people whose electrical supply has gone off. Below is a photo we took the other day when we were called out in Beverley. As you can see, the state of the 'breakers' we removed from the consumer unit (Fuse board) are quite shocking. They were pretty badly burnt. This is not as rare as you might think and the reason is quite simple. Loose connections!

Over time and with repeated use, electrical connections (the bit where the wire is screwed in) become looser. This is a problem, as the looser the physical connection, the poorer the electrical connection is.

Loose electrical connections result in a higher resistance, making it more difficult for current to flow. And just like when you're working out at the gym, the harder you have to work the hotter you get. The end result is heat, damaged insulation, burnt insulation, melted wires, melted terminals, melted terminal strips, fire and even explosions.

According to government statistics the average year sees almost 8,000 electrical fires, with these leading to nearly 4,000 injuries and more than 30 deaths. Many of these electrical fires would have been avoided if the electrical connections had been properly maintained by qualified personnel.



So just like you have a regular MOT for your car every year, why not have your electrical systems checked. Such safety checks are commonly referred to as 'periodic inspection and testing' and you'll receive a certificate stating that your home has been checked.

Remember that loose wires do cause fires. You can contact Burton Electrical on **01964 552769**.

SHORT STORY BY CLINT WASTLING - THE SCORPION

"It cost me twenty million Turkish Lira to buy this island which was once a pirate stronghold."



"You've told me before," his wife stifled a yawn. She looked at her husband and saw a bloated version of the man she married. She compared him unfavourably to her personal trainer. "You haven't forgotten I'm out this afternoon. I'm having a facial after my workout."

"No, I hadn't forgotten," he hated the way his wife had gone from slightly overweight to fit and muscular. "I'll come along, I've an appointment at two on the mainland."

"That's nice," Ffion said taking off her necklace and rings. Alan wondered what had happened to his youth and how he'd arrived at the point where he saw the image of his father peering from reflections. "I'll wait in the bar for you, one beer won't hurt. It's going to be hot!"

"Ok," Ffion replied arranging her husband's wallet on the marble worktop and pushing his EpiPen under a folded tea-towel. "Pass me my things please." They reached the yacht. "I'll steer us across the strait darling,"

Ffion said emphasising the endearment and starting the engine. Alan cast off before relaxing and watching the azure sea, dotted with inquisitive dolphins.

When they docked, Ffion gave Alan a peck on the cheek and waved. He secured the yacht and made his way to the solicitors. He walked along Maras Cad past gaudy displays of trinkets and Ottoman pots. The Evil Eye. He'd been fascinated by these since arriving in Turkey - every room in the house had a Nazar Boncuk - a disc of blue painted with an eye.

He picked up a large one and looked through it. The glass split in two. Alan panicked and hid the pieces before hurriedly leaving. He walked into the shady alley where cicadas sang. He pressed a polished brass bell.

"Good morning Mr Kendrick. Mr Polak will see you straight away go in," the secretary said. Alan waited. He looked out of the window at the street below. He felt a welcome breeze on his face. At that moment he saw his wife sauntering along, her personal trainer by her side.

"Hello Ffion!" he waved. She looked up, walked on, then paused and looked back. Alan liked seeing her quizzical expression.

"Well Mr Kendrick, Alan, nice to see you again." The solicitor said. Alan looked around at the room filled with leather, mahogany and exotic plants blooming from large terracotta pots. Mr Polak brushed past leaves. Alan thought he heard something fall but dismissed the idea.

The solicitor tidied papers and removed a single sheet. "I've amended your will as per your instructions, Mr Kendrick. Are you sure you want to leave everything to Kenan?"

"Yes, everything. You insisted I had the DNA test done, so there's proof Kenan's my son." "You are aware Ffion will get very little?" Alan nodded, "just her pension, so pass me a pen and I'll sign, then I'm off to see Angelica and my son."

Mr Polak passed over a pen and Alan unscrewed the lid. He signed the document. The pen lid rolled off the polished desk and onto the floor. Alan's hand went down to retrieve it. He felt the metallic lid and the sting at the same moment. He withdrew his hand. He stared at it.

"Mr Kendrick are you alright?"

"Scorpion."

"Scorpion?" The solicitor repeated with incredulity. Alan frisked himself desperately. "My EpiPen!" He tried to stand, grasping at his throat but unable to breathe he collapsed and came face to face with the scorpion and for a moment he thought it possessed Ffion's face.

Clint Wastling is a local writer. His novel Tyrants Rex is available through Stairwell Books. He's organising a charity poetry and music evening in aid of Cancer Research: Thursday 10th October from 7.30pm at The Monks Walk (upstairs).



Botterill & Co

Chartered Certified Accountants

We are a modern and professional accountancy practice ideally located to serve businesses in Beverley and the surrounding area.

We utilise modern accounting technology to provide you with a cost effective, professional service.

Our services:

- Annual Accounts
- Tax Planning
- Management Accounts
- Tax Returns
- Company Formations
- Payroll
- Cloud Accounting
- Bookkeeping & VAT

For a free initial consultation please contact us:

Office: 01482 862240

Mobile: 07966 051458

Email: garth@botterillco.co.uk

Website: www.botterillco.co.uk

1st Floor Offices, 40 Norwood, Beverley, HU17 9EY

HUBY DOMESTIC APPLIANCES

Covering Hull, Beverley, Pockington, Driffeld and all the local villages



BOOK ONLINE

and **SAVE**
at
hubys.co.uk

Book in advance and save money.
The further you book in advance
the more you could save...



For service and repair call: **01482 866660**

IN THE GARDEN... SEPTEMBER

The month of September is all about starting to gear up for a change in season and getting prepared for the months to come.

There are still plants to provide colour in borders, few old favourites are: Asters; Dahlias; Chrysanthemums and my favourites Sedums and Rudbeckia. Ornamental grasses are becoming increasingly more popular in gardens, plant them in swathes of a single variety or plant individually in borders to 'set off' other plants. Four of the most popular varieties are:

Festuca - e.g. Blue Fescue Grass (*Festuca glauca* 'Elijah Blue')

Pennisetum - e.g. Fountain Grass (*Pennisetum setaceum* 'Summer Samba')

Miscanthus - e.g. Zebra Grass (*Miscanthus sinensis* 'Zebrinus')

Stipa - e.g. Giant Golden Oats (*Stipa gigantea*)

Tasks for September...

• **Borders** - continue to dead head flowers that have faded - you are unlikely to encourage any new flowers at this stage of the season, but not having them around will allow those in full flower to be shown off at their best. Start clearing up leaves and debris to prevent disease and pests 'settling in' for the winter.

• **Plant prepared bulbs for Christmas flowering** - Prepared bulbs are simply bulbs that have been put in a cold store and 'duped' into thinking that have had a winter, and when they are planted in the relative warmth in our houses they think it's spring and need to get growing.

• **Dead-head roses** and if rambler and climbing roses have got a bit out of hand, spend a bit of time pruning and tying them in before the winter.

• **Hedges** - trim them for the last time this season, but don't feed them as this will encourage 'soft' growth. If you're considering planting a new hedge over the coming months prepare the site before the really bad weather sets in and the ground is too wet to work.

• **Lawns** - September is a good month to seed a new lawn, but do so earlier rather than later and reseed any bare patches. Established lawns should be aerated and an autumn weed/feed applied.

• **Containers** - continue watering, feeding and dead heading seasonal plants in containers, if you do so they should last until the first frosts. However, if they are past their best clear them out and replant with spring bedding plants and under plant with bulbs.

• **Bulbs** - buy and plant your spring flowering bulbs. If you are planning on forcing hyacinths for Christmas then this month is your last chance to do so.

• **Ponds** - continue to feed fish and thin out any pond and marginal plants that have become congested (or started to take over the pond). Lift the plants and leave them on the side of the pond for a few days before removing them completely - this will enable any pond life to safely make their way back into the pond. Cover the pond with netting BEFORE the leaves start to seriously fall.

That's all for now - if you get chance have a wander around your garden with a notepad and see if there are any gaps that might need filling and any plants (particularly perennials) that have become overgrown and will need dividing so...

Until October, J.

Jane Dale of 'Designed Gardens'. Tel: **07983 392 411**.



CLASSIC CARS WITH CARFAN - THE VOLKSWAGEN KARMANN GHIA

The subject of this month's article is a Volkswagen, although it's not one in the accepted sense, it's actually a Volkswagen Karmann Ghia. From a production run spanning the years 1955 through to 1974, this particular example was made in 1970 and was originally exported to South Africa, before arriving here in 1996. This has undoubtedly contributed to its longevity due to the lack of salt on the roads there that British drivers have to endure.

Volkswagen made two different variants of the car - a 2+2 convertible and it was an immediate sales success, with 10,000 being made in its first year, eventually going on to a final total of over 445,000. Available with a 1200, 1300, 1500 or 1600 c.c. engine, this car was never going to leave long skid marks at a traffic light race, but it was popular and the only changes during its nineteen-year production run were lightly cosmetic.



The current owner has only had the vehicle in his possession for three years and in that time, it had benefited from a total respray, a new stainless steel exhaust system and new side trim. The latter was easily available through the Volkswagen owners' club. An interesting feature of this car is that the roof and front and rear ends are all one piece, which could make a relatively minor accident prohibitively expensive if it all has to be replaced.

If you fancy one on your drive, expect to pay anything from £7000 to over £30,000 if you want one that might win you a prize at a car show. There are a lot around, so take your time and choose wisely.

So, should you be fortunate enough to see a Karmann Ghia passing by, don't forget that cheery Carfan wave!

So, should you be fortunate enough to see a Karmann Ghia passing by, don't forget that cheery Carfan wave!

PETS' BEST FRIEND BY LAUREN MIDDLETON

Much of my work lately involves encounters with cats. Cats have ceased to be 'just moggies' and many people are now opting for more exotic breeds such as Bengal, Persian or Siamese. I often 'house-sit' cats for owners who would rather their pet stays in a familiar environment whilst they are on holiday.

Many cats require special diets and, if a long-haired breed, must be groomed regularly, often requiring a full groom by someone qualified. I can recommend someone should you so wish!

Some owners have opted for 'indoor' cats, which may need to have their nails trimmed at regular intervals and have a suitable environment created for them.

During my house-sits involving cats, I always allow them to approach me. They soon settle down and accept me living in their space when they realise their authority has been recognised!

I also house-sit where no pets are involved at all - although I have house-sat fish in a garden pond! I am more than happy to water plants and look after gardens as required and ensure the premises are secure and cared for whilst the owners are away.



Do contact me if I can be of service to you on **07874 737961**.

PRACTICAL MOTORING WITH RICH HAYES - GETTING YOUR CAR MOT'D



An MOT is an essential - and legally required - part of regular motor maintenance to ensure your car stays in safe, working order. If you're looking for an MOT garage in Beverley then Beverley Motor Works is the no.1 choice. With half of new cars registered in September, those on a 66 plate are coming up to their first MOT - so why not book your car in for its service at the same time?

Beverley Motorworks is the only Which? Trusted Trader garage in the area. The highly-trained staff pride themselves in their technical knowledge and customer care, striving to provide dealer-ship standard expertise without the hefty price tag. We also aim to surpass dealership standards with our unique level of care.

Founded in 2010, the service centre is warm and welcoming should you wish to drop your car off yourself, but, if that's not convenient, we will pick your motor up and deliver it back to you. We keep you informed every step of the way, so you know whether your car has passed its MOT or whether it needs work on it to get that 'roadworthy' certificate.

We have won the Hull Daily Mail's Customer Focus Award last year and in 2017 and are delighted to have had our hard work and customer care recognised in this prestigious business award.

All vehicles that are serviced at Beverley Motor Works are done so to the exact same standards as any main dealer, which protects your warranty and the resale value of the car. For example, we only use oils and parts which are of 'Original Equipment' quality standard. All service books are stamped on every vehicle or digital books updated with the manufacturer. Every vehicle service carries a 12-month parts and labour guarantee.

It's really easy to book your car in. Call **01482 881128** - and don't forget your SPECIAL OFFER MOT COUPON offering an MOT for only £29.99.

BEVERLEY



INDEPENDENT
BMW & MINI
SPECIALISTS

Our dealership expertise means high quality car servicing at a fair price...





Unit D1 Grovehill Industrial Estate,
Annie Reed Road, Beverley HU17 0LF

Call today: 01482 881 128

Visit: beverleymotorworks.co.uk



SPECIAL OFFER

MOT COUPON



MOT YOUR CAR FOR ONLY

£29.99

PUZZLE PAGE

WORDSEARCH

G C C N O W M X Y S G U S T E
M N R O N A W X E D U P E A A
D M I Z M N Q P I N N T G U V
N L N L J P T P W V I T N R I
U Z I X C E E A T F V A A S Y
G M S B M Y X T L P E Z H X R
M W X B R Y C O I G R D C Q K
B I E E O A O U C T S O P F A
M R E R I H P P A S I J S I Q
Z V K J C V I R G O T O P L Z
I Q Z S M C T G V S Y J N M S
A R Y W H A U W Z C D A A S W
Q P G E U B J S A E T S U S W
J X H T F F J U R N Q P G Q R
O R X O A E T C J L O F S K V

CHANGES
COMPETITIONS
CYCLING
FILMS
LIBRA

SAPPHIRE
SCHOOL
SEPTEMBER
UNIVERSITY
VIRGO

WHERE IN BEVERLEY?

Where in Beverley would you find this landmark? Answer on Page 32.



FOOD FOR THOUGHT

Re-use your Coffee Grounds -

Ideal for stubborn stains when mixed with soapy water - (Grill Pan)
Sprinkle on the ground to deter cats toileting where they shouldn't!

WHICH WAY ROUND?

Left Shoe on First or Right Shoe First?
Toilet Roll Hangs In or Hangs Out?
Half Full or Half Empty?
B.O.G.O.F or 2.4.1?



THOUGHT FOR THE MONTH

A Smile - It makes you happy and is infectious.
Have a great September to remember.

Do you have any amusing stories,
quotes or pictures? Send them to
info@justbeverley.co.uk

QUALITY KITCHEN MAKEOVERS

by simply replacing the doors and worktops

Est. 1999

From the UK's #1
kitchen makeover experts.
Visit our showroom now

Before



- FROM SIMPLE DOOR REPLACEMENTS TO COMPLETE FITTED KITCHENS
- FULLY INSTALLED BY LOCAL PROFESSIONALS IN JUST A FEW DAYS
- CHOOSE FROM A LARGE SELECTION OF DOORS, WORKTOPS AND APPLIANCES
- 84 SHOWROOMS NATIONWIDE

www.dreamdoors.co.uk



CALL US NOW FOR A FREE ESTIMATE:

01482 861653

VISIT OUR SHOWROOM:
4A Belprin Park, Swinemoor Lane,
Beverley, HU17 0LN

DREAM DOORS®
NEW LIFE FOR OLD KITCHENS



Proud members of
9.7/10 Checkatrade.com
Where reputation matters

See what our customers have to say

EAST RIDING LEISURE BEVERLEY'S TONE ZONE GYM HAS REOPENED FOLLOWING A £350,000 REFURBISHMENT

The refurbishment of the Tone Zone gym at East Riding Leisure Beverley is now complete and means that the facility can offer brand new, state of the art equipment, which includes the replacement of all the existing cardiovascular and resistance equipment with the latest Matrix models, featuring internet capability; fit touch technology; and updated virtual active videos.

The Tone Zone gym was also redecorated and had new functional training equipment installed.



Councillor Shaun Horton, portfolio holder for tourism, culture and leisure, said: "I am delighted that we are able to improve the facilities at East Riding Leisure Beverley further, which will benefit the health and wellbeing of all its customers."

Coby Kemp, senior facility manager at East Riding Leisure Beverley, said: "We are pleased to be able to offer such a great improvement to our Tone Zone gym with enhanced machine capability and new equipment. Customers can see the benefits of our investment, now it has reopened."

Customers can take advantage of several membership packages to choose from, starting from just £23 per month which includes access to all nine centres across the East Riding, 8 Tone Zone Gyms, 8 pools and over 1000 exercise classes a week (casual use is welcome too).

Memberships include access to the HealthPlus programme and the state of the art Boditrax scans. The Boditrax machine allows users to undertake a 'Body Composition' scan in order to determine body fat percentage, metabolic rate and visceral fats along with other metrics.

Added to the education and guidance from instructors, East Riding Leisure Beverley can now offer a gym based programme that can fine tune training aims and goals and identify those strengths and weaknesses more accurately.

For full details of the recent refurbishment, visit www.eastridingleisure.co.uk/gym-redevelopment/ or follow on Facebook: [EastRidingLeisure](https://www.facebook.com/EastRidingLeisure), Twitter: [@ERLeisure](https://twitter.com/ERLeisure), Instagram: [er_leisure](https://www.instagram.com/er_leisure)



CYCLING WITH WILSONS WHEELS

The UCI Road World Championships is the pinnacle of road cycling. It is cycling's most prestigious event, notwithstanding the Tour de France and it's coming to our home county of Yorkshire. We even have the start of the para cycling taking place in Beverley on Saturday 21st September. The last time this event was held in the UK was back in 1982 and so for me, is the first time in my lifetime that I will get chance to watch it on home soil and I cannot wait!

If you're not really interested in cycling and don't know how much of a deal this event is, let me tell you, it is big! I cannot wait to go and watch at various locations in and around Harrogate on 29th of September, the last day of the weeklong event which ends with the Men's Elite road race, a 285k race, with an 8-lap circuit finish around Harrogate.



This will certainly determine who are the best riders in the world with the winner being crowned champion of the world.

If you are thinking of going to watch, my advice would be to get there early as possible as there are certain to be road closures. Standing at the top of a hill is also always a good vantage point as the riders are likely to be going slower when they pass although they will still be travelling quickly!

Alternatively, put your feet up and watch it on TV. It will most probably be on the usual channels such as Eurosport and I would imagine even local broadcasters like the BBC will be showing it at some point.

WILSONS WHEELS

T: 01482 882881
W: www.wilsonswheels.co.uk E: info@wilsonswheels.co.uk

WE NOW STOCK CUBE CYCLES
2019 RANGE NOW AVAILABLE

Be SEEN and be SAFE, stay BRIGHT and on the right track

DISCOUNTS ON:

- Adult Bikes
- Children's Bikes
- Clothing for all cycling weather
- Parts and accessories

89a Grovehill Road, Beverley, East Yorkshire HU17 0EJ
OPEN: Monday - Friday: 8.30am - 5.30pm | Saturday: 9am - 5pm
Sunday: CLOSED - Out riding our bikes



Tone Zone

EAST RIDING LEISURE
BEVERLEY

Tone Zone Gym Now Open

East Riding Leisure Beverley has had a full Tone Zone gym refurbishment with all new equipment.

All existing CV kit have been replaced with the Matrix 7xi Series. The resistance machines have also been replaced with the latest Matrix model. New features include:

- Internet connectivity
- Fit touch technology
- Updated virtual active videos
- Optional workout tracking with single point user sign in, an advanced Sprint 8 HITT training programme.



Memberships
from
£23

Casual use welcome, for more information go to www.eastridingleisure.co.uk/beverley



EAST RIDING
OF YORKSHIRE COUNCIL



EastRidingLeisure



@ERLeisure



er_leisure

eastridingleisure.co.uk

TRENT GALLERIES TO WELCOME KRIS HARDY THIS SEPTEMBER - AND YOU ARE INVITED, SAYS DAVID TUTE

Here in Beverley, we know of an artist who manages to capture the movement and majesty of the sleekest of motor vehicles, as well as conveying the scale and grandeur of the World's most iconic cities, and often the specific architecture within them. We are lucky enough to be hosting an event with this man in September, as highlighted in the accompanying advert. To celebrate this upcoming event, we thought it important to share some of his inspirations and ambitions when it comes to his striking statement pieces.

After studying Photography, Kris Hardy graduated with a 1st class honours degree in Vehicle Design, then going on to gain a masters at the Royal College of Art. After working for some high-profile vehicle design studios including Lotus, Kris decided to take up the paint brush full time, becoming a professional artist some 15 years ago. Fast forward to 2019 and his bold canvas' can be found in galleries and homes all over the Country; his name becoming more well known and his creations becoming more sought-after.



Kris's parents often visit Trent Galleries on Butcher Row and share stories of his early inspirations. Growing up in Nottingham, his early life was surrounded by interesting architecture. He remembers witnessing the demolition of some council flats; even though they were unsightly and uninhabitable 1960s buildings, the bold, geometric graphic they created against the skyline intrigued him even at the age of eight.



Kris has always taken a closer look at the soft romantic elements of a cityscape, and how these contrast to the more harsh, monolithic scale of buildings. His work echoes the combination of bold, strong

lines and blocks of tone with softer foliage or organic architecture.

Amongst other things, he is influenced by urban art and graffiti, paintings and artists from the renaissance period, contemporary culture, illustration, expressionism and photography. These inspirations and passions can be clearly seen in his work; the instantly recognizable steels of the Eiffel Tower, the slick curves of the iconic



Aston Martin DB5, or the imposing skyline of skyscrapers that we all fall in love with when see New York... Regardless of the subject matter, Kris has a distinct and unique style which he can shape large canvas' into perfect statement pieces for any home. Painting in oil, watercolour and acrylic on canvas, Kris's work consists of soft pastel tones combined with sharp, bold 'nearly blacks' and deep purples.

Now residing in nearby Gilberdyke, our Event in September marks his first visit to the Gallery. As one of our more local portfolio artists, we truly hope you will be able to make it to meet the man behind these brilliant contemporary artworks and explore his unique style. Kris would love to meet you, and we would love to see you! Until then...

Come and meet innovative British artist and rising star **KRIS HARDY**



Saturday 21st September from 2pm - 4pm

From Classic Venetian scenes to Pontiac Firebirds and the Batmobile, Kris is inspired by a wide and sometimes unexpected array of subjects. His distinctive style combines pastel hues with bold 'nearly-blacks' and purples, juxtaposing flowing elements with sharp edges to great fascinating takes on iconic buildings, cities, and vehicles.



RSVP: 9 Butcher Row Beverley, HU17 0AA

Tel: **01482 874621**

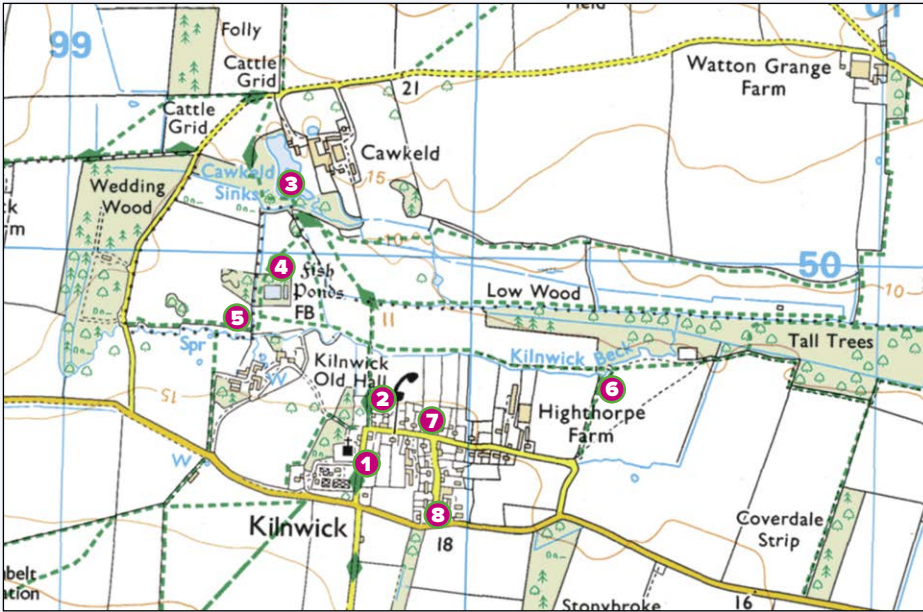
Email: **beverley@trentgalleries.co.uk**

follow us on Instagram & Facebook


TRENTGALLERIES

www.trentgalleries.co.uk

WALKING WITH IAN RICHARDSON... WATERY WANDERINGS AROUND KILNWICK ON THE WOLDS



Kilnwick on the Wolds is one of our lesser known villages, rather hidden in well-wooded and surprisingly watery countryside between two main roads. Of course, it is not really on the Wolds, its suffix oddly distinguishing it from the same-named village near Pocklington, which is. Yet like its namesake it offers a wonderful oasis of secluded beauty for the curious walker. It lacks all three of those indicators of a thriving village: school, shop and pub, nor even a bus route, but in this case this has not prevented it being a seemingly vibrant community, as the charming ladies I spoke with in the village on my last visit were keen to point out. Killick, as it is colloquially known, also has arguably the best network of footpaths surrounding any of our East Riding villages, making it perfect for a lazy late summer wander, full of architectural and natural interest. This walk is just two miles long, but it is easy to make it longer as the map shows.



1 Start by All Saints Church (YO25 9JW) where considerable car parking is usually available. Cycling to Kilnwick is also an option and there are lovely quiet lanes to get there from the Beverley to Malton road. The church always seems to be open and despite largely being a Victorian rebuild is full of earlier architectural features, such as a striking Norman doorway and thirteenth century arcades in the nave. Adjacent to it is the massive brick wall that formerly surrounded the kitchen gardens of now demolished Kilnwick Hall. This is over four metres high and a metre thick, recently a striking modern house of the type beloved by the TV series *Grand Designs* has been built within the old walls - you might just be able to sneak a peek

from the churchyard.

2 Go from the church onto Main Street and immediately on your left take the signed footpath that heads north out into the country. You cross over Kilnwick Beck, heading straight on at the junction of paths through lush meadows. Go diagonally left into woodland, where a nice surprise awaits.

3 Cawkeld Sinks lake is the special kind of place that only those who walk will find being hidden deep in the countryside. It is very lovely and teems with bird life.



4 Having enjoyed the lakeside, turn around and head south back along either marked path back to the beck. There are the remains of a small dam on the stream which provides a most photogenic spot with the restful sounds of rushing water, one thing the East Riding has precious little.



5 Now follow the clear path eastwards along the beck for half a mile, taking a right turn at point 6 to

access the village again at Highbrook Farm. Go right to view more of the delightful cottages, most built by the estate owner some two centuries ago.

6 At one of these, Oak Cottage, lived a remarkable lady, Clare Ellin, between 1956 and her death in 1984. She became known as the Wise Woman of Kilnwick. A former teacher, she contributed to many national and regional papers, local radio and magazines, delivering sage like insights into a fast disappearing rural way of life. She was also a poet of some renown; her work can be purchased online and there is a fine book about her by local resident Frank McGarry. She produced a lovely series of poems on the months and changing seasons, for September she wrote:

*Red apples bend the laden boughs
freckled pears hang warm on walls
ants and wasps make frenzied forays
before the dew of evening falls.*

7 Clare Ellin is one of the names etched beautifully into the village phone box. It is worth going up School Lane, where the former school is now a well-used Village Hall, Chapel House is also most handsome. At the junction with Wilfolme Road, you find a lovely three-bayed Georgian house with verdant front garden.



Lovely house and garden on Wilfolme Road

8 Stroll back to your starting point down School Lane and Main Street. It is sign of a strong community that recently considerable funds were raised to make a quite splendid children's play area just to the west of the church. It is one of the best in the county, remarkable in such a diminutive village. As I reluctantly left Kilnwick, I was lucky to talk to two lady residents, one remembered Clare Ellin, they were both off to take down the village Tour De Yorkshire bunting. As summer fades to autumn once more, do seek out Killick, you won't be disappointed.



All Saints Church

THE BELGRAVE HOUSE BAND IS COMING TO BEVERLEY!

Local music promoter, Gavin Brynley of Hoffman and Leary events, was blown away by The Belgrave House Band from The Belgrave Music Hall in Leeds after seeing them perform their interpretations of Lauren Hill and Erykah Badu classic albums to sell-out audiences. When they said they were reinterpreting Amy Winehouse's debut album 'Frank' he just had to book them to perform in the beautiful and atmospheric surroundings of St Mary's Church.



Gavin said: "I've moved back to the area after 23 years in Manchester, working with bands such as Elbow, The Twang and GusGus, running all kinds of events from student parties to VIP parties at V Festival.

"I now work across the road from

St Mary's Church (at The Modern Draper), have been mixing with local creatives and businesses and just knew The Belgrave House Band with its phenomenal line-up would be the perfect band for this venue. When the band saw the church, they jumped at the chance to play in such historic surroundings!"



The band features the amazing voices of jazz singers Nel Begley and Becci Harrington (pictured) along with members of Tetes De Pois, Skwid Ink, and Garde Dog. Soul, Funk, Rare Grooves DJ set will get everyone in the mood and there is a licensed bar.

Tickets are £15 from The Modern Draper and Bug Vinyl with no booking fee or online from See Tickets/Skiddle/Eventim/Ents24 with booking fee.

The gig is on Saturday 21st September, starting 7.30pm.

Gavin promises this gig won't be a one-off as he is looking to bring a big name to the church next year.

Watch this space!

COMPETITION

If you are an Amy Winehouse fan, you will not want to miss this gig!



We have a pair of tickets to give away to the winner of our competition.

All you have to do to be in with a chance of winning them is to answer the following question:

What was Amy Winehouse's debut album, which The Belgrave House Band are to perform on September 21st at St Mary's Church, Beverley, called?

Send your answer by email to competition@justbeverley.co.uk by September 12th.

Put 'St Mary's Church Comp' in the subject box with your answer, name, address and daytime telephone number in the body of the email.

Winners must be available for publicity for **Just Beverley** and **Hoffman and Leary**.

There is no cash alternative.

'WHERE IN BEVERLEY' ANSWER

The Tipster's Board, Beverley Race's - Parade Ground



Print that gets you noticed







BROCHURES

LEAFLETS

BUSINESS CARDS

POSTERS

CALENDARS

POP UP

BANNERS

INVITES

PADS

Tel: 01482 610902

info@jadan-press.co.uk www.jadan-press.co.uk

Rainbow House, Kimberley Street, Hull, HU3 1HH










GET RID OF THOSE SUMMER POUNDS AT ANYTIME FITNESS

We are all guilty of indulging a little too much on our summer holidays!

After all that hard work getting our bodies beach-ready, lazing around and eating too much rich food means it's easy for the scales to move more than we want when we get back home.

Whilst summer fruits and vegetables are available, now's the time to get back into your fitness and healthy eating routine.



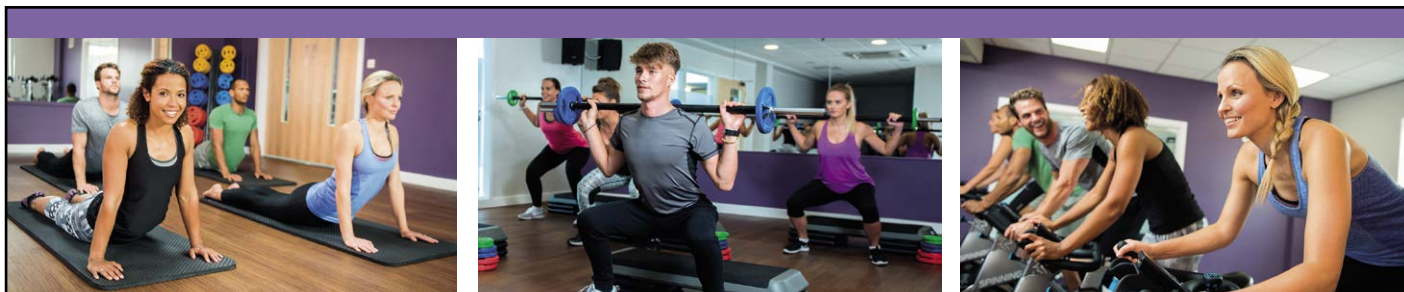
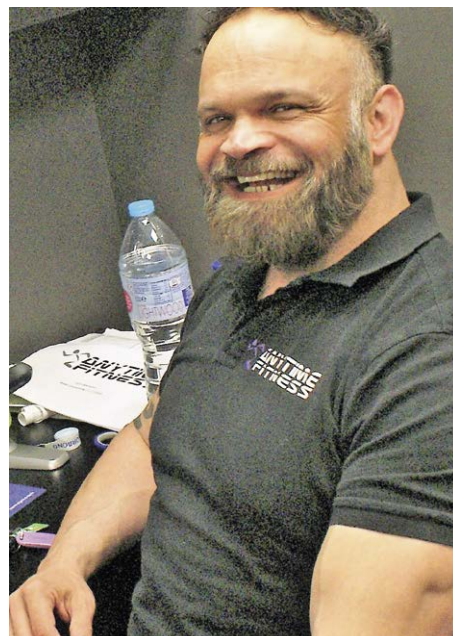
Eating healthy food along with a personal fat-burning exercise regimen will soon see those excess pounds gone and you buzzing with energy, toned and stress-free.

Choose between 4, 6 and 8-week programmes depending on your time availability - but any increase in exercise levels will also increase your metabolism.

The great thing about exercise is that it can improve your appetite as your body craves healthy protein, simple carbohydrates and good-for-you fats in small portions with lots of water!

And if you miss a gym session, the fantastic Anytime Fitness app will still keep you on your fitness target, although, because Anytime really is open at any time, it's easy to fit your work-out in around your schedule.

If you haven't visited Anytime to meet the staff, look around and enjoy a free day pass, give James a call now on **01482 247100!**



ANYTIME FITNESS®

Join Anytime Fitness
Improve your Mind and Body
with Qualified Experienced Staff

New Gym Class Timetable

Call: 01482 247100
Fleming Centre, Flemingate
HU17 0NQ



WHAT'S ON

SPONSORED BY: **küchenhaus**

2 Toll Gavel, Beverley, HU17 9AJ. T: 01482 862172.

Open: Mon - Sat: 10am-5pm. Sun: 11am-3pm. Bank Holidays: 10am-4pm.

Until Saturday 14th September

• **Wildlife Photographer of the Year Exhibition**
Treasure House, Beverley. Free. Mon, Weds, Fri 9.30am-5pm; Tues, Thurs 9.30am-8pm; Sat 9am-4pm; Sun 10am-4pm.

Until Friday 22nd November

• **Edwardian Beverley: A Snapshot in Time**
Beverley Guildhall, Register Square. Free. 10am-4pm Wednesday and Friday until October 30th, then 10am-4pm on Fridays and 10am-1pm on Wednesdays.

Until Friday 24th April, 2020

• **Time off: Leisure and Diversions in the East Riding**
Skiddy Windmill and Museum of East Riding Rural Life. £2.50/£1.50/£1.25/Free.

Thursday 5th September

• **Armstrong Comedy Club Launch Night**
Armstrong Social Club. 8pm. Free. Gary and Jed and three other acts.

Friday 6th - Saturday 7th September

• **'Fragility of Man' and 'In Loyal Company' by David William Byron**
East Riding Theatre. £14/£15 7.30pm nightly and 2.30pm Saturday. Two one-act plays. 'In Loyal Company' is the story of David's great-uncle Arthur Robinson, a missing WWII soldier and prisoner of war which was a sell-out at last year's Edinburgh Fringe.

Sunday 8th September

• **Charity Garden Party in aid of Beverley Social Club for People with Learning Disabilities**
36 Cherry Tree Lane, Beverley. 12noon-4pm. £2 entry includes refreshments. Entertainment by Holly Blackshaw. Foot massage, cake stall, raffle, tombola, white elephant.

Monday 9th September

• **Norwood Nites Community Cinema**
Norwood Methodist Church Schoolroom. 7pm. Free. The one about the bouncer who ends up driving a classical pianist on a tour of venues through the 1960's American south. Raffle and refreshments.

Tuesday 10th September

• **Singalong Memories Just for Fun**
Walkington Methodist Church Schoolroom. 2pm-3.45pm. £2 includes refreshments. For further details contact 01482 865249 or 01482 882188 or email val.memories@outlook.com
• **Margaret Atwood Live**
Parkway Cinema. 7.30pm. £14/£15. 34 years after her seminal book, 'The Handmaid's Tale', Margaret unveils her highly anticipated sequel, 'The Testaments' by interview from the National Theatre. Tickets <https://beverley.parkwaycinemas.co.uk/ticketing>

Thursday 12th September

• **Friendship Month Afternoon Tea**

Rowley Manor, Little Weighton. 1.30pm. £12.50pp. organized by the Oddfellows Friendly Society. Bookings to Chris or Howard Cole on 07732 585186 by 29 August.

September 13th -15th

• **Heritage Open Days**
Various venues around Beverley and the East Riding. Free. Churches, houses, halls, schools and more are open over this weekend with some of the fascinating local history further illustrated by guided walks. There are printable lists available with details of opening hours online. If you want to go further afield, 700 properties are open in Yorkshire and the Humber alone! www.heritageopendays.org.uk

Saturday 14th September

• **Jacob's Well Appeal Drive Sale**
Toll Gavel United Church Drive. 9am-3pm. Bric-a-brac, books, clothes, produce, DVDs, tombola.
• **Vintage, Retro and Handmade Fair**
Beverley Minster. £2/free.
• **Swanland Show**
St Barnabus Church, Swanland. 1pm-5pm. Details <http://swanlandshow.btck.co.uk/ShowSchedule>

Monday 16th September

• **Friendship Month Walk and Lunch**
Welburn and Castle Howard with lunch at The Crown and Cushion. Enjoy a 3-5mile walk with the Oddfellows Friendly Society then lunch with a free drink. Booking details and menu choices from Chris & Howard Cole on 07732 585186 by 29 August.

Wednesday 18th September

• **Afternoon Racing**
Beverley Racecourse. Various Prices. First race 2pm. 7-race card.

Thursday 19th September

• **Tiny Treasures**
Treasure House, Beverley. 1.30pm-2.30pm. Free. Come and explore... the Seaside. For under 5's and their grown-ups.
• **Beverley & District U3A Monthly Meeting**
Beverley Memorial Hall. 2pm. Free/£1. Talk by Jeff Jacklin on the NHS - 'It Only Hurts When I Laugh'.

Saturday 21st September

• **The High Wolds Poetry Festival**
North Dalton Village Hall. 2pm-7pm. Free. Entries for Open Mic (of original material) or to read other people's work to be submitted by September 20th to highwoldspoetry@gmail.com. Or just go along and listen. Refreshments available.
• **The Belgrave House Band presents Amy Winehouse's album 'Frank' + DJ Set**
St Mary's Church, Beverley. 7.30pm. £15. Seated. Licensed bar. Tickets from Bug Vinyl and The Modern Draper or online (with booking fee) See Tickets/Skiddle/Eventim/Ents24.
• **Swanland Screen presents 'Stan and Ollie'**
Swanland Village Hall. 7.30pm. £4/£2. Refreshments available. Steve Coogan and John C Reilly as

Tell us about your event!

Email: info@justbeverley.co.uk

Telephone: 01482 679947

For more events visit:
justbeverley.co.uk/events

Hollywood's greatest double act, Laurel and Hardy.

Tuesday 24th September

• **Season Closer - Afternoon Racing**
Beverley Racecourse. Various prices. First race 2pm. 7-race card.
• **Singalong Memories Just for Fun**
Walkington Methodist Church Schoolroom. 2pm-3.45pm. £2 includes refreshments. For further details contact 01482 865249 or 01482 882188 or email val.memories@outlook.com

Friday 27th September

• **Beverley and District U3A Coffee Morning**
Lairgate Hotel, Beverley. 10am-12noon. Come along and meet us!
• **Beverley Male Voice Choir Chairman's Charity Concert with The Dalesmen MVC**
Toll Gavel United Church 7.30pm £8. Proceeds for St Mary's Church, Beverley. Tickets from Beverley Tourist Information, The Dog and Duck pub or on the door.
• **Friendship Month Quiz and Bingo**
Beverley Conservative Club, Wylies Road. 7.30pm. £1 quiz entry, 50p Bingo entry. Free buffet. Refundable car park fee. Organised by Oddfellows Friendly Society. Details Mike Danby 01482 881018.
• **50's Rock 'n' Roll with Bootleg Buddy and DJ**
Armstrong Social Club. 8pm till late. £5. Tickets from 01482 882999.

Saturday 28th - Sunday 29th September

• **East Yorkshire Open Studios**
Various locations. See brochure for exact timings, generally 10am-5pm. Free. Annual showcase of visual arts (ceramics, prints, paintings, jewellery etc) extending across the region in working studios, galleries and pop-up spaces. Meet the artists. Some demonstrations. Sale of work.

FILM ON A FARM RETURNS!

After the success of last year, Film on a Farm is returning again this year to Butt Farm in Beverley with the award-winning 'Bohemian Rhapsody'. Film on a Farm is a unique outdoor cinema experience. Pull up a chair or a hay-bale and snuggle up beneath a blanket of stars and join us for a night to remember with a great movie.

This year, the event takes place Saturday 21st September - gates open at 7pm, tickets from £12 available to buy from www.filmonafarm.co.uk.

Butt Farm is a working family farm situated 2 miles from the historic market town of Beverley in East Yorkshire. Set in 180 acres the farm is diverse growing crops, rearing cattle and running an award-winning caravan and campsite. With its open views of the East Yorkshire countryside, it is the perfect venue for an outdoor film weekend. Why not make a weekend of this unique event and camp? Bar and food available. Weekend Camping packages from 20th - 22nd September are available from www.butfarm.co.uk.

küchenhaus

The Largest Manufacturer of Quality German Kitchens

At Küchenhaus we have affordable solutions made to meet your highest standards

2 Toll Gavel, Beverley, HU17 9AJ. T: 01482 862172.
Open: Mon-Sat: 10am-5pm. Sun: 11am-3pm. Bank Holidays: 10am-4pm.



ert

**EAST
RIDING
THEATRE**

10 Lord Roberts Road
Beverley HU17 9BE
Tel: 01482 874050

Email: boxoffice@eastridingtheatre.co.uk

Current Box Office Opening Times:
Tues - Fri 10am - 4pm or Sat 10am - 12noon.



Cafe/Bar Opening Times:
Tues - Sat 10am - 4pm

HORSESHOES FOR HAND GRENADES

East Riding Theatre's autumn production Horseshoes for Hand Grenades is a new piece of writing by Richard D. Cushing which explores the passions, hopes and struggles of a Yorkshire community trying to come to terms with the devastation of the First World War.

It's 1914. Andrew wants to be an artist not a blacksmith like his father and grandfather before him.

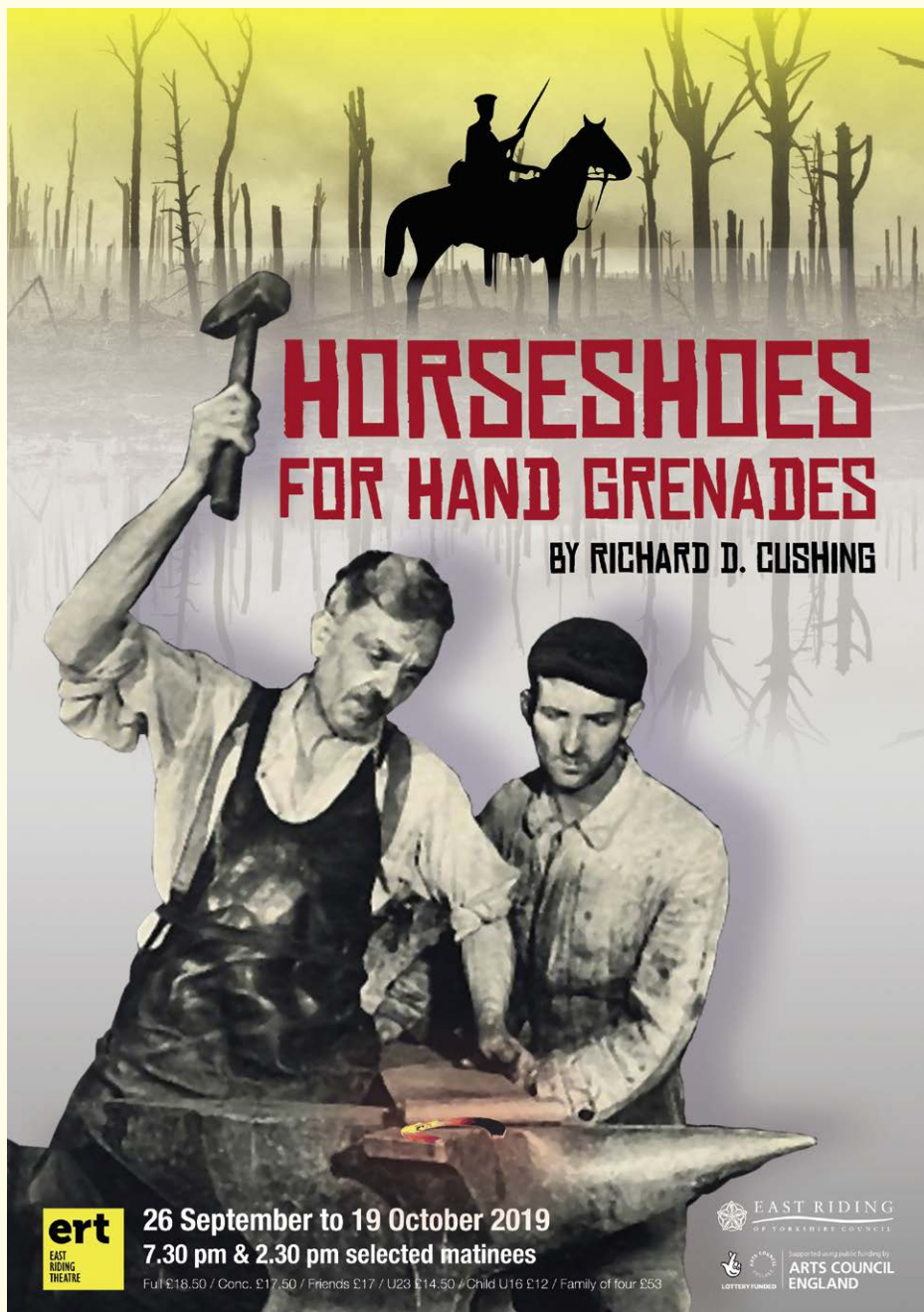
He has great plans for himself and his sweetheart Emily. The Great War, unfortunately, has other plans for the able-bodied men of the East Riding!

As the brutal war in Europe lays waste to the young men of Great Britain, life is changed forever.

After the last shot is fired, Emily waits for Andrew, on the station platform as the wounded return from the front. Did he survive? What will the future hold? Will life ever be the same?

Horseshoes for Hand Grenades opens on the 26th September and runs until the 19th October.

**NEW SEPTEMBER - MARCH WHAT'S ON
BROCHURE OUT NOW**



26 September to 19 October 2019
7.30 pm & 2.30 pm selected matinees

Full £18.50 / Conc. £17.50 / Friends £17 / U23 £14.50 / Child U16 £12 / Family of four £53



Cast L-R Daniel Rainford, Evie Guttridge, Malcolm Tomlinson, Mark Rathbone & Robbie Fletcher-Hill

FREE LOCAL
DELIVERY

DISCOVER OUR NEW KITCHEN & BATHROOM SHOWROOM

Come and meet our Kitchen and Bathroom Specialists Paul and Dan for a free design consultation.

MY KIND OF
HOME



Symphony®

OMEGA PLC

EFF
COOKING BRASSIEN SINCE 1877

DURAVIT

Roca

hansgrohe

50% OFF FLOORS OR TILES*

*Terms and conditions: when spending over £5000+VAT on a kitchen or £3000+VAT on a bathroom. Orders to be placed and delivered before 30th September 2019. Selected ranges only. Offer capped at 30 square metres. Only available at MKM Beverley. MKM reserve the right to withdraw or amend the offer at any time.

BEVERLEY

Swinemoor Lane, East Yorkshire HU17 0JX
01482 880088 | beverley.mkmb.co.uk

MKM
BUILDING SUPPLIES