

just BEVERLEY

01482 679947
justbeverley.co.uk
info@justbeverley.co.uk



FREE ISSUE 26

**PETER HALL
STRINGS AND
THINGS**

**BEVERLEY
LADIES RUGBY**

**SARAH CHADWICK
LIFE, ART AND DESIGN**

**ADRIAN RAWLINS
ERT'S NEW ARTISTIC DIRECTOR**



- **PARKWAY CINEMA
BEAUTY AND THE
BEAST GOODIES**
- **A PAIR OF TICKETS
FOR THE BEVERLEY
RACES**

NEWS, WHAT'S ON, LIFESTYLE, FEATURES, PUZZLES, PHOTOS & MORE



Time
to enjoy
older age

Abbeyfield Langholm House, Beverley

1 Langholm Close, Beverley, HU17 7DH

We offer Supported Housing in a safe environment for older people who no longer want the responsibility and worry of maintaining their own home

Now available: a private, single room

- on-site House Manager
- home-prepared meals
- 24 hour support available when you need it
- a calendar of social activities and a strong link to the local community
- fully inclusive fees

Call the divisional office on **0113 467 2833** or email c.reid@abbeyfield.com for more information

www.abbeyfield.com



Abbeyfield
Making time for older people



CONTENTS

Letters from the Editors	3
News	4, 10
Parkway Cinema	6, 7
Features	
Elizabeth Godber meets Adrian Rawlins	9
Women's World Day of Prayer	8
Fairtrade Fortnight	8
Shakers role for Kate Huntsman	9
Beverley Fertility Support Group	13
Adrian Benson and U3A	27
Peter Hall, Strings and Things	32
Sarah Chadwick	33
Regulars	
Competitions	7, 26
Competition Winners	7, 17
Countryside Matters	22
Finance	17, 23
Flemingate Update	10
Gardening	22
Legal Q and A's	14
Lifestyle	12, 13
Motoring	29
New Businesses	12
Poem	30
Photos	18, 19
Puzzles	28
Sport	24, 25, 26
Travel	20
What's On	34

Competition Terms and Conditions

Competition answers should be emailed to info@justbeverley.co.uk before the closing date with the competition title in the subject field. Include your name, address and daytime contact telephone number along with your answer. Winners will be notified within 1 week of the closing date and MUST be available for publicity purposes for Just Beverley magazine, website and Facebook page and the prize provider. The judge's decision is final. No cash alternative is offered. Details may be used for marketing purposes by Just Beverley and the prize provider and for website analytics by Just Beverley.

CONTRIBUTORS

Julian Minshall, Linda Johnson, Jane Dale, John Fewings, Richard Manville, Carfan, Ian Richardson, Sam Walton, Colin Raynor, Gavin Prest Photography (front cover).

You can pick up the magazine from:

Beverley Parkway Cinema, Beverley Tourist Information, Beverley Library/Treasure House, Tesco, Morrisons, East Riding Leisure Beverley, Browns café, Beverley News, Boyes, Tesco café, Colette and Tyson Garden Centre, Beverley Garden Centre, Cherry Tree Garden Centre, Mace News in Saturday Market and Lincoln Way, Tickton News, Costcutter in Walkington, Molescroft News, Grovehill Convenience Store, Maple News, Leconfield PO, Poundland, Halfords, East Riding Community Hospital, Bishop Burton PO, The Altisidora, Cherry Burton PO, Monks Walk, Health Centres, cafés, hairdressers and more!

Letter from the Editors



At last Spring is on its way, the clocks go forward and the world feels such a brighter place.

Mother's Day ties in with the Clocks going forward. Have a look for some fantastic Mother's Day offers and entertainment from every quarter. Do check out our website, Facebook page and the What's On section

to keep up to date with events! Friday 24th March is Red Nose Day so tell us about your fundraising plans and what you will be getting up to. Remember to take lots of pictures and send them in or post them as a visitor on **Just Beverley's Facebook page**. Look out for the Static Bike Ride on Toll Gavel, too!

Have great March, tell us your good news and get involved! **Just Beverley** is your magazine!

Regards
Julian.



By now you will have eaten up your eggs, milk and flour in the form of pancakes (what do you like on your pancake - I'm a golden treacle girl!) - and be ready for abstemious Lent. Are you giving up anything this month?

Whatever I decide to give up, I'm donating the equivalent to East Riding Food Bank for the people in our community who don't have enough to give anything up. Perhaps you could consider doing the same?

Some of the churches in Beverley hold Lent Lunches on every Sunday bar Mothering Sunday. A Lent lunch is soup and a roll, possibly with a piece of cheese or fruit, water and a cup of tea or coffee in return for a donation to Christian Aid.

Anyone is welcome to go. Starting on Sunday March 5th at St Mary's Church, usually in the church, the other dates and venues are published on our What's On page here in the magazine and on our website.

It's all leading nicely to Easter!
Be happy!
Linda.

Get in touch with us:

Website: justbeverley.co.uk
Email: info@justbeverley.co.uk
Telephone: 01482 679947
Twitter: @JustBeverley
Facebook: [facebook.com/justbeverley](https://www.facebook.com/justbeverley)

Printed by: Jadan Press



Destination Beverley to promote all that is great about Beverley

A new organisation dedicated to promoting all that is great about Beverley is to be launched next month. Destination Beverley will be launched at an invitation-only event attended by representatives of key organisations and influential figures in the town and wider region.

The event, on Thursday, March 23, at East Riding College at Beverley's Flemingate centre, will bring together a wide range of organisations who can contribute to the town's development as a visitor destination. The launch will feature keynote speeches by Sir Gary Verity, Chief Executive of Welcome to Yorkshire, and Rick Bailey, Chief Executive of Daniel Thwaites Plc, the company redeveloping the Beverley Arms Hotel.

Since his appointment as Chief Executive of Welcome to Yorkshire in 2008, Sir Gary has raised the profile of Yorkshire at a regional, national and international level. He led the team that brought the Grand Depart of the Tour de France to Yorkshire in 2014, which generated £102m in economic benefit. This has been followed by Yorkshire's very own international stage race, the Tour de Yorkshire, which featured a stage start in Beverley last year. Sir Gary was knighted in the 2015 Queen's Birthday Honours List for services to tourism.

Rick Bailey has been Chief Executive of family brewer Daniel Thwaites since 2011, having originally joined the business in 2002 as a non-executive director.

Founded in 1807, Thwaites owns over 280 pubs as well as a chain of hotels and spas. Last year Thwaites purchased the Beverley Arms Hotel in North Bar Within and subsequently revealed plans for a complete refurbishment of the property ahead of it re-opening as part of Thwaites' Inns of Character estate. Last December, Thwaites was granted planning permission for a £6m redevelopment of the site, breathing new life into the landmark hotel and creating 60 new jobs.

Sally Iggulden, Chair of Destination Beverley and Chief Executive of Beverley Racecourse, said: "We're looking forward to setting out what Destination Beverley is all about and how we plan to work with other organisations to promote all the great things Beverley has to offer and support the town's development as a visitor destination."

"We're also delighted Sir Gary and Rick Bailey have agreed to speak and give their views on Beverley from a tourism and investment perspective. Their input is sure to be both informative and inspiring." Destination Beverley is an independent organisation dedicated to promoting all that is great about Beverley to drive visits, footfall and spend in the town, as well as supporting initiatives that enhance the visitor experience. Destination Beverley's Board is made up of representatives of the town's leading attractions, traders and individuals with relevant skills and a passion for the town.



Photo: Welcome to Yorkshire

Beverley Twinning Association planning visit to Nogent in April

Fancy a trip to France? Beverley's Anglo-French Twinning Association are due to visit their 'twins' from April 28th to May 1st.

Want to find out more? Head along to Lempicka Café in Wednesday Market, Beverley on March 8th at 7.30pm or contact them through their website <http://beverley-nogent.com/>

Nogent sur Oise is about 40 miles north of Paris, near the famous Chantilly racecourse and the sites of battles fought along the Somme. You don't have to be able to speak French either!

Local Animation Artist's Video broadcast on primetime American TV by Mike Pollock

Mike Pollock, more commonly known as the voice of Dr. Eggman from Sonic the Hedgehog, recently voiced all the characters from Alex Slingsby's cartoon Harry and Larry live on American children's TV programme Wonderama.



The original Harry and Larry cartoon included Mike Pollock voicing just one of the characters with Greg Eagles, the voice of Grim from The Grim Adventures of Billy & Mandy and Erin Fitzgerald of Ed, Edd n Eddy fame voicing the others.

Alex designed the characters, wrote the story and organised production.

You can see the original cartoon at: www.youtube.com/watch?v=cvnVKRvhl_M.

The TV show can be seen here: <https://youtu.be/OPzpALC7n7A>.

St Mary's Church survey open to aid grant bids for restoration project

<http://research.audiencesurveys.org/s.asp?k=146538364783>

STOP PRESS

Beverley Rugby Club Ladies Day on April 1st is now SOLD OUT!

New Baby Group at Toll Gavel United Church



Is your baby under a year old? Then why not pop along to meet other Mums and babies in a relaxed atmosphere?

Tuesdays 9.30am - 11am during term time. Refreshments available. Clean lay, play area and comfy seats for feeding. £2/session. No need to book! Contact Cathy on **07913 378148** for more details.

New Sponsors for Beverley St Nicholas Football Team

Benomi Removals have answered the team's cry for help for sponsorship for new strips. Ben Baker, owner of Benomi, saw the plea on social media and replied within minutes, pledging the amount needed for new kit.

Our pictures show the three teams wearing the new kit. **Just Beverley** thinks they look really smart and echo the words of their football coach, Terry Richardson, who said: "Having this new kit will help the children feel the part and be proud to play for the team. The previous kit was old, tired and discoloured and did not do them justice. Now they will look good as they feel and play! Our grateful thanks go to Ben for all his help."



Beverley & District Chamber of Trade relaunches with new branding



A collaboration between students at East Riding College and several Chamber members has resulted in an up-dating of the logo to freshen the image of this long-established organisation, which works hard to represent the views of businesses within the town.

The Beverley & District Chamber of Trade exists to promote, inform and represent businesses in and around the town and surrounding villages. It promotes Beverley as an active business and retail area to attract locals, visitors and tourists, it informs its members and other interested parties of relevant developments issues and opportunities which affect the town and represents its members with a powerful collective voice, making sure they are heard by local and national government and by development agencies and other bodies. Regular meetings ensure good communication.

At the first meeting of the year, a new committee was voted in to take the Chamber forward. Julian Minshall of Indicoll as Chair is supported by Andy Beet of MKM Building Supplies as Vice-Chair, Amy Bant of Amy Bant Film and Photography as Secretary and Lynne Auton of Stipendia. Other committee members have not been assigned roles as yet.

Meetings take place on the last Wednesday of the month at 6pm. Interested parties are encouraged to check out the website for the venue. Membership is £50/annum, with the first meeting for prospective members free of charge. Membership includes discounted rates for members from other member's businesses and refreshments at meetings. Networking and social meetings also feature in the calendar. These incur an extra cost but are open to any business which wishes to attend.

Contact the Chamber via the website <http://beverleychamber.co.uk/> or call **07925 471975**.

YORSwitch

CHEAPER ENERGY TOGETHER

Scan me!



Could you save money on your energy bills?



HOW

- Register with **YORSwitch**
- East Riding of Yorkshire Council negotiates with energy suppliers
- Receive a no obligation quote to supply your gas and electricity

- Hassle free**
- Obligation free**
- Cost free**

To register for YORSwitch visit
www.eastriding.gov.uk/yorswitch

alternatively call (01482) 393939 or visit your local customer service centre.
You will need to have a recent energy bill to hand.



Register for your no obligation energy quote



EAST RIDING
OF YORKSHIRE COUNCIL



EVERY THURSDAY AT 10.30am
(doors open 9.45am)

Join us for a free brew and a natter and enjoy some great films on Beverley Parkway's Big Screen. Only £4 with drink and biscuits included. Aimed at 55s and over. Films subject to change.

**Thursday 2nd March -
The Accountant (15)**

Starring: Ben Affleck, Anna Kendrick.
Mum's List (12a)
Starring: Rafe Spall, Emilia Fox.

**Thursday 9th March -
A United Kingdom (12a)**

Starring: David Oyelowo, Rosamund Pike.
The Accountant (15)
Starring: Ben Affleck, Anna Kendrick.

**Thursday 16th March -
Sully (12a)**

Starring: Tom Hanks, Aaron Eckhart.
A United Kingdom (12a)
Starring: David Oyelowo, Rosamund Pike.

**Thursday 23rd March -
Allied (15)**

Starring: Brad Pitt, Marion Cotillard.
Sully (12a)
Starring: Tom Hanks, Aaron Eckhart.

**Thursday 30th March -
La La Land (12a)**

Starring: Ryan Gosling, Emma Stone.
Allied (15)
Starring: Brad Pitt, Marion Cotillard.

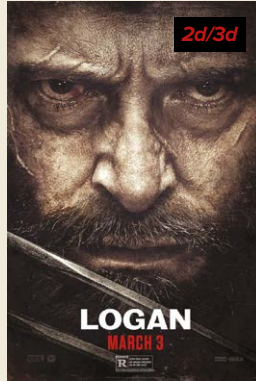


MONDAYS @ 8.15pm

More 'what is it' than 'whodunnit'. Fancy a film but not sure what you want to see? The try our Mystery Movie Monday! You won't know what it is until it starts, unless you can solve our Facebook and Twitter clues! It could be a classic or a gem you have never seen or even the first screening of an upcoming film. The fun is in the discovery! Only £4 per person, restricted to 15 and over only unless otherwise stated as some will be for 18 and over due to content.

Remember to look out for information on our **Facebook page** and **Twitter @parkwaybeverley**.

These are the films scheduled to open in March: **all are subject to change**.
Check out up-to-date cinema listings at www.justbeverley.co.uk/cinema-times



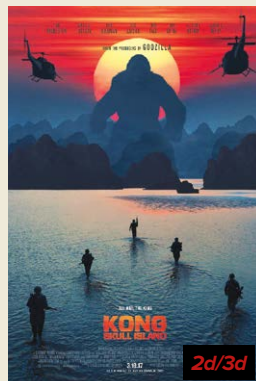
1st March



3rd March



3rd March



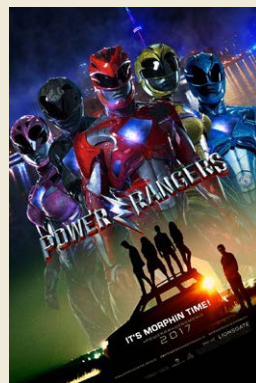
10th March



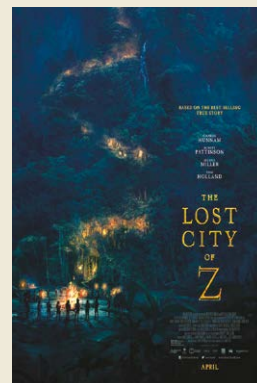
17th March



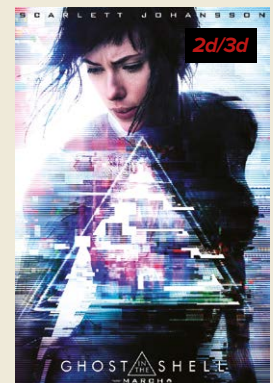
17th March



24th March



24th March



31st March



31st March

PARKWAY PENGUIN PARTIES



YOUR OWN PRIVATE SCREENING
SEE YOUR CHILD ON THE BIG SCREEN
FUN & GAMES WITH OUR PARKWAY PENGUIN

ONLY £170

For more information contact the Box Office or
come in store and speak to a member of staff

YOUR NEW INDEPENDENT CINEMA



Live on Stage - Spring Season 2017



Sunday 26th March at 7pm
Sinatra 'n' Swing with Five Star Swing

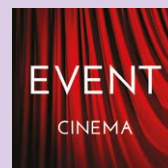
Sunday 2nd April at 7.30pm
Giggles Live presents Giggles at the Parkway

Monday 3rd April at 7.30pm
Ranagri in Concert

Friday 14th April at 2pm
Alice in Wonderland

Sunday 14th May at 7.30pm
Gimme Abba

Sunday 21st May at 8pm
Jeremy Hardy Live 2017



Event cinema offers something a little different to mainstream films. Live and pre-recorded shows beamed in via satellite from all over the world. Here are the latest live streams that you can enjoy on the big screen at Parkway Beverley.

TICKETS NOW ON SALE:

Tuesday 28th February at 7pm - ROH - THE SLEEPING BEAUTY (TBC)

Tuesday 7th March at 8pm - ZIGGY STARDUST & THE SPIDERS FROM MARS (PG) - Plus interview & magazine

Thursday 9th March at 7pm - NT LIVE: HEDDA GABLER (12A)

Tuesday 14th March at 7pm - ALL'OPERA - MANON LESCAUT (TBC)

Sunday 19th March at 3pm - BOLSHOI: A CONTEMPORARY EVENING (TBC)

Tuesday 21st March at 7pm & Thursday 23rd March at 1pm - NT LIVE: AMADEUS - ENCORE (15)

Thursday 30th March at 7.15pm - ROH: MADAMA BUTTERFLY (TBC)

Thursday 6th April at 7pm - NT LIVE: TWELFTH NIGHT (12A)

Sunday 9th April at 4pm - BOLSHOI: A HERO OF OUR TIME (TBC)

Tuesday 11th April at 7.15pm - ROH: JEWELS (TBC)

Tuesday 18th April at 7pm - ALL'OPERA - LA GAZZA LADRA (TBC)

Wednesday 19th April at 7.30pm - THE AUSTRALIAN BALLET: COPPELIA (tbc)

For full programme of the Event Cinema, please visit www.parkwaycinemas.co.uk

Competition Time!



Those wonderful folks at Disney have offered a very special prize for the lucky winner of this month's competition. To celebrate the release of 'Beauty and the Beast' on March 17th the prize includes the following goodies: a Mirror with pouch; a teapot; a jewellery box; a tote bag and a notebook.

Beauty and the Beast is a live-action remake of the original cartoon from 1991, with Emma Watson as Belle, a beautiful and independent young woman who is taken prisoner by a Beast (Dan Stevens) in his castle, in exchange for her father. Despite her fears, she befriends the castle's enchanted staff and learns to look beyond the Beast's hideous exterior and realise the kind heart and soul of the true Prince within. There's a cast of well-known faces playing key roles, including Emma Thompson, Ewen McGregor, Ian McKellen, Luke Evans and Josh Gad. There's lots of songs, too! The film features songs from the original plus new songs written by Alan Menken and Tim Rice with a new cover of the title track by Araina Grande and John Legend. Emma Watson, Ewen McGregor, Emma Thompson all sing in the film and there are other songs featuring Celine Dion and Josh Groban. The film can be seen in 3D as well as 2D.



To win the goodies plus a pair of cinema tickets to a film of your choice, all you have to do is answer the following question:

Emma Watson is well known for playing an independent young lady in the Harry Potter films. Who did she play?

Send your answer by email to info@justbeverley.co.uk by March 15th. Include your name, address and daytime telephone number along with the answer to the question in the email. Put **Beauty and the Beast Comp** in the subject box. Winners must be available for publicity for Parkway Cinema and Just Beverley over the weekend of March 18/19. Good luck!

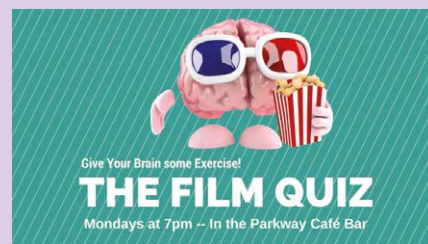


Competition Winner



The winner of last month's competition to win some amazing Batman goodies and a pair of tickets for Parkway Cinema was Steven and Mandy Coe.

Congratulations!



Why not test your film knowledge at 7pm before the Mystery Movie Monday? There are free film tickets for the winners!

Cherry Burton and Beverley prepare for Fairtrade Fortnight

Cherry Burton and Beverley have one thing in common - they are both Fairtrade communities. This means that in both a steering group was formed to raise awareness and local support for Fairtrade, and to encourage retailers, caterers and customers to choose Fairtrade products. The Fairtrade mark shows that farmers have been paid fairly and in this way are given the opportunity to trade their way out of poverty and exploitation.

Each year the Fairtrade Foundation, the movement's umbrella organisation in the UK, runs a Fairtrade Fortnight to concentrate the campaign for trade justice on a particular theme. This is a fun-filled highlight of the year, when campaigners, businesses, schools and places of worship show their support for the farmers and workers who grow our food in developing countries. In 2017 the Fortnight runs up to 12th March.

Picking up this year's theme, Cherry Burton and Beverley are encouraging people to 'Put Fairtrade into Your Break' and help drive much-needed change for farmers in developing countries. Clubs and organisations in Cherry Burton are putting Fairtrade in their breaks.

For example, Pre-school will be eating healthy bananas (Fairtrade of course!), school is having History of Fairtrade workshops. Guides will be consuming even more Fairtrade chocolate, the Friendship Circle will be drinking Fairtrade tea and coffee, not forgetting the Indoor Bowlers and the Footballers who are planning to include Fairtrade snacks in their half time breaks.

And in the village pub, The Bay Horse, they are putting up Fairtrade bunting and blowing up Fairtrade balloons to join the celebrations, and offering menu choices with Fairtrade ingredients, plus Fairtrade desserts, accompanied with Fairtrade tea, coffee or wine. For diners there will be complementary Fairtrade nuts; and customers can join in the raffle of a hamper of Fairtrade goods - perfect for enjoying your own break at home later!

At the village church there will be an exhibition of posters about Fairtrade Gold from 7th to 12th March - open during daylight hours. This will highlight the exploitation and exposure to dangerous chemicals and work practices which are experienced by small scale gold miners, and the opportunity to put an end to this by saying "I do!" to Fairtrade Gold.

Fairtrade tea, coffee and buns will be served after the 10am church services on 5th and 12th March. Meanwhile in Beverley they are celebrating 10 years as a Fairtrade Town, and local schools have been invited to take part in a poster competition to celebrate this milestone and highlight Fairtrade. There are also plans to add "Fairtrade Town" signs to the council notice boards and town entry signs. Watch this space!

So this Fairtrade Fortnight, why not make yourself a nice cup of Fairtrade tea and put your feet up with a Fairtrade biscuit - you've earned it!



World's Women Day of Prayer

The Women's World Day of Prayer has a long history. Since 1812, women had encouraged one another to engage in personal prayer and to lead communal prayer with their mission associations. This emphasis led to annual days and weeks of prayer within individual denominations.

Despite opposition from men, from 1861, women in the USA and Canada organised themselves into co-operative mission boards for foreign and home missions whereby they could work and pray directly with and for women. By 1871, the Presbyterians had called for a day of prayer for Home Missions and the Methodists had called for a week of prayer and self-denial for foreign missions. By 1891, the Baptists had joined in and in 1895, the Anglican Church in Canada had also instigated a day of prayer. This led to a joint venture of six denominations forming a united day of prayer in 1897, which was the catalyst for many more interdenominational arrangements. In 1910, the USA celebrated 50 years of women's missionary activity which highlighted the benefits of ecumenical co-operation, local and global networking, prayer, biblical study and reflection.

In 1922, the first Friday in Lent became the focus for women's prayer in America and Canada. In 1926, the material created for the day was distributed for the first time throughout the world, to many mission partners and women's groups; it was greeted with huge enthusiasm and Women's World Day of Prayer came into being. The official day was 90 years old last year.

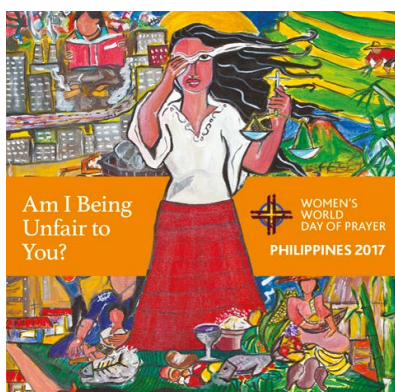
It was a lady called Grace Forgan who first heard of the Women's Day of Prayer in 1928 when she was at an international missionary conference in Jerusalem. The first services to celebrate Women's World Day of Prayer in the UK were held in the 1930s, although Catholic women were unable to join in until after the second Vatican Council in 1967. In 1969, the Catholic women's own day of prayer was moved to coincide with the WWDP. In 1982, women from all over Ireland, North and the Republic, Catholic and Protestant, prepared the material for the act of worship which is used by all participants worldwide. Last year 275,000 copies of the service were printed!

This year, the service is prepared by women in The Philippines. It is one of the fastest-growing Asian economies with labour migration a major economic force. 90% of domestic workers are women, of which the majority work in the Gulf states. Although the constitution is for equal rights, women are often discriminated against and treated unfairly in the home, at church and by society, even though in many families, they are the breadwinner. The theme of this year's prayer is 'Am I being unfair to you' which highlights this issue.

In Beverley, Women's World Day of Prayer is celebrated at Toll Gavel United Church at 2pm with women from many different denominations leading the worship. An offering is taken which is used by the WWDP movement to help support various charities and mission partners throughout the world.

For example The Bible Society, Torch Trust, Leprosy Mission, Dalit Solidarity and Sportsreach have all been recipients of grants.

Although the focus is on women, men are warmly invited to attend the worship!



LA LUMIÈRE PHOTOGRAPHY



TEL: 01482 867455
WWW.LA-LUMIERE.CO.UK
ENQUIRIES@LA-LUMIERE.CO.UK
22 TRINITY LANE, BEVERLEY

Elizabeth Godber meets... the new Artistic Director at the ERT

Adrian Rawlins has just taken over as new Artistic Director at the East Riding Theatre. The original plan was to catch up with him for a chat to discuss his new role, but, caught up in filming work, we had to negotiate over emails.

Adrian explains how he first became aware of the ERT through his friend Vince Reagan, and how he 'gradually became more and more involved helping out in various ways', before moving onto productions, and now, the job of Artistic Director.

He describes how he feels: "Very honoured to take on the role of AD. I think ERT is a very special place. It's run by a few core volunteers who give so much time and heart to keep the theatre moving forward. These few are supported by a small army of further volunteers who help in every way you can imagine. It feels like an extended family, and that gives ERT a very unique atmosphere, which, added to the quality of productions, music, comedy and workshops."

Indeed, he cannot help but profess his "love for Beverley" as he believes it to be "a great size and having lived in London for twenty-five years it's the perfect antidote. It's got everything you need - shops, good places to eat out, and a cinema." He really has nothing but praise for the town.

Adrian's first show as Artistic Director will be a production of Rebecca Lenkiewicz's *The Night Season*. He explains how he "first saw *The Night Season* at the National Theatre in 2004 and was so enthralled he never wanted it to end.

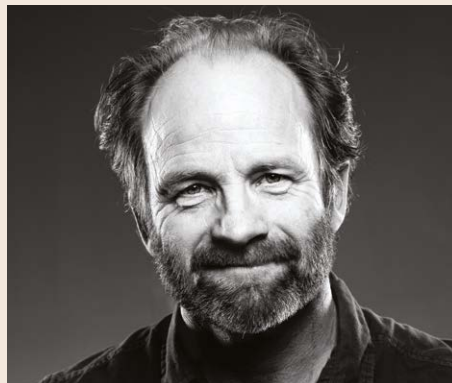
It's set in Ireland and follows the Kennedy family as they noisily fall in and out of love. Three grown up sisters were abandoned by their mother at an early age and have been brought up by their hilarious drunken father and eccentric grandma."

In keeping with what now seems to be tradition at the ERT, Adrian explains: "the cast is a mix of local talent and actors new to the ERT stage. Evie Guttridge steps out in her first professional role, Gabe Winter, who played Hamlet returns for a very different challenge and Lynne Verrall comes from Paris to play the grandma Lily."

Alongside *The Night Season*, ERT also has a lot of exciting projects and events coming up. Mike Friend, who previously directed *A Christmas Carol* and *Oliver Twist* will be directing a musical version of *Dracula*, of which Adrian believes "the old baptist church is a perfect setting... and promises to be spectacular!" There are new plays by Jim Cartwright and Richard Bean, as well as a production of John Godber's *Shakers* and 'plenty of music and comedy'.

Certainly, this coming year, the ERT really will have something for everyone. Adrian himself is just as busy, having finished working on a film called *Darkest Hour* with Gary Oldman who plays Winston Churchill, and started working on a new series by Luther writer Neil Cross, called *Hard Sun*. So readers will either see him next on the big screen - or sat in the ERT's House Café!

The Night Season starts at ERT on Thursday 2nd March and runs until Saturday 25th March.



Shakers role for Beverley actress

Kate Huntsman, originally from Beverley, is an ALRA-trained actress who will soon be starring in a new production of John Godber and Jane Thornton's classic play *Shakers* at The East Riding Theatre. Just Beverley caught up with her to talk about her new role and memories of growing up in East Yorkshire.

Kate will be taking the role of Niki in *Shakers* alongside three other East Yorkshire actresses: Annie Kirkman, Laura Aramayo and Amy Thompson. Kate calls it "a really wonderful opportunity to... be working with that group of people from the same place," on a play that was first written and performed in Hull in 1985.



Interestingly, *Shakers* won't be the first time that Kate has graced The ERT's stage; she was in the Christmas production of *Oliver Twist* just over a year ago, an experience that she describes as "really exciting... as she was part of a Christmas show that was so brave and so well received by its audience".

She goes on to explain her love for the theatre itself, explaining how "everything she has seen there has been really exciting and fresh work... which is really encouraging to see, in my home town especially."

When asked about her favourite place in Beverley, Kate surprisingly mentions "Saturday Market when it's raining" as she "remembers being little and being dragged round, so it's got a nice and nostalgic feel". She cannot wait to return to Beverley as she is currently based in London, to perform to her home town audience.

Shakers is at the East Riding Theatre from 26th April to 20th May.



Creative community to join together at Flemingate

An innovative social enterprise is to provide a creative home for new, upcoming and established artists and designers at Beverley's popular Flemingate centre.

Designed to promote and develop creative individuals, THECREATIVELAB will provide cost-effective shared retail space for the creative community to display and sell their work in a fully-staffed retail environment, without the usual costly overheads incurred by small businesses.



The brainchild of Beverley-based artists Mikey Mathieson and Chris Kidd, THECREATIVELAB will give artists, designers and inventors the support and resources needed to achieve commercial exposure and success. Resources will include experienced salespeople; marketing of individual brands; a web platform with links to those brands; payment card transactions; and bags and packaging services.

Mr Mathieson, joint director of THECREATIVELAB, said: "This is a great opportunity to give local creative individuals and



companies the resources and support needed to become a commercially successful business.

"High costs and overheads can often mean talented artists simply do not have the revenue to showcase and sell their work. THECREATIVELAB will offer those people a mainstream retail environment at a fraction of the cost."

Set to open at the end of March, THECREATIVELAB will occupy a 1,800 sq ft unit next to leading coffee brand Starbucks within the Armstrong House building at Flemingate.

Mr Kidd added: "Our new premises in Flemingate will enable artists and designers to receive professional retail exposure in a high-profile shopping centre which we believe will enhance the shopping experience for residents and visitors to Beverley.

"We provide all the retail services a business needs, such as salespeople and card machines

- we even manage the stocktaking and sales forecasts.

"Our members will be able to concentrate on producing creative artwork and products, knowing their goods will be on sale in a highly-professional retail outlet within a busy shopping centre."

Graham Tait, Flemingate Centre Manager, said: "We're delighted THECREATIVELAB is joining the ever-growing commercial community at Flemingate. It will add further variety and vibrancy to the retail and leisure offer at Flemingate and bring further footfall into the centre.

"The artists behind this innovative venture are bringing the concept to Flemingate at a perfect time, with Hull's year as UK City of Culture in full swing and generating strong interest in the creative arts across the region."

Flemingate has extended and enhanced Beverley town centre and made the historic market town a bigger draw than ever before.

In addition to many leading national retailers that could not previously be accommodated in Beverley, Flemingate has brought much-needed new facilities to the town, including East Riding College, an 80-bed Premier Inn, six-screen independent Parkway cinema and 130 new homes.

Details of how to apply to join THECREATIVELAB community can be found at www.thecreativelab.space.

News from Beverley Town Council

This month sees the first in an occasional series of reports from Beverley Town Council highlighting some of the good news for us all to celebrate!

After success last year at the REYTAs when the Town Council won the Large Tourism Event at the Remarkable East Yorkshire Tourism Awards (REYTAs), for the Beverley Food Festival, it has again been short-listed! Can lightning strike twice? **Just Beverley** hopes so!

But that's not the only award that The Beverley Food Festival has been nominated for! A member of the public suggested that the festival should be considered for a Countryside Alliance Rural Oscar. After judging, the festival went forward as one of the five northern finalists in the Rural Oscar Tourism Enterprise Group. And it won! It now goes forward to the national grant final on March 22nd in London. The Countryside Oscars are supported by the Daily Telegraph, Sheffield Farm Foods and the Farmers Guardian so it should be a fabulous awards ceremony. We look forward to sharing the news of how the Beverley Food Festival fared! Watch the **Just Beverley website** on March 23rd for an announcement.

Away from winning awards, the Council, instigated by Rob Begnett, The Mayor of Beverley, has initiated a Youth Coalition Group. The aim is to provide youth opportunities and activities within the town which are currently not available and to 'join up' community organisations to create new ideas. A survey involving local schools has been completed and funding applications are underway. The Council welcomes approaches from anyone who would like to be involved!

The Council is always pleased to be able to consider grant applications from Beverley-based organisations which contribute to the life of the community (see their website for information on how to apply). This year to date, grants have been awarded to ERVAS Volunteer Group, Beverley and District Pipe Band, Mill Lane United, Beverley Male Voice Choir and Two Churches One Story.

Beverley Town Council are on **01482 874096** or you can email: clerk@beverley.gov.uk



Would you like to make a difference to someone?



VOLUNTEER CAR & MINIBUS DRIVERS NEEDED




Full training given, ring or pop in for a chat!

25 Corporation Road, Beverley, HU17 9HG
Tel: 01482 868082
www.bclift.org.uk
 Reg. Charity No: 506813 

FLEMINGATE

BEVERLEY



FASHION

FOOD



FILM



& FUN!

WE'VE GOT IT ALL AT FLEMINGATE

RIVER ISLAND

OUTFIT

TOPMAN

TOPSHOP

DEBENHAMS

H&M

GUEST & PHILIPS

Superdrug

GOURMET BURGER KITCHEN



SUBWAY

GREGGS

deli



RIVA

PÂTISSERIE VALERIE

PEACOCKS

bobo

Baytree Interiors

tesco

TRESPASS

Card Factory

Poundland

Entertainer

wilko

ASDA

@FlemingateBev

FLEMINGATE.CO.UK

FlemingateBeverley

Are you successful? Do you use your success for good?

A recent survey in a popular woman's magazine found that 80% of the responders said it was important for them to be considered a success. But what does that mean? Who is doing the judging as to whether you are successful or not?

I've always been led to believe that you make your own success because success is an individual objective. So what is success? To some it might be millions in the bank, a large house with a swimming pool, holidays in exotic locations, fine jewellery - the material trappings of wealth which they perceive gives them status. Others see success as more skill-based: being able to play an instrument or sing to critical acclaim; being a world-class photographer or writer winning high-level competitions or being a researcher discovering a new breakthrough. Others have less lofty ambitions: being in a loving relationship which allows space for self-expression; children and healthy parents. But many see success as having a job or position which gives them power and influence which they can use for the good of others.

This seems to be the nugget which defines success. Michelle Obama said: "Success isn't about how much money you make. It's about the difference you make in people's lives." Others are more likely to view you as successful if you are seen to be using your status for positive change outside of your immediate circle. Keeping the trappings of one's success to oneself is seen as selfish and self-serving. If you have position, power and money, you can influence change more than most people. You can help to even out inequalities so that more people can achieve in life. Helping others has the positive effect of counteracting stress, too, so it makes the helper as well as the helped feel good.

As Franklin D Roosevelt said: 'Happiness lies in the joy of achievement'. What's better than helping someone else achieve their goals when you have achieved yours? After all, success breeds success!

Be happy,
Linda.

Contact linda@releaseyourpotential.co.uk or call **07585 802035** for a private chat.



Beverley Welcomes New Business - A Little Different Shoe Emporium

Michael and Chantelle Noble bring a very different approach to ladies' footwear to Beverley.

New to Well Lane is this fabulous shoe emporium, stocking shoes which really do put the wow factor into an outfit! 'Irregular Choice' and 'Ruby Shoo' ranges cannot be described as middle-of-the-road! A Little Different Shoe Emporium will give women the opportunity to buy shoes locally which they would have had to have travelled miles for.



'Irregular Choice' shoes are incredibly different. They are bright, sparkly and sure to put a smile on anyone's face. Ranging in price from £79.99 to £129.00, they are like nothing else available in the area. 'Ruby Shoo' are slightly tamer in that they are 50's inspired, but the bright colours, polka dots and bows are unlike other traditional shoe-shop ranges. They are very reasonably-priced, too, with the most expensive costing £52. Ruby Shoos come with matching bags, too, which, if not stocked by A Little Different, can be ordered in.

The shop now inhabits the space previously occupied by a tattoo parlour, which was owned by Michael. Back issues have meant that Chantelle's wish to put more choice into Beverley has been granted; the shop has been refurbished and is open for visitors from 9.30am - 4.30pm Monday to Saturday.

You can have a sneaky peak at some of the fabulous designs by visiting **A Little Different Shoe Emporium's Facebook page**.

ert

EAST RIDING THEATRE



A funny, modern and intoxicating tale of loves, losses and misdemeanours.

ADRIAN RAWLINS directs

THE NIGHT SEASON

by Rebecca Lenkiewicz

THU 2nd - SAT 25th MARCH 2017

Box Office: 01482 874050

eastridingtheatre.co.uk

10 Lord Roberts Road, Beverley, HU17 9BE

SPECIAL OFFER

3 Contour Wraps for **£99**

TONING TABLE SESSIONS

Lose between 7" and 15" in six sessions, toning tables help if you are new to exercise, have issues with mobility, depression, bad backs & much more

FREE trials, no obligation
TESTIMONIALS AVAILABLE

INCHES

BODY STUDIO

CELEBRATING 25 YEARS IN BUSINESS

Inches Body Studio, 1 Norwood, Beverley, HU17 9ET
Telephone: 01482 865229
Email: inchesofbeverley@hotmail.co.uk
www.inchesofbeverley.co.uk



I've Been Thinking... by Colin Raynor

I've been thinking about music and singing and I freely confess to having no talent in this area of life. If asked why, I would claim that too much shouting at the football field, encouraging my local team over many years ruined my chance of becoming the next super star. That love of soccer also had a bearing on my application to learning any musical instrument, because when my peers were learning the piano or the guitar, I was wrecking another pair of good shoes by kicking a football about in the local park.

So why these musical thoughts? At Toll Gavel United Methodist Church recently, we had what we called a Praise Service. Now you might say, isn't every service one of praise and I would agree. Church worship is about "praising the God we adore" but it is not every Sunday that we sing eight hymns. So why did this service bring me to put my thoughts in writing? Because the music and the words of those familiar hymns, some of which I hadn't heard, or sung for many a long year, did what good words and music always do, be it in a church or the Albert Hall or the local pub. It takes you back to former days and it reminds you of things you meant to do; the many promises you made; people and places you knew and loved. In other words it stirs your emotions up and some of us don't like that to happen to us now, if we ever did.

Many of the words of these hymns relate to another time in society when we were a God-fearing nation, (although some might claim a subservient people), to which we have no intention of going back. One of the hymns spoke of "trust and obey, for there is no other way". If Christian belief is not part of your life such sentiments may have no credibility with you, but bear with me!

I suggest there is another way to look at this. In the Christian faith 'trust' and 'obey' are like two book ends; both necessary to hold the books together. In grammatical terms, 'trust' is the passive verb whilst 'obey' is the aggressive verb. If you trust, you will only get the best out of something if you obey the rules (the teachings) and the One who makes the rules, who asks you to obey, is always there to support you and play His part, even to give His life for you. So come on. Nobody is listening! Sing with me.....

***'When we walk with the Lord, in the light of His word,
What a glory he sheds on our way.
While we do His good will, He abides with us still
And with all who will trust and obey.
Trust and obey, for there's no other way -
To be happy in Jesus, but to trust and obey.'***

Now, are we all looking good and feeling fine? I do hope so!



HAYWARD Befriending

Are you, or someone you know, struggling to maintain independence?

Do you need time-out from your role as carer?

HaywardBefriending can provide support for adults aged 18-65 and 65+

- Company at home
- Accompanied outings
- Shopping with/for you
- Handyperson service
- Support with paperwork
- Support with housework
- Appointment transportation
- Pet service



Contact Jennie for further details
Call: 01482 868166 or 07834 491242

www.haywardbefriending.org.uk

Beverley Fertility Support Group

If you or someone you know is having difficulties conceiving, this new group could provide the emotional support which is lacking in today's world where everyone else seems to have children.

If you have been trying for a baby for a long time, are going for IVF or other types of infertility treatment or have had failed cycles, the emotional strain can be extensive and that can increase stress levels which adversely affect fertility. Along with our toxic environment, chemicals, processed and genetically-engineered foods, preservatives and other additives, our bodies are so often not at their optimum to enhance chances of conception.

There is now more understanding of the connectivity of the body with the external world and how to avoid unhealthy lifestyles. Julie Allison has set up the Beverley Fertility Support Group to give emotional support to infertile couples. The group provides a listening ear, a safe space for discussion and support and reduces isolation. A lot of couples feel alone when they're having fertility problems.

Julie, who is a detox specialist, also sees the group as a way of helping couples maximise their chances of conception by providing information on nutrition, detoxing, and reducing stress. Eating organically, avoiding caffeine and alcohol are important steps to boosting fertility. Unexplained fertility is particularly difficult to deal with.

About 1/3rd of all couples who cannot conceive have unexplained infertility. Childlessness is not unusual and never has been, but unless



not having children is a lifestyle choice, well-meaning family and friends can say the wrong thing at the wrong time.

Unless you have experienced infertility, it is difficult to understand the situation. Hurtful comments are often meant as jokes but

infertility is no laughing matter.

Julie feels she is on a personal journey to help couples maximise their chances of conceiving and is also keen to help couples look at the positives of being childless. Adoption and fostering are often not an option and infertility treatment can be expensive or not suitable.

The sense of void for a childless woman can be particularly acute on Mother's Day, as it is now called. Mothering Sunday was originally the day when people living away from their mother church went back to it on the 3rd Sunday in Lent, but over the years the meaning has changed.

One of the loveliest things we can all do is recognise the feminine, caring aspects of the women in our lives who have not become mothers because their contribution to society is just as important as that of women who have.

It is also important to recognise infertility affects men as well as women.

Beverley Fertility Support Group runs every 3rd Wednesday of the month at 7pm at **Eucalyptus Yoga Studio, 2 Wheatsheaf Lane, Off Lairgate, Beverley.** Julie can be contacted on **07508 824449.**

Visit www.modernmassagebeverley.co.uk/beverley-fertility-support-group/ for details.

National Infertility Awareness Week this year runs from April 23 -29.

Legal Q's and A's

Every month, Just Beverley asks a team of legal experts to answer a question to which we don't know the answer. This month involves a question about property transfers.

Q. My husband and I own our house. We would like to give it to our son, but live in it rent free until we die. Would this be possible, and would we incur any tax in doing so?

Coles the Solicitors have provided the following response.

A. There are several factors that need to be considered dependant on your circumstances. Firstly, your security in your own home is paramount. If your son owned your house and if he was to marry, divorce or become bankrupt you could lose the roof over your heads. There may also be Inheritance tax and Capital Gains tax consequences of doing so depending on how a gift was set up. Finally, there may be implications if you required long term residential care in the future, including a possibility the gift may be overturned. It is essential you take specialist legal advice in relation to whether transferring your house is right for you and the options available to you so you can make an informed choice.

If you need advice, why not give Coles a call?

They are located in the very heart of the town at **22, Lairgate, Beverley HU17 8EP**, telephone **01482 231300**.
www.coles-law.co.uk

HUBY DOMESTIC APPLIANCES

HUGE SAVINGS
when you

BOOK ONLINE

at
hubys.co.uk

Book in advance and save money.
The further you book in advance
the more you could save...



You've tried the rest,
now use **THE BEST!**

01482 240511

Coles
the solicitors

Providing expert legal
advice in the very heart
of Beverley

22 Lairgate, Beverley HU17 8EP

T: 01482 231 300

E: info@coles-law.co.uk W: www.coles-law.co.uk



- Family Law • Wills & Probate • Conveyancing • Powers of Attorney
- Medical Negligence • Litigation • Dispute Resolution • Personal Injury

You can help Michael Durcan secure a Euro Pro Tour Card

The Assistant Golf Professional at Beverley and East Riding Golf Club has the opportunity to play on the European Professional Tour - but needs sponsorship to help him get there.

Michael, who last year 'made the cut' on the European Challenge Tour representing his home country, Ireland, is in the running to attend the PGA Euro Pro Tour Qualifying School in March so he can get his Tour Card. This is a massive achievement and demonstrates the potential Michael has in becoming a world-class golfer!

But the costs associated with playing the Tour are high. Travel, accommodation, competition entry fees and kit do not come cheap. Which is where you or someone you know might be able to step in.

He is offering a promotional package of benefits to any business or individual who can assist, including golf lessons, corporate golf days, PR, access to business contacts, wearing of logos on golf apparel and more depending on the level of sponsorship.

Michael can be contacted by email at michaeldurcanpga@gmail.com. His website is www.michaeldurcanpga.co.uk and you can follow him on **Twitter @MichaelDurcan59** and **Facebook michaeldurcanPGA**



New at The Durham Ox!

Especially for those who like a good traditional pint of beer but can't make up their mind which beer to have, this is for you!

The Durham Ox have launched a 'Paddle of Beer'. Three 1/3 pints of guest beers for **£3.50** - or accompanied by meat pie and mash for **£6.50**.

The current guest beers are Black Sheep, John Smiths Cask, Sharp's Doom Bar or Sharp's Atlantic but these will change week by week.

Available Tuesdays to Fridays 5pm - 8pm. Phone: **01482 873366** for details. Enjoy!



Drifffield's No.1 estate agent*
is now open in Beverley.



...to the Woolley & Parks
experience.

W&P WOOLLEY & PARKS

- Pro-active service
- 5 star rating from buyers and sellers
- Open 7 days a week
- 100% accompanied viewings

**19 North Bar Within
Beverley**

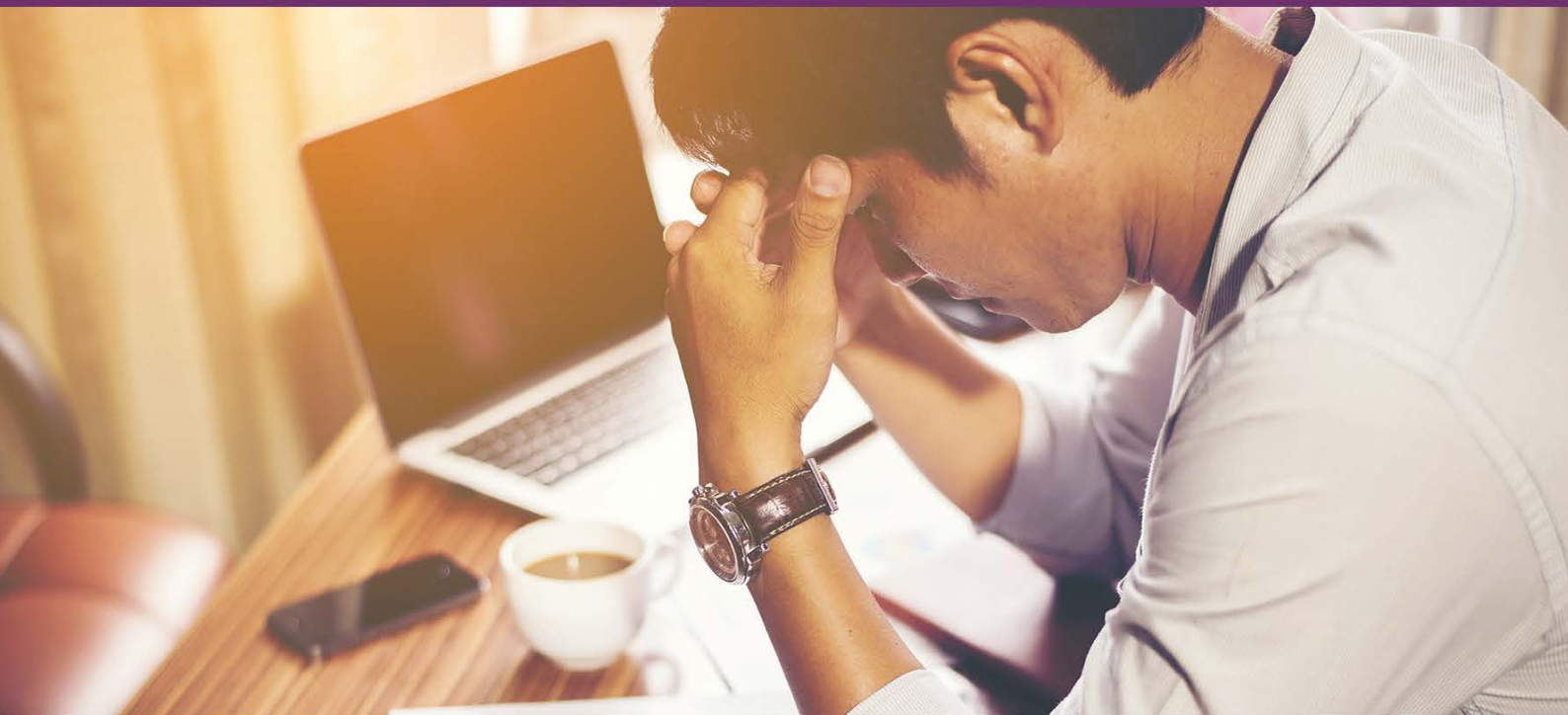
01482 755700

beverley@woolleeparks.co.uk

woolleeparks.co.uk

*For property sales in 2016. Statistics supplied by Rightmove.

Has managing your payroll become a real headache?



New legislation for RTI and Auto Enrolment has tripled the workload for payroll staff! We can help reduce the burden.

Benefits of working with us include:

- Access to a dedicated payroll specialist
- Flexible and tailored services that are adapted to suit your needs
- Transparent pricing
- Clarity and efficiency
- Access to our FREE and easy to use payroll app

Call us a **FREE**, no obligation consultation on 0845 308 2288 or visit our **website** www.stipendia.org.uk

Stick with us on **social media** for updates!



Stipendia Payroll Solutions



@StipendiaPay

Could the National Minimum and Living Wage Increases Affect Your Business?

You may remember back in October that the national minimum wage rates increased for anyone below the age of 25 - But are you aware that both the minimum and living wage are set to increase from April 2017?

Stipendia's team of payroll experts are on hand to help guide you through these changes and keep you and your business up to date with the new laws and legislation.

What is the National Minimum Wage (NMW)?

The minimum wage was brought into effect in October 2012 and is an hourly rate which workers in most sectors of the British economy must be paid. Reviewed on an annual basis, the rates are set to increase from April as follows:

- For 21 to 24 year olds - from £6.95 to £7.05 per hour
- For 18 to 20 year olds - from £5.55 to £5.60 per hour
- For 16 to 17 year olds - from £4.00 to £4.05 per hour
- For apprentices - from £3.40 to £3.50 per hour

How is this different to the National Living Wage (NLW)?

The living wage is a further mandatory rate introduced in April 2016 and was introduced for workers over the age of 25. Currently set at £7.20 an hour, it has been announced that this rate will also increase to £7.50 an hour from April 2017. It is predicted that the NLW will rise to £9 an hour by 2020.

It is important to keep up to date with the wage increases and HM Revenue and Customs (HMRC) can take employers to court for not paying the set wage rates. Companies can receive a fine of up to £20,000 per worker for non-payment and be banned from being a company director for up to 15 years!

If you would to consult with one of their expert team, please contact Stipendia on **0845 308 2288** or visit our website - www.stipendia.org.uk. Our team of payroll specialists are on hand to guide through the processes of wage compliance, payroll, auto enrolment and more.

Competition
Winner



Congratulations to Charley Patterson, pictured here with her family, who are delighted to have won the Family Photoshoot at La Lumière's award-winning studio.

Cosmo's

Flaming Grill,
Restaurant & Bar

Mother's Day

includes a gift for Mum!

SUNDAY 26th MARCH 2017

Starters

Traditional Prawn Cocktail
with Oak Smoked Salmon
Served with brown bread and butter

Chefs Home Made
Tomato and Basil Soup
Served with a crusty roll

Smooth Brussels Pate
Served with a sweet onion chutney and brown toast

Mains

Roasted Salmon Fillet
Served on spinach and asparagus risotto

Pan Fried Chicken Breast with White
Wine and Cream Mushroom Sauce
Served with sauté potatoes and green beans

Roasted Mediterranean
Vegetable Linguine
*Tossed in a Neapolitan tomato sauce finished with
mascarpone cheese*

Your choice of desserts

3 course menu **£19.95**

WWW.COSMOSBEVERLEY.CO.UK

Cosmo's Beverley, 9-10 Wednesday Market, Beverley, East Riding of Yorkshire HU17 0DG

T: 01482 867 891 | E: info@cosmosbeverley.co.uk



Send your photographs of your celeb
Find us on Twitter and Facebook to s

Wildlife Photographer of the Year Exhibition



Beverley Town Council Civic Service



HERE TO GET *you* THERE

HUNTERS®

EXCLUSIVE

BEVERLEY / 01482 861411

One World Travel Agency Party



Beverley Ladies' Circle Fundraising



SALES / LETTINGS / MANAGEMENT

HUNTERS[®]
HERE TO GET *you* THERE

BEVERLEY / 01482 861411

Plan now to visit the ultimate cheese-lover's festival on 18th - 21st September

This year is the 20th anniversary of one of Italy's most exciting festivals - the Bra Cheese Festival. Bra, which is in the stunning region of Piedmont, attracts artisan cheesemakers from across the globe and presents an incredible opportunity for food lovers to experience the culinary delights of a region known globally for its contributions to gastronomy.

In this north-western corner of Italy, untouched by mass tourism and rich in history, lies the baroque town of Bra. Located an hour's drive from major city Turin and the same from the smaller (but equally as fascinating) Cuneo, Bra provides its visitors with an experience they're unlikely to find anywhere else in this beautiful country. The region of Piedmont is known for its exports of



both wine and agricultural and artisan food products, with the town of Bra acting as the centre of the 'Slow Food' movement, which is an international organisation designed to counteract the ever-growing 'fast food' culture.



The cheese festival spans a long weekend in September every other year, swelling the town's population from 30,000 to 270,000 over the course of the four-day festival. The sheer scale of the festival can be understood by the produce being exhibited - for example, one stall dedicated to the Valle d'Aosta will have fourteen varieties of Fontina available, each with a distinct flavour profile based on the altitude of the producer. This stall is just one of over 300.

From famous Parmesans & Gorgonzolas to the more unknown (but equally as tasty) Alpine Castelmagno, you'll find every type of cheese imaginable here - including Cacio Marcatto - the illegal cheese from Abruzzo.

Granted special permission for the festival (only for tasting and not for purchasing) this infamous cheese is so because of the method used to soften the inside of the round. With an Italian translation of Formaggio con I Vermi, the "cheese with maggots" represents some of the most extreme versions of produce available at the festival.

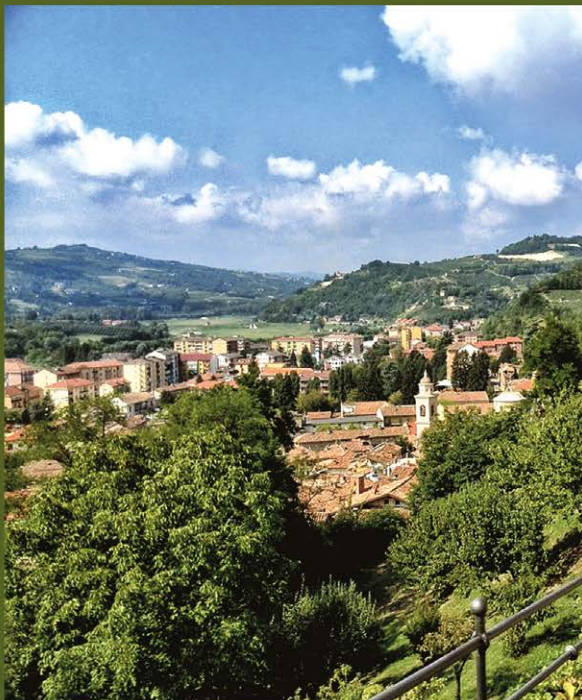


From the highly-coveted Barolo and Barbera D'Alba wines, along with the stunning Dolcetto and the famous Asti, Piedmont is recognised as one of Italy's finest wine growing regions. With many vineyards offering tours and tastings, a stay in the area wouldn't be the same without one. The town of Alba produces some of the most spectacular wines on offer, whilst providing visitors with some of the most photogenic scenes of Italian architecture.

To find out more about the Bra Cheese Festival, head to www.cheese.slowfood.com/2015/en/

BEVERLEY'S ONLY INDEPENDENT TRAVEL AGENCY

ONEWORLD
TRAVEL GROUP



Cheese Festival Tour

DEPARTS 16 SEP 2017

This four-day itinerary includes a visit to the Bra Cheese Festival, as well as a local winery in the heart of the Piedmont region for wine tasting.

INCLUDES:

RETURN FLIGHTS TO MILAN
3 NIGHTS IN AN AGRITURISMO PROPERTY
BREAKFAST & EVENING MEALS
TWO WINE TASTINGS & WINERY VISIT
TRANSFERS & LOCAL GUIDES

695.00 PER PERSON

BASED ON 2 ADULTS. OFFER AND PRICE SUBJECT TO AVAILABILITY.



35 Saturday Market, Beverley HU17 8BE

☎ 01482 280081

🌐 www.1worldtravel.co.uk

Rumi's



Nominated in the 'Curry Awards' and by 'Curry Life Magazine'

The Only Beverley Indian Restaurant included on the Welcome To Yorkshire Spice Trail

Rumi's Bangladesh Indian Cuisine

New Walkergate, Beverley, HU17 9EP

**NEW FOR 2017
TAPAS MENU**
Sun to Wed
5.30pm to 7.30pm

T: 01482 428642

www.rumisrestaurant.co.uk

Mon - Thurs: 5.30pm - 11.30pm

Fri - Sat: 5.30pm - 12am

Sun: 5.30pm - 11pm



Rumi's Recipe - Traditional Indian Vermicelli

Indian vermicelli, made from wheat, is much finer than Italian vermicelli and has a good texture in deserts.

It is available from Asian stores.

Serves 4

Ingredients:

- 4oz cup of Indian vermicelli
- 2 pints of water
- ½ tsp. saffron threads
- 1 tbsp. granulated sugar
- 4 tbsp low-fat fromage frais or Greek yoghurt to serve
- 1 tbsp shredded fresh or desiccated coconut, chopped almonds and/or pistachio nuts to decorate



Method:

1. Crush the vermicelli in your hands and place it in a pan. Pour over the water, add the saffron, bring to the boil and boil for about 5 mins.
2. Stir in the sugar and continue cooking until the water has evaporated. Press through a sieve to remove any excess liquid.
3. Place the vermicelli in a serving dish and decorate with the coconut, almonds and/or pistachio nuts. Serve with fromage frais or yoghurt.

Telephone: 01482 869111
sales@rosesofbeverley.karoo.co.uk



The Kitchen Factory, The Courtyard,
Tokenspire Business Park, Beverley
HU17 0TB

Our bespoke range of kitchens designed, pre-installed and fully project managed from start to completion.

Roses refurbishment range.
Let Roses give your kitchen a makeover with our replacement door and worktop service.

Roses DIY range of kitchens. Designed and pre-installed, ready to fit. Ex-factory price list.

"TICKTON MATT"

715 x 295	Price inc VAT
715 x 395	£22.40
715 x 495	£26.32
715 x 595	£29.28
	£33.08

"WALKINGTON (HANDLELESS GLOSS)"

715 x 295	Price inc VAT
715 x 395	£38.74
715 x 495	£42.92
715 x 595	£48.12
	£53.88

"LEVEN AND SKIDBY SHAKER"

715 x 295	Price inc VAT
715 x 395	£33.52
715 x 495	£37.10
715 x 595	£39.82
	£44.52

"BEVERLEY GLOSS"

715 x 295	Price inc VAT
715 x 395	£35.33
715 x 495	£39.10
715 x 595	£41.98
	£44.99

MANY MORE SIZES, DOOR STYLES AND COLOURS AVAILABLE

FULL PRICE LIST AVAILABLE IN STORE

TRADE ENQUIRIES WELCOME

Visit www.roseskitchens.com

to see our customers kitchens and read what they have to say about us

Telephone: 01482 869111 • www.roseskitchens.com

Countryside Matters with Sam Walton

Some may not know but East Riding probably has more greenhouses for salad production than anywhere else in the country. But other countries also grow under glass. A couple of years ago, I had the pleasure of visiting a hydroponic farm in Thailand and that was a real eye opener. The site covered three acres and the crops were grown on benches with a slope of 1 in 100 for the water mixed with fertiliser to run down.

Lettuces from seedlings were ready in 14 days! It's an incredible example of what can be achieved with a warm climate and plenty of water. The owner, who took an active interest, also had his own restaurant so grew quite a few salad crops, some of which we would never see here. It made me realise that agriculture throughout the world is so diverse, from small market gardens to ranches with thousands of acres.



From seedlings...

Thailand, although a poor country has a varied agricultural industry. It grows a lot of rice, bananas and other fruits, as well as having a large dairy and pig sector. Plus, all the families own holdings which eke out a living for them. The entrepreneur who had set up the hydroponics farm was quite an exception and it reminded me that agriculture has to be the oldest profession (despite what anyone may think!) and logically has to be the most important.



... to this in just 14 days!

You could at a pinch do without all your luxuries of modern life but you would not last long without farming. So next time you go to the shops, think about the huge effort which is put into producing top quality food for you.

And if you want to be able to buy British tomorrow, buy British today, as unfortunately not every country from which we import food abides by the strict rules that we do.

In the garden... March

Well, February has passed and true to form we've had a mixture of cold, grey and damp days; some very frosty days; some snow and some sunny spring like days.

Plants that have brought some cheer to the month in my garden are snowdrops, Helleborus niger and the green tassels on the Garrya elliptica.

March could provide us with much of the same weather, but has the saving grace that the days are becoming much longer and of course the clocks will go forward in the early hours of 'Mother's Day'.

In March I am looking forward to seeing the spring bulbs which are shooting up nicely, the vibrant pink flowers on the Chaenomeles and taking in the fragrance from my Viburnum carlesii (hopefully the flowers will burst open and release their fragrance at the end of the month).



As it is 'Mother's Day' at the end of the month, why not create your own gift of a planter of spring flowers and bulbs? Be creative with your choice of planter, use an old wooden crate; wicker basket or even something like a teapot instead of a pot - there are plenty of ideas on the internet.

Tasks for March...

- Apply plant foods to established borders i.e. pelleted chicken manure.
- Mulch bare soil.
- Continue to prune overgrown and late-flowering shrubs and roses.
- Cut back perennials and grasses that were left over winter.
- Divide overgrown clumps of perennials.
- Start putting supports around perennials - this is so much easier to do than when they have grown and you struggle to contain them!
- Dead-head daffodils, leaving the foliage until it dies back.
- Plant summer-flowering bulbs.
- Sow hardy annuals out of doors.
- Protect fruit blossom from late frosts.
- Treat moss on lawns.
- Re-seed bare patches on lawns (towards the end of the month) and mow the lawn if necessary - set the blades high.
- Check pond pumps and get them running.
- Make sure the birds have plenty of food and fresh water.

That's all for this month,

Happy Gardening! J.

Jane Dale of 'Designed Gardens'
Tel: **07983 392 411**




Botterill & Co
Chartered Certified Accountants

We are a modern and professional accountancy practice ideally located to serve businesses in Beverley and the surrounding area.

We utilise modern accounting technology to provide you with a cost effective, professional service.

Our services:

- Annual Accounts
- Management Accounts
- Tax Returns
- Company Formations
- Cloud Accounting
- Bookkeeping & VAT

For a free initial consultation please contact us:

Office: 01482 862240

Mobile: 07966 051458

Email: gareth@botterillco.co.uk

Website: www.botterillco.co.uk

1st Floor Offices, 40 Norwood, Beverley, HU17 9EY

Making Tax Digital - Are you ready for the changes?

By 2020, HMRC's Making Tax Digital (MTD) initiative will mean that businesses and individual taxpayers can access their own tax affairs online via digital tax accounts.

Making Tax Digital - or MTD for short - is a government initiative that will revolutionise the UK tax system and bring an end to self-assessment from April 2018. The UK Government, through HMRC, is modernising the tax system and replacing tax returns with digital tax accounts for millions of businesses and individuals. A digital tax account brings together each taxpayer's details in one place, just like an online bank account, so they can view their tax affairs in real-time, update their information, register for new services, see at-a-glance how their tax is calculated, and see a list of payment options.

HMRC's main aim of Making Tax Digital is to make tax administration more effective, efficient and easier for taxpayers through the implementation of a fully digitalised tax system by 2020, whilst also reducing its overheads for managing tax affairs. The changes apply to a wide range of taxpayers, including most businesses, the self-employed and landlords. This 'new and improved' tax system will require the majority of business owners to maintain digital records using compatible software. Based on the information published by HMRC, self assessment tax returns will end on 5 April 2018 and be replaced by digital tax accounts. This is the timeline as it currently stands:

April 2018 - Making Tax Digital Go Live - Income Tax

April 2019 - Go Live - VAT

April 2020 - Go Live - Corporation Tax

When Making Tax Digital comes into force in April 2018, HMRC expect unincorporated entities with businesses and/or rental income in excess of a certain limit (£10,000 is the proposed level) to file both quarterly updates and the annual declaration. Day-to-day record keeping need to be maintained digitally, and HMRC are exploring whether spreadsheets satisfy this requirement.

HMRC will not be providing software for Making Tax Digital. HMRC is working in consultation with software developers on what software is required and how this requirement will be met. All this means that businesses have a short window of opportunity to prepare themselves for the new systems and starting to use a compatible software package now would be advisable. If you would like to discuss this in more detail, then please contact Gareth Botterill on **01482 862240** or email: gareth@botterillco.co.uk.

Telephone: 01482 869111
sales@rosesofbeverley.karoo.co.uk



The Kitchen Factory, The Courtyard,
Tokenspire Business Park, Beverley
HU17 0TB

Our bespoke range of kitchens designed, pre-installed and fully project managed from start to completion.

Roses DIY range of kitchens
Designed and pre-installed, ready to fit.
This 12 unit kitchen (18 doors) includes cornice, pelmet, worktops, etc

Roses refurbishment range.
Complete kitchen makeover service.
Ex-factory price list.

"TICKTON MATT"
£2,750.00
inc VAT

"LEVEN SHAKER"
£2,950.00
inc VAT

SEE ALSO OUR NEW:

"SKIDBY SHAKER" • "BEVERLEY GLOSS" • "COTTINGHAM ASH" • "WALKINGTON (HANDLELESS GLOSS)"

FULL PRICE LIST AVAILABLE IN STORE

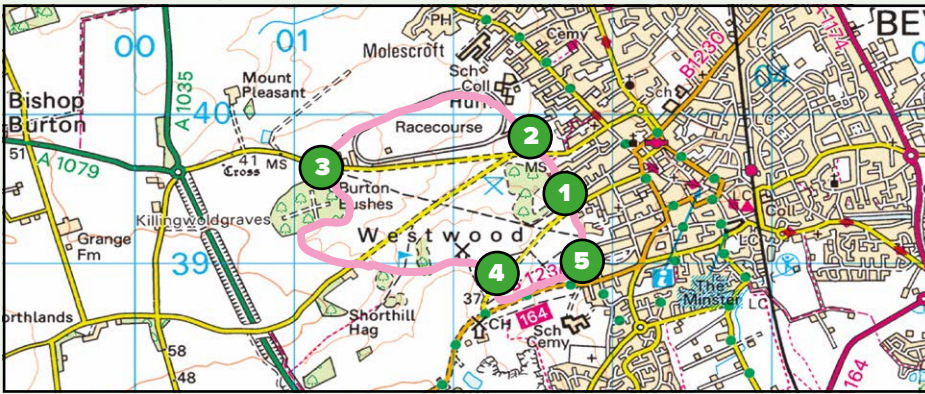
TRADE ENQUIRIES WELCOME

Visit www.roseskitchens.com

to see our customers kitchens and read what they have to say about us

Telephone: 01482 869111 • www.roseskitchens.com

Walking with Ian Richardson - Westwood Ho!



Most of us fortunate enough to live in or come from the beautiful town of Beverley are rightly proud of the Westwood. Fewer perhaps know that it is only one of four common pasture lands established as far back as 1379: Figham, Swinemoor and the Hurn being the others.

We are in fact particularly lucky as most towns and villages lost their commons centuries ago to Enclosure Laws. Over the next three spring months, I will take you on walks around the lesser known delights of our commons. Here we take in the glorious Westwood and the adjacent Hurn, which, as the rules board from 1902 on York Road states, is usually seen as 'one pasture'. The Westwood really is a place for all seasons, from summer picnics to sledging in those now rather rare winter snows. I was lucky on this walk to catch a sunny day in early February with the first promise of spring in the air.



Rare snowy scene of the Westwood.

1. You can start a walk on the Westwood at almost any point on the 500 acres of pasture, race track and woods. I have chosen to begin at what I always feel is the most romantic of entrances, the kissing gate at the top of Woodlands. The walk then goes anti clockwise around the perimeter covering some 3 miles. If parking a car, beware the new restrictions and the hefty fine for transgressors. The redeveloped hospital was originally built as a workhouse in 1869: despite its grim purpose the architecture is most impressive. As you head down the path towards the racecourse there is a large area of hollows and bushes - Newbegin Pits. Here clays were dug for centuries to provide building bricks such as those at North Bar. Today it is a paradise for children especially, with improvised swings and illicit bike tracks - a veritable Swallow and Amazons place, assuming any kids now play outdoors!



The former Workhouse.

2. Head towards the busy York Road and cross with care. There is a smashing view back over Willow Grove to St. Marys Church. Those of us who remember the devastating floods of 2007 will never forget the sight of the huge lake that formed here and the torrents of water rushing down the Westwood slopes. It is to be hoped that the residents of these lovely houses will never have to suffer that again.



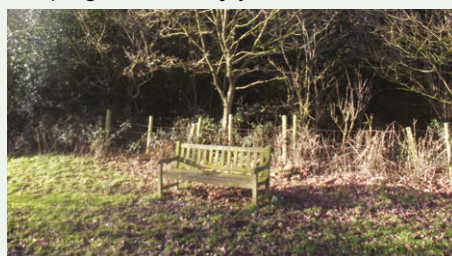
Willow Grove.

Now head for the racecourse across the field, entered by various gates. A walk around the whole course is a real tonic; the views over the town are exceptional. The track has a notoriously stiff climb in the last few furlongs. I recall a course specialist twenty odd years ago, Rapid Lad who never seemed to win elsewhere, but often did at Beverley. He won me a few quid and his name lives on in one of the course bars.



The final furlong on Beverley racecourse.

3. Cross the road near to the grandstands, firstly noting the fine statue of a jockey near the entrance. Now cut across towards the surprisingly dense woodland of Burton Bushes. This is now open to explore, although the access stiles are incredibly high! It is a delightfully wild place and feels miles away from the bustle of town. I am told the spring flowers are a joy here.



Bench at Burton Bushes.

Having had walk on the wild side in the woods, emerge and stick to the perimeter of trees, before striking south on the undulating route to Newbald Road. There are many well sited benches for a rest and marvellous views. The names on the map in this area of the Westwood are fascinating and I suspect unfamiliar to most of us: Shorthill Hag, Killinwooldgraves, Swadgery Mere and Cobbler Well - none of which, try as I might, could I find. There is another nice area of hollows and woodlands just below Blackmill. Built in 1803 this is the most striking survivor from the many mills that once dotted the pastures, I wonder if a new use will one day be found for this fine building with the most spectacular of views?

From the mill, head across the horse training track to the Walkington Road, the trees frame the Minster most photogenically.



Towards the Minster.



Blackmill.

4. To complete this circular walk, cross the rolling pasture towards the golf club, itself having the remains of another mill within it. Head down the newly constructed cycleway by the road and rejoin the pasture at the gates across from the Royal Oak.



Beverley Minster.

5. Now head back to your starting point, admiring the many fine properties that look out over the common, notably the gatehouse and terrace just before Woodlands. It is interesting to reflect that you have passed near to many ancient sites on your walk - one excavated in 1874 revealed a cart burial. These along with the remains of past industry and lost roads make this a walk as historically fascinating as it is beautiful.

Ian can be contacted by email: ricojosh@msn.com

www.justbeverley.co.uk

Golf with Stewart Fraser - how to choose clubs to suit your game

I get asked a lot about the clubs I play with and what I would recommend for golfers of different abilities. The fact is that with the amount of research companies do and the huge budgets they have, there are not many bad clubs/balls around. However, some have unique features that help your shots go longer/straighter. Over the next few issues I am going to talk you through some of the very best equipment currently on the market and highlight how it can help your game.

Drivers:

Two of the leading driver manufacturers in recent years have been Taylormade and Callaway. Here we take a look at their latest offerings:

Taylormade M1

Despite its unconventional design when you look down on it the M1 has a traditional head shape. The new M1 has even more adjustability than last year's model, allowing more weight to be moved backwards and forwards in the head to adjust trajectory, spin and forgiveness. As well as this, more weight can also be moved to the heel or toe of the club to straighten shots and hit more fairways.

There is also new hosel adjustment to give more loft and face angle options without having to buy a new club. When hit, the M1 gives off a nice solid sound and feel and seems a little easier to use than last year's model. It's certainly one of the most adjustable/longest drivers on the market.

When tested on the flightscope, the M1 definitely reduced spin over my current driver and was very easy to use. When properly fitted with the correct loft and shaft, I gained 20 yards.



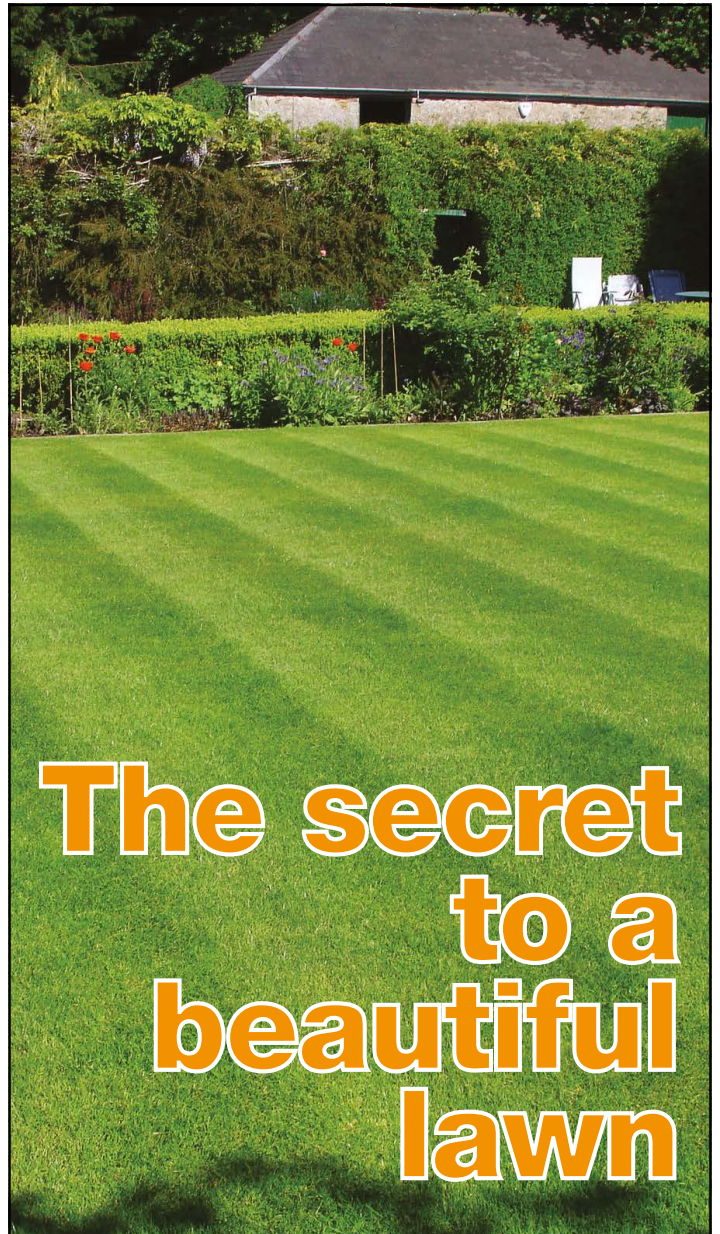
Callaway Epic

The most talked about driver on the market. The ground-breaking face design means that you should get greater distance on average, even with off centre hits. They have introduced a carbon crown like the M1, so that weight can be moved lower to make your drives fly high and spin less. The sliding bar at the back gives 21 yards of shot shape correction and the hosel allows for up to 2 degrees of loft adjustment as well as giving you draw or fade enhancing options.

A driver packed with technology! When hit on the flightscope, I found the Epic extremely easy to use and a lot longer than my own driver, when fitted up to 30 yards at times, but also a very consistent performer. The ball flight was higher, with a lot less spin and it felt very solid off the face.

Which one would I choose? Two outstanding new drivers with very little to separate them. Why not come and try them here at Beverley Golf Club and see how much further and straighter you can hit your tee shots!

Stewart Fraser is the Golf Pro at Beverley and East Riding Golf Club. He can be contacted on **01482 869519**.



The secret to a beautiful lawn

Our lawn experts use the right products, in the right quantities, at the right time. They kill weeds, control the moss, and work with you for a beautifully lush and healthy lawn.

- Free consultation and lawn surveys
- UK's leading professional lawn service for over 28 years
- No contracts to sign, pay as you go service
- Specialist feeds exclusive to GreenThumb
- Cheaper than D.I.Y.
- From £15 (inc VAT) per treatment

GreenThumb
LAWN TREATMENT SERVICE

www.greenthumb.co.uk



01482 880082

Beverley Ladies' Rugby proving 'This Girl Can'

Emma Bryans is the driving force behind ladies' rugby in Beverley - Just Beverley went along on a Monday evening to meet her and the women and girls playing rugby to improve their fitness and team-work whilst having a lot of fun!

The current group of 20 females who belong to Beverley Ladies Rugby (Union) Club includes several who have never played rugby before; that included Emma Bryans until a year or so ago. But, says instigator Emma, taking up rugby has increased her fitness levels way beyond those of her previous life. Emma used to be a dancer, concentrating primarily on ballet, which is a very physical art-form requiring strength, stamina and suppleness. **Just Beverley** has heard of footballers being trained in ballet to increase their athleticism, but never a ballet-dancer taking up rugby! So we had to find out more - what motivated Emma to begin playing rugby?



Emma's husband, Alan, is a huge rugby fan. He plays, too, which has encouraged their three older sons to play. Emma said that rugby has become a huge part of family life and there was an element of 'if you can't beat 'em, join 'em!' in her decision to start the club. But she also discovered three different initiatives which encouraged her. Active Humber, which is one of 44 County Sports Partnerships in England are funded to support Sport England's objectives to increase sports participation amongst the population; 'This Girl Can' is a celebration of active women who are doing their thing no matter how well they do it, how they look or even how red their face gets and England Rugby's 'Meet your Inner Warrior' scheme which is encouraging more women to take up contact rugby by running camps and supporting clubs and coaches with the intention of getting 25,000 women involved. At the same time, Emma herself knew many women who secretly fancied having a go at rugby but were prevented from doing so by fear of judgement - and by not being able to find like-minded people or a women's club.

Rugby, like many sports, promotes mental as well as physical health. It empowers, teaches respect, discipline, sportsmanship and teamwork and gives enjoyment. And it allows you to discover muscles you never thought you had!

There are currently 8 women and 12 girls at the Club, with 3 teams in the making - Under 13 girls, Under 15 Girls and Ladies. Emma is excited about the possibility of entering into the Yorkshire section of the National Ladies league, which is supported by England Rugby. Now that the National Women's Teams play their own Six Nations at the same time as the men's teams, women's rugby is becoming more popular, which is why Beverley Ladies' Rugby Club is planning an official launch on April 22nd!

April 22nd is the last day of the current rugby union season, when the men's team will be playing their final game of 2016/17. Prior to this will be a local derby between Beverley and Driffild Ladies' teams. Emma would like as many people as possible to come along to this game, to meet the teams, watch the rugby, cheer them along and get to know them with a view to more people getting involved and more women signing up to play. Emma is also hoping there will be companies who would be willing to sponsor them with kit, equipment and even help with coaching at all levels.

So, please put your date in the diary and look forward to some exciting rugby. Emma Bryans can be contacted on **07933 512021**.

Tales from the Racecourse - Spring Cleaning for the New Season



With Spring approaching, things at Beverley Racecourse are gathering pace to get ready for the new racing season! The staff are all busy to make this another exciting year!

Along with the ground staff who have put up new running rails in front of the stands and have fertilised all the grass so that it looks fresh and green, the decorators have moved in and are painting just about anything that stands still! The office staff have not been idle either; despite people imagining they only work whilst the racing is on they have, in fact, been there all winter planning this year's racing and taking bookings for special events, especially the very popular Ladies Day in August. Among the themed days for 2017 is the opening race on April 19th - The White Rabbit Raceday. This will be a great day for families and there will be a themed Easter Egg Hunt with Alice in Wonderland and friends there to help you. There will be plenty of singing, dancing and riddles and a free Chocolate egg. Afterwards you'll be able to take part in a decorating workshop. Then there's an exciting afternoon of racing to be had. On Sat 10th June, it will be time to dust off those Union Jacks and come along to A Very British Raceday. The Donkey Derby promises plenty of fun and laughs plus there's side stalls and delicious British food all followed by plenty of racing. Finished off with a good sing-a-long with a Last Night of the Proms atmosphere, it will be a great day out!

Then on Tuesday 20th June there's a chance to get out those flares and platforms for a great evening at our 70s Night, featuring a live band. Watch the racing, boogie the evening away and have a great time. Wednesday 16th August and yes! It's Ladies Day. Presented for the first time in partnership with Flemingate shopping centre, it will be an unforgettable day with lots going on. This is a day not to be missed, so get your tickets booked. Beat the Bookie is out and about gathering info for his tips for the new season to share with you, so come along to a race day this year and keep an eye on that tipsters board! See you there!

Colin Stamford

Caption Competition

Ever wondered what a jockey might be thinking when he is start on his mount in the stalls before the starting gate opens at the beginning of a race?



Well, here's your chance to win 2 tickets to the opening day of the new season at Beverley Racecourse on April 19th, just by putting words into the head of this jockey!



Taken at Beverley Racecourse on Ladies Day 2016 by our own Julian Minshall, all you have to do is send an email with your thoughts as to the jockey's thoughts to info@justbeverley.co.uk. Put 'Racecourse Competition' in the subject box and include your name, address and daytime telephone number. Winners must be prepared to take part in publicity for **Just Beverley** and **Beverley Racecourse**. Closing date March 15th.

Adrian Benson and how U3A fills his life

For many, retirement can seem daunting! How do you fill your days? How do you give your life meaning and make it interesting? U3A was the catalyst for Adrian Benson to develop a new set of interests and make new friends! He came into the Just Beverley office to tell us all about it!

When Adrian retired from his job in agriculture, he and his wife, Christine, did wonder how they would get on now they were going to be together 24/7! Fortunately, a friend of a friend from Swanland mentioned how much he had got out of belonging to U3A, which stands for 'University of the Third Age' although 'university' is entirely in the context of community learning entirely for enjoyment rather than qualifications.

Adrian set himself the task of finding if there was a local group - and there is! The Beverley branch of U3A meets at the Memorial Hall, with a speaker, on the 3rd Thursday of the month between 2-4pm and at the Lairgate Hotel on the 4th Friday between 10am and 12noon for coffee. Adrian and Christine headed along to the Memorial Hall one 3rd Thursday to be greeted by a room full of 140 people - and Christine came out as newsletter editor! She started attending committee meetings, got roped onto the committee and dragged Adrian with her. He is now Vice-chair!

The committee co-ordinates events and activities, which are listed in the newsletter and on the website. There are currently 42 different interest groups which the 500 members participate in through their membership! These include activities as diverse as ukelele-playing, walking, cycling (called the Beverley Re-cyclers!), ballroom dancing,

bridge, singing (for fun), language classes, photography and political discussion! In planning is a table-tennis group and an art appreciation group. One of the restrictions they have is finding venues large enough to accommodate the groups - so if you know of a suitable location, please let Adrian know.

Most members are 50+ and retired or semi-retired, as, although there is no age restriction, it is meant for like-minded people of the 3rd age. The majority of the members in the Beverley group are over 65. But it is the members themselves who lead the interest groups, which keeps their 'hand' in. Adrian said they do find that some group leaders are in demand from other U3As in other towns who like the idea of forming similar groups.

Although members join their local U3A - membership of Beverley is £15/year with some charges for individual events - the constitution means that members can join with events put on by U3As in neighbouring towns through the Humber Accord.

The Humber Accord joins Beverley with Cottingham, Hessle, North and South Cave, Swanland, Hornsea, Hull, Howden & District and Awake (Anlaby, Willerby and Kirk Ella). U3As are members of the Third Age Trust which is the parent body of all affiliated U3A branches.

There are now 900 U3A groups in the UK with over 320,000 members. That's a lot of new friends! If you think U3A is for you, you are most welcome to go along to a meeting on a 3rd Thursday as a guest (it will just cost you £1 to cover



refreshments). You are also welcome to go along to an interest group to see what it is like as a taster.

But after that, you will be handed a membership application form and invited to pay the relevant fee because otherwise the terms of U3A's insurance is invalidated as it is a regulated organisation.

U3A for Adrian and his wife has become part of their new way of life. He stresses that no-one in this town needs to feel lonely or that they are wasting away after retirement - all it takes is a visit to their website where you can complete a contact form <https://u3asites.org.uk/beverley/contact>.

 **HearPure**
YOUR HEARING AID PEOPLE

**FREE Widex
Cordless Phone***
With every mid to top range
Widex Hearing Aid

PHONE-DEX is a cordless phone that streams sound directly into your hearing aids.

Book your FREE demonstration.
Available for 30 day FREE TRIAL Today!

Call: 01482 870957

13a Saturday Market, Beverley, HU17 8BB
www.hearpure.com

Ear Wax Removal Appointments Available



*Call for offer details

PUZZLE PAGE

I Love You is not just for Valentine's Day...

Sudoku

Fill in the grid with digits in such a manner that every row, every column and every 3x3 box accommodates the digits 1-9, without repeating any.

	2	3						
				8				7
5				7				
	1		9					
								2
		9	8	6				
	8		2	7		3	9	
2				1		4		
3								5

Wordsearch

F I C U N B M B A L J U I G P
 A F G Q U V J S Y D A R S L U T I P O
 M O M E U R C I S C S L U V I E S
 I C M O T H E R S D A Y S F S E
 L P D T K F F Y J Q D E E L O T
 Y A K H E N I H S N U S E O T
 M F L Y I T B U U C M W F W A
 H X X Q I V D T H V D L N E L
 Y L E E O P X I E R T D W R O C
 W O K I Q C G S A N H E S S C O
 Q T C W W Y B W P K W B S D O
 U H I T U M R C Z J S Q K A H C
 X G H M A O L J G J H E O E C T
 V I D L F G N I R P S W Z J T E
 C L O C K S T Z Q N Z G Y E

CHOCOLATES LAMBS
 CLOCKS LIGHT
 FAMILY MOTHERSDAY
 FLOWERS SPRING
 FORWARD SUNSHINE



Do you have any amusing stories, quotes or pictures? Send them to info@justbeverley.co.uk

I'm speeding so I get there before I forget why I am going!

Growing older, staying healthy!

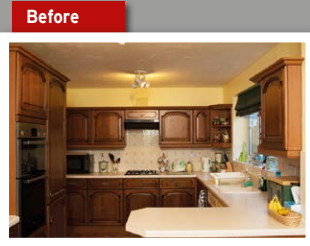
You can't stay young forever, being immature is another story.

The good thing about wrinkles is they don't hurt!

My memory isn't what it used to be, also my memory isn't what it use to be.

QUALITY FITTED KITCHENS AND QUALITY REFURBISHMENTS

DREAM DOORS®
 NEW LIFE FOR OLD KITCHENS



- Huge choice of doors, worktops, appliances, sinks & taps
- 50% deposit, balance on completion
- Made to measure custom-built doors and units
- Door swaps to full kitchens - tailored to your needs

CALL ANDY OR TERRI FOR A FREE ESTIMATE:

01482 861653
dreamdoors.co.uk



EST. 1999

Spring Sale

Terms & Conditions apply

Visit our showroom:
 Belprin Park, Swinemoor Lane,
 Beverley HU17 0LN

Checkatrade.com
 Where reputation matters



indicoll

more than just web design

SPRING MADNESS
GET A WEBSITE FOR ONLY

£1995!

UNLIMITED NUMBER OF PAGES

What's included? Your website comes with all of these fantastic features: A Bespoke Website Design (with no templates used) • Content Management System (so you can update the website yourself) • Contact Form, Analytics (see when & how people visit your website) • Mobile friendly • Blog • Gallery • Links to social media accounts • Dedicated account manager



CALL NOW ON 01482 428650

Classic Cars with Carfan - the Mini

Thank goodness for the Greeks, for without the genius of Alec Issigonis, we would not have the subject of this issue's car - the original Mini, launched by the British Motor Corporation, way back in 1959.

Well over five million Minis were made until production ended in 2000. Many found their way to foreign climes, including Japan, where its small size was loved. It could be said that the Mini's ability to transport four people (providing they had little luggage) has never been bettered by a car of such dimensions; there is a bit of a Tardis-like feeling inside one!

The Mini caught on quite quickly and celebrities such as Peter Sellers and the Beatles had theirs customised to varying degrees of questionable taste.

You didn't need a lot of money to buy one new though, which meant that a lot of people had a Mini for their first car. Being economical to run, it led to a lot of driving schools having them on their fleet. One feature of the Mini is the way it holds the road; this went a long way towards Minis winning many rallies all around the world, often putting much more expensive and more sophisticated cars in the shade and 'eating its dust'.

Many variants were available, including an estate, clubman and Cooper. The version pictured is a 1969 Mark 2 Cooper in Strawberry white with black roof. Its fortunate owner has an appreciating asset as such unmolested, original examples are changing hands in the region of £25,000 and sometimes even more.

Although the engine grew in size during its production run, the basic mechanicals remained the same and spares are still readily accessible with several owner's clubs willing to lend a helping hand if things get tricky. And don't forget, should you see a Mini tootling past, don't forget the cheery Carfan wave!



BEVERLEY **MOTORWORKS** INDEPENDENT BMW & MINI SPECIALISTS

Follow us on:
  
search for
Beverley Motor Works

BMW Qualified Senior and Technicians Offer

- Saving up to 70% OFF main dealer prices
- Manufacturer's warranty not affected
- Resale value of your vehicle not affected
- Award-winning customer service
- Over 30 years' combined BMW experience

Call today on 01482 881128

Our dealership expertise means high quality for car servicing at a fair price...

- ATA Accreditation
- Routine servicing
- Condition-based servicing
- Diagnostics
- Mechanical repairs
- Air conditioning
- Performance tuning
- MOT's

Call now for a no obligation quote or to book in on 01482 881128 or email us directly from our website www.beverleymotorworks.co.uk

Unit D1 Grovehill Industrial Estate Annie Reed Road, Beverley HU17 0LF
E: web@beverleymotorworks.co.uk



 
THE INSTITUTE OF THE MOTOR INDUSTRY
ASSOCIATIVE TECHNICAL ACCREDITATION

LENT by John Fewings

*"Can I borrow your ladders a couple of days?"
Asked the bloke from across the road.
His house got burgled: my ladders got nicked –
At least, that's what I was told.*

*He also borrowed my workbench;
It came back with a leg that was wonky.
So, far from providing a worktop that's sturdy,
It wobbles about like a plonky!*

*He was painting; he borrowed my dust-sheets:
They came back all shredded and tattered.
And as for my brushes (he had them as well)
They're all dog-eared and stiffened and matted.*

*He "borrowed" some wood and some screws and some nails;
He mended both back and front fences.
Everyone said, "What a good job you've done!"
Unaware that I paid the expenses.*

*He borrowed my saw (quite a new one)
And returned it (now there's a relief) –
Until I examined it closely -
He'd extracted two-thirds of its teeth!*

*My screwdriver's bent, my chisel is blunt
(You'd think that by now I would learn)
My electric drill whimpers and whines for a while
But it's given up trying to turn.*

*He borrowed my pasting table -
At a car-boot he wanted to sell.
He sold all his nick-nacks and rusty old tools –
And then sold my table as well!*

*His house is all mended and tidy
Mine's going to wrack and to ruin
While he's got my tools (and my ladders!)
D-I-Y is not something I'm doing.*

*His house wins acclaim from the neighbours;
Mine causes them much discontent,
But I can't help but think the reverse would be true
If I'd borrowed as much as I'd lent!*

John Fewings is Just Beverley's Poet-in-Residence as well as a member of The Argy-Bargy Poets. He writes poetry for people who don't like poems. Check out www.johnfewings.zone

BEES

BURTON ELECTRICAL SOLUTIONS

High quality electrical work across East Yorkshire & the Humber region

DOMESTIC

COMMERCIAL

TESTING

Whether it's for your home, rental property portfolio or business premises, all electrical installations need to be checked periodically by a qualified electrician.

For a quote contact:

Andrew Burton

28 Carnaby Close, Leconfield, East Yorkshire HU17 7LA

Tel: 01964 552769 Mob: 07585 601730

Email: info@burtonelectricalsolutions.co.uk

Web: www.burtonelectricalsolutions.co.uk



Creations

Direct Furniture Repairs

Specialists in

- Leather Restoration
- French Polishing
- Upholstery



T: 01482 871954 M: 07951 759253

E: info@creations-biz.co.uk

W: www.direct-furniture-repairs.co.uk

THE GREEN DRAGON

IN BEVERLEY

MON 'MONDAY CLUB' SELECTED DRINKS £1.99

TUES SMARTPHONE PUB QUIZ 'NO PENS NO PAPER NO CHEATING'

WEDS 8 PM IN THE ROUND OPEN MIC / JAM NIGHT ALL WELCOME

THURS Traditional QUIZ 10% OFF FOOD CASK ALES CRACK THE SAFE 12 AFTER 8PM

FRI JOIN US LAST FRIDAY OF THE MONTH LIVE MUSIC FROM 9 PM

ASK ABOUT OUR DRINK PACKAGES

- BREAKFAST SERVED FROM 9AM EVERY DAY
- FOOD SERVED 7 DAYS A WEEK
- 10 CASK ALES AND HAND PULLED CIDERS
- QUIZ NIGHTS START 9PM



St Patrick's Night
Nick Rooke
with his St Patrick's Night band
Friday 17th March
9pm

WIN A RUGBY SHIRT!
BUY A PINT DURING A 6 NATIONS GAME AND YOU COULD WIN!



51 Saturday Market, Beverley, East Yorkshire, HU17 8AA

Tel: 01482 889801

www.thegreendragonbeverley.co.uk

Beverley's Young Performers Enjoy Professional Dance Masterclass!

Students from The Pauline Quirke Academy of Performing Arts in Beverley had the opportunity to explore commercial dance in a recent Masterclass with professional performer Lori-Suzanne Kellett. The Masterclass covered all aspects of pop and commercial dance as well as giving the students the opportunity to ask questions about the performing arts industry.

Lori-Suzanne, who trained at the Tiffany Theatre College and the Leeds College of Music, has enjoyed much success in UK theatres, television and on cruise liners across the world.

"The young people of Beverley are fantastic young performers", said Lori-Suzanne. "I had a great time working with the students and watching them learn new skills. It was great to chat with them after each workshop to find out what aspects of the performing arts they most enjoyed, and I was able to pass on some of my industry knowledge to help them realise their goals and full potential. There are some real stars of the future at PQA Beverley!"

Lori-Suzanne has played roles in various pantomime around the country and has appeared on reality TV shows such as ITV's Grease is the Word in 2017 and in the National Final of Britain's Got Talent in 2010. For the past five years, Lori-Suzanne has been working on-board P&O Cruises with the Headliners Theatre Company, as well as appearing in UK tours such as Pop Factor whilst on land!



Other masterclass tutors that PQA have on their books include stage combat, musical theatre such as Wicked, We Will Rock You and Matilda, TV Presenting, and make up special effects - all with top industry professionals with a wealth of specialist performing arts knowledge. Masterclasses are provided as part of the students' tuition at PQA.

"Professional industry masterclasses are just one way that we really give our students a unique and up-to-date performing arts experience", Principal of the Academy, James Aconley, told **Just Beverley**.



"We have exciting sessions every week in Musical Theatre, Comedy & Drama and Film & Television, which are further complemented by performance opportunities in London's West End and regionally, cinema screenings, Trinity College London exams and our agency Quirky Kidz Creative Management".

Just Beverley paid a visit to PQA recently and were inspired by the talent and high levels achieved by the young people. PQA Beverley runs every Saturday at Beverley Grammar School. For further information or to book a free taster session call **07753 179070**, email: james@pqacademy.com or visit www.pqacademy.com.



THE PAULINE QUIRKE ACADEMY OF PERFORMING ARTS IS ENROLLING NOW IN BEVERLEY!

Outstanding performing arts tuition for 4-18 year olds.

BOOK YOUR
**FREE
TASTER
SESSION
NOW!**

Academies run on Saturdays
from **9.45am-1pm**

Find us at **Beverley Grammar School,
Queensgate, Beverley, HU17 8NF**

For further information visit

www.pqacademy.com or call 0800 531 6282



PQA
THE PAULINE QUIRKE
ACADEMY OF PERFORMING ARTS

Peter Hall - the expert maker, repairer and 'tweaker' of orchestral stringed instruments in Beverley

At the rear of Beverley Music and Dance is Peter Hall Violins. It's been there for the last couple of years, although Peter has been working at the same premises since 1998. For a player of a violin, viola, 'cello or double bass, it is an Aladdin's cave! But many others would not know it was there or that someone with such specialist skills worked locally. Just Beverley went along to meet Peter Hall himself to find out more.

Before we found Peter, we met Frank, the Labrador, who greets visitors and customers alike with a wag of the tail in return for a pat. Then Peter appears from the workshop. "Come and have a look" he said, "I've got a customer with me; she's just picking up her double bass which needed some TLC!"



Peter is a double bass player. His parents were music teachers who played violin so Peter plays violin, too. But when he discovered the double bass, he said it was like a revelation! He passed all the exams in 2 years! Playing double bass helped him eke out a living, too, when he had a variety of jobs which didn't pay too well - cabinet-maker, White Arrow Express courier, caravan-builder. He would do the day-job and then gig round the country, playing his double bass in show bands.

He said: "I loved the driving job, especially in winter, skidding about! Then I would go and do a gig. Sometimes I only had 2 hours' sleep!" Peter trained for 3 years at the Newark School of Violin-Making which gives him the letters after his name.

After college, he set up in business in Rotherham with a loan from the Prince's Trust, but it failed miserably. He had no training in basic business skills such as book-keeping and accounting and the people who were sent to help him often had little more knowledge than he did. But one day, he needed some strings for his double bass and Beverley Music Centre was the only shop which had them.

In Beverley Music Centre was an advert for a workshop hand. Shay Allen was workshop manager at the time. Peter applied, was interviewed by Mr Pickering, got the job and then Shay left, leaving Peter as workshop manager! All within 3 weeks! Peter has never forgotten the assistance he was given by Kevin Wilkes as he learnt how to run the workshop. But it was then, as now, a labour of love - Peter enjoys every single day working with musicians and the instruments he cherishes, providing a unique service.

In 2014, Peter took the string department over, rented the workshop and began running the business as Peter Hall Violins. When Mrs Willoughby retired, he took over Norwood Music and Dance site, too.

Colin Beharrel now works in the workshop with his daughter, Janey, who is a talented artist with pictures in numerous local galleries designing the website. Lisa Featherstone, a BBC bass player, is training to be a workshop hand. "Lisa's very organised," said Peter, "She's organised the office, is very good at shop design and front-of-house. Plus, she did her first solver lap on a bow the other day! I must also thank Elk Marketing; we bartered our skills!"



Along with full restoration for orchestral stringed instruments, strings and accessories, trade-in and sales, Peter will make an instrument to your specification. He also runs group and one-to-one workshops on making and repairing these instruments. Ever fancied learning how to restring a bow or make your own violin? Now you know where to go to learn!

The showroom, which is upstairs, and includes a beautiful harpsichord which was given to Peter as a gift, is also used as a performance space. Last year, New Paths Music presented a surprise 'pop-up' event there - and the rumour is, that may happen again! Do watch out for an announcement as last time it really was standing room only last time! But this has inspired Peter to create a dedicated performance space within the premises, so, opening later in the year will be a new Music Room complete with Grand Piano. **Just Beverley** will be first in the queue to bring you further details of this exciting new venture, which has all come about by someone who was just looking for new strings for a double bass!

Peter Hall Violins is at **14 Norwood, Beverley, HU17 9EZ**, telephone **07901 591965**. www.peterhallviolins.com

BEVERLEY MUSIC AND DANCE

Specialists in sheet music, guitars, ukuleles, woodwind, brass and accessories

Ballroom shoes · Dancewear

14 Norwood, Beverley, HU17 9EZ

Tel: 01482 881584



Peter Hall Violins

14 Norwood, Beverley, HU17 9EZ

Tel: 07901 591965

- Dealers and restorers of fine Violins, Violas, Cellos and Double Bass
- Bows and Re-hair service
- Strings, Cases and accessories
- Comprehensive teacher list
- Bespoke music stands with individual logos, names or images made to order

Visit our Facebook page and website:
www.peterhallviolins.com



WHITE RABBIT
CHOCOLATIERS

Your Luxury Chocolate Destination
Handcrafted in Beverley!



Hop on over to our new online shop!
whiterabbitchocolatiers.co.uk

16 Dyer Lane, Beverley, HU17 8AE

Facebook: /White-Rabbit-Chocolate

Twitter: @WhiteRabbitChoc

01482 679325

Sarah Chadwick - where life, art and design are intricately intertwined

If you have ever stumbled upon a website called 'The Artist's Measure' you will find out something about Sarah and the artwork she produces. First of all, there are some amazing canvasses of the interior of 'Nellies' (real name The White Horse) on Hengate, Beverley, then there are the glasses, which are beautiful when empty, but when filled with the appropriate liquid, come into their own as function merges with form. Then another section describes screen prints and a large painting commission for TV chef Rosemary Shrager. Just Beverley wondered what informs this diverse body of work?

Sarah Chadwick is a qualified interior designer and architect, studying at Hull University whilst settling down with her architect husband and having her two, now grown-up, children. Art has always informed her architecture. Many of the buildings she has designed or worked on are concerned with healthcare where she has been able to encourage the use of art within the interior - the murals on the walls of Hornsea Cottage Hospital and Sunshine House in Hull are Sarah's, for example. But although Sarah still works as an architect for a couple of days a week, the idea of producing intricate art-work on glass has led her towards her artistic bias. As Sarah said: "Painting is a lot more exciting than producing a set of drainage plans!"

It was the Nellie's pictures which led her towards the production of her first pint glass. The pictures are created using acrylic and oils, which give the impression of being able to walk into the picture. Executing such large, detailed paintings meant Sarah had to spend quite a bit of time in the pub, meeting the locals and seeing beers of different colour, intensity and viscosity in a range of pint glasses. Watching the head of the beer travel down the side of the glass as the beer was drunk gave her the idea of creating a design for a pint glass where the beer, no matter what colour it is or the level in the glass, is part of the design.

Sarah told **Just Beverley**: "Glass is a fascinating surface to work on. I've done 9 designs so far, including one for Hull City of Culture 2017, which features a trawler passing under the Humber Bridge where the beer is the river and the head is the sky. Another design, 'Getting Wrecked' is inspired by Daphne du Maurier's book Frenchman's Creek. There's a picture on my website of her son, Kits Browning, drinking from this glass."



Sarah was able to fund this work with a small legacy from her deceased grandparents. She frequently visited the Lake District with them - which gave her the inspiration for whisky glasses where the whisky represents the lake. There are five lakes represented - Derwent Water, Lake Windermere, Buttermere, Lake Coniston and West Water.

Her other whisky glass is called 'The Swimmer'. This was inspired by a charity swim across the River Humber which Sarah undertook in aid of Humber Rescue. Sarah said she completely underestimated the challenge, turning up for the swim in a swimming costume when all the other swimmers were in wet suits.

Never one to shirk on a challenge, Sarah swam the 4 miles, which seemed much further due to the 'horse-



shoe' path needed to be swum to accommodate the tides, but she came out brown! She raised over £2000, but says 'Never again!'

Sarah's most recent design is that of a diving lady on a champagne flute which looks as if she is diving into the bubbles. The picture is a reinterpretation of a picture on a photograph from 1890 by JS Johnston which required permission from the Library of Congress in Washington DC.

Soon-to-be available is a tumbler, inspired by a trip to Everest Base Camp of Mount Everest with its glacier, which melts, represented by the ice cubes in the drink. Then there will be a glass for Yorkshire - which might not be a traditional glass but a glass tea-cup! Sarah has lots of ideas!

Each glass receives ten handmade processes including a high-quality silk screen print before being placed in a gift box along with a personalised card, which has also been designed by Sarah before being sent off to their new owner.

All of Sarah's work can be seen and ordered from her website: www.theartistsmeasure.com. She can be contacted on theartistsmeasure@btinternet.com



20 YEARS EXPERIENCE

We are committed to providing an excellent service by offering value for money and ensuring complete customer satisfaction

Print that gets you noticed

- ✓ Brochures
- ✓ Leaflets
- ✓ Business Cards
- ✓ Business Stationery
- ✓ Posters

- ✓ Desk Calendars
- ✓ Wall Calendars
- ✓ Pop-up Banners
- ✓ Pads
- ✓ Invites

Jadan Press are a leading family run commercial B2 colour litho printer based in Hull. With 20 years experience, the company is renowned for producing work of an exceptionally high quality. We are committed to providing an excellent service by offering value for money and ensuring complete customer satisfaction.

Tel: 01482 610902
info@jadan-press.co.uk www.jadan-press.co.uk
 Rainbow House, Kimberley Street, Hull, HU3 1HH






What's On IN BEVERLEY

SPONSORED BY: **küchenhaus**

Wednesday 1st March - Friday 14th April

• **Art Installation - A Lent Reflection** by Mervyn King
St Katherine's Chapel, Beverley Minster.

Thursday 2nd March - Saturday 25th March

• **The Night Season** by Rebecca Lenkiewicz,
Directed by Adrian Rawlins
East Riding Theatre. £18-£14. Evenings 7.30pm.
Matinees 2pm. Details from www.eastridingtheatre.co.uk. Tickets 01482 874050 or online via the website.

Friday 3rd March

• **Woman's World Day of Prayer**
Toll Gavel United Church. 2pm. 'Am I being unfair to you?' prepared by women from the Philippines. Join in this service of prayer to unite women of the world.

Saturday 4th March

• **ArtERY Live presents Spitz and Company in 'Gloriator'**
Swanland Village Hall HU14 3QR. 7.30pm. £8/£7/£4
Tickets from 01482 634863 yd@swanlandvillagehall.info. A riotously funny show revealing just what happens when a glamorous French actress and her hapless assistant stage their version of Hollywood blockbuster, *Gladiator*.
• **Country and Western Line Dancing Night with Sundown**
Armstrong Social Club. 7pm-11pm. £5. Complete beginners welcome! Tuition with Hilary Usher. Don't dance - just enjoy the music! Charity Raffle. Tickets from 01482 882999 or sallyann75@hotmail.com
• **Invertatione Concert: Achieved is the Glorious Work**
Beverley Minster. 7.30pm. £9/£6/free. The final symphonies of Mozart and Haydn with choral works. Information: info@invitatione.org
• **North Bar Folke Club presents Simon Kempston**
St Mary's Parish Hall, Beverley. £8. Doors open 7.30pm. Tickets on the door.

Sunday 5th March

• **Wedding Fair**
Beverley Racecourse. 11am- 3pm. Free.
www.beverley-racecourse.co.uk
• **Lent Lunch in aid of Christian Aid**
St Mary's Church, Beverley. 12noon. Soup and a roll in return for a donation. Details: 01482 867573.

Wednesday 8th March

• **Creative Writing Day School with Sue Wilsea - Using the Natural World**
East Riding Theatre. 10.30am-3.30pm. £25 includes materials and 1-2-1 feedback. Booking and details from www.eastridingtheatre.co.uk - 01482 874050.
• **Beverley-Nogent Twinning Association Meeting**
Lempicka Café, Wednesday Market, Beverley. 7.30pm. All welcome.
Details: <http://beverley-nogent.com/>

Thursday 9th March

• **Beverley Film Society presents 'Slow West' (2015) Cent 15. Adventure/mystery/romance (UK/New Zealand)**
Parkway Cinema, Flemingate. 7.30pm. £3/£6.50.
Winner of Grand Jury Prize at Sundance Festival and Oscar-nominated.

Friday 10th March

• **Beverley-Nogent Twinning Association present**

St Patrick's Night
Friday 17th March 2017

Nick Rooke
with his St Patrick's Night band
at The Green Dragon, Beverley
FRIDAY 17th March, 9.00pm

• **'The Other France' Tutored Wine Tasting**
Lempicka Café, Wednesday Market, Beverley. 7.30pm. £20/head to include matched buffet. Tickets from: carolanntree@gmail.com. Limited places.

Saturday 11th March

• **Wedding Fair**
Beverley Minster. 11am-3pm. Free. Fashion shows at 12.20pm and 2pm. Refreshments available.

Sunday 12th March

• **Lent Lunch in aid of Christian Aid**
Beverley Minster Peter Harrison Room. 12noon.
Soup and a roll in return for a donation. Details 01482 867573.

Monday 13th March

• **Norwood Night Community Cinema**
Norwood Church Schoolroom. 7pm. Free. A chance to see a film again or one you have missed! This month's film stars Kate Beckinsale and Stephen Fry in a 2016 period film based on Jane Austen's novel, *Lady Susan*. More details 07990 510541. Call 01482 868082 if you need transport.

Wednesday 15th March

• **Beverley Fertility Support Group**
Eucalyptus Yoga, 2, Wheatsheaf Lane, Beverley. 7pm. £5. Ladies only support group. Tel: Julie Allison on 07508 824449 for details.

Thursday 16th March

• **Fashion Show in aid of Yorkshire Cancer Research M&Co**, Saturday Market, Beverley. 7pm £5. Refreshments included. Tickets from M&Co. Tombola (donations appreciated.)

Saturday 18th March

• **ArtERY Live presents Les Bordeliques in 'Blind Date'**
Beverley Masonic Hall. 7pm. Tickets from Beverley Tourist Information, 01482 391672 or 01482 870751. Target audience 10+. Dance and music become the voice of original and memorable characters desperate to find a soul mate.
• **Bronwynne Brent and Band**
St Mary's Parish Hall, Beverley. 7.30pm. £10. Live from the Mississippi Delta! 'Really Special' - Bob Harris BBC. 'Best Female Performer 2016' - Americana Readers' Poll. Tickets from Beverley

Tell us about your event!

E-mail info@justbeverley.co.uk

Telephone **01482 679947**

For more events visit
justbeverley.co.uk/events

2 Toll Gavel, Beverley, HU17 9AJ. T: 01482 862172.
Open: Mon - Sat: 10am-5pm. Sun: 11am-3pm.
Bank Holidays: 10am-4pm.

Tourist Information 01482 391672.

Sunday 19th March

• **Lent Lunch in aid of Christian Aid**
Norwood Methodist Church Schoolroom. 12noon.
Soup and a roll in return for a donation. Details: 01482 867573.

küchenhaus
The German Kitchen

Let's raise some money

RED NOSE DAY

Cycling
from
Beverley to
nabilia
Verl, Germany

565 miles
Take part
in our
event

Ask in store for more details

Friday 24th March

Saturday 25th March

• **Beverley Community Choir present and Evening of Music and Song**
Toll Gavel United Church. 7.30pm. £8/£6. Tickets from Beverley Tourist Information. 01482 391672. In support of local charities.

Sunday 26th March

• **Michael Simkins in 'An Actor's Life for Me'**
East Riding Theatre. 7.30pm. £12. Ever wondered what it is like to be an actor? Here's your chance to find out from someone who has been there, done that and got the t-shirt!

Monday 27th and Tuesday 28th March

• **Drifting East 4 - festival of graduate work from theatre students at York St John University**
East Riding Theatre. 7.30pm. £6/free.

Tuesday 28th March - Tuesday 25th April

• **Art Exhibition by Jane Beharrell**
Beverley Minster North Transept.

Wednesday 29th March

• **Café Scientifique presents Barbara Guinn 'Wee test for cancer - the future is yellow!'**
Nellies (The White Horse), Hengate, Beverley. 7.30pm. Details from science.cafe.beverley@gmail.com

Thursday 30th March

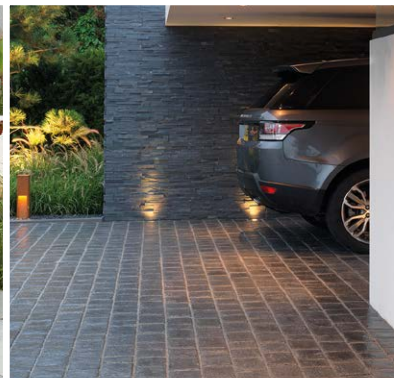
• **Beverley Ghost Walk**
Royal Standard Pub 7pm. £4. Booking essential through Beverley Tourist Information: 01482 391672.
• **Richard Durrant's Stringhenge, Acoustic Music inspired by the British Isles**
Toll Gavel United Church. 7.30pm. £15/£13/free for children with full-paying adult or £5. Tickets from Beverley Library or 01482 395320.

FREE
LOCAL DELIVERY

**MY KIND OF
GARDEN**

Make your **outdoor space** your perfect **living space**

Inject personality into your garden this summer with a little help from **MKM** & ensure your garden is the one they're all talking about!



Call into branch today at...

MKM BEVERLEY
SWINEMOOR LN, BEVERLEY HU17 0JX
01482 880088 | mkmb.co.uk  



Savings are blossoming in our

Spring Sale

We take part exchange



Small Scooters
From
£395

Power Chairs
From
£595



We take part exchange



Rise & Recline
Chairs
From
£595



Stairlifts
From
£995

Hot savings for the new season

HOME VISIT DEMONSTRATIONS AVAILABLE ON REQUEST

SUPPLIERS & INSTALLERS OF INDIVIDUALLY TAILORED EASY ACCESS BATHROOM SOLUTIONS
CALL US FOR MORE DETAILS