

just BEVERLEY

O₂
Media Awards

'Community
Publication Award'
Shortlisted Nominee
2017



REYTA
Remarkable East Yorkshire
Award Nominee 2016
'Best Newcomer'

destination
beverley

01482 679947

justbeverley.co.uk

info@justbeverley.co.uk

FREE

ISSUE 33



**DUGGIE BROWN
IN PERSON**

**THE BELLS OF
ST MARY'S**

**LEE WARDELL
A LIFE IN STYLE**



**- LEGO® Ninjago Goodies
and Cinema Tickets**

**- ERT Tickets to
Wuthering Heights**

**- Just Beverley
Saver Vouchers**

**Jack Parker
International
Singer Songwriter**

NEWS, WHAT'S ON, LIFESTYLE, FEATURES, PUZZLES, PHOTOS & MORE

FREE
LOCAL DELIVERY

Searching for your dream kitchen?

Come see our specialists to discuss your next kitchen project

1.

Professional free design consultation

2.

Expert guidance & advice

3.

Competitive prices for trade & public

MY KIND OF KITCHEN

MKM BEVERLEY

SWINEMOOR LANE, EAST YORKSHIRE HU17 0JX

01482 880 088 | mkmb.s.co.uk

  OPEN Mon-Fri 7:30-5:30 Sat 7:30-noon





CONTENTS

Letters from the Editors
 News
 Parkway Cinema
 Competitions

Features

St Paul's in Tickton's New Minister 8
 St Mary's Bells 600th Birthday Upgrade 8
 Lee Wardell - A Life In Style 10
 Duggie Brown at Parkway 13
 Mingus 'Fan Dance' 18
 Jack Parker 38

Regulars

Arts and Culture 15, 35, 38
 Beverley Town Council 13
 Competition Winner 6, 37
 Countryside Matters 24, 28
 Recipe 27
 Gardening 22
 I've been thinking 25
 Legal 17
 Lifestyle 18, 25
 Motoring 33
 Photos 20, 21
 Poem 38
 Puzzles 26
 Sport 28, 29, 31, 32
 What's On 36

Competition Terms and Conditions

Competition answers should be emailed to info@justbeverley.co.uk before the closing date with the competition title in the subject field. Include your name, address and daytime contact telephone number along with your answer. Winners will be notified within 1 week of the closing date and MUST be available for publicity purposes for **Just Beverley** magazine, website and Facebook page and the prize provider. Photographs are usually taken the weekend after the prize-winners have been notified. The judge's decision is final. No cash alternative is offered. Details may be used for marketing purposes by **Just Beverley** and the prize provider and for website analytics by **Just Beverley**.

CONTRIBUTORS

Julian Minshall, Linda Johnson, Richard Manville, Carfan, Jane Dale, John Fewings, Ian Richardson, Sam Walton, Colin Raynor, Helen Watson, Annie Drew, Elizabeth Godber, Nathan Wilson, Rich Hayes, Lee Wardell, MR Carpets, The Food Rhino.

You can pick up the magazine from:

Beverley Parkway Cinema, Beverley Tourist Information, Beverley Library/Treasure House, Tesco, Morrisons, East Riding Leisure Beverley, Browns café, Beverley News, Boyes, Tesco café, Cherry Tree Community Centre, Colette and Tyson Garden Centre, Beverley Garden Centre, Cherry Tree Garden Centre, Mace News in Saturday Market and Lincoln Way, Tickton News, Costcutter in Walkington, Molescroft News, Grovehill Convenience Store, Maple News, Leconfield PO, Poundland, Halfords, East Riding Community Hospital, Bishop Burton PO, The Altisidora, Cherry Burton PO, Monks Walk, Hayride, Health Centres, Churches, cafés, hairdressers and more!

just BEVERLEY

Letter from the Editors



As mentioned last month, autumn is a time of change, a transitional time and we at **Just Beverley** are no different in embracing change.



We have introduced subtle changes to the magazine recently (can you spot them?) and we have new columnists (say hello to The Food Rhino!) but this month we have an even more exciting announcement to make!



This month **Just Beverley** launches **Just Beverley Saver**. For just £10, **Just Beverley Saver** gives you access to £100s of genuine, exclusive offers from our advertisers, valid until November 30th 2017. Details on our website and Facebook page let you know where you can buy it so that you can start saving! Plus, we have 5 to give away in our exclusive competition!



All you have to do to win a **Just Beverley Saver Booklet** is to tell us how many editions of **Just Beverley** have been published. Send your answer to info@justbeverley.co.uk by October 18th. Include your name, address and daytime telephone number in the body of the email, put **Just Beverley Saver Comp** in the subject box.

Winners will be selected by random number selection. The winners must be available for publicity purposes for **Just Beverley** and associated businesses.

Remember to keep us up to date with your news, photos and stories.

Have a great October! And Happy Saving!

Julian and Linda

PS: Remember to turn those clocks back!

Get in touch with us:

Website: justbeverley.co.uk
Email: info@justbeverley.co.uk
Telephone: 01482 679947
Twitter: @JustBeverley
Facebook: [facebook.com/justbeverley](https://www.facebook.com/justbeverley)

Printed by: Jadan Press



Don't forget to put your clocks back on October 29th!

Winter is upon us as Daylight Saving Time (more commonly known as British Summer Time or GMT+1) ends at 2am on the last Sunday in October and we revert to GMT (Greenwich Mean Time), which is also known as Co-ordinated Universal Time (UTC).

Since 1995, clock-changing has been co-ordinated across the whole of Europe, a move designed to ensure the best use of natural light as winter approaches and to save energy. Playing with time is an ancient concept - the Romans had water clocks with different scales for summer and winter 'hours', so their summer 'hours' were longer than their winter hours. The British have been experimenting with time for about 100 years - anyone as old as the staff in the **Just Beverley** office will remember the three years when Britain remained on GMT+1 (1968-71) and it was permanently summer although known as British Standard Time!

Fortunately, nowadays, many of our clocks automatically adjust themselves to the correct time in response to a radio signal broadcast from Anthon Radio Station in Cumbria which serves as the UK's national time reference. There are three caesium atomic clocks at the transmitter site, which is operated under license by the UK's National Physical Laboratory and funded by The Department for Business, Innovation and Skills. The signal is broadcast at 60kHz so it can be received throughout the UK and much of northern and western Europe, thus ensuring time is consistent across the UK and with our near neighbours.

Some of you will know the time signal as the 'MSF Signal' or 'Rugby Signal'. That's because it used to be transmitted from Rugby which had the call signal 'MSF'. There are suggestions that 'MSF' stood for 'Modulated Standard Frequencies' but, as with any call-sign, the letters allocated are random, so unlikely. But it's a great mnemonic!



St Nicholas School visit planned

In celebration of moving to the new St Nicholas' School, there will be an opportunity for all former pupils, staff and volunteers to visit the junior and infant schools on Thursday 12th October between 4pm and 6pm.

Mrs Pollard and the staff look forward to hearing the reminiscences of past attendees ahead of the demolition of the two old buildings. The new St Nicholas School, which will also accommodate a nursery unit, is due to open after half term - a date will be set closer to the move for a visit to the new site.

St Nicholas Infant School on Holme Church Lane, which is the site of the new school, was built in the early 1970's when most primary schools were replaced; the Junior School on St Nicholas Road dates from 1914.



Beverley Literature Festival is Lit/Up

Joining the celebrations to mark Hull City of Culture 2017 is this ambitious country-wide programme offering new creative ways of exploring language and ideas. Running from September 28th to October 21st along with a Children's Festival, Lit/Up has given a greater focus to women's voices than ever before; it also includes music and film!

Parkway Cinema, Toll Gavel United Church, Masonic Hall, Beverley Minster, Treasure House, Beverley Leisure and Beverley Library are some of the Beverley venues for Lit/Up.

From October 19th, the Festival moves to Bridlington where the focus is on poetry. There are also pop-up events planned so check out the website and associated social media platforms to find out more!

Lit/Up

www.litup.org.uk
Twitter @beviitfest
Facebook /BeverleyLiteratureFestival
and Instagram @litupeastriding

Viewfinder Photographic Society's Exhibition plans to break records!

The Viewfinder Photographic Society is a friendly club of enthusiasts who meet regularly to support each other, exchange ideas and share expertise, with the sole aim of enjoying their photography.

The Society's varied programme includes still life workshops, portrait sessions, talks, presentations, tips on photographic techniques and reviews of members' photographs - the results of which can be seen at their annual exhibition which this year runs from 6th-8th October at Skidby Village Hall, opening from 10am-5pm each day.

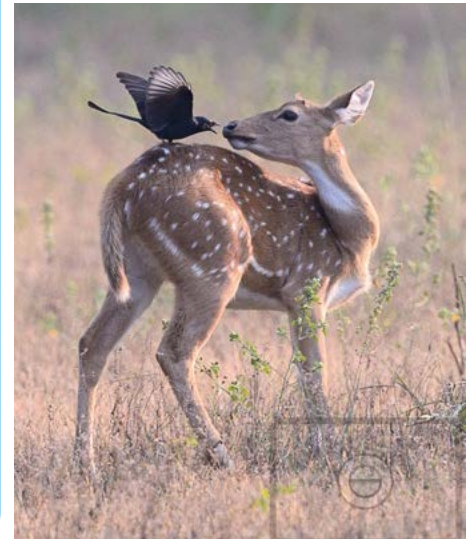
Last year, visitor numbers exceeded all expectations proving that the free event is a welcome fixture.

This year, members hope even more people will visit and perhaps get involved with the society - although there is a waiting list!

Visitors will again have the opportunity to vote for their favourite photograph and perhaps buy a gift from one of the stalls. But if you miss the Open Weekend, the photographs will be displayed later in the year at East Riding Community Hospital.

The Society meets on Monday evenings at Skidby Village Hall in East Yorkshire from May through to August each year although members do like to get out and about, as you can see by the beautiful photograph printed here by Bobby Johnson!

To find out more, check out the website: www.viewfinderphoto.org/contact-vps or visit the exhibition!



Beverley Blues Weekender (October 27-29) takes shape

Graham Hyde, John Wardill, Steve Swales and Stephen Hartley are the driving force behind this year's Blues Weekender.

Now in its 7th year, the weekend has become an established event in the Beverley calendar, as it brings cutting-edge local, national and international blues artists together with appreciative blues fans.

The Weekender is run by volunteers as a not-for-profit enterprise. This year, all proceeds will benefit Beverley's Cherry Tree Centre.

The Weekender takes over the Sun Inn on Flemingate for live music over the weekend, except for the headliner gig on Saturday 28th at Armstrong Social Club. Entry to the Sun is free, although the hat will be passed around frequently for donations in aid of the Cherry Tree Centre. Saturday night at Armstrong's welcomes The Della Grants who merge blues, rock and R'n'B, supported by Sun Inn favourites, The Duke Joint Kings - tickets are £10. Musicians playing at the Sun include Crosscut Saw, Rivers Johansson Band, Julian Socha, Dogfinger Steve, The Alligators, Brian

Williams and local legend Keith 'Ched' Cheeseman and friends. However you like your blues, it will be represented over the weekend! In total there are 14 local and national acts playing!

More information can be found at www.beverleyblues.com where tickets can also be purchased. They are also available at Armstrong's, Cherry Tree and The Sun Inn.



New world record set at 3rd annual Barge Pulling Championships

Teamac Tempest set a new time of 5mins 29secs for pulling the 'Syntan' 200metres from a standing start along Beverley Beck.

Organised by Beverley Barge Preservation Society, this annual competition saw teams of 4 (single-sex or mixed) compete for this prestigious title. The winning team were Geoff Mackrill, Ian Thacker, Lewis Norton and Mark Harrison. Their £200 prize, which was

awarded by the Deputy Mayor of Beverley, Phil Dodsworth, was immediately donated to N.U.R.S.E. charity, although the trophy will remain on-board Syntan. There was also a prize for the best-dressed team which was 'Granny's Gladiators', who came third; second was 'Mixed up but still United' with the Beverley Chamber of Trade team coming 4th.

Enjoy photographs of the event in our centre pages!



Christian Aid Diamond Award for John Turner

John Turner is one of only a few people from Yorkshire who have been honoured for their contribution to Christian Aid. Now in its 60th year, John has been Beverley's Christian Aid organiser since 1968.

Christian Aid house-to-house collections are becoming less popular as a fund-raising activity, but this has meant John has, along with fellow fund-raisers, become more creative in raising much-needed cash for the charity.

John now concentrates his efforts at Toll Gavel Church, forming a support group and planning various events to raise funds for specific projects which gain 'matched' funding from other sponsors.

John has also become a volunteer teacher and preacher for the charity which gives him the opportunity to visit local schools and churches to talk about and create awareness of Christian Aid's work. Christian Aid is the official relief and development agency of 41 British and Irish churches, working in over 60 countries to support sustainable development, stop poverty, support civil society and provide disaster relief. You can find out more about Christian Aid and why John is so passionate about its work at www.christianaid.org.uk

Rumi's nominated for more awards

Hot on the heels of Rumi's 2016 successes, come nominations for Best Asian Restaurant and Best Maitre d' at the Asian Curry Awards 2017 and an approach from the British Curry Awards.

Sham Alom, owner and Head Chef at Rumi's, said: "We got a letter out of the blue from the British Curry Awards, which have been established since 2005, saying that we have been nominated. They didn't say who had nominated us or why, they just asked for lots of information about what we do and why we do it, how long since we launched, who the staff are etc. It's lovely to be approached and appreciated especially as we aren't yet 2 years old.

"I want to recognise Koyes, my second chef, who has been here working with me in the kitchen since we opened; he won awards for his cooking before he came here. And now Sarah (Day), my partner, has been nominated for Best Maitre d' for her excellent front-of-house service, it shows what a great team we have here at Rumi's. We are still developing our menu and offering - there will be a Bollywood Ball next year and more comedy nights due to popular demand and we will be expanding our vegetarian and vegan options as more people are asking for non-meat, non-fish and non-dairy dishes. We are here to serve!"

Rumi's is open every day from 5.30pm at **New Walkergate, Beverley HU17 9EP** for in-restaurant dining and take-aways. Tel: **01482 428642**
www.rumisrestaurant.co.uk



Meet our new contributor - The Food Rhino

The Food Rhino will be contributing recipes, food hints and tips on a regular basis to Just Beverley. We caught up with him to find out more.



He calls himself The Food Rhino because the name evokes a strong, healthy animal which lives on vegetables. Most of the recipes will be veggie or vegan but there will be optional additions for people who do eat meat/fish/dairy or who have dietary specifics. Science shows it's possible to get all of our nutritional needs from a plant-based diet and there is no need for additives, so following a vegetarian or vegan diet is a healthy lifestyle choice.

Food Rhino learnt to cook whilst in the Royal Navy but he has since worked in a variety of establishments gaining a knowledge of off and drink from inspiring people. He has a hatred of food blogs which provide recipes which don't work or need adapting, a love of peppers and a desire to try unfamiliar ingredients - so you can expect all the recipes to be easy-to-follow although there may be some surprises!

His first recipe is on page 27 - let us know how you get on with it!

Hair by Rosie salon to raise funds for cancer research

North Bar Within salon to go pink! You could too!

Milkshake hair products have developed a direct pink colour cocktail (which washes out quickly) for anyone brave enough to go pink in aid of cancer research! 50% of the service will go to charity.

Hair by Rosie will also be donating £1 for every bottle of Milkshake's Incredible Milk (which is now pink!) to charity and holding happy hours where all profits will also go to charity. There will be raffles, games and bake sales, too. The fun lasts until October 21st.

Hair by Rosie is at **34 North Bar Within, Beverley HU17 8DL**, telephone: **01482 863603**.



Beverley's newest festival, Stage 4, in planning for 2018

After a very successful 1st year, Stage 4 is set to run from Thursday 15th - Saturday 18th February at East Riding Theatre.



The mix of different genres, workshops, concerts, late night and informal sessions was so well-received this year that organisers are adding an extra day next year.

Already booked is Claire Martin OBE, one of the best female jazz vocalists you could ever have the pleasure of listening to; comedy folk musician Richard Digance; southwest bluegrass/folk duo The Carrivick Sisters; BBC Radio 2 Young Folk Award nominees Grannies Attic; gypsy/folk/rock/festival band Holy Moly & the Crackers; Chris Difford (ex-Squeeze) & Kathryn Williams and John Tams & Barry Coope with their songs from stage, screen and the Labour Exchange!

John Tams wrote the music for 'War Horse' and 'Sharpe' and together with Barry Coope, presents a unique and captivating experience.

You can join the mailing list to get up-to-date information as the programme develops at admin@stage4beverley.com or check out the website: www.stage4beverley.com



EVERY THURSDAY AT 10.30am
(doors open 9.45am)

Join us for a free brew and a natter and enjoy some great films on Beverley Parkway's Big Screen. Only £4 with drink and biscuits included. Aimed at 55s and over. Films subject to change.

Thursday 5th October -

Gifted - Starring: Chris Evans

My Cousin Rachel - Starring: Rachel Weisz

Thursday 12th October -

Churchill - Starring: Brian Cox

Gifted - Starring: Chris Evans

Thursday 19th October -

Baby Driver - Starring: Ansel Elgort

Churchill - Starring: Brian Cox

Thursday 26th October -

The House - Starring: Will Ferrel

Baby Driver - Starring: Ansel Elgort

Competition Winners

Congratulations to Robert Blenkinsop and Yvonne Wykes who both won a pair of tickets to the Hull Big Band concert at Hayward Theatre, Parkway Cinema on Sunday 24th September.

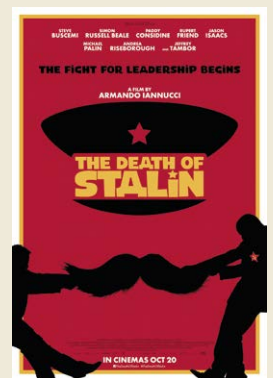


PARKWAY PENGUIN PARTIES



For more information contact the Box Office or come in store and speak to a member of staff

These are the films scheduled to open in October all are subject to change.
Check out up-to-date cinema listings at www.justbeverley.co.uk/cinema-times



YOUR NEW INDEPENDENT CINEMA



Tom Stade, star of stage and TV is at Parkway on October 18th

Direct from the Edinburgh Festival, the Canadian tour-de-force is back with 'I Swear', his brand-new show for 2017 in which he swears to tell the truth, the whole truth and nothing but the truth!



Renowned for his carefree attitude and broad-minded vision, nothing is taboo to this enlightened and captivating comedy legend! Combining off-the-scale charm, razor-sharp wit and a no-holds-barred attitude as seen on BBC One's Live at the Apollo, Michael McIntyre's Comedy Roadshow, The John Bishop Show and Channel 4's Comedy Gala, he's a magnetic stage presence and first-class story-teller, well on his way to being a house-hold name.

He was the co-writer and co-star of Frankie Boyle's Channel 4 series, Tramadol Nights as well as appearing in sitcom The Newsroom and award-winning feature film My Own Private Oshawa. He has also regularly entertained the troops in the Falklands, Afghanistan and Iraq. Kick back and enter the awesome and mischievous world of Tom Stade as he provides an inspiring and incisive antidote to these dark and uncertain times.

Simply sublime comedy... "So cool he could well be the answer to global warming. Gloriously funny." Scotsman.

Win LEGO® Ninjago Movie Goodies!



To celebrate the release of 'The LEGO® Ninjago Movie' in cinemas October 13th (advance screenings 7th and 8th), Warner Bros. Pictures and Parkway Cinema Beverley offer you the chance to win Lego Ninjago goodies and a pair of cinema tickets! There is lots of excitement already for the new LEGO® movie with lots of interaction already online.

The LEGO® Ninjago Movie is an Action Adventure. In this big-screen Ninjago adventure, the battle for Ninjago City calls to action young Lloyd, aka the Green Ninja (Dave Franco), along with his friends, who are all secret warriors and LEGO® Master Builders. Led by kung fu master Wu (Jackie Chan), as wise-cracking as he is wise, they must defeat evil warlord Garmadon (Justin Theroux), the Worst Guy Ever, who also happens to be Lloyd's dad. Pitting mech against mech and father against son, the epic showdown will test this fierce but undisciplined team of modern-day ninjas who must learn to check their egos and pull together to unleash their true power.

The goodies include a child's hoodie, kids cap, colouring sheet, eye mask, notebook and stationery set along with an adult-sized t-shirt PLUS a pair of tickets so you can see the film for free when it is released!

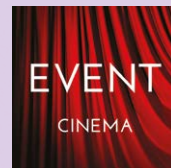
All you have to do to be in with a chance of winning is to answer the following question:

The LEGO® Ninjago Movie stars this internationally known film actor in the role of Master Wu. This actor, director, producer, and stuntman starred in the 2010 revamp of The Karate Kid and had a previous starring voice role in the Kung Fu Panda franchise. Also co-starring in the Rush Hour franchise, this Hong-Kong native is a master in martial arts. Name this actor.

Send your answers to info@justbeverley.co.uk by October 18th. Put 'LEGO NINJANO MOVIE' in the subject box. Include your name, address and daytime telephone number in the body of the email along with your answer. The winner will be chosen at random and must be available for publicity for Parkway Cinema and Just Beverley.



© 2017 Warner Bros. Entertainment Inc. All Rights Reserved © 2017 The LEGO Group



Event cinema offers something a little different to mainstream films. Live and pre-recorded shows beamed in via satellite from all over the world. Here are the latest live streams that you can enjoy on the big screen at Parkway Beverley.

TICKETS NOW ON SALE:

Tuesday 3rd October at 7.15pm -
ROH: LA BOHEME

Thursday 5th October at 7pm -
NT LIVE: HAMLET (ENCORE) (12a)

Monday 9th October at 7pm -
LOVING VINCENT & LIVE Q & A

Wednesday 11th October at 7pm -
RSC LIVE: CORIOLANUS

Sunday 15th October at 2pm -
ERFF: JUDY GARLAND - A STAR IS BORN (U)

Sunday 22nd October at 4pm -
BOLSHOI - LE CORSAIRE

Monday 23rd October at 7.15pm -
ROH: ALICE'S ADVENTURES IN
WONDERLAND

Sunday 12th November at 3pm -
BOLSHOI - THE TAMING OF THE SHREW

Thursday 16th November at 7pm -
NT LIVE: FOLLIES (12a)

Tuesday 21st November at 6pm -
EOS: DAVID HOCKNEY

Tuesday 28th November at 7.15pm -
OWSL: A WOMAN OF NO IMPORTANCE (12a)

Tuesday 5th December at 7.15pm -
ROH: THE NUTCRACKER

Thursday 7th December at 7pm -
NT LIVE: YOUNG MARX (12a)

Tuesday 16th January 2018 at 7.15pm -
ROH: RIGOLETTO

Sunday 21st January 2018 at 3pm -
BOLSHOI - ROMEO AND JULIET

For full programme of the Event Cinema, please visit www.parkwaycinemas.co.uk

St Paul's in Tickton upgrades as New Minister arrives

The Church in Tickton comprises two chapels - St Paul's and the Methodist Chapel. The Anglicans and Methodists formed a Local Ecumenical Project (LEP) in 1994 which allowed them to work together as one so they 'don't see the divide'. Although the Methodist Chapel has a kitchen, disabled access and toilet facilities, St Paul's did not. Weddings, Christenings, funerals and Sunday worship takes place at St Paul's so the lack of toilet facilities and disabled access in particular has caused problems. The vision to enhance St Paul's was driven by Anglican Vicar Rev. Jeremy Fletcher and Methodist Minister Rev. Liz Allison. Now that vision has been realised!

Raising £120,000 was only one of the challenges! St Paul's is built of a type of stone which is only available from one remaining quarry in Derbyshire. In order to meet with Diocesan planning regulations, any additions or changes to the stonework had to be made using the same type of stone. There are very few stonemasons left in the UK with the skills which were required to do the job, which meant that the building contractors had to bring in stonemasons from Germany.

It was important the wood-working for the kitchen was in-keeping with the existing decor and the extension to the right of the altar to house the (disabled) toilet internally and store externally as well as alterations to the porch to improve access was sympathetic to the current design of the chapel. (St Paul's is a chapel rather than a church as it was built as a chapel of ease to Beverley Minster in 1843-4). The money was raised through fund-raising and grant applications. Kate Powell, Churchwarden and Senior Steward at the Church in Tickton said: "People have been very generous because they understood the

restrictions of this 170-year-old building and completely supported the vision of our clergy. St Paul's is well-used for life events but we have had to direct people to the Methodist Chapel or be dependent on some very helpful near neighbours for toilet facilities, which was really not good enough.

"Events with the school, with whom there is a very close relationship, have been challenging sometimes, too - when children want to 'go' they need to 'go!' Getting wheelchairs and buggies in was almost impossible, but now our problems have been solved. We are so grateful to everyone who has contributed in any way."

The alterations now lead the Church in Tickton to more flexibility in the use of its buildings, especially as it is welcoming three new members of staff. New Methodist Minister, Rev. Peter Clark (pictured) has already begun his ministry in Tickton (he will also be working with the Methodist Church in Walkington) along with Children and Family Worker, Karen Eyre, whilst Anglican Vicar Rev. Canon Jonathan Baker arrives in December.

Kate Powell said: "In some ways, the Church community in Tickton has been 'lost' without their own Minister or Vicar. But now we have so many new opportunities! We will be open more often because we have the wherewithal to offer hospitality and we have our new staff. We hope more people will discover our lovely churchyard with its wildlife, including rare flora and fauna, which offers space for reflection and contemplation, too. If anyone would like to donate a garden bench, perhaps as a memorial to a loved one, please get in touch. We are holding a Service of Celebration and Blessing for the building on October 10th at 7pm, led by Peter Clark with the



Archdeacon of the East Riding, the Venerable Andy Broom, preaching. And Christmas is coming! We are already planning for this wonderful time, involving the school and the wider community. But this year, the hot chocolate and mince pies will be hot because we have a kitchen to prepare them!"

The Church in Tickton has its own website at www.ticktonchurch.co.uk for you to keep abreast of the exciting developments at Tickton.

St Mary's Bells to get a 600th birthday upgrade!

St Mary's probably has one of the finest rings of 10 bells in the country. But 12 bells is considered the pinnacle of bell-ringing. So St Mary's has 3 new bells on order. Yes, that confused us! But the additional bell is a semi-tone different so that a 'light' octave can be rung, known as 'a 12 with a sharp 2nd'. St Mary's will be the first church in the East Riding outside of the city of Hull to have a ring of 12 bells meaning it will be on par with most of the main cathedrals in England which have rings of 12 bells.

Bells have been used over the centuries for a variety of reasons - to wake; to call to prayer, to work or arms; in celebration and, in times of crisis, to warn. St Mary's bells are rung regularly for Sunday services, weddings, church open days and for special events such as the Tour de Yorkshire.

Some churches have only a single bell, whilst others have more. St Mary's has had a ring of bells since 1417 - the current 10 have been in place since 1901 after a benefactor, Mrs. Mercy Crust, left £850 in her will to replace the old 8 which were considered 'inferior', according to the report from the bellfounders at the time, commemorated on a brass plaque affixed to the south west tower pillar inside the church facing the south transept.

The largest bell in the current peal weighs 1727kgs (34cwt). Increasing the size of the peal means adding three smaller bells of 5cwt each. Currently the bells ring a peal of 10 in one key; adding two smaller bells will extend the length of the scale. The additional bell will enable a 'light 8' in a different key. The bells are being cast by Taylors of Loughborough, who cast the current ring 117 years ago. The total cost of the 3 new bells is around £60,000; the band are very grateful for the generous donations towards the additional bells and for the fund-raising efforts so far, but are appealing for more cash to meet their target (pun intended!).

The project has the support of the Vicar, Church Warden and Parochial Church Council for several reasons, as well as the clear one of putting St Mary's right up there on the Church Bellringing map!

The lighter ring will make it easier for the older members of the band to ring and facilitate the teaching of new recruits; it will enable an outreach programme with local schools that will introduce young people to the art of change ringing, whilst at the same time, support elements of their curriculum subjects; it will enhance St Mary's existing assets and augment St Mary's active place in the community.



The band will be visiting the foundry in February 2018 to view the casting of the new bells, which will be ready to transport to Beverley in April/May. There will be a dedication service on May 20th when the bells will be visible on the floor of the church. They will then be installed in the bell-tower ready for the first ringing in June or July.

Chris Munday is the current Ringing Master at St Mary's who, along with John Atkinson and James Blackburn, makes up the Project Team. Chris told **Just Beverley**: "A lot of people are going to be very interested in this - it is quite a big thing! It does mean that we have opportunities for new bell-ringers, too!"

We think it is important not only to maintain but to develop the tradition of bell-ringing at St Mary's which has been enjoyed by so many generations before us. I would invite anyone who would like to know more about bell-ringing to get in touch. I would also appeal for local support to raise the remaining money needed (around £10,000) to pay for the new bells, which will definitely increase interest in St Mary's and Beverley."

Chris can be contacted by email: chris@munday.karoo.co.uk or mobile **07854 246903**.



Amazing support

Barchester Healthcare has been providing care and reassurance for over 25 years, and nothing compares to the sense of pride we feel in being trusted by families all over the UK.

At Lindum House Care Home we know it's hard to imagine someone you love ever needing care – our team provides amazing support and we'd love you to join us at our event to celebrate 25 years of Barchester and see our home's stunning new look!



Join the celebrations: Saturday 21st October, 2–4pm

Autumn Fayre: Live entertainment • Stalls • Refreshments

We hope you can join us for our event!

You're welcome to pop in anytime for a tour, or call us for some friendly advice.

Call: 01482 977831

1 Deer Park Way, Lincoln Way, Beverley, HU17 8RN



**LINDUM
HOUSE**

BARCHESTER HEALTHCARE

www.barchester.com

Nursing Care • Residential Care • Respite Breaks

Lee Wardell - a life in style

Featured on our front cover this month is a local man who has a background in fashion, having worked for some of the hottest brands. Establishing VERB as an independent store means he can bring the best brands to Beverley so we can access the current style trends without leaving town!

Many people will know Lee from the 4 years he spent managing menswear store Leonard Silver in Saturday Market until the owner, Eric Silver retired; most people will not know Lee's CV includes working for American company The Gap; being responsible for 50 trendsetting Faith shoes stores and working in London, opening stores for the iconic fashion brand, Blazer Menswear which was founded by David Kranz in the 1980's.

Lee told **Just Beverley**: "My dad was a graphic designer and I have always had an eye for colour and design. I was incredibly fortunate to begin my career at James Wright Menswear in Hull who, I think, most people will remember. It was incredibly high-end and I was only the tea-boy, but there I got the best apprenticeship ever. I learnt how to look after the clothes and the salesmen, and I watched and learnt as they looked after the customers such as the Hull City players who would come in. I was very fortunate. The I moved to Beverley to work at Rileys in a similar role: cleaning, dusting, making the tea, learning the ropes."

Ray Riley and Lee then went into business together, opening a shop in Hull. This, says Lee, was a steep learning curve! Although the business failed, he got an insight into the pleasures and pitfalls of business ownership and the challenges of building a brand. But what was evident at that time was that young men in particular were becoming more aware of how they were dressing; it was becoming more acceptable for men to admit they were looking after their bodies, using grooming products and wearing fashionable clothes which made them look good.

Lee then went to London where he landed on his feet by joining Blazer Menswear, which styled the preppy, yuppy look which is probably the fore-runner of today's look. He worked in Covent Garden, Ealing, on the King's Road, in Brighton and Bath, opening stores and trouble-shooting poor performance.

He then worked for The Gap where he learnt people-management the American way - building teams, training staff and developing customer-focussed service - and how to merchandise through store presentation. After The Gap came Regional Management at Faith Shoes, managing 50 stores (30 concessions in Debenhams and 20 stand-alone stores) across northern England and Scotland. Sometimes he was covering 65,000 miles a year!

Lee said: "Over the 12-13 years I was with Faith shoes, fashion changed considerably. Out went the uninteresting, functional school-style shoes to something which was an accessory, part of an outfit. 'Sex and the City' was all the rage and it brought footwear into a new dimension. Today, footwear can be stylish and comfortable; footwear makes a statement along with the rest of the outfit for men as well as women."

Redundancy gave Lee the opportunity to come back to his Beverley roots and the shop floor, utilising his considerable people and store-management skills by supporting Eric Silver until Leonard Silver came to a natural end. The opportunity to open Verb in Flemingate came as Lee was considering what to do next.



He said: "This was something I couldn't turn down! It's a test and a challenge for me even though my working life has been spent retailing stylish clothing and footwear. Here it's up to me to ensure the brands I choose to stock appeal to the target audience of 25+ (with no upper limit) and give an independent feel to what is essentially a high-street environment. One of the biggest advantages is that this is a large space so I can show off the merchandise to its best advantage, collate outfits to give inspiration and coordinate



colour to create VERB style. Here we give high-end service and advice but without the inflated prices which many high-end shops command!

"My current favourite brands are Pearly King, Florentino, Brooke Taverner and Mac Jeans - I pick out pieces from their collections which work together such as a Pearly King shirt with a Brooke Taverner jacket and a Mac Jean. Dark jeans are resurgent - you can co-ordinate almost anything with a dark jean. And, of course, more mature men are comfortable in jeans but they are dressing more stylishly with better-fitting jeans; the days of expecting men to wear baggy, beige cardigans with their pipe and slippers once they reach 50 are gone! Then there's the socks, shoes, belt, tie, jumper and coat to complete the outfit; we are a one-stop shop!

"Working with Flemingate has been such a positive experience for me, including the tie-up with Ladies Day at the Racecourse. It was great to see men as well as women making the effort to dress stylishly on that amazing day. As a judge for The Most Stylish Man and The Most Stylish Woman, it got a bit frantic but I think we found two worthy winners. I hope they invite me back next year!"

Another exciting development for VERB is the launch of their women's range of Italian-sourced outfits, to be housed on the upper floor. Lee has been working with a consultant to ensure the pieces chosen will fill the current gap in the Beverley women's fashion market. There will also be a seating area (with coffee) along with a sales area on the upper floor.

Lee will be showing some of the new women's collection on October 26th at a Fashion Show in aid of Beverley Christmas Lights (see our What's On section for details). But he welcomes anyone to visit the shop, browse and tap into his not insignificant knowledge of grooming, fashion and style - and help you to develop your unique style under the VERB brand. After all, there is probably no-one better qualified in the whole of Beverley to advise you!



Create your own style with Lee Wardell

It's here... Autumn! The favourite season for clothing retailers. The chiller weather brings the need for layers, be it gloves, scarves and hats or a simple knitwear addition to your outfit, worn with your outdoor jacket.

The choice of knitwear we have in VERB is probably the best I've worked with! Elegant fine merino wool - crew necks / v-necks / half zip / cardigans / sleeveless cardigans / turtle necks (a half roll neck) / full roll necks / heavy lamb's wool shawl neck cardigans. Such a range!

Plain knitwear in all the rustic colours I have previously described - berry reds / burnt oranges / tree greens / mud browns worn over a sky-blue button-down Oxford - perfect to be layered up with a cord or tweed jacket with the accent of any of the colours mentioned.

Quilted jackets in a gilet style in a complimentary navy or berry red obviously give warmth and add another complementary colour layer. Heavier footwear or a chukka boot also works well.

Darker jeans can be worn to come into their own going in to winter. However, heavy twills in practical dark colours and cord are all a great alternative to give a real textured look. Final additions - a paneled flat cap and matching gloves or leather gloves to match the shoe and belt - perfect! We have a full-range of accessories to complement your style in store!

Here at VERB we are expanding! Our first floor will become a womenswear floor to compliment the men's floor, so watch out for future articles describing our unique twist on the season's best for the ladies.

Pop in for further advice and tips. We are open seven days a week at Flemingate.

Our website will give you inspiration, too www.verbfashion.co.uk. Follow our **Instagram** and **Twitter** feeds and like us on **Facebook**.



New CEO looking to build for the future

Beverley Building Society has appointed a former marketing director from within the mutual sector, as it looks to build upon a reputation for excellent personal service to customers and support the community across East Yorkshire.

New Chief Executive, Karl Elliott, 45, comes to Beverley from financial services mutual OneFamily in Brighton, having previously worked for Harrogate based Engage Mutual for 15 years.

"I am delighted to join the team at Beverley Building Society, it appeared a fantastic opportunity from the start as its values of trust, honesty and empathy for customers are consistent with my own.

"I'm sure we can deliver a healthy combination of commercial success and social good by putting the needs of customers and their families first."

"When looking to return to my roots in Yorkshire, Beverley Building Society was a fantastic fit for me; in good shape and with real potential to have more impact across the East Riding. It's also great to see the Society working so closely within the community and supporting activities and charities that matter to our members."

Brian Young, Chair of Beverley Building Society says: "This announcement concludes the Board's thorough process to recruit Karl as our new leader. His skills and experience will very much complement our executive team, which includes Deputy Chief Executive, Janet Bedford with a background as Finance Director and Mark Marsden as Risk Director. We are ideally positioned for the challenges that lie ahead."



VERB

TO WEAR - TO WANT - TO WISH FOR - TO OWN - TO FASHION

FLORENTINE

PEARLY KING

Gibson
LONDON

MAC

BROOK TAVERNER
TAILORS OF DISTINCTION SINCE 1912

OPENING TIMES:
MON / SAT 9.30-5.30
SUN 11.00-4.00

01482 880141
VERBFASHION.CO.UK
INFO@VERBFASHION.CO.UK

FLEMINGATE SHOPPING CENTRE
FLEMINGATE, BEVERLEY
EAST YORKSHIRE HU17 0NQ

[@ VERBFASHION](https://twitter.com/VERBFASHION) [@ VERBFASHION](https://www.instagram.com/VERBFASHION) [f / VERBFASHIONBEV](https://www.facebook.com/VERBFASHIONBEV)

TO FASHION YOUR OWN STYLE

FLEMINGATE

BEVERLEY



FASHION

FOOD



FILM



& FUN

WE'VE GOT IT ALL AT FLEMINGATE



Yorkshire in Bloom recognise Beverley and Lund

Yorkshire in Bloom is a voluntary regional organisation that administers the Britain in Bloom campaign in association with the Royal Horticultural Society (RHS) in North, South, West and East Yorkshire. Every year, more people get involved, as local volunteers, groups and organisations create lasting improvements to local environments; it's not just about flower beds and hanging baskets but developing community spirit and civic pride whilst promoting responsibility for planting, cleanliness and maintenance.

Entries in the various categories are judged in spring and summer. Categories include public, private and charitable establishments, business premises, visitor attractions, caravan and camping sites, youth environmental projects and further education establishments.

Awards are made in true RHS fashion with Gold, Silver-Gilt, Silver and Bronze. This year, Flemingate was again awarded Gold in the Shopping Centres and Retail Parks category.

Judges praised the sustainable planting around

the main centre and play area, vibrant hanging baskets and the variety of evergreen shrubs. Graham Tait, Flemingate Centre Manager, said: "We're absolutely thrilled to win gold for the second year running in the Yorkshire in Bloom awards. It's a real team effort and everyone is really pleased."

In the Harrogate Flower Show Young People's Award Category, Molescroft Primary School's 'Tubs of Culture' entry was also awarded Gold.

The Judges commented on the 'exceptional' entry which they found to be a great way to engage all of the school "in the conservation of wildlife interspersed with art work and the vegetable garden". They said they really wanted to spend more time at the school to appreciate the efforts the children had produced!

Lund was awarded Gold in the Small Village category. The Judges praised the involvement of children who had created a Lund in Bloom emblem, which was displayed in the windows of the homes of many of the residents and recognised the hands-on support from residents

of all ages. They had no hesitation in making it Category Winner!

Matching Lund was Beverley which was awarded Gold and Category Winner as Best Town.

Additionally, Beverley won the Rose Award for the Best Town in Yorkshire. The Judges were impressed with so many 'hidden surprises' in Beverley, such as the Racecourse, the sensory garden within Coronation Gardens, the quiet gardens of the Minster and the sensory garden and vegetable plot at the Chandler Centre.

Helen Watson, Beverley's Town Clerk said: "We couldn't be happier! We work hard to make Beverley a beautiful place to live in - this is a recognition of the hard work and passion of so many people."

Dr Clive Waddington, Coordinator of the Beverley in Bloom Group said: "We are delighted to do so well. But we can't rest on our laurels - the Judges had recommendations for next year!"

From everyone at **Just Beverley**, many congratulations to all Gold award winners!



Comedian Duggie Brown and his wife to appear in Parkway Cinema Pantomime

Last year's pantomime, 'Aladdin', was so popular that Tony Peers this year is presenting 'Dick Whittington and his Wonderful Cat'. The villain, Queen Rat is to be played by Jackie Grimwood - when her husband heard she was coming to Beverley, he asked her to see if she could get him a part! Jackie's husband is Duggie Brown, who stars as Pantomime Dame Sarah the Cook. Just Beverley caught up with Duggie ahead of rehearsals.

Many readers will remember Duggie from the long-running TV show, 'The Comedians' which was first recorded on February 13th, 1971 and transmitted on June 12th. It regularly attracted an audience of 16 million viewers! Duggie remembers he was starring in a show in Jersey that June - the opening act was the late Paul Daniels.

Sadly, all the other comedians in that first ever transmission have now passed away, but Duggie is still going strong at the age of 77, although he certainly doesn't look it. The long flowing locks which were fashionable in 1971 have now gone, but Duggie is still very recognisable.

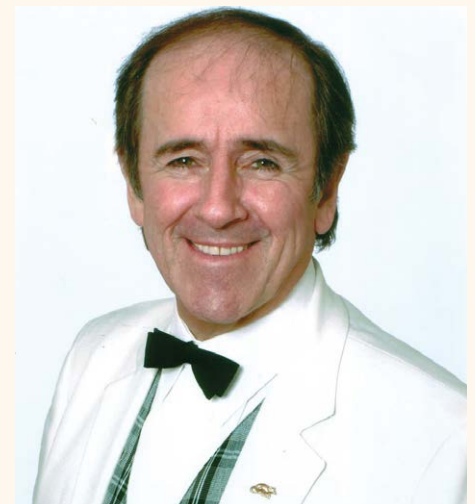
Of course, that may be because he so frequently graces our screens in his other career as an actor or in the Aldi adverts. Duggie remembers he did his first ever TV show, '6-5 Special' with Pete Murray, from the Palace Theatre in Hull in July 1957!

He has appeared in 'Coronation Street' (twice) and 'Brookside'; was in the famous film 'Kes'; has played The Fool in 'King Lear' for Northern Broadsides; travelled the world performing as a comedian on cruise liners and done 39 pantomimes - Beverley will be his 40th! He said: "I hung up my bra 4 years ago, but Tony made me an offer I couldn't refuse - to appear with my wife of 44 years on-stage! I've never performed in Beverley before, either, so I am really looking forward to it! The panto is good, clean family fun - but my wife terrifies the kids!"

Duggie is lucky in that he only needs 4 hours sleep a night - the rest of the time he is a bundle of energy, although he says the acrobatics he performs over the farmyard gate in the Aldi advert was CGI. He's now done 4 commercials for Aldi with the same characters - the latest is due out for Christmas.

He says he is incredibly lucky to have had such an amazing career making people laugh.

"The Comedians' success was due to the fact that it was a 'gag' show and everyone could remember at least one gag. So people could go down the pub and say to their mates 'have you heard this one?', they could tell the joke and then they were a comedian, too! Comedians nowadays don't tell gags anymore. I really like Lee Mack and Sean Lock, but they don't tell gags.



"Jimmy Tarbuck is a brilliant gag-teller and he's still touring - go see him!"

Although Duggie has missed out until now on gracing a Beverley stage, he has spent many a happy hour in the town, particularly at the Racecourse which he thinks is a wonderful little course. But he's looking forward to spending more time here, with Jackie, and we are looking forward to Duggie reprising his Pantomime Dame act.

Oh yes we are!

Choose Stowe Family Law's Beverley team, part of the UK's largest specialist Family Law firm



Stowe Family Law specialises in all areas of family law, including:

Divorce & financial settlements	Children arrangements
Farming and trust cases	Business valuations & tracing assets
Cohabitation issues	Private adoption
Prenuptial agreements	Wills & probate

Call 01482 755 385

“This firm is widely held to be a force to be reckoned with... A strong team with an in-suppressible style and a fantastic practice”

Chambers UK Guide

If you need family law advice, early support can be essential. **Stowe Family Law** can help.

For further information or to arrange an appointment call 01482 755385 or email enquiries@stowefamilylaw.co.uk

Beverley Office First Floor, 22 Trinity Lane, Beverley HU17 0DY
Offices across the UK including: **Central London, Harrogate and Leeds**

www.stowefamilylaw.co.uk

stowe
Family Law LLP

Pergolesi comes to South Dalton

Pergolesi died at the tragically young age of 26 due to tuberculosis. He wrote his 'Stabat Mater' for an annual Good Friday service in honour of the Virgin Mary, sadly passing away as he wrote performance notes. Elaine Dave, Dawn Walters and Robert Poyser are due to perform the work at a series of locations, starting at St Mary's Church, South Dalton, on October 14th.

Jean-Jacques Rousseau was a big admirer of Pergolesi (1710-1736), describing the opening movement of his Stabat Mater as "the most perfect and touching duet to come from the pen of any composer". Its famous plaintive introduction, in which two singers sing so close to each other in pitch as to cause temporary dissonances, was meant to portray the pain of the subjects: each time the two singers come just one note apart, it creates a piercing sound, with each occasion representing the hammering of a nail into the body of Jesus.

Robert Poyser (organist) is the Director of Music at Beverley Minster as well as teaching piano and organ, performing and accompanying, recording CDs and appearing on radio and television. He arrived in Beverley via Gloucester, York, Chelmsford and Portsmouth! He studied at Hull University, where he held the University Organ Scholarship, graduating with a first-class honours degree. He's also been involved with the Government-sponsored 'Sing Up' campaign bringing music into primary schools.

Elaine Dave (soprano) is a singing teacher for the East Riding Schools' Music Service, training two of their youth choirs, as well as giving recitals. She was a founder member of the Beverley Chamber

Choir and a chorister at Beverley Minster and is also an accompanist for the East Riding County Choir and WI Eastern Lights Choir.

She is well-known as a soloist and was delighted to be invited to perform the Stabat Mater with Dawn and Robert, having sung it in the past. Dawn Walters (mezzo-soprano) is a published choral composer whose pieces have been performed internationally, most recently in St Mary's Cathedral, San Francisco. York and Beverley Minsters and choirs in Kent and Somerset have commissioned her work.



Her passion is setting Shakespeare's sonnets and songs and recording them - you can hear some of them on links from her website:

www.dawnwalters.wordpress.com where you can also purchase CDs and sheet music.

As well as singing in the Beverley Minster Choir, Dawn also sings alto in the 'Byrd Four' which busks in Beverley around Christmas time under the alternative name 'The Four Candles', raising funds for Beverley Minster Choir's touring fund.



Dawn told **Just Beverley**: "The Pergolesi is such a beautiful piece - I've always wanted an excuse to sing it! This performance will be the first of a series in the area and the start of a tour which, potentially, includes some London churches.

We will be raising money for the church in which we are singing as well as for the Minster Choir which is going on tour to Germany next year. There are about 50 children and adults in the whole of the choir (including the Girls' Choir which Robert set up), most of whom are keen to experience the tour which will give us the opportunity to showcase Beverley Minster's choral skills and promote Beverley."

BUY ANY OF THE FOLLOWING PASTA OR RISOTTO

AND GET A FREE GLASS OF HOUSE WINE OR BUY ANY 2 AND GET THE BOTTLE*

MONDAY -FRIDAY 12PM-4PM

SEAFOOD RISOTTO

Risotto with king prawns, salmon and mussels in cream white wine and garlic

KING PRAWN LINGUINE

King prawns with garlic butter, parsley and white wine with asparagus

PENNE ARRABIATA CHORIZO

Penne pasta with spicy Italian tomato and chilli sauce, tossed with warmed Spanish chorizo and fresh basil leaves

MUSHROOM RISOTTO V G

Mixed mushroom and sun dried tomato risotto

MEATBALL LINGUINE

Cosmo's special meatballs in a spicy tomato sauce

PENNE FILETTO

Chunks of prime sirloin steak with pepper, onions and mushrooms in a cream and white wine sauce, tossed in traditional penne pasta.



Cosmo's

Flaming Grill
Restaurant & Bar

9-10 WEDNESDAY MARKET, BEVERLEY HU17 0DG

www.cosmosbeverley.co.uk | Tel: 01482 867891

*PASTA / RISOTTO DISHES MUST BE FROM THE LIST ABOVE. OFFER INCLUDES 125ML GLASS OR BOTTLE OF RED OR WHITE HOUSE WINE. NOT TO BE USED IN CONJUNCTION WITH ANY OTHER OFFER



Transform your community with Destination Beverley and Spacehive

Destination Beverley, the new partnership dedicated to promoting all that is best about the town, has teamed up with funding platform Spacehive to enhance your community.

Spacehive is a funding platform for projects that make local places better, by allowing anyone to create and fund public projects online.

Our partnership will make Beverley an even better place to live, do business and visit and we want the people of Beverley to get involved in making that happen.

Why crowdfunding?

Spacehive's crowdfunding platform works by providing tools that help people develop their ideas, get noticed by crowds of people, companies, councils, the media, in order to attract funding to make great projects happen.

Since its launch in 2012, Spacehive has helped fund over 250 projects across the UK worth over £6m - from public wi-fi in Mansfield to an urban farm in London.

We already have great projects put forward by the local community in Beverley. Please find out about those projects, back the ones you love or put forward your own!

Find out how you can get involved at:
www.spacehive.com/movement/destination-beverley



destination
beverley



www.destinationbeverley.co.uk

Follow us on Twitter @DestinationBev and like us on Facebook.com/Destination Beverley

BACK TO SCHOOL OFFER

3 Months Toning
3 Months Vibraxis
3 Contour Wraps

£179

Normal price over £300
Limited Availability

TONING TABLES

help with fat loss, ME, MS, hip replacements, depression, bad backs and much more!

Wheelchair access and stair lift available

FREE TRIALS, No obligation
Testimonials available



INCHES BODY STUDIO

CELEBRATING 26 YEARS IN BUSINESS

Inches Body Studio, 1 Norwood, Beverley, HU17 9ET

Telephone: 01482 865229

Email: inchesofbeverley@hotmail.co.uk

www.inchesofbeverley.co.uk



Legal Q's and A's

Every month, Just Beverley asks a team of legal experts to answer a question to which we don't know the answer. This month the question is about maintenance payments for children after a divorce.

Q. My nephew has a teenage daughter by his first marriage. His ex-wife has moved with her second husband to the Middle East, where my nephew is expected to foot the bills for his daughter's private schooling. Is he compelled to do this? He has paid maintenance since the divorce and is now married again with another child.

Coles the Solicitors have provided the following response:

A. I take it that your nephew pays maintenance voluntarily (i.e. under a 'family-based' arrangement). If, for example, he earns £400 a week, then under Child Maintenance Service calculations he would be expected to pay around £43 a week, since he also has a second child he's responsible for. He's probably paying the school fees in order to do the best he can for his daughter.

If you need advice, why not give Coles a call?

They are located in the very heart of Beverley at **22, Lairgate, HU17 8EP**, telephone **01482 231300**.

Or check out their website: www.coles-law.co.uk

CHOOSE AMUSE

Holiday Mews House

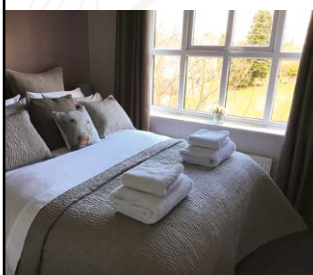


Do you ever need to accommodate family or friends?

Do you love having them nearby but would all like your own space?

Is it a struggle putting up camp beds or finding extra bed linen?

Are you entertaining business clients who may not wish to stay in a hotel?



Or maybe you know someone who is looking for somewhere fabulous to stay in the superb village of Walkington?

Whether you're planning a family celebration or an impromptu get together with friends, then just maybe we can help.

Choose Amuse is a luxury mews style self-catering house situated in the very heart of Walkington.

It offers high quality furnishings and fittings plus those little extras that can make a short break or a holiday that bit more memorable.



Sleeping up to four guests in fabulous hotel standard bedrooms, we can accommodate families or groups of friends in either twin or king-sized beds.

For more information or to make a reservation, please call **Karen** on **07515 325962**.

Email: info@chooseamuse.co.uk or visit the website: www.chooseamuse.co.uk

ACCOUNTANTS FOR SMALL BUSINESS

We specialise in supporting small businesses and can help with:

- Self Assessment Tax Returns
- Bookkeeping & VAT
- Business Accounts
- Payroll & RTI
- Corporation Tax
- Company Formations
- Business Start-ups
- ...and much more

For your free, no obligation meeting call us today on **01482 235363** or visit us at **307 Grovehill Road, Beverley, HU17 0JG** or online at www.taxassist.co.uk/beverley



Mingus' and Chris's 'Fan Dance' training is going to plan

In Issue 31, we highlighted the fact that solicitor and ex-soldier Mingus Menzies-Baird is to celebrate his 56th birthday by tackling the course which soldiers wishing to be selected for the SAS must undertake, known affectionately as 'The Fan Dance'. He is hoping that sponsorship will make a significant contribution to SSAFA, the military charity, which needs to raise £2.5m in the next few months to maintain its level of service. He's being joined by Chris Gibson, who is just 3 days younger than Mingus. Chris is a ERMS service mechanic who has no service history, but he is equally keen to raise funds for SSAFA in recognition of the sacrifices our armed forces make to serve our Queen and country.

Official training started at the beginning of September, with Mingus and Chris walking for 8 miles carrying 30lb packs on their backs, plus food and water. The following week, the walk was 16 miles along the Yorkshire Wolds Way, with 30lb packs plus food and water.



Weekly walks, which will increase in length/difficulty, but will be of at least 10 miles, are interspersed with 5 cardio sessions for Mingus and more walking for Chris. As Mingus says though "cardio in the gym is brilliant but being outside is a different ball-game; it took me two days to get over the 8-mile walk! But whatever we face in training will be nothing like the real thing. The weather on the Brecon Beacons in January when we are doing the walk can be dreadful with snow, cross-winds and freezing temperatures. Chris is hugely motivational - it's wonderful that he is supporting me. It costs £70 each to register for the walk - he's even paid that out too. £70 to pay for torture!"



The 'Fan Dance' is a climb up Pen y Fan, a 2907ft (886m) mountain in the Brecon Beacons and down again. It is 24km in length, must be completed in 6 hours and the walkers (of Mingus' and Chris's age) must carry packs with 25kg plus water plus food on their backs.

The start leads straight onto a climb up to the top of Pen y Fan - but what goes up must come down and the descent can be more gruelling than the climb.



Mingus told **Just Beverley**: "Coming down kills off most of the SAS triallists - it's very bad on the knees. I wear strapping but am not yet confident that I'm placing my feet correctly on down-hills whereas Chris, who's had a knee replacement seems to have it right. I need more practice!"

Mingus has already lost weight since starting a keep fit regime in June and Chris is 2½ stone lighter than he was last year. It's likely that the training and walk itself will see the chaps become very fit indeed! Mingus has set up a Just Giving page for sponsorship. If you could help SSAFA and support Mingus and Chris please go to www.justgiving.com/fundraising/michael-menzies-baird1.

Thank you!



Coles
the solicitors

Providing expert legal advice in the very heart of Beverley

22 Lairgate, Beverley HU17 8EP

T: 01482 231 300

E: info@coles-law.co.uk W: www.coles-law.co.uk



- Family Law • Wills & Probate • Conveyancing • Powers of Attorney
- Medical Negligence • Litigation • Dispute Resolution • Personal Injury



**Your Partners
in Payroll**

Has managing your payroll become a real headache?

New legislation for RTI and Auto Enrolment has tripled the workload for payroll staff!

We can help reduce the burden.

- Benefits of working with us include:**
- Access to a dedicated payroll specialist
 - Flexible and tailored services that are adapted to suit your needs
 - Transparent pricing
 - Clarity and efficiency
 - Access to our FREE and easy to use payroll app



To arrange a **FREE** meeting
call us on 0845 308 2288
or visit www.stipendia.org.uk



Stipendia Payroll Solutions



@StipendiaPay





Send your photographs of your celebrities
Find us on Twitter and Facebook to

2017 World Barge Pulling Championships



HERE TO GET *you* THERE

HUNTERS®

EXCLUSIVE

BEVERLEY / 01482 861411

Culture:Orchestra at Toll Gavel



Beverley in Bloom



SALES / LETTINGS / MANAGEMENT

HUNTERS[®]
HERE TO GET *you* THERE

BEVERLEY / 01482 861411

In the garden... October

October weather can bring rain, wind and cloud, but often a spell of settled weather too. I definitely think the October weather arrived early in September (and minus the settled spell).

As I write this in September it is already feeling decidedly autumnal, leaves are turning colour and I notice piles of them collecting in corners already. Even the 'conker' season is early, conkers started to fall during the second week in September (about three weeks early) due to us having a mild spring and a hot BUT damp summer - at least every school child will be happy!

Enough of being gloomy, gardens can still be colourful in October, Chrysanthemums, Michaelmas Daisies, Japanese Anemones and Cyclamen provide this with flowers. The 'stars of the show' however are berries, fruit and leaf colour. Berries can be found on Pyracantha, Cotoneaster and some varieties of Sorbus. Fruits, on Ornamental Crab apples (Malus), Rose Hips and of course eating Apple and Pears.

Some of the best leaf colour is found on Maples (Acers) and Cherries (Prunus), others to mention are Cotinus (smoke tree), Amelanchier lamarckii and Parthenocissus.

If you feel you don't have much 'autumn cheer' in the garden then now is a good time to plant something to give you colour for years to come - so pop along to your local nursery/garden centre for inspiration.

October hosts 'Apple Day' which falls on the 21st October, however keep a look out for Apple Day events, some are as early as the weekend of 7/8th October this year. They are a great day out for all the family being both informative and fun.

Harvesting in October:

- Bring in tender perennials, trim and store in a frost-free place.
- Harvest apples and pears.
- Dig up carrots, potatoes and other root crops.

Tidying in October:

- Rake up fallen leaves and clear up in the garden (any diseased leaves should be burnt not composted).
- Dig over any empty areas of soil - but not if too wet.

Getting Prepared:

- Plant up containers with bulbs and winter bedding.
- Plant bulbs in the garden.
- Put Glue Bands on fruit trees - these set in place a sticky barrier which stops female moths climbing the tree to mate and lay their eggs, and other pests from hibernating in cracks in the bark.
- This is also a good time of year to plant new shrubs and perennials. The warmth in the soil will help them to get quickly established.
- At the end of the month remove any pumps and filters from the pond, clean them out and store until spring.
- Scarify established lawns with a rake, then aerate with a fork if you haven't done it already.

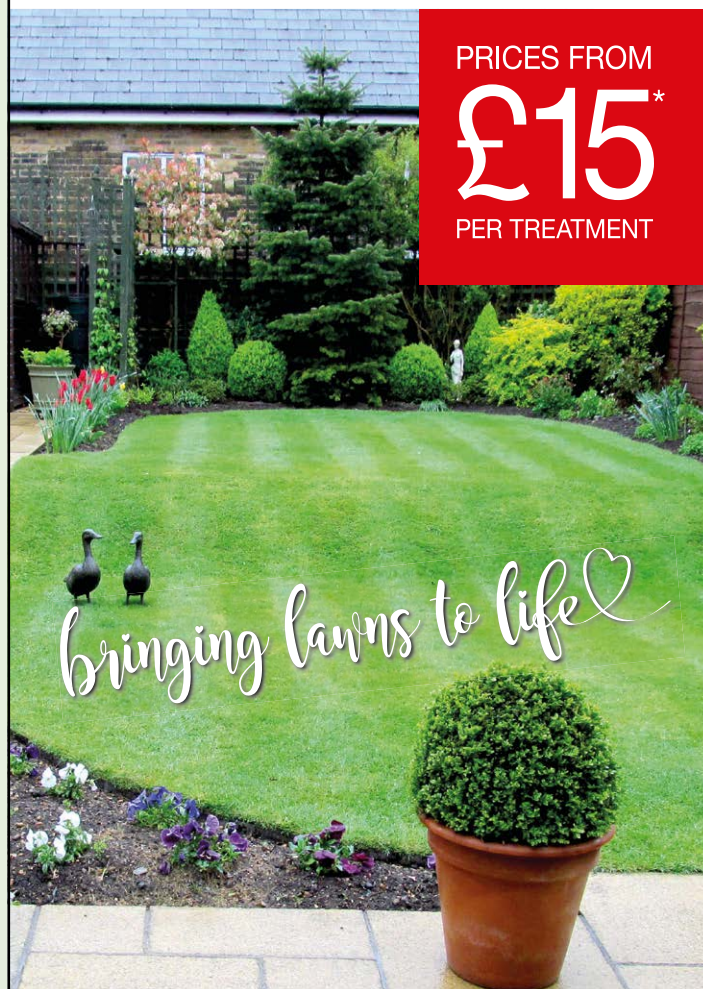
So, until November, happy gardening, J.

Jane Dale of 'Designed Gardens'
Tel: **07983 392 411**



GreenThumb LAWN TREATMENT SERVICE

PRICES FROM
£15*
PER TREATMENT



Our wonderful customers like our service so much, that over 40% of new customers joined us through their recommendation which if you think about it, is a recommendation in itself.

So, if you've been thinking about enjoying a great lawn this year - green, lush and weed-free, why not contact us today and let us bring your lawn to life.

We provide four seasonal treatments, as well as beneficial treatments to keep your lawn in tip-top condition - prices start from just £15*

Ask us about our annual plans, which allow you to both spread the cost and save up to 25%.

Simply call: **01482 880082**
beverley@greenthumb.co.uk



*Based on a lawn size up to 40m²

Telephone: 01482 869111
sales@rosesofbeverley.karoo.co.uk



The Kitchen Factory, The Courtyard,
Tokenspire Business Park, Beverley
HU17 0TB

Together we will design a beautiful kitchen



Roses will then
project manage
your kitchen installation from
start to completion

Visit www.roseskitchens.com
to see our customers kitchens and read what they have to say about us

Telephone: 01482 869111

Countryside Matters with Sam Walton

A recent report reckoned that over 6 billion eggs were sold in the UK last year. That's close to 100 per head of population (if my arithmetic is right). That will not be taking into account eggs bought locally from farms or people who have their own chickens. But who counts them?



Years ago, the pig industry grew beyond all belief. It was then cut back as we were 105 percent self-sufficient in pork and 50 percent in bacon! Currently we will be somewhere in the mid forty percent in total. That's what cheap imports do for you! But we are fighting back as more and more stores decide to opt for UK-produced meat, as we have such strict rules, which are enforced. That is very encouraging.

On the egg situation, I am not up to scratch on percentages, whether the 6 billion were all UK produced or included some imports. What I am sure about is that the UK poultry industry has grown beyond all recognition and is one of the most tightly controlled industries anywhere. That applies to eggs, broilers, ducks, geese and turkeys also. I hope we support UK egg production.

Recently there was panic about Avian Flu coming in from Europe, brought in by wild birds. All our outdoor free-range hens had to be fastened in for a couple of months or so until the danger passed. Thankfully that threat has passed but the possibilities are always there for the future. One thing I do not know is whether or not Avian Flu can be brought in with imported eggs? Anybody any ideas?



Caring for your Carpets - with MR Carpets

There is nothing like a lovely warm carpet to keep you snug and cosy - here's some tips on keeping your carpets look as good as the day they were laid.

Shedding. All cut pile carpets will lose short fibre, which is created during production when spun yarn is cut for tuft formation. These fibres fall to the surface and appear as fluff. The fluff can be safely removed by vacuuming - but gently! Excess fibres is only a small fraction of the total fibre contained in the carpet.

Flattening. All pile carpets will eventually flatten depending on the amount of traffic they get. The construction of the carpet also contributes to the amount of flattening. If you have a high-traffic area, perhaps consider a carpet with high tuft-density but low pile-fibre.

Pulled loops. If you have a carpet with a pulled loop, the first thing to do is to trim the offending end level with the rest of the pile. Do not be tempted to pull the loop, and don't leave it or it could develop into a ladder. You have been warned!

MR Carpets is a carpet and flooring specialist based at Beverley Beck.

They have been providing floor coverings for Beverley and district homes for 30 years!

Visit the showroom at **3, Becksid North, Beverley HU17 OPR** for your new floor-covering or call **01482 872134**.



HUBY DOMESTIC APPLIANCES



HUGE SAVINGS when you

BOOK ONLINE

at **hubys.co.uk**

Book in advance and save money. The further you book in advance the more you could save...



You've tried the rest, now use **THE BEST!** **01482 240511**

MR CARPETS CARPET AND FLOORING SPECIALISTS



30 YEAR

ANNIVERSARY

30 years in business
30 years of good, honest service
30 years speaks for itself

01482 872134

3 Becksid North, Beverley, HU17 OPR

I've Been Thinking... by Colin Raynor

As we move into October there seems to be a proliferation of Literary Festivals and Beverley is no exception. So I've been thinking about the pleasure to be gained from reading books. I think that the ability to read is one of the great treasures of humanity and is why we strive to achieve it from an early age. I know some folks may be born with a disability that robs them of this gift of learning and there are numerous caring parents and others who give of their time to help in such circumstances with remarkable results.

I recall a statement heard many years ago from a person who told me "I never read a book. I haven't got time". I was amazed to hear this because I knew him to be an educated man who, at the time, had a quite senior position in a bank and at some point in his life must have done some reading. Now I know it is not my place to tell people how they should lead their lives. I would not do that, but I do have a personal reason for hoping people will find time to read books of their choice. Due to a childhood accident at the age of ten I have only had sight in one eye for most of my life. If I could not choose to pick up a book to read, just when I wanted, life would be so different.

I recently read about Dame Judi Dench who is suffering from macular degeneration of her eyes and needs help to read her scripts. I hope she finds the right treatment to extend her career for some time to come.

The Literary Festival in Beverley is combined with the Bridlington Poetry Festival and both are promoted by Hull City of Culture 2017 which has consistently asked people to extend their thinking and be ready to engage with aspects of art and culture they may not have considered before.

Poetry is another type of reading that perhaps doesn't come naturally to many. Just give it a try. You will be surprised at the wide variety of poetry that could appeal to you and some may not even rhyme! Everyone who reads will tell you they have favourite books. One of mine is a small paperback about the life of the Rev Peter Marshall, a Scottish Presbyterian Minister who emigrated to the U.S.A. in 1927 and by 1946 had become the Chaplain to the United States Senate. Sadly, he died three years later from a heart attack but those three years have gone down in history as the time when a wonderful man of God began the day in prayer for that most powerful of political institutions.



Today the 62nd Chaplain to the Senate is the Rev Barry C. Black. He is the first African/American to hold the post and the first Seventh Day Adventist. I hope and pray that, as he reads from the Bible, those who make decisions affecting their fellow human beings, listen and consider deeply the love and justice that this most famous of all books proclaims.

Editor's note: You can find this month's poem by our Poet-in-Residence John Fewings on page 38 - and it does rhyme!

When was the last time you audited your relationships?

Every year we audit our finances and reconsider our budget when we submit our accounts to the Inland Revenue; we review our wardrobe at the change of the seasons, sending unwanted clothing to the charity shop and dumping worn out clothes in the recycling bin; and we dig out dead plants and unwanted weeds in the garden BUT do we ever assess our friendships and relationships? Perhaps we should!

Linda Grayson once said: 'There is nothing better than a friend, unless it is a friend with chocolate.' But what if that friend doesn't bring you chocolate anymore? Would you still think of them as a friend? And if you only want them for the chocolate, then how much of a friend are you to them?

A friendship could be considered as a series of transactions on both sides set within a particular context - but when that context changes then chances are the relationship will also change and may even die. What makes friendship magical is that the value of the transaction is impossible to put a price on. The give and take on both sides is freely given because you like each other and what you stand for and the trust you have developed between you is an unspoken guarantee that you will always have each other's backs and never hurt each other.

Sometimes so much is being given and taken that the feelings you have for each other can become intense and develop into love, but equally the balances can become uneven and then it becomes a completely different relationship as one party could become exploited. Auditing friendships can be enlightening. Is the feeling of closeness you have to a particular person reciprocated? Is the time and energy you invest in a particular friendship worthwhile? Is your friend enabling, non-judgemental, supportive, self-sacrificing? Are they allowing you to be the best person you can be? Or does the relationship contain toxic elements that demean you or even upset you? In which case, how can you consider that person a friend?

Sometimes friendships can just drift along. You might not see each other for weeks or months, but you know you can rely on that person in a crisis. They know your innermost fears and will be there for you no matter what, as you would be there for them. When you do get to spend time with them, it is a pleasure; they are a gift. They aren't the same as the acquaintances who you would enjoy going out to the theatre or dinner with, pleasurable as that may be. Walking away from a friendship can be as emotionally difficult as breaking up with a significant other but if it is not working then why prolong the agony? As we go through life, our interests change and so do the circles in which we move.

As you audit your relationships, I can guarantee you will find out more about your own needs, wants, hopes and desires and the sort of people you should have in your life to bring out the best in you! Whatever you do in your life, be happy!



Linda.

Tel: 07585 802035
www.releaseyourpotential.co.uk



Botterill & Co

Chartered Certified Accountants

We are a modern and professional accountancy practice ideally located to serve businesses in Beverley and the surrounding area.

We utilise modern accounting technology to provide you with a cost effective, professional service.

Our services:

- Annual Accounts
- Company Formations
- Tax Planning
- Payroll
- Management Accounts
- Cloud Accounting
- Tax Returns
- Bookkeeping & VAT

For a free initial consultation please contact us:

Office: 01482 862240
Mobile: 07966 051458
Email: gareth@botterillco.co.uk
Website: www.botterillco.co.uk

1st Floor Offices, 40 Norwood, Beverley, HU17 9EY

PUZZLE PAGE

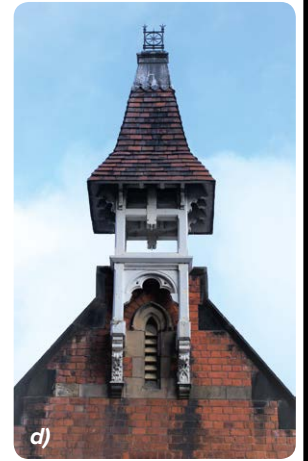
Wordsearch

C I S Q Y I H S J H N N B C L
 R O C Q C F R N E R H B S F R
 C A U N Q U C D J O G G I N G
 F L D N O O G I Q T I H F Y D
 M D O L T E S I C R E X E T A
 Z U O U R R P W P D T M B A M
 Y C M O D I Y U D A W K C O P
 U R W O W S I L G R N V B C Q
 A S I Q X M R O A K Y C U R O
 F Z F A L O A M B N C S S E L
 W S X O H T V Q N I E T H V H
 V B T W M S H V P G N S U O S
 C W M X U E E U P H H H T V J
 S P I C G I H R X T D W L M H
 Y S K V W N F T F S C Z W D D

CLOUDS	DARKNIGHTS
DAMP	HEDGEROWS
FRESHAIR	COUNTRYLANES
OVERCOAT	EXERCISE
COLOURS	JOGGING

Just for Fun

Where in Beverley would you find these landmarks?
 Answers on page 37.



Do you have any amusing stories, quotes or pictures? Send them to info@justbeverley.co.uk

The things they say...

What happens to all the leaves off the trees?

Where do the sheep go in winter?

Why do trees change colour? Are they dead?

Why is my breath steaming?

TOP AUTUMN TIP!
 For minor knocks, use a frozen sponge as an ice pack

Quality Kitchen Facelifts

From a simple door swap to a full replacement kitchen

Why replace when you can reface?



EST. 1999

20% OFF
 Limited time only
 Terms & Conditions apply

DREAM DOORS®
 NEW LIFE FOR OLD KITCHENS

- 50% deposit, balance on completion
 - Made to measure custom-built doors and units
 - Huge choice of doors, worktops, appliances, sinks and taps
- www.dreamdoors.co.uk

Call Andy For a Free Estimate:
01482 861 653

hu@dreamdoors.co.uk
 Dream Doors Beverley, 4a Belprin Park,
 Swinemoor Lane, Beverley, HU17 0LN

Proud members of
Checkatrade.com
 Where reputation matters



Tyrants Rex by Clint Wastling

Local author and poet, Clint Wastling, will be launching his first fantasy novel, *Tyrants Rex* this month at the British Fantasy Society's Annual Conference (FantasyCon) in Peterborough.



Clint says, "Science Fiction and Fantasy is a genre I always loved reading so I decided to write an intelligent fantasy myself. Friends enjoyed reading the first draft, so I was encouraged to persevere and was, needless to say, delighted when a year later it was accepted by Stairwell Books for publication.

It has taken a lot of hard work to have the novel 'ready' for the launch. I doubt whether I would have been able to make this deadline without the help of another local writer, John Fewings, who spent many hours proof reading and Rose Drew (Stairwell Books), who's editing input was invaluable."

Tyrants Rex is a spellbinding, intelligent fantasy novel. The story is told through the eyes of Mycul Zas, a young man, betrayed by his uncle and sold to geneticists. It has a gripping storyline and larger than life characters.

Mycul teams up with a one-handed assassin, an exiled prince, a scientist with a murky past, a drunken giant, a necromancer's daughter and the genetically engineered mordonts (originally humans) modified over many years to become great warriors. Together they strive to overthrow a tyrannical régime and find a place for themselves on this future Earth.

Clint is delighted to be able to launch his novel at FantasyCon 2017. An estimated three thousand delegates will be at the event so this should be the perfect venue for the first launch. A second launch is closer to home at Kardomah 94 in Hull in November. However, Clint will be signing books and answering questions about his novel at W H Smith on Toll Gavel, Saturday 28th October from 10.30-2.30pm.

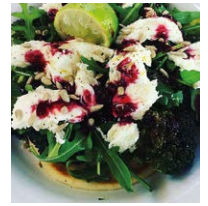


Clint can be contacted at clintwastling@aol.co.uk or 07599 033934. Cover art: Mordont by Rebecca Macfarland.

Broccoli Flatbread Salad Recipe - by @The FoodRhino

Ingredients:

- 1 x small head of broccoli
- 1 tbsp sunflower seeds
- 1 x flatbread
- Rapeseed oil
- Autumn fruit coulis
- 1/2 a sliced red chili (or any other leafy salad)
- 1 x handful of rocket
- 2 x thinly sliced radishes
- Buffalo mozzarella (optional)
- Salt & pepper (to season)



Method:

- Preheat oven to 180°C.
- First make sure you wash all your salad and vegetables, twice... even if they are "washed and prepared".
- Break away the broccoli florets and slice in half, they need to be placed on a baking tray, drizzled with rapeseed oil and seasoned with salt and pepper.
- Roast these in the oven until they have a nice crispness to the heads.
- Put them into a mixing bowl and toss with a good squeeze of half a lime, the chili, radishes and rocket.
- Turn off the oven and put the flatbread inside to gently heat. Once the flatbread is warm, place on a plate and lay on top the broccoli mixture, adding the optional mozzarella.
- Drizzle the fruit coulis over the top and garnish with sunflower seeds and the lime remnants.
- Eat immediately!





Print that gets you noticed

- ✓ Brochures
- ✓ Leaflets
- ✓ Business Cards
- ✓ Business Stationery
- ✓ Posters

- ✓ Desk Calendars
- ✓ Wall Calendars
- ✓ Pop-up Banners
- ✓ Pads
- ✓ Invites

Jadan Press are a leading family run commercial B2 colour litho printer based in Hull. With 20 years experience, the company is renowned for producing work of an exceptionally high quality. We are committed to providing an excellent service by offering value for money and ensuring complete customer satisfaction.

Tel: 01482 610902
info@jadan-press.co.uk www.jadan-press.co.uk
 Rainbow House, Kimberley Street, Hull, HU3 1HH

OVER 20 YEARS EXPERIENCE

We are committed to providing an excellent service by offering value for money and ensuring complete customer satisfaction



Walking with Ian Richardson - Welton Wander (5 miles)



This is a classic walk in the southern Wolds, taking in a wonderful dry valley, architecturally rich village and secluded hamlet. We start by enjoying many of the fine buildings in Welton, then head up the dale to reach what remains of Wauldby, before returning on a high-level route with expansive views, then descending to the village church with its ravishing stained glass and perhaps a drink in the historic pub.



St. Helen's, Welton

1 Start opposite the splendid Green Dragon pub in the heart of Welton. Before heading into the countryside, take the time to enjoy the buildings around the green. Notable are the large houses, Welton Grange and Manor, just across the road from the pub on Cowgate. The village attracted the wealthy merchants of Hull in the eighteenth century and still has a decidedly affluent air. Pass alongside the stream and your route lies straight ahead up Dale Road.

2 Follow the road, passing one of the flowing wells that gives the village its name and a lovely complex of old mill buildings. Soon the road becomes a track and then a clear path as befits the route of the Wolds Way. The ponds are particularly attractive and if you are lucky you may just spot a kingfisher. Alongside a very attractive estate cottage, you pass through a metal gate to enter glorious Welton Dale.

3 The route is very clear following the valley bottom as it gently rises. In recent years I have walked this in August heat and thick January mud but is always nothing short of delightful.



Welton Dale in high summer



...and after winter rain

The path soon rises more steeply through woodland and reaches a farm road at the dale head.

4 Now cross the road and follow the path that leads over fields then past a plantation to Wauldby, now the tiniest of hamlets but once a village.

5 At the far end of the pond take the signed path to the left to pass by the good range of farm buildings, if you look carefully you will see the Victorian Chapel often hidden by foliage. Follow the track down to the road.



Victorian Chapel

6 Turn left here, there is a wide verge to walk on for the next few hundred yards but take care with traffic as you head downhill, turning left into the farm access track crossed at point 4.

7 Now walk along the track, you may notice on your right the impressive early nineteenth century mausoleum of the Raikes family. This is on private land but can be seen from the track if the trees are not in full leaf. Pass the path to Wauldby and as you rise above the dale head, take the well signed path to the right that heads back to Welton, below Wold Farm.



The Raikes Mausoleum

8 This path gives fine views over to the Humber Bridge and across the estuary to Lincolnshire. You pass a large quarry on your left and soon Welton Dale is to your right.

9 After a pleasant mile you re-enter the village with the church a clear marker ahead. St Helen's has an admirable policy of being open to visitors at all reasonable times. Inside is one of the most remarkable collections of Pre-Raphaelite stained glass windows in the whole country, mainly the work of Edward Burne-Jones who had relatives in the village. I was so taken with the beauty of these on my recent visit, that I returned next day and left a set of close up photos I had taken which might still be there. My favourite is the gorgeous two-toned St. Ursula in the south transept. It appears to be modelled by the noted beauty, or stunner, Jane Morris wife of the great designer, William.



Two stunners at St. Helen's

10 It would be a shame not to pay a visit to the Green Dragon to end your walk with a drink or perhaps a bite to eat. It was here in 1739 that the notorious highwayman Dick Turpin was apprehended prior to his trial and execution at York. The village does have a decent bus service into Hull or Brough, so you could access the walk by public transport and really indulge in the pub's offerings!



Journey's End

Ian Richardson
ricojosh@msn.com

Next month - Walk Beverley's War.

Golf with Stewart Fraser - Time to think about keeping warm and dry on the golf course

The time of year is here again when we start to dig out our warm clothing in preparation for the Autumn/winter season. If it is time to renew your waterproof Jacket, what is the best value for money? Which jackets are going to keep you dry in all weathers? Guarantees? I am going to help guide you through the waterproof jacket minefield with some of the best, whatever your budget.

Proquip Aquastorm PX1 - £59.99

The Aquastorm is a good fit for most golfers and comes with a 3 year guarantee, which is amazing value at this pricepoint! Taped seams and it also has Velcro cuffs and tabs on the sides to tailor the fit even more. Breathability is average and it does rustle a little but the best money can buy at this price.

Under Armour Storm - £90

The Storm has a very high waterproof rating with taped seams and a pretty loose fit which will suit most. It is a reasonably breathable material and quite lightweight which makes it wearable even when warmer. It does what it says on the tin!

Proquip Storm Force PX5 - £149

The Storm Force is the most advanced jacket Proquip has ever produced and they have backed this up with a lifetime waterproof guarantee! The fit is fantastic, it feels soft and is whisper quiet when swinging. It is one of the most lightweight jackets on the market and is very breathable in all conditions. It is made from material that stretches and has adjustment tabs on the side to make the fit perfect for you. This jacket also has 3 pockets (1 internal) which are all waterproof too. The best value for money jacket you can buy with outstanding performance.

Galvin Green Argon - £295

The money is no object best jacket on the market and the only Gore-Tex jacket on test. This jacket is also guaranteed for life and is made from a revolutionary new material that glides over garments worn beneath for superior comfort. It has rubberised cuffs and collar for a snug yet comfortable fit that minimises the chance of water entering through these areas. The material is silent, soft and extremely breathable with adjustment at the chest, cuffs and waist, it is also fitted to have a longer back and a better fit. This jacket feels and performs like no other... at a price like no other.

Summary

All the jackets do the job they are designed for at different levels and price points. I believe the best overall value is the Storm Force PX5 with its silky soft material and lifetime guarantee for under £150 however if money was no object it would be the Galvin Green Argon every time, its quite simply the best I've ever tried!

Come and make use of our price match guarantee, at Beverley Golf Club we will beat any genuine U.K. price.

Stewart Fraser is the Golf Pro at Beverley and East Riding Golf Club. He can be contacted on **01482 869519**.



IPHONEDOCTOR

07874 329223

15 MINUTE FITTING WHILE YOU WAIT!

Screen Prices

iPhone 5/5c/5s = £30	iPhone 6s = £65
iPhone 5E = £35	iPhone 6s plus = £80*
iPhone 6 = £40	iPhone 7 = £120*
iPhone 6 plus = £50	iPhone 7 plus = £150*

Parts/prices with a * aren't kept in stock and require a deposit before ordering, delivery takes 2-3 working days

Mon: CLOSED | Tues: 12-7 | Wed: 10.30-7
 Thu: 10.30-7 | Fri: 10.30-6 | Sat: 11-6 | Sun: 12-4

www.iPhoneDoctorHull.com

1 School Lane, Walkergate, Beverley HU17 9AW
 Telephone: 07874 329223 Email: benjamminlee@gmail.com

BURTON ELECTRICAL SOLUTIONS

High quality electrical work across East Yorkshire & the Humber region

DOMESTIC

COMMERCIAL

TESTING

Whether it's for your home, rental property portfolio or business premises, all electrical installations need to be checked periodically by a qualified electrician.
For a quote contact:

Andrew Burton
 28 Carnaby Close, Leconfield, East Yorkshire HU17 7LA
 Tel: 01964 552769 Mob: 07585 601730
 Email: info@burtonelectricalsolutions.co.uk
 Web: www.burtonelectricalsolutions.co.uk

DOMESTIC INSTALLER

♦ HOP ON DOWN TO THE ♦

CHOCOLATE CAFE

— for handmade, quality treats! —

A taste of wonderland...

16 Dyer Lane, Beverley, East Yorkshire, HU17 8AE
 whiterabbitchocolatiers.co.uk



Stockists of Woof Dog Beer!



THE TIGER INN

WEEKLY
Bingo



Cash prizes to be won
50p entry per game
Every Tuesday 1.30pm

FIRST SATURDAY
OF THE MONTH
Big Quiz

Free food/prizes to be won,
all money raised to our
house charities.
£1 per person entry

Brains
required from
8.30pm

CHRISTMAS MENU

Available Monday 4th December to Friday 29th December
(Excluding Sundays and Christmas Day)

2 COURSES - £14.95

3 COURSES - £18.95

BUFFET - £6.95 PER HEAD

Tel: 01482 869040 | www.tiger-inn-beverley.co.uk

Lairgate, Beverley HU17 8JG



News from the Racecourse

Racing may be over until next year, but the Racecourse is a year-round operation. The team are looking forward to the Christmas party season whilst already thinking about next year - and reflecting on the success of 2017.

2017 has been a good year for Beverley Racecourse. Visitor numbers are up 8% (which is impressive when you consider the industry as a whole is down 6%), pre-bookings are up and it's been a bumper year for food and drink sales. There have been some highly-original initiatives of which the Racecourse is especially proud - and which they are shouting about by entering the Racecourse Association (RCA) Awards.

The RCA Awards are the fiercely competitive industry awards which pits small racecourses such as Beverley against the large established courses such as Ascot. Ascot's digital team is bigger than the entire Beverley team, yet Beverley always does well at awards time. Why? Because the team always considers how their innovations will benefit the public.

Marketing Manager, Kate McKee, is tasked with preparing the awards submissions. She said: "We will be entering at least four of our original ideas which proved very popular. We will include the tie-up with



Hull FC which kept the whole family entertained with activities, competitions, the chance to meet some of the players and the opportunity to have a selfie taken with the Challenge Cup; the partnership with Yorkshire Cancer Research which increased awareness of the risk of skin cancer on un-protected skin by providing free sun-cream; the fabulous flower displays on Ladies Day which were inspired by the botanicals used in new partner's SLOEmotion gin and the day when Winteringham Fields took over the kitchen, the kitchen staff had training from a Michelin-starred chef and people enjoyed the fabulous food which they produced."

Kate commented that the food offerings on the racecourse on race days have improved. Visitors have been appreciative of the newer food offerings which include great new mobile units like Yorkshire Wagyu. The ethos now is to provide quality food which is locally-sourced and of good provenance so it's not surprising the food sales have increased!

One activity which will be put on hold until the new racing season is school visits organised by Racing to School (formerly the British Horseracing Education and Standards Trust, known as BeHEST). This charity supports young people's learning through encouraging a broad interest in horse-racing as a leisure activity and as a possible future career path. Visitors get to visit racecourses on race days, see the horses, meet jockeys and trainers (and even dress up in silks and hard hats!), visit the weighing room and find out what happens behind the scenes. This provides practical learning opportunities in maths and literacy.

For example, how much longer it would take a human to run around Beverley racecourse than a racehorse? The racecourse is just over 11 furlongs long (about 1.38miles), right-handed, with tight turns and an up-hill finish and takes a racehorse around 2mins 20secs to



cover it. The answer depends on how fast the human can run but getting a result can lead to interesting discussions! Autumn and winter are busy times for the Head Groundsman and his staff ensuring the course is in tip-top condition ready for the first race next year and the flower displays enhance the environment. It's a time to do planned maintenance and decoration on the buildings and begin new projects to enhance the facility.

Meanwhile, Catering Manager Danny needs to work out how many bottles of prosecco he needs for Christmas Party nights as the racecourse takes on a different vibe in the stylish Attraction Restaurant. Working at a racecourse means there is never a dull moment! **Just Beverley** is looking forward to finding out more about the people who work there and their areas of responsibility over the next few months. Meanwhile, good luck to Kate with her award submissions - we are quietly confident there will be at least one Gold award on the night!



LA LUMIÈRE PHOTOGRAPHY



TEL: 01482 867455
WWW.LA-LUMIERE.CO.UK
ENQUIRIES@LA-LUMIERE.CO.UK
 22 TRINITY LANE, BEVERLEY

Would you like to
make a difference to
someone?



VOLUNTEER CAR & MINIBUS DRIVERS NEEDED



Full training given,
ring or pop in for
a chat!



25 Corporation Road, Beverley, HU17 9HG

Tel: 01482 868082

www.bclift.org.uk

Reg. Charity No: 506813



Cycling Safely with Wilson Wheels - Can you be seen on the dark winter nights?

With the nights drawing in, it's time to think about being seen on your bike on those dark morning and evening commutes/rides.

High visibility clothing is a must! But another obvious option is not wearing dark clothes, either. We'll consider clothing another time, but the most critical consideration at the moment is your lights.

Having lights that work is a legal necessity - you don't want the old bill pulling you over for not having lights. But more importantly, you need to ensure that other road users can see you.

Lights have moved on greatly. You can still get halogen lights, but they are ancient technology and if you still have halogen bike lights, I suggest ditching them and buying a set of LEDs. All you need to spend is about £10 and that will get you a set of front and rear LEDs, with batteries, that can be seen by other road users and help you see clearly ahead of you, too.

By law, every cyclist who rides between sunset and sunrise must have a front-fitted white light, a rear red light and pedal reflectors; even off-landers must follow this guidance. With lights, the more you spend the brighter they get. You can spend upwards of a £100 on the latest super bright lights! Many LEDs have rechargeable batteries as they use very little power, so you can charge them via the USB socket in your laptop or wall time after time to ensure the light is always at its maximum. USB lights start at £14.99 and go up to £300. We can fit them in the shop for you.

I would recommend that you don't be tempted by cheap ones of a brand you have never heard of, though, as I have heard horror stories of chargers going up in smoke and flames and the lights themselves only lasting a short period before they give up. As we say in the shop, buy cheap buy twice!

Wilson Wheels staff are all seasoned cyclists who will give you best advice whether you are an amateur or professional. They are at **89 Grovehill Road, Beverley, HU17 0EJ**, telephone **01482 882881**. www.wilsonswheels.co.uk

Major developments at Beverley Town and Recreation Club

If you were wondering why Beverley Town Football Team is playing at Hutton Cranswick this year, it's because the pitch is being levelled and the drainage upgraded. Originally farm-land, the pitch has in recent years shown signs of reverting back to its former use. A grant from Sport England plus support from ERYC's Commuted Sums will mean Beverley Town has a state-of-the-art pitch to play on next season.

Levelling the pitch isn't the only work which has been on-going at the Club! Other grants from Sport England and ERYC Commuted Sums totalling £122,000 have facilitated the refurbishment of the main changing rooms for cricketers and football teams plus the building of a brand-new pavilion for the back pitch with changing rooms, showers, referee/umpire areas, storage and disabled access.

Ollie Grantham, Trustee of the Recreation Club, Treasurer of the Football Club and First Team Cricket Captain told **Just Beverley**: "With cricket, football, squash, bowls and tennis and a bar for socialising, the Recreation Club is a real asset to Beverley. We are delighted to have received these grants from Sport England and East Riding of Yorkshire Council as our main facilities were getting tired due to the heavy footfall. Now we have upgraded our main facilities and a new second pavilion giving us extra capacity, we have a Club we can be proud to welcome people to! We are very grateful to Hutton Cranswick for hosting our football team this season - but the lads are so excited about the pitch they will have next year."



WWW

WILSONS WHEELS
T: 01482 882881
E: info@wilsonswheels.co.uk
W: www.wilsonswheels.co.uk

WE NOW STOCK CUBE CYCLES
2018 RANGE AVAILABLE SOON





MENTION
JUST BEVERLEY FOR

FREE
BIKE FIT

AT SPORTS LAB SOUTH CAVE
WITH EVERY CUBE, KTM OR
BOTTECCHIA ROAD BIKE
PURCHASED AND
IN STORE
DISCOUNTS



WILSONS WHEELS

A full range of Children's
and Adult Bikes

Stockist of:





Comprehensive range
of parts and accessories

Clothing to suit
your cycling needs



89 Grovehill Road, Beverley, East Yorkshire HU17 0EJ
OPEN: Monday - Friday: 08.30 - 17.30
Saturday: 09.00 - 17.00 Sunday: CLOSED - Out riding our bikes



indicoll

more than just web design



AUTUMN MADNESS GET A WEBSITE FOR ONLY

£1995!

UNLIMITED NUMBER OF PAGES

What's included? Your website comes with all of these fantastic features; A Bespoke Website Design (with no templates used) • Content Management System (so you can update the website yourself) • Contact Form, Analytics (see when & how people visit your website) • Mobile friendly • Blog • Gallery • Links to social media accounts • Dedicated account manager

FREE!

DOMAIN NAME
EMAIL ADDRESSES
WEB HOSTING*
& SUPPORT
*FOR 12 MONTHS



CALL NOW ON 01482 428650

Classic Cars with Carfan - the Vanden Plas Princess 1300

This month's subject rolled out of the factory in 1972. Based on the utilitarian Austin/Morris 1300, the Vanden Plas Princess 1300 was produced in relatively small numbers. But the owners were cosseted in luxurious leather seats and the lucky rear passengers could rest their champagne glasses on beautifully polished picnic tables! This would certainly have been much appreciated by the first owner of the featured car, who is thought to have been a Director of I.C.I. in London.



The current custodian of this beautiful car, with a mini A series engine, has owned it for 3 years. In this time, has replaced the wood and the leather interior, which were both somewhat tired after many years of use, as well as some welding - which is only to be expected for a British-built car from the 1970's.

Another improvement is the conversion from a single carburettor to a twin set, although strangely enough, both were available when the car was new. Fortunately, replacement parts are readily available and don't cost the earth, which helps keep the cost of classic car ownership down.

Joining the Vanden Plas club doesn't have to be too expensive, either. A "barn-find" is currently on offer for £2500; various auction houses have examples in the £4000 to £7000 region and one owner in Switzerland is asking only £12,000 for what appears to be an immaculate example.

This shows that there is a wide range of these cars available for those who might be looking for a project to work on in their spare time (to bring it up to a roadworthy example) to those who just want to drive a car away and enjoy it.

So, should you see a Vanden Plas pootle past, with the passengers happily ensconced in leather and wood, don't forget that cheery Carfan wave!

Practical Motoring - Don't ignore dashboard warning lights any longer!

How many people see a dashboard warning light, give the engine a reboot and, if it goes away, forget about it! If it happens every time the car starts, it becomes a slight annoyance rather than a genuine concern - people carry on driving as normal. Well, there's nothing wrong with the car, is there? Wrong!

The truth is that modern cars are extremely intelligent, and choosing to ignore what they tell you can be detrimental, not only to your car, but also to your own safety and your wallet.

All cars have a complex array of sensors and features that monitor the vehicle and the technology in the majority of modern cars is sophisticated enough to accurately keep track of almost every aspect of the car. No matter how long you leave it, a warning light probably means that you're going to have to visit the garage at some point, but biting the bullet sooner rather than later will save you money, inconvenience and, in extreme cases, even your life.

By not waiting until you finally break down in the middle of nowhere, you save yourself the cost of a recovery service and the hassle of being stranded by the side of the road. Paying attention to red dashboard lights, such as the brake system alert or airbag warning, could make the difference between a quick trip to the supermarket and a trip to A&E. Even in the unlikely event that your car's monitoring system is wrong; you still need to address the error notification in case of a serious problem.

To find out what each dashboard light means, consult your car's owner manual.

If you can't find this, a quick Google search will be able to help you out, with multiple guides on dashboard warning lights that will help you work out what's wrong. In any case, any of the professionals that work at Beverley Motor Works will be able to assist and take care of your car, ensuring that you get back on the road safely and quickly.

Beverley MotorWorks is based at
**Unit D1 Grovehill Industrial Estate,
Annie Reed Road, Beverley
HU17 0LF, telephone 01482 881128.
www.beverleymotorworks.co.uk**



BEVERLEY
**MOTOR
WORKS**

INDEPENDENT
BMW & MINI
SPECIALISTS

**Our dealership expertise means
high quality car servicing at a fair price...**

- ATA Accreditations
- Routine servicing
- Condition-based servicing
- Diagnostics
- Mechanical repairs
- Air conditioning
- Performance tuning
- MOT's

Unit D1 Grovehill Industrial Estate,
Annie Reed Road, Beverley HU17 0LF

Call today: 01482 881 128

Visit: beverleymotorworks.co.uk



the Good Garage Scheme



**BE SAFE THIS
AUTUMN**
GET YOUR FREE SEASONAL
VEHICLE CHECK WITH
BEVERLEY MOTOR WORKS

BEVERLEY GOLF CLUB

18 MONTHS MEMBERSHIP FOR THE PRICE OF 12

JUST £600 UNTIL APRIL 2019

PAYMENT OPTIONS AVAILABLE

OCTOBER 4BALL OFFER - 1 IN 4 PLAYS FREE (QUOTE JUST BEVERLEY)
PLAY 18 HOLES ON THE GOLF SIMULATOR - £10 PER PERSON (MIN 2 PEOPLE)

NEW TO GOLF OFFER - 5 LESSONS FOR £25
PRICE MATCH GUARANTEE - FIND ANY PRODUCT CHEAPER IN THE UK
AND WE WILL MATCH IT!



*Sean Finch Birthday Party Night
60's fancy dress (optional)
October 14th at 7pm*

www.beverleygolfclub.co.uk

THE MARNE RESTAURANT & PUB

Open To The Public

Excellent Home Cooked Fresh Food

EXCEPTIONAL VIEWS OF BEVERLEY WESTWOOD

**FUNCTION ROOM AVAILABLE FOR MEETINGS
AND PRIVATE FUNCTIONS**

To view our menus visit www.beverleygolfclub.co.uk

🚩 **01482 868757** 🚩

Anti Mill, Westwood, Beverley, East Yorkshire HU17 8RG



The John Godber Company uses Flemingate Space to Rehearse World Premiere

The John Godber Company, which frequently produces shows at the East Riding Theatre, has been using a space in Armstrong House, Flemingate to rehearse for their new production 'The Kings of Hull'.

'The Kings of Hull' charts the high and lows of a Hull family from the 1960s to present day. It features music from Ruby Macintosh, who performed in previous John Godber production 'Ruby and the Vinyl' in Beverley and in some East Riding libraries. 'The Kings of Hull' features a collection of local actors and actresses, including Beverley's own actor/musician Grace Christiansen; it is to be performed at the newly-refurbished Hull New Theatre from the 27th September.



The cast rehearsed every day for two weeks in Beverley, enjoying the selection of cafes, restaurants and shops in the area, including Firepit, Pizza di Buca and Deli No 1 in Flemingate, the ERT House cafe bar and Sweetlands in Wednesday Market.



The John Godber Company are set to use the Flemingate rehearsal space again this year for their November production of 'Wuthering Heights' at the East Riding Theatre, which will be, without doubt, a Gothic autumn treat!

The Flemingate space is perfectly sized and in a prime location to make it an ideal rehearsal space for The John Godber Company, and undoubtedly, actors will continue to be seen in Beverley as rehearsals continue!



Competition

East Riding Theatre has generously offered a pair of tickets to the opening night of 'Wuthering Heights' on November 3rd.



The John Godber Company presents 'Wuthering Heights', adapted and directed by BAFTA Award-winning playwright Jane Thornton, who was born within a few miles of the Bronte parsonage.



Yorkshire's most famous story is realised in a bold, physical theatre style with an authentic cast all from God's own country. The complex masterpiece - part love story and gothic horror, part revenge - is told with passion, grit and raw power.

To be in with a chance of winning the tickets, all you have to do is answer the following question.

'Wuthering Heights' was written by one of the Bronte sisters, but which one?

Email your answer to info@justbeverley.co.uk by October 18th. Include your name, address and daytime telephone number in the body of the email with your answer and put **'Wuthering Heights comp'** in the subject box. The winner will be selected by random after the closing date. You must be prepared to be photographed for publicity purposes by **Just Beverley** and **East Riding Theatre**.

THE PAULINE QUIRKE ACADEMY OF PERFORMING ARTS IS ENROLLING NOW IN BEVERLEY & HULL!

Outstanding performing arts tuition for 4-18 year olds.



Academies run on Saturdays

PQA Beverley

Find us at **Beverley Grammar School, Queensgate, Beverley, HU17 8NF**
from 8.45am - 12pm

PQA Hull

Find us at **Wolfreton School and Sixth Form College, Well Lane, Willerby, HU10 6HB**
from 1.45 - 5pm

Visit www.pqacademy.com
or call **FREEPHONE 0800 531 6282**



What's On

SPONSORED BY: **küchenhaus**

2 Toll Gavel, Beverley, HU17 9AJ. T: 01482 862172.

Open: Mon - Sat: 10am-5pm. Sun: 11am-3pm. Bank Holidays: 10am-4pm.

Beverley Food Festival



Making a Difference

Until Saturday 9th December

• **Karl Blossfeldt - Art Forms in Nature**

Treasure House, Beverley. A Hayward Touring exhibition from Southbank Centre, London.

Saturday September 30th - Saturday 14th October

• **Children's Storybook Trail**

Flemingate. Free. Follow the clues in 16 Flemingate shops to lead to a character from a David Walliams' book. Prize draw to win a fantastic prize. 2 age-groups. Completed entries to be handed in to THE CREATIVELAB. Entry forms from Beverley Library, Tourist Information and flemingateevents@gmail.com

Thursday 5th October - Monday 28th October

• **'Kiss Me' by Richard Bean**

East Riding Theatre. 7.30pm plus some matinees. £18/£14/£12. This new play, by the writer of The Hypocrite is a beautiful and unorthodox love story about 2 people struggling to escape the guilt and ghosts of the past. Directed by Matt Aston.

Thursday 5th October

• **Beverley Up and Coming Professionals Networking Group**

Firepit, Flemingate. 5.30pm. Complimentary first drink and buffet courtesy Wilkin Chapman Solicitors. Booking: www.eventbrite.co.uk/e/beverley-up-coming-professionals-october-2017-networking-tickets-37869497687

• **Beverley Film Society presents 'I am not your Negro' Documentary, 2016, USA.**

Parkway Cinema, Beverley. Starts 7.30pm. £3/£6.50. James Pecks' film based on James Baldwin's unfinished book of the lives and assassinations of three of his closest friends - Medgar Evers, Malcolm X and Martin Luther King. An exploration of racism in the US. Nominated at 89th Academy Awards. Annual subscription £15 plus £3/film. Guests £6.50.

Friday 6th October - Sunday 8th October

• **Viewfinder Photographic Exhibition**

Skidby Village Hall. Free. 10am-5pm. Vote for your favourite picture!

Friday 6th October

• **Creating Space for God - I AM that I AM**

Norwood Methodist Church. Refreshments from 6.30pm for 7pm start. Free. Explore worship through personality, ethics, interfaith reflection, practical art and creativity.

• **Ricardo Garcia's Flamenco in 'Flamenco Flow'**

Masonic Hall, Beverley HU17 ODY. 7pm. ArtERY LIVE and Beverley Arts Trust bring a highly-skilled performance and deeply evocative touch of fiery Spain to Beverley with a full spectrum of music, rhythm and dance! We dare you not to tap your feet to the music! Tickets from 01482 869596 or Beverley Tourist Information 01482 391672. Repeat performance at Swanland Village Hall on October 7th.

Saturday 7th October

• **Mr Bloom - What makes Me a Me?**

Parkway Cinema, Flemingate. 11am. £5. Ben Faulks (CBeebies' Mr Bloom) in an energetic, madcap performance. Ages 4+ Tickets from www.litup.org.uk or for wheelchairs call 01482 392699.

• **Craft and Artisan Fair**

Flemingate. 11am - 4pm. Free. Selection of high-quality stalls featuring artworks, crafts and local-created pieces.

• **Sax It Up!**

ERT Café Bar. 12noon - 2pm. Free. East Yorkshire's premier saxophone quartet play an 'open concert' of jazz, classical and contemporary music.

Sunday 8th October

• **Fresh Food and Drink**

Flemingate. 10am - 4pm. Free. Lots of delicious local produce to choose from, including gourmet dog treats.

Monday 9th October

• **Norwood Nites Community Cinema**

The story of Chesley Sullenberger, an American pilot who became a hero after landing his damaged plane on the Hudson River. Starring Tom Hanks, directed by Clint Eastwood. 7pm. Raffle and refreshments.

Thursday 12th October

• **Fluff productions present 'Agent of Influence: The Secret Life of Pamela More'**

Lund Village Hall. 7.30pm. Tickets 01377 217776. Lady Pamela, fashion columnist and socialite, is recruited by MI5 to keep notes on Wallis Simpson and Edward VIII, suspected to be colluding with the German Embassy. Comedy for target audience aged 12+. An ArtERY LIVE event.

Friday 13th October

• **A Night at the Oscars Charity Ball in aid of N.U.R.S.E.**

Armstrong Social Club. 7.30pm. £25/head. Tickets from Hunters Estate Agents 01482 861411. Arranged by Beverley and District Chamber of Trade. Dress for an Oscar-worthy performance!

• **Eduardo Niebla Quartet and ERT Choir perform 'From Tree to Sea'**

East Riding Theatre. 7.30pm. £14/£12/£7.50. Stunning flamenco jazz. Premiere of Eduardo's new piece for the East Riding celebrating Hull City of Culture 2017.

• **Keira Martin - 'Here Comes Trouble'**

Bishop Burton Village Hall. 8pm. Tickets 01964 552364. Email: wchris695@hotmail.co.uk A one-woman autobiographical show presented through a fusion of Irish and contemporary dance theatre, drawing on social and cultural influences from Yorkshire, Ireland and Jamaica. An ArtERY LIVE event. Target audience age 12+.

Saturday 14th October

• **The Big Draw**

Treasure House, Beverley. 10am- 3pm. Free. Explore 'living lines' through drawing and mark-making activities for adults and children. No drawing skills necessary.

• **Pergolesi - Stabat Mater**

St Mary's Church, South Dalton. 6pm. Free - retiring collection. Refreshments. Soprano Elaine Dave, Mezzo-soprano Dawn Walters and Organist Robert Poyser perform one of Pergolesi's most celebrated sacred works.

Sunday 15th October

• **East Riding Film Festival. Beverley Film Society presents Gary Horrocks introducing 'Judy Garland: A Star is Born'**

Parkway Cinema, Beverley. 2pm. £10/£8. Tickets <http://beverley.parkwaycinemas.co.uk>. Gary is the editor of Judy Garland, a Celebration. He presents a documentary about Judy in London in 1957, followed by the 1983 restoration of the 1954 original epic and lavish musical A Star is Born. Hollywood with the lid off!

Wednesday 18th October

• **Tom Stade - I Swear**

Parkway Cinema Hayward Stage. 8pm. Tickets: <http://>

Tell us about your event!

E-mail info@justbeverley.co.uk

Telephone **01482 679947**

For more events visit
justbeverley.co.uk/events

beverley.parkwaycinemas.co.uk. Direct from the Edinburgh Festival, the Canadian tour-de-force is back! Nothing is taboo to this enlightened and captivating comedy legend, Tom pledges to tell the truth, the whole truth and nothing but the truth.

Friday 20th October

• **Billy Kemp - multi-instrumentalist, singer, composer, teacher, producer and story-teller**

Monks Walk, Beverley. 7.30pm. All the way from Baltimore.

Saturday 21st October

• **Village History Study Day**

Treasure House, Beverley. 9.30am - 3.30pm. £20. Learn how to research the history of your village or community. Lunch and refreshments provided. Booking essential on 01482 392790.

• **Britten Sinfonia presents 'Mother Goose'**

Toll Gavel United Church, Beverley. 2pm. £6/£5. An interactive concert designed to introduce children to the delights of classical repertoire in a fun and collaborative environment. A Classically Yours and Hull City of Culture 2017 event.

Sunday 22nd October

• **Candlelight Sessions featuring Pete Dilley**

ERT House Café. 7.30pm. £8. Hear this highly-acclaimed singer-songwriter from County Durham with an impressive CV and 4 albums to his name. Backed by ERT house musicians.

Thursday 26th October

• **Fashion Show in aid of Beverley Christmas Lights**

Treasure House, Champney Road, Beverley. 7.30pm. £10 includes wine and nibbles. Fashion and style from Verb, Seasalt, Lake Land, Crew Clothing, Collections, Beverley Hat Company. Jewellery and gift stalls. Tickets from participating retailers, Shirley's in Lairgate, Adeli in Wednesday Market and Treasure House reception desk.

Friday 27th - Sunday 29th October

• **Beverley Blues Weekender**

Friday night and Sunday sessions at The Sun Inn, free. Saturday night concert with headliners The Della Grants at Armstrong Social Club 7.30pm, £10. Tickets and more details: www.beverleyblues.com

Friday 27th October - Monday 30th October

• **Twinning visit from Nogent-sur-Oise**

Activities to include a welcome drinks reception with

küchenhaus

The German Kitchen

FUN DAYS IN OCTOBER

1ST OCTOBER:
National Homemade Cookie Day

7TH OCTOBER:
World Smile Day

11TH OCTOBER:
National Sausage Pizza Day

13TH OCTOBER:
National Yorkshire Pudding Day

16TH OCTOBER:
World Food Day

28TH OCTOBER:
National Chocolate Day

29TH OCTOBER:
National Cat Day

KÜCHENHAUS
2 Toll Gavel, Beverley, HU17 9AJ.
T: 01482 862172.
Open: Mon-Sat: 10am-5pm. Sun: 11am-3pm.
Bank Holidays: 10am-4pm.

the Mayor of Beverley, visits to Burton Agnes and Sledmere Halls and to Hull for City of Culture events and a farewell dinner. Details on: www.beverley-nogent.com

Saturday 28th October

• Time with Dad

Latimer Congregational Church, Grovehill Road, Beverley. 8.30am - 11am. Free bacon butties and tea/ coffee for Dads. Creating space for Dads and their children aged from 0-7 to spend time together and play with age-appropriate toys. Crafts, lego, brio, giant jenga, bible story-time. More info: bevatimer@hotmail.co.uk

• Halloween Pumpkin Extravaganza

Flemingate. 11am - 2pm. Free. Watch Toffie from Armstrong Social Club turn pumpkins into works of art. Enter a raffle to win one of his pumpkins. Carve your own pumpkin to become Beverley's 'Star Carver'.



Saturday 28th October - Tuesday 31st October

• Trick or Treat Beverley Rocks

Flemingate. Free. Search out a golden star on the back of one of the 100's of Halloween-themed rocks and swap it for your treat!

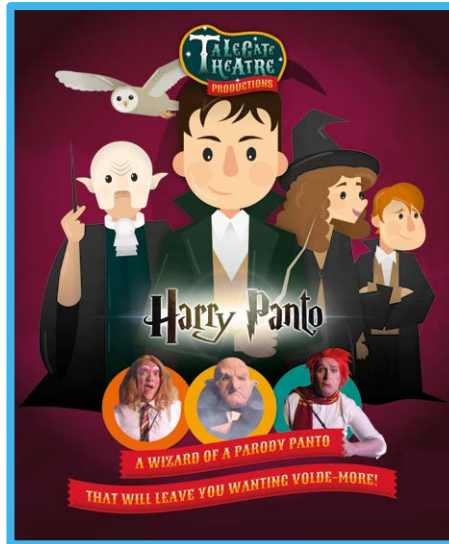
Saturday 28th October - Sunday 5th November

• Half-term Funfair

Flemingate. Funfair rides, bouncy castle (charges apply).

Monday 30th October

• Talegate Theatre presents 'Harry Panto and the



Chamber Pot of Secrets'

Parkway Cinema Hayward Stage. 2pm. Tickets: www.parkwaycinemas.co.uk - Tel: 01482 968090. A parody panto with magical illusions, pop songs and things that go bump in the night. It will leave you wanting Volde-More!

Tuesday 31st October

• 'The Lightless Pumpkin' by SHE Productions with lantern procession led by The BanSHEs

ERT. 3-4pm and 5-6pm. £6/£5/£4.50. Dust off your magic wands, adorn your ghostliest garments and join us for an unforgettable Halloween! A spooktacularly interactive Halloween treat for the whole family!

'Just for Fun' Answers

- a) Minster Garden - North Entrance (Flowers)
- b) Friars Lane (Painting)
- c) Adj Parish Hall, - Minster Yard North (Post Box)
- d) Parish Hall (Tower)

Competition Winner



Congratulations to Mrs Pauline Harrison who won the Hull Skyline Goodies donated by Caroline Aitken.

Pauline was absolutely delighted to win the prize.

She said: "I love the artwork which is in such stunning colours - thank you to Caroline and Just Beverley."



रूमि का इ

ASIAN CURRY AWARD WINNERS
BEST NEWCOMER AND CHEF OF THE YEAR

NEW FOR 2017 TAPAS MENU
Monday's 5.30pm to 8pm
Kid's under 12 eat FREE!
Max 2 per table with 1 paying adult

Disabled Parking and Lift for Disabled access

The Only Beverley Indian Restaurant included on the Welcome To Yorkshire Spice Trail

Rumi's Bangladesh Indian Cuisine
New Walkergate, Beverley, HU17 9EP

T: 01482 428642
www.rumisrestaurant.co.uk
Mon - Thurs: 5.30pm - 11.30pm
Fri - Sat: 5.30pm - 12am Sun: 5.30pm - 11pm

The John Godber Company Presents

WUTHERING HEIGHTS

Adapted for the stage by Jane Thornton

"Wonderful!"
Dr Juliet Barker - World expert on the Brontës.

ert East Riding Theatre 3rd - 18th November
Special Schools Performance 8th November
Matinee Sat 11th November
www.eastridingtheatre.co.uk
01482 874050

NAME THAT JOB by John Fewings

If you're undecided about a career; can't settle your vocation
Why not let your given name decide your occupation?

MIKE could be a singer or a compere in a club

SUE could be a litigation lawyer

MICK could be a barman, mick-sing cocktails in a pub

GRETA greets the guests out in the foyer

CATH could run a café - **DINAH** run a diner

DOUG could be a farmer or a gardener or a miner

BILL is an accountant - **PENNY**'s in the bank

While over in the Post Office, there is a job for **FRANK**



JACK could take up car repairs, that goes without saying

NEIL could be a vicar - though he'd have to take up praying

ANDREW is a handyman (but only if he's **ANDY**)

ALEX could work on the beach if she's ready to be **SANDY**

CLIFF could be a coastguard checking out our shores

ALAN is a keysmith helping people open doors

JUNIOR is aptly named to be a paediatrician

PHIL could be a dentist - and **SEYMOUR** an optician



PETE's a horticulturalist - **DAN** could teach karate

ARTHUR could start teaching art (but only if he's "ARTY")

Over in the library there is a job for **PAIGE**

JIM's a gym instructor (although Zumba's all the rage) **AU**



BARBARA could be a barber, clipping curly locks

STEVE could be a stevedore helping **DEREK** at the docks

But what of **IRIS, DAISY, POPPY, JASMINE, HEATHER, ROSE?**

Are there really enough florist's jobs to give to all of those?

What do you mean, "It's a rubbish idea!"? I say, "Bring it on!"

Though I may have to go to the USA for a job for a guy called **JOHN**.

John Fewings is **Just Beverley's** Poet-in-Residence as well as being a member of the Argy-Bargy poets.

He writes poetry for people who don't like poetry!

Check out: www.johnfewings.zone



Jack Parker - international singer-songwriter in the making

With one LP and a new EP to his credit, Jack is embarking on a full-time career as a musician. Perhaps he will be the next Ed Sheeran or Gavin James!

Jack's EP, 'Wild' was launched in May this year as part of Hull City of Culture 2017. It has 4 self-penned songs, which feature innovative recording technology, loops and MIDI sampling. Jack's live shows are entertaining and engaging as he recreates recorded sounds in a live performance. It was Beverley Folk Festival's Westwood Sessions which gave Jack the confidence and passion to write songs. He learnt to play guitar and piano and began performing his own songs, along with a few covers, around his home town of Bridlington, developing his technique. Whilst still at school, Jack recorded his album 'Love Like Her' in 2015 - which was featured on BBC Radio Humberside!

In early 2016, the Westwood Sessions invited Jack to support Leeds band Maia in Beverley. At that gig was one of the promoters of Costa del Folk. Costa del Folk is 'a festival that puts a smile on your face, song in your heart and the sun on your back', held at a resort complex somewhere warmer than the UK (next year Ibiza!). Jack was invited to play there - and then invited back twice more! This exposure expanded his network, enabled him to increase his fan-base and get bookings for more festivals. He is now mentored by Phil Simpson and recorded 'Wild' at Fairview Studios with John Spence.



Jack was delighted to tell **Just Beverley** that the EP is selling well by physical CD, streaming and downloading and received so well that he will be filming a promotional video early next year with Patrick Mateer. The film will be made at Oakwood Dog Centre although the dog on the front cover of the EP is Jack's own dog, Loki. Loki is a Daschjackapoo who, says Jack "doesn't mind having his picture taken - although actually getting him to sit on a white sheet of paper to take the picture was a challenge; we had to entice him on with food!"

Jack now has enough songs for the planned album for next year which will be accompanied by a promotional tour. Although he will be studying music for the next few months in the 3rd year of a degree course at Hull University, he is now moving away from the teenager who played wherever and whenever he could locally, to preparing for a life on the road.

If you've not heard of Jack Parker yet, remember the name. If you've not heard his music then head over to www.jack-parker.co.uk or www.youtube.com/user/JackParkerAcoustic. If you like what you hear, £5 will get you a physical copy of 'Wild' and the knowledge that you are supporting one of the area's up-and-coming artists.

C Creations
Direct Furniture Repairs

Specialising in:

- Leather Restoration
- French Polishing
- Upholstery
- Loose Covers & Roman Blinds
- Curtains & Soft Furnishings



T: 01482 871954 M: 07951 759253

E: info@creations-biz.co.uk

W: www.direct-furniture-repairs.co.uk

Retired Police
Electrician
& Handyman

Call today for your free quote

0800 255 0 255
trustinblue.com

Trust in
Blue



EAST YORKSHIRE COACHES

Because quality matters.

2018 brochure launch & open day

Saturday 14 October, 1pm to 3pm, Britannia Royal Hotel, Ferensway, Hull.

Book your 2018 holiday before general sale, with discounts and competitions available on the day. Below is just a preview of what's available!

Become an East Yorkshire Coaches VIP Club Member and receive priority booking from 10am to 1pm. Full details at: www.eastyorkshirecoaches.co.uk



ON SALE!
Monday
16 October

NEW FOR 2018 - Escorted Tours & Short Family Breaks.
DOOR to DOOR on selected coach holidays.
Holidays from only £75.

2018 coach holidays,
short getaways & city breaks



City Breaks

From
£75

Spend a couple of days away based on your choices and not ours – where you eat, where you visit and when you do things. With centrally located hotels close to all the cities' amenities, restaurants and attractions, you have the freedom to enjoy the city and savour the atmosphere, with bed and breakfast included.

Liverpool

Sunday 3 June : 2 days from £75pp

Manchester

Saturday 16 June : 2 days from £75pp

Harrogate

Sunday 24 June : 2 days from £79pp

Newcastle

Sunday 15 July : 2 days from £75pp

Cardiff

Friday 3 August : 3 days from £185pp

Lincoln

Friday 17 August : 2 days from £75pp

Liverpool

Sunday 26 August : 2 days from £75pp

Birmingham

Sunday 16 September : 2 days from £85pp

Stratford upon Avon

Sunday 14 October : 2 days from £75pp



Door to Door

From
£299

Door to door pick-ups are included free for all our tours of 5 days or more, available for all our customers within the East Yorkshire area. Sit back and relax, let us pick you up from your home. Here's a selection of our 2018 holidays with door to door included.

Dutch Bulbfields

Thursday 5 April : 6 days from £499pp

North Devon Delights

Monday 4 June : 5 days from £299pp

Eastbourne

& The Sussex Coast

Monday 11 June : 5 days from £349pp

The Lake District

Monday 25 June : 5 days from £339pp

Dublin & Belfast

Monday 9 July : 6 days from £499pp

English Riviera

Sunday 22 July : 6 days from £399pp

Explore The Isle of Man

Thursday 9 August : 6 days from £499pp

Pick of The Peaks

Thursday 30 August : 5 days from £399pp

Poldark & Gloucestershire

Sunday 16 September : 5 days from £389pp

Short Breaks

From
£175

Enjoy a quality short break to a delightful UK destination, with pick-ups from across East Yorkshire. See some of our featured short breaks below, visit our website to see them all or get in touch to request a brochure.

Malvern Flower Show

Friday 11 May : 3 days from £199pp

Hampton Court Flower Show

Thursday 5 July : 3 days from £219pp

Durham & Northumberland

Friday 3 August : 4 days from £269pp

Edinburgh Tattoo

Friday 24 August : 3 days from £245pp

Remembering Diana in London

Friday 21 September : 2 days from £175pp

Bruges Christmas Market

Tuesday 27 November : 4 days from £219pp

Thursford Christmas Spectacular

3 dates available : 2 or 3 days from £179pp

Durham & Grassington at Christmas

Sunday 9 December : 3 days from £189pp



Like us
East Yorkshire Coaches



Follow us
@EYCoaches

Single supplements may apply to some tours, contact us for details.

www.eastyorkshirecoaches.co.uk | 01482 222 444

Book online 24hrs a day.
Or book by phone 8am-6pm, Monday to Saturday.



Get into the swing of Christmas at the NEW Beverley Mistletoe Fair!

Gifts, Food, Decorations and Fun!

Set in the rooms with views of the Westwood dozens of friendly craft makers will be selling unique, creative and entirely original products to light up your Christmas!



Making getting in touch with Santa all the more easy for your kids and grandkids this Christmas!



SANTA'S MAILBOX
1st Class Delivery to Santa's Grotto Lapland

NEW!

Introducing The Santa Phone and Letterbox!

Your kids and grandkids get to tell Santa their Christmas wishes on the all-new Santa Phone.

Plus Santa Mailbox. Post a letter to Santa and you will be sent a personalised reply by post, all letters must be on our form which will be emailed to you.

Request your form at

shopforsomethingdifferent.com/beverley-mistletoe-fair



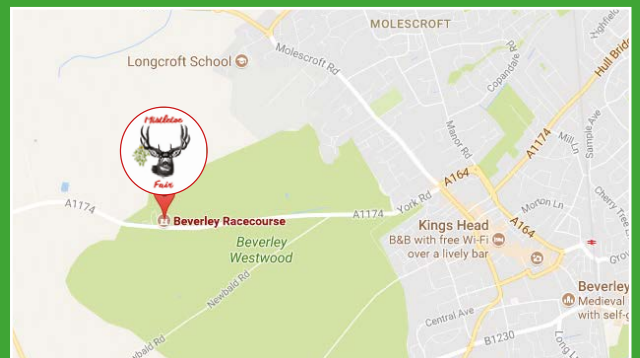
Friday 10th, Saturday 11th and Sunday 12th November
10am – 5pm

£3 ENTRY - KIDS GO FREE!

Beverley Racecourse, HU17 8QZ

For more information visit our website at:

www.mistletoefair.co.uk



For FREE Entry sign up to our newsletter at www.shopforsomethingdifferent.com

GET SOCIAL!

- Like us on Facebook @ShopForSomethingDifferent
- Follow us on Twitter @ShopforSomeUK
- Follow us on Instagram @ShopForSomethingDifferent

It's all about the shopping!