

ISSUE 88

just

# BEVERLEY

IT'S YOUR MAGAZINE

FREE

BEVERLEY  
PLATINUM JUBILEE  
CELEBRATION

THE QUEEN'S  
70  
PLATINUM JUBILEE 2022

## BEVERLEY PLATINUM JUBILEE A RIGHT ROYAL DAY OUT

NEWS, WHAT'S ON, LIFESTYLE, FEATURES, PUZZLES, PHOTOS & MORE



# The National Minimum Wage has Increased... Are you prepared?



**Improve business performance  
by outsourcing payroll**

#### Payroll Outsourcing Benefits

- ✓ Cost reduction
- ✓ Better staff productivity
- ✓ High accuracy & reliability
- ✓ e-payslips direct to employees via our app
- ✓ A named personal contact
- ✓ Added value services including HR & Benefits in Kind
- ✓ Useful online information

to arrange a **FREE** meeting  
call us on: 0845 308 2288  
or visit  
[www.stipendia.org.uk](http://www.stipendia.org.uk)



Stipendia Payroll Solutions



@StipendiaPay

# 6/7 BEVERLEY PLATINUM JUBILEE CELEBRATION



## 5 PROUD TO RUN FOR UKRAINE



## 19 SARA KRUGER



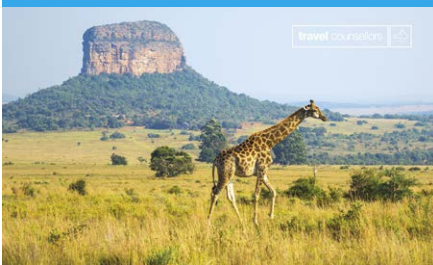
## 20 STUDY FOR FREE AT ERC



## 28 TAP INTO HAPPINESS



## 29 TRAVEL COUNSELLORS



## 34/35 WHAT'S ON



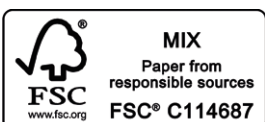
### Contributors:

Julian Minshall, Olivia Peace, Rich Manville, Natalie Acton, Cliff Baillie, Jane Dale, Jack Dickerty, Fran Dunning, Ed Hawkes, M Horst, Sareena L Jarvis, Sara Kruger, Amanda McConnell, Navigation Wealth Management, Suzanne Mather, Phoebe Noel, Colin Raynor, Ian Richardson, Karen Shead, David Tunstall, Becky Walker, Sam Walton, Clint Wastling and Nathan Wilson.  
Illustration Bev n Ley by Jasmine Stephenson.

**REMEMBER!** If you see examples of anti-social behaviour or other types of low-level crime, do report it to the appropriate authorities. **POLICE** - Emergency 999, Non-urgent 101. **ANTI-SOCIAL BEHAVIOUR** (East Riding of Yorkshire Council) - 01482 393939.

Magazine available from outlets in Beverley and surrounding areas.

Disclaimer - All the information provided was correct at the time of going to print.



Please pass your Just Beverley on or recycle it responsibly.  
Printed by: Jadan Press.

MAY  
LETTER FROM THE EDITORS



Spring has sprung and summer is on the way. To get the summer going, Beverley's Right Royal Day will be the event to start the celebrations.

With longer days to enjoy and a lovely summer ahead, whether it's outside fun or a visit to the amazing exhibitions and shows we have in and around Beverley, it's time to get out and about and shake off the cobwebs.

Remember small changes have a big impact. Let's keep working together to create a better Beverley. Why not start with a smile and a hello? You might just make someone's day.

Send in your good news stories and pictures, we look forward to hearing from you.  
Happy May.  
Julian.



Happy May readers - what a month to look forward to.

The days are getting longer and - most importantly as someone who is always cold - warmer! For those of us who can't get enough sunshine, it's time to start planning a holiday in the UK or abroad and planning something for the next bank holiday to enjoy. What have you got in store?

Another thing I'm excited for is the build up to the historic event of the Queen's Platinum Jubilee. It's so special living through and being a part of something that will go down in history, isn't it? Goosebumps. An incredible achievement for Her Majesty The Queen and I can't wait to celebrate it, Beverley is sure to have a Right Royal Day Out. As always, stay safe and enjoy the issue.  
Olivia.

ISSN 2754-9216



'Community Publication Award'  
Shortlisted Nominee  
2017 & 2018



### GET IN TOUCH WITH US:

Website: [justbeverley.co.uk](http://justbeverley.co.uk)

Email: [info@justbeverley.co.uk](mailto:info@justbeverley.co.uk)

Telephone: 01482 679947

Twitter: [@JustBeverley](https://twitter.com/JustBeverley)

Facebook: [facebook.com/justbeverley](https://facebook.com/justbeverley)

If you would like copies for your business to distribute to staff and customers, call Just Beverley on 01482 679947.



# BEVERLEY MINSTER CELEBRATES THE PLATINUM JUBILEE

**Come and join us at Beverley Minster for a series of events and activities to celebrate the Queen's Platinum Jubilee. We have something for everyone over the bank holiday weekend.**

**Thursday 2nd June:**

**Biscuit Decorating and Crown crafting**

We will be running a biscuit decorating drop-in workshop supported by Bunny Bakers for children and alongside this a free craft activity for all. No need to book. 10am-12pm

**Friday 3rd June:**

**Jubilee Festivities**

Come and share our celebrations of the Queen's jubilee with traditional activities. Watch historical footage of the coronation, share memories of royal events over the decades and enjoy traditional games and stalls. Join with us to create a piece of bunting at our sewing bee and enjoy seeing classic cars representing each decade of the Queen's reign courtesy of East Yorkshire Thoroughbred Car Club. Poma will be on site selling their lovely ice cream. 10am-4pm.

**Saturday 4th June:**

**"Paint-your-own" Jubilee Mug**

A craft session with ceramic painting, come and design and paint your own mug to commemorate this historic event! Delivered by The Rainbow Tree - Mobile Pottery Painting. Refreshments available, price includes paints, mug, firing and a hot drink on the day. £15 per head, booking available online. 11am-1pm or 2pm-4pm.

**Crown Jewels Treasure Hunt**

An activity treasure trail for children and families in our Secret Garden off Minster Moorgate. Bring a picnic and enjoy the surroundings. £1 per trail participant, a prize for completion. 11.30am-2.30pm.



See our Website and Facebook pages for more details as they are released.

# BEVERLEY BUILDING SOCIETY ANNOUNCES JANET BEDFORD AS ITS NEW CHIEF EXECUTIVE OFFICER

**Janet, formerly Deputy Chief Executive, succeeds Karl Elliott, who led the Society for five years.**

Stuart Purdy, Chairman of the Beverley Building Society, said: "Karl was a much-valued CEO and we thank him for his service and leadership of the Beverley Building Society".

Janet, a qualified Chartered Accountant, is looking forward to building on these firm foundations and looks to expand Beverley's mortgage lending, in line with its founding purpose of 'Building Better Futures'.



She said: "I am really excited to take Beverley Building Society forward as its new CEO, and I am extremely passionate about continuing our team's great work. We intend to continue to build our reputation as an innovative mutual, offering genuinely outstanding customer service.

Janet has officially taken up her position after the recent AGM, Her appointment is subject to regulatory approval.

Welcoming Janet to her new role, Stuart continued: "We congratulate Janet on her well-deserved appointment, having demonstrated outstanding commitment and capability over the past nine months as she stepped up as our interim CEO.

"We look forward to seeing her take the Society forward as it enters the next stage of its evolution."



## FINNIES ACCOUNTANTS LIMITED, BASED IN BEVERLEY, ARE RECRUITING

**Finnies have vacancies for a Payroll executive plus a bookkeeper / payroll administrator.**

Finnies is an established accountancy practice in Beverley Town centre, looking for enthusiastic individuals to join an expanding team to fill the roles .

If you have experience in payroll and bookkeeping procedures (however full training will be given) and are looking to advance your career, please send your CV, FAO Lynne Auton to:

**la@finnies.org.uk**





# TESCO BEVERLEY COMMUNITY FOOD CONNECTION

*Tesco are pleased to be working with the Beverley Cherry Tree Community Centre, Long Riston Playgroup and Olio food sharing app & social enterprise in their Community Food Connection programme.*

As part of Tesco's pledge to cut food waste, the scheme supports charities and community groups, enabling them to donate surplus unsold food items at the end of each day.

Since the scheme started in 2016, over 107,000 meals have been donated to these and other local community groups from our Beverley store.

Featured is a recent collection by the Cherry Tree Centre. Manager Jo Ramsay said: "I want to thank Tesco for the regular weekly food donations we receive. The donations make such a difference to people and families that are struggling with food poverty. We help over 180 people every week at the Cherry Tree Centre and we rely on the food donations to allow us to keep this vital service going."



# UNITY ALLSTARS BLACKS - WORLD CHAMPIONS 2022



**Congratulations to the Unity Allstars Blacks and Beverley's Matthew Minshall who recently competed in the 2022 Worlds Cheerleading Finals in Florida.**



Hosted by IASF and sponsored by Rebel Athletic who supply the kits, Unity Allstars Blacks were keen to put on a great display for England.

Winning Gold is testimony to all the hard work and determination the team have put in.

Congratulations to you all.

# PROUD TO RUN IN BLUE AND YELLOW

**Never have Beverley AC members been so proud to wear the blue and yellow colours of the Club as during the Wednesday night Club run for the Run for Ukraine!**

Runners from Barton and District AC, who also run in blue and yellow, joined us along with a group from West Hull Ladies for the run, as a mark of solidarity for our Ukrainian friends.

Approximately 120 people dressed in their club colours and enjoyed run routes around Beverley of between 3 and 7 miles.



Through the generous donations of everyone, in providing raffle prizes and a wonderful spread of buffet food, a really lovely evening was enjoyed by all and raised £1002.82 for the Disasters Emergency Committee.

Our thanks to all who came and supported, with a special thank you to Barton and District AC for topping up the donation pot to tip it over the £1000 mark!

A special mention and thanks must go to Club member, Andy Johnson, who came up with the idea, organised the raffle and planned the run routes.

# OFFICE TO RENT

**1st Floor Office To Rent, 40 Norwood, Beverley.**

**For more details, contact Mark Page on 07961 238954.**





# A RIGHT ROYAL DAY OUT

**Are you ready for the biggest, most entertaining, totally royal day out in Beverley? It's only one month to go until the celebration of the Queen's platinum Jubilee in Beverley and you're invited.**

On Friday 3 June, Beverley Town Council have organised a massive programme of events across the whole day to entertain people of all ages as everyone in town will be joined by visitors travelling far and wide for the day to celebrate the fantastic achievement of Her Majesty The Queen.

Come along and create lasting memories for the whole family as we celebrate Queen Elizabeth II's Platinum Jubilee. It's completely free to attend.

Open to everyone between 10am and 8pm, the Council have scheduled fun entertainment that will take part on two main stages, featuring specially chosen music to represent changes we've seen throughout the decades Queen Elizabeth II has reigned.

All of the bands and acts have now been confirmed to be performing across the day, and include a Lady Gaga tribute act, Ultra Jam, Tina & The Rockettes, the Humberside Police Concert Band, a Buddy Holly tribute act Bootleg Buddy, Beverley Garland Dancers, High Flyers, ABBA tribute band Kiss The Teacher and much more. There really is something for everyone to enjoy.

There will also be plenty of entertainment for children and stationed areas for our Little Jesters to get their faces painted, caricatures

drawn and balloons modelled throughout the day. We really want to see you there all day long, so if you plan on seeing all our entertainment we suggest you bring your camping chair for comfort.

Keep your eyes out for our circus acts, jugglers, stilt walkers and more who will be wandering around Beverley at different times appearing at each of the events.

See more information about what's on offer on the Beverley Platinum Jubilee website.

You can expect a brilliant delight of food and drink from our local area available to visitors, and there's going to be a large screen so everyone can keep an eye on how our Queen is spending her monumental day while we enjoy it in our own way.

You don't have to be torn as to whether you want to hear the symphonic sounds of our orchestras in Saturday Market, chill out to the acoustic tunes and have a cup of tea in the Coronation Garden, or want an upbeat vibe over at Flemingate -

we're making sure there's something for everyone so the day is fit for a Queen!

The Beverley Platinum Jubilee celebration is being included as part of the historic extra Bank Holiday in June.

The usual Spring Bank Holiday has been moved from the end of May to the start of June to create the special 4 day Jubilee Bank Holiday weekend from Thursday 2 June to Sunday 5 June.

The official merchandise for the event has been released so why not commemorate the Platinum Jubilee in Beverley with our special memorabilia?


We've got a Bear, a Mug, a T Towel, a Pin Badge, a Commemorative Postcard and if you want one of everything, take advantage of our Commemorative Jubilee Pack offer. Order all merchandise online today



or buy it on the day, but don't risk stock running out on the day - once it's gone, it's all gone!

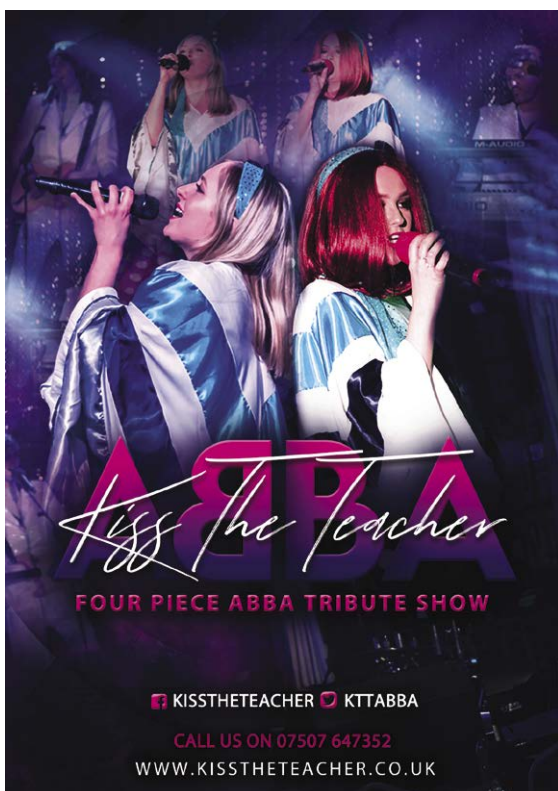
Make sure to still keep an eye out on [www.beverleyjubilee.co.uk](http://www.beverleyjubilee.co.uk) and our social media over the coming weeks before the Platinum Jubilee party in Beverley as any new information or updates will be released there.

Follow the Beverley Platinum Jubilee social media channels to get updates on Facebook:

 **Beverley Platinum Jubilee Celebration**

and on Instagram:

 **@beverleyplatinumjubilee**





# FRIDAY 3RD JUNE

## HERE'S WHAT YOU NEED TO KNOW:

**Where is the Platinum Jubilee Proms?**  
Saturday Market.

**Where is the Platinum Jubilee Pageant?**  
Wednesday Market.

**Where is the Platinum Jubilee Party?**  
Flemingate.

**Where is the Big Platinum Lunch?**  
North Bar Without.

### Seating

We would love you to come and enjoy the day and can easily see why you want to spend the WHOLE day with us given the amazing talent on show, so please feel free to bring your own camping chairs and take the weight off your feet.

Our security team will advise where you need to pitch up for the day to make sure everybody has a fantastic view. We will provide seating at the Big Lunch table.

Please note: no marquees or gazebos and any objects left are at your own risk, we hope the British summer to be kind to us on this special day.

### Can I bring my own food?

We welcome you to bring your own food for our Platinum Jubilee Big Tea Party but we ask you not to share with others due to allergens and personal preferences. If you don't wish to bring your own food and drink, we do have plenty of local food outlets that you can purchase from and grab a seat at the main table with your new friends.

Restrictions - No alcohol and no glass, please dispose of all waste in the bins provided so someone else can join the table.

The event is completely FREE to attend.

### Travel and parking

We recommend that visitors avoid coming by car where possible due to road closures to ensure the event is accessible for everyone, and to consider planning your journey using Public Transport (Beverley Bus Station/Beverley Train Station). We will have a free Park & Ride in place for those who need to drive, further details to follow. Find more details on parking on the website.

### Can I bring my dog?

The event is dog friendly so dogs are more than welcome to attend the Platinum Jubilee Celebration with you, provided they are always kept on a lead.

### Disability-friendly?

Yes this is an accessible event for everyone so come along and enjoy a full day of events for the whole family.



## PLATINUM JUBILEE COMPETITION

The organisers of the BEVERLEY Platinum Jubilee Celebrations have put up one of the limited edition teddies as a prize.

To win the special prize just answer the following question.

**On 3rd June how many years has the Queen reigned for?**

Send your answers to [info@beverleyjubilee.co.uk](mailto:info@beverleyjubilee.co.uk)  
Put "Platinum Jubilee Teddy" in the subject box with your name, address and telephone number in the body of the email.

The winner will be drawn out at random after the closing date Friday 20th May 2022.

Winners must be available for publicity purposes for Just Beverley and Beverley Platinum Jubilee Celebration Team.

No Cash alternative, the Platinum Jubilee organisers decision is final.





# BEVERLEY PLATINUM JUBILEE EVENT TIMETABLE

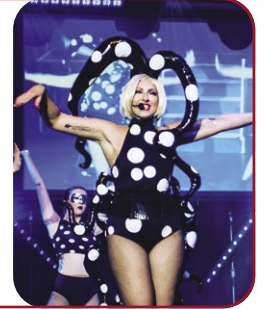
## SATURDAY MARKET:

TIME	BAND	INFO
10.15	Humberside Police Band	<a href="http://www.humbersidepoliceband.co.uk">www.humbersidepoliceband.co.uk</a>
12.15	All for One Choir	<a href="http://www.allforonechoir.com">www.allforonechoir.com</a>
14.15	Civic Procession	
15.00	Syd Lawrence Orchestra	<a href="http://www.syd-lawrence-orchestra.com">www.syd-lawrence-orchestra.com</a>
17.00	Catterick Army Band	@BAB_Catterick
19.00	Culture Orchestra	<a href="http://www.culture-music.co.uk">www.culture-music.co.uk</a>
20.00	<b>CLOSE</b>	



## FLEMINGATE:

TIME	BAND	INFO
10.15	Bootleg Buddy	<a href="http://www.bootleg-buddy.co.uk">www.bootleg-buddy.co.uk</a>
12.00	The Larks	
13.00	Cavernites	<a href="http://www.the-cavernites-tribute-to-the-beatles---the-touring-years.yolasite.com">www.the-cavernites-tribute-to-the-beatles---the-touring-years.yolasite.com</a>
14.30	Kiss The Teacher	<a href="http://www.kisstheteacher.co.uk">www.kisstheteacher.co.uk</a>
16.00	Tina & The Rockettes	<a href="http://www.entertainersworldwide.com/tina-turner-tribute-acts/tina-the-rockettes-97769">www.entertainersworldwide.com/tina-turner-tribute-acts/tina-the-rockettes-97769</a>
17.30	Ultra Jam	<a href="http://www.90sjam.co.uk">www.90sjam.co.uk</a>
18.00	Lady Gaga	<a href="http://www.donnamarie.net">www.donnamarie.net</a>
20.00	<b>CLOSE</b>	



## WEDNESDAY MARKET:

TIME	PERFORMERS
10.30	Beverley Garland Dancers
11.00	High Flyers
N/A	Juggler/Unicycler
N/A	Circus Workshop
N/A	Unicycling Knights
N/A	Balloon Modeller
N/A	Stiltwalkers
N/A	LED Hula Hooper
N/A	Facepainter



## BEVERLEY PLATINUM JUBILEE CELEBRATION



## JESTER AREA 1 - CORONATION GARDENS AND ST MARYS:

TIME	AREA	ACTIVITY
10:00-17:00	Coronation Gardens	Vintage games
12.30	Coronation Gardens	Blessing and Covid remembrance Rvd Lumley
13.30	St Marys Church	Dance show
14.30	St Marys Church	Beverley Betrayal
15.00	North Bar Within	Great Get Together (Tea Party Area)
16.30	St Marys Church	Beverley Betrayal
18.00	<b>CLOSE</b>	



## JESTER AREA 2 - TOLL GAVEL CHURCH:

TIME	AREA	ACTIVITY
10:00-18:00	Driveway	Scrap store
10:00-18:00	Driveway	Labtastic
10:00-18:00	Church	Softplay
10:00-18:00	Cafe	Refreshments



## OTHER ATTRACTIONS:

TIME	AREA	ACTIVITY
10:00-18:00	North Bar Within	Scrap store
10:00-18:00	Saturday Market	East Yorkshire Thoroughbred Car display
TBC	Beverley	BBFM - Hurricane
N/A	Beverley	Jubilee Trail - High Street Safari



## MERCHANDISE:

ITEM	COST	ITEM	COST
Commemorative Pack	£22.27	Mug	£6.77
Teddy	£8.97	Badge	£2.97
Tea Towel	£6.27	Postcard	£0.50







**BEVERLEY**

PLATINUM JUBILEE  
CELEBRATION



**YOU ARE HEREBY INVITED TO  
THE CELEBRATION OF THE  
QUEEN'S PLATINUM JUBILEE IN  
BEVERLEY**

**FRIDAY 3RD JUNE 10AM - 8PM**

- The Big Jubilee Tea Party
- Platinum Party at Flemington
- Platinum Jubilee Proms
- Platinum Jubilee Pageant

• Little Jesters  
And More...



Visit the website

[www.beverleyjubilee.co.uk](http://www.beverleyjubilee.co.uk)

to find out more

Follow us on social

Facebook: **Beverley Platinum Jubilee Celebration**

Instagram: **@beverleyplatinumjubilee**



**BEVERLEY  
TOWN COUNCIL**  
WORKING AS A COMMUNITY



**EAST RIDING  
OF YORKSHIRE COUNCIL**





## EVERY THURSDAY

**(Doors open 10am)**

Join us for a free brew and enjoy some great films on Beverley Parkway's Big Screen.

Only £4.50 with drink and biscuits included.  
Aimed at 55s & over.  
Films subject to change.

### Thursday 5th May -

**Dog (12a) - 10.45am**

Starring: Channing Tatum, Ryder McLaughlin, Aavi Haas

**Cyrano (12a) - 10.30am**

Starring: Peter Dinklage, Haley Bennett, Kelvin Harrison Jr.

### Thursday 12th May -

**Cyrano (12a) - 10.45am**

Starring: Peter Dinklage and Haley Bennett, Kelvin Harrison Jr.

**Death On the Nile (12a) - 10.30am**

Starring: Kenneth Branagh, Gal Godot, Annette Bening

### Thursday 19th May -

**Death On the Nile (12a) - 10.45am**

Starring: Kenneth Branagh, Gal Godot, Annette Bening

**The Duke (12a) - 10.30am**

Starring: Jim Broadbent, Helen Mirren, Anna Maxwell Martin

### Thursday 26th May -

**The Duke (12a) - 10.45am**

Starring: Jim Broadbent, Helen Mirren, Anna Maxwell Martin

### A Special Presentation

**Make It a "Royal" Appointment  
Seen To Be Believed - 10.30am**

A new film by the Yorkshire and North East Film Archives to mark The Queen's Platinum Jubilee. It draws inspiration from a famous remark by the Queen "I have to be seen to be believed"

These are the films scheduled to open in April/May - all are subject to change.  
Check out up-to-date cinema listings at [www.justbeverley.co.uk/cinema-times](http://www.justbeverley.co.uk/cinema-times)



April 29th



May 5th



May 13th



May 13th



May 20th



May 25th



# YOUR LOCAL INDEPENDENT CINEMA



## JOIN US FOR SOME GREAT FILMS AND BIG EVENTS THIS SPRING

### JON RICHARDSON - WORK IN PROGRESS

*We are delighted to announce that Jon Richardson will be performing live on stage at the Parkway Beverley on Sunday 8th May at 8pm*

Work in Progress - Join Jon Richardson trying out some material ahead of his much anticipated nationwide tour!

Tickets are now available via the website.

**SOLD OUT IN 5 HOURS!**



### CON AIR - 25TH ANNIVERSARY SCREENING

*Join us on Sunday 1st May for the 25th Anniversary of a classic - Con Air.*

Just-paroled army ranger Cameron Poe (Nicolas Cage) is headed back to his wife (Monica Potter), but must fly home aboard a prison transport flight dubbed "Jailbird" with some of the worst criminals living. Along with Diamond Dog (Ving Rhames) and Baby-O (Mykelti Williamson), genius serial killer Cyrus "The Virus" Grissom (John Malkovich) unleashes a violent escape plot in mid-flight. Secretly working with U.S. Marshall Vince Larkin (John Cusack), Poe tries to foil Grissom's plan.



### A-HA - THE MOVIE

*Friday 20th May sees a special preview of this music documentary.*

When Take On Me reached number 1 on Billboard in the US in 1985 that dream came true. Almost 35 years after their breakthrough, a-ha still creates magic on stage with their melancholic and timeless music. They tour the world but drive in separate cars and stay apart backstage. They only meet on stage, while doing the one thing they love. The film closely portrays the challenging creative and personal dynamics of a group of three strong individuals. This is a story of great music, big ambitions, broken friendship and maybe forgiveness.



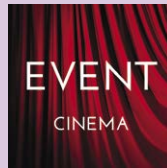
### "CANS" FILM FESTIVAL - SEEN TO BE BELIEVED

*The "CANS" Film Festival is back - and to help, you can make a "royal" appointment on 26th May at 10:30am and 2nd June at 10:45am.*

A new film by the Yorkshire and North East Film Archives to mark The Queen's Platinum Jubilee. A narrated film that takes an affectionate look at how the people of Yorkshire and the North East celebrated coronations, jubilees and royal visits through the decades. It draws inspiration from a famous remark by The Queen "I have to be seen to be believed", with footage made solely by Yorkshire and North East filmmakers, both amateur and professional.



Admission is one can of food which will be donated to the East Yorkshire Food Bank. Cans that would be most appreciated are tinned tomatoes, baked beans, tinned fruit and tinned custard.



Event cinema offers something a little different to mainstream films. Live and pre-recorded shows beamed in via satellite from all over the world. Here are the latest live streams that you can enjoy on the big screen at Parkway Beverley.

**Thursday 19th May, 7.15pm &  
Sunday 22nd May, 2pm -  
Royal Opera House - Swan Lake**

The Royal Ballet's version of this classic love story mixes spectacle, mystery and passion.

**Tuesday 24th May, 1pm & 7.30pm -**

**Exhibition On Screen: Pissarro**  
Without Camille Pissarro, there is no Impressionist movement. He is rightfully known as the father of Impressionism.

**Thursday 26th May, 7pm -**

**National Theatre Live: Straight Line Crazy**  
A new play by David Hare.

**Thursday 21st July, 7pm -**

**National Theatre Live: Prima Facie**  
Jodie Comer makes her West End debut in the UK premiere of Suzie Miller's award-winning play.

## LIVEshows

**Sunday 1st May, 2.30pm -**

**Peter Arden Memorial Concert**  
The City of Hull Band invites you to the Peter Arden Memorial Concert.

**Thursday 12th May, 7.30pm -**

**Beverley Rocks**  
Remarkable Arts brings you the very best of Rock!

**Sunday 17th July, 7pm -**

**The Upbeat Beatles**  
There isn't a band to touch them - 8 bars of "Twist and Shout" and you will know why!

**Sunday 24th July, 12pm & 3pm -**

**The Queen's Knickers**  
New musical adaptation of children's book 'The Queen's Knickers'.

**Sunday 11th September, 7pm -**

**Kinda Queen & The Tom Petty Experience**  
With a high paced setlist guaranteed to get you singing and dancing, they will leave you wanting more.



# BROOK TAVERNER - GETTING READY FOR SUMMER

*And just like that, we're nearing the halfway point of the year here in Beverley. The sun is (every now and then) shining, flowers are in bloom and we're truly on the road to summer!*

It's been a pleasure to welcome so many new faces into store this year, and we're eager to assist more and more of you in the pursuit of lasting comfort and timeless style as the year goes on.

We're entering a time of year that's all about dressing to impress. Whether that's through garden barbecues, trips abroad or attending long-awaited events, it pays to look your finest when getting back out into the world! Nothing can help with this more than the Brandsby floral jacket. Newly arrived into store, this staple is seasonal boldness personified. A one-of-a-kind piece, the Brandsby makes a sartorial statement at any event, equipped with a floral motif that can set you apart subtly. Made from a cotton-blend fabric, an unparalleled ease of



movement is yours, with an accommodating stretch that's worth its weight in gold for longer days when comfort is paramount.

When more casual affairs come calling, why not opt for the Magnus denim overshirt? A composition of cotton and linen, mixed with a hint of elastane for comforting stretch, prioritises comfort with heavy dose of understated style to boot. Pair this laid-back must-have with cargo trousers or chinos for an effortless off-duty appeal, and layer with our new Henley style T-shirts to put a contemporary twist on a classic look!



In need of a summery showstopper? The Ribblesdale stretch chino more than fits the bill. The collection's colour palette oozes the essence of summer, with soft pastel hues to correspond with almost everything in your wardrobe! Not to mention a comfort waistband and hint of elastane that allow them to move with, and not against you. What's more is, these tempting trousers are available as shorts too,



making you especially spoilt for choice when warm weather rolls around...

Put an eco-conscious spring in your step with our brand new 'Tales of the Sea' shirt collection. Made partially from recycled plastic, you can don vibrant new designs while reducing your footprint, so you can be kind to your wardrobe and the environment! These unique summer go-to's use aquatic illustrations with aqua and sea blue shades to truly embody the coast, whether you're navigating a city or strolling sandy stretches of beach! We hope you can visit us soon to enjoy all we have to offer from our new collection, and if there's anything we can do to help, no matter how big or small, do let us know!

**Many thanks,  
Lee and The Brook Taverner Team.**

Our 2022 Spring/Summer collection is now in store

**OPEN**  
9am to 5pm Monday to Saturday  
11am to 4pm Sunday

[www.brooktaverner.co.uk](http://www.brooktaverner.co.uk)

**BROOK TAVERNER**

35, TOLL GAVEL, BEVERLEY. 01482 882356



# SAVING UKRAINIAN BEER!

**Kicked off on the 25th March, the initial plan of Euroboozer was to rescue roughly 45,000 pints of beer from Varvar Brew, which has had to close down since the invasion.**

The brewery was desperate to sell its stock to raise much-needed funds for food, medicine, to pay taxes and wages, and to support the country as a whole.

Euroboozer then, with much difficulty, organised for the first lorry to set off from Kyiv on the 31st March. The lorry passed the Ukraine border on the 4th April and safely arrived at Euroboozer HQ on Friday 8th April.

Varvar Brew is an independent and ambitious craft brewery founded in a former sawmill in Kyiv, Ukraine, in 2015.

With a passion for brewing great beers, the brewery has garnered a loyal following within Ukraine's burgeoning craft beer scene.

Running two brewhouses - 2,000 L and 500 L, they produce over 750,000 L of beer per year across four lines; traditional craft, modern craft, barrel-aged and sours, and experimental.

Ukraine is the breadbasket of Europe so the brewery often incorporates fruits, berries



and herbs, as well as some more unusual ingredients - tomato, gherkin, horseradish, beetroot, birch sap and seaweed into its recipes.

Taking great pride in representing their country at international competitions, festivals, and in collaborations, the brewery aims to show the world what Ukraine has to offer.

Some of the brewery's recent tours of the UK have included collaborations with Siren (Mavka, imperial porter), Marble (Reminiscence, old ale), Pomona Island (Ratamahatta, NEIPA), Carnival (Muddler, imperial gose), North (Smoked Stout, stout), Heist (Limbo Shots, NEIPA), and Neon Raptor (Rise & Paul, NEIPA).

We currently have over 18 different beers from Varvar Stocked so pop in to discover more, I'm sure these won't last long!



## VINE & GRAIN

CRAFT BEER, WINES AND SPIRITS

MENTION "JUST BEVERLEY" FOR 5% OFF YOUR FIRST PURCHASE\*

(\*one per customer, not to be used with any other offer)  
\*Excludes old and rare products. Valid until 01.06.2022

34 BUTCHER ROW, BEVERLEY, HU17 0AB

@VINEANDGRAINBEVERLEY



# YES, WE CAN

*In 2019 we at Atom invested in our own canning line. We did this to lower our carbon footprint and maintain the high standards that our beer is known for. This also makes everything we sell fully and easily recyclable. What we never considered was that it would become the key to getting through the pandemic.*

So why do we can beer? For years, the best beer has been kept in bottles or casks (and it is still the best way to age a dark beer) but canning has the added advantage of not letting the flavour of the beer be affected by exposure to light.

Because of this we can guarantee a solid and reliable flavour profile across both our core range and the limited runs that we brew.

Canning has allowed us the advantage of easier shipping; this means that we have access to beers from all round the UK as well as from around the



world, including most recently from Varvar Brewery in Ukraine.

Our beer also gets shipped worldwide including to France, Italy, Germany and even much further around the globe to New Zealand and Australia.

Sending our beer out to so many different countries gives us the privilege of sharing our brand, our image and, of course, our beer with a much wider, global, community.

During the COVID pandemic, we had to adapt our business to cope with the changes to the market, the high street and the world in general. We have found that buying cans to enjoy at home is still popular though, so we make sure our fridges are always full of plenty of local, and not so local, guest breweries as well as a full range of our own cans.

When we bought and set up our canning line it wasn't just for the advantages it lent towards the sustainability of the quality of our beer, but also for the sustainability of the planet.

What we hadn't realised was how the canning line would allow us to open and grow as a local and international business through unprecedented and awkward times. But we are thankful that the trusty aluminium can helped see us through and



continue to preserve our future as well as our beer!

You can find our cans in our bar on Walkergate or you can hop over to our website [www.atombeers.com](http://www.atombeers.com) and have it shipped to your front door.

We look forward to seeing you and chatting all things beer.



  
**ATOM**  
 BAR BEVERLEY




**OPENING TIMES**  
 MONDAY CLOSED  
 TUESDAY 4PM-10PM  
 WEDNESDAY 12-10PM  
 THURSDAY 12-10PM  
 FRIDAY 12-11PM  
 SATURDAY 12-11PM  
 SUNDAY 12-8PM





**7 NEW WALKERGATE  
 BEVERLEY  
 HU17 9EH**





# CREATE AN OUTDOOR SPACE YOU LOVE

**FREE LOCAL  
DELIVERY**

Open to  
trade and public



*Scan to view  
products*

Explore our range of landscaping materials at MKM Beverley.  
Visit our branch landscaping display or speak to one of our  
specialists who can help you find the right product for your space.

## **SWINEMOOR LANE**

HU17 0JX | 01482 880088 | mkmb.co.uk  
OPEN MON-FRI 7:30-17:30 SAT 7:30-NOON

**MKM**  
BUILDING SUPPLIES

PAVING | DRIVEWAYS | DECORATIVE AGGREGATES | DECKING | FENCING



# WHITE RABBIT - WHAT HAPPENS TO LEFT OVER EASTER EGGS?

*Easter is the bumper time for every chocolate company. Although Christmas is the busiest season across the whole economy, Easter waits not long after and is like a second 'mini-Christmas' for anyone who sells chocolate.*

Even businesses without Easter-specific eggs will still see elevated sales as we all make a dash to stock our cupboards with our favourite treats and those that gave up chocolate for Lent prepare to make up for lost time. But, lacking a crystal ball, how does the industry prepare for the onslaught, and what happens to any eggs that don't sell?

This is a perplexing problem for the whole industry, but one that affects the mass-market and wholesale the most.



**HOP ON DOWN TO**

# WHITE RABBIT

— for handmade, quality treats —

*A taste of wonderland...*

16 Dyer Lane, Beverley, East Yorkshire, HU17 8AE  
Tel: 01482 679325  
Order online: [www.whiterabbitchocolatiers.co.uk](http://www.whiterabbitchocolatiers.co.uk)

If you are a big store buying in your Easter eggs there is very little you can do if you over-prepare. Or, if you make a million eggs and sell 99% that's still 10,000 boxes of product with no-where to go (nationally roughly 80 million eggs are sold each year and not many places completely sell out).

Businesses with the longest supply-chains have one genius solution: they make sure to have a best-before date of over 18 months. It impacts the quality, but that way any that don't sell can simply be sold first the following year. So if you were an early-bird and happened to purchase a big-store Easter egg you can check the best before date to see how long it's been sitting in a warehouse before you eventually bought it (and it might explain why it has that slight cardboard taste).

Smaller and artisan companies are still in a tricky spot. Hand-making eggs is a physically challenging process, requiring you to hold heavy up-turned moulds in your fingers as you bash out excess chocolate, over and over again. For this reason, there are only so many eggs you want to overshoot by as all that hard labour amounts to nothing.

On the other hand, there is nothing worse than a disappointed customer on Easter-eve, so tuning this balancing act is almost impossible.

On top of that, fresh chocolate doesn't have years of shelf-life so it cannot be sold the following year. Of course, you can still sell a few at a discount after the big day, but in my years I have learned it is very hard to sell an egg after Easter without making a loss.

For those ethically-conscious businesses thinking about sustainability waste is an absolute no, so our plan for leftover eggs is three-fold.

First, Easter week is still during the Easter holidays, so we have put together a fantastic seasonal treat. Eggs are cracked in half to make an open shell, and we are serving this filled with your choice of ice-cream, unlimited toppings, drizzled hot chocolate fudge sauce and topped with whipped cream to finish. Decadence at its finest!

Second, for those eggs that never made it onto the shelves due to mishap or breakage, our incredibly popular broken bits is where they go. We make up bags of broken chocolate and sell it off at a discount and they are much loved because they contain 'a bit of everything' and you can rummage around to find the one that tempts you the most.

Finally, for those pristine eggs that were made just days before Easter, our third solution is to simply re-melt the chocolate and make it into something else. Chocolate can be re-melted and cast several times without impacting the quality or flavour, so in this process all that is lost is the time and energy spent in the twilight days of Lent making sure no one is left out- heart-breaking and yet worth it to please that final customer.

So that's it, even if we do over-produce our eggs we can still come out with almost zero waste and a few amazing treats on the side too! So grab them while you can.

**Ed Hawkes, White Rabbit Chocolatiers.**





# I'VE BEEN THINKING... SAYS COLIN RAYNOR

*People who have felt the loss of a friend or relative have known grief in so many different ways. This is the story of one couples experience.*

It felt strange going into Auntie's house knowing she would not be there sitting in her old arm chair. Her greeting was always the same.

"Oh, it is good to see you both." Then looking directly at me she would always ask the question. "How is your mother doing these days."

We knew, that she knew, that my mother had died some years ago. But we also knew that she didn't want an answer. It was her way of saying I know who you are. Auntie would then talk like a tap that pours out water and you wonder if it would run dry if you didn't turn it off.

Auntie had passed away a few weeks ago and the executor had asked us to make one last visit to the house to see if there was anything we might wish to have.

We didn't want anything but both agreed to make a visit. Perhaps we wanted to say farewell to someone who had been a part of our lives for as long as we could remember. Or maybe we also knew we would not make that journey again.

Never again marvel at her well kept garden.

No need to travel down her road, ever again.

Auntie had been expected to die in hospital but she had held on to her intention to leave this

mortal coil from her own arm chair and she had breathed her last in the chair we now gazed upon.

The same chair she was in every time we visited and we asked ourselves, when did we see her standing. It did not require either of us to sit in the chair. Indeed that seemed just the wrong thing to even consider.

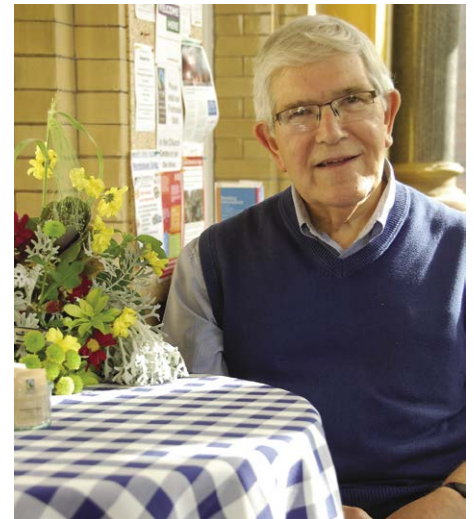
So intent were we on just looking at this chair soon we were taken back to listen to Auntie's voice. A widow for many years she loved to have visitors and once she started talking it was difficult to get a word in.

"Do you want a drink Auntie", I would ask as she stopped to draw breath before continuing her genealogical gyrations. Sometimes I would get an answer. "Not really, but if you want one help yourself."

One question my wife would ask was about food. Diagnosed years ago as a diabetic Auntie just seemed to eat whatever and whenever she fancied. "What did you have for your breakfast Auntie?"

Invariably she would give a reply that mentioned toast and marmalade without stopping the flow of words concerning her late cousin's budgie. It appeared the budgie had survived nearly two weeks after the death of its owner before anybody took the cover off its cage.

Neither my wife or I had ever heard of this cousin and definitely never heard of any dead budgie but we also knew this was important for Auntie to



tell us about it, again. Can words leave a scent or flavour in a room?

If all the words spoken over the years by our beloved Auntie were of a tangible nature they would surely occupy every square foot of this 'very desirable residence'.

These were words from the estate agents of course because that is the type of language they use as they try to sell houses by the amount of square footage, such information having absolutely nothing to do with who might previously have occupied the house.

As we moved to close the door, knowing we would not enter that place again, perhaps it was significant that the house lights flickered once and then went out before we even touched the switch.

LEWIS NORTHEN  
FUNERAL DIRECTORS



MY FAMILY TAKING  
CARE OF YOURS



Get In Touch  
1 Lincoln Way, Beverley, HU17 8RH  
info@lewisnorthenfuneraldirectors.co.uk  
www.lewisnorthenfuneraldirectors.co.uk  
01482 888 658



Born and raised in **Beverley**, we are proud of the funeral services we offer to our local community.

As a family business we want you to have confidence in us to support you from the first point of contact, throughout and thereafter. The moment your loved one comes into our care they will be treated with care and respect. We offer a comprehensive range of funeral services ensuring you receive the perfect funeral service for your loved ones.

We are available 24 hours a day, 365 days a year, we will guide and support your family throughout.

## My family taking care of yours

### Giving the personal touch to funeral services in Beverley and surrounding areas.

Funeral plans, memorial jewellery, available 24/7 365 days a year.



# LET'S TAKE A WALK AT COTTAM AND COWLAM

**Cottam, and nearby Cowlam, nestling in the high Wolds just north of Driffield, are two of the least-known hamlets in our area.**

They are linked by a splendid series of sinuous dry valleys that offer the most tranquil of walks. You probably won't see another soul on this route.

Each has a fascinating church; Cottam's is a picturesque ruin, and Cowlam's sits, most strangely, in the midst of a farmyard. The stroll is around 5 miles long and should take you about 2 and a half hours.

On a warm day, such as one I greatly enjoyed in March, the route is full of perfect picnic spots. It is possible to reach the route by walking from the bus or rail connections in Driffield, but that adds 4 miles each way, so for most a car is essential. Cottam is reached by a signed minor road off the

B1249. Turn left about a mile before Langtoft.

**1.** There is usually room to park cars at the junction of the Cottam Road with the lane that leads down to Langtoft (YO25 3BY.)

Follow the way-marked farm track for 200 yards to a gate in the corner of the field. This gives access to what is widely regarded as one of the best deserted village sites in the country.

The earthworks from many buildings and the holloways of the village tracks are easy to spot. The ruined church is still standing but now fenced off for reasons of safety. It was a thriving settlement in medieval times with over 70 taxpayers but by the eighteenth century the arable land had been converted to a profitable rabbit warren and the people and homes were removed.



Follow this fine valley as it curves and passes a well, a vital water supply for the people above at Cottam in former times.

**3.** At a clear junction of two valleys and paths, our route heads through gates to your right to enter the fine wooded valley of Cowlam Well Dale. Keep to the left, another route heads right before a plantation.

Our track rises steadily out of the valley and joins a farm track, which soon winds round to reveal the odd sight of a church in a farmyard. Cowlam St. Mary, usually open to visitors, is largely a Victorian rebuild of the old church but it does have a glorious Norman front with carved figures of wrestlers and bishops.

Cowlam, like its near neighbour, was formerly a large village, and some of its buildings can be seen as earthworks near the church. Now it is just a scattering of homes and farms.

**4.** Turn left onto the normally quiet lane of Spellowgate, which heads towards Driffield. You walk this for a mile, take care of traffic, but there are verges and sweeping views across the county.

**5.** At the bottom of the hill, look for a way-marked path to the left up the dry valley that leads back the mile and a half to Cottam. The gorse was in bloom here in early April.

Head back past the church to your vehicle. You might, however, also care to visit the very well preserved RAF Cottam airfield, which can be accessed by a path shown on the map at **6 & 7**.

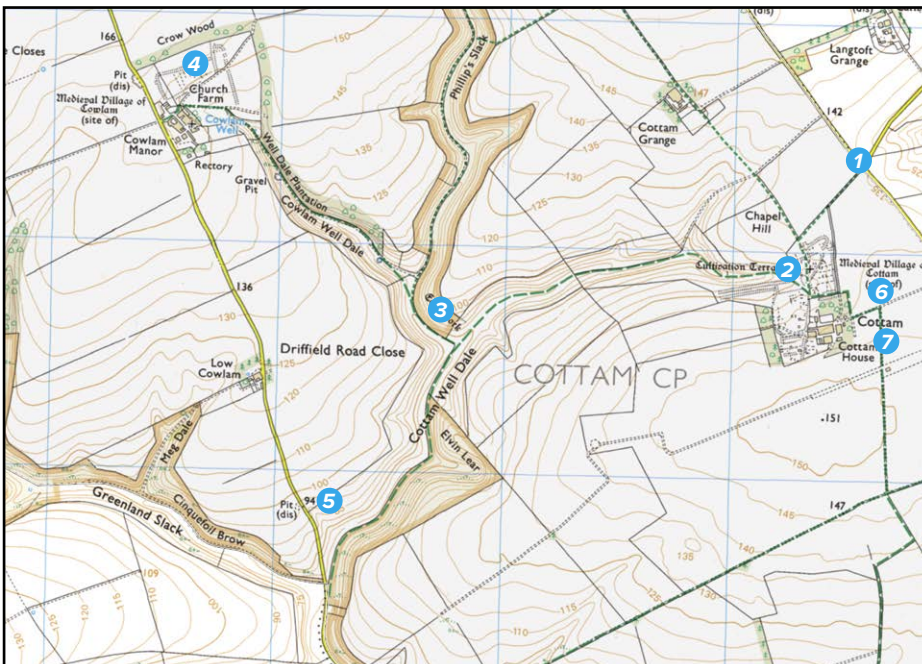
This skirts Cottam House Farm and leads to the runways. It was meant to be an active WW2 bomber base but could not be used due to the high terrain and strong winds in such an exposed location.

Be prepared for sudden changes in the weather on this walk - on Friday April 1st it put me in mind of the classic Crowded House tune - Four Seasons In One Day!

Ian Richardson.



**2.** Our route heads steeply down the pronounced dry valley of Cottam Well Dale ahead. It is worth looking at the handsome Georgian farm house to your left by the trees, probably built by the landlord who removed the village.



HERE TO GET *you* THERE

**HUNTERS**<sup>®</sup>  
EXCLUSIVE

BEVERLEY / 01482 861411

# IN MY VIEW...NEW PHOTOGRAPHY COLUMN WITH SARA KRUGER



**Hello and welcome! I am excited to share my new photography column with all of you.**

Beverley-based, and constantly on the lookout for a great shot, I hope to share an array of photography hints and tips that will

hopefully inspire and encourage a new or existing passion.

I have been taking photographs for as long as I can remember. I see inspiration everywhere. I love capturing details or seeking out views that may get overlooked.

Further to this, I also do photography for our much-loved East Riding Theatre, which is an absolute privilege and a joy.

Be sure to look out for some of my work in *The Hound of the Baskervilles* programme!

In the coming months I would love to share my knowledge with you, and cover all kinds of topics: how to get the best out of your camera, creative ways to frame your shots, colour temperature, editing, night photography, aquarium photography, wildlife, street life, black and white, smart phone photography - the list goes on.



Photography is a brilliant way to get out and about, take in your surroundings, get a bit of exercise and express yourself.

So, whatever means of taking photos you have, there will be something here for everyone. We live in a beautiful place, so get your camera and come



on an adventure with me.

**Instagram: @sara.kruger**  
**Facebook: @S.J.K.Photographic**



## Bev 'N' Ley Make A Mayor



**Fog blankets the Market Square. In their home above the Market Cross, Bev reads contentedly beside the cosy fire. Ley's nose squishes impatiently against the glass.**

"The parked cars look like ghosts," Ley says, the beaver's breath mists on the window. Ley draws a smile in the cloud, then leans closer.

A figure in a bright red cloak and a large three pointed black hat glides through the morning chill.

"Wow! There's a pirate in town!"

"Pirate?" Bev smudges away their drawings to see - "That's not a pirate, that's the mayor. They're wearing the chains of office."

Eager for fun, Ley races off. Thinking quickly, Bev heads straight for the Guildhall. Footsteps echo in the ornate courtroom.

"I didn't know there was treasure in Beverley. Quick! Help me hide it before the pirate gets here." Ley says, carrying a heavy golden rod topped with a crown. Bev looks on, horrified. "You can't hide that! They need it for the Mayor

Making." "How do you make a Mayor?" Bev returns the rod. "Councillors elect a new mayor." Ley looks at the grand portraits.

"There's been lots of pirates - errr, I mean mayors." The cheeky beaver corrects, seeing Bev's expression. "They have a ceremony."

"Like a party?" Bev smiles, "A bit." Ley waves a paper flag with the number seventy on it. "Is that why these are here?"

"Oh!" Bev claps with glee. "They are for the Queen's Platinum Jubilee." With another wave, Ley swaps the flag for an important-looking invitation. "Flemingate cordially invites you to a Live Music Platinum Party."

"Oh! I love music!" Bev dances around the impressive room. "This poster says that there's going to be a special area, for..." Ley pauses. "What's this word?" Bev leans over to see. "Theatians. It means actors, or people who like performances."

"Acting's fun." Ley's eyes shine as an idea forms. However, the plans for the Jubilee distract Bev. Suddenly silence settles. "It will be a busy day." Bev muses then notices Ley is gone. "Busier than Ley is today!"

As Bev searches East Riding Theatre, Ley leaps from the dressing room. "Avast! I'm Captain Ley, of

the North Sea!" Bev shrinks back in fear, then laughs when Ley swishes a play sword. Ley digs through the shelves. "What's this?"

"A pipe. It's a prop for the Hound of the Baskervilles." Bev reveals a leaflet for the play showing a scary black dog. "Oh, that's fierce," Ley says and dives back into the rails of costumes. The beaver reappears wearing a fairy wings.

"Oh, me too!" Bev says, and wriggles into a bee costume. The pair spend the afternoon dressing up.

"You know, I heard the actress talking about a Jubilee Tea Party. It's going to be right next to our Market Cross." Ley tells Bev once they are home.

Bev poured invisible tea into a make believe cup and offered it to Ley. "I love tea parties!" The blue beaver pretends to take a sip. "You'll love all of it because it's going to be amazing."

**Storyline: Michelle Horst.**  
**Illustration: Jasmine Stephenson.**



SALES / LETTINGS / MANAGEMENT

**HUNTERS**  
HERE TO GET *you* THERE

BEVERLEY / 01482 861411



# ADULTS CAN STILL STUDY FOR FREE AT ERC

**A lot has changed in the funding of 'lifelong learning' over the years, but there are still courses adults can study for free at East Riding College.**

The provision of learning to adults has always been one of the foundations of the College's commitment to the community in the East Riding. Whether people want to study to retrain for a new career, to further their knowledge and skills in the career they're in, or whether they just have a thirst for knowledge, the College has much to offer.

The Government launched the National Skills Fund in 2021 and have extended it to pay the course fees of any adult aged 19 and over, who does not already have a level 3 qualification or higher.

Level 3 is equivalent to an advanced technical certificate or diploma, or A levels. Anyone in this category can access one of many fully funded



level 3 qualifications. In addition, from April 2022 any adult in England earning under the National Living Wage, which is the equivalent of £18,525 annually, or who is unemployed, will also be able to access one of these qualifications for free, regardless of their prior qualification level, as long as they have not previously benefited from the National Skills Fund Scheme. This is not a loan and there is nothing to pay back.

This offer is part of the Government's long-term commitment to help everyone gain skills for life. Courses are available in a variety of lengths, to support adults to get the skills they need to boost their careers. Courses that are eligible for the scheme range from care, counselling, leadership and management to computing and policing!

In addition to the National Skills Fund the College also offers a wide variety of free distance learning courses. These have been consistently popular and present adults with an opportunity to learn at their own pace, at their own convenience.

Distance learning courses are designed to be completed in your own time as self-study rather than in a formal teaching environment. Students have an initial induction and ongoing help from a tutor. You are provided with learning materials and a workbook to complete.

The great thing about these courses is that you can complete them anytime and anywhere, to fit around a job or other responsibilities. They are nationally recognised qualifications and



subjects that can be studied for free with East Riding College include: Dementia Awareness, Understanding Autism, Infection Control, Nutrition and Health, Digital Skills, Environmental Sustainability, Team Leading, Business Admin and Mental Health, to name but a few.

Furthermore, if you want to get into teaching, there are even bursaries available to trainee teachers of certain subjects, where you'll be paid to train. The Government are particularly encouraging people from skilled professions to teach in further education, without giving up their employment.

To find out more about any of these options, go to the College website at [eastridingcollege.ac.uk](http://eastridingcollege.ac.uk)

## WILL YOU GET AWAY THIS SUMMER?

**After two years of cancellations, postponements and problems obtaining refunds are you hoping to book a summer trip that happens this year?**

Were you affected once, or twice, by Covid cancelled holidays? No one can predict what the Covid Pandemic will do next. However, you can maximize your chances of fruitful summer travel plans with a few simple steps.

Carefully research your destination. Whether your plans are for the UK or further afield consider what restrictions, tests or similar are required.

Would you prefer no constraints such as in the UK, which may be considered risky, or the inconvenience of meeting locally imposed limits on your activities elsewhere?

Book your trip early as demand is increasing and it is very unlikely that prices will fall during the summer. Check if the travel operator offers any flexibility in dates, cancellation and rebooking. Also carefully review your travel insurance to ensure that a trip shortened or cancelled due to Covid is covered.

Travel agents and travel companies will offer even more advice and tips to help you enjoy your summer, wherever you venture to.

I have personally used the above and will be taking a short break in Madiera this summer.



Enjoy your holiday and please send an e-postcard to [dave@eastridingwills.co.uk](mailto:dave@eastridingwills.co.uk)

## Will You Leave it?

**Protect your family and assets make a will today.**



## Stop Putting it Off

For a free no obligation home visit contact, Beverley based, Dave Tunstall **now**

**07939085752**

**dave@eastridingwills.co.uk**



Family friendly wills in the East Riding and further afield.



# CROSSING BORDERS FROM THE DANUBE TO THE HUMBER

**Beverley Art Gallery has opened its doors to a new exhibition under curator Dr Gerardine Mulcahy-Parker.**

The exhibition introduces the work of Austrian-born sculptor, Alfred Gruber, and his friends. "Crossing borders from the Danube to the Humber" takes you on the journey that inspired Alfred Gruber to produce such wonderful sculptures, ending with Alfred settling in East Yorkshire in 1969.

An artist with such a great vision and inspirational to many always looked to push boundaries, so much so that failure led to success pushing and developing ideas that people once thought impossible. A lot of his finest work came on the back of such experiments to see how far he could push his sculptures. Along the way Alfred enjoyed new friendships and it was the particular relationship he forged with sculptor Jacqueline Stieger that brought Alfred to the beautiful county of East Yorkshire.



The exhibition has been supported by Arts Council England, the Anglo-Austrian Society (Otto Harper Award) and Czech Centre London, and runs until Saturday 2 July. Exhibition Curator, Dr Gerardine Mulcahy-Parker, said: "It has been a journey in itself and a joy to research the story of Alfred and his friends, to see how art can bridge the gap between language and culture as the title suggests 'crossed borders', to come together through a shared love of art. The exhibition is an opportunity for people to visit, understand and enjoy the variety of works on display, puzzle the methods and creative processes used to deliver such incredible works of art. Working together, developing together and growing together reminds us that barriers can be crossed if we wish to do so. Perhaps this message is as true today as it has always been but more pertinent than ever."

Entry to the exhibition is free and there is no need to book in advance.

## Tc Patisserie

*We* are now no longer a café, but still make our own patisseries and Tc Patisserie is now a French food shop to compliment our own products.

*We* have a daily selection of freshly made croissants, breads and patisseries.

*We* make reheat at home meals which can be bought over the counter or pre ordered, via our mailing list or messenger.

*We* can cater for any occasion, buffets, dessert tables or full 3 course meals can be arranged.

*We* are open Tuesday-Saturday 9am - 4pm.

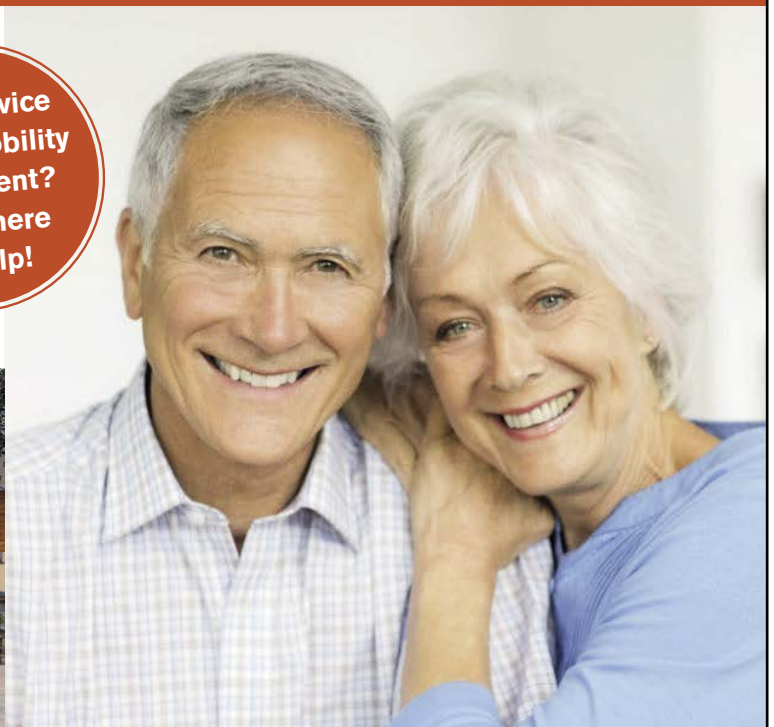


**Tel: 01482 887799**  
**Email: info@fox-mobility.co.uk**

**Fox Mobility**  
**110-112 Walkergate**  
**Beverley**  
**East Yorkshire**  
**HU17 9BT**

- **Stairlifts**
- **Riser Recliner Chairs**
- **Walking Aids**
- **Power Chairs**
- **Scoters and Accessories**
- **Servicing and Repairs for your Mobility Equipment**

**Need advice about mobility equipment? We're here to help!**





# WHY HIGHER TAXES MAKE PENSION AND ISA PLANNING CRUCIAL

**Britons will soon face the highest level of tax since the 1950s,<sup>1</sup> making it more important than ever that your financial plans involve both pensions and ISAs to maximise available tax allowances and options.**

As Chancellor Rishi Sunak sought to repair the nation's finances in the March and October 2021 Budgets, he hiked taxes at the fastest yearly rate since 1993.<sup>2</sup> Though Sunak also tried to ease some of the pain by proposing future Income Tax and Inheritance Tax cuts, individuals will still face a significant tax burden for the next few years.

In March, the biggest shock for many savers was the freezing of the pension lifetime allowance, which is already impacting thousands and will likely affect millions over their lifetime - even middle earners.

Then, in the autumn, the government announced a Dividend Tax increase of 1.25%, which means investors will have to pay more on their earnings. These changes mean savers may need to invest more to achieve their financial goals and they must make the most of their pension and individual savings account (ISA) allowances before the end of this and subsequent tax years.

Combining pensions and ISAs is not just for those affected by the lifetime limit. Rising tax bills mean all savers should think carefully and, ideally, take advice about how much they want to save into these two popular savings vehicles.

## **Why you should use pensions and ISAs together**

Pensions and ISAs are the most attractive savings options available to many people in the UK, and they have complementary benefits for the majority.

A pension is still the most tax-efficient vehicle available to UK savers as the government adds basic-rate tax relief to contributions, meaning basic-rate taxpayers make an immediate 20% gain on their investment.

For active members of workplace pension schemes, their employer also

contributes at least 3% of their qualifying earnings. Savers into personal pensions can access their pot freely from age 55 onwards, rising to 57 in 2028.

Those savers can also choose who receives their pension fund after they die, and pensions fall outside of your estate for Inheritance Tax planning.

ISAs offer tax-efficient investing, simplicity, accessibility and flexibility, which has made them a hugely popular savings option. Around £75 billion was invested in adult ISAs in 2019/20, £71 billion more than the previous year.<sup>3</sup>

Importantly, you don't need to wait until you're 55 to take money out of an ISA - you can access it anytime - so combining pensions and ISAs is a good way to plan for short, medium and long-term goals.

Also, there are various types of ISA, including cash, investment (also known as stocks and shares), lifetime and innovative finance. You don't pay tax on interest, income or capital gains in any of these ISAs, and you don't need to declare them on your tax return.

## **How to balance pensions and ISAs**

These complementary benefits mean whether to save into a pension or ISA is rarely a binary choice. A flexible and tax-efficient retirement plan will normally involve a combination of savings vehicles, which could include other investment types as well.

How to balance your mix of pensions and ISAs depends on your situation and preferences.

It's not straightforward to create the optimum mix while making sure your retirement income and estate plans are the right ones. That's where advice can make a huge difference to your future financial wellbeing.

Here are a few things to start considering:



## Live for today, plan for tomorrow

Like most people, you probably wish to pass on your wealth upon your death. But protecting your assets and ensuring they reach the right people at the right time can be a complex and onerous undertaking.

We offer a local, friendly service backed by the strength and security of FTSE 100 company, St. James's Place Wealth Management. We can guide you through the estate planning maze, making sure your wishes for sharing your wealth are met. Put your future in your own hands – let's start a conversation.

### **NAVIGATION WEALTH MANAGEMENT**

*Managing Partner Practice of St. James's Place Wealth Management*

01482 379504  
navigationwm@sjpg.co.uk  
www.navigationwm.co.uk



Navigation Wealth Management is an Appointed Representative of and represents only St. James's Place Wealth Management plc (which is authorised and regulated by the Financial Conduct Authority) for the purpose of advising solely on the group's wealth management products and services, more details of which are set out on the group's website [www.sjpg.co.uk/products](http://www.sjpg.co.uk/products).  
The 'St. James's Place Partnership' and the titles 'Partner' and 'Partner Practice' are marketing terms used to describe St. James's Place representatives.



<b>ISA and pensions - benefits at a glance</b>		
	<b>ISA</b>	<b>Pension</b>
<b>Can I have instant access?</b>	Yes	No access before age 55 unless due to severe ill health or protected retirement age.
<b>How much can I pay in?</b>	£20,000 each tax year	£3,600 gross or 100% of net relevant earnings (whichever is higher), subject to annual allowance limits (currently £40,000 but can be lower for high earners).
<b>How much tax will I pay on it?</b>	No Income or Capital Gains Tax on the growth	25% tax-free lump sum at retirement, Income Tax on the remaining 75%.
<b>What tax relief is available on my contributions?</b>	None	Immediate 20% available, higher/additional rate taxpayers can claim further relief via self-assessment.
<b>What happens when I die?</b>	Full value is included in your estate for Inheritance Tax (IHT) purposes	Pension funds are not currently included in your estate for IHT purposes. Death benefits are tax free if paid before deceased's 75th birthday, but subject to beneficiary's marginal rate of tax if deceased was over 75 at date of death.

#### **Using a pension to reduce tax and reclaim allowances**

Another advantage of personal pension contributions is that they reduce your taxable income, which means you can avoid losing certain benefits and allowances – and have more money to save or spend. Payments into an ISA don't provide those potential benefits as they come from your taxed income.

For example, if your net income is £125,140 or more this tax year, you'll lose all your entitlement to the personal allowance. But by making a pension contribution of £25,140, you could reduce your taxable income to £100,000 and get your whole personal allowance back.

Pension contributions can also help families keep their Child Benefit, which they would lose if one partner or parent in the household earns more than £50,000.

For example, someone earning £52,000 would have to repay 20% of any Child Benefit they receive via self-assessment. But if they contributed £2,000 (gross) into a pension, they could retain their full Child Benefit payment and avoid a tax charge.

What's more, investing into a pension can help higher-earning individuals bring their income below the additional-rate tax threshold of £150,000. In addition to the 20% basic-rate relief, higher or additional-rate taxpayers can also claim an extra 20% or 25% relief on pension contributions via your annual tax return.

#### **Options for income in retirement**

The retirement income you take from a pension is taxable, whereas you can access funds from an ISA anytime without any tax liability.

The tax savings on income taken from ISAs in retirement can be considerable. But, unlike pensions, the money you put into your ISA has had Income Tax applied before you invest it.

You can take 25% of your pension fund tax-free. Using that carefully together with the personal allowance means you can take pension income tax-efficiently.

Pensioners typically pay lower Income Tax rates than they did while they

were working. This means that, for the vast majority, the tax relief gained when putting money into a pension is more than the tax rate on the money taken out.

But using your pension together with ISA income gives you even more tax-planning options.

One more consideration is that most pensions are not subject to Inheritance Tax when you die. ISAs are subject to IHT, except when left to spouses or civil partners. So, you'll need to think about whether you want to prioritise income from your ISA savings to leave more of your pension benefits intact for beneficiaries when you die.

#### **Act now**

The 2021 Budgets sent a clear message that effective tax planning by using pensions and ISAs together is increasingly important for all savers – not just those affected by the lifetime allowance.

For individuals, it's wise to make full use of the allowances you're entitled to, to ensure you pay the appropriate amount of tax – not too much, not too little – while families should pool their resources to get the maximum value from their wealth.

The last few weeks of this tax year, and the beginning of the next one, provide immediate opportunities to help shore up your financial wellbeing. So get in touch for more advice.

The tax levels and reliefs can change at any time and depend on individual circumstances.

To receive a complimentary guide covering wealth management, retirement planning or Inheritance Tax planning, contact Navigation Wealth Management on **01482 379504** or email [navigationwm@sjpg.co.uk](mailto:navigationwm@sjpg.co.uk)

<sup>1,2</sup> *Overview of the October 2021 economic and fiscal outlook, Office for Budget Responsibility, October 2021.*

<sup>3</sup> *Commentary for annual savings statistics, Gov.uk, June 2021.*



**HASSLE FREE LETTING AGENT**





**Telephone: 01482 241261**

**Website: [www.emlets.co.uk](http://www.emlets.co.uk)**

**Email: [admin@emlets.co.uk](mailto:admin@emlets.co.uk)**

**Facebook: @EmletsLtd**

**Instagram: [emletsproperty](https://www.instagram.com/emletsproperty)**



## SHORT STORY - THE FIFTH ARM BY CLINT WASTLING

*Veronica awoke with a start, screaming.  
She tried to speak but couldn't.*

She was gasping for breath. There was a muffled "Who are you?"

Veronica looked at the arm on her shoulder. It was nearly morning and the birds had begun their dawn chorus.

She counted, two legs, two arms - her own and two arms, two legs - her husband's who was snoring gently as light gathered in their bedroom.

Between them a dismembered fifth arm, quite inappropriately hairy and the hand had five oddly unkempt fingers nails. The hand flexed open and turned over as though the rest of its owner resided somewhere else, invisible.

Bad dream?" Tony turned over.

"Everything alright love?"

Half asleep he snuggled up to the fifth arm.

"Tony!" Veronica overcame her revulsion of the hairy arm and leaned over to shake her husband awake again.

"Can't you see it Tony? I think I'm going mad!"

"What love?" Tony sat up in bed and rubbed the sleep from his eyes.

The fifth arm was hanging from his pyjama top. Veronica knocked it to the floor. "It was going for your neck!"

Tony stared at his wife in disbelief. He looked at her, then the dismembered arm laying on the carpet. It's fingers twitched. He turned on the bedside lamp, leaned out of the bed and picked up the appendage.

"The battery must have gone." He shook it a little. The fingers closed into a fist.

"It's part of Angelica's caveman model toy. We started building it last night but I hadn't realised the level of skill needed. I said I'd sort it with her today but our granddaughter must have brought it to me before going to sleep.

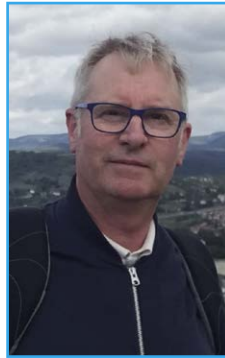
"Well, go and put it back in the toy box!"

Tony obediently did as he was told, got back to the bedroom and turned out the light.

"I'll need to attach it to the rest of the body in the morning!" He pulled the duvet over his head, sniggered then resumed his gentle rhythmic snoring. Veronica sat upright and plumped up her pillows.

She closed her eyes but every time she did the fifth arm was waiting.

*Clint Wastling is the author of Tyrants Rex, a fantasy story (Stairwell Books). His poetry collection Layers is available from Maytree Press.*



## POEM - CORK VILLA, BISHOP BURTON 1873 BY SAREENA.L.JARVIS

Come and view the intricate doll's house  
Carved lovingly from cork

The Blacksmith's fingers find pleasure in its creation  
Relishing the distraction as a refuge in soft materials

Away from the hellish work fires burning  
And singeing his sweating brow  
As the deafening metallic clanking and banging is replaced  
By the soothing rhythmic ticking clock on the mantelpiece

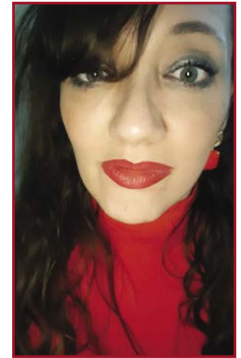
And his daughter's childish dialogue peppered with occasional laughter  
At the tiny lead cat and dog who are fighting over spilt milk in the kitchen  
The door is ajar as his little Rose plays out domesticated dramas in miniature

He ponders to himself as she bundles the baby carefully into the mother doll's arms  
Does she too miss his wife, feel the loss,  
Of a Mother she never got to meet?

He is daily tortured by an ache in the chest that feels empty and never ending

He once read in a newspaper that a lonely Queen Victoria  
Found comfort in an imagined world of her porcelain doll companions  
May it too serve as soothing balm for his most precious little girl  
Playing innocently on the floor with the intricate doll's house carved lovingly from cork.

*Sareena.L.Jarvis lives in East Yorkshire and enjoys writing poetry, plays and articles for museums and galleries. Her inspiration comes from nature, historical houses and a background in medicine.*



## Monks Walk Inn

19 Highgate, Beverley HU17 0DN

Tel: 01482 880871

[www.monkswalkinn.com](http://www.monkswalkinn.com)

**A WARM WELCOME  
TO ALL OUR CUSTOMERS**

- GOOD BEER •
- GOOD COMPANY •
- GOOD CONVERSATION •

*Enjoy Drinks & Chatter inside or outside  
at our Historic & Traditional Public House  
+ Large Outdoor Courtyard & Beer Garden*

*Look out for our Special Pizza Events!!*



**WE LOOK FORWARD TO SERVING YOU!**



SERVING FAMILIES SINCE 1872

# Your funeral wishes. Our local experts.

Funerals from  
**£995**

Unattended Funerals

Attended Funerals

Prepaid Funeral Plans



**We're here for you anytime.**

Whatever your wishes or budget, we can provide a funeral to suit you.

## FRANK STEPHENSON & SON

29 Minster Moorgate

Beverley

01482 881 367

[dignityfunerals.co.uk/local](http://dignityfunerals.co.uk/local)



We're proud to be a Dignity Funeral Director,  
providing exceptional services to families across the UK.

Pricing is correct at time of going to print and is subject to change. Price stated is for an Unattended Funeral.

★★★★★  
Customer rated  
Powered by Yext

# FERGUSON FAWSITT OPEN TO ALL

Having opened the doors to the Ferguson Fawsitt in March, Allen Slinger is set on making the venue a place to visit for great food, drink and entertainment.

Allen, having been successful in all his previous public houses, is keen to put the Ferguson Fawsitt back on the map and is certainly up to the challenge.



Building on his reputation over the past number of years, Allen and his team are keen to deliver a service, food and entertainment that's second to none.

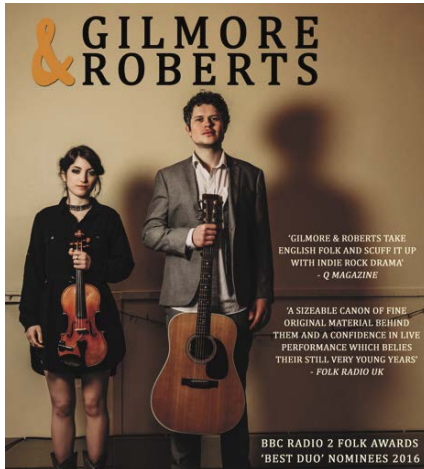
With a great selection of menus to choose from including a traditional Afternoon Tea menu, Allen is now in a position to open up more of the Ferguson Fawsitt.

Having already transformed the interior,

Allen is looking to get the function room up and running, opening with 'Folk at the Fergie' on Thursday 26th May. Award-winning duo Gilmore & Roberts will grace the stage, supported by popular local songstress Jessica Lawson.

Allen commented: "I'm so excited now the doors are open. Walkington is a great location and I am looking forward to entertaining customers old and new.

"We're delighted to be welcoming fans of quality original music to the Ferguson Fawsitt, and plan to book a monthly evening of some of the biggest and best names playing acoustic and folk music today.



"Pop in and experience the new Ferguson Fawsitt with a relaxing setting. We are dog friendly, so come with your dog".

Ticketing information and details of further upcoming concerts can be found on The Ferguson Fawsitt Facebook page and website.

Telephone: **01482 526317**, email: [info@fergusonfawsitt.co.uk](mailto:info@fergusonfawsitt.co.uk), [www.twitter.com/fergiefawsitt](http://www.twitter.com/fergiefawsitt), [www.instagram.com/fergiefawsitt/](http://www.instagram.com/fergiefawsitt/) [www.facebook.com/FergieFawsitt](http://www.facebook.com/FergieFawsitt)



## Four Generations, Giving Over 125 Years Service

Herbert 1870-1962    Eardley 1908-1986    Geoffrey 1939-2015    David 1964



Golden Charter  
Funeral Plans



- Funerals Respectfully Conducted
- 24 Hour Out of Hours Service
- Free Advice & Support
- Private Restrooms
- Prepaid Funeral Plans Available
- Finance Options Available



**Tel: 01482 844695**  
[www.hkempandsonltd.com](http://www.hkempandsonltd.com)

259 Hallgate, Cottingham, East Yorkshire, HU16 4BG  
Fax: 01482 843898  
Email: [hkempandsonltd@gmail.com](mailto:hkempandsonltd@gmail.com)



The  
Ferguson  
Fawsitt

## Afternoon Tea

A SELECTION OF SANDWICHES, SAVOURIES AND DESSERTS,  
A CHOICE OF TEAS AVAILABLE...



£13.50 EACH, 2 FOR £24, 3 FOR £32, 4 FOR £40

MAKE YOUR AFTERNOON TEA FIZZ, ADD A  
BOTTLE OF PROSECCO FOR £15.00

VEGAN AND GLUTEN FREE OPTIONS AVAILABLE

AVAILABLE WEDNESDAY – SATURDAY 12 – 5PM  
24 HOURS NOTICE REQUIRED, MUST BE PRE ORDERED





Telephone: 01482 869111  
sales@rosesofbeverley.karoo.co.uk



The Kitchen Factory, The Courtyard,  
Tokenspire Business Park, Beverley  
HU17 0TB

Monday to Friday 9am - 5pm | Saturday 9am - 1pm

## What's New in 2022

*Roses Kitchens grown in Beverley for over 20 years*



Laburnam Drive



Carter Drive



Thyme Way



Molescroft Road



Lincoln Way

kitchen



All Hallows Road, Walkington



Hunsley Road, Walkington



West Mill Rise, Walkington

**Please call 01482 869111 to book a viewing**

MANY MORE OF OUR CUSTOMERS KITCHENS ON OUR WEBSITE

5 STAR RATED OVER 57 GOOGLE REVIEWS ★★★★★

Visit [www.roseskitchens.com](http://www.roseskitchens.com)

to see our customers kitchens and read what they have to say about us

**Telephone: 01482 869111**



# HOW TO TAP INTO THE HAPPINESS CHEMICALS

**Are some people naturally happy and seem to be able to take life in their stride or are there behaviours that any of us can do which, on a biological level, will make us feel happier?**

The good news is that anyone can tap into the happiness hormones - dopamine, oxytocin, serotonin and endorphins by doing something as simple as taking a stroll around the park.

Getting out into the sunshine for a walk in nature activates the “mood” chemical serotonin and exercise raises the endorphins, the “pain killer” hormone.

If you smile at someone on your walk or pat a dog, you’re increasing the levels of oxytocin, the “love chemical” and remember to congratulate yourself for getting out into the fresh air which gives a rush of dopamine, the “reward chemical”.

All this from just a short walk which can also increase your levels of vitamin D, helping to boost your immune system. Just start where you are, maybe practice mindfulness by stopping and feeling the temperature of the air or become aware of sounds or scents around you or stop and really observe a flower or watch a bee as it goes about it’s business.

On another day, you might want to pick up the pace and sense into the body, feeling your feet in contact with the floor and the muscles

in your legs working and being grateful to experience the day.

Tick off one item from the “happy chemicals” lists below each day and remember to balance out the eating chocolate with a walk in nature!

## Oxytocin - The Love Chemical

- Play with a Dog
- Play with a Baby
- Hold hands
- Hug
- Give someone a Compliment

## Dopamine - The Reward Chemical

- Complete a Task
- Do a Self-Care activity
- Eat Food
- Celebrate a Little Win
- Write a Gratitude List

## Serotonin - The Mood Chemical

- Meditate
- Run
- Get out into the Sunshine
- Walk in Nature
- Swim
- Cycle

## Endorphins - The Pain Killer Chemical

- Laugh
- Watch Comedy
- Eat Dark Chocolate
- Exercise



Every Wednesday evening I run an online mindfulness session free of charge which offers a wonderful opportunity to take time out for yourself. If you’d like to join, drop me a message/e-mail or give me a call and I’ll send the zoom link to you.

For more information and details on further techniques including hypnotherapy, visit [www.francesdunning.com](http://www.francesdunning.com) or contact me, Fran Dunning on **07973 819867**.

I can support you to change your thinking and be that friend to talk to.

# Jadan

Print that gets you noticed

Jadan Press are a leading family run commercial and trade printer based in Hull. With over 20 years experience, we are renowned for producing exceptionally high quality print, design and finishing.

We are committed to providing an excellent service by offering value for money and ensuring complete customer satisfaction.

- BROCHURES LEAFLETS**
- POSTERS CALENDARS PADS**
- LARGE FORMAT PRINTING**
- STATIONERY MAGAZINES**
- SAFETY SIGNAGE BANNERS**
- VARIABLE DATA/MAILING**
- and much much more**

TAKE A LOOK AT OUR  
WEBSITE AND VIDEOS  
[www.jadan-press.co.uk](http://www.jadan-press.co.uk)



01482 610902

[info@jadan-press.co.uk](mailto:info@jadan-press.co.uk)

[www.jadan-press.co.uk](http://www.jadan-press.co.uk)

Rainbow House, Kimberley Street, Hull, HU3 1HH





# TRAVEL COUNSELLORS - AFRICA - EXPERIENCE LIFE

**At Travel Counsellors I have the opportunity to arrange holidays all over the globe and it is such a rewarding experience building bespoke itineraries with the interests and desires of my client at the heart of what I do.**

These itineraries vary as all clients are unique, however one of my favourite destinations is Southern/Eastern Africa, including a safari experience. I had the privilege to travel to Nairobi at the tender age of 3 months old, and was brought up in Kenya where I lived until I was 18.

It gave me the opportunity to experience living in a very different world to what I do now and explore the most amazing continent. It has such a diverse range of scenery - from the green lush highlands, to the massive expanse of the Maasai Mara with the wonderful array of wild animals, to the warm waters of the Indian Ocean softly lapping the soft white sands.

It really is an incredible country and I am actually struggling to find the words to explain the



experience, particularly the animal encounters on a safari. I have also had the privilege to enjoy some time in South Africa which is such an incredible country with so much to offer.

Similarly to Kenya, it offers such a variety of opportunities. The amazing city of Cape Town with its vibrant marina, fabulous day trips that offer sightings of the beautiful penguin colony at Boulders Beach, the drive down the coast road to reach Cape Point, and the fabulous V&A waterfront.

Perhaps a rather timely fact given the forthcoming celebration of her Platinum Jubilee, but when Elizabeth II became Queen she was actually in Africa at Tree Tops!

A short drive in a different direction gives you the Winelands where you can stay in some fabulous boutique style properties and receive such a friendly and personal service

One can't forget the fabulous game reserves, including, but not limited to, the Shamwari, the Kruger, and Welgevonden, all providing unique accommodation and animal encounters that you will never forget.

Sun City near Johannesburg is perfect for the golfers to enjoy the sunshine on the golf course. Depending on when you choose to travel, rugby and cricket matches can be included in your itinerary too.



Nice to round this off with some fabulous beaches in Mauritius, which is also a wonderful destination in its own right and worthy of its own article.

At Travel Counsellors we work very closely with niche suppliers to ensure you have the best experiences and are fully supported whilst you are away should you need us, so if Africa is on your list of places to visit or revisit then please do get in touch.

**Amanda McConnell, Travel Counsellors.**

**T: 01482 770540**

**E: [amanda.mcconnell@travelcounsellors.com](mailto:amanda.mcconnell@travelcounsellors.com)**

**W: [www.travelcounsellors.com/amanda.mcconnell](http://www.travelcounsellors.com/amanda.mcconnell)**

## BEVERLEY PUPPET FESTIVAL

3 days of fun for adults, kids and families



15th - 17th July 2022

[www.beverleypuppetfestival.com](http://www.beverleypuppetfestival.com)



# WILSON WHEELS - CHECK!

As we move from spring towards summer, it is not unusual for the bikes to come out of the shed or garage, so now is the time to **CHECK!**

Before you go on your ride - If the bike has not been cleaned, give it a good clean and inspect the bike checking it is in good working order.

- Check - The Tyres are fit for purpose
- Check - The brakes work
- Check - The chain is not worn
- Check - If the bike has gears and that they are functioning correctly.
- Check - The seat height fits you... "You may have grown"
- Check - Your cycle helmet is in good condition
- Check - Your lights are working. Remember, "be seen, be safe".
- Check - You are up to date with the highway code changes
- Check - Your brain is in gear and you are ready to go

If you are going on a longer ride - Make sure you have water and some suitable snacks to eat so you remain fit enough to get home.

Always be prepared for punctures. Carry either a spare couple of inner tubes or a puncture repair kit, a suitable pump and tools to take the wheels off.

As you get on the bike, always remember to Be Seen, to Be Safe - even in daylight when you are walking or in a car, have a look at other cyclists. Can you see them?

If you are unsure about any of the above, pop in to Wilson Wheels and they will advise what needs to be done to be safe and suitable to ride.



## WW



Pop in store to see the new 2022 bike range

WILSONS WHEELS

T: 01482 882881

W: [www.wilsonswheels.co.uk](http://www.wilsonswheels.co.uk) E: [info@wilsonswheels.co.uk](mailto:info@wilsonswheels.co.uk)

**WE NOW STOCK CUBE CYCLES**  
**2022 RANGE NOW AVAILABLE**

- Adult Bikes
- Children's Bikes
- Electric Bikes
- Clothing for all cycling weather
- Parts and accessories

89a Grovehill Road, Beverley, East Yorkshire HU17 0EJ

NOW OPEN: Monday - Saturday 8.30am - 5.30pm

Sunday: CLOSED - Out riding our bikes

## C CLUB - THIS MONTH'S ENTERTAINMENT

**Beverley's C Club's refurbishment plans are moving ahead and improvements to the Churchill Lounge should be completed by early May.**

This entertainment lounge room will be available to hire for half days or for all day use, and it can accommodate up to 50 people for group meetings, training sessions, private parties and similar use.

The C Club continues to bring the very best entertainment and range of fantastic tribute acts to Beverley.



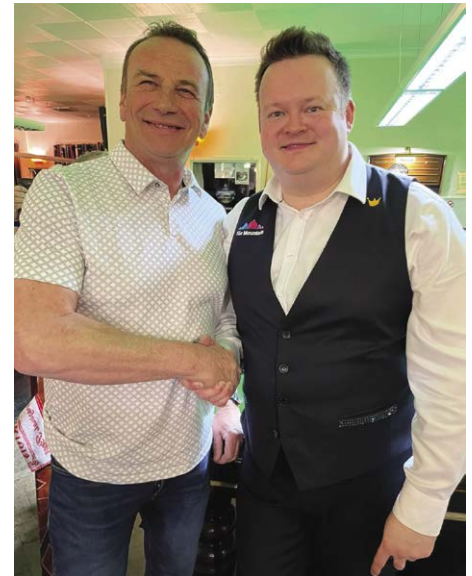
The next event is on Friday 27 May 2022 featuring Adam Parker Brown who does one of the UK's best tributes to Tom Jones.

You really don't want to miss this one. Tickets are available now at £8 each.

Recently on Saturday 9 April the C Club hosted one of the UK's top snooker players for an evening of entertainment. Shaun Murphy played a number of local snooker players and entertained a full house for the evening.

There are hopes to have another top class snooker player to entertain everyone in Beverley later in the year.

Watch this space. Call **01482 867968** for more details about booking the Churchill Lounge at the C Club.





# PUZZLE PAGE

## WORDSEARCH

V D C B D Q R Z S D V I F K S  
 T B P W A O U A T R U Z Z I N  
 O K E F N H P T N T A N N O J  
 M Y G V C K D M E F Q G I L D  
 M U Z N E E U Q V R E T R Y E  
 K U T D R R M W E R A X J R V  
 F W N A S E L Y S R B U X W D  
 P F C I D H D E B G B B K I G  
 F X E R T H U E Y I I L H R U  
 K M K K Z A L T L Y X M L K N  
 X N T Q B E L E T N A E G A P  
 U J Z L C Q E P C T A L N V E  
 E N T E R T A I N M E N T J A  
 N K Q K Z I V S Z P J O X S J  
 G E D E N F S K R O D P Z W P

BEVERLEY  
 CELEBRATION  
 DANCERS  
 ENTERTAINMENT  
 EVENTS

JUBILEE  
 PAGEANT  
 PLATINUM  
 QUEEN  
 SINGERS

## WHERE IN BEVERLEY?

Where in Beverley can you find this landmark?  
 Answer on Page 33.



## WHAT IS IT?

Can you identify what item this is?  
 Answer on Page 33.



Do you have any amusing stories, quotes or pictures? Send them to [info@justbeverley.co.uk](mailto:info@justbeverley.co.uk)

## QUOTE OF THE MONTH

Mum, this is no joke, I need chocolate!

## COMEDY CORNER!

Things that make you laugh!



Velcro –  
 It's a rip off!

Been looking for my Camouflage T Shirt –  
 Can't find it anywhere.

**DREAM DOORS®**  
 NEW LIFE FOR OLD KITCHENS



**SPRING SALE  
 NOW ON!**

VISIT OUR  
 SHOWROOM NOW:

4a Belprin Park,  
 Swinemoor Lane,  
 Beverley, HU17 0LN

Call us now for a free estimate:

**01482 861 653**



**Checkatrade.com**  
 Where reputation matters

AVERAGE SCORE **9.7/10**



**QUALITY BEDROOM  
 MAKEOVERS BY LOCAL  
 PROFESSIONALS**

- Bespoke sliding wardrobes
- Styles to suit every home
- Wide range of colours and finishes to choose from
- 96 showrooms nationwide

[www.dreamdoorsbedrooms.co.uk](http://www.dreamdoorsbedrooms.co.uk)

**SPRING SALE**

**THE UK'S #1 KITCHEN  
 MAKEOVER EXPERTS**

- From simple door replacements to complete fitted kitchens
- Fully installed by local professionals in just a few days
- Choose from a large selection of doors, worktops and appliances
- 96 showrooms nationwide

[www.dreamdoors.co.uk](http://www.dreamdoors.co.uk)



**FOLLOWING  
 GOVERNMENT  
 GUIDELINES**

# HOW TO DO SOCIAL MEDIA AS A PERSONAL TRAINER

**To be a successful PT you need to market yourself. One of the main ways to do that today is through social media.**

Social media platforms like Instagram provide an opportunity to promote your services and build an audience. But you still need to know how to do this well.

## Be consistent

There's a lot of noise out there so you need to stay at the front of people's minds. To do this you need to post consistently and encourage people to interact with your posts. It doesn't have to be 24/7. It could be 2 times, it could be 5 or more. The important thing is being a regular presence. A great way to do this on Instagram or Facebook is to use the story feature.

## Be Real

People can tell if someone is being fake on social media a mile off. So make sure you show your real side. Show off your personality, have a laugh and make your account an overall positive place to be. People are looking for unique content in a sea of sameness, so be different.

Everyone has a unique selling point. It might be your personality, the people you teach or the way you teach or train. Being real also means being authentic. Sometimes it's a good idea to share the good and the bad. Yes, you want to major in the good news and the amazing things happening in your life.

## Share your expertise

When you sell a service like training it can be tempting to keep things close to your chest. You might think sharing tips and tricks is giving the game away but it's actually a great way to attract new clients or even brand deals. Plus it's just good content, making it a lot easier to be consistent, like we mentioned above.

You could post some reels or videos of simple workouts that people can do at home. For example, a workout to wake yourself up in the morning or good stretches to do before a workout.

## Tell your client's stories

Everyone loves a good success story. If they have given you permission, share your client's stories with the world. This is a great way of showing people results and it helps people to understand how you work and what goes into achieving this. Plus, it's good content (basically just share everything you do!)

## Make your posts engaging

A tip that might seem obvious but is actually quite hard to do is making your posts engaging. When posting you want to give your audience a way to interact with you. This can be done by asking them questions, going on live streams, answering comments, inviting them to message you and just generally making it a two way relationship. This can help to boost your engagement too.

Having engaging content is a must when it comes to social media because there is so much out there, you want to make sure that your content doesn't get lost in the crowd. A great way to find out what works well is to take a look at the leaders in your field. Study them and see what posts get the most engagement, then replicate that for yourself.

## Content is king

We hope these tips have been helpful. Follow these and supercharge your online presence. It's important to take time to plan your social media output, but don't stress. As you get busier you'll have less time to focus on this side of things. It's at this point you might want to get someone else on board to help with this.

In the meantime, just remember to be yourself and enjoy it!

We cover general business advice in our training courses for becoming a fitness professional, so be sure to check those out.

[www.sportsabilitytraining.co.uk](http://www.sportsabilitytraining.co.uk)  
Tel: 01482 229676



**WOULD YOU LIKE TO WORK IN FITNESS OR ADD TO YOUR QUALIFICATIONS?**

Visit our website for all our blended learning, elearning and face to face courses available this year

**FACE TO FACE COURSE DATES AVAILABLE AT LOCAL VENUES FOR 2022 INCLUDE**

- Level 2 Gym Instructor
- Level 3 Personal Trainer
- Level 3 Mat Pilates
- Level 3 Pre and Post Natal Exercise

Give us a call for a chat or visit our website

ACCREDITED COURSES

 CIMSPA Education Partner  CIMSPA Training Provider  CIMSPA Employer Partner  ActiveIQ



**CHECK OUT OUR WEBSITE FOR FULL DETAILS OF DATES & COSTS**  
[WWW.SPORTSABILITYTRAINING.CO.UK](http://WWW.SPORTSABILITYTRAINING.CO.UK)  
**OR CALL US FOR A CHAT 01482 229676**  
SCAN OUR QR CODE FOR A QUICK LINK TO OUR WEBSITE



**Botterill & Co**  
Chartered Certified Accountants

We are a modern and professional accountancy practice ideally located to serve businesses in Beverley and the surrounding area.

We utilise modern accounting technology to provide you with a cost effective, professional service.

**Our services:**

- Annual Accounts
- Tax Planning
- Management Accounts
- Tax Returns
- Company Formations
- Payroll
- Cloud Accounting
- Bookkeeping & VAT

For a free initial consultation please contact us:

Office: 01482 862240  
Mobile: 07966 051458  
Email: [gareth@botterillco.co.uk](mailto:gareth@botterillco.co.uk)  
Website: [www.botterillco.co.uk](http://www.botterillco.co.uk)

1st Floor Offices, 40 Norwood, Beverley, HU17 9EY.



# COUNTRYSIDE MATTERS WITH SAM WALTON

Although there are similarities between Cambodia and Thailand, there are still a lot of differences.



I suspect that is because Cambodia is a lot poorer, which is reflected not only in their everyday lives but in their farming as well. I have shown examples of both so far, but on balance Cambodia has still a long way to go.



I saw more backyard systems there than I did in Thailand, but they work for them as much as I would say they exist and allow them to exist.

Having said that, you always find rich and poor, good and bad in whatever country you visit, and this is always

shown at traffic lights. You find cars are for the better off and motorbikes are for the run of the mill population.

It is amazing what their bikes can be used for though, with many being overladen and would certainly not be allowed here. Due to the hot humid climate, buildings only need roofs and whatever can be used as walls to retain the pigs.



Some have sheets hanging down the side of buildings to keep the sun out, and most of the concrete flooring is washed down every day so the pigs are actually quite clean.



They are quite an entrepreneurial race as far as their food production goes, I suppose they have to be as bits and pieces are about all they have access to. The only weather they do not get is cold in any way.

Having mentioned that the villagers survive is true but there are several larger pig producers, and I did actually see one abattoir for the commercial side but declined to ask how the family pigs were slaughtered!



Some readers may have been there, and one superb tourist attraction is Angkor Wat, a magnificent ancient temple which does attract many tourists as it has quite a history.

## IN THE GARDEN... MAY

*Blossom is everywhere in May, tumbling like confetti in the wind. The two main plant families providing this are Malus (crab apple) and Prunus (flowering cherries and almonds), and of course the waxy flowers of the Magnolia should not be left out.*

Generally, the soils in this area are not suitable for the acid loving Azaleas and Rhododendrons which also put on a magnificent display in May - dwarf varieties can happily be grown in containers, but must be planted in ericaceous compost, be fed with an ericaceous feed and ideally watered with rainwater.

May is one of the transitional months in the garden, at the beginning we are still in spring with daffodils and tulips in their full glory. During the month plant growth speeds up and by the end of May we are heralding in the summer - with the showy blooms of large, flowered clematis and roses starting to bud and open their flowers. With all this growth there is plenty to keep us busy in preparation for the long hot days of summer, leading me nicely on to...

### Tasks for May...

- Be ready to protect plants against sudden frosts.
- Water all new plantings if weather is dry.
- Trim spring-flowering perennials.
- Finish pruning spring-flowering shrubs e.g., Forsythia and Kerria.
- Tidy up the foliage of spring bulbs and mark where they are in the garden. Divide daffodil bulbs and replant if they are starting to produce less flowers, this is a sign they are becoming crowded.
- Plant up hanging baskets and patio pots with summer bedding but harden them off in a sheltered spot. I normally plant up my pots and containers at the beginning of May and let them establish under cloches before I place them around the garden at the end of the month, even later if the weather is cold and miserable.
- Keep on top of pests and weeds - including slugs.
- Trim hedges and topiary and then feed them.
- Keep sowing vegetables out of doors.
- Continue to sow tender vegetables under cover.
- Check greenhouse ventilation and provide shading if necessary.
- Continue pruning trained plums and cherries.
- Mulch strawberries with straw or mulch mats.
- Cut lawns weekly and blitz lawn weeds.
- Remove duckweed and blanket weed from ponds

*So, until next month, happy gardening.*

Jane Dale of 'Designed Gardens'. Tel: **07983 392 411**.



### WHAT IS IT?

*The Jubilee Bear!*



### WHERE IN BEVERLEY?

*Toll Gavel United Church*



# WHAT'S ON IN BEVERLEY

Tell us about your event!

E-mail [info@justbeverley.co.uk](mailto:info@justbeverley.co.uk)

Telephone **01482 679947**

For more events visit  
[justbeverley.co.uk/events](http://justbeverley.co.uk/events)

## THE BEVERLEY FOLK FESTIVAL RETURNS TO BEVERLEY 16TH TO 19TH OF JUNE 2022

**Beverley Folk Festival is back. Since 2018 the popular Fringe event has delivered successful, award-winning events.**

In 2021 it was a hybrid of live and online events, part of the success of the event is its connection with local charities.

Each year a local charity gets involved and money is presented to the charity, last year's event raised just short of £800 for the East Yorkshire Food Bank.

2022 headline acts include The Trials of Cato, Iona Lane, The Brothers Gillespie and Henry Parker, with the help of local business sponsorship organisers believe the festival will be rightly back on the national map. With help from local business and main sponsor Stanifords - and accountants Cbasadofskys, 2022 looks to be its strongest line up to date.

Waffle21 Lounge and Bistro will host a comedy event with top comedians Tom Wrigglesworth,

Katie Pritchard, David Eagle (of folk trio The Young'Uns) and Silky on Thursday 16th June.

Top folk acts The Trials of Cato, The Brothers Gillespie, and Iona Lane take to the stage on Friday 17th June at St Mary's Church, and on Saturday night a special party night is planned at the Masonic Hall with the popular local band The Hesse Ceilidh Band.

A wealth of non-stop performances and family events will be taking place at Waffle 21 on Saturday, Saturday night, and Sunday. Lots of events will be free; Beverley will be filled with music, and pubs such as the Sun Inn and The Monks Walk will host open jamming sessions and performances, while Morris teams will be on display dancing throughout the town.

Phil Simpson says "We are delighted to once again present a grassroots led, yet ambitious festival for our town. The music scene we have here is fantastic all year round, and one of the aims of the event is to promote and develop that."

## MOLESCROFT BEVERLEY PETANQUE CLUB OPEN DAY - 15TH MAY

**Molescroft Beverley Petanque Club encourages local residents to go along and try out the sport.**

Molescroft Parish Council was awarded £20,600 funding from East Riding of Yorkshire Council and the funding went towards extending the Petanque Piste at Molescroft Pavilion, supported by Molescroft Parish Council and the Do It For East Yorkshire Fund.

The funding enabled the current petanque pistes to be extended and build a new piste next to the existing site to increase the capacity at Molescroft Petanque Club. On Sunday, 15 May, from 10am-3pm, Molescroft Beverley Petanque Club will open its doors to anybody who wants to give petanque a try. The event will be open to people of all ages and abilities.

Mike Hildyard, Chair of Molescroft Parish Council said: "Molescroft Petanque Club is a true community club, and now we can show the community what we have, and give them a chance to have a go!"

Thierry Condette, Chair of Molescroft Beverley Petanque Club said "We are wanting to share our passion for petanque and deliver a youth development programme at the Club. We will also be looking forward to hosting matches against other teams from across the region."



Other activities will be on offer. The East Riding of Yorkshire Council's Health and Well-being team will be running some fun family activities, and there will be some showcase performances from Silver Swans Ballet, Inspire School of Dance and Beverley Garland dancers. Free refreshments will also be provided.

Molescroft Beverley Petanque Club is located at the Molescroft Playing Field. They usually play on Tuesday, Thursday and Saturday afternoons from 1.30pm. Parking at The Pavilion is limited, so if possible please leave the car at home. Overflow car parking is available nearby (two minutes walk) at North Beverley Medical Centre on Pighill Lane, just off Woodhall Way, HU17 7JY.

To find out more about petanque and the community event on 15 May, visit [www.molescroft-pc.gov.uk](http://www.molescroft-pc.gov.uk)

BEVERLEY 16<sup>TH</sup> TO 19<sup>TH</sup> JUNE 2022  
FOLK FESTIVAL PROUDLY PRESENTS

THE TRIALS OF CATO - IONA LANE  
HENRY PARKER - THE BROTHERS GILLESPIE  
THURSDAY COMEDY NIGHT WITH:

TOM WRIGGLESWORTH, KATIE PRITCHARD, SILKY & DAVID EAGLE (THE YOUNG'UNS)  
SIMON ROBINSON - THE HESSE CEILIDH BAND  
SIMON JAMES - MARTIN HEATON - IMOGEN HART  
PETE DILLEY - ELWHAECO - THE ARKUT BROTHERS  
PHIL SIMPSON - THE RAGPICKERS - THE COX BROTHERS  
DOGFINGER - TIMMY & GERALD PICKFORD - JESSIE MILBURN  
THE SMUGGLERS - NICK OLDRIDGE AND DALE MURPHY  
LASSO THE MOON - LAURA DOUSE AND DENNIS HALL - THE WOLDS  
BECKY OLDRIDGE - WILL SCHULTZ - BUSKATHON - WORKSHOPS  
FAMILY FUN EVENTS - MUSICIAN'S SESSIONS - MORRIS DANCING  
& MUCH MORE...

stanifords cba sadofskys

FOR MORE INFORMATION SEE OUR FACEBOOK PAGE @BEVERLEYFOLK FESTIVAL

To tune in to events organisers encourage people to visit their Facebook page for tickets to the main events, and for all the latest news. [www.facebook.com/beverleyfolkfringefestival](http://www.facebook.com/beverleyfolkfringefestival)

## BEVERLEY PHOTOGRAPHIC SOCIETY - MAY'S PROGRAM

**Saturday 30th April** - 11am photo shoot at the Appleby and North Frodingham railway. Scunthorpe. DN16 1XA Steam train, 4-hour visit.

**Tuesday 3rd May** - 7pm Social at the Rose and Crown.

**Tuesday 10th May** - 11am photo shoot at the Bridlington animal park and birds of prey centre. Covert Lane, Carnaby, Bridlington YO15 3QF.

**Tuesday 17th May** - 7pm show photos taken on our recent excursions.

**Tuesday 24th May** - 10am Meet at the Yorkshire Air Museum Elvington for a photo walk.

**Tuesday 31st May** - 7pm social at the Rose and Crown.

**Tuesday 7th June** - Meet at the North Cave Wetlands for a photo walk.

Why not join us. Always enough in the program to occupy the serious photographer and the help for the beginners. For information contact [billbevphoto@gmail.com](mailto:billbevphoto@gmail.com)



#### Thursday 5th May

##### • Evie Ladin & Keith Terry

Award winning Californian duo, Evie Ladin and Keith Terry make their Beverley debut at the Grosvenor Club in Beverley on May 5th. Specialising in old timey bluegrass tunes and body percussion they've played major festivals all over the world.



7.30pm. Tickets £12 from Beverley Tourist Information and [wegottickets.com/event/538312](http://wegottickets.com/event/538312).

#### Sunday 8th May

##### • Fun Run and Beverley 10k Run

Road Closures from 6am to noon with Wednesday Market closed off until 1pm.

#### Thursday 12th May

##### • Beverley Rocks

With over 100 singers and professional musicians, Remarkable Arts brings you the very best of Rock! Featuring music by Meatloaf, Oasis, E.L.O., The Beatles, Primal Scream, Elvis Presley, Van Morrison, and many more. For one night only Beverley will Rock, with Soaring Harmonies and Screaming Guitar Solos. Join the Remarkable Rock Choir & Live Band, plus support from the Rock Collective, for a great night of live music. 7.30pm at The Parkway. Tickets £10, under 16s £7.50, available from The Parkway, Flemingate, HU17 0PW.

#### Saturday 14th May

##### • Cecil Jones

Families are invited along to hear Cecil Jones perform 'Classical Afro Jazz and Pop' at the Minster on at 5pm. Tickets priced £5 for 18s and over are available at the minster website [www.beverlyminster.org.uk](http://www.beverlyminster.org.uk)

#### Saturday 15th May

##### • Molescroft Beverley Petanque Club

From 10am-3pm, Molescroft Beverley Petanque Club will throw open its doors to anybody who wants to come along to give petanque a try. The

event will be open to people of all ages and abilities.

#### Sunday 15th May to Saturday 21st May

##### • Christian Aid Week

It is the 40th anniversary of the introduction of the Humber Bridge Cross which since its introduction in 1982 has become an annual fundraising event. This year the Humber Bridge Board are allowing people to make crossings on foot or cycle anytime until May 27. Two members of Toll Gavel United Church in Beverley are taking part. Luke Goulder and John Turner will between them attempt 40 crossings or the equivalent in mileage of the bridge over the next few weeks. Luke is walking and John will be cycling. John has completed several cycle rides raising funds through sponsorship for Christian Aid. Luke has a Just Giving page for sponsorship and John can be contacted through Toll Gavel Church or direct on Tel **01482 867573** or email [jetbev2@gmail.com](mailto:jetbev2@gmail.com)

#### Saturday 21st May

##### • Nick Harper

The alt-folk sensation will be performing at St Nicholas' Church. Ticket information: [www.stnicholaschurchbeverley.co.uk/social-events](http://www.stnicholaschurchbeverley.co.uk/social-events)



#### Thursday 26th May

##### • Gilmore and Roberts

The Ferguson Fawsitt in Walkington. Tickets £12 from [www.wegottickets.com](http://www.wegottickets.com).

#### Friday 27th May

##### • Adam Parker Brown tribute act Tom Jones

C Club Beverley. Tickets £8.00. Call 01482 867968.

#### Friday 27th May to Sunday 28th May

##### • Beverley & East Riding Early Music Festival

[www.ncem.co.uk](http://www.ncem.co.uk). Tel: 01904 658338.

#### Tuesday 14th June to Saturday 18th June

##### • Little Shop of Horrors

Beverley Musical Theatre presents Little Shop of Horrors at Beverley Memorial Hall. Tickets £12. [www.beverlymusicaltheatre.co.uk](http://www.beverlymusicaltheatre.co.uk)

# NORWOOD NITES

## Community Cinema @ Norwood Church

**We are back!!**

We warmly invite you to join us again or, for the first time to our monthly film night!

A new programme running from June - August (break from Summer in September) October - December 2022.

Due to Copyright we are only allowed to display film titles on the Church premises.

Films shown in the schoolroom to the rear of the Church. Refreshments and Raffle from 6.30pm.

#### Monday 13th June at 7pm

A warm hearted comedy about a group of allotment gardeners who take umbrage to the arrival of troubled refugees but are united by their love of making things grow.

#### Monday 11th July at 7pm

A 1981 Scottish coming-of-age romantic comedy film written and directed by Bill Forsyth and starring John Gordon Sinclair, Dee Hepburn and Clare Grogan. The film is set in and around a state secondary school in the Abrohill district of Cumbernauld.

#### Monday 8th August at 7pm

Jo March reflects back and forth on her life, telling the beloved story of the March sisters - four young women each determined to live life on their own terms. Little Women is based on the novel, Little Women.

Ring or message **07903 136996** for more film details.

If you require transport to and from this event please contact Beverley Community Lift on Tel **01482 868082**.

**The Hound of the Baskervilles**  
By Sir Arthur Conan Doyle  
Adapted by Steven Canny & John Nicholson  
Directed by Marieke Audsley  
Thu 28 Apr - Sat 21 May  
a comedy  
A Howlingly Funny Spoof  
ert  
proudly sponsored by THE BEVERLEY ARMS

# FLEMINGATE BEVERLEY

FASHION | FOOD | FILM | FUN



## FUN FOR ALL



# THE FAMILY

at  
Flemingate



**FUN, FOOD AND SHOPPING FOR ALL THE FAMILY**

FLEMINGATE.CO.UK



@FlemingateBev



FlemingateBev



FlemingateBeverley