

**CLINT WASTLING'S  
SEA OF HULL  
EXPERIENCE**



• **PARKWAY CINEMA  
WONDER WOMAN  
GOODIES AND  
CINEMA TICKETS**

• **SUNDAY LUNCH  
AT THE TIGER INN**

**JASON HUBY  
ONE MAN AND  
HIS DOG**

## THE TEENAGE MARKET

A free platform for young people to showcase their creative talents

**JANET SMART  
FUNDRAISER  
FOR LESOTHO**

**ANN WILLIS  
BEVERLEY'S  
NEW MAYOR**

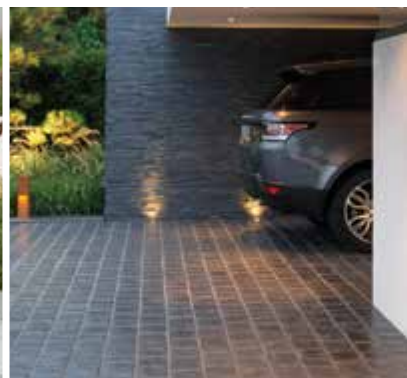
**FLEMINGATE  
HOSTS TEENAGE MARKET**

**FREE**  
LOCAL DELIVERY

**MY KIND OF  
GARDEN**

# Make your **outdoor space** your perfect **living space**

Inject personality into your garden this summer with a little help from **MKM** & ensure your garden is the one they're all talking about!



Call into branch today at...

**MKM BEVERLEY**  
SWINEMOOR LN, BEVERLEY HU17 0JX  
01482 880088 | [mkmb.co.uk](http://mkmb.co.uk)  



# just BEVERLEY

## Letter from the Editors



Summer is upon us! With the good weather comes the smiles, happiness - and looking after the garden - so check out Jane's advice for this month 'In the Garden' on page 27!

June brings a number of days we should be celebrating here in Beverley! National BBQ Week runs from May 29th - June 4th. It's in its 21st year - before 1997 barbecuing in the UK was almost unheard-of, now it's one of our favourite summer past-times.

There's also National YoYo Day on June 6th. I wonder how many children know what a YoYo is? It became popular in the 1920's although it was invented in ancient Greece. 'Yo-yo' was trademarked by an American, Donald F Duncan, who realized the potential for the toy - his birthday is June 6th hence YoYo Day!

But perhaps my favourite is Flip Flop Day on June 16th. A number of my friends will be getting the Flip Flops (or Flop Flips) out ready for the Summer. Perhaps you have yours out already! Flip Flops were worn by the Egyptians way back in 4000BC - and you thought you were in fashion!!!

If you are celebrating anything, send in your pictures and stories, post as a visitor on our Facebook page or email [info@justbeverley.co.uk](mailto:info@justbeverley.co.uk). Don't keep your good news to yourself!

Have a fantastic June

Julian :)



Beverley is unique, as are its surrounding villages. We hear lots about what is going on in Beverley but not too much about the villages. How would you like to be a village correspondent from Walkington, Tickton, Bishop Burton, Cherry Burton or Woodmansey? You wouldn't be committed to writing something every month and we don't want to know what HAS happened, but what is GOING to happen! All too often people tell us about something they have done whereas we want to know about what you are GOING to do. **Just Beverley** is all about looking forwards, getting excited about what is on its way!

By the time you read this, the 30th Early Music Festival will either be in full swing (is that the right term for an Early Music festival, I wonder?) or you will have missed it. But the Folk Festival is on its way on June 16th - 18th. Both Festivals showcase our area, are great fun and amazing value for money. The Early Music Festival includes the fabulous exhibition in the Minster and the Folk Festival is free for the under 12's - don't miss either of them!

If you have an event planned, make sure you tell us about it so we can advertise it on our What's On website page. Getting up to 6000 hits every month, it is a platform not to miss out on when thinking about promotion. And what's more, it's free and includes a link to your website or email!

Be happy!

Linda.

Get in touch with us:

**Website:** [justbeverley.co.uk](http://justbeverley.co.uk)

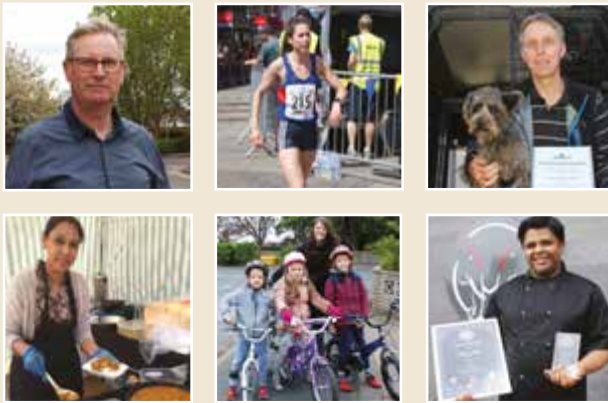
**Email:** [info@justbeverley.co.uk](mailto:info@justbeverley.co.uk)

**Telephone:** 01482 679947

**Twitter:** @JustBeverley

**Facebook:** [facebook.com/justbeverley](https://www.facebook.com/justbeverley)

Printed by: Jadan Press



## CONTENTS

**Letters from the Editors**  
**News**  
**Parkway Cinema**

## PAGE

**3**  
**4, 5**  
**6, 7**

## Features

Jason Huby - One Man and His Dog 8  
Janet Smart - Lesotho Fundraiser 9  
Ann Willis - Beverley's New Mayor 11  
Beverley Soup 11  
Clint Wastling's Sea of Hull Experience 15  
Beverley's Teenage Market 23

## Regulars

Arts and Culture 30  
Charity Champions 16  
Competitions 7, 12  
Competition Winners 5  
Countryside Matters 17  
Finance 25  
Flemingate Update 23  
Gardening 27  
Legal Q & A 25  
Lifestyle 14, 16  
Motoring 20  
Photos 18,19  
Puzzles 33  
Sport 28, 29, 31  
Travel 21  
What's On 34, 35

## Competition Terms and Conditions

Competition answers should be emailed to [info@justbeverley.co.uk](mailto:info@justbeverley.co.uk) before the closing date with the competition title in the subject field. Include your name, address and daytime contact telephone number along with your answer. Winners will be notified within 1 week of the closing date and MUST be available for publicity purposes for Just Beverley magazine, website and Facebook page and the prize provider. The judge's decision is final. No cash alternative is offered. Details may be used for marketing purposes by Just Beverley and the prize provider and for website analytics by Just Beverley.

## CONTRIBUTORS

Julian Minshall, Linda Johnson, Aaron Gilpin, Richard Manville, Carfan, Jane Dale, John Fewings, Ian Richardson, Sam Walton, Colin Raynor, Will Bundy, Helen Watson, Colin Stamford, Rich Hayes, Tom Wardman, Annie Drew.

## You can pick up the magazine from:

Beverley Parkway Cinema, Beverley Tourist Information, Beverley Library/Treasure House, Tesco, Morrisons, East Riding Leisure Beverley, Browns café, Beverley News, Boyes, Tesco café, Colette and Tyson Garden Centre, Beverley Garden Centre, Cherry Tree Garden Centre, Mace News in Saturday Market and Lincoln Way, Tickton News, Costcutter in Walkington, Molescroft News, Grovehill Convenience Store, Maple News, Leconfield PO, Poundland, Halfords, East Riding Community Hospital, Bishop Burton PO, The Altisidora, Cherry Burton PO, Monks Walk, Hayride, Health Centres, cafés, hairdressers and more!

## The Beverley Male Voice Choir join forces with Mansfield Male Voice Choir

*It's a rare treat when you get not one, but two male voice choirs performing together!*

Both choirs will sing separately and together, performing a variety of songs in different styles - from love songs to shanties, sacred to pop - with all proceeds going to Hornsea Inshore Rescue, the independent lifeboat which operates out of Hornsea and relies entirely on volunteers and donations.

The lifeboat is part of the East Yorkshire Flood Relief Team, too, rescuing people trapped by floods and tidal surges as well as those finding themselves in need of help off the Hornsea coast.

The choir have sung in some of the country's most prestigious venues including the Royal Albert Hall, London, Bridgewater Hall, Manchester and the Royal Philharmonic Hall, Liverpool. They have also represented Beverley at its twin town of Lemgo in Germany.

The concert will be at 7.30 pm on Friday 2nd June in Toll Gavel United Church, Beverley. Tickets are £8 each, available from Beverley Tourist Information Centre or **01482 391672**. Further details are on [www.beverleymalevoicechoir.co.uk](http://www.beverleymalevoicechoir.co.uk)



## Beverley Musical Theatre set to entertain with music, dance and comedy

**30 cast and 8 local musicians are staging 'Dirty Rotten Scoundrels', bringing the south of France to Beverley between June 14th and 18th at Beverley Memorial Hall.**

After Dolly Parton's '9 to 5' last year met with critical acclaim, BMT have again broken the mould of performing one of the more usual musicals with a production based on the Steve Martin and Michael Caine film. The film follows two con men who try to swindle money and jewels from gullible wealthy women who are on holiday. All doesn't go their way - which leads to some very amusing scenes!

The lead roles are taken by Brian Hossack, Mandy Pearson and 18-year-old Georgia Kingston. Other parts are played by members working in a whole range of jobs such as medicine, nursing, teaching, science and finance.

## This year's Armed Forces Weekend organised by SSAFA

**Celebrate 80 years of military history and 40 years of military motor transport training at the Defence School of Transport, Normandy Barracks, Leconfield.**

The weekend event kicks off on Saturday July 1st at Leconfield. Starting at 10am until 4pm, there will be military bands and displays with a Battle of Britain Memorial Flight fly-past, military vehicle and equipment displays with local reserve units and regular members of all three services in attendance.

On July 2nd, there will be a Thanksgiving Service in Beverley Minster followed by a march-past of military staff from the Defence School of Transport through Beverley. The weekend's events conclude with a grand Proms-style concert in Beverley's Saturday Market. The occasion provides everyone the opportunity to show support for the men and women who make up our Armed Forces community including serving troops, Service families, veterans and cadets. It will be a fantastic weekend of entertainment and celebration!

## Beverley Folk Festival line-up finalised

**From June 16-18th, Beverley Racecourse is transformed into a festival village with music, dancing, food and crafts. This year, two Big Tops host the main music acts with other events held in marquees and racecourse buildings.**

This year there are 80+ musical acts with some extra special surprises along the way!

For example, Heidi Talbot, who is married to John McCusker, is joined by a host of musicians including Boo Hewerdine amongst others.

Festival Directors John Brien and Jim Pybus told **Just Beverley**: "Boo is most associated with headliner Eddi Reader; he wrote 'Patience of Angels' for her as well as producing her 'Sings the Songs of Robert Burns' album in 2003. He has also written songs with Edwina Hayes, who is also appearing at the festival. Who knows - he might just appear on the stage with both Eddi and Edwina? Wouldn't that be fabulous?"

## Asian Catering Federation Best Chef - Sham Alom of Rumi's

**When Sham and his partner, Sarah Day were invited to the House of Commons on May 15th, they thought it was for a 'Meet and Greet' with fellow chefs - little did they know that Sham was to be honoured with one of the most prestigious awards in the country!**



The Asian Catering Federation, which represents the nation's 35000 curry restaurants and takeaways, honoured the country's best chefs at a special ceremony hosted by TV presented Samantha Simonds.

Held in the terrace pavilion of the Palace of Westminster, the evening was attended by an impressive array of VIPs and dignitaries, including the High Commissioner of Bangladesh and Nepal, Lord Sheikh accompanied by Lady Sheikh.

There were three other chefs recognised for their achievements - Cyrus Todiwala from Café Spice Namaste, London; Stephen Gomes from Moksh in Cardiff and Vincent Bhatia of Gunpowder, London - as well as Sham, who has most definitely put Beverley on the Asian food map!

Many congratulations to Sham, who opened Rumi's less than 2 years ago. Rumi's is located at **New Walkergate, Beverley HU17 9EP**, telephone **01482 428642**. There is disabled access.

## Sky Visuals - reaching for the sky

Set up by video-enthusiast Sam Topham along with his father, Ralph and wife, Lillie, this new videography company uses drone technology to give a different angle to everything it sees.

Sam, a self-confessed techno-geek, first thought about the potential for using drones in business 2-3 years ago. Sam has years of experience in working in digital/media marketing and Ralph is a qualified pilot who is well-versed in aerial safety so their skill-sets match perfectly - all they needed was a drone, for Sam to complete his CAA drone pilot's license and get the necessary permissions and licenses for aerial drone photography.

Then Lillie joined as second camera operative to increase the range of film or shots taken whilst the drone is in operation.

Sky Visuals' drone is called 'Sky One'. It takes video and stills on 20-minute flights, after which the battery needs changing/recharging. Its legs retract, giving 360° views, films in a variety of resolutions, including HD, Full HD, 4K, MP4 and MOV and takes stills in JPEG or DNG. Its flight is perfectly smooth, which gives Sky Visuals a huge range of possibilities for use.

Sky Visuals are currently filming a promotional video of Beverley and District Golf Club to showcase its facilities and the course itself. Every hole is being filmed from a variety of heights and angles so golfers can plan their shots in advance!

The company is also working with construction companies, providing ground surveys and on-the-spot progress-monitoring at every stage of the build as drones can reach places people cannot otherwise see.

Other applications include inspections for solar and power companies, on land or at sea, estate agents, agriculture and weddings. Sky Visuals Films concentrates entirely on weddings, telling the story of the whole day by still and video.

If you would like to find out more do check out their website:

[www.skyvisualsfilms.co.uk](http://www.skyvisualsfilms.co.uk)

Or give one of the team a call on **07719 363140** or email: [enquiries@skyvisuals.co.uk](mailto:enquiries@skyvisuals.co.uk)



## Shape up for Summer

East Riding Leisure will again be running their 'Shape up for Summer' offer in 2017, with three months' premier membership for just £60 (saving £13 a month).

The offer is available from May 22 - July 31. Premier membership provides full unlimited access to all nine East Riding Leisure Centres and offers superb facilities like Tone Zone gyms, swimming pools, classes, Sports Hall activities - and more. Adrian Walters, leisure services manager, said: "Shape up for Summer is one of our most popular offers at East Riding Leisure, and I am sure that this year will be no exception. It's a great way to get fit and have fun at the same time during the early part of summer 2017."

To find out more, visit: [www.eastridingleisure.co.uk/shape-up-for-summer](http://www.eastridingleisure.co.uk/shape-up-for-summer)

## Competition Winners

We do know that there will be a good crowd at Beverley Folk Festival, including the winner of our competition to win a weekend pass for 2 people. Diane Roberts, from Leeds, was delighted to learn that her name was first out of the hat!



Congratulations to Liam Murphy, last month's winner of the tickets for the Giggles Live show.

## LA LUMIÈRE PHOTOGRAPHY



TEL: 01482 867455  
[WWW.LA-LUMIERE.CO.UK](http://WWW.LA-LUMIERE.CO.UK)  
[ENQUIRIES@LA-LUMIERE.CO.UK](mailto:ENQUIRIES@LA-LUMIERE.CO.UK)  
 22 TRINITY LANE, BEVERLEY



**EVERY THURSDAY AT 10.30am**  
(doors open 9.45am)

Join us for a free brew and a natter and enjoy some great films on Beverley Parkway's Big Screen. Only £4 with drink and biscuits included. Aimed at 55s and over. Films subject to change.

**Thursday 1st June -**  
**Viceroy's House**

**Loving**  
**Thursday 8th June -**  
**Fences**

**Viceroy's House**  
**Thursday 15th June -**  
**Beauty & The Beast**

**Fences**  
**Thursday 22nd June -**  
**The Time of Their Lives**  
**Beauty & The Beast**  
**Thursday 29th June -**  
**The Zookeeper's Wife**  
**The Time of Their Lives**

**PARKWAY PENGUIN PARTIES**

YOUR OWN PRIVATE SCREENING  
SEE YOUR CHILD ON THE BIG SCREEN  
FUN & GAMES WITH OUR PARKWAY PENGUIN



ONLY £170

For more information contact the Box Office or come in store and speak to a member of staff



**MONDAYS @ 8.15pm**

More 'what is it' than 'whodunnit'. Fancy a film but not sure what you want to see? The try our Mystery Movie Monday! You won't know what it is until it starts, unless you can solve our Facebook and Twitter clues! It could be a classic or a gem you have never seen or even the first screening of an upcoming film. The fun is in the discovery! Only £4 per person, restricted to 15 and over only unless otherwise stated as some will be for 18 and over due to content.

Remember to look out for information on our **Facebook page** and **Twitter** @parkwaybeverley.

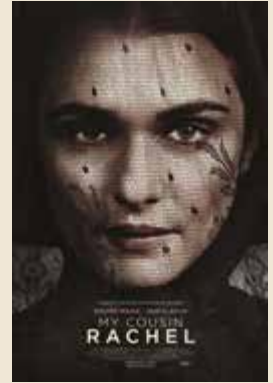
*These are the films scheduled to open in June all are subject to change. Check out up-to-date cinema listings at [www.justbeverley.co.uk/cinema-times](http://www.justbeverley.co.uk/cinema-times)*



1st June



9th June



9th June



9th June



16th June



16th June



16th June



16th June



23rd June



23rd June



28th June



30th June

# YOUR NEW INDEPENDENT CINEMA



## Live On Stage!

**Sunday 11th June at 7.30pm**

Giggles At The Parkway - Evening of Live comedy

**Tuesday 1st August at 2pm**

Talagate Theatre presents - THE GIANT'S LOO ROLL

**Sunday 24th September at 7pm**

Hull Big Band

**Wednesday 18th October at 8pm**

Tom Stace - I Swear

**Monday 30th October at 2pm**

Talagate Theatre presents -

Harry Panto and the Chamber Pot of Secrets - a parody panto



# Giggles



## Win Wonder Woman Goodies!

To celebrate the release of 'Wonder Woman' in cinemas on June 1st, Warner Bros. Pictures and Parkway Cinema, Beverley offer you the chance to win a raft of goodies and a pair of tickets.

The goodies include:

- A beach ball
- Computer stickers
- A Funko Pop Figure
- A Metallic Gold Lace Strap
- A Selfie Button
- A t-shirt (adult medium size)

Gal Gadot returns as the title character in this epic adventure from director Patty Jenkins. Joining Gadot are Chris Pine, Robin Wright, David Thewlis, Ewen Bremner and many others.

Before she was Wonder Woman, she was Diana, princess of the Amazons, raised on a sheltered island paradise and trained to be an unconquerable warrior. When an American pilot crashes on the island shores and tells of a massive conflict raging in the outside world, Diana leaves her home, convinced she can stop the threat. Fighting alongside man in a war to end all wars, Diana will discover her full powers... and her true destiny.

To win the amazing prize Wonder Woman goodies and tickets, all you have to do is answer the following question:-

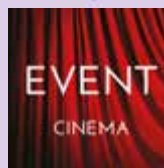
**What accessory does Wonder Woman wear to deflect bullets?**

Send your answer by email to [info@justbeverley.co.uk](mailto:info@justbeverley.co.uk) by June 14th. Include your name, address and daytime telephone number. Put 'Wonder Woman Comp' in the subject box.

If you need a clue, you can follow Wonder Woman on the following social media platforms:

- [www.facebook.com/WonderWomanUK](http://www.facebook.com/WonderWomanUK)
- [www.twitter.com/wonderwomanfilm](http://www.twitter.com/wonderwomanfilm)
- [www.instagram.com/wonderwomanfilm](http://www.instagram.com/wonderwomanfilm)

The winner must be available for publicity purposes for **Just Beverley** and **Parkway Cinema**. Good luck! ©2017 Warner Bros. Ent. All Rights Reserved. TM & © DC Comics.



Event cinema offers something a little different to mainstream films. Live and pre-recorded shows beamed in via satellite from all over the world. Here are the latest live streams that you can enjoy on the big screen at Parkway Beverley.

TICKETS NOW ON SALE:

**Saturday 4th June at 5.45pm -**

**BRITISH MUSEUM PRESENTS HOKUSAI (TBC)**

**Wednesday 7th June at 7.15pm -**

**ROH: SYMPHONIC VARIATIONS (U)**

**Thursday 8th June at 6pm -**

**GLYNDEBORNE - LA TRAVIATA (TBC)**

**Friday 9th June at 8pm -**

**TAKE THAT - WONDERLAND (12A)**

**Saturday 10th June at 2pm -**

**NT LIVE: PETER PAN (TBC)**

**Monday 19th June at 7pm -**

**ALL'OPERA - DIE ENTFUHRUNG AUS DEM SERAIL (TBC)**

**Thursday 22nd June at 7pm -**

**NT LIVE: SALOME (15)**

**Wednesday 28th June at 7.15pm -**

**ROH: OTELLO (U)**

**Wednesday 5th July at 7.30pm -**

**LA BOHEME - LIVE FROM TAORMINA (TBC)**

**Thursday 6th July at 6pm -**

**GLYNDEBORNE - HAMLET (TBC)**

**Thursday 20th July at 7pm -**

**NT LIVE: ANGELS IN AMERICA PART 1 (15)**

**Saturday 22nd July at 7pm -**

**ANDRE RIEU'S 2017 MAASTRICHT CONCERT (PG)**

For full programme of the Event Cinema, please visit [www.parkwaycinemas.co.uk](http://www.parkwaycinemas.co.uk)



Why not test your film knowledge at 7pm before the Mystery Movie Monday? There are free film tickets for the winners!

# One Man and his Dog

**Managing a local domestic-appliance repair business can be stressful and tiring and not conducive to getting much exercise. So Jason Huby of Huby Domestic Appliances bought a dog - which opened up a whole new world!**

Ruby (Kennel Club name Rockin Ruebster) appeared in the Huby household 3 years ago. She's a Schnoodle - a cross between a Miniature Schnauzer and a Toy Poodle - chosen because Poodles don't moult and Schnauzers are obedient and intelligent.

Jason wanted a dog which not only liked a lot of exercise to get him out and about during the day and help him relax, but which he could train. Ruby and Jason enrolled in puppy training at Wag Tails at Weel and enjoyed their time there, learning basic commands, socialising with other dogs and becoming a team. As they were coming towards the end of the course, Jason noticed a group in a field practicing Dog Agility - owners and dogs were running around a field, the dogs were jumping or walking over obstacles and there was lots of laughing and general enjoyment. As Jason says: "Humans and dogs were having fun and I fancied giving it a go, quite nervously at first as I am very self-conscious."

It's fair to say that Ruby took to it like a duck to water! She's 33cm across the withers so is permitted to only jump in classes with jumps up to 350mm, but on her first outing, at a 2-day Kennel Club (KC) competition at Bishop Burton in December 2015, she was entered in 8 Grade 1 (novice) classes. She won 7 rosettes for being placed in the top 3, including 3 first places!

Having shown such promise and clearly enjoyed the experience, Jason started training Ruby quite seriously in Dog Agility. They now train with Katie Long, a well-respected trainer in the Dog Agility world. However, Ruby is now a teenager and her behaviour can be 'patchy' even with Katie.

Jason told **Just Beverley**: "Ruby and I have become a working partnership and we go all over the place for competitions. The other weekend I got up at 5pm to take her to a competition in

Bakewell! Unfortunately, she played up so I put her back in the car and came home! I was so disappointed but maybe I was nervous and she picked up on that.

"But Ruby doesn't know whether she is doing an easy or a hard course or even whether we are in a competition! She thinks it's a game with a reward and petting at the end. However, she needs to know who's boss so I'm trying to find a 'praise' voice and a 'discipline' voice and we have gone 'back-to-basics' with her training to try to change her attitude. We're also working on rewarding her with toys rather than food. We're going on a weekend training camp soon, too - I've even bought a tent!"

Dog Agility for Jason has become a bit of an addiction. There are over 300 licensed KC shows annually, many of which are family occasions held over the weekend with competitors arriving with caravans, mobile homes and tents.

Dog Agility keeps dogs and their owners fit, provides them with lots of fresh air and is very sociable. It also gives Jason the stress release he needs from the day job.

Huby's Domestic Appliances was set up in 1975 by Jason's father; Jason joined in 1983. Staff have all the skill-sets for repairing both gas and electric appliances.

Jason said: "We are a necessary evil! People expect their appliances to work day-in, day-out and when they stop working they need us now! We're a bit like an emergency service! To make life easier, appointments can be booked on the website in 3-hour slots; we confirm the booking and text half-an-hour before the technician is due to arrive so customers don't have to wait in all day. We also offer premium slots first thing in the morning or on Saturdays and may even be able to



accommodate a same-day call. Our priority is local people as we are a local firm. Ruby comes into work with me so I can walk her during the day to ensure I get a break. I'm much more relaxed now and can think clearer, which is why we have been able to make these strategic changes so that we are better organised and our customers know when we will get to them. Our aim is to solve problems successfully so we have happy clients!"

Huby's Domestic Appliances can be contacted on **01482 240511** or you can book direct via their website: [www.hubys.co.uk](http://www.hubys.co.uk)



An advertisement for Huby Domestic Appliances. At the top, the word 'HUBY' is written in large, bold, red letters, with 'DOMESTIC APPLIANCES' in smaller red letters below it. To the right, the text reads 'HUGE SAVINGS when you BOOK ONLINE at hubys.co.uk'. Below this, it says 'Book in advance and save money. The further you book in advance the more you could save...'. On the left, there is a cartoon character of a man in a blue uniform with 'HUBY' on his chest, standing next to a silver washing machine. Above the character is a smartphone displaying the company's website. At the bottom, it says 'You've tried the rest, now use THE BEST!' and '01482 240511'. On the right side, there are logos for 'asa', 'REFCOM', and 'gas safe REGISTER'.



## Janet Smart - fund-raiser for Thuso Orphanage in Lesotho

*It's a long way from Beverley to Lesotho, in southern Africa! Just Beverley meets Janet to find out how she got involved in helping children with learning difficulties in a country so far from home.*

The sad death of Janet's husband in 2003 instigated the contact from a cousin, Chris, who Janet hadn't been in touch with for years. Having no close family, Janet was delighted when Chris invited her to join him and his wife in South Africa, where he has property. Chris's house is only 4 miles from the border with Lesotho (Lesotho is landlocked by South Africa) which is why Janet heard about the orphanage, the children, their medical and educational needs and the fact that they had nothing. When she came back to the UK, she looked around her to see all that she had - food on the table, a table to eat off, a nice warm bed to sleep in - compared to what they had and decided to do something about it!

Her first fund-raising attempt made £1000! Humberside Police agreed to donate £10 for everyone recommended to join their databank for ID parades - Janet recommended 100 people. She gave the money to cousin Chris who took the money to the orphanage. But in 2006 when she herself visited Thuso, she was told the £1000 had been used to build a fence which had fallen down, and to buy food, but she could see there was great need and resolved to do more to make a difference to these children's lives.

Knowing that Prince Harry had been to Lesotho during his gap year, Janet wrote to him to tell him what she had done and plead for practical help. Prince Harry's equerry replied! Incredibly, Prince Harry knew Prince Seeiso of Lesotho and they were setting up a charity together, called Sentebale (which means

'Forget-Me-Not') to raise funds for orphans and vulnerable children in Lesotho - the common link between the Princes being that they had both lost their mothers at an early age - and Thuso was one of the orphanages it planned to help. Janet now had a means of channelling money raised - the challenge now was how to raise more.

Janet started by holding fund-raising nights but her main source of funds now is by public speaking, which she was encouraged into by Trish Porter of The Soroptimists. Janet admits she was terrified the first time she stood up in front of people but afterwards they gave her a bunch of hyacinths with a £50 cheque for the orphanage!

Janet said: "I couldn't believe that this group of people who I had never met would be so generous towards a group of children they had never met! But I realised this not only helped me raise money, it informed people about the disadvantages these kids face and how they could make their lives better. So now I offer my services as a public speaker to any group who will listen to me! The Royal connection definitely helps. People love hearing about the Royals and I've met royalty not only from our country but from Lesotho, too!"

Janet's fundraising has bought bunk-beds and mattresses, tables and benches, a trampoline and sensory equipment. There is a school now at Thuso, which local children attend to learn with the orphans so the tables and benches are doubly useful. The bunk beds are now housed in a dormitory which Prince Harry himself helped to build. As a fund-raiser and friend of Sentebale, Janet has been invited to conferences which Prince Harry has attended, which discuss the plight of these African children, many of whom are orphaned due to the AIDs epidemic and some of whom are HIV-positive themselves. Janet has visited Thuso many times over the years. She likes to bring fun into the children's lives and twice has put on a typical English tea-party with paper hats,



balloons and streamers. Being aware of the usual diet of 'mealy-pap' (cornmeal porridge) and boiled cabbage means going easy on rich food so as not to give the children tummy upsets but they can still enjoy jam sandwiches, cornflake cakes, marshmallows and crisps.

Janet said: "The children are so well behaved. They do not eat until after they have sung a hymn, said a prayer and been given permission to tuck in. Even then, the able-bodied feed the disabled children first. It is so heart-warming to see such love. I get very emotional thinking about these kids and how appreciative they are of everything I can do for them - but what I do couldn't be done without the nice people who entrust money to me on their behalf.

"As well as the talks, I also make decorated spoons and beaded jam-pot covers which I sell. This keeps me busy on nights when I don't have a speaking engagement. This has filled my life - everything I do now leads back to these kids in Africa. I'm happy to go anywhere reasonably local to speak - I update the talk every year so if you haven't heard me for a couple of years, do invite me back!"

Janet can be contacted on **07786 098906** or [smartiepants27@smartipants27.karoo.co.uk](mailto:smartiepants27@smartipants27.karoo.co.uk)

# Rumi's

**NEW FOR 2017  
TAPAS MENU**  
Sun to Wed  
5.30pm to 7.30pm

**The Only Beverley Indian Restaurant included on the Welcome To Yorkshire Spice Trail**

**Rumi's Bangladesh Indian Cuisine**

New Walkergate, Beverley, HU17 9EP

**T: 01482 428642**

[www.rumisrestaurant.co.uk](http://www.rumisrestaurant.co.uk)

Mon - Thurs: 5.30pm - 11.30pm  
Fri - Sat: 5.30pm - 12am Sun: 5.30pm - 11pm

# MR CARPETS

## CARPET AND FLOORING SPECIALISTS

3 Becks North, Beverley, HU17 0PR

30 Years

- in business
- of good honest service
- speaks for itself

**01482 872134**



Memberships

EAST RIDING  
LEISURE

# Shape Up For Summer

Three months membership for only £60.

Giving you unlimited access to:

- Tone Zone fitness suite
- Swimming pool
- Exercise classes

Offer runs  
1 June to  
31 July



For more information visit our website or pop into any  
East Riding Leisure Centre.

# Meet Ann Willis, Beverley's New Mayor

**Ann (without an 'e') has been a Beverley Town Councillor since 2014. Why did she stand for Council? Because there were only 2 women on the Town Council at that time and therefore women were under-represented and, as a devout Christian, she thinks more Christians should be involved in politics. She feels very honoured to be the Mayor of Beverley, following on a tradition started in 1573 and only the 7th woman to hold the office.**

Ann is now retired from her full-time career in counselling, which is why she decided the time was right to stand for Council at the elections 3 years ago, but she still volunteers as a counsellor for Cruse Bereavement Care. Before studying for a degree in psychology, she was a nurse, but she wanted to expand her skill-set. Once qualified as a counsellor, she worked from a GP's surgery, where she used to see a lot of patients, which was

possible because she kept admin down to a minimum. She's also a Mum to four girls and a boy - her eldest daughter, Debbie, will be her Mayor's Consort Monday to Friday and her son, Michael, will take over the responsibility over the weekend. She also has five grandsons.

Ann was widowed a few years ago when husband, Tom, died. Tom was a well-known local Church of England vicar who was involved in Deliverance Ministry (Exorcism).

Ann worships at St John's, Bransholme, where she is Parish Assistant and Church Warden.

Having a busy job whilst bringing up a large family and helping at Church means that Ann is well-organised; this aptitude will surely help as she sets out on her Mayoral year!

Leading such a people-focussed life does mean that Ann has become a master at managing her own life. She is a great fan of mindfulness - non-judgemental acceptance - and working out where she can help so does, and where she can't, so she leaves it to someone else.

Her switch-off time is doing Aqua-fit four times a week at Beverley Leisure - which is also great exercise and a good laugh! As Mayor, she is looking forward to meeting lots of new people and enjoying new



experiences. She is also keen to promote her charities - Cruse Bereavement Care (which offers counselling to anyone who has been bereaved but which finds getting volunteers to train as counsellors difficult) and Beverley Riding for the Disabled.

Ann's son has Down's Syndrome, is registered blind and his feet 'don't work properly' but he loves riding. Ann also actively supports Christian Aid, Mission Aviation Fellowship, Yorkshire Air Ambulance, the Bransholme Food Bank and the Bible Society's 'Open the Book' School Sessions, so choosing just 2 charities to promote was difficult.

Ann said "One of the wonderful things about the British has always been their generosity - which is why I am so disappointed that there seems to be a consensus to reduce foreign aid. But we spend such a lot on food whilst others, even people in our midst, are starving which is why our Food Banks are so important.

"Similarly, there are so many people who don't know about the Bible or how the Church works, but when you tell them they understand the message of Christianity, which is where 'Open the Book' comes in; the children love the Bible stories and how the message can impact their lives."

Ann is clearly relishing her forthcoming year and the positive way she can make a difference. She is very approachable - so if you see the red robes or the chain of office, do say hello!

If you would like Ann to attend your event in her official capacity, contact Beverley Town Council at the following address: <http://beverley.gov.uk/the-mayor>

## Beverley Soup - food for the community

**Beverley Soup - an idea adopted from America which helps local charities by innovative crowd-funding. The second 'Soup' was recently held in St Mary's Church where four charities bid for the money from the entrance fee paid by attendees.**

Amy Kaheri is the lady who first thought of the 'soup' idea in Detroit in 2013. Detroit was suffering from the downturn and Amy wanted to do something to help artists who were particularly suffering. With a small team of volunteers, she begged the loan of a hall, set it with tables laden with (donated) bread and soup and invited the local community to come along, paying \$5 for the pleasure of enjoying the warmth and the food, knowing their entrance fee would go to a good cause.



The audience listened to four people 'pitch' for the money and then they voted on the one they considered the worthiest. Five years later, 'Soup' has become a city-wide community movement; within 3 years, Amy had run her 95th 'soup' and raised over \$85,000!

The BBC heard of this initiative and produced a programme which was aired on the World Service in 2015 along with an article on the BBC website - 'Can Soup change the World?'

It encouraged people to adopt the idea and crowd-fund for their own communities. A group of people in Beverley, Councillors Rob Begnett and Nick Machen, Chris Harrod, Cheryl Murphy, Tina Warne, Howard Tomlinson and Adam Hawley were intrigued.

Knowing there was a York Soup, they travelled up the A1079 to find out how they did it. Suitably inspired, they set up Beverley Soup in St Mary's Church.

The 'winners' of the first 'Soup' were Beverley Community Lift (BCL), who went away with £500 from an audience of 50 people who paid £10 each. BCL needed a new van with a hydraulic tail-lift to transport the housebound and socially-isolated to shops, medical appointments and social events.

The second 'Soup' saw the money raised being shared between the Church Lads and Girls Brigade, who need new tents, and Cherry Tree Centre, who need better access for the disabled, wheel-chair users and buggies. They each got £250. However, the great thing about 'Soup' is that it's not all about money - it's about community!

Chris Harrod told **Just Beverley**: "Although Bundles of Joy and The Lifestyle Freedom Five were not successful, they were able to create awareness of their charities. Bundles of Joy

Photo courtesy of Cheryl Murphy



was offered baby clothing and equipment and help from the Lifestylers, and the Lifestylers so impressed the Mayor with their plans to hold workshops for kids during the summer holidays, that they won his Young Achievers Award!

"He set up a Community Youth Foundation during his Mayoral year and they are now an integral part of leading it. Soup opens the door for possibilities and change and enlarges communities."

The evening was supported with donations of soup, bread and cake from the Bread Shed, Walker's Tearooms; Lempicka, Fresh 'n' Fruity and Hawleys and there was entertainment from The Andrini Sisters and Tom Lumley.

The next 'Soup' is planned for later in the year - but it needs people to support it as well as four charities to bid for the fund; after all, the more people who attend, the bigger the pot of money at the end of the night.

Keep an eye on **Just Beverley** for updates and on Beverley Soup's Facebook page @**BeverleySoup** for the date and do come along.

It is a great social occasion as well as a great fund-raiser and deserves to be as successful as Detroit Soup.

## The Tiger Inn has a £150,000 make-over!

After being closed for 4 weeks, the refurbished Tiger opened its doors in May 26th. Landlord Allen Slinger told Just Beverley: "It looks stunning! We can't wait for everyone to see it!"

The refurbishment comes at the same time as the pub revamps its menu - although the very popular Sunday Lunches remain a backbone of the offering. As do all the community events for which the Tiger is renown - Quiz night every Tuesday, Open Mic Thursdays, folk nights Tuesdays and Fridays and bingo every Tuesday afternoon from 1.30pm.

With summer in mind, the beer garden has had some attention, too, along with the car park. The pub is very dog-friendly and so keen to encourage visits of canines (with their owners) that it has started stocking Woof Dog Beer! Woof Dog Beer, which is non-alcoholic and non-carbonated, is made from 100% British malted barley with wort and beef bone stock. Now man (or woman) and their dog can enjoy a pint together!





Stockists of  
Woof Dog Beer!





Brains required from 8:30pm

FIRST SATURDAY  
OF THE MONTH

## Big Quiz

Free food/prizes to be won,  
all money raised to our house charities.  
£1 per person entry

WEEKLY

## Bingo



Cash prizes to be won  
50p entry per game  
Every Tuesday 1.30pm

## THE TIGER INN

Tel: 01482 869040 | www.tiger-inn-beverley.co.uk  
Lairgate, Beverley HU17 8JG





### Competition

To celebrate the re-opening of The Tiger, Allen has kindly offered a voucher for two for Sunday Lunch! All you have to do to win the voucher is answer the following question:



*If a dog wants a beer at the Tiger, what does he ask for?*

Send your answer by email to [info@justbeverley.co.uk](mailto:info@justbeverley.co.uk) by Wednesday 14th June. Include your name, address and daytime telephone number in the body of the email with 'Tiger Comp' in the subject box. The winner will be drawn by random after the closing date. Winners must be prepared to be involved in publicity for the Tiger and Just Beverley. Good luck!

# BEES

BURTON ELECTRICAL SOLUTIONS

High quality electrical work across East Yorkshire & the Humber region

DOMESTIC

COMMERCIAL

TESTING

Whether it's for your home, rental property portfolio or business premises, all electrical installations need to be checked periodically by a qualified electrician.  
For a quote contact:

**Andrew Burton**  
28 Carnaby Close, Leconfield, East Yorkshire HU17 7LA  
Tel: 01964 552769 Mob: 07585 601730  
Email: [info@burtonelectricalsolutions.co.uk](mailto:info@burtonelectricalsolutions.co.uk)  
Web: [www.burtonelectricalsolutions.co.uk](http://www.burtonelectricalsolutions.co.uk)



## Botterill & Co

Chartered Certified Accountants

We are a modern and professional accountancy practice ideally located to serve businesses in Beverley and the surrounding area.

We utilise modern accounting technology to provide you with a cost effective, professional service.

### Our services:

- Annual Accounts
- Company Formations
- Tax Planning
- Payroll
- Management Accounts
- Cloud Accounting
- Tax Returns
- Bookkeeping & VAT

For a free initial consultation please contact us:

Office: 01482 862240

Mobile: 07966 051458

Email: [gareth@botterillco.co.uk](mailto:gareth@botterillco.co.uk)

Website: [www.botterillco.co.uk](http://www.botterillco.co.uk)

1st Floor Offices, 40 Norwood, Beverley, HU17 9EY



## **Transform your community with Destination Beverley and Spacehive**

Destination Beverley, the new partnership dedicated to promoting all that is best about the town, has teamed up with funding platform Spacehive to enhance your community.

Spacehive is a funding platform for projects that make local places better, by allowing anyone to create and fund public projects online.

Our partnership will make Beverley an even better place to live, do business and visit and we want the people of Beverley to get involved in making that happen.

### **Why crowdfunding?**

Spacehive's crowdfunding platform works by providing tools that help people develop their ideas, get noticed by crowds of people, companies, councils, the media, in order to attract funding to make great projects happen.

Since its launch in 2012, Spacehive has helped fund over 250 projects across the UK worth over £6m - from public wi-fi in Mansfield to an urban farm in London.

We already have great projects put forward by the local community in Beverley. Please find out about those projects, back the ones you love or put forward your own!

**Find out how you can get involved at:**  
[www.spacehive.com/movement/destination-beverley](http://www.spacehive.com/movement/destination-beverley)



destination  
beverley



transform where you live

[www.destinationbeverley.co.uk](http://www.destinationbeverley.co.uk)

Follow us on Twitter @DestinationBev and like us on Facebook.com/Destination Beverley

## I've Been Thinking... by Colin Raynor

*I've been thinking about window cleaners and miracles. Let me explain the connection between the two.*

Do you have a window cleaner come to your house? We do. About once a month, religiously, there is the man with his ladders, bucket and wash leather. In next to no time he has cleaned our windows, including the ones upstairs. For a few weeks, we have nice clean windows but as I quickly realise, whilst our vision is obviously better when the window cleaner has finished, our vision is clearer still when we also clean the windows on the inside.




So, we move on to miracles, specifically the miracles we can read about in the Bible. A preacher in a church pulpit attempts to clarify for the congregation the message we can learn from the many miracles. I will venture to say that the miracles we read about in the Bible e.g. turning water into wine, calming the sea or restoring a man's sight do require explanation, as our natural thought process is to dismiss what we cannot, from a logical point of view, understand. However, the clear meaning of the miracles will only remain with the listener, if he or she takes it upon themselves to clean the window from the inside. By which I mean putting into practice the forgiveness, the humility and awareness of the majesty of Jesus that are to be found in the miracles, thereby adding to their personal well of faith.

My Dad became a window cleaner in the years after the Second World War when there was little work available. It is only in my later years I realised how humbling it must have been for my Dad to go from being a highly skilled worker to work that just about fed his family. There are many folks having to do the same today and I do believe the Church is playing a big part in helping people perform their own miracles on a daily basis. So much is unclear in this modern world, both on a personal level and in the public domain, but remember these words "Now we see through a glass darkly but then shall we see clearly... Now abideth faith, hope and love and the greatest of these is love."

## Places available


in all year groups

- Dedicated to your child's education
- Unparalleled GCSE results for boys in the East Riding
- Mixed sixth form with proven success as University route



### Beverley Grammar School

Specialising in boys' education since 700AD




Contact the school on Tel: 01482 881531 or e-mail: admin@beverleygrammar.co.uk

Beverley Grammar School  
Queensgate, Beverley HU17 8NF

## SPECIAL OFFER

2 Courses for the Price of 1  
on all Toning Tables booked before 10th June

FREE TRIALS, No obligation  
Testimonials available




**TONING TABLES** help with fat loss, ME, MS, hip replacements, depression, bad backs and much more!

Wheelchair access and stair lift available

# INCHES BODY STUDIO

CELEBRATING 26 YEARS IN BUSINESS

Inches Body Studio, 1 Norwood, Beverley, HU17 9ET  
Telephone: 01482 865229  
Email: inchesofbeverley@hotmail.co.uk  
www.inchesofbeverley.co.uk





## WHITE RABBIT

CHOCOLATIERS

Your Luxury **Chocolate Destination**  
*Handcrafted in Beverley!*



16 Dyer Lane, Beverley, HU17 8AE  
01482 679325  
whiterabbitchocolatiers.co.uk






# Clint Wastling and The Sea of Hull

"We congregated at 3am but hung around until about 4am when the message came to strip off (no jewellery or glasses were allowed) and get the paint on. You did need help to get completely covered and there were people checking for 'paint holidays'. Stanley Tunick was chivvying everyone as he wanted the photographs taken in a particular light quality. There was no time to think 'I'm stood here naked covered in blue paint!'"

## SEA OF HULL

*Beyond the checkpoint.  
I queued to register,  
received an empty plastic bag  
labelled B3.  
Queued for body paint  
marvelling at the number and diversity  
of people - - all talking.*

**Local poet and writer, Clint Wastling, was one of the 3,200 people who stripped off and painted themselves various shades of blue and green one chilly morning last July to become the Sea of Hull. Just Beverley asked him why he did it?**

Hull City of Culture 2017 is an amazing accolade for Hull and the wider East Yorkshire. To have attracted the world-renown photographer, Spencer Tunick, to imagine and create the largest living art installation in the streets of Hull is unique; to be part of that experience is a once-in-a-lifetime experience. That's what Clint thought, which is why he signed up to do something he will never forget.

"Spencer Tunick was stood in various places - on a cherry-picker, at the top of the BBC building and the Holiday Inn. He had about 20 assistants who told us where to stand or lay - one called 'Steve' became quite famous! There was not a spec of litter anywhere on the route. People were very quiet during the shots but in between there was a real sense of camaraderie, helping those on crutches or in wheel chairs. And yes, it was quite cold! At 6am whilst lying on cold cobbles I could have done with a cup of coffee! My favourite shot is the one round the Fountain in Queen's Gardens, but photos were also taken by Guildhall, at the end of Lowgate and on Scale Lane Bridge while it opened. Looking at the photos, which are now on display in Ferens Art Gallery, Hull, you can see how the bodies represent the sea, becoming part of the landscape. It's very professional, considering everyone who became the sea was an amateur and a volunteer."

*Just after 4 with a red dawn,  
Spencer ordered us to strip and paint our bodies,  
giving our skin a new colour - -  
helping hands daubed backs  
and I became turquoise.  
Nudity made us equal  
As we walked, colours mixed,  
leaving footprints in shades of blue until  
three thousand people filled The Rose Bowl.  
My backside made it onto Sky News!*

Clint said: "It was advertised on the Hull City of Culture 2017 website, so attracted people from all over. Security was very tight - you were sent a registration number which was checked at the first checkpoint, which is where you were given a plastic bag with a number - mine was B2. At the second check-point, you picked up a large pot of paint corresponding to the number you were given, with instructions of how to put it on. My paint was a deep turquoise colour and yes, when I'd got it on, I did look like a Smurf!"

The Sea of Hull photographs are part of the 'Skin: Freud, Mueck and Tunick' exhibition at Ferens which is open from 10am (11am on Sundays) which runs until August 13th 2017. Free entry. Clint Wastling performs as part of The Argy-Bargy Poets who are poets-in-residence at Beverley Folk Festival which runs from June 16th -18th at Beverley Racecourse. He is also performing at a fund-raiser for Prostate Cancer on June 30th at Ellie-May's Café in Cottingham.

*The unyielding tarmac of Alfred Gelder Street  
was bitterly cold, so when the breeze blew  
An ooo emanated from the crowd.  
Spencer called his assistant - -  
"Steeeve," mimicked through the ranks.  
A Mexican Wave helped prevent shivering.  
A joke about a red light broke the ice  
before we were marshalled into colours  
for the next take.*

*We surrounded an eminent Victorian's statue:  
our nakedness a stark contrast to his baronial robes.  
Our final photo found us crammed on  
Scale Lane bridge.  
"That's a cut!"  
A round of applause. Cheers!  
Four of the coldest July hours but we'd made it!  
A Sea of Hull reaching out the  
hand of friendship in shades of blue.*

Telephone: 01482 869111  
sales@rosesofbeverley.karoo.co.uk



The Kitchen Factory, The Courtyard,  
Tokenspire Business Park, Beverley  
HU17 0TB

Our bespoke range of kitchens designed, pre-installed and fully project managed from start to completion.

**Roses DIY range of kitchens**  
Designed and pre-installed, ready to fit.  
This 12 unit kitchen (18 doors) includes cornice, pelmet, worktops, etc

Roses refurbishment range.  
Complete kitchen makeover service.  
Ex-factory price list.

**"TICKTON MATT"**  
**£2,750.00**  
**inc VAT**

**"LEVEN SHAKER"**  
**£2,950.00**  
**inc VAT**

**SEE ALSO OUR NEW:**  
"SKIDBY SHAKER" • "BEVERLEY GLOSS" • "COTTINGHAM ASH" • "WALKINGTON (HANDLELESS GLOSS)"

FULL PRICE LIST AVAILABLE IN STORE

TRADE ENQUIRIES WELCOME

Visit [www.roseskitchens.com](http://www.roseskitchens.com)  
to see our customers kitchens and read what they have to say about us

Telephone: 01482 869111 • [www.roseskitchens.com](http://www.roseskitchens.com)



## Life can't be good all the time, or can it?

*As we go through the different phases of our lives, we have different motivations. When we are a child, we are focussed on growing up and going to school to learn; as we become a teenager we are concerned about peer groups and image; as we hit our twenties we are interested on careers and our social life until we meet the person we want to spend our life with and we think about family. Our mid-lives are about children, finding our purpose in life and then, as we reach our later years, we focus on legacy.*

At each point in time, there are different 'stressors' which cause us to worry and become stressed or anxious.

Recognising these helps us to understand ourselves and why we feel as we do, which ultimately help us to overcome them so life becomes stress-free and yes, good!

As I keep telling my children, there's nothing new under the sun - but what is new is that experience or discovery to the individual.

Accepting that others have been there before you means tapping into years of past experience and that can help each and every one of us deal with situations as they come up.

When I was a teenager, I got acne. How did I feel? Ashamed! But acne is a fact of life and it eventually went, leaving me with a routine for looking after my skin which has served me

well to this day. In reality, the ugliness I felt was entirely in my head.

I remember being incredibly disappointed when I didn't get the grades I expected at A-level; but I was far more interested in spending time with my friends than studying so it was my own fault.

But I ended up taking a different career path which has given me rewards I could never have conceived of at the time when I was in floods of tears.

I don't know what my life would have turned out if Plan A had worked, but thanks to lots of great advice and shoulders to cry on, Plan B has been amazing!

Learning to accept situations, whether good or bad, is so important; but to be able to turn a negative situation on its head so it becomes good is even more imperative.

Being able to explain to yourself why you feel bad allows you to counsel yourself, change the perspective and move on. If that doesn't work, meet with a friend and let them counsel you or look at your life goals and work towards one of them - a 'win' no matter how small boosts self-esteem!

Volunteering has been shown to reduce unwanted negative thinking as there is always someone worse off than you are or why not carry out a random act of kindness - perhaps



a housebound neighbour would appreciate a bunch of flowers!

Remember, thinking that something is bad immediately releases stress hormones so just accept that sometimes things go wrong - it's part of life's rich pattern - and move on!

Be happy!

Linda.

[www.releaseyourpotential.co.uk](http://www.releaseyourpotential.co.uk)  
07585 802035

## Charity Champions

New 'Side by Side' Service helps people living with dementia get out and about

*People living with dementia are often unable to do the things the rest of us take for granted but with the help of a 'Side by Side' volunteer, the sky can be the limit, as Geoff Cook found out!*

Geoff joined the Hull and East Riding Service when it was first set up in April 2016. Although living at home with his wife, Geoff had become socially isolated. His Side-by-Side volunteer, Susie, offered him the opportunity to regain his independence. They go on long walks, often accompanied by dogs from Carr House Dog Rescue Centre and share long conversations. Susie, and Side by Side Co-ordinator, Corinne Fawcett, learnt that Geoff was in the RAF and that one of his ambitions was to do a wing walk - so that's what he did as a 70th birthday challenge, raising over £1700 for Alzheimer's Society and promoting Side by Side at the same time!



Geoff's wife, Bernice, said she 'went as white as a sheet' when she realised he was serious when he first suggested the challenge. But now she couldn't be prouder. She said: "He has proved to everyone that you can still do amazing things despite a diagnosis of dementia."

Side by Side is built around the individual and their needs. If you or someone you know who would benefit from this service, why not contact Alzheimer's Society on 01482 211255 or [www.alzheimers.org.uk](http://www.alzheimers.org.uk). After all, as Geoff says: "I may not beat dementia in the end but I'll make sure dementia won't beat me while I am alive!"



WATCH YOUR PET FROM HOME  
VIA OUR LIVE STREAMING APP

Prices from £12

Baths, handstrips, mini grooms, full grooms,  
nails, de-shedding and much more!

Pet boutique selling a wide range of  
products, perfume, collars, leads, coats and toys

OPENING HOURS:  
Mon - Sat 9-4.30 Sun 11-4

TELEPHONE:  
01482 880122

WEBSITE:  
[www.doggroomersbeverley.co.uk](http://www.doggroomersbeverley.co.uk)



# Countryside Matters with Sam Walton - Buy British - look for the Red Tractor logo!

*With the ongoing Brexit situation, it is more and more important that shoppers support British. However it is also important that you know you are buying British. In the past, many items have been shown as British when in fact they had been imported and processed here and some meats have been a prime example. So my plea to you is to ask and make sure.*



What you need to look for is the Red Tractor logo. Farms which supply to those high standards have to jump through hoops to supply to reach the protocol required and quite rightly so. Having had the opportunity over the years of travelling to many counties, I have at times been appalled at some of the standards I have seen and the way in which the standards have been flouted.

Some of you may recall the news which hit the headlines in March and April with the report of what had happened in Brazil with rotten meat being marketed. That could never happen here as there are such strict controls on everything a producer does; controls also apply in the abattoir and processing centres.

It would appear there is always someone trying to make a quick buck at the expense of the public and anyone in farming these days trying to do that would be out of business before you could say Jack Robinson!

Life is so much different now from how things were in my youth. A long time ago, when there was more physical work around, you could eat fatter meat as you worked all those extra calories off. People had no mobile phones, iPads, gaming machine, fancy TVs or any other kind of screens like we have to-day. People were more active, playing more sport and there was not the number of obese people around. However, there was also little in the way of processed food or sugary drinks to tempt us. We survived eating good, healthy farm-fresh food, getting fresh air and exercise and never seemed to ail a thing!



**Specialising in:**

- Leather Restoration
- French Polishing
- Upholstery
- Loose Covers & Roman Blinds
- Curtains & Soft Furnishings



**T: 01482 871954 M: 07951 759253**  
**E: info@creations-biz.co.uk**  
**W: www.direct-furniture-repairs.co.uk**

Telephone: 01482 869111  
sales@rosesofbeverley.karoo.co.uk



The Kitchen Factory, The Courtyard,  
Tokenspire Business Park, Beverley  
HU17 0TB

Our bespoke range of kitchens designed, pre-installed and fully project managed from start to completion.

**Roses refurbishment range.**  
Let Roses give your kitchen a makeover with our replacement door and worktop service.

Roses DIY range of kitchens. Designed and pre-installed, ready to fit. Ex-factory price list.

<p><b>"TICKTON MATT"</b></p> <table style="width: 100%; border-collapse: collapse;"> <tr> <td style="width: 60%;">715 x 295</td> <td style="text-align: right;">Price inc VAT</td> </tr> <tr> <td>715 x 395</td> <td style="text-align: right;">£22.40</td> </tr> <tr> <td>715 x 495</td> <td style="text-align: right;">£26.32</td> </tr> <tr> <td>715 x 595</td> <td style="text-align: right;">£29.28</td> </tr> <tr> <td></td> <td style="text-align: right;">£33.08</td> </tr> </table> <p><b>"WALKINGTON (HANDLELESS GLOSS)"</b></p> <table style="width: 100%; border-collapse: collapse;"> <tr> <td style="width: 60%;">715 x 295</td> <td style="text-align: right;">Price inc VAT</td> </tr> <tr> <td>715 x 395</td> <td style="text-align: right;">£38.74</td> </tr> <tr> <td>715 x 495</td> <td style="text-align: right;">£42.92</td> </tr> <tr> <td>715 x 595</td> <td style="text-align: right;">£48.12</td> </tr> <tr> <td></td> <td style="text-align: right;">£53.88</td> </tr> </table>	715 x 295	Price inc VAT	715 x 395	£22.40	715 x 495	£26.32	715 x 595	£29.28		£33.08	715 x 295	Price inc VAT	715 x 395	£38.74	715 x 495	£42.92	715 x 595	£48.12		£53.88	<p><b>"LEVEN AND SKIDBY SHAKER"</b></p> <table style="width: 100%; border-collapse: collapse;"> <tr> <td style="width: 60%;">715 x 295</td> <td style="text-align: right;">Price inc VAT</td> </tr> <tr> <td>715 x 395</td> <td style="text-align: right;">£33.52</td> </tr> <tr> <td>715 x 495</td> <td style="text-align: right;">£37.10</td> </tr> <tr> <td>715 x 595</td> <td style="text-align: right;">£39.82</td> </tr> <tr> <td></td> <td style="text-align: right;">£44.52</td> </tr> </table> <p><b>"BEVERLEY GLOSS"</b></p> <table style="width: 100%; border-collapse: collapse;"> <tr> <td style="width: 60%;">715 x 295</td> <td style="text-align: right;">Price inc VAT</td> </tr> <tr> <td>715 x 395</td> <td style="text-align: right;">£35.33</td> </tr> <tr> <td>715 x 495</td> <td style="text-align: right;">£39.10</td> </tr> <tr> <td>715 x 595</td> <td style="text-align: right;">£41.98</td> </tr> <tr> <td></td> <td style="text-align: right;">£44.99</td> </tr> </table>	715 x 295	Price inc VAT	715 x 395	£33.52	715 x 495	£37.10	715 x 595	£39.82		£44.52	715 x 295	Price inc VAT	715 x 395	£35.33	715 x 495	£39.10	715 x 595	£41.98		£44.99
715 x 295	Price inc VAT																																								
715 x 395	£22.40																																								
715 x 495	£26.32																																								
715 x 595	£29.28																																								
	£33.08																																								
715 x 295	Price inc VAT																																								
715 x 395	£38.74																																								
715 x 495	£42.92																																								
715 x 595	£48.12																																								
	£53.88																																								
715 x 295	Price inc VAT																																								
715 x 395	£33.52																																								
715 x 495	£37.10																																								
715 x 595	£39.82																																								
	£44.52																																								
715 x 295	Price inc VAT																																								
715 x 395	£35.33																																								
715 x 495	£39.10																																								
715 x 595	£41.98																																								
	£44.99																																								

MANY MORE SIZES, DOOR STYLES AND COLOURS AVAILABLE

FULL PRICE LIST AVAILABLE IN STORE

TRADE ENQUIRIES WELCOME

Visit [www.roseskitchens.com](http://www.roseskitchens.com)

to see our customers kitchens and read what they have to say about us

Telephone: 01482 869111 • [www.roseskitchens.com](http://www.roseskitchens.com)



Send your photographs of your celeb  
Find us on Twitter and Facebook to s

# Tickton Scarecrow Hunt



# Mayor Making



HERE TO GET *you* THERE

# HUNTERS®

EXCLUSIVE

BEVERLEY / 01482 861411

# The Beverley 10k



# Flemingate Food Market



SALES / LETTINGS / MANAGEMENT

# HUNTERS®

HERE TO GET *you* THERE

BEVERLEY / 01482 861411

## Classic Cars with Carfan - the Austin Healey

*Who needs a gym membership when you drive an Austin Healey? Without power steering and many other driver aids that we now take for granted, driving this car gives you a good workout just taking it to the shops. Just think of the money saved which can go towards the replacement parts that will be needed, courtesy of various car clubs and many retailers!*

Austin Healey made the car from 1953 to 1967 in various forms, so even the youngest is now 50 years old. A large percentage of them were exported, which made a lot of money for the British exchequer. This car was raced and rallied during and after the manufacturing period with quite a lot of success in such glamorous locations as Sebring, the Mille Miglia and, a bit closer to home, at the Goodwood racing circuit. The United States was a major market for Austin Healey and the car regularly popped up in American films such as The Love Bug and Made in Dagenham.

The featured car is a 1962 3000 Mk.2. It was originally exported to California. California is a "dry state"; it gets plenty of warm sunshine, little rain and no cold weather so there is no need to put salt down on the road, which is a good thing as salt destroys vehicles slowly over time.

Costing £1190 when new, the current owner spent £9995 purchasing it in 1995 and spending the next ten years restoring it. He's done a very good job indeed and the result is a credit to him! It was a particularly good investment as a quick glance at the classified ads will show many similar cars for sale

in the £60,000 to £70,000 price bracket. The engine note is a lovely "burble" and if you hear this distinctive sound one sunny summer Sunday and you see the car with its roof down, don't forget the cheery Carfan wave!



## Vehicle air conditioning - keeping you cool in your car

*Air conditioning systems are closed circuits, operating in a similar way to a refrigerator; they contain high- and low-pressure elements. The high-pressure component forces gaseous refrigerant (coolant) into the condenser with the compressor, which is driven by a belt connected to the engine.*

This process heats the compressed refrigerant which is then cooled by the condenser and turned into a liquid under pressure. The low-pressure component causes all the magic to happen! The pressurised refrigerant, now a liquid, is forced through the expansion valve and evaporator. In simple terms, the low-pressure coolant turns into icy cold gas. The evaporator is inside the vehicle and the system uses the heater fan to blow air through the chilled unit, forcing the cooled air out of the vents.

On a hot day, the inside of a vehicle can reach temperatures in excess of 60°C which is why you should never leave children or pets unattended in vehicles. If your vehicle is like a sauna inside after sitting in the sun all day, you can help the air conditioning system by opening all the windows for a few minutes to expel the heat before turning on the air conditioning. Driving with the windows down will also force the hot air out much quicker.

For best cooling results, once you have removed the hot air from the cabin, close all windows and then use the air con in recirculation mode. This will help circulate the already-cooled air; it's more efficient than continuously drawing in warm air from outside. To help keep your car cool if leaving it on a hot day, try to park the vehicle in shaded areas and use a windscreen shade to keep the heat off the dashboard. This will not only keep the dashboard and vents cool, it will stop the steering wheel from getting hot and uncomfortable to hold.

If you notice that your air conditioning isn't operating to the standard that you think it should or to the level it has operated in the past, Beverley Motorworks can fully service the air conditioning system on all makes and models of cars.

Give them a call on **01482 881128** so you can keep your cool this summer!



BEVERLEY  
**MOTORWORKS**

INDEPENDENT  
BMW & MINI  
SPECIALISTS

Our dealership expertise means  
high quality car servicing at a fair price...

- ATA Accreditations
- Routine servicing
- Condition-based servicing
- Diagnostics
- Mechanical repairs
- Air conditioning
- Performance tuning
- MOT's

Unit D1 Grovehill Industrial Estate,  
Annie Reed Road, Beverley HU17 0LF

Call today: **01482 881 128**

Visit: [beverleymotorworks.co.uk](http://beverleymotorworks.co.uk)



the Good Garage Scheme



  
**SPECIAL  
OFFER  
MOT  
COUPON**

MOT YOUR CAR  
FOR ONLY  
**£29.99**

Simply cut out  
this coupon and  
present it when  
you bring your  
car to us



# Exciting, historic and vibrant - that's Jordan

*Jordan has been on the adventurer's radar for some time now - it's only a matter of time before this relatively undiscovered gem of the Middle East gets popular.*

The outstanding beauty of Petra (probably Jordan's most famous asset) is one of the New Seven Wonders of the World, and while it is definitely a must-see, it certainly isn't all this unique country has to offer.

Most visits start in the capital on Amman which is an experience in itself. Fusing traditional charm with a contemporary ethic, you'll find international clothing brands along with quaint souks selling pretty much everything as well as old-fashioned style cafes and modern chic eateries.



For those interested in cuisine, Jordan's national dish is called 'Mansef'. Usually made from lamb or goat, the meat is cooked in yogurt and seasoned with herbs and spices,

sprinkled with almonds and pine nuts, and served with rice.

The ancient city of Petra needs no introduction. And while guidebooks and travel blogs often picture the treasury building, it really is a city which needs at least a day to be explored.



It takes around half an hour to reach it from the nearest town, for which you'll have to travel through the narrow gorges that lead you to the city itself. If you're not feeling up to walking in the heat, camels provide an interesting method of transportation to the ruins.

The desert region of Wadi Rum is much more than just sand.

This incredible landscape has been used in numerous films (including 'Star Wars' and 'The Martian') for its lunar-like qualities.



4x4 Dune Safaris and Camel Trekking are popular activities here, but for the true nomad, opt for a traditional Bedouin experience under the stars by spending the night here. With open fires, dinner prepared by locals and luxury tents, it's more glamping than camping but equally as brilliant!

Many are familiar with images of newspaper-reading floating bathers on the Dead Sea.

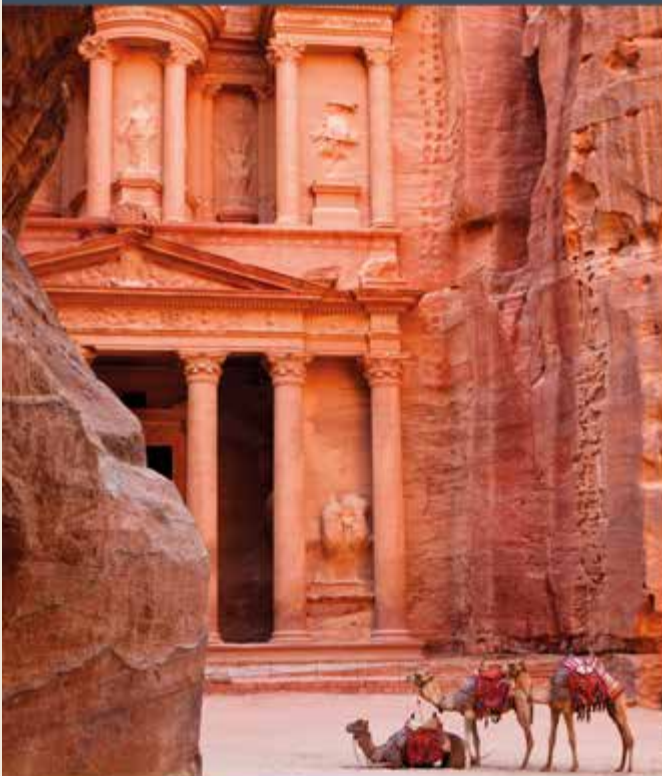
However those who aren't floating should try and keep their mouths closed and not spend over 20 minutes at a time in the water due to its high salinity - which is the reason why it's easy to float but why it tastes awful!

Dead Sea Mud is a famous exfoliant and regularly used in overpriced cosmetics - you'll see plenty of bathers covering themselves in it. It's somewhat customary, so get it slapped on and enjoy!

And don't forget to look around and enjoy the scenery - it really is breath-taking!

## Classical Jordan Tour

**ONEWORLD**  
TRAVEL GROUP



*This fully-escorted tour visits some of Jordan's most famous and incredible places, such as the beautiful and ancient city of Petra, the bustling capital of Amman, and the beautiful desert of Wadi Rum for a 4x4 Jeep Safari experience.*

### INCLUDES:

Fully-escorted tour with local English-speaking guides throughout & all attraction entry fees

Scheduled flights from the UK

All internal travel

Breakfast, lunch & dinner on every full day

**FROM 1225.00 PER PERSON**

BASED ON 2 ADULTS, HOLIDAY AND PRICE SUBJECT TO AVAILABILITY. SELECT DATES IN SEP, OCT & NOV ARE AVAILABLE. TOUR LENGTH IS 7 DAYS, 6 NIGHTS. PRICE BASED ON FLIGHT DEPARTURE FROM LHR. REGIONAL AIRPORT DEPARTURES, INC. LBA & MAN ARE AVAILABLE FROM AN ADDITIONAL £50 PER PERSON.



35 Saturday Market Beverley HU17 8BE

01482 280081

www.1worldtravel.co.uk

# FLEMINGATE

## BEVERLEY



# FASHION

# FOOD



# FILM



# & FUN



WE'VE GOT IT ALL AT FLEMINGATE

RIVER ISLAND

OUTFIT

TOPMAN

TOPSHOP

DEBENHAMS

H&M

GUEST & PHILIPS

Superdrug

GOURMET  
BURGER  
KITCHEN



SUBWAY

#GREGGS

deli



RIVA

PÂTISSERIE  
VILBERNE

PEACOCKS

VERB

Baytree Interiors



TRESPASS

Card Factory

Poundland

#Entertainer

wilko



@FlemingateBev

FLEMINGATE.CO.UK

FlemingateBeverley

## VERB comes to Flemingate

*Beverley resident Lee Wardell, who has 35 years of retail experience, is at the helm of this new brand which brings something special to Beverley in terms of men's fashion. The store also stocks an expanding range of womenswear.*

Featuring menswear brands such as Florentino, Gibson London, Pearly King, Mac Jeans and Goodwin Smith Shoes, which have been hand-picked to give style-aware customers the perfect mix of key fashion themes, classic elegance and up-to-date pieces, VERB is committed to providing outstanding customer service.



Lee said: "I've carefully selected a range of quality brands which provide timeless and contemporary pieces which are key to a man's wardrobe. Our highly-trained staff will offer expert guidance and advice to customers who are looking for excellent product knowledge, high-end service and an independent shopping experience."

Many people will know Lee as manager at popular and long-established Leonard

Silver Menswear in Saturday Market until it closed when the owner retired. VERB is new and different to Leonard Silver, but the commitment to excellence in quality and customer service will be the same and Lee will be delighted to meet old customers as well as new ones.

The 1,550 sq ft store is also very different; it features leather Chesterfield seating and a pool table as well as a display centrepiece showcasing some of the brands.

Graham Tait, Flemingate Centre Manager said: "We are delighted to welcome VERB! It will give customers a taste of something out of the ordinary which will complement Flemingate's strong fashion offering and adds to Beverley's ever-growing appeal as a retail destination and great place to visit."

VERB can be found next to independent jeweller Guest and Philips and is open Monday to Saturday, 9.30am to 5.30pm and Sundays, 11am to 4pm.

For more details visit the VERB website at: [www.verbffashion.co.uk](http://www.verbffashion.co.uk) and follow them on Twitter: @verbFashion; Facebook: VerbFashionBev; and Instagram: verbffashion.

## June Events at Flemingate:

### **Saturday 3rd June**

Craft & Artisan Monthly Fair 11am - 4pm

### **Sunday 4th June**

Teenage Market

### **Saturday 10th June**

Judy's Attic - FREE Summer Crafts and Stalls

### **Sunday 11th June**

FRESH! Food Event 10am - 4pm

### **Saturday 17th June**

Buddhist Meditation Tasters at 1pm & 2pm

## The Second Beverley Teenage Market is on Sunday 4th June at Flemingate

*The fsb and Flemingate have again teamed up to bring an incredible opportunity to young people! Anyone aged between 13 and 29 is invited to showcase their business and/or artistic talents in this FREE platform as visitors to Flemingate enjoy their offering.*

Last year, shoppers and leisure-visitors were able to enjoy hearing 10 performers and visiting 15 traders as they demonstrated their skills.

At the time of going to press, the following traders had signed up: Safi Coffee, Merryhide and Anna Walker Designs all from Beverley; The Crafty Pineapple; Paige Cavill Designs; Spotty Cow Designs; Mink!Maid; Pura Cosmetics; Joanne Coates Photography; Curiosity Clothing; CS Woodwork and Iris Brooks.

Artists booked to appear include Jack Parker, who wowed the crowds last year; Ben Keightley and Anti Classic (both from Beverley); Sophie and KC. The market runs from 10am - 4pm.



Would you like to  
make a difference to  
someone?



## VOLUNTEER CAR & MINIBUS DRIVERS NEEDED



Full training given,  
ring or pop in for  
a chat!



25 Corporation Road, Beverley, HU17 9HG

**Tel: 01482 868082**

[www.bclift.org.uk](http://www.bclift.org.uk)

Reg. Charity No: 506813

Attend



Your Partners  
in Payroll

## Has managing your payroll become a real headache?

New legislation for RTI and Auto Enrolment has tripled the workload for payroll staff!

We can help reduce the burden.

**Benefits of working with us include:**

- Access to a dedicated payroll specialist
- Flexible and tailored services that are adapted to suit your needs
- Transparent pricing
- Clarity and efficiency
- Access to our FREE and easy to use payroll app



To arrange a **FREE** meeting  
call us on 0845 308 2288  
or visit [www.stipendia.org.uk](http://www.stipendia.org.uk)



Stipendia Payroll Solutions



@StipendiaPay



**stipendia**  
payroll solutions



## The New Tax-Free Childcare Scheme

Last month saw the government launch its new tax-free childcare scheme, designed to help parents with the cost of childcare. Despite this, coverage of the new initiative has been rather sparse, so we're here to provide you with an update and discuss the benefits available.

Launched on April 28th, the new scheme applies to children aged under 12, or up to the age of 17 for children with disabilities. Under the new scheme, parents can create an online account into which they contribute money to pay for childcare. Functioning similar to a Help to Buy ISA, the government will also provide "top-ups" of £2 for every £8 that a parent pays into an account.

This "top-up" system is extremely beneficial for parents, allowing them to receive up to £2,000 per child which increases to £4,000 for disabled children. This provides the means for parents to afford services including registered childminders, after-school clubs, play schemes and more, which is the very reason the scheme was introduced. In order to be eligible, parents must both earn on average at least £120 per week, however the tax-free childcare is not available for parents who earn over £100,000 a year. Additionally, the scheme cannot be used alongside childcare vouchers, universal credit or tax credits but can be used with the 15 hours and 30 hours scheme.

This new initiative is the first of two launching this year. From September 2017, working parents of three and four year old children living in England will be able to apply for 30 hours of free childcare, worth around £5,000 per child. As more information on this is provided, we will be publishing updates for you on our website - [www.stipendia.org.uk](http://www.stipendia.org.uk).

At Stipendia, we're the experts in providing high quality and tailored payroll services and if you would like to discuss how this initiative impacts your payroll, you can get in touch with our team by calling **0845 308 2288** or visiting our website.

## Legal Q's and A's

Every month, Just Beverley asks a team of legal experts to answer a question:

**Q. My brother is in the early stages of a divorce. His wife has inherited a substantial amount of money and property but at mediation she said she gave her share to her sister. She has also taken out loans against their property. Can she just give her money away to deny my brother a fair settlement?**

Coles the Solicitors have provided the following response.

**A. Your brother would be advised to sever the joint tenancy on their property if he hasn't already done so, so that his wife cannot make further borrowings. If she has taken capital from their property this should be reflected in the final settlement. Mediation is unlikely to be successful where one of the parties is trying to secure an advantage over the other, and the case may have to go to court.**

If you need advice, why not give Coles a call?

They are located in the very heart of Beverley at **22, Lairgate, Beverley HU17 8EP**, telephone **01482 231300**.  
[www.coles-law.co.uk](http://www.coles-law.co.uk)

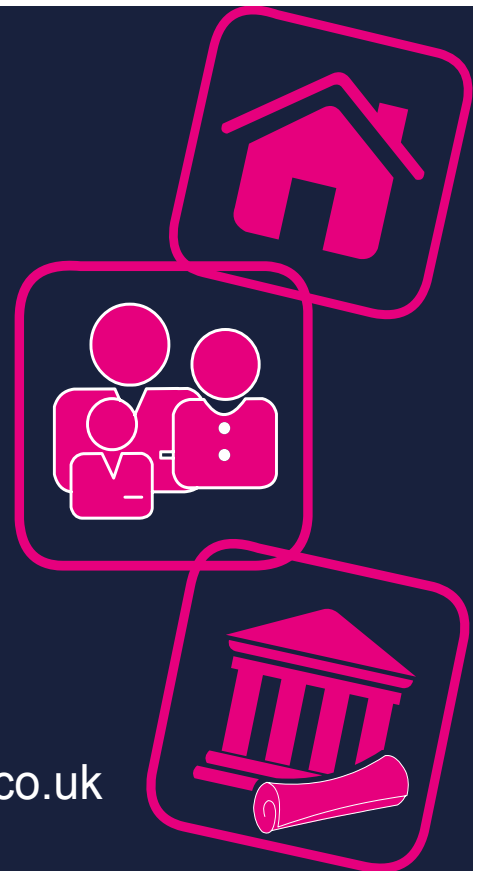
**Coles**  
the solicitors

Providing expert legal  
advice in the very heart  
of Beverley

22 Lairgate, Beverley HU17 8EP

T: 01482 231 300

E: [info@coles-law.co.uk](mailto:info@coles-law.co.uk) W: [www.coles-law.co.uk](http://www.coles-law.co.uk)



- Family Law • Wills & Probate • Conveyancing • Powers of Attorney
- Medical Negligence • Litigation • Dispute Resolution • Personal Injury

# Blooming Beverley!

*Beverley in Bloom is a voluntary organisation, which works to provide communal floral displays, planters and baskets throughout the town. The team work closely with Beverley Town and East Riding of Yorkshire Councils to brighten up Beverley for residents and visitors alike.*

This year, Beverley in Bloom is running a competition for residents, businesses and community organisations to enter.

Entrants are invited to produce the brightest and best garden or display in town.

Judged on the same lines as traditional flower shows, each entry will be judged by two members of Beverley in Bloom and awarded a Gold, Silver Gilt, Silver or Bronze Award at a ceremony on October 30th.

You can enter as a resident, a community, a business or hospitality venue. Judging will take place during July - August (residential and community entrants will be contacted to arrange a time).

Deadline for entries is June 19th. Do give it a go! Good luck!



**BEVERLEY  
IN BLOOM  
Town Competition  
Entry Form 2017**

**Closing date  
Monday 19th  
June 2017**

**Categories include:**  
Residential  
Businesses  
Schools  
Churches  
Community Groups

**HEYHA**  
Hull and East Yorkshire  
Hospitality Association

Now in its 11<sup>th</sup> Year  
**Copper Saucepan Award for the Apprentice Chef of the Year 2017**



Connor Berney from the Ashbourne hotel,  
Winner of the HEYHA Copper Saucepan Final and  
Victoria Martin Runner-up Beverley Food Festival 2016

**Enter the 2017 Copper Saucepan competition now**

Five excellent reasons for young chefs\* to enter the HEYHA Copper Saucepan Award for the Apprentice Chef of the Year 2017:



The competition is free to enter, with a £300 cash prize and the trophy for the winner and £100 for the runner-up, with one day's experience for both finalists working alongside Colin McGurran, Chef Patron, in the kitchen of the award-winning Winterringham Fields Restaurant. Cash Prizes sponsored by Turner Price.

1. Invaluable competition experience at Hull College and the Beverley Food Festival
2. Media coverage for the winner and the winner's establishment
3. Opportunity to show skills and talent at an established and acclaimed, award winning Food Festival
4. Unique experience to work alongside Colin McGurran
5. Being a Finalist or winning looks great on any C.V.

It's easy to enter, just send a three-course dinner menu featuring the best of local food, by 9<sup>th</sup> June to the address shown below. You will receive notification within one week of submitting your entry whether you have been successful and then go forward to the Cook Off at Hull College on the 26<sup>th</sup> June.

**Take this opportunity to shine!**  
\*Applicants to have less than 4 years of experience in the hospitality industry.

Full details and application forms on [www.heyha.co.uk](http://www.heyha.co.uk)  
Send an application form and menu by 26<sup>th</sup> June to:  
HEYHA Copper Saucepan Award 2016  
Beverley Town Council email: [clerk@beverley.gov.uk](mailto:clerk@beverley.gov.uk) or 12 Well Lane, Beverley, East Yorks, HU17 9BL tel: 01482 874096




**NEW  
MENU**



## MEDITERRANEAN STYLE FOOD AT IT'S SUMMER BEST

There's a new look menu at Cosmo's in Beverley. The Mediterranean-style bar and restaurant is bringing a new range of dishes to the menu.

Alongside the popular chicken dishes, there is now risotto, pasta, pizza, steak and a wider range of salads. There are also a new lunchtime, desert, cocktail and children's menus.

And with Summer on it's way, there is alfresco dining with pavement seating.

A warm and friendly welcome awaits from Ali and the team!

**WWW.COSMOSBEVERLEY.CO.UK**

9-10 Wednesday Market, Beverley, HU17 0DG

**T: 01482 867 891**

**E: [info@cosmosbeverley.co.uk](mailto:info@cosmosbeverley.co.uk)**



## In the garden... June

*Earlier today I managed to sit out in the garden (Sunday afternoon in mid-May) and enjoy the warmth of the sunshine. I have to admit that I felt quite pleased with my achievements' so far this year in that the vegetable plot is tidy and I only have my containers to plant up with summer bedding - which I always leave until the May Bank Holiday anyway. So, I am looking forward to more lazy afternoons in the garden if June lives up to its name of 'Flaming June':*

### Tasks for June

There are very few essential tasks other than:

- Mow the lawn - don't cut it too short, if we have a really dry spell the lawn will go brown if you do. Also, leaving the box off the mower and allowing the cuttings to stay on the lawn will 'help' conserve moisture.
- Keep a look out for pests, particularly on roses and lush green shoots.
- Keep on top of weeds.
- Tidy up/lift any remaining spring flowering bulbs.
- Top up water levels in your pond.
- WATERING PLANTS - due to a combination of longer days, generally drier/sunnier days and the rate at which plants 'drink' water, you will probably need to water the garden. Newly planted plants, young vegetables and plants in containers will need watering most. Watering should be done thoroughly - ideally either early in the morning or in the evening. Hanging baskets and small containers should be watered daily and fed with a liquid feed once a week. If you have large areas in the garden to water don't try and water the whole area by splashing a bit of water on daily, split the garden into areas and give each a 'good soak' which should last up to a week. Don't be fooled by heavy thundery downpours - often most of the rain 'runs off' and doesn't enter the soil.
- DEADHEADING (removing flowers as they fade) - this is an important task which needs doing regularly. Deadheading will extend the flowering period, by diverting the plants' energy from producing seeds into new growth and flowers. To deadhead cut back to just above a bud lower down the stem of the plant using secateurs or garden snips.

Recently, there has been a lot of talk about having a water shortage this summer. Believe it or not the whole of the UK has had the driest winter in 20 years, and yes, I can remember the summer of 1976!! Obviously some of the tasks for June will be affected if there is a water shortage. Hopefully there won't be a 'hosepipe ban' this summer, but maybe consider installing a drip or trickle irrigation system for your containers and investing in a water butt or two. Also some bedding plants are more drought tolerant than others, they include: Geraniums, Begonias, Salvia, Osteospermum and Marigolds.

### Happy Gardening! J.

Jane Dale of 'Designed Gardens'  
Tel: **07983 392 411**



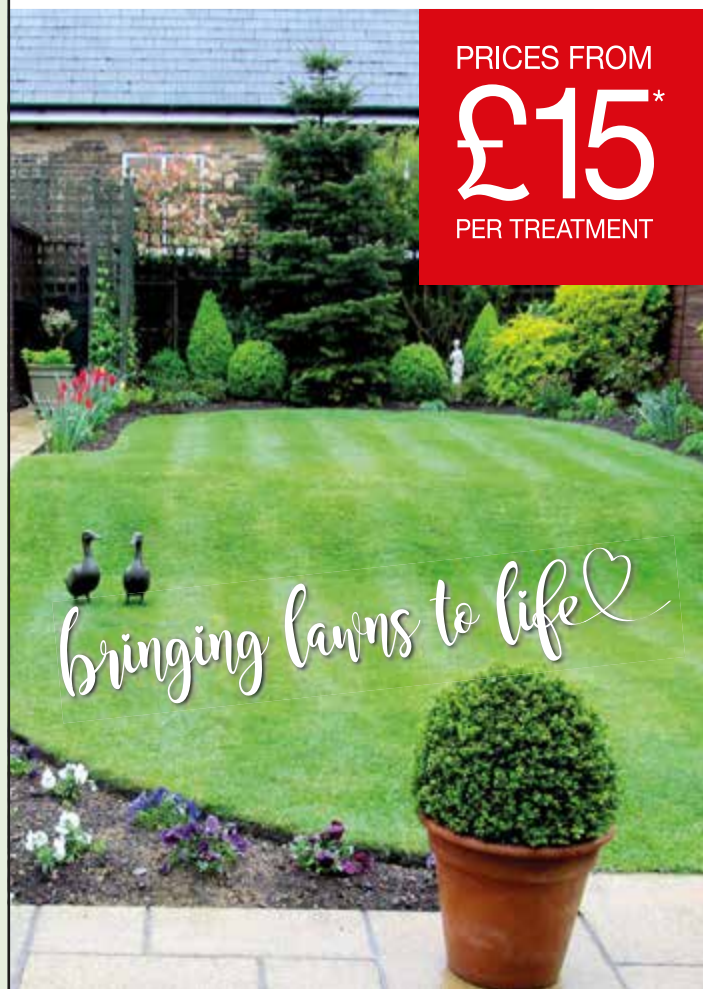
## GreenThumb

### LAWN TREATMENT SERVICE

PRICES FROM

£15\*

PER TREATMENT



Our wonderful customers like our service so much, that over 40% of new customers joined us through their recommendation which if you think about it, is a recommendation in itself.

So, if you've been thinking about enjoying a great lawn this year - green, lush and weed-free, why not contact us today and let us bring your lawn to life.

We provide four seasonal treatments, as well as beneficial treatments to keep your lawn in tip-top condition - prices start from just £15\*

Ask us about our annual plans, which allow you to both spread the cost and save up to 25%.

Simply call: **01482 880082**

[beverley@greenthumb.co.uk](mailto:beverley@greenthumb.co.uk)



\*Based on a lawn size up to 40m<sup>2</sup>

**THE GREEN DRAGON**  
IN BEVERLEY

**MON 'MONDAY CLUB'** SELECTED DRINKS **£1.99**

**TUES** SMARTPHONE PUB QUIZ "NO PENS NO PAPER NO CHEATING" TUESDAY CLUB DRINKS FROM £1.90

**WEDS** 8 PM **IN THE ROUND** OPEN MIC / JAM NIGHT ALL WELCOME

**THURS** Traditional QUIZ 10% OFF FOOD CASK ALES £2.50 AFTER 6PM CRACK THE SAFE

**FRI** JOIN US LAST FRIDAY OF THE MONTH LIVE MUSIC FROM 9 PM

ASK ABOUT OUR **DRINK PACKAGES**

- BREAKFAST SERVED FROM 9AM EVERY DAY
- FOOD SERVED 7 DAYS A WEEK
- 10 CASK ALES AND HAND PULLED CIDERS
- QUIZ NIGHTS START 9PM

51 Saturday Market, Beverley, East Yorkshire, HU17 8AA  
Tel: 01482 889801  
www.thegreendragonbeverley.co.uk

## Tales from the Racecourse - how to be a successful punter!



*Beverley is one of the most difficult race courses for finding winners. It's a very tricky course with an uphill finish. If it's your first time at Beverley there a lots of things to look out for so here's some tips.*

Let's start with taking a look at the horses. Have a stroll down to the paddock and watch the stable people leading the horses around the parade ring. Take a close look at the horses, making sure your selection is not dancing around on its toes or sweating.

Look for the most relaxed horses. Look at their eyes... seeing white in the corners is a good sign as is a horse with its head tucked down tightly. It's also worth noting as to whether the horse's owner is present; they will be if they expect their horse to win!

Often there will just be the stable person there so you can cross that one off your programme. Always check what number your horse has been drawn. At Beverley it's always an advantage to have a low draw number, especially in a 5 furlong race as a low number will be closer to the rails. As the horses leave the parade ring, have a walk to the rails and watch your horse go down to the track making sure they are still looking calm and relaxed and that they are striding well out.

Another tip is to see which horses have previously had a win at Beverley. They are marked as C.D (course and distance winner) in the race card.

Now go and take a look at the bookmakers to see what all the money is going on. You can always start with a £2 win or a £2 each way bet on the tote. If your horse finishes in the first 3 then you will get some money back on an each way bet, providing there are 8 or more runners in that race.

If you still can't decide who to put your money on then check out the tipster's board in the paddock which will tell you what all the newspapers are tipping to win for each race. Some good trainers to follow at Beverley are: W. Haggas, R. Fahey, T Easterby and Ruth Carr. Best jockeys to follow: D. Tudhope, P. Makin, P. Hannigan and P. Mulrennan.

Come along! It's a great day out! Set yourself a budget and if you get the first winner then you can start using the bookies' money to play with!

Good luck!  
Colin Stamford

**indicoll**  
more than just web design

**SUMMER MADNESS**  
GET A WEBSITE FOR ONLY

**£1995!**

**UNLIMITED NUMBER OF PAGES**

What's included? Your website comes with all of these fantastic features: A Bespoke Website Design (with no templates used) • Content Management System (so you can update the website yourself) • Contact Form, Analytics (see when & how people visit your website) • Mobile friendly • Blog • Gallery • Links to social media accounts • Dedicated account manager

**FREE!** DOMAIN NAME EMAIL ADDRESSES WEB HOSTING\* & SUPPORT FOR 9 MONTHS

CALL NOW ON **01482 428650**

**The BEVERLEY HAT COMPANY**

46 Lairgate, Beverley, HU17 8EU

Telephone: 01482 861046  
Email: anne\_anderson24@hotmail.com

## Do you know your Roquet from your Croquet?

**A roquet is a basic shot in the game of croquet, whereas a croquet is a shot played where two balls are touching. Confused? We met Deborah James, Club Secretary of Beverley and East Riding Croquet Club to clear the confusion!**

Croquet is a game of strategy - a cross between snooker and chess - which promotes health and well-being through mental and physical activity.

It's one of the few games which men and women of all ages play on equal terms providing a social, yet competitive environment. Those who play it say it is the thinking person's sport! Once, in 1900, it was an Olympic sport, but as only one spectator attended the match, it was dropped the following year!

To play croquet, you need a 'lawn' which is about the size of two tennis courts; three lawns are required to play matches. Beverley and East Riding Croquet Club has such a facility at Rowley Manor, where the 9 hoops which balls must pass through are laid out. The other requisites are mallets for each player, 4 balls and flat shoes. There is no other dress code, except when playing in a competition when 'whites' must be worn.

There are two 'codes' - Golf and Association. Golf is the simplest game where all 4 players are on the lawn at the same time. They must get the ball through the hoops using a narrower range of shots than in Association. Golf is a much shorter game than Association, although Association can also be played in



'short-lawn' version with only 6 hoops. Association has more shots and more rules. Players build 'breaks' to stay on the lawn. Hitting a ball through a hoop is called 'running the hoop' - this gives you 1 point. Once a player has run a hoop, all 4 balls are 'live' so playing each of the balls creates the means of getting to the next hoop. Only one ball may be used in turn, each turn being one stroke, unless the balls run a hoop or hits another ball. When a hoop is run, the striker has a continuation stroke; if another ball has been hit, that is termed a 'roquet' and the striker can take another stroke, called a 'croquet'. A croquet is made after moving and placing the striker's ball in contact with the roqueted ball - the striker must ensure both balls move but the skill is making sure they go where needed.

There is a handicap system so that beginners can play alongside experienced players and not be too disadvantaged. Beginners are given 24 'bisques' for full-lawn or 10 'bisques' for short-lawn - a 'bisque' is a stick, which is planted in the ground. One bisque entitles a player to 1 extra turn - at every extra turn a bisque is taken out of the ground.

The more experienced players have fewer bisques and a lower handicap. In practice, a beginner uses up all their bisques correcting mistakes but experienced players use the bisques more strategically. Handicaps are reduced by winning matches - win 5 matches in a row and reduce your handicap by 1 bisque.

Beverley and East Riding Croquet Club plays at Rowley Manor in the Yorkshire Federation League in full- and short-lawn matches during April-September, travelling to Sheffield, Huddersfield, York and Malton.



Matches are usually on a Sunday starting around 10am and not completing until 4 or 5pm - though there is a break for lunch and sometimes afternoon tea, too. The home team provides the lunch and it, is fair to say, there is often competition for who can make the most delicious cakes!

The club meets at Bishop Burton Village Hall during the winter months, playing on carpet. National Croquet Day is June 4th. This year, as Norwood Park Tennis Club has kindly offered the croquet club the use of 2 tennis courts this season which are not used as croquet lawns, the club will be holding taster sessions there on that day and, by prior arrangement, on other days, too.

Beverley U3A have already organised a course for their members! Taster days are completely free of charge. The taster day on June 4th will be held from 2-4pm.

For more details, please contact Deborah James on **07772 778232** or check out [www.beverleycroquet.org.uk](http://www.beverleycroquet.org.uk)



**OVER 20 YEARS EXPERIENCE**

We are committed to providing an excellent service by offering value for money and ensuring complete customer satisfaction

**Print that gets you noticed**

- ✓ Brochures
- ✓ Leaflets
- ✓ Business Cards
- ✓ Business Stationery
- ✓ Posters

- ✓ Desk Calendars
- ✓ Wall Calendars
- ✓ Pop-up Banners
- ✓ Pads
- ✓ Invites

Jadan Press are a leading family run commercial B2 colour litho printer based in Hull. With 20 years experience, the company is renowned for producing work of an exceptionally high quality. We are committed to providing an excellent service by offering value for money and ensuring complete customer satisfaction.

**Tel: 01482 610902**  
**info@jadan-press.co.uk** [www.jadan-press.co.uk](http://www.jadan-press.co.uk)  
 Rainbow House, Kimberley Street, Hull, HU3 1HH



## BANK ROBBERS by John Fewings

*Matt & Denny met on a Monday  
To plan to rob a bank  
And Matty's Mum (though she wasn't there)  
Is the woman you can thank  
For putting the idea into their heads  
With a chance remark she made  
About the rising cost of living  
And how little she got paid.*

*They met in Denny's garden shed  
Where they knew they'd get some peace  
Amidst garden paraphernalia;  
A hideaway from the police.*

*Once they'd made the decision, they planned with precision;  
Marked out the position on the sketch that they'd drawn.  
It was quite elementary, showing exits and entries,  
Thankfully no sentries, so no shotguns were sawn.*

*The getaway route was carefully planned  
Avoiding closed circuit TV.  
The pair then synchronised their phones:  
They were ready as can be.*

*They both had brought disguises  
(A bit of a palaver).*

*Matt wore a Maggie Thatcher mask:  
Denny wore a balaclava.*

*So they'd leave no fingerprints,  
Matt wore Marigolds (how sad).  
Denny - a pair of yellow gloves  
He borrowed from his Dad.*

*With cat-like tread the intrepid pair  
Approached the scene of the crime.  
One last glance at a mobile phone  
To check they were on time  
Then the dirty deed was over  
- As quick as a vicar's wink -  
They'd taken all precautions  
So they knew they'd avoid the clink.*

*As quick as a flash they stashed their loot so nobody could see  
In a sturdy, purple bag-for-life which had cost the pair 10p.*

*Then back to Denny's garden shed,  
A haven from pursuit,  
Where Matt and Denny breathed a sigh of relief  
As the pair surveyed their loot.*

*Then off to Matt's kitchen where his Mum was still busy  
Making jam from the fruit that they'd picked.  
They dare not let on that the jars they had brought  
For bottling the jam were all nicked.*

*Besides, Matt's Mum would not have approved  
Of the pair's school holiday prank -  
The day Matt and Denny (ten years old)  
Raided Tesco's bottle bank.*



John Fewings is Just Beverley's Poet-in-Residence as well as a member of The Argy-Bargy Poets.

He writes poetry for people who don't like poems. Check out [www.johnfewings.zone](http://www.johnfewings.zone)

## Short Story - The Hellfire Lady by William Bundy

*Author's note: this story is the fifth in an ongoing narrative series of dark/psychological stories that have been previously published in the November 2016; February, April, and May 2017 editions of Just Beverley magazine.*

*I awoke with a start as a lone dove called from outside. I knew not how much time had elapsed, but I knew from my nightmares that it cannot have been that long. Staring at the clock above me, it held no more meaning to me than a derelict item of antiquity long passed overuse.*

As it occurred to me get up, I heard what sounded like a screech emanating from the other room and sat back down immediately, the sounds in the room dying down to a whisper as fell noises stirred from afar. I closed my eyes but could not shut them as I heard what sounded like a scuttling from the next room.

Tiny feet, or what sounded like them, pitter pattered about before I caught sight of movement out of the corner of my eye. My eyes widened as a face stared at me from underneath a nearby chair - a grim, horrible looking face, wearied and full of scars, looking much like a woman but somehow not, as it disappeared again and the fire seemed to roar to life.

My breathing convulsed as if under some puppet master's spell and the room seemed to dim as if on cue; breath showing in stark beats as I heard what sounded like children's voices echoing all around me. I could not place them as they filtered around like some long-lost echoes of memory, a stark shadow presenting itself on the wall opposite the fireplace. It looked and moved like a spider, only human-like as it veered towards me with eerie repose.

I could not contain myself as my breathing grew heavier and sweat began to form on my brow as the shadow moved over me, tiny pinpricks of small claws making themselves known on my skin as it reacted in just fashion, urging me to crawl beneath the nearest exit and huddle as if under the gaze of some mighty monster. Red eyes seemed to float before me that held within them a hellfire unlike anything I had ever seen. Whether they were human or not I could not tell, but they gazed over me with a hungry flame like an ancient creature of infamy, looking for weaknesses with which to exploit. A dim groaning began to fill my ears as the entire room darkened and spider legs seemed to crawl all over me. I tried to cry out but to no avail, and, my vision failing, I suddenly saw nothing and all was black.

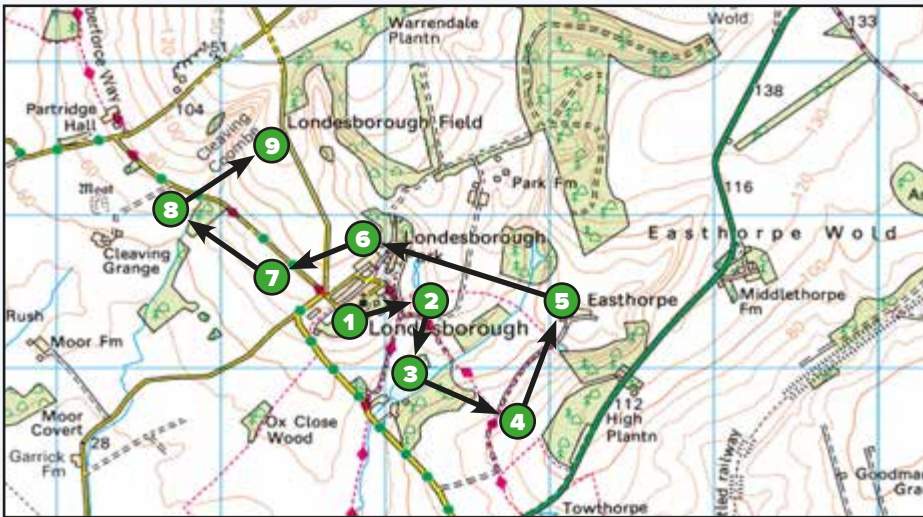


I awoke to see an old lady sitting across from me at a table. Where she had come from I did not know, but she seemed to know me and was dishing out cards at the table. All around me was darkness and I could barely make out small candles in the distance, like stars on a dark summer's night.

"Where... am I?" I asked, somewhat exhausted and confused. She turned to look at me and I saw her full form: an old hag with a face that belied beauty despite its craggy appearance, grey hair skimming the edges of her face as red eyes glared out at me. "Where am I?" I asked again, this time more irritated, "Whatever... thing you are", fear tearing me like an impatient child.

She merely put the cards down and gave me a wee smile, like sunlight glaring out from a dark crack in a wall. "You are in my house... in my domain... and under my care... and as to what we will do next? Only the cards know my dear... only they have any power here." I stared at her in disbelief as the darkness seemed to press in on me and any thoughts of escape. I caught but a glimpse of others surrounding us, their features murky as the blackness closed in and hope began to fade. "Welcome to Hell my dear, and may you enjoy your stay", were the last words I remembered as all faded into nothingness.

# Walking with Ian Richardson - Londesborough Loops (3 or 6 Miles)



*This is a glorious walk, even if you choose to do only the first loop around Londesborough village and park, but especially so if you also visit the spectacular Cleaving Coombe on the second loop. Londesborough is a beautifully secluded estate village, some two miles north west of Market Weighton, it is usually easy to park by the church. The walk explores the fine architecture of the village, notably the evocative remains of the stately home and its gardens. By extending the walk along country lanes, you can also enjoy the recently created open access land of a wonderful dale. Choose a fine day, take a picnic - and enjoy!*



All Saints' Church, Londesborough

**1** Start the walk at the church. Sadly it is only likely to be open to view on summer Wednesdays, but the exterior has some notable features such as the ancient cross above the south entrance and a priest's door. The churchyard is also very lovely and full of wild flowers. Now head down Low Street with its many attractive cottages and gardens. The old brick wall marks the boundary of the former hall; we will go through the alluring metal gates as a special treat later.

**2** Take the well signed track down to the right at the end of the houses. This soon passes some very striking gate piers from the glory days of the hall. Good views of the lakes and extensive parklands open up, whilst to the right you can see the terrace and steps that still remain from the grand house. You can walk up to view these and the striking brick tunnels of the house retaining wall. The main house was demolished in 1818, with much of the fabric reused by the Devonshires at Chatsworth.



Terrace at the Hall



Londesborough Hall remains

**3** 100 yards down the hill, there is a path off to the left. Take this path, which heads over to the lakes. Cross the weir and go up the rising ground on a good path to the farm road. You are walking in the footsteps of some of the great titled families of England who have owned the estate over the centuries: Earls of Burlington and Dukes of Cumberland and Devonshire. In the nineteenth century the railway king, George Hudson, briefly owned the estate before he went bankrupt and the future King Edward VII was a visitor to Park House. No wonder the park land is so splendid! Almost certainly they were laid out by the famous landscape gardener William Kent.

**4** Go left along the farm road towards Easthorpe, you soon reach an attractive pond on the right. Facing this, take the signed path back towards the village. Keep to the right, as there is a gate, then a bridge to cross the stream. From here you get glimpses of the red brick towers of Victorian Park House.



Park House

**5** Turn right at the track and head back to the village. Now you can explore the second lovely street of Londesborough - Top Street. On the corner is the very handsome former school. Incredibly there is also a Concert Hall, originally built as a laundry for the visit of the Prince of Wales in the 1860s, but alas there is no pub!



Gates to the Wilderness Gardens

**6** Even if you choose not to do the second of our loops, there is one more unmissable attraction of the walk. Go back down to Low Street and head for the distinctive gates in the wall of the old hall. I fully expected that the sign would tell people in no uncertain terms to 'Keep Out', but no, the owners in a most commendable gesture make it clear you are welcome to go in and enjoy the Wilderness, terrace and gardens. What a secret and lovely little world this is. The niche grotto below the church on the right is a marvellous spot to sit, whilst the view from the terrace steps with its striking urns, is one of the joys of the Riding.



The Niche in the Wilderness

**7** You may choose to end your walk here - and on a fine day the Wilderness is a tough spot to leave behind - but our second loop offers yet more delights. Head up the road out of the village to the crossroads where you head down the quiet lane to Burnby. Few cars use this road and the views over the Vale of York are splendid. After half a mile or so, the road dips and you will see to your right a huge cleft in the hillside, this is Cleaving Coombe.



Vale of York from Cleaving Coombe

**8** Access to this wonderful dry valley is from a gate at the bottom of the dip; look for the white stones in a small lay by. This is open access land, so you can wander at will, but you should head up the bottom of the Coombe which rises steeply and affords magnificent views. You may also see, as I did in early May, Red Kites swooping across the valley; their re-introduction to Yorkshire has been a wonderful conservation success. The steep slopes of the Coombe are a great picnic spot. You exit the Coombe by the gate to the road at the top of the valley.



In Cleaving Coombe

**9** Turn right back to the village along the minor road. This can be a little busy, so use the verges and take care as you walk the half mile back down the hill to Londesborough and your journey home.

Next month - Hornsea Mere Meander  
Ian Richardson: [ricojosh@msn.com](mailto:ricojosh@msn.com)

Do you have any thoughts and ideas for local walks? Do let me know!

## Burton Agnes Jazz & Blues Festival celebrate its 10th birthday Caribbean-style!

Held at one of the UK's finest Elizabethan stately homes, this year over 25 bands provide a weekend of jazz and blues from June 30th to July 2nd. Enjoy the ambience of the main stage whilst sat on the manicured lawn, marvel at the beautiful carvings and pictures while listening to acoustic jazz and blues in the Great Hall and, late at night, when the lights come on, retreat to the bar tent for more music until it's time for bed. Described as 'One of the Top 15 Festivals for the Over 50's' by the Daily Telegraph, don't let that accolade put you off if you are under 50!

Although the music is the main attraction for festival-goers, it's the whole package which makes this such a great experience. Civilised camping with hot showers in the adjacent park field, children's entertainment, local ale, the famous tea and cake stall, ice cream and other delicious food outlets along with Burton Agnes' own features - the walled garden, giant games, maze, woodland walk, shops, café and the house itself - creates a truly unique venue and sophisticated festival. But this year, as you would expect for a 10th anniversary, there is something special about the music. Along with local and national stars, there are four bands from Saint Lucia plus Caribbean food and rum cocktails and an exhibition of St Lucian artists' work. Burton Agnes Jazz and Blues is now linked with the internationally-acclaimed Saint Lucia Jazz Festival.

Festival organiser Simon Cunliffe-Lister said: "Through the UK Caribbean Chamber of Commerce, I was able to forge a relationship with Saint Lucia. The island was looking to showcase its diverse culture in the UK. I travelled there to audition bands, meet chefs and artists with the intention of bringing them to Burton Agnes for the festival. The four bands chosen are Dynamix, a saxophone-led quartet; soulful and sophisticated singer Chrycee; Claudia Edward, a singer-songwriter who is a local household name and jazz guitarist Rupert Lay with his quartet which includes Caribbean steel drums. Along with the food and drink, if we get the right weather, you could imagine you are in the Caribbean!



"It's exciting to book international stars and attract festival-goers from far and wide, but I'm equally proud to promote the best of local food, drink and music. Field and Forage, who provide the food, graze their cattle on our park field and casks of award-winning Wold Top Ale come direct from the brewery 5 miles away; Tom Mellor, the Wold Top owner, and I often play at the festival together on guitar and saxophone. Talented local musicians grace the various stages in association with Strada Music Agency which is headquartered in nearby North Dalton and local jazz students, some as young as five years of age perform in the Great Hall. I always delight in seeing this all knit together to create a unique festival that celebrates and benefits our region. I wear many hats, including Artistic Director, Festival Programmer and Chooser of Hall Acts! The late night acts are chosen in association with Strada, which has deep knowledge of the local music scene."

Other artists performing include Claire Martin OBE with Ray Gelato; New York Brass Band; Pat McCarthy Quartet with Shannon Riley; Kaz Hawkins; Jamie Brownfield Quartet, Portmanteau; Firebird and Mississippi-born Lisa Mills. Local artists include Stillhouse; Phil Simpson and Jessica Lawson; The Alligators and Half-deaf Clatch. The festival plays out at Sunday tea-time with Ben Beattie's After Midnight Band featuring Simon Cunliffe-Lister himself on sax.



The campsite opens at 3pm on Friday 30th June (first act on at 6pm) and remains open until Monday at noon for people wanting to enjoy the relaxation of the surrounding area.

Tickets for the festival and camping are available in advance from [www.burtonagnes.com/Jazz\\_Festival/Tickets\\_and\\_Prices.html](http://www.burtonagnes.com/Jazz_Festival/Tickets_and_Prices.html), by telephone **01262 490324**, at Burton Agnes Hall courtyard shops or on the gate. Parking is free.

## Elizabeth meets... Dean Jackson

Dean Jackson has been with the children's music group Music Time since 1998 when it was first set up in Beverley Minster Parish Hall. Today, he has seven groups, two in Cottingham and five in Beverley.



Dean explains his reason behind Music Time is that "there is no better joy to see the pre-school children develop and move on to their schools full of confidence and enjoying what music has to offer", and certainly "the aim of Music Time is to encourage singing, dancing and music making. Social skills and language development are also nurtured during classes."

Dean learnt to play the guitar around the age of 12, but has always thought of himself as more of a vocalist, and as well as having a BA in History of Art and a BA in Social, Economic History, he has also previously headlined at Cornucopia Festival, as he performs under the name Jackson D.

Jackson D has enjoyed multiple radio plays and national magazine appearances in the last two and a half years with Dean performing along with his percussionist and bassist. Dean explains that "music has been his life and passing my enthusiasm and knowledge on to anyone who wants to experience it be that from new born babies to the older folk" is all his has ever really wanted to do.

Music Time also runs groups in Howden and South Cave with another leader, but in Beverley, the group really has become a passion of Dean's, which he continues to enjoy even after 19 years. Check out their programme at [www.music-time.org](http://www.music-time.org) or ring **07563 764793**

if you would like to learn more.



Photo of Jackson D with Sarah Shiels (bass) and Zachary Theodorou (drums) courtesy Viceversa Robbie

## BEVERLEY MUSIC AND DANCE

Specialists in sheet music, guitars, ukuleles, woodwind, brass and accessories

Ballroom shoes · Dancewear

14 Norwood, Beverley, HU17 9EZ

Tel: 01482 881584



## Peter Hall Violins

14 Norwood, Beverley, HU17 9EZ

Tel: 07901 591965

- Dealers and restorers of fine Violins, Violas, Cellos and Double Bass
- Bows and Re-hair service
- Strings, Cases and accessories
- Comprehensive teacher list
- Bespoke music stands with individual logos, names or images made to order

Visit our Facebook page and website:  
[www.peterhallviolins.com](http://www.peterhallviolins.com)





# PUZZLE PAGE



"They will never catch me..."

Do you have any amusing stories, quotes or pictures? Send them to [info@justbeverley.co.uk](mailto:info@justbeverley.co.uk)

### Wordsearch

E	L	R	L	H	Z	R	I	F	D	J	R	Y	X	L	
N	N	F	Q	P	E	E	S	J	H	P	K	N	T	Z	
W	B	I	Z	T	Z	H	N	U	J	R	E	R	E	G	
N	I	D	H	K	H	T	K	T	N	D	F	D	I	I	
S	K	C	O	S	D	A	Z	L	R	D	P	U	U	F	
R	K	H	A	T	N	F	X	A	Y	A	A	A	W	Q	T
U	F	X	P	H	Y	U	G	G	R	F	N	Y	K	S	
U	F	H	E	Q	M	E	S	T	M	V	O	Y	F	T	
B	E	T	S	I	A	Q	Y	G	M	M	U	G	M	W	
P	I	V	E	W	Y	Z	H	G	A	L	W	Q	N	A	
Y	F	V	F	I	K	M	X	S	F	E	G	G	U	V	
K	D	L	K	F	G	Q	G	R	E	E	C	A	P	B	
V	I	V	Y	V	S	S	M	I	L	E	S	A	T	E	
K	N	C	D	R	I	Y	F	Y	M	Z	X	V	E	A	
Y	L	D	Q	O	H	R	C	K	G	H	T	G	R	P	

FATHER	QUIET
GARDEN	SMILES
GIFTS	SOCKS
PARTY	SUNDAY
PEACE	SUNSHINE



**Just for Fun**  
Can you spot the couple from this picture... they are hiding on one of the pages in the magazine... somewhere!

## Funny Things They Say - Father's Day

A father is a banker provided by nature

The secret of being a great Dad, know when to stop tickling

Being a good Dad, one of the toughest jobs in the world

"Now can I help" - never goes away

Dad - A son's first hero

Start the day with a smile

**QUALITY FITTED KITCHENS AND QUALITY REFURBISHMENTS**

**DREAM DOORS®**  
NEW LIFE FOR OLD KITCHENS

**Before**

- Huge choice of doors, worktops, appliances, sinks & taps
- 50% deposit, balance on completion
- Made to measure custom-built doors and units
- Door swaps to full kitchens - tailored to your needs

CALL ANDY OR TERRI FOR A FREE ESTIMATE:  
**01482 861653**  
[www.dreamdoors.co.uk](http://www.dreamdoors.co.uk)

EST. 1999

**Summer Sizzler**  
Ask for details in store  
Terms & Conditions apply

Visit our showroom:  
Belprin Park, Swinemoor Lane,  
Beverley HU17 0LN

[Checkatrade.com](http://Checkatrade.com) Where reputation matters

[g+](#) [f](#) [t](#)

# What's On IN BEVERLEY

SPONSORED BY: **küchenhaus**

Tell us about your event!

E-mail [info@justbeverley.co.uk](mailto:info@justbeverley.co.uk)

Telephone **01482 679947**

For more events visit  
[justbeverley.co.uk/events](http://justbeverley.co.uk/events)

2 Toll Gavel, Beverley, HU17 9AJ. T: 01482 862172.  
Open: Mon - Sat: 10am-5pm. Sun: 11am-3pm.  
Bank Holidays: 10am-4pm.

Sponsored by Beverley Town Council  
**JOINT CHARITY CONCERT**  
with  
**Beverley & Mansfield  
Male Voice Choirs**  
in aid of  
**Hornsea Inshore Rescue**

**Friday 2nd June 2017  
at 7.30pm**  
in Toll Gavel Church, Beverley HU17 9BY  
Tickets £8 from Beverley Tourist Information Centre 01482 391672  
or on the door.  
[www.beverleymalevoicechoir.co.uk](http://www.beverleymalevoicechoir.co.uk)

Until Saturday 24th June

- **The McDowall Collection of British Neo-romantic Art**

Beverley Art Gallery. Open daily. Free. This exhibition features over 50 works from the private McDowall collection, including engravings by William Blacke and Samuel Palmer - the 19th century father figures of the neo-romantic movement.

Until Sunday 16th July

- **Through the Looking Glass Exhibition**  
Beverley Minster. Free. Illustrated musical manuscripts from the workshop of 16th century composer, illustrator and Royal spy, Petrus Alamire. Hear the music of Alamire through a media installation. Loan a discovery pack from the Minster shop if aged 5-11 (deposit required). Funded by East Riding of Yorkshire Council as part of Beverley Early Music Festival.

Friday 2nd June

- **Charity Concert with Beverley & Mansfield Male Voice Choirs**

Toll Gavel United Church, Beverley HU17 9BY. £8. Tickets from Beverley Tourist Information or on the door. [www.beverleymalevoicechoir.co.uk](http://www.beverleymalevoicechoir.co.uk)  
In aid of Hornsea Inshore Rescue.

Saturday 3rd June

- **Artisan & Craft Fair**

Flemingate. Free. Show-casing a selection of high-quality stalls featuring artworks, crafts and locally-created pieces.

- **Beverley Arts Trust presents The Fitzgeralds in Everything Fitz**

St Nicholas Community Centre, Holme Church Lane, Beverley. 7.30pm. £7. Tickets from Beverley Tourist Information 01482 391672 or [callybarker@barker05.karoo.co.uk](mailto:callybarker@barker05.karoo.co.uk)

Sunday 4th June

- **Teenage Market**

Flemingate. 10am - 4pm. The launch of Hull

Business Week is greeted by this innovative market for young people aged 13-29 to sell their wares or services on a FREE stall entertained by young performers. If you missed it last year, make sure you catch it this year! <https://theteenagemarket.co.uk/events/teenage-market-at-flemingate-beverley/>

- **National Open Garden Scheme**

23 Molescroft Road, Beverley, HU17 7DX.  
12-5pm. £3/free. Home-made teas. All proceeds to charity.

- **National Croquet Day Taster Sessions**

Norwood Park Tennis Courts. Free. 2pm-4pm. Hosted by Beverley and East Riding Croquet Club. Just turn up! Contact Deborah James on 07772 778232 for more details.

- **Beverley Town Lawn Tennis Club Open Day**

Norwood Park. Free. 1pm - 4pm. All equipment provided. Tuition available. All ages and abilities! Don't be shy - just turn up and have a go! Tennis themed refreshments and BBQ if fine. Contact Ros Parvin for more details 07807 690579.

Monday 5th June

- **The White Horse Folk Club Singers and Musicians Night**

Beverley Conservative Club, Wylies Road. 8.30pm £2.

Tuesday 6th June

- **Stacey Kent**

East Riding Theatre. 7.30pm. £22-£25. The internationally-acclaimed and Grammy-nominated vocalist performs here in Beverley on one of a very few UK dates, featuring music from her latest album.



Wednesday 7th June

- **Antiques Valuation Day**

Roadshow Van, Wednesday Market, Beverley. Free. 10.30am - 2.30pm. Hosted by David Duggleby Auctioneers. Open to all for valuations and advice on antiques, collectibles and valuables. No obligation to sell. Contact 01723 507111. [www.davidduggleby.com](http://www.davidduggleby.com)

Thursday 8th June

- **Beverley Film Society presents 'Second Mother' (Cert 15)**

Parkway Cinema, Beverley. 7.30pm. £3/£6.50. Comedy/drama from Brazil directed by Anna Muylaet. International Film Festival Winner.



Friday 9th June

- **Son of Doctor Who**

Beverley Latimer Church, Grovehill Road. Free - donations welcome. 7.30pm. Meet Rev Mark Troughton, son of Patrick, and learn about his coming to Christ and appointment as Pastor of York Evangelical Church.

- **Festival of Life - The Gospel of Mark performed Live and Uncut with original music**

Toll gavel United Church. 7.30pm. Free - donations welcome. Ian Birkinshaw as John Mark, Music - Peter Birkinshaw.

Friday 9th - Saturday 10th June

- **Stand Up Stand Up by Jim Cartwright**

East Riding Theatre, Beverley. 7.30pm. £12-£15. Writer of 'Road', 'The Rise and Fall of Little Voice' and 'Two' presents his new play in association with Theatre Royal Wakefield and John Godber.

Saturday 10th June

- **Jacob's Well Appeal Bric-a-brac and book sale**

Toll Gavel United Church Drive. 9am - 3pm.

- **Author Speed Dating**

Beverley Library. £2. Tickets from 01482 392699 or [www.eastriding.gov.uk/events](http://www.eastriding.gov.uk/events)

Read everything by your favourite authors? Here some other authors pitch for your affections! A diverse selection of authors will have 15 mins to talk about their work.

- **A Very British Race Day**

Beverley Racecourse. Various prices. First race 2.05pm. Includes the world-famous annual Beverley Donkey Derby, fairground stalls and a 'Last Night of the Proms' sing-a-long. Wear your Best of British! [www.beverley-racecourse.co.uk/event-info/a-very-british-raceday2](http://www.beverley-racecourse.co.uk/event-info/a-very-british-raceday2)

- **Beverley-Nogent Twinning Association Stall and Tombola**

Beverley Market. Raising awareness and funds for the next visit of the Nogentois to Beverley in October.

Sunday 11th June

- **Fresh Food Event**

Flemingate Shopping centre, Beverley. 10am-4pm.

**Monday 12th June**

• **The White Horse Folk Club presents Greg Russell**  
Beverley Conservative Club, Wylies Road. 8.30pm.

**Wednesday 14th June - Saturday 17th June**

• **Beverley Musical Theatre presents Dirty Rotten Scoundrels - The Musical**  
Beverley Memorial Hall. £10. 7.30pm nightly with matinee at 2.30pm on Saturday 17th. Tickets from Norwood Music and Dance 01482 881584.



**Thursday 15th June**

• **Beverley at Waterloo: Heroes and Villains. Talk by Paul Brunyee**  
Treasure House Education Room. £5. Tickets from [www.eastriding.gov.uk/events](http://www.eastriding.gov.uk/events) or 01482 392699. The East Riding has produced two of the most quoted diarists in military history - George Simmons and Alexander Mercer - who wrote about The Battle of Waterloo. Beverley also has other direct

links to this famous battle. Intrigued? Don't miss this!

**Friday 16th June**

• **Festival of Life - The Sounds of Life with the Salvation Army Hull Citadel Band**  
Toll Gavel United Church. 7.30pm.

**Friday 16th June - Sunday 18th June**

• **Beverly Folk Festival**  
Beverley Racecourse. Open from 4pm on 16th. Various prices. See [www.beverleyfestival.co.uk](http://www.beverleyfestival.co.uk) for details and tickets. Folk acts of all genres including many BBC Radio 2 Award winners, workshops, children's programme, comedy, literature, food, camping.

**Monday 19th June**

• **White Horse Folk Club Singers and Musicians Night**  
Beverley Conservative Club, Wylies Road. 8.30pm. £2.

**Tuesday 20th June**

• **70's Racenight featuring Bus Stop**  
Beverley Racecourse. Various prices. First race 6.10pm, last race 8.40pm followed by a party on the roof above Touch Above! The decade of love, peace and massive hair comes to Beverley! Wear your best 70's threads!

**Sunday 25th June**

• **Marie Curie 'Blooming Great Tea Party'**  
40-42 Sigston Road, Beverley. 10am - 2pm. Free - donations welcome. Games, stalls, tea and cake! The money raised will help Marie Curie nurses care for more people living with terminal illness across the UK. 07572 055575 for more information.

**Monday 26th June**

• **Dr Phil Hammond's Health Revolution**  
East Riding Theatre. 7.30pm. £15/£12. NHS Doctor, BBC broadcaster, Private Eye journalist and

whistle-blowing comic combines his 2016 sell-out Edinburgh Fringe shows in one unforgettable evening.

• **White Horse Folk Club presents The Long Hill Ramblers**  
Catholic Church Hall, Beverley. 8.30pm. Bring own drinks and glasses.

**Tuesday 27th June**

• **Afternoon Racing**  
Beverley Racecourse. Various prices. First race 2pm.

**Friday 30th June**

• **Chuckletruck Family Comedy Showband**  
Armstrong Social Club. £3/£5. 8pm. Disco.

# THE PAULINE QUIRKE ACADEMY OF PERFORMING ARTS IS ENROLLING NOW IN BEVERLEY!

Outstanding performing arts tuition for 4-18 year olds.

Find us at **Beverley Grammar School, Queensgate, Beverley, East Riding of Yorkshire, HU17 8NF**

Academies run on Saturdays from **8.45am - 12pm**

To enrol and for further information please visit [www.pqacademy.com](http://www.pqacademy.com) or call **FREephone 0800 531 6282**





Saturday 10th June

# A VERY BRITISH RACEDAY



A gloriously British afternoon of racing, entertainment and fine food awaits you. One of our absolute favourites!

Tuesday 20th June



# 70's Race Night



Featuring the return of the original legendary 70s night



The decade of love, peace and massive hair comes to Beverley as the racecourse bumps and boogies in homage to the 70s.

Tickets now available at [beverley-racecourse.co.uk](http://beverley-racecourse.co.uk)  
Pre-book for the cheapest tickets and under 18s go free

Keep up to date with all the action online!  
Facebook: BeverleyRacecourse Twitter: @Beverley\_Races

  
**RACECOURSE**  
BEVERLEY