

CHRISTMAS GIFT IDEAS



- SULLY MERCHANDISE CINEMA PACKAGE
- RUMI'S CHEF'S TABLE EXPERIENCE

'GREAT EXPECTATIONS' AT ERT

ALADDIN LIVE ON STAGE JOE MAW WITH AN ALL-STAR CAST

Do you struggle to hear?

Introducing **NEW** rechargeable hearing technology.
Audéo B-R

The quickest charging, longest lasting rechargeable hearing aid.



Introducing Phonak's Virto V.



There is no other hearing aid this small, capable of this much performance.

Groundbreaking technology and sound quality not available on the NHS.

Free 30 day Trial Available

Call 01482 870957

www.hearpure.com

13A Saturday Market, Beverley HU17 8BB



HearPure

YOUR HEARING AID PEOPLE



Letter from the Editors



The temperature drops, the Christmas lights start to go up, Christmas presents are being bought and wrapped (and hidden), mince pies and Christmas puddings appear in the shops - yes, we are preparing for Christmas!

In reality, if you are anything like me, getting ready for Christmas happens on 24th December! I have good intentions of buying gifts during November, but other things get in the way. But, this year is different! We have an extra day! On Friday 23rd, I will finish work here at Just Beverley early and enjoy doing my shopping around Beverley. I'll take in the lights, the Christmas cheer, the goodwill to all, having plenty of ideas of what to buy from our articles and advertisers in this month's issue.

Whatever your plans over the festive period, Beverley has it all! Enjoy meals out in our restaurants and cafes, drinks in our pubs, see Great Expectations at East Riding Theatre, catch a film at Parkway Cinema, watch local bands perform, walk, run or cycle around our beautiful market town but most of all, have a great Christmas and a healthy and happy 2017!

Thank you to everyone who has supported Just Beverley and helped it grow. Do keep sending in your photos, stories and good news.

Julian.

PS Don't forget the Beverley Westwood Lions' New Year Run from Market Cross - it's a great way to start the New Year.



By the time you read this, we will have celebrated the first Sunday in Advent at our churches with the lighting of the first Advent candle and with the Beverley Christmas lights switch-on. Mary and Joseph and the donkey walking through the streets of the town really does bring the true meaning of Christmas home; the birth of a baby, a gift from God, who was to grow to be such a guiding influence on all our lives. That gift is replicated on Christmas morning when we give presents to our loved ones.

Sometimes finding the right present isn't easy. Our Christmas Gift Ideas feature on page 11 might help inspire you. If that doesn't work then a visit to Beverley's Festival of Christmas on December 11th surely will. Read all about it on page 19.

Advent means 'coming'; for many it's a time of preparation waiting for the Christ-child, for others it's the opportunity to reflect and make changes. The world is changing so quickly that musician Gerry MacNeice has reviewed some of our favourite Christmas carols and updated them for this day and age - you can have a chuckle on page 25!

Not everyone 'does' Christmas but everyone seems so much friendlier during the month of December as the Christmas lights twinkle, especially if we have frost or snow. And you can't say that even the most curmudgeonly amongst us doesn't feel a little warmer when we see children's eyes light up when they meet Santa Claus - you can find him in the fabulous Grotto at Flemingate! See page 9 for our Update on Flemingate.

So that's me signing off for 2016. Be happy this Christmas and may 2017 be all you want it to be.

Linda.

Get in touch with us:

Website: justbeverley.co.uk

Email: info@justbeverley.co.uk

Telephone: 01482 679947

Twitter: [@JustBeverley](https://twitter.com/JustBeverley)

Facebook: facebook.com/justbeverley

If you would like copies for your business to distribute to staff and customers, call Just Beverley on 01482 679947!

Printed by: Jadan Press

CONTENTS

Letters from the Editors

3

News

4, 5

Parkway Cinema

6, 7

Features

Flemingate Update

9

Christmas Gift Ideas

11

Festival of Christmas

19

Christmas Carols for the 21st Century

25

Regulars

Arts

31, 33, 34

Charity Champions

23

Competitions

7, 30

Competition Winners

7, 9, 24

Countryside Matters

17

Finance

26

Gardening

17

Legal Q and A's

26

Lifestyle

13

Motoring

35

New Businesses

16, 18

Photos

20, 21

Puzzles

24

Sport

36, 38

Travel

13

What's On

32

Correction

We apologise profusely to Sam Walton, our new Countryside Matters contributor for getting his name wrong. We are pleased to say that he knows who he is and so does Mrs Walton and now do we! Read his first column on page 17.

Competition Terms and Conditions

Competition answers should be emailed to info@justbeverley.co.uk before the closing date with the competition title in the subject field. Include your name, address and daytime contact telephone number along with your answer. Winners will be notified within 1 week of the closing date and MUST be available for publicity purposes for Just Beverley magazine, website and Facebook page and the prize provider. The judge's decision is final. No cash alternative is offered. Details may be used for marketing purposes by Just Beverley and the prize provider and for website analytics by Just Beverley.

CONTRIBUTORS

Julian Minshall, Linda Johnson, Aaron Gilpin, John Fewings, Jane Dale, Richard Manville, Carfan, Elizabeth Godber, Stewart Fraser, Ian Richardson, Colin Raynor, Sam Walton.

You can pick up the magazine from:

Beverley Parkway Cinema, Beverley Tourist Information, Beverley Library/Treasure House, Tesco, Morrisons, East Riding Leisure Beverley, Browns café, Beverley News, Boyes, Tesco café, Colette and Tyson Garden Centre, Beverley Garden Centre, Cherry Tree Garden Centre, Mace News in Saturday Market and Lincoln Way, Tickton News, Costcutter in Walkington, Molescroft News, Grovehill Convenience Store, Maple News, Leconfield PO, Poundland, Halfords, East Riding Community Hospital, Bishop Burton PO, The Altisidora, Cherry Burton PO, Monks Walk, Health Centres, cafés, hairdressers and more!

Broadgate Safety Consultants win prestigious contract

Beverley based health & safety company Broadgate Safety Consultants has been appointed as the external health & safety advisor to the national holiday park operator, Blue Sky Resorts.

With holiday parks across northern England and Scotland, Blue Sky Resorts was looking for competent advice and guidance on managing the health and safety of its employees and the thousands of residents and visitors every year. Broadgate Safety were selected due to their extensive experience in the caravanning and holiday park sectors and their experience in providing practical advice for the park managers.



The Bus Stop is open!

Beverley Community Lift now has its own vintage, pre-loved emporium, located near the Bus Station at 6 Sow Hill Road.

Jan Stainforth, CEO of Beverley Community Lift (BCL) told **Just Beverley**: "This is a new venture for our charity to raise desperately needed funds to keep us on the road for many years to come. We offer a volunteer car service and minibus service to take elderly and disabled people out and about. We take people to medical appointments and for weekly food shopping trips in and around the locality. We take the elderly on outings and help reduce social isolation for all ages."

The shop was officially opened by passengers Mrs Josephine Adams and Mrs Pat Osgodby with a suitable proclamation from the East Riding Crier, Michael Wood.



As well as volunteer drivers and accompanying helpers, helpers are now needed to help in the shop. Donations are very welcome for the shop, too, especially clothes, bric-a-brac and vinyl records. Like many charities, BCL is finding it difficult to secure funding, so it would be great if everyone could go along to the new shop and support them. You will be presently surprised at what they have to offer!

Radiographer Pat retires after 40 years in the NHS

East Riding Community Hospital staff gave Pat Bryan a great send-off as she retires to travel the world with husband, Howard.

Pat began her career at Hull Royal Infirmary where she trained as a student radiographer. Today, radiography is one of the medical specialities where qualification requires a degree, but in 1970, a 3-year diploma course was the route to state registration. She then worked at Kingston General Hospital, Beverley Road, Hull for 10 years, had a spell with the Humberside Breast Screening Service before taking a post at the Westwood Hospital. When it closed, she transferred to the East Riding Community Hospital where she has worked ever since. As she told **Just Beverley**: "I have seen a lot of patients and enjoyed great camaraderie with my work colleagues."

Radiography involves the taking of X-rays, making sure that patients are referred by a suitably-qualified person first and lining them up to get a 'picture' of the part of the body which is needed. Pat has plenty of funny stories to tell about patients who have either misunderstood her or taken her literally. She said: "Patients are invited to go into a cubicle to take their clothes off and put a gown on, but they don't always take off what you want them to take off and they don't necessarily put the gown on correctly!"



Although Pat has always worked near to her home, she is getting ready to spread her wings. She and Howard went on their first long-haul flight this year, to Cuba, where they went back-packing and as they love trains, Eurostar to France, Italy and beyond beckons. The Radiography Department can look forward to getting some interesting postcards!

REYTA Awards 2017

The search for East Yorkshire's best accommodation, tourist attractions, restaurants and cafes, pubs, events and food producers in 2017 is on!

Launching the 8th annual Remarkable East Yorkshire Tourism Awards, the Visit Hull and East Yorkshire (VHEY) Visitor Economy Manager said: "The REYTA's are like the Oscars! They

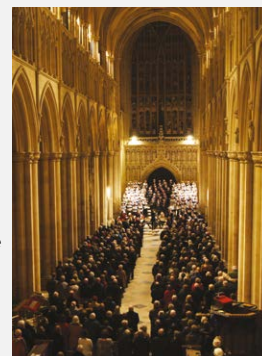
continue to grow in significance year-on-year. Our winners are magnificent torch-bearers for all that's good about East Yorkshire, which is proving to be one of the top choices for visitors from outside our region as well as offering fantastic choices for local people to enjoy all year around." Beverley and District Winners last year included Folly Lake Café at Walkington, Broadgate Farm Cottages, Walkington, Tickton Grange Hotel and Beverley Food Festival. **Just Beverley** was a finalist in the Best Newcomer section. The awards are free to enter by visiting www.hullandeastyorkshire.com/reyta and following the links to the simple entry form. The closing date is January 27th ahead of the glittering finals night at Bridlington Spa on March 30th.



The East Riding County Choir Annual December Concert in Beverley Minster

This is the annual concert renown for turning the Minster around! The choir and orchestra are seated in front of the West Door and the audience is seated with the organ behind them.

This year, the performance includes Poulenc's uplifting Gloria, which is very appropriate for the Advent season and Sir Arthur Sullivan's very English Festival Te Deum. Tickets are £16 and £8 or free for under 16s, available from Tourist information, www.eastridingcountychoir.org or on the door. Local, internationally-acclaimed soprano, Claire Booth, whose mother Ruth sings in the choir, will be the soloist for both works. She previously sang with the choir in 2010 - which was memorable as the Minster suffered a power failure and only the first item could be completed - so this year everyone is looking forwards to realising the whole programme! Next year, the Choir celebrates its 60th year, which coincides with the Hull UK City of Culture 2017. As a contribution to this, East Riding County Choir will join with Beverley Chamber Choir in Beverley Minster on May 6th to perform the Verdi Requiem. Put the date in your new 2017 diary!



Beverley and East Riding Golf Club recognised in Club Mirror Awards

The Club Mirror Awards recognise all that is good about clubs - whether sports clubs, social clubs, company clubs or working men's clubs - and their important place in our ever-changing society.

Held this year on November 24th, Beverley and East Riding Golf Club was nominated as finalists in no fewer than 3 categories: Bar Manager/Bar Steward, Golf Catering Club and Golf Club of the Year. It was also up for Charity Club, Best Website and King of Clubs. This is excellent news for Steve and Jayne Royle who have been Bar and Catering Managers for just one year and have been involved in making some of the changes at the Club. The dining facilities are now open to the public with luncheon served daily and bookings being taken for Christmas and New Year. More details on **01482 868757**. Check out our website to see if Beverley and East Riding Golf Club was a winner!



Beverley Film Society is 10 years old

Expect a little party at December's meeting of Beverley Film Society at Parkway Cinema before the screening of 'Sweet Bean'! The Society has been screening the best of world cinema on the 2nd Thursday of every month for 10 years - and aims to continue far into the future. So why not join them? Membership costs just £15/year. Check out <http://beverleyfilmsociety.org.uk/>

STOP PRESS!

Leanne Marshall, MD of Hunters Estate Agents in Hengate, Beverley has bought the building!

More on this breaking news next month as Hunters cement their commitment to Beverley and the East Riding.



A Christmas Message from Graham Stuart MP

As Christmas approaches it's a good time to take stock of the year. It's been a very busy one and I want to thank everybody who helps to make Beverley such a wonderful town to live and work in.

I pay tribute to those who do so much good for our community and our country, including those who work in our emergency services, volunteer for our charities and serve in our armed forces.

I'm also grateful to all those who have given time to take part in my campaigns, whether it's for fair school and nursery funding, action on flood defences or - most recently - saving our Minor Injury Units. 2017 will see local health chiefs take crucial decisions about whether these close in Beverley and also in Hornsea and Withernsea. I urge readers to go to my website www.grahamstuart.com and download the letter you can send to the East Riding Clinical Commissioning Group as part of their consultation, which will close on 17 January - it really is now or never to make your voice heard.

Whatever you have planned for the holidays, I hope you enjoy spending time with family and friends and that your festive celebrations are happy and relaxing. I wish you all a Merry Christmas and a Happy New Year.

Graham Stuart is the MP for Beverley and Holderness.



A Christmas Message from Councillor Stephen Parnaby MBE

Getting ready for Christmas is always a challenge and the council is keen to support those preparing for the festive season in the East Riding.

To achieve this, the council will, for a seventh year, run its popular free parking scheme. Pay and display machines at all council-run on-street and off-street car parks will be clearly marked to let shoppers know there is no charge for the weekends of 3-4, 10-11, 17-18 and 24-25 December, from 8am on Saturday until 8am on Monday.

Suspending parking charges in the run up to Christmas is a practical way to help boost the local economy and make things a little easier for residents and visitors.

As well as relaxing parking charges, Beverley will also host its annual Festival of Christmas on Sunday, 11 December, from 10am-4pm. This year, the popular Victorian Christmas Market will also take in North Bar Within and the Flemingate centre, as well as both Saturday Market and Wednesday Market.

Local traders will be selling a range of festive stocking fillers, colourful crafts and specialty seasonal food from 130 stalls and visitors will also be able to enjoy an extensive programme of entertainment. Finally, I would like to wish you all a Merry Christmas and a happy and prosperous New Year from myself and all at East Riding of Yorkshire Council.



A Christmas Message from Councillor Rob Begnett, Mayor of Beverley

Well, it's that time of year again. A time where most of us can momentarily forget about the strife and strains of work and everyday life for a few precious days and relax, spending time with our friends and family - however unrelaxing that may seem at times!

I say 'most of us', because of course not everyone will have this opportunity for relaxation.

The hospitals will still be manned, looking after those who cannot make it home, and ready to support anyone who becomes unwell during the holiday season. The emergency services will still be covering their shifts, ready to respond at a moment's notice to those who may need help. The armed services will still be patrolling, sometimes even fighting, to defend our country's interests and to promote freedom at home and abroad. There will be many people out volunteering, too, to provide a bit of warmth and comfort to those less fortunate. Increasingly there will be many people working through the festive period, providing the bars, cafes, shops and restaurants with staff. The power stations will still hum, powering all those Christmas lights. Gas still flows, to cook that lovely turkey. In other words, continuing to provide as they do all year. I doubt there's a person reading this who's family hasn't benefitted from at least one of these services in the last year.

So for me, Christmas is a time to take a moment to think about all the people without whose dedication Christmas, and our lives generally, would be very different. To my mind, it shows the strength of our community, both locally and nationally, and that strength is based on these people and their community-minded spirit.

So enjoy the season. Relax. Have a mince pie, maybe a glass or two of your favourite tippie. Recharge, and when the New Year comes around maybe ask yourself, is there anything you feel you can do to make a contribution, however small, to your local community? It doesn't have to be huge or even a burden. The energetic might want to set something up, such as a 'Chat and Craft' or a regular social event? Or maybe you could join an existing organisation - The Lions, Rotary Club and TimeBank are all active in the area. ERVAS provide a great directory of things going on and of course, just around the corner is Hull City of Culture, where you could be an ambassador for both Beverley and the wider region and have a lot of fun at the same time.

Whatever 2017 brings you, I hope it's a happy and fulfilling year.

Rob Begnett





EVERY THURSDAY AT 10.30am
(doors open 9.45am)

Join us for a free brew and a natter and enjoy some great films on Beverley Parkway's Big Screen. Only £4 with drink and biscuits included. Aimed at 55s and over. (All films are subject to change).

Thursday 1st December -

The Magnificent Seven
Captain Fantastic

Thursday 8th December -

The Magnificent Seven

Bridget Jones's Baby

Thursday 15th December -

Bridget Jones's Baby

Deepwater Horizon

Thursday 22nd December -

Deepwater Horizon

Little Men

PARKWAY PENGUIN PARTIES

YOUR OWN PRIVATE SCREENING
SEE YOUR CHILD ON THE BIG SCREEN
FUN & GAMES WITH OUR PARKWAY PENGUIN



ONLY £170

For more information contact the Box Office or
come in store and speak to a member of staff



MONDAYS @ 8.15pm

More 'what is it' than 'whodunnit'

Fancy a film but not sure what you want to see? Try our Mystery Movie Monday! You won't know what it is until it starts, unless you can solve our Facebook and Twitter clues! It could be a classic or a gem you have never seen or even the first screening of an upcoming film.

The fun is in the discovery! Only £4 per person, restricted to 15 and over only unless otherwise stated as some will be for 18 and over due to content.

Look out for information on our Facebook page and Twitter [@parkwaybeverley](#).

These are the films/performances that will open in November/December. All are subject to change. Check out up-to-date cinema listings at www.justbeverley.co.uk/cinema-times



25th November



25th November



25th November



25th November



2nd December



2nd December



7th December



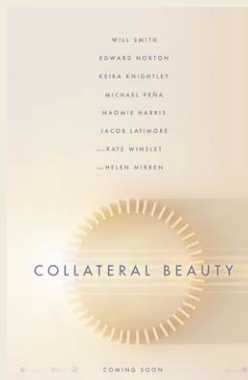
15th December



19th December



21st December



26th December



16th December - 1st January

YOUR NEW INDEPENDENT CINEMA



Sully Competition



To celebrate the release of 'Sully' in cinemas 2nd December, Warner Bros. Pictures and Parkway Cinema Beverley offer you the chance to win fabulous 'Sully' merchandise as a prize along with a pair of tickets to any film of your choice. There are also 3 pairs of cinema tickets for runners-up.

From Oscar-winning director Clint Eastwood ("American Sniper", "Million Dollar Baby") comes Warner Bros. Pictures' drama "Sully", starring Oscar-winner Tom Hanks ("Bridge of Spies", "Forrest Gump") as Captain Chesley "Sully" Sullenberger.

On January 15, 2009, the world witnessed the "Miracle on the Hudson" when Captain "Sully" Sullenberger glided his disabled plane onto the frigid waters of the Hudson River, saving the lives of all 155 aboard. However, even as Sully was being heralded by the public and the media for his unprecedented feat of aviation skill, an investigation was unfolding that threatened to destroy his reputation and his career. The film 'Sully' is based on the book 'Highest Duty' written by Chesley Sullenberger and Jeffrey Zaslow. You can view the trailer at www.youtube.com/watch?v=mjKEXxO2KNE



To be in with a chance of winning this great prize, all you have to do is answer the following question:

This actor portrays First Officer Jeff Skiles in Sully. He is best known for his role as District Attorney Harvey Dent in The Dark Knight. He has also starred in Thank You For Smoking, Olympus Has Fallen, and In The Company of Men. Name the actor.

Send your answer to info@justbeverley.co.uk by December 14th. Include your name, address and daytime telephone number. Put 'Sully Competition' in the subject line. Full terms and conditions are on page 3. © 2016 Warner Bros. Entertainment Inc. All Rights Reserved

Special Christmas Screenings!

Festive Flashback - The Polar Express (U) in 3D will be showing on Sunday 18th December & Saturday 24th December. Watch out for more screenings! Admission is only £5

Little Penguins Goes Festive!

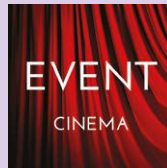
The Grinch (PG) shows on Sat 17th & Sun 18th & Sat 24th Dec at 10:15am.

Tickets will be on sale soon but as always with little Penguins shows, tickets are only £2.



Fantastic Beasts Competition Winner

Wendy Copley, was delighted to win, her daughter could not wait to see the film. its a win win.



Event cinema offers something a little different to mainstream films. Live and pre-recorded shows beamed in via satellite from all over the world. Here are the latest live streams that you can enjoy on the big screen at Parkway Beverley.

TICKETS NOW ON SALE:

Wednesday 7th December at 7pm - ALL'OPERA - MADAME BUTTERFLY (12a TBC)

Thursday 8th December at 7:15pm - ROH: THE NUTCRACKER (12a TBC)

Sunday 11th December at 2pm - ROH: THE NUTCRACKER (ENCORE) (12a TBC)

Thursday 15th December at 7pm - NT LIVE: NO MAN'S LAND (15)

Sunday 18th December at 3pm - BOLSHOI: THE NUTCRACKER (TBC)

Sunday 15th January at 7pm - ALL'OPERA - COPPELIA (TBC)

Thursday 2nd February at 7pm - NT LIVE: AMADEUS (TBC)

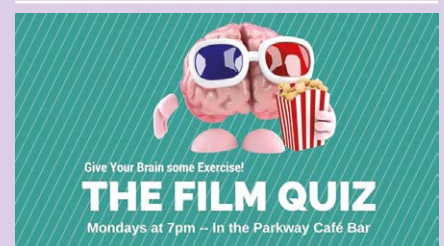
Thursday 16th February at 7pm - NT LIVE: SAINT JOAN (12a)

Thursday 9th March at 7pm - NT LIVE: HEDDA GABLER (12a)

Tuesday 14th March at 7pm - ALL'OPERA - MANON LESCAUT (TBC)

Tuesday 18th April at 7pm - ALL'OPERA - LA GAZZA LADRE (TBC)

Wednesday 19th April at 7.30pm - THE AUSTRALIAN BALLET: COPPELIA (TBC)



Why not test your film knowledge at 7pm before the Mystery Movie Monday? There are free film tickets for the winners!

JOIN US ON A
MAGICAL CARPET RIDE OF A PANTOMIME

TONY PEERS
PRESENTS

LIVE
ON STAGE

Aladdin

**COLIN
ROBERTS**
as Widow Twankey

JOE MAW
as Wishee Washee from
CBBCs The Dumping Ground

WITH FULL SUPPORTING ALL STAR CAST

featuring dancers from

THE FLEUR ELIZABETH ACADEMY OF DANCE

Directed by LINDA NEWPORT

**FRIDAY 16TH DECEMBER 2016 –
SUNDAY 1ST JANUARY 2017**

PARKWAY THEATRE
FLEMINGATE, BEVERLEY

BOX OFFICE: 01482 968090
www.parkwaycinemas.co.uk



Visit Santa and his elves at the region's biggest Christmas Grotto

One of Flemingate's units has been magically transformed into an enchanting Christmas Kingdom.

With snow-capped trees, twinkling lights and a wintery landscape surrounding a magnificent castle, visitors can see Santa's busy band of elves working night and day to make all the presents for local boys and girls. They will have lots of activities, too, to keep visiting families entertained while they wait to meet with the man himself, Santa Claus. He is on-hand to speak to all the good girls and boys to find out what presents they would like for Christmas this year. The special play area is provided by The Entertainer toy store.

Graham Tait, Flemingate Centre Manager said: "It's wonderful that we're able to house this huge Santa's grotto at Flemingate, which will give children and families a fantastic festive experience. The grotto has been designed and built from scratch! It looks amazing - the youngsters will absolutely love it! We're expecting the grotto to be hugely popular. Tickets are available at the grotto but I recommend parents book tickets in advance via our website www.flemingate.co.uk. It costs just £5 to meet Santa and his elves and that includes a Christmas gift."

Opening times for the grotto vary, so please check on the Flemingate website. Group discounts for school and nursery visits are also available. Ring **01482 320088** for details.



Aladdin Competition Winner

Aladdin winner, Margaret Mann enjoys reading the magazine is delighted to win such a fantastic prize.



The Parkway stage is set for Beverley's first professional pantomime

Parkway Cinema is now 1 year old - where did that year go?! Well, at Parkway Cinema the time has passed in a wave of innovative shows and events as well as the screening of the latest blockbusters, independent cinema and special showings. And now it will host a pantomime in Screen 6, which is otherwise known as Parkway or Hayward Theatre.

Parkway Cinema opened with a wave of excitement! Beverley's Picture Playhouse in Saturday Market closed in 2003, which meant people had to travel to Kingswood or Hull to see films. The Playhouse was also used as a venue for live music - the closure was a major loss to the town which struggled to find suitable venues for popular bands. Knowing that the new Parkway Cinema was going to replace all of these lost facilities and more was a real talking point. But the extent to which Parkway Cinema has become a major attraction in Beverley due to the scope and quality of the entertainment it provides could not have been envisaged!

There are several reasons for the success of the Parkway as a venue. First of all, the developers installed state-of-the-art sound equipment in Christie Vive Audio and LA2 speakers, the first multiplex in the UK to do so, which means every seat experiences the same volume and subtle detail. The projection equipment is also made by Christie and includes 4K, 3D and a video scaler and A/V processor which means it can project film made in alternative formats. The cinema opened with 'Star Wars - The Force Awakens' when audiences were 'wowed' by the sound and picture quality. Second, the seats in all screens are the most comfortable of any cinema. Audiences are welcome to take their drinks into the cinema with them, alcohol included, which can be purchased from the café bar; drinks rest in the integral cupholders. Third, the facility is spacious and easily navigated by wheelchair users and the disabled.

But probably the most inspired reason for its success is that Screen 6 is a full-blown theatre. That means that 5 screens can show movies whilst Screen 6 can convert magically into the most modern, spacious and well-equipped theatre in Beverley - the Parkway or Hayward Theatre. The recent Beverley Blues Festival was able to use the theatre for its headline act with 2 supports, which could each be set up and sound-checked before the evening began and then revealed to the audience by pulling back each set of curtains in turn, minimising turn-around time. This 'multi-stage' availability is one of the ways which will enable the forthcoming pantomime, Aladdin, to run smoothly.

Pantomimes are all about creating magic and Parkway Theatre is set up for this. The on-stage and house lighting is arranged so that each part of the stage can be illuminated independently,

Flemingate Christmas Trail

30 businesses at Flemingate have joined together to create a Christmas trail with amazing prizes on offer for the winner and runners-up.

Pick up an entry form from shops, businesses and restaurants at Flemingate, collect festive clues displayed in them and decipher a coded message to be in with the chance of winning a hamper of Flemingate gifts. Clues should be entered onto the form with the entrant's name and address and handed in to Deli No 1, Subway or Costa Coffee by midnight on Friday 23rd December.



allowing for lighting effects to be used to enchant the audience and capture their imaginations. There is plenty of space for scenery and backdrops, the cast and dancers and other necessary equipment. Aladdin is famous for riding on a magic carpet and for conjuring a big, blue genie out of a magic lamp, after all!

Tony Peers, the man who is presenting Aladdin has produced 45 pantomimes to date so he knows the magic ingredients which make pantomime so special. He's been a fan of Parkway Cinema's facilities since he met Parkway's owner, Gerald Parks, when he first visited the Parkway Cinema at Cleethorpes. Tony now produces the annual pantomime at Cleethorpes - this year it is Dick Whittington - and he was delighted to be invited to work with Parkway Cinema, Beverley.

Tony's many years in show business mean he knows a lot of people, which is why his casts are so star-studded! Aladdin stars BBC's Joe Maw as cast as Wishee Washee and Colin Roberts, who must have played almost every pantomime dame in the world of pantomime, is Widow Twankey; Tamsin Winstanley plays Aladdin. Aladdin will be upholding the tradition of pantomime: the principal boy is played by a girl, as is the principal girl; one of them has a controlling widowed mother, a dame, who is played by a man and there is always a 'baddie' to boo, who tries to sneak up on one of the heroes, which involves the audience shouting 'he's behind you' at the top of their voices - but the goodie always turns the wrong way!

Performances involve lots of audience participation with children (and sometimes adults) being invited up on stage to join the cast. There is slapstick, music, singing and dancing. After a convoluted story, the baddie is defeated, the principal boy and girl fall in love and everyone lives happily ever after! Great fun and lots of smiles! Aladdin opens on Friday 16th December and runs until January 1st. Times vary to allow everyone the opportunity to enjoy this fabulous event. Visit www.beverley.parkwaycinemas.co.uk for more details and to book tickets.



FLEMINGATE
BEVERLEY



Christmas
GROTTO
COME SEE SANTA!



Christmas made easy...

Great value, great choice and lots of great new stores - all in one fun family friendly location. 500 parking spaces, 21 stores, Christmas grotto, festive films, Aladdin pantomime and gifts galore. Festive food, fun, film and fashion - we've got it all wrapped up at Flemingate this Christmas.

@FlemingateBev

FLEMINGATE.CO.UK

FlemingateBeverley



RIVER ISLAND

OUTFIT

TOPMAN

TOPSHOP

DEBENHAMS

H&M

GUEST & PHILIPS

Superdrug

GOURMET BURGER KITCHEN



SUBWAY

GREGGS

deli!



RIVA

BRASSERIE VILLERIE

PEACOCKS

bolo

Boytree Interiors



TRESPASS

Card Factory

Poundland

Entertainer

wilko



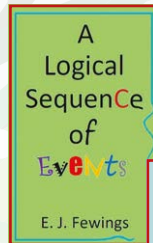
Christmas Gift Ideas



Chances are books by E.J. Fewings will be new to the recipient - and they will love you for them. **A Logical Sequence of Events** is about law-abiding, quiet guy Malcolm - who gets a big shock!

Skinning Cats: Spinning Plates is about Spud, an urban 'avenging angel' and righter of wrongs. Spud's slightly surreal world includes a treasure trove of characters interacting with his take-it-or-leave-it opinion. This story cannot fail to entertain!

Books cost £6 each (plus £1 p&p - or free local delivery) and can be obtained from the author by emailing: fewings@fewings.karoo.co.uk



Alexander Ellis Furniture Emporium has wall clocks ranging in price from £20-£200. Visit the outlet at **Unit 1-3 Tokenspire Business Park, Hull Road, Woodmansey, HU17 0TB.**

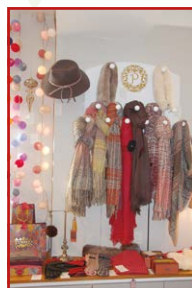


MR Carpets have Christmas special playmats, retailing at £6.50 each which would make great presents for a child's playroom.

MR Carpets are located at **3 Becksid North, Beverley HU17 0PR.**



Georg Jensen is the hot name in silverware despite the company having been making silver jewellery and lifestyle pieces for 100 years. Guest and Philips stock a variety of Georg Jensen pieces. **Guest and Philips, 23-25 Saturday Market, Beverley, East Yorkshire HU17 8BB and also at 23a Flemingate Centre, Chantry Lane, Beverley, East Yorkshire HU17 0PW.**



Help the ladies keep the winter cold at bay with the cosy but funky range of gloves, hats, scarves and socks by Powder at The Pamperhouse. With prices ranging from £7 - £42, there bound to be the perfect gift.

The Pamperhouse, 39 Ladygate, Beverley HU17 8BH. Telephone: 01482 886388. www.thepamperhouse.com

Fox Mobility has a range of trolleys in a range of colours suitable for both sexes and all ages from £24.99 to £44.99. **110-112 Walkergate, Beverley, HU17 9BT. Telephone: 01482 887799. www.fox-mobility.co.uk**





GUEST & PHILIPS

ANTIQUE & MODERN JEWELLERY



Beauty, romance and sunsets - that's Santorini

Voted the most romantic island in Mediterranean, and arguably the most beautiful, the unique Santorini offers those visiting it some of the most stunning views to be seen in Europe.

This volcanic island rises out of the Aegean Sea approximately 140km north of the Island of Crete, in a group of islands known as the 'Cyclades' - a collection of around 220 islands, with around 20 major islands that make great day trips, utilising the bus-like ferries that connect this beautiful archipelago.



The caldera of Santorini is the iconic image of Greece everyone is familiar with - whitewashed churches with blue domes, buildings built into the rugged landscape and the clear turquoise ocean. With its winding, narrow streets that navigate their way up and down the cliffside, the capital of Fira, the island's major commercial centre, is home to hundreds of traditional tavernas that offer both spectacular views over the

ocean to the neighbouring islands and spectacular wines grown from the rich volcanic soil found here.

The traditional village of Oia (pronounced "Ee-ah") is home to many cave houses and hotels - properties built into the rock of the steep cliff face at the north of the island. No longer a well-kept secret, the world-famous Santorini sunset is best seen from the streets of Oia and attracts plenty of visitors in the evening - make sure you're there early enough to grab a good spot along the village walls!

The island gently slopes from the steep cliffs of the west into the sea on the east, where the towns of Perissa and Kamari can be found. Here are some of the best beaches on the island - although Red Beach (an earthy red-coloured beach located on the south of the island) is definitely worth visiting. With plenty of tavernas, bars and convenience stores, both Kamari and Perissa provide the perfect base for a summer sun holiday - it is here that the island's more reasonably-priced accommodation can be found. An island this stunning is not the cheapest place to visit - Santorini is one of the most expensive places in Greece. Hotels in Fira are generally highly-priced year-round and Oia, home to some of the world's most luxurious and leading boutique hotels, is one of the most expensive places to stay in Europe.



Popular on cruise itineraries and now available as part of some fantastic package holidays, Santorini is a perfect destination for couples of all ages - and a good option for families as well.

Many of the other wonderful Cyclades Islands are also worth a visit. Nearby Milos, with its unique lunar beaches and birthplace of the infamous Venus di Milo; Naxos, a stunning non-commercialised island known for its local cheese and authentic food; Paros, a lively, beautiful island great for those who love both watersports and nightlife and Sifnos, a peaceful, quiet island perfect for a couple of days away from it all.

These islands can easily be visited for the day or as part of an island-hopping itinerary that utilises the fantastic Greek ferry system. Regular flights and ferries from Athens to Santorini make these two places an ideal pairing for a multi-centre holiday.

BEVERLEY'S ONLY INDEPENDENT TRAVEL AGENCY

ONEWORLD
TRAVEL GROUP

A UNIQUE CHRISTMAS GIFT

Krakow City Break

DEPARTS 07 FEB 2017 FROM LEEDS BRADFORD
2 NIGHTS IN LUXURY 5* HOTEL INC. BREAKFAST

160.00 PER PERSON

BASED ON 2 ADULTS. SUBJECT TO AVAILABILITY.



Beautiful Santorini

THIS BRILLIANT LUXURY 4* HOTEL IS LOCATED JUST A FEW MINUTES WALK FROM FIRA - THE ISLAND'S CAPITAL. HERE YOU CAN FIND TRADITIONAL GREEK TAVERNAS, AS WELL AS THOSE STUNNING VIEWS OVER THE CALDERA.

DEPARTS 06 MAY 2017
DIRECT FLIGHTS FROM MANCHESTER
7 NIGHTS IN 4* CYCLADIC-STYLE HOTEL
INC. BREAKFAST, LUGGAGE & TRANSFERS

575.00 PER PERSON

BASED ON 2 ADULTS. SUBJECT TO AVAILABILITY.

35 Saturday Market, Beverley HU17 8BE

01482 280081

www.1worldtravel.co.uk

MR CARPETS

CARPET AND FLOORING SPECIALISTS
3 Becks North, Beverley, HU17 0PR



Merry Christmas and a Happy New Year to Customers Old and New

29 Years

- in business
- of good honest service
- speaks for itself

01482 872134

Tips for a Happy Christmas!

Wrapping presents always takes twice as long and uses three times as much paper as you originally thought! So make sure you buy enough tape, paper, ribbon and tags before you start your task. Playing Christmas music always helps, but too much alcohol doesn't.

Accept offers of help gracefully and let them get on with it in their way! It's all about the occasion and being together, not about your micromanagement skills.

Don't worry about spending the same amount on each person. A gift chosen with care and given with love is valuable to the recipient no matter what the cost.

Christmas is meant to be a time of celebration not stress. Sitting around, eating rich food and watching TV 'specials' is not conducive to good health. So feast on those delicious winter vegetables, get out in the fresh air and delight in the making of memories as you stimulate your immune system.

HAYWARD Befriending

Are you, or someone you know, struggling to maintain independence?

Do you need time-out from your role as carer?

HaywardBefriending can provide support for adults aged 18-65 and 65+

- Company at home
- Accompanied outings
- Shopping with/for you
- Handy person service
- Support with paperwork
- Support with housework
- Appointment transportation
- Pet service



Contact Jennie for further details
Call: 01482 868166 or 07834 491242

www.haywardbefriending.org.uk

Beverley Funeralcare, your newly refurbished Funeral Home

Come along and visit your newly refurbished funeral home at 93 Walkergate, proud to be serving the local community.

Here at Beverley Funeralcare your local Funeral Arrangers are Lucy Harrison and June O'Connell. Lucy and June have been working in the funeral home for 2 years, and are proud to be supporting families at their time of need.

Beverley funeral home

Our funeral home has been decorated inside using a colour palette and fabrics which are inviting and comfortable. We have invested in our facilities ensuring they are the very best for our clients.

Call into Beverley Funeralcare this December to meet the team and leave a message in memory of a loved one on the memorial Christmas tree.

Caring professionals

As part of the Co-op Group, our local community service is backed by the strength and reassurance of a truly unique and caring organisation here in Beverley.

So that's us, feel free to call in for advice on funeral arrangements and information on Pre-paid Funeral Plans, memorials, funeral flowers and more. Or if you'd prefer, we can come to you.

Pre-paid Funeral Plans

A Pre-paid Funeral Plan lets you arrange and pay for a funeral in advance.

Our range of Plans let you go into as much or as little detail as you like, with fully guaranteed Plans from £2,995*. Knowing your funeral is paid for can be very reassuring. It means your family won't have to worry about unexpected bills or uncertainty around your funeral wishes.

For a FREE information pack call in today.

Contact your local Funeral Arrangers on:

01482 874 082

Beverley Funeralcare
93 Walkergate, HU17 9BP

www.coop.co.uk/funeralcare

This voucher entitles you to a £125 discount off the price of a Pre-paid Funeral Plan from Co-op Funeralcare.

For full Pre-paid Funeral Plan T&C's see www.co-operativefuneralcare.co.uk/terms-and-conditions

The Discount is only valid for Pre-paid Funeral Plans purchased on or after 01 December 2016, and up to and including 31 March 2017 at the Promoter Funeral Home with a copy of this voucher.

The promotional code for this voucher is MKT/16/158.

* If you are choosing a burial, prices and availability of graves vary widely across the country and are therefore not included in the Funeral Plan. Co-op Funeralcare is a trading name of Funeral Services Limited, a registered society registered in England and Wales with registration number 30808R and registered office 1 Angel Square, Manchester, M60 0AG. VAT registered 403 3146 04. Part of Co-operative Group Limited.

Large Range of New Scooters from £599



Electric Riser Recliner Chairs & Beds from £495



Free Local Delivery



New Slimline Stairlifts - From only £1,350



Visit our Shop today for all your mobility needs

110 - 112 Walkergate
Beverley, HU17 9BT

01482 887799

Open Mon - Sat 10.00am - 4.00pm
www.fox-mobility.co.uk

FOXMOBILITY.

Find us on facebook



Care home or YOUR home? You do have a choice...

We are Europe's largest live-in care provider. Our expert care workers live in your home with you, 24-7 as a companion, a carer and a friend.

We offer a genuine alternative to residential care homes. We help the elderly and vulnerable people to remain safely in their own homes by providing 24 hour, live-in care. Carers are matched to you based on personality, hobbies and interests as well as overall care needs.

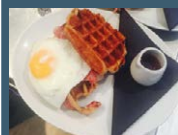
Family and friends need a little break? Been in hospital and need a little extra help? Our carers are live-in companions who help with day-to-day tasks such as cooking, cleaning and shopping. We also offer complex care packages for more advanced care needs such as Dementia, stroke, Parkinson's and end-of-life care.

Our bespoke care packages ensure you retain as much independence and dignity as possible.

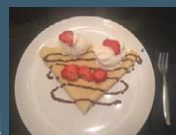
**Your one-to-one live-in companion/
care package starts from just £695pw**

If you would like an informal chat or you would like to know more please get in touch with Jeremy on 07821 669 146 or 01430 638 002 or visit www.promedica24.co.uk/eastyorkshire

PROMEDICA24
Live-in companionship & care



Introducing Lempicka's
**NEW Belgian Style
Creperie and Waffle House Menu**



In addition to our original offerings of delicious breakfasts, tempting lunches, bistro sharing platters, homemade baked goods and renowned espresso based coffees, our crepes and waffles are served with your choice of savoury or sweet fillings.

Also serving our exquisite and luxurious afternoon tea with a Belgian twist. Awarded 'Top 3 Afternoon Tea in Yorkshire' by the Yorkshire Post.

A full range of Vegetarian and Gluten Free meals and baked goods are available.

Enjoy an al fresco glass of fine wine, Belgian beer or continental cocktail in Lempicka's outdoor seating patio.

13 Wednesday Market, Beverley, HU17 0DH

T: 01482 866 960

W: www.lempickacafe.co.uk | E: lempickacafe@aol.com

Just Beverley welcomes Maa Indian Restaurant

Maa means 'Mum's' or 'Mother's' which reflects the ethos behind this new restaurant.

Owner Mohammed Saif hails from Leeds and worked in the family business in York, but his Mum always told him he would run his own restaurant one day, which is why the name of the restaurant reflects the confidence she had in him. So why come to Beverley? Mohammed told **Just Beverley**: "I wanted to come to the East Riding. I found two suitable properties, one in Hornsea and the old Mirchi premises in Beverley; it was the toss of a coin which brings me to Beverley. But the people are so welcoming and helpful that I feel as if I am a Beverley person already. I want to get involved with the community and charities as soon as I can and move here with my wife and family when she has finished her studies at Leeds University."



Joint owners along with Mohammed are head chef Khaled Ahmed and Salinoi Miah. Khaled has 15-20 years of experience working in restaurants across Bangladesh and India, so he brings authenticity to the dishes offered at Maa. Salinoi Miah is also based in the kitchen. Between them they have created traditional as well as unique signature dishes, including a fusion dish - Hariali chicken which is a Thai-style green curry with an Indian twist. But non-curry-eaters and children are not forgotten with omelettes and other English staples served with chips.

The restaurant is open 7 days a week from 5.30pm - 11pm Sunday-Thursday, 5.30pm - 11.30pm Friday and Saturday. Takeaways are available and there is free home delivery within a 3-mile radius of the restaurant. Maa is located at **6 Ladygate, Beverley HU17 8BH**, tel **01482 871537**. Check out their website www.maaindianrestaurant.co.uk, like them on Facebook and follow them on Twitter.

HUBY

DOMESTIC APPLIANCES

HUGE SAVINGS
when you

BOOK ONLINE

at
hubys.co.uk

Book in advance and save money.
The further you book in advance
the more you could save...

You've tried the rest,
now use THE BEST! **01482 240511**

BURTON ELECTRICAL SOLUTIONS

High quality electrical work across East Yorkshire & the Humber region

DOMESTIC

COMMERCIAL

TESTING

Whether it's for your home, rental property portfolio or business premises, all electrical installations need to be checked periodically by a qualified electrician.
For a quote contact:

Andrew Burton
28 Carnaby Close, Leconfield, East Yorkshire HU17 7LA
Tel: 01964 552769 Mob: 07585 601730
Email: info@burtonelectricalsolutions.co.uk
Web: www.burtonelectricalsolutions.co.uk

DOMESTIC
INSTALLER

Creations

Direct Furniture Repairs

Specialists in

- **Leather Restoration**
- **French Polishing**
- **Upholstery**

T: 01482 871954 M: 07951 759253
E: info@creations-biz.co.uk
W: www.direct-furniture-repairs.co.uk

Countryside Matters with Sam Walton

To many, farming will be seen as a male dominated area. Perhaps it used to be but not any longer...

During the last war, the Land Army girls kept the country afloat from a food point of view by doing everything imaginable on farms. So I suppose it sort of followed on that once it was established that ladies could play a role in farming, things escalated.



How many lady vets do you know? There is nothing better on a pig unit than a lady who oversees the farrowing sector (giving birth) where her maternal instinct takes over. I know several female advisers on the crop side, too; there are several ladies who have started their own businesses as feed advisers and they all do an excellent job.

It is not uncommon these days for a lady to own and run, very successfully, a farm. On the edge of Beverley, at Molescroft Grange, you have a prime example in Tamara Hall, who along with her sister Camilla have not only transformed but extended considerably what was a traditional arable and livestock farm into something quite different.

They hold open days for visitors, welcome school trips and have various nature schemes on the go - plus they are building a nursery school. Before I started on my own, I used to manage that enterprise and now I hardly recognise it!

Another great success is something called Ladies In Pigs, known for short as LIPS. Almost 25 years ago this group of pig farmer's wives and helpers was set up by the pig industry to support and market UK pig products and my, how successful they have been!

They have a modern mobile kitchen which they use to travel around the country, giving demonstrations at shows and events, also at Supermarkets where they have had enormous success. You can see what else they get up to on their website: www.ladiesinpigs.co.uk

Would you like to make a difference to someone?

VOLUNTEER CAR & MINIBUS DRIVERS NEEDED

Merry Christmas From BCL

Full training given, ring or pop in for a chat!

25 Corporation Road, Beverley, HU17 9HG
Tel: 01482 868082
www.bclift.org.uk
 Reg. Charity No: 506813

Attend

In the garden...

In December... we are fast approaching the end of the calendar year, and December includes the shortest day.

On average the day length in December is about seven and a half hours and of those hours we only get a maximum of an hour of sunshine per day! Not only does this affect our wellbeing, but plants don't like it too much either - basically they go to sleep, and, consequently, nothing much happens outside in the garden; hence the list of tasks is short.

Tasks and Tips for December...

- If you are feeling energetic and in need of some fresh air - dig over the garden (don't attempt this if the ground is wet and sticky, you will do more harm than good).
- Remove any remaining leaves that are still lingering in nooks and crannies and clear away the remains of any old crops.
- Send off for lots of seed and plant catalogues - and maybe plan a project for next year.
- Ask Santa for some 'garden gift vouchers'.
- Take a trip to your favourite garden centre/nursery and see what plants are available to give your garden a winter boost.

As there is not much to do outside, I am turning my attention to the inside of the home for my offering this month... yes, you may have guessed, it's Christmas Trees! The evergreen Fir Tree and other evergreens have been used to celebrate both Christian and Pagan winter festivals for thousands of years. The Christmas tree as we know it today became popular in Britain during the 1830's and 1840's - we have Prince Albert, Queen Victoria's husband to thank for this I believe?

Xmas tree varieties...

There are several types of conifer that can be brought indoors for decorating at Christmas e.g. Nordmann Fir; Norway Spruce; Fraser Fir; Noble Fir and Scots Pine. They all have slightly different shapes, colour and levels of fragrance. Most are available as cut trees, but container grown and containerised trees (dug up with roots and plunged into pots and there is no guarantee they will continue to grow when planted out). If possible, choose a locally sourced and grown tree, or one that has at least been grown in the UK rather than abroad as imported trees may have cut as early as the beginning of October and sat on a dockside for weeks!

Happy trees...

When displaying trees indoors, avoid placing them too close to a fire or radiator, as this will cause excessive moisture loss and needle drop - even the 'non-drop' varieties with shed their needles if not cared for properly.

Cut trees - treat them as you would a cut flower.

- When you get the tree home, saw 2.5cm (1in) off the bottom with a saw.
- Place in a stand with a well of water in the base.
- Check daily and top up the water when the level drops - a 6ft tree can drink a pint of water a day.
- With care, cut trees should last about four weeks.

Trees in pots

- To reduce stress and damage to living trees, display them in a cool room.
- Bring trees indoors as late as possible - the weekend before Christmas is ideal.
- Do not keep living trees in the house any longer than 12 days, but be guided by the tree. If it looks unhappy, put it back outside.

So, until next month, wishing you all the very best for the 'Festive Season'

Jane Dale of 'Designed Gardens'
 Tel: 07983 392 411



I've Been Thinking... by Colin Raynor

Every baby is given a name but has no say in the matter. Folks spend ages choosing a name for the new born child, and it is often the first thing people ask when they see the baby.

The name may be determined by many things, family heritage, culture or because the name is the one the parents like. It is relatively easy these days to change a name and many do later in life. Modern science, in some countries, gives those who wish to know, the opportunity to find out if the baby will be a boy or a girl. As you read these words the chances are that wherever you look there will be the name of a little boy called Jesus whose birth we continue to joyfully remember on December 25th. The academics will tell you all sorts of reasons why we now celebrate Christmas at this time of year. The churches will (rightly) hope the commercial side of Christmas does not detract from the real meaning of the festival season. Those who do not believe will just take the opportunity to drink and make merry.



Mary and Joseph knew they were having a boy and they knew he would be called Jesus. This is not the place to deliberate on the meaning of the name (there are many) but in the Christian faith "Lamb of God" conveys the reason why this baby came to earth. The Bible shows us how this little child grew into a man who offered people a totally different way of life. He spoke of peace and love and gave His life so we can be forgiven for the wrongs we do to each other. I believe He continues to do that today, for us all.

I've been thinking... there are thirteen different churches all within walking distance of Beverley town centre. Try and pop in to one over the Christmas period, if only for a few minutes. Sit and quietly name all the folks who mean so much to you and those who have enhanced your life but are no longer with you. Give thanks for them, not forgetting, as the hymn writer says: "At the name of Jesus every knee shall bow".

Just Beverley welcomes Eucalyptus Yoga

Beverley now has a dedicated yoga studio, courtesy Kathryn Gibb. Kathryn teaches yoga in a gentle and safe way, to ensure her clients get the benefits of gentle exercise along with the quieting of the mind to bring the mind and body back into balance.

Kathryn's clients include men and women from age 11 to 80+. She told **Just Beverley**: "If you can breathe, you can do yoga! Age is not a limitation! I ask people to come without expectations or hard goals so that we explore possibilities together.

"Different moves can release tension in different parts of the body. The way I practice yoga today isn't the same as when I was 20. But yoga allows for sustainable practice - it's true that you can get better as you get older!"

Kathryn is constantly amazed by the way yoga can help people release trauma and become more mindful.

She said: "Yoga practice can be intimate and emotional and unravel patterns of thinking and holding the body which can be liberating. It can change facial expressions, too. It's great to see the effect it has on people!"

Kathryn runs classes with a maximum of 6 students per class or one-to-one tuition.

Children's, teenagers', cyclists' and other specialist classes are in the planning in the New Year.

If you think yoga could be right for you, do give Kathryn a call on **07853 206981** or email: kathryngibb@eucalyptusyoga.co.uk.

Check out her website: www.eucalyptusyoga.co.uk and Facebook: **Eucalyptus Yoga Beverley**.





Print that gets you noticed

- ✓ Brochures
- ✓ Leaflets
- ✓ Business Cards
- ✓ Business Stationery
- ✓ Posters

- ✓ Desk Calendars
- ✓ Wall Calendars
- ✓ Pop-up Banners
- ✓ Pads
- ✓ Invites

Jadan Press are a leading family run commercial B2 colour litho printer based in Hull. With over 19 years experience, the company is renowned for producing work of an exceptionally high quality. We are committed to providing an excellent service by offering value for money and ensuring complete customer satisfaction.

Tel: 01482 610902
info@jadan-press.co.uk www.jadan-press.co.uk
 Rainbow House, Kimberley Street, Hull, HU3 1HH

OVER 19 YEARS EXPERIENCE

We are committed to providing an excellent service by offering value for money and ensuring complete customer satisfaction



* Price does not include VAT or delivery



Beverley's Festival of Christmas - our flagship event

Great things from small, sustainable ideas grow! Now in its 21st year, the Festival of Christmas promises to be the biggest and best yet!

John Bird, who is now the Honorary Festival Chairman, had the original idea of celebrating Christmas in Beverley by holding a day-long festival. Now organised by EYEvents, the event management team at East Riding of Yorkshire Council (ERYC), it has become Beverley's flagship event. Last year it attracted 55,000 people, generated £770,000 for the local economy and was by far Beverley's busiest day of the year.



The Festival of Christmas is a fixture in the **Just Beverley** calendar, so we were surprised to learn that 41% of the visitors last year were attending for the first time and almost 2/5th of the 55,000 were not locals. In one way, it is wonderful to learn that so many people want to come and share our Festival with us, but in another way, it is concerning that so many Beverley and district residents don't attend. To find out why, how Festival of Christmas could attract more people and how it could be staged better, EYEvents commissioned research at last year's event through 1824 Research and Consultancy Ltd.

The research showed that 98% of both new and returning visitors alike said they would be extremely likely or likely to come again and they would recommend to family and friends. 87% of those responding to the survey had come to Beverley especially for the Festival with 10% of them staying overnight. That's great news! But analysis also showed that most people spent less than 3 hours at the event; 25% thought parking provision was poor; 40% were not impressed with the signage and 10% rated the toilet facilities as poor or very poor. 20% of the respondents didn't think the Festival had been that well promoted, either. It clearly showed there is work to be done - but when asked, respondents were unable to suggest specific improvements which could be made!

This year there have been significant changes to meet the shortcomings identified and to develop and grow on the positives. **Just Beverley** went to meet the EYEvents team in charge of organising the Festival and were amazed to find it is comprised of just two people!

Will Hall joined the team two-and-a-half years ago whilst studying Events Management at Bishop Burton College and became Manager after just one year; he recruited Daisy Jenkinson about a year ago. Soon, they will welcome a third member, Liam van Rijn. The expansion of the team comes at an opportune time as they seek to change the way they work with local facility providers and become more closely aligned with Visit Hull and East Yorkshire (VHEY). VHEY is a partnership between East Riding of Yorkshire Council and Hull City Council. It publishes various town and country guides, runs websites and social media and is the official source of tourism information for the area. VHEY organise the operational aspects of and provide print and multimedia resources for EYEvents, including printing this year's informative fold-out guide to the Festival, which you can pick up from Beverley Tourist Information or download from www.beverleyfestivalofchristmas.co.uk/festival-events/news/beverley-festival-of-christmas-2016-booklet

Will told **Just Beverley**: "Believe it or not, we start organising Festival of Christmas in January! We organise about 40 events in total but Festival of Christmas is key as it generates so much for the local economy. This year we have spread out the footprint so we have a 'Golden Thread' of stalls, activities, shops, venues and music from North Bar to Flemingate. There will be more stalls but they will be spread between North bar, Saturday and Wednesday Markets and Flemingate and yes, there will be more toilets! The Park-and-Ride will operate again from the Racecourse and there will be

entertainment in the Churches along the route. This year we have worked closely with Graham Tait, Centre Manager at Flemingate, Nathan Bush, Chair of the Georgian Quarter and Lisa Burke of Beverley Independent Traders to get their input and improve the offering - we welcome everyone's input!"

Last year, 46 coaches were booked - 51 turned up! This year, at least 55 are expected, bringing visitors from as far away as Newcastle, Manchester and Southampton! There has been a suggestion that if the Festival ran for 2 days over the weekend, those coaches could increase bed occupancy and the average spend/visitor, bringing even more money into the economy.

But this year, the Festival of Christmas will be on Sunday 11th December from 10am - 4pm. If you have never been before, now is your opportunity! Do feedback your comments to Will and Daisy and send your pictures in to info@justbeverley.co.uk or post them as a visitor on the **Just Beverley Facebook page**. **Just Beverley** will, of course, be there, so give us a wave and let the Christmas spirit flow!



great taste
2014
TOP 30 FOODS

WHITE RABBIT
CHOCOLATIERS

have you tried our ho ho ho...

AWARD WINNING
CHOCOLATE

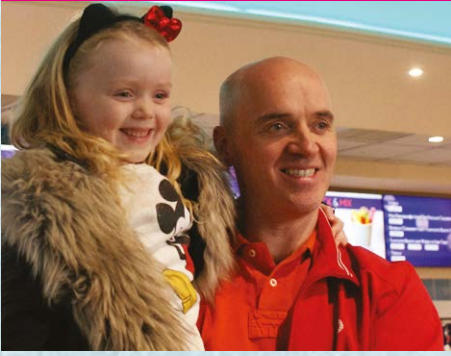
Hop on over to our new online shop!
whiterabbitchocolatiers.co.uk
16 Dyer Lane, Beverley, HU17 8AE

f /White-Rabbit-Chocolate
@WhiteRabbitChoc
01482 679325



Send your photographs of your celeb
Find us on Twitter and Facebook to s

Fantastic Beasts Film



HERE TO GET *you* THERE

HUNTERS®

EXCLUSIVE

BEVERLEY / 01482 861411

Flemingate Santa's Grotto



Remembrance Sunday



SALES / LETTINGS / MANAGEMENT

HUNTERS[®]
HERE TO GET *you* THERE

BEVERLEY / 01482 861411

ALEXANDER ELLIS[®]

FURNITURE EMPORIUM



10 reasons to visit the most unique showroom in the region...



1 *A local* family business you can trust with friendly staff

2 *A massive* choice to make a house your home

3 *Furniture & accessories* sourced from around the world

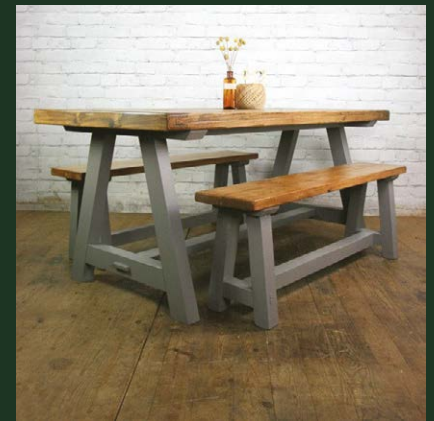
4 *Prices* are amongst the best on the high street and the internet



5 *A huge range* of rustic furniture handmade in our own Yorkshire based workshop

6 *If you can't see it* we will make it and wax, oil laquer or paint it in a colour of your choice

7 *A unique* range of lamps, mirrors, pictures, clocks and accessories



8 *Our own* two man delivery and set up service

9 *Open 7 days* a week with ample FREE parking

10 *We'll make you a brew* while you browse



Tel: 01482 870001

www.alexander-ellis.co.uk

Unit 1-3 Tokenspire Business Park, Hull Road, Woodmansey HU17 0TB. sales.alexanderellis@gmail.com
Opening Hours Monday to Saturday 9.00am to 5.30pm Sunday 10.00am to 4.00pm

SPECIAL OFFER
2 Courses for the Price of 1
 Between 6-15 inches minimum inch loss in 5 sessions

Offer Includes
 Lynfogei and Transion Treatments
 Please call for details
 Offer ends January 2017

TONING TABLES also help with ME, MS, hip replacements, depression, bad backs and much more!

Wheelchair access and stair lift available

New Year - New You!

INCHES BODY STUDIO
 CELEBRATING 25 YEARS IN BUSINESS

Inches Body Studio, 1 Norwood, Beverley, HU17 9ET
 Telephone: 01482 865229
 Email: inchesofbeverley@hotmail.co.uk
 www.inchesofbeverley.co.uk

25 YEARS

Charity Champions

Just Beverley loves to celebrate good news.

This month we met Angela Johnson from the Minor Injuries Unit at East Riding Community Hospital who fund-raises every year for Children In Need by baking and selling cakes.

With cakes as beautiful as these, you can understand why she expects to raise over £200! Well done Angela!



THE KING'S HEAD BEVERLEY

37-38 Saturday Market, Beverley, HU17 9AH
 www.kingsheadpubbeverley.com
 Tel: 01482 868103

THE KING'S HEAD HOTEL

With 10 beautifully designed bedrooms full of home comforts and a touch of luxury with great beds for the perfect nights sleep

FIZZY FRIDAY
 25% Off Champagne & Prosecco
 All Day Friday

LUNCH FOR LESS
 Monday - Friday from 12pm - 3pm
 Meals for just £6



PUZZLE PAGE

Sudoku

Fill in the grid with digits in such a manner that every row, every column and every 3x3 box accommodates the digits 1-9, without repeating any.

| | | | | | | | | |
|---|---|---|---|---|--|---|---|---|
| | 7 | | | 3 | | 5 | | |
| | 8 | | | 5 | | 7 | 2 | |
| | 4 | | | | | | | |
| | | | 3 | 2 | | | 6 | 1 |
| | | | | | | 9 | 8 | |
| 1 | 5 | 2 | | | | 3 | 7 | |
| | | 9 | | 6 | | | | |
| | | 6 | 1 | 4 | | | 2 | |
| 5 | | | 2 | | | 8 | | |

Wordsearch

A P T B A N A J T J Y H X G D
 F C A M K N W H A T Z A B K E
 O E X R C V G O H U Q O H Q C
 C A S Y T I U J D L E W C O O
 C D J T N I P F Z T L T S W R
 E E R D I V E Y O R N T U C A
 S S I S P V P S H A S U E H T
 O M H B W I I W N Y Z L O R I
 R X O Z F Z L T D O E S V C O
 P O K J U Q F A I B D P G W N
 A L P J X P B O R E Z A X R S
 C E N G A P M A H C S R P Q Y
 F R K Z J H T E V K T K N Z P
 Q W G H K E D U S B S L Q W B
 O N E W Y E A R X X N E O Z Q

CELEBRATE
 CHAMPAGNE
 COUNTDOWN
 DECORATIONS
 FESTIVITIES

MIDNIGHT
 NEWYEAR
 PARTIES
 PROSECCO
 SPARKLE

Christmas Jokes!

What do Snowman
 sing at a
 birthday party?
 Freeze a jolly
 good fellow

What do
 Vampires sing on
 New Years Eve?
 Auld Fang Syne

What Bike does
 Santa ride?
 A Holly Davidson

How many letter's
 in the Christmas
 Alphabet?
 25 - There's "no eL!"

Who is Santa's
 favourite Singer?
 Elf - is Presley

White Rabbit Competition Winner

Lucia Sanders loves White Rabbit chocolate and cannot wait to have a chocolate making experience.



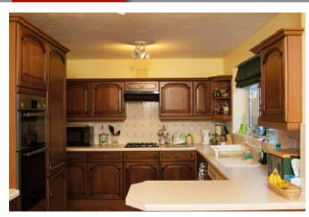
Do you have any
 amusing stories,
 quotes or pictures?
 Send them to
 info@justbeverley.co.uk



QUALITY FITTED KITCHENS AND QUALITY REFURBISHMENTS

DREAM DOORS® NEW LIFE FOR OLD KITCHENS

Before



- Huge choice of doors, worktops, appliances, sinks & taps
- 50% deposit, balance on completion
- Made to measure custom-built doors and units
- Door swaps to full kitchens - tailored to your needs

CALL ANDY OR TERRI
 FOR A FREE ESTIMATE:

01482 861653
 dreamdoors.co.uk



We'll pay the VAT
 this Christmas!

Visit our showroom:
 Belprin Park, Swinemoor Lane,
 Beverley HU17 0LN

Checkatrade.com
 Where reputation matters



Christmas Carols for the 21st Century

Musician and songwriter Gerry McNeice reviews some old favourite carols and brings them up-to-date!

★ Deck the Halls with Boughs of Holly - subject to relevant risk-assessment.

★ Away in a Manger - please be aware that newborns could be affected by ticks and other parasites found in animal bedding.

★ We Three Kings - check relevant documentation/lineage. There are many self-proclaimed kings of pop, rock and roll and wishful thinking who have no rule over any kingdom or subjects.

★ Jingle Bells - before riding on a one-horse open sleigh one should consider safety aspects, such as fitted seatbelts, adequate protection against inclement weather and a back-up audible warning device should the sleigh bells not be of sufficient volume to alert other road-users of the sleigh's presence.

★ We Wish you a Merry Christmas - figgy pudding may include traces of nuts.

★ Do you hear what I hear? - could be offensive to anyone suffering from audio-impairment conditions.

★ God rest ye Merry Gentlemen - care should be taken when imbibing over the Christmas season as men are advised to restrict their alcoholic intake to no more than 14 units per week.

★ In the Bleak Mid-winter - dress appropriately if venturing outside as mid-winter in the Northern hemisphere is seldom anything other than bleak. Remember to call regularly on elderly and vulnerable neighbours.

LA LUMIÈRE

PHOTOGRAPHY



TEL: 01482 867455
WWW.LA-LUMIERE.CO.UK
ENQUIRIES@LA-LUMIERE.CO.UK
22 TRINITY LANE, BEVERLEY

Christmas at **Cosmo's**

**Flaming Grill,
Restaurant & Bar**

3 COURSE MENU £19.95

Offer ends 15th January 2017

Starters

Traditional Prawn Cocktail with Oak Smoked Salmon
Chefs Home Made Tomato and Basil Soup
Smooth Brussels Pate

Mains

Turkey Parcel Stuffed with Sausage meat, Sage and Onion Wrapped in Bacon
Roasted Salmon Fillet
Pan Fried Chicken Breast with White Wine and Cream Mushroom Sauce
Roasted Mediterranean Vegetable Linguine

Desserts

Traditional Christmas Pudding
Hot Chocolate Fudge Cake
Traditional Italian Style Tiramisu

WWW.COSMOSBEVERLEY.CO.UK

Cosmo's Beverley, 9-10 Wednesday Market, Beverley, East Riding of Yorkshire HU17 0DG
T: 01482 867 891 | E: info@cosmosbeverley.co.uk

Water softeners help combat hard water

Beverley and district has hard water and the effects of this can be seen and felt throughout the home.

Hard water contains a high level of calcium and magnesium; it is these minerals that we can see deposited as limescale in the kettle, on the shower screen, around taps or on the surfaces in the kitchen. You can almost feel the presence of these 'hard' minerals as they form scum and scale when you try to create a lather with soap and your towels feel rough and hard. Pipework, appliances and heat exchangers can get scaled up from years of exposure to the chalky minerals, meaning less efficient heat transfer and water flow.



But don't despair! There is a very simple answer for almost every home! All you need is a compact, easy to use, quiet, efficient Water Softener.

With a water softener, much less detergent is needed in the washing machine and the little that there is left, is rinsed efficiently away, leaving clothes soft and towels fluffy.

Softened water is much kinder to the skin; less soap and shampoo is needed and no potentially irritating calcium or magnesium is left to irritate the skin making it itchy and dry. Many customers say that this benefit alone is enough reason to have a water softener.

It's good news for the appliances and pipework too. No matter how long or how badly the pipes have been scaled up, a properly-specified and installed water softener will begin making a difference from day one of its installation. Gradually, existing scale will dissolve away and future build-up prevented. Appliances and water heaters are restored to efficiency and protected 24 hours a day from limescale.

Cleaning becomes a breeze - keeping the shower screen unmarked by residue is a thing of the past and there is now no need to keep a cupboard full of descalers and other harsh chemicals.

For further information, please contact David Parry at:
Greens Water Services, 647 Anlaby Road, Hull HU3 6SX
Telephone: 01482 351 769
Open 10-4 Mon-Thurs
(please call first if you are making a journey)
Email: d.parry@water-systems.co.uk
www.water-systems.co.uk



For water softeners, softener salt, Kooker boiling water taps, water filter systems cartridges and fridge filters. All types of Salt including de-icing salt, block salt, tablet salt and granular salt all delivered or from stock in the shop.



Legal Q's and A's

Every month, Just Beverley invites a local team of legal experts to answer a question to which we don't know the answer.

This month the question involves long memories which could lead to a sticky fresh start!

Q. Seventeen years ago I joined a large company as a secretary. Unfortunately, my boss took a dislike to me and got me sacked. Now I am applying for another job in the very same place. I think it's unlikely that my former boss will still be there, but will they still have my personnel records?

Coles the Solicitors have provided the following response.

A. They should have destroyed your personal records by now, since under the Data Protection Act data must not be kept longer than is necessary for a particular purpose. The consensus is that it is sensible to dispose of personnel records after six years - that being the time limit for an employee to bring a legal action against their former employer. If you were turned down for a job on the basis of your old records you might have a case for compensation.

If you have a question you would like advice on, why not give **Coles the Solicitors** a call?

They are located in the very heart of Beverley at **22, Lairgate, Beverley HU17 8EP**, telephone **01482 231300**.
www.coles-law.co.uk

Do you know about Automatic Enrolment Pensions?

From 2017, every employer in the UK will be required to help their workers save for their retirement. Employers will need to automatically enrol certain workers into a pension scheme and contribute towards it. All organisations will have a 'staging date' for when they need to do this.

The main steps to take are:

1. Nominate a contact for your company who will liaise with the Pensions Regulator.
2. Know your staging date. You can find your staging date by speaking to the Pensions Regulator.
3. Assess your workforce as to whether they are eligible for the pensions scheme. The criteria are listed on the Pensions Regulator website.
4. Review your pension arrangements and choose a qualifying scheme. There are many different schemes and thorough research is required to ensure you choose the best scheme for you and your employees.
5. Communicate changes to all your workers.
6. Automatically enrol your eligible jobholders.
7. Register with The Pensions Regulator and keep records.

The amount of contributions is set by Parliament; the minimum contributions are:

| Date | Employer minimum contribution | Total minimum contribution |
|---------------------------|-------------------------------|---------------------------------|
| Staging date to *05/04/18 | 1% | 2% (inc. 1% staff contribution) |
| *06/04/18 - 05/04/19 | 2% | 5% (inc. 3% staff contribution) |
| *06/04/19 onwards | 3% | 8% (inc. 5% staff contribution) |

It is important to ensure you comply with the Pensions Regulator and keep the necessary records. Using an accountant or a payroll solutions provider can take the headache out of setting up an automatic enrolment pension scheme for your staff and give them the security of knowing that their employer is complying with the law whilst helping them to save for their retirement.

Stipendia are experts in providing solutions to meet with employer's and employees' needs. For a friendly chat or more information, please contact Lynne, Sophie or Liam on **0845 3082288** or visit their website **www.stipendia.org.uk**. Or watch their video on YouTube.

Don't miss the tax return deadline

It's that time of year again when the deadline for submitting your self-assessment tax return approaches quickly.

The deadline of 31 January 2017 is for the submission of tax returns for the year ended 5 April 2016, failure to submit yours on time will leave you with a £100 fine. Further fines are levied if your tax return is then not submitted for a further three months. It's important to note that if you are sent a request to submit a tax return by HM Revenue & Customs, you must submit a tax return even if you are no longer self-employed or don't believe you should need to submit one.

In some circumstances, you may not have received a request from HMRC to submit a tax return but you may still have a responsibility to submit one. For example, if you have untaxed income such as rental income, bank interest or capital gains or you may be in receipt of child benefit and if your income is in excess of £50,000 you may have a tax liability. If you intend to submit your tax return yourself, then you should register online now, as it's now too late to submit the tax return on paper. Registering for the online services is straight forward, just go to www.gov.uk and await the activation code that will be sent through the post. For this reason it is important that you don't wait until January as you then may not receive your activation code on time. Not registering on time is not a valid excuse for missing the deadline. It has also been known for the HMRC website to crash under pressure of the number of last minute submissions. If you use an accountant or tax adviser to submit your tax return on your behalf you should already have passed the information to them, if not then get on with this as soon as possible to ensure that they have enough time to complete the tax return for you.

Once your tax liability is calculated then you should pay your tax by 31 January 2017, failure to do this could cost you more in interest and penalties. If you can't pay your tax on time, you should make arrangements with HMRC for time to pay; if you do this and stick to the terms then you won't incur penalties on your late payment. The penalties for late payment are 5% of the tax due, if the tax isn't paid after 30 days. There is another 5% if not paid by 6 months after the due date and a further 5% after 12 months.

If you are in a partnership with others then you must submit a partnership tax return by 31 January and if this is late, each partner will receive a £100 penalty. If you would like to discuss this in more detail, then please contact Gareth Botterill on **01482 862240** or email gareth@botterillco.co.uk



Botterill & Co

Chartered Certified Accountants

We are a modern and professional accountancy practice ideally located to serve businesses in Beverley and the surrounding area.

We utilise modern accounting technology to provide you with a cost effective, professional service.

Our services:

- Annual Accounts
- Management Accounts
- Tax Returns
- Company Formations
- Cloud Accounting
- Bookkeeping & VAT

For a free initial consultation please contact us:

Office: 01482 862240

Mobile: 07966 051458

Email: gareth@botterillco.co.uk

Website: www.botterillco.co.uk

1st Floor Offices, 40 Norwood, Beverley, HU17 9EY

Coles

the solicitors

Providing expert legal advice in the very heart of Beverley

22 Lairgate, Beverley HU17 8EP

T: 01482 231 300

E: info@coles-law.co.uk **W:** www.coles-law.co.uk



- Family Law • Wills & Probate • Conveyancing • Powers of Attorney
- Medical Negligence • Litigation • Dispute Resolution • Personal Injury



**FREE
LOCAL DELIVERY**

**OUR BIGGEST
EVER**

**KITCHEN
SALE**

**For your free kitchen consultation
with Darren, call in branch today!***



Free no obligation
design consultation



Unbeatable
discounted prices



Free gifts & prizes



Free home
measuring service

MKM BEVERLEY, Swinemoor Lane, Beverley, HU17 0JX
01482 880088 | mkmbss.co.uk



<https://www.facebook.com/MKMBS/>



@mkmbss

*Promotion ends 5th December 2016

Spotlight on... Ben Cook

Beverley has a rich music scene encompassing all genres, including those you have probably never heard of. Every month, Just Beverley has the pleasure of interviewing a musician or musicians who contribute to this rich musical tapestry. Here we meet Ben Cook.

Ben is often to be seen busking around Beverley, frequently surrounded by a group of young girls, dancing away to his Justin Bieber covers. But if you have heard his version of 'House of the Rising Sun' or self-penned songs such as 'Living Casually' you will know that he is a very talented young man.

Ben started singing when at Cherry Burton Primary School. He had a good voice and took lessons so that he would be able to sing when his voice broke, learning the lesson from his Grandfather, a boy soprano, who could not sing a note after he reached puberty! It was almost a 'given' that he would sing in Longcroft School's Gospel Choir when he moved there aged 11.

Ben started to learn guitar from the age of 13 when he found out that, if you could offer more than one instrument for G-CSE Music, you got better grades. If one of those instruments was voice and you could accompany yourself with another instrument, that also boosts your grade.

Playing guitar helped with song-writing and was ideal for working with other musicians in a group as well as playing solo and it's not surprising that Ben got an A for his GCSE. Ben moved to study for a BTEC in Performance Music at Hull College to improve his skills in reading and writing music, arranging for orchestras and large groups and

learning more theory. He has a great 'ear' for music which means he can pick tunes up and, being a guitarist, can also play using 'tabs', which allows for individual interpretation which enables him to make tunes and songs his own.

But understanding theory has enhanced his music appreciation and increased his ability to play in a group.

Ben also now plays bass guitar. He told **Just Beverley**: "When I started at college there were 7 acoustic guitarists and only 1 bass player. So I took up bass which meant there were 2 groups of 4! Working with a band is really interesting - it can take time to gel and get the sound right. But playing in a band is amazing. The only reason I tend to perform as a solo artist is that it's much easier to transport a guitar with a jack-lead rather than full drum-kit, amps, sound-desk etc. All I have to do is plug-in whereas a band has to sound-check multiple instruments. My brother, Alex, is a sound and lighting engineer; I love working with him but he's away at university at the moment. He was an original member of The Westwood Sessions, to which I belong, and which gives me great opportunities."

He does want to become a professional musician so is happy to play as often as he can - although, as he says, it is always good to get paid!

He helps support himself with a part-time job at a local supermarket but it's the Cook family which are Ben's real support network!

Dad, John, is manager, roadie and taxi-driver and Mum, Katie, is his biggest fan.



But his fan-base is growing! He already has an EP which is available from the **Ben Cook-Music Facebook page** which was recorded at the Westwood Sessions at Beverley Folk Festival a couple of years ago.

This year he performed at Area 2 at the Folk Festival, as well as at Beverley's Festival of Christmas (catch him again this year!) and in numerous gigs in pubs, clubs and halls.

Ben's real inspiration is Jake Bugg - a young man from Nottingham who has broken into the pop music scene by sheer hard work, talent and luck.

If Ben continues working as hard as he is and making as many friends, surely luck will come his way and Ben will become as famous as Jake.

That would be great!

Places available

in all year groups

- **Dedicated** to your child's education
- **Unparalleled GCSE results** for boys in the East Riding
- **Mixed sixth form** with proven success as University route



Beverley Grammar School

Specialising in boys' education since 700AD

Contact the school on Tel: **01482 881531**
or e-mail: admin@beverleygrammar.co.uk

Beverley Grammar School
Queensgate, Beverley HU17 8NF



indicoll

more than just web design

WINTER MADNESS
GET A WEBSITE FOR ONLY

£1995!



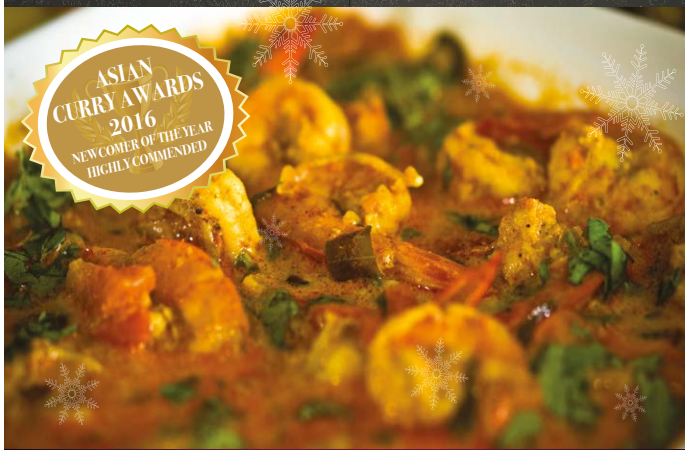
UNLIMITED NUMBER OF PAGES

What's included? Your website comes with all of these fantastic features: A Bespoke Website Design (with no templates used) •Content Management System (so you can update the website yourself) •Contact Form, Analytics (see when & how people visit your website) •Mobile friendly •Blog •Gallery •Links to social media accounts •Dedicated account manager

FREE!
DOMAIN NAME
EMAIL ADDRESSES
WEB HOSTING*
& SUPPORT
*FOR 12 MONTHS



CALL NOW ON **01482 428650**

The Only Beverley Indian Restaurant included on the Welcome To Yorkshire Spice Trail

Rumi's Bangladesh Indian Cuisine

New Walkergate, Beverley, HU17 9EP

Nominated in the 'Curry Awards' and by 'Curry Life Magazine'

Tel: 01482 428642
www.rumisrestaurant.co.uk

Mon - Thurs: 5.30pm - 11.30pm | Fri - Sat: 5.30pm - 12am | Sun: 5.30pm - 11pm

Win a Chef's Table Experience at Rumi's



Head Chef and Owner of Rumi's, Sham Alom, has been recognised as an amazing chef by the recent Asian Curry Awards, when he was awarded 'Best Newcomer'.

On top of this, Rumi's is the only Asian restaurant in East Yorkshire (excepting Tapasya in Hull) listed on the Welcome to Yorkshire Spice Trail, which reflects the delicious, authentic food which Sham prepares.

Sham was born in Bangladesh, so it is the cuisine of that country which underpins his dishes. Bangladesh is famous for food which is produced using many herbs and spices and ranges from sweet and mild to hot. The prize for this special competition will be the perfect treat for anyone who loves the finest Asian cuisine as it will be cooked just for you and your guest, to suit your tastes.



Chef Sham will personally introduce himself and discuss the menu to discover and mould dishes to suit your palate. In all there will be a 7-course meal, after which Sham will join you for a drink.

To be in with a chance of winning this unique experience, answer the following question:
Where was Sham born?

Send your answer in an email to info@justbeverley.co.uk with 'Rumi Competition' in the subject box by December 14th. Normal Just Beverley terms and conditions apply and are listed on page 3 of this magazine.


Recipe - Turkey Korma

Ingredients:

- 400g cooked roast turkey breast pieces
- 1 tsp. turmeric
- 2 tbsp. oil
- 1 onion, chopped
- 1 garlic clove, crushed
- 1 tsp. ground coriander and fresh coriander for serving.
- 1 tsp. cumin
- ½ tsp. chilli powder
- Pinch ground ginger
- 400g tin chopped tomatoes
- 2 courgettes, sliced
- 1 pint water
- 1 tsp. cornflour
- 125ml soured cream
- 50g creamed coconut, grated
- Salt to season.
- Cooked basmati rice to serve.

Method:

1. Fry the onion and garlic in the oil until softened. Stir in the coriander, cumin, turmeric, chilli, ginger and for 2 more minutes.
2. Add in the tomatoes and courgettes and as much of the water as required. Cover and simmer for 20 mins.
3. Add the roast turkey pieces and season as required.
4. Add the grated coconut and stir gently until it melts.
5. Sprinkle with freshly-chopped coriander.
6. Serve with basmati rice.



THE GREEN DRAGON IN BEVERLEY

MON 'MONDAY CLUB' SELECTED DRINKS £1.99

TUES  SMARTPHONE PUB QUIZ 'NO PENS NO PAPER NO CHEATING'

WEDS 8 PM IN THE ROUND OPEN MIC / JAM NIGHT ALL WELCOME

THURS Traditional QUIZ COCKTAILS 2 FOR £6.50 CRACK THE SAFE 

FRI JOIN US LAST FRIDAY OF THE MONTH LIVE MUSIC FROM 9 PM

ASK ABOUT OUR DRINK PACKAGES

- BREAKFAST SERVED FROM 9AM EVERY DAY
- FOOD SERVED 7 DAYS A WEEK
- 10 CASK ALES AND HAND PULLED CIDERS
- QUIZ NIGHTS START 9PM



New Years Eve **Relic Live** from 9.30pm till late

New Cocktail Menu: 2 Cocktails for £6.50 (7 days a week - 5pm - 8pm)

51 Saturday Market, Beverley, East Yorkshire, HU17 8AA
 Tel: 01482 889801
www.thegreendragonbeverley.co.uk

Arts and Culture with Elizabeth Godber - Completing a Dickens Trilogy at East Riding Theatre

This December, the East Riding Theatre complete a 'Dickens trilogy' of Christmas shows with their new staging of Great Expectations, adapted for the stage by Vince Regan. I caught up with the director, Andy Pearson, to talk about the show, the cast, and working at the ERT.

Andy explains how 'Great Expectations is widely regarded as Dickens' greatest novel' and indeed, it only makes sense, after successful staging's of Oliver Twist (2015) and A Christmas Carol (2014), for the theatre to bring the book to life, as such shows always work brilliantly in the ERT's converted-church space.

Andy also describes how they have a 10-strong cast featuring comedian/actor Stephen Frost, David Schaal, known for his role in The Inbetweeners', and Hull-born Janet Prince, as well as several young

cast members from Beverley and East Yorkshire, giving the production a good local connection.

Andy goes on to mention his approach to the show, and how it is, in many ways a comedy, and a thriller... very much a large-scale theatre piece... and certainly a very different Christmas experience to pantomime. As the East Riding Theatre's website states; Great Expectations is 'part thriller, social comedy, gothic horror, satire, melodrama, farce and love story', so there really is something for everyone.

The cast are currently rehearsing in 'an enormous rehearsal space' in Flemingate, with thanks to their Wykeland Group sponsors, so they are 'looking forward to discovering the cafes and restaurants down there' and, as Andy explains, it is 'also handy for Christmas shopping!'

Andy has just finished directing 'As We Forgive Them', also at the ERT, and says that the actors from that show spent lot of time in Nellies: 'learning their lines of course', and perhaps that will also be that case for some in this year's Christmas cast! Indeed, with a run from the 14th December to the 7th of January, undoubtedly the cast will have plenty of time to explore Beverley and discover all of the great places to eat, drink and shop. After Christmas, Andy is working with East Riding



Theatre associate company SHE Productions on their new musical It's Different for Girls, 'about the country's first girl group who came from Hull', which many readers will certainly be excited to see, although dates are yet to be announced.

Until then, of course, it's Great Expectations. The ERT's Christmas show has been delighting audiences in Beverley for the past two years, with their strong casts and stunning settings, and surely they will make it a triple this year!

More details and how to book can be found on the East Riding Theatre's website: www.eastridingtheatre.co.uk

Please note: Great Expectations is only suitable for those aged 10 and over.



THE PAULINE QUIRKE ACADEMY OF PERFORMING ARTS IS ENROLLING NOW IN BEVERLEY!

Outstanding performing arts tuition for 4-18 year olds.



Academies run on Saturdays from 9.45am-1pm

Find us at Beverley Grammar School, Queensgate, Beverley, HU17 8NF

For further information visit

www.pqacademy.com or call 0800 531 6282



PQA
THE PAULINE QUIRKE
ACADEMY OF PERFORMING ARTS

What's On IN BEVERLEY

Email: info@justbeverley.co.uk

Telephone: **01482 679947**

For more events visit:
justbeverley.co.uk/events

Friday 25th November - February 2017

• **20th Annual East Riding Open Art Exhibition**
Beverley Art Gallery. Free. A showcase for the tremendous talent in the East Riding.

Tuesday 29th November - Saturday 3rd December

• **Walkington Pantomime Players present 'Beauty and the Beast'**

Walkington Village Hall. £5/£3. 7.30pm nightly plus matinee at 2pm on Saturday 3rd. Tickets from Walkington Costcutter or 07773 981850.

Wednesday 30th November - Sunday 4th December

• **Beverley Musical Theatre present 'Dick Whittington'**

Beverley Memorial Hall. 7.30pm £7.50/£5. Wednesday to Saturday plus 2.30pm matinees on Saturday and Sunday. Tickets from Beverley Music and Dance, Norwood, HU17 9EZ. Tel: 01482 881584.

Wednesday 30th November - Saturday 24th December

• **Advent Art Installation by Mervyn King**

St Katharine's Chapel Beverley Minster. 9am - 5pm. Free.

Thursday 1st December

• **The Locrian Ensemble in full period costume present Carols by Candlelight**

Toll Gavel United Church. 7.30pm. £15/£13/Children free with full paying adult, additional children £5. Tickets from Beverley Library or 01482 395320 or www.events.eastriding.gov.uk

Friday 2nd December

• **Making Space for God**

Norwood Church. 6.30pm for refreshments, 7pm for alternative worship in a quiet space. All welcome.

Saturday 3rd December

• **Charity Concert - The Beverley Singers present 'Music from the Movies'**

Toll Gavel United Church, Beverley. 2pm. £4 includes refreshments. Tickets from Beverley Tourist Information 01482 391672 or Diane on 07971 012462. All proceeds to East Riding Food Bank and The Morrison's Defibrillator Appeal.

• **Trevor Lilley Book Launch**

East Riding Theatre House Café. 3pm-5pm. Free. Meet the author, have your book signed, hear readings, see artwork and eat cake!

• **East Riding County Choir sing Poulenc and Sullivan**

Beverley Minster. 7pm. £16/£8/free. Tickets from Beverley Tourist Information 01482 391672 or www.eastridingcountychoir.org

POULENC:
Gloria

SULLIVAN:
Festival To Deum

Performed by East Riding County Choir
Beverley Minster
Saturday 3rd December 2016 - 7.30 p.m.

Tickets (from 1st November) £16 & £8
From Beverley Tourist Information: 01482 391672
By visiting: www.eastridingcountychoir.org and also at the door
Musical Director: Colin Wright

Sunday 4th December

• **Plant a tree for Wildlife at Beverley Parks**

Meet in roadside car park at Beverley Parks LNR

signposted off Long Lane, HU17 ORN. OS Explorer Map 293, grid ref. TA 042370. Free. Book tickets on www.eastriding.gov.uk/events or ring 01482 395320. Plant a young tree to help restore Beverley Parks back to traditional parkland.

• **Mini German Market**

East Riding Theatre House Café. Free. Unique items from a range of local artists and craft makers.

• **ArTERY live present Juliet Kelly singing Bond to Bowie: Songs of Stage and Screen**

Bishop Burton Village Hall. 8.00pm. £8. Tickets from 01964 552364 or on the door.

JOIN US ON A
MAGICAL CARPET RIDE OF A PANTOMIME

TONY PEERS PRESENTS
Aladdin
LIVE ON STAGE

COLIN ROBERTS
as Whizzo Fairy

JOE MAW
as Whizzo Fairy

WITH FULL SUPPORTING ALL STAR CAST

THE FLEUR ELIZABETH ACADEMY OF DANCE
Directed by LINDA NEWPORT

FRIDAY 16th DECEMBER 2016 -
SUNDAY 1st JANUARY 2017

PARKWAY THEATRE
FLEMINGATE, BEVERLEY
BOX OFFICE: 01482 968090
www.parkwaycinemas.co.uk

Thursday 8th December

• **Britain's Got Talent Auditions with exclusive performance by The Garnett Family**

Armstrong Social Club. 7.30pm. £2 for audience (must be over 10 years and children must be accompanied by an adult). Performers should register online or call 01482 882999 for an entry form.

• **Beverley Film Society presents 'Sweet Bean' (PG) 2015**

Parkway Cinema, Beverley. £3 members, £6.50 guests. A Japanese drama which is about street food and more. Winner at the International Film Festival and nominated at Cannes.

Friday 9th December - Sunday 11th December

• **Christmas Tree Festival**

Beverley Minster. 10am - 4.30pm daily. £2/free for children, includes programme. Coffee, teas and lunches.

Sunday 11th December

• **Festival of Christmas, Beverley**

Beverley celebrates Christmas with a Victorian Market from North Bar to Flemingate, entertainment and displays from 10am to 4pm. Entertainment and refreshments also at St Mary's Church, Toll Gavel United Church, The Guildhall and Treasure House and Christmas Tree Festival at Beverley Minster.

• **Carol Concert**

St Mary's Church. 3pm. Featuring St Mary's Choir and Beverley Church Lads and Girls Brigade Brass Band.

Monday 12th December

• **Happy 2nd Birthday East Riding Theatre!**

East Riding House Café. 10am-4pm. Drop in for tea

and birthday cake, sing 'Happy Birthday', blow up a balloon, sign the birthday card and hang out as the cast prepare for Great Expectations.

Wednesday 14th December

• **A Christmas Concert by Cadenza**
Norwood Church. 7.30pm.

Friday 16th December

• **Buckrose Concert Band present A Christmas Concert, conductor Becca Heywood**

Beverley Minster. 7.30pm. £8/£5. Refreshments available. Tickets from Beverley Tourist Information 01482 391672 or on the door.

Friday 16th December - Sunday 1st January

• **Tony Peers presents 'Aladdin' with Joe Maw, Colin Roberts and All-star Cast**

Parkway Theatre, Parkway Cinema, Beverley. Various times - 11am/1.30pm/3.30pm/6pm depending on day. £12.50/£11.50/£10.50. Family tickets available. Tickets from Parkway Cinema 01482 968090 or www.parkwaycinemas.co.uk

Friday 16th December - Saturday 7th January

• **Great Expectations by Charles Dickens**

East Riding Theatre. £13.50-£17.00 Dickens' masterpiece adapted by Vincent Regan, directed by Andre Pearson and starring Stephen Frost, Janet Price and David Schaal. 7.30pm nightly with 2pm matinees on selected dates. Check website for details and booking www.eastridingtheatre.co.uk

Saturday 17th December

• **Beverley Chamber Choir & Orchestra present Messiah by Handel**

Beverley Minster. 7pm. £16/£12/£8/£5. Tickets from Beverley Tourist Information or www.beverleychamberchoir.org

• **Holderness Folk Dance Club Christmas Barn Dance**

Woodmansey Village Hall. 7.45pm. £7 includes buffet supper. BYO drinks. Holderness Folk Band with caller Ron Holmes. Contact 07752 587553 or 01482 868918 for details.

Sunday 18th December

• **Beverley Male Voice and Driffeld Male Voice Choirs present 'Prelude to Christmas'**

Toll Gavel Unite Church, Beverley. 2.15pm. £7. Tickets from Beverley Tourist Information, Sokells 52-53 Middle Street South, Driffeld, or on the door. The two choirs sing separately and together plus there is the opportunity to sing with them - you might even be talent-spotted!

• **Churches Together in Beverley Carol Service**

Beverley Minster. 6.30pm.

Tuesday 20th December

• **The York Waits and Deborah Catterall**

St Mary's Church. 7.30pm. £10/£7. Old English music and song for the Christmas season. Tickets from Beverley Tourist Information 01482 391672 or St Mary's Church 01482 869137.

Saturday 31st December

• **Relic Play Classic Rock**

Green Dragon. 9.30pm - late. See in the New Year at the Green D!

Sunday 1st January

• **Beverley Westwood Lions New Year Fun Run**

Market Cross, Beverley. 10.15am registration. £5 for 10k, £3 for £3.

HANKIES AND SOCKS by John Fewings

Once a Christmas standby
For Dads and Uncles, Granddads too;
If you couldn't think what to buy them
You got them hankies and socks.

Hankies and socks.

Posh socks in boxes
With fancy diamond patterns.
Cheap ones in plastic,
Hong Kong-made with cheap elastic,
Hanging round your ankles
Like a Norah Batty lookalike.
Bought from off the market stall -
Six pairs for a fiver
(or less if you were lucky).
Blokes never had to buy their own,
Even when your toes poked through
Or the heels were frayed transparent.
You just hung on 'til Christmas
When they were "Just what I always wanted."

Hankies and socks.

Plain white hankies
Or monogrammed initials
Gracing starchy corners.
Intended for noses
But truly multi-purpose.
Scrunched-up and spat upon
To dab at childhood grazes.
Handy as an oven-glove
When juggling overheated drills
Used for wiping coffee spills,
3-in-1 and creosote,
Mud and blood and snot.



Beyond redemption of the heaviest wash,
Consigned in mercy to the left-hand drawer
Of the bench at the back of the garage;
Never more to flutter on fresh-breeze washing lines
Or, neatly pressed and folded,
Sit snugly, snugly alongside bundled socks.

Hankies and socks.

And what do they buy you these days?
Woolens from Next (to keep you warm);
Technical gizmos (memory sticks);
Recommended bucket-lists
(from cheap remaindered bookshops);
Guinness Book of Records - again -
(because you once enthused convincingly).

But what about the standbys?

With hole-y toes and see-through heels,
I sniff and reach for kitchen-roll,
Recalling,
With affection,
We once got hankies and socks.

I suppose it's time I was off to the shops
To replenish my stocks
Of hankies
And socks.

John Fewings is a member of the Argy-Bargy Poets
as well as **Just Beverley's** Poet-in-Residence.

Find out more about John on his website:
www.johnfewings.zone

Opening Hours
9am - 7pm Monday - Friday
9am - 4pm Saturday



Hair By Rosie




Telephone: 01482 863603

Or you can book online via the website:
www.hairbyrosie.mysalononline.com
www.facebook.com/hairbyrosie16

34 NORTH BAR WITHIN • BEVERLEY • HU17 8DL

10% discount
for students,
NHS,
council workers



the pamperhouse

The Pamperhouse is an independent lifestyle store
located in the heart of Beverley, selling gifts as
well as beautiful home décor and furnishings



39 Ladygate, Beverley HU17 8BH
Telephone: 01482 886388



Young Author Alexander Slingsby tells his Grandfather's story

Alex, who lives in Cherry Burton, was very upset when his grandfather, Albert Neville Medforth (known as Neville as his father was called Albert) passed away in 2007 when he was only 14.

Neville had spent a lot of time with young Alex, regaling him with stories about the war when he served with the Duke of Wellington's Regiment across the Middle East and then, after the war, training as a teacher in Birmingham. But after his death, whilst helping to clear out his flat, Alex found a large box which was full of letters, photos, diaries and newspaper articles on a subject which Neville had never discussed with him. There was also the beginning of a book - only 200 pages or so in a combination of written, typed and word-processed - but it whetted Alex's appetite to find out more about Neville and finish the book.



Picture courtesy of the Hull Daily Mail

Neville Medforth was known to many as 'Mr Aviation'. Since watching his first aeroplane in flight at the age of 5, he was besotted with aircraft and airports. He learnt to fly his own plane, a Tiger Moth which was based at Skegness Aerodrome, but it was difficult to get to Skegness from the East Riding before the Humber Bridge was built. Neville knew there was an airfield at Hedon as he had seen an airshow there in 1939, but it had been closed during the war as the RAF had not found it suitable and after the war, the owners, Hull Corporation decided to keep it closed as too much

work was required to get it up to standard. But Neville believed that Hull needed a commercial airport and in 1956 he applied to Hull Corporation to do the work at Hedon himself. He and his friends started flying from Hedon, but an official application for commercial flights was refused as was the appeal. An enquiry upheld the decision, too, due to objections from The Distillers Company at Saltend who thought it was too risky to fly so close to their chemicals factory.

Unfortunately, Neville's Tiger Moth had crashed by this time, but he still dreamed that the 10th biggest city in England would have its own airport. Neville and his colleagues, Michael Heathcote and fighter ace 'Ginger' Lacey moved to Paull in 1968, licensing 65 acres of land at Oxoannes Farm.

Their licence was granted effective from 1st January 1969. Hull Aero Club, which had disbanded in the 1930's reformed at Paull, two air shows were held there in 1970 and 1971 and there were a steady stream of visitors and helicopters. It operated until 1980 when the Ministry of Agriculture decided they land was needed for farming.

There was a loose agreement that there could be some flying from Hedon, but as it could not be operated as an airfield, Neville's campaigning came to nothing. When Kirmington Airport was reopened in 1974 and developed into Humberside Airport and the Humber Bridge opened in 1981, any plans for a commercial airport near Hull were completely killed off.

Understandably, Neville's book includes his thoughts and feelings of the tribulations he suffered and the cost of such an ambitious project. It is included in Alex's own book, which tells the complete story of Neville's life. Alex has tried to take the emotion out of the story, making it factual, but reading the book is quite a sentimental journey as Neville's plans are thwarted by factors which were out of his control.

The book is entitled 'The Hedon Aerodrome Saga - the Death of an Airport' but in fact, it describes the death of two airports - Hedon and Paull - both of which could have become the airport which Hull still, arguably, needs.



The book is available on Amazon as a paperback at £11.99 or can be ordered from The Cut-price Book Shop in Beverley. It is also available as a Kindle download at £5.99.

The book charts Neville's life from birth to death. It gives a detailed account of his involvement within aviation between 1957 and 1970, with information sourced from personal diaries, correspondence and newspaper articles. The book also gives an insightful personal account of his thoughts throughout, and the frustrations he faced undertaking such an ambitious endeavour.



THE PERFECT GIFT **Beverley**
From **AIRFIELD**

TRIAL FLIGHTS AVAILABLE
FROM £65

Book a trial flight in a light aircraft or microlight and fly over Yorkshire skies

TO BOOK LIGHT AIRCRAFT FLIGHTS
Call us on: **01964 544944** Visit: www.hullaeroclub.co.uk
or pop in and see us for further details

RM
MICROLIGHT **AVIATION** FLYING SCHOOL

TO BOOK MICROLIGHT FLIGHTS Visit: www.rmaviation.co.uk

Classic Cars with Carfan - The Austin 7 Ruby

The subject of this month's column is a rare gem indeed.

The "7" was made in many different configurations - saloon, convertible and van to name just a few and it certainly made its mark with a large percentage of the 290,000 made being exported far and wide. Starting off with what is nowadays considered a tiny engine of just 774 c.c. the car was ideal for a young family and it attracted the attention of a very young Bruce McLaren, who bought one in the first year of production in 1929, passing his driving test in it and winning his first ever race in it at the tender age of 15! Who would have thought that a car a lot smaller than the then ubiquitous Model T Ford would inspire one of the most famous names in motor racing?

The Austin 7 Owner's Club advocates 'To preserve your 7, you must use it' and that certainly seems to be the case with our featured car, being pictured at an East Yorkshire Thoroughbred Car Club meeting in Bridlington this year. The Owner's Club also offers lots of helpful hints and tips about ownership, recommending travelling with a set of spares due to the age of the car. These spares are readily available, which is surprising for a car of this vintage. Ownership, after an initial purchase price in the region of around £5k-£6k, is helped by tax exemption from the Road Fund Licence and no compulsory M.O.T, although the latter is advisable with a car of any age, just to be on the safe side.



This example was manufactured in 1935, having been restored in the 1990s and has also benefited from a recent refurbishment. It is a credit to its current owners and those who have helped to keep it on the road, so when you overtake it (as it probably won't overtake you), give the driver a cheery Carfan wave!

**MINSTER
CYCLES** 
Celebrating our 25th year

**Christmas
Bikes and
accessories
for everyone**



 **bergamont**
BICYCLES

 **Pashley**
SINCE 1926

 **SPECIALIZED**

 **cannondale**

RESERVE YOUR BIKES FOR CHRISTMAS NOW

5-7 Norwood,
Beverley,
HU17 9ET
Tel: 01482 867950

542 Anlaby Road,
Hull,
HU3 6SY
Tel: 01482 509502

www.minstercycles.co.uk

BEVERLEY MOTORWORKS INDEPENDENT BMW & MINI SPECIALISTS

Follow us on:
  
search for
Beverley Motor Works

**BMW Qualified Senior
and Technicians Offer**

- Saving up to 70% OFF main dealer prices
- Manufacturer's warranty not affected
- Resale value of your vehicle not affected
- Award-winning customer service
- Over 30 years' combined BMW experience

Call today on **01482 881128**

*Our dealership expertise means high
quality for car servicing at a fair price...*

- ATA Accreditation
- Routine servicing
- Condition-based servicing
- Diagnostics
- Mechanical repairs
- Air conditioning
- Performance tuning
- MOT's

Call now for a no obligation quote or to book in on
01482 881128 or email us directly from our website
www.beverleymotorworks.co.uk

Unit D1 Grovehill Industrial Estate Annie Reed Road, Beverley HU17 0LF
E: web@beverleymotorworks.co.uk



 
THE INSTITUTE OF THE MOTOR INDUSTRY
AUTOMOTIVE TECHNICIANS
ACCREDITATION

Golf with Stewart Fraser - What a difference a grip makes

Every day I see golfers with worn grips on their clubs, hitting poor shots on the course and the range and yet they never seem to associate the poor shots with the fact their grips are worn! That can't be the reason, can it?!

Well, what if I told you that regripping your clubs when badly worn is the biggest single, instant improvement you can make to your game? The grip is your only point of contact with the golf club and is responsible for control of the clubhead. If you cannot control the clubhead you WILL NOT be able to hit the ball solidly and where you intend to. Really worn grips have been proven to result in around a 15% reduction in accuracy and cause more off centre hits reducing distance.

If your grip is worn, you will have to hold the club a lot tighter than is ideal and that will increase tension in the grip, reducing your chance of making a nice relaxed swing and using your wrists effectively.

Problems due to worn grips can occur at any time, however. Imagine if it was cold or raining, if you were in deep rough or had cold hands: under these conditions your control over the clubhead would be reduced even more.

Most tour players will have their clubs regripped 3-4 times a year; a little excessive perhaps but most club golfers should be thinking at around once a year. How long have you had your current grips?

At Beverley Golf Club, we have all sets of grips, budget through to premium, in stock in the pro shop. Grips come in all shapes and sizes individual to people's needs.

We do up to 6 grip sizes as standard as well as around 20 different putter grips. Grips can range from very soft to help absorb shock through to firm for a good solid feel and feedback.



Different compounds are also available that have different properties; for example, a corded grip still gives good control in wet conditions.



As you can see there are a lot of choices available which is why proper evaluation and fitting is essential when thinking of regripping your set. Feel free to come in for a free grip evaluation and see how many shots you could save!

We currently have sales on some of our sets, too. Additionally, if you bring your copy of Just Beverley in with you, you can get free fitting and 10% of the overall cost of your regrips.

Have a fantastic Christmas and New Year - and see you on the Golf Course!

Play golf on the glorious Westwood

Come and play one of the best draining, best value and most beautiful courses in Yorkshire, in great condition all year round. Winter specials available, call us for more details.

 **Snainton Golf**
The One Stop Golf Experience

The Snainton Golf Store at Beverley Golf Club

- Thursday late night opening in December with special in store deals on the night plus FREE custom fitting in the areas premier custom fit centre
- Nearest the pin prizes to be won in the simulator for every customer
- Full of ideas for the perfect Christmas present
- The best prices in the UK guaranteed, the best choice, and the best service
- Free parking



Beverley & East Riding Golf Club – Call Stewart Fraser on 01482 869519

Now open
to the
Public

Beverley and East Riding Golf Club



Luncheons now being served.



Christmas Sunday Luncheons - 11th & 18th December
open to **NON MEMBERS** with 3 course £15 - bookings now being taken



Bookings being taken for New Year's Party. 7.30pm onwards.
Full Nights Entertainment with 5 course meal.
Live Music - Male Vocalist Luke Sabatino.
Tickets £45 includes welcome drink.

Available to book to Celebrate Christenings, Birthdays, Weddings,
Anniversaries or any special occasion.
Room Hire for Business Events and Social Events.
Social Membership available £20 per Year -
15% off Alcohol.

Find us on
the Westwood

Beverley
Grammar School

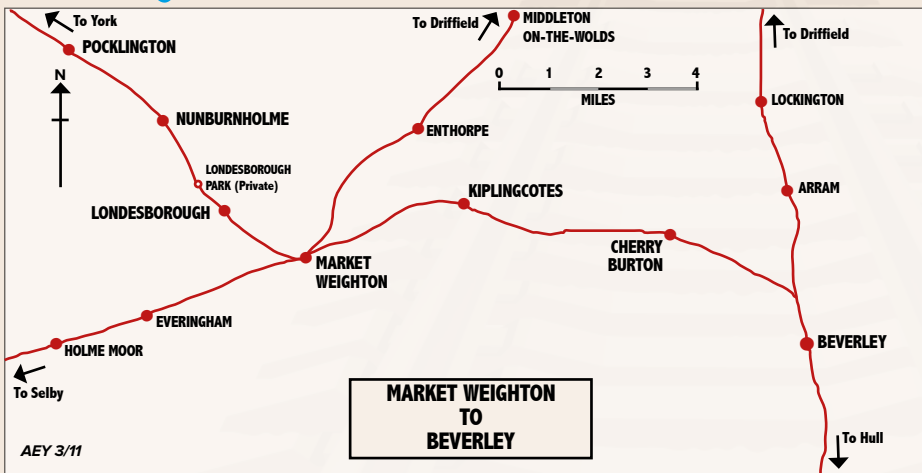
Easy Parking

Beverley Westwood, HU17 8RG
Contact Steve or Jayne Royle

Tel: 01482 868757 or 07773380012



Walking with Ian Richardson - Walk The Line (6 miles return)



As the map shows, for 100 years between 1865 and 1965 Beverley was a rail junction as trains ran west through the Wolds to Pocklington and on to York.

The closure of the line 50 years ago remains controversial to this day, indeed the campaign group Minsters Rail is fighting to restore it. In the meantime we can enjoy the Hudson Way, named after the rail entrepreneur who originally planned and once lived alongside the line at Londesborough. It is now a delightful recreational path that the local authority instigated along the 11 mile route from the outskirts of Beverley to Market Weighton. I will cover this in three easy bite size sections in the coming months: the first stretch, **Gone for a Burton**, explores the route as far as Cherry Burton. The route is suitable for cycling as well as on foot.



Train to Market Weighton

1. This photo was taken at Beverley Station just prior to the closure of the line to York, note the departure signs for Market Weighton. The diesel multiple unit had been recently introduced, replacing steam, but it was unable to save the line. The line branched off the route to Bridlington just beyond the Norwood crossing, the area is still labelled Beverley Junction on modern maps.

Although it is best to start the walk at point 2, the fine station designed by GT Andrews in 1946 still holds a few clues that it once served as a junction. The photo below shows a huge pile of rail sleepers beside the track, presumably once part of the line to York.



Old sleepers outside Beverley Station

2. Start the walk at the end of Thurlow Avenue, off Copandale Road. There is a parking area beside

the lovely Millennium Grove wood. To the east you can explore where the two lines once met at the rear of the rugby ground. We head off west along the well maintained and usually quite dry surface which follows the old track bed. When the Hudson Way opened over 30 years ago this area was all open fields, now of course we are in the midst of the large Butterfly Meadows housing estate. One of the sad aspects of rail closures across the UK in the 1960s is that they failed to anticipate new areas of potential passenger use. Take care where the route crosses the road and try to avoid the temptation so early in the walk of a swift half at the Hayride pub!

3. Route finding could not be easier on this walk, having crossed the by pass bridge, fork to the right to pick up the track again.

One of the pleasures of walking old railways, as championed on TV by the indefatigable Julia Bradbury, is the abundant natural vegetation and wildlife that flourish alongside them. On this stretch are brambles, wildflowers and huge numbers of birds and rabbits. Moreover as you progress, splendid views back over both our wonderful medieval churches open up.



Cutting near Cherry Burton



Steam near Cherry Burton

4. Here we see a photo of a steam train plying the route you are walking some 60 years ago. Then this was the quickest way to travel between Hull and York as well as providing rail access for many rural communities. You pass under two fine brick tunnels and through deep cuttings which can be very muddy. Where the line is embanked the

views across the surrounding country are splendid, you might even spot the well wooded site of the deserted village of Raventhorpe.



Towards the lost village of Raventhorpe

5. It is remarkable how much of Cherry Burton station still stands in the grounds of what is now a private house, even the wooden platform shelter persists. A long stretch of the platform can also be seen.



Stationmasters house, platform and shelter at Cherry Burton

Below is a most evocative photo, showing a remarkable number of staff at this small country station around 1900. Few could have foreseen that within the lifetime of the youngest here, the station in 1959, then the whole line six years later, would close and fade from memory.



The staff of Cherry Burton Station c.1900

6. At this point you can either turn round and retrace your steps back to Beverley, or walk with care the half mile into Cherry Burton village, initially alongside the main road. At the cross roads turn right for the village with its shop, pub and very occasional bus to Beverley. You can walk back either on the track, or take the pleasant cycle path that runs alongside the B1248 to Molescroft.



Cottages and pump at Cherry Burton.

Next month we continue our journey to enigmatic Kiplingcotes

Ian Richardson - ricojosh@msn.com

**Wishing you a very Merry Christmas
and a Happy New Year!**



**Let 2017 be the year you take control of your business
by outsourcing your payroll!**

Payroll Outsourcing Benefits

- ✓ Cost reduction
- ✓ Better staff productivity
- ✓ High accuracy & reliability
- ✓ e-payslips direct to employees via our app
- ✓ A named personal contact
- ✓ Added value services including HR & Benefits in Kind
- ✓ Useful online information

to arrange a **FREE** meeting
call us on: **0845 308 2288**
or visit
www.stipendia.org.uk



Stipendia Payroll Solutions



@StipendiaPay



FREE

winter check
for any scooter/
power chair,
in store only



We take
part exchange

**Small
Scooters**
From
£395

FREE

winter check
for any scooter/
power chair,
in store only



We take
part exchange

**Power
Chairs**
From
£595

Winter Sale

*Yorkshire Mobility wish all
our customers old and new
a Merry Christmas*



**Two
Seater
Sofa**
From
£695



For all your
bathing
solutions
call store
for details

**Heddon -
Electric Dual -
Motor Riser
Recliner**
£795



**Rise &
Recline
Chairs**
From
£495



Stairlifts
From
£995

Hot savings for the cold weather

HOME VISIT DEMONSTRATIONS AVAILABLE ON REQUEST

SUPPLIERS & INSTALLERS OF INDIVIDUALLY TAILORED EASY ACCESS BATHROOM SOLUTIONS
CALL US FOR MORE DETAILS