

just BEVERLEY

**WIN CYCLING ACCESSORIES!
GOLF TIPS FOR NEW SEASON
TOWN COUNCIL ELECTIONS**

FREE

ISSUE 4

NEWS, EVENTS, HEALTH, ENTERTAINMENT, SPORT, PUZZLES, PHOTOS

FEATURE

CYCLING HOLIDAYS

Travelling around Italy

FEATURE

BEVERLEY TOWN CRICKET CLUB

History and information

FEATURE

BEVERLEY MUSICAL THEATRE

Singin' in the Rain

EVENTS

WHAT'S ON IN BEVERLEY

See our monthly listings



PHOTOS

WEDNESDAY MARKET

Buy local produce

FEATURE

TOUR DE YORKSHIRE, 2ND MAY 2015

Everything you need to know!

justbeverley.co.uk

FREE
Local Delivery



KITCHENS ARE THE TALK OF THE TOWN

MY KIND OF
KITCHEN



FREE
CDA Wine
cooler*

1. *Free professional design consultation*
2. *Expert guidance & advice*
3. *Competitive prices for both trade & public*

Call us **today**, we're here & happy to help you discover your dream kitchen

Tel: 01482 880088

Your kitchen specialists at MKM Beverley:

Anne Wallis

anne.wallis@mkmbms.co.uk

Tom Moore

tom.moore@mkmbms.co.uk



Swinemoor Lane, HU17 0JX
OPEN TO TRADE & PUBLIC
Fri: 7.30am - 5.30pm Sat: 7.30am - 12noon

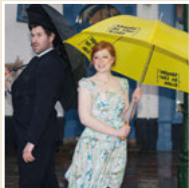
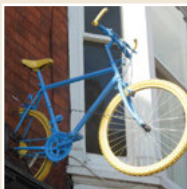
www.mkmbms.co.uk

[@mkmbms](https://twitter.com/mkmbms) facebook.com/mkmbms



“My Kind of Merchant”

*Free CDA 150mm Wine cooler, code: fwc152 with every kitchen order placed between now and the end of March 2015. Orders over £4,000 inc VAT.



Just Beverley magazine can be collected from:
 Beverley Tourist Information Centre, Beverley Library/Treasure House, local newsagents, Morrisons (Victoria Road) & Asda (Norwood).

CONTENTS

Tour de Yorkshire Beverley, by Ian McMillan

A Major Cycling Event	Page 4
Why Tour de Yorkshire?	Page 5
Route and Timings	Page 5
Respect, Protect and Enjoy!	Page 6
Team line-ups	Page 6 & 7
Tour de Yorkshire Events in Beverley	Page 8
Cycling Holidays in Italy	Page 9

Around Beverley

Town Council Elections	Page 10
News	Pages 12 & 13
Stipendia Payroll Solutions	Page 16
Footfriend	Pages 16 & 17
Spring into Action with Release Your Potential	Page 19
Local Produce Market	Pages 20 & 21
East Riding College	Page 22

Entertainment

An Evening of Yorkshire Entertainment Review	Page 23
East Riding Theatre & Artery Live	Page 25
Beverley Musical Theatre	Pages 26 & 27

Sport

Beverley Town Cricket Club	Page 29
Dalton Holme Cricket Club	Page 30
Tips from the Top: Beverley Golf Club	Page 30
Minster Cycles Competition	Page 31

History

Beverley in our Time	Page 32
225 years of NatWest Bank	Page 33

Leisure

Offers	Page 34
Puzzles	Page 35
Events Listings	Pages 36 & 37
Competition Results	Page 38

CONTRIBUTORS

Julian Minshall, Catherine Goble, Nicolas Chambras, Claire Hastie, Jack Baldwin, Linda Johnson, Alison Davies, Ray Teal, Chris Todd, Peter Goldthorpe, John Duncan, Ian Patridge.

just BEVERLEY



I trust all our readers and contributors had a good Easter and, like myself, are looking forward to a good summer ahead of us.

We have had good reports back about the magazine and our competition winners have been delighted to win. This month sees our first male winner picking up a great prize.

This issue we feature the Tour de Yorkshire; it is not often that a small market town gets to welcome some world class athletes to the town and have the world's press descending upon it. I hope you will join in the excitement by decorating a wheel or painting a bike to welcome the world-class field of cyclists coming through Beverley. With the race being shown live to millions of viewers worldwide on Euro sport and terrestrial television, it is important we get our message out to benefit the whole of Beverley, build a great atmosphere and enjoy the day.

We are witnessing new shops and cafes opening, along with the College and new shopping centre taking shape, and the opening of new leisure facilities, confirming what an exciting place we live in.

When you want to know what is on and where it's happening, go to Just Beverley.

Julian Minshall



Are you ready for the Tour de Yorkshire? We have five pages dedicated to it in this month's magazine, so you should find everything you need to know ahead of the big race. If you are getting involved by decorating a bike, a wheel, your shop, school or business, take some photos and send them in to us at info@justbeverley.co.uk, and you may be featured in the next edition and on our website.

The other big thing happening in our area in the coming months is the Town Council elections. Make sure you have your say on who represents you on Beverley Town Council by voting on Thursday 7 May. Read our handy guide to voting on page 10.

We also have a feature with Footfriend, in Wednesday Market, who can help with everything from nail cutting to the way you walk. Speaking of Wednesday Market, did you go to the Local Produce Market on 8 April? Our centre pages have a photo spread so you can see some of the stalls that were there. The next one is on 13 May, so get yourself down there and support our local producers.

Supporting local businesses and societies is at the heart of what Just Beverley is all about, so we spoke to Alison White of Beverley Musical Theatre about their upcoming production of 'Singin' in the Rain', and their plans for the future. It is well worth a read, and then why not book tickets to see the show, or find out how you can get involved?

Cycling isn't the only sport in Beverley at the moment, with Beverley Golf Club gearing up for the new season with some tips for all you aspiring Jordan Spieths. Plus, Beverley Town Cricket Club and Dalton Holme Cricket Club have given us an insight into what they are up to this summer.

Then, there's the usual selection of events listings to help you plan your time. There's plenty going on! To find out more about any of the events, check out justbeverley.co.uk. You know you want to.

Catherine Goble

Tour De Yorkshire 2 May 2015

A Major Cycling Event

The Tour de Yorkshire will be a 2.1 UCI Europe tour event, guaranteeing the participation of some of the world's leading cyclists, including Bradley Wiggins and Marcel Kittel, providing a fitting legacy to last year's visit of the Tour de France.

Gary Verity, chief executive of Welcome to Yorkshire, said: "As we continue to celebrate the success of the Grand Depart 2014, we also look forward to building on its legacy when we host the very first Tour de Yorkshire.

"This is another huge milestone for Yorkshire as we position the county as the cycling heartland of Europe. This is the first ever Tour de Yorkshire, I am confident it will become a huge event and something that will raise Yorkshire's profile year on year."

Director of the Tour de France at ASO (Amaury Sports Organisation) Christian Prudhomme said: "I am delighted we are returning to Yorkshire, where we saw the grandest of the Grand Departs for the Tour de France. It is clear that the people of Yorkshire are passionate about cycling and we can't wait to bring them this new race."

An independent report found the Grand Depart of the Tour de France generated over £100million for the Yorkshire economy, and organisers are confident this new race will further raise the profile of the county and attract visitors, helping businesses big and small across Yorkshire.

The race will be broadcast on ITV - a mixture of highlights and live coverage - and Eurosport, and will be shown by 70 countries around the world.





Why Tour de Yorkshire?

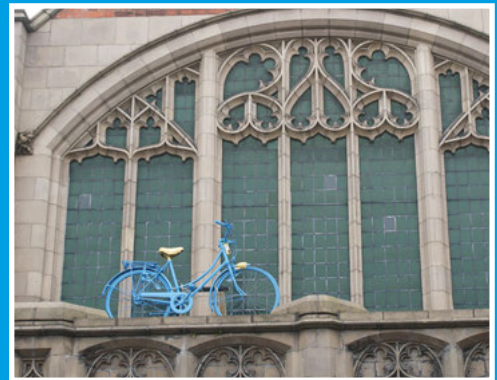
Many people have wondered why the cycling event is called The Tour de Yorkshire, and not the Tour of Yorkshire. We have the answer!

The Tour de Yorkshire race is owned by the ASO (Amaury Sports Organisation) - a French company based in Paris. It therefore has a French name and some of the key climbs have also been given a French name, as a nod to the French origins of the race.



Beverley by Ian McMillan, Poet in Residence, 2014

We're under starter's orders in the opening race
 Over history's jumps to the winning line
 And Beverley's the victor as it sets the pace,
 Minster windows reflecting the warm sunshine;
 Wander through the market and pause and eat
 The kind of food you fantasise and dream about
 Sit in the Yorkshire lunchtime on an outdoor café seat,
 Yes, this is a city with heft and with clout.
 Hear the early music in the late afternoon
 There's a ballad hanging in the morning air
 And Beverley's a song with a chorus and tune
 And when you've sung it once you'll sing it everywhere:
 Ancient and modern, endlessly smart,
 Beverley stays in the mind and the heart.



Route and Timings

The impact on the roads will be limited. In most cases the roads will be closed on a rolling road basis lasting no more than an hour. The only exception will be the start and finish locations and some climbs where the road closures will be longer. Road closures will be managed by the police. Please remember not to park on the race route.

To find out further details including public transport and car parking links go to letouryorkshire.com.

Full details of the timings for the second stage of the Tour de Yorkshire can be found on letouryorkshire.com or downloaded from justbeverley.co.uk.

The route will pass through Beverley on Saturday 2 May arriving in **Walkington** at approximately **12.40pm** and travelling into Beverley at around **12.45pm**.

Beverley and East Riding Golf Club
 Keldgate Road, Cartwright Lane, Keldgate

Beverley Minster
 Eastgate

Wednesday Market
 Lord Roberts Road

East Yorkshire Magistrates Court & Beverley Library
 Champney Road, Lairgate, North Bar Within

St Mary's Church & North Bar
 North Bar Without

Georgian Quarter
 New Walk, Molescroft Road to Cherry Burton at approximately 1pm.

Respect, Protect and Enjoy!

Respect other people

Consider the local community and others enjoying the race; don't block gates, driveways or roads; leave gates and property as you find them; and follow paths.

Protect the environment

Leave no trace of your visit and take your litter home.

Enjoy the Race

Plan ahead and be prepared, follow advice and local signs. Stages 1, 2 and 3 of the Tour de Yorkshire pass through some of the most beautiful countryside in the UK.

Help us to keep it this way by following these simple guidelines.

- **Farmland and footpaths**

For your safety and the protection of the countryside leave gates as you find them, and only follow designated footpaths. Keep

away from crops, machinery and animals. Use gates, stiles or gaps in boundaries and leave them as you find them. Don't climb over hedges – you might damage them and disturb plants and wildlife. Respect signs and do not trespass onto private land.

- **Dry stone walls**

In Yorkshire, we have miles and miles of wonderful dry stone walls. Preserve and protect our dry stone walls by not sitting or climbing on them and only park in allocated areas.

- **Photography**

Take pictures but do so safely and don't obstruct the riders. Please be extra careful with selfie sticks.

- **Grass verges**

Grass verges are home to protected species of wildflowers and wildlife. Avoid parking on them or near dry stone walls where you might cause damage.

- **Fires and barbecues**

Be extremely careful with flames and cigarettes – it only takes one spark to start a

fire. Avoid barbecues to protect farmland, the countryside and others.

- **Dogs**

Keep them on a short lead to protect them and nearby wildlife. Stick to footpaths and bridleways – open moorland is home to nesting birds, and dogs are not allowed on most heather moorland. Keeping your dog on a lead is important, especially near the race. There have been crashes in the past when dogs have escaped onto the route.

Team line-ups for Tour de Yorkshire

Sir Bradley Wiggins and Marcel Kittel will be among the big names in action at the inaugural Tour de Yorkshire.

Wiggins will lead his newly formed team, WIGGINS, for the first time since leaving Team Sky at the end of April, at the three-day race. And he will come up against his old employers straight away, as Team Sky



have been listed as one of five UCI WorldTour teams taking part, along with BMC Racing, IAM Cycling, Giant-Alpecin and LottoNL-Jumbo. Another new British team set to race is ONE Pro Cycling, which was established by former England Test cricketer Matt Prior over the winter.

The teams taking part are:

UCI WorldTour: BMC Racing, Giant-Alpecin, IAM Cycling, LottoNL-Jumbo, Team Sky
 UCI Pro Continental: Cofidis, Cult Energy Pro Cycling, Europcar, MTN-Qhubeka, Roompot Oranje Peloton, Topsport Vlaanderen-Baloise
 UCI Continental: Madison Genesis, NFTO, ONE Pro Cycling, WIGGINS
 Other: Great Britain National Team

The race is being co-organised by Welcome to Yorkshire, the tourism agency behind bringing the Tour de France's Grand Depart to the county last summer, and the Amaury Sports Organisation (ASO), who run the Tour de France.

Welcome to Yorkshire chief executive Gary Verity said: "Our aim is for the Tour de Yorkshire to be one of the biggest and best three-day races in the world and this incredible line-up is evidence that we can achieve that.

"It's a testament to our county that some of the top riders in the world want to come here. We are going to put on a show people will remember for the rest of their lives, whether they are lining the route or watching on TV as it is broadcast to countries around the world."

The race is ranked in the third tier of professional cycling, two below the Tour de France and one below the Tour of Britain, but could still see some of the best cyclists in the world in action.

Each of the 16 teams will be made up of eight riders, with Kittel, who is widely regarded as the best sprinter in the sport, expected to lead Giant-Alpecin.

Tour de France race director Christian Prudhomme said: "The first ever Tour de Yorkshire will be another occasion to

showcase the outstanding landscapes of the county, especially of the coast where we didn't go last year with Le Tour.

"Tour de Yorkshire will be a great opportunity to review young talents among British riders and enable them to ride with top Tour de France professional teams and cycling stars like Sir Bradley Wiggins and Marcel Kittel."



Events in Beverley

The Tour de Yorkshire events and publicity in this area have been part-funded by East Riding of Yorkshire Council's High Street Fund.



Please note all these events are provisional and subject to change.

Official Hub in North Bar Within

- Magician entertaining the crowds
- Big screen showing coverage of the Tour de Yorkshire
- Mountain bike display team

Market Cross

- Static bike ride – Two static bikes available to ride for one minute, to see who can get the furthest, shown on the bike computer. Competition in age group categories

Beverly Minster

- Two large bicycle wheels will sit horizontally on the North Towers
- Small children on bikes will be allowed to ride up and down the South Transepts in a very special 'Tour de Transepts'
- Churchyard used for publicity and as a gathering space, including light



refreshments on a Yorkshire theme. Expect plenty of Yorkshire Tea and parkin. French's ice cream will be selling blue ice cream in honour of the official Tour de Yorkshire colours

- A flat wooden sculpture of the word 'Beverley' will be built in the churchyard, to be picked up by the helicopter flying over, so people are in no doubt about where the Minster is

St Mary's Church, Beverley

- Annual Church Open Day - St. Mary's will be open from 10am-4pm with a variety of



stalls, children's activities and refreshments.

- Tours of the priest rooms
- Tours of the bell tower (with access to the roof) to have a birds' eye view of the race going through. As places are limited they are thinking about auctioning them off to the highest bidder
- A bike will go up on the tower with other decorations, including decorated wheels.
- BBQ and singers on the grounds of the church gardens (or inside if it rains)

Toll Gavel Church, Beverley

- Coffee Morning every Saturday morning in the School Room from 9.30am – 11.30am
- At 11.30am tea, coffee and Tour de Yorkshire themed cakes will be served in the Church Centre, until 2.30pm
- Drive Sale in aid of Christian Aid
- Decorating the Church Centre and Drive with bunting, bikes and bike wheels
- They are going to try to get coverage of the Tour on screens in the Church

Walkington Methodist Church, Walkington

- Serving drinks and biscuits on the drive.
- The church will be open for toilet facilities

St Leonard's Church, Molescroft

- Gathering in the churchyard with bunting, coffee etc

Working together to Build a Better Business Community for Beverley



Promoting Beverley as a destination venue and being the voice of local business, Beverley & District Chamber of Trade is wholeheartedly supporting the Tour de Yorkshire.

The Chamber of Trade is at the heart of the Beverley community. Our aim is to grow and develop all Beverley-based businesses through working together by increasing awareness of each other's capabilities; focusing on education, promotion and understanding of the changing needs of the business community.

It PROMOTES Beverley as an active business and retail area to attract locals, visitors and tourists by supporting projects such as the Tour de Yorkshire and Beverley Business Improvement District and by leading town centre initiatives such as Christmas lighting.

It INFORMS its members and other interested parties of relevant developments issues and opportunities which affect the town.

It REPRESENTS its members with a powerful collective voice, making sure we are heard by local and national government and by development agencies and other bodies. Through regular meetings and good communication, the Chamber reflects the views of its members.

If you are in business in Beverley, come along to a Chamber of Trade meeting on the last Wednesday of every month. More details can be found on www.beverleychamber.co.uk

Explore Italy on two wheels

Cycling in Italy is extremely popular especially due to their annual race "Giro d'Italia". This year the Giro d'Italia opens with a team time trial on Saturday 9 May in San Lorenzo Al Mare and finishes in Milan, three weeks and 21 stages later covering an amazing 3,481km and finishing on Sunday 31 May.

After watching the Tour De Yorkshire, you can then book your holiday to experience pedalling around one of the many beautiful regions of Italy.

Italy has plenty of art, history and glorious scenery to discover. Cycling here is so much fun and with the delicious cuisine and excellent wines, why would you holiday anywhere else?

We have plenty of itineraries for you, from the northern mountains of the Dolomites right down to the Baroque towns of Sicily.

In Italy there is something for everyone, you can choose a cycling holiday to suit your level of ability with the choice of scenery you wish to explore.



Tuscany Landscapes

Self-guided holiday prices start from £498 per person which includes:

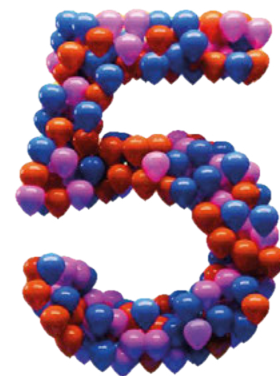
- 4 nights accommodation with breakfast
- luggage transported from hotel to hotel
- route notes and maps
- high-quality bicycle
- return rail from Pisa

We can arrange flights to Pisa Airport for an extra cost.

You can view the full itinerary of this trip on our website:
www.tuttoitalia.co.uk

Claire Hastie, Tutto Italia

hemingway
bailey



To celebrate five years of working with local businesses, we're giving away a **full year of free accountancy services!**

One client, fully signed up by 30th June 2015, will be picked from random to win the services from our new Limited Company Essentials package.

FREE QuickBooks Online software included



Full details at: www.hemingwaybailey.co.uk/5thBirthday

Hemingway Bailey Ltd, 37A North Bar Within, Beverley HU17 8DB
www.hemingwaybailey.co.uk help@hemingwaybailey.co.uk Telephone: 01482 679333

Town Council Elections



A Town Council election is held to elect councillors to sit on Beverley Town Council. The Mayor is selected from this group of councillors.

Beverley Town Council

Making a difference



The last election for Beverley Town Council took place on Thursday 5 May 2011. The next Beverley Town Council election will take place on Thursday 7 May 2015.

Unless a casual vacancy arises during a term of office (four years), town council elections take place once every four years, usually on the first Thursday in May.

During a term of office, an election can also take place when a vacancy has been advertised and 10 electors have requested an election for that specific town. If there is no request for an election then a vacancy can be filled by co-option (by invitation).



Why should I vote in the Town Council elections?

- Being able to vote gives you a say on who represents you in your local council, in the UK Parliament and in Europe.
- At any election in your area, one of the candidates will be selected to represent you whether you vote or not. If you vote, you get to have your say on who represents you.
- Some people are quick to say when they disagree with politicians, but if you don't vote, you won't be able to have your say.
- Across the world people have died fighting for the right to vote and be part of a democracy.
- It gives you a say on important issues that affect you - everything from roads and recycling in your area, to education and climate. Registering to vote doesn't mean you have to, it just means you can if you want to.

How do I vote in the Town Council elections?

You must be 18 years or over on polling day and registered to vote, and be:

- British or qualifying Commonwealth citizens (those citizens who have been granted entry to the UK (for a limited period only) and those that have an unrestricted right to live in the UK); Commonwealth member countries (external website)
 - Citizens of the Republic of Ireland or other European Union (EU) member states: GOV.UK - Countries in the EU and EEA (external website)
- You cannot vote in the town council elections if you are:
- under 18
 - not a British, Irish or a Commonwealth or European Union citizen living in the UK
 - in prison (apart from remand prisoners)
 - an overseas elector (a British citizen living abroad)

The process of voting in the Town Council elections

1. Find out if you are registered to vote. You must be registered before you can vote in any election.
2. About a month before the elections, you will receive a poll card in the post. The poll card will specify the date of the elections, where your specified polling station is, the hours it is open and whether you have requested a postal vote.
3. If you have chosen to vote by post, you will receive your postal vote by 29 April 2015. Postal votes need to be returned by 10pm on 7 May 2015.
4. If voting in person, visit your polling station on 7 May 2015 between the hours of 7am and 10pm to cast your vote. You do not need to take your poll card or any identification with you to your assigned polling station unless you are an anonymous voter.
5. At the polling station you will need to give your name and address to the presiding officer or poll clerk, who will tick you off their register and hand you a ballot paper.
6. Take your ballot paper to a polling booth, where you can mark the person(s) you want to vote for in private. Pencils are provided.
7. Fold your ballot paper and place it in the ballot box.

What happens next?

- After the close of the poll at 10pm, the ballot boxes are taken to a count centre.
- The ballot boxes are then opened and all ballot papers verified to ensure the number of ballot papers in the ballot boxes matches the number of ballot papers issued at the polling stations.
- Once verified, the ballot papers are then counted for each candidate who has received a vote.
- The candidates with the most votes are announced as duly elected by the returning officer.



Help your vision last a lifetime.

Book your Eye Test with an in-store expert.

Find us on Toll Gavel, Beverley.

Call 01482 863547 or visit visionexpress.com

vision *express*

VISION.TAKEN SERIOUSLY.

News in Brief...



De Lacy Spa wins UK Award

De Lacy Hair & Beauty is celebrating in typical style after winning the award for the best beauty salon in Yorkshire and the UK's best beauty salon at 2015's English Hair & Beauty Awards.

Now in its fourth year, the annual event continues to receive a positive reception. Manchester's Mercure Piccadilly Hotel played host to the finest and most talented individuals the hair and beauty industry has to offer.

The prestigious event was broken into categories ranging from Best Colourist to Make-up Specialist of the year, as well as the sought-after title of Best Beauty Salon of the year. Nominees came from all over England and thousands of votes and testimonials were counted in what was a very tight contest.

Each category had representatives from all over the UK, De Lacy being just one of five nominees to make it through to represent the Yorkshire region.

De Lacy's first year entered into the competition was a highly successful one for the salon, which is based on Saturday Market. After first discovering they had been appointed the Best Beauty Salon in Yorkshire, they then went on to find out that had been crowned the UK's Best Beauty Salon.

Proprietor Kerris Lacy said: "I just want to say a massive thank you to all of our lovely clients who voted for us. Also, to the amazing team who work so hard at the salon and make it such a wonderful place to be.

"To first be awarded the Best Beauty Salon in Yorkshire was amazing, then to discover just moments later that we'd received Best Beauty Salon in the whole of the UK was just incredible! Some of the names we were up against were huge! We've had an amazing response, not just from our clients but from many locals too."

Sunday Times rates Beverley in Top 50

A national survey, featured in the Sunday Times, has confirmed what we already know, by naming Beverley as one of the best towns to live in across the UK.

Beverley was ranked in the Top 50 'best town or suburb' listing in the Sunday Times' Best Places to Live series.

The survey looked at places which offer a 'perfect blend' of country and city life, and Beverley won praise for its compact and architecturally stunning centre, the Minster, lively shopping scene, and Beverley Westwood.



Record Profit Growth for Beverley Building Society



In a backdrop of economic challenge, Beverley Building Society has achieved a 30% profit increase for 2014, which represents the fourth consecutive year of record growth. Profits of £329k further strengthens the Society's position as East Yorkshire's only independent society, in advance of its 150th anniversary in 2016. The results represent the third year of a growth strategy set out by the board at the end of 2011.

These results are a reflection of a back-to-basics approach, offering uncomplicated mortgage and savings products with outstanding customer service, which has delivered an increased membership, balance sheet growth and a boosted mortgage book from £122.4m to £151.5m.

The three-year shake-up provided the opportunity for existing staff to take on more senior roles and new recruits have brought additional expertise including Janet Bedford as financial director and Mark Marsden, as the society's first risk director who is reviewing the approach to risk management, control and mitigation.

Peter Myers, Chief Executive of Beverley Building Society said: "I am delighted to announce that results have been strong, with a fourth consecutive year of increased profits driven by a record £25.7m of gross mortgage lending and savers' balances up by £2.1m to £170.8m, with all net profit being reinvested in the society's capital reserves.

"The Beverley Building Society is an integral part of the East Yorkshire community, lending over £70m in the last three years, and we have also supported over 40 charities during this time. Plus, employment opportunities have also been given to three interns, three graduates, a management trainee, a new marketing manager, an apprentice, and local school pupils have come to us for work experience.

"Overall, as a traditional, long-established building society we have responded to the requirements of operating in a global market and feel very proud of our local heritage and the part we play in supporting young professionals and families to get on the property ladder and save for the future.

"Within the next phase of improvements, initiatives include online access for mortgage and savings accounts and the first stage of this broader online strategy has already been successful.

"I would like to thank all members for their support and I look forward to a successful 2015 as we build towards the society's 150th anniversary.

"We are holding our AGM on 27 April at Browns Department Store in Beverley at 5.30pm. Anyone interested in finding out more about how the organisation operates is welcome to come along."

2014 Highlights:

- Net profit has grown by 30% to £329k, driven by an improvement in the net interest margin (1.30% 2014 versus 1.02% in 2013) and growth in the mortgage book
- Total assets increased by £6.2million to £187.5million (2013: increase of £1.9million to £181.3million)
- Net increase in total mortgage balances of £10.5million (2013: increase of £9.7million)
- Net increase in total savers' balances of £2.1million (2013: increase of £4.1million)



Coles Solicitors launches in Beverley

Coles Solicitors celebrated the official launch of their recently acquired 22 Lairgate office on 22nd March with an open invitation buffet for the Beverley community.

The latest office represents Coles' ninth in Yorkshire, and staff from Beverley and Market Weighton were on hand to introduce the firm.

Lead solicitor Mingus Menzies-Baird, a resident of Beverley for over 20 years, said: "It was fantastic to catch up with old friends and acquaintances as well as be introduced to new people and businesses. It was a very successful evening, thanks to the support and enthusiasm of our guests. I look forward to continuing the Coles success story in Beverley and surrounding areas."



OUTSOURCING YOUR PAYROLL COULD INCREASE YOUR PROFITS



Has the new legislation for RTI and Auto-Enrolment had a serious impact on your payroll workload?

Outsourcing to payroll experts can reduce costs whilst increasing productivity, accuracy and reliability. With a named personal contact, e-payslips direct to staff via our app, added value services and useful online information there has never been a better time to check out our services.

To arrange a **FREE** consultation to discuss the benefits of a tailored payroll package to suit your business needs call us on: 0845 308 2288 or visit www.stipendia.org.uk



Stipendia Payroll Solutions



@StipendiaPay

It Pays to Outsource Your Payroll

Stipendia Payroll Solutions offers bespoke payroll services for local businesses. Recently established to compliment the accountancy services offered by Finnies, they currently process the payroll for over 90 successful local businesses.



The team has 25 years' experience of dealing with payroll so you can be sure you are in safe hands. Many of the Stipendia staff worked for Finnies before branching out to become their sister company. The team at Stipendia realises the importance of payroll services to local businesses and knows that they are able to save both time and money as the process has become complex for those without such experience. They offer a tailored personal payroll service with a free initial consultation. Here they will determine your exact needs and leave you with a package that will suit your business and bring you maximum benefit.

This personal approach carries on into their business with a variety of charitable endeavours being undertaken by the team. Lynne, Jonathan and Jack will be running the Beverley 10K in May, to raise money for a local charity, and Anthony is taking part in the Humber Bridge Sportif, which is raising money for The Echoes Foundation. Last year, Stipendia was a drop-off location for the Mission Christmas campaign for Cash 4 Kids. They are always looking for other things they can do, to support local charities.

Stipendia is breaking the mould and turning on its head the perception that accountants and accountancy is boring. They currently attend events such as networking, business weeks and trade exhibitions - not the sorts of things that usual accountants do. They are working within the community and promote their business in many different ways. They are still professional, but they have ambition. And a little ambition goes a

long way.

They are in the process of developing a new app, which they see as being information in people's pockets 24/7, including everything from payroll dates to calculators. Stipendia want to be seen as a modern business that is technologically advanced. And this app ensures it.

Their aim is to make everything to do with payroll easier and more efficient, offering a streamlined process that fits the need of the business and its employees. They pride themselves on being able to offer an outsourced service that is cheaper than if the business were to do their own payroll in-house.

Stipendia assesses your payroll, produces spreadsheets that streamline your process where possible and identify the most appropriate format for the HMRC accredited reports to be printed off for your information. They provide security sealed payslips which can be posted directly to employees and will inform you every month of your HMRC liability and monitor the payments that are paid via BACS or a cheque direct to HMRC. Stipendia can become your official payroll agent, which means that they take away the hassle of you having to deal with HMRC. By completing a form and sending it to HMRC, you would give Stipendia permission to discuss any PAYE related matters directly with them on your behalf.

This means they could:

- Deal with over or under payments
- Upload P45s and P46s to HMRC for you
- Offer you a consultancy for your managed payroll
- Submit your data online
- Download the latest tax code changes
- Download student loan notices for your staff

Because they are an approved BACS partner, they are also able to administer your pension payments and liaise with your pension provider. If Stipendia can help you with your payroll, contact them on 0845 308 228 or visit www.stipendia.org to find out more.

stipendia
payroll solutions

The future of payroll is pink!

Contact us now:
0845 308 2288

www.stipendia.org.uk



Put Your Best Foot Forward With Footfriend

Footfriend Chiropodists & Podiatrists on Wednesday Market has been treating customers in Beverley for 25 years, thanks to Damian Johnson.

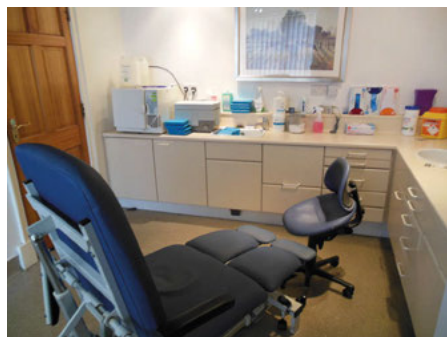


He set up Footfriend in 1990, having always been interested in the medical profession and wanting to have his own practice so he could “do things the way I thought they should be done”.

“We have high standards and use the best equipment. It is all about patient therapy, and seeing our patients at a time that is convenient to them, in a nice, professional, clean environment. Hopefully that gives them confidence every time they walk through the door.”

Footfriend offers a variety of foot health services, for everyone from babies to the elderly.

“People have different requirements. There are some who have foot infections, such as athlete’s foot or verrucas, and others who can’t look after their own feet because they have a bad back or their eyesight has deteriorated,” Damian said. “Plus, we offer nail surgery for ingrowing toenails, which is done under local anaesthetic. Often, people only need one short appointment to correct it.



“We see a lot of sporting people with injuries, and we can help correct gaits for people who don’t walk properly. This may be because they have a leg turned in or out, or one leg is shorter than the other. We can see what tissues are being stressed, and we then remove that stress.”

People often know they have a problem with their gait because they are in pain, or have abnormal wear and tear on their footwear, or have corns and hard skin build-up because



they are putting excessive pressure on certain areas of the foot. “If they have corns on the top of their toe, we might splint the toe to keep it flat or suggest deeper footwear, to give their toes more room.”

The best way to treat a patient is based on their circumstances and medical history. So, Damian and his colleague Victoria will take a thorough history from their patient and examine them thoroughly.

“People are not like motor cars, where parts are exactly the same,” Damian said. “We examine the joints and look at the patient walking. We can normally identify the injured structure and relieve the stress to solve it. We look at it from a podiatric aspect but, even if it isn’t our discipline and we need to refer on, we can often identify the problem in order to do so.

Damian and Victoria might make something temporary to test in the first appointment, after which they can use their findings to look for a more long-term solution such as an adapted or custom made insole.

“We supply insoles, and also shoes for hard to fit feet – in a range of widths, with cushioned soles so they are comfortable.

And they are suitable for diabetics and arthritis sufferers, because they don’t have any seams.”

Diabetes affects the body in many ways. People can have reduced circulation which affects their healing abilities. A reduction in sensation (neuropathy) means they may not know they have had an injury, or a scratch or a sore. This can very quickly deteriorate into an ulcer or could become gangrenous. It can also affect eyesight, which means diabetics struggle to look after their feet.

“Good monitoring by professionals is essential to reduce diabetic foot problems,” Damian said. “It often shows up in the foot first, because that is furthest from the heart.

“With an ageing population, professional footcare requirements have increased. They are less dexterous with their hands so find cutting nails a problem. They can also have musculoskeletal issues which cause pain in the ankle, knee, hip or foot. They are everyday things, but people do struggle with them.

“Often, over-the-counter medicines are not very effective solutions. We teach people what to do, so they can help themselves. The right footwear can solve a lot of problems.”

"We always like to put people at ease. They come in worried, and go out smiling."



Footfriend is situated at 15 Wednesday Market.

For more information, or to book an appointment, ring 01482 868448 or visit www.footfriend.co.uk.

Tips for healthy feet

- Wash feet regularly
- Dry them thoroughly
- Carefully trim toenails when required, or get someone else to trim them if you are unable
- Clean cuts and scratches with an antiseptic wipe, and dress them properly
- If anything is painful, not healing or getting worse, seek attention immediately
- Natural fibres in socks and shoes tend to be better than synthetic ones. Try to wear ventilated trainers.



SPRING OFFERS

3 Months Toning
3 Months Vibraxis
3 Contour Wraps

£179

Normal price over £300
Limited Availability

TONING TABLE SESSIONS

Lose between 7" - 15" in six sessions, toning tables help if you are new to exercise, have issues with mobility, depression, bad backs & much more

FREE trials, no obligation
TESTIMONIALS AVAILABLE



SPECIAL OFFERS

Skin Deep Personalised Facial includes eyebrow shape

£25 was £30

Aromatherapy Massage Back & Shoulders 45 mins

£15 was £20

Valid until 31st May

INCHES BODY STUDIO

Inches Body Studio, 1 Norwood, Beverley, HU17 9ET

Telephone: 01482 865229

Email: info@inchesofbeverley.co.uk

www.inchesofbeverley.co.uk

HUBY

DOMESTIC APPLIANCES

Domestic Appliance Repairs and Servicing



Hubys specialise in domestic appliance repairs and servicing for a wide range of gas and electric domestic appliances including washing machines, dishwashers, tumble dryers, refrigerators, cookers, ovens and more.

www.hubys.co.uk | 01482 240511

Spring Into Action With Release Your Potential!

Hello! Linda here!

Isn't Spring a wonderful time of year? Light nights, warmer days; the desire to get out and about more, become more active and experience life beyond the four walls of our homes.



There is some science behind all this. Light hitting our pineal glands reduces melatonin production which reduces lethargy, whilst increasing serotonin production, which makes us feel happier and gives us the impetus to achieve more.

This is the time when we throw out old, worn-out or just-too-depressing clothes, furniture and furnishings and replacing them with shiny, new items which make us feel so much better. But it's not just tangibles which we can remove from our lives! Now is the time to give our minds a make-over, get rid of negative thoughts and habits and free ourselves from guilt and doubt.

Everyone is an individual who deserves to live their life their way. And we only get one chance at it! Yet so many of us lack the confidence to achieve what we want to achieve due to internalised negative suggestion from other people. Other people are great at telling us what we should or shouldn't do - which might be perfect for them but is definitely not right for us! Indeed, how does anyone but you know your inner-most thoughts, feelings and desires?

So, how can we escape these psychological chains which bind us? The key is to change our perspective on things. What is the reality of the situation from another angle? Is there an alternative? What do you really want for you? How good will this make you feel if you give it a go and succeed? What can you learn to make things even better?

So much of our thinking is rooted in the past, which is history, and therefore not necessarily relevant or helpful anymore. Looking at things non-judgmentally allows us to be in the present so that we can remove our doubts and allow the future to become an exciting mystery!

So, the next time someone tells you what to do, you can make up your own mind as to whether you want to take their well-meaning advice. You can be in charge of your life!

Linda Johnson
Life Coaching and Clinical Hypnotherapy
Tel: 07585 802035
www.releaseyourpotential.co.uk

Release Your Potential
 Helping you transform your life

Do you want to change your life for the better?

Lifestyle Coaching and Clinical Hypnotherapy which will help you...

- ✓ Lose Weight
- ✓ Reduce pain
- ✓ Curb anger
- ✓ Control bad habits
- ✓ Over-rule addictions
- ✓ Stop Smoking
- ✓ Ease stress and anxiety
- ✓ Become fitter and healthier
- ✓ Conquer fears and phobias
- ✓ Sleep better

Tel: 07585 802035
 Email: linda@releaseyourpotential.co.uk
 Web: releaseyourpotential.co.uk

Send your photographs of your celebrations



Wednesday Market



around Beverley, to info@justbeverley.co.uk.



Construction Students Explore New Beverley Campus

Construction students have been given an insight into a live major project during a tour of East Riding College's new £14m Beverley campus.

The learners were shown around the site and given an in-depth talk on construction methods as part of their studies. The four storey building, which will open to students in September, is part of the Flemingate shopping and leisure development in central Beverley and is being built by Houlton.

The exterior of the building is almost complete and the project is now moving onto the internal finishing stage, with electrical and mechanical installations taking place prior to wall, floor and ceiling finishes.

Level two bricklaying student Roy Carmichael, 17, of Walkington, said: "Seeing a site in action with people working on it is the best way of finding out what it's like to work in the industry. It was interesting to hear how the project is moving ahead and all the different methods Houlton's are using in the build."

The new Beverley campus will feature 30 teaching rooms with specialist IT and engineering facilities and a large Learning Resource Centre with access to a wide range of digital and printed reference materials.



It will also feature industry standard hairdressing and beauty therapy salons, a restaurant and a travel agency, which will provide realistic training facilities for students and be open to paying members of the public.

All of the College's Beverley courses will switch to the new campus from September and the old buildings, in Gallows Lane, will make way for a new housing development.

For more information about the new Beverley campus, including an animated walkthrough video, go to www.eastridingcollege.ac.uk/flemingate



EAST RIDING COLLEGE OPEN EVENT

Gallows Lane, Beverley

Tuesday, 28 April,
4pm to 7pm

Come along and find out about
our £14m new Beverley campus!



Opening September 2015



Browse our range of courses at
www.eastridingcollege.ac.uk
or call 0845 120 0037

- ◆ Full and part-time courses
- ◆ A-levels ◆ Higher education
- ◆ Apprenticeships

East Riding College
BEVERLEY • BRIDLINGTON • HULL

It Were A Right Good Do, It Were!

by Alison Davies

I was fortunate to go along to 'A Reight Bobby Dazzler of a Night' at Tickton Grange on 27 March. The event was run by Bishop Burton College event management students. It was a fantastic night with good food, good company and plenty of entertainment.

The students' attention to detail was fabulous. Each table was named after a well-known Yorkshire city or town and there were some fun facts about each town on the table. As we entered the Rose Room a brass band quintet - volunteers from the East Yorkshire Motor Services Brass Band - played. They were fantastic and played a wide range of music from popular classics such as Mack the Knife and Delilah to Clair de Lune.

The Yorkshire theme was maintained through the choice of two course meal; braised beef with Yorkshire pudding and lemon posset with rhubarb compote and Yorkshire parkin. True Yorkshire Tykes then came to the fore with a quiz on all things Yorkshire!

Jan Stainforth, chief executive of Beverley Community Lift, to whom the money raised is going, said: "The attention to detail was amazing. People have been coming up to me all evening telling me what a great night they have had. It is great for the charity to be associated with such a talented group of young people."

The prize draw was the feature of the evening with a wide range of prizes donated by local companies. The students certainly deserve credit in approaching a large number of local organisations to secure great prizes.

Fran Lane, one of the students who organised the night, said: "It has been great to design a different type of event for Beverley Community Lift. We worked really hard to pull it all together and organising something like this gives us great experience that enhances our employability."



For people who cannot easily use other forms of transport
e.g. elderly, disabled or those who are rurally isolated.



VOLUNTEER CAR SERVICE

Do you need help with transport?

We can offer lifts to medical appointments.



Hospital, dentist, doctors, opticians.

Call today to register for use of our service or to volunteer as a driver

Tel: 01482 868082

Serving Beverley & surrounding villages

Reg. Charity No: 506813 www.bclift.org.uk

MAKE MORE MONEY!



Google AdWords™ TRAINING COURSE

ONLY £99 PER PERSON

(INCLUDES LUNCH AND REFRESHMENTS)

Training delivered by
Google AdWords™ Certified Professionals

ONLY 4 PEOPLE PER COURSE

This results-focused training course will show you how to create and manage campaigns that don't break the bank and are focused on your target audience, improving your return on investment

Call now to book your place 01482 871178

Visit www.indicoll.co.uk/googleadwordstrainingcourse for more information

Training Venue: indicoll, 40 Norwood, Beverley, HU17 9EY



The John Godber Company & Theatre Royal Wakefield Present Shafted!

This extra special production will see John Godber perform on East Riding Theatre's intimate stage, with his wife Jane Thornton for the first time in 23 years.

Shafted! depicts the relationship of a married couple during the 1984 miners' strike, the media circus that unfolded and the trials and tribulations of married life 30 years on.

Suddenly they were thrown together, with new battles to fight, and new jobs to hold down; from window cleaning in Wakefield to running a boarding house in Bridlington; life would never be the same again!

Fuelled with eye-watering honesty and true Yorkshire grit, Shafted! is an hilarious account of those whose jobs had been taken, and communities destroyed, and how they fought back. The pits may have gone but the shifts are still seismic.

John Godber and Jane Thornton's previous work together includes the Olivier Award nominated April In Paris, BBC Radio 4 Classic Theatre, September in the Rain, Happy Jack and the Laurence Olivier Award winning comedy Up N Under!

Godber's career began as Head of Drama at Minsthorpe High School in Pontefract and went on to see him writing for TV series such as Channel 4's Brookside and the BBC's Grange Hill. His play 'Bouncers' has gained international recognition and earned two BAFTA awards for the BBC programme Odd Squad.

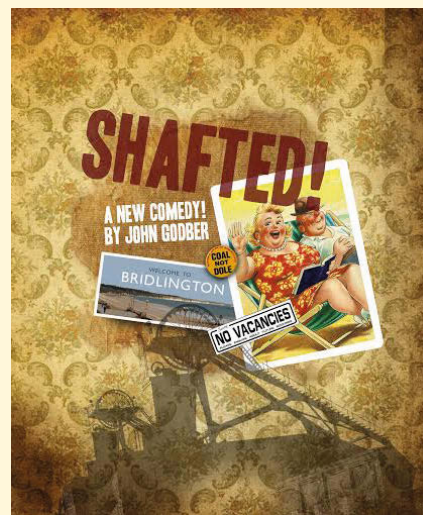
Well known in Yorkshire for his artistic director position at Hull Truck Theatre, John Godber is now also an ambassador of East Riding Theatre in Beverley, offering support during its initial inception, continuing to develop and grow.

As an audience member of the inaugural adaptation of A Christmas Carol in December, he was eager to write a new play to perform alongside Jane on the intimate stage of the renovated chapel in Beverley.

Sue Kirkman, theatre director of East Riding Theatre, said: "This is major coup for the theatre and a huge honour to have one of its ambassadors playing to our audience. Shafted! is another example of the quality we are

showing at ERT. We wanted to set the bar high to ensure the theatre's supporting audience would witness the best, live performances in East Yorkshire."

Shafted! runs from 25 April to Sunday 10 May at 7.30pm (Sundays 2pm). Tickets from £14 - to book visit www.eastridingtheatre.co.uk or call 01482 874050. Twitter @ertheatre or find them on Facebook.



With Cruel Times In Between

Currently touring the UK, Canadian company Theatre Newfoundland is stopping off in Bishop Burton to present With Cruel Times In Between, a lyrical and beautiful portrait of their island life back home.



What better way to portray the culture of Newfoundland, Eastern Canada, than to use the writings of one of the area's best loved poets as the basis of a play? The bewitching and lyrical words of poet Al Pittman are woven into a heartfelt and moving show which becomes a touching memoir of traditional Newfoundland life. Using selections from Pittman's poems, prose, songs and plays, the company tells the highs and lows of island life, whose culture, like many others around the world, is threatened with extinction by the relentless advance of technology.

The production has been a huge hit in Canada. It was adapted for stage and directed by Sarah McDonald was originally created as part of a Youth Theatre Island Exchange Program with the Youth Theatre of Launceston, Tasmania, in celebration of the words and lyrics of Pittman. Founded in 1979 by the late Maxim Mazumdar, Theatre Newfoundland operates a year-round professional theatre company from its home base, Corner Brook in Newfoundland. The company concentrates on preserving the island's rich history through the stories they tell.

ArtERY Live Manager Ellen Thorpe said: "ArtERY Live is delighted to welcome Theatre Newfoundland to Bishop Burton as part of our specially funded Canadian season this spring. It's a family friendly show which should appeal to everyone who loves the idea of keeping traditional cultures alive through music and poetry."

Sunday 3 May 7.30pm - Bishop Burton Village Hall, HU17 8QJ. 01964 552303. Tickets £8.

Spotlight On Beverley Musical Theatre

Beverley Musical Theatre was set up in 1927, as Beverley Amateur Operatic Society, and is still going strong today, with two shows a year and various other engagements and social events.

Their winter pantomime takes place at Beverley's Memorial Hall and is always extremely well received and a complete sell out. The society's next summer production, from 9-13 June at Hull New Theatre, is Singin' in The Rain.

IT'S ALL ABOUT THE PEOPLE...

As with all their shows, they try to get as many people involved as possible. So, as well as a large cast of characters, they have employed the services of East Riding College media students to film scenes for the movie sections, at Burton Constable Hall.

With dance being such an important aspect of this particular musical, local dance school pupils are also on hand to lend their expertise to the chorus, and leading man Chris Holmes has been teaching the rest of the cast how to tap dance.

There is very much a community feel to the shows, and the society as a whole, with local choirs having been invited to take part in a previous production of The Sound of Music, to boost the chorus of nuns, and 40 children getting involved as orphans in Annie.



It is no surprise that the society doesn't struggle for members, and even had more than their fair share of men (notoriously difficult to find!) when it came to doing Fiddler on the Roof last year.



Chairman of the society Alison White said: "Wherever there is any possibility, the producer will get as many of the cast involved. We added crowd scenes and extra twiddly bits, and giving bits of the songs from the leads to the chorus.

"We want to put on shows that the cast enjoy being involved in. We try not to have the same leads in every show, to keep it fresh. There is always up-and-coming talent and someone will add a new dimension. The progression is amazing, and is often a stepping stone for bigger and better things.

"Both Annies have gone into musical theatre; one of them is in Hairspray in London. And, The Artful Dodger for us in our production of Oliver, starred in Sleepy Hollow alongside Johnny Depp. We are obviously extremely proud of them and delighted to have been a part of their development."

CAN YOU HELP?

Beverley Musical Theatre would like to find an accompanying pianist who would be available for rehearsals from 7.30pm-9.30pm on Sunday evenings. Plus, they

are always looking for help backstage, as well as on stage, with sound, lighting, hair, make-up and anyone with any other talents.

"The wardrobe lady is amazing, but we need an army of people to help," Alison added. "The society has a family feel, but we are still very professional. We are passionate and dedicated and work really hard. Come and join our musical Beverley community. We are always looking for new skills and fresh ideas for publicity etc."

PUTTING ON A SPECTACLE!

Publicity is something which is often hard to achieve, but Beverley Musical Theatre pull out all the stops when it comes to thinking up new and different ideas, which might be of interest.

"When we did Fiddler on the Roof, we actually got our fiddler to be photographed on the roof of Hull New Theatre," Alison said. "For The Sound of Music, we took the seven Von Trapp children to a local goat herd for a photoshoot, and with Annie we ran a competition in the local papers to find the dog."



Singin' in the Rain brings another challenge, with 10,000 litres of water being pumped around the set to provide the rain, plus jugglers and clowns being brought on for Cosmo's scene in Make 'em Laugh. They also aim to replicate the premiere of the first talking movie, at the entrance of Hull New Theatre.

"It is nice to make a spectacle of it," Alison admitted. "It can cost £20,000 to £25,000 to put on one of our shows, with the set, costumes, theatre hire and orchestra.

VENUE STRUGGLES

Beverley Musical Theatre currently rehearses at the Masonic Hall, having been a bit nomadic over the last few years, going from Tickton Methodist Church Hall to Beverley Rugby Club to Molescroft Pavilion. The problem has

been finding somewhere big enough to hold them all.

This is already proving an issue for next year's performance, as Hull New Theatre will be shut for extensive refurbishments. This has meant putting back their plans for producing Legally Blonde, and necessitated new ideas and the search for a potential new venue.

"We would like a suitable venue in or near Beverley, if anyone has any ideas," Alison said. "We currently perform in June, but we can be quite flexible with our dates."

If you would like to become a member of the Beverley Musical Theatre family, or can offer a suitable performance venue for next summer, contact info@beverleymusicaltheatre.co.uk or follow us on Facebook, Instagram or Twitter @bevmusictheatre.

'IT'S A GLORIOUS FEELING'

"It is very gratifying to see it when it all comes together. We get a great sense of achievement, because we have all been a part of it. It is definitely worth it, and we hope our audiences think so too."

For tickets to see Singin' in the Rain, call Hull New Theatre box office on 01482 300300.

Or, why not try winning a pair of tickets in our competition? Just send your answer to the following question:

Who plays Don Lockwood in the famous film version of Singin' in the Rain?

to info@justbeverley.co.uk by **Sunday 31 May**, and we will pick a winner.

Judges' decision is final. No cash alternative is offered. Details may be used for marketing purposes by Sport for Everyone, and for data collection and website analytics by Just Beverley. The winner will be notified within one week of the closing date and must be prepared to participate in publicity within the magazine and website.



 **ceramic**
TILE MERCHANTS

Ceramic Tiles in Beverley
www.ceramictilemerchants.co.uk



Visit Our Beverley Showroom

Monday – Friday: 08.30 – 17.30
Saturday: 09.00 – 17.00

 379 Grovehill Road
Beverley
East Yorkshire
HU17 0JG

 **Tel:** 01482 679599
E: info@ceramictilemerchants.co.uk

**CLASSICAL
FLAGSTONES**
Internal Stone Flooring and Tiling

 **ORIGINALSTYLE**

unicomstarker™

GRESPANIA

EDMAX

Beverley Town Cricket Club

Beverley Town Cricket Club prepared for another season with the usual repairs, improvements and patching up off the pitch, as well as some serious practice indoors and then on grass, before the first ball of the 2015 league season was bowled on 18 April.

The club, which for those who don't know, is tucked away down Recreation Lane off Norwood, caters for cricketers of all ages, with four senior Saturday teams, a Sunday Under-18 XI, a Women's XI and junior teams from Under-9s to Under-17s. The senior teams all compete in the York & District League with the 1st XI in the Premier Division and the 2nd XI in Division One. However, a major reorganisation of Yorkshire cricket in 2016, with the creation of Yorkshire Premier Cricket, is being established, so Beverley will be keen to take their place in the new leagues at the highest possible level.

Although the club takes its cricket seriously, Norwood is, without doubt, a welcoming family place with a strong social aspect and an emphasis on coaching and guiding local youngsters through to senior cricket. There are two, and sometimes three, generations of families involved at Norwood which is great for progression and development.

The club, though, is open to anyone to join. Children start at 5 or 6 years of age on Monday evenings from May to August, having fun and learning the basic skills with a soft ball. An Under-9 team play in soft ball tournaments before, at Under-11, they progress to the serious stuff, with a hard ball. Under-13s, U15s and U17s follow, and the senior teams almost always include some players from the latter three age groups.

The club plays a prominent role in the community, not least through its fundraising efforts for charity. In recent years, led by former 1st XI captain Alan Acklam, the club has raised thousands of pounds for local and regional charities with members and friends going through some gruelling challenges. All money raised is shared between the club, which is itself a registered charity, and a charity partner, most recently Leukaemia and Lymphoma Research.

The business community, in turn, has the opportunity to support the club through sponsorship and there are a number of generous club members who offer regular financial support. Running such a large concern is costly and any offer of financial support through sponsorship, advertising and donation, as well as in kind support, is always gratefully received.



BTCC members prepare for another fundraiser (National Three Peaks in 24 hours) in 2012



Currently, the club's major project is building a new pavilion for the second pitch at Norwood. When sufficient funds can be raised this will be a major and much-needed asset.

All this is a long way from the first recorded Beverley cricket team in the 1770s; matches on the Westwood; and at the tiny ground on Mill Lane. Cricket has been played at Norwood for just over 100 years and the centenary of sport there was marked by a number of events in 2009. In 2012 there were further celebrations when the modern club, formed at a meeting at the Royal Standard in 1862, reached the grand old age of 150.

There have been some outstanding teams and some great characters in that time, including the legendary professional Charles Mitchell, Billy Featherby, who was selected for Yorkshire CCC while a Beverley player; club stalwart Bob Sanderson who gave fantastic service as both administrator and player and, in more recent years the spin twins of Savage and Stubbs and the outstanding player of the last few years, Jamie Mitchell.

The club is keen to attract new players who want to play good quality senior cricket as well as youngsters who want to take up the game. New supporters are always welcome; all matches are free to watch, and social members play an important part in the club too.

Anyone requiring further information on the club as either a prospective playing or social member should go to www.beverleycc.playcricket.com where they will find contact details as well as fixtures, results and other useful information, or simply turn up at Norwood. We'd love to see you.



BTCC 1919 includes Bill Featherby who was selected for Yorkshire



CH Mitchell BTCC professional 1892 1905. On retirement he founded a sports shop and tobacconists in Beverley which many people will remember.

Bob Sanderson, a great servant of the club as both player and administrator, pictured in 1949

BEVERLEY CRICKET CLUB

- Cricket recorded as being played in Beverley since the 18th century.
- Matches were played on Beverley Westwood.
- 1862 Beverley Town Cricket Club began, in its present form.
- 1884 The club moved to a ground on Mill Lane.
- 1909 The club moved to Norwood Park.
- 1914-18 Norwood Park used by the military during The Great War.
- 1919 Beverley's Peace Celebrations held at Norwood Park.
- 1920s The club started playing league cricket
- 1939-45 The club was opened to armed forces personnel during World War II
- 1948 Beverley Town Cricket & Recreation Club formed.
- 1961 A second pitch was added.
- 1964 BTC&RC became a registered charity.
- 1964 The clubhouse was built.
- Between 2000 and 2010 the ground was refurbished with upgrades to the pavilion and clubhouse, a new electronic scoreboard, and a three-bay hard net facility
- 2009 saw major celebrations to mark the centenary of sport at Norwood Park
- 2012 saw the 150th anniversary of the club marked by a number of celebratory events.

Tips From The Top Beverley Golf Club

Are you ready for the new golfing season? Richard from Beverley Golf Club provides advice...



1. Check your gear

If it has been a while since you last played you may need to check it is all still there, but also check that it is all serviceable. Check that your grips, shafts, shoes and waterproofs are still in good condition.

2. Warm up your golfing muscles

Obviously you don't need to be a super athlete to play golf but warming up your muscles could help stop minor strains. There are many videos on youtube that will give you some ideas for simple exercises to help improve your strength and flexibility.

3. Hit the range

It is always tempting to head straight for the course when the sun comes out. Just

an hour on the range a week can really improve your results on the course. Make sure you work through all the clubs in the bag to cover all the aspects of the game.

4. Talk to a pro

Lots of golfers waste a lot of time and energy trying to self-diagnose, when having one lesson could be a shortcut. Lessons often can cost less than a round of golf and can prevent you from being a frustrated golfer.

5. The key is the short game

It sounds like a cliché but you really do drive for show and putt for dough! Dedicate more time to practising your

chipping and putting and you will see the benefits.

6. Play your own game

Many golfers think golf is played against others, when you are actually just playing against yourself. Concentrate on your own game and no one else's, even when your friend can drive it 30 yards past you.

7. Stay positive

The most valuable tool you have on a golf course is your mind. We have all lost our temper on a golf course before and, if we are honest, we know it didn't make us play better. Remember, golf is a game and supposed to be fun!

Dalton Holme Cricket Club



Situated just outside Beverley on the Dalton Estate, South Dalton, you will find Dalton Holme Cricket Club. This is not a club that has benefited from Lottery grants or a private backer. This is a club that prides itself on being a genuine village cricket club.

Having driven up the dirt track and manoeuvred around the local livestock you will be greeted by the ground. The old wooden pavilion situated at 'cow corner' houses two moderately sized changing rooms, fitting six players at once, along with a small kitchen. Electricity and sidescreens have still not found their way to the ground, but this does not take away the spectacular views with which you are greeted.

Dalton Holme Cricket Club has a Saturday team playing in Division Two of the Eastern Conference as well as an evening team in the Beverley Evening League. With a disappointing season in 2014, the club will be looking



upon the likes of Robert Todd and Matty Arnold to lay the foundations in the top order, while hoping club captain Martyn Gamble and Lewis Draper deliver with the ball.

Dalton Holme Cricket Club is always looking for players, both old and new to join the club. Even if you are new to cricket, the club has a number of coaches that are happy to help.

For any information about the club, please contact Chris Todd on 07921 714111 or via email on chris_todd1@talk21.com.

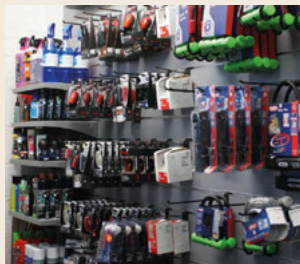
Minster Cycles!

Pashley is a name synonymous with high-quality ladies' traditional bikes. At Minster Cycles, we have the full range of Pashley bikes on display and available to purchase today.

With our advice and fitting service, make the most of the long spring evenings and take a leisurely bike ride around Beverley on a Pashley from Minster Cycles.

Handmade in Britain, Pashley bikes come with a basket and a kickstand, making them practical as well as beautiful. The perfect lifestyle choice.

Minster Cycles, 5-7 Norwood, Beverley, HU17 9ET
01482 867950
www.minstercycles.co.uk



For your chance to win cycling accessories from Minster Cycles, go to justbeverley.co.uk and fill in the competition entry form, answering the question: **Which Officer of the British Empire is taking part in the Tour de Yorkshire?** Closing date for entries is Monday 4 May.



Judges' decision is final. No cash alternative is offered. Details may be used for marketing purposes by Sport for Everyone, and for data collection and website analytics by Just Beverley. The winner will be notified within one week of the closing date and must be prepared to participate in publicity within the magazine and website.

Get In The Zone And Tone Up

There was a chance to tour the newly-refurbished Tone Zone at East Riding Leisure Beverley during the open weekend of 11 and 12 April.

There were tours from 8am – 9pm, and on Sunday there was the launch of new Les Mills classes and a range of activities including Zumba and RPM.

The new Tone Zone is double the size of the previous gym – with around 90 stations – and will offer a wide range of high-tech resistance and cardiovascular equipment, as well as a purpose-built RPM room. Boasting the latest Matrix equipment with new features such as Virtual Active software, this gives users a choice of location to run or cycle through, from Hollywood streets to tracks around the Grand Canyon. Users can also watch TV and listen to their MP3 player on the machines.

For more information go to www.eastridingleisure.co.uk/beverley-leisure-complex/beverley-leisure-complex-gym-redevelopment/



Beverley Photographic Club

Photo's by John Duncan, Beverley Photographic Club.



Walkergate 1970's



Walkergate 2008



Walkergate early 1970's



Walkergate 2008



Walkergate early 1970's



Walkergate 2008



Swabys Yard & walkergate early 1970's



Swabys Yard & walkergate 2008

Natwest In Beverley Celebrates 225 Years

(Reproduced by kind permission of The Royal Bank of Scotland Group plc. Copyright 2015)

NatWest's presence in Beverley can be traced back to 1790, and the establishment of the private bank Sir Christopher Sykes & Co. A prominent local landowner, Sir Christopher Sykes had served as one of Beverley's two Members of Parliament between 1784 and 1790. Although little is recorded about the very early history of the bank, in the early 1790s it was trading from an office in Lairgate, Beverley, and from that time onwards was also known as East Riding Bank. During the first decades of its existence, a number of partners in the London bank Curries & Co joined the firm, including Robert Waikes and William and Isaac Currie.

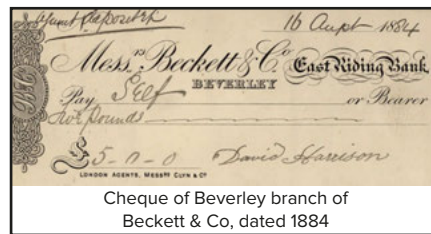
By 1790, Beverley was a busy market town serving the local agricultural district, and had a population of over 4,000 inhabitants. The arrival of the York and North Midland Railway in 1846 improved access to the town and in 1884 a shipyard was established nearby on the River Hull. In 1875, when it was trading as Bower Hall & Co, East Riding Bank was acquired by the Leeds bank Beckett & Co, but it continued to trade as an independent business, known as the East Riding Bank of Beckett & Co. At this time, Beverley was large enough to support the business of four different banks.

During the early decades of the 20th Century, the banking sector underwent a transformation, as smaller banks were forced to grow or merge, in order to remain competitive. Despite its local success, Beckett & Co was still relatively small. In 1921, when it had 13 branches, it was acquired by London County Westminster & Parr's Bank, one of the emerging 'Big Five' high street banks, known from 1923 as Westminster Bank.

During the First World War, banks took on extra responsibilities, such as the sale of war loan subscriptions and were subject to a raft of new government controls. Shortly after the end of the war, another of the future 'Big Five' banks also opened a branch in Beverley. On 15 September 1919, National Provincial & Union Bank of England – formed the previous year through the important merger of the National Provincial Bank of England with the Union of London & Smiths Bank, opened a branch at 68 Market Place. In 1924, this bank shortened its name to National Provincial Bank.

By 1922, the London County Westminster & Parr's Bank branch had outgrown its premises at 24 Lairgate, which it had occupied since at least the 1860s, and required a larger home in a more prominent position. The Bank took the opportunity to purchase recently-vacated premises at 60 Market Place, formerly occupied by a branch of the London City & Midland Bank, and the Beverley branch moved there in mid-1924. The outbreak of the Second World War soon ushered in a period of shortages, with constraints on foreign exchange and lending. As men left to serve in the forces, banks had to adapt.

By 1958, the National Provincial Bank branch had also outgrown its Beverley premises, and the branch was extended into the two shops



Cheque of Beverley branch of Beckett & Co, dated 1884

on either side to provide more spacious accommodation for its growing business.

In 1970, National Westminster Bank was formed through the amalgamation of Westminster Bank with National Provincial Bank and its subsidiary District Bank. The new bank sought to rationalise its presence in places where it had multiple offices in close proximity. In Beverley, the bank had two offices on Market Place, the businesses of which were brought together in 1973 under one roof at 60 Market Place.

NatWest is proud of its long association with Beverley, and the branch continues to operate from its premises at 60 Market Place.

Photo Credit: The Royal Bank of Scotland. Copyright 2015.



Westminister Bank's Beverley branch at 60 Market Place, c.1930



Beckett & Co's Beverley branch at 24 Lairgate in the 1920s



Beverley branch of National Provincial Bank at 68 Market Place in 1958

Offers BEVERLEY



Check out this month's special offers

Want to lose weight, get fitter and healthier?

Release Your Potential can help you change your life for the better – forever! Using life coaching and hypnotherapy, we can help you:

- Change the way you think about nutrition
- Help you incorporate exercise into your daily life
- Keep you mindful of what you are eating
- Give you added confidence, vitality and enthusiasm

Check out www.releaseyourpotential.co.uk for testimonials and case studies. Usual price for 8-week course, plus 6-month follow-up £395. Just Beverley readers get a 25% discount until 31 May 2015 by quoting JBRYPO2.

Rachel's Beauty World

Get six anti-aging oxygen facials for just £299 (normally £493), including one day cream, one night cream and one serum. Quote Just Beverley. To maintain that glowing look, come back every month for just £55.

Plus, call today to book a consultation and get a free skin analysis worth £45 when you quote Just Beverley.

Inches Body Studio

Skin Deep Personalised Facial (includes eyebrow shape) - £25 (was £30). Aromatherapy Back & Shoulder Massage (45 minutes) - £15 (was £20) Call 01482 865229 and quote 'Just Beverley'.

Spring sale at Minster Cycles

50% off selected clothing
Customised bike fitting from £50.
Enquire now on 01482 867950 and quote 'Just Beverley'.

Lempicka Café and Bistro

Mention Just Beverley in Lempicka Café and Bistro to get a hot chocolate sachet to take home. For enquiries, call 01482 866960.

AdWords training for £99

Get a personalised AdWords training course at indicoll for just £99 + VAT (normally £295).
Run by a Google Certified Professional, helping you get more bang for your buck. Call Gary on 01482 871178 for more information and to book your place.



Book now for

Afternoon Tea at Lempicka

An exquisite and delicious Afternoon Tea service at Lempicka Café is now being served daily. Treat yourself to our elegantly prepared Afternoon Tea including homemade baked cakes and tarts, savoury sandwiches, speciality loose leaf teas and our inspiring Kir Royale aperitif.

Please call 01482 866960 for reservations.

Visit Lempicka Café and Bistro for delicious all-day breakfasts, tempting lunches, home-made baked goods and our renowned espresso based coffees.

Luxury 4 star self catering/bed and breakfast holiday accommodation also available at Lempicka Apartment and Cottages

**LEMPICKA CAFE AND BISTRO, 15 WEDNESDAY MARKET
BEVERLEY HU7 0DH**

Mention this advertisement for a Lempicka hot chocolate sachet to take home

BEVERLEY NEWS

"More than just a newsagent"



Is your garden ready for our massive selection of home-grown, sturdy, seasonal bedding plants?

Perfect for pots & hanging baskets etc.



Why not pop along and see

what we have to offer your garden?



Bringing the News to your doorstep

Have your favourite daily newspaper delivered to your door by one of our delivery team.

Call 01482 866 010 to arrange delivery

Opening Times

Mon - Sat 5:15am to 6:30pm

Sunday 5:15am to 2pm

292 Grovehill Road, Beverley

PUZZLE PAGE

Sudoku

Fill in the grid with digits in such a manner that every row, every column and every 3x3 box accommodates the digits 1-9, without repeating any.

		6			7		8	3
9		7	3	1	2		4	
		5				1		
	9		4	7		3		
6	3						5	4
		4	1		3		9	
		3			1			
		8	9		4	2	3	1
1	5		2			4		

Tour De Yorkshire Wordsearch

F V L E R I H S K R O Y
 Y F M F C W I G G I N S
 M A X Y Y Y B P M R A X
 M L F X E M Y E S R E J
 H A N D L E B A R S P S
 G H N X L B A Z R U A B
 K B S E O I Z C D D X Y
 M W L X W C L P D A Q A
 N E A K R Y B L S D L B
 S W D Q O C E K Q M X L
 Q F E D S L E E H W C U
 H Y P W U E V O D E N E

Bicycle
 Blue
 Handlebars
 Jersey
 Pedals

Saddle
 Wheels
 Wiggins
 Yellow
 Yorkshire

LAST MONTH'S ANSWERS

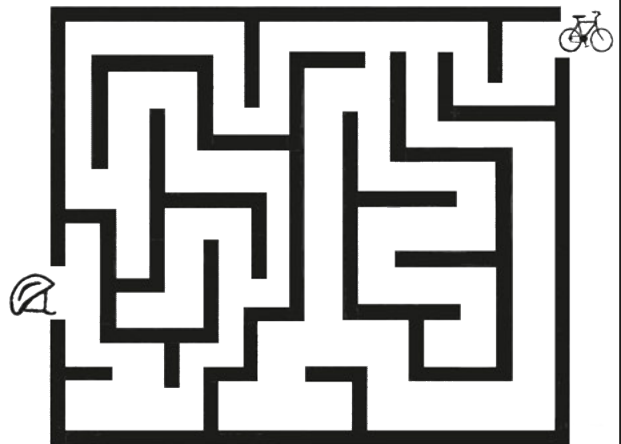
Easter Wordsearch ANSWERS

O L N C R Y W B P V B O
 I N U B S S O R C T O H
 R B U N N Y N V A P Z I
 Q T L G E G G E V L E
 H C R U C I F I X I O N
 X O N O O Z S S G M R G
 Y G O O D F R I D A Y P
 N Y C R E T S A B U U G
 Y V S I M N E L C A K E
 J F W F U S H T N I J J
 N I P A P R I L T N E L
 J O B M A L C T X F R K

April
 Bunny
 Crucifixion
 Easter
 Egg
 Good Friday
 Hot Cross Bun
 Lamb
 Lent
 Simnel Cake



Tour De Yorkshire Maze



WHAT'S ON IN BEVERLEY

APRIL & MAY

Saturday 25 April – Sunday 10 May

Shafted – East Riding Theatre, 7.30pm

Saturday 25 April

'Me and My Dad' Breakfast – Beverley Minster Parish Hall, 9am-10.30am

Vintage Fair – Beverley Minster, 10am-4pm

British Showjumping Event – Bishop Burton College, 10am-4pm



Monday 27 April

National Vegetable Society – Beverley Catholic Club, 7.30pm

Tuesday 28 April

Mini-Messy Church – Beverley Minster Parish Hall, 3.30pm-5.30pm

Dance on the Map – Memorial Hall, 4.30pm-8.15pm

MixEd: Increasing Productivity – East Riding College, 5.30pm-7pm

General Election Hustings – Beverley Minster, 7.30pm

Frank Yamma – East Riding Theatre, 7.30pm

Thursday 30 April

The Story of Art: England Promotes Arts and Crafts – Creation Fine Arts, 7pm-9pm

Ceroc Dance Class – Memorial Hall, 7.30pm-10.30pm

Saturday 2 May

Tour de Yorkshire – Walkington, Beverley and Cherry Burton, 12pm

East Riding County Choir Concert – Beverley Minster, 7.30pm

Theatre Newfoundland: With Cruel Times in Between – Bishop Burton Village Hall, 7.30pm

Cycles and Songs for Cherry Burton – Cherry Burton Village Hall, 8pm



Want to advertise on
justbeverley.co.uk?
Call 01482 679947
or email
info@justbeverley.co.uk.
Just
BEVERLEY

Monday 4 May

May Day Raceday – Beverley Racecourse, 10am-4pm

Tuesday 5 May

Dance on the Map – Memorial Hall, 4.30pm-8.15pm

Thursday 7 May

The Story of Art: Modern Considerations – Creation Fine Arts, 7pm-9pm

Friday 8 May

Beverley Film Society: The Lunchbox – Masonic Hall, 7.30pm

CRE:8 – Peter Harrison Room, Beverley Minster, 7.30pm-9.30pm

Cello and Piano Recital – Beverley Minster, 7.30pm

Saturday 9 May

Clowning Workshop – East Riding Theatre, 10am-4pm

Choral Evensong – Beverley Minster, 5pm



Monday 11 May

Norwood Nites – Norwood Church, 7pm

For more information visit justbeverley.co.uk/events

To submit an event email info@justbeverley.co.uk or call 01482 679947.

Tuesday 12 May

Afternoon Racing – Beverley Racecourse, 2.25pm-5.25pm
 Mini-Messy Church – Beverley Minster Parish Hall, 3.30pm-5.30pm
 Dance on the Map – Memorial Hall, 4.30pm-8.15pm
 Curating the Celts – Treasure House, 6.30pm
 Celtic Fiddle Festival – East Riding Theatre, 7.30pm



Wednesday 13 May

Local Produce Monthly Market – Wednesday Market, 10am-4pm

Wednesday 13 May – Saturday 16 May

Satin and Steel – East Riding Theatre, 7.30pm-10pm

Thursday 14 May

Beverley U3A Meeting – Memorial Hall, 2pm

Friday 15 May

Pirate Party: Tom Mason & The Blue Buccaneers – Armstrongs Social Club, 7.30pm



Saturday 16 May

Shoppers' Lunch – Beverley Minster, 10am-2pm
 Rock Roadshow – Treasure House, 11am-3pm
 Organ Recital – Beverley Minster, 6pm

Tuesday 19 May

Beverley Anglo-French Society – Conservative Club, 7.30pm

Tuesday 19 May – Wednesday 20 May

Pirates of Penzance – East Riding Theatre, 7.30pm

Thursday 21 May

Early Music Festival Concert – The Quire, 1pm-2pm
 Creative Writing Workshop – East Riding Theatre, 6pm
 An Evening of Poetry with Mike Harding – East Riding Theatre, 8pm



Friday 22 May

Beverley U3A Coffee Morning – Lairgate Hotel, 10am
 Youth Café – Beverley Minster, 7.30pm

Saturday 23 May

'Me and My Dad' Breakfast – Beverley Minster Parish Hall, 9am-10.30am
 A Very British Raceday – Beverley Racecourse, 2pm-5.25pm
 Early Music Festival: Choral Evensong – Beverley Minster, 5.30pm
 Early Music Festival: Concert by Candlelight – Beverley Minster, 7.30pm

Saturday 23 May – Saturday 18 July

@Work, Rest & Play: Capturing the East Riding – Beverley Art Gallery, 10am-4pm

Tuesday 26 May

MixEd: Stress & Time Management – East Riding College, 5.30pm-7pm

Thursday 28 May

Mini-Messy Church – Beverley Minster Parish Hall, 3.30pm-5.30pm

Thursday 28 May & Friday 29 May

The Devil's Chord – East Riding Theatre, 7.30pm-10pm

Saturday 30 May

Collecting – Treasure House, 10am-3pm
 Song Recital – Beverley Minster, 7.30pm

Sunday 31 May

Picnic at the Pavilion – Molescroft Pavilion, 12pm
 Saturday 6 June to Saturday 1 August
 Everything you want it to be: The WI Inspiring Women for 100 Years – Treasure House, 10am-4pm

theWI
 INSPIRING WOMEN



Competition Winner

NICK ELLARBY

Last month we ran a competition on justbeverley.co.uk to win a giant 20cm Easter egg made from 440g of extra fine milk chocolate, on a solid chocolate egg cup, and even including a 'surprise' 11cm tall chocolate rabbit inside the egg, from **White Rabbit Chocolatiers**.

We asked you: **The 'Pilgrim Hare' carving in St. Mary's church was the inspiration for which famous character?**

The answer was, of course, **The White Rabbit** from Alice in Wonderland by Lewis Carroll. Thank you to everyone who entered.

Nick is pictured here, receiving his delicious-looking chocolate egg from Ed Hawkes of White Rabbit Chocolatiers.

We have another competition for you to enter this month, with the chance to win a Just Beverley cycling shirt, in honour of the Tour de Yorkshire which comes through Beverley on 2 May. Good luck!

Also, check out page 27 to find out how you could win two tickets to see Singin' in the Rain performed by Beverley Musical Theatre, which takes place at Hull New Theatre from 9-12 June.



BEVERLEY MOTORWORKS INDEPENDENT BMW & MINI SPECIALISTS

Follow us on:



 search for
 Beverley Motor Works

BMW Qualified Senior and Technicians Offer

- Saving up to 70% OFF main dealer prices
- Manufacturer's warranty not affected
- Resale value of your vehicle not affected
- Award-winning customer service
- Over 30 years' combined BMW experience

Call today on **01482 881128**

Our dealership expertise means high quality for car servicing at a fair price...

- ATA Accreditation
- Routine servicing
- Condition-based servicing
- Diagnostics
- Mechanical repairs
- Air conditioning
- Performance tuning
- MOT's

Call now for a no obligation quote or to book in on **01482 881128** or email us directly from our website www.beverleymotorworks.co.uk

Unit D1 Grovehill Industrial Estate Annie Reed Road, Beverley HU17 0LF
 E: web@beverleymotorworks.co.uk



allmobility

The Company That Cares



50% OFF

New Scooters

Up to 50% off RRP
Includes 2 Year



Package Includes - 2 Years

Guarantee, Insurance, Breakdown Cover & Servicing
Call in for a **Test Drive Today** - **FREE Lessons** (if needed)

🇬🇧 Riser Recliner Chairs

- ✓ Handcrafted here in GB
- ✓ Hardwood Frames
- ✓ Matching Settees
- ✓ Large selection of fabrics/leather



Made to Measure because not everyone's the same!

FREE Demonstrations in Store



Stairlifts - Straight Curved, Indoor & Outdoor

New Stairlift Offers - Fitted from £1,250

Free Home Assessment

Free Quotation - Ring today!

For All Your Daily Living Aids - Please Visit Our Shop - Open 10am - 4pm Mon-Sat

110 - 112 Walkergate, Beverley, HU17 9BT TEL: 01482 887799



(Butcher Row & School Lane Car Parks approx 35 yards away)

Feel good in the skin you live in...

Rbw

Rachel's Beauty World
anti-aging laser clinic



Appleton House, 3a Wednesday Market, (opposite Boyes) Beverley HU17 0DG.

PAY AS YOU GO TREATMENTS FROM ONLY £60
NO NEEDLES • NO DOWNTIME • NO RISK

Skin Rejuvenation



All the very latest anti-aging treatments.

Wrinkles, fine lines, uneven skin tone and oily skin. IPL and carbon laser anti-aging facials. The latest RF technology celebrities are using instead of Botox, also called by some the collagen wave, used together with our Oxygen "Madonna Treatment" for radiant-looking skin "We can't make you sing like Madonna, but we can make skin as beautiful".

Thread Vein Removal (face or leg)



The very latest technology for large areas on the leg, or a brand new laser which targets small areas on the face and around the nose. See them being zapped away.

Slimming & Body Contouring



Inch loss and cellulite reduction. We have a variety of treatments that attack that *stubborn fat* in a number of ways – melting, freezing and vibrating by sound. We use laser, ultrasound and infrared. And for that annoying cellulite – the only answer is RF (radio frequency).

Tattoo removal



Got a tattoo with the wrong name on it? Or, maybe what suited you last year doesn't this year.

Permanent Hair Removal

Does what it says on the tin!



You come, you try, you decide. We are friendly and flexible. We look forward to seeing you.

Call us on 01482 888 234 • www.rachelsbeautyworld.uk