

**FREE**

just

ISSUE 90

# BEVERLEY

IT'S YOUR MAGAZINE

## FRATERNITY BUILDING ON SUCCESS

90th  
PUBLICATION

NEWS, WHAT'S ON, LIFESTYLE, FEATURES, PUZZLES, PHOTOS & MORE



# The National Minimum Wage has Increased... Are you prepared?



**Improve business performance  
by outsourcing payroll**

#### Payroll Outsourcing Benefits

- ✓ Cost reduction
- ✓ Better staff productivity
- ✓ High accuracy & reliability
- ✓ e-payslips direct to employees via our app
- ✓ A named personal contact
- ✓ Added value services including HR & Benefits in Kind
- ✓ Useful online information

to arrange a **FREE** meeting  
call us on: 0845 308 2288  
or visit  
[www.stipendia.org.uk](http://www.stipendia.org.uk)



Stipendia Payroll Solutions



@StipendiaPay

## 6 FRATERNITY - BUILDING ON SUCCESS



## 4 BEVERLEY'S BEACON



## 16 IN MY VIEW



## 24/25 PARKRUN



## 15 CARAMBOLA



## 20 BEVERLEY TOWN FC



## 36 ERT



### Contributors:

Julian Minshall, Olivia Peace, Rich Manville, Lynne Auton, Cliff Baillie, Sheel About Beverley, Carfan, Jane Dale, Jack Dickerty, Fran Dunning, Vicki Hawker, M Horst, Sara Kruger, Amanda McConnell, Navigation Wealth Management, Colin Raynor, Ian Richardson, Twisted Root, David Tunstall, Becky Walker, Sam Walton, Clint Wastling and Nathan Wilson.  
Illustration Bev n Ley by Jasmine Stephenson.

**REMEMBER!** If you see examples of anti-social behaviour or other types of low-level crime, do report it to the appropriate authorities. **POLICE - Emergency 999, Non-urgent 101. ANTI-SOCIAL BEHAVIOUR (East Riding of Yorkshire Council) - 01482 393939.**

Magazine available from outlets in Beverley and surrounding areas.

Disclaimer - All the information provided was correct at the time of going to print.



Please pass your Just Beverley on or recycle it responsibly.  
Printed by: Jadan Press.

JULY  
LETTER FROM THE EDITORS



July is here, summer is here and our 90th publication is here, we look forward to a special time ahead. "THANK YOU" to all our contributors old and new along with the great support we have had from our advertisers, without which we would not be here

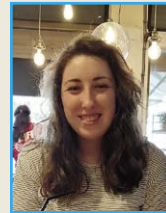
today.

Children are looking forward to the Summer holidays and some children are looking forward to starting school, moving up to a new school or going on to college after the summer, looking ahead to "Positive change".

If sport is your passion, Wimbledon, Tour de France, Commonwealth Games are just a few to look forward to. Congratulations to Jo Ramsey who will be part of the Queen's Baton relay carrying the commonwealth baton around Beverley.

Whatever you get up to, enjoy the outdoors and have a great summer ahead.

Julian.



Happy July readers! Even more things to look forward to this month with summer sunshine, summer holidays and lots of fun things happening in Beverley.

As a side note I'm really excited to support the

Lionesses as the UEFA Women's Euros start this month, there's coverage on tv and some matches happening in the north so let's get behind the team and bring it home!

As always, stay safe and have fun.

Olivia.

ISSN 2754-9216



'Community Publication Award'  
Shortlisted Nominee  
2017 & 2018



REYTA  
'Remarkable East Yorkshire'  
Award Nominee 2016  
'Best Newcomer'

## GET IN TOUCH WITH US:

Website: [justbeverley.co.uk](http://justbeverley.co.uk)

Email: [info@justbeverley.co.uk](mailto:info@justbeverley.co.uk)

Telephone: 01482 679947

Twitter: [@JustBeverley](https://twitter.com/JustBeverley)

Facebook: [facebook.com/justbeverley](https://facebook.com/justbeverley)

If you would like copies for your business to distribute to staff and customers, call Just Beverley on 01482 679947.



# THE STORY BEHIND BEVERLEY'S PLATINUM JUBILEE BEACON

**On Thursday 2nd June at 9.45pm the Mayor of Beverley lit Beverley's platinum jubilee beacon of fire before 200 people in Coronation Gardens, and connected Beverley to the national and worldwide beacon celebrations that were happening to honour the Queen at that precise moment.**

Beverley people are special, some go the extra mile in the time of need, and the lighting of the Beacon was a special moment for Beverley Town Council's Cllr Peter Astell.

Peter's sheer determination and community spirit ensured that Beverley didn't miss out on having a beacon of its own to light on that special evening.



Although Beverley's plans for the main Jubilee event the following day had been underway for at least 12 months, no-one had given much thought to the beacon celebrations the night before, and former mayor, Peter, was adamant that Beverley wasn't going to miss out, so he took it upon himself to make a personal call to the Queen's Pageant Master.

Peter takes up the story: "Although a lot of work had gone into organising the activities which took place in Beverley on Friday 3rd June, the beacon celebrations on the Thursday evening hadn't



really been considered. Beverley doesn't have a beacon site of its own. The Westwood would be an ideal location, but lies outside the jurisdiction of Beverley Town Council, and so the only alternative was to secure one of the special free standing beacons that are available.

"I really hoped that we could get hold of one of these special beacons, and my idea was for it to be lit in Coronation Gardens, which opened in 1953 to celebrate the accession of Queen Elizabeth.

"However, when I made enquiries with the sole supplier of Platinum Jubilee beacons, I was told that Beverley was too late and that no more beacons were available. That's when I hit on the idea of contacting the Queen's Pageant Master who I remember talking to when I was Mayor in 2011 in the run up to the Diamond Jubilee.



"Her Majesty's Pageant Master is a gentleman called Bruno Peek, and he is the person who has organised the lighting of all 3000 beacons across the world for the Platinum Jubilee celebration. Mr Peek was also at Her Majesty's side when she triggered the lighting of the principal beacon at Buckingham Palace on the 2nd June.

"At her Diamond Jubilee in 2012, it was Mr Peek who handed the Queen the Jubilee Crystal Diamond to light the national beacon at the Mall in London.

"I put a phone call in to Mr Peek a couple of weeks before the Jubilee celebrations and when I explained that Beverley was in danger of missing out on having a beacon to light for the Platinum Jubilee, he was genuinely concerned.

"Peter," he said, "Beverley absolutely must have a beacon, but the only problem is that there is only one left in the whole country, and it happens to be here at my house in Norfolk, and the only way that I can get it to you is for someone from Beverley to drive here in a large vehicle and pick it up. Would that be possible?"

"I immediately knew that the only person who would be able to do this would be me, and without giving the matter a second thought I said, "Yes sir, I can assure you that will be possible, and I will be the person coming to collect it."

"The drive to Norfolk was an 8 hour return trip across the bridge and through the



country lanes of Lincolnshire and Norfolk, but it was so worthwhile to stand next to the Mayor and hand her the torch that would ignite Beverley's Platinum Jubilee flame.

"It means so much to me that Beverley was in synchrony with 3000 beacons across the Commonwealth of nations. Back in medieval times we were the 10th largest town in England. Her Majesty Queen Elizabeth has visited us twice, and we simply didn't deserve to miss out.

"The Vicar of St Mary's Rev Becky Lumley conducted a poignant and moving service on Thursday evening, and then 200 people crossed the road to Coronation Gardens for the beacon lighting and the singing of the commonwealth hymn which had been especially composed for the occasion.

"I just feel happy that I was able to play my part in making it all happen."

## GOOD NEWS - CHANGES IN NATIONAL INSURANCE

**With effect from 6 July, millions of employees will get an increase in their net pay due to changes in the national insurance threshold.**

The threshold for when employees start to pay NIC will rise from £9,880 to £12,570.

This means some two million low-income workers will pay no NIC at all, while millions more will see their amounts reduced.

This means you will not pay NIC as an employee if your earnings are below £241.30 per week / £1,047.49 per month.

If you wish to discuss the above matter or have any other queries then please call Lynne Auton of Stipendia Payroll Solutions on **01482 861919**.





# ABOUT BEVERLEY

*I run costumed guided walking tours of Beverley - you might have seen me at the Market Cross on Tuesdays and Fridays (I'm the one in 17th century costume). I used to be a tour guide with the National Trust, and now I enjoy showing people around the town where I was born.*

In this regular column I explore Beverley's history month by month. For July, we have to cast our minds back to the very beginning of the English Civil War.

On 3rd July 1642 Charles I and his young sons Charles and James rode into Beverley to oversee what became known as the 1st Siege of Hull, the first action of the Civil War.

They stayed with Lady Gee at her house near North Bar - a monarch and two future monarchs (Charles II and James II), all under one roof, in Beverley. Plus their entourage. For three weeks.

Lady Gee was the widow of Sir William Gee (who'd left her with six children under the age of nine, and an estate to manage). Her father, Thomas Crompton, had been auditor to Elizabeth I.

Did Lady Gee invite the King to stay with her? Or did Royal privilege mean he was able to just assume that he would be made welcome?

Whichever, we shouldn't underestimate the work that would have been involved in having the King come to stay, for everyone - from the lowliest servant to the lady of the house herself.

Walk with me through 1,300 years of history. Tours run Tuesdays and Fridays at 11am and 2pm from April to October.

In July and August there'll be evening tours as well - book online and meet at the Market Cross at 6pm.

For more information and to book, visit [aboutbeverley.co.uk](http://aboutbeverley.co.uk) or call 07775 173755.



## BEVERLEY BUILDING SOCIETY'S CHARITY GOLF DAY ON 26 AUGUST!

**Calling all golfers to Hessele Golf Club\* on Friday 26th August 2022 to have some competitive fun and raise much needed income for the Beverley Cherry Tree Community Centre.**

The Centre is the Society's Charity of the Year and has been providing a vital lifeline for vulnerable people in the East Riding since 1993.

Keen golfers can enter a four-person team, either as a business or as a group of individuals, whilst businesses can donate raffle prizes and take advantage of fantastic sponsorship opportunities to promote their brand.



The team requirement is four people (men, women and/or children) and is open to all abilities.

Entry fee, which includes a one-course meal, is £20 per person for Hessele club members, or £35 per person for non-Hessele members. Sponsorship opportunities are available at £100 (par 3), or £50 (par 4 and 5).

\*PLEASE NOTE: Hessele Golf Club is located at Westfield Road, Raywell, Cottingham, HU16 5ZA.

To enter, please contact the event organiser, James Woodhead, at: [James.Woodhead@beverleybs.co.uk](mailto:James.Woodhead@beverleybs.co.uk) or on 01482 881510.

Full event details can be found at [www.beverleybs.co.uk/news](http://www.beverleybs.co.uk/news) and you can follow their updates on social media.

## THE MAYOR CHOOSES CLASSIC CAR WINNER

**The Mayor of Beverley, Cllr Linda Johnson and her Consort, Cllr Graham Johnson, were amongst the crowds of people who visited the EYCCC Summer Gathering with classic cars extending from the Market Cross all the way through Saturday Market along Toll Gavel and Butcher Row to Wednesday Market.**

There were cars being exhibited which have not graced the streets of Beverley before, including one which the Mayor selected as 'best' car.

Amongst the many marques, some of them sadly now just names only familiar to the more senior readers, was a 1956 Singer Hunter Saloon, in its original grey with the most comfortable leather seats ever built into a car.



Mayor Linda said: "The tradition that the Mayor is tasked with choosing the car of the show is far more difficult than I would ever have thought possible. The car owners are all passionate about their cars and I was torn between a beautiful blue Triumph Stag, an immaculate dark red 1958 Wolseley Mini, a Citroen 2CV6 and a 1931 sports car, but the Singer won my heart because she's as old as me."

Pictured left is owner Mick Knott from Willerby receiving his plaque from the Mayor and her Consort.



## QUEEN'S BATON RELAY

**Jo Ramsey, Manager of the Cherry Tree Centre, has been chosen to be the Batonbearer in the "Queen's Baton Relay" for the Birmingham 2022 Commonwealth Games.**

The Queen's Baton Relay takes place on Wednesday 13th July 2022 starting at Beverley Minster 10.17am then on to Minster Yard North - Highgate - Wednesday Market - Toll Gavel - Saturday Market - North Bar Within - New Walk - Molescroft Road - and arriving at Molescroft Roundabout approx (10.50am).

Encourage Jo and watch the relay on the day, get involved and celebrate the arrival of the Queen's Baton Relay. [www.birmingham2022.com/queens-baton-relay/route/england](http://www.birmingham2022.com/queens-baton-relay/route/england)





# BUILDING ON SUCCESS

*Fraternity are now into their 3rd year since opening in 2019 in Beverley's historic Wednesday Market.*

Ash has been reflecting on how far The Fraternity has developed in such a short space of time as well as having to deal with the Pandemic so soon after starting the business.

Ash has worked in barbershops for sometime now and believes they are pivotal spaces in every community, a place where people can escape life and unwind. Developing the right atmosphere has been foremost in his mind for the interior design of Fraternity. Looking and feeling dapper after you leave is just a bonus really!



Ash mentioned, "I remember reading that in World War 2 on rest days, soldiers were encouraged to cut each other's hair whether they knew how to or not, it is proven to increase self esteem and morale!"

Ash went on to say, "This is why I felt that "Fraternity" was an appropriate name for a barbershop.... a space where all are made welcome and feel part of what we are all about".

"It seems the idea and philosophy I always had resonated with others straight away, as the shop has always attracted like minded people of all ages. We are eternally grateful to anyone and everyone that has stepped through our doors over the past 3 years. Without you we wouldn't be standing behind our chairs".

Fraternity as a shop try to do their bit for the local community too, having sponsored Beverley Town Football club for the past two seasons and are committed to continue to do so for the foreseeable future. Fraternity also sponsors another local team North Ferriby Sporting football club, they train in the Beverley area.

Ash is modest with his achievements and has a rounded look and approach to his business, the key being hard work, he considers himself fortunate to have such a very diverse and hardworking team at Fraternity



and he is looking to expand with the addition of another barber. He is also looking at the prospect of opening another shop in the local area as he plans to expand within the East Riding In 2023.

The Fraternity won an award in November 2021 with England's Business Awards hosting the event where they were nominated for the best new barbershop in Yorkshire which they went onto win. On the back of this achievement they were over the moon to be told that they would be entered into the national awards to be held the following March 2022.

Leading up to the awards night all the lads at the Fraternity were just humbled to have got that far in the competition, delighted to be amongst such great company and talent from around the country.

It may have come as no surprise to the friends and family of the Fraternity that they went onto win the best new barbershop in England. However Ash & the team were overwhelmed and in disbelief as they took to the stage.

A huge accolade and accomplishment and testament to all the hard work that has gone into the place. Ash is set to drive the business forward even further for the remainder of 2022 and onwards with plenty of exciting things to come that cannot be revealed just yet.

Ash mentioned, "We are all constantly asked questions, given compliments and receive such humbling feedback about the interior design of the shop. People stop at the door or windows walking past and stare for a while and even ask to take pictures of everything we have on display, it's good to be recognised not only for our work, but for the contribution we make to our beautiful market town. A few customers have even donated odd items they thought would suit the style of the shop."

Fraternity believes the interior is pretty incredible and feels lucky to work out of such a space everyday, Ash also thinks the design has a part to play in the success of the Fraternity as it is extremely unique and stands out above any other in the area.

Fraternity looks forward to welcoming you all old or new! Bookings can be made by downloading the Booksy app, via Facebook and Instagram or by calling **01482 886329**.





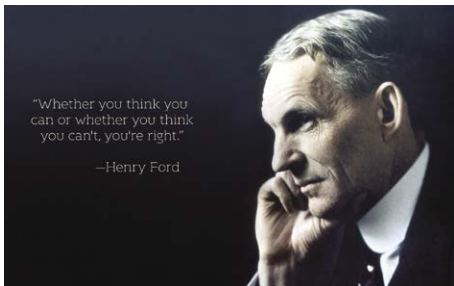
# GAIN CONFIDENCE AND OVERCOME FEARS

*The great industrialist and founder of the Ford motor company, Henry Ford alludes to the power of the mind and self belief in the quote - "Whether you think you can or you think you can't, you're right".*

Over the last 20 years, I have worked with many people to help them gain confidence and overcome fears, whether it's in a corporate setting (fear of public speaking or imposter syndrome) or on a personal level - presenting the perfect best man's speech or having the focus and determination to train for and complete a marathon.

It's widely known that sports teams have not only a head coach to ensure the physical wellbeing and prowess of the team but also a mind coach to imbue crucial psychological skills to boost individual and team performance.

Whether you're looking to improve your golf handicap, overcome dartsitis (the inability for



a darts player to throw their dart!) or get your trainers on for the first time with the aim of doing the Couch to 5k or Park Run over the Westwood, the ability to make those first, brave steps, resides in the mind.

One of my favourite memories is working with a client who gave up smoking with hypnotherapy and then a few years later, increased their fitness level and successfully applied to run the London Marathon.

Having picked up a minor injury, they sought my help to get the right mindset prior to the marathon and we worked with hypnotherapy to embed the mantra "easy, smooth, light, fast" to chant internally as they ran the course. Not only did they finish the Marathon in a very respectable time but also raised over £40,000 for the Parkinson's Disease Association.

Confidence, particularly in the sporting field, is the difference between success and failure. When you have confidence, your performance flows, you're in the zone and success comes naturally and success follows success.

So, whether you want to be the golfer who's going to hole every putt, the unbeatable goalkeeper, a rider who wants to be at one with their horse or the tennis player smashing every return, confidence is key.

The famous quote "A journey of a thousand



miles begins with a single step" is very true and having the mindset to begin your journey in whatever field you wish to succeed, is vital.

If you're curious about mindfulness, every Monday evening I run an online mindfulness session free of charge which offers a wonderful opportunity to take time out for yourself.

If you'd like to join, drop me a message/e-mail or give me a call and I'll send the zoom link to you.

For more information and details on further techniques including hypnotherapy, visit [www.francesdunning.com](http://www.francesdunning.com) or contact me, Fran Dunning on **07973 819867**. I can support you to change your thinking and be that friend to talk to.



The  
Ferguson  
Fawsitt



## Afternoon Tea

A SELECTION OF SANDWICHES, SAVOURIES AND DESSERTS,  
A CHOICE OF TEAS AVAILABLE...



£13.50 EACH, 2 FOR £24, 3 FOR £32, 4 FOR £40

MAKE YOUR AFTERNOON TEA FIZZ, ADD A BOTTLE OF PROSECCO FOR £15.00

VEGAN AND GLUTEN FREE OPTIONS AVAILABLE

AVAILABLE WEDNESDAY – SATURDAY 12 – 5PM  
24 HOURS NOTICE REQUIRED, MUST BE PRE ORDERED





**EVERY THURSDAY**

**(Doors open 10am)**

Join us for a free brew and enjoy some great films on Beverley Parkway's Big Screen. Only £4.50 with drink and biscuits included. Aimed at 55s & over. Films subject to change.

**Thursday 7th July -**

**The Road Dance (15) - 10.30am**

Starring: Hermione Corfield, Will Fletcher and Mark Gatiss.

**The Outfit (15) - 10.30am**

Starring: Mark Rylance, Simon Russell Beale, Dylan O'Brien and Zoey Deutch.

**Thursday 14th July -**

**The Road Dance (15) - 10.45am**

Starring: Hermione Corfield, Will Fletcher and Mark Gatiss.

**Benediction (12a) - 10.30am**

Starring: Jack Lowden and Peter Capaldi.

**Thursday 21st July -**

**Benediction (12a) - 10.45am**

Starring: Jack Lowden and Peter Capaldi.

**Father Stu (15) - 10.30am**

Starring: Mark Wahlberg, Mel Gibson and Jacki Weaver.

**Thursday 28th July -**

**Father Stu (15) - 10.45am**

Starring: Mark Wahlberg, Mel Gibson and Jacki Weaver.

**Ali & Ava (15) - 10.30am**

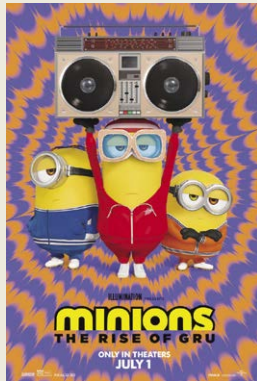
Starring: Adeel Akhtar and Claire Rushbrook.

**Thursday 4th August -**

**Ali & Ava (15) - 10.45am**

Starring: Adeel Akhtar and Claire Rushbrook.

*These are the films scheduled to open in July - all are subject to change. Check out up-to-date cinema listings at [www.justbeverley.co.uk/cinema-times](http://www.justbeverley.co.uk/cinema-times)*



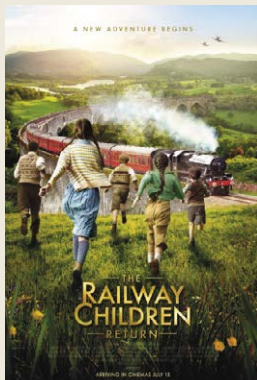
1st July



7th July



8th July



15th July



15th July



22nd July



29th July



FLASHBACK SCREENING - 3rd July



FLASHBACK SCREENING - 10th July



# YOUR LOCAL INDEPENDENT CINEMA



## WIN FOUR TICKETS TO WATCH THE QUEEN'S KNICKERS



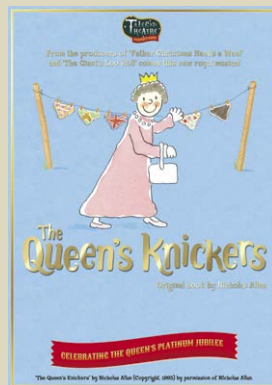
**Parkway Cinema has put up four tickets to watch *The Queen's Knickers* at 12noon on Sunday 24th July.**

The original, award winning book explores the Queen's fashions with a cheeky wink to childish humour. "Everyone can see the Queen's smart coats and dresses, but what does she wear underneath? Through the eyes of a little girl hoping for a school visit by the Queen, the range of royal underwear is revealed, in all its regal glory."

This new adaptation, by permission of Nicholas Allan, will see the same creative team come together including artistic director James Worthington directing and writing the book, Kate Lindsey on lyrics, Laura Bulless as choreographer, Jason Burns working on Orchestration and David Law as scenic designer.

To win this special prize just answer the following question:

***The Queen has recently celebrated which Jubilee?***



Send your answer to [competition@justbeverley.co.uk](mailto:competition@justbeverley.co.uk). Put 'The Queen's Knickers Competition' in the subject box with your name, address and telephone number in the body of the email.

The winner will be drawn out at random after the closing date Friday 15th July 2022 at noon. Winners must be available for publicity purposes for Just Beverley and Beverley Parkway Cinema. No Cash alternative, the organisers decision is final.

## WIN A PAIR OF TICKETS FOR THE UPBEAT BEATLES



**Parkway Cinema has put up a pair of tickets (2), to watch *The Upbeat Beatles* at 7pm on Sunday 17th July 2022.**

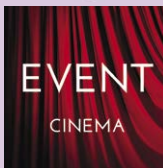
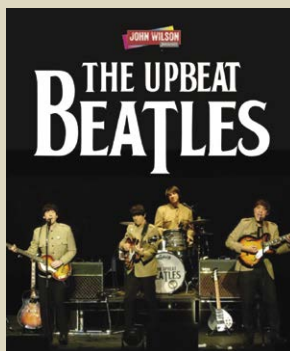
The show takes you through the Fab Four's long and winding road from the early Cavern days through Beatlemania, America, Sergeant Pepper to Abbey Road, with narrative and full multimedia presentation. If you love The Beatles you'll love this show, and if you don't love The Beatles you'll love this show!

To win the special prize just answer the following question:

***Which City did the Beatles originate from?***

Send your answer to [competition@justbeverley.co.uk](mailto:competition@justbeverley.co.uk). Put 'The Beatles Competition' in the subject box with your name, address and telephone number in the body of the email.

The winner will be drawn out at random after the closing date Friday 8th July 2022 at noon. Winners must be available for publicity purposes for Just Beverley and Beverley Parkway Cinema. No Cash alternative, the organisers decision is final.



Event cinema offers something a little different to mainstream films. Live and pre-recorded shows beamed in via satellite from all over the world. Here are the latest live streams that you can enjoy on the big screen at Parkway Beverley.

**Thursday 21st July, 7pm & 7.30pm - National Theatre Live: *Prima Facie* (15)**  
Jodie Comer makes her West End debut in the UK premiere of Suzie Miller's award-winning play.

**Saturday 6th August, 8.30pm & Sunday 7th August, 3pm - Westlife: *Live from Wembley Stadium***  
The wait is over! After 2 long years, maestro Ande Rieu is perfo

**Saturday 27th August, 7pm & Sunday 28th August, 2pm - Andre Rieu's 2022 *Maastricht Concert***  
The UK's biggest-selling album group of the 21st century, Westlife will be broadcasting their first ever show from Wembley Stadium.

**Thursday 8th September, 7pm - NT Live: *Much Ado About Nothing* (12a)**  
Katherine Parkinson (The IT Crowd) leads the cast in Shakespeare's romcom of sun, sea and mistaken identity.

**Thursday 6th October, 7pm - NT Live: *Jack Absolute Flies Again***  
A rollicking new comedy by Richard Bean (One Man, Two Guvnors) and Oliver Chris (Twelfth Night), based on Richard Brinsley Sheridan's *The Rivals*.

## LIVEshows

**Sunday 17th July, 7pm - The Upbeat Beatles**  
There isn't a band to touch them - 8 bars of "Twist and Shout" and you will know why!

**Sunday 24th July, 12pm & 3pm - The Queen's Knickers**  
New musical adaptation of children's book 'The Queen's Knickers'.

**Sunday 11th September, 7pm - Kinda Queen & The Tom Petty Experience**  
With a high paced setlist guaranteed to get you singing and dancing, they will leave you wanting more.



# BROOK TAVERNER - THE SEASON OF SUN

**Summer is upon us here in Beverley, and we've welcomed it with open arms!**

Long have we awaited a season of sun cream and ice cream in equal measure, garden lounging and beach trips in abundance and a whole host of memories to be made.

Rest assured that we're stocked to the rafters with dozens of summery garments to stock your wardrobe with everything you'll need for a season of sun!

Having just arrived in store, the Felix Ice Blue Overcheck Jacket has become an overnight favourite!

The Felix is woven in the prestigious FITECOM mill, blending linen with smart fibres to achieve a crease-resistant masterclass of tailoring.

Coming from Portugal, this formal staple knows a thing or two about keeping its cool when

temperatures rise! Rest assured that you'll maintain an elegant silhouette and a feeling of refined comfort throughout the day, thanks to a jacket that sits at the cutting edge of garment design.

The Felix's delicate blue hue epitomises the beginning of spring, with a versatile overcheck that will complement just about anything in your wardrobe!



We're entering a time of year that's all about dressing to impress. Whether that's through garden barbecues, trips abroad or attending long-awaited events, it pays to look your finest when getting back out into the world!

Nothing can help with this more than the Brandsby floral jacket. This staple is seasonal boldness personified. A one-of-a-kind piece, the Brandsby makes a sartorial statement at any event, equipped with a floral motif that can set you apart subtly. Made from a cotton-blend fabric, an unparalleled ease of movement is



yours, with an accommodating stretch that's worth its weight in gold for longer days when comfort is paramount.

Put an eco-conscious spring in your step with our brand new 'Tales of the Sea' shirt collection. Made partially from recycled plastic, you can don vibrant new designs while reducing your footprint, so you can be kind to your wardrobe and the environment! These unique summer go-to's use aquatic illustrations with aqua and sea blue shades to truly embody the coast, whether you're navigating a city or strolling sandy stretches of beach!

Come on in and see us, even if it's just for a chat and to sample our second to none air conditioning!

**Lee and The Brook Taverner Team.**



Our 2022 Spring/Summer collection is now in store

OPEN  
9am to 5pm Monday to Saturday  
11am to 4pm Sunday

[www.brooktaverner.co.uk](http://www.brooktaverner.co.uk)

**BROOK TAVERNER**

35, TOLL GAVEL, BEVERLEY. 01482 882356



# ATOM BEERS - COMMUNITY COUNTS

*Through the turbulence of the last 30 months, one thing that we noticed during all of the chaos was that, despite everything, there was so much love and support for Atom in Beverley: we found a real sense of community. As the world slowly relaxed and our bar was able to open its doors, we were delighted to see that the support that saw us through lockdown continued.*

As we continue to establish ourselves as a destination in town, we want to make the people of Beverley the heart of our business.

More than just being a bar, we strive to bring people together, encourage new friendships, educate individuals on what craft beer is and what it can be, and above all provide a kind and welcoming place for everyone. To further this ethos, we have found ways in which we can give back: through clubs, groups, and community events.



Perhaps our flagship club is our running club. Atom Running Club has grown from strength to strength. The premise is simple: turn up on the day in your best running gear and join us for a social 5k run around the historic streets of Beverley;

with a free half pint of our core range beer upon completion and a promise to accommodate for all running abilities there's no reason not to give it a try!

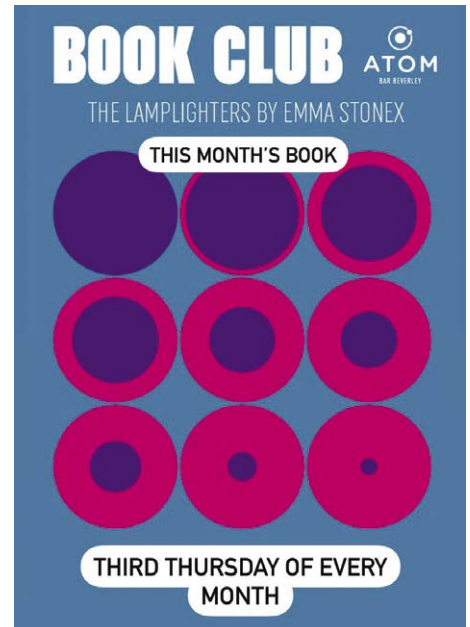
We aim to promote a healthy balance between fitness and the enjoyment of beer in a fun and rewarding way. If your interest has been piqued: our running club meets at 6.15pm and runs fortnightly, with next month's dates being the 5th July and the 19th July.

If running isn't quite your glass of beer then never fear, we also organise other regular events. If you prefer mental exertion over physical then pop along to our monthly charity quiz night, held on the 2nd Thursday of every month, the next one being 14th July at 7.30pm.



Our quiz is created to have fun; with a £30 bar tab up for grabs for the winning team the stakes can get quite high, so we recommend booking your table in advance for this one.

We also hold a book club that meets every 3rd Thursday of the month, with our next date being



21st July at 7pm. Feel free to pop by and ask one of our friendly team what the book for the month is and then join our host Ellen on the night for discussion and drinks. Contrary to popular belief, full completion of the book is not mandatory to join in the chat!

As well as our regularly organised events and clubs we are also able to accommodate private parties and events in our bar. If you have something on the horizon and think our bar would be a good venue for you then don't hesitate to get in touch with the team, we're happy to help and we'd love to welcome you into the Atom community.

**ATOM**  
BAR BEVERLEY

VEGAN FRIENDLY  
DOG FRIENDLY

**OPENING TIMES**  
MONDAY CLOSED  
TUESDAY 4PM-10PM  
WEDNESDAY 12-10PM  
THURSDAY 12-10PM  
FRIDAY 12-11PM  
SATURDAY 12-11PM  
SUNDAY 12-8PM

7 NEW WALKERGATE  
BEVERLEY  
HU17 9EH







# Bev 'N' Ley - Enjoy the Summer Sunshine



**Bev contentedly explores the Friary in the usual search for the inquisitive beaver. Ley, always eager for adventure, had barely let the sun rise.**

Joyful shouts echoed from over the railway bridge. Ley was close. Bev ducked out of sight as a train rushed below. The wise beaver wondered what mischief Ley had found and followed the gleeful laughter into the building opposite.



Inside there is a giant bouncy castle.

"It has to be two storeys high," Bev gasps, then admires the blue and orange colours. "Ley would tell me they'd made this for us."

Bev grins seeing Ley. "There you are!

You've bounced so much there's no wonder you're smiling."

"What do you mean?" Ley asks.

"Exercise cheers you up."

"But we're always doing something, so we're always happy." Ley says and drags Bev to play in the park.

"Wait!" Ley stops so suddenly Bev bumps into them. "I'll protect you. I know you don't like moths!"

The energetic beaver stands defensively between Bev and the bug.

"What are you talking about, Ley?"

Ley points up to a huge, multicoloured moth hanging above the pair.

"IT'S HUGE! IT'S GOING TO EAT US!"

Bev just laughs. "I think you need to calm down."

All the spirit drains from Ley. "What's so funny?"

"It's not a real moth. It's a Magical Moth. Artists designed them to celebrate Amy Johnson, the first female pilot to fly to Australia. She flew in a type of plane called

a moth. You'll notice that this one has art by the children from St Nicholas School."

Curious as ever, Ley scampers up to examine the art.

"People do lots of celebrating things, like all the events for the Jubilee. Queen Elizabeth's the first monarch to reign for so long." Ley says.

"Yes. Lots of memories are made over parties and picnics."

"And moths! I want to design a moth too!"

"A perfect end to a busy day," Bev agreed, setting out paper and pens. "There are two more Moths Beverley, can you find them?" Bev asks.

"Of course I can," Ley yawned and stretched, "but that's tomorrow's adventure!"

**Storyline: Michelle Horst.**

**Illustration: Jasmine Stephenson.**



## Tc Patisserie

*We* are now no longer a café, but still make our own patisseries and Tc Patisserie is now a French food shop to compliment our own products.

*We* have a daily selection of freshly made croissants, breads and patisseries.

*We* make reheat at home meals which can be bought over the counter or pre ordered, via our mailing list or messenger.

*We* can cater for any occasion, buffets, dessert tables or full 3 course meals can be arranged.

*We* are open Tuesday-Saturday 9am - 4pm.



## Four Generations, Giving Over 125 Years Service

Herbert 1870-1962    Eardley 1908-1986    Geoffrey 1939-2015    David 1964



Golden Charter  
Funeral Plans



- Funerals Respectfully Conducted
- 24 Hour Out of Hours Service
- Free Advice & Support
- Private Restrooms
- Prepaid Funeral Plans Available
- Finance Options Available



**Tel: 01482 844695**  
**www.hkempandsonltd.com**

259 Hallgate, Cottingham, East Yorkshire, HU16 4BG

Fax: 01482 843898

Email: hkempandsonltd@gmail.com



Telephone: 01482 869111  
sales@rosesofbeverley.karoo.co.uk

**ROSES**  
OF BEVERLEY LTD.  
THE KITCHEN SPECIALISTS

The Kitchen Factory, The Courtyard,  
Tokenspire Business Park, Beverley  
HU17 0TB

Monday to Friday 9am - 5pm | Saturday 9am - 1pm

## What's New in 2022

*Roses Kitchens grown in Beverley for over 20 years*



Laburnam Drive



Carter Drive



Thyme Way



Molescroft Road

I would love a  
**ROSES**  
OF BEVERLEY LTD.



Lincoln Way

kitchen



All Hallows Road, Walkington



Hunsley Road, Walkington



West Mill Rise, Walkington

**Please call 01482 869111 to book a viewing**

MANY MORE OF OUR CUSTOMERS KITCHENS ON OUR WEBSITE

5 STAR RATED OVER 57 GOOGLE REVIEWS ★★★★★

Visit [www.roseskitchens.com](http://www.roseskitchens.com)

to see our customers kitchens and read what they have to say about us

**Telephone: 01482 869111**





# FUN ACTIVITIES FOR THE SUMMER HOLIDAYS

*Are you ready to have the best summer yet with your kids during the six weeks holiday? Here are some fun things you can do to make the most of this summer.*

## **Spend more time outside**

Whether you're spending the holidays at home, going to visit another city, or you're flying to an exotic destination in Europe or beyond, there are plenty of outdoor activities to get your kids moving.

Scientists have found links between happiness and the amount of time spent outdoors and in nature, so make sure to get fresh air.

As parents don't just sit and watch your kids



or spend time on your phone, instead jump into their mindset and get involved.

Your kids will love it and you might be shocked at how much fun you have too.

## **Go camping**

There are lots of places to go camping near Beverley, so why not step out of your comfort zone and spend a night camping with family and friends.

It's a fantastic way to limit your mobile phone or tablet use and you'll spend quality time with your loved ones doing something different. You can make s'mores over the campfire, tell stories, go on nature walks, see local attractions and much more.

## **Plan ahead**

Don't miss out on opportunities to have fun, plan ahead and make sure you can fit everything in.



There might be a nearby fayre happening in the middle of the summer holidays but if you don't plan for these events you could miss out on some good times for the family.

As dull as planning can sound, even just having a loose idea of the things you want to do over the summer means you've always got something to look forward to.

# BEVERLEY PUPPET FESTIVAL

3 days of fun for adults, kids and families

15th - 17th July 2022 [www.beverleypuppetfestival.com](http://www.beverleypuppetfestival.com)



# "CARAMBOLA... A TASTE OF LUXURY IN WOOD LANE"

*Alyson Day is creative, passionate about Beverley and has a vision for the future. When she came across a property which had stood empty on Wood Lane, Alyson said, "The property was calling out for a new lease of life."*

She remembered back to a place she visited called Carambola whilst on holiday in Barbados. She considered it paradise and luxury, and saw the property in Beverley as her opportunity to create "Carambola", a taste of paradise and luxury for all to enjoy.

The listed building, opposite St Mary's Church, needed a lift. Alyson didn't think twice. She had a vision. One of the most beautiful overlooked buildings in Beverley that holds a lot of history. They could work together, to explore, to give joy, relaxation and drift into another world of adventure, similar to the White Rabbit in Lewis Carroll's Story and woven into the fabric of St Mary's Church.



Alyson had plans, "The past, the present and open up a whole new future for the building".

As Alyson looked around the interior of the building all she saw was Magnolia. She said the building was calling out "Help Me". Looking beyond the magnolia and looking across at St Mary's Church a plan was taking shape. The transformation was already under way.

Having looked at the building in November 2021, discussed her ideas with family and friends, meetings followed with agents and plans, timetables and schedules put in place. Throughout the transformation Alyson said "It's all about the detail, to be bold, brave and sympathetic to the building, apart from relocating some furnishings, I had a clear idea of what was needed. Family,

friends and colleagues supported me all the way, it was a team effort".

Alyson went on to say "The detail in furnishings, colours and decoration needed to tell a story and bring out the feel of not only the building, but Beverley and a nod to St Mary's Church. The end result is "WOW".



The property is now ready for people to rent through Airbnb catering for up to 6 people in this beautiful old building while enjoying the View of St Mary's and experiencing the history of Beverley along with the hospitality that Beverley has to offer. Alyson has created her vision, her "Carambola",

Alyson is grateful that she has been able to fulfil her ambition and vision, it would not have been possible without the help of her landlord Mr Paul Butler and sends a heartfelt "Thank You", to him for leasing it to her.

With any project people undertake, the contractors help make or break projects, Alyson has been delighted with the work delivered by her contractors, taking her vision and making it a reality. Mike Saltmer and Phil Cross who have gone above and beyond their roles as just decorators along with Andy, Chris and Christian.

Carambola is now complete and ready for people to book and enjoy a little piece of Luxury in the heart of Beverley.

**Carambola, 4 Wood Lane, Beverley, HU17 8BS.**  
**Airbnb - Carambola**  
**Instagram - Carambola**  
**Facebook - Carambola**  
**Email - alyvu@hotmail.com**  
**Telephone - 07853 874726.**





# I'VE BEEN THINKING... SAYS COLIN RAYNOR

**On July 12th at 2.30pm there is a special pets service taking place at Toll Gavel Methodist Church here in Beverley. What a wonderful opportunity for everybody to take their favourite pet to church for a blessing and to say thanks for all the pleasure that our pets give to us.**

I have been to pet services before in churches and the variety of pets that are brought by their owners is amazing. Might be your cat or tortoise or perhaps a pet mouse or a hamster. Might be a chicken or a goldfish. One young man brought his favourite stick insect but it seemed totally unmoved by the experience.

It's great to see all the wonderful dogs in town these days I felt sure that 'man's best friend' would be well represented, but not to be. I was told that dogs will not be allowed because they are inclined to 'fratch with each other and they take every



opportunity to piddle!!

We don't have a dog in our house anymore but some of our best memories over past years include the dogs we have had and loved. After my initial disappointment I had to accept that dogs do not always choose the most discreet of places to 'piddle'. When that word came to mind I recalled hearing a story long ago about a dog who was a 'champion piddler'.

A farmer's dog once came to town, whose Christian name was Pete. As he trotted down the road, it was beautiful to see his mark on every corner, his work on every tree. He watered every garden gate, he never missed a post, for piddling was his game, piddling was his boast. The city dogs stood looking on with deep and jealous rage at this simple country dog. As dogs do they smelt him over one by one, they smelt him two by two, but noble Pete, with some disdain, stood still till they were through. But when one smelt him underneath Pete piddled on him too.

The city dogs debated what to do and finally decided they would hold a Piddling Carnival and show this stranger a thing or two. They showed him all the piddling posts they knew about the town and started out, with many a wink, to wear the stranger out. But Pete was with them everyone, with vigour and with vim. A thousand piddles, more or less, was all the same to him.

On and on went noble Pete, with hind legs kicking high, while most were lifting legs in bluff and piddling mighty dry. Then Pete an exhibition gave,



on all the ways to piddle (like double drips and fancy fillips and now and then a dribble). After a while this country dog, without a growl or grin, just quietly piddled out of town as he had piddled in. The city dogs said 'so long Pete, your piddling did defeat us'. But no one ever put them wise that Pete had DIABETES.

No doubt they will sing at the Methodist pet service about "all creatures great and small" but not dogs! I wonder if the Anglicans would be more welcoming. They don't have carpets on the floor. Maybe man's best friend will have to be content in Beverley to being dragged around the Market trying not to get tangled up in the jungle of towering human legs and frightening little children in prams. It really is a dogs life until you get to the Westwood and freedom!

# IN MY VIEW... IT'S TIME FOR A GETAWAY

***I don't know about you, but I love to travel. Be it this country, abroad, familiar places, new places - nothing beats getting out and about and exploring. As such, with it now being Summer, I thought travel photography would be a fun topic this issue.***

As ever, I like to try and find 'hidden shots', or angles that I feel set certain photos apart from my more general holiday shots. One that springs to mind is a picture I took on a boat trip in Amsterdam a few years ago.



Out of the many photos I took that trip, I feel that this one captures the essence of Amsterdam and some of the brilliant views it has to offer.

You may remember from the last issue that I talked about depth of field and what difference that makes to photos. Well, this time I used a 'wide' depth of field. All that really means is that more of the photo is in focus, and this

is achieved by using a small aperture. My aperture setting here was around f5.6. Small apertures are good for landscapes due to how much more detail you can capture in focus.



The same can be said when opting to use a wide angle lens. This enables you fit a lot more into your image, often producing some quite interesting shots. Take this monochrome beach shot for example. I deliberately got low to the ground because I wanted the paw prints to feature. This resulted in an image

that somehow feels contained but expansive at the same time.

Another thing I would always encourage you to do is look up! Who knows what you might miss if you don't?

So, wherever you take yourself off to this summer, take your camera, look out for those interesting angles, experiment with different apertures and, above all, have fun!

Don't forget - I would love to see what you take, so feel free to share your photos with me.

Happy snapping, everyone!

Instagram: [@sara.kruger](#)  
Facebook: [@sara.kruger.photography](#)  
Web: [www.sarakrugerphotography.com](http://www.sarakrugerphotography.com)





# Your home for **KITCHENS, BATHROOMS AND LANDSCAPING**



**FREE  
LOCAL  
DELIVERY**

Swinemoor Lane **Beverley**  
01482 398979 **HU17 0JX**  
[mkmbbs.co.uk](http://mkmbbs.co.uk)

**MKM**



# CRAFTY COFFEE BEVERLEY

**Crafty Coffee are coming up to 2 years of successful trading.**

**• Alcohol License -**

We now have beer, cider, wine and prosecco to enjoy outside or inside.

**• Afternoon teas in a wooden sewing box -**

Advance bookings only - features a hot drink with or without prosecco, mini quiches, sandwiches, vegan and gluten free options available.

**• Craft Classes in the Café -**

We have a wide range from beginners and some intermediate sessions in Crochet, Knitting, Macrame, pottery painting and many more.

• Wool and fabric craft shop emporium extension in the back been open since September.

• **Alterations** - We also take clothes in that need repairs or alterations with a trouser and dress hems and new zips.

We are available for private bookings for drinks, food or craft sessions, please enquire about pricing and accomodations.

Crafty Coffee are at 119 Walkergate, Beverley.  
**enquiries@craftycoffeeshop.co.uk**  
**www.craftycoffeeshop.co.uk**  
**Tel: 01482 739630.**



## CRAFTY COFFEE CRAFT CLASSES

### RECURRING

**Craft and Natter**

Tuesdays 10 - 12 FREE

Come and join us with your own craft in the cafe and meet other crafters. Bring your knitting, crochet, cross stitch or even just a colouring book.

**Beginners Crochet**

Wednesdays 10 - 12 and 18:30 - 20:30

Sundays 13:30 - 15:30

Learn basic crochet skills in our easy sessions  
 £20 for the 4 week course

**Beginners Knitting**

Dates and Times TBC

Learn basic knitting skills in our easy sessions  
 £20 for the 4 week course

**Carry on Crochet**

Wednesdays 13:00 - 15:00

Can you already crochet? Or maybe you want a follow-on after our beginner course. Come to our carry on sessions and learn new stitches every week  
 £4 each week

### SUMMER BEGINNERS CROCHET

Feeling busy over the summer? Don't fancy booking onto a four week class? Try our summer beginners crochet classes! Pick and choose dates to suit you and book onto each individually. You can finish the whole course at your own pace or come to all four in one day!

**Intro to Crochet**

Tuesdays 10 - 12 and

Wednesdays 6 - 8

Learn basic stitches  
 £5 per person

**Diagonal squares**

Tuesdays 3:30-5:30 and

Wednesdays 1-3

Learn to make increases and decreases to use for patterns and make a corner to corner square  
 £5 per person

**Granny squares**

Tuesdays 1-3 and

Wednesdays 3:30-5:30

Learn how to make and attach basic granny squares  
 £5 per person

**Intro to Amigurumi**

Tuesdays 6 - 8 and

Wednesdays 10 - 12

Learn the skills to make easy amigurumi crochet creatures  
 £10 per person

Dates are Tuesdays and Wednesdays and run over the weeks beginning 8th, 15th and 22nd of August

### BOOK TODAY

Come into Crafty Coffee Beverley or book by ringing 01482 739630  
 All prices cover all sessions of the course and all materials needed

### JULY

**Sunflower Crochet Bag**

Monday 4th - 18th 18:30 - 20:30

Make a crochet bag made up of sunflower granny squares over 3 weeks  
 £30 per person

**Needlefelt Bee**

Tuesday 5th 18:30 - 21:00

Learn to Needlefelt a bee perfect for summer  
 £25 per person

**Pottery Painting Night**

Tuesday 19th 19:00 - 21:00

Adult only pottery painting evening. Come and enjoy a glass of wine and paint a pot of your choice using a speciality glaze  
 £25 per person

**Arm Knitting**

Tuesday 12th 19:00 - 21:00

Learn to arm knit and make a person sized 2kg blanket  
 £58 per person

### SUMMER CRAFTS

**Intro to Knitting**

Tuesdays 6-9 and Wednesdays 10-1

Learn basic stitches in one session  
 £10 per person

**Macrame Plant Hanger**

Monday 15th August 18:30 - 21:00

Make a macrame plant hanger  
 £25 per person

**Crochet Bee**

Thursday 25th August 1 - 4:30

Perfect for beginners to learn more crochet skills  
 £15 per person

### AUTUMN CRAFTS

**Crochet Cardigan**

Monday 19th September 19:00 - 21:00

Learn to make a no-sew Crochet Aran Cardigan over 5 evenings  
 £70 which covers 5 evenings and 1.2kg of wool

**Crochet Blanket**

Tuesday 20th September 19:00 - 21:00

Learn to make a throw suitable for beginners. Learn 11 stitches over 6 weeks perfect to gain confidence with new crochet stitches  
 £65 which covers 6 evenings and 1kg of yarn

**Dates for the Blanket evenings**

20th September  
 27th September  
 4th October  
 18th October  
 1st November  
 15th November

Check our Facebook for more upcoming events



# EAST YORKSHIRE THOROUGHbred CAR CLUB BEVERLEY MIDSUMMER GATHERING



**FOXMOBILITY.**

**Tel: 01482 887799**  
**Email: info@fox-mobility.co.uk**

**Fox Mobility**  
**110-112 Walkergate**  
**Beverley**  
**East Yorkshire**  
**HU17 9BT**

- **Stairlifts**
- **Riser Recliner Chairs**
- **Walking Aids**
- **Power Chairs**
- **Scoters and Accessories**
- **Servicing and Repairs for your Mobility Equipment**

**Need advice about mobility equipment? We're here to help!**





# BEVERLEY TOWN FC - AN EVENING WITH BRUCE GROBBELAAR



HERE TO GET *you* THERE

# HUNTERS®

EXCLUSIVE

BEVERLEY / 01482 861411



# BEVERLEY FOLK FESTIVAL



SALES / LETTINGS / MANAGEMENT

**HUNTERS**<sup>®</sup>  
HERE TO GET *you* THERE

BEVERLEY / 01482 861411



# LET'S TAKE A TRIP TO NORTH FRODINGHAM AND FOSTON ON THE WOLDS

*The attractive villages of North Frodingham, and nearby Foston on the Wolds, some 15 miles north of Beverly, are somewhat off the beaten track.*

They both, however, amply reward the curious visitor, offering the chance, not just of nice leisurely summer strolls, but also a lovely opportunity to go 'messing about on the river'.

Sadly, neither village is easy to reach by public transport, unless you are prepared to trek from Nafferton. Parking, however, is easy in both villages. We begin at Foston, which is reached by turning off the B1249 Driffield to Beeford Road.

Start from the southern end of this remarkably long village, with a wide range of stunning period and modern properties. It is hard to fathom why the village has so many substantial homes, some, such as the converted chapel, are stunning.

One also functions as a nursery, where you can purchase organic eggs and plants.

The church of St. Andrew was open on my recent visit, it had a second hand book sale in the porch. It has a splendid interior, with Norman arches and a particularly fine range of windows.

Sadly, the village pub closed a few years ago, although the village hall seems a lively social hub, even hosting film nights.

Just before the church, look for the oddest of footpaths to begin your walk out into the country and along the beck - the sign points to a garden door!

I had to check that this was really the right way, it leads to a nice meadow; the start of a smashing 1.5 mile loop back to the village. Follow the clear track on its dog-leg route down to the sparkling



waters of Foston Beck. Follow this to the bridge, a path continues to a lovely area of former mill buildings and a gushing weir. This was once a busy industrial place, with a brewery, trading vessels could reach here from Hull.

Today, it is a beautiful, and little known backwater. Follow the lane back to the village main street passing more fine homes.



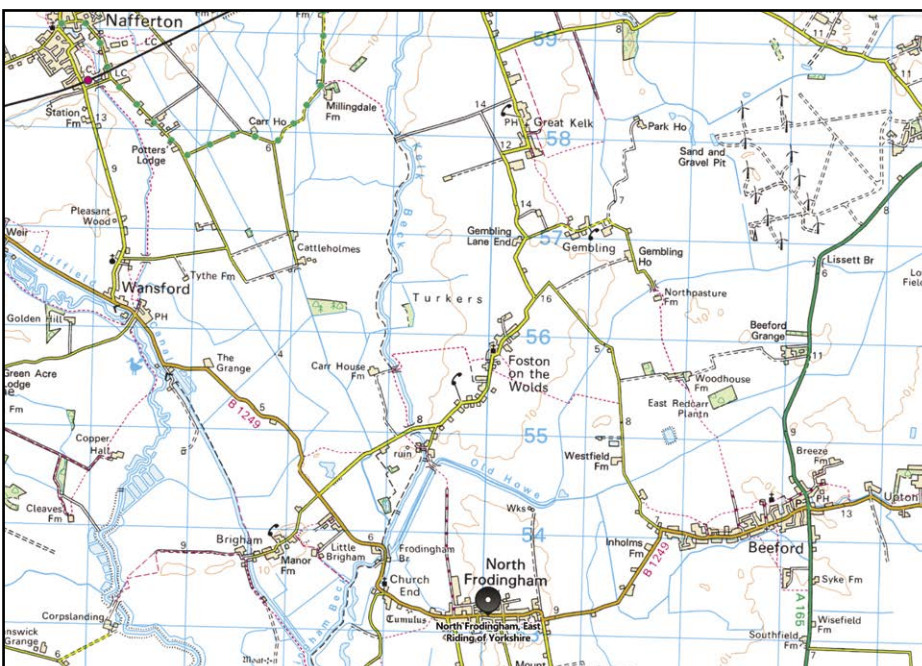
*Right of Way!*

North Frodingham is a bigger village, with shop, pub and school, it's just a five minutes drive away. The restored market cross is a reminder that it was once a more important place. The village church is half a mile distant along the road to Driffield. It is on a striking site, overlooking the river, a beautiful seventeenth century farm adjoins the churchyard.

Just beyond the church, by the river bridge do visit Frodingham Landing (YO25 8JR.) Here you can choose to hire a wide variety of craft for exploring down river, including pedalos and paddle boards. Recently, a friend and I took out a rowing boat, and headed down tranquil reaches towards Brigham, it was absolutely delightful.



*Foston Mill*



*Boating on Frodingham Beck*

At the end of June, a group of us have booked a motor boat, hoping to have a leisurely luncheon on the river; art lovers may bring to mind Renoir's painting! There are parking and picnic tables at the site.

All boats must be booked in advance on **01262 488599/0770 93777**. To make a nice circular day trip, return to the Beverley area by either of the main roads from Driffield, hopefully suitably charmed by visiting such a sedate area of our county.

Ian Richardson.



**£20  
M&S  
Gift Card**  
Visit us by 31st August 2022\*



## “NEW ADDRESS, NEW ADVENTURE”.

Our Andrews Court development is situated in the beautiful market town of Beverley. We have a limited number of high quality 1 and 2 bed apartments available now at our age exclusive development, for the over 55's. Each is stylish to live in and reassuringly low maintenance.

Why not take a tour by 31st August and not only will you discover more about our lively community and fantastic facilities including our communal lounges and landscaped gardens but you'll also receive a **£20 M&S Gift Card** as a thank you.

**McCARTHY STONE**

*Life, well lived*

To book your visit call **0800 185 5005**  
or go to **[mccarthystone.co.uk/andrews-court](https://mccarthystone.co.uk/andrews-court)**

Andrews Court, Molescroft Road, Beverley, East Riding of Yorkshire HU17 7FQ





# PARKRUN CELEBRATE 3 YEARS IN BEVERLEY

**On the 13th July 2019 Beverley Westwood parkrun welcomed runners of all abilities to experience parkrun and to enjoy the Westwood and its beautiful surroundings.**

Just Beverley were privileged to catch up with Kay Farrow who was behind the parkrun coming to Beverley.



Kay Farrow, from Beverley, started parkrunning in Hull and loved it but she wanted to go to an event nearer home in Beverley. There wasn't one so she decided to try to set one up. Kay said "I was unaware that Andy Moore, Louise Barrett and Nick Frère were all separately at various stages of trying to set up a parkrun in Beverley. None of us knew about the others but Andy did some research, found out about the rest of us and got us all together. We then worked as a team to get Beverley Westwood parkrun up and running, this whole procedure took about 18 months."

It is often asked why the Westwood was chosen as the venue for the parkrun and Kay explained, "We looked all over Beverley and the surrounding area but the Westwood was the only place that could accommodate a 5k course. As well as being a great place to run, the Westwood allows us to satisfy the

requirements of a parkrun course - a 5k route with no roads to cross with parking, toilets and a café/pub nearby."

## **How did you choose the route?**

It was the only one possible! Due to the racecourse, the golf course and the roads crossing the Westwood we were limited to the area between Walkington Road and Newbald Road. The area could not accommodate a one lap course but we managed to limit it to two. We were still constrained by the golf course and the terrain. We planned a route then Andy and I walked round it with the secretary of the golf club and the club's pro to ascertain the safe area where there is no chance of a stray ball hitting anyone on the parkrun course. We had to amend our proposed course slightly and then have it checked by a Health and Safety Officer from East Riding of Yorkshire Council. We followed his advice and made a further minor adjustment and he was satisfied that the course was safe. Our local parkrun ambassador then did the official measurement of the route and approved it.



## **Who was involved?**

Our team of four - Andy, Louise, Nick and me - had support and advice from our local parkrun ambassador, Paul Tremere, and from Mark Gadie, an experienced local parkrunner. We had to get permission to use the Westwood from the Pasture Masters and they were very supportive from the start. Officers at East Riding of Yorkshire Council were also very

supportive and the council funded our start-up costs. We are very grateful for that and for the additional funding which came from Beverley Town Council, Sir James Reckitt Charity, William Jackson Food Group, Drax and Beverley Athletic Club. This was used to purchase various items such as our PA system, radios and storage box for equipment.



## **How many volunteers do you need each week?**

We like to have at least 30 volunteers but we've had as few as 27 and as many as 55. There are 18 different roles to cover - some require several people and some volunteers cover several roles. No experience is necessary. Most people start with marshalling and we always pair up first time marshals with someone who has done it before because it's more enjoyable and makes the new volunteer feel part of a team.

I knew that a parkrun in Beverley would attract lots of runners but I have been surprised and delighted by the number of wonderful people who volunteer. We have 3 people who only volunteer while all the other volunteers are runners and walkers who give up their time some weeks to help stage parkrun for the benefit of others. There's such a great atmosphere when they all arrive on a Saturday morning and they're always cheerful and enthusiastic no matter what the weather. It's a different group of people each week but there's always a great team spirit.

## **How many runners did you have at the first event?**

419 - despite no publicity.

## **How many attend on a regular basis?**

We have an average of 227.8 finishers. Numbers have dropped since we started again after COVID restrictions were lifted.

## **What are your hopes for the future of Beverley Westwood parkrun?**

I hope that our free, timed, 5k run, walk or opportunity to volunteer continues for as long as the local community wants it, hopefully forever.

The future depends on a regular influx of new people of all ages participating and volunteering. I'd like to see more families with children taking part together. parkrun is a great way for the whole family to keep fit.

I'd like to see our numbers increase past the pre-COVID levels as so many more people could benefit from regular exercise and being





actively involved in the local community whether by participating or by volunteering.

I'd like more people to experience the pleasure of volunteering and to have the satisfaction gained from having helped to stage an event for the benefit and enjoyment of others. 395 people have volunteered so far and I'd like to see that figure continue to rise.

### What do you hope to do on the 3rd anniversary day?

We are planning to hold a picnic on the Westwood after parkrun to celebrate our birthday. Although our parkrun will be 3 years old it will be the first time we can celebrate it as we missed our first two birthdays due to COVID. Everyone is welcome to join us.

### What events have you held over the years?

So far we've held 82 events which includes a pacing event, a volunteer takeover by Fitmums and Friends and Beverley AC's couch to 5k runners have 'graduated' by running at our parkrun. We've held a monthly social event so volunteers and participants can strengthen the friendships made on the Westwood and feel part of our community. We've also held litter picking events on the Westwood to show our gratitude to the Pasture Masters for allowing us to hold our parkrun on the pasture.

### Do parkrunners meet away from the parkrun?

Yes. On Saturday morning after parkrun people go to their favourite place for coffee or breakfast. Our official post parkrun venue is the Windmill Inn.

People get together for parkrun tourism and travel to other parkruns in the area. A group



of us had planned a trip to a parkrun in the Netherlands but it was postponed due to COVID.

Great friendships have been forged at parkrun especially between people who volunteer regularly. People don't need an organised event to get together with parkrun friends and some of us meet up regularly away from parkrun e.g. a group goes to watch Hull City together.

If you've somehow not heard about Beverley Westwood parkrun until now here's what you need to know:

• It's FREE - parkrun is 100% free but you MUST register online first at <https://www.parkrun.org.uk/register/>. Once registered print your barcode off or save it on your phone and take it with you to parkrun. Your barcode is scanned when you finish so that your participation and time are recorded for the results.

• BWp starts at 09.00 every Saturday with a briefing for first timers at 08.50.

• All abilities are welcome - you can run, jog, walk or volunteer.

• Children under 11 must stay within arm's reach of their accompanying adult.

• The course is not suitable for buggies.

• Dogs are allowed but must be on a short, non-extendable hand-held lead.

• Nobody finishes last - tail walking volunteers are always the last people to cross the finish line.

• Volunteers must be registered too. If you want to

volunteer go to [www.parkrun.org.uk/beverleywestwood/volunteer/](http://www.parkrun.org.uk/beverleywestwood/volunteer/)



### LATEST STATS:

**Events:** 82

**Finishers:** 4,312

**Finishes:** 18,660

**Average finishers per week:** 227.6

**Volunteers:** 395

**PBs:** 3,503

**Average finish time:** 00:30:46

**Average finishes per participant:** 4.3

**Groups:** 359

**Female record:** Becky BRIGGS - 18:20 - Event 6 (17 Aug 2019)

**Male record:** Kian WILES - 16:00 - Event 50 (23 Oct 2021)

**Age graded record:** Carol BAKER - 87.6% 21:14 - Event 50 (23 Oct 2021)





# NAVIGATION WEALTH MANAGEMENT - WHAT HER MAJESTY THE QUEEN CAN TEACH US ABOUT RETIREMENT

**After 70 years of service, the Queen was the first British monarch to celebrate a Platinum Jubilee.**

While few people work into their 90s, retirement is not the cut-off point it once was, and many of us can expect to continue working or volunteering after we reach State Pension age.

By planning ahead and seeking guidance from an expert financial adviser, you can ensure you have funds in place to make your retirement what you want it to be.

As celebrations marking her Platinum Jubilee got underway, the Queen's remarkable life and longevity are once again in the spotlight.

At the age of 96, she is still working, albeit not making as many public appearances as she used to.

In fact, the recent scaling back of public engagements offers a reminder that the pattern of her later years has in some ways been typical of today's older generations. Because for a growing number of people, retirement is no longer a cliff-edge event that takes place when they reach State Pension age.

## Will retirement become a thing of the past?

When the Queen turned 60 in 1986, there was no withdrawal from public life. State Visits continued right up until the COVID-19 pandemic, while the past three decades have been eventful in other respects.

It's now 30 years since her 'annus horribilis', 25 years since the death of Princess Diana and 20 years since she travelled some 40,000 miles around the world for her Golden Jubilee tour.

Like the Queen, it's increasingly likely that those reaching pension age will continue working or taking on their own engagements for years or even decades to come.

The Queen is an example of someone who has never really retired. Just because you get to a certain age doesn't mean that you have to stop - you can continue to be engaged, proactive and give to the community.

## Why retirement planning is important

Living for a decade or longer in retirement was still the exception rather than the norm when those now reaching State Pension age began their working lives. Now, however, those of working age know there's a decent chance of living for two or even three decades past their State Pension age.

A man aged 65 now can expect to live for another 18.5 years on average, while a 65-year-old woman typically has 21 years ahead of her, according to the Office for National Statistics.<sup>1</sup>

Previously, getting to retirement was your chance to stop, but now it's the next phase of life and the chance to start something new. You have choices in retirement now.

There's also the question of how to manage your emotional wellbeing as you age. The Queen's loss of Prince Philip last year underlined that later life is a time when bereavement can be a prominent feature.

No one is ever prepared for that, regardless of how many advisers they have, you can't really prepare for the emotional impact of bereavement, but preparing for the financial aspect can provide peace of mind and give you the space to grieve.

There are several steps you can take to plan ahead and make retirement what you want it to be:

### • Work out what you want

Whether or not you give up work entirely in retirement, you may wish to review how you spend your time and what you want from life.

You might focus on things that are more meaningful to you, perhaps something that started out as a hobby, doing some volunteering or a different kind of paid work. Let yourself think about what's important for you and build that into your plans.

### • Don't underestimate your potential life span

Research in 2018 by the Institute for Fiscal Studies found that, on average, people in their 50s and 60s underestimated their chances of survival to age 75 by about 20 percentage points and to 85 by around five to ten percentage points.<sup>2</sup>

This increases the risk of running out of money if you live longer than expected.



## Plan your next big *adventure*

These days, retirement is less about slowing down and more about regaining time - to enjoy the hobbies and adventures you've been dreaming about for so long. But with the shift to financial self-reliance, making the right retirement decisions means you need advice that's personal to you.

That's where we come in. We can give you a local, friendly service backed by the strength and security of a FTSE 100 company, St. James's Place Wealth Management. We can help you manage your income and savings, while guiding you through the complexities of tax.

If you're looking for security alongside your bucket list, let's talk about how we can make it happen.

**Call today to find out more**

Managing Partner

**St  
James's  
Place**

T. 01482 379504  
E. [navigationwm@sjpg.co.uk](mailto:navigationwm@sjpg.co.uk)  
W. [www.navigationwm.co.uk](http://www.navigationwm.co.uk)



Navigation Wealth Management is an Appointed Representative of and represents only St. James's Place Wealth Management plc (which is authorised and regulated by the Financial Conduct Authority) for the purpose of advising solely on the group's wealth management products and services, more details of which are set out on the group's website [www.sjpg.co.uk/products](http://www.sjpg.co.uk/products). The 'St. James's Place Partnership' and the titles 'Partner' and 'Partner Practice' are marketing terms used to describe St. James's Place representatives.



It's safer to plan on the basis that you'll live for a long time in retirement. You need to do some financial planning to ensure you have enough money through retirement.

**• Talk about it**

As you enter your later years, you might be thinking about setting up a power of attorney, so that if you do lose capacity, support will be there. That invariably means having potentially difficult conversations with family members.

That can be a real worry, asking children to do certain things and being able to have those conversations with them. It's about choosing the right people as well, as you're passing on responsibility as well as money.

**• Build your team**

The Queen isn't alone in being able to turn to specialist advisers for financial, legal and other matters.

A financial adviser, for example, can ensure you don't run out of money later in life, taking longevity into account. They can map out your plans, review them as the years pass, make changes when necessary and help with the difficult conversations.

They can be invaluable for those conversations and in providing an independent point of view.

To receive a complimentary guide covering wealth management, retirement planning or Inheritance Tax planning, contact Navigation Wealth Management on **01482 379504** or email [navigationwm@sjpg.co.uk](mailto:navigationwm@sjpg.co.uk)

**Sources:**

<sup>1</sup> National Life Tables - Life Expectancy in the UK: 2018-2020, Office for National Statistics, September 2021.

<sup>2</sup> Subjective Expectations of Survival and Economic Behaviour by Cormac O'Dea and David Sturrock, Institute for Fiscal Studies, April 2018.



**HASSLE FREE LETTING AGENT**



Telephone: 01482 241261

Website: [www.emlets.co.uk](http://www.emlets.co.uk)

Email: [admin@emlets.co.uk](mailto:admin@emlets.co.uk)

Facebook: @EmletsLtd

Instagram: [emletsproperty](https://www.instagram.com/emletsproperty)

# Jadan

Print that gets you noticed

Jadan Press are a leading family run commercial and trade printer based in Hull. With over 25 years experience, we are renowned for producing exceptionally high quality print, design and finishing.

We are committed to providing an excellent service by offering value for money and ensuring complete customer satisfaction.

- BROCHURES LEAFLETS**
- POSTERS CALENDARS PADS**
- LARGE FORMAT PRINTING**
- STATIONERY MAGAZINES**
- SAFETY SIGNAGE BANNERS**
- VARIABLE DATA/MAILING**
- and much much more**

**TAKE A LOOK AT OUR WEBSITE AND VIDEOS**  
[www.jadan-press.co.uk](http://www.jadan-press.co.uk)



**01482 610902**

**info@jadan-press.co.uk**

**www.jadan-press.co.uk**

**Rainbow House, Kimberley Street, Hull, HU3 1HH**

JadanPress JadanPress jadan\_press





# SHORT STORY BY CLINT WASTLING - ESCAPEE



**Madam Marzena lost her circus lion, Leo. He had been obediently waiting for her to put her head inside his cavernous mouth when she'd been distracted by an argument. She turned back and he was nowhere to be seen.**

All the circus performers searched frantically around the Big Top and side shows to no avail. Eventually she realised she had no other option than to call the police.

Meanwhile, Leo was quite happy relaxing in the sun on The Westwood with its swathe of buttercups and shrubs providing plenty of cover. At the copse near the sixteenth tee, the lion pounced on a middle aged golfer. He quickly tore open the designer shirt and jumper to enjoy a hearty meal. Dessert was an attractively coiffured poodle. Hence the lion was soon fast asleep in the sunshine.

However, it wasn't long before Leo was rudely awoken by sirens. He was shot with a dart and before he realised it was a tranquilliser, the carnivore was read his rights. As Leo fell asleep, he was arrested and bundled unceremoniously into a police van.

Ava (aged 4) lifted the telephone receiver and dialled 999. Which service? Asked the voice.

"My lion has escaped," replied Ava trying to sound as much as possible like a grown up.

"I'd better put you through to the police," said the operator. She was truly fed up about receiving so many calls about a lion from some distant market town.

Ava listened carefully as the police officer asked "What is the nature of the emergency?"

"My lion has escaped. I've looked everywhere but there's no trace."

"How big is the lion?"

"About this big." Replied Ava helpfully trying to gauge its dimensions with her hands.

"Don't worry," replied the officer, "he's been caught."

"Who were you talking to darling?" asked her mum as she returned from the kitchen, taking care to avoid the model cars and stuffed animals on the floor.

"A nice policewoman. She said she'd send a police van with my escaped lion."

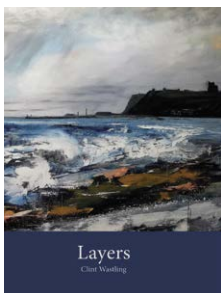
Ava's mum went pale. "I hope this is another one of your stories Ava." She sat on the sofa and offered the young girl a biscuit. "Only one, I don't want to ruin your tea."

There was a knock at the door. Ava's mum answered and was surprised to see armed soldiers and a police liaison officer looking nervously at a lion, an eight foot giant of a beast with sharp teeth and a lugubrious smile.

Madam Marzena was bemused when a large stuffed lion was delivered to the circus along with a hefty vet's bill for out of hours services. It didn't end well. There was a public inquiry about the mix up.

Blame was pinned rather unfairly on the lion. If you visit Hull Prison, there is a special cell on the ground floor. Do not enter! Panthera leo has another seven years to serve and then faces the prospect of being deported.

**Clint Wastling is the author of Tyrants Rex, a fantasy story (Stairwell Books). His poetry collection Layers is available from Maytree Press.**



# POEM BY VICKY HAWKER - GENIUS LOC1



Buildings are Beings  
Inserted into time and space.  
Like grand mnemonics  
They fold us back into  
Themselves and summon memory

Of an abandoned avenue  
Lining silent, restless trees  
Once leading to a Great Hall  
Where an ancient family  
Holding fast to Faith  
Dwelt in mellow bricks on Sylvan lands.

Their lives touched everywhere:  
Each gilded chair, each kitchen pan,  
Each tiny fray of galloons, ganses, fringe,  
That framed unbroken Outlooks.

But Beauty always costs  
When coupled with a troubled past  
So demi gods diminished in the Garden.  
Now, in corridors and rooms they Sleep.  
Memorialized in marble, paint and wood.

What turns around forever though  
Is this - their dwelling place on Earth  
That points towards the stars,  
As Constant as a Lode Stone.  
Encompassing, enveloping Us.

**Vicky is a retired teacher living by the sea in Bridlington. Her poetry is influenced by mythology, a sense of place and a bit of philosophy.**

## Monks Walk Inn

19 Highgate, Beverley HU17 0DN

Tel: 01482 880871

[www.monkswalkinn.com](http://www.monkswalkinn.com)

**A WARM WELCOME  
TO ALL OUR CUSTOMERS**

- GOOD BEER •
- GOOD COMPANY •
- GOOD CONVERSATION •

- Historic Public House
- Local Cask Ales • Lagers • Beers • Wines •
- Spirits • Tea • Coffee •

**LIVE MUSIC Wednesday & Thursday Evenings  
& Sunday Afternoons**

**Stone-Baked, Wood-Fired Pizzas Available**  
Wed-Thu - 5.30pm-8.30pm  
Fri - 5.30pm-7.30pm Sat-Sun - 2pm-5.30pm



**WE LOOK FORWARD TO SERVING YOU!**



SERVING FAMILIES SINCE 1872

# Your funeral wishes. Our local experts.

Funerals from  
**£995**

Unattended Funerals

Attended Funerals

Prepaid Funeral Plans



**We're here for you anytime.**

Whatever your wishes or budget, we can provide a funeral to suit you.

## FRANK STEPHENSON & SON

29 Minster Moorgate

Beverley

01482 881 367

[dignityfunerals.co.uk/local](http://dignityfunerals.co.uk/local)



We're proud to be a Dignity Funeral Director,  
providing exceptional services to families across the UK.

Pricing is correct at time of going to print and is subject to change. Price stated is for an Unattended Funeral.

★★★★★  
Customer rated  
Powered by Yext



# WILL YOU READ THIS? ?SIHT DAER UOY LLIW

*During these "interesting" times, we may be at a loss as to what to do next. Life is uncertain. It can be uncomfortable, but it's not necessarily a bad place to be. Our ego likes to know everything and be in control. Often this is not the case and we find ourselves at a crossroads in our life. Gaining perspective is key. It often makes the difference between resisting or accepting changes that are happening in our lives.*

Our perspectives influence everything: our attitudes, mindset, viewpoint, outlook and even our beliefs.

Are you a glass half full or a glass half empty person? The same glass however, the perspective is different. You may be like me in that it depends on the day.

Many people do not appreciate what is all around them. For example, do you ever look up? I love exploring the stars and planets above. Have you ever seen the International Space Station flying overhead? The astronauts on the station have an extremely different perspective on planet earth.

During lockdown I walked more, watched the birds feeding and discovered new things in our locality, such as a disused railway line. I found that there is one over the footbridge opposite the Hayride pub in Beverley. Let us keep this new perspective and accept change rather than returning to all our old habits.

I have a friend who complains a lot. He has a roof over his head, eats 3 times a day has a large colour TV to watch and is never lonely. He has two lovers, keeps fit and exercises daily. Why then is he complaining and moaning about his life? His main grumble is that he does not like prison! Perspective.

Take a moment to check your perspective, make the effort to look at things from a different angle. Finally, I recommend reading the poem "If" by Rudyard Kipling.

Please send a smile to [dave@eastridingwills.co.uk](mailto:dave@eastridingwills.co.uk)

# Will You Leave it?

Protect your  
family and assets  
make a will  
today.



## Stop Putting it Off

For a free no obligation home visit  
contact, Beverley based, Dave Tunstall  
**now**

**07939085752**

**[dave@eastridingwills.co.uk](mailto:dave@eastridingwills.co.uk)**



Family friendly wills  
in the East Riding  
and further afield.

Fast Riding Wills  
Established 2008

LEWIS NORTHEN  
FUNERAL DIRECTORS

# IN

MY FAMILY TAKING  
CARE OF YOURS



Get In Touch

1 Lincoln Way, Beverley, HU17 8RH

info@lewisnorthenfuneraldirectors.co.uk

www.lewisnorthenfuneraldirectors.co.uk

01482 888 658



Born and raised in **Beverley**, we are proud of the funeral services we offer to our local community.

As a family business we want you to have confidence in us to support you from the first point of contact, throughout and thereafter. The moment your loved one comes into our care they will be treated with care and respect. We offer a comprehensive range of funeral services ensuring you receive the perfect funeral service for your loved ones.

We are available 24 hours a day, 365 days a year, we will guide and support your family throughout.

## My family taking care of yours

### Giving the personal touch to funeral services in Beverley and surrounding areas.

Funeral plans, memorial jewellery, available 24/7 365 days a year.





# C CLUB - A PLACE FOR ANY OCCASION

*The C Club is looking forward to helping people celebrate in style.*

Now that all the refurbishments are coming to a completion, members and guests alike can look forward to enjoying the new look. Under the guidance of Keith Saunders, chairman all the renovations have been carried out to a high standard as is expected at the C Club.

A warm welcome awaits those that enter into the C Club to enjoy and experience the relaxing environment.

The Churchill Room has recently undergone a refurbishment, with pride Keith said, "We are

delighted with the results and with the new fixtures and fittings installed, the new mood lighting and multimedia screen, the room can meet the requirements for any occasion wishing to hire the facilities."

Keith went on to say "The Churchill Room is available to hire, everyone is welcome to view and enquire about booking it for a private function, business meeting, training sessions or a variety of parties such as birthday celebrations, wedding or christening functions and more recently inviting a celebration of life "Wake" for those who have passed."



Coming Soon: Tony Lewis performs as Robbie Williams on Friday 9th September. Tickets £10.00.

Additional dates for the diary, Richie Penrose entertains people on 21st October with a night of Motown.

And always a great night, returning to the C Club, Peter Sarsfield is Frankie Vallie on 2nd December.



For all enquiries, contact Chris Wilkinson during opening hours via email at [bccsecretary@hotmail.com](mailto:bccsecretary@hotmail.com) or call **01482 867968**.



Est.  
1866

## BEVERLEY

BUILDING SOCIETY

Building Better Futures

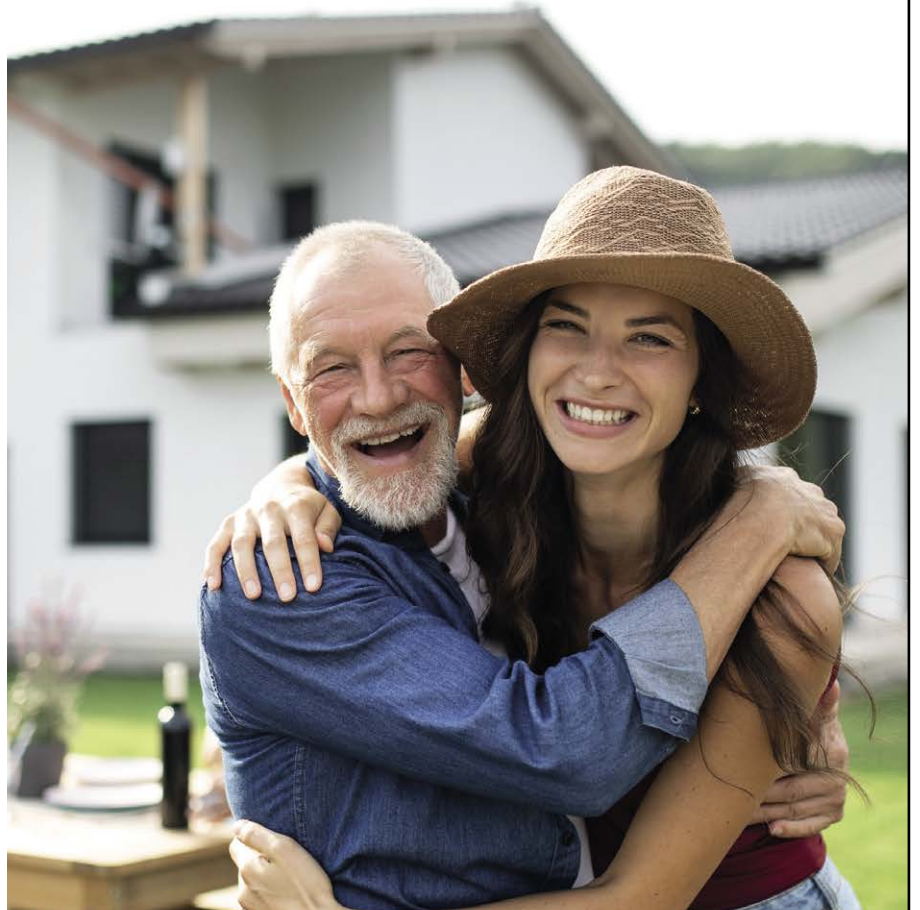
Want to help a loved one secure a mortgage?

Our family assist mortgages help families to help one another.

Contact us to find out more  
Tel: 01482 881510



Email: [mortgages@beverleybs.co.uk](mailto:mortgages@beverleybs.co.uk)  
[www.beverleybs.co.uk](http://www.beverleybs.co.uk)



YOUR HOME MAY BE REPOSSESSED IF YOU DO NOT KEEP UP REPAYMENTS ON YOUR MORTGAGE



# WILSON WHEELS - WEARING YELLOW IN JULY!!

If you speak to the ardent cyclist and mention what's happening in July, the answer will most certainly be "Tour de France", perhaps the toughest tour and most prestigious tour that all pro cyclist would like to be involved in and certainly to be a winner of a stage is the dream of all top cyclists.

The 2022 Tour de France will begin on Friday 1 July, 2022 in Copenhagen. Denmark will host 3 stages.

The Tour de France runs from 1st July to 24th July, covering a total distance of 3328km.

The cycling will begin with a time trial followed by two sprint stages where riders tackle the flat roads from Roskilde to Nyborg and from Vejle to Sønderborg.

The 2022 Tour will have the earliest rest day in the history of the event, a travel day, which will be the first of 3 rest days over the duration of the tour.

The riders will negotiate the cobbles of northern France and the tough summit finishes at La Planche des Belles Filles and Alpe d'Huez.

The final week will see riders tackling the high mountains on stages 17 and 18, which will also incorporate the back-to-back summit finishes at Peyragudes and Hautacam.

To bring to a close the tour the villages of Lacapelle-Marival and Rocamadour will host the final 40km individual time trial July 23, after which cyclists will move on to Paris for the traditional Sunday morning finale around the French capital.

Only one will be able to stand on the podium on the Champs-Élysées stage wearing the Yellow jersey, the best recognised bike race in the world, where winning it is considered very prestigious.

# CARFAN - A 70'S CLASSIC

The 70's is often referred to as the decade that style forgot but the subject of this month's issue is the exception to the rule - the Ford Capri.

Beauty is in the eye of the beholder and this car brought its owner and future wife together after a night club visit many years ago with the rest being history. The model featured is a 1600 GT XLR produced in 1971, owned since 1974 and has had a lot of love, time and money spent on it and it certainly shows.

It has been resprayed in the original shade of Fern metallic and the carburettor has been replaced with a bigger Ford one for better performance, as well as a better exhaust system bought at auction many years ago and still going strong. Parts are getting expensive now, with the side mouldings only being available second hand now for example.



This car has had a wide audience, not just in the metal at car shows for people to appreciate but also on screen too, with appearances on the B.B.C., and an I.T.V. drama about Bobby Moore and even a big screen appearance in the film Funny Cow.

Although a rare sight on our roads now, this Mark 1 version was very popular indeed with 1.2 million produced between 1968 and 1973 before giving way to the Mark 2, being made in the U.K. Germany, Australia and South Africa.




Should you fancy a Capri on your drive, prices range from a few thousand to a faintly ridiculous £75,000 for a pristine South African rust free one but a lot are in the high teen thousands and there are quite a few for sale.

So don't forget, should you see this beauty on your travels, don't forget that cheery Carfan wave!

Pop in store to see the new 2022 bike range

**WILSONS WHEELS**  
 T: 01482 882881  
 W: [www.wilsonswheels.co.uk](http://www.wilsonswheels.co.uk) E: [info@wilsonswheels.co.uk](mailto:info@wilsonswheels.co.uk)

WE NOW STOCK **CUBE CYCLES**  
 2022 RANGE NOW AVAILABLE

- Adult Bikes
- Children's Bikes
- Electric Bikes
- Clothing for all cycling weather
- Parts and accessories

89a Grovehill Road, Beverley, East Yorkshire HU17 0EJ  
 NOW OPEN: Monday - Saturday 8.30am - 5.30pm  
 Sunday: CLOSED - Out riding our bikes



**Children's Lessons**

- Adult Lessons
- Group Lessons (max 6 children per group)
- SEN Lessons
- Private Lessons 1-2-1
- Rookie Lifeguards
- Lifeguarded Adult Swim Sessions

New Venue - Skidby

Exclusive Large Private Pool



Welcome to our beautiful new pool

BOOK TODAY!

Contact our friendly team for further information on  
 01482 229676 | [info@sportsability.org.uk](mailto:info@sportsability.org.uk) | [www.sportsabilityswimschool.co.uk](http://www.sportsabilityswimschool.co.uk)  
 @SportsabilitySwim SportsabilitySwimSchool







# PUZZLE PAGE

## WORDSEARCH

C U L V Z V S F U W I I M Y S  
 G O C A X L B I I Z Z P S H U  
 S D M P F B Y M I T A B G T N  
 C U Q M O R B K R Q J C A L S  
 G E N F O L S I N N E T M A H  
 Q V E C E N E C Y B M K E E A  
 N A E D R R W L N J B A S H D  
 F O O F U E G E G Y Z P J A E  
 S N I T Z D A F A Z F E T A Z  
 G Y A T J A D M J L X R N R S  
 D N H Y A Z P L Y Y T N G X E  
 D M M H Y C P S X P O H N D Q  
 B B Z S V O A S U N S H I N E  
 A L C A B C V V C W H Q C T R  
 J E C B P Y A E F U J B I I J

COMMONWEALTH  
 GAMES  
 HEALTHY  
 NATURE  
 SUNCREAM

SUNSHADE  
 SUNSHINE  
 TENNIS  
 VACATION  
 WIMBLEDON

## WHERE IN BEVERLEY?

Where in Beverley can you find this landmark?  
 Answer on Page 37.



## WHAT IS IT?

Can you identify what item this is?  
 Answer on Page 37.



## COMEDY CORNER!

Things that make you laugh!

I asked a friend who has a photographic memory.  
 How long did that take to develop?

During the strikes a friend asked me for a lift.  
 I said, "You are great, you can achieve anything you want".

I asked a Yoga instructor to teach me The Downward Facing Dog.  
 She asked how flexible I am  
 I said Thursday is probably my best day.



## SMALL CHANGE BIG IMPACT FOR THE SUMMER

Adopt the following as a habit -  
 "Do it now"

Do you have any amusing stories,  
 quotes or pictures? Send them to  
[info@justbeverley.co.uk](mailto:info@justbeverley.co.uk)

**DREAM DOORS®**  
 NEW LIFE FOR OLD KITCHENS



**SUMMER SALE  
 NOW ON!**

VISIT OUR  
 SHOWROOM NOW:

4a Belprin Park,  
 Swinemoor Lane,  
 Beverley, HU17 0LN

Call us now for a free estimate:

**01482 861 653**



**Checkatrade.com**  
 Where reputation matters

AVERAGE SCORE **9.7/10**



**QUALITY BEDROOM  
 MAKEOVERS BY LOCAL  
 PROFESSIONALS**

- Bespoke sliding wardrobes
- Styles to suit every home
- Wide range of colours and finishes to choose from
- 96 showrooms nationwide

[www.dreamdoorsbedrooms.co.uk](http://www.dreamdoorsbedrooms.co.uk)

**SUMMER SALE**

**THE UK'S #1 KITCHEN  
 MAKEOVER EXPERTS**

- From simple door replacements to complete fitted kitchens
- Fully installed by local professionals in just a few days
- Choose from a large selection of doors, worktops and appliances
- 96 showrooms nationwide

[www.dreamdoors.co.uk](http://www.dreamdoors.co.uk)



FOLLOWING  
 GOVERNMENT  
 GUIDELINES



# MAKING WAVES - EXPECT THE UNEXPECTED

*I was recently invited to experience Virgin Voyages Valiant Lady on their French Daze and Ibiza Nights adventure. Virgin are completely new to the cruise market and I was very interested to see if it would be of interest to my clients.*



The first key difference to note is that it is completely adult only all year round. For this reason it automatically captures a clientele that travel without children and gives a very different vibe on the ship. Dining

is again different in that there is no structure to your evening meal times. You select whichever restaurant and dining time you wish with as many or as few fellow sailors as you wish. So you have a selection of restaurants to choose from each with their own speciality so you have a variety of cuisine - note no cover charge for booking the speciality restaurants.

There is a philosophy of not wasting food, you have three to four choices per course and everything is freshly prepared.

The staff are very knowledgeable on the menu

and are able to suggest the right cocktails and wines to pair with your food choices. One interesting choice was the Test Kitchen - beautifully designed and a very different concept where the menu shows you only the main ingredient of each course. However the creation is a surprise - a tasting menu consisting of six different courses - beautifully presented and a wonderful experience.

In terms of entertainment there are no official formal nights - I would suggest the dress code would be smart casual - you are asked to be as individual as you and dress as you would like to and everyone looks lovely every evening, however it certainly is not a formal setting.

On Scarlet Night you are invited to wear red to match their brand colours and at 2200 hours the moves are happening up on deck with a very much "feel good rock star pool party". So definitely a fun vibe and most definitely different to anything I have experienced with other cruise lines. One of their shows - Duel - was absolutely incredible - a modern take on West Side Story and the talent is incredible.

Virgin has two overnight stays on the itinerary. This enables guests to actually experience more of a destination and go out on an evening in the resort.

Our overnight stay in Cannes fitted in with the international film festival so it was time for some celebrity spotting. Our second overnight stay was Ibiza and again it was lovely to experience the vibrant atmosphere in Ibiza Town after dinner and return to the ship as early or late as you wanted to.



The service was superb and I particularly liked the flexibility to dine at different times. It was in part quite different to other cruises, and I am sure there are many cruisers out there that would very much enjoy sailing the Virgin way.

This summer they are offering free flights so if you fancy some Mediterranean sunshine and can fit in a week sailing from Barcelona, or want to know more about this product, please feel free to contact me.

**Amanda McConnell, Travel Counsellors.**  
**T: 01482 770540**  
**E: amanda.mcconnell@travelcounsellors.com**  
**W: www.travelcounsellors.com/amanda.mcconnell**



## Botterill & Co

Chartered Certified Accountants

We are a modern and professional accountancy practice ideally located to serve businesses in Beverley and the surrounding area.

We utilise modern accounting technology to provide you with a cost effective, professional service.

**Our services:**



- Annual Accounts
- Company Formations
- Tax Planning
- Payroll
- Management Accounts
- Cloud Accounting
- Tax Returns
- Bookkeeping & VAT

For a free initial consultation please contact us:

**Office: 01482 862240**  
**Mobile: 07966 051458**  
**Email: gareth@botterillco.co.uk**  
**Website: www.botterillco.co.uk**

**1st Floor Offices, 40 Norwood, Beverley, HU17 9EY.**

# SATURDAY NIGHT PIZZERIA

- Choose indoor or outdoor seating
- Enjoy drinks at our bar
- Try our homemade ice cream
- Or simply pick up a takeaway

**At William's Den, North Cave**  
**HU15 2LS**

ARTIZAN  
 PIZZAS  
 MADE IN OUR  
 WOOD-FIRED  
 OVEN

**BOOK NOW**  
 HELLO@WILLIAMSDEN.CO.UK  
 01430 472230

**Get 15% off**  
 your first visit by using the code WillsPizzaBev  
 Offer ends 3rd September 2022.



# COUNTRYSIDE MATTERS WITH SAM WALTON

*New Zealand is about as far away as you can get from the UK and a very nice Country as well.*

Farmers there have difficult times the same as we do but they can produce milk, mutton and wool cheaper than we can because of the way grass grows there.



Driffield nucleus units set up in Australia ensuring high health all the time.

One thing we can't do here is to graze cattle 11 months of the year, which is something which is done in New Zealand, so that makes milk much cheaper to produce and they also have plenty of grass with which to make silage, used before the grass starts to grow again and before it starts to drop off.

The cows help themselves to that, it really is a superb set up. The main herd of cows are milked through a rotary parlour which is a huge circular set up where the cows walk into what look like stalls and walk off again once they have been milked which takes about two minutes.



A man puts the milking units onto the teats and another takes them off before they leave the parlour.

They have another milking set up for some of the cows which calve at a different time which enables them to produce milk 12 months of the year.

The Merino breed of sheep they have is famous for its quality and quantity also per ewe. Sheep shearing is a massive occupation in New Zealand and what some of you may not know is that during our shearing time here in the late spring and early summer, many of the travelling shearers are from New Zealand and travel the World when their season finishes.



It must be 10 years or more since I was there and still have a contact, Torben Christensen who runs Waratah Farms nr Hamilton in the North Island.

He runs 1200 acres, 1200 cows and 1200 sows and was at that time the back-up nucleus herd for the two JSR Healthbred from

## IN THE GARDEN... JULY

*Welcome to July, midsummer in the gardening calendar, a lovely month when most of us can spend time in the garden enjoying the fruits of our labour, with the garden filled with an abundance of colour and produce.*

July is the month for roses, whether they are climbers, ramblers, shrub, or miniatures there are over 150 species and thousands of cultivars. We are spoilt for choice; even so I have one favourite which is 'Gertrude Jekyll,' an English Shrub Rose bred by David Austin. It has large bright pink rosette flowers and a strong old rose fragrance.

### *Some 'Rose Tips'...*

**Deadhead and feed to prolong flowering** - deadhead by pruning back to a bud in a leaf axel (joint) lower down the stem and feed with a 'rose fertilizer' or one which is high in potash (K on the label).

**Combat Diseases** - in the main there are three; all fungal diseases. **Blackspot and Rust** occur in damp weather, spray as soon as you can with a fungicide, collect up and burn any infected and fallen leaves (do not compost them as you will spread the spores all around the garden).

Rust is also an indication the plant is deficient in potash. **Mildew** will strike when plants are under stress due to lack of water - so keep plants well-watered and spray with a fungicide.

### *Tasks for July, maintain the status quo...*

- Prune shrubs that have flowered and feed them.
- Continue to mow the lawn, in dry spells do not cut it so often, raise the blades on the mower and leave the clippings on the lawn, all this will help retain moisture. I know we all like a lovely green lawn but watering your lawn is not necessary. When rain does fall, the grass will spring back and look lush again almost instantly. If we do have a long dry spell spike the lawn with a garden fork, this will allow the water to enter the soil more easily when rain does fall.
- Water containers every day in hot weather and more so if it is very windy - this is best done early in the morning or in the cool of the evening. Hanging baskets will need a good soak - do not be fooled by the fact we have had rain, often baskets are sheltered from the rain by the wall they are attached to. You can also reduce the frequency of watering by using larger planters.
- Water borders, if necessary, then mulch. Most established trees and shrubs will survive quite long spells of dry, hot weather. But water any newly planted shrubs and trees - give them a good soaking, it is better to give a few a good soak in rotation than all of them a little water each day.
- Clear excess pondweed - and top up the water if necessary.
- Deadhead like a demon - do this religiously. 'Dead heading' is removing /cutting off any flowers that have faded or lost their petals; it encourages more flowers to form and prevents flowers from setting seed too early.
- Prune and train cordon, espalier and fan trained fruit trees.

I suspect many more of us will be 'getting away' this summer, if so, make sure everything is 'ship shape' before you go and book a friendly neighbour or relative to come in and water and harvest the produce.

*That's all for this month, enjoy your gardens, J.*

Jane Dale of 'Designed Gardens'. Tel: **07983 392 411**.



## WHERE IN BEVERLEY?

*The White Horse above the White Horse Inn entrance*



## WHAT IS IT?

*A hairdryer*

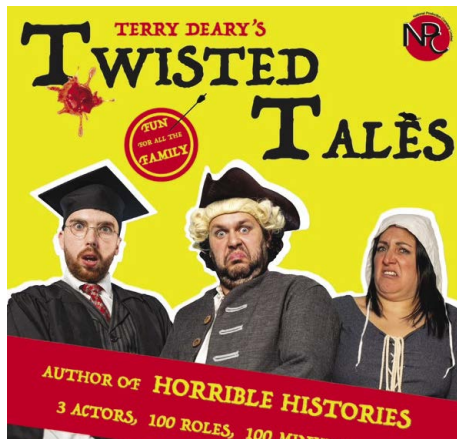




# A MESSAGE FROM ANDREW ALDIS, GENERAL MANAGER OF EAST RIDING THEATRE

*It's the new season at East Riding Theatre and we'll be publishing our exciting new What's On guide later this month. The guide will help you to plan your visits to the theatre all the way to Christmas.*

We've got three of our in-house or associate productions set to be performed, a myriad of music events, some comedy shows - including a new 'Laugh 'Til It Erts' event that we hope to make a regular fixture.



We have music events ranging from folk to musical theatre to prog rock to blues and swing, and we'll be welcoming Twisted Tales from the creator of Horrible Histories.

At the end of September, we'll be premiering Gladys: A Beverley Love Story, a true-to-life and heart-warming tale of enduring love. Written by Jane McLaughlan and directed by Mike Friend. This is going to be one of those lovely feel-good shows to see us through autumn and into the colder months.

Our friends at Other Lives Productions will be presenting Landmarks, the tale of Wilf the farmer, a new tractor, the fear of disaster from the arrival of a stranger and the interference of an eccentric busybody. A funny and thought-provoking story.

At Christmas, we'll be presenting Letters from the Lighthouse, telling the story of sleuthing Olive, who, in 1941, has been evacuated from London to the Devon coast where she embarks on solving the mystery of something dark and impossibly dangerous.

Letters from the Lighthouse has been adapted from Emma Carroll's novel of the same name and, will again, be directed by Mike Friend. Last year's show at Christmas, Frost Hollow Hall, was also written by Emma Carroll.

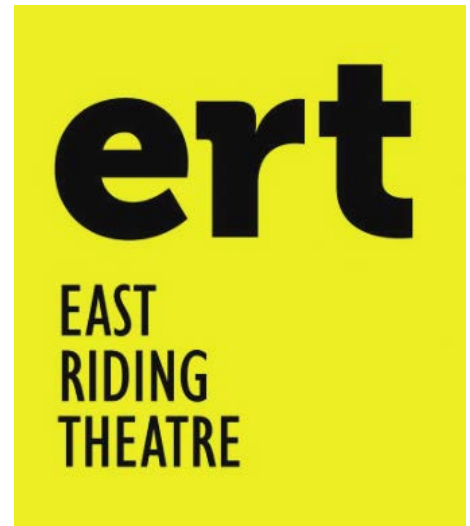
In August, East Riding Theatre will be presenting three weeks of summer schools for young people of different age groups.

Mike Friend will use his time before directing our in-house productions to lead these sessions, creating a unique piece of theatre, and performing it on our professional stage.

As a theatre, we're still struggling with the after-effects of the pandemic.

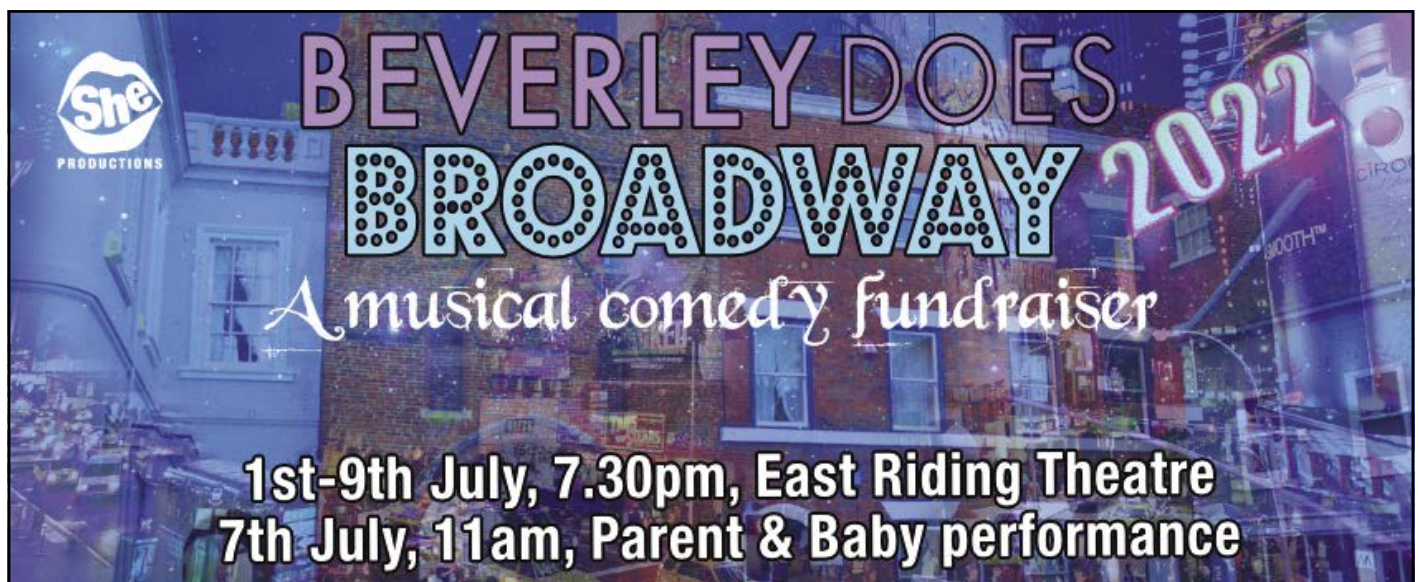
Audience numbers continue to be reduced and we know people are nervous about coming back to social occasions like a trip to the theatre.

We understand and we want to help. If you want a chat about it or if you'd like to have a look



around the theatre before you commit to buying tickets, then let us know. We'd be delighted to show you the venue and what we're doing to keep you safe.

We hope to see you soon.





# SUMMER LIFT OFF!



Do you want the opportunity to create and perform in a theatre, make new friends and have lots of fun this summer?

East Riding Theatre's Summer Schools are back and this year there is something for everyone!

We are offering week long courses for three different age groups:

**Ages 7 - 11 - Mon 1st Aug - Sat 6th Aug 2022**

**Ages 11 - 14 - Mon 8th Aug - Sat 13th Aug 2022**

**Ages 14 - 19 Mon 15th Aug - Sat 20th Aug 2022**

Young people will develop skills and improve their confidence in acting, movement, singing and even circus skills! No experience is necessary – just plenty of enthusiasm and a commitment to taking part, having lots of fun and making new friends.

This is a unique opportunity to take part in creating an original piece of theatre and performing it on a professional stage.

This year's *Summer Lift Off* will be led by director **Mike Friend** who has worked in performing arts education all his life. He was the founder and director of Performing Arts at Hurtwood House for 14 years, has directed national productions for Stagecoach and currently works at the Lyttelton Arts Factory in New Zealand. Mike has established an education programme that currently has over 140 students in music, theatre and dance. Mike has also had a long relationship with ERT and directed *Christmas Carol*, *Oliver Twist* and *Sparrow*.

“Working with Mike on the summer schools was an inspiring and exciting experience that massively boosted my confidence on and off stage.”

– Evie Guttridge

“Working with Mike was a great opportunity, he treated you with respect and allowed you the freedom to experiment as an actor, whilst harnessing your potential”

– Oliver Cooper

For more information visit [www.eastridingtheatre.co.uk](http://www.eastridingtheatre.co.uk)



Department  
for Education

or call us on 01482 874050



EAST RIDING  
OF YORKSHIRE COUNCIL



# WHAT'S ON IN BEVERLEY

Tell us about your event!

E-mail [info@justbeverley.co.uk](mailto:info@justbeverley.co.uk)

Telephone **01482 679947**

For more events visit  
[justbeverley.co.uk/events](http://justbeverley.co.uk/events)

**Friday 1st - Monday 4th July**

• **Jubilee Flower Festival**

Beverley Minster. 9am - 4pm, Sun 1pm to 4pm.  
Tickets £6. [www.beverleyminster.org.uk](http://www.beverleyminster.org.uk). U18's  
FREE. Thursday 30th VIP preview 7pm - 9pm.  
Tickets £12 includes drinks and canapes.

**Friday 1st - Saturday 9th July**

• **Beverley Does Broadway**

7.30pm at East Riding Theatre. She Productions are putting on a show. Back by popular demand after a sell-out run in 2015 and 2018, this troupe of musical comediennes will transport you to the West End. With classics from your favourite West End shows, everyone can enjoy some of the world's most popular tunes...with a twist. Tickets: £13.50 Standard / £11.50 Under 23 & Full-Time Students / £11.50 Parent and Baby (Babes in arms go free).

**Wednesday 13th July - 10.17am**

• **Queen's Baton Relay - Batonbearer, Jo Ramsey**



**Beverley Minster  
Jubilee Flower Festival**

Friday 1 July	09.00 - 16.00
Saturday 2 July	09.00 - 16.00
Sunday 3 July	13.00 - 16.00
Monday 4 July	09.00 - 16.00

Tickets £6 at the door or online at [www.beverleyminster.org.uk](http://www.beverleyminster.org.uk)  
Under 18s FREE. Cash or contactless. Last entry 15.30  
REFRESHMENTS available

Thursday 30 June - 19.00 - 21.00  
VIP Preview Evening with drinks and canapes  
Tickets £12 available in advance only at [www.beverleyminster.org.uk](http://www.beverleyminster.org.uk)



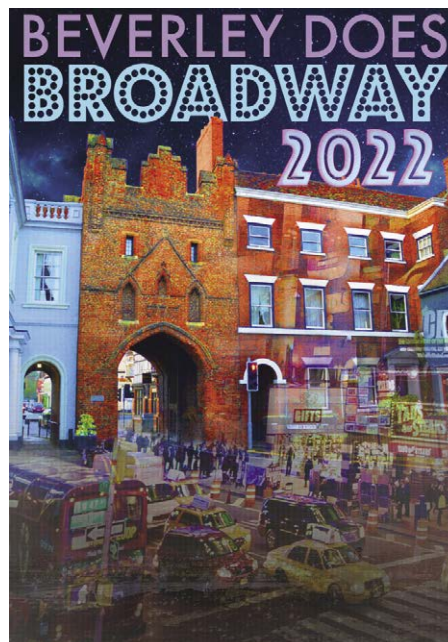
**HUMBERSFF**  
Speculative Fiction

The Kings Head  
Saturday Market, Beverley

**JULY 24TH**  
5.30PM

Guests  
**Susan Oke**  
&  
**Carl F Northwood**

[www.humberspeculativefiction.co.uk](http://www.humberspeculativefiction.co.uk)



**BEVERLEY DOES  
BROADWAY  
2022**

## NORWOOD NITES Community Cinema @ Norwood Church

**We are back!! We warmly invite you to join us again or, for the first time to our monthly film night!**

A new programme running from June - August (break from Summer in September) October - December 2022.

Due to Copyright we are only allowed to display film titles on the Church premises. Films shown in the schoolroom to the rear of the Church. Refreshments and Raffle from 6.30pm.

**Monday 11th July at 7pm**

A 1981 Scottish coming-of-age romantic comedy film written and directed by Bill Forsyth and starring John Gordon Sinclair, Dee Hepburn and Clare Grogan. The film is set in and around a state secondary school in the Abrohill district of Cumbernauld.

**Monday 8th August at 7pm**

Jo March reflects back and forth on her life, telling the beloved story of the March sisters - four young women each determined to live life on their own terms. Little Women is based on the novel, Little Women.

Ring or message **07903 136996** for more film details.

If you require transport to and from this event please contact Beverley Community Lift on Tel: **01482 868082**.

## BEVERLEY PHOTOGRAPHIC SOCIETY - JULY'S PROGRAM

**This month we are holding an exhibition of members work in St Mary's Church from 11am from Monday 18th until 4pm Saturday 23rd.**

**Tuesday 5th July at 7pm** - Meet at the Rose and Crown for members to show images from recent visits for critique.

**Saturday 16th July at 10am** - Visit to Brighton airfield. YO8 6DS for the Real Aero Clubs G-George day.

**Tuesday 19th July at 7pm** - Meet at the Rose and Crown.

**Wednesday 27th July at 11am** - Visit to YWT Spurn Point. HU12 0UH. Safari trip and lighthouse visit.

**Tuesday 2nd August at 7pm** - Meet at the Rose and crown.

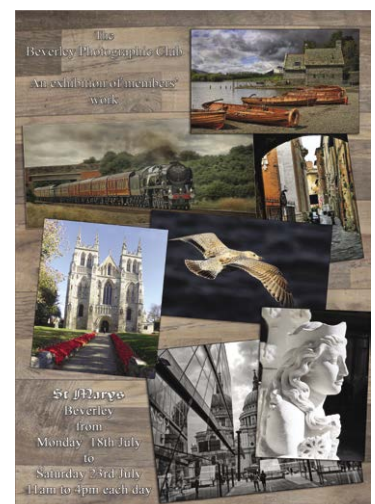
**Tuesday 9th August at 11am** - Visit to Tythe Farm Gardens, Wansford. YO25 8NP.

If you are interested in photography, please come along to one of our meetings and meet the members.

No commitments. Join us on Facebook:

[www.facebook.com/groups/beverleyphotographyclub](https://www.facebook.com/groups/beverleyphotographyclub)

If you don't want to join the club but are interested in a particular presentation or visit you can join us for £3 by prior appointment, **07512 008894**. We are members of the Yorkshire Photographic Union and affiliated to the Photographic Alliance of Great Britain. <https://ypu.org.uk/> For information contact [billbevphoto@gmail.com](mailto:billbevphoto@gmail.com)



The Beverley Photographic Club  
An exhibition of members' work

St Mary's Beverley  
from  
Monday 18th July  
to  
Saturday 23rd July  
11am to 4pm each day





# NEW LOOK WATERSIDE FILLING STATION HULL ROAD, BEVERLEY



**100 FREE\***  
COSTA COFFEES



**100 FREE\***  
TANGO ICE BLASTS



Pop in and say **HELLO** to our friendly team on **Saturday 16th July** at the official launch of the new look **Waterside Filling Station** on **Hull Road, Beverley!**

To celebrate, we'll be giving away **100 FREE COSTA Coffees, 100 FREE Tango Ice Blasts** and lots of other freebies. There's also the **CHANCE TO WIN £30 WORTH OF SHOP GOODS** when you spend in-store on the day!

\*VALID SATURDAY 16th JULY 2022 ONLY





FLEMINGATE  
BEVERLEY

FASHION | FOOD | FILM | FUN

THE RETURN OF

# Summer Fun!

Join us at Flemingate **every Wednesday** during the **summer holidays** for **FREE** Family Entertainment.  
**WEDNESDAY 27<sup>TH</sup> JULY TO WEDNESDAY 31<sup>ST</sup> AUGUST**  
**NO BOOKING REQUIRED**

*Just turn up and have FUN!*



FOR MORE INFORMATION TAKE A LOOK AT OUR WEBSITE  
**FLEMINGATE.CO.UK**



@FlemingateBev



FlemingateBev



FlemingateBeverley

