

just

ISSUE 55

BEVERLEY

PICK ME  
UP, I'M  
FREE

THE TIGER INN



# ROARING BANK HOLIDAY BEER FESTIVAL

NEWS, WHAT'S ON, LIFESTYLE, FEATURES, PUZZLES, PHOTOS & MORE



To arrange a **FREE** meeting  
call us on 0845 308 2288  
or visit [www.stipendia.org.uk](http://www.stipendia.org.uk)



## Your Partners in Payroll

Changes in payroll. Have you got it right?

Benefits in kind / informing HMRC of changes

Outsource your payroll today and be rest assured everything is taken care of!

Are you:

- Making the Correct Pension Contributions?
- Aware of the Minimum Wage Rates?
- On top of the Statutory Sick and Maternity Pay Rates?
- Making the most of your Payslips?

Improve business  
performance by  
outsourcing payroll

Registered Office:  
4-6 Swabys Yard, Walkergate,  
Beverley, East Yorkshire. HU17 9BZ







## CONTENTS

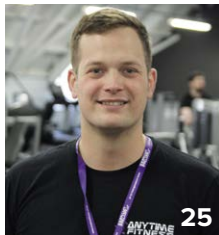
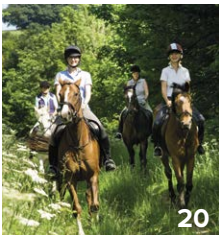
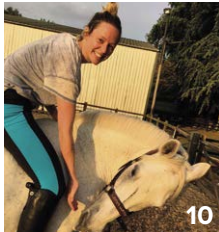
Letters from the Editors 3  
News 4, 5  
PARKWAY CINEMA 6, 7  
EAST RIDING THEATRE 35

## FEATURES

Positivity can be a Powerful Business Tool 8  
Excellent progress at ERC on new IoT 16  
Walking and Outdoors Festival 20, 21  
Tiger Inn's First Beer Festival 30  
Beverley/Lemgo Twinning 40th Anniversary 31

## REGULARS

Art & Culture 4, 15, 32, 33, 35  
Competitions 4, 7, 34  
Competition Winners 4, 7, 11, 24  
Countryside 4, 20, 21, 28, 29  
Education 5, 16  
Fashion 11, 13  
Finance 16  
Fitness 20, 21, 25, 27  
Gardening 28, 32  
I've Been Thinking 22  
Lifestyle 4, 5, 12, 20, 33  
Literature 33  
Motoring 26  
Pets 10  
Photos 18, 19  
Puzzles 24  
Sport 27  
Travel 12, 31  
What's On 30, 32, 34, 35



### Competition Terms and Conditions

Competition answers should be emailed to [competition@justbeverley.co.uk](mailto:competition@justbeverley.co.uk) before the closing date with the competition title in the subject field. Include your name, address and daytime contact telephone number along with your answer. Winners will be notified within 1 week of the closing date and MUST be available for publicity purposes for **Just Beverley** magazine, website and Facebook page and the prize provider. Photographs are usually taken the weekend after the prize-winners have been notified. The judge's decision is final. No cash alternative is offered. Details may be used for marketing purposes by **Just Beverley** and the prize provider and for website analytics by **Just Beverley**.

### Contributors:

Julian Minshall, Linda Johnson, Rich Manville, Lara Blythe, Clare Atkinson, Jane Dale, Rich Hayes, Lauren Middleton, Glyn Myerscough, John Olivant, Colin Raynor, Karen Shead, Sam Walton, Clint Wastling, Nathan Wilson.

### REMEMBER!

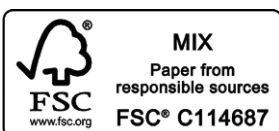
If you see examples of anti-social behaviour or other types of low-level crime, do report it to the appropriate authorities. Without knowledge, the Police and Council cannot put in place processes and procedures to combat it! Cyclists without lights, on one wheel, traveling the wrong way down a one-way street put other road-users in danger - let the Police know immediately!

**POLICE - Emergency 999, Non-urgent 101.**

**ANTI-SOCIAL BEHAVIOUR (East Riding of Yorkshire Council) - 01482 393939.**

### You can pick up the magazine from:

Parkway Cinema, Flemingate, Beverley Tourist Information, Beverley Library/Treasure House, Tesco, Morrisons, East Riding Leisure Beverley, East Riding Theatre, Browns café, Beverley News, Boyes, Tesco café, Colette and Tyson Garden Centre, Beverley Garden Centre, Cherry Tree Garden Centre, Mace News Saturday Market, Co-op Food Lincoln Way, Tickton News, Costcutter in Walkington, Molescroft News, Grovehill Convenience Store, Maple News, Leconfield PO, Willerby News, Poundland, Halfords, East Riding Community Hospital, Bishop Burton PO, Leven PO, The Altisidora, Cherry Burton PO, Barkers of Cottingham, Middleton-on-the-Wolds PO, Light Dragon at Etton, Gnu at North Newbald, Monks Walk, Hayride, Sally's Deli, Ferguson Fawcett at Walkington, THECREATIVELAB, health centres, churches, cafés, hairdressers and more!



Please pass your Just Beverley on or recycle it responsibly.  
Printed by: Jadan Press.

## LETTER FROM THE EDITORS



Summer is here! Whether you are holidaying in this country or abroad, send in your holiday stories and amusing pictures.

Remember the slogan SLIP, SLOP, SLAP to protect yourself and your loved ones

from the sun's rays - SLIP on a t-shirt, SLOP on the sun cream and SLAP on a hat. And keep a (reusable) bottle of water with you, too, so you can stay hydrated! This is especially important if you are doing the new Beverley Westwood parkrun on Saturdays at 9am - the summer sun can be deceiving!

If you have pets, do consider them in hot weather. Lauren Middleton has some great advice on Page 10.

### Julian.



The highlight of the year at Beverley Racecourse has to be Flemingate Ladies Day, when the dress-code is 'dress to impress' and the clientele is probably more interested in socializing than the racing! We love the ambience of Ladies Day, whether in the

town or on the racecourse, so if you see us with our cameras, give us a pose and check out our Facebook page.

The Racecourse Pastors and Beverley Street Angels work extra hard on Ladies Day, ensuring everyone has a good time and comes to no harm. If you are enjoying a drink, please remember alcohol dehydrates and if it is a hot day, you will need to take more water onboard. Our Street Angels always have water with them as they patrol the town during the evening of Ladies Day, so there's no need to suffer in silence. Do acknowledge these trained volunteers who do so much to aid our night-time economy.

On Ladies Day or any day, be happy!

### Linda.



'Community Publication Award'  
Shortlisted Nominee  
2017 & 2018



REYTA  
Remarkable East Yorkshire  
Award Nominee 2016  
'Best Newcomer'

## GET IN TOUCH WITH US:

Website: [justbeverley.co.uk](http://justbeverley.co.uk)

Email: [info@justbeverley.co.uk](mailto:info@justbeverley.co.uk)

Telephone: 01482 679947

Twitter: @JustBeverley

Facebook: [facebook.com/justbeverley](https://www.facebook.com/justbeverley)

If you would like copies for your business to distribute to staff and customers, call Just Beverley on 01482 679947.



# BEVERLEY WESTWOOD PARK RUN A HUGE SUCCESS

Every Saturday at 9am, you can join in a 5k run/jog/walk across Beverley Westwood with hundreds of other parkrun enthusiasts. It's not a race, it's you against the clock! And it's free - but do register first or you don't get a time.

Organised by volunteers, there are now more than 600 parkruns in the UK! They are all over a 5k distance and all start at 9am. Some parkrun addicts travel countrywide to take part - Beverley Westwood could tick several boxes as it starts with a 'B' for 'Alphabet' parkrunners, but also has 'West' in its title for those following the points of the compass.

It's a social event, especially for those who prefer to walk or jog, rather than run. Many use their local parkrun to get fit, or for training for other events. Martyn Gibbs is training for an event in September called 'Endurance' which echoes the fitness levels required by British Special Forces - this 5k means he can run with his load on his back at the same

speed as his daughter, so they can do the run together. Martyn was the first Beverley Westwood parkrunner to compete the 5k with a load on his back, his daughter was the first to complete it carrying a teddy bear!

It's a great way to start a Saturday! Everyone enjoys parkrun! If you don't fancy actually taking part in the 5k, there are always opportunities for volunteers.

Find out more at [www.parkrun.org.uk/beverleywestwood/](http://www.parkrun.org.uk/beverleywestwood/)



# ARE YOU A POET? WHY NOT ENTER THE FESTIVAL OF WORDS POETRY COMPETITION!



You have until November 30th to write a poem on the theme of 'My Mind, My Thoughts' which will be judged by a panel of published Yorkshire poets, including James Nash, for cash prizes.

Enter your poem to be judged anonymously to win the prestigious Larkin Prize worth £500 for the poem considered to be the best use of imaginative use of language and poetic form. There's also prizes of £200 and £100 for adults in second and third places, prizes of £75 for secondary school pupils, £50 for primary school pupils and four highly-commended prizes of £25 each for adults and school pupils. What's more, the winners get to read their own work at a special event in January at North Bridlington Library.

Entries can be made online at [www.festivalofwords.co.uk](http://www.festivalofwords.co.uk). They cost £3 for adults, and schoolchildren of any age can enter free of charge. Follow the East Riding Festival of Words on social media @ERWordfest.

# EDWARDIAN BEVERLEY: A SNAPSHOT IN TIME EXHIBITION NOW OPEN AT THE GUILDHALL

Experience the people and places of Beverley as they were at the start of the 20th Century in photographs taken on the Box Brownie camera.

Fiona Jenkinson, curator of the Guildhall, said: "We have taken a fairly loose approach to the Edwardian period as, strictly, it was the time when Edward VII was on the throne from



1901 to 1910. However, for the purposes of this exhibition, we considered it to be the period during which Britain paused between the rigidity of the Victorian era and the chaos of global war.

"After this time the world had changed, and we generally look back at the Edwardian period as a somewhat romantic age. Luckily for us, it was also a time when ordinary people became able to take their own photographs with the coming of new, cheap cameras, so the exhibition is able to draw on the wonderful images of real life taken by ordinary people, as opposed to the posed studio photographs of earlier years."

The free exhibition runs until 22 November 2019. You can see it from 10am to 4pm every Wednesday and Friday until 30 October and then 10am to 4pm on Fridays and 10am to 1pm on Wednesdays.

# HELP THE HEDGEHOG! FIVE TIPS TO MAKE YOUR GARDEN MORE HEDGEHOG FRIENDLY

Sadly, in both urban and rural areas across Britain hedgehog numbers are in decline. Our spiky friends are slowly being sidelined as their habitats are reduced and they have access to fewer gardens. Our roads don't help and pose a serious risk to the little 'hog!

Hedgehog Street is an initiative encouraging everyone to get involved and do what they can to increase hedgehog numbers. So here are five easy tips Hedgehog Street suggest to make your own garden more hedgehog friendly:



Photo: Brian Austin

- **Link your garden:** Gardens nowadays tend to be enclosed by a fence or wall - not helpful for the wandering hedgehog! Making a hole in your fence or wall means hedgehogs can roam more freely and access more gardens.
- **Create a wild corner:** A wild corner where plants have been allowed to grow freely, without being pruned could provide an ideal nesting site for hedgehogs. Insects will also gather here providing a tasty hedgehog meal!
- **Make your pond safe:** Hedgehogs can swim! Getting into a garden pond for a dip may be no problem - getting out is the trouble! Create a small slope using stones, wood or wire so hedgehogs can get out of ponds more easily.
- **Put out food and water:** The only drink you should put out for hedgehogs is water. They also appreciate chopped peanuts (not salted), and 'meaty cat and dog food'.
- **Make a home for hedgehogs:** Log piles, spaces under sheds, ready-made houses or even a DIY home (try your hand!!) offer a lovely refuge for our prickly pals!

## COMPETITION WINNER

Congratulations to Alix Johnson from Gilberdyke who won the meal for 2 at Mirage Cocktail Bar & Bistro.



Photo: Angela Hodge

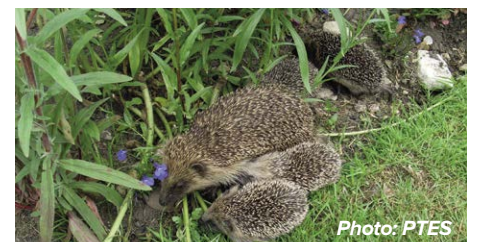


Photo: PTES

See [www.hedgehogstreet.org](http://www.hedgehogstreet.org) as well as 'The State of Britain's Hedgehogs 2018' report for more information. The Peoples Trust for Endangered Species (<https://ptes.org>) and the British Hedgehog Preservation Society ([www.britisshedgehogs.org.uk](http://www.britisshedgehogs.org.uk)), both charities supporting the Hedgehog Street scheme, offer further details.



# COMBINING SALT AND SOUND THERAPY IN A SALTY GONG BATH!

**On Sunday 4th Aug 14:30-15:30 Salt Revive are hosting a Salty Gong Bath! A one-of-a-kind collaboration, offering another unique experience, on top of the sold-out yoga events.**

Sound therapy has been around for thousands of years and uses vibrational sound and frequency to help ease pain, reduce stress and create a deep sense of peace and wellbeing for better health. Combined with the salt therapy which could also help with respiratory and skin conditions, you'll come out feeling like new!



The session is completely dry - it's called a 'gong bath' due to the sound 'waves' that will envelop you.

Sarah who will be running the session came across gong baths as she herself suffers from Fibromyalgia and sound therapy was recommended to her as an alternative pain relief. After travelling some distance to her first gong bath she was amazed at how the session alleviated her pain and other symptoms. So much so, she then went on to train in sound therapy, bought herself some gongs and set up her own business!

All you have to do is come, lie on our blankets and mats in the salt room and let the powerful and therapeutic gong bathe you in sound waves and vibrations to help re-tune and re-balance you on a physical, mental, emotional and possibly spiritual level, bringing you back into harmony.

All this during a salt session AND you will also benefit from the anti-bacterial and anti-inflammatory properties of the salt.

We only have 10 spaces available for this unique experience, which is £38 per person and payment must be made upfront. Please call **01482 679453** to book your space now. If the session is booked up on August 4th, alternative sessions will be available. Register your interest on **01482 6795453!**



## ST MARY'S PRIMARY SCHOOL RATED 'EXCELLENT' BY SIAMS

**St Mary's Church of England Primary School in Eden Lane, Beverley, was recently visited by inspectors for Statutory Inspection of Anglican and Methodist Schools. The 'Excellent' rating is the highest possible under the new inspection framework and is the first awarded to any Church school, not only in the East Riding but in the whole of the Diocese of York.**

Headteacher Laura Wallis is delighted with the outcome of the inspection and the comments within the report which include: "Every pupil is seen as a 'unique individual' and as a result, pupils achieve well"; "Leaders ensure that the school's vision is lived through an unwavering commitment to ensuring all pupils flourish academically and spiritually" and "Parents speak highly of the consistent support available to them and justifiably demonstrate great confidence in the school." She said; "This report builds on our Ofsted inspection which rated us as Good overall with Outstanding for personal development, behaviour and welfare. It is testament to the pupils, teachers, governors and parents and our strong link to St Mary's Church

and Rev'd Becky Lumley that we have achieved such positive and encouraging feedback."

The SIAMS framework considers seven strands which empower the school to use their distinctive Christian vision to enable children and adults to flourish. It encourages children to challenge contemporary issues such as injustice, which St Mary's enacts through Christian Aid's Global Neighbours Accreditation Scheme and the Modeshift Stars Gold Award - with one child writing to the local MP to ask for help in securing the future of the Food Bank. It also looks at the way the school's Christian ethos impacts outside of its gates. The SIAMS inspectors also noted the way in which the school develops relationships and takes the wellbeing of children and adults extremely seriously.

There was special mention of collective worship and the way the pupils in the school's Worship Committee get involved in planning daily worship and the church services held each half term at St Mary's. The Worship Committee said they particularly enjoy singing hymns and worship

songs with 'When all the Saints', 'Amazing Grace' and 'How Great is Our God' mentioned as favourites! But the school also provides space for peace, calm and reflection which is so important in our busy lives.



## DO YOU HAVE SPACE TO STORE SANTA'S SLEIGH?

**Every year, Santa very kindly gives up some of his time to help the Beverley Westwood Lions raise money for local good causes. Instead of bringing his own sleigh all the way from Lapland, he uses the one the Westwood Lions have made especially for him.**

The only problem is that they garage where the sleigh is housed until the Christmas season is not available to the Lions anymore.

Do you have a space where it could be housed?

If you could help Beverley Westwood Lions, please get in touch with Judy Sagar on **01482 868179**.



**STOP PRESS!** 

**Do you know anyone with an underused private pool who would be prepared to rent it out?**

Sportsability are looking to expand their swimming programme but need the facilities to do so! Any size of pool would be considered but it must have changing facilities, toilets and parking. All areas considered. The utmost care will be taken of the pool and an hourly rate negotiated. Call Suzanne or Molly on **01482 229676**.





**EVERY THURSDAY AT 10.30am**  
(doors open 9.45am)

Join us for a free brew and a natter and enjoy some great films on Beverley Parkway's Big Screen. Only £4.20 with drink and biscuits included. Aimed at 55s and over. Films subject to change.

**Thursday 1st August -**

**Wild Rose (15)**

Starring: Jessie Buckley, Julie Walters

**Tolkein (12a)**

Starring: Nicholas Hoult, Lily Collins

**Thursday 8th August -**

**Tolkein (12a)**

Starring: Nicholas Hoult, Lily Collins

**Pond Life (15)**

Starring: Tom Varey, Esme Creed-Miles

**Thursday 15th August -**

**Pond Life (15)**

Starring: Tom Varey, Esme Creed-Miles

**Red Joan (12a)**

Starring: Judi Dench, Sophie Cookson

**Thursday 22nd August -**

**Red Joan (12a)**

Starring: Judi Dench, Sophie Cookson

**The Hustle (12a)**

Starring: Anne Hathaway, Rebel Wilson

**Thursday 29th August -**

**The Hustle (12a)**

Starring: Anne Hathaway, Rebel Wilson

**Rory's Way (12a)**

Starring: Brian Cox, Rosanna Arquette

## PENGUIN PARTIES



**ONLY  
£195**

- Suitable for ages 5 to 12
- Up to 40 guests (additional charge for extra guests)
- Party games in a private function room with Parkway Penguin
  - Tea and coffee for parents on arrival
- Personal Photo montage on screen followed by your own film screening

For more information,  
please contact a member of staff

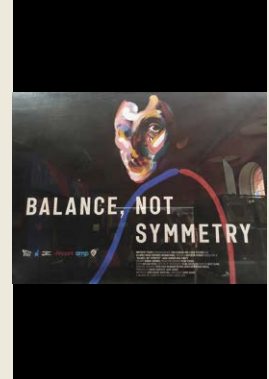
These are the films scheduled to open in August - all are subject to change.  
Check out up-to-date cinema listings at [www.justbeverley.co.uk/cinema-times](http://www.justbeverley.co.uk/cinema-times)



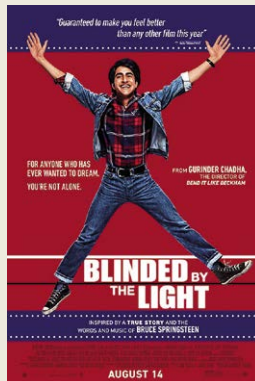
1st August



2nd August



2nd August



9th August



9th August



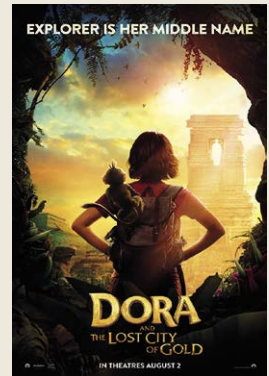
9th August



14th August



16th August



16th August



23rd August



23rd August



30th August



# YOUR LOCAL INDEPENDENT CINEMA



## HAVE YOU HEARD OF THE AMAZING BUBBLE MAN?

Louis Pearl is one of the world's leading bubble-ologists. He began in 1980 by making, demonstrating, and selling a toy called the Bubble Trumpet on a street corner in Berkeley, California. Eventually his toy company had 147 products with international manufacturing and distribution. But Louis found that he preferred playing with the toys over selling them! He sold Tangent Toys in 2002. Since then he has been touring the world, performing hundreds of shows every year. And this month, he will be at Parkway Cinema demonstrating bubble art, tricks, science and fun!

On August 30th, at 2pm, you will be amazed by the incredible Bubbleman's bubbles! There are dancing bubbles, layered bubbles, bubbles made by hand, karate-chopped bubbles, fashion bubbles, smoky bubbles, bubbles on a rope, bubbles in and around, pretty bubbles, you-name-it bubbles. The show is funny, goofy, educational and entertaining and kids and adults alike love it. This Bubbleman is cool!



The show is bound to be a sell-out so get your tickets now! Tickets cost £10/£9/£35 family with 2 children minimum and are available from <https://beverley.parkwaycinemas.co.uk/Ticketing/> or phone 01482 968090.

## COMPETITION

How would you like to win a pair of tickets to see *The Amazing Bubbleman*? Parkway Cinema is offering a pair of tickets to the lucky winner of our competition.



All you have to do to win the tickets is to answer the following question:



**What was the Bubbleman's first toy?**

Send your answer by email to [competition@justbeverley.co.uk](mailto:competition@justbeverley.co.uk) by August 14th. Put 'Bubbleman Comp' in the subject box with your answer, name, address and daytime telephone number in the body of the email. The winner will be chosen at random after the closing date and informed as soon as possible. Winners must be available for publicity purposes for Just Beverley, Parkway Cinema and the Amazing Bubbleman. There is no cash alternative.

## SLEEPING BEAUTY PANTOMIME TICKETS NOW ON SALE!

TaleGate Theatre Productions are back at Parkway this Christmas for their second year. After the giant success of *Jack and the Beanstalk* in 2018, this year they are presenting the panto of your dreams - *Sleeping Beauty*. This is Beverley's local pantomime with a talented chorus of thirty children representing ten dance schools from the East Riding area as well as a professional cast.

Returning from last years' production will be Alex Foreman as Dame Queenie, Fi Hudson as the evil fairy Molevola and Megan Edmondson as Princess Aurora. They will be joined by TaleGate regular Justine Lee as the good fairy. You will recognise Justine from the Easter Panto 'The Little Mermaid'. A fresh face joining us is Patrick Coulter as Prince Valentine. Parkway are once again offering the chance to get your tickets for a bargain with the early bird prices available until 31st October. The Panto runs from December 15th to December 31st. Early Bird prices are £13 adult, £11.50 Concession, Family Ticket £40 (Family ticket includes four tickets with a minimum of two children). Pop into the Parkway to get your tickets now!

## COMPETITION WINNER

Congratulations to Lesley Coats from Driffield who won a pair of tickets to the Buzz Comedy Club.



Event cinema offers something a little different to mainstream films. Live and pre-recorded shows beamed in via satellite from all over the world. Here are the latest live streams that you can enjoy on the big screen at Parkway Beverley.

**Wednesday 31st July at 7pm -  
RSC: MEASURE FOR MEASURE**

**Thursday 1st August at 7.30pm -  
BALANCE NOT SYMMETRY WITH BIFFY  
CLYRO SET & Q&A (15)**

**Wednesday 21st August at 7.30pm -  
RUSH: CINEMA STRANGIATO 2019**

**Tuesday 10th September at 7.30pm -  
MARGARET ATWOOD - LIVE IN CINEMAS  
(12a)**

**Monday 16th September at 8pm -  
THE GAME CHANGERS & ADDITIONAL  
FOOTAGE**

**Tuesday 17th September at 7.15pm -  
RIGOLETTO ON THE LAKE**

**Thursday 26th September at 7pm &  
Sunday 29th September at 1pm -  
NT LIVE - ONE MAN TWO GUVNORS  
(ENCORE) (12a)**

**Tuesday 1st October at 7.15pm -  
PLACIDO DOMINGO: 50TH ANNIVERSARY  
GALA EVENING**

**Wednesday 2nd October at 7.30pm -  
ROGER WATERS US+THEM**

**Tuesday 8th October at 6.45pm -  
ROH: DON GIOVANNI**

**Thursday 17th October at 7pm -  
NT LIVE: MIDSUMMER NIGHT'S DREAM (12a)**

## LIVEshows

**Friday 30th August at 2pm -  
THE AMAZING BUBBLE MAN**

**Sunday 15th September at 7pm -  
THE BON JOVI EXPERIENCE**

**Sunday 13th October at 7pm -  
GIMME ABBA**

**Sunday 20th October at 7pm -  
TAKE THAT EXPERIENCE**

**Monday 28th October at 2pm -  
PANTO OF THE DEAD**

**Sunday 10th November at 7pm -  
THE COUNTERFEIT SIXTIES**



# POSITIVITY CAN BE A POWERFUL BUSINESS TOOL SAYS LARA BLYTHE

*We are surrounded by books and blogs outlining the benefits of a positive mindset and have been introduced to techniques from mindfulness and meditation to just spending more time in green spaces to relax the mind. Whatever our thoughts on the matter, does it really work? We think it does...*

Cultivating a positive outlook takes practice, especially if you are not used to it. However, the rewards are many. Looking at each of the positive things we have in our lives and what we do have makes us feel so much better and lighter than focussing on the things that have gone wrong or what we don't have. Positivity is infectious, generates enthusiasm, and is an attractive quality.

We all know those people whose energy and passion for life makes us feel good when we spend time with them. Don't we also want to work with others who are positive, committed and motivated? Imagine how difficult it is to work with someone who isn't all of the things - perhaps you even know someone!

There are myriad tips on how to cultivate a positive mindset. There are things you can do for yourself. For example:

- Develop or find some short phrases or mantras with a positive message - every little bit of positivity helps!
- Don't listen to/watch the news. Instead listen to your favourite pieces of motivational music, a TED talk, an audio book or podcasts that will give you inspiration and energy.
- Exercise. It is well known that exercise is beneficial to our physical and mental health.
- Gratitude. Being grateful for all the good things in our lives, the things that have gone well and the wonderful people that surround us. This practice encourages us to look for the good things in life.
- Practice mindfulness and spend time in the moment.
- Be compassionate to yourself, don't judge yourself and don't beat yourself up if things don't work out as you planned.



And things that have a positive impact on others:

- Smile! It costs nothing and may make someone's day!
- Practice random acts of kindness. Spontaneously perform an action or gesture that will benefit someone else.
- Be compassionate to others and don't judge. We all have our own individual circumstances and until you walk in someone else's shoes, you have no idea what they are.

Positivity breeds positivity and negatively breeds negativity. Think of skiing (yes, that's right, skiing!) Many skis travelling in the same direction produce sledging ruts, which become hard to escape. The brain works similarly, with thought pathways developing over time as we think the same way.

Changing the direction of the sledging ruts is at first hard, just as changing our way of thinking is at first a challenge. However over time, as the new direction is repeatedly followed, new pathways develop and old ones are covered over by new snowfall. The difference between a new thought pattern your old one is practice.



So, how does this translate into business? An upbeat approach is almost essential in the business world. Positive energy and enthusiasm is transferred to your colleagues and customers alike, resulting in happy colleagues and reassured customers.

Equally, a positive outlook will influence how you build your business network - getting to know others and building relationships through trust. Everyone wants to be around those who emanate the right attitude.

Approaching all potential business opportunities with a positive mind open to new possibilities, even when you don't feel like

it, is important - you never know what the next conversation could result in!

Business networking groups such as the Beverley Referral Business Network allows members to get to know the variety of other businesses within the group and build



knowledge and trust in those individuals and businesses. This then develops into referrals, recommendations and further networking opportunities. All relationships require optimism. In any relationship be it business or personal there are always low points and it is positivity that enables us to push through these times without giving up. As Adam Guttridge says: "We've all got a limited time on this planet and we all have to decide what we want to do with that".

It is all about taking the positive message from everything rather than automatically going with the negative perspective.

This was written in conjunction with Fran Dunning and Adam Guttridge, both members of the Beverley Referral Business Network.

For more information on the network please visit their website at <https://beverleyreferralbusinessnetwork.co.uk>



**SHOCKINGLY GOOD VALUE**

**£49 PER MONTH WEBSITES**

**PAY JUST £499 DEPOSIT**

**THEN JUST £49 PER MONTH**

**FOR A MINIMUM TERM OF 12 MONTHS**

**AND THEN PAY MONTH-BY-MONTH THEREAFTER**

**FOR A WEBSITE THAT GETS REAL RESULTS...**

**CALL NOW ON:**  
01482 428650  
[marketing@indicoll.com](mailto:marketing@indicoll.com)  
[indicoll.com](http://indicoll.com)

**INDICOLL**





# CAN YOU SPOT THE DEADLY MISTAKE IN THIS PICTURE?

Burton Electrical Solutions have been helping the good folk in the East Riding of Yorkshire for the last 10 years with their electrical requirements. The nature of the work is that occasionally there is a need to correct electrical work which others have carried out which can politely be described as 'sub-optimal' or, in some cases, such as this, 'downright dangerous'.

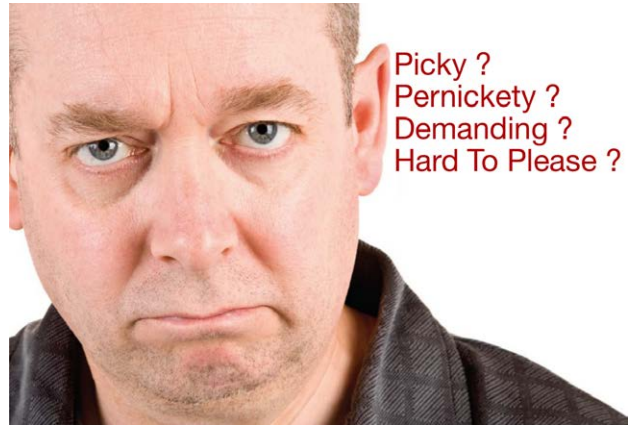
Have you ever wanted to 'really, really' listen to music in the shower, so much that you would risk your life and that of others to do so? Or have you thought it would be handy to have an extension socket right there in the bathroom so you could use your hairdryer without getting out of the shower? This person did, through bypassing all the electrical safety systems on the shower system and connecting in an extension socket.

Not only were they committing a criminal offence, they were seriously putting at risk every single person who used this shower. It doesn't take a massive amount of electrical current to kill you (it can be as little as a few hundred milli amps) and water is fairly good at conducting electricity, which is why we don't have electrical sockets in our bathrooms.



Sadly, every year in the UK about 70 people die and 1.2 million are injured in electrical accidents at home. A significant proportion of these could easily be avoided through the use of a little common sense and if in any doubt consulting a qualified electrical engineer. Remember that loose wires do cause fires. You can contact Burton Electrical on **01964 552769**.

# Need An Electrician?



Picky ?  
Pernickety ?  
Demanding ?  
Hard To Please ?

When You Want The Job Done Right The First Time. **Then We're The Right Electrical Contractors for YOU !**

Call Beverley's Premier Electrical Contractors Today On

01964 552769 / 07585 601730

**BEES BURTON ELECTRICAL SOLUTIONS**

[www.burtonelectricalsolutions.co.uk](http://www.burtonelectricalsolutions.co.uk)



# Hear CLEARLY again...

Never miss out on the sounds you love

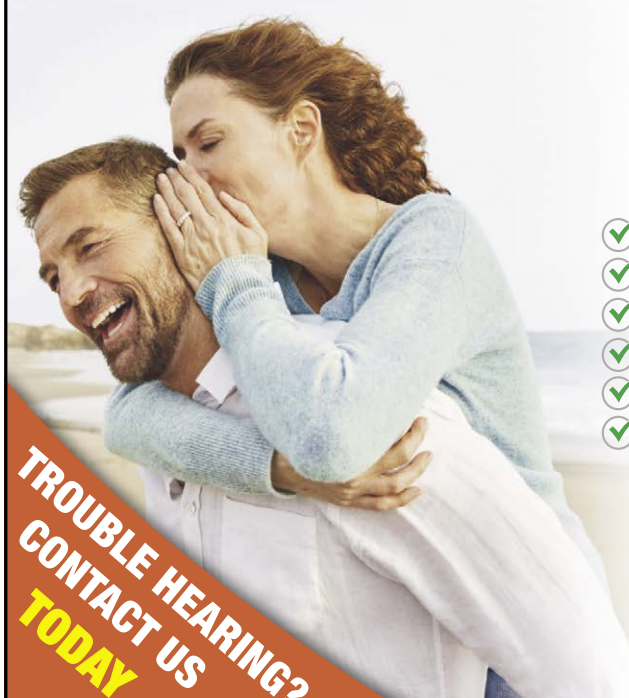
with the latest comfortable and invisible hearing aids

**FREE HEARING AID TRIALS\***

**FREE HEARING TESTS**

**INVISIBLE RECHARGEABLE & SPECTACLE HEARING AIDS**

**WAX REMOVAL SERVICE**



- ✓ **EASY** parking
- ✓ **HOME** visits available
- ✓ **FREE** aftercare
- ✓ **5 YEAR** warranty\*
- ✓ **5 YEAR FREE** batteries\*
- ✓ **INDEPENDENT** family business



Hearing aids don't have to be seen!

**TROUBLE HEARING? CONTACT US TODAY**

Clare House, 8-10 Baker Street, Hull HU2 8HP

**t: 01482 22 22 04**

[www.hullhearingcentre.co.uk](http://www.hullhearingcentre.co.uk)



**HULL hearing CENTRE**  
independent hearing aid audiologists



## LAUREN MIDDLETON - PETS' BEST FRIEND - STRAIGHT FROM THE HORSE'S MOUTH

*I can still remember the distinct 'outdoorsy' smell as I got out the car: the sound of clip-clopping hooves as these magnificent animals were lead past. I was four years old and I still remember experiencing a mixture of nervousness and excitement about my very first riding lesson. That smell is still one of my favourites and that very first lesson created a passion and love for horses and animals like nothing I'd ever felt before; it's stayed with me ever since.*



During my teenage years and early adulthood, every spare moment I had was spent with horses. Volunteering at my local riding school and building my knowledge at a small yard with 4\* eventer Gary Parsonage and his wife Camilla, before eventually owning my own horse. This was the pinnacle - a horse to call my own. Sasha maybe wasn't the most suitable 'first horse'; she was frisky and a difficult ride, but she taught me how to be patient, calm and find quiet ways to communicate with her. I had her for 13 lovely years before she sadly left us at 29 years old. Now I'm back from New Zealand, I'm making the most of the summer months by getting back in the saddle and riding with my cousin most days - it's a great feeling to be back on board!



Talking of summer months, it's really important that dog owners are keeping up to date with their dog's needs, especially on hot days. See my tips below:

- Keep dogs well-groomed all year round to ensure good coat and skin health.
  - Walk your dog early morning or evening during the hottest days of the year - they suffer like we do, but can't tell us!
  - If you must walk your dogs during the day, stick to grass. Hot pavements can burn paws.
  - Try to avoid travelling with your pet in your car in hot weather - they can really struggle. Never leave your pet in a car on a hot day.
- If you'd like to chat to me as to how I can help you and your pet, do call me on **07874 737961**.

## MR CARPETS

CARPET AND FLOORING SPECIALISTS



**31 YEAR ANNIVERSARY**  
31 years in business  
31 years of good, honest service  
31 years speaks for itself

**01482 872134**

3 Becks North, Beverley, HU17 0PR

[f mrcarpetsbeverley](https://www.facebook.com/mrcarpetsbeverley)

INTRODUCING

RODIZIO BAR & GRILL

SISTER BUSINESS

# MIRAGE

COCKTAIL BAR & BISTRO

Combining luxurious decor with industrial-chic detailing, Mirage is a contemporary Bar & Bistro combining fantastic food and drink and **live music EVERY Friday** evening making it one of Beverley's trendiest eateries & cocktail bars!

**COCKTAIL O'CLOCK**  
COCKTAILS £4.50 JUGS £12.95  
on selected cocktails  
SUNDAY - THURSDAY 5 PM - 7 PM • ALL DAY THURSDAY  
LATE CLUB SUN - FRI 10 PM - CLOSE

**2 PIZZAS AND A BOTTLE OF PROSECCO** **£28**  
Every Wednesday after 5pm  
until 31 August \*T&Cs apply

**ANY 2 TAPAS AND A DRINK** **£9.75**  
**SOUL PATROL**  
every last Friday of the month!

**COME AND SEE FOR YOURSELF!**

8 Wednesday Market, Beverley, HU17 9DG • Tel: 01482 880600 • [miragebeverley.co.uk](http://miragebeverley.co.uk)



# BROOK TAVERNER - HISTORY AND HERITAGE

*Although Brook Taverner is a recent name to Beverley, the Brook Taverner story began in 1912 when Mr Brook and Mr Taverner met on a boat travelling to Calcutta. They decided on their return to work together, selling linings and trimmings to manufacturers in the textile trade.*

In the 1980s Brook Taverner owned a made to measure suit factory in Leeds with a speciality for making clothes for films and theatre.

Today Brook Taverner is based in Keighley, West Yorkshire and has three divisions to its business.



The business grew and they started to sell cloth, woven in Huddersfield. Their customers were tailors, clothing manufacturers and small clothing retailers.

The business grew and survived difficult times during the Second World War when a fire in the Huddersfield office and warehouse badly affected the business. But, through hard work, the business recovered and developed.

Brook Taverner became well known for three qualities of polyester and wool fabric stocked in a multitude of colours. This fabric was extremely hard wearing and durable and ideal for corporate/business clothing.

The decision was taken to use their own fabrics to make garments and sell them to customers - hence the ready to wear business was born.

- Corporate / business clothing.
- Retail, wholesale, mail order and standalone stores.
- Cloth, selling to manufacturers and tailors. The same founding principles remain today as they did in 1912 of quality, style, attention to detail and value for money.

Whether for business or pleasure, Brook Taverner has the perfect style and fit, along with accessories to complete the outfit.



With the sale now on, Brook Taverner is even more affordable - do visit the store on Toll Gavel, Beverley, where Manager Lee Wardell and his knowledgeable staff will advise and guide you.

Brook Taverner is open seven days a week at 35, Toll Gavel, Beverley, telephone **01482 882356**.



**COMPETITION WINNER**


BROOK TAVERNER  
35 TOLL GAVEL

The winner of the prize draw competition to win a £250 voucher to spend at Brook Taverner was Mr Charles Cliff of South Dalton. Congratulations!




**BROOK TAVERNER**  
**35, TOLL GAVEL, BEVERLEY. 01482 882356**





**WHITE RABBIT**  
CHOCOLATIERS

◆ COOL OFF IN OUR ◆  
**CHOCOLATE CAFE**  
— Perfect for the Summer! —



*A taste of wonderland...*

16 Dyer Lane, Beverley, East Yorkshire, HU17 8AE  
Tel: 01482 679325    [whiterabbitchocolatiers.co.uk](http://whiterabbitchocolatiers.co.uk)  
Open 7 days a week  
Breakfast, Lunch & Afternoon Tea available Tue-Sat

## ASK THE EXPERT - WHAT'S THE DIFFERENCE BETWEEN A LATTE AND A FRAPPÉ?

*The beautiful thing about coffee is that all drinks are open to interpretation, and each outlet can be different. Here's a rough guide to summer drinks at White Rabbit.*

The latte, a very familiar drink, consists of hot espresso coffee topped up with warm steamed milk. But who wants a hot coffee in the hot summer sun? Bring on the blended iced latte; a hot espresso coffee topped up with cold milk, which is either poured over ice or blended with ice. Sometimes a little

sugar is added to offset the slightly bitter taste of cold espresso.

Here at White Rabbit we blend our iced lattes to give not just a cold drink but the full icy texture.

At some other outlets this may be known as a frappé. BUT, a White Rabbit frappé goes that step further and contains an additional scoop of vanilla ice cream to give a wonderful creamy texture! Swap vanilla ice cream for chocolate ice cream and you have a Mocha Frappé. Cool off with a coffee? Summer sorted!



For an extended version of Ask the Expert with Ed Hawkes, please see the **Just Beverley** website at <https://justbeverley.co.uk>.

## ONEWORLD TRAVEL - ICELAND

**Discover Iceland's Arctic North flying direct from Humberside Airport on Friday 14th February or Friday 13th March 2020 with Super Break.**

With packages available that include direct return flights from Humberside Airport, 20kg hold luggage and 5kg hand luggage, return resort transfers, 3 nights' accommodation in a choice of 3\* or 4\* hotels and TWO fantastic excursions worth £200pp, you can enjoy one of these once-in-a-lifetime, exclusive experiences from as little as £699pp or £499pp deposit\*.

Akureyri, North Iceland, is simply one of the most beautiful places on Earth. Although this stunning country is celebrated all-year-round for its fantastic views, cultural attractions and natural phenomenon, this contagious corner of the world is something special come the winter season. The Northern Lights dancing, giant whales feeding, hot springs steaming - you have to see it to believe it. So, if you're looking to uncover the natural wonders of Iceland, an Incredible North Iceland break is the perfect choice!



Explore the surrounding volcanic landscape, geothermal pools and roaring waterfalls with unmissable excursions, including 'Search for the Northern Lights' evening tour and 'Lake Myvatn - Land of Fire & Ice' full day tour where you can explore the breath-taking landscapes, volcanic lava fields, bubbling mud pools and beautiful waterfalls. Plus, with fantastic optional extras such as Whale Watching, Beer Spa visit, Myvatn Nature Baths entrance and much more, building your perfect North Iceland short break has never been easier.



**ONEWORLD**  
TRAVEL GROUP

# ICELAND



**Exclusive direct flights from Humberside Airport**  
**Includes two amazing excursions**  
**Departing Friday 14th February 2020**  
**Departing Humberside at 11:40**  
**Returning from Akureyri at 15:30**  
**From £699 per person**

**ONEWORLD TRAVEL GROUP**  
35 Saturday Market, Beverley HU17 8BE  
T: 01482 280081  
[www.1worldtravel.co.uk](http://www.1worldtravel.co.uk)



# BOING JEWELLERY - HANDMADE, HAND-POLISHED AND BRITISH-MADE IN BERKSHIRE

**BOING make tough bracelets, necklaces and rings for men and women inspired by the great outdoors.**

There's a jewellery brand from Berkshire which is creating a new fashion trend.

BOING make their pieces from genuine climbing and sailing ropes and leather which look great when multiple pieces are worn together.

The bracelets and necklaces fasten with magnetic clasps in stainless steel or sterling silver with silver plate, rose gold or yellow gold.

BOING's designs are unique, vibrant, unfussy, tough and tactile and appeal equally to both men and women, especially those who love the outdoors.

Bracelets are available as single or double skinny ropes or single thicker ropes, in many colours and designs, most with a choice of finish for the fastener.

Bracelets can be handmade to order, too, as well as available from stock at Guest and Philips, Flemingate!

BOING bracelets come in their own round embossed tin or pouch and have a 2-year guarantee.

For that perfect item of jewellery for the man or woman in your life who loves climbing, sailing and other outdoor pursuits, BOING has the perfect piece.



GP  
GUEST & PHILIPS

EXCLUSIVE TO  
GUEST AND PHILIPS:

TOMMY HILFIGER

CARAT\*  
LONDON

CLOGAU®  
GOLD OF ROYALTY

UNO<sub>de50</sub>

swatch<sup>®</sup>+



BOING  
BRACELETS  
FOR THE GREAT OUTDOORS

LINKS  
LONDON

CLAUDIA BRADBY  
*Paul Power*

CALVIN KLEIN

MONDAINE

KIT HEATH

BOING 

23A FLEMINGATE CENTRE, CHANTRY LANE, BEVERLEY HU17 0PW  
T: 01482 881001 | WWW.GUESTANDPHILIPS.CO.UK



FLEMINGATE  
BEVERLEY

FASHION | FOOD | FILM | FUN



MORE TO  
ENJOY  
AT  
FLEMINGATE

FABULOUS FUN, FOOD AND SHOPPING THIS SUMMER

FLEMINGATE.CO.UK



@FlemingateBev



FlemingateBev



FlemingateBeverley



# A FRESH FACE AT THECREATIVELAB



Photo Credit: Jamie Newson-Smith

**After two & a half years THECREATIVELAB gets a daily store manager.**

**THECREATIVELAB** at the **Flemingate in Beverley** is thrilled to welcome its first ever store manager: **Rachel Conroy (27)**.

The social enterprise that puts local artists, makers, designers and small businesses at the heart of the local shopping centre has, up until now, been run by the Community Interest Company (CIC) founders: Chris Kidd & Mikey Mathieson.

After two and a half years the space is in the position for them to hand over the reigns to upcoming retail talent.

Rachel has worked on and off in the space since it opened in 2017, learning more and more about the business and taking on more responsibility as she progressed.

Rachel has now stepped up to take over the day to day running of the store and is thrilled to have been given the opportunity.

Rachel said, "I love working at THECREATIVELAB and everything it represents. Since I started working here I have always hoped that one day I would get the opportunity to come on board full time."

She added, "I am thrilled to be entrusted with the responsibility to continue this exceptional space from day to day and am so grateful to Chris and Mikey for their continuing support in allowing me to progress at my job."

Chris Kidd said, "Rachel has consistently proved her ability in the field of retail and her commitment to our ethos is second to none. She makes a great fit to the brand"

Mikey Mathieson added, "Although we will continue the overarching management of THECREATIVELAB as a business it is great to know that we have such a passionate individual as the day to day face of the store."

If you are an artist, maker, designer or other creative individual then be sure to get in touch with Rachel to enquire about selling your work in this prime location.

Be sure to head by any day to see the store that has been named by the press as "... the most beguiling store to grace the town in decades".





# EXCELLENT PROGRESS IS BEING MADE AT EAST RIDING COLLEGE ON THE YORKSHIRE AND HUMBER INSTITUTE OF TECHNOLOGY

*In early June, following a great deal of hard work from local colleges and support in Westminster from Graham Stuart, MP for Beverley and Holderness, it was announced that a regional network of educational institutions had been successful in their bid to become a Yorkshire and Humber Institute of Technology (IoT).*

The Yorkshire and Humber IoT will be established with £9 million of Government funding which will be used to upgrade facilities and develop innovative curriculums in high-quality technical education, particularly in STEM skills. Graham has been a strong advocate for the regional IoT, and he welcomed the opportunity to visit East Riding

College to go over the plans with Principal Mike Welsh.

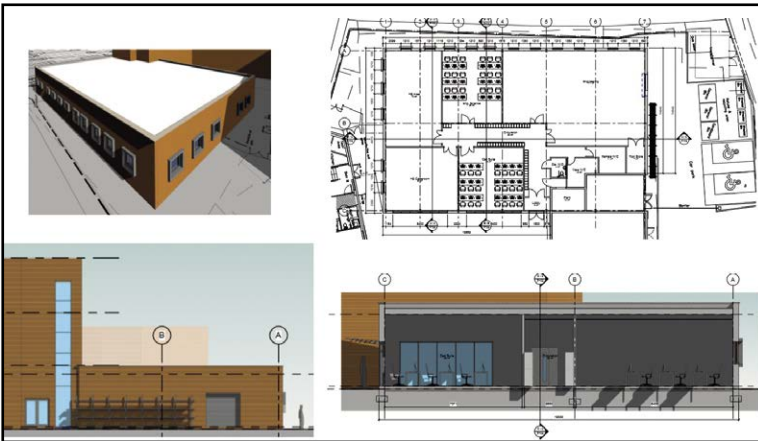
Graham commented: "It was great to meet Mike at East Riding College to discuss proposals for the IoT. The college is collaborating with regional employers, and it has major plans for curriculum development in construction and engineering. It was also exciting to view the design for the new IoT facility.

"The IoT initiative is a part of the Government's ambitious reforms to build one of the world's best technical education systems. When complete, the Yorkshire and Humber IoT will drive regional growth by responding to future skills needs.

It will also provide students with a clear route into skilled employment, resulting in life-changing opportunities for local children. I'm impressed by the vision of Mike Welsh and his team, and I have no doubt they will set an example of the merits of the IoT concept."



Mike Welsh, Principal at East Riding College, added: "I was delighted to welcome Graham to East Riding College to go over our IoT plans. Graham has long been a champion of technical education, including throughout his Chairmanship of the Education Select Committee, and it shows. He's extremely enthusiastic about our IoT plans, and it's great to have his continued support."



## VAT CHANGES IN THE CONSTRUCTION INDUSTRY

*With effect from 1 October 2019 HMRC has introduced a new VAT reverse charge for building and construction services. If you work in the construction industry either as a contractor or subcontractor then you should be aware of the new rules.*

The domestic reverse charge for VAT will only apply to businesses that are VAT registered and operating within the construction industry. It will not apply if the service is zero rated or if the customer is not registered for VAT, it will also not apply to services which are supplied to end users.

Under the new rules, the customer receiving the service will be required to pay the VAT element to HMRC instead of paying the VAT to their supplier. It sounds simple enough but due to the nature of the building sector there will be many examples where the new rules will cause difficulties, such as;

- How to assess whether the customer is an end user
- Changing the VAT treatment in the middle of a contract
- How to complete VAT returns correctly

Businesses affected should begin checking whether the new rules will affect either their sales or purchases or both. It will also be useful to inform suppliers and customers to avoid any misunderstandings.

The biggest issue for many construction businesses will be lost opportunity to use the VAT received on sales for a cash flow advantage, until their VAT is due to be paid to HMRC. This is a legitimate use of funds but will be withdrawn to some extent under the new rules.

The timing of this change seems poor as it comes at the same time as Brexit challenges and the recent introduction of Making Tax Digital for VAT.

If you would like to discuss this in more detail, then please contact Gareth Botterill on **01482 862240** or email: [gareth@botterillco.co.uk](mailto:gareth@botterillco.co.uk)



## Botterill & Co

Chartered Certified Accountants

**We are a modern and professional accountancy practice ideally located to serve businesses in Beverley and the surrounding area.**

**We utilise modern accounting technology to provide you with a cost effective, professional service.**

**Our services:**

• Annual Accounts	• Company Formations
• Tax Planning	• Payroll
• Management Accounts	• Cloud Accounting
• Tax Returns	• Bookkeeping & VAT

**For a free initial consultation please contact us:**

**Office: 01482 862240**

**Mobile: 07966 051458**

**Email: [gareth@botterillco.co.uk](mailto:gareth@botterillco.co.uk)**

**Website: [www.botterillco.co.uk](http://www.botterillco.co.uk)**

**1st Floor Offices, 40 Norwood, Beverley, HU17 9EY**



**WE'RE**  
**No. 1**  
**IN**  
**YORKSHIRE**  
**FOR ACHIEVEMENT**



(General FE Colleges based in Yorkshire)



# East Riding College

- Full & Part-Time Courses
- Further & Higher Education
- Apprenticeships

**Apply  
now!**



**East Riding College**



[www.eastridingcollege.ac.uk/yourtime](http://www.eastridingcollege.ac.uk/yourtime)





Send your photographs of your celebration  
Find us on Twitter and Facebook to share

# BEVERLEY WESTWOOD PARKRUN



# BEVERLEY IN BLOOM



HERE TO GET *you* THERE

# HUNTERS<sup>®</sup>

EXCLUSIVE

BEVERLEY / 01482 861411



## ARMED FORCES DAY



## ARMSTRONG TIKI BAR OPENING



SALES / LETTINGS / MANAGEMENT

# HUNTERS®

HERE TO GET *you* THERE

BEVERLEY / 01482 861411



# WALKING & OUTDOORS FESTIVAL

## 7<sup>th</sup> - 15<sup>th</sup> SEPTEMBER 2019

***This September, the Yorkshire Wolds once again plays host to the Yorkshire Wolds Walking and Outdoor Festival.***

Brought together by 30 partners, the 9th annual festival has grown in strength and now feature over 100 walks and activities for all ages and abilities showcasing the wonderful landscape and rich heritage of this unique area.

The festival programme offers an exciting range of outdoor pursuits including specialist guided walks, boating, horse riding, cycling and outdoor pursuits.

The focal point of the festival this year is a trek along **the Minster Way** footpath which links the Minsters of Beverley and York. This 50 mile route crosses the chalk hills of the Yorkshire Wolds, as well as countryside in the East Riding of Yorkshire. The Trail wends through some of the most tranquil and gentle countryside with breath taking views across the Wolds. The walk will take place over five days of the festival covering approximately ten miles per day.

For those who enjoy being close to the sea, join us for a coastal walk along the beach and cliff top from Filey to Bridlington on **the Headlands way** or visit **RSPB Bempton Cliffs Nature Reserve** for a walk around the coast and country finishing off with tea and cake at the visitor centre.

Guided walks around our historic stately homes have been popular in previous years, so has been extended to include **Sledmere House, Burnby Hall Gardens** and **Kilnwick Percy Hall** for the 2019 festival. Join one of **Burton Constables** guides on a 'behind the scenes' tour of the Hall or learn about the Sykes family of **Sledmere House**. **Wassand Hall** are providing a tour of their regency House, finishing off with a walk exploring the woodlands and arboretum with view across Hornsea Mere. **Secrets of Sewerby Hall and Gardens** offers a rich history tour of the hall and grounds. **Burnby Hall Gardens** will be

taking visitors on a tour of their gardens which has recently completed a restoration programme thanks to the Heritage Lottery restoration programme money. You will hear how the Gardens came to be created by Major Percy Stewart. **Kilnwick Percy Hall** are offering a meditation taster session along with a tour of the Georgian Hall.

**Driffeld Navigation Trust** will be joining us again with a trip aboard the Lady Jayne on the Driffeld Canal. The cruise will take you from Frodingham Landing southwards towards Bethells Bridge at Hempholme.

**Pocklington Canal Amenity Society** will once again be hosting two trips aboard the New Horizons narrowboat where you can spot wildlife along the way. For those looking for something a bit more adventurous, why not join the crew of the **Humber Keel and Sloop** for a sailing on the River Humber.

Climb to dizzy height at **Flamborough Lighthouse** or take a tour of **Beverley Minster** and climb the 113 steps to roof where you will

see things normally hidden from public view.

**Walking the Town Beverley** will be hosting their usual comprehensive list of guided history walks including **Larkin about Beverley** which tells the story of Philip Larkin who was a frequent visitor to Beverley for over 30 years. **A Walk of Small Things** brings to life small details that you may walk past every day and not have seen or **Over 500 years of history in less than 500 steps** takes you a short history walk with masses of information about the town past. Prepare to be scared on the **Beverley Ghost Walk!**

Further guided walks including a **Bridlington Old Town Trail** and **Hornsea History walk** which will follows part of the new Hornsea Pottery Trail. **Hedon and Howden** also invite you to learn more about the fascinating history of their towns.

**Pocklington** will once again be walking in the footsteps of the Pilgrimage of Grace, a







popular uprising that began in Yorkshire in October 1536, before spreading to other parts of Northern England.

Join the Pilgrimage of Grace team for a 'fair hollick' (East Riding dialect for a good walk) from the Wolds Heritage Centre in Warton and taking in some breath taking scenery on a route back to Pocklington.

New events to the festival this year include **Wolds Way Lavender** who will be providing a talk on their distilling process and the benefits of these calming oils. **Side Oven Bakery** at Foston will be opening their doors for a tour of the bakery and mill to learn about how the farm has diversified into an award winning bakery.

Other festival highlights include the popular **Boots and Beer Walk**, guided cycle rides with the **Breeze Cycling Ladies**, tours of **Little Wold Vineyard** at Market Weighton, **Spurn Nature Safaris**, **Nordic Walking** or Canoeing and paddle boarding at **Kelsey Gardens**.



From long walks to short walks and experiences not usually open to the public, immerse yourself in the Yorkshire Wolds Walking and Outdoor Festival programme. pick up a copy of the festival guide at one of East Yorkshires Tourist Information Centres or view online at [www.visithullandeastyorkshire.com](http://www.visithullandeastyorkshire.com)





## I'VE BEEN THINKING... SAYS COLIN RAYNOR

*The eight month of the year, August, always seems to be different to other months. Life appears to slow down; but I wonder if all those away from their work are really able to slow down and enjoy their holiday.*



In times gone by, many took their annual holidays around this time of year hopeful of 'the better weather'. My hometown of Huddersfield was predominantly a textile and engineering workplace and there were two very distinct holiday fortnights: two weeks for those who worked in the many mills in the area - this was the 'textile fortnight' - followed by the 'engineers' fortnight', when the other half of the town's workforce went on their annual spree. I do not wish to paint a picture of idealism either in the work force or in the town itself. Many people lived 'from hand to mouth' as the saying goes, and life was hard for people. A man, who I had a lot of respect for, was often heard to say "the poor are like dandelions; you will always have them with you." His comment related to the hundreds of people who were not in work and if they were, could not always afford to take their family away to the seaside. The Welfare State, created in the late forties, embraced the principle that a country should care for all its citizens no matter what their position in life.

This is not a political column but it does concern me that, as my friend said "the dandelions are always with us", but now they are appearing in a different guise in our country. It is still, in many cases, of a financial nature, but it also has its origins, I do suggest, in the increasing complexity of life and the pressure it puts us under. We often hear the phrase 'quality of life' and it may relate to an elderly person's health, but it often refers to an increasing inability for those in work to cope with the ever-increasing demand and speed of daily life. It can affect all age groups and every conceivable type of work pattern. For the latter part of my working life, in the late 90's, it was an accepted fact that those in work would, in many cases, be expected to do the work of two people. The one factor that was not built into this work pattern was any form of actual support. I do not refer to extra physical help but to the knowledge that you were not alone with the problem. There was someone who knew you were struggling and would come to your aid. Without such actual consideration and real help the worker would in time suffer 'burn out' and be unable to continue work at any level.

People take holidays at any time of the year in this modern era and that has to be a good thing particularly for those who are struggling to do work that once was a joy and a pleasure and is now becoming a burden. Let us ensure that we all are able to enjoy a holiday without any feel of guilt and therefore return refreshed and at peace with the world.

## Four Generations, Giving Over 125 Years Service

Herbert 1870-1962    Eardley 1908-1986    Geoffrey 1939-2015    David 1964



Golden Charter  
Funeral Plans



- Funerals Respectfully Conducted
- 24 Hour Out of Hours Service
- Free Advice & Support
- Private Restrooms
- Prepaid Funeral Plans Available
- Finance Options Available



**Tel: 01482 844695**  
**www.hkempandsonltd.com**

259 Hallgate, Cottingham, East Yorkshire, HU16 4BG  
Fax: 01482 843898  
Email: hkempandsonltd@gmail.com



## LOOKING TO MAKE FRIENDS in the Beverly area?

Since 1929 many women across the country have enjoyed the invaluable benefits of TG membership. They've experienced new things, visited different places, taken on incredible challenges, fought for women's rights and most importantly developed lasting friendships.

**Interested in seeing what it is all about?**

You are welcome to attend a Guild before considering membership.

If you would like more information or to find your local Guild visit  
**www.the-tg.com/north** or call **0121 326 0400**

**Join the TG family**

JBJOIN



**UNITING  
WOMEN  
SINCE  
1929**



Telephone: 01482 869111  
sales@rosesofbeverley.karoo.co.uk



The Kitchen Factory, The Courtyard,  
Tokenspire Business Park, Beverley  
HU17 0TB

*Together we will design a beautiful kitchen*



Roses will then  
**project manage**  
your kitchen installation from  
**start to completion**

Visit [www.roseskitchens.com](http://www.roseskitchens.com)

to see our customers kitchens and read what they have to say about us

**Telephone: 01482 869111**



# PUZZLE PAGE

## WORDSEARCH

M E N U E V A Y V P U S P I D  
M N A U U K P C Y F U U B T V  
B T G E Q E R U T N E V D A S  
Q E N N J Q A I G C N G G H B  
U R P N I H I L O D O N O D Y  
Z T A J Z M A D D O I R U X O  
S A H Z N S M N F X T V E E Q  
U I W H S F D I A S A B X R S  
N N F E Y H R L W B C H U U P  
T M S J N A E I B S A C M X D  
A E Q L J R D Z E W V Y C G S  
N N Y Y P L A Y I N G L D U F  
M T V O L H H X R H D L X E F  
R T O V U X Y I M H N S T C D  
G Q F M B A F P V O F X E C C

ADVENTURE  
ENTERTAINMENT  
FRIENDS  
PLAYING  
RELAXING

SHORTS  
SUNGLASSES  
SUNTAN  
SWIMMING  
VACATION

## WHERE IN BEVERLEY?

Where in Beverley would you find this landmark? Answer on Page 26.



## SMALL CHANGE - BIG IMPACT

- Are you seated for long periods of time? Every hour stand up and stretch, keeps you fresh and alert.
  - Gentle exercise - try the Beverley Park Run.
- Try - Do it NOW rather than later!
  - Keep Hydrated, get water with your tea or coffee.

Do you have any amusing stories, quotes or pictures? Send them to [info@justbeverley.co.uk](mailto:info@justbeverley.co.uk)

## COMPETITION WINNER

The winner of the competition to win tickets for the Burton Agnes Jazz and Blues Festival was Mrs Jill Dolman of Beverley. The answer was 'Simon Cunliffe-Lister'.



# QUALITY KITCHEN MAKEOVERS

by simply replacing the doors and worktops

Est. 1999

From the UK's #1 kitchen makeover experts. Visit our showroom now

Before



- FROM SIMPLE DOOR REPLACEMENTS TO COMPLETE FITTED KITCHENS
- FULLY INSTALLED BY LOCAL PROFESSIONALS IN JUST A FEW DAYS
- CHOOSE FROM A LARGE SELECTION OF DOORS, WORKTOPS AND APPLIANCES
- 84 SHOWROOMS NATIONWIDE



CALL US NOW FOR A FREE ESTIMATE:

**01482 861653**

VISIT OUR SHOWROOM:  
4A Belprin Park, Swinemoor Lane,  
Beverley, HU17 0LN

**DREAM DOORS®**  
NEW LIFE FOR OLD KITCHENS



Proud members of  
**9.7/10 Checkatrade.com**  
Where reputation matters

See what our customers have to say

[www.dreamdoors.co.uk](http://www.dreamdoors.co.uk)



# ANYTIME FITNESS EXPAND THEIR BUSINESS WITH NEW STAFF MEMBER GRANT CHAPERLIN

**Membership Sales Consultant Grant joins Anytime to develop the gym's social and community aspects to ensure members get the most from their membership.**

Grant has worked in the health and fitness industry for over ten years in management, as a gym instructor and personal trainer. His new role at Anytime incorporates all of those aspects as well as liaison with new and existing members.

Anytime Fitness constantly bring new ideas and fun, functional and varied classes to the gym - but Grant is convinced their own members have some great ideas which could be adopted, too!

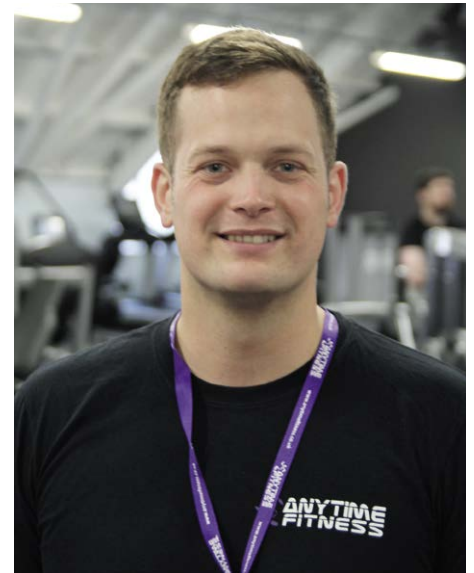
Grant is especially keen to ensure the gym is seen as a welcoming environment to anyone keen to improve their health and fitness and that the members work together as a community, supporting each other to achieve their goals, whether actually in the gym or in social situations outside it.

Grant said: "Whatever it is you want to do in life, if you Dream it and Believe it, you can Achieve it! When someone new comes into the gym, I use the mantra PRIME to ensure it is right for them. PRIME stands for:

- Propriety (being polite and courteous)
- Reasons (understanding why a client wants to join)
- Interest (keep training through the seasons varied and rewarding)
- Make a plan (set out goals)
- Empathy (understanding how best to work with a client)

It's so important that clients who join stay as that means a win-win - both parties are getting what they need from the relationship."

Grant's interests are rugby league, swimming and athletics, especially the long jump. Why not pop into Anytime for a chat with Grant - you never know, Anytime might be the gym for you become fitter and healthier.



**sportsability**  
**INTENSIVE SWIM COURSES**

Intensive Courses provide a half hour lesson per day over the period of a week. By returning to the pool on a daily basis we are able to reinforce learning, allowing for rapid progression.

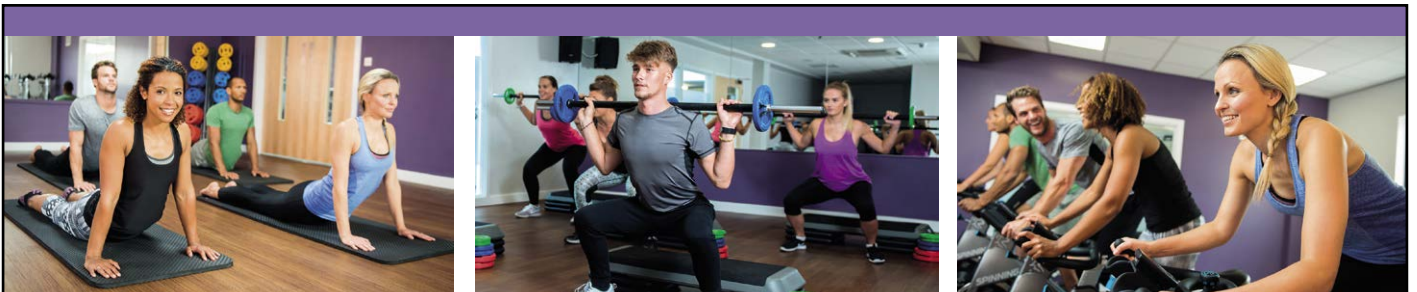
Intensives are particularly rewarding for:

- Introducing new swimmers to the pool environment
- Increasing water confidence
- Stroke and stamina development

**Cost £45 per week**  
Discounts available if booking for 2 weeks+

Facebook: @SportsabilitySwim  
Email: sportsabilityswim@gmail.com  
Website: www.sportsability.org.uk  
**Tel: 01482 229676**

Swim England



**Join Anytime Fitness**  
**Improve your Mind and Body**  
**with Qualified Experienced Staff**

**New Gym Class Timetable**

**Call: 01482 247100**  
**Flemingate Centre, Flemingate**  
**HU17 0NQ**





# CLASSIC CARS WITH CARFAN - THE VOLKSWAGEN TYPE 2 BAY WINDOW CAMPER VAN

Some might say that the subject of this month's issue is not a car at all, but it is a van, a second-generation Volkswagen Type 2 bay window camper van, in fact. Purchased 8 years ago and presented in Fiat 500 blue, this 1973 model has had a lot of love bestowed upon it by its current and previous owners and it shows! It really is a home from home as it comes complete with a fridge, cooker, sink, 2 bunk beds and extending roof which means you can even stand up in it. All this helps to save the owners a fortune in hotel bills as they add about 2000 miles each year tooting about.

First produced in 1967 and continuing until 1979, the Type 2 has certainly got an enthusiastic following and is often associated with the hippy movement in California where it was de rigeur to own one. Fortunately for those hippies, owning one is not expensive, either



purchasing one or maintaining it, with parts very easy to obtain. Should you fancy one on your drive, expect to pay anything from £6500 to £25,000, with one for sale in America for £42,000! Admittedly, the latter is a rare, multi-windowed version that is much harder to find. There are many other versions available and they include a pick-up and even a bus. Engine-wise, expect to find a 1.6 litre, 1.7 litre or 2.0 litre lurking in the rear and don't expect to leave skid marks at any traffic lights as they were not built for speed, but then again, a high top speed and nippy acceleration are not important when purchasing such a vehicle.

So, should you see a Type 2 passing by with occupants sporting happy smiles, don't forget that cheery Carfan wave!

## PRACTICAL MOTORING WITH RICH HAYES - AIR CONDITIONING IN YOUR CAR



*If your air conditioning stops working, more often than not it can be resolved quickly and easily with an air-con regas.*

Most of us expect our air con to work without a second thought, but when warm air comes out of the vents on a hot day, it's very disappointing!

Over time, your air-con system doesn't work as well as it did when new - but that's because it needs regular maintenance. How many of us forget to service our car's air-con?

Fortunately, it's not an expensive or difficult job to keep your air-con working; here at Beverley Motor Works we have all the capabilities and solutions to resolve your air conditioning troubles.

Air-con regassing is the process of removing the old refrigerant gas from your air conditioning system and replacing it with new refrigerant, so your air con can run cold again. It should be the first thing you explore if your air-con system isn't blowing as cold as it should. The process should take no longer than an hour to do.

There could be other reasons why your air-con isn't blowing cold anymore, but one of our trained mechanics will be able to advise on what may be the issue.

If you would like your air conditioning re-gassing please give us a call on **01482 881128** for a competitive quote. We also have the capability to look after vehicles that have the new type of air conditioning gas.

### 'WHERE IN BEVERLEY' ANSWER

Flemingate Memorial Bench

**INCHES BODY STUDIO**

COURSES FROM **£110**



What are toning tables used for?

Toning Tables help with fat loss, ME, MS, Osteoarthritis, rheumatoid arthritis, knee and hip replacements, depression, bad backs, frozen shoulders and stroke rehab

Take advantage of School Term time and get fit for Christmas!

SPECIAL OFFER

3 Months Toning  
3 Months Vibraxis  
3 Contour Wraps

£179

Normal Price over £300  
Limited Availability

FREE WEEKS TRIAL

for anyone with Health issues - No obligation

Inches Body Studio, 1 Norwood, Beverley HU17 9ET

Wheelchair access & stairlift available

Telephone: 01482 865229

Email: [inchesofbeverley@hotmail.co.uk](mailto:inchesofbeverley@hotmail.co.uk)  
[www.inchesbodystudio.co.uk](http://www.inchesbodystudio.co.uk)

Established 1992

BEVERLEY MOTOR WORKS

INDEPENDENT BMW & MINI SPECIALISTS

Our dealership expertise means high quality car servicing at a fair price...





Unit D1 Grovehill Industrial Estate,  
Annie Reed Road, Beverley HU17 0LF

Call today: 01482 881 128  
Visit: [beverleymotorworks.co.uk](http://beverleymotorworks.co.uk)

SPECIAL OFFER

MOT COUPON

MOT YOUR CAR FOR ONLY **£29.99**



# CYCLING WITH WILSONS WHEELS - IT'S COMING UP TO CYCLO CROSS SEASON

*It's nearly that time of year again when I start preparing for the cyclo cross season. This is a sport that I have touched upon in previous Just Beverley articles, as it is a discipline that I really enjoy and excell at.*

The cyclo cross season starts in September and this year the local cyclo cross scene is fortunate enough to have a local race, courtesy of the nice guys at the Velo Club Beverley cycling group who are hosting the second round of the Yorkshire Series at Bishop Burton College on the 8th of September.

Anybody can turn up and ride. You don't even have to own a cyclo cross bike as mountain bikes are allowed too. I have even seen **Just Beverley's** very own Julian Minshall have a blast on his mountain bike before at another series held at Costello Stadium.

There will be races on all day that cater for everyone, from kids' races in the morning to seniors and veterans in the afternoon. Cycling mad families normally spend the whole day out at these events as the kids race in the morning and the parents in the afternoon.

If this is something that might float your boat, please go to the Yorkshire Cyclo Cross Association website for more information or you can always pop into the shop and I will be happy to help.

**Nathan Wilson.**



## WILSONS WHEELS

T: 01482 882881  
W: [www.wilsonswheels.co.uk](http://www.wilsonswheels.co.uk) E: [info@wilsonswheels.co.uk](mailto:info@wilsonswheels.co.uk)

**WE NOW STOCK CUBE CYCLES**  
2019 RANGE NOW AVAILABLE

Be SEEN and be SAFE, stay BRIGHT and on the right track

**DISCOUNTS ON:**

- Adult Bikes
- Children's Bikes
- Clothing for all cycling weather
- Parts and accessories

89a Grovehill Road, Beverley, East Yorkshire HU17 0EJ  
OPEN: Monday - Friday: 8.30am - 5.30pm | Saturday: 9am - 5pm  
Sunday: CLOSED - Out riding our bikes

Print that gets you noticed

OVER  
20 YEARS  
EXPERIENCE

BROCHURES LEAFLETS BUSINESS CARDS POSTERS

CALENDARS POP UP BANNERS INVITES PADS

Tel: 01482 610902

info@jadan-press.co.uk [www.jadan-press.co.uk](http://www.jadan-press.co.uk)

Rainbow House, Kimberley Street, Hull, HU3 1HH



# COUNTRYSIDE MATTERS WITH SAM WALTON

I was amused the other day to receive this photograph of how some weaners are moved in Vietnam. It reminded me of how important the wonderful small motorbikes are in Asia - really hard-working pieces of kit - and of some of the things I have seen being transported!



I have seen seven people on a small motorbike and some most unusual loads being ferried about. It also reminded me of how important pork is to them. I bet they do not have to record animal movements like we do and to have animals identified, which is probably why the massive epidemic of African Swine Fever is currently running riot across Asia, China in particular.

In the UK we have a host of rules which affect our everyday life in whatever we do, such as wearing a crash helmet, yet still have accidents. I sometimes think we have too many rules because of all the unusual loads I have seen on these small machines, I have never seen an accident. Granted they don't go very fast, not like some of the high-revving speed machines we see and hear here.

Farming in most of the Asian countries is, of course, different and many families live on small enterprises. But they still somehow manage to exist and run one of these (mostly Honda) motorbikes, which act as transport for man, beast and product.



## IN THE GARDEN... AUGUST

Welcome to August and I hope we have enough good weather for you to sit in the garden and enjoy the fruits of your labours earlier in the year. The vegetable plot will be bountiful in August and harvesting will be a daily task - I have had a wonderful crop of raspberries and redcurrants this year and I am looking forward to more courgettes and runner beans (the beans are nicely up the canes with flowers and tiny beans have formed), I will harvest my onions when the leaves start to bend over, leaving them to dry in the sunshine before storing them.

### Tasks and Tips for August...

- Water all containers every day and feed regularly.
- Arrange holiday care for your garden if you are going away - try and arrange for a friend or neighbour to come round and water your containers, if you have vegetables ask them to 'help themselves' to produce too! If they can't come every day, take steps to cut down on watering requirements by moving all containers and hanging baskets out of the sun as far as possible - also larger containers require watering less frequently so, if you know that you go away a lot invest in some larger containers. Clay pots can be stood on trays filled with wet gravel. If you have a very elaborate summer display with window-boxes and hanging baskets, it would be worth considering installing an automatic watering system controlled by a timer or self-watering systems (or make your own from plastic bottles and hose as I've done, there's plenty of information on the web).
- Lightly trim hedges and Lavender bushes once the flowers have finished (this isn't essential and finches love the seeds).
- Pick courgettes whilst they are still small and tender.
- Pinch out tomato side shoots and runner beans when they reach the top of the cane.
- Prune raspberries and gooseberries after fruiting.
- Mow the lawn before going on holiday - don't give it 'a short back and sides', because if there is a dry spell while your away you'll return to a 'brown lawn'.
- Roses - stop feeding them as any lush new growth will not have time to ripen before the winter. Prune the long old stems of rambling roses when they have finished flowering, leave those that have not flowered this year to bloom next summer.
- If you have Camellias, Azaleas or Rhododendrons water them well in dry weather otherwise the flower buds for next year may not develop properly. To boost growth feed them a liquid ericaceous feed.

### And don't forget...

Spring flowering bulbs will start to be stocked in garden centres and nurseries. If you want hyacinths flowering in the house for Christmas, now is the time to buy your prepared hyacinth bulbs. Prepared hyacinths have simply been conned into thinking they have had a 'winter' (by placing them in a cold store) so when you plant them up in bowls they think it is spring and start growing - clever heh!

That's all for now - have a lovely time this August whether you're away or spending time at home, if you get chance maybe visit some gardens for inspiration in your own patch.

### Until September, Jx.

Jane Dale of 'Designed Gardens'. Tel: **07983 392 411**.



# HUBY DOMESTIC APPLIANCES

Covering Hull, Beverley, Pockington, Driffield and all the local villages



## BOOK ONLINE

and **SAVE**  
at  
**hubys.co.uk**

Book in advance and save money.  
The further you book in advance  
the more you could save...



For service and repair call: **01482 866660**



# WALKING WITH IAN RICHARDSON... A TRAIL OF TWO (OR PERHAPS THREE) VILLAGES: HUTTON CRANSWICK CIRCULAR



Although originally two separate villages, most outsiders now regard Hutton and Cranswick as one place. Yet as our walk shows they are still distinct, each has its separate charms. You can restrict yourself to wandering the streets and green areas of these twins, or if you feel up to it, take in a third village: diminutive Watton. The full circular walk is a good 7 miles, just two, if you confine yourself to Hutton Cranswick. The longer route is highly recommended as it takes in some gems of our lesser-known heritage, and on a good summer's day in late June I found it utterly delightful.



**1** The huge village green (YO25 9QN) in Cranswick is a fine place to begin. There is ample free roadside parking - and a real rarity for most Yorkshire villages - a good train and bus service. At over 6 acres it is surely the largest in East Yorkshire, and must be amongst the biggest in England. It is also clearly well-loved and cared for, with interesting features aplenty, such as the new WW1 memorial bench, sundial and fantastic children play area, which all my three children have enjoyed over the years. There are many pleasant buildings that surround the green, notably the White Horse pub and lovely shop fronts of the hairdressers and butchers.

**2** Having enjoyed the green, head east down towards the railway station. It is currently being renovated but is a fine example of the work of the celebrated nineteenth century architect GT Andrews. The old stationmaster's house and goods shed have been well-converted into modern homes and the platforms are lovingly planted with floral displays. I, like one of my great heroes, John Betjeman, can greatly enjoy waiting for even a delayed train in such pleasant surroundings. Alongside the station is the new housing development, aptly called the Sidings, its totem sign is a nice touch.

**3** Adjacent to the Sidings, take the signed path that goes through woods and then crosses fields up towards Hutton. The path rises with the first gentle

swell of the Wolds. It enters the Centenary woodland, just before, on your right are the now grassy mounds of former chalk pits. The woodland, as the exemplary information boards show, is full of flora and fauna.



The mill at Pit Top Farm

**4** Head right up the road to Hutton, pausing to admire the fine Georgian buildings at Pit Top Farm, particularly the tower of the former windmill, which makes a striking photo. Head up Church Street to St. Peter's Church. The churchyard here is very lovely and there are medieval remains in the exterior fabric. This is one of the very few local churches that I have never been able to enter, but there is an advertised local key holder, so you might be more fortunate. Hutton folk, conscious of their smallness compared to their larger neighbour down the hill, do rightly point out they have the parish church and that most Cranswick folk ended up in their churchyard!

**5** There are lovely quiet lanes to explore behind the church, you can access them by the footpath in the far right corner and enjoy the buildings on Orchard Lane, Church Lane and Mill Street in particular, before either following the path at point 4. back to Cranswick, or heading down the road.

**6** Back in Cranswick, you might want to have a drink at the pub or if walking down to Watton, buy a picnic from the well-stocked village store. Take the path on the south side of the green that winds behind gardens and across fields before becoming a straight mile to Watton Abbey. Here I was buzzed by a pair of feisty lapwings intent on keeping me away from their offspring.

**7** Two striking buildings still stand amongst the prominent earthworks of this former Gilbertine monastery, destroyed by that cultural vandal, Henry VIII in 1539. The medieval prior's lodging is the core of the delightful residence of Watton Abbey - on private land but visible from the path. There is also an enormous barn from Tudor times, recently it has been

magnificently re-roofed and restored - it is one of the architectural gems of the East Riding. Gilbertines were the only order that allowed monks and nuns to live on the same site, albeit divided by strong walls. That did not always stop liaisons dangereuses, as the sad story of a twelfth century nun and her lover illustrate, she became pregnant but was miraculously 'cured' of her affliction, he was castrated for his sins: how times change! Behind the house you can also see a mound that was once an archery butt.



The newly restored barn at Watton Abbey

The church across the field is worth a look from the outside, if not normally open to view internally. From here you can take the quiet lane to the right, then cross the busy A164 with care to the other side of the village.

**8** After 100 yards go left down a path that crosses the stream and goes right through the garden of the handsome former mill house. Here the chalk stream is crystal clear - and full of trout.

**9** Go right by the mill and head up the pleasant stream, until a footbridge takes you back over fields to the lane out of Watton.

**10** Follow the lane to the left, forking right at the large farm of Watton Grange.

**11** In half a mile a clear track leads back to Cranswick across the fields, which were full of vibrant poppies when I walked them. Further treat remains, as you now walk along the runways of a former WW2 RAF base, the buildings of which still stand eerily in a field to your left. If you are as curious as me you can get a closer look from the footpath that leads past the industrial estate on the main road. Notably this base, largely for spitfire crews, was manned mainly by Free Polish airmen, who were some of the bravest and best pilots that fought against the Nazis in the war, their contribution to victory deserves greater recognition.

**12** The path emerges onto the main road just outside Cranswick, to get back to your starting point bare left and perhaps visit the excellent farm shop or garden centre, both with good cafes. At the latter, I partook of a quite wonderful rhubarb ice cream. It seemed to sum up something of the essence of Hutton Cranswick, as you can buy almost anything in this thriving and well-served community. As a friend and local resident confirmed, community it most assuredly is - friendly, welcoming and with a good social and demographic mix - rural life at its best. The village has an amazing range of clubs, fetes and societies, with an especially strong sporting tradition. He is a big fan of the fish and chip shop, thankfully now frying again after a major fire. So you could end a grand day out with that favourite of all Yorkshire treats!



Cranswick Pond



# THE TIGER INN'S FIRST BEER FESTIVAL RUNS OVER AUGUST BANK HOLIDAY WEEKEND

From 4pm on Friday August 23rd until closing time on Sunday, August 25th, The Tiger Inn and Yorkshire Brewhouse are teaming up to bring some of the best beers in the area for your delight!

Brewing beer is a vocation for some whilst sampling them is a joy and a pleasure for many!

The Tiger Inn always has a great selection of beers, including cask beers, for their customers to enjoy, but a beer festival gives them the opportunity to try beers from other breweries which would not normally be on offer.



Yorkshire Brewhouse was founded in Hull in 2017 by two friends, Yorkshiremen Jon Constable and Simon Cooke, to produce cask and bottle conditioned real ale.

The brewery has grown steadily from producing 200 litres a week (using equipment purchased on Ebay!) to a 1000 litre high-quality stainless-steel system.

The brewing, casking and bottling is carried out by hand by a loyal workforce of family and friends.

The core range of beers is inspired by their Yorkshire roots and local pride and consists of Reet Amber ale (3.8%), Ey Up Best Bitter (4.0%), Faithful Stout (4.6%), Yorkshire Pale Ale (3.9%), Red Robin chocolate stout (4.4%), 1904 Amber Ale (3.9%), Spout Stout 4.5% and Flippin' Eck dark ale (5.1%). None of the ales use isinglass finings, so they are all vegan friendly.



Next up is a range of fruit and hop oil-infused beers.

You might have seen the cask ale in several East Yorkshire pubs and at other beer festivals around the country. Bottles are available at local markets, online and in various local shops.

You can find out more about Yorkshire Brewhouse at [www.yorkshirebrewhouse.com](http://www.yorkshirebrewhouse.com)

## LIST OF FESTIVAL ALES:

- Yorkshire Brewhouse - YPA 3.9%
- Crafty Little Brewery - Wolf Bite 4.8%
- East Yorkshire Beer Company - Earl de Grey IPA 4.5%
- Yorkshire Brewhouse - Dynamite 3.9%
- Great Heck - Mercy 4%
- Morley Brewery - Miners Blonde 3.8%
- Great Heck - Shankar IPA 5.9%
- Yorkshire Brewhouse - Ey Up 4%
- Crafty Little Brewery - Apex Predator 3.8%
- Morley Brewery - Seven Hills IPA 4.5%
- Yorkshire Brewhouse - Reet 3.8%
- Lytham - Lowther 3.9%
- Cooper Hill Brewery - Golden 3.8%
- East Yorkshire Beer Company - King Billy 4.2%
- Yorkshire Brewhouse - Flippin' Eck 5.1%
- Crafty Little Brewery - Red Tail 4.5%
- Yorkshire Brewhouse - Faithful 4.4%
- Trinity Brewery - Hop and under 4.2%
- Settle Brewery - Flying Pig 3.8%
- Great Heck - Chopper 3.8%





# BEVERLEY/LEMGO TWINNING ASSOCIATION CELEBRATES ITS 40TH ANNIVERSARY

*Did you know that Beverley is 'twinned' with the German town of Lemgo, which is a beautiful half-timbered medieval town in the North Rhine-Westphalia region and was a member of the Hanseatic League, as was Beverley. The original association between the two towns was between the fire brigades - which is unusual and has been honoured by the EU! To this day, the Committee of the Beverley/Lemgo Association meet at Beverley fire station! Lemgo's (former East German) twin town is medieval Stendal, which is in Saxony-Anhalt and is also a former member of the Hanseatic League. Since 1990, it now enjoys an equally active partnership with Beverley and, as it has a Fire Brigade Museum, the fire brigade links are also continued.*

The Hanseatic League of Merchants was founded in Germany to cultivate trade between Germany, the Baltic States, The Netherlands and the UK. In 1175, Henry II offered the Guildhall in London to the Cologne merchants as a base for their important trade. Special rates of duty applied to Hanseatic League Merchants around Northern Europe between 1175 and 1669. This in many ways was the forerunner of the EEC, which is now the EU.

The Beverley/Lemgo Twinning Association was founded in 1979 as a civic partnership to bring friendship and cultural exchanges. The Honorary President is the Mayor of Beverley.

The committee and membership is made up of people who have an interest in Germany. They

might or might not speak German, although some do! It also includes people born in Germany or who have lived there or studied the language. The Association is very much alive and has monthly meetings involving:

**Stammtisch:** An evening meal and get together with English and German spoken. This is held at the Cottingham Golf Club on a monthly basis.



**Kaffeeklatsch:** A German Coffee morning meeting, whereby a group of German speakers gather to swap the news and have a general discussion. This is held in the Monks Walk Pub in Highgate, Beverley at 10.30am on the third Thursday of the month.

A German speaking evening is held monthly at the



Chairperson's house to keep up German language skills. There is an Annual Dinner and AGM and a stall at Beverley's Festival of Christmas.

There are regular visits to and from Lemgo. Lemgo citizens visited Beverley in June, followed by a 4-day visit to Lemgo by UK members which was timed to coincide with Strohsemmelfest, a town festival with a market and music-making.

Members stayed in hotels and were generously treated to tours of the local attractions with complimentary food and drink. The next visit will be from Stendal to meet the Beverley contingent in Norfolk in September 2019.

If you have a fascination with Germany, are a German-speaker or have lived or studied there and would like to join this interesting and vibrant Association, please contact Chair Eva La Pensee on **01482 869609**.

**AFTERNOON  
TEA MENU**

£12.95 PER HEAD OR  
£24 FOR TWO PEOPLE

AVAILABLE MON-SAT 12-5PM,  
PRE-BOOKING IS REQUIRED AND  
GLUTEN FREE OPTIONS ARE AVAILABLE

**BEER  
FESTIVAL**

Friday 23rd August from 4pm  
to Sunday 25th August  
**20 Real Ales & 7 Ciders**

**HOME COOKED  
FOOD SERVED  
7 DAYS A WEEK**

**THE TIGER INN**

**CYCLISTS  
WELCOME**

Brains  
required  
from  
8.30pm

FIRST SATURDAY  
OF THE MONTH

**Big Quiz**

Free food/prizes to be won,  
all money raised to our house charities.  
£1 per person entry

Tel: 01482 869040

www.tigerinnbeverley.co.uk

Lairgate, Beverley HU17 8JG

**Going to East Riding Theatre?  
Book at The Tiger Inn for a  
pre - show meal**

HOMECOOKED

**Sunday  
Lunches**

Served every Sunday  
12noon-7pm



# THE BEVERLEY IN BLOOM GROUP BRIGHTENS BEVERLEY ALL YEAR ROUND

**Many cities, towns and villages have a 'Bloom Group' - volunteers who use floral displays and planting to make their municipality more attractive to locals and visitors alike. Beverley's group is known as 'Beverley in Bloom' or, more colloquially, 'Bloomers'. In the early noughties, Beverley Town Council aligned the 'Beverley in Bloom Group' as an officially-supported organisation, with Town Councillors working alongside the group and operational support from the Town Clerk. Since then, the group has gone from strength to strength. Chairwoman, Linda Freeman, describes how the group works and how it has gone on to win Royal Horticultural Society (RHS) Awards.**

Linda said: "Over the past 30 years, the idea of using flowers and planting to brighten city, town and villages has grown, so much so that the RHS set up a little competition between groups, which they called 'Britain in Bloom'. Bloom Groups entered under different categories, such as village, sea-side town etc. Beverley is a Large Town.

"As the popularity of Britain in Bloom grew, so the criteria changed to incorporate aspects of community involvement, cleanliness and attractiveness of the streets, the type of plants used and their condition, the suitability of the chosen plants, colour-schemes, themes etc.

"The judging also became more proficient with trained judges. Entrants now compete across county lines to win medals – gold, silver-gilt, silver and bronze - with the 'Best' being awarded to the entry with the most points.

"Beverley was awarded Gold and the Golden Rose Award for Best Large Town in Yorkshire in Bloom in 2017. So, last year we represented Yorkshire at Britain in Bloom and were awarded a Silver-Gilt - Ballymena in Northern Ireland won. This year, we started all over again, entering as a Large Town in Yorkshire in Bloom. The judging was held last month and we find out how we have scored on September 13th at York Racecourse.

"Making Beverley look beautiful is a pleasure, but also hard work! We really do need as many people as possible to get involved and help - because every little does help! We have a group of people who go out on litter picks (called Brighter Beverley) but if people wouldn't drop litter in the first place, that would really help.

"It was the litter (detritus) that marked us down at Britain in Bloom last year. I know the Town Council are looking at litter bin provision and Community Rail has given us a grant to help improve the station platform area, for which we are very grateful. We must also thank the Rotary Club for their help, too. Perhaps other groups reading this would be prepared to help, too?

"We need volunteers, even if just for an hour or so every week during day-times and evenings. There are 17 different sites which the Bloomers look after, so it takes a bit of effort - and that's not counting businesses which decorate their own premises.

"There's watering, dead-heading, planting and working in the greenhouse at Woodmansey so

there's something for everyone. We are insured by Beverley Town Council so volunteers are covered when on 'Bloom' duties!

"If you, your friends, your business or network, organisation or special interest group could help, please call me **01482 862275** for an informal chat. We especially love young people getting involved!"



## 'WOODLAND AND MAGIC' AND RUSSIAN TREASURES AT THIS YEAR'S BEVERLEY CHAMBER MUSIC FESTIVAL

**"A meeting of minds" is how the founder of New Paths Music, Roland Deller, has referred to the new collaboration of Libby Burgess and Martin Roscoe, co-artistic directors of the Beverley Chamber Music Festival.**

New Paths is a charity which aims to promote music and help music flourish in the East Riding. Last year it was invited to organize the Chamber Music Festival alongside its own spring 'New Paths' festival. Events during the Chamber Music Festival, which are working to that aim, include a free performance for (invited) school children in Beverley Minster; free talks on Shostakovich and Elgar and the opportunity for young musicians in the East Riding Youth Orchestra to work with New Paths members: the latter will end in a short performance in the Minster.

These events are close to Roland's heart as Roland himself played the viola for the East Riding Youth Orchestra, and was also a Minster Chorister. Interestingly, the original founder of the Beverley Chamber Music Festival also played the viola!

Held in St. Mary's Church, with its fabulous acoustics and stunning architecture, the festival features some exciting collaborations, a World Premiere and a some truly immersive experiences.

This first of the two themes, 'Woodland' is defined by Elgar's musically-productive period of recovery in Sussex where, surrounded by a wooded landscape, he stayed after the First World War. It also echoes the joint artistic directors' love for nature and woodland.



The second theme, 'Russia' is from works by Shostakovich, Rachmaninov and Borodin. Musicians at the Chamber Music Festival include two previous winners of the BBC Young Musician of the Year award (Jennifer Pike and Laura van der Heijden) and the highly acclaimed Brodsky Quartet, who have been playing together for over 40 years!

Roland said: "These are some of the best classical musicians around, so we feel lucky to have them in Beverley!"

The Beverley Chamber Music Festival runs between 25-28th September. Tickets are on sale now and can be bought online at [www.newpathsmusic.com](http://www.newpathsmusic.com) or through Beverley Tourist Information Centre. Look out for 'Saver' tickets and 'Golden Tickets' for under 18s.



# THIS YEAR'S MOST STYLISH LADY AT FLEMINGATE LADIES DAY TO WIN A CHRISTMAS BREAK

**It's East Yorkshire's hottest summer day out! Beverley Racecourse has teamed up with Humberside Airport to award the winner of the coveted Most Stylish Lady competition an unforgettable weekend at the Christmas Markets of Cologne, one of the world's most magical festive experiences.**

The prestigious raceday, presented in partnership with Beverley's Flemingate, returns on August 14. This year's hosts, judges and prizes have been revealed as they prepare for the most exciting Ladies Day yet.

Leading the way will be Alex and Ellie, the popular presenters of the morning show on Viking FM, the official media partner for Ladies Day. The DJ duo will be playing the biggest tunes of the summer and will host the Flemingate Most Stylish competition, sponsored by Humberside Airport. They will be joined in the beautiful English-rose themed marquee by the competition judges - Lee Wardell, manager of Brook Taverner; fashion expert Mandy Buchanan

and previous champion Julie Short - who will choose the winning lady and the best-dressed man. A mystery celebrity will also be joining in the fun, although the racecourse team are keeping their name under wraps for now.

Chief Executive Sally Iggulden said: "We're sure the prospect of winning a truly unforgettable Christmas trip to Cologne will spur on our racegoers to do their very best to be winners in the fashion stakes. We want this to be one of the best afternoons you'll spend with your friends this year, whether that's by enjoying a laid-back picnic in the Course Enclosure or experiencing the glamour and vibrancy of the Premier Enclosure. It really is the social event of the summer."

The winning lady in the Flemingate Most Stylish competition will enjoy a weekend for two to the Christmas Markets of Cologne, departing on December 6th. The prize will include a private flight experience from Humberside Airport, including complimentary parking and a luxury breakfast,



refreshments onboard the flight and two nights' accommodation on a bed and breakfast basis.

This is the third year of the racecourse's partnership with Flemingate for the Ladies Day meeting. It is the best-attended meeting in Beverley's busy calendar, last year attracting a bumper crowd of 12,000. With a similar number expected this year, racegoers are being encouraged to book early.

Gates for Flemingate Ladies Day will open at 11.30am with the last race at 5.30pm (times to be confirmed). For more information, or to book tickets, visit [www.beverley-racecourse.co.uk/event/flemingate-ladies-day](http://www.beverley-racecourse.co.uk/event/flemingate-ladies-day) or call **01482 867488**.

## SHORT STORY BY CLINT WASTLING - ASPHODELS

**It was the only Victorian house on the estate. The scale of the house suited Susie, however, the décor in Mrs Desmond's old place was not to her taste so she set about decorating. Susie admired her handiwork before opening the front door to reveal the view across the Wolds bathed in August sunlight. She sighed, turned back then stopped.**

She was certain she had covered everywhere with the white emulsion but it appeared she had missed an area where a small frame had hung. Susie returned to the kitchen, picked up a brush to go over the offending section. The next morning after breakfast she checked the walls for pipes and electric wires before hammering in the picture hooks. Her Victorian prints gave the place an authentic air once more. Susie was proud of all her hard work. Time to read, she thought, settling herself on the sofa with the local paper when the sound of shattering glass made her jump. The Victorian picture in the hall had fallen. She quickly cleaned up the mess, checked the hook, as there was nothing wrong with it, she replaced the print without its glass. Later in the afternoon, Susie returned from her coffee morning. She had to force the door open because the frame had once again come off the wall. She managed to sweep it away with the bamboo cane which had been supporting the asphodels. Once again, she checked the picture hook; it was fine. As she replaced the bamboo cane she noticed how the asphodels framed the view of the Wolds. She smiled, contented until she turned around and saw the mucky grey outline on the wall again.

Exasperated, Susie painted over the offending section until it matched the rest of the hall. Later that evening whilst relaxing reading the local newspaper, she heard a scratching sound which interrupted her concentration. She ventured into the hallway. Flakes of paint had been removed from the repainted area. She swallowed hard. A shadow appeared at the front door. The bell rang. Susie took a deep breath before opening the door. Her visitor was an older lady who was wearing a dark green hat and matching coat. "Forgive me calling so late in the day, I'm Ophelia Desmond, do you remember me, we only met the once."

"Do come in," Susie gestured, Ophelia stepped into the hall. "I see father's already taken against the change," she said indicating the flakes of paint below the dusty outline where a frame had once hung. "It's all a bit odd," Susie remarked. "Let me explain," Ophelia replied hooking her walking cane over the door handle. She uncovered a frame, it contained a daguerreotype of a dark young man with coils of black hair. "Father," she announced hanging the picture, which fitted exactly into the smudge of dust. "He'll be happy now. I see you still have the asphodels by the door. He loved sitting here, the view across the Wolds you know." Ophelia Desmond smiled as she backed out of the hall. Susie looked at the old photo then down the path. The old lady had vanished. Despite being shaken, Susie returned to reading the local paper. She gasped when she saw the photograph in the obituary of a well-dressed lady wearing a matching coat and hat. Ophelia Desmond had died two weeks ago!

**Clint will be talking about his novels and poetry at York Writers on Thursday 15th August at 8pm. They meet at The Trafalgar Bay on Nunnery Lane. All welcome.**

## POEM BY GLYN MYERSCOUGH - PARADOXICAL PEBBLE

*On one side you are smooth-polished, to reveal  
A silver-speckled stardust-pepper of fool's gold;  
On the other you are rough, Saturn-ring etched sandstone.  
Still ovoid, you just elude nature's intended orb-shape.  
Smaller than a bantam's egg, larger than a wood pigeon's,  
You are just big enough to slay a mythical giant;  
A perfect shot to sling across the borderlands.*

*Sculpted over aeons of time  
Skittering around the sides of some pothole,  
Deep in the riverbed of a Yorkshire gorge.  
Spewed onto its bank, as if by magic,  
In a spray of muddy-brown water  
By autumn's first surge-tide,  
Your innate beauty remains hidden until you dry.*

*Now you journey along the Dales Way  
Ambling towards Windermere,  
Secure in the corner-pocket of a fleece jacket.  
Snug-warm in my hand, you urge me on  
Providing purpose and penance,  
Yielding comfort and distraction,  
As my pack becomes heavier,  
As pressure point blisters five-pence small,  
Slow-swell seeking bursting point.*

*At rest now, perched proud and safe, on a bookshelf,  
Amidst a scatter of nature's flotsam and jetsam.  
Mementos of long days spent by loch and mountain,  
Over dale and moor, rescued from destruction,  
As the river continues to flow, swirling, churning,  
Sculpting random-perfect-imperfections, into  
Ever shrinking pebbles born of the same mother-lode.*

Glyn Myerscough is an avid reader and an eternal student of literature. He writes poetry and short stories. Glyn is currently chair of York Writers. The group meets alternate Thursdays: 1st and 15th August at The Trafalgar Bay on Nunnery Lane at 8pm.



# WHAT'S ON

## SPONSORED BY: **küchenhaus**

2 Toll Gavel, Beverley, HU17 9AJ. T: 01482 862172.

Open: Mon - Sat: 10am-5pm. Sun: 11am-3pm. Bank Holidays: 10am-4pm.

### Until Saturday 14th September

• **Wildlife Photographer of the Year Exhibition**  
Treasure House, Beverley. Free. Mon, Weds, Fri 9.30am-5pm; Tues, Thurs 9.30am-8pm; Sat 9am-4pm; Sun 10am-4pm.

### Until Friday 22nd November, 2019

• **Edwardian Beverley: A Snapshot in Time**  
Beverley Guildhall, Register Square. Free. 10am-4pm Wednesday and Friday until October 30th, then 10am-4pm on Fridays and 10am-1pm on Wednesdays.

### Until Friday 24th April, 2020

• **Time off: Leisure and Diversions in the East Riding**  
Skidby Windmill and Museum of East Riding Rural Life. £2.50/£1.50/£1.25/Free.

### Saturday 3rd August

• **Wild Art for Little Ones Workshop with Claire West**  
Treasure House Education Room. 10am-11am. £3/child + 10% booking fee. For under 5's and their grown-ups. Dress for mess!  
• **Wild Art for Children - Workshop with Claire West**  
Treasure House Education Room. 1pm-3.30pm. £7/child + 10% booking fee. For ages 5+ (under 8's must be accompanied by an adult). Dress for mess!

### Wednesday 7th August

• **Find Your Groove Drum Circle for People Living with Dementia**  
Peter Harrison Room, Beverley Minster. Free. 1.30-3.30pm. Carers and family very welcome to join in. No experience necessary. All equipment provided. Refreshments available.

### Friday 9th - Saturday 10th August

• **The Twilight Radio Show Lunar Landing Laugh-a-long Special**

East Riding Theatre Café Bar. £10. Lupe Lu and Stewy Stu (Mariana Barbera and Gordon Meredith) present and evening of eclectic entertainment in the guise of a live radio show celebrating the 50th anniversary of the lunar landings. Tickets 01482 874050 or [boxoffice@eastridingtheatre.co.uk](mailto:boxoffice@eastridingtheatre.co.uk)

### Saturday 10th August

• **Organ Recital by Robert Poyser**  
Beverley Minster. Free. Concert in memory of Rosemary Adams to include music by her favourite composers, Bach and Buxtehude. Retiring collection.

### Monday 12th August

• **Summer Teddy Bear's Picnic with Gary and Jed**  
Armstrong Social Club. 4pm-6pm. £4 for children, adults and under 1's free. Bring a picnic and your teddy bear! Fun for all ages. Ice creams available from Tiki Bar.

### Tuesday 13th August

• **Singalong Memories Just for Fun**  
Walkington Methodist Church Schoolroom 2pm-3.45pm. £2 incl. refreshments. Ring 01482 865249 or 01482 882188 or email [val.memories@outlook.com](mailto:val.memories@outlook.com) for more details.

### Wednesday 14th - Saturday 24th August

• **She Productions presents The Three Kingdoms by Annie Kirkman and Jessica Duffield**  
East Riding Theatre. 10.30am and 2.30pm £6/£6.50. Salmon Ella, Umbar Ella and Acapp Ella have inherited the Three Kingdoms - one third each, which they can rule exactly as they wish - but the power of choice proves too much! A modern fairytale about teamwork, togetherness and the power of three. Relaxed performances 15th and 22nd August. Bookings 01482 874050 [www.eastridingtheatre.co.uk](http://www.eastridingtheatre.co.uk)

Tell us about your event!

Email: [info@justbeverley.co.uk](mailto:info@justbeverley.co.uk)

Telephone: 01482 679947

For more events visit:  
[justbeverley.co.uk/events](http://justbeverley.co.uk/events)

### Saturday 17th August

• **Organ Music for a Summer Afternoon by Robert Poyser**  
St Peter's Church, Woodmansey. 4pm.  
• **Leven and Brandesburton Horticultural Annual Summer Show**  
Leven Sports Hall, North Street, Leven HU17 5NF. 2pm onwards. 75p/children free. Tea and Homemade cakes. Tombola. Display of exhibits.

### Sunday 18th August

• **The Liturgy Singers**  
Beverley Minster. 4pm. Free. Concert featuring the music of Bach.

### Sunday 25th August

• **Delaney Davison in 'Ship of Dreams'**  
East Riding Theatre. 7.30pm. £13-£15. A glimpse into the world of the traveler. Set in Europe and New Zealand, Davidson re-envisions fables that define our morality, blending past and future using unique and compelling live music as the soundtrack. There is an incredible cast in this extraordinary show. Tickets 01482 874050. More details and online booking [www.eastridingtheatre.co.uk](http://www.eastridingtheatre.co.uk)

### Tuesday 27th August

• **Singalong Memories Just for Fun**  
Walkington Methodist Church Schoolroom 2pm-3.45pm. £2 incl. refreshments. Ring 01482 865249 or 01482 882188 or email [val.memories@outlook.com](mailto:val.memories@outlook.com) for more details.

### Wednesday 28th August

• **Beverley Youth Festival**  
Beverley Rugby Club. 12.30-3.30pm. Beverley Youth Coalition host food and drink, games, competitions, live music, gig buddies, henna art, youth services, mocktails, sports, BBQ.

## FILM ON A FARM RETURNS!

After the success of last year, *Film on a Farm* is returning again this year to *Butt Farm* in Beverley with the award-winning *'Bohemian Rhapsody'*. *Film on a Farm* is a unique outdoor cinema experience. Pull up a chair or a hay-bale and snuggle up beneath a blanket of stars and join us for a night to remember with a great movie.

This year, the event takes place Saturday 21st September - gates open at 7pm, tickets from £12 available to buy from [www.filmonafarm.co.uk](http://www.filmonafarm.co.uk).

Butt Farm is a working family farm situated 2 miles from the historic market town of Beverley in East Yorkshire. Set in 180 acres the farm is diverse growing crops, rearing cattle and running an award-winning caravan and campsite. With its open views of the East Yorkshire countryside, it is the perfect venue for an outdoor film weekend. Why not make a weekend of this unique event and camp? Bar and food available. Weekend Camping packages from 20th - 22nd September are available from [www.buttfarm.co.uk](http://www.buttfarm.co.uk).

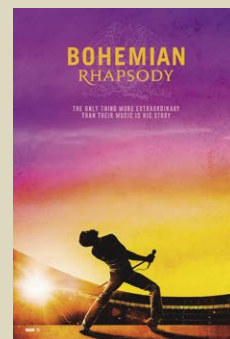


## COMPETITION

Butt Farm and Just Beverley are offering a lucky couple a pair of tickets to this special screening of *'Bohemian Rhapsody'*. All you need to do to be in with a chance of winning the tickets is to answer the following question:

**Rami Malek won the Oscar for Best Male Actor for portraying who in 'Bohemian Rhapsody'?**

Send your answer by email to [competition@justbeverley.co.uk](mailto:competition@justbeverley.co.uk) by Friday 6th September. Put **'Film on a Farm'** in the subject box with your answer, name, address and daytime telephone number in the body of the email. The winner will be the first name drawn at random on September 6th. They will be informed on that day. The winner must be available for publicity for Butt Farm and Just Beverley. Travel and camping is not included. Winners should take their own chairs and blankets. No cash alternative. The editor's decision is final.



# küchenhaus

The Largest Manufacturer of Quality German Kitchens

At Küchenhaus we have affordable solutions made to meet your highest standards

2 Toll Gavel, Beverley, HU17 9AJ. T: 01482 862172.

Open: Mon-Sat: 10am-5pm. Sun: 11am-3pm. Bank Holidays: 10am-4pm.





# ert

**EAST  
RIDING  
THEATRE**

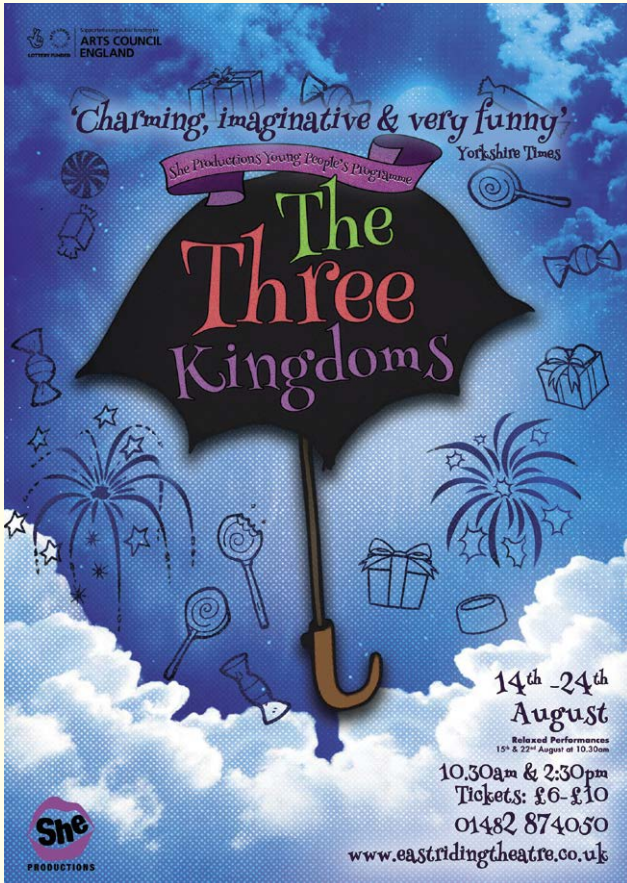
10 Lord Roberts Road  
Beverley HU17 9BE  
Tel: 01482 874050

Email: [boxoffice@eastridingtheatre.co.uk](mailto:boxoffice@eastridingtheatre.co.uk)

Current Box Office Opening Times:  
Tues - Fri 10am - 4pm or Sat 10am - 12noon.

**ert**  
Café  
Bar

Cafe/Bar Opening Times:  
Tues - Sat 10am - 4pm



**The Three Kingdoms**  
Weds 14th - Sat 24th August  
10.30am & 2.30pm



**ONE FOR THE KIDS!**

*Let us enter The Three Kingdoms; Where anything is possible and what you want you'll always get. But just be warned to think it through; a wish forever stays with you.*

Salmon Ella, Umbar Ella, and Acapp Ella have inherited The Three Kingdoms; one third each. To their delight, they have the freedom to rule their Kingdom exactly as they wish, but the power of choice proves too much. Will they find it in their hearts to unite before it's too late? A modern-day fairy-tale about teamwork, togetherness and the power of three.

**Tickets: Children £6 / Adults £6.50.**

**Relaxed Performances 15th & 22nd August.**

[www.justbeverley.co.uk](http://www.justbeverley.co.uk)

## Mariana Barbera & Gordon Meredith Present The Twilight Radio Show - Lunar Landing Laugh-a-long Special

Weds 14th - Sat 24th August  
10.30am & 2.30pm



*Lupe Lu & Stewy Stu return to present an evening of eclectic entertainment in the guise of a live radio show, performed in front of you, the studio audience, in the ERT café bar.*

You will be MGBFM's studio audience for our dynamic DJ's as they work their way through this evening's Twilight Radio Show!

Tonight's show is a special programme to celebrate the 50th anniversary of the lunar landings in July 1969. It is 50 years ago this summer that NASA made the seemingly impossible happen when it landed humans on the moon and our radio double act ponder the stories, the truth and the myths behind the event. So come along and laugh like a Cadbury's Smash alien, sit back, grab a beer and watch the sun go down as we take a sideways swipe at the greatest achievement of the 20th Century in this commemorative 'lunar landing laugh-along special.'

**Tickets £10. Friday 9th and Saturday 10th August at 7.30pm.**

## Ship Of Dreams Sunday 25th August 7.30pm

*DELANEY DAVIDSON touring force extraordinaire presents a glimpse into the world of the traveller. Filmed on Locations throughout Europe he fits his vision of Old World into a new format featuring film along with his carnival barker's voice, avant-garde sensibilities and genius vision.*

Set in Bavaria, Serbia, Romania, the Black Forest, Amsterdam, New Zealand and the swamps of England, Davidson re-envisions the fables that define our morality, blending past and future into a time outside the modern age in this fabulous zigzag quest for the stories of our day. Using his unique and compelling live music as the soundtrack to his own short films, woven in the style of David Lynch, Bella Tar and Murnau, Delaney transports us into a flickering realm of Grimm's fairy tales, Expressionist cinema, Brechtian epic theatre, forgotten values and lost stories.



Delaney has set up his show with an incredible cast, including members of Hamburg's esteemed Thalia Theatre, radical photographer Miron Zownir, underground legend Reverend Beatman, long-time film collaborator Chris Martin and emerging playwright and actor Hester Ulyart. An extraordinary, out-of-this-world opportunity, you'll kick yourself if you miss it.

**Tickets £13-15.**



FREE LOCAL  
DELIVERY

# DISCOVER OUR NEW KITCHEN & BATHROOM SHOWROOM

Come and meet our Kitchen and Bathroom Specialists Paul and Dan for a free design consultation.

MY KIND OF  
**HOME**



Symphony®

OMEGA PLC

EFF  
COOKING BRASSIEN SINCE 1877

DURAVIT

Roca

hansgrohe

## 50% OFF FLOORS OR TILES\*

\*Terms and conditions: when spending over £5000+VAT on a kitchen or £3000+VAT on a bathroom. Orders to be placed and delivered before 30th September 2019. Selected ranges only. Offer capped at 30 square metres. Only available at MKM Beverley. MKM reserve the right to withdraw or amend the offer at any time.

**BEVERLEY**

Swinemoor Lane, East Yorkshire HU17 0JX  
01482 880088 | [beverley.mkmb.co.uk](http://beverley.mkmb.co.uk)

**MKM**  
BUILDING SUPPLIES