

just BEVERLEY

WIN TICKETS TO THE THREE KINGDOMS AT ERT
AROUND THE WOLDS IN 80 WALKS

FREE

ISSUE 7

NEWS, EVENTS, HEALTH, ENTERTAINMENT, SPORT, PUZZLES, PHOTOS

FEATURE

GET ACTIVE

The Track & Fitness Boxing Club

FEATURE

SUMMER'S HERE

Find out what's on in the area

EVENT

WHAT'S ON IN BEVERLEY

See our monthly listings



PHOTOS

AT THE RACES AND MORE

CLAIM YOUR FREE LEISURE CENTRE VOUCHER

justbeverley.co.uk

MAKE MORE MONEY!



Google AdWords[™] TRAINING COURSE

ONLY £99 PER PERSON

(INCLUDES LUNCH AND REFRESHMENTS)

Training delivered by
Google AdWords[™] Certified Professionals

ONLY 4 PEOPLE PER COURSE

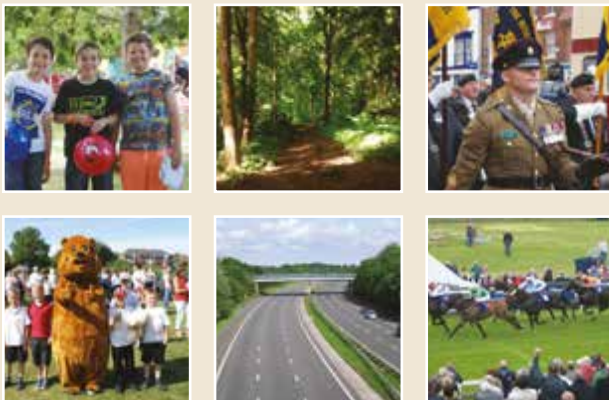
This results-focused training course will show you how to create and manage campaigns that don't break the bank and are focused on your target audience, improving your return on investment

Call now to book your place 01482 871178

Visit www.indicoll.co.uk/googleadwordstrainingcourse for more information

Training Venue: indicoll, 40 Norwood, Beverley, HU17 9EY





You can pick up the magazine from
 Beverley Tourist Information Centre, Beverley Library/Treasure House, Beverley News on Grovehill Road, Boyes, Asda, Morrisons, Tesco Café, Colette and Tyson Garden Centre, Mace News in Saturday Market and Lincoln Way, Tickton News, Costcutter in Walkington and Molescroft News.

CONTENTS

Comment and news	page 4
News	page 5
What's On...Just Kids!	page 6-7
Learning with arts and crafts	page 8
News	page 10
Eating In	page 12
Fashion	page 15
News	page 16
Around the Wolds in 80 Walks	page 18-19
Beverley's special events in photos	page 20-21
New to Beverley	page 22
Get Active	page 24
Competition and free voucher	page 26
Visit an allotment	page 27
Beverley Community Lift	page 28
Summer car safety	page 30
Release Your Potential	page 31
Life after Creation	page 32
Hidden Treasures	Page 33
Offers	page 34
Puzzles	page 35
What's On	page 36-37

Corrections

Barbara English apologises for two errors she made in last month's Just Beverley, in her article 'Gas lighting, political corruption and ale'. The eighth paragraph listed Francis Burrell as the father of 14 children, when in fact this should have been Francis Collinson. The article's final sentence also alluded to the same mistake.

CONTRIBUTORS

Julian Minshall, Laura Smith, Linda Johnson, Ian Partridge, Barbara English, Credit Neil Cameron Cover photo, Nico Chambras, Shelley Ashley, Stephen Parnaby.

just BEVERLEY

Letter from the editor



This month is all about the great things going on in and around Beverley. Now schools have finished for the long summer, we've made sure there's plenty on offer to keep everyone entertained, from the little ones to the much bigger ones!

To do this we've created a special edition of What's On...Just Kids, so pull it out, pin it to the fridge and make sure you keep an eye out for the things that are going to keep your young ones occupied right through the next month and beyond.

Of course, with days out often come long car journeys, and for that provided you with the essential tips to keep your car running smoothly in the warmer weather, so have a look at page 30 to avoid any mishaps. Nobody thinks the hard shoulder makes a good tourist attraction!

Julian Minshall



Is there anything better than the summer holidays? If there is it would have to be our very own Yorkshire Day. On page 9 we tell you all about how the tradition started, and you might be surprised to learn where it originated, so have a read and make sure you tell us how you celebrate the day. We want your stories, photos and memories of Yorkshire Day this year. You can share them with us by email, Facebook or Twitter.

Also this month I've shared my latest venture on page 8. Stitch Education is a project I'll be running starting this summer and I can't wait to get started and share what it brings. Celebrating creativity is really important and there's no better way to do this with children than with arts and crafts.

Don't miss our competition this month either. We've got two tickets to The Three Kingdoms at East Riding Theatre, which would make a great day out and be sure to be a good show. Finally, take a look at our photo spread on page 20. Were you spotted at any of the local events recently?

Laura Smith



Announcements

We are pleased to announce that Linda Johnson has joined the Just Beverley team. Linda has been writing a Lifestyle and Wellbeing column for us and is now also going to be involved with marketing. Linda says 'I love the ethos of 'Just Beverley' and its objective of profiling Beverley - its people, businesses, architecture, arts and culture. Beverley is a very special place to live and work and 'Just Beverley' celebrates that. I know of no other publication which does what 'Just Beverley' does, which is why I wanted to be involved!'

Linda Johnson

Get in touch

Website: justbeverley.co.uk
 Email: info@justbeverley.co.uk
 Telephone: 01482 679947
 Twitter: @JustBeverley
 Facebook: facebook.com/justbeverley

Financial challenges and a healthy start

Councillor Stephen Parnaby OBE, Leader of East Riding of Yorkshire Council begins a new term

I am delighted to be at the start of a new term as leader of East Riding of Yorkshire Council, and I look forward to the challenges and opportunities the next few years will bring. Your council will continue the good work we have been carrying out for many years, although the continuing difficult financial climate in which we have to operate will exert pressure on us all.

These are very exciting times here in Beverley. As I write this column, I have just returned from the official opening of East Riding Leisure Beverley, where we marked the completion of a £1.2 million refurbishment of this superb leisure centre. The new Tone Zone is twice the size of the previous gym, with around 90 exercise stations, and it offers state of the art equipment, along with a new online booking system to allow customers to book courses, sessions and courts via their laptop or smartphone.



As a council, we have taken a different approach to many other local authorities – we are not closing or privatising facilities like East Riding Beverley, but instead we are keeping them open and improving them. We have the

right business plan in place which allows us to have leisure centres which contribute to the council budget. I am proud that East Riding Leisure Beverley in particular consistently wins in the APSE Public Service Excellence Awards.

It's particularly pleasing that the Centre plays a vital role in the GP referral scheme – an introduction to physical activity which enables GPs to recommend a course of exercise for people who would benefit from it - and in the public health of the East Riding, and is of course in a partnership with the new campus of East Riding College, soon to open across the road in Flemingate.

If you haven't yet visited, I can heartily recommend a trip to East Riding Leisure Beverley – there's something for everybody!

Successful accountancy firm expands at bigger premises

The Beverley based accountancy practice, Hemingway Bailey has moved to larger premises in the town to accommodate their growing practice. Speaking to Just Beverley, Alan Hemingway, director at Hemingway Bailey, told Just Beverley how pleased he was with the move.



“We have been looking at alternative premises in Beverley because our old office was too small for our growing practice. We were attracted to the Walkergate office because of its size. It will accommodate all of the team but its central location just off the main shopping area made it a great choice too. We work predominantly with the market leading, cloud accounting software, Quickbooks and with the installation of KC Lightstream in the office, we can now offer an even better quality of service to our clients for

bookkeeping, accounts and tax return preparation.

“The new premises have certainly been a winner with both our team and our clients who have visited and making the move when we did was a great decision. We pride ourselves on our high level of customer service and being different to other accountants because we always want our clients to have the best information to make informed business decisions. The new Walkergate office is going to help us continue doing this.

We are very proud to be working in Beverley and we look forward to helping local businesses to continue to grow and develop to make a strong local economy.”

For more information on how Hemingway Bailey can help your business grow, contact Alan Hemingway at alan.hemingway@hemingwaybailey.co.uk or visit their website at hemingwaybailey.co.uk

Children celebrate end of primary school

Pupils from St Nicholas Primary School have celebrated the end of their time at the school before moving on in September.

Year 6 pupils at the school were invited to a sleepover party with a difference this month – instead of sleeping at a friend's house, the whole year group spent the night in their classrooms!

The idea behind the sleepover was to celebrate the end of the pupils' time at primary school, giving them a fun send off before starting secondary school in September.

The sleepover had all the usual fun and games, plus a traditional campfire and sing-along, where the children gathered with their friends to enjoy a whole night of being around their classmates.

The school's pupils also recently raised £151 for Beverley Armed Forces Day by taking part in a non-uniform day. The pupils were invited to wear blue, red and white colours for the day ahead of the celebrations.



Ted's story

Ted Oxley runs Tai Chi classes in Beverley, but has practiced the ancient art around the world. Just Beverley asked him to tell us about his practice.

I have spent 30 glorious years doing Tai Chi as well as Kung Fu. Tai Chi is an ancient fitness program, and regular practice over short periods of time can lead to health improvements.

I've visited China three times, the first being in 2000. I was accompanied by Master John Ding from London along with 5 other people. We travelled to Beijing, where we travelled a total of 3000 miles, taking planes, trains, mini-vans, taxis, boats, ferries, underground metros, bicycles, rickshaws and an incredible amount of walking.

Once we arrived in the country we visited five cities, and were met by a local tour guide each time.

The first place we visited was Summer Palace, a place full of envious beauty. We then went on to the Forbidden City which I had only seen parts of on TV. The highlight of the trip was when I was given the opportunity to explore one of the Seven Wonders of the World, The Great wall of China. On The Great Wall we performed Tai Chi and Kung Fu accompanied by several Chinese natives. It started off being a focussed session but by the end of it we were having a fun time, finding humour in each other's presence.



After the wall expedition we visited the Shaolin Temple, the origin of Chinese kung fu. There I had the honour of participating in Kung Fu with many Shaolin Masters. It was absolutely amazing, especially looking around the mysteries of the temple.

Once we had visited the temple we then went to see the Terra-Cotta army, I could only explain it in one word, wow!

The trip was an experience of a lifetime, with an enormous wealth of culture brought to me that will remain in my mind forever. The only thing I regret was not visiting Wu-Dan Mountain but that's another story and an opportunity for the future.

I now run Kung Fu and Tai Chi classes, for more info please contact Ted Oxley on 01482 86535.

What's On...Just Kids!

The summer holidays have arrived and with them comes the challenge of keeping the young ones entertained for the next six weeks. Here's our guide to the best kids' events taking place across the region this summer. Don't forget to send us photos of your days out!



Tuesday 28 July
Family fun day featuring Frozen sing-a-long, Beverley Racecourse, 2.25pm

Wednesday 26 August
Sports summer school, Longcroft School, 10am

- Rugby Summer Camp, 10am – 3pm 20TH & 21ST July, ages 9-11, Beverley Rugby Union Club
- Rugby Summer Camp, 10am – 3pm 22ND & 23RD July, ages 12-14, Beverley Rugby Union Club
- Rugby Summer Camp, 10am – 3pm 27TH & 28TH July, ages 9-11, Beverley Rugby Union Club
- Rugby Summer Camp, 10am – 3pm 29TH & 30TH July, ages 12-14, Beverley Rugby Union Club
- Rugby Summer Camp, 10am – 3pm 17TH & 18TH August, ages 9-11, Beverley Rugby Union Club
- Rugby Summer Camp, 10am – 3pm 19TH & 20TH August, ages 12-14, Beverley Rugby Union Club
- Rugby Summer Camp, 10am – 3pm 24TH & 25TH August, ages 9-11, Beverley Rugby Union Club
- Rugby Summer Camp, 10am – 3pm 26TH & 27TH August, ages 12-14, Beverley Rugby Union Club

The Sewing Bee's

4 WEEK SUMMER SCHOOL
SEWING COURSE FOR AGES 8 - 16
(VARIOUS PROJECTS FOR DIFFERENT AGE GROUPS)

MONDAY	9.30am - 12.30pm	
	1.30pm - 4.30pm	mix & match sessions on different times/days for your convenience
TUESDAY	9.30am - 12.30pm	
	1.30pm - 4.30pm	

(all materials and refreshments provided, limited places available)

BEVERLEY METHODIST CHURCH, WALKERGATE, BEVERLEY

FOR INFO / BOOK CALL
SHELLEY 07940 243375



Saturday 15 August
The Three Kingdoms, East Riding Theatre, 11am and 2pm

Open all summer:

Honeysuckle Farm, Hornsea
 – visit farm animals, go on woodland walks and enjoy homemade ice cream.
honeysucklefarm.co.uk



Sledmere House, near Driffield – stately home with large grounds, children's quiz and play area plus café.
sledmerehouse.com

Allerthorpe Lakeland Park – Watersports activity centre near Pocklington.
allerthorpelakelandpark.co.uk

South Cave Falconry – owls, hawks and falcons. Open Thurs – Sun.
 Call 01430 422616



Bempton Cliffs – view puffins and gannets on a cliff walk at this famous spot.
rspb.org.uk/bemptoncliffs

Hornsea Mere – Yorkshire's largest freshwater lake with rowing boats for hire.
hornseamere.com

Hornsea Freeport – factory outlet shops and cafes, plus indoor play area and climbing wall for children.
hornseafreeport.com

Kids go Wild – butterfly and seashore safaris, pond dipping, den building and teddy bear picnics.
eastriding.gov.uk/events

Humber Bridge Country Park – trails and ponds and great views of the bridge.



Beverley Beasty Trails – discover the darker side of Beverley's history with the North and South trails

The Treasure House – Beverley's museum, art gallery and library. Children's craft activities and treasure house trail.
eastriding.gov.uk/museums

Beverley's Town Trails – discover the history of the town's Medieval Guilds and Crafts

Paint the town – a fun quiz for children on the town's Fred & Mary Elwell Art Trail.

Skidby Mill & Museum – working mill and museum of East Riding rural life

Tasr Skatepark – skatepark, games room and youth centre
tasr.co.uk

Mega Fun and Jack in the Box – soft play centre, activity workshops, craft time and teddy bear picnics
mega-fun.co.uk

For full details of all our events, including how to book, go to justbeverley.co.uk

Celebrating creativity through arts and crafts



While the kids have put school firmly to the back of their mind for the summer, educators are already working hard in preparation for September. This year sees the launch of Stitch Education, run by Just Beverley editor, Laura Smith. Read on to hear about what she has in store.

Stitch is a brand new educational programme for schools, which encourages participation in learning using arts and storytelling. Aimed at children from five to 14, the programme uses four modules to nurture empathy, motivation and friendships.

Why is Stitch important?

Factors like children's attitudes towards learning can have a huge impact on how successful they are at school. Simple things like making sure a child feels confident to participate in lessons can dramatically alter how fast they progress in their subjects, and that's what Stitch is designed to target.

From children lacking in confidence, to motivation and those struggling with friendships or engagement, Stitch aims to rebuild the focus on enjoying school by simply making it fun.

Laura said, "Children can sometimes be mistaken as falling behind at school, but this isn't always down to a lack of ability. Whether it's being too shy to answer a question or fears of getting something wrong, low confidence can have a big effect on a child's development.

"Every child is different, and Stitch recognises that. Nobody likes sitting still all day or learning by sitting at a desk with an exercise book. Stitch lets children have that freedom to express themselves in a positive and creative way. It encourages using a bit of energy, getting up and playing. Children don't even realise they are developing new skills when they're enjoying themselves, but they do notice the difference in how they feel at school."

During Stitch sessions, children leave exercise books behind, and explore their learning by hands on crafts, lots of kinetic activities and letting their interests guide them into realising how much their approach to school affects how positive their time is there.

Stitch modules include Healthy Eating, Learning through Stories and All About Me, a topic designed to celebrate



the individual and instil confidence in every child.

The programme is launching over the summer, with taster sessions being planned for children in the area before it is opened up to schools in September.

Laura also writes educational activity packs. You can find out more about her work at laurasmithwriter.com and get in touch at hello@laurasmithwriter.com

You can find Stitch on Twitter @StitchEducation

Repertory Scores on the Yorkshire Coast

The Spa Bridlington launches its third Musical Repertory Season in the mid-July; consisting of three weekly shows taking place in three East Riding based venues over an eight week period.

There was a time when every theatre in the country had repertory; with resident performers entertaining audiences with different performances every week. It was how many British film actors and actresses learned their trade and grew their reputation.

Repertory is just one of many great things from the past being pioneered for the future by The Spa Bridlington. Previous audience members have been staggered by the quality and originality produced.

Andrew Aldis, general manager and producer of the season said "It's a far cry from the cheesy, seaside variety shows of the past and sets Bridlington apart from other resorts in producing high quality theatre experiences with bespoke-arrangements, live band and London-sourced performers.

"Add to this the use of local couture talent in costume design and production, local band members and a theme running throughout, it makes for a night out at the theatre more akin with a visit to a major city than a coastal town in Yorkshire."

This year's lead production is Fables and Fairy Tales. Set in a derelict, stately home library, the show takes the audience to both dark and comedic worlds in musical theatre style. From Pinocchio telling fibs and the three pigs as maids to the newly commissioned tale of the Giant Lobster of Bridlington; the show is a mix suitable for all ages and is, without doubt, the team's most epic creation so far.

The cast includes Andrea Miller; a mature actress approaching 70 years old, whose credits include the classic BBC post-apocalyptic drama Day of the Triffids. Accompanying her is Sarah Francis; who appeared in the BBCs Festival of Remembrance in 2013 and Cameron Leigh, a west-end stalwart who has appeared in many productions in the west end including Chicago, Charlotte's Web, Cats and Joseph.

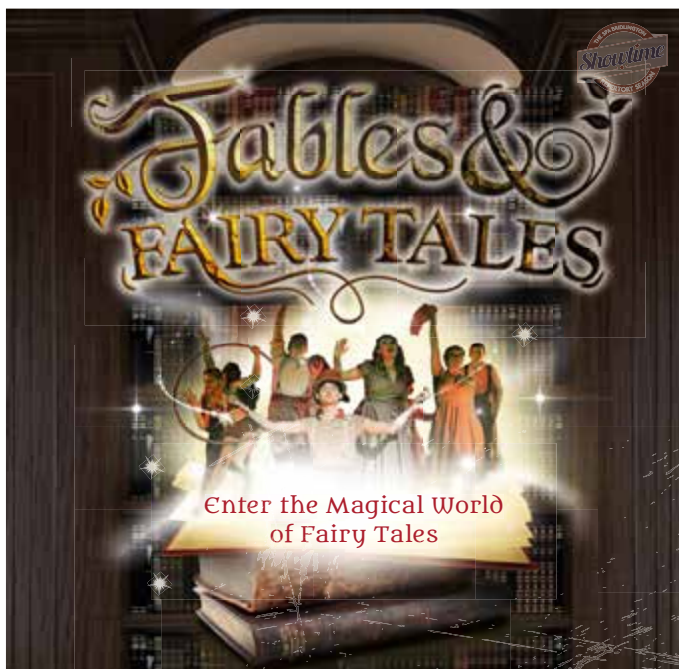
Alan Richardson and Dale Page return with their incredible counter-tenor voices and comedy timing. Previous audience members will recall Alan as a lobster and a meringue-frocked bride!

The show's band consists of five talented musicians playing a range of different instruments including piano, string, woodwind, brass and percussion. There will even be a xylophone and glockenspiel.

In addition, there will be a performance in promenade of a Cole Porter-themed show called Pass the Porter, being performed on Tuesday and Friday early evenings at Sewerby Hall and Gardens and on Saturday early evenings at Burton Constable Hall.

Andrew Aldis added, "If you want to experience the most professional new theatre production in the East Riding then pop a visit to The Spa Bridlington into your summer diary."

The Spa Bridlington repertory season runs from Wednesday 15 July to Saturday 5 September.



Fables & FAIRY TALES

Enter the Magical World of Fairy Tales

JULY			AUGUST				SEPT
WED 15	WED 22	WED 29	WED 5	WED 12	WED 19	WED 26	WED 2
THU 16	THU 23	THU 30	THU 6	THU 13	THU 20	THU 27	THU 3

7.30pm

AD £16.50
CO £14.50
CH £3.50



at Sewerby Hall

SEWERBY HALL AND GARDENS

at Burton Constable Hall

Every Tuesday and Friday evening

Every Saturday evening

Pass the PORTER

The performance will take you not only on a tour of the works of Cole Porter but also a tour of the venue.

21 July to 5 September

5pm
6.45pm

AD £14
CO £12
CH £3

Pre-booked 2 course meals available for £16 per person at Sewerby Hall and Gardens

Whole country celebrates Yorkshire

How do you start your day? Do you make a cup of Yorkshire tea, have a slice of parkin or find your flat cap before heading to the shops? For some, this could just be any other day, but for the rest of the country, the first day in August is Yorkshire Day.

What is really special about this annual celebration however, is where it all started. Yes, you guessed it! According to The Times, the idea of Yorkshire Day originated here in Beverley in 1975 by the Yorkshire Ridings Society, where it took place as a protest movement against the local government reorganisation of 1974.

What was once taken fairly seriously is now seen as a chance for some light hearted humour and fun to celebrate all things Yorkshire. Whether that's an extra cup of tea in the morning or a full day out, visiting one of the region's best attractions, Yorkshire Day is celebrated everywhere from John O'Groats to Devon.



If you're looking for a fun way to celebrate Yorkshire Day, have a look at our What's On guide on page 36. This month there's also a special edition of What's On...Just Kids too on page 6. Make sure you stick it to the fridge for inspiration throughout the summer holidays.



Coles Solicitors celebrate 50 years in business

Staff at Coles Solicitors invited their past colleagues back this month to celebrate the firm's 50th year of trading.

The local firm celebrated with a party in Northallerton's Golden Lion Hotel.

Guests included Robina Cole, wife of founder David J Cole, and their son Simon Cole, who has worked for the firm for 25 years.

David J Cole opened his law firm in May 1965, at premises on Northallerton High Street. Also in attendance was Jennifer Hogg who joined the firm in its first year and has amassed 50 years of service. Robina was presented with a bouquet and Jennifer received flowers and will be treated to a champagne afternoon tea on the Countess of York.

Peter Gibson, managing director at Coles, said, "We now provide a broad range of legal services from 10 offices across North Yorkshire and beyond having recently opened our latest office in Beverley. We deliver modern legal services, whilst acknowledging our considerable history and heritage."



Celebrity beauty on your doorstep

Celebrities worldwide are doing it, everyone in the beauty industry is talking about it, and now Beverley residents can get their hands on it too.

Radio frequency (RF) is a new skin-tightening procedure that's seeing the old technique of muscle-relaxing injections fall to the wayside.

By targeting the deep layer of your skin (the dermis), radio frequencies shorten the collagen, which not only prompts your body to produce more of it, but shortens and tightens the collagen already there. The result? Younger looking skin that comes from below the surface for a true glow.

RF, or 'the Collagen Wave' is a less invasive procedure than traditional injections, allowing this beauty procedure to put you at ease and make looking after your skin something to look forward to.

And that's what Rachel's Beauty World is all about. Situated opposite Boyes in the town centre, it has less of a clinic feel and more the atmosphere of a spa. Perfectly located for an appointment amongst a relaxing day of shopping and lunch, Rachel loves the charming atmosphere her clients immediately warm to.

"It's a pleasure to come into work. We're

professional in what we do, but that doesn't mean we can't enjoy our work and we love to have a chat with our clients."

Rachel's Beauty World has seen a great deal of success since opening its doors just a few months ago. Clients have now become regulars and new faces are walking in each week, all keen to see what a difference Rachel's treatments can really make.

As well as Radio Frequency treatments, Rachel's Beauty World also offers skin toning treatments such as rosacea reduction, freckle removal, sun spot removal and acne treatment. Inch loss and cellulite reduction treatments have also proved popular with clients, and tattoo removal and permanent hair removal is also on the up.

You can drop in and have a chat about the services Rachel offers at Appleton House, 3a Wednesday Market, First and Second Floor (above the sweet shop).

You can call Rachel's Beauty World on 01482 888234'



MINSTER CYCLES

Minster Cycles' success continues with the acquisition of an established business in Hull with 40 years of trading. Minster Cycles offers a huge range of quality bikes, components and accessories from both outlets.

Minster cycles currently has a massive sale on with up to 20% off selected 2015 bikes and up to 50% off selected clothing.

Minster Cycles,
5-7 Norwood,
Beverley,
HU17 9ET
01482 867950

Minster Cycles,
542 Anlaby Road,
Hull,
HU3 6SY
01482 509950

www.minstercycles.co.uk



Eating In

Bringing you a selection of the town's best choices of pubs, restaurants and bars for the lowdown on where to eat in Beverley.

Beverley Arms Hotel



You can relax in our newly refurbished lounge area and enjoy a meal from our new menu, and while the weather is good you can sit in our beautiful courtyard area too and enjoy coffee and toasted tea cakes.

Our aim here at the Beverley Arms is to make your dining experience an enjoyable and relaxing one. Our new menu includes bites from paninis and burgers to our raved about meat feast, not forgetting our sizzlers, hot enough to set off the fire alarm!

Our chefs have a passion for food that's not to be missed out on.

**The Beverley Arms Hotel,
25 North Bar Within, Beverley, HU17 8DD
reception@thebeverleyarms.co.uk
thebeverleyarms.co.uk
01482 869241**

Want to see your restaurant or pub featured here?
Get in touch info@justbeverley.co.uk or call 01482 679947

Hide Restaurant at Tickton Grange Hotel



Our menu is based on the rich array of Yorkshire produce. Each dish's accompaniments are chosen to reflect the natural surroundings of the main element.

David Nowell heads the brigade of chefs here at Hide. He is also Chair of the East Riding Food Network, an exciting group of artisan growers, farmers and producers whose products we always prefer. Hide, of course, suggests beef. Yorkshire beef, often reared on lush Wolds pastures, ranks amongst the best in the country. Whilst beef is only one element of our menu, we do give it a little more emphasis in terms of choice and style of cooking.

The name of our restaurant is also a nod to the past. Generations of the Whyment family, owners of Tickton Grange Hotel, previously dedicated their working lives to the production of high quality leathers and shoes.

**Hide Restaurant, Tickton Grange Country House Hotel,
Tickton, Beverley, HU1 9SH
info@ticktongrange.co.uk
hiderestaurant.co.uk 01964 543 666**

BEVERLEY MOTORWORKS INDEPENDENT BMW & MINI SPECIALISTS

Follow us on:

search for Beverley Motor Works

BMW Qualified Senior and Technicians Offer

- Saving up to 70% OFF main dealer prices
- Manufacturer's warranty not affected
- Resale value of your vehicle not affected
- Award-winning customer service
- Over 30 years' combined BMW experience

Call today on **01482 881128**

Our dealership expertise means high quality for car servicing at a fair price...

- ATA Accreditation
- Routine servicing
- Condition-based servicing
- Diagnostics
- Mechanical repairs
- Air conditioning
- Performance tuning
- MOT's

Call now for a no obligation quote or to book in on **01482 881128** or email us directly from our website www.beverleymotorworks.co.uk

Unit D1 Grovehill Industrial Estate Annie Reed Road, Beverley HU17 0LJ
E: web@beverleymotorworks.co.uk



HUBY

DOMESTIC APPLIANCES

Domestic Appliance Repairs and Servicing



Hubys specialise in domestic appliance repairs and servicing for a wide range of gas and electric domestic appliances including washing machines, dishwashers, tumble dryers, refrigerators, cookers, ovens and more.

www.hubys.co.uk | 01482 240511

Wednesday 12th August

Ladies Day

3 bars

Late licence

**Free glass of bubbly
for first 150 guests**

Professional photographer

2 DJs

BBQ

£5 entry

Strictly over 18s
Doors open at 5pm

LIVE MUSIC BY
LEEDS LEGENDS

LSL



THE
KING'S
HEAD
BEVERLEY

Do not blend in

These are strong words of wardrobe advice from Shelley Ashley this month, owner of designer boutique, Fascino. Read on to hear how she thinks you should dress for the races this Ladies' Day.

On starters orders

There's nothing like a race day to let your style shine through and for you to enjoy the chance to dress up. Here are some of my favourite combinations that guarantee to turn heads and make you stand out from the crowd, whilst still staying elegant and classy.

Solid Colours

Loud and proud colour combinations make for a dynamic, confident look. Feel free to mix it up with another colour or be bold and stay true to your chosen colour from head to toe. Accessories are a must for this look and can either co-ordinate or clash with your main block colour.



Modern Prints

This is a fun trend to go with no matter what the occasion. Mixing up abstracts with colours can create a bold fun look that will have heads turning everywhere you walk. Pair a print skirt with a solid top, or go big and mix two prints together! These types of prints can give you free reign in your millinery choice. You can pair your outfit with something totally different than what you would normally wear and it will all flow together! This type of outfit shows you as the fashionista you truly are! They show you can take a risk...and still look fabulous.

Monochrome

Black & white is always a winner in the style stakes. Play with separates or prints to get the monochrome trend. A little black dress with bold accessories is so classy. Want to add a splash of colour? Pair with a bold red lips and a small clutch and you'll look like you are ready for the red carpet!

Accessories

Accessorising is a must and it's a great way to bring your personality in to your outfit from shoes to hats to bags. One good tip to remember is that your accessories don't have to be big and flamboyant sometimes less is more. Really it's all about complementing the outfit and getting that polished look – it's the combination of the whole look and the fact that you should feel comfortable wearing it.

Fascino Boutique, 1 School Lane, Beverley is a designer selling agency, providing customers with new and nearly new designer pieces that are more individual than high street collections, yet still have a high street price tag, so you don't have to break the budget to achieve an upmarket designer look.

Sale now on! 20% off fabulous collections of dresses, skirts, tops, trousers, hats, shoes and handbags.

Opening times: Tues – Sat 10.30am – 5pm
 Contact Shelley - 07940 243375
www.facebook.com/fascinodesignerboutique
www.fascinodesignerboutique



FASCINO



**15% off
 Designer selling services.**

Swinging 60s to Techie 2000s: Evans Halshaw celebrates resurgence of iconic car

At a time when the Beatles were topping the UK charts, bell-bottoms were in and anything that could swing did swing, the Vauxhall Viva first made the headlines. Now this iconic car is making a comeback, with 21st century features that will see the model make waves amongst the small-car market.

With a name that pays homage to Vauxhall's original model, which was produced from 1963 to 1979, VIVA; the manufacturer's all-new five-door, five-seater addition has now arrived at the showroom of local retailer, Evans Halshaw.

Drivers in Beverley might remember the classic car from years gone by, and will be pleased to hear that whilst its style is timeless, there are several features in the new model that have come on a great deal since the Swinging 60s.

To showcase just how far technology has advanced in the new VIVA, Vauxhall has produced a series of light-hearted videos that highlight the new model's features and explore the more manual approach drivers would have employed in its 1960s counterpart.

Available at www.youtube.com/Vauxhall, the videos explore six features of the modern-day VIVA that come as standard, that back-in-the-day required a different approach...

One such feature is City Mode Power Steering, which for today's driver reduces steering effort at the push of a button. A look back at yesteryear reveals the only way for a driver to ease the steering effort was through bigger muscles!

Furthermore, when checking tyre pressure in the original Viva, a driver-powered swift kick

was required. Thankfully, clever technology in the new VIVA provides drivers with an automated tyre pressure display, which is a much more sophisticated and safer way of checking.

Similarly, the 1960s equivalent of a lane-departure-warning system was a beady-eyed passenger giving you a nudge if you crossed the line. Fortunately, drivers of the new VIVA benefit from a built-in system, to help avoid nasty knocks.



Adding to the standard features is the new VIVA's front fogs lights with cornering function, which allow 21st century customers to see easily and safely around corners in the dark, which in the original Viva, depended on the driver consuming a large amount of carrots!

And when it comes to keeping eyes on the road, the new VIVA comes complete with a pair of electrically-operated and heated door mirrors, which is a major development, considering that old Viva didn't have door mirrors at all.

Naturally, safety is of paramount importance. Gone are the days of the backseat passenger; the new VIVA boasts cruise control with speed limiter

as standard, making for a much less stressful in-car experience for everyone!

Other modern-day optional features include Park Assist, which alerts the driver to obstacles whilst parking, plus there's an electric glass sunroof, heated front seats and heated steering wheel.

As Vauxhall's videos prove, whilst much has changed since the conception of the original Viva, one aspect that hasn't altered is its focus on value. Launched in 1963 for the modest sum of £478, the Viva was famed for being strong, reliable, spacious and inexpensive to run. Step forward five decades and these values remain.

The latest incarnation comes at an extremely attractive price-point from just £7,995 on-the-road, making it once again an ideal choice for drivers who demand great value for money.

Today's VIVA shares the original's philosophy of clean lines, durability and practicality and brings with it superb design, performance and cutting-edge technology.

The all-new VIVA will be seen imminently on the roads around Beverley, which is a great reason for drivers to visit the local retailer on Swinemoor Lane to test-drive the model that joins Vauxhall's fashionable ADAM and popular New Corsa supermini portfolio.

To find out more about the new Vauxhall VIVA and to book a test drive, please visit Evans Halshaw at Swinemoor Lane, Beverley, HU17 0LJ. Alternatively, go online to www.evanshalshaw.com/vauxhall or call 01482 862 801

To explore the series of six VIVA videos, please visit www.youtube.com/Vauxhal

New restaurant celebrates Molescroft's 40th birthday party

To celebrate the opening of new restaurant, Rumis, sponsored Molescroft's 40th birthday party.

The Indian eatery gave away a £50 voucher to use on food and drink and a £50 Toys R Us voucher, with nine year old Edward Waterson being the lucky winner. He is invited to cut the ribbon at the official opening.

The restaurant held a special evening to celebrate the new business. A raffle was held to raise money for local schools, and a generous 50% of the first day's takings were added to the donations.





"Cocoa Rose is Beverley's newest independent ice cream seller. With more gluten free and non-dairy alternatives than ever before, you'll be spoilt for choice."



Want to get even closer to the perfect chocolate experience? Book one of our taster sessions or workshops, where you will learn to craft your own luxurious chocolate"

14 Wednesday Market, Beverley HU17 0DH
01482 882220
www.cocoarosebeverley.co.uk



Book now for

Afternoon Tea at Lempicka

An exquisite and delicious Afternoon Tea service at Lempicka Café is now being served daily. Treat yourself to our elegantly prepared Afternoon Tea including homemade baked cakes and tarts, savoury sandwiches, speciality loose leaf teas and our inspiring Kir Royale aperitif.

Please call 01482 866960 for reservations.

Visit Lempicka Café and Bistro for delicious all-day breakfasts, tempting lunches, home-made baked goods and our renowned espresso based coffees.

Luxury 4 star self catering/bed and breakfast holiday accommodation also available at Lempicka Apartment and Cottages

LEMPICKA CAFE AND BISTRO, 15 WEDNESDAY MARKET BEVERLEY HU17 0DH

Mention this advertisement for a Lempicka hot chocolate sachet to take home



The Game Bird is shaking its feathers and introduced an exciting new menu on 22 July.

A combination of the traditional and contemporary such as tasty burgers, steaks, swinging skewers, combo boards and exotic meat sizzlers.

For those brave enough there will be a metre long Burrito challenge.....

(24 hours' notice required and general T&C's apply)

The Game Bird 183, Holme Church Lane, HU17 0QL.
T : 01482 886173

E : gamebird@bateman.co.uk

W : www.gamebird@bateman.co.uk

Follow us on &

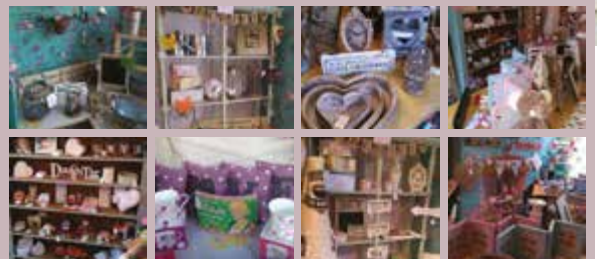
Landress Lane, Beverley (opposite Clintons)



A beautiful collection of home decor and gifts

Unique up-cycled and new furniture at affordable prices

Vintage wedding accessories



www.facebook.com/bchicy e: info@bchicy.co.uk

w: www.bchicy.co.uk t: 07771 360112

Around the Wolds in 80 walks

Visit Hull and East Yorkshire has compiled a guide to over 80 walks and rides as part of the organisation's Walking and Outdoors Festival this year. Here, we've picked out a few of the highlights.

Saturday 12 September - River Hull

Borrow a self-drive boat from Beverley Boat Hire and join the group as they drift through nature reserves and farmland to Hempholme lock. The day out includes time to explore the Driffeld Navigation. It's not every day you get the chance to explore Yorkshire by boat, and this trip is the perfect chance to try something new in the area.

Cost: £25

To book, and for more details, email Beverley Boat Hire info@beverleyboathire.co.uk

Saturday 12 September - Smelly and mucky, to shiny and new

Local Beverley guide, Colin Bradshaw will lead this historical walk, starting at the town's Guildhall. In an intimate group of 20 walkers, a route will be taken through Wednesday Market, Eastgate and Flemingate, looking at how Beverley has changed over the years. Topics are set to vary from medicine and housing, to archaeology and cock fighting.

Cost: Free

Sunday 13 September - Family bushcraft

This family event will see you learning the basics of survival, from fire lighting to making a shelter. Survival skills expert, Brian Bate will cover the essentials during this fun day out at Thixendale.

Cost: £6 adults, £4 children

To book, contact Robert Fuller Gallery on 01759 368355

Monday 14 September - Fungi foray at Millington Woods

Learn all about the role of fungi in our natural woodland areas with an expert in the field on this day out. Those attending will have the chance to appreciate the picturesque scenery and stroll around the local nature reserve.

Cost: £2.50 adults, £1.50 children and over 60s, £7.50 family ticket

Tuesday 15 September - Green plaques walk

This is your chance to be taken on a guided walk around Beverley, learning about the featured places on the Civic Society's green plaques. They paint a picture of Beverley you might be surprised to hear about! Barbara English leads this walk.

Cost: Free

Tuesday 15 September - Nordic walking on Beverley Westwood

A walk for the more active, this ancient method of walking will be taught in a one hour session, known for burning 30% more calories than normal walking and good for reducing pressure on knees and joints. Expert, Neil Thompson will lead the session.

Cost: £5

Wednesday 16 September - Boots and beer walk

For many, the perfect walk ends at the pub. Sound familiar? This walk is just for you. This 6.5 mile walk will visit the Wolds landscapes which inspires the Wold Top Brewery. After taking in the scenery of the surrounding Wolds Way, attendees are invited into the brewery at Hunmanby Grange, where they will be given two samples of award winning beer and invited to stay for a buffet lunch.

Cost: £10 (inclusive of beer samples and buffet)

Wednesday 16 September - New regional route

Perfect for the seasoned walker, or those looking to challenge themselves, this 12 mile route starts in Filey. Join the Pocklington Ramblers on this linear walk.

Cost: Free

No booking required.



Thursday 17 September - Bainton North Dalton circular

The Walkers are Welcome group invite the public on a 6.5 mile walk. The area feeds into Tibthorpe, North Dalton and Middleton on the Wolds, where walkers could easily extend their day with a village visit. The group is invited for a coffee or lunch at the Wolds Village following the walk.

Cost: Free

The festival takes place between 12- 20 September, so there's plenty of time to get out and about to discover the routes you like best. Whether it's a casual stroll to meet other walkers, or a longer stretch, taking in the beautiful Yorkshire scenery, there's something in the Wolds for everyone.

You can pick up a brochure, with full details of all the walks included in the Walking and Outdoors Festival from the Tourist Information Centre.

Unless otherwise stated, bookings can be made at the Beverley Tourist Information Centre.

Thursday 17 September – A walk starting in the Georgian Quarter

This walk is designed to take you past some of the oldest and grandest buildings in the town. It allows you to peek into a hidden area of the town and cross the Westwood.

Cost: Free



Friday 18 September – The Beverley Pub Walk

Host, Paul Schofield will lead this walk around Beverley's historical pubs, asking why so many of them have existed in the town. There'll be the chance to enjoy some drinks along the way, and enjoy the conversation and company of fellow walkers.

Cost: £3

Friday 18 September – RSPB Bempton Cliffs Photography Workshop

You won't find a better opportunity to practice amateur photography than this workshop. With over 200,000 seabirds making Bempton Cliffs their home, this location serves as a perfect classroom for those wanting to get to know their camera a little better. The 1 to 1 workshops will teach you about exposure, tricky lighting conditions and depth.

Cost £40

To book, call 01262851999. Full details are available at yorkshirecoastnature.co.uk

Saturday 19 September – Wildlife photography hideaway

This informal tour at Arglam Grange in Holme-on-Spalding-Moor is led by professional photographer, Les Gibbon. The walk will give participants the chance to visit the pond and photography hides, with a final session in the woodside hide, overlooking a purpose-built reflection pool to allow photographers to capture some great shots.

Cost £10

To book, call Les Gibbon on 07971546747 or email les@hullnews.co.uk

Sunday 20 September – Great geocaching treasure hunt

This easy walk will suit the whole family as they take a GPS over a two mile walk and search for the hidden boxes on the route. Geocaching is a fun, year round activity, and this would make a perfect introduction to the hobby.

Cost: Free (£20 refundable deposit required for GPS unit)

LAVISH ALICE

Lavish Alice is the best unkept secret in showbiz. From singers, to radio DJs and reality TV stars, the collection constantly graces the backs of the best national and international stars.

RAGS 2 RICHES
ROUTIQUE

Unit 6, St Mary's Arcade
North Bar Within
Beverley

www.rags2richesboutique.co.uk

£10 OFF
with this voucher
When you spend £50
or more.
*cannot be used with any other offer

ICHI

NÜMPH

PAISIE

Paisie is a London-based fashion brand founded in 2010 by two graduates who gained their experience at leading fashion houses including Alexander McQueen & Vivienne Westwood. They create affordable yet stylish pieces for the fashion-conscious customer without compromising on quality.



Send your photographs of your celebration
Find us on Twitter and Facebook to spot yo



Race day



Armed Forces Day



s around Beverley, to info@justbeverley.co.uk.
yourself in more photos each month



Summer Fair



Joint 6th prom



Botterill & Co

Name: Gareth Botterill

Works as: Chartered Certified Accountant

Favourite thing about Beverley: The town centre and number of local independent businesses

Favourite hobby: Running

Favourite thing about summer: Light mornings

Gareth Botterill is one of Beverley's newest business owners. After 18 year of working at various accountancy firms across East Yorkshire, Gareth decided it was time to go it alone, and established Botterill & Co earlier this year.

The accountancy firm, based on Norwood in Beverley, is what Gareth has been building up to for the last decade.

"After qualifying as a chartered certified accountant in 2005 I always had an ambition of setting up my own firm. I spent the last ten years gaining lots of relevant experience and building relationships with other small and medium sized businesses and decided that the timing was right to start my own firm in Beverley.

"There's no greater reward than being able to set your own hours, and the flexibility is great. I work extra hours when work dictates and I hope to continue to grow the business throughout the next few years."

Gareth told Just Beverley that he chose to open his business in Beverley due to the range of clients here. His Norwood office makes a convenient meeting spot for most people in the town, while also giving him the room for a possible expansion further down the line.

"As a business owner, you're always thinking about the next step, and expanding to bring others on board is a definite possibility."

Botterill & Co offers a range of services with a particular focus on small owner managed businesses and providing up to date financial information.

"Businesses need to know their financial position more frequently than once per year. Traditionally business owners would discover their profit and tax liability months after the



end of the year and a lack of planning may lead to cash flow problems. By working with clients throughout the year I am able to give more timely information and help my clients plan further ahead."

Gareth lives with his wife, Julie, and their dog, Jazz. In his spare time he enjoys playing golf and running, having ran the Yorkshire Marathon in 2014 and has recently joined the Beverley running club.

Frozen Yoghurt company chooses Beverley to open first UK store

A brand new frozen yoghurt shop has opened its doors in Beverley.

YOG.art originated in Cyprus, where the chain has been hugely successful. Now Beverley is their first UK opening and the start of many more stores to come.

Manager, Zoe Stergides told Just Beverley why she thinks the town is the perfect place to open.

"We've taken three months to complete the shop's interior. We've used local businesses and help from West Folk Truck to get us up and running."

Frozen yoghurt is a healthy alternative to ice cream, and just as enjoyable in the warm weather. YOG.art was lucky enough to have its opening day coincide with the recent heatwave, and immediately saw a flurry of customers through the doors.

Zoe continued, "We plan to introduce more

products as the business develops and are going to listen to what people want locally."

At present YOG.art is serving frozen yoghurt in original flavour, strawberry, Ferrero Roche, cheesecake, biscuit and cherry.

You can find YOG.art on Toll Gavel.





Prescription sun lenses for £59.

Find us on Toll Gavel, Beverley.

Call 01482 863547 or visit visionexpress.com

vision *express*

VISION.TAKEN SERIOUSLY.

Get Active

In issue five we told you about the new Tasr Skatepark which Beverley dad, Tony Thurston opened for his sons to have somewhere to spend their evenings. This month we visited Phil Dodsworth, co-founder of Beverley's Track, Fitness and Boxing Club, which aims to encourage more young people into using sport to fill their time.



Children can join the club from as young as four years old, although current members go up to 57, and in the past they have seen people aged 70 attend!

When people attend for the first time they meet someone from the club who will talk to them about their interests, health and how joining the club could be beneficial to them.

The club has been working with local police to reduce anti-social behaviour and encourage a positive attitude amongst young people in the area, an idea which the club is continuing to promote through visits to local schools.

Phil said, "Often the problem with young people spending their evenings gathering on the street can come from a lack of knowledge



of what's available to them. That's why we work hard in the community to let them know that they can come along and try something new.

"You never know who's going to have some really good talent. It's great to see new people getting involved in boxing and being able to immediately spot someone with potential to develop their training into something really worthwhile."

Bigger ambitions are definitely something the club encourages in its members. It has links with the England Boxing Association and sees some of its amateur boxers compete locally.

For more information about the club, visit them at [facebook.com/thetrackfitnessandboxingclub](https://www.facebook.com/thetrackfitnessandboxingclub)

SUMMER OFFERS

- 3 Months Toning
- 3 Months Vibraxis
- 3 Contour Wraps

£179

Normal price over £300
Limited Availability

TONING TABLE SESSIONS

Lose between 7" - 15" in six sessions, toning tables help if you are new to exercise, have issues with mobility, depression, bad backs & much more

FREE trials, no obligation
TESTIMONIALS AVAILABLE

SPECIAL OFFERS

Skin Deep Personalised Facial includes eyebrow shape

£25 was £30

Aromatherapy Massage Back & Shoulders 45 mins

£15 was £20

Valid until 31st August

INCHES BODY STUDIO

Inches Body Studio, 1 Norwood, Beverley, HU17 9ET

Telephone: 01482 865229

Email: info@inchesofbeverley.co.uk

www.inchesofbeverley.co.uk



OUTSOURCING YOUR PAYROLL COULD INCREASE YOUR PROFITS



Has the new legislation for RTI and Auto-Enrolment had a serious impact on your payroll workload?

Outsourcing to payroll experts can reduce costs whilst increasing productivity, accuracy and reliability. With a named personal contact, e-payslips direct to staff via our app, added value services and useful online information there has never been a better time to check out our services.

To arrange a **FREE** consultation to discuss the benefits of a tailored payroll package to suit your business needs call us on: 0845 308 2288 or visit www.stipendia.org.uk



Stipendia Payroll Solutions



@StipendiaPay



'Let us take you on a journey to a land that's faraway, where anything is possible, where dreams will be fulfilled.'

Let us enter The Three Kingdoms, in a sugar-coated carriage; no desire will be denied because what you want, you'll always get. But just be warned to think it through; a wish forever stays with you. Be careful what you wish for...'

SHE Productions will, quite literally, open the gates to The Three Kingdoms and welcome you into their eclectic and interactive world. This modern day fairy-tale will have you laughing, singing and casting spells with the Ella family as you follow them in this immersive theatrical experience. This immersive and interactive children's show is guaranteed to bring out the child in everyone from 3 years to 300.

The Three Kingdoms comes from the company that brought you Beverley Does Broadway and the project is in collaboration with East Riding Theatre. SHE Productions are an emerging theatre company of local actresses who aims to make innovative multimedia theatre for local audiences.

This month we're giving away two tickets to see The Three Kingdoms at East Riding Theatre on 22nd August.

To win, answer the following question:

Which children's fiction story is celebrating its 150th anniversary this year?

Answers should be emailed to info@justbeverley.co.uk by Friday 7 August. You can also look out for the competition on Facebook and Twitter.

Judges' decision is final. No cash alternative is offered. Details may be used for marketing purposes by East Riding Theatre, and for data collection and website analytics by Just Beverley. The winner will be notified within one week of the closing date and must be prepared to participate in publicity within the magazine and website.

Leisure Centre Voucher

To activate your voucher, answer the following question:

When does our Shape up for Summer promotion end?

Hint: The answer can be found at eastridingleisure.co.uk/Beverley

Email your answer with your name, address and contact number to leisure@eastriding.gov.uk



Lost the plot?

It's this time of year that sees more of us getting out and about and spending more time in the garden. But what about those of us who don't have a lot of outside space? Perhaps your garden is on the small side, or maybe the space you have is dedicated to flowers, water features or serves as the kids' playground, leaving no space for rows of home-grown veg. For those, allotments can be the perfect answer.

Gardener and RHS Chelsea Flower Show presenter, Monty Don wants to see an allotment revival to combat the number of young people having limited access to their own outdoor space, but allotments can offer so much more than that.

As well as offering the uninterrupted space to grow and nurture your own greens, allotments can offer people membership to a small community of like-minded people, ready to share their expert gardening tips to the new or amateur plot holder. Allotments serve as a garden away from home, and many appreciate the short distance that takes them further than the garden path and away to a space that's reserved just for the peace and quiet of turning soil, tending to the veg and taking home some well-earned produce.



This month sees Beverley's NGS Open Day take place at the Queensgate and Kitchen Lane allotments – an NGS Yellow Book event which sees the town's allotments go on show to the public for the fourth time.

For those wondering about taking on a plot of their own, the day will provide a great opportunity to speak to current allotment owners and ask questions to those in the know. You might want to know just how much work an allotment takes, how often they need to be visited and what happens to them over the winter months. Whatever your question, Beverley residents are sure to have the answer.

Throughout the summer of 2015 fellow Yellow Book garden owner, Sarah Wint will be travelling the country offering a helping hand to other garden owners preparing their gardens for NGS openings.

Sarah has been opening her own garden at Brook Farm in Worcestershire for four years and in 2011 the garden featured on the front cover of The Yellow Book and inside the pages of The English Garden Magazine.

During her time at other gardens Sarah hopes to collect the stories of the people and places she visits which will be included in a book compilation to be sold to raise funds for the National Garden Scheme.

Recognisable from afar, Sarah travels to events in her infamous yellow daisy bus, something which has become a status symbol for those in the Yellow Book community. She will be collecting stories from those she meets to compile in a book of her own. She's interested in hearing from local gardeners, especially on themes of health, wellbeing and creative endeavour.

She says, "It need not be an epic tale – a small area or just one plant that means something special will be interesting."

So whether you're a seasoned gardener looking to expand your plot, or a first timer wanting to learn more about allotment keeping, have a look at what's on offer locally. From attending an open day like Beverley's NGS on 26 July, to getting in touch with a green-fingered expert, owning your own allotment needn't be a far-off reality.

hemingway
bailey

Does your accountant provide year-long support for all your accounting issues with direct, honest answers whilst you pay a fixed fee?



Contact us today to find out how we are different.

Providing better insights for you and your business.

Hemingway Bailey Ltd, 37A North Bar Within, Beverley HU17 8DB
www.hemingwaybailey.co.uk help@hemingwaybailey.co.uk Telephone: 01482 679333

Beverley Community Lift - a case study

Ann Heaton

Ann has been using the Beverley Community Lift (BCL) car and minibus services for over 2 years. She has macular degeneration – so is nearly blind. Ann explained how she benefits from using Beverley Community Lift:

"I use the car service to take me to the eye hospital for regular appointments. The lovely driver from BCL usually stays with me while I wait to be seen. If they don't have time, then they drop me off and then come back for me. It's nice to know someone is waiting for me.

I also use the minibus for the shopping service on a Monday. Liz, one of the volunteers from BCL helps me to do my shopping – which is wonderful, as I can't see very well.

The best thing about BCL is the kindness and friendliness of volunteers. Their willingness to help is so appreciated. I depend on BCL – I couldn't live my life without them.

I also enjoy the outings, especially to the Sunday pub lunch. It's great to meet other people on the trip and we've got to know each other very well.

I started using BCL when I bought my bungalow – the lady who had lived there before me was one of the BCL drivers and she told me all about the service BCL provides.



I do have family nearby, my son and his wife. My son works away a lot and his wife is a schoolteacher. They do take me out whenever they can, but I don't like to ask them as they have so little time themselves.

If I didn't have BCL, I would have to use taxis to get to my hospital appointments, which can be expensive, and it's simply a drop off service. Once I've finished my hospital appointment I then have to find a telephone and call for another taxi to take me home. It's not such a caring service like BCL, where people do care about me and look after me.

Going out and about with BCL really lifts my spirits. If I'm feeling down - and living on your own is really very lonely - it's nice to know there are friendly people on the minibus just like me and that the drivers are friendly too.

The volunteers and drivers are charming and can be quite amusing. There isn't anything about BCL and the service it provides that I would change or that could be improved. I would certainly recommend BCL to anyone and everyone.

I can't walk very well, so I recently bought a mobility scooter which folds up nice and small. I can take it on the BCL minibus when there's an outing and then I move around without anyone having to push me in a wheelchair. It helps me to keep my independence. I don't really like asking for help. I can take it on the minibus and feel independent.

Without BCL, I would be very much lost. I might become what my grandchild would call 'a miserable old fart!'

Beverley Westwood Lions

The local organisation of community volunteers aims to offer a modern approach to the club, offering membership for men and women and concentrating on offering a family-orientated membership suited to modern lifestyles.

Memberships are available for anyone over 18 who wish to help with the local community and feel they want to give something back to those less fortunate than themselves.

The Beverley Lions pride themselves on contributing all of the money they raise to national and international disasters, keeping none in administration costs.

If you are interested in learning more about the Lions, please contact one of the organisers, Alan Porter on 01482 882514 or Les Ford on 01482 866696.





Ceramic Tiles in Beverley
www.ceramictilemerchants.co.uk



Visit Our Beverley Showroom

Monday – Friday: 08.30 – 17.30
Saturday: 09.00 – 17.00

379 Grovehill Road
Beverley
East Yorkshire
HU17 0JG

Tel: 01482 679599
E: info@ceramictilemerchants.co.uk



Car safety in the summer

Rising temperatures, increased days out and more miles on the dashboard... summer is here and your car knows it. We all tend to get out a bit more over the summer months, which means we should be giving our cars the once over more regularly. According to research though, more of us are inclined to wash our cars than to maintain their safety before a big trip. Follow these simple tips regularly to avoid the risk of spending your days out on the hard shoulder.

Tyre pressure can change in the heat. Even if you've checked yours recently, after a heatwave it's always best to have another look before setting off on a long drive. The wrong tyre pressure can cause problems from increased fuel consumption to causing your car to aquaplane on wet surfaces, so whether it's the benefit of extra pennies in the pocket for ice creams or the peace of mind of a safe journey, stopping to check your tyre pressure the next time you're at the petrol station could be well worth it.

You can also make sure your car is using all-season tyres. Some cars come equipped with heavy tyres to cope with the winter weather, and these impact on your fuel efficiency. Swapping them over for lighter tyres is recommended.

Change the air filter every 12,000 miles or annually. It's not a part of the car we think of regularly, but they can become clogged with salt and grit over winter, causing inefficiency and increasing your fuel consumption by as much as 10%. They don't have to be perfectly clean to work well, as some dirt can help the filtering process, but check it isn't completely clogged up before a long journey.

Windscreen wipers can crack and tear in extreme heat, reducing visibility, especially in a sudden downpour. We're all likely to get caught in one, making the wipers one of the most important parts of a car to maintain. They're relatively inexpensive and easy to spot when they need replacing. If your windscreen is left with lines or smears, or taking a few goes to clear during a rainfall, it's time to replace the wipers.

Oil doesn't just keep your car running smoothly, it also contributes to keeping the engine cool. You should change your car's oil every three months, based on average use, but check it more regularly, and before every long trip. The best way to check your oil is to run the engine for a few minutes, before parking somewhere level and taking out the oil dipstick. If the oil is particularly dark, grimy or not smooth in appearance, it's time to change it.

Remember, always recycle oil and never pour it down a drain.

Check the radiator and coolant. When cars are stuck in traffic on a hot day, they are most likely to overheat. The lack of airflow from being stationary can lead to metal components fusing together if the temperatures rise high enough, leading to expensive repairs. Keeping your car's radiator topped up with a mix of water and coolant can combat this. Coolant should be replaced every two years after flushing the radiator system.

While you're checking the radiator, it's also a good idea to look at the hoses that run from it and the fan belt for any signs of wear and tear, as these are also parts likely to feel the strain under hot weather.

Once you're set to go, you can enjoy the peace of mind of a well maintained car during a day out, and we've got plenty of those to recommend. Turn to our What's On...Just Kids guide on page 6 for some great ideas for days out.



You can't please everyone all of the time so why not just please yourself!

I wonder what your answer would be if I asked you who the most important person is in your life? Your kids? Parents? Significant other? I'm sure you would have a good argument for justifying your answer. But I'm going to persuade you to seriously rethink because the most important person in your life is you!

I can almost hear your cry of 'No! That can't be right!' so here are a few reasons why each and every one of us is deserving of self-regard first and foremost.

- We have been programmed to think that looking after number one is selfish so we feel guilty if we look out for ourselves rather than others. Yet in order to look after others we have to be fit and healthy.
- The only person who can control how well each of us looks after our own body by exercising, eating the correct amount of nutritious food and drinking water for hydration is us. Similarly, it is up to us whether we abuse our bodies by smoking, drinking too much alcohol or eating too much nutritionally-poor food.
- Ignoring what makes us happy by concentrating on what makes other people happy or by letting others rule our lives with their thoughts on what they think makes us happy ultimately causes us to become stressed, miserable and frustrated. It also gives us an excuse to blame others for our unhappiness. Blame is another negative emotion we can do without!
- We are only here in this life once; we only have a finite number of years to enjoy it and make a difference. Yet we cannot contribute fully if we are continually distracted by other people's wants and needs, by other people's rules and regulations and by other people's expectations. Saying no to give yourself time to relax, distress and just 'be' allows you to focus on the best way for you to live your life.

It's often a life-threatening illness that causes us to stop, take stock and get our lives in perspective. Don't let that be the driver for you to become a little more self-aware and, yes, even selfish!

Until next time, be happy!

Linda





Do you want to change your life for the better?

Lifestyle Coaching and Clinical Hypnotherapy which will help you...

- ✓ Lose Weight
- ✓ Reduce pain
- ✓ Curb anger
- ✓ Control bad habits
- ✓ Over-rule addictions

- ✓ Stop Smoking
- ✓ Ease stress and anxiety
- ✓ Become fitter and healthier
- ✓ Conquer fears and phobias
- ✓ Sleep better

Tel: 07585 802035
 Email: linda@releaseyourpotential.co.uk
 Web: releaseyourpotential.co.uk

Life after Creation

Photographer Nigel Walker talks about life after Creation Fine Arts and his desire to connect through his pictures.

Nigel Walker has recently closed Beverley's much acclaimed gallery, Creation Fine Arts and is returning to his love of photography, although his work never appeared in the gallery.

Nigel has been taking photographs since his teens and had his first "proper" camera bought for him for his eighteenth birthday. "Of course it was all film then and I learned to develop my own black and white pictures, which I remember was always really exciting as you had to wait to see the image appear."

Now Nigel works largely with digital files, partly for the immediacy but partly due to the flexibility. "Digital is no longer a low quality cousin to film. With cameras able to shoot at beyond 50 million pixels there is no excuse for taking substandard photographs."



Nigel concentrates mainly on landscapes, although he is also working on a series of portraits of artists in their studios. He was drawn to this subject by his love of art. "I would like to eventually show the photos alongside some of the work by those I am shooting in order to help people appreciate the skill and thought that they put into producing art."

In the meantime his landscapes are starting to be seen more widely and visitors to Vanessa's award winning deli and café in Beverley are among the first to appreciate them. "It is important for any landscape to connect with someone. Emotion is always a strong connection in art;



colour; subject; place - and so taking pictures which have these elements is important to me. I want to connect directly with people through the picture. Everyone is a photographer these days and so there has to be a special element which connects. In the photograph of Venice, it may be the gesture of the gondolier. Photographers often have to wait for months to catch the quality of light in a particular place. Just sometimes a happy accident (like the gesture of the gondolier) presents itself and you need to capture it immediately. The more familiar a place is, the more challenging it is to capture a photograph that shows it differently. Having a camera in my hand certainly makes me look more thoroughly and discerningly."

To maintain exclusivity, Nigel only ever makes three limited edition prints of any photograph for sale. "I am aware through running the gallery that people do not wish to feel that a photographer is selling multiple copies for a large fee to anyone who wants one. Photographs are expensive because of the cost of equipment, time, professional printing and framing so a buyer wants to know that the image has some exclusivity."

For a man who retired and then spent five years in the art world it doesn't sound as though Nigel is likely to be slowing down anytime soon. This year he already has trips planned to Barcelona, The Dordogne, The New Forest and Skye and next year hopes to fit in trips to Scandanavia and Romania as well. "That doesn't mean I will be ignoring East Yorkshire though, and I am already working on a series of photographs of the Wolds."

You can see Nigel's work in Vanessa's Café in Saturday Market and on Facebook at Creation Fine Arts as well as creationfinearts.co.uk.



Andrew Burton,
28 Carnaby Close, Leconfield, East Yorkshire, HU17 7LA
t: 01964 552769 m: 07585 601730
e: info@burtonelectricalsolutions.co.uk



Hidden treasures

It's holiday season, and whether you're relaxing in the garden or on a warm beach in the Med, there's nothing better than a good book to kick back with. Beverley has some incredible book shops on offer, and we love uncovering the smaller, lesser known treasures in the area, which is why we caught up with Hetty Tatman, joint owner of the Beverley Old Bookshop with her husband Colin.

The Beverley Old Bookshop has been around since the early nineties, and while 22 years in business might not earn the title of 'old' to many, over two decades in a competitive retail industry is no small feat, especially given the rough economic climate of recent years. But where others fell, the Beverley Old Bookshop has continued on, and today is one of the only remaining book binding businesses in the area.



Anyone who enjoys shopping for books will know the joys of finding a second hand store with more titles than should be possible to fit in the space available, and the Beverley Old Bookshop is just that. With tiny rooms, Hetty and Colin can be found stocking books above doorframes, inserting shelves into the smallest of nooks and crannies, and somehow it still leaves enough room for gentle perusing and discovering something new every time.

A love of books will often lead to day dreaming about running your own shop, hand picking the titles you love and sharing them with others, but for Hetty and Colin, their passion goes beyond the retail and sees them also carrying out restoration work on dearly loved titles. Hetty said, "Whether it's a well-used dictionary, bible or cookery book, Colin

spends a great deal of time working on customers' battered, but treasured books."

Colin also carries out repair work for other book dealers, a craft that takes a lot of time and attention to detail to get right, but is always worth the effort. While bookselling might seem a fairly static business, Hetty assures me the industry does have its trends, and that literary fashions are constantly changing.

"Books go in and out of favour. It can also depend on what's on the television. For years you couldn't sell a Poldark novel but because of the television series everyone now wants to read them."

For booksellers, acquiring new stock can be like going on a treasure hunt. Books are found at auctions and fairs, as well as people bringing them into the shop. Often they will come across boxes and boxes of books at a time, and have to be careful about what they select.

"We go to people's houses who are downsizing, however we have to pick carefully with a view to what will sell. It's a small shop and trends change. It can be thrilling to find something exciting amongst a lot of common titles though. We'd bought a load of old books in banana boxes and going through them we discovered an old copy of Dracula. Someone had drawn in biro, on the cloth boards, a spooky castle scene complete with bats flying around. It turned out to be a first edition!"

When asked if she gets many requests from customers, Hetty told me how frequently people are looking for a children's book.

"Finding that long lost book you had as a child is a frequent request. Books,



especially children's books, can be incredibly nostalgic. We also look out for books on specific subjects for our customers or maybe a book in a series."

Talking about books to take on holiday this year, she suggested picking up a classic you've never read before. The titles that we've heard of our whole lives can often turn into all-time favourites, given the chance. So whether it's a Bronte, Wordsworth or a modern paperback perfect for summer, have a look next time you're passing the Beverley Old Bookshop. You really never know what you might find.

The Beverley Old Bookshop can be found on Dyer Lane and is open 10am – 5pm, Monday to Saturday.

Offers



SAVE **10%**

allmobility
The Company That Cares

Exclusive "Just Beverley" Offer
Present in store for your discount

*Excludes already discounted items
One voucher per person
One voucher per transaction
Expires 31.08.2015

Check out this month's special offers

Want to lose weight, get fitter and healthier?

Release Your Potential can help you change your life for the better – forever! Using life coaching and hypnotherapy, we can help you:

- Change the way you think about nutrition
- Help you incorporate exercise into your daily life
- Keep you mindful of what you are eating
- Give you added confidence, vitality and enthusiasm

Check out www.releaseyourpotential.co.uk for testimonials and case studies.
Usual price for 8-week course, plus 6-month follow-up £395. Just Beverley readers get a 25% discount until 31st August 2015 by quoting JBRYP02.

Inks and Toners Business for Sale

Established national web store with hundreds of loyal, existing customers, needs a new home. Between 10 and 15 orders daily, the website would suit a small retailer, or a dynamic entrepreneur.
Turnover approx. £150k p.a. Sale Price £30k plus stocks.
Great opportunity to expand locally - Beverley needs a decent inks/toners supplier!
For more details, e-mail wphsimmonds@msn.com

AdWords training for £99

Get a personalised AdWords training course at indicoll for just £99 + VAT (normally £295). Run by a Google Certified Professional, helping you get more bang for your buck.
Call Gary on 01482 871178 for more information and to book your place.



Beverley Motor Works

Book an MOT for £20 when you book any other service.
Air conditioning recharges for £20 when you book any other service.

Inches Body Studio

Skin Deep Personalised Facial (includes eyebrow shape) - £25 (was £30).
Aromatherapy Back & Shoulder Massage (45 minutes) - £15 (was £20). Call 01482 865229 and quote 'Just Beverley'.

Rachel's Beauty World

Get six anti-aging oxygen facials for just £299 (normally £493), including one day cream, one night cream and one serum.
Quote Just Beverley. To maintain that glowing look, come back every month for just £55. Plus, call today to book a consultation and get a free skin analysis worth £45 when you quote Just Beverley.



BEVERLEY NEWS

"More than just a newsagent"

We're all going on a summer holiday...

Pop along and see what we have to keep your kids entertained for the Summer Holidays.

We have Rounder sets and Tennis Sets for the sporty kids.

Water Bombs/Guns for those we wish to make a splash

But. If the rain comes pouring down, we have Activity Sets and Arts and Crafts to save the day



Bringing the News to your doorstep

Have your favourite daily newspaper delivered

to your door by one of our delivery team.

Call 01482 866 010 to arrange delivery

Opening Times

Mon - Sat 5:15am to 6:30pm

Sunday 5:15am to 2pm

292 Grovehill Road, Beverley

Aegis Martial Arts

Attend 12 summer evening martial arts classes for £60 and receive a free suit for your child over the summer holidays.
Call AEGIS Martial Arts on 07791216116 to book.
<http://aegismartialarts.co.uk/beverley/>

The Gamebird Hotel and Restaurant

Can you face the metre long burrito challenge?
Contact 01482 886173 or gamebird@bateman.co.uk with 24 hours notice

Summer Sale at Minster Cycles

50% off selected clothing
Customised bike fitting from £50.
Enquire now on 01482 867950 and quote 'Just Beverley'.

Rags 2 Riches

Host a clothes party and get 10% of the takings to spend in store. Get 10% off when you spend £50 with the voucher on page 17.

Lempicka Café and Bistro

Mention Just Beverley in Lempicka Café and Bistro to get a hot chocolate sachet to take home. For enquiries, call 01482 866960

PUZZLE PAGE

LAST MONTH'S ANSWERS ON justbeverley.co.uk

Sudoku

Fill in the grid with digits in such a manner that every row, every column and every 3x3 box accommodates the digits 1-9, without repeating any.

			4	5				
		8			7	1		
	7		1		3		5	
	3	5				9		7
9								8
4		6				5	1	
	4		9		8		2	
		9	3			6		
				1	2			

Wordsearch

O S H O B K F U T U B J S U M
 S T N E W Y S F M I B R W O G
 U N I V E R S I T Y O H Q Y E
 Q A B M F K B W C L U Y K S E
 U R R E M P V S L D L X X T M
 X U J Z V W C I S C I U E S V
 Q A X U U E C Y T Q S A Y I F
 Y T Y E U N R G U I C K F T U
 O S I P U H N L D H Z M J R O
 T E R O L I V Y E J O T J A U
 P R C A M V Z R N Y S B S G D
 H V A R B G S D T S C H O O L
 L L A B T O O F S Q R I K Q R
 O F J F V P S W Y F B K Y U D
 C E C J G H K S S X X L Y W D

ARTISTS
 BEVERLEY
 COUNCILLORS
 FARMING
 FOOTBALL

RESTAURANTS
 SCHOOL
 STUDENTS
 TEACHERS
 UNIVERSITY



WHITE RABBIT
 CHOCOLATIERS

Your Luxury
Chocolate Destination
handcrafted in beverley!

16 Dyer Lane, Beverley, HU17 8AE
 01482 67932
whiterabbitchocolatiers.co.uk

Gourmet drinks from The White Rabbit

Have you tried our artisan hot chocolates and coffees? All of our drinks are served with a sample of our delicious chocolate. Sit in our cosy seating area, or carry-out.

AZTEC STYLE HOT CHOCOLATE

This age old recipe combines bitter chocolate with a blend of spices & water. Dark and intense. (No dairy)

GEORGIAN STYLE HOT CHOCOLATE

King George I kick-started his day with a cup of hand-brewed hot chocolate, made by his personal chocolatier, Thomas Tossier. Try our version of this luxurious drink, finished off with cream.

BELGIAN STYLE HOT CHOCOLATE

Your choice of real chocolate (45g of dark, milk, white, strawberry, orange or caramel!), melted down and topped up with creamy hot milk

ARTISAN COFFEE

We use a South American Rainforest Alliance espresso blend by the husband and wife team at the York Coffee Emporium. This is a delicious and full bodied coffee, sweet, smooth and rich with a delightful mocha-chocolate aftertaste. The perfect accompaniment to our chocolates!

Our milk is a velvety microfoam, either dairy or non-dairy. Decaffeinated drinks are also available.

WHAT'S ON IN BEVERLEY

JULY

Friday 24 July

Elite Cycle Race, town centre, 6pm

Saturday 25 July

Water Works: mixed media art by Ebor, Beverley Art Gallery, 10am

Seascapes, Treasure House, 10am

Raft race, Beverley Beck, 11am

Sunday 26 July

NGS Open Allotments day, Queensgate & Kitchen Lane allotments, 12pm

Tuesday 28 July

Family fun day featuring Frozen sing-a-long, Beverley Racecourse, 2.25pm

Mixed neuro-linguistic programming, East Riding College, 5.30pm



Wednesday 29 July

Let there be light, Beverley Minster, 7pm

AUGUST

Saturday 1 August

Yorkshire Day, Beverley Minster.

Beverley News defibrillator funding day, 294 Grovehill Road, 10am – 4pm

Saturday 8 August

Three men and their boats: artists and designers of the Humber Yawl Club, Treasure House, 10am
What the butler saw! Treasure House, 6.30pm

Sunday 9 August

Odd Shaped Balls, East Riding Theatre, 8pm



Wednesday 12 August

The Journal Ladies' Day, Beverley Racecourse, 2.10pm



Thursday 13 August

Afternoon racing, Beverley Racecourse, 2.30pm

For more information visit justbeverley.co.uk/events
 To submit an event email info@justbeverley.co.uk or call 01482 679947.

Friday 14 August

The Three Kingdoms, East Riding Theatre,
 11am and 2pm
 The show runs until 22 August



Wednesday 19 August

Local produce market, Wednesday Market, 10am



Friday 21 August

Beverley Folk and Roots, Beverley Arms Hotel, 7.30pm
 Beverley Folk Club – The Bronze & David Ward
 Maclean, Hodgsons, 8pm
 Musical evening with Zenith Nadir and friends,
 Armstrongs Social Club, 8pm

Tuesday 25 August

Mixed – Communication, East Riding College, 5.30pm

Wednesday 26 August

Sports summer school, Longcroft School, 10am

Saturday 29 August

Beverley Bullet Raceday, Beverley Racecourse, 2.20pm

Sunday 30 August

A Sunday Hop, Beverley Racecourse, 1.55pm



To advertise in
 this magazine or
justbeverley.co.uk
 Call 01482 679947
 or email
info@justbeverley.co.uk
 BEVERLEY



Competition Winner

Last month we offered readers the chance to win **Shirley and Scruff** collectibles and a bottle of wine.

We asked you: **Which prestigious art award will be displayed at the Ferens Art Gallery in 2017?**

The answer was **The Turner Prize**. Well done to everyone who answered correctly.

The winner was **Marian Cox**, pictured here with local artist, Shelley. Congratulations Marion!

This month you can win two tickets to see The Three Kingdoms at East Riding Theatre. Turn to page 26 to find out how to enter.



Get Your Independence Back



Call and see us today for all your Mobility Needs



**Riser Recliner Chairs, Aids for Daily Living
Stairlifts, Wheelchairs, Walking Aids
Dressing & Grooming, Kitchen, Bathroom**



allmobility
The Company That Cares

110 - 112 Walkergate, Beverley, HU17 9BT

01482 887799

www.all-mobility.co.uk

Shop open Mon - Sat 10.00am - 4.00pm



Free Assessments

All Mobility offer a free assessment service for all the major products in our range.

We don't expect everyone to buy from us but please be aware of the pitfalls of buying a product at a very low price without a proper assessment.

Incorrectly sized or applied products, such as wheelchairs, stairlifts, riser recliner chairs, walkers etc. can cause additional medical problems (see below) and it is important that you are seen by an experienced person so that when you finally buy the product, it will be correctly sized and applied for your use.

If you are suffering from any of the following medical conditions, these can be worsened by the wrong selection of a product, but conversely, they can be helped by a proper assessment carried out before you purchase.

- Arthritis
- Joint Inflammation
- Pressure Sores
- Sleep Disorders
- Asthma
- Multiple Sclerosis
- Rheumatism
- Stroke
- Back Pain
- Post Surgery Ailments
- Sciatica
- Thrombophlebitis
- Varicose Veins

We operate a full assessment service from our Shop on Walkergate, Beverley. If you have any difficulty getting into the store, call us today on 01482 887799 and we can visit you at home, by appointment to help you choose the correct product for your needs.

Once your assessment has been completed we shall be pleased to offer you a quotation for the most suitable product for your requirements.

If you choose us to provide the product that you require, we will provide a full after sales service and back up to keep your purchase in full working order.

Give us a call today on: 01482 887799



Our local legal experts are here to help...

...you

Family Law
Land & Estates
Wills & Probate
Conveyancing
Personal Injury
Medical Negligence

...your business

Litigation
Employment Law
Agricultural Law
Property Work
Dispute Resolution
Disaster Planning

Proudly serving you from Yorkshire for 50 years

22 Lairgate, Beverley HU17 8EP

T: 01482 231300 E: info@coles-law.co.uk

www.coles-law.co.uk

Offices also in... Market Weighton, Northallerton, York,
Settle, Harrogate, Thirsk, Yarm, Guisborough and Ripon.

MY KIND OF GARDEN

DESIGN, BUILD AND ENJOY THE OUTDOORS WITH



FREE LOCAL DELIVERY

OUR TOP TRENDS

from **£3.80***
+vat
£4.56 inc vat

Stonemarket Arctic Granite
Available in 3 colours

from **£3.25***
+vat
£3.90 inc vat

Stonemarket Truslate
Available in 2 colours

from **£17.95**
/m²
£21.54 inc vat

Stonemarket Sandstone Paviors

from **£1.75***
+vat
£2.10 inc vat

Stonemarket Torver
Available in 2 colours

DECKING BALUSTRADES

➤ Choose from traditional, classic or contemporary options

Don't forget! Matching decking screws available

TREX COMPOSITE DECKING

- 25 year fade & stain guarantee
- Extremely low maintenance
- Secret fix for screwless finish
- Made from 95% recyclable materials
- Available in 8 different colours

Traditional Panels & Trellis

NEW

Kyoto Panel Range

from **£36.99 +VAT** £44.39 inc vat

Decorative Prague Panels

Various styles & sizes available

OFFERS EXTENDED



Fence Care

Cuprinol Less Mess 6L

£5.99
+vat
£7.19 inc vat

Choose from 5 colours



Jointing Compound

Stonemarket Fast Point

£33
+vat
£39.60 inc vat

Choose from 3 colours

POP INTO BRANCH FOR A FREE BROCHURE & CHECK OUT OUR LANDSCAPING DISPLAYS

Full Collections Online at mkmbss.co.uk

MKM BEVERLEY
SWINEMOOR LANE, EAST YORKSHIRE HU17 0JX
01482 880 088 | mkmbss.co.uk

