

just BEVERLEY

01482 679947
justbeverley.co.uk
info@justbeverley.co.uk



FREE ISSUE 22

**TONY PEERS
PRESENTS
ALADDIN**



**• EXCLUSIVE VIP
PANTO PRIZE**

**• CINEMA GOODIES
PACKAGE**

**• WHITE RABBIT
CHOCOLATE MAKING
EXPERIENCE**

**RACHEL ALLISON
SCHOLARSHIP WINNER**

**LOST BUILDINGS
OF BEVERLEY**

**WHITE RABBIT
CHOCOLATE LOVER'S PARADISE EXPANDS**

NEWS, WHAT'S ON, LIFESTYLE, FEATURES, PUZZLES, PHOTOS & MORE



GUEST & PHILIPS

ANTIQUE & MODERN JEWELLERY





Letter from the Editors



It's starting to get cold, winter is upon us and Christmas is coming.

We have seen a lot of changes around Beverley over the last 12 months. The East Riding College has settled in after its move to Flemingate; Parkway Cinema celebrates its first anniversary with the announcement of the pantomime Aladdin coming to the Parkway

Theatre and Flemingate has well and truly established itself as a major retail and leisure outlet.

But it's not all about Flemingate! Beverley town centre has new shops, restaurants, cafe's and bars which have added to the diverse shopping and eating experience which Beverley has to offer. With all the events and festivals, Beverley really is becoming a destination venue.

Halloween, Bonfire Night and the Christmas Lights switch-ons in Beverley and district attract lots of people to the sights, giving lots of photo opportunities and creating memorable experiences. Do remember to send us your pictures here at **Just Beverley** - we will publish the best either in the magazine, on our Facebook page or on the website.

Just remember to keep wrapped up and stay warm!

Julian.



November is a month of contradictions. On the first day of November we celebrate All Saint's Day, or All Hallows' Day, which is preceded by All Hallows' Eve, now more commonly known as Halloween. It begins a three-day observance of a time in the year when we remember the departed, including saints (hallows), martyrs and the faithful.

It ties in quite well with our remembrance of the Glorious Dead who gave their lives in battle to protect our country. A few days later, there's Bonfire Night when the skies are lit with amazing fireworks. Then at the end of the month we have the beginning of Advent when the streets are lit with coloured lights and decorated Christmas trees are displayed in our windows as we look forward to Christmas Day, the birth of Jesus and Father Christmas delivering presents to the fortunate amongst us.

The only thing wrong with November is the weather when it tends to be cold and damp - but then again, it's great to wrap up in hats, coats and boots and marvel as the landscape changes from green to gold to brown. Being British, nothing seems to stop us from getting out there and enjoying ourselves whatever the weather. But it is a time to keep an eye on your elderly neighbours, make sure they are warm and comfortable and offer a helping hand should they need one. Our rough-sleepers might appreciate a warm cup of tea, too!

I'm off to get my electric blanket checked,
Be happy!

Linda.

Get in touch with us:

Website: justbeverley.co.uk

Email: info@justbeverley.co.uk

Telephone: 01482 679947

Twitter: [@JustBeverley](https://twitter.com/JustBeverley)

Facebook: facebook.com/justbeverley

Printed by: Jadan Press



CONTENTS

Letters from the Editors	3
News	4, 5
Parkway Cinema	6, 7
Features	
Aladdin	8
Rachel Allison, winner of Helen Kim Scholarship	12
White Rabbit Expands	13
Remember, Remember the Fifth of November	16
Lost Buildings of Beverley	29
Regulars	
Arts	30
Charity Champions	14
Competitions	7, 8, 13
Competition Winners	7, 22
Legal	19
Gardening	26
Lifestyle	15, 17, 18, 24, 26, 39
Motoring	34
New Contributors	10
Photos	20, 21
Poem, Short Story	31
Puzzles	22
Sport	36, 38
Travel	23
What's On	32, 33

Competition Terms and Conditions

Competition answers should be emailed to info@justbeverley.co.uk before the closing date with the competition title in the subject field. Include your name, address and daytime contact telephone number along with your answer. Winners will be notified within 1 week of the closing date and MUST be available for publicity purposes for Just Beverley magazine, website and Facebook page and the prize provider. The judge's decision is final. No cash alternative is offered. Details may be used for marketing purposes by Just Beverley and the prize provider and for website analytics by Just Beverley.

CONTRIBUTORS

Julian Minshall, Linda Johnson, Alicia Beet, Aaron Gilpin, John Fewings, Jane Dale, Richard Manville, Colin Stamford, Carfan, Elizabeth Godber, Sarah Evans, Stewart Fraser, Will Bundy, Ian Richardson, David Mills.

You can pick up the magazine from:

Beverley Parkway Cinema, Beverley Tourist Information, Beverley Library/Treasure House, Tesco, Morrisons, East Riding Leisure Beverley, Browns café, Beverley News, Boyes, Tesco café, Colette and Tyson Garden Centre, Beverley Garden Centre, Cherry Tree Garden Centre, Mace News in Saturday Market and Lincoln Way, Tickton News, Costcutter in Walkington, Molescroft News, Grovehill Convenience Store, Maple News, Leconfield PO, Poundland, Halfords, East Riding Community Hospital, Bishop Burton PO, The Altisidora, Cherry Burton PO, Monks Walk, Health Centres, cafés, hairdressers and more!

Molescroft Primary School adopts Maths Mastery with help from Friends Association

This new school year will see the children of Molescroft Primary School engage in Maths Mastery, a new mathematics curriculum developed from the way in which children are taught in China, Singapore and Japan based on approaches suggested in the UK as far back as the 1950s.

With Maths Mastery, children will study just a few concepts a year, but study them in depth before moving on. New topics are introduced with small increments in concepts so that the previously-learned concept helps in learning each new one. Traditionally, maths teaching has involved the demonstration of an example by a teacher with pupils practicing the same routine. With Maths Mastery, children master a concept through variation so they have to think about solving the problem, rather than relying on memorising a procedure. This makes maths more engaging and interesting. Textbooks are written to be read and explored supporting mastery of the subject in the same way as textbooks support mastery of a historical event or geography. This means anyone can understand and master maths! This generation will not find it acceptable to say "I can't do maths!"

Although the Government has provided £41m of funding through Maths Hubs to support the Maths Mastery approach, none of that money has been allocated to place the necessary resources in schools, which is where Molescroft Primary School's Friends Association comes in. They have agreed to support the adoption of this approach to the tune of £6000 so their children will become masters and have confidence in their use of maths.

If you would like to know more about Maths Mastery go to www.mathematicsmastery.org

Beverley Folk Festival announces more acts

Further names have been announced for Beverley Folk Festival 2017, including renowned Scottish singer Eddi Reader.

Starting as a busker and folk club performer, Eddi has led a remarkable career, with membership of Fairground Attraction bringing her into the limelight. Remember the single 'Perfect' and album 'First of a Million Kisses'? Both topping the British charts. Over the years she has assimilated a wide range of musical styles and was awarded an MBE in 2006 for services to singing.



Announcing this latest signing for 2017, chairman Matt Snowden said: "We are delighted to be welcoming Eddi Reader to Beverley. Every year we carry out surveys with festival attendees to find out what they liked about the event, what we could improve upon and who they would like to see perform at the festival in the future. With this year's feedback we kept seeing Eddi's name repeated! We are therefore proud to announce that 'you asked - we listened' and Eddi Reader will be one of our 2017 headliners. We hope all those who asked for her will join us!"

Artists also signed-up so far include Martin and Eliza Carthy; Henry Priestman; former Bellowhead front-man Jon Boden; False Lights; Moore, Moss and Rutter; Dallahan; Heidi Talbot; banjo-player Dan Walsh; Edwina Hayes and Rachel Croft. There will be at least 100 artists performing between June 17th-19th including literature, poetry, comedy, film and dance acts. Folk is an ever-expanding genre so expect a few surprises, too!

Autumn Gold discounted tickets are currently on-sale at £100 for a full weekend ticket via www.beverleyfestival.com. Children under 12 are free.

Beverley Theatre Company celebrates 70th Anniversary!

The Company was formed originally as the Beverley St. Nicholas Players in 1946, by a group of amateur theatre enthusiasts.

For 36 years, the company staged several productions each year at St. Nicholas' Church Hall. In 1983 the players moved to the Memorial Hall and became the Beverley Theatre Company (BTC). BTC has staged nearly 200 productions and is one of East Yorkshire's foremost amateur groups.

Their most successful production is undoubtedly their 2015 presentation of 'Allo, Allo', which most of the town seemed to see judging by the attendance figures! Here is the cast pictured in costume. The Company are now hard at work rehearsing their next production, 'Stags and Hens', by Willy Russell. It will be staged at the Memorial Hall from Wednesday 9th November to Saturday 12th November 2016.

Anyone wishing to join the BTC is more than welcome. You don't have to be an actor - directors, backstage crew and front of house helpers are always wanted. To contact BTC, visit the webpage at www.beverleytheatrecompany.com



Beverley's Christmas Festival of Food and Drink to be held on November 26th

Beverley Minster is the venue for this Christmas event.

Running from 10am to 3.30pm, it showcases local producers' Christmas fayre with tastings, demonstrations and the opportunity to buy!

There is festive entertainment running throughout the day along with a craft fair, commentary by Beverley FM and, of course, Father Christmas. **Just Beverley** will see you there!



Tesco - Bags of Help

Tesco Bags of Help scheme is now permanently open for applications from community groups for grants of £5k, £2k and £1k to help fund projects which support community participation in the development and use of open spaces.

The money comes from the 5p plastic bag charge. What's more, the local community can now vote on the winner! Projects can now include revenue activities on the space as well as capital works, so projects can include volunteer training, equipment purchases, sports and leisure activities as well as community events. There are no restrictions regarding match funding.

Bags of Help is now a rolling programme of approvals, so if you have an identified project, submit it as soon as you can! There is an eligibility checker an application form on the following link: www.groundwork.org.uk/Sites/tescocommunityscheme/pages/Category/apply-for-a-boh-grant-tes2

The local enabler is Karen Tozer from Groundwork. She can be contacted on **07963 028560** or email: hull@groundwork.org.uk

Beverley Christmas Lights Switch-On to create a moving passage of light

The build-up to Christmas traditionally starts on the first Sunday in Advent which this year is November 27th and this year, Beverley's Christmas Lights Switch-on will reflect the traditions of the Christmas Story.

The Switch-On will be centred around the Story of the Nativity and the Birth of Jesus, with local actors and volunteers recreating the events of over 2000 years ago. The crowd are invited to bring a source of light (a torch, a phone, an electronic candle or glow-in-the-dark band, maybe) to the occasion to represent the Star of Bethlehem, accompanying Mary and Joseph (and a donkey) from Saturday Market, along Toll Gavel into Wednesday Market to Flemingate where the stable, complete with a sheep, will be situated. Christmas trees and lights will be turned on along the way as school choirs sing Christmas carols. The proceedings start at 4pm with a Nativity service at Market Cross.

Councillor Tom Astell, Chair of the Beverley Christmas Lights Committee on Beverley Town Council told **Just Beverley**: "I hope residents will embrace this new concept which will create a beautiful Switch-on event which engages with the whole community."

Rumi's Restaurant wins accolade at Asian Curry Awards

After just over 1 year in business, Rumi's has been acknowledged as one of the best newcomers at the UK's Asian Curry Awards.

At a glittering awards ceremony, Sham Alom and Sarah Day were presented with their impressive trophy and certificate.

This comes hot on the tail of news that Rumi's is the only local curry-house to be included in the Welcome to Yorkshire Spice Trail. Congratulations to Sham Alom and Sarah Day for putting Beverley on the map!



Denis Healy (Liberal Democrat Party) wins Beverley St Mary's by-election

The by-election was called on October 20th after the sad passing of Conservative Councillor Irene Charis.

St Mary's Ward covers Molescroft and part of Beverley itself. The seat was won by the Lib Dems, who took 40% of the vote on a turnout of just 29.2%, one of the lowest seen in an East Riding election for some time. Denis joins two other Lib Dem Councillors on the East Riding of Yorkshire Council. The Conservatives are the dominant Party on ERYC with 49 seats.



Co-op re-opens

The new-look Co-op Beverley FuneralCare at 93 Walkergate opens after a complete refurbishment on Monday November 14th.

During the alterations, June and her team are available on **01482 874082** or via freefone **0800 088 4883**. Care, support and reassurance is available 24 hours a day, 7 days a week should you need it during difficult times following a bereavement.

Beverley Musical Theatre's 27th pantomime is Dick Whittington

Running from Wednesday 30th November to Sunday 4th December at 7.30pm Wednesday to Saturday with matinees at 2.30pm on Saturday and Sunday at Beverley Memorial Hall, Dick Whittington promises to be the best yet.

With song and dance and lots of traditional audience participation - Oh yes there is! - don't miss the fun!

Tickets are on sale now from **Beverley Music and Dance, Norwood, Beverley HU17 9EZ**, telephone **01482 881584** at £7.50 for adults, £5 for under 16's with a special offer for groups of Buy 9, get 1 free.



Stage 4 festival fills the February void

Based at East Riding Theatre, Beverley's newest festival Stage 4, aims to entertain and inform with a widespread variety of music, comedy and other surprise events.

Held over the weekend of February half-term, 17th-19th, there's a possibility of other venues being used to accommodate the ambitious plans for the festival, which is being organised by Ray Williams, Roy Woodcock, Simon Bedwell and Chris Wade. However, every event will be held indoors to protect festival-goers from the vagaries of the weather.

As Ray Williams told **Just Beverley**: "February used to be known as 'February fill-dyke' because of all the rain! Stage 4 will instead fill people with joy. It's Beverley's own winter music celebration! There will be something for everyone including late-night clubs, workshops and possibly even afternoon tea served in the ERT House Café.

"Once upon a time, there was an upmarket tea-room in King Edward Street in Hull called The House of Powolny. It was known locally as 'Polly's'! They served afternoon tea, which they called 'Dainty Tea'. Polly's was unfortunately destroyed by a direct hit during the blitz, but their descendant, local artist Robin Horspool, has written a book about it. Robin is going to present the story of Polly's which will be accompanied by a Dainty Tea.

"Our musical acts include jazz from The New York Brass Band; folk-jazz from Stillhouse; gipsy from The Tcha Limberger Trio; folk from Gregg Russell and Ciaran Algar, Dougie Maclean (playing his only gig in England in 2017) and Coope, Boyes and Simpson (in their final year as a band). We're delighted to welcome comedy/poet John Hegley and are looking to complete the line-up with some classical music."

Not surprisingly, tickets are selling already! You can book through the East Riding Theatre's box office on **01482 874050** or via the Stage 4 link: www.stage4beverley.co.uk

A Christmas Present that reaches for the skies



Trial flights make great gifts for Christmas, a birthday or anniversary - or just to have fun! There's nothing quite like taking control of an aircraft for the very first time.

And it's an experience that is open to everyone. At Hull Aero Club, the flight takes the form of a proper lesson and even counts towards flying time needed for a licence should you wish to take things further. The flight includes day membership of the club and comes with a personalised certificate on completion.

Flights can be of a duration of your choice in one of our available aircraft. If you book a four-seater, you can take two friends or family members with you at no extra cost. Interested? Ring **01964 544994** to find out more!



EVERY THURSDAY AT 10.30am
(doors open 9.45am)

Join us for a free brew and a natter and enjoy some great films on Beverley Parkway's Big Screen. Only £4 with drink and biscuits included. Aimed at 55s and over. (All films are subject to change).

Thursday 3rd November -
The Shallows

Café Society

Thursday 10th November -

Café Society

Jason Bourne

Thursday 17th November -

Jason Bourne

Ben-Hur

Thursday 24th November -

Ben-Hur

Captain Fantastic

PARKWAY PENGUIN PARTIES



YOUR OWN PRIVATE SCREENING
SEE YOUR CHILD ON THE BIG SCREEN
FUN & GAMES WITH OUR PARKWAY PENGUIN

ONLY £170

For more information contact the Box Office or
come in store and speak to a member of staff



MONDAYS @ 8.15pm

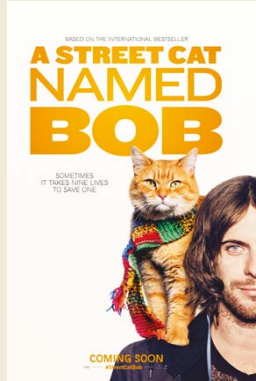
More 'what is it' than 'whodunnit'

Fancy a film but not sure what you want to see? Then try our Mystery Movie Monday! You won't know what it is until it starts! It could be a classic you love or a gem you have never seen; perhaps even the first screening of an upcoming film.

The fun is in the discovery and it's only £4 per person. Look out for clues on our Facebook page and on Twitter @parkwaybeverley

Most screenings will be 15 and over only. However, and this is a big clue, some will be over 18 only due to content.

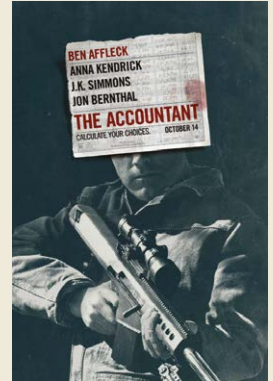
These are the films/performances that will open in November. All are subject to change. Check out up-to-date cinema listings at www.justbeverley.co.uk/cinema-times



4th November



4th November



4th November

yfa YORKSHIRE
FILM ARCHIVE
connecting you to Yorkshire's film heritage

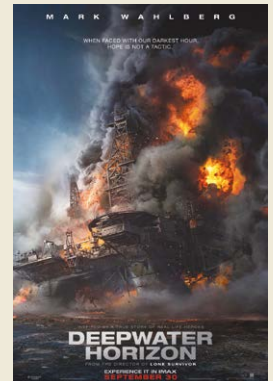
**BEVERLEY
ON FILM**

Archive footage of
Beverley's past
Presented on
Screen and Stage
1pm and 7pm

8th November



11th November



11th November

**Extra show at 11am due
to popular demand!**

**FATHER CHRISTMAS
NEEDS A WEE!**

★★★★★ "Delightful...
bright, cheerful and simply put, long-wish
safe in this musical!"

★★★★★ "Comed review
"excellent tale, told with energy, enthusiasm,
and plenty of wit!"

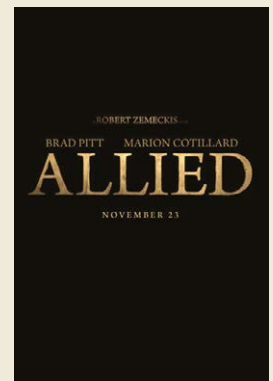
"The delightful, entertaining show
is a real hit with the youngsters." **STAGE**

Original Book by Nicholas Allen
LIVE ON STAGE

13th November



18th November



25th November



25th November



25th November



16th December - 1st January

YOUR NEW INDEPENDENT CINEMA



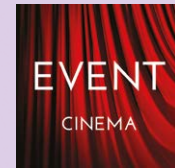
LIVE ON STAGE: Alfie Moore - Getting Away with Murder

Sunday 27th November at 7:30pm

In this brand new stand up show, former Detective Sergeant Alfie Moore, and star of BBC Radio 4 comedy 'It's a Fair Cop', takes you on a thrilling and interactive journey through the art and science of murder investigation.

What makes a murderer? And why did they get caught... or not? Experience first-hand how it feels to be part of planning 'The Perfect Murder'. Everything you need to know from choosing a murder weapon to disposing of the body. A truly charismatic performer, this show will have you in stitches and is certainly not to be missed.

Alfie's TV credits include 'The Wright Stuff' (Channel 5), 'Comic Relief, Bizarre Crime' (BBC3) and 'Confessions of a Police Officer' (Channel 4). He was one of the stars of 'Show Me The Funny' (ITV) and has also supported Rhod Gilbert, Sarah Millican, Russell Kane and Milton Jones on their national comedy tours.



Event cinema offers something a little different to mainstream films. Live and pre-recorded shows beamed in via satellite from all over the world. Here are the latest live streams that you can enjoy on the big screen at Parkway Beverley.

TICKETS NOW ON SALE:

Wednesday 2nd November at 7.15pm -
ROH: ANASTASIA (12a)

Sunday 6th November at 3pm -
BOLSHOI: THE BRIGHT STREAM (12a TBC)

Tuesday 8th November at 1pm & 7pm -
BEVERLEY ON FILM - FROM THE YORKSHIRE
FILM ARCHIVE (U) - ALL SEATS £6

Tuesday 15th November at 6.15pm -
ROH: LES CONTES D'HOFFMAN (12a TBC)

Wednesday 16th November at 8pm -
ALAN BENNETT DIARIES LIVE (12a TBC)

Saturday 19th November at 5pm -
ANDRE RIEU: CHRISTMAS WITH ANDRE
(12a TBC)

Wednesday 23rd November at 7.30pm -
THE AUSTRALIAN BALLET: CINDERELLA
(12a TBC)

Sunday 27th November at 3pm -
ANDRE RIEU: CHRISTMAS WITH ANDRE
(ENCORE) (12a TBC)

Wednesday 7th December at 7pm -
ALL'OPERA - MADAME BUTTERFLY (12a TBC)

Thursday 8th December at 7.15pm -
ROH: THE NUTCRACKER (12a TBC)

Sunday 11th December at 2pm -
ROH: THE NUTCRACKER (ENCORE) (12a TBC)

Thursday 15th December at 7pm -
NT LIVE: NO MAN'S LAND (15)

Competition



To celebrate the release of 'Fantastic Beasts and Where to Find Them' in cinemas November 18th, Warner Bros Pictures, Parkway Cinemas and Just Beverley offer you the chance to win some wonderfully wizarding prizes!

"Fantastic Beasts and Where to Find Them" opens in 1926 as Newt Scamander has just completed a global excursion to find and document an extraordinary array of magical creatures. Arriving in New York for a brief stopover, he might have come and gone without incident... were it not for a No-Maj (American for Muggle) named Jacob, a misplaced magical case, and the escape of some of Newt's fantastic beasts, which could spell trouble for both the wizarding and No-Maj worlds. To be in with a chance of winning surprise 'Fantastic Beasts' prizes plus a pair of cinema tickets along with runners-up prizes of 3 pairs of cinema tickets just answer the following question:

What is the American name for a Muggle?

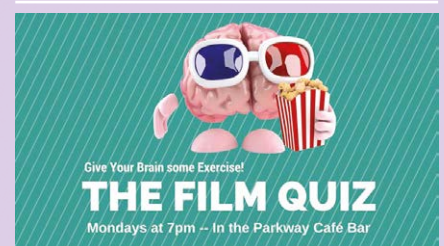
Send your answer to:
info@justbeverley.co.uk by November 16th. Include your name, address and daytime telephone number. Full terms and conditions available on page 3.

Good luck! © 2016 Warner Bros. Entertainment Inc. All Rights Reserved.



The winner of last month's Storks cinema competition:

Emma and Evie Gallagher



Give Your Brain some Exercise!
THE FILM QUIZ
Mondays at 7pm - In the Parkway Café Bar

Why not test your film knowledge at 7pm before the Mystery Movie Monday? There are free film tickets for the winners!

Aladdin - Beverley's professional pantomime at Parkway Theatre now booking!

Tony Peers is a musical impresario who provides light entertainment productions to theatres, hotels and resorts across the UK.

He is bringing all the fun of the marvellous and wonderful British institution of pantomime to Beverley's marvellous and wonderful Parkway Theatre from December 16th to January 1st.

Never been to a pantomime? Well, here's a short resume of what to expect! Traditionally, pantomimes take place around Christmas and are almost always based on well-loved children's stories. There is always audience participation in the form of booing the baddie, cheering the goodie and arguing with the Dame (who is always a widow and always a man!).

The audience always warn The Principal Boy (who is played by a girl) that the baddie is behind him by shouting 'He's behind you!' which the Principal Boy always pretends he hasn't heard so that when he turns around, the villain has gone! There's slapstick, colourful costumes, songs and usually a pantomime horse which is played by 2 people, one at the front with the head and one at the back with the rump.

There is always a song which the audience join in with, too, with audience members invited up onto the stage to take part. If it's your birthday and you let the cast know, you will, no doubt, get persuaded to go up onto the stage to have 'Happy Birthday' sung to you!



The Principal Boy always falls in love with the Principal Girl (played by a girl) who is the Dame's daughter, defeats the baddie and everyone lives happily ever after.



Parkway Theatre's 'Aladdin' promises a magic carpet ride of a pantomime! Starring Joe Maw from CBBC's 'The Dumping Ground' and Colin Roberts as Widow Twankey with local dancers from The Fleur Elizabeth Academy of Dance.



The timings of shows mean that everyone will be able to go along. Shows are timed to start at 11am, 1.30pm, 3.30pm and 6pm on different days so they will never finish too late in the day.

Just Beverley thinks this is a great idea!

WIN - VIP Access-all-areas prize to Aladdin on Saturday 17th December

A family of 4 can experience a VIP trip to see Beverley's own FIRST professional pantomime on December 17th with this fabulous prize!

Here's what the prize entails:

Two adults and two children will be picked up by limousine (from within a 10-mile radius of Beverley town centre) and transported to Beverley Parkway Theatre at Flemingate to enjoy Aladdin from the best seats in the house. After the performance, our winners will enjoy a behind-the-scenes tour, including meeting the cast, before being transported back home!

To be in a chance of winning this fabulous prize, all you have to do is answer the following question:

Who plays Wishee Washee in Aladdin?

Send your answer by email to info@justbeverley.co.uk by November 16th with your name, address and daytime telephone number. Full terms and conditions are on page 3.



Tony Peers - the man behind Aladdin

Some might know Tony from his days as a comedian, many more will know him as the man behind the Summer Season Shows at Bridlington Spa and the Spa Theatre in Scarborough and even more from the shows he has presented at Beverley's Memorial Hall and Toll Gavel United Church.

What most people won't know is that he has produced 45 pantomimes to date in 7 different venues around the country, including the pantomimes at Parkway Cinema, Cleethorpes. And now, Tony is thrilled to be producing 'Aladdin' at our very own Parkway Theatre in the Parkway Cinema, Beverley.



Tony's successful career as a producer started in 2008 when he became the owner of a production company which was already working with Parkway Cinemas.

On his first visit to the Parkway at Cleethorpes, he met Parkway Cinemas owner, Gerald Parks and his wife, Denise, with whom he became firm friends.

Gerald has now sadly passed away, but the relationship between Tony Peers and Parkway holds firm.

Tony told **Just Beverley**: "I saw the construction of Flemingate and thought what a marvellous addition is was the lovely town of Beverley. When Parkway announced they would be taking up residence, I was delighted to be invited to produce their first pantomime. I look forward to Aladdin and invite you to join us for a fun-filled, traditional family panto, especially as we have Yorkshire-born Joe Maw from CBBC appearing as Wishee Washee!"

Tony is no stranger to innovation and excellence! In 2010 he produced and hosted the opening ceremony of Scarborough's Open Air Theatre in the presence of Her Majesty Queen Elizabeth and The Duke of Edinburgh; in 2012 he was awarded Producer of the Year Award and he was also awarded Outstanding Contribution to Tourism Award in 2007. We are in very safe hands!

JOIN US ON A
MAGICAL CARPET RIDE OF A PANTOMIME

TONY PEERS
PRESENTS

LIVE
ON STAGE

Aladdin

**COLIN
ROBERTS**
as Widow Twankey

JOE MAW
as Wishee Washee from
CBBCs The Dumping Ground

WITH FULL SUPPORTING ALL STAR CAST

featuring dancers from

THE FLEUR ELIZABETH ACADEMY OF DANCE

Directed by LINDA NEWPORT

**FRIDAY 16TH DECEMBER 2016 –
SUNDAY 1ST JANUARY 2017**

**PARKWAY THEATRE
FLEMINGATE, BEVERLEY**

**BOX OFFICE: 01482 968090
www.parkwaycinemas.co.uk**



JUST BEVERLEY WELCOMES NEW CONTRIBUTORS

Colin Raynor

Colin is a Member of the Association of Christian Writers, who writes about life in general with reference to his Christian faith.

Colin is a Yorkshireman, through and through, as are his children, and has lived in Beverley for the last 9 years, preferring suburbia to the country.

He likes the convenience of being able to walk to the shops or catch a bus at the bottom of the road! He also points out that the town is warmer - did you know that in the last 9 years there have only been 5 days of snow in Beverley?

Colin's working life began in the textile industry but he moved to social services, influenced by his admiration for people who foster or adopt. Colin was adopted within a year of his birth by a Mr & Mrs Raynor, who changed his Christian name from Ernest and his surname from Cookhill. They gave him a loving home and he has great respect for them.



Colin became a member of the Baptist Church by full immersion; his wife Doreen is a Baptist by profession, although both now worship and are very involved at Toll Gavel United Church, which is a Methodist/United Reform Church local ecumenical project. Colin is often to be found in the Centre Café at Toll Gavel United Church which is open between 9.30am and 12noon (sometimes later) from Monday to Friday where all are welcome for a cuppa, a chat or to sit in the tranquillity of the Church. He is involved with the Church's Reading Club, Thursday morning Prayer and Share Group and with Open Doors, an Official Centre for asylum seekers and refugees based at Princes Avenue Methodist Church in Hull.

Colin's wife, Doreen, says that Colin often starts his conversations with 'I've been thinking...' So that's what his new column will be called. This, we know, will enhance and broaden the appeal of **Just Beverley** and we look forward to his first contribution.

Sam Watson

Our new monthly column, Countryside Matters, which will start next month, is being penned by local farmer, writer, traveller and pig expert, Sam Watson.

Sam has been farming 170 acres in Lockington for the past 43 years. The farm is now mainly arable but it used to house 200 sows. Sam keeps very much abreast of all that is happening in the pig world by writing for the magazine 'Pig World' and by using his expertise as a judge for the National Pig Awards.

Sam told **Just Beverley**: "I bought Village Farm at Lockington after spending 4 years as Farm Manager at Molescroft Grange. You would have to have a huge amount of capital to start today like I did! Although I like farming, I also enjoy writing. I started 'Pig World' 30 years ago with two friends from Lincolnshire and did all the advertising as well as the editorial - a full-time job in itself - whilst running the farm. We sold it in 2012 but I still write for them. I must have visited every pig farm in the UK and many beyond, researching articles, but no two farms are the same; they all have the same objectives but don't get the same results. I also wrote a book called 'Pig in a Pub' but it's out of print now.

"I've been to 42 different countries in all, starting with a Young Farmer's Club trip to Southern Rhodesia (now Zimbabwe) when I was 21, visiting 100 different places, including farms and games reserves. The farthest I've been is New Zealand. There's still plenty more countries to visit on my list and now the farm is run by contractors, I have more time to enjoy life!"

We are delighted that Sam will be bringing his unique insight of the countryside to **Just Beverley**.



Will Bundy

One of Will's short stories features on page 31 this month.

Will was born in Beverley, 30 years ago, at Westwood Hospital, which is sadly no longer there, but he still remembers Saturday afternoons in Beverley when he was growing up, particularly the streets teeming with people and the market with its wares of all sorts.



Will studied film at the University of Hull. He's particularly fascinated by escapism, which has led to him adopting the writing of short stories and screenplays as a 'lovely little hobby in which to wrap myself in'.

He's an avid reader, and is excited and intrigued by the idea of storytelling in a local way, especially considering the wealth of local stories and maybe using the local area itself for all sorts of goings on and adventures.

Will looks forward to entertaining us with his tales and we at **Just Beverley** are very proud to be able to offer our readers more unique content.

Ian Richardson

Ian Richardson, landscape lover, historian and heritage enthusiast joins Just Beverley to introduce readers to some wonderful walks in the area. See his first walk on page 39!

Ian will be well-known to many people in Beverley as a history teacher (he currently teaches A-level history at Beverley's Joint 6th Form) or as a father to three children currently studying at Beverley schools (namely Longcroft and St Mary's). He already feels connected to **Just Beverley** as he once taught under our Poet-in-Residence, John Fewings!

Ian's love of the outdoor natural and built environment started when he was a student, working for the Youth Hostels Association (YHA) based on The Pennine Way. He went to university in Leeds and developed a passion for the Yorkshire Dales, with its dramatic scenery. His arrival in East Yorkshire, with its gentler landscape could have been something of a shock, but as Ian says "it creeps up on you!"

Ian has always enjoyed walking. He especially enjoys walking by himself or with a friend as he finds too many people distracting. But that means he can explore the East Riding's beaches, plains and Wolds and find the hidden, secluded gems which are of particular interest to him.

Ian told **Just Beverley**: "Much of the East Riding is unresearched, unlike other areas of the country. There are local archaeological sites for which there is no consensus as to their use, such as the excavations at Duggleby. Then there are sites which are incredibly hard to find, for example the Roman Temple at Millington. The recent discovery that Skipsea Castle was built on an Iron Age mound and is 1500 years older than originally thought is astonishing.



"The East Riding has a quiet, secluded charm. Every now and then, somewhere enigmatic appears, like the little church in Givendale. I love churches!"

Ian will be publishing a variety of walks around Beverley to help us get to know and appreciate our area better, get us out into the fresh air and help us celebrate our corner of East Yorkshire.



**FREE
LOCAL DELIVERY**

**OUR BIGGEST
EVER**

KITCHEN

SALE

**For your free kitchen consultation
with Darren, call in branch today!***



**Free no obligation
design consultation**



**Unbeatable
discounted prices**



Free gifts & prizes



**Free home
measuring service**

MKM BEVERLEY, Swinemoor Lane, Beverley, HU17 0JX
01482 880088 | mkmbss.co.uk



<https://www.facebook.com/MKMBS/>



@mkmbss

*Promotion ends 5th December 2016

Rachel Allison, winner of The Helen Kim Memorial Scholarship 2016

Beverley's strong Methodist movement is further enhanced by the winner of this World Federation of Methodist and Uniting Church Women Award.

21-year-old Rachel is currently studying politics, religion and philosophy at Birmingham. Her hobbies include cycling, baking and playing viola as well as being part of the University Methodist Society.

She hails from a Methodist background - her Mum is a Minister and her Dad a Local Preacher - and has always had a passion for justice, peace and faith.



Having become a member of Methodist Women in Britain, a charity which actively campaigns for social justice nationally and internationally, it was a fellow member who suggested she also got involved in the World Federation of Methodist and Uniting Church

Women (WFM&UCW) and apply for a Helen Kim Memorial Scholarship.

Helen Kim was the founder of the WFM&UCW. She had a vision of world-wide sister-hood which would work together for justice and peace, inspiring young women particularly to have hope for the hopeless, security for the insecure, faith for the fearful and give voice to the voiceless. Rachel has been selected as the Memorial Scholar for the British Unit of the WFM&UCW.

The 5-year scholarship provides leadership training to encourage more women to get involved in the work of the organisation as well as to work on one or more of the United Nation's Strategic Development Goals.

Rachel's goal is to work for gender equality through challenging gender-based violence, specifically looking at helping tackle the practice of Female Genital Mutilation (FGM) in the UK.

Rachel told **Just Beverley**: "Any form of gender based violence is abhorrent and for me this is one of the least talked about and most worrying forms of gender-based violence. It is an attack on the autonomy and sexuality of women. It's inflicted on young girls all over the world and is particularly prevalent in the UK now. I hope to help increase awareness of the practice in Britain and encourage women and men



to campaign on better checks and more support and training for those who are trying to tackle the problem and deal with the aftermath."

Rachel's initial training was carried out at the World Assembly of the WFM&UCW in Houston, Texas recently. This she found exciting and challenging.

I am sure we all wish her well over the next 5 years and look forward to updates as she fights the corner for so many women and girls who are unable to fight for themselves.

To find out more about the Helen Kim Memorial Scholarship and the WFM&UCW please visit: www.wfmucw.org/about/helen-kim-memorial-scholarship

To find out more about Methodist Women in Britain visit: www.mwib.org.uk

AUTUMN OFFERS

3 Months Toning
3 Months Vibraxis
3 Contour Wraps

£179

Normal price over £300
Limited Availability

TONING TABLE SESSIONS

Lose between 7" and 15" in six sessions, toning tables help if you are new to exercise, have issues with mobility, depression, bad backs & much more

**FREE trials, no obligation
TESTIMONIALS AVAILABLE**

NOVEMBER SPECIAL

One Month's **FREE** Vibration Training **WORTH £25**
for the first 25 Just Beverley Callers

INCHES BODY STUDIO

CELEBRATING 25 YEARS IN BUSINESS

Inches Body Studio, 1 Norwood, Beverley, HU17 9ET
Telephone: 01482 865229
Email: inchesofbeverley@hotmail.co.uk
www.inchesofbeverley.co.uk

Opening Hours
9am - 7pm Monday - Friday
9am - 4pm Saturday

10% discount
for students,
NHS,
council workers

Hair By Rosie

Telephone: 01482 863603

Or you can book online via the website:
www.hairbyrosie.mysalononline.com
www.facebook.com/hairbyrosie16

34 NORTH BAR WITHIN • BEVERLEY • HU17 8DL

Chocolatier White Rabbit expands

Beverley's own fine chocolatier is expanding to meet demand.

After 11 years of making Beverley's favourite chocolates, the tiny premises in Dyer Lane are just not big enough to accommodate the popularity of this chocolate-lover's paradise. Luckily, the unit next to the current premises has become vacant, making enlargement of the premises and facilities much easier than it might have been. As owner Ed Hawkes said: "It seemed like this was meant to be! White Rabbit can extend its production and storage facilities, café space and shop space all at the same time without the huge disruption usually associated with moving premises.



"It also means our café offering can be expanded and we will have increased availability of our chocolate experiences. Now more people will be able to enjoy our chocolate afternoon tea or come on a chocolate-making party."

Ed's Mum, Sally, started the business after studying at Bishop Burton College. At the time, it was difficult to get high-quality chocolate in Beverley and a trip to Fortnum and Mason, where she learnt how to make chocolate, led to the opening of White Rabbit. Sally has also trained in Canada and France and researched extensively to ensure White Rabbit's chocolate meets the standards of the best chocolate in the world.

Sally is a member of the Guild of Fine Food and as such is eligible to enter competitions for chocolate-makers. Last year, their blackcurrant and juniper truffle was ranked in the top 50. Food and Drink critic Nigel Bardon even made a video as to why it was so highly-commended!

Sally told **Just Beverley**: "Fashions in chocolate have changed. Once upon a time it was all about chilli and chocolate and now salted chocolate is in vogue. We artisans have to stay on our toes, creating new tastes and flavours. Blackcurrant is a very strong flavour, but the juniper gave it a base note of perfume that was a good marriage and gave it the right balance. We have tried rhubarb but I don't think it worked, although Ed liked it!

"However, you don't want to neglect the classics - they have been tested and tested over and over and are classics for a reason. They are never going to go out of fashion. But chocolate varies a lot anyway with the flavour and percentage of cocoa solid or cocoa butter. Our chocolate is very fresh - there are no preservatives, most items are gluten free and our dark chocolate is vegan. It's made in small batches right here on the premises, so the chocolate here at White Rabbit is some of the best you can find; there is a chocolate for everyone."

Chocolate parties and workshops are becoming increasingly popular at White Rabbit. Chocolate-making parties are suitable for anyone age 7 or over for a minimum group of 6 people. Here attendees learn how to make moulded figures, lollipops, baskets and bars from white, milk and dark chocolate, which they can take home with them. There's even a melted chocolate pot with dips at break time! White Rabbit supply invitations for guests, too. Chocolate workshops are for anyone aged 16 or over in groups of between 6 and 10 people, allowing attendees to spend time in a professional chocolate kitchen with Sally.



Learn about the history of chocolate and then experience the art of chocolate-making by working with different types of chocolate. You then can take whatever you make home with you. There is also a break with chocolate-tasting and a drink. This is a great social group occasion!

Afternoon tea at White Rabbit is a chocolate-lover's dream where hot chocolate, coffee or tea is accompanied with handmade chocolates and sweets. The extension of the premises means that afternoon tea in the future could include baked treats, such as little bruschettas. Watch out for more details! Also in planning is DIY chocolate-tasting where guests can experience chocolates from around the world, chocolates with different infusions or enjoy a chocolate fondue with fudge, marshmallow and fruit. The future is so exciting for White Rabbit!

The new shop will be open by the time you are reading this article - it opens October 27th - with the new café opening on November 18th. The chocoholics here at **Just Beverley** could be at the front of the queue!

White Rabbit is located at **16 Dyer Lane, Beverley HU17 8AE**, telephone **01482 679325**. They can be contacted by email info@whiterabbitchocolatiers.co.uk or via their website www.whiterabbitchocolatiers.co.uk



Competition

To celebrate the extension of White Rabbit's premises and the opening of their new Chocolate Café, 2 places on one of Sally Hawke's Chocolate-making Workshops are on offer, worth £50.



Learn about the history of chocolate and then spend an hour in the kitchen, working with chocolate. Enjoy a chocolate fondue break and then head back into the kitchen to demould and wrap your chocolate creations.

To be in with the chance of winning this fabulous prize, just answer the following question:

Which White Rabbit chocolate is ranked in the top 50?

Send your answers to info@justbeverley.co.uk by Wednesday 16th November. Include your name, address and daytime telephone number with 'White Rabbit Competition' in the subject field. Winners will be notified within 1 week of the closing date and MUST be available for publicity purposes for **Just Beverley** magazine. Full terms and conditions are on page 3.

The workshops are for a maximum of 6-10 people, so the winners will be enjoying their prize with other people. If the winners would like to bring family and friends with them, additional slots can be purchased for £25.00 each.

WHITE RABBIT CHOCOLATIERS

have you tried our ho ho ho...

AWARD WINNING CHOCOLATE

Hop on over to our new online shop!
whiterabbitchocolatiers.co.uk
 16 Dyer Lane, Beverley, HU17 8AE

Facebook: /White-Rabbit-Chocolate
 Twitter: @WhiteRabbitChoc
 01482 679325

Charity Champions

Just Beverley loves to celebrate good news! We know there are many un-sung heroes in Beverley who do so much to help others, so here's your chance to let us know about your efforts.

Email: info@justbeverley.co.uk or call 01482 679947.

Inches Members and Staff keep raising pounds whilst losing pounds!

The amazing ladies who use the Toning Tables and beauty services at Inches Body Studio on Norwood have just raised a staggering £776.30 for Macmillan at their recent Macmillan coffee morning. This topped last year's total of £596.00! Inches fund-raising efforts aren't restricted to just one day a year, though!

Earlier this year, Yorkshire Cancer Research received a cheque for £5480.00; sales of bracelets for Cancer Research UK raised £54.10 and £200.00 was sent off to Unicef UK.

Inches truly deserve to be recognised as Charity Champions.



HAYWARD Befriending

Are you, or someone you know, struggling to maintain independence?

Do you need time-out from your role as carer?

HaywardBefriending can provide support for adults aged 18 – 65 and 65+

Company at home
Accompanied outings
Shopping with/for you
Handyperson service
Support with paperwork
Support with housework
Appointment transportation
Pet service

Contact Jennie for further details
Call: 01482 868166
or 07834 491242



www.haywardbefriending.org.uk



Your local Funeral Home in Beverley

Introducing your local Funeral Arrangers, Lucy and June, who are proud to serve the local community in Beverley.

Our team of friendly Funeral Arrangers at Beverley Funeralcare, Lucy Harrison and June O'Connell, have been working in the funeral home for 2 years. Both are experienced Funeral Arrangers, and are proud to be supporting families at their time of need. They have helped local charities (such as FIND - Families for individual Need and Dignity, who are based in Beverley, Hessle and North Ferriby), and involved themselves within the local community, such as sponsoring local bowling teams. From donating raffle prizes and food, to raising money for worthy causes, giving back to the community are high on Lucy and June's priorities.

The funeral home help to fund the Butterfly Service at St. Mary's Church, Beverley and provided items for Christingles at some of the local churches in Beverley, and bought enough oranges, sweets and candles to cater for almost 600 people.

This Christmas there will be a memorial tree at the funeral home, to give an opportunity to write a message in memory of a loved one

and hang it from the tree, and also they will be sponsoring a Christmas tree at Beverley Minster.

Beverley Funeralcare will be going through an extensive refurbishment in November, and will reopen it's doors on Monday 14th November. 24/7 assistance will still be available on the funeral home contact number.

Caring professionals

As part of the Co-op Group, our local community service is backed by the strength and reassurance of a truly unique and caring organisation.

So that's us, feel free to call in for advice on funeral arrangements and information on Pre-paid Funeral Plans, memorials, funeral flowers and more. Or if you'd prefer, we can come to you.

Pre-paid Funeral Plans

Planning ahead with a Pre-paid Funeral Plan can be a simple way of ensuring your loved ones are protected in the future against unexpected costs and the worry of planning your funeral. **For a FREE information pack call in today.**

For more information contact Lucy and June, your local Funeral Arrangers on:

01482 874 082

Beverley Funeralcare
93 Walkergate, HU17 9BP

www.coop.co.uk/funeralcare

This voucher entitles you to a **£125** discount off the price of a Pre-paid Funeral Plan from Co-op Funeralcare.

For full Pre-paid Funeral Plan T&C's see www.co-operativefuneralcare.co.uk/terms-and-conditions

The Discount is only valid for Pre-paid Funeral Plans purchased on or after 14 October 2016, and up to and including 31 January 2017 at the Promoter Funeral Home with a copy of this voucher.

The promotional code for this voucher is MKT/16/137.



June O'Connell and Lucy Harrison

Co-op Funeralcare is a trading name of Funeral Services Limited, a registered society registered in England and Wales with registration number 30808R and registered office 1 Angel Square, Manchester, M60 0AG. VAT registered 403 3146 04. Part of Co-operative Group Limited.

Remembrance Sunday - November 13th

Beverley's Annual Service of Remembrance will take place at Beverley Minster on Sunday 13th November at 10.50am, preceded by a parade prior to the start of the service from School Lane of Civic Dignitaries, the Royal British Legion, representatives of the Armed Forces, uniformed organisations, local charities and other local organisations.

Members of the public not wishing to march are kindly invited to be seated in The Minster by 10.30am.

The Parade will leave School Lane at 10.30am, proceeding via New Walkergate, Railway Street and Eastgate into Minster Yard North. Parade members enter Beverley Minster by the Highgate Door.

After the Service, the Parade reassembles in Minster Yard North, marching to the Memorial Gardens in Hengate via Eastgate, Wednesday Market, Butcher Row, Toll Gavel and Saturday Market. The salute will be taken by The Vice Lord-Lieutenant of the East Riding of Yorkshire, Mr Andrew Marr as the Parade passes the Market Cross.



There will be a Memorial Service with Laying of Wreaths in the Memorial Gardens. Those wishing to lay wreaths should make contact with a member of the Royal British Legion who will tell them where to stand and the protocol to follow. Wreaths can be purchased from **01482 866936**.

Remembrance Sunday, which always falls on the 2nd Sunday in November, follows Armistice Day which marks the day WW1 ended at 11am on the 11th day of the 11th month in 1918. A 2-minute silence is held to remember all who have died during wars so that 'the thoughts of everyone may be concentrated on reverent remembrance of the glorious dead' as requested by King George V in 1919 when the observation was first held.



2nd MARRIAGE?

It's important to make a Will.

Your children may not inherit from you if you haven't written your Will correctly.

CALL JENNY FOTHERGILL NOW for **FREE** initial advice and to arrange a no-obligation **HOME VISIT**.

Tel: 01482 968001

www.apslegalbeverley.co.uk

aps
Legal & Associates



Care home or YOUR home? You do have a choice...

We are Europe's largest live-in care provider. Our expert care workers live in your home with you, 24-7 as a companion, a carer and a friend.

We offer a genuine alternative to residential care homes. We help the elderly and vulnerable people to remain safely in their own homes by providing 24 hour, live-in care. Carers are matched to you based on personality, hobbies and interests as well as overall care needs.

Family and friends need a little break? Been in hospital and need a little extra help? Our carers are live-in companions who help with day-to-day tasks such as cooking, cleaning and shopping. We also offer complex care packages for more advanced care needs such as Dementia, stroke, Parkinson's and end-of-life care.

Our bespoke care packages ensure you retain as much independence and dignity as possible.

**Your one-to-one live-in companion/
care package starts from just £695pw**

If you would like an informal chat or you would like to know more please get in touch with Jeremy on 07821 669 146 or 01430 638 002 or visit www.promedica24.co.uk/eastyorkshire

PROMEDICA24
Live-in companionship & care

Remember, Remember the 5th of November

Every year, the people of Beverley and district are able to attend a professional firework display on Beverley Westwood in a safe environment, complete with a huge bonfire. Apart from donating a few pounds to the buckets which are passed around to help with the cost of the fireworks, this is a free event. But why do we watch fireworks and light bonfires on November 5th? Read on!

In 1605, a man called Guy Fawkes, along with four friends, including Thomas Percy of Beverley, plotted to blow up the Houses of Parliament. The date was to be November 5th, the State Opening of Parliament, when the King, James 1, his family and his government would all be there. Why did they want to carry out this most dreadful and treasonable of things? Because James 1st was a Protestant and the plotters were Catholic - they wanted to return England to Catholicism and thought they could do this by killing the King.

When James 1st ascended the throne in 1603 after the death of the Protestant Queen Elizabeth 1st, Catholics had hoped that he would be tolerant towards them because his wife and her mother were both Catholics, but instead, he increased sanctions on anyone who practiced Catholicism.

So Guy Fawkes and his fellow plotters put 36 barrels of gunpowder, kindling and fuse-wire in cellars under the Houses of Parliament.

But the stash was discovered! Lord Monteagle, who was the brother-in-law of one of the plotters' associates, Francis Tresham, received a letter suggesting he should miss the State Opening of Parliament.

Lord Monteagle passed the letter to Robert Cecil, the King's Chief Minister. It's not known who wrote the letter, as Francis Tresham denied writing it, but it clearly raised concerns.

Robert Cecil sent people to search the Houses of Parliament. Why would anyone be warned against attending this key event? There was found the gunpowder, kindling and fuse-wire.

There was also found a tall young man, who said he was called John Johnson, but who was, in fact, Guy Fawkes himself. He was sent to the Tower of London where he was tortured for two days until confessing everything. The King was so cross that any sympathies he had to Catholics were completely destroyed and the plotters all ordered to be put to death with their

heads displayed on spikes to stop anyone else who might have such wicked ideas.

So the bonfire and fireworks commemorate what might have happened to the Houses of Parliament had the 36 barrels been ignited and the effigy which is burnt on top of the bonfire represents Guy Fawkes.



But perhaps, because we are in Beverley, we should have an effigy of Thomas Percy!

It's an old folk verse from around 1870 which ensures we celebrate November 5th every year so long may Beverley Westwood Lions Club continue this very English tradition! Just stay safe and contribute to those buckets!

**Remember, remember!
The fifth of November,
The Gunpowder treason and plot;
I know of no reason
Why the Gunpowder treason
Should ever be forgot!**

LA LUMIÈRE

PHOTOGRAPHY



TEL: 01482 867455
WWW.LA-LUMIERE.CO.UK
ENQUIRIES@LA-LUMIERE.CO.UK
22 TRINITY LANE, BEVERLEY

HUBY

DOMESTIC APPLIANCES

HUGE SAVINGS
when you
BOOK ONLINE
at
hubys.co.uk

Book in advance and save money.
The further you book in advance
the more you could save...



**You've tried the rest,
now use THE BEST!** **01482 240511**

Cosmo's Flaming Grill, Restaurant and Bar at the heart of Beverley

It takes about 15 minutes to walk from North Bar to Flemingate without stopping. At about 8 minutes, you find yourself in Wednesday Market.

Once upon a time, the only market place in Beverley was Wednesday Market which occupied a large triangular piece of land between Eastgate and Highgate. Gradually shops and other buildings were erected on the land and it shrunk in size.

As there was less space for the market, Saturday Market came into existence to cater for the overflow and Wednesday Market got its name!

The development of Wednesday Market over the years has meant there is still a market on Wednesdays and Saturdays, but now there is also the opportunity for the restaurants and cafés to provide outside seating so their visitors can enjoy the ambience of this ancient, accessible space.

One of the restaurants which has enabled customers to choose between dining or drinking outside or enjoy the cosiness of its funky, relaxed interior is Cosmo's.

There is seating outside of Cosmo's all year around with the loan of blankets should you feel a little chilly!

As well as being at the heart of Beverley, flexibility is at the heart of the offering. Grills and burgers are a staple, with chicken featuring highly, but there is a good choice of fish, vegetarian, vegan and gluten free choices.



There is a multitude of sides and extras and to ensure your meal is served just the way you want it.

You are spoilt for choice in choosing from a menu which includes pittas, wraps, salads, pastas and risottos, too!

As well as the restaurant and outdoor seating, Cosmo's has a private dining facility, which can seat 50 people (or 70 standing).

It's ideal for business meetings as well as parties, Christenings and weddings.



Cosmo's has a three-tier buffet menu priced at £8, £10 or £12/head or the new Christmas menu would be a great option for your work's Christmas 'do' at £19.95/head!

It would be difficult to find somewhere more central in Beverley with such an accommodating ethos.

Why not pop in to see for yourself, say hello to manager Deimante Rainyte and tell her you heard all about Cosmo's in **Just Beverley!**

Cosmo's
Flaming Grill,
Restaurant & Bar

LUNCH TIME OFFER
TWO DINE FOR £13.95
VALID SUNDAY - FRIDAY 11AM - 4PM

Choose any two main courses from our salads, risottos, sandwiches or wraps
Plus accompany your meal with any 2 of the following:
125ml Glass of House Wine • Soft Drink • 1/2 Pint of Draft Beer

COME CELEBRATE
WONDERFUL WEDNESDAYS
AT COSMO'S
£3.50 COCKTAILS OR JUGS FOR £9
ALL DAY WEDNESDAY*

WWW.COSMOSBEVERLEY.CO.UK

Cosmo's Beverley, 9-10 Wednesday Market, Beverley, East Riding of Yorkshire HU17 0DG
T: 01482 867 891 | E: info@cosmosbeverley.co.uk

Large Range of New Scooters from £599



New Auto-fold Scooters



IN STOCK NOW

Electric Riser Recliner Chairs & Beds from £495



Free Local Delivery



New Slimline Stairlifts - From only £1,350



Visit our Shop today for all your mobility needs

**110 - 112 Walkergate
Beverley, HU17 9BT**

01482 887799

**Open Mon - Sat 10.00am - 4.00pm
www.fox-mobility.co.uk**

FOXMOBILITY

Find us on facebook

Time To Think About Christmas

Buying Christmas presents for the more senior members of the family can often be difficult. What do you buy for the man or woman who seems to have everything except youth? Here Anne Fox of Fox Mobility explores some of the options which might just solve your Christmas-present problems!

This time of the year can be so exciting with the Christmas lights and the festive fun - as well as looking forwards to opening your presents on Christmas Day. But it can be more difficult to find a suitable present for someone who is a little older in years. Fox Mobility just might be able to give you some helpful and suitable suggestions and ideas!

- Shoes and slippers which fit properly and give support can be a boon. We have several ranges of footwear suitable for people suffering with swollen feet and ankles or other foot problems. We are sure to be able to find something which looks good and fits properly.
- How about very large-printed playing cards and a stand? Great for playing with grandchildren, too!
- Freestanding magnifying stands to read a newspaper or book might be perfect. Or magnifying sheets which can be placed over letters can be a great help for people with eye-sight which is not as good as it used to be.
- Walking sticks and canes also make good presents as they can be used all year round. Some sticks have seats built into them, too, making them extra-useful.
- A personalised backpack with a name or logo embroidered on it can make a fun present.
- We have lots of ideas which make great stocking-fillers. For example, walking-stick rests; wheel-chair warmers; can openers and more.

Do come and see us and browse around our shop at **110-112 Walkergate, Beverley HU17 9BT**. Or have a look online **www.fox-mobility.co.uk**. **Tel: 01482 887799**.



Jadan press

Print that gets you noticed

- ✓ Brochures
- ✓ Leaflets
- ✓ Business Cards
- ✓ Business Stationery
- ✓ Posters

- ✓ Desk Calendars
- ✓ Wall Calendars
- ✓ Pop-up Banners
- ✓ Pads
- ✓ Invites

Jadan Press are a leading family run commercial B2 colour litho printer based in Hull. With over 19 years experience, the company is renowned for producing work of an exceptionally high quality. We are committed to providing an excellent service by offering value for money and ensuring complete customer satisfaction.

Tel: 01482 610902
info@jadan-press.co.uk **www.jadan-press.co.uk**
 Rainbow House, Kimberley Street, Hull, HU3 1HH



OVER 19 YEARS EXPERIENCE
 We are committed to providing an excellent service by offering value for money and ensuring complete customer satisfaction

* Price does not include VAT or delivery

Marriage Allowance - Don't miss out on this tax relief

Are you married or in a civil partnership? If so you may be entitled to a tax repayment of up to £432.

The marriage tax allowance is available to married couples or those in a civil partnership. However, a large proportion of those eligible haven't claimed yet. The marriage allowance hasn't been very well publicised and this is one tax relief that you must make a claim to HMRC for, otherwise it won't be made available to you.

In order to qualify for the tax relief, one of you needs to be a non-taxpayer and the other one needs to be paying tax at the basic rate of 20%. This rules out anybody with earnings in excess of £43,000 in 2016/17 and £42,385 in 2015/16. You also need to be born after 6 April 1935.

If the above means that you still qualify then the partner who is a non-taxpayer can elect to transfer up to 10% of their tax free allowance to the other, giving the taxpayer an increased tax free allowance. The marriage allowance was introduced from 6 April 2015 and it's still possible to claim for the 2015/16 tax year as well as for 2016/17.

The maximum amount that can be transferred for 2015/16 would be 10% of the personal tax free allowance (£10,600 x 10% = £1,060) giving a tax refund of £212. For 2016/17 the personal allowance increased to £11,000 so this increases the marriage allowance to £1,100 and a tax refund of £220. It's easy to apply for either by going onto the HMRC website or calling them on **0300 200 3300**.

If eligibility is confirmed, then HMRC should refund the amount due for 2015/16 but may adjust the taxpayers tax code for the current tax year to ensure the relief is given via their employment. Once applied for the relief should then continue each year without you being required to apply every year.

If you would like to discuss this in more detail then please contact Gareth Botterill on **01482 862240** or email: gareth@botterillco.co.uk

Legal Q's and A's

Every month, Just Beverley invites a local team of legal experts to answer a question to which we don't know the answer.

This month the question involves property and the rights of separated couples.

Q. My husband and I have separated after 34 years of marriage. He now lives with another woman with whom he has a child. Can we change the deeds to this property to my name only? He agrees to this as long as I leave the house to our son in my will. We have not divorced.

Coles the Solicitors have provided the following response.

A. Both you and your husband should take legal advice about your plans: if you don't, any agreements you reach could potentially be overturned. But it's much better (and less expensive) to reach an agreement. You should probably arrange to divorce in order to prevent future claims on you, and draw up a consent order to be ratified by a judge for the same reason. The will aspect might involve tax issues, but you can discuss this in detail with your solicitor.

If you have a question you need to know the answer to, why not give **Coles the Solicitors** a call?

They are located in the very heart of Beverley at **22, Lairgate, Beverley HU17 8EP**, telephone **01482 231300**.
www.coles-law.co.uk



Botterill & Co

Chartered Certified Accountants

We are a modern and professional accountancy practice ideally located to serve businesses in Beverley and the surrounding area.

We utilise modern accounting technology to provide you with a cost effective, professional service.

Our services:

- Annual Accounts
- Company Formations
- Management Accounts
- Cloud Accounting
- Tax Returns
- Bookkeeping & VAT

For a free initial consultation please contact us:

Office: 01482 862240

Mobile: 07966 051458

Email: gareth@botterillco.co.uk

Website: www.botterillco.co.uk

1st Floor Offices, 40 Norwood, Beverley, HU17 9EY

Would you like to make a difference to someone?



VOLUNTEER CAR & MINIBUS DRIVERS NEEDED



Full training given, ring or pop in for a chat!



25 Corporation Road, Beverley, HU17 9HG

Tel: 01482 868082

www.bclift.org.uk

Reg. Charity No: 506813

Attend



Send your photographs of your celeb
Find us on Twitter and Facebook to s

Pictures Arou



HERE TO GET *you* THERE

HUNTERS®

EXCLUSIVE

BEVERLEY / 01482 861411

and Beverley



SALES / LETTINGS / MANAGEMENT

HUNTERS®

HERE TO GET *you* THERE

BEVERLEY / 01482 861411

PUZZLE PAGE

The funny things they say...

Sudoku

Fill in the grid with digits in such a manner that every row, every column and every 3x3 box accommodates the digits 1-9, without repeating any.

	4	6			5	7		
			9					
	9			1				6
					9			
	3							
4			5	2				8
	8						7	
5	7		3				8	2
2						3		

Wordsearch

T X A K S H F I D N A U Z S G
 P A R K I N S I O J T Q E J U
 Y F W D O G W K R I A O M T Y
 U F L S O V O L Q E T Q X S F
 D C W D Z V T A R A W S A Z A
 C A T F N H M A T Y P O A K W
 H O T C H O C O L A T E R J K
 H E U O N K P D R L S R Z K E
 D M R F F T G K Y P U T A O S
 F C P I E L L C C S W C B U J
 F Z H K F E E Y P I G C D J D
 D C C L R N E F K D E I U C M
 N A O S A W O C Z O I U V J W
 J N W R W V D B P D G O T U D
 D O O W T S E W N F S T X Q A

BONFIRE
 DISPLAY
 FIREWORKS
 GUYFAWKES
 HOTCHOCOLATE
 HOTDOGS
 JACKETPOTATOES
 PARKIN
 SPARKLERS
 WESTWOOD

Why doesn't super glue stick to the inside of the tube?

Why is your hair grey?

Why are Grandad's ears so big?



Do you have any amusing stories, quotes or pictures? Send them to info@justbeverley.co.uk

Competition Winner



Susan Crosswaite from Beverley won the Afternoon Tea for Two.

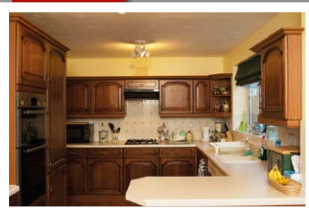
Susan thinks the magazine is fantastic looks forward to reading about whats going on in and around Beverley.



QUALITY KITCHEN FACELIFTS

Guaranteed fitting before Xmas!

Before



- Huge choice of doors, worktops, appliances, sinks & taps
- 50% deposit, balance on completion
- Made to measure custom-built doors and units
- Door swaps to full kitchens - tailored to your needs

CALL ANDY OR TERRI FOR A FREE ESTIMATE:

01482 861653
dreamdoors.co.uk



DREAM DOORS®
 NEW LIFE FOR OLD KITCHENS

Visit our showroom:
 Belprin Park, Swinemoor Lane,
 Beverley HU17 0LN

Checkatrade.com
 Where reputation matters



Puglia - the unique region in the heel of Italy

With lovely beaches, fascinating towns, rich history, stunning architecture and excellent food, along with some of the best wines in Europe, Puglia is one of the most beautiful regions of Italy and a place you can really explore - away from the crowds of the more popular cities such as Venice and Rome.

Orecchiette - little ear-shaped pasta shells that are a local delicacy, are still produced by hand on a daily basis and are just one great example of what makes this part of the country so unique. Look out for the local women lining the streets hand making this fresh traditional pasta.

Staying in a famous Trulli (a traditional circular stone house with a conical roof) is just one of the many beautiful and special choices for accommodation in the region.



Whilst these houses are still lived in by locals, many have now been converted into excellent holiday homes with some even

excellent holiday homes with some even featuring private swimming pools. You can also stay in a cave!

Matera, one of the most incredible towns in Puglia, is famous for its extensive cave-dwelling districts - where there are now several hotels and B&Bs.

A visit to the Caves of Castellana are a good opportunity to enjoy one of the most stunning natural wonders of Italy.

If you enjoy being active, Puglia is a perfect region for walking and biking tours, and for taking in the picturesque views.

You can enjoy a multi-centre holiday by taking advantage of Italy's excellent rail network, however hiring a car is an excellent way to explore the more hidden parts of this region.

There are two main airports serving this region of Puglia, both of which are approximately 3 hour flight.

With its beautiful Mediterranean climate, it an excellent holiday destination for most of the year, with temperatures still reaching highest 20°C in October and November - a perfect time to beat the crowds, and the changing weather back home.



BEVERLEY'S ONLY INDEPENDENT TRAVEL AGENCY

ONEWORLD
TRAVEL GROUP

Valentines Day in Banff, Canada

DEPARTS 14 FEBRUARY 2017
FLIGHTS FROM LONDON GATWICK
7 NIGHTS 3.5* BANFF HOTEL

590.00 PER PERSON

BASED ON 2 ADULTS. SUBJECT TO AVAILABILITY.



Explore Puglia

A beautiful hotel (pictured) in a perfect location to explore this exciting region in the heel of Italy. Close to the nearby town of Alberobello - home to the iconic white Trulli huts. The cities of Bari & Brindisi, as well as some of the most stunning beaches in Europe, are all less than an hour away.

DEPARTS 01 MAY 2017
DIRECT FLIGHTS FROM MANCHESTER
7 NIGHTS IN 4* TRULLI-STYLE HOTEL
INC. BREAKFAST, LUGGAGE & CAR HIRE

585.00 PER PERSON

BASED ON 2 ADULTS. SUBJECT TO AVAILABILITY.

35 Saturday Market Beverley HU17 8BE ☎ 01482 280081 🌐 www.1worldtravel.co.uk

Chris Corney - Creations' upholstery expert

**Need a suite reupholstering? Want new curtains, loose covers or cushions?
Chris is your woman!**

As a child, Chris was always found with her sewing, embroidery or making something. She was always top of her class at crafts, whether weaving, making towelling or making something more challenging. She remembers making one lampshade out of satin, silk and chiffon; these are not the easiest materials to work with and making a lampshade would be time-consuming and fiddly. But that's Chris - she is and always has been up for a challenge.

Chris says she does not know where her talent comes from and it might never have been discovered if she had been able to run about like other kids. She contracted polio when 4 years old and wears a full leg calliper; she is now registered disabled and relies on her crutches and wheelchair to get around. She also recently broke the ankle of her 'good' leg so she has to stagger her day as she cannot stand for long, but most jobs can be done sat down. She even enjoys gardening.



Now that she has joined Simon Barker and Ian Coates at Creations, life is getting busier at a time of life when many would look to be retiring. But Chris just loves to sew! Recovering a caravan with its awkward shapes and odd sizes? No problem! Want curtains and a valance for a particularly large window? No problem! Got a whole student house needing refurbishment? No problem! Chris has recently completed student accommodation refurbs in Glasgow, Newcastle, Liverpool, Chester, Nottingham and Sheffield and they all wanted grey - it's a good job grey is one of her favourite colours.

Chris told **Just Beverley**: "I have a good eye for colour and matching fabrics so I can get the maximum out of a piece of material. I like to visit customers in their own homes with sample books to ensure they get the 'look' they want. There are hundreds of sample books but customers are also welcome to get their own material as long as it meets legal requirements. If anyone wants a make-over for Christmas, they need to get in touch very soon, as I'm getting booked up. Similarly, don't leave caravan or motor home refurbs until Easter! " Chris can be contacted on **01482 871954** during usual business hours.

Check out the following link to see Chris's work: www.creations-biz.co.uk/furniture-repair-services/curtains-and-soft-furnishings-beverley-hull/



Specialists in

- **Leather Restoration**
- **French Polishing**
- **Upholstery**



T: 01482 871954 M: 07951 759253

E: info@creations-biz.co.uk

W: www.direct-furniture-repairs.co.uk

Coles

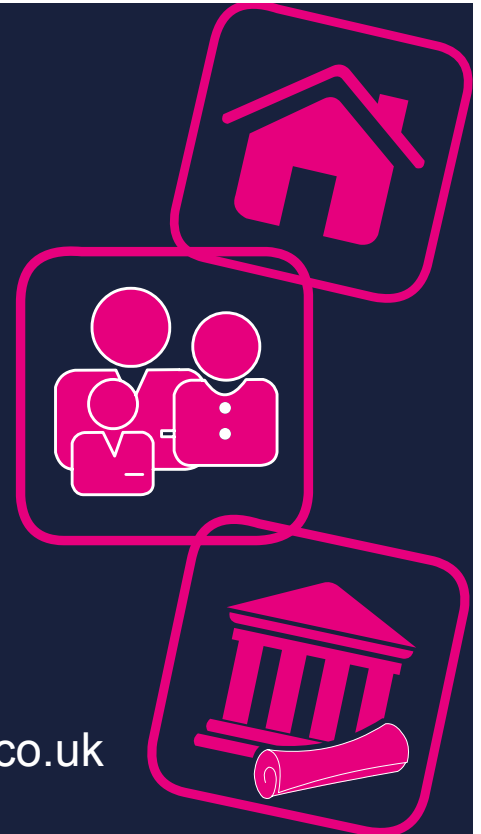
the solicitors

Providing expert **legal**
advice in the very heart
of **Beverley**

22 Lairgate, Beverley HU17 8EP

T: 01482 231 300

E: info@coles-law.co.uk W: www.coles-law.co.uk



- Family Law • Wills & Probate • Conveyancing • Powers of Attorney
- Medical Negligence • Litigation • Dispute Resolution • Personal Injury

ALEXANDER ELLIS[®]

FURNITURE EMPORIUM



10 reasons
to visit the most unique
showroom in the region...



1 *A local* family business you can trust with friendly staff

2 *A massive* choice to make a house your home

3 *Furniture & accessories* sourced from around the world

4 *Prices* are amongst the best on the high street and the internet



5 *A huge range* of rustic furniture handmade in our own Yorkshire based workshop

6 *If you can't see it* we will make it and wax, oil laquer or paint it in a colour of your choice

7 *A unique* range of lamps, mirrors, pictures, clocks and accessories

8 *Our own* two man delivery and set up service

9 *Open 7 days* a week with ample FREE parking

10 *We'll make you a brew* while you browse



Tel: 01482 870001
www.alexander-ellis.co.uk

Unit 1-3 Tokenspire Business Park, Hull Road, Woodmansey HU17 0TB. sales.alexanderellis@gmail.com
Opening Hours Monday to Saturday 9.00am to 5.30pm Sunday 10.00am to 4.00pm

Compact and easy to use water softener's

Quite often, the questions customers ask are not about whether they should have a water softener but practical questions about their looks or usage. Many people are convinced that a water softener is a good idea but they are under the misapprehension that they are big, ugly things which have to go in the utility room or that the bags of salt are huge and bulky. They also think they are complicated or fiddly to use.



Greens take great delight in explaining to customers that whatever pre-conceptions they may have had about water softeners of old, modern, efficient, compact and well-designed water softeners are now available that can often fit conveniently in any kitchen. They can be fitted, neat and tidy, in a few hours by skilled fitters with no fuss. Approximately the size of a computer tower unit, the softeners are stylishly designed to fit in in the minimum possible space and on a free, no obligation site survey, Greens will discuss the various options and possibilities depending on the specific plumbing and kitchen layout of your home.

Are they complicated to use? Well, they used to be, with dials and meters and plugs and sockets and programmes to input, but, although this type of softener is still available, worry not! Modern, simple-to-use, eco-friendly units are kinetically powered by water and pre-programmed so that the only attention they need is topping up with salt every now and then.

Softeners of old tended to be of the type that required to be filled from large 25 kilo bags of salt tablets or granules and this could be difficult for some customers. But modern, compact water softeners take compact, handy sized salt blocks that are easily stored and convenient to use, although the old-fashioned types are still available along with salt tablets and granules.

The comforting benefits of soft water for bathing, hair washing, and soft, fluffy laundry are well known to softener owners, which is why they are so enthusiastic about them. The cost-savings, protection of appliances and pipe work and easier cleaning is almost a bye-product! They work 24 hours a day to protect your home from limescale; they make the chore of cleaning the shower screen a breeze!

Do give Dave Parry at Greens Water Systems a call if you have any questions. Greens offer a free no obligation site survey, testing water hardness, finding out customer requirements and checking the plumbing to recommend the best solution.



Contact David Parry at:
**Greens Water Services, 647 Anlaby Road,
Hull HU3 6SX
Telephone: 01482 351 769
Open 10-4 Mon-Thurs**

(please call first if you are making a journey)

Email: d.parry@water-systems.co.uk | www.water-systems.co.uk

For water softeners, softener salt, Quooker boiling water taps, water filter systems, cartridges and fridge filters. All types of salt, including block salt, tablet salt and granular for softeners and all other uses delivered.



In the garden...

November is the transitional month in the garden from autumn into winter.

Autumn ends when most plants stop growing because the daily temperature is too low (due to a combination of shorter days and a weaker sun) and they enter a period of dormancy.

A few leaves will still be clinging to the branches of deciduous trees and shrubs, determined to give us the last remnants of any autumn colour - eventually they will be blown off and foliage colour will be found from evergreen plants.

Flower colour is also limited, but a few pots planted with seasonal bedding will brighten things up - remembering to under plant them with spring flowering bulbs.

This year I have noticed that there are a lot of berries on shrubs and trees - hopefully we can still enjoy their fiery colours through into November, that is unless the birds have had a feast!

Tasks and Tips for November...

- Continue to clear up leaves and compost if applicable. Don't allow them to stay on the lawn as this will lead to bare patches and clear them from nooks and crannies, slugs and snails will overwinter in them especially if they are dry!!
- Aerate (spike) the lawn, give it a light cut and apply an autumn feed. Autumn feed differs from the spring/summer feeds, containing a different ratio of nutrients which enhance root development. Don't apply any feed if frost is forecast.
- Protect tender plants using horticultural fleece.
- Plant spring flowering bulbs - plant bulbs at 2 to 3 times their own depth.
- November is a good month to plant a hedge; bundles of bare root hedging plants will become available in nurseries and garden centres. It is also a good time to transplant any shrubs or trees that maybe not 'quite where you want them' in the garden.
- Continue to dig over bare soil in the vegetable garden when weather permits. Don't trample on the soil if it is wet enough to stick to your boots as you will end up compacting it, which will do more harm than good.

So until next month, happy gardening, J.

Jane Dale of 'Designed Gardens'

Tel: **07983 392 411**





stipendia
payroll solutions

OUTSOURCING YOUR PAYROLL COULD INCREASE YOUR PROFITS



Has the new legislation for RTI and Auto-Enrolment had a serious impact on your payroll workload?

Outsourcing to payroll experts can reduce costs whilst increasing productivity, accuracy and reliability. With a named personal contact, e-payslips direct to staff via our app, added value services and useful online information there has never been a better time to check out our services.

To arrange a **FREE** consultation to discuss the benefits of a tailored payroll package to suit your business needs call us on: 0845 308 2288 or visit www.stipendia.org.uk



Stipendia Payroll Solutions



@StipendiaPay



AFTER WORK SOCIAL

2 For 1 COCKTAIL FRIDAYS

on All Cocktails Every Friday 5pm - 8pm

Every
Friday
5pm - 8pm

FIZZY FRIDAY

25% Off Champagne & Prosecco

All Day
on Friday's

HOUSE SPECIAL

3 Grazers and a Bottle of House Wine for £19.95

Every
Friday
12noon - 8pm



37-38 Saturday Market, Beverley, HU17 9AH

www.kingsheadpubbeverley.com

Tel: 01482 868103

drinkaware.co.uk
for the facts about alcohol

Subject to availability, T & Cs apply. Offers not available on Bank Holidays.

Lost Buildings of Beverley

The Margaret Powell Memorial Lecture this year is to be given by Dr David Neave, on Thursday 10 November at St Mary's Parish Hall, 7.30pm on 'Lost Buildings of Beverley'. Here, local historian Barbara English introduces readers to Margaret Powell, who almost single-handedly saved many of the buildings we know and love today from being demolished.

Knock down North Bar? Good idea, we can drive faster. Can't knock it down, protected. OK then, knock down all the houses around it, and put the Bar on a roundabout? That'll do. Demolish Nellies and all that side of Hengate?

Yes, make it a two-way street. Take out Ladygate too, and drive a road from Old Waste to York Road, 100 or so old houses could be felled there. Widen Eastgate, then the traffic will really move. Flatten the Friary too, old and useless.

This was the thinking of our councils in the 1960s. It was a time of destruction all over England, and many towns like Beverley were being 'improved'. Fortunately, one woman, Margaret Powell, had better ideas, and with enormous energy stopped almost all these 'mad' schemes. She saved our town, while elsewhere many were ruined.

Margaret Powell 'came upon unsuspecting Beverley with the suddenness of a storm cloud'. Condescendingly described by the local press as 'a Beverley housewife', she was ferociously attacked for her defence of our historic town.

'Housewife' was a feeble description of Margaret Powell, a formidable woman.

She was the descendant of the famous architectural family of Gilbert Scotts: her great-grandfather designed St Pancras Station Hotel and the Albert Memorial, and her uncle designed Liverpool Anglican Cathedral, Battersea Power Station, and our famous K2 telephone boxes.

From her earliest years she knew about buildings; and she loved Beverley deeply, saying it was a daily privilege and delight to be able to live here.

Elected as an Independent County and Borough Councillor (and with the help of local and national figures such as John Betjeman, she was a great organiser of campaigns) she succeeded against enormous odds in preventing almost all these 'mad' schemes.

Later she succeeded in saving Old



Walkergate, but not the ancient Globe Inn, demolished to make Sow Hill Road. It was down to her that cars no longer drive through the market on Saturdays. She retired to Cornwall with her husband, and died there aged 91, still feisty and still campaigning, in 2014.

Looking back now, the 'modernising' policies of the 1960s seem extraordinary to us - but without Margaret Powell much of historic Beverley would have been destroyed.

In memory of her achievements, the Beverley & District Civic Society have endowed an Annual Lecture, to be given this year by David Neave, whose illustrated talk will outline (although we still have many amazing buildings) how and why many fine buildings in Beverley were destroyed.

LEMPICKA CAFE AND BISTRO

Introducing Lempicka's NEW Belgian Style Creperie and Waffle House Menu

In addition to our original offerings of delicious breakfasts, tempting lunches, bistro sharing platters, homemade baked goods and renowned espresso based coffees, our crepes and waffles are served with your choice of savoury or sweet fillings.

Also serving our exquisite and luxurious afternoon tea with a Belgian twist. Awarded 'Top 3 Afternoon Tea in Yorkshire' by the Yorkshire Post.

A full range of Vegetarian and Gluten Free meals and baked goods are available.

Enjoy an al fresco glass of fine wine, Belgian beer or continental cocktail in Lempicka's outdoor seating patio.

13 Wednesday Market, Beverley, HU17 0DH
T: 01482 866 960

W: www.lempickacafe.co.uk | E: lempickacafe@aol.com

ASIAN CURRY AWARDS 2016
NEW COMER OF THE YEAR
HIGHLY COMMENDED

The Only Beverley Indian Restaurant included on the Welcome To Yorkshire Spice Trail

Rumi's Bangladesh Indian Cuisine

New Walkergate, Beverley, HU17 9EP

Nominated in the 'Curry Awards' and by 'Curry Life Magazine'

Tel: 01482 428642

www.rumisrestaurant.co.uk

Mon - Thurs: 5.30pm - 11.30pm

Fri - Sat: 5.30pm - 12am

Sun: 5.30pm - 11pm

Spotlight on... Sarah Shiels

Beverley has a thriving music scene, encompassing all genres including those you have probably never heard of! Every month, Just Beverley has the pleasure of interviewing a musician who contributes to this rich musical tapestry. Here we meet Sarah Shiels.

Sarah is an ex-Longcroft School pupil, a naturally-gifted musician, who hails from a musical family. She was taught to play classical piano from the age of 7 by Grandmother Sheila, has Mumm, Carole, who has a great voice (although Sarah says she won't admit it!) and Dad, Steve, who builds amplifiers so he knows what sounds good. Sarah realised she could 'kinda sing' when she was about 12, and, encouraged by her Dad she started writing her own songs, learning to play acoustic guitar and bass at the same time. When she decided to concentrate on a music career instead of going to university, her family were not surprised and are very supportive.



Sarah formed her first band, The Velvet Dolls, at the age of 16. They split up a year ago. Since then, Sarah has been playing with Rivers Johanssen and Jackson D and also had a 6-month slot with North Lincolnshire band (and Radio Humberside's David Burns' favourites) The Ming City Rockers. The Velvet Dolls had played as support act to The Ming

City Rockers a few times, so the gig happened almost by osmosis. She loves the travelling associated with being a musician and especially loved Seattle with its grunge scene. Sarah has had lots of experience jamming along to different people so she finds it easy 'to pick stuff up'. She grew up listening to 50's blues, but rock 'n' roll, pop, blues - you name it, she can play it! Her favourite bands are Velvet Underground and Black Sabbath and favourite vocalists include the late Elliott Smith and Beverley Folk Festival 2017 headliner Eddi Reader. Sarah is a member of The Westwood Sessions and is hoping to be able to meet her idol at the Folk Festival next June!

At the moment, Sarah has plans for a band to play her own material to produce an EP which she will self-release a single from. She wants to play bass herself as she's most comfortable with that instrument. Best friend Rivers Johansson will be in the band, there's already competition for drums and there will be auditions for guitar. This is a really exciting time for her! She said: "I've never really done anything like this for me before - I've been so busy pushing other people! As well as the EP, there could be another all-girl band in the offing, too. I can't really divulge much but the future beckons in a big way." We can't wait! Would you like to be included in this section? Or know anyone who we should include? Then call us on **01482 679947** or email: info@justbeverley.co.uk

Interview with Jack Brady

Local actor Jack Brady plays Mr. Clark in new Tim Burton movie Miss Peregrines Home for Peculiar Children, Just Beverley caught up with him to talk about how he got into acting, his experiences on set, and his love for East Yorkshire.

Jack claims that he 'got into acting because he didn't do his maths homework and skived out of double maths to see a workshop production of Hamlet, by Warwick University students and has been cursed ever since with a desire for language and storytelling.' When he was older, he went to drama school in Birmingham for three years, winning the Laurence Olivier Award in his final year. Since then, Jack has regularly appeared on stage across the country, including, often, at Hull Truck Theatre. Now though, he is moving into film, having just appeared in Hollywood blockbuster Miss Peregrines Home for Peculiar Children. Jack describes the whole experience of being on set as seeming 'like a dream', and is full of praise for director Tim Burton. Tim is 'a whirlwind of chaos, but a fine tuned one.' Jack explains, 'he is so much fun and his enthusiasm is contagious... it was so much fun and a real family feel' on set.



Performing in front of the camera is certainly something Jack is getting used to; he has just finished playing a psychopath in an adaptation of Evelyn Waugh's book Decline and Fall, and he is currently working on two American TV shows, one called WILL, about the life of young Shakespeare, and an episodic television version of Snatch.

So, whilst Jack loves Beverley market, and can often be found in a variety of cafes across the town because, as he states, he 'drinks too much coffee', we might not be seeing him for sometime, as he continues to work across the Atlantic.

ArtERY Live Autumn 2016 hits the road

Living in the countryside might seem like a rural idyll to town and city-dwellers, but it does mean that there is much reduced access to the arts without incurring travel and sometimes hotel costs.

ArtERY live is East Yorkshire's own rural arts touring programme which tries to help fill that gap. It brings high quality, professional music, drama and dance to a range of venues across our county, with the support of the Arts Council through the Lottery. The events can be anything from a full touring production to a magician, a dance troupe or a celebrated vocalist.

Cally Barker is the marketing manager for Blaize, the company who manages ArtERY Live. Every year, she and her colleagues at Blaize are able to attend a 3-day festival which showcases the available shows. The shows selected make up the menu from which promoters can choose events. Beverley Arts Trust is the promoter for ArtERY Live in Beverley, putting on shows at Longcroft School, St Nicholas' Church Hall and St Mary's Parish Hall - other promoters put on shows in Bishop Burton, Lund, Etton and Swanland.



ArtERY's offerings this autumn include dance, magic, drama and song. If you missed Panta Rei Danseteater then the welcome return visit of Balbir Singh Dance Company at Lund on 19th November is a must. All are top quality shows which villages often turn into a real community occasion and which artists love as they can get up close to the audience.

Cally Barker told Just Beverley: "Because this programme is supported by The Arts Council, ticket prices are kept low. Last season we welcomed the talented jazz trumpeter Jay Phelps to Bishop Burton Village Hall - the previous night he was playing Ronnie Scotts! Tickets were just £8!" All the events are listed on **Just Beverley's What's On** website page www.justbeverley.co.uk/whats-on and you can find out more about the artists on the Blaize website: www.blaize.uk.net.

THE GREEN DRAGON
IN BEVERLEY

MON	'MONDAY CLUB' SELECTED DRINKS	£1.99
TUES	SMARTPHONE PUB QUIZ	NO PENS NO PAPER NO CHEATING
WEDS	8 PM IN THE ROUND	OPEN MIC / JAM NIGHT ALL WELCOME
THURS	Traditional QUIZ	COCKTAILS 2 FOR £5.50 CRACK THE SAFE
FRI	JOIN US LAST FRIDAY OF THE MONTH	LIVE MUSIC FROM 9 PM

ASK ABOUT OUR DRINK PACKAGES

- BREAKFAST SERVED FROM 8AM EVERY DAY
- FOOD SERVED 7 DAYS A WEEK
- 10 CASK ALES AND HAND PULLED CIDERS
- QUIZ NIGHTS START 9PM




New Cocktail Menu
2 Cocktails for £6.50
Mon - Fri 5pm - 8pm

New Menu out in November
Christmas Bookings
now being taken

51 Saturday Market, Beverley, East Yorkshire, HU17 8AA
Tel: 01482 889801
www.thegreendragonbeverley.co.uk

Short Story - A Small Figure by William Bundy

Moonlight shone through my bedroom window as a nightingale sang from afar. It was a dark summers night, and my already acute senses were awakened to the potential of the endeavour which now lay before me.

Several weeks before, I had commissioned a painting by one Sir Thomas of Riley. He was, at first glance, an elderly man of great accomplishment, rigour, and prospect, who held, in the palm of his hand, light which shone through the grave concerns of the everyday and penetrated into my very soul.

We had first met at a party held on the grounds of Burton Constable Hall, a magnificent building of remarkable history that had a curious "Cabinet of Curiosities", one which had spurred my imagination as to enquire about its abstract and unusual items. Sir Thomas had a keen interest in such areas of arcana, and offered to construct a painting of such dark beauty as to illuminate our mutual interest and set my own imaginings aflutter with its dark mystery.

The painting was by all accounts a most dreary sight to behold. Yet it held, within its nightmarish interior, the light of my inspiration and the seed of my doom. For a small figure in the painting did call to me, and sprang forth a sense of purpose which laid out the path of my future self.

Examining the painting, I made sure that the body I held fit the image displayed within its crooked interior and held it up to the light. A small figure, it was made up of parts I had found in strange crevices of the house, one which had once been used by witches to practice mischief and devilry.

Intrigued by such a strange origin I studied them, and found them to resemble fairy parts of some kind, a most unusual discovery and one that spurred me to piece together the little man and bring him back to life.

As I turned on the contraption I had built for this purpose he began to convulse, wriggling as if shook by some invisible hand. I stood back and watched as he startled to life and looked around the dark room, candlelight flickering in his eyes as he let out little puffs of breath.

"Where... am I?", he called out, sentences strung together by as if by needle threads of hope that barely grasped that which they now held. "You are in a room in my house", I said softly, not wanting to startle him.

He looked around further, moving his small hands then taking uncertain steps towards the edge of the table. I observed him, kneeling down to face him at eye level.

"Where did you come from?" I asked, hesitantly. "From... there" he pointed at the window, before suddenly gasping for breath and collapsing in a heap.

I grasped him in my hands and felt for a pulse, any life at all. There was none. Holding him in my arms, the prospect of further experiments crossed my mind. I did however banish them, merely cradling this small figure and wondering what brief life he had led before disappearing into the darkness.

Darkness that now surrounded us both, offering little hope of return.

NEIGHBOURHOOD WATCH

by John Fewings



Most streets have a "curtain-twitcher" - who can sniff out gossip faster than a truffle-pig. The following poem is by "her at number 4"

*There's Monica at number 3
Has the vicar round for tea.
She's 80-plus and mad as a hatter.
On Wednesdays goes to "Knit & natter"
But it's not worth knitting really, is it,
For great grandkids who never visit?*

*At number 5 there's "Naughty Nan"
Entertains her "fancy man",
But though she's feeling all romance-y
There's trouble ahead for Nan, I fancy.
Though she thinks it just for her he comes
He's working his way round all the mums.*

*Number 7 with the ginger twins
Decorates her rubbish bins
With cheery flowers in sticky-back plastic,
Thinks her efforts look fantastic.
But "Naughty Nan" doesn't share the feeling;
Nips out each night to advance their peeling.*

*You don't see her at number 9 -
Whatever she says, she's not, "Fine, just fine."
She's flaky as pastry and falling apart
Nursing a terminal broken heart.
Couldn't satisfy his sexual hunger -
Ran off with a lass that were 10 years younger.*

*Along the way at number 10
They've got the builders in again!
There's sand in the front - there's bricks at the back -
There's mud all down the cul-de-sac.
I keep on saying but they don't take heed.
Just how many conservatories do you need?*

*Then there's that baggy-trousered lout -
He'd benefit from hefty clout.
Excuse me if you think I'm grouching
But I just can't stand young people slouching.
Stand up straight! Put your shoulders back!
Pull up your jeans and hide that crack!*

*The corner-house is bigger than most:
Mr & Mrs "We Don't Like to Boast".
He thinks that he's a wealthy man -
He's got two cars and a caravan -
But he works all hours, gets home at 10
Then at six in the morning he's off again.*

*And as for me - I've not got a lot
But you have to be happy with what you've got
And every other Sunday (if she's not too busy)
I see our Carol - and her good friend, Lizzy.
When push comes to shove I'm quite content;
I can do as I please since Bernard went.*

*They say, "Oooh, you must miss him" - and I s'pose
it's so
But he were always under my feet you know.
Ate like an 'orse! Hogged the bed!
Spent half his life in the garden shed.
I just thank the Lord that I've got my health.
Wrap up warm - Keep myself to myself.*

John Fewings is Just Beverley's Poet-in-Residence as well as a member of The Argy-Bargy Poets. Find out more about John on his website: www.johnfewings.zone

GUITAR GALLERIES

15A WEDNESDAY MARKET BEVERLEY, HU17 0DH

01482 863 733



EST. 1833

HERITAGE CENTRE

"Quality Instruments & Unrivalled Customer Care"



















WWW.GUITAR-GALLERIES.CO.UK

What's On IN BEVERLEY

Email: info@justbeverley.co.uk

Telephone: **01482 679947**

For more events visit:
justbeverley.co.uk/events

Monday 31st October

• Drifting East - The Masters

East Riding Theatre. 7pm. £5. Exciting new work created by Masters students from York St John University. www.eastridingtheatre.co.uk

• White Horse Folk Club presents Singers and Musicians Night

Conservative Club, Wylies Road, Beverley. £2. 8.30pm

Tuesday 1st - Sunday 20th November

• Art Installation - 'Wounded' by Martin Waters

Beverley Minster. 9am-5pm daily. This year's poppy installation remembers the work of stretcher bearers, nursing and medical staff. In remembrance of family & friends now lost.

Tuesday 1st - Saturday 5th November

• Brief Lives

East Riding Theatre. 7.30pm. £11/£10/£9. Old John Aubrey regales with tales of his contemporaries - Oliver Cromwell, Charles II, Nell Gwyn - and stories from his childhood. Once he starts speaking, you cannot choose but to listen. www.eastridingtheatre.co.uk

Saturday 5th November

• Vintage Afternoon Tea Special with Cherie Lawrence

Armstrong Social Club. £10 members, £12 non-members. 1pm - 3pm. 16+ years. Enjoy full afternoon tea with unlimited tea/coffee and entertainment of songs from the 1940's. Bookings 01482 882999. www.armstrongsocial.co.uk

Sunday 6th November

• East Riding Suzuki Violin Group Charity Night in aid of CRY (Cardiac Risk in the Young)

East Riding Theatre. 7pm. £10/£6. www.eastridingtheatre.co.uk

Monday 7th November

• Beverley Flower Club presents Crafted for Christmas with Jonathan Moseley

Longcroft Upper School. 7.30pm. £10 includes refreshments. For information call 01482 865951.

• White Horse Folk Club presents The Wilsons

Conservative Club, Wylies Road, Beverley. £9. 8.30pm. www.whfolk.co.uk



Membership costs £15/year. 7.30pm.

Documentary. Winner of Grand Jury prize at Sundance Festival.

• Beverley Civic Society present the annual Margaret Powell Lecture, 'Lost Buildings of Beverley' by David Neave.

St Mary's Parish Hall. 7.30pm. Free to members, £3 for non-members. All welcome. Refreshments available.

Saturday 12th November

• Table Top Sale

Etton Village Hall. 9.30-11.30am. Bric-a-brac, crafts, Christmas gifts, antiques, cakes and sweets. Come along to browse and buy before Christmas.

• Handel's 'Instant' Messiah

Toll Gavel United Church. 7pm. £5. Conductor Colin Wright, organist Julian Savory, local soloists Elaine Dave, Berry Lewis, David Bowden and Kevin Ormond. If you would like to sing in the choir, contact 01482 867573. £14 includes practice, afternoon tea & music hire.

• Ukulele Concert

St Mary's Church. 7.30pm.

• Autumn Party with The Corsairs and Disco

Armstrong Social Club. Free. 8pm. No ticket required.

Sunday 13th November

• East Riding Remembrance Service

Beverley Minster. 10.50am followed by laying of wreaths and Memorial Service in The Memorial Gardens, Hengate at 12.15pm.

• James Veitch 'Dot Con'

East Riding Theatre. 7.30pm. £13/£12/£10. For anyone who has an e-mail account and has received a scan email! A blend of stand-up, interactive projections and music.

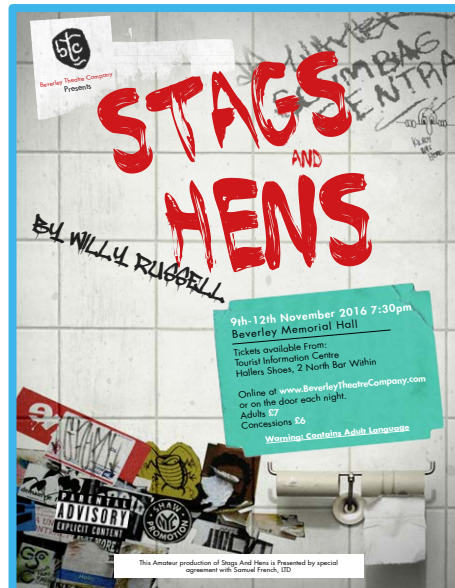
Monday 14th November

• Norwood Nites Community Cinema

Norwood Church Schoolroom. 7pm. Free. Catch up with a film you might have missed! Refreshments and raffle. Need a lift? Contact Beverley Community Lift 01482 868082.

Friday 18th November

• Beverley Folk and Roots presents Harp and a Monkey performing 'War Stories'



Wednesday 9th November - Saturday 12th November

• Beverley Theatre Company presents 'Stags and Hens' by Willy Russell

Beverley Memorial Hall. 7.30pm. £7/£6. Tickets from Beverley Tourist Information or Haller's Shoes, 2, North Bar Within, Beverley. Contains adult language.

Wednesday 9th November - Saturday 26th November

• ERT Productions present 'As We Forgive Them'

East Riding Theatre. 8pm. £10/£11.50/£12/£13. Award-winning production of Richard Vergette's play reworked and remounted to coincide with the American Presidential Elections. Directed by Andrew Pearson, starring Marc Pickering.

Thursday 10th November

• Beverley Film Society presents Weiner (2016) Cert 15

Parkway Cinema, Beverley. £3 members, £6.50 for guests accompanying members.

**Beverley Westwood
Lions Club**

Bonfire & Fireworks

Saturday 5th November 2016
on
Beverley Westwood

Lighting the Bonfire: 6.15pm
Professional Fireworks Display: 7.45pm

A bucket collection will be made to help cover the costs of the fireworks - Please give generously.
Come and enjoy a great night safely!

Printed and donated by Print and Design. Call 01482 393323 or visit printanddesignonline.co.uk

• Beverley Westwood Lions Club Bonfire and Fireworks

Beverley Westwood. Free. Bonfire lit 6.15pm, fireworks 7.45pm. Bucket collection to cover the costs of the fireworks and infrastructure.

Norwood Methodist Church. £10. 7.30pm. Refreshments available. Raffle. Charismatic English folk music at its best. Tickets from 01482 866685, 01482 864979, Beverley Tourist Information, Minster Records or on the door.

Sunday 20th November

• **Youth Music Showcase**

East Riding Theatre. 7.30pm. £8/£6. An evening of music and song from across the genres by a hand-picked group of supremely talented performers.

Thursday 24th November

• **Beverley Up and Coming Professionals Networking Group**

The Potting Shed. 6pm. Details from SParker@wilkinchapman.co.uk

Saturday 26th November

• **Beverley Festival of Food and Drink**

Beverley Minster. 10am - 3.30pm. Free.

• **The Ultimate Ben: Michael Jackson Tribute Concert**

Armstrong Social Club. £5. 7.30pm. Back by popular demand. The closest you can get to the King of Pop.

<http://armstrongsocial.co.uk/event/tribute-to-michael-jackson/>

• **Quiz Night for all the Family**

St Mary's Parish Hall. 6pm. General knowledge quiz plus pie and pea supper (bookings 01482 869137). Bring a team or join one when you arrive. Bring your own drinks.

Sunday 27th November



• **Beverley Christmas Lights Switch-on**

4pm at the Market Cross for Nativity Service followed by procession to Flemingate of Mary and Joseph (and a donkey) as carols are sung and lights switched on. Bring a source of light.

• **Advent Procession**

Beverley Minster 6.30pm (doors open 5.45pm). An atmospheric service tracing the journey from darkness to light.

Tuesday 29th November - Saturday 3rd December

• **Walkington Pantomime Players present 'Beauty and the Beast'**

Walkington Village Hall. £5/£3. 7.30pm nightly

plus matinee at 2pm on Saturday 3rd. Tickets from Walkington Costcutter or 07773 981850.

Wednesday 30th November - Sunday 4th December

• **Beverley Musical Theatre present 'Dick Whittington'**

Beverley Memorial Hall. 7.30pm £7.50/£5. Wednesday to Saturday plus 2.30pm matinees on Saturday and Sunday. Tickets from Beverley Music and Dance, Norwood, HU17 9EZ. Tel: 01482 881584.

Wednesday 30th November - Saturday 24th December

• **Advent Art Installation by Mervyn King**

St Katharine's Chapel Beverley Minster. 9am - 5pm. Free.

Saturday 3rd December

• **Charity Concert - The Beverley Singers present 'Music from the Movies'**

Toll Gavel United Church, Beverley. 2pm. £4 includes refreshments. Tickets from Beverley Tourist Information 01482 391672 or Diane on 07971 012462. All proceeds to East Riding Food Bank and The Morrison's Defibrillator Appeal.

• **Trevor Lilley Book Launch**

East Riding Theatre House Café. 3pm-5pm. Free. Meet the author, have your book signed, hear readings, see artwork and eat cake!

• **East Riding County Choir sing Poulenc and Sullivan**

Beverley Minster. 7pm. £16/£8/free. Tickets from Beverley Tourist Information 01482 391672 or www.eastridingcountychoir.org

THE PAULINE QUIRKE ACADEMY OF PERFORMING ARTS IS ENROLLING NOW IN BEVERLEY!

Outstanding performing arts tuition for 4-18 year olds.

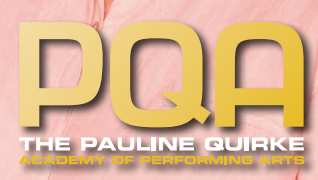


Academies run on Saturdays from 9.45am-1pm

Find us at Beverley Grammar School, Queensgate, Beverley, HU17 8NF

For further information visit

www.pqacademy.com or call 0800 531 6282



THE PERFECT GIFT 
From



TRIAL FLIGHTS AVAILABLE
FROM £65

Book a trial flight in a light aircraft or microlight and fly over Yorkshire skies

TO BOOK LIGHT AIRCRAFT FLIGHTS

Call us on: **01964 544944** Visit: www.hullaeroclub.co.uk
or pop in and see us for further details



TO BOOK MICROLIGHT FLIGHTS Visit: www.rmaviation.co.uk



MINSTER CYCLES 
Celebrating our 25th year

**GETTING
READY FOR
CHRISTMAS**



Bikes and accessories for everyone



CYCLING KNOW-HOW FOR ALL YOUR NEEDS

5-7 Norwood, Beverley, HU17 9ET
Tel: 01482 867950
www.minstercycles.co.uk

542 Anlaby Road, Hull, HU3 6SY
Tel: 01482 509502

Classic Cars with Carfan - The Rover P6

The venerable Rover P6 was produced between 1963 and 1977, admittedly not the best time for British car manufacturing, quality-wise.

However, one thing you can say about this car is that it is a solid car and various Prime Ministers and Members of Government could be seen being chauffeured around in them during that period, safe in the knowledge that the car was sufficiently robust for them. Indeed, the car was thought to be so innovative that it won the first European Car of the Year award in 1964 and the AA Gold Rosette for safety in 1967. The power assisted disc brakes on all four wheels, crumple zones and a specially designed independent suspension system for radial tyres doubtless contributed to winning these prestigious awards.



Over its production run there were various versions available - the original 2 litre when it was launched, followed by a 2200 c.c. with both of these having four cylinders each. For speed merchants a 3500 c.c. V8 was available and the very rare estate version was offered, albeit by an outside company that only made about 200 of them.

One fascinating aspect about this car is that the panels can be bolted on and off quite easily, facilitating repair work. The model pictured here was a daily runner until not too long ago, having benefited from a completely new leather interior, braking system, steering joints and suspension mountings. This is only to be expected of a car of such vintage and parts are readily available with more than one Owners Club for enthusiasts to join! A full respray followed but the lack of power steering and gearbox problems led to it being sold to an enthusiast in Middlesbrough.

If you see a P6 driving around, the passenger probably isn't a Member of Parliament, but is more likely to be someone who appreciates driving a solid British motor, so give him a wave!



BURTON ELECTRICAL SOLUTIONS

High quality electrical work across East Yorkshire & the Humber region

DOMESTIC

COMMERCIAL

TESTING

Whether it's for your home, rental property portfolio or business premises, all electrical installations need to be checked periodically by a qualified electrician.

For a quote contact:

Andrew Burton

28 Carnaby Close, Leconfield, East Yorkshire HU17 7LA

Tel: 01964 552769 Mob: 07585 601730

Email: info@burtonelectricalsolutions.co.uk

Web: www.burtonelectricalsolutions.co.uk



indicoll

more than just web design

EXTENDED FOR 1 MORE MONTH

SUMMER MADNESS GET A WEBSITE FOR ONLY

£1995!

UNLIMITED NUMBER OF PAGES

What's included? Your website comes with all of these fantastic features; A Bespoke Website Design (with no templates used) • Content Management System (so you can update the website yourself) • Contact Form, Analytics (see when & how people visit your website) • Mobile friendly • Blog • Gallery • Links to social media accounts • Dedicated account manager



FREE! DOMAIN NAME EMAIL ADDRESSES WEB HOSTING* & SUPPORT *FOR 12 MONTHS

CALL NOW ON 01482 428650

BEVERLEY



INDEPENDENT BMW & MINI SPECIALISTS

Follow us on: in f t search for Beverley Motor Works

BMW Qualified Senior and Technicians Offer

- Saving up to 70% OFF main dealer prices
- Manufacturer's warranty not affected
- Resale value of your vehicle not affected
- Award-winning customer service
- Over 30 years' combined BMW experience

Call today on 01482 881128

Our dealership expertise means high quality for car servicing at a fair price...

- ATA Accreditation
- Routine servicing
- Condition-based servicing
- Diagnostics
- Mechanical repairs
- Air conditioning
- Performance tuning
- MOT's

Call now for a no obligation quote or to book in on 01482 881128 or email us directly from our website www.beverleymotorworks.co.uk

Unit D1 Grovehill Industrial Estate Annie Reed Road, Beverley HU17 0LF E: web@beverleymotorworks.co.uk



Golf with Stewart Fraser

Here at Beverley Golf Club we have one of the best custom fitting centres in the country.

This week sees us take a closer look at club fitting and how it can benefit you and your game. Over the last 5-10 years more golfers are starting to realise the importance of buying clubs that are correctly fitted to themselves, no matter what level of golfer you are, you will benefit by using the correct clubs.

Drivers, irons, wedges and putters can be custom fitted to get the best performance from your clubs. The fact is, you could be saving several shots a round, without changing your swing!

There are several areas to look at when getting clubs custom fitted:

- **Grip size**

Can affect trajectory and direction of the shot.

- **Shaft flex and weight**

Can affect the height as well as accuracy, distance and spin of the shot. The correct shaft optimises clubhead and ball speed.

- **Head design**

A major factor to the trajectory of the shot.

- **Loft**

Affects the trajectory and spin of the shot.

When correctly fitted, taking into account all of the above areas, it is common nowadays for

me to see increases of 20 yards from a golfer's old driver. A big increase in distance is not all you can expect from a properly fitted club though, it is also possible to reduce/increase launch spin on the ball, as well as giving you the best trajectory for maximum distance, this can also improve accuracy.

The only way you can gather all of this data is by getting fitted on a launch monitor. Three of the most important readings you get from a launch monitor are:

- **Ball Speed**

The speed the ball leaves the clubface, nothing is more important to generating distance.

- **Launch angle**

The angle the ball leaves the clubface at in relation to the ground, not always the same as the loft on the clubface. Key to driving it longer and straighter.

- **Spin**

The rotation of the ball after impact, ideally 2-3000 revolutions per minute dependant upon the individual.

With launch monitors like the Flightscope X2 we have at Beverley, it also tracks the ball from



leaving the face to landing to give an accurate reading of distance, showing you the improved results of your correctly-fitted driver.

As mentioned above, the main contributing factors to optimising distance from the tee are spin and launch angle. For higher swing speeds spin rate is key, for lower swing speeds launch angle is more critical. Generally, for most club golfers though the optimum will be 10-14 degrees launch angle combined with 2,200-2,800 spin rate.

Book a club fitting yourself and see how much it improves your game. Give me a call on **01482 868757**.

Play golf on the glorious Westwood

Come and play one of the best draining, best value and most beautiful courses in Yorkshire, in great condition all year round. Winter specials available, call us for more details.

 **Snainton Golf**
The One Stop Golf Experience

The Snainton Golf Store at Beverley Golf Club

- Thursday late night opening in December with special in store deals on the night plus FREE custom fitting in the areas premier custom fit centre
- Full of ideas for the perfect Christmas present
- The best prices in the UK guaranteed, the best choice, and the best service
- Free parking

The gift of better golf!
with Stewart Fraser PGA Professional



Lesson vouchers and special offers now available for the festive period



Beverley & East Riding Golf Club – Call Stewart Fraser on 01482 869519

**Now open
to the
Public**

Beverley and East Riding Golf Club



Luncheons now being served.



Christmas Bookings are now being taken.



**Bookings being taken for New Year's Party. 7.30pm onwards.
Full Nights Entertainment with 5 course meal.
Live Music - Male Vocalist Luke Sabatino.
Tickets £45 includes welcome drink.**

Available to book to Celebrate Christenings, Birthdays, Weddings,
Anniversaries or any special occasion.
Room Hire for Business Events and Social Events.
Social Membership available £20 per Year -
15% off Alcohol.



Find us on
the Westwood

Beverley
Grammar School

Easy Parking

Beverley Westwood, HU17 8RG
Contact Steve or Jayne Royle

Tel: 01482 868757 or 07773380012



Tales from the Racecourse - The House that Jack built

We are now coming to the end of the flat season and the start of National Hunt racing.

Jockeys who ride on the flat and particularly over jumps take the risk every time of a serious fall, often breaking bones or worse still getting a head injury or paralysis.

Thanks to the fundraising of many, we now have a fantastic rehabilitation centre for injured jockeys - Jack Berry House in Malton.

One fundraiser is local man Ken Brooke, an ex-Beverley police officer. He has worked hard organising events and after dinner speeches with the likes of John Francombe and the late Lord John Oaksey to raise vital funds for injured jockeys.

Ken has recently written an interesting book about horse racing, jockeys and trainers in



Beverley and Yorkshire, a contribution from the proceeds is going to Jack Berry House.

The Jack Berry House opened its doors on 20th April 2015. Named after Jack Berry, the former jockey and brilliant trainer, who pushed fund-raising to a new level to ensure jockeys and stable staff had a northern base from



which to recover from injuries sustained whilst at work.

The house contains a state of the art gymnasium and hydrotherapy pool. It also contains units for long stay patients and those in need of respite accommodation.

The house has a resident site manager and first class staff and equipment are at hand to ensure the right treatment is given to those in need. The house is administered by the Injured Jockeys' Fund as is the southern-based



equivalent, Oaksey House. The late Lord John Oaksey was the founding Trustee and past President. The President at the moment is A.P. McCoy who was recently knighted.

HM The Princess Royal is now patron and Jack Berry himself is Vice President.

Colin Stamford

Beverley Chess Pieces with David Mills

Steve Hodge, Douglas Vleeshouwer, Derek Sheppard, Paul Kendall, Tim Turner, Alec Grice and Malcolm Hara from Beverley Chess Club recently played in the 53rd Annual Hull Chess Congress.

There were four tournaments running: the Open (which anyone can play in); the Major (for anyone with a grading of below 165); the Intermediate (for players with a grading below 140) and the Minor (for those graded below 115). Steve Hodge, Derek Sheppard and Douglas Vleeshouwer played in the Open, Paul Kendall and Tim Turner played in the Major and Alec Grice and Malcolm Hara in the Intermediate Tournament. The Minor tournament was very well subscribed, which is encouraging as more people get to play the game, but sadly there were no representatives from Beverley.

The competitors each played five games over the weekend against different opponents on a similar score. This system is called the Swiss Pairing System. It means that winners play winners and losers play weaker players and will always result in a winner with ranked placings.

This system is used for the Beverley Chess Club individual championships. It's also used for Scrabble, Go!, and other strategy games. Special congratulations go to Paul Kendall who won the Major Tournament, although all results were encouraging considering the standard of entries. Paul Kendall is pictured below.



Beverley Chess Club is staging a Publicity Day from 9am to 4pm on Saturday 19th November 2016 at Beverley Library, Champney Road, Beverley HU17 8HE. Several players and officials from the club will be present to meet the public and answer questions. A large number of chess books will also be available for loan from the library. For further information, please telephone **01482 509476** (message minder service available) or email redsox1@redsox1.karoo.co.uk

Beverley Chess Club meets from 6.45pm each Wednesday at the St. Nicholas Community Centre, Holme Church Lane, Beverley. New members are always welcome, irrespective of playing strength, and tuition is available. For further information, telephone **01377 241571**.

For The Body You Deserve

Each month Sarah Evans owner of Gymophobics in Beverley, Hull & Hessle, shares her secrets on diet, health & figure improvement. If you haven't exercised in a long time, are over forty or have an existing medical condition, always consult your doctor before commencing an exercise or diet regime.

In my previous columns, I shared with you some of the things I ask my clients to do when they come to me for advice on losing weight. I suggested smaller portions, cutting out bread and drinking more water. Along with our very own exercise system called Resisted Tension, all of these things helped me to lose weight. What I did not do was go on a 'diet'. Like me, you have probably tried every diet going so you need me to give you another diet like you need a hole in the head! My advice is not a diet. It is more like a series of simple steps designed to change the habits of a lifetime. If you can change the built-in habits that have helped to make you fat, then you can not only get the figure you deserve, but more importantly, you will keep slim for the rest of your life. I know it can be done because I have done it; I lost the weight and have kept it off.

Compare that achievement with what happened to thousands of slimmers who lost weight with a famous chain of slimming clubs in the USA. The consumer magazine 'Which' wrote to all the slimmers who had achieved their goal weight, and asked them one simple question. "What happened to your weight in the twelve months after you achieved your goal weight?" 30,000 responded. 93% of them had put back all of their weight and were now heavier than before.

There are two things we need to learn from this: the first is that dieting doesn't work and the second is that unless you can change your attitude towards food, you will never achieve the figure you want. I will talk more about why dieting can make you fatter in a later column, but this week I want you to try something really simple to help you lose weight: eat earlier in the day!

I tried it myself and found the weight falling off me faster than I ever imagined! George and Margaret have lost 3 stone between them just by swapping lunch for tea! So much easier than a 'diet'!

This week's isometric exercise is for the outer thighs. Lie on the floor, on your left side with your left leg bent and your right leg extended. Flex your right foot and raise your right leg as far as possible; hold for the count of seven and then lower slowly to the count of five. Repeat 10-12 times. Turn over and repeat with the opposite leg. If you are making time to do the four exercises I have given you each morning and are making the small changes in your eating habits I have recommended, then you will already be losing weight and seeing changes to your figure. Do email to tell me how you are getting along so that I can share your success with others! Contact me at: hull@gymophobics.karoo.co.uk

Walking with Ian Richardson - In the Footsteps of a Giant

Beverley is one of the fine English towns which were chosen by the greatly admired and much loved architectural expert and BBC presenter Alec Clifton-Taylor (1907-85) to feature in an iconic TV series, broadcast over 35 years ago to showcase the very best of England's wonderful urban architectural heritage. Here, Ian Richardson takes us on a route followed by Clifton-Taylor in 1981, complete with observations.



Minster, South Transept

1. Start the walk at Beverley's fine railway station. Head across the nicely appointed square and into Trinity Lane noting the Masonic Hall. Turn right up Eastgate and then quickly left into Wednesday Market.

2. Bear left into one of the town's best streets, Highgate. Admire the stone setts which give so much more character to a historic town than tarmac. As you approach the minster, look for the Parish Office at 38 Highgate, a lovely Georgian building, formerly Bluecoat School. The pantile roof is made from local clays, not slates from distant quarries.

3. Enter the Minster at the sumptuous North Porch. Clifton-Taylor thought that only Westminster Abbey is a finer church than our Minster - perhaps the wrong order? Notice the Percy tomb, admire the very rare wooden treadmill in the roof and the glorious south transept. He did not approve of how the huge organ spoils the view down the nave, I think he is right, as confirmed by the delight of seeing the 'astonishing richness' of the nave without furniture which has been temporarily cleared twice this summer. In ACT's day it was difficult to access the grounds, now thankfully they are usually open for admiring the architecture and indeed the falcons.



The nave, cleared of chairs

4. On leaving the Minster, turn left into lovely

St. Johns Street and cross at the zebra to take in the fine view of the entire south side of the Minster. He was disturbed that the proposed new housing in the Lurk Lane area would destroy this view, you can decide if he was right.

5. Turn around and head down Keldgate, view the interesting Ann Routh Hospital on the right. The recessed arches here can be found across the town, as ACT observed, they are a 'Beverley motif', as are off centre doorways such as 7 Hengate.



Ann Routh Hospital

6. Turn right into Lairgate and view the very impressive Lairgate Hall. Turn right to walk into town. ACT was appalled by the heavy traffic here, he would approve of the recently opened relief road.

7. Towards the end of Lairgate, turn left to explore Newbegin which has many wonderful old brick houses which ACT so loved, he especially admired the cornice, at gutter level, of number 8.



Newbegin

8. Now cross over into the Market Place, where ACT admired the 'delightful Market Cross' of 1714. Head towards Beverley's other majestic church, St. Marys.



Market Cross

9. As ACT observed in most towns this would be the dominant building and many visitors still mistake its splendour for the Minster, we are indeed fortunate to have them both. ACT greatly admired North Bar Within with its splendid Georgian terrace,

and North Bar of 1409. He also pauses at the one remaining water pump to explain exactly why Beverley is such a long narrow town - it follows the course of the now culverted springs that ran off the Westwood.



St. Mary's

10. Heading out of the Bar, go up North Bar Without and New Walk. This is a most elegant part of town. ACT particularly liked the former town house of the Sykes of Sledmere, Ash Close 62 North Bar Without. Walk on to admire the impressive former Sessions House with its particularly fine portico and statue of justice. A walk back into town on either side is a pleasure.



Sessions House

11. You can make your way back to the station taking in more of the buildings ACT admired, notably Norwood House and Tymperon House at 62 Walkergate with its typical recessed arch. Old Walkergate clearly follows the winding course of a stream and leads you onto Toll Gavel, from where a left turn along Railway Street brings you back to the start. As ACT said Beverley is a relatively unknown town considering its many attractions, so wherever you travel, spread the word, it really is much too good to keep for ourselves.



Tymperon House

FREE

winter check
for any scooter/
power chair,
in store only

FREE

winter check
for any scooter/
power chair,
in store only

Winter Sale

We take
part exchange

**Small
Scooters
From
£395**



We take
part exchange

**Power
Chairs
From
£595**



**Two
Seater
Sofa
From
£695**



For all your
bathing
solutions
call store
for details

**Heddon -
Electric Dual -
Motor Riser
Recliner
£795**



**Rise &
Recline
Chairs
From
£495**



**Stairlifts
From
£995**



Hot savings for the cold weather

HOME VISIT DEMONSTRATIONS AVAILABLE ON REQUEST

SUPPLIERS & INSTALLERS OF INDIVIDUALLY TAILORED EASY ACCESS BATHROOM SOLUTIONS
CALL US FOR MORE DETAILS