

# just BEVERLEY

ISSUE 41

**FREE**  
TO PICK UP  
EVERY MONTH

**WIN!**

- Parkway Cinema  
Great Escape Tickets
- Probike Mountain Bike

**Beverley Fringe  
15th - 17th June**

**Well I Never...  
Sue Kirkham**

**Anytime Fitness' Manager,  
Sasha Young, celebrates  
a year at Flemingate**

**NEWS, WHAT'S ON, LIFESTYLE, FEATURES, PUZZLES, PHOTOS & MORE**

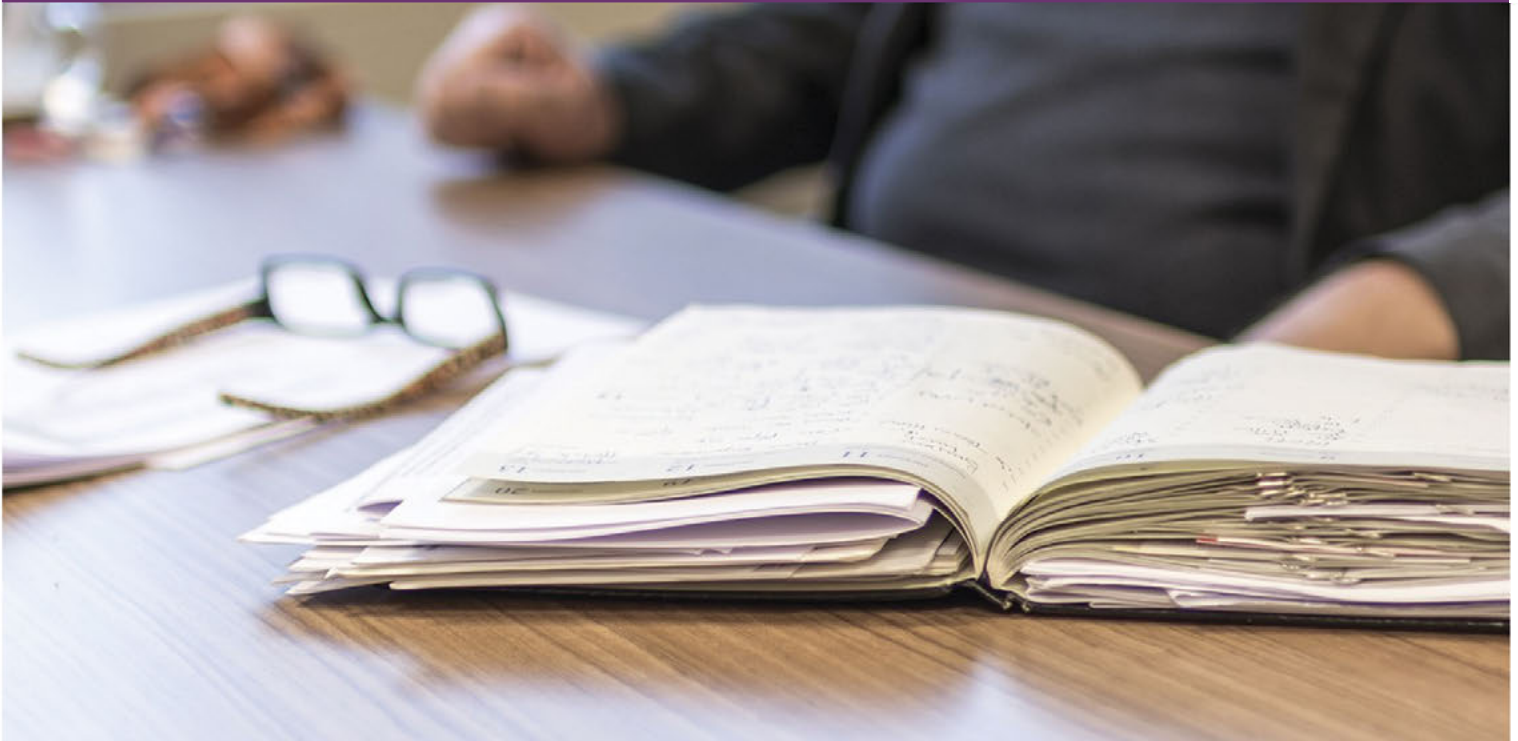


*Spring is in the air*



And so is the new financial Tax year.

Are you worried about getting your payroll right? It's time for change.  
Outsource your payroll today and be rest assured everything is taken care of!



**Pension contributions have changed now that final Automatic Enrolment dates have passed, new tax codes, Apprenticeship Levy's, up to date figures, CIS tax and more.**

Outsourcing payroll will save you time and money, redirecting time to growing your business. You will be given a named personal contact and access to our free and easy-to-use app with a plethora of online information available for you to use on the go!



To arrange a **FREE** meeting  
call us on 0845 308 2288  
or visit [www.stipendia.org.uk](http://www.stipendia.org.uk)



Stipendia Payroll Solutions



@StipendiaPay



## CONTENTS

Letters from the Editors **3**  
News **4, 5, 15**  
Parkway Cinema **6, 7**

## FEATURES

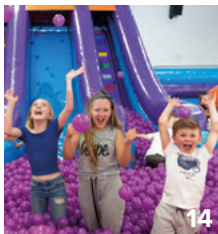
Anytime Fitness celebrate 1 Year at Flemingate **11**  
Beverley's New Mayor **16**  
Beverley Fringe Festival **33**  
Well I Never... Sue Kirkman **32**

## REGULARS

Arts and Culture **15, 20, 31**  
Business **4, 11, 12, 14, 15**  
Competitions **7, 29**  
Competition Winners **6, 22, 31**  
Countryside Matters **20**  
Finance **22**  
Food Rhino **27**  
Gardening **21**  
I've Been Thinking **15**  
Lifestyle **9, 14**  
Motoring **30**  
Photos **18, 19**  
Puzzles **25**  
Sport **28, 29**  
What's On **34**



5



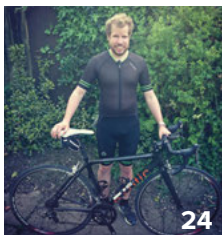
14



16



19



24



32

**Erratum.** The photograph published with Sam Walton's 'Countryside Matters' column managed to transport itself into the future, as it should accompany this month's piece on the use of robots in farming. The photo which should have been published was a lovely picture of cows! Sorry, Sam!

### Competition Terms and Conditions

Competition answers should be emailed to [competition@justbeverley.co.uk](mailto:competition@justbeverley.co.uk) before the closing date with the competition title in the subject field. Include your name, address and daytime contact telephone number along with your answer. Winners will be notified within 1 week of the closing date and **MUST** be available for publicity purposes for **Just Beverley** magazine, website and Facebook page and the prize provider. Photographs are usually taken the weekend after the prize-winners have been notified. The judge's decision is final. No cash alternative is offered. Details may be used for marketing purposes by **Just Beverley** and the prize provider and for website analytics by **Just Beverley**.

### Contributors include:

Julian Minshall, Linda Johnson, Richard Manville, James Bedford, Andy Burton, Carfan, Jane Dale, John Fewings, Elizabeth Godber, Fiona Kemp, Food Rhino, Colin Raynor, Sam Walton, Helen Watson, Lee Wardell, Clint Wastling, Nathan Wilson.  
Additional photography by: Brown's Photography.

### You can pick up the magazine from:

Parkway Cinema, Flemingate, Beverley Tourist Information, Beverley Library/Treasure House, Tesco, Morrisons, East Riding Leisure Beverley, East Riding Theatre, Browns café, Beverley News, Boyes, Tesco café, Colette and Tyson Garden Centre, Beverley Garden Centre, Cherry Tree Garden Centre, Mace News Saturday Market, Co-op Food Lincoln Way, Tickton News, Costcutter in Walkington, Molescroft News, Grovehill Convenience Store, Maple News, Leconfield PO, Willerby News, Poundland, Halfords, East Riding Community Hospital, Bishop Burton PO, Leven PO, The Altisidora, Cherry Burton PO, Barkers of Cottingham, Middleton-on-the-Wolds PO, Light Dragoon at Etton, Gnu at North Newbald, Monks Walk, Hayride, Sally's Deli, New Inn at Tickton, Ferguson Fawcett at Walkington, health centres, churches, cafés, hairdressers and more!  
Printed by: Jadan Press.

[www.justbeverley.co.uk](http://www.justbeverley.co.uk)

# just BEVERLEY

## LETTER FROM THE EDITORS



The Tour de Yorkshire certainly put Beverley on the map. For once we were blessed with beautiful sunshine. Of course, the sun always shines in Beverley which is a great lead in-to Summer! Which is why we are so excited about our competition to win a bike, courtesy of Wilson Wheels. We are hoping the winner will be inspired by the TdY to take up or do more cycling - see entry details on page 29 and good luck!

June sees the start of the World Cup. You will be able to keep up with games in our Beverley pubs and clubs. There's also Father's Day to celebrate - it's the perfect day for families to get out and enjoy themselves and spoil the male members of the family - they surely deserve it!

Remember to let us know about events you are planning - do let us know what you are up to, send us your photos and get involved! In fact, send us your good news, funny stories, achievements - people love to read about people and that's what **Just Beverley** is all about. We have an ever-growing readership through the magazine, website, Facebook page and Twitter so tell your friends about us!

Have a great June. Come on England.

**Julian.**



You all know I am a massive music fan, so the demise of the Folk Festival was a real blow. But, Beverley is never beaten and Beverley Fringe has expanded to fill its place! You can read about developments on page 33 - but there will be music in pubs, dancers in the town, concerts and late-night sessions so no-one will miss out on their folk music fix on the 3rd weekend in June.

As Julian has pointed out, the World Cup starts (on June 14th - which just happens to be my birthday when I will be 21 again!). For those of us who are not enamoured with 'the beautiful game', Parkway Theatre is offering a 'Great Escape' of classic films for just £5 each. We have the perfect prize for anyone who wishes to take advantage of this football-free zone - two tickets for each of the Parkway's 'Great Escape' Classic films. The winner could potentially have 12 tickets to 6 films! See page 7 for details.

This month's magazine is crammed full of interesting stuff as ever. Beverley has lots to celebrate with a new Mayor, new bells at St Mary's and an innovative inflatable leisure venue at Flemingate. Whatever you are celebrating this June, be happy!

**Linda.**



'Community Publication Award'  
Shortlisted Nominee  
2017



REYTA  
'Remarkable East Yorkshire'  
Award Nominee 2016  
'Best Newcomer'

## GET IN TOUCH WITH US:

**Website:** [justbeverley.co.uk](http://justbeverley.co.uk)  
**Email:** [info@justbeverley.co.uk](mailto:info@justbeverley.co.uk)  
**Telephone:** 01482 679947  
**Twitter:** @JustBeverley  
**Facebook:** [facebook.com/justbeverley](https://facebook.com/justbeverley)

**If you would like copies for your business to distribute to staff and customers, call Just Beverley on 01482 679947.**



## INSPIRED TO START RUNNING? BEVERLEY ATHLETIC CLUB'S 'COUCH TO 5K' PROGRAMME COULD BE FOR YOU!

1850 runners ran 10k around Beverley on a beautiful spring day last month - see selected photos in the centre pages, on our Facebook page and website. There was huge support for the runners along the route with lots of people commenting that they fancied running, too. Were you one of them? If so, Beverley Athletic Club might have the course for you!

The club launched its first ever 'Couch to 5k' 15-week programme on May 16th - but enquiries from new joiners who have missed the start of the course are welcome. The course is run by UKA qualified coach Patrick Marshall, assisted by club members, with the objective of getting everyone to achieve the goal of running 5k. It's a structured programme - you might have seen the App - which takes into account different levels of fitness and ability and speed of improvement.

Beverley Athletic Club is the largest, friendliest and most supportive club in the area, so it is fun and social, too.

The course culminates in a 5k run at Peter Pan Parkrun, Hull, on Saturday September 1st. If you fancy joining, get yourself along on a Wednesday evening to Beverley Leisure at 6.45pm.

The cost is £15 in total and any runner choosing to join the club following completion of the course will receive a £15 discount on their first year's membership fee.

For more information or if you have any queries, please see the Beverley AC website at [www.beverleyathleticclub.co.uk](http://www.beverleyathleticclub.co.uk) or contact [patrickmarshall@btinternet.com](mailto:patrickmarshall@btinternet.com)



## CALLING YOUNG DANCERS, SINGERS AND ACTORS! TAILGATE THEATRE PRODUCTIONS NEED YOU FOR THIS YEAR'S PARKWAY PANTOMIME

Tailgate is renown in Beverley for its previous fun productions, such as 'The Giant's Loo-Roll'; the company is therefore delighted to be invited to produce the professional pantomime this year - 'Jack and the Beanstalk'. But they need a Junior Chorus.

Talegate is a Yorkshire company, dedicated to bringing the magic of theatre to any venue to provide a unique and unforgettable experience for all ages. This year, the local community will be involved more extensively than in other pantomime!

Talegate say 'we want the community to take ownership of it!' Local dance teacher Laura Bulless will also be involved so whoever becomes a member of the junior chorus is guaranteed a wonderful time.

Auditions are being held at the Parkway on June 16th. More details in the poster.

**TaleGate Theatre Productions**

**JUNIOR CHORUS AUDITIONS**

**Jack and the Beanstalk**

TaleGate Theatre Productions are producing this year's GIANT pantomime at Parkway Beverley and we need YOU!

We are holding open auditions to be part of our junior dance chorus. Auditions are open to boys and girls from the age of 7 and up.

VENUE: PARKWAY BEVERLEY  
DATE: SATURDAY 16TH JUNE  
TIMES:  
10AM - 12PM FOR 7-11 YEARS  
12PM-2PM for 11+ YEARS

## BEVERLEY PUPPET FESTIVAL RETURNS 13TH, 14TH, 15TH JULY

The amazing, award-winning Puppet Festival returns to Beverley this July. This year, there are three acts from the Netherlands, whoppingly-big dinosaurs, Cloud Travelers and family favourite, Little Fawn Caravan.

It's not just for children, either! As July 13th just happens to be a Friday, what better night to stage a Spooktacular opening event with tales of terror from the seaside? There are other adult-orientated shows, too. And this year, there's also music from the versatile Mambo Jambo. The Beverley Puppet Festival is now well-established as an event for puppet-industry professionals, too.

There are over 30 acts scheduled to perform at East Riding Theatre, Toll Gavel United Church and the Masonic Hall plus free outdoor performances in Beverley town centre and Flemingate.



The Friary will be the Festival Hub and central box office and host a licensed bar and food.

Thanks must go to Arts Council England, East Riding of Yorkshire Council and Beverley Town Council. Tickets are available now from [www.beverleypuppetfestival.com](http://www.beverleypuppetfestival.com) or 01482 391672 or 07855 328552.

## 'LEGALLY BLONDE THE MUSICAL' COMES TO HULL NEW THEATRE

Beverley Musical Theatre (BMT) has been given permission to perform this fabulous musical for the first time anywhere in the East Riding. It's a high energy musical, based on the novel by Amanda Brown and the 2001 film of the same name, with music and lyrics by Laurence O'Keefe and Neil Benjamin. It won a Laurence Olivier Award for Best New Musical.

The story is that of Elle Woods, who enrolls at Harvard Law School to win back her ex-boyfriend, Warner. Elle turns out to be an excellent lawyer who discovers how her skills can be used to help others - which she does!

Beverley Musical Theatre presents **LEGALLY BLONDE** the musical

**Hull New Theatre**  
**19-23 June 2018**  
Tues-Fri 7.30pm  
Sat 2pm & 7pm

Music & lyrics by Laurence O'Keefe & Neil Benjamin  
Book by Heather Hach

Seats: From £11.50\* to £24.00\*  
(\* including £1.50 booking fee)

Ticket booking office: 01482 300306

This musical production is presented by arrangement with JOSEF WEINBERGER LTD on behalf of MUSIC THEATRE INTERNATIONAL OF NEW YORK

BMT has recruited some very talented young people to add to the already highly-skilled members of the company. This included recruiting two dogs, who need their own performing licenses and changing rooms. They are behaving as the Divas they are meant to be by showing total dislike of each other! Fortunately, director Mark Daniels does know the dogs and their owners which is why both attended auditions and were cast at the same time.

BMT has been joined by students studying film and media from East Riding College to help them stage 'Legally Blonde the Musical' and ensure it is the exciting, vibrant, fun musical which appeals to all ages.

It runs from June 19-23rd at Hull New Theatre, 7.30pm each night and 2pm on the Saturday.

Tickets, which are priced from just £11.50 (including booking fee) are on sale at [www.hulltheatres.co.uk](http://www.hulltheatres.co.uk) or phone 01482 300306.

## THE QUEEN'S BIRTHDAY

Just Beverley wishes to recognise the Queen's Official Birthday on June 9th and wish Her Majesty many happy returns.

She shares her day with Donald Duck who made his cartoon debut on June 9th 1934, making him 84 years old.

## BEVERLEY DOES BROADWAY - THE REBOUND

*If you missed She Productions' 'Beverley Does Broadway' first time around, well, it's back on the rebound from June 14-23 at East Riding Theatre.*

She Productions are putting on a show but Follies of their own have been distracting them and Aspects of Love have cast-members preoccupied. Despite relentless rehearsals, will it be alright on the night? With classic favourites from My Fair Lady, Chicago, Hairspray and more, everyone can enjoy some of the world's most popular show-tunes, with a twist! There's a new cast and creative team which includes Fleur Stevenson of the Fleur Elizabeth School of Dance, Wicked London's Paul Frankish as Musical Director and Abey Bradbury from Manchester-based Cream-Faced Loons Theatre Company. All-girl She Productions have written and produced 9 original plays over the last 3 years, including It's Different for Girls inspired by



Hull girl-band Mandy and the Girlfriends.

They are also taking their hit satire MissCast to the International Festival of Cabaret in Mexico this August. But Beverley Does Broadway was their first show and they are rightly proud of it!

So, join them for a night of belly-aching laughs, show-stopping singing and a little bit of relationship therapy without the need to buy a train ticket to London! Tickets are £10-£14 and available from [www.eastridingtheatre.co.uk](http://www.eastridingtheatre.co.uk) or via the box office on **01482 874050**.

## CULTURE TRAIN RIDES AGAIN!

*The Culture Train & Bus Tour will be rolling into St Mary's Church in Beverley on June 30th.*



East Riding of Yorkshire's Active Creative Arts Fund and Northern rail are again funding the Culture Train, which brings musicians from the Hull music scene to perform free concerts in towns and villages accessible by railways and buses. The artists leave Paragon Station for their venues, courtesy Northern Rail and arrive at their destination by EYMS bus. On Saturday June 30th, Pavey Ark will be joined by Happy Endings, Quicksilver Kings and Elwhaeko, four acclaimed acoustic acts, which will be very popular. The evening begins at 7.15pm.

Although the concert is free, attendees are invited to contribute to the collection on the evening, which will be for church funds, and to purchase refreshments. Artists will be catching the train back to Hull after the event. Other venues visited by the tour are Market Weighton, Nafferton, Goole, Brough, Hornsea, Bridlington and Hull.

Chris Warkup of Quiet Riot Arts who has put the project together is delighted that such a variety of venues and so many artists have come on board for this 'plug and play' tour. More details on **Facebook @CultureTrain2017** or **Twitter @quietriotgigs** or on **Just Beverley's What's On** pages online.

## NEW FESTIVAL BRINGS FLAVOURS OF THE WORLD TO FLEMINGATE

*Beverley is becoming well-known as a town of festivals; it welcomes a new International Food and Craft Festival to Flemingate this month, bringing a mouth-watering selection of tastes from around the world along with quirky craft items and live music from local musicians.*

From Friday 8th June until Sunday 10th, from 10am on all three days, there will be foodie delights ranging from hot street food from Greece, Spain, Poland and Vietnam to continental cakes, pastries, cheeses, bread and olives. Stalls will be located throughout Flemingate, there will be a stage for live music and Beverley FM will be broadcasting live. Jo Bridgeman, Events Manager at Flemingate, said: "The International Food and Craft Festival will be a great event for Beverley. Run by RR Events, Beverley is a new-comer to this type of festival. We are delighted to be working with them to provide something so exciting and vibrant which will appeal to residents and visitors from further afield." You can follow the events in social media: **@CSmarkets on Facebook**; **@Continent\_SM on Twitter**; and **continental\_sm on Instagram**.



## INTRODUCING SIGHT SUPPORT HULL & EAST YORKSHIRE

*Hull-based charity HERIB, have rebranded to become Sight Support in a bid to engage more people, whatever their degree of visual impairment, through its wide-ranging support services.*

Originally formed 154 years ago as Hull and east Riding Institute for the Blind, the name was abbreviated to HERIB some years ago. However, the disconnect between the name and its services gave the charity good reason to consult the public on a name-change. They found the word 'sight loss' is more inclusive than 'blind' and that references to an 'Institute' is old-fashioned.

Colin Vize, Consultant Ophthalmologist at Hull Eye Clinic, which treats 450 people each month on average, said "Hull Eye clinic sees on average four hundred and fifty people each month with varying levels of sight loss. People who are newly diagnosed with sight loss can benefit hugely from the valuable service charities like Sight Support provides, especially if they engage in the early stages. We found however, that patients are fearful of being referred because they do not consider themselves to be blind. I am very pleased to see the results of the consultation and feel Sight Support is an excellent new name to replace HERIB."

Sight Support provides assistance for around 2500 people within Hull and East Yorkshire through day centres in various locations, a Resource Centre full of useful aids, equipment and information, home visiting, telephone befriending, supported housing, transcription services and visual impairment training for businesses, organisations and the public. It runs activity groups include a tandem cycling club, acoustic shooting, fitness sessions, walking, tenpin bowling, singing, football and a calendar of outings and events throughout the year.

Sight Support is a self-financed charity which requires over £750,000 annually to provide its life-enhancing services for local people. Sight Support welcomes any fundraising on their behalf and has places for runners in several events such as the Great North Run. It also has a wide range of volunteer opportunities for all skill-sets.

Please call **01482 342297** or check out [www.herib.co.uk](http://www.herib.co.uk) (new website under construction).



## THE NEW BELLS OF ST MARY'S HAVE ARRIVED!

*Excitement mounts as St Mary's welcomed their 3 new bells which are being installed this month. The new bells will give St Mary's a 'light' octave, known in bell-ringing circles as a '12 with a sharp 2nd' and make St Mary's the first church in the East Riding outside of the city of Hull to have a 'ring' of 12 bells. It will be on a par with most of the cathedrals in England which have 'rings' of 12 bells.*



The new bells each weight 5cwt, which are dwarfed by the largest bell in the tower which weights 34cwt. They have been cast by Taylors of Loughborough who cast the current 10 bells 117 years ago, to replace 8 bells which had been in the tower since 1417 and were considered to be past their sell-by date.

St Mary's are still 'appealing' for contributions to their bell fund to help pay for these new bells, which cost £60,000. If you can help, please contact Ringing Master Chris Munday on **07854 246903**.



**EVERY THURSDAY AT 10.30am**  
(doors open 9.45am)

Join us for a free brew and a natter and enjoy some great films on Beverley Parkway's Big Screen. Only £4.20 with drink and biscuits included. Aimed at 55s and over. Films subject to change.

**Thursday 7th June -**

**Game Night (15) -**

Starring: Jason Bateman, Rachel McAdams

**Dark River (15) -**

Starring: Ruth Wilson, Mark Stanley, Sean Bean

**Thursday 14th June -**

**Dark River (15) -**

Starring: Ruth Wilson, Mark Stanley, Sean Bean

**Finding Your Feet (12a) -**

Starring: Joanna Lumley, Timothy Spall

**Thursday 21st June -**

**Finding Your Feet (12a) -**

Starring: Joanna Lumley, Timothy Spall

**The Leisure Seeker (15) -**

Starring: Helen Mirren, Donald Sutherland

**Thursday 28th June -**

**The Leisure Seeker (15) -**

Starring: Helen Mirren, Donald Sutherland

**I Feel Pretty (12a) -**

Starring: Amy Schumer, Michelle Williams

## PENGUIN PARTIES



**ONLY  
£195**

- ★ Suitable for ages 5 to 12
- ★ Up to 40 guests (additional charge for extra guests)
- ★ Party games in a private function room with Parkway Penguin
  - Tea and coffee for parents on arrival
- ★ Personal Photo montage on screen followed by your own film screening

For more information,  
please contact a member of staff

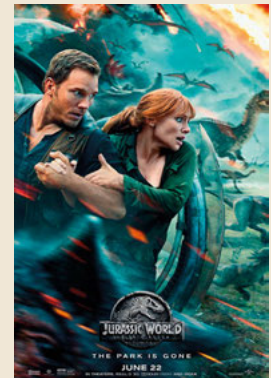
These are the films scheduled to open in June - all are subject to change.  
Check out up-to-date cinema listings at [www.justbeverley.co.uk/cinema-times](http://www.justbeverley.co.uk/cinema-times)



1st June



1st June



6th June



15th June



15th June



18th June



29th June



29th June



29th June



29th June

## COMPETITION WINNER



Congratulations to last month's winner, Bridget West, who won the fabulous Deadpool goodies.

# YOUR NEW INDEPENDENT CINEMA



## PARKWAY'S GREAT ESCAPE

*Recognising that not everyone is a fan of football, Parkway Cinema, Flemingate, is creating a football-free zone during the World Cup. Showing classic favourites, some or all of them are bound to be appealing to those of us who find the thought of endless hours of watching 22 men chase around a pitch after a ball of wind quite uninspiring - national pride in our boys notwithstanding, of course! The six films are all bound to be very popular, especially as tickets are just £5 each.*

'**2001: A Space Odyssey**' is a 1968 science fiction film produced and directed by Stanley Kubrick, inspired by Arthur C Clarke's short story, 'The Sentinel', with Clarke helping Kubrick write the screenplay. It is famous for its use of classic music (especially Also Sprach Zarathustra by Richard Strauss), minimal dialogue and human-like computer, HAL. It is a story about a journey to Jupiter after the discovery of a mysterious black monolith affects human evolution. If you have not seen this mind-blowing film in 4K, now is your opportunity!

'**Grease**' (PG) is famous for Olivia Newton John's name appearing over the top of John Travolta and John Travolta's name appearing over the top of Olivia Newton John on the posters as both were considered leading actors! It's also famous for the sound-track being the second best-selling album of 1978, beaten by 'Saturday Night Fever' which also starred John Travolta!

Who does not love '**The Sound of Music**', to be shown here at Parkway in 4K. This 1965 film was adapted from the 1959 stage musical which is a still a favourite of musical theatre groups nationally. It won 5 Oscars, 2 Golden Globes, a Director's Guild of America Award and a Writers' Guild of America Award. It's about kindness, patience, courage, faith and love and ultimately, happiness. What's not to like?

'**Top Gun**' was a slow-starter. But word-of-mouth about its amazing action sequences meant there were almost double the number of cinemas showing it 4 weeks after release than on its release day. It won an Academy Award, Brit Award, Golden Globe Award and Grammy Award for its featured song 'You Take My Breath Away' by Berlin. There is a sequel scheduled for next year, 33 years after the original and yes, it will be starring Tom Cruise again as Pete 'Maverick' Mitchell!

'**Back to the Future**' was released in 1985. In this film, Marty McFly accidentally travels back in time in Doc Brown's time-traveling DeLorean to 1955 where his own mother develops a crush on him. The film made a star of Michael J Fox and popularised skate-boards which were in their infancy.

Bringing us right up to date is '**The Greatest Showman**' which is about the life of PT Barnum. Released in 2017, there are 11 original songs which have been released on an album, which has been at No 1 for as long as Adele's '21'! Parkway Cinema's showing is a sing-a-long where everyone can join in with the now well-known songs. If you don't know the songs, you will be dazzled by the spectacle of this groundbreaking and innovative film which is sure to become a Christmas classic.

### TIMINGS:

#### 2001: A SPACE ODYSSEY 4K

Thursday 14th June at 7.30pm  
Wednesday 27th June at 7.30pm

#### GREASE (PG)

Sunday 17th June at 3pm  
Tuesday 26th June at 7.30pm

#### THE SOUND OF MUSIC 4K

Tuesday 19th June at 7pm  
Sunday 24th June at 2pm

#### TOP GUN

Wednesday 20th June at 7.30pm  
Monday 2nd July at 7.30pm

#### THE GREATEST SHOWMAN SINGALONG

Thursday 21st June at 7.30pm  
Sunday 1st July at 3pm

#### BACK TO THE FUTURE

Saturday 23rd June at 3pm  
Monday 25th June at 7.30pm



## COMPETITION

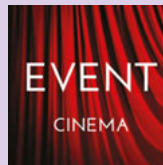
*How would you like to win a pair of tickets to every one of these films?  
Parkway Cinema is offering this fabulous prize to one lucky winner!*

All you have to do to be in with a chance of winning is answer the following question?

**What was the name of the computer in '2001: A Space Odyssey'?**

Send your answer by email to [competition@justbeverley.co.uk](mailto:competition@justbeverley.co.uk) by June 17th, 2018.

Put 'Great Escape' in the subject box with your name, address and daytime telephone number in the body of the email. Winners must be available for publicity purposes for **Just Beverley** and **Parkway Cinema** as soon as possible after the closing date. It will also give the winner maximum time to take advantage of the tickets.



Event cinema offers something a little different to mainstream films. Live and pre-recorded shows beamed in via satellite from all over the world. Here are the latest live streams that you can enjoy on the big screen at Parkway Beverley.

### TICKETS NOW ON SALE:

Tuesday 5th June at 7.15pm -  
**OWSL: AN IDEAL HUSBAND (12a)**

Sunday 10th June at 4pm -  
**BOLSHOI - COPPELIA**

Tuesday 12th June at 7.15pm -  
**ROH: SWAN LAKE**

Monday 25th June at 1.30pm & 7.15pm -  
**AN AMERICAN IN PARIS - THE MUSICAL - ENCORE (PG)**

Thursday 5th July at 7.20pm -  
**EVERYBODY'S TALKING ABOUT JAMIE (12a)**

Thursday 12th July at 8pm -  
**MUSE - DRONES WORLD TOUR**

Wednesday 18th July at 7pm -  
**RSC: ROMEO & JULIET (12a)**

Saturday 28th July at 7pm -  
**ANDRE RIEU MAASTRICHT CONCERT 2018**  
For full programme of the Event Cinema,  
please visit [www.parkwaycinemas.co.uk](http://www.parkwaycinemas.co.uk)

## LIVEshows

Thursday 30th August at 12noon -  
**JEDDYBEAR & GARY'S PICNIC**

Tuesday 4th September at 7.30pm -  
**KEEP IT CASH**

Sunday 9th September at 7pm -  
**WENDY KIRLAND - PIANO DIVAS**

Sunday 7th October at 7pm -  
**GIMME ABBA**

Sunday 21st October at 7pm -  
**THE BON JOVI EXPERIENCE**

Monday 29th October at 2pm -  
**Talegate Theatre Productions presents  
HOCUS PANTO**

Sunday 4th November at 7pm -  
**ALI COOK: PRINCIPLES OF DECEPTION**

# FLEMINGATE BEVERLEY

FASHION | FOOD | FILM | FUN

TAKE A

# FRESH LOOK



AT ALL YOU CAN ENJOY!

GREAT SHOPPING AND MORE THIS SPRING AT FLEMINGATE.

@FlemingateBev

FLEMINGATE.CO.UK

FlemingateBeverley



## ESCAPE THE FOOTBALL FRENZY

Join Parkway's Great Escape and enjoy some cult classics!

- 2001: A Space Odyssey
- The Sound of Music
- Grease
- Top Gun
- Back to the Future
- The Greatest Showman

\*Please see [parkwaycinemas.co.uk](http://parkwaycinemas.co.uk) for full listings

T&Cs apply. Voucher only valid on Parkway's Great Escape season - Full price tickets £5. Maximum of 4 people per voucher at the reduced price of £4.

★★★★★  
**ONLY £4.00**  
with this voucher  
★★★★★



# CREATE YOUR OWN STYLE WITH LEE WARDELL FROM VERB

*Dark jeans, black trousers and beige chinos are staple items in everyman's wardrobe, with dark jeans being the most worn fashion items of the last few years. Most men make a bolder statement with a vibrant shirt, quirky socks or colourful pocket square, however there is another way...*

This season, the trend is for bolder more colourful trousers: plums, greens, mustard, oranges, rusts. They are all there and available in shorts, too! Green is predicted to be a key colour in chinos this coming season, coupled with sky blue Oxford shirts from Mircam or Brook Taverner with a coordinated brown footwear and belt; it is a distinctively different twist on a classic look.



Footwear is more relaxed at this time of year. Deck shoes, Italian driving shoes and smart suede trainers in chestnut, grey and blue suede which all can be worn with an 'invisible sock' and a slightly shorter length on the chino to show your 'man ckles' off!

When making a statement with your trouser keep it simple with the shirt and jacket - nothing too bold. As mentioned, shorts are in season and the colours are bold too... dusty pinks, bright oranges and rusts. Hawaiian shirts add a touch of fun and co-ordinated deck shoes, with a cool set of sunglasses which all make for a comfortable relaxed look. A final 'rule' to making a statement and wearing a bolder look is to believe in what you are wearing. Be comfortable not only in fit but also in your mind. At VERB, we will give an honest opinion, because if you don't look fantastic, then we certainly won't!

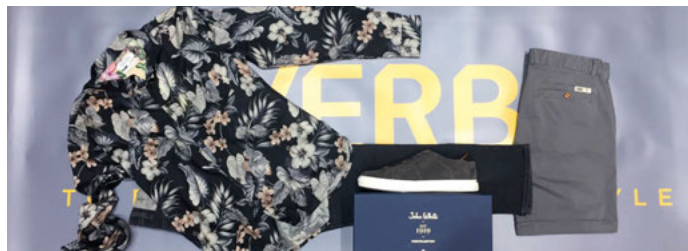


Following on from menswear, the 1st floor at VERB is dedicated to womenswear... it's adorable and affordable!

A riot of colour is how the girls would describe the many looks and colours we stock. Navy, white and Fuchsia are perennial favourites, with primary reds, bold greens and mustard yellows all featuring in this season's key pieces.

If the bolder look isn't for you, dusty pink and powder blue are also tipped to be the must-have colours for this season. As always our womenswear comes in cotton, linen and silks, perfect for any occasion and temperature.

If you are looking for beachwear or occasion wear, VERB womenswear is... adorable and affordable! Do come and check us out at Flemingate or online at [www.verbfashion.co.uk](http://www.verbfashion.co.uk). Follow us on social media, too, on Facebook, Twitter and Pinterest.



# VERB

TO WEAR - TO WANT - TO WISH FOR - TO OWN - TO FASHION

FLORENTINO

PEARLY KING

GIBSON  
LONDON

MAC

BROOK TAVERNER  
TAILORS OF DISTINCTION SINCE 1912

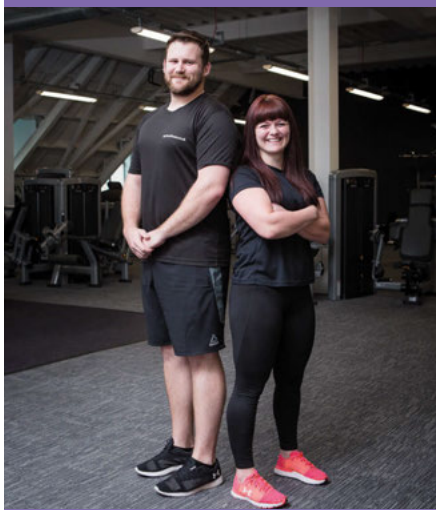
OPENING TIMES:  
MON / SAT 9.30-5.30  
SUN 11.00-4.00

01482 880141  
VERBFASHION.CO.UK  
INFO@VERBFASHION.CO.UK

FLEMINGATE SHOPPING CENTRE  
FLEMINGATE, BEVERLEY  
EAST YORKSHIRE HU17 0NQ

@ VERBFASHION   @ VERBFASHION   / VERBFASHIONBEV

TO FASHION YOUR OWN STYLE



**Train with your friends!**  
**Refer your friends to **Anytime Fitness****  
**and we will **guarantee a price****  
**matched membership**

**Call us today on:**  
**01482 247100**  
**ANYTIME FITNESS**  
**Flemingate Centre, Flemingate HU17 0NQ**



To mark our 1 year anniversary we are having a party at the Firepit in Beverley on the 16th June.

All our members are welcome to join us for food and drinks to celebrate our anniversary of the club.

We'd like to thank our loyal members for their support over our first year.

# SASHA YOUNG AND TEAM CELEBRATE ANYTIME FITNESS' FIRST YEAR IN BEVERLEY

*With a membership of 750 and growing, Anytime Fitness is fast becoming one of the area's favourite gyms. Opening on June 2nd last year, the gym is celebrating its 1st year in business. We visited the Flemingate-based gym to find out why it is the place to work out!*

There are several ways in which Anytime Fitness differs from other gyms. The first is that it is located upstairs, so some of the exercise stations look out over Flemingate. But there is a wide door and a lift for those of us who are a little less mobile than we would like to be when it comes to climbing stairs and for wheelchair users. This means that the gym is accessible to anyone over the age of 18 who wishes to work out.

The second most obvious difference is the individual changing facilities, with a shower, toilet and changing area in one cubicle!

The third is the spaciousness of the gym; there is room to move around the state-of-the-art equipment and machines offering resistance, cardio and functional training and a separate large exercise studio in the 7,500 square feet. The other differences become more obvious as you chat to Regional Manager Sasha Young, who opened the gym just 12 months ago.

Visiting during the day means you have no appreciation of the fact that the gym is the first 24/7 gym in Beverley. Although there are no staff in the premises between the hours of 10pm and 6am Monday to Friday or 4pm - 8am Saturday and Sunday, members have secure access. About 30 people regularly work out at night - shift workers, bar staff, carers etc. Not closing means people don't have to rush to work out and shower by 10pm either!

There are 30 instructor-led classes every week, run by Anytime Fitness' permanent staff, who are all qualified fitness instructors, along with a couple of external teachers. You can find Boot Camp, Spin, Boxercise, Body Pump, Stretch and Tone, Yoga and Zumba classes running on different days of the week and at different times. Additionally, members have access to a free work-out app with 1500 work-outs. Members also have access to Premium level of the My Fitness Pal app and the machines will sync with a Fitbit or other wearable health tracker.

Sasha says she is very lucky to be working with such a great company and such a great team of people. Anytime Fitness is the fastest-growing franchise in the UK. Beverley Anytime Fitness was opened by Neel Sodha, who is also involved with 12 other Anytime Fitness sites. There are now 4000 gyms world-wide, offering reciprocal membership. But each gym is different, tailored to the needs of the people who use it. Sasha manages gyms in Ashton-under-Lyne and Leeds as well as Beverley and says the other two are nothing like each other or Beverley, except for their core offering: they are all 24/7 gyms!

"Beverley is very much a community gym" said Sasha. "It's not just about training - its about support and guidance. My staff - James Bedford the Club Manager; Les Tobbell the Assistant Manager and John Williams the Personal Trainer - are there to help everyone achieve success, whatever that may look like.

We design plans and check frequently they are right for our clients with weekly or monthly reviews - nothing is routine or pre-scripted! Anytime Fitness allows us to work with our clients for their benefit rather than stick with programmes which only benefit the company. We welcome and encourage feedback from clients and do change things if they aren't happy. We all genuinely care about our members - we want them to feel as much a part of all this as we are.

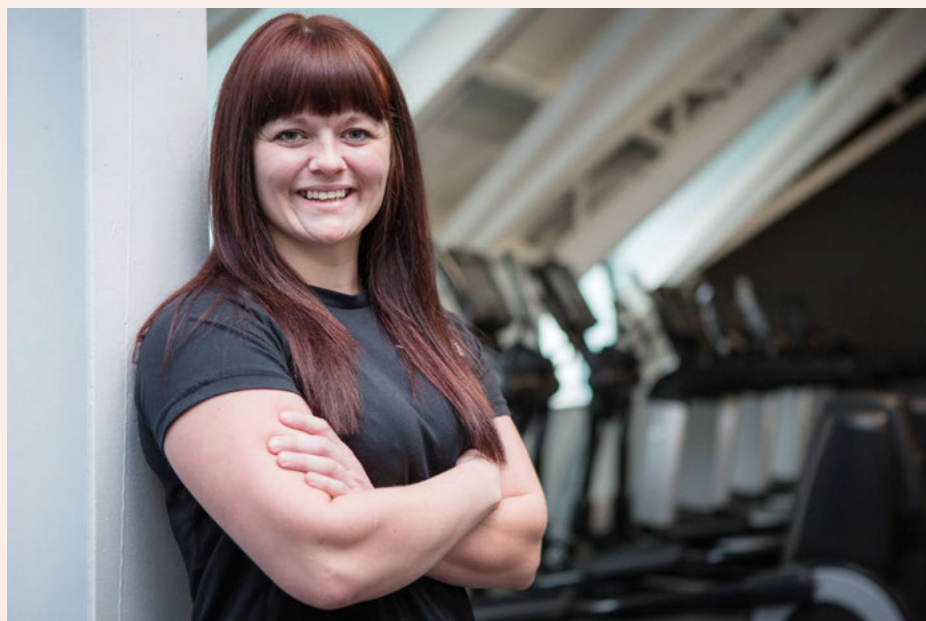
"We encourage members to work with local businesses to offer discounts which will promote the gym and we offer corporate rates for companies. We hope to do a deal with Flemingate to make parking cheaper for our members, too."

Unlike most people, Sasha doesn't have to go to a gym to keep fit as she has 3 to choose from! But for those of us who do, Anytime Fitness offers something very different to many other gyms' offerings. 750 members plus are clearly impressed!

Anytime Fitness is always happy to give prospective new members the opportunity to try out the facilities and meet the staff with a 24-hour free pass.



Membership costs £37.95/month on a 12-month rolling contract or £445.50/year (£10 off monthly price). Do give Sasha and the team a call on **01482 247100** to arrange a time to pop in and meet them. Congratulations to Sasha and team and here's to year 2!



# A DAY IN THE LIFE OF AN INDEPENDENT FUNERAL DIRECTOR

*Fiona Kemp of H Kemp and Son Ltd gives Just Beverley readers insight into a caring profession which most people will encounter at some time in their lives and how an independent funeral director might be your preferred first port of call when you suffer a bereavement*

Being a Funeral Director in a small family business such as H Kemp and Son Limited is very different to being part of a team of Funeral Directors in a large company. There is no room for demarcation of roles and responsibilities, you are involved in and responsible for every aspect of arranging a funeral and looking after the deceased and their grieving family. I have tried to cover the varied aspects of the role in the hope you are able to get an overall view of what is involved.

**6.00am** - We take a call from a bereaved family asking us to attend and remove their loved one to our premises. Two members of staff attend the residence as soon as possible and provide the family with guidance on the next steps before removing the deceased to our private mortuary.

**8.00am** - We open up our premises in Cottingham, attend to daily tasks such as reverting the landline back from the out of hours number and check the diary for today's schedule and appointments.



**8.30am** - The days floral tributes begin to arrive. We check the orders to ensure they are correct and represent the family's wishes. The flowers are placed with the relevant caskets ready for the day's services.

**9.00am** - We attend to our Jaguar Hearse and Limousine ensuring they are spotless both inside and out and ready for the day's funerals or bookings by other Funeral Directors. Deliveries of orders of services arrive and are checked and placed with the flowers ready to take to the relevant service.

Before the day gets too busy we contact doctors' surgeries regarding paperwork for forthcoming cremation services and arrange for doctors to visit our chapels to see their deceased patients.

**10.00am** - Meeting with a bereaved family wanting to arrange a funeral service, this meeting takes a little over an hour and the Funeral Director must listen very carefully to what the family would like and ensure that where possible their wishes are put into place. He/she will spend this time getting to know the family and make informed suggestions regarding the type of service and the type of person most suitable to conduct the service on behalf of the family. It is usually at this meeting that the type, date and time of service is discussed and confirmed.

Following this meeting the Funeral Director will then start contacting third party providers regarding the arrangements to be made. This will include the local florist to order the flowers, someone to conduct the service, the local newspaper for an announcement and possibly a printer for copies of the Order of Service.

**11.30am** - We begin to source music and service content for each family we are representing, complete any paper work required for cremations due to take place during the following week.

**1.00pm** - A delivery of coffins and urns arrive. These need to be stored before an up-to-date inventory can be made. Following delivery, handles need fitting, linings must be fixed in place and cloth trim attached.



**3.00pm** - We welcome a family coming to visit their loved one in our Chapels of Rest. We make ourselves available to answer any queries about the funeral service they may have and provide support during their visit, which can be very difficult for them.

**4.00pm** - Work in the mortuary preparing the deceased in our care for viewing by their families. This involves washing, shaving (if male), styling hair (if female), applying natural make up and dressing in clothing provided by their family. It is not always necessary to embalm, and this procedure is undertaken only if absolutely necessary. Our aim is to ensure that everyone looks at peace and is as natural as possible.

**6.00pm** - Office closes, but the phone line is transferred to an out of hours number to ensure a member of staff is always contactable by phone on **01482 844695**.

H. Kemp and Son are based at **259 Hallgate, Cottingham HU16 4BG**.  
[www.hkempandsonltd.com](http://www.hkempandsonltd.com)

## Four Generations, Giving Over 125 Years Service

Herbert 1870-1962	Eardley 1908-1986	Geoffrey 1939-2015	David 1964
----------------------	----------------------	-----------------------	---------------



Golden Charter  
Funeral Plans



- Funerals Respectfully Conducted
- 24 Hour Out of Hours Service
- Free Advice & Support
- Private Restrooms
- Prepaid Funeral Plans Available
- Finance Options Available



**Tel: 01482 844695**  
[www.hkempandsonltd.com](http://www.hkempandsonltd.com)

259 Hallgate, Cottingham, East Yorkshire, HU16 4BG  
Fax: 01482 843898  
Email: [hkempandsonltd@gmail.com](mailto:hkempandsonltd@gmail.com)

# Personalised Care

At Lindum House Care Home



**At Lindum House we understand finding the right care home can be a daunting decision, that's why our friendly team are on hand to offer advice and guidance at a time to suit you.**

Our beautifully refurbished home offers a range of care services whilst supporting independence and maintaining individual interests. With a varied activities programme and freshly prepared home-cooked meals, we pride ourselves on making everyone feel at home.

**Nursing Care • Residential Care • Respite Care & Short Breaks**

Whether you need urgent care or just some help and advice, our friendly team at **Lindum House Care Home** are here when you need them.

**Call: 01482 977 831**

1 Deer Park Way, Lincoln Way, Beverley, HU17 8RN



**LINDUM  
HOUSE**

BARCHESTER HEALTHCARE

[www.barchester.com](http://www.barchester.com)

# INFLATANATION SET TO PUT THE BOUNCE INTO BEVERLEY!

**Two more firsts for Beverley as the UK's first ever dual-level 'double-decker' inflatable theme park is set to open in Flemingate along with the UK's biggest ball pool - home to a staggering 200,000 plastic spheres!**

InflataNation is the brainchild of husband and wife duo Michelle and Matt Ball. There are two InflataNation Centres already in Manchester and Cheshire with another in Birmingham set to open later this year. But the arena coming to Beverley is completely unique!



Michelle says: "The other InflataNation centres are on one level, spread out across a large space, Flemingate! We've created a dual-layer, double-decker system with a mezzanine floor in between. It will give you the impression that you are 'floating' above our trademark giant inflatables. It also presents lots of fun options when it comes to ascending and descending!"

"It's been a real blast to design. Bouncers will be able to access the second level by way of rope ladders, climbing walls, or via normal stairs. We'll also have the first ever 'Inflata' Mountain which is a big structure to clamber up if you're an aspiring Bear Grylls! And there'll be a series of drop-slides which all exit into a massive ball-pit - which we believe is going to be the biggest in Britain."

Matt Ball says: "The double-decker layout also means we can build a climbing wall which will be a vertigo-inducing 25ft tall. It will also boast obstacle courses, a 'Gladiator Duel' area for doing battle with friends and an extensive play area for the under 4s. It will be unique in that it'll be the first Flemingate leisure attraction where families can work up a sweat together!"

Graham Tait, Flemingate Centre Manager, said: "We're really excited that Inflata Nation is coming to Flemingate. InflataNation's existing venues are a massive hit with children and adults alike and we're sure the same will be the case at Flemingate. This new attraction will underline Flemingate's reputation as East Yorkshire's fastest-growing retail and leisure destination and draw people to Beverley from far and wide. If Manchester and Cheshire are anything to go by, it will bring an influx of celebrities, too. It is due to open in time for the school summer holidays, which begin on July 26th."



When InflataNation Cheshire opened earlier this month (May 4) Coronation Street's Kym Marsh and I'm a Celebrity... Get Me Out of Here! star Adam Thomas attended the VIP launch party, alongside Hollyoaks actors Ashley Taylor Dawson and Sophie Porley. The following day, Manchester United footballers Marcos Rojo and Ander Herrera were also seen at Inflata Cheshire, enjoying some time away from the football pitch.

Michelle and Matt first shot to fame in 2014 when they launched a series of Jump Nation trampoline parks. But speaking about a change of direction implemented in October last year, Matt revealed: "While trampoline parks are becoming more and more common, we think InflataNation is a pretty unique concept - there's certainly nothing else quite like it in the world so far. We'll be looking to run disability-friendly sessions, 'InflataTots' where

little ones can run wild without fear of bumping into any adults and 'Inflata Fitness Classes' which were recently featured on several national TV news outlets. InflataNation Beverley will have something for everyone!"

InflataNation Beverley will include the following features:

- Inflata MOUNTAIN: The brand new mountain containing;
  - Inflata Drop - with two signature slides into a giant ball pool.
  - Inflata Wave - Two giant wavy slides. Who can race to the bottom first and reach the sea of balls?
  - Inflata Wall - Start by scrambling up the ropes to reach the bottom of the giant inflatable climbing wall. Set high up, it really will feel like you're climbing Inflata Mountain - and then use the fun slide at the end of the wall to get back on solid ground!
- New Inflata Ladder - 2 Giant unclimbable ladders. Who can reach the top and sound the bell first?
- Inflata Race - Who will be the first to complete the two-lane assault course set under Inflata Mountain and end up in the giant ball pool?
- Inflata Bubbles - A large extra bouncy 'bubble' area, when all you want to do is bounce.
- Inflata Bash - Dash through the biff bash air filled pillars - but be warned! They bounce back!
- Inflata Dual - A wibbly wobbly 'Gladiator Duel' platform. Will you win the duel or take a tumble onto the inflatable below?
- Inflata Pillow - Giant air pillow with funky lighting under Inflata Mountain. Who can climb to the top?

• Inflata Tots - Only for under 4's, a dedicated arena with lots of fun features, including slide & ball.

As with other Inflata Nation centres, InflataNation Beverley will also feature a cafe selling fine coffee and snacks. For more information, head to: [www.inflatanation.com](http://www.inflatanation.com)

# BEES

BURTON ELECTRICAL SOLUTIONS



HIGH QUALITY ELECTRICAL WORK ACROSS EAST YORKSHIRE AND THE HUMBER REGION

DOMESTIC

COMMERCIAL

TESTING

FAULT DIAGNOSTICS

Whether it's for your home, rental property portfolio or business premises, all electrical installations need to be checked periodically by a qualified electrician. For a quote contact:

Andrew Burton

01964 552769 • 07585 601730

[www.burtonelectricalsolutions.co.uk](http://www.burtonelectricalsolutions.co.uk)  
[info@burtonelectricalsolutions.co.uk](mailto:info@burtonelectricalsolutions.co.uk)

## GEMMA IS A CHARITY CHAMPION!

*If you were celebrating your birthday, wouldn't you want to keep the presents for yourself? Not Gemma Barua! She organised a Bank Holiday Bonanza at Armstrong Social Club to benefit local mental health charities Second Thoughts East Yorkshire and Beverley Rethink, making £1070 for them!*

Gemma's hard work at promoting the event involved the support of 30 local businesses which donated sponsorship and raffle prizes, including a flight over East Yorkshire offered by Andy Burton of Burton Electrical Solutions. Entertainment was provided by the fabulous Ruby Red Performers who famously appeared on Britain's Got Talent in 2015 and Armstrong's resident DJ, Elite Entertainments. There was also an Ice-cream Bike supplied by Jenny at Dream-Shakers, which was very popular!

The night was a sell-out and a huge success. Greg Harman from Second Thoughts East Yorkshire, which provides services aimed at improving the quality of life for people suffering with mental health issues and their carers as well as offering training for individuals and businesses to ensure good mental health, said he 'never stopped laughing all night' and was very grateful for the money raised for the charity he founded. Beverley Rethink also benefitted - it is a support group for carers, relatives and friends of people with mental health issues. Gemma has personal experience of mental health issues and not only wanted to raise money for the charities but to help raise their profile, too.

Gemma was overwhelmed by the support of all involved and delighted at the amount raised for the mental health charities she feels so passionately about. It was a birthday to remember for all the right reasons!



## THE GAME BIRD REOPENS IN TIME FOR THE WORLD CUP

**New Managers take the helm at The Game Bird to ensure it retakes its rightful place at the heart of the community.**

The Game Bird in Holme Church Lane has been closed for some time and has been sorely missed. Mark Sturdy, his sons Billy and Harry and partner Angela Boulton have been looking at the closed doors and darkened interior for some time, wondering if they could take it on.

Circumstances have aligned and, after discussions and training with the pub's owners, Batemans of Lincolnshire, the family are now a team, who, by working together, are looking to create a welcoming community atmosphere and turn the pub into the venue it should be.

The hands-on day-to-day relaunch has fallen into the very capable hands of Billy Sturdy, who, until the beginning of the year, was working as a project manager for Hull City of Culture 2017, and brother Harry, who was a Customer Experience Manager at Sky. They already have BT Sports showing in the pub!

Similarly, although they plan a more extensive menu in the future, for now it's good pub favourites - burgers, scampi and steak and chips etc - along with a kid's menu. Food is served every day with last orders at 8.30pm. And, of course, there are the 5 beautiful B&B rooms available.

Every game of the World Cup will be shown in the Game Bird. By the time you read this, it's likely the 2 original screens have multiplied to ensure more people can get a good view. There's a selection of beers - Bateman's as well as Carling, Fosters and bottled beers - with wines, spirits and soft drinks to make your visit a pleasurable experience.

Billy said: "The Game Bird was closed and it needed to be opened! I've spent many a happy hour there and was saddened that it looked so forlorn. Now we are open and starting to put our own stamp on the place. We're having a refurbishment and looking to welcome old regulars and new people, too."

## I'VE BEEN THINKING... BY COLIN RAYNOR

*As June is bursting out all over, I have been thinking of all the sporting events that we can expect at this time of year. I am a fan of all sports, but I do know that many people have no interest in such activities. Maybe the question arises, at a time when there is so much trouble and strife in the world, is it not a bit frivolous to be even writing about something that is so irrelevant to many people?*



My answer to that is I know sport is of no consequence to some folks, irrespective of the state of the world. I can understand why people have no interest in sport given that the cloud of dishonesty, greed, and the celebrity culture at times gets more exposure than the sport itself. This article is not about going, or not going, to the World Cup in Russia this month for instance.

I write to promote the genuine pleasure that an individual can get from an interest in sport and I do think being a fan of a chosen sport can be mentally and physically beneficial for a person. I suggest a number of reasons why I believe this to be so. It may be that I am even making a strong anthropological point when I state a person who call themselves a fan of a particular sport is immediately connected to thousands of folks all over the world who have a similar love of that sport. If I were to meet a stranger, on a train for instance, and we recognised the scarves we were wearing, there would be an immediate rapport and the possibility of endless chatter. It can be a real pleasure engaging in such a conversation, not just about your team, but about the laws of the game, and memories of matches.

I began by saying that I am interested in all sports. I do not claim to have the same depth of knowledge about them all but there is an aspect of all sport that I do enjoy and that is the competitive element. I recently watched the football team I support score the only goal of the game in extra time. The noise in the stadium was deafening and the gloom that had begun to descend on everyone was gone because we all knew the ramifications for our team because of that goal. I was equally thrilled to see the English women's team win the netball final a day or two after this, although my knowledge of netball is negligible. I'm sure that ballet and music and all manner of human activities can lift the spirits in a matter of seconds when we witness another individual performing in a way we know we can never achieve.

There is however evidence to show that such experiences may inspire us all to do something that we can be proud of, despite any limitations that life has placed on us. I may not have persuaded you to like football or cricket or any sport. That doesn't matter. But I ask you to keep an open mind and be willing to admire another person's enthusiasm for their passion in life (even though you may not understand it), especially when that passion is giving joy and pleasure to others. I trust we can all develop that sincere appreciation of our fellow travelers in life.

Until the website has its revamp, the **Game Bird Facebook page** is the place to go to follow new developments, which are happening by the day!

Do pop in and say hello to the team, though; it's people with enthusiasm and vision like the Sturdy's who make Beverley thrive.

[www.facebook.com/The-GameBird-Beverley-164576984237413](https://www.facebook.com/The-GameBird-Beverley-164576984237413)



## BEVERLEY'S NEW MAYOR OUT TO MAKE BEVERLEY BRIGHTER

**Stepping into the breach left by former Deputy Mayor Phil Dodsworth, who has had to step down is Councillor Bryan Pearson. After 50 years of continuous public service, it seems fitting that Bryan takes the reins at Beverley Town Council and builds on the success of previous Mayor, Councillor Ann Willis.**

Bryan was Mayor of the old Beverley Borough Council in 1994/95 but the role is now very different. Bryan is already discovering that he is in great demand to appear with the Chains of Office, flying the flag for Beverley from many different quarters and is already having to make choices between events he is attending. So, it's a good job that he has Councillor Duncan Jack as Deputy!

Bryan is Beverley born and bred. 84 years ago, young Pearson arrived, the 8th of 9 children, and although one sibling died, his parents adopted a nephew, so there were still 11 of them in the house. His family lived on 'Shanghai' (Cherry Tree Estate) and were very poor. His Dad worked in the Beverley shipyard and died when he was 76; his Mum did part-time jobs to try to make ends meet and had a major stroke when she was 49, dying at 59 - Bryan says she was 'worn out'.

He said: "We lived on hand-outs from the Salvation Army. I managed the ration books and begged and borrowed extra supplies for my brothers and sisters. My Grandad, Josh Robson, was a rabbit-catcher and I would go out with him to catch rabbits and hares to keep us going. I went to St Mary's Boys School and then to the High School for Commerce in Hull. I got a free transport pass which meant I could go to Albert Avenue Swimming Pool as I loved swimming and I was good at it - I was County of Yorkshire Back Stroke Swimming Champion in 1959/60. I was in the RAF from 52-56, working as an accounts clerk, but the Station Commander was a swimming fan, so he let

me form a swimming team and a water polo team. I don't swim nowadays, but I do keep fit by walking and gardening."

Bryan married his wife, Shirley, now Mayor's Consort, 58 years ago. "She trailed round after me whilst I was at swimming training" said Bryan "so I knew she was serious about me. We now have 2 sons, 4 grandchildren and a great grandchild who was born on my birthday and lots of nieces and nephews."

Bryan first became a Councillor in 1976 and has been elected every year since bar one when he temporarily lost his seat on East Riding Council. He is very proud of his achievements which he firmly believes have made Beverley a better place. Beverlonians clearly concur with his vision and hard, mainly voluntary work (Beverley Town Councillors are not paid) as he keeps being re-elected.

He said: "Councillors should work together no matter what their political colour. We've stopped planners wanting to knock the Friary down, stopped them bull-dozing St Andrew's Street, from demolishing the cottages on the corner of Swaby's Yard, from destroying the corner of Saturday Market with what is now Browns. We've made cost-savings although people don't realise we have and bid for pockets of money to make improvements such as road developments and we've removed sex inequality in the work-place discrimination." Bryan's aim for his Mayoral Year is to encourage more collaboration between the town's organisations with the Town Council as the hub and to make Beverley even more attractive to visitors, which should also help to counteract online purchasing. "Beverley blossoms with activity" said Bryan "but there are some buildings which let the place down. I want everyone to have pride in the town and make sure it sparkles. I don't



care if you work for a multinational - if you work here in Beverley you are contributing to its success. And every contribution is important. So get out the paint-tin, clean those windows, hang up a basket of flowers and let's look bright and welcoming. If there's a problem, come and talk to the Town Council - we are open to ideas!"

Bryan's aim for his Mayoral Year is to encourage more collaboration between the town's organisations with the Town Council as the hub and to make Beverley even more attractive to visitors, which should also help to counteract online purchasing. "Beverley blossoms with activity" said Bryan "but there are some buildings which let the place down. I want everyone to have pride in the town and make sure it sparkles. I don't care if you work for a multinational - if you work here in Beverley you are contributing to its success. And every contribution is important. So get out the paint-tin, clean those windows, hang up a basket of flowers and let's look bright and welcoming. If there's a problem, come and talk to the Town Council - we are open to ideas!"

Our new Mayor is a very engaging man and one thing we can be very sure about is that, with him at the helm, Beverley is in safe hands! Councillor Bryan Pearson can be contacted via the Town Council on **01482 874096**.

## MEMORIES REKINDLED AT AT BEVERLEY GRANGE NURSING HOME RAF DISPLAY

**In the conservatory at the Lockwood Road Home is a display of various RAF uniforms plus memorabilia to commemorate 100 years of the RAF. The display is open until the end of June to anyone who would like to look at it. Perhaps you know someone who would like to reminisce, too?**

The display was opened by the Mayor of Beverley, Cllr Ann Willis and Ex-Flight Lieutenant Peter Raynor AFC. It was put together by Beverley Grange's gardener Maureen Dunn and carer Rose Thompson, who had a hand in a previous display based on a 1940's Family Christmas. The conservatory seemed very empty when that display had been taken down. But now there is a display which, along with lots of memorabilia and a model of an Anderson Shelter, includes 6 mannequins dressed in RAF uniforms including a Nurse; Warrant Officer; Air Load Master; Pilot (complete with bomber jacket, helmet and goggles) and 2 WRAF personnel. Some of the uniforms were residents' own!

Two of the home's residents were in the forces. Estelle Crump was in the Motor Transport section of the RAF, having joined when she was only 18 years old; she got a plumb posting to Paris during her time of service. Bob Godber is one of 4 generations which have served his country.

Bob has suffered a stroke, but his story has been recorded for posterity for the display and his memory has been jogged by the artefacts.

One uniform was leant by Roy Williamson, who is the husband of another of the home's residents. Roy's Warrant Officer No 1 uniform is on display; he was in the RAF for 35 years as a Radar Wireless Technician, joining at age 18.

He served in Singapore, France, Germany and served finally at Funningley before being demobbed. He designed the RAF Jubilee Plate in 1977 (pictured right).

Peter Raynor was recommended as an expert by the Mayor's office; he was available the day the display was officially opened as an on-the-ground expert, talking to visitors about his experiences and telling stories about life in the RAF. When Peter was called up for National Service at the age of 18, he opted to join the RAF. Over his career, he's flown Tiger Moths, Chipmunks, Harvards, Vampires, Venoms, Meteors, Hunters, Jet Provosts and trained pilots to fly Jaguars, amongst others. He's been involved in aerobatic display teams, too! He's served all over the world but met his wife of 60 years at a Saturday night dance at Broadgate in Beverley! They live in Beverley to this day.

Every visitor so far has been enthralled by the display as it has got them chatting about days gone by and, understandably, there has been great feedback. Beverley Grange's phone number is **01482 679955** if you would like to arrange a visit - just ask for Maureen or Rose as they would love to show you around.





Telephone: 01482 869111  
sales@rosesofbeverley.karoo.co.uk



The Kitchen Factory, The Courtyard,  
Tokenspire Business Park, Beverley  
HU17 0TB

*Together we will design a beautiful kitchen*



Roses will then  
**project manage**  
your kitchen installation from  
**start to completion**

Visit [www.roseskitchens.com](http://www.roseskitchens.com)

to see our customers kitchens and read what they have to say about us

**Telephone: 01482 869111**





Send your photographs of your celebra  
Find us on Twitter and Facebook to sp

# MAYOR MAKING



HERE TO GET *you* THERE

# HUNTERS®

EXCLUSIVE

BEVERLEY / 01482 861411

celebrations around Beverley, to [info@justbeverley.co.uk](mailto:info@justbeverley.co.uk)  
to spot yourself in more photos each month.

# ARCHBISHOP SENTAMU VISITS BEVERLEY



SALES / LETTINGS / MANAGEMENT

# HUNTERS®

HERE TO GET *you* THERE

BEVERLEY / 01482 861411

# COUNTRYSIDE MATTERS WITH SAM WALTON

*New technology is making life easier for our farmers in the field as well as in the factory.*



Every day seems to bring something new, except poverty and taxes! But all the rain this spring got me thinking about the future. If climate change is going to mean more extremes of weather, will farms be able to cope? However, the use of drones on farms is increasing along with other robots. I have a friend who has bought a robotic lawn mower which he has nicknamed Rob. It has been set up to cut his lawn absolutely correctly and when it is finished it goes back to its resting place and connects itself to the charger. If it is running out of electricity, it will also go back on its own accord to be changed up and then finish the job. I think that is frightening.

I suppose if you think about it, we have had robots working in industry for a while and in the car manufacturing industry as an example. So, I suppose if robots become more and more popular or versatile, it could create redundancy amongst humans. I can see the time when robots make other robots no need for humans on the shop floor. So that poses the question what will humans do? Will they set up businesses which can be run by robots or will there always be need of a non-robot to keep an eye on things? I have a neighbour who has just changed his car. From his mobile phone he can see how many miles per gallon he has done and can also, from his phone, start the engine to get the car warmed up on cold mornings! He can also unlock it from his phone. On the first day he had it, it was raining, and his wife came back to the car to find she had mislaid her keys. She telephoned him and he unlocked the car from his mobile so she could wait for him, in the car, in the dry. I wonder what would happen if I could get a robot to write this column? Sorry - what was that? You thought I did already!!!!!!



# AUTOBIOGRAPHY NO. 2 FROM SAM WALTON - 'PIGS MIGHT FLY!' - NOW IN PRINT

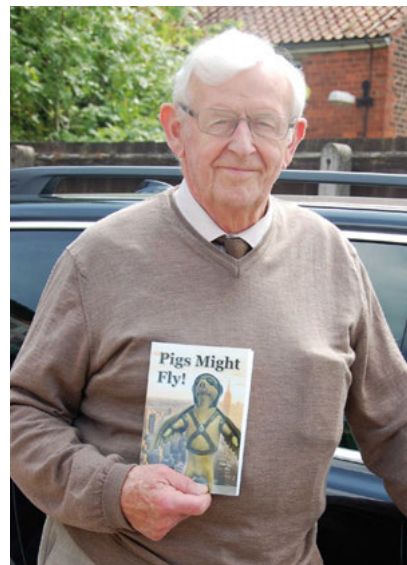
*Following on from his previous publication, 'Pig in a Poke' comes more musings from Sam Walton. He says it's not all about pigs, but, it is true that pigs do feature.*

Sam Walton's column in **Just Beverley** is always popular, not because he writes about a subject many of us know not much about, stewardship of the countryside, but because he has a winning way with words. He was encouraged to put pen to paper because he not only wanted to update his experiences, but his children and grandchildren wanted him to, too!

Sam said: "I've been to 42 different countries, many with work to see pigs and pig units. Some of the places I have been to I would go back to in a trice - New Zealand for example is like the UK was 50 years ago. I could live in New Zealand. The people are laid back, the countryside is green and picturesque, they speak English and drive on the proper side of the road!

"I'm not that keen on China, though. I went there once to look at a 5-story piggery but when I arrived they changed their minds and wouldn't give me access. On another occasion in China, I turned up at an appointment, but they said I had the wrong day. It costs a lot of money, time and effort to get to China, too. But I do like Denmark and their pig husbandry is superb."

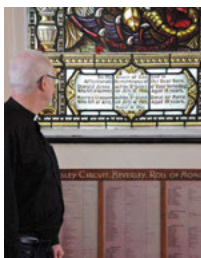
Sam's book is available from Leconfield Post office or direct from Sam on **01430 810597**.



# TOLL GAVEL CHURCH COMMEMORATES CENTENARIES IN SPECIAL REMEMBRANCE

*Toll Gavel United Church has two memorial windows, commemorating the First World War and in particular, two Beverley brothers who were sadly killed as the result of the war. As Superintendent Minister of the Beverley Methodist Circuit, Rev'd. Stephen Caddy is also Officiating Chaplain to the Military at the Defence School of Transport and Chaplain to the Humberstone and South Yorkshire Army Cadet Force, it seems an ideal setting to commemorate four centenaries: the End of the War to end all War; the Spring Offensive (which was the closest Germany came to winning the war); the death of the younger brother, Maurice Grassam Ashby RAF and the founding of the RAF.*

Two years ago, Toll Gavel United Church commemorated the 100-year anniversary of the death of the older brother and think about the dreadful conditions endured by men fighting in the trenches. This time, the service will be a Civic Service with invited dignitaries, including the Mayor of Beverley, Councillor Bryan Pearson and his consort, Mrs Shirley Pearson. Rev'd Rob Birnie, Regular Army Chaplain at the Defence School of Transport will mark the end of the First World War; Rev'd Michael Bowman, Wing Chaplain Central and East Yorkshire, along with RAF personnel from Leconfield, The RAF Association and the Air Training Corps. will mark the founding of the RAF; representatives of Beverley Grammar School including the Headteacher, Mr Gavin Chappell, Governor Derek Thorpe and Deputy School Captain Joshua Thorpe will remember Grammar School Boy Maurice Ashby and local historian, Barrie Barnes, author of 'Known unto God' will speak about the impact of the 1918 German Spring Offensive on local men. Rev'd Stephen Caddy said: "Sadly, Maurice was only 19 when he died, which was the average age of a soldier killed during the Vietnam war. He was an Observer in the RAF. He was in a 2-seater plane which crashed shortly after take-off. His father was Wesleyan Sunday School Superintendent who owned a cycle shop in Beverley; he invented a cycle called 'The Wanderer.'" (If anyone knows anything about this cycle, please let **Just Beverley** know - Ed.) The service is to be held on Monday, June 25th at 7.30pm. All who wish to attend are warmly invited to be seated by 7.15pm.





**Beverley Community Lift  
CHARITY SHOP**

[www.bclift.org.uk](http://www.bclift.org.uk)  
Tel: 01482 868082

6 Sow Hill Road,  
Beverley, HU17 8BG

**Making a difference to local people's lives**

**Have you visited our local charity shop?**





**A warm welcome awaits you!**

Open Tues to Fri - 9.30am to 4pm  
Sat 9.30am to 4.30pm






Reg Charity No: 1163868

## IN THE GARDEN... JUNE

Well once again mid-May is turning out to be rather pleasant on the weather front - a good bank holiday and nice weather since, fingers crossed it will continue into June. This spell of good weather will have encouraged many people to go out and buy summer bedding plants for their pots and containers. Apologies for being a bit of a 'killjoy' but we could still get frosts and some cold weather which will damage tender plants (that have come from a very cosy greenhouse), personally I never plant up my containers until the end of May/early June.

As with shrubs and trees certain bedding plants thrive better in certain conditions. For shady areas: use *Impatiens* (*Busy Lizzies*); *Lobelia*; *Begonias*; *Coleus* and *Fuchsias*. *Pelargoniums* (*Geraniums*); *Marguerites*; *Petunias*; *Verbena* and *Osteospermums* prefer a sunny position. If you want some fragrance, then go for *Stocks* and *Nicotiana*.

When planting ensure you don't overfill the pot with compost, leave a couple of inches between the top of the pot and compost - this enables you to fill this with water and it will soak through the pot, whereas if the pot is too full the water 'bounces' off and is wasted... and feed at least weekly with a liquid plant food.

### Tasks for June

There are very few essential tasks other than:

- Mow the lawn - don't cut it too short, if we have a really dry spell the lawn will go brown if you do. Also, leaving the box off the mower and allowing the cuttings to stay on the lawn will 'help' conserve moisture.
- Keep a look out for pests, particularly on roses and lush green shoots.
- Keep on top of weeds.
- Tidy up/lift any remaining spring flowering bulbs.
- Top up water levels in your pond.
- WATERING PLANTS - due to a combination of longer days, generally drier/sunnier days and the rate at which plants 'drink' water, you will probably need to water the garden. Newly planted plants, young vegetables and plants in containers will need watering most. Watering should be done thoroughly - ideally either early in the morning or in the evening. Hanging baskets and small containers should be watered daily and fed with a liquid feed once a week. If you have large areas in the garden to water don't try and water the whole area by splashing a bit of water on daily, split the garden into areas and give each a 'good soak' which should last up to a week. Don't be fooled by heavy thundery downpours - often most of the rain 'runs off' and doesn't enter the soil.
- DEADHEADING (removing flowers as they fade) - this is an important task which needs doing regularly. Deadheading will extend the flowering period, by diverting the plants' energy from producing seeds into new growth and flowers. To deadhead cut back to just above a bud lower down the stem of the plant using secateurs or garden snips.

Well I do hope we are going to have a 'flaming June', so until next month,

*Happy gardening, J.*

Jane Dale of 'Designed Gardens'  
Tel: 07983 392 411



## FREE LAWN ANALYSIS

Is your lawn full of moss and weeds or in need of some serious revitalisation? We offer a completely free, no obligation, lawn analysis to assess your lawn's condition.

### SEASONAL TREATMENTS

Designed for the great British weather, our bespoke seasonal treatments contain nutrients to feed the lawn - supporting root development and encouraging stronger, more robust grass plants - and a herbicide to control weeds.

*We'll provide you with a wonderful lawn and exceptional customer service.*

Contact GreenThumb for your FREE lawn analysis and quote:

**01482 880082**

or email: [beverley@greenthumb.co.uk](mailto:beverley@greenthumb.co.uk)

**GreenThumb**  
LAWN TREATMENT SERVICE



## YOUR FINANCES WITH GARETH BOTTERILL CARILLION - A LOOK INTO WHAT WENT WRONG

*The latest report on the collapse of Carillion has suggested that aggressive accounting policies and the failings of the auditors are to blame for the scale of the collapse. The report states that nobody stopped the directors "stuffing their mouths with gold" for years before it went into liquidation in January 2018. The debts of the company are around £7 billion.*

It's reported that in 2016, management had insisted on a healthy profit margin being reported and this resulted in a £53 million 'adjustment' in the accounts. The company was accounting for revenue even before work had been agreed.

The finance director, who retired in 2016, was no doubt fully aware that the accounting practices couldn't continue to cover up the issues. When he retired at the end of 2016, he sold his shares for £776,000 before the value dropped. The company had a practice of delaying payments to suppliers for many months. Some subcontractors would be waiting for payment up to six months after presenting their invoices and experienced a number of tactics used by Carillion as excuses not to pay their suppliers. The cash situation was drastic and the only way to continue to keep the company afloat was to dictate their payment terms to the suppliers, who in many cases were small companies with very little option but to put up with Carillion's terms of business. The auditors have also been heavily criticised, as all of the big four accounting firms had some level of involvement in Carillion, either through audit work or consultancy work. KPMG, PWC, Deloitte and EY were paid substantial sums of money for their services, it has been recommended that the Competitions and Markets Authority take a closer look at how the big four firms dominate the audit market and possibly break up the size of these organisations in order to deal with their conflict of interest. Surely auditors cannot be completely independent whilst earning such fees from their client?

The Pensions Regulator has also come under scrutiny for being too passive and not making use of their powers. The Carillion pension scheme was a defined benefit scheme, based on either final salary or career average earnings. The pension scheme is reported to have a deficit of over £2 billion. This sequence of events is all very worrying, in this case it appears that the Carillion board were able to manipulate their results with little resistance. We should expect a review of the processes, which will include the role of the external auditors. It is possible that even with intervention, Carillion would still have failed but not on the same scale and the creditors may not have been quite as financially exposed as they ended up being. If you have been affected by the Carillion fallout or would like to discuss this in more detail, then please contact Gareth Botterill on **01482 862240** or email: [gareth@botterillco.co.uk](mailto:gareth@botterillco.co.uk)

### COMPETITION WINNERS

Congratulations to Adele Kelly, Brenda Cartwright, Rachel Laud, and Helen Todd who have won £50 vouchers to spend at Unique Hair Salon.



## Botterill & Co

Chartered Certified Accountants

We are a modern and professional accountancy practice ideally located to serve businesses in Beverley and the surrounding area.

We utilise modern accounting technology to provide you with a cost effective, professional service.

### Our services:

- Annual Accounts
- Tax Planning
- Management Accounts
- Tax Returns
- Company Formations
- Payroll
- Cloud Accounting
- Bookkeeping & VAT

For a free initial consultation please contact us:

Office: 01482 862240

Mobile: 07966 051458

Email: [gareth@botterillco.co.uk](mailto:gareth@botterillco.co.uk)

Website: [www.botterillco.co.uk](http://www.botterillco.co.uk)

1st Floor Offices, 40 Norwood, Beverley, HU17 9EY

RIBA

Chartered Practice

rdstott

Architects Limited



An architects practice putting the client first. From small extensions to a complete new home R D Stott Architects can offer services from initial appraisal to completion.

- Architectural and Design services
- Building surveys
- Feasibility studies
- Cost advice
- Planning services
- Building regulation submissions
- Detailed and working drawings
- Tender information,
- Advice on appointing a contractor
- On site project management

22 Lairgate  
Beverley  
East Riding of Yorkshire  
HU17 8EP

T +44 (0)333 772 9707

E [studio@rdstott.co.uk](mailto:studio@rdstott.co.uk)  
W [www.rdstott.co.uk](http://www.rdstott.co.uk)

# EAST RIDING CREATIVE STUDENTS HOST THE TRANSCEND MEDIA CONFERENCE 2018

**Final year BA Contemporary Media Design and Production students not only produced an exhibition of their work, but hosted a conference using multi-media presentation techniques for delegates which also engaged Twitter and Facebook users.**

The creative degree includes film, game, animation, visual effects and digital design, all of which were on view in the exhibition and conference, which was held at Parkway Cinema, Beverley. The conference was opened by Mike Welsh, CEO of East Riding College with Adam Kerr, who runs his own design and illustration company, as key-note speaker. Adam spoke about some of his work, including the Hull City of Culture 2017 'Hull 52' project which he instigated and crowd-funded.

Four students from East Riding College presented their work: Lewis Singleton premiered his animation Station along with his presentation about Representation of Disabilities in Animation; Daniel Taylor Crossland conducted a walkthrough of his game PermaFrost followed by his presentation on Video Game Narrative; Sam Milner presented his documentary Full Metal: Public Perceptions of Music followed by his findings on the question: Does the Media Play a Significant Role in Public Perception of Subcultural Groups? and Christopher Wood amused everyone with his short comedy film The Getaway Driver and then made us all think with his talk on The Evolution of Female Protagonists in Sci-Fi.

Christopher Wood spoke to **Just Beverley** about his work. He said he had always been fascinated as to how female characters in sci-fi often turn out

to be the protagonists. For example, Sarah Connor in the Terminator franchise and Ripley in Aliens. Sarah Connor grows from being the protected into the protector and Ripley, who is originally undermined by Ash, becomes the decision-maker and survivor.

And even though his film, The Getaway Driver was not sci-fi, the woman driver is the smart one with all the sensible suggestions. Christopher said he was keen to demonstrate the versatility of his technical skills along with critical thinking.



Programme Leader Adam Corkett said, "The aim of the conference and exhibition is for students to show their work in an accessible and unique format with the community and representatives of industry whilst completing a compulsory module.

"It also gives first and second year students the opportunity to see how it is done and to contribute their work to the exhibition. The standard this year is extremely high - next year's students have a hard act to follow! There aren't many events of this kind for young creatives outside of London and we hope this will grow and flourish."

The students put together a website: [www.transcendconference.uk](http://www.transcendconference.uk), Facebook @Transcend2018 and Twitter @Transcend\_2018 pages.

It was a free event which deserved to attract more delegates as there is nothing else like it for miles around.

Do watch out for it next year - and support these young people who are at the forefront of modern design and technology.



## MR CARPETS

CARPET AND FLOORING SPECIALISTS










30  
YEAR

ANNIVERSARY

30 years in business  
30 years of good, honest service  
30 years speaks for itself

Tel: 01482 872134

 [mrcarpetsbeverley](https://www.facebook.com/mrcarpetsbeverley)

3 Becks North, Beverley, HU17 0PR

# HUBY

## DOMESTIC APPLIANCES

Covering Hull, Beverley, Pockington, Driffeld and all the local villages



BOOK ONLINE

and SAVE

at

hubys.co.uk

Book in advance and save money.  
The further you book in advance  
the more you could save...




For service and repair call: 01482 866660

# BEVERLEY DOES BROADWAY

## THE REBOUND

**ert**  
EAST RIDING THEATRE

14 - 23 June (7:30PM)

**She**  
PRODUCTIONS

Tickets available online at: [www.eastridingtheatre.co.uk](http://www.eastridingtheatre.co.uk) | Box Office: 01482 874050

*The Game Bird*  
Hotel, Restaurant & Bar

**NOW OPEN & UNDER NEW MANAGEMENT**

Come and watch every game of the World Cup in the Game Bird!

**The Game Bird**  
183 Holme Church Lane, Beverley HU17 0QL  
Tel: 01482 886173  
[gamebirdbeverley@gmail.com](mailto:gamebirdbeverley@gmail.com)

**Jadan press**

Print that gets you noticed

**OVER 20 YEARS EXPERIENCE**

- ✓ Brochures
- ✓ Leaflets
- ✓ Business Cards
- ✓ Business Stationery
- ✓ Posters
- ✓ Desk Calendars
- ✓ Wall Calendars
- ✓ Pop-up Banners
- ✓ Pads
- ✓ Invites

Jadan Press are a leading family run commercial B2 colour litho printer based in Hull. With 20 years experience, the company is renowned for producing work of an exceptionally high quality. We are committed to providing an excellent service by offering value for money and ensuring complete customer satisfaction.

**Tel: 01482 610902**  
**info@jadan-press.co.uk** **www.jadan-press.co.uk**  
Rainbow House, Kimberley Street, Hull, HU3 1HH

**MORE THAN... JUST A GOLF CLUB**

Two challenging courses, one great location, the ideal holiday for you and your game.

Corttingham Parks  
THE COMPLETE EXPERIENCE

Jadan-Press
 PROMOTA
 PROMOTA
 BPIf
 UKS
 UKS
 bpma
 UKS
 @JadanPress



# PUZZLE PAGE

## WORDSEARCH

S P U C D L R O W S F G K Q J  
 T U B G C D M Q U F A N G A O  
 L Z N O I Y F N Z X T I C N C  
 W L H G P Z S G N C H K Y A M  
 P T A Y L H U Q B G E L Q G Y  
 R L T B I A G V Y Y R A P S H  
 I P G N T N S K D Y S W K J L  
 W F E I I O I S U E D P T C V  
 X Y L L F Q O P E V A Z Q A V  
 N H C E B T Z F V S Y E O E N  
 O Y B L O S S O M B X T Z X J  
 C C O U N T R Y S I D E S F A  
 R X J N S Q G E C O E K T A W  
 I F C Q I P D X K T Q W K K D  
 L W V O K Q S Q B H F V Q H G

BLOSSOM	GIFTS
COUNTRYSIDE	SUNGLASSES
CYCLING	SUNSHINE
FATHERSDAY	WALKING
FOOTBALL	

## THOUGHTS FOR JUNE...

Take a couple of minutes to appreciate nature

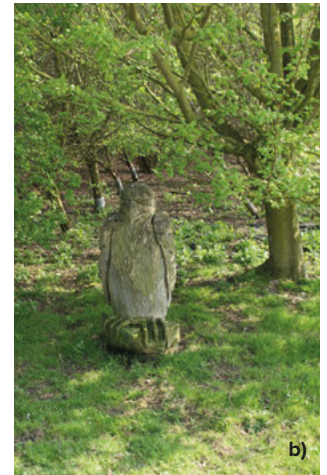
A journey starts with just one step

Overcome an old fear

The only failure is to not to do anything

## JUST FOR FUN

Where in Beverley would you find these landmarks?  
 Answers on Page 32.



Do you have any amusing stories, quotes or pictures?  
 Send them to  
[info@justbeverley.co.uk](mailto:info@justbeverley.co.uk)

## Quality Kitchen Facelifts



## From a simple door swap to a full replacement kitchen



Why replace when you can reface?



EST. 1999

**SUMMER SIZZLER!**

Ask for details in store  
Terms and conditions apply

**DREAM DOORS®**  
 NEW LIFE FOR OLD KITCHENS

- 50% deposit, balance on completion
  - Made to measure custom-built doors and units
  - Huge choice of doors, worktops, appliances, sinks and taps
- [www.dreamdoors.co.uk](http://www.dreamdoors.co.uk)

Call Andy For a Free Estimate:  
**01482 861 653**

[hu@dreamdoors.co.uk](mailto:hu@dreamdoors.co.uk)  
 Dream Doors Beverley, 4a Belprin Park,  
 Swinemoor Lane, Beverley, HU17 0LN

Proud members of  
**Checkatrade.com**  
Where reputation matters



## THE PERFECT PICTURE BY BROWNS PHOTOGRAPHY

*This month we consider lighting:*

### **The broader the light source, the softer the light.**

The narrower the source, the harder the light. A broad light source lessens shadows, reduces contrast, suppresses texture. A narrow light source does the opposite. This is because, with a broad source, light rays hit your subject from more directions, which tends to fill in shadows and give more even more illumination to the object.



### **The closer the light source, the softer the light.**

The further the source, the harder the light. This stands to reason: Move a light closer, and you make it bigger, broader in relation to your subject. Move it further away, and you make it relatively smaller and therefore narrower.

### **Bouncing light acts as diffusion.**

Aim a narrow light source at a broad, matte surface such as a wall, ceiling, or matte reflector and it not only reflects the light but also diffuses it by scattering it over a wider area. Use a shiny reflector, though, and the light will stay fairly narrow on the bounce. The most extreme type of shiny reflector, a mirror, will keep the light focused pretty much as narrowly in the reflection.



## IN 2018 REACH MORE CUSTOMERS ONLINE

### A WEBSITE THAT GETS REAL RESULTS FOR ONLY £1995

#### WHAT'S INCLUDED?

Your website comes with all of these fantastic features;

- A bespoke website design
- Content Management System
- Contact form
- Analytics
- Mobile friendly
- Blog & gallery
- Links to social media accounts
- A dedicated account manager

**FREE!**  
Domain name  
Email addresses  
Web hosting\*  
& Support  
\*for 12 months

CALL NOW ON:

01482 428650

marketing@indicoll.com

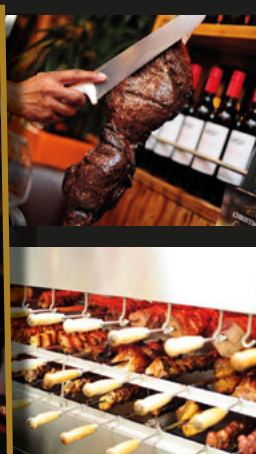
indicoll.com

## INDICOLL



## FUSING THE TRADITION BEHIND BRAZIL'S UNIQUE gaucho style grilling and rodizio dining

Direct from the southernmost region of the Brazilian high plains comes a centuries-old way of cooking, where the rodizio found its roots around the campfires of the traditional gaucho.



A continual service of large skewers of meat including beef, pork, lamb and chicken were spit-roasted over the famous churrasco barbecues and passed from man to man to enjoy.

At Chamas, we warmly invite you to experience an authentic taste of the gaucho life - the food, the wine and most importantly, **the passion of the people.**

**RATED No. 1**

out of 112 best  
restaurants in  
Beverley on

BOOKINGS  
RECOMMENDED



chamasbeverley.co.uk | Tel: 01482 867897 | 9-10 WEDNESDAY MARKET, BEVERLEY

## CAN'T SWIM? SPORTSABILITY HAS THE PERFECT POOL FOR YOU TO LEARN

*Are you someone who has never learnt to swim or stay safe in water? Do you have young children (especially pre-school plus) who require a calmer learning environment to swim and gain confidence in the water? Or are you intimidated by busy swimming pools yet would love to swim? The new Sportsability Swim School at Dunswell could be the answer.*

ASA-qualified swimming teacher, Suzanne Mathers has recently been offered the use of a private swimming pool, which has opened up many opportunities for teaching swimming and water safety to children and adults. The pool is 9m x 3.8m with Roman steps leading down into the water so no ladders to climb down or haul yourself up, which is particularly helpful when carrying a small child or for people with special needs and disabilities. The changing rooms are excellent and there are benches around the pool for parents or spectators. Suzanne told **Just Beverley**: "This is a great place to learn to swim. I run small classes (no more than 6) or 1-2-1 sessions. There are no interruptions and the pool is in a beautiful landscaped garden, so it is a relaxing setting. This enables pupils to come on very quickly. It's especially good when parents bring their children and they watch the classes, so they can reinforce what their kids have learnt."



Swimming is great exercise and can help people become fitter and healthier. Which is why Suzanne is keen to encourage adults to take advantage of her expertise. There is a gap in swimming lessons provision, not only for 3-5 year-olds, but for adults, too! As Suzanne says; "The programme is developing day-by-day! I will be running intensive courses during the summer holidays for children who would like to swim every day. I teach Aqua Aerobics, too, so I'd like to slot sessions in for that, too. And the pool is available for private hire, too. Pool parties? Why not?! Watch this space!" Suzanne's courses are very competitively priced at £39.00 for a block of 6, 30minute sessions. If you would like to find out more, please contact Suzanne on **01482 229676** or check out the **Facebook page @sportsabilityswim**

## RECIPE BY THE FOOD RHINO - SWEET POTATO SLICE

### Ingredients:

- 200g Sweet Potato (Sliced)
- 300g Aubergine (Sliced)
- 300g Squash (Sliced)
- 2 x Courgettes (Sliced)
- 1 x Red onion (Diced)
- 1 x Tin of drained chickpeas
- 1 x Pack of filo pastry
- 1 x Tbsp Rosemary
- 1 x Tbsp Nutmeg
- 1 x Tsp Cinnamon
- 1 x Tsp Cumin
- 2 x Cloves of garlic
- 1 x 23cm Quiche tin (or tray with equivalent surface area)
- Sesame seeds garnish
- 1 x Tbsp yeast extract
- 1 x Stock cube
- 250g x Filo pastry



### Method:

1. Season and roast the sliced sweet potato, aubergine, courgette and squash separately in the oven until al dente then remove and allow to cool.
2. While the vegetables are roasting, sweat the onion and add the rosemary, nutmeg, cinnamon, cumin and garlic to cook out for a minute. Add the chickpeas and half a can full of water along with the stock cube to the mix. Cook bring to the boil and simmer for 5 minutes. Blend the ingredients together in the pan, add the yeast extract and season to taste before allowing the 'hummus' to cool.
3. Once your veg and 'hummus' are cooled, open your pack of filo pastry and overlap the sheets (length way) so they measure roughly 60cm long. Use the full pack and lay over the beginning to end until you have no more pastry. Spread the 'hummus' evenly across half of the pastry. Layer the cold roast vegetables across the filo sheet and delicately roll into a snake like parcel.
4. Lay some greaseproof paper on the quiche tin. Gently twist the filo snake into a swirl and slide onto the tin. Lightly brush the entire pastilla with olive oil, sprinkle over the sesame seeds and some more rosemary and bake until golden on 190C.

## SPECIAL OFFER

**2 Courses for the Price of 1**  
on all Toning Tables  
booked before 30th June

**FREE TRIALS, No obligation**  
Testimonials available

**TONING TABLES**  
help with fat loss, ME, MS,  
hip replacements,  
depression, bad backs  
and much more!

Wheelchair access and  
stair lift available

## INCHES BODY STUDIO

**CELEBRATING 27 YEARS IN BUSINESS**

Inches Body Studio, 1 Norwood, Beverley, HU17 9ET

Telephone: 01482 865229

Email: inchesofbeverley@hotmail.co.uk

www.inchesofbeverley.co.uk



WHITE RABBIT  
CHOCOLATIERS

## HOP ON DOWN TO THE CHOCOLATE CAFE

for handmade, quality treats!



*A taste of wonderland...*



16 Dyer Lane, Beverley, East Yorkshire, HU17 8AE

whiterabbitchocolatiers.co.uk

Tel: 01482 679325

# BRAVE ANDREW IS DETERMINED TO HELP THOSE WHO HELPED HIM

*At the age of just 3½, Andrew Ferguson was diagnosed with Acute Lymphoblastic Leukaemia (ALL), which is the commonest childhood cancer. After years of grueling treatment, Andrew is now in long-term remission (cancer can never be said to be cured). But that does not mean he sits back and lets life pass him by! Andrew, now 34, is doing all he can to celebrate his health and push his body to the limit whilst raising funds to help others with similar life-threatening illnesses.*

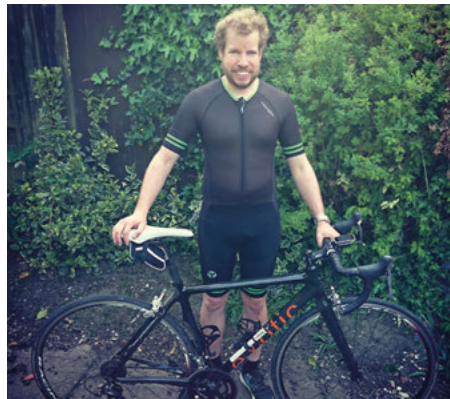
Andrew's family will be eternally grateful for the support Candlelighters gave them when he was a small child. He was diagnosed with cancer on Friday 13th November 1987 and immediately rushed to St James's Hospital in Leeds, which was the local centre for treating childhood cancers at the time. There followed 3-4 years of treatment, chemotherapy and radiotherapy, which caused huge expense and emotional turmoil on his mother, father and older sibling.

His mother had to move to Leeds to be with him, his brother had to stay with friends and his father, who continued to work as much as he could to support his family financially, was constantly backwards and forwards between Beverley and Leeds.

Andrew can't remember much of his treatment. His family told him that all children lived in hospital, were given drugs through a drip and radiotherapy and felt unwell, which he accepted as he was so young he did not understand what was going on. He knows he was so ill he nearly died of septicaemia after his second course of chemotherapy but today he is so well that he

competes in Ironman competitions, has a full-time job and doesn't need to see a Consultant. He has to monitor his lifestyle a little bit - not too many take-aways for example and he has to go to hospital for dental treatment - but it's the memories of the way in which Candlelighters supported his family which pushes him to help them through achieving levels of fitness which will encourage people to sponsor him.

Candlelighters help with financial and emotional support, facilitate holidays and hold events, help on the wards, invest in research, maintain networks and fund a bus which is used as a travelling drop-in centre. Unless you have experienced the worry of having a child or sibling with cancer, it is impossible to understand the impact it can have on you as a family.



Andrew says his experience has enabled him to become a very positive person, because everyone he met in Leeds and through Candlelighters was positive.



So Andrew is now undertaking a series of challenges to raise funds and he would love as much sponsorship as possible - even if that is only £1 from everyone who reads this article, he would raise £20,000 or more! He's cycling, running and swimming in a variety of races, including an Olympic distance Triathlon, Hell on the Humber endurance run and a ½ Ironman between now and September, so there's plenty of opportunities to give him your support.

He has a Just Giving page to sign up to and you can follow his progress on his Facebook page. If there are any companies which would like to offer sponsorship to Andrew, please get in touch with him on **07511 925190**.

<https://www.facebook.com/justkeepgoing1>  
<https://www.justgiving.com/fundraising/andrew-ferguson25>

# Family BIKE FEST



10am-4pm  
Sun 17 June  
Saturday Market,  
Beverley

IT'S  
ALL  
FREE

Come along to our  
**FREE** Festival  
of Cycling.  
There's something  
for all the family!

TRY OUT  
SOME WEIRD  
BIKES!

BIKE  
TRACKS,  
SKILLS  
PRACTICE

360  
STUNT  
TEAM

GIANT  
CYCLE  
AIR BAG

KMX CARTS  
3 WHEELED  
PEDAL  
POWER



**EAST RIDING**  
OF YORKSHIRE COUNCIL



**cycle4life challenge**  
better by bike



**R-evolution**



**MODESHIFT  
STARS**

# CYCLING WITH WILSONS WHEELS - CLOTHING FOR SUMMER CYCLING

*Cycling during the summer months can be made much more enjoyable, on those hot, sunny days, by wearing the right gear. As cycle clothing is specifically designed to be breathable, by wearing it, you are likely to sweat less and generally be much cooler and comfortable when out riding your bike. Cycle clothing also tends to be more breathable than other sportswear and is definitely more so than jeans and a t-shirt!*

You don't need to spend hundreds of pounds on cycle clothing either to get something decent. You can buy a good pair of shorts and a jersey for around £70.00. I personally wouldn't recommend buying cheap clothing from supermarkets, unless of course you really are on a tight budget, as these items are often cheap for a reason and are of a much poorer quality than specially designed cycle wear.

We maintain a stock of shorts, bib shorts and jerseys, manufactured by Funkier, a high-quality brand with reasonable prices in the shop on Grovehill Road, Beverley. We also stock and recommend products made in Manchester by the premium brand, Lusso.

For those who prefer to go out on an evening ride, there are a few items of clothing I would recommend for when the temperature starts to drop. Arm warmers and a gillet are always useful as both can easily be put on or taken off and can be kept in your back pocket.

Gillets are also usually windproof and are great for when you are going down a steep descent as they help keep your body core nice and warm, especially when the wind-chill factor really creeps up.



## WILSONS WHEELS

T: 01482 882881

W: [www.wilsonswheels.co.uk](http://www.wilsonswheels.co.uk) E: [info@wilsonswheels.co.uk](mailto:info@wilsonswheels.co.uk)

**WE NOW STOCK CUBE CYCLES**  
2018 RANGE NOW AVAILABLE

2018 CLOTHING AND ACCESSORIES  
FREE BIKE CHECKS  
DISCOUNTS  
IN STORE NOW

£100 of FREE ACCESSORIES  
WITH EVERY CUBE MOUNTAIN BIKE PURCHASED WHEN YOU MENTION JUST BEVERLEY

**DISCOUNTS ON:**

- Adult Bikes
- Children's Bikes
- Clothing for all cycling weather
- Parts and accessories

89a Grovehill Road, Beverley, East Yorkshire HU17 0EJ  
OPEN: Monday - Friday: 08.30 - 17.30  
Saturday: 09.00 - 17.00 Sunday: CLOSED - Out riding our bikes

Base layers are a must as well, even on really hot days. I personally think they are more comfortable against the skin compared with a jersey and as they are breathable, they really help with preventing and absorbing any sweat.

When going out for a ride, remember as well to apply a suitable factor sun cream before you set off or if it's a particularly long ride, maybe take some with you, to reapply as you go. I often stick some in my back pocket as I am fair and can suffer with sunburn.

Also remember to take plenty of water with you. One small bottle for every hour of riding should be sufficient to keep you well hydrated.

Ultimately, whatever you choose to wear while out and about on your bike, make sure to make the most of the good Summer weather we are currently experiencing, as who knows how long it will last!

## COMPETITION



*How would you like to try mountain biking? Wilsons Wheels are offering you the chance to WIN a BRAND NEW PROBIKE ESCAPE (Gents). It's an 18" frame (medium) with 26" wheels and features 18 gears (Shimano), retail price £150\*.*

Mountain bikes are made to be ridden everywhere - they are designed for durability as well as the capability of conquering off-road terrains like gravel, mud and grass. Their wheels feature thick tires with lugs for traction and suspension to absorb the vibrations from uneven surfaces. That doesn't mean to say they can't be ridden on a road and indeed, many commuters choose them on a day-to-day basis for their comfort. Mountain bikes make easy work of pot-holes and uneven road surfaces!

ProBike Cycles make bikes to enable riders 'to experience the joy of riding'. Wilsons Wheels' competition is sure to be one of our most popular - the winner will be drawn at random but be sure to get your entry in by the closing date should you wish to be in with a chance of taking ownership of this fabulous prize!

To be in the draw to win this Probike Escape, just answer the following question:

**What colours do the Wilson Wheels Race Team ride in?**

Email your answer to [competition@justbeverley.co.uk](mailto:competition@justbeverley.co.uk) by June 17th. Put **PROBIKE COMP** in the subject box and your name, address and daytime telephone number along with your answer in the body of the email. The winner must be available to receive the prize in Beverley at Wilsons Wheels, 89a Grovehill Road, Beverley and for publicity for **Just Beverley** and **Wilsons Wheels** between June 19th and 23rd. \*PLEASE NOTE: THE PRIZE IS AS DESCRIBED. THERE IS NO ALTERNATIVE IN EITHER CASH OR GOODS.



**sportsability**

- PRESCHOOL SWIMMING LESSONS (3-5 YEAR OLDS)
- DAY AND EVENINGS AVAILABLE
- EXCLUSIVE POOL USE
- SMALL GROUPS

Learn to Swim & Be Safe with our amazing highly qualified & experienced teachers

**BLOCK OF 6 LESSONS ONLY £39**

Facebook: @SportsabilitySwim  
Email: [info@sportsability.org.uk](mailto:info@sportsability.org.uk)  
Tel: 01482 229676

## CLASSIC CARS WITH CARFAN - THE MG TF

*A common sight in Great Britain during and after the second world war was a dashing uniformed pilot speeding along country lanes at the wheel of subject of this issue - an MG TF. Manufactured only for a relatively short time - from 1953 to 1955, with just over 9500 being made - it was replaced by the much more modern-looking and vastly superior MG A.*

The example here has been in the care of its lucky owner for only three years. Whilst it was in good condition at purchase, it has been treated to an engine rebuild and its leaky core plugs were attended to, too.

A new brake servo has also been fitted and the gearbox upgraded from its original four speed to a five speed one, which much improves its touring capabilities.



The issue of upgrades is contentious, and opinions vary widely, as any car can only be original once. Do let me know what you think about this by writing to [info@justbeverley.co.uk](mailto:info@justbeverley.co.uk) with **FAO CARFAN** in the subject box.

Averaging 2500 miles each year, the owner is very happy with his purchase and the car understandably attracts many favourable comments. If you fancy an "A" in your garage, be prepared to hand over between £15,000 and £25,000 or to delve even deeper up to £37,500 for a 'concours' example.

The Netherlands was a popular destination for them but buying from a "dry-state" in the U.S.A. would be a better bet as rust protection was not a priority in post-war England, with the inevitable disastrous results. Adding to that was the fact that there is a lot of wood hidden away, some of it in the frame. This naturally rots, with predictable results.

Don't forget, if you see a happy driver cruising along at a comfy 55 m.p.h. with the wind in their hair, don't forget that cheery Carfan wave!

## MIDSUMMER CLASSIC CAR GATHERING IN BEVERLEY SCHEDULED FOR JUNE 20TH

*East Yorkshire Thoroughbred Car Club (EYTCC) takes over Beverley's Saturday Market and Toll Gavel between 6pm and 9.30pm with classic cars and motor-bikes for all to admire.*

Just Beverley's own Carfan is just one of the owners who are always on-hand to chat about their pride and joy. Carfan owns an Aston Martin DB7 and many of the cars he writes about in his monthly column are owned by people who belong to the EYTCC. So, put the date in your diary and prepare to enjoy an evening of nostalgia (and perhaps even envy) as you admire the gleaming paintwork and chrome finishes and, perhaps be tempted to buy the car you have always wanted if you see an example for sale.



## PRACTICAL MOTORING WITH RICH HAYES - PREPARING YOUR CAR FOR SUMMER

*Sunny days are the perfect opportunity to get out in your car; here's how to prepare your car for a hot day out.*

### PERFORM BASIC CHECKS

Complete some basic checks before you set off on your journey - check the engine's oil level, coolant and screen-wash levels and top them up as necessary. You should also check your tyre pressures and tread, along with making sure you have enough fuel for you to make your journey. Did you know that running out of fuel is one of the most common causes of motorway breakdowns? Make sure you don't get caught short.

### PLAN YOUR ROUTE

It's a good idea to check your route, especially if it's a weekend or Bank Holiday when there's likely to be more cars on the road. Use a route planner such as the AA's, or the Maps app on your phone. Tune into the local travel updates on your local radio station too, as they could help you to avoid getting stuck in traffic.

### TIME IT WISELY

Avoid travelling on Sunday evenings before the start of a new school term, a time that is notorious for bad traffic on the roads. Likewise, avoiding rush hour is advisable to ensure you keep moving.

### TAKE REGULAR BREAKS

If you're travelling for more than a couple of hours you should plan some refreshment breaks, to ensure you stay properly hydrated and comfortable on your journey. Whilst these stops won't add much on to your overall journey time, they will help you stay focused and able to concentrate throughout.

### KEEP COOL IN THE CAB

Use your air con and vents to keep a supply of cool air circulating throughout the car to help you stay comfortable and alert and use your sun visor and sunglasses to help with windscreen glare. To ensure your car is properly prepared for the summer months, why not book in for a **FREE** seasonal vehicle check with Beverley Motor Works. Give them a call on **01482 881128** and they will help you stay safe on the road!



BEVERLEY  
**MOTOR  
WORKS**

INDEPENDENT  
BMW & MINI  
SPECIALISTS

Our dealership expertise  
means high quality car  
servicing at a fair price...



the Good Garage Scheme



Unit D1 Grovehill Industrial Estate,  
Annie Reed Road, Beverley HU17 0LF

Call today: **01482 881 128**

Visit: [beverleymotorworks.co.uk](http://beverleymotorworks.co.uk)

**SPECIAL  
OFFER  
MOT  
COUPON**

  
MOT YOUR CAR  
FOR ONLY  
**£29.99**

## ONE AND ONLY BY JOHN FEWINGS

As a twin, I've never been just one;  
I was always half of a pair.  
"Like peas in a pod!" passers-by would exclaim,  
"You'll have your work cut out there."

Identical jumpers, identical shirts,  
Identical shorts, shoes and socks,  
Identical cute, turned-up noses,  
Identical curly, blond locks.

Identical presents at Christmas  
So we knew we were both loved the same.  
When Kerplunk marbles vanished and Lego got lost  
We equally shouldered the blame.

I remember one day in primary school -  
The effusive Mrs Binns.  
"Every one of you is unique!" she proclaimed,  
"Except, of course, the twins."

"Ha ha ha! How funny! How droll."  
We all joined in to laugh -  
But deep down inside a part of me cried,  
"I don't want to be just a half!"

Identical subjects at high school;  
A sausage machine of same classes.  
Identical nerves as we faced the exams.  
Identical failures and passes.

We made friends at the pub and the badminton club  
And some lasses we met at the gym,  
But a niggling doubt tried to gnaw its way out -  
Was it me they admired - or him?

I tried to make my choices distinct;  
To be different my primary aim.  
But however bizarre I endeavoured to be,  
He undoubtedly chose just the same.

And now that I'm facing a life on my own  
You may think my future looks bleak  
But, you see, I had to poison him  
So that I could be unique.

They've diagnosed schizophrenia  
They think my mind's coming undone  
How wrong can they be? Oh, why can't they see?  
At last - at last - I am one.

John Fewings is **Just Beverley's** poet-in-residence and a member of the Argy-Bargy Poets. He writes poems for people who don't like poetry.

Find out more at [www.johnfewings.zone](http://www.johnfewings.zone)



## COFFEE-TIME STORY - JUST ENOUGH TIME BY CLINT WASTLING

*Seb felt as though he was being watched, which made the hairs on the back of his neck prickle. He searched the crowd of race goers in the grandstand, but no one appeared to be looking towards him.*



After ripping up the betting slip he tapped his pockets for any cash then looked up at the odds for the final race. He pulled out the coins and counted them up, just enough to get home. They say you should never bet more than you can afford to lose and he'd already pawned his watch to Angela. She shouted excitedly as she passed by with others from the office, "are you coming for a drink?" she asked. His designer watch too large for her thin wrist. "No thanks. I need a clear head for my interview and I must get home to do some research," he reminded her. "We're putting our cash on number five in the final race!"

"See you over there," he added as his colleagues moved untidily toward a queue of punters. Seb was about to follow but was startled by a comment made by a young woman who appeared by his side. "Looks like you've had a run of bad luck again." She wore a wide brimmed white hat and an elegant suit which glittered in the sunlight. "It's difficult to judge the winner with the last furlong being uphill," he replied defensively. "The Westwood was a beautiful place. You wouldn't recognise it now," she remarked. Seb was about to ask for an explanation, however, before he could, a strange looking person arrived with a tray of glasses. The lady took one and offered another to Seb. "Frederick is an android," she explained then changed the subject. "Of course, I recognised you from the archives."

"The archives?" "That's what you call historic records isn't it?" Seb nodded. There was something oddly familiar about this lady. "I like these cloak and dagger missions, although strictly speaking they're not kosher." "Oh!" Seb stammered not certain what to say. "It rather reminds me of those old TV programmes granny and you like to watch." Seb took a deep breath. Someone had had a drop too much prosecco. The lady smiled, "I should introduce myself, though it's strictly against the rules. Irene Velasquez-Cohen."

"Funny, Cohen is my surname." Irene raised an eyebrow and smiled. "What a coincidence," she laughed. "Would you escort me to my car? I can't stay long. Rules!" "Sure, any chance of a lift?" "Sorry, can't, rules. Here..." Irene handed him a cutting from a newspaper. "What's this?" Seb asked. "Do look at the date," she said. When they reached the car, Seb took in the sleek lines and iridescent finish. "See you in a few years time, grandpa." Irene shouted as she waved goodbye. "Grandpa?" Seb asked, confused. "Yes, grandpa. You're my special project. The family needs money. We've always had to scrimp and save because of your gambling." "Does it get that bad?" Irene nodded. "It looks like you have just enough time to change that." She slipped into the car. It silently drove off with both Irene and the android in the back. It was a driverless car but even more surprisingly it was able to hover over the queue of traffic to reach the exit. Seb was staggered by what he'd just witnessed. He read the newspaper clipping, it was dated Sunday 10th June 2018, tomorrow. The lotto numbers were highlighted. It looked like he had just enough time to change his family's fortunes.

*Clint Wastling is a novelist and poet. He regularly appears at open mics in the area. His Sci-fi novel Tyrants Rex is on sale through Stairwell Books.*

## COMPETITION WINNERS

Congratulations to Jane McCaffer and Patricia Fletcher who have each won a pair of tickets to a performance of A Midsummer Night's Dream at the Shakespeare Rose Theatre.



Congratulations to Brenda Boyton who met and won a copy of talented new singer, Frankie Turton's, latest album.



Congratulations to Helen Levitt who won the £50 voucher to spend on a Chamas experience!



# WELL I NEVER... SUE KIRKMAN

*Beverley and District is blessed with many residents who contribute to the character of the region and go well beyond the confines of their job-spec to make a difference. Just Beverley is keen to meet these people to find out what makes them tick! This month, we meet Sue Kirkman, one of the founders of the East Riding Theatre. She tells us a little about her background, how she came to be involved in the East Riding Theatre and then answers our 19 questions (20 would be too obvious). Her answer to question 17 has us saying 'well I never...' Over to Sue.*

I was born and lived in central London until I reached 19 when I moved out into the 'sticks' of Uxbridge, Middlesex where I worked in the library at Brunel University. One day, a handsome young student called Alan asked me for a ticket, and I later married him.

We lived in Swindon for 6 years where our first daughter, Elspeth, was born. In 1989, Alan became a partner at the Hull office of a national firm of accountants and we moved to Beverley. Our second daughter, Annie, was born a year later.

I've always been attracted to the Arts but left school before taking A levels. I returned to education in my late forties eventually achieving a first-class English degree with the Open University.

At this point, Annie, who is now an actor, got to know Vincent Regan who was looking for someone to help open a theatre in Beverley. Annie offered my services, and my life took a different path.

My job, as we set up the theatre, was to manage the overall project and secure the help of business theatre practitioners and business associates.

The venture pretty much hinged on a giant leap of faith that paid off in volumes. When the team opened the doors on 12th December 2014, it dawned on us we'd accomplished something extraordinary.

My current role is as general manager of the whole organization. Like most administrative posts at ERT, it's unpaid but full time. Fortunately, I'm a keen list maker!

I'm driven by the positive response of audiences and working with such a passionate and dedicated team.

From Adrian Rawlins, our Artistic Director, to our café bar staff, technical production team, and amazing volunteers, everyone shares the determination to achieve high standards and make what we do the best.

The Christmas show is a great example of people pulling together. It's a time that's both frantic and thrilling because our best is seen by so many people enjoying the festive season. Here's my answers to the 19 questions.

**1. Do you consider yourself an introvert or an extrovert?**

I'm a hybrid - an extrovert in my comfort zone and positively introverted when stepping outside.

**2. What's the craziest thing you have ever done?**

Set up a theatre.

**3. When was your biggest adrenaline rush?**

Opening night at ERT - 12th December 2014.

**4. Is what you are doing now, what you always wanted to do when you were growing up?**

No, I wanted to be a journalist, an airhostess or a model! I became a librarian.

**5. Who were you closest to when you were growing up?**

Both my parents. My Father for creativity and my Mother for her down to earth pragmatism.

**6. Who is the one person you can talk to about anything?**

My husband.

**7. What are you most thankful for?**

My husband and daughters.

**8. What's on your bucket list for this year?**

To have a ball at my eldest daughter's



wedding this year. It's Harry Potter themed and bound to be magical.

**9. If a genie granted 3 wishes, what would you wish for?**

Good health, happiness and long lives for my family.

**10. What's your idea of a perfect vacation?**

Menorca, Menorca, Menorca.

**11. What do you think about when you are by yourself?**

Vegan Recipes.

**12. Do you judge a book by its cover?**

Absolutely - and I generally get that terribly wrong.

**13. What's your favourite all-time movie and why?**

Cabaret - I love musicals.

**14. What would you do differently if you had your time again?**

Start a career in theatre management and the Arts much earlier in life.

**15. What would you change in Beverley and why?**

The front of ERT - we desperately need signage to show visitors we are here.

**16. What was your most memorable birthday?**

40th - my first trip to NYC.

**17. What's your favourite drink, alcoholic or non-alcoholic?**

Pomada - a Menorcan drink of lemon and gin.

**18. What's your biggest achievement - sporting, hobby or past-time?**

Being a central part of East Riding Theatre.

**19. How would you describe yourself in one sentence?**

Once I put my mind to something, I do it.

3 CENTURIES. 1 GOAL. A GLORIOUS TALE OF STRUGGLE AND SWEAT

# OFFSIDE

by Sabrina Mahfouz and Hollie McNish

★★★★★ Morning Star

★★★★★ Reviews Hub

★★★★★ Edinburgh Guide

**Fri 29th & Sat 30th June 7:30pm**

**ert**  
EAST RIDING THEATRE

**Tickets £10-12**

**Box Office 01482 874050**  
**www.eastridingtheatre.co.uk**

10 Lord Roberts Road, Beverley, HU17 9BE

**'JUST FOR FUN' ANSWERS**

a) Beaver Pub Alley Way - Hanging Jerkin

b) Beverley Parks, Millennium Orchard - Shepherd's Lane



# BEVERLEY FRINGE EXPANDS TO FILL FOLK-FESTIVAL HOLE ON JUNE 15-17

The Beverley Fringe has always run along-side the Beverley Folk Festival - in fact, the Folk Festival was originally based in town centre pubs before moving to Beverley Leisure Centre and then the Racecourse when the Fringe really came into its own as a festival in its own right. Key venues are the Tiger, the Monks Walk and the Sun and this year they will be joined by East Riding Theatre and the Memorial Hall to ensure that folk fans will not miss out on their June 'fix' of folk music. Within minutes of the announcement that Beverley Folk Festival had gone into liquidation and been cancelled, Beverley Fringe was confirmed as happening as usual. After 35 years, Beverley Fringe is stronger than ever as it expands to fill the gap left by the Folk Festival.

Beverley has a strong folk tradition. Every week there are sing-arounds and sessions in the Tiger Inn (Friday Folk Club with Open Mic on Thursdays), Monks Walk (Open mic nights on Mondays and Wednesdays) and Sun (Folk on Saturday afternoons). Every month there is the Processed Pea Folk Club at Etton - soon coming up to its 50th year at the same venue - and the weekly White Horse Folk Club held at the Conservative Club or the Catholic Church Hall - the White Horse Folk Club being the instigators and original organisers of the Folk Festival back in 1983. All that's needed for a folk festival is sessions and sing-arounds, concerts and Morris dancing. Beverley Fringe will be no different to any other festival.

Morris dancers who had planned to come to Beverley between June 15th and 17th will still be coming; musicians who planned to come and join in with music-making in the pubs will still be coming and some of the artists who were booked to play at the Folk Festival will still be coming, appearing in at least two concerts. Beverley Fringe has been organised by people who have got together to ensure Beverley comes alive with the sound of music, as has been the case for the last 35 years, in the third weekend of June. Two of those people are Phil Simpson and Jessica Lawson, well-known local artists who run an open mic at the Monks Walk and who have appeared at Beverley Folk Festival. Liaising with Allen Slinger, Manager of The Tiger, Richard Price at The Sun, Gill Pickford at Monks Walk and Chris Wade at East Riding Theatre, Beverley Fringe's programme is rapidly coming together. The Queen's Head is also getting involved!



Phil Simpson said: "The infrastructure is already there; the community spirit is already there, and the love of live music is already there! Beverley Fringe will reignite the town and will help to make up some of the losses that people who have bought their Folk Festival tickets have incurred. Dan Webster has hired the Memorial Hall out of his own pocket to put on a concert which is free for people who can show their ticket receipts; East Riding Theatre is putting on a concert on the Sunday evening which is offering 40 free tickets to Folk Festival ticket-holders and Butt Farm is stepping in to offer camping for people with Folk Festival camping passes who are still planning to come. There will be

a 'Welcome' session with Les and Maggie at the Monks Walk the same as there ever was with dancing and busking throughout the town." There are 5 Morris Dance Teams due in town that weekend with 6 or 7 official busking/dancing locations. An official 'Buskathon' is planned between 10 and 1 pm on both days for anyone who wishes to join in, with 2 separate groups playing different types of music - one traditional folk and the other more contemporary.

The Saturday night concert at the Memorial Hall will see headliners The Dan Webster Band appearing with Bella Gaffney & Polly Bolton; Jack Parker and Katie Spencer, all of whom were booked for the Folk Festival. The Sunday night concert at East Riding Theatre (ERT) will see local legend Michael Chapman with Edwina Hayes and The Hut People in support. ERT will also host a Late Night Club at 10pm each evening with free entry. The Westwood Sessions won't be missing out, either. Co-ordinated by Nikki Airey, the Westwood Sessions gives a professional platform to younger artists.

Acts already booked to perform at the Westwood Sessions which will feature at The Monks Walk on Saturday 16th and Sunday 17th from 1pm include Amy Bell; Ben Cook; Emily Thompson; Arizona Tides; Fiona Lee; Leonora Brooks; Ella Payne; Mina Budworth; Katrina Rae; Frankie; Evie Barrand and Imogen Hart. Nikki said: "We're delighted to have been asked to be involved in Beverley Fringe, allowing us to provide performance opportunities for young musicians on the traditional folk festival weekend. You can find some of the best young, local talent performing in the Westwood Sessions".

BEVERLEY FRINGE FESTIVAL   15TH - 17TH JUNE 2018			
SESSIONS   LIVE BANDS   MORRIS DANCING + AND MUCH MORE			
Follow 'Beverley Fringe' on Facebook, Twitter and Instagram for more details.			
DAY	TIME	VENUE	EVENT
FRIDAY 15 <sup>TH</sup>	4PM - 8PM	The Sun Inn	Ukulele Session with Roy Dyson
	8PM	The Sun Inn	Open Tunes & Songs with John 'The Harp'
	8PM	Monks Walk	Welcome Session with Maggie & Les
	8PM	The Tiger Inn	Jo & Graham's Mostly Traditional Tunes Session
	10PM	ERT Theatre	Late Night Club
SATURDAY 16 <sup>TH</sup>	10AM - 1PM	Town Centre	Buskathon (meet outside The Angel pub - all musicians welcome!)
	10AM - 4PM	Town Centre	Morris Dancers
	1PM	The Monks Walk	The Westwood Sessions
	2PM - 9PM	The Tiger Inn	Speakeasy with Adam Brodie
	2PM - 4PM	East Riding Theatre	Horizon Stage with Sam Pirt
	2PM	Queen's Head	Old Time Americana Session with John Yeaman & Friends
	1PM	The Monks Walk	Shiptipig Open Musicians Session / folk / traditional
	1PM	The Sun Inn	Open Tunes & Songs with John 'The Harp'
	1PM	The Tiger	Session with Folk in Hull + Hillbilly Troupe/Street Urchin/Folk Collective
	7PM	Syntax Barge	Ticketed Concert: Spare Hands
	7PM	Memorial Hall	Ticketed Concert: Dan Webster Band + Katie Spencer + Jack Parker + Polly Bolton + Bella Gaffney (free to cancelled Beverley Folk Festival ticket holders)
	8PM	The Monks Walk	Ticketed Concert: Of Savannah
	8PM	The Tiger	Open Folk Session with Alterego Celidh Band
	9PM	The Sun Inn	Live Band: The Laggy Band
SUNDAY 17 <sup>TH</sup>	10PM	East Riding Theatre	Late Night Club
	10AM - 1PM	Town Centre	Buskathon (meet outside The Angel pub - all musicians welcome!)
	10AM - 3PM	Town Centre	Morris Dancers
	12PM - 3PM	The Sun Inn	Open Session with Jim McDonald and Chris Mullen
	1PM	The Monks Walk	Westwood Sessions
	2PM - 9PM	The Tiger Inn	Speakeasy with Adam Brodie
	2PM - 4PM	East Riding Theatre	Horizon Stage with Sam Pirt
	2PM	Queen's Head	Old Time Americana Session with John Yeaman & Friends
	4PM - 6PM	The Sun Inn	Live Music with Chequered Past
	7PM	The Monks Walk	Farewell Session with Maggie and Les
	7.30PM	East Riding Theatre	Ticketed Concert: Michael Chapman, The Hut People & Edwina Hayes (£14.50 - 40 free tickets to cancelled Beverley Folk Festival ticket holders)
	10PM	East Riding Theatre	Late Night Club

## AFTERNOON TEA MENU

£12.95 PER HEAD OR  
£24 FOR TWO PEOPLE

AVAILABLE MON-SAT 12-5PM,  
PRE-BOOKING IS REQUIRED AND  
GLUTEN FREE OPTIONS ARE AVAILABLE



ALL ENGLAND  
WORLD CUP  
MATCHES  
SHOWN LIVE



Brains  
Required  
from  
8.30pm

FIRST SATURDAY  
OF THE MONTH

## Big Quiz

Free food/prizes to be won,  
all money raised to our house charities.  
£1 per person entry

WEEKLY

## Bingo

Cash prizes to be won  
50p entry per game  
Every Tuesday 1.30pm

# THE TIGER INN

Tel: 01482 869040 | www.tiger-inn-beverley.co.uk  
Lairgate, Beverley HU17 8JG

HOME COOKED  
FOOD SERVED  
7 DAYS A WEEK



TRY OUR  
LEGENDARY  
SUNDAY LUNCH!

# WHAT'S ON

## SPONSORED BY: **kü**tchenhaus

2 Toll Gavel, Beverley, HU17 9AJ. T: 01482 862172.

Open: Mon - Sat: 10am-5pm. Sun: 11am-3pm. Bank Holidays: 10am-4pm.

### Until 30th June

• **Our Histories Revealed - African Stories in Hull and East Yorkshire**  
East Riding Treasure House.

### Tuesday 29th May - Saturday 2nd June

• **Funfair and Candyfloss**  
Flemingate. Daily.

### Sunday 3rd June

• **'Human Cargo' with Matthew Crampton & Jeff Warner**  
East Riding Theatre. 7.30pm. £16/£14. A epic night of story and song. A rich and entertaining evening. Tickets [www.eastridingtheatre.co.uk](http://www.eastridingtheatre.co.uk)

### Monday 4th June

• **The Processed Pea presents Edwina Hayes, Carrie Martin and Lucy Marshall**  
The Light Dragoon, Etton. 7.30pm. £5. Three, very talented, local female artists each with their own sets. Sponsored by Just Beverley.

### Tuesday 5th June

• **Friends of Beverley Minster visit Beverley Friary**  
Meet at the Friary. 7.15pm. £6/£5. Guide: Chris Dawson. All welcome Booking on 01482 442221 or [friendsbooking@beverleyminster.org.uk](mailto:friendsbooking@beverleyminster.org.uk)

### Thursday 7th and Friday 8th June

• **'The Woman who Cooked her Husband' by Debbie Issit**  
East Riding Theatre. 7.30pm. £14/£13/£10. Little Diamond Theatre Company present a high energy dark comedy with adult themes and strong language. Find out more at [www.eastridingtheatre.co.uk](http://www.eastridingtheatre.co.uk)

### Saturday 9th June

• **Come and Sing! Mozart Requiem**  
Toll Gavel United Church. 10am - 5pm with public performance at 5pm. £15/£5, hire of score £2.50. Refreshments included. Booking essential [www.eastridingcountychoir.org](http://www.eastridingcountychoir.org) Tel 01482 634427 for details.

### • A Very British Race Day

Beverley Racecourse. First race 1.55pm. £22/£12/£4. Packages and multi-buys available. A glorious British afternoon of racing, entertainment and fine food awaits you, featuring the now world-famous Donkey Derby. [www.beverley-racecourse.co.uk](http://www.beverley-racecourse.co.uk)

### • Beverley Singers present 'Night and Day'

Haywood Theatre, Parkway Cinema, Flemingate. 2pm. £7. Proceeds for Yorkshire Air Ambulance. Tickets from Beverley Tourist Information or 01482 866065. [info@beverleysingers.org.uk](mailto:info@beverleysingers.org.uk)

### • Ricky Cool with 'A Night at the Flamingo'

East Riding Theatre. 7.30pm. £16/£14. The Flamingo was a famous (and infamous) London jazz and blues club during the 1960s. Ricky Cool and his band recreate and display the Flamingo's social and musical history. See [www.eastridingtheatre.co.uk](http://www.eastridingtheatre.co.uk) for tickets and more details.

### Sunday 10th June

#### • East Coast Classic Car Run

East Park to Limekiln Lane, Sewerby Fields YO15 1ER. Starts 11am and heads out via Holderness Road. 18 different classes judged mid-afternoon. Memorabilia, parts, food & drink stalls. More details and bookings <https://eytcc.uk/events-calendar>

#### • ArtERY Live present Birkett & Fisk playing the Music of Venuti and Lang

Bishop Burton Village Hall. 8.00pm. Hot violin and guitar jazz of the 20's and 30's. Tickets 01964 552364.

### Monday 11th June

#### • Norwood Nites Community Cinema

Norwood Church Schoolroom. 7pm. Free. Raffle and refreshments. A 1952 film by Anthony Asquith of an Oscar Wilde classic with unmatched witty dialogue and one-liners.

### Thursday 14th June

• **Beverley Film Society presents 'Paterson'**  
Parkway Cinema Beverley. 7.30pm. £6.50/£3. The last film of the season. A comedy/drama directed by Jim Jarmusch.

### Thursday 14th - Saturday 23rd June

#### • Beverley Does Broadway

East Riding Theatre. 7.30pm plus 2.00pm 21st June. £14/£13/£10. Head to the West End for popular show-tunes and laughter... with a twist. She Productions 2015 show revamped!

### Saturday 16th June

#### • Applying Play to Plays Workshop

East Riding Theatre. 10.30am - 3.30pm. £25. Explore your inner actor with Caro Ulliyart. Booking: [www.eastridingtheatre.co.uk](http://www.eastridingtheatre.co.uk)

Tell us about your event!

Email: [info@justbeverley.co.uk](mailto:info@justbeverley.co.uk)

Telephone: **01482 679947**

For more events visit:  
[justbeverley.co.uk/events](http://justbeverley.co.uk/events)

### Tuesday 19th June

#### • Evening Racing

Beverley Racecourse. Gates open 4.30pm, first race 6.30pm. £20/£12/£4. Packages available. See [www.beverley-racecourse.co.uk](http://www.beverley-racecourse.co.uk). The first evening meeting of 2018.

### Wednesday 20th June

• **EYTCC Midsummer Classic Car Gathering**  
Saturday Market and Toll Gavel, Beverley. 6pm - 9.30pm. Free. Camera definitely required!

### Monday 25th June

#### • Civic WW1 Commemoration Service

Toll Gavel United Church. 7.30pm. Please be seated by 7.15pm.

#### • Friends of Beverley Minster Talk

Beverley Minster. 7.15pm. £6/£5. Meet at Highgate entrance. All welcome. Booking 01482 442221 or [friendsbooking@beverleyminster.org.uk](mailto:friendsbooking@beverleyminster.org.uk)

### Tuesday 26th June

#### • Afternoon Racing

Beverley Racecourse. First race 2pm. Various prices, packages available. See [www.beverley-racecourse.co.uk](http://www.beverley-racecourse.co.uk)

### Thursday 28th June

#### • Tom Binns is Ian D Montfort (psychic) and Ivan Brackenbury (Hospital DJ)

East Riding Theatre. 7.30pm. £14/£12. Star and co-writer of 'Hospital People', Tom has won Best International Comedian and Fosters Comedy God Awards.

### Friday 29th - Saturday 30th June

#### • Offside

East Riding Theatre. 7.30pm. £12/£11/£10. 4 women from across the centuries live, breathe and play football. The beautiful game will change their futures!

### Saturday 30th June

#### • Folk in the Field

Shiptonthorpe Playing Fields. 6pm-11pm. £10/£5 plus booking fee. Artists include Edwina Hayes, Flossie Malavialle and the Nick Rooke band. Details and tickets <https://www.facebook.com/folkinthefieldshiptonthorpe/>

#### • Culture Train

St Mary's Church, Beverley. 7.15pm. Free. Donations welcome. Refreshments. Pavey Ark, Happy Endings, Quicksilver Kings and Elwhaeko.

# kü

tchenhaus

The Largest Manufacturer of Quality German Kitchens

At Kutchenhaus we have affordable solutions made to meet your highest standards

2 Toll Gavel, Beverley, HU17 9AJ. T: 01482 862172.

Open: Mon-Sat: 10am-5pm. Sun: 11am-3pm. Bank Holidays: 10am-4pm.



# Baytree Interiors

— Beverley —

Furniture | Home Furnishings | Clocks | Lighting | Wall Art



Grand re-opening on the Saturday 9th June.

The revamped store will feature new lines including **Mayfair** - reclaimed elm and gloss chrome furniture; burlesque-style **Estelle** range; the elegant mirrored - **Belfry** collection; and the Indonesian inspired **Bali** selection.

Visit the new look store and enjoy **10% off** with this publication.

**Come and Visit Us**

Flemingate Shopping Centre, Beverley, HU17 0NQ

[www.baytree-interiors.co.uk](http://www.baytree-interiors.co.uk)

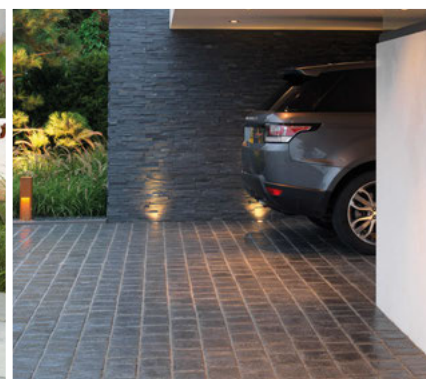


MY KIND OF  
GARDEN

FREE  
LOCAL DELIVERY

# Make your **outdoor space** your perfect **living space**

Inject personality into your garden this summer  
with a little help from **MKM** & ensure your garden  
is the one they're all talking about!



Call into branch today at...

**MKM BEVERLEY**

SWINEMOOR LN, BEVERLEY HU17 OJX

01482 880088 | [mkmb.co.uk](http://mkmb.co.uk)  

