

just

BEVERLEY

ISSUE 38

FREE



East Riding College

**Well I Never...
BBC Look North's
Nigel Clarke!**

**Alice, Chocolate and
Theatre in an Easter
Eggstravaganza**

WIN!

**- Tickets to the Easter
Eggstravaganza
and more**

- Lara Croft Goodies

**Ivan Usher
Memorial Plans**

**Meet Mike, ERC's New
Principal and CE**

**Exercise is Great –
even at 91!**

NEWS, WHAT'S ON, LIFESTYLE, FEATURES, PUZZLES, PHOTOS & MORE



**Your Partners
in Payroll**

Has managing your payroll become a real headache?

New legislation for RTI and Auto Enrolment has tripled the workload for payroll staff!

We can help reduce the burden.

Benefits of working with us include:

- Access to a dedicated payroll specialist
- Flexible and tailored services that are adapted to suit your needs
- Transparent pricing
- Clarity and efficiency
- Access to our FREE and easy to use payroll app



To arrange a **FREE** meeting
call us on 0845 308 2288
or visit www.stipendia.org.uk



Stipendia Payroll Solutions



@StipendiaPay





CONTENTS

Letters from the Editors **3**
News **4, 5, 10, 11, 12, 14, 17, 22, 23, 26**
Parkway Cinema **6, 7**

FEATURES

Mike Welsh, ERC's New CEO **9**
Hilda's 'Inches' Exercise Sessions **24**
Ivan Usher Memorial Plans **26**
Alice's Eggstravaganza in Wonderland **29**
Well I Never...Nigel Clarke **30**

REGULARS

Arts and Culture **12, 28, 29**
Business **17**
Competitions **7, 29**
Competition Winners **6, 23, 29, 32**
Countryside Matters **16**
Finance **23**
Gardening **21**
Lifestyle **10, 14, 16, 28**
Motoring **33**
Photos **18, 19**
Puzzles **32**
Sport **25, 26, 27, 31**
What's On **34**



Competition Terms and Conditions

Competition answers should be emailed to competition@justbeverley.co.uk before the closing date with the competition title in the subject field. Include your name, address and daytime contact telephone number along with your answer. Winners will be notified within 1 week of the closing date and **MUST** be available for publicity purposes for **Just Beverley** magazine, website and Facebook page and the prize provider. Photographs are usually taken the weekend after the prize-winners have been notified. The judge's decision is final. No cash alternative is offered. Details may be used for marketing purposes by **Just Beverley** and the prize provider and for website analytics by **Just Beverley**.

Contributors include:

Julian Minshall, Linda Johnson, Richard Manville, Michael Menzies-Baird, James Bedford, Carfan, Nigel Clarke, Jane Dale, John Fewings, Tracy Fletcher, Food Rhino, Colin Raynor, Ian Richardson, Karen Shead, Sam Walton, Helen Watson, Lee Wardell, Nathan Wilson.

Additional photography by:

Brown's Photography, Gavin Prest, Ciaran Thompson.

You can pick up the magazine from:

Parkway Cinema, Flemingate, Beverley Tourist Information, Beverley Library/Treasure House, Tesco, Morrisons, East Riding Leisure Beverley, East Riding Theatre, Browns café, Beverley News, Boyes, Tesco café, Colette and Tyson Garden Centre, Beverley Garden Centre, Cherry Tree Garden Centre, Mace News in Saturday Market and Lincoln Way, Tickton News, Costcutter in Walkington, Molescroft News, Grovehill Convenience Store, Maple News, Leconfield PO, Willerby News, Poundland, Halfords, East Riding Community Hospital, Bishop Burton PO, Leven PO, The Altisidora, Cherry Burton PO, Barkers of Cottingham, Middleton-on-the-Wolds PO, Light Dragon at Etton, Gnu at North Newbald, Monks Walk, Hayride, Sally's Deli, New Inn at Tickton, Ferguson Fawcett at Walkington, health centres, churches, cafés, hairdressers and more!

Printed by: Jadan Press

www.justbeverley.co.uk

just BEVERLEY

LETTER FROM THE EDITORS



It's March! Mothering Sunday! St Patrick's Day! The clocks go forwards! Easter! We all get a 'Spring in our Step' (to coin a phrase!) Everyone seems to be on their exercise regimes to lose a few kg preparing for Summer! With the longer days and lighter nights, more and more events start to happen in our lovely part of East Yorkshire. We include as many as we know about on our **What's On** section of the **Just Beverley** website and include as many as we can in the magazine and Facebook page. We are getting up to 6000 hits every month on the website and have almost 2,500 followers on Facebook - if you would like to advertise your event it's free to do so in **Just Beverley**.

If you fancy a Spring challenge, then check out a great way to help raise money for local charities. I'm in training for the Anytime Fitness Challenge which is a 109-mile bike ride. Why not join me? You can read all about it on page 25. Whatever you get up to in March, take lots of pictures and, if you are happy to share them, send them in to info@justbeverley.co.uk. We will post the best and, of course, give you the credit as the author!
Julian.



How are you getting on with Lent this year? What have you given up or done specially to acknowledge the run up to Easter? Did you know that some of our Churches get together on the Sundays during Lent (except for Mother's Day) to serve a simple lunch of bread and soup in return for a donation to Christian Aid? Everyone is welcome! Head to Toll Gavel Church Hall on March 4th, Norwood on 18th and Friends Meeting House on Quaker Lane on the 25th. I can guarantee the warmth of the welcome and the tastiness of the homemade soups as can Mr J!

Beverley is becoming firmly established on the tourist route and we are now, as a town, starting to blow our own trumpet as to what a fabulous place it is to live and work. It's great to see the new History Board at Flemingate, produced by the Beverley Civic Society and funded by Wykeland Group which owns Flemingate and it complements the other History Boards at North Bar Within and Saturday Market. There are History Boards in Walkington and Tickton, too. I'm sure residents learn from these boards as well as visitors. I know I do! Well done to everyone involved in ensuring the history of our area is so accessible. Whatever you do during ever-lengthening days of March, be happy!
Linda.



'Community Publication Award' Shortlisted Nominee 2017



REYTA Renewable East Yorkshire Award Nominee 2016 'Best Newcomer'

GET IN TOUCH WITH US:

Website: justbeverley.co.uk
Email: info@justbeverley.co.uk
Telephone: **01482 679947**
Twitter: [@JustBeverley](https://twitter.com/JustBeverley)
Facebook: facebook.com/justbeverley

If you would like copies for your business to distribute to staff and customers, call **Just Beverley** on **01482 679947**.



BINDLE LEATHER - HANDCRAFTED IN BEVERLEY

Contemporary leather goods made, by hand, from vegetable-tanned leather is now available locally.

Beverley man Nathan Smith has been able to turn his hobby into a unique business through funding and mentoring from the Prince's Trust. He has a degree in Computer Sciences and a Masters in Complex Systems Simulation from Southampton University, but he says there is 'nothing like hand-crafting a piece of leather into a beautiful, useful item.'

Nathan uses only the best, full-grain leather, which is hand-stitched with braided, waxed polyester thread and stamped with his own Bindle Leather logo.

He also designs his own pieces - he has a wallet which is so cleverly cut that, when folded correctly, requires no stitching; Nathan uses one of these wallets every day!

Nathan is looking for retail outlets and collaborators for his wallets, phone cases, pencil cases, notebook cases and key fobs, which can all be branded as required. He will have belts for sale within the next few months and bags within a year.

He sells his goods online at: www.bindleleather.co.uk, through word-of-mouth and also, occasionally, at markets - you might have spotted him at the Minster Food Festival last Christmas!



FAIRTRADE FORTNIGHT RUNS UNTIL MARCH 11TH

Fairtrade Fortnight's campaign is designed to challenge the British public to open their doors to Fairtrade and help close the door on the exploitation facing the people who produce the things we love to eat, drink, and wear. As Beverley is a Fairtrade Town, it's important to understand what life can be like for farmers and workers who aren't paid fairly. It is scandalous that millions of producers are ripped off despite working hard to provide products we enjoy.

This year, the story focuses in Marcial, who farms bananas in a co-operative in Panama. Before Fairtrade stepped in, the price he got did not cover his costs. He lived, slept and cooked with his whole family in a single 10-foot square room.

Now, since Fairtrade stepped in, he gets a fair price, which means he can afford a proper house with separate facilities and privacy.



The co-operative has spent over 50% of the Fairtrade premium on social needs, 30% on production improvements and 20% on environmental projects.

The small Fairtrade premium which we pay means more than just a way out of poverty - it is transformational.

There is a small shop in Toll Gavel United Church which sells Fairtrade products and is open every weekday from 10am - 12noon, alongside the café selling Fairtrade tea and coffee.

CLOCKS SPRING FORWARD ON SUNDAY MARCH 25TH AT 1AM

Unfortunately, it means a whole hour less in bed on the last Sunday in March, but it means Spring is upon us, with warmer and longer days.

Nowadays, many clocks are linked to the internet which picks up the radio-signal from Anthorn in Cumbria and moves clocks forward automatically, meaning we don't get caught out by the lost hour and we don't have to spend time moving our time-pieces on automatically. However, it can still be disruptive to our body clocks!

Fortunately, we do quickly adjust and find that the benefits outweigh the inconvenience - we become up to 20% more productive, save energy in our homes, there are fewer accidents and less crime. It makes you wonder why we bother putting the clocks back in Autumn!



CHURCHES TOGETHER IN BEVERLEY JOIN TOGETHER FOR GOOD FRIDAY WALK OF WITNESS

Christians from Beverley churches will follow the Cross from Beverley Minster at 10.45am to the Market Cross where there will be a short service to conclude the reflections.

A Walk of Witness is a powerful ongoing and public statement of faith which is being replicated in many cities, towns and villages across the world.

Next year, Churches Together hope to stage the popular and moving Passion Play once again.

BURTON ELECTRICAL SOLUTIONS GAINS CHAS QUALIFICATION



Andy Burton is a fully-approved NICEIC contractor who is now an accredited member of the Contractors Health and Safety Assessment Scheme (CHAS) meaning he is committed to maintain high health and safety practices at all times.

Andy has been an electrician for over 30 years, running Burton Electrical Solutions for the last 5, carrying out electrical work in domestic and commercial properties throughout the region.

He has experience of working on new-builds as well as old properties and offers a 24-hour call-out service. So whether it's a light swap, extra socket, complete re-wire or electrical testing, Burton Electrical Solutions is the company you can trust to carry out your work efficiently and safely.



LONGCROFT SCHOOL PUPILS LEARN ABOUT WW1

We are always keen to hear what our young people are getting up to, either at school or in their leisure time and were interested to receive a copy of the reading list Longcroft School has put together to inform them of a time in our history that fewer and fewer people have direct knowledge of. We thought you might be encouraged to visit or reread a few of these suggestions, which is a mixture of fiction, non-fiction and poetry, as this year will celebrate the centenary of the end of WW1. Beverley will be marking this most important event in several ways - Just Beverley will be keeping you informed of plans as we go through the year.

Line of Fire: Diary of an Unknown Soldier - Stephanie Barroux;
 Ghost Soldier - Theresa Breslin;
 Valentine Jones - Rebecca Stevens;
 Private Peaceful - Michael Morpurgo;
 Wherever You Are (Ellie's War) - Emily Sharratt;
 Dusk - Eve Edwards;
 War Horse - Michael Morpurgo;
 Archie's War: My Scrapbook of the First World War - Marcia Williams;
 Stories of WWI - Tony Bradman;
 Women in World War I - Nick Hunter;
 World War I in Cartoons - Mark Bryant;
 Testament of Youth - Vera Brittain;
 Scars Upon My Heart - Women's Poetry & Verse of the First World War - selected by Catherine Reilly;
 War Girls - A Collection of First World War Stories through the Eyes of Young Women;
 Birdsong - Sebastian Faulks;
 Regeneration - Pat Barker;
 All Quiet on the Western Front - Erich Maria Remarque;
 A Farewell to Arms - Ernest Hemingway;
 Goodbye to All That - Robert Graves;
 The Penguin Book of First World War Poetry - Poems of Wilfred Owen/Siegfried Sassoon/Rupert Brooke



BEVERLEY AC WELCOMES NEW MEMBERS

Beverley's own running club welcomes new runners to its friendly fold. The club meets on Wednesdays from 6.25pm at Beverley Leisure, with runs starting at about 6.40pm.

There are always groups to run with at any pace. New people are made most welcome and are invited to become part of this wonderful club. Prospective new members can contact Club Secretary Fiona Oakes on secretarybeverleyac@gmail.com for a chat beforehand. Beverley AC organise the Pittaway Beverley 10k; this year is its 25th anniversary. All 1850 places were sold out within 5 and a half hours of the race entries opening - the first 600 places going in 10 minutes!



There are still places left for the B&A Scaffolding 2km Fun Run - bookings on www.sportsentrysolutions.com/new_race_page.php?recordID=200733. The event happens on 13th May with the start at Beverley Leisure, where there are also stalls and a great atmosphere - and do support the runners as they run around Beverley, finishing along Toll Gavel. Beverley AC runners compete in many road and cross-country races throughout the year of different lengths and difficulty, as well as its own handicap races so members of all ability have a chance of success.

IT'S MOTHERING SUNDAY ON MARCH 11TH

Also known as Mother's Day, Mothering Sunday always falls on the fourth Sunday in Lent, which is why the date moves from year-to-year. It's a great opportunity to show your grateful thanks to the women in your life who care for you.

It's an age-old concept - the ancient Greeks had an annual spring festival to maternal goddesses and the Romans had a spring festival to celebrate the mother goddess Cybele.

In the UK, it's the day when girls in service would be given the day off to go back to see their families and to worship at their mother church.

We think it's a great opportunity to say 'thankyou' to anyone who has looked after us, male or female, as the definition of 'Mothering' is 'the process for caring as a mother does'.

BOOK YOUR SEAT FOR THE TUESDAY EAT!

The Tuesday Eat Club at Toll Gavel United Church now has vacancies. The club has been running for well over 30 years, with 2 teams of chefs who produce a 2-course meal plus tea/coffee for the princely sum of £5!



Hilary Simpson, the organiser of one of the teams which prepares lunch for the 'Tuesday Eat' is well-practiced in that this is her 34th year.

Every week, during term time, she or Janet Grimes, organiser of the other team, along with their helpers, will cook a joint or hotpot or pie and a selection of vegetables and potatoes for the diners along with a pudding and custard - think here of your very favourite puddings such as apple crumble, treacle sponge or 'spotted dick' with custard.

Hilary told **Just Beverley**: "We tend to attract the more mature members of society who appreciate good home cooking. We have a lovely group of people but do have spaces for others if they would like to join us. We would suggest anyone who would like to find out more about us and maybe come and join in call Christine Milburn, our Co-ordinator on **01482 863558**."





EVERY THURSDAY AT 10.30am
(doors open 9.45am)

Join us for a free brew and a natter and enjoy some great films on Beverley Parkway's Big Screen. Only £4.20 with drink and biscuits included. Aimed at 55s and over. Films subject to change.

Thursday 1st March -

Wonder (PG) -

Starring: Julia Roberts, Owen Wilson.

Murder on the Orient Express (12A) -

Starring: Kenneth Branagh, Dame Judi Dench.

Thursday 8th March -

Murder on the Orient Express (12A) -

Starring: Kenneth Branagh, Dame Judi Dench.

Film TBC

Thursday 15th March -

Film TBC

All the Money in the World (15) -

Starring: Christopher Plummer, Mark Wahlberg.

Thursday 22nd March -

All the Money in the World (15) -

Starring: Christopher Plummer, Mark Wahlberg.

Journey's End (12A) -

Starring: Paul Bettany, Sam Claflin.

Thursday 29th March -

Journey's End (12A) -

Starring: Paul Bettany, Sam Claflin.

The Commuter (15) -

Starring: Liam Neeson, Vera Farmiga.

COMPETITION WINNER

Congratulations to **Gill Lound**, who is the winner of a pair of tickets to see the Five Star Swing Band at Parkway Cinema.



These are the films scheduled to open in March all are subject to change.
Check out up-to-date cinema listings at www.justbeverley.co.uk/cinema-times



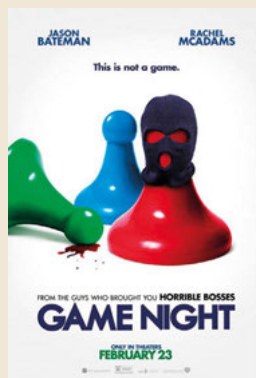
1st March



2nd March



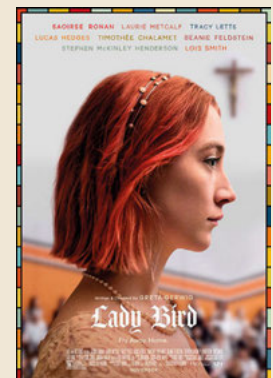
2nd March



2nd March



9th March



9th March



9th March



15th March



16th March



23rd March



23rd March



29th March

YOUR NEW INDEPENDENT CINEMA



LIVE SHOWS AT PARKWAY CINEMA ARE INCREASINGLY POPULAR

Screen 6 at Parkway Beverley is also known as the Hayward Theatre. A fully-equipped stage brings you the best in live entertainment including comedy, music, drama and more for all members of the community. Here's a few highlights for your diary!

TALEGATE THEATRE PRODUCTIONS PRESENT 'THE WIZARD OF OZ'

Talegate shows contain fantastic professional performers from the world of pantomime. With colourful costumes, magical sets and quality sound and lighting, you're in for a fantastic time. Talegate's heart-warming stories include songs, puppets and magic!

Click your ruby heels together and join Talegate over the rainbow for a magical adventure suitable for all ages. Follow Dorothy and her new friends along the yellow brick road as they help the wonderful Wizard of Oz defeat the Wicked Witch of the West. A fast-paced, highly entertaining Easter pantomime featuring pop songs, magic, puppets and your favourite Oz characters. It plays on Saturday March 31st at 2pm. Get your tickets from: <http://beverley.parkwaycinemas.co.uk/>



RELIVE THOSE MAGIC DAYS OF QUEEN ON APRIL 8TH!

MAGIC, the first and still the best tribute to Queen, perform all of Queen's greatest hits plus some you may not have heard for a while, in their latest show for 2017.

It's refreshing that in these days of pre-recorded backing tracks, Magic perform completely live. With five vocals to back up the powerful lead vocal of the dynamic Taylor Payne, Magic can recreate all the complex harmonies that are Queen's trademark recording sound. This, along with two guitars, bass, drums and the brilliant piano and keyboard skills of Dave Chapman, produces a sound that is second to none. While not attempting to emulate Queen visually, Magic creates all the excitement of a Queen live show - not to be missed. Sunday 8th April at 7pm. Tickets from: <http://beverley.parkwaycinemas.co.uk/>



DON'T FORGET BUZZ COMEDY CLUB, SUNDAY 25TH MARCH, 7.30PM!

Tudur Owen - the funniest raconteur in Wales; Craig Deeley - a delightfully self-mocking Brummie; Danny Pensive - a charming but curiously quirky character plus Fran Garrity revealing the full spread of North East culture are here in Beverley to make you chuckle! Don't miss out!



TOMB RAIDER COMPETITION

To celebrate the release of the new hugely-anticipated Tomb Raider film from Warner Bros. Pictures which hits cinemas on Friday 16th March, Parkway Cinema Beverley and Warner Bros offer you the chance to win some amazing Tomb Raider goodies!



The goodies include a Hoodie; a Leather Journal; a Mobile Phone Holder; a Phone wallet with Microfibre Cleaning Cloth and a Copperhead Snake Cube Wooden Puzzle. Lara Croft is the fiercely independent daughter of an eccentric adventurer who vanished when she was scarcely a teen. Now a young woman of 21 without any real focus or purpose, Lara navigates the chaotic streets of trendy East London as a bike courier, barely making the rent, and takes college courses, rarely making it to class. Determined to forge her own path, she refuses to take the reins of her father's global empire just as staunchly as she rejects the idea that he's truly gone.



Advised to face the facts and move forward after seven years without him, even Lara can't understand what drives her to finally solve the puzzle of his mysterious death. Find out more about the movie at www.tombraidermovie.com on Facebook /TombRaiderMovie on Twitter @TombRaiderMovie and Instagram @tombraidermovie. Remember to use the hashtag #TombRaider on social media!

All you have to do to win these fabulous goodies is answer the following question:

Tomb Raider is a big adventure with intrigue, huge scope and scale, incredible action, and a kick-ass heroine at its core. Name this heroine.

Send your answers by email to competition@justbeverley.co.uk by March 16th. Terms and conditions are on page 3 of this magazine. Good luck!

© 2018 Warner Bros. Entertainment Inc. and Metro-Goldwyn-Mayer Pictures Inc. All Rights Reserved. TOMB RAIDER and LARA CROFT are registered trademarks or trademarks of Square Enix Ltd.

EVENT CINEMA

Event cinema offers something a little different to mainstream films. Live and pre-recorded shows beamed in via satellite from all over the world. Here are the latest live streams that you can enjoy on the big screen at Parkway Beverley.

TICKETS NOW ON SALE:

Sunday 4th March at 3pm -

BOLSHOI - FLAMES OF PARIS

Tuesday 6th March at 6.45pm -

ROH: CARMEN

Thursday 8th March at 6.30pm -

BOMBSHELL PLUS LIVE Q&A

Tuesday 20th March at 6pm -

EOS: VINCENT VAN GOGH - A NEW WAY OF SEEING

Tuesday 20th March at 7.15pm -

OWSL: LADY WINDERMERE'S FAN (12a)

Thursday 22nd March at 7pm -

NT LIVE: JULIUS CAESAR (12a)

Tuesday 27th March at 7.15pm -

ROH: BERSTEIN CENTENARY

Wednesday 28th March at 7.30pm -

MESSIAH FROM BRISTOL OLD VIC

Wednesday 4th April at 7.15pm -

ROH: MACBETH

Sunday 8th April at 3pm -

BOLSHOI - GISELLE

Wednesday 11th April at 7pm -

RSC: MACBETH (12a)

Thursday 3rd May at 7.15pm -

ROH: MANON

For full programme of the Event Cinema, please visit www.parkwaycinemas.co.uk

PARKWAY PENGUIN PARTIES

YOUR OWN PRIVATE SCREENING
SEE YOUR CHILD ON THE BIG SCREEN
FUN & GAMES WITH OUR PARKWAY PENGUIN

ONLY £170

For more information contact the Box Office or come in store and speak to a member of staff

FLEMINGATE

BEVERLEY

FASHION | FOOD | FILM | FUN

ENJOY



EGG-CITEMENT AT FLEMINGATE

FUNFAIR AT THE BEACH

Holiday fun for all
the family

31 March - 8 April



PETER RABBIT EASTER FUN

Family activities and
competitions

From 16 March



FIREPIT DOVE HOUSE FIREWALK

Would you walk on hot
coals for Dove House?

Wednesday 28 March
7.30pm



LLOYD FROM NINJAGO AT THE ENTERTAINER

The Lego star comes to
Flemingate

Saturday 7 April

FRESH FOOD EVENT

Savour and enjoy
delicious delights

Sunday 9 April
10am - 4pm

FEEL FANTASTIC WITH THESE EXCLUSIVE MARCH OFFERS

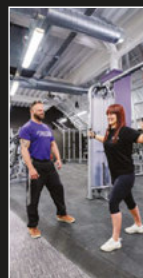
GOURMET
BURGER
KITCHEN



FREE COCKTAIL WITH EVERY MAIN COURSE

Valid until 31 March 2018

T&Cs apply. Not valid in conjunction with any other offer, set menu or reward on the app. Cocktail can be substituted for any soft drink. Every person dining must purchase a main meal.



ANYTIME
FITNESS

7 DAY FREE PASS

Valid until 31 March 2018

T&Cs apply. Once redeemed has to be used as 7 consecutive days. Only to be used within staffed hours - Monday - Friday 6am - 10pm / Weekends - 8am - 4pm. First time users only.

MIKE WELSH - COLLEGE CE, MUSICIAN, PARENT AND ENERGISER

New East Riding College Principal and Chief Executive Mike Welsh has been in post since 4 January and has had a busy first two months at the helm. As well as getting to know College staff and students, Mike has been meeting with local partners and businesses. He is working with the College governors and wider management team to set out a vision for the future of the thriving college which has campuses in Beverley, Bridlington and Hull.

Mike said, "I'm all for meeting people face-to-face, in fact I think these interactions are crucial, as they enable me to hear first-hand a variety of opinions regarding the College's journey to date, whilst gathering ideas for our future direction of travel. It's the start of a conversation about the College's longer-term vision and goals and what its community wants.

"If we are to sustain our position as one of the leading FE providers in the North of England, it's essential that we continue to take a considered and structured approach. I must pay tribute to my predecessor Derek Branton's outstanding leadership of the College as Principal and Chief Executive over the past 13 years and thank him for enabling such a smooth transition since my appointment."

Mike has connections with Yorkshire that go back to his own student days. He trained as a musician at Bretton Hall during the early eighties, on the same site of the Yorkshire Sculpture Park.

He said "I'm very pleased that the next step in my career has brought me back to Yorkshire. My connection with Beverley itself is a memorable one, as I was fortunate enough to perform in the acoustically amazing Beverley Minster during my time at Bretton Hall."

Some readers may also recall Access to Music, an organisation that Mike was a part of for twelve years, which established what is still the venue for the College's music provision at the St James Centre in Hull.

As a musician, music teacher, senior leader and parent governor, Mike has worked in a range of schools, FE colleges and training providers, as well as working in partnership with a number of universities. Most recently, he was the Deputy Principal - Curriculum, Teaching and Quality at the College of North West London (CNWL), with campuses in Willesden, Wembley and King's Cross.

Joining in January 2014, with the College in the bottom 5% of colleges in terms of performance nationally, and very much 'Requiring Improvement', Mike was part of a senior team which led it to an Ofsted 'Good' judgement in November 2015.

In the 2015/16 national league tables, by the same measure, CNWL was placed in the top 15% of colleges nationally. In August 2017 CNWL then completed a successful merger with City of Westminster College, to form the United Colleges Group.

So why East Riding College? Mike said, "I have an understanding of the College and the journey it has taken to become the success it is today.

Given my previous experience of 'starting from scratch', developing and improving poorly performing schools and colleges into good ones, I am energised by the new challenge of taking an already very good college, and making it even better.

"The organisation has just brought a long-term property strategy to fruition, which now sees both campuses at Beverley and Bridlington with truly state-of-the-art teaching and learning facilities. And we won't stop investing in the future - the



recent addition of a Mechatronics Centre at Bridlington, funded by the local enterprise partnership and sponsored by partners in the industry, proves our continued investment in modern industry-standard learning spaces.

"Now's the time to make sure our community knows how well the College delivers skills training within these excellent facilities and in the workplace, delivering apprenticeships. I'd like to see the College be better known for its curriculum specialisms and strengths.

"Of course, to see this happen, the College needs to sustain sound financial health, which in the current funding climate is always a challenge. The further education sector, which provides post-16 education has never been so stretched financially, as acknowledged by Ofsted's Chief Inspector Amanda Spielman in her first annual report this year."

Approachable and likeable, Mike seems to have ruffled very few feathers with his arrival and the transition appears to have gone very smoothly.

In addition to meetings with staff, students and governors, Mike will be experiencing a 'day in the life' of every department - spending time working

with staff, and in lessons, getting to know the curriculum and support services.

"Understandably, everyone expects a new principal to want to change everything, often just for the sake of it! Whilst some change is inevitable, where we do change things, it will be to enhance, improve and deliver even more positive impact for the communities that we exist to serve. It is a great privilege to be given the opportunity to lead a college in such a strong position."

Part of a college principal's role is to be an ambassador and advocate for the organisation.

Mutually beneficial, collaborative partnerships have been crucial to the success that the College has enjoyed and they will continue to be important for its sustainable future.

Mike is already meeting with local and regional partners and networks, making sure the East Riding and its communities are represented in the changing skills agenda.

He said, "Watch this space for news regarding Institutes of Technology, extended work placements for 16-18 year olds, new re-engagement programmes and employment opportunities for the most vulnerable and disadvantaged within our local community. We also hope to take part in a national programme to be one of the first colleges to deliver the proposed new Technical Level qualifications."

Mike is married with two grown up sons who both live in Leicestershire, where the family have their main base.

His wife is also a college principal at New City College: Hackney but will join Mike at weekends in the new home they have recently bought in Beverley.

He said, "We're excited to rediscover the area and have already enjoyed taking advantage of some Beverley's fabulous eateries. I include Elwell's, the College's own restaurant in that, where my wife and I recently enjoyed a superb evening meal. I must say that so far, Beverley is living up to its reputation as the gastronomic hub of Yorkshire."



I'VE BEEN THINKING... BY COLIN RAYNOR

I've been thinking in this month of March about something we all do, every day, at times even without knowing we are doing it. To what do I refer? I am thinking about questions. In fact I will call them "a quantum of questions" as they play such a big part in our lives.



Every day humans ask questions, firstly of themselves. Consider the first thought that comes into our minds as we awake from a night's sleep: 'what time is it?' followed closely by: 'what day is it?' or even: 'where am I?'. The good part of this is that in a short space of time we know all the answers! The strange part is we may ask exactly the same questions the next day! It is part of our human nature to be fascinated by questions and puzzles and the media know this only too well.

On television and on radio, in newspapers and magazines you cannot escape the challenge to pit your wits and your knowledge against the experts. I have to assume there are some folks who don't indulge in such cerebral gymnastics, but many do, even when past experience tells them it is beyond them. How many times have you listened to a quiz programme and silently confessed you didn't understand the question never mind the answer! But some questions when asked in a certain way can without a doubt be beneficial and help to resolve problems.

Consider the circumstance when a well-established group appear to have come to a crossroads. The group are custodians of a legacy passed down to them over the years by several past generations. The decisions this group must take will determine if the legacy they have been trusted with will survive for another generation, so others can value and gain from it as they have done.

The governing body of the group, in an attempt to help them reach a decision, creates a questionnaire which asks relevant questions, so the group can find answers which will lead them to a satisfactory conclusion. Key to giving the appropriate answers, and therefore making right choices, usually rests with those who can accept that change does not mean betraying, or failing, those who began what is now held most dear by so many.

We are already at the time of year in the Church's calendar when during Lent it is the practice to stand back and consider what we believe and why. The One who created the Church asked a simple question, which depending on your answer probably determines how you view your life. "Who do men say that I am?" asked Jesus. If, like me, you think that this year, like the last and the one before that, is going so fast there has to be a reason. Well, I put it to you that this could be the answer! After you are seventy years of age (three score years and ten) the good Lord takes a week off you each year and you never miss it. My question is, do you believe that it or have you another theory?

TIME FOR A NEW CHAPTER IN COLIN'S LIFE

Old books are like old friends - there to be cherished! Colin Tatman has been running The Beverley Old Bookshop in Dyer Lane since 1996, working there since 1993 and book-binding and restoring for the past 40 years. He and wife Hetty are now retiring from the bookshop but Colin will continue with book-binding and restoration as there is nothing like looking after a good book.

Colin used to teach book-binding and book-restoring but has retired from that role. However, renovating books is like a calling in that his business is more like a hobby - and continuing with it makes the wrench of retiring from the book shop a little bit easier to come to terms with.

He and Hetty actually met in the bookshop - she was collecting Dick Francis books at the time - so there is a sentimental love of the building as well as of the books within it.

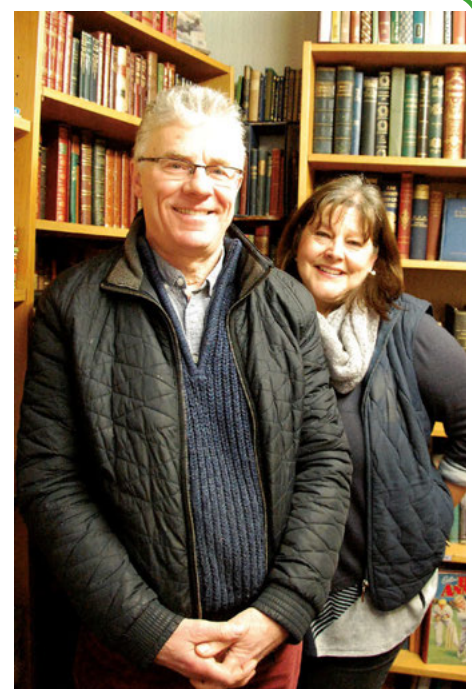
Colin said: "The shop has been a very pleasurable tie over the years but now, as we are getting older, we feel we would like to spend some time visiting some of the wonderful places which have read about in the books on our shelves. We'd also like to spend more time with the children and grandchildren - Hetty and I have 7 children between us and 3 grandchildren.

Many people will know my artist and musician son Kerrin who is involved with the Beverley Puppet Festival which returns to Beverley July 13th-15th - we are already looking forward to that!"


The Old Bookshop has been a bit of a treasure trove over the years. The books are sourced from auctions, job-lots, house clearances and people bringing them in. Colin says: "We have found a 1st edition 'Dracula' and a 1st edition Ian Fleming! In the past, people used to wrap books in brown paper - it's so exciting unwrapping a book to see what it is! The colours on the cover are preserved - they gleam out from a different generation. And the inscriptions are so beautiful - poignant, handwritten in perfect script. Occasionally there are old bookmarks and even money - we did once find £200 in old money in a book!"

Colin and Hatty will, of course, miss the customers as many have become friends who will call in for a chat and on the off-chance that there might have a book come in on their favourite subject or by their favourite writer. Colin says the shop sometimes feels like a hub and hopefully, the new owner will continue this tradition.

It is reassuring to know that Colin will still be practicing his art of book restoration going forward.



If you have that old family Bible, favourite childhood book or first edition which needs a bit of TLC, why not give Colin a call on **01482 866916** or **07787 526248**?



ANTIQUES VALUATION DAY

WITH

DAVID DUGGLEBY AUCTIONEERS & VALUERS

FREE EVENT







Curious to know what your antiques, collectables and jewellery are worth?

Have your items valued for free by the experts from David Duggleby Auctioneers & Valuers

Wednesday 21st March
10.30am-2.30pm

at
TICKTON GRANGE
Main Street, Tickton HU17 9SH

No obligation to sell
Appointments not required, just turn up on the day
For more information call 01723 507111

THE VINE STREET SALEROOMS SCARBOROUGH YO11 1XN
www.davidduggleby.com 01723 507111

NEW KID-ON-THE-BLOCK PIPPA WILL MAKE YOU LOOK AMAZING!

Makeup Artist Pippa Hutchinson Chan is following her heart of making women look good, whether for a special occasion or every day of the week. Most of her work is for bridal parties and fashion events but her pamper parties and make-up lessons are gaining in popularity too.

Pippa has recently changed her career from being a film and media studies teacher to working part-time at Beverley Tourist Information whilst running her new creative business. Her signature style is that of a more natural glowing look, choosing to highlight the skin rather than following the severely contoured trends seen all over social media.



Pippa said: "The looks that you see on social media are amazing and take real skill to perfect. However not every woman wants to achieve this look with her makeup. And most women in my situation - working mums - don't have the time to perfect this look every day.

Don't get me wrong


I love going all out glam for a special occasion but on a day-to-day basis, it's impractical. But I focus on my skincare so that I don't need to cover and conceal every inch of my face day to day. This is an ethos that I carry through to my work and encourage my clients to follow."

Pippa comments that current trends and social media sometimes encourage women to achieve unreasonable and ridiculous standards to be worthy of praise. Pippa aims to help women increase their confidence, using make-up to enhance their features, so they can be confident in their own skin, letting their inner beauty shine. Pippa said: "I champion the woman beneath the make-up. Nearly all the women that have sat in my chair start with telling me about their flaws and want me to hide them. This upsets me as I know women have become programmed to see the worst in themselves. With working so closely with people I get to see and work with their beautiful features. I make it part of my job to let them know they are beautiful even if they can't see it... yet. A Pamper Party is the perfect opportunity to try new make-up ideas - and I always recommend a trial make-up session for my brides before their big day!"

Pippa also offers clients a Personal Shopper service, helping clients choose the products which are best for them. With so many products on offer it can be intimidating trying to pick something new and so Pippa provides an informed yet impartial opinion. Pippa is keen to work with photographers and stylists collaboratively and welcomes enquiries via her website. If you would like to book an appointment please contact Pippa via her website: www.pippahutchinsonchan.com



Pippa Hutchinson-Chan
Makeup Artist



Freelance makeup artist specialising in bridal and occasion makeup.

Also available for makeup lessons and pamper parties.

Tel: 07856 776584
www.pippahutchinsonchan.com

HAVE YOU VISITED THE BEVERLEY COMMUNITY LIFT CHARITY SHOP?

The Beverley Community Lift (BCL) on Sow Hill is well worth a look, with real treasures to be discovered and bargains to be bagged!

From jewellery, clothes and games, to bric-a-brac and small furniture, there's something to catch everyone's eye, and prices to suit all pockets. The shop is located at 6 Sow Hill Road in the centre of Beverley (that's the main road that leads into The Marketplace). Jan Stainforth, CEO of Beverley Community Lift, explains how the shop supports the vital work of the charity: "All proceeds from our charity shop go directly to helping us to take elderly and disabled local people out and about.



"We'd really like to encourage local people to call in and support our local shop. It's clear to see how their contributions directly make a difference in our local community - you can see our minibuses out on the road every day, taking people on weekly food shopping trips to local supermarkets, and on social outings. These trips help to reduce feelings of loneliness and keep people connected to their community.

"Our caring volunteer car service is essential for taking vulnerable local people to their vital medical appointments. One passenger told us 'It's lovely to be greeted by such lovely people when they come to collect you for your appointment. I'm very lonely since my partner passed away. I really like the fact that someone cares about me. Thank you for your kindness.'

"The charity shop is open Tuesday to Friday from 9.30am to 4.00pm and Saturdays from 9.30am to 4.30pm. Call in and see us - a warm welcome awaits!"



**Beverley Community Lift
CHARITY SHOP**

www.bclift.org.uk
Tel: 01482 868082

6 Sow Hill Road,
Beverley, HU17 8BG

Making a difference to local people's lives

Have you visited our local charity shop?





A warm welcome awaits you!

Open Tues to Fri - 9.30am to 4pm
Sat 9.30am to 4.30pm






Reg Charity No: 1163868

BERTIE THE BEAVER LEADS A MUSICAL TAKEOVER OF BEVERLEY ON NEW PATHS

New Paths Music Festival is exploring new ways to engage as many people as possible in a musical journey round Beverley. No matter your age or musical preference, there is literally something for everyone!

Expect something very different on Saturday 7th April when the Bells of St Mary's wake the town to a day of music-for-all. Then follows 10 more events at 10 more venues for all to enjoy - and to prove you have been there, you can get a stamp card to stamp at the venues. Attend more than 8 events and you could win a prize! All the events are free, except for the legendary New Paths ploughman's lunch served in the Minster Parish Hall for £5 - well, you will need something to keep you going as the events go on until 4.30pm!

Events on the day will be held in a diverse range of places - indoors at the Guildhall, Masonic Hall, Minster, Toll Gavel Church, Peter Hall Violins and East Riding Theatre and outside on Syntan Barge at the Beck, Flemingate and Market Cross. There might also be some pop-up events along the way! There will be two more scheduled events on the 7th - a Jorvik Evensong at Beverley Minster at 5pm (also free) sung by the choir of Jesus College, Cambridge, who will be the 'Choir-in-Residence' during the festival. Then a Festival Ceilidh with 'the finest ceilidh band in the UK', Triple Scotch, at the Memorial Hall (with an optional pie-and-pea supper) which rounds off the day from 7.30pm. Do save some energy for that!

The festival is the brain-child of Roland Deller and Libby Burgess. Roland grew up in Beverley, singing in the Minster Choir and the East Riding Orchestra whilst attending Longcroft School before pursuing a career in finance; his parents are resident in the town. Libby first came to Beverley in 2013 after meeting Roland; they were introduced by a mutual friend who happens to be the conductor of the Jesus College Cambridge Choir! Libby, who is an internationally renowned accompanist was looking to set up a festival but where? When she came to Beverley, she knew she had found the perfect location! Libby said: "The warmth of the welcome from the people of Beverley from so many different walks of life is amazing and this has been transferred into the festival. Many of the audience are not traditional classical music fans, encouraged by the fact that at least half of the events won't cost a penny.

Although I'm Artistic Director, ideas for events come from the artists, the venues and the audiences - how many opportunities do you get to watch a choir rehearse; hear from three world-famous (female) composers talking about their life's work whilst enjoying a cuppa or get to sing a solo piece of your choice in an informal setting? On top of this there are workshops, masterclasses and sessions for children and young people who are budding brass or organ players and social events at a variety of Beverley's lovely venues, which mean that everyone, audience and artists, will get the chance to mingle."



New Paths this year promises to go beyond the expectations even of the organisers! It is now a registered charity, thanks to some very generous founder donors, and the festival can now access grants to ensure its sustainability going forward. This means Roland and Libby are able to reach out to people who might, in the past, have been unable to access such fine music.

For example, one of their ventures this year is with Frederick Holmes School in Hull which caters for children with severe disabilities and profound



and multiple needs. New Paths artists have been working with some of the children to create original music which will be performed as Item 11 at Toll Gavel United Church on April 7th. It could be the highlight of the festival! This year there is also a 'warm-up week' from Monday 2nd April (Easter Monday) until the festival-proper starts on Thursday 5th - Sunday 8th April, which includes a trip out to Selby. Putting on a week-long festival is not a cheap undertaking, grants or no, and individuals and businesses are encouraged to help with sponsorship of artists, events or days or by becoming a 'Founder Friend'.

More details can be found on the New Paths website: www.newpathsmusic.com or contact Roland direct on roland@newpathsmusic.com. 'Founder Friends' get treated to a special concert featuring Matt Wadsworth playing lute and theorbo - but the venue is only revealed to those who sign up to be a 'Friend'!

Keep in touch with New Paths news on **Facebook** and **@NewPathsMusic** on **Twitter**. Tickets, day and festival passes are already on sale through the East Riding Theatre Box Office on **01482 874050** or boxoffice@eastridingtheatre.co.uk or may be available on the door on the day.

Registration is recommended for some of the unticketed or free events by emailing: admin@newpathsmusic.com - check out the website to find out which ones: www.newpathsmusic.com/events-2018

LANGUAGE RULES BY JOHN FEWINGS

As a lover of words who is almost fanatical about spelling, syntax and punctuation, it pains me to publish this tongue-in-cheek guide to 'better writing':

Rules of language. Here's a few Things you should and shouldn't do.

*Put an I before an E
(Unless that thing to do with C).
Then when you end a word with S
Put an apostrophe - unless
You work in a grocers, that's the rule,
(I'm sure that's what I learned in school.)*

*And when you're writing speaking lines
Put sixty-sixes and ninety-nines.
To make sure that you don't confuse 'em,
That's the order when you use 'em.*

*Now "you and I" and "you and me"
Can get confusing (you'll agree)
Remember "I's at the front and me's at the ending"
(I don't understand it, there's no use pretending.)
You and I are the subjects when we're the front two
But apparently we're objects when we're done to.
My teacher said, 'To get it right, you and me should really try
'Cos if we do not right it write they'll laugh at you and I'.*

*And then there's where and wear and ware and weir
and were and we're
And then there's also there and their and they're and here and hear.
It could be quite confusing to get them all just so,
But I say, "Spell 'em how you like! Who else is gonna know?"*

*I'd like to learn you all these rules (although they're not exciting)
But if, like me, you keep them all - you'll do much better writing.*

John Fewings is Just Beverley's Poet-in-Residence as well as being a member of the Argy-Bargy Poets. He writes poetry for people who don't like poetry! Check out www.johnfewings.zone





Images courtesy of Humber Bondholders, Hannah Ali Photography and Neil Holmes Photography.

Destination Beverley - promoting our town as a great place to visit and enjoy!



Performers from Beverley Puppet Festival in 2016. Photo: Nigel Walker.

Beverley boasts a festival line-up for all tastes

Beverley is picking up the mantle of Cultural Centre of the East Riding, determined there should be no let-up following Hull's year as UK City of Culture 2017.

It's no surprise that the town is now enjoying an influx of visitors because, in addition to the wonderful historical and architectural treasures all year round, Beverley can boast a festival line-up spanning the whole calendar and catering for all tastes.

For 2018 there are 12 major festivals that locals and visitors alike can enjoy, so make sure you don't miss out!



The Treasure House is a heritage centre providing museum, library and archive facilities.

Treasure House unveils its programme of events

With the highlight being the 53rd Wildlife Photographer of the Year exhibition, on loan from the Natural History Museum from July 14th to September 8th, there's so much to enjoy at East Riding Treasure House in Beverley.

From open art to sculpture, life drawing to snakes, and straw people to World War One paintings, the Treasure House has a packed programme of events and exhibitions for 2018.

Along with other activities in the library – including the Summer Reading Challenge – and the archives, the Treasure House will host a full range of events all year round.



For the full stories and much more, go to our website

www.destinationbeverley.co.uk

Follow us on Twitter @DestinationBev and like us on Facebook

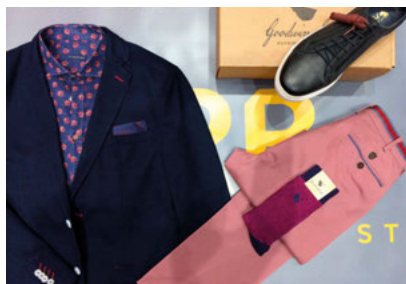
CREATE YOUR OWN STYLE WITH LEE WARDELL FROM VERB

Spring is in the air! The month of March, which this year contains EASTER is upon us! A much more positive mood is reflected in us ALL, bought on by lighter nights, increased temperatures and better weather.

Naturally, this is reflected in our wardrobe changes. The coats, scarves, woolly hats and gloves can be stored away along with heavier boots/ footwear. Lighter colours and weights in clothing choices can be made. The season will once again be jeans-based with lighter washes and fantastic fabrics containing 2% elastane for comfort.

More daring colours and prints for shirts and T shirts have been bought at VERB, to co-ordinate all thru' spring and summer with shorts or classic cotton chinos. Casual jackets and blousons are constructed with technical fabrics, allowing breathability and unstructured looks. Social suiting for occasions including weddings and most importantly **LADIES DAY @ BEVERLEY on 15th AUGUST**, is seeing a move towards pin stripes, alongside plain fabrics to once again wear with a more daring shirt choice. The Peaky Blinder theme is evolving into a 'Dandy' look with men not afraid to add a flourish of co-ordination, be it a scarf/hat/silk square or tie. Womenswear in store at VERB is again being influenced by Italy, so light linens, very floaty and strong colour pallets will be revealed!

This really is an exciting time! Newness in store always brings excitement and it passes on to customers who can feel re-vitalised with the new season colour pallet and clothing ranges. Do pop in and see what's in store.



VERB is located at Flemingate Shopping centre, is open 7 days a week and can be found on www.verbfashion.co.uk. Follow VERB on [Twitter](#), [Instagram](#) and [Facebook](#).

WITCHCRAFT AND WIZADRY COME TO FLEMINGATE

Budding wizards and witches can stock up on magic wands, potions and broomsticks at a new exhibition which has materialised in The Creative Lab at Flemingate.

The Wizard's Emporium is the brainchild of Mark Richardson, a furniture maker and woodwork artist who was inspired to make handcrafted wands and magic-themed toys for his children at the height of Harry Potter-mania. The shop front is stocked full of handmade fairy, dragon, unicorn, wizard and vampire paraphernalia to the delight of supernatural fans of all ages.

Chris Kidd, co-owner of The Creative Lab, said: "Mark has had a space in Creative Lab for about four months and the recent decision to expand and create a faux shop front has been incredibly popular. Within 12 hours of us putting out a Facebook post about Mark's work it had over 100 likes!



"Mark's a furniture maker by trade and everything you see is handmade, from the shop front itself to the magical-themed stock inside. He's working day and night to keep up with demand and also taking orders for bespoke furniture."

The Wizard's Emporium can be found within The Creative Lab at Flemingate. Opening hours are 9.30am to 5.30pm Monday to Saturday, and 10am to 4pm on Sundays.

The Creative Lab is a social enterprise providing a creative retail space for new, upcoming and established artists and designers.

For more details about The Creative Lab, visit: www.thecreativelab.space

VERB

TO WEAR - TO WANT - TO WISH FOR - TO OWN - TO FASHION

FLORENTINO

PEARLY KING

GIBSON LONDON

MAC

BROOK TAVERNER
TAILORS OF DISTINCTION SINCE 1912

OPENING TIMES:
MON / SAT 9.30-5.30
SUN 11.00-4.00

01482 880141
VERBFASHION.CO.UK
INFO@VERBFASHION.CO.UK

FLEMINGATE SHOPPING CENTRE
FLEMINGATE, BEVERLEY
EAST YORKSHIRE HU17 0NQ

[@ VERBFASHION](#) [@ VERBFASHION](#) [f / VERBFASHIONBEV](#)

TO FASHION YOUR OWN STYLE

Telephone: 01482 869111
sales@rosesofbeverley.karoo.co.uk



The Kitchen Factory, The Courtyard,
Tokenspire Business Park, Beverley
HU17 0TB

Together we will design a beautiful kitchen



Roses will then
project manage
your kitchen installation from
start to completion

Visit www.roseskitchens.com

to see our customers kitchens and read what they have to say about us

Telephone: 01482 869111



ARE YOU A TRADITIONALIST?

When we talk to families about the kind of funeral service they would like for their loved one, more often than not they decide to have the same format as they have followed previously for other family members. There is nothing wrong with that, but are they choosing it because that's what they really want, or is it because they aren't aware that there are other choices?

The funeral industry is changing and developing very rapidly. Families are taking ownership of their loved one's funeral services, creating unique and fitting tributes to their nearest and dearest - and quite rightly so. No longer are they conforming to tradition that they feel is out of date; they are coming with fresh ideas and requesting help to make them happen.

No longer do burials or cremations have to be preceded by a religious service, although many families do take comfort in the traditional way of conducting a service. They can be non-religious and take place before or after the burial or cremation; they don't have to be held on the same day or even in the same town or even take place at all.

Special requests can be made for those attending to wear a certain colour or carry a particular flower. Services can include live musicians, slide shows, guards of honour, Scottish pipers - the list is endless. Nobody needs to speak.

If desired, families can just spend their time at the service listening to music and quietly reflecting. The choice is theirs to make and can never be wrong.

The message I'm trying to relay is that funeral services should be a celebration of the person's life and reflect their personality within its content. This can be done in many ways and our role is to facilitate the wishes of the deceased and their family. We would encourage them not to be frightened to make the request that they may feel is out of the ordinary, it's those requests that make the tribute special and bring comfort to those attending, leaving a memorable impression.

For more information or advice please feel free to contact us tel: **01482 844695** or email: hkempandsonltd@gmail.com

COUNTRYSIDE MATTERS WITH SAM WALTON

I know Christmas has been and gone and the thoughts about reindeer are now a distance memory. But we have other kinds of deer in the UK, many of which are on large private estates and bred for both visitors and for meat. Venison is a beautiful tasty meat and very healthy too.



I have been on several farms where deer-farming is a commercial enterprise, not only for meat but also as breeding stock to sell to other like-minded farmers who wish to have a different gene line in their current stock or who may be starting a new venture. In a way, deer are a bit of a cross between sheep and cattle when it comes to management. They can be timid or they can be slightly aggressive or that may just be them being nosy! They graze all the year round and are equally at home being fed in a trough with supplementary feed, the same as we would do with either sheep or cattle in wintery weather.

I don't think they have to be tested for TB; they don't need to be clipped and the stags look magnificent. How they don't smash more of their antlers than they actually do is a bit of a mystery when they are rutting and knocking seven bells out of each other in order to become the dominant male and reign supreme! But that is nature playing her part in establishing the best stag to control the herd, just like a lion and his pride.



There are several herds around these parts; the giveaway is usually an extra high fence. Whereas sheep seem to be able to squeeze through any hole in a hedge or a fence, deer are exceptional jumpers. Cattle may smash their way out of field, either by breaking a fence or rolling through a hedge but they certainly can't jump like deer.

I think deer also have small brains as they will run out in front of a car when trying to cross the road. I have seen many accidents because of that.

Four Generations, Giving Over 125 Years Service

Herbert 1870-1962 Eardley 1908-1986 Geoffrey 1939-2015 David 1964



Golden Charter
Funeral Plans



- Funerals Respectfully Conducted
- 24 Hour Out of Hours Service
- Free Advice & Support
- Private Restrooms
- Prepaid Funeral Plans Available
- Finance Options Available



Tel: 01482 844695
www.hkempandsonltd.com

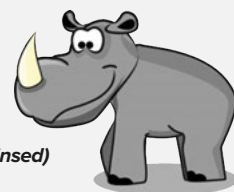
259 Hallgate, Cottingham, East Yorkshire, HU16 4BG
Fax: 01482 843898
Email: hkempandsonltd@gmail.com

RECIPE BY THE FOOD RHINO - BAKED CHILLI ARANCINI BALLS

Makes 8-10

Ingredients:

- 1 x Red onion (thinly sliced)
- 3 x Cloves garlic (crushed & chopped)
- 2 x Handful of spinach
- 400g Tin of chopped tomatoes
- 400g Tin of mixed beans (drained and rinsed)
- 1 x Veg stock cub
- 1 x Tbsp thyme
- 2 x Tbsp smoked paprika
- 2 x Tbsp brown sugar
- 1 x Tbsp ground coriander
- Fresh Chilli (preferred amount to taste, seeded & chopped)
- 200g Risotto/Paella rice
- 80g Breadcrumbs
- Olive oil
- Salt & pepper to season



Method:

In a large pan sweat the onion, garlic & thyme with olive oil. Once the onion is soft add the paprika, chilli and spinach and cook until the spinach has wilted slightly. You may need to add a Tbsp if water to help. Add the tomatoes, stock cube & sugar. Fill the empty tomato tin with water and add to the pan. Cook for 10 minutes then add the rice. Bring them an to the boil and reduce to simmer until the rice is al dente. Season and allow to cool. The rice should be soft & firm once cooled for you to roll into balls.

Put the breadcrumbs into a small bowl and start coating your risotto balls. The breadcrumbs should stick easily to the rice. Roll each ball into a better circle then refrigerate for ten minutes. Bake for 20 minutes at 180C then remove from the oven. Drizzle olive oil over the balls and turn them a little. Put back into the oven for a further 20 minutes. Remove and serve.

NEW BRBN NETWORKING GROUP LAUNCHES IN BEVERLEY

Just before Christmas a group of local business people got together to address perhaps one of the oldest business questions there is - How do I get more business? They went on to clarify this question. All business need business which will build on their current business, business that can be reliably used to help the business grow and develop and gain a first-class reputation. Moreover, businesses need to gain a set of suppliers that can be trusted and who can be referred to others that may need their services?

With this in mind, the group decided to start a local business referral group. Thus, the Beverley Business Referral Network (BRBN) was born.

The BRBN is a face-to-face meeting, where local businesses get together on a regular basis and pass each other business from their own connections. It's a simple concept because everyone has contacts and everyone has a business need. For example, the accountant might have been working with a new start-up. The start-up might have need of an electrician or office-services and the accountant could tell the electrician and secretary in the network group about the start-up. Or perhaps the business needs a website, then the website designer could well come in handy - you get the idea. The important thing is that the accountant would need to be confident that their client would be well looked after by the others they passed them on to. This is where the power of the referral networking group comes in.



Because the group meets on a weekly basis, members become close colleagues and perhaps even friends, and no one wants to let down their friends. So, you can almost guarantee that the level of quality this start-up company would receive is going to be a lot higher than just using an electrician, secretary or web-designer off the internet, or some other random way of picking a supplier. If you want to gain an edge with your business and get involved with BRBN business referral networking, then you need to do the following. Drop an email to john@johnolivant.com to request an invite to the BRBN's open meeting on the 21st of March. The cost will be £10 payable on the door.

If you're lucky enough to get involved on a more permanent basis the group meets weekly on a Wednesday morning (0700h start) at the Tiger Inn on Lairgate. The final thing you need to know about this group is that any surpluses the group generates will be used to develop the group in the first instance with the remainder donated to local charities, ensuring that all monies generated stay in the local community.

ADULT COUPLES LEARN ALL

BALLROOM DANCES NOW!

START! TUESDAY 13th. MARCH.

6-55 TO 7-55 pm. ONLY £5-00.pp

AT THE BRANTINGHAM VILLAGE HALL

ADULT COUPLES ALL AGES.

LEARN. WALTZ, SOCIALFOXTROT, TANGO, QUICKSTEP,

RUMBA, CHA-CHA-CHA, SAMBA, PASO DOBLE, SALSA,

CHARLESTON. THEN. EASY SOCIAL SEQUENCE DANCES



Tell a friend, Bring a friend,

Make new friends.



CALLIS / WAUDBY FOR DANCING

infor@calliswaudby.co.uk tel. 01430424418

IN 2018 REACH MORE CUSTOMERS ONLINE

A WEBSITE THAT GETS REAL RESULTS FOR ONLY £1995

WHAT'S INCLUDED?

Your website comes with all of these fantastic features;

- A bespoke website design
- Content Management System
- Contact form
- Analytics
- Mobile friendly
- Blog & gallery
- Links to social media accounts
- A dedicated account manager

FREE!
Domain name
Email addresses
Web hosting*
& Support
*for 12 months

CALL NOW ON:

01482 428650

marketing@indicoll.com

indicoll.com

INDICOLL

HUBY DOMESTIC APPLIANCES

Covering Hull, Beverley, Pockington, Driffield and all the local villages



BOOK ONLINE

and **SAVE**

at
hubys.co.uk

Book in advance and save money.
The further you book in advance
the more you could save...



For service and repair call: **01482 240511**



Send your photographs of your celebra
Find us on Twitter and Facebook to spc

BEVERLEY PANCAKE RACE



CHARITY NIGHT AT PARKWAY CINEMA



HERE TO GET *you* THERE

HUNTERS®

EXCLUSIVE

BEVERLEY / 01482 861411

celebrations around Beverley, to info@justbeverley.co.uk
spot yourself in more photos each month.

TOLL GAVEL PANCAKE PARTY



SNAIL AND THE WHALE AT BEVERLEY MINSTER



SALES / LETTINGS / MANAGEMENT

HUNTERS[®]
HERE TO GET *you* THERE

BEVERLEY / 01482 861411

Personalised Care

At Lindum House Care Home



At Lindum House we understand finding the right care home can be a daunting decision, that's why our friendly team are on hand to offer advice and guidance at a time to suit you.

Our home offers a range of care services whilst supporting independence and maintaining individual interests. With a varied activities programme and freshly prepared home-cooked meals, we pride ourselves on making everyone feel at home.

Nursing care • Residential care • Respite breaks

Whether you need urgent care or just some help and advice, our friendly team at **Lindum House Care Home** are here when you need them.

Call: 01482 977 831

1 Deer Park Way, Lincoln Way, Beverley, HU17 8RN



**LINDUM
HOUSE**

BARCHESTER HEALTHCARE

www.barchester.com

IN THE GARDEN... MARCH

I consider March to be the month when spring is on its way - the days are getting longer and the sun when it shines is warmer. The one plant that evokes thoughts of spring to me is the sweet violet (Viola odorata), as a child I used to pick them (with wild primroses) from the hedgerow as I walked to and from primary school. Perhaps this is why I always plant small flowered pansies (Viola x wittrockiana) in my winter containers; there may be others reasons, read on.

The violet is the flower of Aphrodite, the goddess of love and has always been associated with love and love potions. Romans cured their hangovers with violets; in the Middle Ages they were strewn on floors as and 'air freshener' and Napoleon (the old romantic) gave Josephine a posy of violets every year on their wedding anniversary.

Tasks for March...

- Apply plant foods to established borders i.e. pelleted chicken manure
- Mulch bare soil
- Continue to prune overgrown and late-flowering shrubs and roses
- Cut back perennials and grasses that were left over winter
- Divide overgrown clumps of perennials
- Start putting supports around perennials - this is so much easier to do than when they have grown and you struggle to contain them!
- Dead-head daffodils, leaving the foliage until it dies back
- Plant summer-flowering bulbs
- Sow hardy annuals out of doors
- Protect fruit blossom from late frosts
- Treat moss on lawns
- Re-seed bare patches on lawns (towards the end of the month) and mow the lawn if necessary - set the blades high
- Check pond pumps and get them running
- Make sure the birds have plenty of food and fresh water
- You may even need to start weeding - if we get any reasonable weather!

Some dates for your diary...

- March 11th - Mothering Sunday
- March 20th - RHS Spring Free Day at Harlow Carr Gardens
- March 25th - European Summer Time begins
- March 30th - Good Friday

So hopefully if the weather is favourable, plenty of gardening can be achieved over the 'Easter Weekend'.

Until April,

Happy Gardening. J.

Jane Dale of 'Designed Gardens'

Tel: **07983 392 411**



GreenThumb are the UK's most recommended lawn care service. Our aim is to provide you with a wonderful lawn and exceptional customer service.

Save time and money

Our busy lives make every chance to relax even more important, so simply let us treat your lawn. You'll save both time and money. We're cheaper than DIY and we do all the work so, with results that are far superior, you also get to spend more time enjoying a beautiful lawn.



Seasonal treatments

Designed for the great British weather, our bespoke seasonal treatments contain nutrients to feed the lawn - supporting root development and encouraging stronger, more robust grass plants - and a herbicide to control weeds. Our late-autumn treatment also contains a moss control element.

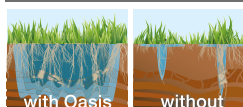


Additional treatments

- **SlowMow** - our innovative product which slows grass growth - means less mowing
- **Oasis** helps to maintain water at the root zone. Great for dry lawns and/or periods of low rainfall
- Aeration and scarification are the most effective tools to defeat moss - essential annual work

Reduction in grass clippings

with SlowMow without



Hollow-tine aeration



Scarification

Contact GreenThumb for your FREE lawn analysis and quote: 01482 880082
Email: beverley@greenthumb.co.uk

GreenThumb
LAWN TREATMENT SERVICE



EAST RIDING'S YORSWITCH COLLECTIVE ENERGY SWITCHING SCHEME DELIVERS SAVINGS FOR RESIDENTS AGAIN

East Riding householders who signed up for the latest round of the Council's YORSwitch scheme saved an average of £190 each following an auction between energy companies. The council partnered with iChoosr, the UK's leading expert in collective energy switching, and together they were able to deliver bespoke and highly competitive tariffs.

The winners of the auction for dual fuel were SSE and will supply a range of contracts to residents. SSE is currently ranked number one for customer service by Citizens Advice with 5 out of 5 stars for ease of switching and contact.

Since the scheme began in 2013, just shy of 20,000 East Riding residents have switched, saving more than £4,500,000.

Now is the ideal time for residents, especially those on standard tariffs, to switch. Residents should see if they could secure a good rate for the year ahead as wholesale energy prices are likely to continue increasing.

Councillor Symon Fraser, portfolio holder for strategic asset management, housing and environment at East Riding of Yorkshire Council said: "In the short term, despite forthcoming energy price caps, households should not be lulled in to a false sense of security that they will get the best deal for their energy. It remains the fact that households which have not switched tariff recently could make significant savings by reviewing their energy contracts, and council operated collective switching schemes such as YORSwitch provide a safe and easy route for householders to engage with the energy market, and will continue to do so."

The next auction will take place in February 2018. Registering for future YORSwitch energy auctions is easy and straightforward, register online at www.eastriding.gov.uk/yorswitch, visit your local customer service centre, or alternatively call (01482) 393939.

You will need your most recent energy bill to register.

BEES
BURTON ELECTRICAL SOLUTIONS

NICEIC APPROVED CONTRACTOR 24/7 Emergency Call Out NICEIC DOMESTIC INSTALLER

HIGH QUALITY ELECTRICAL WORK ACROSS EAST YORKSHIRE AND THE HUMBER REGION

DOMESTIC
COMMERCIAL
TESTING
FAULT DIAGNOSTICS

*Whether it's for your home, rental property portfolio or business premises, all electrical installations need to be checked periodically by a qualified electrician.
For a quote contact:*

Andrew Burton
01964 552769 • 07585 601730
www.burtonelectricalsolutions.co.uk
info@burtonelectricalsolutions.co.uk

YORSwitch
CHEAPER ENERGY TOGETHER

Could you save money on your energy bills?

HOW

- Register with YORSwitch
- East Riding of Yorkshire Council negotiates with energy suppliers
- Receive a no obligation quote for the supply of your gas and electricity

- ✓ **Hassle free**
- ✓ **Obligation free**
- ✓ **Cost free**

Visit www.eastriding.gov.uk/yorswitch
Call (01482) 393939 or visit your local customer service centre

EAST RIDING
OF YORKSHIRE COUNCIL

MINGUS AND CHRIS COMPLETE THE 'FAN DANCE' WITH HELP FROM SLIMMING WORLD

On January 20th, Chris Gibson and Michael Menzies-Baird completed the gruelling challenge of the SAS Fan Dance in aid of the local branch of SSAFA (Soldier, Sailor, Airman and Families Association), the Armed Forces charity. They raised nearly £3000. They were both celebrating their 56th birthdays that weekend; both lost considerable amounts of weight and did an incredible amount of training. Neither believe they could have completed their task without help, advice and motivation from Slimming World.

Chris and Mingus have been attending the local Slimming World Club run by Phillipa Dukes. Chris has lost a staggering 11 stone in just over 2 years and Michael just over 2 stone. They both owe a huge vote of grateful thanks to the group and Phillipa especially, who has educated them on the correct, healthy foods to eat to which has allowed them both to then move on to fitness programmes and achieve such amazing results physically.

Michael, being an ex-serviceman was going to undertake the 'Fan Dance' alone but Chris, a mechanic for EYMS, said he wanted to do it with him. Michael did explain that the 'Fan Dance' was in essence 50 years old and is a Special Forces pre-selection course! To complete it, walkers must carry over 30lbs with food and water over a gruelling 15-mile course in the Brecon Beacons, in a strict timescale. It gets its name from Pen y Fan, the highest mountain in the Brecon Beacons.

Out of 250 competitors on the day, only 150 finished- but finishers did include both Chris and Michael. As a gift to Chris, Michael presented him with his certificate and medal for completing the 'Fan Dance' for his birthday, having it framed and presented where it all began, at the Thursday Slimming world club at Molescroft Pavilion.



GDPR - IS YOUR BUSINESS READY FOR THE CHANGES?

GDPR (The EU's General Data Protection Regulation) becomes effective from 25 May 2018, when it supersedes EU's 1995 Data Protection Directive (DPD). The UK Data Protection Act 1998 (DPA) will be superseded by a new Data Protection Act that complies with the EU's new GDPR. The new law marks a significant shift in the way that organisations must protect personal data.

Individuals will have a number of new rights, including the right to judicial remedy against organisations that have infringed their rights, and requires organisations to adopt "appropriate technical and organisational measures" to protect personal data. It also introduces mandatory data breach reporting. Organisations that do business with any EU customer, or process their data, must comply. Data privacy includes restrictions on a number of factors used by businesses to identify individuals. Businesses must think carefully about categorising individuals into groups based on gender, sexual orientation, financial standing, mental state etc. Companies should therefore, take steps to reduce the amount of irrelevant personal information that is stored and do not store any personal information for longer than is necessary.

Another big change is in relation to children under the age of 16, where parental consent will be required to store data. Consent documentation should be easy for the individual to understand and laid out in simple terms. Silence or inactivity does not constitute consent; clear and affirmative consent to the processing of private data must be provided. For example, individuals must "opt in" to their data being held rather than data being held unless you "opt out". A data protection officer must be appointed for all public authorities.

In addition, a DPO will be required where a company's activities involve "regular and systematic monitoring of data subjects on a large scale" or where the entity conducts large-scale processing of "special categories of personal data". Firms whose core business activities are not data processing are exempt from this obligation. The GDPR does not specify credentials necessary for data protection officers, but does require that they have "expert knowledge of data protection law and practices."

Data controllers will be required to report data breaches to their data protection authority unless it is unlikely to represent a risk to the rights and freedoms of the data subjects in question. The notice must be made within 72 hours of data controllers becoming aware of it, unless there are exceptional circumstances, which will have to be justified. Where the risk to individuals is high, then the data subjects must be notified, although a specific timescale is not specified by the Regulation. Individuals whose data is kept by an organisation have the right to request removal of their data and to be forgotten.

The Regulation provides clear guidelines about the circumstances under which the right can be exercised. The Regulation applies tough penalties for non-compliance. Organisations found in breach of the Regulation can expect fines of up to 4% of annual turnover or €20 million - whichever is greater. It is advisable that, with only months until the new rules are introduced, any organisation processing and holding personal data, make themselves fully aware of the new rules and are compliant from 25 May 2018.

If you would like to discuss this in more detail, then please contact Gareth Botterill on 01482 862240 or email: gareth@botterillco.co.uk

Botterill & Co

Chartered Certified Accountants

We are a modern and professional accountancy practice ideally located to serve businesses in Beverley and the surrounding area.

We utilise modern accounting technology to provide you with a cost effective, professional service.

Our services:

- Annual Accounts
- Tax Planning
- Management Accounts
- Tax Returns
- Company Formations
- Payroll
- Cloud Accounting
- Bookkeeping & VAT

For a free initial consultation please contact us:

Office: 01482 862240

Mobile: 07966 051458

Email: gareth@botterillco.co.uk

Website: www.botterillco.co.uk

1st Floor Offices, 40 Norwood, Beverley, HU17 9EY

COMPETITION WINNER

Congratulations to Rob Brown who won the Brook Taverner shirt in last month's Verb competition.



THOMAS HENEBURY

CLASSICAL GUITARIST

AVAILABLE FOR RECITALS AND PRIVATE TUITION

Thomas has a Bachelor's Degree of Music, and an Associateship of Trinity College.

He teaches grades one through eight for Trinity and Associated boards.



T: 07732 099838

W: www.thomasheneburyguitar.com

E: tom@thomasheneburyguitar.com

MEET THE 91-YEAR-OLD WHO STILL EXERCISES TWICE A WEEK!

One of Inches' mature clients is Hilda Frankish who has been going to Inches twice a week since 1994. She's now 91 and puts her good health and supple joints down to her twice-weekly work out. Owner Yvonne Jones and Health Consultant Suzie Kitchen described why Inches Body Studio Toning Tables are so good for maintaining flexibility as well as muscle tone and why a visit to Inches is much more than an hour's exercise.

Research on the benefits of using Toning Tables, which offer supported and passive exercise, has shown that they benefit people suffering with illnesses as diverse as MS, bad backs, depression and ME and can help with the rehabilitation of patients after hip replacements. They also help with weight and inch-loss, especially if following a recommended reducing diet. Hilda is absolutely certain that without the nutritional advice she gets from Yvonne and Suzie and her twice-weekly visit, she would not be able to get around or do the things she does.



She said: "The encouragement of the Inches staff helps keep me fit. You would think that just laying on the tables for an hour wouldn't be enough, but after 24 years, I'm not chancing missing my sessions!" The Inches clients have become a community, with friends often meeting for their sessions at the same time as each other. Inches also raises funds for charity with clients taking part in different fund-raising activities, which increases the 'feel-good' factor associated with exercise.

Although many of Inches' clients are more mature, almost anyone can use the tables; there is a stair-lift for people who cannot climb stairs and lots of help to get on and off them. Inches also has a Vibraaxis machine to help with bone density, which is important for post-menopausal women and offers various therapies which are additive to the effect of the Toning Tables.

Hilda is seen here receiving flowers and chocolates from Yvonne and Suzie and beautician Sarah Sutton. Inches welcomes enquiries from anyone, young or mature, male or female, on **01482 865229**. It is open Monday to Friday 8.15am - 7pm and Saturday 8am - 11am.

AFTERNOON TEA MENU!
£12.95 PER HEAD OR £24 FOR TWO PEOPLE
AVAILABLE MON-SAT 12-5PM. PRE BOOKING IS REQUIRED AND GLUTEN FREE OPTIONS ARE AVAILABLE.

Stockists of **Woof Dog Beer!**

THE TIGER INN

Brains required from 8.30pm

FIRST SATURDAY OF THE MONTH

Big Quiz

Free food/prizes to be won, all money raised to our house charities.
£1 per person entry

WEEKLY

Bingo

Cash prizes to be won
50p entry per game
Every Tuesday 1.30pm

THE TIGER INN
Tel: 01482 869040 | www.tiger-inn-beverley.co.uk
Laigate, Beverley HU17 8JG

HOME COOKED FOOD SERVED 7 DAYS A WEEK

TRY OUR LEGENDARY SUNDAY LUNCH!

Mother's Day Special Offer

TONING TABLES
£35.00
for one month

Please call for details
Offer ends March 31st 2018

TONING TABLES can help with ME, MS, osteoarthritis, RA, knee and hip replacements, depression, bad backs, frozen shoulder and stroke rehab

Wheelchair access and stair lift available

Lose between 7" and 15" in six sessions
Toning tables help if you are new to exercise
Testimonials available
Wear comfortable clothing

INCHES BODY STUDIO

CELEBRATING 26 YEARS IN BUSINESS

Inches Body Studio, 1 Norwood, Beverley, HU17 9ET
Telephone: 01482 865229
Email: inchesofbeverley@hotmail.co.uk
www.inchesofbeverley.co.uk

CYCLING WITH WILSONS WHEELS - TIME TO BE SEEN

With increasing hours of daylight as the days go by, it's more or less light now when travelling to and from work for most of us. It's the time of year when we start to see more cyclists getting their bikes out of their sheds and garages and thinking about either commuting to work or going out in an evening/early morning for exercise or for fun. However, until we change the clocks on March 25th and with levels of light still a little weather dependent, it is very easy to get caught out and find yourself cycling when visibility is poor.

You hear so many stories of cyclists having been knocked off their bikes at night because the car driver said they didn't see them, even when they have lights on their bikes. Without entering into a debate about car users vs cyclists, ultimately the roads are there to be shared by all and it is every road-users' responsibility to look after one another. Of the two, however, cyclists are of course the most exposed and vulnerable and will almost always end up worse off if involved in a collision with a car. It is therefore in your best interests, as a cyclist, to do absolutely everything possible to try and avoid this. Have you considered carrying a small emergency light in your pocket? You can buy ones with an elastic rubber strap that are small and USB rechargeable which will take seconds to attach to your bike when visibility becomes limited. Bright yellow clothing isn't necessarily cool, but please make the rest of you as visible as possible for your own safety. Let's face it, wearing black lycra (or lycra of any colour for that matter), is never going to win any fashion prizes, so there is absolutely no harm in jazzing up your bike or helmet etc with lots of lights and reflective strips. The more lights and reflective strips and/or clothing you wear the better!

Try also to take time and anticipate cars' movements in order to avoid danger, as you may be lit up like a Christmas tree, but a car driver may not always be looking in your direction. Bike lights have come on in leaps and bounds in recent years and you can now buy super bright lights. You can get super-bright lights which allow you to see perfectly clearly at night because it's nearly as bright as a car headlight, which means that you are also clearly visible to others and can easily be seen from miles away in the distance. But please don't put them in flashing mode - they are a real distraction to a car-driver - just use them in constant beam! You could put a second, less-bright light on your bike which does flash; it won't blind a car-driver but will high-light your presence. That old saying 'Wear something bright at night' still holds true! Wilsons Wheels has a great selection of lights, clothing and reflective materials which can help you be seen. Do pop in Monday to Saturday at 89 Grovehill Road, Beverley or call **01482 882881** - we love to talk about all things bike.



WILSONS WHEELS
T: 01482 882881
W: www.wilsonswheels.co.uk E: info@wilsonswheels.co.uk

WE NOW STOCK CUBE CYCLES
2018 RANGE NOW AVAILABLE   

2018 CLOTHING AND ACCESSORIES
FREE BIKE CHECKS
DISCOUNTS
IN STORE NOW

MENTION JUST BEVERLEY FOR FREE BIKE FIT
WITH EVERY CUBE, KTM OR BOTTECCHIA ROAD BIKE PURCHASED AND IN STORE DISCOUNTS

DISCOUNTS ON:

- Adult Bikes
- Children's Bikes
- Clothing for all cycling weather
- Parts and accessories

89 Grovehill Road, Beverley, East Yorkshire HU17 0EJ
OPEN: Monday - Friday: 08.30 - 17.30
Saturday: 09.00 - 17.00 Sunday: CLOSED - Out riding our bikes

THE CHALLENGE OF MAKING AND KEEPING GOALS BY JAMES BEDFORD

We are well into the New Year and everyone is focussed on achieving their goals and resolutions they set out at the start of the year. But it is important to reflect on achievements to date and look at the process and path ahead to achieving those goals.

Whatever your goal in life, it's important to break it down into smaller structured goals to keep motivated and constantly striving. It takes time and planning to be successful; remember, Rome was not built in a day! With planning you can achieve more than rushing and falling at the first hurdle.

Imagine you want to lose 2 stone in weight. You can't possibly safely lose 2 stone in a week or a month, even. If you break it down into sensible, achievable weekly targets of 2lb per week weight loss, then you will be happy when you have lost 2lb after the first week and not disheartened when you haven't lost a stone.

At 2lb/week, you will have lost a stone in 7 weeks (less than 2 months) and 14 weeks to lose 2 stone. Within 4 months you will be slimmer, fitter and looking great - and that's worth working towards!

At Anytime Fitness Beverley we LOVE a challenge!! Whether it be helping our clients plan and achieve their goals or setting our own personal fitness goals. This year, we have set ourselves a very special challenge...

This year we at the 24-hour gym have decided to do a challenge for charity. We are going to do a 109-mile sponsored cycle ride from Anytime Fitness in Ashton-under-Lyne to Anytime Fitness Beverley. This is something none of us have done before and will be 100+ miles well outside our comfort zone!

With support from **Just Beverley** magazine and a few friends from Flemingate, we are assembling a crew to help us along the way and have a great time raising money for two fantastic charities, Beverley community Lift and Hull for Heroes.

We have already started training - breaking the training down into achievable chunks so we hit peak fitness on the day, Saturday 2nd June.

Keep your eye out in **Just Beverley** magazine for more information coming soon on this fantastic challenge!



Support
Every member gets a free, personalised Get Started Plan when they join along with free regular health checks. Our friendly, professional staff are trained to help you along your fitness journey, no matter how much support you need.

Convenience
24 hour access to the club to fit in workouts around your lifestyle

Tools and Training
With a fully equipped state of the art facility we offer all the tools to help you succeed with your health and fitness goals. The gym it boasts a multitude of cardio equipment along with resistance machines, free weights area and a functional training rig.

We also run classes throughout the week which are included in all memberships with virtual classes available if you're unable to make the scheduled ones. We have our personal training staff on hand to provide you with the right tools to reach your goals.

Community
You're not just joining a gym; you're joining a supportive community of like-minded people who are here to give you the encouragement you need.

ANYTIME FITNESS
Flemingate Centre, Flemingate HU17 0NG
Tel: 01482 247100

WANTED! A SUPERB TRIBUTE TO A SUPREME SPORTSMAN - BUT WHAT?

There are few people in Beverley who won't know or have not heard of Ivan Usher. His passing was a great sadness to many, none more so than to his wife, Hilary and son Greg. It seems very fitting that someone who inspired so many in the sporting world or touched so many lives should have a lasting legacy. But what could that legacy be?

Ivan went to Beverley Grammar School where he was captain of the football and cricket teams, back in the day when you played football in the winter and cricket in the summer; he was also East Riding County captains. He was on the books of both Hull City and Nottingham Forest at junior level and played for Bridlington Town as a semi-professional - he didn't give up playing football until he was 65! He also played squash, cricket and tennis.

Although Ivan loved playing sports, he enjoyed teaching sport and fitness even more. He became a PE teacher at Longcroft School, running all the football teams and taking pupils away on skiing trips. He met Hilary who was to become his wife in Gerlos, Austria, where she was a ski instructor and, co-incidentally, a PE teacher, when he took kids from Longcroft on school trips.

They discovered that they both had a dream of starting a gym... Ivan eventually persuaded Hilary to move to Beverley from her London base, he took early retirement from school teaching at the age of 55 and Usher's Gym, then located in Saturday Market behind Lloyds Bank was born.

In 1988, the Gym moved to premises in Mill Lane. By this time, Ivan and Hilary were falling in love and they married in 1990. Their son, Greg, was born in 1991. The gym thrived for the next 14 years. Many will tell stories of Ivan's legendary 'legs, tums and bums' aerobic classes or running around the Westwood to get fit. There were classes for everyone from a few months old in the Kangaroo Club to 85+ years. Hilary trained as a Line Dance instructor and it soon became all the rage! There were gymnastics sessions, including artistic gymnastics, aerobics, karate, boxercise, weight training and circuits as well as the gym to work out in. There were charity events to raise money for cancer research and sponsorship of local teams and individuals. Some famous people trained at the gym including Paul Robinson, ex-England goalkeeper and paralympic gymnast Susie Pipes

MBE. Paul Robinson was also Greg's baby-sitter! With such an inspirational father and friends, Greg was becoming a footballer himself! He played for Leeds United and Sheffield United as a junior, Beverley Town and now Harborough Town, enjoying trips to Slovenia, Singapore and America. Dad Ivan never missed a match! He loved to be able to sit in the stand and watch his son play - something it was impossible to do at Beverley Town as there was no stand. Ivan frequently commented how good it would be to build a stand at Beverley Town's ground.

Usher's Gym closed in 2004 when Ivan needed a knee replacement and the friend who helped out suddenly passed away at the age of 48. Although the intention was for Ivan to retire, the gym was replaced by mobile classes in and around Beverley - for someone who has been active all of their life, just stopping enjoying his passion was not an option! Unfortunately, Ivan died unexpectedly of undiagnosed encephalitis while Greg was still at university. Since then, Hilary and Greg have realised there is so much positive regard for Ivan in the town that his wish of building a stand at Beverley Town could come true. Greg has done some costings and found that a 50-seater stand will cost about £17,000.

Although (at the time of writing) planning permission has not been granted by East Riding

Council, many people have already got behind the idea of erecting a stand at the Norwood ground. For example, the Beverley 10k will feature 40 runners all wearing Usher's Kangaroo Club t-shirts collecting sponsorship money for the Ivan Usher Memorial Fund - the race is being sponsored by Ivan's best friend, Dave Artley of B&A Scaffolding who once, very briefly, held the 100m sprint record!

There will be a tombola, raffle and other activities at Beverley Leisure and a social afterwards at Armstrong Social Club. Hilary and Greg hope to raise £3000 on the day, May 13th. A memorial service held for Ivan raised £2000 and Hilary is organising a sponsored Line Dance. They are hoping to approach other sources of income for grants, such as local charities, the local Councils and Sport England.

If, for some reason, the stand idea does not come off, Ivan's legacy does already live on in practical, personal ways. Hilary helps over 100 people a week keep fit with her classes at Armstrong's, the Memorial Hall and David Lloyd Gym; Jack-in-the-Box started through Ushers and Base Fitness' Claire Moran was a gym coach at Ushers.

But how wonderful it would be to see the 'Ivan Usher Stand' at Beverley Town unveiled for all to appreciate and remember this truly amazing man!



BEVERLEY TOWN SAINTS UNDER 7'S WIN THEIR FIRST TROPHY

Beverley Town Football Club entered four teams into the 12-team Leeds United Academy 5-Aside Tournament which was held in Hull last month. It was a great success with the 'Saints' taking the silverware back to Beverley!

The winning team was made up of Sebastian Ewans, Seth Waldren, James Shaw, William Hunsley and Alex Matta.

James scored over 20 goals throughout the tournament, 4 in the semi-final and 4 in the final! Alex was immovable in defence providing key tackles and quick passes to counter attack. Seth and William were constant in chasing down opponents and making decisive passes, whilst also scoring important goals and Sebastian was the match winner showing calm and poise when he curled the ball into the corner of the net in a win over East Riding Rangers.

Ben Jagger and George Carter stepped into deputise in goal for the semi-final and final when the team were left with a player short, making the win a real Beverley Town team effort.

The 'Saints' were emphatic in their final against Hessele Sporting Hawkes winning out 5-2 and exacting revenge for their one defeat in the group stage!

This is a great, confidence-boosting start to the season - parents and coaches are immensely proud of these youngsters; who knows where this might take them in the future?

Beverley Town youngsters meet at the Leisure Centre every Saturday morning from 10am - 12noon. Do go along and join in the fun! Contact leegcarter@gmail.com for more info.



PICK INDIGO POLE FITNESS TO IMPROVE ALL-ROUND STRENGTH, TONE AND FLEXIBILITY

India Alton's work-outs at Indigo using a pole are fun and addictive! They improve core fitness and stability, motor skills and memory week by week. The ultimate aim is to be able to climb the pole, do tricks, spins and routines and perhaps even win competitions. It's great exercise for both sexes and all ages. Are you intrigued? Read on!

India got into pole fitness because she was bored of the gym. The aerobics and step-aerobics fads seem to have had their day and nothing else around kept her inspired and motivated, whereas the endorphin rush and feeling of achievement when using a pole to work out can be amazing.

Most of India's clientele are between the ages of 20 and 55.



Classes in her own studio off Riverview Road, Beverley, are for a maximum of 8 people and run hourly from 6pm to 9pm on Tuesdays and Thursdays and 8-9pm on Wednesday. She has a kid's class on Tuesdays 4.15pm-5pm and she's considering a class for the 45+ age-group.

She is available for private lessons and tuition and is also thinking of running flexibility classes without using the poles. India doesn't have a particular type of client. She has a Mum and daughter go to her for private lessons to learn (pole) routines to their favourite pieces of music and get some fun, quality time together. Many of her clients say it is their 'me time' as they feel as if they are achieving something just for them. India says: "Most of my clients come on their own but then make friends so there is now an Indigo Facebook group just for members - Indigo is turning into a little community!"

India has won several competitions, including the Performance Professional category at the Yorkshire Pole Championships, which are held at Hull University. She has qualified again for the final this year - along with 2 of her students who are in the Beginners category. The competitions are marked in a similar fashion to ice dance with musicality, level of difficulty, flow of movement etc. scores to give an overall score.

At the moment, India is continuing with her 'day' job as a Technical Operator for BBC Look North. However, as Pole Fitness becomes more popular and as India wins more competitions and becomes more famous as a local athlete, who



knows? She is establishing her brand already with a clothing range and her Pole Parties, especially parties for Hen Nights, are becoming very popular.

Remember to take your camera if you book one! If you fancy having a go at Pole Dance and Fitness, you can find more details on www.indigofit.co.uk. You can call India on **07887 870000** or email her on india@indigofit.co.uk

'JUST FOR FUN' ANSWERS

a) Beverley Parkway Cinema
 b) George Monkman, Mace Bearer of Beverley 1890, located on Well Lane, opposite The Beverley Flower Company



Print that gets you noticed



- ✓ Brochures
- ✓ Leaflets
- ✓ Business Cards
- ✓ Business Stationery
- ✓ Posters
- ✓ Desk Calendars
- ✓ Wall Calendars
- ✓ Pop-up Banners
- ✓ Pads
- ✓ Invites




Jadan Press are a leading family run commercial B2 colour litho printer based in Hull. With 20 years experience, the company is renowned for producing work of an exceptionally high quality. We are committed to providing an excellent service by offering value for money and ensuring complete customer satisfaction.

Tel: 01482 610902
info@jadan-press.co.uk www.jadan-press.co.uk
 Rainbow House, Kimberley Street, Hull, HU3 1HH








NORWOOD NITES COMMUNITY CINEMA - THE PERFECT NIGHT OUT FOR CAMERADERIE

Victoria Cook has the pleasure of putting together the programme for Norwood Nites at Norwood Church, which runs on the 2nd Monday of every month. It's a great way of spending an evening - catching up with a film you may have missed at the cinema or watching an old favourite. Many people go by themselves, others go with friends; either way, there is a very warm welcome. If you are disabled, elderly or socially isolated and need transport, Norwood Nites is on the Beverley Community Lift schedule so all you need to do is give them a call.

Norwood Nites has been running for over 3 years, showing an eclectic range of films which entertain, challenge and enrich the lives of the people watching. Every film chosen has a deeper spiritual meaning which often fosters discussion afterwards - but the film could be of almost any genre. The first ever film shown was a musical - it attracted an audience of 75 - but usually there are 25 attendees who have developed into friendship group, who often make suggestions as to the films they would like to see themselves. The Church Film License under which Norwood Nites operates restricts advertising the name of the film to the Church premises, but the synopsis is freely available, including on **Just Beverley's What's On** section in the magazine and on the website. If you can't work out the name of the film, it's always advertised on Norwood Church's noticeboard. The license also restricts which films can be shown but the list is so extensive there are plenty of options still left!

Victoria said: "Norwood Nites is one of the ways Norwood Methodist Church reaches out to the community - we have had people coming from Lockington and Leconfield, but most are locals, including people from Appletree House Assisted Living. We have refreshments, a raffle, a bric-a-brac stall and fun. We have a good projector and speaker system but are looking to upgrade our projection screen - although the evenings are free to attendees, many make donations, buy raffle tickets or contribute to the refreshments - so the fund is growing. But if anyone has a film-quality screen they could let us have we would be most grateful!" Anyone who would like to find out more about Norwood Nites, please call Victoria on **07990 510541**. If you feel shy about going, give Victoria a call and she will reassure you and meet you at the door.



'GOOD PEOPLE' - A THOUGHT-PROVOKING (AND VERY FUNNY) PLAY FOR TODAY WITH GREAT ROLES FOR 'WOMEN OF A CERTAIN AGE'

ERT's first in-house production of the year is an award-winning play by award-winning playwright, David Lindsay-Abaire, who also wrote 'Rabbit Hole'. Set in working-class, downtown Boston, Massachusetts, the 4-women, 2-man play, 'Good People' features several local actors. Chosen by ERT Artistic Director, Adrian Rawlins, who directs (and who also lives locally), it is a story which resonates with today's society where life can throw up unwanted and nasty surprises.



Just Beverley met with 3 of the ladies in the cast to find out more. We were delighted to chat to Joy Brook who hails from Scarborough; Janet Price, who was born in Hull but went to Beverley High School and whose parents still live in Willerby, and Nada Sharp, from Hertfordshire who is in Beverley for the first time and 'cannot believe I've not been here before' (her words!)

The play follows Margie Walsh (Joy Brook), a single mother who is down on her luck. She's been fired from her job in a 'dollar' store and is in danger of being kicked out of her accommodation. Her only hope is by winning at the bingo! The she hears that an old flame is back in town which helps to open old wounds as well as possible new opportunities. Joy said, "David Lindsay-Abaire writes in a similar vein to Alan Ayckbourn in that the characters are people who we recognise, dealing with social situations in ways we can all relate to. For example, one character in the play does end up on the streets - it has been said that everyone is only 2-3 pieces of bad luck away from being homeless.

"The play has been performed twice before so only two actresses have previously played Margie - Frances McDormand in New York, who won a Tony Award and Imelda Staunton, who was nominated for an Olivier Award in England - so this is a huge role. I'm probably familiar to most people through my TV work in The Bill, Eastenders and Emmerdale, but stage is my first love. This part is wonderful - Margie is funny, brave and full of hope for the future, or at least hopeful that tomorrow will be no worse than today. She has nothing to hide behind and so you see her, warts and all!"

Margie's friends are Jean (Nada Sharp) and Dottie (Janet Price). Nada chipped in, saying: "It's wonderful to find a play which has such great roles for the more mature woman. Many actresses of a 'certain age' have to rely on advertising for work, which is becoming more reflective of society, but stage and film-roles are still not as available as they perhaps should be. It's inspiring that a male writer like David Lindsay-Abaire has taken so much time to perfect his female characters and that directors like Adrian Rawlins have been willing to take on the challenge of performing it and giving us the confidence to perform it."

Janet, who is making a welcome return to ERT after appearing in Great Expectations and Murder, Margaret and Me, added: "This play is a hard-hitting piece of drama which is for everyone. We are making it as real as we can on a small stage and doing some research such as going to Armstrong's Social Club to play Bingo to get the atmosphere right. There is some strong language in the play - it is billed as 'a comedy with an edge' - but this is reality, people swear when emotions run high and young people do swear. It is fantastic for younger people and the ERT price-structure means tickets are affordable. I know someone who paid £140 for a ticket in London - 10 people could come to watch Good People on opening night for that price!"

The three other members of the cast are Michael Kinsey (who is from Driffield), Misha Duncan-Barry and Rory Murray. The set design is by Ed Ulyart with lighting by Simon Bedwell. Adrian Rawlins previously directed The Night Season and appeared in A Steady Rain with his predecessor, Vincent Regan. He has been acting on stage and screen for 30 years, most recently appearing in Hard Sun and Girlfriends on TV and as Air Chief Marshall Dowding in the film, Darkest Hour. Good People runs from March 1st to March 24th at 7.30pm most evenings and with selected matinees at 2.30pm. Tickets can be booked at www.eastridingtheatre.co.uk, telephone **01482 874050**. Ticket prices range from £14-£18.

East Riding Theatre

GOOD PEOPLE

by David Lindsay-Abaire

directed by Adrian Rawlins

a comedy with an edge

01 to 24 March 2018

7.30 pm and selected matinees 2.30 pm

ert

eastridingtheatre.co.uk

box office: **01482 874050**

10 Lord Roberts Road

Beverley HU17 9BE

tickets: **OPENING NIGHT £14 / FULL £18 / CONCESSIONS £17**

FRIENDS £16.50 / UNDER 23 & STUDENTS £14

EAST RIDING

OF YORKSHIRE COUNCIL

CHOCOLATE-INSPIRED DRAMATIC SENSATION TO TAKE OVER BEVERLEY STREETS AT EASTER

White Rabbit Chocolatiers and all-female theatre company She Productions have joined forces to run an Easter 'Eggstravaganza' of family entertainment in Beverley. They are working together on an all-original musical play created by director of She, Annie Kirkman, called 'Alice's Eggstravaganza in Wonderland'. The production, which includes a walk through central Beverley from the East Riding Theatre venue in Lord Roberts Road, to White Rabbit's Dyer Lane shop, promises to be a veritable feast of entertainment for all involved.

Ed Hawkes, Co-owner of White Rabbit, said the event is all part of his family's aim of building an imaginative experience around chocolate, that brings families and the wider community together. "Even more-so than Christmas, Easter is probably THE time for celebrating with chocolate," he said. "Easter eggs and other characters are all part of the magic of this special festival which also marks the imminent arrival of Spring, and so we thought partnering with She Productions again was a great way to celebrate fabulous food and entertainment in one go. And of course, we particularly love the way our own white rabbit emblem - which is inspired both by the sculpture in Beverley's St Mary's church and a little by the magical tale of Alice, features centre stage!"

Based on the classic 'Alice in Wonderland' story, their version involves - yes, you've guessed it - a mischievous white rabbit and a protagonist called Alice, with bags of audience participation. Aimed at families, attendees are invited to get involved in helping Alice bring the naughty bunny in line. And the dramatised tale even includes a specially-written song about White Rabbit's chocolate shop. Here's how She Productions are billing the production: "Deep down the rabbit warren, things aren't quite as they seem. A family feud has shaken Wonderland to its core and the two cotton-tailed culprits have let their jealousy get the better of them. And so, late last night, the White Rabbit fled from her home in a rage, but she didn't leave empty-handed. Today is the Queen of Hearts' Annual Eggstravaganza Party and she is relying on the Easter Bunny to deliver her prized chocolate eggs. But, or course, the Easter Bunny has awoken this morning to an empty basket and a missing sister. Alice needs your help to retrieve the eggs and return them to their rightful owner or it's 'off with their heads!'"

The performance promises to be quite a spectacle too. Classed as a 'promenade piece', it involves cast and audience members parading from East Riding Theatre to the White Rabbit Chocolatiers shop and café on Dyer Lane, where the children will receive a chocolate treat and, on the Friday and Saturday show days, will also

have the chance to take part in a chocolate egg-decorating workshop. Alice will be played by Grace Christiansen, a local singer-songwriter who has also worked with the renowned John Godber theatre company.

"Both our organisations are passionate about helping to put Beverley on the map and bring visitors to the town and surrounding area, and we're really hoping that our show will add to the Easter weekend ambiance, said writer and She Executive Producer Annie Kirkman.



"It's the second year that we've created a play with White Rabbit Chocolatiers. The 2017 event was sponsored by Beverley Racecourse and staged on that site, and we're extremely grateful to them for helping us get it off the ground. This year we're bringing it into the town centre and are hoping it'll be even bigger and better. We've also tried to make it as accessible as possible and give it real family appeal, to attract people who might not normally consider attending the theatre and encourage kids to experience the thrill of live performance and leave their phones and iPads at home."

White Rabbit Chocolatiers are also running a competition in collaboration with Just Beverley giving away two tickets for the show on Thursday 29 March at 11am. See below for details. She Productions are currently company in residence at East Riding Theatre, with plans to expand their offering and take some of their productions on tour over the coming weeks and months.

Performance dates for Alice's Eggstravaganza in Wonderland are:
 Wednesday 28 March, 11am and 2pm
 Thursday 29 March, 11am and 2pm
 Monday 2 April, 2pm
 Friday 30 March, 2pm*
 Saturday 31 March, 2pm*

Tickets cost £5 per child and £6 per adult, apart from the performances marked with a *, which cost £6.50 per child and £7.50 per adult and include a limited edition White Rabbit Chocolatiers' egg decorating workshop. Tickets are available from East Riding Theatre, in person from the box office, online at: www.ert.co.uk or calling (01482) 874050.

great taste 2014 TOP 50 FOODS

WHITE RABBIT CHOCOLATIERS

this Easter, crack into our yummy...

AWARD WINNING CHOCOLATE

made in Beverley

Natural ingredients, NO preservatives.

Hop on over to our new online shop!
whiterabbitchocolatiers.co.uk

f /White-Rabbit-Chocolate @WhiteRabbitChoc

COMPETITION - WIN TWO TICKETS TO ALICE'S EGGSTRAVAGANZA IN WONDERLAND



White Rabbit Chocolatiers are offering two tickets (child or adult) for the show on Thursday 29th March at 11am, with a chocolate lunch (2-course meal including chocolate fondue) and a chocolate Easter Egg to take home.

All you have to do to win this fabulous prize is answer the following question:

What famous character did the carving in St Mary's Church inspire?

Send your answers to: competition@justbeverley.co.uk by Friday 16th March. Terms and conditions are on page 3 of this magazine.



COMPETITION WINNER

Congratulations to **Brenda Burgess** who was the winner of the signed Henry Priestman and Les Glover album.



Happy listening Brenda!

WELL I NEVER... NIGEL CLARKE



Beverley and district is blessed with many residents who contribute to the character of the region, go well-beyond the confines of their 'job-spec' to make this area unique. Just Beverley is keen to meet these people to find out what makes them tick! But we didn't want to ask them the usual Twenty Questions, so here's Nineteen Questions which we hope will reveal something about our special person this month which will surprise you.

This month we put BBC Look North Director, Technical Manager and Graphic Designer Nigel Clarke in the spotlight. Here's Nigel's story (in his own words) and the answer to the questions. Nigel's answer to Question 19 had us saying 'well, I never...!'

Who I am: I was born and grew up in Leeds in a very musical family - my Dad was a very good organist and choir master, my Mum was (and still is) an accompanist for several choirs. Not surprising that I was brought up to be musical too, learning to play the piano (a bit) and reached Grade 8 on the Viola.

After studying Music with Applied Physics (acoustics and recording) at Surrey University my first job was operating the sound and lights for a nightclub in Leeds, that was great fun - a party every night! I kept my music going by joining the Leeds Festival Chorus and church choir.

Then I was fortunate to get my dream job, as a technical operator at the BBC in Leeds. I've slowly worked my way up in the BBC, gaining experience all around the country, including Television Centre in London, but always coming back to Leeds. I was there when the Hull version of Look North split away from the Leeds version, and in 2005, at a time of staff cuts in Leeds I moved permanently over to work in Hull and moved the family over to Beverley. I'm now one of the Directors of Look North, as well as being a Technical Manager and Graphic Designer.

I've been fortunate in that the management in Hull have kindly arranged my shifts to allow me to join the Beverley Male Voice Choir, which rehearse every Monday evening in Toll Gavel United Church at 7pm - a bit tricky to be there when Look North finishes at 7pm in Hull, so I always do the early shift on a Monday, and to be at Toll Gavel on a Sunday, so I can play violin in the Church Band.

1. Do you consider yourself an introvert or an extrovert?

I'm an introvert, except when I'm performing, then the music takes me over and I'm someone else entirely.

2. What's the craziest thing you have ever done? Would you do it again?

I once did a parachute jump for charity. I still remember looking up and thinking "that's a perfectly

flying aeroplane I've just jumped out of! Why?" Then the chute opened and I loved the peaceful floating down with a fantastic view. I would love to do it again, but I do remember aching for days afterwards from all the practising we had to do before being allowed to jump.

3. When was your biggest adrenaline rush?

During my time at Television Centre in London I vision mixed many programmes, but it's the live ones that give you the biggest buzz. Vision mixing Blue Peter with Biddy Baxter in the gallery was probably my happiest adrenaline rush. It's when things are going wrong on a live programme that I still get that rush, even now.

4. Is what you are doing now what you always wanted to do when you were growing up?

I either wanted to be a music teacher or work for the BBC, so yes and yes, because my paid job is at the BBC, and being the Assistant Musical Director of the Beverley Male Voice Choir I'm able to pass on things I've learned to the men in the choir.

5. Who were you closest to when you were growing up?

My Dad. We used to play music together, chase steam trains around the country together and make home movies together. Once, when he visited the BBC, a colleague commented "that explains a lot".

6. Who is the one person you can talk to about anything?

My wife. We've just had our silver wedding and she's always been there for me. I couldn't live without her.

7. What are you most thankful for?

My health and the NHS. Hull Royal Infirmary did a brilliant job stitching my leg back together when I pulled my ligaments apart playing with my son, and Castle Hill did a brilliant job when I needed a heart bypass. I'm still able to cycle the 10 miles to work, which seems a miracle after what I've been through.

8. What's on your bucket list for this year?

I've always wanted to see the Northern Lights. Maybe this year I'll get to see them.

9. If a genie granted 3 wishes, what would you wish for?

A large house with a big music room, big enough for a grand piano. A state of the art recording studio. And my last wish would be to be able to play the piano like a virtuoso without practising.

10. What's your idea of a perfect vacation?

I love looking at hills and mountains, and it's the one thing I miss about living in Beverley (although not when I'm cycling to work, then it's nice and flat), and I love warm sandy beaches. The Amalfi Coast comes close to being perfect.

11. What do you think about when you are by yourself?

I mostly think about music. Which music do I need to practise, and which music to do next.

12. Do you judge a book by its cover?

I try not to. It is difficult when you work in graphics not to judge the insides of a book by what you see on the outside. Oh, isn't that what you meant?

13. What's your favourite all-time movie and why?

The Muppet Christmas Carol. It's not Christmas without a version of Charles Dickens' story and the Muppet version is quite close to the book.

14. What would you do differently if you had your time again?

Move to Beverley sooner. I love living here, and the houses would have been so much cheaper if I'd only done it a few years earlier.

15. What would you change in Beverley and why?

The parking. It's a nightmare in Beverley. I'm sure visitors are put off when trying to park here.

16. What was your most memorable birthday?

2010, we went out for lunch to celebrate and my daughter fell off the monkey bars outside and broke her arm. I spent the rest of my birthday at Hull Royal (including an overnight stay).

17. What's your favourite drink, alcoholic or non-alcoholic?

Dark real ales. I love those from all the local breweries, but my favourite is Bad Kitty from Brass Castle.

18. What's your biggest achievement - sporting, hobby or past-time?

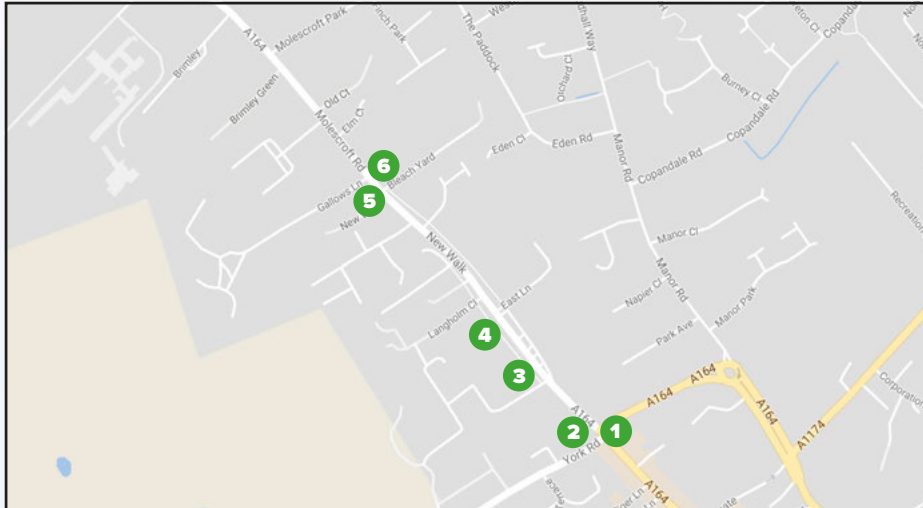
My favourite achievement was being invited to become Assistant Musical Director at Beverley Male Voice Choir. I love singing with them, and it's great fun when I'm needed to conduct. But the sporting achievement I'll never surpass was skiing down a black run (most difficult) in France with a full-sized video camera (this was the days before digital cameras).

19. How would you describe yourself in one sentence?

I'm known for being smiley, friendly, practical and helpful.



A NEW WALK, WITHOUT BAR!



The weather may still be too chilly and damp for many to venture into the countryside, so we will enjoy one more leisurely stroll in town. This is a very short walk from the North Bar to the Sessions House in New Walk and back, yet if you explore, it is full of historical and architectural interest. I venture to suggest that this is the finest axis of buildings in the East Riding, with only Micklegate in York bettering it in the whole of Yorkshire.



New Walk with original lamp

1 North Bar is a most splendid entrance or exit to the town; it's such a shame that the other Bars in Norwood, Newbegin, Keldgate and Flemingate have long gone. The lovely green metal information plaque, a model of elegance that modern signs might well replicate, tells the story of the Bar's construction: £100 admirably spent given that it has lasted for over 600 years. The properties adjoining the Bar are very much linked to the Elwell family. Artist Fred lived at the elegant Bar House and his father's woodwork adorns the mock Tudor assemblage outside, with the lively wood carvings featuring Gladstone and Disraeli. Here also was once a leper house, to keep the unfortunate victims away from townsfolk and also a ducking stool in a now vanished pond.



North Bar Without

2 Cross York Road to the currently vacant Rose and Crown, the street now without bar! We will stay on the left side of North Bar Without, which becomes New Walk, for the first half of our stroll. Until the early eighteenth century this wide area was used for sheep fairs and then became a fashionable residential area and elegant promenade for well to do Beverlonians. St. John's Catholic church is late nineteenth century, in striking red and cream terracotta.

All the buildings here are worth close inspection, especially the early Georgian Elms, set back from the street. You might take a look up Peel's Yard, which the architecture expert John Grundy (who made a fascinating TV documentary on Beverley's townscape 30 years ago) calls a 'sneaky-uppy': half hidden corners, in which this walk abounds.



St John's

3 Go left up Seven Corners Lane, which appears to live up to its name: by all means count them! This is a lovely secluded residential area with a fine array of many old and some distinctive modern homes. When you reach the tennis club, where Kyle Edmund honed his craft, double back to North Bar Without, going left up the rise.

4 It is a great surprise to many to find a functioning Polish Consulate, one of 6 in the UK. I used to particularly enjoy seeing the striking Polish flag flying outside this lovely house. The UK's relationship with Poland over the past 80 years is a fascinating, sometimes troubling subject to ponder upon. Many forget that we went to war in 1939 to preserve Poland's independence - that took another 50 years to arrive. The street name now changes to New Walk. The cast iron street lamps made locally at Crosskills in the early nineteenth century, give the area much additional charm. Two well-known actors live at one of the lofty properties here. The outstanding building of this walk is of course the spectacular classical court house of 1809, now Sessions Spa. I particularly like the statue of Justice atop the pediment and the oddity of a Birmingham street urinal in the grounds; the building is framed by an enormous copper beech tree.



Sessions House, framed by the copper beech tree

5 Turn left into Norfolk Street, which is full of fine buildings, most notably on the left is a range of former prison buildings with the unusual octagonal tower house where the turnkey lived. In those times with police station, court and prison all together, justice was certainly very local. The end of Norfolk Street gives good access to the open pasture of the Hurn, should you wish to stretch your legs a little.



Former prison buildings in Norfolk Street

6 Return to New Walk and cross over to the nicely proportioned St. Mary's Lodge at the entrance to the graveyard. A few years ago, this was bought by a former colleague of mine. She did not live there long, claiming it was too spooky! Take a look down the Bleach Yard, if only to marvel at the two incredible brick walls, the moss-clad one facing north leans at a seemingly precarious angle.



St Mary's Lodge

The promenade back down the hill to North Bar is particularly elegant, like a fine spa town. The line of trees, beloved of local children at conker time are lovely. In an exemplary lesson in urban design, which sadly has not often been followed, the properties benefit immensely from being set far back from the traffic and are also well screened from it by the trees. Enjoy the grand terraces of Victorian buildings of different designs. Nos. 2-10, for example, a fine terrace, shows classical French influence - a pleasing result of past rivalries between local architects. Where the street changes name to North Bar Without, there is the Georgian set piece of Ash Close of 1732, with its distinctive iron gates. Go back to your starting point at the Bar, passing the much-acclaimed White's restaurant and some intriguing side yards which tempt the curious. Use the pelican crossing on Wylies Road, facing the walled playground in which traces of the town earth wall can still be seen.



North Bar Without

John Grundy called New Walk and North Bar Without 'absolutely glorious... a grand and elegant introduction to the town'. How very true - and if you go now, in early spring, you will have the extra pleasure of seeing the daffodil displays.

Ian Richardson
ricojosh@msn.com

PUZZLE PAGE

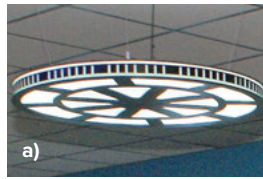
WORDSEARCH

B	M	M	M	E	M	Q	W	Y	I	H	W	Z	C	Z
C	Q	G	I	N	A	N	G	C	M	T	H	F	C	O
K	X	S	W	I	R	X	P	C	K	Q	X	K	P	C
F	B	G	B	H	K	D	A	Y	L	I	G	H	T	J
N	A	I	D	S	E	Y	H	D	F	Y	B	I	Q	B
T	G	W	Z	N	T	X	C	E	L	C	L	I	A	Z
S	H	Q	Q	U	S	V	S	G	A	R	D	E	N	S
L	Q	P	U	S	X	R	K	Q	J	S	O	O	S	F
C	O	U	N	T	R	Y	S	I	D	E	O	F	L	L
A	F	L	W	A	E	N	B	N	B	S	P	S	W	O
B	W	M	R	M	H	H	K	D	E	M	K	X	Z	W
X	Q	H	W	G	N	I	W	O	S	W	N	A	J	E
P	W	X	D	I	F	D	G	U	W	D	X	K	X	R
T	G	N	I	R	P	S	Y	A	D	I	L	O	H	S
A	G	C	L	O	C	K	S	W	K	T	X	V	N	I

- | | |
|-------------|----------|
| Clocks | Holidays |
| Countryside | Markets |
| Daylight | Sowing |
| Flowers | Spring |
| Gardens | Sunshine |

JUST FOR FUN

Where in Beverley would you find these landmarks?
Answers on Page 27.



COMPETITION WINNER



Congratulations to Mrs S. Mcgonegal who was the winner of the stunning Aqua Box of seasonal flowers from the Beverley Flower Company.



If you want to make your dreams come true, wake up.

THOUGHT FOR MARCH

CAMPING OUT TIP FOR SPRING



If you need to light a fire and have no kindling... Use a tortilla chip or a snack which is similar it does the trick.

Do you have any amusing stories, quotes or pictures?
Send them to info@justbeverley.co.uk

Quality Kitchen Facelifts



From a simple door swap to a full replacement kitchen



Why replace when you can reface?



EST. 1999

EASTER SALE
Terms and Conditions Apply

- 50% deposit, balance on completion
 - Made to measure custom-built doors and units
 - Huge choice of doors, worktops, appliances, sinks and taps
- www.dreamdoors.co.uk

Call Andy For a Free Estimate:
01482 861 653

hu@dreamdoors.co.uk
Dream Doors Beverley, 4a Belprin Park,
Swinemoor Lane, Beverley, HU17 0LN

DREAM DOORS
NEW LIFE FOR OLD KITCHENS

Proud members of **Checkatrade.com**
Where reputation matters



CLASSIC CARS WITH CARFAN - THE MORRIS MINOR

That man Issigonis certainly was busy! It was Sir Alec that we have to thank for designing this month's subject - The Morris Minor. At a time when car production was only for the war effort, Sir Alec brought the world what was to be the first British car to sell over one million units, eventually reaching a total of over 1.6 million.

Variants offered included 2 and 4 doors, a convertible, a van and the featured car, a traveller or "Woody" as they are often called. Locally owned, its current owner has various plans to restore it. Parts are readily available and usually inexpensive which makes it an ideal first classic car should you want to join the happy band of classic car owners. The idea of using wood on the outside of a car may seem unusual and it does seem to be a weak spot in a vehicle that is otherwise so sturdy. Opinions differ as to whether varnish or oil should be used as a preservative and it would appear that the argument will run and run.

With so many made, it's not too unusual to see a Minor tootling around. The large number of customers included the Armed Forces and motoring organisations such as the A.A.

The car was exported far and wide so don't be surprised if you see one on your holidays in far-flung places such as Canada, Australia and New Zealand.



With so many made, there is always a lot of choice; they range from a couple of thousand pounds which will need work right up to a pristine convertible currently on sale at £14,000. So in conclusion, should you spot a "Woody" on your travels, don't forget the cheery Carfan wave!

PRACTICAL MOTORING WITH RICH HAYES - DID YOU KNOW MOTORISTS SPEND 31 HOURS STUCK IN TRAFFIC EVERY YEAR?

According to a recent survey, drivers spent on average more than an entire day stuck in traffic last year. Whilst the average direct cost to each driver was approximately £1,168, there were also indirect costs associated with this inconvenience.

The direct result of being stuck in traffic is both wasted fuel and time, but the indirect costs are those associated with the knock-on effect of ever-increasing freighting fees on household goods, which is passed on to all of us. So how to reduce the amount of time you spend stuck in traffic? One option is to consider "car sharing", whether that be with family members, friends or work colleagues. You could also find other commuters who want to share lifts using websites like liftshare.com. It's a great way to not only reduce the sheer volume of vehicles on the road, but you'll likely save time and money in the long-run too. You can make a point of listening to local radio & news before making your journey, so you can avoid already congested areas. Set your vehicle radio to pick up traffic announcements, too, along the route. Traffic announcements are almost always behind the times, but you could avoid joining the end of a very long queue if you are forearmed.

Using your Sat Nav - no matter how well you know the route - is a must. Most systems have traffic-flow monitoring built in, meaning they will suggest alternative routes for you to take. Learn several routes to reach your destination so you can quickly choose an alternative if your normal one is congested. Whether that's a route to work, the shops or school to pick the kids up - it pays to have some alternatives in your back pocket so to speak. If you are travelling further afield, it's always worthwhile carrying an up-to-date national road map, just in case your Sat Nav wants to send you along a road which is closed. Sometimes, avoiding a tail-back is impossible so make sure you have some food, a drink, a blanket and a charger for your phone with you - and make sure your car is regularly serviced.

Beverley Motor Works is the only garage within the Beverley area to have obtained 'Which Trusted Trader' status which demonstrates their commitment to delivering honest and trustworthy value. You can contact them on **01482 881128** or online at www.beverleymotorworks.co.uk to get your car checked over!





The Beverley Flower Company
Specialists in Weddings Funerals and flowers for all occasions



Mother's Day - Sunday 11th March

Mums love flowers

Orders now being taken for the finest quality Mother's Day bouquets

[f TheBeverleyFlowerCompany](https://www.facebook.com/TheBeverleyFlowerCompany)

10, Well Lane, Beverley HU17 9BL
Tel: 01482 873313

MOTORWORKS
INDEPENDENT BMW & MINI SPECIALISTS

Our dealership expertise means high quality car servicing at a fair price...





Unit D1 Grovehill Industrial Estate,
Annie Reed Road, Beverley HU17 0LF

Call today: 01482 881 128
Visit: beverleymotorworks.co.uk

SPECIAL OFFER

MOT COUPON



MOT YOUR CAR FOR ONLY

£29.99

WHAT'S ON

SPONSORED BY: **kü**tchenhaus

2 Toll Gavel, Beverley, HU17 9AJ. T: 01482 862172.

Open: Mon - Sat: 10am-5pm. Sun: 11am-3pm. Bank Holidays: 10am-4pm.

Until Sunday 11th March

• Fairtrade Fortnight

Centred on Toll Gavel United Church. The theme this year is 'Come on In'.

Thursday 1st March - Saturday 24th March

• Good People by David Lindsay-Abaire, directed by Adrian Rawlins

East Riding Theatre. 7.30pm with selected matinees at 2.30pm. An award-winning comedy with an edge! If you're on the wrong side of the tracks in Boston USA, it's tough making ends meet.

www.eastridingtheatre.co.uk

Friday 2nd March - Saturday 28th April

• 21st Annual East Riding Open Art Exhibition

Beverly Art Gallery. Free. Selected works from this year's Open Art Competition. Vote for the People's Choice!

Saturday 3rd March

• Fairtrade Breakfast

St Michael's Church, Cherry Burton. 9am-11.30am. celebrating all that's Fairly traded for Fairtrade Fortnight. Contact 01964 550688, email: rosstanley@cherryb.karoo.co.uk for details.

• Wedding Fair

Beverly Minster. 11am - 3pm. Free entry. East Yorkshires largest wedding fair.

• Gonzo Moose Theatre Company presents The Thing That Came From Over There

Lund Village Hall. 7.30pm. Phone 01377 217776 for tickets and prices. Inspired by old horror movies.

• Ted Lewis Open Afternoon

Treasure House, Beverley. 1pm - 3pm. Free. The writer of 'Get Carter', artist and jazz musician grew up in Barton-Upon-Humber. Listen to his music, excerpts from his books and personal anecdotes. Signed memorabilia on sale. Visit www.tedlewis.co.uk for more information about his life.

Monday 5th March

• Processed Pea presents Jessica Lawson and Phil Simpson

The Light Dragoon, Eton. 7.30pm. £7.50.

• White Horse Folk Club Singers & Musicians Night

The White Horse Folk Club at Beverley Conservative Club, Wylies Road. 8.30 pm. £2. Performers and audience welcome.

Tuesday 6th March

• Lockington Railway Evening

Lockington Village Hall. 7.30pm. Donations welcome to cover costs. Bring your own refreshments.

Thursday 8th March

• Beverley Film Society presents Franz (2016)

Parkway Cinema, Beverley. 7.30pm prompt. In the aftermath of WWI, a young German woman who grieves the death of her fiancé in France meets a mysterious Frenchman who visits the fiancé's grave to lay flowers. Oscar nominated. Members and guests only. Join the society for £15/annum at <https://beverleyfilmsociety.org.uk/membership/>

• Beverley Civic Society talk - Mary Wollstonecraft: The Beverley Connection

St Mary's Parish Hall, 7.30pm, £3 for non-members. Talk by Val Wise.

Saturday 10th March

• Our Criminal Ancestors: Crime, Policing and Punishment Workshop

Education Room, Treasure House, Beverley. 10am - 3.30pm. £20 (includes lunch and refreshments). Learn how to use historical crime, policing and punishment records to search for your relatives. Booking essential on 01482 392699.

• How to Read & Write Day School with Sue Wilsea

East Riding Theatre. 10.30am - 3.30pm. £28 includes refreshments, materials and feedback. Includes writing exercises, discussion and recommended reading. Booking essential on 874050.

• Beverley Community Choir and ER Suzuki Violin Group Charity Concert

Toll Gavel United Church. 7.30pm. £8/£6. Tickets from Beverley Tourist Information 01482 391672.

Monday 12th March

• The Walkington Singers Entertain

Walkington Methodist Church Schoolroom. 2pm. Songs you know interspersed with humorous readings.

• Norwood Nites Community Cinema

Norwood Church. 7pm. Free (donations welcome). The one about drug-addicted, homeless James who begs for money as a street performer until he meets an orange tabby cat called Bob who helps him turn his life around. Need a lift to get there? Call BCL on 01482 868082.

• White Horse Folk Club presents Will & Pippa Noble

Beverley Conservative Club. 8.30pm. £7. Rich repertoire of songs from the South Pennines.

Saturday 17th March

• Organ Recital by Harry Hainsworth-Staples and Luca Myers

Beverly Minster. 6pm. Free admission with retiring collection. Young organists from the Young Organ Scholars Trust.

Monday 19th March

• White Horse Folk Club Singers & Musicians Night

Beverly Conservative Club. 8.30pm. £2.

Wednesday 21st March

• WEA Beverley Latin Language Course Taster

Friends Meeting House, Quaker Lane, Beverley. 6pm. Free. Contact 01482 868848 for details.

Thursday 22nd March

• Classic Classics with Sinfonia Viva

Toll Gavel United Church, Beverley. 7.30pm. £15/£13/ Children under 14 free with full paying adult. Youthful favourites by Mozart, Elgar, Schubert and Haydn. Conducted by Alice Farnham. Tickets from 01482 395320.

Saturday 24th March

• Jelly Roll Jazz Band

Lund Village Hall, YO25 9TF. 7.30pm. £8.50. Fun-filled evening of eccentric inventions, quirky capers and hot New Orleans jazz. Tickets 01377 219598.

Tell us about your event!

E-mail info@justbeverley.co.uk

Telephone **01482 679947**

For more events visit
justbeverley.co.uk/events

• Alligators Let Loose in Cherry Burton

Village Hall, Cherry Burton, Beverley. 8pm. £10. Cherry Burton Arts event with Martin Peirson and the Runaway Train in support. Tickets from 01964 551145 or martin@peirson.karoo.co.uk.

Sunday 25th March

• Beverley Minster Choir sing Stainer's Crucifixion

Beverly Minster. 5.30pm. Free admission, retiring collection.

Monday 26th March

• White Horse Folk Club Singers & Musicians Night

Catholic Church Hall. 8.30pm. £2. Bring your own drinks and glasses.

Monday 26th and Tuesday 27th March

• Opera - Medea Maria performed by graduates of York St John University

East Riding Theatre. 7.30pm. £6. A moving and powerful contemporary opera retelling Euripides' Medea through the lens of Maria Callas, who played Medea many times in her career. Tickets from 01482 874050.

Wednesday 28th March - Monday 2nd April

• Alice's Eggstravaganza in Wonderland presented by She Productions and White Rabbit Chocolatiers

East Riding Theatre. £5/£6/£6.50/£7.50. 11am and 2pm. The Easter Bunny wakes up to find all the eggs meant for the Queen of Hearts' annual Eggstravaganza Party missing. Alice needs your help to retrieve them! Wonderland locals will have you singing and dancing around the streets of Beverley as you search for the missing eggs and the culprit who took them! Booking on 01482 874050.

Wednesday 28th March

• Fire Walk for Dove House Hospice

Firepit, Flemingate. 7.30pm. £30/entrant registration with minimum fundraising target of £100. Registration 6pm, training at 6.30pm. Walk barefoot on hot embers at a temperature of up to 650degrees Celsius and raise money for Dove House.

Thursday 29th March

• Beverley Ghost Walk

Royal Standard Pub. 7pm. £4 - booking essential at 01482 391672. Join Paul Schofield on a ghostly tour of Beverley.

Friday 30th March

• Good Friday Walk of Witness

Churches Together in Beverley celebrate the powerful Good Friday message through Beverley. 10.45am from Beverley Minster.

• Beverley Chamber Choir Good Friday Concert

St Mary's Church, Beverley. 7.30pm. £17.50/£12.50/£5. Brahms: A German Requiem and Allegri@Miserere Tickets from Beverley Tourist Information in the Treasure House.

Saturday 31st March - Sunday 8th April

• Funfair at the Beach

Flemingate. Pop-up funfair and beach with daily competitions.

kü

tchenhaus

The Largest Manufacturer of Quality German Kitchens

At Kutchenhaus we have affordable solutions made to meet your highest standards

2 Toll Gavel, Beverley, HU17 9AJ. T: 01482 862172.

Open: Mon-Sat: 10am-5pm. Sun: 11am-3pm. Bank Holidays: 10am-4pm.





RODIZIO BAR & GRILL

FUSING THE TRADITION BEHIND BRAZIL'S UNIQUE gaúcho style grilling and rodizio dining

Direct from the southernmost region of the Brazilian high plains comes a centuries-old way of cooking, where the rodizio found its roots around the campfires of the traditional gaúcho.



A continual service of large skewers of meat including beef, pork, lamb and chicken were spit-roasted over the famous churrasco barbecues and passed from man to man to enjoy.

At Chamas, we warmly invite you to experience an authentic taste of the gaúcho life - the food, the wine and most importantly, **the passion of the people.**

RATED No.1
out of 112 best
restaurants in
Beverley on

BOOKINGS
RECOMMENDED



chamasbeverley.co.uk | Tel: 01482 867897 | 9-10 WEDNESDAY MARKET, BEVERLEY

PREPARED WITH PASSION - SERVED WITH PRIDE!



Mouth-watering Mediterranean cuisine in a friendly and vibrant atmosphere.

Cosmos Restaurant Bar & Grill is perfect for a spot of lunch or a delicious dinner



UPSTAIRS DINING WITH VIEWS
OVER WEDNESDAY MARKET

Cosmo's

Flaming Grill
Restaurant & Bar

LUNCHTIME OFFER
MONDAY - FRIDAY 11AM - 4PM

CHOOSE ANY MAIN COURSE
FROM OUR SPECIAL LUNCH TIME MENU

FOR **£6.99***

*Terms and conditions apply. Please see website

**PIZZA AND
PROSECCO NIGHT**
EVERY THURSDAY!

2 PIZZAS AND A BOTTLE OF PROSECCO

FOR JUST **£19.95**

9 WEDNESDAY MARKET, BEVERLEY HU17 0DG ● COSMOSBEVERLEY.CO.UK ● TEL 01482 867891

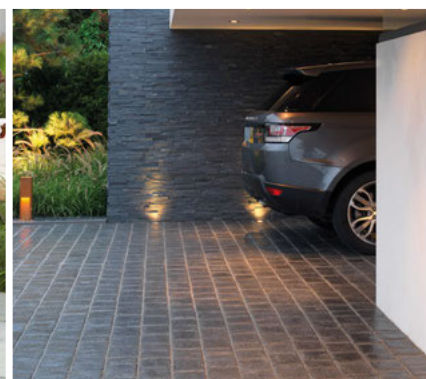
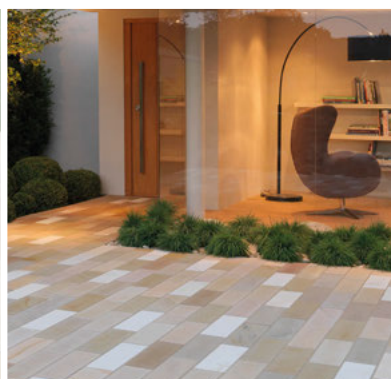


MY KIND OF
GARDEN

FREE
LOCAL DELIVERY

Make your **outdoor space** your perfect **living space**

Inject personality into your garden this summer with a little help from **MKM** & ensure your garden is the one they're all talking about!



Call into branch today at...

MKM BEVERLEY

SWINEMOOR LN, BEVERLEY HU17 OJX

01482 880088 | mkmb.co.uk  

