

just  
ISSUE 57

# BEVERLEY

PICK ME  
UP, I'M  
FREE

THE

GARDEN

Room



**SALT  
REVIVE.**  
COMBINING HEALTH  
AND BEAUTY

NEWS, WHAT'S ON, LIFESTYLE, FEATURES, PUZZLES, PHOTOS & MORE

To arrange a **FREE** meeting  
call us on 0845 308 2288  
or visit [www.stipendia.org.uk](http://www.stipendia.org.uk)



## Your Partners in Payroll

Changes in payroll. Have you got it right?

Benefits in kind / informing HMRC of changes

Outsource your payroll today and be rest assured everything is taken care of!

Are you:

- Making the Correct Pension Contributions?
- Aware of the Minimum Wage Rates?
- On top of the Statutory Sick and Maternity Pay Rates?
- Making the most of your Payslips?

Improve business  
performance by  
outsourcing payroll

Registered Office:  
4-6 Swabys Yard, Walkergate,  
Beverley, East Yorkshire. HU17 9BZ





33

## CONTENTS

Letters from the Editors **3**  
News **4, 5, 8, 9, 11, 14, 30**  
**PARKWAY CINEMA 6, 7**  
**EAST RIDING THEATRE 33**

## FEATURES

Beverly Food Festival **8**  
Salt Revive open the Garden Room **17**  
Fitness training and more **29**  
85 years in Business **30**

## REGULARS

Art & Culture **5, 9, 32**  
Competitions **7, 22**  
Competition Winners **6, 34**  
Countryside **12**  
Fashion **10, 20, 21, 22**  
Finance **25**  
Gardening **24**  
Literature **14, 17**  
Motoring **26**  
Pets **26**  
Photos **18, 19**  
Puzzles **27**  
Sports and Fitness **17, 28, 29**  
Travel **14, 23**  
What's On **35**  
Walking with Ian Richardson **16**



4



5



10



18



28



29

### Competition Terms and Conditions

Competition answers should be emailed to [competition@justbeverley.co.uk](mailto:competition@justbeverley.co.uk) before the closing date with the competition title in the subject field. Include your name, address and daytime contact telephone number along with your answer. Winners will be notified within 1 week of the closing date and MUST be available for publicity purposes for **Just Beverley** magazine, website and Facebook page and the prize provider. Photographs are usually taken the weekend after the prize-winners have been notified. The judge's decision is final. No cash alternative is offered. Details may be used for marketing purposes by **Just Beverley** and the prize provider and for website analytics by **Just Beverley**.

### Contributors:

Julian Minshall, Linda Johnson, Rich Manville, Lara Blythe, Clare Atkinson, Carfan, Jane Dale, Rich Hayes, Lauren Middleton, Glyn Myerscough, John Olivand, Colin Raynor, Karen Shead, Sam Walton, Clint Wastling, Nathan Wilson.

### REMEMBER!

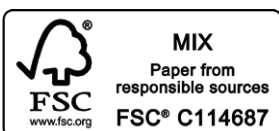
**If you see examples of anti-social behaviour or other types of low-level crime, do report it to the appropriate authorities. Without knowledge, the Police and Council cannot put in place processes and procedures to combat it! Cyclists without lights, on one wheel, traveling the wrong way down a one-way street put other road-users' in danger - let the Police know immediately!**

**POLICE - Emergency 999, Non-urgent 101.**

**ANTI-SOCIAL BEHAVIOUR (East Riding of Yorkshire Council) - 01482 393939.**

### You can pick up the magazine from:

Parkway Cinema, Flemingate, Beverley Tourist Information, Beverley Library/Treasure House, Tesco, Morrisons, East Riding Leisure Beverley, East Riding Theatre, Browns café, Beverley News, Boyes, Tesco café, Colette and Tyson Garden Centre, Beverley Garden Centre, Cherry Tree Garden Centre, Mace News Saturday Market, Co-op Food Lincoln Way, Tickton News, Costcutter in Walkington, Molescroft News, Grovehill Convenience Store, Maple News, Leconfield PO, Willerby News, Poundland, Halfords, East Riding Community Hospital, Bishop Burton PO, Leven PO, The Altisidora, Cherry Burton PO, Barkers of Cottingham, Middleton-on-the-Wolds PO, Light Dragoon at Etton, Gnu at North Newbald, Monks Walk, Hayride, Sally's Deli, Ferguson Fawcett at Walkington, THECREATIVELAB, health centres, churches, cafés, hairdressers and more!



Please pass your Just Beverley on or recycle it responsibly.  
Printed by: Jadan Press.

# just BEVERLEY

## LETTER FROM THE EDITORS



October sees the clocks going back by 1 hour, "Fall Back", which sees the end of summer. Autumn already! But the good news is that on the last Sunday of October, the 27th, we will be given an extra hour, either to sleep or to get things done.

However you choose to use the time, use it wisely. Remember, small change, BIG impact!

Just over four years ago, we welcomed Linda to **Just Beverley**. Now is the time to wish her well as she moves on to pastures new. Linda is pursuing a new path, keeping engaged with the local community, working for the good of Beverley and the East Riding. We wish Linda every success in her new position; it just leaves me to say: "Thank you, it has been a pleasure working together over these past 4 years."

Issue 58 - November, we will welcome Lara Blythe to **Just Beverley** to step into Linda's shoes. Have a great October and keep the stories coming in. **Julian.**



I officially joined the **Just Beverley** team on Edition 7, way back in June 2015. We are now on Edition 50 and I can honestly say the time has flown by! But it's now time for me to hand over my quill-pen and ink to someone who will take the magazine forward for

the next 50 issues and beyond, Lara Blythe. Not that I will be leaving completely (Julian isn't getting rid of me that easily!) as I will still be involved as a contributor. Having been elected to both East Riding and Beverley Town Councils in May, I shall be sharing my 'View from the Council Chambers' with you - none of the serious stuff, though, and definitely no politics, just a light-hearted look at some of the things that go on there! As a newbie, I'm still walking round County Hall with a map, trying to find my way around - the place is like a rabbit warren. So, if you work in County Hall and see me looking lost, it's because I probably am! Thank you for such positive feedback during my tenure and now it's all yours, Lara. But just remember one thing - wherever you are and whatever you are doing, be happy!  
**Linda.**



## GET IN TOUCH WITH US:

**Website:** [justbeverley.co.uk](http://justbeverley.co.uk)

**Email:** [info@justbeverley.co.uk](mailto:info@justbeverley.co.uk)

**Telephone:** 01482 679947

**Twitter:** @JustBeverley

**Facebook:** [facebook.com/justbeverley](https://www.facebook.com/justbeverley)

**If you would like copies for your business to distribute to staff and customers, call Just Beverley on 01482 679947.**

# LOCAL DANCER TO APPEAR IN NORTHERN BALLET'S CINDERELLA

*Northern Ballet's Cinderella features East-Yorkshire-born dancer Ashley Dixon in the role of the Magician, Cinderella's mystical benefactor who changes her destiny after a chance encounter in the marketplace.*

Ashley joined Northern Ballet in 2004 after training in Hull followed by London's Central School of Ballet. He has previously performed many leading roles during his time with Northern Ballet including Peter in Peter Pan, Beast in Beauty & the Beast and the Nutcracker Prince in The Nutcracker which audiences in Hull may have seen him perform last winter. This summer he was promoted to Principal Soloist.

Northern Ballet's performances in Hull this year sees Ashley return to Hull New Theatre performing in Cinderella which was last performed at the theatre during its world première tour in 2014. Choreographed by David Nixon OBE and combining thrilling dance with magic and circus skills, Cinderella will be at Hull New Theatre from 15-19 October 2019.

Tickets are now on sale from **01482 300306**.



# ARTERY LIVE KICKS OFF ITS AUTUMN PROGRAMME WITH THE HUT PEOPLE



*Sam Pirt and Gary Hammond (The Hut People) are one of the most entertaining and best-loved acts in the UK, let alone East Yorkshire. They play a mix of global rhythms with folk tunes from Quebec to Spain, Scandinavia to Sussex and everywhere in between.*

With lots of audience participation, step-dancing, Quebecois foot percussion (you have to see it!) and lots of humour, a night out with The Hut People is a great night out! Catch them at Swanland Village Hall on Saturday October 26th, 7.30pm. Tickets from **01482 634863** or [yd@swanlandvillagehall.info](mailto:yd@swanlandvillagehall.info)

# IT'S BEEN A BLOOMING GOOD YEAR FOR BEVERLEY

*Last month, communities from across Yorkshire headed to York Racecourse to find out how their villages, towns, cities, schools and shopping centres had done in the RHS Yorkshire in Bloom awards. Their horticultural, environmental and community efforts had been judged over the months of July and August and the marks tallied ready for the big announcement. It's fair to say that Beverley's results were 'blooming marvellous' with not one, not two or even three, but FOUR Golds and Best Large Town!*

Winning Gold for Beverley were Beverley Racecourse, Flemingate Shopping Centre, Molescroft School and Beverley. As the overall winner in the Large Town category, Beverley was awarded the coveted RHS Yorkshire Rose Award - Best Town 2019. This is the second time that Beverley has won the Yorkshire Rose Award!

We have Beverley in Bloom, a working group of Beverley Town Council with around 40 fabulous volunteers (including councillors past and present and staff) along with environmental and neighbourhood planting groups such as R-evolution and Harvest Court, Brighter Beverley, Beverley Litter Club, officers from the East Riding of Yorkshire Council and associated businesses and organisations to thank for

making Beverley look so tidy and beautiful. The Mayor of Beverley, Cllr. Duncan Jack said: "Each individual floral display plays its part in making Beverley a lovely place for residents and visitors. I am overjoyed we won the RHS Yorkshire Rose Award again - it's a tribute to the hard work and commitment from our volunteers all year around, not just on judging day."

Positive comments from the judges included praise for the way in which the town council and county council work together; how different communities come together to make the town so vibrant; the great range of festivals which attract visitors from around the world and the sense of pride. They also said they would come and visit when not judging!

Well done to everyone involved. If you would like to be part of Beverley in Bloom, give Town Clerk Helen Watson a call on **01482 308313** and she will get you signed up!



# CLOCK'S GO BACK AT 2AM ON SUNDAY 27TH OCTOBER

*British Summer Time is coming to the end for this year as we revert to Greenwich Mean Time (GMT) for the winter months. GMT is the standard time zone, against which all other countries in the world are referenced.*

Fortunately, modern time-pieces and smartphones adjust themselves, but there are still those older clocks around the house which need manually moving backwards. It's easy to forget and get caught out. But the BIG advantage of autumn is that we get an extra hour in bed. What's not to like!

# NEW SOCIAL GROUP, BEVERLEY BRUNCH BUDDIES, HAS STARTED AT CHERRY TREE CENTRE

*Are you over 60 and living on your own? Need a bit of company? Beverley Brunch Buddies could be for you!*

Enjoy a bacon bap and a cup of tea every Wednesday morning between 10am and 12noon at Cherry Tree Community Centre, make new friends and try some new activities! The MHA Live at Home Scheme provides support and services to relieve social isolation in and around Beverley. Beverley Community Lift will get you there and home again if you don't have transport.

Ellie Goodyear is the Community Programme Coordinator who will be running the group. Call Ellie on **01482 595574** or **07568 612020** for more details.

**EAST RIDING FESTIVAL OF WORDS** From the 15th to the 20th October, Beverley and the East Riding library team provide a literary bonanza! With some events already sold out as we go to press, this replacement for the former literature festival (LitUp) has captured the imagination with the most talented authors and performers to ignite your love of words and wordsmithery.

The festival incorporates children's events as well as more adult-focused events. There are workshops, talks, panels, the opportunity to enjoy tea and cake and even a murder mystery dinner when you have to work out who dunnit - 1920's dress optional!

From real-life experience to award-nominated novels and crime to comedy, the Festival of Words really does have something for everyone. To find out more, visit [www.festivalofwords.co.uk](http://www.festivalofwords.co.uk) or pick up a brochure at your local library or at Tourist Information.

# FROM HULL TO PROVENCE VIA BEVERLEY

**Those of you who lived in Hull or went to Beverley High School might remember Shirley Goodsell. Even more will know her as an artist who has exhibited in Beverley Art Gallery and Beverley Minster, as well as being a featured artist during Hull City of Culture 2017.**

You might think you know her work - but you will get a great surprise when you see her upcoming exhibition at Gallery@Salt in November because working in Provence, France, has thrown a whole new light on Shirley's compositions, literally!



Gone are the browns and muted colours of Hull's Old Town and here is 'Provence - The Colour Purple' in bright, bold colourways, painted with brave brush-strokes, sponges and palette knives. Provence in the hot sun has given Shirley the opportunity to transfer that heat to canvas and the result is striking!

When you are a Hull lass from Dagger Lane with Uncle Jack being famous for being the last blacksmith in the Old Town, painting your history is a rite of passage.

Ex-MP Alan Johnson opened Shirley's 'Hull's Old Town' exhibition which went to 5

different venues during 2017 and reminded people that the history of Hull and older people were as important to the City as new initiatives and the young.

But then a friend, Betty, who has an olive mill facing Mt Ventoux in Provence invited Shirley to go to stay as she thought the area was so beautiful that it needed Shirley's artistic talents to give it justice. Mt Ventoux has featured at least 16 times in the Tour de France and is interesting because the summit is made of salt and has no vegetation growing on it.

Ventoux means 'windy' and there can be wind speeds of up to 200mph; Shirley has managed to capture the yellow heat and the wind in her paintings, but she has also managed to capture the tranquility of Mirabelle's square at mid-day, calmness of the valleys with white-painted buildings, the shade of the olive trees and the movement of the lavender and grasses.

Shirley said: "Some of the work was completed in Provence, other paintings were started there and finished back in my East Yorkshire studio. I will be adding to the body of work over the next few months because this experience has been so liberating. I have felt a kind of freedom from the restrictions of the often sombre light intensity in Hull's Old Town and been able to experience different ways of expression.

Those who have seen the paintings comment on the shock of colours and are very complimentary of the new style. Hence the excitement of this new exhibition!" 'Provence - The Colour Purple' exhibition opens on November 7th at 5.30pm at Gallery@Salt and then runs every weekday 9am-5.30pm with occasional special weekend openings until January 31st.

## BEVERLEY'S ST NICHOLAS SCHOOL RETAINS ITS 'INVESTORS IN PUPILS' ACCREDITATION

**St Nicholas' pupils took the lead when their school was assessed by Investors in Pupils and were so impressive that the assessor wrote to them directly to tell them how much she had enjoyed her day with them!**

Investors in Pupils is a national programme which originated in West Yorkshire. It aims to empower all pupils, increase motivation and contribute to raising achievement across the Key Stages.

It offers schools a framework for involving pupils in decision-making, developing responsibility and leadership in relation to their learning, behaviour, attendance, classroom management and induction.

It develops a positive ethos where pupils learn about how the school is run and how they can contribute to that. This results in team-working, not only with other pupils, but also with the staff!

Schools provide evidence of achievements against different indicators which, most important, also contribute to a school's Ofsted inspection.

# SALT

GALLERY at SALT offers an opportunity for local artists to exhibit their work within a contemporary space situated on the ground floor of SALT Architects, in the heart of Beverley, East Yorkshire.

A rolling programme of exhibitions showcases a wide range of high quality works including paintings, printmaking, ceramics, jewellery and glassware.

GALLERY at SALT reinforces the connections between Art and Architecture providing a hub for discussion, debate and creativity.

**Tel: 01482 888102 | Email: [enquiries@saltarchitects.co.uk](mailto:enquiries@saltarchitects.co.uk)**  
**Web: [www.creationatsalt.co.uk](http://www.creationatsalt.co.uk)**  
**54 Lairgate, Beverley, East Yorkshire, HU17 8EU**



The children at St Nick's were praised for their caring, enthusiasm, good behaviour, knowledge of how the school works, team-working and leadership whilst the staff were praised for their encouragement and making school fun.

Teachers, governors and pupils should all be very proud of themselves!

There is an open hour Wednesday 23rd October, 10am to 11am for prospective pupils to look around the school.



**EVERY THURSDAY AT 10.30am**  
(doors open 9.45am)

Join us for a free brew and a natter and enjoy some great films on Beverley Parkway's Big Screen. Only £4.20 with drink and biscuits included. Aimed at 55s and over. Films subject to change.

**Thursday 3rd October -**

**The Art of Racing in the Rain**

Starring: Amanda Seyfried, Kevin Costner

**The Current War**

Starring: Benedict Cumberbatch, Tom Holland

**Thursday 10th October -**

**Aladdin**

Starring: Will Smith, Naomi Scott

**The Art of Racing in the Rain**

Starring: Amanda Seyfried, Kevin Costner

**Thursday 17th October -**

**Yesterday**

Starring: Himesh Patel, Lily James

**Aladdin**

Starring: Will Smith, Naomi Scott

**Thursday 24th October -**

**Blinded by the Light**

Starring: Viveik Kalra, Kulvinder Ghir

**Yesterday**

Starring: Himesh Patel, Lily James

**Thursday 31st October -**

**The Mustang**

Starring: Matthias Schoenaerts, Jason Mitchell

**Blinded by the Light**

Starring: Viveik Kalra, Kulvinder Ghir

## PENGUIN PARTIES

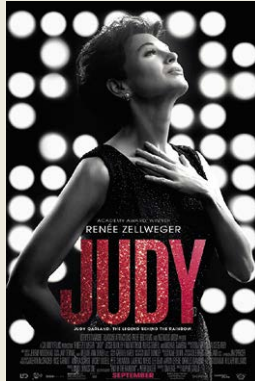


**ONLY  
£195**

- ★ Suitable for ages 5 to 12
- ★ Up to 40 guests (additional charge for extra guests)
- ★ Party games in a private function room with Parkway Penguin
  - Tea and coffee for parents on arrival
- ★ Personal Photo montage on screen followed by your own film screening

For more information,  
please contact a member of staff

These are the films scheduled to open in October - *all are subject to change.*  
Check out up-to-date cinema listings at [www.justbeverley.co.uk/cinema-times](http://www.justbeverley.co.uk/cinema-times)



2nd October



4th October



11th October



11th October



18th October



18th October



18th October



18th October



23rd October



25th October



30th October

## COMPETITION WINNER

Congratulations to Lucy Bilton who won the 'IT CHAPTER TWO' goodies.



# YOUR LOCAL INDEPENDENT CINEMA



## A LIFE IN FILM - 'HARRY BIRRELL PRESENTS FILMS OF LOVE AND WAR'

*Beverley's Parkway Cinema is to show the extraordinary story of amateur filmmaker, Harry Birrell, the man who captured his life on camera on Monday 21st October at 7pm.*

Harry Birrell was given his first cine-camera as a boy aged 10 in 1928. He spent his life recording incidents great and small. Home movies of family events and fine romances now ache with fond nostalgia, but Harry's life was also filled with far away adventures.

Narrated by RICHARD MADDEN the documentary plunders the treasure trove of Harry's 400 films and personal diaries to capture a vivid sense of wartime years spent in Bombay, the jungles of Burma, leading a battalion of Gurkhas and in the mountains of Nepal. Matt Pinder's beautifully composed, captivating documentary delivers one man's cinematic vision of the 20th century and his own incredible journey through it. Harry's granddaughter, actress and producer of the film, Carina Birrell, will be in person at the Parkway to answer questions after the film screening.



**Special presentation  
with On Stage Q&A**

**with Carina Birrell**

**Monday 21st October  
at 7pm**

**Tickets now on sale**

## COMPETITION - WIN HARRY BIRRELL PRESENTS FILMS OF LOVE AND WAR TICKETS



*Parkway Cinema is offering a pair of tickets to this fascinating event with a showing of the film followed by a Q&A session with Carina Birrell.*

Harry, as well as being a passionate photographer and movie-maker, was also a diarist, which puts the films into context. Harry lived in Paisley in Scotland so we see Glasgow in the twenties and thirties when Harry was courting along with footage of the time Harry spent with the Gurkhas and elsewhere during the war.

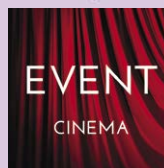
The footage is mostly in colour, which adds clarity to the events and is narrated by Game of Thrones, Bodyguard and Rocketman star Richard Madden, who hails from Elderslie, which is close to Paisley.

All you have to do to be in with a chance of winning the tickets is to answer the following question:

**Where did Harry Birrell come from?**

Send your answer by email to [competition@justbeverley.co.uk](mailto:competition@justbeverley.co.uk) by October 17th. Put 'Harry Birrell' in the subject box with your answer, name, address and daytime telephone number in the body of the email.

The winner will be drawn at random immediately after the closing date and winners informed as soon as possible. There is no cash alternative. Good luck!



Event cinema offers something a little different to mainstream films. Live and pre-recorded shows beamed in via satellite from all over the world. Here are the latest live streams that you can enjoy on the big screen at Parkway Beverley.

**Friday 27th September at 3pm &  
Thursday 3rd October at 7.30pm -  
NT LIVE: FLEABAG (ENCORE) (15)**

**Monday 30th September at 7.30pm -  
HITSVILLE: THE MAKING OF MOTOWN**

**Tuesday 1st October at 7.15pm -  
PLÁCIDO DOMINGO: 50TH ANNIVERSARY  
GALA EVENING**

**Wednesday 2nd October at 7.30pm -  
ROGER WATERS US+THEM (15)**

**Monday 7th October at 7.30pm -  
ELVIS UNLEASHED (PG)**

**Tuesday 8th October at 6.45pm -  
ROH: DON GIOVANNI**

**Wednesday 9th October at 7.30pm -  
S&M2: METALLICA AND THE SAN  
FRANCISCO SYMPHONY**

**Thursday 10th October at 7.30pm -  
BILLY CONNOLLY: THE SEX LIFE OF  
BANDAGES (18)**

**Tuesday 15th October at 7.45pm -  
MILES DAVIS: BIRTH OF THE COOL**

**Thursday 17th October at 7pm -  
NT LIVE: MIDSUMMER NIGHT'S DREAM (12a)**

**Monday 21st October at 7pm -  
HARRY BIRRELL PRESENTS PICTURES OF  
LOVE & WAR**

## LIVEshows

**Sunday 13th October at 7pm -  
GIMME ABBA**

**Sunday 20th October at 7pm -  
TAKE THAT EXPERIENCE**

**Sunday 27th October at 7.30pm -  
BEVERLEY BUZZ COMEDY CLUB**

**Monday 28th October at 2pm -  
PANTO OF THE DEAD**

**Sunday 10th November at 7pm -  
CHRISTMAS WITH STEPTOE & SON**

**Sunday 3rd November at 7.30pm -  
THE COUNTERFEIT SIXTIES**

# BEVERLEY FOOD FESTIVAL RETURNS FOR A 14TH TASTE-TERRIFIC YEAR!

*When Beverley Town Council organised the first Food Festival in 2006, little did they know it would go on to be an annual success enjoyed by thousands of residents and visitors alike. The original idea was to bring a few producers from Beverley's rural hinterland into the town centre to help celebrate local food. So, on a crisp Sunday morning, thirty-five producers set up their stalls along with a small Food Theatre. It proved to be a big success for the Town Council and has become an award-winning event!*

This year 120-plus stalls will be there, alongside the well-loved Food Theatre Marquee. Thousands of people will attend this free community event, bringing a welcome economic boost, not just to the food producers, but also to retailers and the local hospitality trade.

This year, students from East Riding College are joining in to help in the Food Theatre which is sponsored by the East Riding College, EY Events, Hull & East Yorkshire Hospitality Association and Beverley Town Council and John Cosham will be giving talks on food-waste and composting in line with environmental themes. Additionally, the Mayor of Beverley, Cllr Duncan Jack, will be hosting a charity stall raising funds for the East Yorkshire Foodbank, profiling the need within our area. We are also to be joined by a celebrity Yorkshire guest chef Nigel Brown from his Academy in Barton-on-Humber.

Starting at 9.30am on Sunday 6th October, with an official opening by The Mayor of Beverley

Councillor Duncan Jack at 10.00am, the festival runs until 4.30pm, with a wide range of different foods from around the region available to purchase and enjoy. Shoppers can find everything from locally reared meat and traditional preserves, to tasty tangy cheese and real Yorkshire ale. One of the favourite festival sights is hundreds of people walking around the streets of Beverley, with sticks of freshly bought local sprouts over their shoulders! Additional to these traditional stalls will be some carefully selected hot food vendors, giving people the chance to taste some terrific street food not usually available in our market town.

Once again, the Food Theatre Marquee will feature a host of local chefs ready to whip some ingredients from stall holders into delicious and exciting dishes with the hotly-contested HEYHA Copper Saucepan Apprentice Chef competition featuring two local aspiring apprentice chefs. Familiar festival friends including Professor Fiddlesticks, Bandanarama, the All For One Choir and Beverley Garland Dancers will be out and about to entertain around the town, with Beverley FM and BBC Radio Humberside broadcasting live. The Beer Festival at St Mary's and the Gentle Festival at Toll Gavel United Church are also happening making the weekend a real community celebration.

The beauty of the entertainment is that it's all locally home-grown just like the food!  
The Mayor of Beverley Cllr Duncan Jack said, "This award-winning festival has really put

Beverley Town Council Presents  
**BEVERLEY FOOD FESTIVAL**  
SUNDAY 6th OCTOBER 2019

9:30am to 4:30pm - Market Place, Beverley

Over 120 stalls selling the finest food and drink produced in the region

Beverley on the foodie map! Thanks to Beverley Town Council officers and collaborative partners for their hard work in pulling this event together. It coincides with a visit from our 'twins' from Nogent-sur-Oise in France, too! Beverley Town Councillors will be there all day, so do come and say 'hello' to us!" Town Clerk Helen Watson said "The Beverley Food Festival is a calendar event which residents and visitors look forward to each year. Beverley was founded around 721 by St John and it became a town of sanctuary and pilgrimage for many; here there would have been feasting and music within the community. In 2019 we are still able to offer a warm welcome to Beverley with this free community event to continue the long-established customs of old. It does have something to suit all tastes. We hope the idea whets your appetite and you will join us for a family day of food, festivities and fun!"

For more information contact tel. **01482 874096**, [www.beverley.gov.uk](http://www.beverley.gov.uk) or [clerk@beverley.gov.uk](mailto:clerk@beverley.gov.uk)



## LOOKING TO MAKE FRIENDS in the Beverley area?

Since 1929 many women across the country have enjoyed the invaluable benefits of TG membership. They've experienced new things, visited different places, taken on incredible challenges, fought for women's rights and most importantly developed lasting friendships.

**Interested in seeing what it is all about?**

You are welcome to attend a Guild before considering membership.

If you would like more information or to find your local Guild visit [www.the-tg.com/north](http://www.the-tg.com/north) or call **0121 326 0400**

**Join the TG family**

JBJOIN



**UNITING WOMEN SINCE 1929**



# NO SNOOZING AT THIS YEARS PARKWAY PANTO

**Beverley's professional pantomime at Parkway is proud to present a relaxed performance of 'Sleeping Beauty' on Saturday 21st December at 6pm.**

We believe theatre is for everyone! This special performance will be signed by a BSL interpreter as well as aims to accommodate people on the autism spectrum, as well as those with communication difficulties and learning disabilities.



During this show, the lights in the auditorium will be left on a dim setting and there are no loud bangs or pyrotechnics used.

The doors are left open to the bar should you wish to dip in and out during the show but the pantomime will still be a high energy, fabulous quality production.

PERFORMANCES			TICKETS
Sat 14	2pm	6pm	Early Bird Prices (ends Oct 31st) Adult £13 Conc £11.50 Family £40**
Sun 15	11am	3pm	
Fri 20		6pm	Normal Prices Adult £14 Conc £13 Family £48**
Sat 21	11am	3pm 6pm*	
Sun 22	11am	3pm 6pm	
Mon 23		2pm 6pm	
Tue 24	11am	3pm	
Thu 26		2pm 6pm	
Fri 27	11am	3pm	* Saturday 21st 6pm will be a BSL signed and autism friendly relaxed performance
Sat 28	11am	3pm	** Family ticket includes four tickets with a minimum of two children.
Sun 29	11am	3pm	

Everyone is welcome to the 'panto of their dreams'... East Riding's delightful and fun, Festive treat. Don't get caught napping and get your tickets at early bird prices!



## Hear CLEARLY again...

Never miss out on the sounds you love

with the latest comfortable and invisible hearing aids

**FREE HEARING AID TRIALS\***

**FREE HEARING TESTS**

**INVISIBLE RECHARGEABLE & SPECTACLE HEARING AIDS**

**WAX REMOVAL SERVICE**

- ✓ **EASY** parking
- ✓ **HOME** visits available
- ✓ **FREE** aftercare
- ✓ **5 YEAR** warranty\*
- ✓ **5 YEAR FREE** batteries\*
- ✓ **INDEPENDENT** family business



Hearing aids don't have to be seen!

Clare House, 8-10 Baker Street, Hull HU2 8HP

**t: 01482 22 22 04**

[www.hullhearingcentre.co.uk](http://www.hullhearingcentre.co.uk)

**HULL hearing CENTRE**  
independent hearing aid audiologists

**TROUBLE HEARING? CONTACT US TODAY**

\*on selected products

# THE BROOK TAVERNER HARRIS TWEED CONNECTION

*Harris Tweed is viewed by many as one of the pillars of Scottish culture. Woven in the Outer Hebrides since the late 18th century, this famous Tweed has a distinct reputation of style, heritage and quality. If fashion changes with the seasons, Harris Tweed is an exception that proves the rule.*

It is widely known that Harris Tweed is protected by a 1993 Act of Parliament, whereby all labelled Harris Tweed garments must have been woven on the Isles of Harris, Lewis, Barra, or Uist in the Outer Hebrides of Scotland. It is an unparalleled act replicated by few fabrics and further enhances the traditional values and quality of heritage Tweed.



Less widely known however, is the connection with Brook Taverner - the home of all menswear needs in the heart of Beverley. Whilst many boast of their long Harris Tweed lineage, few are able to beat the claim offered by Brook Taverner.

Our own West Yorkshire home in Haincliffe Road, Keighley, has shared its roof with dozens of Kenneth Mackenzie Ltd members of staff, the

company once responsible for 97% of Harris Tweed production, over the past 15 years.

Mr J B Haggis, the man who, until very recently, held 100% ownership of Kenneth Mackenzie Ltd, was heavily involved in the purchase of Brook Taverner, and in 2003 played a key role in their move from Huddersfield to the current 180,000 sq foot location in Keighley.



Brook Taverner, now a second generation family business, has maintained this long-lasting tradition to enhance relationships between the two historical powerhouses.

The 2019 Autumn Winter collection consists of three lead products; the matching Luskentyre Jacket and Waistcoat, the in-store exclusive Scarista Jacket with matching waistcoat, and the award-winning Traigh Winter Jacket.

The latter two garments, produced in association with the islanders of the Outer Hebrides are made from the new-to-2019 lolaire fabric, a fabric produced in commemoration of the 1919 Maritime



disaster close to Stornaway Harbour to raise funds for local lifesaving children.

The eagle-eyed may notice darker shades compared to previous collections. With a contemporary take on navy-blue (historically Scottish colours of course!), more distinct checks combined with supplementary vibrant colours, this year's Harris Tweed collection was designed to stand out from the crowd yet continues to offer the distinct qualities the fabric is famous for.

All three jackets and matching waistcoats are now available in our Beverley store.

Brand New  
Autumn 2019 Collection  
In store Now

Store Opening Times  
Monday to Saturday 9am - 5.30pm  
Sundays 11am - 4pm

**BROOK TAVERNER**  
35, TOLL GAVEL, BEVERLEY. 01482 882356

# RAYMAC CELEBRATES MOVE TO BEVERLEY

*Imagine if there was a way you could order large bespoke signage straight to your door, receive express free delivery on all orders and have them arrive within the same day. Isn't that the dream. Now just imagine if you had that simple, flexible and quick production facility right here in Beverley. Well, thanks to Raymac Signs Ltd, now you actually do.*

Raymac Signs Ltd have specialised in the manufacture and supply of health and safety signs, stickers and large format printing in the agricultural sector since 1982 and have recently celebrated their move to a new premises right here in the industrial centre of Beverley.

Previously based in Malton, the business was bought in 2016 by Managing Director Andy Hayes. Now 3 years later following a challenging period of business reorganisation, he talks us through the big decision to relocate and what the future holds for Raymac and Beverley. While Raymac brings with it 30 years of long standing heritage and a well-known national reputation, it is essentially a new business in the heart of Beverley as the big move puts Andy's three businesses all under one roof: Raymac, Indicol and Just Beverley.

Localising all three businesses together just off Annie Reed Road in Beverley effectively combines Raymac's new services of express large scale and personalised printing with the one stop shop for web, graphic design, print, social media and internet marketing of Indicol and the thriving business hub of Just Beverley. The printing services Raymac are bringing to Beverley include everything from large scale printing of safety signs, bespoke vehicle graphics and pop-up banners to personalised gifts, wall art, vinyls, frosted windows and more.

There are now many opportunities that will allow Raymac to expand into other markets and help retailers across the UK grow their businesses too, and Andy is keen to continue investing in the future. Just last year, Raymac invested more than £100,000 into new state of the art printing equipment. The Mimaki JFX200-2513 UV LED flatbed printer replaced manual processes and increased the production capability of in-house products.

Andy said: "It was a big investment in the future and technology, but ultimately offered Raymac unlimited creative opportunities to increase the company's potential, and it's really exciting that this kind of technology exists now in Beverley".

With a printing capacity of 2.5m x 1.3m, Raymac can print large format prints on an extensive range of materials: Foamex, Slate, Ceramic Tiles, Stone, Splashbacks, Wood, Glass, Acrylics, Doors, Aluminium Substrates, Polycarbonates, PVC, Metal, Polyester and more - it even prints on water!

Andy said: "What's great about the new business and technology we're bringing to Beverley is the impressive speed of which we can give solutions to our customers in the public and trade. It's an express service and the turn around is so quick now."

Coinciding with the relocation, Ali Hornby will be joining Raymac as Sales Director and Co-Owner. Ali brings with her over 20 years of retail and sales merchandise experience that will help service, manage and grow local and national sales at Raymac, and provide an essential strength to the company's skillset. Speaking about the avenues this role will open up for business, Andy said: "We have never had this role at the company before so it's an exciting first for Raymac. Ali is going to bring a new energy and sales-oriented viewpoint that we have perhaps been lacking before, so it's great for the direction the business is heading in".

"Raymac already exists on a national level in that it currently has over 500 distributors across the UK but we want to encourage and increase national business even further, so it will be Ali growing that side."

The move into a new all-purpose design studio just off Annie Reed Road in Beverley seems to be accommodating Raymac's plans for growth already, so if you're thinking of paying a visit, the new address is **Unit 2, Becks Court, Annie Reed Road, Beverley, HU17 0LF.**

# RAYMAC

[www.justbeverley.co.uk](http://www.justbeverley.co.uk)



## Botterill & Co

Chartered Certified Accountants

We are a modern and professional accountancy practice ideally located to serve businesses in Beverley and the surrounding area.

We utilise modern accounting technology to provide you with a cost effective, professional service.

### Our services:

- Annual Accounts
- Company Formations
- Tax Planning
- Payroll
- Management Accounts
- Cloud Accounting
- Tax Returns
- Bookkeeping & VAT

For a free initial consultation please contact us:

Office: 01482 862240

Mobile: 07966 051458

Email: [garth@botterillco.co.uk](mailto:garth@botterillco.co.uk)

Website: [www.botterillco.co.uk](http://www.botterillco.co.uk)

1st Floor Offices, 40 Norwood, Beverley, HU17 9EY

**SHOCKINGLY GOOD VALUE**

# £49 PER MONTH WEBSITES

**PAY JUST £499 DEPOSIT**  
**THEN JUST £49 PER MONTH**  
**FOR A MINIMUM TERM OF 12 MONTHS**  
**AND THEN PAY MONTH-BY-MONTH THEREAFTER**

**FOR A WEBSITE THAT GETS REAL RESULTS...**

CALL NOW ON:  
01482 428650  
[marketing@indicoll.com](mailto:marketing@indicoll.com)  
[indicoll.com](http://indicoll.com)

**INDICOLL**

Just BEVERLEY

# COUNTRYSIDE MATTERS WITH SAM WALTON

We hear a lot these days about drones in their various forms. There are many other words in the English dictionary too which have different meanings which is probably why English is one of the most difficult languages to learn. Taking the word **DRONE**, it can mean a couch potato, a scrounger or parasite and it can also mean a buzz or a whirr or something monotonous which goes on and on, like a boring person talking in the same dull tone. However, in farming terms we have a couple of drones which are **VERY helpful**.

One of them is a drone bee in a hive with the sole intent in life of mating with the Queen bee and then dying. Bees play a huge part in farming and I think we are only just beginning to realise just how vital they are.

The other is the model flying drones we are seeing more and more of, like the ones which have played havoc with aeroplanes and airports recently, but which are playing an even bigger part in modern farming.

I remember the days when tractors didn't even have a cab, so you sat with a sack over your shoulders if it rained.

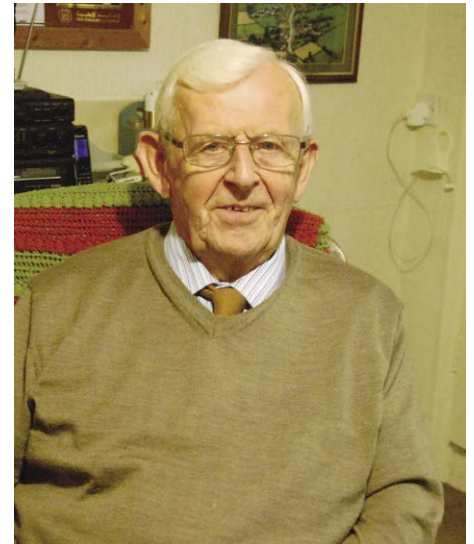
Nowadays they are awash with technology and the farmer can take pictures with the drone which will tell him which part of the field needs more or less fertiliser or spray, from the colour of the crop or the soil, denoting soil type.

I have a friend who covers the whole of his farm with a sophisticated drone and maps it all out which is then put into the tractor programme and that then applies the material at the correct rate. That can make huge savings instead of putting the same amount on the whole field. That sounds very simple but that is the best way I can describe it. Drones can be used to assess flooding or disasters of any kind, or take aerial photos for information, so are playing a vital role in modern agriculture and I suppose life also.



I know that there are several people now owning drones which they use for photography and I am sure that some of the shots we see on some TV programmes are from drones, as some of the tree and hill tops shown are far too close for a plane or a helicopter to be used.

So back to the bees. The drones are all males and only ever leave the hives to mate with a Queen, so they eat a lot of the honey to sustain



themselves while all the workers are female, frantically collecting to keep the hives going, which is probably one reason why they only live six weeks!

I mentioned some time ago about a trip over the Yorkshire Moors and when the heather is in full flower, that is where the best honey comes from and you have to say that it looks absolutely magnificent in full flower.

What many people might not think about or even realise is how important bees are to the farming industry by helping to pollinate a variety of crops, without which the yields would be a lot less, and you would probably be quite hungry without them. Isn't nature wonderful?

### AFTERNOON TEA MENU

£12.95 PER HEAD OR  
£24 FOR TWO PEOPLE

AVAILABLE MON-SAT 12-5PM,  
PRE-BOOKING IS REQUIRED AND  
GLUTEN FREE OPTIONS ARE AVAILABLE

### CHRISTMAS BOOKINGS

NOW BEING TAKEN

MON 2ND DECEMBER -  
FRI 27TH DECEMBER

2 COURSE MEAL £15.95  
3 COURSE MEAL £21.95  
(EXCLUDES SUNDAYS &  
CHRISTMAS DAY)

HOME COOKED  
FOOD SERVED  
7 DAYS A WEEK

CYCLISTS  
WELCOME

# THE TIGER INN

Brains required from 8.30pm

FIRST SATURDAY  
OF THE MONTH

## Big Quiz

Free food/prizes to be won,  
all money raised to our house charities.  
£1 per person entry

Tel: 01482 869040

www.tigerinnbeverley.co.uk

Lairgate, Beverley HU17 8JG

Going to East Riding Theatre?  
Book at The Tiger Inn for a  
pre - show meal

HOMECOOKED  
Sunday  
Lunches

Served every Sunday  
12noon-7pm

Telephone: 01482 869111  
sales@rosesofbeverley.karoo.co.uk



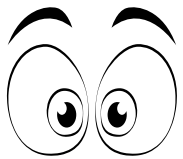
The Kitchen Factory, The Courtyard,  
Tokenspire Business Park, Beverley  
HU17 0TB

*Together we will design a beautiful kitchen*



Roses will then  
**project manage**  
your kitchen installation from  
**start to completion**

**Our NEW 2020 Season  
Displays are now being  
Installed in our Showroom**  
*Why Don't You Come And Have A Look*



Visit **www.roseskitchens.com**  
to see our customers kitchens and read what they have to say about us

**Telephone: 01482 869111**



# EAST YORKSHIRE COACHES SET TO UNVEIL 2020 HOLIDAY PROGRAMME

Local coach operator East Yorkshire Coaches will this month release its 2020 holiday and city break programme, with a fresh, new look brochure, and a range of holidays to choose from.

To celebrate the new programme, there will be a launch event and open day on Saturday 12 October, 12.30pm until 3pm, at the Britannia Royal Hotel on Ferensway in Hull, with brochures also available a few days before from Hull Travel Centre.

The hotel is next to Hull Paragon Interchange, so is easily accessible with regular buses from Beverley on Services X46, 121, 122 and 246.

Members of the East Yorkshire Coaches team will be available at the event to give more information about the 2020 programme and answer any questions. All holiday and city break bookings made on the day will receive a 5% discount.

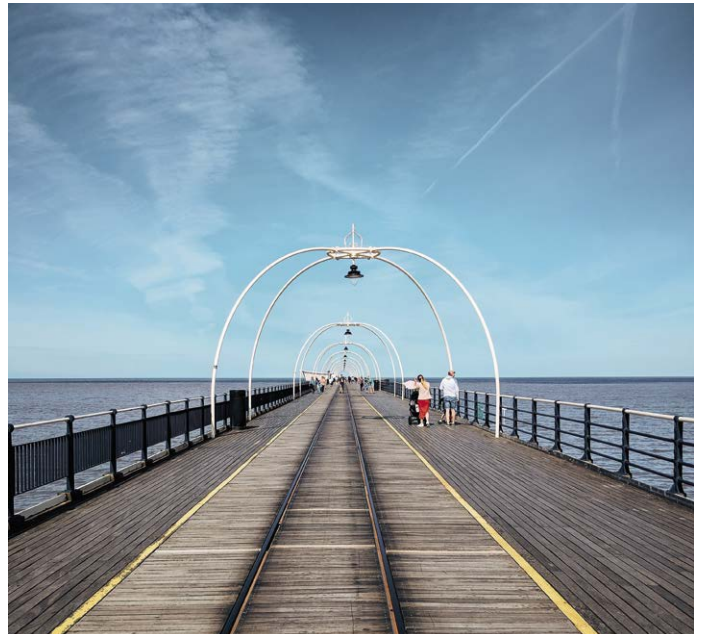


The programme itself will feature a choice of 2-day and 3-day weekend city breaks from just £89, with centrally-located hotels to make it easy to explore, and breakfast included in the price.

Longer holidays include classic favourites such as the Isle of Man and The Lake District, as well as plenty of new destinations to discover.

All holidays and city breaks pick up in Beverley, with 5-day or longer breaks including door to door pick-ups free of charge to make the trip even more enjoyable.

More details about the East Yorkshire Coaches 2020 holiday brochure can be found online at [www.eastyorkshirecoaches.co.uk](http://www.eastyorkshirecoaches.co.uk) or by calling 01482 222444.



## INCHES BODY STUDIO

COURSES  
FROM

# £110

SPECIAL OFFER

3 Months Toning  
3 Months Vibraxis  
3 Contour Wraps

# £179

Normal Price over £300  
Limited Availability

What are toning tables used for?

Toning Tables help with fat loss, ME, MS, Osteoarthritis, rheumatoid arthritis, knee and hip replacements, depression, bad backs, frozen shoulders and stroke rehab

GET FIT  
FOR  
CHRISTMAS!

FREE WEEKS TRIAL

for anyone with Health issues - No obligation

Inches Body Studio, 1 Norwood, Beverley HU17 9ET

Wheelchair access & stairlift available

Telephone: 01482 865229

Email: [inchesofbeverley@hotmail.co.uk](mailto:inchesofbeverley@hotmail.co.uk)  
[www.inchesbodystudio.co.uk](http://www.inchesbodystudio.co.uk)  
Established 1992

# East Yorkshire Coaches

## 2020 holiday brochure launch & open day

Saturday 12 October 2019 : From 12.30pm until 3.00pm  
Britannia Royal Hotel : Ferensway : Hull

- : Catch the bus direct to Hull Paragon Interchange.
- : Come and meet the East Yorkshire Coaches team and find out more about our 2020 coach holidays and city breaks.
- : Plus, there's 5% OFF all bookings made on the day!

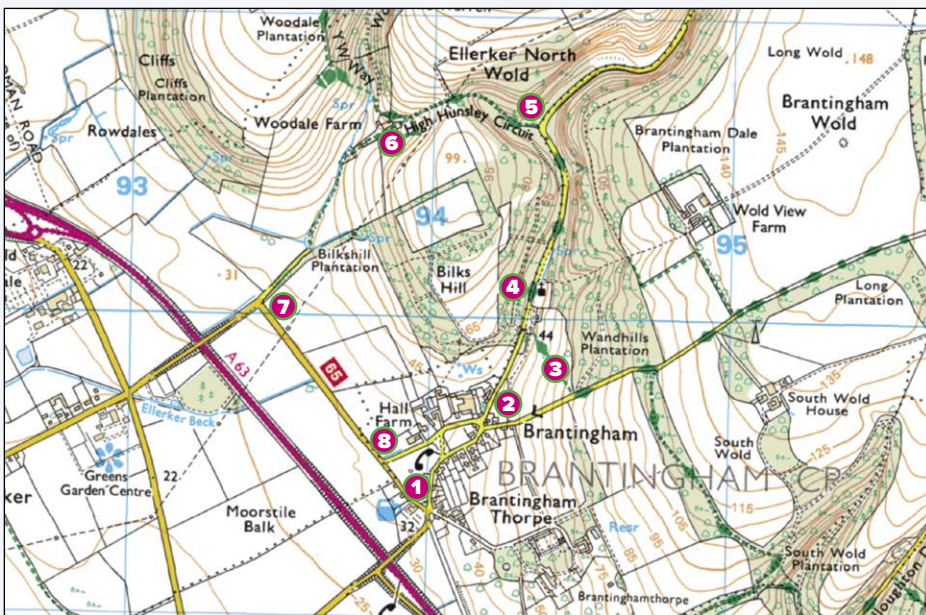
01482 222 444

[www.eastyorkshirecoaches.co.uk](http://www.eastyorkshirecoaches.co.uk)



Edinburgh Tattoo, Scotland

# WALKING WITH IAN RICHARDSON... AN AUTUMN AMBLE AT BEAUTIFUL BRANTINGHAM



*Brantingham is an exceptionally lovely village, set beneath the slopes of the delightful southern wolds. This gentle 3 mile amble lets you enjoy its many fine buildings and takes in two splendid dales. You can make it far shorter, if you are content to just walk the village streets and go up to the church.*

There is a little road walking involved, but they are usually quiet ones with verges allow you to stay safe. Whilst walking you can also ponder on one of the most perplexing of unsolved local crimes: the Roman mosaic pavement that walked!

**1** Begin at the popular Triton pub (HU15 1QE), where you can park if you purchase refreshments there, or use the adjacent quiet lanes, there is also a limited EYMS bus service to and from Hull.



This tiny village has a wealth of fine architecture, with almost every building enjoyable. The war memorial is distinctly odd, made up of pieces from the demolished Victorian Hull town hall.

Across the road is a group of nice rusticated cottages, including the former the post office. The village was part of the vast Sykes estates - the Triton being their symbol.

Head north, up to the imposing village hall and the village green with its nice pond. Surrounding this are handsome grand Georgian houses, especially the tall Brantingham Hall.

Enjoyable also is the lovely stepped water pump. No village in the Riding has a greater air of affluence.



Village pump

**2** Go right up the metalled lane of Spout Hill, which rises to give fine views, there is a lovely stone cottage here with a date stone of 1713.

**3** After 400 yards, take the path to the left that heads down into Brantingham Dale, emerging through tree by the beautifully sited church, which you might be fortunate enough to find open. Largely a Victorian rebuild, the best thing about All Saints is for me its gorgeous location in this lovely valley, that unusually for the wolds has a beck running through.



All Saints

**4** Go right and walk carefully up the dale road for some 500 yards.

**5** Take the the clear marked path that heads left over to South Cave. This is a smashing rollercoaster of a route, with fantastic views over the Humber and into the surrounding verdant hills.

**6** After half a mile, take the path left that heads down the secluded valley of Wooddale, passing

farm buildings and a lovely little pond. The path soon becomes a metalled lane, here, whilst walking in early September, I came across an adventurous dachshund, which despite its short legs, had wandered far from home. I am pleased to say that the phone number on its collar meant it was soon reunited with its owner.

**7** In 500 yards you reach the road back to Brantingham - which can have fast traffic - so as you head left back to the village, do take care and use the broad verge on your right.

**8** When you reach Burrill Lane on the village outskirts, go left and curve back past an imposing farmhouse, to the green and pond before heading back down to your starting point. Half a mile south of the village there is the site of a major Roman archaeological discovery and mystery. Sadly, there is nothing now to see above ground. Here in 1941 the mosaics and heating system of a fine villa, close to the Roman settlement of Petuaria (now Brough). The beautiful Tyche mosaic found here is now in the East Riding Museum in Hull, but its geometric partner, which was equally impressive, vanished in 1948, just prior to it being due to join the other. It is amazing that 70 years, on who took it, and where it went, remains unsolved. It forms the central narrative of the successful Clive Ashman novel, Mosaic (The Pavement That Walked) of 2011, well worth reading I may add. You might well finish your walk with a visit to the pub and see if you can solve the Brantingham mystery. Sadly the village, like most, has now lost its post office, not surprisingly for its population is only just over 300, but well-served Brough and Elloughton are both nearby. Happy ambling this autumn.



Woodale



Village pond



The missing mosaic



# THE GARDEN ROOM - BEVERLEY'S NEWEST HEALTH & BEAUTY ROOM!

*This flower-adorned room continues Salt Revive's natural theme and offers the chance to enjoy an incredibly calming atmosphere created to achieve maximum relaxation and help you feel as good on the inside as you do on the outside!*

The Garden Room is also very excited to be introducing an innovative product, new to Beverley, the infrared blanket!

Like a large, heated sleeping bag, this blanket uses infrared technology to heat your body, just like an infrared sauna.

Benefits include detoxification, improved blood circulation, relief from back pain, arthritis, sore muscles and joints and it could also aid weight loss.

In addition to the standard treatments - massage, facials, spray tans, manicures and pedicures etc, treat yourself to one of their 'health packages' to

help your insides too! Salt Revive offers a unique, spa like therapy, using naturally medicinal salt-infused air to help you to breathe easier, improve your skin and could help relieve stress and anxiety by boosting your serotonin levels.



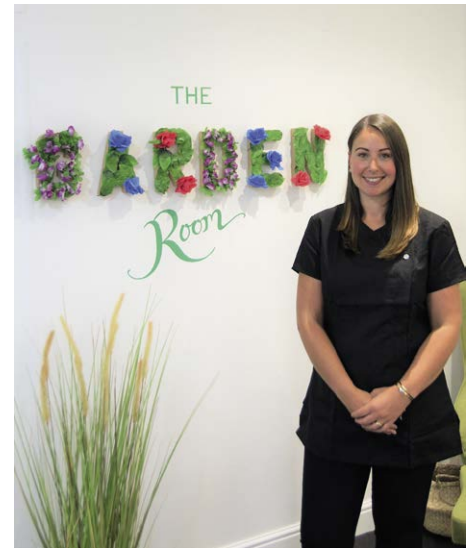
Salt Revive are proud to be celebrating their first anniversary and to mark this will be holding a special open day on Saturday 12th October. A variety of special offers will be available all day, from £10 salt therapy

sessions, to discounts on beauty treatments. Booking is essential, call Salt Revive on **01482 679453** to secure your space.

What's more, as a thank you to loyal customers, anyone who has bought a salt therapy package within the last year will qualify for a free salt session on Saturday 12th October!

Booking is essential and will be on a first come first served basis.

With additional rooms, Salt Revive can now offer you even more rejuvenating treatments, such as



reflexology, ear candling and Reiki. Other special events combining yoga, sound therapy and salt therapy are also available. Be quick though, they're usually sold out well in advance!

Salt Revive is fast becoming a centre of wellbeing and staff would like to thank everyone who has supported them over the last year.

On first opening, salt therapy was relatively unheard of. Now customers come from far and wide to escape, relax and revitalise and some have even improved their quality of life through salt therapy, what better accolade or recommendation do you need?!



**Salt Revive**  
nature's cleanser

For thousands of years 'salty air' has been a recommended form of health therapy.

Salt therapy could help adults and children suffering from COPD, Asthma, Eczema, Psoriasis, Stress, Anxiety.

**Tel: 01482 679453**  
85 Mill Lane, Beverley HU17 9DH

**AT SALT REVIVE**

**New health and beauty room**  
Look after your inside as well as your outside

The benefits of our innovative infrared blanket include detoxification, improved blood circulation, relief from back pain, arthritis, sore muscles and joints, and it could also aid weight loss.



Send your photographs of your celeb  
Find us on Twitter and Facebook to s

# YORKSHIRE PARA-CYCLING 2019



# THE IVAN USHER STAND OPENING



HERE TO GET *you* THERE

# HUNTERS®

EXCLUSIVE

BEVERLEY / 01482 861411

## FILM ON A FARM



## PROCESSED PEA CELEBRATES 50 YEARS



SALES / LETTINGS / MANAGEMENT

# HUNTERS®

HERE TO GET *you* THERE

BEVERLEY / 01482 861411

# NEW TOMMY HILFIGER WATCHES ARRIVE AT GUEST AND PHILIPS!

As mentioned in the previous issue many brands are refreshing their offerings in line with the seasonal changes.

One such luxury brand and a world-leader in designer lifestyle items is Tommy Hilfiger.

An exciting new range of Hilfiger Watches - both Ladies and Gents - is now in store at Guest and Philips in an elegant array of colours and designs.

Renowned internationally for its Classic American cool designs, preppy with a twist, Tommy Hilfiger represents style, quality and value.

The brand was founded in 1985, and the founder himself, Tommy Hilfiger, continues to be the leading designer to this day.

Guest and Philips also stock a wide range of Tommy Hilfiger Jewellery including bracelets, necklaces, earrings and rings in a variety of different styles to suit a range of looks and personalities.

And with Lewis Hamilton, famous for his prowess in F1 racing, as the Brand Ambassador, what's not to like?

With the festive season just around the corner,

perhaps some of you may already be thinking about a beautiful timepiece as a luxury yet functional gift for that someone special.

Pop down to have a closer look, the welcoming staff would be delighted to help you!





## GUEST & PHILIPS

EXCLUSIVE TO  
GUEST AND PHILIPS:

CARAT\*  
LONDON

CLOGAU  
GOLD OF ROYALTY

UNO<sub>de50</sub>

swatch<sup>®</sup>+

TOMMY HILFIGER



LINKS  
LONDON

CLAUDIA BRADBY  
*Paul Power*

CALVIN KLEIN

MONDAINE

KIT HEATH

23A FLEMINGATE CENTRE, CHANTRY LANE, BEVERLEY HU17 0PW  
T: 01482 881001 | [WWW.GUESTANDPHILIPS.CO.UK](http://WWW.GUESTANDPHILIPS.CO.UK)

# ChloBo

*Cosmic Connection*

Now available at Guest & Philips

23A Flemingate Centre, Chantry Lane, Beverley, HU17 0PW

## WIN A £50 VOUCHER FOR UNIQUE BEVERLEY



Just Beverley has teamed up with award winning salon Unique to offer FIVE of our lucky readers the opportunity to win a £50 voucher off all hair services at their Beverley salon at 108 Walkergate. What's more, all other entrants will receive a £10 gift voucher for participating.

At Unique they are all about keeping up to date with the latest trends and techniques. After celebrating a double victory at the inaugural Yorkshire Salon Awards where they took the title of Best Salon in Yorkshire and Best Salon for Training, Unique remain at the cutting edge of salon innovation. Visit the Unique website and meet the teams or call in for a complimentary consultation (subject to available appointments).

To be in with a chance of winning a £50 voucher or to get your hands on a £10 voucher, simply answer the following question:

**How many awards did Unique win at the Yorkshire Salon Awards:**

**Awards: a. 1    b. 2    c. 3**

Send your answer by email to [competition@justbeverley.co.uk](mailto:competition@justbeverley.co.uk) by 17th October. Put 'Unique' in the subject box and your answer, name, address and contact telephone number in the body of the email.

The 5 first prize winners will be required to receive their £50 vouchers and have their photographs taken over the weekend following 17th October. They must be prepared to be available for publicity for Just Beverley and Unique with names and photographs appearing in Just Beverley magazine, website and possibly Just Beverley and Unique's Facebook pages. Full terms and conditions are available on Page 3 of this magazine, which is downloadable from [www.justbeverley.co.uk/magazine](http://www.justbeverley.co.uk/magazine). Entrants who do not win one of the £50 vouchers will receive their £10 voucher by post.

# UNIQUE

### Unique Beverley

108 Walkergate  
Beverley HU17 9BT  
Tel: 01482 881199

### Unique Cottingham

7-8 Market Green  
Cottingham HU16 5QG  
Tel: 01482 847111

### Unique Hessle

12 The Weir  
Hessle HU13 0RU  
Tel: 01482 645499

[auniquesalon.co.uk](http://auniquesalon.co.uk) • Facebook: [unique.eastriding](https://www.facebook.com/unique.eastriding)  
Twitter: [@UNIQUEsalons](https://twitter.com/UNIQUEsalons) • Instagram: [UNIQUEsalons](https://www.instagram.com/UNIQUEsalons)



Enjoy an unlimited table side service of up to 15 different prime cuts of meat from our traditional Brazilian grill and a variety of hot and cold sides from our gourmet buffet bar in the unique and festive atmosphere of Chamas Rodizio Bar & Grill.

**Includes festively dressed tables and £10 gift voucher for tables of 4 or more to spend in January!**



### DECEMBER MENU

15th November - 31st December 2019

A glass of Prosecco on arrival, our usual hot and cold sides from our Brazilian buffet and an unlimited Rodizio of 8 cuts of barbecue meats plus grilled Turkey. A choice of Christmas pudding or Brazil's traditional Mousse Do Maracuja (Passion Fruit Mousse).

**MON - SUN: LUNCH 12PM - 4PM - £26.95pp • EVENING 4PM - 10PM - £42.95pp**

#### VEGETARIAN/FISH OPTION

A glass of Prosecco on arrival, all suitable options from our Brazilian buffet, choice of any main meal and a choice of Christmas pudding or Brazil's traditional Mousse Do Maracuja (Passion Fruit Mousse)

**MON - SUN: LUNCH - 12PM - 4PM - £24.95pp • EVENING - 4PM - 10PM - £32.95pp**

**CHILDREN: under 5's FREE • 5 Yrs to 12yrs - 15.95pp**

### CHRISTMAS DAY RODIZIO

**CHRISTMAS RODIZIO | £59.95pp  
12pm - 2:30pm & 3pm - 5:30pm**

A glass of Prosecco on arrival, a Christmas Rodizio of 15 prime cuts of beef, lamb, chicken and pork plus fillet steak & Roast Turkey, a VIP buffet with all the traditional trimmings and a choice of Christmas Pudding or Brazil's traditional Mousse Do Maracuja (Passion Fruit Mousse)

**CHRISTMAS DAY VEGETARIAN OPTION  
£49.95pp**

**CHILDREN: under 3's FREE  
All Day Price for under 12 years: £29.95pp**

\*December Menu offered alongside our usual menu throughout December and is available on request. A non refundable deposit of £10 per person is required to secure your table throughout December unless a minimum of 48 hours notice of cancellation is given. Our usual menu is not available alongside the Christmas Day Rodizio on Christmas Day. We politely request that the final balance for Christmas Day reservations are settled no later than 4 weeks before dining with us.

[chamasbeverley.co.uk](http://chamasbeverley.co.uk) | 9-10 WEDNESDAY MARKET, BEVERLEY | 01482 867897

# ASK THE EXPERT WITH AMY FENNER

So, making chocolate is an art and a science? Tell me more!

This week we're chatting to Amy Fenner (Ed's sister!), who along with Kathy Bates, is one of the two chocolatiers at White Rabbit. Amy heads the production team and so is the perfect person to ask about the artistic side of chocolate making... we'll do the science bit next week!

Artistically, there are a range of techniques used to make exceptional tasting chocolate look stunning too!

Delicate piping work can be used to decorate the chocolate and create lettering or patterns, and textural effects - appealing to both the eyes and the palate - can be created using contrasting chocolates as well as additional ingredients.



Using natural cocoa paints is a colourful means to express your artistic side - spraying, flecking, or painting the surface of the chocolate to adorn your creation. Moulds can also be adorned this way, resulting in a final cast enhanced with fine detailing.

Additionally, more complicated chocolate 'sculptures' can be constructed using smaller individual pieces, which are built up to create three dimensional shapes without the use of moulds.



For an extended version of this article please visit [www.justbeverley.co.uk](http://www.justbeverley.co.uk).

More details on the workshops and parties on offer at White Rabbit are available at [www.whiterabbitchocolatiers.co.uk](http://www.whiterabbitchocolatiers.co.uk)

◆ COOL OFF IN OUR ◆

## CHOCOLATE CAFE

Perfect for the Summer!

A taste of wonderland...

16 Dyer Lane, Beverley, East Yorkshire, HU17 8AE  
**Tel: 01482 679325** [whiterabbitchocolatiers.co.uk](http://whiterabbitchocolatiers.co.uk)  
**Open 7 days a week**  
 Breakfast, Lunch & Afternoon Tea available Tue-Sat

# GENEVA

**7th December 2019**  
**Flights from Manchester**  
**4 Nights**  
**£289 per person**  
**No transfers included - subject to availability**

**ONeworld TRAVEL GROUP**  
**35 Saturday Market, Beverley HU17 8BE**  
**T: 01482 280081**  
**[www.1worldtravel.co.uk](http://www.1worldtravel.co.uk)**

## ONEWORLD TRAVEL - GENEVA

A small historical jewel with medieval charm! Geneva lies on the southern tip of expansive Lac Léman (also known as Lake Geneva). Surrounded by the Alps and Jura mountains, the city has views of dramatic Mont Blanc. The largest historic city in Switzerland, the old town is dominated by St. Peter's Cathedral, the centre of the Reformation. The centre is surrounded with many small narrow streets linking up historical treasures. Geneva has something for everyone, with the Quartier des Bains for art lovers as well as numerous museums and sites of historical importance. In the festive period, Geneva is home to a series of Christmas markets.

### Christmas Markets

One of the biggest Christmas markets on Lake Geneva is the Montreux Marché de Noël. The main market is on the banks of Lake Geneva with wonderful views not only of the lake but also the snow-covered Alps. Around 150 open-air stands here sell various trinkets as well as ample food and drink. A few rides are also available. There is also a special medieval Christmas market at Chateau de Chillon, a short 20 minute walk away.

### CERN

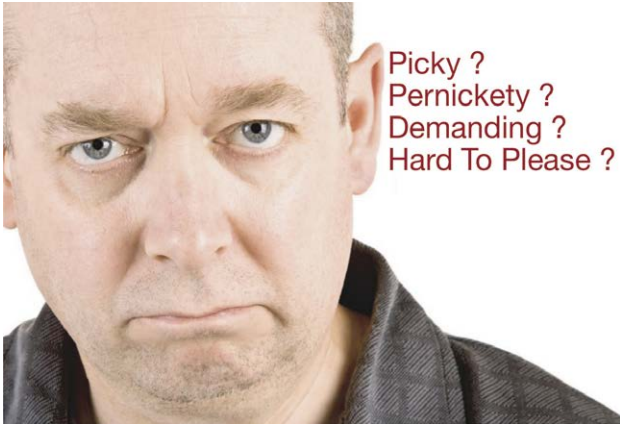
CERN, in Geneva, is the world's largest particle physics research centre. CERN has recently brought into service the world's most powerful accelerator, the LHC (Large Hadron Collider), which will provide new insights into the Universe and how it evolved. As well as being a functional laboratory, the centre gives guided tours and interactive exhibits, giving insight in to the workings of the collider and its findings. These are both free and are accessible to all, no matter your scientific knowledge.



### Cathedrale de St-Pierre

This famous cathedral is best known for its historic significance as the church where John Calvin gave his inspiring sermons during the mid-16th century. Climb the 157 steps to the top of the bell tower for a unique panorama of the city, diving remarkable views of the harbour and the lake. In South-West corner of the cathedral is the Chapel of the Maccabee which houses beautiful Gothic paintings. There is also the International Museum of Reformation, on the north side, portraying the reformation times, ideas, lives of the common people throughout the period.

# Need An Electrician?



Picky ?  
Pernickety ?  
Demanding ?  
Hard To Please ?

When You Want The Job Done Right  
The First Time. Then We're The Right  
Electrical Contractors for YOU !

Call Beverley's Premier Electrical  
Contractors Today On

01964 552769 / 07585 601730

**BES** BURTON ELECTRICAL  
SOLUTIONS

www.burtonelectricalsolutions.co.uk



## I KNOW A BIT ABOUT HOW ELECTRICITY WORKS, CAN I DO MY WIRING MYSELF?

*It's often very tempting to do a little bit of DIY, particularly when it comes to something you think you know something about. As our previous articles have shown there's lots of people out there who are willing to risk their lives, and others, by doing a bit of dodgy DIY electrical work. But is it legal?*

There is no straightforward answer to this, however since 2005, all electrical work in dwellings in England and Wales whether carried out professionally or as DIY must meet the requirements of Part P of the Building Regulations.

Part P states that anyone carrying out electrical work in a dwelling must ensure that reasonable provision has been made in the design and installation of electrical installations in order to protect any persons who might use, maintain or alter the electrical installation of that dwelling from fire and injury, including electric shock. By law, the homeowner or landlord must be able to prove that all electrical installation work meets Part P, or they will be committing a criminal offence. Local authorities have the power to make homeowners or landlords remove or alter any work that does not meet the requirements of the Building Regulations.



As one of Beverley's premier electrical contractors it is common to be asked to verify a homeowner's own electrical work and we won't do it. It's not that the work hasn't been carried out to a high standard, but more of a point that we can't verify that it has. To be frank the work needs to be carried out by a professional to begin with.

So if you're thinking of having any electrical work carried out. Always use a qualified electrician. Ensure they have Part P certification and ask for their scheme enrolment number and registered body. You can then check that they have the right credentials. Remember that loose wires do cause fires. You can contact Burton Electrical on **01964 552769**.

## IN THE GARDEN... OCTOBER

*October is the month when autumn is in full swing - sweeping up leaves is a continual task, leaf colour is at its best and of course berries abound on Pyracantha, Cotoneaster and some varieties of Sorbus.*

Plus fruit on Ornamental Crab apples (Malus), Rose Hips in addition to Apples and Pears. Flower borders can start to be tidied up, but try not to be over zealous some plants have lovely decorative seed heads and provide food for birds so leave them for a while. If you discover any gaps or need to brighten up a border invest in a few plants e.g. Chrysanthemums, Michaelmas Daisies, Japanese Anemones and Cyclamen provide this with flowers. If your borders have become overcrowded especially with perennials now is the time to lift and divide them.

### Tasks and Tips for October...

The pace quickens this month - there is a lot to do before the 'clocks change' and we lose our evenings.

- Bring in tender perennials, trim and store in a frost-free place.
- If you have a 'homemade' compost heap - mulch your borders with any compost that is remaining. Then start a new compost heap(s), material for composting is plentiful at this time of year: summer bedding; perennial trimmings and fallen leaves.
- Plant up containers with winter bedding under planted with spring flowering bulbs.
- Plant spring flowering bulbs in the garden.
- Put Glue Bands on fruit trees - these set in place a sticky barrier which stops female moths climbing the tree to mate and lay their eggs, and other pests from hibernating in cracks in the bark.
- Harvest apples and pears.
- This is also a good time of year to plant new shrubs and perennials. The warmth in the soil will help them to get quickly established. Be generous with the planting mixture and be sure to water in well in dry weather.
- At the end of the month remove any pumps and filters from the pond, clean them out and store until spring.
- Scarify established lawns with a rake, then aerate with a fork if you haven't done it already.
- When you have cleared the vegetable plot after harvesting the fruits of your labours, give it a 'dig over' in preparation for next spring (please don't do this if the ground is wet or soggy).

October is host to 'Apple Day' so look out for events planned around this (circa. 21st), great for entertaining the children - even the grown up ones!! I'm also looking forward to the 'conker season' too - I have noticed that some trees are well laden with whopping conkers.

That's all for now.

### Until November, J.

Jane Dale of 'Designed Gardens'. Tel: **07983 392 411**.





# IS YOUR PAYS Lip CORRECT?

New research has found 45% of SME employees have paid too much tax due to errors in their payslip as a result of several confusions regarding tax codes and responsibility of checking if they are paying the correct amount.

Many of us can feel a bit lost when checking our payslips and feel unsure about the many elements that contribute to our net pay calculation including being on the wrong tax code, or errors with deductions such as childcare vouchers.

The survey found that the problem was particularly prevalent among employees of smaller businesses, with 77% of SME employees believing, incorrectly, that it is not their responsibility to check they are paying the right amount of tax.

In addition, 66% do not realise how multiple jobs affects their tax, and 19% not even checking their payslip.

Small businesses in particular have so many different areas of a business to manage, often with limited support in terms of man-power and knowledge.



Employers want to do all they can to get pay right for their employees but as this research shows this is not the case.

Unfortunately employers rely on software and assume that the calculations are correct and that is the mistake.

Payroll knowledge is vital and that is where we can help at Stipendia and take the payroll burden away from the business owner to concentrate on what they do best.

## Four Generations, Giving Over 125 Years Service

Herbert 1870-1962    Eardley 1908-1986    Geoffrey 1939-2015    David 1964

Golden Charter  
Funeral Plans



- Funerals Respectfully Conducted
- 24 Hour Out of Hours Service
- Free Advice & Support
- Private Restrooms
- Prepaid Funeral Plans Available
- Finance Options Available



Tel: 01482 844695  
www.hkempandsonltd.com

259 Hallgate, Cottingham, East Yorkshire, HU16 4BG  
Fax: 01482 843898  
Email: hkempandsonltd@gmail.com

# HUBY DOMESTIC APPLIANCES

Covering Hull, Beverley, Pockington, Driffield and all the local villages



**BOOK ONLINE**

and **SAVE**  
at  
**hubys.co.uk**

Book in advance and save money.  
The further you book in advance  
the more you could save...



For service and repair call: **01482 866660**

# MR CARPETS

CARPET AND FLOORING SPECIALISTS



**31  
YEAR**

**ANNIVERSARY**

31 years in business  
31 years of good, honest service  
31 years speaks for itself

f mrcarpetsbeverley

**01482 872134**

3 Becks North, Beverley, HU17 0PR

# CLASSIC CARS WITH CARFAN - THE FORD ESCORT MEXICO

*The subject of this month's column is the Ford Escort Mexico - a rather fast version of the Ford Escort Mark One, launched to an unsuspecting public in 1970. After Ford won the London to Mexico World Cup Rally that year, the company decided to commemorate it by bringing out an eponymous model and thank goodness they did as the Mexico gained fans as rapidly as it accelerated!*

Whilst the Ford Escort Mexico's quoted 85 brake horse power is a fraction of many of today's cars, back in the 70's it was enough for the car to win plaudits and rallies in equal measures. Your author still has a photograph of him helping push one out of a ditch on Oliver's Mount back in the day when its driver got just a little bit too enthusiastic on a bend.



The current owner purchased the featured car in 1977 to replace a previous Mexico. This one was originally built in 1973 for export and spent its first few years in Germany and Belgium as its first owner was in the helicopter section of the army branch of the NAAFI. As such, it has the European specification which included twin rear number plate

lights, rear fog lights, inertia reel seat belts and a laminated windscreen. Concours judges would need to know how this differs from a U.K. delivered car to mark it fairly.

Parts are easy to obtain via specialised companies or the internet. Values for Mexicos have rocketed in recent years and you would need to deep deeply for an average of £25,000 for a good one - although a somewhat optimistic Dutch owner is asking an astonishing £63,000 for a pristine example!

So, don't forget, should you see a Mexico, possibly even on a track or a rally, don't forget that cheery Carfan wave!

## PETS' BEST FRIEND BY LAUREN MIDDLETON

*Hello there! In recent weeks I've been out in the beautiful East Yorkshire countryside in Beeford, Beverley and Bishop Burton spending time in the company of several breeds of delightful canines and felines.*



During longer engagements while my clients are on holiday I often indulge in my other passion - artwork - and take the time to make portraits of their pets.

I generally work with graphite and colour pencils and have had several clients who were delighted with the drawings I have produced. So much so that some clients have wanted their pet's portrait framed and hung in their home!

Of course, there is always the opportunity to take a photograph but somehow a portrait captures the essence of an animal's character so much better!

If you are interested in viewing more of my work or following my animal encounters please find me (Laura Middleton) on Facebook at Dream Magik and Pets' Best Friend!



## PRACTICAL MOTORING WITH RICH HAYES - AUTUMN LEAVES DON'T JUST GET ON RAILWAY LINES!



*When the clocks 'fall' back, we know summer is officially over for another year. But life goes on - albeit with different driving conditions and hazards to contend with. Perhaps it's time for an Autumn check and clean of your motor to make sure it is fit for whatever the weather throws at you.*

Make sure your wiper blades are in good condition to clean the windscreen effectively. Squeaky blades need replacing!

Ensure your screen-wash fluid reservoir is full of the most appropriate product for the time of year. There is a bewildering array of screenwash products, but it needs to repel water and keep ice at bay in winter, rather than clear bugs off the screen as in summer.

It's also important to make sure your windscreen is clean inside to enhance visibility especially on dark nights. There are now some very effective cloths available which clean just with water or use water and vinegar in equal parts and dry off with a micro-fibre cloth.

Always give yourself extra time to clear condensation or ice from your windscreen before setting off - which means putting the ice-scraper back into the car!

Lastly, check your battery terminals and make sure they are clean, dry, tight and free from corrosion. If your battery is more than 3 years old, do get it checked as colder weather does affect battery efficacy.

Beverley Motor Works would be delighted to check your car over for you - we offer high quality servicing at a fair price and have won award for customer service. Contact us on **01482 881128**.

BEVERLEY **MOTOR WORKS**

INDEPENDENT BMW & MINI SPECIALISTS

Our dealership expertise means high quality car servicing at a fair price...



the Good Garage Scheme



Unit D1 Grovehill Industrial Estate, Annie Reed Road, Beverley HU17 0LF

Call today: 01482 881 128

Visit: [beverleymotorworks.co.uk](http://beverleymotorworks.co.uk)

**SPECIAL OFFER**  
**MOT COUPON**



MOT YOUR CAR FOR ONLY **£29.99**

# PUZZLE PAGE

## WORDSEARCH

S U F Z X E C R O O J I Q S E  
 H S M I W Z R T J J T V O D C  
 I A R D C B E I R N A Y T N S  
 E F L W V V W K P V Y A Q K P  
 B P M L V N B W V M G T B E Q  
 V I W T O D I F W N A D L D E  
 H M S M O W U S Q O K V A E X  
 M W W O K L E O A N O Y C R P  
 Y X L A L D E E W R W F K A O  
 P B O M D Z U Y N J K L N C F  
 X B O T S G N I V R A C E S F  
 C O T D R X U D Y Y T K S Q A  
 N J H S O E L Q V U I P S J N  
 T R I C K B A C X A Y H Y K G  
 K L S J X T E T U K L W S W S

BLACKNESS  
 BLOOD  
 CARVINGS  
 FANGS  
 FULLMOON

HALLOWEEN  
 SCARED  
 TREAT  
 TRICK  
 VAMPIRE

## WHERE IN BEVERLEY?

Where in Beverley would you find this landmark? Answer on Page 32.



## WORDS OF WISDOM!

Doing things right is management - Doing the right thing is leadership.  
 Carry the right attitude with you  
 to positively change the attitude of others.

## WHICH WAY ROUND?

Watch on the left wrist or the right wrist?  
 Milk in your cup of tea first or last?  
 Right Glove on first or left Glove on first?  
 Spaghetti or Baked Beans?



## THOUGHT FOR THE MONTH

Wear Bright Clothes at Night...  
 Be seen - Be safe.

Do you have any amusing stories,  
 quotes or pictures? Send them to  
[info@justbeverley.co.uk](mailto:info@justbeverley.co.uk)

# QUALITY KITCHEN MAKEOVERS

by simply replacing the doors and worktops

Est. 1999

From the UK's #1  
 kitchen makeover experts.  
 Visit our showroom now

Before



- FROM SIMPLE DOOR REPLACEMENTS TO COMPLETE FITTED KITCHENS
- FULLY INSTALLED BY LOCAL PROFESSIONALS IN JUST A FEW DAYS
- CHOOSE FROM A LARGE SELECTION OF DOORS, WORKTOPS AND APPLIANCES
- 84 SHOWROOMS NATIONWIDE



Autumn Sale  
**20% OFF**  
 T&C's Apply

**DREAM DOORS®**  
 NEW LIFE FOR OLD KITCHENS

CALL US NOW FOR A FREE ESTIMATE:

**01482 861653**

VISIT OUR SHOWROOM:  
 4A Belprin Park, Swinemoor Lane,  
 Beverley, HU17 0LN

[www.dreamdoors.co.uk](http://www.dreamdoors.co.uk)



Proud members of  
**9.7/10 Checkatrade.com**  
 Where reputation matters

See what our customers have to say

# CYCLING WITH WILSONS WHEELS

*It might only be October but it's time to get ready for winter conditions!*

Your bicycle is a mode of transport just like a car and should be maintained accordingly. After spells of warm dry weather like we have had recently, roads tend to get a build-up of grease on them and when it rains, they can be very slippery. So, I recommend always check you have the correct tyre pressures and that your tyres are not worn.



Worn tyres do not disperse the water as well as they should, giving you less grip.

In winter the roads tend to be wet a lot of the time as they don't dry out so a pair of healthy tyres is always recommended.

Keep your chain oiled, as when the gritters come out, salt and water do not sit well with

mechanical parts, as they corrode them; a well-oiled chain will protect against this.

Another recommendation is to fit full-length mudguards; not only do they protect the rider from all the horrible wet spray but they protect some of the components of the bike like brakes and the front derailleur, meaning they are less likely to corrode during wintery conditions.

## ST NICHOLAS' SCHOOL AIM TO GET FIT!

**Teacher Mrs Main and the School Council want to increase the fitness level of the children who attend St Nick's. How to do it? They now have a running track, a pitch for team sports and games and actively encourage healthy eating.**

Children and teachers know that healthy eating and keeping fit aids concentration but, with St Nick's being a new school on a new site, there was no provision for outdoor sports. Now there is! And the children and teachers are enjoying their new running track (9 laps is a mile) and new sports field. The pitch is flexible in its use in that it can be used for football, games, exercises and more. Headteacher Mrs Pollard said: "It adds a new dimension to the school day now that the children can go outside to enjoy games. They are all loving the new facility."



## WILSONS WHEELS

T: 01482 882881  
W: [www.wilsonswheels.co.uk](http://www.wilsonswheels.co.uk) E: [info@wilsonswheels.co.uk](mailto:info@wilsonswheels.co.uk)

**WE NOW STOCK CUBE CYCLES**  
2019 RANGE NOW AVAILABLE

Be SEEN  
and be SAFE,  
stay BRIGHT  
and on the  
right track

DISCOUNTS ON:

- Adult Bikes      • Children's Bikes
- Clothing for all cycling weather      • Parts and accessories

89a Grovehill Road, Beverley, East Yorkshire HU17 0EJ  
OPEN: Monday - Friday: 8.30am - 5.30pm | Saturday: 9am - 5pm  
Sunday: CLOSED - Out riding our bikes

# FITNESS TRAINING AND MORE - LOCAL COURSES FOR LOCAL PEOPLE

**Sportsability Fitness Training are a unique local Fitness Training Provider giving the learner the level of support needed by the individual.**



Our courses include Gym Instructor, Group Training, Personal Training as well as courses to continue your professional development such as Studio Cycling and Circuit.

We also offer the opportunity for you to become qualified in training specific groups including the elderly, children and pre- and post-natal.

Our tutors are highly qualified and experienced, not only in the delivery of the qualifications, but have many years of working within the industry delivering the skills they are passing on to the learners.

We don't just look at the qualification, we guide and assist to develop your communication and business skills to help you become the very



best instructor and businessperson. We are developing as a business with established relationships with Cottingham Parks, Total Fitness, Nuffield Health and Peak Health and Fitness already in place; we strive to develop relationships with gyms and clubs in all







## Join Anytime Fitness

Improve your Mind and Body  
with Qualified Experienced Staff

FREE

Day pass

Call James  
01482 247100



New Gym Class Timetable

Tel:  
01482 247100

Flemingate Centre, Flemingate  
HU17 0NQ

areas in order to ensure all our learners have easy access to a course of their choice without having to travel to cities further afield.

However, we offer e-learning options for those who simply can't attend a course or prefer to learn at their own rate. Rest assured though, we support you through the whole course and provide you with a 1-2-1 tutor, however you wish to learn. You may wish for us to come to you - we can do that, too!



We are passionate about ensuring that you, the learner, has the highest-quality learning experience and gains the maximum benefit from the course, which includes supported learning throughout, additional resources and benefits to help you gain the confidence to become established in the fitness industry. We care that all our learners truly understand their learning and feel supported throughout the whole learning journey and beyond.

We aren't just about fitness, either! We also offer Level 2 Mental Health Awareness and Level 2 Safeguarding courses which can be offered in the workplace as well as at external venues. We understand the importance of recognising where and when help is needed. Our courses can help equip more of us to identify, recognise and take the first steps on the pathway to the support so many of us need. Please contact us if you'd like us to bring a course to you.

We are looking for course venues and would love to hear from gym/studio owners interested in hosting our fitness courses. Our full range of courses can be seen on our website [www.sportsabilitytraining.co.uk](http://www.sportsabilitytraining.co.uk) or call Suzanne or Luke on **01482 229676** or email [info@sportsabilitytraining.co.uk](mailto:info@sportsabilitytraining.co.uk)









## Level 2 Certificate in INSTRUCTING GYM

The aim of this qualification is designed to train learners to a professionally competent level, enabling them prescribe, plan and deliver safe and effective exercise programmes in a gym or health club environment.

COST £550

PAID IN FULL OR 3 MONTHLY INSTALLMENT PLAN AVAILABLE

VENUE: PEAK HEALTH & FITNESS Main Road, Ryehill, Hull, HU12 9NH

DATES: TBC IN NOVEMBER/DECEMBER 2019  
(2x Weekends Saturday and Sunday 10am - 6pm plus 1 Assessment Date)

WE ARE LOOKING FOR YOU TO CONTACT US WITH AN EXPRESSION OF INTEREST IN THE COURSE COURSE DATES WILL BE BOOKED BASED ON THE INTEREST SHOWN AND AVAILABILITY

CONTACT SUZANNE OR LUKE AT SPORTSABILITY LIMITED TODAY TO EXPRESS YOUR INTEREST OR TO GAIN FURTHER INFORMATION

☎ 01482 229676 ✉ [info@sportsabilitytraining.co.uk](mailto:info@sportsabilitytraining.co.uk)  
f @SportsabilityFitnessTraining globe [sportsabilitytraining.co.uk](http://sportsabilitytraining.co.uk)

# THE HOME SPECIALISTS CELEBRATING 85 YEARS IN BUSINESS

*It's six years since Leightons opened their store at Swinemoor Lane, but alongside that, this well-known family firm is celebrating another anniversary - 85 years in business in the area!*

Neal Booker, his brother Chris and sister Suzanne are the second generation of the family to be at the helm of Leightons, and they head a team of friendly and efficient sales staff who take a genuine pleasure in helping customers.

The store in Beverley is a favourite destination with local people as it offers such great value in beds, bedroom furniture and carpets. Expert fitting of carpets is all part of the service on offer. Leightons describe themselves as 'the home specialists' because over the years they have developed a wealth of experience in presenting and stocking the ranges that local people love to see in their own homes.

Managing Director Neal Booker said: "We make sure we offer the best quality with our carpet ranges exclusive to Leightons at prices that are real value, and with names like Harrison Beds, Sleeppezee, Millbrook Beds, Ulster Carpets, Brintons and bedroom furniture from Wiemann and Welcome we have something for all types of home from traditional to contemporary. We're looking forward to continuing our success at Beverley."





Print that gets you noticed







**BROCHURES LEAFLETS BUSINESS CARDS POSTERS  
CALENDARS POP UP BANNERS INVITES PADS**

**Tel: 01482 610902**  
**info@jadan-press.co.uk www.jadan-press.co.uk**  
**Rainbow House, Kimberley Street, Hull, HU3 1HH**











# The Best in Beds & Mattresses

A really high quality bed or mattresses makes a huge difference to your lifestyle – and now is the time to buy at Leightons. Just check out the prices and offers at our Beverley store. You're not dreaming, these reductions are real!



**SAVE  
£200**

**York 1000 Pocket Spring Divan Set with  
FREE Drawers  
FREE Headboard**  
Was £599  
**Now Only £399**



**SAVE  
£400**

**Back Care Select Pocket Spring Divan Set  
Double with FREE Drawers & FREE Headboard**  
Was £899  
**Now Only £499**



**SAVE  
UP TO  
30%**

**Harrison**  
The Sleep Tailors

Harrison Beds use natural materials, tailored to the size and firmness that suits you and are upholstered to your taste. It's more than just a bed, it's a completely bespoke nights sleep.

**Right now at Leightons save up to 30%.**



**'WHICH'  
AWARD  
WINNER**

**Sleepeeze 'Which' Award Winner Hybrid 2000 Mattress**  
4'6" £549 5'0" £599 6'0" £749



**BED DISPOSAL**  
We'll take away your old bed/  
mattress ask in store for details.



**FREE DELIVERY**  
We offer free delivery on all  
beds/mattresses over £199.

## SHORT STORY BY MALCOLM J BROOKS - AN ENCOUNTER IN TIME



*The droplets of blood fell onto the frozen snow. They fell at regular intervals and as they hit the hard, frozen surface they threw out a red ring of smaller droplets, much like the effect of a firework in the sky. I wiped my hand across my face. Yes, it was my blood, dripping as regularly as the beats of a metronome.*

How I got in this position, on all fours staring at the ever-increasing pool of blood, was a mystery to me. The last recollection I had was of being behind the trenches somewhere in France and sometime in 1916. The night sky had been alive with the sound of guns.

My thoughts were interrupted by the sudden appearance of two boys.

"We are ever so sorry missus," said the slightly younger looking one.

"You just appeared from nowhere and Alan hit you with his sledge!" said the other.

Alan offered me a handkerchief to stem the flow of blood. I hesitated for a moment and then graciously accepted the offer, germs and all.

"Where am I?" I asked.

The boys looked at each other.

"Beverley Westwood," came the simultaneous reply. I lived in Beverley but not at that moment in time.

"This might seem stupid, but what year is it?"

"It's New Year's Day 1963," Alan said, as if to give me the benefit of the doubt that the year had only just changed.

"I'll get help," said the older one and ran off down the snow-laden hill.

"Is this the bag you were carrying when we hit you." He picked it up and placed it closer to where I was now sitting. As he did so, the bag toppled sideways and a gun fell out.

The boy looked shocked that an elderly lady wandering around on a dark evening should possess a gun. In truth, I was fifty-three years old and had he looked in the bag, he would have seen five more, all First World War pistols.

"Why've you got a gun?" Not an easy question when you are a time traveller from 2048, getting guns for your antique shop in Toll Gavel!

"You wouldn't believe me if I told you."

"Are you a Russian spy? There's been a lot in the newspaper about women like you, but they're prettier."

I ignored the insult. "No, I'm not a spy. I travel through time."

"Prove it or I'll get the police."

"Look at my watch, no hands. In the future they're called digital watches and this is a mobile phone."

"Go on, phone somebody then!"

"Ah, no signal"

"You're a spy!"

I cautiously stood up, not wanting to argue. In a minute I would disappear back to 2048 but I wanted to convince Alan of my innocence on the Russian Spy front. I looked in the bag and pulled out what to Alan was a strange looking device. "This," I said "is a Hoverboard, better than that sledge. They're cool in the 2040s. Watch!" I stood on it and circled him as the board sensed it was me and set off immediately.

"Bye Alan, see you in the future," and I threw my mobile phone at him. "You can use it in 2019!" And I disappeared into the night.

## LET YOUR ARTISTIC SIDE LOOSE THIS HALLOWE'EN!

*Dark nights are now upon us, and with colder weather too it's time to get those winter woolies out! This isn't quite the time of year to hibernate though - not just yet.*

Hallowe'en and All Saint's Day are fast approaching and both adults and children alike are ever more enthusiastic about making pumpkin lanterns to light up those dark nights. So join the artists, and get creative!

By the middle of October the supermarkets and greengrocers are awash with huge, bright orange pumpkins - the perfect canvas for your artistic creations.

After the hard work of extracting the flesh, your creative flare can be let loose, cutting, slicing and sculpting to produce your own work of art! Add a tea light or two and you have the perfect lantern.

The pumpkin flesh doesn't have to be thrown for compost though - there are plenty recipes in which it can be used - curried pumpkin soup, roast pumpkin or a delicious pumpkin pie with vanilla ice cream!

With cooking or carving pumpkins (or both!), and plenty of events across the area, there's no reason not to get involved!

Remember, if you are going out in fancy dress, stay safe and take a friend or an adult with you!



## CELEBRATION - A POEM BY PAULINE KIRK

*Our shapes are dark,  
Halloweens against orange flame.  
We stamp in boots, bang gloved hands  
and await the firework display.  
We have paid a pound to freeze thus.  
The hot dogs steam for charity.*

*Below us the streets are dark,  
but on other hills other bonfires blaze,  
each dedicated to a rebellion  
barely remembered. Long before,  
when this school field was heath,  
it was Samhain we celebrated.*

*Then the whole land was dark  
and the dead warmed their hands  
beside us. Romans marched the valleys  
and each rock and tree had meaning.  
We burnt more than a doll then -  
our gods were feared, not played at.*

*Now we gasp as rockets are lit  
but the faces upturned are Celtic still.  
For two thousand years the bonfires  
have burned, and the dance stirs our feet  
even now. Once more the old ring joins,  
unconsciously.*



*Pauline is a published poet and Editor of Fighting Cock Press, writing as both Pauline Kirk and as PJ Quinn. Pauline will hopefully be reading with Clint Wastling & Catherine Scott at Poetry, Pints and Guitar, The Monks Walk 10th October 7.30pm. Its a free event in aid of Cancer research.*

### 'WHERE IN BEVERLEY' ANSWER

*Glove on the Bench - Saturday Market North*



# ert

EAST  
RIDING  
THEATRE

10 Lord Roberts Road

Beverley HU17 9BE

Tel: 01482 874050

Email: [boxoffice@eastridingtheatre.co.uk](mailto:boxoffice@eastridingtheatre.co.uk)

Current Box Office Opening Times:

Tues - Fri 10am - 4pm or Sat 10am - 12noon.

ert  
Café  
Bar

Cafe/Bar Opening Times:

Tues - Sat 10am - 4pm

## HORSESHOES FOR HAND GRENADES

East Riding Theatre's autumn production *Horseshoes for Hand Grenades* is a new piece of writing by Richard D. Cushing which explores the passions, hopes and struggles of a Yorkshire community trying to come to terms with the devastation of the First World War.

It's 1914. Andrew wants to be an artist not a blacksmith like his father and grandfather before him. He has great plans for himself and his sweetheart Emily. The Great War, unfortunately, has other plans for the able-bodied men of the East Riding!

As the brutal war in Europe lays waste to the young men of Great Britain, life is changed forever. After the last shot is fired, Emily waits for Andrew, on the station platform as the wounded return from the front. Did he survive? What will the future hold? Will life ever be the same?

*Horseshoes for Hand Grenades* is proudly sponsored by Beverley Building Society and opens on the 26th September and runs until the 19th October.

## IT'S TRUE, IT'S TRUE, IT'S TRUE

*"And there's blood pouring out of this man's throat. Because these two women are beheading him - did I not mention that?"*

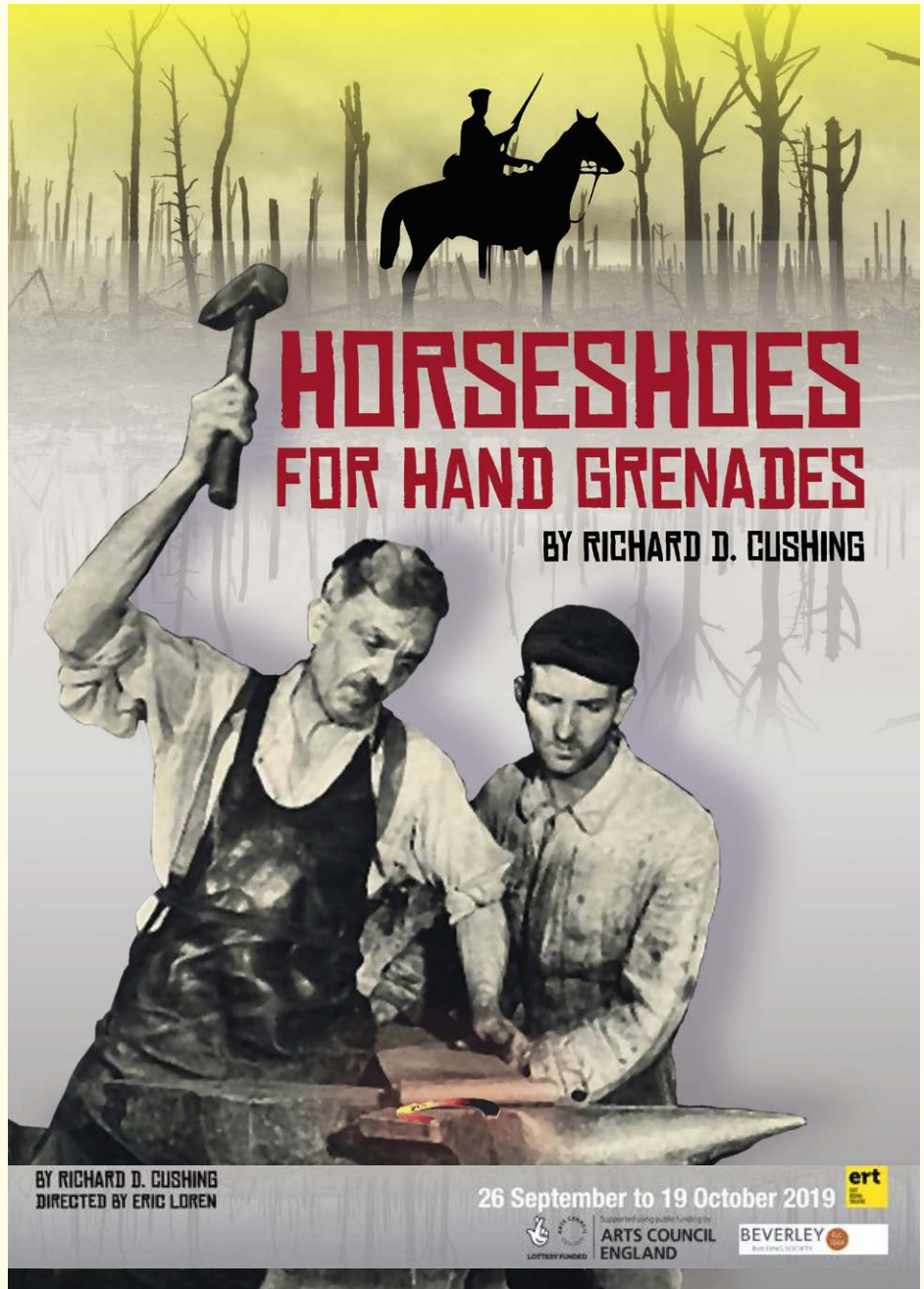
Fringe First and Total Theatre Award-winning Breach (Tank, The Beanfield) restage the 1612 trial of Agostino Tassi for the rape of baroque painter Artemisia Gentileschi.

Based on surviving court transcripts, this new play dramatises the seven-month trial that gripped Renaissance Rome and asks how much has changed in the last four centuries. Blending myth, history and contemporary commentary, this is the story of how a woman took revenge through her art to become one of the most successful painters of her generation.

★★★★★ *"Consistently exciting...uneasily current."* - *The Financial Times*  
★★★★ *"A gripping court drama... it is as if she is roaring down the ages."* - *The Guardian*  
★★★★ *"There is little to match this latest piece from the award-winning Breach Theatre."* *The Times*

Breach is a multimedia performance company founded by Dorothy Allen-Pickard, Billy Barrett and Ellice Stevens. It's True is produced by ex Longcroft School pupil Ellie Cloughton who went on to study producing at Mountview Theatre School, London.

Saturday 26th October 7.30pm - Tickets £14-15.



[www.justbeverley.co.uk](http://www.justbeverley.co.uk)

Just  
BEVERLEY 33

# WHAT'S ON

## SPONSORED BY: **kü**tchenhaus

2 Toll Gavel, Beverley, HU17 9AJ. T: 01482 862172.

Open: Mon - Sat: 10am-5pm. Sun: 11am-3pm. Bank Holidays: 10am-4pm.

### Until Friday 22nd November

#### • Edwardian Beverley: A Snapshot in Time

Beverley Guildhall, Register Square. Free. 10am-4pm Wednesday and Friday until October 30th, then 10am-4pm on Fridays and 10am-1pm on Wednesdays.

### Until Saturday 30th November 2019

#### • Mysteries Inside Us: Medical Illustrations by Annamaria Dutto

Treasure House, Beverley. Annamaria produces illustrations for books, patient leaflets and medical teaching materials including the illustrations for Channel 4's 'One Born Every Minute'.

### Until Friday 24th April, 2020

#### • Time off: Leisure and Diversions in the East Riding

Skidby Windmill and Museum of East Riding Rural Life. £2.50/£1.50/£1.25/Free.

### Friday 4th - Saturday 5th October

#### • The Beverley Real Ale Festival

St Mary's Church. £5.50/£3.50. Friday 1pm-6pm and 6.30pm-11pm with live music. Saturday 12noon-11pm with live music from 3pm. Tickets for Friday from [www.beverley.realalefestivals.co.uk](http://www.beverley.realalefestivals.co.uk) or Roberts and Speight on Norwood. Saturday tickets on the door.

### Friday 4th - Sunday 6th October

#### • Beverley's First Gentle Festival

Toll Gavel United Church. Free. Workshops and concerts for everyone to come and go as they please. Friday 6.30pm-9pm Concert with Laura Dowse, Jessica Lawson & Phil Simpson and The Westwood Belles; Saturday 2pm-4pm Gentle Music with Laura Dowse; Saturday 7-9pm 'Hope and Magic' Concert with Adults with Learning Difficulties and The Westwood Belles; Sunday 10.30am Community Service with The Westwood Belles and Holy Communion.

#### • Viewfinder Photographic Society Exhibition

Skidby Village Hall, 10am-5pm. Free. Prints, cards and gift items for sale.

### Saturday 5th October

#### • Workshop to set up Community-led Housing Scheme

Parish Rooms, Minster Yard North, Beverley. 9.30am - 12.30pm. Free. Whether you have thought about the concept or not, this workshop includes speakers who will cover providing affordable community housing for local people. To register a place at the workshop, please visit [www.eventbrite.co.uk/e/community-led-housing-seminar-opportunities-and-achievements-tickets-69984229715?aff=ebds](http://www.eventbrite.co.uk/e/community-led-housing-seminar-opportunities-and-achievements-tickets-69984229715?aff=ebds) or contact (01652) 637700 for more information.

#### • Exhibitions Up Close: Annamaria Dutto

Treasure House Exhibition Space. 10am-12noon. Free. Anna talks about her journey into her unusual career. Just turn up!

#### • Cherry Burton Arts present The Alligators

Cherry Burton Village Hall. 8pm. £10. The Alligators will be their own warm-up band as they play an

intimate acoustic set followed by their usual full-on blues! Tickets from Minster Records, Cherry Burton Costcutter or from [martin@peirson.karoo.co.uk](mailto:martin@peirson.karoo.co.uk) or 01964 551145

### Sunday 6th October

#### • Beverley Food Festival

Saturday Market. 9.30am-4.30pm. Official opening at 10am by The Mayor of Beverley. Local food and drink, entertainment, demonstrations by local chefs, stalls and more. Come and meet your local Town Councillors, too!

### Monday 7th October

#### • The White Horse Folk Club presents Alice Jones

Beverley Conservative Club, Wylies Road, HU17 7AP. 8.30 pm. £8 Alice sings and plays traditional English and American folk songs.

### Tuesday 8th October

#### • Singalong Memories Just for Fun

Walkington Methodist Church Schoolroom. 2pm-3.45pm. £2 incl refreshments. For further details please contact Val/Mike on 01482 865249 or Sue on 01482 882188 or email [val.memories@outlook.com](mailto:val.memories@outlook.com)

#### • Beverley Naturalists' Society Annual Tom Upton Memorial Evening

St Mary's Parish Hall. 7.30pm. £6/£5 incl light refreshments. Geoff Trinder ARPS presents an illustrated talk 'Natural Wonders'.

### Thursday 10th October

#### • Poetry, Pints and Guitar

Upstairs at The Monks Walk, Highgate, Beverley. 7.30pm. Free. Catherine Scott, Clint Wastling, Johanna Boal and Guests. Donations to Cancer Research.

### Friday 11th October

#### • Red Kites in Yorkshire

Little Weighton Village Hall. 7.30pm. £5 incl refreshments. Illustrated talk by Nigel Puckrin.

### Saturday 12th October

#### • Jacob's Well Appeal Drive Sale

Toll Gavel United Church Drive. 9am-3pm. Loads of bargains!

#### • The Big Draw

Treasure House Education Room. 10am-3pm. Fun, creative session with no skill needed. Just turn up!

### Monday 14th October

#### • Norwood Nites Community Cinema

Norwood Church School Room. Free. 7pm. Catch up on a film you may have missed or wish to see again. This month's film is a post-apocalyptic science fiction drama starring Gergory Peck, Ava Gardner, Fred Astaire and Anthony Perkins. Contact Beverley Community Lift if you need a lift.

#### • White Horse Folk Club Singers and Musicians Night

Beverley Conservative Club, Wylies Road, HU17 7AP. 8.30 pm. Performers and audience welcome.

Tell us about your event!

Email: [info@justbeverley.co.uk](mailto:info@justbeverley.co.uk)

Telephone: 01482 679947

For more events visit:

[justbeverley.co.uk/events](http://justbeverley.co.uk/events)

Only £2.

### Tuesday 15th - Sunday 20th October

#### • Festival of Words

Various East Riding Libraries and the Treasure House, Beverley. Interesting selection of best-selling and emerging authors and speakers. Visit [www.festivalofwords.co.uk](http://www.festivalofwords.co.uk) for details and bookings.

### Thursday 17th October

#### • Tiny Treasures explore Line and Texture

Treasure House, Beverley. 1.30-2.30pm. Free for under 5's and their grown-ups.

### Monday 21st October

#### • The White Horse Folk Club presents Katie Spencer

Beverley Conservative Club, Wylies Road, HU17 7AP. 8.30 pm. £8 Striking vocals and deft song writing together with an evocative and complex guitar style.

### Tuesday 22nd October

#### • Singalong Memories Just for Fun

Walkington Methodist Church Schoolroom. 2pm-3.45pm. £2 incl refreshments. For further details please contact Val/Mike on 01482 865249 or Sue on 01482 882188 or email [val.memories@outlook.com](mailto:val.memories@outlook.com)

### Saturday 26th October

#### • AC/DC (Bon Scott Years) and Queen Double Bill Tribute

Memorial Hall, Beverley. £7. Tickets from Bug Vinyl and Minster Records or via Skiddle.

### Monday 28th October

#### • Singers and Musicians Night at The White Horse Folk Club

Catholic Church Hall, Beverley (next to the Rose and Crown). 8.30pm. Bring your own drinks and glasses. Performers and audience welcome. Only £2.

## COMPETITION WINNER

Congratulations to Sue Crosswaite who won a pair of tickets to the special screening of 'Bohemian Rhapsody' at Film on a Farm.



# kü

tchenhaus

The Largest Manufacturer of Quality German Kitchens

At Kutchenhäus we have affordable solutions made to meet your highest standards

2 Toll Gavel, Beverley, HU17 9AJ. T: 01482 862172.

Open: Mon-Sat: 10am-5pm. Sun: 11am-3pm. Bank Holidays: 10am-4pm.



FLEMINGATE  
BEVERLEY

Roll up, roll up!

A great circus celebration this half term at Flemington with street performers, circus skill workshops, magic shows and more fun for all ages.

THE STREET

CIRCUS

IS COMING TO TOWN

TUESDAY - SATURDAY

29<sup>TH</sup> OCTOBER - 2<sup>ND</sup> NOVEMBER

CHECK OUT OUR WEBSITE OR SOCIAL MEDIA  
FOR MORE DETAILS

GREAT SHOPPING & MORE TO ENJOY AT FLEMINGTON



@FlemingtonBev

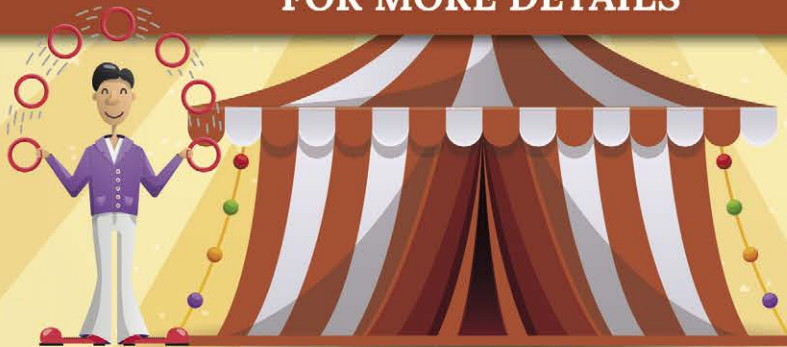


FlemingtonBev



FlemingtonBeverley

FLEMINGTON.CO.UK



FREE LOCAL  
DELIVERY

# DISCOVER OUR NEW KITCHEN & BATHROOM SHOWROOM

Come and meet our Kitchen and Bathroom Specialists Paul and Dan for a free design consultation.

MY KIND OF  
**HOME**



Symphony®

OMEGA PLC

EFF  
COOKING BRASSIEN SINCE 1877

DURAVIT

Roca

hansgrohe

## 50% OFF FLOORS OR TILES\*

\*Terms and conditions: when spending over £5000+VAT on a kitchen or £3000+VAT on a bathroom. Orders to be placed and delivered before 30th September 2019. Selected ranges only. Offer capped at 30 square metres. Only available at MKM Beverley. MKM reserve the right to withdraw or amend the offer at any time.

**BEVERLEY**

Swinemoor Lane, East Yorkshire HU17 0JX  
01482 880088 | [beverley.mkmb.co.uk](http://beverley.mkmb.co.uk)

**MKM**  
BUILDING SUPPLIES