

just

ISSUE 46

BEVERLEY

PICK ME
UP, I'M
FREE

BEVERLEY REMEMBERS

COMPETITIONS WIN!

- A meal for two at the Kings Head
- Family VIP tickets to Parkway Panto

BEVERLEY IN BLOOM WINS SILVER-GILT

JACK'S ERC JINGLE

WELL I NEVER... KEN ROSE

NEWS, WHAT'S ON, LIFESTYLE, FEATURES, PUZZLES, PHOTOS & MORE



Open events

Flemingate, Beverley

Thursday
8 November
4-7pm

Tuesday
22 January
4-7pm

- Have a go activities
- Talks
- Demonstrations
- Tours
- Challenges
- Meet our students



East Riding College



www.eastridingcollege.ac.uk/visit



CONTENTS

Letters from the Editors **3**
News **4, 5, 19, 26**
Parkway Cinema **6, 7**

FEATURES

Beverley and the Great War **8**
Remembrance Sunday **9**
Rev. Mike Peatman **12**
Well I Never... Ken Rose **14**
Links of London New Range **22**
Jack's New ERC Jingle **35**

REGULARS

Arts and Culture **8, 31, 34, 38**
Competitions **7, 26**
Competition Winners **7, 30**
Countryside **18, 28**
Finance **16**
Gardening **28**
Lifestyle **10, 14, 25, 35**
Motoring **27**
Photos **20, 21**
Puzzles **30**
Sport **32, 33**
What's On **36, 37**



Competition Terms and Conditions

Competition answers should be emailed to competition@justbeverley.co.uk before the closing date with the competition title in the subject field. Include your name, address and daytime contact telephone number along with your answer. Winners will be notified within 1 week of the closing date and **MUST** be available for publicity purposes for **Just Beverley** magazine, website and Facebook page and the prize provider. Photographs are usually taken the weekend after the prize-winners have been notified. The judge's decision is final. No cash alternative is offered. Details may be used for marketing purposes by **Just Beverley** and the prize provider and for website analytics by **Just Beverley**.

Contributors include:

Julian Minshall, Linda Johnson, Rich Marville, Barrie Barnes, Dave Brown, Jane Dale, Mary Day, Fleur Duke, Elizabeth Godber, Fiona Kemp, Colin Raynor, Colin Stamford, James Storrie, Dave Tunstall, David Tute, Sam Walton, Clint Wastling, Helen Watson.

You can pick up the magazine from:

Parkway Cinema, Flemingate, Beverley Tourist Information, Beverley Library/Treasure House, Tesco, Morrisons, East Riding Leisure Beverley, East Riding Theatre, Browns café, Beverley News, Boyes, Tesco café, Colette and Tyson Garden Centre, Beverley Garden Centre, Cherry Tree Garden Centre, Mace News Saturday Market, Co-op Food Lincoln Way, Tickton News, Costcutter in Walkington, Molescroft News, Grovehill Convenience Store, Maple News, Leconfield PO, Willerby News, Poundland, Halfords, East Riding Community Hospital, Bishop Burton PO, Leven PO, The Altisidora, Cherry Burton PO, Barkers of Cottingham, Middleton-on-the-Wolds PO, Light Dragoon at Etton, Gnu at North Newbald, Monks Walk, Hayride, Sally's Deli, Ferguson Fawcett at Walkington, health centres, churches, cafés, hairdressers and more!

Printed by: Jadan Press.

www.justbeverley.co.uk

just BEVERLEY

LETTER FROM THE EDITORS



This year's Remembrance Sunday will be especially poignant as we commemorate 100 years since the end of the First World War and pay tribute to those who gave the ultimate sacrifice. We hope you like our special front cover. On

a lighter note, Bonfire Night always puts a smile on people's faces. This year, as ever, Beverley Westwood Lions will be hosting the annual display on the Westwood but this year, the Potting Shed on Flemingate is also hosting displays. You will be spoilt for choice!

Parkway Cinema's pantomime this year is 'Jack and the Beanstalk' presented by TaleGate Promotions; **Just Beverley** has a VIP trip for a family of 4 up for grabs on December 15th. See page 7 for details. Make sure you get your tickets to the Panto as they are going as fast as Jack's Mum's Hot Cakes!

Julian.



We are on the build-up to Christmas! I love the Beverley Christmas Lights Switch-on, but this year there will be not one, but two evenings to be dazzled!

The lighting of Flemingate Centre's lights is scheduled for November 23rd. Hosted by Beverley FM with tv and radio presenter Adam Smith, the evening will start at 5pm with the switch flicked at 7:15pm. There will be lots of entertainment and surprises and a fantastic firework display. The shops will open until 9pm and Bartipi will be back with a Nordic tipi bar. The Christmas Tree in Saturday Market will be lit up on Sunday 25th November following a short service at the Market Cross lead by Rev Canon Jonathan Baker, featuring St Mary's School Choir.

Put both dates in your dairies!!! The lovely lights in Beverley ensure it is a brighter Beverley even through the winter months!

Linda.



'Community Publication Award'
Shortlisted Nominee
2017 & 2018



REYTA
Remarkable East Yorkshire
Award Nominee 2016
'Best Newcomer'

GET IN TOUCH WITH US:

Website: justbeverley.co.uk

Email: info@justbeverley.co.uk

Telephone: 01482 679947

Twitter: @JustBeverley

Facebook: [facebook.com/justbeverley](https://www.facebook.com/justbeverley)

If you would like copies for your business to distribute to staff and customers, call **Just Beverley** on **01482 679947**.

EAST RIDING FESTIVAL OF WORDS BRINGS NEW SHOW ABOUT DEMENTIA TO BEVERLEY LIBRARY

A new play highlighting how dementia affects East Yorkshire families plays on November 10th at 10.30am at Beverley Library.

The show, titled 'The Memory Project', was written by **Just Beverley's** own Elizabeth Godber, and is being produced by her company Smashing Mirrors Theatre, which most recently performed a sellout production of 'Three Emos' at Hull New Theatre.

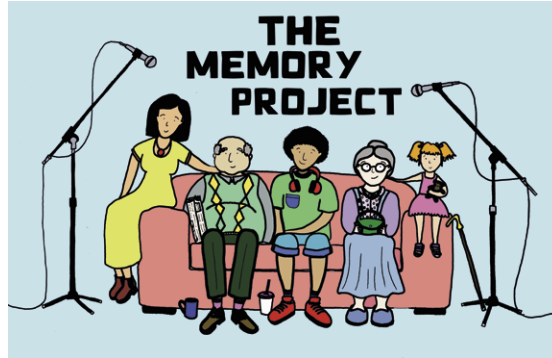
Smashing Mirrors is a Dementia-friendly organisation which has created this show with the help of Dementia Friendly East Riding and Butterflies Memory Loss Support Group. Elizabeth stresses that the show is not for those with Dementia, but is for those wanting to find out more. "It's not a depressing show" she explains, "of course, some aspects are sad, but there are also a lot of funny moments in the show. I didn't want it to be upsetting. It is primarily about the human spirit, and that is always such a positive thing".

Joining Elizabeth in creating the production is local student designer Kathryn Walker, who is making her debut with a professional production. "We've got a brilliant crew of local talent for this show" Elizabeth explains, "and that's something I'm really excited for. Travelling around my home county, performing a show that hopefully creates dementia awareness: that is bound to be something really special".

Indeed, the show is touring all over, from Willerby to Hornsea, and Bridlington to South Cave, before finishing up in Beverley. The cast is yet to be announced, but is certain to be a collection of more northern talent.

Elizabeth attempts to sum up her aims for the show: "I just hope people come to see the show for a few reasons. It's great to see something performed in a local library; it's so important for us, as a society to learn more about Dementia, and also, hopefully, it's a really enjoyable forty-five minutes!"

To find out more about the show, get tickets or look at other dates, go to the East Riding Festival of Words website: www.festivalofwords.co.uk. Tickets are also available from **01482 392699** or in person at the library. Alternatively, there is also information on Smashing Mirrors Theatre's Facebook page: www.facebook.com/smashingmirrorstheatre



DREAM DOORS' TEAM EXPANDS!

Are you dreaming of a new kitchen for the New Year? Dream Doors on Swinemoor Lane has expanded (again) to offer more customers their dream kitchen!

Dream Doors is not just about doors! Upgrading your kitchen has never been simpler - from a simple door swap to a Professional kitchen Refurbishment or a brand new quality fully fitted kitchen - Dream Doors have the solution.

Now Jason Wilkinson has joined Terri and Andy Wilkinson and Richard Brown, capacity has increased, as have the options available. The quality of the products is undoubtedly high, as any visitor to the showroom can see, with 18mm solid carcasses and all doors fitted with soft-close hinges, in over 100 different styles, colours and finishes.

There are even more choices of worktops, handles, splash-backs and lights!

Want an odd sized door? No problem! Want plinth heaters and high-end integrated appliances? No problem!

Give Dream Doors a call on **01482 861653** or pop into the showroom at **4a Belprin Park, Swinemoor Lane, Beverley HU17 0LN** for a chat to ensure your dream kitchen becomes a reality!



BEVERLEY IN BLOOM WINS SILVER-GILT AT BRITAIN IN BLOOM AWARDS

So many different groups input into the winning of an overall Silver-Gilt in the Large Town category, with the highest scoring for Community Participation.

The RHS 'Bloom' awards are about much more than pretty flowers. Although horticulture accounts for 50% of the marks, environmental responsibility accounts for 25% as does community participation.

The horticulture score of a Silver-Gilt is commendable as this was the first year Beverley has qualified to campaign in the Large Town category - the Judges gave some positive feedback as to how the score could become Gold should the town qualify again.

Similarly, the Environmental score of Silver-Gilt was not far off a Gold. However, despite the fabulous heritage and artworks in the town and the commitment to recycling, the Judges were concerned about litter in the streets and communal areas and chewing gum on the paths. But the icing on the cake was the Gold for Community Participation!



Helen Watson, Beverley's Town Clerk said: "So many people have been involved in this campaign, which is about so much more than plants! The Town Council, who co-ordinate the hard work which goes into making Beverley such a vibrant place to live and visit and lead by example, wish to thank the Planting Group; Brighter Beverley; our Young Litter Pickers; East Riding Council; East Riding College; Bishop Burton College; the Prisoners who helped; Molescroft School; Allotment Holders; Flemingate; Beauty From Chaos Flower Festival; Tina Cerruti; the Chrysanthemum Society; the Catholic Club; Community Rail Partnership, media partners and others.

Bloom is about growing people, not just plants!

It increases community cohesion and encourages collaboration, fosters creativity and combats loneliness. There are already lots of people involved in making Beverley into a perfect destination, but wouldn't it be great if everyone looked after the town to make it the best it can possibly be, taking litter - and gum- home with them?

"If you have been enthused about our award and wish to get involved in any way - you don't have to be green-fingered or even nimble on your pins - do give me a call for a chat on **01482 874096**."

MOLESCROFT PRIMARY SCHOOL WELCOMES NEW STAFF MEMBER

It's now recognised by organisations such as 'Dogs for Good' and 'Dogs helping Kids' that 'there is significant potential for dogs to help young people in a range of educational environments, bringing benefits to their academic, emotional and social development.' Puppy Kevin joins human staff at Molescroft Primary to do just that! He's already helping some of the children overcome a fear of dogs.

Kevin has his school home under Mrs Jameson's desk. Like the children, he is taking lessons, but Kevin's training is to learn how to respond to a variety of commands (sit, lay, come back) and to adapt to the school environment so that he can get more involved in school life.

As he grows, he will be working with different classes and will be able to welcome the children as they arrive at school.

He seems to already have an 'ear' for music, as his ears prick up when he hears the children singing and he thoroughly enjoys running around the school field.

So far, his arrival has been greeted with much enthusiasm by pupils, teachers and parents, meaning there is no shortage of pats and volunteers to take him for a walk!



NEW FESTIVAL WINS PRESTIGIOUS AWARD IN ITS FIRST YEAR!

Congratulations to Beverley Fringe which has won Yorkshire Gig Guide's Best Small Festival.

Beating stiff competition from Barnsley Live and Hebden Folk Roots into second and third place, Beverley Fringe was the surprise winner on the night!



Credit to Beverley residents Phil Simpson and Jessica Lawson who imagined the festival and pulled so many people together - venues and artists - to step into the breach after the sad cancellation of the long-running Beverley Folk Festival.

Boyed up by the reception and support throughout the weekend, Phil and Jessica are already planning the next Beverley Fringe to run across the weekend of June 21st-23rd 2019. Save the date in your diary!

BEVERLEY WESTWOOD LIONS HOST BONFIRE AND FIRWORKS ON THE WESTWOOD

No-one around Beverley can forget Bonfire Night with its links to the Gunpowder Plot.

Last year, we enjoyed the BBC drama 'Gunpowder', starring Kit Harington as Robert Catesby. Two of the plotters, John and Kit Wright were born at Welwick while Thomas Percy, who helped fund the group and secured access to the cellar beneath the House of Lords where the gunpowder was placed, was the son of Edward and Elizabeth Percy of Beverley.

Sir Thomas Knyvett, the man who led the soldiers who discovered Guy Fawkes was also from Beverley.

This year's bonfire will be lit at 7.30pm by the President of the Westwood Lions, Alan Blenkharn, with assistance from Mayor Cllr. Bryan Pearson.

The firework display follows at 7.30pm. There's a fairground with food.

Please contribute generously to the bucket collection- the evening costs around £7,000 to put on! Bonfire night in Beverley wouldn't be the same without it!

Beverley has been remembering the gunpowder plot for many, many years.



LOCAL BAND TO LAUNCH NEW SINGLE AT SPECIAL GIG

Indi-folk favourites, Elwhaeko are launching their new single 'Lone Wolf' at St Mary's Church in Beverley on November 10th along with an exclusive screening of the accompanying video and special guests.

Elwhaeko's front-man, Lee Atkinson, whose name is the inspiration for the band's name, lives in St Mary's Parish.

He came up with the idea of holding the record launch in the church to help raise much-needed funds for the church. So, although the evening is free, Lee is hoping that everyone will donate a minimum of £2 per person.

There will be a licensed bar for the evening which

begins at 6pm. Supporting Elwhaeko are Crooked Weather, back from a recent tour of Australia and the ethereal Happy Endings.



SING FOR FUN WITH THE 'CAN'T SING GROUP'

New women's only singing group means you CAN sing, for fun, fellowship and confidence!

It is official - everyone can sing! This group promises NO soloing, NO practicing and NO performing!



Travel the world in song, learn new tunes and sing old favourites in a relaxed, non-judgmental atmosphere. Mondays from 1pm till 3pm - you don't even have to turn up on time! Contact Denise on **07964 059912**.



EVERY THURSDAY AT 10.30am
(doors open 9.45am)

Join us for a free brew and a natter and enjoy some great films on Beverley Parkway's Big Screen. Only £4.20 with drink and biscuits included. Aimed at 55s and over. Films subject to change.

Thursday 1st November -

The Children Act

Starring: Emma Thompson, Stanley Tucci

The Meg

Starring: Jason Statham, Bingbing Li

Thursday 8th November -

The Equalizer

Starring: Denzel Washington, Marton Csokas

The Children Act

Starring: Emma Thompson, Stanley Tucci

Thursday 15th November -

Christopher Robin

Starring: Ewan McGregor, Hayley Atwell

The Equalizer

Starring: Denzel Washington, Marton Csokas

Thursday 22nd November -

Mamma Mia! Here We Go Again

Starring: Lily James, Amanda Seyfried

Christopher Robin

Starring: Ewan McGregor, Hayley Atwell

Thursday 29th November -

King of Thieves

Starring: Charlie Cox, Michael Caine

Mamma Mia! Here We Go Again

Starring: Lily James, Amanda Seyfried

PENGUIN PARTIES



**ONLY
£195**

- Suitable for ages 5 to 12
- Up to 40 guests (additional charge for extra guests)
- Party games in a private function room with Parkway Penguin
 - Tea and coffee for parents on arrival
- Personal Photo montage on screen followed by your own film screening

For more information,
please contact a member of staff

These are the films scheduled to open in October/November - all are subject to change. Check out up-to-date cinema listings at www.justbeverley.co.uk/cinema-times



31st October



2nd November



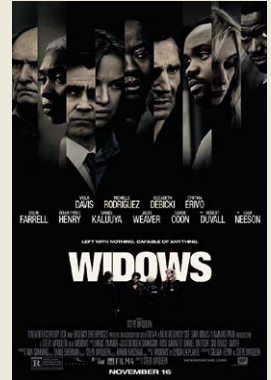
2nd November



9th November



9th November



9th November



16th November



21st November



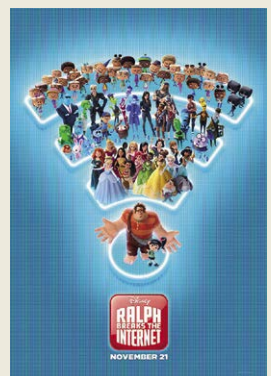
23rd November



23rd November



30th November



30th November

YOUR NEW INDEPENDENT CINEMA



TALEGATE THEATRE PRODUCTIONS COUNT DOWN TO THIS YEAR'S PARKWAY PANTO

There are so many opportunities to join in on the fe-fi-fo-fun, as we countdown to the opening of this year's GIANT Parkway Pantomime 'Jack and the Beanstalk'.

On the 23rd November, you will see the cast performing songs from the Pantomime at the Flemingate Christmas Lights Switch-On. Miss them then and you have another chance to see the cast on the 9th December at the Beverley Festival of Christmas. The pantomime itself begins on Saturday 15th December and runs until December 31st, with child-friendly start times to ensure everyone can see this fabulous show.

TaleGate just LOVES panto! The bright costumes, the slapstick, the songs, the fun! But all TaleGate's productions are playful and unforgettable! At Parkway Cinema, there is a purpose-built theatre, but TaleGate can transform any venue or space to provide a unique and unforgettable experience - seeing them at Flemingate on the 23rd or at the Festival of Christmas on December 9th will be memorable. They are a Yorkshire touring company who bring the magic of theatre to audiences young and old.

So why 'Jack and the Beanstalk?' It's a children's tale about Jack, a poor country boy, who lives with his widowed mother. The last of their belongings is a cow, who Jack takes to market to sell for money - but instead he trades her for a handful of magic beans, which grow into an enormous beanstalk reaching up into the clouds. Jack climbs the beanstalk and finds himself in an unfriendly giant's castle.



When the giant returns home, Jack hides, but the giant knows he is there and utters those famous words 'Fee, fi, fo, fum, I smell the blood of an Englishman; be he live or be he dead, I'll grind his bones to make my bread.' As with all pantomimes, there is lots of audience participation, booing the 'baddy', cheering the 'goody'; the principal male role (Jack) is usually played by a young lady and the widowed mother (the Dame) played by an older man; good always triumphs over evil and the principal male (Jack) usually falls in love, so there is a happy ending with a wedding. Will TaleGate's production follow these pantomime norms? You will have to go along to find out!

Join in the adventure on social media: @BeverlyPanto @talegatetheatre. Don't forget to book your tickets or you'll be a has 'bean'.

COMPETITION

Just Beverley, Parkway Cinema and TaleGate Productions have joined together to give you a fantastic VIP experience to see 'Jack and the Beanstalk' at Parkway Cinema's Theatre on Saturday December 15th at a showing of the winner's choice.



A family of four (at least one adult) can get into the festive spirit with pre-show drinks, best seats in the house to see the show, meet the cast afterwards and have pictures taken with the actors in their costumes by **Just Beverley!**

All you have to do to be in with a chance of winning this great prize is this:

What is the name of the Theatre Company putting on the production?

Send your answer by email to competition@justbeverley.co.uk by November 19th. Put 'Jack and the Beanstalk' in the subject box with your name, address and daytime telephone number in the body of the email. The winner will be the first name drawn out of the hat after the closing date. Winners must be prepared for publicity for Just Beverley, Parkway Cinema and TaleGate Theatre. There is no cash alternative.



Event cinema offers something a little different to mainstream films. Live and pre-recorded shows beamed in via satellite from all over the world. Here are the latest live streams that you can enjoy on the big screen at Parkway Beverley.

TICKETS NOW ON SALE:

**Thursday 1st November at 7pm -
NT LIVE: ALLELUJAH! (12a)**

**Tuesday 6th November at 6pm -
EOS: DEGAS - PASSION FOR PERFECTION (12a)**

**Sunday 11th November at 3pm -
BOLSHOI: LA SYLPHIDE**

**Tuesday 13th November at 7.15pm -
ROH: LA BAYADERE**

**Wednesday 14th November at 7pm -
RSC: TROILUS AND CRESSIDA**

**Tuesday 20th November at 7pm -
NT LIVE: THE MADNESS OF GEORGE III (12a)**

**Thursday 29th November at 7pm -
THE KING AND I FROM LONDON
PALLADIUM (12a)**

LIVEshows

**Sunday 4th November at 7pm -
ALI COOK: PRINCIPLES OF DECEPTION**

**Sunday 25th November at 7.30pm -
BEVERLEY BUZZ COMEDY CLUB**

**Thursday 6th December at 7.30pm -
FIVE STAR SWING AT CHRISTMAS**

**From Saturday 15th December -
PARKWAY PANTO - JACK & THE BEANSTALK**

COMPETITION WINNER

Congratulations to Sue Fryatt who was the winner of last month's competition to win Smallfoot goodies.



BEVERLEY AND THE GREAT WAR - THE AFTERMATH BY BARRIE BARNES

At 11am on the 11th Day of the 11th Month 1918 the Great War came to an end; it felt good to be alive at the front on that cold winter's day. The news arrived in Beverley on the 11th November and was quickly given to the townsfolk.

Factories, offices and schools were closed and the people spilled out onto the streets. Church bells rang out and flags and bunting was put up on main buildings. People gathered to discuss this unexpected event and the pubs did a roaring trade.

However, there was no wild rejoicing as Beverley was too much of a traumatised and depressed community that was still suffering from war weariness. Many people felt that some time must elapse before the peace could be celebrated properly.



Feelings had been too much harassed and sympathies too often called forth for the loss of friends and neighbours.

As people looked back over the last four years there had been so many

tragedies in families they knew well that it didn't seem right that those who had escaped should give themselves up to joyous celebration. This is not to say that people were not glad it was all over but so many families had suffered loss, some losing two and three sons.

So many men had returned home maimed and disfigured and so many were still listed as missing; it was too soon for celebrations.

Three years after the end of the Great War as 1921 drew to a close, the people of Beverley prepared themselves for the first Armistice Day remembrance service and the two minutes silence at the new war memorial

in Hengate. Servicemen polished their newly-issued medals and women dusted the photographs of fallen loved ones that stood on the sideboard or mantelpiece, invoking once again old memories and heightening the still raw pain of loss. As the last stroke of 11am reverberated from St Mary's church tower, the heart of Beverley stopped beating, creating a deep silence as vehicles and people halted where they happened to be at that moment.



In the crowd around the memorial black clad women wept openly as memories of dear ones lost rushed upon them and many a man found it hard to hide his emotions as the two minutes slipped slowly by. More than any eloquence of tongue was this eloquence of silence.

The world and its troubles were for the time being forgotten and in the minds and hearts of the bereaved, the dead returned home again. Many other people chose not to spend this private moment in public, they withdrew in their grief to their darkened living rooms and the thoughts of what might have been.

The pain and loss that this memorial once represented has now faded into history as that generation and their children have passed from living memory, but it is also right and proper that we should continue to remember the suffering of the Fallen, the service people who survived and their grieving families every year at this important time.



Beverley Town Council
Making a difference



THE GREAT WAR REMEMBERED

**A concert from Beverley Minster commemorating
the Centenary of the Armistice in 1918**

Beverley Town Council

**Invite you to join them in the anniversary of the Armistice commemorations,
remembering the bravery of those who fought, lived and died in the First World War**

We continue to honour all those who served, died and were affected by the war both at home and overseas and we will give thanks for peace and for those that returned, and remember the sacrifice of the soldiers who died and all these affected by war

Featuring:

Fallen Leaves
Excerpts from the life and times of the courage and commitment of men and women from Yorkshire and the East Riding in particular using songs and sketches and words from Other Lives Productions bringing uplifting stories full of comedy and courage discovered in the darkest of times

Humberside Police Concert Band
A repertoire of period music

Four Candles
Performing beautiful music and song from the period

Cherie Lawrence
Performing sing-a-long songs of the time to join in with

FREE ENTRY

Saturday 3rd November 2018 at 2.00 pm
To reserve tickets contact: clerk@beverley.gov.uk / 01482 874096

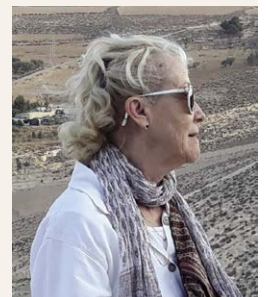


POEM - THROUGH THE WINDSCREEN BY MARY D DAY

*Driving down to Devon
In early morning rain
Suddenly a swipe of poppies
Slashed the ripening grain*

*I wasn't there
I was **not** there
Not ever there at all*

*The poppies in the cornfield
tell it all.*



Mary says: "I wrote this over 35 years ago. Poems for me are a snapshot, a way of encapsulating lived experience. They are often very private. I don't usually have any interest in sharing them but every year, at this time, this one comes to mind and seems to want to be set free.

"My family used to set off on holiday in the early hours, five children sleeping higgledy-piggledy in the back of a VW camper (pre seat belts), so that by the time they woke up we would be well on the way.

"That was the setting for this experience."

BEVERLEY'S REMEMBRANCE SUNDAY COMMEMORATIONS

As is customary in Beverley, there will be a Service at Beverley Minster followed by a Memorial Service and Laying of Wreaths in the Memorial Gardens, Hengate, Beverley on Sunday, 11th November 2018

• PARADE TO BEVERLEY MINSTER

The Parade will assemble under the guidance of representatives from the Defence School of Transport. Anyone wishing to take part should assemble for instructions in the School Lane Car Park, at the rear of Beverley Fire Station, by

no later than 10.15am. The Parade will leave for Beverley Minster at 10.30am precisely and will proceed along New Walkergate, Railway Street, Eastgate and into Minster Yard North. Parade members will then enter The Minster by the Highgate Door.

Anyone not involved with the parade should proceed directly to The Minster, entering by the Highgate Door and take their seats as indicated by the Churchwardens. Seats are reserved for the Civic Dignitaries and Parade members only.

• THE SERVICE

The congregation is asked to be seated by 10.30am. The Service will commence at 10.50am and, at the conclusion of the Service, the Congregation should remain standing and wait until the Clergy, Civic Dignitaries and Parade members have left The Minster.

• PARADE TO THE MEMORIAL GARDENS

The Parade will reassemble in Minster Yard North and proceed along Eastgate, Wednesday Market, Butcher Row, Toll Gavel and Saturday Market, to the Memorial Gardens in Hengate.

The Salute will be taken at the Market Cross in Saturday Market by the Vice Lord-Lieutenant of the East Riding, Mr Stephen Larard, MBE, JP.

By-standers are invited to support the Parade members by lining the streets along the route.

Members of the public wishing to take part in the Memorial Service and Laying of Wreaths should assemble in the Memorial Gardens in Hengate.

• MEMORIAL SERVICE AND LAYING OF WREATHS

This Service should start at 12.15pm, depending on the parade speed.

On entering the Memorial Gardens, Civic Dignitaries, Parade members and anyone wishing to lay a wreath, will be directed into position by Royal British Legion representatives.

Service Sheets will be available at the entrance gates.



HEAR THIS!

HEAR ANYTHING, ANYWHERE.

Would you like professional hearing care that is different, more experienced and more caring than others?

Finding your perfect hearing aid is easier than ever because our independence guarantees you access to the biggest choice and best value for money. Try the latest, smallest hearing aids available, programmed to suit your lifestyle. Ask us for a **FREE**, no-obligation demonstration.

- **INDEPENDENT** family business
- **FREE** Hearing Assessment
- **FREE** aftercare
- **5 YEAR** warranty*
- **5 YEAR FREE** batteries*

- HOME VISITS AVAILABLE
- WAX REMOVAL SERVICE
- INVISIBLE HEARING AIDS
- FREE HEARING AID TRIAL*



"We care about you and your hearing"



A LEADING CONSUMER SURVEY



AWARDED Independent hearing specialists like HULL HEARING CENTRE **5 GOLD STARS** for choice, pricing & service.

Trouble hearing? Then contact us today.

GO Local. **GO** Independent. **BE** Happy!

Clare House, 8-10 Baker Street, Hull HU2 8HP

tel: **01482 22 22 04**

www.hullhearingcentre.co.uk e:stephen@hullhearingcentre.co.uk



*on selected products

HOW WOULD YOU LIKE TO BE REMEMBERED? ASKS FIONA KEMP

We often mention in conversation how we want to be remembered. But what makes us do this? Is it just human nature not to want to be forgotten, or does talking about it bring peace of mind about the legacy and memories we leave behind?

This year we recognise the Centenary of the ending of World War 1 and remember all those brave men and women who have lost their lives during times of war. Last month, I was privileged to visit a World War 1 Cemetery in Northern France.



I was overwhelmed by the magnitude of the loss of life represented by pristinely kept grounds and white memorial stones. Up until that point I thought I understood the sacrifice made by so many, but I couldn't have been more wrong. Just spending a little time reading the inscriptions on some of the headstones was a humbling experience when I started to comprehend the effect the loss of so many must have had on families, friends and whole communities. Those men, quite rightly, will not be forgotten by generations to come. But the majority of us are not included in public remembrance; instead we are remembered privately by those who love us.

Remembrance can take many forms and can evolve in time. Shortly after a bereavement, a family may plant a tree or purchase a garden of rest plot or a headstone in memory of their loved one to provide a place to visit to spend quiet reflective time recalling memories both happy and sad.

As time passes we feel able to talk with others about our memories of the person we have lost. You find yourself asking what they would have thought or said about a recent event or how much they would have enjoyed a family gathering. When I have a dilemma to deal with, I often say to myself "what would Gran have said or done in this situation?" My Grandmother passed away nearly twenty years ago, yet I still think about her most days. I'm sure she would be delighted to know she had such a positive impact on my life, then and now.

It is becoming more popular to purchase memorial items such as jewellery or keepsakes as a constant reminder of the person we have lost. Recently I watched a well-known TV programme, where a member of the public brought in a diamond ring which had been in her family for many generations. The family called it 'The Elizabeth Ring' as it was passed down through the female line to any family member with the name Elizabeth! What a lovely and unique way of making sure your name and memory remains alive from one generation to the next.

The way you remember your loved ones recognises the special relationship you had with them. It could be a tradition or a saying which reminds you of them rather than something tangible. However you choose to remember, I hope it brings you comfort. Like so many, my family will be participating in the Act of Remembrance this month, but also privately remembering those we have lost with fond memories. If you would like information or advice on memorials for your loved ones, please feel free to contact hkempandsonltd@gmail.com or call **01482 844695**.

WHAT IF... BY DAVE TUNSTALL

What if you are in two minds about making a will? Perhaps this will help you decide you should!



DO NOT MAKE A WILL IF:

- You hate your children and want them never to speak to each other again after the battle over your estate. This can extend to any number of relatives who believe they should inherit something from you, for example; "they promised me the collection of rare decorative plates". A will sets down exactly what you wish to happen to your estate and who will inherit. At the extreme, without a will and living relatives the Treasury will get everything. May I suggest a charity would benefit more?
- You wish that your spouse/partner will suffer the agony of attempting to probate your estate without a will. A will makes the probate process considerably easier in terms of time and money.
- You think foster care is great and want your minor children placed in care whilst a court decides which of your relatives (if any) will get custody. Without a will the decision making is out of your control and may result in unintended consequences for your family. The most efficient way to ensure minor children are looked after is to appoint guardians of your choice in a will.
- You are happy for your hard-earned money and potentially the whole value of your house to be spent on paying for your long-term care costs. With a will you can plan to pay the minimum allowed.
- You have reliable information that you are never ever going to die. I may have some bad news for you! Please do not be like Prince, Rik Mayall, Pablo Picasso and Amy Winehouse who all died without making a will and caused distress and financial loss to their families, in court fees and inheritance tax.

Please stop putting it off and make a will today! For a free guide to help you make your will or for a no obligation free appointment to discuss your requirements please contact: dave@eastridingwills.co.uk
Telephone: **07939 085752**.

**Four Generations,
Giving Over 125 Years Service**

Herbert 1870-1962	Eardley 1908-1986	Geoffrey 1939-2015	David 1964
----------------------	----------------------	-----------------------	---------------

H. KEMP & SON LTD.
FUNERAL DIRECTORS
(ESTABLISHED 1893)

Golden Charter
Funeral Plans

- Funerals Respectfully Conducted
- 24 Hour Out of Hours Service
- Free Advice & Support
- Private Restrooms
- Prepaid Funeral Plans Available
- Finance Options Available

Tel: 01482 844695
www.hkempandsonltd.com

259 Hallgate, Cottingham, East Yorkshire, HU16 4BG
Fax: 01482 843898
Email: hkempandsonltd@gmail.com

Enjoy Life

at a Barchester care home



Personalised care is at the heart of everything we do.

- Choice of nutritious and delicious menus, prepared by talented chefs
 - Daily activities, tailored to residents' interests and hobbies
- Beautiful and safe surroundings with a choice of ample living spaces
 - Well-trained and experienced staff who get to know each and every residents' care needs and personal preferences

Nursing Care • Residential Care • Respite Care & Short Breaks
Beautifully Refurbished • Minibus • Beauty Salon • En-suite Rooms

Call our friendly team or visit our website for more information.

Call: 01482 977 831

1 Deer Park Way, Lincoln Way, Beverley, HU17 8RN



**LINDUM
HOUSE**

BARCHESTER HEALTHCARE

www.barchester.com

WELCOME TO REV'D MIKE PEATMAN, THE NEW VICAR AT ST NICK'S

If you think Mike Peatman looks familiar, then he maybe is! Remember '15 Kids and Counting', most recently '20 kids and Counting', Channel 4's TV programme about Britain's biggest family, the Radfords? Well, Mike was the Vicar who had the pleasure of baptizing 15 of the children, 11 of them all at the same time!

Mike first met the Radford Family, Sue and Noel, who at the time had 16 children, when he got a phone-call out of the blue saying there was a family in Morecambe who wanted 11 of their kids christening. Sue and Noel have known each other since they were 7 years old, got married when Sue was 17 and have just loved having children ever since! Their 21st child is due this month. Their oldest is 29 with baby Archie just 14 months. Mike said: "They are a fab family - the kids are great. I baptized 11 of them, then one individually, then three together. I've also baptized one of the grandchildren! They are all polite and listened - and one of them can be heard on the Channel 4 programme saying 'He's a lovely vicar!' What more could I ask?!"

Mike was ordained in 1990, along with his wife, Debbie, who was one of the first women priests in the Church of England. Mike's first job was as curate in Greasley, Nottinghamshire, which is famous as the setting for DH Lawrence novels. He was then stationed as Parish Priest and Diocesan Stewardship Advisor at St James' Church, Whitley & Stonehouse, Coventry, which is where the Peatman's 2 children, Jono (now 24) and Ellie (21) grew up. In 2002, the family moved to Lancaster to St Martin's College (now the University of Cumbria) where Mike was Chaplain. In 2009, they were on the move again, when Mike became Rector of Morecambe Parish Church which has the claim to

fame that Eric Morecambe was baptized there and Edward Elgar stayed in the Rectory and conducted pieces in the church during a music festival. Wife Debbie became the Ecumenical Officer for Churches Together in Lancashire, wrote for Messy Church Magazine and composed worship songs. Sadly, Debbie died in 2016 but one of her songs, 'Patient Grace' was sung by son Jono at her funeral. By 2018, Mike knew it was time to move on. He had no preconceived ideas of where he wanted to be, except that he felt drawn to a position which involved some teaching as well as parish responsibilities.

The position at St Nicholas' Church was a perfect match! Mike knows the area quite well as Debbie's father was born and bred in these parts so there are cousins still around and Mike had friends in Beverley. Mike is now half-time Training Adviser for the Archdeaconry of the East Riding which runs training courses and events for lay and ordained people as well as Vicar, with its many and varied responsibilities, at St Nicholas. St Nicholas' is a thriving church which works closely with Beverley's two other Parish Churches, St Mary's and Beverley Minster as well as ecumenically with Beverley's non-conformist churches and the Roman Catholic Church. But Mike wants to ensure that St Nick's becomes the focal point for St Nicholas' parish, to discern its distinctive contribution and find the unique opportunities which will enable it to become more present in the lives of its parishioners.

St Nick's is well-known to the Folk Festival community for the Communion service during festival weekend, which will continue with the Beverley Fringe, especially as Mike plays guitar and enjoys many different musical genres. The Minster and St Mary's are both renowned for their



traditional choral music so perhaps St Nick's will become known for a more contemporary offering. Mike's installation by the Bishop of Hull, Rt Rev'd Alison White, was accompanied by a band, rather than an organ, and, despite some of the necessary 'Shakespearean' language (her words!), was a very relaxed affair. Bishop Alison also graciously allowed Mike to sit in 'her' chair for photographs!

Working in Lancashire exposed Mike to working with deprived communities; he was Trustee of the local Food Bank and the area was the trial area for Universal Credit. Although Beverley and the East Riding are nowhere near Morecambe on the Deprivation Index, he can help people in need negotiate their way through a time when they need practical and spiritual help. With this, he has the help and prayers of the committed members of St Nicholas' Church. One of the biggest 'selling points' of St Nicholas' Church is that it offers a more intimate space to worship and for wedding parties than the other parish churches in Beverley. And if you know anyone wishing to be baptised, Mike has lots of experience!



The Ethical Fostering Service
"Partnerships for Children"

OUR CORE SET OF VALUES:

- ✓ PUTTING CHILDREN FIRST
- ✓ WORKING IN PARTNERSHIP WITH FOSTER CARERS, CHILDREN & THEIR FAMILY, ALL AGENCIES AND OUR STAFF
- ✓ OFFERING LIFE OPPORTUNITIES TO OTHERS



BECOME A FOSTER CARER TODAY

www.ethicalfostering.co.uk

Would you like to offer life opportunities to children?
Could you keep a child safe and secure?
Do you think brothers and sisters should remain together?

Fostering is an amazing and rewarding journey that puts children first. Could you work with us to maximise a child's life chances?

We are a small, socially responsible fostering agency that is looking to recruit applicants and experienced foster carers and we would love to hear from you.
Please call Colin on **07736397251** or Marilyn on **07501234611**.
www.ethicalfostering.co.uk
enquiries@ethicalfostering.co.uk

Beverley's newest affordable meeting space...

THE BUSINESS LOUNGE AT WAFFLE21



WAFFLE 21

8P PER MINUTE, THAT'S £4.80 PER HOUR OR JUST £19.20 PER DAY

EVERYTHING ELSE IS FREE - hot & cold drinks, lunch, snacks, cake, superfast broadband, FREE Car Parking & more!
FREE Business Membership Required

Contact us: **01482 534746**
info@waffle21.co.uk
www.waffle21.co.uk
Waffle21, Colonial House, Swinemoor Lane, Beverley, HU17 0LS



FLEMINGATE BEVERLEY

FASHION | FOOD | FILM | FUN

Christmas Lights Switch on!

FRIDAY 23RD NOVEMBER 2018

5PM - 8PM

LIGHTS SWITCH ON 7:15PM

Spectacular
Firework Display
plus

- Bartipi Christmas Tipi Bar
- Father Christmas
- Remarkable Rock Choir
- Parkway Panto Cast - Talegate Theatre
- Late Night Shopping and more...

LIVE
PERFORMANCE
OF SONGS FROM



THE
**GREATEST
SHOWMAN**



FLEMINGATE.CO.UK

GREAT SHOPPING & MORE TO ENJOY
AT FLEMINGATE



@FlemingateBev



FlemingateBev



FlemingateBeverley

WELL I NEVER... KEN ROSE

Beverley and district is blessed with many residents who contribute to the area, giving it the special flavour which makes it unique. Just Beverley is keen to meet such people to find out more about them. This month, we meet Ken Rose of Roses Kitchens.

Ken runs Roses of Beverley with his son Matthew. Roses of Beverley is a family business, with an excellent reputation for installing kitchens in Beverley and the surrounding area.

Ken, a former Director of Hygena, has worked in the kitchen industry for over forty years.

He has vast experience within the kitchen industry, including running a sawmill in the USA! Ken has been married to his wife Maureen for forty years. He also has a daughter and two granddaughters. Over to Ken for his answers to the 19 questions. His response to No. 3 made us smile and say 'well I never!'

1. Do you consider yourself an introvert or an extrovert?

I am an introvert when I am asleep and an extrovert when I am awake and a nuisance when I have had a beer.

2. What's the craziest thing you have ever done?

In 1964 I decided to become a Hull City Supporter... enough said.

3. When was your biggest adrenaline rush?

When I was six years old I snook onto the Splash Boat at East Park, I had my duffel coat on back to front, on the way down the wind blew the hood over my eyes... it was extreme!!!

4. Is what you are doing now what you always wanted to do growing up?

Yes, I started work when I was twelve years old delivering newspapers, I had a car cleaning round at the same age, I love working for myself, I have always wanted to be The Boss.

5. Who were you closest to when you were growing up?

My Mother, I miss her badly, there isn't a day goes by that I don't think of her but she still watches over me.

6. Who is the one person you can talk to about anything?

Matthew, my son, he is my best pal and the best man I have ever met.

7. What are you most thankful for?

My beautiful little Granddaughters... Francesca Rose and Grace Isobella.

8. What's on your bucket list for this year?

I really could do with a new bucket.

9. If a genie granted you 3 wishes, what would you wish for?

- 1) I wish I could play a guitar like Mark Knopfler.
- 2) I wish I could sing like Roy Orbison.
- 3) I wish I could play football like George Best.

10. What's your idea of a perfect vacation?

Sat outside a beach bar at five o'clock with a cold beer in my hand, watching the Mediterranean sun go down with my feet in the sand... Bliss.

11. What do you think about when you are by yourself?

I am a proper Tinkerman! I think about what I can do to make things better, mainly for my family and the business.

12. Do you judge a book by its cover?

I never judge a book by its cover, some of the best stories are hidden behind dodgy looking covers.

13. What is your favourite all-time movie - and why?

Field of Dreams with Kevin Costner, James Earl Jones and the brilliant Burt Lancaster... I cry every time I watch it.

14. What would you do differently if you had your time again?

I would have looked after myself much better, I didn't think I was going to live this long.

15. What would you change in Beverley and why?

I would build a Pleasure Dome on the Swinemoor Roundabout like the one Kubla Khan built in Xanadu - it would complement all the traffic lights on the roundabout!! And everyone in Beverley and for as far as the eye can see would own a Roses Kitchen!

16. What was your most memorable birthday?

My Sixteenth birthday. I bought a Lambretta Scooter, some brogues, a pair of Levi Stay press trousers, a Ben Sherman shirt with a pleat up the back and became a MOD.

17. What is your favourite drink - alcoholic or non-alcoholic?

A nice cup of tea.

18. What is your biggest achievement - sporting, hobby or past-time?

Being a father and a grandad... and I am brilliant at it!!

19. How would you describe yourself in one sentence?

Little and fat!



RECIPE BY THE FOOD RHINO - COFFEE AND WALNUT CAKE

Ingredients:

- 20g Ground Coffee
- 300ml Boiling water
- 1 x Cafetiere
- 150g x Dairy free spread
- 150g x Dark brown sugar
- 250g x Self raising flour
- 40g x Aquafaba
- 120g x Chopped walnuts
- 200g x Icing sugar
- 2lb Bread tin



Method:

In a cafetiere mix together the 300ml boiling water and ground coffee and allow to cool before pressing. Cream together 150g dairy-free spread and dark brown sugar in a mixing bowl until a smooth paste is formed. Add to the mix your self-raising flour, aquafaba and 100g of the pressed coffee, make sure you keep the remaining coffee as you will need it later. Mix together well before stirring in 100g of the chopped walnuts. Grease and line a 2lb bread tin and add your batter, making sure the mixture is evenly spread in the tin.

Cook at 180°C for 45 minutes turning halfway.

Once the cake is cooked place on a cooling rack to cool.

When the cake has cooled mix the icing sugar, 20g of pressed coffee and 100g of dairy-free spread until smooth and lay over the top of the cake. Finish by adding the remaining walnuts and chill for a few minutes until the frosting has set, then serve.



Telephone: 01482 869111
sales@rosesofbeverley.karoo.co.uk



The Kitchen Factory, The Courtyard,
Tokenspire Business Park, Beverley
HU17 0TB

Together we will design a beautiful kitchen



Roses will then
project manage
your kitchen installation from
start to completion

Visit www.roseskitchens.com

to see our customers kitchens and read what they have to say about us

Telephone: 01482 869111

YOUR FINANCES WITH GARETH BOTTERILL RESTRICTING MORTGAGE INTEREST RELIEF

From April 2017 HMRC have introduced restrictions on the amount of mortgage interest that can be offset against rental income for landlords. Tax relief on mortgage interest suffered will be restricted to the basic rate of tax, currently 20%, meaning that any landlords that are higher rate taxpayers, will receive tax relief at 20% rather than 40%.

The new rules are being introduced gradually from the 2017/18 tax year, when 75% of finance costs will be allowed at the higher rate, this falls to 50% in 2018/19, only 25% of finance costs will be allowed at the higher rate in 2019/20 and the higher rate relief will be fully removed by 6 April 2020.

The removal of the interest relief will mean that some landlords not only lose the tax relief but also see an increase in their taxable income, this could have implications for child benefit and potential loss of other tax allowances.

Consideration should be given to alternatives, which may reduce the impact:

- Some property owners may look at the potential for transferring the property into a limited company structure. Corporation tax is currently paid at 19% on taxable profits and this will be reduced to just 17% in 2020. A transfer of residential property to a limited company may have other tax implications such as stamp duty on the transfer price and capital gains tax on any uplift in the property value since it was originally purchased. There may also be additional taxes payable when the property is eventually sold.

- Change the use of the residential property and turn it into furnished holiday letting, there are currently no proposals to restrict mortgage interest relief for furnished holiday lets.

If the properties are mortgaged though, it is possible that the lenders could have issues with the change of legal ownership or use of the property. If you would like to discuss this in more detail, then please contact Gareth Botterill on **01482 862240** or email gareth@botterillco.co.uk



Botterill & Co Chartered Certified Accountants

We are a modern and professional accountancy practice ideally located to serve businesses in Beverley and the surrounding area.

We utilise modern accounting technology to provide you with a cost effective, professional service.

Our services:

- Annual Accounts
- Tax Planning
- Management Accounts
- Tax Returns
- Company Formations
- Payroll
- Cloud Accounting
- Bookkeeping & VAT

For a free initial consultation please contact us:

Office: 01482 862240

Mobile: 07966 051458

Email: gareth@botterillco.co.uk

Website: www.botterillco.co.uk

1st Floor Offices, 40 Norwood, Beverley, HU17 9EY



Print that gets you noticed







**BROCHURES LEAFLETS BUSINESS CARDS POSTERS
CALENDARS POP UP BANNERS INVITES PADS**

Tel: 01482 610902
info@jadan-press.co.uk www.jadan-press.co.uk
Rainbow House, Kimberley Street, Hull, HU3 1HH


 Jadan-Press


 PROMOTA


 PROMOTA


 BPiF


 URS


 bpm


 URS


 @JadanPress

IT'S BACK!

THE BIG
KITCHEN
DRAW

Free
MKM apron
when you book
a consultation
with our dedicated
kitchen
specialist***

WIN A
SYMPHONY
OR OMEGA
KITCHEN*

WIN**
1 of 10
VIP
experience
days

* Up to the value of £2500, cabinets only. All Symphony and Omega kitchens purchased between 03/09/18 and 03/12/18 will automatically be entered into the draw. If the winner has already purchased a Symphony or Omega kitchen between these dates, they will be credited the value up to £2500. Minimum spend £2500. ** No purchase necessary. You will be entered into the experience day prize draw if your consultation is between 03/09/18 and 03/12/18. *** Free gift, while stocks last. For full T&Cs for the above, visit mkmb.co.uk or ask in branch.

AEG

Symphony®



OMEGA PLC

natural stone
surfaces

MKM BEVERLEY
SWINEMOOR LANE, EAST YORKSHIRE HU17 OJX
01482 880 088 | mkmb.co.uk

OPEN Mon-Fri 7:30-5:30 Sat 7:30-noon



DUSK'S SHOW-TIME - STARLING MURMURATIONS

Every year at this time, just before dusk, wildlife watchers flock to locations across the country to watch spectacular starling murmurations - the shifting shapes in the sky made by thousands of starlings as they wheel and dive, preparing to roost for the night.

Tophill Low, Yorkshire Water's reserve situated between Beverley and Driffield is a great wildlife watching destination as winter approaches and a good place to watch this sky show. No one really knows why the phenomenon occurs, but it could be the birds' collective way of warding off predators or grouping for warmth as nights become colder.

The best place to see them on the reserve is the south marsh reed beds - keep an eye out for small parties heading to the murmuration, showing just where they are that night. Look out too for sparrowhawk and marsh harriers causing havoc among the throng as they take the opportunity to hone their hunting skills. On the reservoirs, thousands of black-headed and common gulls also put on a spectacular and noisy roost display at dusk and barn owls may be spotted quartering over fields.

Kingfisher sightings also peak in autumn at the reserve until the first frost. Despite the cold, autumn and winter makes wildlife spectacles

easier to see as 1000's of wildfowl overwinter across the site. The reserve's Reception Hide is fully accessible, glazed with a tea counter and a log burner! Feeders next door mean that even on a cold wet day, 50 or so species could easily be seen from a chair in the same place without ever moving or getting cold. There are 11 other hides across the reserve.



© Mandy West

Plan your visit:

You'll find the reserve signposted off the A164 between Beverley and Driffield. It is open 9am to 6pm daily - reception hide when staffed. Sorry but dogs are not permitted. The 300-acre site has a £3.50 adult and £1.80 concession admission fee, parking and two reservoirs surrounded by marshes, ponds, woodland and grassland which attract over 160 different birds throughout the year.



© Andrew Mason

HUBY

DOMESTIC APPLIANCES

Covering Hull, Beverley, Pockington, Driffield and all the local villages

BOOK ONLINE

and SAVE

at
hubys.co.uk

Book in advance and save money. The further you book in advance the more you could save...

No. 24001

For service and repair call: 01482 866660

BEES

BURTON ELECTRICAL SOLUTIONS

HIGH QUALITY ELECTRICAL WORK ACROSS EAST YORKSHIRE AND THE HUMBER REGION

DOMESTIC

COMMERCIAL

TESTING

FAULT DIAGNOSTICS

Whether it's for your home, rental property portfolio or business premises, all electrical installations need to be checked periodically by a qualified electrician. For a quote contact:

Andrew Burton

01964 552769 • 07585 601730

www.burtonelectricalsolutions.co.uk

info@burtonelectricalsolutions.co.uk

FEED-IN TARIFF (FIT) SCHEME TO END IN MARCH - NOW'S THE TIME TO INVEST IN SOLAR PV

The UK Government has announced plans to end the Feed-in Tariff (FIT) scheme from April next year. It does not intend to replace the initiative and there will be no grace period after the closure date of 31st March 2019. The end date has been set for both export and generation tariff.

The FIT scheme was established in 2010 and provides payments to owners of small-scale renewable generators (e.g. solar panels) at a fixed rate per unit of electricity produced and is funded through levies on suppliers, which are passed on to consumers. There are 5 months left for new Solar PV installations to be eligible for Feed-in and Export Tariffs.



Solar PV materials have reduced in cost since 2010 by up to 75%, which means solar panels have never been cheaper. Although Government FIT tariffs have reduced over the past few years, there is still a return of investment of up to 15%, even for new installations. If you are considering buying Solar PV, this could be an excellent time, especially as grid energy prices are increasing between 5-10% annually.

It could also be worthwhile weighing up whether battery storage to store excess energy generated through Solar PV is an option. Tesla's Powerwall is available for UK domestic properties scalable from 13.5kWh - 121.5kWh (from 1 to a maximum of 9 Powerwalls). A Powerwall is a useful back-up facility for ever-increasing grid power cuts, increases solar self-consumption (and energy self-sufficiency) and can be topped-up using Economy 7 overnight if not filled through solar during the day. If you would like to find out if Solar PV or a Tesla Powerwall will help you become more energy-efficient, don't hesitate to contact Steve Baillie at East Riding Energy on **07817 242535** or email: steve@eastridingenergy.com

RIBA 
Chartered Practice

rd stott
Architects Limited



An architects practice putting the client first. From small extensions to a complete new home R D Stott Architects can offer services from initial appraisal to completion.

- Architectural and Design services
- Building surveys
- Feasibility studies
- Cost advice
- Planning services
- Building regulation submissions
- Detailed and working drawings
- Tender information,
- Advice on appointing a contractor
- On site project management

22 Lairgate
Beverley
East Riding of Yorkshire
HU17 8EP

T +44 (0)333 772 9707
E studio@rdstott.co.uk
W www.rdstott.co.uk



TESLA
POWERWALL
CERTIFIED INSTALLER

ROLEC
EV



APPROVED INSTALLER



East Riding Energy Ltd, 2 Pollard Garth, Skidby HU16 5GA

Email: info@eastridingenergy.com

Web: www.eastridingenergy.com

Tel: 01482 210089



Send your photographs of your celeb
Find us on Twitter and Facebook to s

CHRISTMAS LIGHTS FASHION SHOW



REMEMBER ROCKS - MANOR SCHOOL NURSERY



HERE TO GET *you* THERE

HUNTERS®

EXCLUSIVE

BEVERLEY / 01482 861411

BEVERLEY FOOD FESTIVAL



SALES / LETTINGS / MANAGEMENT

HUNTERS®

HERE TO GET YOU THERE

BEVERLEY / 01482 861411

POPULAR LINKS OF LONDON ANNOUNCE NEW, FUN OVALS RANGE

Links of London have moved to a different level with the launch of their strong but bold femininity of their OVALS range. Links of London is exclusive to Guest and Philips of Beverley, so you can be impressed by the 'design meets attitude' of OVALS which is now on-show in their Flemingate store.

Links of London was founded in 1990 by John Ayton and Annoushka Ducas. Their objective was imaginative design and uncompromised craftsmanship using the finest materials, ensuring each piece remains and timeless contemporary classic.

Following acquisition by the Folli Follie Group in 2006, Links of London has grown as an international player in the luxury goods markets. It launched its first watch collection in 2007 and has since developed statement watch ranges for men and women. Links of London always have something exciting and new to offer, with contemporary must-haves and those extra special pieces you weren't expecting.

Ovals is based on the oval shape. Necklaces, rings, ear-rings and bracelets in 18ct yellow gold vermeil and black rhodium with white topaz are simple, yet elegant pieces which embody bold, femininity and strength. The ear-rings are modular so they can be worn in different lengths to co-ordinate with individual

out-fits and the cuff bracelets (pictured) have matching rings - very different from Links of London's previous charm bracelets.

Charm bracelets still feature in Links of London other ranges. The British Tea Keepsakes range will appeal to the lovers of the British tradition of tea and biscuits with novelty charms depicting bourbon, jammy dodger and custard cream biscuits along with a teacup and tea pot! There are some enchanting Christmas-present ideas in the Protection Keepsakes range with a shooting star and a guardian angel particularly appealing.

The Narrative range includes engravable items in gold, silver and rose gold whilst the Ascot range for men could be the answer to many a wife's, girlfriend's or mother's Christmas present challenge for the man in their life. There are some beautiful items for babies and children, too.

Links of London is not the only brand exclusive to Guest and Philips at their Flemingate branch. Gold is resurgent and Clogau uses rare Welsh gold for its fabulous jewellery from the very same gold-mine which fashions the wedding rings worn by members of the Royal family. Carat London, Tommy Hilfiger, Swatch and Mondaine are also exclusive, giving great choice between higher-end and more competitively-priced pieces.



Manager Ruth and Assistant Manager Danny are both knowledgeable and enthusiastic about the beautiful jewellery available and on-hand to assist you in choosing the perfect piece for you or a loved one.

Guest and Philips Flemingate is at **23a Chantry Lane, Beverley HU17 0PW**, tel **01482 881001**, opening hours Mon-Sat 9am-5pm, Sunday 10.30am-4.30pm.



Friday 23rd - Sunday 25th November - BLACK FRIDAY and CHRISTMAS LIGHTS SWITCH ON SPECIAL 20% OFF WEEKEND

OPEN FROM 9AM - 8PM ON FRIDAY 23RD!

A woman with long dark hair, wearing a black sleeveless dress, is shown from the chest up. Her hands are raised near her face, with fingers slightly spread. She is wearing a gold ring on her left ring finger, a silver ring on her right ring finger, a gold cuff bracelet on her left wrist, and a silver cuff bracelet on her right wrist. The background is a plain, light-colored wall.

Show
your
Metal

LINKS

LONDON

CREATE YOUR OWN STYLE WITH LEE WARDELL FROM VERB

Established in Flemingate in early 2017, Verb men's and ladieswear, is the creation of local Beverley resident Lee Wardell and his family. Working previously at Leonard Silver in Saturday Market, Lee took the opportunity to open his own store, and create his own sense of style.

Buying co-ordinating brands such as Brook Taverner, Florentino, Gibson and Mac Jeans with footwear from John White, London Brogue and Ikon, customers, with the help of Lee and his team, are given the opportunity to fashion their own style at Verb. It's complete head-to-toe retailing with shoes/socks/suits/jeans and shirts all available plus the finishing touches for winter, with overcoats, jackets and outerwear all available.

A more formal social suiting look is available for occasions such as weddings with sharp tailoring and suits from Gibson stocked in



lightweight tweeds and styled in 3-piece. Penny collars and knitted ties with the peaky blinder panelled cap is definitely a fashion statement for winter 2018, finished off with a London Brogue and a Burlington sock - perfect!

Upstairs at Verb there is a co-ordinated women's wear range which is both adorable and affordable. With the exclusive launch of brand Lilly and Me, this season is built around colour pallets of



'Autumn Frost' and 'Mulled Wine'.

Lilly and Me as a brand offer a full range for the customer's wardrobe, casual weekend wear and smarter work wear, prints for the autumnal and festive seasons, inspired by nature, teals and blues alongside navy for the 'Autumn Frost' range and deep plum and purple alongside calming silvers for the 'Mulled Wine' pallet.

Verb, Flemingate, Beverley HU17 9BW. Tel: 01482 880141.
Follow us at: www.verbfashion.co.uk/Twitter/Facebook/Instagram



VERB

MENS AND WOMENS FASHION

TO WEAR • TO WANT • TO WISH FOR • TO OWN • TO FASHION



OPENING TIMES:
MON / SAT 9.30 - 5.30
SUN 11.00 - 4.00

01482 880141
VERBFASHION.CO.UK
INFO@VERBFASHION.CO.UK

FLEMINGATE SHOPPING CENTRE
FLEMINGATE, BEVERLEY
EAST YORKSHIRE HU17 0NQ

@VERBFASHION

@VERBFASHION

VERBFASHIONBEV

TO FASHION YOUR OWN STYLE

I'VE BEEN THINKING... ABOUT WORDS BY COLIN RAYNOR



Writers are often asked where their ideas come from and there are many different answers to this question. In this November issue I will give you my answer how this article came into being.

My approach, when I get an idea for an article, is to choose one word that will remind me what the original idea was. This month I have chosen three words to prompt my recall.

The words are pronoun, enhance and street. The words are totally unrelated at this stage and may remain so, depending on how the article proceeds.

Let's deal with the word "pronoun". This reminds me of an article I read in a national newspaper. It concerned the Student's Union at Edinburgh University. This body was advocating that all new students should be required to wear around their necks a label indicating how they wished to be addressed.

One label might use the pronoun "him" another "her" and a third "they". The issue of gender definition is a serious matter and I am aware that the appropriate use of pronouns is part of gender identity. I fail to see how this could cause anything but embarrassment to all involved and as the proposal comes from a place of higher education it is, in my view, unfortunate. Remember, however, that what we read in newspapers is not the whole story or even the truth at times. I have no such doubt about my second word "enhance". I found this word in an article written by a well-known personality who after a long period on TV is now writing a weekly column in a popular Yorkshire newspaper.

The column is well-written and entertaining but recently the writer went to great lengths to state how "the mobile phone enhances my life". I'm not sure if I spoke the words out loud but I know I thought "no, I cannot agree with using the word enhance in that context".

The same article had begun by the writer telling how she had a love of words. Enhance is a beautiful word but to use it in admiration of a mobile phone, however beneficial in life it may be, I find too much to accept! But there are those who claim the mobile phone is one of the greatest advancements of the last fifty years... I suggest the jury is still out!

My third word is self-explanatory. I write of a "street" which has had a make-over and is now providing high-quality student rental properties for what is referred to as 'sober options'.

Students who come from many different nationalities and religions, who do not drink and want to live in a quiet house where they can concentrate on their studies, can be paired up with like-minded individuals. The article I read stated 'students are taking their studies much more seriously these days with many realising getting a good degree helps them in the jobs queue'. Is this a street in some wealthy southern suburb? No, it is a street in Hull where the University, in conjunction with a property firm have renovated over 200 Edwardian houses to create "The University Quarter".

I think there is a clear link between the three words but that is for you to decide.





- SWIMMING LESSONS AGE 3 YEARS +
- STAMINA AND TECHNIQUE CLASSES
- DAYTIME AND EVENING
- SMALL GROUPS 6:2
- PRIVATE POOL - EXCLUSIVE USE
- BASED IN DUNSWELL

Learn to swim and be safe with our amazing highly qualified and experienced teachers

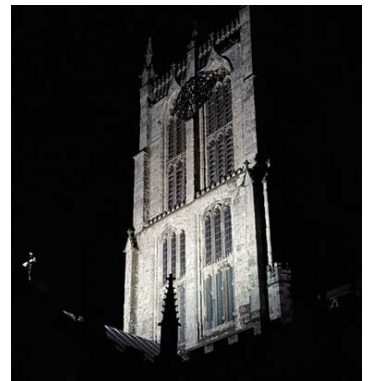
6 WEEK COURSES - PRICES START @ £45

Facebook: @SportsabilitySwim
Email: sportsabilityswim@gmail.com
Tel: 01482 229676

THE PERFECT PICTURE BY BROWNS PHOTOGRAPHY

Do you enjoy photos taken at night? Do you wish that you were able to capture beautiful images of the stars but struggle to get the result you want? In this article, you'll be introduced to the fundamentals of Night Photography and at the end of it, you will be ready to go out and photograph the night sky.

You meet a new set of challenges when photographing at night. The rules or guidelines you follow during the day aren't necessarily the correct choices when the sun goes down and darkness sets in. It's not uncommon for someone who's new to nighttime photography to end up with a bunch of black images (don't worry, we've all been there!). Although I always recommend using manual mode when photographing landscapes, using a semi-automatic mode such as Aperture Priority or Shutter Priority can be acceptable but that isn't the case with night photography. When photographing in the dark, you can't rely on either a semi-automatic or an automatic mode; you must go manual.



With Bonfire Night coming up, it's worthwhile thinking how best to capture the amazing spectacle of fireworks. Here I would recommend using a tripod with a cable release or wireless remote to trigger the shutter if you have one. Turn on long exposure noise reduction. Shoot the highest quality file you can - NEF is ideal. Set the camera to low ISO, such as 200, with the aperture set at f/11. Instead of choosing a shutter speed, set the camera to Bulb (B) which allows you to keep the shutter open for as long as you wish so you can expose for the entire fireworks' burst and even keep the shutter open for multiple bursts. As recommended for any night-time photography, turn off the autofocus and manually focus your lens at infinity.

SPECIAL OFFER

3 Months Toning
3 Months Vibraxis
3 Contour Wraps

£179

Normal price over £300
Limited Availability

TONING TABLES
help with fat loss, ME, MS, hip replacements, depression, bad backs and much more!
Wheelchair access and stair lift available

FREE TRIALS
No obligation
Testimonials available

Make friends
and get fit for
Christmas

INCHES BODY STUDIO

CELEBRATING 27 YEARS IN BUSINESS

Inches Body Studio, 1 Norwood, Beverley, HU17 9ET
Telephone: 01482 865229
Email: inchesofbeverley@hotmail.co.uk
www.inchesofbeverley.co.uk



KING'S HEAD HOTEL LAUNCHES ITS WINTER WARMERS

Last month, the King's Head launched its winter menu to run alongside its signature home-made stone-baked pizzas and Jospo-cooked steaks with 50% off on Tuesdays.

What would you want to tempt you when it gets chilly outside? Burgers, ale-battered fish and chips or Gloucester Old Spot sausages and mash almost always hit the spot, but sometimes something a little more exotic is needed to cast off that winter gloom and satisfy the appetite.

So how does Moroccan lamb rump or grilled sea bass with truffle mash sound? Or butternut squash and sweet potato curry with sticky coconut rice, which is just one of the vegetarian/vegan options available. There are gluten-free dishes, too. To appeal to those with hearty appetites, a warming chicken pie is a sure-fire hit.

The Kings Head is particularly proud of its fabulous choice of desserts! They come in great-sized portions, too. From toffee apple profiterole with a honeycomb crumble to the mighty sticky-toffee pudding with vanilla pod ice cream, sometimes choosing is a impossible. In which case, the 'dessert sharer' is perfect with all the puddings featuring for just £14!

For those with a little less time than they would ideally wish for lunch, the Lunch-time Light Bite menu is available from 12noon-3pm, Monday to Saturday. Choose from 3 starters, 8 mains and 3 desserts for just £12.50.

All menus and offers can be found on the website where you can also sign up for the monthly newsletter which always has a special offer, such as a free drink or money offer experience: www.kingsheadpubbeverley.com/hull-restaurant/

NOW TAKING BOOKINGS FOR CHRISTMAS FESTIVE MENU DURING DECEMBER

CHRISTMAS DAY AVAILABILITY IS LIMITED - BOOK SOON!

BOOKING ALSO RECOMMENDED ON TUESDAYS FOR 50% OFF STEAKS



COMPETITION



The Kings Head is offering a 3-course meal for two, including a complimentary bottle of wine for the winner of our competition. How do you win this fantastic prize? All you need to do is answer the following question:

What kind of mash is served with the new sea bass dish?

Send your answer by email to competition@justbeverley.co.uk by close of business on November 19th. Put **Kings Head Comp** in the subject box with your answer, name, address and daytime telephone number in the body of the email. The winner will be the first person drawn at random after the closing date.



Terms and Conditions: The winner will be notified as soon as possible after the closing date. The prize is not transferable and cannot be exchanged for cash. The prize consists of a meal for two and a bottle of wine and must be pre-booked with the King's Head. The value of the prize will be communicated at the time of booking. The winner must be available for publicity purposes for The Kings Head and Just Beverley. The promoters reserve the right to amend the rules or cancel the competition at any time without prior notice. Entry into the competition implies acceptance of these rules. Only one entry per person.

THE KING'S HEAD BEVERLEY

37-38 Saturday Market, Beverley, HU17 9AH.
Tel: 01482 868103

TASTE OUR NEW WINTER MENU

Featuring

- MOROCCAN LAMB RUMP
- BEEF BRISKET BURGER
- ALE BATTERED FISH AND CHIPS
- GLOUCESTER OLD SPOT SAUSAGES AND MASH
- BUTTERNUT SQUASH AND SWEET POTATO CURRY
- GRILLED SEA BASS WITH TRUFFLE MASH

and a selection of desserts

LUNCHTIME LIGHT BITE MENU AVAILABLE FROM 12noon- 3pm MONDAY TO SATURDAY
3 COURSES FOR £12.50

HURRY!
Booking for Christmas Day and our December festive dates are filling up fast!

CLASSIC CARS WITH CARFAN - THE PORSCHE 911

The subject of this edition should be familiar as it's been around for a long time - 55 years if we go back to the original. Correctly pronounced Por-she, this seemingly never-ending car has survived many facelifts and even outlived the 928 which was intended as its successor!

An interesting point about the model number is that Peugeot nabbed all the numbers with a zero in the middle so the planned 901 became the 911! Indeed, a small number of 901s were made before Peugeot successfully complained and the change was made.

The car can be traced back to its spiritual ancestor, the 356 which came out in 1948. Many, many versions have appeared - coupe, convertible, Targa, Carrera, 2-or 4-wheel drive, turbo and the bonkers GT2 and GT3. There is truly something for everyone - even families with small children as most models have 2 rear seats.

This is one car that seems to get better with each and every facelift, as its many enthusiastic owners will testify. The model featured is a Carrera 4 manufactured in 2000; it has done 100,000 miles. The lucky owner of this speed machine has only had it for a couple of years but it has shown itself to be very reliable with little work needing doing in that time - just a new starter motor and replacement wheels from the original 5-spoke version to personal preference. Parts are easy to obtain with so many variants being made - many spares are quite inexpensive.



Owning a 911 can start from as little as £7000 and rise to over £100,000 depending on the model. Choose wisely and you could end up with a permanent grin on your face!

So, should you see a 911 blasting past, don't forget that cheery Carfan wave!



SHOCKINGLY GOOD VALUE

£49 PER MONTH WEBSITES

PAY JUST £499 DEPOSIT

THEN JUST £49 PER MONTH

FOR A MINIMUM TERM OF 12 MONTHS

AND THEN PAY MONTH-BY-MONTH THEREAFTER

FOR A WEBSITE THAT GETS REAL RESULTS...

CALL NOW ON:
01482 428650
marketing@indicoll.com
indicoll.com

INDICOLL



PRACTICAL MOTORING WITH RICH HAYES AVOID SUPERSIZED FINES AT THE DRIVE-THRU'

Have you ever been through the fast food drive-thru and paid using your phone? If that's you then you could lose your license under new mobile phone laws.

Whether you're picking up a cheeseburger or a coffee, using your phone at the drive-thru with your engine running could land you a £1,000 fine and six penalty points.



When motorists use their phone behind the wheel they are automatically breaking the law. For new drivers who have had their license for less than 2 years this could mean an automatic ban - so make sure your teenagers are aware.

If your engine is running, your phone should be nowhere near your hands. This is still the case if the engine stops automatically to save fuel (called 'start-stop' technology).

The answer?

Stick to paying with card or cash the unsavoury penalty.



BEVERLEY
MOTORWORKS
INDEPENDENT BMW & MINI SPECIALISTS

Our dealership expertise means high quality car servicing at a fair price...





Unit D1 Grovehill Industrial Estate,
Annie Reed Road, Beverley HU17 0LF

Call today: 01482 881 128
Visit: beverleymotorworks.co.uk

SPECIAL OFFER

MOT COUPON

MOT YOUR CAR FOR ONLY £29.99

COUNTRYSIDE MATTERS WITH SAM WALTON

How would you describe an ideal world?

I wonder at times if there is such a thing.

Years ago - and I mean years ago! - when I was no more than a lad, people seemed content with what they had or perhaps did not have.

As time progresses, 'more needs more seems to be' the cry to-day. Money, money, money! We all need money because of the way our world has evolved but nowadays most people seem to think they can never have enough.



Spare a thought for some of the poorer counties in our world and how they have to live, though. Parts of Africa and Asia spring to mind.

I have been extremely lucky to have travelled widely but looking through my collection of slides I realised the poor living conditions in Africa and how badly people are treated, especially women and children.

We hear how youngsters have to travel miles every day to collect water and see women carrying huge loads on their heads whilst carrying their baby in a sling on their backs at the same time.



There is probably more employment in parts of Asia than in Africa, but ladies are treated dreadfully there. It must be very hard for them. Or do they simply take it in their stride and accept things as the way they are?

I remember in Cambodia seeing a massive building and asking what went on there. The answer was that they were making clothes as they could do it cheaper than Thailand.



On the way back, later that day, I met three lorries laden with rows of women standing on the back of them with just a rail around, being transported from the factory back to their villages.

Safety does not seem to matter! You sometimes see a motor bike laden with produce on the way to market with a lady sitting on the end of an extended plank to hold the goods on.

So, if it rains here when you want sun, or the rain does not come at all, or the bus is late, or your holiday flight is delayed, it rather puts things into perspective; those are trivial indeed compared to some counties. At least we always have plenty of food.

IN THE GARDEN... NOVEMBER

For me November is a transitional month, we move from the bright hues of autumn colour that may still be lingering at the beginning of the month and then tumble into winter at its close. Colour from flowers will be scarce, but replaced by berries, variegated evergreen foliage, and decorative bark on trees, seed heads and grasses.

Two plants that may be worth considering for some winter colour are Vibernum tinus and Mahonia vars. The Vibernum bears clusters of small white flowers from pink buds and the Mahonia bears slender racemes of yellow, fragrant flowers.

Tasks and Tips for November...

- Continue to clear up leaves and compost if applicable. Don't allow them to stay on the lawn as this will lead to bare patches and clear them from nooks and crannies, slugs and snails will overwinter in them especially if they are dry!!
- Tidy up roses and any other shrubs by clearing old stems and dead foliage - don't overdo this as grasses and seed heads can look very attractive in the depths of winter (especially with a frost on them) and they will provide food and shelter for the smaller creatures in the garden.
- Aerate (spike) the lawn, give it a light cut and apply an autumn feed. Autumn feed differs from the spring/summer feeds, containing a different ratio of nutrients which enhance root development, helping your lawn get off to a flying start next spring. Don't apply any feed if frost is forecast.
- Protect tender plants using horticultural fleece.
- November is your last chance to plant spring flowering bulbs - plant bulbs at 2 to 3 times their own depth for best results.
- November is a good month to plant a hedge; bundles of bare root hedging plants will become available in nurseries and garden centres. It is also a good time to transplant any shrubs or trees that maybe not 'quite where you want them' in the garden.
- Dig over bare soil in the vegetable garden when weather permits. If done early in the month the rain and frost over winter will help to break up the soil and digging will be easier in the spring. However, don't trample on the soil if it is wet enough to stick to your boots as you will end up compacting it, which will do more harm than good.

Well I think that's about it for this month - just remember if you do have a bonfire for November 5th celebrations, take care and check that no small creatures i.e. hedgehogs, have decided to make a home at the base.

So until December, happy gardening, J.

Jane Dale of 'Designed Gardens'

Tel: **07983 392 411**



Winter is on its way

Are you worried about getting your payroll right? It's time for change. Outsource your payroll today and be rest assured everything is taken care of!



Pension contributions have changed now that final Automatic Enrolment dates have passed, new tax codes, Apprenticeship Levy's, up to date figures, CIS tax and more.

Outsourcing payroll will save you time and money, redirecting time to growing your business.

You will be given a named personal contact and access to our free and easy-to-use app with a plethora of online information available for you to use on the go!



To arrange a **FREE** meeting call us on 0845 308 2288 or visit www.stipendia.org.uk



Stipendia Payroll Solutions



@StipendiaPay

PUZZLE PAGE

WORDSEARCH

I N R Q F E E J U C M K S E W
 N N V O Y R C A M A K N P C S
 F N H L I I I R F O P I A I X
 O N Y F F M D N E C Q R R V O
 A X N I S I O S T B E Y K R D
 I O D S C V R Z W C J O L E N
 B Q H C E N T E N A R Y E S K
 H W K M A T E A W Q R P R H M
 A H B F B O R C X O X R S X Q
 N E L V G B Q G N E R J I M X
 R Z H L M R I Q N E G K J H Q
 H N S E I P P O P A L Z S R L
 H D M R J D F Z Z N O I S E W
 N E T Q B S G N S B M E S S G
 R O J N F S V D F F Y I J X W

BONFIRE
 CENTENARY
 FIREWORKS
 NOISE
 NOVEMBER

POPPIES
 REMEMBRANCE
 SERVICE
 SILENCE
 SPARKLERS

WHERE IN THE MAGAZINE?

Where in this edition of the magazine would you find this picture?
 Answer on Page 37.



Do you have any amusing stories, quotes or pictures? Send them to info@justbeverley.co.uk

COMPETITION WINNER

The winner of last month's competition to win a meal for two at the Beverley Arms is Alison Botten.



THOUGHT FOR THE MONTH

The most positive impact you can have is by saying "How can I help?"

Quality Kitchen Facelifts

From a simple door swap to a full replacement kitchen

Why replace when you can reface?



- UK's leading kitchen facelift expert
- 50% deposit, balance on completion
- Huge choice of doors, worktops, appliances, sinks and taps

www.dreamdoors.co.uk

Call Us Now For a Free Estimate:
01482 861653

hu@dreamdoors.co.uk
 Dream Doors Beverley
 4A Belprin Park, Swinemoor Lane
 Beverley. HU17 0LN

DREAM DOORS®
 NEW LIFE FOR OLD KITCHENS

Proud members of
Checkatrade.com
 Where reputation matters



ART TO INSPIRE AT TRENT GALLERIES BY DAVID TUTE

November marks a busy time for Trent Galleries in Beverley! The winter chill starts to set in and festive plans are afoot, ready for a family get-together or time in front of the fire with a brew and a mince pie!

After the hugely successful Philip Gray event on the evening of October 5th, Trent Galleries have prepared the gallery to help inspire the passing public and the regular gallery visitors. There's a wide variety of familiar artists but also some exciting new additions to the portfolio... just in time for the busy Festive period!

Alongside established artists like Sherree Valentine Daines, Doug Hyde and Jennifer Hogwood, Trent Galleries are delighted to be showcasing fresher-faces and more emerging artistic talents. Daniel Mernagh's debut release of iconic portraits have been going down a storm since their arrival. With David Bowie and Amy Winehouse being two of the four familiar faces available, their bold colours and intriguing artistic

style have grabbed the attention and made perfect statement pieces in many homes already.

Completely different in subject matter and style are the releases of Debbie Boon, one of the countries celebrated wildlife artists. Her gorgeous works are full of charm, elegance and warmth, and could make the perfect finishing touch to the right room. The works of Kris Hardy have also been capturing the imagination, with various commissions of favourite places or dream cars being created through the gallery as special gifts for loved ones. As the accompanying images highlight, Trent Galleries are keen to share the diversity of the portfolio and make fantastic work accessible to everybody. So, if you are looking for a thoughtful and original gift idea for a loved one, or indeed a treat for yourself, why not pay David & Roni a visit when you're next on Butcher Row?

There are so many wonderful discoveries to be made - and we have a special voucher especially for readers of **Just Beverley** to redeem, too!



Winter Voucher

Take this voucher into the gallery before December 24th 2018 to receive a £50 discount on any artwork priced at £395 or over. Originals, Limited Edition, sculpture, books & Gift vouchers all available.

#JustBew2018



TRENT GALLERIES
is delighted to be
showcasing the new
collection by celebrated
wildlife artist
DEBBIE BOON



Pop into the gallery to view or call us on **01482 874621**
or email: **beverley@trentgalleries.co.uk**
9 Butcher Row Beverley, HU17 0AA

www.trentgalleries.co.uk

TALES FROM THE RACECOURSE WITH BEAT THE BOOKIE

Well that's another year over and what a year it's been. Crowd numbers have been well up and thousands of people have had a fantastic time along the way.



We had a great start to the beginning of the season with our "Bygone Days"-themed meeting. It was a chance for the staff to get their 50s/60s outfits on and all have a bit of fun assisted by a great band, Bus Stop, who played during the day. Following on from this we had "A Great British Race Day", a themed celebration of all things British, including the famous Donkey Derby which saw some top jockeys riding some not-so-top donkeys! One of the most fun days has to be when we had Camel racing! There were 6 races with camels and betting on each race. This was the first time I had seen camel racing and it was very exciting to watch! Come August and it was time for the much-anticipated Ladies Day, and what a day that was! The weather was perfect and all the ladies and gents arrived dressed up to the nines for the occasion. The champagne was flowing and a good time was had by all.

So, looking ahead to next season. How about some ideas from our readers for themes for next year? What about a Gentlemen's Day or an Irish Day? Or even 'Who is the Greatest Tipster Day'... could you tip six winners and beat the bookie? Let's have some of your ideas! Perhaps this is something to think about over the winter. After a very successful season, let's say a big thank you to all the ground, office and catering staff and Raceday staff that made it all possible.

Last but not least, we were very sad to hear of the loss of John Matthias earlier this year. He was one of our great jockeys and he rode his very first win at Beverley on Garden Games in 1972. Ironically his last British winner was also at Beverley on Northern Goddess in 1990. He was a very likeable jockey who will be very much missed. For now, let's look forward to next season. We're very excited that the work starts on our new stand next year - it should be completed by 2020. Meanwhile, I wish you all the very best. Think about those theme days!

CYCLING WITH WILSONS WHEELS - GETTING THE RIGHT BIKE FOR THE JOB!

Nowadays there are literally dozens of different categories of bikes available. Gone are the days when you had only the choice of road bike, mountain bike and town bike. But even mountain bikes only came into being in the 1980's.



Today, it's easy to get a bike that does the job you need it to do. In some cases, it will suit more than one task. As a rule, hybrid bikes are very versatile; having said that there are numerous types of hybrid bikes these days and even road bikes that can do similar jobs to the hybrid! A hybrid bike is a cross between a road bike and a mountain bike - the key feature is the larger 28" wheels which help the bike roll better on and off-road. So, if you want a bike that you can use to commute that can cope with road and rougher terrain, a hybrid is a good starting point. But you then have choices! Some have front suspension for added comfort; some are sportier, with road bike-orientated gearing that help you go faster, but you retain the hybrid position of more upright seating which can help individuals who suffer with a bad posture.

Say you want to go fast and go off-road but a hybrid is too bulky then you need a cyclo cross bike! A cyclo cross bike is essentially two bikes in one - put nobly tyres on to go off-road or keep the slick tyres on for the road. The cyclo cross bike has been around for a while but now there's a gravel bike which is in-between a road bike and cyclocross bike which has only been around for a couple of years. The gravel bike and especially the cyclocross bike have a lot more clearance between the frame and wheel compared to a road bike and generally have a relaxed seating position, but still have drop handle bars the same as a racing bike. These bikes are very flexible - all you have to do is change your tyres to suit the conditions!

Confused yet? If you need advice on the best bike for your needs, Wilsons Wheels would be happy to help! We have a full range of bikes for all occasions!

AFTERNOON TEA MENU
£12.95 PER HEAD OR £24 FOR TWO PEOPLE
AVAILABLE MON-SAT 12-5PM. PRE-BOOKING IS REQUIRED AND GLUTEN FREE OPTIONS ARE AVAILABLE

CHRISTMAS BOOKINGS
NOW BEING TAKEN

THE TIGER INN

Brains required from 8.30pm
FIRST SATURDAY OF THE MONTH
Big Quiz
Free food/prizes to be won, all money raised to our house charities.
£1 per person entry

HOMECOOKED Sunday Lunches
Served every Sunday 12noon-7pm

THE TIGER INN
Tel: 01482 869040 | www.tigerinnbeverley.co.uk
Lairgate, Beverley HU17 8JG

HOME COOKED FOOD SERVED 7 DAYS A WEEK

TRY OUR LEGENDARY SUNDAY LUNCH!

WWW

PREPARE FOR CHRISTMAS

WILSONS WHEELS

T: 01482 882881
W: www.wilsonswheels.co.uk E: info@wilsonswheels.co.uk

WE NOW STOCK CUBE CYCLES
2018 RANGE NOW AVAILABLE

Be SEEN and be SAFE, stay BRIGHT and on the right track

CHRISTMAS PAYMENT PLANS NOW AVAILABLE

DISCOUNTS ON:

- Adult Bikes
- Children's Bikes
- Clothing for all cycling weather
- Parts and accessories

89a Grovehill Road, Beverley, East Yorkshire HU17 0EJ
OPEN: Monday - Friday: 08.30 - 17.30
Saturday: 09.00 - 17.00 Sunday: CLOSED - Out riding our bikes

MIKE WEBB JOINS THE TEAM AT ANYTIME FITNESS

New Assistant Manager, Mike, is ready to help you get fit and healthy.

Having worked in the leisure industry for the past 10 years and qualified as a Personal Trainer 5 years ago, Mike is delighted to have joined the Beverley Anytime team. His experience in gym management and sales as well as in fitness as a gym instructor, class instructor and Personal Trainer will be a great asset to the gym. He's also a qualified fitness assessor and teaches people who wish to become personal trainers and gym instructors, themselves!



He's passionate about training and nutrition and that shows when working with clients in the gym or trainers. You can find out more at www.mikewebbpt.com and follow him on social media - Instagram: [mikewebb91](#) and Facebook: [Mike Webb Personal Training](#).

Mike is keen to build relationships with local businesses and to build on the sense of community in the club. As an introductory offer, he is offering personal training to members of the gym with 12 sessions for the price of 10. If you aren't a member of the gym

and wish to join, you pay nothing until February - your direct debit does not kick in until February! To view Anytime Fitness' fabulous gym and facilities at Flemingate, and to meet Mike, do make an appointment on **01482 247100!** Anytime Fitness is conveniently located at Flemingate. It's open 24 hours a day, seven days a week! Visit the website: www.anytimefitness.co.uk for more details!

TAI CHI WITH A DIFFERENCE! A NEW CLASS IN TOWN

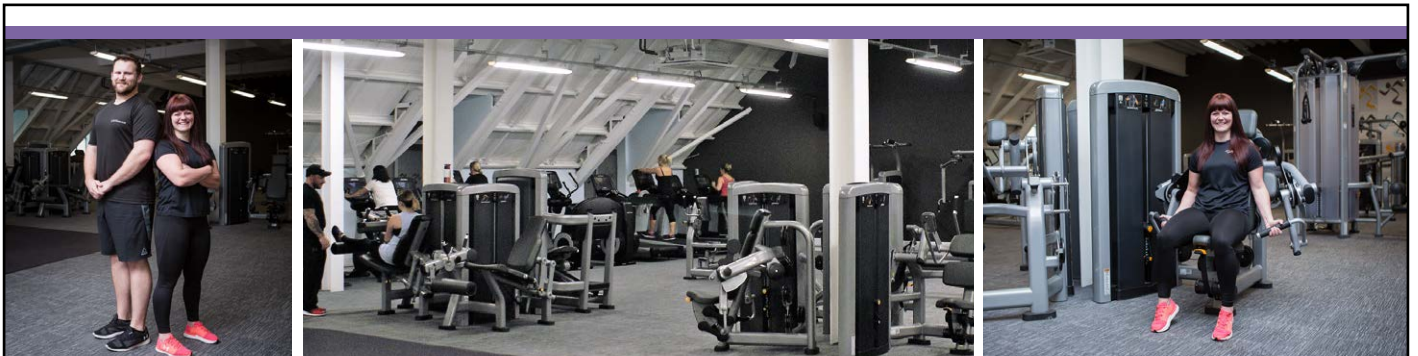
Glen Jenkins teaches tai chi and qigong techniques which can help us 'come more into our bodies' and calm 'the chattering mind'. They are suitable for people of any age or fitness level. As there's no long sequences to learn you're welcome to you drop into the classes at any point during the year.

The gentle exercises and postures are good for health, helping us move and stand with greater relaxation and alignment, so especially useful for back, neck and shoulder tension.

Through practice we can develop our energy flow and find a greater sense of calm and wellbeing. Classes are every Monday, 6.30-7.30pm at the Flemingate Anytime Fitness gym, no membership required. £6 or £3 for gym members.

You're warmly welcome to come along and see if it's for you or you can get in touch to ask us more through the email below. We are also looking to start a daytime class at Anytime Fitness, probably in the New Year.

If that's something you'd be interested in please drop us a line. Contact details are: web: www.wuji.co.uk email: wujipurespace@gmail.com



Personal training offer to all our members

12 sessions for the price of 10!



And as a club in the run up to Christmas we have an amazing offer on, Join Now and Pay Nothing Until Feb! *

To take advantage of this offer just give us a call on

01482 247100

Flemingate Centre, Flemingate HU17 0NG



* Direct Debit starts February

A SHORT STORY FOR BONFIRE NIGHT - THE BEST GUY ALL ROUND BY CLINT WASTLING



"That's great!" exclaimed Charlotte's dad Pete, as Charlotte stood back and admired her handiwork - well her ideas and her dad's handiwork, though it wouldn't be safe to admit the truth. Their finished 'guy' sat safely in the kitchen chair sporting a wig from a charity shop, grandpa's old cardigan and some trousers from a bag in the cupboard under the stairs. The completed model looked almost too realistic.

"Gosh, is that the time?" Pete doubled checked his watch. "We need to be on our way to collect mum from work, before the best dressed guy competition and firework display."

Without any dissent Charlotte got her coat then fixed her hair, "I always love the firework display on The Westwood."

"Yes, The Lions put a lot of effort into the event. We'll get mum first, then fish and chips. Don't forget your..."

"Wellies!" Charlotte added.

Charlotte's mum Sally was waiting by Wednesday Market. As soon as they pulled up she jumped into the car. They exchanged greetings, then mum asked, "did you see Agnieszka?"

"No, why?"

Sally looked at her daughter. "Nothing really, she just said she'd drop by to pick up that bag of clothes."

There was a long pause. "The big plastic bag under the stairs?" Charlotte blurted out, "that's where daddy got the clothes for the guy." "Thanks, Charlotte, I'll remember where to go when I need an alibi." "Oh! No. The guy competition is tonight." Mum pulled out her phone and began texting.

"What is it?" Dad asked.

As they turned the corner a blue light arced around the night sky and Pete pulled over to wait for the police car to pass.

"Fish and chips all round then?" "And mushy peas," Charlotte added.

"I guess we don't have time for anything else."

After buying their meal, they drove to their cul-de sac in Molescroft only to find the road blocked. A police car and officer were preventing anyone from passing. Charlotte's dad wound down the window. "Is something wrong officer?"

"Crime-scene," the police woman said. "Number 14." "That's our house, daddy," Charlotte shouted with concern. "Well, sir," the policewoman continued, perhaps if you could unlock the patio door before CSI get here."

"CSI? Yes, yes indeed." Sally got out and accompanied the officer. "Can I go?"

"Best wait with me," was her dad's advice.

Sally returned to the car a few minutes later and started laughing. Once she'd collected herself, she explained. The guy you made fell over and Agnieszka thought it was a body and rang the police. It's fine. It's sorted. Agnieszka is sitting with a cup of tea along with that nice policewoman. I said we'd share the fish and chips."

"Well dad, we obviously did a good job with our guy." "So far so good Charlotte. Come on let's see if he can be as convincing in the competition on The Westwood."

Clint Wastling is a writer and poet. His science fiction/fantasy novel, Tyrants Rex, is available from Stairwell Books.

The Snowman Tour



Big screen | Iconic film
World class musicians

BEVERLEY MINSTER - 27 DECEMBER 2018

SEATS AVAILABLE FROM
www.carrotproductions.com
BOX OFFICE: 0344 8000 410

© Snowman Enterprises Limited



Jack and the Beanstalk

PARKWAY, BEVERLEY
14th-31st December 2018
Box Office: 01482 968 090
parkwaycinemas.co.uk

ERC'S NEW JINGLE WRITTEN BY FORMER STUDENT

Jack Parker studied for his HND in Music at East Riding College's St James Centre in Hull before transferring to Hull University to complete his studies and get a degree in just 1 year. Now he's a full-time musician and the composer of ERC's latest radio jingle!

Opportunity does seem to be knocking for the very-talented Jack Parker! A former member of The Westwood Sessions, where he honed his skills, playing at Beverley Folk Festival and Festival of Christmas amongst others, this year he played the prestigious Cambridge Folk Festival as well as Beverley Fringe and has become a bit of a fixture at Costa del Folk in Portugal.

He's released one EP, 'Wild', to critical acclaim and has a new band who will debut at Kardomah94 on December 8th. But the opportunity to write the jingle came completely out of the blue.

Jack said: "I got a call from Howard Young at the award-winning Engine7 Audio Production Studio in Willerby who said ERC were looking for a jingle. I sent off a few demos, which I recorded in my own home studio, went for a meeting with East Riding College - ERC - who chose the one they liked and gave me the final spec and that, apart from Howard adding the voice-over, was it!

"Now it's being played on radio stations all over the place! I've not done anything commercial before, but this has opened my eyes to a whole new world!"



Jack honed his recording skills in the small recording studio at ERC. He has nothing but praise for his tutors there, Adam Dowd and Martin Jones who were "amazing - they know so much about music, the local music scene and about singing. After I'd finished my HND, they encouraged me to go to Hull University to expand my musical horizons there - which I did.

"Walking in on the first day straight into the third

year and a group of people who knew each other really well was daunting, especially when faced with a row of Macs when I had grown up with PCs and a recording studio which used Pro Tools when I was used to Cubase. And their mixing desk is twice the size of the one in Abbey Road Studios! But I learnt to work with musicians I'd only just met and got the chance to study world music with indigenous instruments. I was very chuffed when I came out with a 2:1."

As well as gigging and writing, Jack is also doing some teaching. He has private pupils within a 20-mile radius of his home in Bridlington and is also helping out at his old school, Bridlington School. But being able to promote the college which gave him such 'massive grounding' in skills and confidence makes Jack very happy.

You can follow Jack on www.jack-parker.co.uk, Facebook: [@JackParkerOfficial](https://www.facebook.com/JackParkerOfficial) and Twitter: [@jackparker](https://twitter.com/jackparker)

If you would like to enquire about a booking or guitar lessons, drop an email to contact@jackparker.co.uk. You can get tickets for the Kardomah94 gig via www.eventbrite.co.uk for £6 in advance.

CHRISTMAS FESTIVAL OF FOOD AND DRINK 2018

The Beverley Christmas Festival of Food & Drink is to be held on Saturday 24th November from 10am to 4.00pm in the glorious, gothic surroundings of Beverley Minster. It's set to be the biggest and best yet following on from the Beverley Food Festival on 7th October.

This winter festival attracts the finest local food and drink producers from across East Yorkshire. The event, now in its sixth year, is free to attend. It features over 60 stallholders offering a great variety of local produce to residents and visitors to the town. From beers and liqueurs, to hand raised pork pies and Christmas puddings, the produce on offer is all made with locally sourced ingredients!

Medieval-style entertainment features with a visit from Panto-land and the Ukulele Band. There's a full day of festival demonstrations, showing a variety of skills. Learn how to make festive favourites, decorate Christmas cupcakes and cookies! There's also a festive floral theme, with local florists to inspire ready for the festive season.



Speaking about the event, the Mayor of Beverley Cllr

Bryan Pearson said: "This will be the biggest indoor food festival that the Minster has seen. We work in partnership with Beverley Minster to hold this prestigious local food event, which is going from strength to strength every year. It helps to showcase the large variety and high quality of local food the area has to offer whilst also showing the Minster in all its glory. The event brings in many residents and visitors to enjoy the festival day and see this magnificent building for themselves. It's an important event which helps to raise funds for the future of the Minster."

Town Clerk, Helen Watson said: "Beverley Town Council welcomes residents and visitors to this festive and seasonal local produce event. It promotes the best of Beverley and showcases the high quality of local food and drink on offer in our area. We would encourage people of all ages to attend, as there will be lots to see and do, as well as stocking up delicious local fare and buying gifts for Christmas."

For further information, contact Beverley Town Council on **01482 874096**, email: clerk@beverley.gov.uk or visit www.beverley.gov.uk

www.justbeverley.co.uk

WHITE RABBIT CHOCOLATIERS

i won't ask for much
THIS CHRISTMAS
chocolate is all i'm
ASKING FOR

Jingle down to our shop and cafe
14-16 Dyer Lane, Beverley, HU17 8AE
whiterabbitchocolatiers.co.uk
01482 679325



WHAT'S ON

SPONSORED BY: **küchenhaus**

2 Toll Gavel, Beverley, HU17 9AJ. T: 01482 862172.

Open: Mon - Sat: 10am-5pm. Sun: 11am-3pm. Bank Holidays: 10am-4pm.

Until Friday 16th November

• Conservation 50

Beverley Guildhall, Register Square. Free. Fridays 10am-4pm, Wednesdays 10am-1pm after November 1st. An exhibition celebrating the 50th anniversary of Beverley's Conservation Area designation.

Friday 2nd November

• Creating Space for God - Portraits

Norwood Methodist Church. 7pm. Refreshments available in the Schoolroom from 6.30pm. Non-traditional worship; a more reflective time to explore hidden depths.

Friday 2nd - Saturday 3rd November

• The Two Pianos

East Riding Theatre. 7.30pm. £20/£18. Al Kilvo and David Barton and their band journey back in time to celebrate the finest hits of the Rock 'n' Roll era.

Saturday 3rd November - Friday November 16th

• LOST by Martin Walters

Beverley Minster. A poppy installation for remembrance with hope for the future.

Saturday 3rd November

• The Great War Remembered

Beverley Minster. 2pm. Free - retiring collection. A Concert featuring Other Lives Productions, Humberside Police Concert Band, Four Candles and Cherie Lawrence.

Sunday 4th November

• Ali Cook - Principles of Deception

Parkway Cinema, Beverley. 7pm. £14. Comedy magician, actor, illusionist. Ages 8+. Tickets from Parkway Cinema.

Monday 5th November

• Beverley Westwood Lions Bonfire and Fireworks

Westwood. Free - donations gratefully received. Bonfire lit at 6.45pm, fireworks 7.30pm. Fairground and food.

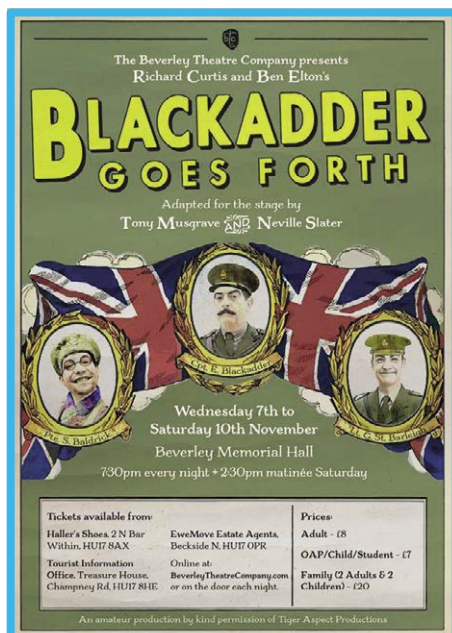
• Processed Pea presents and Irish-themed night with 'Gone to the Dogs'

Light Dragoon, Eton. 7.30pm. £6. Tickets www.wegotickets.com/event/426329

Wednesday 7th November - Saturday 10th November

• Beverley Theatre Company presents 'Blackadder Goes Forth'

Beverley Memorial Hall, 7.30pm nightly, 2.30pm matinee Saturday. £8/£7. Ticket from Haller's



Shoes, EweMove Estate Agents, Beverley Tourist Information, online www.beverleytheatrecompany.com or on the door subject to availability.

Thursday 8th November - Sunday 11th November

• Other Lives Productions present 'Fallen Leaves'

East Riding Theatre. 7.30pm. £14/£13/£12. Songs, sketches and the words and experiences of men and women from the East Riding and beyond who were involved in the First World War.

Friday 9th November

• Lunchtime Recital by Roderick McPhee and Louise McPhee

Beverley Minster. 12.30pm. Free - retiring collection. Light refreshments from 12noon.

Friday 9th November - Saturday 11th November

• Mistletoe Fair

Beverley Racecourse. 10am-5pm. Free/£3/£1.50. Check website for tickets www.shopforsomethingdifferent.com

Saturday 10th November

• **The Memory Project by Elizabeth Godber**
Beverley Library. 10.30am. £5. Smashing Mirrors Theatre brings a touching and emotional new show based on interviews and real east

Tell us about your event!

Email: info@justbeverley.co.uk

Telephone: 01482 679947

For more events visit:
justbeverley.co.uk/events

Yorkshire families living with dementia.

• Meet Peter Barker of 'Working Hands' Photography Exhibition

Treasure House and Beverley Art Gallery. 1-3pm. Free. Drop-in on the opening day of the new exhibition to meet the artist and staff.

• **First World War Lives Exhibition Opening**
Education Room, Treasure House. 1-3pm. Free.

• **Elwhaeko, Crooked Weather and Happy Endings**
St Mary's Church, Beverley. 6pm. Entry by donation, min £2. Refreshments.

Saturday 10th November - February 2019

• Peter Barker: Working Hands

Treasure House. Free. Photographic portraits of longstanding crafts and trades around the East Riding.

• **Legacy: A Painterly Response to WW1 by Paul Clifford**

Beverley Art Gallery. Free.

Sunday 11th November

• Fauré 'Requiem' sung by Beverley Minster Choir

Beverley Minster. 5.30pm. Free, retiring collection.

Monday 12th November

• Norwood Nites Community Cinema

Norwood Church Schoolroom. 7pm. Free. Refreshments and raffle. An Oscar-winning film describing the events in May 1940 on the beaches of Dunkirk.

• White Horse Folk Club presents Dave Burland

Conservative Club, Wylies Road, Beverley. 8.30pm. £7. Tickets on the door.

Tuesday 13th November

• Single Story Theatre Company presents 'Delicate Flowers'

East Riding Theatre. 7.30pm. £9/£7. One-woman show highlighting the fascinating story of female boxing legend The Mighty Atom juxtaposed with contemporary issues faced by women in sport.

Thursday 15th November

• First World War Lives

Education Room. 6.30-7.45pm. £5. Volunteers and archivist Lizzy Baker have found the stories of more than 600 local men by researching the archives. Come and hear about some of them!

Friday 16th November

• **Lunchtime Concert with Hull Collegiate School**

küchenhaus

The Largest Manufacturer of Quality German Kitchens

At Küchenhaus we have affordable solutions made to meet your highest standards

2 Toll Gavel, Beverley, HU17 9AJ. T: 01482 862172.

Open: Mon-Sat: 10am-5pm. Sun: 11am-3pm. Bank Holidays: 10am-4pm.



Beverley Minster. 12.30pm. Free - retiring collection. Light lunch from 12noon.

• **The Pasadena Roof Orchestra**

East Riding Theatre, Beverley 7.30pm.
£26.50/£24.50. Authentic swing - this orchestra has no equal!

Saturday 17th November

• **Tracing Your First World War Ancestors Study Day**

Education Room, Treasure House, Beverley.
£25. 10am-3.30pm. Lunch and refreshments provided.

• **Beverley Chamber Choir presents 'A Moment to Remember'**

St Mary's Church, Beverley. 7.30pm £17.50 - £5. Fauré's Requiem and Dona Nobis Pacem by Vaughan Williams. Tickets from www.beverleychamberchoir.org or at Beverley Tourist Information on 01482 391672.

• **'Pop Music' by Anna Jordan**

East Riding Theatre, Beverley. 7.30pm £12/£10. For anyone who's been a dick on the dance floor. A wedding. A free bar. A Paines Plough and Birmingham Repertory Theatre production in association with Latitude Festival.

• **Rebecca Pery in From Judy to Bette: The Stars of Old Hollywood**

Bishop Burton Village Hall. 8pm. Tickets 01964 552364/07595 843558. An ArtERY Live production, particularly popular with the 40+ age-group! See www.rebeccaparry.ca

Monday 19th November

• **White Horse Folk Club Singers and Musicians Night**

Conservative Club, Wylies Road, Beverley. 8.30pm. £2.

Monday 19th November - Sunday 2nd December

• **Jamie Newson-Smith Exhibition**

Beverley Minster. An exhibition of aerial images from across East Yorkshire.

Wednesday 21st November

• **Graham Fellows is Completely Out of Character**

East Riding Theatre. 7.30pm. £13/£11. Best known for his comic creation John Shuttleworth, hit single Jilted John, hit series 500 Bus Stops and appearances on Celebrity Antiques Roadshow, Pointless and Count Arthur Strong, Graham is now on tour as himself!

Thursday 22nd November

• **Finding Henry: Somme Battlefield Recovery and Identification**

Education Room, Treasure House, Beverley. £5. 6.30-7.45pm. Steve Erskine from the Green Howards Museum tells the story of how human remains found on the Somme were identified.

Friday 23rd November

• **The Loud Shirts**

East Riding Theatre. 7.30pm. £10. Back again after their major success here two years ago. Songs of the Eagles, Crosby Stills Nash and Young, The Byrds and more.

Saturday 24th November

• **Archives in 3D:Maritime**

Education Room, Treasure House, Beverley. 10am-3.30pm. £15. Learn how to digitally model one of the East Riding's maritime structures. Booking essential. Tel 01482 392699 or visit www.eastriding.gov.uk/events

• **Minster Festival of Food and Drink**

Beverley Minster. 10am-3.30pm.

• **Mini Christmas Market**

East Riding Theatre Café Bar. 10.30am-4pm. Free.

• **Sonnet Saturday with Trevor Millum**

East Riding Theatre. 10.30am-1pm. £15. Get to know some brilliant modern and traditional sonnets before writing your own.

Sunday 25th November

• **Beverley Buzz Comedy Club**

Parkway Cinemas 7.30pm £10/£9 starring Sully O'Sullivan, Andy White, Amy Gledhill, and Wayne Beese. Tickets from Parkway Cinema or on the night!

Monday 26th November

• **White Horse Folk Club Singers and Musicians Night**

Catholic Church Hall, North Bar Without. 8.30pm. £2. Bring your own drinks and glasses.

Saturday 1st December

• **Skidby Christmas Fair**

Skidby Village Hall. 10am-3pm. Free. Refreshments available.

• **East Riding County Choir sing Charpentier, CPE Bach and Handel**

Beverley Minster. 7.30pm. £17.50/£10/free. Tickets from www.eastridingcountychoir.org, Beverley Tourist Information or on the door subject to availability.

'WHERE IN THE MAGAZINE' ANSWER

Page 14 - Well I Never... Ken Rose

JOIN US FOR Christmas



Enjoy an unlimited table side service of up to 15 different cuts of prime meats from our churrascaria and a variety of traditional Brazilian hot and cold side dishes from our gourmet salad bar in the unique festive atmosphere of Chamas Rodizio bar & Grill.

DECEMBER MENU

1ST - 31ST DECEMBER 2018

LUNCH 12PM - 5PM | £25.95pp
EVENING 5PM - 10PM | £37.95pp

A glass of Prosecco on arrival, our usual rodizio plus grilled Turkey and a Christmas pudding or Chamas dessert.

VEGETARIAN/FISH OPTION

LUNCH 12pm - 5pm | £24.95pp
EVENING 5pm - 10pm | £28.95pp

Includes a glass of Prosecco on arrival and a choice of Christmas pudding or Chamas dessert

CHILDREN: Under 5 free.

All day price for 5 yrs - 12 yrs: £13.95pp

CHRISTMAS DAY RODIZIO

12PM - 2:30PM & 3PM - 5:30PM | £48.95pp

Enjoy a Christmas Rodizio of 15 cuts of meat plus fillet steak and roasted Turkey, a VIP buffet with all the traditional trimmings, a glass of bubbly on arrival and a choice of Christmas pudding or Creme caramel.

CHRISTMAS DAY

VEGETARIAN OPTION | £42.95pp

CHILDREN: Under 5 free.

All day price for 5 yrs - 12 yrs: | £22.95pp

NEW YEARS EVE RODIZIO

LUNCH 12pm-5pm | £25.95pp

VEGETARIAN/FISH OPTION: £24.95

CHILDREN: Under 5 Yrs Free.

5 yrs - 12 yrs: £13.95

Our usual rodizio plus grilled Turkey, a glass of Prosecco on arrival and a choice of Christmas pudding or Chamas dessert

EVENING 5pm - late | £48.95pp

VEGETARIAN/FISH OPTION: £42.95

CHILDREN: Under 5 yrs Free.

5 yrs - 12 yrs: £22.95

Enjoy a full evening rodizio menu of 15 cuts of meat plus fillet steak, a VIP buffet, glass of bubbly on arrival and chocolate fountain whilst being entertained by live Brazilian samba dancers*.

*Usual rodizio menu available on request throughout December except for Christmas Day and New Year's Eve evening sitting. Christmas Day and New Year's Evening sitting pre-bookings only. A non refundable deposit of £10 per person is required to secure your table throughout December. For Christmas Day and New Year's Eve evening bookings, we request the final balance is paid 2 weeks before your booking with us. Samba dancers to perform on our last evening sitting only.

chamasbeverley.co.uk Tel: 01482 867897
9-10 WEDNESDAY MARKET, BEVERLEY

Beverley Chamber Choir

Music Director: Jeffrey Makinson

A MOMENT TO REMEMBER

A concert to commemorate
100 years since the end of the First World War

Fauré : Requiem
Vaughan Williams : Dona nobis pacem



Saturday 17th November 7.30pm
St Mary's Church Beverley

Tickets £17.50 Reserved, £12.50 Unreserved & £5 Students from
October 8th from Beverley Tourist Information (01482 391672)

online at www.beverleychamberchoir.org

or on the door from 7:00pm

Registered Charity No : 1094877



A MOMENT TO REMEMBER

Take a moment to commemorate the end of the First World War 100 years ago with Beverley Chamber Choir, conducted by Jeffrey Makinson, who will feature Fauré's Requiem and Dona Nobis Pacem by Vaughan Williams in their special concert.

Dona Nobis Pacem written in 1936 is an overt memorial by Vaughan Williams to the war. The outbreak of the war on 4th August 1914 led Vaughan Williams to abandon all composition for the duration of the conflict. He enlisted as a Private in the Royal Army Medical Corps (Territorial Force) on New Year's Eve 1914.

At 42, he was old enough to have been excused service, but the medical corps were often chosen by older, perhaps less fit men who wanted to serve. Becoming a medical orderly was not an easy posting, however. Ralph Vaughan Williams survived the war, which ended on November 11th, 1918, but lost many friends.

Requiem by Gabriel Fauré is ever-popular. Composed in the late 1880s, revised in the 1890s and finished in 1900, the Requiem in D Minor, Op. 48, is the best-known of Fauré's large works with its focus on eternal rest and consolation, which is very fitting for a commemoration service to a who sell who served or were involved in the Great War, especially the many who made the ultimate sacrifice.

The concert will be held on Saturday November 17th at 7.30pm at St Mary's Church, Beverley. Tickets from £5 - £17.50 are available online: www.beverleychamberchoir.org or at Beverley Tourist Information on **01482 391672**.

NOTES FROM THE BOX OFFICE AT ERT

November and December are usually pretty hectic months at ERT! This year, alongside a whole range of one/two-night shows such as *Phill Jupitus*, *The Two Pianos* and *The Pasadena Roof Orchestra*, we are busy in the background working on our Christmas show. This year, it's the world-wide classic *Goodnight Mister Tom* written by Michelle Margorian and adapted for stage by David Wood. We can't wait for you to see this story of friendship and community.

Shows to look out for in November include 'Delicate Flowers' by Single Story Theatre Company which focuses on a young Hull boxer called Karen who idolises Hull boxing legend Barbara Butterick (The Mighty Atom). Barbara won a World Boxing title in America in 1957. The play is a very fast moving, piece of physical theatre, telling the fascinating story of a female boxer in the 1940's /50's.

We also have a night of gig theatre from Paines Plough and Birmingham Repertory Theatre. 'Pop Music' is an epic journey through thirty years of pop music told by two characters G and Kayla.

'Fallen Leaves' is a tribute to the courage of the men and women from Yorkshire and the East Riding and takes place exactly one hundred years after the end of World War One. The show is not solemn and is ultimately uplifting. It comprises a cavalcade of sketches, songs, letters and other material through which we hear the stories of six real people from Yorkshire, three men and three women, who lived through the war and see the effect it had on them and society at large.

Another show to look out for is 'Glory Dazed' in January when Sam Edward-Cook who played Danny Whizz-Bang in the hit BBC Series 'Peaky Blinders' comes to ERT with this dark comedy.

You can see all the details of our forth-coming shows and events at www.eastridingtheatre.co.uk or do pop in. We hope to see you soon!

Goodnight Mister Tom

A play by David Wood
adapted from the book
by Michelle Magorian
Directed by Jake Smith

13 December 2018 to 06 January 2019
7.30 pm & 2.30 pm selected matinees

Full £18.50 / Conc. £17.50 / Friends £17 / U23 £14.50 / Child U16 £12 / Family of four £53

eastridingtheatre.co.uk
Beverley 01482 874050



WWW.POTTINGSHEDBAR.COM



Join us for our
BONFIRE NIGHT
**FIREWORK
DISPLAY**

MONDAY 5TH NOVEMBER



1ST FIREWORK
DISPLAY - 7PM



2ND FIREWORK
DISPLAY - 9PM



OUTDOOR
FOOD STALLS

JACKET
POTATOES
HOT DOGS
MULLED WINE
& MUCH MORE

BOOK NOW CONTACT LOISWOODHOUSE@POTTINGSHEDBAR.COM

FLEMINGATE, BEVERLEY HU17 0NU



**BECOME YOUR BEST
AT THE HOME OF SPORT**



sport.bishopburton.ac.uk

Whether it is competing at elite-level, taking part in team activities for fun or simply maintaining a general level of fitness, we understand the importance of sport.

Find out more about studying a course in sport, joining one of our academies or becoming a gym member at sport.bishopburton.ac.uk

Breathe it. Believe it. **Become it.**