

**FREE**

just

ISSUE 86

# BEVERLEY

IT'S YOUR MAGAZINE



# ATOM BAR

**CHEMISTRY THAT BRINGS PEOPLE TOGETHER**

**NEWS, WHAT'S ON, LIFESTYLE, FEATURES, PUZZLES, PHOTOS & MORE**

# The National Minimum Wage is Increasing... Are you prepared?



**Improve business performance  
by outsourcing payroll**

#### Payroll Outsourcing Benefits

- ✓ Cost reduction
- ✓ Better staff productivity
- ✓ High accuracy & reliability
- ✓ e-payslips direct to employees via our app
- ✓ A named personal contact
- ✓ Added value services including HR & Benefits in Kind
- ✓ Useful online information

to arrange a **FREE** meeting  
call us on: 0845 308 2288  
or visit  
[www.stipendia.org.uk](http://www.stipendia.org.uk)



Stipendia Payroll Solutions



@StipendiaPay

## 6/7 ATOM BAR



## 4 PLANT BABY



## 5 BEVERLEY AC



## 11 VINE AND GRAIN



## 16 WHITE RABBIT



## 18 BEV 'N' LEY



## 26 THE C CLUB



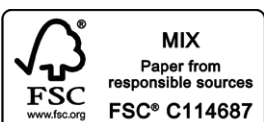
### Contributors:

Julian Minshall, Olivia Peace, Rich Manville, Natalie Acton, Cliff Baillie, Malcolm Brooks, Jane Dale, Jack Dickerty, Ed Hawkes, M Horst, Amanda McConnell, Navigation Wealth Management, Colin Raynor, Ian Richardson, David Tunstall, Becky Walker, Sam Walton, Clint Wasting and Nathan Wilson.

**REMEMBER!** If you see examples of anti-social behaviour or other types of low-level crime, do report it to the appropriate authorities. **POLICE** - Emergency 999, Non-urgent 101. **ANTI-SOCIAL BEHAVIOUR** (East Riding of Yorkshire Council) - 01482 393939.

Magazine available from outlets in Beverley and surrounding areas.

Disclaimer - All the information provided was correct at the time of going to print.



Please pass your Just Beverley on or recycle it responsibly. Printed by: Jadan Press.

## MARCH LETTER FROM THE EDITORS

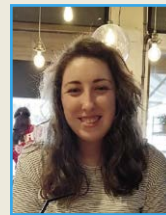


Issue 86 is our March publication, which means spring is on its way, our landscape changes, the colours start to brighten up the town, countryside and gardens, which in turn, invokes conversation and puts smiles on people's faces.

The Queen's Platinum Jubilee is on everybody's lips, looking forward to the big event across Beverley in June. Hopefully everyone will get involved on what will be a fantastic day.

As the clocks go forward ("1 hour less in bed!!!") and Mother's Day, we do have a lot to look forward to.

Have a lovely March, send in your stories and photos as we like to hear from you, and look out for Bev 'n' Ley, see what they have been up to. **Julian.**



Happy March readers! Time to recognise a day I value greatly - International Women's Day on March 8. It's a day to celebrate women all over the world and a collective chance for people of all backgrounds, ages and genders to consider what

they can do to make the world a more equal place. Gender equality has progressed vastly since the suffragette movement, but we need International Women's Day more than ever.

On Sunday 27th March we have the opportunity to let our mothers know how much they are loved on Mother's Day, so let's give our mums a Mother's Day to remember. Why not make something special instead of buying a gift? You could draw a picture, recreate an old photo, write a poem or simply make them breakfast, lunch or tea, go for a walk or a trip out.

Keep your eyes peeled for updates on the Beverley Platinum Jubilee celebration, and there's a lot to look forward to now the nights are getting lighter. As always, stay safe and enjoy the issue. **Olivia.**

ISSN 2754-9216



'Community Publication Award' Shortlisted Nominee 2017 & 2018



REYTA Remarkable East Yorkshire Award Nominee 2016 'Best Newcomer'

## GET IN TOUCH WITH US:

Website: [justbeverley.co.uk](http://justbeverley.co.uk)

Email: [info@justbeverley.co.uk](mailto:info@justbeverley.co.uk)

Telephone: 01482 679947

Twitter: @JustBeverley

Facebook: [facebook.com/justbeverley](https://www.facebook.com/justbeverley)

If you would like copies for your business to distribute to staff and customers, call Just Beverley on 01482 679947.

# HOUSEKEEPER TO HOUSE PLANTS

*Sisters Abbie and Becki are as close as any sisters can be, and during the last couple of years lockdown has brought them even closer.*

Whilst working at a local hotel as housekeeper's and having time at home, Abbie's husband bought her a house plant to add some cheer to the house. Abbie could not have imagined the impact this would have on her. Carrying out extensive research on houseplants, the impact they have on interior decoration and people's lives, health and wellbeing, Abbie shared the experience with her sister and they began to explore and research houseplants together.

The entrepreneurial sisters set off on a journey together, buying and selling houseplants through the markets working in both Beverley and Cottingham.

that a full time premises was required. The pair got Plant Baby up and running when the premises on Well Lane became available they snapped up the opportunity especially as the building had previous connections with flowers, everything seemed too good to miss out.

Abbie and Becki opened the doors in February and have not looked back since, the reaction and feedback has been superb, especially as they are dog friendly and encourage customers to pop in with their dogs. All are welcome.

If you are looking to create a space and look after plants to have a 'living room', then get in touch with Abbie and Becki. They will advise on the type of house plant to suit your needs and how to care for them. Abbie and Becki, from housekeeper to keeping houseplants.

Email: [hello@plantbabyuk.co.uk](mailto:hello@plantbabyuk.co.uk)  
Telephone: **01482 259003**  
Business Address:  
**10 Well Lane, Beverley, HU17 9BL**  
Instagram: [@plantbabyyy](https://www.instagram.com/plantbabyyy)  
Facebook: [facebook.com/plantbabyyy](https://www.facebook.com/plantbabyyy)



## HEY HOTSHOT WE'RE RECRUITING!

Unique is expanding and we'd love to hear from talented hair stylists who would like to join our award-winning Beverley salon.

If you share our passion for delivering great hairdressing and a truly Unique experience, please email [allan@auniquesalon.co.uk](mailto:allan@auniquesalon.co.uk) in strictest confidence to find out more about the amazing FT/PT opportunities available.

# UNIQUE

[auniquesalon.co.uk](http://auniquesalon.co.uk)  

# FEBRUARY HAS BEEN A VERY BUSY MONTH FOR BEVERLEY AC!

**Beverley AC are delighted to announce that registration for the Pittaway Beverley 10kms and B&A Scaffolding fun run taking place on Sunday 8th May 2022 opened on Saturday 26th February.**

After the success of the initial release, the remaining places will be on sale in early March. The entry link can be found on the Club's website page.

We are delighted that these popular events are enthusiastically supported by local sponsors, Pittaway and B&A Scaffolding and our event HQ hosts, East Riding College.

The Couch25k started its first 13-week programme of 2022 at the end of January, with a total of 30 participants registering. Meeting on a Monday evening, (and with homework done on 2 other sessions during the week!) The group look forward to graduating in May with a graduation ceremony taking place at the Beverley Westwood Parkrun.

As ever, the Club's calendar has been full, with members taking part in several events. There was

no better way for several members to spend a pre-St. Valentine's Day Sunday morning other than to turn out for the fifth race of the East Yorkshire Cross-Country League at Langdale End, hosted by Scarborough AC.

If you are in love with mud and hills, then this was the place to be!



With one more race in the League to go, Sunday's results see both the Beverley AC mens and ladies team in first place in the League, with the final race to take place at Sewerby on Sunday 13th March.



Meanwhile, other members headed over the Humber Bridge for the Valentine's 10k race taking place in Scunthorpe.

The Club held its Annual General Meeting on Wednesday 23rd February, at its new home at Beverley Cricket Club.

Those attending were able to enjoy the meeting as well as food and refreshments and reflect on the past year as well as discuss the way forward for 2022.

The next event on the Club's calendar is the



Annual Club Awards Evening on Friday 11th March when members will celebrate the achievements of 2021 at the Beverley Barn. More details on award winners to follow next month!

If you love to run and are interested in becoming a member of the Club, whatever your age or ability, you will receive a warm welcome.

If you would like more information and details on how to join, please visit the Club website on [www.beverleyathleticclub.co.uk](http://www.beverleyathleticclub.co.uk)

## BEVERLEY PHOTOGRAPHIC CLUB

**The Beverley Photographic Club Program for March.**

**Tuesday 1st March at 7.30pm** AGM at the Rose and Crown. Cheese and biscuits.

**Tuesday 8th March at 7.30pm** Alison Taylor ARPS will give a Zoom presentation on Coastal Photography.



Anyone wanting to join us on Zoom contact [billbevphoto@gmail.com](mailto:billbevphoto@gmail.com). Cost £3.00.

**Monday 14th March at 7.30pm** we are away at the Priory Meeting Rooms, Bridlington for the Millennium

Trophy competition.

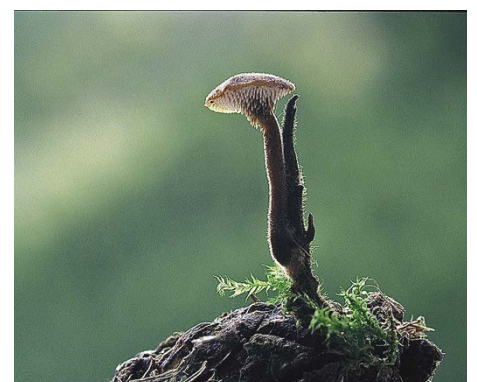
**Tuesday 22nd March at 7.30pm** at the Rose and Crown, Tracy Lund ARPS will give a presentation on wildlife photography. Her talk will cover trips to Japan, Finland, Greece, Iceland, Camargue, and the UK. Non members can join us for £3.00 by prior appointment.

**Tuesday 29th March** is our annual awards dinner at the Rose and Crown.

**Tuesday 5th April at 7pm** at the Rose and Crown a workshop with Julien. "An introduction to on and off camera flash".

If you are interested in joining the club, please come along and meet the members. No commitments. If you don't want to join the club but are interested in a particular presentation or Zoom session you can join us for £3 by prior appointment.

We are members of the Yorkshire Photographic



Union and affiliated to the Photographic Alliance of Great Britain. All participants are asked to do a Lateral Flow Test before attending meetings.

Quite a few people over the last year have expressed an interest in joining us, come along, we are a friendly bunch and would love to welcome you. Our summer program of visits and photo walks starts in April. For more information contact [billbevphoto@gmail.com](mailto:billbevphoto@gmail.com)

Photography by Mervin Nethercoat.

# ATOM BAR - CREATING A COMMUNITY

**Atom Bar Beverley is one of the newer "kids on the block" and we wanted to find out just who they are and what they're about.**

**Just Beverley** met some of the team as well as Allan and Sarah, the faces behind Atom Bar Beverley. We had an opportunity to ask some questions so did just that!

## 1) Who is behind the inspiration that is Atom Bar Beverley?

Inspired by science to produce flavour forward experimental beers, Atom was founded by Sarah and Allan, two scientists from Beverley who since founding Atom in 2014 have been seeking their own venues for their beers.



## 2) For readers that may be unfamiliar, give us a sense of who you guys are and what you're about?

We are a local, family-owned business that seeks to brew and serve beers of the highest quality, using the best ingredients to make beers that excite us. As scientists we love bringing flavour, maths and physics of brewing together to create impressionable beers.

## 3) Where did your decision to open a bar in Beverley come from?

We launched our first venue in Hull, but as Beverley locals we always wanted to have a bar in our local town serving the best beers possible, it was also important to us that it was inclusive and welcoming to all.

## 4) How did you come up with the name Atom?

Walking down the sand at Portobello Beach close to Edinburgh one day, inspired to create our own beers and as both scientists the name Atom was the most obvious choice.

## 5) Is what you are doing now, what you always wanted to do when growing up?

Erm, no I (Allan) wanted to be a pilot, jet setting all over the world and travelling to experience new cultures. Sarah always knew growing up she would have something to do with science, it unfolded later that teaching would be her path.

## 6) What is on your bucket list for this year?

Personally I would like to cycle the outer Hebrides and get some cycling miles in.

## 7) What is on your anti bucket list? Something you never want to do again.

Put simply, the Lyke Wake Walk! Well at least not in winter.

## 8) What would you change in Beverley and why?

Beverley is fabulous as it is, however as avid readers a few more book shops wouldn't go amiss!

## 9) What is your favourite piece / area of Beverley?

Put simply the Westwood, nothing better than going for a run to clear the head around such a beautiful area. It's such an amazing feature of the town and one we hope will never be changed as we enjoy watching our community using it daily to exercise, socialise or relax.

## 10) What is your most memorable interaction within Beverley?

When we first launched the brewery we wanted to see as many people locally as possible enjoying our beers, we knew we had done the right thing when Beverley people embraced us at the various Christmas, farmers and food markets. Many folk found us for the first time, and came back time and time again. We are so thankful for the good friends we have made along the way.

## 11) What can you add to develop community spirit?

We want our Beverley venue to be an inclusive space for anyone to use. Initially we have started with Café scientifique, pub quizzes and our very own running club. However we want to expand our events with food pairings, beer tastings, and also have others use the space to benefit their community clubs and groups.



## 12) What would an achievement look like for Atom Bar Beverley?

An achievement for us would come in many different forms. One that is high on our list though is creating a safe space. A space where anyone can enjoy a drink of their choice and be able to relax. We work closely with the police to achieve this, having tools to help us stamp down on spiking and being involved in the Ask Angela campaign we believe everyone deserves to feel safe.

## 13) Upstairs or downstairs where would you sit?

It's awful to pick a favourite, but in reality it's upstairs, but not just all of the upstairs. It has to be the little fireplace room, snuggled away and surrounded by great art.

## 14) Personal or business related, what is the biggest obstacle you've overcome?

I think, like everyone, the Covid-19 pandemic (on-going) has without a doubt been the biggest challenge, there have been many nights where we have cried and thought we could never get through. Infact we still do, the brewing and hospitality industries are still suffering but we firmly believe if we all work together and support

each other then we can continue to make great beer, with great service and put smiles on peoples faces.

## 15) When you're not working, how do you like to relax?

We love cycling and escaping into the Wolds, seeing new places and meeting lots of different people is the greatest way to relax, for us. Our hope is to launch our very own cycling club this summer from Beverley and around surrounding villages then back for a nice half pint on us!

## 16) Out of all the beers you have created, which is your favourite and why?

Sarah's favorite is Dark Alchemy - our original brew designed to bring together spices to create a dark beer that is super easy to drink with strong flavours to pair with a spicy curry. Me (Allan), I'm not sure I can choose. I have a few favourites depending what mood I am in.

## 17) What marketing tactic has had the most unexpected return for you and what was it?

Local loyalty. As a proud East Yorkshire family owned business, we love where we are from and the people who are our customers and fans. The pandemic has made us recognise that local community well-being and being there for each other is vitally important. Our local fans have embraced us from the very beginning and helped us through the pandemic, and as much as they embrace us, we want to embrace them.

## 18) What's your favourite thing to listen to while commuting to work?

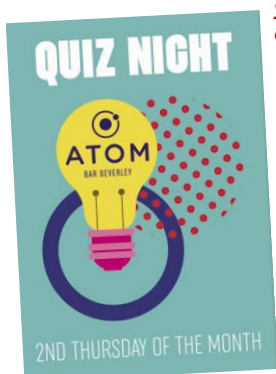
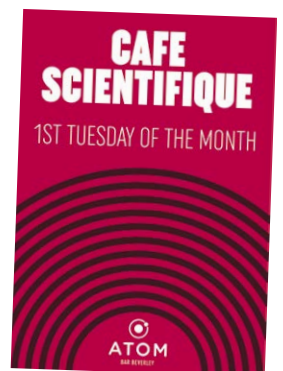
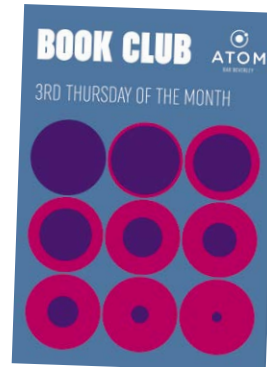
Allan: This year I have been getting into podcasts, currently listening to the High Performance Podcast by Jake Humphreys, which is both inspirational and relaxing.

## 19) How do you see the craft beer scene changing in the coming years?

The craft beer scene is one of passion and vibrancy, sadly let down by the lack of women working in the industry and enjoying beer itself. Over the past twelve months there has been a drive to make the beer scene more open to women, this will have a profound impact and will make not only the brewing of beer but the act of drinking beer that much better.

## 20) What can we expect to see from Atom in the coming months?

We look to working closely with other local businesses to become a firm part of the community, as well as listening to what the people of Beverley want from us. We hope to put on many different events and work with the festivals that Beverley welcome each year, eventually creating our own festival as mentioned above. We also look to how we can lower our carbon emissions further to help our planet. 2022 is going to be a busy one. We can't wait to share it with you!



# ATOM BAR - HOW BEER IS MADE

The Oxford dictionary definition of beer is “an alcoholic drink made from yeast fermented malt, flavoured with hops”.

The reality, beer is much more complex, produced from agricultural raw materials, which are continually changing depending on the season. The skill of any brewer is taking these materials, working with them, understanding them and tweaking them to produce beers that are both consistent and experimental at the same time.

To better understand beer, the third largest consumed beverage in the world, behind water and tea. We must first understand the key ingredients used.

Water to bring the other ingredients together, barley grown locally in East Yorkshire is used to derive both simple sugars and complex sugars



which will be used by yeast (a whole family of single celled creatures) whose mission is to convert sugars to alcohol and a panoply of beery flavours.

Hops are added to most beers, used in combination to create bitterness, aroma and preserving qualities.



For us here at Atom Brewing Co, we combine the basic four raw ingredients to enable us to brew beers that are flavour forward, complex, easy drinking and enjoyed in our home region of East Yorkshire as well as all over the world.

Nothing but nothing excites us brewers and perhaps true beer lovers more than hops. They are the perfect aromatic spice and bitter foil to balance with the sweet malts to bring delicate and bold aromas and flavours to a multitude of styles of beer.

Originating in Asia and thought to have spread to Europe via various invading hordes,




Humulus Lupulus or “little wolf plant” excites us on many levels. We source our hops from across the globe, seeking the best quality from world renowned farms who are as passionate about the science behind their hops as we are about the science behind our beers.



Typically, we seek hops that provide us with evocative and addictive aromas and flavours.

Old world hops (German, Czech, English) tend to have more subtle flavours (herbal/spicy), New world hops (NZ, SA, Australian) have more fruity, citrus characteristics. American hops tend to have citrus, piney and woody attributes.




When you have an ingredient as powerfully aromatic and flavourful as hops, it inspires us to combine these aromas as well as bitterness in a wide array of beer styles.

Ranging from low abv session pale ales (Juicy, fruity, and piney), to bold IPA's (Stone fruits, tropical and complex). Head to Atom Bar Beverley and try for yourself, after that beer is your ocean. Enjoy.

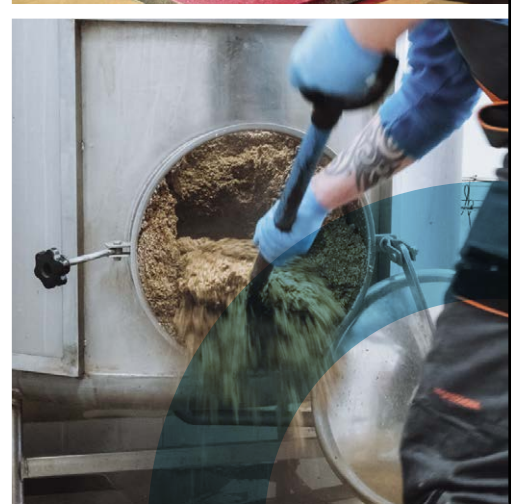
  
**ATOM**  
BAR BEVERLEY

**OPENING TIMES**  
MONDAY CLOSED  
TUESDAY 4PM-10PM  
WEDNESDAY 12-10PM  
THURSDAY 12-10PM  
FRIDAY 12-11PM  
SATURDAY 12-11PM  
SUNDAY 12-8PM

**7 NEW WALKERGATE  
BEVERLEY  
HU17 9EH**





## EVERY THURSDAY

(Doors open 10am)

Join us for a free brew and enjoy some great films on Beverley Parkway's Big Screen. Only £4.50 with drink and biscuits included. Aimed at 55s & over. Films subject to change.

### Thursday 3rd March -

**House of Gucci (15) - 10.45am**

Starring: Lady Gaga, Adam Driver

**The 355 (12a) - 10.30am**

Starring: Jessica Chastain, Penélope Cruz

### Thursday 10th March -

**The 355 (12a) - 10.45am**

Starring: Jessica Chastain, Penélope Cruz

**The Electrical Life of Louis Wain (12a) - 10.30am**

Starring: Benedict Cumberbatch, Claire Foy

### Thursday 17th March -

**The Electrical Life of Louis Wain (12a) - 10.45am**

Starring: Benedict Cumberbatch, Claire Foy

**West Side Story (12a) - 10.30am**

Starring: Ansel Elgort, Ariana DeBose

### Thursday 24th March -

**West Side Story (12a) - 10.45am**

Starring: Ansel Elgort, Ariana DeBose

**Save the Cinema (12a) - 10.30am**

Starring: Samantha Morton, Jonathan Pryce

### Thursday 31st March -

**Save the Cinema (12a) - 10.45am**

Starring: Samantha Morton, Jonathan Pryce

**The Power of the Dog (15) - 10.30am**

Starring: Benedict Cumberbatch, Kirsten Dunst

These are the films scheduled to open in March - all are subject to change.  
Check out up-to-date cinema listings at [www.justbeverley.co.uk/cinema-times](http://www.justbeverley.co.uk/cinema-times)



**1st March**

**Starring:** Paul Dano, Robert Pattinson, Zoe Kravitz  
**Director:** Matt Reeves



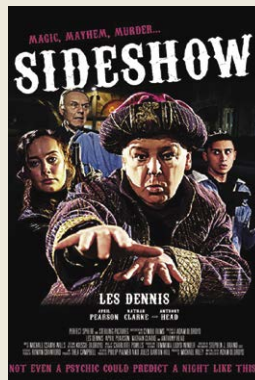
**1st March**

**Starring:** Claire Rushbrook, Adeel Akhtar  
**Director:** Clio Barnard



**11th March**

**Starring:** Bree Elrod, Judy Hill, Simon Rex  
**Director:** Sean Baker



**11th March**

**Starring:** Les Dennis, Anthony Head  
**Director:** Adam Oldroyd



**18th March**

**Starring:** Mark Rylance, Sally Hawkins  
**Director:** Craig Roberts



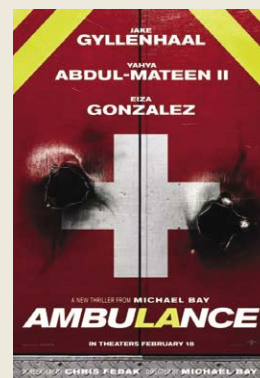
**18th March**

**Starring:** Hugh Grant, Jason Statham  
**Director:** Guy Ritchie



**18th March**

**Starring:** Catherine Tate, Katherine Parkinson  
**Director:** Josie Rourke



**25th March**

**Starring:** Jake Gyllenhaal, Eiza González  
**Director:** Michael Bay



**31st March**

**Starring:** Jared Leto, Matt Smith, Jared Harris  
**Director:** Daniel Espinosa



# YOUR LOCAL INDEPENDENT CINEMA



## JOIN US FOR SOME GREAT FILMS AND EVENTS THIS SPRING

Take a look at what is forthcoming this Spring at Beverley Parkway.

### MICHAEL BALL & ALFIE BOE TOGETHER AGAIN!

The ultimate musical duo, Michael Ball and Alfie Boe are "Back Together" and set to delight cinema audiences up and down the country with the final show of their UK tour at the O2 Arena.

Ball and Boe will reunite to tour their third album 'Back Together' following the number one best-selling hits 'Together' and 'Together Again'.

**Monday 14th March, 1pm & 7.15pm.**



### MICK FLEETWOOD & FRIENDS

With a line-up featuring Neil Finn (Crowded House), Noel Gallagher (Oasis) and Bill Wyman (The Rolling Stones), this once-in-a-lifetime concert event captured at The London Palladium on 25th February 2020 is an absolute must-see for any music fan out there.

**Thursday 17th March, 1pm & 7.15pm.**



### CLIFF RICHARD - THE GREAT 80 TOUR

In 2018, Sir Cliff Richard was joined by 100,000 fans in cinemas worldwide to celebrate 60 years in the music industry. This October he invites you all to be part of the most fabulous big screen party of the year!

Featuring a selection of his greatest hits, this will be Cliff Richard's most exciting tour yet.

**Thursday 24th March, 1pm & 7.15pm.**

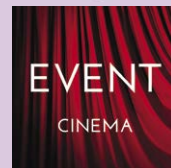


### RAPUNZEL: A TANGLED TALE

From Talegate Theatre, the team that brought you "Goldilocks", "The Little Mermaid" and "Wizard of Oz" comes this hair raising adventure.

Join Rapunzel as she escapes the tower from the evil witch Gothel and has the most amazing day ever! A tangled tale featuring pop songs, magic and puppets. Don't have a bad hair day, book your tickets today!  
<https://beverley.parkwaycinemas.co.uk/rapunzel>

**Monday 11th April at 12noon & 3pm.**



Event cinema offers something a little different to mainstream films. Live and pre-recorded shows beamed in via satellite from all over the world. Here are the latest live streams that you can enjoy on the big screen at Parkway Beverley.

**Sunday 6th March, 3pm -  
Bolshoi Ballet: Swan Lake**

**Tuesday 8th March, 1pm & 7.30pm -  
Exhibition On Screen: Frida Kahlo**

**Wednesday 9th March, 1pm & 7.30pm -  
Mirusia Sings For You**

**Thursday 10th March, 7.15pm -  
Royal Opera House - Rigoletto**

**Monday 14th March, 1pm & 7.15pm -  
Michael Ball & Alfie Boe Together Again**

**Thursday 17th March, 1pm & 7.15pm -  
Mick Fleetwood & Friends**

**Thursday 24th March, 1pm & 7.15pm -  
Cliff Richard - The Great 80 Tour**

**Tuesday 5th April, 1pm & 7.30pm -  
Exhibition On Screen: Easter In Art**

**Wednesday 13th April, 6.45pm -  
Royal Opera House - La Traviata**

**Thursday 21st April, 7pm -  
NT Live 2022: Henry V**



# BROOK TAVERNER - SPRING / SUMMER COLLECTION IN STORE

*After a month of what can only be described as inclement weather in February, we in Beverley are looking ahead to sunnier horizons as conditions grow milder.*

We launched our new Spring/Summer Collection last month, and were thrilled with the reaction both to styles never before exhibited by Brook Taverner, as well as classic bestsellers!

Temperatures slowly climbing and days lengthening introduces the need for transitional layers - lightweight but insulating to shrug off spring breezes without weighing you down.

For the ultimate transitional layer, opt for the Blake Quilted Zip Through Cardigan. A hybrid garment, the Blake features soft-shell padding and knitted jersey sleeves to bring you the handiest, functional staple to throw on as you're leaving the house.

A synthetic down composition in the torso will make the Blake the warmest and most lightweight casual jacket in your collection. Alternatively, the Malta Unstructured Barn Jacket offers a



completely different style. Take pleasure in the finer touches with a contrast corduroy collar for depth and texture, and a zip front with accompanying storm flap to keep yourself sheltered from the elements stylishly. The Malta is the height of functionality, with a machine washable composition and a handy array of pockets for when you're on the move.



Knitwear is a must to strike that tricky balance of warmth and breathability in predictably temperamental British climates. Our Earby Cotton Crew Neck Jumper has a chunkier gauge than our cotton/merino knitwear, making it ideal for spring and early summer. Throw this casual staple over a shirt or T-shirt as the sun sets and indulge in the additions of colour in this characterful collection.

A brand-new knit, the Marvin 14 Gauge Zip Through Cardigan is the latest in contemporary layering, featuring a sand base tone and contrast ivory striping for an understated sportiness. A double zip allows you to shape and layer the garment as you please, lending the Marvin an elegant silhouette.



The warmer seasons also call for more adventurousness with legwear, adopting different shades and patterns into your wardrobe, with lighter fabrics for optimum comfort. A feature piece of our new trouser collection, the Robert Muted Check Trousers offer that something different for spring and summer, in two immensely versatile colours. The Robert's pattern oozes a refined yet unique subtlety, and a comfort waistband simply makes this cotton-rich trouser a pleasure to wear.

If you haven't yet had the chance to visit us in store since the launch of our collection, we looked forward to showcasing dozens of new products to you in person!

**Many thanks, Lee and The Brook Taverner Team.**

Our 2022 Spring/Summer collection is now in store

OPEN  
9am to 5pm Monday to Saturday  
11am to 4pm Sunday

[www.brooktaverner.co.uk](http://www.brooktaverner.co.uk)

**BROOK TAVERNER**

35, TOLL GAVEL, BEVERLEY. 01482 882356

# VINE & GRAIN - FLAVOUR OF THE MONTH

**Vine & Grain is a small independent shop in the heart of Beverley where we strive to bring you the very best in Craft Beer, Wines & Spirits.**

From Whisky distillers in Yorkshire to tiny Vineyards in Greece we hope to find something that will whet your palate. Pop in store, say hi and lets discover your next favourite drink!

## Whisky

### The Spirit Of Yorkshire - Filey Bay Flagship, £55

If you haven't yet discovered Yorkshire's field to bottle single malt yet now is as good as time as any. The Spirit of Yorkshire distillery is based in Hunnamby and is well worth the visit if you are in the area, the tours are fantastic.

The Filey Bay Flagship release is the distillery's house style, showcasing what their single malts are all about. The whisky is a great allrounder and very approachable for novice and experienced



whisky drinkers alike. The Whisky is Light and fruity on the nose, 100% Bourbon cask ageing gives the whisky caramel, honey and vanilla on the palate.

## Wine

### Laurel Vines - Red 2020, £14.50

Nestled away in the small East Yorkshire village of Aike is the picturesque Laurel Vines, one of the growing number of Vineyards in East Yorkshire.



Vines were first planted in April 2011 and as time has gone by, they have gone from strength to strength showing that quality wines can be made in regions that not long ago was thought of as impossible.

They were recently featured on the Hairy Biker's Go North series, which gave this family business the publicity it so richly deserved.

The Laurel Vines Red 2020 is a blend Rondo and Pinot Noir and makes for a great example of

English Red wine. This is a medium bodied red with plenty of red plums and cassis with a touch of oak, together this produces a structured and elegant wine that partners well a roast dinner or a cheese board.

A great example of English red wine.

## Brewery

### Atom - Hull

My Brewery of the month is Atom Brewing, based in Hull, with a tap room in Beverley (if you haven't been yet, make it the next place you go for a pint).

They produce a solid core range of beers including (amongst others); Pulsar - Pilsner, Catalyst - American Pale Ale and Dark Matter - Chocolate Stout.

On top of this they also release a steady stream of quality specials with such yearly highlights as Neutron star which is a 12% imperial stout which has been aged on vanilla and locally roasted Guatemalan coffee, this is never to be missed.

If you are looking for a great everyday beer or something a bit different be it a sour beer or an imperial stout then Atom will have something for you, pop in store and discover their range, its extensive and very tasty!



# VINE & GRAIN

CRAFT BEER, WINES AND SPIRITS

MENTION "JUST  
BEVERLEY" FOR 5% OFF  
YOUR FIRST PURCHASE\*

(\*one per customer, not to be used with any other offer)

34 BUTCHER ROW, BEVERLEY, HU17 0AB

 @VINEANDGRAINBEVERLEY

# FLEMINGATE WELCOME CHIC BOUTIQUE

*An independent boutique offering stylish and affordable womenswear, jewellery and accessories has opened at Beverley's Flemingate centre.*

Jo Ja Be Boutique has operated as a successful online business since last summer and owner Jo Briggs has now taken the leap to open her first shop, bringing sought-after fashion brands to the high street, just in time to launch her exciting spring and summer collection. Her business was born from a desire to bring a modern twist to classic and unique styles to suit all ages and all within an achievable budget.

Jo, from Skirlaugh, said: "I'm so excited to open my first shop in such a fantastic location. Flemingate is a really vibrant place which offers that whole day out experience.

"We aim to be a place where customers can visit time and time again and always find something new. By carrying limited numbers of each item and changing the stock regularly, we can offer a fresh shopping experience every time."

Jo Ja Be Boutique's prices range from £30 to £300. The store's opening times are 9am-5.30pm Monday to Saturday and 10am-4pm on Sundays.

Follow Jo Ja Be Boutique on social media - [@jojabeboutique](#) on Facebook and [@jo\\_ja\\_be\\_boutique](#) on Instagram. Alternatively, visit the website at [www.jojabeboutique.com](http://www.jojabeboutique.com)

Picture Credit: Neil Holmes Photography.



# ONESTOP GOING THE EXTRA MILE WITH YOUR HELP

**One stop will be holding a Charity event on the 5th March where they will be cycling from opening time 7am to closing at 10pm.**

Unfortunately a close friend of One Stop took their own life, so the team stepped in to raise money to buy a bench in memory of him and also to donate money to the SOB charity who help families who have lost parents or children to suicide.



There will be a bike set up in the shop which has been provided by Anytime Fitness so people can pedal all day and clock up as many miles as possible.

If you want to get involved and raise some money for a worthy cause or do some miles then pop into One Stop Shop and help out.

# WINNERS OF THE MAYOR'S WINTER TREASURE HUNT

**The Mayor of Beverley, Cllr Linda Johnson and her Consort, Cllr Graham Johnson were delighted to present the winners of the Mayor's Winter Treasure Hunt with their prizes - food vouchers from The Potting Shed and a framed certificate.**



The Mayor and Consort are seen here with the Manager of The Potting Shed, Alice and two of the winning teams, 'The Boltons' and 'Sparkly Penguins'.



Unfortunately, 'The Dennisons' were unable to attend the official presentation.

Mayor Linda said: "Thank you to everyone who took part in the Treasure Hunt. Every penny of the proceeds went to Scope, the Disability Equality Charity, which is one of the chosen charities for my Mayoral year."

# MAYOR OF BEVERLEY'S CIVIC SERVICE TO RETURN!

**The Mayor of Beverley, Cllr Linda Johnson, is pleased to announce that her Civic Service will be held at Toll Gavel United Church on Sunday March 20th at 10.30am.**

It will be preceded by a procession of Civic Dignities and Councillors, led by the Church Lads and Church Girls Brigade Band, from Wednesday Market to Toll Gavel United Church.

The band will play to the assembled dignitaries and bystanders in Wednesday Market at 10am before the procession sets off.

Toll Gavel United Church's Baden Powell organisations will also parade their flags, along with the Union Jack.

The service will be led by Rev. Fran Rhys.

Anyone wishing to attend the service should be seated by 10.15am.



# FLEMINGATE

BEVERLEY

FASHION | FOOD | FILM | FUN



SPRING

INTO ACTION  
AT FLEMINGATE



FRESH NEW SHOPPING AND MORE TO ENJOY

FLEMINGATE.CO.UK



@FlemingateBev



FlemingateBev



FlemingateBeverley

# PARTY IN PINK WITH THE MAYOR IN AID OF HER BREAST FRIENDS

The Mayor of Beverley, Cllr Linda Johnson, is raising much-needed funds for HER Breast Friends with a party at Beverley's Memorial Hall on Saturday, April 2nd.



The evening features Paragon Porkers Pink Pig Racing, Bra Pink-Pong, a raffle and spot prizes and is compered by Beverley FM's Alex Dunn, who will also provide the soundtrack to the evening for dancing.

With a glass of pink fizz on arrival, chicken (or vegan alternative) and chips for supper (sponsored by El Pollo) and pink donuts for sweet (sponsored by Morrisons), party-goers are invited to wear pink - or be 'fined'!

Tickets, which are just £15 each, are available from [generalenquiries@herbreastfriends.org.uk](mailto:generalenquiries@herbreastfriends.org.uk),

telephone **01482 221368**, or in person at Mirage or Chamas in Wednesday Market. Cash purchases are preferred, or cheques should be made payable to HER Breast Friends. Donations for the raffle are very welcome and can be dropped off at Chamas or Mirage, labelled for the attention of Nicola Tekce 'Party in Pink'.

## WILL YOU VOLUNTEER IN 2022?

Would you like to make a difference in your local community and give a bit back?

Supporting local charities is not just about making donations of articles or cash, though they will always be welcome. You can also donate some of your time, from as little as an hour a week.

Perhaps you have a skill that could benefit a charity such as administration, retail, social media or warehouse management. You may also learn or develop skills and knowledge and meet some new people.

If you are looking for your first job or you are between jobs, having volunteering on your CV could impress potential employers. Experience is a valuable commodity in the jobs market.

East Riding Wills supports East Yorkshire Foodbank with donations of goods and time, 3 hours per week.

Skills and knowledge gained include using a pallet truck and lifter, stock rotation and recently becoming a trustee for this local charity. None of which had been experienced previously.

For further information and opportunities in the local area a good starting point is: [ervas.org.uk](http://ervas.org.uk) and [hullcv.org.uk](http://hullcv.org.uk).

Or just search volunteering in East Yorkshire.

If you would like an informal chat about volunteering in general or the Foodbank in particular, please contact: [dave@eastridingwills.co.uk](mailto:dave@eastridingwills.co.uk)



## WHY IS MOTHER'S DAY CELEBRATED ON A DIFFERENT DATE EACH YEAR?

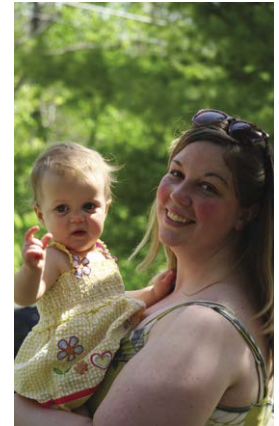
The celebration of mums all over the UK is soon approaching and you might be wondering when it actually is. Mother's Day changes its date every year so it's hard to keep track of, but why does it change?

Mother's Day is a significant occasion in the calendar, being a day to celebrate the strong, caring and kind maternal figures in your life. It is also known as Mothering Sunday in the UK and this year we will celebrate it on March 27. Records show that Mothering Sunday originally began as a church tradition that took place three weeks before Easter on the fourth Sunday of the Christian festival of Lent. The reason Mother's Day annually changes its date is primarily due to these origins.

During the Middle Ages, a custom developed that allowed people who had moved away from the place they grew up in to return to visit their home or 'mother church' and their actual mothers on the fourth Sunday of Lent.

At the time, it was a key opportunity for families to reunite and be together again as it was common for children as young as 10 to leave home to work, and so Mothering Sunday was born. The dates that Lent is celebrated change every year, and therefore so does the date of Mother's Day.

What becomes confusing however, is the distinction between the British and American celebration of Mother's Day. Neither are connected to each other as the day wasn't founded through religion in America. The idea was started in America by Anna Jarvis, who held a small memorial service for her own mother in 1907, and it soon took off among peers. After gaining nationwide traction over the following years, Mother's Day was officially declared a US holiday in 1914 by Woodrow Wilson, the president at the time.



## Will You Leave it?

Protect your family and assets make a will today.



## Stop Putting it Off

For a free no obligation home visit contact, Beverley based, Dave Tunstall now

**07939085752**

**dave@eastridingwills.co.uk**



Family friendly wills in the East Riding and further afield.

# DISCOVER YOUR DREAM KITCHEN & BATHROOM

**BOOK A  
FREE DESIGN  
APPOINTMENT**

With our expert  
Specialists

Book a **FREE** design appointment with Paul and Dan, our dedicated Kitchen and Bathroom Specialists. We'll be with you every step of the way to turn your dreams into a reality.

## **SWINEMOOR LANE**

HU17 0JX | 01482 880088 | [mkmb.co.uk](http://mkmb.co.uk)  
OPEN MON-FRI 7:30-17:30 SAT 7:30-NOON

**MKM**  
BUILDING SUPPLIES

WORKTOPS | APPLIANCES | TILES | FINISHING TOUCHES

# CAN I HAVE A GO AT MAKING CHOCOLATE?



Ever since 2007, when White Rabbit moved to Dyer Lane into a unit with it's own chocolate kitchen, White Rabbit has been hosting chocolate making workshops to give everyone, young or old, the opportunity to get hands-on with chocolate.

Since 'hands-on' has been a bit taboo recently we have had a couple of years off, but we are back on it with a range of workshops being held on Easter Saturday!

More details are to come, but I thought I would give the readers of **Just Beverley** a sneak preview and a chance to book

before anyone else. All of our workshops will be hosted in our Chocolate Kitchen down Dyer Lane, so if any of these workshops sound like the perfect Easter treat to you, simply pop into one of our stores or send us an email using the details below! We hope to see you for an Easter Egg-stravagans!

## Under 5s - small egg decorating workshop -

£10 per child. 15 minute slots: 12.15pm, 12.30pm & 12.45pm.

## 6 - 8 year olds - medium egg decorating workshop -

£15 per child. 15 minute slots: 1.00pm, 1.15pm.

Children can choose from a milk, white or dark chocolate egg and customise their own egg by sticking on decorations with chocolate glue! 6-8 year olds will get a slightly bigger egg, but everyone will get to take away a free gift of a rabbit lolly to enjoy whilst their egg dries and then can pop back later to collect their creation.

## 9 - 11 year olds - large egg decorating workshop -

£20 per child. 30 minute slots from 1.30pm - 2.30pm.

This egg is pretty big! Children can choose from a milk, white or dark chocolate egg and customise their own egg by sticking on decorations

with chocolate glue and experimenting with cocoa butter paints, like a professional chocolatier. They'll take away a free gift of a rabbit lolly to enjoy whilst their egg dries and then can pop back later to collect their creation.

## Age 12+ (and adults!) - Extra Large egg decorating workshop -

£50 per head.

2.5 hour workshop

(2 sessions - AM slot

starts at 9.30 and PM

slot starts at 3pm).

Two of our expert chocolatiers will be on hand to teach you techniques to handcraft your own eggstravagant creation. You'll have a chunky chocolate bar to decorate first so you can perfect your decorating skills before you move on to your egg.



Choose to decorate your egg with cocoa butter paints, add inclusions such as chocolate shapes and buttons with chocolate glue and pipe on your own special messages or patterns to make it your own.

Everyone who takes part in this workshop will leave with their bespoke egg, customised bar and a free gift, we will make sure everyone gets their Easter-fill of chocolate and magic.

**Ed Hawkes, White Rabbit Chocolatiers.**

  
**WHITE RABBIT**  
 CHOCOLATIERS

## CRACKING GIFTS

INDEPENDENT, ETHICAL, HAND-MADE CHOCOLATE CREATIONS



UNIQUE  
EASTER HOT  
CHOC BOMB



HAND-FINISHED  
TRUFFLES









Indulge in luxury, fresh tasty treats

whiterabbitchocolatiers.co.uk



01482 679325  
14 - 16 DYER LANE, HU17 8AE  
BEVERLEY



01482 699039  
PARAGON ARCADE, HU1 3PQ  
HULL



## Botterill & Co

Chartered Certified Accountants

We are a modern and professional accountancy practice ideally located to serve businesses in Beverley and the surrounding area.

We utilise modern accounting technology to provide you with a cost effective, professional service.

**Our services:**

- Annual Accounts
- Company Formations
- Tax Planning
- Payroll
- Management Accounts
- Cloud Accounting
- Tax Returns
- Bookkeeping & VAT

For a free initial consultation please contact us:

Office: 01482 862240

Mobile: 07966 051458

Email: [gareth@botterillco.co.uk](mailto:gareth@botterillco.co.uk)

Website: [www.botterillco.co.uk](http://www.botterillco.co.uk)

1st Floor Offices, 40 Norwood, Beverley, HU17 9EY.



# CHANGING THE CLOCKS - TIME TO SPRING FORWARD

*Get ready to spring forward into British Summer Time when the clocks change and the light nights and warmer weather start to make a return.*

The clocks go forward at 1am on March 27 as part of Daylight Saving Time. It might mean we lose an hour in bed but with the longer days just a breath away we won't be feeling that extra hour of tiredness when we see an immediate difference with brighter skies in an evening.



We've done it long enough now we're all used to the cyclical nature of changing the clocks as we lose an hour every spring, but why do we do it? Here's what you need to know.

The clocks were originally changed as an idea to save energy, prevent wasting electricity and encourage people to spend more time outside when there was more daylight that could be used.

The first notion of changing the clocks is dated back to a whimsical suggestion by Benjamin Franklin in an article in 1784, and then many years later led to the first official campaign in 1907 where horse rider William Willett wanted to advance clocks in spring and summer and return them in the autumn.

In 1908, the House of Commons first rejected a Bill to advance the clocks by one hour during the spring and summer months, but in 1916 the Summer Time Act was passed, stating that for a certain period during the year legal time should be one hour in advance of GMT.

When it became an official act nationwide, the annual pattern of change was chosen for a Saturday night going into Sunday morning so it would be the least disruptive period for schools and most businesses. Now, employees who are scheduled for night shifts or night workers should check their contracts and discuss the situation with their employer.



Approximately 70 countries have some form of daylight saving time, but it varies from region to region. While most of Europe and North America change their clocks, countries closer to the equator such as those in Africa or Asia don't change their time.

If you can't remember whether we put the clocks forward or back, an easy way to remember is to think of the seasons - in spring the clocks 'spring forward', but in autumn they 'fall back'. Most mobile devices with an internet connection such as smartphones, laptops and other digital devices should automatically update, but don't forget to manually change any watches, clocks in cars and kitchen clocks.

The days will continue getting longer until the summer solstice on June 21, the longest day of the year. After that, they start to get shorter again and the cycle continues.

LEWIS NORTHEN  
FUNERAL DIRECTORS

MY FAMILY TAKING  
CARE OF YOURS

**Get In Touch**  
1 Lincoln Way, Beverley, HU17 8RH  
info@lewisnorthenfuneraldirectors.co.uk  
www.lewisnorthenfuneraldirectors.co.uk  
01482 888 658

A dark blue banner for Lewis Northen Funeral Directors. It features a large, stylized 'IN' logo in gold. Below the logo is the tagline 'MY FAMILY TAKING CARE OF YOURS'. To the right of the logo is a photograph of a black hearse with two people standing next to it. At the bottom, there is contact information including the address '1 Lincoln Way, Beverley, HU17 8RH', email 'info@lewisnorthenfuneraldirectors.co.uk', website 'www.lewisnorthenfuneraldirectors.co.uk', and phone number '01482 888 658'. A small circular logo with a lion is also present.

Born and raised in **Beverley**, we are proud of the funeral services we offer to our local community.

As a family business we want you to have confidence in us to support you from the first point of contact, throughout and thereafter. The moment your loved one comes into our care they will be treated with care and respect. We offer a comprehensive range of funeral services ensuring you receive the perfect funeral service for your loved ones.

We are available 24 hours a day, 365 days a year, we will guide and support your family throughout.

## My family taking care of yours

### Giving the personal touch to funeral services in Beverley and surrounding areas.

Funeral plans, memorial jewellery, available 24/7 365 days a year.

# BEV 'N' LEY: COOKING UP ADVENTURES

*The tempting sound of sizzling crepes wakes the beavers. Bev savours the scent and is curious who could be cooking. It's so nice, Ley's stomach rumbles. Of course, always inquisitive and fast Ley dashes off to investigate.*

Ley doesn't notice the restaurants with bright menus for Mother's Day in their windows. Bev does. The orange beaver takes time to admire the flowers decorating the tables around the Market Square.

"Hurry up, Bev!" Ley tracks the warm, sweet smell past the floral displays to the door of T. C. Patisserie.

"Mmhhm!" Ley sniffs the air impatiently. "It smells delicious and I'm so hungry."

"You rushed out without breakfast again, didn't you?"

Ley looked guilty for a moment, then points into the window. "What are they making?"

"Croissants, Tarts, Crepes." Bev replies.

"Crepes? For Pancake Day?"

"Not quite. Pancakes aren't crepes. Pancakes are thicker. Crepes are easier to toss, though," Bev explains, then ruffles the blue beaver's fur. "Easier, and tastier, too. Hey! You can't go in..."

Too late, Ley has already found the kitchen and is flicking through a recipe book.



"Look!" Ley cries. "I found a recipe! I want to make crepes like they do on Pancake Day."

"That sounds like fun," Bev agrees, and is wise enough to put on an apron. "It's also called Shrove Tuesday, Ley."

A moment later, Ley's fur is white with flour. So is the kitchen floor. With a smile, Bev helps measure out the milk.

"We don't want to leave any more mess."

Too late, the cheeky beaver has written L.E.Y in the flour.

"Sorry." Ley grins mischievously and surveys the paw prints left in the flour. "I'll sweep!"

"Do you think everyone's kitchen ends up in a mess?" Bev asks while cooking.

"Maybe. It's fun, though and it will clear away easily." Ley pauses, then worriedly adds, "It will, won't it?"

Bev nods and together they mix in the eggs, then Ley collects a cloth and starts to clean.

"Awww," Ley says disappointedly when Bev flips the crepe. "It didn't stick to the ceiling."

"I don't think Thierry would like that," Bev warns, but Ley snatches the crepe from the air and disappears.

"Keep up!" Ley complains around a mouthful of crepe as Bev joins the blue beaver once more in the square. "Why are there so many flowers on tables? Are they getting ready for the Queen's Platinum Jubilee already?"

"No, not yet. It's for Mother's Day. People treat those who are or are like mothers to them. Sometimes to flowers, or chocolates. Sometimes all a mum wants is to spend time with their family."

Ley turned around to look at Bev, confused. "So I should treat you?"

Bev smiles. "I'm not a mum."

"But you're like a mother to me."

"That's sweet of you, Ley. You treat me every day, see? We made pancakes together!"

Ley pulls a face, but secretly plans to treat Bev



to flowers and chocolates to make up for the pancake mess.

"That sounds like something a mum would say," Ley says instead.

They laugh, and Ley blurts out,

"White Rabbits!"

"Oh Ley, I told you, I don't need chocolate."

"No," it's Ley's turn to explain through a fit of giggles, "I don't mean the chocolatier!" The beaver makes a mental note to see how a chocolatier makes the fancy treats another day. "I've heard people say white rabbits on the first day of the month."

Bev nods as the pair return to the Market Cross. "Don't forget, we need to turn the clocks forward soon."

"Oh..." Ley nibbles thoughtfully on a savoury crepe. "That means we have to get up extra early." The beaver sulks, then brightens again with another idea. "Bev, can I do St Mary's clock? There are too many stairs at the Minster."

Bev laughs. "You just want to explore the Priest Rooms again. Alright, but be sure to brush out all the flour from your fur first."

Ley mutters something about it taking too long, but scurries off to find a comb. Bev wonders what adventures wait for them next.

**Storyline: M Horst.**

HERE TO GET *you* THERE

**HUNTERS**<sup>®</sup>  
EXCLUSIVE

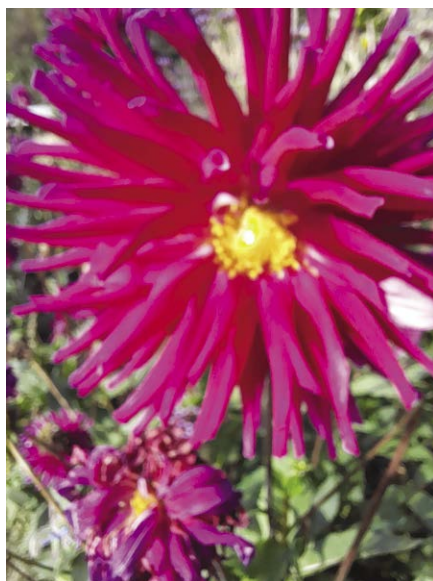
BEVERLEY / 01482 861411

# LET'S TAKE A TRIP TO MALTON AND SCAMPSTON HALL GARDENS

*As spring approaches, here is a cracking day out, combining time in Yorkshire's Food Capital of Malton with a visit to the stunning gardens at nearby Scampston Hall.*

It is possible to reach both from the Beverley area by public transport, but sadly there is no direct route and thus driving the lovely 30 miles or so is the best option.

Indeed, if you take a circular route using the B1248 to Malton and returning from Scampston by a beautiful route across the Wolds, each journey will be a big part of the day's pleasures.



The drive to Malton via Wetwang is usually most pleasant with fabulous views.

Parking in the town is normally easy, and there is free street parking on the outskirts and at Morrisons as long as you use the store.

Around the Market Place and adjoining streets independent food stores are especially prominent. I especially like the range of quirky shops in the distinctive Shambles, a great place for antique collectors and lovers of bric-a-brac.

On the second Saturday of each month, this area is full of fabulous local food stalls at the regular food market event - the next one is March 12. There are many great places to eat and drink; last summer my wife and I had delightful al fresco coffee and cakes overlooking the town church.

Dickens was a frequent visitor to Malton as it was home to his close friend Charles Smithson. It actually inspired some of the locations in famous novels such as *A Christmas Carol* and *Our Mutual Friend*.

A pleasant half mile stroll up Pickering Road offers the pleasure of the park with the earthworks of the Roman fort of Derventio where we had a nice picnic. A little further on is delightful Old Malton, where the fine priory church is well worth exploring. Here, Dickens attended the funeral of his friend Smithson, who had died in his early 40s.

Scampston is some 5 miles east along the busy A64 and is a joy to turn away from the traffic into the calm of the exquisite little estate village with its beautiful brick cottages, a tiny church and a cafe. Parking for the hall is at the end of the lane.

The gardens open again for the season from March 26th - visit [www.scampston.co.uk](http://www.scampston.co.uk) to check its opening times and prices. A little tip; the BBC Gardeners World magazine, which is due out soon, usually gives a free 2 for 1 discount card that covers hundreds of gardens such



as this. In September 2021 I was delighted to use mine here - I have lived in Yorkshire far too long to waste money!

The huge walled gardens are simply stunning, melding traditional and modern design in visually thrilling ways. Statues, sculptings and water are especially prominent. A walk across the parkland towards the hall is recommended.

The hall is open for guided tours on selected dates, and the conservatories are well worth exploring too. We ended our visit with a beautifully cooked light meal on the splendid cafe terrace, which uses all locally sourced ingredients.

You can drive back towards Malton and then follow your incoming route home, but the lanes over the beautiful Wolds via Wintringham, West Lutton and Sledmere are quiet and delightful, providing a fitting end to a grand day out in our neighbouring county.

*Ian Richardson.*



SALES / LETTINGS / MANAGEMENT

## HUNTERS®

BEVERLEY / 01482 861411

HERE TO GET *you* THERE

# I'VE BEEN THINKING... SAYS COLIN RAYNOR

**One of the difficulties of writing for a monthly magazine is the time scale. Generally I submit my article two or three weeks before it is in the shops.**

As you know I rarely touch on matters of a political nature adhering to the statement often made that "a week is a long time in politics", meaning of course that all sorts of (unexpected) things can, and do happen, making nonsense of what I might have written.

This doesn't prevent me making a comment on the forthcoming weather, confident that I won't be too far out. The 16th century nursery rhyme tells us "March winds doth blow and we shall have snow and what will the robin do then poor thing".

Having lived in Beverley now for nearly fifteen years and in that time only having seen about five days of snow (in some years none at all), I think I can say with confidence the old robin has not much to worry about.

And before folks start talking about climate change I can assure you that the snow will still drift



in over the Pennine hills to great depths, where we lived before, without a shadow of a doubt.

So, whilst contemplating the forthcoming weeks, I read recently these words which pose a question requiring some thought: "Should we judge a person on their best of days or on their worst of days".

If you are the manager of a Premiership football team there would appear to be no logic to why some managers lose their jobs. However if you have been appointed as the head of a large company and the shareholders do not see profits, despite your best personal efforts, the 'worst of days' will bring about the loss of your job.

There is another way in which a leader loses his or her position of authority and that is by acknowledging it is time they accepted what was once called 'collective responsibility'. That in essence simply means "I may not have done anything wrong, but I will shoulder the blame for those for whom I am responsible".

For a person to act in such a way requires them to have a conscience I suggest. But perhaps that's an old fashioned term these days as I don't see much written about it. Wanting not to end on a too sombre note, but to leave you with a smile at least I will recount to you how having a conscience led me recently right up the garden path, as the saying goes.

After having a conversation with a friend in Beverley Town Centre we went our separate ways.



About fifteen minutes later I drove past a bus stop and there was my friend waiting in the rain for the next bus that would take her near the supermarket. I felt sure she had told me she was going to.

As my journey took me near that supermarket surely I should have stopped and given her a lift but no, I carried on home. In due course I felt I had to try and remedy my 'selfish' act and so went to the said supermarket to see if I could make amends and drive her home but she was nowhere to be found. I telephoned and offered my apologies.

My friend thanked me for my concern but told me she had not seen my car pass the bus stop and had gone to a supermarket closer to her home.

We both had a laugh.

## ALLEN MOVES TO FERGUSON FAWSITT

**After just over 5 successful years, Landlord of the Tiger Inn Allen Slinger is moving on to pastures new.**

Taking over The Tiger Inn in 2016, he oversaw a refurbishment of the premises in 2017 and has made the most of his time as Landlord. He now looks to Walkington for his future and to reopen the Ferguson Fawsitt Arms.

Allen said, "It's been a great 5 years at the Tiger Inn but it's time for a change. We have made some wonderful friends and memories and have been very fortunate to have so many fantastic customers, we are very proud of our time here.

"It's been great to get involved in the community and to have been associated with several local sporting clubs, we just want to say thank you to everyone. We can't wait to get started at the Ferguson Fawsitt, in what is a huge challenge and opportunity for myself and the team. We will be serving food, the coffee shop will reopen, we'll be dog friendly and we can't wait to get the function room back open."

Allen commented, "We hope to have the pub reopen by the end of March, stay tuned to social media as we hope to have our online presence visible very soon, we can't wait to see you!"



## Four Generations, Giving Over 125 Years Service

Herbert	Eardley	Geoffrey	David
1870-1962	1908-1986	1939-2015	1964



Golden Charter  
Funeral Plans



- Funerals Respectfully Conducted
- 24 Hour Out of Hours Service
- Free Advice & Support
- Private Restrooms
- Prepaid Funeral Plans Available
- Finance Options Available



**Tel: 01482 844695**  
**www.hkempandsonltd.com**

259 Hallgate, Cottingham, East Yorkshire, HU16 4BG  
Fax: 01482 843898  
Email: hkempandsonltd@gmail.com

# TOGETHER IN GRIEF - THE FOREST PROJECT

*We were contacted by Sam, founder of Fitmums & Friends, asking if we would be able to help with providing transport for 3 children to their new programme, Together in Grief - The Forest Project.*

This is an innovative Fitmums and Friends programme, run in collaboration with the Humber Forest Project, at Meaux Abbey Farm, which offers support for bereaved children.



It combines the therapeutic effects of being in a forest environment with opportunities to help children and young people explore their grief and loss.

The sessions are delivered by trained Forest School Leaders and focus on practical activities including, den building, wood carving, camp fire cooking, tool making, tree climbing, fire lighting and rope work.

They provide a perfect focus for children who may find a traditional group discussing intimidating.

Interwoven into the practical element are discussions and activities supported by Bereavement Support Facilitators who offer therapeutic support.

The first programme of 4 workshops completed in January 2022 and the feedback has been wonderful, programme two is currently underway and we are

continuing to provide transport for another young boy. If you know anyone who would benefit from this please contact Sam or Vickie at Fitmums & Friends, details can be on their website:

<https://fitmums.org.uk/news-article/Together-in-Grief-The-Forest-Project-first-feedback/318>



**FOXMOBILITY.**

**Fox Mobility**  
110-112 Walkergate  
Beverley  
East Yorkshire  
HU17 9BT

**Tel: 01482 887799**  
**Email: [info@fox-mobility.co.uk](mailto:info@fox-mobility.co.uk)**

- Scooters and Accessories
- Walking Aids
- Power Chairs
- Stairlifts
- Bathing Aids
- Bedroom Equipment
- Vehicle Adaptation

**Need advice  
about mobility  
equipment?  
We're here  
to help!**



# NAVIGATION WEALTH - DIVIDEND MAGIC

**Pedestrian as they can appear, dividends end up doing much of the work for long-term equity investors.**

When times are good and companies are doing well, dividends are a welcome reward to investors who have backed these businesses. But there are also the lean years, when a company might not pay anything at all; in the aftermath of the financial crisis, several major banks simply couldn't afford to.

And in the wake of COVID-19, investors are unlikely to see the consistent dividends they may have become used to.

Even in a good year, dividends can appear unexciting - at best, they offer only a few pence on the pound. The impact on your total capital barely seems to move the dial - in the

short term. Yet over the long term something miraculous begins to happen, something that Albert Einstein reportedly named as man's greatest invention and called "the eighth wonder of the world"<sup>1</sup>.

That something is compound interest; and reinvesting dividends achieves a similar effect.

The power of compounding lies in the exponential rate at which it increases the value of the initial capital sum over time.

One of the more remarkable implications of this compounding-via-dividends effect is that a temporary fall in the share price can in fact have a silver lining.

So long as the company continues to pay a dividend, then the shareholder who reinvests his or her next payment will receive a greater number of shares as a result.

Not only does this help to balance out the loss in capital value, it also means the investor is effectively buying up more shares when they are cheaper; yet doing so without committing fresh capital.

In short, dividends are far



more than a seasonal bonus. Over the long haul, they can even end up doing most of the work.

To receive a complimentary guide covering wealth management, retirement planning or Inheritance Tax planning, contact Navigation Wealth Management on **01482 379504** or email [navigationwm@sjpg.co.uk](mailto:navigationwm@sjpg.co.uk)

<sup>1</sup> It is far from clear that he said either of these things, but they have been attributed to him for decades.



## It's crunch time to get the most from this year's tax allowances

Don't let anything go to waste. Use by 5 April 2022.



### NAVIGATION WEALTH MANAGEMENT

Senior Partner Practice of St. James's Place Wealth Management

01482 379504  
[navigationwm@sjpg.co.uk](mailto:navigationwm@sjpg.co.uk)  
[www.navigationwm.co.uk](http://www.navigationwm.co.uk)



The levels and bases of taxation, and reliefs from taxation, can change at any time and are dependent on individual circumstances.

The Partner Practice is an Appointed Representative of and represents only St. James's Place Wealth Management plc (which is authorised and regulated by the Financial Conduct Authority) for the purpose of advising solely on the group's wealth management products and services, more details of which are set out on the group's website [www.sjp.co.uk/products](http://www.sjp.co.uk/products). The 'St. James's Place Partnership' and the titles 'Partner' and 'Partner Practice' are marketing terms used to describe St. James's Place representatives.

SJP11763b V4 (01/22)

# TIME TO EMBRACE THE SPRING SEASON

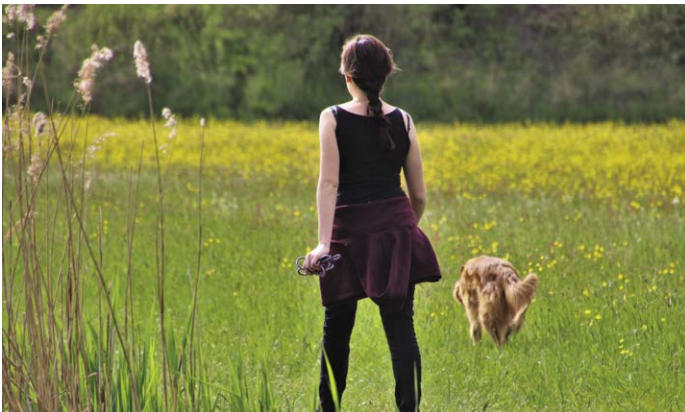
*Even though winter still has a hold on us, the spring equinox will shortly arrive and the bright spring sunshine will soon be shining on our faces.*

If the changing of seasons from darkness to light signifies a changing of your energy and overall mood, here are a few things you can do to prepare for the spring season.

## **Reconnect with nature**

Like hedgehogs, winter appeals to most of our tendencies to hibernate until the cold, damp weather and dark nights are on their way out. This means for the last few months we may be lacking a connection with the outdoors.

The turn of spring makes being outside more enjoyable, and long walks taking in the fresh air are more appealing. Not only is it a great way to ease into exercise again, but it encourages you to clear your head, keep your mind free and reconnect with nature while you embrace each day.



## **Declutter**

In all aspects of life, decluttering is a great way to clear your mind and keep stress out. Get rid of the old and in with the new, whether that's by clearing out your closet or putting away your thick winter coat.

A change of indoor scenery from cluttered and cramped into open and welcoming is a great way to breathe new energy into your surroundings.



## **Spring clean your eating habits**

Say goodbye to hot, hearty stews and soups and say hello to locally sourced springtime fruits and vegetables. When the new season arrives with warmer weather so does the new crop of fresh produce, so why not change up your eating habits with in-season produce that reap high nutritional value?

If your kitchen is your zen, spend time testing out different recipes and cooking techniques when using typical springtime food selections.



HASSLE FREE LETTING AGENT



Telephone: 01482 241261  
Website: [www.emlets.co.uk](http://www.emlets.co.uk)  
Email: [admin@emlets.co.uk](mailto:admin@emlets.co.uk)  
Facebook: @EmletsLtd  
Instagram: [emletsproperty](https://www.instagram.com/emletsproperty)

# HUBY™

Covering Hull, Beverley, Pockington, Driffield and all the local villages



**BOOK ONLINE**

and **SAVE**  
at  
[hubys.co.uk](http://hubys.co.uk)

Book in advance and save money.  
The further you book in advance  
the more you could save...



For service and repair call: **01482 866660**

## SHORT STORY BY MALCOLM BROOKS - LAST OFF THE LORRY



Since most of the novels that I have written have a supernatural theme to them, I frequently get asked if I myself have had any paranormal encounters. Sadly, the answer is 'No' - although the following true occurrence could perhaps be classed as 'spooky'.

Everybody will have had a 'sliding door' moment, named after the film where a young woman is impeded for seconds in a train station; an event which subsequently alters her whole life. We make decisions all the time that initially appear inconsequential, little thinking that they may turn out to be life-changing.

My father, Harry, was born in Sussex and at the age of nineteen was sent to war, leaving the farm he worked on in the village of Ringmer.

After the horrors of Dunkirk, he and some of his fellow Sussex Royal Engineers were sent north to guard the Ouse Bridge (sometimes known as Boothferry Bridge) near Airmyn from the German Luftwaffe.

At that time, it was the lowest bridging point on the Ouse / Humber, but how Harry and his mates were meant to guard it against air attack was a mystery to them! After a long journey in the back of a lorry, Harry and his mates arrived at Cowick Hall, then used as a military base.

Harry was last off the lorry and literally fell into the arms of Pearl, the woman who was to become my mother. The good people of Castleford and surrounding area had offered to billet these young soldiers whilst they kept the Luftwaffe from destroying the bridge, and my mother's family home was one such billet.

Cowick Hall became many things in its lifetime, but was always a fond memory for my parents, being the place where they first met. Sadly, Mum passed away in 1999 and six years later so did Harry.

The day of Harry's funeral meant that my family and I had to drive from the East Riding to Castleford. It was a stressful day, made more so by the fact that the M62 was closed after its junction with the M18.

We followed the diversion signs down the M18 without much idea of where we were going. As the diversion twisted and turned along unknown roads, mild panic turned into the full-blown variety as the possibility of missing the funeral became more likely.

You may be ahead of me here but yes, as the stream of diverted traffic made its way along those narrow country lanes, there it was... Cowick Hall.

So, on the very day that Harry and Pearl were to be reunited at the cemetery in Castleford, we had been diverted to the very place they had first met.

Subsequently, to everyone's relief, we also made it to the funeral on time. It would be nice to think that somehow, Harry and Pearl were also meeting in heaven and in some way had a hand in the diversion which took us to the very place of their first meeting.

It was a reminder to me and my family of the circumstances of their first fateful meeting - and a reminder too, that if Harry had not been last off the lorry, my children and I wouldn't exist!

**Malcolm Brooks lives in Beverley and is the author of the *Eva Trilogy* and the novels *'Waiting in Line'* and *'Living with Certainty'*.**

## POEM BY CLINT WASTLING - RE SPRING

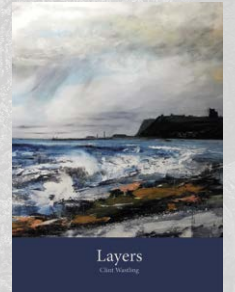


Cherry trees blossom in rows  
arrow straight towards the mountain,  
piercing Canigou's heart,  
its ichor a stream of pink petals.

Spring is once a year  
but luckily we'll see it twice-  
March in the Pyrenees,  
April in Beverley.

Violets, anemones, primroses  
brighten a woodland walk there and here.  
If only getting on a plane could  
allow us to repeat our lives so  
easily.

**Clint's poetry collection *Layers*  
is available from Maytree Press.  
His fantasy novel *Tyrants Rex*  
can be ordered via *Stairwell  
Books*.**



## Monks Walk Inn

19 Highgate, Beverley HU17 0DN

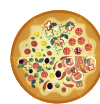
Tel: 01482 880871

[www.monkswalkinn.com](http://www.monkswalkinn.com)

### A WARM WELCOME TO ALL OUR CUSTOMERS

- BAR & TABLE SERVICE •
- GOOD BEER •
- GOOD COMPANY •

- *Historic Public House*
- *Enjoy Drinks and Conversation by our Real Fire*
- *Local Cask Ales • Lagers • Beers • Wines •*
- *Spirits • Tea • Coffee •*



**COMING SOON - Pizza Night!**



**WE LOOK FORWARD TO SERVING YOU!**



SERVING FAMILIES SINCE 1872

# Your funeral wishes. Our local experts.

Funerals from  
**£995**

Unattended Funerals

Attended Funerals

Prepaid Funeral Plans



**We're here for you anytime.**

Whatever your wishes or budget, we can provide a funeral to suit you.

## FRANK STEPHENSON & SON

29 Minster Moorgate

Beverley

01482 881 367

[dignityfunerals.co.uk/local](http://dignityfunerals.co.uk/local)



We're proud to be a Dignity Funeral Director,  
providing exceptional services to families across the UK.

Pricing is correct at time of going to print and is subject to change. Price stated is for an Unattended Funeral.

★★★★★  
Customer rated  
Powered by Yext

# C CLUB - A WARM WELCOME TO EVERYONE

## OPEN DAY SATURDAY 19TH MARCH 11.30AM TO 2PM

With a history going back to the 1960s, the C Club, located on Wylies Road, Beverley, is one of the long standing entertainment venues in the area.

Over the many years in business it has continued to offer a warm welcome to all who have frequented the club and enjoy the relaxing environment with a well stocked bar, snooker area and entertainment in the concert room. The C Club has it all.



The C Club is currently going through a refurbishment programme to keep everything looking spick and span, ensure the club is up to date with modern trends, and to ensure its members' experiences are kept on a high.

If snooker is your favourite pastime then you are in for a treat as there are plenty of tables available and new lighting so you will be in your element.

A booking system has also been introduced to ensure guests can find a time to suit and partners to play against.

Chris Wilkinson, the Club Secretary, will take your enquiries for booking parties including kids parties, anniversary parties, celebration parties or indeed if you just need space for your community

Each month the C Club puts on a variety of different events to cater for all tastes, whether it's with big comedy nights or a variety of musical genres to keep guests entertained. Keith Saunders, Chairman said, "We always welcome new members and we are having an open day on Saturday 19th March from 11.30am to 2pm to allow people have a look at what we have to offer, everyone is welcome."



meeting. Coming soon to the C Club is Shaun Murphy, a professional snooker player, for an exhibition match on Saturday 9th April. Tickets are available to buy from £35.00.

Also in the line up of events is Paul Sutton entertaining people as Boy George on Friday 22nd April. Tickets are £8.00.



For all enquiries contact Chris Wilkinson during opening hours via email at [bccsecretary@hotmail.com](mailto:bccsecretary@hotmail.com) or call 01482 867968.

Telephone: 01482 869111  
sales@rosesofbeverley.karoo.co.uk



The Kitchen Factory, The Courtyard,  
Tokenspire Business Park, Beverley  
HU17 0TB

Monday to Friday 9am - 5pm | Saturday 9am - 1pm

## What's New in 2022

*Roses Kitchens grown in Beverley for over 20 years*



Laburnam Drive



Carter Drive



Thyme Way



Molescroft Road



Lincoln Way

kitchen



All Hallows Road, Walkington



Hunsley Road, Walkington



West Mill Rise, Walkington

**Please call 01482 869111 to book a viewing**

MANY MORE OF OUR CUSTOMERS KITCHENS ON OUR WEBSITE

5 STAR RATED OVER 57 GOOGLE REVIEWS ★★★★★

Visit [www.roseskitchens.com](http://www.roseskitchens.com)

to see our customers kitchens and read what they have to say about us

**Telephone: 01482 869111**



# PLATINUM JUBILEE PLANS REVEALED FOR BEVERLEY



*To celebrate the Queen's Platinum Jubilee in style, Beverley is being encouraged to come out in its masses for an epic event all over the town.*

As part of the special extended bank holiday weekend, Beverley Town Council have organised a fantastic programme of events on Friday 3rd June to make the occasion memorable for the whole family.

The wide range of events are being held all

across the market town, including a main stage at Market Cross on Saturday Market, and other prime locations such as North Bar, Flemingate, Wednesday Market and more.

Some entertainment for the day has already been revealed, but even more entertainers are being announced each month leading up to the day-long event so make sure to keep checking the website to see what's on.

The programme of events includes the

Big Jubilee Tea Party at North Bar, Platinum Party at Flemingate, Platinum Jubilee Proms at Saturday Market, Platinum Jubilee Pageant at Wednesday Market, a Little Jesters Kids Zone at Toll Gavel and much more.

It's understandable that little jesters can sometimes get overlooked on days of public celebrations but there are events in place to make sure children have the most amazing day without costing a small fortune as they will carry the longest memories to celebrate Her Majesty the Queen's special day.

It is especially important to make this a special day that children will look back on over their lives as this year, Her Majesty The Queen will become the first British Monarch to celebrate a Platinum Jubilee, marking 70 years on the throne, and no one

is anticipating this day of celebration to occur again in many of our lifetimes.

The Mayor of Beverley, Cllr Linda Johnson, has emphasised the huge range of events planned across the whole day, highlighting that there is something for everyone to celebrate.

She said: "Never before have we had 70 years of one monarch being on the throne and what an excuse for a party. It's something we have all been waiting for, the opportunity to celebrate with flags, bunting, bands, parties and picnics to come together in the way Beverley can."

She continued: "We will be able to party, and we will be able to enjoy a celebration like no other. We are going to do what Beverley does best - celebrate as a community. It's going to be a ball".

All the day's events scheduled for the Beverley Platinum Jubilee celebration are being posted on the new website, with other acts and headliners set to be revealed the closer the day gets.

You can visit the website to see the latest event announcements:

[www.beverleyjubilee.co.uk/events](http://www.beverleyjubilee.co.uk/events)

You can also join Beverley's Platinum Jubilee celebration on social media using #HM70 and #BeverleyPlatinumJubilee to see what's on.

Don't miss out on any updates and like the Facebook page:

[Beverley Platinum Jubilee Celebration](https://www.facebook.com/BeverleyPlatinumJubileeCelebration)

and follow the Instagram page:

[@beverleyplatinumjubilee](https://www.instagram.com/beverleyplatinumjubilee)



## Bootleg Buddy

Friday 3rd June 2022  
10.30 - 11.30am

Bootleg Buddy (Dave Reblence) performs the best of Buddy Holly and Artistes connected to this Rock and Roll star.



## Garland Dancer

Friday 3rd June 2022  
10.30 - 11.30am



## Flemingate Winner

Friday 3rd June 2022  
12 - 12.30pm



## High Flyers

Friday 3rd June 2022  
11am - 12pm



## Humberside Police Concert Band

Friday 3rd June 2022  
10 - 11am

# PUZZLE PAGE

## WORDSEARCH

S B Q S R O N L C D P F L R S  
 B P N K Y W C H S U O O J C E  
 Q V R E L S L I D O F F A D T  
 E G V I S B O W S L G W L A A  
 L O V E N J C A T V N L A J L  
 J Y G W T G K R K O P H U K O  
 W I A F A B S J I J Y F G L C  
 P I X D T F C T P J L H H J O  
 Z S V D S N A V B O C E T M H  
 J P S M A R W M W M Q U E E C  
 S T L J B Z E E I L S X R M H  
 M F U E F A R H A L E B Q D L  
 R K L J Y S D W T J I W W L Z  
 U E P P R X L U Q O A E B M Y  
 C G O H K E N F A V M N S K F

CELEBRATION  
 CHOCOLATES  
 CLOCKS  
 DAFFODILS  
 FAMILIES

FLOWERS  
 LAUGHTER  
 LOVE  
 MOTHERSDAY  
 SPRING

## WHERE IN BEVERLEY?

Where in Beverley can you find this landmark?  
 Answer on Page 32.



## WHAT IS IT?

Can you identify what item this is?  
 Answer on Page 32.



## COMEDY CORNER

Things that make you laugh!



*I have a photographic memory,  
 it just took a while to develop.*

*Found a note on my Car. "Parking Fine".  
 We all like compliments.*

Do you have any amusing stories,  
 quotes or pictures? Send them to  
[info@justbeverley.co.uk](mailto:info@justbeverley.co.uk)

## WORTH A THOUGHT

Never ask someone to do something you  
 are not prepared to do yourself.

**DREAM DOORS®**  
 NEW LIFE FOR OLD KITCHENS



**SPRING SALE  
 NOW ON!  
 20% OFF**  
 T&Cs Apply

VISIT OUR  
 SHOWROOM NOW:

4a Belprin Park,  
 Swinemoor Lane,  
 Beverley, HU17 0LN

Call us now for a free estimate:

**01482 861 653**



**Checkatrade.com**  
 Where reputation matters

AVERAGE SCORE **9.7/10**



## QUALITY BEDROOM MAKEOVERS BY LOCAL PROFESSIONALS

- Bespoke sliding wardrobes
- Styles to suit every home
- Wide range of colours and finishes to choose from
- 96 showrooms nationwide

[www.dreamdoorsbedrooms.co.uk](http://www.dreamdoorsbedrooms.co.uk)

## SPRING SALE

### THE UK'S #1 KITCHEN MAKEOVER EXPERTS

- From simple door replacements to complete fitted kitchens
- Fully installed by local professionals in just a few days
- Choose from a large selection of doors, worktops and appliances
- 96 showrooms nationwide

[www.dreamdoors.co.uk](http://www.dreamdoors.co.uk)



FOLLOWING  
 GOVERNMENT  
 GUIDELINES

# SAILING IN TO SPRING

*Over the last few weeks I have had the great pleasure of booking some wonderful River Cruise itineraries for my clients.*

This type of holiday provides a wonderful opportunity to be able to enjoy so many different cities and towns along various inland waterways. By comparison to an ocean cruise the ambience is more relaxed, and there are no grand West End shows and large auditoriums. You would find a quieter more personal and intimate atmosphere with significantly less guests on board. There are a number of river cruise companies that offer an all inclusive experience to include premium drinks and gratuities and a wide choice of immersive excursions which are included in the price.

From my experience I would say that clients progress to river cruising after some time enjoying ocean cruising or perhaps as a special anniversary holiday, so the on board demographic would not tend to be families with young children. It could be slightly difficult if you had quite challenging mobility issues as the vessels do line up against each other and you need to use the ramps to cross from one to the other to get to the bank.

River Cruising can lend itself to some wonderful seasonal opportunities such as Dutch Bulbfields in Spring, or the vibrant Christmas Markets on the Rhine or the Danube.

The scenery that you can enjoy on a river cruise is wonderful too and obviously very different to the vistas on a sea day on an ocean cruise. The simplicity of having the town or city you explore quite literally steps away from the ship is also very convenient to getting the most out of your holiday



time exploring new places. Some River Cruise lines offer superb fine dining experiences - including buying fresh produce from the best suppliers in each local town on your itinerary which are then lovingly created

into magnificent dishes for you to enjoy that evening.

River Cruises offer so much choice in terms of the destinations you can visit. Whilst the Rhine and the Danube are particularly popular and are usually a first choice for first time river cruise clients, there are many rivers that are now showing a huge growth in demand particularly the Douro.

Rio Douro, which roughly translates from Portuguese as "river of gold", is a particularly beautiful journey and when the sun sets and catches the light on the river it actually does appear to gleam like liquid gold bullion bars.



Obviously rivers are not limited to Europe and as the world gradually reopens it will be lovely to be able to enjoy incredible itineraries further afield such as the Irrawaddy and Mekong in South East Asia. Cruising is a style of holiday I really enjoy, and one of the main reasons is the fact that I can visit several new destinations and enjoy new experiences in a variety of places all on one holiday. This has often inspired me to book city breaks to some of these places so that I can actually spend more time exploring.

Although with careful planning and research there is so much that you can do in a day and I have had many happy memories of various places visited on a cruise. If you feel that this experience may float your boat and you would like to discuss either River and/or Ocean Cruising with me, then please do not hesitate to contact me, and I would be more than happy to assist you in navigating your way through the various different options available to you.

**Amanda McConnell, Travel Counsellors. T: 01482 770540**  
**E: [amanda.mcconnell@travelcounsellors.com](mailto:amanda.mcconnell@travelcounsellors.com)**  
**W: [www.travelcounsellors.com/amanda.mcconnell](http://www.travelcounsellors.com/amanda.mcconnell)**

# Jadan

Print that gets you noticed

Jadan Press are a leading family run commercial and trade printer based in Hull. With over 20 years experience, we are renowned for producing exceptionally high quality print, design and finishing.

We are committed to providing an excellent service by offering value for money and ensuring complete customer satisfaction.

- BROCHURES LEAFLETS**
- POSTERS CALENDARS PADS**
- LARGE FORMAT PRINTING**
- STATIONERY MAGAZINES**
- SAFETY SIGNAGE BANNERS**
- VARIABLE DATA/MAILING**
- and much much more**

**TAKE A LOOK AT OUR WEBSITE AND VIDEOS**  
[www.jadan-press.co.uk](http://www.jadan-press.co.uk)



**01482 610902    [info@jadan-press.co.uk](mailto:info@jadan-press.co.uk)    [www.jadan-press.co.uk](http://www.jadan-press.co.uk)**

**Rainbow House, Kimberley Street, Hull, HU3 1HH**



# CYCLING WITH WILSONS WHEELS - PROTECTION WHILST CYCLING

As we move towards spring and summer, quite a number of people look to get their bikes out, enjoy the countryside and work on maintaining a little fitness. They use their bike for the commute to work and save a few pounds on fuel costs.

## Protect yourself


Whilst everyone will look to wear suitable clothing, such as a cycle hat, jacket, shorts, shoes and gloves, it is easy for many people to forget about protecting their eyes.

In the summer we will wear sunglasses to protect against the sun, but what about falling twigs or dust and particles which can get stuck in our eyes while cycling.

Even flies or bugs can pose a danger.


As you prepare for a cycle ride this spring, don't forget to think about eye protection.








Pop in store to see the new 2022 bike range

**WILSONS WHEELS**  
T: 01482 882881  
W: [www.wilsonswheels.co.uk](http://www.wilsonswheels.co.uk) E: [info@wilsonswheels.co.uk](mailto:info@wilsonswheels.co.uk)

**WE NOW STOCK  CUBE CYCLES**  
**2022 RANGE NOW AVAILABLE**

• Adult Bikes   • Children's Bikes   • Electric Bikes  
• Clothing for all cycling weather   • Parts and accessories

89a Grovehill Road, Beverley, East Yorkshire HU17 0EJ  
 NOW OPEN: Monday - Saturday 9am - 5pm  
 Sunday: CLOSED - Out riding our bikes

## Tc Patisserie

*We* are now no longer a café, but still make our own patisseries and Tc Patisserie is now a French food shop to compliment our own products.

*We* have a daily selection of freshly made croissants, breads and patisseries.

*We* make reheat at home meals which can be bought over the counter or pre ordered, via our mailing list or messenger.

*We* can cater for any occasion, buffets, dessert tables or full 3 course meals can be arranged.

*We* are open Tuesday-Saturday 9am - 4pm.







FITNESS TRAINING

## LOVE PILATES? HAVE YOU A PASSION TO TEACH?

### ENROL FOR OUR LEVEL 3 PILATES DIPLOMA AT DAVID LLOYD, HULL

Dates: 19th, 20th March and 2nd, 3rd, 23rd and 24th April 2022

£995 with Discount Code **PILATES205** (normally RRP £1200)

Monthly Interest Free Instalment Plan Available

ACCREDITED COURSES

 Training Provider

 Employer Partner





**CHECK OUT OUR WEBSITE FOR FULL DETAILS OF DATES & COSTS**  
[WWW.SPORTSABILITYTRAINING.CO.UK](http://WWW.SPORTSABILITYTRAINING.CO.UK)  
**OR CALL US FOR A CHAT 01482 229676**  
 SCAN OUR QR CODE FOR A QUICK LINK TO OUR WEBSITE

# COUNTRYSIDE MATTERS WITH SAM WALTON

**Cambodia - The Kingdom of Cambodia nestles alongside the Thailand Eastern border, is about quarter the size, and now has a population of around 16 million after 1.5 million were killed by the Kmer Ruge during a horrific rule.**



The farming is as you might expect, similar to Thailand, rich and poor, good and bad. Whilst driving down to the Capital Phnom Penh, I noticed a massive blue building set back from the road and was told by the driver that Cambodia had taken over from Thailand in making clothes as their labour was cheaper. That

was made more obvious on the way back as several open backed lorries were laden with women clinging on and sitting on the cab roof being delivered back to their villages, almost unbelievable.

After visiting several farms, I could also see the same poverty and wealth as in parts of Thailand, pigs in hovels and also new units built. On one of them I saw a fairly new unit with a slurry lagoon which was covered in a green crop and growing remarkably well, which meant the crop took the nutrients out of the slurry and there was no smell.



I did manage to ask the owner how long he would expect that to last before having to empty it and he thought it would be a continual process. I have never seen one in the UK, which made me wonder if it would be something worth-while trying? I'm not quite sure how you would get the crop out if it needed to be disposed of or replaced.

He was building another new piggery about a mile away from that one, and they had already built the surrounding wall. They had left a tree growing in the middle however, which would be more difficult to remove because of the wall. They had not thought of that.



The man who was taking us around was one of the wealthy ones. He had a mill and an advisory service for the more up to date pig herds and drove a top of the range Lexus car - That told me all I needed to know!

That it is warm in Cambodia was obvious on a pedigree breeders farm where

there were no walls in the house he lived in other than the bedrooms and I remember having lunch in a very pleasant atmosphere in his dining room with just a roof. But more about that next month.

**WHAT IS IT?**  
Did you guess? It's a door lock!

**WHERE IN BEVERLEY?**  
The lamppost in Saturday Market opposite HSBC Bank

# IN THE GARDEN... MARCH

**Thanks to Dudley, Eunice and Franklin I think March is going to be exceptionally busy in the garden for some of us this year.**

The level of activity (and number of tasks) generally increases during March as spring 'kicks in', and additionally, based on my observations and news reports there are going to be a lot of fences, other garden structures, and mature planting needing attention or replacement. Let's hope Gladys and Herman don't hit our shores too soon.

I always look forward to March, this is the month when we start to get some serious bursts of colour appearing; mainly from spring flowering bulbs; early flowering shrubs such as Forsythia and Chaenomeles; flowering cherries and of course my favourites 'Catkins' and 'Lamb's Tails' from Salix caprea and Corylus avellana respectively.

I am particularly looking forward to my Camellia and clematis armondii flowering - they were new purchases/plantings last year and are full of flower buds.

## Tasks for March...

- Apply plant foods to established borders i.e., pelleted chicken manure.
- Mulch bare soil.
- Continue to prune overgrown and late-flowering shrubs and roses - these plants flower on new wood - so pruning will produce strong growth and extra flowers.
- Cut back perennials and grasses that were left over winter.
- Divide overgrown clumps of perennials.
- Start putting supports around perennials - this is so much easier to do than when they have grown, and you struggle to contain them!
- Dead-head daffodils and other spring flowering bulbs as the flowers fade, cut them just below the flower head, leaving the foliage until it dies back.
- Plant summer-flowering bulbs.
- Sow hardy annuals out of doors.
- Protect fruit blossom from late frosts.
- Treat moss on lawns.
- Re-seed bare patches on lawns (towards the end of the month) and mow the lawn if necessary - set the blades high.
- Check pond pumps and get them running.
- Make sure the birds have plenty of food and fresh water.
- You may even need to start weeding - if we get any reasonable weather!
- And if it is warm keep an eye out for slugs and snails.

Before I sign off, a date for your diary - Sunday 27th March, British Summer Time begins and it is Mother's Day, and that means Easter is only 3 weeks away.

*Thanks for reading, and happy gardening, J.*

Jane Dale of 'Designed Gardens'. Tel: **07983 392 411**.







## Make 2022 the year of the greatest **Great British holidays!**

**Get picked up in Cottingham with FREE door to door pick-ups from your home.**  
We've chosen a selection of great value holidays, but for a greater choice, including short trips, visit Beverley Tourist Information Centre and pick up one of our 2022 brochures.

**From  
£305**

### Rye Place, Right Time

Monday 18 April – 5 days from **£459pp**

Visit Sussex, a county rich in history and culture, with visits to famous gardens and a Jacobean house.

### Norfolk Broads Explorer

Monday 2 May – 5 days from **£479pp**

Big skies, sweeping beaches and the tranquil Norfolk Broads. Who could ask for more?

### Mull it over in Bute & Iona

Sunday 15 May – 6 days from **£659pp**

Take a guided tour of the Hebridean islands of Mull and Iona.

### Liverpool Culture

Friday 3 June – 4 days from **£379pp**

Experience the hometown of the world-famous Beatles, with a delightful river cruise.

### Concorde, Castles & Code Breakers

Monday 13 June – 5 days from **£455pp**

Visit the UK's most popular National Park, famous for its mesmerizing shores.

### The Beautiful Lake District

Monday 20 June – 5 days only **£405pp**

Enjoy a tour of the Imperial War Museum, Bletchley Park and a guided tour of Rockingham Castle.

### Wales in a Nutshell

Monday 27 June – 7 days from **£695pp**

Take in Wales' most beautiful landscapes and popular attractions.

### The Yorkshire Dales

Monday 4 July – 5 days from **£439pp**

Enjoy a packed itinerary visiting some of the best destinations in the Yorkshire Dales National Park.

### Northumberland Castles & Coasts

Sunday 10 July – 5 days from **£429pp**

Explore the beautiful and historic Northumberland, complete with coasts and castles.

### Historic Durham

Friday 22 July – 4 days from **£305pp**

A tour full of history, with plenty of free time to explore the city of Durham.

### Lofty Heights to Isle of Wight

Monday 8 August – 5 days from **£475pp**

Make the most of Hampshire's long maritime history, complete with a ferry crossing to the Isle of Wight.

### Edinburgh & Scottish Borders

Monday 5 September – 5 days from **£455pp**

Take a tour of Edinburgh and the beautiful Scottish Borders, including excursions to Thirlestane Castle and more.



**From  
£99**



Single supplements apply for some holidays.



### Itineraries

For all our holidays, itineraries are available online and in our 2022 brochure. These are subject to change and final itineraries are sent to booked passengers 7-14 days before the departure date. For information on holiday itineraries, visit [eastyorkshirecoaches.co.uk](http://eastyorkshirecoaches.co.uk) or call us on 01482 222 444 and ask for a brochure.

# EAST RIDING THEATRE LAUNCHES A MOBILE APP, BRINGING THEATRE TO THE OUTDOORS

**The free 'Time Travellers' Theatre Trail' app is now available on the Apple and Android store.**

ERT is delighted to announce the launch of the 'Time Travellers' Theatre Trail' app. Users can enjoy a FREE outdoor walking theatre trail travelling back into Beverley's past, where they meet local characters and discover what the town's theatrical life really looked like in times gone by.

Simple to use through most smartphones, this app offers a fun and exciting day out for the whole family!

Twelve historic sites in the market town of Beverley are included in the tour, taking you on an expedition through time, with actors Annie, Richard, Evie, Gordon and a host of historical figures, from Henry V to artist Mary Elwell.

At each site you'll find yourself immersed in a thrilling audio drama performance bringing to life stories which took place on that very spot! The app was made possible thanks to funding received from Arts Council England, Beverley Town Council and Hull and East Riding Charitable Trust.



The accompanying 'Time Travellers' Theatre Trail' booklet, filled with fun questions to answer along the way, can be picked up free from ERT or downloaded online. The booklets were made possible thanks to sponsor Beverley Building Society.

Producer Sue Kirkman said: "The app is the result of a community project undertaken by the theatre when the doors were closed due to the pandemic. Inspired by the theatre's aims to bring high quality performing arts to the local community, the project engaged a number of local professional actors, artists and creatives."

Alongside the audio trail ran a community art project, 'The Beverley Heard', a perfect play on words, led by ERT's artist-in-residence Emma Garness. 'The Beverley Heard' saw 10 local artists paint by hand a collection of cow statues inspired by their own personal artwork, shared on the Art & Ert facebook group which was created



during lockdown. The finished designs were then installed in locations around Beverley including cafes, shop windows, and at ERT.

Listeners of the audio trail can try to spot all 10 cows as they follow the map around Beverley.

Emma Garness said: "I really appreciate the commitment and creativity of the artists in painting a beautiful 'Herd of Art'. A special thank you goes to the shops that gave up their valuable window space for these unique cows. The imagination, talent and humour from all the creatives involved within the trail will not disappoint."

For more information and how to download the app please visit: [www.eastridingtheatre.co.uk/time-travellers-theatre-trail/](http://www.eastridingtheatre.co.uk/time-travellers-theatre-trail/)  
Or scan the QR code to the right.



East Riding College



**FIND**

**YOUR**

**FUTURE!**

**OPEN DAY**

Wednesday 16 March,  
4pm-7pm

Flemingate, Beverley

- Full & Part-Time Courses
- Higher Education
- Apprenticeships
- Courses for Business

Register on-line:

[www.eastridingcollege.ac.uk/open](http://www.eastridingcollege.ac.uk/open)



Free travel  
**2 college**

Visit our website  
for details



# Spring into action, get vaccinated!

 <p>Ventilate to help keep the virus out of your home</p>	 <p>Wash your hands regularly with soap and water</p>	 <p>Wear a face covering in busy places (unless exempt)</p>	 <p>Do a rapid lateral flow test before periods of high risk</p>	 <p>Be mindful and give others space</p>	 <p>Know your risk, particularly if interacting with anyone vulnerable</p>
---	---	---	--	--	--

## Help protect your community and your loved ones.

If you still need to get your COVID-19 booster, or even your first or second vaccine, it's not too late.

You can book an appointment or get a walk-in – whatever works best for you.

To find out more and check eligibility:  
[nhs.uk/covid-vaccination](https://nhs.uk/covid-vaccination)

If you've had yours, why not help someone else get their jab?



Scan to see walk-in sites