

just
BEVERLEY



01482 679947
justbeverley.co.uk
info@justbeverley.co.uk



REYTA
Remarkable East Yorkshire
Award Nominee 2016
'Best Newcomer'

FREE

ISSUE 24

HUNTERS[®]

**OAK HOUSE
CUSTODIAN
REQUIRED**

**NATALIE ACTON -
UK EVENTS
FOUNDER**

**WALKING WITH
IAN RICHARDSON**

**HUNTERS
COMMITTED TO BEVERLEY**



• **SING PACKAGE
COURTESY OF
PARKWAY CINEMAS**

• **COSMOS -
MEAL FOR TWO
WITH BUBBLY**

NEWS, WHAT'S ON, LIFESTYLE, FEATURES, PUZZLES, PHOTOS & MORE



HearPure

YOUR HEARING AID PEOPLE



Hearing loss
isn't invisible

FREE Streamer Pro with every Mid to Top Range Oticon Hearing Aid

The **Streamer Pro** turns your hearing aids into a small wireless headset, allowing you to shift programs, adjust volume, and connect to your TV, Computer or Audio devices. **BOOK your FREE Hearing Consultation for January now and EXPERIENCE your FREE Hearing Aid TRIAL. Offer only on orders paid for in January 2017**



Including
Invisible Aids
and Behind
the Ear Aids

Call: 0845 299 6331 or visit hearpure.com
13a Saturday Market, Beverley, HU17 8BB



Letter from the Editors



2017 will be no different to all the other years, or will it?

I have made my New Year Resolutions which includes approaching the year ahead with optimism and good will.

Last year saw big changes in Beverley! Beverley is moving with the times! 2017 will have City of Culture on our doorstep, a new adventure park opening so that we can all "Hang Loose", and, hopefully, the Beverley Arms back in action. We can all work together to make our friendly market town into the place to stay in and explore before going out towards Hull and the rest of the East Riding.

I would like to thank everyone who supports **Just Beverley** and all the positive contributions made to it. This is Beverley's own magazine so please get involved! Send in your good news and engage on Facebook. If you have a business, why not advertise in the magazine and/or website - call **01482 679947** to have a chat as to how we can work together.

I am excited about the year ahead - 2017 is going to be special! May I wish you all a happy and healthy 2017.

Julian.



January is often the month where nothing much happens. After the excitement of Christmas, we are all feeling the pinch. Many of us will have spent too much, eaten too many mince pies and drunk too much mulled wine over Christmas so we have to tighten our belts to pay off the credit card whilst going on a diet and cutting down on the alcohol intake.

The Season of Good Will means we are happy to put our hands in our pockets to support our favourite charities, too, but what happens in January? As I said before, nothing much! Giving to charities often dries up. But charities still need to support people in need. Very much at the sharp end of supporting the poor and needy are charities such as East Yorkshire Food Bank. The day **Just Beverley** visited, 37 families were issued with food parcels. If we continue to do nothing much, then those 37 Beverley families could go hungry in January. So please continue to do something! You can read all about the East Yorkshire Food Bank on page 10.

There are many charities which need our support and which so many people work tirelessly for. **Just Beverley** is always keen to recognise these Charity Champions - we mention 3 on page 13. Do you know someone who deserves an appreciative nod? Do let **Just Beverley** know about them! Contact details below!

Helping other people builds resilience, decreases stress levels and makes you feel good. So here's to doing and being happy!

Linda.

Get in touch with us:

Website: justbeverley.co.uk

Email: info@justbeverley.co.uk

Telephone: 01482 679947

Twitter: [@JustBeverley](https://twitter.com/JustBeverley)

Facebook: facebook.com/justbeverley

If you would like copies for your business to distribute to staff and customers, call Just Beverley on 01482 679947!

Printed by: Jadan Press

CONTENTS

Letters from the Editors

3

News

4, 5

Parkway Cinema

6, 7

Features

Hunters practice what they preach

9

Natalie Acton Running flagship events

27

Dianne Woodford Loving life

31

Beverley FM in the spotlight

33

Regulars

Arts

32

Charity Champions

13

Competitions

7, 17

Competition Winners

7, 26

Countryside Matters

23

Finance

21

Gardening

23

Legal Q and A's

20

Lifestyle

10, 13, 16

Motoring

26

New Businesses

15

Photos

18, 19

Puzzles

24

Sport

28, 29, 30

Travel

16

What's On

34

Competition Terms and Conditions

Competition answers should be emailed to info@justbeverley.co.uk before the closing date with the competition title in the subject field. Include your name, address and daytime contact telephone number along with your answer. Winners will be notified within 1 week of the closing date and MUST be available for publicity purposes for Just Beverley magazine, website and Facebook page and the prize provider. The judge's decision is final. No cash alternative is offered. Details may be used for marketing purposes by Just Beverley and the prize provider and for website analytics by Just Beverley.

CONTRIBUTORS

Julian Minshall, Linda Johnson, Aaron Gilpin, John Fewings, Richard Manville, Carfan, Ian Richardson, Sam Walton, Colin Raynor.

You can pick up the magazine from:

Beverley Parkway Cinema, Beverley Tourist Information, Beverley Library/Treasure House, Tesco, Morrisons, East Riding Leisure Beverley, Browns café, Beverley News, Boyes, Tesco café, Colette and Tyson Garden Centre, Beverley Garden Centre, Cherry Tree Garden Centre, Mace News in Saturday Market and Lincoln Way, Tickton News, Costcutter in Walkington, Molescroft News, Grovehill Convenience Store, Maple News, Leconfield PO, Poundland, Halfords, East Riding Community Hospital, Bishop Burton PO, The Altisidora, Cherry Burton PO, Monks Walk, Health Centres, cafés, hairdressers and more!

New Fairtrade Village signs announce Cherry Burton's status

Signs herald continuous support for Fairtrade since 2003.

Cherry Burton was only the second village in the country to be awarded Fairtrade status - a commendation which includes every organisation, business and society in the village. To celebrate their 13 continuous years of actively promoting and practicing fair trade, several local businesses sponsored the funding of 'Fairtrade Village' signs which have been erected by East Riding of Yorkshire Council at each of the four entrances to the village.

Ros Stanley, Secretary of Cherry Burton Fairtrade and Local Produce Group, told **Just Beverley**: "The village is so willing to be involved in this important movement which stands for fair terms for farmers and workers, protects the environment, fosters safe working conditions and promotes

equality. We don't consider fair trade as important just for overseas suppliers but also for our local farmers and workers. It allows us to connect with the people who produce our food and for them to know we appreciate their endeavours. We invite speakers from overseas and the locality to speak at our events which increases knowledge and brings more people on board.

"Whichever organisation, business or society you visit in Cherry Burton you will find fairly-traded produce. From the school to the shop, church to catering outlets the Fairtrade logo is on as much produce as possible. The football team uses Fairtrade footballs and the wine society drinks Fairtrade wine! Our young people are just as enthusiastic as the more mature.

"There is a young designer working on the website and teenagers on the steering group.

"It really does involve the whole village."

If you would like to find out how your community could get more involved with Fairtrade, Ros can be emailed on ros.stanley@cherryb.karoo.co.uk or check out the website www.cherryburtonftip.org



Beverley Braves get go-ahead for sporting facility at Molescroft Carr Playing Fields, Hudson Way

The 9 rugby league teams which are known collectively as The Beverley Braves have had to meet at Beverley Leisure and Longcroft School as there are no changing facilities at Molescroft Carr. But now, thanks to Molescroft Parish Council, and East Riding of Yorkshire Council who own the site, the 150 Beverley residents who play for the club will have their own home!

Within the next year or so, Beverley Braves will have their own single-story modular building which will provide 2 changing rooms for home and away sides, toilets, showers, a referee's room, storage space and a kitchenette to make hot drinks and sandwiches.

To say they are excited is an understatement! There are restrictions on height, overall size and looks and there are still some fine points to clarify with regards to the lease, but this new facility will transform the club's operation and enable them to bring more youngsters on.



Chairman of the club and coach, Neil Gay told **Just Beverley**: "It has taken us 3 years to get this through planning and get funding from Sport England in place. But it will be a great facility for the area because other community groups will be able to use it when we don't need it.

"There are restrictions on its use, which we fully support because we are a club for 4-15-year-olds, but this will also ensure the playing fields are used to their full potential, too."

Beverley Braves currently have vacancies for players at all levels, would love more people to train as coaches and/or help out as volunteers.

Find out more about them at www.pitchero.com/clubs/beverleybravesallagegroups or contact them on beverleybraves@gmail.com

Tomorrow's Youth meets at Molescroft Pavilion on Wednesday afternoons

Set up by Molescroft Parish Councillors Jackie Heffer and Mac Fleming, and supported by East Riding Councillors Elaine Aird and Denis Healy, this informal club for the over 50s provides a range of activities for the more mature in Molescroft, Beverley and beyond.

Filling a gap in the services provided by the council, this new weekly event in the social calendar is supported by the East Riding of Yorkshire Council with funding, loaning of equipment and staffing.

Activities include arts and crafts, board games and indoor sports as well as refreshments and time to chat, all free of charge. Transport for the elderly and disabled is available via Beverley Community Lift. There is no need to book - just turn up between 2.15 and 3.45pm. For more details contact Jackie Heffer on **07715962108**.



Beverley Music and Dance new dancewear room open

There is a full range of ballroom, ballet, tap and jazz shoes now in stock, plus leotards, tights and dance accessories in the newly-refurbished shop at 14 Norwood.

It also has its own private changing area. Additionally, owner Sue Harker is available to take her stock to children's and adult's dance classes by arrangement. Contact Beverley Music and Dance on **01482 881584** or call in between 9am and 5pm Monday to Friday or 9am to 4pm on Saturdays.

Dementia Friendly East Riding

This new charity, based alongside Beverley Community Lift at 25, Corporation Road, Beverley 9HG, aims to continue the excellent work of raising the profile of dementia in the East Riding.

Chaired by Phil Anastasi with 11 trustees, the charity aims to build on the work of the Dementia Action Alliance under the direction of Emma Williams, who has moved to York.

The charity is running a competition to design a Forget-me-not which will then be used in a larger public display. Information about the competition is on their Facebook page: www.facebook.com/DementiaER. Closing date is Friday, 3rd March.



Beverley Film Society celebrated its 10th birthday in December with cake!

The new 'home' of Beverley Film Society is a definite hit as more people join to enjoy the best in world cinema on the 2nd Thursday of every month.

Check out www.beverleyfilmsociety.org.uk to see their future programme. Membership costs just £15/year!



The most successful Beverley Festival of Christmas so far

An estimated 60,000 people enjoyed the atmosphere, the entertainment and the shopping at the Festival on December 11th, which took in the whole of Beverley town centre from Flemingate to North Bar.

Entertainment included The Westwood Sessions and Birds of Prey at North Bar, choirs, bands and orchestras on the streets and in churches all the way to the Disney-themed Christmas grotto and nativity at Flemingate.

Organisers felt the event brought the whole of Beverley together, with market traders, stall holders, shops, cafes and restaurants maximizing on the increased footfall that the event provided. One café-owner commented that she was ten-times busier

than usual whilst another independent trader in Wednesday Market commented that the huge number of visitors meant that they had almost sold out of stock.

63 coaches brought visitors to the event, an increase over last year's total of 55. Coach drivers were welcomed with refreshments, maps and lunch-vouchers.

Councillor Jane Evison, cabinet portfolio holder for economic investment and tourism at East Riding of Yorkshire Council, said: "We have been pleased with the positive feedback received about this year's Beverley Festival of Christmas. The whole event ran like clockwork, with visitor numbers

Simon Delaney appointed as Building Surveyor to Beverley Minster

Beverley Minster is one of the oldest and best-known buildings in the East Riding of Yorkshire and for a chartered building surveyor, is one of the most exciting premises to work in.

It is an iconic landmark and visitor attraction as well as a place of worship and now film location.

The current building, which was built by hand, requires significant maintenance and tender loving care, whilst adhering to good conservation practice.

Simon Delaney of Delaney Marling Partnership, who has been appointed to his new role from this month told **Just Beverley**: "This is a very exciting opportunity! My role as Chartered Building Surveyor will be to manage the maintenance team and liaise with the other experts working on the building. A building of this type needs constant maintenance to preserve its condition. Last year, works have included a new fire alarm system and the rebuilding of the stone mason's yard. This year, there will be ongoing repairs to glazing and stone pinnacles as part of the continued conservation of the building. There are many different rooms, levels and spaces which aren't obvious which all need attention, some of which are over 900 years old. However, it is testament to the robust building practices, the work which has been done over the years and the care of my predecessors, especially John English, which will make my new role so pleasurable."

John English commented: "It was a great privilege when at the beginning of 2006 I became Surveyor to this magnificent medieval structure. I have loved every minute of working with great professionals, our Chairman and the excellent Old Fund Trustees and witnessed the continuing improvement in the condition of the Minster. As I look towards retirement, however, it is with sadness that I hand over the reins to a younger person. I have complete confidence in Simon Delaney who is a Building Surveyor with the necessary experience in conservation projects and who importantly lives in Beverley.

"Much has been completed since I became Surveyor but Simon is fortunate in that arguably even more exciting times lie ahead but this to some extent depends on the outcome of the on-going Restoration Project. I wish Simon every success in the future."





EVERY THURSDAY AT 10.30am
(doors open 9.45am)

Join us for a free brew and a natter and enjoy some great films on Beverley Parkway's Big Screen. Only £4 with drink and biscuits included. Aimed at 55s and over. (All films are subject to change).

Thursday 5th January -

Jack Reacher: Never Go Back (12a)

Cast: Tom Cruise, Cobie Smulders

Little Men (PG)

Cast: Greg Kinnear, Jennifer Ehle

Thursday 12th January -

Inferno (12a)

Cast: Tom Hanks, Felicity Jones

Jack Reacher: Never Go Back (12a)

Cast: Tom Cruise, Cobie Smulders

Thursday 19th January -

Hunt for the Wilderpeople (12a)

Cast: Sam Neill, Julian Dennison

Inferno (12a)

Cast: Tom Hanks, Felicity Jones

Thursday 26th January -

The Girl on the Train (15)

Cast: Emily Blunt, Haley Bennett

Hunt for the Wilderpeople (12a)

Cast: Sam Neill, Julian Dennison



MONDAYS @ 8.15pm

More 'what is it' than 'whodunnit'

Fancy a film but not sure what you want to see? Try our Mystery Movie Monday! You won't know what it is until it starts, unless you can solve our Facebook and Twitter clues! It could be a classic or a gem you have never seen or even the first screening of an upcoming film.

The fun is in the discovery! Only £4 per person, restricted to 15 and over only unless otherwise stated as some will be for 18 and over due to content.

Look out for information on our Facebook page and Twitter @parkwaybeverley.

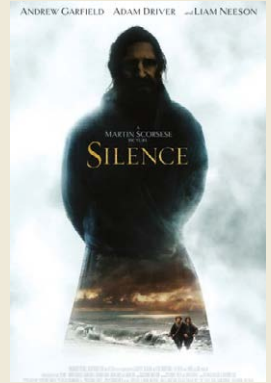
These are the films scheduled to open in January: all are subject to change.
Check out up-to-date cinema listings at www.justbeverley.co.uk/cinema-times



1st January



1st January



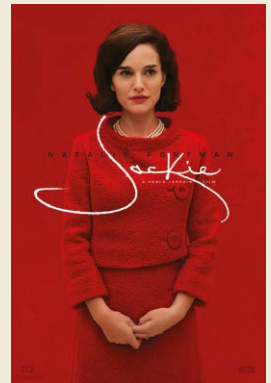
1st January



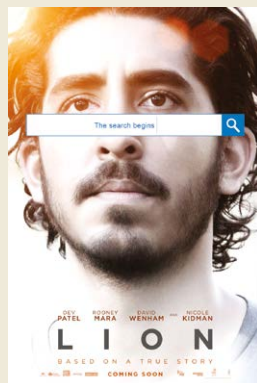
12th January



13th January



20th January



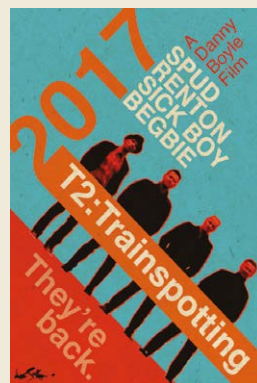
20th January



20th January



27th January



27th January



YOUR NEW INDEPENDENT CINEMA



Parkway Cinema celebrated its 1st birthday on December 18th

How many films have you been to see this year? Which were the most memorable? Which was your favourite?

Here's the Top Ten films from the Parkway:

1. Bridget Jones's Baby
2. Star Wars - The Force Awakens
3. Dad's Army
4. The Secret Life of Pets
5. Fantastic Beasts & Where to find Them
6. Finding Dory
7. The Jungle Book
8. The BFG
9. Eddie the Eagle
10. Absolutely Fabulous

The Top Ten films nationally were:

1. The Jungle Book
2. Bridget Jones's Baby
3. Finding Dory
4. Captain America: Civil War
5. Deadpool
6. Fantastic Beasts and Where to find Them
7. Batman v Superman: Dawn of Justice
8. The Secret Life of Pets
9. Suicide Squad
10. The BFG

Although these were the top-grossing films of 2016, it's interesting to note that of Empire's Top 25 Films of 2016, 24 of them were shown at Parkway!

Competition Time!



Universal Studios release 'Sing', a computer-animated musical comedy film on January 27th. The competition this month is to win a surprise package of 'Sing' merchandise (pictured) along with 2 free tickets to a film of your choice. There are also 3 pairs of runners-up tickets courtesy Parkway Cinema, too.

There are a host of well-known actors voicing the characters in 'Sing'. Matthew McConaughey, Reese Witherspoon, Seth MacFarlane, Scarlett Johansson, John C. Reilly, Tori Kelly, Taron Egerton, Peter Serafinowicz, Jennifer Saunders and Nick Kroll. There are 85 classic songs from famous artists as well as an original song by Stevie Wonder and Ariana Grande called 'Faith'.

The plot centres round Buster Moon, a koala, who owns a music theatre which is in danger of closing as recent productions have bombed. So he comes up with the idea of holding a singing contest with a prize of \$1,000, despite the fact that he doesn't have \$1,000! Other animals in the city have their own problems. Rosita has had to give up on her dream of being a singer to raise 25 badly-behaved children; Meena has a great voice but severe stage fright; Mike loses his temper too easily; Johnny's Dad wants him to be a mobster although he wants to sing and Ash is a punk-rocker but gets criticized by her boyfriend who is in a band with her.

Buster's assistant, Karen Crawley, prints the fliers for the contest but she has a glass eye and the \$1000 becomes \$100,000. They are blown out of Buster's office and find their way to Rosita, Meena, Ash, Rosita and Mike, who audition successfully for the show. But all doesn't go to plan! Buster finds out about the misprint and instead of owning up to it, tries to get the money from his Nana, but after an altercation with a glass tank full of squids, the theatre is destroyed. Buster is now homeless and jobless. But Buster's friend Eddie tells him that the only way is up. Does it all end happily ever after? Go see the feel-good film of the year to find out! To be in with the chance of winning the prize, all you have to do is answer the following question:

How many classic songs feature in 'Sing'?

Send your answer to info@justbeverley.co.uk by January 18th. Include your name, address and day-time telephone number and be prepared to be involved in publicity for Parkway Theatre and Just Beverley. Put **Sing Competition** in the subject box. Full terms and conditions are on page 3. Good luck!

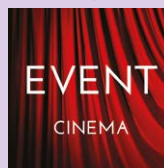


Competition Winner



Lewis Palin of Walkington won the Sully Competition, a whole host of Goodies and a pair of tickets.

One of the runners up, Mrs McGonegal won a pair of Cinema tickets.



Event cinema offers something a little different to mainstream films. Live and pre-recorded shows beamed in via satellite from all over the world. Here are the latest live streams that you can enjoy on the big screen at Parkway Beverley.

TICKETS NOW ON SALE:
Wednesday 11th January at 7pm -
RSC LIVE - THE TEMPEST (TBC)

Encore Performance Thursday 12th January at
7.30pm & Monday 16th January at 1pm
NT LIVE: NO MAN'S LAND (15)

Sunday 15th January at 2pm -
ALL'OPERA - ROMEO AND JULIET (TBC)

Sunday 22nd January at 3pm -
BOLSHOI - THE SLEEPING BEAUTY (TBC)

Tuesday 31st January at 7.15pm -
ROH - IL TROVATORE (TBC)

Thursday 2nd February at 7pm -
NT LIVE: AMADEUS (12a)

Sunday 5th February at 3pm -
BOLSHOI - SWAN LAKE (TBC)

Wednesday 8th February at 7.15pm -
ROH - WOOLF WORKS (TBC)

Thursday 16th February at 7pm -
NT LIVE: SAINT JOAN (12a)

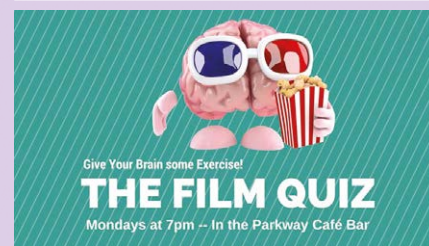
Sunday 19th February at 3pm -
DISNEY'S NEWSIES - THE BROADWAY
MUSICAL (PGtbc)

Tuesday 28th February at 7pm -
ROH - THE SLEEPING BEAUTY (TBC)

Thursday 9th March at 7pm -
NT LIVE: HEDDA GABLER (12a)

Thursday 30th March at 7.15pm -
ROH - MADAMA BUTTERFLY (TBC)

Thursday 6th April at 7pm -
NT LIVE - TWELFTH NIGHT (12a)



Why not test your film knowledge at 7pm before the Mystery Movie Monday? There are free film tickets for the winners!

Hard Water Horrors?

Fitting a new kitchen or bathroom often gets people thinking about protecting their planned investment from the ravages of hard water - limescale, soap scum, streaks and spotting... the list goes on.

After the effort and cost of selecting and fitting new units and appliances it's only natural to want to keep them sparkling and pristine; one way of doing this in our hard water county is to find the correct water softener for the property and get it installed as soon as possible!



A professionally specified and installed unit will start working its magic immediately to protect plumbing, showers and appliances and keep everything at peak efficiency and performance year after year. Amazingly the effects of a softener doesn't stop there. It will also help to undo the previous years of scale build up in existing plumbing and appliances and over a period of 6 months or so will gently dissolve away the limescale. Cleaning and care for kitchens and bathrooms are transformed with a softener; no need for harsh chemicals or scrubbing and elbow grease - a rinse and wipe down is all that is needed!

The other good news about water softeners is that they are now more compact than they used to be. Consumer-range softeners are the size of a tower computer, stylishly-designed to blend in with your décor. Modern softeners do not need to be placed near an electric power source as they are kinetically-powered by water and as they are pre-set by our skilled installers, you do not need to worry about operation; all you have to do is top them up with salt when they run low. Many units use compressed salt blocks or tablets which come in smaller bags. These can be delivered to your door or picked up from our store as required.

Long-term softener owners would not be without theirs! Bathing, showering and washing in superbly-soft water with super-soft fluffy towels becomes a luxury most people would not be without.

For further information, please contact David Parry at:
Greens Water Services, 647 Anlaby Road, Hull HU3 6SX
Telephone: 01482 351 769
Open 10-4 Mon-Thurs
(please call first if you are making a journey)
Email: d.parry@water-systems.co.uk
www.water-systems.co.uk



For water softeners, softener salt, Quoker boiling water taps, water filter systems cartridges and fridge filters. All types of Salt including de-icing salt, block salt, tablet salt and granular salt all delivered or from stock in the shop.

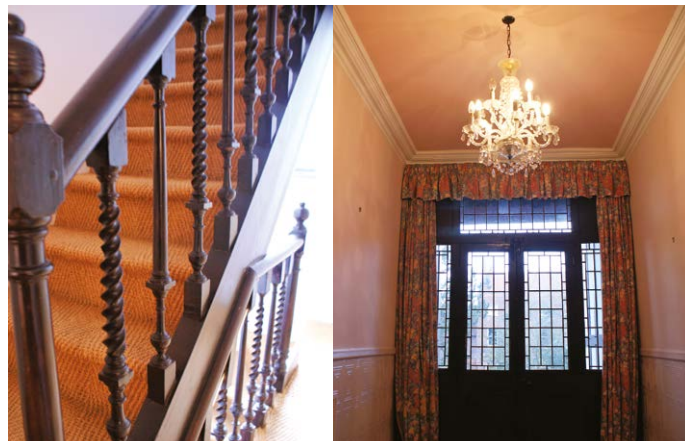


Oak House, 43 North Bar Without, built in 1880 but refurbished for modern living

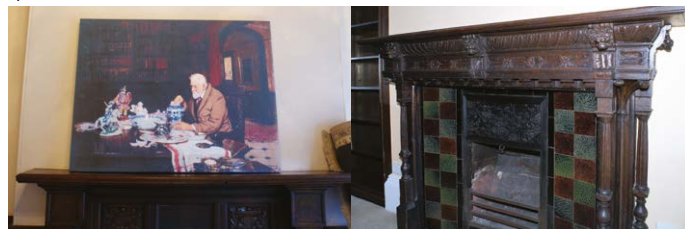
This handsome mock timber-framed building in a style more typical of Cheshire than Yorkshire was designed by a local architect, FS Brodrick, in collaboration with the owner, wood-carver and cabinet-maker James Elwell. At the time of build, there was nothing comparable in the area, yet despite the elaborate interior, James did not plan to live there himself! But the interest in the style saw several buildings built or rebuilt in a similar mode.

The first tenant of Oak House was brewer, maltster and publican Robert Ranby Stephenson who owned the Golden Ball pub and brewery on the site in Toll Gavel now occupied by Boots. After he died, Gladys and John Curtis lived there for a while until Sir John Rumney Nicholson and his wife Sybil moved there in 1925. James Elwell died while Sir John lived at Oak House, but it remained in the Elwell family. There were a succession of tenants between 1930 and 1939 (John and Mabel Reddihough, George and Ada Frankish and Lt. Col. Ernest Harward Mayhew O'Farrell and his wife Selina) after which it was used as a billet during the war.

In 1946, James' unmarried daughter, Margaret, who lived in Scarborough, sold Oak House to Ralph Hindmarsh of Gosforth; he lived there with his wife until his death in 1966, when it was sold to Edith Little of Ripon for £7750. Edith (also known as Hindle) lived there with her farmer son, Robert and his wife Sheila, until her death in 1984. To generate additional income, Robert and Sheila had created a 9-bedroom property to run the house as a bed and breakfast. But insufficient funds saw the building fall into disrepair. The chimneys were close to collapsing, there was damp and rotting timbers and the wiring needed completely replacing.



In 1997 the house was sold to Geoff and Wendy Noble who, along with their four daughters, saw the house refurbishment as a project. The family moved to Beverley when Geoff left the Royal Navy and took on the role of Purser at Hymers College; he was initially living away and only returning to Beverley at weekends, so Wendy, who is a Consultant Gynaecologist, had the unenviable task of living amongst the dust and disruption. But with loving care and attention, the partitioning walls have been removed, returning the house to a 6-bedroomed property, the fireplaces restored, beautiful carvings rediscovered, floors renewed and the house brought back to new life, becoming a show-piece of James Elwell's work. Now the design details are there for all to see, such as the ornate decoration on the side of the house where the gentry lived compared with the blandness of the servant's quarters.



Having lived happily at Oak House for nearly 30 years, it is just too big for Geoff and Wendy now their children have left home. However, as they consider themselves custodians of the property they would like to think that it will be taken on by someone who will appreciate the history and place which Oak House has in Beverley and treasure it as they have, contributing their story in the years to come.

Oak House is for sale through Hunters Estate Agency. Telephone: **01482 861411** or find the details at www.hunters.com/property/Oak-House-North-Bar/153158.

Hunters Estate Agents practice what they preach

Leanne Marshall of Hunters in Beverley works with clients wishing to buy, sell or let property. As an individual, she has bought and sold property but now, having bought the building which Hunters inhabits, she is demonstrating commitment to Beverley and increasing her skill-set in renovating a Grade II listed building. Leanne spoke to Just Beverley about her love of Beverley and the career-path she is following.

Leanne's first love is people - working with them in her Hunters' team, learning about their needs and wants as clients and helping them with her charity work. She is determined to ensure everyone she meets is happy with the outcome of that meeting, whether it involves staff training, ensuring customer satisfaction when buying, selling or letting a property or working with a charity to raise much-needed cash.

Yet working as an Estate and Lettings Agent is a stressful job, especially in these times of financial challenge and economic turmoil.

Fortunately, Leanne is made of strong stuff! She first became involved with Hunters when she was office manager for the branch which opened in Bridlington in 2007, just before the down-turn of 2008. It was so successful that Leanne took the calculated risk of opening her own branch of Hunters in Beverley in August 2014.



As Leanne said: "It had to be Beverley! I've lived in Beverley since I was 10 years old when my Dad, who was in the army, was posted to Leconfield. I went to Longcroft School and Bishop Burton College. All my friends and family are here; I'm not interested in working or living anywhere but here.

"The property in Hengate is just perfect; there's lots of passing traffic and a fabulous view of St Mary's. I remember when it was a sports shop and then a fitted kitchen retailer. We have been renting it but the opportunity came to buy and that's what I've done. It needs extensive renovation to bring it back to the standard a Grade II-listed building deserves so we are going to do it all ourselves; it will be a labour of love and will bring a different dynamic to estate agency."

Hunters Estate Agents aim for distinction as all staff are trained internally through their own training academy which is recognised

by the Estate Agents' governing body, ARLA. There are additional briefings and e-learning packages to keep staff up-to-date as new legislation or changes to current legislation is enacted.

Incredibly, there are 172 pieces of legislation applicable to lettings alone!

Leanne told **Just Beverley**: "People shouldn't choose their estate agent by the same principal as buying their clothes. They need to be sure the agent understands their background, their property, the area and their reasons for moving - and that the agent is there for them 7 days a week. I meet clients in the evenings and at weekends to get to know them to deliver a professional service.

"All of us in the office have bought, sold or let property and been tenants; the advice we give - and much of it is given freely - is the result of personal experience. We have had 100% customer satisfaction on Head Office surveys which is a credit to everyone in the office. We work as a multi-tasking team, treating our clients with the same individuality and respect, whether it's a £70k flat or a £1m mansion they are buying or selling, tailoring the marketing to get the best result for them.

"Some people might think that buying rather than renting is a gamble but property always has been and always will be a safe bet. Despite the economic uncertainty, banks are lending at a very cheap rate, which is reassuring for people wanting to move. Investing in 2-4 Hengate is practicing what we preach - we feel honoured that we have become custodians of this beautiful building, which is one of Beverley's landmarks and we will look after it to the best of our ability."

Just Beverley is looking forward to seeing the changes which we will feature in a future magazine. Our pictures, on the right, show the challenge ahead but Leanne has an eye for design - the shop interior is her creation - so we know it will be done very tastefully.

Meanwhile, if you are looking to buy, sell or rent property, why not call into Hunters at **2-4 Hengate, Beverley HU17 8BN**, telephone: **01482 861411**, website: **www.hunters.com/offices/beverley**



East Yorkshire Food Bank - providing emergency food and support to local people in crisis

"Foodbanks do more than just feed people - they are listening ears and can signpost people to further support" says Richard Newby, Development Manager of this local charity.

There are 26,500 people living under the poverty line in East Yorkshire, with a similar number in Hull (postcodes HU1-HU9). Over the last 7 months, the East Yorkshire Food Bank has helped over 1300 adults and 500 children, many of whom would have gone hungry due to a whole variety of reasons.

Richard told **Just Beverley**: "There are many reasons why people need us. Some of the people who come to us are desperate. One of the saddest cases was that of a gentleman who had been in a high-powered job, but had given up work to look after his three school-age children after his wife suddenly died. He couldn't get benefits as he had voluntarily given up his job. The Foodbank helped by referring him to Cherry Tree Advice Centre as well as supplying an emergency food parcel. In fact, we ensure that anyone who comes in, with or without a food voucher is signposted to the right agency.

"Most people finding themselves in strained circumstances do not know where to go for help. Food vouchers are issued by statutory agencies such as the Welfare Benefits Team, Youth Services, Children's Centres, Doctors' Surgeries, AGE UK, Gipsy and Traveller Liaison Office and Citizen's Advice and we can also issue them. Which is why we are so pleased to be opening new premises on Mill Lane, even though it will cost £500/month for

the rent without heating and lighting. It will mean we will need to do more fund-raising but being more visible, we hope, will bring in more support. We can hold Open Days and have somewhere comfortable for our users to sit and chat to agencies, too. If anyone has an unused laptop or tablet which they could donate so we can help users look for work or accommodation, please let me know."

The Food Bank was seeded by The Trussell Trust, a NGO and national charity which co-ordinates and supports food banks nationally. It is supported by Tesco, which hosts a food collection point in each store for donations, tops up donations by 20%, holds special food collection days and donates cash.

As Richard says: "Without Tesco's support we could not survive. In November, we spent over £2000 topping up food as there were not enough food donations coming in, so cash is just as valuable to us. If just one extra person could think about the problems other people have and donate at permanent food collection points in Tesco, M&Co, Dyer Lane Barbers or Toll Gavel United Church, it would make a huge difference. Can we say 'thank you' in advance to that person?"

"We are so grateful for our supporters who adopted the American 'Reverse Advent Calendar' idea, donating an item every day during December instead of buying an Advent calendar and eating the chocolate themselves. Some people were very generous, adding in toiletries and boxes of chocolate as well as tinned and dried food so our



needy families had a little treat on Christmas Day."

Richard has a core of 30 helpers with 20 more on an ad hoc basis, some of whom have needed to use the Food Bank themselves and are 'paying back' their debt of gratitude, others of whom would love to see it closed down. But with around 37 families currently getting help and the need increasing, that is not likely anytime soon. Anyone who has a few hours on their hands who would like to get involved should give Richard a call on **07842 753728** for an chat or visit the Food Bank website for more information. www.trusselltrust.org/get-help/find-a-foodbank/eastyorkshire/

New year, new you. There's never been a better time to sign up to an adult learning course in Beverley

East Riding of Yorkshire Council's new adult learning course guides are out now. Aimed at people aged 19 years and over, the course guides have plenty to offer people living in and around Beverley. Whether you are looking to improve your skills, gain new qualifications, or learn something completely new, there really is something for everyone.

Starting in January we have courses on offer that can help you to improve your IT, English and maths skills as well as our most popular courses including counselling, mindfulness, teaching assistant qualifications and photography.

If you fancy learning a brand new hobby or skill we also have a range of art, crafts, dressmaking, flower arranging, soft furnishing, knitting, patchwork, quilting, creative writing and paper sculpture courses on offer.

Sign up to a FREE taster course during January!

Not sure adult learning is for you? Register for a free taster session and get an idea of what on in the classroom, what adult

learning centres are like and meet our fantastic tutors.

Our taster week takes place between 9-14 January, so hurry to book your place. There's no pressure to commit to anything further and you may just find something that you really enjoy.



Dressmaking and sewing are popular courses at the new Beverley Centre. With beginners and more advanced courses plus weekend masterclasses there's something to suit all levels. New for 2017 are our soft furnishing classes, so if you fancy making your own cushions or roman blinds come along!

You can pick up a copy of our new course guide at the adult learning centre on Burden Road in Beverley, or any East Riding library, leisure centre or customer service centre. Alternatively, download a copy online at www.eastriding.gov.uk/learn.

To book a place on a course or a free taster session you can book online or call **(01482) 887670**. Concessions may apply - ask at time of booking.



Did you get a new camera for Christmas and want to learn how to use it? Maybe you've got some experience, but want to develop your skills further? We have a range of photography courses on offer for all levels and interests.



Adult Learning Courses

Enrolling now for January 2017

Learn something new:

- ▶ English and maths
- ▶ ICT and computers
- ▶ Soft furnishings
- ▶ Drawing & painting
- ▶ Help finding a job
- ▶ Patchwork, Quilting, Knitting
- ▶ Floristry
- ▶ Photography
- ▶ Creative writing
- ▶ Dressmaking
- ▶ Counselling

...and so much more

Pick up a copy of the new Spring 2017 course guide at the Beverley adult learning centre, library or customer service centre or look online at:

www.eastriding.gov.uk/learn
or tel (01482) 887670

Not sure adult learning is for you?

Try a course for **FREE** between 9-14 January

What will you do next?



**FREE
LOCAL DELIVERY**

**OUR BIGGEST
EVER**

**KITCHEN
SALE**

**For your free kitchen consultation
with Darren, call in branch today!***



Free no obligation
design consultation



Unbeatable
discounted prices



Free gifts & prizes



Free home
measuring service

MKM BEVERLEY, Swinemoor Lane, Beverley, HU17 0JX
01482 880088 | mkmbss.co.uk



<https://www.facebook.com/MKMBS/>



@mkmbss

*Promotion ends 5th December 2016

Charity Champions

Just Beverley loves to celebrate good news! We know there are many unsung heroes in Beverley who do so much to help others, so please let us know about them so they can be recognised.

Email: info@justbeverley.co.uk or phone 01482 679947.

The East Riding Community Respiratory Team raise over £1000 to support COPD patients.

World COPD day is held in November each year, but patients need support all year. Chronic Obstructive Lung Disease is an umbrella term for two specific respiratory conditions: Chronic Bronchitis and Emphysema. Both conditions cause breathlessness and chronic cough and impact greatly on sufferers' quality of life. Pulmonary Rehabilitation is an exercise and education programme which helps manage and optimise patients with COPD and other respiratory conditions.

It is led by specialist respiratory physiotherapists, who are based at Beverley Health Centre, Manor Road, Beverley, who cover the whole of the East Riding. Unfortunately, patients without transport are unable to access this programme of rehabilitation even though clinics are held in a variety of locations - Aldbrough, Bridlington, Goole, Haltemprice, Market Weighton and Ottringham as well as Beverley, a 120-mile radius.

The Community Respiratory Team decided that, to highlight World COPD Day on November 16th and to fundraise to help patients without transport they would cycle 120 miles on a static bike! Cliff Pratt Cycles and Mark Ellam provided the bike and technical support, which was set up within the East Riding of Yorkshire Community Hospital. Taking it in turns, the team actually cycled 150 miles 8 hours!

They then took the cycle to Total Fitness Gym in Willerby to cycle even further to raise more awareness and cash. That wasn't all they did, though! During the week of November 14th, patients, relatives and staff within the Pulmonary Rehabilitation Groups were challenged to walk/jog/run 120 miles via 10 metre walking assessment, thus setting seven classes 2743 lengths to jointly achieve 19200 lengths.

Many patients surpassed their own expectations and those of the team and must be praised for their tremendous effort. You can find out more about the work of the Community Respiratory Team and East Riding Pulmonary Rehabilitation Team at www.humber.nhs.uk and follow them on Twitter @HumberNHSFT.



Dine Bangla support Dove House Hospice.

To celebrate head chef Mahboob Rahman's recognition as one of the top curry chefs in the country at the recent Curry Life Awards, owner Ash Islam held a special event with proceeds going to Dove House Hospice. £625 was raised in total; the money will be used to help provide free end of life care.

Jethro Shearring from Dove House Hospice told **Just Beverley**: "It costs £6.7m a year to run the hospice yet we only get the equivalent of 41 days funding from the government. Dine Bangla has kindly supported Dove House in the past and we were delighted to see how hard the staff worked and how generous the attendees were in raising such a significant amount of money. This will allow us to continue making a positive difference to our patients and their families throughout Christmas and beyond."



Beverley First Probus Club giving companionship to the retired or semi-retired gentleman

First Probus Press Officer Bill Clark describes the benefits of joining a Probus Club.

PPROBUS comes from the first three letters of the words PROFESSIONAL and BUSINESS; however established PROBUS clubs are open to any retired or semi-retired individual, no matter what their (previous) occupation, who have had some measure of responsibility in any field of worthy endeavour, who are of character and respected in their communities. Probus is also a Latin word meaning honest or virtuous, from which the English word "probity" is derived.

There are around 2000 Probus Clubs in the UK and Ireland - there are 2 in Beverley! Beverley Westwood Probus is the original club which split when membership reached over 50 to form Beverley First. Each club has its own organising body with its own rules which set the congenial nature of the club. Beverley First Probus is for men only, but there are many Probus Clubs which are for women only or for both sexes.

The clubs are a-political and non-sectarian; there is no charitable work. Beverley First meets monthly at Tickton Grange; it invites lady partners to 3 lunches and the 12 coffee mornings. Although the watchword is informality, there is a dress-code of jacket and tie or suit for the lunches, when there is an after-dinner speaker. There are also trips out, which include a 5* pub lunch! In planning is a trip to the RAF control centre at Holmpton, which is as it was when closed in the 1980's, and to Butt farm gun emplacement.

For Bill, who is a semi-retired aircraft technician, specialising in Airbus A300-600 and A320-family aeroplanes, Probus gives him the opportunity to meet with other men with similar interests. Although he keeps busy, lecturing and training, writing technical documents and editing a newsletter for the Royal Aeronautical Society, having been based in Toulouse for 20 years, his social circle was small when he repatriated to the UK. If you 'fit-the-bill' and would like to find out more, please visit www.beverleyfirstprobus.co.uk and complete the on-line form. Bill will get back to you as soon as he possibly can.



Creations

Direct Furniture Repairs

Specialists in

- Leather Restoration
- French Polishing
- Upholstery



T: 01482 871954 M: 07951 759253

E: info@creations-biz.co.uk

W: www.direct-furniture-repairs.co.uk



Care home or YOUR home? You do have a choice...

We are Europe's largest live-in care provider. Our expert care workers live in your home with you, 24-7 as a companion, a carer and a friend.

We offer a genuine alternative to residential care homes. We help the elderly and vulnerable people to remain safely in their own homes by providing 24 hour, live-in care. Carers are matched to you based on personality, hobbies and interests as well as overall care needs.

Family and friends need a little break? Been in hospital and need a little extra help? Our carers are live-in companions who help with day-to-day tasks such as cooking, cleaning and shopping. We also offer complex care packages for more advanced care needs such as Dementia, stroke, Parkinson's and end-of-life care.

Our bespoke care packages ensure you retain as much independence and dignity as possible.

**Your one-to-one live-in companion/
care package starts from just £695pw**

If you would like an informal chat or you would like to know more please get in touch with Jeremy on 07821 669 146 or 01430 638 002 or visit www.promedica24.co.uk/eastyorkshire

PROMEDICA24
Live-in companionship & care

Caring for your hair in winter

Harsh winter weather on top of the stress of the festive season can make your hair looking dull and listless. We don't think twice about moisturising our faces when it feels dry, so why not treat our hair? Most of us invest in a moisturising shampoo and conditioner, but in winter, there are treatments and oils which can give hair the most incredible shine and softness, making it look healthy and bouncy.



During the winter months, we tend to use heated appliances more. Too much heat causes hair to dry out even more. It's a good idea to use a good-quality heat protection spray before using the straighteners or curling tongs and adding a protein hair mask into our weekly routine is good practice, too. Most salons have a full range of specialist hair masks which include concentrated ingredients to leave the hair vibrant, strong and full of body; some of them are especially made for coloured hair, too. Argan oil is fast becoming a staple for dry hair as it adds moisture instantly; you can comb it through and leave it in your hair to gain instant shine and control. Your stylist will recommend a product which is not too heavy for your hair.

Talking about combing, do make sure you use a tangle-teezer as they are perfect for those of us who end up with knotty, uncontrollable hair in damp weather.

Finally, regular trims are the only way to get rid of split ends. A good cut along with professional products will ensure your hair survives until summer - which creates its own challenges!

Hair by Rosie at **34, North Bar Within, Beverley, HU17 8DL** are experts in caring for hair of all types using Milk Shake products. Milk Shake professional products and treatments are inspired by nature, are kind to hair and skin and give amazing results. You can contact Hair by Rosie on **01482 863603**, see the results on Facebook /hairbyrosie16 and Instagram /hairbyrosie22.

SPECIAL OFFER

2 Courses for the Price of 1
Between 6-15 inches
minimum inch loss
in 5 sessions

Offer Includes
Lynfojei and Transion
Treatments
Please call for details
Offer ends January 2017

TONING TABLES
also help with ME, MS,
hip replacements,
depression, bad backs
and much more!

Wheelchair access and
stair lift available

New Year -
New You!

INCHES
BODY STUDIO

CELEBRATING 25 YEARS IN BUSINESS

Inches Body Studio, 1 Norwood, Beverley, HU17 9ET
Telephone: 01482 865229
Email: inchesofbeverley@hotmail.co.uk
www.inchesofbeverley.co.uk

The Appleyards Group

To celebrate increasing their presence in Beverley, the Appleyards Group has painted a new truck in distinctive Beverley livery (pictured).

Appleyards removal service has been operating in Hull since 1995. Specialists in local, national and international removals, the group also offers self-storage and traditional storage.

Additionally, Appleyards has a commercial team which has expertise in office moves, document storage and secure destruction. Appleyards of Beverley look forward to becoming involved in the local community and being an active member of the Beverley and District Chamber of Trade.

Appleyards can be contacted on **01482 429184**. Check out their website for more details: www.removalsbeverley.co.uk or find them at **Unit D1, Grovehill Road Ind. Estate, Beverley HU17 0LF**.



Woolley and Parks Estate Agents

Mark Woolley and Natalie Parks set up their first estate agency in Driffield in 2015 to find themselves the market-leader for sales within 6 months. They have now opened in Beverley to meet demand.

Just Beverley went along to meet Mark Woolley to find out what makes this new agency so different. The first thing which struck us was the vibrant orange, black and white branding which are Marks favourite colours and extend all the way from the logo to the clothes he and the staff wear. Vibrant is a word which Mark uses to describe Beverley, too, as it is a town which is growing unlike Driffield which has now perhaps come of age, although there is more happening in Driffield than most people think there is! Mark said: "We wouldn't be looking to invest in a location where there is no growth potential. Beverley is developing quickly, but the new housing developments are sensitively built and the 'fit' with Driffield is perfect. The compliments we have had are testimony to our active approach, unique range of market intelligence, professional advice, cutting edge marketing solutions and local expertise. It all adds up to service – we pack a lot of good things into our offering. We aim to be 100% proactive and try to be at the forefront of technology. We have a high-quality website with 3D interactive house-viewing available and an LED digital touch-screen in the window. I am an experienced photographer specialising in photographing country houses and hotels which means I can produce the best images for any property, whether it is worth £50k or £1million."

Just one week after opening in Beverley, Mark was delighted to discover Woolley and Parks had been short-listed for the Sunday Times/Times Estate Agency of the Year 2016 on the 'Best Newcomer' category. A trip down the A1 to the Hilton Metropole in London saw Woolley and Parks presented with the Silver Award in front of 4,000 fellow estate agents. Mark told **Just Beverley**: "We did put ourselves up for this. We wanted to be judged; we wanted to ensure we were doing things right. Judging included 'mystery' shops and telephone calls from people posing as potential clients. We had to submit our financial statement and business plan for analysis and undergo a rigorous telephone interview to explain it. The judging panel was chaired by the National Ombudsman and the Chair of the National Association of Estate Agents and they left no stone unturned! It was an amazing accolade to be short-listed let alone win silver." If you are considering selling your property this award-winning estate agency might be the perfect agent for you. You can find them at **19, North Bar Within, Beverley, HU17 8DB**, telephone **01482 755700**. www.woolleyandparks.co.uk Facebook: **Woolley&Parks** Twitter: **@woolley&parks**



37-38 Saturday Market, Beverley, HU17 9AH
www.kingsheadpubbeverley.com
 Tel: 01482 868103

CHARCOAL OVEN STEAKS

On Tuesday's - all day through January



CRISPY SOURDOUGH PIZZAS

Mon to Fri between 12pm to 3pm



Sri Lanka - a reserved culture, rich history and welcoming locals

With the colony days and its turbulent political history long in the past, Sri Lanka (formerly known as Ceylon) is now a vibrant and spectacular island and the cultural jewel of the Indian Ocean.

Here, giant gold Buddhas perch on hilltops, overlooking the wild elephants that roam the vast jungle below. Local workers pick tea leaves high in the cool and cloudy mountains while the sun shines on the golden sandy beaches of the south coast.



Leopards casually stroll through the national parks, whilst multi-coloured buses and tuk-tuks beep their horns at one another in the bustling streets of towns filled with colonial architecture.

With such a diverse range of things to see and do, along with incredible cuisine, brilliant weather and friendly locals - a trip to Sri Lanka will always provide a truly unforgettable experience. Those interested in history should focus on visiting some of the eight impressive UNESCO World Heritage Sites, such as

the ancient city of Polonnaruwa, the famous Sigiriya rock fortress and the old Dutch fortress in the stunning city of Galle. In the mountainous region at the centre of the country, where the average daytime temperature is around 16°C due to its elevation, you can find the tea plantations and the unique town of Nurwara Eilyah - known as 'Little England' since the colony days. The Pinnawala Elephant Orphanage is also an incredibly popular attraction with tourists - you can watch the elephants walk from the Orphanage down to the river to bathe every morning.



An area of global importance in terms of biodiversity, Sri Lanka is home to some of the most varied and exciting natural exhibitions on the planet. Jeep Safaris in the Yala National Park give visitors the chance to see the infamous wild leopards that call this area home, along with wild elephants, sloth bears, monkeys and water buffalo. Only 35km from Yala is Bundala National Park - an absolute must for bird watchers, home to peacocks, flamingo and jungle fowl - the country's

national bird. Those interested in flora and fauna should head to the impressive city of Kandy to visit the Botanical Gardens, which display a stunning collection of plants and flowers amongst beautifully manicured lawns, including an impressive Orchid House.

Kandy is also home to the 'Sacred Temple of the Tooth Relic' - Buddhists travel here from all over the world to offer lotus flowers to a tooth - believed to be from Lord Buddha himself.

The amazing beaches of Sri Lanka aren't to be missed - there are so many excellent beach hotels and guest houses along the coastal areas in the south that are perfect for an afternoon of relaxing after a morning of exploration. Twin a week's tour with a private driver with a week on the beach for the perfect holiday - it's a lot more affordable that you may think - and the perfect way to experience the true essence of this vibrant country.



BEVERLEY'S ONLY INDEPENDENT TRAVEL AGENCY

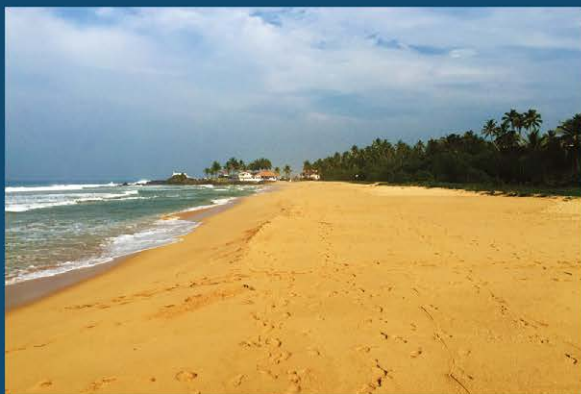
ONEWORLD
TRAVEL GROUP

Gran Canaria

DEPARTS 24 JAN 2017 FROM LEEDS BRADFORD
7 NIGHTS ALL INCLUSIVE IN 3* HOTEL
INCLUDES LUGGAGE AND TRANSFERS

390.00 PER PERSON

BASED ON 2 ADULTS. SUBJECT TO AVAILABILITY.



Sri Lanka - Beach Stay

RATED 4.0 OUT OF 5.0 ON TRIPADVISOR, THIS HOTEL IS LOCATED ON THE ISLAND'S BEAUTIFUL SOUTH COAST, ONLY 25 MINUTES FROM THE UNIQUE CITY OF GALLE. A GREAT HOLIDAY FOR RELAXATION, WITH THE OPTION TO EXPLORE.

DEPARTS 06 NOVEMBER 2017
FLIGHTS FROM MANCHESTER
11 NIGHTS ALL INCLUSIVE IN 3* HOTEL
INCLUDES RETURN TRANSFERS

980.00 PER PERSON

BASED ON 2 ADULTS IN TWIN ROOM. SUBJECT TO AVAILABILITY.

35 Saturday Market, Beverley HU17 8BE

01482 280081

www.1worldtravel.co.uk

Win a Meal for 2 at Cosmo's, with bubbly!

Customer feedback is so important to pubs and restaurants, with Trip Advisor leading the way. Which is why Cosmo's Flaming Grill, Restaurant and Bar is so pleased to be ranked at #4 for Beverley.

Occupying a corner position on Wednesday Market, which is ideal for traffic and people-watching, Cosmo's has a great atmosphere whether dining alone, à deux or with the family. Manager Deimante Rainyte effortlessly accommodates babies in high chairs whilst finding space for pushchairs. At the same time, she ensures wheelchair users are within easy reach of a table with their wheelchair located close by. Having tables upstairs, which can be reserved for private dining, ensures any group can be seated in the most appropriate way.

The food is as flexible as the space. Although chicken is a staple, served as a main in salads, risottos, pastas, burgers or wraps there are many other options, including fish and vegetarian. There is a great range of sides - the sweet potato fries are delicious! Sweets include a dairy-free chocolate dish and the range of alcoholic and non-alcoholic drinks is extensive. It is all these ingredients which have ranked Cosmo's so high on Trip Advisor! Our competition to win a meal for 2 with bubbly is therefore going to be very popular! To be in with a chance of winning this fabulous prize, all you have to do is answer the following question:

Cosmo's is in the top 5 restaurants in Beverley. Where is it located?

Send your answer on an email to info@justbeverley.co.uk along with your name, address and daytime telephone number. You must be available for publicity purposes for Cosmo's and Just Beverley. Competition Terms and Conditions are on page 3.



I've Been Thinking... by Colin Raynor

I've been thinking about Mrs Noah. You know who I mean. The wife of the chap who built the Ark. After writing about names last time I remembered the time my grandson told me his homework was to write about the wife of Noah.

"So what was her name Grandad?" Truth is we don't know.

We read the words 'Noah and his wife and his three sons and their wives'. On one occasion also this lady is written about as 'the mother of sons who were to be ancestors of all the world'. Noah's wife may have lived her life in almost the shadow of her husband but I do suggest she played a vital part in the family's daily life. Isn't that the meaning of the phrase "behind every good man is a strong woman"?

Noah's wife was a very important person; I believe in God's plan to recreate the world so He named her, by her position in the family. In today's world, some will say it is politically incorrect to use terms like "wife" and they are entitled to their opinion but for someone like me, who has been happily married for over fifty years, the word is one to be treasured not discarded. I would go further and suggest that there have been many women over the centuries who have been the steady guiding hand when men have made a mess of things. Often such women have never been given the credit for their efforts and when the family ship sails into calmer waters they fade into the shadows again, as Noah's wife did, because never hear her mentioned again when the floods receded. If we look closely at the current world scene many countries and institutions have a woman in the seat of power. Only time will tell if this will mean a more peaceful world. I think there is every chance it will be so.



Mary lived her life in the shadow of her son Jesus but there is ample evidence that He loved her deeply and she knew her role in life was to let her son live His short life in the way that he knew it had to be. The Twelfth night of Christmas is also known in some places as Mary's Eve. Toll Gavel United Church hold a special service to celebrate women on this day. If you missed it this year, put it in your diary for next year! Happy New Year to all!

New Year at Cosmo's

Flaming Grill,
Restaurant & Bar

3 COURSE MENU £19.95

Offer ends 15th January 2017

Starters

Traditional Prawn Cocktail with Oak Smoked Salmon
Chefs Home Made Tomato and Basil Soup
Smooth Brussels Pate

Mains

Turkey Parcel Stuffed with Sausagemeat, Sage and Onion Wrapped in Bacon
Roasted Salmon Fillet
Pan Fried Chicken Breast with White Wine and Cream Mushroom Sauce
Roasted Mediterranean Vegetable Linguine

Desserts

Traditional Christmas Pudding
Hot Chocolate Fudge Cake
Traditional Italian Style Tiramisu

WWW.COSMOSBEVERLEY.CO.UK

Cosmo's Beverley, 9-10 Wednesday Market, Beverley, East Riding of Yorkshire HU17 0DG
T: 01482 867 891 | E: info@cosmosbeverley.co.uk



Send your photographs of your celebrations
Find us on Twitter and Facebook to share yours

Christmas



HERE TO GET *you* THERE

HUNTERS[®]

EXCLUSIVE

BEVERLEY / 01482 861411

in Beverley



SALES / LETTINGS / MANAGEMENT

HUNTERS®

HERE TO GET *you* THERE

BEVERLEY / 01482 861411

indicoll

more than just web design

WINTER MADNESS
GET A WEBSITE FOR ONLY

£1995!

UNLIMITED NUMBER OF PAGES

What's included? Your website comes with all of these fantastic features: A Bespoke Website Design (with no templates used) • Content Management System (so you can update the website yourself) • Contact Form, Analytics (see when & how people visit your website) • Mobile friendly • Blog • Gallery • Links to social media accounts • Dedicated account manager

FREE!
DOMAIN NAME
EMAIL ADDRESSES
WEB HOSTING*
& SUPPORT
*FOR 12 MONTHS



CALL NOW ON 01482 428650

Legal Q's and A's

Every month, Just Beverley asks a team of legal experts to answer a question to which we don't know the answer.

This month the question involves a question about property.

Q. I was widowed 18 years ago and recently remarried. I own my own house, but the deeds are in my previous name. Do I need to have the name on the deeds changed, and how would I go about it? Is there a charge?

Coles the Solicitors have provided the following response.

A. It's not necessary to change the name on your deeds, since production of your marriage certificate will clear up any confusion. However the Land Registry won't charge you for being tidy! If your property isn't currently registered at the Land Registry you could consider registering it at the same time: there is a charge (around £100 depending on the property's value) for this. You should make a new will, since remarriage will have cancelled any previous one you may have made.

If you have a question you would like advice on, why not give Coles the Solicitors a call?

They are located in the very heart of Beverley at **22, Lairgate, Beverley HU17 8EP**, telephone **01482 231300**.
www.coles-law.co.uk

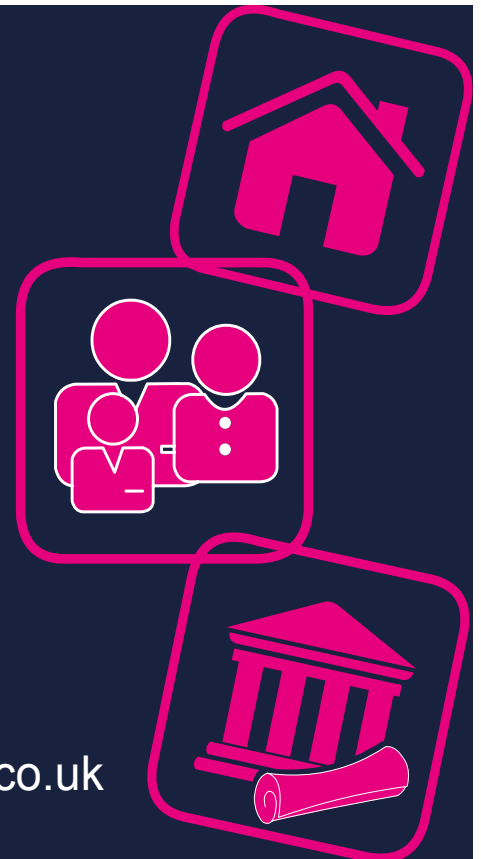
Coles
the solicitors

Providing expert **legal**
advice in the very heart
of **Beverley**

22 Lairgate, Beverley HU17 8EP

T: 01482 231 300

E: info@coles-law.co.uk W: www.coles-law.co.uk



- Family Law • Wills & Probate • Conveyancing • Powers of Attorney
- Medical Negligence • Litigation • Dispute Resolution • Personal Injury

Small businesses beware - the VAT flat rate scheme is ending

HM Revenue & Customs is to make substantial changes to the flat rate scheme for VAT. The scheme is used by many small businesses and simplifies their reporting requirements.

The flat rate scheme was introduced by HMRC to simplify the process of paying VAT and reclaiming VAT for small businesses. For many small businesses, contractors and consultants it is the preferred method. A business registered under the scheme select their trade description from the list provided by HMRC and this then gives a flat rate percentage to apply to gross sales. The result of multiplying the flat rate percentage to the gross sales in the VAT period is the VAT paid by the business.

Any business using the scheme cannot then reclaim any VAT incurred on costs, unless they spend more than £2,000 on an asset, then the VAT on this cost can be reclaimed. As an example, if your classification was "Management consultancy" then your flat rate percentage would be 14%. However, HMRC is now concerned that the system has been overly beneficial to some businesses who have very little costs. This has resulted in a review of the system. From 1 April 2017, if a business falls into a category called a "limited cost trader" then the flat rate percentage will be 16.5%.



A business must check its actual spending on goods each quarter and identify whether it can continue to use its normal flat rate percentage or if its VAT inclusive expenditure on goods is less than 2% of its gross sales or £250, then the 16.5% rate will apply.

Goods are direct costs used in the business and exclude overhead costs such as motor expenses, utilities, rent, telephone costs etc. A good example of goods is building materials for a builder or raw materials purchased by a bakery. Many of the businesses using the flat rate scheme won't have any direct costs.

Bearing in mind that the 16.5% is applied to VAT inclusive turnover, the real VAT paid to HMRC will be 19.8%.

Example:

A Management consultancy business that has sales of £10,000 + VAT in the relevant quarter;

Net sales	£10,000
VAT	£2,000
Gross income	£12,000

VAT payable under the current 14% flat rate scheme = £1,680.
VAT payable under the new 16.5% limited cost trader = £1,980.
The additional cost means that if the business has more than £20 of VAT incurred on costs, then they will be best advised to exit the scheme and return to the standard method.

If you would like to discuss this in more detail, then please contact Gareth Botterill on **01482 862240** or email: gareth@botterillco.co.uk.



Botterill & Co

Chartered Certified Accountants

We are a modern and professional accountancy practice ideally located to serve businesses in Beverley and the surrounding area.

We utilise modern accounting technology to provide you with a cost effective, professional service.

Our services:

- Annual Accounts
- Company Formations
- Management Accounts
- Cloud Accounting
- Tax Returns
- Bookkeeping & VAT

For a free initial consultation please contact us:

Office: **01482 862240**

Mobile: **07966 051458**

Email: gareth@botterillco.co.uk

Website: www.botterillco.co.uk

1st Floor Offices, 40 Norwood, Beverley, HU17 9EY

Cloud Accounting - what is it?

Cloud accounting allows you to access your accounts 24/7 from your computer, mobile or tablet. Utilising a cloud-based accounting solution (for example XeroTM or QuickbooksTM) allows you to access your business finances at anytime, anywhere, helping you with the decision-making process as well as documenting progress.

The benefits of Cloud Accounting can mean you have more time for you, your finances and your business. More and more business owners are realising its potential. Multiple users can access the system simultaneously and your data is automatically backed up with world class security!

Many accountants are certified in using Cloud Accounting software and can offer you a free demonstration and 3-day trial so you can experience it yourself with no obligation.

XeroTM and QuickbooksTM software include many add-ons to assist the business in more areas than just the accounts, including Customer Relationship Management (CRM), job costing, stock control and more!

You can reconcile your accounts, send emails to your advisor, manage your time, invoice customers and use hundreds of other apps which all integrate seamlessly to be more efficient and control costs. It also makes preparing your tax return or calculating VAT payments and reclaim much easier!

Finnies Chartered Certified Accountants will work with you to ensure you achieve financial success, providing you with the best advice tailored to your needs.

Do have a chat with them to see if a Cloud-based Accounting package is right for you.

You can find them at **4-6 Swaby's Yard, off Walkergate, Beverley HU17 9BZ**. Telephone: **01482 861919**. Email: enquiries@finnies.org.uk

Could 2017 be the year you take control of your business by outsourcing your payroll?



Are you ready for the impact that workplace pensions could have on you and your business?

Benefits of working with us include:

- Access to a dedicated payroll specialist
- Flexible and tailored services that are adapted to suit your needs
- Transparent pricing
- Clarity and efficiency
- Access to our FREE and easy to use payroll app

Call us a **FREE**, no obligation consultation on 0845 308 2288 or visit our **website** www.stipendia.org.uk

Stick with us on **social media** for updates!



Stipendia Payroll Solutions



@StipendiaPay

Countryside Matters with Sam Walton

There are two things we cannot do without, one is water and the other is food and the rest is incidental. With that in mind, how do you feel about farming? Does anyone ever think where their food comes from, other than a Supermarket? Believe it or not, there are still people around who think milk comes in bottles, without the faintest idea it might come from cows.

No doubt most of you will eat cereals and bread, but do you ever think of where the ingredients come from? As you travel around the countryside, you will no doubt wonder what all the tractors and machinery are doing. At this time year, the farming industry is flat out cultivating the land in preparation for next year's crop of cereals, proteins and oil seed to be made into food which will eventually adorn your tables.



No doubt you will have been delayed in September and October with tractors and trailers on the road, ferrying their cargo to either farm or storage areas. So I beg of you to be patient next time!

As the world population increases and as we lose land to erosion each year, the balance is going to be very difficult to maintain. Yes, yields have increased enormously in the last 50 years but I doubt if we can do that increase again in the next 50 years, bearing in mind that there are an extra 250,000 people in the world every day.

Technology never ceases to amaze me and I do wonder just how far it will take us. There is much news that we will have driverless tractors shortly as we already have technology which allows a tractor to be driven in a straight line by satellite. The picture hopefully shows just how straight.



In the garden...

Unless you have had an artificial Christmas tree, one of the first tasks after Christmas will be to take down the 'Tree'. This task often creates higher stress levels than buying and decorating it! How do you get this tree that came into the house netted and a nice cigar shape out of the house, without leaving a trail of needles that you still find sticking into your bare feet in July!!

So here are a few tips...

- Firstly, if your tree has been kept well hydrated, needle drop will be minimised.
- Before you take the lights and decorations off, place an old sheet or similar (decorators plastic cover sheets are ideal) underneath the tree - to catch any needles that fall off during this process.
- Now either wrap up the tree in another sheet as tightly as possible and take it outside, or cut off the branches, again placing them on a separate sheet and remove from the house wrapped up in the sheet.
- Finally, get the vacuum cleaner out and clean up the remaining few needles after you have taken out the tree in the sheet which caught the majority of needles.

Real Christmas Trees will be recycled by the ERYC. Either put them in the brown bin if you've chopped them up or place the entire tree by your brown bin on collection days. They can of course be taken to the house waste recycling sites.

Outside in the garden

Tasks to complete will very much depend on the weather. Winters are generally becoming warmer so plants that normally started appearing in February may be well on the way to flowering e.g. Viburnum bodnantense, hamamelis (witch hazel) and winter honeysuckle. These not only have welcome flowers at this time of year but the most amazing fragrance. The early spring flowering bulbs could also be poking their heads out of the soil.

If it is mild pay particular attention to your 'garden and greenhouse hygiene' as bugs will be enjoying the warmth and ready to enjoy a feast on the lush growth in spring!

Tasks for January...

- Protect tender plants against frosts and icy winds
- Order seeds and summer-flowering bulbs
- Plant new fruit trees and canes when weather allows
- Plant bare-root roses, hedging, trees and shrubs when weather allows
- Mulch around new plantings
- Prune wisteria
- Prune fruit trees
- Start digging over vegetable beds when weather allows
- Sow early vegetables under cover
- Check forced bulbs for growth
- Keep small area of ponds ice-free
- Clean out your greenhouse
- Clean and sharpen mowers and other tools
- Make sure the birds have food and water

So, roll on February and spring,

Jane Dale of 'Designed Gardens'
Tel: 07983 392 411



PUZZLE PAGE

New Year Quotes

Sudoku

Fill in the grid with digits in such a manner that every row, every column and every 3x3 box accommodates the digits 1-9, without repeating any.

	9			3	1			
	4	9			5		7	
4			9					
	3		6	1	9			
			7				4	6
		1			8			
	6							
2	7							3

Wordsearch

N Y Y M M E J T T D T G O C J
 W Q Q L S T J Y V A J N U I B
 B W Y D T A A O C K V W R X K
 G G T L H R N M O Z W G E F U
 M J A M G B U T A W Q L S O B
 Y C H S I E A T T D T O O G M
 I F G N N L R W S E T V L F D
 W C T S K E Y S L M E E U R I
 F Y E R R C U A D J I S T J I
 C J L X A R Z E P R D Q I G T
 S V S P D A K D Z R I U O P X
 C X F R E E Z I N G A Y N Q A
 A A W E I Z I W Z Z X O S X T
 R X K T P H M E W D G L D S V
 F I C A G M J N O V J S U B V

SCARF
 RESOLUTIONS
 COATS
 GLOVES
 JANUARY

DARKKNIGHTS
 CELEBRATE
 DIET
 FREEZING
 NEWIDEAS

A positive attitude inspires, be inspirational in 2017!

A New Year, New Resolutions, Old Habits...

Some of the greatest achievements started with people saying "that cannot be done"; in 2017, just do it!

2017 - let's see if we can get this one right!

In 2017 we will be older, rounder and none the wiser!

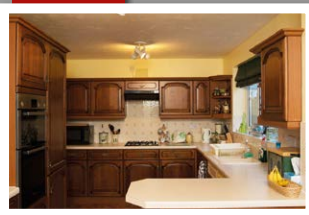
Do you have any amusing stories, quotes or pictures? Send them to info@justbeverley.co.uk



QUALITY FITTED KITCHENS AND QUALITY REFURBISHMENTS

DREAM DOORS®
 NEW LIFE FOR OLD KITCHENS

Before



- Huge choice of doors, worktops, appliances, sinks & taps
- 50% deposit, balance on completion
- Made to measure custom-built doors and units
- Door swaps to full kitchens - tailored to your needs

CALL ANDY OR TERRI FOR A FREE ESTIMATE:

01482 861653
dreamdoors.co.uk



EST. 1999

January Sale

Terms & Conditions apply

Checkatrade.com
 Where reputation matters



Visit our showroom:
 Belprin Park, Swinemoor Lane,
 Beverley HU17 0LN

रुमी'इ



Nominated in the 'Curry Awards' and by 'Curry Life Magazine'

The Only Beverley Indian Restaurant included on the Welcome To Yorkshire Spice Trail

Rumi's Bangladesh Indian Cuisine

New Walkergate, Beverley, HU17 9EP

Tel: 01482 428642

JANUARY 2017
New TAPAS menu
Sun to Wed
5.30pm to 7.30pm

www.rumisrestaurant.co.uk
Mon - Thurs: 5.30pm - 11.30pm
Fri - Sat: 5.30pm - 12am
Sun: 5.30pm - 11pm

New 2017 Evening Menu

Rumi's Recipe - Prawn Curry

Ingredients:

- 2 tbsp. sunflower oil
- 1 large onion, chopped
- Large piece ginger, crushed
- 4 cloves garlic, crushed
- ½ red chilli, finely chopped
- 1 tsp. golden castor sugar
- 1 tsp. black mustard seed
- 1 tsp. ground cumin
- 1 tsp. ground coriander
- 1 tsp. turmeric
- 1 tbsp. garam masala
- 2 tsp. malt vinegar
- 400g chopped tomatoes
- 400g raw King prawns
- Small bunch fresh coriander, chopped

Method:

1. Fry the onion and garlic in the oil until softened.
2. Stir in the ginger, chilli, sugar, mustard seeds, cumin, coriander, turmeric, garam masala and cook for 2 more minutes.
3. Add the vinegar and tomatoes and stir well.
4. Add in the King prawns. Cover and simmer for 20minutes.
5. Sprinkle with the fresh coriander.
6. Serve with basmati rice, yogurt, mango chutney and carrot and cumin salad.

Would you like to make a difference to someone?



VOLUNTEER CAR & MINIBUS DRIVERS NEEDED



Full training given, ring or pop in for a chat!



25 Corporation Road, Beverley, HU17 9HG

Tel: 01482 868082

www.bclift.org.uk

Reg. Charity No: 506813



WHITE RABBIT
CHOCOLATIERS

have you tried our ho ho ho...

AWARD WINNING CHOCOLATE

Hop on over to our new online shop!
whiterabbitchocolatiers.co.uk
16 Dyer Lane, Beverley, HU17 8AE

/White-Rabbit-Chocolate
 @WhiteRabbitChoc
01482 679325

Classic Cars with Carfan - the Citroen SM

A current 'hot topic' in the car world is the vast number of hybrids there are to choose from nowadays. The Citroen SM could be considered a hybrid in as much as it is a Citroen with a Maserati engine.

The letters SM appear to stand for many things. Some agree it is for "Special Maserati"; in some eyes it certainly is special, but others might think the styling somewhat challenging. These cars are a rare sight nowadays and need a lot of maintenance due to the 2.7 litre or 3 litre V6 engine and complicated hydro-pneumatic suspension.

Being French, the car has its fair amount of quirks too! When stationary the front wheels always revert to the forward position and some of the six headlamps swivel with the steering, allowing the driver to see around corners!

Available between 1970 and 1975, the U.K. Owner's Club say that only 325 made the journey over the Channel. This is partially explained by the fact that the factory never made it in right hand drive. All models were 3 door coupes, although a tiny number of convertibles and even 4 door versions were made by other companies. Find one of these and the asking price can well be into six figures!

The fuel crisis, American bumper regulations and the eventual bankruptcy of the company led to only 12,900 being delivered to owners looking for something a little different. Needing both a Citroen and Maserati specialist to keep the car maintained and in tune certainly didn't help either. Over the last few years the original 3-door versions have become prized classic cars and have appreciated in value so if you can find a good one that has been looked after, be prepared to pay up to £40,000.



If you see one on the road make sure you give a cheery Carfan wave!

Competition Winner



Amanda Clarke of Lockington won the Chefs Table competition courtesy of Rumis Restaurant in Beverley.

Mrs Clarke was delighted to win such a fantastic prize and is looking forward to a night out with her husband, sitting down with Sham and having a meal cooked to suit their palate.

HAYWARD Befriending

Are you, or someone you know, struggling to maintain independence?

Do you need time-out from your role as carer?

HaywardBefriending can provide support for adults aged 18-65 and 65+

- Company at home
- Accompanied outings
- Shopping with/for you
- Handyperson service
- Support with paperwork
- Support with housework
- Appointment transportation
- Pet service



Contact Jennie for further details
Call: 01482 868166 or 07834 491242

www.haywardbefriending.org.uk

BEVERLEY MOTORWORKS INDEPENDENT BMW & MINI SPECIALISTS

Follow us on:

search for
Beverley Motor Works

BMW Qualified Senior and Technicians Offer

- Saving up to 70% OFF main dealer prices
- Manufacturer's warranty not affected
- Resale value of your vehicle not affected
- Award-winning customer service
- Over 30 years' combined BMW experience

Call today on **01482 881128**

Our dealership expertise means high quality for car servicing at a fair price...

- ATA Accreditation
- Routine servicing
- Condition-based servicing
- Diagnostics
- Mechanical repairs
- Air conditioning
- Performance tuning
- MOT's

Call now for a no obligation quote or to book in on **01482 881128** or email us directly from our website www.beverleymotorworks.co.uk

Unit D1 Grovehill Industrial Estate Annie Reed Road, Beverley HU17 0LF
E: web@beverleymotorworks.co.uk



UK Event Associates' Natalie Acton talks about running some of the biggest events in the UK

Health and safety and stewarding and security are a must if you are planning an event! UK Event Associates have expertise in total event planning, crowd safety and security for every kind of gathering! From pop concerts such as Creamfields and Glastonbury to the largest agricultural show in the UK, The Royal Cornwall, to a one-off promotional day at Sheffield Meadowhall for MAC Cosmetics, to sports events including the Tour de France, Burghley Horse Trials and London 2012, UK Event Associates ensure their smooth-running and that the memories for spectators are positive ones.

You would not expect a company with such a stellar list of customers to be based in Beverley, but it is! On Annie Reed Road, to be precise! You might also expect it to have been established for longer than just 3 years. But Natalie, who is the company's expert in Safeguarding, Child Protection and Health and Safety had a very good reason for joining forces with Operations Director Neil Sheard and Consultant Executive Operations Manager Ian Greenhedge when she did. Personal circumstances, which saw her brother nearly lose his life when he was badly-injured coming down a zip-wire off the Humber Bridge at a charity fund-raising event, inspired her to research into the legislation required to hold such events. The case is still going through the courts but the mistakes which were made were numerous and could have been prevented by a comprehensive risk-assessment and provision of effective health and safety and event management; instead, Natalie's brother and his family have had their quality of life adversely affected.

Natalie told **Just Beverley**: "I realised there was a huge gap in the market for well-trained, professional event management, which is why I set up the

company. We now have 240, security-screened staff who work for us; all are trained in IOSH Managing Safety, First Aid at Work, Fire Marshalling, Traffic Management, FDA Crowd Safety and SIA Door Supervisor. Additionally, and unlike most other event management companies, our staff are trained and accredited in counter-terrorism and child abduction through the police's Project Griffin initiative.

"We consider our staff as ambassadors for an event. Each team member has at least 2 briefings so they can work anywhere on a site. They frequently get moved around so they gain experienced in different areas. This means that event-holders can have confidence in knowing that every aspect of the project is covered and documented. Our staff are as passionate as the management team in delivering a quality service, which is why we can supply staff to an event within as little as 4 hours."

Natalie's staff have had some interesting incidents to deal with at events including a sick visitor who had to be removed from the site by helicopter; the crowd thought the helicopter was part of the entertainment! But that is one of UK Event Associates' unique selling points - their knowledge and expertise is such that emergencies can be dealt with the least impact on the event.

The legislation for managing events is such that injuries sustained at events which are due to poor health and safety or crowd management could result in fines of thousands of pounds in compensation for the organisers. If someone has a heart-attack in the middle of a crowd, how would they get to hospital? If access points are blocked to an emergency vehicle due to poor traffic or crowd management, the event organiser is at fault. How would the patient be isolated and screened from the crowd for treatment?



Are First-aiders suitably qualified and covered to remove a patient from the site? All these issues and many more are well within the proficiency of UK Event Associates, which is why their workload is increasing through word-of-mouth referrals and repeat business.

As Natalie said: "Whether a large or small event, everyone is potentially vulnerable which is why we treat every occasion as unique. The event plan for Royal Cornwall Show in 2015 was not the same as the event plan for Royal Cornwall Show 2016 which won't be the same for Royal Cornwall Show 2017. We have developed our own key performance indicators through our extensive experience, and work with organisers as individuals and events as stand-alone occurrences. We are passionately committed to understanding our customers and always look to provide an outstanding service so their reputation is enhanced and complimented by our professionalism."

If you are planning an event and want to know it is in safe hands, Natalie and her colleagues are available by email info@ukeventassociates.co.uk or call **03333 441033**. They are also keen to speak to people who might wish to join their expanding team of professionals.

HUBY

DOMESTIC APPLIANCES



HUGE SAVINGS

when you

BOOK ONLINE

at

hubys.co.uk

Book in advance and save money.
The further you book in advance the more you could save...







You've tried the rest,
now use **THE BEST!**

01482 240511

BEES

BURTON ELECTRICAL SOLUTIONS

High quality electrical work across East Yorkshire & the Humber region

DOMESTIC

COMMERCIAL

TESTING

Whether it's for your home, rental property portfolio or business premises, all electrical installations need to be checked periodically by a qualified electrician.

For a quote contact:

Andrew Burton
 28 Carnaby Close, Leconfield, East Yorkshire HU17 7LA
 Tel: 01964 552769 Mob: 07585 601730
 Email: info@burtonelectricalsolutions.co.uk
 Web: www.burtonelectricalsolutions.co.uk



DOMESTIC INSTALLER 

Golf with Stewart Fraser - It's a mental game

There has to be level of physical competence to be a successful golfer, but having said that, we must not overestimate the importance of the mind in golf.

I hear a lot of people talking about muscle memory and its place in golf; however the muscles have no capacity to remember anything - memory only exists in your head. The muscles only do what the brain tells them to, therefore no matter how much you practice a golf swing, your muscles alone cannot remember it. If your mind isn't properly trained and prepared your muscles will not receive the correct information and will falter. Bad Thoughts = Bad Shots.

Having control of your mind can be the difference between you and the competition in the next medal you play. You will never fulfil your full potential and realise how good you can be unless you spend time developing not only physical skills but also mental ones. Here are just a few suggestions that will help you improve the mental side of your game over the summer months and fulfil your potential:

- Recognise that no one has ever mastered golf and no one ever will! Golf is a game of mistakes and not a game of perfect shots. Golfers that accept the game for what it is and react well to inevitable mistakes and misfortunes will end up

enjoying the game more and playing better because of this. Bob Rotella said: "No one will ever have complete control of their golf ball, but anyone can control their attitude".

- Create and execute a pre-shot routine on every shot.
- Trust your swing 100% on every shot. If you don't trust what you have, what is the point of all the practice you have been doing?
- Stay in the present. Never speculate mid round about what your score will be at the end or where you are standing in the competition you are competing in.



- Never criticise or analyse any shot you have already played; the next shot is always the most important one! Make sure that as soon as the club you are using goes back in the bag, that shot is over with and you move forward.



- Keep your emotions constant and even throughout your round. Anger or irritation is a sign that your mind is stuck in the past, thinking about a poor shot that has already been played.

Try simply taking one of these points out onto the golf course with you the next time you play competitively and your performances will improve.



Print that gets you noticed

- ✓ Brochures
- ✓ Leaflets
- ✓ Business Cards
- ✓ Business Stationery
- ✓ Posters

- ✓ Desk Calendars
- ✓ Wall Calendars
- ✓ Pop-up Banners
- ✓ Pads
- ✓ Invites

Jadan Press are a leading family run commercial B2 colour litho printer based in Hull. With over 19 years experience, the company is renowned for producing work of an exceptionally high quality. We are committed to providing an excellent service by offering value for money and ensuring complete customer satisfaction.

Tel: 01482 610902
info@jadan-press.co.uk www.jadan-press.co.uk
 Rainbow House, Kimberley Street, Hull, HU3 1HH

OVER 19 YEARS EXPERIENCE

We are committed to providing an excellent service by offering value for money and ensuring complete customer satisfaction

* Price does not include VAT or delivery



Walking with Ian Richardson - On Track for Kiplingcotes (8 miles return trip)

Landscape-lover, historian and heritage enthusiast Ian guides us on a local walk, pointing out areas of interest as we go.

This is the second stage of our walk along the route of the Beverley to Market Weighton railway which follows on from last month. A delightful 4 mile stretch through Wolds scenery and exploring the lovely village of Etton.

Kiplingcotes Station is a rail enthusiasts dream with much surviving from the days of steam. This is the second stage of our walk along the route of the Beverley to Market Weighton railway. A delightful 4 mile stretch through Wolds scenery and exploring the lovely village of Etton. Kiplingcotes Station is a rail enthusiasts dream with much surviving from the days of steam.



1. We resume our walk at Cherry Burton station. The track continues on the west side of the B1248. The stretch to the red brick bridge at Etton with the adjacent windmill (minus sails) is most pleasant, with abundant berries in the early winter. Having passed under the bridge, take the track on the left and head down to see the village.

2. Views of red roofed Etton, snug in its dry valley open up. It is surprising that this once bustling agricultural village did not merit a station. There is a fine pub, tranquil duck pond and interesting church. St. Marys is usually open and welcoming, mainly Victorian neo Norman, but with many ancient fragments to enjoy.



Head back uphill to the old railway. Splendid views over to South Dalton open as you proceed west towards the road crossing at Gardham.



3. The mile to Kiplingcotes is absolutely glorious. An embankment with sweeping views over the Wolds is one of the most beautiful spots in the county. It is marked on the OS map as Cinder Hole, perhaps a reference to the train emissions?

Many years ago, I lost a ten pound note here, seeing it float away in the breeze is still painful to recall. If you happen to find it, please return to its rightful owner - you will know it's mine from the picture of Dickens on the back!

I once read a lovely poem by a local lady who recalled picking cowslips here as a youngster and waving to a boy in the train. It epitomised this special place and the bittersweet memories of lost youth and departed trains. If any reader has details of this poem, please email me.



4. The incredible complex of railway buildings at Kiplingcotes is just ahead. Well preserved, platforms, goods shed, signal box, station masters house and station sign make this a wonderful location. Why was there a station in the middle of nowhere?

The explanation is that Lord Hotham insisted the price for the line crossing his land included his own station. Kiplingcotes has another claim to fame as up on the hills an annual horse race has been run since 1519, making it the world's oldest - 2019 should be exciting.

Your return to Cherry Burton can either be along the track or on quiet country roads. As you finish this section of the walk, picture crowds once alighting here for the Kiplingcotes Derby, always held in late March. It is a place that stirs the imagination.

Next Month - Change at Market Weighton.

Ian can be contacted by email:
ricojosh@msn.com



Beverley Breezers - British Cycling's initiative to get women out on their bikes!

For many women, the lycra-clad female cyclists tearing up-hill and down dale at incredible speeds is a put-off. 'How will I ever keep up' they say to themselves on one hand, yet on the other they envy the fitness, freedom and camaraderie that cycling brings. Which is where British Cycling's Breeze come in.

Barbara Joy is the woman who has taken the bull by the horns and set Beverley up on the Breeze network. She has been trained by British Cycling as Breeze Champion to lead ladies' rides. She has gained competencies which include first aid; safeguarding; route risk-assessment; checking a bike is fit-for-purpose; ensuring a helmet is fitted properly; keeping a group together (and what to do if it splits up) and negotiating junctions as a group. She is now putting together rides to which all women of any fitness level are invited, as long as they have a roadworthy bike which they can ride. Beverley rides leave from Beverley Leisure.

Breeze rides are fun, social occasions first and foremost which increase fitness almost as a side-effect. They aim to increase confidence, too, as riders increase their social circle as they join the friendly and supportive rides across the network. Breeze Champions are active in Brantingham, Cottingham, Driffild and Hull as well as Beverley, leading rides from 3 miles to 30, graded all the way from *Easy-going* to *Challenging*.

All rides are listed on the Breeze website: www.goskyride.com/Breeze/Index which is where the booking portal can be found.

The website contains lots of information about cycling: how to choose a new bike; cycling gear; the benefits of cycling; how to look after your cycle; cycling apps; riding positions and much more. It also lists lots of cycling routes all around the country of varying lengths and degrees of difficulty for women who are confident enough to go-it-alone.



Barbara told **Just Beverley**: "Cycling can be the key to helping people branch out. My rides tend to be graded Easy-going. Easy-going rides are just that, easy-going! We always stop for a coffee in the middle and never, ever leave anyone behind.

"Cycling is a great de-stressor which is why cycling is so popular. The East Riding is now one of the most active Breeze areas in the

country so there is no excuse for any lady not to get on their bike! The number of rides from Beverley is increasing, too, as Judith Horrocks has now trained as a Breeze Champion. But if anyone is unsure about joining us, I would invite them to call me for a chat on **07906 590076** first."

There are a maximum number of riders allowed per Breeze Champion so it is advisable to book through the website or ring the Champion first - but chances are you will be ok if you just turn up.

However, if you do book and can't make it, Barbara does request that you let her know as she has to complete a report after each ride, and that includes take-up rates.

As Barbara says: "Rides are limited due to the number of Breeze Champions - I would be more than happy to chat to anyone who might be interested in undertaking training and leading rides themselves. The admin is so easy it can be done on a smartphone.

"But it's a great way of volunteering! You meet some really interesting ladies; you see some women become more out-going and confident and everyone increases their fitness levels cycling around our beautiful countryside in the fresh air. In the winter, you have to wear more layers and sometimes the weather means we have to cancel but you feel so good after a ride out that the negatives outweigh the positives. If you are female or you know ladies (over 18s) who might like to join us, do tell them about Breeze!"

Track Fitness and Boxing Club - inspiring adults and kids to keep fit

Just Beverley visits a fitness and boxing club which is run by the community for the community, providing a much-needed facility for able-bodied and disabled users.

9 years ago, the building in which Track Fitness and Boxing is based, was used by East Riding of Yorkshire Council's Youth and Family Services, but was becoming surplus to requirements.

The gym and other rooms were not being used and the building was in need of refurbishment. Fortunately, Beverley Town Councillor Phil Dodsworth and fellow boxing enthusiast, Mike Pardoe, saw the potential for using the building as a fitness and boxing club.

It took 6 years to set up the club, with support from fellow Town and East Riding Councillors and an army of volunteers, negotiate the lease, find funding and make changes to the building to ensure it was fit-for-purpose. The club is now 3 years old, is open 7 days a week and enjoys tremendous support and success.

Alterations to the building included making its own entrance, an extension with a small changing room and kitting out a kitchen area. Club membership ranges from age 3 upwards, male and female.

Along with boxing in the full-size competition boxing ring, there is fitness coaching, fitness training for football and rugby and Paralympic coaching. Coaches include Craig Demoulied, who is England Boxing qualified, although there are several others, who also give their time and experience for free.



Following recent alterations and refurbishment earlier this year, opened officially by the Mayor and Esham "Brown Sugar" Pickering former Super Bantamweight Champion, the facilities allow children like Riley to get involved, enjoying a workout in the Gym whilst supervised by the coaches in a safe environment.

Dianne Woodford - loving life despite her disabilities

Dealing with Type 1 Diabetes is a challenge for many, but developing meningitis, site loss and epilepsy on top would be daunting. Not for Dianne Woodford, though, who, with lots of help from Guide Dog, Darcy, does not allow her disabilities to stand in the way.

Dianne was diagnosed with Type 1 diabetes whilst a young teenager. Type 1 diabetes occurs when the body's immune system attacks and destroys the insulin-producing cells in the pancreas, which affects the body's ability to maintain normal blood sugar levels, as distinct to Type 2 diabetes (which used to be known as 'maturity-onset diabetes' as it is due to lifestyle choices) where the body becomes resistant to insulin and the pancreas needs to start producing more and more of it to maintain a level blood sugar.

When diagnosed, Dianne had to use pigs' insulin which came in glass syringes which required sterilising and had to be purchased privately; today, Dianne uses an insulin pump which maintains her blood sugar level.

As Dianne told **Just Beverley**: "The insulin pump took a bit of getting used to, but it has revolutionised my life; I can now do almost anything because of it and Darcy."

We were delighted to meet Darcy when she came into the office with Dianne and her friend, Jim. Although Darcy is trained as a Guide Dog, not as a Dual Dog to work with people of two morbidities, Darcy can also indicate if Dianne is unwell or going to fit by sitting with her head on Dianne's lap. But when out-and-about, Darcy works so well with Dianne that many people think Dianne is training Darcy because Dianne doesn't 'look' blind! But on Darcy's days off (known as 'free-running days') when Dianne has to use a white stick, things can be very difficult for her.

She said: "I need to walk close to walls and shops to orientate myself with Darcy or a stick in my left hand. But Beverley now has a profusion of A-boards, bikes and other pavement-based advertising which can mean I sometimes have to walk onto the road to get around them. I am constantly banging into them as Darcy has to watch me and other people as well as the obstructions. About 18 months ago, I walked round Beverley with Calendar News, highlighting the difficulty of navigating the street furniture. In Hull, shops are fined for putting out A-boards, but here going shopping is hard work."

Dianne went blind very suddenly at the age of 38 after contracting meningitis. She has no vision in her right eye and in her left eye sees blurring, with black dots obscuring the field of view; she has no night vision.

The morning she woke up blind, her children were aged 16, 13 and 2 and Dianne was a single mum, yet she just thought the mirror was steamed up! Panicking is not something which Dianne does! But her first thoughts were for her children - she wouldn't be able to drive anymore so how would Mum's taxi operate? But she did not want to have to rely on them so there have been some faux pas - like the time she took frozen scones out of the freezer instead of Yorkshire puddings, brushed her teeth with hair removal cream instead of toothpaste and rinsed her mouth out with Fairy Liquid instead of mouthwash!

Dianne had to give up working as a nurse/phlebotomist so she learnt braille, did an OU degree and set up a charity called 'Visibility' predominantly to ensure her children didn't consider themselves as the only kids with a visually-impaired mum and could get on with their lives doing whatever kids do.

But they have used it to their advantage sometimes! One of her sons got out of PE for 3 years by taking a letter written in braille to his teacher - the teacher couldn't read braille but if she had been able to she would have seen the letter was an electricity bill!



Life is colourful in the Woodford household!

Dianne now works for the RNIB as a lobbyist, going down to London every month and currently inputting to a Government Green Paper called 'Work, Health and Disability: Improving Lives'. She recently spoke at an Ophthalmology Conference in Birmingham to promote the prompt issuing of a Certificate of Visual Impairment to newly-registered visually-impaired person, as such a certificate opens up access to a variety of services.

She's also involved with promoting Guide Dogs for the Blind (she will happily come and talk to anyone about her experience of having a Guide Dog), helping people who have just been diagnosed with Type 1 diabetes and supporting parents of children with Type 1 diabetes and talking about her experiences, which she has now written down in a book.

Friend Jim, who met Dianne after she lost her sight, has experience of writing and publishing. Dianne dictated her story to him, which he transcribed. Daughter Ella wrote a chapter in the book and she also reads the script as an audiobook - it was too costly to put it into braille.

The book is available through Amazon and is stocked by Beverley Tourist Information Centre. It can also be downloaded onto Kindle.

Dianne said: "Losing your sight isn't the end of the world and, in fact, only 3% of people who are registered blind are totally blind, so there is, in 97% of people, a glimmer of light which makes all the difference as you are not totally shut out. But your other senses compensate. I have played blind cricket, been tandem cycling, walked up Pen-y-ghent, flown an aeroplane from Leven airfield, been paragliding, been on Songs of Praise and on a cruise. I love going to cricket and was interviewed by Jonathan Agnew! My attitude is 'if you can... then so can I!'"

Dianne is certainly an inspirational woman. You can read more about her on her website www.diannewoodford.co.uk or follow her on Facebook /dianne.woodford.16

If you have an inspiring story or know someone who has, why not let **Just Beverley** know about it? Email: info@justbeverley.co.uk or call **01482 679947**.

Large Range of New Scooters from £599



Electric Riser Recliner Chairs & Beds from £495



New Slimline Stairlifts - From only £1,350



Visit our Shop today for all your mobility needs

110 - 112 Walkergate
Beverley, HU17 9BT

01482 887799

Open Mon - Sat 10.00am - 4.00pm
www.fox-mobility.co.uk

FOXMOBILITY.
Find us on facebook

OOP NORTH by John Fewings



*Ee but it's grim oop North
With us "dark Satanic mills"
With clogs on us feet
And whippets in yard
And lads trudging up cobbled hills
To fetch t'loaf from village shop
And scoot back on thur bike
Maybe stop for a chat with Compo or Cleggy
Or Willy Eckerslike*

*Them Southerners've not got a clue
They a'nt got no idea
To be honest we'd rather they stayed where they are
We don't want them coming oop here.*

*You can keep yer fancy cup-cakes
Parkin's fine for me
You can keep your High-Costa Coffee
Cos we've got Yorkshire Tea*

*We don't need none of yer Southern ways
Yer way too soft by far
With yer airy-fairy confectionery
What's wrong with a Yorkie Bar?*

*They reckon t'South is cultured 'n' that
With theatres and concerts and shows
But they've not got the time to attend anything
That's something that everyone knows*

*The South's clogged up with traffic jams
Car horns blaring and hooting
Overdue busses that travel in threes
Oh, the joys of daily commuting!*

*We can't be doing with charging around
We like a more leisurely pace
Them in the South has misunderstood
What's meant by "the human race"
Oop here we've got humanity
We've still got time for caring
For wandering, strolling, stopping a while
For pondering and staring
For having a chat
For counting us blessings
For taking in countryside's bounty
There's nowhere else I'd rather be
Than in Yorkshire - God's own county.*

John Fewings is Just Beverley's Poet-in-Residence as well as a member of The Argy-Bargy Poets. He writes poetry for people who don't like poems. Check out www.johnfewings.zone

LA LUMIÈRE

PHOTOGRAPHY



TEL: 01482 867455
WWW.LA-LUMIERE.CO.UK
ENQUIRIES@LA-LUMIERE.CO.UK
22 TRINITY LANE, BEVERLEY

BEVERLEY MUSIC AND DANCE

Specialists in sheet music, guitars, ukuleles,
woodwind, brass and accessories

Ballroom shoes · Dancewear

14 Norwood, Beverley, HU17 9EZ
Tel: 01482 881584



Peter Hall Violins

14 Norwood, Beverley, HU17 9EZ
Tel: 07901 591965

- Dealers and restorers of fine Violins, Violas, Cellos and Double Bass
- Build and Re-hair service
- Strings, Cases and accessories
- Comprehensive teacher list
- Bespoke music stands with individual logos, names or images made to order

 Visit our Facebook page and website:
www.peterhallviolins.com



In the Spotlight - Beverley FM 107.8FM

For many of us, January 20th 2015, the day Beverley FM first started broadcasting was just as important a day as 30th September 1967 when Tony Blackburn launched radio 1. Why? Because at last we had something which was relevant to us, something which spoke to us and something which involved us.

David Fewster is the driving force behind Beverley FM. It took a year to get a license and then a further 6-months to get on-air, during which time his team honed their presentation skills, planned the programmes and built the music library.

David told **Just Beverley**: "I always felt Beverley and its surrounding villages was neglected by other local broadcast media, which seemed to prioritise Hull. Fortunately, many others agreed with me! We have a team of 58 volunteers who work as trustees, presenters, administrators, technical support, researchers and more. Beverley Town Council and East Riding of Yorkshire Council have been very supportive - I can't thank them, and all our supporters, enough.

"Once we started broadcasting, we were then able to offer advertising opportunities to businesses. Being local, we are able to create the right platform for our advertisers, who we know are happy with the response from our listeners, because they tell us! But because we are a community station, only 50% of our revenue can come from commercial sources; the other 50% has to come from local government grants or donations of cash or donated labour. Cashflow is a constant battle as we are not a registered charity."

Despite the challenges of limited income, Beverley FM was able to move to new premises last year;

the new premises mean they now have a second studio. This means that presenters can record programmes whilst others are broadcasting live. In the past, presenters had to either book studio times when a pre-recorded programme was going out, or record elsewhere, which may have meant reduced quality. Now every programme is of superb quality.

Local and international news, travel and sport are just as important as the music and the chat of the presenters. Beverley FM's own music bank has 28,000 tracks, which, if played one after the other would take around 78 days to play!



However, should anyone request a song, tune or piece of music which is not in the bank, jazz presenter Billy Bell has 10s of 1000s of tracks and Head of Music, Andy Fea has 105,000! There is music everywhere! John Brien also has a vast, but eclectic musical collection.

He presents a programme every Sunday called 'My stroll through the World of Music' where almost anything goes. His aim is to introduce all kinds of music to different people. If you're a folk fan, there'll be some prog rock; if you like Gilbert and Sullivan there'll be some jazz; if you like classical there'll be rock and roll.



John told **Just Beverley**: "When I first met Dave Fewster, I had this idea of playing music from anywhere in the world from any point in history and it kind of works. I had the idea when listening to some bazookie music in Cyprus. How often do you hear that on the radio? My only rule is not to let bad language sneak in - but it did once when I played 'Money' by Pink Floyd, so I do apologise! I like to tell stories about the music, where it has come from, where I've heard it, when it was written, what it was played on. I love it when people send me obscure stuff, too. I also do the Tuesday afternoon show and just love the enthusiasm - Beverley FM really does buzz!"

It is great to know that Beverley FM is one of the most successful community stations ever launched, which is because it does what it set out to do - work for the community. There are always opportunities for interested people to get involved, learn about the station and maybe even have a go at presenting. David is always on the look-out for volunteers, because everyone involved brings the spirit of Beverley and the surrounding villages to the station. If you would like to find out more, why not check out the website and complete an application form? www.beverleyfm.com

THE PAULINE QUIRKE ACADEMY OF PERFORMING ARTS IS ENROLLING NOW IN BEVERLEY!

Outstanding performing arts tuition for 4-18 year olds.

BOOK YOUR
**FREE
TASTER
SESSION
NOW!**

Academies run on Saturdays
from **9.45am-1pm**

Find us at **Beverley Grammar School,
Queensgate, Beverley, HU17 8NF**

For further information visit

www.pqacademy.com or call 0800 531 6282



What's On IN BEVERLEY

Email: info@justbeverley.co.uk

Telephone: **01482 679947**

For more events visit:
justbeverley.co.uk/events

Wednesday 4th January

• Beat the Stress - Beverley Drum Circle

St Mary's Parish Hall, Beverley. 7.30pm. £7 on the door. A drum circle is a facilitated event in which participants create an 'in the moment' rhythmic movement using hand drums. No experience necessary. You are welcome to bring your own piece of percussion.

Thursday 5th January

• Mary's Eve Carol Service with The Salvation Army Band

Toll Gavel United Church. 7pm. Celebrate Twelfth Night, the eve of Epiphany, as the Christmas Season draws to a close.

Monday 9th January

• Norwood Nites Community Cinema

Norwood Methodist Church Schoolroom. 7pm (doors open 6.30pm). Free. Raffle and refreshments. The chance to see a film again - or you may have missed it. Come along and make new friends. 07990 510541 for details.



Thursday 12th January

• Beverley Film Society presents Whiplash (2014) Cert 15, drama, USA

Parkway Cinema, Flemingate, Beverley. 7.30pm. £3/£6.50 guests. A promising young drummer at a music conservatory is mentored by an unrelenting instructor who will stop at nothing to realise a student's potential. Winner of three Oscars and a BAFTA.

Wednesday 18th January

• Candlelighters Bus in Beverley

Beverley Market Square. 10-30am - 4pm. Massage available for anyone

affected by childhood cancer. Pop in for a brew and a chat with the friendly team.

• Beat the Stress - Beverley Drum Circle

St Mary's Parish Hall, Beverley. 7.30pm. £7 on the door. A drum circle is a facilitated event in which participants create an 'in the moment' rhythmic movement using hand drums. No experience necessary. You are welcome to bring your own piece of percussion.

Thursday 19th January

• Breakfast Seminar - Managing Poor Performance

Cottingham Parks Golf and Leisure Club. 8am for registration. Hosted by Wilkin Chapman Solicitors, this seminar is designed for HR Managers and line managers who have responsibility for staff performance. Booking essential: events@wilkinchapman.co.uk

Sunday 22nd January

• Andy 'The Hammer' Hamilton

Game Bird, Holme Church Lane, Beverley. 1pm. Bring your darts for a chance to play this professional darts player.



Tuesday 24th January

• Hope and Social

East Riding Theatre. 7.30pm. £10 - £14. A band that do things differently. They wear blue jackets and play mind-blowing, balls-to-the-floor, anything-for-a-laugh, much-more-for-a-tear, heart-

on-your-sleeve, foot-on-your-monitor gigs. 'Rousing, joyous' The Guardian.

Thursday 26th January

• Fostering Information Event

Tickton Grange Hotel. 6pm-9pm. An opportunity to find out all about fostering, what is involved, how to apply and how to access support and training. Refreshments provided. Children welcome.

Saturday 28th January

• The London Theatre Voices present An Evening of Gilbert and Sullivan

Toll Gavel United Church. 7.30pm. £15/£13. Children under 14 free with paying adult, additional children £5. The first half will be devoted to 'The Pirate of Penzance' with the second half a mixture of songs from their many other operas.



Friday 3rd February

• Ian McMillan and Luke Carver Goss

East Riding Theatre. 7.30pm. £10-£12.50. Poet, broadcaster and comedian Ian McMillan and Olympic composer Luke Carver Goss present an hilarious night of words, music and improv., climaxing in a brand new musical created from the neighbourhood!

Friday 17th - Saturday 19th February

• Stage 4 Beverley

East Riding Theatre Auditorium and Cafe Bar. Various prices. A celebration of musical styles, workshops, informal sessions and talks. Tickets 01482 874050. www.eastridingtheatre.co.uk

ALEXANDER ELLIS[®]

FURNITURE EMPORIUM



10 reasons
to visit the most unique
showroom in the region...



1 *A local* family business you can trust with friendly staff



2 *A massive* choice to make a house your home

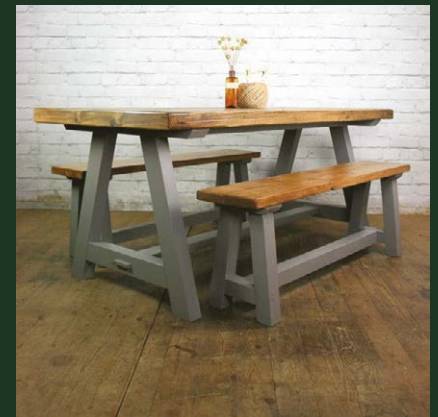
3 *Furniture & accessories* sourced from around the world



4 *Prices* are amongst the best on the high street and the internet

5 *A huge range* of rustic furniture handmade in our own Yorkshire based workshop

6 *If you can't see it* we will make it and wax, oil laquer or paint it in a colour of your choice



7 *A unique* range of lamps, mirrors, pictures, clocks and accessories

8 *Our own* two man delivery and set up service

9 *Open 7 days* a week with ample FREE parking

10 *We'll make you a brew* while you browse



Tel: 01482 870001
www.alexander-ellis.co.uk

FREE

winter check
for any scooter/
power chair,
in store only

FREE

winter check
for any scooter/
power chair,
in store only

Winter Sale

*Yorkshire Mobility
wish everyone a
Happy New Year*

We take
part exchange



**Small
Scooters**
From
£395

We take
part exchange



**Power
Chairs**
From
£595



**Two
Seater
Sofa**
From
£695



For all your
bathing
solutions
call store
for details

**Heddon -
Electric Dual -
Motor Riser
Recliner**
£795



**Rise &
Recline
Chairs**
From
£495



Stairlifts
From
£995

Hot savings for the cold weather

HOME VISIT DEMONSTRATIONS AVAILABLE ON REQUEST

SUPPLIERS & INSTALLERS OF INDIVIDUALLY TAILORED EASY ACCESS BATHROOM SOLUTIONS
CALL US FOR MORE DETAILS