

just BEVERLEY

30th
issue

01482 679947
justbeverley.co.uk
info@justbeverley.co.uk

REYTA
Remarkable East Yorkshire
Award Nominee 2016
'Best Newcomer'



FREE ISSUE 30

THE BEVERLEY 'CRIT'
CYCLING EXCITEMENT
AROUND OUR STREETS



**- SUPERB
MOBILITY SCOOTER**

- DELUXE FOOT SPA

**- DESPICABLE ME 3
GOODIES AND CINEMA
TICKETS**

**CHERRY TREE CENTRE'S
VALUABLE WORK
RECOGNISED**

**MATT SNOWDEN
BEVERLEY'S NEWEST
HONORARY FREEMAN**

NEWS, WHAT'S ON, LIFESTYLE, FEATURES, PUZZLES, PHOTOS & MORE



Your Partners
in Payroll

Has managing your payroll become a real headache?

New legislation for RTI and Auto Enrolment has tripled the workload for payroll staff!

We can help reduce the burden.

Benefits of working with us include:

- Access to a dedicated payroll specialist
- Flexible and tailored services that are adapted to suit your needs
- Transparent pricing
- Clarity and efficiency
- Access to our FREE and easy to use payroll app



To arrange a **FREE** meeting
call us on 0845 308 2288
or visit www.stipendia.org.uk

 Stipendia Payroll Solutions

 @StipendiaPay


stipendia
payroll solutions



Letter from the Editors



School Sports Day, exams, East Yorkshire Classic Cars in Beverley - they all mark the build up to the school holidays. As I walked around the classic cars last month, the memories of my summer holidays came flooding back with those long car journeys, in cars without air conditioning, to our holiday destination. This year large numbers of families will be doing similar journeys to get away and relax. But you could base yourself in Beverley and have get-away days instead!

People come to Beverley to relax and enjoy the summer! It's a great base for the Wolds, the coast and Hull, City of Culture 2017. **Just Beverley's** What's On guide on the website keeps you in tune with events in Beverley. Then there's our series of Walks around the area courtesy Ian Richardson (this month on page 33) - previous walks are in previous editions which are all on the website. And don't forget to keep up to date with our National Days in July, listed in our What's On guide in the magazine on page 34!! It's all good fun!

This summer, I have decided to challenge myself to raise some funds for a charity which is close to my heart - the Haemophilia Society. On Sunday, 30th July, I will be riding in the Prudential Ride London - 100 miles of cycling with 29999 other people. You can read about the challenge on page 13 and details for sponsoring me, if you would be so kind.

Closer to home the Yorkshire Classic Cycle race, the Beverley 'Crit' is back. We have the organiser's view on page 30 and a rider's view on page 31. Thanks to Andy Cawley and Nathan Wilson for their insight.

If you are about this summer, send in your stories and pictures (the funnier the better), post as a visitor on our Facebook page or email: info@justbeverley.co.uk Everyone loves good news, so please share them through **Just Beverley**.

Please remember to Slip, Slop and Slap this Summer - Slip on a top, Slop on the sun cream and Slap on a hat - it's going to be hot.

Julian.



I have lived in and around Beverley for over 26 years so I'm wondering whether I've been here long enough to be classed as a local.

I first came here to stay with my job of the day about 30 years ago and just fell in love with it! I remember parking outside St Mary's Church and walking through to Saturday Market, which, apart from a few tweaks and different shops, really doesn't look so different today. I just loved the traditional feel with a contemporary twist.

What I didn't know in those days was how much of Beverley is looked after and cared for on a voluntary basis - from the planters and hanging baskets to the festivals to transport to social groups - and how integrated everyone seems to be. It really does seem that there are only 3 degrees of separation in Beverley, rather than the usual 6 degrees!

Volunteering is such a wonderful thing to do and it does seem to be 'in the blood' in Beverley, which is why it is such a pleasure to have Matt Snowden gracing our front cover this month. Business (and money) do make the world go around, but doing something for someone else out of the goodness of your heart is what makes us socially cohesive. So here's to volunteers and Beverley!

Be happy!

Linda.

Get in touch with us:

Website: justbeverley.co.uk

Email: info@justbeverley.co.uk

Telephone: 01482 679947

Twitter: [@JustBeverley](https://twitter.com/JustBeverley)

Facebook: facebook.com/justbeverley

Printed by: Jadan Press



CONTENTS

Letters from the Editors

News

Parkway Cinema

Competitions

Features

Freeman Honour for True Beverlonian

Community Initiative Award

Beverley's Talking Newspaper

Cycling in and around Beverley

Regulars

Arts and Culture

Beverley Town Council

Competition Winners

Finance

Gardening

Legal

Lifestyle

Motoring

Pets

Photos

Poem

Puzzles

Sport

What's On

PAGE

3

4, 5, 7, 12, 13, 14, 24

6, 7

7, 14

8

10

21

30, 31

5, 21

8

6, 29

11, 15

22

11

17, 22

26

27

18, 19

20

32

29, 30, 31, 33

34

Competition Terms and Conditions

Competition answers should be emailed to info@justbeverley.co.uk before the closing date with the competition title in the subject field. Include your name, address and daytime contact telephone number along with your answer. Winners will be notified within 1 week of the closing date and MUST be available for publicity purposes for Just Beverley magazine, website and Facebook page and the prize provider. The judge's decision is final. No cash alternative is offered. Details may be used for marketing purposes by **Just Beverley** and the prize provider and for website analytics by **Just Beverley**.

Errata

We wish to point out that Huby's ring their customers 30 mins before they arrive; they will also text customers the day before if they so wish. Jason Huby also wishes to point out that he gets up at 5am, not 5pm to go to competitions with Ruby, his agility dog!

CONTRIBUTORS

Julian Minshall, Linda Johnson, Aaron Gilpin, Richard Manville, Carfan, Jane Dale, John Fewings, Ian Richardson, Sam Walton, Colin Raynor, Helen Watson, Rich Hayes, Annie Drew.

You can pick up the magazine from:

Beverley Parkway Cinema, Beverley Tourist Information, Beverley Library/Treasure House, Tesco, Morrisons, East Riding Leisure Beverley, Browns café, Beverley News, Boyes, Tesco café, Cherry Tree Community Centre, Colette and Tyson Garden Centre, Beverley Garden Centre, Cherry Tree Garden Centre, Mace News in Saturday Market and Lincoln Way, Tickton News, Costcutter in Walkington, Molescroft News, Grovehill Convenience Store, Maple News, Leconfield PO, Poundland, Halfords, East Riding Community Hospital, Bishop Burton PO, The Altisidora, Cherry Burton PO, Monks Walk, Hayride, Health Centres, cafés, hairdressers and more!

The Moors explorer bus rides again!

East Yorkshire Motor Services (EYMS) is running The Moors Explorer from Beverley to the North Yorkshire Moors on Bank Holidays and summer Sundays from July 23rd to August 28th.

The Moors Explorer is the only direct transport up to Malton, Pickering, Kirbymoorside, Hutton le Hole, Blakey, Castleton and Danby. There is also the opportunity to travel from Pickering on to Helmsley and Thornton-le-Dale using other EYMS buses. It is particularly loved by ramblers who use it to access parts of the Moors which are otherwise inaccessible for those without a car.

The timetable can be downloaded at www.eyms.co.uk/bus-services/timetable/moors-explorer-me1

EYMS Marketing Manager Claire Robinson said: "Moors Explorer has had a great reaction from the public since we launched it a few years ago, and it gives people a 'green' way to visit the North York Moors without clogging up the roads with cars. Rain or shine, there's always something to do and see up in the Moors, so plan Moors Explorer into your next visit to the Moors and help us ensure that we can keep running this valuable service for years to come."

More information can be found by picking up a leaflet from Hull Interchange, Beverley Bus Station, or local Tourist Information Centres, visiting the company's website: www.eyms.co.uk or ringing BusLine on **01482 592929**.



All Change at the Golf Club!

With a Public License which means the bar and restaurant at the club are open to all, Chrissie Singleton and Shane Tate join the team as Bar and Restaurant Managers.

Beverley and East Riding Golf Club is one of the oldest-established courses in Yorkshire with some of the finest facilities which are now available to all, whether you are a golfer or not! With some of the finest views in Beverley across the Westwood to the Racecourse and the Minster, the venue now offers opportunities for everyone. Serving breakfast every day from 8am, lunch from 12 noon until 4pm Monday - Saturdays or until 6pm on Sundays, afternoon teas (booked in advance) and dinners from 6pm - 9pm Thursday to Saturday, the venue also offers private dining and functions (weddings, Christenings, funerals, birthday parties and anniversaries), conferencing facilities for up to 30 people (with plenty of free car-parking space) and training space.

Shane and Chrissie, who are well-known in Beverley, are delighted to have been offered the position which will take The Anti Mill (as the restaurant has been named) and the Golf Club to a whole new level in hospitality and dining. Shane is already refurbishing the kitchen; the facilities are enjoying planned upgrades and the all-new menu launched.

To celebrate the opening of the Anti Mill Restaurant, diners booking a table for an evening meal for a minimum of 4 people will be offered a free bottle of wine (subject to availability).



There will be a promotional event at Flemingate on July 2nd followed by an Open Day at the Golf Club on 9th July with a special offer for diners - with every main meal or sandwich enjoy either ½ pt. of Carling, 125ml glass of wine or a selected soft drink.

Shane told **Just Beverley**: "Everyone involved with the Golf Club - the Men's and Ladies' captains, Marketing Manager, Committee, Golf Pros and Golf Shop - are keen to see more people use these wonderful facilities, whether they play golf or not. We are keen to put on seminars, entertainment, mini festivals and fairs going forwards. The more people who use the space, the more we can do! Do come and see us!" Beverley and East Riding Golf Club is on **Beverley Westwood, HU17 8RG**, telephone **01482 868757**.

Longcroft engineers the future

Three Longcroft students won an engineering competition run by BAE, using today's technology to update BAE's first Blackburn Seaplane.

Taking place at Sirius Academy Hull, the event saw Thomas Smith, James Wilkes and Joseph Harding compete in an engineering challenge to list cockpit instruments and their purpose for the aviation company's 1916 Blackburn Seaplane, and produce drawings and working models of their chosen instrument, to present to a judging panel.

Working on models produced to 1/3 scale, the boys, along with Design and Technology Curriculum Leader and Technology Teacher, Mr. West, gave up their lunch hours to perfect their entry.

The contest was entered by students from across the Humber region and despite some tough competition, the Longcroft team were crowned the winners! As their prize, they will be guests at BAE Systems' Warton site, in Lancashire, this summer, where they will tour the company's Hawk and Typhoon manufacturing facilities and have chance to "fly" in the Typhoon flight simulator, which is used to train pilots.



6th Annual NURSE Charity Raft Race sails down Beverley Beck on July 22nd

The Beck come into its own when colourful home-made rafts crewed by enthusiastic teams of 4 in fancy dress race for charity! With charity stalls, promotional stands, live entertainment, refreshments and commentary from Beverley FM, it's a fun day for participants and spectators alike!



NURSE (Needed Urgent Remedial & Surgical Equipment) is a Hull and East Riding charity, run by local people, who aim to raise at least £10,000 every year to support the local NHS, councils, parishes and individuals with the purchase of equipment to make lives better. It began when a surgical ward at a local hospital required a bath hoist to lift patients in and out of the bath instead of staff lifting the patients themselves - something which is not allowed today.

But it was the 1980's and the hoist cost £1000! The hospital management didn't have that amount of money available but agreed the staff could fundraise to reach their goal - so they held a pub crawl around the Old Town of Hull. Due to the nature of the event, there was no difficulty in recruiting fundraisers, the event was a great success and the hoist was duly purchased.

Over the years, NURSE gained charitable status in 1991 and has raised 1,000s of pounds for patients. Knowing the proceeds from the raft race is going to such a great charity makes the fun of it even more worthwhile!

Come and sing for Beverley Community Lift!

Leconfield Community Choir's Musical Director, Fiona Ives, is planning a 24-hour Singathon on July 8th at Leconfield Village Hall. There are 96 slots of 15 minutes for you to get your 15 minutes of fame!

Are you a singer of any genre? Do you sing in a choir, musical group or know people who do? Then let them know about this innovative fund-raising idea to fill 24 hours with music and song - and replenish BCL's coffers.

Sponsorship packages are available and help is needed to serve refreshments throughout the night. Contact **07984 657071** or **07778 409909** for details!



Creating Thrills and skills for life at the Pauline Quirke Academy Beverley

The students from the Pauline Quirke Academy of Performing Arts in Beverley are thrilled to announce that they have been invited to perform in London's West End in July 2018!

As part of PQA's curriculum, the students have the opportunity to perform at Her Majesty's Theatre London home to Phantom of the Opera, and get to experience the thrill and buzz of performing on a West End Stage!

PQA Beverley will be performing a brand-new show written specially for PQA. The Academy has the freedom to be as imaginative and creative with their part of the show as they like, from the casting, staging and choreography.

"We are thrilled to have been invited to perform at Her Majesty's Theatre next year in the brand-new PQA Musical. It's such a prestigious venue and I know the students will love performing on that stage", said Principal James Aconley.



"We have some very talented students at PQA - and I know they will do Beverley proud on that stage!"

With 45 academies performing in the West End next year, PQA students continue to take the London's Theatreland by storm! To join PQA Beverley and perform in the West End visit: www.pqacademy.com or call **0800 531 6282**.

Tale of Hull Men in the Spanish Civil War coming to Beverley

OCHO is a new play by BAFTA-winning playwright Jane Thornton, which tells the story of eight men from Hull who went to fight in the Spanish Civil War.

Beginning in Hull in 1936 and set against the background of the Depression, the play evokes memories of picnics in East Park, the tannery, the docks and the joy of washing day! Facing the challenge of unemployment and the rise of Fascism, James Bentley and Robert Wardle decide to take a train from Paragon Station in Hull and travel to London, through France and over the Pyrenees, on foot, to fight with the International Brigades in Spain.

They leave behind, their wives; Kitty and Maggie and three small children who despite the struggles of the time remain optimistic and hopeful for their husband's return. With specially composed songs by Dave Rotheray of The Beautiful South, **OCHO** is performed by the Spotlight Ensemble from Archbishop Sentamu Academy in Hull.



The school had heard the story of the 8 men from Gary Hammond (drummer with The Beautiful South and The Hut People) who was seeking a platform to honour them; the school had also approached John Godber and Jane Thornton to help them with an idea to launch a scholarship programme. Thus the two ideas came together and Jane set about writing a play!

The students have had the opportunity to work with professional in all areas of the production and to perform in professional spaces, not just schools. **OCHO** comes to Beverley's East Riding Theatre on July 6th. Don't miss it!

THE PAULINE QUIRKE ACADEMY OF PERFORMING ARTS IS ENROLLING NOW IN BEVERLEY & HULL!

Outstanding performing arts tuition for 4-18 year olds.

BOOK YOUR FREE TASTER SESSION NOW!

Academies run on Saturdays

PQA Beverley

Find us at **Beverley Grammar School, Queensgate, Beverley, HU17 8NF**
from 8.45am - 12pm

PQA Hull

Find us at **Wolfreton School and Sixth Form College, Well Lane, Willerby, HU10 6HB**
from 1.45 - 5pm

Visit www.pqacademy.com
or call **FREEPHONE 0800 531 6282**





EVERY THURSDAY AT 10.30am
(doors open 9.45am)

Join us for a free brew and a natter and enjoy some great films on Beverley Parkway's Big Screen. Only £4 with drink and biscuits included. Aimed at 55s and over. Films subject to change.

Thursday 6th July -

The Zookeeper's Wife

Director: Niki Caro

Cast: Jessica Chastain, Daniel Brühl

Kong: Skull Island

Director: Jordan Vogt-Roberts

Cast: Tom Hiddleston, Samuel L. Jackson

Thursday 13th July -

Kong: Skull Island

Director: Jordan Vogt-Roberts

Cast: Tom Hiddleston, Samuel L. Jackson

A Quiet Passion

Director: Terence Davies

Cast: Emma Bell, Sara Vertongen

Thursday 20th July -

A Quiet Passion

Director: Terence Davies

Cast: Emma Bell, Sara Vertongen

The Lost City of Z

Director: James Gray

Cast: Charlie Hunnam, Robert Pattinson

Thursday 27th July -

The Lost City of Z

Director: James Gray

Cast: Charlie Hunnam, Robert Pattinson

Another Mother's Son

Director: Christopher Menaul

Cast: Jenny Seagrove, John Hannah

PARKWAY PENGUIN PARTIES

YOUR OWN PRIVATE SCREENING
SEE YOUR CHILD ON THE BIG SCREEN
FUN & GAMES WITH OUR PARKWAY PENGUIN

ONLY £170

For more information contact the Box Office or come in store and speak to a member of staff

These are the films scheduled to open in June/July all are subject to change. Check out up-to-date cinema listings at www.justbeverley.co.uk/cinema-times



30th June



30th June



30th June



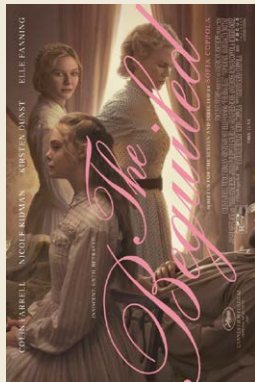
7th July



7th July



14th July



14th July



14th July



21st July



28th July

Competition Winner

Congratulations to Angela Lawson, winner of last month's Wonder Woman goodies.



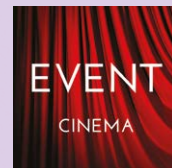
YOUR NEW INDEPENDENT CINEMA



Oh yes it is! The 2nd Parkway Pantomime is Dick Whittington and his Wonderful Cat!

Tony Peers Productions returns to Beverley with an all-star cast to entertain the family.

Yorkshire-born comedian, actor and TV star **Dougie Brown** stars in Dick Whittington which runs from 15 December - 1st January. With the young and the not-so-young in mind, performances will again run in the mornings, afternoons and no later than 7pm start in the evenings. With colour, dancing, song and laughter, Dick Whittington is sure to be a hit! Booking is now open through the cinema website or in person.



Return of The Giant's Loo Roll

Returning to Beverley by public demand...

Look out for the biggest loo roll ever on stage in this GIANT of a children's musical. The villagers living in the town below the Giant's house had better watch out, that loo roll has gone bouncing down the hill and straight towards them! Luckily, the townsfolk find lots of uses for runaway loo paper - one sheet provides a huge canvas for an artist, a tailor uses another to fill her shop with paper pants and a school class makes a huge dart that can fly. But what about the Giant himself - doesn't he need any loo paper? The townspeople have an answer for that, too! Featuring the perfect combination of witty humour... Featuring the perfect combination of witty humour, fantastic music and a touch of sparkle, this fabulously funny and brilliantly bouncy musical adaptation of Nicholas Allan's much-loved book. Suitable for ages 3 - 11. Catch it on August 1st at 2pm live on the Hayward Stage!



Event cinema offers something a little different to mainstream films. Live and pre-recorded shows beamed in via satellite from all over the world. Here are the latest live streams that you can enjoy on the big screen at Parkway Beverley.

TICKETS NOW ON SALE:

Wednesday 5th July at 7.30pm -
LA BOHEME - LIVE FROM TAORMINA (TBC)

Thursday 6th July at 6pm -
GLYNDEBORNE - HAMLET (TBC)

Thursday 20th July at 7pm -
NT LIVE: ANGELS IN AMERICA PART 1 (15)

Saturday 22nd July at 7pm -
ANDRE RIEU'S 2017 MAASTRICHT CONCERT (PG)

Thursday 27th July at 7pm -
NT LIVE: ANGELS IN AMERICA PART 2 (15)

Thursday 3rd August at 6pm -
GLYNDEBORNE - LA CLEMENZA DI TITO (TBC)

Wednesday 9th August at 7pm -
RSC LIVE: TITUS ANDRONICUS (TBC)

Thursday 31st August at 7pm -
NT LIVE: YERMA (15)

Thursday 7th September at 7.45pm -
JOHN LE CARRE - AN EVENING WITH GEORGE SMILEY (TBC)

Wednesday 13th September at 7.30pm -
DAVID GILMOUR LIVE AT POMPEII (TBC)

Thursday 14th September at 7.15pm -
CARMEN ON THE LAKE (TBC)

Wednesday 20th September at 7.15pm -
ROH: THE MAGIC FLUTE (TBC)

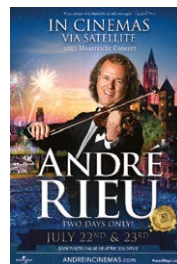
Tuesday 3rd October at 7.15pm -
ROH: LA BOHEME (TBC)

For full programme of the Event Cinema, please visit www.parkwaycinemas.co.uk

Andre Rieu's 2017 Maastricht Concert comes to Event Cinema on July 22nd!

2017 will be the 13th consecutive year of Andre Rieu's summer evening concerts on the most romantic city square in the Netherlands - the Vrijthof in Maastricht.

This year celebrating 30 years of Andre and his Johann Strauss Orchestra, the maestro will be putting on a magnificent spectacle during this new edition of his much-loved Open Air concerts! Andre Rieu works his magic as he turns the Vrijthof into an enormous open-air concert hall, creating concerts with many high points, guest artists, light shoes, soloists and humour! See it all from the comfort of your armchair seat at Parkway Cinema!



Competition - Win Despicable Me 3 Goodies and Parkway Cinema Tickets!

To celebrate the release of computer-animated comedy 'Despicable Me 3', Universal Pictures and Parkway Cinema Beverley are offering you the chance to win a raft of goodies and a pair of tickets to a film of your choice.

The goodies include:

Sunglasses	Badges
Ruler	Sticker sheet
A lunch box	Figures
Pencil	

This 'threequel' stars Jenny Slate, Kristen Wiig, Steve Carrell, Julie Andrews, Russel Brand, Steve Coogan and Trey Parker, amongst others, voicing these familiar characters in their third outing. Steve Carrell voices Gru and his long-lost twin brother Dru (they were separated when their parents split up shortly after they were born) and Trey Parker voices new super-villain, Balthazar Bratt.

Gru is now married to super-agent Lucy (Kristen Wiig) and step-father to 3 daughters, Margo (Miranda Cosgrove), Edith (Dana Gaier) and Agnes (Nev Scharrel), who wants to find a unicorn. He has been fired from the Anti-Villain League for failing in his last mission. But there is a new bad guy on the scene - Balthazar Bratt is a former child star who has fallen out of the public eye and become obsessed with the character he played in the 1980's - complete with shoulder pads, sneakers and a great 80's soundtrack. He has stolen a diamond, which Dru wants to get back with Gru's help.

To win the Goodies and Tickets, all you have to do is answer the following question:
What colour are the Minions?

Send your answer by email to: info@justbeverley.co.uk by July 19th. Include your name, address and daytime telephone number. Put 'Minions Competition' in the subject box. Winners must be available for publicity purposes for Just Beverley and Parkway Cinema. Good luck!



Freeman honour for true Beverlonian!

Matt Snowden is Beverley's newest Honorary Freeman, being honoured at this year's Mayor-making. Just Beverley caught up with Matt to find out more about him.

Matt said: "Both sides of my family have been involved with the local community. There was Grandpa Albert Snowden, who was, amongst other things, secretary of the local association of the Green Howards and his wife, Grandma Vera who volunteered at Oxfam in the town centre for years. Nana Jean Thackeray was involved with the local Brownies as a Brown Owl and District Commissioner; she was supported by my Mum, Marian, as Tawnie Owl.



"Lots of people knew my Dad, Steve Snowden, who was manager of the Cherry Tree Centre and whom the centre was named after in 1999 after he passed away. Dad was also involved with folk music and known on the folk scene as a shanty man; he and Mum were there when the Beverley Folk Festival started 34 years ago. Mum is still very much with us and is an active member of the Minster congregation. Getting involved with the community of Beverley, where my family has lived for generations, just seems like the natural and right thing to do. My current main voluntary commitment is the Beverley Folk Festival, where I am Chairman - although the Festival happens in June, it's an all-year commitment! We had plans for 2018, our 35th anniversary, before this year's Festival had even taken place!"

Volunteering, especially as a Chair, brings with it responsibility, something which Matt indicated at a very young age, becoming Head Boy in the Minster Choir and heading up an anti-bullying campaign whilst a pupil at Longcroft School (utilising his quirky style of art work as part of that campaign).

It was perhaps fitting that trustworthy, helpful and considerate Matt started his working life at the Cherry Tree Centre where he demonstrated his developing skills in organising, leading, caring and just getting on with it!

Although Matt says his main volunteering responsibilities now are with the Beverley Folk Festival, he is also currently a member of the Beverley Renaissance Partnership. In the recent past, he has been a Beverley Town Councillor, including Mayor from 2006-2007, founding the very successful Beverley Food Festival and leading the regeneration of Hengate Memorial Garden and the Samman Road Shops area. During his time as a Town Councillor, he received an ERYC Chairman Award for Improving the Environment of East Yorkshire through the Brighter Beverley initiative which he co-founded and chaired.

He's also been the community representative on the Beverley Partnership dealing with social regeneration; on the Beverley in Bloom Committee (including chair); Chair of the ERYC/Beverley Neighbourhood Action Team; funding panel member of Beverley and Driffild Community Chest Fund; Trustee of the Rev'd James Graves Charity managed by Beverley Minster and a member of Beverley Community Partnership and on the management committee of Cherry Tree Association.

His organisational skills have been put to good use in the launch of the Beverley Town Trail and the celebration of the 600th anniversary of Beverley North Bar. It's not surprising that he's been the recipient of a Respect Award from the Home Office in recognition of his voluntary work in the community! Matt's involvement as a volunteer with the Folk Festival, other than just as a Festival-attendee, began in 2009 when he was invited to join an advisory group. This developed into a Directorship and then Chair since 2016. Why does he do it?

Matt said: "It's a privilege to be the Festival's Chairman and part of such a big volunteering team. Sometimes people think it's a paid role or that the Festival tries to make a profit to pay Directors, but they, like all the other volunteers, give their time for free because it's their passion to make the event the best it can be! All money raised covers event costs and even if we were ever to make a profit, it would



be plowed directly back into the festival. The biggest pleasure from being involved with the festival is standing at the back of a concert, seeing hundreds of people enjoying themselves and knowing that in a small way I, along with everyone else involved, have played a part helping to make that happen."

"I'm sure that's why people like to volunteer - they're making a difference to the lives of people and their communities. It's also about being part of something bigger - putting aside difference and helping to contribute towards a happy community, which recent weeks have taught us is more important now than ever before. Beverley has a great community spirit and there are lots of people that turn out and take part with all sorts of events and organisations - there are many other residents volunteering in Beverley, which is why it's humbling to be acknowledged in this way."

Beverley is very lucky to have someone as dedicated, dependable, reliable, hard-working, conscientious, honest, peace-loving, courteous, helpful, considerate, supportive, considerate, dedicated, compassionate, caring and understanding as Matt - and it is an honour to be able to recognise him!

Beverley is Blooming Lovely

Beverley Town Council
Making a Difference



SUMMER PLANTING - Beverley Town Council and the Beverley in Bloom group have been busy with preparations for Summer Planting within the town. This year we have several new planters, some of which have been kindly sponsored by local organisations Manor Road Health Centre and Beverley Lions. Special thanks go to Nick Denham of Plantraisers who donated many of the summer plants and also to the local retailers and businesses who joined the hanging basket scheme.

We have also teamed up with the Defence School of Transport and East Riding of Yorkshire Council to create a special flower bed to commemorate the RAF within Beverley and Leconfield, within the Diamond Jubilee Gardens on Railway Street. All the planting really does brighten up the town for both residents and visitors!



Staying on the 'Bloom' theme we have a young volunteer organising a poster competition for schools to enter, with a prize for the winning poster. These posters will be used to welcome the Yorkshire in Bloom judges to the town in mid-July. Also, the Beverley in Bloom Garden competition judging will take place as in previous years. Huge thanks goes to the Bloom volunteers and sponsors, with a special mention for Dr Clive Waddington the Beverley in Bloom co-ordinator.

NGS OPEN ALLOTMENT DAY - The NGS Open Allotment Day takes place on Sunday 9th July from 12 noon to 4pm at Queensgate and Kitchen Lane allotments. Refreshments will be available and experienced allotment holders will be on hand to answer questions on fruit and vegetable growing.

There will be some scarecrows on display with a prize for the winning scarecrow so come along and join in the fun. Growing your own vegetables can be very rewarding and seasonal food tastes fantastic. Allotment growing is often known as the green gym, and is great for the mind, body and spirit.

COMMUNITY NEWS - The Great Get Together took place on 18 June in Coronation Gardens; thanks goes to all who attended this event to celebrate our local community in Beverley.



Beverley Youth Coalition, a working group of Beverley Town Council, has been in consultation with a group of young people to discuss ideas for activities within the town. Some great ideas were put forward which are being examined at present. More details will be available in mid to late July. The newly elected Mayor, Cllr Ann Willis is visiting schools in Beverley as part of this process. The Heyha Copper Saucepan competition, which teams up with the Beverley Food Festival took place in June and we have 2 worthy finalists from a kitchen of 14, who will be cooking live at the Beverley Food Festival on 1st October. Members and officer are busy with Food Festival preparations with a great demand for stalls.

Helen Watson, Town Clerk, Beverley Town Council.
Tel: **01482 874096**. www.beverley.gov.uk
email: clerk@beverley.gov.uk



Transform your community with Destination Beverley and Spacehive

Destination Beverley, the new partnership dedicated to promoting all that is best about the town, has teamed up with funding platform Spacehive to enhance your community.

Spacehive is a funding platform for projects that make local places better, by allowing anyone to create and fund public projects online.

Our partnership will make Beverley an even better place to live, do business and visit and we want the people of Beverley to get involved in making that happen.

Why crowdfunding?

Spacehive's crowdfunding platform works by providing tools that help people develop their ideas, get noticed by crowds of people, companies, councils, the media, in order to attract funding to make great projects happen.

Since its launch in 2012, Spacehive has helped fund over 250 projects across the UK worth over £6m - from public wi-fi in Mansfield to an urban farm in London.

We already have great projects put forward by the local community in Beverley. Please find out about those projects, back the ones you love or put forward your own!

Find out how you can get involved at:
www.spacehive.com/movement/destination-beverley



destination
beverley



www.destinationbeverley.co.uk

Follow us on Twitter @DestinationBev and like us on Facebook.com/Destination Beverley

They do magic at the Cherry Tree Centre - their Duke of York Community Initiative Award proves it!

The Beverley Cherry Tree Community Centre was originally set up by Steve Snowden, a social worker and father of Matt, who graces our front cover, as a charity in 1993. Its remit is to help prevent or relieve poverty and advance health and save life through the provision of advice, advocacy, information, services and human resources; education and training; community development; provide facilities and open space to be used by the disabled and elderly, children and young people. Manager since 2006, Jo Ramsay, says Cherry Tree is needed more than ever as its rooms are in constant use and office space is at a premium. Just Beverley went to meet Jo to find out what she does in an average day!

There is no such thing as an average day for Jo! There is such a lot going on! But it's like a ship - there is no back door, you can't jump off. As well as managing the team to keep them motivated, which can be difficult when they cannot help someone or they run out of money, much of Jo's work is case work. The day we visited, the photocopier, which is in constant use, had gone wrong and the phones were playing up; there was a room full of people waiting to be seen for advice, a ladies' support group for carers, single Mums and anyone who needs time out was meeting downstairs and the playgroup was in full swing. Needless-to-say, the kettle was on constantly...

Beverley Town Council help with the Centre's running costs which pays for the telephone, internet, water, fuel, insurance and council tax whilst East Riding of Yorkshire Council funds a part-time adviser and receptionist. The ERYC grant has not increased since 2008, restricting the hours the Centre opens and increasing the reliance on volunteers. Jo would like to open 24/7 because there are not enough hours in the day to help all the people who call on them. The Trustees apply to charities for more funding - Jo is particularly complimentary of Reckitts. Various agencies house themselves at the Cherry Tree Centre, including the Probation Service and Humberside Substance Misuse and Addiction so room rental does provide income.

Jo said: "We get 15-18 people at our Friday Drop -in. We deal with Employment and Support Allowance

(ESA) problems and Personal Independent Payments (PIP) as well as homelessness and sofa-surfers, regularly adding 4 new people, of all ages, to the list every week. There is no day shelter in Beverley although we can usually find them a bed for the night. The homeless can use Cherry Tree as an address to help them access benefits. We constantly battle the Council who say these people aren't vulnerable. One case can take over... we have to put in place checks and balances to ensure people aren't abusing the system but we can see clients up to 12 or 15 times to get them their benefits and then they only last for a year, so we have to start again.



It's stressful for them, especially if they have mental health problems, as well as for us. We provide food vouchers for the hungry on Tuesdays and Thursdays which can be redeemed at the Food Bank at Toll Gavel Church on Wednesdays or at The Hub in Mill Lane on Fridays. I think it's dreadful that we live in a society where we need Food Banks and allow so many people to be on benefits."

Constant use of equipment means Cherry Tree

would welcome donations of computers and other IT equipment as well as cash. But they would also welcome housewares such as pots, pans and wooden spoons, fabric and curtains and gardening equipment. The Pre-school playgroup needs paints and crafts, glue, card and even pasta as does the Messy Time Parent and Toddler Group, which is separate to the Pre-school. The Breakfast Club for children which becomes a Holiday Club for under 11's in the school holidays also welcomes donations. Additionally, they are a drop-off centre for clothes for Syrian refugees and they also work with asylum seekers.

Cherry Tree's vital work was recently recognised when it was awarded the Duke of York Community Initiative Award. Jo, along with other members of the team, went to meet Prince Andrew at Buckingham Palace!

Jo said: "He was lovely! Assessors had been to see us three times, talk to Trustees and volunteers and to service users to find out about the vital work we do and the high standards we achieve. No-one else in this area has won this award - the nearest to us is Recall in York and Whitby. Through this award, we've been able to network, develop new policies and procedures so we can do things even better. Our Trustees are all volunteers - local people who give of their time and expertise because they care.

"Having won this award and have our work recognised, we are even more enthusiastic about expanding our service to weekends and be able to offer more during the week. We would especially like to speak to people who can help our Advisor, Steve, and me with advice on Tuesday, Wednesday and Thursday afternoon/early evening and at weekends. We can train people! Recently joining us we have an ex-headteacher, an ex-newspaper editor and someone from industry - everyone is considered!"

Donations, offers of help and enquiries should be directed to Jo Ramsey at Cherry Tree Community Centre on **01482 871993**.

The Centre is located at **117, Cherry Tree Lane, Beverley HU17 0AY**.

I've Been Thinking... by Colin Raynor

I've been thinking in recent weeks about the tragic events that have taken place in our land and trying in my own small way to understand.

One way to try and make sense of it all is to acknowledge that such conflicts between people have occurred throughout our history. One of the prevailing reasons offered by the protagonists who have caused such mayhem on our streets is their personal unquestionable belief that their actions were justified and right. This despite every clear thinking and law-abiding person of all nationalities seeing no rhyme or reason for the manner in which the deaths and injuries of so many innocent men women and children people took place.

Mahatma Gandhi spoke of "his total loss to understand why men feel themselves honoured by the humiliation of their fellow human beings". Whilst recent events take over the headlines in our media, the continuing "humiliation" of people is constant in so many parts of the world. Indeed, it is almost like a backcloth to life in some parts of the world. Unless it escalates, as it is doing in our country now, our life goes

on as before. I was born in Huddersfield where the town motto is "Juvat Imprigo Deus" which has a number of interpretations.

The one most folks know is "God helps those who help themselves" and for many years I thought this was a good and honourable statement. (In my early years, I even felt this might be the motto of burglars!). Later I understood it to have been developed during the Victorian era when the Poor Law and workhouses were all that were offered to people in total despair and humiliation. It was around the middle of the 19th century that one of the biggest tragedies ever to occur in these islands took place - the potato famine in Ireland caused over a million deaths.

The total population was reduced by more than a quarter, with many being forced to emigrate by the Government of the day "as it was cheaper to send them to Canada than to keep them in their homeland as paupers". Humiliation of our fellow human beings is not a new phenomenon, but thankfully there are many people, within and without the Christian churches who are prepared to walk that extra mile to ensure that the



"humiliation" I have written about occurs less and less.

I hope you feel able, at some point in your life, to agree with the following words: "O Lord, remember not only the men and women of good will, but also those of ill will. Do not only remember the suffering they have inflicted upon us, but remember the fruits we bore thanks to this suffering: our comradeship, our loyalty, the courage, the generosity and the greatness of heart which has grown out of it. Then, when they come to judgement, let all the fruits that we have borne be their forgiveness".

Employers - Do you know when you're auto-enrolment staging date is?

The number of small employers staging for auto-enrolment will peak in 2017.

The process has become much easier for many small organisations, often packaging up pensions staging with their payroll provider, making compliance and payment simple. And for those staging this year just check before you spend loads of time on this as the rules have been revised. Where a company has a single director and no other staff or has more than one director and no other staff, it will only be an employer for the purposes of automatic enrolment if more than one of the directors has a contract of employment with the company. All organisations have a staging date for when they need to do this. You will have been sent a letter notifying you of your staging date by The Pensions Regulator. As part of the enrolment process, we can help you with the following:

- **Assessing your workforce**
- **Processing any opt outs that you receive**
- **Processing cessation of contributions**
- **Enrolling any opt ins**
- **Providing you with an employee status report each period**
- **Providing you with a schedule of contributions**

Resources:

Visit our website and watch our video or download our useful factsheet and the learn more about the 10 step process:

www.stipendia.org.uk/auto-enrolment

Employers can find out their own staging date at www.tpr.gov.uk/planner Stipendia can help your business with the auto enrolment process. We offer services alongside our tailored payroll solutions for your employees, including help with compliance, employee communications and consultancy. If you would like to discuss how this initiative impacts your payroll, you can get in touch with our team by calling **0845 308 2288** or visiting our website.

Legal Q's and A's

Every month, Just Beverley asks a team of legal experts to answer a question to which we don't know the answer.

This month the question is about death duties - something which we might all have to deal with at some time in our lifetime.

Q. My husband died recently and, unknown to me, had credit card debts of several thousands of pounds. Am I liable to pay these? I could just about afford the repayments, but it would put me on a very tight budget. We owned our home, which has now transferred to my sole ownership, but this is my only asset.

Coles the Solicitors have provided the following response:

A. You personally are not liable to pay off your husband's debts if they were in his sole name. But this isn't to say they shouldn't be met from his estate. If he left nothing other than his share in your property (which I take it has now passed to you, as the joint owner, by survivorship) then it's possible the debts will have to be repaid from this share. If the credit card firms are demanding repayment you should see a solicitor about this.

If you need advice, why not give Coles a call?

They are located in the very heart of Beverley at **22, Lairgate, HU17 8EP**, telephone **01482 231300**.

Or visit their website: www.coles-law.co.uk

Coles
the solicitors

Providing expert legal
advice in the very heart
of Beverley

22 Lairgate, Beverley HU17 8EP

T: 01482 231 300

E: info@coles-law.co.uk W: www.coles-law.co.uk



- Family Law • Wills & Probate • Conveyancing • Powers of Attorney
- Medical Negligence • Litigation • Dispute Resolution • Personal Injury

New to Beverley - the iPhone Doctor

Ever had a problem with your iPhone or iPad and not known where to go to get it fixed? The iPhone Doctor is here to help!

Benjamin Lee is the man to solve your iPhone issues! He's been mending Apple phones and tablets for the last 6 years and has become busier and busier so decided the time was right to set up shop and offer his skills to Beverley. When a customer mentioned she had an empty shop unit which turned out to be perfect for Ben's business, so the iPhone Doctor was established.

As long as the parts are available, Ben can mend any version of iPhone or iPad. The most frequent repair job is a screen replacement, followed by battery and charging port replacement. Most tasks take under 1 hour, many only 15 minutes, which means you don't need to be without your phone or pad for too long!

Ben is a huge fan of iPads, which he thinks are the best on the market - he's less enthusiastic about iPhones due to their restrictive storage capacity, but Apple is bringing out hard drives up to 256GB for them in the near future. There are other new add-ons coming out soon, such as port protectors, which will prevent dirt getting into ports stopping them working properly.

Ben will have these in stock once they are available. He also plans a personalisation service so that an iPhone can be customised to look different to everyone else's. The future looks bright for this entrepreneurial young man!

You can find the iPhone Doctor at **1, School Lane, Walkergate, Beverley HU17 9AW**, telephone **07874 329223**.
Email: benjamminlee@gmail.com
www.iphonedoctorhull.com



New Brazilian restaurant to open in Beverley

Ali Tekce, owner of Cosmo's Flaming Grill Bar and Restaurant is preparing to swing open the doors to a new Brazilian restaurant called 'Chamas Rodizio Bar and Grill' which will be offering Beverley and the surrounding areas a new and exciting dining experience. Located next to his existing restaurant, Cosmo's, Chamas is scheduled to open this month.

Chamas, meaning 'flames' in Brazil is an authentic Brazilian Rodizio style restaurant, that warmly invites you to experience and enjoy this unique dining concept, which originated from Southern Brazil. The 'Rodizio' experience is a celebration of authentic Brazilian cuisine where succulent barbecued meats are roasted in an authentic Brazilian churrascaria using the method based on the centuries-old Gaucho (Brazilian cowboys) tradition. Ali and the team, many of which are Brazilian are ready to bring this experience to the heart of Beverley.

Just Beverley went to find out more about Chamas! There is no food ordering or waiting when diners arrive. All they need to do is help themselves to an unlimited gourmet salad bar featuring a wide range of freshly homemade hot and cold dishes, and sit back and relax whilst they will be served up to 15 sizzling cuts of different prime meats - all of which are brought to the table in abundance and expertly carved by Chamas passadores (meat carvers) at your request, until you say stop: all for a fixed price. Diners will be equally spoiled by the variety of carefully-selected South American wines to compliment the dishes! However, the experience would not be complete without trying a Caipirinha cocktail - the national drink of Brazil made with Cachaça rum, freshly-squeezed lime and sugar.

Bookings are open from July 1st on **01482 867897** or via the website: www.chamasbeverley.co.uk

Chamas Rodizio Bar and Grill is located 9-10, Wednesday Market, Beverley HU17 0DG.



IPHONEDOCTOR

07874 329223



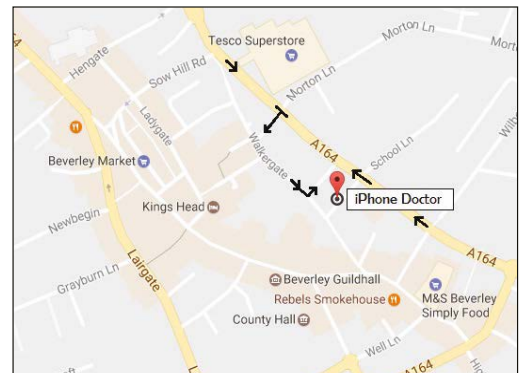
15 MINUTE FITTING WHILE YOU WAIT!

Screen Prices

iPhone 5/5c/5s = £30
iPhone SE = £35
iPhone 6 = £40
iPhone 6 plus = £50
iPhone 6s = £65
iPhone 6s plus = £80*
iPhone 7 = £120*
iPhone 7 plus = £150*

Opening Times

Mon: CLOSED!
Tues: 12 - 7
Wed: 10.30 - 7
Thu: 10.30 - 7
Fri: 10.30 - 6
Sat: 11 - 6
Sun: 12 - 4



Batteries & charging ports from £15

Parts/prices with a * aren't kept in stock and require a deposit before ordering, delivery takes 2-3 working days



www.iPhoneDoctorHull.com



1 School Lane, Walkergate, Beverley HU17 9AW
Telephone: 07874 329223 Email: benjamminlee@gmail.com

Raising awareness of Haemophilia through cycling

Just Beverley's Julian Minshall is taking on the Prudential Ride London in aid of a charity which few know about unless your family is affected.

The Prudential Ride London on Sunday 30th July is cycling's equivalent to the London Marathon and is a legacy of the 2012 Olympic Games. It's a 100-mile sportive involving 30,000 amateur cyclists following the same closed-road course as the professional cyclists ride on their UCI World Tour Prudential London-Surrey Classic.

This year, Julian has been lucky and has won a place. He is training hard for this endurance challenge, in order to complete the ride in less than 8 hours. Most seek sponsorship for the event and Julian is no different; he is looking to raise funds for the Haemophilia Society UK. The Haemophilia Society supports people with any bleeding disorder. It also supports carriers, families of people affected and healthcare professionals. It aims to provide education and advice about these relatively rare genetic disorders and living with them.

For example, it runs 'newly diagnosed weekends' where families, who have recently had a child with a bleeding disorder, can come together with others to learn more. It organises young people's activity breaks where children having or affected by a bleeding disorder can do various activities without parents around, but with the support of healthcare professionals and Youth Ambassadors (young people with a bleeding disorder who are trained by the society in leadership skills and mentoring), thus giving the children the confidence to manage their condition independently and engage with their peers whilst having fun.

You can help Julian raise much-needed funds for the Haemophilia Society through Virgin Money Giving at <http://uk.virginmoneygiving.com/julianminshall>

Just Beverley will be following Julian's story and letting you know how he has done!



RIDE LONDON

New service for small businesses launches in Beverley

Local accountant, Tony Hall has launched a new business, TaxAssist Accountants, offering a dedicated service to support small businesses in Beverley and the surrounding areas.

As a member of the Institute of Chartered Accountants in England and Wales (ICAEW), Tony has over 18 years' experience advising small and medium sized businesses. After seeing increasing numbers of new businesses starting up and speaking to businesses in the area, Tony recognised a growing demand for jargon-free specialist tax and accountancy advice tailored to small businesses, to guide new start-ups and provide ongoing support to existing businesses.

"After years of working for others, I decided now was the time to work for myself and saw this as a great opportunity to start my own accountancy practice, with the assistance of my wife Camilla. TaxAssist Accountants has a great reputation and offered me extensive support and training to set up my own practice," said Tony. "The shop front on Grovehill Road, just outside the industrial estate is in a great location, with nearby free parking and plenty of passing traffic making it really convenient for the many thriving small businesses in the area to pop in and use the great range of services we can offer."

Tony is looking to recruit part and full-time members of staff and is planning on having an official opening event towards the end of the year. Tony commented: "I'm really looking forward to working with the Beverley Chamber of Trade and the local small business community across East Yorkshire." TaxAssist Accountants in Beverley specialises in providing accountancy services, tax returns, payroll, bookkeeping, tax savings and tax advice to small businesses. TaxAssist Accountants has been working with individuals and businesses to prepare them for Making Tax Digital since the new tax regime was first announced in the 2015 Budget. It is the largest network of independent accountants working specifically for small businesses, servicing over 65,000 clients. Tony is based at **307 Grovehill Road, Beverley, HU17 0JG**, telephone: **01482 235363**, email: **tonyhall@taxassist.co.uk**, web: **www.taxassist.co.uk/beverley**



BEES

BURTON ELECTRICAL SOLUTIONS

High quality electrical work across East Yorkshire & the Humber region

DOMESTIC

COMMERCIAL

TESTING

Whether it's for your home, rental property portfolio or business premises, all electrical installations need to be checked periodically by a qualified electrician.

For a quote contact:

Andrew Burton

28 Carnaby Close, Leconfield, East Yorkshire HU17 7LA

Tel: 01964 552769 Mob: 07585 601730

Email: info@burtonelectricalsolutions.co.uk

Web: www.burtonelectricalsolutions.co.uk



ACCOUNTANTS FOR SMALL BUSINESS

We specialise in supporting small businesses and can help with:

- Self Assessment Tax Returns
- Business Accounts
- Corporation Tax
- Business Start-ups
- Bookkeeping & VAT
- Payroll & RTI
- Company Formations
- ...and much more

For your free, no obligation meeting call us today on **01482 235363** or visit us at **307 Grovehill Road, Beverley, HU17 0JG** or online at www.taxassist.co.uk/beverley



Exciting times ahead for new Independent Mobility store

As well as occupying the old Yorkshire Mobility premises at Belprin Retail Park on Swinemoor Lane, Independent Mobility has also opened the largest mobility showroom in the area at 32 Witham in Hull.

The team at Independent Mobility, who are led by Mike Robinson in the Beverley store, have been involved in this sector for many years. Independent Mobility has great offers and promotions all year round but to celebrate their opening there are some new, exclusive offers along with some brand new exciting products to try! These include a new range of stylish riser beds and chairs, complete bathroom solutions and stair lifts, as well as a range of fireside chairs, along with the most comprehensive range of new and used scooters in the area.

The store is welcoming, light and airy and customers old and new are encouraged to spend time trying products and asking questions about them so their buying decisions are made with confidence. The store is open Mon - Sat 9am - 5pm where you are welcome to pop in anytime. Or if you prefer you can arrange a home demonstration of any of their products at a date and time that suits you, including evenings. Manager Mike Robinson told **Just Beverley**: "We're delighted that so many customers have joined us here. We are confident that we

provide a great range of products at a good price. But it's our customer service which sets us apart."

Gary Marshall, David Long and David Parker are all customers who are delighted with Independent Mobility's service. Gary hired a scooter so he could go on holiday; David Long now has three scooters for different tasks all from Independent Mobility and David Parker, who is a Lancastrian who visits Beverley twice a year, has had a damaged scooter part-exchanged for a new one which was delivered directly to his home in Preston.



Mike said: "We always work with customers to ensure they get the products they need at a price they can afford. All of our used scooters are given a thorough check and service prior to sale and are supplied with a 12-month warranty to mirror that of a new scooter, thus adding to the customer's peace of mind.

"We are happy to take part exchanges and even buy unwanted scooters if the need arises. Mr Long originally bought a scooter for short distances, then he bought a larger one for longer distances and to go off-road and then bought a 'folding' scooter to go on holiday to The Gambia!"



To mark the launch of Independent Mobility and encourage people to visit the new store at Swinemoor Lane, there is a prize draw to **WIN** a mobility scooter!



For your chance to win, all you have to do is pop along to the store, register your details and cross your fingers that you are lucky. In addition, you will also be able to take away with you some discount vouchers which you can use against products from Independent Mobility - and, just in case your name isn't pulled out of the hat, against a mobility scooter!

Independent Mobility is located at **4b Belprin Park, Swinemoor Lane, Beverley HU17 0LN**. Telephone: **01482 862015** Email: mike@independentmobility.co.uk www.independentmobility.co.uk

Competition

As well as the opportunity to win a mobility scooter, Independent Mobility is offering one lucky Just Beverley reader the chance to win a Pure-Fit Deluxe Massage Foot Spa and Pedicure Kit, retailing at £40.



To be in the draw, just answer the following question:
Where is Independent Mobility's Beverley shop located?

Send your answer by email to info@justbeverley.co.uk by July 19th.

Put 'Independent Mobility' in the subject box and include your name, address and daytime telephone number. You must be prepared to take part in publicity for **Just Beverley** and **Independent Mobility**.

Full **Just Beverley** terms and conditions are on page 3.



Would you like to make a difference to someone?



VOLUNTEER CAR & MINIBUS DRIVERS NEEDED



Full training given, ring or pop in for a chat!

25 Corporation Road, Beverley, HU17 9HG
Tel: 01482 868082
www.bclift.org.uk
Reg. Charity No: 506813



Making Tax Digital - Are You Ready?

"Making Tax Digital" - or MTD for short - is the latest initiative by HM Revenue & Customs that will transform the way taxpayers submit their tax returns.

The tax returns as we currently know it will be replaced by a new digital system by 2020. The changes will apply to a wide range of taxpayers, including most businesses, self-employed professionals and landlords. HMRC's overarching mission is for the new system to make things simpler and easier for taxpayers whilst also reducing its overheads for managing tax affairs. The new system will require business owners to maintain digital records using compatible software.

The first people affected will be the self employed and landlords with a turnover above £85,000. They will have to record their business transactions digitally using MTD compliant software and send updates to HMRC on a quarterly basis. The new system will be introduced for these businesses from 2018/19.

By 2019/20 unincorporated businesses with a turnover below £85,000 will be required to comply and by 2020/21 companies will also have to comply. It is concerning that given the government's plan for taxpayers to send in summaries of their income and expenditure at least four times a year from 2018, a vast majority of small businesses have not yet implemented MTD compliant software. If this isn't done soon then how accurate and meaningful will the data be that is sent in with these reports?

Small businesses should take the changes as a positive as there will be many advantages to the MTD process;

- Improved quality of record keeping.
- Reduced likelihood of error (due to less manual entry).
- More efficient management of business affairs.
- Less time gathering and inputting data.
- More relevant and up to date information.

Digital software such as Quickbooks Online, Sage and Xero will become crucial in keeping business records and manual bookkeeping systems and spread sheets will no longer be viable.

If you would like to discuss this in more detail, then please contact Gareth Botterill on **01482 862240** or email: gareth@botterillco.co.uk

Botterill & Co

Chartered Certified Accountants

We are a modern and professional accountancy practice ideally located to serve businesses in Beverley and the surrounding area.

We utilise modern accounting technology to provide you with a cost effective, professional service.

Our services:

- Annual Accounts
- Tax Planning
- Management Accounts
- Tax Returns
- Company Formations
- Payroll
- Cloud Accounting
- Bookkeeping & VAT

For a free initial consultation please contact us:

Office: 01482 862240

Mobile: 07966 051458

Email: gareth@botterillco.co.uk

Website: www.botterillco.co.uk

1st Floor Offices, 40 Norwood, Beverley, HU17 9EY



Print that gets you noticed

- ✓ Brochures
- ✓ Leaflets
- ✓ Business Cards
- ✓ Business Stationery
- ✓ Posters

- ✓ Desk Calendars
- ✓ Wall Calendars
- ✓ Pop-up Banners
- ✓ Pads
- ✓ Invites





Jadan Press are a leading family run commercial B2 colour litho printer based in Hull. With 20 years experience, the company is renowned for producing work of an exceptionally high quality. We are committed to providing an excellent service by offering value for money and ensuring complete customer satisfaction.

Tel: 01482 610902

info@jadan-press.co.uk www.jadan-press.co.uk

Rainbow House, Kimberley Street, Hull, HU3 1HH



FLEMINGATE

BEVERLEY



FASHION

FOOD



FILM



& FUN

WE'VE GOT IT ALL AT FLEMINGATE

RIVER ISLAND

OUTFIT

TOPMAN

TOPSHOP

DEBENHAMS

H&M

GUEST & PHILIPS

Superdrug



SUBWAY

#GREGGS

deli



RIVA

PÂTISSERIE
VILNERIE

PEACOCKS

VERB

Boytone Interiors



TRESPASS

Card Factory

Poundland

Entertainer

wilko



@FlemingateBev

FLEMINGATE.CO.UK

FlemingateBeverley

Create your own style with the help of Lee Wardell from Verb

Need help with your wardrobe? Want to portray a certain style, co-ordinating your 'look'? Do you struggle to create outfits with detail and depth which give a look of considered sophistication? Would you like your style to be smart enough for work but relaxed enough for down the pub? With 35 years retail experience from a predominantly menswear background, Lee has seen key looks come and go under the heading 'fashion'. But he believes most men are better suited to enjoy a style which enhances their body type and personality.

Just Beverley welcomes this new monthly column which will appeal to our male and female readers. This month - JEANS!

Welcome! When considering my thoughts for the article, one overriding thought came about - Jeans! The emergence of denim from a workwear item of clothing for cowboys many years ago to a staple in a man's wardrobe has been gradual. Today, denim is accepted in all walks of life - you can even buy jeans with solid silver buttons created by some fashion houses retailing at over £300!!!

But style doesn't necessarily mean costing the earth. Style can be created at a very reasonable outlay and jeans have become a key member of any wardrobe because of their comfort and versatility. With 5 pockets, hardwearing cotton denim which today often contains 1% elastin to give a real comfort fit when sitting down, and variety of colours, you can never have too many. Black, washed-out black, dark navy with a tan stitch to match tan brogues, slightly worn and a converse-trainer wearing battered pair (otherwise

known as the 'comfort-blanket' pair) seem to be the order in many a man's wardrobe.

The look this month, see the photograph, has key details. A dark navy jean in the correct waist size with the correct leg length breaking nicely on your high shine brogue shoe with a matching belt - IT'S A MUST!



Have fun with your socks - orange maybe or sky blue to match the shirt! A sky-blue shirt is a must for any man's wardrobe - watch future editions for more detail on shirt fit and features. To add real sophistication, a well-tailored jacket with correct shoulder fit, correct sleeve and body length can be worn, and with such a neutral back drop all colours and even checks can be considered.

This look can be worn to a function/pub/restaurant, although smart, darker wash jeans are much classier and acceptable.

A detailed waist-coat with a small lapel adds to the sophistication and negates the need to wear a tie, especially if the wearer is not used to the formality of one. In future features, I will detail neck wear and its many variations.

As a starter, good fitting jeans are a great flexible piece to have in your wardrobe. In future issues, we'll also look at jackets and suits, shoes and summer wear. I hope these tips help and observations are encouraged.

I'd be delighted to help you work on your style. Do come into Verb for an informal chat - we're available 7 days a week!

And check out our webpage or follow us on social media for more ideas!

www.verb-fashion.co.uk
Twitter: @verbFashion
Facebook: VerbFashionBeverley
Instagram: verb-fashion



VERB

TO WEAR - TO WANT - TO WISH FOR - TO OWN - TO FASHION

FLORENTINE

PEARLY KING

Gibson
LONDON

MAC

BROOK TAVERNER
TAILORS OF DISTINCTION SINCE 1912

OPENING TIMES:
MON / SAT 9.30-5.30
SUN 11.00-4.00

01482 880141
VERBFASHION.CO.UK
INFO@VERBFASHION.CO.UK

FLEMINGATE SHOPPING CENTRE
FLEMINGATE, BEVERLEY
EAST YORKSHIRE HU17 0NQ

@ VERBFASHION @ VERBFASHION / VERBFASHIONBEV

TO FASHION YOUR OWN STYLE



Send your photographs of your celeb
Find us on Twitter and Facebook to s

Classic Cars



The Tiger Inn



HERE TO GET *you* THERE

HUNTERS[®]

EXCLUSIVE

BEVERLEY / 01482 861411

Folk Festival



Bike Fest



SALES / LETTINGS / MANAGEMENT

HUNTERS
HERE TO GET *you* THERE

BEVERLEY / 01482 861411

MR KITE by John Fewings

A poem to celebrate 50 years since the release of the Beatles' "Sergeant Pepper" album

For the benefit of Mr Kite
There will be a show tonight -
The best you've seen!
But Mr H looks woebegone;
He's noticed that the springs have gone
On the trampoline.
But we've still got ponies, feathers and fans
And a dwarf who joined from Pablo Fanques' Fair
And you'll marvel as he hurtles through the air.

We're not allowed to use real fire
(The Health and Safety people will
Kick up a stink.)
But we've got artificial flames;
The effect is pretty much the same,
Don't you think?
And we extend our sympathy to Hilda H
And hope she gets well soon.
You can hardly tell that she's been burned at all.

Mr H must be pragmatic;
He won't be very acrobatic.
What a shame!
He agrees that he's at fault
He shouldn't have tried to somersault
With a Zimmer frame!
But he'll be the main attraction
When he's out of traction
In a month or two.
In the meantime he'll be playing the didgeridoo.

The celebrated Mr. Kite
Performs his feat on Friday night,
As he rehearsed.
The Hendersons will sing and dance
And Mr H will take the chance
To read some verse.
Messrs K and H assure you that the show
Is just as good as it was before -
So stay in your seats and don't walk out the door.

The band begins at six tonight
If the roadies get it right.
(Don't hold your breath.)
Young Wayne tries hard so please don't scoff;
He's not the same since he fell off
The Wall of Death.
But Mr K will do his best
And so, I'm sure, will all the rest
Of the crew -
Though Henry the Horse has sadly gone for glue.



John Fewings is Just Beverley's Poet-in-Residence as well as being a member of the Argy-Bargy Poets.

He writes poetry for people who don't like poems. Check out www.johnfewings.zone

THE GREEN DRAGON BEVERLEY

MON 'MONDAY CLUB' SELECTED DRINKS £1.99

TUES SMARTPHONE PUB QUIZ NO PENS NO CHEATING TUESDAY CLUB DRINKS FROM £1.90

WEDS 8 PM IN THE ROUND OPEN MIC / JAM NIGHT ALL WELCOME

THURS Traditional QUIZ 10% OFF CASK ALES CRACK THE SAFE FOOD £2.50 AFTER 8PM

FRI JOIN US LAST FRIDAY OF THE MONTH LIVE MUSIC FROM 9 PM

ASK ABOUT OUR DRINK PACKAGES

- BREAKFAST SERVED FROM 9AM EVERY DAY
- FOOD SERVED 7 DAYS A WEEK
- 10 CASK ALES AND HAND PULLED CIDERS
- QUIZ NIGHTS START 9PM

Exciting new flavours available #cidermakesummer Buy 4 get one free. Conditions apply.

51 Saturday Market, Beverley, East Yorkshire, HU17 8AA
Tel: 01482 889801
www.thegreendragonbeverley.co.uk

রুমি'স

ASIAN CURRY AWARDS WINNERS
BEST NEWCOMER AND CHEF OF THE YEAR

NEW FOR 2017 TAPAS MENU
Sun to Wed 5.30pm to 7.30pm

Disabled Parking and Lift for Disabled access

The Only Beverley Indian Restaurant included on the Welcome To Yorkshire Spice Trail

Rumi's Bangladesh Indian Cuisine

New Walkergate, Beverley, HU17 9EP

T: 01482 428642
www.rumisrestaurant.co.uk
Mon - Thurs: 5.30pm - 11.30pm
Fri - Sat: 5.30pm - 12am Sun: 5.30pm - 11pm

Creations

Direct Furniture Repairs

Specialising in:

- Leather Restoration
- French Polishing
- Upholstery
- Loose Covers & Roman Blinds
- Curtains & Soft Furnishings

T: 01482 871954 M: 07951 759253
E: info@creations-biz.co.uk
W: www.direct-furniture-repairs.co.uk

Elizabeth meets... Tony Nolan

Tony Nolan is the writer of Hull Born and Bred, a new book charting the successes of 50 of Hull's most famous influential and famous faces, who he ranks in a countdown.

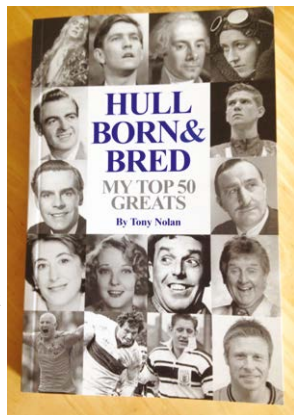
The book came out just after the Hull City of Culture announcement, initially as purely a project of Tony's, but it has gained much attention, and indeed, as Tony says, he "certainly wasn't expecting to end up on the radio, television and in the newspapers talking about his book."

Tony finds it difficult to name his favourite person in the book. As a Hull FC fan, he says one of his favourites has to be "Johnny Whiteley, particularly as he met him when he and Karen Briggs helped Tony to launch the book." But, Tony's "favourite story in the book is probably that of Barbara Buttrick, who is one of many people that he had never heard of before he wrote the book. Barbara was a female boxer who, against all the odds, went on to become the World Champion." She certainly has an inspiring story.

Tony now lives in the East Riding and spends much time in the town. His favourite place is Minster Records, with it being one of "very few such shops that still exist today" where he finds new vinyl for his jukebox. He is also a fan of The Cut-Price Bookstore, where his book is sold for £9.95.

By profession, Tony is a Chartered Accountant, but he is now working as a Civil Funeral Celebrant. However, he is thinking about writing more books, including one about Hull FC, and one detailing more of the biographies featured in Hull Born and Bred. And of course, as he says, "every writer feels that they have at least one novel in them!"

With the success of Hull Born and Bred, we think that he might do pretty well!



Have you heard about Beverley and District Talking Newspaper (BDTN)?

BDTN aims to provide a service for those who find it difficult to read a newspaper but want to keep up with what's going on in Beverley and the Yorkshire area. A disk is recorded each Monday based on local newspapers and magazines (including Just Beverley, of course) which is free of charge and posted out as soon as possible after the recording. It is suitable for anyone with a visual impairment as well as those who have had a stroke or have a tremor, in fact for anyone who finds handling a newspaper tricky!

The BDTN team is always looking for new recruits! **Just Beverley** met with Martin Cox to find out how a Monday evening recording session works and the roles involved.

Martin said: "A reader hosts the team at their home for two hours. One reader has compiled the news clippings into folders and 3 of us read in turn. A different volunteer records the reading and makes a "master disk" which is then delivered to a volunteer who spends an hour making lots of copies (we have a copying system that does 10 at a time). Each disk is popped into a labelled envelope and posted to the recipient.

"New readers are welcome to visit and sit in to see what we do. Hopefully they will then want to join us in some capacity. We hold occasional fundraisers as well as social events. We're keen to meet with anyone who could help with this service in any of these roles - recording, reading, copying disks, publicity..."

It's also important that people who would benefit from this service know that it is available. If you know someone who would like to receive a copy of the disk each week, BDTN would love to hear from you!

You can contact Martin or his colleague Carolleanne on one of the following numbers - Carolleanne on **01482 657073** or Martin on **07846 283593**.



A Summer Festival
of Engagement,
Inspiration
& Celebration

at

East Riding Theatre

SUMMERTIME

June
to August
2017



See what's on at
www.eastridingtheatre.co.uk
10 Lord Roberts Road, Beverley, HU17 9BE

Box Office
01482 874050

In the garden... July

Although the longest day is in June, I always feel that July is the main summer month - July and August are the warmest and sunniest summer months, and it may come as no surprise that July can also be the wettest!!

This weather combination is ideal for pests and disease to take hold rapidly - so keep a good look out and deal with any infestations quickly. There should be minimal work to do in the garden during July - all the hard work was done earlier in the season, so enjoy the 'fruits of your labour'. Colour and fragrance in borders and containers are found in abundance during July, the list of plants could be endless. However my favourites are roses, sweet peas and lavender.

Tasks for July

- Prune shrubs that have flowered and feed them - particularly roses.
- Continue to mow the lawn, in dry spells don't cut it so often, raise the blades on the mower and leave the clippings on the lawn, all this will help retain moisture. I know we all like a lovely green lawn but watering your lawn is not necessary. When rain does fall, the grass will spring back and look lush

again almost instantly. If we do have a long dry spell spike the lawn with a garden fork, this will allow the water to enter the soil more easily when rain does fall.

- Take cuttings from many shrubs and alpine.
- Water containers every day in hot weather - this is best done early in the morning or in the cool of the evening. Hanging baskets will need a good soak - don't be fooled by the fact we have had rain, often baskets are sheltered from the rain by the wall they are attached to. You can also reduce the frequency of watering by using larger planters.
- Water borders if necessary, then mulch. Most established trees and shrubs will survive quite long spells of dry, hot weather. But water any newly planted shrubs and trees - give them a good soaking, it's better to give a few a good soak in rotation than all of them a little water each day.
- Clear excess pondweed - and top up the water if necessary.
- Spray roses and feed.
- Dead-head like a demon - do this religiously. 'Dead heading' is removing cutting off any flowers that have faded or lost their petals; it encourages more flowers to form and prevents flowers from setting seed too early.
- Plant leeks and winter brassicas.



- Prune trained fruit trees - I must remember to do this to my pear I am training against a fence.

Finally, if you are planning on going away, get organised by asking someone to come in and water your containers (move them to a shady corner if you can) and harvest any vegetables and fruit while you're away. Personally, I'm looking forward to relaxing and enjoying my garden this July (I hope the sun shines a lot) as the last few months have been quite busy for me, so until next month...

Happy Gardening! J.

Jane Dale of 'Designed Gardens'
Tel: 07983 392 411

Does modern life overwhelm you? You're not alone - your kids can feel the strain, too!

Ever get a feeling of complete panic, when you don't know which way to turn and all you want to do is to curl up in a ball and hide? That's stress! It's not just adults who feel like that - so do your kids.

How often do you come in from your busy day feeling tired and ready for a sit down? All you want to do is remove the shackles of making decisions, close your eyes and enjoy a few quiet moments. But just think how your children feel when they get home. They are tired and hungry after a long day of learning, negotiating relationships with other kids and teachers and, if they are teenagers, dealing with developmental hormones which cause their bodies to behave in strange ways.

They crave the emotional security of the nest in which they are reared, as it gives them a sense of security - which is enhanced if they know where to find everything. Woe betide a parent or sibling who enters their space and moves their belongings around! Providing a safe haven for your children is vital for their well-being. That includes ensuring their place in the family unit is ensured - even if their parents are divorced and no longer live in the same household or they have new step-parents and step-siblings.

Practicing mindfulness can be a coping strategy which can help them deal with the situation. Mindfulness can be described as 'non-judgemental acceptance' or 'it is what it is'. It allows negative emotions such as anger or disappointment to subside so stress does not take hold and unwanted, extreme behaviours arise.

Why not teach your kids mindfulness? I know a teacher who runs a mindfulness session for her junior school class every morning before they start their school sessions; she says her class are calm, clear-headed and ready to start their day. Read more about mindfulness and try the exercises on my blog:

www.releaseyourpotential.co.uk/mindfulness



Kids love routine, which is why most of the year they go to school, with its timetables, rules and expectations. Parents who continue the day with their own tight structure of enjoying a family meal and doing an activity together, even watching TV, then bath-time and bed create a culture of caring in which everyone can discuss their day, learn to express their feelings and feel valued and connected.

Why not schedule a 'family meeting' once a week?

It's easy to criticise our kids when maybe it's we grown-ups that are at fault - creating a safe space where they can feed-back your short-comings could be a very salutary experience!
Be happy!

Linda.

www.releaseyourpotential.co.uk
07585 802035

LA LUMIÈRE PHOTOGRAPHY



TEL: 01482 867455
WWW.LA-LUMIERE.CO.UK
ENQUIRIES@LA-LUMIERE.CO.UK
22 TRINITY LANE, BEVERLEY

FREE
LOCAL DELIVERY

**MY KIND OF
GARDEN**

Make your **outdoor space** your perfect **living space**

Inject personality into your garden this summer
with a little help from **MKM** & ensure your garden
is the one they're all talking about!



Call into branch today at...

MKM BEVERLEY
SWINEMOOR LN, BEVERLEY HU17 OJX
01482 880088 | mkmb.co.uk  



The King's Head - winning customers and awards!

General Manager Matt Clapison's 15 years at the helm is recognised with yet more awards for excellence!

Earlier this year, the King's Head were rewarded with the 'Best Bar' nod in the East Riding in the Best Bar None awards - a national award scheme supported by the Home Office, East Riding of Yorkshire Council and the drinks industry which is aimed at promoting responsible management and operation of licensed premises.

Being Best Bar recognises the positive effect the King's Head has on the night time economy in Beverley and promotes Beverley as a safe and vibrant place to go at night. There are 6 categories for entrants - all entrants must all be registered as reaching the standards required by Best Bar None - with an overall winner as best of the best, which the King's Head won.



However, since then, the hotel has also won 'Best Rooms 2017' within the Revere Group and Events Co-ordinator Lucy Munns has been acclaimed for 'Excellence in Customer Service'.

Lucy says: "I've been here working with Matt for 11 years. He leads the 45 staff members from the front. His attention to details in all aspects of our service - bar, food, hotel - is second to none. He is my inspiration! From the moment guests arrive, we set the standard. Our room occupancy rate is 92% with many guests returning. Trip Advisor reviewers always mention the team and the high standards of service - and how good the food is!"

Matt added: "We are never complacent and always strive to do more. Our gardens are being refurbished with a £60,000 make-over as we get ready for the busy race weekend of July 8/9. We listen to our local customers too, and make them

feel special, which is why we are reintroducing our 50% off all steaks all day on Tuesdays until further notice.

"Our steaks are locally sourced and cooked in our Josper oven over charcoal at 465°F - the high temperature instantly seals the meat, keeping in the juices, so they are especially tender."

The King's Head, which is a Grade II listed building, has been in use as a bar with

rooms since the mid-18th century; it is a piece of Beverley which has links with the past but is very much of the moment.

It is reassuring to know that Matt and his team are doing such a marvellous job and are being recognised for their dedication and commitment to Beverley.



Amore Headwear

BESPOKE MILLINERY & BRIDAL ACCESSORIES

01482 888298 | 07843 760162

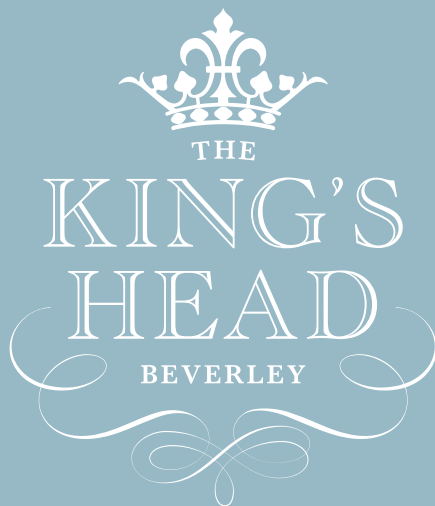
Email: enquiries@bespoketiara.com

AWARD WINNING BESPOKE MILLINERY

FABULOUS BRIDAL & OCCASION HEADWEAR

f /Amore Headwear

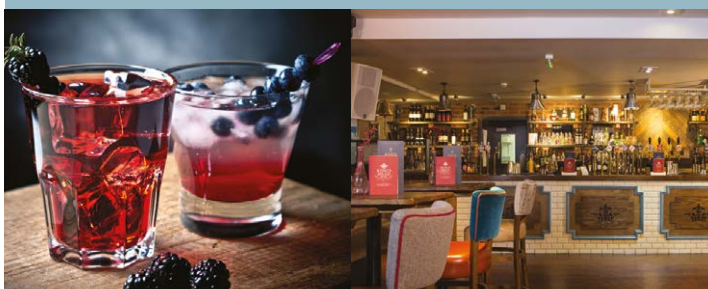
www.amoreheadwear.co.uk



37-38 Saturday Market, Beverley, HU17 9AH

www.kingsheadpubbeverley.com

Tel: 01482 868103



CHARCOAL OVEN STEAKS



All day Tuesdays



FIZZY FRIDAYS

ALL BOTTLES OF CHAMPAGNE AND PROSECCO ALL DAY

HUBY

DOMESTIC APPLIANCES



HUGE SAVINGS
when you
BOOK ONLINE
at
hubys.co.uk

Book in advance and save money.
The further you book in advance
the more you could save...



You've tried the rest,
now use **THE BEST!** **01482 240511**

indicoll

more than just web design

SUMMER MADNESS
GET A WEBSITE FOR ONLY
£1995!

UNLIMITED NUMBER OF PAGES

What's included? Your website comes with all of these fantastic features; A Bespoke Website Design (with no templates used) • Content Management System (so you can update the website yourself) • Contact Form, Analytics (see when & how people visit your website) • Mobile friendly • Blog • Gallery • Links to social media accounts • Dedicated account manager



CALL NOW ON 01482 428650

Telephone: 01482 869111
sales@rosesofbeverley.karoo.co.uk



The Kitchen Factory, The Courtyard,
Tokenspire Business Park, Beverley
HU17 0TB

Our bespoke range of kitchens designed, pre-installed and fully project managed from start to completion.

Roses DIY range of kitchens
Designed and pre-installed, ready to fit.
This 12 unit kitchen (18 doors) includes cornice, pelmet, worktops, etc

Roses refurbishment range.
Complete kitchen makeover service.
Ex-factory price list.



SEE ALSO OUR NEW:
"SKIDBY SHAKER" • "BEVERLEY GLOSS" • "COTTINGHAM ASH" • "WALKINGTON (HANDLELESS GLOSS)"

FULL PRICE LIST AVAILABLE IN STORE

TRADE ENQUIRIES WELCOME

Visit **www.roseskitchens.com**

to see our customers kitchens and read what they have to say about us

Telephone: 01482 869111 • www.roseskitchens.com



Classic Cars with Carfan - the E-type Jaguar

When Enzo Ferrari described the E-Type as the most beautiful car ever made, Jaguar must have known that they had a winner on their hands!

They certainly did have a winner, because a total of over 71,000 E-types found their way to new owners between 1961 and 1975. British owners had to wait a few months for delivery when it was launched, as the initial production was export only. Even celebrities such as Stirling Moss and Adam Faith had to plead with dealers to jump the queue! Some people even paid over list price for a car that was an instant hit.

Various versions were available during the production run, ranging from the original 3.8 litre, followed by the 4.2 litre and ending with a whopping 5.3 litre V12, in coupe and convertible form. With so many made, there are always a lot of them for sale with prices ranging from around £35,000 for a restoration project up to £250,000 for a low mileage early version that the purists prefer. But if one of the twelve lightweight variants ever come up for sale, be prepared to spend many millions!

The E-type is held in such high esteem that it is one the first exhibits seen by visitors to the New York Museum of Modern Art, something that Carfan can testify to. The car featured is a series 1 coupe produced in 1963 and was originally left-hand drive. Its lucky owner has had the car for eight years and has spent quite a bit on it, converting the gearbox from its original four gears to five, upgrading the brakes, changing it over to electronic ignition and replacing the bumpers - which came all the way from Vietnam as they were so much cheaper than British sourced examples.

So, if you hear this gorgeous cat purring behind you one lucky day, don't forget that cheery Carfan wave!



MOT Testing

The MOT test (Ministry of Transport, or simply MOT) is an annual test of vehicle safety, roadworthiness aspects and exhaust emissions required in Great Britain for most vehicles over three years old used on any way defined as a road in the Road Traffic Act 1988. Here's a few tips to ensure you keep your vehicle in tip-top condition all year round rather than waiting for MOT time and praying that it passes!

- Ensure that any air fresheners or portable navigation units are removed from the screen and interior mirror - obstruction of the screen will fail.
- Weekly tyre pressure checks can keep your tyres in the best condition, avoiding uneven tyre wear and even premature tyre wear by under inflating is very common.
- Check all your lights are working. One of the top ten failures on an MOT is bulb failure, mostly number plate light bulbs. Ask a member of your family to check them for you whilst you operate them.
- Top up your screen wash and ensure that the washer system works correctly.
- Check your windscreen wipers. Can you see clearly? If not, have them changed.
- Check that all doors open freely and all seat belts are operating. You should always know that your vehicle is safe to enter and exit and seat belts work at all times - your life could depend on it!

There are over 600 possible failures on the MOT test! If you would like more information on what is checked on an MOT, please call Richard Hayes of Beverley Motor Works - telephone **01482 881128**.

PS: Cleaning and hoovering the car out before an MOT does not make any difference!



BEVERLEY
**MOTOR
WORKS**

INDEPENDENT
BMW & MINI
SPECIALISTS

Our dealership expertise means
high quality car servicing at a fair price...

- ATA Accreditations
- Routine servicing
- Condition-based servicing
- Diagnostics
- Mechanical repairs
- Air conditioning
- Performance tuning
- MOT's

Unit D1 Grovehill Industrial Estate,
Annie Reed Road, Beverley HU17 0LF

Call today: **01482 881 128**

Visit: beverleymotorworks.co.uk



the Good Garage Scheme



**SPECIAL
OFFER
MOT
COUPON**

MOT YOUR CAR
FOR ONLY

£29.99

Simply cut out
this coupon and
present it when
you bring your
car to us



Looking after Man's Best Friend by Antonia Edwards of The Dog House

Keeping your dog cool this summer...

It's essential to keep your dog well-groomed to keep him or her cool and comfortable.

Brushing thicker-coated dogs and removing dead coat is important of both adults and pups. Ideally, your dog should be taken to a professional groomer so that the coat isn't cut too short (as dogs can get sun-burnt) but not left too long so that it gets matted and can contribute towards over-heating on very hot days. Once your dog's coat has been cut, you can do your bit at home by adopting a good brushing regime to remove dead hairs to prevent matting. A good dog-groomer will advise on the best brushes, combs, rakes and de-shedding tools for your breed.



Bathing is also good for cooling your pet down in the summer. Brushing after bathing allows air to circulate down to their skin, reducing matting. There are shampoos available for different breeds of dog with their different coat types. There's even a special shampoo called 'Fox Poo' shampoo which does what it says it does - removes stubborn fox poo and its foul odour from your dog's coat!

Overheating in dogs can be fatal. Remember to ensure your dog has fresh, clean drinking water available, is kept indoors if the temperature reaches 32°C or higher, is exercised during the coolest part of the day - and gets that good cut!

The Dog House is located on **10 Landress Lane, Beverley HU17 8HA**, telephone: **01482 880122**.
www.doggroomersbeverley.co.uk



WATCH YOUR PET FROM HOME
VIA OUR LIVE STREAMING APP

Prices from £12

Baths, handstrips, mini grooms, full grooms, nails, de-shedding and much more!

Pet boutique selling a wide range of products, perfume, collars, leads, coats and toys

OPENING HOURS:

Mon - Sat: 9-4.30

TELEPHONE:

01482 880122

WEBSITE:

www.doggroomersbeverley.co.uk

Telephone: 01482 869111
sales@rosesofbeverley.karoo.co.uk



The Kitchen Factory, The Courtyard,
Tokenspire Business Park, Beverley
HU17 0TB

Our bespoke range of kitchens designed, pre-installed and fully project managed from start to completion.

Roses refurbishment range. Let Roses give your kitchen a makeover with our replacement door and worktop service.

Roses DIY range of kitchens. Designed and pre-installed, ready to fit. Ex-factory price list.

"TICKTON MATT"	Price inc VAT
715 x 295	£22.40
715 x 395	£26.32
715 x 495	£29.28
715 x 595	£33.08

"WALKINGTON (HANDLELESS GLOSS)"	Price inc VAT
715 x 295	£38.74
715 x 395	£42.92
715 x 495	£48.12
715 x 595	£53.88

"LEVEN AND SKIDBY SHAKER"	Price inc VAT
715 x 295	£33.52
715 x 395	£37.10
715 x 495	£39.82
715 x 595	£44.52

"BEVERLEY GLOSS"	Price inc VAT
715 x 295	£35.33
715 x 395	£39.10
715 x 495	£41.98
715 x 595	£44.99

MANY MORE SIZES, DOOR STYLES AND COLOURS AVAILABLE

FULL PRICE LIST AVAILABLE IN STORE

TRADE ENQUIRIES WELCOME

Visit www.roseskitchens.com

to see our customers kitchens and read what they have to say about us

Telephone: 01482 869111 • www.roseskitchens.com

BEVERLEY GOLF CLUB OPEN DAY

SUNDAY 9TH JULY 1PM - 5PM

FREE BUFFET LUNCH OR DRINK*

PUTTING, CHIPPING AND TARGET GOLF COMPETITIONS

NEAREST THE PIN GOLF SIMULATOR COMPETITION

COMPETITIONS OPEN TO EVERYONE (EQUIPMENT PROVIDED)

*Free buffet lunch or free drink with any main meal purchased on the day.



- ▶ Trial membership offer for all attendees
- ▶ Chance to meet members of the golf club
- ▶ Raffle with golf and non-golf prizes

www.beverleygolfclub.co.uk

ANTIMILL CLUBHOUSE RESTAURANT & PUB

Open To The Public

Excellent Home Cooked Fresh Food

EXCEPTIONAL VIEWS OF BEVERLEY WESTWOOD

**FUNCTION ROOM AVAILABLE FOR MEETINGS
AND PRIVATE FUNCTIONS**

To view our menus visit www.beverleygolfclub.co.uk

🚩 **01482 868757** 🚩

Anti Mill, Westwood, Beverley, East Yorkshire HU17 8RG



Golf with Stewart Fraser - The Open 2017 at Royal Birkdale

Make the most of your visit to The Open Championship.

If you haven't been to an Open Championship before this year is a great opportunity to see the best golfers in the world at this wonderful course near Liverpool, one of the nearest venues on the rota.



The open is a fantastic day out for the whole family, with free entry to under 16's and free golf lessons available for spectators throughout the tournament at the Swingzone.

Plus entertainment and daily challenges for the kids and adults in the Skillszone and Golfzone.

Maybe you want to see your heroes close up? This can be done in the Autograph Zone, keep an eye on the big screens to see when your favourite players will be passing through. My favourite place to visit is the practice ground where you get to appreciate how impressively the world's best strike the ball, watch out for Bubba Watson and Dustin Johnson clearing the fence at the back!

Did you know?

- This year 156 golfers will compete for the title at Royal Birkdale; the first Open Championship was in 1860 where only 8 competed.
- There has never been a British winner of The Open at Royal Birkdale.
- The prize fund has changed somewhat over the years: 1864 was the first time a cash prize was introduced when Old Tom Morris won £6, this year the winner will receive £1,175,000!

This year I have decided to run a promotion for The Open Championship - if you have a golf lesson from me the week before or during The Open 2017 (10th - 23rd July) and we have a British Winner you will get a full refund, meaning your lesson will be free of charge! Book early as availability can be limited close to the week.



Competition Winner

Congratulations to the Tiger Inn competition winner, Mike Brown (right), pictured here with Allen Slinger, Landlord of the Tiger Inn. Mike takes away a voucher for two for Sunday Lunch.





Stockists of
Woof Dog Beer!





Brains required from 8.30pm

FIRST SATURDAY OF THE MONTH

Big Quiz

Free food/prizes to be won, all money raised to our house charities.
£1 per person entry

WEEKLY

Bingo




Cash prizes to be won
50p entry per game
Every Tuesday 1.30pm

THE TIGER INN

Tel: 01482 869040 | www.tiger-inn-beverley.co.uk
Lairgate, Beverley HU17 8JG












HOP ON DOWN TO THE CHOCOLATE CAFE

for handmade, quality treats!

A taste of wonderland...





16 Dyer Lane, Beverley, East Yorkshire, HU17 8AE
whiterabbitchocolatiers.co.uk

East Yorkshire Classic Cycle Race around Beverley in its 13th Year

Hull Thursday Road Club's Andy Cawley organises this increasingly-popular race with sponsorship and support from East Riding of Yorkshire Council and partnership sponsors including Beverley Town Council and Jadan Press.

Last year, over 3,000 people turned out on a sunny Friday evening in July to watch cyclists racing round Beverley town centre at speeds of up to 35mph on a 1.25km course which includes sections over cobbles.

This year the event takes place on Friday July 21st. There will be three races - the Keith Jordan Memorial Novice Race (which is open to 'category 4 riders'), the Jadan Press Women's Race (which is open to all categories, including elite riders) and an Elite Race (for the top male riders with the appropriate number of ranking points).

As in previous years, it is hoped the Mayor of Beverley and the Chairman of East Riding Council will be there to present the winners of the three



races with their prizes and that spectators will enjoy Beverley's café-culture whilst admiring the gleaming cycles and their super-fit riders with their incredible bike-handling skills.

This year, the larger teams will be setting up camp in Saturday Market to create a Team Village and increase the excitement for spectators. Riders will be based at Longcroft School and will ride down New Walk to register in Saturday Market - they will need their licenses and, as with all such high-profile sporting events, there will be random dope testing.

The popularity of the race has involved making changes to the route over the years. In past years, race organisers had to construct a wooden ramp for riders to use to navigate the pavement at Sow Hill onto Old Walkergate but East Riding Council has now dropped the pavement, making the wooden ramp obsolete and the course safer for the riders. The ramp had to be built in 1 hour and have a gravelled surface, so Andy is most grateful that the Council have been able to help.

However, recent experience has meant the barrier line on the crossing at Highgate has been expanded - even so, Wednesday Market is a great place to watch the race! Race marshals are vital for rider and crowd safety - spare a thought for these volunteers in their hi-vis jackets as they can be stood at crossing points for up to 3 hours!

Because this is such a well-established and well-organised race, there is lots of media interest. Viking FM come along to help promote it whilst it is being set up, Look North often come down with a live feed and **Just Beverley** are out and about taking photos!

Racing starts at 6.10pm for the Novice Race, 7.10pm for the Ladies' and 8.15pm for the Elite Men.



**Do you enjoy Cycling?
Why not enter for the Big G? It's your last chance!**

On July 22nd, up to 750 riders of all abilities, children and adults, will be heading out from Bishop Burton College across the Yorkshire Wolds. There are 4 routes of 4 distances from 20 miles to 100 miles with hot food and refreshments afterwards. Tempted? Read on...

Organised by Paul Kilvington and Neil Dean of the Hull Thursday Road Club, the Grimpeurs des Wold Cyclosporitive (or 'Big G', named in honour of the late Graeme Forrester) takes riders through some of the best roads featuring stunning views of the Yorkshire Wolds. At some points, the Yorkshire Dales and North Yorkshire Moors are clearly visible!

Families are very welcome for the 'Mini G' route of 20miles, with an entry fee of £15 (under 18's must be accompanied by an adult) with a £25 fee for the 40, 60 and 100 mile rides. Start times are between 7am and 9.30am. Anyone who has ridden the previous 9 'Big Gs' gets free entry as this will be the last time it is held. Go to www.big-g-sportive.co.uk to register or find out more!

www.eastriding.gov.uk



DOES THE THOUGHT OF CYCLING LEAVE YOU DEFLATED?



WE'LL GET YOU BACK IN THE SADDLE!

it's like cycling proficiency for grown ups!



WE CAN HELP YOU:

- GAIN SKILLS AND IMPROVE CONFIDENCE
- UNDERSTAND ROAD POSITIONING
- PASS QUEUING TRAFFIC
- NEGOTIATE HAZARDS AND BLIND SPOTS
- TACKLE ROUNDABOUTS AND JUNCTIONS
- AND MUCH MORE!

Bikeability will help you overcome your fears and be confident enough to get out on the road. It also offers advanced training for existing cyclists.

Whatever your level of cycling there will be something we can help you with. For further information or to book a free session contact the Road Safety Team:

☎ (01482) 395610

@ road.safety.training@eastriding.gov.uk

EAST RIDING
OF YORKSHIRE COUNCIL



The Inside Story - a Cyclists view of the Beverley 'Crit'

The East Yorkshire Classic Cycle Race around Beverley is known by those who ride in it as the Beverley 'crit', short for criterium. A criterium is a bike race consisting of several laps around a closed circuit, the length of each circuit or lap ranging from between 500m and 1000m. Just Beverley found out from Nathan Wilson of Wilson Wheels, what it's like to ride in this exciting event.

Nathan said: "The Beverley 'crit' is a unique is a unique opportunity for us cyclists to race on closed roads in our home town. What makes it unique is that it appeals to non-cyclists, who come to watch as they get to see a lot of the action with the competitors flying by every couple of minutes! Our close family and friends to come out to watch the event - something they don't normally do - which brings added pressure for us riders to do well and not make a fool of ourselves! The nature of the crit is fast and furious. Riders take corners at startling speeds and there's rapid changes in pace due to attacks from other competitors. All these factors that make it exhilarating! It gives you a real buzz! Normally you can't sleep afterwards because you're still on a natural high from the race."

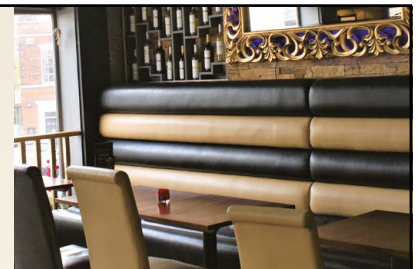
The Beverley 'crit' has a reputation for attracting some of the top names in the cycling world. **Just Beverley** remembers Olympian Ed Clancy lining up one year. How does Nathan feel about riding against the best? He said: "These famous people are riders you look up to and admire. You have massive respect for them as they are celebrities and you can feel you aren't worthy of riding in the same race as them. But when you line up next to them at the start you soon realise these riders are

normal people and, actually, are very chatty and not scary at all! But you still don't want to get in their way!"

As Beverley 'crit' includes sections on cobbles along with short sprints and some relatively tight corners, Nathan said the training is different to other races. He recommends shorter rides at higher intensity, so-called "interval" training, to help his body get used to the changes in speed.

Nathan says it's not enjoyable training but it works! It's one of the races he looks forward to and trains for every year, due to the fantastic atmosphere and the fact that so many of his friends, family and customers line the route, cheering him and the other riders on!

As a spectacle, there is nothing comparable - so whether you are a cyclist or not, why not head into Beverley town centre on July 21st and enjoy some local, talented cyclists compete on our own roads against some of the best! Do watch out for the Wilson Wheels' riders in their orange and black and give Nathan and his teammates an extra loud cheer.



MEDITERRANEAN STYLE FOOD AT ITS SUMMER BEST



There's a new look menu at Cosmo's in Beverley. The Mediterranean-style bar and restaurant is bringing a new range of dishes to the menu.

Alongside the popular chicken dishes, there is now risotto, pasta, pizza, steak and a wider range of salads. There are also new lunchtime, desert, cocktail and children's menus.

And with Summer on its way, there is alfresco dining with pavement seating.

A warm and friendly welcome awaits from Ali and the team!

WWW.COSMOSBEVERLEY.CO.UK

9-10 Wednesday Market, Beverley, HU17 0DG

T: 01482 867891

E: info@cosmosbeverley.co.uk



PUZZLE PAGE



Hide and Seek in the country -
Birds in Beverley

Wordsearch

X T H A E T R R L S X P S S B
 W X R Q H E L E O O X U S H T
 I J R E M Z M L Z L N H E O U
 Y X F M A U H A A G E A I R H
 C V U W S T V X L P N J T T P
 L S O I O G S A F J B I R S M
 G S C W N M S T I B B V A R E
 S P W T T S T I Y G E T P G M
 G Y O D E S P O L F P I L F F
 E U A S R T H N N T Y Q Y K L
 C F B D P T C B U W V S S R Z
 X F Z Z I H C O Q H M M X V E
 R Z B I V L S I M S B L U I C
 S P O R T S O E I Q V F W N U
 U Y V K K X W H Z Z K W S V D

FLIPFLOPS	RELAXATION
PARTIES	SUMMER
SPORTS	MUSIC
TREATS	SHORTS
HOLIDAYS	SUNGLASSES



Just for Fun

Where in Beverley would you find
this 'Dog Station'?

Do you have any
amusing stories,
quotes or pictures?
Send them to
info@justbeverley.co.uk

Funny Things They Say - "Are we there yet?"

I spy -
beginning with k -
Clouds!

Why have
we stopped?

When will we
be in the lead?

How does she
know where we
are going?

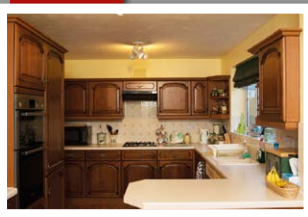
Where are we,
whats that nav
saying?

Are we there
yet? - How long!

QUALITY FITTED KITCHENS 
AND QUALITY REFURBISHMENTS

DREAM DOORS®
NEW LIFE FOR OLD KITCHENS 

Before



- Huge choice of doors, worktops, appliances, sinks & taps
- 50% deposit, balance on completion
- Made to measure custom-built doors and units
- Door swaps to full kitchens - tailored to your needs

CALL ANDY OR TERRI
FOR A FREE ESTIMATE:

01482 861653

www.dreamdoors.co.uk



EST.
1999

Summer Sale
20% OFF

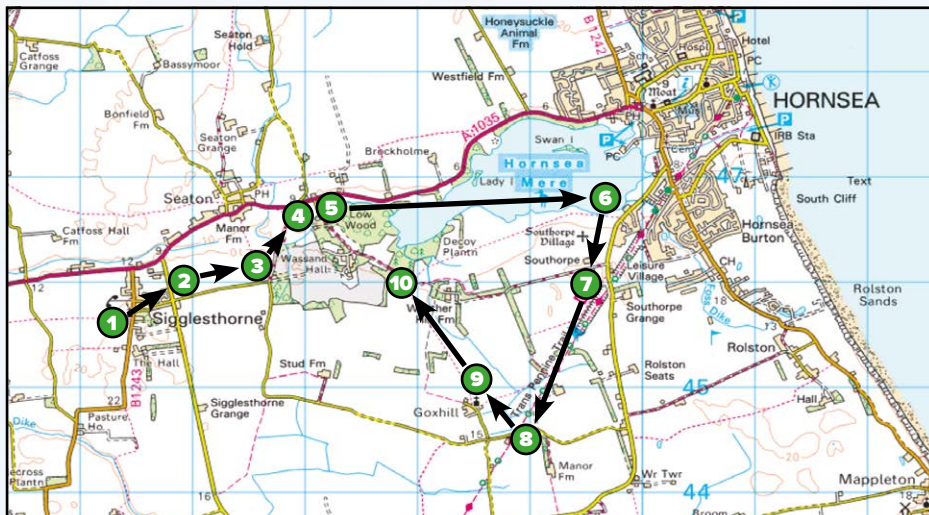
Ask for details in store - Terms & Conditions apply

Visit our showroom:
Belprin Park, Swinemoor Lane,
Beverley HU17 0LN

Checkatrade.com
Where reputation matters



Walking with Ian Richardson - Sigglesthorpe and Hornsea Mere Circular (6 miles)



This is an exceptionally varied walk, perfect for a summer morning or evening when the light should be at its best.

We start and finish at the pretty village of Sigglesthorpe, walk through the fine grounds of Wassand Hall, skirt the southern shore of Yorkshire's largest natural lake, then return via a disused railway track and some pleasant surprises in and around the secluded hamlet of Goxhill.



Hornsea Mere from Souththorpe

1 Start by St Lawrence Church at Sigglesthorpe, which is just off the B1244, 3 miles from Hornsea. This walk can easily be accessed by bus as there is an hourly service to and from Beverley. The churchyard is particularly nice with many mature trees; it is a lovely place to sit and contemplate. The church is open to visitors at weekends and is a pleasing mix of styles and building materials. Across the road there are glimpses of very fine houses, notably the handsome Georgian rectory. On leaving the church, head for the signed road to Hatfield facing you. It is sad that this village, like so many now, has no shop, no school and no pub, which I would suggest are three highly desirable assets for all villages - at least it is but a short walk to the Swan Inn at Seaton!



St. Lawrence, Sigglesthorpe

2 Turning right off Main Street into the quiet Hatfield Road, there are a set of distinctive gothic style cottages to enjoy. Head straight on past the bungalows and across to Wassand Balk - a very quiet back road where you are very unlikely to meet cars. This is nicely wooded and soon you see a distinctive lodge of Wassand Hall.

3 Take the track to the left at the lodge which again passes through woods and then very verdant sheep pasture. I assume that the land around here is so fertile as the lake would once have been much larger leaving behind good grazing land.

4 As you approach a gate and a large pond on the right - do not pass through the gate - but take a rather indistinct path on the right alongside the pond that soon joins the access road to Wassand Hall. The hall with its fine gardens and tea room, is open to visit on summer weekends. Through the trees you see another striking lodge which is rather like something in a fairy tale.



Lodge lost in the woods

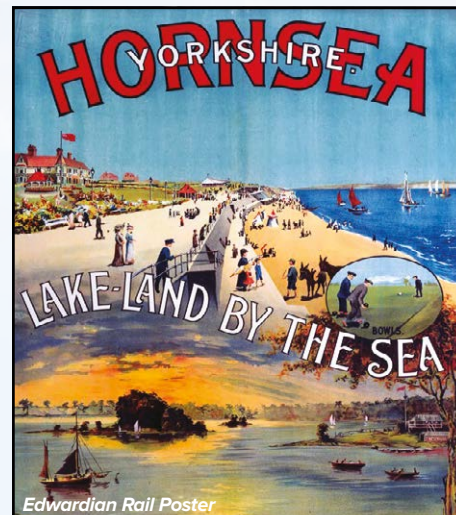
5 Turn right up the access road for the hall which has a fine avenue of trees. Glimpses of the outbuildings to the right and the mere over to your left add interest to this lovely route. Go through a series of farm gates and stiles, following first the marker left and then keeping straight on, well above the lake shore. Take care as route finding can be a bit tricky here. At Snipe Ground you can get down to the lake shore where I enjoyed a smashing picnic in the May sunshine. The path is now close to the shore and the mere teems with birds, the views over the town are particularly fine. As the information boards by the road explain, this was once the thriving village of Souththorpe, now just a series of mounds survive.

6 At the road, turn right and walk along the pavement up to the railway bridge about 600 yards away. The disused railway now forms the excellent leisure track for walkers, bikes and horses that runs the 18 miles or so between Hornsea and Hull. The line lasted just 100 years, closing like so many in the 1960s.

7 Head right at the start of the bridge to the path that soon takes you down onto the well surfaced former track bed. Lovely walking now ensues as you head south. A feature of this route are the many apple and pear trees that flourish, almost certainly the result of passengers discarding their fruit out of the train windows as they approached the seaside.



Rail Trail



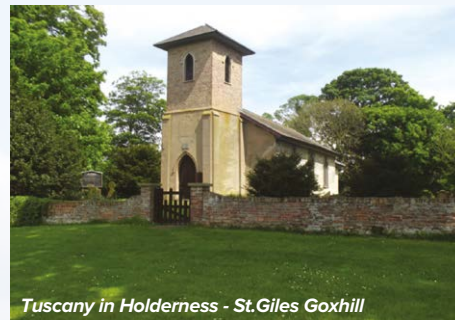
Edwardian Rail Poster

8 At the first road crossing by the red brick railway cottage, head right down the quiet road to Goxhill, soon you take another right into the hamlet, look out for one of the most incredible sign posts in all Yorkshire!



Rural charm at Goxhill

Time seems to stand still at Goxhill, especially on a fine day. The church looks almost Italian; thankfully it always seems open to explore. Although an early nineteenth century building, there are two excellent medieval features inside, a fine font and an even better piscina by the altar.



Tuscany in Holderness - St. Giles Goxhill

9 To the left of the church a clear field path heads back towards Wassand Hall. This passes some distinctive ridge and furrow earthworks at West Hills, the residue of centuries of strip farming. You soon reach the larger tack you took earlier.

10 Turn left here to retrace the track and road around the Hall. Head past the lovely lodge to the road. Here a choice; either take the field path to the left which retraces your steps back to Sigglesthorpe, or if you feel, as I did, that your exertions have earned a drink, take the pavement on the right to the splendid pub at Seaton, from where the pavement on the left leads back to your starting point.

Next Month - Leven Linear.

If you have any local walks you would like to share - do let me know!

Ian Richardson - ricojosh@msn.com

What's On IN BEVERLEY

SPONSORED BY: **küchenhaus**

Tell us about your event!

E-mail info@justbeverley.co.uk

Telephone **01482 679947**

For more events visit
justbeverley.co.uk/events

2 Toll Gavel, Beverley, HU17 9AJ. T: 01482 862172.
Open: Mon - Sat: 10am-5pm. Sun: 11am-3pm.
Bank Holidays: 10am-4pm.

FRESH
FLEMINGATE FOOD EVENTS

9TH JULY
13TH AUGUST
10TH SEPTEMBER
8TH OCTOBER

2ND SUNDAY OF THE MONTH
10AM - 4PM

FLEMINGATE SHOPPING CENTRE, BEVERLEY, EAST RIDING, HU17 0NQ
www.flemingate.co.uk Facebook: [flemingatebeverley](https://www.facebook.com/flemingatebeverley) Twitter: [@flemingatebev](https://twitter.com/flemingatebev)

• **Beverley Minster Roof Tours**
Every Saturday at 11am or on Thursdays at 11am by appointment.

Until 16th July

• **Through the Looking Glass exhibition and multimedia installation**

Beverley Minster North and South Transepts. Daily. Free. Part of Beverley Early Music Festival. Reproductions of manuscripts from 16th century composer, copyist and spy, Petrus Alamire and a unique sound and visual experience of his music by Rudi Knoops.

Saturday 1st July

• **Craft and Artisan Fare**
Flemingate, Beverley 11am - 4pm. Free.

Saturday 1st July - Friday 14th July

• **Exhibition of Watercolours by David Thomas**
The Gallery, 36, Highgate, Beverley HU17 0DN. 10am-4pm daily. Free. Demonstrations. Prints available of originals.

Saturday 1st July - Saturday 26th August

• **Red Earth and Blue Water - Studies of Indian Life by Susan Beaulah**
Beverley Art Gallery. Free.

Saturday 1st July & Sunday 2nd July

• **Beverley Armed Forces Weekend**
Saturday at the Defence School of Army Transport, Normandy Barracks, Leconfield. 10am - 4pm. FREE. Sunday in Beverley. 1.15pm Military Parade from Beverley Minster to Saturday Market. 1.30pm - 5pm SSAFA Concert in Saturday Market. FREE.

Sunday 2nd July

• **Meditation Class**
Quaker Meeting House, Woodlands, Beverley HU17 8BY. 5pm. £6. Meditation and teaching of New Kadampa Buddhism. Refreshments. Details: 01759 304832. www.madhyamaka.org

Monday 3rd July

• **Processed Pea presents Fake Thackray**
Light Dragoon, Etton, 7.30pm. £7.00. John Watterson presents 'The Lost Will and Testament of Jake Thackray' by Jake's biographer and the UK's foremost interpreter of his work. www.theprocessedpea.co.uk

• **The White Horse Folk Club Singers & Musicians Night**
Beverley Conservative Club, 8.30pm. £2.

Wednesday 5th July

• **Beverley Drum Circle**
St Mary's Parish hall. 7.30pm. £7. Beat stress! No experience necessary. Details from 07731 614349. www.boombangbangdrums.co.uk

Friday 7th July

• **Party on the Pasture**
Beverley Racecourse. First race 6.10pm. Various prices. Party the night away with 6 thrilling races, entertainment, neon performers and music from fabulous The New York Brass Band.
• **Lucy Ayrton - High on the Storm-torn Coast**
East Riding Theatre. 7.30pm. £8. An investigation of tragedy through poetry, story-telling and song. Tickets from 01482 874050. www.eastridingtheatre.co.uk

Saturday 8th July - Sunday 9th July

• **24-hour Singathon in aid of Beverley Community Lift**
Leconfield Village Hall HU17 7NW. 10am onwards. Groups, individuals, bands, choirs singing for a new BCL Mini-bus. Audience needed too! £1+ entry. Sponsorship packages available. Refreshments. Contact 07984657071 or 07778409909 for details.

Sunday 9th July

• **National Garden Scheme - Two Walled Gardens Open for Charity**

5, Willow Grove and 6, York Road, Beverley HU17 8DS. 12noon - 4pm. £5/free. Refreshments. Plants for sale. Artist in residence Shirley Goodsell. www.ngs.org.uk

• **Meditation Class**

Quaker Meeting House, Woodlands, Beverley HU17 8BY. 5pm. £6. Meditation and teaching of New Kadampa Buddhism. Refreshments. Details: 01759 304832. www.madhyamaka.org

FLEMINGATE BEVERLEY
TEDDY BEARS PICNIC
Monday 10th July 11am - 4pm

Bring along a picnic and your teddy

FLEMINGATE SHOPPING CENTRE, BEVERLEY, HU17 0NQ
www.flemingate.co.uk
Facebook: [flemingatebeverley](https://www.facebook.com/flemingatebeverley)
Twitter: [@flemingatebev](https://twitter.com/flemingatebev)

Yorkshire Cancer **smile**
Reg Number 516898 Reg Number 1125856

- Giant Games with Smile
- Crazy Golf
- Name the teddy
- Facepainting
- RugbyTots 12:30pm
- Dance Stars 1:00 pm
- Buggy Boot Camp 1:30pm
- Sun Awareness with YCR
- Bundles of Joy
- Mial First Aid
- Fit Mums

Monday 10th July

• **The White Horse Folk Club Singers & Musicians Night**
Beverley Conservative Club, 8.30pm. £2.

Friday 14th July

• **Invitatione Concert**
Beverley Minster. £9/£6/free. 7.30pm. Mahler, Debussy, Weill and Durufle. Tickets: info@invitatione.org or on the door.

Saturday 15th July - Saturday 16th September

• **Morning Campers! The British Holiday Camp**
Treasure House, Beverley. Free. A touring exhibition by Emma Warrens Exhibitions.

Sunday 16th July

• **Beverley Minster Choir Concert and CD Launch**
Beverley Minster. 5.30pm. Free. Annual end of term concert, includes the Junior Choir. Launch of their latest CD 'Sing Epiphany'.

Monday 17th July

• **The White Horse Folk Club presents Hannah Sanders and Ben Savage**

Beverley Conservative Club, 8.30pm. £7. Accompanied by mountain dulcimer, dobro and guitar, Hannah and Ben look and sound classically timeless yet feel refreshingly unique.

Wednesday 19th July

• **Beverley Drum Circle**
St Mary's Parish hall. 7.30pm. £7. Beat stress! No experience necessary. Details from 07731 614349. www.boombangbangdrums.co.uk

Thursday 20th July

• **Meet the Gardeners**
Quiet Garden at rear of Beverley Minster Parish Centre, 38 Highgate. 10am-12noon. Coffee and home-made scones. Beverley in Bloom 2016 Award Winner.

Friday 21st July - Sunday 23rd July

• **Ciderfest Weekend**
Green Dragon, Saturday Market, Beverley. Usual opening hours.

Saturday 22nd July

• **N.U.R.S.E. Raft Race**
Beverley Beck. Day begins 11am, races from 12.30pm. Stalls, entertainment and refreshments. Details: 07775 404846 or jane@nurse-charity.uk

Monday 24th July

• **The White Horse Folk Club Singers & Musicians Night**
Catholic Church Hall. 8.30pm. £2.

Saturday 29th July

• **10th Dove House 10k Midnight Walk around Beverley (ladies only)**
Beverley Racecourse, 11pm. Registration £15 (minimum £20 sponsorship) includes t-shirt. Medal on completion. Refreshments, face-painting, disco, bouncy castle. Dogs on leads welcome. Men needed to help! Sign up: www.dovehouse.org.uk/midnightwalk - 01482 785743.

küchenhaus
The German Kitchen

FUN DAYS IN JULY!

7TH JULY - WORLD CHOCOLATE DAY

19TH JULY - NATIONAL CHERRY DAY

29TH JULY - NATIONAL CHICKEN WING DAY

KUTCHENHAUS
2 Toll Gavel, Beverley, HU17 9AJ.
T: 01482 862172.
Open: Mon - Sat: 10am-5pm. Sun: 11am-3pm.
Bank Holidays: 10am-4pm.

EAST YORKSHIRE COACHES

Because quality matters.



Summer days away with East Yorkshire Coaches!

Days away from Beverley this summer from just £11!

From family trips to Flamingo Land and Yorkshire Wildlife Park to scenic days away at Skegness and Whitby, choose from over 60 summer days out!



July

		Adult	Over 60s	Child
Mon 24 July	Harrogate & Knaresborough..	£17.00	£15.00	£15.00
Wed 26 July	Skipton & Settle.....	£19.00	£17.00	£17.00
Thu 27 July	Yorkshire Wildlife Park*.....	£23.50	£21.50	£20.50
Thu 27 July	Meadowhall.....	£15.00	£15.00	£15.00

Pickering & Whitby

Fri 28 July : Adults £16.50 : Over 60s £14.50 : Child £14.50

Sun 30 July	Flamingo Land*.....	£38.00	£38.00	£34.00
Mon 31 July	York Maze*.....	£23.50	£23.00	£21.50

Yorkshire Wildlife Park*

From £23.50

Thursday 27 July & more dates available!

Adults £23.50 : Over 60s £21.50 : Child £20.50

August

Tue 1 Aug	Ilkley & Haworth.....	£18.00	£16.00	£16.00
Wed 2 Aug	Beamish Living Museum*....	£33.00	£31.50	£27.00
Fri 4 Aug	Yorkshire Sculpture Park*.....	£17.50	£16.00	£16.00
Sat 5 Aug	Skegness.....	£17.00	£15.00	£10.00
Sun 6 Aug	Saltburn by the Sea & Redcar.....	£18.50	£16.50	£16.50
Mon 7 Aug	Flamingo Land*.....	£38.00	£38.00	£34.00
Tue 8 Aug	Yorkshire Wildlife Park*.....	£23.50	£21.50	£20.50
Wed 9 Aug	Scarborough & Eden Camp*.....	£23.00	£21.00	£21.00

Sundown Adventure Land*

Thu 10 Aug : Adults £25.50 : Over 60s £25.50 : Child £21.50

Sun 13 Aug	Scarborough or Whitby.....	£17.50	£15.50	£15.50
Mon 14 Aug	National Media Museum*....	£16.00	£16.00	£14.00
Tue 15 Aug	Skegness.....	£17.00	£15.00	£10.00
Wed 16 Aug	Flamingo Land*.....	£38.00	£38.00	£34.00
Fri 18 Aug	Thirsk & Helmsley.....	£17.50	£15.50	£15.50
Sun 20 Aug	Skirlington Market & Bridlington.....	£11.50	£11.50	£11.50

Flamingo Land*

Sunday 30 July & lots more dates available!

Adults £38.00 : Over 60s £38.00 : Child £34.00

From £38.00



Disney on Ice presents: Passport to Adventure

Tickets on sale now!

£48 per person

Saturday 18 & Sunday 19 November

Only £48!



more August

		Adult	Over 60s	Child
Mon 21 Aug	Lightwater Valley*.....	£31.00	£31.00	£28.00
Tue 22 Aug	Yorkshire Wildlife Park*.....	£23.50	£21.50	£20.50
Thu 24 Aug	York Maze*.....	£23.50	£23.00	£21.50
Fri 25 Aug	Flamingo Land*.....	£38.00	£38.00	£34.00

National Coal Mining Museum*

Sun 27 Aug : Adults £16.00 : Over 60s £16.00 : Child £14.00

Mon 28 Aug	Eureka*.....	£23.00	£23.00	£18.00
Tue 29 Aug	Diggerland*.....	£29.00	£29.00	£27.00
Tue 29 Aug	Otley & Saltaire.....	£18.00	£16.00	£16.00
Wed 30 Aug	The Forbidden Corner*.....	£28.00	£28.00	£26.00
Thu 31 Aug	Skegness.....	£17.00	£15.00	£10.00

September

Fri 1 Sept	Yorkshire Wildlife Park*.....	£23.50	£21.50	£20.50
Sun 3 Sept	Flamingo Land*.....	£38.00	£38.00	£34.00
Tue 5 Sept	Doncaster Market (back by 16.00).....	£11.00	£11.00	£11.00

Scampton Airshow*

Sat 9 Sept : Adults £47.50 : Over 60s £47.50 : Child £17.50

Tue 12 Sept	Harrogate & Knaresborough..	£17.00	£15.00	£15.00
Fri 15 Sept	Hemswell Antiques & Lincoln.....	£14.50	£12.50	£12.50

Day trip pick-ups & booking

Call in to our Travel Centres in Hull Interchange or Beverley Bus Station, or visit Beverley Tourist Information on Butcher Row. Alternatively, you can book by 'phone or online - it's so easy!

Coach pick-ups from Beverley New Walkergate, Cottingham Green and Hull Paragon Interchange, plus more on selected trips.

More trips available with Hull-only pick-ups, see them all online!



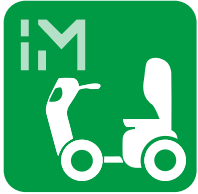
Ages may vary for child prices. Please check when booking.

* Includes admission or entry is free

See our Competition on Page 14 to WIN a NEW mobility scooter



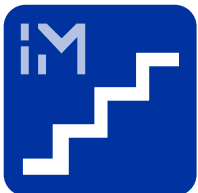
INDEPENDENT MOBILITY



NEW AND USED SCOOTERS FROM **£395**



RISE AND RECLINE BEDS AND CHAIRS FROM **£495**



NEW STAIRLIFTS FROM **£995**



DISCOUNT VOUCHERS FOR JUST BEVERLEY READERS**



SAME DAY REPAIR SERVICE*



**CALL US NOW
01482 862015**



4b Belprin Park, Swinemoor Lane, Beverley, HU17 0LN

Tel: 01482 862015

www.independentmobility.co.uk



Open 6 days - Mon - Sat 9am - 5pm



**Bring this advert or mention Just Beverley to receive exclusive Discounts

*SUBJECT TO AVAILABILITY