

just

ISSUE 48

# BEVERLEY

PICK ME  
UP, I'M  
FREE

**WIN!**

• BEVERLEY BUZZ  
COMEDY TICKETS

**REVD WENDY WALE  
& JONAH**

**SMALL CHANGES  
BIG IMPACT**

NEWS, WHAT'S ON, LIFESTYLE, FEATURES, PUZZLES, PHOTOS & MORE



*the*  
**POTTING SHED**

BAR & GARDENS

**JANUARY**

**SALE**

**£2 PINTS  
OF CASK ALE**

**£2.50  
SELECT SPIRIT  
& MIXER**

**15%  
OFF  
FOOD\***

**2-4-1  
CLASSIC  
COCKTAILS**

\*CANT BE USED IN CONJUNCTION WITH ANY OTHER OFFER

**FLEMINGATE, BEVERLEY HU17 0NU**

01482 870942 | [beverley@pottingshedbar.com](mailto:beverley@pottingshedbar.com) | [www.pottingshedbar.com](http://www.pottingshedbar.com)







## CONTENTS

Letters from the Editors **3**

News **4, 5, 9**

Parkway Cinema **6, 7**

## FEATURES

Wendy Wale - Small Changes, Big Impact **10**

Clogau, Beautiful Jewellery **13**

## REGULARS

Arts and Culture **14, 15**

Competition **7**

Competition Winners **6, 26**

Countryside Matters **26**

Finance **20**

Gardening **26**

I've Been Thinking **14**

Lifestyle **19, 22, 24, 29**

Motoring **23**

Photos **16, 17**

Poem **15**

Puzzles **18**

Short Story **15**

Sport **24, 25**

What's On **30**



5



5



13



14



17



24

### Competition Terms and Conditions

Competition answers should be emailed to [competition@justbeverley.co.uk](mailto:competition@justbeverley.co.uk) before the closing date with the competition title in the subject field. Include your name, address and daytime contact telephone number along with your answer. Winners will be notified within 1 week of the closing date and MUST be available for publicity purposes for **Just Beverley** magazine, website and Facebook page and the prize provider. Photographs are usually taken the weekend after the prize-winners have been notified. The judge's decision is final. No cash alternative is offered. Details may be used for marketing purposes by **Just Beverley** and the prize provider and for website analytics by **Just Beverley**.

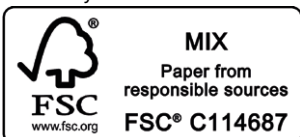
### Contributors include:

Contributors: Julian Minshall, Linda Johnson, Rich Manville, Carfan, Gareth Botterill, Jane Dale, Emma Lusby, Colin Raynor, Ian Richardson, Colin Speakman, Dave Tute, Sam Walton, Clint Wastling, Nathan Wilson.

### You can pick up the magazine from:

Parkway Cinema, Flemingate, Beverley Tourist Information, Beverley Library/Treasure House, Tesco, Morrisons, East Riding Leisure Beverley, East Riding Theatre, Browns café, Beverley News, Boyes, Tesco café, Colette and Tyson Garden Centre, Beverley Garden Centre, Cherry Tree Garden Centre, Mace News Saturday Market, Co-op Food Lincoln Way, Tickton News, Costcutter in Walkington, Molecroft News, Grovehill Convenience Store, Maple News, Leconfield PO, Willerby News, Poundland, Halfords, East Riding Community Hospital, Bishop Burton PO, Leven PO, The Altisidora, Cherry Burton PO, Barkers of Cottingham, Middleton-on-the-Wolds PO, Light Dragoon at Etton, Gnu at North Newbald, Monks Walk, Hayride, Sally's Deli, Ferguson Fawcett at Walkington, health centres, churches, cafés, hairdressers and more!

Printed by: Jadan Press.



## IAN RICHARDSON'S WALKS RETURN TO JUST BEVERLEY

*Absence makes the heart grow fonder, as they say, which is why we are delighted to welcome Ian Richardson back to our team of writers.*

# just BEVERLEY

## LETTER FROM THE EDITORS



**Just Beverley** thrives on change, going forwards, making small changes to create those big differences which impact on all of our lives. We think 2019 is the year when more people will think about the impact their lifestyles have on their own bodies and the planet. The

most valuable thing we have is our health so making small changes to our lifestyle can not only make us healthier but can help the earth, too - walking or cycling instead of using the car, for example, reduces our carbon footprint. But just as important is social interaction - greeting everyone with a smile and offering a helping hand, perhaps passing on unused items which you've had sat in the cupboard for years. Repurposing, repairing and reusing can literally keep the world rolling around. Our slogan here in the Just Beverley office is going to be 'Small Changes, Big Impact'. We are facing unprecedented challenges politically and environmentally but who ever said life was going to be easy? We just need to face things with a different mindset - we hope our front cover shows how impactful thinking differently can be! Happy New Year!

**Julian.**



Have you made any New Year Resolutions? If you have, you've probably broken them already! That's because most resolutions are negative objectives which deprive you of something rather than positive resolutions which benefit you. I challenged myself to Veganuary 2 years

ago to reduce my carbon footprint and 2 years later, I'm still eating a plant-based diet! I've discovered new ways of preparing vegan dishes and haven't had a really bad cold in all that time. Must be all those vitamins I consume! And all that fibre really gets you moving - if you know what I mean! Talking about plants, our Beverley Bloom Group is getting ready for spring planting to make our town beautiful once more. Helping with litter picking or clearing detritus from the streets is just as important. Perhaps we could encourage everyone to 'Keep Beverley Tidy' by taking their litter home and putting it in the appropriate bin. Call Beverley Town Council on **01482 874096** to offer your services. You will be as welcome as the flowers in spring - as Ernie Teal used to say on Radio Humberside! Whatever you do in 2019, be happy!

**Linda.**



'Community Publication Award'  
Shortlisted Nominee  
2017 & 2018



**REYTA**  
Remarkable East Yorkshire  
Award Nominee 2016  
'Best Newcomer'

## GET IN TOUCH WITH US:

**Website:** [justbeverley.co.uk](http://justbeverley.co.uk)

**Email:** [info@justbeverley.co.uk](mailto:info@justbeverley.co.uk)

**Telephone:** 01482 679947

**Twitter:** @JustBeverley

**Facebook:** [facebook.com/justbeverley](https://www.facebook.com/justbeverley)

If you would like copies for your business to distribute to staff and customers, call Just Beverley on **01482 679947**.

# DON'T FORGET THE FOODBANK THIS JANUARY

After the excess of Christmas and the run on your credit card, it's easy to forget those who are in need. East Yorkshire Foodbank supports 27,600 families in the area - and the numbers are growing. We know several companies which collected on behalf of the Foodbank in the run up to Christmas with 'reverse' Advent calendars -where you donate an item every day instead of taking chocolate - including Stipendia Payroll Solutions, who were amazed at the generosity of the public.

Lynne Auton, director of Stipendia said: "We have a good working relationship with East Yorkshire foodbank so we were more than happy to give up some of our office space to act as a collection and storage point. We've also been helping to raise awareness and drive donations through social media. The numbers speak for themselves; there are too many people struggling and I feel that it's important to do what you can to help."

Now we are into January and the New Year, donations of non-perishable food items, toiletries and money are most welcome. You can take your donations to the Foodbank Hub at 87 Mill Lane, Beverley on Mondays and Fridays, drop them into the box in Tesco on Morton Lane whenever the shop is open, Beverley or take them to Toll Gavel Church on a weekday morning.



For more information visit [www.eastyorkshire.foodbank.org.uk](http://www.eastyorkshire.foodbank.org.uk)

## WATCH OUT FOR THREE HANDY NEW OUTDOOR GUIDES TO MAKE THE MOST OF EAST YORKSHIRE THIS WINTER!

Wrap up warm, pull on your walking boots and enjoy our beautiful Yorkshire Nature Triangle .

Guides for visiting the coast, Wolds and Humber are packed with fun, low cost suggestions. They include walks on the Yorkshire Wolds Way to watch red kites, strolls along cliff-tops to spot seal and short eared owls and wildlife watching from cosy, heated hides.

The Yorkshire Triangle runs along the stunning coastline from Filey to Spurn Point via Flamborough's dramatic headland; along the Humber Estuary to the Lower Derwent Valley and back to the coast via the Yorkshire Wolds. The Yorkshire Wold's Way is one of the UK's 16 National Trails where walkers can enjoy historic and scenic landscapes, with stunning views across the Vale of York. It has several circular walks along it, too!

Helen Jones, Nature Tourism Manager at Yorkshire Wildlife Trust said; "East Yorkshire is still one of the UK's best kept wildlife secrets. With dramatic coastline, rolling hills and a mighty estuary, it features a vast array of amazing places to watch wildlife or take a stroll all year round. We've created these concise and colourful guides, so people can easily discover more places and be inspired to stay longer in the area or return to experience the wonders of another season - there's something for all ages and ability. It might be cold outside but winter is still a wonderful time to enjoy the very best of East Yorkshire's wildlife and wild places."



Very local to Beverley are:

- Yorkshire Water's Tophill Low reserve, which is open all year for people to enjoy over 50 different species from a cosy hide complete with log burner and hot drinks counter. It's one of East Yorkshire's only places to watch spectacular starling murmurations.
- Yorkshire Wildlife Trust's North Cave Wetlands, which is a former quarry and winter wildfowl wonder - all viewable from several accessible hides and platforms.

For bracing winter sea-air visit:

- Bridlington where you can venture onto the beach in search of fossils.
- Filey Bay, where the five miles of golden sands were awarded The Times Beach of the Year 2018, or nearby Hunmanby Gap.
- Hornsea which marks the eastern end of the Trans Pennine Trail.
- Flamborough Cliffs where you can spot seals and harbour porpoises causing a splash.
- Yorkshire Wildlife Trust's new Discovery Centre at Spurn for stunning views from picture windows across the point and Humber Estuary. Wrap up and venture to the newly-renovated lighthouse - the tallest in Northern England - for 360-degree views throughout the year. Spurn Safaris on the amazing Unimog run throughout the year - otherwise it's a very pleasant 7-mile walk!

The guides have been published by the Yorkshire Wildlife Trust-led Nature Triangle project to encourage more visitors to the area throughout the year. They can be downloaded at: [www.yorkshirenaturetriangle.org.uk/wild-days-out](http://www.yorkshirenaturetriangle.org.uk/wild-days-out)

## HAVE YOU BEEN 'UPSTAIRS AT MONKS'?

From the first 'Upstairs at Monks' in February 2017 to the eclectic acts booked for 2019, you can be sure of experiencing cutting-edge, original artists in a unique and 'cool' setting.

Mark Kelly, who organises 'Upstairs at Monks' along with Carl Patrick, was first introduced to the venue by the late Neil Pickering who, with his wife Gill, took over the oldest pub in Beverley. Neil took Mark up to the room with its ancient wall, which Neil uncovered, which has now been dated back to 1270. Mark immediately thought about using the room for acoustic/unplugged nights and the rest is, as they say, history.



Fuzzy Jones was the first artist, playing underneath the strip lights, but she enjoyed it and so did the small crowd who watched her. Since then, 'Upstairs at Monks' has been a monthly event, the lighting has been improved (lava lamps, standard lamps, twinkly lights and children's umbrellas!) and word is getting around!

'Upstairs at Monks' has featured artists from Canada, America, Poland, France and Scotland as well as closer to home. Ryley Walker played at 'Monks' in June and then played Glastonbury! Martin Stephenson is playing 2 dates in January but check availability as the room only holds 40 people and tickets were selling very well at the time of going to press, followed by Tildon Krautz in February. Tickets are available on Eventbrite.

You can find out about 'Upstairs at Monks' by following the **Facebook page** and **Twitter (@\_monks)**



© Richard Lee



# MOVING MAGIC

**If you were amazed to see 8 removal lorries traveling around Beverley and district on December 6th last year, that's because 8 people all moved to their new house on the same day! 7 of the house moves involved Hunters Estate Agency in Beverley! Leanne Marshall from Hunters was able to co-ordinate the chain on the day, but the creation of the chain was only possible because Leanne understood her buyer's needs and was able to match them with vendor's properties.**

The chain of 7 properties was not a straight line, in that 2 of the properties sold resulted in the vendors moving into one property. There were further complications in that two properties (one sold and one bought) involved a charity and its local and national Trustees.

The whole thing was kicked off by Leanne matching a buyer with a property which hadn't even got onto the market. Leanne said: "I proactively rung a database of properties in order to get things moving and then things snowballed. Sales progression is so important and having one estate agent controlling the pipe-line can make sure there is less chance of the chain breaking



down. Sales are vulnerable until there is an exchange of contracts, especially when movers need to book removal vans.

"Nowadays, exchange and completion are so close together, which is what happened with this chain - working closely with solicitors who you know and trust to get the job done in a timely manner. Usually sales take 12-14 weeks but this whole chain completed in just 7 weeks - just in time for Christmas!"

Part of the chain involved **Just Beverley's** own Linda Johnson, who engaged Hunters for the sale of a property along with local company James Legal as conveyancing solicitors. She said: "Leanne at Hunters not only marketed our property but also found the perfect replacement. But Cheryl Leaning and her colleagues at James

Legal really went the extra mile to ensure our sale and purchase went through in the shortest possible time. Our transactions involved a charity which meant its Trustees had ultimate authority, which could have increased the time-frame as everything needed double the number of signatories, but Cheryl managed the process with absolute professionalism, keeping local Managing Trustees informed every step of the way."

On the day, several people in the chain met each other for the first time as keys were released in Hunter's office. They were also pleased to receive a beautiful, bespoke, eco-friendly candle with the personal message 'Home is where your journey begins'. Much thought has gone into the design of the gift which is reflective of everything Hunters does.



## THERE'S TWO NEW ELWELLS ON SHOW IN BEVERLEY!

**Beverley Art Gallery recently unveiled 'In the Studio' by local renowned artist Fred Elwell, which is a painting of his wife Mary Elwell. But St Mary's Development Office now has a Fred Elwell painting of St Mary's Church on show, too!**



Fred Elwell was a prolific painter, so it's not surprising that new paintings turn up every now and again. The framed

painting of St Mary's Church had been locked away in a cupboard in the church, along with a painting by Mary Elwell, when the Church Wardens decided they really would like them to be on view.

Both were sent to the Treasure House which requested permission to keep the 'Mary' as it was considered to be a better, more valuable painting, but the 'Fred' was returned. The new Development Office on Wheatshaf Lane therefore leapt at the opportunity to display the painting on its walls.

Roland Deller, Director of Development and Anne Mansfield, Treasurer, said: "We are glad this painting isn't hidden away in a cupboard anymore! Elwell is one of Beverley's most cherished artists and it's wonderful to think that he took the time and trouble to paint the church and then donated the picture to it! It's not of massive monetary value but it is a huge asset. Would we ever sell it? No! Despite the fact we need £5.5m to repair crumbling stone work, some things are worth more than money."

St Mary's has many other treasures within its

medieval and Tudor walls, which the Development Office are working to enable more people to experience. For example, the 625 colourful and curiously-carved bosses which show all facets of life but which are 15m high up and therefore difficult to see which are being made accessible through mirrors and digital technology; the beautifully-painted ceilings depicting a map of the heavens and the Kings of England which dates from 1445, and the carving of the White Rabbit which inspired Lewis Carroll to write 'Alice in Wonderland.'

It's no wonder visitor numbers are projected to rise to 25,000 a year!

## CAN YOU HELP STUART?

**Stuart Reid, who was brought up in Beverley in the 60's/70's runs a company which produces Memory Packs which are sold in museum shops and sent to reminiscence centres. He's looking to produce a 1980's pack - but needs your help!**

Stuart's packs contain small items of paper ephemera from the era - tickets, leaflets etc - as well as diary entries about everyday life during that time. Did you keep a diary (or



Filofax, as it might have been) about everyday life during the 1980's which you could loan/share with Stuart?

Do you have a box of memories to

help inform Stuart's project? Contact Stuart on **0131 550 3799**. Find out more at **www.mempackcompany.com**.

## LADIES' BOUTIQUE, AURA BEVERLEY, OPENS ON LADYGATE

**Abi Dee from Hutton Cranswick has always dreamed of opening a boutique in Beverley. After 6 years working in London as a PA to fashion brands LK Bennett and Jack Wills, she found the right premises in the perfectly-named street and Aura was born.**

Stocking women's fashion and lifestyle accessories, Aura is an inspirational shop. Abi's objective is to stock contemporary lines for all ages by labels most people will not have seen, and are unique to Beverley, along with jewellery, handbags, scarves and some lovely winter hats!! There's also some fabulous gift ideas - men, please take note!! It's a lovely shop to pop into to look around and with new stock arriving constantly, you never know what you might find.

Aura is at **17, Ladygate, Beverley HU17 8BH**, tel **01482 864890**, **www.aurastore.co.uk**.

Follow AuraBeverley on Facebook and Instagram!







**EVERY THURSDAY AT 10.30am**  
(doors open 9.45am)

Join us for a free brew and a natter and enjoy some great films on Beverley Parkway's Big Screen. Only £4.20 with drink and biscuits included. Aimed at 55s and over. Films subject to change.

**Thursday 3rd January -**

**The Wife**

Starring: Glenn Close, Jonathan Pryce

**Lucky**

Starring: Harry Dean Stanton, David Lynch

**Thursday 10th January -**

**Johnny English Strikes Again**

Starring: Rowan Atkinson, Ben Miller

**The Wife**

Starring: Glenn Close, Jonathan Pryce

**Thursday 17th January -**

**A Simple Favour**

Starring: Anna Kendrick, Blake Lively

**Johnny English Strikes Again**

Starring: Rowan Atkinson, Ben Miller

**Thursday 24th January -**

**Peterloo**

Starring: Rory Kinnear, Maxine Peake

**A Simple Favour**

Starring: Anna Kendrick, Blake Lively

**Thursday 31st January -**

**First Man**

Starring: Ryan Gosling, Claire Foy

**Peterloo**

Starring: Rory Kinnear, Maxine Peake

## PENGUIN PARTIES



**ONLY  
£195**

- Suitable for ages 5 to 12
- Up to 40 guests (additional charge for extra guests)
- Party games in a private function room with Parkway Penguin
  - Tea and coffee for parents on arrival
- Personal Photo montage on screen followed by your own film screening

For more information,  
please contact a member of staff

These are the films scheduled to open in January - all are subject to change.  
Check out up-to-date cinema listings at [www.justbeverley.co.uk/cinema-times](http://www.justbeverley.co.uk/cinema-times)



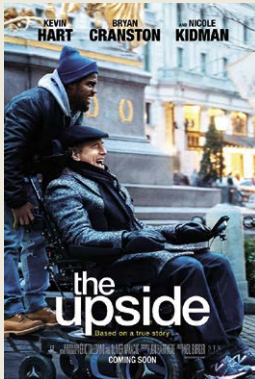
January 1st



January 9th



January 11th



January 11th



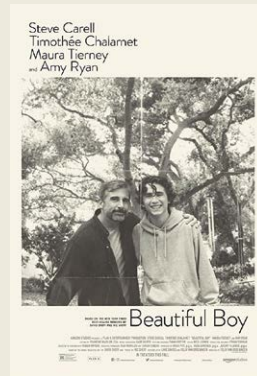
January 18th



January 18th



January 25th



January 25th



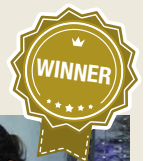
January 25th



January 30th

## COMPETITION WINNER

Congratulations to Sarah Jackson who won last month's Aquaman goodies competition.





# YOUR NEW INDEPENDENT CINEMA



## BEVERLEY BUZZ COMEDY CLUB RETURNS TO... BEVERLEY

Following a critically acclaimed and well-attended Autumn re-launch, Beverley Buzz Comedy Club returns to the Hayward Theatre at Parkway Cinemas, Beverley on Sunday 27th January. The successful format features five differing styles of comedy each show, with four guest comedians from the top comedy circuit plus the convoluted puns of veteran compere Agraman the human Anagram.

The line-up for this first show in 2019 is headlined by Steve Shanyaski whose inherent warmth and roguish twinkle elevates his observational precision into wild tangential imaginings of hilarious consequence. He is a long-established and popular headliner at all the top comedy clubs. Pete Teckman was crowned "Silver Stand-up" winner at Leicester Comedy Festival, an accolade only awarded to the best comedian of a certain age! His brilliantly precise routine about getting older regularly gets spontaneous rounds of applause.

Nicky Wilkinson follows in the developing tradition of featuring a local young East Yorkshire stand-up on each show. She and will only have to travel from Cottingham to bring her down-to-earth anecdotes! She tempers her exuberance with just the right amount of warm self-deprecation.

The programme is completed with the nervously energetic style of Tom Taylor whose bizarre improvised lyrics and keyboard forays surely signal him as a star for the future. His silly and quirky act will have the majority of the audience struggling not to fall off their seats, but a few souls will remain bemused.

Beverley Buzz Comedy Club is on Sunday 27th January at Parkway Cinemas, Flemingate Centre, Beverley HU17 0PW. Doors open at 7pm for start at 7.30pm prompt.

Reserve the best seats with tickets at £10 (£9) from the box office via **01482 968090** or online at [www.parkwaycinemas.co.uk](http://www.parkwaycinemas.co.uk) or you can just pay on the door on the night.

## COMPETITION - WOULD YOU LIKE TO WIN A PAIR OF TICKETS TO BEVERLEY BUZZ?

Our fiendishly-difficult competition this month is to name the top-grossing film of 2018 at Parkway Cinema?

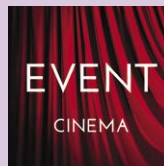
There have been so many great films this year to choose from, but to give you guidance, at the time of going to print, the competition was between the following films:

- *The Greatest Showman*
- *Darkest Hour*
- *Mamma Mia - Here We Go Again!*
- *Bohemian Rhapsody*



We will be able to reveal the answer on January 2nd when we will also be able to compare our Beverley Parkway favourites with the nation's favourites.

To be in with a chance of winning the tickets, email your answer to [info@justbeverley.co.uk](mailto:info@justbeverley.co.uk) by the end of January 16th. Put **TOP FILM** in the subject box with your answer, daytime telephone number and address in the main body of the email. Winners must be available for publicity purposes for **Just Beverley, Parkway Cinema** and **Buzz Comedy**. Good luck!



Event cinema offers something a little different to mainstream films. Live and pre-recorded shows beamed in via satellite from all over the world. Here are the latest live streams that you can enjoy on the big screen at Parkway Beverley.

**TICKETS NOW ON SALE:**  
Saturday 5th January 2019 at 7pm &  
Sunday 6th January 2019 at 3pm -  
**ANDRE RIEU'S 2019 NEW YEAR'S CONCERT**

Monday 7th January at 7pm -  
**THE KING AND I FROM LONDON PALLADIUM (U)**

Tuesday 15th January at 7pm -  
**NT LIVE: THE TRAGEDY OF KING RICHARD THE SECOND**

Sunday 20th January at 3pm -  
**BOLSHOI: LA BAYADERE**

Tuesday 22nd January at 6.45pm -  
**ROYAL OPERA HOUSE: QUEEN OF SPADES**

Tuesday 29th January at 7pm -  
**EVERYBODY'S TALKING ABOUT JAMIE (ENCORE) (12a)**

Wednesday 30th January at 6.45pm &  
Encore Sunday 3rd February at 2pm -  
**ROYAL OPERA HOUSE: LA TRAVIATA**

Thursday 31st January at 7pm -  
**NT LIVE: I'M NOT RUNNING (12a)**

Tuesday 19th February at 6pm -  
**EOS: YOUNG PICASSO**

## LIVEshows

Sunday 27th January 2019 at 7.30pm -  
**BUZZ COMEDY CLUB'S JANUARY SHOW**

Sunday 10th February at 7pm -  
**THE BOOTLEG SHADOWS**

Sunday 3rd March at 7pm -  
**THE UPBEAT BEATLES**

Wednesday 20th March at 7.30pm -  
**WEST END NIGHTS**

Sunday 24th March at 7pm -  
**OYE SANTANA**

Monday 8th April at 7.30pm -  
**VIEWFINDER PHOTOGRAPHIC SOCIETY: HEATHER ANGEL**

Saturday 13th April at 2pm -  
**TALEGATE THEATRE PRODUCTIONS PRESENTS THE LITTLE MERMAID**



# Courses for Adults

## Creative Arts

Course Title	Duration	Starting	Day and Time	Location	Fee	Reduced	Course code
Creative Writing	5 weeks	12/02/19	Tue, 6.30pm to 8.30pm	Beverley	£45	Free	K0270GXPEA
Photography - be more creative with your camera	5 weeks	15/01/19	Tue, 6.30pm to 8.30pm	Beverley	£45	Free	K0259GXPEA
Sewing - garment making and fitting	5 weeks	15/01/19	Tue, 6.30pm to 8.30pm	Bridlington	£45	Free	K0261SXPEA
Spring Flower Arrangements	1 day	30/03/19	Sat, 10am to 2pm	Beverley	£18	Free	K0246GXPPA

## General interest

Course Title	Duration	Starting	Day and Time	Location	Fee	Reduced	Course code
Bricklaying for Beginners	5 weeks	15/01/19	Tue, 6pm to 9pm	Bridlington	£68	Free	K0244SXPEA
Car Maintenance (General) Step 1	5 weeks	15/01/19	Tue, 6.30pm to 8.30pm	Bridlington	£45	Free	K0245SXPEA
Introduction to Counselling Skills	3 weeks	15/01/19	Tue, 6pm to 8.30pm	Bridlington	£34	Free	K0252SXPEA
	3 weeks	16/01/19	Wed, 6pm to 8.30pm	Beverley	£34	Free	K0252GXPEB
Introduction to Forensic Science	5 weeks	14/01/19	Mon, 6.30pm to 8.30pm	Beverley	£45	Free	K0253GXPEA
Introduction to Mindfulness	5 weeks	17/01/19	Thu, 6.30pm to 8.30pm	Beverley	£45	Free	K0254GXPEA
Introduction to Psychology Step 1	5 weeks	17/01/19	Thu, 7pm to 9pm	Beverley	£45	Free	K0255GXPEB
	5 weeks	15/01/19	Tue, 6.30pm to 8.30pm	Bridlington	£45	Free	K0255SXPEA
Introduction to Psychology Step 2	10 weeks	06/03/19	Wed, 6.30pm to 8.30pm	Beverley	£90	Free	K0256GXPEA
Joinery for Beginners	5 weeks	14/01/19	Mon, 6pm to 9pm	Beverley	£68	Free	K0258GXPEA
	5 weeks	15/01/19	Tue, 6pm to 9pm	Bridlington	£68	Free	K0258SXPEB
Motorcycle Maintenance	5 weeks	17/01/19	Thu, 7pm to 9pm	Bridlington	£45	Free	K0269SXPEA
Plumbing for Beginners	5 weeks	14/01/19	Mon, 6pm to 9pm	Beverley	£68	Free	K0260GXPEA

## Languages

Course Title	Duration	Starting	Day and Time	Location	Fee	Reduced	Course code
French Beginners Step 1	10 weeks	16/01/19	Wed, 2.30pm to 4.30pm	Beverley	£90	Free	K0248GXPPA
	10 weeks	17/01/19	Thu, 6.30pm to 8.30pm	Bridlington	£90	Free	K0248SXPEB
French Beginners Step 2	10 weeks	16/01/19	Wed, 7pm to 9pm	Beverley	£90	Free	K0249GXPEA
French Improvers 1	10 weeks	14/01/19	Mon, 6.30pm to 8.30pm	Beverley	£90	Free	K0250GXPEA
French Intermediate	10 weeks	15/01/19	Tue, 7pm to 9pm	Beverley	£90	Free	K0251GXPEA
French Advanced 1	10 weeks	17/01/19	Thu, 6.30pm to 8.30pm	Beverley	£90	Free	K0247GXPEA
Italian Beginners Step 1	10 weeks	17/01/19	Thu, 6.30pm to 8.30pm	Beverley	£90	Free	K0257GXPEA
Spanish Beginners Step 1	10 weeks	15/01/19	Tue, 6pm to 8pm	Beverley	£90	Free	K0263GXPEA
	10 weeks	17/01/19	Thu, 6.30pm to 8.30pm	Bridlington	£90	Free	K0263SXPEB
Spanish Beginners Step 2	10 weeks	14/01/19	Mon, 6pm to 8pm	Beverley	£90	Free	K0264GXPEA
	10 weeks	15/01/19	Tue, 6.30pm to 8.30pm	Beverley	£90	Free	K0264GXPEC
	10 weeks	16/01/19	Wed, 6pm to 8pm	Beverley	£90	Free	K0264GXPEB
Spanish Improvers	10 weeks	18/01/19	Fri, 1pm to 3pm	Beverley	£90	Free	K0267GXPPA
Spanish Improvers 1	10 weeks	15/01/19	Tue, 1.30pm to 3.30pm	Beverley	£90	Free	K0265GXPPA
	10 weeks	16/01/19	Wed, 6pm to 8pm	Beverley	£90	Free	K0265GXPEB
Spanish Improvers 2	10 weeks	17/01/19	Thu, 6pm to 8pm	Beverley	£90	Free	H0153GXPEA
Spanish Intermediate	10 weeks	16/01/19	Wed, 6.30pm to 8.30pm	Beverley	£90	Free	K0268GXPEA
Spanish Advanced	10 weeks	18/01/19	Fri, 10am to 12pm	Beverley	£90	Free	K0262GXPPA

Your time is here!



## Enrol now on-line

You can enrol for any of these classes on-line. Find the course in the course search on our website and look for the enrol and pay button. Enrol using the course code.

**Next open event**  
**Tuesday**  
**22 January**  
**4-7pm**  
**Flemingate, Beverley**





# EAST RIDING COLLEGE SETS OUT TO CHANGE THE PERCEPTION OF THE CONSTRUCTION INDUSTRY

**Alex Sheldon, Head of Curriculum for Construction and Engineering at East Riding College, is keen that the college is at the forefront of training to boost the pool of domestic talent for employers.**

At a recent workshop focusing on the construction skills gap across the Humber and York, North Yorkshire and East Riding areas, the Construction Industry Training Board (CITB) and the Strategic Housing Partnership for York, North Yorkshire and East Riding met with the Local Enterprise Partnerships (LEPs), training providers, planning authorities, employers and developer representatives to share best practice examples to addressing these skills gaps.

There are vacancies in every area of the building industry, with excellent career-progression and salaries, yet the perception is that there are no jobs.

There are new pathways to training and East Riding College is keen to work with employers and the Go Construct recruitment campaign to increase industry diversity by attracting women (14% of construction industry professionals are women), 19+ age-group, long-term unemployed, service

leavers and young people not in education, employment or training.

Alex said: "There are so many roles within the building trade, but they all need a skill base. Along with scaffolders, bricklayers, joiners and roofers, which is what most people think of when they think of construction, there are vacancies for architects, quantity surveyors and project managers. Some of our local construction companies need 100 apprentices every year, with real full-time employment at the end earning good money.

"At East Riding College we are challenging the stereotypes of yesteryear and helping to train the people the industry needs. There's nothing quite

like building someone's dream home or a 'smart' building like East Riding College's Beverley campus. If you enjoy working within a team knowing your skills have contributed to the whole, then construction could be for you!"

To find out more, visit: [www.eastridingcollege.ac.uk](http://www.eastridingcollege.ac.uk); [www.goconstruct.org](http://www.goconstruct.org) or visit East Riding College on their next Open Day!



# HEAR THIS!

**HEAR ANYTHING, ANYWHERE.**

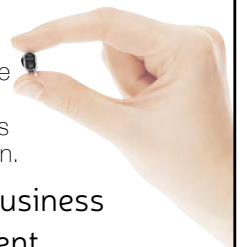
- HOME VISITS AVAILABLE
- WAX REMOVAL SERVICE
- INVISIBLE HEARING AIDS
- FREE HEARING AID TRIAL\*

"We care about you and your hearing"

Would you like professional hearing care that is different, more experienced and more caring than others?

Finding your perfect hearing aid is easier than ever because our independence guarantees you access to the biggest choice and best value for money. Try the latest, smallest hearing aids available, programmed to suit your lifestyle. Ask us for a **FREE**, no-obligation demonstration.

- INDEPENDENT family business
- **FREE** Hearing Assessment
- **FREE** aftercare
- 5 YEAR warranty\*
- 5 YEAR **FREE** batteries\*



**A LEADING CONSUMER SURVEY**



AWARDED Independent hearing specialists like HULL HEARING CENTRE **5 GOLD STARS** for choice, pricing & service.

**Trouble hearing? Then contact us today.**

**GO** Local. **GO** Independent. **BE** Happy!

Clare House, 8-10 Baker Street, Hull HU2 8HP

**01482 22 22 04**

tel:

[www.hullhearingcentre.co.uk](http://www.hullhearingcentre.co.uk)

e:[stephen@hullhearingcentre.co.uk](mailto:stephen@hullhearingcentre.co.uk)



\*on selected products



# ASSOCIATE VICAR AT BEVERLEY MINSTER, WENDY WALE AND HER DOG, JONAH, HELP MAKE SMALL CHANGES WITH A BIG IMPACT

**Wendy was a primary school teacher and Systemic Therapist before she was called to ordination in 2011; her dog, Jonah Wale (geddit?) was a Welfare Dog for Students. Now in Beverley, Wendy and Jonah are out and about making those small connections which make a big difference.**

Cockapoo Jonah comes as part of the Wale's package! A kind of 'buy-one-get-one-free'. But, says Wendy, if he's the catalyst to removing someone's fears or loneliness, if he's the reason why someone changes from being shy to being confident, then his ministry is every bit as important as hers.



"Jonah offers unconditional love," said Wendy, "he doesn't judge, is a very good listener and he doesn't talk back. He loves visiting - he's already been to stay with a lady who lost her own dog to keep her company - and meeting people, especially when we are walking around the streets. There are lots of dog-owners and would-be dog-owners in Beverley and we are keen to connect with all of them. In fact, I see my ministry as one of making meaningful connections and creating an even stronger community to the one already here. Belonging to a purposeful community is the key to living

a fulfilling life - I watched a Ted Talk once on the topic. Meaning in life is probably more important than happiness when it comes to longevity, too."

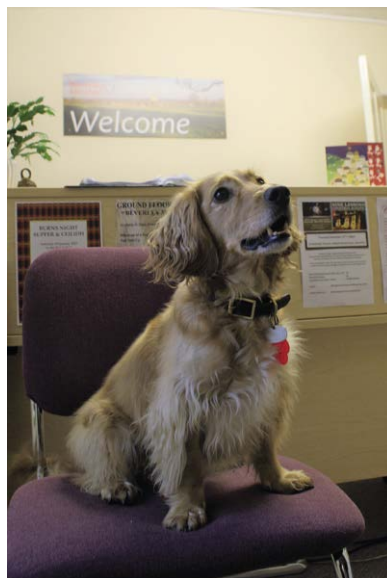
Wendy is keen to get involved in the Beverley Minster Sanctuary Project. Beverley Minster has been a place of sanctuary since 937AD, as is the area extending 2 miles away from it in each direction as marked by the three remaining sanctuary crosses, which are now scheduled ancient monuments.

There is other evidence for this special heritage as the Minster also houses an Anglo-Saxon sanctuary chair, one of only two remaining and there is a Beverley Sanctuary Book dating 1478-1540 with the Minster Sanctuary Oath, which are now housed in the British Library.

The Beverley Minster Project Team will work with the City of Sanctuary organisation, which was formed in 2010, to highlight the needs of refugees and asylum seekers and produce school study packs to highlight contemporary attitudes to migrants with those of the Middle Ages. The Church has always fought for social justice and continues to do so today.



Wendy said: "Today we should not feel guilty about what we can't do but celebrate what we can do. So many things are possible but making a small difference every day could make a big difference to someone. Beverley Minster has given sanctuary to people for far more years than we can possibly imagine with random acts of kindness which have benefitted many. The Minster continues to do this - some people come in to just sit and be, wonder at the structure or listen to the organ with a cup of tea. Others will stop and pat Jonah as we walk around town and perhaps see my collar which gives me an opportunity to build bridges which others might not have. But I think all of us have a responsibility to make a difference and offer sanctuary, even if it's only checking on a neighbour, especially in this cold weather."



Wendy, husband Tom and Jonah have come up from Oxford to 'God's own county of Yorkshire' and love the welcome they have received. Wendy thinks we really are a friendly lot! She can also understand why Beverley is so proud of itself and why we want others to come and experience it. But, she believes, we can make it even better! As a Systemic Therapist, she is interested in the relationships within a community and how small changes within one relationship or group can make a big, positive difference.

She said: "Some people or groups will be called to look at the bigger picture whilst others will concentrate on just one specific issue, but all are equally valid and lead to change. At New Year we have the opportunity to look back to see how we can change to do things better. For me as an individual, I'll be trying to ensure I buy Fair Trade products wherever possible and not to feel guilty when I haven't in the past. Buying fair trade means we are thinking about our neighbour who produces that good and enabling them to have a better life. I'll be encouraging our Church members to do likewise. Buying fair trade is a small change to our buying habits which could make a big difference to someone we might never meet."

As a Vicar, Wendy is charged with spreading the Good News of God's kingdom, but as an honorary Beverlonian, we can all celebrate the good news that Wendy has joined our community!

## Four Generations, Giving Over 125 Years Service

Herbert 1870-1962	Eardley 1908-1986	Geoffrey 1939-2015	David 1964
----------------------	----------------------	-----------------------	---------------

**H. KEMP & SON LTD.**  
FUNERAL DIRECTORS  
(ESTABLISHED 1893)

SAIF  
INDEPENDENT  
FUNERAL  
DIRECTORS

**Golden Charter**  
Funeral Plans

SAIF  
INDEPENDENT  
FUNERAL  
DIRECTORS

- Funerals Respectfully Conducted
- 24 Hour Out of Hours Service
- Free Advice & Support
- Private Restrooms
- Prepaid Funeral Plans Available
- Finance Options Available



**Tel: 01482 844695**  
[www.hkempandsonltd.com](http://www.hkempandsonltd.com)

259 Hallgate, Cottingham, East Yorkshire, HU16 4BG  
Fax: 01482 843898  
Email: [hkempandsonltd@gmail.com](mailto:hkempandsonltd@gmail.com)



*Wishing you a Healthy and Prosperous 2019*

Are you worried about getting your payroll right? It's time for change. Outsource your payroll today and be rest assured everything is taken care of!



## Pension contributions are increasing in April, are you ready?

Outsourcing payroll will save you time and money, redirecting time to growing your business.

You will be given a named personal contact and access to our free and easy-to-use app with a plethora of online information available for you to use on the go!



To arrange a **FREE** meeting  
call us on 0845 308 2288  
or visit [www.stipendia.org.uk](http://www.stipendia.org.uk)





# FLEMINGATE

## BEVERLEY

FASHION | FOOD | FILM | FUN

MORE TO

ENJOY

AT FLEMINGATE

ENJOY YOUR FIRST MONTHS MEMBERSHIP FREE

**PLUS 15% DISCOUNT OFF MONTHLY RATE IN 2019**

AT ANYTIME FITNESS AT FLEMINGATE  
VALID UNTIL 31ST JANUARY 2019

Bring this voucher into the gym or give us a call on  
01482 247100 and quote JUSTBEV

T&Cs apply. 15% discount is for the duration of the membership on a 12 month contract. Monthly rate discounted from £39.95 to £33.95

ANYTIME  
FITNESS



# CLOGAU, STORYTELLING THROUGH BEAUTIFUL JEWELLERY

*Clogau jewellery features Welsh gold from the Clogau St David's gold mine as worn by some members of our Royal Family for over 100 years, including the coronation regalia of Prince Edward when he was invested as Prince of Wales in 1911 and the wedding rings of the late Queen Elizabeth The Queen Mother; The Queen; Prince Charles and Camilla Duchess of Cornwall and Catherine, Duchess of Cambridge.*

Over 150 years ago, gold was discovered in the mountains of Snowdonia. Mining ceased 50 years ago when seams of gold were becoming increasingly difficult to locate. But in 1989, William Roberts discovered the abandoned mine and gambled on the idea there would still be gold buried within it. There was and still is!



To make the best use of this precious metal, William, Chairman of Clogau, used the gold to create jewellery of the highest quality, beauty and originality, celebrating the magnificent landscapes, myths and legends, flora and fauna of Wales.



As we move into a fresh New Year, Clogau revisits nature in its rawest form, recognizing how colour affects our everyday lives and leads us forward.

Clogau's pieces reflect nature at its best within its design, capturing the hearts and imaginations of jewellery lovers far and wide.

As every piece contains rare Welsh gold, it becomes an heirloom with both personal and cultural meaning and a permanent tie to Wales. Fortunately for those of us who aren't Welsh or who don't have Welsh ancestry, Clogau enables us to own something very British and valuable which can be passed down the generations.



With the chill of winter and the prospect of beautiful spring ahead a piece of Clogau jewellery would be a great way to experience nature at its best. Clogau celebrates the jewels of nature, all of which contain rare Welsh gold - the Gold of Royalty for over 100 years - to be treasured for a lifetime.

Clogau's heritage defines the company's being and provides the cornerstone for its future - a future that will hopefully be as successful as their story has been to date.

Guest and Philips, Flemingate, stock a variety of Clogau ranges including items from the beautiful Tree of Life™ range. They are open Mon-Sat 9am - 5.30pm, Sun 10.30am - 4.30pm.

Tel **01482 881001** or visit their website: [www.guestandphilips.co.uk/clogau1](http://www.guestandphilips.co.uk/clogau1)



## GUEST & PHILIPS

EXCLUSIVE TO  
GUEST AND PHILIPS:

TOMMY HILFIGER

CARAT\*  
LONDON

CLOGAU®  
GOLD OF ROYALTY



COMMENCES 4TH JANUARY  
DISCOUNTS OF UP TO 50%  
ON WATCHES & JEWELLERY

LINKS  
LONDON

swatch®

MONDAINE

23-25 SATURDAY MARKET, BEVERLEY HU17 8BB  
23A FLEMINGATE CENTRE, CHANTRY LANE, BEVERLEY HU17 0PW

T: 01482 881001 | [WWW.GUESTANDPHILIPS.CO.UK](http://WWW.GUESTANDPHILIPS.CO.UK)



## ART TO INSPIRE AT TRENT GALLERIES

*It feels almost surreal how quickly the past year has flown by - 2019 is upon us! Since opening the doors in Beverley in Spring 2017, our relationships with local clients, and indeed with visitors from further afield, have grown from strength to strength. Familiar faces pass through every day and it's lovely to be a settled member of Butcher Row.*

Last year was a tremendous year for Trent Galleries; we like to think that we have nurtured a good reputation as a welcoming, knowledgeable and reliable source of inspiration for homes all over the county (and country!).

Regular clients are returning, looking for gifts for loved ones, or looking to build on their earlier purchase for the home - they've been bitten by the 'art-bug' that's for sure! With those repeat customers, we have been delighted to welcome new faces and introduce them to the wide selection of artworks available to us at Trent and perhaps engage them with the prospect of investing in their first ever piece - which is a real pleasure for us.

This year we look forward to a return visit of renowned artist Doug Hyde in March and summer exhibitions in the company of local artist Kris Hardy, Anna Gammans and internationally-recognised Master, Fabian Perez. There are exciting times ahead! The team is buoyed by the prospect of engaging with many more of you and building on the relationships already under way. Trent Galleries thrive on getting to know what makes our clients 'tick' and we aim to continue in this way with personal touches, passion, warmth and a smile!

All the Best for the New Year, and we hope to see you in the Gallery very soon!



## I'VE BEEN THINKING... BY COLIN RAYNOR



*On January 8th a life-long friend of mine will be 81 years old. Thirteen days before, I also joined the octogenarians. I enjoyed the company of many generations of my loving family at my celebrations, but I think my friend will probably pass the day alone.*

Friends since junior school, living a few doors apart, the contrast in our lives could not be greater. I was a moderate scholar but my friend excelled at Grammar school and got a degree in English at Oxford. He eventually became the head librarian at a top university on Tyneside. An only child, his parents died during his early thirties. Due to ill health he retired in his mid-fifties. By this time, he had settled on Tyneside but also kept on the family home in Yorkshire. He has commuted between the two homes over many years. He does not drive, own a mobile phone or PC and I doubt he has any living relatives. He travels all over the country to see his many acquaintances, but I am confident that my dear friend has never had a lasting relationship with another adult.

Our friendship has been maintained through hundreds of letters, regular phone calls and infrequent meetings, as we both have an interest in sport. He has stayed with us at times but never seemed at ease away from his own home. I am sure he is not a wealthy man and he does admit that both houses are in need of extensive repair. Despite this friendship there are areas in life that I know not to touch on but, given our ages, I ventured recently to mention one.

I have often wondered who would let me know if my friend passed away. In a recent letter, I raised this matter and asked if he could provide me the name of a person who would contact me, if such a situation arose. My friend thanked me for my concern, which he "totally understood", and he would endeavour "to comply with my request" (He is a great admirer of Dickens.) I still await a name. Loneliness takes different forms and I do accept this is the way he has chosen to live his life. He was the best man at our wedding and I'm glad to have called him my friend over the years. My sincere wish for him, and everyone, is a happy and healthy New Year.



# SALE

THE SALE BEGINS  
**FRIDAY 28th DECEMBER**  
(through to mid-January)



Trent Galleries - tel: **01482 874621**  
or email: **beverley@trentgalleries.co.uk**  
9 Butcher Row Beverley, HU17 0AA

[www.trentgalleries.co.uk](http://www.trentgalleries.co.uk)



## SHORT STORY BY CLINT WASTLING - RESOLUTIONS



*He didn't sleep again last night because he was thinking about all his New Year's Resolutions; made annually yet seldom sustained. Some were easy to achieve, others required much more thought. Dry January was going well considering it was already the 14th and he'd used his new gym membership once a week. The real problem occupying Stephen's sleepless night was proposing to Gemma.*

At 3am he had an idea, or rather connected two events. For her birthday on 18th January he'd buy her a trip to Bruges. She'd become interested in the city after seeing a darkly comic movie about two hitmen. He remembered the square with lots of horse-drawn carriages and some magnificent medieval buildings.

He set his heart on getting down on one knee in one of those beautiful squares then whisking Gemma off for a carriage ride around the historic centre.

Everything had gone rather well. When Gemma opened the card, there was an eye-popping pause before she flung her arms around him.

"Wow! What a lovely idea!"

And here they were, getting off the bus on a cold morning and following the crowd over Minnewater Bridge. "This is where they filmed the scene with..."

Stephen smiled, to see Gemma so enthusiastic. She kept looking up at the stepped gable ends with Baroque flourishes. They stopped for breakfast at a busy restaurant. Gemma believed busy meant good, on this occasion she was right.

They enjoyed croissants with home-made marmalade and espresso coffee, whilst sitting in front of a wood burning stove. Stephen tapped the box in his pocket anxiously. He squeezed her hand under the table, hoping it wasn't that obvious what he was going to do.

Unfortunately, as they walked towards the Belfry the rain began. By the time they reached Markt, the image Stephen had in his head had literally dissolved into puddles.

The horses snorted, their breath steaming as they stamped the ground impatiently. It was then he remembered the climax of the film. He looked toward the Belfry.

"You up for some exercise?" Stephen asked.

"You bet and I'll beat you." Gemma replied.

"There's 366 steps."

The Belfry was quiet as they began the climb. The sound of the bells striking midday could be heard throughout the building. Stephen let Gemma gain a turn of the spiral stairs as he nervously checked the engagement ring. Through a window he saw a patch of blue sky.

He took a deep breath and carried on climbing. When they opened the door at the top a cold breeze roared towards them. Gemma's hair caught across her face and she pinned it behind her ear.

Stephen put his arm around her and looked down at the market square. The narrow footway didn't give much room. He got down on one knee.

"Gemma would you marry me?" Stephen presented the box and opened it.

Gemma looked stunned, it took a moment to sink in. She pulled Stephen up into her arms. "I'm happy just as we are for now."

Stephen sighed, closed the box, realising the proposal would have to be placed top of 2020's New Year's Resolutions.

**Clint & Friends will be performing poetry and humorous tales at The White Rabbit, Dyer Lane, Beverley on Sunday 20th January from 1-3pm. Clint's book, 'Tyrants Rex', is available from Stairwell Books.**

## AUTHOR SYLVIA BRADY INSPIRED BY ENTIRELY BY EAST YORKSHIRE

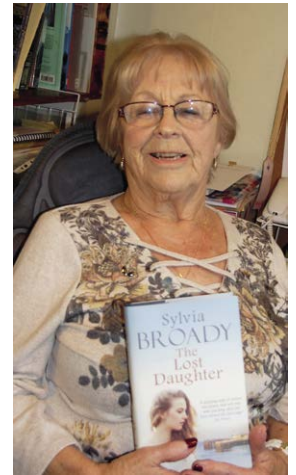
*With two novellas and three novels already published, a drawer full of manuscripts and more story ideas than she can remember writing, it's no wonder Sylvia has been nominated for a Romantic Novelist Award.*

Sylvia has been writing stories for many years. She wrote for True Magazine until it closed, has entered writing competitions and been to many a book fair - but it wasn't until she met her current agent, Kate Nash, and publisher Allison & Busby, that things have started to take off. Her third book, 'The Lost Daughter' was published on November 22nd last year and is getting great reviews. It is inspired by a lady who flew air ambulances during WW2 - but then it also deals with domestic abuse, a lost child and many more intertwined topics.

Sylvia has had a varied career in childcare, the NHS and the library services but now writes full-time. She learnt how to structure a book by trial and error but once she discovered creative writing classes then the stories flowed. She remembers writing on a Remington typewriter which had an 'i' missing and writing a book about the fishing industry called 'Beyond the Tide' on an old Amstrad on the kitchen table - unfortunately the publisher she sent it to, turned it down. Her first published book was entitled 'The Yearning Heart' but it was her second published book, a contemporary novel called 'The House by the Mere' which brought about her nomination for Romantic Novelist, which, although she didn't win, saw her travelling down to the Savoy for a lunch with her fellow nominees!

Although Sylvia is now a member of the Society of Authors, which is only open to published writers, she is still to be found at the Royal Standard in Beverley on the last Tuesday of the month at the Beverley Chapter of the Romantic Novelists Association. She's also working on her next book, which is about the fishing industry in the 1930's set in, where else but Hull!

'The Lost Daughter' by Sylvia Broady is available in hard-back and on Kindle from the publisher and Amazon. She also occasionally posts on her blog <http://sylviabroady.blogspot.com/>



## POEM - PLOUGHING THE WOLDS BY COLIN SPEAKMAN



*England's gentle, understated hills of chalk  
- emptied acres of green, ochre, straw-gold,  
under chatter of rooks, descent of lark;  
horizons defined by curve of tree-capped wold.*

*Between each ridge a narrow dale hides.  
Neither spring nor stream flow along its dry  
razored floor yet the lush grass on its steep sides  
is pierced with blood-scarlet poppy, scabious blue as sky.*

*Across the long field above, a steady groan  
as Jim Foster's tractor moves slowly to and fro.  
He works alone with practised precision,  
to make each perfect corduroy furrow so.*

*Is Jim the last of those whose ghosts still follow  
their unseen horse to reap, plough and sow?*

**Colin Speakman is a writer, poet, walker and environmentalist who lives in the Yorkshire Dales. His recent book with his wife Fleur 'The Yorkshire Wolds - a Journey of Discovery' celebrates the unique landscape of the Wolds.**

**He is giving a talk to Beverley Civic Society on the book on the evening of Thursday 10th January.**





Send your photographs of your celeb  
Find us on Twitter and Facebook to s

# PARKWAY PANTOMIME



# BEVERLEY FESTIVAL OF CHRISTMAS



HERE TO GET *you* THERE

# HUNTERS®

EXCLUSIVE

BEVERLEY / 01482 861411



# NEW YEAR'S DAY FUN RUN



SALES / LETTINGS / MANAGEMENT

# HUNTERS®

HERE TO GET *you* THERE

BEVERLEY / 01482 861411



# PUZZLE PAGE

## WORDSEARCH

X Q J F A L G H S M V D B R F  
 A O R T R F L S E H U U N Z C  
 B C C E J I E T R M C M M U V  
 R H T I S N E G O K V D D X V  
 Y A A M T O U N E F O N T D J  
 R L S I P D L T D H L A F L Z  
 A L F E N R L U K S G P D D V  
 U E A V I I Z K T A M J L R M  
 N N M Q S T A E S I C R E X E  
 A G I T A M R W T V O I S M B  
 J E L O L E K A L I X N F D E  
 C S Y W W D Z C P U W N S R V  
 H E A L T H Y T G M R P R P K  
 J S U Z G M I D C J Q N X D X  
 F R Q F E M L J G V X W I D L

BUCKETLIST  
 CHALLENGES  
 EXERCISE  
 FAMILY  
 FITNESS

FRIENDS  
 HEALTHY  
 JANUARY  
 PARTIES

## WHERE IN BEVERLEY?

Where in Beverley would you find these landmarks?  
 Answers on Page 30.



## THOUGHTS FOR 2019

Small Change  
 Big Impact -  
 Healthy =  
 wealthy and wise

Health is priority  
 Number One

## SMALL CHANGES BIG IMPACT

**EAT HEALTHY -**  
 Broccoli is great for you

**BRISK WALK -**  
 Get some fresh air

**FAMILY TIME -**  
 Phone down time

**COUNT TO 10 -**  
 rather than argue

**SMILE -**  
 Say Hello - it will make  
 someone's day

Do you have any amusing stories,  
 quotes or pictures? Send them to  
[info@justbeverley.co.uk](mailto:info@justbeverley.co.uk)

## START THE NEW YEAR WITH A NEW KITCHEN

Est. 1999

From the UK's #1  
 Kitchen makeover experts.  
 Visit our showroom now

### Before



- FROM SIMPLE DOOR REPLACEMENTS TO COMPLETE FITTED KITCHENS
- FULLY INSTALLED BY LOCAL PROFESSIONALS IN JUST A FEW DAYS
- CHOOSE FROM A LARGE SELECTION OF DOORS, WORKTOPS AND APPLIANCES
- UP TO 50% LESS THAN A FULLY FITTED KITCHEN

**20% DISCOUNT**  
 Terms And  
 Conditions Apply

**FAMILY RUN BUSINESS**

Proud members of  
**9.7/10 Checkatrade.com**  
 Where reputation matters

See what our customers have to say

CALL US NOW FOR A FREE ESTIMATE:

**01482 861653**



VISIT OUR SHOWROOM:  
 4A Belprin Park, Swinemoor Lane,  
 Beverley, HU17 0LN

**DREAM DOORS®**  
 NEW LIFE FOR OLD KITCHENS

[www.dreamdoors.co.uk](http://www.dreamdoors.co.uk)



# SALT REVIVE CUSTOMER TESTIMONIALS

Salt Revive has now been open for a couple of months and is starting to see its regular customers. Some of them wanted to share their testimonials about just how much salt therapy has helped them, in so many different ways.

## Malcolm

After now having had a few sessions, I can say that salt therapy has completely improved my lungs and helped immensely with my jogging. I hope to do the Beverley 10k this year and improve on my time 5 years ago and believe Salt Revive can help me achieve this!



## Shelley

Having suffered with lung infections all my life, I was still recovering from a virus 6 weeks after it had started. I thought I'd give Salt Revive a go, as the first treatment is half price, I figured I didn't have much to lose, and I am so pleased that I did. Clare and her colleagues could not be more welcoming and informative, and the premises are exceptionally well decorated and clean. The treatment room itself is incredibly relaxing, with comfy chairs, blankets and candles along the wall, you feel right at home, apart from the fact you're sat on a beach of salt! The deep breathing they recommend you do not only helps the salt to be taken into your lungs, but also relaxes you, and I've ended up falling asleep at some point during every visit, which for someone who is a bit of an insomniac, is pretty amazing in itself. It has made such a positive difference to me, and I cannot recommend Salt Revive enough!



## Kim

I would like to recommend the Salt Revive spa. I found this so beneficial for my asthma and COPD. It cleared my air ways, enabling me to be more active. It is so relaxing and I felt energised after. I have taken my friends to try this and they have booked more sessions.



The Ethical Fostering Service  
"Partnerships for Children"

### OUR CORE SET OF VALUES:

- ✓ PUTTING CHILDREN FIRST
- ✓ WORKING IN PARTNERSHIP WITH FOSTER CARERS, CHILDREN & THEIR FAMILY, ALL AGENCIES AND OUR STAFF
- ✓ OFFERING LIFE OPPORTUNITIES TO OTHERS



## BECOME A FOSTER CARER TODAY

[WWW.ETHICALFOSTERINGSERVICE.CO.UK](http://WWW.ETHICALFOSTERINGSERVICE.CO.UK)

Would you like to offer life opportunities to children?  
Could you keep a child safe and secure?

Do you think brothers and sisters should remain together?

Fostering is an amazing and rewarding journey that puts children first.  
Could you work with us to maximise a child's life chances?

We are a small, socially responsible fostering agency that is looking to recruit applicants and experienced foster carers and we would love to hear from you.

Please call Marilyn on **07501 234611**,  
or Norma **07378 321249**, or Monica **07511 610243**.  
[www.ethicalfostering.com](http://www.ethicalfostering.com)  
[enquiries@ethicalfostering.co.uk](mailto:enquiries@ethicalfostering.co.uk)  
[www.facebook.com/theethicalfostering.com](https://www.facebook.com/theethicalfostering.com)

**WONDERING HOW TO SPEND YOUR CHILDREN'S CHRISTMAS MONEY WISELY?**

*Try our new classes*

*Must be booked in advance*

*New Year - Small changes, big impact*

**\*OVER 6 MONTHS**

**FREE\* BABY SIGNING CLASSES!**

**STARTS FRIDAY 11TH JAN 14:00 - 14:30**

\*PAY FOR A STANDARD CHILDREN'S SALT THERAPY SESSION AND GET A FREE BABY SIGNING CLASS. SAVE EVEN MORE IF YOU BUY A BLOCK OF 5 SESSIONS UPFRONT!

**SPECIAL JANUARY OFFER, BUY ONE COURSE AND GET ONE FREE!**

**FREE\* LITTLE ROCK STAR MUSIC CLASSES!**

**STARTS SUNDAY (DADS ONLY) 6TH JAN - 15:00 - 15:30**

**THURS CLASS STARTS 10TH JAN - 09:30-10:00**

\*PAY FOR A STANDARD CHILDREN'S SALT THERAPY SESSION AND GET A FREE LITTLE ROCK STAR CLASS. SAVE EVEN MORE IF YOU BUY A BLOCK OF 5 SESSIONS UPFRONT!



# YOUR FINANCES WITH GARETH BOTTERILL - DON'T MISS THE TAX RETURN DEADLINE

*It's that time of year again when the deadline for submitting your self-assessment tax return approaches quickly. The deadline of 31 January 2019 is for the submission of tax returns for the year ended 5 April 2018; failure to submit yours on time will leave you with a £100 fine. Further fines are levied if your tax return is then not submitted for a further three months.*

It's important to note that if you are sent a request to submit a tax return by HM Revenue & Customs, you must submit a tax return even if you are no longer self-employed or don't believe you should need to submit one! In some circumstances you may not have received a request from HMRC to submit a tax return, but you may still have a responsibility to submit one. For example, if you have untaxed income such as rental income, bank interest or capital gains or you may be in receipt of child benefit and if your income is in excess of £50,000 you may have a tax liability. If you intend to submit your tax return yourself, then you should register online now, as it's now too late to submit the tax return on paper. Registering for the online services is straight forward, just go to [www.gov.uk](http://www.gov.uk) and await the activation code that will be sent through the post. For this reason, it is important that you don't wait until January as you then may not receive your activation code on time. Not registering on time is not a valid excuse for missing the deadline. It has also been known for the HMRC website to crash under pressure of the number of last-minute submissions.

If you use an accountant or tax adviser to submit your tax return on your behalf, you should already have passed the information to them; if not then get on with this as soon as possible to ensure that they have enough time to complete the tax return for you. Once your tax liability is calculated then you should pay your tax by 31 January 2019, failure to do this could cost you more in interest and penalties. If you can't pay your tax on time, you should make arrangements with HMRC for time to pay. If you do this and stick to the terms then you won't incur penalties on your late payment. The penalties for late payment are 5% of the tax due, if the tax isn't paid after 30 days. There is another 5% if not paid by 6 months after the due date and a further 5% after 12 months. Making arrangements for time to pay can therefore, save you significant penalties. If you are in a partnership with others then you must submit a partnership tax return by 31 January and if this is late, each partner will receive a £100 penalty. If you would like to discuss this in more detail, then please contact Gareth Botterill on **01482 862240** or email [gareth@botterillco.co.uk](mailto:gareth@botterillco.co.uk)



## Botterill & Co Chartered Certified Accountants

We are a modern and professional accountancy practice ideally located to serve businesses in Beverley and the surrounding area.

We utilise modern accounting technology to provide you with a cost effective, professional service.

### Our services:

- Annual Accounts
- Tax Planning
- Management Accounts
- Tax Returns
- Company Formations
- Payroll
- Cloud Accounting
- Bookkeeping & VAT

For a free initial consultation please contact us:

Office: **01482 862240**

Mobile: **07966 051458**

Email: [gareth@botterillco.co.uk](mailto:gareth@botterillco.co.uk)

Website: [www.botterillco.co.uk](http://www.botterillco.co.uk)

**1st Floor Offices, 40 Norwood, Beverley, HU17 9EY**



Print that gets you noticed







**BROCHURES LEAFLETS BUSINESS CARDS POSTERS  
CALENDARS POP UP BANNERS INVITES PADS**

**Tel: 01482 610902**  
**info@jadan-press.co.uk [www.jadan-press.co.uk](http://www.jadan-press.co.uk)**  
**Rainbow House, Kimberley Street, Hull, HU3 1HH**













Telephone: 01482 869111  
sales@rosesofbeverley.karoo.co.uk



The Kitchen Factory, The Courtyard,  
Tokenspire Business Park, Beverley  
HU17 0TB

*Together we will design a beautiful kitchen*



Roses will then  
**project manage**  
your kitchen installation from  
**start to completion**

Visit [www.roseskitchens.com](http://www.roseskitchens.com)

to see our customers kitchens and read what they have to say about us

**Telephone: 01482 869111**

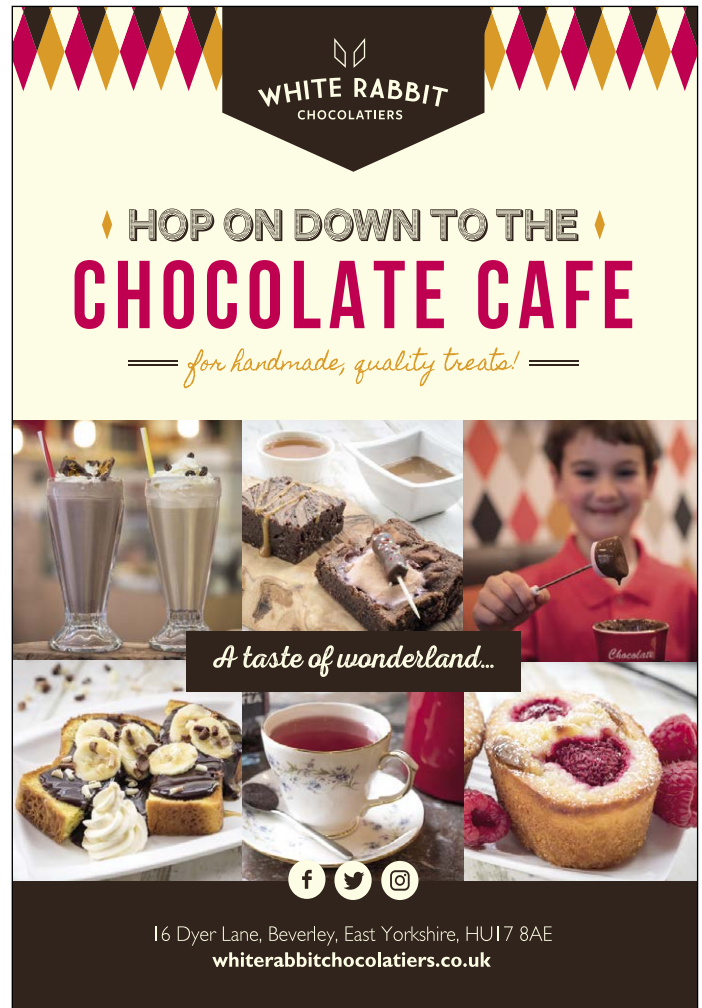


## CONTROL YOUR OWN ENERGY USE AND SAVE MONEY - BUT HURRY!

**Small-scale renewable generators such as solar panels along with battery storage can help you reduce your electricity bills. But if you want to be able to access the Government's current scheme for Feed-in-Tariffs for new Solar PV installations, you need to move quickly as it ends on March 31st.**

Current owners of solar panels, which generate electricity, are able to access what is known as a 'Feed-in-Tariff' which is a payment from the Government, not only for generating electricity but also for feeding unused energy into the grid. The Feed-in-Tariff rates have reduced over the last few years as the cost of a solar installation has reduced. 6 years ago, an array of 16 solar panels with the ability to generate up to 4.0 kW of electricity, could cost up to £1500; the feed-in-Tariff payment was calculated to ensure the panels paid for themselves within 5 years, with a return on investment of around 15%. Today, a similar array could cost 75% less, so the FIT has reduced accordingly. However, that means solar panels have never been cheaper and are therefore accessible to more people but as the return is still 15%, and energy costs are increasing between 5-10% annually, it makes them a wise investment. It is the FIT scheme which ends on March 31st. Anyone with solar fitted before then will still get their payments. If insufficient energy is generated from solar, additional energy can be pulled from the grid, whilst excess electricity can be fed into the grid. Once solar panels have been paid for, electricity generated in this way is essentially free, with the FIT a cash bonus. If you are thinking of investing in solar, it is worthwhile moving quickly!

To improve energy management, battery storage is becoming increasingly affordable. Instead of automatically sending excess energy to the grid, it can be stored and used when the panels are not generating power - at night, for example. To top up the battery during the winter months, when there are fewer day-light hours, power can be drawn from the grid at a cheaper tariff (such as Economy 7) and stored for use during the hours of darkness or when the tariff prices are higher. Tesla's PowerwallTM can store 13.5kWh and as 9 can be connected in sequence, 121.5kWh of power can be stored. East Riding Energy is committed to helping you manage your electricity costs. Do give them a call on **01482 210089** or email [info@eastridingenergy.com](mailto:info@eastridingenergy.com) to see how solar PV, battery storage or EV charging can help you save money. Visit [www.eastridingenergy.com](http://www.eastridingenergy.com) for more information.



**WHITE RABBIT**  
CHOCOLATIERS

♦ HOP ON DOWN TO THE ♦  
**CHOCOLATE CAFE**

— for handmade, quality treats! —

*A taste of wonderland...*

16 Dyer Lane, Beverley, East Yorkshire, HU17 8AE  
[whiterabbitchocolatiers.co.uk](http://whiterabbitchocolatiers.co.uk)



**EAST RIDING ENERGY**  
Harnessing Nature's Power™

TESLA  
POWERWALL  
CERTIFIED INSTALLER

ROLEC  
EV

**It's still not too late for you to benefit from solar PV, we have some great battery storage, EV charging and energy saving solutions**

**Stop wasting your ENERGY and call us today on 01482 210089**

APPROVED INSTALLER

MCS NICEIC RECC  
RENEWABLE ENERGY CONSUMER CODE

East Riding Energy Ltd, 2 Pollard Garth, Skidby HU16 5GA  
Email: [info@eastridingenergy.com](mailto:info@eastridingenergy.com)  
Web: [www.eastridingenergy.com](http://www.eastridingenergy.com)  
Tel: 01482 210089



# CLASSIC CARS WITH CARFAN - THE FIAT 500

The subject of this month's edition should be very familiar with most readers, especially people of Italian origin, as it's the Fiat 500, known as the Cinquecento in its home country of Italy. Whilst producing famous marques such as Ferrari, Lamborghini and Maserati, amongst others, this cute little Fiat has a place in many Italians' hearts! It isn't hard to see why it is so popular after even a short drive: the car is nippy around town, easy to drive, simple to park and cheap to run.

The Cinquecento was originally produced between 1957 and 1975 in a variety of guises that included a panel van and a semi-convertible. Almost four million were manufactured. They were built reasonably well as a trip to Italy will show many examples brightening up a city street.



This particular model is a 500L produced in 1970. It is part of an eclectic collection and is a recent acquisition, having been in the current owner's possession for only six months. It was bought because it was thought to be "cute" and has so far proved to be very reliable. It has been totally restored with a new petrol tank and carburetor. The unusual Italian flag painted on the rear is not a factory option, perhaps unsurprisingly, but was painted on by a previous owner.

Such is the affection for this car that it has its an Owner's Club. Parts are relatively easy to obtain and are generally not too expensive. A quick perusal of the classifieds will show a lot of them for sale, with most falling between about £6000 and a surprising £19,000 for very good examples. There is an exception to every rule though and a concours example from 1958 is currently for sale at an astonishing £37,000! So, don't forget - if you see this dinky little motor tootling past, make sure you give that cheery Carfan wave!

# PRACTICAL MOTORING WITH RICH HAYES TIPS FOR LOOKING AFTER YOUR CAR IN THE COLD

We're all guilty of taking our cars for granted, and it's easy to forget that when the cold wintry months eventually roll around, your car can struggle to cope. Here's some tips for happy motoring over the winter months.



## PARK WISELY

Avoid the risk your car might not start in the morning by choosing where to park wisely. It's always best to park under cover where it's dry and warm, like under a carport or in a garage, if possible. If you don't have either of these then parking in the lee of your house is a good idea, or beside a tall hedge. Both will help to protect your car from the weather, and you'll spend less time ice-scraping in the morning before you set off as a result.

## KEEP IT CLEAN

When driving conditions are wet and cold, lots of people think there's little point keeping the outside of their car clean; after all, it's only going to be filthy after a trip on the motorway anyway, right? Wrong! Keeping your car clear of wintry muck will help you to avoid corrosion and rust. If you don't fancy digging the bucket and sponge out yourself, take it to a hand carwash - there's plenty to choose from in Beverley.

## CLEAR OUT THE INTERIOR

With journeys taking a little longer in wintry conditions, it's best to make sure your car is as comfortable as possible. That means regularly clearing out litter, and wiping down the windows and door sills, along with keeping the dashboard clean. Again, if you don't fancy doing it yourself, lots of the car washes offer a reasonably priced valeting service to save you the job.

## PACK AN EMERGENCY KIT

Anyone who's ever broken down in winter will agree that the wait for that tow truck can feel like forever, so make sure you have some essentials in your vehicle in case you do break down. If you do break down or get stranded in traffic you'll thank yourself for packing the likes of a blanket, a big bottle of water, some emergency snacks, a first aid kit and book.

## CLAIM YOUR FREE WINTER VEHICLE CHECK

Here at Beverley Motor Works we understand the importance of keeping your car in top working order all year round, which is why every year we offer free vehicle checks for both new and existing customers. There's no catch - simply book online or call **01482 429350** - and our team will carry out a thorough check of your vehicle and advise of anything you need to address. And remember, drive safely this winter!

**HOME COOKED  
FOOD SERVED  
7 DAYS A WEEK**

**AFTERNOON  
TEA MENU**  
£12.95 PER HEAD OR  
£24 FOR TWO PEOPLE  
AVAILABLE MON-SAT 12-5PM,  
PRE-BOOKING IS REQUIRED AND  
GLUTEN FREE OPTIONS ARE AVAILABLE

**TRY OUR  
LEGENDARY  
SUNDAY LUNCH!**

**THE TIGER INN**

Brains  
Required  
from  
8.30pm

**FIRST SATURDAY  
OF THE MONTH**

**Big Quiz**

Free food/prizes to be won,  
all money raised to our house charities.  
£1 per person entry

**HOMECOOKED  
Sunday  
Lunches**

Served every Sunday  
12noon-7pm

**THE TIGER INN**

Tel: 01482 869040 | [www.tigerinnbeverley.co.uk](http://www.tigerinnbeverley.co.uk)  
Lairgate, Beverley HU17 8JG

BEVERLEY
**MOTOR  
WORKS**
INDEPENDENT  
BMW & MINI  
SPECIALISTS

**Our dealership expertise  
means high quality car  
servicing at a fair price...**

Unit D1 Grovehill Industrial Estate,  
Annie Reed Road, Beverley HU17 0LF

**Call today: 01482 881 128**  
**Visit: [beverleymotorworks.co.uk](http://beverleymotorworks.co.uk)**

**SPECIAL  
OFFER**

**MOT  
COUPON**

**MOT YOUR CAR  
FOR ONLY  
£29.99**



## GO FOR A SPIN AT ANYTIME FITNESS WITH OLIVER JOHNSTON

Whatever you call it, studio cycling or 'spinning' is an excellent way to have fun getting fit, working hard and torching calories in a short, but intense, workout. Upwards of 500 calories per class is standard.



Classes are usually 45 minutes long and follow a varied programme of cycling techniques, such as sprinting, climbing (in and out of the saddle) and time-trialing. It is sure to test you - you work at your level. Being indoors, the classes take place whatever the weather and are totally safe; there's no traffic! Great, uplifting tunes and motivational instruction are guaranteed; you may even find that if you sing along, you do not notice how hard you are working.

The studio at Anytime Fitness provides a perfect environment for an exclusive, professional and focused class. New, modern bikes coupled with a great sound system and air-conditioning ensure you can push yourself to get the most from your workout. The classes are at 10am on Thursdays and 7pm on Fridays. These are private classes, led by Oliver, so you do not need to be a member to participate. The cost is £5 per class, if you join the series. Here's some comments about the classes:

*"Explosive-fast, fun and challenging... 45 minutes of professional instruction."*

*"The 45 minutes fly by... Whoever hasn't tried Oliver's spinning class yet you must give it a go and I'm sure you will become addicted to it."*

*"I thoroughly enjoy Olly's spin classes, he's one of the best if not the best instructor I've had. The class is highly energised, challenging but most of all it's fun and that's because Olly puts so much time and effort into his programmes, with great music choice which is highly motivating."*

*"Very approachable and a true professional, Oliver is a highly competent instructor. I would recommend his classes to anyone who needs some positive energy in their life. If you get yourself there, Oliver will get you through!"*



**SHOCKINGLY GOOD VALUE**

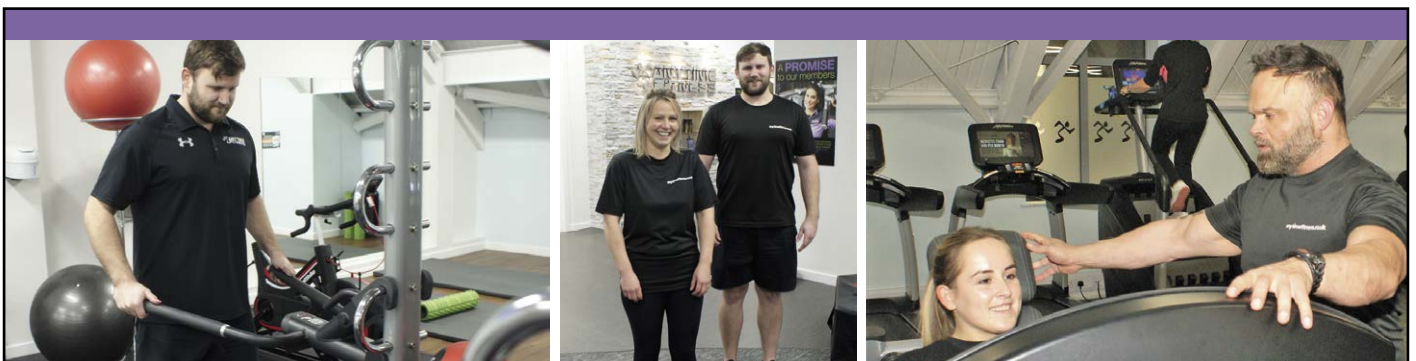
# £49 PER MONTH WEBSITES

**PAY JUST £499 DEPOSIT**  
**THEN JUST £49 PER MONTH**  
**FOR A MINIMUM TERM OF 12 MONTHS**  
**AND THEN PAY MONTH-BY-MONTH THEREAFTER**

**FOR A WEBSITE THAT GETS REAL RESULTS...**

CALL NOW ON:  
 01482 428650  
 marketing@indicoll.com  
 indicoll.com

**INDICOLL**

## Free Trial Session



**January's offer: first month free and receive 15% discount on your monthly DD payment**

**To take advantage of this offer just give us a call on 01482 247100**

**Flemingate Centre, Flemingate HU17 0NQ**







WISHING YOU  
A HEALTHY  
2019

## WILSONS WHEELS

T: 01482 882881

W: [www.wilsonswheels.co.uk](http://www.wilsonswheels.co.uk) E: [info@wilsonswheels.co.uk](mailto:info@wilsonswheels.co.uk)

### WE NOW STOCK CUBE CYCLES

2019 RANGE NOW AVAILABLE



Be SEEN  
and be SAFE,  
stay BRIGHT  
and on the  
right track

#### DISCOUNTS ON:

- Adult Bikes
- Children's Bikes
- Clothing for all cycling weather
- Parts and accessories

89a Grovehill Road, Beverley, East Yorkshire HU17 0EJ

OPEN: Monday - Saturday: 9am - 5pm  
Sunday: CLOSED - Out riding our bikes

# CYCLING WITH WILSONS WHEELS

*Tips to keep your bike working in tip-top condition during the winter months.*

When its damp and cold, the roads and cycle paths stay wet, greasy and muddy for longer, so spray gets thrown off your tyres and onto your bike (and you!). There's salt in the spray, too, which can cause rust and corrosion. The Council grit the roads to keep us safe, but we need to ensure that our machines are protected from the salt in it. The best way to do this is to clean all moving parts and then spray lubricant onto. WD40 is not recommended as this can dry out components. Wilsons Wheels use and sell a couple of sprays, TF2 and GT85, that protect and lubricate with a thicker oil for your chain. Try to avoid spraying your brake pads or rims as it will prevent them from working properly.

Mudguards not only help stop spray reaching you, the rider, but also help prevent it from reaching many of your cycle's moving parts, such as the brakes and front derailleur. Mudguards could be a worthy investment for the winter months - but always fit the longer version rather than the clip-on hybrid guards to get maximum effect. They cost twice as much but you will get more than double the benefit.



Should you bring your bike in for a service at Wilsons Wheels, the first thing we do is to give it a good clean. We degrease the components, too, to check for corrosion or other damage. It's amazing how just a small amount of dirt can stop your machine moving smoothly! Do pop into Wilsons Wheels - we just love talking bikes! Wilsons Wheels, 89a Grovehill Road, Beverley HU17 0EJ, **01482 882881** [www.wilsonswheels.co.uk](http://www.wilsonswheels.co.uk)



RODIZIO BAR & GRILL

## FUSING THE TRADITION BEHIND BRAZIL'S UNIQUE gaucho style grilling and rodizio dining

Direct from the southernmost region of the Brazilian high plains comes a centuries-old way of cooking, where the rodizio found its roots around the campfires of the traditional gaucho.



A continual service of large skewers of meat including beef, pork, lamb and chicken were spit-roasted over the famous churrasco barbecues and passed from man to man to enjoy.

At Chamas, we warmly invite you to experience an authentic taste of the gaucho life - the food, the wine and most importantly, **the passion of the people.**

**RATED No. 1**

out of 112 best restaurants in Beverley on



BOOKINGS  
RECOMMENDED

[chamasbeverley.co.uk](http://chamasbeverley.co.uk) | Tel: 01482 867897 | 9-10 WEDNESDAY MARKET, BEVERLEY



# IN THE GARDEN... JANUARY

Welcome to 2019 - I suspect that we will have very few good gardening days in January, therefore the list of essential tasks is limited.

## Gardening tasks for January...

- Continue to protect tender plants against frosts and icy winds.
- Plant new fruit trees, bare-root roses, hedging, trees and shrubs when weather allows.
- Mulch around new plantings.
- Prune fruit trees.
- Start digging over vegetable beds when weather allows - not if the soil is frozen or 'sticky'.
- Clean out your greenhouse, tidy the shed and service the lawn mower.

## Other tasks to do (and help the wildlife in your garden)...

- Keep a small area of ponds ice-free.
- Make sure the birds have food and clean water.
- Clean out bird boxes and maybe add to your collection - even our feathered friends like a clean house to move into and raise a family or take shelter in during periods of inclement weather.
- If you are feeling creative make a 'bug hotel' or 'hedgehog house'.
- Are you going to replace a rickety fence? Then consider replacing it with a hedge - this will provide refuge and shelter for birds.
- Plant flowers and trees that provide nectar/pollen for insects and seeds for birds late into the season. Berried plants and trees are a wonderful source of nutrition for many birds when other food is scarce.

## And finally for you...

Take a look around your garden - does it seem dull at this time of year? There is no need for it to be, many plants provide winter colour or interest, and some even have fragrant flowers.

Hopefully February will see things starting to move in the garden.

*Jx.*

Jane Dale of 'Designed Gardens'.  
Tel: **07983 392 411**.



# COUNTRYSIDE MATTERS WITH SAM WALTON

An interesting report recently on *Country File* about the sugar beet industry was a timely reminder that sugar beet is an integral part of farming in certain areas of the UK. *Wissington factory in the Fens takes in something like 8.5 million tons of sugar beet from September until end of January. That produces something like 1.5 million tons of sugar: try calculating that into teaspoons! I suppose sugar is regarded by the public a bit like the rest of their food - it appears in supermarkets and is always available so perhaps they don't even think of where it comes from. It's a bit like thinking that milk comes in bottles and not from cows as one surprised couple found out many years ago!*



In the mid-sixties, I was involved with a farm that grew sugar beet. Back then it was very labour-intensive. Men had to go with hoes up and down each row. At one time, it was also pulled by hand! The leafy tops were cut off and several beet thrown together into rows to make it easier to pick up with sugar beet forks. The beet were then loaded onto a small low trailer to be taken to a point where it could be tipped up into a larger heap. It was then, once again, loaded by hand into a small lorry when it was time to go to the factory. Then elevators appeared which would take the beet from the heap and deliver into the lorry but the elevator still had to be loaded by hand.



As time went on, hydraulics appeared on tractors and fore-end loaders were all the rage so they would be able to load the elevator, or, if the lorry was not too big, then even load the lorry. Sugar beet is drilled in rows and often two or three seeds would be drilled together, hence the need for hoeing by hand to single the extra plants out. Then a new invention, a specific drill appeared which would only sow one seed at a time which would also space them out at exactly the right intervals. No more singling by hand - but still weeds to be hoed! Then hurrah, band sprays then became available to kill the weeds between the

plants! All we had to do then was to use a tractor-drawn scruffler to cultivate between the rows to keep them clean.

Then harvesters appeared which would actually take the top off the beet but only take one row at a time and deliver the beet into a tractor drawn trailer alongside. Oh, what progress! Now the machinery is colossal, five or six rows at a time elevated into a huge storage tank on the machine itself until a huge trailer is available to take it to where it will be stored before going to the factory. The trailer can run alongside the machine once they have started and cleared space for it to do so. The lorries which take it to the factory are also enormous carrying 30 tons or more.

So, each time you put a spoonful of sugar in your coffee, just think of the amount of work which goes on to provide you with it!

## COMPETITION WINNER

Congratulations to Jane Johnson who won last month's Chamas voucher competition.



**RIBA**   
Chartered Practice

**rd stott**  
Architects Limited



Architects practice putting the client first. From small extensions to a complete new home R D Stott Architects can offer services from initial appraisal to completion.

- |                                     |                          |
|-------------------------------------|--------------------------|
| • Architectural and Design services | 22 Lairgate              |
| • Building surveys                  | Beverley                 |
| • Feasibility studies               | East Riding of Yorkshire |
| • Cost advice                       | HU17 8EP                 |
| • Planning services                 |                          |
| • Building regulation submissions   | T +44 (0)333 772 9707    |
| • Detailed and working drawings     |                          |
| • Tender information,               | E studio@rdstott.co.uk   |
| • On site project management        | W www.rdstott.co.uk      |



IT'S BACK!

THE BIG  
KITCHEN  
DRAW

Free  
MKM apron  
when you book  
a consultation  
with our dedicated  
kitchen  
specialist\*\*\*

WIN A  
SYMPHONY  
OR OMEGA  
KITCHEN\*

WIN\*\*  
1 of 10  
VIP  
experience  
days

\* Up to the value of £2500, cabinets only. All Symphony and Omega kitchens purchased between 03/09/18 and 03/12/18 will automatically be entered into the draw. If the winner has already purchased a Symphony or Omega kitchen between these dates, they will be credited the value up to £2500. Minimum spend £2500. \*\* No purchase necessary. You will be entered into the experience day prize draw if your consultation is between 03/09/18 and 03/12/18. \*\*\* Free gift, while stocks last. For full T&Cs for the above, visit [mkmb.co.uk](http://mkmb.co.uk) or ask in branch.

AEG

Symphony®



OMEGA PLC

natural stone  
surfaces

MKM BEVERLEY  
SWINEMOOR LANE, EAST YORKSHIRE HU17 OJX  
01482 880 088 | [mkmb.co.uk](http://mkmb.co.uk)

f t OPEN Mon-Fri 7:30-5:30 Sat 7:30-noon





# BEES

BURTON ELECTRICAL SOLUTIONS



HIGH QUALITY ELECTRICAL WORK ACROSS EAST YORKSHIRE AND THE HUMBER REGION

- DOMESTIC
- COMMERCIAL
- TESTING
- FAULT DIAGNOSTICS

Whether it's for your home, rental property portfolio or business premises, all electrical installations need to be checked periodically by a qualified electrician. For a quote contact:

Andrew Burton  
01964 552769 • 07585 601730  
www.burtonelectricalsolutions.co.uk  
info@burtonelectricalsolutions.co.uk

# HUBY

## DOMESTIC APPLIANCES

Covering Hull, Beverley, Pockington, Driffield and all the local villages



**BOOK ONLINE**

and **SAVE**  
at  
**hubys.co.uk**

Book in advance and save money. The further you book in advance the more you could save...



For service and repair call: **01482 866660**

# VERB

MENS AND WOMENS FASHION

TO WEAR • TO WANT • TO WISH FOR • TO OWN • TO FASHION



OPENING TIMES:  
MON / SAT 9.30 - 5.30  
SUN 11.00 - 4.00

01482 880141  
VERBFASHION.CO.UK  
INFO@VERBFASHION.CO.UK

FLEMINGATE SHOPPING CENTRE  
FLEMINGATE, BEVERLEY  
EAST YORKSHIRE HU17 0NQ



@VERBFASHION



@VERBFASHION

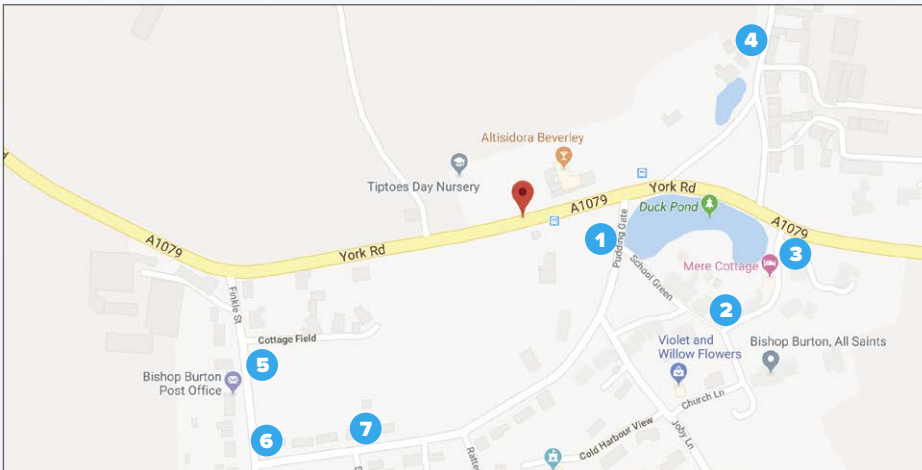


VERBFASHIONBEV

TO FASHION YOUR OWN STYLE



# WALKING WITH IAN RICHARDSON... AROUND BONNY BISHOP BURTON



**Bishop Burton was the first East Yorkshire village I discovered when moving to the area 35 years ago. It struck me then, and still does, as very lovely.**

**So a fine place to start this series of village visits: all close to Beverley, where on gentle strolls we will discover something of the heritage, architecture and modern atmosphere of the many pearls that surround our jewel of a town.**

**It has long associations with the Archbishops of York, who once had a palace here. Farming is still very important, and so a fitting location for the large agricultural college. It is also the perfect place for a post-Christmas walk: to help revive flagging spirits and perhaps reduce the waist line!**



**A picturesque corner of Bishop Burton**

**1** Start on School Green; there is normally ample parking. Or use the excellent bus X47 service, as I did recently. Sadly, the school closed over 30 years ago, often a crushing blow to any village but one which Bishop Burton with its many assets has been well able to parry. The exemplary information board by the pond is often a good place to start exploring our local villages - this one is full of interesting details.

The plaque to the casualties of the Great War is moving; it's hard not to ponder on the losses to the Hudson and Curtis families. Bishop is certainly a place of greens, ponds and benches - you will never be short of somewhere nice to rest! The unity of the buildings here, white paint, rusticated porches, pantiles and dormers is characteristic of former estate villages and very charming.

**2** Go left at the top of the green up Church Hill. The tower of All Saints Church makes for a striking vista, rather French I always feel. The church is normally open to visitors. How my spirits fall when a parish church, the treasure houses of our rural heritage, is inaccessible. Although much of the fabric is nineteenth century, there are many

older fragments and much of interest and beauty inside. The tiled sedilia seat by the altar is striking and don't miss the tiny Norman figure tablet just to the left of the entrance on the nave wall. It is refreshingly ecumenical to see the carved bust of John Wesley in an Anglican church; he preached the Methodist message on the village green in 1769.

As you descend from the churchyard, the views of the red-roofed village surrounded by trees would be well worthy of any artist's brush.



**Church Hill**

**3** Cross the main road with care by the large pond, known as the mere, which the fine WI guide to East Yorkshire villages calls 'its chief glory'. The village pump still stands, a vital part of life until modern times in these dry Wolds settlements.



**Pump by the mere**

The green here is particularly nice, surrounded by fine brick and pantile cottages and full of mature trees. Willow Cottage and The Forge, at the rear of the charming small pond, are exceptionally photogenic. You can walk down North End as far as the College entrance, but sadly no further as the grounds are closed to the public except on special occasions.

The writer Will Self found this out to his cost in a much-reported incident in 2013 when he and his son got into a most unfortunate dispute with college security. You can see how lovely the park of the former hall is, with the outline of the Reins

earth banks to contain deer.

**4** Return to the green. Turn right to pass, if you can resist it, the striking Altisidora (highest gift) pub, named after a nineteenth-century local St. Leger-winning horse. Cross the A1079 and take the signed footpath up and over the mound which is full of medieval remains. If the ground is too wet, you can of course walk around on the pavements. Turn right along Pudding Lane, then Bryan Mere - the street names in the village really are lovely.

**5** Turn right into Finkle Street, where it is fantastic to see the Post Office and village store still open, even sporting tables and chairs for alfresco snacks. It is very sad that most of our local villages have lost their shops and sometimes their pubs over recent years. With the extra trade brought by the students, Bishop Burton has been fortunate to avoid both.



**Red Roofs**

**6** Turn around and head back up Finkle Street to the signed footpath on your left across the undulating field that rises above the village. The earthworks here are particularly intriguing and very pronounced. I confess that my researches have been unable to tell me much on their origins. The views are very striking, red roofs, mature trees, England at its best. The path emerges in the Village Hall car park. As the posters around the village, and a chat with a local resident, confirmed, Bishop is a very 'vibrant' community with all kinds of meetings, shows and societies flourishing! Just after I was there the intriguingly titled show From Judy to Bette was to be held in the hall. The excellent village website: [www.bishopburton.org.uk](http://www.bishopburton.org.uk) - is another indication of what a thriving community this is.

**7** Head back to your starting point on School Green, passing the very handsome classical former chapel. You could do far worse than have a drink and meal at the pub or buy some snacks at the shop. Bishop Burton is indeed a lovely place, fortunate perhaps in its general affluence and to have such a successful college in its midst. I hope you enjoy your visit as much as I always do.



**View towards the Altisidora**

Do you have a favourite village which you enjoy wandering around? Why not let me know! [ricojosh@msn.com](mailto:ricojosh@msn.com)



# WHAT'S ON

## SPONSORED BY: **kü**tchenhaus

2 Toll Gavel, Beverley, HU17 9AJ. T: 01482 862172.

Open: Mon - Sat: 10am-5pm. Sun: 11am-3pm. Bank Holidays: 10am-4pm.

### Until Sunday 6th January

#### • Goodnight Mister Tom by David Wood

East Riding Theatre. £18.50/£17.40/£17/£14.50/£12. 7.30pm and 2.30pm selected matinees. A world-wide classic to bring generations together, inspire and move the whole family.  
www.eastridingtheatre.co.uk

### Saturday 5th January

#### • Epiphany Organ Recital by Robert Poyser: Messiaen: La Nativité du Seigneur

Beverley Minster. 6pm. Followed by refreshments. Supported by the Friends of Beverley Minster.

### Sunday 6th January

#### • Epiphany Procession

Beverley Minster. 5.30pm.

### Sunday 6th January - Saturday 2nd February

#### • Art Installation 'Magi-Wise Men from the East' by Mervyn King

Beverley Minster. Sculpture for the season of Epiphany.

### Monday 7th January

#### • The White Horse Folk Club Singers and Musicians Night

Beverley Conservative Club, Wylies Road. 8.30pm. £2. Performers and audience welcome.

### Thursday 10th January

#### • Beverley Civic Society presents 'Wandering Round the Wolds' with Fleur & Colin Speakman

St Mary's Church Hall. 7.30pm. Join the Civic Society www.beverleycivicsociety.co.uk

#### • Beverley Film Society presents 'In the Fade' (2017)

Parkway Cinema, Flemingate. German, Oscar-nominated, Golden Globe-winning crime/drama. £3/£6.50. Why not join the society at www.beverleyfilmsociety.org.uk

### Saturday 12th January

#### • London Theatre Voices in Topsy Turvey

Toll Gavel United Church. 7.30pm. £15/£13/£5/free. Tickets from Beverley Library or 01262 678258. Opera, musical theatre and Gilbert & Sullivan Operetta.

### Monday 14th January

#### • Norwood Nites Community Cinema

Norwood Church. Doors open 6.30pm for 7pm show. Free. Refreshments available. Raffle. A young Englishman dreams of escaping his dead-end job as an undertaker's assistant. He lies to escape the penalties of his indiscretions and life becomes a mess. But he has the opportunity to run away and leave it all behind.

#### • The White Horse Folk Club presents Jack Rutter

Beverley Conservative Club, Wylies Road.

8.30pm. £8. A young Yorkshire singer and BBC award winning musician.

### Saturday 19th January

#### • The Stephen Frost Improv Allstars

East Riding Theatre. 7.30pm, £15/£14. You shout it out, they act it out! Fast, funny and furious! Tickets 01482 874050.

#### • Swanland Screen presents 'The Guernsey Literary and Potato Peel Pie Society'

Swanland Village Hall. 7.30pm. £4/£2. More details www.swanlandvillagehall.info/forthcoming-events.htm or follow them on Facebook.

### Sunday 20th January

#### • Clint & Friends Poetry and Humorous Tales

White Rabbit Cafe, Dyer Lane, Beverley 1pm-3pm

### Monday 21st January

#### • The White Horse Folk Club Singers and Musicians Night

Beverley Conservative Club, Wylies Road. 8.30pm. £2. Performers and audience welcome.

### Saturday 26th January - Saturday 2nd February

#### • Glory Dazed by Cat Jones starring Sam Edward-Cook

East Riding Theatre. 7.30pm. £15/£14. Examining the plight of ex-servicemen in modern Britain. Suitable for 15+. Tickets www.eastridingtheatre.co.uk

### Sunday 27th January

#### • Sylvia Hood talks about 'Hoody'

St Mary's Parish Centre. 4pm. Hear about Sylvia Hood's son's spiritual journey as he fought against bone cancer and how brave David was in dealing with it. Copies of the book 'Hoody' will be on sale.

### Monday 28th January

#### • The White Horse Folk Club Singers and Musicians Night

Catholic Church Hall, Beverley (next to the Rose and Crown). 8.30pm. £2. Bring your own drinks and glasses. Performers and audience welcome.

#### • St Mary's Thursday Coffee Club Seek New Crafters

If you enjoy crafting and a natter with your coffee, you would be very welcome to join with the small group which meets in St Mary's Parish Hall from 10am-11.15am on Thursdays. All ages and abilities welcome!

### 'WHERE IN BEVERLEY' ANSWERS

- a) Railway Bridge by Flemingate
- b) Beverley Minster

Tell us about your event!

Email: [info@justbeverley.co.uk](mailto:info@justbeverley.co.uk)

Telephone: 01482 679947

For more events visit:  
[justbeverley.co.uk/events](http://justbeverley.co.uk/events)

### Wednesday 13th - Sunday 17th January

#### • Stage4Beverley returns

Beverley's winter music festival brings an eclectic mix of music, stories and humour to its hosts the East Riding Theatre and Monks Walk public house.

Now in its 3rd year, its innovative approach and eclectic programming brings together audiences with a wide range of musical and literary interests.

Those appearing include popular ex-politician and best-selling author, Alan Johnson, who launches the festival; John Hegley, who, early in his career could be seen busking in the streets of Hull; the formidable flamenco jazz guitar virtuoso Eduardo Niebla; Eliza Carthy; Dan Webster; Granny's Attic; Gary Stewart with his 'Graceland' show and the premier of 'Broadside On' which presents a sideways look at the men and women who worked in the Beverley Shipyard in its thriving heyday.

The Late Night Festival Club will again run over the weekend evenings for those with unlimited energy! Tickets are already selling very well, so don't miss out! For more information visit: [www.stage4beverley.com](http://www.stage4beverley.com) or phone 07801 124264 or 01482 874050.

Tickets are on sale at East Riding Theatre or via [www.eastridingtheatre.co.uk](http://www.eastridingtheatre.co.uk) Tel: 01482 874050.

# kü

tchenhaus

The Largest Manufacturer of Quality German Kitchens

At Kutchenhhaus we have affordable solutions made to meet your highest standards

2 Toll Gavel, Beverley, HU17 9AJ. T: 01482 862172.

Open: Mon-Sat: 10am-5pm. Sun: 11am-3pm. Bank Holidays: 10am-4pm.





Directed by Jake Smith (*It's a Wonderful Life & Goodnight Mister Tom*)

Saturday 26 January - Saturday 2 February 2019

# GLORY DAZED

Sam Edward-Cook, an actor in the series *Peaky Blinders*, plays Ray in Cat Jones's *Glory Dazed*. This dark comedy examines the plight of ex-servicemen in modern Britain, focusing on an Afghanistan veteran's attempt to find redemption through reconciliation with his ex-wife.

Set in a backstreet pub in Doncaster, after hours, ex-squaddie Ray, mentally scarred from his time in Afghanistan, knocks on the door. His old friend, Simon, the pub's landlord, feels he has no alternative but to let him in but, in the pub, are Leanne, a teenage barmaid, and Carla, Ray's ex-wife and the mother of his children. The stage is set for off-kilter drama and heart-wrenching recrimination.



Tickets £14-15 Box Office 01482 874050  
[www.eastridingtheatre.co.uk](http://www.eastridingtheatre.co.uk)



10 Lord Roberts Road  
Beverley  
HU17 9BE



New Brochure Out Now

**ert**  
Café  
Bar

Open Tues-Sat 10-4 pm



Follow us on social media



# CLOGAU®

Clogau is a second generation family business based in Wales.

Since 1989, our growing range of jewellery has captured the hearts and imaginations of jewellery lovers from far and wide. Every piece they create contains rare Welsh gold - the Gold of Royalty for over 100 years.

Clogau jewellery is seen as an heirloom with both a personal and cultural meaning and a permanent tie to Wales – something valuable to pass down the generations.



FREE ANGEL WINGS HEART BRACELET  
WORTH £89

When you spend £199 or more  
on Clogau jewellery in-store



GUEST & PHILIPS

23a Flemingate Centre, Chantry Lane, Beverley, HU17 0PW