

just

ISSUE 75

BEVERLEY

IT'S YOUR MAGAZINE

FREE



PREPARING FOR EASTER AND BEYOND MAKING EASTER SPECIAL

NEWS, WHAT'S ON, LIFESTYLE, FEATURES, PUZZLES, PHOTOS & MORE

The National Minimum Wage is Increasing... Are you prepared?



Are you:

- Making the Correct Pension Contributions?
 - Aware of the Minimum Wage Rates?
- On top of the Statutory Sick and Maternity Pay Rates?
 - Making the most of your Payslips?

**Improve business performance
by outsourcing payroll**

To arrange a **FREE** meeting
call us on 0845 308 2288
or visit www.stipendia.org.uk

6/7 WHITE RABBIT CHOCOLATIER



4 ZIPPING ACROSS BEVERLEY



5 FIT4DOGS



16 ST NICHOLAS PRIMARY



19 THE TIGER INN



22 JAMES STEPHENS



27 RIDING FOR DFER



Contributors:

Julian Minshall, Olivia Peace, Rich Manville, Mandy Aitken, Lynne Auton, Carfan, Jane Dale, Jack Dickerty, Ed Hawkes, Rich Hayes, Pauline Kirk, Amanda McConnell, Colin Raynor, Karen Shead, Sam Walton, Clint Wastling and Nathan Wilson.

REMEMBER! If you see examples of anti-social behaviour or other types of low-level crime, do report it to the appropriate authorities. **POLICE - Emergency 999, Non-urgent 101. ANTI-SOCIAL BEHAVIOUR (East Riding of Yorkshire Council) - 01482 393939.**

Magazine available from outlets in Beverley and surrounding areas.



Please pass your Just Beverley on or recycle it responsibly.
Printed by: Jadan Press.

LETTER FROM THE EDITORS



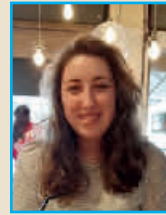
Spring has arrived, the vaccination is doing its job and we can look forward to a lovely summer ahead.

The last 12 months have seen the community pull together, working together to help each other where they can, keep spirits up and look forward to a good time ahead.

Easter is here, and as always the Easter Bunny will be keeping both children and adults happy in supplying the treats for people to find around the garden, but what about other Easter eggs!! We have a few takes on Easter eggs but not the chocolate variety. Can you find the hidden Easter egg in the magazine?

Beverley as usual is trying to think outside the box, so as we move to view Beverley in different ways, I look forward to the unveiling of the zip wire. Will you?

Have a great Easter.
Julian.



Happy Easter readers! I can't believe how time is flying and we're already ready to stuff our faces with all the chocolate goodness Easter has to offer.

Yet again, we have all come to accept that Easter will be different this year, but it is important to remember that different doesn't mean bad. There are still plenty of things we can do to have a good time, so take the focus away from what we can't do and shift it to what we can do to regain a sense of control.

No matter how you spend it, make sure you celebrate Easter in a Covid-friendly style. Now I for one am looking forward to eating lots of chocolate! Have a great April everyone.
Olivia.



GET IN TOUCH WITH US:

Website: justbeverley.co.uk
Email: info@justbeverley.co.uk
Telephone: 01482 679947
Twitter: @JustBeverley
Facebook: facebook.com/justbeverley

If you would like copies for your business to distribute to staff and customers, call Just Beverley on **01482 679947.**

WAGES AND FURLOUGH UPDATE FROM STIPENDIA PAYROLL SOLUTIONS

NATIONAL MINIMUM WAGE

With effect from April 2021 the national minimum wage is increasing to the following:

Aged	Rates
23 and over	£8.91
21 - 22	£8.36
18 - 20	£6.56
Under 18	£4.62
Apprentice*	£4.30

*If under 19 or in the first year of apprenticeship (otherwise refer to age bands)

ENTITLEMENT TO THE NATIONAL MINIMUM WAGE (NMW)

Most workers in the UK over compulsory school leaving age are legally entitled to be paid at least the NMW and all employers have to pay it to you if you are entitled to it. It makes no difference:

- If you are paid weekly or monthly
- If you work full time, part time or any other working pattern
- If you work at your employers own premises or elsewhere
- What size your employer is
- Where you work in the UK

FURLOUGH (CORONAVIRUS JOB RETENTION SCHEME)

The Coronavirus Job Retention Scheme (CJRS)

has been extended until the end of September 2021. The UK Government will continue to pay 80% of employees' usual wages for the hours not worked, up to a cap of £2,500 per month, up to the end of June 2021.

For periods in July, CJRS grants will cover 70% of employees' usual wages for the hours not worked, up to a cap of £2,187.50. In August and September, this will then reduce to 60% of employees' usual wages up to a cap of £1,875. You will need to continue to pay your furloughed employees at least 80% of their usual wages for the hours they do not work during this time, up to a cap of £2,500 per month.

This means, for periods between July and September, you will need to fund the difference between this and the CJRS grants yourself. You can also top up wages above the 80% if you wish, but you are not required to do so. You must continue to pay the associated Employer National Insurance contributions and pension contributions on subsidised furlough pay from your own funds.

CJRS ELIGIBILITY FROM MAY

For periods from 1 May 2021 onwards, you will be able to claim for eligible employees who were employed by you and on your PAYE payroll on 2 March 2021.



This means you must have made a PAYE Real Time Information (RTI) submission to HMRC between 20 March 2020 and 2 March 2021, notifying us of earnings for that employee.

You and your employees do not need to have benefitted from the scheme before to make a claim, as long as you meet the eligibility criteria.

STIPENDIA TEAM MEMBER

We are pleased to announce a new member who has joined Team Stipendia. Tyler Hulbert has worked within payroll for a number of years and specialises in the technical side of payroll.

If you are interested in a free no obligation quote, then please do not hesitate to contact either Ellie, Lynne or Tyler on **0845 308 2288** or email payroll@payrollsolutions.org.uk

ZIPPING ACROSS BEVERLEY

Over the last 12 months, people have appreciated the outside more than normal, and in celebration of coming out of lockdown, working towards continued mind and wellbeing, and pushing the boundaries, we have uncovered a major coup for Beverley.



To connect the Two Churches and embrace the history connecting the old to the new, plans have been revealed to run a short zip wire from the Minster Roof to Flemingate and a longer zip wire across Beverley to Saturday Market, (in the hope to challenge for the fastest zip wire in the world) and to complete the connection a short run from St Mary's to Saturday Market. The landing area will be adjacent to Market Cross, which has historically been a gathering point.

Simon Delaney, Surveyor for the Minster Old Fund, said: "It is great that Beverley is forward thinking whilst maintaining tradition, and I look forward to being the first to zip across Beverley and hopefully set a world record. It's surprising how quickly these zip wires can be erected, and using the Historic Tower of The Minster and St Marys to run wires that

finish adjacent to Market Cross in Saturday Market Place is a great movement forward for everyone concerned".

Jo Bridgeman, Marketing Manager of Flemingate, said: "It is great to be included in this project, the zip wire is a great way to see the old and new sights of Beverley from a new angle and in under 3 minutes". The Two Churches Old Fund are delighted as the money raised from the venture will go straight back into the funds to maintain the Two Churches for many years to come, a win win for everyone. With the final planning due to be complete and in place for the start of April, it looks like the people of Beverley and visitors will be zipping about for some time to come.

The group behind the project and funding the development is "All Projects Relevant Investment Lobby" in conjunction with "Fellows Of Operational Logistics".

ARMSTRONGS CLUB - A NEW LEASE OF LIFE

Beverley Baptist Church have signed the lease on the Armstrong's Sports and Social Club building to use for their Sunday meetings, and plan to make the venue available for community hire during the week.

Minister Phil Palmer said "For the last 20 years our church has met in school halls on Sunday mornings, so we are really excited to be getting a permanent building. Armstrong's Sports and Social Club is a well-known venue for birthday parties and events, and we plan



to continue to make the rooms available for hire. In fact we had already received two enquiries for dance classes before the lease was signed!"

"We have not finalised any plans yet, but we aim to create a facility

which works for us when we meet as a Church, and which is a great resource for the local community to hold meetings and events, it will be redecorated internally and there will be some upgrades to improve access for wheelchairs and buggies, and to provide disabled toilet facilities"

As soon as the building becomes available it is hoped that the Church will be able to start meeting for restricted worship on Sundays (socially distanced, no singing) - and eventually for less restricted services. Hiring the halls will have to wait a little longer until the refurbishments are complete and covid restrictions have been lifted.

Bookings are not yet being taken to hire rooms, but enquiries can be made via the church email address - office@beverleybaptist.com

FIT4DOGS RESPOND TO CALL

East Yorkshire Foodbank (EYFB), whose emergency deliveries have more than doubled since the start of the pandemic, put out an appeal for cat and dog food on social media after growing calls from pet-owners who are struggling to keep their animals fed.

Fit 4 Dogs in Beverley, acted on the appeal and contacted EYFB through Facebook.

They made their premises a drop off point for the food so large donations of dog food could be collected for the charity at one time.

Fit 4 Dogs collected and donated 70kg of dog food, which will help hundreds of dogs across the county, putting minds at rest for those who struggle to feed their dogs.

Throughout the pandemic, it has become increasingly evident how pets have been the

life line for many people to help keep a positive mindset and keep off depression.

The charity took to social media to say: "We are requesting donations of dog food. A dog is family to many, and many will feed their dog before themselves". Fit4dogs responded to the call.

The demand for donated foods for people continues, EYFB said "Any tinned or dried foods are fabulous, we want people to work within their budgets for what they can donate".

In May 2016 EYFB became a registered charity with a new name and a new Beverley base.

The charity provides three days' emergency food and support to local men, women and children in crisis, with its vision being that no one in the county has to go hungry. If you need help from East Yorkshire Foodbank, please call



07842 753 728. To make a donation please visit the foodbank's main collection points:

Tesco Beverley, Tesco Hornsea, Morrisons Beverley, Asda Kingswood and the Promenades Shopping Centre, Bridlington, or alternatively contact East Yorkshire Foodbank on Facebook or Twitter.

MAX IS NOT LETTING THE GRASS GROW UNDER HIS FEET

Max Wallis is the sort of person that likes to get up and go, and lockdown has not prevented him from fulfilling any ambitions.

At 17 years old, he has recently started up his own small gardening business in Beverley.

Not letting the grass grow under his feet, he has set up a business to help people with their gardening duties, which includes the tasks of mowing lawns, trimming hedges, planting beds, weeding and garden tidying.

Max said: "I enjoy gardening and I spend a lot of time looking after my grandparents' garden and now I would like to help more people who struggle to look after their gardens".

As a hard worker who maintains a high standard, Max is keen to get out and assist those people in need of a helping hand, whether it's mowing a lawn or just raking some leaves.

If you find yourself looking for help in the garden to get it looking its best for the summer months, then contact Max who would be delighted to help.

It is not only gardening duties Max can help with, so if you are struggling to take your dog for a walk, Max is on hand to assist.

Contact Max for a price today on **07904 093380** or email: maxwallis59@gmail.com



NEW ENGINEERS JOIN HUBYS

Huby Domestic Appliances Limited are delighted to announce that 3 more engineers will join the business in April after successfully winning further major contracts with leading manufacturers.

The business continues to grow since it was taken over in September 2020 with a total of 5 engineers and 1 additional member of the office team being recruited.

Owner Steve Rooms commented, "The lockdown has been extremely tough for many people and we count ourselves fortunate that we have not had to furlough any of the team during the latest lockdown period.

"At times we have had to ask customers to be patient with us as we have had to self-isolate some of our engineers with another being taken out of our diary altogether due to underlying health concerns.

"Brexit has also proved challenging for us in that it has on occasion delayed spare part orders too. I would like to take this opportunity to thank all of our customers for their understanding during such a strange time for us all."

From Monday 12th April Huby Domestic Appliances will again be able to accept 'walk in' repairs of appliances such as vacuum cleaners and lawn mowers.

For anyone wanting this service please call our main office line on **01482 866660** or email us at service@hubys.com



küchenhaus

The Largest Manufacturer of Quality German Kitchens

At Kutchenhaus we have affordable solutions made to meet your highest standards

2 Toll Gavel, Beverley, HU17 9AJ. T: 01482 862172.

Open: Mon-Sat: 10am-5pm. Sun: 11am-3pm. Bank Holidays: 10am-4pm.



WHAT DOES A CHOCOLATIER DO FOR EASTER AND ONCE ALL THE EGGS HAVE GONE?



Easter is one of the best times to be a chocolatier, especially one called White Rabbit!

Although we take our name from Beverley heritage, the stone carving in St. Mary's Church is said to be the inspiration behind the White Rabbit character in Alice in Wonderland. Rabbits are synonymous with spring, and especially at Easter because of the other famous bunny who delivers all the eggs.

We go all out at this time of year, catering for every taste: from classic Easter eggs to extra special single-origin eggs, Easter bunnies, Easter egg alternatives, and fresh chocolate truffles, all handmade in the heart of Beverley. So, how do we decide what to do at Easter, and what does a chocolatier do once all the eggs have gone?

At Easter Time, the egg is by far the most important product, with the vast majority of families picking an egg as their customary treat. There is a deep and historical tradition behind the Easter egg as mentioned in my last 'Ask the Expert', so we have to think very carefully about our product range to make sure there is an egg to cater to every preference.



People come to an artisan chocolaterie for something special, made with great chocolate, and a bit different from the mass market generics; in other words, the quality of the product is a given.

For 2021, the greatest challenge has been preparing for an online Easter. Chocolate is one of the most fragile materials to craft with, even more so than glass, and one fracture can ruin the entire appeal of the product (and the price you are paying!)

Chocolate eggs are always hollow because otherwise you can't get your teeth into them, leaving them vulnerable in transit, and, because we are whimsical creatives, we always like to put extra treats inside our eggs, which means as much as you pad and protect this delicate morsel it can still be smashed from the inside.

So this year we have had to come up with a way of delivering our eggs in a socially distance world, selling online instead of in-store, opening us up to a new host of issues. We are now all geared up to send our chocolate far and wide! It was quite a project. The challenge was to create a box and method of packing that keeps our Easter eggs safe but still allows us to bundle them with other



treats for that authentic White Rabbit experience. The box has to fit everything, but still look purposeful, even if it's with just a small bag of buttons or a big box of chocolates. The design had to allow for different product combinations without getting lots of different boxes produced, and it also had to fit snugly in our existing ecommerce packaging so we weren't over-buying on materials just to send our products out.

We have come out with this beautifully simple idea of the Easter Egg Box, each one coming with a milk, white or dark chocolate, 230g extra thick gold-foiled egg plus your choice of extra treat. The whole box is a feast for the eyes and an absolute joy to open and unpack! With pleasure, I would like to give you a run-down of our best-sellers, most creative products and personal favourites!

Most Creative - Kathleen Bates.

Kathy's favourite product this year is her Easter Smash Cake.



Smash Cakes are very on trend and I love them because they are all about the whole experience, not just eating... although that is the best bit! It's fun, colourful, and a little bit of everything which is what makes it so great.

Kathy fused our already popular smash cakes with an Easter theme to create a hollow chocolate egg, nestled in chocolate cornflakes (made with our masterblend of chocolate), which you smash into to reveal crispy mini-eggs, chocolate rabbits and other treats inside!

This is only available for collection and local delivery, meaning only you Beverlonians are privileged enough for this product this year.

Personal Favourite - Amy Fenner.

Amy's favourite product this year is our Artisan

Egg. A hand-tempered chocolate egg made from specially selected chocolates; one, a 72% Peruvian dark chocolate from British bean-to-chocolate producer J-Cocoa, and the other an incredibly popular caramelised white "Amber" chocolate which is cocoa-trace certified and ethically sourced.

I love this so much because it's rare to see chocolate with such provenance, hand-tempered into an Easter egg.

The shine on the chocolate looks great with the curve of the egg and you know it's special.

Best-Seller.

I have grown up with White Rabbit Easters most of my life. I have been helping to design our Easter ranges since 2014 and seen how our products have evolved through the years.

One of the things I have started to look forward to every year is Amy's Easter chocolate truffles, so much so I have entered them into the Great Taste Awards this year. I love an egg, but we freshly make our truffles every day up to Easter and you just can't beat that.

Amy uses Mum's old recipe to make a Hot Cross Bun chocolate, and an Easter Pashka Truffle; Easter Pashka is a traditional Russian Easter dessert, a bit like an almond cheesecake. It has this unusual yet familiar sweet and creamy flavour that I think is just perfect for this time of year, I can see why it's such a popular tradition!

We have had a specially designed sleeve made for our Limited Edition Truffle Boxes, and it is these finishing touches that are really resonating with our customers at the moment, making everything beautiful as well as delicious.

By the time this article is published we will almost be done with Easter. But what will we do once all the eggs have gone? Beyond Easter and lockdown, we are looking forward to welcoming people back into our shop and cafes. It has been different looking after people from a distance, so it's going to be great to concentrate on hospitality and the dine-in experience again.

Traditionally, I'd say a chocolatier can have a holiday after Easter. It's really hard to sell chocolate once people have indulged and many still have store cupboards full of confectionery.

But this year, with the ways timings have worked out I'm guessing we are going to be kept busy as people can finally go outside and meet up with friends, and we can't wait to be here for them.

Ed Hawkes, White Rabbit Chocolatiers.



HOP ON DOWN TO

WHITE RABBIT

— for handmade, quality treats —

A taste of wonderland...

16 Dyer Lane, Beverley, East Yorkshire, HU17 8AE

Tel: 01482 679325

Order online: www.whiterabbitchocolatiers.co.uk

I'VE BEEN THINKING... SAYS COLIN RAYNOR

If you are expecting more words about either the Royals or the virus you have come to the wrong place. However, if you are wanting something to smile about, I will do my best to meet your needs as I've got other 'fish to fry' as the saying goes.

This leads me on to say I heard a phrase the other day that pulled me up sharp because I cannot remember when I last heard anyone use these words: 'it's muck or nettles time', and I do wonder how many of our readers have ever heard them.

When would you be inclined to use the words? In what situation and why? What do the words mean?

Any writer will tell you that words fascinate them and particularly, as in this case, when the words themselves are not to be taken literally and are meant only to be thought of only in a figurative sense.

My dictionary informs me that this type of phraseology is known as an idiom, but back to the words which are most interesting.

They mean 'be decisive', to 'get off the fence', 'do not prevaricate any more', 'whatever you do it may hurt but you have to do it now, so do it!', or 'whatever it is that you have been putting off, do it now!'

Everyone will have their own circumstances in which they have not been willing to 'grasp the nettle', but no more.

April is the month to get up and go. My youngest daughter is 50 on April 1st (bless her), and she has a long list of things she is determined to do.

So my second point in this merry month of April is to remind you that unless you have completed a certain form, which the law of the land requires you so to do, you could be paying a hefty fine to the government.

Sunday March 21st was the day of the National Census and although it states you can do it as soon as possible after that date, I would not take that chance.

Apply the wisdom of the previously mentioned idiom and send it in now. All adult residents of the United Kingdom, apart from Scotland who are not doing theirs until 2022, are required, by law, to complete the census.

We have had a census since 1801 but the 1840 census is considered the official modern one and is usually done about every ten years.

There is a lot of information available about



how the need for a National Census arose and how the vast amount of detail the National Statistics Board are given by us is used for the benefit of present and future populations.

Over the years the information required has changed many times, and this census, which is the 221st, is no different. But of course the person who really began the census was William the Conqueror with his Doomsday Book.

I imagine if you did not do as he told you, you would have suffered far more than a fine. I think he would have known about 'muck and nettles'.



Litho and Digital Print
that gets you noticed

BROCHURES LEAFLETS
POSTERS CALENDARS PADS
LARGE FORMAT PRINTING
STATIONERY MAGAZINES
SAFETY SIGNAGE BANNERS
VARIABLE DATA/MAILING
and much much more



Jadan Press are a leading family run commercial and trade printer based in Hull. With over 20 years experience, we are renowned for producing exceptionally high quality print and finishing. We are committed to providing an excellent service by offering value for money and ensuring complete customer satisfaction.

01482 610902

info@jadan-press.co.uk

www.jadan-press.co.uk

Rainbow House, Kimberley Street, Hull, HU3 1HH











Your Local Funeral Professionals

*Serving families in and around Beverley
for many years*

FRANK STEPHENSON & SON FUNERAL DIRECTORS

29 Minster Moorgate | HU17 8HP | 01482 881 367



WE'RE HERE FOR YOU ANYTIME

Whatever your funeral wishes and budget, we can provide a funeral to suit you. Prepaid funeral plans also available.

*We are very proud to be a Dignity Funeral Director,
providing a 5 star service to families across the U.K.*

www.dignityfunerals.co.uk/local



THE DOORS REOPEN AT BROOK TAVERNER

We're dusting off the cobwebs of winter and lockdown here at 35 Toll Gavel, eagerly awaiting the arrival of our much-missed Brook Taverner customers when doors reopen on Monday 12th April.

Awaiting this imminent return lies our most multifaceted collection yet, offering an array of textures, colours, patterns and styles whilst maintaining our incomparable deal of 4 shirts for £100 which has always been a firm favourite among customers. Lee and the team are raring to open their doors to locals of the town where we opened our first English store!

We're striking a fine a balance between smart and casual this season, covering all the stops for the variety of possible events taking place across the next few months of ever-loosening restrictions. The introduction of 'rule of six' outdoor gatherings from 29th March and outdoor dining from 12th April are the first dates circled in our calendar!



We're looking forward to being able to once again take immense pride in our store, and experience the unparalleled joy of having real customers within! We have (fortunately) heard a lot of positive feedback on the statement pieces of our spring/summer collection, and have gathered a smattering of our favourites!

For example, the Tatton jacket. The washed cotton provides a superb rustic effect, along with its colour selection of apricot, indigo and rose proving a unique favourite among staff and customers alike - a longstanding bestseller in our jacket collection.



Along with this is our Ribblesdale trouser collection. Designed with a cotton stretch fabric, and dyed for that 'lived-in' look, our Ribblesdale range walks the line perfectly between looking and feeling good. After being caged up for various lockdowns, why not dress somewhat colourfully?

We believe our casual shirt collection to be the broadest range yet. On the more classic side of the spectrum, we have a grid check shirt in beautiful spring colours like lemon and sky blue. Made from 100% cotton, the shirt is soft to the touch and delightful to wear. A shorter body length



also makes both tucking in and untucked possible - perfect for spring evenings! On the bolder side of things, we have our quirky print shirts. Featuring hot air balloons, boats, lighthouses and jungle prints, there's certainly something out there for everyone.

Our casualwear selection is more diverse than ever, allowing customers to feel good in every Zoom call, barbecue or pub garden gathering! The Oxshott polo shirt selection for example, in 100% breathable cotton, paired with some of our comfortable cotton-stretch Ashdown shorts will go down a storm wherever you decide to wear them.

Weather permitting, our Ryton T-shirt range will have you relaxing in style on those hotter days. Made in a washed cotton for comfort, paired with overlocking detail on the collar, sleeve and hem, this T-shirt selection makes for a versatile addition to your spring/summer wardrobe.

We wish the residents of Beverley, the customers of our store and everyone a safe and happy spring, and hope to play a role in helping people dress stylishly and comfortably for a gradual return to normality.

Warmest regards,
The Brook Taverner Team.

Reopening on
Monday 12th April

www.brooktaverner.co.uk

BROOK TAVERNER
35, TOLL GAVEL, BEVERLEY. 01482 882356

LEWIS NORTHEN FUNERAL DIRECTORS - TAKING CARE OF YOUR FAMILY

Lewis Northen Funeral Directors are now creating 'See You' memorial jewellery made with loved ones ashes, fingerprints or hair. 'See You' memorial jewellery is exclusive to Lewis Northen Funeral Directors in Beverley.



Bespoke funeral plans made with Lewis Northen Funeral Directors are in partnership with Golden Leaves, and all plans can be tailored to individual wishes and budget.

The funeral plans are held in the Golden Leaves Trust Fund until the time they are required.

Lewis Northen said: "We can guarantee all of our cremation plans at today's prices, and with our burial plans we guarantee the funeral directors professional fees and a strong contribution towards the burial fees making sure your plan pays for the majority of the funeral service."

"We are registered with the FPA (Funeral Planning Authority and National Association of Funeral Plans)".

As well as offering the exclusive "See You" memorial jewellery, the

LEWIS NORTHEN
FUNERAL DIRECTORS

MY FAMILY TAKING
CARE OF YOURS

1 Lincoln Way, Beverley HU17 8RH
T: 01482 888 658
E: info@lewisnorthenfuneraldirectors.co.uk
W: www.lewisnorthenfuneraldirectors.co.uk



funeral directors offer bespoke keepsake teddies and cushions made bespoke with your loved ones' clothing.

They can also be made with any message or poem you wish for.

These can be made as a patchwork, which is made out of a few different pieces of your loved ones clothing, or made just from one piece of clothing, the choice is yours.

The wide range of coffins and urns available enables Lewis Northen Funeral Directors to meet every client's needs such as having the ability to have the coffin engraved to a bespoke design unique to the person.

Lewis said: "We recently engraved a formula one logo into an urn. The gentleman's family had requested this as he loved formula one. This is another way we can work with our clients to fulfil all of their requests".



The entire premises and vehicles have been treated with a long-term antimicrobial coating by Cicada, which kills viruses and bacteria on all of the touch surfaces, to reassure families that the business is helping to protect all its staff and clients from Covid-19.



FLEMINGATE BEVERLEY

FASHION | FOOD | FILM | FUN

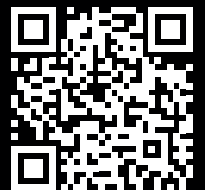
WE CAN'T
WAIT TO

SPRING

BACK
INTO ACTION
AT FLEMINGATE

With non-essential retail, outside dining and the gym due to open on **12th April**, it's the perfect time to discover Fizz. Play 6 different virtual games and challenges with the help of **our new Flemingate friend!**

Simply search '**Flemingate**' on the App Store or Google Play to **download for FREE!**



FRESH NEW SHOPPING AND MORE TO ENJOY

FLEMINGATE.CO.UK



@FlemingateBev



FlemingateBev



@FlemingateBeverley

COUNTRYSIDE MATTERS WITH SAM WALTON

Some people think we have lost the art of farming, well at least how it used to be, but I would disagree. The basics and skills are still there, but it's true, the whole procedure has changed.

Farming is not just about growing crops and having large machinery, it is much more complex than that.



Yes, we do now have crops today that we did not have in the olden days, Oil Seed Rape springs to mind as does Miscanthus, which is grown for the power stations, differing types of grass

and cover crops to benefit the arable.

Other crops include more potatoes, sugar beet and of course the amount of vegetables and fruits grown today is enormous.

In the olden days, all farms had livestock, sheep and/or cattle, but there are lots of farms today without livestock. Pigs were never really big business until the fifties when it began to grow and the technicalities of that industry are unbelievable now, moving from Pedigree Breeding and selling breeding stock.



Not to mention how it looked to performance testing for growth rates, feed conversion, lean meat and killing out percentages, the number of pigs born and reared per litter, the number of pigs per sow per year, none of which were thought of in those early days.

Other things include specialised pig housing with ventilation and insulation, temperature control, automatic feeding with a variety of different feeding systems and watering devices, various types of flooring, and vaccines and medicines, all of which we did not have years ago.



Nowadays we have pig specialists who have devised specific recording systems, and of course specialist pig veterinarians.

One of the biggest advances in the pig industry has been the bed and breakfast system, where pigs at weaning go to arable farms who no longer have pigs or have spare buildings, and that farmer is then paid to supply the accommodation, labour and water.

That allows breeding farms to expand, keep a cleaner unit and concentrate on breeding, which also means both the breeder and the finisher farm can have a batch system, where the buildings are emptied each time and thoroughly cleaned.

All this has been made possible by the use of artificial insemination, as many sows can be served from one boar that way.





Botterill & Co

Chartered Certified Accountants

We are a modern and professional accountancy practice ideally located to serve businesses in Beverley and the surrounding area.

We utilise modern accounting technology to provide you with a cost effective, professional service.

Our services:

- Annual Accounts
- Company Formations
- Tax Planning
- Payroll
- Management Accounts
- Cloud Accounting
- Tax Returns
- Bookkeeping & VAT

For a free initial consultation please contact us:

Office: 01482 862240

Mobile: 07966 051458

Email: gareth@botterillco.co.uk

Website: www.botterillco.co.uk

1st Floor Offices, 40 Norwood, Beverley, HU17 9EY

LOOKING FOR THE "HOLIDAY EASTER EGG"

Easter time always reminds me of fresh new beginnings, spring cleaning, and those wonderful little surprises you would find as a child in your kinder egg.

Talking of Easter eggs, the dictionary defines this as "a hidden surprise or extra feature that is included", and this got me thinking of the wonderful little experiences you can enjoy on a holiday.

That little something special you enjoyed - perhaps an exhilarating activity, or an indulgent meal, or a wonderful view - that moment creates memories that last a lifetime.

So please allow me some time to indulge you with

some inspiration to hopefully whet your appetite for something a little different.

I am conscious that there are many readers and everyone has different interests, so hopefully some, if not all, appeal to you or someone you know.

How about experiencing the rejuvenating power of nature on a luxury wild swimming and yoga retreat in north Wales?

Or you could enjoy an immersive week learning German in Berlin. There is also the option of mastering the treasured art of learning to create authentic Tuscan dishes in a thirteenth century villa in Italy.



Perhaps an opportunity to bring back a personal souvenir as you personally craft your own piece of jewellery whilst staying in a beautiful 19th century farmhouse in France.

Do you have a desire to complete the coast to coast walk, or would love nothing more than a cycling holiday either in the UK or overseas?

So many ideas, and too many to mention them all, but hopefully when you open your Easter eggs you can think the world is your oyster and is happily waiting for your arrival.

Amanda McConnell, Travel Counsellors.



MR CARPETS

CARPET AND FLOORING SPECIALISTS

↓ TAKE A LOOK AT OUR QUALITY INSTALLATIONS ↓

33
YEAR
ANNIVERSARY

33 years
in business

33 years
of good, honest service

REOPENING
APRIL 12TH
SUBJECT TO
GOVERNMENT
RESTRICTIONS

Check out our Facebook and Google reviews [f mrcarpetsbeverley](#)

01482 872134

3 Becks North, Beverley, HU17 0PR

SHOCKINGLY GOOD VALUE

£49 PER MONTH WEBSITES

PAY JUST £499 DEPOSIT
THEN JUST £49 PER MONTH
FOR A MINIMUM TERM OF 12 MONTHS
AND THEN PAY MONTH-BY-MONTH THEREAFTER

FOR A WEBSITE THAT GETS REAL RESULTS...

CALL NOW ON:
01482 428650
marketing@indicoll.com
indicoll.com

INDICOLL

SANCTUARY IN CREATIVITY - FESTIVAL ISSUES A CALL OUT FOR STORIES FROM BEVERLEY'S PAST

This year the biennial Beverley Puppet Festival has chosen the theme 'Sanctuary in Creativity' as its interim project, which aims to celebrate Beverley and its people through puppetry.

The festival's organisers are seeking stories, memories, histories and thoughts about Beverley from residents past and present, young and old, which will be used as inspiration by a commissioned artist to create a puppetry film to be exhibited both online and in Beverley Minster during summer this year.



The best story submission will be awarded two festival passes for the 2022 Beverley Puppet Festival. Deadline for submissions is Thursday 15th April at midnight.

Full information about the project and how to send in stories can be found on the Festival website:

www.beverlypuppetfestival.com/yourstory

CONGRATULATIONS TO HENRY

Inspired by the heroics of Captain Sir Tom Moore, six-year-old Henry from Tickton, Beverley (recently moved from Nottingham) wanted to do his bit to support this country's amazing and brave frontline workers. Over 12 days, he challenged himself to run a marathon to raise money for the Frontline19 charity.

As we went into print, Henry was well on his way to running his marathon and has raised over £1000. Check our website to see how he got on.

Over the past year, hospital staff, emergency response teams, ambulance support staff, social care and care home workers, agency and bank staff across the UK have put their own welfare and health on the line in order to help others. As a result of the COVID-19 pandemic, the mental wellbeing of these workers has been under an incredible amount of stress and strain. Frontline19 are there to help.

They are a free and confidential psychological support service who work with specialist therapy providers to help frontline staff in their time of need.

Henry takes inspiration from Captain Sir Tom Moore and enjoys reading his book. For the 12 days, Henry set about running with his Mum or Dad, and younger brother Billy, who joined in for shorter runs to show his support and get involved too.



Henry's mum, Clare, said: "As parents we are so proud of Henry. For him to come and ask one day, out of the blue if he can raise money for the doctors, nurses and all the people helping during this time, just made us burst with pride".

Clare is a keen runner herself, and Henry and Billy have been to many races to cheer her on, so it was no surprise he wanted to run to raise money.

LET LOOSE!
YOUR ADVENTURE AWAITS

THE INDOOR, OUTDOOR, ALL YEAR, ANY WEATHER ADVENTURE

Run Wild AND Climb High

• HIGH ROPES • LOW ROPES • BIG LEAP • SUPER SLIDE
• INDOOR SOFT PLAY • ADVENTURE PLAYGROUND • CAFÉ

BOOK ON-LINE

www.letlooseyorkshire.co.uk

OR CALL 01482 843475*

*£3 booking fee will be charged on telephone bookings, except when booking using a gift voucher.

BEVERLEY ST NICHOLAS PRIMARY SCHOOL

World Book Day was due to be celebrated on the 4th March but we decided to delay ours until the 17th March as we wanted all of the children to be back in school and able to take part.

The day was organised by Mrs Priday our English leader. Every year group chose an author to focus on and investigate over the course of the week and have all thoroughly enjoyed the choices that were made for them by their teachers.

On the 17th March children (and staff) were asked to come dressed as their favourite book character if they wanted to. During the morning we had a virtual assembly which our whole school joined. This was a chance to celebrate all of the effort that the children and their parents had gone to when creating their costumes. It was great to see our school returning to some kind of normality whilst celebrating this great event. The staff at St Nicks have been delighted to have all of the children back in school and we think judging by the smiles that we are greeted with each day that the children are enjoying being back as well!



HERE TO GET *you* THERE

HUNTERS®

EXCLUSIVE

BEVERLEY / 01482 861411

SCHOOL CELEBRATE WORLD BOOK DAY



SALES / LETTINGS / MANAGEMENT

HUNTERS[®]
HERE TO GET *you* THERE

BEVERLEY / 01482 861411

BEVERLEY AC ROLLS OUT THE BLUE AND YELLOW CARPET FOR ITS VIRTUAL AWARDS CELEBRATIONS!

Beverley AC rolled out the virtual red (or should that be the blue and yellow?) carpet on Friday 12th March when the Club held its first ever virtual Annual Club Awards Evening.

All activities undertaken by the Club throughout the year have been in full accordance with the lockdown guidance and tonight's event was no exception. Over 90 members joined the event via a virtual meeting platform and after pre-Award entertainment in the form of a photo caption competition followed by a quiz, Andy Tate, the Club's President, welcomed everyone. He was followed by one of the main hosts of the evening, Lucas Meagor, who set the evening in motion from outside Beverley Minster. Other hosts for the evening were Rob Reid, Club Chairman and Fiona Oakes, Club Secretary, also hosting from undisclosed locations around Beverley!

The first Award of the night to be presented was the 2020 Lockdown Award, a new Award which keeps members involved and supported in these difficult and challenging times. The Award winner was Nicole Dawson for her Pass the Baton Challenge which sees individual members running and handing over the virtual baton.

This year also saw the creation of some new awards which reflected the very different climate of the year. Members were invited to submit photos to be



NEW HORIZONS TRAVEL GRAND RE-OPENING

New Horizons Travel Beverley is re-opening its newly-refurbished shop on 12 April, when non-essential shops and businesses can re-open, according to the Government's roadmap to ease coronavirus restrictions.

The independent travel agency based on Flemingate is one of East Riding College's commercial premises and part of the Hays Travel IG Family, one of the largest retail travel agents in the UK.

New Horizons manager Katrina Diamatis said, "We can't wait to get back in there, tailor-making our customers their perfect holidays!"

"We've been helping clients out over the phone throughout the pandemic, so it's fantastic to reopen with a refurbished agency and more space to welcome new customers.

"We'll have offers on all week in the shop and via our Facebook page, so follow us to get the best deals!"

Those planning a trip might be cautious given the global impact of the pandemic, but with low or zero deposits, direct debit payments and ABTA and ATOL protection, consumers are being drawn back to using trusted, well-established travel agencies like New Horizons Travel Beverley, as opposed to booking holidays or flights with faceless online companies that often require payment in full or large deposits.

New Horizons Travel Beverley reopens on 12 April at 9am.

considered in three categories - Comedy, Views, and People. The Comedy Photo of the Year was won by John Parish, the Views Photo of the Year was awarded to Lucy Stamford and the People Photo of the Year was awarded to Paul Allen. There was a Special Recognition Award presented to Lucas Meagor. Lucas works tirelessly for the Club in many ways, but the Award was presented in recognition for his role in organising the Dave MacDonald Haltemprice 10K during the pandemic.

Two of the most prestigious Awards are the Club Runner of the Year, the member who has achieved the most as a runner and the Members' Member Award, where members nominate and vote for the Club Member who has made a huge and significant contribution to the Club. This year's Club Runner Award was presented to Jody Horth, (who also won the pre-Awards entertainment quiz!).

Graeme Pittaway, of the Pittaway Group, sponsor of the Beverley 10K, presented the Award of the Members' Member of the Year to Paul Furness, for all his efforts in organising socially distanced runs over a range of distances and terrains throughout the year. Fiona Oakes, the Club's Secretary, summed it up perfectly: "Virtual events are very difficult to make engaging and personal. Our team completely nailed it! On the night we had over 90 people join us to celebrate the extraordinary year that was 2020."

We all look forward to a time when events can be scheduled but until then, the club continues to support its members. Whatever your age or ability, you will receive a warm welcome. If you would like more information and details on how to join, please visit the Club website on www.beverleyathleticclub.co.uk for further details.




NEW HORIZONS TRAVEL AGENCY



GRAND RE-OPENING WEEK From 9am 12 April

Come along to grab exclusive offers!

- Low deposits
- special offers
- Spread the cost of payments 
- Book with confidence - ABTA & ATOL protected part of the Hays Travel IG Family

ENTER OUR PRIZE DRAW

First class service, let us tailor-make your perfect holiday

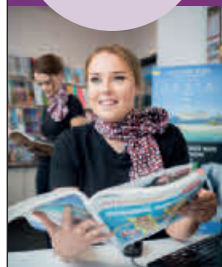
Flemingate Centre, Beverley

☎ 01482 390933 / 01262 455061

✉ travelhub@eastridingcollege.ac.uk

📘 /newhorizonstravelbeverley

📷 @newhorizonstravelbeverley



 ABTA P6908



SAFETY FIRST AT THE TIGER INN

Like all businesses in the hospitality sector, the Tiger Inn have had a tough year and are now looking to make the most of lockdown restrictions starting to ease.



Allen Slinger, who took over management at the Tiger in August 2016, is not one for resting on his laurels.

He has been keeping busy during lockdown, and managed to use some time to adapt and change the space at the Tiger Inn to ensure customer safety and confidence is at a high when it is allowed to reopen.

To ease back in and follow the guidelines, the Tiger Inn will reopen for takeaways from

Good Friday (2nd April), and continue every Friday, Saturday, Sunday until 16th May. Extensive work is being carried out to the outside of the pub to accommodate everyone and keep in-line with guidelines.

The outside area will open from Friday 16th April and open every Friday, Saturday and Sunday until 16th May. It is recommended to book in advance as a 2 hour table policy will be in place.



To ensure clients enjoy their return to the Tiger, a new menu will be in place and will cater for people wishing to eat outside or take out to enjoy food at home. This refreshed new food menu will be launched when the inside is allowed to open, with plans at the moment for everyone to note is 17th May, inside or out. The new outside area will be covered, heated and lit up to create that special atmosphere as everyone looks to put the last 12 months behind them.

You can support The Tiger Inn and see updates about the new menu and opening times over on Facebook.



THE TIGER INN

REOPEN FOR TAKEAWAYS FROM GOOD FRIDAY (2ND APRIL) - THESE WILL RUN EVERY FRIDAY, SATURDAY AND SUNDAY UNTIL 16TH MAY

REOPEN OUTSIDE FROM FRIDAY 16TH APRIL
OPEN FRIDAY, SATURDAY AND SUNDAYS ONLY UNTIL 16TH MAY

BOOKING WILL BE RECOMMENDED - WE WILL BE RUNNING A 2 HOUR ON A TABLE POLICY

NEW OUTSIDE AREA WHICH WILL BE COVERED, HEATED AND LIT UP

Tel: 01482 869040 | www.tigerinnbeverley.co.uk
Lairgate, Beverley HU17 8JG

SHORT STORY BY PAULINE KIRK - ACROSS THE BAY



Sighing, Jess went to the bay window. Opening the curtain, she looked out, just as the girl next door appeared in the other bay and waved. Embarrassed, Jess turned away.

Over a hurried breakfast she planned her morning: two zoom meetings and a conference call. Her calendar said it was the first day of spring but she didn't feel springlike. She had been so excited at moving back north.

Selling her London bed-sit had helped her buy a semi-detached only twenty miles from her parents. Then, within a month, Lockdown 2 started. She had scarcely left home since.

By lunchtime Jess was feeling low and tired. Going outside helped. Putting on her anorak, she set off for a quick walk. Daffodils splashed yellow around her garden, but she scarcely saw them.

A noise startled her. "Honk honk!!" a voice called. Within seconds a scooter was looping round her, on and off the pavement.

"Laura!" a voice called. "Stop that!"

Pushing a pram rapidly, the girl's mother caught up. "I'm so sorry," she panted, fumbling for a mask.

"It's alright," Jess assured her, recognising her next-door neighbour.

"It's all the home schooling. She goes wild when we're out."

"It must be hard," Jess agreed, "with a little one too."

Keeping their distance they walked on, not knowing what to say, but neither woman wanting to end the conversation.

"You live next door, don't you?" Laura asked suddenly. "I've seen you. You stand in the big window, like you're imagining you're sailing away."

"I sometimes wish I could." Jess smiled and turned towards the mother. "I don't know your name," she admitted with a pang of shame. After nearly six months she should at least have knocked on the door to introduce herself.

"Jasmine."

In normal times they would have shaken hands, but instead they paused awkwardly either side of a lamp post.

"I have to get back to work," Jess apologised.

"I'd invite you in for a coffee if I could. It would be nice to talk..." The other woman's voice tailed off.

"I know what you can do!" Laura announced. "Both of you go up to the front bedroom and open the bay window. You can talk across the gap - like you're two ships in a harbour."

"It's a nice idea..." her mother said wistfully. "But Miss Templeton's busy." She turned the pram towards home.

Jess let the family get ahead then followed. As she turned into her gate she noticed the daffodils. "I could do a bit of gardening," she thought, "plant some pansies perhaps. That would brighten the weekend."

Standing on her front step, she looked up at the bay windows. "Like two ships in a harbour," Laura had said. Would it be possible to talk across the gap? Her neighbour was clearly lonely. They both needed company. On an impulse, Jess went upstairs. Crossing to the bay, she undid the window fastening - just as the window opposite opened. "Mum!" a voice called. "She's here!"

Pauline is a published poet and Editor of Fighting Cock Press. She writes as both Pauline Kirk and with her daughter, as PJ Quinn for the DI Ambrose novels set in the late 1950's. Pauline was nominated for the York Culture awards Excellence in Writing category in 2018.

POEM BY CLINT WASTLING - HOPE



It could be a tedious task on a cold day - direct traffic, ask people to remain in their cars until five minutes before. This freezing, sunny day at the centre was vaccination day for the over 80's.

Same atmosphere as Christmas but a gift with greater potential for the only generation to remember The War. They needed to get out for the first time, it was dry, they could chat

queue in the cold, not so much feeling the need, hopefully feeling the needle. Inside - hands, face, space, clipboards, a one way system out again - hope first time in a year.

Thankyous and goodbyes shared with us carpark volunteers. How the world has changed, how quickly it changes for the better. Being done. First step to a post-lockdown life.

Clint Wastling is the author of Tyrants Rex, a fantasy story (Stairwell Books).

His poetry collection, Layers, is available from Maytree Press.



Four Generations, Giving Over 125 Years Service

Herbert	Eardley	Geoffrey	David
1870-1962	1908-1986	1939-2015	1964



Golden Charter
Funeral Plans



- Funerals Respectfully Conducted
- 24 Hour Out of Hours Service
- Free Advice & Support
- Private Restrooms
- Prepaid Funeral Plans Available
- Finance Options Available



Tel: 01482 844695
www.hkempandsonltd.com

259 Hallgate, Cottingham, East Yorkshire, HU16 4BG
Fax: 01482 843898
Email: hkempandsonltd@gmail.com

Telephone: 01482 869111
sales@rosesofbeverley.karoo.co.uk



The Kitchen Factory, The Courtyard,
Tokenspire Business Park, Beverley
HU17 0TB

INSTALLING KITCHENS IN AND AROUND BEVERLEY FOR 20 YEARS

Our new showroom is now open

Monday to Friday 9am - 5pm
Saturday 9am - 1pm

Please call 01482 869111 to book a viewing

FACTORY TOURS | VISIT OUR PRE-INSTALLATION FACTORY | COOKERY DEMONSTRATIONS
BROWSE AROUND OUR UNIQUE DOOR LIBRARY | SEE OUR CLASSIC COMPILATIONS



Together we will design a beautiful kitchen

ROSES WILL THEN PROJECT MANAGE YOUR KITCHEN INSTALLATION FROM START TO FINISH



MANY MORE OF OUR CUSTOMERS KITCHENS ON OUR WEBSITE
5 STAR RATED OVER 39 GOOGLE REVIEWS ★★★★★

Visit www.roseskitchens.com
to see our customers kitchens and read what they have to say about us

Telephone: 01482 869111



JAMES STEPHENS "JCS VALETING" CELEBRATING 20 YEARS IN BUSINESS

James Stephens is celebrating 20 years valeting cars this April, and to celebrate in style, he has ordered a brand new Toyota van.

His aim is to have two vans on the road by the summer so he can further focus efforts on spreading his experience and expertise to further develop and grow in the niche valeting market he operates in.

Originally from Leven, when James was around 14 he started knocking on people's doors to ask if they would like their cars washing. At the time it was just to earn some money, and he used to charge £2.50 for a wash and £5.00 for the interior. Fast-forward 26 years and having developed and grown his business over two decades, James now goes to some of the wealthiest families in the East Riding area on a regular basis.

He is trusted on every level and has worked on many expensive cars from limited edition Ferrari's, his favourite, to Rolls Royce's, Lamborghini's, and McLaren's. He has also valeted motor bikes, tractors and helicopters.

James had an interest in cars from a young age as he recalls playing top trumps with fast cars in primary school, and being a bit of a boy racer as a teenager led to the idea of making a business out of keeping cars immaculate so valeting cars has long been in his bones.

He said: "When I first started up, I would do any car, anywhere, in any condition, but I soon realised the importance of working to establish a reliable customer base and build up a strong, reputable name in the valeting market.

"Over the years I have focused on keeping my customer base, and built my business on good solid recommendations and working with clients that have become more successful and learnt from them, I have gained more experience and trust, which has allowed me to work on many many prestige cars".



Over the years, "detailing" has come over from America, which means James now receives more requests for ceramic coating, clay barring, and special waxes so the hours he spends on each car can soon rise.

To keep in line with changes James has always believed in buying the appropriate products to meet the needs of the job. Quality counts.

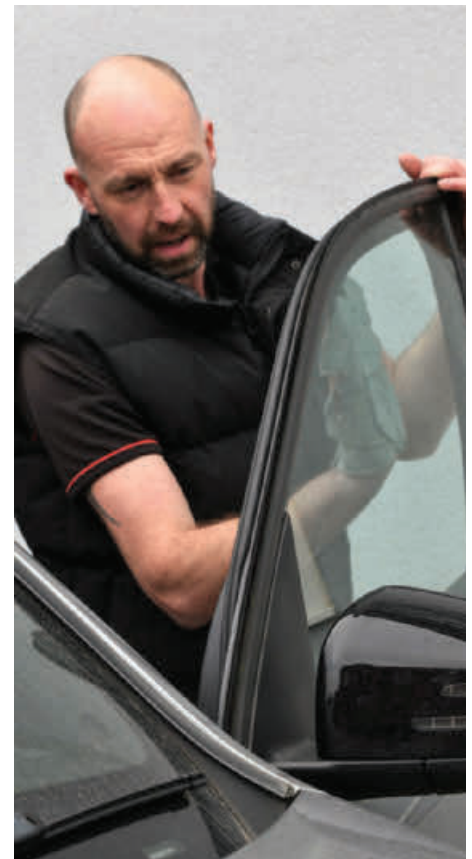
He continues: "If I'm working on the best cars, I want to use the best products so I have personally always used Autoglym from a very young age.

"I think it is vital to always use quality products to use on quality cars, valeting circa £1 million pounds of car each day".

"My advice to people in regard to car cleaning is firstly never use washing up liquid. Plus, don't use any car washes as the chemicals they use over time, such as traffic film remover and acid wheel cleaner, slowly eat away at the vehicles paint work so the car ages it quicker.

"Just invest in a good quality shampoo and do it yourself."

JCS Valeting
Email: jamjcs@hotmail.co.uk. Phone: 07818 424078.



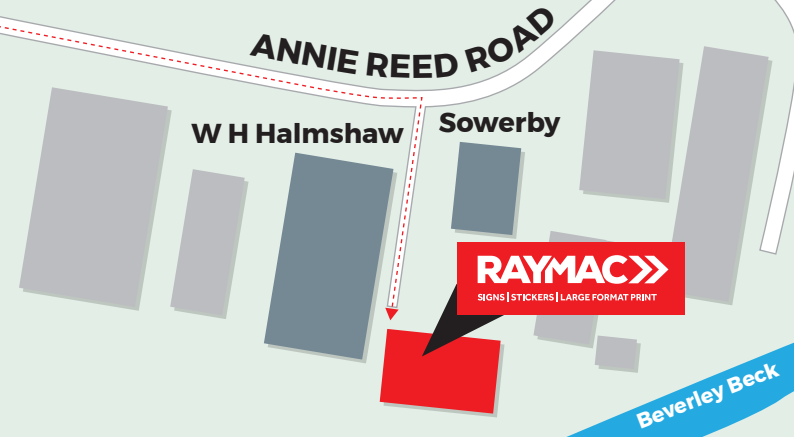
RAYMAC

SIGNS | STICKERS | LARGE FORMAT PRINT

30 YEARS IN BUSINESS

NOW IN BEVERLEY

FREE DESIGN SERVICE



SIGNS | STICKERS | LARGE FORMAT PRINT

PRODUCING QUALITY SAFETY SIGNAGE FOR OVER 30 YEARS



OPENING TIMES

MON – FRI 9AM UNTIL 5PM

Unit 2, Becksid Court, Annie Reed Road, Beverley

**CUSTOM SIGNS
MADE TO ORDER**



- FREE DESIGN
- MARCH MADNESS

ONLY £39
inc VAT



VINYL BANNERS

SWING SIGNS

OPEN TO TRADE AND PUBLIC

Call: 01653 600015 | Email: sales@raymac.co.uk | raymac.co.uk

Unit 2, Becksid Court, Annie Reed Road, Beverley, East Yorkshire HU17 0LF

CARFAN - DOES YOUR CAR HAVE AN EASTER EGG?

When thoughts move to Easter, chocolate eggs come to mind and there doesn't immediately appear to be a link with cars, but there is - just not in an obvious way.

An Easter Egg is also a term for something not immediately seen, or even better, hidden, and it might need searching for.

For example, a message at the end of a long-playing record or the oblique references to "The Master" in some of the Dr. Who episodes featuring David Tennant.

Automotive Easter Eggs are numerous, providing it is known where to look, which is the whole point. Certain Volvo XC90s have a spider embossed in a storage bin as the moulding may appear to some to be a spider's web.

Jaguar have also got in on the act with their E-Pace, which features a cub and its parent on the base of the windscreen surround.

Hidden animals are a common theme as various Vauxhalls have sharks, often on the glovebox hinge.

Supercar companies also join in the fun with McLaren's P1, as on closer inspection the headlamp outline mirrors the swirl of the company logo.



Toyota go down the numerical route with their 86 model, which has exhaust pipes that are 86 millimetres in diameter.

But surely the most impressive has to be found with the Tesla model X, which can on demand by remote control open its doors, flash its lights and play disco music simultaneously.

This is a sight to behold as Carfan can attest, and rumour has it that there is an Easter Egg hidden in their cars that no one has found. Yet.

Knowing Elon Musk it will be very clever, quirky and possibly blindingly obvious once it is revealed.

So don't forget, if you see a model X performing its party trick, don't forget that cheery Carfan wave!



BEVERLEY MOTOR WORKS - MOT CHECKS - WHAT TO EXPECT



An MOT is an essential and legally required part of regular motor maintenance to ensure your car stays in safe, working order on the roads so it's a good idea to know when it is and what happens.

The DVLA has a handy tool to find out when your MOT is due, and it's free to use. Simply enter your registration number and you'll be able to view details about your vehicle such as when its tax and MOT run out.

Having an MOT test without your car needing any repairs can usually take between 45 minutes to 1 hour, but if your vehicle fails its MOT and repairs are required, the length of time your car is at the garage will be longer.

The testing process involves inspection of electrical equipment such as headlights and indicators, steering, suspension, tyres, exhausts, brakes, mirrors, windscreen and windscreen wipers, seat belts and seats.

You would be surprised at how many vehicles fail their MOT for a lot of minor issues that could easily have been prepared for. Make sure to check that your registration plates are easy to read, ensure the general interior and exterior of your vehicle is clean and decluttered, check that you have fixed any dashboard warning lights beforehand, and that the windscreen wash is topped up.

If you're looking for an MOT garage in the local area, Beverley Motor Works is the number 1 choice. Our MOT price is the cheapest in Beverley, and includes a retest if needed.

Book your MOT with Beverley Motor Works today by calling **01482 881128**.

BEVERLEY **MOTOR WORKS** INDEPENDENT BMW & MINI SPECIALISTS

Our dealership expertise means high quality car servicing at a fair price...

Unit D1 Grovehill Industrial Estate,
Annie Reed Road, Beverley HU17 0LF

Call today: 01482 881 128

Visit: beverleymotorworks.co.uk



BOOK YOUR MOT TODAY



PUZZLE PAGE

WORDSEARCH

O S K H Q K F L K V R T C I G
 Y Q L K L L F A Y U I C U H R
 V F W I O J H M I F T D S C X
 Y V A W D L S B B U Q Y T R B
 J Z E U L O S S I K V P E U I
 P R W J T O F X C Q E M G H M
 S K L A M O M F N F O E G C F
 D Y R H L N I F A S E B S R H
 C K K U J K V J S D A K E S J
 G N I R P S S O L Y L S R H P
 P C H O C O L A T E H W F J X
 K A C M J B B Z X A Y U L G Z
 U F C V T O P P I T P U V X V
 H M P V Z S D R Y Z C I G N N
 H G V N B K D Y G K I Y A H Y

BLOSSOM
 CHOCOLATE
 CHURCH
 DAFFODILS
 EGGS
 FLOWERS
 FRESH AIR
 LAMBS
 SPRING
 WALKS

WHERE IN BEVERLEY?

Where in Beverley can you find this landmark?
 Answer on Page 30.



KNOW YOUR NUMBERS

Each row adds up to the total on the right.

Each column adds up to the total at the bottom.

The diagonals add up to the totals top and bottom.

X	X	X	X	?
1	4	?	2	13
?	?	5	9	?
4	1	3	?	16
7	?	5	4	22
15	13	?	23	?

Answers on Page 30.

Do you have any amusing stories, quotes or pictures? Send them to info@justbeverley.co.uk



QUOTE OF THE MONTH

Mindset - Something to think about... or is it.

THOUGHT FOR THE MONTH

Spring Clean - Throw out bad habits, replace with good ones.

DREAM DOORS®
 NEW LIFE FOR OLD KITCHENS



**SPRING SALE
 NOW ON!
 20% OFF**
 T&Cs Apply

VISIT OUR
 SHOWROOM NOW:
 4a Belprin Park,
 Swinemoor Lane,
 Beverley, HU17 0LN

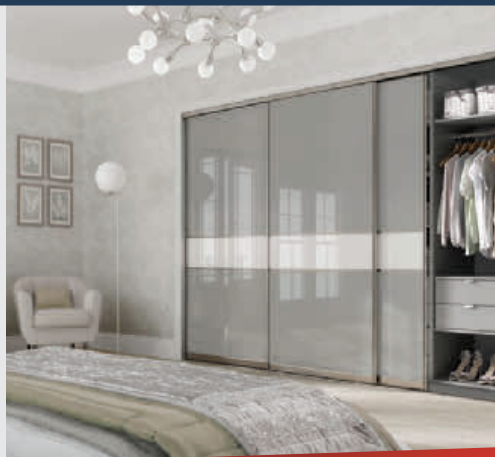
Call us now for a free estimate:

01482 861 653



Checkatrade.com
 Where reputation matters

AVERAGE SCORE **9.7/10**



QUALITY BEDROOM MAKEOVERS BY LOCAL PROFESSIONALS

- Bespoke sliding wardrobes
- Styles to suit every home
- Wide range of colours and finishes to choose from
- 96 showrooms nationwide

www.dreamdoorsbedrooms.co.uk

Start 2021 with a kitchen makeover

FOLLOWING GOVERNMENT GUIDELINES

THE UK'S #1 KITCHEN MAKEOVER EXPERTS

- From simple door replacements to complete fitted kitchens
- Fully installed by local professionals in just a few days
- Choose from a large selection of doors, worktops and appliances
- 96 showrooms nationwide

www.dreamdoors.co.uk



CYCLING WITH WILSONS WHEELS - STAY SAFE WHILE YOU CYCLE

Following an unprecedented year where lockdown and encouraged exercise were all prescribed within various guidelines, we are now advised by the government to continue to follow guidelines which will allow everyone to come out of lockdown sooner than later, with the ongoing success of the Vaccination programme, exercise is key to our health, well being and mindfulness.



As we continue to follow the guidelines and build up our exercise regime, always ensure you are within your physical limits. Take extra precautions on your ride, to ensure you can arrive home safely, advise family or friends of your route, cycle with a friend if possible.

Choose routes close to your home where you cover distance but where you are never too far from home. If you are looking to build up your fitness you may wish to do a zig zag route and check your times.

As we are moving from Spring towards Summer and the good weather is coming, ensure you carry enough fluid for the ride. Starting off after lockdown try not to do too much as a body that is under strain and fatigue will have a temporary weakened immune system. The vaccine may not give you full immunity yet. Be mindful and treat your cycling workout with care.

The roads may remain quieter for the first few months as we ease out of lockdown, some drivers may be used to driving on quieter roads so listen out for cars and hopefully drivers will be aware of cyclists.

As a rule of thumb motorist should give a cyclist 1.5m according to the highway code, so if a cyclist is giving a pedestrian 2m space that means the car driver has to wait behind or drive on the other side of the road effectively.

In this situation try to pre-empt this manoeuvre and signal to the car driver you are pulling out well before you get to the pedestrian as the driver may not be that forward thinking.

As we start to enjoy exercise coming out of lockdown the same rules still apply, Be Seen, Be Safe and be Mindful of those around you. Space is key. Space on the roads, cars to cyclists and space when you have stopped.

Maintain your social distancing. 2021 - exercise and enjoy your cycling, get out there and have some fun.

Nathan Wilson.

Pop in store to see the new 2021 bike range

WILSONS WHEELS

T: 01482 882881

W: www.wilsonswheels.co.uk E: info@wilsonswheels.co.uk

WE NOW STOCK CUBE CYCLES

CUBE
2021 RANGE NOW AVAILABLE
KTM

Electric Bikes in Stock - Demo one today!

- Adult Bikes
- Children's Bikes
- Electric Bikes
- Clothing for all cycling weather
- Parts and accessories

89a Grovehill Road, Beverley, East Yorkshire HU17 0EJ

NOW OPEN: Monday - Saturday 8.30am - 5.30pm

Sunday: CLOSED - Out riding our bikes

19 Highgate, Beverley HU17 0DN

Tel: 01482 880871

www.monkswalkinn.com

BEST WISHES TO ALL OUR CUSTOMERS!

TABLE SERVICE • RULE OF SIX
GOOD BEER • GOOD COMPANY

We look forward to serving you again from Monday 12th April 2021 in our outside seating areas.

Meanwhile... Stay Safe!

JUST BEVERLEY EDITOR TO CYCLE FOR DFER

Julian Minshall, Editor of Just Beverley, has set himself a challenge to cycle a minimum of 300 miles in the 30 days of April to raise money for Dementia Friendly East Riding (DFER).



Charities such as DFER have faced many problems during lockdown with finding ways to raise money, but as we come out of lockdown we are being encouraged to get more fresh air and put our wellbeing as a top priority.

This year Julian has cycled around 60 miles to date, and in 2019 he cycled a total distance of 669 miles, averaging out at 56 miles per month. This included 100 miles in the Prudential

RideLondon, an annual festival of cycling. He is always looking to push himself but this new challenge is Julian's hardest ride yet.

Julian said: "In 2020 I managed to improve on the year before by reaching 700 miles cycled in total, which equates to 59 miles per month, so to complete 300 miles in 30 days is a big challenge for me".

He has always found ways to do his bit for the Beverley community and help others less able than himself, and is determined to complete this challenge while raising money and awareness of dementia.

Having chosen to support DFER, he commented: "Almost everyone knows someone who is living with Dementia, it is a terrible condition. To raise awareness while completing the challenge is massively important to me".

Mandy Aitken Trustee said "2020 was been a challenging year for DFER and many other charities as their fundraising efforts and ability to deliver projects to the community have been limited. We are so appreciative of efforts like Julian's to help keep the charity going. Best of luck on your challenge!"

Support Julian this month by following his progress throughout the challenge on the **Just Beverley Facebook page** and make a donation at <https://justbeverley.co.uk/justgiving>



SPORTSABILITY RESTART SWIMMING LESSONS

All our teachers are really looking forward to our reopening of the pools and seeing all our swimmers again.

It's been a long time away but it has given us the opportunity to make some great improvements.

We now have a fabulous extension to the Dunswell pool which houses spacious changing rooms and waiting areas and an extended car park. It looks fabulous and we can't wait for our swimmers, old and new, to see the changes.



We've been really busy in the break working very closely with Swim England and are really proud of the highest standard of care we offer for all our families and swimmers which will still include social distancing, hand sanitising and the use of face masks for all.

We have a fabulous cleaning regime and we are really proud to announce that we are a Covid 19 Government Workplace Testing Centre, which provides us with the ability to test all our staff weekly as per the guidance - offering even greater protection for all.

Can't wait to see you at the pool - remember we only ever have a maximum of 6 swimmers to 2 teachers at all our venues!



RETURN TO SWIMMING LESSONS

Following Strict Government Guidance
Government Covid 19 Workplace Testing Centre

- Daytime and Evening Lessons
- Pre School 2½ years plus
- Beginners, Intermediate and Advanced
 - Adults
 - Private 1-2-1
 - Intensive Weeks
- Education Lessons: Small Groups and Class Swimming
- SEN Specialist Centre









BOOK TODAY!

Contact our friendly team for further information on
01482 229676 or info@sportsability.org.uk
www.sportsabilityswimschool.co.uk

 [@SportsabilitySwim](https://www.facebook.com/SportsabilitySwim)
 [SportsabilitySwimSchool](https://www.instagram.com/SportsabilitySwimSchool)

HIGH QUALITY ELECTRICAL WORK ACROSS EAST YORKSHIRE AND THE HUMBER REGION



**Stay safe -
loose wires cause fires!**

**DOMESTIC
COMMERCIAL
TESTING
FAULT DIAGNOSTICS**

Whether it's for your home, rental property portfolio or business premises, all electrical installations need to be checked periodically by a qualified electrician. For a quote contact:

Andrew Burton
01964 552769 • 07585 601730
www.burtonelectricalsolutions.co.uk
info@burtonelectricalsolutions.co.uk



BURTON ELECTRICAL SOLUTIONS - A SOCKET MAKES ALL THE DIFFERENCE

At last it looks like we are coming out of lockdown. Time to celebrate and get on top of the garden and all those other jobs so you can look forward to spending time in the garden soaking up the summer sunshine.

Spring means time to prepare, scarifying the garden, starting the lawnmower, trimming the hedge, fixing the fence, doing odd jobs, maybe even power washing your paths. For all of these jobs, the outdoor power sockets are a must.

An outdoor socket, which should be protected by an RCD unit, makes working with outdoor electrical equipment simple and safe to use.

Rather than have the window or patio door open and dirty flexes poking through a window to an internal socket, think how much better and easier the job would be with an outside socket.

Housing outdoor sockets in a weatherproof box is essential and will reduce any damage to the socket that's caused by those days full of rain or dust. Treat yourself this Spring - Install an outside Socket.



For further information contact Burton Electrical on **01964 552769** or see www.burtonelectricalsolutions.co.uk for more information.

IN THE GARDEN... APRIL

If March is the month when the garden starts to 'green up', then April is the month of 'blossom' - sometimes there is so much its looks as though it has been snowing petals.

The mainstays of this glorious display are the flowering cherries (Prunus), the crab apples (Malus) and Magnolia stellata. I had hoped that my Viburnum carlesii would be in flower and giving off its wonderful fragrance by the end of March, this won't have happened and so I still have that treat to look forward to. Other shrubs, perennials and climbers to enjoy in April are: Chaenomeles; Camellia; Forsythia; Clematis alpine and armandii; Bergenia; Aubretia and Dicentra spectabilis (bleeding heart) and of course Tulips to name a few.

April is undoubtedly a busy month in the garden. However, try to spend some time enjoying your garden, remember 'all work and no play'... So, enjoy the plants I have already mentioned.

Tasks for April...

Planting and Sowing

- Plant new shrubs, perennials and any other container grown plants.
- Plant out autumn sown sweet peas and sow vegetables outdoors.
- April is a good month to seed a new lawn - remember sowing the seed is the easy part, it is important to prepare the ground carefully.
- Seed any bare patches in the lawn.
- Plant out all summer flowering bulbs by the end of the month.
- If you have a greenhouse or protected space, plant up your summer containers and hanging baskets towards the end of the month, BUT don't be in too much hurry to put them out much before the end of May.

Pruning and Tidying

- Spend a little time tidying your borders and weeding - annual weeds can be pulled out by hand or give the border a quick hoe, perennial weeds are deeper rooted and will need digging out.
- Prune hydrangeas, lavender and other grey foliaged plants.
- Prune and shape fan trained fruit and tie in new growth on climbers.
- Dead head daffodils (leaving the foliage to die back) and prune forsythia and chaenomeles plants after they have finished flowering - they both flower on wood produced the previous summer.
- Of course the lawn may need mowing more regularly - trim it lightly with the blades set high.

Pests etc...

- All this lush growth makes a veritable feast for aphids, slugs and snails so keep a lookout for them and deal with them swiftly. If you're not an 'organic' gardener use slug pellets. Organic gardeners have several ways to control slugs, including a biological control using nematodes. Traps are also effective and my favourite is the 'beer trap', lay an empty plastic sparkling water bottle (or similar) on the ground, sinking it far enough down so that the bottle opening is just proud of the soil surface and fill with some beer which attracts the slugs - what a way to go!!

- Try to encourage hedgehogs, frogs, toads and thrushes into your garden - they all enjoy a meal of succulent slugs and snails.

I hope that Easter provides us with some good weather allowing us to sit in the garden and relax with a cup (or glass) of something, until next month.

Happy gardening! J. x.

Jane Dale of 'Designed Gardens'. Tel: **07983 392 411**.



CREATE A GARDEN SPACE YOU LOVE

From relaxing to entertaining, partying with friends or an impromptu BBQ. Let us help you create a garden you love.

**BOOK A
FREE DESIGN
APPOINTMENT
ONLINE OR IN
BRANCH**

SWINEMOOR LANE

HU17 0JX | 01482 880088 | bevelery.mkmb.s.co.uk
OPEN MON-FRI 07:30-17:30 SAT - 07:30-NOON



PAVING • DRIVEWAYS • FENCING • DECKING • OUTDOOR LIVING

THE BEVERLEY ARMS REOPENS

After months of waiting and wondering, the team behind the much-loved Beverley Arms are thrilled to announce that the hotel will re-open its doors this Spring.

Guests can look forward to enjoying the milder climate from the hotel's sunny open-air terrace from Monday 12th April.

There's no need to book a table, just turn up for brunch, lunch or dinner and enjoy a glass of Champagne and the feeling of being waited upon.

Like so many businesses, the Beverley Arms was forced to close throughout key trading periods and missed out on the festivities of

Christmas, but the team have continued to provide loyal customers with their favourite dishes.

'The Beverley Arms at Home' is the hotel's premium takeaway service and includes carefully curated menus of delicious food cooked fresh to order. Enjoy Afternoon Tea for two, homemade pies or a sumptuous Sunday lunch with all the trimmings until the restaurant can re-open.

The Beverley Arms at Home has been more successful than the team could have imagined with over 400 orders being placed for Mother's Day alone.

It has been wonderful to receive such fantastic reviews and the team would like to say a big thank you to everyone who has supported their at home venture throughout the last few weeks.

After a rollercoaster of a year the team can't wait to welcome guests back from 17th May when the hotel's bedrooms, bar and restaurant can fully re-open.

Until then the Beverley Arms will remain open to support those travelling for essential business and from 12th April three self-contained rooms will become available to guests who are looking for a much-needed break in beautiful Beverley.



WHERE IN BEVERLEY?

This month we are on the Cross Street inlet at ERYC Offices



'KNOW YOUR NUMBERS' ANSWER

Missing numbers in yellow

X	X	X	X	15
1	4	6	2	13
3	2	5	9	19
4	1	3	8	16
7	6	5	4	22
15	13	19	23	10



HUBY™

Covering Hull, Beverley, Pockington, Driffield and all the local villages



BOOK ONLINE

and **SAVE**
at
hubys.co.uk

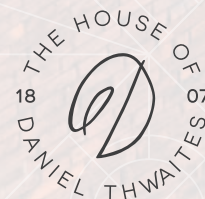
Book in advance and save money.
The further you book in advance
the more you could save...



For service and repair call: **01482 866660**



THE
BEVERLEY ARMS



WE CAN'T WAIT TO WELCOME YOU!



We are delighted to be able to open our doors again and welcome you back to The Beverley Arms. Here is a little guide to what is happening when. We've missed all our wonderful guests and can't wait to welcome you back!



AL FRESCO DINING

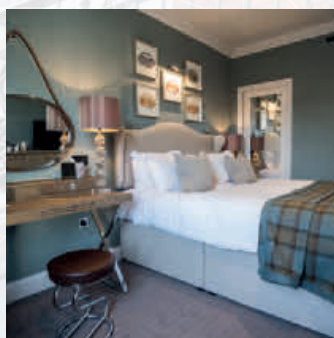
From 12th April our outdoor area is open for al fresco dining. We're keeping everything crossed for good weather!

INDOOR DINING & DRINKS

From 17th May our restaurant and bar will re-open. Our al fresco area will remain open too. We can't wait!

THE BEVERLEY ARMS AT HOME

Delicious takeaway dishes and afternoon tea for two are available now. From the 12th April our takeaway meals will stop but we will continue to offer afternoon tea as a takeaway option.



OVERNIGHT STAYS

Our bedrooms are available now for guests travelling for permitted reasons. From 12th April we will also have 3 self-contained bedrooms available for leisure bookings.



beverleyarms.co.uk
houseofdanielthwaites.co.uk

For more details please visit beverleyarms.co.uk or call us on 01482 296999 or email relax@beverleyarms.co.uk

COVID-19

Keep following the 3 Steps to Safety.



Thank you for helping to stop the spread.
We know it's hard but you're making a difference.

For more information visit eastriding.gov.uk/3stepstosafety