

just

ISSUE 81

BEVERLEY

IT'S YOUR MAGAZINE

FREE



BEVERLEY AC
IT'S NOT JUST RUNNING!

NEWS, WHAT'S ON, LIFESTYLE, FEATURES, PUZZLES, PHOTOS & MORE

Have you claimed your September furlough before the deadline?



Are you:

- Paying the current Furlough payments?
- Have you claimed back any SSP relating to COVID?
- Making the correct Pension Contributions?
- Up to date with minimum Wage Rates?

**Improve business performance
by outsourcing payroll**

To arrange a **FREE** meeting
call us on 0845 308 2288
or visit www.stipendia.org.uk

6/7 BEVERLEY AC - IT'S NOT JUST RUNNING!



4 BEVERLEY BLUES



4 FESTIVAL OF CHRISTMAS



16 HANSA DAY



17 GIRLS GO FOR GOAL



18 BEVERLEY 10K



19 ART & SOUL

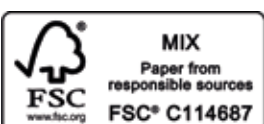


Contributors:

Julian Minshall, Olivia Peace, Rich Manville, Lynne Auton, Cliff Baillie, Jo Bridgeman, Carfan, Jane Dale, Jack Dickerty, Jackie Hardman, Richard Harries, Ed Hawkes, Rich Hayes, Suzanne Mathers, Amanda McConnell, Navigation Wealth Management, Colin Raynor, Ian Richardson, Sam Walton, Clint Wastling and Nathan Wilson.

REMEMBER! If you see examples of anti-social behaviour or other types of low-level crime, do report it to the appropriate authorities. **POLICE - Emergency 999, Non-urgent 101. ANTI-SOCIAL BEHAVIOUR (East Riding of Yorkshire Council) - 01482 393939.**

Magazine available from outlets in Beverley and surrounding areas.



Please pass your Just Beverley on or recycle it responsibly.
Printed by: Jadan Press.

OCTOBER LETTER FROM THE EDITORS



As usual the clocks will go back in October. They will "Fall Back", by 1 hour which sees the end of summer. We are now looking forward to a beautiful Autumn, when the trees change colour as the leaves fall.

As we look towards cooler weather, the good news is that on the last Sunday, 31st October at 2am the clocks going back means we get an extra hour, so choose wisely do you sleep in or get things done.

Whatever you decide to do, take a positive step, engage in change and look forward to good times ahead.

Have a great October and keep the stories coming in.
Julian.



Happy October readers! The weather might be getting worse and the nights may be getting darker but let's have some skele-fun this month - it's Halloween!

Even if you don't like or celebrate the notion of Halloween, pumpkin spiced lattes will be back in coffee shops and that's exciting for everyone. Not to mention all the beautiful autumnal colours are coming back, the leaves will be rustling on the pavement under our shoes, and getting cosy under a blanket will be the norm again.

We've also got an extra hour to our day this month which I will most certainly be spending cosy in bed. You've got to love it!

We hope this month's issue of **Just Beverley** will keep you entertained. As always stay safe and enjoy the issue.
Olivia.



GET IN TOUCH WITH US:

Website: justbeverley.co.uk
Email: info@justbeverley.co.uk
Telephone: 01482 679947
Twitter: @JustBeverley
Facebook: [facebook.com/justbeverley](https://www.facebook.com/justbeverley)

If you would like copies for your business to distribute to staff and customers, call **Just Beverley** on **01482 679947.**

60TH BIRTHDAY CHARITY CYCLE RIDE

To mark his 60th birthday by raising money for charity, Andy hosted a fun charity bike ride on September 19 around local villages, and is expecting to raise over £300.

Andy was joined by 34 cyclists who took part in the scenic ride from Market Cross, through the villages of Huggate and Thixendale, before heading back via Millington, the climb at Nunburnholme and Market Weighton, all to raise money for the Guide Dogs for the Blind Association.

Encouraging others to take part in the 60 mile route helped Andy raise awareness of the great work done by the Guide Dogs for the Blind Association, and he is expecting to raise over £300 for the charity's 90 year appeal from entry fees, donations and sponsorship.

If you would still like to make a donation or you want to learn more about the charity, visit: www.guidedogs.org.uk



THE BEVERLEY FESTIVAL OF CHRISTMAS TO RETURN THIS YEAR

One of the leading Christmas market events in the UK returns to Beverley on Sunday 12th December with The Beverley Festival of Christmas 2021, proudly sponsored by The Beverley Arms.

The festival returns following last year's cancellation due to the pandemic and will light up the historic market town for a 25th year.

As always, there will be plenty of fun things for both adults and children alike, from live music, dancing and carols, to face painting, traditional Victorian fairground rides and the chance to get a picture with Santa.



Keep an eye out for future updates as plenty more is set to be announced as we get closer to the festive period, with more activities to be added!

MAJOR LIVE BLUES GIG RETURNS TO BEVERLEY

A musician regarded by many to be the most compelling British blues artist since the great names of the sixties, heads to Beverley in November for the first major live Beverley Blues gig in two years.

Ian Siegal plays the Masonic Hall in Trinity Lane on Thursday November 11 as the forerunner of a return of the annual Beverley Blues Weekender in 2022.



"We've been promoting a weekend festival since 2011 but Covid forced us to cancel our plans last year. Now we're really excited to be bringing Ian to the town and the message we're getting is that people can't wait to see and hear live blues again," said Graham Hyde, guitarist with Beverley blues band The Juke Joint Kings and one of

the volunteers behind the event. In more than a quarter century of touring, multi-award winner Ian Siegal's mission statement has barely changed: Songs that are real, shows that resonate, vocals served raw.

Classic Rock tags Siegal "a national treasure" while MOJO magazine ranks him "the cleverest writer and most magnetic blues performer in the UK." He has taken his music to some 50 countries and presided over a trophy haul that includes two UK Blues Awards, 10 British Blues Awards, four European Blues Awards, two Mojo Blues Albums Of The Year not to mention three US Blues Music Awards nominations - an unprecedented nod for a non-American. And that's just what he has clocked up in the past ten years.

Singer-guitarist Siegal is known as a bluesman, but it's just one shade in the palette of an artist who slips between continents, eras and expectations. They say you can't sing the blues until you've lived the life, and when Ian Siegal steps up to the mic, you can hear the slings and arrows. His forte is playing to an audience. He takes command of the stage in a way very few artists alive today can match. Sweat, passion, humour, incendiary slide guitar and a soul-infused voice big enough to fell trees!



Each year his influence spreads further; but what sticks most in Ian's mind is his guest appearance at London's Jazz Café with 92-year old Pinetop Perkins and other remaining members of Muddy Waters' band. Then later at a festival in Norway, in a role reversal and totally unexpected, these legends of post-war Blues spontaneously joined Ian on stage for what turned into a memorable hour-long set.

Tickets for Ian's Beverley gig have gone on sale and cost £14 (plus booking fee) and are available at www.beverleyblues.com.



"We're expecting this to be a sell-out so we would urge people to book as soon as possible," said Graham Hyde. "We're determined to be back bigger and better than ever for a full weekend of live blues next year."

NATIONAL INSURANCE CONTRIBUTIONS TO RISE BY 1.25% FROM APRIL 2022

From April 2022 certain National Insurance Contributions (NICs) paid by both employed and self-employed workers will rise by 1.25%.

From 2023 the health and social care levy element will then be separated out and the exact amount employees pay will be visible on their payslips. It will be paid by all working adults, including workers over the state pension age (unlike other NICs)

The increase will apply to Class 1 NICs paid by employees and Class 4 NICs paid by self-employed workers:

How the health and social care levy will apply from 2022			
	Employee Class 1 NICs Main rate (i) / Higher rate (ii)	Employer Class 1 NICs	Self-Employed Class 4 NICs Main rate (i) / Higher rate (ii)
NICs rates for 2021/22	12% / 2%	13.8%	9% / 2%
NICs rates for 2022/23	13.25% / 3.25%	15.05%	10.25% / 3.25%
NICs rates from 2023/24 Health and social care levy from 2023/24	12% / 2% 1.25%	13.8% 1.25%	9% / 2% 1.25%
Threshold at which NICs become payable in 2021/22	£9,568	£8,840	£9,568

(i) For the 2021/22 tax year this applies to those who earn £9,568/yr to £50,270/yr. (ii) For the 2021/22 tax year this applies to those who earn over £50,270/yr. Downing Street says this means an employed basic rate taxpayer earning the median basic rate taxpayers income of £24,100 pa in 2022/23 would contribute £180 pa, while a higher rate taxpayer earning the median higher rate taxpayers income of £67,100 pa in 2022/23 would pay £715 pa.

Class 2 self-employed and Class 3 NICs, which are voluntary payments are not impacted by the levy. Dividend tax rates will increase from April 2020. Dividend tax rates will rise by 1.25% from April 2022, which is payable on dividend earnings above £2,000 pa:

Dividend tax rates and changes from 2022			
	Basic rate taxpayers	Higher rate taxpayers	Additional rate taxpayers
Dividend tax rates for 2021/22	7.5%	32.5%	38.1%
Dividend tax rates from 2022/23	8.75%	33.75%	39.35%

If you wish to discuss any of the above matters then please call Lynne Auton of Stipendia Payroll Solutions and parent company Finnies Accountants on 01482 861919.

WESTWOOD ANNUAL BONFIRE AND FIREWORKS CANCELLED

Beverley Westwood Lions' Annual Bonfire and Fireworks Display set to take place on Beverley Westwood have been cancelled again due to insurance restrictions following Covid-19.

It is the second year in a row the event has had to be cancelled due to the pandemic, with the event usually well attended as one of the highlights of the year.

The annual bonfire and fireworks display was first run by the Beverley Lions where it quickly established itself as an exciting and successful event to mark on Beverley's calendar, before its organisation was passed on to the Westwood Lions to carry on the tradition.

Everyone at the Westwood Lions is hoping the event will be able to recommence next year.



MEET AFC TICKTON COBRAS U11S NEW TRAINING TOP SPONSOR... JOE BAXTER

I started playing football at a young age, and as I developed I realised the importance of health, fitness and the value of team sports. This inspired me to build my career around this area.

I am now a qualified fitness instructor and personal trainer working with football and sports teams, individuals, and groups of people to support and motivate them to improve their physical and mental wellbeing.

Using one-to-one weight training programs, group personal training and boot camp sessions, sports massage and designing training programs, I support football and sports teams' fitness goals.

More recently I have been helping clients through my customisable training app, which they can use to manage their personal training plans, and track and monitor their fitness goals. I am passionate about supporting and inspiring kids to build good healthy habits at a young age, and after speaking with Garry Butler, I jumped at the chance to offer sponsorship to the Tickton under 11s.

The opportunity allows me to give back to the local community and still play football myself, but most importantly support the kids and coaches do what they love and what I am passionate about. I really look forward to cheering the team on at their games and offering any support where I can.

küchenhaus

The Largest Manufacturer of Quality German Kitchens

At Kutchenhaus we have affordable solutions made to meet your highest standards

2 Toll Gavel, Beverley, HU17 9AJ. T: 01482 862172.
Open: Mon-Sat: 10am-5pm. Sun: 11am-3pm. Bank Holidays: 10am-4pm.



BEVERLEY AC - IT'S NOT JUST RUNNING!

How many times are runners asked "Why do you run? Why do you get up, put on your running shoes and go out in all weathers?"

They will give a range of answers about getting fitter, feeling good and experiencing the "runners' high".

If you then ask them why they are members of a running club, you will likewise get a range of answers about running with like-minded people, who will support and motivate you in your personal challenges and achievements and being part of a group who will help others achieve their goals and dreams.

Beverley AC is a club that, while it provides its members with the training and support to enable them to meet their running goals, it gives so much more through its programme of events and activities.

From the seasoned marathon and ultra-runner with very muddy trainers to the member who woke up one morning and took on the challenge of the Couch 2 5k programme, every member can access what they need to achieve their dreams.

Running is accessible to all. All you need is a pair of trainers and comfortable clothes!

The "Couch to 5k" (C25K) is a fantastic programme that has been designed to get anyone from the couch to running 5 kms in just 15 weeks. The next Couch25k programme will start in January 2022 and details and further information will be available in due course. Keep an eye on local press and social media if you are interested.

As well as four regular weekly sessions - Monday - Strength and Conditioning; Wednesday - Club run; Thursday - Speed training; Friday - Introduction to Speed training - members can access other activities and events that are supported by the Club and its members.

We operate a Welcome Runner squad at every Wednesday Club run, so that newcomers can run with someone of a similar pace and distance and can give them loads of information about Club life.



Social club runs started as the recent pandemic lockdown eased and have continued as members enjoy steady social runs focussing on exploring some of the beautiful countryside in the area and finding new running trails. The well-deserved coffee and cake at the finish goes without saying!

Other regular annual events for members include things like the Wolds Way Relay, the Handicap race series, knock-out cup and the Cross-Country League. Weekly Parkrun continues to be popular with members, whether participating locally as a runner or volunteer, or park running further afield.

During the year, there are regular events in the calendar which also enable the club to support our community and local charities. Our Santa run in December sees members dressed as Santa run through the streets of Beverley and raise funds for local charities. In April, the Easter Bunny challenges members to secretly donate Easter treats to fellow club members and contribute Easter eggs to local foodbanks.





weather permitting. A September Sunday cycle ride recently saw the group and its supporters raise funds for the Guide Dogs 90 Appeal.

Deciding to join a club is one of the best things any runner can do. Being part of a club can often instigate big improvements in performance and more importantly provide enduring memories, experience, and friendships.

We all run for different reasons - improving our health, both mental and physical, the personal challenges and motivation, the friendships - and the club can support everyone in achieving their own personal goals.

Further information and details about the Club and what it has to offer can be found on the Beverley AC website - www.beverleyathleticclub.co.uk.



events in the area. Members also enjoy the social and fitness benefits of cycling. A group, the Beverley Saints, originally established by Beverley AC members includes friends and like-minded people who enjoy the many health and social benefits by cycling on the many routes East Riding has to offer.

The group doesn't take part in competitive events but is an informal group meeting in the summer months on Thursday evenings generally cycling 20-25 miles with a refreshment stop at the end. Sunday morning rides take place in the winter,

In 2011, the first charity cake stall was set up at the popular Walkington 10k and since then, £1,800 has been raised with local charities benefitting from the proceeds.

The Beverley 10k and fun run together with the Walkington 10k and fun run are the Clubs key races which are supported by members whether as runners or as members of the huge team of volunteers and marshals without whom the events could not take place.

The Club attracts members of all ages and experience and has a thriving Juniors section, which aims to ensure that Junior members get as much fun and fitness out of their athletics as possible.

Whilst primarily focussing on running, juniors are also introduced to the basics of other athletics, such as jumping and throwing, with an emphasis on the fun of athletics. As well as training on Sunday mornings and Wednesday evenings, older Juniors also enjoy cross country, and multi-terrain as well as track and road racing events.

Junior parkrun is also proving to be particularly popular in this area and a new event for children has started on Sundays at 9:00am at 26 Corporation Road, Flat 4, Beverley, HU17 9HG. More information about this weekly 2k event for children aged 4-14 can be found at www.parkrun.org.uk/kinggeorgeplayingfields-juniors

The Club has also acquired a canine membership as some members are accompanied by their dogs on the social runs. This has led to members sharing information and taking part in cani-cross





EVERY THURSDAY

(Doors open 10am)

Join us for a free brew and enjoy some great films on Beverley Parkway's Big Screen. Only £4.50 with drink and biscuits included. Aimed at 55s & over. Films subject to change.

Thursday 7th October -

Off The Rails (15) - 10.45am

Starring: Kelly Preston, Judi Dench, Ben Miller

Cruella (12a) - 10.30am

Starring: Emma Stone, Emma Thompson

Thursday 14th October -

Cruella (12a) - 10.45am

Starring: Emma Stone, Emma Thompson

The Last Letter From Your Lover (12a) - 10.30am

Starring: Felicity Jones, Callum Turner, Joe Alwyn

Thursday 21st October -

The Last Letter From Your Lover (12a) - 10.45am

Starring: Felicity Jones, Callum Turner, Joe Alwyn

Stillwater (15) - 10.30am

Starring: Matt Damon, Camille Cottin

Thursday 28th October -

Stillwater (15) - 10.45am

Starring: Matt Damon, Camille Cottin

The Last Bus (12a) - 10.30am

Starring: Phyllis Logan, Timothy Spall

Thursday 4th November -

The Last Bus (12a) - 10.45am

Starring: Phyllis Logan, Timothy Spall

These are the films scheduled to open in October - all are subject to change. Check out up-to-date cinema listings at www.justbeverley.co.uk/cinema-times



October 8th



October 15th



October 15th



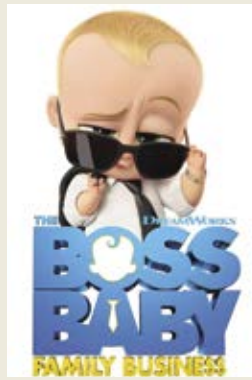
October 15th



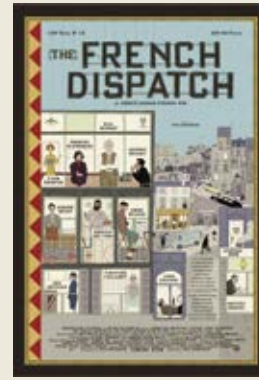
October 15th



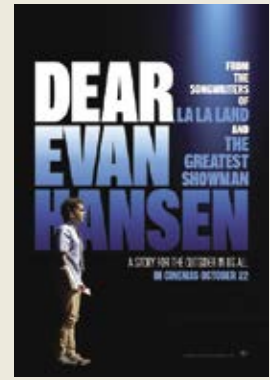
October 21st



October 22nd



October 22nd



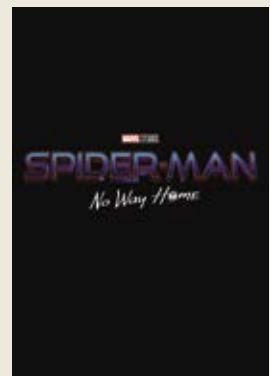
October 22nd



October 29th



Coming Soon



Coming Soon

YOUR LOCAL INDEPENDENT CINEMA



THE WAIT IS OVER. BOND IS BACK, EXCLUSIVELY IN CINEMAS - WHERE IT BELONGS

Retirement doesn't suit James Bond. When an old friend turns up to his Jamaican retreat in need of help, the spy is taken on a mission far more treacherous than even he could have expected.

Léa Seydoux, Daniel Craig, Ralph Fiennes and Rami Malek star in the 25th film in the Bond series.

Joined by Paloma (Ana de Armas), Bond is led onto the trail of a mysterious, masked villain armed with dangerous technology and known only as Safin (Rami Malek).

But life back in the field also forces him to confront an old foe (Christoph Waltz) who threatens to reveal a sinister secret about the buried past of Madeleine.



JOIN US FOR ALADDIN - THE 2021 CHRISTMAS PANTO

Join TaleGate Theatre Productions, this Christmas for the pantomime you wished for!

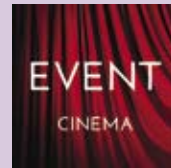
Follow our hero Aladdin and his troublesome Mum, Widow Twankey, beat the evil Abanazar to the magic lamp and win the hand of Princess Jasmine. "Aladdin" is guaranteed to be full of eastern promise. It will be our funniest and most spectacular pantomime ever!

Packed with songs, slapstick, silliness, audience participation and all the fairytale magic of traditional pantomime! This fun-filled extravaganza is guaranteed to delight the whole family.



PERFORMANCES		TICKETS	
Sun 19 Dec	11am 2pm	Adult £15	Child £12
Sun 19 Dec	11am 2pm	Family £43	
Sun 19 Dec	11am 2pm		
Sun 20 Dec	11am 2pm		
Sun 20 Dec	11am 2pm		
Thu 23 Dec	11am 2pm		
Fri 24 Dec	11am 2pm		
Sun 26 Dec	11am 2pm		
Sun 27 Dec	11am 2pm		
Sun 28 Dec	11am 2pm		

Box Office: 01482 968090
www.parkwaycinemas.co.uk



Event cinema offers something a little different to mainstream films. Live and pre-recorded shows beamed in via satellite from all over the world. Here are the latest live streams that you can enjoy on the big screen at Parkway Beverley.

Tuesday 12th October - Raphael Revealed

Thursday 14th October & Sunday 17th October - The V&A presents Alice: Curiouser and Curiouser

Wednesday 27th October, 7.45pm & Sunday 31st October, 2.30pm - Cliff Richard - The Great 80 Tour

Thursday 4th November, 7.0pm - The Doors: Live At The Bowl 68 Special Edition

Sunday 7th November, 3pm - Bolshoi Ballet: Spartacus

Tuesday 30th November, 1pm & 7.30pm - Exhibition On Screen: The Danish Collector

Sunday 19th December, 3pm - Bolshoi Ballet: The Nutcracker

Sunday 23rd January 2022, 3pm - Bolshoi Ballet: Jewels



BROOK TAVERNER - AUTUMN / WINTER COLLECTION

While the days are becoming increasingly colder and shorter here at 35 Toll Gavel, we're never short of excitement! Our brand-new autumn/winter collection is in full swing, with fresh products taking centre stage both online and in store for customers old and new.

Not only this, but we're thrilled to announce the opening of an eighth Brook Taverner store in Stratford-upon-Avon! And with a variety of bestsellers in October already, this is sure to not be the winter of our discontent...

Colder weather in October calls for versatile outerwear that cuts a dash while remaining functional. Our Malta Casual Unstructured Barn Jacket earns serious style points thanks to its contrast corduroy collar for added texture, offering a pop of something unique! Fashioned with both a zip front and six button fastening storm flap, the



Malta allows you keep yourself sheltered from the elements in a streamlined, stylish way. Pair your Malta with the brand new Stanbury 5 Gauge Cable Front Jumper for the ultimate layering combo. This collection comes equipped with a characterful nep, making the fabric truly come alive up close!

Heading deeper into autumn also has us thinking of dressing up too. For a dinner party or a weekend away, new additions to our jacket collection will allow you to dress to the nines in classic autumnal style. Deep, rich shades contribute to our colour palette, with wine, ginger and forest green quickly becoming standout colours of the collection!



The exclusive Montgomerie Harris Tweed Jacket is refreshingly unique, putting its own vibrant take on the classic fabric we all know and love. An attractive blue, copper, green and purple check



reimagine tweed into something you simply won't find anywhere else on the high street. Crafted from 100% pure new wool, you'll be reassuringly insulated in style wherever you roam.

The Montgomerie pairs beautifully with our brand-new Seychelles Winter Weight Cotton Twill Trousers. When temperatures enter single digits, its composition will keep you indulgently warm - so much so, that you won't want to take them off at the end of the day! An intricate seam detail achieves a cord-like finish, with its diagonal twill adding a rich and sumptuous texture - available in Dijon, olive, berry and navy.

Whatever you get up to this month, we hope you get the chance to peruse (and hopefully enjoy!) our new autumn/winter collection, whether that's in store or online. We look forward to hearing your feedback, as we're constantly innovating to make our products and customer experience as faultless as possible. See you soon!

**Warmest regards,
Lee and The Brook Taverner Team.**

Autumn / Winter Collection Available In Store Now



OPEN

Following
Government Guidelines

www.brooktaverner.co.uk

BROOK TAVERNER

35, TOLL GAVEL, BEVERLEY. 01482 882356

INDICOLL: IMPACTFUL GRAPHIC DESIGN THAT COMMUNICATES WITH YOUR CUSTOMERS

From business cards to leaflets, brochures to signage, and everything in between, Indicoll are a graphic design agency you can count on.

Having spent more than 30 years creating promotional materials for businesses across a variety of sectors all around the world, Indicoll's impactful graphic design is the key to creating a lasting first impression with your customers.

Our creative team use decades of experience to bring your ideas to life in ways that align with your business objectives and achieve your goals. We will not only use graphic design to meet your commercial goals, but also to help to communicate your key messages to your customers in order to help you win new ones too.

If your business has been established a while, we can help you breathe new life into your brand as we craft memorable graphic design that truly represents your business. Visit www.indicoll.co.uk to see how we can rebrand your ideas into a reality.



SHOCKINGLY GOOD VALUE

£49 PER MONTH WEBSITES

PAY JUST £499 DEPOSIT
THEN JUST £49 PER MONTH
FOR A MINIMUM TERM OF 12 MONTHS
AND THEN PAY MONTH-BY-MONTH THEREAFTER

FOR A WEBSITE THAT GETS REAL RESULTS...

CALL NOW ON:
 01482 428650
marketing@indicoll.com
indicoll.com

INDICOLL

LEWIS NORTHEN
FUNERAL DIRECTORS

IN

MY FAMILY TAKING CARE OF YOURS

Get In Touch
 1 Lincoln Way, Beverley, HU17 8RH
info@lewisnorthenfuneraldirectors.co.uk
www.lewisnorthenfuneraldirectors.co.uk
 01482 888 658

Born and raised in **Beverley**, we are proud of the funeral services we offer to our local community.

As a family business we want you to have confidence in us to support you from the first point of contact, throughout and thereafter. The moment your loved one comes into our care they will be treated with care and respect. We offer a comprehensive range of funeral services ensuring you receive the perfect funeral service for your loved ones.

We are available 24 hours a day, 365 days a year, we will guide and support your family throughout.

My family taking care of yours

Giving the personal touch to funeral services in Beverley and surrounding areas.



HUBY™

Covering Hull, Beverley, Pockington, Driffeld and all the local villages



BOOK ONLINE

and **SAVE**
at
hubys.co.uk

Book in advance and save money.
The further you book in advance
the more you could save...



For service and repair call: **01482 866660**

SPECIAL DAYS TO CELEBRATE IN OCTOBER

October is filled with plenty of fun and educational themed days to celebrate with your friends, family and colleagues. Some of these special days are mainly acknowledged on social media, but celebrating these fun themed days can be a great way to bring light-hearted joy into your home or workplace and bring about a whole range of unexpected conversations.



1 October - International Coffee Day

Words cannot express how much International Coffee Day means to coffee lovers, so what better way to start the day with a cup?! Coffee is said to have many health benefits such as improving concentration and increasing

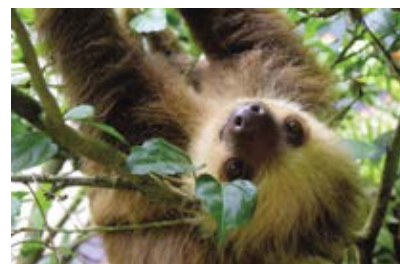
energy levels, so on this International Coffee Day why not get your morning energy boost by visiting a local independent cafe and ordering a new blend?

11 October - International Day of the Girl

The world is home to more than 1.1 billion girls under the age of 18 who are poised to become the largest generation of female leaders, entrepreneurs and change-makers the world has ever seen, and this day is for them. The mission is to make a difference to girls' lives around the world to live free from gender-based violence and harmful practices.

17 October - Spreadsheet Day

If you haven't touched spreadsheets since school, do something new today that will help your life admin - celebrate the fun and challenges of spreadsheets! Followers of Spreadsheet Day often create their own helpful spreadsheets to help others, such as students. Today could be the day you use a spreadsheet to help balance your budget, create a shopping list or keep track of important dates.



20 October - International Sloth Day

Have you ever been called a sloth for being lazy, sleepy or dumb? Well it's time you celebrated that because sloths are special! There are actually six species of sloths, one of which is the pygmy three-toed sloth.

Of all the species, the pygmy sloth is the only one that's endangered. If you love sloths and want to help protect them, you could make a small donation to a wildlife organisation that works to protect them from extinction such as the Sloth Conservation Foundation.

1 - 31 October - Black History Month

People from African and Caribbean backgrounds have been a fundamental part of British history for centuries, but their value and contribution to society is often overlooked, ignored or distorted. As most schools teach a history curriculum mainly focused on traditional events and the achievements of white figures, Black History Month gives everyone the opportunity to share, celebrate and understand the impact of black heritage and culture. The celebration was officially recognised by the US government in 1976, and first celebrated in the UK in 1987. Celebrate with your children by learning more about Black British history together, such as the Windrush which brought the first West Indian immigrants to Britain in the 1950s, and key black figures from the UK such as Walter Tull, Olive Morris, Dr Shirley Thompson and Lewis Hamilton.

Four Generations, Giving Over 125 Years Service

Herbert 1870-1962	Eardley 1908-1986	Geoffrey 1939-2015	David 1964
----------------------	----------------------	-----------------------	---------------



Golden Charter
Funeral Plans



- Funerals Respectfully Conducted
- 24 Hour Out of Hours Service
- Free Advice & Support
- Private Restrooms
- Prepaid Funeral Plans Available
- Finance Options Available



Tel: 01482 844695
www.hkempandsonltd.com

259 Hallgate, Cottingham, East Yorkshire, HU16 4BG
Fax: 01482 843898
Email: hkempandsonltd@gmail.com

RAYMAC

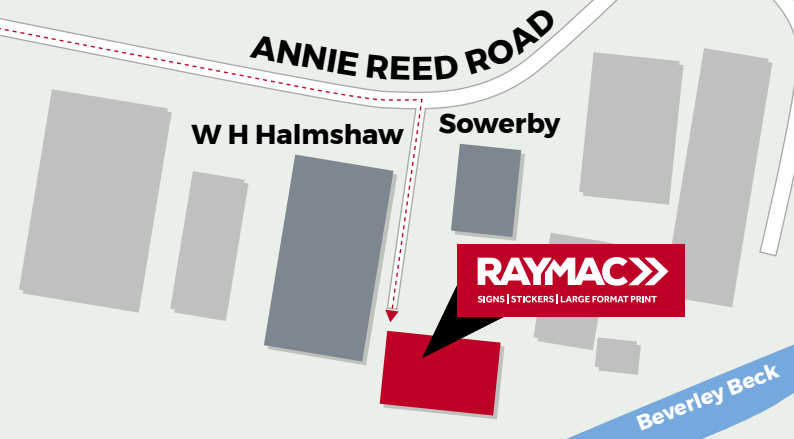
SIGNS | STICKERS | LARGE FORMAT PRINT

30 YEARS IN BUSINESS

NOW IN BEVERLEY

FREE

Design Service



SIGNS | STICKERS | LARGE FORMAT PRINT

PRODUCING QUALITY SAFETY SIGNAGE FOR OVER 30 YEARS



STICKERS/WALL ART



ROADSIDE SIGNS



SWING SIGNS

OPEN TO TRADE AND PUBLIC

Call: 01653 600015 | Email: sales@raymac.co.uk | raymac.co.uk
Unit 2, Becksid Court, Annie Reed Road, Beverley, East Yorkshire HU17 0LF

TIGER INN PREPARE FOR THE FESTIVE SEASON

Allen Slinger at the Tiger Inn is now taking bookings for Christmas.

Having revised the menus in the build up to the winter and Christmas season over the past weeks, the Tiger Inn will soon begin offering a range of festive food and drink options.

From festive afternoon teas to bookings for Christmas Meals, Allen is expecting the pub's tables to be reserved quickly as people look to make this Christmas even better than last year.

This year, there will be an increase in people going out and about and making reservations, so Allen has made various areas of the pub available to drink and dine.

The outside seating area will be open for people who want to embrace the more cosy autumn and winter atmosphere.

There are also options of the high bar booths if you are just having a drink and other indoor seating areas for food, so book your desired area quickly to avoid missing out.

Allen looks forward to being your host in the run up to the festive season so keep up with any festive updates by liking the Facebook page at The Tiger Inn Beverley and following on Twitter and Instagram.

You can book your table online via www.tigerinnbeverley.co.uk or call **01482 869040** to make a reservation.



Afternoon Tea

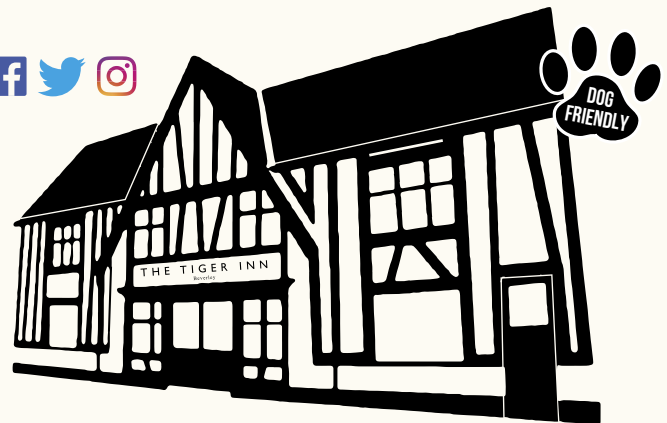
A selection of sandwiches, savouries and desserts, a choice of teas available...

£12.99 each, 2 for £22, 3 for £30, 4 for £35

Make your afternoon tea fizz for an extra £4 per person.

Available 12-5pm Monday to Saturday
Must be pre-booked

Vegan and Gluten Free options available



THE TIGER INN

OPENING TIMES:

MON - WEDS 12PM TO 10PM

THUR - SAT 12PM TO 11PM

SUN 12PM TO 10PM

FOOD SERVED:

MON - WEDS 12PM TO 7PM

THUR - SAT 12PM TO 8PM

SUN 12PM TO 7PM

OPEN
7 DAYS
A WEEK
SERVING FOOD
7 DAYS
A WEEK

CHRISTMAS BOOKINGS

NOW BEING TAKEN

Tel: 01482 869040 | www.tigerinnbeverley.co.uk
Lairgate, Beverley HU17 8JG

FLEMINGATE BEVERLEY

FASHION | FOOD | FILM | FUN



SAY
HELLO TO

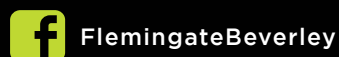
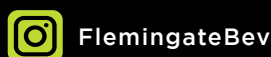
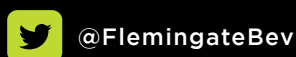
AUTUMN

Enjoy
the new season
IN STYLE



FUN, FOOD AND SHOPPING FOR ALL THE FAMILY

FLEMINGATE.CO.UK



THE HANSEATIC LEAGUE ANNOUNCED "HANSA DAY"

Before Beverley joined the Modern Hanseatic League in 2020, it had to be proved that Beverley had been trading partners of the Hanseatic League in Medieval times.

After achieving this, it joined the largest membership of towns in the world, all of which are on Beverley's doorstep. The first Hanse Tag (Hansa Day) was on Friday 17th September 2021.

In medieval times Beverley was a manufacturing town, whereas today it is a tourist hub and attracts many visitors on the back of its history. Having changed the narrative, Beverley now aims to attract more tourists following the pandemic and help rebuild its hospitality trades and general shops.

Hansa Beverley is also encouraging young people to mix with their peers from all over Europe, and the Hanseatic League makes this possible through their Youth Hansa. The Youth of the Hanseatic League get together for visits, sporting occasions, scouts and guides, debates and more.

The Hanseatic League has two languages; German and English. Hansa Beverley, chaired by Hamish Stewart, thought it would be a good idea to showcase a film of the Hanseatic League on the 'Syntan' barge on the Beck. The Beck is of course the port of Beverley, so it all seemed rather appropriate.

Unfortunately, the Hanseatic League have not made the film in English, nor have they made subtitles in English, so Hansa Beverley decided

to make the film themselves by translating it and dubbing the film. It wasn't easy as German words are longer than English ones mostly, and the trick is to get the English words to match the actions of the Narrator, as well as the pictures on the film. This version of the film will be presented to the Hanseatic League HQ following the launch on the Syntan.

20 invited guests gathered at the Syntan at 10.30am on Friday 17th September to watch the film on board. The film lasted 45 minutes and allowed time for a Q&A. Following the film,

everyone took a tour that started with a short walk up to the historical boards and 'The Creeler' where guests discussed the Flemings arriving in Beverley to create cloth from the wool which Beverley produced in Flemingate.

This was followed by a walk to the Guildhall, or formerly The Hanse Haus as per the plaque on the front wall. Guests then continued with a guided tour of the Guildhall by Fiona Jenkinson.

Following the 45 minute guided Tour participants will be given a map of Medieval Beverley to follow.



START TRAINING WITH AFFAFIT TODAY

Personal trainer Ali Akkus has brought her training business to Beverley to help clients achieve a healthy lifestyle for their bodies and their future.

Affafit offers a specialised program with services that include body building, cardio, exercise, football education, technical and tactical exercises and weight loss.

After graduating from university in Turkey as a physical education and sports teacher, Ali stayed in Turkey to develop her specialty training in weight loss and cardio.

She has since brought Affafit to the UK to develop her business further.

Ali uses her own experience and equipment to help others achieve desired fitness levels by using exercises they enjoy. She intends to transform her experience and networking into a concrete business.

Affafit fitness programs are for people of all ages and are personalised to ensure Ali is fully available to offer support.

Ali's motivation will drive her business into success as she use the experience and networking that she developed through the years to achieve her goals and objectives at Affafit.

Call **07830 387271** for more information about starting training today.

AFFAFIT

For Your Body and Future

START TRAINING TODAY

Services

- *Body Building ✓
- *Cardio ✓
- *Exercise ✓
- *Football Education ✓
- *Technical and Tactical Exercises ✓
- *Weight Loss ✓

Healthy life Style

Ali Akkus
07830 387271
Instagram: Affafit

BOOM TIME IN BEVERLEY AS GIRLS GO FOR GOAL

Girls football is booming in Beverley thanks to the explosion in popularity of the women's game, according to one local coach.

AFC Tickton has gone from struggling to field girls' teams to having a squad at every age group from under-9s to under-17s and even a waiting list to join some teams.

The number of women and girls playing football in England is now more than 3.4 million, a 54% increase since the Football Association launched its Gameplan for Growth in 2017.

Tickton Comets Under-11s coach Tim Brady said: "The increase in interest among girls has been phenomenal. At one point we were struggling to find enough players and it meant we had to combine girls from two different age groups but now we've got teams at every level. There's now a waiting list of girls wanting to play for some teams.



"As well as players, we're seeing more and more female coaches get involved, which is fantastic. Between the under-9s to under-12s teams, three of the four coaches are women.

"Our under-12s team, Tickton Cygnets is coached by Emma White, who had no background in football but stepped in to keep that team going and was even shortlisted for an FA Award earlier this year for services to grassroots sport".

The new season of the Women's Super League, the top flight in England, kicked off in September with matches live on BBC and the growth of the game shows no sign of slowing down.

Mr Brady said: "The general promotion of the women's game in recent years has been a massive factor, along with the success of the England team. Girls have been inspired to come along and give football a go and their attitude is fantastic, they just get on with the game.

"More exposure is also great because it means our sponsors get a bit more recognition for the support they give us. This season, for Comets and Cygnets, it's Vivo Electrical, who have helped pay for our training kits. Local businesses like this who support grassroots sport help keep clubs like ours going and we're hugely grateful for that."

Tickton's girls teams train at Longcroft School & Sixth Form College and play their home matches on the newly developed pitches at Beverley Leisure Centre. For more information, visit the club's Facebook page: www.facebook.com/afcticktonofficial

HALLOWEEN AND THE SPOOKY MYTHS SURROUNDING OCTOBER 31ST

Originating from the ancient Celtic festival of Samhain, the premise for Halloween essentially began when people would light bonfires and wear costumes to ward off ghosts. From witches to clowns to werewolves, here are some of the spookiest myths and legends with a connection to October 31.

The Salem Witch Trials

Every year, thousands of people flock to 'Witch City' (Salem, Massachusetts), which has become associated with Halloween due to a dark part of its history; the Salem Witch Trials. It was the deadliest witch hunt in the history of colonial North America.

In Colonial America's Salem Village between 1692 and 1693, numerous young girls began having fits and convulsions. The authorities declared it witchcraft, the magic work of the devil, and determined the girls were bewitched. As mass hysteria spread throughout Salem, over 200 girls were accused of witchcraft and jailed. Following the trials, 20 people were executed, 19 of which were hanged and one was pressed to death.



The legend of Dracula



Count Dracula, the fictional, legendary vampire in Bram Stoker's novel, was inspired by one of the best-known, gruesome figures of Romanian history, Vlad Dracula. He had a taste for blood and was nicknamed Vlad Tepes (Vlad the Impaler) when he was the ruler of Walachia during various

periods between 1456-1462. Mythological beasts that suck the blood of their victims in the dark of night, the history of vampires goes back to a time before Dracula, but the legacy of Stoker's beast has continued to inspire many horror films, television shows and other bloodcurdling tales of vampires around the world.

Evil clowns

Some of the very first clowns were palace jesters, pranksters and jokesters for kings to bring mischief and antics to the court. They were intended to be fun and cheerful, so how did they manifest the level of darkness and terror now associated with them?

Certainly the likes of Stephen King's depiction of clowns as murderously menacing in 'It' hasn't helped in recent decades, not to mention the sinister media coverage of evil clowns that came with "Killer Clown", serial killer John Wayne Gacy, who occasionally dressed as Pogo the Clown in the 1970s and 80s. Many people put the fear factor surrounding clowns down to the psychological discomfort they bring, from their portrayal in pop culture down to the scary make-up.

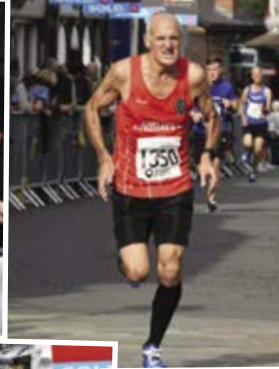


Werewolves

Another classic Halloween monster is the werewolf. Those who were once humans, they cry like wolves and get drawn to a full moon. Legends concerning men turning into werewolves have derived from many cultures; some believed werewolves befell a mighty curse, and others believed a bite from one would turn you into one.

Descriptions of werewolves have dated back as early as Greek mythology and early Nordic folklore. Tales of werewolf transformations became popular old wives' tales, which along with alleged werewolf sightings, helped solidify the myth.

BEVERLEY 10K



HERE TO GET *you* THERE

HUNTERS®

EXCLUSIVE

BEVERLEY / 01482 861411

ART & SOUL CELEBRATE 1ST BIRTHDAY PARTY IN STYLE



Art & Soul were thrilled to have so many artists attend its first birthday party on Friday September 17, which gave all its artists the chance to meet each other.

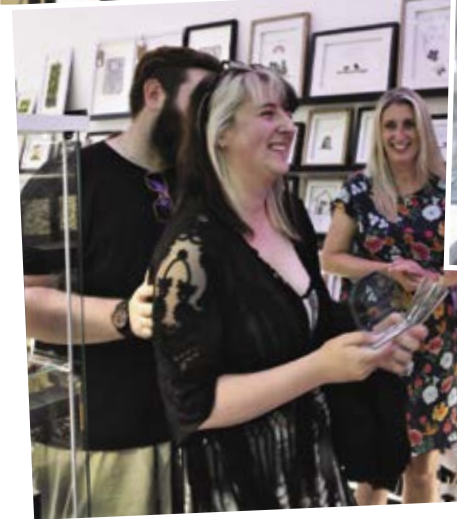
The creative independent art and gift shop is a hub which provides an affordable platform for UK artists, makers and creatives to sell their work. It is run by a small team who are dedicated to supporting and growing its seller community, which returned their support by surprising the team with unexpected gifts at the party.

All the artists whose work is on display inside the high street store enjoy showcasing and selling their work in store and online. Shoppers can pop into the store or visit online and find something unique, handmade and very different to standard high street shops. Art & Soul has recently celebrated another success in order #11000 being placed, which was Gummy Bear Earrings by The Black Sheep & Dog.



Awards were given out at the birthday party:
Artists of the Year (voted by the artists) - Jenny Wren Draws and The Painter's Daughter
Seller of the Year (Small Space) - Copper Moon
Seller of the Year (Medium Space) - DIY Terrariums
Seller of the Year (Large Space) - Jenny Wren Draws

If you're looking for unique gifts, visit the store in Flemingate today or shop online at www.artandsoulhub.co.uk. Art & Soul offers a click & collect service and free local delivery on orders over £20.



SALES / LETTINGS / MANAGEMENT

HUNTERS[®]
 HERE TO GET *you* THERE

BEVERLEY / 01482 861411

ARE YOU PLANNING ON RETIRING?

Just because saving for retirement is difficult, it doesn't mean you should give up; and the current reliefs and allowances on pension contributions should give cause for optimism.

If you expect to retire on a final-salary pension and with no mortgage, your perspective on retirement may well be rosy; if you are grappling with debt and worried about having insufficient pension savings, it may be a different picture. For some, the question is not how to retire successfully, but how to retire at all, given that there may be precious little in the way of a state safety net to fall back on. Research from the Financial Conduct Authority in 2017 revealed that around 15 million individuals were not saving anything towards their retirement and would have to rely entirely on the State Pension in their later years.¹ The introduction of pension freedoms has helped somewhat: figures for 2018 show that nearly 80% of working-age employees were contributing to a pension.²

Of particular concern is the group of pre-retirees aged 55–64, only half of whom have given thought to how they will manage in retirement and only a quarter know how much they have in their pension pot.³ These people may only have a few working years left to build their nest egg. In the UK, 31% of adults have no private pension provision and the State Pension is the main source of income in retirement for 44% of retirees.⁴

Why do so many people fail to plan their retirement? According to BlackRock's latest survey results, 57% of people aren't currently investing. In the UK, 58% of non-investors say they don't have enough money to start investing, and 42% are too worried about their financial situation today to think about the future.⁵

Those able to put some aside really should - people massively underestimate the amount of money they need to save. According to BlackRock, those who were asked to calculate how much they would need for their desired retirement income of £26,000 a year estimated they would require £233,000 in savings; and yet they would need a pot of £525,000 for this income, even including the State Pension.⁶ People also underestimate longevity and therefore how long retirement could last. Only 7% of people aged 55-64 today expect to live to 90, but research indicates that half of them can expect to live that long.⁷ The obvious implication is that many retirement pots will run out too soon. Many experts are warning that the end of final-salary pension schemes, chronic underfunding of defined contribution pensions, and increasing life expectancy are creating a perfect storm that threatens to destabilise the financial wellbeing of the coming generation of retirees.

The solution is to plan

You have to ask yourself: how much will I need, and how much can I afford to put away? Then you need to factor in any other sources of retirement income and you can see the size of the gap you are trying to fill. Obviously, the younger you are, the longer the investment time horizon and the most you will have to gain when thinking ahead.

However, middle age is a time when incomes are at or near their peak, so there are significant opportunities to catch up. Subject to limitations, people in the UK can make pension contributions of up to 100% of their earnings or £40,000, whichever is lower. While paying the maximum may seem a tall order, remember that the government rewards you for saving into a pension in the form of tax relief. Worryingly, according to BlackRock's research, 50% of people are unaware that the government boosts pension contributions; the research also showed that fewer than a third of people are aware of 'pension freedoms' changes and how these impact on their retirement prospects.⁸ This is further evidence that lack of awareness remains one of the key barriers to making adequate retirement provision.

It is vital savers know and understand all their options for using their pension, but also that they make the most of the current tax breaks while building one. Finally, 61% of non-investors recognise that their outlook would be better if they started investing now, and 76% of investors who use a financial adviser report having a sense of wellbeing.⁹ To receive a complimentary guide covering wealth management, retirement planning or Inheritance Tax planning, contact Navigation Wealth Management on **01482 379504** or email: navigationwm@sjpp.co.uk.

^{1, 3, 7} Financial Conduct Authority, Financial Lives Survey 2017

² Institute for Fiscal Studies, October 2020

⁴ Financial Conduct Authority, 'The financial lives of consumers across the UK', report 20 June 2018, updated January 2020

^{5, 9} BlackRock, 6th Annual Global Investor Pulse Survey, February 2019

^{6, 8} BlackRock, Global Investor Pulse Survey 2017

LET'S TAKE A TRIP TO - BURTON AGNES

The first in a series of visits to beautiful and interesting places within easy reach of Beverley.

They do not come much finer than Burton Agnes, nestling between Driffild and Bridlington, just off the A614. The fine parish church and adjacent Norman Manor House are free to visit, while the grand Jacobean Hall and gardens are in a league of their own, aptly described by acclaimed writer Simon Jenkins as 'the perfect English house'. You can visit just the gardens or the Hall as well.



The ponds, walled gardens, fountains, huge board games and maze are all delightful. The children's playground is new a venture and much appreciated, especially for its double zip wire, by my 9 year old daughter. Inside, all is of the highest quality in this stunning building, built in 1601, to the designs of master architect Robert Smythson. The amazing collection of paintings, notably by French Impressionists such as Renoir and Pissarro, come as a delightful surprise to many.



Do not miss the old Manor House with its fine vaulted ceilings and distinctive treadmill to the rear. Nice strolls can be taken around the small village, and many of the cottages have smashing gardens. There is also the highly-regarded Blue Bell pub to enjoy. I have visited many times, the Hall and grounds are perhaps at their very best on a mellow autumn evening, as the sun fades on this stunning place, almost on our doorsteps.

Ian Richardson.

Essential Information

- Free car park for visitors to hall/gardens.
- On regular EYMS bus route 121 to/from Beverley.
- Hall and gardens open from 11am to 5pm each day*, closed 1st to 13th November.
- Website www.burtonagnes.com, which you can check for prices.
- Cafe at the Hall, which is currently serving outside due to Covid.
- Gift shop and plant sales.
- Large children's adventure playground and garden board games at Hall.
- Special events in October, Autumn Festival (9th/10th) and Halloween Trail (23rd/31st).



ON CLOUD 9

Complementary Therapies

- Various Massage Techniques
 - Indian Head Massage
 - Reflexology
 - Hopi Ear Candling
- Crystal Healing and more

Find me within Salt Revive,
Mill Lane, Beverley.

Book with me on
07794 644 279

CLOCKS GOING BACK

We change the clocks every year but the dark nights are creeping up on us so quickly that we're getting another fright soon - this year the clocks go back on Halloween.

Our clocks are currently using British Summer Time (BST), meaning when we put them back one hour this month on Sunday October 31 we'll switch to Greenwich Mean Time (GMT).

Anyone who has a smartphone or laptop will notice their time will change automatically, but any clocks on ovens, cars, wall clocks and watches will need changing manually.

Moving into GMT during the autumn and winter seasons mean we'll be getting an extra hour in bed, but that joy will be short-lived as we start to see the nights getting dark quickly and early.

Before we focus on the days getting shorter, there's lots we can do to make the most of the extra hour. You could do something you don't usually have time for, such as having breakfast in bed, spending extra time with your loved ones, or watching the television. If you're an active person you could get your daily walk in early, or take your dog for a walk, or go for a run.

For the ultimate relaxation, you could enjoy the extra hour by staying in bed. Waking up early on a cold autumn morning will only get more difficult, so enjoy the extra hour by staying cosy and warm before going about your day. There's no doubt sun-worshippers will be looking forward to Spring 2022 when the clocks can go forward again on March 27.





HALLOWEEN WEEK AND SPOOKY FAMILY ROLLER DISCO

Starting on **Sat 23rd Oct** to **Sun 31st Oct**: Pumpkin Carving, Apple Bobbing, Face Painting, Treasure Hunt.
Daily Activities to include - Adventure Park, Climbing & Zipping, Leaping, Bouncing, Go-Karting, Roller Skating.
Fri 29th sees the return of the Family Roller Disco **5:00 - 7:00pm**
Adults Only Halloween Roller Disco **Fri 29th 7:30 - 9:30pm**

BOOK ON LINE

www.letlooseyorkshire.co.uk
info@letlooseyorkshire.co.uk

OR CALL **01482 843475***

*£3 booking fee will be charged on telephone bookings, except when booking using a gift voucher.

A NEW TWIST AT WHITE RABBIT!

...Since the end of lockdown it has been harder to tempt people in, so it became clear to us: either we stop doing food altogether, or we smash it out the park.

On the one hand we have much fewer staff than we used to, but on the other we have learned that coffee and cake just doesn't cut it anymore; so we set about designing something our small team can handle, yet something that won't just satisfy people, but be a delight, something to relax and

indulge over in our beautiful venue. Inspired by the wonderful food in our region, British charcuterie, but also the culture of indulgence and sharing that chocolate is so good for, we have sourced rare and speciality delights to showcase some of the best produce we can get our hands on.

The idea is to serve produce with the same provenance as our hand-made Yorkshire chocolate, things you can't get at home or that are a real experience to eat.



We have sourced a standout wholemeal loaf and white bloomer from Haxby Bakehouse near York, which we serve with traditionally churned artisan butter (we also have delicious gluten-free crackers so no one is excluded!).

To go with this we have a selection of Yorkshire and British cheeses, served still in their wax case, rare-breed and free-range Yorkshire meats, locally smoked salmon and chicken, Yorkshire chutneys, pickles, jams and honey, with enough selection that even vegans and other dietary requirements are catered for (try the curried veg pie!).

We have refined these into 6 meals which we will cater over the seasons, or you can build your own to create a light personal



snack or a miniature feast for family and friends to enjoy! Finished with espresso and chocolates, or some delicious patisserie, it's so good or next step will be wines & spirits, a natural accompaniment to incredible food.

If this sounds tempting to you, plan a trip, and come check out some rare and exclusive produce served in a way to maximize the experience of each morsel. We hope to see you soon!

For the full inspiring story visit: <https://justbeverley.co.uk/news>

Ed Hawkes, White Rabbit Chocolatiers.

WHITE RABBIT
CHOCOLATIERS

HOP ON DOWN TO

WHITE RABBIT

— for handmade, quality treats —

A taste of wonderland...

f t i

16 Dyer Lane, Beverley, East Yorkshire, HU17 8AE
Tel: 01482 679325
Order online: www.whiterabbitchocolatiers.co.uk

MR CARPETS

CARPET AND FLOORING SPECIALISTS

TAKE A LOOK AT OUR QUALITY INSTALLATIONS

33
YEAR
ANNIVERSARY

33 years
in business

33 years
of good, honest service

Check out our Facebook and Google reviews [mrcarpetsbeverley](https://www.facebook.com/mrcarpetsbeverley)

01482 872134

3 Becks North, Beverley, HU17 0PR



Ardent Fireworks

QUALITY FIREWORKS

over 100 lines from only £4.00

Open from Saturday 23rd October to
Saturday 6th November inclusive.
10-6 daily.

www.ardentfireworks.co.uk

Annie Reed Road
Grovehill Industrial Estate
Beverley
HU17 0JT
Tel: 07962 225 600

Our Pocklington shop is open all year -
Wednesday, Thursday, Friday and
Saturday, 10am - 6pm
2F Hampden Road,
Pocklington Industrial Estate YO42 1NR

You must be over 18 to purchase fireworks



SHORT STORY BY CLINT WASTLING - LOOSE CHANGE



Gemma had a keen eye for currency, particularly 50p and £2 coins. There were so many commemorative issues and sometimes she'd strike it lucky and find a low mintage design. That's when a well known online auction site came in and Gemma would excitedly watch the last few minutes of the auction and tot up the profit. The one to find was the Kew Gardens 50p. So far this coin had eluded her.

Last Monday morning she took her carefully wrapped and addressed packages to post first class to the auction winners. In the hassle of finding a parking space and trying to avoid unmasked shoppers on Toll Gavel, Gemma tripped over a man huddled by a shop front.

"Sorry!" she said smelling an unpleasant mix of body odour and damp. The man held out a tray containing assorted coins and rattled them.

"Sorry!" Gemma said again, "I've no change." Then something caught her eye. The tower wrapped around with ivy. She stopped, balanced the parcels in one hand and fished in her jacket pocket for a coin.

"Give me that 50p and you can have this £2 coin. I'll have change for the carpark then." She lied.

The man smiled and coins were exchanged. Gemma walked towards the post office feeling a mix of elation and guilt. The interminable queue at the back of the shop gave her time to examine the coin. It was definitely a Kew Gardens commemorative. She checked what they were currently going for and one was over a hundred pounds. She smiled then shuffled forward in the queue.

"You'll never guess what I received in my change, Tommy." Gemma said as she kicked off her shoes in the hall and flopped on the sofa. "Make me a cuppa please." She held out the coin.

Tommy looked over the top of his paper, "An undated 20p?"

"No, much better than that." Gemma passed the coin over.

"It's fifty pence!"

"Yes, but look at the reverse. It's a Kew Gardens commemorative from 2009."

"Are you sure it's genuine?"

"Fairly certain. I'll post photos and let the punters decide."

"Lovely, you can take the family out for Sunday lunch on the proceeds."

"That's a nice idea."

Gemma was keen to tell all her friends about her acquisition and how the auction was going. "You're beginning to sound like a stuck record," Tommy commented.

"It went for £120 and I don't need to post it. Someone is coming round to collect the coin in person. He wanted to check the coin was genuine."
"Sounds sensible. What time? I'll make certain I'm around."

Tommy put his shoes on and disappeared into the garden. A little later she joined him as he was planting bulbs in newly washed pots. She put down the pile of tenner's next to his dibber. "See, told you!" Tommy laughed. He turned over the notes, every single one was blank. "They only bothered photocopying the one side!" Gemma felt a little shaky and sat down. "You mean...some people are so" Slowly it dawned on her. "You can't trust anyone these days!"

Clint Wastling is the author of *Tyrants Rex*, a fantasy story (Stairwell Books). His poetry collection *Layers* is available from Maytree Press.



POEM BY RICHARD HARRIES - IT'S HAPPENED



When?
It's got here! When? And how?
A young pretty blond girl
Seated on a bus, she smiled
At me
I was flattered and pleased
She stood up
Gave up her seat
To the old guy
ME!

It's happened
How?
When?
Why?

And then it happened
Again
And again
And again

Richard Harries is an older poet who appears all over the North of England at festivals, charity and other events.

His first anthology of poems is *AWAKENING* published by Stairwell Books.

Monks Walk Inn

19 Highgate, Beverley HU17 0DN

Tel: 01482 880871

www.monkswalkinn.com

**WELCOME BACK TO
ALL OUR CUSTOMERS**

- TABLE SERVICE •
- GOOD BEER •
- GOOD COMPANY •

**OPEN TUE-FRI 4pm-10pm,
SAT 12noon-10pm, SUN 1pm-9pm
LARGE COVERED BEER GARDEN &
OUTDOOR COURTYARD AREA**

NEW! QUIZ Tuesday

LIVE music Wednesday-Sunday (Closed Mondays)



It's good to be open again

Telephone: 01482 869111
sales@rosesofbeverley.karoo.co.uk



The Kitchen Factory, The Courtyard,
Tokenspire Business Park, Beverley
HU17 0TB

INSTALLING KITCHENS IN AND AROUND BEVERLEY FOR 20 YEARS

Our new showroom is now open

Monday to Friday 9am - 5pm
Saturday 9am - 1pm

Please call 01482 869111 to book a viewing

FACTORY TOURS | VISIT OUR PRE-INSTALLATION FACTORY | COOKERY DEMONSTRATIONS
BROWSE AROUND OUR UNIQUE DOOR LIBRARY | SEE OUR CLASSIC COMPILATIONS



Together we will design a beautiful kitchen

ROSES WILL THEN PROJECT MANAGE YOUR KITCHEN INSTALLATION FROM START TO FINISH



MANY MORE OF OUR CUSTOMERS KITCHENS ON OUR WEBSITE
5 STAR RATED OVER 39 GOOGLE REVIEWS ★★★★★

Visit www.roseskitchens.com
to see our customers kitchens and read what they have to say about us

Telephone: 01482 869111



BEVERLEY PHOTOGRAPHIC CLUB

We are now starting our winter program. Why not come along and see what we are about. We are a friendly crowd meeting in a newly refurbished pub. We won't charge you to come and look. If you like what you see the subscription is £35 per year or £60 per couple. This is real value for money when you look at our program.



7.30pm on Tuesday 28 September at the Rose and Crown, Nth Bar Without. Beverley. Guest speaker Darren McDonald will give a presentation entitled, "Railways through my Lens".

7.30pm on Tuesday 5 October at the Rose and Crown, Nth Bar Without. Judging and club selection for Bell Trophy. Guest Judge, Neil Holmes.

7pm on Monday 11 October. Brigg Trophy interclub competition held at the Bell Hotel, Driffield, YO25 6AN.

11am on Tuesday 12 October, meet at Burnby Hall Gardens car park, Pocklington, YO42 2QF for a photo walk at through the gardens. The theme is autumn colours.

7.30pm on Tuesday 19 October at the Rose and Crown, Nth Bar Without. Club knockout competition of outstanding summer prints. (Any images taken this summer shown elsewhere or not but not entered in a competition.)

7.30pm on Tuesday 26 October by Zoom. Guest speaker Andrew Fusek Peters will give a presentation entitled, "Hill and Dale, my Shropshire Year."

www.andrewfusekpeters.com/about.html. Andrew shares a journey through the wildlife and landscape of Shropshire. Anyone wishing to join us the cost is £3.00. Contact for details.

For further details contact: billbevphoto@gmail.com.

FRANK STEPHENSON & SON FUNERAL DIRECTORS

Affordable, no-fuss cremations

Since David Bowie opted for a no-frills approach in 2016, there has been more awareness of the fact that it is possible to have a funeral without the traditional ceremonial excess such as the cars, the procession, the flowers and even the service. To meet the rise in demand for a no-fuss approach, Frank Stephenson & Son is now offering the option of an Unattended Funeral - an affordable, low-key alternative to a traditional funeral from just £995.

The importance of personal choice

Arranging a funeral can bring with it tremendous pressure to get it right. In years gone by, funerals followed a format, and people tended to do what they felt was expected of them. Today, funerals are less bound by tradition and religion. As with anything else in life, people have a choice. Choosing how, where and when you want your final send-off is a very personal decision. We work closely with families to create a funeral that fits their preferences, tastes and budgets. While a direct cremation is undoubtedly a lower-cost option, the decision isn't always down to budget. Some people see the traditional funeral as an important way to say goodbye, others prefer a celebration of life or remembrance ceremony. A direct cremation separates the practicalities of a cremation from the memorial event, giving the family the opportunity to say goodbye in a way that is personal to them.

No compromise on quality

At Frank Stephenson & Son the focus is on choice and taking the greatest care in everything we do. With our Unattended Funeral from £995 and our Attended Funeral from £1,995, our Beverley team will help arrange a fitting farewell for your loved one within a budget that's right for you.



Litho and Digital Print that gets you noticed

BROCHURES LEAFLETS
POSTERS CALENDARS PADS
LARGE FORMAT PRINTING
STATIONERY MAGAZINES
SAFETY SIGNAGE BANNERS
VARIABLE DATA/MAILING
 and much much more



Jadan Press are a leading family run commercial and trade printer based in Hull. With over 20 years experience, we are renowned for producing exceptionally high quality print and finishing. We are committed to providing an excellent service by offering value for money and ensuring complete customer satisfaction.

01482 610902

info@jadan-press.co.uk

www.jadan-press.co.uk

Rainbow House, Kimberley Street, Hull, HU3 1HH



Your Local Funeral Professionals

*Serving families in and around Beverley
for many years*

FRANK STEPHENSON & SON FUNERAL DIRECTORS
29 Minster Moorgate | HU17 8HP | 01482 881 367



WE'RE HERE FOR YOU ANYTIME

Whatever your funeral wishes and budget, we can provide a funeral to suit you. Prepaid funeral plans also available.

*We are very proud to be a Dignity Funeral Director,
providing a 5 star service to families across the U.K.*

www.dignityfunerals.co.uk/local

To find up to date news about our work in the community, please visit our Facebook page:

[f www.facebook.com/frankstephensonbeverley](https://www.facebook.com/frankstephensonbeverley)



CARFAN - VOLKSWAGEN SCIROCCO STORM

Volkswagen took a leaf out of Maserati's book when they named the subject of this month's column after a wind - the Scirocco. Then they went one better by also calling it Storm.

From a production run between 1972 and 1981, the featured car was made in 1980 and its looks have certainly stood the test of time, undoubtedly helped by the talent of its original designer - Giorgetto Giugiaro. They don't come better than that.

Intended to replace its predecessor the Karmann Ghia, over half a million of the Mk. 1 versions were produced but are sadly a rare sight on our roads now. Somewhat surprisingly, Volkswagen offered six different engine sizes, ranging from 1100 c.c. to 1700 c.c. according to the country it was exported to and this version sports 1600 c.c.



Owned since 1998 with 140,000 miles now on the clock and replacing a succession of six Mk.2 versions, the current custodian has resprayed it, replacing the doors and re-welding the subframe, which is a common thing to have to do with this model so pre-purchase checks in this area would certainly be a good idea. Resplendent in Hellau blue which looks great in the sunshine, a rare and original sunroof adds to the leather seats to complete the picture.

For a car that is now over 40 years old, parts are becoming a struggle to obtain. The Scirocco Register will try to help owners but it is more of a social club now. Should you fancy a Storm on your drive, expect to pay somewhere in the region of eight to fourteen and a half thousand pounds.

Reports show that there are less than 20 Storms remaining in the UK so should you see the elegant lines of one gliding past, don't forget that cheery Carfan wave!



Botterill & Co

Chartered Certified Accountants

We are a modern and professional accountancy practice ideally located to serve businesses in Beverley and the surrounding area.

We utilise modern accounting technology to provide you with a cost effective, professional service.

Our services:

- Annual Accounts
- Tax Planning
- Management Accounts
- Tax Returns
- Company Formations
- Payroll
- Cloud Accounting
- Bookkeeping & VAT

For a free initial consultation please contact us:

Office: 01482 862240

Mobile: 07966 051458

Email: gareth@botterillco.co.uk

Website: www.botterillco.co.uk

1st Floor Offices, 40 Norwood, Beverley, HU17 9EY

BEVERLEY MOTOR WORKS: CHECKING YOUR TYRES



Tyres are an integral part of our vehicles. Along with being the only part of your vehicle that makes contact with the road at all times, tyres support the full weight of your vehicle so it is vital to ensure tyre maintenance is carried out to avoid breakdowns and avoidable repair costs.

Legal tyre tread depth

Car tyres are required by the law to have a minimum tread depth of 1.6mm in a continuous band around the central three quarters of the tyre. This rule also applies to goods vehicles such as vans, trailers and caravans that don't exceed 3500kg.

Check your tyres

Check your tyres with a tyre tread depth gauge to avoid hefty fines and driving license penalty points. To check the tread depth, insert the gauge's probe bar into the groove of the tyre and push the shoulders flush with the tread. You can also check the tyre's tread wear indicators; if you find the indicator is flush with the level of the tread, the tyre should be replaced.

When to change tyres

If you notice your car has started having more difficulty than usual when handling the road in wet weather, or it is taking you longer to stop when you apply the brakes, it could be a sign that your tyres need changing. With the natural gradual wear and tear your vehicle sustains over time, it is a good idea to get your tyres checked by professional technicians.

Beverley Motor Works offer a free seasonal vehicle check which covers tyre maintenance. Why not take advantage of this offer before the cold, winter seasons strike. Visit www.beverleymotorworks.co.uk to book online.

BEVERLEY
MOTOR
WORKS

INDEPENDENT
BMW & MINI
SPECIALISTS

Our dealership expertise
means high quality car
servicing at a fair price...

Unit D1 Grovehill Industrial Estate,
Annie Reed Road, Beverley HU17 0LF

Call today: 01482 881 128

Visit: beverleymotorworks.co.uk



the Good Garage Scheme

BOOK YOUR
MOT TODAY



PUZZLE PAGE

WORDSEARCH

P V S C E W P J K K B U A K U
 P V O X B T I Y J C K X H H H
 O L R G O P A A S I K P Q Z V
 D G X J S E M N L R Q C M G M
 D A Z B I N O B R T Q N A S N
 O S F K Z O R Z J E I P Y T C
 P Y B W M B Y M H B B C P A B
 E E S L I M O J C J U I F Y U
 U Z L K N T X K W A S N H R T
 X U P F C X C R A T P U I L Y
 F L F O P O Y H Y S E N P R P
 V B K G W M L J E C L O Z Z S
 K B R Z I X N C H S L G H I T
 B H A L L O W E E N S P G K O
 W C D J D Y N N M U T U A W M

AUTUMN
 CLOCKS
 COLD
 DARK
 FULLMOON

HALLOWEEN
 HIBERNATE
 SPELLS
 TRICK
 WITCHES

COMEDY CORNER

Things that make you laugh!



Wife – Have you seen the Dog Bowl?
 Husband – I didn't know he could play cricket.

When does a joke become a dad joke?
 When it becomes apparent.

What do you call a train carrying bubblegum?
 A chew chew train.

What do you call a magic dog?
 A labracadabrador.

WHAT IS IT?

What is the ? Where will you find it?
 Answer on Page 32.

E R T
D ? G

Do you have any amusing stories, quotes or pictures? Send them to info@justbeverley.co.uk

QUOTE OF THE MONTH

Learning from your mistakes is more useful than a life doing nothing.

THOUGHT FOR THE MONTH

Opportunities -
 Are your eyes open to them?

DREAM DOORS®
 NEW LIFE FOR OLD KITCHENS



AUTUMN SALE
NOW ON!
20% OFF
 T&Cs Apply

VISIT OUR
 SHOWROOM NOW:

4a Belprin Park,
 Swinemoor Lane,
 Beverley, HU17 0LN

Call us now for a free estimate:

01482 861 653



Checkatrade.com
 Where reputation matters

AVERAGE SCORE **9.7/10**



QUALITY BEDROOM MAKEOVERS BY LOCAL PROFESSIONALS

- Bespoke sliding wardrobes
- Styles to suit every home
- Wide range of colours and finishes to choose from
- 96 showrooms nationwide

www.dreamdoorsbedrooms.co.uk

Give your kitchen an Autumn makeover

FOLLOWING
 GOVERNMENT
 GUIDELINES

THE UK'S #1 KITCHEN MAKEOVER EXPERTS

- From simple door replacements to complete fitted kitchens
- Fully installed by local professionals in just a few days
- Choose from a large selection of doors, worktops and appliances
- 96 showrooms nationwide

www.dreamdoors.co.uk



COAST 2 COAST BIKE CHALLENGE FOR BRAIN TUMOUR RESEARCH

In his most ambitious challenge yet, Wilson Wheel's Nathan Wilson is taking on a one day 180 mile solo bike ride to raise money for charity and awareness for Brain Tumour Research.

On October 10, Nathan will start the challenge at Morecambe and finish at Bridlington, following as closely as possible the Way of the Roses Route. He faces many challenges along the way such as steep climbs over the Pennines and only 11 hours of daylight riding in the dark is never easy. The route is roughly 180 miles and usually advised to complete over three days if you are a fit and keen cyclist, but Nathan will be completing it in just one day with a 12 hour target. He said: "Life isn't easy so neither should these challenges!" He aims to start at 6am and finish at 6pm depending on the number of stops he makes and the weather conditions on the day. He has focused in two pre-selected stops, one which is at Pately Bridge and the other near Pocklington, but may make more if necessary.



The challenge is for a good cause, with the chosen charity close to Nathan's heart. Brain tumours kill more children and adults under the age of 40 than any other type of cancer, and only 1% of the national spend on cancer research has been allocated to this disease. He will be receiving support and backup from family members on the day of the challenge, and having years of experience working in the bike trade means he is well equipped to tackle any technical issues along the way. This cycle is the longest Nathan will have ever done with his previous record being 120 miles in one day, though he says that was many years ago in a warmer climate. Facing this challenge in the colder months, is going to make this challenge even tougher so can you help him reach his target?

Support Nathan this month and follow his journey throughout the challenge on the **Just Beverley Facebook page** or make a donation at www.justgiving.com/fundraising/Nathan-Wilson24

WHAT IS HIIT AND IS IT FOR ME?

Go into any gym now and the chances are there will be HIIT classes on offer. It's a popular form of training to run and take part in. Why is it popular? Well, in short because it provides a quick way of 'getting fit'.

HIIT stands for High Intensity Interval Training and involves short intervals of exercise broken up by rest periods. Often these are different exercises, but they don't have to be. These intervals are, as the name suggests, characterised by vigorous bursts of energy involving high intensity exercises.

As such it's one of the most efficient ways of exercising as a typical HIIT session can usually be completed in 20-30 minutes.

A simple example might go as follows: After a warmup period you have 5 intervals on an exercise bike, cycling at a high intensity (getting your heart rate above 80% of its maximum capacity) for 60 seconds at a time. Each interval will be followed by a 90 second break and the workout will finish with a longer warm down.

The main thing that HIIT does is burn calories and improve cardio-respiratory health. It's also claimed to continue the work after the exercise.

Such is the level of intensity, that many people can experience EPOC Or Excess Post-Exercise Oxygen Consumption. This means your body continues to burn calories even after the exercise because of the metabolic changes in your body.

Overall, it's a very efficient way of doing cardio. Studies have shown that you can achieve a similar level of oxygen uptake in a 10 minute interval training session as you can doing lower intensity continuous exercise for 50 minutes.

Being more aerobically fit allows you to exercise for longer without getting out of breath and therefore it has a positive impact on your overall physical fitness. Most people training HIIT would recommend that you include it as part of a wider, more varied fitness regimen.

The greatest benefits still appear to come from doing longer (and more tiring) intervals of 3-5 mins.

W

Pop in store to see the new 2021 bike range



WILSONS WHEELS



T: 01482 882881

W: www.wilsonswheels.co.uk E: info@wilsonswheels.co.uk

WE NOW STOCK CUBE CYCLES

2021 RANGE NOW AVAILABLE

Electric Bikes in Stock - Demo one today!

- Adult Bikes
- Children's Bikes
- Electric Bikes
- Clothing for all cycling weather
- Parts and accessories

89a Grovehill Road, Beverley, East Yorkshire HU17 0EJ

NOW OPEN: Monday - Saturday 8.30am - 5.30pm

Sunday: CLOSED - Out riding our bikes

 CIMSPA
Member Partner

 CIMSPA
Education Partner

 ActiveIQ



sportsability

FITNESS TRAINING

Level 3 Diploma in Gym and Personal Training

Venue: Total Fitness

Course Starts: Saturday 13th November 2021

Costs:

Level 2 Gym - £650

Level 3 Personal Training - £1200

Combined Level 3 Gym & Personal Training - £1500

Interest Free Monthly Instalment Plans Available







Contact our friendly team for further information on

01482 229676 or info@sportsability.org.uk

www.sportsabilitytraining.co.uk

[@SportsabilityFitnessTraining](https://www.facebook.com/SportsabilityFitnessTraining) [sportsabilityft](https://www.instagram.com/sportsabilityft)

30

 **BEVERLEY**

www.justbeverley.co.uk

Autumn EVENT

SAVE
OVER
20%



Headboard
Included

Cashmere

1000 Pocket Spring Divan Set, 2 Large Drawers & Luxury 24" Headboard, Choice of Colours & Styles
Single 3' Was ~~£598~~ **Now £449**
Double 4' / 4' 6" Was ~~£748~~ **Now £499**
Kingsize 5' Was ~~£848~~ **Now £549**
Superking 6' Was ~~£1198~~ **Now £799**

Also available as Ottoman Cashmere 1000 Pocket Ottoman Divan Set. With Luxury 24" Headboard, Choice of Colours & Styles
Single 3' Was ~~£899~~ **Now £599**
Double 4' / 4' 6" Was ~~£1099~~ **Now £749**
Kingsize 5' Was ~~£1199~~ **Now £799**



Mattresses
SAVE
UP TO
30%



Orchid Traditional Spring Quilted Finish

Single 3' Was ~~£199~~ **Now £119**
Double 4' / 4' 6" Was ~~£299~~ **Now £169**

Opulence 1500 Pocket & Memory Foam

Single 3' Was ~~£399~~ **Now £299**
Double 4' / 4' 6" Was ~~£499~~ **Now £349**
Kingsize 5' Was ~~£599~~ **Now £399**
Superking 6' Was ~~£799~~ **Now £549**

Cashmere 1000 Pocket Spring

Single 3' Was ~~£299~~ **Now £199**
Double 4' / 4' 6" Was ~~£399~~ **Now £249**
Kingsize 5' Was ~~£499~~ **Now £299**
Superking 6' Was ~~£699~~ **Now £449**

FREE
SUPER 8
UNDERLAY
WITH ALL
MAJOR BRAND
CARPETS



Leightons exclusive
stock ranges
100s to choose from

15% OFF



FREE
Super 8
Underlay
usually £6.99
per sq.m

Free Delivery

to room of choice
We offer free delivery
on all beds,
mattresses, sofas
& chairs*



*Free delivery applies to local area only
and orders over £249

Bed Disposal Service

We'll take away
your old
bed/mattress
ask in store
for details.



Belprin Park,
Swinemoor Lane,
Beverley HU17 0LN
Tel: 01482 326590
info@leightonscarpets.co.uk
www.leightonscarpets.co.uk

COUNTRYSIDE MATTERS WITH SAM WALTON

I briefly mentioned the Danish Pig Herd last month and how their units are all tidy, and in fact I would almost go as far as to say that the majority are immaculate. That also includes the approach to them with nice drives, lawns and flowers to give it a welcoming appearance. Their pig industry is extremely well run, and with precision.



I was able to look round their newest abattoir some years ago now where everything literally goes like clockwork, and one thing in particular which sticks in my addled brain is the fact that deliveries of live pigs to the abattoir is very finely organised. A lorry arrives every 15 minutes, so there is no waiting for the pigs to be unloaded. Whilst the pigs are being transported in air-conditioned lorries they lie down, but it is when the lorries stop and have to wait that they then become restless, so they have overcome that environmental problem.



This particular abattoir was run like clockwork, with the pigs walking into a revolving pen like a big wheel, which then went down into a gas to put them to sleep, meaning there was no stress at all. I am pleased to say that this procedure is now virtually everywhere in UK too. The staff in the abattoirs have good working conditions and everywhere is like the farms, totally immaculate.



Most of their farms are mixed arable to produce their own cereals and proteins for feeding their pigs. They also have a substantial dairy industry, but I did not see any beef units and very few sheep. That might be because I was only taken to pig farms.



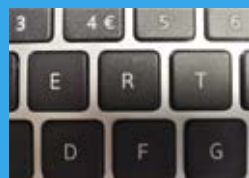
As you may know Denmark has several islands with superb bridges, many of them several miles long and their road network puts our country to shame. The other thing they have which helps farmers is an exceptional advisory service as pigs are their major export.

Their farm machinery is also immaculate, as are the fields in which they grow their crops. They somehow take a pride in what they do. Their road network is fantastic; no potholes, wide enough for easy travelling, and scenic views virtually everywhere.

So I would say that Denmark is one of the cleanest countries you could visit, with its friendly people, however, everything is extremely expensive. It must be seven years since I was last there and although I don't drink beer, I know a pint then cost £6.00, with the price of land about twice of that here.

WHAT IS IT?

*The answer is...
a keyboard*



IN THE GARDEN... OCTOBER

As I write this there is a distinct autumnal feel in the air, and during October autumn will well and truly be in full swing.

The deciduous trees and shrubs will be shedding their leaves - making an endless task of sweeping them up. The trees may be losing their foliage and 'greenness' (is that a word?), but that is compensated by the wonderful autumn hues we will have and of course their will 'berries' in abundance, on Pyracantha, Cotoneaster and some varieties of Sorbus.

Plus, fruit on Ornamental Crab apples (Malus), Rose Hips in addition to Apples and Pears. Flower borders can start to be tidied up but try not to be over zealous some plants have lovely decorative seed heads and provide food for birds so leave them for a while.

The pace for 'getting things done' quickens this month - there is a lot to do before the 'clocks change' and we lose our evenings so...

Lawns in October

- Scarify established lawns with a rake, then aerate with a fork if you haven't done it already - this will be quite important this year as some soils will be rock hard and need opening up.
- Top dress established lawns and apply an autumn 'weed and feed', this has a slightly different balance of elements to the spring lawn feeds, encouraging strong root and grass growth next spring.
- Remove fallen leaves - if they are allowed to build up bare patches will appear.
- Continue to mow existing lawns (albeit less frequently) with the blades set at their highest.

Harvesting in October

- Bring in tender perennials, trim and store in a frost-free place.
- Harvest apples and pears - before they fall and get damaged or 'nibbled' by various beasties.
- Dig up carrots, potatoes and other root crops.

Tidying in October

- Rake up fallen leaves and clear up in the garden (any diseased leaves should be burnt not composted).
- Dig over any empty areas of soil - but not if too wet.

Getting Prepared

- Plant up containers with bulbs and winter bedding.
- Plant bulbs in the garden.
- Put Glue Bands on fruit trees - these set in place a sticky barrier which stops female moths climbing the tree to mate and lay their eggs, and other pests from hibernating in cracks in the bark.
- This is also a good time of year to plant new shrubs and perennials. The warmth in the soil will help them to get quickly established.
- At the end of the month remove any pumps and filters from the pond, clean them out and store until spring.

That's all for now.

Happy gardening. J.

Jane Dale of 'Designed Gardens'. Tel: **07983 392 411**.



DISCOVER YOUR DREAM KITCHEN & BATHROOM

**BOOK A
FREE DESIGN
APPOINTMENT**

With our expert
Specialists

Book a **FREE** design appointment with Paul and Dan, our dedicated Kitchen and Bathroom Specialists. We'll be with you every step of the way to turn your dreams into a reality.

SWINEMOOR LANE

HU17 0JX | 01482 880088 | mkmb.co.uk
OPEN MON-FRI 7:30-17:30 SAT 7:30-NOON

MKM
BUILDING SUPPLIES

WORKTOPS | APPLIANCES | TILES | FINISHING TOUCHES

I'VE BEEN THINKING... SAYS COLIN RAYNOR

Scientists explain rainbows as a result of water droplets and their refraction and reflection of light. No point looking for that pot of gold, I was once told could be found at the end of the rainbow.



I was also told a quick way to remember the colours of the rainbow was with the mnemonic R.O.Y.G.B.I.V. Richard of York gave battle in vain. (He was defeated and died at the battle of Wakefield in 1460). I want to suggest a more literary way of recalling

the colours of the rainbow with words that may help us think a bit about life.

If we say we see RED it usually means we are angry about something and there are many injustices in life to be angry about. It benefits nobody, least of all ourselves, to let our anger get out of control. So as the saying goes "cool it man".

The ORANGE of the sun brings us warmth and makes us feel good, as though all is right with the world. However the heat of the sun is so intense in some lands now it is causing drought and devastation on an unprecedented scale.

Perhaps unjustly the colour YELLOW has at times

being associated with man's unwillingness to engage with actions the majority thought to be a right and just cause. We should not be too quick to judge those who are, at the time, not strong enough either physically or mentally to follow the crowd.

If there is one predominant colour that we see in this beautiful land of ours it is GREEN and there are so many different hues to delight in. Yet again it is used in a strange way in the phrase "green with envy".



Some people just don't seem content with what they have and always seem to want what somebody else. Am I wrong to think the ever present power of advertising is to blame in part.

that. Over the years battles have been won and lost by many brave men and women to ensure 'peace in our time'.

But there are also people who have to battle daily just to keep body mind and soul together as their human frame lets them down.

If BLUE relates to battle we all know about



If we picture the beautiful colour of INDIGO it comes alongside blue and can give us a sense of that peace and calmness that is so vital for us to achieve in this frantic life.

To conclude my rainbow colour eulogy I offer you the VERSE from Thomas Chisholm's hymn 'Great is thy faithfulness' in which he calls for 'strength for today and bright hope for tomorrow'. When you next see a rainbow think on those words.

Still on the theme of colour I have been talking recently to a lady called Pat who is Beverley born and bred and rightly proud of her town. She is delighting right now in the wonderful display of flowers to be seen in just about every corner of Beverley.

So we want to say thank you to everyone including the council, private sponsors and individuals who continue to provide so much colour around for us all to enjoy.

TRAVEL CHANGES - GET READY FOR HOLIDAYS

Whilst the pandemic has taught us so much, and in many cases perhaps changed our priorities in life, one thing that has not changed for me is my passion for travel. In all honesty if anything it has made me appreciate just how much I love to explore the world and see new places and experience new cultures.

So our first good news has very recently been announced by our government with a complete overhaul of the traffic light system with the introduction of a single red list.

Fully vaccinated travellers will no longer require a pre departure test before arrival in to England from countries that are not on the red list. From a later date in October the day 2 PCR test on return to the UK will be replaced by a cheaper lateral flow test.

In addition eight countries including the Maldives and Turkey will be removed from the



red list from Wednesday 22nd September. So gradually the requirements are becoming easier and more straightforward.

The second bit of good news has been that the last few months have been particularly busy with departures to European destinations which vs last year is such a huge improvement.

My clients are finding that the support and guidance I provide has helped them navigate the requirements and they have found that the experience is actually straightforward and the holidays have done them the world of good.

The most popular places have been the Balearics, Greek Islands and Malta and these have been booked fairly close to departure date. I have also been very busy on new long haul bookings with flexible booking conditions for 2022, particularly Maldives, America multi centres, Dubai and Mauritius.

Whilst I am still needing to work on some re books it is so lovely to be making new bookings for clients to look forward to.

It is said that "things come in three's" so our third bit of news for you is our recent success in winning the award for the best homeworking agency at the Travel Weekly Agent Achievement Awards.

These awards celebrate excellence in the travel trade and are highly regarded in the travel



industry. At Travel Counsellors we work hard to show our customers the highest level of care and support, so winning this award means so much to us.

So lots to celebrate and lots to look forward to, and should you need any guidance or support in making your travel arrangements please do not hesitate to get in touch.

Amanda McConnell, Travel Counsellors.
T: 01482 770540
E: amanda.mcconnell@travelcounsellors.com
W: www.travelcounsellors.com/amanda.mcconnell

FIND

YOUR

FUTURE!

East Riding College



OPEN DAYS

EAST RIDING COLLEGE

SATURDAY, 9 OCTOBER

9.30am-12pm

WEDNESDAY, 10 NOVEMBER

4pm-7pm

Flemingate, Beverley



www.eastridingcollege.ac.uk/open

Stay safe, Beverley

**Get your COVID-19 and flu jabs
and create a protective shield for
yourself and others this winter.**

- ▶ **Ventilate or meet outside**
- ▶ **Continue to wash your hands regularly with soap and water**
- ▶ **Do a rapid lateral flow test twice a week**
- ▶ **Respect personal choice**
- ▶ **Know your risk**
- ▶ **Be socially responsible and take care if visiting the vulnerable or elderly**

Prevent, Notice and Act.

visit eastriding.gov.uk/3stepstosafety



EAST RIDING
OF YORKSHIRE COUNCIL



#TogetherEastRiding