

**FREE**

just

ISSUE 60

# BEVERLEY

IT'S YOUR MAGAZINE



# UNITED BY FITNESS

NEWS, WHAT'S ON, LIFESTYLE, FEATURES, PUZZLES, PHOTOS & MORE

*Wishing you a Healthy and Prosperous 2020*

Are you worried about getting your payroll right? It's time for change.  
Outsource your payroll today and be rest assured everything is taken care of!



**Are you:**

- **Making the Correct Pension Contributions?**
- **Aware of the Minimum Wage Rates?**
- **On top of the Statutory Sick and Maternity Pay Rates?**
- **Making the most of your Payslips?**

**Improve business performance  
by outsourcing payroll**

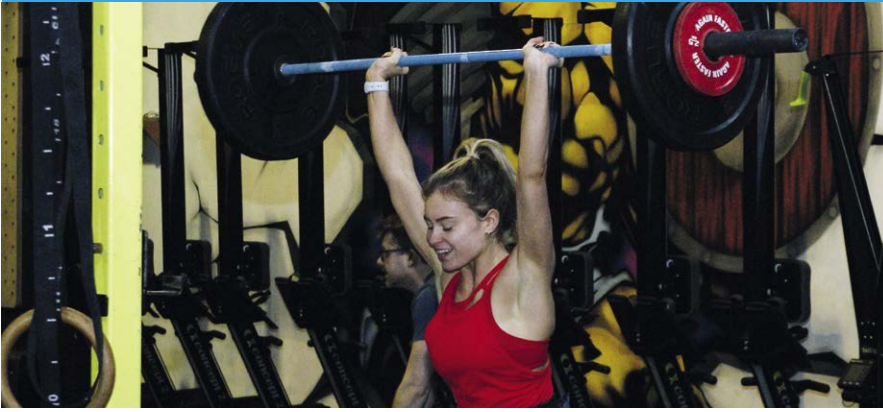
To arrange a **FREE** meeting  
call us on 0845 308 2288  
or visit [www.stipendia.org.uk](http://www.stipendia.org.uk)



 Stipendia Payroll Solutions

 @StipendiaPay

## 14/15 CROSSFIT BARBARIC



# just BEVERLEY

## LETTER FROM THE EDITORS



Happy New Year to everyone, may you have a healthy 2020!

2020 will be a year full of change and excitement. A time to implement all those changes we want to reach our aspirations in this

special year.

So whatever your goals, targets or aspirations, focus on the good things whatever they may be. Remember 'small change - BIG impact' - tell us your stories!

**Julian.**



Happy New Year!

January is the time many of us take to reassess, commit to a New Year's resolution and set out some positive changes for the year ahead. As you read through the magazine, you'll see we've made some

changes too! There's plenty of good news coming in as always - some lovely reasons to keep our spirits up!

What's more, winter is a beautiful month - glistening frost, bright sunny days and beautiful orange sunsets. So get wrapped up, get outdoors and enjoy some of nature's real treats!

**Lara.**

### Competition Terms and Conditions

Competition answers should be emailed to [competition@justbeverley.co.uk](mailto:competition@justbeverley.co.uk) before the closing date with the competition title in the subject field. Include your name, address and daytime contact telephone number along with your answer. Winners will be notified within 1 week of the closing date and MUST be available for publicity purposes for **Just Beverley** magazine, website and Facebook page and the prize provider. Photographs are usually taken the weekend after the prize-winners have been notified. The judge's decision is final. No cash alternative is offered. Details may be used for marketing purposes by **Just Beverley** and the prize provider and for website analytics by **Just Beverley**.



'Community Publication Award'  
Shortlisted Nominee  
2017 & 2018



**REYTA**  
Remarkable East Yorkshire  
Award Nominee 2016  
'Best Newcomer'

## GET IN TOUCH WITH US:

**Website:** [justbeverley.co.uk](http://justbeverley.co.uk)

**Email:** [info@justbeverley.co.uk](mailto:info@justbeverley.co.uk)

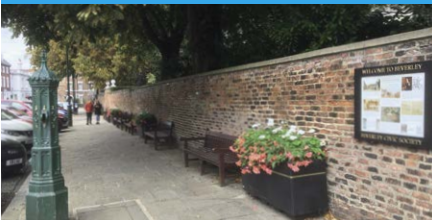
**Telephone:** 01482 679947

**Twitter:** @JustBeverley

**Facebook:** [facebook.com/justbeverley](https://www.facebook.com/justbeverley)

If you would like copies for your business to distribute to staff and customers, call **Just Beverley** on **01482 679947**.

## 5 ST MARY'S PUMP



## 8/9 BEV 'N' LEY



## 16 BROOK TAVERNER



## 17 TRENT GALLERIES



## 25 NEW YEAR



## 26 SALT REACH 20



### Contributors:

Julian Minshall, Lara Blythe, Rich Manville, Tony Barker, Jane Dale, Richard Hayes, Ed Hawkes, Dick Lidwell, Lauren Middleton, Olivia Peace, Colin Raynor, Sam Walton, Nathan Wilson.

### REMEMBER!

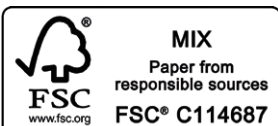
If you see examples of anti-social behaviour or other types of low-level crime, do report it to the appropriate authorities. Without knowledge, the Police and Council cannot put in place processes and procedures to combat it! Cyclists without lights, on one wheel, traveling the wrong way down a one-way street put other road-users' in danger - let the Police know immediately!

**POLICE - Emergency 999, Non-urgent 101.**

**ANTI-SOCIAL BEHAVIOUR (East Riding of Yorkshire Council) - 01482 393939.**

### You can pick up the magazine from:

Parkway Cinema, Flemingate, Beverley Tourist Information, Beverley Library/Treasure House, Tesco, Morrisons, East Riding Leisure Beverley, East Riding Theatre, Browns café, Beverley News, Boyes, Tesco café, Colette and Tyson Garden Centre, Beverley Garden Centre, Cherry Tree Garden Centre, Mace News Saturday Market, Co-op Food Lincoln Way, Tickton News, Costcutter in Walkington, Molescroft News, Grovehill Convenience Store, Maple News, Leconfield PO, Willerby News, Poundland, Halfords, East Riding Community Hospital, Bishop Burton PO, Leven PO, The Altisidora, Cherry Burton PO, Barkers of Cottingham, Middleton-on-the-Wolds PO, Light Dragoon at Eton, Gnu at North Newbald, Monks Walk, Hayride, Sally's Deli, Ferguson Fawcett at Walkington, THECREATIVELAB, health centres, churches, cafés, hairdressers and more!



Please pass your Just Beverley on or recycle it responsibly.  
Printed by: Jadan Press.

## HAPPY 50TH BIRTHDAY BEVERLEY COMMUNITY LIFT!

The transport charity, Beverley Community Lift, celebrates a golden milestone in 2020, marking the 50th anniversary of an organisation which set out to help local people in times of need.

It was the brainchild a group of residents and organisations, particularly Beverley Council of Churches, Social Services and the Women's Royal Voluntary Service (WRVS) which developed the then Beverley Community Care Association. The idea was to provide a network of street contacts to help with specific tasks.

The donation of a minibus by the town's Round Table in 1974 changed the focus somewhat as such transport had not been top of the list. It became a registered charity in 1979 and the change of name to Beverley Community Lift was voted in as recently as 2003 to avoid confusion with community care legislation.

To demonstrate the enduring appeal of the charity, there are still two people involved who were there at the beginning. Retired teacher John Turner continues to drive each week and Margaret Law is now a service user.



The car and minibus services provided every week do not just cover Beverley, but Cottingham and along the A1079 corridor to Market Weighton, Holme upon Spalding Moor and Pocklington.

The big 50 milestone will be marked by the delivery of a new minibus, thanks to successful grant applications and fundraising by volunteers. However, Beverley Community Lift really needs more people to deliver its services, particularly passenger assistants. Please contact the office on **01482 868082**, email [manager@bclift.org.uk](mailto:manager@bclift.org.uk) or visit [www.bclift.org.uk](http://www.bclift.org.uk) to find out more.

## POST OFFICE NOW OPEN!

Sue MacKinder is delighted that Beverley News on Grovehill Road can now offer Post Office services.

The Post Office desk will be a great asset to the local community!

The address is as follows: Grovehill Road Office in **Beverley News, 292 Grovehill Road, HU17 0JE.**



## A NEW LEASE OF LIFE FOR THE LORD NELSON

Jo and Bob Poole bought the Lord Nelson Pub back in 2018 and after the purchase renovated the interior of the property. The pub was subsequently leased out until November this year when Jo and Bob decided to run the pub themselves.

They now run it as a successful Freehouse, which offers locally-sourced hand-pulled ales with a Yorkshire origin, including beers from Wold Top and Great Newsome breweries.



The Lord Nelson is very much a local pub with a warm, friendly atmosphere. It regularly holds informal Jam Nights, has an Open Mike night on Thursdays at 8pm, has Sky Sports and shows all Premier League Matches when they're on.

It also has some great offers. From Tuesdays to Thursdays 4pm to 7pm, draft beers are available at £2.75 a pint and Friday night means fizz with Prosecco sold at £12 a bottle.

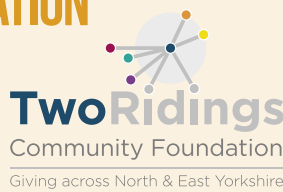
It's dog friendly, and offers tea or coffee with a muffin at £2.95 - the perfect place to stop for a brew after a walk out in the cold.

The Lord Nelson can be found on Facebook @[thelordnelsonpubbeverley](https://www.facebook.com/thelordnelsonpubbeverley). For more information please contact Jo and Bob at [joandbobpoole@yahoo.co.uk](mailto:joandbobpoole@yahoo.co.uk) or on **07536 108516**.

## TWO RIDINGS COMMUNITY FOUNDATION MAKES A BIG IMPACT

Two Ridings Community Foundation is dedicated to supporting local charities and groups in North & East Yorkshire.

It awards funding to organisations that will have the greatest effect on people's lives and in the last 19 years has allocated more than 3,000 grants that in total, amount to £10 million.



For the complete version of this article and more information on the success of Two Ridings Community Foundation, please visit the **Just Beverley** website at <https://justbeverley.co.uk>.

## PRIZE FOR LOCAL PHOTOGRAPHER IN THE 2019 XPERIENCE PORTRAIT AWARDS!

Aaron Gilpin, photographer at La Lumiere Photography portrait studio, Beverley has been presented with a consumer award in the "Little Miss" category of the 2019 Xperience Portrait Awards!

Aaron's winning image (inset) was chosen from amongst 9,000 others and is testament to his photographic skill.

Aaron was "delighted" at the news and goes on to say 'The "Little Miss" category is a real favourite of mine. The images we can create are beautiful!' For more information contact: La Lumiere Photography on **01482 867455**, [enquiries@la-lumiere.co.uk](mailto:enquiries@la-lumiere.co.uk)



## NEW BEVERLEY TRAVEL AGENT

A new travel agent 'Beverley Travel - Inspiring Journeys' opens its doors early January 2020!

An exotic addition to the Flemingate Centre, between Bay Tree and Inflatation, agents Steph McInnes, Vicky Thompson and Jackie Nichols welcome customers wanting to plan their next journey - near or far!



# BEVERLEY CIVIC SOCIETY BRING HISTORY BACK TO LIFE

**You may have noticed something missing recently on North Bar Within... The striking green, Grade 11 listed Victorian Water Pump, that has sat in the same location for nearly 150 years was, on the 10th December last year, removed.**

Thankfully the pump has not gone for good! Instead, as the result of a Beverley Civic Society project, it has been sent for restoration. Using an identical pump as an example, (which is located in Esher, Surrey) a new handle and spout will be cast and the missing castellations - the ornate patterning around the top of the pump - will be replaced.

The pump will also undergo a much-needed spring clean and will receive a fresh coat of paint. The precise colour scheme is still up for debate, but a project is underway at Wyke College, Hull where students are working on a number of possible schemes.

A stalwart in the architectural scene of Beverley, the pump is a major part of the town's heritage, and many Beverlonians feel a strong sense of communal ownership towards it. The pump was made in the 1870's by the London firm Owens of Whitefriars, which is no longer in existence. Designed in the Gothic architectural



style, which was at the time experiencing a revival, the pump was used for a variety of purposes supplying local households, the general community, and horses with water. It was in use until the 1940's, but since its decommission the handle has been lost and the spout broken off.

The restoration project, initiated in March 2018 by Mr Richard Fatkin and managed by Dick Lidwell of the Beverley Civic Society, has received funding from the Civic Society itself, Yorkshire Water, Thwaites Brewery (of the Beverley Arms), Beverley Town Council, East Riding of Yorkshire Council, plus six Beverlonians, including one individual who remembers using the pump when it was still in use in the 1940's!



Donors will be acknowledged on a plaque to be unveiled on the pump's return.

For further information about this and other projects Beverley Civic Society are involved in, please visit their website at [www.beverleycivicsociety.co.uk](http://www.beverleycivicsociety.co.uk) and/or attend one of the monthly meetings which are usually held in St. Mary's Church Hall.

With acknowledgements to Dick Lidwell for permission to use photographs of the Pump.

## REDUCE, REUSE, RECYCLE AND NOW REFILL!

**A year in the planning and execution, The Refill Jar is now open! Located on Butcher Row, The Refill Jar is Beverley's first dedicated eco-store, selling food, and environmentally-friendly toiletries and household products in such a way that packaging is almost eliminated!**

Planet Earth and our impact on it has recently become a regular feature of popular and political discourse. A hot topic in more ways than one, the public are increasingly interested - and motivated - to reduce their footprint on the Earth.

Reducing packaging on new items, and considering the contents of the products we

use are two ways to decrease this impact; The Refill Jar has got these covered. The business is family-run and at the helm are Claire and Jamie Newton-Smith supported by their children Ethan, Poppy, Isaac, Caleb and baby Alice.

The wide range of food items on offer includes grains, pasta, cereals, nuts, dried fruit, tea, coffee, and herbs and spices. You can bring along your own containers or purchase plastic free ones on the premises and fill up on your staples and favourites without filling your waste bin too! Washing up liquid and detergents as well as toiletries - toothbrushes, soap and shampoo bars - are also available. We wish everyone at The Refill Jar all the best for 2020!



## BEVERLEY BRAVES TACKLE NEW EQUIPMENT

**Beverley Braves have been getting to grips with the equipment obtained following an application to the RLWC2021 (Rugby League World Cup) Capital Grants Programme.**

The programme is dedicated to improving the environment where Rugby League takes place; giving people better opportunities to engage with the game and to get active. The club having just moved into a new clubhouse on Thurlow Avenue

obtained post pads, tackle shields, tackle bags and balls plus much more following the awarding of almost £7000.

Hull FC's forward Scott Taylor who originates from Beverley was on hand to examine the equipment. Scott himself will be hoping to be part of the England squad during the world cup.

If anybody is interested in their son or daughter playing for the Braves please contact Michala on **07900 391027** email [info@beverleybraves.com](mailto:info@beverleybraves.com)





**EVERY THURSDAY AT 10.30am**  
(doors open 9.45am)

Join us for a free brew and a natter and enjoy some great films on Beverley Parkway's Big Screen. Only £4.20 with drink and biscuits included. Aimed at 55s and over. Films subject to change.

**Thursday 2nd January -  
The Kitchen**

Starring: Melissa McCarthy, Tiffany Haddish  
**Brittany Runs a Marathon**  
Starring: Jillian Bell, Jennifer Dundas

**Thursday 9th January -  
Brittany Runs a Marathon**

Starring: Jillian Bell, Jennifer Dundas  
**Downton Abbey**  
Starring: Matthew Goode, Maggie Smith

**Thursday 16th January -  
Official Secrets**

Starring: Keira Knightley, Matt Smith  
**Downton Abbey**  
Starring: Matthew Goode, Maggie Smith

**Thursday 23rd January -  
Judy**

Starring: Renée Zellweger, Jessie Buckley  
**Official Secrets**  
Starring: Keira Knightley, Matt Smith

**Thursday 30th January -  
The Good Lie**

Starring: Helen Mirren, Ian McKellen  
**Official Secrets**  
Starring: Keira Knightley, Matt Smith

## PENGUIN PARTIES



**ONLY  
£195**

- Suitable for ages 5 to 12
- Up to 40 guests (additional charge for extra guests)
- Party games in a private function room with Parkway Penguin
  - Tea and coffee for parents on arrival
- Personal Photo montage on screen followed by your own film screening

For more information,  
please contact a member of staff

These are the films scheduled to open in December/January - all are subject to change. Check out up-to-date cinema listings at [www.justbeverley.co.uk/cinema-times](http://www.justbeverley.co.uk/cinema-times)



26th December



26th December



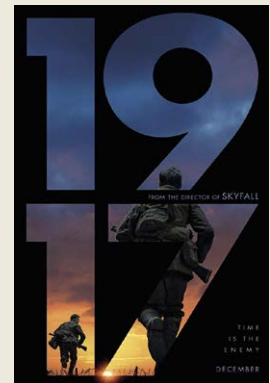
26th December



1st January



1st January



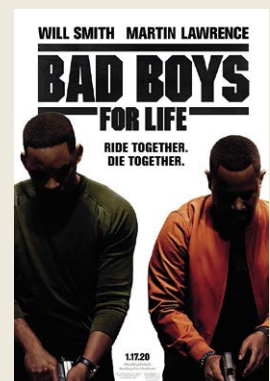
10th January



10th January



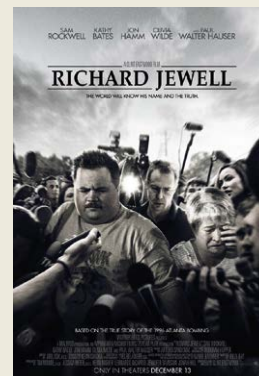
17th January



17th January



24th January



31st January



31st January

# YOUR LOCAL INDEPENDENT CINEMA



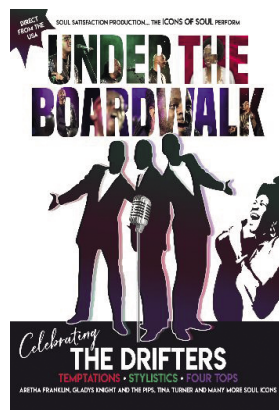
## THE MUSIC OF THE 60'S COMES TO PARKWAY!

*Under the Boardwalk is a fabulous live celebration of some of the greatest hits of the 60's, and is coming straight to Parkway Cinema from the USA on 26th January 2020!*

Get your Glad Rags out and be transported back in time with songs from the Drifters, the Stylistics, the Temptations, Tavares and more.

The wonderful vocalist Pamela Ivonne Cole will be performing, and you'll hear songs from such greats as Gladys Knight, Tina Turner, the Pips and Aretha Franklin!

Not to be missed, Under the Boardwalk is a one night only performance, and a chance to enjoy the entertainment and relive one of the most renowned musical eras of our time!



## WIN A PAIR OF TICKETS TO WATCH THE ICONS OF SOUL!



*Two tickets to see Under The Boardwalk on Sunday 26th January at 7.30pm at parkway Theatre are up for grabs in this month's edition of Just Beverley!*

All you have to do to be in with a chance of winning a pair of tickets is to answer the following question:

**Which decade did the vocal music featured in the show come from?**

Send your entries by email to [competition@justbeverley.co.uk](mailto:competition@justbeverley.co.uk) by **January 16th 2020**. Put **'Boardwalk'** in the subject box with your answer, name and daytime telephone number in the body of the email.

The winner will be drawn at random immediately after the closing date and winners informed as soon as possible. The winner **MUST** be available for publicity purposes for Just Beverley and Parkway Cinema on Saturday 18th or Sunday 19th of January. There is no cash alternative. Good Luck!

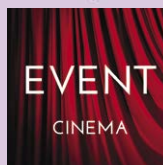
## COMPETITION WINNER

Congratulations to Roy Walker who won a pair of tickets for the opening night of Star Wars: Rise of Skywalker at Parkway Cinema's Theatre.



[www.facebook.com/Parkway-Cinema-Beverley](https://www.facebook.com/Parkway-Cinema-Beverley)

Twitter: @ParkwayBeverley



Event cinema offers something a little different to mainstream films. Live and pre-recorded shows beamed in via satellite from all over the world. Here are the latest live streams that you can enjoy on the big screen at Parkway Beverley.

**Saturday 4th January at 7pm & Sunday 5th January 2020 at 3pm -**  
**ANDRÉ RIEU: 70 YEARS YOUNG**

**Wednesday 8th January at 7.30pm -**  
**THE RUNAWAYS WITH MARK ADDY Q&A (12a)**

**Monday 13th January at 12.30pm & 8pm -**  
**NEITHER WOLF NOR DOG (12a)**

**Tuesday 14th January at 6pm -**  
**EOS: LUCIAN FREUD - A SELF PORTRAIT**

**Thursday 16th January at 7.15pm & Sunday 19th January at 2pm -**  
**ROH: THE SLEEPING BEAUTY**

**Sunday 26th January at 3pm -**  
**BOLSHOI: GISELLE**

**Wednesday 29th January at 7.45pm -**  
**ROH: LA BOHEME**

**Tuesday 4th February at 7.15pm & Sunday 9th February at 2pm -**  
**KINKY BOOTS - THE MUSICAL**

**Thursday 20th February at 7pm -**  
**NT LIVE: CYRANO DE BERGERAC (15)**

**Sunday 23rd February at 3pm -**  
**BOLSHOI: SWAN LAKE**

**Tuesday 25th February at 7.15pm -**  
**ROH: THE CELLIST/ DANCES AT A GATHERING**

## LIVEshows

**Sunday 26th January at 7.30pm -**  
**UNDER THE BOARDWALK**

**Sunday 2nd February at 7.30pm -**  
**BUZZ COMEDY CLUB**

**Sunday 16th February at 7.30pm -**  
**PHIL CAMPION**

**Sunday 8th March at 7pm -**  
**LED ZEP 2**

**Sunday 22nd March at 7.30pm -**  
**COME WHAT MAY**

**Saturday 18th April at 2pm -**  
**GOLDBLOCKS & THE 3 BEARS**

# INTRODUCING BEV 'N' LEY

*Did you hear the Fireworks on New Year's Eve? The world over, celebrations took place letting in 2020 - the third decade of the 21st century!*

Two others also heard the Fireworks that night. After a long period of hibernation, Bev 'n' Ley rubbed their eyes and said 'Hello' to a new year and what is for them, a new Beverley.

They woke up, in their current home, the cupola roof of Market Cross. The well-known landmark in Saturday Market was built in 1714, which is when Bev 'n' Ley moved in. Market Cross has undergone various repairs since, but Bev 'n' Ley have been happy there.

Bev 'n' Ley are explorers, both are curious creatures that like to find out what's going on



in and around Beverley and the surrounding areas. We'll be keeping up with them as they travel the area and investigate...

Their first encounter with 2020 was the fun-runners that took part in the Beverley Westwood Lions Club charity fun-run. Bev 'n' Ley watched the runners with interest as they set off from Market Cross on New Years Day, and a while later watched them return too - after running either 3km or 10 km!



Bev 'n' Ley have been hovering around Beverley since the time the Friary was in use. In between their long periods of hibernation



## LOOKING TO MAKE FRIENDS in the Beverley area?

Since 1929 many women across the country have enjoyed the invaluable benefits of TG membership. They've experienced new things, visited different places, taken on incredible challenges, fought for women's rights and most importantly developed lasting friendships.

**Interested in seeing what it is all about?**

You are welcome to attend a Guild before considering membership.

If you would like more information or to find your local Guild visit [www.the-tg.com/north](http://www.the-tg.com/north) or call **0121 326 0400**



**UNITING WOMEN SINCE 1929**

**Join the TG family**

JBJOIN



they're always out looking for new things to do and learn. Over the years they've lived in various places in Beverley - always choosing a different place to hibernate in. They're very happy they chose the Market Cross for their last hibernation - it's a very central location! Details about the Market Cross as a listed building found here: <https://britishlistedbuildings.co.uk/101346372-the-market-cross-beverley#.Xej7vy2cbUo>.

The very first edition of **Just Beverley** also contains more information about the history of Bev 'n' Ley's home: <https://justbeverley.co.uk/magazine>.

## Hi! I'm Bev

*I'm a little bit shy but very curious and want to know all about Beverley. It has changed so much recently, and it's so much bigger than before! There's lots to learn about Beverley's past as well as all about the new things happening in 2020!*



## Hello! I'm Ley

*I was a friar when Beverley had a Friary. That was long ago. I love exploring Beverley and the surrounding area, and being inquisitive means that I get up to all sorts of things! I'm always out looking for new and interesting things - Bev's often searching for when I go missing, I've often just disappeared through a wall!*

## BEVERLEY SHOPWATCH

*As shopwatch, the initiative between local police and Beverley retailers, continues to grow Shaun Dart looks forward to 2020. There are a number of things that would support the scheme even more to reinforce the great progress already made in striving to develop a tighter community.*

- To improve communication between all the local shops would be a significant step forward and would present a united front against theft.

- Additional signage throughout the town warning thieves of Shopwatch as well as continued support from local bodies.



- A larger scale data-sharing agreement that allows more participants to get involved over a wider area.

Ultimately the success of Shopwatch will benefit the town as a whole, resulting in an even safer environment in which to live, work and spend leisure time.

A brighter, tighter Beverley and a shopping experience to be enjoyed by all. Beverley working together for a prosperous 2020.

# Hear CLEARLY again...

Never miss out on the sounds you love

with the latest comfortable and invisible hearing aids

**FREE HEARING AID TRIALS\***

**FREE HEARING TESTS**

**INVISIBLE RECHARGEABLE & SPECTACLE HEARING AIDS**

**WAX REMOVAL SERVICE**

- ✓ **EASY** parking
- ✓ **HOME** visits available
- ✓ **FREE** aftercare
- ✓ **5 YEAR** warranty\*
- ✓ **5 YEAR FREE** batteries\*
- ✓ **INDEPENDENT** family business



*Hearing aids don't have to be seen!*

Clare House, 8-10 Baker Street, Hull HU2 8HP

**t: 01482 22 22 04**

[www.hullhearingcentre.co.uk](http://www.hullhearingcentre.co.uk)



**HULL hearing CENTRE**  
independent hearing aid audiologists

**TROUBLE HEARING? CONTACT US TODAY**

\*on selected products

**Melrose**

Traditional spring single divan set, soft knit fabric, choice of colours.

Was ~~£299~~ **Now £168**



**Sleepeeze**

Back Care Select Pocket spring divan set with FREE drawers & FREE headboard

Double Was ~~£899~~ **Now £499**

King Size Was ~~£999~~ **Now £599**



**Mattresses**

**Excellence 1000 pocket spring firm mattress**

3' Was ~~£299~~ ~~£199~~ **Now £168**

4'/4'6" Was ~~£349~~ ~~£249~~ **Now £227**

5' Was ~~£499~~ ~~£399~~ **Now £293**

**Majestic 1000 Pocket Spring with memory gel mattress**

3' Was ~~£399~~ ~~£299~~ **Now £224**

4'/4'6" Was ~~£499~~ ~~£349~~ **Now £297**

5' Was ~~£599~~ ~~£399~~ **Now £346**

6' Was ~~£699~~ ~~£449~~ **Now £417**



**York**

1000 pocket spring divan set

3' Was ~~£399~~ **Now £299**

4'/4'6" Was ~~£599~~ **Now £399**

5' Was ~~£699~~ **Now £449**

**Harrison**  
The Sleep Tailors

**30% OFF Harrison**

luxury bespoke range of divan sets & mattresses

**Sleepeeze**

**25% OFF Sleepeeze**

pocket gel collection divan sets & mattresses

**MILLBROOK BEDS**  
HANDMADE ENGLISH BEDS SINCE 1946

**25% OFF Millbrook**

cotton collection divan sets & mattresses

Belprin Park, Swinemoor Lane, Beverley HU17 0LN

Also at 510 - 520 Hessle Road, Hull HU3 5BQ

Tel: 01482 326590

Email: [info@leightonscarpets.co.uk](mailto:info@leightonscarpets.co.uk)

[www.leightonscarpets.co.uk](http://www.leightonscarpets.co.uk)

\*Free delivery applies to local area only and orders of £199



**FREE DELIVERY**

We offer free delivery on all beds, mattresses, sofas & chairs\*



**BED DISPOSAL**

We'll take away your old bed/ mattress ask in store for details.

# THE SCIENCE OF SLEEP

*It's a well-known statistic that we spend about one third of our lives asleep. Yet these days, with TV and mobiles 'a given' in the bedroom, and work life balance under pressure, many of us wake in the morning not exactly bright eyed and bushy tailed!*

The environment of the bedroom, and the bed itself, are crucial to the quality of sleep.

With many bed and mattress manufacturers implementing the latest engineering and materials technology, choosing the right bed is a worthwhile investment.

But these advances can be confusing to the customer. Steve Domney, Leightons' buyer of beds & mattresses explains: "There are now so many options that consumers can feel overwhelmed. We find that more and

more people are coming to us asking for advice about what would be right for their needs. For instance, we can advise whether memory foam would be suitable for them, whether pocket springs would be a better option than open coil, and so on. We are always happy to talk through the choices, explain the differences, and ensure the customer gets the best bed for their budget.

"People are amazed at the improvement in sleep comfort and that's got to be a good thing."



# UNIQUE

**Unique Beverley**  
108 Walkergate  
Beverley  
HU179BT  
Tel: **01482 881199**

**Unique Cottingham**  
7-8 Market Green  
Cottingham  
HU16 5QG  
Tel: **01482 847111**

**Unique Hessle**  
12 The Weir  
Hessle  
HU13 0RU  
Tel: **01482 645499**

Winner 2018 BEST SALON FOR TRAINING  
Winner 2018 BEST SALON IN YORKSHIRE

[www.auniquesalon.co.uk](http://www.auniquesalon.co.uk)

**SHOCKINGLY GOOD VALUE**

## £49 PER MONTH WEBSITES

**PAY JUST £499 DEPOSIT**  
**THEN JUST £49 PER MONTH**  
**FOR A MINIMUM TERM OF 12 MONTHS**  
**AND THEN PAY MONTH-BY-MONTH THEREAFTER**

**FOR A WEBSITE THAT GETS REAL RESULTS...**

CALL NOW ON:  
01482 428650  
[marketing@indicoll.com](mailto:marketing@indicoll.com)  
[indicoll.com](http://indicoll.com)

**INDICOLL**

## COUNTRYSIDE MATTERS WITH SAM WALTON

*Over the years I have often been asked about the roles women can play in modern farming. It is a good question as we are seeing more and more ladies taking on really important roles, not just on the practical side but also in creating and driving on businesses.*



Not so many years ago, it was always the son who took on the farm but there are many daughters now who have the opportunity to do so; or maybe a farmer's daughter marries another farmer's son and becomes a partner in the business. We have an excellent President of the National Farmers Union in Minette Batters, who has her own farm in Wiltshire and produces excellent beef cattle. She has thrown herself whole heartedly into the role, travels extensively and maybe because she is female, is very good at putting points across and doesn't tolerate being bullied. She has a clear vision of where our industry needs to go. It is a pity in some ways that some M.P.'s don't have the same vision. If you think about it logically, food production has to be the most important industry as without food none of us could exist, so there would not be any other industries! So do think about it!



Farmers know very well that a woman's touch in livestock production far exceeds that of a man. Many is the farm I have been on where a girl is in charge of lambing or farrowing in pigs where maternal instincts are extremely important. I am not in any way suggesting that men do not cope in such situations, but women do seem to have more patience in certain circumstances. I have travelled in Africa and seen women working there planting and harvesting various crops, and in Asia planting and harvesting rice. Thankfully none of those practices exist here, but it brings to mind the Land Army girls in the UK during the war, they milked cows, and ploughed and cultivated land. We owe them a great deal. At the recent National Pig Awards, the stock-person of the year was a young girl, Jess Graves who works on an exceptionally well run pig unit in East Yorkshire. I know that unit and the things Jess has done to improve it - her boss is delighted. Let us hope that this sort of thing carries on.

## I'VE BEEN THINKING... SAYS COLIN RAYNOR

*As we enter a New Year, and because it is only a week since my birthday, I have decided to award some New Year's honours. Well, other folks do it... Here are my three awards for the M.B.E (Making Beverley Excellent).*



This group have taken on an empty building and completely transformed it into a wonderful artistic venue. Besides offering a friendly café facility, there is the opportunity to watch a truly diverse selection of performances that are of the highest standard. For giving numerous groups around the area access to their facilities at a reasonable price, and for giving the local populace the chance to volunteer and maintain the venue with a cheerful and helpful manner, The East Riding Theatre gets my first M.B.E.

My second award goes to a person who I am pleased to call a friend. She has lived in Beverley many years and is well known as a 'worker'. You know the old saying 'If you want a job doing, ask a busy person'; this lady fits that bill. Working with and supporting many people in Beverley who find themselves in difficult times, she is the 'go to' person who will get them back on their feet. The source for her energy she finds in Toll Gavel Church. She's inspired the increased floral decoration at the entrance to the church and ensured there is now an illuminated cross above the church door. Working alongside fellow church members she personifies creativity. My friend Sally is the worthy recipient of the second M.B.E.

Describing my third choice is not easy, suffice to say they are truly synonymous with Beverley, even having places named about them. Come rain or shine they transform the town every time they set up their stalls and their presence attracts folks from all over Yorkshire. True local produce is available with so much to choose from. Beverley is a genuine market town and these good folks continue to maintain that tradition. The many market stallholders get my third well deserved M.B.E.

These three are just my personal choices. You may have other ideas. I think we need to say thank you, more often, to those who seek to brighten our town.

### AFTERNOON TEA MENU

£12.95 PER HEAD OR  
£24 FOR TWO PEOPLE

AVAILABLE MON-SAT 12-5PM,  
PRE-BOOKING IS REQUIRED AND  
GLUTEN FREE OPTIONS ARE AVAILABLE

### VEGAN NIGHT

THURS 16TH JAN  
FROM 6PM

IN PARTNERSHIP WITH KIWIFOOD  
COMPANY, A LOCAL VEGAN CHEF

CHARITY  
RACE NIGHT

SAT 25TH JAN 7.30PM

### ROCK N ROLL BINGO

THURS 23RD JAN  
8.30PM START

### RUGBY LEAGUE QUIZ NIGHT

THURS 30TH JAN  
FROM 8.30PM

# THE TIGER INN

CYCLISTS WELCOME

Brains required from 8.30pm

## Big Quiz

FIRST SATURDAY OF THE MONTH

Free food/prizes to be won,  
all money raised to our house charities.  
£1 per person entry

Tel: 01482 869040

www.tigerinnbeverley.co.uk

Lairgate, Beverley HU17 8JG

GOING TO EAST RIDING THEATRE?  
BOOK AT THE TIGER INN FOR A PRE-SHOW MEAL

### HOMECOOKED Sunday Lunches

Served every Sunday  
12noon-7pm

HOME COOKED FOOD  
SERVED 7 DAYS A WEEK

12

**Just BEVERLEY**

www.justbeverley.co.uk

Telephone: 01482 869111  
sales@rosesofbeverley.karoo.co.uk



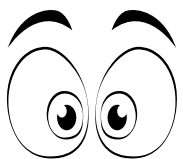
The Kitchen Factory, The Courtyard,  
Tokenspire Business Park, Beverley  
HU17 0TB

*Together we will design a beautiful kitchen*



Roses will then  
**project manage**  
your kitchen installation from  
**start to completion**

**Our NEW 2020 Season  
Displays are now being  
Installed in our Showroom**



*Why Don't You Come And Have A Look*

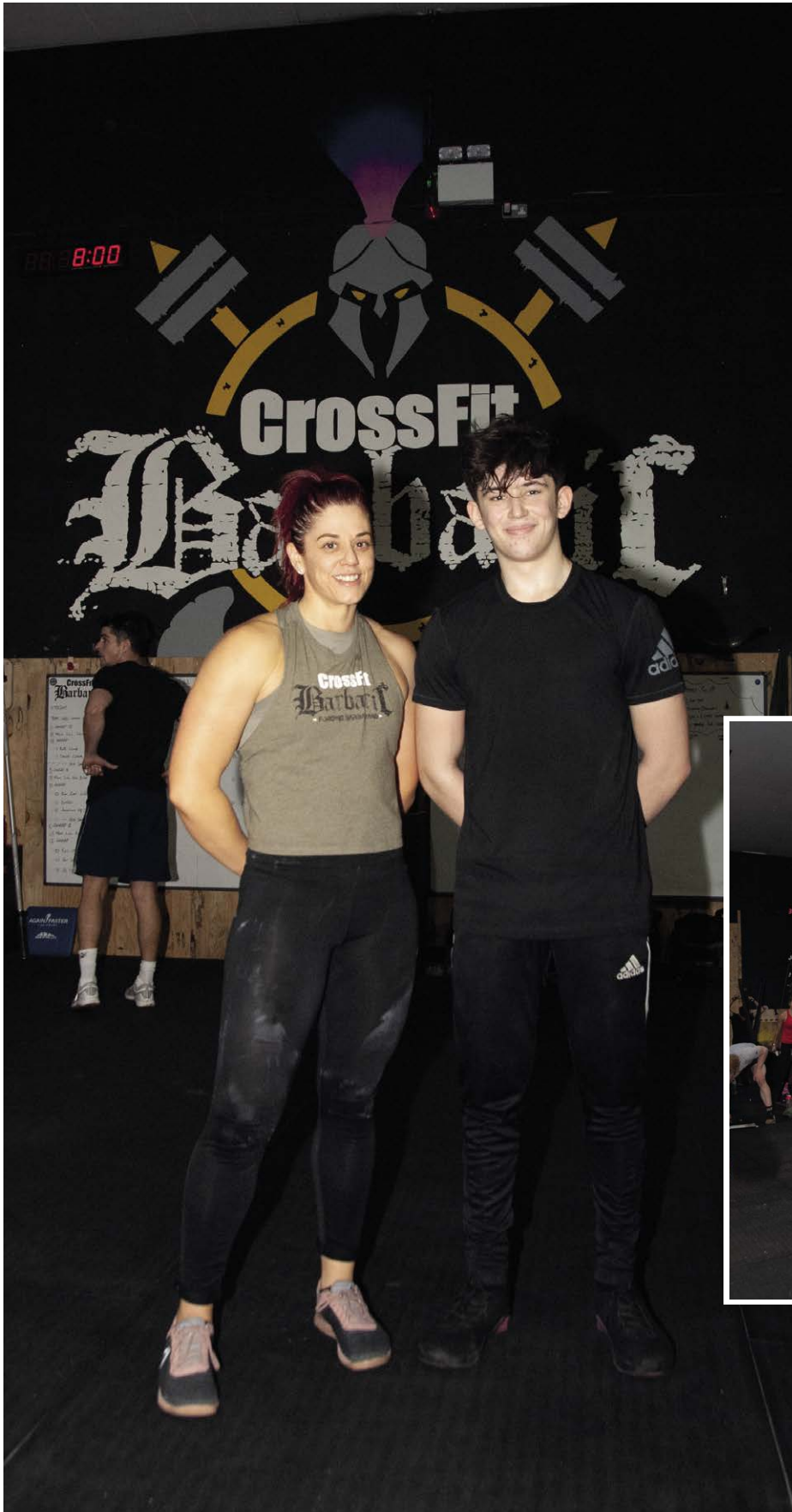
Visit **www.roseskitchens.com**

to see our customers kitchens and read what they have to say about us

**Telephone: 01482 869111**



# CROSSFIT BARBARIC 'FORGING ELITE FITNESS'



*Three years in and CrossFit Barbaric is going from strength to strength. Membership has grown substantially and that growth continues as CrossFit as a sport becomes increasingly popular across the globe.*

## CROSSFIT BARBARIC

CrossFit is functional training at its best, it's a great combination of movements that incorporates the whole body to a high level of intensity. When CrossFitters train, they train in 'The Box' using a whole host of exercises and pitting themselves against their own bodyweight as well as a range of equipment from barbells to medicine balls.

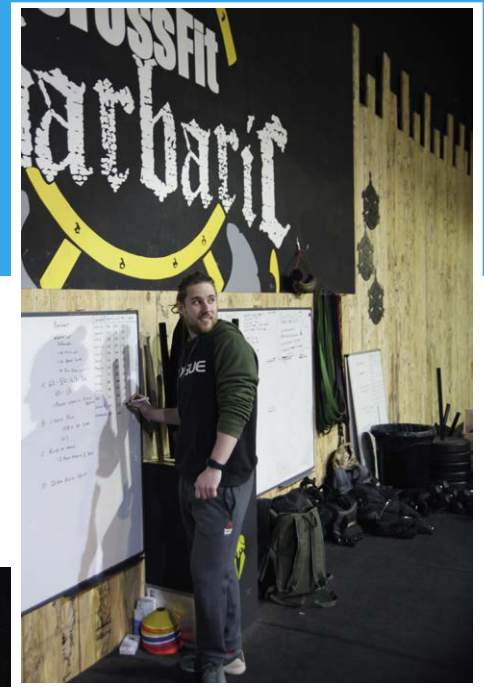
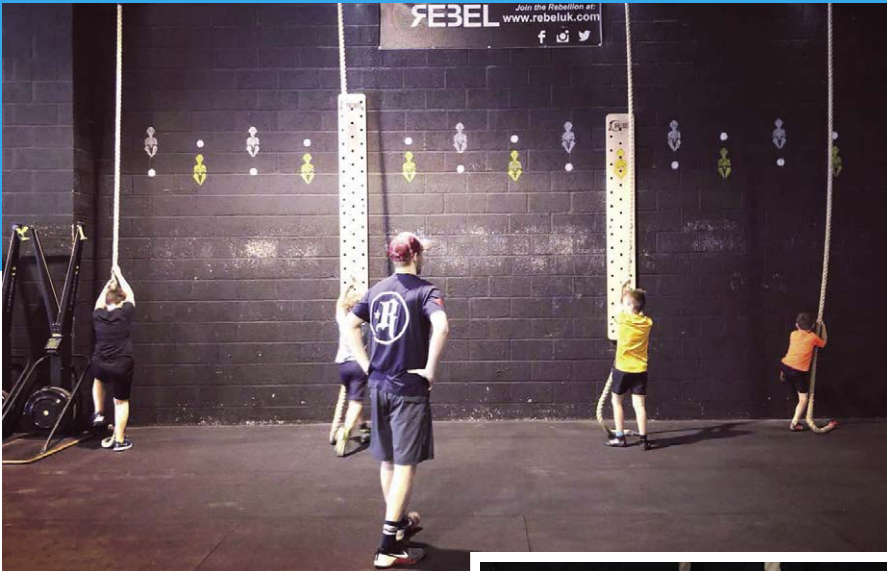
## IT'S NOT A GYM

Let's get this straight - it's not a gym in the traditional sense. Working against the mundane routine the same exercise regime can produce, CrossFit keeps the mind engaged and the body challenged, it produces an energy and excitement that routine workouts extinguish. "Routine is the enemy" says Greg Glassman, CrossFit Founder. Using diversity to dispel routine, CrossFit keeps the mind and body guessing. Yes, it's extremely physical, but it's also fun, dynamic and fluid.



## AIMING HIGH

Functional training - as with all exercise - needs to be done correctly. If you can master the moves and use good form, there is no limit to what you can do. Ben, age 16, is currently training to reach CrossFit Games standards - if successful he will be the youngest individual ever to achieve this. Watch this space for 2020!



### EVERYONE'S INVITED

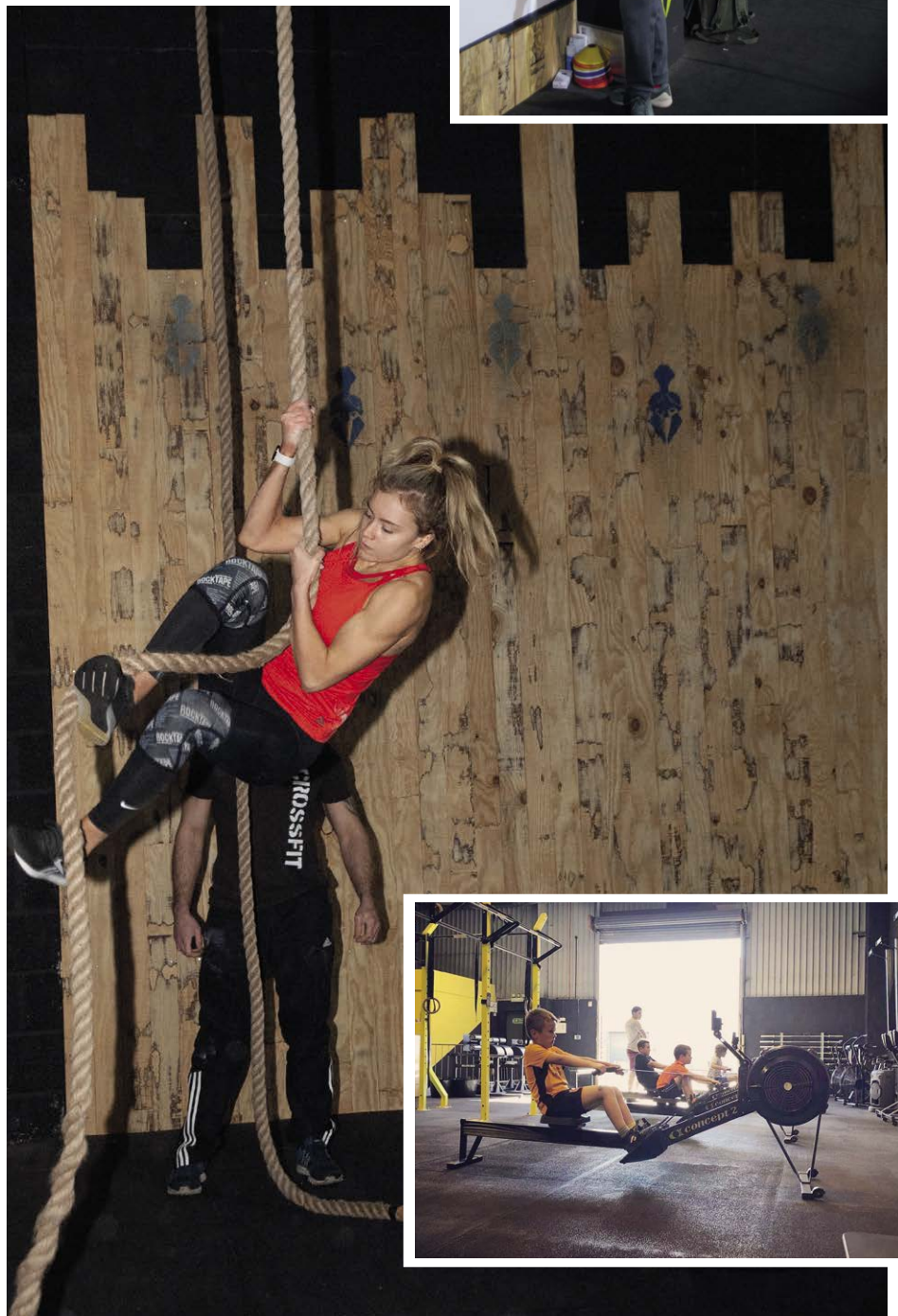
CrossFit is not just for the elite athlete, it's for everyone. Whatever your age or fitness level, you're invited - a surefire way to rocket you into health, fitness and a supportive community that will spur you on to great achievements. There's also a junior section 'Barbaric Kids' dedicated to getting the younger generation into exercise and a habit that will hopefully last a lifetime. Classes are divided by age: 4-8 year olds and 9-13 year olds, these classes are, as the strap-line says 'forging future barbarians.'

### COMMUNITY ATMOSPHERE

Working out together produces camaraderie and solidarity. Friendships are made as likeminded people come together to achieve similar aims and support each other to maintain a positive mindset and attain set goals. What's more, this support spills over into the wider community; so far, £6,500 has been raised for the charity Mind through group challenges that are set throughout the year.

### WELLBEING

Overall wellbeing doesn't just mean physical fitness. It can also incorporate the right personal attitude as well as that feeling of inclusion that a great community atmosphere can produce. Achieving your goals - whatever they are, having a positive outlook, giving your body what it needs nutritionally, and being part of that supportive community are, for CrossFit Barbaric, what wellbeing is all about.



CrossFit Barbaric is located at **Unit 4A, Tokenspire Business Park, Beverley, HU17 0TB.**  
 Open Monday to Friday 5.30am-8pm and Sat: 8am-12pm. Mobile: **07980 100569.** Website: [www.crossfitbarbaric.com](http://www.crossfitbarbaric.com)

# THE THINGS YOU DIDN'T KNOW ABOUT BROOK TAVERNER...

*The time has come to welcome in the start of a new decade. It's almost impossible to think that the turn of the millennium is in the distant past... time is quickly disappearing!*

Our high street store has now been in operation for over 6 months. It feels like yesterday that we became part of the Beverley community and is another example of time flying by the wayside, although of course we have loved every minute of it!

To celebrate our 6-month anniversary, we thought we'd provide you with some lesser known facts about Brook Taverner...



**1) Our history stretches back to 1912...** It may have taken us 100 years to put our stamp on the high street, but the Brook Taverner name stems from founders Frank Brook and Walter Taverner. Their desire to provide leading quality cloths and materials across the country for garment creation laid the foundation of the synonymous British Heritage Brook Taverner have become famous for. Their story still lives on today.



**2) The 180,000 square foot warehouse in Keighley...** We are often asked how we're able to provide such a wide variety of products in a magnitude of sizes. The answer is storage. Our Keighley head office spans 180,000 square feet and over 12 miles of hanging garment rails.



**3) The Store Objective...** Beverley was the first English based Brook Taverner store. At the time of opening it was the 4th location in the UK (after the opening of our 3 Scottish stores) and we hope to expand yet further across the country over the next few years.

**4) Our Range of Sizes...** With stores not always able to showcase every size in every garment, is isn't obvious that we stock jackets in sizes up to a 54" chest, trousers up to a 48" waist, casual shirts up to XXXL and formal shirts up to a 20" collar. Select Formal Shirts are available in Short, Regular, and Long sleeve lengths. And whilst you may see Short, Regular and Long leg lengths in store, if you need an extra inch (or half inch!), then just speak to Lee and the team. Remember, if you're unable to find what you're looking for a member of staff will more than happily find a solution and source the perfect size for you.

So here's to another 6 months and more of welcoming customers into our Beverley store, which is setting a precedent for the great things to come in 2020!

Brook Taverner  
Beverley  
Winter Sale -  
23rd December -  
28th January

Store Opening Times  
Monday to Saturday 9am - 5.30pm ☉  
Sundays 11am - 4pm

**BROOK TAVERNER**  
35, TOLL GAVEL, BEVERLEY. 01482 882356



# SEE IN 2020 WITH A SPLASH OF ARTY-INSPIRATION!

*It seems like only yesterday that I was writing a New Year message to the readers of Just Beverley for 2019... What a whirlwind of year it has been! Roni and I, along with the Gallery Owner Tracey, have been continuing to strive for excellence with the people of Beverley and the surrounding areas, and our main aim still remains the same in everything that we do - let's give you art inspiration with personality...*



Since joining the Trent Galleries family in November 2017, I have personally grown very fond of the Beverley High street and the sense of community which it possesses. There has been a lot going on in politics lately of course, climate change, election campaigns and the like; much of it with good reason and of importance of course. It hasn't done much to raise the spirits of the nation, and it has created a great deal of uncertainty with all of us. Having said all of that, what has shone through in my conversations with fellow business' and clients, is that we mustn't stand still. Let's keep smiling, and let's enjoy life as ever! What Beverley does brilliantly is bring people together, whether that be for various Festivals it hosts, the Tour de Yorkshire fanfare, or just at the weekly hubbub of the Saturday Markets.

To be part of this community spirit brings us great pleasure, and as we head into another



decade, we look forward to building our existing great relationships with local people, and welcoming the new faces with a dose of artistic inspiration to raise a smile and hopefully create new art collections over the County!



Trent Beverley has had the privilege of hosting events with four of our portfolio's eminent names; and these events have been supported and embraced by many. Our final event of 2019 was a highlight, as we had the pleasure of world-renowned artist Fabian Perez joining us - his first visit to Beverley. The great thing is, I very much doubt it will be his one-and-only visit, as he was given such a warm reception and we had many a happy client that evening. Some outstanding artworks were taken home, and a fab time was had by all.

Such occasions are what we endeavour to bring to Beverley as we move forward; continuing to introduce our clients to artists and artworks of colour, emotion, and heart. Already we have our events pencilled into our calendars here (so watch this space!...One name that is confirmed is Doug Hyde, who will be returning at the end of February once again - after two superb receptions here previously. Doug's work is still highly sought after and much loved, and we look forward to welcoming him back to meet our clients, new and old.



2020 will hopefully be a year of exciting times for all, and we trust you will continue to support the Highstreet of the Town and keep the buzz of Beverley well and truly alive. You are always welcome to join us in the gallery to explore the artworks available, and to pick our brains to help find you the perfect piece you have been seeking for that very specific wall in your home... That is what we do, and what we are here for!



Nothing gives us greater pleasure than helping find you that ideal splash of art to bring the sunshine into your homes and put a smile on your faces.

**From the whole Trent-team, we look forward to seeing you very soon  
David, Roni & Tracey x**



9 Butcher Row Beverley, HU17 0AA  
Tel: 01482 874621  
Email: [beverley@trentgalleries.co.uk](mailto:beverley@trentgalleries.co.uk)  
follow us on Instagram & Facebook

[www.trentgalleries.co.uk](http://www.trentgalleries.co.uk)



Send your photographs of your celebrations  
Find us on Twitter and Facebook to share yours

# BEVERLEY AT



HERE TO GET *you* THERE

# HUNTERS®

EXCLUSIVE

BEVERLEY / 01482 861411

# T CHRISTMAS



SALES / LETTINGS / MANAGEMENT

**HUNTERS**<sup>®</sup>  
HERE TO GET *you* THERE

BEVERLEY / 01482 861411

# SEE IN 2020 WITH NEW OFFERS AT GUEST AND PHILIPS

To launch the New Year in style, *Guest and Philips* are offering **15% discount** in their *Flemingate* store for the first 3 weeks of 2020, from 3rd January 2020 until Sunday 26th January 2020.

Jewellery is the perfect gift, a timeless classic that can bring even more joy than its financial worth.

With that in mind, why not take the opportunity to purchase some beautiful items at reduced prices and receive additional value.



The full range of Mark Milton Gold, Elements Gold and Guest and Philips branded Gold Jewellery are all available in the offer, including matching sets!



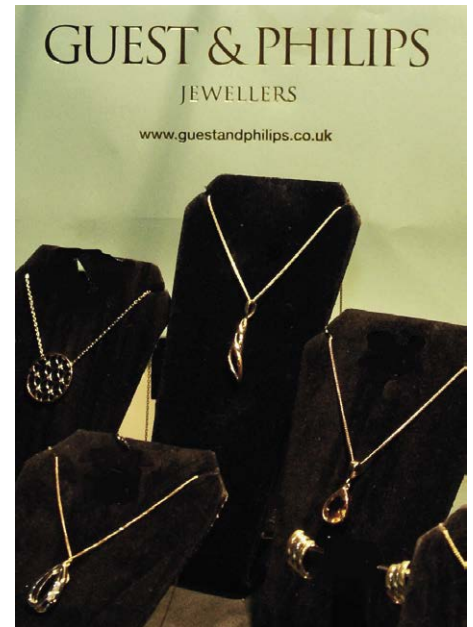
Choose from 9 carat gold earrings, bracelets, bangles and rings.

Or perhaps precious and semi-precious stones are more to your taste?

Diamonds and coloured-gem stones magnetite, tanzanite, amethyst and emerald set in gold are all stunning!



So whether it's a New Year gift or a birthday gift, or Christmas money you



received as a gift, we hope you'll find something that meets with your approval; will fit into your life, feature in many memories to come and grow into a classic itself.

The 15% discount applies to the lines mentioned above only.



## GUEST & PHILIPS

EXCLUSIVE TO  
GUEST AND PHILIPS:

**CARAT\***  
LONDON

**CJOGAU**  
GOLD OF ROYALTY

**BOSS**  
HUGO BOSS

**swatch**+



SALE

COMMENCES 3RD JANUARY

TOMMY HILFIGER

CLAUDIA BRADBY  
*Paul Power*

CALVIN KLEIN

MONDAINE

KIT HEATH

15% DISCOUNT IS REDEEMABLE ON ALL BRANDS IN STORE.  
TERMS AND CONDITIONS APPLY.

23A FLEMINGATE CENTRE, CHANTRY LANE, BEVERLEY HU17 0PW  
T: 01482 881001 | [WWW.GUESTANDPHILIPS.CO.UK](http://WWW.GUESTANDPHILIPS.CO.UK)

# FLEMINGATE BEVERLEY

FASHION | FOOD | FILM | FUN



START 2020  
WITH

# FASHION, FOOD & FUN

A PLENTY



EVERYTHING YOU NEED TO BEAT THE  
JANUARY BLUES AT FLEMINGATE

FLEMINGATE.CO.UK



@FlemingateBev



FlemingateBev



FlemingateBeverley



THE  
BEVERLEY ARMS

AA 5 STAR INN



# THE BEVERLEY ARMS



Enjoy the comfort and cosiness of The Beverley Arms this winter, with hearty food, delicious cakes and cocktails, it's the perfect place to relax with a coffee or celebrate with friends.



25 North Bar Within, Beverley, HU17 8DD

01482 296999

[beverleyarms.co.uk](http://beverleyarms.co.uk)



# ASK THE EXPERT WITH WHITE RABBIT CHOCOLATIERS

In this month's Ask the Expert, we catch up with Ed Hawkes, co-owner of White Rabbit Chocolatiers. We discuss the source of their chocolate, and coffee, in a little more detail, and find out how knowing where your chocolate comes from can have a big - and positive - impact!

## Where does your chocolate come from?

The chocolate we use is bought from cocoa farm cooperatives, mainly in South America, where the communities there put much care into their farming and sustainable practices.

## What are the advantages of using these cooperatives?

Using cocoa farm cooperatives guarantees beans with the best quality and flavour. The cooperatives work together and set the price of the beans they sell at a sustainable rate. Our chocolate is traceable, meaning we can go back to the source to ensure ethical and sustainable practices are used over the whole process.

## Does buying from cooperatives increase the price?

Using beans from cocoa farm cooperatives does make our chocolate more expensive, but we believe the additional cost it is well worth it. Knowing that the product you are eating or drinking is well-sourced means you really can enjoy your quality, sustainable and ethical treat!

## And your coffee?

Our coffee is sourced from Dark Woods, the speciality coffee roastery in huddersfield, and the same applies to our coffee as applies to the chocolate we use. In order to get the best and most consistent beans for the complex coffee blend we use ('Crow Tree'), beans from single and traceable origins must be purchased making this form of speciality coffee very ethical.

So cure any January blues and enjoy delicious chocolate or coffee knowing that it is responsibly sourced, traceable and produced with care!





WARM UP IN OUR

# CHOCOLATE CAFE

Perfect for the New Year



A taste of wonderland...

16 Dyer Lane, Beverley, East Yorkshire, HU17 8AE  
**Tel: 01482 679325** [whiterabbitchocolatiers.co.uk](http://whiterabbitchocolatiers.co.uk)  
**Open 7 days a week**  
 Breakfast, Lunch & Afternoon Tea available Tue-Sat



## ONeworld TRAVEL GROUP



# TORONTO

**17th May 2020**

**4 Nights**

**Fly direct from Manchester**

- Return flights with 23kg included
- 4\* accommodation in the city centre
- Room only basis

**£776.00pp**

**ONeworld TRAVEL GROUP**  
 35 Saturday Market, Beverley HU17 8BE  
 T: 01482 28081  
[www.1worldtravel.co.uk](http://www.1worldtravel.co.uk)

## ONEWORLD TRAVEL - TORONTO

Toronto, the capital of Ontario, is the largest city in Canada and also one of the most diverse.

It's home to a mix of tourist attractions, from museums and galleries to Toronto's famous landmark, the 553-meter CN Tower, it is one of the city's must-see attractions and also the most impossible to miss. Towering above the downtown, this Canadian icon can be seen from almost everywhere in the city, and if you dare, you can walk on the glass floor or simply relax by taking the ferry to Toronto Islands. Located at 351 meters is the revolving 360 Restaurant, featuring fine dining and some of the best views from a table anywhere in Toronto.

The best time of the year to visit Toronto is from late April through May, and from mid-September through mid-October. During these times, the sidewalks will come to life with patio eateries, cultural events, and pedestrian markets. Centreville Amusement Park and other Toronto Island attractions will be open, and parks will be buzzing with activities.

### Events going on in May - Canadian Music Week

The biggest new music festival in Canada hosts hundreds of bands at over 60 venues throughout the city.

### Doors Open Toronto

Around 150 significant buildings open their doors for free to the public for one weekend a year. Participating buildings include museums, historical sites, government buildings, broadcasting facilities, houses of worship, and other attractions.

### Day Trips from Toronto to Niagara Falls

A must do whilst in Toronto, would be a visit to Niagara Falls, One World Travel would be happy to arrange your day trip! When visiting Niagara Falls, you could do a jetboat along the Lower Niagara River at 80 km/h for a ride that will leave you soaking wet and thrilled to bits or take a helicopter ride to see the Falls and Niagara. You get breath taking views of both the CN Tower in Toronto and the Falls in Niagara.

Why not tick it off your bucket list and visit Toronto, Canada.



BURTON ELECTRICAL SOLUTIONS

HIGH QUALITY ELECTRICAL WORK ACROSS EAST YORKSHIRE AND THE HUMBER REGION



Stay safe - loose wires cause fires!

DOMESTIC COMMERCIAL TESTING FAULT DIAGNOSTICS

Whether it's for your home, rental property portfolio or business premises, all electrical installations need to be checked periodically by a qualified electrician. For a quote contact:

Andrew Burton
01964 552769 • 07585 601730
www.burtonelectricalsolutions.co.uk
info@burtonelectricalsolutions.co.uk



CURE THE JANUARY BLUES WITH SOME BEAUTIFUL FAIRY LIGHTS

Take a moment to imagine what the winter months would be like without outdoor lighting...



Although it would be warm and cosy inside, outside would be a different matter; searching for the keyhole at the front door, losing the dog in the garden and

no outdoor decorations would be commonplace. A bleak prospect indeed! Thankfully we've all got measures to combat those dark mornings and evenings - up down lighting at the front of the house, perhaps security lights at the back and pretty fairy lights to warm the soul.

Any outdoor lighting, whether attached to the house and wired internally, or just hung in the garden and plugged in to an outdoor socket should be protected by an RCD unit. If you are using outdoor sockets then housing them in a weather-proof box is a must. By not taking these precautions you run the risk of malfunction and potential fire. So protect your home this winter and keep the January blues at bay - make sure your outdoor lighting is safe!

Loose wires do cause fires. Contact Burton Electrical on 01964 552769 or see www.burtonelectricalsolutions.co.uk

IN THE GARDEN... JANUARY

Welcome to January 2020 - Christmas and all its festivities have passed, with the decorations consigned to the loft/garage until next year. So, if like me you feel the house is very bare when you take down the decorations why not think about introducing some houseplants in their place? Houseplants have recently had a bit of a revival; in addition to being decorative many can improve your wellbeing and the environment in the home.

Some benefits of houseplants...

- During photosynthesis they absorb carbon dioxide and release oxygen. At night photosynthesis stops and so plants are like us absorbing oxygen and releasing carbon dioxide - exceptions to this are orchids and succulents.
• They remove many airborne toxins which are released by everyday items in the home - they do this by pulling the toxins into the soil and converting them into food (clever heh!)
• Plants release water into the air - helping prevent dry skin, sore throats and dry coughs in air conditioned environments.
• Many studies have found that an environment with plants in it reduces stress levels.

Here are a few to choose from...

- Peace Lily (Splatiphyllum)
• Snake Plant (Sanceveria)
• Aloe
• Spider Plant (Chlorophytum comosum)
• Boston Fern (Nephrolepis)
• Kentia Palm
• Rubber Plant (Ficus elastica)
• Philodendron

I suspect that the ability to get out and get things done in the garden will be limited - as I write this in December the land is already saturated, with standing water in many places. However, if you do get the opportunity...

Gardening tasks for January...

- Continue to protect tender plants against frosts and icy winds.
• Plant new fruit trees, bare-root roses, hedging, trees and shrubs when weather allows.
• Mulch around new plantings.
• Prune fruit trees.
• Start digging over vegetable beds when weather allows - not if the soil is frozen or 'sticky', you will do far more harm than good.
• Clean out your greenhouse, tidy the shed and service the lawn mower.
• Keep a small area of ponds ice-free - place a plastic football on the surface to form a hole if frost is forecast. If your pond has frozen over don't 'break' the ice by hammering a hole, place a saucepan/metal dog bowl filled with boiling water on the surface of the ice and a hole will be made as the ice melts from the heat.
• Make sure the birds have food and clean water.

So, until February when hopefully we will see the first signs of spring. Jane Dale of 'Designed Gardens'. Tel: 07983 392 411.



Monks Walk Inn

19 Highgate, Beverley HU17 0DN Tel:01482 864972 www.monkswalkinn.com

FOOD SERVED DAILY 12noon-2.45pm

Enjoy Traditional English Hospitality in our Historic Mediaeval Timber-Framed Building
\*Beer Garden \*Cask Ales, Craft Beers
\*Lagers, Wines & Spirits \*Live Music



ENJOY OUR REAL FIRE!





# Hello 2020

***New Year celebrations are global with fireworks launched from a number of iconic locations across the world including Sydney Harbour, Australia, the Thames Riverside in London, and Victoria Harbour, Hong Kong. Displays are lit as the Earth turns, another time zone reaches midnight and more countries let in the New Year.***

If you've ever attended one of those magnificent displays - or seen one on TV for that matter - you'll know the awe such light shows inspire. It also inspires in us positivity and anticipation of the New Year ahead.

There are a number of important dates across January and perhaps the first that springs to mind is the 1st January itself - the first day of the New Year - a bank holiday, which many use to spend with family and friends, and perhaps rest after the night before.

There is some debate as to which day Christmas decorations should be taken down, the 5th or 6th January - just have a look on the internet! According to Historic UK, the twelfth night - the 5th January - is traditionally the day that Christmas decorations are taken down. The twelfth day after Christmas Day - the 6th January - is Epiphany, the date the three Kings arrived at the bedside of Jesus. Burns Night, held on the 25th January, is a celebration of the great Scottish poet who lived

between 1759 and 1796. Celebrations include a traditional Scottish meal, readings of Robert Burns' poetry and other works, and the drinking of whisky! Auld Lang Syne, the song sung the world over on 31st December to let in the New Year was written by Burns in 1788.

This year, Chinese New Year falls in January - on the 25th! So there's plenty of reason to celebrate come this date. The new Chinese year will be the Year of the Rat. If you are fortunate enough to be part of any Chinese New Year celebrations have a wonderful time!

Hot on the heels of the Christmas festivities, New Year is often considered a period for reflection and resolutions - an opportunity to make those changes we have been intending to make for a while! Many want to spend more time with family and friends that they rarely see, perhaps volunteer for a local charity or social group they are involved with, or even take on a course and learn something new.

New Year's resolutions are often associated with improving health and fitness, especially after the indulgence of Christmas. 'Dry January' is an opportunity to eliminate alcohol for the month giving the body and specifically the liver a break. Recent years have also seen the rise of 'Veganuary' - becoming vegan for a few weeks

and eliminating meat and other animal-derived products from the diet. This means no meat, milk, butter, cheese and other dairy products; no eggs, and depending on preference no honey or leather products. Nowadays 'Veganuary' is perhaps a lot easier and more popular as many vegan replacement products are on the supermarkets shelves, though not all of them are healthy! Many cite the wider natural environment as a reason for becoming vegan as we all become increasingly aware of our impact on the planet.

Whatever motivates you to make changes in you life - whether it's New Year's resolutions or perhaps other significant events at another time of the year, we wish you all the very best! Small changes can have wider repercussions resulting in bigger changes in the long term!

If you would like more information the topic please see the following sites:

[www.historic-uk.com/CultureUK/The-Folklore-Year-January](http://www.historic-uk.com/CultureUK/The-Folklore-Year-January)

[www.robertburns.org](http://www.robertburns.org)

[www.telegraph.co.uk/christmas/0/twelfth-night-when-should-take-christmas-decorations-epiphany-traditions](http://www.telegraph.co.uk/christmas/0/twelfth-night-when-should-take-christmas-decorations-epiphany-traditions)

# SALT ARCHITECTS - 20 YEARS IN 2020!

**For 20 years, award winning SALT Architects have maintained their aim - to deliver sustainable, ecologically sound and aesthetically pleasing solutions to architectural challenges for people and communities.**

Gary Hornsby and Bridget Hansford, both qualified architects for over 30 years, initially joined forces in the late 90's to establish Hansford Hornsby Architects.

In 2000, however they made a significant change in direction, and over the subsequent 20 years, the business has seen much success and has altered substantially. At the core however, their principles have remained.



Through this success SALT Architects expanded over two offices - Beverley and Scarborough - and employed 17 staff. The clients they worked with represented a wide cross section of society and included developers, private and domestic clients, community groups, charities and National Bodies such as the National Trust. The range of projects allows for a great deal of creativity and expertise in buildings and landscape. In 2010 SALT Architects downsized with the specific aim to focus on those projects that benefit society as a whole.



These include collaborating with charities and national bodies, protecting public assets as well as undertaking local projects for domestic clients. These projects are very much design and site-led. This allows the architects and clients to work together creatively to deliver buildings that will form part of a community's heritage.

The practice has received numerous awards, most recently the North and East Yorkshire Local Authority Building Awards including 'Best Public Service Building' in 2018 for the Spurn Point Visitor Centre and Highly Commended in 2019 for Best change of use of an existing building or conversion, for the Perfect 32 dental practice in Beverley. Alongside their architectural work, the team have found time to open Gallery at SALT. In 2016 the ground floor gallery opened and has since welcomed local artists to display their works.

Currently there is a staff team of 6, including Gary and Bridget, with the longest serving employee being Stella, who has been with the company for 18 years. Stella is currently the practice manager and has gained the BTEC National Award and National Certificate in Construction whilst in post. Stella is joined by Dom, Shaun and Alex, all of whom hold

degree-level and post graduate qualifications Architecture or Architectural Technology. Alex, in the words of Stella 'has also gained the coveted title of social secretary'. The practice help to encourage students and offer numerous work experience placements throughout the year. Liam, who has a degree in Graphic Design, is currently gaining some work experience with them.

Gary and Bridget are both members of the Architects Registration Board and the Royal Institute of British Architects (RIBA); the practice is a RIBA Chartered member. Bridget has Landscape qualifications and the practice is a member of the Green Register.



'All in all we've got an amazing team that work well together and compliment each other' says Stella. A recipe for success. So, what does the future hold for Salt Architects? Working towards 2030 the company aim to be fully carbon-neutral. On their journey, they plan to maintain their commitment to education, community and the cultural heritage of the buildings they work with. The focus on their global and social responsibility will remain and will continue to be demonstrated through reusing and repurposing land and buildings rather than invading the green belt. For SALT Architects community and sustainability trump profits by far, they are their raison d'etre.

Salt Architects, tel: **01482 888102**, email: **enquiries@saltarchitects.co.uk**  
**54 Lairgate, Beverley, East Yorkshire, HU17 8EU.**

## PRACTICAL MOTORING WITH RICH HAYES - LOOKING AFTER YOUR CAR IN THE COLD

**With freezing temperatures, high winds, heavy rain and potentially snow and ice, winter can be a tough time for your car**



Park wisely! It's always best to park under cover where it's dry and warm, for example under a carport or in a garage, or parking in the lee of your house, or beside a tall hedge. Using the locations will help to protect your car from the weather so you'll spend less time ice-scraping in the morning!

Keep your car clean! Keeping your car clear of dirt will help to avoid corrosion and rusting. If you don't fancy digging the bucket and sponge out yourself, take it to a hand carwash - there's plenty to choose from in Beverley.

Pack an emergency kit! Anyone who's ever broken down in winter will agree that the wait for that tow truck can feel like forever, so make sure you have some essentials in your vehicle in case you do break down:

a blanket, a bottle of water, emergency snacks, a first aid kit and book.



Every year we offer free vehicle checks for both new and existing customers because we understand the importance of keeping your car in top working order all year round. There's no catch - simply book online [www.beverleymotorworks.com](http://www.beverleymotorworks.com) or call **01482 429350** - and our team will carry out a thorough check of your vehicle and advise of anything you need to address.

BEVERLEY
MOTORWORKS
➔
INDEPENDENT  
BMW & MINI  
SPECIALISTS

**Our dealership expertise means  
high quality car servicing at a fair price...**

- ATA Accreditations
- Routine servicing
- Condition-based servicing
- Diagnostics
- Mechanical repairs
- Air conditioning
- Performance tuning
- MOT's

Unit D1 Grovehill Industrial Estate,  
Annie Reed Road, Beverley HU17 0LF

**Call today: 01482 881 128**  
**Visit: [beverleymotorworks.co.uk](http://beverleymotorworks.co.uk)**

Which? Trusted trader

The Good Garage Scheme

ata  
AUTOMOTIVE TECHNICIAN  
ACCREDITATION

ert

Proud sponsors of:

Little Women

CHRISTMAS PRODUCTION

# PUZZLE PAGE

## WORDSEARCH

Q D C O E P C V E N D J C F T  
 O J V V C H W S F H T L A E H  
 K I Y J A Y I T I U U K L S L  
 S J C N M C Y M T Y T G R O Q  
 S N G E R M O W N C V J A B C  
 Q E O E I B J E E B Y Q Z D O  
 T N X I F V R E S P T S T J Z  
 I E O P T I M I S M J S U B B  
 J L I Y Q U L D U W X E P Z T  
 D A J D G C L P T E N N F M T  
 W K N S V O M O E M S I A T L  
 B R B U D H D L S X Q P W N E  
 E S V X A H P Q J E J P O D F  
 K H N S A R H E U X R A N O U  
 F G Z O A M Y K Z T R H S C L

CHANGE  
 DIET  
 EXERCISE  
 FITNESS  
 HAPPINESS

HEALTH  
 JANUARY  
 OPTIMISM  
 RESOLUTIONS  
 SNOW

## WHERE IN BEVERLEY?

Where in Beverley would you find this landmark?  
 Answer on Page 32.



## KNOW YOUR NUMBERS

Each row adds up to the total on the right.

Each column adds up to the total at the bottom.

The diagonals add up to the totals top and bottom.

|    |    |    |    |    |    |
|----|----|----|----|----|----|
|    |    |    |    |    | 17 |
| 2  | ?  | ?  | 4  | 18 |    |
| ?  | ?  | 5  | 8  | 21 |    |
| 2  | ?  | 4  | ?  | 14 |    |
| ?  | 4  | ?  | 6  | 16 |    |
| 16 | 17 | 13 | 23 | 13 |    |

Answer on Page 32.

Do you have any amusing stories, quotes or pictures? Send them to [info@justbeverley.co.uk](mailto:info@justbeverley.co.uk)

**THOUGHT FOR THE MONTH**  
 Focus on the good things

## QUALITY KITCHEN MAKEOVERS

by simply replacing the doors and worktops



FAMILY RUN BUSINESS

### DO YOU DREAM OF A NEW KITCHEN?

From simple door replacements to complete fitted kitchens

Fully installed by local professionals in just a few days

Choose from a large selection of doors, worktops and appliances

90 showrooms nationwide

THE UK'S #1 KITCHEN MAKEOVER EXPERTS. EST. 1999



BEFORE



2020 is here with our  
**20% JANUARY SALE**  
T&C's apply

**DREAM DOORS®**  
 NEW LIFE FOR OLD KITCHENS  
[www.dreamdoors.co.uk](http://www.dreamdoors.co.uk)

4a Belprin Park, Swinemoor Lane,  
 Beverley, HU17 0LN  
 Call us now for a free estimate:  
**01482 861 653**



**Checkatrade.com**  
Where reputation matters  
 AVERAGE SCORE **9.7/10**

# CYCLING WITH WILSONS WHEELS

*Getting out on your bike in winter often requires a little more discipline than it does in the summer - the cold, wet weather can be a major deterrent! That said, a good ride will get you out into the fresh air, get you moving and get those feel-good hormones flowing combatting any winter gloom.*

So here are a few tips and tricks to keep you warm on your winter ride...

- Fit silver foil between the sole of your cycling shoes and the insoles - this will prevent cold air from entering the vents.
- Use water resistant rather than water repellent fabric, this will keep you dryer and warmer for longer.
- Try out thermal base layers - they're lightweight and will act as an additional layer skin
- Wear your cycling gear in the house for around 30 minutes before you go out on your ride. When you go out your clothes will have reached body temperature.
- This time of year the tyres kick up a lot of spray, so fitting mudguards to your bike will help keep you dry and warm!
- Use a water bottle with a thermal lining and take a warm drink with you instead of cold water.
- Try harder - the more effort you put in the more heat you will generate!
- Sheltered routes will protect you from the wind and reduce the wind chill factor, which can make it feel a lot colder than it actually is.
- Mountain bike and cyclocross routes are generally warmer in winter than road - speeds are slower lowering the wind chill factor.
- Riding in a group will give you shelter, but being with others will also keep your moral up.



WISHING YOU  
A HEALTHY  
2020

## WILSONS WHEELS

T: 01482 882881  
W: [www.wilsonswheels.co.uk](http://www.wilsonswheels.co.uk) E: [info@wilsonswheels.co.uk](mailto:info@wilsonswheels.co.uk)

**WE NOW STOCK CUBE CYCLES**  
2020 RANGE NOW AVAILABLE

Be SEEN  
and be SAFE,  
stay BRIGHT  
and on the  
right track

**DISCOUNTS ON:**


- Adult Bikes
- Children's Bikes
- Clothing for all cycling weather
- Parts and accessories


89a Grovehill Road, Beverley, East Yorkshire HU17 0EJ  
OPEN: Monday - Saturday: 9am - 5pm  
Sunday: CLOSED - Out riding our bikes



# EXPERIENCE STEAK

# LIKE NEVER BEFORE







**ABUNDANT • ENTERTAINING • FRESH**

9-10 Wednesday Market, Beverley HU17 0DG  
[www.chamasbeverley.co.uk](http://www.chamasbeverley.co.uk) | T: 01482 867897

Rated Number 1  
out of 104 restaurants on  
 \* as of 06/01/2019

# DISCOVER OUR NEW KITCHEN & BATHROOM SHOWROOM

FREE LOCAL  
DELIVERY

Come and meet our Kitchen and Bathroom Specialists Paul and Dan for a free design consultation.

MY KIND OF  
**HOME**



Symphony®

  
OMEGA PLC

  
COOKING PASSION SINCE 1877







## 2020 New Year offers in store

**BEVERLEY**

Swinemoor Lane, East Yorkshire HU17 0JX  
01482 880088 | [beverley.mkmb.co.uk](http://beverley.mkmb.co.uk)

  
**MKM**  
BUILDING SUPPLIES

**INCHES BODY STUDIO**

- Warm friendly environment
- A great way to improve joint mobility



**NEW YEAR OFFER - COURSES FROM £110 BUY A COURSE AND GET 1 FREE!**

**What are toning tables used for?**  
Toning Tables help with fat loss, ME, MS, Osteoarthritis, rheumatoid arthritis, knee and hip replacements, depression, bad backs, frozen shoulders and stroke rehab

**SPECIAL OFFER**

- 3 Months Toning
- 3 Months Vibraxis
- 3 Contour Wraps

**£179**  
Normal Price over £300  
Limited Availability

**FREE ONE WEEK TRIAL**  
for anyone with health issues - No obligation

Inches Body Studio, 1 Norwood, Beverley HU17 9ET  
Wheelchair access & stairlift available  
**Telephone: 01482 865229**  
Email: inchesofbeverley@hotmail.co.uk  
www.inchesbodystudio.co.uk  
Established 1992

**HUBY**  
**DOMESTIC APPLIANCES**

Covering Hull, Beverley, Pockington, Driffield and all the local villages

**BOOK ONLINE**  
and **SAVE**  
at **hubys.co.uk**

Book in advance and save money. The further you book in advance the more you could save...




**GAS safe**  
No. 24001

For service and repair call: **01482 866660**

**OVER 20 YEARS EXPERIENCE**

**Jadan press**

Print that gets you noticed



**BROCHURES LEAFLETS BUSINESS CARDS POSTERS  
CALENDARS POP UP BANNERS INVITES PADS**

**Tel: 01482 610902**  
**info@jadan-press.co.uk www.jadan-press.co.uk**  
Rainbow House, Kimberley Street, Hull, HU3 1HH

Jadan-Press | PROMOTA | PROMOTA | BPIf | URS | U.K.A. | bpma | URS | @JadanPress

# POSSIBLE CHANGES TO ENTREPRENEURS RELIEF

*We are now entering a period of uncertainty after the general election. A budget will be forthcoming in the near future and we understand that a review will be undertaken on Entrepreneurs relief.*

## Current position

Entrepreneurs relief is the tax charge that replaces capital gains tax when you sell all or part of your business, providing you meet certain conditions. Entrepreneurs relief means that the taxpayer will pay just 10% tax on qualifying sales, as long as certain conditions are met;

- The business or shares must have been owned for at least 2 years prior to the sale.
- The relief is restricted to £10 million of lifetime gains.
- The company shares being sold must be in a trading company.
- You must have held at least 5% of the share capital in the business.
- You must have been an employee or officer of the company.
- Only available to individuals (not companies).

Without Entrepreneurs relief, capital gains tax would be paid at a tax rate of 20%, for higher rate tax payers.

## What changes can we expect

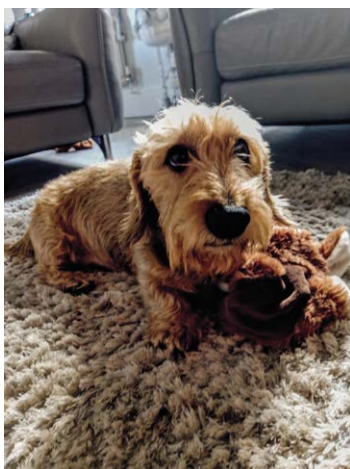
The government have mentioned that they are going to carry out a review of Entrepreneurs relief. This review could mean a complete removal of the relief, which we feel is unlikely. More likely are changes to the qualifying conditions, such as extending the qualifying period of ownership from 2 years to 10 years, or maybe increasing the required share ownership from 5%. It is expected that the changes will be announced in a budget in February 2020 so if you are looking to sell your business in the near future, it may be worth trying to get this process completed sooner rather than later. Particularly if any of the possible changes could affect you.

If you would like to discuss this in more detail, then please contact Gareth Botterill on **01482 862240** or email [gareth@botterillco.co.uk](mailto:gareth@botterillco.co.uk)

## PETS' BEST FRIEND BY LAUREN MIDDLETON

*Hey from Pets' Best Friend! The winter season is here and Christmas is just around the corner - one of my favourite times of year bringing snow and bright, frosty mornings. I particularly enjoy walking the dogs early whilst the sun rises and gives glittering views and pretty skies.*

It is starting to get icy on the roads, and after recently encountering a near miss I would warn cars to drive slowly especially near dog walkers and other pedestrians as you have very little control when you hit ice.



I have been quite busy with dog grooming these past few weeks. It is important to keep up with appointments throughout the winter months to avoid your pets' fur matting and causing them discomfort. A few of my customers like a longer style during winter, which is fine. However, a regular brushing regime that owners carry out at home is necessary, and possibly a shorter time between grooming appointments to ensure the coat is cared for properly. A good conditioning spray that I use is called 'Amazing Trix'; this can be sparingly sprayed onto the coat (avoiding the eyes and facial

area) a couple of times a week before brushing and can help prevent coat damage, dryness and help to eliminate matting.

I'm not a big believer in dog fashion clothing, nevertheless a jacket would be a good option for dog walks on colder days just to keep the chill off. A few of my older or more leaner-built dogs wear them but not all dogs require them so use only when necessary.



## Botterill & Co

Chartered Certified Accountants

We are a modern and professional accountancy practice ideally located to serve businesses in Beverley and the surrounding area.

We utilise modern accounting technology to provide you with a cost effective, professional service.

### Our services:

- Annual Accounts
- Company Formations
- Tax Planning
- Payroll
- Management Accounts
- Cloud Accounting
- Tax Returns
- Bookkeeping & VAT

For a free initial consultation please contact us:

Office: **01482 862240**

Mobile: **07966 051458**

Email: [gareth@botterillco.co.uk](mailto:gareth@botterillco.co.uk)

Website: [www.botterillco.co.uk](http://www.botterillco.co.uk)

1st Floor Offices, 40 Norwood, Beverley, HU17 9EY

## PRESCHOOL SWIMMING LESSONS

Daytime Classes  
Ages 2½ Years Plus

2 Highly Experienced & Qualified Instructors with 6 Children in the Pool

**EXCLUSIVE POOL USAGE - DUNSWELL  
BEAUTIFUL LEARNING ENVIRONMENT**

COST: £40 PER MONTH  
Weekly Half Hour Lessons

☎ 01482 229676 ✉ [SportsabilitySwim@gmail.com](mailto:SportsabilitySwim@gmail.com)  
📱 @SportsabilitySwim 🌐 [sportsability.org.uk](http://sportsability.org.uk)  
Swim England Learn to Swim

SEN SPECIALISTS Learn to Swim Programme

# THE APPLE BLOSSOM LADY BY PAULINE KIRK



Maria shivered, turning towards David. "What was that?" she whispered. "The ghost?" Until then she hadn't believed the legend.

"Ghosts don't scatter stones," David replied. "Look!" He pointed to where a fine rain of gravel fell behind the house. "Someone slipped. But what are they doing on the hill in the dark? We'd better see if Miss B's ok."

After three rings of the bell an eye appeared at the spy hole. "It's David and Maria - your new neighbours," David called. "There's someone prowling around. Are you all right?" The door opened and Miss Blavaski greeted them. "Come in Darlings," she invited. "I'm fine. I was going to call. I have a present for you."

Mystified, they followed the woman down a panelled hallway and into a large lounge dominated by a grand piano. There was a strong scent, like apple blossom. Maria saw David frown but he said nothing. "Forgive the mess," Miss Blavaski said. "I'm working."

She saw their bewilderment. "I'm a composer. That's how I earn my living, though mostly from writing practice pieces for children. This is theme music for a film but it's being stubborn. Greta isn't helping tonight."

Maria looked at the cat curled on a pile of paper. "I thought he was called Henry," she said. Miss B laughed, crossing to fetch a carrier bag from the table. "Just a little thank you for feeding him," she explained and passed the bag to Maria.

"Henry hinders rather than helps, sitting on my music. Greta's long dead of course but I like to think she keeps me company. I imagine you've heard the story at the Fox and Grapes?" Uncertainly David nodded. "An ancestor perhaps?" he asked tactfully.

"My Great Grandmother. Slipped from the rocks while she was waiting for her lover. Great Grand Daddy may have given her a push."

"So she really existed?" Maria asked. "Oh yes. I have photos. She was lovely, and a very clever musician. She toured the music halls as Greta Blavaski before she married. I took her surname when I went professional - much more interesting than Angela Brown. I'm not surprised she had a lover. She must have been bored to tears here." The woman smiled and glanced at the clock. "You must come for drinks sometime, but I have a deadline to meet this week."

Taking the hint David and Maria left, thanking her for the gift. "I want to see if anyone's still on the hill," David insisted afterwards. "Come on. We've both got torches and there's a good moon."

They walked carefully up the track as far as the beacon stone. There was no one about. In relief they stood in the moonlight looking at the house below. "Can you smell apple blossom?" Maria asked in surprise. "It must have got stuck in my nostrils."

"Yes," David said. He shook his head in bewilderment. "There's a bit of the legend I didn't tell you. I thought it was trivial. People say that whenever the ghost appears you can smell the perfume she wore: Apple Blossom."

**Pauline is a published poet and Editor of Fighting Cock Press. Pauline writes as PJ Quinn for the D I Ambrose novels. Her sci-fi novel Borders 7 is out with Stairwell books.**

**'KNOW YOUR NUMBERS' ANSWER**  
*Missing numbers in yellow*

|    |    |    |    |    |
|----|----|----|----|----|
| 2  | 9  | 3  | 4  | 18 |
| 7  | 1  | 5  | 8  | 21 |
| 2  | 3  | 4  | 5  | 14 |
| 5  | 4  | 1  | 6  | 16 |
| 16 | 17 | 13 | 23 | 13 |

# POEM BY CLINT WASTLING - FOLLY DOLLY FALLS



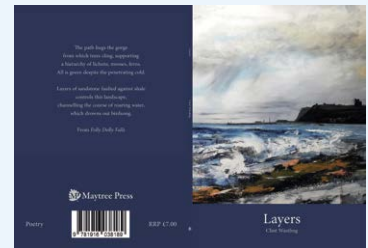
*Birdsong drowns out gurgling water  
and on a cold January day  
the walk begins near a railway track--  
investment too late to save the mines.*

*The path hugs the gorge  
from which trees cling, supporting  
a hierarchy of lichens, mosses, ferns.  
All is green despite the penetrating cold.*

*Layers of sandstone faulted against shale  
controls this landscape,  
channelling the course of roaring water,  
which drowns out birdsong.*

*In the dank, irriguous domain  
I clamber mossy outcrops for photographs.  
Here nature hushes human voices  
but joy and hope remain.*

Clint's poetry collection, from which Folly Dolly Falls is taken, is called Layers and is available from Maytree Press and Tourist Information, Beverley.



## 'WHERE IN BEVERLEY' ANSWER

*The clock at Railway Square*

## Four Generations, Giving Over 125 Years Service

|           |           |           |       |
|-----------|-----------|-----------|-------|
| Herbert   | Eardley   | Geoffrey  | David |
| 1870-1962 | 1908-1986 | 1939-2015 | 1964  |



Golden Charter  
Funeral Plans



- Funerals Respectfully Conducted
- 24 Hour Out of Hours Service
- Free Advice & Support
- Private Restrooms
- Prepaid Funeral Plans Available
- Finance Options Available



**Tel: 01482 844695**  
[www.hkempandsonltd.com](http://www.hkempandsonltd.com)

259 Hallgate, Cottingham, East Yorkshire, HU16 4BG  
Fax: 01482 843898  
Email: [hkempandsonltd@gmail.com](mailto:hkempandsonltd@gmail.com)



# ert

EAST  
RIDING  
THEATRE

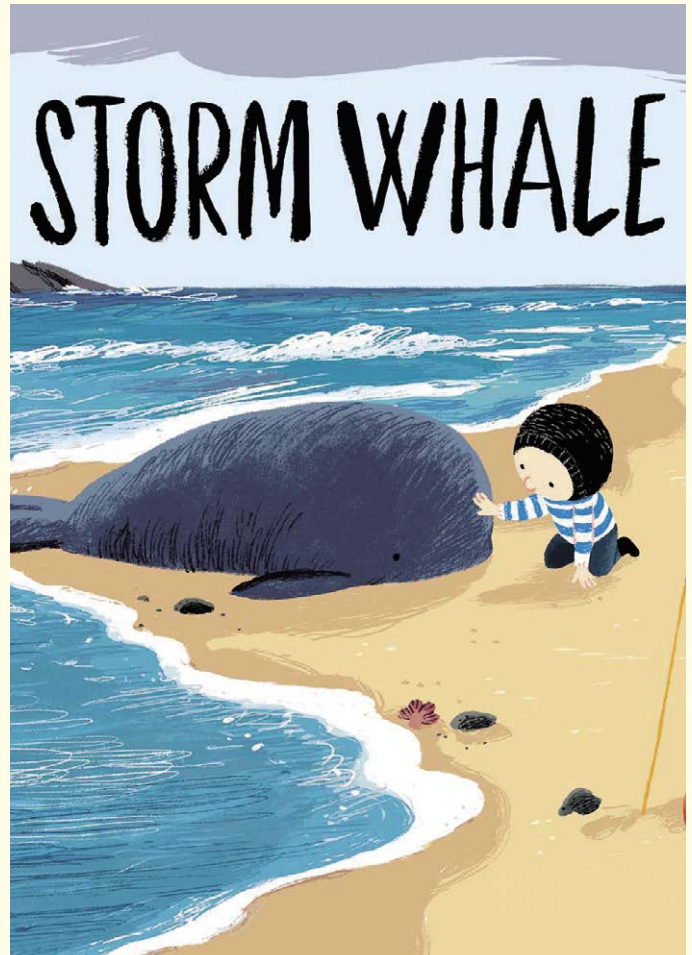
10 Lord Roberts Road  
Beverley HU17 9BE  
Tel: 01482 874050

Email: [boxoffice@eastridingtheatre.co.uk](mailto:boxoffice@eastridingtheatre.co.uk)

Current Box Office Opening Times:  
Tues - Fri 10am - 4pm or Sat 10am - 12noon.



Cafe/Bar Opening Times:  
Tues - Sat 10am - 4pm



## BOMBSHELLS

Thursday 23rd January - Saturday 1st February  
(Wednesday 29th January 11.30am - parent and baby performance)

A mother. A schoolgirl. A businesswoman. A widow. A bride-to-be. And a world-famous singer. Six women on the cusp of a crisis.

In this hilarious & often heart-breaking one-woman play by Joanna Murray-Smith, we explore humanity on the edge of a breakdown.

Why does your newborn baby keep crying?

How do you cope when your husband cheats on you?

How do you fill your days once your life partner dies?

How do you survive after a series of life catastrophes?

Directed by Becky Hope-Palmer, Director of She Productions' sell-out show It's Different For Girls & performed by She's first-class chameleon Alice Rose Palmer, BombsHELLS will be a night of cabaret & Victoria Wood style entertainment.

Tickets: Full £13.50 / Conc. £12.50 / Preview £8.

## THE STORM WHALE

Saturday 8th 2pm & 4.30pm & Sunday 9th February 11am & 1.30pm

Written and Directed by Matt Aston.

Based on the award-winning books The Storm Whale and The Storm Whale in Winter by Benji Davies.

Noi lives with his Dad and six cats by the sea...

One summer, while his Dad was busy at work, Noi rescued a little whale that washed up on the beach. A friendship began that changed their lives forever.

The following winter his Dad takes one last trip in his fishing boat. Noi is alone once more and longs to see his friend again. He waits and watches, watches and waits...

Will it take another storm to bring them back together?

Benji Davies's tender and heart-warming stories of loneliness, love and courage is brought to life as one magical piece of theatre from the team behind Grandad's Island.

Recommended for children aged 4+ and their families.

# WHAT'S ON

## SPONSORED BY: **küchenhaus**

2 Toll Gavel, Beverley, HU17 9AJ. T: 01482 862172.

Open: Mon - Sat: 10am-5pm. Sun: 11am-3pm. Bank Holidays: 10am-4pm.

### Thursday 2nd January

#### • Subtle Flame Poetry Group

The Tiger Inn, Lairgate, Beverley. 8.30pm. £2 on the door. First round on the theme of First. All welcome.

### Friday 3rd January

#### • Bounce and Rhyme

Children's Library, Treasure House, Beverley. 9.45am-10.15am and 2.15pm-2.45pm. Free. Songs and rhymes for pre-school children. Call Beverley Library on 01482 392750 to book a place.

### Monday 6th January

#### • The White Horse Folk Club Singers and Musicians Night

The White Horse Folk Club at Beverley Conservative Club, Wylies Road, HU17 7AP. 8.30pm. Only £2. Performers and audience welcome.

### Wednesday 8th January

#### • Reminiscence

Children's Library, Treasure House, Beverley. 10.30am-11.30am. A social group for older people. Call Beverley Library on 01482 392750 to book a place.

### Thursday 9th January

#### • Reminiscence

Children's Library, Treasure House, Beverley. 2pm-3pm. A social group for older people. Call Beverley Library on 01482 392750 to book a place.

#### • Chatterbooks

Children's Library, Treasure House, Beverley. 4.15pm-5.15pm. Free. Reading group for young people aged 8-11.

### Monday 13th January

#### • The White Horse Folk Club Singers and Musicians Night

The White Horse Folk Club at Beverley Conservative Club, Wylies Road, HU17 7AP. 8.30pm. Only £2. Performers and audience welcome.

### Tuesday 14th January

#### • Singalong Memories - Just for Fun - Singalong Group

Walkington Methodist Church Schoolroom. 2pm-3.45pm. £2 (incl. refreshments). For further details please contact Val/Mike on 01482 865249 or Sue on 01482 882188 or email val.memories@outlook.com

### Thursday 16th January

#### • Tiny Treasures - Archaeology

Education Room, Treasure House, Beverley. 1.30pm-2.30pm. Free for under 5's and their grown-ups.

#### • Teenage Book Group

Children's Library, Treasure House, Beverley. 4.15pm-5.15pm. Free. A chance to chat about the book you're currently reading or to find out about new authors.

### Monday 20th January

#### • The White Horse Folk Club presents Sam Martyn

The White Horse Folk Club at Beverley Conservative Club, Wylies Road, HU17 7AP. 8.30pm. £8. A talented local musician with a splendid singing voice.

### Thursday 23rd January

#### • The Tiger Inn's Rock n Roll Bingo

New music quiz night to be held once a month, all proceeds go to Macs Fund, £1 per person entry.

Ideal for all you all music fans! 8.30pm start.

### Friday 24th January

#### • Bounce and Rhyme

Children's Library, Treasure House, Beverley. 09.45am-10.15am and 2.15pm-2.45pm. Free. Songs and rhymes for pre-school children. Call Beverley Library on 01482 392750 to book a place.

#### • Rotary Club of Beverley Presents 'A Burns Night'

The Lairgate Hotel, Beverley. 6.30pm-10.30pm. £30. Traditional Burns Night Meal and music and dancing with The Hessle Ceilidh Band. Tickets available at [www.beverleyrotaryclub.org.uk](http://www.beverleyrotaryclub.org.uk)

### Saturday 25th January

#### • The Tiger Inn's Race Night

Race Night to raise funds for the Beverley Braves Junior Section. Night starts at 7.30pm, under starters orders for the 1st race at 8pm. Raffle to be held too.

### Monday 27th January

#### • The White Horse Folk Club Singers and Musicians Night

The White Horse Folk

Tell us about your event!

Email: [info@justbeverley.co.uk](mailto:info@justbeverley.co.uk)

Telephone: 01482 679947

For more events visit:

[justbeverley.co.uk/events](http://justbeverley.co.uk/events)

Club at Catholic Church Hall, Beverley (next to The Rose and Crown). 8.30pm. Only £2. Bring your own drinks and glasses. Performers and audience welcome.

### Tuesday 28th January

#### • Singalong Memories - Just for Fun - Singalong Group

Walkington Methodist Church Schoolroom. 2pm-3.45pm. £2 (incl. refreshments). For further details please contact Val/Mike on 01482 865249 or Sue on 01482 882188 or email val.memories@outlook.com

### Thursday 30th January

#### • Adult Book Group

Beverley Library, Treasure House, Beverley. 5.30pm-6.30pm. Free. Reading group for adults of all ability levels.

#### • The Tiger Inn's Rugby League Quiz

On the eve of the new Rugby league season, editor of Hull FC fanzine 'Up the Cream' Dan Tomlinson will be hosting a Rugby League themed quiz, £1 per person. All proceeds to go to Beverley Braves Junior Section. From 8.30pm.

### Until Friday 13th March 2020


#### • Beverley Guildhall Exhibition - Looking at Lairgate

Beverley Guildhall, Register Square, Beverley. Guildhall Opening Hours: Wednesday 10am-1pm and Friday 10am-4pm. Free admission.

### Until Saturday 29th February 2020

#### • Beverley Art Gallery Exhibition - Open Art Exhibition

Education Room, Treasure House, Beverley. Opening Hours: Mon, Weds and Fri 9.30am-5pm; Tues and Thurs 9.30am-8pm and Sat 9am-4pm. Free admission.



Be part of something amazing.

Start your volunteering journey today:

[www.dovehouse.org.uk/volunteer](http://www.dovehouse.org.uk/volunteer)

01482 785747

[volunteers@dovehouse.org.uk](mailto:volunteers@dovehouse.org.uk)

© Dove House Hospice 2019

# küchenhaus

The Largest Manufacturer of Quality German Kitchens

At Küchenhaus we have affordable solutions made to meet your highest standards

2 Toll Gavel, Beverley, HU17 9AJ. T: 01482 862172.

Open: Mon-Sat: 10am-5pm. Sun: 11am-3pm. Bank Holidays: 10am-4pm.

## Book your 2020 getaway by coach!

Coaches from Beverley

### City Breaks

Your holiday, your choice...

Your holiday, your choice...

Spend a couple of days away based on your choices and not ours – where you eat, where you visit and when you do things. With centrally located hotels close to all the cities' amenities, restaurants and attractions, you have the freedom to enjoy the city and savour the atmosphere – with bed and breakfast included. All pick up at Beverley New Walkergate, as well as Hull, Cottingham and others.

### Liverpool : £99pp

Saturday 2 May : 2 days away

### Manchester : £99pp

Saturday 20 June : 2 days away

### Lincoln : £89pp

Saturday 4 July : 2 days away

### Liverpool : £104pp

Sunday 30 August : 2 days away

### Bristol : £175pp

Friday 2 October : 3 days away

# ON SALE SOON!

## 2020 Summer days away by coach



### Mystery Tour

Saturday 21 March – 2 days from £109

Price Includes:

- : One night's dinner, bed & breakfast.
- : Full excursion programme.
- : Use of hotel's leisure facilities.
- : Admission to at least one attraction.

Your Hotel:

That'd spoil the surprise!

### Bath, Longleat & the Cotswolds

Thursday 16 April – 5 days from £399

Price Includes:

- : Four nights' dinner, bed & breakfast.
- : Admission to Longleat Safari Park, House & Gardens.
- : Visit with free time in Bath.
- : Scenic drive & excursions through the Cotswolds.

Your Hotel:

4-Star DoubleTree by Hilton, Swindon.

FREE pick-ups  
DOOR to DOOR

### A Great Tour is Brewing in Kent

Tuesday 5 May – 5 days from £455

Price Includes:

- : Four nights' dinner, bed & breakfast.
- : Admission to Leeds Castle & Gardens.
- : Tour of Shepherd Neame Brewery.
- : Walking tour of Chatham Historic Dockyard.
- : Full excursion programme.

Your Hotel:

4-Star Bridgewood Manor Hotel & Spa, Chatham.

FREE pick-ups  
DOOR to DOOR



### The Best of the West in Cornwall

Sunday 24 May – 6 days from £579

Price Includes:

- : Five nights' dinner, bed & breakfast.
- : Full excursion programme.
- : Admission to Tolgus Tin Streaming Mill.
- : Entry to the Eden Project.
- : Access to the hotel's leisure facilities.
- : Entertainment in the hotel.

Your Hotel:

Pentire Hotel, Newquay.

FREE pick-ups  
DOOR to DOOR

### Bournemouth & Beyond

Sunday 7 June – 6 days from £499

Price Includes:

- : Five nights' dinner, bed & breakfast.
- : Full excursion programme.
- : Boat cruise from Poole Harbour.
- : Access to the hotel's leisure facilities.
- : Entertainment in the hotel.

Your Hotel:

Suncliff Hotel, Bournemouth.

FREE pick-ups  
DOOR to DOOR

### Genteel Charm of Suffolk

Thursday 2 July – 5 days from £475

Price Includes:

- : Four nights' dinner, bed & breakfast.
- : Full excursion programme.
- : Guided tour of Glemham Hall with lunch.
- : Visit to Kentwell Hall.
- : Boat cruise on the River Deben.
- : Visit to Sutton Hoo.
- : Use of the hotel's leisure facilities.

Your Hotel:

BW Marks Tey Hotel, Colchester.

FREE pick-ups  
DOOR to DOOR



**WE ARE**  
**No.1**  
**IN YORKSHIRE**  
**FOR OVERALL ACHIEVEMENT**  
(General FE Colleges based in Yorkshire)



**Book  
now!**

# OPEN EVENT

**Wednesday,**  
**22 January, 4-7pm**  
**Flemingate, Beverley**



**Free Travel**  
**2 college**

Visit our website  
for details

East Riding College



[www.eastridingcollege.ac.uk/visit](http://www.eastridingcollege.ac.uk/visit)