

# just BEVERLEY

O<sub>2</sub>  
Media Awards

'Community  
Publication Award'  
Shortlisted Nominee  
2017



**REYTA**  
Remarkable East Yorkshire  
Award Nominee 2016  
'Best Newcomer'

**b** destination  
beverley

01482 679947

justbeverley.co.uk

info@justbeverley.co.uk

**FREE**

**ISSUE 32**

## WALKING AND OUTDOORS FESTIVAL

9th - 17th SEPTEMBER



**- HULL SKYLINE  
GOODIES**

**- HULL BIG BAND  
TICKETS**

**- FAMILY PANTO  
TICKETS**

**MOLESCROFT  
FARM ESTATE**

**ON YOUR BIKE  
WITH VELO CLUB BEVERLEY**

**MARK SMITH  
THE FOOTBALL SEASON BEGINS**

**NEWS, WHAT'S ON, LIFESTYLE, FEATURES, PUZZLES, PHOTOS & MORE**



Your Partners  
in Payroll

# Has managing your payroll become a real headache?

New legislation for RTI and Auto Enrolment has tripled the workload for payroll staff!

We can help reduce the burden.

#### Benefits of working with us include:

- Access to a dedicated payroll specialist
- Flexible and tailored services that are adapted to suit your needs
- Transparent pricing
- Clarity and efficiency
- Access to our FREE and easy to use payroll app



To arrange a **FREE** meeting  
call us on 0845 308 2288  
or visit [www.stipendia.org.uk](http://www.stipendia.org.uk)



Stipendia Payroll Solutions



@StipendiaPay





# just BEVERLEY

## Letter from the Editors



September to me is a Marmite month - you either like it or loathe it! It's an in-between month; a transition month; the end of summer and the move towards the start of autumn; the nights drawing in and freshness in the air; the colour changes in the countryside and often a tranquil feeling all around. September just seems to lack definition - it signifies change.

Change! Children start school in September or go up into new school years; young adults go off to university or college, begin their first job; many move away from home, flying the nest. Adults look out their warmer clothes; put the heating on; harvest the last of the summer produce.

Here at **Just Beverley** we embrace change and look to move forward. September will see **Just Beverley** starting to change. See if you can spot the changes in our October issue! Phone in, email in, send us a message on Facebook and let us know what you think about the change. And as always, let us know your good news!

Whatever is new for you in September, have a great one!

Julian.



Time really does fly as you get older, but I am certainly a lot fitter after following Ian Richardson's walks - next month there will be a whole year of walks!

I hope you have enjoyed them as much as Mr J and I. He had no idea there was a Beverley 'lake district' or a place called Goxhill at this side of the River Humber as well as on the south side. This month, Ian heads out towards Flamborough. I love the sea - coming from a sea-faring family I am sure sea-water runs in my blood! I also like quirky places and Flamborough is definitely one of those! If you have missed any of Ian's walks, remember every issue of **Just Beverley** is available for download on our website: [www.justbeverley.co.uk/magazine](http://www.justbeverley.co.uk/magazine)

You will know that my colleague, Julian, prefers travelling on two wheels rather than Shanks's pony. Many congratulations to him for completing the 100-mile Prudential Ride London sportive in 7 hours 16mins, raising just short of £1,000 for Haemophilia Society. If you fancy the idea of getting on a bike but would like some support, VC Beverley is welcoming beginners on Wednesday evenings (more details on page 31). There is also the Beverley Breezers Easy Breeze rides for ladies who prefer gentler, sociable cycling listed on [www.letsride.co.uk](http://www.letsride.co.uk). One day I might even turn up - but I do so like meandering!

Whatever you plan to do this September, be happy!

Linda.

Get in touch with us:

**Website:** [justbeverley.co.uk](http://justbeverley.co.uk)  
**Email:** [info@justbeverley.co.uk](mailto:info@justbeverley.co.uk)  
**Telephone:** 01482 679947  
**Twitter:** @JustBeverley  
**Facebook:** [facebook.com/justbeverley](https://www.facebook.com/justbeverley)

Printed by: Jadan Press

## CONTENTS

Letters from the Editors  
 News  
 Parkway Cinema  
 Competitions

## PAGE

3  
 4, 5  
 6, 7  
 7, 13, 32

## Features

Flemingate celebrates  
 Walking and Outdoors Festival  
 Football season begins

11  
 22  
 31

## Regulars

Arts and Culture  
 Beverley Town Council  
 Competition Winner  
 Countryside Matters  
 Finance  
 Gardening  
 I've been thinking  
 Legal  
 Lifestyle  
 Motoring  
 New Business  
 Photos  
 Poem  
 Puzzles  
 Sport  
 What's On

5, 12, 36, 37  
 14  
 6  
 25  
 15, 34  
 27  
 17  
 15  
 8, 13, 14, 25  
 18  
 4, 5, 11, 24, 25  
 20, 21  
 36  
 32  
 26, 29, 30, 31  
 38

## Errata

The telephone number quoted as the contact for Guide Dogs was incorrect. The correct number is **0345 143 0207**.

## Competition Terms and Conditions

Competition answers should be emailed to [info@justbeverley.co.uk](mailto:info@justbeverley.co.uk) before the closing date with the competition title in the subject field. Include your name, address and daytime contact telephone number along with your answer. Winners will be notified within 1 week of the closing date and MUST be available for publicity purposes for **Just Beverley** magazine, website and Facebook page and the prize provider. Photographs are usually taken the weekend after the prize-winners have been notified. The judge's decision is final. No cash alternative is offered. Details may be used for marketing purposes by **Just Beverley** and the prize provider and for website analytics by **Just Beverley**.

## CONTRIBUTORS

Julian Minshall, Linda Johnson, Richard Manville, Carfan, Jane Dale, John Fewings, Ian Richardson, Sam Walton, Lynne Auton, Colin Raynor, Helen Watson, Annie Drew.

## You can pick up the magazine from:

Beverley Parkway Cinema, Beverley Tourist Information, Beverley Library/Treasure House, Tesco, Morrisons, East Riding Leisure Beverley, Browns café, Beverley News, Boyes, Tesco café, Cherry Tree Community Centre, Colette and Tyson Garden Centre, Beverley Garden Centre, Cherry Tree Garden Centre, Mace News in Saturday Market and Lincoln Way, Tickton News, Costcutter in Walkington, Molescroft News, Grovehill Convenience Store, Maple News, Leconfield PO, Poundland, Halfords, East Riding Community Hospital, Bishop Burton PO, The Altisidora, Cherry Burton PO, Monks Walk, Hayride, Health Centres, Churches, cafés, hairdressers and more!



## Just Beverley nominated for Best Community Publication at O2 Media Awards!

*There was never so much excitement in the Just Beverley office as when the announcement came through! In fact, there was complete incredulity as the email was checked several times! But yes! there was Just Beverley as a finalist in the Community Publication section.*



'Community Publication Award'  
Shortlisted Nominee  
2017

Staff at Just Beverley work hard to ensure each edition is informative and interesting for readers, supports our local enterprises and gives advertisers the platform they need to promote their businesses. We like to think we have a product which delivers what it promises. Deadlines always arrive sooner than they should; there is never time to check copy so it is 100% perfect and there is always something that conspires to disarm the smooth-running of word or PDF to print. But the vast majority of the time, the zine is available as hard copy by the last Friday of the month (except when a Bank Holiday gets in the way) and it's on the website for download.

Every month we try to find lead articles which have not been covered by other print media - which is where our readers come in! Without people telling us their good news we would never know about some of the stories we have covered. We would also be lost without our regular contributors who give the magazine a unique flavour. But there are some people who have supported us from the very beginning with cash (each copy costs around 40p to produce yet we are able to give it away free), with advertising and with time. You know who you are! Without you, Just Beverley would not exist and Beverley would be poorer for it.

It's great to know that there is a national company now recognising all of our efforts. Wish us luck on the night - if we win you will know about it as fast as we can post out!

## Culture:Orchestra makes Toll Gavel United Church its Beverley home

*From the very beginning, Culture:Music's new Culture:Orchestra is hoping to bring something different to music! The orchestra, led by Danny Thompson, is intent on challenging how people experience live orchestral music through exciting repertoire and an open and welcoming experience. No need to be glued to your seat, no worries about clapping and cheering at the wrong times, just enjoy the performance in whichever way it suits you!*

Culture:Orchestra recently announced that Hull Minster would be its base in Hull, but discovering Toll Gavel Church's amazing acoustics has ensured performance space in Beverley, which means that concerts in Hull will be replicated in Beverley! So you can enjoy 'A Night at the Movies' on September 15th, featuring original arrangements of well-loved movie themes without having to trek into Hull! Trustees and Stewards at Toll Gavel would love you to be there and take part in this new partnership from the start!

Movies featured include: *The Dark Night; Man of Steel; Spiderman; How To Train Your Dragon; Lord*

*Of The Rings: Fellowship Of The Ring; Magnificent 7; Star Trek - Into Darkness; Fantastic Beasts And Where To Find Them; Beauty And The Beast and Back To The Future.*

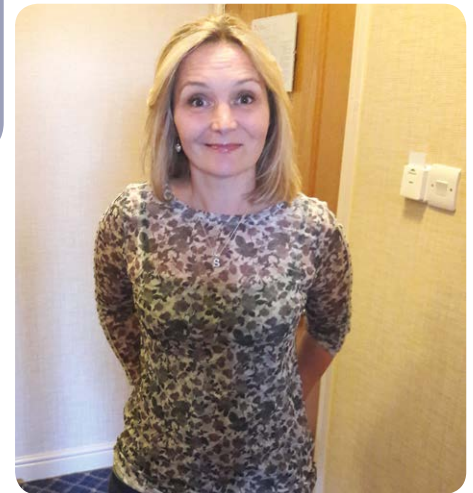
There will be an interval of around 20 minutes when the members of the Orchestra (and Toll Gavel Church) will be mingling and chatting! There will, of course, be refreshments on sale. A wise doctor once said, "Roads? Where we're going, we don't need roads!" (Dr Brown. E, 1985). But all roads lead to Toll Gavel Church on September 15th when you can be brought 'Back To The Future!' Tickets are £10 for adults, £6 for children, free for under 5's and are available from [www.hullboxoffice.com/events/a-night-at-the-movies](http://www.hullboxoffice.com/events/a-night-at-the-movies) or Toll Gavel Church members or on the door.



## Reflexologist now based at Beverley and Molescroft Surgery

*Symone Duncan is now able to offer Beverley clients more local service as she will be based in Molescroft on Monday afternoons.*

Reflexology claims to help stress and promote relaxation; improve circulation and nerve function; is beneficial for pregnancy, menstruation and menopause; can restore the body's natural homeostasis, boost the immune system and help with chronic or life-limiting conditions such as fibromyalgia and multiple sclerosis. Symone became convinced of the benefits of reflexology when she was offered the therapy as part of her care after a cancer diagnosis 12 years ago and was inspired to train as a reflexologist so that others could benefit in the same way as she has.



Symone told **Just Beverley**: "The experiences I have had have often left me in awe. I hope I can inspire others to take time to try the experience of reflexology with me. Reflexology is based on the principle that reflex points on the soles, tops and sides of the feet, leading up to the calf, all correspond to different areas of the body. By applying specialised massage techniques to specific reflex points, balance can be restored and the client's general well-being improved. I am offering discounts to those who are employed in the public sector and promotions which will be advertised via my Facebook page and website which goes live soon. I can be contacted on **01964 502262** or **07956 924402**."

## Concerned about the tradesmen you let into your house? Trust in Blue is here!

*Local retired police officers with a passion for home maintenance and gardening are taking up tools to provide peace of mind to residents and businesses in Beverley and district.*

Nick and Elena Orde-Powlett who have set up the business are aware that there are 'cowboy' tradespeople who can prey on the vulnerable, hence their vetting process is second-to-none.



They told **Just Beverley**: "Police Officers typically retire after 30 years but many are still eager to play an active and productive role in the communities where they understand local issues and people's concerns. Our staff have all proved their skills in home maintenance or gardening and are Enhanced DBS (CRB) checked. Our handymen provide a quote before any work is started - we often do smaller jobs which some tradespeople are not prepared to do - and can also offer advice on topics such as crime prevention. Being ex-Police Officers, they are caring people who enjoy sitting having a chat with their clients, rather than rushing off to the next job."

More information can be found at: [www.trustinblue.com](http://www.trustinblue.com) and bookings can be made online or by calling **Freephone 0800 2550255**. You can follow **Trust in Blue on Twitter** and 'Like' them on **Facebook!**



## The latest from ERT by James Storr

As Hull City of Culture 2017 sets out to 'Tell The World' in its final season, ERT begins the autumn with the first of a trio of Hull connected plays.

ERT's all-female Company in Residence, She Productions, kicks off with a new musical It's Different for Girls, redefining the powerful historical role of creative women in the North through the story of 1960's Hull pop group, Mandy and the Girlfriends, who were one of the UK's first girl bands to play their own instruments.

The next of ERT's trio, brings playwright Richard Bean's work back to the region for the second time this year after the successful run of The Hypocrite at Hull Truck Theatre. A huge hit at the Trafalgar Studios, Kiss Me is restaged as an ERT production and directed by Matt Aston, who is soon to be a local resident! Set in 1929, Kiss Me presents a tender and unusual love story amid the aftermath of World War 1 as two survivors attempt to rebuild their lives. The last in this trio of celebratory plays, takes audiences up to Bronte country where The John Godber Company revisit the terrain of Wuthering Heights with a young, vibrant cast of recent top Northern drama school

graduates. Energetic and wild, this physical production uses the 'cream of the crop' to 'tell the World' about Northern talent.



As the trio ends, anticipation mounts at ERT in preparation for its fourth Christmas show. Having built a reputation for the increasing quality of its festive offerings, ERT is pushing the boat out this year with a stage production of truly joyous Christmas fare with its stage adaptation of It's a Wonderful Life. Tickets are expected to fly off the shelves for a hearty helping of this warm and familiar Christmas tale. Be sure to pick up one of our new 'What's On' next time you're passing by. And do visit our website: [www.eastridingtheatre.co.uk](http://www.eastridingtheatre.co.uk) to keep up to date!

## New Manager at the Green Dragon

Simon and his wife Sheila have spent nearly 20 years working around the UK, experiencing managing public houses in Bridlington, Tynemouth, Leeds and seven years in Stratford upon Avon before moving into hotel management and heading South into Hampshire.

After spending the last 18 months in rural Lancashire, the opportunity was presented to them by Mitchells and Butlers to manage the Green Dragon in Beverley. They decided it was time to come back home to East Yorkshire where they started out all those years ago.

Simon and Sheila look forward to making you welcome at The Green Dragon in Saturday Market Place, Beverley.



## Yorkshire Day celebrated in style!

The wonders of Yorkshire, words of wisdom from a true Yorkshire gent and fundraising to help local Yorkshire charities are an integral part of being from Yorkshire - along with good wholesome Yorkshire food!

The Mayor of Beverley, Ann Willis invited 130 civic dignitaries and community guests including the Lord Lieutenant, The Hon Mrs Susan Cunliffe Lister, Chair of ERYC, Cllr Caroline Fox and High Sheriff Mrs Gill Drewery to Tickton Grange on August 1st to celebrate Yorkshire Day.



Duggie Brown (who will be appearing in Panto at Beverley's Parkway Cinema this Christmas) gave an entertaining after-dinner speech and Sir Rodney Walker CBE gave a toast, along with a few words of what makes Yorkshire such a great place.

Tony Peers, promoter of the pantomime, which this year will be Dick Whittington and his wonderful Cat, lead the auction and raffle, with items donated by local businesses, raising £1,815 to be shared between the Mayor's Charities, Cruse Bereavement Counselling and Riding for the Disabled in Beverley.

**THE PAULINE QUIRKE ACADEMY OF PERFORMING ARTS IS ENROLLING NOW IN BEVERLEY & HULL!**  
Outstanding performing arts tuition for 4-18 year olds.



Academies run on Saturdays

### PQA Beverley

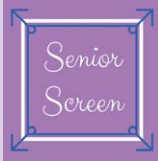
Find us at **Beverley Grammar School, Queensgate, Beverley, HU17 8NF**  
from 8.45am - 12pm

### PQA Hull

Find us at **Wolfreton School and Sixth Form College, Well Lane, Willerby, HU10 6HB**  
from 1.45 - 5pm

Visit [www.pqacademy.com](http://www.pqacademy.com)  
or call **FREEPHONE 0800 531 6282**





**EVERY THURSDAY AT 10.30am**  
(doors open 9.45am)

Join us for a free brew and a natter and enjoy some great films on Beverley Parkway's Big Screen. Only £4 with drink and biscuits included. Aimed at 55s and over. Films subject to change.

**Thursday 7th September -**

**Their Finest** - Starring: Gemma Arterton  
**Snatched** - Starring: Amy Schumer

**Thursday 14th September -**

**The Promise** - Starring: Christian Bale  
**Their Finest** - Starring: Gemma Arterton

**Thursday 21st September -**

**Hampstead** - Starring: Diane Keaton  
**The Promise** - Starring: Christian Bale

**Thursday 28th September -**

**My Cousin Rachel** - Starring: Rachel Weisz  
**The Promise** - Starring: Christian Bale

## Competition Winner

Congratulations to Natalie Battle and her children, the winners of the Nut Job 2 competition.



**PARKWAY PENGUIN PARTIES**

YOUR OWN PRIVATE SCREENING  
SEE YOUR CHILD ON THE BIG SCREEN  
FUN & GAMES WITH OUR PARKWAY PENGUIN

**ONLY £170**



For more information contact the Box Office or come in store and speak to a member of staff

These are the films scheduled to open in September *all are subject to change*.  
Check out up-to-date cinema listings at [www.justbeverley.co.uk/cinema-times](http://www.justbeverley.co.uk/cinema-times)



1st September



4th September



8th September



15th September



15th September



15th September



15th September



20th September



22nd September



29th September



29th September



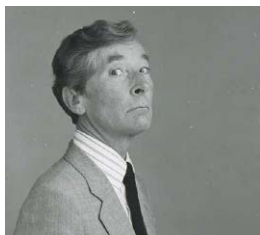
29th September

# YOUR NEW INDEPENDENT CINEMA



## Parkway Cinema to host three East Riding 'On Film' events

Part of the East Riding's contribution to Hull City of Culture 2017 is a series of 'On Film' events where East Riding regional cinemas invite local personalities who have a particular interest in a film talk to the audience about it and then show the film. Parkway Cinema is hosting three events. This is a very exciting development for the cinema, which, in the past has hosted similar events to popular acclaim. The first event is on Friday, September 15th at 7.30pm and entitled 'To Barbara, Love Kenneth - My friendship with Kenneth Williams'



The film will be introduced by Barbara Waslin-Ashbridge in conversation with Wes Butters. Barbara, who lives in Hull, could not believe her luck when, in 1973, she befriended Kenneth Williams, a member of the Carry On team and well-loved comedy star of radio and TV. They shared over 120 letters as they formed a close bond. One of these letters was published in 'The Kenneth Williams Letters' which was published in 1994 as a sequel to his infamous diaries.



Barbara appears in conversation with one of Kenneth Williams's biographers, broadcaster and writer Wes Butters. Barbara's story will be illustrated with many of her previously unseen letters, rare archive material and photographs.

The evening culminates in a showing of Carry On Camping. Price £10.

The next event will be on Sunday October 1st when Andrew Penny MBE will introduce Bridge on the River Kwai, focussing on Malcom Arnold's fabulous score, which won the Academy Award for Best Original Music Score in 1958.

On Sunday October 15th, Gary Horrocks of the International Judy Garland Club will introduce Judy Garland in London and A Star is Born.

More of that next month!

## Competition - Win Hull Big Band Tickets

To celebrate Hull Big Band live on stage at Parkway Beverley on Sunday 24th September at 7pm. Parkway Cinema offer you the chance to WIN tickets for the live performance.



Hull Big Band was formed in 2015 by Richard Moore (saxes), to bring together a high class local musical talent in the East Riding area. Since formation the band have played at local Jazz Festivals and venues to sell out performances. The band is orchestrated in the traditional way, 5 saxes, 4 trombones, 4 trumpets and rhythm section with the additional of local vocalists. They play a variety of music from the original big band charts by Count Basie, Duke Ellington through to more present day arrangements such as the Phil Collins Big Band charts.

For your chance to win one of 2 pairs of tickets, all you have to do is answer the following question:

**How many saxes are in the Hull Big Band?**

Send in your answer by email to [info@justbeverley.co.uk](mailto:info@justbeverley.co.uk) by September 15th. Put 'Hull Big Band Competition' in the subject box and include your name address and daytime telephone number in the body of the email along with your answer. The winner will be chosen at random and must be available for publicity for Parkway Cinema and Just Beverley magazine. Full terms and conditions are on Page 3 of the magazine.



Event cinema offers something a little different to mainstream films. Live and pre-recorded shows beamed in via satellite from all over the world. Here are the latest live streams that you can enjoy on the big screen at Parkway Beverley.

**TICKETS NOW ON SALE:**

**Thursday 7th September at 7.45pm - JOHN LE CARRE - AN EVENING WITH GEORGE SMILEY**

**Sunday 10th September at 6pm - JONAS KAUFMANN - MY ITALY (U)**

**Wednesday 13th September at 7.30pm - DAVID GILMOUR LIVE AT POMPEII (PG)**

**Thursday 14th September at 7.15pm - CARMEN ON THE LAKE**

**Friday 15th September at 7.30pm - ERFF: TO BARBARA, LOVE KENNETH (PG)**

**Wednesday 20th September at 7.15pm - ROH: THE MAGIC FLUTE**

**Thursday 21st September at 7.30pm - KING LEAR LIVE FROM SHAKESPEARE'S GLOBE**

**Thursday 28th September at 8pm - BLACK SABBATH - THE END OF THE END**

**Sunday 1st October at 6.30pm - ERFF: ANDREW PENNY INTRODUCES BRIDGE ON RIVER KWAI (PG)**

**Tuesday 3rd October at 7.15pm - ROH: LA BOHEME**

**Thursday 5th October at 7pm - NT LIVE: HAMLET (ENCORE) (12a)**

For full programme of the Event Cinema, please visit [www.parkwaycinemas.co.uk](http://www.parkwaycinemas.co.uk)



**Monday 4th September at 8pm - THE ITALIAN JOB (PG)**

Director: Peter Collinson

Cast: Michael Caine, Noël Coward

# Create your own style with Lee Wardell

*This month we focus on shirts - long-sleeved and short-sleeved. Shirts are a real staple in a man's wardrobe and give you the opportunity to make a personal statement. A well-fitted, washed and ironed shirt with a nice trouser of jean and appropriate footwear can make the impression you want.*

Shirt fit can be a 'mine field' with collar size as a guide. However, if no tie is being worn a neater-fitting shirt can be worn, as the top button is not dressed. Shoulder/chest-fit is all important. Broad-shouldered and strong-necked gentlemen should consider a slim fit shirt, which means there is not as much excess shirt around the tummy. Tailored shirts may suit a taller man because they are longer in length.

A simple tip: tuck your shirt into your underwear and secure it with a belt which stops the shirt rising out of the trouser.

Trying before buying is always important! A good tailor can make alterations to a shirt for the perfect fit, though. Darting the back of a shirt to slim the waist area; sleeves shortened; relocating buttons a quarter of an inch can all make subtle differences and make the shirt fit perfectly. Fabrics have evolved so much over time. Lycra added to cotton to give a stretch fabric has given a more comfortable wear. Man-made fabrics are now of a very high quality giving a durable, practical hard-wearing shirt. Cotton and linens are obviously natural fabrics and allow the skin to breath, different weaves include poplin, pin point, twill and oxford all have different characteristics and it's very much a buyer's personal choice as to what you buy.

Essentials for any wardrobe are plain sky blue, white, pink and lilac for work or suiting. Repeated prints, checks, chambray or denim are all relaxed and casual options with darker colours also more suited to informal wear. Button down collars are more casual / dress down options.

Finally, shirt collars come in all varieties. Full cut-away or semi cut-away when worn with a tie require different knots - full Windsor and half Windsor respectively. Pointed collars should have collar bones inserted.

For advice, do come into Verb for an informal chat - we're available seven days a week. We're located at Flemingate in Beverley, phone **01482 880141**.

[www.verbfashion.co.uk](http://www.verbfashion.co.uk)

Twitter: @verbFashion

Facebook: VerbFashionBeverley

Instagram: verbfashion



# VERB

TO WEAR - TO WANT - TO WISH FOR - TO OWN - TO FASHION

FLORENTINO

PEARLY KING

Gibson  
LONDON

MAC

BROOK TAVERNER  
TAILORS OF DISTINCTION SINCE 1912

OPENING TIMES:  
MON / SAT 9.30-5.30  
SUN 11.00-4.00

01482 880141  
VERBFASHION.CO.UK  
INFO@VERBFASHION.CO.UK

FLEMINGATE SHOPPING CENTRE  
FLEMINGATE, BEVERLEY  
EAST YORKSHIRE HU17 0NQ

@ VERBFASHION

@ VERBFASHION

f / VERBFASHIONBEV

TO FASHION YOUR OWN STYLE



# FLEMINGATE

## BEVERLEY



# FASHION

# FOOD



# FILM



# & FUN

WE'VE GOT IT ALL AT FLEMINGATE

RIVER ISLAND

OUTFIT

TOPMAN

TOPSHOP

DEBENHAMS

H&M

GUEST & PHILIPS

Superdrug

GOURMET BURGER KITCHEN



SUBWAY

GREGGS

deli



RIVA

PTISSERIE VILLERIE

PEACOCKS

VERB

Daytree Interiors



TRESPASS

Card Factory

Poundland

Entertainer

wilko



@FlemingateBev

FLEMINGATE.CO.UK

FlemingateBeverley



## **Transform your community with Destination Beverley and Spacehive**

Destination Beverley, the new partnership dedicated to promoting all that is best about the town, has teamed up with funding platform Spacehive to enhance your community.

Spacehive is a funding platform for projects that make local places better, by allowing anyone to create and fund public projects online.

Our partnership will make Beverley an even better place to live, do business and visit and we want the people of Beverley to get involved in making that happen.

### **Why crowdfunding?**

Spacehive's crowdfunding platform works by providing tools that help people develop their ideas, get noticed by crowds of people, companies, councils, the media, in order to attract funding to make great projects happen.

Since its launch in 2012, Spacehive has helped fund over 250 projects across the UK worth over £6m - from public wi-fi in Mansfield to an urban farm in London.

We already have great projects put forward by the local community in Beverley. Please find out about those projects, back the ones you love or put forward your own!

**Find out how you can get involved at:**  
[www.spacehive.com/movement/destination-beverley](http://www.spacehive.com/movement/destination-beverley)



destination  
beverley



[www.destinationbeverley.co.uk](http://www.destinationbeverley.co.uk)

Follow us on Twitter @DestinationBev and like us on Facebook.com/Destination Beverley

## Flemingate's 1st Ladies Day a Success!

**18,000 people attended the first Flemingate Ladies' Day, which enjoyed fine, warm (if slightly blustery) weather, some excellent racing and the new Most Stylish Competition.**

Ladies Day must be Beverley's social event of the year with the tie-up with Flemingate being hailed a hit. Racegoers dressed to impress with the Flemingate Most Stylish competition having to be extended due to the number of people who wanted to enter it! The judges had a very difficult time deciding their winners.

After much deliberation, the Most Stylish Lady was deemed to be Leigh-Anne Shulver, with Damian Mattocks winning the Most Stylish Man accolade. Leigh-Anne wins a holiday donated by Humberside Airport along with a holiday suitcase full of clothes and make-up courtesy of Debenhams; she goes on to represent Beverley at Yorkshire's Grand Final at Doncaster on October 28th.



We wish her the best of luck in the final - **Just Beverley** reckons she just might win! Damian is now the proud owner of a fabulous watch from Guest and Phillips. Guest and Phillips and Debenhams also sponsored races, along with Flemingate.

Prior to Ladies Day, Flemingate ran a competition to win a pair of VIP Hospitality Tickets on the day. The lucky winners were Katy Murdock, Judy Naylor, Emma Warwick, Bridgette Clark and Steven Tradewell.



Judy Naylor, who is a regular Beverley race-goer said: "We had a fantastic day! I was delighted to have won! The food, entertainment, ambience and racing were marvellous and it was a pleasure to share the day with fellow winners! Thank you, Flemingate."

It was noted that the horses in the races wore Flemingate purple saddle-cloths - they were all beautifully turned out and must have appreciated the



cheers of the crowds as they raced up to the finishing line! It was an amazing spectacle with the race course so beautifully prepared by Sally Iggulden and her team and the new features, such as the Secret Garden Gin Bar and Retreat Spa being very well-used!

Graham Tait, Flemingate's Centre Manager said "We were very pleased the day went so well, the record numbers who attended and look forward to developing our relationship with Beverley racecourse. Roll on next year!"

## Buca Di Pizza now open in Flemingate

**Buca di Pizza are welcomed to Flemingate following a £350,000 fit out, creating 20 full-time and part-time jobs.**

Buca di Pizza loosely translates as "the pizza pit" and is named after the basement premises of the brand's first restaurant in Wellington Street, Leeds city centre. Geoff Thornton said: "Beverley feels just right for us. It's a historic market town with a sizeable and growing local population, as well as incoming trade from tourists and the surrounding towns and villages.

"Flemingate is a fantastic development with a wide variety of shops, a boutique-style cinema, a hotel and on-site parking - all just a few minutes' walk from the heart of the town centre. It feels really integrated and ideal for our concept."

Offering relaxed, informal dining in a bistro-style setting, the Flemingate pizzeria feature's an exposed kitchen and pizza oven and have 120 covers inside, with space for a further 45 diners outside. Buca di Pizza takes traditional Italian classics and gives them an exciting and contemporary twist by using flavours from around the world. Alongside pizza classics such as the Margherita are unique offerings such as the Snake Charmer, a pizza topped with Goan coconut curry sauce, lamb koftas and onion bhajis, and the Hickory Pig pizza with smoked pulled pork, pancetta and spiced cheddar. The brand has made a name for itself with its Tutto deal, offering bottomless pizza and refills of prosecco or house beer. Mr Thornton added: "The essence of Buca di Pizza is classic Italian pizza, but with a modern twist in terms of ingredients and flavour. Lots of people tell us it's the best pizza they have tasted outside Italy."

Buca di Pizza is located between FirePit Smokehouse & Sports Bar and the highly-successful Gourmet Burger Kitchen restaurant. Centre Manager Graham Tait today welcomed news that Buca di Pizza is to join the ever-expanding line-up at Flemingate. Mr Tait said: "Buca di Pizza is a great addition to Flemingate and brings another new and distinctive offering to the centre and Beverley as a whole." For more details about Buca di Pizza visit [www.bucadipizza.com](http://www.bucadipizza.com) or follow the brand on social media @bucadipizza



## Potting Shed celebrates its 1st Birthday

**The Potting Shed in Beverley celebrated its first birthday last month with a day of live music, pop-up bars, party food and some garden-themed surprises!**

The bar and gardens on Flemingate marked its big day in spectacular style with fire performers, stilt walkers and a special version of its popular Shed Stock sessions featuring a line-up of artists and bands. The rum shack set up in the gardens, serving birthday cocktails throughout the day and evening, and craft ale specialists Meantime Brewery, made a guest appearance with its award-winning beers.

General Manager Matthew Bordewijk, who runs the bar/restaurant with his wife, Anna, said the event was a great way to thank everyone who's become a regular since the bar opened last year, on the landmark site of the former Hodgsons pub.

The great thing about The Potting Shed is the flexibility of the space, with performers both inside

and out, and two outside pop-up bars appearing for the day.

**Just Beverley** very much enjoyed the party food which Potting Shed prepared! The hotdogs and cupcakes went down a treat! Potting Shed has established itself as a part of the community, getting involved in the town in a very short time. We wish Matthew, Anna and their team all the best as plans are made to make year two even better!



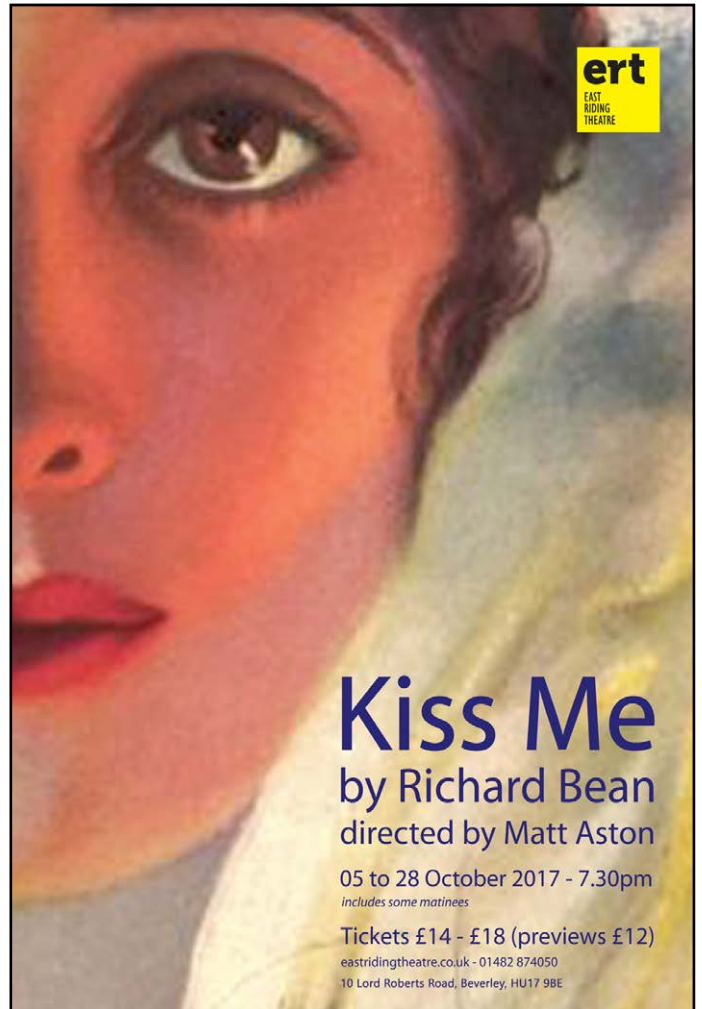
# LA LUMIÈRE

PHOTOGRAPHY



TEL: 01482 867455  
WWW.LA-LUMIERE.CO.UK  
ENQUIRIES@LA-LUMIERE.CO.UK  
22 TRINITY LANE, BEVERLEY

ert  
EAST  
RIDING  
THEATRE



## Kiss Me

by Richard Bean  
directed by Matt Aston

05 to 28 October 2017 - 7.30pm  
*includes some matinees*

Tickets £14 - £18 (previews £12)  
eastridingtheatre.co.uk - 01482 874050  
10 Lord Roberts Road, Beverley, HU17 9BE



Join us at Trent Galleries, Beverley  
for the new collection by

## DOUG HYDE

### Looking on the BRIGHTSIDE

From eccentric dogs to electric smiles, Doug's new collection is nothing if not eclectic and shows a whole range of different sides to this much loved artist - all of them bright.

All purchases will also qualify for an invite to meet Doug and a dedication on your purchase at our event in our Newark gallery later this month



9 Butcher Row, Beverley, HU17 0AA - 01482 874621  
Beverley@trentgalleries.co.uk

3 Chain Lane, Newark, NG24 1AU - 01636 646426  
sales@trentgalleries.co.uk

[www.trentgalleries.co.uk](http://www.trentgalleries.co.uk)

## Local business woman, Caroline Aitken, nominated for a 'BizMums' award

**BizMums is a national community of self-employed ladies who inspire and motivate each other through networking and training. It was started by Michelle Childs in Cheshire who, in 2012 was pregnant with her second child, had a full-time office job and a small business. She wanted to leave the office job to grow her own business and spend time with her family. She already knew of the power of networking, especially for small and growing businesses, but she needed one which she could take her children along to - there weren't any! So she started her own! BizMums is now her business - with 80 BizMums groups across England which now recognises the success of its members through its annual Awards.**

Caroline Aitken has been nominated by her fellow members in the 'Creative Mum of the Year' category. Caroline attends the Beverley, Anlaby and Kingswood BizMums groups which meet monthly on different mornings (see [www.bizmums.biz/meetup-map/](http://www.bizmums.biz/meetup-map/) for details). She runs Simply Interiors, making soft furnishings, Roman blinds, curtains and unique Harris Tweed Dog Bandanas but more recently has made a name for herself with her Hull Skyline design which was created with the help of graphic designer Nick Hill to celebrate Hull City of Culture 2017.

**Just Beverley** met up with Caroline to find out more about her and how BizMums has helped her grow.

She said: "BizMums has opened up new doors for me. It's given me confidence and I've made many new supportive friends. Women can sometimes be hard-nosed, which is why I was initially reticent about joining, but this is a social meeting with babies and toddlers welcome, as well as a business meeting, so it's very different to your usual networking group! Every meeting includes a guest speaker on a specialist topic, which is suggested by HQ, and then a member 'show-cases' their business.

"Last year, there was only 1 nomination for the Awards from East Yorkshire, this year there are 7! My fellow 'Mum of the Year' nominees include Nicola King (Network Marketing); Diane Parnham (Host); Jennifer Gilmour (Inspirational); Louise Bell (Online); Katy Cowell and Claire Raper (both Charity). We find out whether we have won on October 8th at our Conference and Awards Ceremony. **Just Beverley** will be the first to know if we have won!"

Hull Skyline is a multicoloured design celebrating Hull's history, culture and heritage. The images in the 'skyline' include Hull New Theatre; Amy Johnson's Statue; The Deep; The Humber Bridge; Hull Minster (Holy Trinity Church); William Wilberforce's Statue; KCOM Stadium and The Fish Trail.

Caroline says the intention is to encourage people to look at Hull in a different light and she is hoping that the image itself will become iconic. It is available on several products: as a print on high quality photographic board ready for mounting; on tea-towels; canvass bags; post-cards; keyrings; car stickers; notepads and pens.

Currently, 12 outlets stock Hull Skyline products, including Creative Labs in Flemingate and Tyler & Black in St Mary's Arcade or they are available through Caroline's website: [www.simply-cushions.co.uk/hull-skyline.aspx](http://www.simply-cushions.co.uk/hull-skyline.aspx). She's already encouraged by the response, especially as she is donating a percentage from each item sold to Dove House Hospice - her target is £1000 by the end of 2017.

Caroline has a social media presence - on **Twitter** as [@hullskyline](https://twitter.com/hullskyline); [@SimplyCushions](https://twitter.com/SimplyCushions) and [@thedogsgladrags](https://twitter.com/thedogsgladrags) and on **Facebook** as **Caroline Aitken**. Do follow her and watch out for her new creations - she has said that a Beverley Skyline could be in the offing - and if you need some new curtains or cushions, you know where to go!

### Competition

**Caroline Aitken, the designer of Hull Skyline has kindly offered a range of goodies as a prize for a lucky winner!**



The prize includes an unmounted print (48cm x 33cm in size) so that you can choose the type of frame to suit your décor, a key-ring and a tea-towel. All you have to do to win the prize is answer the following question:



**Caroline has chosen several Hull landmarks to grace her Skyline but one of them once held the record for being the longest of its type in the world at 1,379 miles. Jeremy Clarkson also said he thinks it is one of the prettiest things in the world, along with the Aston Martin DB7 and Blackbird SR71 spy plane. What is it?**

Send your answer by email to [info@justbeverley.co.uk](mailto:info@justbeverley.co.uk) by September 14th. Include your name, address and daytime telephone number and put 'Hull Skyline Comp' in the subject box. You must be prepared to be photographed with your prize for publication and publicity purposes by **Just Beverley** and **Caroline Aitken**.

# ACCOUNTANTS FOR SMALL BUSINESS

We specialise in supporting small businesses and can help with:

- Self Assessment Tax Returns
- Bookkeeping & VAT
- Business Accounts
- Payroll & RTI
- Corporation Tax
- Company Formations
- Business Start-ups
- ...and much more

For your free, no obligation meeting call us today on **01482 235363** or visit us at **307 Grovehill Road, Beverley, HU17 0JG** or online at [www.taxassist.co.uk/beverley](http://www.taxassist.co.uk/beverley)



**CHOOSE AMUSE**  
Holiday Mews House

Do you ever need to accommodate family or friends?

Do you love having them nearby but would all like your own space?

Is it a struggle putting up camp beds or finding extra bed linen?

Are you entertaining business clients who may not wish to stay in a hotel?

Or maybe you know someone who is looking for somewhere fabulous to stay in the superb village of Walkington?

Whether you're planning a family celebration or an impromptu get together with friends, then just maybe we can help.

**Choose Amuse** is a luxury mews style self-catering house situated in the very heart of Walkington.

It offers high quality furnishings and fittings plus those little extras that can make a short break or a holiday that bit more memorable.

Sleeping up to four guests in fabulous hotel standard bedrooms, we can accommodate families or groups of friends in either twin or king-sized beds.

For more information or to make a reservation, please call **Karen on 07515 325962**.

Email: [info@chooseamuse.co.uk](mailto:info@chooseamuse.co.uk) or visit the website: [www.chooseamuse.co.uk](http://www.chooseamuse.co.uk)

## Top Tips from the iPhone Doctor - Battery Care

How often should you charge a phone's battery? Will charging it to 100 percent reduce its lifespan? Here at iPhone Doctor, we've rounded up the best battery care tips.

Batteries do not enjoy eternal life. Most smartphone manufacturers say their devices rate their batteries at 300-500 cycles. Apple claims that its laptop batteries reach 80 percent of their original capacity after 1,000 charges. Most modern smartphones are clever enough to stop charging when full, so there isn't a great risk in leaving your phone charging overnight. But some experts recommend you remove the phone from a case if charging for a long time, as a case could lead to over-heating - which Lithium-ion batteries do not like.

The rule with Li-ion batteries is to keep them 50 percent or more most of the time. When it drops below 50 percent top it up a little if you can. A little a few times a day seems to be the optimum to aim for. But don't charge it all the way to 100 percent. It won't be fatal to your battery if you do a full charge - most of us are forced to do this every now and again in emergencies. But constantly doing a full recharge will shorten the battery's lifespan.

Where possible use the charger that came with your phone, as it is sure to have the correct rating. Or make sure that a third-party charger is approved by your phone's manufacturer. Cheap alternatives from Amazon or eBay may harm your phone; there have been several reported cases of cheap chargers actually catching fire.



Don't leave a Li-ion battery lying around too long at 0 percent. Try to leave it at around 40-50 percent. Batteries drain at about 5-10 percent a month when not in use. If you let the battery discharge completely and leave it uncharged for a long period of time it may eventually become incapable of holding a charge at all - which means it is properly dead and you will need a new one.

Need more information about your iPhone or iPad? Give Ben Lee a call on **07874 329223**, drop an email to: [benjamminlee@gmail.com](mailto:benjamminlee@gmail.com) or pop into **1, School Lane, Walkergate, Beverley HU17 9AW**.

## Beverley Town Council News - it's the Beverley Food Festival on October 1st

Beverley once again will celebrate its local food producers on October 1st with over 140 exhibitors attending on the day, offering an exciting abundance of local seasonal food and drink.

The 12th Beverley Food Festival preparations are in full flow! The award-winning Food Festival takes place on 1st October in Saturday Market, Beverley. Our great local chefs will be demonstrating the best the market has to offer in the Food marquee and serving up some tasty local dishes.

There will be a great offer of stalls selling wonderful local food and this year, Street Food Revolution, the catering outlets, will offer a larger selection and more variety as requested by visitors last year.

It's not just food and drink which is show-cased. This year, there is home-grown entertainment from the Processed Pea Club who will be starting to celebrate their 50th anniversary year. Beverley Brass Band and other family entertainment, along with local radio station Beverley FM, will be there to help make the day go with a swing!



Beverley Town Council

Making a difference



Ahead of the Beverley Food Festival, the Beverley Beer & Cider Festival will take place at the Memorial Hall on 29th and 30th September to offer a full-flavoured foodie weekend.

So, come along and sample the Best Beverley has to offer from the Food Festival and the fabulous pubs, cafes and restaurants - welcome to Beverley, the Dining Room of East Yorkshire.

For further information, book a stall or a Street Food Revolution hot food outlet, call Beverley Town Council, **01482 874096** or email Helen Watson, the Town Clerk on [clerk@beverley.gov.uk](mailto:clerk@beverley.gov.uk)



# IPHONEDOCTOR

## 07874 329223



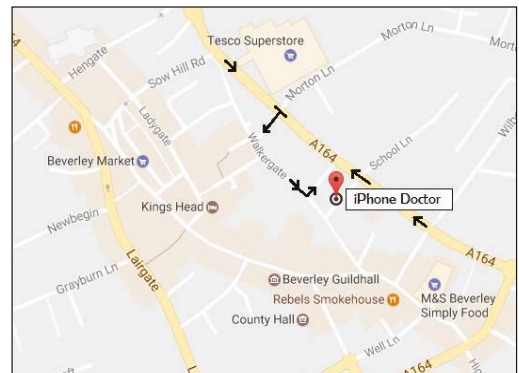
### 15 MINUTE FITTING WHILE YOU WAIT!

#### Screen Prices

- iPhone 5/5c/5s = £30**
- iPhone SE = £35**
- iPhone 6 = £40**
- iPhone 6 plus = £50**
- iPhone 6s = £65**
- iPhone 6s plus = £80\***
- iPhone 7 = £120\***
- iPhone 7 plus = £150\***

#### Opening Times

- Mon: CLOSED!**
- Tues: 12 - 7**
- Wed: 10.30 - 7**
- Thu: 10.30 - 7**
- Fri: 10.30 - 6**
- Sat: 11 - 6**
- Sun: 12 - 4**



**Batteries & charging ports from £15**

Parts/prices with a \* aren't kept in stock and require a deposit before ordering, delivery takes 2-3 working days



**www.iPhoneDoctorHull.com**



**1 School Lane, Walkergate, Beverley HU17 9AW**

**Telephone: 07874 329223 Email: benjamminlee@gmail.com**

## Finance for Business - Payroll in the Modern World

Employers need to be aware that not being paid on time not only causes upset for the employee but can also damage the reputation of the company. Ensuring wages are paid on time allows for peace of mind for all involved and will keep your employees engaged. Here's some suggestions for managing your payroll.

### • Introduce online pay slips

Offering employees instant access to their pay slips not only removes another onerous administration task from your to-do list, it also provides employees with the opportunity to back-track and access important pay slip information - which may be required for mortgages, bank loans etc.

### • Use Web-based solutions

Processing your payroll online gives you the freedom to run payroll anytime, anywhere - making missing those important payroll deadlines even harder to miss. Also, web-based payroll systems have low impact on accuracy and processing times when new employees are added or when employees quit - so no matter how your employee numbers fluctuate, you can be sure that you are paying your people on time.

### • Establish a backup / contingency plan

There needs to be more than one person who is capable of understanding and handling all payroll functions within the company to mitigate single points of failure. Also, if you are using software, make sure you have reliable access to technical support and a backup system in case any systems go down.

### • Outsource:

Free up your time and spend the time spent on payroll growing your business. With the ever-increasing burden on employees with RTI and Auto enrolment, outsourcing your payroll makes sense allowing you to take advantage of the new technology in your business at a small cost.

Stipendia already embrace the technology for its clients and their employees and the flexibility it gives makes payroll easier to operate for the client. Talk to them on **0845 308 2288** or visit their website: **www.stipendia.org.uk**. They have a team of payroll specialists on hand to guide you through the processes of wage compliance, payroll, auto enrolment and more.

## Legal Q's and A's

Every month, Just Beverley asks a team of legal experts to answer a question to which we don't know the answer. This month the question is about wills.

**Q. When I was 60, I made a simple will leaving everything to be distributed between my 4 children. I am now 75 but one of my sons still lives with me. I want to ensure he can remain in the house after my death if he is still single, as he may not be able to afford to buy it.**

Coles the Solicitors have provided the following response:

**A. You need to rewrite your will as soon as possible to include your wish for your stay-at-home son to be able to remain in the house after your death. As things stand at present, he would probably be obliged to buy out your other children's shares if he wished to remain living there after you die. It's something you should discuss with all of your children, though, to avoid resentment. It may be an idea to make your son a joint owner of the property.**

If you need advice, why not give Coles a call?

They are located in the very heart of Beverley at **22, Lairgate, HU17 8EP**, telephone **01482 231300**.

Or check out their website: **www.coles-law.co.uk**

**Coles**  
the solicitors

Providing expert legal  
advice in the very heart  
of Beverley

22 Lairgate, Beverley HU17 8EP

T: 01482 231 300

E: [info@coles-law.co.uk](mailto:info@coles-law.co.uk) W: [www.coles-law.co.uk](http://www.coles-law.co.uk)

• Family Law • Wills & Probate • Conveyancing • Powers of Attorney  
• Medical Negligence • Litigation • Dispute Resolution • Personal Injury

# Choose Stowe Family Law's Beverley team, part of the UK's largest specialist Family Law firm



Stowe Family Law specialises in all areas of family law, including:

Divorce & financial  
settlements

Farming and trust cases

Cohabitation issues

Prenuptial agreements

Children arrangements

Business valuations  
& tracing assets

Private adoption

Wills & probate

**“This firm is widely  
held to be a force  
to be reckoned with...  
A strong team with an  
in-suppressible style  
and a fantastic practice”**

**Chambers UK Guide**

**Call 01482 755 385**

If you need family law advice, early support can be essential. **Stowe Family Law** can help.

**For further information or to arrange an appointment call 01482 755385 or email [enquiries@stowefamilylaw.co.uk](mailto:enquiries@stowefamilylaw.co.uk)**

**Beverley Office** First Floor, 22 Trinity Lane, Beverley HU17 0DY  
Offices across the UK including: **Central London, Harrogate and Leeds**

**[www.stowefamilylaw.co.uk](http://www.stowefamilylaw.co.uk)**

**stowe**  
Family Law LLP



## I've Been Thinking... by Colin Raynor

**I've been thinking this September about Richard the Big Apple Greeter who we met in New York just five years ago in 2012.**

I wrote earlier about how our family became linked to an American family from Michigan. This was our third visit 'across the pond' and we agreed to meet in New York, a place we had never been to, but keenly anticipated seeing.

For our friends also, who live a quiet rural life, a visit to a big city would be a different experience. How to get the best out of a few days in the Big Apple we both wondered? Check out the website for the Big Apple Greeters we thought! Greeters are to be found in over thirty countries and their aim is to extend a friendly welcome to visitors. The service is free of charge, too!

Greeter Richard met us at our hotel on Tuesday September 11th (9/11), exactly eleven years since the attack on the World Trade Centre. He wanted to get some idea of what we wanted to see in the 5 hours he would be with us.

We chose to visit the 250-year-old St Paul's Chapel which is the oldest building in Manhattan. Situated just a short distance from the Twin Towers, it suffered no structural damage at all and became known as "the little chapel that stood".

It became a haven for rescue and recovery workers. There were more than five thousand volunteers taking it in turn to work long hours at the church, providing hot meals and offering comfort and refuge for the many who staggered through the doors, unable to comprehend what they had seen.

Just about every square inch of the church's walls, pews and windows bears witness to someone who, having come away from the turmoil that was outside, left some item in the church as a memory of their visit.

From a fire fighter's helmet to a little scrap of cloth every article must have been significant to the person who left it and one could only imagine the anguish and pain behind them all. At a time when many of our churches, even in



Beverley, are looking to raise money to repair the structure of buildings built many years ago, I hope we will not lose sight of the real reason why churches were built in the first place. St Paul's in Manhattan became the place of sanctuary for people in despair who were hurting deeply from their own unimaginable grief.

It mattered not what the church building looked like externally or if there were pews or a mighty organ. When I think of this "little church that stood", I recall the words of Jesus: "Build my church and the gates of Hell will not prevail against it."

## Do you suffer with Irritable Bowel Syndrome (IBS)? Hypnotherapy could help

**Hypnotherapy is often considered to be airy-fairy mumbo jumbo. Yet the National Institute of Health and Clinical Excellence (NICE) recommend that patients with IBS should be considered for psychological interventions such as hypnotherapy, cognitive behavioural therapy (CBT) and/or psychological therapy if they do not respond to medicines after 12 months and continue to suffer. Hypnotherapy has been recommended for IBS since 2008 and continues to be so notwithstanding a recent review of the results. Hypnotherapy should not be dismissed lightly!**

The recommendation by NICE comes on the back of clinical studies showing the benefits of hypnotherapy, particularly in IBS. An American study in Gut (well, what else would you call a publication dedicated to the gastro-intestinal system?) published in November 2003 of 204 people suffering from IBS, demonstrated 58% of men and 75% of women reporting a major improvement in their symptoms.

Patients were followed-up for 6 years with 80% reporting continued relief and fewer than 10% needing other therapies. Each patient had 12 weekly sessions of hypnosis of about 1 hour. Why does hypnotherapy work so well for these patients?

My description of hypnotherapy is that it is a meditative state where the body is so relaxed that it is in homeostasis (i.e. no excess stress hormones) so the subconscious mind can accept suggestions of changes in perception, sensations, thoughts or behaviour.

For example, in IBS hypnotherapy, after allowing the client to become very relaxed, he/she can be given the

suggestion that they are drinking a liquid which takes away the spasm and the pain of IBS. The therapist has no control over whether the patient 'accepts' the suggestions, so it is important to make sure the 'drink' is of a flavour the patient likes and something which doesn't usually exacerbate their IBS symptoms, hence getting to know the patient is key!

If you suffer from IBS and would like to explore whether hypnotherapy can help you, do give me a call. IBS can be debilitating yet relief may be available through a therapy not yet considered.

Linda

Tel: 07585 802035

[www.releaseyourpotential.co.uk](http://www.releaseyourpotential.co.uk)



## Retired Police Electrician & Handyman

Call today for your free quote  
0800 255 0 255  
[trustinblue.com](http://trustinblue.com)

Trust in  
**Blue**

# Classic Cars with Carfan - the 1938 Sunbeam Talbot Sports Tourer 10H.P.



**The subject of this month's Carfan column has a very long name indeed - it's a 1938 Sunbeam Talbot Sports Tourer 10 H.P. Consider yourself lucky if you see one on your travels as it's even more beautiful than this picture if you see it in the metal.**

Only 822 convertibles were made, compared to 6500 other versions of the Sunbeam Talbot which means that it a very rare beast indeed. The earliest versions are now almost 80 years old, hence there are so few around. Good luck trying to find one as good as the one in the picture below!

Carfan found one for sale in the U.S.A. It needed a lot of love and attention for £16,500 plus shipping. Being American, it will have the major plus point of being largely rust-free, though. A runner is available here in the U.K. for £15,000, so the decision is yours.

Some of the parts are Hillman based so they are not too hard to obtain, but the body parts are handmade, which is a different matter altogether.

As a result, don't be surprised, if you encounter one, to see it happily tootling along, not in any rush to get anywhere fast. The lucky owner of the car featured has owned it for 32 years and has spent ten of those restoring it to its present glorious state, doing all the work himself except the chrome, which is a specialist job. It is called Grace and can be regularly seen at shows, so do approach the affable owner and have a chat, which he is always happy to do.

Costing the princely sum of £260 when new, Grace manages 28-30 m.p.g. She has beautiful coachwork, courtesy of Whittingham and Mitchell, and a 1184 c.c. engine so don't expect fireworks at the traffic lights!

If you should see Grace or another 1938 Sunbeam Talbot Sports Tourer, don't forget that cheery Carfan wave!

## Memories of last month's featured car...



Pamela Porter popped into the **Just Beverley** office to reminisce about the Triumph Herald she owned between 1970 and 1985. She bought the car in Cape Town - she is pictured here in the car at her parent's house in Bulawayo. She said it was the easiest car ever to drive - if the starter-motored jammed you just had to rock the car back and forth to start it! Pamela remembers transporting her children around in it until it could not be repaired anymore and had to be scrapped.

Do you have memories of any of our featured cars? Do let us know! Call **01482 679947** or email: [info@justbeverley.co.uk](mailto:info@justbeverley.co.uk)

**BEVERLEY MOTORWORKS** INDEPENDENT BMW & MINI SPECIALISTS

**Our dealership expertise means high quality car servicing at a fair price...**

- ATA Accreditations
- Routine servicing
- Condition-based servicing
- Diagnostics
- Mechanical repairs
- Air conditioning
- Performance tuning
- MOT's

Unit D1 Grovehill Industrial Estate,  
Annie Reed Road, Beverley HU17 0LF

**Call today: 01482 881 128**

**Visit: [beverleymotorworks.co.uk](http://beverleymotorworks.co.uk)**



the Good Garage Scheme



**SPECIAL OFFER MOT COUPON**

**MOT YOUR CAR FOR ONLY £29.99**

Simply cut out this coupon and present it when you bring your car to us



Telephone: 01482 869111  
sales@rosesofbeverley.karoo.co.uk



The Kitchen Factory, The Courtyard,  
Tokenspire Business Park, Beverley  
HU17 0TB

*Together we will design a beautiful kitchen*



Roses will then  
**project manage**  
your kitchen installation from  
**start to completion**

Visit [www.roseskitchens.com](http://www.roseskitchens.com)  
to see our customers kitchens and read what they have to say about us

**Telephone: 01482 869111**



Send your photographs of your celeb  
Find us on Twitter and Facebook to s

# Yorkshire Day Celebrations



# Cystic Fibrosis Golf Night



# Beverley Rocks



HERE TO GET *you* THERE

# HUNTERS<sup>®</sup>

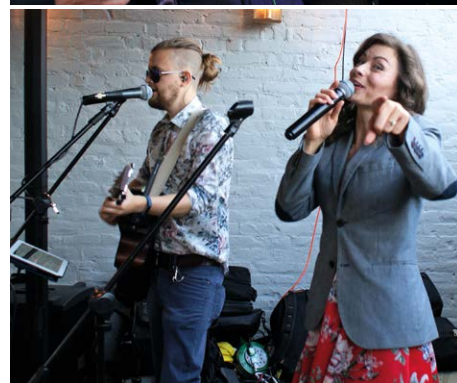
EXCLUSIVE

BEVERLEY / 01482 861411

## Flemingate Ladies' Day at Beverley Racecourse



## Ladies Day at the King's Head



SALES / LETTINGS / MANAGEMENT

**HUNTERS**<sup>®</sup>  
HERE TO GET *you* THERE

BEVERLEY / 01482 861411

# WALKING & OUTDOORS FESTIVAL

## 9<sup>th</sup> - 17<sup>th</sup> September 2017

This September, the Yorkshire Wolds once again plays host to the Walking and Outdoor Festival. Brought together by over 30 partners, the 7th annual festival has grown in strength and now features over 100 walks and activities for all ages and abilities showcasing the wonderful landscape and rich heritage of this unique area. It offers an exciting range of outdoor pursuits including specialist guided walks, boating, horse riding, cycling and outdoor pursuits.

The festival plays host to some firm favourites including; **Beverley Ghost Walk** - a twilight visit to the spooky bits of Beverley drawing chilling tales from the town's history, **Nordic Walking** across Beverley Westwood using specially designed walking poles - this is a great new way of walking that can be done any time and helps to improve fitness, lose weight and tone the whole body.

The **Pilgrimage of Grace circular walk** discovers the fascinating story of this historic rebellion whilst enjoying spectacular views over the stunning Yorkshire Wolds.

New for 2017, **Walking the Town Beverley** are playing host to **Snapshots of Medieval Beverley** let by Colin Bradshaw, which links together some of Beverley's many medieval buildings and **A Walk of Small Things** that bring to life small details that you may walk past every day and not have seen. **A walk along 19th Century Flemingate** examines the fabric of this historic street and the lives of people who lived along it. Walk the "Alta Via", the High Street extending from Beverley Minster to North Bar, whilst considering how things may have looked many years ago and how much of the town has been altered over the centuries.



For the first time, the festival has adapted a **walk for people with impaired mobility**. This walk takes you round some of Beverley's oldest streets, using a route designed to make it easier for someone with limited mobility. The route utilises dropped kerbs to give those using a wheelchair or a mobility scooter the chance to navigate the centre of town and learn about its history including; foods, famous people, executions and the lives of ordinary citizens.

Further afield, Pocklington play host to **Burnby Hall Gardens and Canal Heritage Walk**, which showcases two of the town's most beautiful landmarks.





Find out about the history of this stunning Hall and Gardens before taking in the heritage and wildlife along the Canal.

Alternatively join the crew of the **New Horizons Canal**, spotting wildlife and the experience of passing through a lock. There will also be an opportunity for those interested to have a go at steering the boat!

Other festival highlights include; photography walks, beach walks, seabird cruises, treasure trails, nature safaris and cliff top walks discovering the Gannets at Bempton.

Not forgetting a selection of walks across the stunning Yorkshire Wolds picking up secret art as you go!

For a full Yorkshire Wolds Walking and Outdoor Festival programme, costs and all booking details - pick up a copy of the festival guide at one of East Yorkshires Tourist Information Centres or view online at [www.visithullandeastyorkshire.com](http://www.visithullandeastyorkshire.com)



## Molescroft Farm Estate - diversifying to meet local needs

**Molescroft Farm is an efficient farm dedicated to producing top-quality food whilst caring for wild-life, the environment and the wider community. It's over 600 hectares in size, which now hosts a variety of smaller businesses which work alongside the main arable farm. Just Beverley went to meet Camilla Parsonage to find out more!**

Camilla and her sister, Tamara Hall, who is the Managing Director of Molescroft Farm, have a passion for ethical farming and for engaging with the public to show the way in which their food is produce. Their farm is part of 'Open Farm Sunday' when they showcase the way in which they manage the land and the wild-life that shares the land with them - in fact, Tamara is Regional Co-ordinator for the scheme.

10% of the land is turned over to the Government's Environmental Stewardship Scheme, where nectar-rich plants to attract bees and other insects and crops for bird seed are grown. Seeing the response of the public and particularly children to the farm encourage Tamara to be instrumental in developing 'Open Farm School Days'. Tamara and Camilla are always surprised at how fascinated the children are when they visit the farm, are exposed to the outdoors and nature at large. This high level of engagement has been the instigator for Molescroft Farm Children's Nursery, which is open from September 4th.

Camilla said: "Tamara and I grew up on a farm. We would go out for the day, coming back when we were hungry. Kids can't do that today - the world is a different place. But here we can allow children to experience something of that uncomplicated life where they learn through play and practice rather than through structured teaching. The nursery will have an allotment to grow its own vegetables; the kids can see the sheep (from Beswick) which live under the solar panels and watch the pigs (which belong to the Pig Club) being fed and watered so they learn where

food comes from. Parents can get involved, too."

The Nursey, with its accessible ethos, fits well with the Community Allotments which were set up in 2012. Tamara won a Nuffield Farming Scholarship looking at community-supported initiatives; had a 4-acre field which was not suitable for farming and with the aid of a Lottery Grant, Molescroft Grange Allotments Society was born. All the allotments were taken within days and there is a long waiting list! Call **07909 905233** if you would like to find out more about the allotments.

Another field which has gotten a new lease of life is now a Dog-walking Field. The field was an old grass field, not suitable for farming. Horses kept in it kept getting out! The idea was instigated by a lady who has sled-dogs who had nowhere to let her dogs off the leash, but it is also useful for dogs who have issues with other dogs or unreliable recall. It is very busy! Sessions can be booked for 30mins or 1 hour through: [www.molesfarm.co.uk/home/dogfield](http://www.molesfarm.co.uk/home/dogfield)

Frith Farm has also set up at Molescroft Grange, growing vegetables and salads using chemical-free methods which are sold through community supported agriculture (box) schemes and to local businesses. Volunteers who work on the farm get paid in vegetables! People who purchase the boxes are encouraged to share deliveries. To find out more, visit [www.frithfarming.com](http://www.frithfarming.com)

Along with luxury offices, all highly-insulated and heated from the solar panels and a biomass boiler, is Creations Furniture Repairs and maker of curtains, blinds, loose covers and soft furnishings. Creations have two workshops at Molescroft Grange - the soft-furnishing workshop is the place to go for your soft furnishing needs. Creations can reupholster chairs and sofas - even car seats - in fabric or leather and are experts in French polishing. Contact them on: [www.direct-furniture-repairs.co.uk](http://www.direct-furniture-repairs.co.uk)



Parsonage Equestrian is run by Camilla and her husband Gary. Both have competed in national and international competitions and won many medals. Gary was part of the British 3-day event team at the Atlanta Olympics, is Technical Advisor for British Eventing and was, until recently, Chairman of Selectors for the British Pony Squad. Both are now involved in coaching and teaching. Camilla coaches the British Team which won silver at the recent European Championships in Belgium. They are building a cross-country course for training purposes, which will be a huge local resource for people who wish to compete whether at amateur or higher levels.

Tamara and Camilla are so enthusiastic about the future of the farm that it is infectious - and you do wonder what other ideas they will come up with! But at the heart of all of their schemes is good stewardship of the land for the health of the people who benefit from it - and long may that continue! [www.molesfarm.co.uk](http://www.molesfarm.co.uk)



**OVER 20 YEARS EXPERIENCE**

We are committed to providing an excellent service by offering value for money and ensuring complete customer satisfaction

**Print that gets you noticed**

- ✓ Brochures
- ✓ Leaflets
- ✓ Business Cards
- ✓ Business Stationery
- ✓ Posters

- ✓ Desk Calendars
- ✓ Wall Calendars
- ✓ Pop-up Banners
- ✓ Pads
- ✓ Invites

Jadan Press are a leading family run commercial B2 colour litho printer based in Hull. With 20 years experience, the company is renowned for producing work of an exceptionally high quality. We are committed to providing an excellent service by offering value for money and ensuring complete customer satisfaction.

**Tel: 01482 610902**  
**info@jadan-press.co.uk [www.jadan-press.co.uk](http://www.jadan-press.co.uk)**  
 Rainbow House, Kimberley Street, Hull, HU3 1HH








## Countryside Matters with Sam Walton

*There is a saying that necessity is the Mother of invention. How true - and evermore so on a farm anywhere in the world...*



I have lost count of the number of times I have either been involved with or seen something which is a bit of an eye opener to get around some problem or other.

Of course, the days of a piece of string or a length of wire to fasten something together are more or less gone, but by Jove, in their day they came to the rescue many times!

I have a farmer friend in Australia who is a genius at making things. Several of his achievements spring to mind. He farms around 8,500 acres. Many years ago before the big tractors of today were available, he couldn't get one big enough, so he built one! He also flies his own aeroplane - he built that, too!



Another thing he wanted was a large slurry tanker to take his pig manure for spreading and, of course, there were none big enough for him, so he bought an ex brewery tanker, put it on double wheels and converted it into the biggest slurry tanker I have ever seen; when full it weighs 45 tons.



I have seen many other examples, sometimes quite simple, like a gate which opens both ways to divert pigs or sheep.

Then there are innovative ways of recording events in a livestock house, such as a black pig drawn on the wall so it can be written on with chalk or a pencil fastened to a piece of retractable string which has a piece of paper attached to it to record numbers which then goes above head height out of the way until wanted again.



This means that recording information on the back of a fag packet is now out of favour - which is a good job now that cigarettes are being consigned to history!

Who said ingenuity is dead?

## You can't get milk fresher than this!

**Cherry View Milk sells pasteurised whole milk within hours of it being sourced from Becky Waring's herd of 'happy' cows. If you have never tried milk straight from the cow, you are in for a life-changing experience and may never want to go back to the homogenised product usually available from supermarkets!**

Becky comes from a Derbyshire dairy-farming family. When she married into an East Yorkshire dairy-farming family, she brought some of her own cows with her; it's these cows which will be providing the milk which will be sold straight to the public. Becky is well-known for her role as Higher Education Leader for Agriculture at Bishop Burton College where she is responsible for the degree programme but she has always wanted to set up her own business - Cherry View Milk is the result.



Currently, the milk from her cows is sent to Chestnut Dairies at Hornsea, along with the milk from the 130 other cows on the farm which belong to her husband and his parents. But the arrival of a refrigerated vending machine from Vicenza in Italy has facilitated the sale in 1- or 2-litre quantities. From 7am until 7pm, people can come to Field House Farm at Cherry Burton, purchase a 1litre glass bottle or bring their own containers and enjoy fresh milk for £1/litre. Any milk left over at the end of the day will be fed back to the calves on the farm, so none will be wasted. As Becky says, this is an ethical product with no food miles!

Field House Farm is a dynamic farm with its own bull, Milo, who services the Holsteins. He's the son of Waring's Champion Cow from this year's Driffeld Show, Mila. There are also some Jerseys and one or two other breeds represented. The cows are grazed outside or, when brought in for the winter, fed on grass silage cut from the 200-acre farm's own fields. Becky told **Just Beverley**: "Buying whole milk from the farm gate is common in Europe! Our milk is around 3.7% fat and, because it is not homogenised means the cream rises to the top of the bottle - so if you don't like cream, you can pour it off. But if you do like cream, as in our family, there is a competition as to who can get there first! As it is a fresh product, it should be consumed within 48 hours - but it seems unnatural that milk from supermarkets lasts so long."

It is interesting that scientists are changing their minds about dairy fat. Recent research shows full fat dairy products may have a protective effect against some cancers, coronary heart disease and type 2 diabetes. There's also no difference in body weight between children who eat whole milk dairy products and those who consume low fat dairy - young children are now encouraged to drink full-fat products.

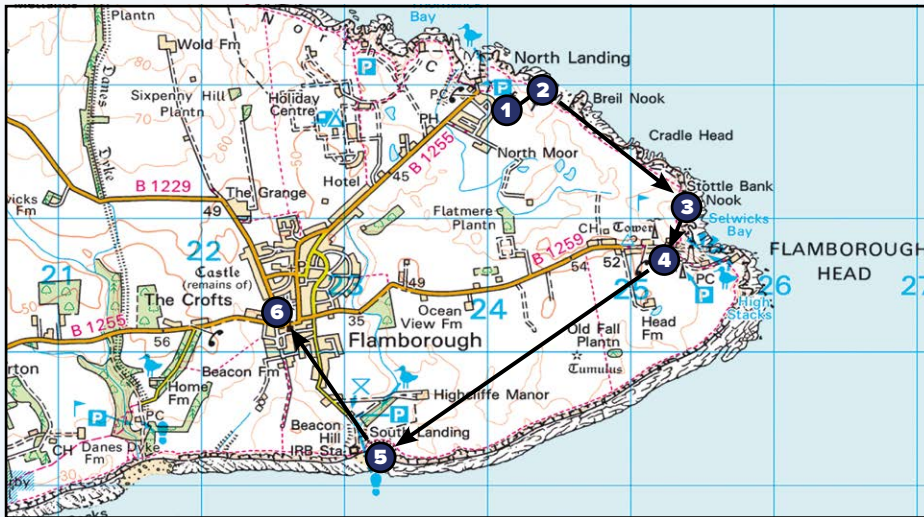


Becky is expecting to sell around 50 litres of fresh milk a day, which is 2 cows' milk. Next spring there will be fresh eggs, ice-cream and possibly cheese, too, on sale and the opening of a café selling shakes and cakes. As there are 4 other cows currently producing milk for Cherry View, if all goes well, Becky will put another vending machine at Molescroft Grange Farm.

Becky said: "All our cows are pedigree and named, not numbered, as they have different personalities. We are trying to stay small and make a living through selling premium products because we care about our cows as well as our customers. We hope everyone will support us!"

Cherry View Milk is located at **Field House Farm, Etton Road, Cherry Burton, Beverley HU17 7RP**, telephone: **01964 551086**, email: **info@cherryviewmilk.co.uk**. Follow **@CherryViewMilk** on Facebook or check out their website: **www.cherryviewmilk.co.uk**

# Walking with Ian Richardson - Head For Flamborough



## 5 mile circular from North Landing



Beverley's Lake District

*The whole headland at Flamborough provides in the words of the Guardian 'ten miles of world class coastal scenery'. This walk takes in around half of this stunning landscape, where the chalk Wolds plunge into the North Sea. Try to go on a bright day when the combination of white cliffs, blue skies and sea are at their most thrilling. There is great deal of historic interest, too. Often things at Flamborough were not quite as they seemed, from the lighthouse that barely ever shone and a misleading location for Dads Army, to an eloping Edwardian vicar!*

**1** There is a good pay and display car park at North Landing, or take the bus from Bridlington. The cafe, bar and shop selling splendid ice cream, are perhaps best left as your treat at walk's end. It is good to explore the wonderful coves and caves of the bay right at the start, so head down the track to the sands. Holmes Gut cove (see photo) has a particular surprise, a waterfall at its head; I am pretty sure it is the only one in the East Riding. Film fans might recognise the scenes in the recent *Dads Army* movie that were shot here. Apparently Catherine Zeta Jones spent many hours in the chilly waters during the filming in November 2014. Of course, the story is supposed to be based on the south coast, just one of the deceptions at Flamborough.



The surprise Waterfall is in the large cove on the left - Holmes Gut

**2** Return to the cliff top path and head south towards the lighthouse. The walk to Selwicks Bay is very dramatic; ever changing views of cliffs, sea arches and isolated pinnacles of chalk known as stacks. It is very close to my heart, as on a hot August day in 1983 it was my first ever walk in East Yorkshire and like most newcomers I had no notion that such splendours existed here.

My favourite Flamborough story also took place here in 1913 when a firebrand preacher from Leeds was last seen on a cliff edge and presumed killed in a fall. The Reverend Alfred Knight was much missed by his Hunslet flock, but his body could not be located. A few months later, however, this married man turned up in Australia with his rather fetching young mistress!



Arch at Flamborough Head



Stack at Flamborough Head

**3** On reaching Selwicks Bay, take the steep steps down to this dramatic beach but avoid it if you do not fancy the very steep climb back. There is another good cafe here - there can be few finer places to take a break. As the information boards show, you are right at the centre of Britain, equidistant from Lands' End and John O'Groats. You can also trace the story of a sea battle which the American navy fought here in 1779. The American commander John Paul Jones is a national hero and the Battle of Flamborough Head is widely known there as a great victory for the newly-formed USA. It must be said, however, that as usual at Flamborough, this is somewhat deceptive!



Selwicks Bay

Jones was a Scot whose French ship the *Bonhomme Richard* sank during the battle, which explains why the US government have spent millions of late in trying to locate the wreck. No doubt this will infuriate President Trump - but I would call the battle a draw.



Lighthouse

**4** At the cliff top, continue to head south past the lighthouse and fog station. This lighthouse was built in 1806 and has a light visible for over twenty miles; I can sometimes see it from my roof in Beverley. You can also see down the lane a much older elegant stone lighthouse built in 1674 but this private venture was barely ever used. The path now continues to South Landing on the cliff top. The beach at South Landing is easier to access and the water here is often warmer for bathing, no doubt due to its southerly aspect.



South Landing Beach

**5** You can now take the quiet road up to the village. The Yorkshire Wildlife Trust's Living Seas Centre is well worth a visit. Flamborough village is often missed by visitors, eager to get to the coast, but is lovely and has much of interest as well as fish and chips, shops and pubs.



St. Oswald's church

**6** Do go in St. Oswald's church with its beautiful rood screen and tiles and on Tower Street see the remains of the Constable's fortified manor. You will need to follow signs to North Landing and take the pavement footpath alongside North Marine Road to get back to our starting point, hopefully having enjoyed a wonderful coastal walk full of interest.

Ian Richardson  
ricojosh@msn.com

Next Month - Wold Tops

## In the garden... September

September is the month when we harvest the fruits from the summer to store for winter and the colours in the garden start to take on an autumnal hue.

If the weather is being 'kind' we can experience spells of high pressure, as a result we will have calm, warm sunny days. That said, the days are shortening and the warmth of the sun decreasing - so it won't be scorching hot and there may even be the possibility of an occasional early morning frost when the weather is like this. On the flip side of this we could have a month of unsettled weather with a succession of low pressure systems rolling in from the Atlantic - giving us wind and (more) rain.

**Plants to enjoy...** there are few old favourites: Asters; Dahlias; Chrysanthemums and my favourites Sedums and Rudbeckia. Ornamental grasses are becoming increasingly more popular in gardens, plant them in swathes of a single variety or plant individually in borders to 'set off' other plants. Four of the most popular varieties are:

**Festuca** - eg. Blue Fescue Grass (*Festuca glauca* 'Elijah Blue')

**Pennisetum** - eg. Fountain Grass (*Pennisetum setaceum* 'Summer Samba')

**Miscanthus** - eg. Zebra Grass (*Miscanthus sinensis* 'Zebra')

**Stipa** - eg. Giant Golden Oats (*Stipa gigantea*)

### Tasks for September

Tasks in September are all about starting to gear up for a change in season and getting prepared for the months to come.

- **Borders** - continue to dead head flowers that have faded - you are unlikely to encourage any new flowers at this stage of the season, but not having them around will allow those in full flower to be shown off at their best. Start clearing up leaves and debris to prevent disease and pests 'settling in' for the winter.

- **Hedges** - trim them for the last time this season, but don't feed them as this will encourage 'soft' growth. If you're considering planting a new hedge over the coming months prepare the site before the really bad weather sets in and the ground is too wet to work.

- **Lawns** - September is a good month to seed a new lawn, but do so earlier rather than later and reseed any bare patches. Established lawns should be aerated and an autumn weed/feed applied.

- **Containers** - continue watering, feeding and dead heading seasonal plants in containers, if you do so they should last until the first frosts. However, if they are past their best clear them out and replant with spring bedding plants and under plant with bulbs.

- **Bulbs** - buy and plant your spring flowering bulbs. If you are planning on forcing hyacinths for Christmas then this month is your last chance to do so.

- **Ponds** - continue to feed fish and thin out any pond and marginal plants that have become congested (or started to take over the pond). Lift the plants and leave them on the side of the pond for a few days before removing them completely - this will enable any pond life to safely make their way back into the pond. Cover the pond with netting BEFORE the leaves start to seriously fall.

Well, that's all folks - I for one hope we have an 'Indian Summer' this September.

So until October, happy gardening, J.

Jane Dale of 'Designed Gardens'  
Tel: 07983 392 411



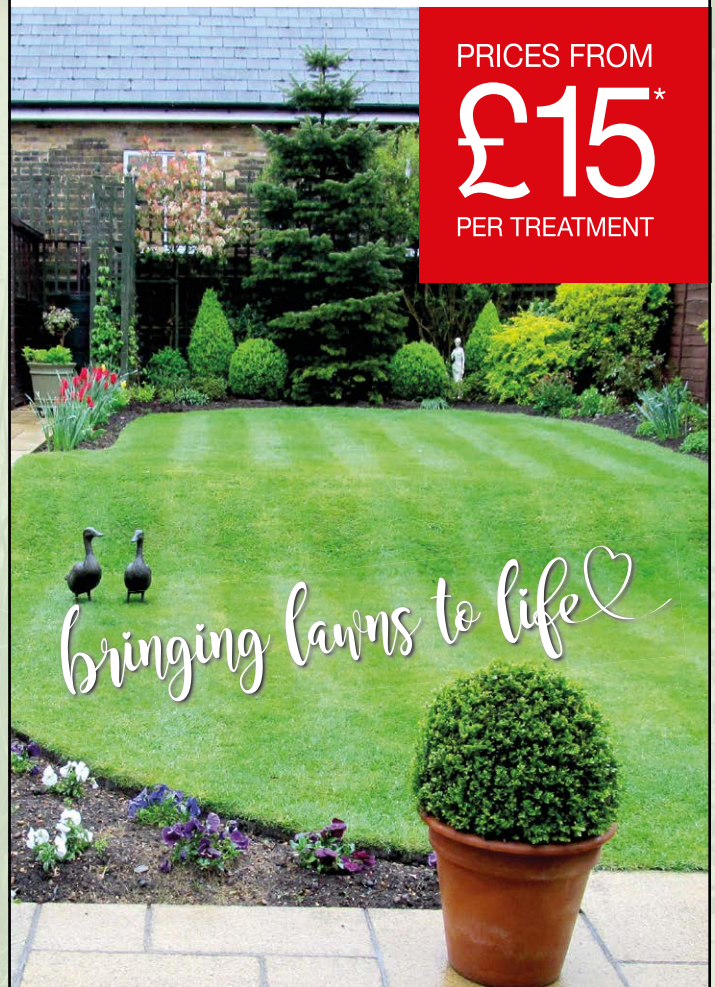
# GreenThumb

## LAWN TREATMENT SERVICE

PRICES FROM

£15\*

PER TREATMENT



bringing lawns to life

Our wonderful customers like our service so much, that over 40% of new customers joined us through their recommendation which if you think about it, is a recommendation in itself.

So, if you've been thinking about enjoying a great lawn this year - green, lush and weed-free, why not contact us today and let us bring your lawn to life.

We provide four seasonal treatments, as well as beneficial treatments to keep your lawn in tip-top condition - prices start from just £15\*

Ask us about our annual plans, which allow you to both spread the cost and save up to 25%.

Simply call: 01482 880082

beverley@greenthumb.co.uk



\*Based on a lawn size up to 40m<sup>2</sup>

# BEVERLEY GOLF CLUB

£350 ADULT MEMBERSHIP TILL APRIL 1ST 2018

£10 JUNIOR MEMBERSHIP TILL APRIL 1ST 2018

---

SEPTEMBER 4BALL OFFER - 1 IN 4 PLAYS FREE (QUOTE JUST BEVERLEY)  
PLAY 18 HOLES ON THE GOLF SIMULATOR - £10 PER PERSON (MIN 2 PEOPLE)

---

NEW TO GOLF OFFER - 5 LESSONS FOR £25

SRIXON DEMO DAY - SEPTEMBER 15TH 1PM-5PM

PRICE MATCH GUARANTEE - FIND ANY PRODUCT CHEAPER IN THE UK  
AND WE WILL MATCH IT!



Psychic Supper  
Thursday 7th September  
7.30pm  
£15 per ticket including meal

[www.beverleygolfclub.co.uk](http://www.beverleygolfclub.co.uk)

## THE MARNE RESTAURANT & PUB

**Open To The Public**

*Excellent Home Cooked Fresh Food*

**EXCEPTIONAL VIEWS OF BEVERLEY WESTWOOD**

**FUNCTION ROOM AVAILABLE FOR MEETINGS  
AND PRIVATE FUNCTIONS**

To view our menus visit [www.beverleygolfclub.co.uk](http://www.beverleygolfclub.co.uk)

🚩 **01482 868757** 🚩

Anti Mill, Westwood, Beverley, East Yorkshire HU17 8RG



## Tales from the Racecourse - another successful year of racing!

**Racing, and the racecourse, is a huge part of Beverley and has been so for over 300 years. So, although the racing season comes to a close at the end of September, life at the racecourse goes on as it is such a flexible venue. During the course's lifetime, it has had numerous uses other than racing. It has been used as a wartime military base; as a film set for 'Dads Army'; as a setting for an episode of Coronation Street and more recently as the venue for Beverley's Folk Festival.**

Beverley's first grandstand was built in 1767, quite different, I'm sure, to today's grandstand. Situated 1 mile from the centre of town, the course was built on what was a section of Beverley Westwood. Racing began on the site in 1690.

In 1740, the owner of the Rose and Crown pub, Robert Norris became the first ever Clerk of the Course. The current workshops were originally aircraft hangers. After World War 2, there were just two race days held in the whole year.

Today we have 19 race days a year! In its 300 years, Beverley has had many great horses run here including Altisidora (the Altisidora Inn at Bishop Burton was named after it); Crusador's Horn which won seven times at Beverley; Raffingora who set a new 5-furlong record here and probably most famous of all, Red Rum.

I'd like to think Robert Norris would be very surprised and happy to see how the course has evolved and that it now has a choice of restaurants, bars, function rooms, an up-to-date weighing room and many other features, making

it an excellent venue for all kinds of events, thus making sure life goes on at Beverley Racecourse every day of the year.

There are three race days in September, featuring some fine racing - so there is still time for you to try to Beat the Bookie! His tips are in red on the Tipster Board in the paddock. Do give him a wave if he gets it right!

**Colin Stamford  
(aka Beat the Bookie)**



## Golf with Stewart Fraser - new American golfing talent

**A New Generation of American golfing talent has recently hit our screens; a generation that is not scared of the winning line or the opposition. Last year the U.S.A. took the Ryder cup back across the Atlantic with 2 rookies and 6 players that had only previously played 1 Ryder Cup and this year 3 of the 4 majors were won by U.S. golfers that until a few years ago were unknown to most of us. This could well be the start of the next American golden generation. But where are all these players coming from?**

Why, all of a sudden, does the U.S. seem to have a wealth of new talent? The likes of Jordan Speith, Brooks Koepka, Patrick Reed, Justin Thomas, Dustin Johnson, Rickie Fowler.

The new Europeans on the scene, Thomas Pieters and John Rahm, are all products of the U.S. collegiate golf production line, a system in the U.S. that acts as a step-ladder to future golfing glory. The fact that these golfers have had mentors and role models like Tiger (Woods) and Phil (Mickelson) has also helped their swift progression to the top of the game of golf; these guys learnt from the best!



Golf is also swiftly become a young person's sport. Emphasis is on strength and fitness, something that wasn't a top priority amongst the masses on tour until recently.

42 golfers currently average over 300 yards on the P.G.A. Tour this year compared to just 21 five years ago. Only 18 golfers averaged that ten years ago and just one 15 years ago! (John Daly 2002).

There are currently 7 golfers in the top 10 in the world in their 20's, 4 of whom are 25 or under, more than ever before. Consequently, fewer golfers in the world's top 50 are in their 40's than ever before.

Golf is changing! The physical peak for a golfer is now, it seems, mid to late 20's. The U.S. collegiate system is giving these golfers a lot of experience of competitive golf and winning tournaments by the time they reach this peak.

Young golfers no longer have to earn their stripes before they have enough experience to win on tour; they have gained this experience before they even reach that level.



How long these golfers spend at the top remains to be seen; peaking earlier in life and with the stresses of the modern swing on the body, careers seem to be shorter. Will we still be seeing golfers similar to the likes of Nicklaus, Watson and Vijay Singh having success into later life again? Or will today's modern golfer be plagued with injuries and retire younger?

Whatever happens it will be intriguing to watch the modern generation over the next few years as they play a game that is more aggressive and more powerful - and indeed more exciting to watch than ever! One thing is for certain, golf is in good hands.

Stewart Fraser is Beverley and East Riding Golf Club's Golf Professional, he can be contacted on **01482 869519**.

# Fancy getting out on your (road) bike? Velo Club Beverley could be for you!

Has the Tour de Yorkshire inspired you to get a road bike? Perhaps you fancy your chances as a future Chris Froome? VC Beverley was set up in 2004 for people just like you!

Wednesday evenings at VC Beverley are exciting as they are designed for people who are either new to road cycling and want to give it a go in the safety of an organised ride, or are improving in their fitness and so increasing their cycling speed and the distance they can cover.

"Nothing should deter anyone from coming along", said Simon Dongray-Burke, Chairman of the Club. "Wednesday evenings are a very fluid set-up in relation to who turns up and their abilities and everyone is welcome. Children are encouraged although they must be proficient on roads and have an adult with them at all times. There is no maximum age."

Rides leave from The Royal Standard, North Bar Within at 6.30pm and are between 45 and 60 minutes for children with 90 minutes for adults. The pace depends on the ability of the group. All riders need to carry spare inner tubes or a puncture repair kit and be able to look after themselves in case of a puncture.

Simon said "The great thing about Wednesday evenings is that we can encourage riders to improve in a group. There is always an experienced cyclist or two on hand to give tips and advice so that people can go further and quicker - such as using gears more efficiently, keeping hydrated and fuelled, wearing appropriate clothing. Some people may never progress beyond the Wednesday night, which is perfectly fine!



"As long as they get to enjoy cycling and reach the level which is right for them, then they will become fitter and healthier and make new friends."

Once people get the 'bug' and do progress beyond Wednesday nights, there is a social ride every Sunday - known as a 'Club Run' - which leaves Beverley Leisure at 9am, returning at around 12.30pm, covering between 40-60 miles with an average speed of 16-18mph.



Keen cyclists also go out on Tuesdays and Thursdays on training rides as VC Beverley has a licence as a club under British Cycling which allows it to hold races - and its members represent the Club in the East Yorkshire Road Race League and other leagues. The 'Tuesday Night Chaingang' go out for an hour or so on quiet Wolds roads from March to October averaging speeds of 18-20mph whilst the Thursday 'Blood and Guts' riders average 20+mph.

Perhaps you have seen these more elite riders setting out from The Royal Standard at 6.30pm? They are very noticeable in their classy blue VC Beverley club kit! If you would like to find out more why not contact Simon on **07740 425311** or [vcbchair@hotmail.com](mailto:vcbchair@hotmail.com). Cycling could become your new hobby!

## Time to give your bike its pre-winter check!

The nights are starting to pull in so now is a good time to ensure your bike is fit-for-purpose. Our cars get serviced - so why not give your cycle the MOT-equivalent?



Knowing your bicycle is safe to ride, especially as the colder, wetter, winter months approach can give you piece of mind. If you are a parent of a child who cycles to school or college, ensuring their wheels are in top condition is imperative. Here's the **Just Beverley** guide to checking your cycle will get you safely through the dark nights.

- **Tyres.** Tyres affect comfort, performance and safety so make sure you have the right tyres for the kind of terrain you will be riding on - road tyres are designed to be used on asphalt and are optimized for dealing with a smoother, less resistant road surface than mountain bike tyres and so are narrower with smooth tread patterns. But if the tread begins to wear, the tyre loses its rounded shape, starts getting lots of small cuts and punctures or the outer layer is wearing through so the threads begin to appear, it's time to get a new one! Road bike tyres last between 1,000 and 3,000 miles - you can cover that distance quicker than you think!
- **Wheels.** The spokes share the bike load, so if a spoke is damaged or the wheels are not 'true', putting an uneven strain on the wheel, it will not be able to support the weight of the rider.
- **Brakes.** Brake pads need replacing as they pick up dust and grime from road surfaces. Rim brake pads have teeth or grooves; the wear and tear of stopping the bike wears down these grooves which means it's time for a new set. Disc brakes, which clamp onto a disc in the centre of the wheel and are increasingly found on road and hybrid bikes, need to be replaced when down to 1mm of compound - they will have become much less effective. If the brakes don't feel as tight as they should, but the pads are OK, then the brake cable probably only need adjusting.
- **Gears.** The drive chain is the mechanical heart of the bike and needs regular checking. Chain-rings with worn, misshapen 'teeth' can be dangerous, as the chain can slip or come off when the gear is changed and the chain transfers from one ring to the next. The chain is the component under greatest stress - a worn chain will 'ride up' on the teeth of the chain ring rather than sitting flush. The cassette should outlast 3 chain replacements, so replacing the chain will protect the cassette.

## WILSONS WHEELS

T: 01482 882881  
E: [info@wilsonswheels.co.uk](mailto:info@wilsonswheels.co.uk)  
W: [www.wilsonswheels.co.uk](http://www.wilsonswheels.co.uk)

**WE NOW STOCK CUBE CYCLES**  
2018 RANGE AVAILABLE SOON







**WILSONS WHEELS**

Wilson's Wheels stock a large range of cycles from Children's bikes right through to Road Bikes from KTM and Bottecchia.

Call in to see us where we can advise you on the best cycle for whatever your purpose as there are many new styles of bikes on the market now such as Gravel and Adventure Bikes and 29ers.

Wilson's Wheels always carry a comprehensive range of clothing, wheels, spares and accessories.

89 Grovehill Road, Beverley, East Yorkshire HU17 0EJ  
OPEN: Monday - Friday: 08.30 - 17.30  
Saturday: 09.00 - 17.00 Sunday: CLOSED - Out riding our bikes

Next time we'll consider the accessories you need to check. Wilson Wheels staff are seasoned cyclists who will keep your cycle in good condition. They can be found at **89, Grovehill Road, Beverley HU17 0EJ**. Tel: **01482 882881**.

# 2017/18 East Riding Football Season kicks off

*Many of us who have played or been involved with local amateur football teams over the years remember the camaraderie and still foster friendships made, either as a player, official or supporter. This year, the league is bigger and better as more girls get involved, inspired by the achievements of the England Women's UEFA EURO Team, which, through skill and determination, reached the semi-finals. The Youth Football League gives every child the opportunity to achieve through football - more kids playing means more adult help is needed, so come on, why not join in?*

With Beverley Town FC and Beverley Whitestar FC now merged under the Beverley Town FC banner, Mark Smith chairman of Beverley Town FC is delighted that they will be able to provide football for all age groups. Scott Pilgrim is heading up the Academy who meet on Saturday mornings at the Beverley Leisure Centre.



And you don't have to be Messi to play football!

Almost anyone can kick a ball (there are disabled players' teams for wheelchair users) or be coached. Football is inclusive and, certainly at Beverley Town Football Club, all players of any ability are very welcome.

If you are a youngster joining, then, yes, there is the possibility of making it professionally as professional club scouts do visit local clubs on the off-chance that they do find the new Messi! If you are an adult taking your coaching or refereeing qualifications then you could, like Carl Boyson, end up refereeing in the English Football League.



There are 18 junior sides (age under 17 or below) at Beverley Town. They train at Beverley Leisure, Longcroft School and at Norwood.

They play the other teams in the area in different leagues and cups, so there is plenty of opportunities for all players to get a game.

The boys play on Sundays, the girls on Saturdays. There are 517 boys' teams playing in 45 divisions this season - the East Riding Youth Football league is reckoned to be the largest in the country!



Headed up by administrator Keith Pinder on behalf of the Football Association, he is a great ambassador for youth football. The league is run by committee and Keith is always on the look-out for new members so if you would like to volunteer, he can be contacted on [keithpinder@msn.com](mailto:keithpinder@msn.com)

There are 10-12 teams in each league, with all teams aspiring to be at the top of the Myton League (the equivalent of the Premiership), then Drypool is the Championship equivalent with Wyke the 1st Division and Kingston the 2nd division. But everyone has to start somewhere!

There is healthy rivalry between some of these teams and, yes, good players can be persuaded to join their competitors!

August has been a time of planning, with teams getting their kits and sponsorship sorted out whilst the FA work out where matches are going to be played. Sponsorship is so important as teams cannot survive without it, even though members



pay a subscription.

Pitches and facilities have to be hired and referees' mileage costs paid; strips need to be bought (with the sponsor's name on the back) and training equipment acquired.

For any company with a few pounds to spare, Beverley Town Football Club would be delighted to hear from you! The club is a registered charity and seeks to develop their players through building team spirit and developing ability, thinking and decision-making skills.

If being involved with an entirely new team would appeal, Beverley Town is setting up an Under 9 team under new coach James Black. James is currently studying for his coaching certificates and has the support of Ed Grady, one of Beverley Town's established coaches and all of the parents of the children who have signed up.

**Just Beverley** will be meeting James and hearing more about his journey and that of the team-members and their supports in future issues, so watch this space!

If your child would like to play football, Scott Pilgrim of Beverley Town runs an Academy at Beverley Leisure on Saturday morning throughout the year, introducing children to football, teaching the basic skills and preparing them to play in a football team if they desire.

[www.hdyfl.co.uk](http://www.hdyfl.co.uk)



### Wordsearch

C I S Q Y I H S J H N N B C L  
 R O C Q C F R N E R H B S F R  
 C A U N Q U C D J O G G I N G  
 F L D N O O G I Q T I H F Y D  
 M D O L T E S I C R E X E T A  
 Z U O U R R P W P D T M B A M  
 Y C M O D I Y U D A W K C O P  
 U R W O W S I L G R N V B C Q  
 A S I Q X M R O A K Y C U R O  
 F Z F A L O A M B N C S S E L  
 W S X O H T V Q N I E T H V H  
 V B T W M S H V P G N S U O S  
 C W M X U E E U P H H H T V J  
 S P I C G I H R X T D W L M H  
 Y S K V W N F T F S C Z W D D

CLOUDS  
 COLOURS  
 COUNTRYLANES  
 DAMP  
 DARKNIGHTS  
 EXERCISE  
 FRESHAIR  
 HEDGEROWS  
 JOGGING  
 OVERCOAT



You can drink & clean with Cola - Tile stains, Pen stains, Sinks

Clean the BBQ with half an Onion

Revive Celery - cut off the bottom and put it into a glass of cold water

Make a DIY mobile phone stand with a Large Paper Clip

Did You Know you can...

Do you have any amusing stories, quotes or pictures? Send them to [info@justbeverley.co.uk](mailto:info@justbeverley.co.uk)

Win family tickets for the Panto at Parkway Cinema! Simply spot the deliberate mistake on the flyer above.

Send your answer by email to [info@justbeverley.co.uk](mailto:info@justbeverley.co.uk) by 30th September. Include your name, address and daytime telephone number. Put 'Panto Tickets' in the subject box. The winner must be available for publicity purposes for Just Beverley and Parkway Cinema and Tony Peers Productions.

## Quality Kitchen Facelifts

## From a simple door swap to a full replacement kitchen

Why replace when you can reface?



EST. 1999

**20% OFF**  
 Limited time only  
 Terms & Conditions apply

- 50% deposit, balance on completion
  - Made to measure custom-built doors and units
  - Huge choice of doors, worktops, appliances, sinks and taps
- [www.dreamdoors.co.uk](http://www.dreamdoors.co.uk)

Call Andy For a Free Estimate:  
**01482 861 653**

[hu@dreamdoors.co.uk](mailto:hu@dreamdoors.co.uk)  
 Dream Doors Beverley, 4a Belprin Park,  
 Swinmoor Lane, Beverley, HU17 0LN

**DREAM DOORS®**  
 NEW LIFE FOR OLD KITCHENS







**BUY ANY OF THE FOLLOWING  
PASTA OR RISOTTO  
AND GET A FREE GLASS OF HOUSE WINE  
OR BUY ANY 2 AND GET THE BOTTLE\*  
MONDAY -FRIDAY 12PM-4PM**

**SEAFOOD RISOTTO**

*Risotto with king prawns, salmon and mussels in cream white wine and garlic*

**KING PRAWN LINGUINE**

*King prawns with garlic butter, parsley and white wine with asparagus*

**PENNE ARRABIATA CHORIZO**

*Penne pasta with spicy Italian tomato and chilli sauce, tossed with warmed Spanish chorizo and fresh basil leaves*

**MUSHROOM RISOTTO v g**

*Mixed mushroom and sun dried tomato risotto*

**MEATBALL LINGUINE**

*Cosmo's special meatballs in a spicy tomato sauce*

**PENNE FILETTO**

*Chunks of prime sirloin steak with pepper, onions and mushrooms in a cream and white wine sauce, tossed in traditional penne pasta.*



**Cosmo's**

**Flaming Grill  
Restaurant & Bar**

9-10 WEDNESDAY MARKET, BEVERLEY HU17 0DG

[www.cosmosbeverley.co.uk](http://www.cosmosbeverley.co.uk)

Tel: 01482 867891

\*PASTA / RISOTTO DISHES MUST BE FROM THE LIST ABOVE.  
OFFER INCLUDES 125ML GLASS OR BOTTLE OF RED OR WHITE HOUSE WINE.  
NOT TO BE USED IN CONJUNCTION WITH ANY OTHER OFFER

# Personal Service Companies and IR35 - what does it mean for you?

**IR35 refers to the tax rules where an individual supplies their services to an end client via their own company. HMRC classes this practice as disguised employment.**

An example of disguised employment would be if a permanent employee were to leave their employment on a Friday afternoon then return to work on the Monday, at the same company, doing the same job role, but as a contractor rather than a permanent employee. Where a worker supplies his or her services to an end client via an intermediary company then IR35 must be considered.

If your contract has the same level of risk, responsibility, liability and control as a permanent employee, then you would be classed as caught by IR35 legislation. This means you will have to pay full tax and full National Insurance (instead of the usual salary and dividends from the profits of your company) and the level of expenses that you can claim will be restricted. HMRC have an employment status test that is available on their website and after asking a series of questions will give an indication as to whether IR35 applies to your situation. The kind of working practices that HMRC are looking for to see if you are inside or outside IR35 include:

- **Control:** Are you free to work under your own control i.e. not managed by the client?
- **Financial risk:** Employees rarely risk financial loss by being employed, whereas if you buy assets such as PC's, laptops, servers, printers, office equipment or a client fails to pay you as director of your company you will most definitely experience financial loss.
- **Substitution:** In your contract do you have a clause about using somebody other than you to perform the task your company has been contracted to do?
- **Provision of equipment:** Will you be using your own equipment?
- **Right of dismissal:** Do you have a fixed notice period. The Revenue will argue that this is like an employee, therefore there should be provision in your contract for immediate termination should the client choose to do so.
- **Employee benefits:** There should be no holiday pay, sick pay, pension contributions, training courses, or staff dinners.

HMRC don't just look at the above - they review everything in an effort to

establish if you are really an employee or a director running, managing and controlling your own limited company.

It doesn't matter if you are working for the same client for one month or twenty years. It's what you're doing and your level of risk, responsibility, liability and control.

If IR35 applies, your company is required to deduct PAYE and NIC from the income received from services supplied.

The rules are designed to ensure that a worker cannot simply supply their services via a company and pay themselves a low salary, benefitting from lower tax rates.

From 6 April 2017 where a worker supplies their services to the public sector via a personal service company, then the public authority will be responsible for assessing whether IR35 applies and will be required to deduct PAYE and NIC from the payments made.

If you would like to discuss this in more detail, then please contact Gareth Botterill on **01482 862240** or email: [gareth@botterillco.co.uk](mailto:gareth@botterillco.co.uk)



## Botterill & Co

Chartered Certified Accountants

**We are a modern and professional accountancy practice ideally located to serve businesses in Beverley and the surrounding area.**

**We utilise modern accounting technology to provide you with a cost effective, professional service.**

**Our services:**

|                       |                      |
|-----------------------|----------------------|
| • Annual Accounts     | • Company Formations |
| • Tax Planning        | • Payroll            |
| • Management Accounts | • Cloud Accounting   |
| • Tax Returns         | • Bookkeeping & VAT  |

**For a free initial consultation please contact us:**

**Office: 01482 862240**

**Mobile: 07966 051458**

**Email: [gareth@botterillco.co.uk](mailto:gareth@botterillco.co.uk)**

**Website: [www.botterillco.co.uk](http://www.botterillco.co.uk)**

**1st Floor Offices, 40 Norwood, Beverley, HU17 9EY**

BACK TO SCHOOL OFFER

3 Months Toning  
3 Months Vibraxis  
3 Contour Wraps

£179

Normal price over £300  
Limited Availability

TONING TABLES

help with fat loss, ME, MS, hip replacements, depression, bad backs and much more!

Wheelchair access and stair lift available

FREE TRIALS, No obligation  
Testimonials available



## INCHES BODY STUDIO

**CELEBRATING 26 YEARS IN BUSINESS**

Inches Body Studio, 1 Norwood, Beverley, HU17 9ET

Telephone: 01482 865229

Email: [inchesofbeverley@hotmail.co.uk](mailto:inchesofbeverley@hotmail.co.uk)

[www.inchesofbeverley.co.uk](http://www.inchesofbeverley.co.uk)





## Creations

Direct Furniture Repairs

**Specialising in:**

- Leather Restoration
- French Polishing
- Upholstery
- Loose Covers & Roman Blinds
- Curtains & Soft Furnishings



**T: 01482 871954 M: 07951 759253**  
**E: [info@creations-biz.co.uk](mailto:info@creations-biz.co.uk)**  
**W: [www.direct-furniture-repairs.co.uk](http://www.direct-furniture-repairs.co.uk)**

# HUBY

## DOMESTIC APPLIANCES



**HUGE SAVINGS**

when you

**BOOK ONLINE**

at  
**hubys.co.uk**

Book in advance and save money.  
The further you book in advance  
the more you could save...



You've tried the rest,  
now use **THE BEST!**

**01482 240511**



Would you like to  
make a difference to  
someone?

## VOLUNTEER CAR & MINIBUS DRIVERS NEEDED



Full training given,  
ring or pop in for  
a chat!



25 Corporation Road, Beverley, HU17 9HG

**Tel: 01482 868082**

[www.bclift.org.uk](http://www.bclift.org.uk)

Reg. Charity No: 506813



# BEES

BURTON ELECTRICAL SOLUTIONS

High quality electrical work across East Yorkshire & the Humber region

DOMESTIC

COMMERCIAL

TESTING

Whether it's for your home, rental property portfolio or  
business premises, all electrical installations need to be checked  
periodically by a qualified electrician.

For a quote contact:

Andrew Burton

28 Carnaby Close, Leconfield, East Yorkshire HU17 7LA

Tel: 01964 552769 Mob: 07585 601730

Email: [info@burtonelectricalsolutions.co.uk](mailto:info@burtonelectricalsolutions.co.uk)

Web: [www.burtonelectricalsolutions.co.uk](http://www.burtonelectricalsolutions.co.uk)



WATCH YOUR PET FROM HOME  
VIA OUR LIVE STREAMING APP

Prices from £12

Baths, handstrips, mini grooms, full grooms,  
nails, de-shedding and much more!

Pet boutique selling a wide range of  
products, perfume, collars, leads, coats and toys

OPENING HOURS:

Mon - Sat: 9-4.30

TELEPHONE:

01482 880122

WEBSITE:

[www.doggroomersbeverley.co.uk](http://www.doggroomersbeverley.co.uk)

## WOMBLE'S LAMENT by John Fewings

*Underground, overground, they say we womble free  
But there's more to life than scavenging for litter.  
A Wimbledon waste operative is not the life for me  
I'd rather be a salesman - or a Kwik-fit fitter.*

*I'd rather be a teacher answering to "Sir!"  
Or a paramedic rushing to a crash,  
Instead of which I'm 3 foot 6 and covered all in fur  
And wombling on the Common, gathering trash.*

*I tried to be a pop-star but my nose was much too pointed  
(Though Barry Manilow achieved his goals);  
I tried to be a gymnast but I'm not too supple-y jointed  
Though I'm very good at doing forward rolls.*

*Any jobs with burrows I would enter into wholly  
(A tube-train driver - someone catching moles)  
But Orinoco says that I am much too roly-poly  
And my girth would block the entry to those holes.*

*I'm sure there must be some career for which I'm truly suited  
(I'd love to plough an independent furrow)  
But when I told Bulgaria, my Uncle merely hooted  
And scurried back inside the family burrow.*

*Miss Adelaide said I could be whatever I aspired  
But now my aspirations all are sunk -  
From every job I've ever had I just kept getting fired  
Which is why I'm on the Common - sorting junk!*

John Fewings is **Just Beverley's** Poet-in-Residence as well as being a member of the Argy-Bargy poets. He writes poetry for people who don't like poems. Check out: [www.johnfewings.zone](http://www.johnfewings.zone)



## The Story of Hull Paragon Station by Alex Slingsby

*The Story of Hull Paragon Station is a book that, for the first time, charts the complete history of the main railway station serving Kingston-upon-Hull, from its construction in the 1840s to the present day. Local compiler Alex has been working on the project for the last 3 years, bringing together material from a variety of other books and sources. He has completely updated the information available on the station, including the meticulous multi-million-pound restoration work in 2007. There are rare and previously unseen photographs and interviews with key players in the station's behind-the-scenes operation.*

The station has had a varied history. George Hudson, The Railway King, oversaw the station's construction; it played a vital role in the late nineteenth and early twentieth centuries in transporting millions of migrants to their destinations and was affected by the Beeching cuts of the 1960s. The book reveals hidden areas inside the station and, of course, explores its connection with Philip Larkin, who's statue graces the concourse today.



The station was opened by The York and North Midland railway on 8th May 1848, which means it has served the area for over 165 years.



'Paragon' means 'model of excellence' and it is, arguably, one of Hull's most important features, being in the middle of the city within walking distance of many of Hull's popular attractions.

It certainly creates a positive first impression for visitors arriving by train!

The book is available at the price of £8.99 and more information about it and ways of purchasing a copy can be found at the following link: [www.hullparagon.co.uk](http://www.hullparagon.co.uk)

**WHITE RABBIT**  
CHOCOLATIERS

**HOP ON DOWN TO THE CHOCOLATE CAFE**

*for handmade, quality treats!*

*A taste of wonderland...*

16 Dyer Lane, Beverley, East Yorkshire, HU17 8AE  
[whiterabbitchocolatiers.co.uk](http://whiterabbitchocolatiers.co.uk)

**INTRODUCING OUR NEW AFTERNOON TEA MENU!**  
£12.95 PER HEAD OR £24 FOR TWO PEOPLE

AVAILABLE MON-SAT 12-5PM  
PRE-BOOKING IS REQUIRED AND GLUTEN FREE OPTIONS ARE AVAILABLE.

Stockists of **Woof Dog Beer!**

**THE TIGER INN**

FIRST SATURDAY OF THE MONTH

**Big Quiz**

Free food/prizes to be won, all money raised to our house charities.  
£1 per person entry

WEEKLY

**Bingo**

Cash prizes to be won  
50p entry per game  
Every Tuesday 1.30pm

**THE TIGER INN**

Tel: 01482 869040 | [www.tiger-inn-beverley.co.uk](http://www.tiger-inn-beverley.co.uk)  
Lairgate, Beverley HU17 8JG

# John Fewings, writer and poet, entertainer and literary scamp \*

**If you like the poems printed in each issue of Just Beverley by our poet in residence, John Fewings, you are sure to enjoy his books! He now has 3 volumes of poetry and 2 novels published, plus he has written several plays which you can find on his website. We went to find out more about this 'naturalised' Beverlonian!**

'Poetry with Bits In' is the latest collection of poetry from rhymester, John - 39 poems in all PLUS anecdotes, nostalgia, the occasional rant and even a quiz.

Topics range from ad-breaks, to zebras via bicycles, nosy neighbours, sheds, unicorns and wormholes (yes, really!).

It is a collection of poems about the sort of things you and I would discuss on a daily basis - or the sort of things you could find yourself discussing with John! John's inspiration is from the everyday but coupled with his imagination and amazing word-smithery, anything could happen and often does!

John writes a blog which you can find at [www.johnfewings.zone/Home.html](http://www.johnfewings.zone/Home.html) which gives you a flavour of the way his mind works! Who else could write a Country and Western-themed poem inspired by a Cornish seal, which he called Lou Seal, transported to Scarborough, and which just has to be sung to the tune of Kenny Rodgers' 'Lucille'?

Or create Spud the Cat and a host of other characters where it is impossible to second-guess the plots of not one, but two hilarious books?

Or produce a book of poetry which is recited by a giraffe? One might ask the question 'Why?' but John's answer would be rather more considered, reflective, elegant and funny than 'Why not?'

John's poems do engender responses! In fact, **Just Beverley's** biggest mailbag ever came after publication of John's tongue-in-cheek poem 'Oop North! John hails from 'Down South' but after studying at Hull University and gaining employment in these parts, he stayed and now very much considers himself a Yorkshireman.

But poetry is meant to stir the emotions in its choice of words and, although John says he can be reflective, his main objective is to entertain.

John's sense-of-humour shines through in his work - and if that creates a reaction then it has hit the mark.

Poetry is meant to be challenging and thought-provoking but John's skill at finding that killer rhyme adds humour which makes his work stand out. You can find 'Oop North' on John's website [www.johnfewings.zone](http://www.johnfewings.zone) under Poetry.

Although officially retired, John is busy as a writer and performer. He's to be found at 'Stand and Deliver' open mic music and poetry evenings at The Crooked Billet in Ryehill every other Tuesday and at 'Subtle Flame' Poetry Group at Tiger Inn, Lairgate on the first Thursday of the month - see his website for more details.

He's also a member of the Argy-Bargy Poets who perform and run work-shops together at gigs all over the county.



John's books are available direct from the author via [fewings@fewings.karoo.co.uk](mailto:fewings@fewings.karoo.co.uk) or as e-books from Amazon. In fact, 'Twists and Turns' is currently out of print, so it is only available as an e-book!

John is also now tweeting as [@JohnFpoet](https://twitter.com/JohnFpoet) so you can engage with him on Twitter if you are a literati twitterati - that's his phrase, but what else would you expect from someone with such command of the English language!

\*As described by Sue Lozynskyj

**ASIAN CURRY AWARDS WINNERS**  
BEST NEWCOMER AND CHEF OF THE YEAR

**NEW FOR 2017 TAPAS MENU**  
Sun to Wed 5.30pm to 7.30pm

**Disabled Parking and Lift for Disabled access**

**The Only Beverley Indian Restaurant included on the Welcome To Yorkshire Spice Trail**

**Rumi's Bangladesh Indian Cuisine**  
New Walkergate, Beverley, HU17 9EP

**T: 01482 428642**  
[www.rumisrestaurant.co.uk](http://www.rumisrestaurant.co.uk)  
Mon - Thurs: 5.30pm - 11.30pm  
Fri - Sat: 5.30pm - 12am Sun: 5.30pm - 11pm

**indicoll**  
more than just web design

**SUMMER MADNESS**  
GET A WEBSITE FOR ONLY

**£1995!**

**UNLIMITED NUMBER OF PAGES**

**What's included?** Your website comes with all of these fantastic features; A Bespoke Website Design (with no templates used) • Content Management System (so you can update the website yourself) • Contact Form, Analytics (see when & how people visit your website) • Mobile friendly • Blog • Gallery • Links to social media accounts • Dedicated account manager

**FREE!** DOMAIN NAME, EMAIL ADDRESSES, WEB HOSTING\* & SUPPORT FOR 12 MONTHS

**CALL NOW ON 01482 428650**

# What's On

SPONSORED BY: **küTchenhaus**

2 Toll Gavel, Beverley, HU17 9AJ. T: 01482 862172.

Open: Mon - Sat: 10am-5pm. Sun: 11am-3pm. Bank Holidays: 10am-4pm.



#### Until Saturday 9th September

##### • Treasure House Children's Trail

Pop in and take part in this popular children's trail exploring the fascinating treasures in the building. As for a trail sheet at the Museum reception. Free.

#### Until Saturday 16th September

##### • Morning Campers! The Great British Holiday Camp

Treasure House, Beverley. Free. The first Holiday Camp appeared in 1894 on the Isle of Man but Billy Butlin popularised the concept after WW2 when his Butlin's Holiday Camps dominated the British holiday scene. Did you go to Butlins Filey or Skegness? Relive your memories of this uniquely British institution!

#### Thursday 31st August - Sunday 3rd September

##### • Family Funfair

Flemingate. Fun for the youngsters!

#### Friday 1st September

##### • The Loneliest Girl in the World by Elizabeth Godber

East Riding Theatre Café Bar. 7.30pm £6. One Saturday night, Fiona leaves her Halls of Residence at her university and never returns. Now, three students try to understand exactly what happened to her. Features original music from Grace Christensen. Tickets: 01482 874050  
Email: [boxoffice@eastridingtheatre.co.uk](mailto:boxoffice@eastridingtheatre.co.uk)

#### Saturday 2nd September

##### • Beverley Bullet Race Day

Beverley Racecourse. Various prices. 12noon - 6.30pm. The most prestigious day in Beverley's racing calendar featuring the fastest horses in top-quality racing and racing-themed entertainment. The featured race is the Totepool Beverley Bullet Stakes. There are displays from the British Thoroughbred Retraining Centre, showing what horses can achieve when their racing days are over and from the Charles Owen Pony Racing Series - many famous jockeys have come through racing ponies! More details and tickets from: [www.beverley-racecourse.co.uk](http://www.beverley-racecourse.co.uk)

##### • Bunker Crazy Golf

Flemingate. 11am - 4pm. £2/round.

##### • Craft and Artisan Fair

Flemingate. Showcasing a selection of high-quality stalls featuring artworks, crafts and locally-created pieces.

#### Monday 4th September

##### • Beverley Flower Club present 'Around the World' by Kathleen Gibson

Longcroft Lower School, Church Road, Beverley. 7.30pm.

#### Wednesday 6th September - Saturday 23rd

##### • It's Different for Girls devised by She Productions

East Riding Theatre. £16-£10. Ages 13+ Inspired by Hull girl-band, Mandy and the Girlfriends with live music and a swinging-sixties vibe! Tickets: 01482 874050. Email: [boxoffice@eastridingtheatre.co.uk](mailto:boxoffice@eastridingtheatre.co.uk)

#### Thursday 7th September

##### • Psychic Supper with guest medium Audrey Wilson

Beverley and District Golf Club House and Marne Restaurant. 7.30pm. £15 includes food. Bookings on 01482 868757 option 4.

#### Friday 8th September

##### • The Pettman Ensemble

Toll Gavel United Church. 7.30pm. £10/£5. Tickets from [www.eventbrite.co.uk](http://www.eventbrite.co.uk) or on the door. This flexible touring ensemble of violin, viola, cello and piano play Lilburn, Bliss, Cowan and Schumann.

#### Saturday 9th September

##### • Judy's Attic Artwork Pop-up

Flemingate. 10m - 4pm. Free.

#### Sunday 10th September

##### • Fresh Farmer's Market

Flemingate. 10am - 4pm. An indoor and outdoor event offering locally-grown and prepared food. Savouries, sweets, fruit and vegetables, hot and cold street food and even a range of gourmet dog biscuits!

#### Monday 11th September

##### • Norwood Nites Community Cinema

Norwood Church Schoolroom. 7pm. Free. This month's film stars Matt Damon, a widower, who moves, with his children to an 18-acre property which includes Rosemoor Wildlife Park. The Park is still home to many animals, cared for by Kelly Foster (Scarlett Johansson). Together they renovate and reopen the zoo. Refreshments and raffle. Ring 07990 510541 for more details.

#### Tuesday 12th September

##### • Meet and Eat Open Networking

Gourmet Burger Kitchen, Flemingate. 12noon - 2pm. £6.95 includes lunch. Everyone welcome! Bookings essential. More details from: [flemingateevents@gmail.com](mailto:flemingateevents@gmail.com)



#### Friday 15th September

##### • Culture: Orchestra presents 'A Night at the Movies'

Toll Gavel United Church. £10/£6/free. 7.30pm. Enjoy original arrangements of well-loved movie themes! Refreshments.

#### Saturday 16th September

##### • Jacobs Well Book and Bric-a-Brac Sale

Toll Gavel United Church Drive. 9am - 3pm. Come and find a bargain!

#### Wednesday 20th September

##### • Afternoon Racing

Beverley Racecourse. 12noon - 6pm. Various prices. The penultimate meeting of 2017. <http://beverley-racecourse.co.uk/>

Tell us about your event!

E-mail [info@justbeverley.co.uk](mailto:info@justbeverley.co.uk)

Telephone 01482 679947

For more events visit  
[justbeverley.co.uk/events](http://justbeverley.co.uk/events)

#### Sunday 24th September

##### • Hull Big Band

Parkway Cinema, Beverley. 7pm. £10. Why not enter our competition on page 7 to win tickets? <http://beverley.parkwaycinemas.co.uk/Browsing/Movies/Details/m-1000000788>

##### • 3rd World Barge Pulling Championships

Beverley Beck. Free. The annual championship will be held from 11am onwards. Teams of 4 (men, women or mixed) will compete by pulling the 64-ton Syntan from a standing start over a 200-metre course in the fastest time.



#### Tuesday 26th September

##### • Afternoon Racing - Season Closer

Beverley Racecourse. 12noon - 6.30pm. Help us close the season in style! <http://beverley-racecourse.co.uk/>

#### Friday 29th - Saturday 30th September

##### • Beverley's 6th Ale and Cider Festival

Beverley Memorial Hall. Afternoon till late. £5/£3. The very best selection of beer and cider, festival food and live entertainment. [www.beverley.realalefestivals.co.uk](http://www.beverley.realalefestivals.co.uk)

#### Saturday 30th September

##### • EYMS Band

East Riding Theatre. 7.30pm. £10-£12. Making a welcome return, the Brass Band, under the direction of Stig Maersk, has put together an eclectic programme of music which will showcase several of the band's soloists as well as the excellent musicianship of the whole ensemble. Tickets from 01482 874050.

#### Sunday 1st October

##### • Beverley Food Festival

Saturday Market. 10am - 4pm. Beverley's award-winning festival with over 140 stalls selling the best of local produce!

**FUN DAYS IN SEPTEMBER**

- 3RD SEPTEMBER - PET ROCK DAY
- 13TH SEPTEMBER - ROALD DAHL DAY
- 17TH SEPTEMBER - BEER LOVERS DAY
- 19TH SEPTEMBER - INTERNATIONAL TALK LIKE A PIRATE DAY
- 29TH SEPTEMBER - INTERNATIONAL COFFEE DAY

**KÜTCHENHAUS**  
2 Toll Gavel, Beverley, HU17 9AJ.  
T: 01482 862172.  
Open: Mon - Sat: 10am-5pm. Sun: 11am-3pm.  
Bank Holidays: 10am-4pm.

**FREE**  
LOCAL DELIVERY

# Searching for your dream kitchen?

Come see our specialists to discuss your next kitchen project

1.

Professional free design consultation

2.

Expert guidance & advice

3.

Competitive prices for trade & public

MY KIND OF KITCHEN

**MKM BEVERLEY**

SWINEMOOR LANE, EAST YORKSHIRE HU17 0JX

01482 880 088 | [mkmb.co.uk](http://mkmb.co.uk)

  OPEN Mon-Fri 7:30-5:30 Sat 7:30-noon





**RACECOURSE**  
BEVERLEY

**SPARKLE  
NIGHTS**

# Christmas Parties 2017

**We are delighted to present the return of our  
hugely popular Sparkle Nights for Christmas 2017.**

The most Christmassy of Christmas parties.

Enjoy a seasonal feast in the beautiful twinkly Attraction  
Restaurant followed by a highly competitive Christmas quiz,  
as tables go head-to-head to win the mystery prize.

Our DJ will then keep you dancing right through to 1am!

**If you're looking for the perfect feel good  
Christmas, this is the one for you!**

Thursday  
**14 December**

Friday  
**1, 8, 15, 22 December**

Saturday  
**2, 9, 16 December**

**£37.50** per person

To book, call Sarah on **01482 867488**  
**beverley-racecourse.co.uk**