

just

ISSUE 77

BEVERLEY

IT'S YOUR MAGAZINE

FREE

NEW MAYOR LOOKS TO THE FUTURE

NEWS, WHAT'S ON, LIFESTYLE, FEATURES, PUZZLES, PHOTOS & MORE

The National Minimum Wage has Increased...

Are you prepared?



Are you:

- Making the Correct Pension Contributions?
 - Aware of the Minimum Wage Rates?
- On top of the Statutory Sick and Maternity Pay Rates?
 - Making the most of your Payslips?

**Improve business performance
by outsourcing payroll**

To arrange a **FREE** meeting
call us on 0845 308 2288
or visit www.stipendia.org.uk

6/7 NEW MAYOR LOOKS TO THE FUTURE



4 COMMUNITY BOOK PLEDGE



9 PARKWAY CINEMA OPEN



10 BROOK TAVERNER



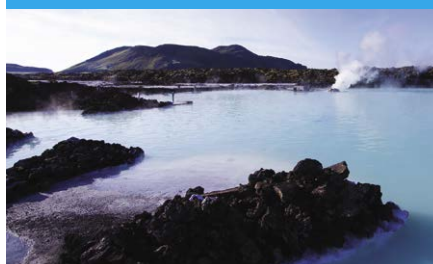
14 CRAFTY COFFEE



18 WHITE RABBIT



30 TRAVEL COUNSELLORS



Contributors:

Julian Minshall, Olivia Peace, Rich Manville, Lynne Auton, Malcolm Brooks, Carfan, Jane Dale, Jack Dickerty, Ed Hawkes, Rich Hayes, Suzanne Mathers, Amanda McConnell, Lewis Northen, Colin Raynor, Ian Richardson, Sam Walton, Clint Wastling and Nathan Wilson.

REMEMBER! If you see examples of anti-social behaviour or other types of low-level crime, do report it to the appropriate authorities. **POLICE - Emergency 999, Non-urgent 101. ANTI-SOCIAL BEHAVIOUR (East Riding of Yorkshire Council) - 01482 393939.**

Magazine available from outlets in Beverley and surrounding areas.



Please pass your Just Beverley on or recycle it responsibly.
Printed by: Jadan Press.

JUNE LETTER FROM THE EDITORS



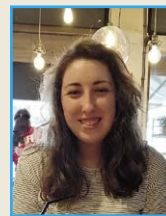
June is always a time when people start to look forward to the summer holidays ahead, and this year is no different.

As we start to come to terms with the easing of lockdown and how it has affected everything we do, a holiday is now high on most people's agenda. Health and welfare is high on everyone's priority. It is important that we continue to work together and help each other as best we can.

We are all looking forward to 21st June when more hospitality venues are to open and restrictions hopefully will be lifted. Patience is key as we look forward to fans being allowed back into sporting events and festivals, along with audiences at theatres and other entertainment venues, so this summer should be special for many reasons. We can enjoy the longest day, celebrate the Queen's birthday and ponder what to get Dads for Father's Day.

With a good summer ahead, enjoy the local walks and access to the countryside and scenery around us, and find time to explore and enjoy what you have.

Julian.



Happy June readers! It's finally summer time and after the miserable skies and rainy weather of May, I sure am ready for a sunny month ahead.

There's lots to look forward to in June, which means lots of reasons to smile. Here are some of mine - the long summer days and nights, and sitting outside in the garden until late right next to the chiminea; reaching the longest day of the whole year which means I can have a guilt-free lie in on the weekends but still have a lot of daylight left to do something with; and ice cream. Although let's be real, I don't have to wait until summer to have one of those! What's making you smile this month?

If things go to plan, we should be even closer to normality this month with more businesses reopening.

No doubt everyone is looking forward to things going back to how they were, but let's be sensible and stay safe so that they can. Enjoy the issue.
Olivia.

GET IN TOUCH WITH US:

Website: justbeverley.co.uk
Email: info@justbeverley.co.uk
Telephone: 01482 679947
Twitter: @JustBeverley
Facebook: [facebook.com/justbeverley](https://www.facebook.com/justbeverley)

If you would like copies for your business to distribute to staff and customers, call Just Beverley on 01482 679947.

COMMUNITY BOOK PLEDGE - OFFERING LOCAL FAMILIES THE OPPORTUNITY TO READ...

Launched by local business owner Sally Ann Reña of Tiki Cafe at Ings Lane Garden Centre, the Community Book Pledge offers a way of donating books to local families who are in crisis or struggling in our area.

Books and reading are so important in any child's development. It has been proven that just 10 minutes of reading a day can help improve a child's future, something that can easily be taken for granted. Some of you are likely to know Sally Ann from her days at Armstrong's Club where she managed for a number of years, and has worked and lived in Beverley for most of her life. The last year has been tough on many, including Sally Ann, but she used her free time with her business closed to become an Independent Usborne Organiser selling children's books and has proved to be a real lifeline. It is now coming up to her 1st year with Usborne and she wants to give something back to her local community.



Sally Ann will be working alongside The Cherry Tree Centre and East Yorkshire Food Bank on this project as she looks to raise as many pledges as possible to provide children in our area with their own selection of books. Even if it is just one book each, it will make huge difference.



Kate Leaf from East Yorkshire foodbank said: "We were delighted when Sally Ann came to us with the Book Pledge project. We continue to see large numbers of families in crisis in our area, unable to afford food and the basics. Working together with Sally Ann and the Cherry Tree Centre, we hope to reach as many children as possible just in time for the summer holidays."

Here's how can you get involved:

The Community Book Pledge will run for the month of June and we are looking for businesses and individuals that would like to pledge a donation to buy a book or selection of books to be then distributed by the Cherry Tree Centre and the Foodbank teams to local families.

Below are some examples of the books you could pledge:

- Mini book - £3.99.
- Sticker or activity book - £5.99.
- Jigsaw & book - £9.99.
- Lift the flap knowledge books - £9.99.
- Children's encyclopaedia - £12.99.
- Dictionary/thesaurus - £9.99.
- 100 things to know set - £19.95 (5 books).
- Reading libraries - £39.99 (40-50 books).

Sally Ann will also be topping up the fund by 25% to buy more books for the project. Sally Ann said: "I have been an Usborne organiser for coming up to a year now and it helped me get through a difficult time. It had a really positive impact not just on myself but my two young boys, who have embraced reading and now love to read."

"I love Beverley and the community, and I want to share this experience to hopefully pass on the love of reading with these wonderful books to as many children as possible."

How to donate or pledge a book:

To donate or pledge a book, please call Sally Ann on **07855 830685**, email **sallyannrena@gmail.com**, or take a visit to the cafe and donate in person at Ings Lane Garden Centre, Dunswell, the Tiki Cafe.

JOB OPPORTUNITY - HUBY GROWTH CONTINUES

Huby Domestic Appliances, repairers of domestic appliances such as washing machines, dishwashers, ovens and hobs are continuing to grow and we are now looking to add to our existing office-based team.

The business has seen a significant increase in the number of jobs being undertaken in recent months and has already recruited 2 new engineers and appointed a new Technical Support Manager to support this growth. We are seeking to recruit a full time Office Administrator operating from our offices in Beckview Road in Beverley.

Job Description

The role will be to assist and maintain our high levels of customer service with the main tasks to include answering the phones on a daily basis, contacting our customers, contacting our work providers and liaising with our team of engineers in order to plan and maintain our present and future workloads.

The Ideal Candidate

Our ideal candidate will be enthusiastic with an excellent and understanding telephone manner. You will continually strive to improve customer service and be able to communicate clearly and confidentially on the telephone. You will work well as part of a team but also capable of working under your own initiative too. Strong IT and typing skills are also essential.

Main Duties

Communicate with customers, clients and engineers in order to maintain our high levels of customer service. Uploading of jobs into our existing IT system on a daily basis. Prepare and process engineers workloads and calls on a daily basis. In return the company will provide a competitive salary, pension scheme, 20 days annual leave and a positive working environment.

HUBY™

Covering Hull, Beverley, Pockington, Driffield and all the local villages



BOOK ONLINE

and **SAVE**
at
hubys.co.uk

Book in advance and save money.
The further you book in advance
the more you could save...



For service and repair call: **01482 866660**

DOMESTIC REVERSE CHARGE VAT FOR THE CIS COMMUNITY

This is a new rule, effective from 1st March 2021, affecting all VAT registered businesses in the construction industry who operate under CIS, whether normal CIS Status or Gross Status. This impacts most businesses in the category, whether they suffer CIS or deduct CIS from contractors.

This change in rules is being introduced by HMRC to close an apparent fraud, which HMRC believes is large amounts of VAT being charged by businesses but never paid over to HMRC.

The new rules mean that anyone operating under the CIS system that makes supplies of services to other businesses in the chain of contractors are now charged with effectively 0% VAT. Under these rules, the main customer is the one who accounts for the VAT, not all the individual businesses in the chain. VAT is only charged at the standard rate, 20%, to the final user in the chain, or the deemed final user.



The impact on your business maybe a positive one in the long run, but initially the short term cash flow of a supplier will be impacted as they are no longer receiving the VAT on initial payment.

However, the customer will have the benefit of not having to pay out the VAT on each invoice before the returns are submitted. In the long term, this should remove the large VAT bills some businesses dread as they have used the cash available as cash flow, and VAT returns may now become regular repayments rather than payments to HMRC.

Ways to manage this change include making sure you understand where your customer sits in the chain of the project.

Incorrect VAT treatment on invoices may be rejected by the customer, meaning invoices reissued could have delayed payment, impacting cash flow further.

To help with the correct details on the invoice, software such as Xero or Quickbooks could be used. These will ensure the correct information is on the invoice as long as the correct VAT rate is selected, and also helps you manage the CIS making these returns easier.

They will further ensure all the accounting entries are correct on VAT returns, and filing with MTD is compliant. This could be a good time to review your accounting system and how this could be improved to make your accounting processes easier.

For further information on either the new domestic reverse charge, CIS, or how software could help your business, contact Lynne Auton at Finnies Accountants on **01482 861919**, where we will be happy to meet you and discuss how we can help.

PIRI PIRI CHICKEN RESTAURANT OPENS

A new Piri Piri restaurant has opened in Beverley, offering a Portuguese dining experience.

Based on Butcher Row in Beverley, Piri Piri Chicken Grill Restaurant and Takeaway offers customers a full chicken Piri Piri menu, along with drinks and cocktails.



It specialises in succulent, grilled chicken pre-marinated in the delicious Piri Piri chilli sauce containing a mix of fresh herbs and spices for a taste sensation.

The restaurant seats up to 26 people inside and 8 people outside at a time, and also accepts walk-ins.

Why not add a little spice to dining out in Beverley? Piri Piri Chicken Grill is open Tuesday to Sunday 11.30am - 12.00pm.

You can book a table via the website at www.piripirichickenbeverley.co.uk



The New Piri Piri Chicken Restaurant and Grill is Now Open at 1 Butcher Row, Beverley, East Yorkshire.

**web: www.piripirichickenbeverley.co.uk
email: hello@piripirichickenbeverley.co.uk
or phone 01482 862 053**

Open Tuesday to Sunday 11.30am to 12pm




kitchenhaus

The Largest Manufacturer of Quality German Kitchens

At Kutchenhaus we have affordable solutions made to meet your highest standards

2 Toll Gavel, Beverley, HU17 9AJ. T: 01482 862172.
Open: Mon-Sat: 10am-5pm. Sun: 11am-3pm. Bank Holidays: 10am-4pm.



NEW MAYOR LOOKS TO THE FUTURE



Following on from 2020, history was made when Cllr Linda Johnson was elected as Mayor.

Linda is the first Madam Mayor to be elected during a virtual meeting, with the council making the most of today's technology and ready to accept the change that has been made necessary over the last 12 months.

The ceremony was conducted online with councillors electing their new mayor from their own homes due to the restrictions in place. Linda announced her consort for the year is her husband Graham Johnson.

Cllr Linda Johnson was previously elected to serve as Deputy Mayor, with her husband, Graham, as her consort last year, working alongside Beverley's youngest Mayor, Cllr Tom Astell.

Now, as a reverse of the previous year, Cllr Tom Astell has been elected as Deputy Mayor to support Linda when required.

Linda has been involved in the local community for many years, taking experience from her roles as a Circuit Steward of the Beverley Methodist Churches (she worships at Toll Gavel Church), Governor at East Riding College and as a volunteer in many local groups. She has always offered support when she can.

As Mayor of Beverley, Cllr Linda Johnson addressed fellow councillors and the watching virtual attendees, saying: "Thank you, fellow Councillors for electing me as your Chairman of the Council and bestowing on me the title of Mayor of Beverley for the next year. I've been visiting Beverley since I was a youngster; it's where I aspired to live. I moved to the area 32 years ago and now I've been made Beverley's First Citizen, it's more than a dream come true; I am truly privileged".

Linda is the 418th Mayor of Beverley, and only the 13th woman to hold the position. The first Mayor of Beverley was installed in 1573, and so the role brings with it 448 years of history.

The new Mayor of Beverley is keen to make a difference by building on community spirit and to promote the intention of Beverley Town Council's new logo, 'working as a community'.

Taking the positives from the last 12 months, Linda believes Beverley has become more connected than ever. People from all walks of life have put themselves out for others in so many different ways, by volunteering, donating, and caring.

The new Mayor hopes to continue with this sense of community and wants the Town Council to support some of the community responses with practical and monetary



Beverley and its neighbouring parishes of Molescroft and Woodmansey litter-free and is co-ordinated using social media by Chairman, Paul Coe and Vice-chairman, Lynne Smith.

Beverley Town Council has recently donated litter pickers and the tow organisations have plans for recycling initiatives in the town. The Mayor hopes that The Wombles will become Official Partners very soon.

The new Mayor has not announced a 'pet' charity to support but aims to help charities working with people who are struggling because of their current situation or because of the disabilities they live with.

She said: "I am passionate about ensuring we live in a caring society where everyone is considered as important as the next person. Any fundraising I support will be in partnership with charities meeting this criteria and the money raise will go straight to them. I've already had two approaches and more are welcome. Please contact the Mayor's Office at Beverley Town Council admin@beverley.gov.uk."



donations. Cllr Johnson emphasised: "I want the council to build on that community spirit by becoming partners with community groups so we can work together. As they say, two heads are better than one and many hands make light work!

"I'd like to announce that such potential partners can apply for cash or other support up to the value of £3,000/year from the Town Council, guaranteed for up to 3 years, depending on the agreed criteria being met

when the partnership is formed. The paperwork to apply for partnership status is now on the Town Council's website, along with the terms and conditions, and we hope that many organisations in the town will want to explore this initiative.

"There is no restriction on the type of organisation applying, as long as they are within the scope of types of organisations which can be supported with public money, and they are properly constituted".



The Town Council already supports many groups with its grants system.

The Wombles of Beverley do a great job in keeping

The new Mayor of Beverley is also a councillor for St Mary's Ward on the East Riding of Yorkshire Council.

Working in both roles sometimes means she can get things sorted out sooner rather than later - like getting permission for roadside planting and flower tower siting.

She is keen to promote areas of the town which sometimes get neglected and will work to ensure everyone can enjoy this beautiful town which has such an incredible history with more history boards, more outdoor seating, year-round lighting of interesting features and more initiatives to make Beverley cleaner and greener.

FLEMINGATE

BEVERLEY

FASHION | FOOD | FILM | FUN



SAY
HELLO TO



FLEMINGATE



It's
great to
have you
back!



FUN, FOOD AND SHOPPING FOR ALL THE FAMILY

FLEMINGATE.CO.UK



@FlemingateBev



FlemingateBev



FlemingateBeverley



EVERY THURSDAY
(Doors open 10am)

Join us for a free brew and enjoy some great films on Beverley Parkway's Big Screen. Only £4.50 with drink and biscuits included. Aimed at 55s & over. Films subject to change.

Thursday 3rd June -

The Little Things (15) - 10.45am

Director: John Lee Hancock
Starring: Denzel Washington, Rami Malek, Jared Leto

Pixie (15) - 10.30am

Director: Barnaby Thompson
Starring: Olivia Cooke, Colm Meaney

Thursday 10th June -

Pixie (15) - 10.45am

Director: Barnaby Thompson
Starring: Olivia Cooke, Colm Meaney

The Dig (12a) - 10.30am

Director: Simon Stone
Starring: Carey Mulligan, Ralph Fiennes, Lily James

Thursday 17th June -

The Dig (12a) - 10.45am

Director: Simon Stone
Starring: Carey Mulligan, Ralph Fiennes, Lily James

Honest Thief (15) - 10.30am

Director: Mark Williams
Starring: Liam Neeson, Kate Walsh

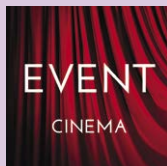
Thursday 24th June -

Honest Thief (15) - 10.45am

Director: Mark Williams
Starring: Liam Neeson, Kate Walsh

The Mauritanian (15) - 10.30am

Director: Kevin Macdonald
Starring: Jodie Foster, Tahar Rahim



Event cinema offers something a little different to mainstream films. Live and pre-recorded shows beamed in via satellite from all over the world. Here are the latest live streams that you can enjoy on the big screen at Parkway Beverley.

Thursday 1st and Sunday 4th July -
MICHAEL BALL AND ALFIE BOE
TOGETHER AGAIN

These are the films scheduled to open in June - **all are subject to change.**
Check out up-to-date cinema listings at www.justbeverley.co.uk/cinema-times



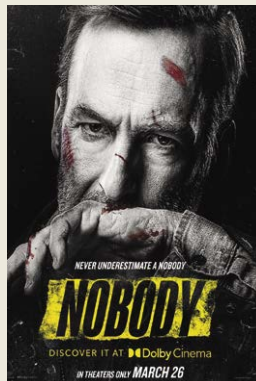
3rd June



4th June



4th June



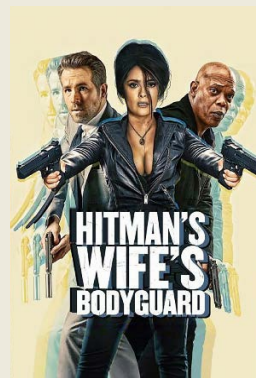
9th June



11th June



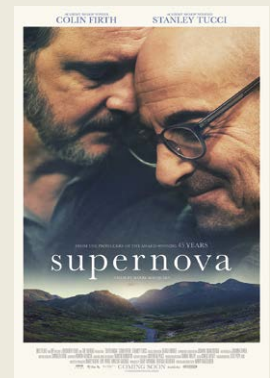
18th June



21st June



23rd June



25th June



25th June

We've spent a lot of time and effort making sure we're ready to give you a warm welcome in the safest possible way. Some parts of your visit might be a little different, but our brilliant staff and updated procedures will make sure it's still a great cinema experience.

Face coverings must be worn when entering, leaving and moving around inside the cinema. Social distancing will be in place across the whole cinema.

We have introduced enhanced cleaning for all high touch points in the cinema, and there will be plenty of hand sanitiser stations for customers and employees. We will accept cash, but encourage contactless payments wherever possible.

BROOK TAVERNER - THE START OF SUMMER

We at 35 Toll Gavel are more eager than ever for the return of blue skies and the sun on our faces.

With what has been an underwhelming month for weather, we've had to daydream about rising temperatures instead of getting to experience it first-hand! It's been a pleasure to see so many customers returning to the store since April, and we've valued hearing your thoughts on our latest spring/summer collection immensely. We in store have been touched by the support for small, local businesses during what has been an immeasurably difficult and unprecedented time.

We're all excited for the opening up of events, gatherings and restaurants in the coming weeks. Tickets have gone on sale for Beverley racecourse, and we're itching to put together some stand-out ensembles to look our best at the races!

Occasionwear like the Leeds linen jacket in blue are sure to make a sartorial statement this summer. Its 100% cool and breathable linen



composition makes it ideal for a sunny day at the racecourse, with its characterful lining making it a unique must-have. Paired with the stone Ashdown chino, this seasonal ensemble is sure to go down a storm!

If the weather proves to be slightly breezier than anticipated, you can always choose a weightier garment like the Fountains Sage Tweed Jacket. Its check pattern oozes subtle refinement, making it unique but not too loud with the way it goes about it. Pair it with a navy chambray shirt and some smart cotton chinos to nail smart-casual race day attire.



With restrictions loosening, you may be thinking of getting away in the coming months. Our team members in store have

already begun to notice some customer favourites for travelling this summer... The Overton polo collection for example; In shades like strawberry, coral and gold, the collection's colour palette inspires thoughts of long summer days bursting with vibrant colour. Made from 100% cotton, they'll keep you cool and comfortable wherever you happen to roam during the height of summer. For the deluge of postponed weddings and parties you're likely to be invited to this season, you may need to update your events wardrobe! Fortunately, we have the goods to ensure you'll be



stylish and comfortable for whatever the summer has to throw at you.

The Clifford Donegal Three Piece Suit's heathered effect of its homespun weave adds texture and depth to what is a beautifully tailored wardrobe staple. It walks the line elegantly between standing out, while not taking attention away from the bride, groom or guest of honour. Pair it with one of our business casual floral shirts for a pop of colour and personality!

Lee and the team forward to seeing you all in store to discuss our collection further, and we at Brook Taverner hope you have a safe and enjoyable start to the summer!

**Warmest regards,
The Brook Taverner Team.**

NOW OPEN
Following
Government Guidelines

www.brooktaverner.co.uk

BROOK TAVERNER
35, TOLL GAVEL, BEVERLEY. 01482 882356

LEWIS NORTHEN - THINKING AHEAD AND MAKING MEMORIES THAT LAST

Always a difficult topic to discuss, yet perhaps one of the most important, is how to ensure a loved one has the send off they deserve.

Lewis Northen Funeral Directors can help every step of the way, assisting people in pre arranging their own funeral so they can ensure their wishes are documented, fully planned and tailored to their own personal wishes and beliefs.

As an independent family business that gives a personal touch to funeral services in and around Beverley, Lewis Northen Funeral Directors have a special way of being able to think ahead. They offer a comprehensive range of funerals, organising prearranged funeral services or fulfilling the clients last wishes at the most difficult of times. Following the death of a loved one, most people like to have something that they can be remembered by.



Lewis Northen now provides memorial jewellery, which has been quite a popular choice for many families.

Having jewellery made from a small part of the ashes, a fingerprint, or hair has provided great comfort for the loved ones. They also work closely with a local seamstress, and so can offer families keepsakes such as Memorial Teddies with patchwork of your loved ones clothing.



Lewis Northen Funeral Directors, Beverley, are reminding families that the following crematoriums will be able to accommodate the following number of mourners:

- The Haltemprice Crematorium, Willerby - 40 mourners.
- Chanterlands Crematorium (Large Chapel) - 50 mourners.
- The East Riding Crematorium, Octon - 70 mourners.

Face masks will still be mandatory while inside the crematorium, and social distancing guidelines still need to be followed.

The limit on the number of mourners allowed at funerals will remain restricted until the social distancing measures are no longer being advised by the government. Lewis Northen Funeral Directors will give an update on local churches when they have the information.

Contact Lewis Northen Funeral Directors on **01482 888 658**.

LEWIS NORTHEN
FUNERAL DIRECTORS

LN

MY FAMILY TAKING
CARE OF YOURS



1 Lincoln Way, Beverley HU17 8RH

T: 01482 888 658

E: info@lewisnorthenfuneraldirectors.co.uk

W: www.lewisnorthenfuneraldirectors.co.uk

UK ON TRACK TO COME OUT OF LOCKDOWN

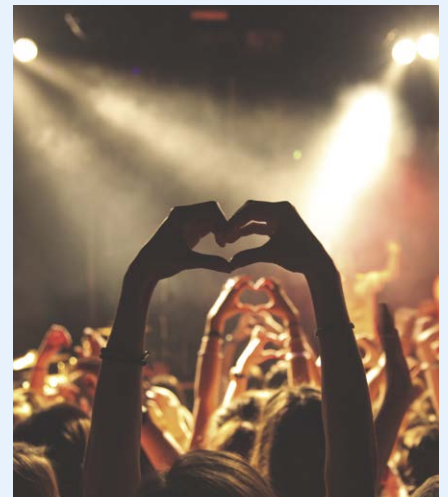
As things stand, the UK is on track to come out of lockdown by June 21 in accordance with the government's four-step plan, if strict conditions have been met.

By step 4, which will take place no earlier than June 21, the UK is hoped to be in a position to remove all legal limits on social contact. This means that any remaining premises currently closed will reopen, which includes nightclubs, and the restrictions on large events and performances that were applied in Step 3 will be eased. This is still subject to any change.

While this brings new hope of returning to normality, it is still important to remember Covid-19 remains part of our lives.

We should continue meeting outdoors when we can, keep letting the fresh air in, and enjoying being out in nature for our health and wellbeing.

It will also still be necessary to get tested when needed and get vaccinated when offered. If we all continue to play our part in the national recovery from Covid-19, we will be that bit closer to normality.



HOW CAN FLIPBOOKS BENEFIT YOUR BUSINESS?

Does your business print magazines, brochures, e-books, catalogs, user guides or reports? We can help you reach a wider audience through flipbooks, which offer a way of turning content from brochures or magazines into interactive flippable books customers can access online without needing any additional software.

Elegant, embeddable, professional flipbooks will give your customers the best viewing experience as flipbooks take on the illusion of flipping the pages of a book.



They can be used to create a sophisticated, glossy and dynamic website experience that is interactive and engaging for viewers.

Flipbooks increase engagement on all devices with a pixel perfect look that integrates seamlessly into websites and social media, leading to an increase in digital sales.

The familiarity of page turning means users will have increased engagement with your content and are more likely to click links which leads to conversions.

If your business is ready to reach a wider audience, flipbooks might be your answer. Call Indicoll on **01482 871178** to find out how we can help your business generate valuable sales from flipbooks.

IT'S TRADITIONAL, AFTERNOON TEA AT THE TIGER INN

Easing lockdown means many things to many people, but there's nothing better than a good old afternoon tea at a traditional public house, or an afternoon tea with a twist.

The Tiger Inn has been well renowned for their afternoon teas, with lockdown previously putting a stop to this good old english tradition, but not for much longer.



Allen at the Tiger Inn is keen to ensure things get back to normal sooner than later without jeopardising people's safety, so he has now put afternoon tea back on the menu. The Tiger has served up afternoon tea for many years and its popularity never seems to go away, such is the popularity that afternoon tea is on most menus, but what about something a little different?

Everything at the Tiger Inn is made fresh to serve to the table and you have a choice of sandwiches, savouries, desserts and of course a selection of teas. If you want something extra, why not add a little fizz to your tea? Now the doors are open as lockdown is easing, prepare yourself for a traditional afternoon at a traditional public house and enjoy an afternoon tea at the Tiger Inn.



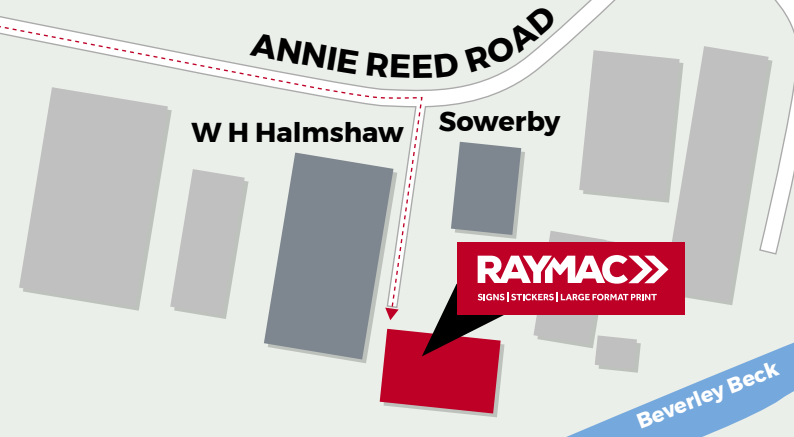
RAYMAC

SIGNS | STICKERS | LARGE FORMAT PRINT

30 YEARS IN BUSINESS

NOW IN BEVERLEY

FREE DESIGN SERVICE



SIGNS | STICKERS | LARGE FORMAT PRINT

PRODUCING QUALITY SAFETY SIGNAGE FOR OVER 30 YEARS



OPENING TIMES

MON – FRI 9AM UNTIL 5PM

Unit 2, Becksid Court, Annie Reed Road, Beverley

CUSTOM SIGNS MADE TO ORDER

6ft x 2ft vinyl banners
RAYMAC

- ✓ FREE DESIGN
- ✓ MARCH MADNESS

ONLY £39
inc VAT



VINYL BANNERS

SWING SIGNS

OPEN TO TRADE AND PUBLIC

Call: 01653 600015 | Email: sales@raymac.co.uk | raymac.co.uk

Unit 2, Becksid Court, Annie Reed Road, Beverley, East Yorkshire HU17 0LF

TIME FOR A CRAFTY COFFEE

9 years ago, Kim Prescott decided to marry her two passions, crafting and coffee, together - and the Crafty Coffee Shop was born.

A place where knitters could natter over a latte, crocheters could compare over cuppa and sewers can thread over a shortbread.

Hornsea has been the home of Crafty Coffee for 8 years, but the opportunity to expand to Beverley was too good to miss. Kim thought Beverley, a crafting town, deserved a dedicated haberdashery to help fulfil the ambitions of its craft enthusiast residents.

Over the past year, many people have turned to crafting to break the monotony of a national



lockdown, bringing a new diverse wave of crafters as a result.

The Crafty Coffee Shop has since tried to cater to all crafting needs, including sewing accessories, fabrics, items and patterns for knitting and crochet, motifs and patches, huge selection of wool and much more.

The café side of the business is looking to bring the crafting community together, with its helpful and friendly staff serving a variety of quality coffees, cakes and food.



It's the perfect place if you're looking for something small such as afternoon tea, scones and a teacake, or if you're looking for more substantial options, including a multitude of hot paninis, oven-baked jacket potatoes and sandwiches accompanied with salad and homemade coleslaw.



Those with a sweet tooth can indulge in a glutony of cakes, Mr Moo's ice cream or deluxe milkshakes. All of these selections have gluten free options available.

Kim said: "Once restrictions are lifted, we want to welcome the crafters of Beverley to build a welcoming community for all ages together at dedicated "knit and natter" sessions, a variety of craft classes and kid's craft afternoons."

"Thank you for staying with us in this difficult time, opening a hospitality business in 2020 has been extremely challenging but it has been a pleasure to become part of the Beverley community".

PETER RABBIT VISITS FLEMINGATE!

The easing of lockdown has seen visitors enjoy returning to Flemingate. May 17 saw leisure and entertainment being able to reopen, with Parkway Cinema and Inflata Nation reopening their doors. Cafés, restaurants and bars also welcomed people back inside.

Flemingate hosted fun family activities to celebrate the Peter Rabbit 2 film being released at Parkway Cinema.

The first event since lockdown saw Peter Rabbit make a special visit to say hello to both young and old. It was wonderful to hear the tales the children had to tell him.



Children's colouring competitions were given out and a Vegetable Hunt took place around Flemingate, with 16 vegetables to find. Families also had to look for the vegetable that Peter had half eaten!

The competition forms are available to pick up

at Flemingate and run until the 7th of June and the winners will be announced shortly afterwards. Flemingate are looking forward to the return of more events over the summer.

Four Generations, Giving Over 125 Years Service

Herbert 1870-1962	Eardley 1908-1986	Geoffrey 1939-2015	David 1964
----------------------	----------------------	-----------------------	---------------



Golden Charter
Funeral Plans



- Funerals Respectfully Conducted
- 24 Hour Out of Hours Service
- Free Advice & Support
- Private Restrooms
- Prepaid Funeral Plans Available
- Finance Options Available



Tel: 01482 844695
www.hkempandsonltd.com

259 Hallgate, Cottingham, East Yorkshire, HU16 4BG
Fax: 01482 843898
Email: hkempandsonltd@gmail.com

GAMES TO PLAY IN THE GARDEN OR PARK THIS SUMMER

While the UK is easing out of lockdown measures and the final group of premises all over the country are starting to reopen again, it is still as important as ever to embrace the outdoors and encourage children to fully utilise the time to be outdoors.

Do you and your family need a break from your screens but aren't used to spending extra time outdoors? Here are some fun, family friendly outdoor games you can play in a garden or park.

Outdoor 3 in 1: Tennis, Catch and Flying Disc

These outdoor games can usually be found in bundle packs in supermarkets, corner shops and Amazon, and aren't expensive - yet they make for an instant barrel of laughs and fun. They are the perfect set of games for your garden or to bring to a park or beach as they are easy to play and encourage children to learn different skills. The game pack isn't heavy and doesn't take up much room in the car either.

Swingball

Perhaps best suited to a garden, Swingball is one of the most classic lawn games and definitely considered a family favourite. In fact, it grew even more in popularity and became a 'top lockdown toy' during the Covid-19 pandemic despite being invented over 50 years ago.

It was one of the best selling family outdoor toys, particularly last summer, and actually won Toy of the Year in the Outdoor category. It's a great, fun game to get everyone up on their feet, keep them engaged, and enjoying the fresh air all in the name of healthy competition.

Basketball hoop

Do you have a private drive or a shared drive with neighbours where you can drill a basketball hoop into the wall, or an area in your garden where you can put a pop up basketball ring?

Basketball is a great outdoor activity for the family, is easy to play, and easy to set up.



Card games

Perhaps your family doesn't enjoy sporty activities? Well there are plenty of card games to enjoy playing in the sunshine instead. Classic card games such as Clock, Patience, Go Fish, Pyramid and Rummy are sure to keep everyone entertained.

If your children enjoy other styles of strategic deck building card games, you could try Uno, or Pokémon and Yu-Gi-Oh cards which are collectible trading card games. All of these will be sure to keep the family entertained for hours.

WILL THE THREE LIONS BRING IT HOME?

In yet another unprecedented change in sport following the effects of Covid-19, the postponed 2020 European Championship begins this June, taking place in a number of countries across the continent. The tournament will still retain the name "UEFA Euro 2020".



Originally scheduled for June and July 2020, the football competition had to be postponed until 2021. The games will now take place between June 11 and July 11, with a total of 51 games including the group stage, which runs from June 11 to 23. Most days during this period will feature 3 games.

The competition was already making history as the first European Championship to be played under a new format with group games spread across several countries. It is expected to be a one-off occasion to mark the 60th anniversary of the European confederation. Now amidst a global pandemic, Euro 2020 will go down in history for more reasons than one.

The first match will still be between Italy and Turkey at the Stadio Olimpico in Rome. Over the course of the competition, two teams out of the 24 involved will ultimately make it all the way to the final on July 11, hosted in London at Wembley Stadium. Due to some Covid-19 restrictions still being in place, Wembley has initially confirmed a minimum capacity of 25 per cent, which is approximately 22,500 spectators, for all seven of its UEFA Euro 2020 matches, but this is subject to change.



The matches played at Wembley Stadium include England's 3 group games, 1 last-16 tie, the 2 semi-finals and the final.

The teams in the qualifying rounds are: Group A - Italy, Switzerland, Turkey and Wales; Group B - Belgium, Denmark, Finland and Russia; Group C - Austria, Netherlands, North Macedonia and Ukraine; Group D - Croatia, Czech Republic, England and Scotland; Group E - Poland, Slovakia, Spain and Sweden; Group F - France, Germany, Hungary and Portugal.

If you want to watch and support the team in the group stage, here are the times and dates you don't want to miss: Group D Sunday, June 13 - England vs Croatia (kick-off 2pm), Friday, June 18 - England vs Scotland (kick-off 8pm), and Tuesday, June 22 - Czech Republic vs England (kick-off 8pm). The top two in each group qualify to the knock-out stage.

Whether you are watching from home, from your local pub, or from the seats in Wembley Stadium, UEFA Euro 2020 is hoping to bring football fans closer to elite football for an unforgettable experience. Let's get our flags and face paint out to get behind the Three Lions!

NATIONAL DAYS IN JUNE

Each month, more and more unique days are being created and celebrated, and June is no exception. Here are some of the fun, bizarre and informative days you can observe this month.

June 1 - Dare Day

The most challenging day... literally. Dare Day offers you the chance to challenge yourself, your friends and your family to anything. The dares can be anything, from silly and fun pranks to something more serious such as finally fulfilling a personal action you've been putting off. Just make sure any dares are safe!

June 8 - National Best Friend Day

Mainly recognised in America, this day is all about friendship. National Best Friend Day is all



about celebrating the people who are there for us at a moment's notice, the people we love, the people we laugh with, and those who support us through thick and thin. Make sure to let your best friends know how much they mean to you.

June 14 - 20 - Diabetes Week

Created by British charity group Diabetes UK,

Diabetes Week is a nationwide initiative with aims of raising awareness of all types of diabetes and raising money to help fund research into the condition. It is often celebrated by people with diabetes through a huge range of community events, challenges, races and walks and much more. If you don't have diabetes, why not do some research into the condition so you can learn best how to support your friends or family living with it.

21 June - National Selfie Day

In this day and age, you'd have to live under a rock to not have heard the term 'selfie', but it seems the term only became popular after 2003 when the first evidence of it being used was from a young drunk in a personal blog. Naturally, the day can be celebrated by taking and sharing a selfie!

INTO THE WOLDS, WALKING THE MINSTER WAY



Stage 2 - Bainton to Millington: 11 Miles.

This is an exceptionally lovely walk with the landscape becoming ever more splendid as your day, deep in the countryside, unfolds.

Well Dale

① Our walk resumes at handsome St. Andrew's church in Bainton. The village can be reached by buses from Beverley, but I walked the quiet lanes from Hutton Cranswick rail station.

Apart from being sliced in two by the busy road, the village is rather nice with many period buildings. From the church, head down the alley to the west and cross the A614 with care.

Go down Back Lane and West End; where the road bends the Minster Way heads across pleasant fields.

The area of pronounced earthworks of former structures is intriguing.

A dog-leg route leads to a clear farm track to the B1246 road as it enters North Dalton. You should use the wide verge on the right to proceed into this fine linear village. The former school and chapel are particularly attractive.

② There is a signed path on the left after 200 yards that loops you to the fine village pond, and you'll see the popular Star Inn seeming to float from its eastern flank.

Cross the road and detour to see

the church on its distinctive mound and attractive Norman doorways. The Way now heads steadily west, rising gently onto the Wolds. North Dalton

③ This is a fine route and very easy to follow; bear left for a few yards at the



HERE TO GET *you* THERE

HUNTERS[®]
EXCLUSIVE

BEVERLEY / 01482 861411

farm track and then quickly take a right as a long track heads west.

After a mile, go right to pass the buildings at Blanche Farm. The track continues to join the quiet road to Huggate. Ray Wallis, who devised this walk, does provide an alternative route out of North Dalton, but I think this original one this is better.

4 After 300 yards along the lane, a clearly signed path heads over the fields to the west. You could, if you wish, continue into Huggate, which now has a farm cafe as well as a pub for refreshments.

After an easy mile, our route continues across a lane and becomes very attractive as we pass above the stunning valleys of Keasey Dale and Well Dale. These are now open access areas and perfect for a picnic stop.

5 The Way continues across the road from stunningly sited Cobdale Cottage. Fabulous views unfold as we head into Nettle Dale, near here the eagle-eyed may catch the first glimpse of our ultimate destination: York Minster.

Our route joins the longer Wolds Way, then steeply descends on a switchback



into well-named Sylvan Dale. Here you may well see red kites soaring on the thermals.

The route out of the valley now rises steeply but the views are worth the effort.

Nettle Dale

6 Proceed along the ridge, and at 600 feet you are now at the high point of

the Way. After Warren Farm, a glorious panorama unfolds down to Millington village and across the Vale of York.

A signed path to the right leads you steeply down into the village, where the delights of the Ramblers' Rest cafe or the pub await.



We are now at the half way point of the 50 mile Way.

Perhaps some kind soul has arranged to meet you with a ride home or you can walk the pleasant 3 miles to Pocklington, as I did, to catch a bus back to Beverley.

Millington.

Ian Richardson - May 17th 2021.

SALES / LETTINGS / MANAGEMENT

HUNTERS[®]
HERE TO GET *you* THERE

BEVERLEY / 01482 861411

ASK THE EXPERT WITH WHITE RABBIT CHOCOLATIERS - TREATS FOR FATHER'S DAY



Father's Day is the last holiday in the Chocolate Year, and although it is the smallest peak in the diary of a chocolatier, it is important not to forget those dads with a sweet tooth.

Deciding we need something for the 'old man' is one thing, but "what would Dad like" is a totally different question, and one we get asked every year.



It's 2021 and the culture is changing, so we feel it is important not to lean too heavily on outdated stereotypes. When you think of a classic Father's Day gift, people tend to imagine one of a handful of things: football, tools and beer, so the temptation is to rehash these ideas year after year. Of course, we have tried this and I can tell you these things do sell, but at White Rabbit we always try to push the boat out and try new ideas.

We have looked at our own customers and how they tend to buy, so we have some top tips for those looking for chocolate for men - it is important to say that everybody is different with their own tastes, these are just patterns we have noticed. Men are not too different from women when it comes to chocolate, and all chocolate is suitable for a man. Even if you think it is too girly or fussy, there are not many blokes that refuse a taste of something sweet.

They do tend, however, to be drawn more towards dark chocolate, especially if it comes with a bit of extra information such as the origin (where the

chocolate was grown), the percentage of cocoa, the processes involved, etc.

At White Rabbit, our hand tempered chocolate bars are perfect for this. Each one is from a different location, processed by a different artisan, and comes with a little postcard with all the extra information to drop into conversation later on. They aren't big, but they are bars of some of the most exclusive chocolate in the UK.

Our big collaboration this year is with Great Newsome Brewery, sometimes you cannot get away from a little cliché! This fantastic local brewery is running a Father's Day competition to win some beer, and chocolate from us.

We are making chocolate beer bottles, using our edible printer to make a professional label, and filling with Beer & Butterscotch Chocolates made with Great Newsome's "Tyto Alba" Pale Ale! Keep an eye out on Facebook, give us and Great Newsome a follow and try your luck, or purchase one of these great bundles online.



**Ed Hawkes,
White Rabbit Chocolatiers.**

HISTORY OF FATHER'S DAY

Father's Day is celebrated in the UK on the third Sunday of every June, which falls on June 21 this year, but have you ever wondered why it is celebrated and where the notion came from?



The first recorded celebration of a Father's Day was in the USA on June 17, 1910, and was inspired by the presence of Mother's Day and how successful it had become.

However, the introduction of Father's Day wasn't quite met with the same excitement as Mother's Day, so it wasn't actually until 1972, 58 years after American President Woodrow Wilson made Mother's Day official, that the day honouring fathers became a nationwide holiday in the United States too.

Over time, Father's Day eventually did grow in popularity and the celebration transferred over to the UK and beyond where it has become commercialised and celebrated all over the globe.

During the 1920s and 1930s, Father's Day did face such opposition that a movement arose to scrap Mother's Day and Father's Day completely in favour of sharing a single holiday, Parents' Day.

People still campaign for this today for many reasons.

If you are celebrating Father's Day this year, there's still time to get your dad a gift. If you're stuck on what to get, popular choices include chocolates, ties, shirts, socks, a wallet, alcohol, personalised gift options and more which you can take inspiration from.

WHITE RABBIT
CHOCOLATIERS

HOP ON DOWN TO

WHITE RABBIT

— for handmade, quality treats —

A taste of wonderland...

16 Dyer Lane, Beverley, East Yorkshire, HU17 8AE
Tel: 01482 679325
Order online: www.whiterabbitchocolatiers.co.uk

COUNTRYSIDE MATTERS WITH SAM WALTON

I am often asked what farming is like in other countries, particularly those on the African Continent, but also in parts of Europe. Very different would be the answer, as you would expect.



I have abiding memories of a trip I was awarded through the Young Farmers Clubs movement when I was 21 along with a lad from Nottinghamshire, to what is now Zimbabwe but was then Southern Rhodesia, the bread basket of Africa. In those days, the exchange visits were usually to either America, Canada, Australia, New Zealand and some shorter ones to the continent, so this one was a new venture.



I remember having my 22nd birthday out there during the five-month trip from April until the end of August. It meant a voyage of 14 days from Southampton to Capetown, which in itself was an experience to see the flying fish alongside the ship,

calling for half a day on Madeira where we were allowed ashore to explore and being taken around in Ox drawn sleighs. I found that wine growing was an important industry to them, as it is now becoming here in the UK.

To get to Rhodesia by train from Capetown took from 5pm on the Thursday til 12 noon on the Saturday. On route we saw a lot of wildlife, crops of rice, maize and lots of other things I could not identify, along with ostriches running alongside the train. During the five month trip, we stayed with 30 different families who were all connected to farming, visited 100 different places including Victoria Falls, the enormous Wankie Game Reserve, saw how tobacco was grown and cured - including Turkish, which was cured by the sun, and Virginian, which was dried in huge kilns.



Rice and cotton were important

crops, and watermelons and other root crops were similar. It was the first time I had seen crops being irrigated and this was mostly by what they called flood irrigation where water went from one end of the field to another with a drop of one in a hundred down the rows. It was the first time I had ever seen or heard of avocados, which were absolutely delicious, there were oranges in abundance, pumpkins, and of course bananas, which were harvested whilst still green and sent to Beira on the East Coast where they came to the UK in ships travelling in Athelyne gas to preserve them.



People often say that the natives must have been badly treated, but on the contrary, the farmers actually built schools for the children of the

workers, paid for a teacher, and killed a bullock every week with which they fed the worker's families. They really were well looked after as the farms could not have operated without the staff, and particularly at that time in 1957, modern machinery had not yet been imported. How sad that all came to an end with the awful mess it is in today.

More next month.

I'VE BEEN THINKING... SAYS COLIN RAYNOR



I'm sure I am not the only one thinking, as this year moves on, of all the people who have been part of our living and sadly are no longer with us. I refer to public figures as well as more personal and private individuals.

Many will have succumbed in a short space of time to the Covid 19 virus but also others have died after years of illness. Because of the Covid restrictions it has not been possible to say farewell in the usual way with many friends and family gathering together.

At such times people have spoken of having memorial services when restrictions are lifted. I wonder how many will go down that road. A few years ago my wife and I travelled some 250 miles to attend a memorial service in memory of a friend who died suddenly aged 63.

Folks came from all over the country, and abroad, filling the village church in a way it had not seen for any years. It was a measure of the high esteem and love people, of all ages, had for our friend who literally was a giant of a man in every way.

A true gentleman he had a generosity of spirit and an enthusiasm for life that endeared him to everyone he met. He lived his life to the full both for his family and the local community treating everyone the same and always willing to give of himself and his time to help his fellow men and women. When the news of his sudden death became known in the village someone said 'it was as if a hush came over the place'.

Afterwards at the buffet lunch I heard it said 'He didn't want a heavy service because he wasn't a religious man'. I thought at the time how the word religious gets banded about from describing football mania to political fervour or climate change. I was a little disappointed to hear that statement but not surprised. People today seem to be almost afraid of acknowledging a belief in anything other than themselves.

The man who we had travelled to honour, and to pay our respects to his family, had a great belief in the goodness of his fellow men and women. He made it his life's work to do what he could to serve them in every way possible with energy and a genuine humbleness of spirit. People who have lost loved ones during these unprecedented times of the pandemic will of course make their own minds up about their need for a memorial gathering in either a secular or religious setting.

It was Ronald Regan, the film star who became America's 40th President for two terms between 1981 and 1989 who famously misquoted Shakespeare's Julius Caesar. The President declared 'the good that men do lives after them', and who would disagree with that statement. If a memorial service serves any purpose it should remind us, as the one we attended did, how a good man, or woman, can live their life in the service of others and thereby leave a legacy for others to learn from.

WHAT'S ON IN BEVERLEY

Stage4Beverley's "Summer Outing" is delighted to announce that for its Saturday night event on 19th June, it will be hosting a unique performance by members of Hull's charismatic and pioneering Waterson/Carthy family.

The performance is scheduled for Saturday 19th June at 7.30pm.

If you have Live Audience tickets, the doors open at 6.45pm at Toll Gavel United Church, Toll Gavel, Beverley, HU17 9AA.

You can get Live Audience tickets for £20 and Live Streamed tickets for £15 from www.stage4beverley.co.uk, or call **07780 376419** for more information.



The Live Streamed tickets can be accessed worldwide for a week following the event date.

SHORT STORY BY MALCOLM BROOKS - THE PERFECT MURDER



Greenway was the perfect house for a successful woman. It was ideally situated overlooking the River Dart in Devon. Originally Georgian, the house had had some Victorian additions. It was a beautiful white house with many windows.

As she settled into one of the window seats, she looked at the river scene before her. Unfortunately, the tranquillity of the River Dart did not reflect her mood. 'A view to die for' she thought, as she contemplated her next move.

She hated one man. He was a foreigner but that wasn't the only reason. He was a detestable, bombastic, tiresome little creature! She could not understand why he was so popular with other people.

She had first encountered him in 1920 at Styles on the Wentworth Estate. That was 50 years ago. At first, she tolerated him, sometimes appeased him, but as time went on she began to hate him and now was the time to end their relationship. The only way to do that was to kill him.

A voice interrupted her evil thoughts.

"Do you want a cup of tea, Nima?" It was her daughter, Rosalind.

Nima was a family name for her, born out of Rosalind's son's inability to pronounce 'nanna'.

"Yes please, darling."

"I'll get father one too."

Back to her thoughts. What would be the best way to kill off that despicable man? Poison is the murder choice of women but that seemed too obvious.

She was coming up to her 80th birthday in September, so using a knife or even a gun seemed out of the question. It had to be clean and undetectable. She knew that with a bit of female guile, she could do it. She had had some practice of this sort of thing as she had worked in a hospital dispensary during both World Wars.

By breakfast the next morning she had made up her mind, he had to die, there was no other possibility. Max, her husband, had given her breakfast in bed and he could be so sweet at times, particularly that time when she had broken her ankle in Athens.

His moustache was the only thing she liked about the man. She was pleased that she had convinced him to grow one.

She had spent all night thinking about it. Her plan was set. Her knowledge of medicines, like it or not, was her forte. It had to be poison!

She prepared the necessary ingredients during the day and contacted the people who she thought would agree to help her with the killing. He must die tomorrow otherwise it would be too late.

She knew she would be the target of hatred but she didn't care and she would have to face the consequences of her actions. They'll no doubt come for me, say nasty things about me, even hate me, but I couldn't let that man live any longer. The consequences were worth it. No way could she avoid them.

After the deed was done, she phoned her accomplice Mr Allen Lane and told him what he had to do. She knew it would be the press in the near future, so she had to warn him of the likely furore when the world discovered that the detective had been murdered. He had to make himself scarce, as did she. The headline duly arrived in all the papers, just as she expected. 'Agatha Christie latest novel 'Curtain' kills off Hercule Poirot!'

Malcolm Brooks lives in Beverley and is the author of the Eva Trilogy and the novels 'Waiting in Line' and 'Living with Certainty'.

POEM BY CLINT WASTLING - HORNSEA



*Walking the strand
with my feet in the sand
feeling the cold damp grains.
Looking for sea glass of various hues
frosted whites, greens, browns, rarer blues,
between chasing the waves and climbing the groyne's.*

*The glass I collect
isn't all broken bottles
but windows, vases, crystals that sparkle.
Buildings with sea views once clung to the
land,
bricks ground by tides, abraded by storms,
become sand.
When future generations walk on this
beach, what will be found?*

Clint Wastling is the author of Tyrants Rex, a fantasy story (Stairwell Books). His poetry collection Layers is available from Maytree Press.



BOOK REVIEW: THERE IS ONLY NOW - BY GLENN D. WEBSTER



A rich pick 'n' mix of thought-provoking and humorous contemporary poems and short stories with an anti-consumerism theme, assessing the human condition through eyes that have watched a society lose its innocence in the pursuit of technological advancement, There Is Only Now utilises a broad range of literary genres and writing styles to force readers to confront the question of whether or not the juice is truly worth the squeeze.



A snippet from the latest Amazon.com 5 STAR review of my book:
'...My partner and I began reading it separately, then together, and at last we took turns reading it aloud because the words were so delicious to recite and hear...'

"Great"	"Fantastic"	"Addictive"
"Magical"	"Hilarious"	"Cracking"
"Unbelievable"	"Outstanding"	"Amazing"
"Wonderful"		

Originally from Kingston Upon Hull, There Is Only Now is Glenn's first anthology, which as a writer and artist, now living in London, he not only wrote but also produced the book cover artwork for. As a proud Yorkshireman with strong family links to Beverley and Kingston Upon Hull, Glenn describes himself as being 'buried in my creative silo' working on numerous artistic projects in London, over the last twenty years. These projects include contemporary abstract artwork for sale to private clients and two documentary films.

His book, There Is Only Now, is his first and is largely based on his inspiration to capture 'real life' across its kaleidoscope of colours, focussing his creative work on reflecting the world he sees and has experienced.

'If art dramatizes the reality of the world, then words define it'
He is presently working on his next book.

There Is Only Now - ebook link:

www.amazon.co.uk/There-Only-Now-Glenn-Webster-ebook/dp/B085V99MP8

Paperback Link:

www.amazon.co.uk/There-Only-Now-Glenn-Webster/dp/1916366309

Hardcover Link:

www.amazon.co.uk/There-Only-Now-Glenn-Webster/dp/1916366325

Telephone: 01482 869111
sales@rosesofbeverley.karoo.co.uk



The Kitchen Factory, The Courtyard,
Tokenspire Business Park, Beverley
HU17 0TB

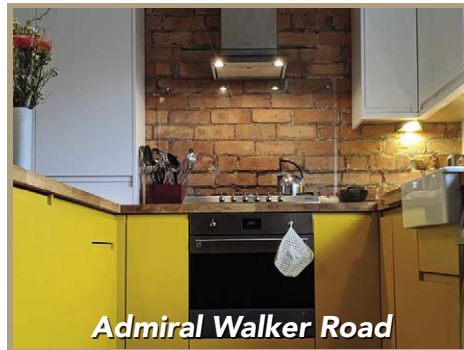
INSTALLING KITCHENS IN AND AROUND BEVERLEY FOR 20 YEARS

Our new showroom is now open

Monday to Friday 9am - 5pm
Saturday 9am - 1pm

Please call 01482 869111 to book a viewing

FACTORY TOURS | VISIT OUR PRE-INSTALLATION FACTORY | COOKERY DEMONSTRATIONS
BROWSE AROUND OUR UNIQUE DOOR LIBRARY | SEE OUR CLASSIC COMPILATIONS



Together we will design a beautiful kitchen

ROSES WILL THEN PROJECT MANAGE YOUR KITCHEN INSTALLATION FROM START TO FINISH



MANY MORE OF OUR CUSTOMERS KITCHENS ON OUR WEBSITE
5 STAR RATED OVER 39 GOOGLE REVIEWS ★★★★★

Visit www.roseskitchens.com
to see our customers kitchens and read what they have to say about us

Telephone: 01482 869111



MR CARPETS

CARPET AND FLOORING SPECIALISTS



TAKE A LOOK AT OUR QUALITY INSTALLATIONS

33 YEAR ANNIVERSARY

33 years in business

33 years of good, honest service

Check out our Facebook and Google reviews [f mrcarpetsbeverley](https://www.facebook.com/mrcarpetsbeverley)

01482 872134

3 Becks North, Beverley, HU17 OPR

FRANK STEPHENSON & SON FUNERAL DIRECTORS - DAISY MEMORY BEARS

Thank you very much to June at Daisy Interiors for coming forward to offer our families her 'Daisy Memory Bears'.

Each of the unique Bears are hand stitched with tender love by a time served seamstress at their local premises.

They can tailor each Bear to your exact requirements by adding hats, scarves, medals, jewellery or almost anything that triggers your special memories.



These bears can be made from most fabrics or items of clothing from saved garments of a passed love one.

They were worn with love.
Bears made with love.
Given with love.

A touchable huggable real life character that will be heirlooms passed to future generations.

Your special memories can live on.



Litho and Digital Print that gets you noticed

- BROCHURES LEAFLETS**
- POSTERS CALENDARS PADS**
- LARGE FORMAT PRINTING**
- STATIONERY MAGAZINES**
- SAFETY SIGNAGE BANNERS**
- VARIABLE DATA/MAILING**
- and much much more**



Jadan Press are a leading family run commercial and trade printer based in Hull. With over 20 years experience, we are renowned for producing exceptionally high quality print and finishing. We are committed to providing an excellent service by offering value for money and ensuring complete customer satisfaction.

01482 610902

info@jadan-press.co.uk

www.jadan-press.co.uk

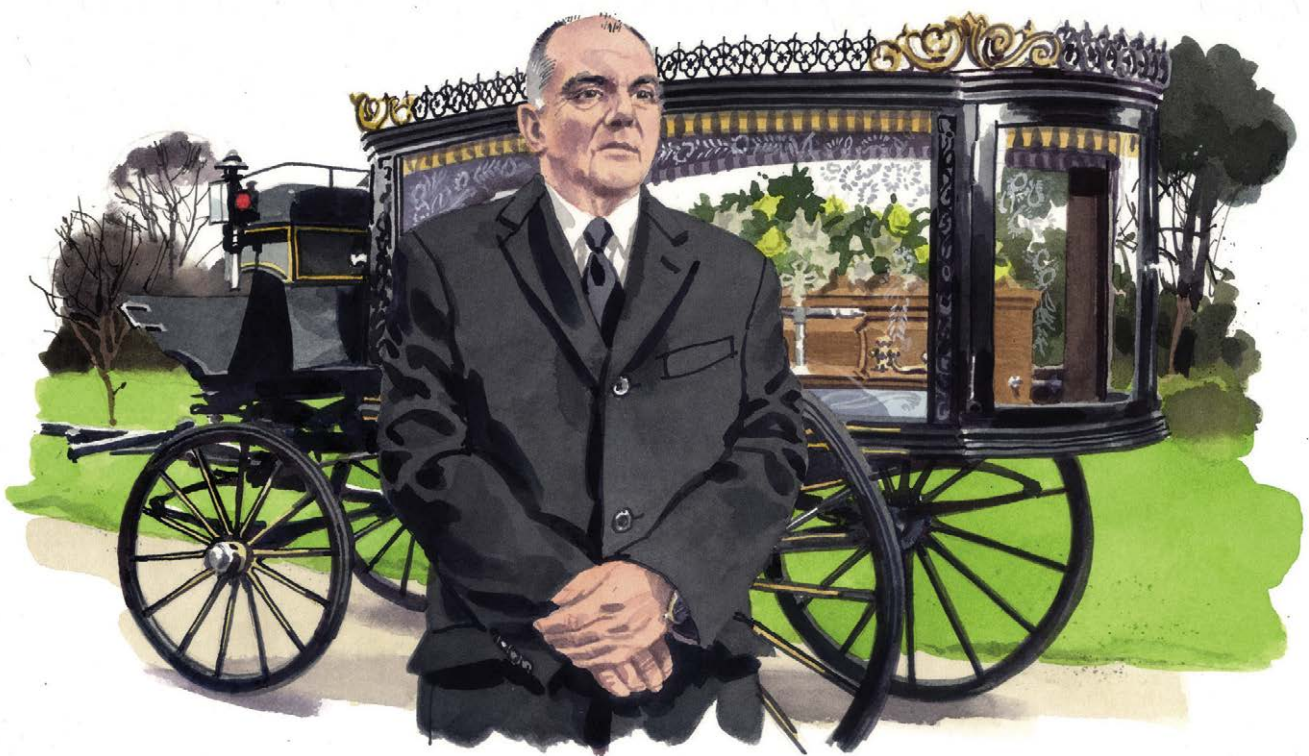
Rainbow House, Kimberley Street, Hull, HU3 1HH



Your Local Funeral Professionals

*Serving families in and around Beverley
for many years*

FRANK STEPHENSON & SON FUNERAL DIRECTORS
29 Minster Moorgate | HU17 8HP | 01482 881 367



WE'RE HERE FOR YOU ANYTIME

Whatever your funeral wishes and budget, we can provide a funeral to suit you. Prepaid funeral plans also available.

*We are very proud to be a Dignity Funeral Director,
providing a 5 star service to families across the U.K.*

www.dignityfunerals.co.uk/local

To find up to date news about our work in the community, please visit our Facebook page:

[f www.facebook.com/frankstephensonbeverley](https://www.facebook.com/frankstephensonbeverley)



CARFAN - LIVES A BEACH "BUGGY"!

A long time ago, some bright spark thought that it might be fun to build a car that was capable of being able to drive on sand, and hey presto, the beach buggy was born.

As we are coming out of lockdown and perhaps looking forward to a holiday on the beach, this car is the subject of this issue.

Readers of a certain age may well remember a beach buggy appearing in Banana Splits and The Monkees on television, and a lot of the versions that appeared are a variation on those themes. Unsurprisingly, it was an American in California, Bruce Meyers, who is credited with the first beach, or dune buggy as they are often known, based on a Volkswagen beetle chassis.

A lot of them are not registered for road use, so it would be wise to check this before purchase. This didn't stop the S.A.S. using one during the Gulf War and it doubtless increased their popularity.



Engine-wise they usually come with 1300 or 1600 c.c., but some brave souls have 3 litre V6s under the bonnet. One major plus with a car like this is the easy access for engine repair and maintenance due to its unusual design. This is a very specialised car and won't appeal to the vast majority of the population, but should you be in the market for one, you aren't exactly spoilt for choice and need to be prepared to pay up to around £10,000 and even more if you fancy a mint one. The main problem will be finding one you are happy with, plus of course the added expense of a trailer if it isn't road-legal.

So don't forget, should a beach buggy spray sand in your face as you are catching some rays, don't forget that cheery Carfan wave!

BEVERLEY MOTOR WORKS - PREPPING YOUR CAR FOR EUROPEAN TRAVEL



With summer on the way and restrictions on travel abroad being lifted, the last thing you want is to be driving your way to Europe, only to let a breakdown spoil your trip. Here's what you can do to help prepare your car for European travel this summer.

Free seasonal checks

At Beverley Motor Works, we offer free seasonal checks. There's no catch, it's a free service. We just want to give you the opportunity to experience our outstanding customer service and expert technicians who will thoroughly inspect your car to ensure it is ready for the change in season. Then they will make any recommendations as to work which may need carrying out. If you're going abroad on holiday, make sure to take advantage of our offer so you minimise the risk of breaking down.

Check the European driving laws

Make sure you know of and follow any European driving rules, including local speed limits and drink driving laws. You don't want to accidentally break the law and get a fine if you do not follow them properly. Check if you need extra equipment such as a GB sticker, headlight converter stickers, or emission stickers and permits like some European cities require - do your research ahead of your trip in case you need to buy these items well in advance of you driving in Europe. Don't forget to ensure you have insurance organised.



If you would like to book in for a free seasonal vehicle check in Beverley, you can use our online booking form or call **01482 881128**.



Botterill & Co

Chartered Certified Accountants

We are a modern and professional accountancy practice ideally located to serve businesses in Beverley and the surrounding area.

We utilise modern accounting technology to provide you with a cost effective, professional service.

Our services:

- Annual Accounts
- Tax Planning
- Management Accounts
- Tax Returns
- Company Formations
- Payroll
- Cloud Accounting
- Bookkeeping & VAT

For a free initial consultation please contact us:

Office: 01482 862240

Mobile: 07966 051458

Email: gareth@botterillco.co.uk

Website: www.botterillco.co.uk

1st Floor Offices, 40 Norwood, Beverley, HU17 9EY

BEVERLEY **MOTOR WORKS**

INDEPENDENT
BMW & MINI
SPECIALISTS

Our dealership expertise means high quality car servicing at a fair price...

Unit D1 Grovehill Industrial Estate,
Annie Reed Road, Beverley HU17 0LF

Call today: **01482 881 128**

Visit: beverleymotorworks.co.uk



BOOK YOUR MOT TODAY



PUZZLE PAGE

WORDSEARCH

S V N S I I S S U V U W V F S
 B T D D F J E R M J J M Z M U
 N T N S O C I A L I S I N G N
 O E U E G I T I O U L A Q I S
 I V D F V N I L B S P E K O H
 T A I R Z E V D Y A Q S S C I
 A O X Q A Q I T U B S B T J N
 S J M T R G T Q N Y G Q P H E
 R K B T O S C E A A L U E M K
 E J I V W T A D M U D G W K G
 V Y E S T B I M K Z D A S Z N
 N H H T N L W M U L L W M W U
 O E X F O S O W L K I M L U O
 C Q E H M I V H S I A T Z A W
 E D I S Y R T N U O C K A Y A

- | | |
|--------------|-------------|
| ACTIVITIES | HOLIDAYS |
| CONVERSATION | SMILES |
| COUNTRYSIDE | SOCIALISING |
| EVENTS | SUNSHINE |
| GARDEN | WALKS |

WHERE IN BEVERLEY?

Where in Beverley
 can you find
 this landmark?
 Answer on Page 26.



KNOW YOUR NUMBERS

Each row adds up to the total
 on the right.

Each column adds up to the total
 at the bottom.

The diagonals add up to the totals
 top and bottom.

X	X	X	X	10
5	3	1	?	13
7	?	3	5	24
?	2	?	2	?
1	7	4	?	18
?	21	14	17	?

Answers on Page 26.

Do you have any amusing stories,
 quotes or pictures? Send them to
info@justbeverley.co.uk

QUOTE OF THE MONTH

If you say "Good Morning" or
 "Good Afternoon", mean it.

THOUGHT FOR THE MONTH

Summer Time - Make the most of the
 daylight, enjoy the outdoors.

DREAM DOORS®
 NEW LIFE FOR OLD KITCHENS



SUMMER SALE
 NOW ON!
20% OFF
 T&Cs Apply

VISIT OUR
 SHOWROOM NOW:
 4a Belprin Park,
 Swinemoor Lane,
 Beverley, HU17 0LN

Call us now for a free estimate:
01482 861 653



Checkatrade.com
 Where reputation matters
 AVERAGE SCORE **9.7/10**



QUALITY BEDROOM MAKEOVERS BY LOCAL PROFESSIONALS

- Bespoke sliding wardrobes
- Styles to suit every home
- Wide range of colours and finishes to choose from
- 96 showrooms nationwide

www.dreamdoorsbedrooms.co.uk

Give your kitchen a Summer makeover

THE UK'S #1 KITCHEN MAKEOVER EXPERTS

- From simple door replacements to complete fitted kitchens
- Fully installed by local professionals in just a few days
- Choose from a large selection of doors, worktops and appliances
- 96 showrooms nationwide

www.dreamdoors.co.uk



FOLLOWING
 GOVERNMENT
 GUIDELINES

OUT IN FRONT AT WILSON WHEELS

Summer and cycling go together like a hand in a glove. As the weather improves our bikes tend to see more of the roads and we explore even further, enjoying the countryside and all that nature offers.

Nathan and Dave at Wilson Wheels have already been putting all their individual experience to the test checking out the local roads and local racing events. It is true to say that after 20 years, the Wilson Wheels team are still winning races and remain out in front.

Recently, Dave won a time trial and was the quickest in his category, which is a great start and sets him up for a good season ahead.

If you are out and about, make sure to look out for those bright orange and white shirts and give them a cheer, the lads will be looking for the top spot in the local North Newbald Road Race Event scheduled for early June, or if you fancy something different, check them out at the Ennerdale Race Circuit where they will be participating this month..

Picture shows the team at the Monstercross event at Catton Park on the Derbyshire border. With 191 riders, and the team coming in from 8th to 54th, they remain in the top 28% of the field. Nathan Wilson came 8th in the senior category, a great result for the start of the year.

Wilson Wheels, with all their experience, are still delivering results both on and off the bikes, ensuring when you buy your bike it's the right one for you and you have the confidence for the backup and service. Wilson Wheels are out in front.



WHERE IN BEVERLEY?

The Phone Box on Laigate, adjacent the Memorial Hall.



'KNOW YOUR NUMBERS' ANSWER

Missing numbers in yellow

X	X	X	X	10
5	3	1	4	13
7	9	3	5	24
8	2	6	2	18
1	7	4	6	18
21	21	14	17	26



Pop in store to see the new 2021 bike range

WILSONS WHEELS

T: 01482 882881
W: www.wilsonswheels.co.uk E: info@wilsonswheels.co.uk

WE NOW STOCK CUBE CYCLES

2021 RANGE NOW AVAILABLE

Electric Bikes in Stock - Demo one today!

- Adult Bikes
- Children's Bikes
- Electric Bikes
- Clothing for all cycling weather
- Parts and accessories

89a Grovehill Road, Beverley, East Yorkshire HU17 0EJ
NOW OPEN: Monday - Saturday 8.30am - 5.30pm
Sunday: CLOSED - Out riding our bikes

Monks Walk Inn

19 Highgate, Beverley HU17 0DN
Tel: 01482 880871
www.monkswalkinn.com

WELCOME BACK TO ALL OUR CUSTOMERS

TABLE SERVICE

GOOD BEER • GOOD COMPANY

*Open Inside & Outside
Live Music Wednesdays,
Thursdays and Sundays*

*Fringe Festival Music
Friday 18th - Sunday 20th June*

THE EXERCISE AND HEALTH BENEFITS OF SWIMMING

When was the last time you went for a swim?

Some people may not have taken a proper dip in the local pool since they were a kid. Or maybe swimming for you is associated with sunshine, loungers and the beach. But have you considered that swimming is a great way to exercise and could be your new favourite hobby?

Other health benefits of swimming:

It may be that the appeal of swimming is less about the exercise itself and more about the other benefits it provides, particularly for people with specific conditions. There are other benefits to swimming, related to mental health, long term health and day to day wellness that you may not know about. Whilst some of these benefits are probably applicable to a wide range of exercises there are some where swimming stands above the rest.

Alleviate stress and depression:

It's common knowledge that many forms of exercise alleviate stress, depression and other mental health problems. Swimming is no different and also allows you to exercise without the pressure and competitiveness of other sports making it even more appealing for some.

Helps with recovery from illness or disability:

If you're recovering from an injury, swimming may be a great way to exercise and speed up the healing process without causing any unnecessary stress or damage to the healing part of the body.

Get kids exercising:

When you're raising kids, finding ways to get them to exercise regularly can be difficult. All children are different and not all will want to join the local football team. Swimming however presents a different alternative. It can be great fun and being in the water can also expand the imagination.

Swimming can also sometimes be beneficial for those with Asthma and help improve sleep.



BOOK TODAY!

- PRIVATE POOL
- LADIES OF ALL AGES
- £60 FOR A 6 WEEK BLOCK
- PAYABLE IN ADVANCE
- VENUE: DUNSWELL, NEAR BEVERLEY
- WEDNESDAYS 1PM & 2PM
- 45 MINUTE CLASSES

EXCLUSIVE AQUA CLASSES

CIMSPA Employer Partner **CIMSPA** Education Partner | Training Provider **Swim England** Swim School Member



Contact our friendly team for further information on
01482 229676 or info@sportsability.org.uk
www.sportsabilityswimschool.co.uk
@SportsabilitySwim SportsabilitySwimSchool



LET LOOSE!
YOUR ADVENTURE AWAITS

BOOK YOUR HEN/STAG PARTY

AT LET LOOSE! ADVENTURE PARK!

- HIGH ROPES • LOW ROPES • **BIG LEAP** • SUPER SLIDE
- INDOOR SOFT PLAY • ADVENTURE PLAYGROUND • **CAFÉ**

BOOK ON LINE

www.letlooseyorkshire.co.uk
info@letlooseyorkshire.co.uk
OR CALL **01482 843475***

*£3 booking fee will be charged on telephone bookings, except when booking using a gift voucher.



BURTON ELECTRICAL SOLUTIONS

HIGH QUALITY ELECTRICAL WORK ACROSS EAST YORKSHIRE AND THE HUMBER REGION



Stay safe - loose wires cause fires!

DOMESTIC COMMERCIAL TESTING FAULT DIAGNOSTICS

Whether it's for your home, rental property portfolio or business premises, all electrical installations need to be checked periodically by a qualified electrician. For a quote contact:

Andrew Burton 01964 552769 • 07585 601730 www.burtonelectricalsolutions.co.uk info@burtonelectricalsolutions.co.uk



BURTON ELECTRICAL SOLUTIONS - CAN YOU SPOT THE DIFFERENCE?

With the easing of lockdown on everybody's minds, now is the time to start thinking about spending time in the garden soaking up the summer sunshine.



In preparation for the summer ahead whether it's tidying the garden or maybe even power washing your paths, do the job the right way. Outdoor power sockets are a must. An outdoor socket, which should be protected by an RCD unit, makes working with outdoor electrical equipment simple and safe to use.

Having safely finished in the garden, it's time to cool off, nothing better than a shower to freshen up. Or maybe not if your shower is like this one!

Did you spot the problem, would you have taken a shower? Occasionally there is a need to correct electrical work which others have carried out which can politely be described as "downright dangerous". Do not risk your life just to listen to music in the shower or run an extension socket right there in the bathroom so you could use your hairdryer without getting out of the shower?



Unfortunately in the UK about 70 people die and 1.2 million are injured in electrical accidents at home every year. A significant proportion of these could easily be avoided through the use of a little common sense.

If in doubt consulting a qualified electrical engineer is a must and remember Loose wires do cause fires. Contact Burton Electrical on: 01964 552769 www.burtonelectricalsolutions.co.uk

IN THE GARDEN... JUNE

Well, having had the sunniest and coldest April for a great many years, it was followed by the wettest and coldest May in 25years!! So, I for one am hoping that June is a 'flaming June' - I want to get out into my garden and enjoy the work (and investment) that I have put in over the last twelve to fifteen months.

June is early summer in the gardening calendar, there is still lushness in the foliage of plants and flowers are appearing in abundance. Many Clematis will be in full flower and Peonies will be showing off their magnificent blooms. One of my favourite perennials is Alchemilla mollis, with its primrose yellow flowers and ornamental leaves that hold raindrops after showers, some gardeners consider it a weed (because it spreads quite quickly), but if you want a ground cover plant that grows in full sun or partial shade it is ideally suited at the edge of a border.

Tasks for June...

All the hard work should have been done earlier in the year. However, you will need to keep on top of things so...

- Mow the lawn - don't cut it too short, if we have a really dry spell the lawn will go brown if you do.
- Keep a look out for pest, particularly on roses and lush green shoots.
- Keep on top of weeds.
- Tidy up/lift any remaining spring flowering bulbs.
- Lift and divide daffodils - especially if they have been in the same place for a long time. Daffodils can become crowded and over time stop producing flowers (this is called coming up blind).

• WATERING PLANTS - I'm well aware that we have had one of the wettest May's ever but due to a combination of longer days, and hopefully drier/sunnier days and the rate at which plants 'drink' water, you may need to water the garden. Newly planted plants, young vegetables and plants in containers will need watering most. Watering should be done thoroughly - ideally either early in the morning or in the evening. Hanging baskets and small containers should be watered daily and fed with a liquid feed once a week. If you have large areas in the garden to water don't try and water the whole area by splashing a bit of water on daily, split the garden into areas and give each a 'good soak' which should last up to a week. Don't be fooled by heavy thundery downpours - often most of the rain 'runs off' and doesn't enter the soil.

• Feed plants in containers with a water soluble feed - this can be done every time you water and certainly once a week.

• DEADHEADING (removing flowers as they fade) - this is an important task which needs doing regularly. Deadheading will extend the flowering period, by diverting the plants' energy from producing seeds into new growth and flowers. To deadhead cut back to just above a bud lower down the stem of the plant using secateurs or garden snips.

So until July and fingers crossed June comes up trumps with some good weather,

Happy gardening. J.

Jane Dale of 'Designed Gardens'. Tel: 07983 392 411.



CREATE A GARDEN SPACE YOU LOVE

From relaxing to entertaining, partying with friends or an impromptu BBQ. Let us help you create a garden you love.

**BOOK A
FREE DESIGN
APPOINTMENT
ONLINE OR IN
BRANCH**

SWINEMOOR LANE

HU17 0JX | 01482 880088 | bevelery.mkmbss.co.uk
OPEN MON-FRI 07:30-17:30 SAT - 07:30-NOON



PAVING • DRIVEWAYS • FENCING • DECKING • OUTDOOR LIVING

EXPLORE OUR COUNTY BY BUS THIS SUMMER

Local bus company East Yorkshire has started its summer season, offering a range of fantastic days out all accessible by bus. Explore the North York Moors, enjoy a day out in York or visit the coast at Bridlington or Scarborough, while travelling green and not having to worry about parking.

The popular Moors Explorer is the perfect way to travel to the North York Moors, running every Sunday and bank holiday from 25 July until 30 August.

Take the opportunity to explore the area's quaint villages for a great day out. Spend a few hours in Pickering, then jump on the bus again to travel to picturesque Hutton le Hole or the Moors National Park Centre at Danby.

Buy your Moors Explorer ticket on the bus with



contactless or cash, and save with a Go-Anywhere ticket giving unlimited travel all day with great value adult, child and concessionary options available.

Take EastRider X46/X47 from Beverley to York and travel in style on East Yorkshire's brand new, ultra-low emission buses featuring extra-comfy seating, free WiFi, USB and wireless charging, tables upstairs and next stop announcements helping you know when to get off. There are also cycle racks on board, making it easy to extend your visit with a bike ride.

Visit the seaside with Service 121 to Bridlington then explore further with open top bus rides along the coast to Flamborough, or take Service 12/13 to Scarborough.

Beachcomber open top buses run in Bridlington on weekends and school holidays, and every day in Scarborough, with both offering spectacular scenery.

Book your ride in advance at scarboroughpentopbus.co.uk or buy on board with contactless or cash.

For full timetables and prices, see the East Yorkshire website at eastyorkshirebuses.co.uk or download the EY Buses app from Google Play or the Apple App Store, or pick up a leaflet



from Beverley Tourist Information at the Treasure House (subject to opening times).

Want to travel further afield? East Yorkshire also offer a range of days out by coach throughout the summer, with most picking up in Beverley.

See eastyorkshirecoaches.co.uk



NORTHERN LIGHTS GETS THE GREEN LIGHT

From gazing at the Northern Lights to soaking in a geothermal pool surrounded by volcanic landscapes, Iceland is a unique destination that offers incredible opportunities to get close to nature.

From glaciers, waterfalls and geysers to whale watching, it really is an incredible destination. Its sheer beauty and landscape makes it an ideal destination for those interested in hiking, cycling, geology, and photography.

For those that enjoy getting active and adventurous you can take in snowmobiling, bumpy dusty buggy tours, trekking volcanoes, or snorkelling and diving in Silfra where the North American and Eurasian tectonic plates cut through Iceland.

It is particularly popular to take in a short break of about three nights and book in a Northern

Lights excursion, the Golden Circle Tour, and an opportunity to relax in the Blue Lagoon.

The Golden Circle tour enables you to take in a circular tour of the Southern region of Iceland, in particular the Thingvellir National Park, Geysir Hot Springs, and Gullfoss Waterfall. Whilst a sighting of the elusive Aurora Borealis is not guaranteed the best time of year is from October to March and the experience can be enjoyed by either super jeep or a cruise.

Iceland can offer a very different experience in the summer and works particularly well as a self drive holiday, so perfect for those that prefer to travel independently and explore a destination at an easier pace than the short break offers.

So, summer or winter, main holiday or short break, the land of fire and ice really is simply quite wonderful.



At Travel Counsellors, we work closely with ground agents so that we can build an itinerary to suit the client, all tailored to your interests to ensure that your holiday includes all the experiences you are looking for.

As one of the countries that is featured on the Green List, it is a



destination I am looking forward to visiting in October. If I will be lucky enough to spot the Northern Lights remains to be seen, however a glass of bubbly in the Blue Lagoon is a guarantee, and an experience I am very much looking forward to.

Amanda McConnell, Travel Counsellors.
T: 01482 770540

E: amanda.mcconnell@travelcounsellors.com
W: www.travelcounsellors.com/amanda.mcconnell

Let's holiday again!



Clean & safe Great British holidays. We're ready, are you?

Get picked up in Beverley.

FREE door to door pick-ups from your home!

This is just a selection of great value holidays available. See our brochure for more...

From
£359

The Beautiful Lake District

Monday 21 June – 5 days from £399pp

Hotel: Shap Wells Hotel ***+

Northumberland, Castles & Coasts

Sunday 11 July – 5 days from £419pp

Hotel: Holiday Inn Gosforth Park ***+

The Quay to Three Counties

Sunday 18 July – 4 days from £389pp

Hotel: Hollin House Hotel ***

Scenic South Wales

Thursday 29 July – 5 days from £449pp

Hotel: Mercure Swansea ***+

Eastbourne & The Sussex Coast

Monday 9 August – 5 days from £459pp

Hotel: Langham Hotel, Eastbourne ***+

A Look at Hampshire's History

Monday 16 August – 5 days from £465pp

Hotel: Norton Park Hotel, Winchester ****

Monster Cruise & Steam in Scotland

Monday 23 August – 5 days from £465pp

Hotel: Highlander Hotel, Newtonmore ***

Warner Lakeside Coastal Village

Adults only

Monday 30 August – 5 days from £379pp

Hotel: Lakeside Coastal Village, Hampshire ***+

Stowe Away to Silverstone

Thursday 9 September – 5 days from £425pp

Hotel: Marrott Hotel, Northampton ***+

Norfolk Broads Explorer

Monday 13 September – 5 days from £459pp

Hotel: Dunston Hall, Norwich ****

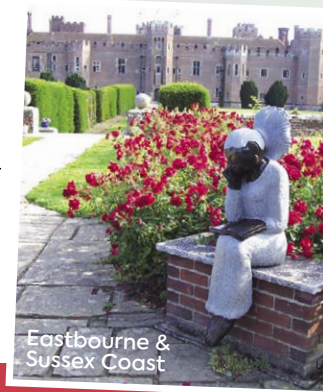
Have a Blast in Essex

Friday 1 October – 4 days from £359pp

Hotel: Comet Hotel, Hatfield ***+



Chatsworth House



Eastbourne & Sussex Coast



Scotland



Making coach travel safe

Our focus will always be on keeping our passengers and drivers safe.

- : Social distancing will be in place, with a reduced capacity.
- : Face coverings are required for the whole journey, unless you're medically exempt.
- : Hand sanitiser is available on all our coaches.
- : Extra cleaning with anti-viral fogging takes place before every holiday, and touchpoints will be cleaned regularly during your trip.

Our Covid-19 guarantee

If we cancel your holiday because of coronavirus restrictions, you will have the choice of a swap onto a future holiday, subject to availability, or be issued with a full refund – it's up to you. Our full Covid-19 policy can be read on our website or with our 2021 brochure.

Get your brochure and book online now or call **01482 222444**.

Single supplements apply for some holidays.

Protect your community. We're stronger together.

Getting vaccinated will help us get back to normal sooner and help prevent the spread of COVID-19.



Keep doing what you're doing and follow the national Hands, Face, Space, Fresh Air advice. If indoors, please ventilate well to prevent a rise in infection rates.

